

LASER INTERFEROMETER GRAVITATIONAL WAVE OBSERVATORY

- LIGO -

CALIFORNIA INSTITUTE OF TECHNOLOGY
MASSACHUSETTS INSTITUTE OF TECHNOLOGY

Document Type publication	DCC Number LIGO-P010035-00-D	Date 30 th of October 2001
The Linear Variable Differential Transformer (LVDT) position sensor for Gravitational Wave Interferometer low-frequency controls.		
Hareem Tariq, Akiteru Takamori, Chenyang Wang, Riccardo DeSalvo, Alberto Gennai, Lee Holloway, Giovanni Losurdo, Szabolcs Márka, Federico Paoletti, Diego Passuello, Virginio Sannibale, Ruggero Stanga		

Distribution of this draft: TBD
Paper submitted to Nuclear Instruments and Methods

California Institute of Technology
LIGO Laboratory - MS 18-34
Pasadena CA 91125
Phone (626) 395-212
Fax (626) 304-9834
E-mail: info@ligo.caltech.edu

Massachusetts Institute of Technology
LIGO Laboratory - MS 16NW-145
Cambridge, MA 01239
Phone (617) 253-4824
Fax (617) 253-7014
E-mail: info@ligo.mit.edu

www: <http://www.ligo.caltech.edu/>

**The Linear Variable Differential Transformer (LVDT) position sensor
For Gravitational Wave Interferometer low-frequency controls.**

HareemTariq^(a,b), Akiteru Takamori^(a,c), Flavio Vetrano^(f,j), Chenyang Wang^(a),
Alessandro Bertolini^(a,g), Giovanni Calamai^(f,i), Riccardo DeSalvo^(a),
Alberto Gennai^(d), Lee Holloway^(e,d), Giovanni Losurdo^(d), Szabolcs Márka^(a),
Massimo Mazzoni^(f,h), Federico Paoletti^(d), Diego Passuello^(d), Virginio Sannibale^(a),
Ruggero Stanga^(f,h).

- a) LIGO project, California Institute of Technology, 1200 E. California Bl., Pasadena, CA, 91125, USA
- b) Florida Institute of Technology, 150 W. University Bl., Melbourne, FL, 32901, USA
- c) Department of Physics, University of Tokyo, 7-3-1 Hongo, Bunkyo-ku, Tokyo 113-0033, Japan
- d) INFN Sezione di Pisa, via Livornese 1291, S. Piero a Grado, 56100 Pisa, Italy
- e) Dept. Of Physics, University of Illinois at Urbana-Champaign, 901 West Illinois Street, Urbana, IL 61801
- f) INFN Sezione di Firenze, via G. Sansone 1, 50019 Sesto Fiorentino, Firenze, Italy
- g) Dipartimento di Fisica, Università di Pisa, via F. Buonarroti, 4, 56100 Pisa, Italy
- h) Dip. di Astronomia e Scienze dello Spazio, Università di Firenze, Largo E. Fermi 2, 51125 Firenze, Italy
- i) Osservatorio di Arcetri, Largo E. Fermi 4, 51125 Firenze, Italy
- j) Istituto di Fisica, Università di Urbino, via S. Chiara 27, 61019 Urbino, Italy

(*) Corresponding authors, htariq@ligo.caltech.edu and desalvo@ligo.caltech.edu

Abstract

Low-power, Ultra-High-Vacuum compatible, non-contacting position sensors with nanometer resolution and centimeter dynamic range have been developed, built and tested. They have been designed at Virgo as sensor for low frequency modal damping of Seismic Attenuation System chains in Gravitational Wave interferometers and sub-micron absolute mirror positioning. One type of these LVDT's has been designed to be also insensitive to transversal displacement thus allowing 3D movement of the sensor head while still precisely reading its position along the sensitivity axis. A second LVDT geometry has been designed to measure the displacement of the vertical seismic attenuation filters from their nominal position. Unlike the commercial LVDTs, mostly based on magnetic nuclei, the LVDTs described here exert no force on the measured structure.

Introduction

One of the most simple and effective Seismic noise Attenuation Systems for Gravitational Wave Detection interferometers^{1,2,3} is a chain of pendula^{4,5,6,7,8} suspended from a very low frequency stage called Inverted Pendulum (IP). The IP^{9,10} has the triple function of,

- Pre-filtering low frequency seismic noise to diminish the excitation of the rigid body motion resonance of the attenuation chain;
- Provide a suitable platform to damp the above mentioned resonance;
- Provide the mechanical compliance to allow precision positioning of the mirror suspended from the chain using small forces.

The attenuation chains provide seismic attenuation in the frequency region of interest for gravitational wave detection and are capable of delivering the required seismic attenuation factors ($\sim 10^{-10}$) above 5 to 10 Hz, depending on the pendula lengths.

The IP is composed of three flex joints, each supporting a leg. At the top, the three legs are connected to a rigid table by means of small flexures. The IP has two translational modes and one torsional mode.

A triplet of accelerometers^{11,12} is mounted at 120° , in pinwheel geometry, at the periphery of the IP top table. It is designed to detect the acceleration in the IP's three degrees of freedom. Their signal is fed to actuators¹³ to damp the rigid body resonant modes of the chain^{14,15,16}, and hence reduce the mirror r.m.s. residual motion of the suspended mirror to a few tens of nanometers in the frequency band between 10 mHz and 5 Hz.

The accelerometers are inertial sensors, totally insensitive to velocity, and cannot provide positioning of the IP table (and of the mirror suspended from it) with respect to a local frame. Additionally, at low frequency (typically below 100 Hz, depending on the mechanics precision and ground stability) inertial sensors can be more sensitive to tilts than to real accelerations. In order to take full advantage of the accelerometer performance it is necessary to complement them with a set of high precision position sensors. The specifications of these position sensors are as follows:

- Linearity within 1% over +/-10 mm, to match the typical IPs dynamic range
- Position resolution ~ 10 nm r.m.s. to allow the reduction of mirror residual motion
- Insensitivity to movements in the directions orthogonal to the sensing axis, to allow for free movements of the IP on the horizontal plane and not to re-inject seismic signals from the orthogonal directions in the feed back loop
- Force-free and contact-free, to avoid short circuiting of the seismic excitation to the IP table
- Only passive components inside the vacuum system, for reliability reasons
- Fully UHV compatible, to prevent contamination of the vacuum conditions.

Special LVDT position transducers have been designed for the GW interferometer VIRGO, to satisfy all the above requirements. Note, also, that all the electronic circuitry is placed outside the vacuum enclosure to satisfy the passive instrument requirement. The LVDT are driven and read-out at the end of 20 or more meters of twisted shielded cable without loss of resolution. They turned out to be so versatile that a modified, smaller version (that has been defined as a “second type”) has been designed, which is

being used in several other locations of the GW interferometer seismic attenuation systems, as a sensor for all the Virgo superattenuator filter vertical working point, in the TAMA MGASF top filter, and as generic precision position sensor in mechanics R&D¹⁷.

The LVDT working principle

The LVDT is composed of three coils whose cross section is shown in Figure 1¹⁸. The central emitter coil, driven with a sinusoidal signal at a frequency between 10 and 20 kHz, mounted between two larger receiver coils; the two receiver coils are identical, counter-wound and connected either in series or in parallel. The emitter is mounted on the IP table while the two receivers are attached on a reference structure; when the emitter is exactly in the mid point between the twin receiver coils, no net signal is induced. When the table movements move the emitter coil in a direction, a sinusoidal signal appears on the receiver coils. This signal has amplitude roughly proportional to the displacement from the center position. If the coil is moved in the opposite direction the sign of the induced sinusoid is changed.

By a careful choice of the coil geometry it was possible to get better than one percent linearity over 25 mm of movement range with less than a percent sensitivity to transversal movements. Also the sophisticated design of the lock in amplifier circuit allowed for better than 10 nm r.m.s. position resolution over the afore mentioned range.

The coils are made of Kapton-coated copper wire, wound around glass or Peek supports, and are therefore completely UHV compatible. Although the coils were accurately spooled, the lumped coil of this design makes it quite insensitive to the spooling precision.

Unlike conventional magnetic core LVDTs¹⁹, this arrangement has no ferromagnetic components and does not generate unwanted forces when exposed to external magnetic fields

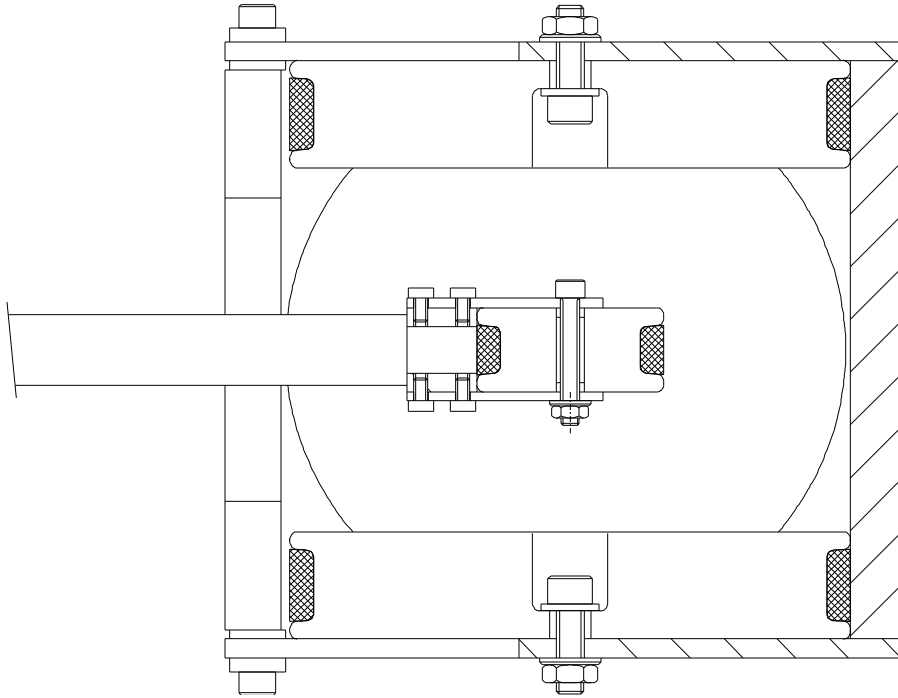


Figure 1: Schematic view, sectioned along the symmetry axis, of a LVDT position transducer. The three coils appear as the six darkly shaded rectangles. The coil spools are made of either glass or Peek, the coil supports are made of slotted and mutually isolated aluminum parts to avoid eddy current loops. No effort is made to make thermally compensated supports because they are intended for use in a thermally stabilized vacuum envelope.

The one percent linearity and transversal motion insensitivity are obtained by using two simple circular coils wired in series and placed in a Maxwell Pair (MP) configuration.

The MP configuration is related to the better-known Helmholtz Coils (HC) configuration. The HC coil is optimized to deliver a magnetic field intensity as uniform as possible over a volume as large as possible at the center of the pair. The MP is designed to deliver a maximally uniform field gradient over the same volume. The MP configuration is slightly less compact than the HC one; in the MP the coil separation s is

$$s = r\sqrt{3} \quad \text{where } r \text{ is the coil radius}$$

The MP pairs also differ from the HC because the current flows in opposite directions in the two receiver coils to generate the linear position signal of the LVDT. If the two MP coils had parallel and same direction field, the emitter coil would induce a signal insensitive to position. Opposite current flow in the windings induces null signal at the central position while a remarkably linear signal is obtained along the displacement when the emitter coil moves along the MP symmetry axis. The instrument remains insensitive to movements along other two axis. The MP has a reasonably large sweet spot (~20% of the volume). As long as the emitter coil remains in the sweet spot, good linearity and insensitivity to transversal motion is achieved. An example of the calculated linearity is shown in Figure 2.

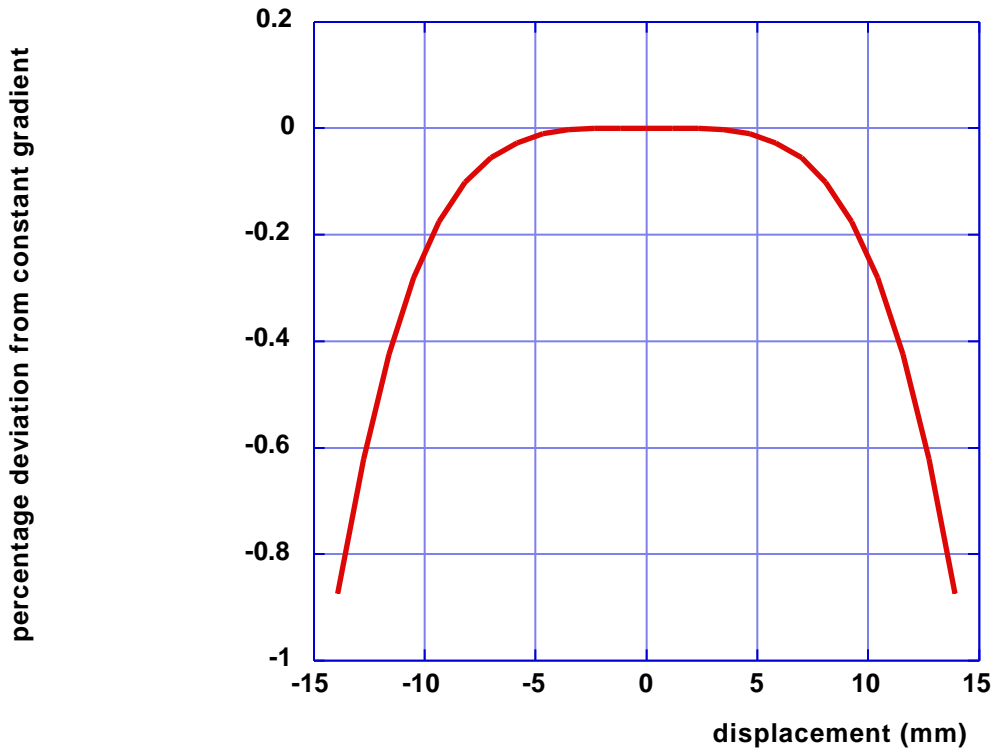


Figure 2: Percentage deviation of the magnetic field gradient along the sensitive axis of the LVDT.

LVDT measured performances

The LVDT is expected to be linear well below a percent over a range of 30 mm and it is quite insensitive to movements in the other two orthogonal directions. The expected linearity is confirmed by the calibration of the actual instruments. The emitter coil is moved along the LVDT axis with the help of a micrometric positioning stage. A calibration constant of about 500 mV/mm was obtained as shown in Figure 3 (top), with less than +/-1% deviation from the linearity; Figure 3 (bottom). The very symmetric and

almost sinusoidal residuals seem to point to geometrical effects due to the non-negligible thickness of the three coils or to the imperfect spacing of the two receiver coils.

Alignment errors of the emitting coil with the receiving coils' symmetry axis affect the LVDT sensitivity only to the second order and may introduce some unwanted sensitivity to transversal motions.

The insensitivity of the LVDT to transversal motion is shown in Figure 4. Only the trend of the measured distribution is important. The dispersion of the measurement points is due to a small wobble of the micrometric sled in the magnetic field gradient direction, because the equations of magnetic field in vacuum require smoothness of the LVDT response. The flat trend of the measurement proves that the actual sensitivity of the LVDT to transversal movements is very small up to a radial distance of 12 mm.

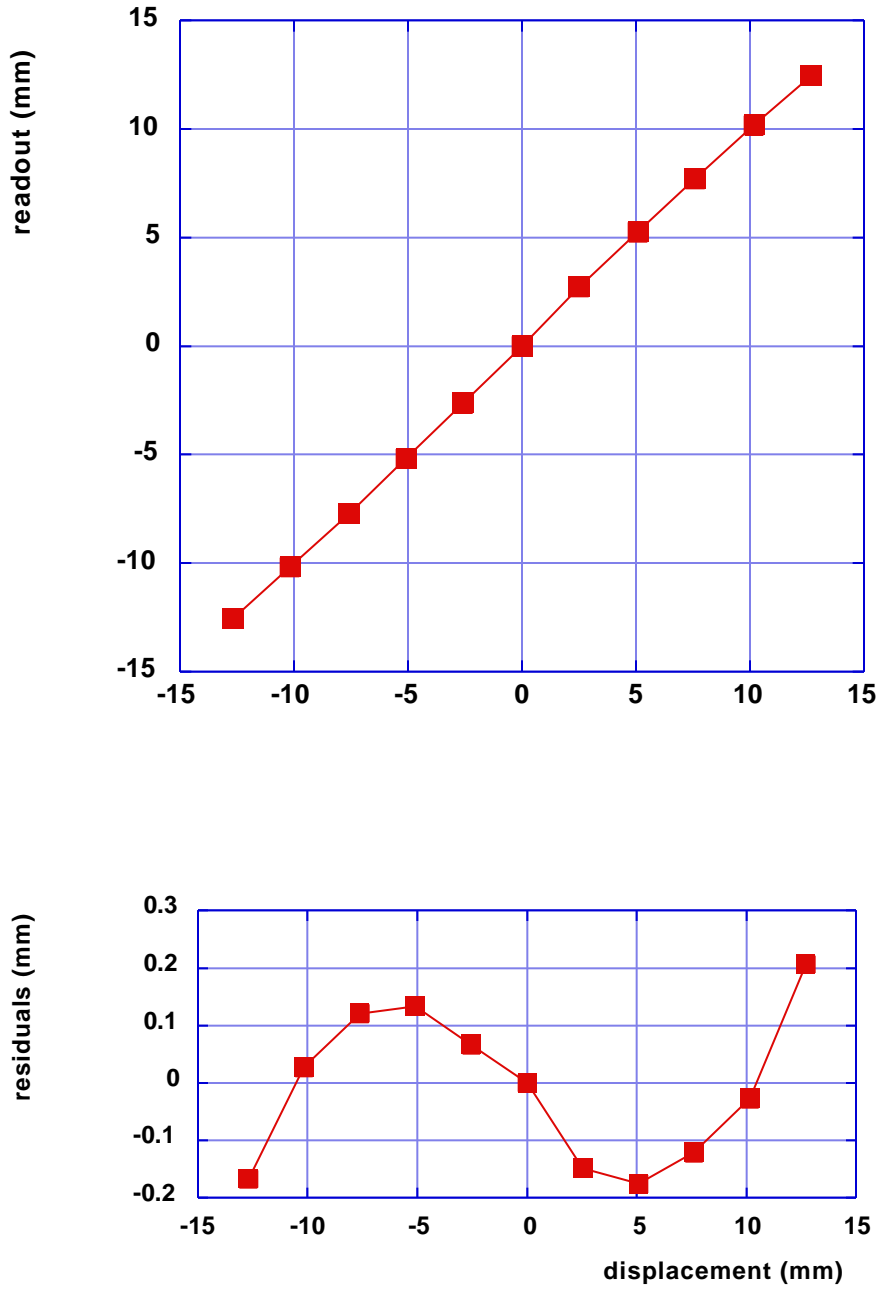


Figure 3: Calibration measurement of an IP LVDT (top) and its residuals from a linear fit (bottom).

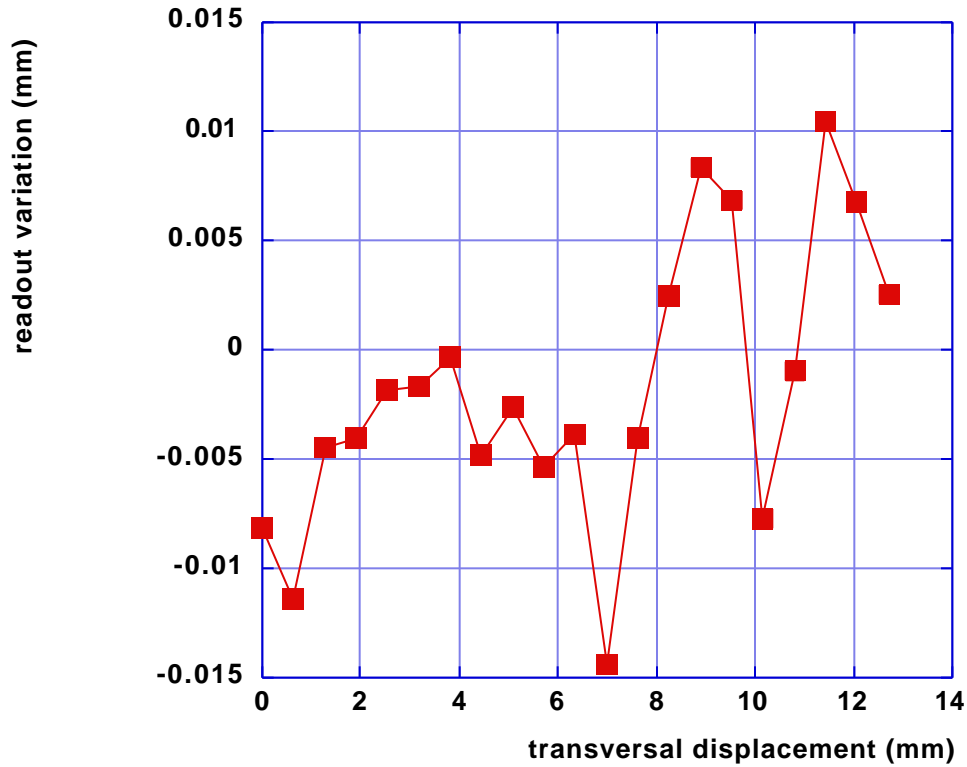


Figure 4: Sensitivity of a LVTD to transversal motion.

In principle the LVDT position resolution is only limited by the electronics noise. The electronics noise is kept low by using a simple phase locked signal detection technique. The signal sent to the emitter coil is also used to synchronize a low noise, double input linear gate. The amplified signal of the receiver coils and its opposite are sent to the two alternate gate inputs. For a more detailed discussion of the electronics see ref.²⁰. The actual circuit can be found in ref.²¹.

In the IP configuration of the LVDTs, described above, a resolution of 20 nm was achieved, as shown in Figure 5. Further electronics noise improvements have led to LVDT resolution twice as good as what is shown in Figure 5; it is less than 10 nm r.m.s..

Other applications of LVDTs

Smaller versions of the LVDTs, with a different geometry, shown in Figure 6, ²² have been used to generate diagnostics of passive filters of the attenuation chains in the Virgo superattenuators⁴ and position feedback signals in the top filter both in the superattenuators and in the TAMA-SAS²³. They have been used also as position sensor in R&D creep measurements¹⁷.

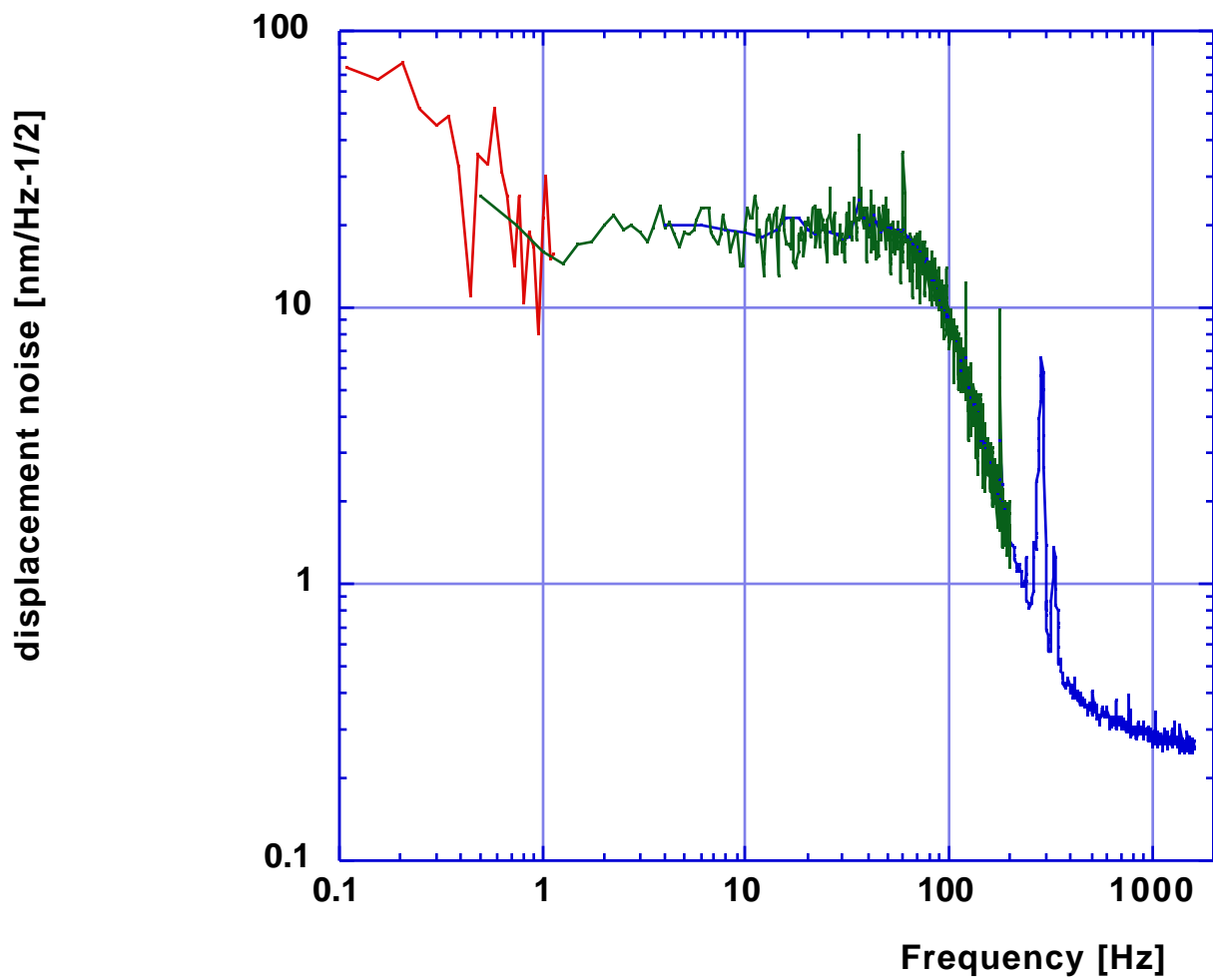


Figure 5: Spectral r.m.s. position resolution of the LVDT. The apparent drop off of the residual noise above 50 Hz is generated by the low pass filters after the demodulation and it is not an indicator of improved sensitivity.

These smaller LVDTs have a simpler, monolithic geometry and rely on a different geometry to achieve good linearity. They are made with long, thin, uniformly wound cylindrical coils rather than with short, lumped, loop-like coils. Similarly good linearity is achieved by choosing the right coil aspect ratios (Fig. 6). While mechanically much simpler and self-supporting, a feature quite useful for small geometries, these coils are more sensitive to the smoothness of the coiling of the wire around the spool. Even small imperfections of coiling are easily detectable as local perturbations on the linearity of the response.

The LVDTs are obviously very sensitive to the coil spool stability. In a creep measurement where nylon spools were used, the creep signal was actually dominated by the spool shrinking while it itself progressively dried up in the dry thermally stabilized measured chamber²⁴. Ceramics or Peek coil spools have been successfully used as a replacement to avoid this problem and to achieve the desired signal stability¹⁷.

While the linear dynamic range of these smaller LVDTs is similar to that of the bigger LVDT versions (Figure 7), they do not allow much of a lateral movement and are used only where the mechanics demands a purely linear response. These small LVDTs are routinely used with higher gain (in part obtained with more coil layers in the emitter and in part electronically) to drive their position resolution below nm level. This is obtained at the price of a dynamic range reduced to a few mm only.

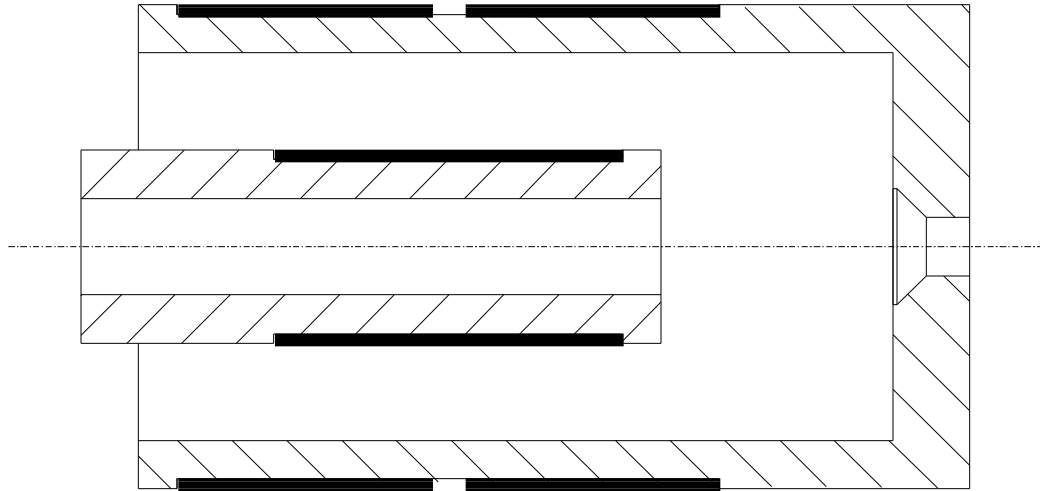


Figure 6: Geometry of a small LVDT. The emitter coil is 9 mm in diameter and 18 mm long. The receiver coils are continuously wound on a spool 24 mm in diameter, 28 mm long; the first 14 mm are wound in one direction and the remaining 14 mm are counter-wound; in the drawing a gap is shown in the center to show where the winding direction changes. The receiver coils are wound in a single layer without any space between each wire turn. In the emitter more than one layer is often wound to improve the sensitivity.

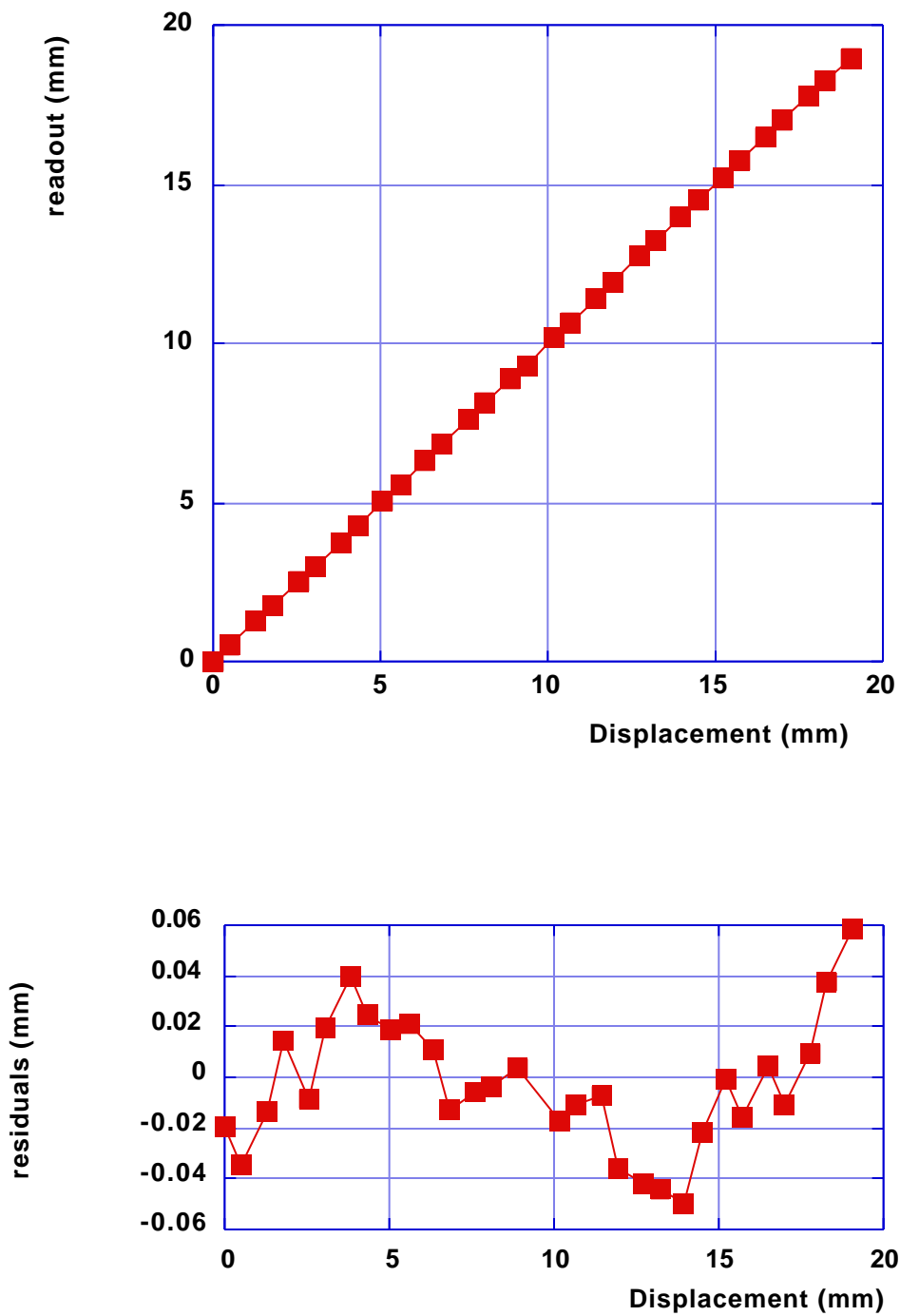


Figure 7: Linearity performance of the small LVDT of Figure 6.

Problems due to electronics

The LVDT drivers are sensitive to variation of amplitude of the excitation signal. Special care was in designing the LVDT driver card in order to generate a suitably stable excitation signal. These internal frequency generators of the LVDT drivers are perfectly adequate when absolute positioning resolution is not an issue, like for example in mode damping feedback circuits, where drifts \ll mHz are irrelevant.

Thermal stabilization of the frequency generator and of the LVDT driver card is needed when absolute precision is necessary. For example thermal drifts have been found to be the dominating noise source in long-term precision position measurements¹⁷.

For very high stability use, the LVDT driver card is provided with an input for an external, amplitude-stabilized oscillator.

Conclusion

High resolution and high linearity non-contacting position sensors have been developed to satisfy the requirement of GW detector passive Seismic Attenuation Systems. They are fully UHV compatible. Only passive LVDT coils are mounted inside the vacuum enclosure thus guaranteeing a very high level of reliability. Position resolutions below the nm within useful ranges of a few mm and percent linearity have been achieved. Their low sensitivity to movements in the orthogonal degrees of freedom is particularly well suited for use in feedback loops. This precision position detector, designed for position feedback in GW Seismic Attenuation Systems, has proved useful for many other non-contacting position measurements.

References:

¹ G. Ballardin, et al., “Measurement of the Virgo superattenuator performance for seismic noise suppression”, *Rev. Sci. Instrum.*, Vol 72, no 9, p. 3643-3652 (2001)

² Alessandro Bertolini, et al., “New Seismic Attenuation System (SAS) for the Advanced LIGO Configurations (LIGO2)”, proceedings of 1999 Amaldi conference, Pasadena, CA.

³ A. Bertolini, et al., “Recent progress of the R&D program of the Seismic Attenuation System (SAS) proposed for the Advanced Gravitational Wave Detector, LIGO II”, proceedings of 8th Pisa Meeting on Advanced Detectors (May 21-27 2000, Isola d'Elba, Italy)

⁴ M. Beccaria, et al. “Extending the VIRGO gravitational wave detection band down to a few Hz: metal blade springs and magnetic antisprings”, *Nucl. Instr. and Meth. in Phys. Res. A*, 394, 397-408 (1997)

⁵ G. Cella, et al., “Seismic Attenuation Performance of the First Prototype of a Geometric Anti-spring Filter”, submitted to Nuclear Instruments & Methods in Physics Research Section A

⁶ S. Marka et al., “Anatomy of the Seismic Attenuation System for TAMA300 (TAMA SAS)”, Amaldi 2001, P-010034-00-D, available at <http://admdbsrv.ligo.caltech.edu/dcc/>

⁷ G. Cella, et al., “Seismic Attenuation Performance of the first prototype of a Geometrical Anti Spring Filter”, submitted for publication to *Nucl. Instr. and Meth. in Phys. Res.*, (2001)

⁸ J. Winterflood, et al., “Using Buckling Euler Springs for vibration isolation”, **Amaldi 2001**

⁹ G. Losurdo, et al., “An inverted pendulum pre-isolator stage for VIRGO suspension system”, *Rev. Sci. Instrum.*, 70, 2507-2515 (1999)

¹⁰ R. De Salvo, et al., “Performance of an ultra low frequency vertical pre-isolator for the VIRGO seismic attenuation chains”, *Nucl. Instrum. Meth. In Phys. Res. A*, 420, 316-355 (1999)

¹¹ Alessandro Bertolini, “High sensitivity accelerometers for gravity experiments”, Doctoral thesis, Università di Pisa, June 2001, ref. P010009-00-Z available at <http://admdbsrv.ligo.caltech.edu/publications/default.htf?page=theses>

¹² S. Braccini et al., “Low noise wide band accelerometer using an inductive displacement sensor”, *Rew Sci Instr* 66 (3) p. 2572 (1995)

- ¹³Chenyang Wang et al., “Constant Force Actuator for Gravitational Wave Detector’s Seismic Attenuation Systems (SAS)”, Submitted to Nuclear Instruments and Methods, ref. P010026-00-D available at <http://admdbsrv.ligo.caltech.edu/dcc/>
- ¹⁴G. Losurdo, et al, “Initial controls of the mirror suspensions of Virgo interferometer for gravitational wave detection” *Rev. Sci. Instrum.*, Vol 72, no 9, p. 3653-3661 (2001)
- ¹⁵G. Losurdo, “Inertial control of the Virgo superattenuators”, proceedings of 1999 Amaldi conference, Pasadena, CA.
- ¹⁶Akiteru Takamori, et al. “Mirror suspension system for the TAMA-SAS”, Amaldi 2001, P-010033-00-D, available at <http://admdbsrv.ligo.caltech.edu/dcc/>
- ¹⁷M. Beccaria, et al., “The creep problem in the Virgo suspensions: a possible solution using Maraging steel”, *Nucl.Instr.and Meth. in Phys.Res. A*, **404**, p. 455-469 (1998)
- ¹⁸The actual mechanical design can be found for example in the report “LIGO-II Seismic Attenuation System (SAS), test tower LVDT (Linear Variable Differential Transducer).Mechanical drawings”, ref. D-010243-00-R available at <http://admdbsrv.ligo.caltech.edu/dcc/>
- ¹⁹Walter Kester. “Practical Design Techniques For Sensor Signal Conditioning”, Analog Devices Inc., 1999.
- ²⁰Federico Paoletti, “L.V.D.T.: chi era costui?”, *Elettronica*, Luglio/Agosto 1996, p. 37-45. Ref. T-010146-00-R available at <http://admdbsrv.ligo.caltech.edu/dcc/>
- ²¹Circuit diagrams can be found in the report D-010248-00-R “LIGO-II Seismic Attenuation System (SAS) test tower LVDT (Linear Variable Differential Transducer), electronics circuits diagrams”, available at <http://admdbsrv.ligo.caltech.edu/dcc/>
- ²²The actual mechanical design can be found for example in the report “TOTEM, blade’s creep measuring facility, Mechanical drawings” ref. D-010252-00-R available at <http://admdbsrv.ligo.caltech.edu/dcc/>
- ²³An illustration of this LVDT can be found in: D-010249-00-R, “TAMA Seismic Attenuation System (SAS) tower, Mechanical drawings”, or in: D-010241-00-R, “LIGO-II Seismic Attenuation System (SAS) test tower Filter-0, Mechanical drawings”, available at <http://admdbsrv.ligo.caltech.edu/dcc/>
- ²⁴“The GAS blade creep measurements, problems and some solutions”, ref. T-10112-00-R available at <http://admdbsrv.ligo.caltech.edu/dcc/>