



Citation for published version:

Jack, RL & Berthier, L 2016, 'The melting of stable glasses is governed by nucleation-and-growth dynamics', *Journal of Chemical Physics*, vol. 144, no. 24, pp. 244506. <https://doi.org/10.1063/1.4954327>

DOI:

[10.1063/1.4954327](https://doi.org/10.1063/1.4954327)

Publication date:

2016

Document Version

Publisher's PDF, also known as Version of record

[Link to publication](#)

University of Bath

Alternative formats

If you require this document in an alternative format, please contact:
openaccess@bath.ac.uk

General rights

Copyright and moral rights for the publications made accessible in the public portal are retained by the authors and/or other copyright owners and it is a condition of accessing publications that users recognise and abide by the legal requirements associated with these rights.

Take down policy

If you believe that this document breaches copyright please contact us providing details, and we will remove access to the work immediately and investigate your claim.

The melting of stable glasses is governed by nucleation-and-growth dynamics

Robert L. Jack and Ludovic Berthier

Citation: *The Journal of Chemical Physics* **144**, 244506 (2016); doi: 10.1063/1.4954327

View online: <http://dx.doi.org/10.1063/1.4954327>

View Table of Contents: <http://scitation.aip.org/content/aip/journal/jcp/144/24?ver=pdfcov>

Published by the AIP Publishing

Articles you may be interested in

[Coupling of caged molecule dynamics to Johari-Goldstein \$\beta\$ -relaxation in metallic glasses](#)

J. Appl. Phys. **119**, 024902 (2016); 10.1063/1.4939676

[Can a stable glass be superheated? Modelling the kinetic stability of coated glassy films](#)

J. Chem. Phys. **138**, 12A516 (2013); 10.1063/1.4772480

[Dynamic processes in a silicate liquid from above melting to below the glass transition](#)

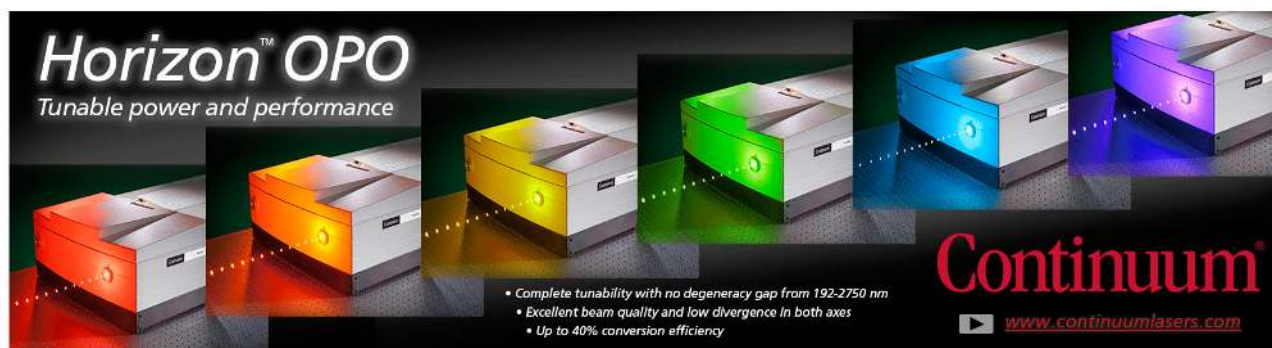
J. Chem. Phys. **135**, 194703 (2011); 10.1063/1.3656696

[Comment on "Melting dynamics of superheated argon: Nucleation and growth" \[*J. Chem. Phys.* 126, 034505 \(2007\)\]](#)

J. Chem. Phys. **126**, 187101 (2007); 10.1063/1.2732743

[Molecular dynamics simulations of melting and the glass transition of nitromethane](#)

J. Chem. Phys. **124**, 154504 (2006); 10.1063/1.2174002



Horizon™ OPO
Tunable power and performance

• Complete tunability with no degeneracy gap from 192-2750 nm
• Excellent beam quality and low divergence in both axes
• Up to 40% conversion efficiency

Continuum®
www.continuumlasers.com

The melting of stable glasses is governed by nucleation-and-growth dynamics

Robert L. Jack¹ and Ludovic Berthier²

¹*Department of Physics, University of Bath, Bath BA2 7AY, United Kingdom*

²*Laboratoire Charles Coulomb, UMR 5221 CNRS-Université de Montpellier, 34095 Montpellier, France*

(Received 21 March 2016; accepted 27 May 2016; published online 30 June 2016)

We discuss the microscopic mechanisms by which low-temperature amorphous states, such as ultra-stable glasses, transform into equilibrium fluids, after a sudden temperature increase. Experiments suggest that this process is similar to the melting of crystals, thus differing from the behaviour found in ordinary glasses. We rationalize these observations using the physical idea that the transformation process takes place close to a “hidden” equilibrium first-order phase transition, which is observed in systems of coupled replicas. We illustrate our views using simulation results for a simple two-dimensional plaquette spin model, which is known to exhibit a range of glassy behaviour. Our results suggest that nucleation-and-growth dynamics, as found near ordinary first-order transitions, is also the correct theoretical framework to analyse the melting of ultrastable glasses. Our approach provides a unified understanding of multiple experimental observations, such as propagating melting fronts, large kinetic stability ratios, and “giant” dynamic length scales. We also provide a comprehensive discussion of available theoretical pictures proposed in the context of ultrastable glass melting. *Published by AIP Publishing.* [<http://dx.doi.org/10.1063/1.4954327>]

I. INTRODUCTION

Recent experiments using vapor deposition methods have produced stable glass states with very low enthalpy,^{1–5} offering a new route for production of amorphous materials with controllable properties.⁶ Simultaneously, the discovery of such new amorphous materials raises exciting theoretical challenges,⁷ because they open a new observational window on the behaviour of glassy materials.

In particular, these novel glassy states are kinetically “ultrastable.”^{1,8} On heating at constant rate, they recover back to equilibrium at a higher temperature than conventional glasses. Alternatively, if the stable glasses are held at a fixed temperature above the glass transition, their relaxation to equilibrium is much slower than that of conventional glasses. Some stable glasses retain their glassy structure over periods up to 10^5 times longer than the structural relaxation time of the equilibrium fluid.⁸ In addition, the mechanism by which thin films of stable glasses transform into the equilibrium liquid appears strongly heterogeneous, and is accompanied by melting fronts that are initiated at the film boundaries, and sweep through the system.⁹ This process is reminiscent of the melting of crystalline materials, and is different from the behavior of ordinary glasses. The qualitative analogy with crystal melting forms the basis of the current interpretation of experimental findings.² For thicker films of vapor-deposited glasses, the situation is different again—it is believed^{2,10} that melting fronts are initiated in the bulk, and then mediate the subsequent transformation to the fluid. The crossover between thin-film and bulk behaviour defines a dynamic length scale characterizing the melting process, and experiments report a crossover length in the micrometer range.² Such a “giant” dynamic length scale is unexpected in supercooled liquids, in

which the dynamic correlation length scales associated with equilibrium relaxation near the glass transition are typically a few nanometers.^{11,12}

These recent observations are currently the subject of intense experimental investigations.^{1–5,8,9,13,14} They raise several interesting questions. For example, what structural features are responsible for the stability of these materials? How do deposition conditions affect their properties? What is the microscopic mechanism for the recovery back to equilibrium of these stable states? In this work, we concentrate on this last question, comparing the transformation kinetics of these amorphous materials with the melting of crystalline solids. We argue that this process has a universal (material-independent) character, because of the presence of a nearby first-order phase transition,^{15–17} with associated nucleation-and-growth phenomenology. The phase transition that we invoke to rationalise the observed behaviours takes place when two physical copies of the system are coupled to each other by a field ε . This phase transition is therefore “hidden,” because it cannot directly be accessed in experiments, although its presence in realistic glass-formers has been established numerically.¹⁷ We show that this theoretical construction is useful for understanding experimental observations such as the existence of melting fronts,⁹ the fitting of transformation kinetics by the Avrami equation, and the existence of giant length scales.²

To illustrate this theoretical picture, we use computer simulations of a simple spin model—the triangular plaquette model (TPM). This system does not capture the molecular details of supercooled liquids, but it does mimic many features of glassy materials, such as dynamical slowing down and spatially heterogeneous dynamics, linked to growing dynamic and static correlation length scales.^{18–25} In particular,

the existence of growing static correlations in this model is accompanied by first-order phase transitions associated with coupled replicas,^{26–28} as also seen in molecular glass-formers.^{16,17,29,30} The idea that simple plaquette spin models of this type can be useful for describing glass-forming liquids is at the root of dynamical facilitation theory,^{20,31} as their low-temperature dynamics is controlled by the constrained diffusion of a sparse assembly of localised defects. We show here that the TPM exhibits the universal features that we expect of stable glasses: kinetic stability, nucleation-and-growth phenomena associated with melting close to first-order phase transitions, and giant dynamic length scales. Since these features are associated with a phase transition, we expect that results for this simple system also apply to atomistic models that have similar phase diagrams, and by extension, to experiments.

The TPM is particularly well-suited for the present study because it is relatively cheap to simulate computationally, compared with atomistic liquids. More importantly, a formidable advantage over off-lattice liquids is the possibility to prepare directly—and at no computational cost—equilibrium configurations with arbitrarily low energy, without the need for simulating the vapor deposition process, or achieving brute force equilibration at low temperatures. By construction, therefore, our results can say nothing about the preparation of ultrastable glasses (this problem has been addressed computationally^{32–34}), but we can shed light on their behaviour upon sudden heating. Other strategies have been used to achieve similar effect, including a random pinning procedure,³⁵ or simulations with kinetically constrained models,^{36–38} which all permit to “plant”³⁹ low-temperature configurations at no cost.

In comparing our results with those of kinetically constrained models (KCMs),⁴⁰ we note that while both plaquette models and KCMs are representative of dynamical facilitation theory, the KCMs do not undergo the thermodynamic phase transitions described here, because they are defined explicitly as models of excitations (or defects) that lack any static interactions. By contrast, the TPM is defined in terms of spin variables with simple local interactions—the low temperature behaviour of this model is characterised by long-ranged many-body spin correlations (amorphous order), as well as low energy excitations without static interactions, similar to those that appear in KCMs. The static many-body spin correlations in the TPM are essential for the analogy that we draw here with nucleation-and-growth. Earlier simulations of atomistic liquids have invoked a similar analogy with melting processes based on empirical observation,³⁵ and a qualitative picture essentially similar to ours has been invoked to interpret experimental findings,² but in none of these earlier works was the corresponding first-order phase transition precisely characterized. Here, we show how to make these ideas concrete and how they may be used to make quantitative predictions for the observed behaviour. In addition, we provide in Sec. VI B a detailed comparative discussion of the various theoretical efforts proposed so far.

The structure of the paper is as follows. Section II outlines our general theoretical setting, and Section III describes the model that we consider. Section IV describes the kinetics of the

transformation process from stable glass back to equilibrium, and Section V investigates the mechanism of this process using spatio-temporal correlation functions. In Section VI we discuss the main implications of our results for theory and experiments, before concluding with a short outlook in Section VII.

II. THEORETICAL BACKGROUND

A. Basic process: Bulk transformation of stable glasses

To describe our general theoretical setting, we use C to denote a configuration of some glassy system (for example, this might represent the positions of N particles within a liquid, or the states of N spins in the TPM). The potential energy of configuration C is $E(C)$. We prepare a stable glass state, according to a probability distribution P_{st} . For example, we might take

$$P_{\text{st}}(C) \propto e^{-E(C)/T_0}, \quad (1)$$

which corresponds to a thermal equilibrium distribution at some low temperature T_0 . In Eq. (1) we have set the Boltzmann constant to unity. In experiments performed with ultrastable glasses, thermalisation at low temperature is not guaranteed by the vapor deposition process, and the distribution P_{st} is not known.

At time $t = 0$, we couple this initial configuration to a heat bath at temperature $T \geq T_0$ for which the average energy $\langle E \rangle_T$ is larger than its average in the stable glass state $\langle E \rangle_{\text{st}}$. If the system has any kind of ideal glass transition then we also assume that T is higher than this temperature. After some (possibly very long) time, the system will recover back to equilibrium at temperature T . The time τ_{rec} taken for this process quantifies the kinetic stability of the original state. It is natural to measure this time relative to the equilibrium α -relaxation time τ_{eq} of the system measured at the same temperature T . This suggests that the appropriate adimensional measure of the kinetic stability of the glass is^{8,35}

$$S = \frac{\tau_{\text{rec}}}{\tau_{\text{eq}}}, \quad (2)$$

which we call the kinetic stability ratio. In experiments, $S = 10^3$ – 10^5 . In previous simulations using off-lattice supercooled liquids, stability ratios of at most $S \approx 10^2$ were reported.^{35,41}

B. Link with an equilibrium first-order transition for coupled replicas

We now introduce the coupled replica setting originally devised by Franz and Parisi.¹⁵ They defined the overlap $Q(C, C')$ which measures the similarity between configurations C and C' . For identical configurations we have $Q(C, C') = 1$ while for independent random configurations one expects $Q(C, C') \approx 0$. For a spin system, it is conventional to take $Q = \frac{1}{N} \sum_i s_i s'_i$ where s_i is the state of spin i in configuration C containing N spins, and similarly s'_i is the state of spin i in configuration C' .

For a fixed stable glass configuration C_0 , we then consider a biased thermal distribution for configuration C at temperature T ,

$$P_\varepsilon(C|C_0) \propto e^{-[E(C) - \varepsilon N Q(C, C_0)]/T}. \quad (3)$$

Here, a positive value of the field ε biases the configuration C to be similar to the reference configuration C_0 .

If C_0 is a low temperature stable glass state and the temperature T is not too high, mean-field theory predicts¹⁵ a first-order phase transition to occur at some $\varepsilon^* = \varepsilon^*(T, T_0)$. The expected phase diagram in the plane (ε, T) is sketched in Fig. 1(a). At this transition, the average value of the overlap $\langle Q \rangle_\varepsilon$ jumps from a small to a large value, as ε is increased through ε^* . For $\varepsilon > \varepsilon^*$, the configuration C becomes trapped in the same metastable state as the reference configuration C_0 . We emphasize that the field ε is a thermodynamic quantity that appears directly in the energy function (3), so that the transition at ε^* is an ordinary thermodynamic phase transition, not a non-equilibrium one.

What is the connection with the bulk melting of a single stable glass configuration? To see this, consider the following thought-experiment (or computer simulation). We generate a stable glass configuration C_0 , and we initialise the system in this state by setting $C = C_0$. Then, at time $t = 0$, we connect the system to a thermal bath at temperature T , as in the usual setting of Sec. II A. For $t > 0$ we run the dynamics as usual, except that the system energy is now biased, as $E_\varepsilon(C) = E(C) - \varepsilon N Q(C, C_0)$, so that the system will eventually converge to the distribution function in Eq. (3). This distribution differs in general from an equilibrium state at temperature T , which is recovered only for $\varepsilon = 0$.

If we choose the field strength ε such that $\varepsilon > \varepsilon^*$ then Eq. (3) means that C will remain forever in the same metastable state as C_0 , so the overlap $Q(C, C_0)$ will remain close to unity. This implies that the system remains in a configuration close to the initial stable glass state for arbitrary long times: the glass never melts! If instead one has $\varepsilon < \varepsilon^*$, then the system will eventually relax to a state whose overlap with the initial glass configuration is low. In this case, it should sample configurations similar to the equilibrium fluid at temperature T . In other words, the field ε gives an additional

handle to control the kinetic stability ratio S of the glass when heated to a temperature $T \geq T_0$. The ratio S can then be tuned from the physical value obtained at $\varepsilon = 0$, up to $S \rightarrow \infty$ when $\varepsilon \rightarrow \varepsilon^*$. We argue that this new handle, which *allows us to produce glasses with arbitrary-large kinetic stability ratio*, provides a key to a deeper understanding of the melting process and makes our study experimentally relevant.

The central point of our paper is that the case $\varepsilon < \varepsilon^*$ includes the physical melting dynamics which occurs at $\varepsilon = 0$. In this case, our thought-experiment corresponds to the natural (unbiased) dynamics of C , which is independent of C_0 , except for the transient effect of this initial condition. The existence of the first-order transition at ε^* becomes physically relevant for the melting process when $\Delta\varepsilon = (\varepsilon^* - \varepsilon)$ is small, because the system is then very close to a first-order phase boundary. In this case, the system can be expected to relax into the low-overlap stable phase by a nucleation-and-growth mechanism. The range of ε over which this condition applies is discussed in Sec. II C below. The result is that if the critical field ε^* itself is sufficiently small, the natural melting process for stable glasses occurs close to this first-order phase boundary, so the nucleation-and-growth phenomenology should be at play. The qualitative difference between ordinary and ultrastable glasses is then very clear, as $\varepsilon(T, T_0)$ for a given T decreases rapidly as T_0 becomes smaller, implying that the melting of more stable glasses occurs closer to the phase boundary than the one of ordinary glasses.

Note finally that this argument about the existence of a first-order transition is fully independent of the existence of a finite temperature ideal glass transition T_K . Therefore, the unsettled issue of the existence in realistic glass-formers of the (mean-field) Kauzmann transition does not affect our conclusions. By contrast, it is known that the transition in the (ε, T) that we invoke is present in finite dimensional glass-formers,¹⁷ and thus our approach goes beyond (and does not rely on) the mean-field approach where the first-order transition was first discovered.¹⁵

C. Transformation kinetics near first-order transitions

If the transformation of a stable glass into a liquid occurs near a first-order phase transition, this immediately suggests

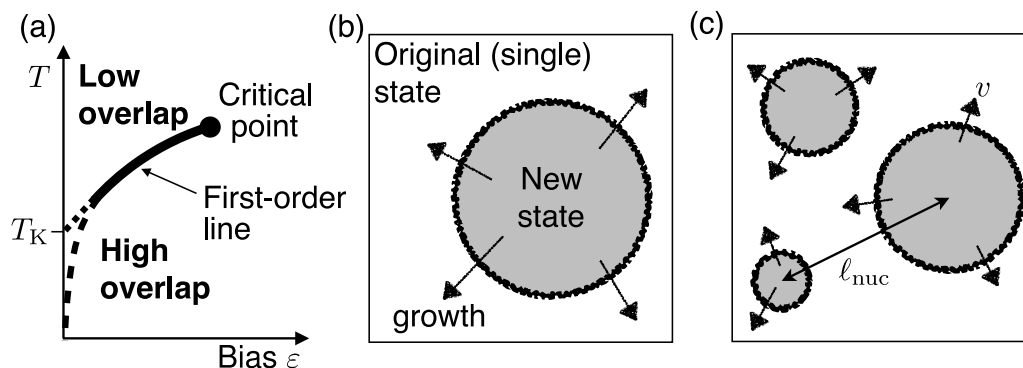


FIG. 1. (a) Phase diagram for coupled replicas. There is a first-order phase boundary between high- and low-overlap phases. Depending on the model, this phase boundary may intersect the $\varepsilon = 0$ axis at a finite temperature T_K (as in mean-field models¹⁵) or at $T = 0$ (as in plaquette models^{26–28}). (b) Schematic figure illustrating nucleation and growth of a single droplet of a new state, within an original (reference) state. (c) Schematic figure showing nucleation and growth in a large system, where multiple nuclei form and grow. There is a large length scale ℓ_{nuc} which is the typical spacing between nuclei. A picture qualitatively similar to (c) was put forward on empirical grounds in Ref. 2, for which the phase diagram in (a) provides theoretical support.

that behaviour similar to ordinary first-order melting should be observed. We briefly summarize the features of these processes that are relevant for the experimental situation.

1. Classical nucleation theory

Close enough to the phase boundary, the transformation from configuration C_0 will take place via the nucleation of a droplet of the low-overlap phase, as depicted in Fig. 1(b). Applying classical nucleation theory (CNT) to this physical situation, we express the free energy to grow a droplet of the new (low-overlap) state of size R inside the old (high-overlap) phase as^{42,43}

$$\Delta F(R) \approx \gamma R^{d-1} - \Delta\mu R^d, \quad (4)$$

where γ is an interfacial energy cost and $\Delta\mu > 0$ the free energy difference between the two phases, which is expected to scale as the distance to the phase transition, $\Delta\mu \propto (\varepsilon^* - \varepsilon)$. Maximising ΔF then gives the size of the critical nucleus, $R^* \sim \gamma/\Delta\mu$, and of the free energy barrier to be crossed, $\Delta F^* \sim \gamma^d/\Delta\mu^{d-1}$. Both R^* and ΔF^* diverge at the phase boundary where $\Delta\mu \rightarrow 0$.

In the coupled-replica system, this picture is slightly more complicated since the reference configuration C_0 enters the problem as a source of quenched disorder.^{17,44,45} Physically, this means that (i) the system is no longer translationally invariant, so nucleation events might take place preferentially in regions of the system where the free energy barrier is particularly low and (ii) there will be important sample-to-sample fluctuations of γ and $\Delta\mu$, which means that these parameters will depend on the specific reference configuration C_0 . While these two effects are certainly relevant for the melting of real stable glasses, we shall neglect them in the following. Our strategy is to first obtain a robust general picture of the physical process, leaving for future work a more careful study of how quenched disorder affects the simple description offered here. This represents a significant, but certainly worthwhile, additional effort.

2. Avrami kinetics

We can use the phase diagram in Fig. 1(a) to rationalise the giant length scale and the heterogeneous relaxation observed in experiments. The idea is that when ε^* is small, then the natural dynamics of the system at $\varepsilon = 0$ still corresponds to the regime where $(\varepsilon^* - \varepsilon)$ is small and positive. In this case the system is dominated by nucleation-and-growth, where large length scales and heterogeneous relaxation are expected.

To see this, let us recall the Avrami picture of nucleation kinetics.^{43,46} In a large system, the nucleation rate per unit volume is

$$k_{\text{nuc}} \sim e^{-\Delta F^*/T}. \quad (5)$$

That is, starting from a system of volume V that is entirely in the high-overlap phase, the droplets of the low-overlap phase appear at random positions in the system, with total rate $k_{\text{nuc}}V$, as sketched in Fig. 1(c). These droplets grow with a characteristic velocity v , until such time as they encounter each other and start to overlap. Thus, paraphrasing Avrami's

derivation,⁴⁶ the fraction f of material in the original (high-overlap) state evolves as

$$\frac{\partial f}{\partial t} = -f \cdot k_{\text{nuc}}t \cdot c_d v^d t^{d-1}, \quad (6)$$

where c_d is a dimensionless constant that depends only on the spatial dimension, such that the factor $c_d v^d t^{d-1}$ is the mean rate of growth of new material due to a single droplet whose radius is randomly (uniformly) distributed between 0 and vt . The factor $k_{\text{nuc}}t$ is the number of nucleation events that have occurred up to time t , and the factor of f takes care of the fact that if new material is generated in a place where the system has already transformed then this has no effect on the amount of the old phase that remains. The resulting time dependence is

$$f_{\text{avr}}(t) = e^{-(t/\tau_{\text{avr}})^{d+1}}, \quad (7)$$

where the characteristic time for formation of the new phase is

$$\tau_{\text{rec}} = \tau_{\text{avr}} \approx (k_{\text{nuc}}v^d)^{-1/(d+1)}. \quad (8)$$

The characteristic compressed exponential shape of the relaxation function in Eq. (7) appears because droplets grow with a fixed velocity, so the rate of production of the new phase increases with time and is proportional to the surface area of these droplets. The transformation time τ_{rec} in Eq. (8) has a strong dependence on both T and T_0 as it involves both the velocity v of the front propagation (which presumably decreases rapidly as T is decreased) and the nucleation rate k_{nuc} , which varies exponentially with control parameters, see Eq. (5).

Note also that if quenched disorder in the system leads to heterogeneous nucleation, the factor $k_{\text{nuc}}t$ in (6) will only be linear in time for small t , and will cross over to a sublinear increase for larger times. This may lead to an apparent reduction of the exponent $d + 1$ that appears in the compressed exponential in (7), as found in Ref. 47.

3. Emergence of a “giant” dynamic length scale

There is an important length scale associated with this process, which is much larger than the size of the critical nucleus R^* discussed above. The physical picture is that phase transformation of a large system involves many independent nucleation events, followed by growth of the resulting droplets of the new phase, until they coalesce. This situation is sketched in Fig. 1(c). The typical number of nucleation events that happen during the transformation is $\mathcal{N} \approx k_{\text{nuc}}V\tau_{\text{avr}}$ so the typical distance between the independent nucleation events is

$$\ell_{\text{nuc}} = (V/\mathcal{N})^{1/d} \approx (v/k_{\text{nuc}})^{1/(d+1)}. \quad (9)$$

Near the phase boundary, the nucleation rate is extremely small, $\log k_{\text{nuc}} \sim -1/(\varepsilon^* - \varepsilon)$, whereas the velocity $v \sim (\varepsilon^* - \varepsilon)$ vanishes much more slowly. This means that ℓ_{nuc} can become very large, or “giant,” as it scales exponentially with the distance from the phase boundary,

$$\ell_{\text{nuc}} \sim \exp\left[\frac{\Delta F^*}{T(d+1)}\right] \sim \exp(A/|\varepsilon^* - \varepsilon|^\alpha), \quad (10)$$

where ΔF^* is the free energy barrier within CNT, so A is a constant that depends on the surface tension γ between the phases and α is a constant (equal to $d - 1$ within CNT).

The scale ℓ_{nuc} appears as a sort of *dynamical heterogeneity* in the non-equilibrium transformation process. It also leads to *strong finite-size effects* in the transformation kinetics. If the system size is less than ℓ_{nuc} then the Avrami picture breaks down and the system transforms by a single nucleation event, followed by a droplet that quickly grows and takes over the system. In this case the compressed exponential relaxation of Eq. (7) is replaced by simple exponential relaxation associated with the waiting time for the first nucleation event to occur. That is, for system sizes $L \gtrsim \ell_{\text{nuc}}$, one expects relaxation to follow (7) but for $L \lesssim \ell_{\text{nuc}}$ one expects instead

$$f(t) = e^{-t/\tau_1}, \quad (11)$$

with $\tau_{\text{rec}} = \tau_1 \sim 1/(k_{\text{nuc}}V)$ the volume-dependent mean waiting time for the first nucleation event. (Notice that this relation implies that smaller samples are more stable than larger ones.) Therefore, the exponentially diverging length scale ℓ_{nuc} in Eq. (10) corresponds to the crossover length scale controlling finite-size effects.

We note that this picture, of nucleation followed by front propagation at finite velocity, requires two important assumptions. First, it only makes sense if nucleation is rare enough (that is, k_{nuc} small enough) that the growing nuclei can be identified and observed before they start to overlap. This condition can be interpreted as the finite-dimensional signature of a spinodal line—roughly speaking, the spinodal is the point where the nucleation barrier is of the same order as the thermal energy, $\Delta F^*/T \approx 1$, so that nucleation is no longer rare, and the system becomes *locally unstable* to phase transformation.⁴² In terms of stable glass melting, this criterion sets an upper limit on $(\varepsilon^* - \varepsilon)$. In addition, to observe Avrami-like nucleation-and-growth kinetics, one also requires that the growth velocity v is large enough that nuclei of the new phase grow quickly once they are formed. Equivalently, the length scale ℓ_{nuc} should be much larger than the critical nucleus size R^* , since otherwise the arguments leading to (7) break down. As $\varepsilon \rightarrow \varepsilon^*$, the critical nucleus R^* diverges as a power law in $(\varepsilon^* - \varepsilon)$ while ℓ_{nuc} diverges exponentially, so this condition is surely satisfied. However, if this condition breaks down for smaller ε (including the case of unbiased dynamics, $\varepsilon = 0$), then one expects the transformation by nucleation-and-growth to be replaced by an alternative mechanism with different kinetics. This might be what happens in the melting of ordinary glasses.

4. Relation to stable glass melting

Assuming that the picture of Fig. 1 applies to stable glass melting, we arrive at the following predictions. (i) We expect Avrami kinetics as in Eq. (7) for the transformation of large systems, with a crossover to simple exponential kinetics in smaller systems. For systems close to phase boundaries, the length scale ℓ_{nuc} associated with this crossover may become very large. (ii) The transformation process should be strongly heterogeneous, involving fronts moving with a typical velocity v , and dynamical correlations over length scales up to ℓ_{nuc} .

(iii) If it is possible to introduce (in simulations) a bias ε , length and time scales should grow rapidly as ε increases towards ε^* .

The first two of these predictions are consistent with observed experimental data.^{2,3,8} In particular, fitting using Avrami kinetics and the determination of a giant length scale stemming from sparse nucleating sites have been discussed.^{2,8} In the following, we illustrate all three of these effects in the TPM. We also discuss some behaviour in this model that may be different from the experimental situation, and we discuss the reasons for these effects.

III. THE TRIANGULAR PLAQUETTE MODEL

The TPM is defined on a two-dimensional triangular lattice.^{18,20} In our computer simulations we use a rhombus-shaped system of $L^2 = N$ sites, with periodic boundaries. The spins are located on lattice sites and are denoted by $s_i = \pm 1$ with $i = 1 \dots N$. We also identify upward-pointing triangular plaquettes on the lattice: each plaquette μ is associated with three spins $s_{i_\mu}, s_{j_\mu}, s_{k_\mu}$. We define plaquette variables $n_\mu = (1 - s_{i_\mu}s_{j_\mu}s_{k_\mu})/2$, with $n_\mu = 0, 1$. The energy of the system is

$$E = -\frac{J}{2} \sum_{\mu} s_{i_\mu} s_{j_\mu} s_{k_\mu} \quad (12)$$

$$= -NJ/2 + J \sum_{\mu} n_{\mu}. \quad (13)$$

Hence plaquettes with $n_\mu = 1$ are excitations (or excited plaquettes) which carry energy J .

For large systems at equilibrium, excited plaquettes are distributed as an ideal gas, so the plaquette variables are independently identically distributed with $\langle n_\mu \rangle = c = 1/(1 + e^{J/T})$. In the following we fix the energy scale $J = 1$, which also sets the temperature scale. In finite periodic systems, it is convenient to take the size L as an integer power of two, in which case thermodynamic properties of the model are free from finite-size effects.¹⁸ In this case, for any given configuration of the plaquette variables n_μ , there is exactly one possible configuration of the spin variables s_i , which may be constructed directly.^{18,27}

The model evolves in time by flipping spins according to Metropolis rates: spin i flips with rate given by $\min(1, e^{-\Delta E_i/T})$, where ΔE_i is the change in energy required to flip the spin. This ensures that the system converges to a Boltzmann distribution $p(C) \propto e^{-E(C)/T}$. The dynamical evolution is implemented using a continuous time Monte Carlo (MC) method.⁴⁸

When considering coupled replicas, the overlap between configurations with spins s_i and s'_i is $Q = \frac{1}{N} \sum_i s_i s'_i$. The distribution of initial (stable glass) states is $p_{\text{st}}(C) \propto e^{-\tilde{E}(C)/T_0}$ with $T_0 < T$. For $T_0 = 0$, this means that the initial state always has all spins with $s_i = +1$, since this is the ground state of the model, which is unique since we take periodic boundaries and the system size is an integer power of two.

Since the model is defined in two spatial dimensions, the phase diagram in Fig. 1(a) applies only for the special case $T_0 = 0$. The first-order phase transition meets the $\varepsilon = 0$ axis at $T = 0$, since the thermodynamic properties of the model for

$\varepsilon = 0$ are trivial for all $T > 0$ (the system maps to an ideal gas of excited plaquettes). The critical temperature in Fig. 1(a) is then $T_c = 0.38$ (see Ref. 27). For $T_0 > 0$, the phase transitions in Fig. 1 are destroyed by the quenched disorder that enters the problem through the random configuration C_0 . In this case, the first-order transition in Fig. 1 is replaced by a smooth crossover,^{49,50} but the behaviour near this crossover can still resemble what happens near a phase transition: this effect will be demonstrated below. To observe a phase transition using a finite preparation temperature $T_0 > 0$, one should study a three-dimensional generalisation of the model,²⁷ which would then allow detailed theoretical analysis of the effect of the quenched disorder on the melting dynamics.

IV. KINETICS OF STABLE GLASS MELTING

A. Bulk melting in large systems

As described above, we initialise a TPM in an equilibrium configuration at temperature T_0 and time $t = 0$. The system then evolves for $t > 0$ by MC dynamics at temperature T , and eventually equilibrates at that temperature. For fixed $T = \frac{1}{3}$, Fig. 2 shows the time-dependence of this process for various T_0 , through the time-dependent average overlap $q(t) = \langle Q(C_t, C_0) \rangle$ and the average energy per spin $\langle E(t)/N \rangle$. The system size is $L = 64$, which is large enough that these results are representative of the large- L limit (for this specific example). Finite-size effects will be discussed in more detail below.

For $T_0 = 0$ the initial configuration has all spins up. Both the overlap and the energy are fitted in the long-time regime by Avrami (compressed exponential) form given in Eq. (7), with $\tau_{\text{avr}} = 1.1 \times 10^4$. At very early times, there are small fluctuations within the stable glass state that reduce Q and increase E —these are not fitted by the Avrami form, which describes only the nucleation-and-growth process. For this reason the fitting function is $q(t) = a f_{\text{avr}}(t)$ with $f_{\text{avr}}(t)$ given by (7) and $a = 0.925$ a fitting parameter.

Another special situation is when $T_0 = T = \frac{1}{3}$ in which case the average energy does not depend on time, by definition, and the overlap shows the equilibrium relaxation of the TPM. In this case the overlap has a stretched exponential form, as is typical in glassy systems at equilibrium. We show a fit to $a \exp[-(t/\tau_{\text{eq}})^\alpha]$ with $\tau_{\text{eq}} = 857$, $\alpha = 0.74$, and $a = 0.978$: note this is a three-parameter fit, in contrast to the two-parameter Avrami fit shown for $T_0 = 0$ where the compression exponent is fixed by theory. As T_0 increases from 0 to T , the system crosses over from compressed exponential (Avrami-like) kinetics, indicative of nucleation-and-growth, to stretched exponential (glassy) kinetics, indicative of heterogeneous relaxation with a broad range of time scales. In the language of Fig. 1 this crossover takes place because increasing T_0 moves the relaxation dynamics at $\varepsilon = 0$ further away from the first-order phase boundary until its influence is no longer felt when $T_0 = T$.

B. Kinetic stability ratio

It is clear that the stable glass state with $T_0 = 0$ requires a long time to recover to equilibrium, compared with

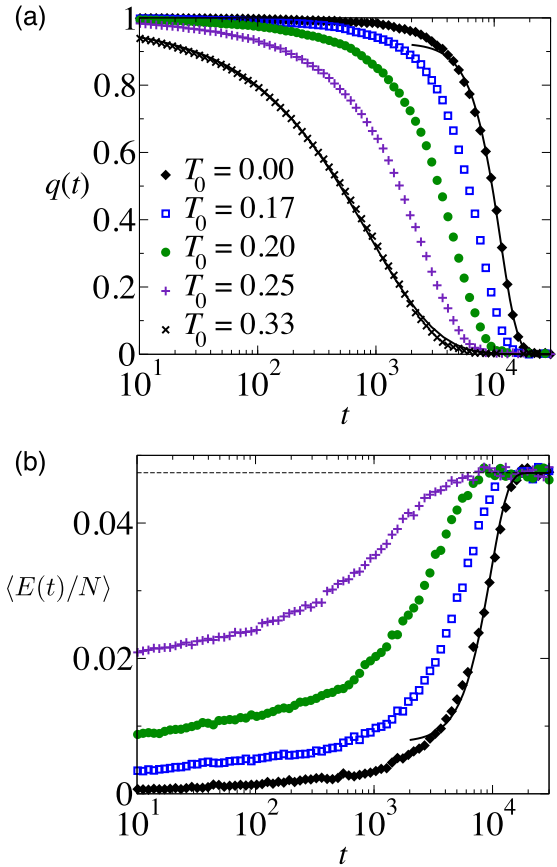


FIG. 2. Overlap $q(t)$ for stable glass recovery at $T = 1/3$, varying T_0 . (Temperatures are quoted to 2 significant figures throughout, the precise values used were $T_0 = 0, \frac{1}{6}, \frac{1}{5}, \frac{1}{4}, \frac{1}{3}$.) Points are simulation results and lines are fits: for $T_0 = 0$ the late-time relaxation ($t \geq 2000$) is fitted to an Avrami form $q(t) = a e^{-(t/\tau)^3}$. For $T_0 = T$ (equilibrium relaxation) the fit is a stretched exponential $q(t) = a e^{-(t/\tau)^\alpha}$ with fitted $\alpha = 0.74$. The system size is $L = 64$, which is large enough that the behaviour is representative of the limit $L \rightarrow \infty$. (b) Energy per spin, $\langle E(t)/N \rangle$, for the same process. The dashed line is the equilibrium energy $\langle E \rangle_T = N(1 + e^{1/T})^{-1}$, and the results for $T_0 = 0$ have been fitted with an Avrami form (in $d = 2$) $E(t) = \langle E \rangle_T - a e^{-(t/\tau)^3}$.

equilibrium relaxation at $T = \frac{1}{3}$. We extract the time for recovery to equilibrium as $q(\tau_{\text{rec}}) = 1/e$, and we identify $S = \tau_{\text{rec}}/\tau_{\text{eq}}$ as a stability ratio. We measure S for various pairs (T_0, T) and report our results in Fig. 3. These results depend both on the stable glass state itself (through the temperature T_0) and on the transformation temperature T . For a fixed melting temperature T , lower energy stable glasses are always more stable, as might be physically expected, but the dependence on the transformation temperature is non-monotonic. Large stability ratios appear in a range of intermediate transformation temperatures T .

To understand this last result, note that for very high T , the rate for any spin to flip in the TPM approaches 1, and all glassy behavior is lost. Hence $\tau_{\text{rec}} \approx \tau_{\text{eqm}} \approx 1$, so that when the melting temperature belongs to the non-glassy high-temperature regime, one necessarily has $S \approx 1$. Physically, this effect may be attributed to the MC dynamics of the system, which implies that all spins are directly coupled to a stochastic heat bath, and this coupling is strong enough to melt the glass locally, without requiring any collective dynamics. Another trivial limit, on the other hand, is for $T = T_0$ where

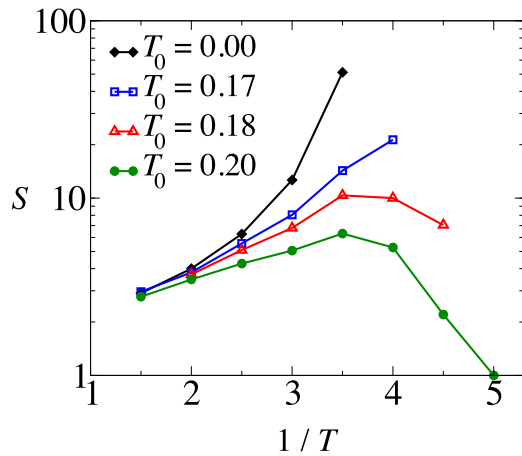


FIG. 3. Stability ratio $S = \tau_{\text{rec}}/\tau_{\text{eq}}$ as a function of inverse temperature T^{-1} where melting occurs, for various preparation temperatures T_0 . Trivially, $S = 1$ when $T = T_0$ and also when T hits the high temperature non-glassy regime, so that S is in general a non-monotonic function of the melting temperature T , with a maximum which increases when glass stability increases, i.e., when T_0 decreases.

the recovery time extracted from the time-dependent overlap τ_{rec} is equal, by definition, to the equilibrium relaxation time τ_{eqm} . Hence one must again have $S = 1$ at $T = T_0$. Therefore, for a given low T_0 value, $S \approx 1$ both at very high T and when T approaches T_0 : the stable glass behavior becomes apparent only for intermediate T values, which results in a non-monotonic temperature dependence. The only exception is when $T_0 = 0$ in which case we expect S to increase monotonically on reducing T without turning down again, because $\tau_{\text{eq}} \rightarrow \infty$ as $T_0 \rightarrow 0$ and the position of the maximum of S has shifted to $T = 0$.

We note that kinetic stability ratios S found in experiments are often much larger than the values shown here, and they also tend to increase with temperature T ,^{2,3,51} which is the opposite trend to the data for $T_0 = 0$ in Fig. 3. In comparing absolute values of S with experiments, we note that the temperatures T considered here are relatively high, in the sense that equilibrium relaxation in the TPM at temperature $T = \frac{1}{3}$ is only 2-3 decades slower than high-temperature (liquid-like) relaxation times. The stability ratio increases rapidly (faster than an Arrhenius-law) on reducing T so we might easily imagine reaching much larger stability ratios if we were able to perform simulations on the very long time scales comparable with experiment. It is indeed hard to imagine having a “more stable” glass than a perfectly thermalised $T_0 = 0$ initial configuration.

From our results, it is not so easy to rationalize the apparent experimental finding that stability ratios S tend to increase with T over a wide temperature range (and not just for T close to T_0). However, we note that the nature of the coupling of the stable glass to the thermal bath is rather different in experiments, compared to this kind of model, where all spins are strongly and directly coupled to the heat bath. As discussed above, we expect this strong coupling to lead to $S \approx 1$ at high temperatures. Experimentally, such a trivial effect has not been reported, even after temperature jumps to relatively high-temperatures in the mode-coupling regime.⁵² Of course, in experiments, each molecule is not

directly coupled to a stochastic heat bath, and the calorimetric process following a sudden temperature change is less trivial than in simulations: this might explain the discrepancy with our results in this regime, which is anyway not very relevant.

C. System size dependence of transformation dynamics

As discussed in Sec. II C, the nucleation-and-growth picture of stable glass transformation predicts strong finite-size effects in the transformation kinetics. Figure 4 shows this effect, for the case $T = \frac{1}{3}$ and $T_0 = 0$ discussed above. Fig. 4(a) shows a significant finite-size effect in systems of linear sizes $L = 32$ and $L = 16$, whereas $L = 64$ seems to have converged to the infinite system size limit. This may be compared with the behavior shown in Fig. 4(b), which shows similar results for equilibrium relaxation at $T = \frac{1}{3}$. In this case, finite-size effects are significant only for $L = 8$ and $L = 4$. This indicates that the non-equilibrium melting is characterised by a length scale that is of order four times larger than its equilibrium counterpart. At equilibrium, the typical length scale for many-body spin correlations and dynamical heterogeneity in the TPM scales as $\xi \approx e^{1/(T d_f)}$ where $d_f = \log_2(3) \approx 1.585$ is the fractal dimension of Sierpinski’s triangle.²¹ While the prefactor (proportionality constant) in the scaling relation for ξ is not known, assuming that this factor is close to unity yields $\xi \approx 7$ for $T = \frac{1}{3}$, consistent with Fig. 4(b).

Returning to the non-equilibrium relaxation of low-temperature initial states [Fig. 4(a)], the behaviour of $q(t)$ in the smaller system ($L = 16$) is close to exponential, consistent with the theoretical prediction in Eq. (11) and in contrast to the compressed exponential found for Avrami kinetics in large systems. Finally, Fig. 4(c) shows that while the average relaxation is exponential in a small system size, the individual trajectories relax with a simple two-state mechanism, where a single rare event leads to immediate transformation of the whole system. The physical idea is that once nucleation has occurred, the growth of the droplet of the new phase is so fast that it quickly takes over the whole system, so the system transforms by a single nucleation event. The exponential form is recovered by performing averages over different samples, because the instant of the melting fluctuates from one sample to another, presumably in a Poisson manner.

We again emphasise that while the length scale in Fig. 4 is still relatively modest, and not comparable with the giant length scales observed in experiments, the stability ratio for this case is also relatively low ($S \approx 13$). For lower transformation temperatures T , we expect much larger stability ratios accompanied by much larger length scales—the difficulty is that the long time scales for these processes make simulations difficult. In Section IV D, we show how this difficulty can be avoided by exploiting the coupled-replica construction described in Sec. II B, producing both large stability ratio and, indeed, giant dynamic length scales.

D. Transformation dynamics for coupled replicas

The fits to Avrami theory in Fig. 2 indicate a nucleation-and-growth mechanism associated with a first-order phase

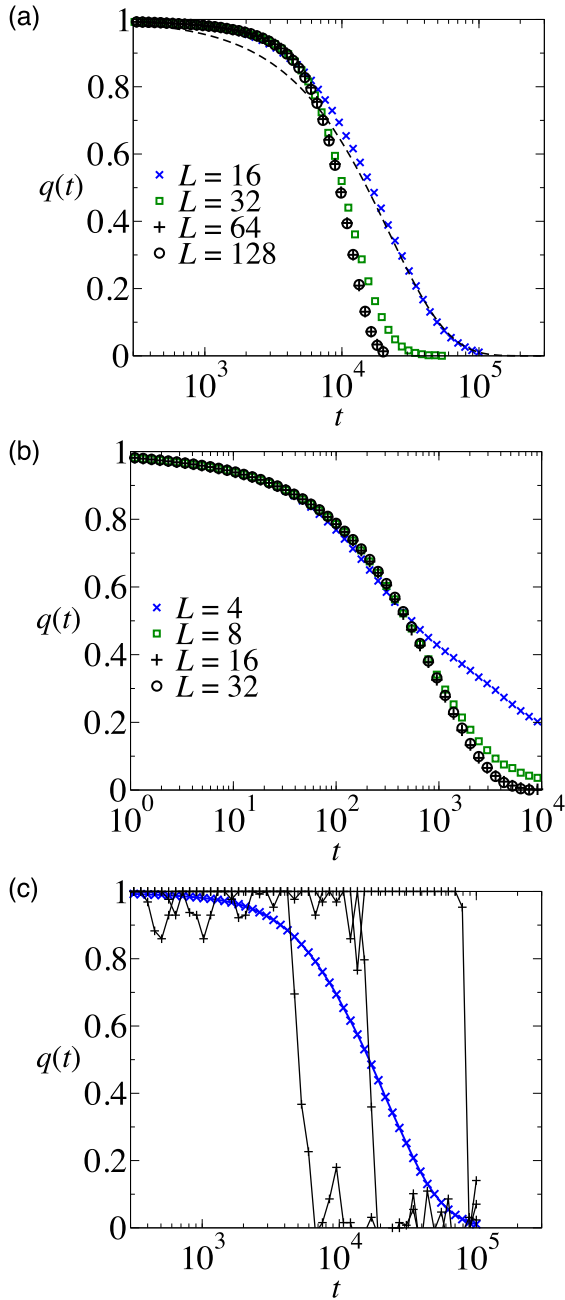


FIG. 4. (a) System size dependence of stable glass recovery at $(T, T_0) = (\frac{1}{3}, 0)$. For large systems, one observes compressed exponential (Avrami-like) kinetics, as in Fig. 2. For smaller systems, the long-time relaxation is close to exponential (dashed line), which we attribute to the exponentially distributed waiting time for the first nucleation event. (b) Finite size effects for equilibrium relaxation at $T = T_0 = \frac{1}{3}$ are visible only for small systems $L = 4, 8$. (c) The average overlap during stable glass recovery at $L = 16$ (data repeated from (a)), compared with three realisations of the time-dependent overlap $Q(C_0, C_t)$. In each individual trajectory, the system makes a rapid transformation between two states, involving a slow nucleation step followed by a very rapid growth of the new phase, which leads to an abrupt decay of the overlap.

transition. We now show that this phase transition is the one anticipated by Franz and Parisi,¹⁵ as discussed for the TPM in Refs. 26 and 27, and for a three-dimensional generalisation of this model in Ref. 28.

To this end, we consider melting from T_0 to T in the presence of a positive biasing field $\varepsilon > 0$, as discussed in

Sec. II B. We show results in Fig. 5(a) for the transformation kinetics of a stable glass with $T_0 = 0$ at $T = \frac{1}{3}$, as the biasing field ε is slowly increased. Concentrating first on the bulk (large-system) behaviour, one observes an increase of almost three orders of magnitude in the transformation time. To rationalise this effect, Fig. 5(b) shows the phase diagram of the TPM in the presence of the coupling field ε for a reference temperature $T_0 = 0$. Note that since $T_0 = 0$, the reference configuration C_0 has $s_i = 1$ for all i . Due to this simple reference configuration, the bias ε simply behaves as a magnetic field, and so this model belongs to the $2d$ Ising universality class²⁷ and there is no quenched disorder, in contrast to cases with $T_0 > 0$. The first-order phase boundary is known exactly due to a duality symmetry of the model,^{53,54} the position of the critical point was obtained numerically in Ref. 27 as $T_c \approx 0.38$. The path followed in Fig. 5(a) is represented in the phase diagram shown in Fig. 5(b), which explains the rapid growth of the transformation time τ_{rec} as the transition is approached, as expected for first-order transitions.

The growth of the (bulk) transformation time τ_{rec} with ε is shown in Fig. 5(c), in a representation which clearly indicates that it should diverge exponentially fast as $\varepsilon \rightarrow \varepsilon^* \approx 0.0166$. Because the temperature is constant in this figure, the increase of τ_{rec} translates into an increase of the kinetic stability ratio

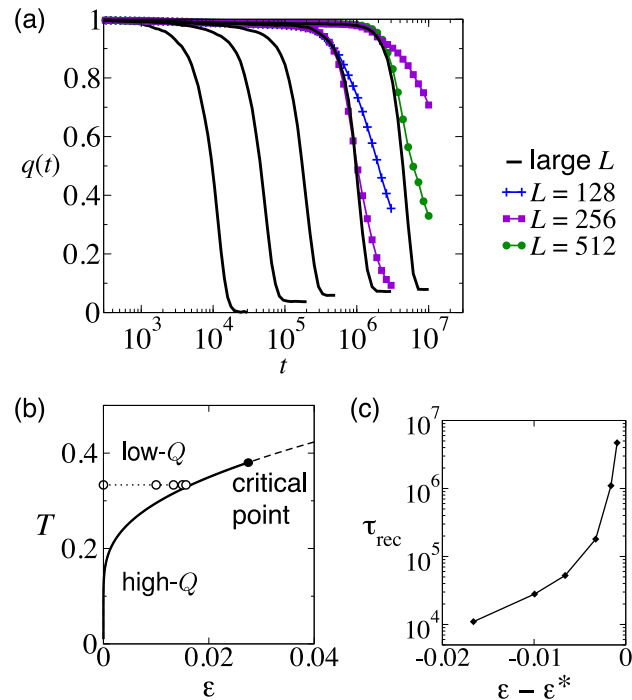


FIG. 5. (a) Overlap $q(t)$ showing stable glass recovery for $(T_0, T) = (0, \frac{1}{3})$, varying ε (increasing left to right). The values of ε are $(0, 0.01, 0.0133, 0.0150, 0.0157)$, as indicated in panel (b) with open circles. Solid lines show the behaviour that we find in the limit of large system size. For the largest values of ε , convergence of this limit requires system sizes of $L = 512, 1024$. To illustrate these strong finite-size effects, numerical results for smaller systems are also shown. (b) Phase behavior of a TPM, coupled by the field ε to a configuration C_0 at $T_0 = 0$. The solid line indicates a first-order phase transition, which separates high-overlap and low-overlap phases, and ends at a critical point (black dot). The state points considered in (a) are indicated by open circles. (c) The transformation times τ_{rec} obtained from panel (a) grow rapidly as ε approaches the first-order transition, which occurs at $\varepsilon^* \approx 0.0166$.

S from $S \approx 13$ at $\varepsilon = 0$ to $S \approx 5500$ at $\varepsilon = 0.0157$. The very large stability ratio reached near ε^* is comparable to the experimental measurements reported for ultrastable glasses, and we hypothesise that the melting process in both cases should be very similar.

It is therefore experimentally relevant to demonstrate that such a large stability ratio is also associated with very strong finite-size effects in the transformation kinetics, as predicted in Sec. II C. These results are also shown in Fig. 5(a). For the largest field considered ($\varepsilon = 0.0157$), there is a significant finite-size effect in melting dynamics even for $L = 512$. For $\varepsilon = 0.0150$, the behaviour for $L = 512$ is consistent with the large- L limit, but there is a significant finite-size effect for $L = 256$. Comparing with equilibrium relaxation at this temperature [Fig. 4(c)], the stability ratio of $S \approx 5500$ is accompanied by a giant length scale, in the sense that it is around two orders of magnitude larger than the length scales characterising equilibrium behaviour of the simple liquid at the same temperature.

For $T_0 > 0$ the fact that the TPM is a two-dimensional model means that the first-order phase transition shown in Fig. 5(b) is destroyed by the quenched disorder that comes from the randomness contained in the finite temperature configuration C_0 .^{49,50} (The same reasoning also explains the absence of a phase transition in the random field Ising model in two dimensions.) Nevertheless, one can still observe vestiges of this phase transition on finite length and time scales. Indeed, Fig. 2 shows that the stable glass transformation for $T_0 > 0$ is qualitatively very similar to that for $T_0 = 0$, at least when T_0 is low enough. To illustrate this effect more clearly, Fig. 6 shows results for $T_0 = \frac{1}{6}$, for increasing bias ε . For small fields ε , these results resemble the ones in Fig. 5(a), with a transformation time that increases by nearly two orders of magnitude, with compressed exponential (Avrami-like) transformation kinetics. We again attribute these results to nucleation-and-growth kinetics. As long as the critical nucleus is not too large, it is not apparent that the first-order phase transition has been destroyed by quenched disorder, since the effect of the disorder operates on large length scales.^{49,50} However, as ε is increased, the critical nucleus grows and the

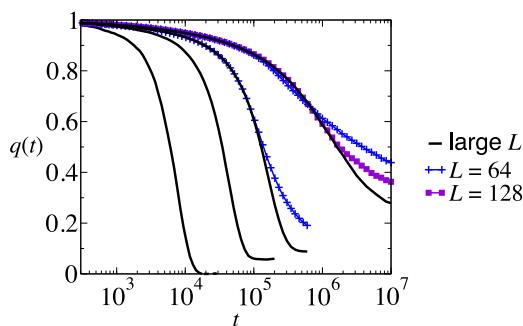


FIG. 6. Overlap $q(t)$ showing stable glass recovery at $T = \frac{1}{3}$ and $T' = \frac{1}{6} \approx 0.17$, for $\varepsilon = 0, 0.0133, 0.0167, 0.0183$ (increasing from left to right). As in Fig. 5, solid lines show the behaviour in the large size limit, while symbols show data in smaller systems, to illustrate finite size effects. For the largest ε , we have verified that the large- L limit is converged by comparing data for $L = 256, 512, 1024$, which all agree to within statistical error (not shown).

effects of the quenched disorder become apparent as a change in transformation kinetics, crossing over from a compressed to a stretched exponential form. This shows that the effects of the (avoided) transition can still be felt, particularly when ε is not too close to ε^* .

In three dimensions, phase transitions survive²⁸ for $T_0 > 0$, so one would expect nucleation-and-growth kinetics with a diverging time scale in that case too. It would be interesting to investigate these effects in a three-dimensional model such as the square-pyramid model (SPyM), which is a three-dimensional generalisation of the TPM. In particular, it would be useful to understand the influence of quenched disorder on nucleation and growth near the first-order transition in that case, but we postpone that investigation for a future study.

V. NUCLEATION-AND-GROWTH DYNAMICS

A. Qualitative observations

In this section, we show images of the heterogeneous nucleation-and-growth dynamics that takes place in the TPM as it transforms from an initial state at $T_0 = 0$ to an equilibrium state at temperature T . To investigate this, we consider the local time-dependent overlap

$$q_i(t) = s_i(t)s_i(0), \quad (14)$$

which is equal to +1 if spin i is in the same state as it was in the initial (reference) configuration C_0 . Similar snapshots have been produced in earlier simulations of ultrastable glasses produced by random pinning.³⁵

We show in Fig. 7(a) how the overlap evolves as a system transforms from a low energy initial condition to an equilibrium state, for a representative trajectory at $T = \frac{1}{3}$, $\varepsilon = 0.007$. In that case, the system size is $L = 64$. As time increases, we see the emergence of a first nucleation event (highlighted in red), followed by a second one at a later time (also highlighted). These two droplets then rapidly expand and fill the entire system. At the time when the growing domains merge, the dynamic heterogeneity seems to be maximal, as the system is half relaxed in a spatially heterogeneous manner. At very long times, the system is homogeneous again, and resembles a typical equilibrium liquid configuration at that same temperature.

In Fig. 7(b) we show a similar time series of spin configurations for the same temperature $T = \frac{1}{3}$ but a larger field value $\varepsilon = 0.0150$, much closer to the transition point at $\varepsilon^* \approx 0.0166$. There is clearly a large length scale associated with this dynamical relaxation, which is accompanied by the much larger stability ratio shown in Fig. 5(c). To construct these images, we have used a system size $L = 1024$. The large length scale that is apparent in these snapshots is consistent with Fig. 5(a) above, which showed that finite-size effects are significant for this process even for system sizes up to $L = 256$. We see multiple nucleation events, followed by a rapid growth of the fluid phase invading the glass. These images provide a vivid visual demonstration of the melting process taking place in the present model.

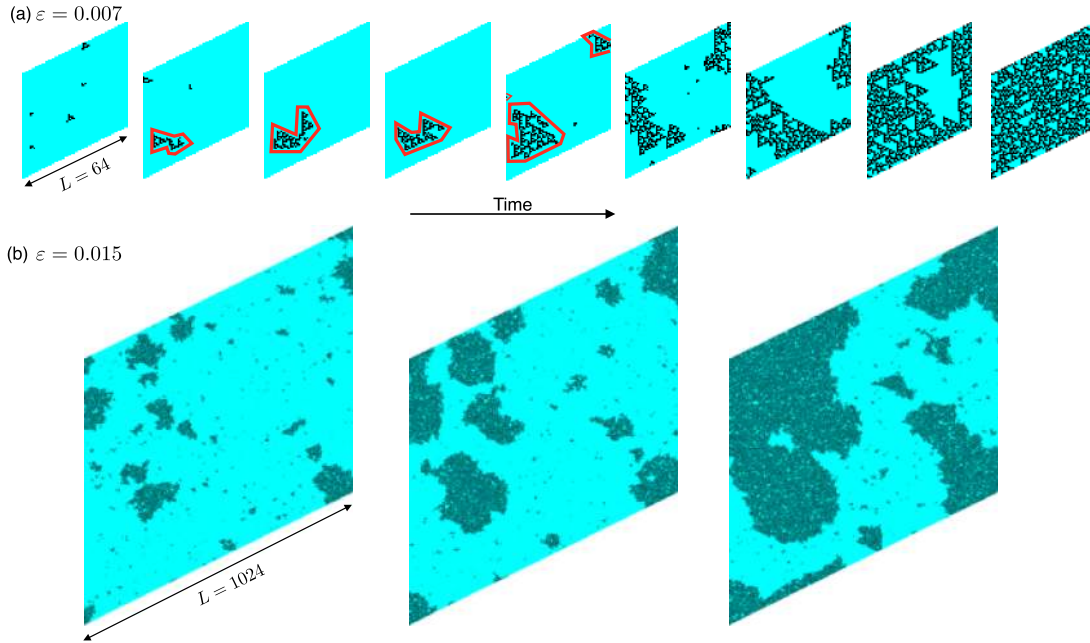


FIG. 7. Time-dependent local overlap $q_i(t)$ during nucleation and growth for $(T_0, T) = (0, \frac{1}{3})$. Pale blue indicates sites where $q_i(t) = +1$, so C_t matches the initial configuration C_0 ; black sites are where the configurations differ. (a) System size $L = 64$ and $\varepsilon = 0.007$. The configurations are equally spaced in $\log(\text{time})$ between $0.15\tau_{\text{rec}}$ and $1.06\tau_{\text{rec}}$, with $\tau_{\text{rec}} \approx 28\,000$. Two independent growing nuclei of the low overlap phase are highlighted in red. At the final time, the system has reached equilibrium and approximately half of the spins match the initial condition, so the overlap is small ($q(t) \approx 0.02$). (b) System size $L = 1024$ and $\varepsilon = 0.015$ for times $(t/\tau_{\text{rec}}) = (0.36, 0.52, 0.75)$ with $\tau_{\text{rec}} = 1.1 \times 10^6$. There are multiple nucleation events, and the growing clusters merge and eventually percolate. At the merging time, the “giant” length scale of the dynamic heterogeneity is about two orders of magnitude larger than in equilibrium at the same T .

B. Dynamic length scales via four-point functions

To analyse this behaviour quantitatively, we use the machinery of four-point correlation functions, which have been used extensively to discuss dynamical heterogeneity in glassy systems at equilibrium.^{12,55} Similar correlation functions were calculated for nucleation and growth processes,^{56,57} and were measured also during the melting of randomly pinned glasses.³⁵

Four-point correlation functions are constructed from the overlap $q_i(t)$ as

$$g_{4,ij}(t) = \langle q_i(t)q_j(t) \rangle - q(t)^2. \tag{15}$$

We emphasise that these averages run over both the random initial condition and the stochastic dynamics of the model. This means that $g_{4,ij}$ depends only on the relative positions of sites i and j , and that $\langle q_i(t) \rangle = N^{-1} \langle \sum_i q_i(t) \rangle = q(t)$.

The function $g_{4,ij}$ measures the correlations of the overlap between sites so it characterises the correlated regions shown in the snapshots of Fig. 7. For a simpler characterisation of the strength of these correlations (or the size of the correlated domains), we also consider the four-point susceptibility

$$\chi_4(t) = \left\langle \frac{1}{N} \left[\sum_i q_i(t) \right]^2 - Nq(t)^2 \right\rangle \tag{16}$$

$$= \frac{1}{N} \sum_{ij} g_{4,ij}(t). \tag{17}$$

Figure 8 shows results for $\chi_4(t)$ for $T_0 = 0, T = \frac{1}{3}$, and increasing ε . As expected for a system undergoing dynamically heterogeneous relaxation, the four-point susceptibility is non-monotonic in time, with a peak close to τ_{rec} , where

$q(t) \approx 1/e$. The maximum value of χ_4 , which we denote by χ_4^* , reflects the volume of domains of high (or low) overlap, as seen in Fig. 7. The significant result from Fig. 8 is that χ_4^* increases strongly as ε is increased, providing a quantitative comparison of the increased heterogeneity associated with nucleation-and-growth as the phase boundary is approached. We expect χ_4^* to be comparable with the maximal volume of correlated domains in Fig. 7. Comparing with Fig. 1, this size should be of order ℓ_{nuc}^2 , which diverges exponentially fast as the phase boundary is approached. Because the transformation time τ_{rec} also diverges exponentially, we expect a power law relation between χ_4^* and τ_{rec} , consistent with the simulation results in Fig. 8. Such power law indicates a direct correlation

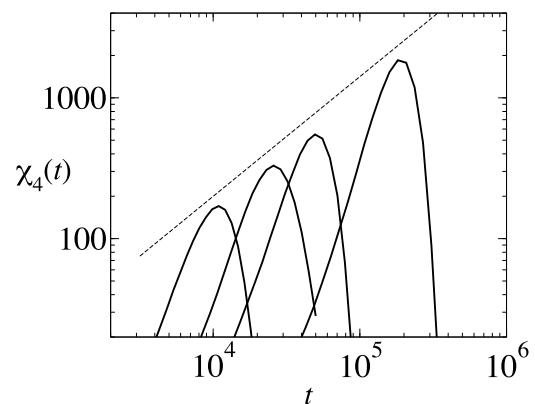


FIG. 8. Four-point susceptibility χ_4 for $(T_0, T) = (0, \frac{1}{3})$ as ε is varied from 0 to 0.013 (increasing from left to right). The increasing recovery time is accompanied by an increase in dynamical heterogeneity. The dashed line indicates $\chi_4 \sim t^{0.85}$, showing that the dynamic heterogeneity length scale increases algebraically with the kinetic stability of the glass.

between the stability ratio S quantifying the kinetic stability to the relevant dynamic length scale controlling the melting process, as suggested before.³⁵

To investigate this behaviour in more detail, we consider the four-point correlation function $g_{4,ij}(t)$. This function depends only on the relative positions of sites i and j . For simplicity, we take a circular average of this function, arriving at a function $g_4(r,t)$, where r is the distance between sites i and j . (There is fine structure in the dependence $g_{4,ij}$ on the orientation relative to the lattice of the vector connecting sites i and j , but this is unimportant for the behavior considered here.) For nucleation and growth, we expect domains to be compact, and hence

$$g_4(r,t) \simeq n(t)e^{-r/\xi_4(t)}, \quad (18)$$

where $\xi_4(t)$ is the typical size of a growing domain of the new phase, and the prefactor $n(t)$ should be proportional to the number density of critical nuclei, at least in the early time regime where droplets do not overlap. Assuming as in Sec. II C that droplets of the new phase grow with velocity v , we expect

$$\xi_4(t) \sim vt + \xi_0. \quad (19)$$

Results for a representative state point (with $\varepsilon = 0$) are shown in Fig. 9, including fits to Eqs. (18) and (19). The agreement is good, with a maximal domain size $\xi_4^* \approx 11$, consistent with the observation of Fig. 4 that a system size $L = 16$ is not large enough to recover bulk behaviour at this state point.

We emphasise also that the linear growth with time of the (non-equilibrium) dynamic heterogeneity length in Eq. (19) again differs strongly from the subdiffusive behaviour found in equilibrium studies of dynamic heterogeneity.⁵⁵ This result shows that the propagation of mobility from rare nucleation sites is qualitatively similar to the heterogeneous melting taking place from the interface in experimental work on ultrastable glasses, even though what we observe here is the analog of “homogeneous” melting,⁴³ i.e., nucleation initiated from the bulk rather than from an interface. For the present model, we expect the velocity v to scale roughly as

$$v \simeq \frac{\xi_{\text{eq}}}{\tau_{\text{eq}}}, \quad (20)$$

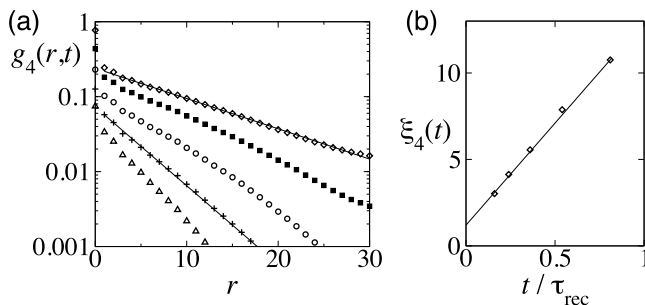


FIG. 9. Four-point correlation function $g_4(r,t)$ for $(T_0, T) = (0, \frac{1}{3})$ and $\varepsilon = 0$, for times $t/\tau_{\text{rec}} = 0.16, 0.24, 0.36, 0.54, 0.81$ (increasing from bottom to top). The lines (for selected times only) are fits to $g_4(r,t) = a(t)e^{-r/\xi_4(t)}$. (b) The time-dependence of the length $\xi_4(t)$ can be fitted as $\xi_4(t) = \xi_0 + vt$, indicating growth at a constant velocity.

where ξ_{eq} is the equilibrium correlation length (of order $e^{1/(TdT)}$ as discussed above), and τ_{eq} is the equilibrium relaxation time. The physical reasoning leading to Eq. (20) is that on the low-overlap side of the front, the system has a near-equilibrium structure, so its dynamics are equilibrium-like. At equilibrium, regions of linear size ξ_{eq} take a time of order τ_{eq} to equilibrate. Hence the front moves through the system by successive equilibration of regions of size ξ_{eq} , each taking a time τ_{eq} , leading to Eq. (20); see also the discussion in Ref. 58, and the numerical analysis of kinetically constrained models in Refs. 36, 38, and 58.

This scaling relation indicates that the velocity should only depend on the final temperature T , and should scale essentially as $1/\tau_{\text{eq}}$, since the temperature dependence of ξ_{eq} is much weaker than that of τ_{eq} . The scaling in Eq. (20) is very much consistent with experiments.⁵⁹ The temperature dependence of $v(T)$ has also been addressed in the context of RFOT theory.^{10,65,66} Together with the snapshots in Fig. 7, the linear time dependence of $\xi_4(t)$ is strong evidence that this system is exhibiting nucleation-and-growth behaviour, consistent with Avrami’s theory. We emphasise that this dynamical behaviour is taking place for the natural (unbiased, $\varepsilon = 0$) behavior, even if the only phase transitions that occur in this model happen for finite bias ε . This is a sense in which *avoided phase transitions* such as the one shown in Fig. 1 can still provide explanatory behaviour for the natural dynamical behaviour of glass-forming systems.

VI. DISCUSSION

A. Connection to experimental results

There are three principal aspects of our results for the TPM that are relevant for the mechanism of transformation of stable glasses in experiments. Since the simulations use periodic boundaries, the relevant comparison is with bulk stable glasses, or thick films.

(1) The transformation of stable glasses in experiments has been observed to be similar to crystal melting.⁹ The TPM reproduces this effect and we have explained this phenomenology by reference to the first-order transition shown in Fig. 5. In two dimensions the transition is destroyed for $T_0 > 0$, but its signature can still be seen in the transformation kinetics. In the experimentally relevant three-dimensional case, the transition will survive for $T_0 > 0$ so the mapping to first-order phase transformation should remain precise, and our interpretation should hold. Therefore, we propose that the first-order phase transition discussed in our work represents the correct framework to support the analogy with crystal melting suggested in experimental work² on purely empirical grounds.

(2) Our framework predicts naturally the emergence of a “giant” length scale ℓ_{nuc} from Eq. (9) that is essentially the spacing between independent nucleation events. This length scale diverges at the first-order transition between high-overlap (stable glass) and low-overlap (fluid) states, but this transition is present only for $\varepsilon > 0$. In general, the length scale is controlled by the nucleation rate k_{nuc} , which depends strongly on the free energy difference $\Delta\mu$ between the stable

glass and equilibrium fluid states. For the physical case $\varepsilon = 0$, we expect $\Delta\mu \approx Ts_{\text{conf}}(T) - u(T) + u(T_0)$ where s_{conf} is the configurational entropy density that is gained by the liquid during the transformation,⁶⁷ while $u(T) - u(T_0)$ is the increase in internal energy due to the temperature difference. At fixed T , more stable glasses have lower $u(T_0)$, and these will therefore be associated with larger length scales. (More strictly, u would be a free energy that includes the entropy associated with intra-state fluctuations and enthalpic contributions from volume changes during the transformation process.)

Our interpretation of the giant length scales observed as finite-size effects in experiments is that for thin films, critical nuclei are so rare that propagating fronts coming from the boundaries of the system can travel through the entire film before any nucleation event takes place. The thick-film (bulk) limit sets in only when homogeneous nucleation and growth have a significant effect on relaxation.² Transformation of stable glasses by (homogeneous) nucleation-and-growth is one of the two scenarios proposed in Ref. 9, the other being growth by melting fronts that are initiated at structural defects. We note that the homogeneous scenario provides a prediction for the large length scale [see Eq. (9)], in terms of the spacing of critical nuclei—the heterogeneous picture requires that these rare defects be present with the required low density, presumably due to some feature of the film growth.

In the homogeneous picture, the crossover from thin to thick film behaviour should take place at the point where the film thickness becomes comparable to the typical spacing between nucleation events. For a finite film of thickness W , one should compare the time for a mobility front to spread from the boundary through the system, W/v , with the time τ_{avr} for homogeneous transformation given in Eq. (8). One finds that the homogeneous transformation mechanism operates only if $W \gtrsim \ell_{\text{nuc}}$. For this reason, we identify the large length scale ℓ_{nuc} with the giant crossover length scale measured in experiments,² which is characterised through the dependence on the film thickness W . Our results suggest that this large length scale could be observed directly in bulk stable materials, and would appear as a giant dynamic heterogeneity length scale.⁹ To our knowledge, this has not been directly observed in experiments yet where the length scale has only been inferred from the crossover behaviour as the film thickness is varied.

(3) The length scales and stability ratios observed in this work are much smaller, for $\varepsilon = 0$, than those in experiments. We attribute this to the relatively high transformation temperatures T considered here. As noted above, equilibrium relaxation at these temperatures is only 2-3 decades slower than relaxation at the onset of glassy dynamics, in contrast to the experimental case where relaxation is typically studied close to the experimental glass temperature. For the TPM, we expect that the stability ratio S and the length scale ℓ_{nuc} should increase significantly as T is reduced, and are likely to diverge as $T \rightarrow 0$, taking always $T_0 \ll T$, or perhaps more precisely $\tau_{\text{eq}}(T_0) \gg \tau_{\text{eq}}(T)$. For this reason, we expect that the modest length and time scales that we have found in this work are due to our restriction to state points where computer simulations are tractable—our theoretical arguments are applicable to the large length and time scales found in experiments. We

have supported this claim using the biasing field ε at constant (T, T_0) to promote by more than two orders of magnitude both the kinetic stability ratio and the dynamic length scale of the melting process.

In addition to these three points, a potentially important factor that we have not considered here is the heterogeneous nature of the nucleation process, given that realistic initial conditions in experiments are not translational invariant (in contrast to the special case $T_0 = 0$ for the TPM). This leads to the possibility that nucleation will occur preferentially at particular starting points within the stable glass phase. It would be interesting to investigate this effect further, either in the TPM or in its three-dimensional generalisation (the SPyM).

B. Connection to theoretical work

Since their experimental discovery, stable glasses have attracted a large interest in the theoretical community as well. In this section, we provide a comparative discussion of our approach with other theoretical studies that discuss the transformation kinetics of ultrastable glasses.

We have emphasised throughout our paper that the picture provided by the study of the present plaquette model whose behaviour is sketched in Fig. 1 is essentially the same as the sketch provided in the analysis of experimental findings.² It should therefore come as no surprise that our findings and predictions are in qualitative agreement with experimental results, where words such as “nucleation” and “melting” have already been employed. However, two points are worth emphasising. (i) Previous interpretations have been empirical, and presumably obtained by analogy with melting of crystals. Such crystal melting of course involves the presence of a first-order transition, but the nature of the transition required to provide a nucleation-and-growth picture for glass melting was not previously discussed. (ii) The picture provided in Ref. 2 is a coherent description of experimental findings, but it does not enable predictions of the time scales and length scales that appear in this qualitative description. In addition, the nucleation-and-growth mechanism for bulk melting is inferred from the observation of a crossover length and the Avrami-like kinetics, but it has not been directly observed. On the other hand, by connecting the transformation time of stable glasses to a nucleation rate k_{nuc} , and hence to a competition between a surface tension and a difference in free energy, our work can offer predictions for the large length and time scales observed in experiments.

Kinetically constrained models of glasses^{60,61} have also been used to understand front propagation and melting of stable glasses.^{36–38} If configurations of the TPM are represented in terms of the defect variables n_i , this system behaves as a kinetically constrained model: localised defects (or excitations) move by dynamical rules that lead to strong dynamical heterogeneity, without static correlations between the defects.²⁰ It is therefore not surprising that many of our results, including front propagation at finite velocity, are also observed in kinetically constrained models.

However, a significant difference between the TPM and the kinetically constrained models considered in other studies^{36–38} is that the (constrained) defect dynamics of the

TPM is a natural consequence of its spins s_i flipping with (unconstrained) rates given by the Metropolis formula. The coupled replica construction that we use here is based on these spins—it is easy to show that the bias ε has a trivial effect if the definition of the overlap is based on defect variables, as would necessarily be done within kinetically constrained models. This prevents a direct analogy between kinetically constrained models and the thermodynamic first-order phase transitions considered here. Kinetically constrained models do support dynamical phase transitions,^{62,63} but it is not clear how such transitions can be connected to nucleation-and-growth dynamics.

For kinetically constrained models that lack a thermodynamic transition, one expects melting of metastable states to start at pre-existing defects, or “soft spots,” where spins are able to flip—this is the heterogeneous scenario of Refs. 2 and 9. In this case, the giant length scale associated with stable glass transformation is not associated with the spacing between spontaneous nucleation events, but instead arises from the distance between these pre-existing defects. Very recently, a kinetically constrained model with a “softened” constraint⁶⁴ was used to study glass transformation,³⁸ where the soft constraint acts as a kinetic barrier for the production of defects. This process mimics the nucleation step that is absent in ordinary kinetically constrained models. Since the models already support mobility fronts moving with finite velocity, the introduction of such a slow nucleation step means that one is then bound to recover a dynamics that is similar to that described here. A difference with our approach is that the length and time scales associated with melting are adjusted by an extra modelling parameter (the softness of the constraint), whereas in our case they emerge directly from the definition of the model.

Finally, it is interesting to compare our approach to the one first initiated by Wolynes,¹⁰ and developed further later.^{65,66} Although based on random first-order transition theory (where the coupled-replica transition was first described), this approach attacks the problem of front propagation by the derivation of approximate equations of motion for a mobility field. The main outcome is the description of ballistic propagation of a front moving with a velocity which tracks closely (but not exactly) the equilibrium relaxation time, which is again a result similar to our results and the outcome of kinetically constrained model analysis. However, the melting of bulk ultrastable glasses and the associated time scales and length scales was not discussed in this approach.

C. Crossover between stable glass melting and equilibrium relaxation

Before ending, we return to a question that arises from Fig. 2(a): can the equilibrium relaxation itself occurring for $T_0 = T$ be explained by a similar nucleation argument to the transformation of the stable glass? The shape of the relaxation function is different, but the general RFOT-like description of Bouchaud and Biroli⁶⁸ would seem applicable in both cases (see also Ref. 21). We offer a scaling argument as to how these two regimes might be smoothly connected.

Starting with transformation from a stable glass with $T_0 = 0$, the usual CNT predicts that the free energy cost for a droplet of the new phase is

$$\Delta F \approx \gamma R^{d-1} - \Delta\mu R^d, \quad (21)$$

with a critical nucleus $R^* \sim \gamma/\Delta\mu$ and a barrier $F^* \sim \gamma^d/\Delta\mu^{d-1}$. Both diverge at the phase boundary where $\Delta\mu \rightarrow 0$.

For equilibrium relaxation, we imagine that the phase boundary is still present (as would be the case in $d = 3$). However, the relevant state for equilibrium relaxation is much further from the phase boundary and so the critical nucleus is much smaller. Also, the form of the “droplets” that mediate relaxation at equilibrium is different—the droplets are fractal objects of size R that contain $N_{\text{drop}} \sim R^{d_f}$ spins and have an energetic cost that scales as $J \log_2 R$. (For the TPM, $d_f = \log_2 3$ is the fractal dimension of Pascal’s triangle; for the three-dimensional square-pyramid model, it is believed that $d_f = \log_2 5$. In both cases $d_f < d$.) The free energy gain on relaxing such an object is purely entropic (the idea is that the initial state is localised in a single metastable minimum while the final state can choose from many similar states). The configurational entropy per site in the TPM is comparable with the total entropy, which scales as $s \sim (J/T)e^{-J/T}$. Considering the growing droplet we therefore estimate

$$\Delta F \approx J \log R - s R^{d_f}. \quad (22)$$

This free energy barrier is maximal at $R^* \sim (J/s)^{1/d_f}$. Substituting for s , the barrier height is therefore $F^* \sim J^2/(T d_f)$, leading to a relaxation time that scales as

$$\log \tau \sim J^2/(T^2 d_f). \quad (23)$$

This result coincides with the relaxation-time scaling for the TPM that is predicted and observed in numerics,^{20,21} subject to numerical prefactors in (23) which are rather hard to establish, both in numerics²¹ and analytically (consider for example the simpler case of the East model^{40,69}). We note that the length scale R^* obtained from this argument is also of the same order as the four-point correlation length at equilibrium, and the cavity point-to-set length, both of which scale as $(e^{-J/T})^{-1/d_f}$; see Ref. 21.

The resulting picture is that the interfacial costs for nucleation of relaxation of localised droplets can be understood in terms of a crossover formula, $\Delta F_{\text{int}} \sim J \log R + \gamma R^{d-1}$, with the logarithmic term being relevant for the relatively small droplets that control equilibrium relaxation, while the surface tension term (γR^{d-1}) is relevant for large droplets, such as those found in nucleation close to first-order phase boundaries. Similarly, the bulk free energy gain from a droplet of size R can be approximated as $\Delta F_{\text{bulk}} \sim s R^{d_f} + \Delta\mu R^d$ where again the first term is relevant for smaller droplets and equilibrium relaxation, and the second term applies to larger droplets, as found in nucleation and growth.

Of course, these arguments are based on several conjectures: it would be interesting to test them using further numerical studies. However, they do seem to offer a coherent picture of the TPM dynamics and of its static many-body correlations (at least at the level of point-to-set). In general, the

idea that nucleation-and-growth of relatively small droplets might occur with a non-classical free energy such as (22) follows the arguments in Ref. 68, but with the additional generalisation that even the bulk term might not scale as R^d .

VII. OUTLOOK

We have used the TPM to illustrate how phase transitions that occur in systems of coupled replicas can be used to rationalise the experimental behaviour of ultrastable glasses, constructing a direct connection with nucleation-and-growth dynamics. This provides a theoretical explanation for the compressed exponential Avrami kinetics and the giant length scales that are observed in experiments.²

The TPM is a schematic model and does not describe the experimental system in detail, but these results show how predictions based on phase transitions and universal behaviour can be useful in practical settings. The TPM combines facilitated dynamics of point-like excitations with static many-body spin correlations that can be long-ranged and lead to significant amorphous order. By combining these two ingredients, the model can capture many qualitative features of glass-forming systems, including non-trivial aging behaviour, dynamical heterogeneity, and both static and dynamic phase transitions.

More generally, the present results should serve as useful guides to interpret future work dealing with the dynamics of stable glasses. In particular, our approach suggests that spatially resolved analysis of the melting dynamics of *in silico* stable glasses or experimental materials would be very valuable in validating the present picture. Equilibrium dynamic heterogeneity is so short-ranged that direct measurements of dynamic correlation length scales remain scarce for molecular liquids. We suggest that direct measurements of the non-equilibrium length scales discussed here could be much easier, as these length scales may be larger by orders of magnitude, and potentially more easily accessible to experimental work.

ACKNOWLEDGMENTS

We thank M. D. Ediger for helpful discussions. The research leading to these results has received funding from the European Research Council under the European Unions Seventh Framework Programme (No. FP7/2007-2013)/ERC Grant Agreement No. 306845.

¹S. F. Swallen, K. L. Kearns, M. K. Mapes, Y. S. Kim, R. J. McMahon, M. D. Ediger, T. Wu, L. Yu, and S. Satija, *Science* **315**, 353 (2007).

²K. L. Kearns, M. D. Ediger, H. Heiko, and C. Schick, *J. Phys. Chem. Lett.* **1**, 388 (2010).

³K. Dawson, L. A. Kopff, L. Zhu, R. J. McMahon, L. Yu, R. Richert, and M. D. Ediger, *J. Chem. Phys.* **136**, 094505 (2012).

⁴S. S. Dalal and M. D. Ediger, *J. Phys. Chem. Lett.* **3**, 1229 (2012).

⁵Y. Guo, A. Morozov, D. Schneider, J. W. Chung, C. Zhang, M. Waldmann, N. Yao, G. Fytas, C. B. Arnold, and R. D. Priestley, *Nat. Mater.* **11**, 337 (2012).

⁶L. Berthier and M. D. Ediger, *Phys. Today* **69**(1), 40 (2016).

⁷L. Berthier and G. Biroli, *Rev. Mod. Phys.* **83**, 587 (2011).

⁸A. Sepúlveda, M. Tylinski, A. Guiseppi-Elie, R. Richert, and M. D. Ediger, *Phys. Rev. Lett.* **113**, 045901 (2014).

⁹S. F. Swallen, K. Traynor, R. J. McMahon, M. D. Ediger, and T. E. Mates, *Phys. Rev. Lett.* **102**, 065503 (2009).

¹⁰P. G. Wolyne, *Proc. Natl. Acad. Sci. U. S. A.* **106**, 1353 (2009).

¹¹M. D. Ediger, *Annu. Rev. Phys. Chem.* **51**, 99 (2000).

¹²*Dynamical Heterogeneities in Glasses, Colloids and Granular Materials*, edited by L. Berthier, G. Biroli, J.-P. Bouchaud, L. Cipelletti, and W. van Saarloos (Oxford University Press, Oxford, 2011).

¹³T. Pérez-Castaneda, C. Rodriguez-Tinoco, J. Rodriguez-Viejo, and M. A. Ramos, *Proc. Natl. Acad. Sci. U. S. A.* **111**, 11275 (2014).

¹⁴H. B. Yu, M. Tylinski, A. Guiseppi-Elie, M. D. Ediger, and R. Richert, *Phys. Rev. Lett.* **115**, 185501 (2015).

¹⁵S. Franz and G. Parisi, *Phys. Rev. Lett.* **79**, 2486 (1997).

¹⁶L. Berthier, *Phys. Rev. E* **88**, 022313 (2013).

¹⁷L. Berthier and R. L. Jack, *Phys. Rev. Lett.* **114**, 205701 (2015).

¹⁸M. E. J. Newman and C. Moore, *Phys. Rev. E* **60**, 5068 (1999).

¹⁹J. P. Garrahan and M. E. J. Newman, *Phys. Rev. E* **62**, 7670 (2000).

²⁰J. P. Garrahan, *J. Phys.: Condens. Matter* **14**, 1571 (2002).

²¹R. L. Jack and J. P. Garrahan, *J. Chem. Phys.* **123**, 164508 (2005).

²²R. L. Jack, L. Berthier, and J. P. Garrahan, *Phys. Rev. E* **72**, 016103 (2005).

²³R. L. Jack, L. Berthier, and J. P. Garrahan, *J. Stat. Mech.* **2006**, P12005.

²⁴R. L. Jack and L. Berthier, *Phys. Rev. E* **85**, 021120 (2012).

²⁵C. Cammarota and G. Biroli, *EPL* **98**, 36005 (2012).

²⁶J. P. Garrahan, *Phys. Rev. E* **89**, 030301 (2014).

²⁷R. M. Turner, R. L. Jack, and J. P. Garrahan, *Phys. Rev. E* **92**, 022115 (2015).

²⁸R. L. Jack and J. P. Garrahan, *Phys. Rev. Lett.* **116**, 055702 (2016).

²⁹S. Franz, M. Cardenas, and G. Parisi, *J. Chem. Phys.* **110**, 1726 (1999).

³⁰C. Cammarota, A. Cavagna, I. Giardina, G. Gradenigo, T. S. Grigera, G. Parisi, and P. Verrocchio, *Phys. Rev. Lett.* **105**, 055703 (2010).

³¹D. Chandler and J. P. Garrahan, *Annu. Rev. Phys. Chem.* **61**, 191 (2010).

³²S. Singh, M. D. Ediger, and J. J. de Pablo, *Nat. Mater.* **12**, 139 (2013).

³³I. Lyubimov, M. D. Ediger, and J. J. de Pablo, *J. Chem. Phys.* **139**, 144505 (2013).

³⁴P.-H. Lin, I. Lyubimov, L. Yu, M. D. Ediger, and J. J. de Pablo, *J. Chem. Phys.* **140**, 204504 (2014).

³⁵G. M. Hocky, L. Berthier, and D. R. Reichman, *J. Chem. Phys.* **141**, 224503 (2014).

³⁶S. Léonard and P. Harrowell, *J. Chem. Phys.* **133**, 244502 (2010).

³⁷I. Douglass and P. Harrowell, *J. Chem. Phys.* **138**, 12A516 (2013).

³⁸R. Gutierrez and J. P. Garrahan, e-print arXiv:1604.03495.

³⁹F. Krzakala and L. Zdeborova, *Phys. Rev. Lett.* **102**, 238701 (2009).

⁴⁰J. P. Garrahan, P. Sollich, and C. Toninelli, "Kinetically constrained models," in *Dynamical Heterogeneities in Glasses, Colloids, and Granular Media*, edited by L. Berthier, G. Biroli, J.-P. Bouchaud, L. Cipelletti, and W. van Saarloos (Oxford University Press, Oxford, 2011), Chap. 10.

⁴¹H. Staley, E. Flenner, and G. Szamel, *J. Chem. Phys.* **142**, 244508 (2015).

⁴²P. G. Debenedetti, *Metastable Liquids: Concepts and Principles* (Princeton University Press, Princeton, 1996).

⁴³R. P. Sear, *J. Phys.: Condens. Matter* **19**, 033101 (2007).

⁴⁴S. Franz and G. Parisi, *J. Stat. Mech.* **2013**, P11012.

⁴⁵G. Biroli, C. Cammarota, G. Tarjus, and M. Tarzia, *Phys. Rev. Lett.* **112**, 175701 (2014).

⁴⁶M. Avrami, *J. Chem. Phys.* **7**, 1103 (1939).

⁴⁷M. Castro, *Phys. Rev. B* **67**, 035412 (2003).

⁴⁸A. B. Bortz, M. H. Kalos, and J. L. Lebowitz, *J. Comput. Phys.* **17**, 10 (1975).

⁴⁹Y. Imry and S.-K. Ma, *Phys. Rev. Lett.* **35**, 1399 (1975).

⁵⁰M. Aizenman and J. Wehr, *Phys. Rev. Lett.* **62**, 2503 (1989).

⁵¹K. J. Dawson, L. Zhu, L. Yu, and M. D. Ediger, *J. Phys. Chem. B* **115**, 455 (2011).

⁵²C. Rodriguez-Tinoco, M. Gonzalez-Silveira, J. Rafols-Ribe, A. F. Lopeandia, and J. Rodriguez-Viejo, *Phys. Chem. Chem. Phys.* **17**, 31195 (2015).

⁵³S.-i. Sasa, *J. Phys. A* **43**, 465002 (2010).

⁵⁴J. R. Heringa, H. W. Blöte, and A. Hoogland, *Phys. Rev. Lett.* **63**, 1546 (1989).

⁵⁵C. Toninelli, M. Wyart, L. Berthier, G. Biroli, and J.-P. Bouchaud, *Phys. Rev. E* **71**, 041505 (2005).

⁵⁶F. Krzakala and L. Zdeborova, *J. Chem. Phys.* **134**, 034512 (2011).

⁵⁷F. Krzakala and L. Zdeborova, *J. Chem. Phys.* **134**, 034513 (2011).

⁵⁸M. Tylinski, A. Sepulveda, D. M. Walters, Y. Chua, C. Schick, and M. D. Ediger, *J. Chem. Phys.* **143**, 244509 (2015).

⁵⁹A. Sepulveda, S. F. Swallen, L. A. Kopff, R. J. McMahon, and M. D. Ediger, *J. Chem. Phys.* **137**, 204508 (2012).

- ⁶⁰G. H. Fredrickson and H. C. Andersen, *Phys. Rev. Lett.* **53**, 1244 (1984).
- ⁶¹W. Kob and H. C. Andersen, *Phys. Rev. E* **38**, 4364 (1993).
- ⁶²J. P. Garrahan, R. L. Jack, V. Lecomte, E. Pitard, K. van Duijvendijk, and F. van Wijland, *Phys. Rev. Lett.* **98**, 195702 (2007).
- ⁶³J. P. Garrahan, R. L. Jack, V. Lecomte, E. Pitard, K. van Duijvendijk, and F. van Wijland, *J. Phys. A* **42**, 075007 (2009).
- ⁶⁴Y. S. Elmatad and R. L. Jack, *J. Chem. Phys.* **138**, 12A531 (2013).
- ⁶⁵A. Wisitsorasak and P. G. Wolynes, *Phys. Rev. E* **88**, 022308 (2013).
- ⁶⁶A. Wisitsorasak and P. G. Wolynes, *J. Phys. Chem. B* **118**, 7835 (2014).
- ⁶⁷L. Berthier and D. Coslovich, *Proc. Natl. Acad. Sci. U. S. A.* **111**, 11668 (2014).
- ⁶⁸J.-P. Bouchaud and G. Biroli, *J. Chem. Phys.* **121**, 7347 (2004).
- ⁶⁹P. Sollich and M. R. Evans, *Phys. Rev. Lett.* **83**, 3238 (1999).