

# Review

## The Metabolic Syndrome

### A High-Risk State for Cancer?

Stephanie Cowey and Robert W. Hardy

From the Department of Pathology, Division of Laboratory Medicine, University of Alabama at Birmingham, Birmingham, Alabama

**The metabolic syndrome is composed of cardiovascular risk factors including increased body mass index/waist circumference, blood pressure, plasma glucose, and triglycerides, as well as decreased high-density lipoprotein cholesterol. The essence of the metabolic syndrome lies in the clustering of these risk factors, which are associated with cardiovascular disease. Interestingly, most of the components of the metabolic syndrome have individually been linked in some way to the development of cancer. However, epidemiological studies linking the metabolic syndrome to cancer are scarce. Nevertheless, two such studies indicate that the clustering of metabolic syndrome components significantly increases the risk of colon cancer mortality compared with the individual components. The purpose of this review is to further explore the potential relationship between the metabolic syndrome and cancer risk. Specifically, we examine the hypothesis that individual components of the metabolic syndrome contribute to the development of several processes, including insulin resistance, aromatase activity, adipokine production, angiogenesis, glucose utilization, and oxidative stress/DNA damage, which can work together to increase cancer risk beyond that of the individual components alone. We propose that the metabolic syndrome be considered as a high-risk state for certain types of cancer and that this relationship should be systematically explored across cancer types. (Am J Pathol 2006, 169:1505–1522; DOI: 10.2353/ajpath.2006.051090)**

Syndrome can be defined as a group of signs and symptoms that occur together and characterize a particular abnormality.<sup>1</sup> Insulin resistance, which is a key underlying feature of type 2 diabetes mellitus, has also been shown to be associated with dyslipidemia [hypertriglyc-

eridemia and hypohigh-density lipoprotein cholesterol (HDLc)], obesity, and hypertension.<sup>2,3</sup> These risk factors were combined into the insulin resistance syndrome, or syndrome X as described by Reaven,<sup>3</sup> and subsequently obesity was included. This syndrome has since become known as the “metabolic syndrome,” which is a risk factor for cardiovascular disease (CVD). The metabolic syndrome has been similarly defined by the World Health Organization, the National Cholesterol Education Program’s Adult Treatment Panel III (ATP III), and the European Group on Insulin Resistance (Table 1). Although each group appears to agree that dyslipidemia, glucose intolerance, insulin resistance, obesity, and hypertension are components, there are differences in how each defines the metabolic syndrome. Unfortunately, there does not appear to be a clear explanation as to why these differences exist.<sup>3</sup>

According to the ATP III definition of the metabolic syndrome, ~24% of US adults have the metabolic syndrome (no gender preference).<sup>4</sup> However, in Mexican Americans, the prevalence is ~32%, and in this group, women are more likely to meet the criteria (1.3-fold versus men).<sup>4</sup> Likewise, African-American women are more likely to meet the criteria (1.6-fold versus men).<sup>4</sup> These numbers are likely an underestimate since they are at least 10 years old.

The metabolic syndrome is widely cited in the literature and has its own ICD-9 code (277.7). Nevertheless, it has recently come under fire because of its imprecise definition, the uncertainty of its pathogenesis, and its value as a risk marker for CVD.<sup>5</sup> Although valid points are raised on both sides of the controversy it should be remembered that similar issues have been raised with other complex metabolic processes such as type 2 diabetes mellitus, in which criticism has led to new definitions and progress on defining pathogen-

Supported by the National Institutes of Health (grants R21AT01636 to R.W.H. and T32AR047512 to S.C.).

Accepted for publication August 1, 2006.

Address reprint requests to Robert W. Hardy, Department of Pathology, University of Alabama at Birmingham, 701 South 19th St., LHRB Room 531, Birmingham, AL 35294-0007. E-mail: hardy@path.uab.edu.

**Table 1.** Definitions of the Metabolic Syndrome

Risk factors	National Cholesterol Education Program's Adult Treatment Panel III (ATP III) ( $\geq 3$ of 5 criteria necessary)	World Health Organization (WHO) 1999 (impaired glucose regulation or hyperinsulinemia and $\geq 2$ of criteria necessary)	European Group on Insulin Resistance (EGIR) 2002 (hyperinsulinemia and $\geq 2$ of criteria necessary)
Impaired glucose regulation	110 to 126 mg/dl (6.1 to 7.0 mmol/L)	Plasma glucose: fasting $\geq 6.1$ mmol/L or 2-hour postglucose load $\geq 7.8$ mmol/L or capillary whole blood glucose: fasting $\geq 5.6$ mmol/L or 2-hour postglucose load $\geq 7.8$ mmol/L	Fasting plasma $\geq 6.1$ mmol/L or capillary whole blood $\geq 5.6$ mmol/L
Hyperinsulinemia	Not included	Fasting serum insulin $\geq$ third quartile for control group	Fasting serum insulin $\geq$ third quartile for nondiabetic control group
Abdominal obesity	Men: waist circumference $\geq 40$ inches (102 cm); women: waist circumference $\geq 35$ inches (89 cm)	Waist-to-hip ratio $>0.85$ or BMI $>30$ kg/m <sup>2</sup>	Waist circumference $>80$ cm
Triglycerides	$\geq 150$ mg/dl (1.7 mmol/L)	Fasting serum triglyceride $\geq 1.7$ mmol/L	Fasting serum triglyceride $>2.0$ mmol/L and/or HDLc $<1.0$ mmol/L and/or treatment for dyslipidemia
HDLc	Men: $\leq 40$ mg/dl (1.04 mmol/L); women: $\leq 50$ mg/dl (1.3 mmol/L)	Not included	Included with triglycerides
Hypertension	$\geq 130/\geq 80$ mm Hg	$\geq 140/90$ mm Hg	Systolic blood pressure $\geq 140$ mm Hg and/or diastolic blood pressure $\geq 90$ mm Hg and/or treatment for hypertension
Microalbuminuria	Not included	Albumin/creatinine ratio $\geq 30$ mg/g	Not included

esis. In addition, the central feature of the metabolic syndrome, which is the clustering of cardiovascular risk factors described above, is not in doubt, nor is its association with CVD.<sup>6</sup>

In addition to CVD, individual components of the metabolic syndrome have been linked to the development of cancer. Our purpose here is to highlight the potential increase in cancer risk that is likely associated with the clustering of metabolic syndrome components. We will focus on epidemiological evidence as well as underlying pathophysiologies that link the metabolic syndrome to certain types of cancer.

### ***Epidemiological Evidence Suggesting the Metabolic Syndrome Promotes Cancer***

In the US, one in five adults meets the criteria for the metabolic syndrome and is therefore more susceptible to CVD, type 2 diabetes mellitus,<sup>4</sup> and possibly cancer. We propose that the metabolic syndrome is composed of a variety of pathologies that can cooperatively contribute to cancer development and progression. The purpose of this section is to review the epidemiological evidence linking components of the metabolic syndrome to cancer; although not inclusive, we have focused on relatively

large studies with a multifactorial design. Epidemiology studies are discussed below, beginning with studies examining patients with multiple components of the metabolic syndrome and then examining studies with individual metabolic syndrome risk factors in relation to cancer risk and mortality rates.

### ***Metabolic Syndrome and Colorectal Cancer***

Studies examining cancer incidence in patients diagnosed with the metabolic syndrome are generally lacking; however, two studies indicate that clustering of the components of the metabolic syndrome increases the risk of colorectal cancer mortality compared with the individual components alone.<sup>7,8</sup> These studies are summarized in Table 2. One study used data from the Chicago Heart Association Detection Project in Industry that, after exclusion of diabetes mellitus, included 20,433 men and 15,149 women, with a median follow-up of 26.2 years.<sup>7</sup> In this study, the risk factors were plasma glucose, body mass index (BMI), systolic blood pressure, and heart rate, while controlling for several covariates. Men and women combined in the upper quartile of the distribution of the risk factors were categorized as having 0 of 4, 1 of 4, 2 of 4, or  $\geq 3$  of 4

**Table 2.** Referenced Multivariate Epidemiology Studies Examining the Metabolic Syndrome as a Risk for Colorectal Cancer

Study	Trevisan et al, 2001 <sup>8</sup>	Colangelo et al, 2002 <sup>7</sup>
Results (relative risk ratio 95% CI)	Highest quartile glucose: M and F 1.80 (1.05, 3.09), M 1.83 (0.99, 3.39), F 1.73 (0.58, 5.21); IRS (patients with highest quartile of TG and blood glucose, lowest quartile of HDLc, and SBP $\geq$ 140 or DBP $\geq$ 90 mm): M and F 2.99 (1.27, 7.02), M 2.96 (1.05, 8.31), F 2.71 (0.59, 12.51)	IRS (one of four risk factors—PLG, SBP, BMI, or heart rate): M and F 1.05 (0.76, 1.44), M 1.00 (0.66, 1.52), F 1.12 (0.69, 1.81); IRS ( $\geq$ 3 risk factors) M and F 1.50 (1.03, 2.19), M 1.67 (1.04, 2.70), F 1.29 (0.70, 2.37)
Size and type	Italian men <i>n</i> = 21,311; women <i>n</i> = 15,991; population-based cohort study	American men <i>n</i> = 20,433, women <i>n</i> = 15,149; population-based cohort study
Covariates	Age; smoking; alcohol consumption	Age; heart rate; smoking; height; SBP; BMI; postload plasma glucose; education; race; serum uric acid concentration; alcohol consumption
Exclusion	None	Diabetes
Nonsignificant studies	HDL; TG; hypertension	BMI

Results refer to cancer mortality. DBP, diabolic blood pressure; IRS, insulin resistance syndrome; PLG, post-load plasma glucose; SBP, systolic blood pressure; TG, triglyceride.

risk factors. The graded increases in multivariable adjusted relative risk (RR) of colorectal cancer mortality were 1.67 (95% CI, 1.04 to 2.7) for men and 1.29 (95% CI, 0.70 to 2.37) for women with  $\geq$ 3 risk factors, indicating that clustering of components of the metabolic syndrome significantly increases cancer risk in men. In the second study, Trevisan and colleagues<sup>8</sup> used information from the Risk Factors and Life Expectancy study, which pooled data from nine large epidemiological studies and includes 21,311 men and 15,991 women with a median follow-up of 7 years. In this study serum triglycerides, glucose, HDLc, and blood pressure were analyzed as components of the metabolic syndrome. Trevisan and colleagues<sup>8</sup> identified patients in the upper quartile of serum glucose and triglycerides and the lower quartile of HDLc or patients on medication for diabetes mellitus or hyperlipidemia as having the insulin resistance syndrome/metabolic syndrome. Men and women combined demonstrated increased risk of death from colorectal cancer from clustering of the components of the metabolic syndrome (men RR, 2.96 and 95% CI, 1.05 to 8.31; men and women combined RR, 2.99 and 95% CI, 1.27 to 7.02). Once again colorectal cancer mortality in women was not affected. When analyzing the individual components, only glucose was consistently associated with increased risk of death from colorectal cancer, and only in men and women combined (RR, 1.8; 95% CI, 1.05 to 3.09). Relative risk was increased in the cluster analysis compared with glucose alone, suggesting that the effects of the individual components are additive. Furthermore, a recent study done in males also indicates that the metabolic syndrome is associated with increased risk for colorectal adenoma.<sup>9</sup>

In both large studies,<sup>6,7</sup> the association between the metabolic syndrome and colorectal cancer mortality was stronger for men versus women. However, neither study took into account the menopausal status of women or the use of hormone replacement therapy. It

is possible that accounting for these factors may determine that a protective effect of estrogen or progesterone may be masking the true effects of the metabolic syndrome on colorectal cancer development. The Women's Health Initiative estrogen plus progestin trial suggested that hormone replacement therapy with estrogen and progestin reduced invasive colorectal cancer by 44% compared with placebo (RR, 0.56; 95% CI, 0.38 to 0.81); however, when colorectal cancer was present, it was more advanced at the time of diagnosis.<sup>10</sup> Because observational studies on hormone replacement therapy and colorectal cancer development are conflicting (9 of 21 decreased risk, 9 of 21 no effect, 3 of 21 nonsignificant increased risk<sup>10</sup>), it is unclear whether female gonadal hormones affect colorectal cancer. These studies indicate that the effects of hormone replacement therapy on colon cancer are complex and may involve progesterone<sup>9</sup> and/or a reduction or mutation of estrogen receptor  $\beta$ .<sup>11,12</sup> These and other issues related to hormone replacement therapy and colon cancer merit a discussion beyond the scope of this review. Nevertheless, not accounting for hormonal status in women may be a possible explanation for the lack of association between the metabolic syndrome and cancer in women. More research is needed to clarify whether women with the metabolic syndrome will be at increased risk for colon and other cancers, such as breast or endometrial cancer. Interestingly, one small study has recently shown that the metabolic syndrome is a prognostic factor for breast cancer recurrences.<sup>13</sup> These data, although limited, support the hypothesis that clustering of metabolic risk factors promotes the development and progression of colon cancer in men and indicate that more studies should be conducted.

Many more epidemiological studies have shown an independent correlation between a single risk factor of the metabolic syndrome and cancer. Tables 3 through 8 summarize large epidemiological studies that calculated

**Table 3.** Referenced Multivariate Epidemiology Studies That Examine Risk Factors of the Metabolic Syndrome and Cancer Incidence/Mortality for Multiple Kinds of Cancer

Study	Jee et al, 2005 <sup>29</sup>	Jee et al, 2005 <sup>29</sup>
Correlation	Fasting serum glucose (>140 versus <90 mg/dl): cancer mortality	Diabetes (fasting glucose >125 mg/dl or medication for diabetes): cancer mortality
Cancer type		
All cancers	M 1.22 (1.16, 1.27); F 1.15 (1.01, 1.25)	M 1.27 (1.22, 1.33); F 1.31 (1.20, 1.44)
Breast	F 0.82 (0.61, 1.21)	F 2.23 (1.49, 3.33)
Cervix	F 1.81 (1.03, 3.15)	F 2.50 (1.58, 3.95)
Prostate	M 1.14 (0.74, 1.77)	
Colorectal	M 1.13 (0.98, 1.30); F 1.07 (0.84, 1.36)	F 1.11 (0.81, 1.51)
Pancreatic	M 2.09 (1.70, 2.58)*; F 1.67 (1.09, 2.56)*	M 1.71 (1.42, 2.06); F 1.71 (1.25, 2.34)
Liver	M 1.72 (1.56, 1.89)*; F 1.22 (0.91, 1.63)	M 1.59 (1.45, 1.74); F 1.28 (1.00, 1.66)
Renal	M 1.26 (0.94, 1.71)*	
Esophageal	M 1.44 (1.08, 1.93)	
Stomach	M 1.11 (0.97, 1.27); F 1.00 (0.74, 1.32)	
Size and type	Korean men <i>n</i> = 829,770; women <i>n</i> = 468, 615; prospective population-based cohort study	
Covariates	Age; age squared; smoking; alcohol consumption	

**Table 3—continued**

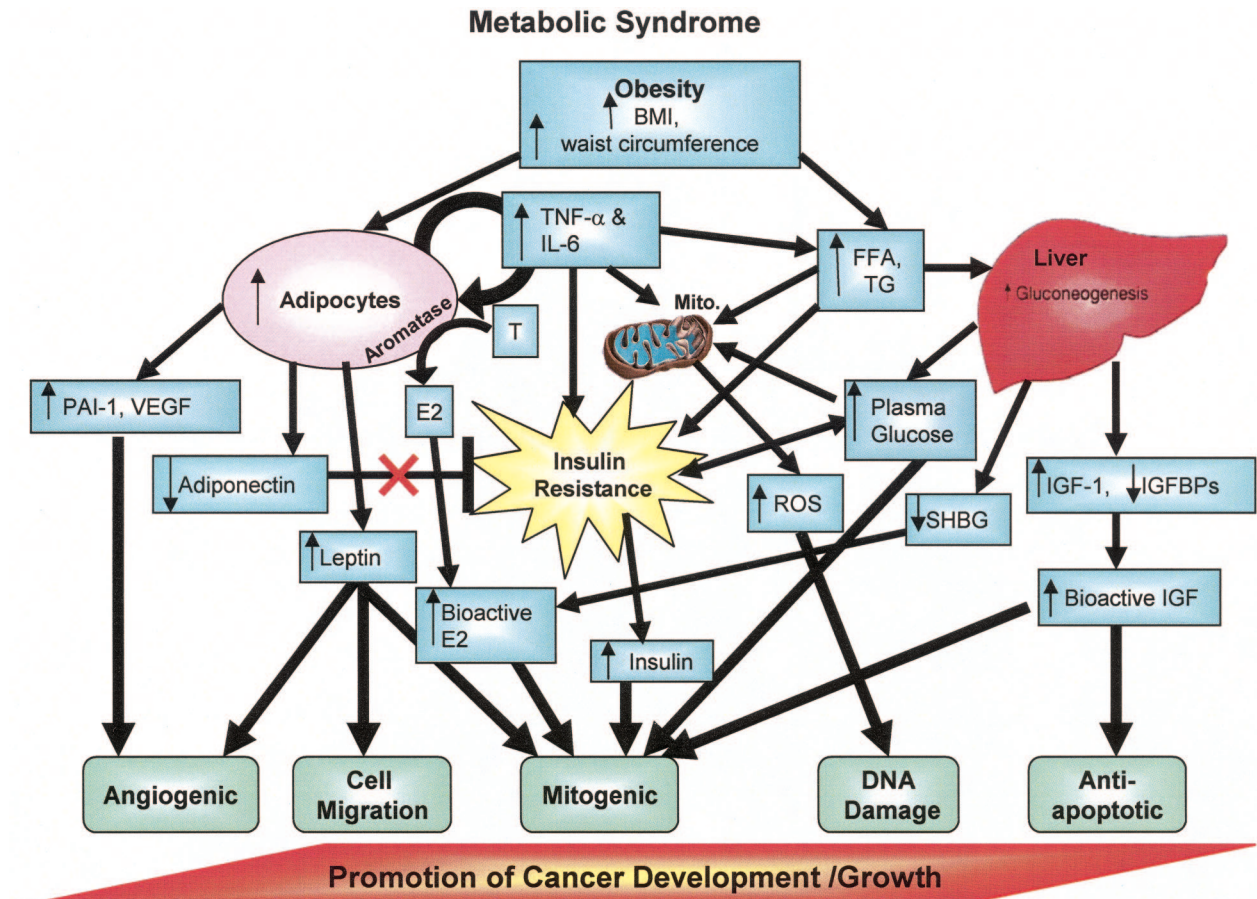
Study	LaVecchia et al, 1994 <sup>31</sup>	Calle et al, 2003 <sup>18</sup>
Correlation	Diabetes: cancer risk	BMI (>35 versus 18 to 24.9 kg/m <sup>2</sup> ): cancer mortality
Cancer type		
All cancers		M 1.52 (1.13, 2.05) <sup>†</sup> ; F 1.62 (1.40, 1.87) <sup>†</sup>
Breast	F 0.8 (0.6, 1.0)	F 2.12 (1.41, 3.19) <sup>†a</sup>
Endometrial	F 3.4 (2.7, 4.3)*	F 6.25 (3.75, 10.42) <sup>†b</sup>
Cervix		F 3.20 (1.77, 5.78) <sup>†</sup>
Prostate	M 0.7 (0.3, 1.6)	M 1.34 (0.98, 1.83) <sup>†</sup>
Colorectal	M 1.2 (0.8, 1.8); F 1.0 (0.6, 1.5); M and F 0.6 (0.4, 0.9)*	M 1.84 (1.39, 2.41) <sup>†</sup> ; F 1.46 (0.94, 2.24) <sup>†</sup>
Pancreatic	M 2.6 (1.8, 4.0)*; F 1.4 (0.8, 2.5); M and F 2.1 (1.5, 2.9)*	M 1.49 (0.99, 2.22) <sup>†</sup> ; F 2.76 (1.74, 4.36) <sup>†</sup>
Liver	M 2.8 (2.0, 3.9)*; F 2.5 (1.3, 4.9)*; M and F 2.8 (2.0, 3.9)*	M 4.52 (2.94, 6.94) <sup>†</sup> ; F 1.68 (0.93, 3.05)*
Renal	M 0.6 (0.2, 1.5); F 0.5 (0.1, 2.0); M and F 0.6 (0.3, 1.2)	M 1.70 (0.99, 2.92); F 4.75 (2.50, 9.04) <sup>†</sup>
Esophageal	M 0.9 (0.5, 1.5); F 0.7 (0.2, 2.4); M and F 0.8 (0.5, 1.4)	M 1.63 (0.95, 2.80) <sup>†</sup>
Stomach	M 0.6 (0.4, 1.0)*; F 0.7 (0.4, 1.2); M and F 0.6 (0.4, 0.9)*	M 1.94 (1.21, 3.13)*; F 1.08 (0.61, 1.89)
Non-Hodgkin's lymphoma	M 0.3 (0.1, 0.8)*; F 0.6 (0.2, 1.8); M and F 0.3 (0.1, 0.8)*	M 1.49 (0.93, 2.39) <sup>†</sup> ; F 1.95 (1.39, 2.72) <sup>†</sup>
Size and type	Italian men and women; cases <i>n</i> = 9991; controls <i>n</i> = 7834; population-based case control study	
Covariates	Age	Age; education; smoking; number of cigarettes; physical activity; marital status; race; aspirin use; estrogen-replacement therapy (women only); fat, vegetable, and alcohol consumption
Exclusion		Patients who lost >10 pounds 1 year prior to study; BMI < 18.5 kg/m <sup>2</sup> ; cancer at baseline

\**P* < 0.05.

<sup>†</sup>*P* < 0.001.

<sup>a</sup>Premenopausal and perimenopausal women excluded.

<sup>b</sup>Women with hysterectomy excluded.



**Figure 1.** Diagram of factors linking the MS with cancer development. Plasma glucose, BMI/waist circumference, and triglycerides/FFA affect different complementary processes that can work together to promote cancer development/growth. Additional characteristics of the MS, such as increased HDL and hypertension, are also correlated with cancer growth, but a direct mechanism for these associations has not been confirmed. Abbreviations: E, estrone; E<sub>2</sub>, estradiol; A, androgens; mito, mitochondria; ROS, reactive oxygen species; SHBG, sex hormone-binding globulin; FFA, free or nonesterified fatty acids; TG, triglycerides; IGF-BPs, insulin-like growth factor-binding proteins.

relative risk (RR) ratios for cancer risk/mortality. Note that significant *P* values are indicated when stated in the study. The tables are not intended to be comprehensive but are representative.

### Obesity

Obesity, whether defined by waist/hip ratio (WHR) or BMI (kg/m<sup>2</sup>), has clearly been linked to cancer. BMI is commonly used as a measure of obesity because it is easily calculated from a questionnaire assessing the weight and height of the patient. Epidemiological studies indicate that increased waist circumference and/or BMI is positively correlated with the development of cancers of the colon, breast (postmenopausal), endometrium, esophagus, liver, gallbladder, gastric cardia, and kidney.<sup>14-17</sup> Furthermore, a large prospective study by Calle and colleagues<sup>18</sup> demonstrated that increasing BMI is associated with increased mortality from many types of cancer (Table 3). The authors suggest that increased BMI (>25 kg/m<sup>2</sup>) contributes to 90,000 cancer-related deaths per year in the US.

WHR is used to assess central obesity, or the presence of excess fat in the abdomen. Central adiposity may be a

better anthropometric indicator of insulin resistance, attributable at least in part to increased lipolysis from abdominal fat cells.<sup>14</sup> In addition, abdominal obesity is correlated with decreased concentrations of sex hormone-binding globulin (SHBG) and the conversion of androgens to estrogen, a mitogenic growth factor for hormone-dependent cancers (see *Insulin Resistance/Hyperinsulinemia*).<sup>19,20</sup> WHR is positively correlated with colorectal, breast (postmenopausal women), and endometrial cancers in several studies in which BMI was not significantly associated with cancer risk.<sup>21-23</sup>

Weight gain or loss may also be an important factor in cancer risk, depending on its magnitude, the fat distribution, and stage of life of the patient. Numerous studies have demonstrated that adult weight gain (after the age of 18; measured as a change in BMI or kg) is significantly correlated with an increased risk of postmenopausal breast cancer in the absence of hormone replacement therapy (Table 6).<sup>19,20</sup> Studies reporting changes in WHR have cited increases in abdominal fat as a potential culprit.<sup>19</sup> Likewise, Xu and colleagues<sup>24</sup> demonstrated that weight gain (particularly in perimenopausal women age 40 to 50 years) significantly increases the risk of endometrial cancer, irrespective

**Table 4.** Referenced Multivariate Epidemiology Studies Examining Metabolic Syndrome Risk Factors and Cancer Incidence/Mortality for Colorectal Cancer

Study	Nilsen and Vatten, 2001 <sup>26</sup>	Hou et al, 2006 <sup>16</sup>
Results (relative risk ratio 95% CI)	Physical activity frequency: M 0.69 (0.50, 0.95)* F 1.12 (0.83, 1.52); Physical activity index: M 0.54 (0.37, 0.79)* F 0.81 (0.54, 1.23); Physical activity (metastatic cancer risk) M 0.33 (0.16, 0.67)*, F 0.77 (0.43, 1.38); History of DM: M 0.66 (0.35, 1.24) F 1.55 (1.04, 2.31); Blood glucose ( $\geq 8.0$ mmol/L versus $< 8.0$ mmol/L): M 0.90 (0.58, 1.40) F 1.98 (1.31, 2.98)	BMI Q5 ( $> 22.8$ kg/m <sup>2</sup> ) versus Q1 ( $< 19.2$ kg/m <sup>2</sup> ): M 1.7 (1.1, 2.4)* BMI Q5 ( $> 23$ kg/m <sup>2</sup> ) versus Q1 ( $< 19.0$ kg/m <sup>2</sup> ): Pre BMI Q5 ( $> 23.6$ kg/m <sup>2</sup> ) versus Q1 ( $< 19.0$ kg/m <sup>2</sup> ): F 2.9 (1.7, 8.6)*; Post BMI Q5 ( $> 23.6$ kg/m <sup>2</sup> ) versus Q1 ( $< 19.0$ kg/m <sup>2</sup> ): F 0.6 (0.3, 0.9)*; (Pre + Post) F 1.4 (1.0, 2.1)
Size and type	Norwegian men $n = 36,975$ ; Norwegian women $n = 38,244$ ; population-based cohort study	Chinese men $n = 462$ cases, $n = 851$ controls; Chinese women $n = 469$ cases, $n = 701$ controls; population-based case control study
Covariates	BMI; physical activity; diabetes; blood glucose; marital status; education	Age; monthly income; marital status; total energy intake; intake of red meat, carotene, and fiber; parity and years of menstruation (women only)
Inclusion	No history of cancer at baseline	Cases: histologically confirmed colorectal carcinoma in situ; controls: no history of colorectal carcinoma in situ or inflammatory bowel disease
Exclusion		
Nonsignificant studies	BMI and the following variables for metastatic cancer: frequency of physical activity, physical activity index, history of diabetes, and blood glucose	

Results refer to cancer risk unless otherwise stated. Pre, premenopausal; Post, postmenopausal; Peri, perimenopausal.  
 \* $P < 0.01$ .

(table continues)

of BMI (Table 8). A 20-kg weight gain since the age of 20 years was associated with a threefold increase in endometrial cancer risk in both pre- and postmenopausal women, whereas a loss of  $\geq 2.5$  kg since the age of 20 significantly reduced the risk of cancer in premenopausal women (RR, 0.4; 95% CI, 0.2 to 1.0) but not significantly in postmenopausal women (RR, 0.7; 95% CI, 0.4 to 1.5). Similar studies have correlated increased risk of colorectal cancer with weight gain, but it was not independent of BMI.<sup>25</sup> It should be noted that most studies rely on surveys or anthropometric measures (usually BMI) to compare weight change in their study population; thus, weight gain/loss was not determined as fat or muscle.

In contrast to weight gain, exercise can improve insulin-stimulated glucose disposal and thereby reduce colorectal cancer risk and metastasis in men.<sup>26</sup> A single session of physical activity can significantly lower plasma glucose levels in obese rodent models and type 2 diabetic patients.<sup>27</sup> A large meta-analysis examined the association of physical activity with cancer risk; 35 of 48 colon/colorectal cancer studies and 26 of 41 breast cancer studies reported a dose-responsive decrease in colon and (pre-, peri-, and postmenopausal) breast cancer risk with exercise.<sup>28</sup> More studies are required to determine whether exercise consistently reduces cancer risk in a dose-dependent manner for other specific sites.

**Table 4.** *Continued*

Bird et al, 1998 <sup>25</sup>	Schoen et al, 1999 <sup>22</sup>
<p>BMI Q4 (29.2 to 51.0 kg/m<sup>2</sup>) versus Q1 (15.9 to 24.41 kg/m<sup>2</sup>): polyp risk M and F 1.6 (1.1, 2.2)*;                      Weight gain over last 10 years Q4 (&gt;2.3 to 33.3 kg) versus Q1 (-21.8 to -0.7 kg): polyp risk M and F 1.7 (1.1, 2.9)*;                      Adult weight gain Q4 (&gt;22.7 to 81.8 kg) versus Q1 (-34.1 to 4.5 kg): polyp risk M and F 1.4 (0.9, 2.1);                      BMI Q4 (29.2 to 51.0 kg/m<sup>2</sup>) versus Q1 (15.9 to 24.41 kg/m<sup>2</sup>): large polyp risk M and F 2.5 (1.1, 5.4)*</p>	<p>Fasting serum glucose Q4 (111 to 657 mg/dl) versus Q1 (53 to 96 mg/dl): M and F 1.8 (1.0, 3.1)*;                      2-hour serum glucose Q4 (171 to 691 mg/dl) versus Q1 (38 to 110 mg/dl): M and F 2.4 (1.2, 4.7)*;                      2-hour serum insulin Q4 (102 to 500 IU/ml) versus Q1 (5 to 45 IU/ml): M and F 2.0 (1.0, 3.8)*;                      Waist/hip ratio Q4 (0.961 to 2.33) versus Q1 (0.61 to 0.93): M and F 2.6 (1.4, 4.8);                      LDL Q4 (≥336.8 mg/dl) versus Q1 (24.8 to 109.8 mg/dl): M and F 0.5 (0.3, 0.9)*;                      Waist circumference Q4 (101.2 to 167 cm) versus Q1 (32.5 to 91 cm): M and F 2.2 (1.2, 4.1)</p>
<p>American men and women, cases = 483, controls <i>n</i> = 483; case control study</p>	<p>American men and women, <i>n</i> = 5849; prospective population-based cohort study</p>
<p>Sex; age; date of sigmoidoscopy; smoking; race; regular use of NSAID; vigorous leisure time; exercise &gt;3 times/week; caloric intake; dietary fiber</p>	<p>Age; sex; physical activity</p>
<p>50 to 75 years old; cases: diagnosed for the first time with histologically confirmed adenomatous polyps; controls: no adenomas or polyps</p>	
<p>Invasive cancer; inflammatory bowel disease; familial polyposis; previous bowel surgery</p>	
<p>BMI 5 years before; BMI 10 years before; BMI at age 18 years; height; net weight gain over the last 5 years; number of large weight changes (≥4.5 kg); number of rapid large weight changes (≥4.5 kg in ≤5 years)</p>	<p>BMI; HDL; TG; glucose intolerance; diabetes; fasting insulin</p>

### *Impaired Glucose Regulation and Hyperinsulinemia*

A recent study by Jee and colleagues<sup>29</sup> examining hyperglycemia in Korea found that elevated fasting glucose levels were associated with increased risk of pancreatic, liver, and renal cancers and contributed to mortality from numerous other types of cancer (see Table 3 for relative risks). Likewise, other groups have found that elevated serum glucose levels (>6.1 mmol/L or ≥111 mg/dl) are significantly correlated with increased risk of endometrial<sup>15</sup> and colorectal<sup>22</sup> cancers in their cohort studies. However, patients with diabetes mellitus were not excluded from these studies or controlled for as a covariate (Table 3). Nilsen and Vatten<sup>26</sup> controlled for diabetes mellitus in their large cohort study (*n* = 36,975; Table 4) and still found a significant

correlation of blood glucose to colorectal cancer risk in women but not men (RR, 1.98; 95% CI, 1.31 to 2.98).

More commonly, cancer epidemiological studies have examined increased blood glucose concentrations with cancer risk in the context of the presence or absence of type 2 diabetes mellitus. In type 2 diabetes mellitus, long-term insulin resistance leads to diminished insulin production from the pancreas, resulting in hypoinsulinemia and elevated blood glucose concentrations.<sup>30</sup> Diabetes mellitus is correlated with liver, endometrial, pancreatic, cervical, and breast incidence or mortality (Table 3).<sup>26,29,31</sup> In addition, increased fasting insulin levels in nondiabetic patients are significantly and independently associated with development of colorectal, breast, endometrial, and prostate cancers.<sup>32-35</sup> These studies indicate that hyperglycemia, diabetes mellitus, and hyperinsulinemia

**Table 5.** Referenced Multivariate Epidemiology Studies Examining Metabolic Syndrome Risk Factors and Cancer Incidence/Mortality for Breast Cancer

Study	Goodwin et al, 2002 <sup>34</sup>	Kaaks et al, 1998 <sup>23</sup>
Results (relative risk ratio 95% CI)	Insulin Q4 (51.9 to 339.8 pmol/L) versus Q1 (8.1 to 27.0 pmol/L): cancer mortality 3.1 (1.7, 5.7); BMI Q4 (27.8 to 54.8 kg/m <sup>2</sup> ) versus Q1 (16.3 to 21.9 kg/m <sup>2</sup> ): cancer mortality 1.78 (1.25, 2.53)	Pre waist/hip ratio (>0.80 versus ≤0.73): 0.96 (0.60, 1.54) Post waist/hip ratio (>0.80 versus ≤0.73): 2.63 (1.09, 6.35) <sup>†</sup>
Size and type	Canadian women <i>n</i> = 512; prospective cohort study	Dutch pre women <i>n</i> = 5891; post women <i>n</i> = 3521; population-based cohort study
Covariates	Age at diagnosis; tumor stage; tumor grade; hormone receptor status; adjuvant chemotherapy; adjuvant tamoxifen	Age; age at menarche; age at first childbirth; number of liveborn children; menopausal status; age at menopause
Inclusion	Age <75 years; lumpectomy for breast cancer; axillary node dissection	
Exclusion	Prior malignancy; diabetes 1 or 2; medications influencing variable	
Nonsignificant studies	Estradiol; IGF-1; IGF-2	BMI; waist circumference; height; weight; hip circumference

Results refer to cancer risk unless otherwise stated. Pre, premenopausal; Post, postmenopausal.

\**P* < 0.05.

†*P* < 0.001.

‡*P* < 0.01.

(table continues)

can be risk factors for cancer development and underscore the importance of insulin and glucose regulation for suppressing aberrant cell proliferation.

### Dyslipidemia

Suppressed HDLc and elevated triglycerides in patients are also risk factors for colon, breast, and prostate cancers.<sup>33,35,36,37</sup> One large, long-term, prospective study controlling for such factors as BMI, age, height, blood pressure, and total serum cholesterol demonstrated that postmenopausal women with increased HDLc had a significantly reduced risk of developing breast cancer (RR, 0.75; 95% CI, 0.58 to 0.97; Table 5).<sup>36</sup> When patients were stratified by BMI, overweight or obese (≥25 BMI) postmenopausal patients in the highest quartile of HDLc levels (>1.64 mmol/L) had a dramatically reduced risk of developing breast cancer (RR, 0.43; 95% CI, 0.28 to 0.67) compared with obese patients in the lowest quartile of HDLc.<sup>36</sup> Thus, postmenopausal women with low plasma HDLc (particularly those with a BMI ≥25 kg/m<sup>2</sup>) are more susceptible to developing breast cancer than women with normal to high plasma HDLc; however, fast-

ing insulin levels/diabetes mellitus were not considered as covariates, despite the strong relationship between insulin resistance and a BMI >25 kg/m<sup>2</sup>, so decreased HDLc may not be an independent risk factor. Likewise, a recent case control study excluding patients with diabetes mellitus reported lower concentrations of HDLc in breast cancer patients (40.75 ± 5.44 mg/dl) versus healthy patients (56.77 ± 5.63 mg/dl, *P* < 0.05).<sup>37</sup>

Hypertriglyceridemia may be a prognostic indicator for prostate cancer according to one recent Swiss case control study that controlled for age, BMI, diabetes mellitus, and statin medication.<sup>38</sup> Furthermore, prostate cancer progression to grade 3 is accompanied with a significant increase in serum triglycerides (grade 3, 1.50 mmol/L versus grade 1, 1.21 mmol/L; *P* = 0.019).<sup>35</sup> In contrast, several large American cohort studies have demonstrated that serum triglycerides do not correlate with colorectal cancer.<sup>8,22,39</sup> The effects of serum triglycerides on breast cancer incidence is controversial, since several small studies indicated that triglycerides are a significant risk factor for breast cancer<sup>37,40</sup>; however, large (*n* > 300 cases) multivariate studies were unable to confirm these find-



**Table 5.** *Continued*

Furberg et al, 2004 <sup>36</sup>	Lahmann et al, 2004 <sup>17</sup>	Tehard and Clavel-Chapelon, 2006 <sup>55</sup>
Post HDLc Q4 ( $\geq 1.64$ mmol/L) versus Q1 ( $< 1.20$ mmol/L): 0.75 (0.58, 0.97)* Post HDLc Q4 ( $\geq 1.64$ mmol/L) versus Q1 ( $< 1.20$ mmol/L) BMI $\geq 25$ kg/m <sup>2</sup> : 0.43 (0.28, 0.67) <sup>†</sup>	Post (no HRT) BMI ( $\geq 30.0$ versus $< 25$ kg/m <sup>2</sup> ): 1.31 (1.08, 1.59); Pre hip circumference ( $\geq 108.0$ versus $< 94.0$ cm): 1.70 (1.05, 2.77)*; Post hip circumference ( $\geq 108.0$ versus $< 94.0$ cm): 1.56 (1.12, 2.17); Post weight ( $\geq 75$ versus $> 56.8$ kg): cancer risk 1.65 (1.32, 2.08)	Pre BMI (Q4 $\geq 24.4$ kg/m <sup>2</sup> versus Q1 $< 18.5$ kg/m <sup>2</sup> ): 0.61 (0.42, 0.89)*; Post BMI (Q4 $\geq 25.1$ kg/m <sup>2</sup> versus Q1 $< 20.0$ kg/m <sup>2</sup> ): 1.21 (0.96, 1.52); Pre weight Q4 ( $> 65$ kg) versus Q1 ( $< 54$ kg): 0.57 (0.42, 0.98)*
Post Norwegian women $n = 13,519$ ; pre women $n = 25, 304$ ; prospective population-based cohort study	Post women $n = 103,344$ ; pre women $n = 73,542$ ; prospective population-based cohort study	Post French women $n = 42,357$ ; pre women $n = 20,839$ ; prospective cohort study
Age; height; BMI; serum cholesterol; recreational activity; occupational activity; parity; menopausal status; country of residence	Study center; age; education; smoking; alcohol consumption; parity; age at first pregnancy; age at menarche; current pill use; BMI	Family history of breast cancer in first degree relatives; age at menarche; age at first birth; benign breast disease; alcohol consumption; education; marital status; physical activity (BMI not controlled for pre weight)
Cancer-free and alive 1 year after the study started		
Pregnancy during the survey; primary amenorrhea	Surgical menopause or uncertain of menopause state	Undefined menopausal status; women who never menstruated; cancer other than basal cell carcinoma
HDLc with BMI in pre women	BMI (pre); waist circumference; waist/hip ratio; height; weight	Waist/hip ratio; hip circumference; height; breast circumference; waist circumference; thorax circumference

ings.<sup>41,42</sup> Because triglyceride and HDLc levels are closely linked, studies controlling for these factors are necessary to establish that the effects are independent of one another. Nevertheless, there is good epidemiological evidence to support the association of reduced HDLc with certain types of cancer development, but triglycerides may only be weakly related to cancer incidence. Further studies are needed to clarify the potential role of hypertriglyceridemia in cancer.

### Hypertension

Most studies that examined the correlation between cancer development and hypertension have failed to demonstrate a statistically significant association when BMI was controlled for.<sup>8,35,43</sup> However, Grossman and colleagues<sup>43</sup> performed a meta-analysis of the association between hypertension and kidney, breast, and overall cancer mortality using 28 longitudinal or case-control studies (12 of which controlled for BMI and three of which controlled for diabetes mellitus). Four of the 12 studies controlling for BMI found a positive correlation with hypertension, although only two of the studies had confidence intervals that were  $> 1.00$ . Of the three studies controlling for diabetes mellitus, two studies showed a positive correlation, but only one was significant (CI,  $> 1.00$ ). Nevertheless, the meta-analysis revealed that

hypertension (particularly systolic blood pressure) was associated with general cancer mortality (RR, 1.23; 95% CI, 1.11 to 1.36) and was specifically correlated with renal cancer mortality (adjusted RR for smoking and age 1.75; 95% CI, 1.61 to 1.90). The authors concluded that hypertension is associated with a 23% increased risk of overall cancer mortality. Likewise, one large multivariate cohort study ( $n = 24,460$ ; Table 7) found a significant risk of endometrial cancer associated with hypertensive women.<sup>15</sup> The mechanism for this association is unknown and requires further prospective studies that account for BMI, waist circumference, HDLc, and insulin resistance, which have been independently associated with hypertension.<sup>44,45</sup> At the present time, there is not sufficient evidence to indicate that hypertension per se increases cancer risk.

### Summary of Epidemiological Data

The epidemiological data presented support a relationship between obesity (measured by BMI, waist circumference, or WHR), as well as hyperinsulinemia (measured by fasting insulin levels, insulin after glucose challenge, or diabetes mellitus), and the development of colon and certain other types of cancer. Although some evidence substantiates that hyperglycemia may

**Table 6.** Referenced Multivariate Epidemiology Study Examining Metabolic Syndrome Risk Factors and Cancer Incidence/Mortality for Breast Cancer

Study	Morimoto et al, 2002 <sup>20</sup>
Results (relative risk ratio 95% CI)	BMI at baseline (>31.1 versus ≤22.6 kg/m <sup>2</sup> ): 2.52 (1.62, 3.93) <sup>†</sup> ; BMI Δbase, age 18 years (>9.7 versus ≤0): 1.92 (1.07, 3.43) <sup>†</sup> ; BMI Δbase, 50 years (>4 versus ≤0 kg/m <sup>2</sup> ): 1.45 (0.98, 2.15) <sup>*</sup> BMI at age 50 years (>31.1 versus ≤22.6 kg/m <sup>2</sup> ): 2.07 (1.32, 2.35) <sup>*</sup> ; Max BMI (>31.1 versus 22.6 kg/m <sup>2</sup> ): 2.24 (1.31, 3.84) <sup>†</sup> ; Waist circ (>95 versus ≤73 cm): 1.99 (1.31, 3.02) <sup>*</sup> ;
Size and type	American postmenopausal women <i>n</i> = 85,917 (never used HRT); population-based cohort study
Covariates	Age; education; age at menopause; age at first birth; first degree of relative family history; smoking; age at menarche; race; alcohol consumption; recreation physical activity; dietary energy (kcal)
Inclusion	Postmenopausal; age 50 to 79; only invasive carcinomas considered as breast cancer cases; all data shown are from patients with no HRT
Exclusion	History of breast cancer at enrollment; bilateral mastectomy; age <55 with undetermined menopause date; extreme anthropometric measurements
Nonsignificant studies	Waist/hip ratio; height

Results refer to cancer risk. Base, baseline; circ, circumference; HRT, hormone replacement therapy; Max, maximum.

<sup>\*</sup>*P* < 0.05.

<sup>†</sup>*P* < 0.001.

be a risk factor for colorectal and endometrial cancers, more studies are needed that control for both BMI and diabetes mellitus/hyperinsulinemia. The effects of decreased HDLc or increased triglycerides on cancer risk are controversial, because there are studies to support and refute this finding; HDLc and triglycerides may be important variables when considered with other risk factors, but more multivariate studies are needed to confirm the role of these risk factors in cancer development. Finally, more studies evaluating the relationship between hypertension and cancer risk are needed to determine whether this is an independent risk factor for cancer; at present, the data are relatively weak because of the absence of controlling for confounding factors. In summary, many studies have examined the relationship between the independent risk factors of metabolic syndrome and cancer, but few studies have investigated cancer incidence in patients with the metabolic syndrome. Two studies indicated that patients with ≥3 components of the metabolic syndrome are more at risk of dying from colorectal cancer, than patients with one or two of the independent risk factors.<sup>7,8</sup> These findings suggest that the metabolic syndrome may be a predictor of colorectal cancer-related mortality; this association should be considered further in relation to other types of cancer in future studies. A better understanding of the underlying pathophysiology for the association between the metabolic syndrome and cancer may provide new insight into the potential additive or synergistic effects of the components of the metabolic syndrome, the development of cancer treatment modalities and may strengthen the clinical relevance of treating patients who meet the criteria for this insidious syndrome.

### *Pathophysiological Mechanism(s) Whereby the Components of the Metabolic Syndrome Promote the Development of Cancer*

In this section we shall discuss potential pathophysiological mechanisms whereby components of the metabolic syndrome may promote the development of cancer. The potential mechanisms may act additively or synergistically to promote cancer associated with the metabolic syndrome (see Figure 1 and Table 2). Mechanistic evidence is summarized at the end of each section as follows: strong: human correlative studies (may be blood or tumor component, receptor concentrations, or clinical trials) plus *in vivo* (animal studies) and *in vitro* (cell culture or other *ex vivo*) studies; intermediate: *in vivo* (animal studies) plus *in vitro* (cell culture or other *ex vivo*) studies.

#### *Insulin Resistance/Hyperinsulinemia*

Insulin resistance may hold the potential to explain many, if not all, of the factors associated with the metabolic syndrome. It can be defined as a condition in which the normal cellular response to insulin is reduced. The pancreatic β cells respond by secreting more insulin, leading to increased circulating insulin concentrations (hyperinsulinemia) for insulin to maintain normal plasma glucose concentrations.

Rat tumorigenesis models using various carcinogens followed by insulin injections five times per week confirmed that insulin promotes colon cancer *in vivo*.<sup>33</sup> It has been suggested that the promotion of colonic tumors by insulin may be attributable to insulin's ability to promote farnesylation of ras, which allows ras translocation to the plasma membrane for cell signaling<sup>33</sup>; the majority of colonic tumors have ras mutations that

**Table 7.** Referenced Multivariate Epidemiology Studies Examining Metabolic Syndrome Risk Factors and Cancer Incidence/Mortality for Endometrial and Prostate Cancer

Study	Furberg and Thune, 2003 <sup>15</sup>	Xu et al, 2005 <sup>21</sup>	Wuermli et al, 2005 <sup>38</sup>
Cancer type	Endometrial	Endometrial	Prostate
Results (relative risk ratio 95% CI)	BMI >30 versus <25: 2.57 (1.61, 4.10) <sup>†</sup> ; Hypertensive (≥140/90 mm Hg) versus normotensive: 3.47 (1.24, 9.70)*; Serum glucose (≥6.1 versus <5.2 mmol/L): 1.88 (1.07, 3.33)*	Waist/hip ratio (>0.855 versus ≤0.782): 2.6 (1.9, 3.6) <sup>†</sup> ; Diabetes and BMI Q4: 4.3 (2.5, 7.3) <sup>†</sup> ; Waist circumference (>86 versus ≤73 cm): 3.9 (2.5, 5.9) <sup>†</sup> ; Diabetes and waist circumference Q4: 6.0 (3.6, 10.1) <sup>†</sup>	Serum triglyceride: cancer mortality 1.148 (1.003, 1.315)*
Size and type	Norwegian women (all ages) <i>n</i> = 24,460; population-based cohort study	Chinese women cases <i>n</i> = 832, controls <i>n</i> = 846; population-based case control study	Swiss men cases <i>n</i> = 504, controls <i>n</i> = 565; retrospective case control study
Covariates	Age; geographical region; height; BMI; recreational and occupational activity; smoking; parity (BMI not controlled for hypertensive cancer risk)	Age; education; years of menstruation; number of pregnancies; BMI	Age; BMI; diabetes; medication with statins
Inclusion	Alive with no cancer after 1 year		Cases had prostate carcinoma; controls had benign prostate hyperplasia
Exclusion		Hysterectomy	
Nonsignificant studies	Energy intake; recreational activity; occupational activity	Height; weight; BMI; hip and waist circumference and BMI	BMI; age; diabetes; statin comedication

Results refer to cancer risk unless otherwise stated.  
 \**P* < 0.05.  
<sup>†</sup>*P* < 0.01.  
<sup>‡</sup>*P* < 0.001.

activate this oncogene. Furthermore, the insulin receptor is up-regulated in colon<sup>33</sup> and breast<sup>46</sup> tumors, making them more susceptible to the growth stimulatory effects of insulin, particularly during a state of hyperinsulinemia.

Insulin is a major anabolic hormone that can stimulate cell proliferation. The effects of insulin on cancer cell proliferation *in vivo* may involve an indirect mechanism, such as insulin-like growth factor (IGF)-1 stimulation. Like insulin, IGF-1 plays an important role in cellular proliferation in response to nutrient availability. Growth hormone is the primary stimulus for IGF-1 production in the liver (80% of circulating IGF-1), and insulin can stimulate IGF-1 production by up-regulating growth hormone receptors in the liver.<sup>33</sup> Hyperinsulinemia can also increase IGF-1 bioavailability by decreasing hepatic secretion of IGF-binding protein (IGFBP)-1 and -2 so that more IGF-1 is free to bind to its receptor on normal and cancerous cells. The IGF-1 receptor is overexpressed in breast and colon cancers,<sup>47</sup> and activation of the IGF-1 receptor

stimulates the p21 ras/MAPK pathway for cell proliferation and the PI3K/AKT cell survival pathway.<sup>48</sup> The proliferative and antiapoptotic effects of IGF-1 are important in tumorigenesis because overexpression of IGF-1 stimulates and suppression of IGF-1 reduces mammary tumor development in mutant mice treated with a carcinogen.<sup>48</sup> Angiogenesis is also stimulated by IGF-1 because it increases vascular endothelial growth factor (VEGF) production in colon, endometrial, breast, and prostate cancer cells (see below).<sup>49–51</sup> Furthermore epidemiological studies indicate a strong correlation between increased IGF-1 levels, decreased IGFBP-3 levels and colon, premenopausal breast, and prostate cancer in patients.<sup>33</sup>

Finally, it has been suggested that insulin and free IGF-1 regulate the bioavailability of sex steroids that affect the development of cancers dependent on estrogens and androgens.<sup>14</sup> Normally, SHBGs produced by the liver circulate bound to estrogens and andro-

**Table 8.** Referenced Multivariate Epidemiology Study Examining Metabolic Syndrome Risk Factors and Cancer Incidence/Mortality for Endometrial Cancer

Study	Xu et al, 2006 <sup>24</sup>
Results (relative risk ratio 95% CI)	Pre recent BMI Q4 ( $\geq 25.69$ kg/m <sup>2</sup> ) versus Q1 ( $< 21.03$ kg/m <sup>2</sup> ): 3.6 (2.2, 5.9)*; Post recent BMI ( $\geq 25.69$ kg/m <sup>2</sup> ) versus Q1 ( $< 21.03$ kg/m <sup>2</sup> ): 2.7 (1.8, 4.1)*; Pre BMI change/year since age 20 ( $> 0.189$ versus $\leq 0.049$ kg/m <sup>2</sup> ): 3.4 (2.0, 5.8) <sup>†</sup> ; Post BMI change/year since age 20 ( $> 0.189$ versus $< 0.049$ kg/m <sup>2</sup> ): 2.7 (1.8, 4.2) <sup>†</sup> ; Pre weight change (kg) since age 20 (gain $> 20$ kg versus loss/gain $< 2.5$ kg): 3.1 (1.8, 5.5); Peri weight gain with BMI $< 25$ kg/m <sup>2</sup> (gain $> 5$ versus $\leq 0$ kg): 2.3 (1.4, 3.9); Peri weight gain with BMI $\geq 25$ kg/m <sup>2</sup> (gain $> 5$ versus $\leq 0$ kg): 2.0 (1.3, 3.0); Post weight change (kg) since age 20 (loss $> 2.5$ kg versus loss/gain $< 2.5$ kg) 0.4 (0.2, 1.0)  Pre weight change (kg) since age 20 (gain $> 20$ kg versus loss/gain $< 2.5$ kg); 2.8 (1.4, 5.7)
Size and type	Chinese women cases $n = 832$ , controls $n = 846$ ; case control study
Covariates	Education; menstrual status; years of menstruation; oral contraceptive use; number of pregnancies; family history of cancer; adolescent perceived weight or height at ages 10, 15, and 20; age; BMI at age 20; and initial body weight in each 10-year adulthood period
Exclusion	Hysterectomy
Nonsignificant studies	BMI at ages 20 and 30 (post), at age 50 (pre); Weight gain at age 20 (post); Perceived weight at ages 10, 15, and 20 (BMI $< 25$ kg/m <sup>2</sup> )
Other significant studies not listed here	BMI at ages 20 and 30 (pre), at ages 40, 50, and 60 (pre and post); Weight gain from ages 20 to 30 (pre); at ages 30 to 40 (pre and post); from ages 40 to 50, and 50 to 60 (post); Perceived weight at ages 10, 15, and 20 (BMI $< 25$ kg/m <sup>2</sup> ); weight change from age 20 to recent (all BMIs)

Pre, premenopausal; Post, postmenopausal; Peri, perimenopausal.  
 \* $P < 0.01$ .  
<sup>†</sup> $P < 0.0001$ .

gens to inhibit their receptor binding and cell growth effects.<sup>14</sup> Hyperinsulinemia and IGF-1 inhibit the synthesis of the SHBGs, thereby promoting sex hormone-dependent cancers such as breast, endometrial, and prostate cancers by increasing the bioavailability of sex hormones.<sup>14</sup> Mechanistic evidence for insulin resistance/hyperinsulinemia is considered strong for colon and breast cancers based on the growth and IGF-1-promoting effects of insulin, as well as the inhibition SHBGs and increased bioavailability of sex hormones.

### Obesity (Defined by BMI or WHR)

#### Aromatase

A central feature of the metabolic syndrome is increased WHR or BMI, which reflects an increase in adipose tissue. Estradiol can be formed from the conversion of androgens via the cytochrome P450 enzyme complex known as aromatase, which is present in adipocytes and adipocyte stromal tissue. Circulating concentrations of estradiol in postmenopausal women are directly related to BMI.<sup>52</sup> Many breast and endometrial cancers are dependent on estradiol for tumor growth. This could explain observed associations that obesity (BMI  $> 30$  kg/m<sup>2</sup>) predisposes to increased estrogen production and is associated with a twofold to fivefold increase in risk of endometrial cancer<sup>53</sup> and a twofold increase in risk of breast cancer in postmenopausal

women.<sup>20</sup> Furthermore, controlling for circulating estrogen levels in the serum of postmenopausal women significantly reduced the association of BMI with postmenopausal breast cancer risk,<sup>52</sup> indicating that circulating estrogens are an important pathological mechanism linking obesity with breast cancer development in postmenopausal women. Thus, in postmenopausal women and in men, circulating estrogen concentrations are indicative of androgen conversion to estrogens in adipose tissue and other extragonadal sites.

Although BMI is positively associated with breast cancer in postmenopausal women, wherein the adipose tissue (not the ovaries) are the primary source of estrogen production,<sup>54</sup> in premenopausal women increased BMI may have a protective effect on the development of premenopausal breast cancer.<sup>55</sup> Presumably this protective effect is attributable to increased anovulatory menstrual cycles in obese premenopausal women, resulting in a decrease in circulating steroid hormones.<sup>56</sup> Although abdominal obesity clearly plays a role in increasing circulating estradiol concentrations, there is also evidence in patients that sufficient estrogen could be synthesized by adipocytes in breast tissue to exert proliferative effects on breast cells.<sup>54</sup>

Adipocytes secrete interleukin (IL)-6 and tumor necrosis factor (TNF)- $\alpha$  cytokines, which act together with prostaglandins secreted by fibroblasts as potent inducers of aromatase activity when secreted in a paracrine manner.<sup>54</sup> Thus, increased adiposity raises cytokine produc-

tion in obese women that can stimulate aromatase activity and production of estradiol, which is a potent growth factor for estrogen receptor-positive breast and endometrial cancers.

Importantly, aromatase inhibitors are presently recommended for use in postmenopausal women with hormone-dependent breast cancer.<sup>57</sup> In addition, aromatase activity derived from adipose and endometrial tissues increases circulating levels of estradiol that are directly related to endometrial cancer risk.<sup>53</sup> Recently, the aromatase inhibitor anastrozole was used to successfully reverse endometrial hyperplasia in obese postmenopausal women.<sup>58</sup> The aromatase inhibitor letrozole is just beginning to be tested as primary or adjuvant therapy for patients with endometrial cancer; so far the results of the clinical trials look promising.<sup>59</sup> Evidence for the role of estrogens in breast and endometrial cancer and the importance of aromatization within fat cells to generate estrogens that contribute to cancer cell growth is strong.

### Adipokines

Obesity is, by definition, an increase in fat. Adipocytes, or fat cells, were once thought of as simple storage sites for triglycerides; however, adipocyte synthesis and secretion of hormones, cytokines, and other proteins with signaling properties (collectively termed "adipokines") are evidence that adipose tissue is a complex endocrine organ. Adipokines are a diverse group of signaling molecules that play roles in such processes as appetite and energy balance, inflammation, insulin resistance/sensitivity, angiogenesis, lipid metabolism, cell proliferation, and atherosclerosis.<sup>60</sup> Many of these functions are related to either the metabolic syndrome or cancer, and they may serve as a link between these two pathologies.

**Leptin:** Leptin is an adipocyte-specific hormone that serves as a metabolic signal to the brain that results in inhibition of appetite and increased basal metabolism to promote use of the stored energy (fat). Thus, circulating leptin levels are directly related to adiposity.<sup>61</sup> However, obese patients develop resistance to leptin and consequently become hyperleptinemic and more susceptible to the components of the metabolic syndrome.

In addition to its association with obesity and insulin resistance, increased plasma leptin levels are associated with prostate, colon, breast, and endometrial cancer in patients.<sup>62</sup> Leptin has consistently been shown to promote cancer cell proliferation *in vitro* in prostate, colon, breast, and leukemia cancer cell lines.<sup>62</sup> Leptin stimulates proliferation via MAPK signaling in prostate cancer cells and MCF-7 breast cancer cells; however, in transformed breast epithelial cells it has also been shown to activate STAT3, ERK, and AP-1 pathways leading to cell proliferation. Leptin also contributes to metastasis of cancer cells by stimulating angiogenesis *in vitro* and *in vivo* and increasing expression of matrix metalloproteinase-2 and -9.<sup>62</sup> Thus, leptin has direct stimulatory effects on cancer cells and may serve as an important link between obesity and cancer development.

**Adiponectin:** Adiponectin is an adipose-specific 30-kd secreted protein that is the most abundant hormone in circulation, accounting for 0.05% of serum proteins. Unlike most adipocyte-secreted hormones, adiponectin is significantly reduced in obese patients (BMI > 30 kg/m<sup>2</sup>).<sup>63</sup> Adiponectin has an insulin-sensitizing effect and can ameliorate insulin resistance and diabetes mellitus in two transgenic mouse models overexpressing either full-length or globular adiponectin.<sup>63</sup> The primary mechanism for increasing insulin sensitivity is the activation of 5'-AMP-activated protein kinase (AMPK) in the muscle (by globular adiponectin) or in the liver (by full-length adiponectin).<sup>63</sup> Adiponectin also reduces plasma-free fatty acid concentrations and has anti-inflammatory and anti-atherosclerotic properties.<sup>63</sup> Adiponectin is inversely correlated with breast, endometrial, and gastric cancer risk.<sup>64</sup> Thus, adiponectin has been inversely correlated with breast, endometrial, and gastric cancer and is known to inhibit inflammation and insulin resistance, both of which are involved in cancer progression.

**VEGF (Vascular Endothelial Growth Factor):** Angiogenesis is the process of new blood vessel formation from pre-existing vasculature and is a critical process for tumor formation and metastasis. One of the most important proangiogenic factors secreted by adipocytes is VEGF. VEGF and the VEGF receptors (VEGFR-1 and VEGFR-2) modulate endothelial cell proliferation and migration as well as survival, vascular permeability, and tubulogenesis. VEGF is secreted by human fat cells, especially omental fat.<sup>65</sup> Serum VEGF was positively associated with visceral fat accumulation but not subcutaneous fat, as assessed by computerized tomography scans at the umbilical level.<sup>66</sup> VEGF secretion by fat and other tissues is stimulated by hypoxia, as well as the following hormones and growth factors: insulin, IGF-1, estrogen, leptin, and TNF- $\alpha$ , all of which are increased in obesity and have been discussed above. Although the role of VEGF in angiogenesis and tumor progression is not in doubt, the relative importance of adipocyte-derived VEGF to tumor progression is less clear. One recent study demonstrated an increase in serum VEGF and soluble VEGFR-2 in obese ( $\geq 25$  m/kg<sup>2</sup>) versus lean (<25 m/kg<sup>2</sup>) patients; however, these data are correlative and cannot identify whether the VEGF was derived from adipose tissue.<sup>67</sup>

**Proinflammatory Cytokines:** Adipocytes secrete a number of cytokines such as TNF- $\alpha$ , IL-6, IL-8, IL-10, macrophage inflammatory protein 1 (MIP-1), and monocyte chemoattractant protein 1 (MCP-1).<sup>68</sup> It is still unclear why adipocytes produce so many proinflammatory factors in the obese condition, although Trayhurn and Wood<sup>60</sup> suggest that clusters of adipocytes become hypoxic and secrete cytokines to stimulate angiogenesis into the adipose tissue. TNF- $\alpha$  and IL-6 are consistently increased in the serum and adipose tissue of obese patients.<sup>68</sup> These cytokines secreted by adipocytes are known to promote insulin resistance and increase circulating triglycerides, features of the metabolic syndrome.<sup>69</sup>

Inflammation has also been linked to many types of cancer, such as gastric, pancreatic, esophageal, liver, bladder, and colorectal cancers because it influences growth, apoptosis, and proliferation of tumor and stromal

cells. TNF- $\alpha$  activates nuclear factor- $\kappa$ B (by phosphorylation of its inhibitor I $\kappa$ B), which increases production of NO, a substrate for reactive oxygen species (ROS) formation,<sup>70</sup> and stimulates other inflammatory cytokines. ROS and inflammatory cytokines lead to insulin resistance and glucose intolerance.<sup>69,70</sup> Thus ROS, inflammatory cytokines, and insulin resistance can promote a vicious cycle, because free fatty acids, glucose, and insulin further stimulate nuclear factor- $\kappa$ B activation.<sup>70</sup> Invading white blood cells within the tumor stroma are also an important source of TNF- $\alpha$ , IL-6, IL-10, and other cytokines within tumors. Nevertheless, it is likely that increased circulating cytokines from adipocytes promote cancer progression by contributing to inflammation and ROS formation.

There are more than 50 adipokines with diverse functions affecting glucose homeostasis, insulin sensitivity, angiogenesis, adipogenesis, inflammation, cellular proliferation, apoptosis, and differentiation.<sup>60</sup> Adipokines influence insulin resistance by increasing or decreasing insulin sensitivity.<sup>71</sup> Because insulin resistance is directly related to the metabolic syndrome and cancer development, adipokines may play a crucial role in linking these two diseases. The evidence for adipokines and proinflammatory cytokines derived from adipose tissue promoting carcinogenesis (either via promoting insulin resistance or directly influencing cancer cells) is considered intermediate.

### *Impaired Glucose Regulation/Hyperglycemia*

#### *Energy Excess*

The metabolic syndrome is characterized by increased circulating glucose, which cancer cells have specifically adapted to use. Cancer cells have an accelerated metabolic rate and an accompanying high demand for glucose. To accommodate this high demand, cancer cells have an enhanced ability to take up and use glucose. Glucose transporter proteins and especially GLUT1 are increased in many tumors.<sup>72</sup> GLUT3 has been detected in lung, ovarian, and gastric cancers but not in the corresponding noncancerous tissues.<sup>72</sup> GLUT12 has been found in prostate and breast cancer, but not in benign prostatic hyperplasia, and was reduced or absent in noncancerous breast tissue.<sup>72</sup> Furthermore, an accelerated metabolic rate in cancer cells is coupled to an increased requirement for energy and ATP production.<sup>73</sup> Enzymes involved in glycolysis have been shown to have increased activity and/or expression in cancer cells.<sup>72</sup> Several studies of patients with different tumor types (including breast cancer) have confirmed that increased glucose uptake/accumulation by tumors correlates with a higher grade of tumor, increased metastatic potential, reduced response to therapy, and poorer survival.<sup>72</sup>

If it is true that excess energy favors cancer development, then energy restriction should hinder cancer development. In fact, energy restriction does inhibit cancer progression.<sup>74</sup> In animal models energy restriction inhibits several spontaneous neoplasias including tumors that are generated from p53-deficient mice and Wnt-1 transgenic mice.<sup>74</sup> It also suppresses cancers in rodents in-

duced by carcinogens and radiation-induced cancers.<sup>74</sup> Long-term controlled studies in humans are lacking; however, preliminary data from long-term studies in primates are consistent with an inhibitory effect of energy restriction on cancer progression.<sup>75</sup> Evidence for an energy excess mechanism is considered strong.

#### *Reactive Oxygen Species*

Excess glucose also promotes the formation of ROS, which can promote cancer development. ROS are highly reactive molecules containing unpaired electrons. With respect to cancer, ROS can damage DNA by several processes including DNA base modification, deletions, frame shifts, strand breaks, DNA-protein cross-links, and chromosomal rearrangements.<sup>76</sup> DNA damage can occur in genes that are important in cell proliferation (such as ras), or cell survival (such as p53), which can then trigger cancer progression.

Excess glucose drives the polyol/sorbitol pathway in which glucose is converted to sorbitol by aldose reductase. This reaction consumes NADPH, which is required for regenerating reduced glutathione, thereby exacerbating oxidative stress.<sup>77</sup> The process of nonenzymatic protein glycation is increased by excess glucose and generates advanced glycation end products (AGE) and AGE precursors, which then bind to AGE receptors on macrophages, endothelial, and mesangial cells causing receptor-induced ROS production. In addition, glucose moieties on glycated proteins are capable of donating electrons and forming hydrogen peroxide.<sup>77</sup> Furthermore, glucose promotes the chemical inactivation of nitric oxide, which has antioxidant capabilities, thereby increasing oxidative stress.<sup>78</sup>

Numerous dietary components, such as olive oil, tea polyphenols, soy, resveratrol, fresh fruit and vegetables, omega-3 fatty acids, selenium, and others with antioxidant activity have demonstrated cancer-protective effects in breast and colon cancer *in vitro* and *in vivo*; however, it is not clear whether the antioxidant effect per se is sufficient to account for their anti-cancer effects. Overall, the evidence for an ROS mechanism resulting from increased blood glucose concentrations is considered to be intermediate.

### *Elevated Triglycerides*

#### *Reactive Oxygen Species*

ROS have been considered as a potential mechanism whereby hyperglycemia causes the development of cancer (see above). However, the generation of ROS by different molecules could potentially work in an additive or synergistic manner to promote cancer development. If this is true, then it is also important to consider mechanistic evidence for hypertriglyceridemia-generated ROS. Mitochondria are the cell powerhouses producing energy in the form of ATP and also ROS.<sup>79</sup> Increased oxidative stress in fat has been demonstrated to be an important pathogenic mechanism in

**Table 9.** The Potential Mechanisms Connecting the Metabolic Syndrome to Cancer Development and Future Areas of Study

Risk factors for the metabolic syndrome	Potential mechanisms	Future research
Obesity	Aromatase; adipokines; angiogenic factors; excess energy intake	Identify and characterize adipokines; find tumor-specific inhibitor of angiogenesis; inhibit tumorigenic adipose cytokine production; regulation of energy intake and expenditure
Hyperinsulinemia	Insulin and IGF-1 growth factors; inhibition of SHBG	Increased insulin sensitivity; reduce hyperinsulinemia
Hyperglycemia	Excess energy intake; ROS	Regulation of energy intake and expenditure; identify and inhibit ROS
Hypertension	Unknown	
Dyslipidemia (increased TG, decreased HDLc)	Contributes to IR; ROS	Increase insulin sensitivity; inhibit ROS, AGEs, and precursors

the metabolic syndrome.<sup>80</sup> Adipocyte NADPH oxidase production of ROS is specifically increased in fat in an obese mouse model, and inhibition of NADPH oxidase improved blood glucose, insulin, and triglyceride concentrations in this model. These data suggest that fat ROS may be a cause of the metabolic syndrome and a possible therapeutic target for obesity-associated metabolic syndrome.<sup>80</sup> In addition, it has been proposed that excessive cytosolic triglyceride accumulation in nonadipose tissue such as liver and muscle enhances ROS produced by respiring mitochondria by inhibiting adenosine nucleotide translocator and thereby decreasing ADP. The decreased ADP then slows the flow of electrons along the electron transfer chain increasing the likelihood of superoxide anion production.<sup>81</sup>

ROS can also react with lipids; fatty acids are particularly prone to oxidation, forming fatty acid peroxidation products that are highly reactive and that decompose to bifunctional/reactive aldehydes.<sup>79</sup> The most abundant bifunctional aldehyde is 4-hydroxy-2E-nonenal (4-HNE), which has been reported to cause mutation of the p53 gene in human hepatocarcinoma.<sup>82</sup> In addition, it up-regulates cyclooxygenase-2 (COX-2), which has been linked to breast, colon, and prostate cancers.<sup>83</sup> Another important reactive aldehyde produced by lipid hydroperoxides is malondialdehyde, which also forms adducts with DNA.<sup>79</sup> Each triglyceride molecule carries three long-chain fatty acids. Thus, increased triglyceride/fatty acids and obesity contribute to the development of oxidative stress and ROS accompanying the metabolic syndrome. Mechanistic studies linking ROS to cancer are considered to be of intermediate strength.

### Summary and Conclusions

Two large epidemiological studies indicate that clustering of components of the metabolic syndrome increases the risk for the development of colon cancer compared with individual components of the metabolic syndrome (Table 2). One possible explanation for this is that components of the metabolic syndrome promote

cancer via different mechanisms that then act in an additive or synergistic manner. Consistent with this notion, we have highlighted several cellular and molecular mechanisms that may link the components of the metabolic syndrome to cancer (Table 9). Specifically, these components may promote cancer development by generating ROS, increasing hormone production/bioavailability (including estrogen, IGF-1, insulin, and adipokines), and providing an energy-rich environment. This imbalance of hormones, the redox system, and energy availability promote cell transformation, angiogenesis, migration, and proliferation, as well as inhibition of apoptosis (Figure 1). These mechanisms have been linked to obesity/BMI, insulin resistance, glucose, and triglycerides/fatty acids; however, the potential molecular mechanisms linking HDLc and hypertension to cancer remain unclear and require further study.

The components of the metabolic syndrome appear to have an additive effect on colon cancer development; nevertheless, it is difficult to distinguish between the primary and secondary mechanisms through which the metabolic syndrome may promote cancer. Although the disease processes associated with obesity and insulin resistance are clearly important, they may act via numerous mechanisms that complement one another in a complex manner (Figure 1). Future basic science research aimed at understanding how adipokines, insulin, and IGFs, and ROS stimulate cancer progression will aid in determining which factors are primary and which are secondary in the development of the metabolic syndrome and how we can potentially intervene in these pathways by use of pharmacological inhibitors, behavioral modification, or gene therapy (Table 9).

Future epidemiology studies are also needed. For example, studies examining the potential link of hypertension and HDLc as independent risk factors for cancer should be designed to control for confounding factors such as BMI, waist circumference, triglyceride concentrations, and insulin resistance. More studies evaluating cancer risk in patients diagnosed with the metabolic syn-

drome are essential for determining whether individual components of the metabolic syndrome act together to create a greater synergistically/additively increased risk of cancer development compared with individual risk factors. To date, colorectal cancer is the only type of cancer that has been evaluated in patients with >3 metabolic syndrome risk factors; the results of these studies show increased risk with multiple metabolic syndrome components in men but not women. The effects of the metabolic syndrome on cancer risk in women should be further evaluated for other types of cancer such as breast or endometrial cancer, taking into account menopausal status.

Understanding the underlying pathological mechanisms and associated risk factors of the metabolic syndrome will provide the information necessary to arrive at a consensus definition of the metabolic syndrome, thereby assisting clinicians in diagnosis and treatment of patients that meet these criteria. If the individual components of the metabolic syndrome are additive in predisposing to cancer, which may be the case for colon cancer, then controlling even just one or two of these components may significantly contribute to living a longer, healthier, cancer-free life. From a clinical standpoint this information would put more emphasis on therapeutic life style changes for metabolic syndrome patients, such as exercise, eating healthy, losing weight, as well as being compliant with prescribed medication(s) to control hypertension, blood glucose, or dyslipidemia.

## References

1. Webster's 9th New Collegiate Dictionary. Edited by FC Mish. Springfield, Merriam-Webster Inc., 1989
2. Beck-Nielsen H, Hother-Nielsen O: Obesity in type 2 diabetes mellitus. *Diabetes Mellitus*. Edited by D LeRoith, SI Taylor, JM Olefsky. Philadelphia, Lippincott Williams & Wilkins, 2004, pp 857–868
3. Reaven GM: Banting Lecture 1988. Role of insulin resistance in human disease. *Diabetes* 1988, 37:1595–1607
4. Moller DE, Kaufman KD: Metabolic syndrome: a clinical and molecular perspective. *Annu Rev Med* 2005, 56:45–62
5. Kahn R, Buse J, Ferrannini E, Stern M: The metabolic syndrome: time for a critical appraisal: joint statement from the American Diabetes Association and the European Association for the Study of Diabetes. *Diabetes Care* 2005, 28:2289–2304
6. Grundy SM, Brewer Jr HB, Cleeman Jr SC, Smith Jr SC, Lenfant C: Definition of metabolic syndrome: report of the National Heart, Lung, and Blood Institute/American Heart Association conference on scientific issues related to definition. *Circulation* 2004, 109:433–438
7. Colangelo LA, Gapstur SM, Gann PH, Dyer AR, Liu K: Colorectal cancer mortality and factors related to the insulin resistance syndrome. *Cancer Epidemiol Biomarkers Prev* 2002, 11:385–391
8. Trevisan M, Liu J, Muti P, Misciagna G, Menotti A, Fucci F: Markers of insulin resistance and colorectal cancer mortality. *Cancer Epidemiol Biomarkers Prev* 2001, 10:937–941
9. Morita T, Tabata S, Mineshita M, Mizoue T, Moore MA, Kono S: The metabolic syndrome is associated with increased risk of colorectal adenoma development: the Self-Defense Forces health study. *Asian Pac J Cancer Prev* 2005, 6:485–489
10. Barrett-Connor E, Grady D, Stefanick ML: The rise and fall of menopausal hormone therapy. *Annu Rev Public Health* 2005, 26:115–140
11. Slattery ML, Sweeney C, Murtaugh M, Ma KN, Wolff RK, Potter JD, Caan BJ, Samowitz W: Associations between ERalpha, ERbeta, and AR genotypes and colon and rectal cancer. *Cancer Epidemiol Biomarkers Prev* 2005, 14:2936–2942
12. Foley EF, Jazaeri AA, Shupnik MA, Jazaeri O, Rice LW: Selective loss of estrogen receptor beta in malignant human colon. *Cancer Res* 2000, 60:245–248
13. Pasanisi P, Berrino F, De Petris M, Venturelli E, Mastroianni A, Panico S: Metabolic syndrome as a prognostic factor for breast cancer recurrences. *Int J Cancer* 2006, 119:236–238
14. Calle EE, Kaaks R: Overweight, obesity and cancer: epidemiological evidence and proposed mechanisms. *Nat Rev Cancer* 2004, 4:579–591
15. Furberg AS, Thune I: Metabolic abnormalities (hypertension, hyperglycemia and overweight), lifestyle (high energy intake and physical inactivity) and endometrial cancer risk in a Norwegian cohort. *Int J Cancer* 2003, 104:669–676
16. Hou L, Ji BT, Blair A, Dai Q, Gao YT, Potter JD, Chow WH: Body mass index and colon cancer risk in Chinese people: menopause as an effect modifier. *Eur J Cancer* 2006, 42:84–90
17. Lahmann PH, Hoffmann K, Allen N, van Gils CH, Khaw KT, Tehard B, Berrino F, Tjonneland A, Bigaard J, Olsen A, Overvad K, Clavel-Chapelon F, Nagel G, Boeing H, Trichopoulos D, Economou G, Bellos G, Palli D, Tumino R, Panico S, Sacerdote C, Krogh V, Peeters PH, Bueno-de-Mesquita HB, Lund E, Ardanaz E, Amiano P, Pera G, Quiros JR, Martinez C, Tormo MJ, Wirfalt E, Berglund G, Hallmans G, Key TJ, Reeves G, Bingham S, Norat T, Biessy C, Kaaks R, Riboli E: Body size and breast cancer risk: findings from the European Prospective Investigation into Cancer And Nutrition (EPIC). *Int J Cancer* 2004, 111:762–771
18. Calle EE, Rodriguez C, Walker-Thurmond K, Thun MJ: Overweight, obesity, and mortality from cancer in a prospectively studied cohort of U.S. adults. *N Engl J Med* 2003, 348:1625–1638
19. Friedenreich CM: Review of anthropometric factors and breast cancer risk. *Eur J Cancer Prev* 2001, 10:15–32
20. Morimoto LM, White E, Chen Z, Chlebowski RT, Hays J, Kuller L, Lopez AM, Manson J, Margolis KL, Muti P, Stefanick ML, McTiernan A: Obesity, body size, and risk of postmenopausal breast cancer: the Women's Health Initiative (United States). *Cancer Causes Control* 2002, 13:741–751
21. Xu WH, Matthews CE, Xiang YB, Zheng W, Ruan ZX, Cheng JR, Gao YT, Shu XO: Effect of adiposity and fat distribution on endometrial cancer risk in Shanghai women. *Am J Epidemiol* 2005, 161:939–947
22. Schoen RE, Tangen CM, Kuller LH, Burke GL, Cushman M, Tracy RP, Dobs A, Savage PJ: Increased blood glucose and insulin, body size, and incident colorectal cancer. *J Natl Cancer Inst* 1999, 91:1147–1154
23. Kaaks R, Van Noord PA, Den T, I, Peeters PH, Riboli E, Grobbee DE: Breast-cancer incidence in relation to height, weight and body-fat distribution in the Dutch "DOM" cohort. *Int J Cancer* 1998, 76:647–651
24. Xu WH, Xiang YB, Zheng W, Zhang X, Ruan ZX, Cheng JR, Gao YT, Shu XO: Weight history and risk of endometrial cancer among Chinese women. *Int J Epidemiol* 2006, 35:159–166
25. Bird CL, Frankl HD, Lee ER, Haile RW: Obesity, weight gain, large weight changes, and adenomatous polyps of the left colon and rectum. *Am J Epidemiol* 1998, 147:670–680
26. Nilsen TI, Vatten LJ: Prospective study of colorectal cancer risk and physical activity, diabetes, blood glucose and BMI: exploring the hyperinsulinaemia hypothesis. *Br J Cancer* 2001, 84:417–422
27. Henriksen EJ: Invited review: effects of acute exercise and exercise training on insulin resistance. *J Appl Physiol* 2002, 93:788–796
28. Thune I, Furberg AS: Physical activity and cancer risk: dose-response and cancer, all sites and site-specific. *Med Sci Sports Exerc* 2001, 33:S530–S550
29. Jee SH, Ohrr H, Sull JW, Yun JE, Ji M, Samet JM: Fasting serum glucose level and cancer risk in Korean men and women. *JAMA* 2005, 293:194–202
30. Nathan DM, Hamman RF, Garfield S, Brenneman A, Fowler SF, Knowler WC: Preventing type 2 diabetes mellitus. *Diabetes Mellitus*. Edited by D LeRoith, SI Taylor, JM Olefsky. Philadelphia, Lippincott Williams & Wilkins, 2004, pp 1078–1079
31. La Vecchia C, Negri E, Franceschi S, D'Avanzo B, Boyle P: A case-control study of diabetes mellitus and cancer risk. *Br J Cancer* 1994, 70:950–953
32. Berstein LM, Kvatchevskaya JO, Poroshina TE, Kovalenko IG, Tsyrlina EV, Zimarina TS, Ourmantecheva AF, Ashrafian L, Thijssen JH:



- Insulin resistance, its consequences for the clinical course of the disease, and possibilities of correction in endometrial cancer. *J Cancer Res Clin Oncol* 2004, 130:687–693
33. Giovannucci E: Insulin, insulin-like growth factors and colon cancer: a review of the evidence. *J Nutr* 2001, 131:3109S–3120S
  34. Goodwin PJ, Ennis M, Pritchard KI, Trudeau ME, Koo J, Madarnas Y, Hartwick W, Hoffman B, Hood N: Fasting insulin and outcome in early-stage breast cancer: results of a prospective cohort study. *J Clin Oncol* 2002, 20:42–51
  35. Hammarsten J, Hogstedt B: Clinical, haemodynamic, anthropometric, metabolic and insulin profile of men with high-stage and high-grade clinical prostate cancer. *Blood Press* 2004, 13:47–55
  36. Furberg AS, Veierod MB, Wilsgaard T, Bernstein L, Thune I: Serum high-density lipoprotein cholesterol, metabolic profile, and breast cancer risk. *J Natl Cancer Inst* 2004, 96:1152–1160
  37. Michalaki V, Koutroulis G, Syrigos K, Piperi C, Kalofoutis A: Evaluation of serum lipids and high-density lipoprotein subfractions (HDL2, HDL3) in postmenopausal patients with breast cancer. *Mol Cell Biochem* 2005, 268:19–24
  38. Wuermli L, Joergel M, Henz S, Schmid HP, Riesen WF, Thomas G, Krek W, Cerny T, Gillessen S: Hypertriglyceridemia as a possible risk factor for prostate cancer. *Prostate Cancer Prostatic Dis* 2005, 8:316–320
  39. Tsushima M, Nomura AM, Lee J, Stemmermann GN: Prospective study of the association of serum triglyceride and glucose with colorectal cancer. *Diag Dis Sci* 2005, 50:499–505
  40. Ray G, Husain SA: Role of lipids, lipoproteins and vitamins in women with breast cancer. *Clin Biochem* 2001, 34:71–76
  41. Gaard M, Tretli S, Urdal P: Risk of breast cancer in relation to blood lipids: a prospective study of 31,209 Norwegian women. *Cancer Causes Control* 1994, 5:501–509
  42. Tulinius H, Sigfusson N, Sigvaldason H, Bjarnadottir K, Tryggvadottir L: Risk factors for malignant diseases: a cohort study on a population of 22,946 Icelanders. *Cancer Epidemiol Biomarkers Prev* 1997, 6:863–873
  43. Grossman E, Messerli FH, Boyko V, Goldbourt U: Is there an association between hypertension and cancer mortality? *Am J Med* 2002, 112:479–486
  44. Sung KC, Ryu SH: Insulin resistance, body mass index, waist circumference are independent risk factor for high blood pressure. *Clin Exp Hypertens* 2004, 26:547–556
  45. Halperin RO, Sesso HD, Ma J, Buring JE, Stampfer MJ, Gaziano JM: Dyslipidemia and the risk of incident hypertension in men. *Hypertension* 2006, 47:45–50
  46. Milazzo G, Giorgino F, Damante G, Sung C, Stampfer MR, Vigneri R, Goldfine ID, Belfiore A: Insulin receptor expression and function in human breast cancer cell lines. *Cancer Res* 1992, 52:3924–3930
  47. Moschos SJ, Mantzoros CS: The role of the IGF system in cancer: from basic to clinical studies and clinical applications. *Oncology* 2002, 63:317–332
  48. Ibrahim YH, Yee D: Insulin-like growth factor-I and cancer risk. *Growth Horm IGF Res* 2004, 14:261–269
  49. Hoeben A, Landuyt B, Highley MS, Wildiers H, Van Oosterom AT, De Bruijn EA: Vascular endothelial growth factor and angiogenesis. *Pharmacol Rev* 2004, 56:549–580
  50. Kucab JE, Dunn SE: Role of IGF-1R in mediating breast cancer invasion and metastasis. *Breast Dis* 2003, 17:41–47
  51. Stearns M, Tran J, Francis MK, Zhang H, Sell C: Activated Ras enhances insulin-like growth factor I induction of vascular endothelial growth factor in prostate epithelial cells. *Cancer Res* 2005, 65:2085–2088
  52. Key TJ, Appleby PN, Reeves GK, Roddam A, Dorgan JF, Longcope C, Stanczyk FZ, Stephenson Jr HE, Falk RT, Miller R, Schatzkin A, Allen DS, Fentiman IS, Key TJ, Wang DY, Dowsett M, Thomas HV, Hankinson SE, Toniolo P, Akhmedkhanov A, Koenig K, Shore RE, Zeleniuch-Jacquette A, Berrino F, Muti P, Micheli A, Krogh V, Sieri S, Pala V, Venturelli E, Secreto G, Barrett-Connor E, Laughlin GA, Kabuto M, Akiba S, Stevens RG, Neriishi K, Land CE, Cauley JA, Kuller LH, Cummings SR, Helzlsouer KJ, Alberg AJ, Bush TL, Comstock GW, Gordon GB, Miller SR, Longcope C: Body mass index, serum sex hormones, and breast cancer risk in postmenopausal women. *J Natl Cancer Inst* 2003, 95:1218–1226
  53. Kaaks R, Lukanova A, Kurzer MS: Obesity, endogenous hormones, and endometrial cancer risk: a synthetic review. *Cancer Epidemiol Biomarkers Prev* 2002, 11:1531–1543
  54. Reed MJ, Purohit A: Aromatase regulation and breast cancer. *Clin Endocrinol (Oxf)* 2001, 54:563–571
  55. Tehard B, Clavel-Chapelon F: Several anthropometric measurements and breast cancer risk: results of the E3N cohort study. *Int J Obes (Lond)* 2006, 30:156–163
  56. Calle EE, Thun MJ: Obesity and cancer. *Oncogene* 2004, 23:6365–6378
  57. Brueggemeier RW, Hackett JC, Diaz-Cruz ES: Aromatase inhibitors in the treatment of breast cancer. *Endocr Rev* 2005, 26:331–345
  58. Agorastos T, Vaitis V, Pantazis K, Efstathiadis E, Vavilis D, Bontis JN: Aromatase inhibitor anastrozole for treating endometrial hyperplasia in obese postmenopausal women. *Eur J Obstet Gynecol Reprod Biol* 2005, 118:239–240
  59. Berstein L, Maximov S, Gershfeld E, Meshkova I, Gamajunova V, Tsyrlina E, Larionov A, Kovalevskij A, Vasilyev D: Neoadjuvant therapy of endometrial cancer with the aromatase inhibitor letrozole: endocrine and clinical effects. *Eur J Obstet Gynecol Reprod Biol* 2002, 105:161–165
  60. Trayhurn P, Wood IS: Adipokines: inflammation and the pleiotropic role of white adipose tissue. *Br J Nutr* 2004, 92:347–355
  61. Kershaw EE, Flier JS: Adipose tissue as an endocrine organ. *J Clin Endocrinol Metab* 2004, 89:2548–2556
  62. Somasundar P, McFadden DW, Hileman SM, Vona-Davis L: Leptin is a growth factor in cancer. *J Surg Res* 2004, 116:337–349
  63. Kadowaki T, Yamauchi T: Adiponectin and adiponectin receptors. *Endocr Rev* 2005, 26:439–451
  64. Ishikawa M, Kitayama J, Kazama S, Hiramatsu T, Hatano K, Nagawa H: Plasma adiponectin and gastric cancer. *Clin Cancer Res* 2005, 11:466–472
  65. Hausman GJ, Richardson RL: Adipose tissue angiogenesis. *J Anim Sci* 2004, 82:925–934
  66. Miyazawa-Hoshimoto S, Takahashi K, Bujo H, Hashimoto N, Saito Y: Elevated serum vascular endothelial growth factor is associated with visceral fat accumulation in human obese subjects. *Diabetologia* 2003, 46:1483–1488
  67. Silha JV, Krsek M, Sucharda P, Murphy LJ: Angiogenic factors are elevated in overweight and obese individuals. *Int J Obes (Lond)* 2005, 29:1308–1314
  68. Fantuzzi G: Adipose tissue, adipokines, and inflammation. *J Allergy Clin Immunol* 2005, 115:911–919
  69. Shoelson SE, Lee J, Goldfine AB: Inflammation and insulin resistance. *J Clin Invest* 2006, 116:1793–1801
  70. Sonnenberg GE, Krakower GR, Kissebah AH: A novel pathway to the manifestations of metabolic syndrome. *Obes Res* 2004, 12:180–186
  71. Pittas AG, Joseph NA, Greenberg AS: Adipocytokines and insulin resistance. *J Clin Endocrinol Metab* 2004, 89:447–452
  72. Macheda ML, Rogers S, Best JD: Molecular and cellular regulation of glucose transporter (GLUT) proteins in cancer. *J Cell Physiol* 2005, 202:654–662
  73. Warburg O: On the origin of cancer cells. *Science* 1956, 123:309–314
  74. Hursting SD, Lavigne JA, Berrigan D, Perkins SN, Barrett JC: Calorie restriction, aging, and cancer prevention: mechanisms of action and applicability to humans. *Annu Rev Med* 2003, 54:131–152
  75. Lane MA, Black A, Handy A, Tilmont EM, Ingram DK, Roth GS: Caloric restriction in primates. *Ann NY Acad Sci* 2001, 928:287–295
  76. Valko M, Izakovic M, Mazur M, Rhodes CJ, Telser J: Role of oxygen radicals in DNA damage and cancer incidence. *Mol Cell Biochem* 2004, 266:37–56
  77. Huerta MG, Nadler JL: Oxidative stress, inflammation, and diabetic complications. *Diabetes Mellitus*. Edited by D LeRoith, SI Taylor, JM Olefsky. Philadelphia, Lippincott Williams & Wilkins, 2004, pp 1485–1501
  78. Brodsky SV, Morrishow AM, Dharia N, Gross SS, Goligorsky MS: Glucose scavenging of nitric oxide. *Am J Physiol* 2001, 280:F480–F486
  79. Cejas P, Casado E, Belda-Iniesta C, De Castro J, Espinosa E, Redondo A, Sereno M, Garcia-Cabezas MA, Vara JA, Dominguez-Caceres A, Perona R, Gonzalez-Baron M: Implications of oxidative stress and cell membrane lipid peroxidation in human cancer (Spain). *Cancer Causes Control* 2004, 15:707–719
  80. Furukawa S, Fujita T, Shimabukuro M, Iwaki M, Yamada Y, Nakajima

- Y, Nakayama O, Makishima M, Matsuda M, Shimomura I: Increased oxidative stress in obesity and its impact on metabolic syndrome. *J Clin Invest* 2004, 114:1752–1761
81. Bakker SJ, Ijzerman RG, Teerlink T, Westerhoff HV, Gans RO, Heine RJ: Cytosolic triglycerides and oxidative stress in central obesity: the missing link between excessive atherosclerosis, endothelial dysfunction, and beta-cell failure? *Atherosclerosis* 2000, 148:17–21
82. Hu W, Feng Z, Eveleigh J, Iyer G, Pan J, Amin S, Chung FL, Tang MS: The major lipid peroxidation product, trans-4-hydroxy-2-nonenal, preferentially forms DNA adducts at codon 249 of human p53 gene, a unique mutational hotspot in hepatocellular carcinoma. *Carcinogenesis* 2002, 23:1781–1789
83. Brown JR, DuBois RN: COX-2: a molecular target for colorectal cancer prevention. *J Clin Oncol* 2005, 23:2840–2855