

REVIEW ARTICLE

The mismatch negativity: an index of cognitive decline in neuropsychiatric and neurological diseases and in ageing

Risto Näätänen,^{1,2,3} Teija Kujala,³ Kairi Kreegipuu,¹ Synnöve Carlson,^{4,5,6} Carles Escera,^{7,8} Torsten Baldeweg^{9,10} and Curtis Ponton¹¹

1 Institute of Psychology, University of Tartu, Tartu, Estonia

2 Center of Integrative Neuroscience (CFIN), University of Aarhus, Aarhus, Denmark

3 Cognitive Brain Research Unit, Institute of Behavioural Sciences, University of Helsinki, Helsinki, Finland

4 Neuroscience Unit, Institute of Biomedicine/Physiology, University of Helsinki, Helsinki, Finland

5 Brain Research Unit, Low Temperature Laboratory, Aalto University School of Science and Technology, Espoo, Finland

6 Medical School, University of Tampere, Tampere, Finland

7 Institute for Brain, Cognition and Behaviour (IR3C), University of Barcelona, Barcelona, Catalonia, Spain

8 Department of Psychiatry and Clinical Psychobiology, Cognitive Neuroscience Research Group, University of Barcelona, Barcelona, Catalonia, Spain

9 Institute of Child Health, University College London, UK

10 Great Ormond Street Hospital for Sick Children NHS Trust, London, UK

11 Compumedics Neuroscan, Santa Fe, NM, USA

Correspondence to: Risto Näätänen,
Cognitive Brain Research Unit,
Institute of Behavioural Sciences,
POB 9 Helsinki 00170,
University of Helsinki,
Helsinki, Finland
E-mail: risto.naatanen@helsinki.fi

Cognitive impairment is a core element shared by a large number of different neurological and neuropsychiatric diseases. Irrespective of their different aetiologies and symptomatologies, most appear to converge at the functional deficiency of the auditory-frontal cortex network of auditory discrimination, which indexes cognitive impairment shared by these abnormalities. This auditory-frontal cortical deficiency, and hence cognitive decline, can now be objectively measured with the mismatch negativity and its magnetic equivalent. The auditory-frontal cortical network involved seems, therefore, to play a pivotal, unifying role in the different abnormalities. It is, however, more likely that the dysfunction that can be detected with the mismatch negativity and its magnetoencephalographic equivalent manifests a more widespread brain disorder, namely, a deficient N-methyl-D-aspartate receptor function, shared by these abnormalities and accounting for most of the cognitive decline.

Keywords: neuropsychiatric disorders; neurological disorders; central auditory processing; cognitive decline; mismatch negativity (MMN)

Abbreviation: MMN = mismatch negativity

Introduction

In all major neuropsychiatric and neurological disorders, with different aetiologies and symptomatologies, there seems to exist a common core, i.e. cognitive impairment. For instance, in schizophrenia, there is often a gradual cognitive and functional decline (Umbricht and Krljes, 2005). Cognition is also affected in bipolar disease (Thompson *et al.*, 2005), stroke (Ilvonen *et al.*, 2003; Dhawan *et al.*, 2010), epilepsy (Boatman *et al.*, 2008; Kaaden and Helmstaedter, 2009), Parkinson's disease (Rongve and Aarsland, 2006), multiple sclerosis (Jung *et al.*, 2006), Alzheimer's disease and other neurodegenerative brain disorders. In addition, cognition is also affected in ageing (Cansino, 2009) and, for example, in patients with HIV infection (Schroeder *et al.*, 1994) and in survivors of coma (Fischer *et al.*, 2004) and the persistent vegetative state (Wijnen *et al.*, 2007). Importantly, in almost all of these cases, this cognitive decline seems to be indexed by temporofrontal functional deficiency expressed as deficient auditory discrimination and orienting.

This functional deficiency, and hence cognitive decline, can now be objectively assessed, even in the absence of the patient's attention and task performance, by means of a relatively simple electrophysiological measure, the mismatch negativity (MMN; Näätänen *et al.*, 1978). The MMN is generated by the temporofrontal network of automatic auditory change (or regularity-violation) detection (Alain *et al.*, 1998), and its magnetoencephalographic equivalent, magnetoencephalographic MMN (Hari *et al.*, 1984), even in the absence of attention (in fact, the MMN is usually recorded under ignore conditions, with the subject or patient, for example, watching videos or reading a book). This is a major advantage of the MMN relative to other cognitive event-related potentials such as the P3 (Sutton *et al.*, 1965), which depend on attention and cannot therefore be reliably used in several clinical populations. The magnetoencephalographic MMN selectively reflects the temporal component of the MMN since magnetoencephalography is insensitive to the frontal generators of the MMN (Hämäläinen *et al.*, 1993). Therefore, the magnetoencephalography is particularly well-suited for detecting cognitive deficits specific for the temporal lobes. The combined use of the electroencephalography and magnetoencephalography recordings help to determine to what extent the temporal and frontal MMN components are impaired, since with electroencephalography, both components can be detected (Hämäläinen *et al.*, 1993).

Figure 1 illustrates that the MMN indexes the behavioural discrimination accuracy. In addition, the MMN can also index sensory–memory traces (their duration, accuracy and capacity) formed on the basis of the preceding stimulation, that provide the necessary prerequisite for the detection of change (regularity-violation) (Näätänen *et al.*, 2007). In this review, we firstly show that this functional deficit indexed by the MMN and the magnetoencephalographic MMN reflects cognitive decline in the different neuropsychiatric and neurological abnormalities and in ageing. Thereafter, we will review converging evidence indicating that the auditory neural function involved is enhanced by different cognition-enhancing drugs and is dampened by drugs

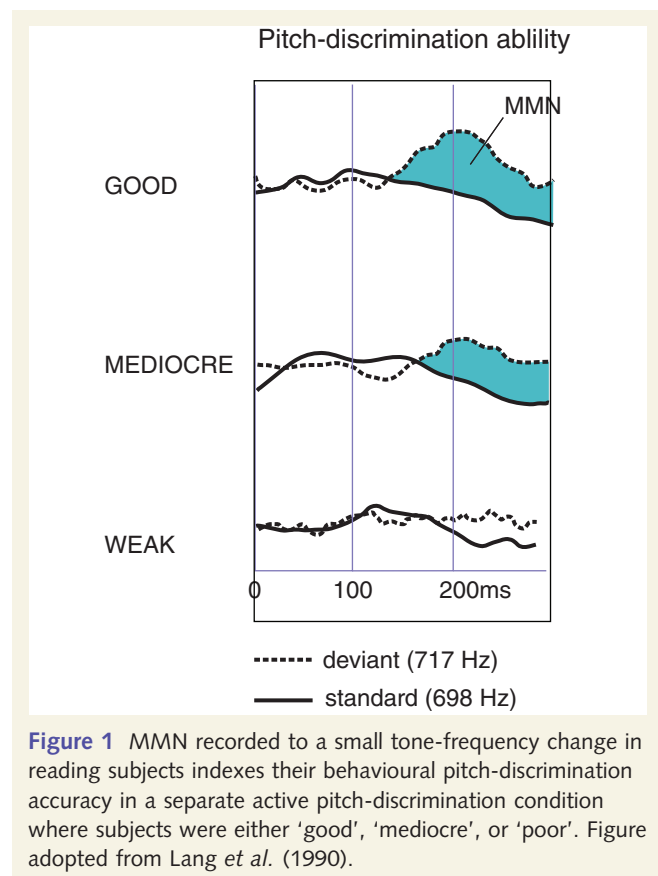


Figure 1 MMN recorded to a small tone-frequency change in reading subjects indexes their behavioural pitch-discrimination accuracy in a separate active pitch-discrimination condition where subjects were either 'good', 'mediocre', or 'poor'. Figure adopted from Lang *et al.* (1990).

decreasing cognitive performance and, further, that it reflects cognitive variation even in normal healthy individuals. In addition, we will also review relevant data involving the visual-modality analogy of the auditory MMN. To complement our personal collections forming the literature basis of the present review, we also conducted a literature search with terms 'mismatch negativity and cognition' and included all studies published in English-language refereed journals, from 2005–2010, that report clinical data pertinent to the MMN–cognition relationship. To sharpen the focus of the review, we have, however, omitted the extensive developmental literature.

The MMN is generated by a temporofrontal network of auditory change detection, in which bilateral auditory-cortex activation, underlying pre-perceptual change detection, triggers—with a very short time delay (Rinne *et al.*, 2000)—a predominantly right hemispheric frontal process associated with involuntary attention switch to auditory change (Näätänen and Michie, 1979; Giard *et al.*, 1990; Rinne *et al.*, 2005, 2006). Consequently, the MMN has two overlapping subcomponents, one bilaterally and feature-specifically generated (Rosburg, 2003) by the auditory cortices (the supratemporal MMN subcomponent) and the other by the frontal cortex (the frontal MMN subcomponent). In magnetoencephalographic MMN recordings, only the supratemporal component can be seen, with the radially oriented frontal component being absent. In contrast, both subcomponents have their functional MRI (Celsis *et al.*, 1999; Schall *et al.*, 2003; Molholm *et al.*, 2005; Opitz *et al.*, 2009), PET (Tervaniemi *et al.*, 2000; Dittmann-Balcar *et al.*, 2001; Müller *et al.*, 2002) and

optical-imaging (Tse and Penney, 2008) equivalents. Furthermore, the MMN has its equivalents in other sensory modalities too [the visual MMN (Alho *et al.*, 1992; Tales *et al.*, 1999, 2002; Heslenfeld, 2003; Pazo-Alvarez *et al.*, 2003; Czigler 2007); the somatosensory MMN (Kekoni *et al.*, 1997); and the olfactory MMN (Krauel *et al.*, 1999)], and can also be recorded in different animals [e.g. in monkey (Javitt *et al.*, 1992); cat (Csepe *et al.*, 1987; Pincze *et al.*, 2001, 2002); rat (Astikainen *et al.*, 2006; Ruusuvirta *et al.*, 2007); guinea pig (Kraus *et al.*, 1994); and mouse (Umbricht *et al.*, 2005; Ehrlichman *et al.*, 2008)]. Recently, it was shown by Restuccia *et al.* (2009) and Spackman *et al.* (2010) that, similarly to the auditory MMN, the somatosensory MMN, too, has sensory-specific (somatosensory cortex) and frontal subcomponents.

Sometimes, reliable MMN data cannot be obtained, usually because of a weak signal-to-noise ratio. Moreover, even though the MMN procedure usually provides satisfactory, and often excellent results at the group level, much work is still needed until the MMN can reliably be used in the objective assessment of discrimination of individual subjects and patients. Fortunately, considerable progress toward this end has recently been made (e.g. Marco-Pallares *et al.*, 2005; Kalyakin *et al.*, 2007, 2008a, b, 2009; Cong *et al.*, 2009, 2010a, b).

Neuropsychiatric disorders

Schizophrenia

Shelley *et al.* (1991), in a pioneering study, found that the MMN amplitude for an occasional duration increment of a repetitive tone was considerably attenuated in patients with schizophrenia compared with that of controls, suggesting that patients' duration discrimination was compromised. Javitt (1993), in turn, was the first to demonstrate frequency-MMN deficiency in patients with schizophrenia. The duration-MMN deficit was subsequently corroborated by Catts *et al.* (1995) and Michie *et al.* (2000). Michie (2001) also found that the MMN abnormalities for duration change, particularly those for duration increments, were even more robust than those for frequency change (Davalos *et al.*, 2003). Importantly, Catts *et al.* (1995) found that in bipolar patients, the duration-change MMN was not affected, suggesting the specificity of the duration-MMN deficiency in patients with schizophrenia. Fisher *et al.* (2008), who recorded five different MMNs in parallel (Näätänen *et al.*, 2004; Thönnesen *et al.*, 2008), reported that the MMN attenuation for duration decrement only occurred in patients with schizophrenia with auditory hallucinations.

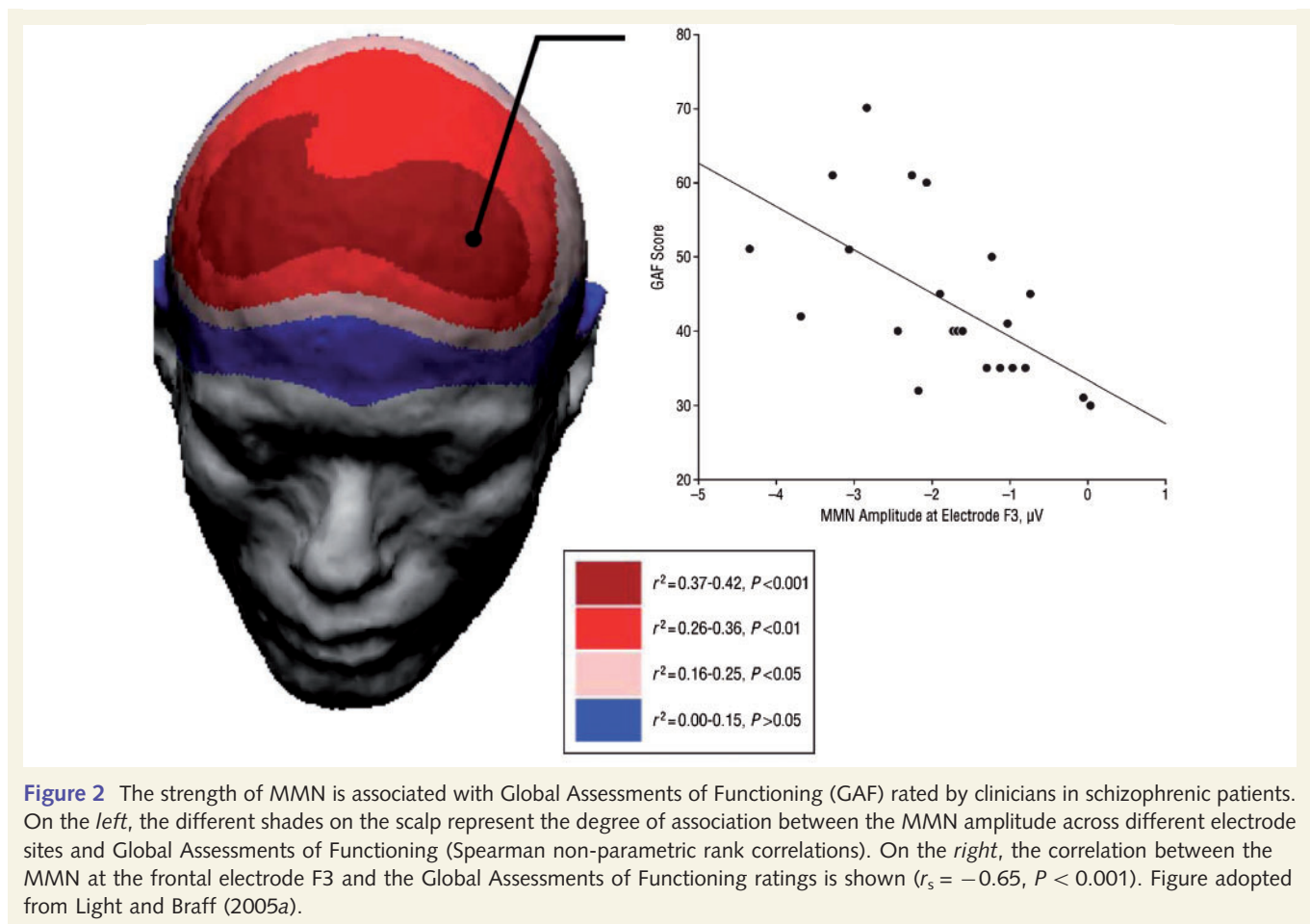
In the meta-analysis of Umbricht and Krljes (2005), most of the 32 MMN studies published by the end of 2003, meeting the inclusion criteria, showed that schizophrenia is associated with a MMN-amplitude decrease for frequency or duration changes. There was also a systematic increase in the effect size of the MMN deficit as a function of illness duration, indicating that this attenuation reflects disease progression.

A correlation of the MMN deficit for tone-duration increment with neuropsychological impairment (as indexed by Digit Span Test and Rivermead Behavioural Memory Test) in patients with

chronic schizophrenia was reported by Baldeweg *et al.* (2004). These authors introduced a novel paradigm, the so-called roving paradigm (in which the standard is frequently replaced by another), to schizophrenia research, which seemed to provide a better index for the degree of cognitive impairment of patients than that provided by the traditional constant-standard paradigm. Furthermore, Light and Braff (2005a) showed that the MMN deficit for tone-duration prolongation specifically indexes gradual functional deterioration; there was a strong correlation between the clinical ratings on the Global Assessment of Functioning and the MMN amplitude in these patients (Fig. 2). Moreover, the MMN was highly predictive of patients' level of independence in their community-living situations. The authors concluded that '... the MMN deficits represent a core neurophysiological dysfunction that is linked to global impairments in everyday functioning in patients with schizophrenia' (Light and Braff, 2005a, p. 127). Furthermore, this correlation between the MMN deficit and the Global Assessment of Functioning ratings was replicated in longitudinal studies 1–2 years later, indicating a stable relationship (Light and Braff, 2005b). For corroborating results, see Hermens *et al.* (2010). Interestingly, this relationship was also found in normal healthy subjects (Light *et al.*, 2007).

Subsequently, using a visual-MMN paradigm, Urban *et al.* (2008) found that patients with schizophrenia below the median on the Global Assessment of Functioning ratings had smaller visual-MMN amplitudes for change of the direction of a peripheral movement than normal controls and patients who were above the median on the Global Assessment of Functioning ratings. Moreover, Wynn *et al.* (2010) found that the (auditory) MMN for duration increment can also index social cognition and functioning in patients with schizophrenia. Further evidence for the MMN-cognition relationship in patients with schizophrenia was provided by Turetsky *et al.* (2009). Umbricht *et al.* (2006) found that first-episode patients, in general, did not show an attenuated MMN for tone-frequency and -duration changes except for those with a low premorbid educational level.

The results of Baldeweg *et al.* (2002, 2004) and Sato *et al.* (2003) suggested that the frontal generator of the MMN in particular is affected in schizophrenia. This pattern of results, interpreted by Baldeweg *et al.* (2002) as reflecting a dampened frontal involuntary attention-switching function, correlated with the negative symptoms in the Baldeweg *et al.* (2004) study. For corroborating results, see Sato *et al.* (2003). This dampening of the frontal involuntary attention-switching function might, according to Näätänen and Kähkönen (2009), contribute to patients' negative symptoms (such as social withdrawal) by diminishing involuntary attention switches to socially relevant auditory cues such as stress and loudness, changes in speaker voice, or the change from one speaker to another (Oades *et al.*, 1996; Javitt *et al.*, 1998). Consistent with this, Matthews *et al.* (2007) obtained MMN and behavioural data for change of the locus of sound origin suggestive of a selective impairment in the encoding of inter-aural time cues in patients with schizophrenia. The authors proposed that this impairment could have a detrimental effect on a patient's ability to locate sounds in natural settings, and thus it could contribute to their social communication problems. In particular, as spatial loci of origin of sounds function as a central cue when



selectively attending to a certain speaker in the presence of multiple speakers, any decline in the capacity to use spatial cues will interfere with the ability to control the focus of attention effectively and further impair communication skills.

On the basis of such evidence, Näätänen and Kähkönen (2009), regarding it unlikely that the structural (Hirayasu *et al.*, 1998; Salisbury *et al.*, 2007) and functional central auditory system changes occurring in patients with schizophrenia directly cause the cognitive and functional decline, suggested that it might be the cognitive, intellectual deprivation (in analogy to sensory deprivation) that gradually leads to the long-term cognitive and functional loss. According to these authors, this deprivation would be caused by the blurring of the auditory input, and by the dampening of the automatic attention-switching function supporting the adequate reception and analysis of speech-related and other auditory stimulation and thus the continuous contact with the environment (Shenton *et al.*, 1997; Toyomaki *et al.*, 2008).

Magnetoencephalographic studies (e.g. Kreitschmann-Angermahr *et al.*, 1999, 2001; Thønnesen *et al.*, 2008) have also shown a magnetoencephalographic MMN deficit for auditory change in patients with schizophrenia, indicating the involvement of the auditory cortices too, in particular the left auditory cortex (Hirayasu *et al.*, 2000), in the magnetoencephalographic MMN deficit of these patients.

Subsequently, the relationship between the MMN for tone-duration increment and the functional status of patients

with schizophrenia was also found by Kiang *et al.* (2007) who reported that this MMN deficiency was associated with proverb-interpretation abnormalities and deficits in auditory verbal memory. In addition, Rasser *et al.* (2011) found that MMN deficit for tone-frequency change indexed low socio-occupational function levels of the patients. This frequency-MMN deficit also indexed widespread cortical grey matter loss not only in the left hemisphere Heschl's gyrus but also in the motor and executive regions of the frontal cortex, while MMN-amplitude reduction for duration increment also correlated with grey matter loss in the right Heschl's gyrus. Kawakubo *et al.* (2007) showed that, in patients with schizophrenia, the MMN to across-phoneme change (but not that to tone- or phoneme-duration prolongation) was predictive of the acquisition of social skills during a 3-month social skills training programme. In addition, Toyomaki *et al.* (2008) found that MMN deficits for tone-duration increment in patients with schizophrenia were related to impairments in executive functioning. Moreover, Kawakubo *et al.* (2006) observed that MMN deficit for duration decrement of a speech sound (but not that of a simple tone) predicted verbal memory deficits in these patients.

Further, medication did not abolish MMN abnormality in patients with schizophrenia (Catts *et al.*, 1995; Schall *et al.*, 1998; Umbricht *et al.*, 1998, 1999; Korostenskaja *et al.*, 2005). Moreover, the MMN deficit was present irrespective of the stimulus-onset-asynchrony used (Javitt *et al.*, 1998), indicating

that it is the memory-trace formation (and thus perception; Näätänen and Winkler, 1999) that is affected rather than memory-trace duration. Consequently, this data pattern is orthogonal to that obtained in patients with Alzheimer's disease who show a normal MMN with short stimulus-onset-asynchronies, suggesting normal memory-trace formation and perception, but no MMN with long stimulus-onset-asynchronies such as 3 s, indicating that their sensory-memory trace duration is abnormally short (Pekkonen *et al.*, 1994).

The MMN amplitude is also attenuated in different (healthy) schizophrenia risk groups, such as individuals with velo-cardio-facial (DiGeorge) syndrome (Baker *et al.*, 2005), healthy first-order relatives of patients with schizophrenia (Jessen *et al.*, 2001; Michie *et al.*, 2002), prodromal subjects (Brockhaus-Dumke *et al.*, 2005), subjects with an 'ultra-high' risk of schizophrenia (Shin *et al.*, 2009), and children at 'high' risk for schizophrenia (Schreiber *et al.*, 1992). Importantly, it was recently shown by Bodatsch *et al.* (2011) that the duration-decrement MMN of high-risk individuals predicted who of them would convert to first-episode psychosis within 2 years and when this might happen. These results consequently contribute not only to the prediction of conversion but also to a more individualized risk estimation and thus risk-adopted prevention.

Bipolar disease

In contrast to schizophrenia, bipolar disease is usually not associated with MMN attenuation (Catts *et al.*, 1995; Umbricht *et al.*, 2003; Hall *et al.*, 2007, 2009; Salisbury *et al.*, 2007; Takei *et al.*, 2010). Takei *et al.* (2010), however, found that the magnetoencephalographic MMN peak latencies for tone-duration increment and frequency change were prolonged in the right hemisphere of patients with bipolar disease, in comparison with those of controls. There was also an equivalent-current-dipole location difference in the left hemisphere between the patients and controls. Andersson *et al.* (2008), studying patients with bipolar II disorder, found that their MMN for tone-duration decrement was attenuated in amplitude and prolonged in latency in comparison to that of controls and, further, that patients performed worse than controls in different neuropsychological tasks. Reite *et al.* (2009) recently described structural and functional auditory-cortex abnormalities in bipolar patients which, according to the authors, may relate to the cognitive impairments found in these patients (Bruder *et al.*, 1975, 1981, 1994).

Chronic alcoholism

Chronic use of alcohol induces neurotoxicity and results in cognitive impairment (Campanella *et al.*, 2009), particularly in that associated with the frontal-cortex functioning (Pfefferbaum *et al.*, 1997; George *et al.*, 2001; Polo *et al.*, 2003; Park *et al.*, 2010). Kathmann *et al.* (1995) reported delayed MMN peak latencies in chronic alcoholics, in comparison with their healthy peers. Polo *et al.* (1999) found MMN attenuation for tone-frequency change in patients relative to age-matched control subjects, particularly after a certain critical age, of ~40 years.

Furthermore, this MMN deficiency was increased with age and was more prominent when a longer (2 s) than shorter (0.75 s) stimulus-onset asynchrony was used, suggesting the presence of an additional effect of alcoholism in the form of the accelerated age-related shortening of the auditory sensory-memory duration (Polo *et al.*, 1999; Grau *et al.*, 2001).

Neurological and neurodegenerative disorders

Stroke and aphasia

In patients with stroke, a focal cerebral infarction in the affected core territory is often accompanied by damage even in brain regions that can be quite remote from the locus of infarction (including even contralateral regions), explaining, in part, the widespread cognitive and other neurological defects in these patients (Biegon *et al.*, 2004; Dhawan *et al.*, 2010). In addition, the MMN in these patients is considerably attenuated in amplitude, correlating with the cognitive loss, and permitting the objective monitoring of the latent post-stroke recovery process when reliable behavioural measurements are not yet possible (Ilvonen *et al.*, 2003). Ilvonen *et al.* (2003) found that at 4 and 10 days after left-hemisphere stroke onset, patients' sound discrimination was impaired in their left hemisphere, as suggested by attenuated MMNs for duration and frequency change in a harmonically rich tone, especially when presented to the right ear. At 3 months after stroke onset, the MMN for right-ear duration change had considerably increased in amplitude, and was again of approximately normal size. Moreover, a remarkable increase in the left-ear frequency MMN was observed between 3 and 6 months post-stroke. During the follow-up period, progressive improvement in speech comprehension test scores was also found. There was a close relationship between the duration-MMN amplitude increase and improvement in the Boston Diagnostic Aphasia Examination speech-comprehension test from 10 days to 3 months post-stroke.

Särkamö *et al.* (2010a), dividing their 60 middle cerebral artery stroke patients into music and audio-book listening and control groups, recorded their magnetoencephalographic MMN to frequency and duration changes in a binaurally delivered complex tone (in addition, all patients received normal hospital treatment and rehabilitation of stroke patients). It was found, as expected, that the magnetoencephalographic MMN amplitudes were generally smaller in the lesioned than opposite hemisphere. Importantly, the frequency-magnetoencephalographic MMN amplitude increased more in both music and audio-book groups than in the control group during the 6-month post-stroke period (Fig. 3). In addition, the duration-magnetoencephalographic MMN amplitude increased more in the audio-book group than in the other groups. The frequency-magnetoencephalographic MMN amplitude increase correlated with the behavioural improvement of verbal memory and focused attention induced by music listening. The authors interpreted their results as demonstrating that merely listening to music or speech starting early in

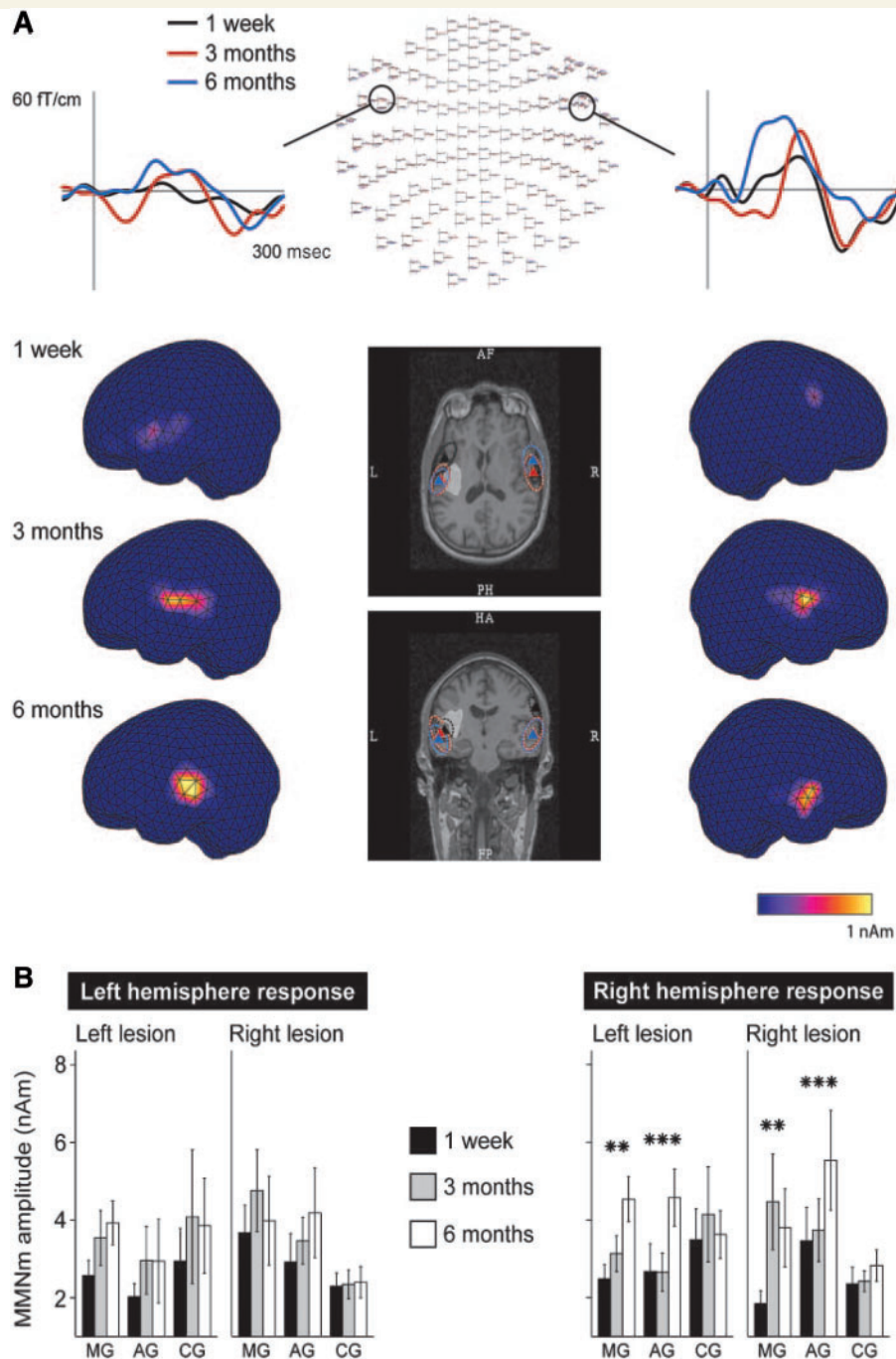


Figure 3 The tone-frequency magnetoencephalographic MMN (MMNm) at different stages of stroke recovery. (A) A case example illustrating the typical post-stroke recovery of the magnetoencephalographic MMN. Changes in the strength of the magnetoencephalographic MMN response in the left and right hemispheres are shown by difference waves from individual magnetoencephalographic channels over the temporal lobes. The magnetic resonance images in the middle of the figure show the lesioned area (white). (B) Across-patient results of the strength of the frequency-magnetoencephalographic MMN source in the left and right hemispheres. Data are shown separately for the left- and right-hemisphere patients. AG = audio book group; CG = control group; MG = music group. From Särkämö *et al.* (2010a).

the post-stroke period can induce long-term plastic changes in early sensory processing, as reflected by the magnetoencephalographic MMN enhancement, which, in turn, may facilitate the recovery of higher cognitive functions. These remarkable results

encourage the use of music and speech stimulation in the early post-stroke period.

In another study Särkämö *et al.* (2010b; see also Särkämö *et al.*, 2009) addressed amusia caused by left or right middle cerebral

artery stroke. They found that amusia caused by right hemisphere damage, especially that to temporal and frontal areas, was more severe than that caused by left hemisphere damage. Furthermore, the severity of amusia correlated with weaker frequency-magnetoencephalographic MMN responses in amusic right hemisphere patients. Within the right hemisphere-damage group, the amusic patients who had damage in the auditory cortex showed worse recovery from amusia as well as weaker magnetoencephalographic MMN responses throughout the 6-month follow-up than did the non-amusic patients or the amusic patients with no auditory-cortex damage. The amusic patients (both with and without auditory-cortex damage) performed worse than the non-amusic patients on a number of tests of different aspects of cognitive performance (including working memory, attention and cognitive flexibility). These findings suggested, according to the authors, domain-general cognitive deficits as the primary mechanism underlying amusia without auditory-cortex damage, whereas amusia with auditory-cortex damage is associated with both auditory and cognitive deficits. Previously, Kohlmetz *et al.* (2001) found a gross frequency-MMN amplitude reduction in left hemispheric stroke patients with amusia whereas left hemispheric stroke patients with no amusia showed a normal-sized MMN.

Auther *et al.* (2000) found that the presence of the MMN for speech-sound change indicated better auditory comprehension than did MMN absence. In addition, poor comprehension and MMN absence were related to temporal-lobe lesions. Subsequently, Pettigrew *et al.* (2005) found a strong correlation between the MMNs both to complex-tone duration decrement and consonant-vowel syllable change (from word to non-word and *vice versa*) with auditory comprehension. Such complex changes appear to be better in separating aphasic patients from control subjects than simple tone-frequency changes (Aaltonen *et al.*, 1993; Csepe *et al.*, 2001). Wertz *et al.* (1998) found that the MMN for speech-sound (consonant-vowel syllable) change was present in 100% of control subjects, whereas it was present only in 54% of aphasic subjects. Among those patients who showed this response, the MMN duration was shorter with more severe aphasia on The Western Aphasia Battery, Porch Index of Communicative Ability and The Token Test.

Multiple sclerosis

Jung *et al.* (2006), studying 46 patients with multiple sclerosis, found that, besides the exogenous N1–P2 complex, the MMN and P3a for duration decrement were attenuated in amplitude in patients with multiple sclerosis, concluding that these changes might suggest that patients with multiple sclerosis are prone to pre-attentive auditory information processing deficits, besides previously described controlled processing difficulties (Kujala *et al.*, 1995; Foong *et al.*, 1999). In addition, the N1–P2 complex alterations might, according to these authors, signify that the basic cortical auditory processing is altered in multiple sclerosis. The MMN was considerably smaller in amplitude in patients showing cognitive decline (assessed by using a battery of cognitive tests) than in those with no cognitive decline (Fig. 4). The authors concluded that MMN alterations may represent an objective index of cognitive disturbances in patients with multiple sclerosis.

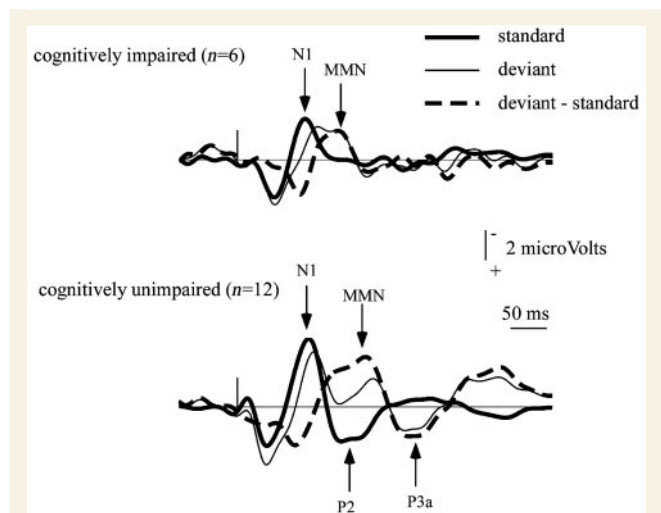


Figure 4 Neural responses reflecting cognitive decline in multiple sclerosis. In patients with cognitive impairment (*top*), the N1 and MMN responses are considerably smaller in amplitude than those of patients with no cognitive impairment (*bottom*). Adapted from Jung *et al.* (2006).

Consistent with this, Santos *et al.* (2006) found that the absence of the MMN for tone-duration decrement in patients with multiple sclerosis was closely related to cognitive impairment, assessed with the Paced Auditory Addition Test, observed in some of the patients. Similar results were also obtained with the frequency MMN, corroborating the previous results of Gil *et al.* (1993). In patients with no cognitive decline, the MMN response was similar to that in healthy control subjects.

Velo-cardio-facial syndrome

Individuals with the velo-cardio-facial (DiGeorge) syndrome (Goldberg *et al.*, 1993), who have a greatly increased schizophrenia risk (Baker *et al.*, 2005), also show an MMN deficit. It was found by Baker *et al.* (2005) that the MMNs for different speech-sound and non-speech-sound changes of adolescents and young adults with the velo-cardio-facial syndrome were considerably attenuated in amplitude. Moreover, these MMN effects were considerably stronger and the cognitive deficiencies more severe in the subjects with velo-cardio-facial syndrome carrying the COMT108/158Met allele (a greater risk of schizophrenia) than the COMT108/158Val allele (a smaller risk of schizophrenia).

Epilepsy

Studying children of 7–11 years of age with benign rolandic epilepsy, Boatman *et al.* (2008) found that in approximately half of them, the MMN to speech-sound change was absent and its peak latency was prolonged in the remainder of the patients. Those who had no MMN for speech sounds also had the most severe cognitive impairments on behavioural testing. Liasis *et al.* (2001) found no MMN to syllable change in children with benign rolandic epilepsy, who usually suffer from language

difficulties (Staden *et al.*, 1996). Borghetti *et al.* (2007), studying adult patients with epilepsy, obtained some frequency-MMN results suggesting that the MMN could be used as an index of the improvement of pre-attentive central processing in audition as a result of the implantation of a vagus-nerve stimulator.

Korostenskaja *et al.* (2010), using the five features MMN paradigm of Näätänen *et al.* (2004), found that the magnetoencephalographic MMN of their patients with a mean age of 13 years was attenuated in amplitude for each of these deviations (tone duration, frequency, intensity, perceived locus of origin, silent gap in the middle of the tone). Lin *et al.* (2007) found that the magnetoencephalographic MMN peak latency for tone-duration decrement in young adult patients was longer than that of the controls. Interestingly, the magnetoencephalographic MMN was accompanied and temporally overlapped by a phase-locking response of alpha and theta oscillations (revealed by using a wavelet-based analysis). In the five patients who subsequently became seizure-free after the successful surgical removal of right temporal epileptic focus, the phase-locking response was enhanced in amplitude, which did not occur in patients with a less successful surgical operation.

Dementia, Alzheimer's disease and Huntington's disease

Schroeder *et al.* (1995) found that the MMN to novel stimuli was delayed in peak latency in all elderly subjects compared with that of the young. Further, it was smaller in amplitude in the demented than non-demented elderly subjects. The MMN for frequency change was smaller only in the low-functioning but not in the high-functioning elderly, compared with that of the young. Consistent with this, Nakagawa *et al.* (2002) found that in middle-aged individuals with intellectual disabilities, the MMN was considerably attenuated in amplitude, related to that in controls, in response to a small tone-frequency change. Ikeda *et al.* (2004) found an MMN deficit for tone-frequency and vowel changes in young adults with intellectual disability.

In patients with, or possible, Alzheimer's disease, the MMN is smaller in amplitude than that in age-matched controls (Pekkonen *et al.*, 1994; Kazmerski *et al.*, 1997; Gaeta *et al.*, 1999). This MMN deficit is dramatically increased when the stimulus-onset-asynchrony is prolonged (e.g. from 1 to 3 s; Pekkonen *et al.*, 1994), suggesting a pathologically shortened sensory-memory duration in Alzheimer's disease. Tales and Butler (2006) found a qualitatively and quantitatively abnormal visual MMN in Alzheimer's disease; for corroborating results, see Tales *et al.* (2008). Important for the prognostic perspectives, the mild cognitive impairment group showed a visual MMN data pattern resembling that of the patients with Alzheimer's disease (Tales and Butler 2006; Tales *et al.*, 2008) and, important for the therapeutic perspectives, Engeland *et al.* (2002) found that nicotinic stimulation tended to normalize the amplitude and latency of the auditory MMN for tone-frequency change in patients with Alzheimer's disease.

Huntington's disease provides an interesting exception to the general rule that cognitive functions deteriorate globally in late

stages of various neurodegenerative disorders. Beste *et al.*, (2008) found that symptomatic patients with Huntington's disease performed better than presymptomatic gene-mutation carriers and controls in an auditory signal-detection task. These patients also had a larger MMN amplitude (above the right hemisphere) and shorter peak latency for tone-frequency change than those of controls and the presymptomatic subjects. The authors attributed this surprising result to an increased activity of the *N*-methyl-D-aspartate-receptor system, an assumed pathogenic mechanism in Huntington's disease, proposing that this increased activity might facilitate signal propagation at the striatal level. In other kinds of cognitive tasks, this data pattern was not replicated however; thus the authors concluded that improved functioning of specific cognitive processes can emerge together with deterioration of other cognitive functions in late stages of Huntington's disease.

Parkinson's disease

In patients with Parkinson's disease, the MMN for tone-frequency change was attenuated in amplitude (Pekkonen *et al.*, 1995). These patients also tend to show some cognitive impairment, at least at later stages of the disease (Parkinson's disease dementia; Rongve and Aarsland, 2006). Brønnick *et al.* (2010) found an MMN deficit for tone-frequency decrement in patients with Parkinson's disease who were also demented, whereas patients with no dementia showed normal-sized MMNs, as was previously shown by Karayanidis *et al.* (1995) for tone-duration decrement. Brønnick *et al.* (2010) proposed that the MMN attenuation in patients with Parkinson's disease is associated with the pathological processes leading to dementia in these patients and might be caused by subcortical serotonin depletion or a severe cholinergic deficit.

Down's syndrome

Down's syndrome is a congenital disorder caused by the presence of an extra 21st chromosome and it is almost always characterized by intellectual deficiency (Roizen and Patterson, 2003). Lalo *et al.* (2005) found that the MMN for a wide tone-frequency change was often absent in young adult patients (mean age 25 years) and, further, that when the MMN was present, it tended to be of a smaller amplitude and longer latency than that in the control group.

Neurodegenerative changes secondary to medical illness

In advanced stages of diabetes mellitus, some cognitive decline can often be observed (Helkala *et al.*, 1995). In a group of these patients, the MMN for tone-frequency change was attenuated in amplitude, and there was also a trend towards impaired performance in the Digit Span backward test (Vanhanen *et al.*, 1996). The authors estimated that the diabetic subjects of their study might have had a slight impairment of their verbal working memory.

In HIV infection, the later stages are usually accompanied by cognitive decline (Navia *et al.*, 1990). In these patients, the MMN peak latency for a wide tone-frequency change was considerably prolonged with the declining immunological capacity (Schroeder *et al.*, 1994). The authors concluded that the MMN peak latency may be a useful indicator of the progression of the disease, suitable for use in clinical practice and as a marker of therapeutic response to anti-viral or neuroprotective treatments.

Normal ageing

The MMN amplitude is systematically attenuated and its peak latency prolonged with ageing (Verleger *et al.*, 1991; Schroeder *et al.*, 1995; Pekkonen *et al.*, 1996; Jääskeläinen *et al.*, 1999; Gaeta *et al.*, 2001, 2002; Bertoli *et al.*, 2002; Ikeda *et al.*, 2004; Kisley *et al.*, 2005; Cooper *et al.*, 2006; Horvath *et al.*, 2007; Kiang *et al.*, 2007, 2009; Schiff *et al.*, 2008). A particularly convincing characterization of the MMN–age relationship was provided by Kiang *et al.* (2009), who carefully plotted MMN and P3a amplitudes for tone-duration increment across adulthood for 147 normal subjects and 253 patients with schizophrenia. Along with the MMN changes by age, the level of performance in different cognitive tasks was gradually decreased (Cansino, 2009). There is evidence linking these MMN changes to cognitive deterioration. For example, it was found by Kisley *et al.* (2005) that the MMN for an occasional stimulus-onset-asynchrony shortening was much smaller in amplitude in elderly (55–85 years) than young (18–23 years) subjects and, further, that in the elderly, the MMN was smaller in amplitude in those with weaker performance in a memory task and in the Tower of London task requiring a number of psychological processes attributed to the frontal cortex, including planning and working memory, than that in those with a better performance. In addition, Gaeta *et al.*'s (2001) elderly subjects (mean age 71.8 years) had an MMN for tone-frequency change with a smaller amplitude and longer latency than that in their young subjects (mean age 22.6 years). The elderly had poorer scores on neuropsychological tests of executive function than the young. In addition, the visual analogue of the auditory MMN was also attenuated with ageing (Tales *et al.*, 2002; Tales and Butler, 2006).

There is an additional effect of ageing in the form of the shortening of the sensory–memory durations as estimated from the MMN-data pattern obtained by varying the stimulus-onset-asynchrony across the stimulus blocks (Pekkonen *et al.*, 1996; Cooper *et al.*, 2006). Interestingly, in the early years of life, there is a corresponding change of the memory-trace duration but in the opposite direction, of course (Glass *et al.*, 2008a, b).

Altered states of consciousness

Sleep

With increasing drowsiness, the MMN tends to be attenuated; yet, an MMN with a low amplitude can usually be recorded in light

sleep (Stages 1 and 2) (Paavilainen *et al.*, 1987; Sallinen *et al.*, 1994). Furthermore, the MMN is absent, or very small, at sleep stages III and IV, whereas it tends to reappear in rapid eye movement sleep (Sallinen *et al.*, 1996; Atienza and Cantero, 2001; Atienza *et al.*, 2002).

Sleep and rapid-eye movement sleep deprivation

Sleep deprivation results in performance decrement in a number of cognitive tasks. Zerouali *et al.* (2010) found that the MMN for frequency and duration changes was attenuated in amplitude by rapid eye movement sleep deprivation, which also decreases the level of cognitive performance. In addition, Raz *et al.* (2001) observed that the MMN for tone-frequency change was somewhat attenuated in amplitude at the end of a 36-h continuous sleep deprivation. By this time, there is also clear evidence of cognitive decline (Binks *et al.*, 1999).

Coma

In patients in a comatose state, no MMN can usually be recorded unless a latent recovery process has started, leading to the return of consciousness and cognitive capacities in the near future. Therefore, the MMN can be used in coma-outcome prediction (Kane *et al.*, 1993, 1996; Fischer *et al.*, 1999, 2004, 2006a, b; Morlet *et al.*, 2000; Fischer and Luaute, 2005; Luaute *et al.*, 2005). Moreover, the MMN peak latency, measured at hospitalization, of survivors of coma caused by a severe head injury predicted, to some extent, their expressive language ability and visuo-spatial performance 1 year after the injury (Kane *et al.*, 2000). Kotchoubey *et al.* (2003) showed that in using the MMN for the objective assessment of the remaining cognitive capacity, it is better to use complex rather than simple sound stimuli that may result in severe underestimation of the capacity. For a meta-analysis, see Daltrozzo *et al.* (2007).

Persistent vegetative state

Coma outcome can also be a compromise between life and death; the persistent vegetative state that may last for several months. The process of the recovery of consciousness and cognitive skills is accompanied by a dramatic MMN emergence while the unconscious patient crosses the borderline to consciousness (Wijnen *et al.*, 2007). Furthermore, the MMN specifically reflects, and predicts, their cognitive status, as the MMN for tone-frequency change recorded at hospitalization predicted the level of consciousness and the extent of cognitive recovery even 2 years ahead (Wijnen *et al.*, 2007). Van der Stelt and Boxtel (2008) proposed that the MMN may also have some diagnostic utility in differentiating vegetative states from the minimally conscious state (Zarza-Lucianez *et al.*, 2007).

Drug effects supporting the mismatch negativity-cognition relationship

Above we have reviewed a large bulk of clinical evidence supporting the MMN-cognition relationship across a number of different diseases and abnormalities. We will now review psychopharmacological data pertinent to this issue. Javitt *et al.* (1996) proposed that in patients with schizophrenia, deficient *N*-methyl-D-aspartate-receptor function could explain MMN abnormalities, impaired auditory discrimination and cognitive dysfunction. This hypothesis received support from the authors' experiments in monkeys showing that the (intracortically recorded) MMN for tone-intensity decrement was abolished by MK-801 (a *N*-methyl-D-aspartate receptor antagonist) injection that left the afferent responses in layer 4 intact. Moreover, Tikhonravov *et al.* (2008) found that MK-801 attenuated the MMN amplitude for tone-frequency change in rats. Refer to Ehrlichman *et al.* (2008) for corroborating ketamine (an anaesthetic with *N*-methyl-D-aspartate-receptor antagonizing properties) results with the tone-frequency MMN recorded in mice. Consistent with this, in normal healthy human subjects, ketamine attenuated the MMN amplitude for tone-frequency and -duration changes (Umbricht *et al.*, 2000), prolonged the magnetoencephalographic MMN peak latency for frequency, duration and intensity changes and decreased the magnetoencephalographic MMN dipole moment, whereas it affected neither the N1m latency nor dipole moment (Kreitschmann-Andermahr *et al.*, 2001). Umbricht *et al.* (2002) found that normal healthy subjects with a smaller baseline MMN for tone-frequency changes (before any drug intake) were more affected (i.e. had a larger number of 'psychotic' responses on the Brief Psychiatric Rating Scale) by a small dose of ketamine than subjects with a larger MMN. An analogous pattern of results was obtained with duration changes. In a recent study by Lavoie *et al.* (2007), a 6-week administration of *N*-acetyl-cysteine, a glutathione precursor that can potentiate the activity of the *N*-methyl-D-aspartate receptors, corrected MMN deficiency for tone-frequency change in patients with schizophrenia, and there was also evidence for the improvement of the clinical condition (Berk *et al.*, 2008) [for further supportive evidence, see Coyle, 2006 and Schwieler *et al.* (2008)]. Importantly, this MMN recovery preceded clinical improvement and can thus serve as its predictor (Javitt, 2008, 2009). Horton *et al.* (2010) found that clozapine increased the MMN amplitude for tone-frequency changes, with increasing doses being associated with increasing frequency-MMN amplitudes (but with decreasing duration-MMN amplitudes).

In contrast, cognitive performance is adversely affected by alcohol, which also attenuated the MMN amplitude for tone-frequency change (Jääskeläinen *et al.*, 1996). Consistent with this, Pang and Fowler (1999) found that inhaling nitrous oxide (N₂O) attenuated the MMN amplitude for tone-frequency change, which even in sub-anaesthetic doses produces amnesia and also has other adverse effects on cognition (Fowler *et al.*, 1985). Nakagome *et al.* (1998) found MMN-amplitude reduction for tone-frequency change on the morning following nocturnal

triazolam administration, a short-acting benzodiazepine hypnotic also affecting cognitive function (Clark *et al.*, 1979). Serra *et al.* (1996) observed that the H1-receptor antagonist chlorpheniramine, known to impair cognitive performance (Nicholson *et al.*, 1991), attenuated the MMN amplitude for frequency change of a tone.

In contrast, nicotine has well-known cognition-enhancing effects. Such effects have been found in aged rodents, both in healthy smokers and non-smokers (Martin *et al.*, 2009), and in patients with schizophrenia (Inami *et al.*, 2007). Transdermal administration of nicotine shortened the MMN peak latency (Inami *et al.*, 2005) and oral administration of nicotine increased the MMN amplitude for interval duration (Martin *et al.*, 2009) and tone duration deviation (Baldeweg *et al.*, 2006) in normal healthy subjects. For consistent results with a consonant-vowel syllable change MMN, see Harkrider and Hendrick (2005). Also, the MMN for tone-frequency change was enhanced in amplitude and its peak latency shortened after the administration of the selective neuronal nicotinic receptor agonist AZD3480 in healthy volunteers (Dunbar *et al.*, 2007). Furthermore, Fisher *et al.* (2010) found that nicotine enhanced the visual MMN amplitude for change of the length of a vertically oriented bar and increased the amplitude of the auditory MMN for frequency change of a tone in normal healthy subjects.

In addition, Inami *et al.* (2007) reported that nicotine shortened the MMN peak latency for tone-frequency change in healthy control subjects, but not in non-smoking patients with schizophrenia. The authors attributed the weak MMN response to nicotine administration in non-smoking patients to low nicotinic receptor function implicated in the dysregulation of the glutamatergic system in these patients. In contrast, in patients with Alzheimer's disease, in whom nicotine has favourable effects on cognition, nicotine shortened the MMN peak latency and increased the MMN amplitude for tone-frequency change (Engeland *et al.*, 2002).

Mismatch negativity-cognition relationship in normal healthy populations

Even in the normal healthy population, the MMN seems to index cognition. Dividing their subjects into high-ability and low-ability groups on the basis of a comprehensive psychometric assessment, Bazana and Stelmack (2002) found that the MMN peak latency for frequency change in a backward-masking paradigm was considerably longer in the low- than high-ability group. Moreover, the MMN peak latency exhibited a substantial factor loading on the general (g) factor of intelligence in the battery of ability tests used. Subsequently, these results were corroborated and extended by Beauchamp and Stelmack (2006). In a similar vein, larger amplitude MMNs for syllable change were recorded in children with higher than lower level of general intellectual functioning by Liu *et al.* (2007).

Corroborating results were also obtained by Light *et al.* (2007). Their MMN data pattern for tone-duration increment in healthy

control subjects paralleled that previously obtained in patients with schizophrenia (Light and Braff, 2005a, b) in both the strength of the MMN-cognition association and the frontocentral scalp distribution. This equivalence of associations across groups and studies is, according to the authors, striking, because these healthy, non-psychiatric subjects performed within the normal range on all of the functional and cognitive measures, yet exhibiting enough range to reveal robust associations among disparate measures (i.e. MMN, cognitive and functional). These data indicate that sensory-level CNS information processing (as reflected by the MMN to auditory change) in clinically healthy individuals is strongly associated with cognitive and real-world psychosocial functioning of these individuals (Light *et al.*, 2007).

Concluding discussion

The present review has shown that MMN abnormality is closely associated with cognitive change and decline occurring in a number of different neurological and neuropsychiatric illnesses as well as in normal ageing. Consequently, deficient auditory discrimination, as indexed by MMN (magnetoencephalographic MMN) deficiency, provides a convenient metric of this cognitive decline. Furthermore, it might even have a role in the aetiology of these cognitive deficiencies; deficient auditory discrimination might form an obstacle in particular to the linguistic development of the individual, starting even from the earliest stages of speech development (Kraus *et al.*, 1996; Benasich *et al.*, 2006; van Leeuwen *et al.*, 2006; for a review see Kujala, 2007). Importantly, this temporofrontal cortex functional deficiency might also index a more general functional deficiency, such as the deficient neuro-modulatory status (e.g. *N*-methyl-*D*-aspartate-receptor function) of the brain that would not be confined to the neural mechanisms of auditory discrimination but rather involves the whole cortex (Breier *et al.*, 1997; Kohlmetz *et al.*, 2001), hence affecting cognitive performance more generally, in different kinds of cognitive tasks. A *N*-methyl-*D*-aspartate-receptor dysfunction can affect cognition in many different ways. It is, for instance, well-established that the adequate functioning of this receptor system plays a crucial role in the initiation of long-term memory and probably also in that of working memory (Javitt *et al.*, 1996; Newcomer *et al.*, 1998) and in plastic changes in the brain in general (Izquierdo, 1999; Santini *et al.*, 2001; Gu *et al.*, 2002; Siegel *et al.*, 2003; Stephan *et al.*, 2006; Heekeren *et al.*, 2008; Izquierdo, 1999). We have reviewed evidence for the central role of the *N*-methyl-*D*-aspartate-receptor dysfunction in the brain pathology of schizophrenia and, in particular, in the cognitive deficit in these patients (Olney and Farber, 1995; Coyle, 2006). We have also reviewed converging evidence showing that the administration of a glutathione precursor that can potentiate the *N*-methyl-*D*-aspartate receptor activity alleviated the MMN deficiency in patients with schizophrenia and subsequently also resulted in some clinical improvement in the state of patients (Lavoie *et al.*, 2007). Moreover, the cognitive decline occurring in several other neurocognitive abnormalities might also be explained, at least in part, with the dysfunctional *N*-methyl-*D*-aspartate-receptor system. Alzheimer's disease, stroke, traumatic

brain injury, and even normal ageing are accompanied by widespread dysfunctions in the *N*-methyl-*D*-aspartate-receptor system of the brain (Izquierdo 1991; Dalkara *et al.*, 1996; Biegon *et al.*, 2004; Magnusson *et al.*, 2010; McGeer and McGeer, 2010; see also Bickel *et al.*, 2008). For example, middle cerebral artery occlusion in rat resulted in widespread decreases in *N*-methyl-*D*-aspartate-receptor density in brain regions extending far beyond the infarct area, even including regions contralateral to the lesion important to cognitive function (Dhawan *et al.*, 2010). Dhawan *et al.* (2010) therefore concluded that a persistent and widespread loss of these receptors may contribute to cognitive and other neurological deficits in stroke patients, which cannot be localized to the side of infarction.

Furthermore, it is also possible that the favourable effects of music and speech stimulation on cognitive performance and the magnetoencephalographic MMN found by Särkämö *et al.* (2010) in stroke patients in the early post-stroke period were mediated by improved glutamatergic transmission, involving the *N*-methyl-*D*-aspartate receptors. The authors suggested that glutamate may be a crucial neural factor linking auditory stimulation to changes in the magnetoencephalographic MMN, memory and stroke recovery.

Importantly, the association of the MMN with cognition is also supported by the fact that even the MMN generator itself is capable of performing complex cognitive processes (Näätänen *et al.*, 2001, 2010). A number of recent MMN studies indicate that in audition, surprisingly complex processes occur automatically and mainly in the sensory-specific cortical regions. These processes include, e.g. stimulus anticipation and extrapolation (Tervaniemi *et al.*, 1994; Winkler *et al.*, 2009a; Todd *et al.*, 2010), sequential stimulus-rule extraction (Zachau *et al.*, 2005; Bendixen *et al.*, 2007, 2008, 2009; Grimm and Schröger, 2007; Paavilainen *et al.*, 2007; Schröger *et al.*, 2007; Bendixen and Schröger, 2008; Sculthorpe *et al.*, 2009; Winkler *et al.*, 2009), and pattern and pitch-interval encoding (Stefanics *et al.*, 2009; Winkler, Haden *et al.*, 2009). Furthermore, these complex perceptual-cognitive processes, first found in waking adults (Saarinen *et al.*, 1992), occur similarly even in sleeping newborns (Carral *et al.*, 2005; Winkler *et al.*, 2009b), anaesthetized rats (Astikainen *et al.*, 2006; Ruusuvirta *et al.*, 2007), and deeply sedated adult humans (Heinke and Koelsch, 2005), suggesting that they form the common perceptual-cognitive core of cognitive processes shared by different species, ontological stages, and states of consciousness (Näätänen *et al.*, 2010). Consequently, these studies suggest that it might be possible to use the MMN in the objective assessment of cognitive abilities by recording it in paradigms targeting complex sensory-cognitive processes performed by sensory-specific-frontal cortical networks of the type reviewed above. This might complement the objective assessment of cognitive abilities already demonstrated by previously reviewed studies (Bazana and Stelmack, 2002; Beauchamp and Stelmack, 2006; Lin *et al.*, 2007) recording the MMN for simple auditory changes.

Some other uses of the MMN and magnetoencephalographic MMN in clinical settings are the objective determination of (i) auditory discrimination accuracy for any auditory attribute (including speech sounds); (ii) sensory-memory duration (a possible index of general brain plasticity (Näätänen and Kreegipuu, 2010). This sensory-memory duration is gradually shortened in ageing

Table 1 MMN deficit indexes cognitive decline in neuropsychiatric and neurological disorders

| |
|---|
| Neuropsychiatric disorders |
| Schizophrenia |
| Chronic alcoholism |
| Neurological and neurodegenerative diseases |
| Stroke |
| Aphasia |
| Velo-cardio-facial (DiGeorge) syndrome |
| Multiple sclerosis |
| Epilepsy |
| Dementia |
| Alzheimer's disease |
| Intellectual disability |
| Mild cognitive impairment |
| Down's syndrome |
| Parkinson's disease |
| Coma (MMN predicting cognitive recovery) |
| Persistent vegetative state (MMN predicting cognitive recovery) |
| Huntington's disease (MMN and cognition are enhanced in parallel in the late, symptomatic stage of illness) |
| Other |
| Ageing |
| Sleep |
| Sleep deprivation |
| Rapid eye movement sleep deprivation |
| Acute alcohol intoxication |
| Other cognition-reducing drugs (e.g. benzodiazepines, nitrous oxide, ketamine, chlorpheniramine) |
| Sedation and anaesthesia |
| Diabetes mellitus (advanced stage) |
| HIV |

(Pekkonen *et al.*, 1996; Cooper *et al.*, 2006), chronic alcoholism (Polo *et al.*, 1999; Grau *et al.*, 2001), and in particular in Alzheimer's disease (Pekkonen *et al.*, 1994); (iii) auditory backward masking [abnormally strong in chronic alcoholism (Ahveninen *et al.*, 1999) and dyslexia (Kujala *et al.*, 2003)]; (iv) in addition, the MMN can be used in the monitoring of the patient's state [e.g. in coma (Fischer *et al.*, 1999), persistent vegetative state (Wijnen *et al.*, 2007), schizophrenia (Umbricht and Krljes, 2005), post-stroke recovery (Ilvonen *et al.*, 2003; Särkämö *et al.*, 2010)]; and (v) as a prognostic tool. For example, the MMN recorded in comatose patients strongly predicts the recovery of consciousness in the near future (Fischer *et al.*, 2004, 2006a, b; Fischer and Luaute, 2005). The MMN recorded in patients in persistent vegetative state predicted the extent of cognitive recovery during the period of the next 2 years (Wijnen *et al.*, 2007). In schizophrenia, the MMN predicts changes in the patient's state (Umbricht *et al.*, 2006; Kawakubo *et al.*, 2007), and even drug-treatment efficacy (Schall *et al.*, 1998; Lavoie *et al.*, 2007; Javitt *et al.*, 2008; Horton *et al.*, 2011). Most remarkably, the duration MMN predicts psychosis onset within 2 years and even the remaining lag time to conversion (Bodatsch *et al.*, 2011); and (vi) the MMN can also index genetic disposition to certain disorders such as schizophrenia (Jessen *et al.*, 2011; Michie *et al.*, 2002; Baker *et al.*, 2005; Hall *et al.*, 2007, 2009) and dyslexia (van der Leeuwen *et al.*, 2006).

In summary, the present review has shown that (i) cognitive decline is a core element shared by a large number of different

neurological and neuropsychiatric illnesses as well as normal ageing; (ii) this cognitive decline is indexed by auditory-frontal-cortex dysfunction manifested in the form of compromised auditory discrimination or abnormally short sensory-memory traces; (iii) this auditory dysfunction can be objectively measured by using the MMN and its magnetic equivalent magnetoencephalographic MMN; (iv) the abnormality of these responses does not, however, express only a deficient local function but rather serves as a convenient index of a more widespread disorder in the brain such as deficient *N*-methyl-D-aspartate-receptor function; (v) these responses can therefore also index cognition and its decrement in ageing and in different neurological and neuropsychiatric abnormalities (Table 1); (vi) this conclusion is further supported by studies showing that pharmacological manipulations enhancing cognition also enhance the MMN (magnetoencephalographic MMN) response and vice versa, and further, that (vii) the MMN-cognition relationship holds even in normal populations.

In more general terms, the present review, aimed at contributing to the ongoing discussion on the similarities and differences between the different neurological and neuropsychiatric illnesses and abnormalities (e.g. Reite *et al.*, 2009; Hugdahl and Calhoun, 2010), indicates that cognitive decline in these disorders shows similarities in that it is associated with deficient low-level sensory processing. Irrespective of the very different aetiologies and symptomatology, this deficiency is similarly reflected by a central auditory-system dysfunction, expressed by deficient neural

discrimination or shortened sensory-memory duration in audition indexed by MMN (magnetoencephalographic MMN) deficit. Future studies should therefore determine in detail the profiles of cognitive deterioration across the different types of cognitive performances separately for the different neuropsychiatric abnormalities. This would further clarify similarities of/differences between the different abnormalities and thus further confine the 'common nucleus' of cognitive decline shared by a large number of neuropsychiatric illnesses and abnormalities, as well as normal ageing.

Future studies should also determine whether the visual MMN is similarly useful as the auditory MMN in clinical research and settings (even though its reliable measurement in patients is much more demanding than that of the auditory MMN). It is possible that sensory-memory or context-related sensory processing (and its possible deficiencies) are quite similar across the different sensory modalities.

Reite *et al.* (2009) showed, as already mentioned, the presence of auditory-cortex structural and functional abnormalities in bipolar disorder and suggested that they might be due to altered neuronal migration patterns, genetic, epigenetic or both. According to the authors, recent findings in molecular cytogenetics concerning the role of altered DISC-1 proteins as they may impact neuronal migration might be considered in this regard. These proteins are involved in neuronal migration, synaptogenesis and glutamatergic, and GABAergic transmission (Bellon, 2007), and according to Reite *et al.* (2009), they appear to co-segregate with psychotic disorders as well as declined cognition, which supports a common pathophysiology contributing to a possible schizophrenia–schizoaffective disorder–bipolar continuum. Reite *et al.* (2009), however, concluded that magnetoencephalographic studies have not yet provided a neurophysiological measure of this common pathology. Fortunately, now it appears that this missing metric is provided by the MMN and its magnetoencephalographic equivalent, magnetoencephalographic MMN, an objective index of cognitive decline shared by a large number of different neurological and neuropsychiatric diseases and abnormalities, as well as by normal ageing.

Acknowledgements

We are grateful to Prof. Chris Frith for his constructive comments on a previous version of the present manuscript and to Prof. Lars-Göran Nilsson for his important advice at an early stage of this work. Finally, we wish to acknowledge Ms Piiu Lehmus' skillful and patient text-editing work.

Funding

R.N. and K.K. were supported by Grant no.8332 from the Estonian Science Foundation. T.K. was supported by Grant no. 128840, S.C. by National Centres of Excellence Program 2006–2011 and Grant no 214412, and R.N. by Grant no. 122745 from The Academy of Finland. T.B. was supported by Great Ormond Street Hospital Children's Charity. C.E. was supported by Grants CSD2007-00012, EUI2009-04806, PSI2009-08063 of the Spanish

Ministry of Science and Innovation, and SGR2009-11 from the Generalitat de Catalunya.

References

- Aaltonen O, Tuomainen J, Laine M, Niemi P. Cortical differences in tonal versus vowel processing as revealed by an ERP component called mismatch negativity (MMN). *Brain Lang* 1993; 44: 139–52.
- Ahveninen J, Jääskeläinen IP, Pekkonen E, Hallberg A, Hietanen M, Mäkelä R, *et al.* Suppression of mismatch negativity by backward masking predicts impaired working-memory performance in alcoholics. *Alcoholism: Clin Exp Res* 1999; 23: 1507–14.
- Alain C, Woods DL, Knight RT. A distributed cortical network for auditory sensory memory in humans. *Brain Res* 1998; 812: 23–37.
- Alho K, Woods DL, Algazi A, Näätänen R. Intermodal selective attention II: Effects of attentional load on processing auditory and visual stimuli in central space. *Electroencephal Clin Neurophysiol* 1992; 82: 356–68.
- Andersson S, Barder HE, Hellvin T, Løvdahl H, Malt UF. Neuropsychological and electrophysiological indices of neurocognitive dysfunction in bipolar II disorder. *Bipolar Dis* 2008; 10: 888–99.
- Astikainen P, Ruusuvirta T, Wikgren J, Penttonen M. Memory-based detection of rare sound feature combinations in anesthetized rats. *NeuroReport* 2006; 17: 1561–4.
- Atienza M, Cantero JL. Complex sound processing during human REM sleep by recovering information from long-term memory as revealed by the mismatch negativity (MMN). *Brain Res* 2001; 901: 151–60.
- Atienza M, Cantero JL, Dominiguez-Marin E. Mismatch negativity (MMN): an objective measure of sensory memory and long-lasting memories during sleep. *Int J Psychophysiol* 2002; 49: 215–25.
- Auther LL, Wertz RT, Miller TA, Kirshner HS. Relationship among the mismatch negativity (MMN) response, auditory comprehension, and site of lesion in aphasic adults. *Aphasiol* 2000; 14: 461–70.
- Baker K, Baldeweg T, Sivagnanasundaram S, Scambler P, Skuse D. COMT Val108/158 Met modifies mismatch negativity and cognitive function in 22q11 deletion syndrome. *Biol Psychiat* 2005; 58: 23–31.
- Baldeweg T, Klugman A, Gruzeliel JH, Hirsch SR. Impairment in frontal but not temporal components of mismatch negativity in schizophrenia. *Int J Psychophysiol* 2002; 43: 111–22.
- Baldeweg T, Klugman A, Gruzeliel J, Hirsch S. Mismatch negativity potentials and cognitive impairment in schizophrenia. *Schizophr Res* 2004; 69: 203–17.
- Baldeweg T, Wong D, Stephan KE. Nicotinic modulation of human auditory sensory memory: evidence from mismatch negativity potentials. *Int J Psychophysiol* 2006; 59: 49–58.
- Bazana PG, Stelmack RM. Intelligence and information processing during an auditory discrimination task with backward masking: an event-related potential analysis. *J Pers Soc Psychol* 2002; 83: 998–1008.
- Beauchamp CM, Stelmack RM. The chronometry of mental ability: an event-related potential analysis of an auditory oddball discrimination task. *Intelligence* 2006; 34: 571–86.
- Bellon A. New genes associated with schizophrenia in neurite formation: a review of cell culture experiments. *Mol Psychiatr* 2007; 12: 620–9.
- Benasich AA, Choudbury N, Friedman JT, Realpe-Bonilla T, Chojnowska C, Gou Z. The infant as a prelinguistic model for language learning impairments: predicting from event-related potentials to behaviour. *Neuropsychol* 2006; 44: 396–411.
- Bendixen A, Prinz W, Horvath J, Trujillo-Barreto NJ, Schröger E. Rapid extraction of auditory feature contingencies. *Neuroimage* 2008; 41: 1111–9.
- Bendixen A, Roeber U, Schröger E. Regularity extraction and application in dynamic auditory stimulus sequences. *J Cogn Neurosci* 2007; 19: 1664–77.
- Bendixen A, Schröger E. Memory trace formation for abstract auditory features and its consequences in different attentional contexts. *Biol Psychol* 2008; 78: 231–41.

- Bendixen A, Schröger E, Winkler I. I heard that coming: event-related potential evidence for stimulus-driven prediction in the auditory system. *J Neurosci* 2009; 29: 8447–51.
- Berk M, Copolov D, Dean O, Lu K, Jeavons S, Schapkaitz I, Anderson-Hunt M, Bush AI. N-acetyl cysteine as a glutathione precursor for schizophrenia: A double-blind, randomized, placebo-controlled trial. *Biol Psychiatr* 2008; 64: 361–8.
- Bertoli S, Smurzynski J, Probst R. Temporal resolution in young and elderly subjects as measured by mismatch negativity and a psychoacoustic gap detection task. *Clin Neurophysiol* 2002; 113: 396–406.
- Bertoli S, Smurzynski J, Probst R. Effects of age, age-related hearing loss, and contralateral cafeteria noise on the discrimination of small frequency changes: psychoacoustic and electrophysiological measures. *J Assoc Res Otolaryngol* 2005; 6: 207–22.
- Beste C, Saft C, Gunturkun O, Falkenstein M. Increased cognitive functioning in symptomatic Huntington's Disease as revealed by behavioral and event-related potential indices of auditory sensory memory and attention. *J Neurosci* 2008; 28: 11695–702.
- Bickel S, Lipp H-P, Umbricht D. Early auditory processing deficits in mouse mutants with reduced NMDA receptor function. *Neuropsychopharmacol* 2008; 33: 1680–89.
- Biegon A, Fry PA, Paden CM, Alexandrowitch A, Tsenter J, Shohami E. Dynamic changes in N-methyl-D-aspartate receptors after closed head injury in mice: implications for treatment of neurological and cognitive deficits. *PNAS* 2004; 101: 5117–22.
- Binks PG, Waters WF, Hurry M. Short-term total sleep deprivation does not selectively impair higher cortical functioning. *Sleep* 1999; 22: 328–34.
- Boatman DF, Trescher WH, Smith C, Ewen J, Los J, Wied HM, et al. Cortical auditory dysfunction in benign rolandic epilepsy. *Epilepsia* 2008; 49: 1018–26.
- Bodatsch M, Ruhrmann S, Wagner M, Müller R, Schultze-Lutter F, Frommann I, et al. Prediction of psychosis by mismatch negativity. *Biol Psychiatry* 2011; 69: 959–66.
- Borghetti D, Pizzanelli C, Maritato P, Fabbrini M, Jensen S, Iudice A, et al. Mismatch negativity analysis in drug-resistant epileptic patients implanted with vagus nerve stimulator. *Brain Res Bull* 2007; 73: 81–5.
- Breier A, Malhotra AK, Pinals DA, Weisenfeld NI, Pickar D. Association of ketamine-induced psychosis with focal activation of the prefrontal cortex in healthy volunteers. *Am J Psychiatr* 1997; 154: 805–11.
- Brockhaus-Dumke A, Tendolkar I, Pukrop R, Schultze-Lutter F, Klosterkötter J, Ruhrmann S. Impaired mismatch negativity generation in prodromal subjects and patients with schizophrenia. *Schizophr Res* 2005; 73: 297–310.
- Brønneck KS, Nordby H, Larsen JP, Aarsland D. Disturbance of automatic auditory change detection in dementia associated with Parkinson's disease: a mismatch negativity study. *Neurobiol Aging* 2010; 31: 104–13.
- Bruder GE, Schnurr DB, Fergeson P, Murherjee S, Leite P, Sackeim HA. Dichotic-listening measures of brain laterality in mania. *J Abnorm Psychol* 1994; 103: 758–66.
- Bruder GE, Sutton S, Babkoff H, Gurland BJ, Yozawitz A, Fleiss JL. Auditory signal detectability and facilitation of simple reaction time in psychiatric patients and non-patients. *Psychol Med* 1975; 5: 260–72.
- Bruder GE, Sutton S, Berger-Gross P, Quitkin F, Davies S. Lateralized auditory processing in depression: dichotic click detection. *Psychiat Res* 1981; 4: 253–66.
- Campanella S, Petit G, Maurage P, Kornreich C, Verbanck P, Noël X. Chronic alcoholism: insights from neurophysiology. *Neurophysiol Clin* 2009; 39: 191–207.
- Cansino S. Episodic memory decay along the adult lifespan: a review of behavioural and neuropsychological evidence. *Int J Psychophysiol* 2009; 71: 64–9.
- Carral V, Huotilainen M, Ruusuvirta T, Fellman V, Näätänen R, Escera C. A kind of auditory 'primitive intelligence' already present at birth. *Eur J Neurosci* 2005; 21: 3201–04.
- Catts SV, Shelley A-M, Ward PB, Liebert B, McConaghy N, Andrews S, Michie PT. Brain potential evidence for an auditory sensory memory deficit in schizophrenia. *Am J Psychiatr* 1995; 152: 213–19.
- Celsis P, Boulanouar K, Doyon B, Ranjeva JP, Berry I, Nespoulous JL, et al. Differential fMRI responses in the left posterior superior temporal gyrus and left supramarginal gyrus to habituation and change detection in syllables and tones. *Neuro Image* 1999; 9: 135–44.
- Clark ED, Glanzer M, Turndorf H. Pattern of memory loss resulting from intravenously administered diazepam. *Arc Neurol* 1979; 36: 296–300.
- Cong F, Kalyakin I, Huttunen-Scott T, Li H, Lyytinen H, Ristaniemi T. Single-trial based independent component analysis on mismatch negativity of children. *Intl J Neural Syst* 2010; 20: 279–92.
- Cong F, Sipola T, Huttunen-Scott T, Xu X, Ristaniemi T, Lyytinen H. Hilbert-Huang versus Morlet wavelet transformation on mismatch negativity of children in uninterrupted sound paradigm. *Nonlinear Biomed Phys* 2009; 3: 1.
- Cooper RJ, Todd J, McGill K, Michie PT. Auditory sensory memory and the aging brain: A mismatch negativity study. *Neurobiol Aging* 2006; 27: 752–62.
- Coyle JT. Glutamate and schizophrenia: beyond the dopamine hypothesis. *Cell Mol Neurobiol* 2006; 26: 365–84.
- Csépe V, Karmos G, Molnar M. Evoked potential correlates of stimulus deviance during wakefulness and sleep in cat—animal model of mismatch negativity. *Electroencephalogr Clin Neurophysiol* 1987; 66: 571–78.
- Csépe V, Osman-Sági J, Molnár M, Gósy M. Impaired speech perception in aphasic patients: an event-related potential and neuropsychological assessment. *Neuropsychol* 2001; 39: 1194–208.
- Czigler I. Visual mismatch negativity: violation of nonattended environmental regularities. *J Psychophysiol* 2007; 21: 224–30.
- Dalkara T, Ayata C, Demirci M, Erdemli G, Onur R. Effects of cerebral ischemia on N-methyl-D-aspartate and dihydropyridine-sensitive calcium currents: an electrophysiological study in the rat hippocampus in situ. *Stroke* 1996; 27: 127–33.
- Daltrozzo J, Wioland N, Mutschler V, Kotchoubey B. Predicting coma and other low responsive patients outcome using event-related brain potentials: a meta-analysis. *Clin Neurophysiol* 2007; 118: 606–14.
- Davalos DB, Kisley MA, Polk SD, Ross RG. Mismatch negativity in detection of interval duration deviation in schizophrenia. *NeuroReport* 2003; 14: 1283–286.
- Dhawan J, Benveniste H, Nawrocky M, Smith SD, Biegon A. Transient focal ischemia results in persistent and widespread neuroinflammation and loss of glutamate NMDA receptors. *Neuro Image* 2010; 51: 599–605.
- Dittmann-Balcar A, Juptner M, Jentzen W, Schall U. Dorsolateral prefrontal cortex activation during automatic auditory duration mismatch processing in humans: a positron emission tomography study. *Neurosci Lett* 2001; 308: 119–22.
- Dunbar G, Boeijinga PH, Demazières A, Cisterni C, Kuchibhatla R, Wesnes K, Luthinger R. Effects of TC.1734 (AZD3480), a selective neuronal nicotinic receptor antagonist, on cognitive performance and the EEG of young healthy male volunteers. *Psychopharmacol* 2007; 191: 919–29.
- Ehrlichman RS, Maxwell CR, Majumdar S, Siegel SJ. Deviance-elicited changes in event-related potentials are attenuated by ketamine in mice. *J Cogn Neurosci* 2008; 20: 1403–14.
- Engelard C, Mahoney C, Mohr E, Ilivitsky V, Knott VJ. Acute nicotine effects on auditory sensory memory in tacrine-treated and nontreated patients with Alzheimer's disease. An event-related potential study. *Pharmacol Biochem Beh* 2002; 72: 457–64.
- Fischer C, Luauté J. Evoked potentials for the prediction of vegetative state in the acute stage of coma. *Neuropsychol Rehab* 2005; 15: 372–80.
- Fischer C, Luauté J, Adeleine P, Morlet D. Predictive value of sensory and cognitive evoked potentials for awakening from coma. *Neurology* 2004; 63: 669–73.
- Fischer C, Luauté J, Némóz C, Morlet D, Kirkorian G, Mauguière F. Improved prediction of awakening or nonawakening from severe

- anoxic coma using tree-based classification analysis. *Crit Care Med* 2006a; 34: 1–5.
- Fischer C, Luauté J, Némóz C, Morlet D, Kirkorian G, Mauguière F. Editorial response: evoked potentials can be used as prognosis factor for awakening. *Critical Care Med* 2006b; 34: 2025.
- Fischer C, Morlet D, Bouchet P, Luauté J, Jourdan C, Salord F. Mismatch negativity and late auditory evoked potentials in comatose patients. *Clin Neurophysiol* 1999; 110: 1601–10.
- Fisher DJ, Labelle A, Knott VJ. Auditory hallucinations and the mismatch negativity: Processing speech and non-speech sounds in schizophrenia. *Int J Psychophysiol* 2008; 70: 3–15.
- Fisher DJ, Lynne Scott T, Shah DK, Prise S, Thompson M, Knott VJ. Light up and see: enhancement of the visual mismatch negativity (vMMN) by nicotine. *Brain Res* 2010; 1313: 162–71.
- Foong J, Rozewicz L, Davie CA, Thompson AJ, Miller DH, Ron MA. Correlates of executive function in multiple sclerosis: the use of magnetic resonance spectroscopy as an index of focal pathology. *J Neuropsychiat Clin Neurosci* 1999; 11: 45–50.
- Fowler B, Ackles KN, Porlier G. Effects of inert gas narcosis on behaviour – a critical review. *Undersea Biomed Res* 1985; 12: 369–402.
- Gaeta H, Friedman D, Ritter W, Cheng J. Changes in sensitivity to stimulus deviance in Alzheimer's disease: an ERP perspective. *NeuroReport* 1999; 10: 281–87.
- Gaeta H, Friedman D, Ritter W, Cheng J. An event-related potential evaluation of involuntary attentional shifts in young and older adults. *Psychol Aging* 2001; 16: 55–68.
- Gaeta H, Friedman D, Ritter W, Hunt G. Age-related changes in neural trace generation of rule-based auditory features. *Neurobiol Aging* 2002; 23: 443–55.
- George MA, Anton RF, Bloomer C, Teneback C, Drobos DJ, Lorberbaum JP, et al. Activation of prefrontal cortex and anterior thalamus in alcoholic subjects on exposure to alcohol-specific cues. *Arch Gen Psychiat* 2001; 58: 345–52.
- Giard MH, Perrin F, Pernier J, Bouchet P. Brain generators implicated in processing of auditory stimulus deviance: a topographic event-related potential study. *Psychophysiol* 1990; 27: 627–40.
- Gil R, Neau JP, Jonveaux T, Agbo C, Rosolacci T, Burbaud P, Ingrand P. Event-related auditory evoked potentials and multiple sclerosis. *Electroencephalogr Clin Neurophysiol* 1993; 88: 182–87.
- Glass E, Sachse S, von Suchodoletz W. Auditory sensory memory in 2-year-old children: an event-related potential study. *NeuroReport* 2008a; 19: 569–73.
- Glass E, Sachse S, von Suchodoletz W. Development of auditory sensory memory from 2 to 6 years: an MMN study. *J Neural Transm* 2008b; 115: 1221–9.
- Goldberg R, Motzkin B, Marion R, Scambler PJ, Shprintzen R J. Velo-cardio-facial syndrome: a review of 120 patients. *Am J Med Genet* 1993; 45: 313–9.
- Grau C, Polo MD, Yago E, Gual A, Escera C. Auditory sensory memory as indicated by mismatch negativity in chronic alcoholism. *Clin Neurophysiol* 2001; 112: 728–31.
- Grimm S, Schröger E. The processing of frequency deviations within sounds: evidence for the predictive nature of the mismatch negativity (MMN) system. *Restor Neurol Neurosci* 2007; 25: 241–49.
- Gu Q. Neuromodulatory transmitter systems in the cortex and their role in cortical plasticity. *Neurosci* 2002; 111: 815–35.
- Hall M-H, Rijdsdijk F, Kalidindi S, Schulze K, Kravariti E, Kane F, et al. Genetic overlap between bipolar illness and event-related potentials. *Psychol Med* 2007; 37: 667–78.
- Hall M-H, Schulze K, Rijdsdijk F, Kalidindi S, McDonald C, Bramon E, et al. Are auditory P300 and duration MMN heritable and putative endophenotypes of psychotic bipolar disorder? A Maudsley bipolar twin and family study. *Psychol Med* 2009; 39: 1277–87.
- Hämäläinen M, Hari R, Ilmoniemi RJ, Knuutila J, Lounasmaa OV. Magnetoencephalography—theory, instrumentation, and applications to noninvasive studies of the working human brain. *Rev Mod Phys* 1993; 65: 413–97.
- Hari R, Hämäläinen M, Ilmoniemi R, Kaukoranta E, Reinikainen K, Salminen J, et al. Responses of the primary auditory cortex to pitch changes in a sequence of tone pips: neuromagnetic recordings in man. *Neurosci Lett* 1984; 50: 127–32.
- Harkrider AW, Hedrick MS. Acute effect of nicotine on auditory gating in smokers and non-smokers. *Hear Res* 2005; 202: 114–28.
- Heekeren K, Daumann J, Neukirch A, Stock C, Kawohl W, Norra C, et al. Mismatch negativity generation in the human 5HT_{2A} agonist and NMDA antagonist model of psychosis. *Psychopharmacol* 2008; 199: 77–88.
- Heinke W, Koelsch S. The effects of anesthetics on brain activity and cognitive function. *Curr Opin Anaesthesiol* 2005; 18: 625–31.
- Helkala E-L, Niskanen L, Viinamäki H, Partanen J, Uusitupa M. Short-term and long-term memory in elderly patients with NIDDM. *Diabetes Care* 1995; 18: 681–85.
- Hermens DF, Ward PB, Redoblado Hodge MA, Kaur M, Naismith SL, Hickie IB. Impaired MMN/P3a complex in first-episode psychosis: cognitive and psychosocial associations. *Progr Neuro-Psychopharm Biol Psychiat* 2010; 34: 822–29.
- Heslenfeld DJ. Visual mismatch negativity. In: Polich J, editor. *Detection of change: event-related potential and fMRI findings*. Boston: Kluwer Academic Publishers; 2003. p. 41–59.
- Hirayasu Y, Potts GF, O'Donnell BF, Kwon JS, Arakaki H, Akdag SJ, Levitt JJ, Shenton ME, McCarley RW. Auditory mismatch negativity in schizophrenia: topographic evaluation with a high-density recording montage. *Am J Psychiat* 1998; 155: 1281–4.
- Hirayasu Y, McCarley RW, Salisbury DF, Tanaka S, Kwon JS, Frumin M, et al. Planum temporale and Heschl gyrus volume reduction in schizophrenia: a magnetic resonance imaging study of first-episode patients. *Arch Gen Psychiat* 2000; 57: 692–9.
- Horton J, Millar A, Labelle A, Knott VJ. MMN responsivity to manipulations of frequency and duration deviants in chronic, clozapine-treated schizophrenia patients. *Schizophrenia Res* 2011; 126: 202–11.
- Horváth J, Czizler I, Winkler I, Teder-Sälejärvi WA. The temporal window of integration in elderly and young adults. *Neurobiol Aging* 2007; 28: 964–75.
- Hugdahl K, Calhoun VD. An update on neurocognitive impairment in schizophrenia and depression. *Front Hum Neurosci* 4:4: 1–3.
- Ikeda K, Hayashi A, Hashimoto S, Kanno A. Distinctive MMN relative to sound types in adults with intellectual disability. *NeuroReport* 2004; 15: 1053–6.
- Iivonen T-M, Kujala T, Kiesiläinen A, Salonen O, Kozou H, Pekkonen E, Roine RO, Kaste M, Näätänen R. Auditory discrimination after left hemisphere stroke: an MMN follow-up study. *Stroke* 2003; 34: 1746–53.
- Inami R, Kirino E, Inoue R, Arai H. Transdermal nicotine administration enhances automatic auditory processing reflected by mismatch negativity. *Pharmacol, Biochem Be* 2005; 80: 453–61.
- Inami R, Kirino I, Suzuki T, Arai H. Nicotine effects on mismatch negativity in nonsmoking schizophrenic patients. *Neuropsychobiology* 2007; 56: 64–72.
- Izquierdo L. The role of NMDA receptors in memory. *Trends Pharmacol Sci* 1991; 12: 128–9.
- Jääskeläinen IP, Näätänen R, Sillanaukee P. Effect of acute ethanol on auditory and visual event-related potentials: A review and reinterpretation. *Biol Psychiat* 1996; 40: 284–91.
- Jääskeläinen IP, Varonen R, Näätänen R, Pekkonen E. Decay of cortical pre-attentive sound discrimination in middle-age. *NeuroReport* 1999; 10: 123–6.
- Javitt DC. Neurophysiological approaches to analyzing brain dysfunction in schizophrenia. *Biol Treatm Schizophrenia* 1993; 23: 144–50.
- Javitt DC. Glycine transport inhibitors for treatment of schizophrenia: Symptom and disease modification. *Curr Opin Drug Discov Dev* 2009; 12: 468–78.
- Javitt DC, Grochowski S, Shelley AM, Ritter W. Impaired mismatch negativity (MMN) generation in schizophrenia as a function of stimulus deviance, probability, and interstimulus/interdeviant interval. *Electroen Clin Neurophysiol* 1998; 108: 143–53.

- Javitt DC, Schroeder CE, Steinschneider M, Arezzo JC, Vaughan HG Jr. Demonstration of mismatch negativity in the monkey. *Electroen Clin Neurophysiol* 1992; 83: 87–90.
- Javitt DC, Spencer KM, Thaker GK, Winterer G, Hajós M. Neurophysiological biomarkers for drug development in schizophrenia. *Nat Rev* 2008; 68: 68–83.
- Javitt DC, Steinschneider M, Schroeder CE, Arezzo JC. Role of cortical *N*-methyl-D-aspartate receptors in auditory sensory memory and mismatch negativity generation: implications for schizophrenia. *Proc Natl Acad Sci USA* 1996; 93: 11962–7.
- Jessen F, Fries T, Kucharski C, Nishimura T, Hoening K, Maier W, Falkai P, Heun R. Amplitude reduction of the mismatch negativity in first-degree relatives of patients with schizophrenia. *Neurosci Lett* 2001; 309: 185–8.
- Jung J, Morlet D, Mercier B, Confavreux C, Fischer C. Mismatch negativity (MMN) in multiple sclerosis: an event-related potentials study in 46 patients. *Clin Neurophysiol* 2006; 117: 85–93.
- Kaaden S, Helmerstaedter C. Age at onset of epilepsy as a determinant of intellectual impairment in temporal lobe epilepsy. *Epilepsy Behav* 2009; 15: 213–7.
- Kalyakin I, González N, Ivannikov A, Lyytinen H. Extraction of the mismatch negativity elicited by sound duration decrements: A comparison of three procedures. *Data Knowl Eng* 2009; 68: 1411–26.
- Kalyakin I, González N, Joutsensalo J, Huttunen T, Kaartinen J, Lyytinen H. Optimal digital filtering versus difference waves on the mismatch negativity in an uninterrupted sound paradigm. *Dev Neuropsychol* 2007; 31: 429–52.
- Kalyakin I, González N, Kärkkäinen T, Lyytinen H. Independent component analysis on the mismatch negativity in an uninterrupted sound paradigm. *J Neurosci Methods* 2008b; 174: 301–12.
- Kalyakin I, González N, Lyytinen H. Extraction of the mismatch negativity on two paradigms using independent component analysis. *Proceedings of the CBMS 2008*. In: Puuronen S, Pechenizkiy M, Tsybmal A, Lee DJ, editors. 21st IEEE International Symposium on Computer-Based Medical Systems, CBMS 2008a. Los Alamitos, CA: IEEE Computer Society Conference Publishing Services; 2008a. p. 59–64.
- Kane NM, Butler SR, Simpson T. Coma outcome prediction using event-related potentials: P3 and mismatch negativity. *Audiol Neuro-Otol* 2000; 5: 186–91.
- Kane NM, Curry SH, Butler SR, Cummins BH. Electrophysiological indicator of awakening from coma. *Lancet* 1993; 341: 688.
- Kane NM, Curry SH, Rowlands CA, Manara AR, Lewis T, Moss T, Cummins BH, Butler SR. Event-related potentials — neurophysiological tools for predicting emergence and early outcome from traumatic coma. *Intens Care Med* 1996; 22: 39–46.
- Karayanidis F, Andrews S, Ward PB, Michie RT. ERP indices of auditory selective attention in aging and Parkinson's disease. *Psychophysiol* 1995; 32: 335–50.
- Kathmann N, Wagner M, Rendtorff N, Engel RR. Delayed peak latency of the mismatch negativity in schizophrenics and alcoholics. *Biol Psychiat* 1995; 37: 754–7.
- Kawakubo Y, Kamio S, Nose T, Iwanami A, Nakagome K, Fukuda M, et al. Phonetic mismatch negativity predicts social skills acquisition in schizophrenia. *Psychiat Res* 2007; 152: 261–5.
- Kawakubo Y, Kasai K, Kudo N, Rogers MA, Nakagome K, Itoh K, Kato N. Phonetic mismatch negativity predicts verbal memory deficit in schizophrenia. *NeuroReport* 2006; 17: 1043–6.
- Kazmerski VA, Friedman D, Ritter W. Mismatch negativity during attend and ignore conditions in Alzheimer's disease. *Biol Psychiat* 1997; 42: 382–402.
- Kekoni J, Hämläinen H, Saarinen M, Gröhn J, Reinikainen K, Lehtokoski A, et al. Rate effect and mismatch responses in the somatosensory system: ERP-recordings in humans. *Biol Psychol* 1997; 46: 125–42.
- Kiang M, Light GA, Prugh J, Coulson S, Braff DL, Kutas M. Cognitive, neurophysiological, and functional correlates of proverb interpretation abnormalities in schizophrenia. *J Int Neuropsychol Soc* 2007; 13: 653–63.
- Kiang M, Braff DL, Sprock J, Light GA. The relationship between pre-attentive sensory processing deficits and age in schizophrenia patients. *Clin Neurophysiol* 2009; 120: 1949–57.
- Kisley MA, Davalos DB, Engleman LL, Guinther PM, Davis HP. Age-related change in neural processing of time-dependent stimulus features. *Cognitive Brain Res* 2005; 25: 913–25.
- Kohlmetz C, Altenmüller E, Schuppert M, Wieringa BM, Münte TF. Deficit in automatic sound-change detection may underlie some music perception deficits after acute hemispheric stroke. *Neuropsychologia* 2001; 39: 1121–4.
- Korostenskaja M, Dapsys K, Siurkute A, Maciulis V, Ruksenas O, Kähkönen S. Effects of olanzapine on auditory P300 and mismatch negativity (MMN) in schizophrenia spectrum disorders. *Progr Neuro-Psychopharmacol Biol Psychiat* 2005; 29: 543–8.
- Korostenskaja M, Pardos M, Fujiwara H, Kujala TM, Horn P, Rose D, et al. Neuromagnetic evidence of impaired cortical auditory processing in pediatric intractable epilepsy. *Epilepsy Res* 2010; 92: 63–73.
- Kotchoubey B, Lang S, Herb E, Maurer P, Schmalohr D, Bostanov V, Birbaumer N. Stimulus complexity enhances auditory discrimination in patients with extremely severe brain injuries. *Neurosci Lett* 2003; 352: 129–32.
- Krauel K, Schott P, Sojka B, Pause BM, Ferstl R. Is there a mismatch negativity analogue in the olfactory event-related potential? *J Psychophysiol* 1999; 13: 49–55.
- Kraus N, McGee TJ, Littman T, Nicol TG, King C. Nonprimary auditory thalamic representation of acoustic change. *J Neurophysiol* 1994; 72: 1270–7.
- Kraus N, McGee TJ, Carrell TD, Zecker SG, Nicol TG, Koch DB. Auditory neurophysiologic responses and discrimination deficits in children with learning problems. *Science* 1996; 273: 971–3.
- Kreitschmann-Andermahr I, Rosburg T, Demme U, Gaser E, Nowak H, Sauer H. Effect of ketamine on the neuromagnetic mismatch field in healthy humans. *Cognitive Brain Res* 2001; 12: 109–16.
- Kreitschmann-Andermahr I, Rosburg T, Meier T, Volz H-P, Nowak H, Sauer H. Impaired sensory processing in male patients with schizophrenia: a magnetoencephalographic study of auditory mismatch negativity. *Schizophrenia Res* 1999; 35: 121–9.
- Kujala P, Portin R, Revonsuo A, Ruutiainen J. Attention related performance in two cognitively different subgroups of patients with multiple sclerosis. *J Neurol Neurosurg Psychiat* 1995; 59: 77–82.
- Kujala T. The role of early auditory discrimination deficits in language disorders. *J Psychophysiol* 2007; 21: 239–50.
- Kujala T, Belitz S, Tervaniemi M, Näätänen R. Auditory sensory memory disorder in dyslexic adults as indexed by the mismatch negativity. *Eur J Neurosci* 2003; 17: 1323–7.
- Lalo E, Vercueil L, Bougerol T, Jouk P-S, Debû B. Late event-related potentials and movement complexity in young adults with Down syndrome. *Neurophys Clinique* 2005; 35: 81–91.
- Lang HA, Nyrke T, Ek M, Aaltonen O, Raimo I, Näätänen R. Pitch discrimination performance and auditory event-related potentials. In: Brunia CHM, Gaillard AWK, Kok A, Mulder G, Verbaten MN, editors. *Psychophysiological brain research*. Vol. 1. Tilburg, the Netherlands: Tilburg University Press; 1990. p. 294–98.
- Lavoie SS, Murray MM, Deppen P, Knyazeva MG, Berk M, Boulat O, et al. Glutathione precursor, *N*-Acetyl-Cysteine, improves mismatch negativity in schizophrenia patients. *Neuropsychopharmacology* 2007; 33: 2187–99.
- Liasis A, Towell A, Alho K, Boyd S. Intracranial identification of an electric frontal-cortex response to auditory stimulus change: a case study. *Cognitive Brain Res* 2001; 11: 227–33.
- Light GA, Braff DL. Mismatch negativity deficits are associated with poor functioning in schizophrenia patients. *Arch Gen Psychiat* 2005a; 62: 127–36.
- Light GA, Braff DL. Stability of mismatch negativity deficits and their relationship to functional impairment in chronic schizophrenia. *Am J Psychiat* 2005b; 162: 1741–3.
- Light GA, Swerdlow NR, Braff DL. Preattentive sensory processing as indexed by the MMN and P3a brain responses is associated with

- cognitive and psychosocial functioning in healthy adults. *J Cognitive Neurosci* 2007; 19: 1624–32.
- Lin Y-Y, Hsiao F-J, Shih Y-H, Yiu C-H, Yen D-J, Kwan S-Y, et al. Plastic phase-locking and magnetic mismatch response to auditory deviants in temporal lobe epilepsy. *Cerebral Cortex* 2007; 17: 2516–25.
- Liu T, Shi J, Zhang Q, Zhao D, Yang J. Neural mechanism of auditory sensory processing in children with high intelligence. *NeuroReport* 2007; 18: 1571–5.
- Luauté J, Fischer C, Adeleine P, Morlet D, Tell L, Boisson D. Late auditory event-related potentials can be useful to predict good functional outcome after coma. *Arch Phys Med Rehab* 2005; 86: 917–23.
- Magnusson KR, Brim BL, Das SR. Selective vulnerabilities of *N*-methyl-D-aspartate (NMDA) receptors during brain aging. *Front Ag Neurosci* 2010; 2: 11. doi:10.3389.
- Marco-Pallares J, Grau C, Ruffini G. Combined ICA-LORETA analysis of mismatch negativity. *Neuro Image* 2005; 25: 471–7.
- Martin LF, Davalos DB, Kiskey MA. Nicotine enhances automatic temporal processing as measured by the mismatch negativity waveform. *Nicotine Tob Res* 2009; 11: 698–706.
- Matthews N, Todd J, Budd TW, Cooper G, Michie PT. Auditory lateralization in schizophrenia -mismatch negativity and behavioral evidence of a selective impairment in encoding interaural time cues. *Clin Neurophysiol* 2007; 118: 833–44.
- McGeer EG, McGeer PL. Neuroinflammation in Alzheimer's disease and mild cognitive impairment: a field in its infancy. *J Alzheimer's Dis* 2010; 19: 355–61.
- Michie PT. What has MMN revealed about the auditory system in schizophrenia? *Int J Psychophysiol* 2001; 42: 177–94.
- Michie PT, Budd TW, Todd J, Rock D, Wichmann H, Box J, et al. Duration and frequency mismatch negativity in schizophrenia. *Clin Neurophysiol* 2000; 111: 1054–65.
- Michie PT, Innes-Brown H, Todd J, Jablensky AV. Duration mismatch negativity in biological relatives of patients with schizophrenia spectrum disorders. *Biol Psychiat* 2002; 52: 749–58.
- Molholm S, Martinez A, Ritter W, Javitt DC, Foxe JJ. The neural circuitry of pre-attentive auditory change-detection: an fMRI study of pitch and duration mismatch negativity generators. *Cereb Cortex* 2005; 15: 545–51.
- Morlet D, Bouchet P, Fischer C. Mismatch negativity and N100 monitoring: potential clinical value and methodological advances. *Audiol Neuro-Otol* 2000; 5: 198–206.
- Müller BW, Jüptner M, Jentzen W, Müller SP. Cortical activation to auditory mismatch elicited by frequency deviant and complex novel sounds: a PET study. *Neuro Image* 2002; 17: 231–9.
- Näätänen R, Kähkönen S. Central auditory dysfunction in schizophrenia as revealed by the mismatch negativity (MMN) and its magnetic equivalent MMNm: a review. *Int J Neuropsychopharmacol* 2009; 12: 125–35.
- Näätänen R, Kreegipuu K. The mismatch negativity (MMN) as an index of different forms of memory in audition. In: Bäckman L, Nyberg L, editors. *Memory, aging and the brain. A Festschrift in honour of Lars-Göran Nilsson*. New York: Psychology Press; 2010. p. 287–99.
- Näätänen R, Michie PT. Early selective attention effects on the evoked potential. A critical review and reinterpretation. *Biol Psychol* 1979; 8: 81–136.
- Näätänen R, Winkler I. The concept of auditory stimulus representation in cognitive neuroscience. *Psychol Bull* 1999; 125: 826–59.
- Näätänen R, Astikainen P, Ruusuvirta T, Huotilainen M. Automatic auditory intelligence: an expression of the sensory-cognitive core of cognitive processes. *Brain Res Rev* 2010; 64: 123–36.
- Näätänen R, Gaillard AW, Mäntysalo S. Early selective-attention effect on evoked potential reinterpreted. *Acta Psychol* 1978; 42: 313–29.
- Näätänen R, Paavilainen P, Rinne T, Alho K. The mismatch negativity (MMN) in basic research of central auditory processing: a review. *Clin Neurophysiol* 2007; 118: 2544–90.
- Näätänen R, Pakarinen S, Rinne T, Takegata R. The mismatch negativity (MMN) - towards the optimal paradigm. *Clin Neurophysiol* 2004; 115: 140–4.
- Näätänen R, Tervaniemi M, Sussman E, Paavilainen P, Winkler I. "Primitive intelligence" in the auditory cortex. *TiNS* 2001; 24: 283–8.
- Nakagawa K, Shoji H, Katada A, Ozaki H. How regularities in stimulus series and in ISI affect on MMN in persons with intellectual disabilities. *Int Cong Ser* 2002; 1232: 363–6.
- Nakagome K, Ichikawa I, Kanno O, Akaho R, Suzuki M, Takazawa S, et al. Overnight effects of triazolam on cognitive function: an event-related potentials study. *Neuropsychobiology* 1998; 38: 232–40.
- Navia BA. The AIDS dementia complex. In: Cummings JL, editor. *Subcortical dementia*. New York: Oxford University Press; 1990. p. 181–98.
- Newcomer JW, Farber NB, Jevtovic-Todorovic V, Selke G, Melson AK, Hersey T, et al. Ketamine-induced NMDA-receptor hypofunction as a model of memory impairment and psychosis. *Neuropsychopharmacology* 1998; 20: 106–18.
- Nicholson A N, Pascoe PA, Turner C, Ganellin CR, Greengrass PM, et al. Sedation and histamine H1-receptor antagonism: studies in man with enantiomers chlorpheniramine and dimethindene. *Br J Pharmacol* 1991; 104: 270–6.
- Oades RD, Zerbin D, Dittmann-Balcar A, Eggers C. Auditory event-related potential (ERP) and difference wave topography in schizophrenic patients with/without active hallucinations and delusions: a comparison with young obsessive-compulsive disorder (OCD) and healthy subjects. *Int J Psychophysiol* 1996; 22: 185–214.
- Olney JW, Farber NB. Glutamate receptor dysfunction and schizophrenia. *Arch Gen Psychiat* 1995; 52: 998–1007.
- Opitz B, Mecklinger A, von Cramon DY, Kruggel F. Combined electrophysiological and hemodynamic measures of the auditory oddball. *Psychophysiology* 1999; 36: 142–7.
- Paavilainen P, Arajärvi P, Takegata R. Preattentive detection of nonsalient contingencies between auditory features. *NeuroReport* 2007; 18: 159–63.
- Paavilainen P, Cammann R, Alho K, Reinikainen K, Sams M, Näätänen R, Johnson R, Rohrbaugh JW, Parasuraman R, editors. *Current Trends in Event-Related Brain Potential Research Electroen Clin Neurophysiol* 1987; 40: 246–55.
- Pang EW, Fowler B. Dissociation of the mismatch negativity and processing negativity attentional waveforms with nitrous oxide. *Psychophysiology* 1999; 36: 552–8.
- Park SQ, Kahnt T, Beck A, Cohen MX, Dolan RJ, Wrase J, Heinz A. Prefrontal cortex fails to learn from reward prediction errors in alcohol dependence. *J Neurosci* 2010; 30: 7749–53.
- Pazo-Alvarez O, Cadaveira F, Amedeo E. MMN in the visual modality: a review. *Biol Psychol* 2003; 63: 199–236.
- Pekkonen E, Jousmäki V, Könönen M, Reinikainen K, Partanen J. Auditory sensory memory impairment in Alzheimer's disease: an event-related potential study. *NeuroReport* 1994; 5: 2537–40.
- Pekkonen E, Jousmäki V, Reinikainen K, Partanen J. Automatic auditory discrimination is impaired in Parkinson's disease. *Electroen Clin Neuro* 1995; 95: 47–52.
- Pekkonen E, Rinne T, Reinikainen K, Kujala T, Alho K, Näätänen R. Aging effects on auditory processing: an event-related potential study. *Exp Aging Res* 1996; 22: 171–84.
- Pettigrew CM, Murdoch BE, Kei J, Ponton CW, Alku P, Chenery HJ. The mismatch negativity (MMN) response to complex tones and spoken words in individuals with aphasia. *Aphasiol* 2005; 19: 131–63.
- Pfefferbaum A, Sullivan EV, Mathalon DH, Lim KO. Frontal lobe volume loss observed with magnetic resonance imaging in older chronic alcoholics. *Alcohol Clin Exp Res* 1997; 21: 521–9.
- Pincze Z, Lakatos P, Rajkai C, Ulbert I, Karmos G. Separation of mismatch negativity and the N1 wave in the auditory cortex of the cat: a topographic study. *Clin Neurophysiol* 2001; 112: 778–84.
- Pincze Z, Lakatos P, Rajkai C, Ulbert I, Karmos G. Effect of deviant probability and interstimulus/interdeviant interval on the auditory N1 and mismatch negativity in the cat auditory cortex. *Brain Res Cogn Brain Res* 2002; 13: 249–53.

- Polo MD, Escera C, Gual A, Grau C. Mismatch negativity and auditory sensory memory in chronic alcoholics. *Alcohol Clin Exp Res* 1999; 23: 1744–50.
- Polo MD, Escera C, Yago E, Alho K, Gual A, Grau C. Electrophysiological evidence of abnormal activation of the cerebral network of involuntary attention in alcoholism. *Clin Neurophysiol* 2003; 114: 134–46.
- Rasser PE, Schall U, Todd J, Michie PT, Ward PB, Johnston P, et al. Gray matter deficits, mismatch negativity, and outcomes in schizophrenia. *Schizoph Bull* 2011; 37: 131–40.
- Raz A, Deouell LY, Bentin S. Is preattentive processing compromised by prolonged wakefulness? Effects of total sleep deprivation on the mismatch negativity. *Psychophysiology* 2001; 38: 787–95.
- Reite M, Teale P, Rojas DC, Asherin R, Hernandez O. MEG auditory evoked fields suggest altered structural/functional asymmetry in primary but not secondary auditory cortex in bipolar disorder. *Bipolar Disord* 2009; 11: 371–81.
- Restuccia D, Zanini S, Cazzagon M, Del Piero I, Martucci L, Della Marca G. Somatosensory mismatch negativity in healthy children. *Dev Med Child Neurol* 2009; 51: 991–8.
- Rinne T, Alho K, Ilmoniemi RJ, Virtanen J, Näätänen R. Separate time behaviors of the temporal and frontal mismatch negativity sources. *Neuroimage* 2000; 12: 14–9.
- Rinne T, Degerman A, Alho K. Superior temporal and inferior frontal cortices are activated by infrequent sound duration decrements: an fMRI study. *NeuroImage* 2005; 26: 66–72.
- Rinne T, Särkkä A, Degerman A, Schröger E, Alho K. Two separate mechanisms underlie auditory change detection and involuntary control of attention. *Brain Res* 2006; 1077: 135–43.
- Roizen N J, Patterson D. Down's syndrome. *Lancet* 2003; 361: 1281–9.
- Rongve A, Aarsland D. Management of Parkinson's disease dementia. *Drug Aging* 2006; 23: 807–22.
- Rosburg T. Left hemispheric dipole locations of the neuromagnetic mismatch negativity to frequency, intensity and duration deviants. *Cogn Brain Res* 2003; 16: 83–90.
- Ruusuvirta T, Koivisto K, Wikgren J, Astikainen P. Processing of melodic contours in urethane-anaesthetized rats. *Eur J Neurosci* 2007; 26: 701–3.
- Saarinén J, Paavilainen P, Schröger E, Tervaniemi M, Näätänen R. Representation of abstract stimulus attributes in human brain. *NeuroReport* 1992; 3: 1149–51.
- Salisbury DF, Kuroki N, Kasai K, Shenton M, McCarley RW. Progressive and interrelated functional and structural evidence of post-onset brain reduction in schizophrenia. *Arch Gen Psychiat* 2007; 64: 521–9.
- Sallinen M, Kaartinen J, Lyytinen H. Is the appearance of mismatch negativity during stage 2 sleep related to the elicitation of K-complex? *Electroencephalogr Clin Neurophysiol* 1994; 91: 140–8.
- Sallinen M, Kaartinen J, Lyytinen H. Processing of auditory stimuli during tonic and phasic periods of REM sleep as revealed by event-related brain potentials. *J Sleep Res* 1996; 5: 220–8.
- Santini E, Muller RU, Quirk GJ. Consolidation of extinction learning involves transfer from NMDA-independent to NMDA-dependent memory. *J Neurosci* 2001; 15: 9009–17.
- Santos MAR, Munhoz MSL, Peixoto MAL, Haase VG, Rodrigues JL, Resende LM. Mismatch negativity contribution in multiple sclerosis patients. *Rev Bras Otorrinolaringol* 2006; 72: 800–7.
- Särkkämö T, Pihko E, Laitinen S, Forsblom A, Soinila S, Mikkonen M, et al. Music and speech listening enhance the recovery of early sensory processing after stroke. *J Cogn Neurosci* 2010a; 22: 2716–27.
- Särkkämö T, Tervaniemi M, Soinila S, Autti T, Silvennoinen H M, Laine M, Hietanen M. Cognitive deficits associated with acquired amusia after stroke: A neuropsychological follow-up study. *Neuropsychology* 2009; 47: 2642–51.
- Särkkämö T, Tervaniemi M, Soinila S, Autti T, Silvennoinen HM, Laine M, et al. Auditory and cognitive deficits associated with acquired amusia in stroke: a magnetoencephalography and neuropsychological follow-up study. *PLoS ONE* 5: e15157.
- Sato Y, Yabe H, Todd J, Michie P, Shinozaki N, Sutoh T, et al. Impairment in activation of a frontal attention-switch mechanism in schizophrenic patients. *Biol Psychol* 2003; 62: 49–63.
- Schall U, Catts SV, Chaturvedi S, Liebert B, Redenbach J, Karayanidis F, Ward PB. The effect of clozapine therapy on frontal lobe dysfunction in schizophrenia: neuropsychology and event-related potential measures. *Int J Neuropsychopharmacol* 1998; 1: 19–29.
- Schall U, Johnston P, Todd J, Ward PB, Michie PT. Functional neuroanatomy of auditory mismatch processing: an event-related fMRI study of duration-deviant oddballs. *Neuro Image* 2003; 20: 729–36.
- Schiff S, Valenti P, Andrea P, Lot M, Bisiacchi P, Gatta A, Amodio P. The effect of aging on auditory components of event-related brain potentials. *Clin Neurophysiol* 2008; 119: 1795–802.
- Schreiber H, Stolz-Born G, Kornhuber H, Born J. Event-related potential correlates of impaired selective attention in children at high risk for schizophrenia. *Biol Psychiat* 1992; 32: 634–51.
- Schroeder MM, Handelsman L, Torres L, Dorfman D, Rinaldi P, Jacobson J, et al. Early and late cognitive event-related potentials mark stages of HIV-infection in the drug-user risk group. *Biol Psychiat* 1994; 35: 54–69.
- Schroeder MM, Ritter W, Vaughan HG Jr. The mismatch negativity to novel stimuli reflects cognitive decline. *Ann NY Acad Sci* 1995; 769: 399–401.
- Schröger E, Bendixen A, Trujillo-Barreto NJ, Roeber U. Processing of abstract rule violations in audition. *PLoS ONE* 2007; 2: e1131.
- Schwieler L, Linderholm KR, Nilsson-Todd LK, Erhardt S, Engberg G. Clozapine interacts with the glycine site of the NMDA receptor; Electrophysiological studies of dopamine neurons in the rat ventral tegmental area. *Life Sci* 2008; 83: 170–5.
- Sculthorpe LD, Ouellet DR, Campbell KB. MMN elicitation during natural sleep to violations of an auditory pattern. *Brain Res* 2009; 1290: 52–62.
- Serra JM, Escera C, Sanchez-Turet M, Sanchez-Sastre J, Grau C. The H1-receptor antagonist chlorpheniramine decreases the ending phase of the mismatch negativity of the human auditory event-related potentials. *Neurosci Lett* 1996; 203: 77–80.
- Shelley AM, Ward PB, Catts SV, Michie PT, Andrews S, McConaghy N. Mismatch negativity: an index of a preattentive processing deficit in schizophrenia. *Biol Psychiat* 1991; 30: 1059–62.
- Shenton ME, Wible CG, McCarley RW. A review of magnetic resonance imaging studies of brain abnormalities in schizophrenia. In: Krishnan KRR, Doraiswamy PM, editors. *Brain Imag Clin Psychiat*. New York: Marcel Dekker; 1997. p. 297–380.
- Shin KS, Kim JS, Kang DH, Koh Y, Choi JS, O'Donnell BF, et al. Pre-attentive auditory processing in ultra-high-risk for schizophrenia with magnetoencephalography. *Biol Psychiat* 2009; 65: 1071–8.
- Siegel SJ, Connolly P, Liang Y, Lenox RH, Gur RE, Bilker WB, et al. Effects of strain, novelty, and NMDA blockade on auditory-evoked potentials in mice. *Neuropsychopharmacology* 2003; 28: 675–82.
- Spackman LA, Towell A, Boyd SG. Somatosensory discrimination: an intracranial event-related potential study of children with refractory epilepsy. *Brain Res* 2010; 1310: 68–76.
- Staden U, Isaacks E, Boyd SG, Brandl U, Neville BG. Language dysfunction in children with rolandic epilepsy. *Neuropediatrics* 1996; 29: 242–8.
- Stefanics G, Háden GP, Sziller I, Balázs L, Beke A, Winkler I. Newborn infants process pitch intervals. *Clin Neurophysiol* 2009; 120: 304–8.
- Stephan K E, Baldeweg T, Friston K J. Synaptic plasticity and disconnection in schizophrenia. *Biol Psychiat* 2006; 59: 929–39.
- Sutton S, Braren M, Zubin J, John ER. Evoked-potential correlates of stimulus uncertainty. *Science* 1965; 150: 1187–8.
- Takei Y, Kumano S, Maki Y, Hattori S, Kawakubo Y, Kasai K, Fukuda M, Mikuni M. Preattentive dysfunction in bipolar disorder: a MEG study using mismatch negativity. *Prog Neuro-Psychophysiol* 2010; 34: 903–12.
- Tales A, Butler S. Visual mismatch negativity highlights abnormal preattentive visual processing in Alzheimer's disease. *NeuroReport* 2006; 17: 887–90.

- Tales A, Haworth J, Wilcock G, Newton P, Butler S. Visual mismatch negativity highlights abnormal pre-attentive visual processing in mild cognitive impairment and Alzheimer's disease. *Neuropsychology* 2008; 46: 1224–32.
- Tales A, Newton P, Troschianko T, Butler S. Mismatch negativity in the visual modality. *NeuroReport* 1999; 110: 3363–7.
- Tales A, Troschianko T, Wilcock GK, Newton P, Butler SR. Age-related changes in the preattentive detection of visual change. *NeuroReport* 2002; 13: 969–72.
- Tervaniemi M, Maury S, Näätänen R. Neural representations of abstract stimulus features in the human brain as reflected by the mismatch negativity. *NeuroReport* 1994; 5: 844–6.
- Tervaniemi M, Medvedev SV, Alho K, Pakhomov SV, Roudas MS, van Zuijen TL, et al. Lateralized automatic auditory processing of phonetic versus musical information: a PET study. *Human Brain Map* 2000; 10: 74–99.
- Thompson JM, Gallagher P, Hughes JH, Watson S, Gray JM, Ferrer IN, et al. Neurocognitive impairment in euthymic patients with bipolar affective disorder. *Br J Psychiat* 2005; 186: 323–40.
- Thönnesen H, Zvyagintsev M, Harke KC, Boers F, Dammers J, Norra C, Mathiak K. Optimized mismatch negativity paradigm reflects deficits in schizophrenia patients. A combined EEG and MEG study. *Biol Psychol* 2008; 77: 205–16.
- Tikhonravov D, Neuvonen T, Pertovaara A, Savioja K, Ruusuvirta T, Näätänen R, Carlson S. Effects of an NMDA receptor antagonist MK-801 on an MMN-like response recorded in anesthetized rats. *Brain Res* 2008; 1203: 97–102.
- Todd J, Myers R, Pirillo R, Drysdale K. Neuropsychological correlates of auditory perceptual inference: a mismatch negativity (MMN) study. *Brain Res* 2010; 1310: 113–23.
- Toyomaki A, Kusumi I, Matsuyama T, Kako Y, Ito K, Koyoma T. Tone duration mismatch negativity deficits predict impairment of executive function in schizophrenia. *Prog Neuro-Psychoph* 2008; 32: 95–9.
- Tse C-Y, Penney TB. On the functional role of temporal and frontal cortex activation in passive detection of auditory deviance. *NeuroImage* 2008; 41: 1462–70.
- Turetsky BI, Bilker WE, Kohler CG, Gur RE. Profile of auditory information-processing deficits in schizophrenia. *Psychiat Res* 2009; 165: 27–37.
- Umbricht D, Vyssotki D, Latanov A, Nitsch R, Lipp H-P. Deviant-related electrophysiological activity in mice: is there mismatch negativity in mice? *Clin Neurophysiol* 2005; 116: 353–63.
- Umbricht DS, Bates JA, Lieberman JA, Kane JM, Javitt DC. Electrophysiological indices of automatic and controlled auditory information processing in first-episode, recent-onset and chronic schizophrenia. *Biol Psychiat* 2006; 59: 762–72.
- Umbricht D, Javitt D, Novak G, Bates J, Pollack S, Lieberman J, Kane J. Effects of clozapine on auditory event-related potentials in schizophrenia. *Biol Psychiat* 1998; 44: 716–25.
- Umbricht D, Javitt D, Novak G, Bates J, Pollack S, Lieberman J, Kane J. Effects of risperidone on auditory event-related potentials in schizophrenia. *Int J Neuropsychopharmacology* 1999; 299–304.
- Umbricht D, Koller R, Schmid L, Skrabo A, Gröbel C, Huber T, Stassen H. How specific are deficits in mismatch negativity generation to schizophrenia? *Biol Psychiat* 2003; 53: 1120–32.
- Umbricht D, Koller R, Vollenweider FX, Schmid L. Mismatch negativity predicts psychotic experiences induced by NMDA receptor antagonist in healthy volunteers. *Biol Psychiat* 2002; 51: 400–6.
- Umbricht D, Krljes S. Mismatch negativity in schizophrenia: a meta-analysis. *Schizophr Res* 2005; 76: 1–23.
- Umbricht D, Schmid L, Koller R, Vollenweider FX, Hell D, Javitt DC. Ketamine induces deficits in auditory and visual context-dependent processing in healthy volunteers: implications for models of cognitive deficits in schizophrenia. *Arch Gen Psychiat* 2000; 57: 1139–47.
- Urban A, Kremláček J, Masopust J, Libiger J. Visual mismatch negativity among patients with schizophrenia. *Schizophr Res* 2008; 102: 320–28.
- van der Stelt O, van Boxtel GJM. Auditory P300 and mismatch negativity in comatose states. *Clin Neurophysiol* 2008; 119: 2172–4.
- van Leeuwen T, Been P, Kuijpers C, Zwarts F, Maassen B, van der Leij A. Mismatch response is absent in 2-month-old infants at risk for dyslexia. *NeuroReport* 2006; 17: 351–5.
- Vanhanen M, Karhu J, Koivisto K, Pääkkönen A, Partanen J, Laakso M, Riekkinen P Sr. ERPs reveal deficits in automatic cerebral stimulus processing in patients with NIDDM. *NeuroReport* 1996; 7: 2767–71.
- Verleger R, Neukäter W, Kömpf D, Vieregge P. On the reasons for the delay of P3 latency in healthy elderly subjects. *Electroencephalogr Clin Neurophysiol* 1991; 79: 488–502.
- Wertz RT, Auther LL, Burch-Sims GP, Abou-Khalil R, Kirshner HS, Duncan GW. A comparison of the mismatch negativity (MMN) event-related potential to tone and speech stimuli in normal and aphasic adults. *Aphasiol* 1998; 12: 499–507.
- Wijnen VJM, van Boxtel GJM, Eilander HJ, de Gelder B. Mismatch negativity predicts recovery from the vegetative state. *Clin Neurophysiol* 2007; 118: 597–605.
- Winkler I, Denham SL, Nelken I. Modeling the auditory scene: predictive regularity representations and perceptual objects. *Trends Cogn Sci* 2009; 13: 532–40.
- Winkler I, Haden GP, Ladinig O, Sziller I, Honing H. Newborn infants detect the beat in music. *Proc Natl Acad Sci USA* 2009; 106: 2468–71.
- Winkler I, Näätänen R. The effects of auditory backward masking on event-related brain potentials. *Electroencephalogr Clin Neurophysiol* 1994; 44: 185–9.
- Wynn JK, Sugar C, Horan WP, Kern R, Green MF. Mismatch negativity, social cognition, and functioning in schizophrenia patients. *Biol Psychiat* 2010; 67: 940–7.
- Zachau S, Rinker T, Körner B, Kohls G, Maas V, Hennighausen K, Schecker M. Extracting rules: early and late mismatch negativity to tone patterns. *NeuroReport* 2005; 16: 2015–9.
- Zarza-Lucianez D, Arce-Arce S, Blathal H, Sanjuan-Martin F. Mismatch negativity and conscience level in severe traumatic brain injury. *Rev Neurol* 2007; 44: 449–55.
- Zerouali Y, Jemel B, Godbout R. The effects of early and late night partial sleep deprivation on automatic and selective attention: An ERP study. *Brain Res* 2010; 1308: 87–99.