



## Model for Dilution Process of Landslide Triggered Debris Flows —A Case in the Guanba River, Southeastern Tibetan Plateau

Jun Li<sup>1</sup>, Ningsheng Chen<sup>2\*</sup>, Javed Iqbal<sup>3</sup>, Dawei Han<sup>4</sup>

1. Sichuan University of Science & Engineering, School of Civil Engineering, Sichuan Zigong 643000, China;

2. Key Laboratory of Mountain Hazards and Land Surface Processes, Institute of Mountain Hazards and Environment, Chinese Academy of Sciences, Sichuan Chengdu 610041, China;

3. Department of Earth Sciences, COMSATS Institute of Information Technology, Abbottabad 22060, Pakistan;

4. Department of Civil Engineering, University of Bristol, Bristol BS81TR, United Kingdom

\*Correspondence author: chennsh@imde.ac.cn, Fax 028-85210110, Telephone 0086 13808171963

### ABSTRACT

Understanding and modeling the downstream dilution process of a landslide triggered debris flow is the foundation for recognizing the boundary condition and dilution mechanism of this type of debris flow, and this serves as the theoretical basis for the categorized control of viscous debris flows, diluted debris flows, hyperconcentration flows and flash floods in a drainage basin. In this study, taking as an example a typical debris flow that occurred in the Guanba River on Tibet's southeastern plateau on July 6<sup>th</sup>, 1998, empirical models are used to calculate the density, water flow discharge, debris flow discharge, average depth of loose materials and channel gradient at 11 cross-sections upstream to downstream in the debris flow. On this basis, the dilution characteristics and debris flow dilution process are analyzed in this study. According to the correlation between the debris flow density and the water-soil ratio and channel gradient, we have established the density evaluation model for the debris flow dilution process, which can predict the dilution process of a landslide triggered debris flow. The study results include the following four aspects: (1) The key factors in the dilution process of landslide triggered debris flows are the water flow discharge, average depth of loose materials and channel gradient. (2) The debris flow dilution characteristics in the Guanba River in 1998 include the occurrence of the debris flow dilution process after a significant increase in the water-soil ratio; an increase in the proportion of fine particles after dilution of the debris flow; and the size distribution of grain is "narrowed". (3) In accordance with the density and dilution characteristics, the debris flow dilution process in the Guanba River can be divided into the upstream viscous debris flow section, midstream and downstream transitional debris flow section and downstream diluted debris flow section. (4) The density evaluation model for the debris flow dilution process is expressed by the Lorentz equation, and this model can reflect the debris flow dilution process such that the debris flow density will decrease gradually with an increase in the water-soil ratio and decrease in channel gradient. The density evaluation model for the debris flow dilution process has been verified by three debris flow cases, which include Gaoqiao Gully, Haizi Valley and Aizi Valley.

*Keywords: Debris flows; Dilution characteristic and process; Evaluation model; Guanba River; Southeastern Tibetan Plateau*

### Modelo para el proceso de dilución del flujo de escombros originados por deslizamientos de tierra

#### RESUMEN

#### - Caso del río Guanba, en el sureste del altiplano tibetano

El entendimiento y modelado del proceso de dilución aguas abajo del flujo de escombros causado por deslizamientos de tierra es fundamental para el reconocimiento de las condiciones límite y el mecanismo de dilución de este tipo de flujos, además de ser útil como base teórica para el control categorizado de la viscosidad de los escombros, detritos diluidos, flujos hiperconcentrados e inundaciones súbitas en una cuenca de desagüe. En este estudio, al tomar como ejemplo un flujo de detritos típico en el río Guanba, en el sureste del altiplano tibetano, del 6 de julio de 1998, se utilizaron modelos empíricos para calcular la densidad, la descarga de agua, la descarga de detritos, la profundidad promedio de materiales sueltos y la gradiente del canal en once secciones cruzadas desde aguas arriba y hacia abajo. Con base en estos datos, se analizan las características de dilución y el proceso de dilución del flujo de escombros. De acuerdo con la correlación entre la densidad del flujo de escombros y el índice agua-suelo más el gradiente del canal, se estableció el modelo de evaluación de densidad para el proceso de dilución del flujo de escombros, el cual puede predecir el proceso de dilución de un flujo causado por un deslizamiento de tierra. Los resultados del estudio incluyen los siguientes cuatro aspectos: (1) Los factores clave en la dilución de flujos de escombros causados por deslizamientos de tierra son la descarga de agua, la profundidad promedio de los materiales sueltos, y la gradiente del canal. (2) Las características de dilución

*Palabras clave: flujo de escombros; procesos y características de dilución; modelo de evaluación; río Guanba; sureste del altiplano tibetano.*

#### Record

Manuscript received: 09/10/2017

Accepted for publication: 02/03/2018

*How to cite item* Li, J., Chen, N., Iqbal, J., & Han, D. (2018). The Model for Dilution Process of Landslide Triggered Debris Flow —A Case of Guanba River in Tibet Southeastern Plateau. *Earth Sciences Research Journal*, 21(2), 103-111. DOI: <http://dx.doi.org/10.15446/esrj.v22n2.68177>

del flujo de detritos en el río Guanba en 1998 incluye la ocurrencia del proceso de dilución después de un incremento significativo en el índice agua-suelo, un incremento en la proporción de partículas finas después de la dilución de los detritos, mientras la distribución por tamaños del grano es "reducida". (3) De acuerdo con las características de densidad y dilución, el proceso de dilución de detritos en el río Guanba se puede dividir entre la viscosidad de los detritos aguas arriba, el flujo transicional de detritos en el centro de la corriente y aguas abajo, y la sección de detritos diluidos aguas abajo. (4) El modelo de evaluación de densidad para el proceso de dilución del flujo de detritos se expresa con la ecuación de Lorentz, y es este modelo el que puede reflejar el proceso de dilución de forma que el flujo de escombros disminuye gradualmente con el incremento del índice agua-suelo y el decrecimiento de la gradiente de canal. El modelo de evaluación de densidad para el proceso de dilución del flujo se verificó con tres casos de flujos, que incluyen el Gaoqiao Gully, el valle Haizi y el valle Aizi.

## 1. Introduction

Debris flows can be mobilized by the occurrence of landslides, which are usually viscous, high-density debris flows (Iverson et al. 1997). Three main factors influence landslide triggered debris flows including the water source, loose materials and slope gradient (Zhou et al. 1991, Xu et al. 2014, Guo et al. 2016). When the water-soil ratio increases and channel gradient decreases, the water-soil ratio is the water flow discharge divided by the average depth of loose materials, and such debris flows will be gradually diluted into a diluted debris flow, which is a flow with a high concentration of sediment or a flash flood (Pierson and Costa 1987, Smith 1991, Svendsen et al. 2003); we call this the dilution process of a landslide triggered debris flow (Kang et al. 2004). Such a phenomenon is common in the southwestern mountainous area of China. For example, observed dilution events have been found in the Longxi River (drainage basin area of 78.79 km<sup>2</sup>) in Dujiangyan on August 13, 2013 (Qu et al. 2015), recently in Haizi Valley (drainage basin area of 103.6 km<sup>2</sup>) in the upstream area of the Jinsha River (Chen et al. 2015b), and Peilong Gully (drainage area of 86.1 km<sup>2</sup>) in the Sichuan-Tibet Highway area (Chen and Chen 2002).

While some studies have been performed on the dilution process and mechanism (Pierson 2005, Felix and Peakall 2006), there are still unsolved questions for the following 3 aspects: (1) some studies on the dilution index and its related factors have been completed (Pierson and Costa 1987, Dasgupta 2003, Pierson 2005), and the results indicate that the sediment content indexes can be used to distinguish between a debris flow and hyperconcentration flow or other type flows. In addition, their results also show that some related factors influence the debris flow dilution process including the sediment volume, flow depth and channel gradient. The dilution process and characteristics of volcanic debris flow were also studied and show that the duration of dilution processes is quite long and the sediment contents of hyperconcentration flow are very high, ranging from 40 to 60% (Pierson and Scott 1985, Lavigne 2004, Pierson 2005). The pattern of change in density, velocity and discharge was determined, and there are related equations for calculating the occurrence of a landslide triggered debris flow (Chen et al. 2007, Guo et al. 2015, Peng et al. 2015). However, there are few studies on the dilution process and characteristics based on the water source, loose materials and channel gradient, etc.; (2) Although the existence of dilution is well known (Pierson 2005, Pederson et al. 2015), there is still little understanding about the detailed predicted model on the dilution process due to absence of the investigation methods and typical cases; (3) The absence of a dilution process prediction model hampers quantitative study of the dilution process and mechanism. This also makes it difficult to implement the relevant mitigation measures for various types of debris flow. For example, the mitigation measures for viscous debris flows mainly include retaining, damming and diverting, whereas those for diluted debris flows mainly include diverting and dredging. In addition, the diversion channel gradient for a viscous debris flow is usually 5%-18%, and the channel shape is usually is trapezoidal or rectangular, whereas the diversion channel gradient for diluted debris flows is usually 3%-10%, and the channel shape is narrow and tall (Chen et al. 2015a).

To tackle the abovementioned issues, a case study is carried out based on a major dilution event that occurred in 1998 in the Guanba River, China. Section 2 describes the study area. Section 3 addresses the methodology. Section 4 analyzes the dilution characteristics and the process of dilution.

Section 5 develops the dilution process model based on the water-soil ratio, channel gradient and section 6 are the conclusions.

## 2. Study area

### 2.1 Location

The Guanba River is on the southeastern margin of the Qinghai-Tibet Plateau (Fig. 1a), and its geographical coordinates are N: 27° 46' 21.3" ~ 27° 46' 21", E: 102° 17' 8.24" ~ 102° 27' 46" 21". The Guanba River has an area of 137.24 km<sup>2</sup>, average channel gradient of 6.09%, length of 23 km, maximum altitude of 3264 m, minimum altitude of 1510 m and relative relief of 1754 m (Fig. 1b). The Guanba River gully is a V-shape gully with a mountain slope of 25-40°, and upstream channel gradient of 10.7-18.8%. This oscillating river developed in a midstream and downstream fault basin, there are many river islands in the waterway, and the channel gradient is 6.9-10.7%. There is a flat terrain from the downstream to the lake entrance, and the channel gradient is within 6.1-6.9%.

### 2.2 Landform conditions

The Guanba River belongs to the Luoji Mountain system in the southeastern Qinghai-Tibet Plateau and is located on the east side of the south-north Anninghe Fault zone in Sichuan and Yun'nan and on the north end of the Zemuhe River-Xiaojiang River Fault zone. The tectonic stability of the Guanba River is mainly controlled by the Zemuhe River-Xiaojiang River Fault zone. The Guanba River top layer is mainly Quaternary gravel and sand, and the underlying bedrock is sand and mudstone of the Lower Cretaceous. Due to the influence of earthquakes and the wetting-drying cycle that occurs over a long period, the Guanba River basin is impacted by many landslides, slope erosions, loose deluvials and channel deposition. Fig. 1b shows a series of landslides numbered from 1 to 45. The landslide statistics for 1, 2, 3, 22, 23, 34 and 35 are the total number of landslides in the corresponding branch gully, and the serial numbers of the loose deluvials, channel deposition and slope erosions are 46-61, 62-66 and 67-69, respectively. Fig. 2 illustrates the 4 typical types of materials in debris flows. In accordance with the calculation results of the loose material volume, the total volume of loose materials in the Guanba River in 2010 was 392.06×10<sup>4</sup> m<sup>3</sup> (including 35.2% from the landslide source of 138.19×10<sup>4</sup> m<sup>3</sup>, 44.1% from the slope erosion source volume of 172.67×10<sup>4</sup> m<sup>3</sup>, 20.7% from the loose deluvial source volume of 38.41×10<sup>4</sup> m<sup>3</sup>, and the channel deposition source volume of 42.80×10<sup>4</sup> m<sup>3</sup>). According to the literature, the main material sources (landslide and slope erosion) before the occurrence of the debris flow in 1998 were very likely to be the main materials sources in the Guanba River in 2010 in terms of spatial distribution and volume (Wei et al. 2014, Chen et al. 2015c); this indicates that the loose material source volume before the occurrence of the debris flow in 1998 could be approximately substituted by the loose material source volume in 2010.

### 2.3 Hydrometeor

The Guanba River is within the basin of Qionghai Lake, which is in the low-latitude and high-altitude zones. Due to the alternating effects of the southwest monsoon and southeast inland drought monsoon, the basin of

Qionghai Lake shows the characteristics of a mid-subtropical plateau mountain climate. It has a multi-year mean temperature of 16.9°C, maximum annual mean temperature of 17.2°C and minimum annual average temperature of 15.4°C. The precipitation is controlled by the southwest monsoon of the Indian Ocean, and it has a multi-year mean precipitation of 1013.5 mm, maximum annual precipitation of 1549.6 mm and minimum annual precipitation of 691.2 mm. Vegetation includes evergreen coniferous and broad-leaved forest, as well as evergreen & deciduous broad-leaved mixed forest. The soil in the basin of Qionghai Lake mainly includes purple soil, mountain red soil and mountain yellow soil. The debris flow in the area is characterized by high frequency, large scale and high sediment content, etc.

2.4 The debris flow events in Qionghai Lake basin

The Guanba River and Ezhang River have suffered from frequent debris flows at different degrees in the Qionghai Lake basin during 1996-2003. The debris flow outbreak in the Guanba River at 16:00 on July 6<sup>th</sup>, 1998, was the largest scale debris flow in the area in recent years, and this debris flow had a return period of 100 years or greater and a duration of more than 2 hours. Thousands of acres of farmland in the midstream river section of Daxing Village were flooded by the debris flow, and the loose solid matter carried by the debris flow led to the diversion of the downstream section of the Guanba River and advancement of 172 m of coastline on Qionghai Lake. The Ezhang River suffered from successive debris flows in 1996, 1997 and 1998, and these debris flows destroyed nearly a thousand acres of farmland; as of 2015, there were still more than 200 acres of farmland that could not be restored. These two points explain that the debris flow in the basin of Qionghai Lake has characteristics of large-scale. The debris flows that have occurred in the Guanba River, Ezhang River and Xiaoqing Gully in the basin of Qionghai Lake during 1950-2003 have transported a large volume of sediments, which are the results of gravitational erosion such as landslide or collapse into Qionghai Lake. The sediments transported by the debris flow decreased the area of Qionghai Lake by 11.6%, and the average water depth of Qionghai Lake was reduced from original 14.0 m to 10.95 m in 2003, which means that the debris flows in the Qionghai Lake basin are characterized by a high sediment content.

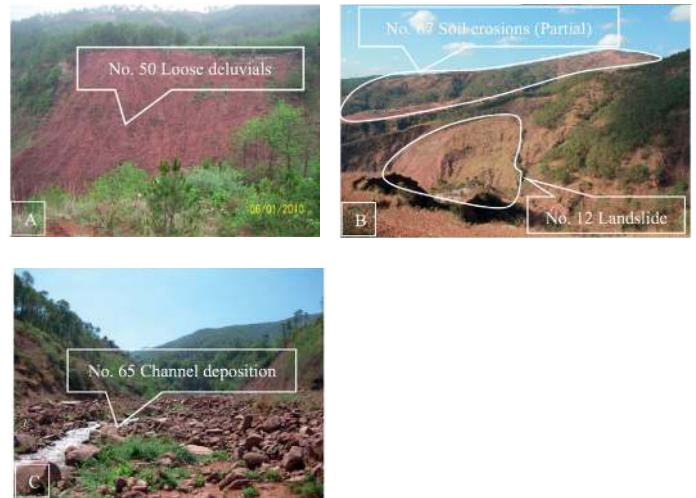


Figure 2. Typical loose materials distributed in the Guanba River (A is a photo of typical loose deluvials No. 50 in Dele, B is a photo of typical soil erosion No. 67 and landslide No. 12 in Dapingzi, C is a photo of typical channel deposition No. 65 in Dawanzi).

3. Methodology

Using the debris flow in the Guanba River with a return period of 100 years, which occurred at 16:00 on July 6<sup>th</sup>, 1998 as an example, the intent in this study is to achieve the following using the workflow path shown in Fig. 3: to reveal the dilution characteristics and process of debris flow based on the factors of water sources, loose material and channel gradient. We establish the density evaluation model for the debris flow dilution process based on the water-soil ratio and channel gradient.

In this study, based on the typical debris flow that occurred in the Guanba River in 1998, empirical models are first used to calculate the density, water flow discharge, debris flow discharge, average depth of loose materials and channel gradient at 11 cross sections, and these methods are shown in Table 1. Second, we use the following rule to distinguish the types of fluid. The fluid with a density larger than 1.70 t/m<sup>3</sup> and smaller than 2.30 t/m<sup>3</sup> is the viscous debris flow, fluid with a density between 1.40-1.70 t/m<sup>3</sup> is the diluted debris flow (Kang et al. 2004). Based on this rule, we further analyze the dilution characteristics and process of debris flow under the dynamic changes in water-soil ratio and channel gradient. Here, the water-soil ratio  $C_v$  is the water flow discharge divided by the average depth of loose materials. Third, we establish the density evaluation model for the debris flow dilution process based on the water-soil ratio and channel gradient using the Lorentz numerical simulation. Fourth, we use the three typical types of debris flows to verify the density evaluation model for the dilution process. These calculation methods are shown in Table 1.

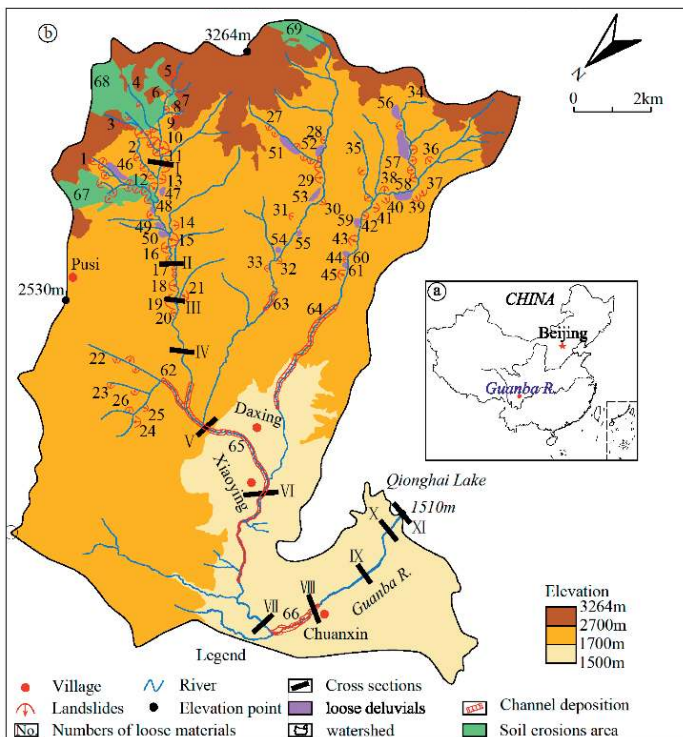


Figure 1. Geographical location of the Guanba River basin.

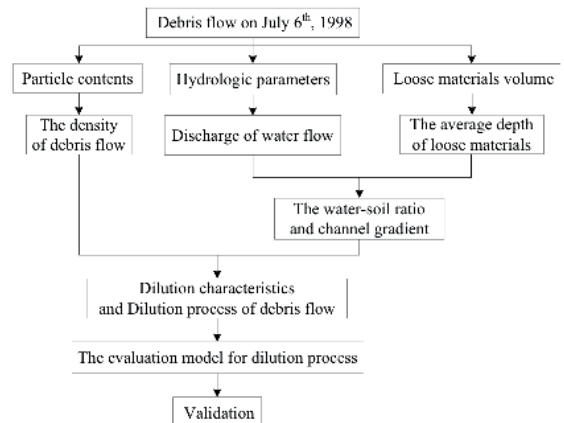


Figure 3. Workflow chart.



**Table 1.** Calculation method for the density, water flow discharge, debris flow discharge, average depth of loose materials and channel gradient of the 1998 Guanba River debris flow.

Category of Calculation	Calculation Formula	Description of Parameters	Literature
Calculation method for the density	$\gamma_c = P_{0.5}^{0.35} P_2 \gamma_v + \gamma_x$	$P_{0.05}$ is the percentage content (fractional representation) of fine particles <0.05 mm; $P_2$ is the percentage content (fractional representation) of coarse particles >2 mm. $\gamma_v$ is 2.0 t/m <sup>3</sup> , $\gamma_x$ is 1.4 t/m <sup>3</sup> , and $\gamma_c$ is the debris flow density, t/m <sup>3</sup> .	(Yu 2008)
Water flow discharge	$Q_w = 0.278 \psi \frac{s}{\tau^n} F$ $\psi = f(\mu, \tau^n)$ $\tau^n = f(m, s, J, L)$ $n_2 = 1 + 1.2851 \lg \left( \frac{H_{1p}}{H_{6p}} \right)$ $s = H_{1p} \quad H_{1p} = K_p \overline{H_1}$ $H_{6p} = K_p \overline{H_6}$	where $Q_w$ is the water flow discharge, m <sup>3</sup> /s. $\psi$ is the runoff coefficient of flood peak. $s$ is the rainstorm force, mm/h. $n$ is the rainstorm index. $F$ is the basin area, km <sup>2</sup> . $L$ is the gully length, km. $\tau$ is the concentration time in the basin, h. $\mu$ is the infiltration intensity calculated using $\mu = 3.6F^{0.19}$ , mm/h. $m$ is the flow concentration parameter, using 1.0-1.2. The parameters $\psi$ and $\tau$ are the function relationship and will be determined using the trial method. $H_{1p}$ is the storm rainfall in 1 h with a frequency of $p$ , mm. $K_p$ is the modulus curve of Pearson III type curve and can be obtained by looking up related tables. $\overline{H_1}$ is the average point rainfall in a maximum of 1 hour and can be obtained by looking up related tables, mm. $\overline{H_6}$ is the average point rainfall in a maximum of 6 hours and can be obtained by looking up related tables, mm.	(Shen et al. 1984)
Chanel gradient	$J = \frac{\sum (h_{i-1} + h_i) \times l_i}{L^2}$	$J$ is the channel gradient. $L$ is the length of the river from each location to the watershed, m. $h_i$ and $h_{i+1}$ is the relative height difference of each turning point, m. $l_i$ is the relative distance of each turning point, m.	(Shen et al. 1984)
Debris flow discharge	$Q_c = (1 + \varphi_c) D_u Q$ $\varphi_c = \frac{(\gamma_c - \gamma_w)}{(\gamma_s - \gamma_c)}$	$Q_c$ is the debris flow discharge, the debris flow having the same frequency as the water, m <sup>3</sup> /s. $\varphi_c$ is the debris flow increase coefficient. $D_u$ is the blockage coefficient of the debris flow. $\gamma_c$ is the debris flow density, t/m <sup>3</sup> . $\gamma_w$ is the density of water, using 1.0 t/m <sup>3</sup> . $\gamma_s$ is the density of solid particles, using 2.65 t/m <sup>3</sup> .	(Zhou et al. 1991)
Landslide volume	$V_L = 0.074 \times A_L^{1.45}$	$V_L$ is the volume of the landslide, m <sup>3</sup> . $A_L$ is the area of the landslide, which are interpreted from the remote sensing, m <sup>2</sup> . From reference (Wei et al., 2014), this model of the landslide is suitable for calculating the landslide volume in the Guanba River.	(Guzzetti et al. 2009)
The average depth of loose materials	$D_p = \frac{\sum V_L}{A}$	$D_p$ is the average depth of loose materials, 10 <sup>4</sup> m <sup>3</sup> /km <sup>2</sup> =1 cm, $A$ is the basin area above the cross section, m <sup>2</sup> , $\sum V_L$ is the cumulated landslide volume above the cross section, 10 <sup>4</sup> m <sup>3</sup> .	
Water-soil ratio $C_v$	$C_v = \frac{Q_w}{D_p}$	$C_v$ is the water-soil ratio, m <sup>3</sup> /s/cm. $Q_w$ is the water flow discharge, m <sup>3</sup> /s. $D_p$ is the average depth of loose materials, cm.	



Figure 4. Site sampling pictures for the Guanba River debris flow

**4. Dilution characteristics and dilution process of the Guanba River debris flow**

Through analysis of the dynamic process of parameters and particle size distribution curve for the debris flow at different locations, the following three dilution characteristics of the debris flow are obtained. (1) The key factors of the dilution process are the water flow discharge, average depth of loose materials and channel gradient. (2) The debris flow dilution process occurs after a significant increase in the water-soil ratio. (3) The proportion of fine particles increases after dilution of the debris flow. The change in particles size distributions is “narrowed” with the movement of the debris flow. Based on the density and dilution characteristics, the dilution process of the debris flow in the Guanba River can be divided into the upstream viscous debris flow section, midstream and downstream transitional debris flow section and downstream diluted debris flow section. With the key factors of water flow discharge, average depth of loose materials and channel gradient, we use the changes in energy and sediment content to explain the reason for the dilution process.

**4.1 Dilution characteristics of the debris flow**

**4.1.1 The dilution process of the debris flow occurs after a significant increase in water-soil ratio**

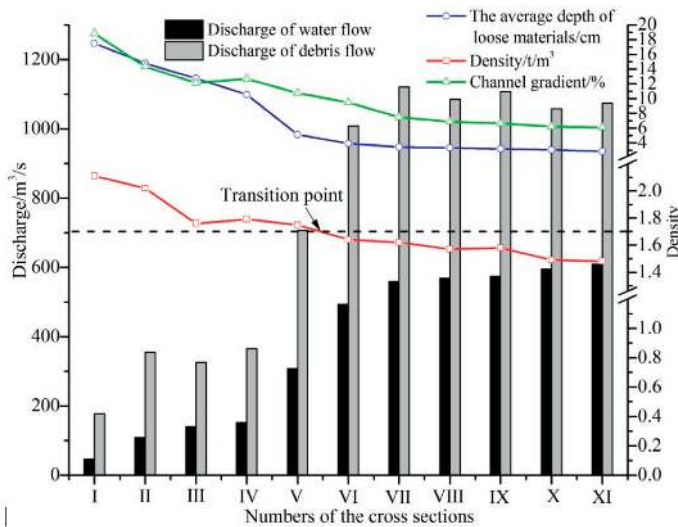


Figure 5. The change in parameters with the movement of debris flow in the Guanba River (movement of debris flow is represented by cross-sections from upstream I to downstream XI).

When the average depth of loose materials suddenly decreases, the water flow discharge increases suddenly and the channel gradient decreases. Thus, the viscous debris flow will not be immediately transformed into a diluted debris flow; instead, it will be transformed after continued movement over a very long distance, which indicates that the dilution process of viscous debris flow

occurs after a significant increase in the water-soil ratio and channel gradient. In accordance with Fig. 5, the water flow discharge, debris flow discharge, average depth of loose materials and channel gradient will experience a significant change within section IV-V; in this situation, the rates of water flow discharge and debris flow discharge increase by up to 50% and 48%, respectively, the average depth of loose materials decreases by up to 51%, and the channel gradient decreases up to 13%. However, the fluid in section IV-V is still a viscous debris flow, because the water-soil ratio and channel gradient do not exceed the required critical value to transform the viscous debris flow into a diluted debris flow. In section V-VI, the average depth of loose materials and channel gradient continue to decrease as the water flow discharge increases, and the viscous debris flow will be changed into a diluted debris flow only after moving 4.93 km. This means the debris flow dilution process occurs after a significant increase in the water-soil ratio. According to the analysis, the water flow discharge, the average depth of loose materials and the channel gradient are the key factors that determine the debris flow dilution process.

**4.1.2 The proportion of fine particles is increased after the dilution of the debris**

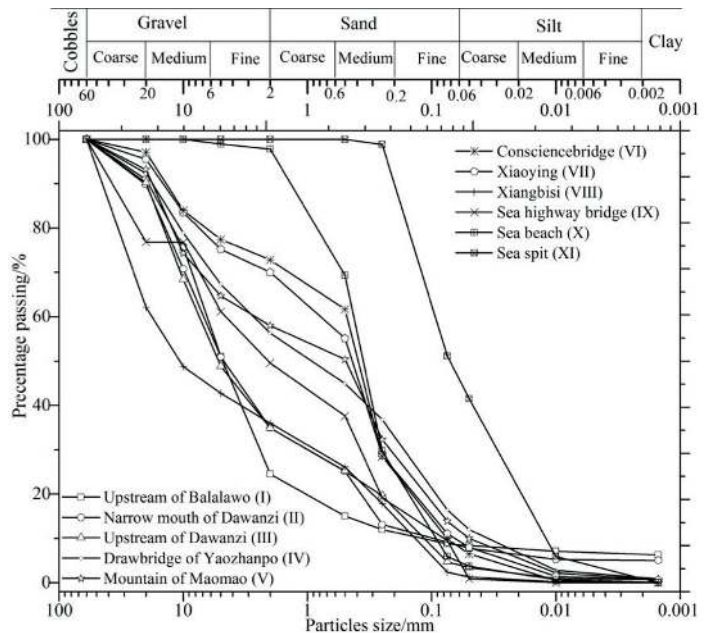


Figure 6. Particle size distributions of the Guanba River debris flow.

flow, and the size distribution of particles is “narrowed” with the movement of the debris flow

In accordance with Fig. 6, the proportion of fine particles is increased after dilution of the debris flow from cross-section V to cross section XI. As the debris flow moves from cross section I to cross section XI, the gravel content is gradually decreased from 75.5% to 0, the sand content is increased from 15.7% to 48.9%, the silt content is gradually increased from 2.5% to 51.1% and the clay content is gradually decreased from 6.3% to 0. The gravel and clay contents in the debris flow decrease gradually, whereas the sand and silt contents are gradually increased, which means that the proportion of fine particles is increased after dilution of the debris flow. In addition, the size distribution of particles in the debris flow is gradually “narrowed” from cross section I to cross section XI. The particle size distribution scope of cross section I includes gravel, sand, silt and clay; along with the movement of the debris flow, the particle size distribution scope of cross-section V includes fine gravel, sand, silt and clay, and the particle size distribution scope of cross section XI includes silt and fine sand without gravel and clay. The particle size distribution scope of soil samples from cross section I to cross section XI indicates that the particle size distribution of the debris flow fluid is gradually “narrowed”.



The increase in the proportion of fine particles and “narrowed” particle size distribution after dilution of the debris flow is possible because of the following: the sediment concentration in the debris flow will be gradually decreased with the increase in water-soil ratio, decrease of channel gradient and reduction of clay particles in the fluid; the solid mass will be selectively transported, the

quantity of coarse particles will be gradually reduced due to the sedimentation effect, fine particles (fine sand and silt) can be maintained in a suspended state, and more fine particles will enter the debris flow with the increase in turbulent fluctuation of the debris flow.

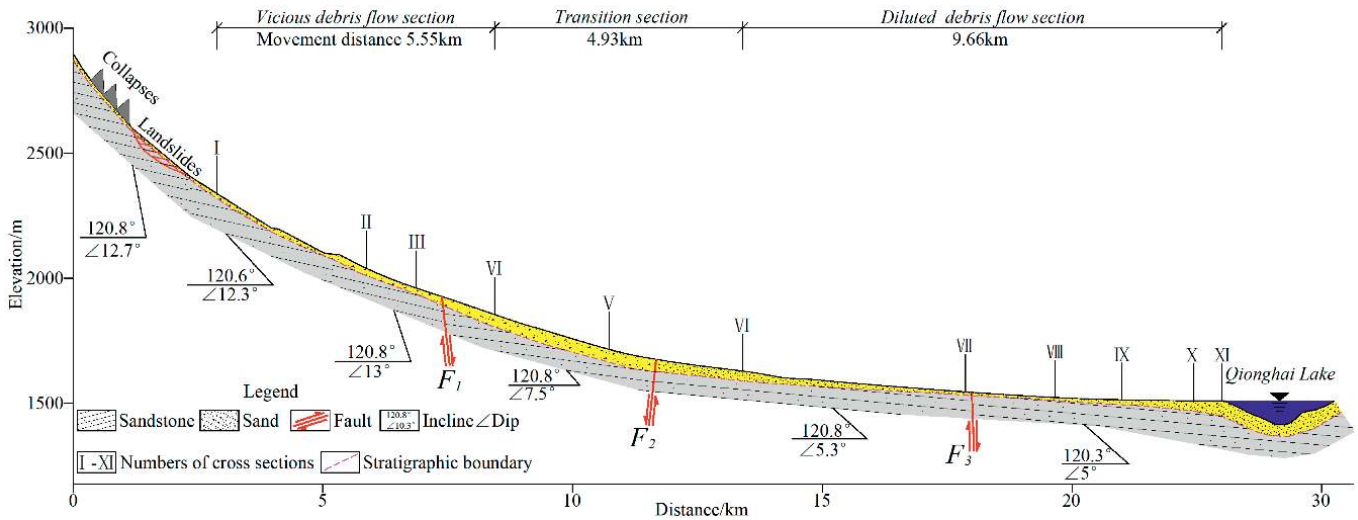


Figure 7. Section division for the debris flow dilution process in the Guanba River.

4.2 Dilution process of the Guanba River Debris flow

In accordance with the density and dilution characteristics of the 1998 debris flow, the debris flow dilution process is divided into three stages (Fig. 7): section I-IV is the viscous debris flow, IV-VI is the section in which the viscous debris flow is transformed into a diluted debris flow, and VI-XI is the diluted debris flow section (the fluid in the IX-XI section

discharge, average depth of loose materials and channel gradient on the dilution process of the 1998 debris flow. To facilitate the analysis, we define the Guanba River upstream area as the I-IV section, midstream and downstream as the IV-VI section and downstream as the VI-XI section.

Under the influence of a smaller water-soil ratio and larger channel gradient (Fig. 8), the gentle decrease in density in the upstream viscous debris flow is mainly occurs for two reasons. On the one hand, the larger upstream channel gradient leads to a stronger erosional effect from the debris flow (erosion depth in some upstream sections was up to 1.2 m within 22 months from May 31, 2010, to March 30, 2012 (Fig. 9), which means that the upstream debris flow is more erosive under the influence of a larger channel gradient), and the debris flow obtains more solid masses through the stronger erosion effect; moreover, the water flow discharge provided by the upstream mountain is smaller, which maintains the debris flow density at a higher level all the time in the upstream area. On the other hand, the erosive ability of the debris flow will be reduced with the gradual decrease in the upstream channel gradient in the Guanba River, and the solid mass content in the debris flow is reduced, and

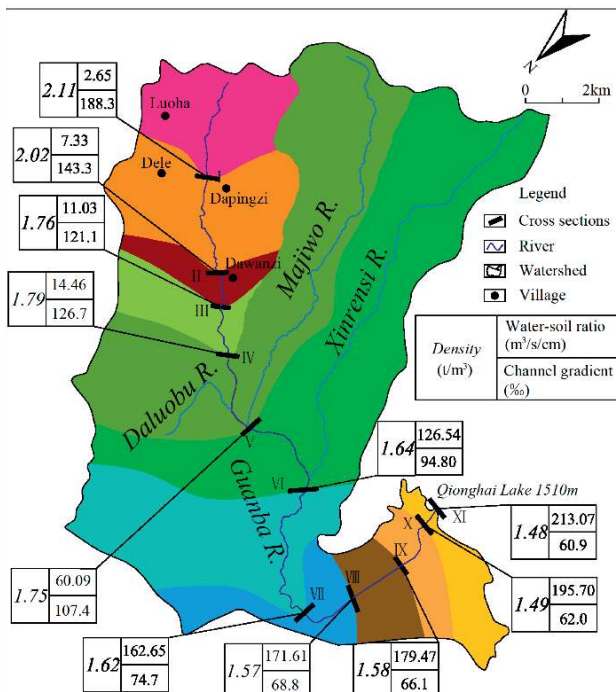


Figure 8. Plan for changes in density, water-soil ratio and channel gradient in the Guanba River (different colors indicate the basin area between cross sections).

may be a hyperconcentration flow).

In accordance with the aforementioned section division results for the debris flow dilution process, we further analyze the influence of the water flow

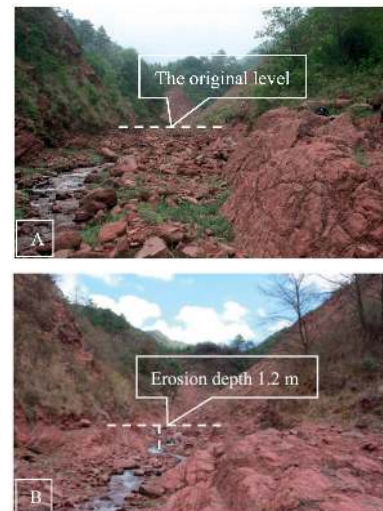


Figure 9. Change in erosive depth in the upstream area of the Guanba River. Photo A is from May 31<sup>st</sup>, 2010, and photo B is from April 30<sup>th</sup>, 2012.

thus, the debris flow density is gently decreased.

Under the influence of a significant increase in the water-soil ratio and continued decrease in the channel gradient, the midstream and downstream viscous debris flow is gradually transformed into a diluted debris flow, and the sharp decrease in its density is mainly because of the following: the influence of gully broadening (20-80 m within the midstream and downstream gully width scope of the Guanba River) on the debris flow depth at section IV-VI is gradually decreased; the decrease in the debris flow depth and channel gradient reduces the drag force of the viscous debris flow, which weakens the erosive effect of the debris flow. When the debris flow cannot obtain more solid mass through the erosive effect, a large amount of low-density water flow from the Majiwo River and Xinrensi River dilutes the debris flow (Hallworth et al. 1993), which leads to a sharp decrease in the debris flow density and transforms the viscous debris flow into a diluted debris flow.

With a large amount of low-density water flow entering the diluted debris flow, the turbulent fluctuation effect of the downstream diluted debris flow will be further enhanced, and the diluted debris flow can carry more fine particles. With the increase of sand content in the debris flow, the diluted debris flow may be converted to a hyperconcentration flow.

**5. The density evaluation model for the debris flow dilution process based on the water-soil ratio and channel gradient**

Based on the debris flow particle content, we can use the density (calculated by the Yu equation) to divide the debris flow dilution process. However, there are thousands of debris flow gullies in southwest China since the Wenchuan earthquake (Tang et al. 2009). This method will require much time and money to obtain the particle content based on a field investigation and laboratory test. A rapid and reliable evaluation model for detecting the debris flow dilution process is urgently needed. Our density evaluation model is suitable for rapidly detecting the debris flow dilution process because the input data (water-soil ratio and channel gradient) of the model are easily obtained from the remote sensing data and topographic map of 1:10000 or 1:50000 scale (Zhou et al., 2016). The density evaluation model for the debris flow dilution process is established according to the following steps.

**5.1 Correlation analysis of model parameters**

In accordance with the analysis results of the debris flow dilution process in the Guanba River in 1998, the water source (discharge), loose materials source (average depth of loose materials) and gradient (channel gradient) are the main factors that influence the debris flow dilution process. Based on the Pearson method, we have calculated the correlation coefficient of the density with the water-soil ratio and gradient. The fitting result shows that the density has a positive correlation with the gradient and the correlation coefficient is 0.97, and the density has a negative correlation with the water-soil ratio, and

**Table 2.** Water-soil ratio, gradient and debris flow density in Guanba River in 1998.

Numbers	Water-soil ratio (m <sup>3</sup> /s/cm)	Gradient (%)	Actual Density (t/m <sup>3</sup> )	Calculated density (t/m <sup>3</sup> )	ARE (%)
I	2.65	18.83	2.11	2.13	9.41%
II	7.33	14.33	2.02	1.95	
III	11.03	12.12	1.76	1.85	
IV	14.46	12.67	1.79	1.87	
V	60.09	10.74	1.75	1.75	
VI	126.54	9.48	1.64	1.66	
VII	162.65	7.47	1.62	1.59	
VIII	171.61	6.88	1.57	1.57	
IX	179.47	6.61	1.58	1.57	
X	195.70	6.20	1.49	1.55	
XI	213.07	6.09	1.48	1.54	
Coefficient of correlation	-0.89	0.97	1.00	None	

the correlation coefficient is -0.89 (Table 2). This indicates that the density correlates well with the gradient and water-soil ratio.

**5.2 Model establishment**

Based on the Pearson method, we know the density correlates well with the water-soil ratio and channel gradient. Therefore, we use a regression analysis to establish a density evaluation model based on the Lorenz equation.

$$\gamma'_c = \gamma_0 + \frac{A}{\left[1 + \left(\frac{C - C_v}{\omega_1}\right)^2\right] \left[1 + \left(\frac{J - J_c}{\omega_2}\right)^2\right]} \tag{1}$$

$$\gamma'_c = 1.4 + \frac{0.85}{\left[1 + \left(\frac{C + 117.46}{316.31}\right)^2\right] \left[1 + \left(\frac{J - 20.49}{10.57}\right)^2\right]} \tag{2}$$

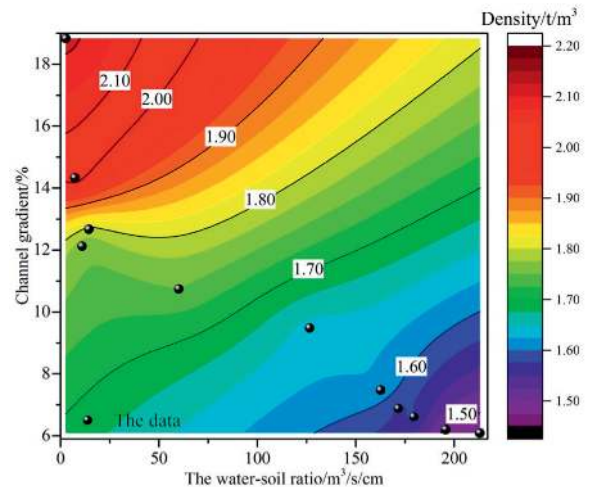
$$ARE = \frac{\sum_{i=1}^n |\gamma'_{ci} - \bar{\gamma}_c|}{n\bar{\gamma}_c} \times 100\% \tag{3}$$

The input data of this model are the water-soil ratio and channel gradient, and the output result of this model is the debris flow density. The Lorenz equation is shown in equation (1).

In equation (1),  $\gamma'_c$  is the debris flow density,  $\gamma_0$  is the minimum density using 1.4 t/m<sup>3</sup>,  $C$  is the water-soil ratio expressed in m<sup>3</sup>/s/cm,  $J$  is the channel gradient and  $J > 0$  expressed in %.  $A$  is the difference value between the maximum and minimum debris flow densities.  $C_v$  is the water-soil ratio corresponding to the maximum debris flow density, and  $J_c$  is the channel gradient corresponding to the maximum debris flow density.  $\omega_1$  is the maximum water-soil ratio corresponding to 0.5  $A$ , and  $\omega_2$  is the maximum gradient value corresponding to 0.5  $A$ . In equation (3),  $\gamma'_{ci}$  is the density of the  $i$  cross-section, t/m<sup>3</sup>.  $\bar{\gamma}_c$  is the average of the actual density, t/m<sup>3</sup>.  $n$  is the numbers of cross-sections.

The density evaluation model for the debris flow dilution process is established based on the water-soil ratio and channel gradient using the Lorenz numerical simulation. Equation (2) is the specific expression of the density evaluation model. The correlation coefficient  $R^2$  of this equation is 0.94. In addition, Equation (3) of the Average Relative Error (ARE) is used to check the error in the calculation. From Table 2, we know the ARE value of the density evaluation model is low, which is 9.41%. Therefore, the density evaluation simulated by the Lorenz equation has high precision (Fig. 10).

The scope of application is shown as follows. The range of water-soil ratio is 0-632.62 m<sup>3</sup>/s/cm, and the range of channel gradient is 0-21.14% in the density evaluation model for the debris flow dilution process. In addition, the density model cannot be used under the circumstances when all debris flow



**Figure 10.** Fitting curve for the density evaluation model of the dilution process based on the channel gradient and water-soil ratio.

density and water-soil ratio values are obtained. Our model is a rapid model for detecting the debris flow dilution process in a large boundary using remote sensing interpretation and a geographical map.

In accordance with Fig. 10, the debris flow density in Guanba River will gradually decrease with the increase in water-soil ratio and decrease in channel gradient. The density evaluation model for the debris flow dilution process based on the water-soil ratio and channel gradient can better reflect the debris flow dilution process in the Guanba River in 1998. Under certain conditions, the density evaluation model can be used to predict the dilution process of landslide triggered debris flows in the southwestern mountainous area of China.

### 5.3 Verification of the density evaluation model for the debris flow dilution process

This study selects three typical cases to verify the density evaluation model, which is the Gaoqiao Gully debris flow on August 13, 2010, the Haizi Valley debris flow on August 11<sup>th</sup>, 1996, and the Aizi Valley debris flow on June 28<sup>th</sup>, 2012. The debris flow data for Gaoqiao Gully are obtained from a previous study (Zhang, 2014). The debris flow data for Haizi Valley and Aizi Valley are obtained from a previous study (Chen, 2016) and a related report of debris flow

**Table 3.** Calculation results for the debris flow dilution process in the Gaoqiao Gully, Haizi Valley and Aizi Valley.

Name	Dilution Location of Debris Flow (Distance to the gully mouth)	Longitude and latitude	Water-soil ratio (m <sup>3</sup> /s/cm)	Channel gradient (%)	Actual Density (t/m <sup>3</sup> )	Calculated Density (t/m <sup>3</sup> )	ARE
Gaoqiao Gully	6.7	N31°29'16.18" E104°05'46.82"	5.72	14.5	1.91	1.96	2.86 %
	3.2	N31°29'21.85" E104°07'3.80"	12.39	9.8	1.73	1.76	
	0	N31°29'26.98" E104°08'9.20"	16.84	7.4	1.61	1.68	
Haizi Valley	8.8	N27°13'46.16" E102°59'9.21"	12.50	14.1	1.86	1.93	3.65 %
	7.2	N27°13'0.20" E102°58'27.26"	13.49	11.2	1.75	1.81	
	4.5	N27°11'38.11" E102°56'9.52"	14.61	6.5	1.6	1.66	

prevention. The water-soil ratios of the three debris flows are obtained from the remote sensing interpretation and geographical map. Based on Equation (2), the results of the debris flow dilution process are shown in Table 3.

From Table 3, the viscous debris flow is gradually transformed into a diluted debris flow during movement with an increase in the water-soil ratio and gradual decrease in the channel gradient for all three debris flows. The dilution process of the three debris flows predicted by the density evaluation model is basically consistent with the actual dilution process. The ARE values of the density evaluation model in Gaoqiao Gully, Haizi Valley and Aizi Valley are 2.86%, 3.65% and 3.06%, respectively. This demonstrates that the density evaluation model is suitable for detecting the debris flow dilution process.

Here, the following should be noted that: the density evaluation model for the debris flow dilution process established according to the typical cases of debris flows in the Guanba River is only a preliminary work, and more debris flow dilution cases will be studied in the future work to further complete the density evaluation model for the prediction of the debris flow dilution process.

## 6. Conclusions

1. The key factors in the dilution process of landslide triggered debris flows are the water flow discharge, the average depth of loose materials and the channel gradient.
2. The debris flow that occurred in 1998 in the Guanba River had the following three dilution characteristics: 1) The debris flow dilution process occurs after a significant increase in the water-soil ratio. 2) The proportion of fine particles is increased after dilution of the debris flow. 3) The size distribution of particles is "narrowed". The characteristic that the debris flow dilution process occurs after a significant increase in the water-soil ratio is reflected by the

fact that the viscous debris flow is completely transformed into a diluted debris flow only after moving for a distance of 4.93 km. The characteristic that the proportion of fine particles is increased after dilution of the debris flow is reflected by the fact that the proportion of fine particles in the debris flow will gradually increase with the increase in movement distance of the debris flow.

3. The debris flow dilution process in the Guanba River can be divided into the upstream viscous debris flow section, midstream and downstream transitional debris flow section and downstream diluted debris flow section. When the debris flow cannot obtain more solid masses through the erosion effect, the viscous debris flow transforms into a diluted debris flow because a large amount of low-density water flow from the Majiwo River and Xinrensi River dilutes the debris flow.
4. In accordance with the calculation result of the Pearson correlation coefficient method, the debris flow density in Guanba River in 1998 has a negative correlation with the water-soil ratio, and the correlation coefficient is -0.89; the density has a positive correlation with the channel gradient, and the correlation coefficient is 0.97. The density evaluation model is established based on the water-soil ratio and channel gradient. This model can be expressed by the Lorentz equation, and the specific expression is

$$\gamma'_c = 1.4 + \frac{0.85}{\left[1 + \left(\frac{C + 117.46}{316.31}\right)^2\right] \left[1 + \left(\frac{J - 20.49}{10.57}\right)^2\right]}$$

the correlation coefficient is 0.94 and the ARE value is 9.41%. The density evaluation model can reflect the debris flow dilution process in that the debris flow density will decrease gradually with the increase in water-soil ratio and decrease in channel gradient.

### Acknowledgement:

The study is supported by the National Natural Science Foundation of China (Grant No. 41671112) and Newton Fund via Natural Environment Research Council (Grant No 41661134012). The Opening Project of Sichuan Province University Key Laboratory of Bridge Non-destruction Detecting and Engineering Computing (2016QYY02).

### Reference:

- Chen, J., Chen, X., Li, Y. & Wang, F. (2015a). An experimental study of dilute debris flow characteristics in a drainage channel with an energy dissipation structure. *Engineering Geology*, 193, 224-230.
- Chen, N. S. & Chen, R. (2002). Glacial and rainstorm debris-flow in peilong gully and possibility in its blocking main river (In Chinese). *Journal of Mountain Science*, 20(6), 738-742.
- Chen, N. S., Yue, Z. Q., Cui, P. & Li, Z. L. (2007). A rational method for estimating maximum discharge of a landslide-induced debris flow: A case study from southwestern china. *Geomorphology*, 84(1-2), 44-58.
- Chen, N. S., Hu, G. S., Qi, X. Y., Wang, Y. H. & Sun, L. (2015b). Analysis of grouting treatment in minute joint area of three gorges dam (In Chinese). *Yangtze River*, 46(10), 34-37.
- Chen, N. S., Chen, M. L., Li, J., He, N., Deng, M. F., Javed, I. T. & Cai, M. (2015c). Effects of human activity on erosion, sedimentation and debris flow activity - A case study of the Qionghai lake watershed, Southeastern Tibetan Plateau, China. *The Holocene*, 25(6), 973-988.
- Chen, N. S., Tanoli, J. I., Hu, G. S., Wang, F. N., Yang, C. L., Ding, H. T., He, N., & Wang, T. (2016). Outlining a stepwise, multi-parameter debris flow monitoring and warning system: an example of application in Aizi Valley, China. *Journal of Mountain Science*, 13(9), 1527-1543.



- Dasgupta, P. (2003). Sediment gravity flow—the conceptual problems. *Earth-Science Reviews*, 62(3), 265-281.
- Guo, X. J., Cui, P., Li, Y., Zou, Q., & Kong, Y. D. (2015). The formation and development of debris flows in large watersheds after the 2008 Wenchuan Earthquake. *Landslides*, 13(1), 1-13.
- Guo, X. J., Cui, P., Li, Y., Fan, J. L., Yan, Y. & Ge, Y. G. (2016). Temporal differentiation of rainfall thresholds for debris flows in Wenchuan earthquake-affected areas. *Environmental Earth Sciences*, 75(2): 1-12.
- Guzzetti, F., Ardizzone, F., Cardinali, M., Rossi, M. & Valigi, D. (2009). Landslide volumes and landslide mobilization rates in Umbria, central Italy. *Earth and Planetary Science Letters*, 279(3-4), 222-229.
- Hallworth, M. A., Phillips, J. C., Huppert, H. E., & Sparks, R. S. J. (1993). Entrainment in turbulent gravity currents. *Nature*, 362(6423), 829-831.
- Iverson, R. M., Reid, M. E. & LaHusen, R. G. (1997). Debris-flow mobilization from landslides 1. *Annual Review of Earth and Planetary Sciences*, 25(1), 85-138.
- Kang, Z. C., Li, Z. F., Ma, A. N. & Luo, J. T. (2004). *Debris flow study in China* (In Chinese). Science press.
- Lavigne, F. (2004). Rate of sediment yield following small-scale volcanic eruptions: A quantitative assessment at the Merapi and Semeru stratovolcanoes, Java, Indonesia. *Earth Surface Processes and Landforms*, 29(8), 1045-1058.
- Pederson, C. A., Santi, P. M. & Pyles, D. R. (2015) Relating the compensational stacking of debris-flow fans to characteristics of their underlying stratigraphy: Implications for geologic hazard assessment and mitigation. *Geomorphology*, 248, 47-56.
- Peng, J. B., Fan, Z. J., Wu, D., Zhuang, J. Q., Dai, F. C., Chen, W. W. & Zhao, C. (2015). Heavy rainfall triggered loess–mudstone landslide and subsequent debris flow in Tianshui, China. *Engineering Geology*, 186, 79-90.
- Pierson, T. C. & Scott, K. M. (1985). Downstream dilution of a lahar: Transition from debris flow to hyperconcentrated streamflow. *Water resources study*, 21(10), 1511-1524.
- Pierson, T. C. & Costa, J. E. (1987). A rheologic classification of subaerial sediment-water flows. *Reviews in Engineering Geology*, 7, 1-12.
- Pierson, T. C. (2005). *Distinguishing between debris flows and floods from field evidence in small watersheds*. US Geological Survey.
- Pierson, T. C. (2005). Hyperconcentrated flow—transitional process between water flow and debris flow. Debris-flow hazards and related phenomena, Springer, pp 159-202.
- Qu, Y. P., Tang, C., Liu, Y., Wang, J. L., & Chang, M. (2015). Survey and analysis of the “8.13” debris flows fan in Longchi Town of Dujiangyan City, Sichuan province. *Journal of Hydraulic Engineering*, 46(2), 197-207.
- Shen, Y. M., Xu, Z. C. & Xu, H. J. (1984). *Handbook of rainstorm and flood calculation in the middle and small watersheds of Sichuan Province* (In Chinese). Chengdu: Sichuan Provincial Water Conservancy and electric power department.
- Smith G. A (1991). Lahars: *Volcano hydrologic-events and deposition in the debris flow—hyperconcentrated flow continuum*. In: R.V. Fisher, & G.A. Smith (Eds.), *Sedimentation in Volcanic Settings* (59-70). SEPM Special Publication, 45.
- Svensden, J., Stollhofen, H., Krapf, C. B. & Stanistreet, I. G. (2003). Mass and hyperconcentrated flow deposits record dune damming and catastrophic breakthrough of ephemeral rivers, Skeleton Coast Erg, Namibia. *Sedimentary Geology*, 160(1-3), 7-31.
- Tang, C., Zhu, J., Li, W. L., & Liang, J. T. (2009). Rainfall-triggered debris flows following the Wenchuan Earthquake. *Bulletin of Engineering Geology & the Environment*, 68(2), 187-194.
- Wei, X. L., Chen, N. S., Cheng, Q. G., Na, H., Deng, M. F. & Iqbal, T. J. (2014). Long-term activity of earthquake-induced landslides: A case study from Qionghai Lake Basin, Southwest of China. *Journal of Mountain Science*, 11(3), 607-624.
- Xu, F. G., Yang, X. G. & Zhou, J. W. (2014). An empirical approach for evaluation of the potential of debris flow occurrence in mountainous areas. *Environmental Earth Sciences*, 71(7), 2979-2988.
- Yu, B. (2008). Study on the calculating density by the deposit of debris flows (In Chinese). *Acta Sedimentologica Sinica*, 26(5), 789-796.
- Zhang, S. H. (2014). *Study on development characteristics and perniciousness of Gaoqiao Gully debris flows in Hanqing section of Mianmao highway from Sichuan*. Sichuan Jiaotong University. (In Chinese)
- Zhou, B. F., Li, D. J., Luo, D. F., Lu, R. R. & Yang, Q. X. (1991). *A guide for debris-flows hazard mitigation* (In Chinese). Science Publisher, Beijing.
- Zhou, W., Tang, C., Asch, T. W. J. V., & Chang, M. (2016). A rapid method to identify the potential of debris flow development induced by rainfall in the catchments of the Wenchuan Earthquake Area. *Landslides*, 13(5), 1243-1259.