

# The multiwavelength afterglow of GRB 050721: a puzzling rebrightening seen in the optical but not in the X-ray<sup>\*</sup>

L. A. Antonelli<sup>1,2</sup>, V. Testa<sup>1</sup>, P. Romano<sup>3</sup>, D. Guetta<sup>1</sup>, K. Torii<sup>4</sup>, V. D'Elia<sup>1</sup>, D. Malesani<sup>5</sup>, G. Chincarini<sup>3,6</sup>, S. Covino<sup>3</sup>, P. D'Avanzo<sup>3</sup>, M. Della Valle<sup>7,8</sup>, F. Fiore<sup>1</sup>, D. Fugazza<sup>3</sup>, A. Moretti<sup>3</sup>, L. Stella<sup>1</sup>, G. Tagliaferri<sup>3</sup>, S. Barthelmy<sup>9</sup>, D. Burrows<sup>10</sup>, S. Campana<sup>3</sup>, M. Capalbi<sup>2</sup>, G. Cusumano<sup>11</sup>, N. Gehrels<sup>9</sup>, P. Giommi<sup>2</sup>, D. Lazzati<sup>12</sup>, V. La Parola<sup>11</sup>, V. Mangano<sup>11</sup>, T. Mineo<sup>11</sup>, J. Nousek<sup>10</sup>, P. T. O'Brien<sup>13</sup>, and M. Perri<sup>2</sup>

<sup>1</sup> INAF - Astronomical Observatory of Rome, via Frascati, 33, 00040 Monte Porzio Catone, Rome, Italy  
e-mail: a.antonelli@oa-roma.inaf.it

<sup>2</sup> ASI Science Data Center, via Galileo Galilei, 00044 Frascati, Rome, Italy

<sup>3</sup> INAF - Astronomical Observatory of Brera, via E. Bianchi 46, Merate (LC) 23807, Italy

<sup>4</sup> Department of Earth and Space Science, Graduate School of Science, Osaka University, 1-1 Machikaneyama-cho, Toyonaka, Osaka 560-0043, Japan

<sup>5</sup> International School for Advanced Studies (SISSA-ISAS), via Beirut 2-4, 34014 Trieste, Italy

<sup>6</sup> Università degli Studi di Milano "Bicocca", Piazza delle Scienze 3, 20126 Milano, Italy

<sup>7</sup> INAF - Astrophysical Observatory of Arcetri, Largo E. Fermi, 5, 50125 Firenze, Italy

<sup>8</sup> Kavli Institute for Theoretical Physics University of California Santa Barbara, CA 93106, USA

<sup>9</sup> NASA/Goddard Space Flight Center, Greenbelt, MD 20771, USA

<sup>10</sup> Department of Astronomy & Astrophysics, 525 Davey Lab., Pennsylvania State University, University Park, PA 16802, USA

<sup>11</sup> INAF - Istituto di Astrofisica Spaziale e Fisica Cosmica Sezione di Palermo, via Ugo La Malfa 153, 90146 Palermo, Italy

<sup>12</sup> JILA, University of Colorado, Boulder, CO 80309, USA

<sup>13</sup> Department of Physics and Astronomy, University of Leicester, Leicester LE 1 7RH, UK

Received 27 March 2006 / Accepted 12 June 2006

## ABSTRACT

**Context.** GRB 050721 was detected by *Swift* and promptly followed-up, in the X-ray by *Swift* itself and, in the optical band, by the VLT operated, for the first time, in rapid response mode starting observations about 25 m after the burst. A multiwavelength monitoring campaign was performed in order to study its afterglow's behavior.

**Aims.** We present the analysis of the early and late afterglow emission in both the X-ray and optical bands, as observed by *Swift*, a robotic telescope, and the VLT. We compare early observations with late afterglow observations obtained with *Swift* and the VLT in different bands in order to constrain the density of the medium in which the fireball is expanding.

**Methods.** We have analyzed both the X-ray and the optical light curves and compared the spectral energy distribution of the afterglow at two different epochs.

**Results.** We observed an intense rebrightening in the optical band at about one day after the burst which was not seen in the X-ray band. This is the first observation of a GRB afterglow in which a rebrightening is observed in the optical but not in the X-ray band. The lack of detection in X-ray of such a strong rebrightening at lower energies may be described with a variable external density profile. In such a scenario, the combined X-ray and optical observations allow us to derive that matter located at  $\sim 10^{17}$  cm from the burst is about a factor of 10 higher than in the inner region.

**Key words.** gamma ray: bursts

## 1. Introduction

The *Swift* Gamma-ray Burst Explorer (Gehrels et al. 2004) is currently detecting 2–3 gamma-ray bursts (GRBs) per week, distributing coordinates with very small uncertainties (few arcmin down to several arcsec) with delays ranging from few seconds to tens of seconds after the GRB event. Thanks to its fast-pointing capabilities, *Swift* is able to perform observations of the GRB early afterglow phases, both in the X-ray and ultraviolet/optical bands. Moreover, the prompt *Swift* alerts also allow quick follow-up of GRBs with ground-based facilities. In particular the European Southern Observatory (ESO) made its four Very Large Telescope (VLT) units able to quickly react

to transient sources, allowing them to repoint and start observations within just 8 min after the trigger, by developing the Rapid Response Mode (RRM) procedure. Before *Swift* the time needed to determine the GRB position was large and most afterglow measurements could start hours after the burst. Thanks to *Swift* we can now investigate the characteristics of the very early stages of the afterglow, when the physical properties of the fireball and of the circumburst medium can be derived from the properties of the light curve. Moreover, early observations easily span a long dynamical range in the afterglow lifetime, so that a rich phenomenology can be observed.

Here we report our analysis of GRB 050721, a long, weak burst discovered and located by the Burst Alert Telescope (BAT, Barthelmy et al. 2005) on board *Swift* and immediately (186 s after the burst) followed-up with the *Swift* narrow field

<sup>\*</sup> Based on observations acquired with ESO telescopes at Paranal, under programs 275.D-5022 and 075.D-0787.

**Table 1.** Log of *Swift* XRT observations.

Sequence	Obs. mode	Start time	End time	Exposure s	Time since trigger s
		yyyy-mm-dd hh:mm:ss	yyyy-mm-dd hh:mm:ss		
00146970000	XRT/IM	2005-07-21 04:32:20	2005-07-21 04:32:22	2.5	186
00146970000	XRT/WT	2005-07-21 04:32:28	2005-07-21 05:48:30	205	194
00146970000	XRT/PC	2005-07-21 04:34:38	2005-07-21 05:50:49	1291	324
00146970001	XRT/PC	2005-07-21 09:00:03	2005-07-21 19:01:44	8818	16249
00146970003	XRT/PC	2005-07-22 00:05:07	2005-07-22 23:42:59	19169	70554
00146970004	XRT/PC	2005-07-23 11:27:27	2005-07-24 13:13:58	5937	197894
00146970005	XRT/PC	2005-08-28 14:50:42	2005-08-29 08:52:59	8600	3320489

instruments: the X-ray Telescope (XRT, Burrows et al. 2005) and the UV Optical Telescope (UVOT, Roming et al. 2005). A previously unknown fading X-ray source was detected within the BAT error circle, while no evident optical counterparts were seen in the optical images obtained by UVOT (Antonelli et al. 2005). The fast accurate localization allowed a 0.3 m robotic telescope, located in New Mexico, to detect the optical afterglow (OA)  $\sim 369$  s after the trigger (Torii 2005), at the level of  $I_c \sim 15.6$  mag. The field was also observed by the *MISTICI* collaboration with the ESO-VLT UT2 telescope operated for the first time in rapid response mode (RRM). The VLT observations started 25 min after the GRB and confirmed the presence of the OA within the XRT error circle (Covino et al. 2005). Such a prompt identification of the OA allowed a very dense sampling of its light curve at early times, making it one of best examples ever obtained (Testa et al. 2005). A spectroscopic observation was also performed at VLT but the OA spectrum was heavily contaminated by the contribution of a bright ( $R = 16.7$  mag) foreground star lying very close ( $1.4''$ ) to the OA. No useful information could be extracted from it.

The OA was extensively observed for several days after the burst with both *Swift* and the VLT, obtaining a very good multi-wavelength coverage.

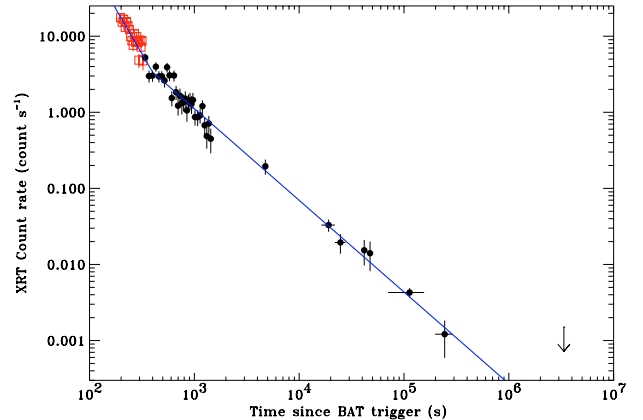
In the next sections a detailed study of the XRT and the VLT data is presented and discussed.

## 2. GRB 050721

GRB 050721 was detected by BAT on 2005, July 21 at 04:29:14.3 UT and the BAT on-board calculated location was  $RA = 16^h53^m47^s$ ,  $Dec = -28^\circ23'22''$  (J2000), with an uncertainty of  $3'$  error radius (90% containment, Antonelli et al. 2005). The refined BAT ground position was  $RA = 16^h53^m48^s.5$ ,  $Dec = -28^\circ23'10''$  (J2000), with an error radius of  $3'$  (90% containment, statistical and systematic). The partial coding was 13% (Fenimore et al. 2005).

The masked-weighted light curve shows a FRED-like structure with a single large peak starting to rise at  $T_0 - 5$  s ( $T_0$  being the trigger time), peaking at  $T_0 + 3.7$  s and decaying back to background levels by  $T_0 + 50$  s. The peak is visible in the 15–100 keV energy band, but not at higher energies. The calculated  $T_{90}$  (15–350 keV) is  $(39 \pm 2)$  s (estimated error including systematics).

The power-law photon index of the time-averaged spectrum was  $1.81 \pm 0.08$ . The fluence in the 15–350 keV band was  $(5.05 \pm 0.25) \times 10^{-6}$  erg  $cm^{-2}$ . The 1-s peak photon flux measured from  $T_0 + 3.7$  s in the 15–350 keV band was  $(3.4 \pm 0.8)$  ph  $cm^{-2} s^{-1}$ . All the errors are quoted at the 90% confidence level (Fenimore et al. 2005).



**Fig. 1.** X-ray light curve of GRB 050721 afterglow in the 0.2–10 keV energy band. Empty squares and filled circles indicate WT and PC data, respectively. The curve is background-subtracted and the time is referred to the BAT trigger, 2005 Jul. 21 at 04:29:14.28 UT. The solid line shows the best-fit broken power law (see Sect. 3.2). The last point is a  $3\text{-}\sigma$  upper limit.

## 3. XRT data analysis

The XRT observations of GRB 050721 started on July 21, 2005 at 04:32:20 UT, only 186 s after the trigger, and ended on July 28 at 08:52:59 UT, thus summing up a total net exposure (in photon counting (PC) mode) of  $\sim 35\,000$  s spread over a  $\sim 4$  d baseline (see Fig. 1). The monitoring was organized in 7 observations. The first one was performed as an automated target (AT) with XRT in auto state. Therefore, during this observation the automated mode switching made XRT take an initial 2.5 s image (IM at  $T_0 + 186$  s) followed by ( $T_0 + 194$  s) a series of windowed timing (WT) frames which were taken until the on-board measured count rate was low enough for XRT to switch to PC mode ( $T_0 + 324$  s). After this, XRT remained in PC mode. The log of *Swift* observations used for this work is summarized in Table 1.

The XRT data were processed with the task *xrtpipeline* (v0.9.9), applying standard calibration and filtering and screening criteria, i.e., we cut out temporal intervals during which the CCD temperature was higher than  $-47^\circ\text{C}$ , and we removed hot and flickering pixels. An on-board event threshold of  $\sim 0.2$  keV was also applied to the central pixel, which has been proven to reduce most of the background due to either the bright Earth limb or the CCD dark current (which depends on the CCD temperature). For our analysis we further selected XRT grades 0–12 and 0–2 for PC and WT data, respectively (according to *Swift* nomenclature).

### 3.1. Spatial analysis

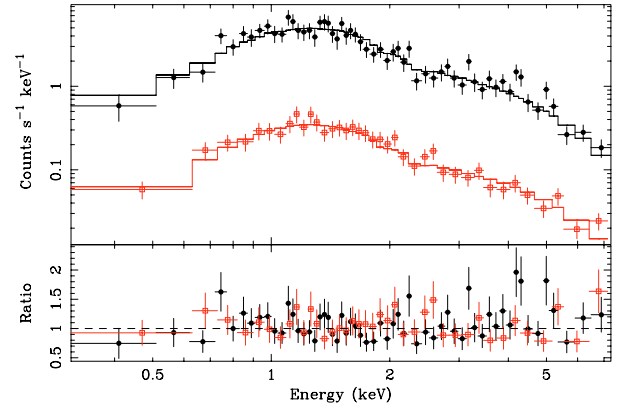
An uncatalogued, fading X-ray source was detected within the BAT error circle. We used the `xrtcentroid` task (v0.2.7) to derive the afterglow position, obtaining RA =  $16^{\text{h}}53^{\text{m}}44^{\text{s}}.62$ , Dec =  $-28^{\circ}22'52''.1$  (J2000). We estimate the uncertainty to be  $3''.3$  (90% confidence level). This position takes into account the correction for the misalignment between the telescope and the satellite optical axis (Moretti et al. 2005).

### 3.2. Temporal analysis

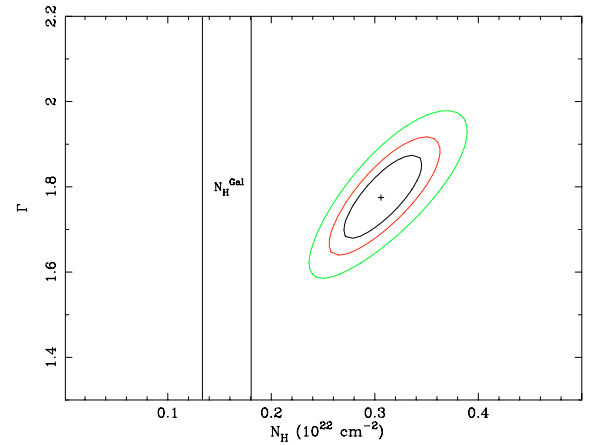
During the first orbit of the XRT observation the intensity of the afterglow was high enough to cause pile-up in the PC mode data. To account for this effect we extracted the source events in an annulus with a 30-pixel outer radius ( $\sim 71''$ ) and a 4-pixel inner radius. For the PC data collected after the first orbit, the entire circular region (30 pixel radius) was used, instead. The WT data were extracted in a rectangular region  $40 \times 20$  pixels along the image strip. The selected extraction regions correspond to  $\sim 43\%$  (piled-up PC),  $\sim 95\%$  (non piled-up PC), and  $\sim 95\%$  (WT) of the XRT PSF. To account for the background, data were also extracted in PC mode within an annular region (inner and outer radii of 50 and 100 pixels) centered on the source, and in WT mode within a rectangular box ( $40 \times 20$  pixels) far from background sources. Figure 1 shows the background-subtracted light curve extracted in the 0.2–10 keV energy band, with the BAT trigger as origin of time. The last point is a  $3\text{-}\sigma$  upper limit. A fit with a broken power law  $F(t) = Kt^{-\alpha_1}$  for  $t < t_b$  and  $F(t) = Kt_b^{-\alpha_1} (t/t_b)^{-\alpha_2}$  for  $t > t_b$ , where  $t_b$  is the time of the break, yields slopes  $\alpha_1 = 2.37 \pm 0.24$  and  $\alpha_2 = (1.20 \pm 0.04)$ , and a break at  $t = 399^{+75}_{-35}$  s after the BAT trigger ( $\chi^2_{\text{red}} = 1.39$ ; 52 d.o.f.). The late afterglow (i.e. the last 3 observations reported in Table 1) light curve is fitted by a simple power law  $F(t) = Kt^{-\alpha}$  with  $\alpha = 1.20^{+0.39}_{-0.42}$ .

### 3.3. Spectral analysis

Spectra of the source and background were extracted in both the WT mode and PC mode in the same regions described above at the time corresponding to the first orbit. Ancillary response files were generated with the task `xrtmkarf` within FTOOLS v6.0.4, and account for different extraction regions and PSF corrections. We used the latest spectral redistribution matrices (RMF, v008). The 0.3–10 keV band spectra were rebinned with a minimum of 20 counts per energy bin to allow the use of  $\chi^2$  and fitted by adopting a simple model of an absorbed power law model, with the Hydrogen column density (at  $z = 0$ ) kept as a free parameter. In the early part of the observation (first 324 s) the WT mode spectrum yields a photon index  $\Gamma = 1.71^{+0.14}_{-0.13}$  and a column density  $N_{\text{H}} = 2.92^{+0.55}_{-0.49} \times 10^{21} \text{ cm}^{-2}$  (slightly higher than the Galactic value:  $1.57 \times 10^{21} \text{ cm}^{-2}$ ; Dickey & Lockman 1990;  $1.60 \times 10^{21} \text{ cm}^{-2}$ ; Kalberla et al. 2005),  $\chi^2_{\text{red}} = 1.00$ ; 55 d.o.f. The observed count rate was  $(10.0 \pm 0.3) \text{ cts s}^{-1}$  corresponding to an unabsorbed flux  $F_{\text{X}}(0.2\text{--}10 \text{ keV}) = 7.2 \times 10^{-10} \text{ erg s}^{-1} \text{ cm}^{-2}$ . In the remaining part of the first orbit (324–1450 s) the PC mode spectrum yields a photon index  $\Gamma = 1.86^{+0.17}_{-0.16}$  and a column density  $N_{\text{H}} = 3.25^{+0.74}_{-0.62} \times 10^{21} \text{ cm}^{-2}$ ,  $\chi^2_{\text{red}} = 0.67$ ; 36 d.o.f. The observed count rate was  $(0.72 \pm 0.02) \text{ cts s}^{-1}$  corresponding to an unabsorbed flux of  $F_{\text{X}}(0.2\text{--}10 \text{ keV}) = 1.40 \times 10^{-10} \text{ erg s}^{-1} \text{ cm}^{-2}$ . In order to enhance statistics, we also performed a simultaneous fit of the WT data and the PC data relevant to the first orbit within the 0.3–10 keV band. A free constant factor was introduced to



**Fig. 2.** X-ray spectrum of the afterglow of GRB 050721. *Top*: spectra of WT (filled circles) and PC data (empty squares) fitted with an absorbed power law model. *Bottom*: residuals from the simultaneous power-law fit to all the data.



**Fig. 3.** Contour plot of the column density vs. the power law photon index for the X-ray spectrum of GRB 050721. The contours refer to 1-, 2- and 3- $\sigma$  confidence levels. The Galactic column density ( $1.60 \times 10^{21} \text{ cm}^{-2}$ ; Kalberla et al. 2005) is reported with an uncertainty of 15% (solid vertical lines).

take into account both the decrease of the mean flux between the WT and PC data and the different size of extraction regions. We obtain a photon index  $\Gamma = 1.77^{+0.11}_{-0.10}$  and a column density  $N_{\text{H}} = 3.06^{+0.43}_{-0.39} \times 10^{21} \text{ cm}^{-2}$ ,  $\chi^2_{\text{red}} = 0.86$ ; 93 d.o.f. (Fig. 2). Figure 3 shows the contour plot of the column density versus the power law photon index, which shows that the column density is higher ( $>3\text{-}\sigma$  confidence level) than the Galactic value. The PC mode spectrum, obtained by the sum of the last 4 observations (see Table 1), yields a best fit value of  $\Gamma = 2.18^{+0.25}_{-0.22}$  and a column density consistent with the Galactic value ( $\chi^2_{\text{red}} = 0.88$ ; 18 d.o.f.). The photon index of the late afterglow spectrum, compared with the early afterglow spectrum, observed in the PC mode, shows a possible softening of the photon index by  $\Delta\Gamma = 0.32 \pm 0.30$ .

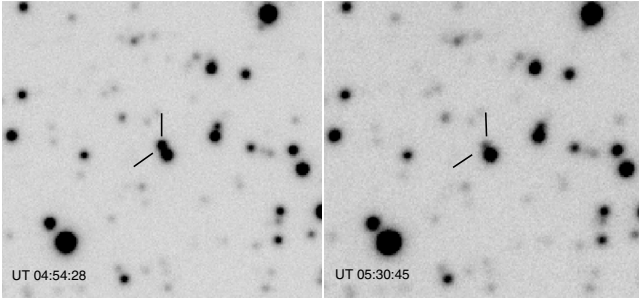
## 4. Optical observations

### 4.1. Prompt observation

The remotely controlled 0.30 m telescope, located in the New Mexico Skies observatory and operated from the Osaka University, observed the field of GRB 050721 starting on 2005 July 21 at 04:35:23 UT (369 s after the burst), collecting 6  $I_C$

**Table 2.** Log of optical observations.

Run	Night	UT start	UT end	Filters	Images	Exp. time [s]	Seeing	Observing mode
1	2005 Jul. 21	04:35:23	05:32:31	$I_c$	6	120	<1.4''	Robotic
2	2005 Jul. 21	04:53:58	05:45:21	$R$	34	30	0.9''	VLT+RRM
3	2005 Jul. 21	06:40:45	06:50:35	$B, R$	2, 4	120, 60	1.2''	VLT+ToO
4	2005 Jul. 22	00:47:11	04:39:39	$B, R, I$	15, 20, 10	60, 10	0.6''	VLT+ToO
5	2005 Jul. 23	02:00:42	02:07:41	$R$	5	60	1.5''	VLT+ToO
6	2005 Jul. 24	00:31:57	01:51:58	$R, I$	10, 20	90	0.7''	VLT+ToO
7	2005 Oct. 06	23:49:37	00:18:14	$R$	30	900	0.65''	VLT+ToO

**Fig. 4.** VLT image of the field of the afterglow of GRB 050721, showing the proximity with the USNO star and the fading behavior of the optical transient.

frames. A visual comparison of the frames with the DSS and 2MASS images revealed a bright, fading object within the XRT error circle. Due to the large pixel scale (1''41 per pixel, for a field of view of  $24' \times 24'$ ) the optical afterglow was indistinguishable from the USNO star (U0616–0429150) at RA =  $16^{\text{h}}53^{\text{m}}44^{\text{s}}.496$ , Dec =  $-28^{\circ}22'52''.75$  (J2000), (hereafter star A, see Fig. 4). The contribution from star A was estimated from a second observation performed on 2005 July 25 with the same instrumental configuration and assuming a negligible contribution from the afterglow at that time.

Here we report the first observation only in which the contribution of star A to the afterglow flux was negligible. The observed OA flux was  $I_c = 15.6 \pm 0.2$  mag. The field was calibrated using USNO-B1.0  $I$  magnitudes and the total systematic error was estimated in absolute photometry as 0.15 mag which is included in the error quoted above.

#### 4.2. Prompt and late VLT observations

VLT optical data were obtained in five series during four nights, as specified in Table 3. The earliest data came from the activation of the rapid response mode, and consist of 33 images in the  $R$  filter, starting on 2005 Jul. 21, 4:54 UT (25 min after the GRB) and lasting 53 min. Since the RRM request also included a spectrum, we used the  $R$ -band acquisition image for photometry too, hence reaching a total of 34 RRM images in the  $R$  filter. One hour later, a second series of 4 images in  $R$  and 2 in  $B$  were acquired. In the two days after the burst, target-of-opportunity (ToO) observations were activated to extend the light-curve sampling. In total, the optical sample consists of 39 measurements in  $R$ , 2 in  $I$ , and 2 in  $B$ .

##### 4.2.1. Optical data reduction and analysis

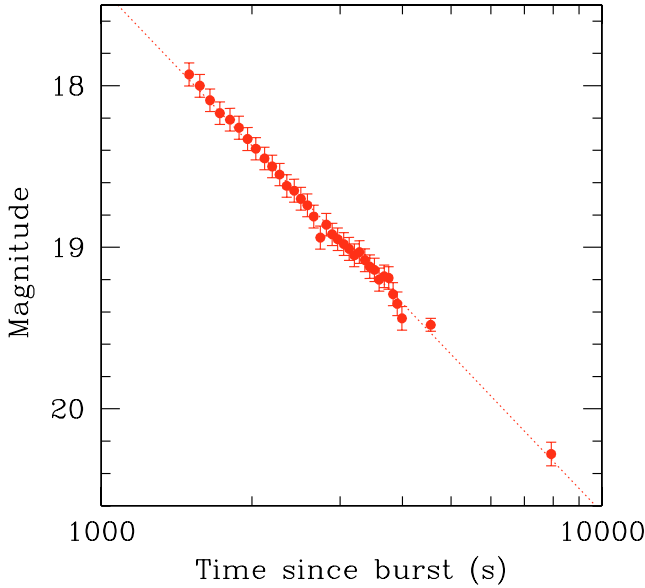
The optical afterglow was detected at RA =  $16^{\text{h}}53^{\text{m}}44^{\text{s}}.53$ , Dec =  $-28^{\circ}22'51''.8$  (J2000), very close (1''4) to a relatively bright star ( $R = 17.4$ ) present in the USNOB1.0 catalog

**Table 3.** Log of  $R$  band observations.

Time since burst s	Exp. time s	Magnitude mag	Error mag
1484	30	17.93	0.075
1559	30	18.00	0.075
1634	30	18.08	0.075
1710	30	18.17	0.074
1794	30	18.21	0.074
1869	30	18.26	0.075
1945	30	18.33	0.075
2021	30	18.39	0.073
2105	30	18.45	0.074
2181	30	18.50	0.074
2256	30	18.55	0.074
2332	30	18.62	0.074
2415	30	18.65	0.075
2491	30	18.70	0.074
2566	30	18.74	0.074
2642	30	18.81	0.075
2726	30	18.94	0.075
2802	30	18.86	0.074
2878	30	18.92	0.073
2954	30	18.95	0.074
3037	30	18.98	0.075
3113	30	19.01	0.075
3189	30	19.05	0.075
3265	30	19.03	0.075
3348	30	19.08	0.075
3424	30	19.12	0.077
3501	30	19.14	0.076
3577	30	19.20	0.075
3661	30	19.18	0.074
3737	30	19.19	0.074
3813	30	19.29	0.075
3889	30	19.35	0.077
3973	30	19.44	0.077
4537	30	19.48	0.043
7891	240	20.28	0.077
73 076	1000	21.58	0.016
78 075	20	21.66	0.062
85 946	1000	21.60	0.024
248 595	1200	22.51	0.110
6 721 500	900	>25.8	( $5\sigma$ u.l.)

(U0616–0429150), see Fig. 4). In order to avoid any possible contribution from the nearby star, a PSF profile fitting was adopted using DAOPHOT/ALLSTAR (Stetson 1987, 1994) within IRAF<sup>1</sup>. In order to maximize the efficiency in the detection, all the  $R$ -band images from the RRM run were carefully aligned and averaged together. Since the FWHM varied slightly during the

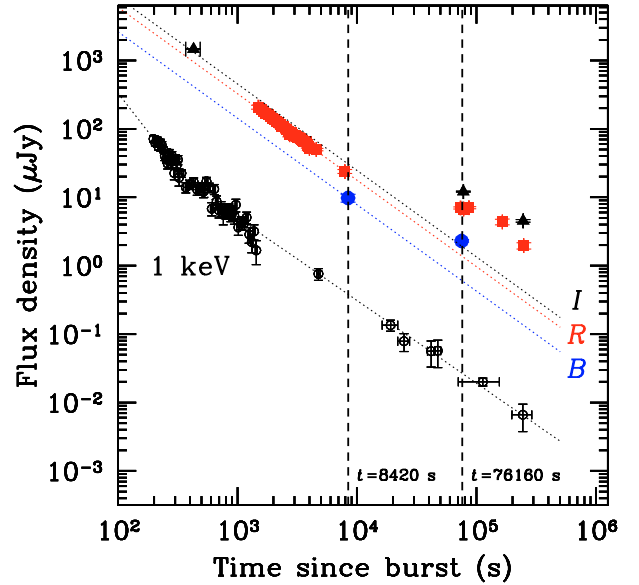
<sup>1</sup> IRAF is distributed by the National Optical Astronomy Observatories, which are operated by the Association of Universities for Research in Astronomy, Inc., under cooperative agreement with the National Science Foundation.



**Fig. 5.** The  $R$ -band light curve of the early afterglow of GRB 050721 observed with VLT equipped with FORS 2. Optical data can be fitted by a simple power law model ( $F(t) \propto t^{-\alpha}$ ) with  $\alpha = 1.29 \pm 0.06$  (dotted line). This slope is in good agreement with the X-ray slope at the same time.

acquisition of the sequence, only the best-seeing frames were used to obtain the average master image. The master was then used to create, with *daofind*, a list of candidate objects, that was used as input list to process the individual images. Thanks to the good mean seeing conditions, DAOPHOT/ALLSTAR was able to resolve the two components of the pair USNO star/afterglow, providing an excellent PSF fitting. The output photometry lists were then carefully checked for relative zeropoint differences, finding a very good agreement among the measurements without the need of further re-adjustment. All the catalogs from the individual images were translated to a homogeneous coordinate system by transforming pixel coordinates into sky coordinates. The same approach was also used later for the images obtained in the other ToO series. Magnitudes and, where applicable, colors have been obtained for all the objects in the master candidate list. FORS 1 and FORS 2 data have been later matched by transforming all the image coordinates to sky coordinates, obtaining a homogeneous catalog. Image calibration was obtained after applying aperture corrections to the measured objects; calibration relations derived from standard star observations were applied. Standard stars were observed all nights and the calibrations were performed with the IRAF package *photcal*. Color terms have been fitted against the available magnitudes, i.e.  $B - R$  for the  $B$  and  $R$  bands, and  $R - I$  for the  $I$  band, and were found to be very small ( $+0.015$  for  $B - R$ ,  $<0.005$  for  $R - I$ ). Since the standards (Landolt fields PG 1323-086 and SA 110) were observed only once per night, we used the mean extinction coefficients for Paranal.

The VLT prompt observations, obtained in RRM, provided a very well sampled light curve. The observed light curve shows the typical fading behavior for GRB afterglows well described by a simple power law ( $F(t) = Kt^{-\alpha}$ ) with a slope  $\alpha = 1.29 \pm 0.06$  which is in good agreement with the X-ray slope during the same time interval (see Fig. 6). A late point, obtained at the end of the night ( $\sim 8000$  s after the burst and  $\sim 6500$  s after the first point), is well aligned along the early curve. The optical light curve is smoothly decaying and it does not show any significant

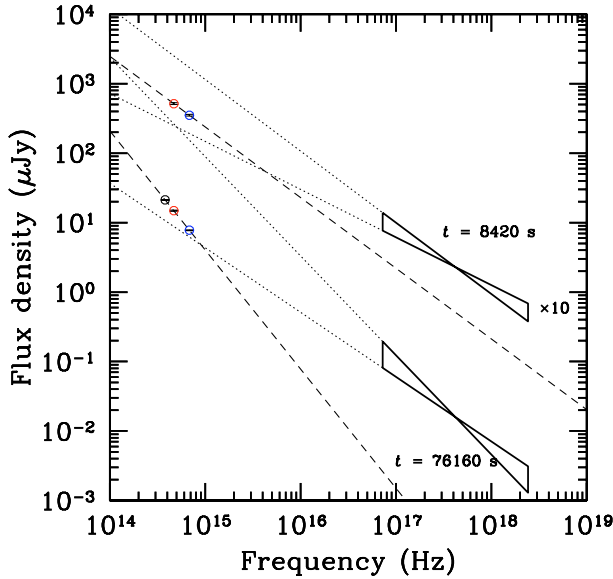


**Fig. 6.** Multiwavelength light curve of the afterglow of GRB 050721: from top to bottom:  $I$  band (black filled triangles),  $R$  band (red filled squares),  $B$  band (blue filled circles), X-flux at 1 keV (black open circles). Vertical dashed lines show the times of the SEDs in Fig. 7.

flaring activity. GRB 050721 was also observed during the second night starting about 20 h after the burst. We collected our data set in three different images in which the afterglow is still clearly detected and we found it about 1.8 mag brighter than the value predicted by extrapolating the first night data set. Such a rebrightening was also observed in the following two observations, obtained respectively 45 and 69 h after the burst. Moreover if we consider these two points only we obtain a power law decay with a steeper slope ( $\alpha = 1.9 \pm 0.7$ ) but still consistent with the previous one given the large error. A late deep observation (2.5 months later) did not reveal either an afterglow or a host galaxy down to a limiting magnitude of  $R > 25.8$  mag ( $5\sigma$ ). We can conclude that the observed flattening was not due to the emergence of the host galaxy, but that a rebrightening was present in the afterglow.

## 5. Results and discussion

GRB 050721 was promptly observed in both the X-ray and optical bands and it was accurately monitored for several days after the burst. Such a long term multiwavelength monitoring showed a different behavior in the X-ray and optical light curves. Thanks to *Swift* it is now well known that the early X-ray light curves of a large fraction of the bursts are characterized by a steep decay, followed by a shallower phase and finally a somewhat steeper decay (Tagliaferri et al. 2005; Nousek et al. 2006; O’Brien et al. 2006). Many events have superimposed X-ray flares, probably still related to the central engine (Burrows et al. 2005; Falcone et al. 2006; Romano et al. 2006; Zhang et al. 2006; Guetta et al. 2006). In the case of GRB 050721 we did not detect flares in the X-ray light curve, while we saw the early steep decay, although not one of the steepest so far seen by XRT, followed by a shallower phase at about 400 s after the burst. We also did not see a second break in the 0.2–10.0 keV light curve, which in fact shows a regular fading behaviour up to a time interval of about one week, that can be fitted with a simple power law ( $F(t) = Kt^{-\alpha}$ ) yielding a slope of  $\alpha = 1.20 \pm 0.04$  on the entire observation. The optical light curve



**Fig. 7.** Spectral energy distribution of the afterglow of GRB 050721 before the optical bump ( $t = 8420$  s) and at the time of the optical bump ( $t = 76160$  s). Early optical and X-ray fluxes are artificially shifted up by a factor of 10 to distance them from the later time points.

shows the same regular fading behavior over a time interval of about 7000 s with the same power law ( $\alpha = 1.29 \pm 0.06$ ) then, at about 24 h after the burst, a rebrightening of about 1.8 mag is observed.

The consistency between the early optical and X-ray decay indices suggests that both emissions result from the same component during the first hours after the GRB. This fact can be further confirmed by looking at the broadband spectral energy distribution (SED). Figure 7 shows the SED at two times, chosen during the initial decay phase and during the optical bump. At the first epoch, the optical data agree well with the extrapolation of the X-ray spectrum. The optical color ( $B - R = 1.25$  mag) also provides a spectral index  $\beta_{\text{opt}} = 1.16 \pm 0.35$ , after correcting for the significant Galactic extinction ( $A_B = 1.2$  mag,  $A_R = 0.75$  mag; Schlegel et al. 1998). This value, given its large uncertainty, is consistent with that observed in the X-ray range ( $\beta_X = 0.86 \pm 0.17$ ), and with the broad-band optical-to-X-ray slope ( $\beta_{\text{OX}} = 0.80$ ). The picture is therefore consistent with the optical and X-ray emission lying on the same segment of a power-law SED, with slope  $\beta = 0.80$ . Thus, no synchrotron breaks were present between the two bands. Moreover, the extinction affecting the optical data was likely small.

The spectral and temporal properties of the afterglow of GRB 050721 during the first hours are consistent with a fireball expanding inside a uniform external medium (Sari et al. 1998), providing that the cooling frequency lies blueward of the X-ray band. For a spectral index  $\beta \sim 0.80$ , the predicted decay slope is  $\alpha = 3\beta/2 \sim 1.2$ , in very good agreement with the observed values both in the optical and in the X-ray band (their average being  $\alpha = 1.23 \pm 0.03$ ). The inferred electron distribution index is computed as  $p = 2\beta + 1 \sim 2.6$ , or, alternatively,  $p = 4\alpha/3 + 1 = 2.64 \pm 0.04$ . Such value is not uncommon among GRB afterglows.

The situation changes substantially starting  $\sim 1$  d after the GRB. At this time, the optical flux is significantly brighter than predicted by the early-time decay and the optical spectrum is softer ( $\beta_{\text{opt}} = 1.85 \pm 0.11$ ) than observed at earlier time, and steeper than usually observed in GRB afterglows. Both the flux

and SED suggest that a new mechanism is powering the optical emission, leaving unaffected the X-ray region.

Among the possible explanations for a bump in the optical light curve, we consider the emergence of an additional energy source like a supernova (SN). It is now well established that long duration GRBs (or a significant fraction of them) are produced in SN explosions (Galama et al. 1998; Stanek et al. 2003; Hjorth et al. 2003; Malesani et al. 2004). Sometime bumps have been detected during the afterglow decay days/weeks past the GRB (e.g. Bloom et al. 1999; Della Valle et al. 2006). However, the bump associated with GRB 050721 rose very quickly, only  $\sim 1$  d after the gamma event, which is much shorter than the observed rising time of SNe-Ibc (10–20 days, e.g. Hamuy 2003). One possibility is that the SN has occurred before the GRB, as advocated in the Supranova model (Vietri & Stella 1999). An analysis of the present data suggest that SNe and GRBs go off simultaneously (Della Valle et al. 2005), nevertheless a few days of delay between SN and GRB events can be yet accommodated within the uncertainties. The major caveat for this hypothesis is represented by the magnitude of the bump ( $R \approx 21$ ). For a SN as bright as SN 1998bw ( $M_R = -19.4$ ; Galama et al. 1998), the inferred redshift would be  $z \sim 0.25$ . This would be difficult to reconcile with the nondetection of any host galaxy (our limit would correspond to  $0.003 L_*$  at this redshift). A fainter SN would imply a distance even smaller. We thus consider this hypothesis unlikely.

A more exotic possibility calls for the mini-SN scenario (Li & Paczyński 1998), which evolutionary timescale is comparable to that of the rebrightening (1–2 d). However this scenario would suffer a problem similar to the one faced by a conventional SN, since the peak magnitude is expected to be comparable to that of a SN.

A plausible explanation for the rebrightening could be given by modifications in the afterglow physics: rebrightenings due to energy injection (e.g. refreshed shock, Guetta et al. 2006) or fluctuations in the external medium. In the refreshed shock scenario flux fluctuations in both the X-ray and optical bands are expected to be proportional to energy fluctuations of the fireball. Therefore, a bump in both the optical and X-ray light curves is expected. The lack of a rebrightening in the X-ray band rules out this hypothesis.

In the case of fluctuations in the external medium, we expect a bump in the optical light curve (but not in the X-ray one) when the fireball encounters regions with enhanced density  $n$  (e.g. Lazzati et al. 2002, Berger et al., 2000). Such a density jumps may be caused by winds termination shock, as proposed for the case of GRB 030329 (Huang et al. 2006). Nakar et al. (2003) have shown that the afterglow flux  $F_\nu$  at different frequencies may be written in terms of the external density in a very simple way. Assuming the typical afterglow parameters, the synchrotron cooling frequency at 1 d from the burst is expected to be  $\nu_c \sim 10^{15}$  Hz (just between optical and X-ray band). Our data on the late X-ray afterglows of GRB 050721 cannot exclude (within uncertainties) both a steepening in the light curve ( $\alpha = 1.20^{+0.39}_{-0.42}$ ) and a softening of the photon index ( $\Delta\Gamma = 0.32 \pm 0.30$ ), that are compatible with the hypothesis that  $\nu_c$  is shifted to energies lower than the X-ray band at this epoch. In such a case the X-ray flux ( $\nu > \nu_c$ ) is weakly dependent on the external medium density  $n$ , while the optical flux ( $\nu < \nu_c$ ) is  $F_\nu \propto n^{3/4}$  (Nakar et al. 2003). Since we see a rebrightening only in the optical band ( $\nu < \nu_c$ ) and not in the X-ray band ( $\nu > \nu_c$ ) we can conclude that this is an evidence of fluctuations in the external medium. In particular we can derive an estimate

of the variation in the density from the fluctuations in the flux  $n_2/n_1 \propto (F_\nu^{(2)}/F_\nu^{(1)})^{4/3} \sim 10$ .

However, the optical flux at the second epoch shows a redder spectral distribution than what expected by adopting a simple synchrotron model with parameters extrapolated by the X-ray flux. A possible explanation for such a red spectrum is that the high-density region could be composed of very dense clumps, with a covering factor  $f \ll 1$ . In such a scenario, the rebrightening observed in the optical band may be due to the interaction of the fireball with the clumps. Dust in the clumps may survive the intense radiation field, so that the spectrum produced inside them emerges reddened. Since  $f \ll 1$  the optical flux did not suffer significant extinction, since only a fraction  $f$  was intercepted by the high-density clouds.

## 6. Conclusions

We have presented a comprehensive multiwavelength study of the afterglow of GRB 050721 based on RRM and ToO observation with the VLT, early robotic observations and *Swift* XRT data. Both the X-ray and optical light-curve are very well sampled and showed a regular fading behavior (with almost the same decay index) within 24 h after the burst. At about one day from the burst a remarkable (1.8 mag) rebrightening is observed in the optical afterglow, while no variations are observed in the X-ray light curve at the same epoch. A late optical observation (2.5 months after the burst) did not show any afterglow or host galaxy down to a limiting magnitude of  $R > 25.8$  ( $5\sigma$ ) confirming that the observed rebrightening was not due to the presence of a bright host galaxy. The broad band SED obtained at two different epochs, during the initial decay and during the rebrightening, suggests that during the second epoch a new mechanism is powering the optical emission, leaving unaffected the X-ray region. Many different scenarios are considered in order to explain such a peculiar rebrightening. Since the rebrightening was observed only in the optical band and not in the X-ray band we propose that this is a plausible evidence of fluctuations in the external medium and we derive an estimate of the variation in the density from the fluctuations in the flux  $n_2/n_1 \sim 10$ . In order to take into account an optical spectral distribution redder than what expected by adopting a simple synchrotron model, we suggest that the observed rebrightening may be due to the interaction of the fireball with a high-density region composed by very dense clumps, with a covering factor  $f \ll 1$ .

*Acknowledgements.* This work is supported at OAR, OAB and IFC-PA by funding from ASI on grant number I/R/039/04, at Penn State by NASA contract NAS5-00136 and at the University of Leicester by the PPARC on grant numbers PPA/G/S/00524 and PPA/Z/S/2003/00507. This research was supported in part by the National Science Foundation under Grant No. PHY99-0794. We also thank Alex Kann and an anonymous referee for their helpful comments. We gratefully acknowledge the support from the Swift team and from the ESO VLT staff.

## References

- Antonelli, L. A., Page, K., Morris, D., et al. 2005, GCN 3654  
 Barthelmy, S., Barbier, L. M., Cummings, J. R., et al. 2005, *Space Sci. Rev.*, 120, 143  
 Beloborodov, A. M. 2003, *ApJ*, 585, L19  
 Berger, E., Sari, R., Frail, D. A., et al. 2000, *ApJ*, 545, 56  
 Bloom, J. S., Kulkarni, S. R., Djorgovski, S. G., et al. 1999, *Nature*, 401, 453  
 Burrows, D. N., Hill, J. E., Nousek, J. A., et al. 2005, *Space Sci. Rev.*, 120, 165  
 Burrows, D. N., Hill, J. E., Chincarini, G., et al. 2005, *ApJ*, 622, L85  
 Covino, S., D'Avanzo, P., Bagnulo, S., et al. 2005, GCN 3656  
 D'Avanzo, P., Covino, S., Malesani, D., et al. 2005, GCN 3658  
 Della Valle, M. 2005, in the Proceedings of the 4th Workshop Gamma-Ray Bursts in the Afterglow Era, Rome, 18–22 October 2004, ed. L. Piro, L. Amati, S. Covino, & B. Gendre, *Il Nuovo Cimento*, 28, 563  
 Della Valle, M., Malesani, D., Bloom, J. S., et al. 2006, *ApJ*, submitted  
 Dickey, J. M., & Lockman, F. J. 1990, *ARA&A*, 28, 215  
 Fan, Y. Z., Zhang, B., & Wei, D. M. 2005, *ApJ*, 628, 298  
 Falcone, A., Burrows, D. N., Lazzati, D., et al. 2006, *ApJ*, in press [arXiv:astro-ph/0512615]  
 Fenimore, E., Barbier, L., Barthelmy, S., et al. 2005, GCN 3661  
 Fox, D., Yost, S., Kulkarni, S. R., et al. 2003, *Nature*, 422, 284  
 Galama, T. J., Vreeswijk, P. M., van Paradijs, J., et al. 1998, *Nature*, 395, 670  
 Gehrels, N., Chincarini, G., Giommi, P., et al. 2004, *ApJ*, 611, 1005  
 Guetta, D., Fiore, F., D'Elia, V., et al. 2006, *A&A*, submitted [arXiv:astro-ph/0602387]  
 Hamuy, M. 2003, in the Proceedings of Core Collapse of Massive Stars, ed. C. L. Fryer (Dordrecht: Kluwer) [arXiv:astro-ph/0301006]  
 Henden, A. 2000, *Journ. AVSO*, 29, 35  
 Hjorth, J., Sollerman, J., Møller, P., et al. 2003, *Nature*, 423, 847  
 Huang, Y. F., Cheng, K. S., & Gao, T. T. 2006, *ApJ*, 637, 873  
 Kalberla, P. M. W., Burton, W. B., Hartmann, D., et al. 2005, *A&A*, 440, 775  
 Lazzati, D., Rossi, E., Covino, S., Ghisellini, G., & Malesani, D. 2002, *A&A*, 396, L5  
 Li, L.-X., & Paczyński, B. 1998, *ApJ*, 507, L59  
 Malesani, D., Tagliaferri, G., Chincarini, G., et al. 2004, *ApJ*, 609, L5  
 Mazzali, P. A., Deng, J., Maeda, K., et al. 2002, *ApJ*, 572, L61  
 Moran, J. A., & Reichart, D. E. 2006, *ApJ*, 632, 438  
 Moretti, A., Perri, M., Capalbi, M., et al. 2005, *A&A*, 448, L9  
 Nakar, E., Piran, T., & Granot, J. 2003, *New Astr.*, 8, 495  
 Nousek, J. A., Kouveliotou, C., Grupe, D., et al. 2006, *ApJ*, in press [arXiv:astro-ph/0508332]  
 O'Brien, P. T., Willingale, R., Osborne, J., et al. 2006, *ApJ*, submitted [arXiv:astro-ph/0512615]  
 Romano, P., Antonelli, L. A., Chincarini, G., et al. 2005, GCN 3659  
 Romano, P., et al. 2006, *ApJ*, in press [arXiv:astro-ph/0601773]  
 Roming, P. W. A., Kennedy, T. E., Mason, K. O., et al. 2005, *Space Sci. Rev.*, 120, 95  
 Sari, R., Piran, T., & Narayan, R. 1998, *ApJ*, 497, L17  
 Sari, R., & Mészáros 2000, *ApJ*, 535, L33  
 Schlegel, D. J., Finkbeiner, D. P., & Davies, M. 1998, *ApJ*, 500, 525  
 Stanek, K. Z., Matheson, T., Garnavich, P. M., et al. 2003, *ApJ*, 591, L17  
 Stetson, P. B. E. 1987, *PASP*, 99, 191  
 Stetson, P. B. 1994, *PASP*, 106, 250  
 Tagliaferri, G., Goad, M., Chincarini, G., et al. 2005, *Nature*, 436, 985  
 Testa, V., Antonelli, L. A., Malesani, D., et al. 2005, GCN 3662  
 Torii, K. 2005, GCN 3655  
 Vietri, M., & Stella, L. 1999, *ApJ*, 527, L43  
 Waxman, E., & Draine, B. T. 2000, *ApJ*, 537, 796  
 Zhang, B., Fan, Y., Dyks, J., et al. 2006, *ApJ*, in press [arXiv:astro-ph/0508321]