



Cite this: *Phys. Chem. Chem. Phys.*,  
2015, 17, 25073

## The oxidation of copper catalysts during ethylene epoxidation†

M. T. Greiner,<sup>\*a</sup> T. E. Jones,<sup>a</sup> B. E. Johnson,<sup>a</sup> T. C. R. Rocha,<sup>a</sup> Z. J. Wang,<sup>a</sup>  
M. Armbrüster,<sup>b</sup> M. Willinger,<sup>a</sup> A. Knop-Gericke<sup>a</sup> and R. Schlögl<sup>a</sup>

The oxidation of copper catalysts during ethylene epoxidation was characterized using *in situ* photoemission spectroscopy and electron microscopy. Gas chromatography, proton-transfer reaction mass spectrometry and electron-ionization mass spectrometry were used to characterize the catalytic properties of the oxidized copper. We find that copper corrodes during epoxidation in a 1:1 mixture of oxygen and ethylene. The catalyst corrosion passes through several stages, beginning with the formation of an O-terminated surface, followed by the formation of Cu<sub>2</sub>O scale and eventually a CuO scale. The oxidized catalyst exhibits measurable activity for ethylene epoxidation, but with a low selectivity of <3%. Tests on pure Cu<sub>2</sub>O and CuO powders confirm that the oxides intrinsically exhibit partial-oxidation activity. Cu<sub>2</sub>O was found to form acetaldehyde and ethylene epoxide in roughly equal amounts (1.0% and 1.2% respectively), while CuO was found to form much less ethyl aldehyde than ethylene epoxide (0.1% and 1.0%, respectively). Metallic copper catalysts were examined in extreme dilute-O<sub>2</sub> epoxidation conditions to try and keep the catalyst from oxidizing during the reaction. It was found that in feed of 1 part O<sub>2</sub> to 2500 parts C<sub>2</sub>H<sub>4</sub> ( $P_{O_2} = 1.2 \times 10^{-4}$  mbar) the copper surface becomes O-terminated. The O-terminated surface was found to exhibit partial-oxidation selectivity similar to that of Cu<sub>2</sub>O. With increasing O<sub>2</sub> concentration (>8/2500) Cu<sub>2</sub>O forms and eventually covers the surface.

Received 27th June 2015,  
Accepted 27th August 2015

DOI: 10.1039/c5cp03722k

www.rsc.org/pccp

## Introduction

Ethylene epoxidation is an important topic both from an academic and industrial standpoint. Academically, it represents one of the most fundamental partial oxidation reactions, and is one of the most-studied catalytic reactions in surface-science.<sup>1</sup> The understanding of catalytic epoxidation provides valuable insight into how heterogeneous catalysts permit a thermodynamically metastable molecule—such as an epoxide—to be preferentially synthesized over the thermodynamically most stable product, CO<sub>2</sub>.

From an industrial point of view, ethylene epoxide is an important feedstock for the production of a variety of valuable materials and chemicals. It is produced worldwide in amounts of *ca.* 19 million tons annually (2010).<sup>2</sup> It is usually produced *via* direct oxidation of ethylene by O<sub>2</sub> over promoted silver catalysts, using promoters such as Cl, Cs and Re.<sup>3,4</sup> Although the direct epoxidation process is relatively efficient—with selectivities greater than 85% achievable—given the large scale of

epoxide production, even a 1% improvement in selectivity is worth close to \$200M USD annually to producers.<sup>5</sup> Furthermore, less expensive catalysts than silver and less-toxic promoters than chlorinated hydrocarbons are of interest to industry. While silver is the only catalyst that performs direct epoxidation well enough for use at an industrial scale,<sup>3</sup> recent studies have demonstrated that copper also exhibits interesting epoxidation behavior and holds promise as a possible alternative or perhaps additive to silver catalysts.

It has been shown—*via* model ultra-high vacuum (UHV) studies of single crystals—that copper can epoxidize several olefins with very high selectivity.<sup>6–8</sup> In fact, UHV studies using styrene as a model molecule for ethylene found that styrene can be epoxidized on Cu(111) with essentially 100% selectivity.<sup>8</sup> In support of these findings, density functional theory (DFT) computations have also suggested that metallic copper should be a more selective catalyst than silver for epoxidation.<sup>9</sup> Analysis of the reaction pathway, based on DFT computations, can explain copper's high selectivity in terms of its relative copper/oxygen and copper/carbon bond strengths in the oxametallacycle intermediate.<sup>10</sup> Due to copper's strong bonding to oxygen and relatively weak bonding to carbon, the reaction pathway to the epoxide is favored over the pathway to the aldehyde.

These studies suggest that, in order for high-selectivity epoxidation to occur on copper, both metallic copper sites and adsorbed

<sup>a</sup> Fritz-Haber Institute of the Max-Planck Society, Inorganic Chemistry Department,  
4-6 Faradayweg, 14195 Berlin, Germany. E-mail: mgreiner@fhi-berlin.mpg.de

<sup>b</sup> Institut für Chemie, Technische Universität Chemnitz, Straße der Nationen 62,  
R. 312, 09111, Chemnitz, Germany

† Electronic supplementary information (ESI) available. See DOI: 10.1039/c5cp03722k



oxygen sites are required. Indeed, the UHV studies on Cu single crystals demonstrated high selectivities for copper surfaces covered with only 0.03 monolayers of atomic oxygen.<sup>8</sup> After the copper surface became saturated with atomic oxygen it exhibited no measurable activity.<sup>8</sup>

Under industrial epoxidation conditions—*i.e.* in a mixture of O<sub>2</sub> and an olefin at atmospheric pressures and temperature of 250–350 °C—copper does not remain metallic but rather oxidizes to form copper oxides,<sup>11,12</sup> although there are some reports that suggest Cu(0) is present under atmospheric-pressure operating conditions in propylene epoxidation.<sup>13,14</sup> Thus another consequence of copper's strong oxygen bonding is that, under high oxygen pressures, its surface cannot remain in a state that offers the same high selectivity of the oxygen-adsorbed metal.

The oxides of copper were believed not to be able to catalyze epoxidation.<sup>11,12,15</sup> For instance, in propylene epoxidation Cu<sub>2</sub>O was found to generate acrolein, while CuO gave rise only to total oxidation.<sup>16</sup> Contrary to this belief, a few recent works have implicated Cu(I) as an active species in epoxidation,<sup>17–19</sup> although supported or promoted catalysts were investigated in these reports, so it is not certain whether the copper oxides alone are intrinsically active for epoxidation.

A recent work by Jayamurthy *et al.* demonstrated that oxidized copper can in fact epoxidize ethylene with an initial moderate selectivity of 28%, followed by a progressive decrease in selectivity to 1%.<sup>18</sup> Based on *ex situ* X-ray diffraction measurements, the decrease in selectivity was attributed to oxidation of Cu(I) to Cu(II).

One possible route to keeping copper in an oxidation state that provides a selective pathway to epoxidation is *via* alloying with another metal. Copper–silver catalysts in ethylene epoxidation have demonstrated selectivities that are better than the respective pure metals.<sup>4,20,21</sup> In this case, copper segregates to the silver surface and forms a surface oxide that is predicted to possess a unique electronic structure.<sup>22</sup> It is postulated that the copper–silver interaction influences the copper oxidation state. This issue is not yet resolved, and a closer investigation of the oxidation behavior of copper in alloys is needed.

Although it is acknowledged in several publications that copper becomes oxidized under epoxidation conditions,<sup>11,12</sup> an in-depth investigation of copper oxidation during epoxidation has not yet been documented in the literature. As it stands, it is not clear whether copper oxides are intrinsically active for epoxidation, whether the metal/oxide interface plays an important role, under what conditions metallic copper may remain stable during epoxidation, and what role copper oxidation plays in bimetallic catalysts.

In order to understand copper's behavior under epoxidation conditions we find it appropriate to examine the oxidation process in more detail. In the current report, we present an *in situ* photoemission study of the oxidation of copper during ethylene epoxidation. Our findings illustrate that the initial stages of copper corrosion proceed *via* the formation of an O-terminated surface, followed by the formation of Cu<sub>2</sub>O and eventually CuO layers. These findings are consistent with DFT

computations of phase stability of O-terminated copper and copper-oxide surfaces.<sup>23–25</sup> The corrosion of copper under these conditions is extensive, and the oxide layer continues to grow indefinitely with reaction time. However, oxidized copper was found to exhibit partial-oxidation activity, which is consistent with the recent observations of Jayamurthy *et al.*<sup>18</sup>

During the reaction in which partial-oxidation activity was detected from oxidized copper, copper metal was still present in the sample underneath the oxide layer, thus it is possible that the partial-oxidation activity originates from the metal/oxide interface rather than from the oxides themselves. In order to confirm that the copper oxides exhibit partial oxidation activity, we have examined pure un-supported Cu<sub>2</sub>O and CuO powders in epoxidation. We found that indeed both oxides (CuO and Cu<sub>2</sub>O) exhibit some partial oxidation activity; however, under the conditions used here ( $P_{\text{total}} = 0.3$  mbar,  $T = 50\text{--}400$  °C), rather low selectivity to ethylene oxide was observed (between 1–3%). In general, Cu<sub>2</sub>O was found to be slightly more selective than CuO for forming ethylene oxide. Cu<sub>2</sub>O was also found to produce a larger proportion of acetaldehyde than CuO. This finding is consistent with recent DFT computations that have predicted acetaldehyde formation to be favorable on Cu<sub>2</sub>O(001).<sup>26</sup>

After confirming that copper oxides can perform partial oxidation, we examined whether metallic copper could be maintained under near-ambient pressure epoxidation conditions. We examined the copper catalyst's surface composition when operated in a reactant feed of extremely dilute oxygen (ranging in oxygen-to-ethylene ratio from 1:2500 to 64:2500). We found that even in extremely dilute-O<sub>2</sub> conditions, copper forms an oxygen-terminated surface, illustrating that the strong oxo-philic nature of copper combined with the weak reducing power of ethylene cannot maintain a metallic surface under realistic epoxidation conditions. Reactivity tests of the O-terminated surface reveal that it exhibits similar partial-oxidation selectivity to the oxides. With increasing oxygen concentration (> 8:2500), Cu<sub>2</sub>O eventually nucleates and grows to cover the surface.

## Experimental and computational methods

Near-ambient pressure photoemission spectroscopy measurements were performed at the ISSS beamline at the synchrotron radiation facility BESSY II of the Helmholtz-Zentrum Berlin. The NAP-XPS set-up consists of a differentially-pumped electrostatic lens and analyzer system, attached to a reaction cell. Details of this equipment are available elsewhere.<sup>27</sup> During *in situ* measurements, reaction gases (from Westfalen AG, purities: ethylene 3.5 N and oxygen 6.0 N) were continuously flowed into the reaction cell *via* mass-flow controllers, using a total flow of 6 mL min<sup>-1</sup>, while a constant pressure of 0.3 mbar was maintained by continual pumping, *via* a molecular drag pump whose pumping speed was adjusted *via* a regulating valve. The samples were heated from the back side using an



infrared laser, and temperature was measured *via* type K thermocouples clamped to the sample surface.

The analysis of gas-phase products was performed using online gas chromatography (GC, Varian Micro-GC CP4900), electron-ionization quadrupole mass spectrometry (EI-QMS, from Balzers) and proton-transfer reaction mass spectrometry (PTR-MS, from Ionicon Analytik). All gas analytical instruments were calibrated for product quantification.

Cu L<sub>3</sub>-edge NEXAFS were measured in total-electron-yield (TEY) mode by measuring the current collected at the photoelectron spectrometer entrance nozzle. The O K-edge NEXAFS spectra were measured in Auger yield mode (measuring electrons of 493 eV kinetic energy) in order to avoid interference from the O<sub>2</sub> gas-phase signal. For the Auger Yield spectra the probing depth was between 4.3 and 5.3 nm (depending on whether the material is Cu, Cu<sub>2</sub>O or CuO). The probing depth for the Cu L<sub>3</sub>-edge TEY spectra are about 10 nm.<sup>28</sup> Here we define probing depth as the depth at which the measured signal falls below 1% of the intensity of the pure material.

The Cu-L<sub>3</sub> edge of metallic copper was calibrated by taking the derivative of the absorption spectrum, then setting the peak position of the derivative spectrum to the binding energy of the Cu2p<sub>3/2</sub>, namely 932.67 eV. The M1 mirror on the ISSS beam-line contains a small amount of Cu, so that measuring the mirror current shows a small absorption at the Cu-L<sub>3</sub> edge. This signal was used as an internal standard. All spectra of the copper oxides could be calibrated by ensuring that the Cu-L<sub>3</sub> signal seen in the mirror current for the oxide spectra lines up with the Cu-L<sub>3</sub> signal of the mirror current for the metallic Cu standard. This calibration procedure gives the following Cu-L<sub>3</sub> absorption peak positions: Cu (933.40 eV), Cu<sub>2</sub>O (933.56 eV) and CuO (931.26 eV), and the following Cu-L<sub>3</sub> edge positions (*i.e.* the position of the peak of the derivative spectrum): Cu (932.67 eV), Cu<sub>2</sub>O (932.87 eV) and CuO (930.71 eV).

The copper foils used in the temperature ramp experiments were purchased from Advent Research Materials Ltd and were 99.998% pure on a metals basis. CuO and Cu<sub>2</sub>O powders were purchased from Sigma-Aldrich and were 99.999% and 99.99% pure (metals basis), respectively. Prior to all NAP-XPS experiments, copper metal surfaces were cleaned by several cycles of heating to 550 °C in 0.5 mbar H<sub>2</sub> for 30 minutes, followed by sputter cleaning for 10 minutes using 1 kV Ar<sup>+</sup>. Copper foam was produced by sintering pre-pressed copper powder (ChemPur, 99.95%) in static vacuum at 700 °C for 12 hours.

Laboratory-based UHV photoemission and LEED measurements were performed at the Fritz-Haber Institute in Berlin, Dahlem, in a UHV chamber with a base pressure of  $3 \times 10^{-10}$  mbar. Photoemission measurements were done using a non-monochromated Al K $\alpha$  X-ray source and a Phoibos 150 hemispherical analyzer from Specs GmbH. Copper single crystals were mechanically polished to a mirror finish and were sputter annealed in UHV until no contaminants were detectable and sharp LEED patterns were obtained.

All DFT calculations were performed using the Perdew, Burke, and Ernzerhof exchange (PBE) and correlation potential<sup>29</sup> without spin-polarization, as implemented in Quantum ESPRESSO.<sup>30</sup>

Ultra-soft pseudopotentials from the PS library were used to describe the interactions between electrons and ions. In order to compute O K-edge spectra, two Gauge Including Augmented Wave (GIPAW) projectors were included for the  $l = 1$  channel of the oxygen pseudopotential. Wave functions were expanded in a plane wave basis set with a kinetic energy cutoff of 30 Ry, and a charge density cutoff of 300 Ry. For the metallic surfaces Brillouin zone integrations were performed using a  $(12 \times 12 \times 1)$  Monkhorst-Pack<sup>31</sup>  $k$  point grid for the  $(1 \times 1)$  surface unit cell. Marzari-Vanderbilt cold smearing<sup>32</sup> was employed with a smearing parameter of 0.02 Ry to improve convergence. For the Cu<sub>2</sub>O calculations  $k$  point meshes were equivalent  $(16 \times 16 \times 16)$  for the conventional bulk unit cell (Cu<sub>4</sub>O<sub>2</sub>) and  $(16 \times 16 \times 1)$  for the surface unit cells.

Within this approach we found the lattice constant of fcc Cu to be 6.92 au, in good agreement with the 6.83 au found experimentally,<sup>33</sup> and the 6.86 au obtained from full potential PBE calculations.<sup>34</sup> Metallic surfaces were modeled as five layer slabs using the computed lattice constant and *ca.* 10 Å of vacuum separating periodic images. The bottom two layers of the slabs were held fixed at their bulk values during geometry optimizations. The remaining atoms were relaxed until the change in total energy was  $<10^{-4}$  Ry and all the components of all the forces was  $<10^{-3}$  Ry au<sup>-1</sup>. The initial adlayer structures were taken from Duan *et al.*<sup>35</sup> The lattice constant of Cu<sub>2</sub>O was found to be 8.22 au, about 2% larger than the 8.07 au found experimentally, as may be expected for a GGA calculation. The Cu<sub>2</sub>O surfaces were calculated using 17-layer thick slab, separated by 20 Å of vacuum, with  $(2 \times 2)$  surface unit cells (structures are shown in ESI†). The calculations on the bulk vacancy defect were done using a  $(2 \times 2 \times 2)$  supercell with a neutral stoichiometric (*i.e.* Cu<sub>2</sub>O) vacancy.

O1s binding energies were computed using the  $\Delta$ SCF method to capture both initial and final state effects.<sup>36</sup> The resultant relative binding energies were shifted to absolute binding energies using a reference calculation on a  $(4 \times 4 \times 4)$  supercell of Cu<sub>2</sub>O, for which we know the measured O1s BE is 530.2 eV.

The absorption cross section tensors used to generate spectra of oxygen in the  $c(6 \times 2)$  reconstruction were computed with the XSpectra package,<sup>37</sup> using a pseudopotential with a 1/2 O1s core hole on the absorbing atom.<sup>38</sup> To account for lifetime broadening, the raw spectra were convoluted with a Lorentzian with an energy dependent linewidth:  $\Gamma(E) = \Gamma_0 + \Gamma(E)$ .  $\Gamma_0$  was taken as the natural linewidth of oxygen, 0.14 eV.<sup>39</sup>  $\Gamma(E)$  was assumed to increase linearly as  $\Gamma(E) = 0.1(E - E_{\text{Fermi}})$ . This empirical change in linewidth has been shown to be reasonable for many systems.<sup>40</sup> The Fermi energy of the computed spectra was set to the computed O1s binding energy to facilitate comparison with experimental results.

The absorption cross section tensors used to generate the O K-edge of oxygen in the  $c(6 \times 2)$  reconstruction were computed with the XSpectra package,<sup>37</sup> using a pseudopotential with a 1/2 O1s core hole on the absorbing atom.<sup>38</sup> Unlike the metallic surface we found that the O K-edge spectra of Cu<sub>2</sub>O could be calculated without the inclusion of a core hole. As such, the



absorption cross section tensors used to generate the O K-edge of oxygen in the various  $\text{Cu}_2\text{O}$  structures were computed in the absence of an O1s core hole. To account for lifetime broadening in the spectra of both the metal and the oxide, the raw spectra were convoluted with a Lorentzian with an energy dependent linewidth:  $\Gamma(E) = \Gamma_0 + \Gamma(E)$ .  $\Gamma_0$  was taken as the natural linewidth of oxygen, 0.14 eV.<sup>39</sup>  $\Gamma(E)$  was assumed to increase linearly as  $\Gamma(E) = 0.1(E - E_{\text{Fermi}})$ . This empirical change in linewidth has been shown to be reasonable for many systems.<sup>40</sup> The Fermi energy of the computed spectra was set to the computed O1s binding energy to facilitate comparison with experimental results.

## Results

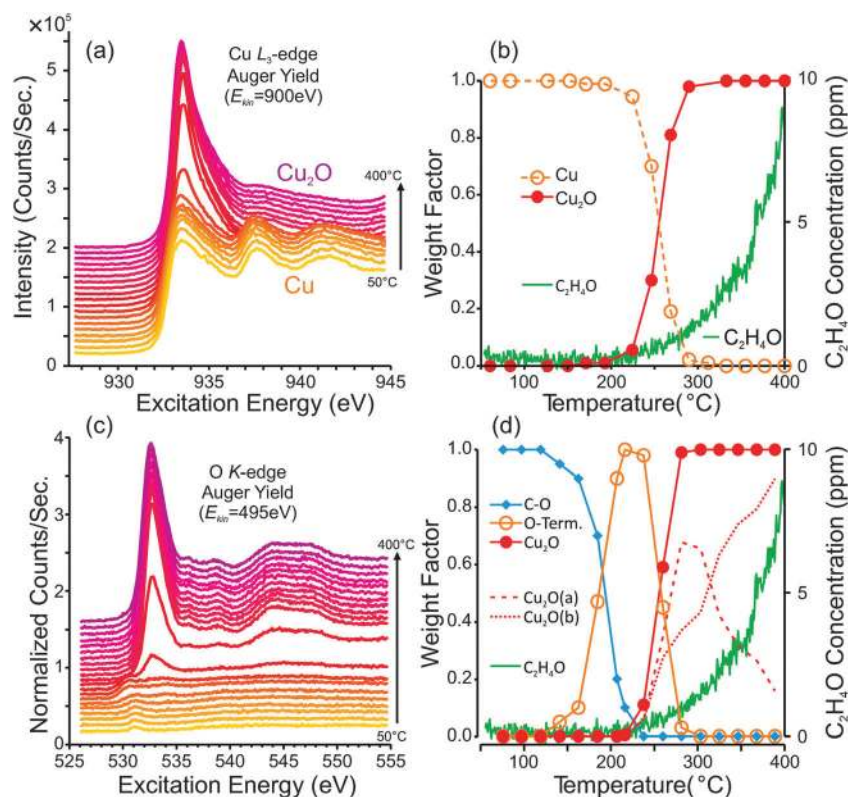
### 1. Temperature ramps of Cu in $\text{O}_2 + \text{C}_2\text{H}_4$

To begin the investigation of the behavior of Cu under reactive epoxidation conditions, we performed heating ramps from 50–400 °C ( $3.75 \text{ }^\circ\text{C min}^{-1}$ ) using a copper foil catalyst in a 1:1 mixture of  $\text{O}_2 + \text{C}_2\text{H}_4$  ( $P_{\text{total}} = 0.3 \text{ mbar}$ ). During the heating ramp, the chemical state of the copper surface was monitored *in situ* using near-ambient pressure photo-emission spectroscopy (NAP-PES). We measured, in alternation, the Cu-L<sub>3</sub> and O-K NEXAFS spectra. Simultaneously, the production of partial

oxidation products ( $\text{C}_2\text{H}_4\text{O}$ ) was measured using an on-line PTR-MS. Note that PTR-MS is sensitive to  $\text{C}_2\text{H}_4\text{O}$ , but not  $\text{CO}_2$ .<sup>41</sup> Two temperature ramps were performed: one starting with a metallic copper surface and another starting with a pre-oxidized surface. The results of this investigation are shown in Fig. 1 and 2.

The foil's surface was pre-reduced to the metallic state by annealing in 0.5 mbar  $\text{H}_2$  at 550 °C until no O1s signal could be detected (using  $h\nu = 700 \text{ eV}$ ). Note that if the sample is cooled in  $\text{H}_2$  or vacuum a small O1s signal returns, due to the formation of oxygen surface termination from trace gas-phase oxygen in the chamber. However, by exchanging the  $\text{H}_2$  with  $\text{C}_2\text{H}_4$  at 550 °C, followed by cooling, the sample does not become oxidized during cooling because a protective carbonaceous layer is formed on the surface in  $\text{C}_2\text{H}_4$ . Thus after reduction, the foil samples were cooled in  $\text{C}_2\text{H}_4$  before  $\text{O}_2$  was introduced into the gas feed.

Fig. 1a and c show the Cu L<sub>3</sub>-edge and O K-edge NEXAFS spectra that were measured during the first heating ramp. From the stack of Cu L<sub>3</sub>-edge spectra in Fig. 1a, one can see that the surface begins as metallic copper, and eventually becomes oxidized to  $\text{Cu}_2\text{O}$ . A plot of surface composition *versus* temperature is shown in Fig. 1b. The surface composition was determined by fitting the NEXAFS spectra using calibrated Cu,  $\text{Cu}_2\text{O}$  and CuO reference spectra. From the plot of surface



**Fig. 1** *In situ* photoemission measurements and partial oxidation production from a reduced copper foil during a heating ramp from 50 °C to 400 °C in 0.3 mbar of a 1:1 mixture of  $\text{O}_2$  and  $\text{C}_2\text{H}_4$ . (a) Cu L<sub>3</sub>-edge NEXAFS spectra, (b) spectral component analysis of the Cu L<sub>3</sub> spectra and concentration of  $\text{C}_2\text{H}_4\text{O}$  in the product stream. (c) O K-edge NEXAFS spectra measured during the ramp, (d) spectral component analysis of the O K spectra and concentration of  $\text{C}_2\text{H}_4\text{O}$  in the product stream. The dashed lines in (d) represent two different  $\text{Cu}_2\text{O}$  reference spectra: one for  $\text{Cu}_2\text{O}$  at low-temperature and one for  $\text{Cu}_2\text{O}$  at high temperature, as described in the discussion.



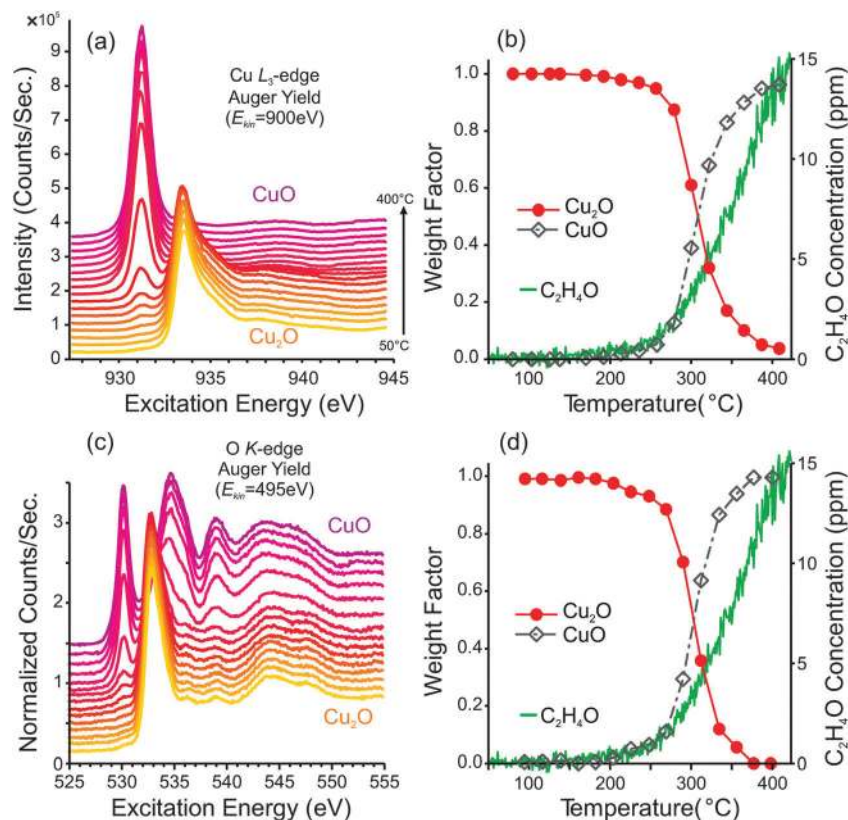


Fig. 2 *In situ* photoemission measurements and partial oxidation production from a pre-oxidized copper foil during a heating ramp from 50 °C to 400 °C in 0.3 mbar of a 1:1 mixture of O<sub>2</sub> and C<sub>2</sub>H<sub>4</sub>. (a) Cu L<sub>3</sub>-edge NEXAFS spectra, (b) spectral component analysis of the Cu L<sub>3</sub> spectra and concentration of C<sub>2</sub>H<sub>4</sub>O in the product stream. (c) O K-edge NEXAFS spectra measured during the ramp, (d) spectral component analysis of the O K-edge spectra and concentration of C<sub>2</sub>H<sub>4</sub>O in the product stream.

composition, one can see that the first signs of Cu<sub>2</sub>O are detectable at temperatures greater than 200 °C, and after 300 °C the metallic Cu signal is completely absent.

The O K-edge spectra reveal additional information. Due to their sensitivity to oxygen-containing surface species, the O K-edge spectra indicate how the copper surface is terminated prior to oxide formation. At low temperatures (50–180 °C) the carbonaceous layer that covers the copper surface becomes oxygenated, which is evident from the weak absorption edge at *ca.* 531.0 eV, consistent with an oxygenated carbonaceous species.<sup>42</sup> Furthermore, C1s and O1s XPS spectra (Fig. S1 in ESI†) reveal the presence of species with C1s binding energies at 285.8 eV (C–O) and 287.9 eV (C=O) and O1s binding energies at 531.0 eV (C=O) and 532.7 eV (C–O).<sup>43</sup> While the C1s spectra allow us to identify the type of carbon–oxygen bonding in the surface carbon layer, they do not provide sufficient information to identify the molecular structures of these species. For instance, one might speculate the possible presence of an oxymetallacycle, carbonate species, or carbonyl on the copper surface. While any of these species could be present, further work is needed, for instance using *in situ* vibrational spectroscopy, to identify these species.

At temperatures above *ca.* 120 °C the carbonaceous layer begins to burn away, and a new oxygen species forms. This species has an O K absorption edge at *ca.* 530.0–530.5 eV and an

O1s binding energy of *ca.* 529.6 eV (Fig. S1 and S2, ESI†). Based on these spectra, we attribute this species to the oxygen of an O-terminated Cu surface. The justification for this assignment and a more detailed examination of the O-terminated surface is presented in Section 4. As the temperature increases beyond 200 °C, the O-terminated surface is replaced by Cu<sub>2</sub>O. A plot of the spectral composition of the O K-edge spectra is shown in Fig. 1d. Overlaid onto the surface composition plots of Fig. 1b and d, we have shown the partial-oxidation product (C<sub>2</sub>H<sub>4</sub>O) concentration in the product stream, as determined using PTRMS. Here one can see that the onset of C<sub>2</sub>H<sub>4</sub>O formation appears concurrently with the formation Cu<sub>2</sub>O. Note that the product distribution was also measured using GC; however, due to the low surface area of the foil and the comparatively low sensitivity of GC, only a small signal could be detected. The GC data indicate that selectivity to epoxide was 2.7% ± 0.2% (Fig. S3, ESI†).

Note that the Cu<sub>2</sub>O signal is best fit by using two different Cu<sub>2</sub>O O K-edge reference spectra: one for low temperature (*ca.* 100 °C) and one for high temperature (500 °C). The surface compositions of these spectra are indicated in Fig. 1d by the dashed lines. The need for two Cu<sub>2</sub>O reference spectra in the fit is due to observed subtle differences in the O K-edge with increasing temperature. These differences are believed to be due to slight changes in the electronic structure of the oxide at



high temperature, possibly due to defects. The low-temperature and high-temperature spectra are explained in more detail in the discussion section, in conjunction with Fig. 11.

After the heating ramp, the sample was cooled to room temperature and a second heating ramp was performed in order to examine how a pre-oxidized sample behaves. From the Cu  $L_{3}$ -edge and O K-edge spectra in Fig. 2a and c, one can see that the sample surface begins as  $\text{Cu}_2\text{O}$ , and eventually becomes oxidized to CuO. The spectral fitting analyses, in Fig. 2b and d, reveal that the oxidation to CuO begins at *ca.* 200 °C. Eventually, the entire surface is composed of CuO. The PTRMS data show that the CuO-covered sample is also capable of producing partial-oxidation products, and the GC data indicate selectivity to epoxide of *ca.* 2.2%  $\pm$  0.2%.

A summary of the stages of Cu oxidation during the heating ramps in epoxidation conditions is illustrated in Fig. 3. In general, at low temperatures (<150 °C) the surface is covered with carbonaceous species that become oxygenated once  $\text{O}_2$  is added to the feed. Above *ca.* 120 °C these carbon species burn away and the surface begins to oxidize; first with the formation of O-terminated Cu, followed by the formation of  $\text{Cu}_2\text{O}$ , and then eventually with the formation of CuO.

Based on the oxygen partial pressures and temperatures used in these experiments (0.15 mbar, 50–500 °C), CuO is expected to be the thermodynamically most stable form of copper.<sup>44,45</sup> Interestingly, the CuO does not form on the  $\text{Cu}_2\text{O}$  during the first temperature ramp. In fact, the surface can remain kinetically trapped as  $\text{Cu}_2\text{O}$  under epoxidation conditions (350 °C in a 1 : 1 mixture of  $\text{O}_2$  and  $\text{C}_2\text{H}_4$ ) indefinitely, and only begins to form CuO during cooling (Fig. S4, ESI<sup>†</sup>). The same behavior can be observed when copper metal is heated in oxygen without ethylene (Fig. S5 and S6, ESI<sup>†</sup>). When comparing the behavior of copper under epoxidation conditions with the corrosion of copper in pure  $\text{O}_2$ , it is clear that the presence of ethylene in the gas feed plays little role in preventing oxidation. The sequence of oxidation events presented in Fig. 3 is the same for copper in pure  $\text{O}_2$ , except that in pure  $\text{O}_2$  the temperatures at which each phase transition occurs are lower by *ca.* 30 °C.

The behavior of copper in ethylene epoxidation is in stark contrast with the behavior of copper in methanol oxidation, where metal-like sub-stoichiometric copper oxides have been observed.<sup>46,47</sup> One reason for the difference between copper's behavior in methanol oxidation and in ethylene epoxidation is that methanol is a much stronger reducing agent than ethylene. Methanol is a strong enough reducing agent to reduce  $\text{Cu}_2\text{O}$  to copper metal at *ca.* 350 °C (in 0.5 mbar  $\text{CH}_3\text{OH}$ ). Ethylene will not fully reduce  $\text{Cu}_2\text{O}$  to metallic copper even at 500 °C (in 0.5 mbar  $\text{C}_2\text{H}_4$ ). Consequently, during methanol oxidation, the dynamics of copper oxide reduction by methanol and copper re-oxidation by  $\text{O}_2$  gives rise to a sub-stoichiometric oxidic surface. In the case of ethylene epoxidation, the rate of oxide reduction by ethylene is very slow compared to the re-oxidation by  $\text{O}_2$ , and consequently copper corrosion takes place.

## 2. SEM investigation

To examine the structure of the oxidized copper, a sample was investigated post-reaction with scanning electron microscopy (SEM). Fig. 4 shows a copper foil sample after 12 hours of reaction in a 1 : 1 mixture of  $\text{O}_2$  and  $\text{C}_2\text{H}_4$  at 0.3 mbar and 350 °C. The copper surface is covered with a *ca.* 15  $\mu\text{m}$ -thick oxide film that, at several areas, has broken away from the underlying metallic copper (as seen in Fig. 4a). The oxide scale consists of two distinct layers, seen in Fig. 4b and c. Energy-dispersive X-ray fluorescence spectroscopy (EDX) was performed on the sample to determine the composition of the layers, and reveals that the outermost layer consists of CuO and middle layer of  $\text{Cu}_2\text{O}$  and the buried material of Cu, as illustrated in Fig. 4d. This type of layered structure is known to form during dry oxidation of copper.<sup>48–50</sup>

The initial formation of oxide on the copper surface proceeds *via* nucleation and lateral growth, as seen from *in situ* environmental SEM (E-SEM) measurements. Fig. 5 shows a series of E-SEM images, measured at different times during the reaction of Cu in 0.3 mbar of a 1 : 1 mixture of  $\text{O}_2$  and  $\text{C}_2\text{H}_4$  at 350 °C. Fig. 5a shows the reduced metallic surface prior to the introduction of the reaction gas feed. One can see three different grains in the image, all of which are highly faceted.

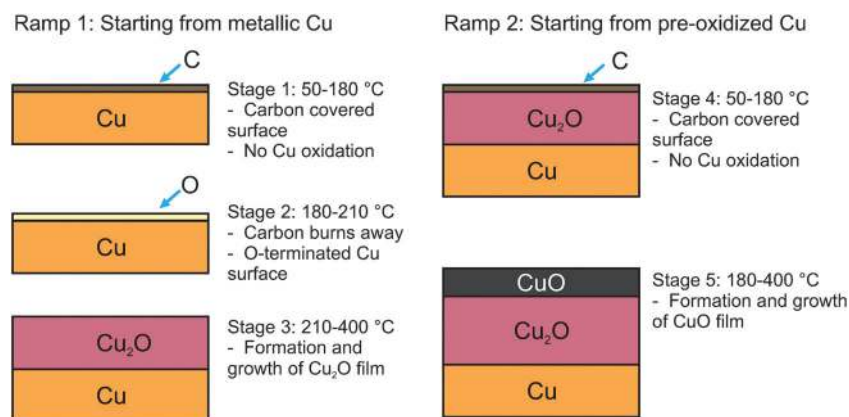


Fig. 3 Illustration of the stages of oxidation that a copper foil experiences during temperature ramps under ethylene epoxidation conditions (based on the measurements in a 1 : 1 mixture of  $\text{O}_2$  and  $\text{C}_2\text{H}_4$  at 0.3 mbar).



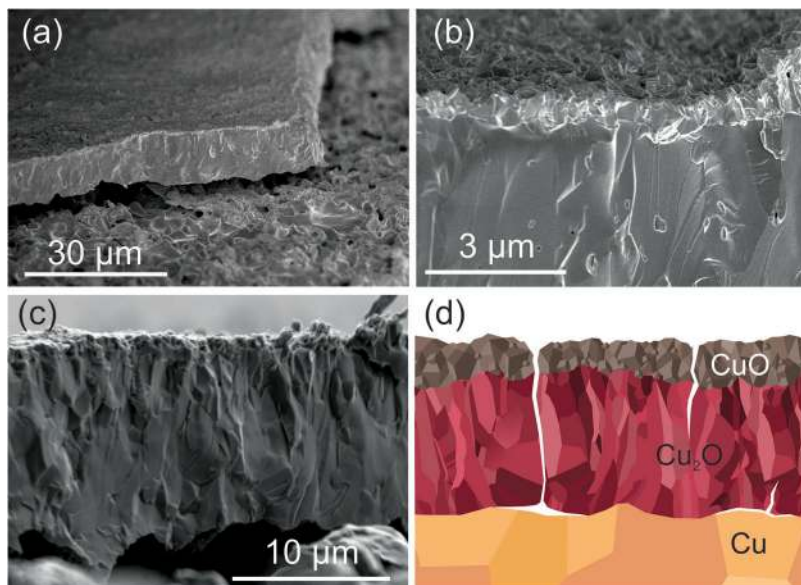


Fig. 4 Secondary electron microscope images of the oxide film that formed on a copper foil after 12 hours of reaction in a 1 : 1 mixture of  $O_2$  and  $C_2H_4$  at a pressure of 0.3 mbar and a temperature of 350 °C. (a) Image showing the layered structure of the film and how the film has broken off from the metal substrate. (b) An image showing a magnified view of the  $CuO/Cu_2O$  interface. (c) A cross sectional view of the oxide film, showing a film thickness of ca. 15  $\mu m$ . (d) An illustration of the layered oxide film, with cracks drawn in to illustrate possible pathways that gas molecules might follow reach the metal/oxide interface.

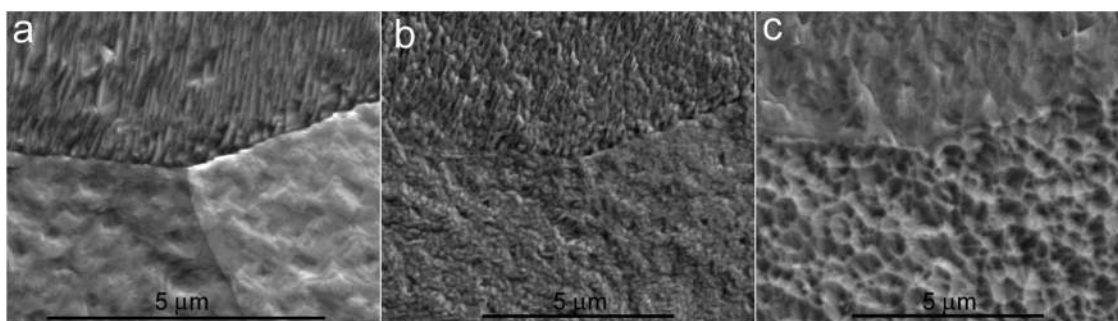


Fig. 5 Environmental SEM images of Cu foil measured under epoxidation conditions (1 : 1 mixture of  $O_2$  and  $C_2H_4$  at a total pressure of 0.3 mbar and temperature of 350 °C). Frame (a) shows the reduced metal surface prior to the introduction of oxygen. Frame (b) shows the oxide nuclei formed on the surface after 10 minutes of reaction. Frame (c) shows the oxidized surface after 80 minutes of reaction.

Upon the introduction of the reaction feed, oxide nuclei rapidly form and uniformly cover the surface with a density of ca. 50 nuclei  $\mu m^{-2}$ , as shown in Fig. 5b. Eventually, the nuclei merge together and coarsen, as shown in Fig. 5c. Post-reaction XPS analysis of this sample showed the surface to consist of  $Cu_2O$ .

### 3. Epoxidation on pure oxides

While metallic copper is predicted to be capable of selective ethylene epoxidation,<sup>9</sup> the oxides traditionally have been viewed as only capable of total oxidation. In our temperature-ramp experiments on copper foil, metallic copper was always present underneath the growing oxide layer. Thus we cannot exclude the possibility that metallic copper might still be exposed to the gas phase at the metal/oxide interface. For instance, given the poor adhesion of the oxide film to the

underlying metal, it is possible that diffusion pathways through the oxide may exist such that gases may reach the metal/oxide interface, as illustrated in Fig. 4d. If this is the case then it is possible that, even though copper oxide is continually forming, metallic copper at the metal/oxide interface may be responsible for the epoxidation reaction.

To investigate whether the copper oxides perform epoxidation we have examined pure oxide powders of  $Cu_2O$  and  $CuO$ , under epoxidation conditions. Fig. 6 shows GC measurements and *in situ* NEXAFS measurements from pressed  $Cu_2O$  and  $CuO$  powders, heated to 350 °C in 1 : 1 mixtures of  $O_2$  and  $C_2H_4$  at a total pressure of 0.3 mbar. The GC data shows that  $Cu_2O$  exhibits activity for epoxidation, but with only 0.9% selectivity to epoxide and 98.0% selectivity to  $CO_2$ . Interestingly, 1.1% ( $\pm 0.2\%$ ) ethyl aldehyde was also detected. The detection of acetaldehyde is consistent with recent DFT predictions that



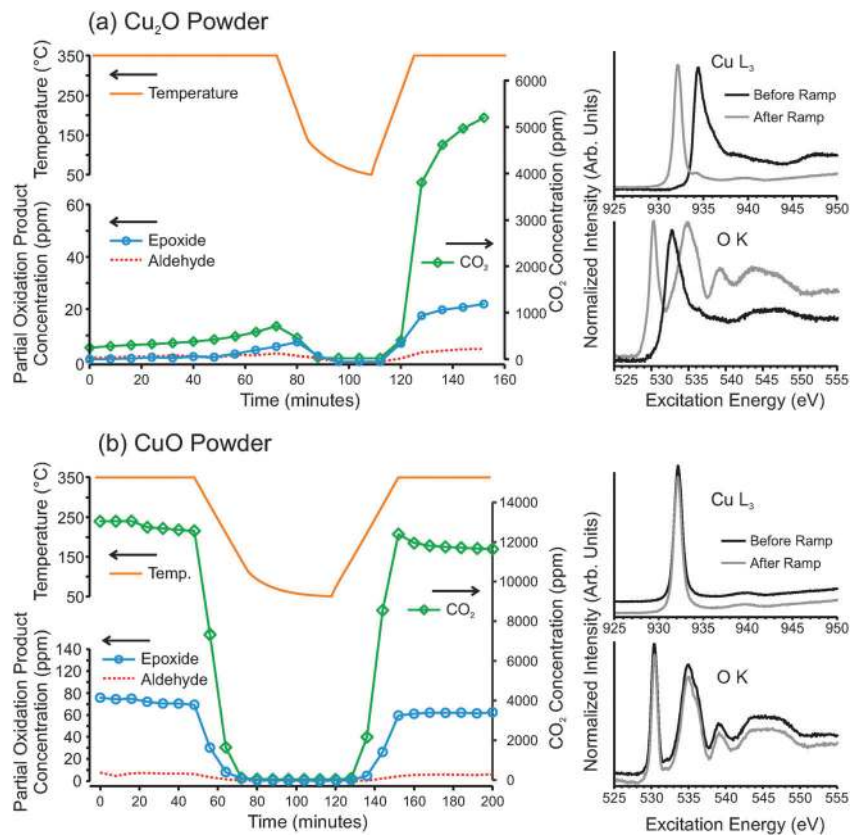


Fig. 6 (left) Gas chromatography product analysis and (right) *in situ* measured NEXAFS spectra of (a)  $\text{Cu}_2\text{O}$  and (b)  $\text{CuO}$  powders heated in a 1 : 1 mixture of  $\text{O}_2$  and  $\text{C}_2\text{H}_4$  at 0.3 mbar.

found ethylene epoxide on  $\text{Cu}_2\text{O}(100)$  can easily isomerize to acetaldehyde.<sup>26</sup> On silver catalysts acetaldehyde is believed to be very rapidly oxidized to  $\text{CO}_2$  before it can desorb from the catalyst surface.<sup>51,52</sup> Thus, acetaldehyde is not detected in the product stream from silver catalysts (see Fig. S7 in ESI† for GC data on silver in identical conditions). It should be noted that the combustion pathway for ethylene on copper and copper oxides is not as well known as for ethylene combustion on silver. On silver catalysts, it is generally accepted that the total oxidation pathway occurs *via* the formation of acetaldehyde, and that once acetaldehyde is formed it very rapidly proceeds to complete combustion.<sup>52–56</sup> The rate of combustion of acetaldehyde on copper oxides appears to be significantly slower than on silver. This is apparent because acetaldehyde can be detected in the product stream from  $\text{Cu}_2\text{O}$ , which implies that at least some portion of the acetaldehyde that is initially formed can desorb from the copper oxide surface before proceeds towards total combustion. However, if we assume a similar reaction pathway on copper oxides as on silver, then most of the  $\text{CO}_2$  that was produced by the copper oxides would have originated from acetaldehyde combustion.

Given the high oxo-philic nature of copper and the weak reducing power of ethylene, even  $\text{Cu}_2\text{O}$  is not thermodynamically stable in epoxidation conditions. With time on stream, the  $\text{Cu}_2\text{O}$  powder begins to oxidize to  $\text{CuO}$ . The transformation to  $\text{CuO}$  is slow, but is stimulated by cooling and re-heating, as

seen in Fig. 6a. Upon re-heating, the oxide's activity increases by a factor of 10. Furthermore, the product distribution changes such that, after  $\text{CuO}$  is formed, the product stream consists of 0.9% epoxide, 0.2% ( $\pm 0.05\%$ ) aldehyde and 98.9%  $\text{CO}_2$ . Investigation of the *in situ* NEXAFS spectra reveals that before the ramp, the sample surface was entirely  $\text{Cu}_2\text{O}$ , and after the ramp it was 90%  $\text{CuO}$ .

The GC results of pure  $\text{CuO}$  powder reveal similar catalytic behavior for pure  $\text{CuO}$  as the  $\text{CuO}$  formed by oxidation of  $\text{Cu}_2\text{O}$  (Fig. 6b). The product stream consisted of 1.2% epoxide, 0.1% ( $\pm 0.05\%$ ) aldehyde and 98.8%  $\text{CO}_2$ . Unlike  $\text{Cu}_2\text{O}$ ,  $\text{CuO}$  cannot be further oxidized, and the cooling and heating ramps do not significantly change the activity or product distribution of  $\text{CuO}$ . As can be seen from the NEXAFS spectra, the oxide also does not change its chemical state.

Note that the measured partial-oxidation selectivities were found to depend on sample morphology, with oxidized foils exhibiting higher selectivities than pressed oxide powders. For instance, on oxidized copper foils, a surface composed of  $\text{Cu}_2\text{O}$  was found to produce 2.6% ethylene oxide and 2.4% acetaldehyde, while the same foil after oxidation to  $\text{CuO}$  produced 1.9% ethylene epoxide and 0.9% ( $\pm 0.1\%$ ) acetaldehyde (Fig. S4, ESI†). The observed selectivities of pressed copper oxide powders and oxidized copper foils at steady state are tabulated in Table 1.

Thus, although the partial-oxidation selectivities found here are considerably lower than those recently reported by





**Table 1** Selectivities of pressed copper oxide powders and oxidized copper foils for the partial oxidation and total oxidation products of ethylene oxidation at 350 °C in a 1:1 feed of ethylene and oxygen at 0.3 mbar (measured with gas chromatography)

	Ethyl oxide (%)	Acetaldehyde (%)	CO <sub>2</sub> (%)
Cu <sub>2</sub> O on foil	2.6 ± 0.2	2.4 ± 0.2	95.0 ± 0.4
Cu <sub>2</sub> O powder	0.9 ± 0.2	1.1 ± 0.2	98.0 ± 0.4
CuO on foil	1.9 ± 0.1	0.9 ± 0.1	97.2 ± 0.4
CuO powder	1.1 ± 0.05	0.1 ± 0.05	98.8 ± 0.1

Jayamurthy *et al.*,<sup>18</sup> it should be recognized that this may be due to differences in sample morphology; however, we cannot rule out the possibility that support interactions in Jayamurthy's study might enhance selectivity, or perhaps that the selectivities are lower in our experiments due to the 'pressure gap'. For instance, non-promoted silver catalysts exhibit epoxide selectivities at atmospheric pressure conditions of *ca.* 50%,<sup>57</sup> while epoxide selectivity in NAP-XPS conditions was found to be *ca.* 10%.<sup>58</sup>

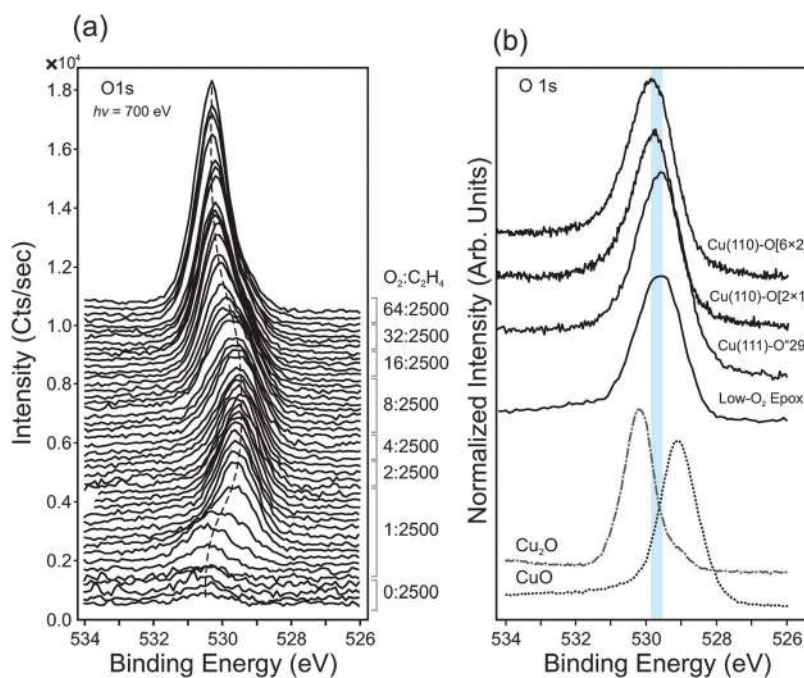
Regardless of these differences, we can confirm that the oxides exhibit partial oxidation activity, and in general, Cu<sub>2</sub>O exhibited higher epoxide selectivity than CuO, and also produced a higher proportion of acetaldehyde than CuO. If we assume that all the CO<sub>2</sub> formed had to pass through an acetaldehyde intermediate (as it does on silver catalysts in the total combustion pathway) then it would seem that the different selectivities between Cu<sub>2</sub>O and CuO could stem from a difference in rates of aldehyde combustion for the two oxides, but also possibly a difference in rates acetaldehyde and isomerisation to/from epoxide and subsequent desorption of the epoxide. A detailed

computational investigation of these reaction pathways could be carried out as future work.

#### 4. Dilute O<sub>2</sub>

After investigating the oxidation of copper during ethylene epoxidation and finding that both copper oxides can perform epoxidation to some degree, we sought to determine whether metallic copper could be maintained under near-ambient pressure conditions and whether the high selectivity seen for copper under UHV conditions could be achieved. To do so, we carried out reactions under a gas feed of extremely dilute O<sub>2</sub>, ranging in composition from 1:2500 to 64:2500 (O<sub>2</sub>:C<sub>2</sub>H<sub>4</sub>), equivalent to oxygen partial pressures ranging from  $1.2 \times 10^{-4}$  mbar to  $7.7 \times 10^{-3}$  mbar. Under these conditions, a unique non-oxide oxygen species is observed. The spectral features of this species—*i.e.* the O1s, O K-edge and valence band spectra—resemble O-terminated copper surfaces (*e.g.* Cu(110)-[2 × 1]O, Cu(110)-c[6 × 2]O, Cu(111)-'29'O), as shown in Fig. 7b.

Fig. 7a shows the O1s spectra measured in dilute-O<sub>2</sub> conditions ( $T = 350$  °C,  $P_{\text{total}} = 0.3$  mbar). One can see that the reduced metallic surface (bottom most spectrum in the spectrum stack) contains a small oxygen signal. No impurities were detectable even when using a photon energy that is highly sensitive for the common contaminants, such as Si, P, S, and Cl.<sup>59</sup> The observed oxygen species has an O1s binding energy of *ca.* 530.3 eV, which is consistent with previous reports of sub-surface oxygen in copper.<sup>60</sup> Upon the addition of O<sub>2</sub> into the gas feed, this peak initially grows in intensity with time (Fig. S8, ESI†).



**Fig. 7** (a) O1s spectra of Cu foil, measured at 0.3 mbar in various gas mixtures ranging from 1:2500 to 64:2500 (oxygen-to-ethylene ratios). The dashed line shows the change in binding energy with increasing oxygen concentration in the gas feed. (b) Reference O1s spectra of several O-terminated Cu single crystals (measured in UHV using a laboratory photon source,  $h\nu = 1486.6$  eV) and reference spectra of Cu<sub>2</sub>O and CuO (measured UHV using synchrotron radiation,  $h\nu = 700$  eV). The shaded area represents the range of binding energies observed for O-terminated Cu surfaces.



After about 4 minutes under these conditions, a new oxygen species begins to form at lower binding energy (529.6 eV). The O1s binding energy of this species is not consistent with CuO (O1s at 529.1 eV) or Cu<sub>2</sub>O (O1s at 530.2 eV), as shown in Fig. 7b. The Cu2p spectra and Cu LMM spectra also show no evidence of CuO or Cu<sub>2</sub>O (Fig. S9, ESI†).

The oxygen species at 529.6 eV is consistent with what is found for O-reconstructed Cu single crystals. The O1s spectra of Cu(110)-[2 × 1]O, Cu(110)-c[6 × 2]O, Cu(111)-'29'O surfaces was measured in UHV (LEED images in Fig. S10, ESI†) are shown in Fig. 7b for comparison. Their binding energies fall within the range of 529.5 to 529.8 eV.

The species at 529.6 eV remains on the surface while the O<sub>2</sub>-to-C<sub>2</sub>H<sub>4</sub> ratio is increased from 1 : 2500 to 8 : 2500. At reaction feeds more oxygen-rich than 8 : 2500, Cu<sub>2</sub>O begins to form. The Cu<sub>2</sub>O signal continues to increase until, in a reactant mixture of 64 : 2500, Cu<sub>2</sub>O completely covers the catalyst surface. From the valence band spectra ( $h\nu = 150$  eV) and Cu LMM Auger spectra (Fig. S9, ESI†), no metallic copper signal can be seen, indicating a Cu<sub>2</sub>O film thicker than 8 nm (IMFP in Cu<sub>2</sub>O of 900 eV electrons is *ca.* 1.7 nm, and probing depth is *ca.* 4 × IMFP).

To support our assignment of the oxygen species at 529.6 eV, we also examine the valence band spectra measured in dilute-O<sub>2</sub> epoxidation conditions. The valence band spectrum of metallic Cu is compared with that of Cu measured in 1 : 2500 O<sub>2</sub> : C<sub>2</sub>H<sub>4</sub> ( $P_{\text{total}} = 0.3$  mbar,  $T = 350$  °C), in Fig. 8a. Here one can see that in dilute-O<sub>2</sub> conditions, new valence states arise on the high- and low-binding energy sides of the Cu3d band.

We find that the same valence features arise for O-terminated Cu single crystals. Valence spectra of metallic Cu(110) and oxygen-terminated Cu(110), as shown in Fig. 8b. Density functional theory calculations of the Cu(100)-O[2 × 1] also show similar features, and reveal that such valence states arise from hybridization between O p-states and Cu d-states, as seen in the partial density of states (pDOS) plots in Fig. 8c.

Note that in the pDOS plots of Fig. 8c the contribution to the intensity of each atomic layer of the calculated O–Cu slab was attenuated according to Beer's law, using an inelastic mean-free path (IMFP) of 4.6 Å, which is the calculated IMFP of photoelectrons with 150 eV kinetic energy.<sup>61</sup> This was done so that the pDOS plots could be easily comparable with the measured photoemission spectra. Furthermore, the pDOS plots were multiplied by a Fermi–Dirac function, such that the pDOS represents only occupied states.

The O K-edge and Cu L<sub>3</sub>-edge NEXAFS spectra of copper in dilute-O<sub>2</sub> epoxidation conditions were measured and compared with reference spectra of the copper oxides and O-terminated copper single crystals. These spectra are shown in Fig. 9. The bottom four spectra are of a metallic copper surface during exposure to increasing O<sub>2</sub> concentrations in the gas feed ( $P_{\text{total}} = 0.3$  mbar,  $T = 350$  °C). In the O K-edge spectra, one can see that in the most dilute oxygen conditions (1 : 1100) there is an absorption feature at *ca.* 530.3 eV, and another absorption feature at *ca.* 533.0 eV. These features appear at similar energies to the white lines of CuO (530.3 eV) and Cu<sub>2</sub>O (532.6 eV), respectively. However, examination of the corresponding Cu

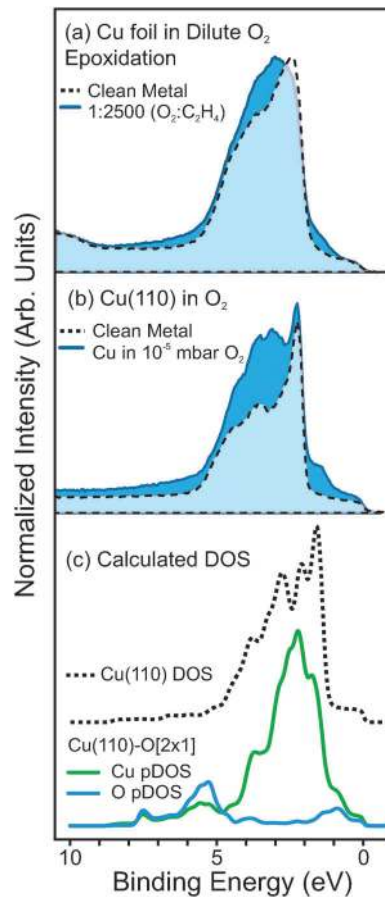


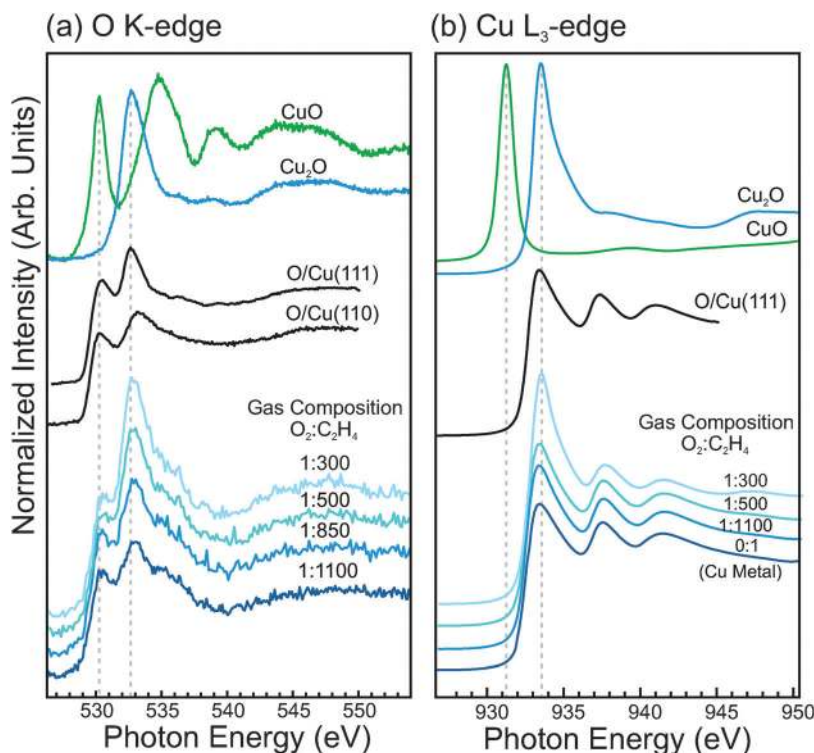
Fig. 8 (a) Valence band spectra of polycrystalline Cu foil, (dashed line) measured in vacuum after reduction in H<sub>2</sub>, (solid line) measured in a 1 : 2500 mixture of O<sub>2</sub> : C<sub>2</sub>H<sub>4</sub> at 350 °C. Photon energy was 150 eV. (b) Valence band spectra of single crystal Cu(110), (dashed line) measured in vacuum after reduction in H<sub>2</sub>, (solid line) measured in a 1 × 10<sup>-5</sup> mbar of O<sub>2</sub> : C<sub>2</sub>H<sub>4</sub> at 350 °C. (c) Density of occupied states (DOS) calculated using DFT for metallic Cu(110) (dashed line) and Cu-partial DOS (green line) and O-partial DOS (blue line) of the Cu(110)-O[2 × 1] surface. The DOS was calculated using a 6-layer slab of Cu atoms and periodic boundary conditions. The DOS from the buried atomic layers were attenuated by the electron escape depth (IMFP of 4.6 Å) so that the calculated occupied DOS are comparable with the measured photoemission spectrum. Note, also that the calculated DOS was multiplied by a Fermi–Dirac function.

L<sub>3</sub>-edge spectra reveals that the surface contains no trace of CuO or Cu<sub>2</sub>O, and appears to consist only of metallic copper. Comparison of the NEXAFS spectra with O-terminated Cu single crystals reveals that similar features are observed for the O-terminated Cu surfaces, and is consistent with the interpretation of the O1s and valence band spectra.

With increasing O<sub>2</sub> concentration in the gas feed, the O K and Cu L<sub>3</sub> spectra begin to show Cu<sub>2</sub>O contributions. The fact that both Cu<sub>2</sub>O features and O-terminated Cu features are observed simultaneously likely indicates a non-uniform surface, where Cu<sub>2</sub>O nuclei have formed and grown to partially cover the surface. Such behavior is known to occur during the initial stages of oxide formation on metallic copper.<sup>62,63</sup>

While our photoemission analysis indicates that, even when very dilute oxygen feeds are used for ethylene epoxidation,



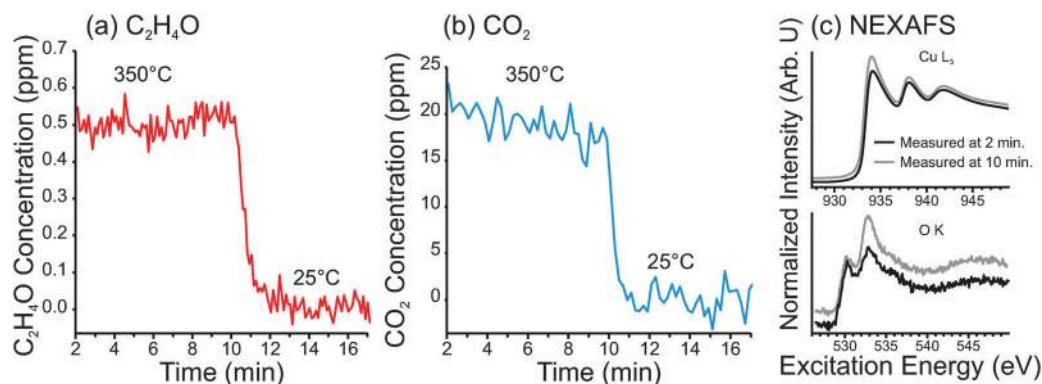


**Fig. 9** (a) O K-edge NEXAFS spectra. (b) Cu L<sub>3</sub>-edge NEXAFS spectra. In (a) and (b) the bottom four spectra are of Cu foil under epoxidation conditions ( $P = 0.3$  mbar,  $T = 350$  °C) in a dilute oxygen feed, and the top two spectra are reference spectra for Cu<sub>2</sub>O and CuO. (c) O K-edge NEXAFS spectra of O-terminated Cu single crystals, measured in  $10^{-4}$  mbar O<sub>2</sub> at 350 °C. For comparison, the O K-edge of Cu foil in epoxidation conditions and a DFT-calculated spectrum of an O-terminated surface are shown.

copper becomes covered by an atomic layer of oxygen, one wonders whether such a surface can exhibit the high activity of the metallic surface. Measuring activity under such a dilute oxygen feed is difficult due to the extremely low conversion. To increase conversion we used high-purity copper foam with a surface area that is roughly 50 times greater than a copper foil. Using such a sample, we were able to detect C<sub>2</sub>H<sub>4</sub>O using PTRMS and CO<sub>2</sub> using EI-QMS; however, the oxygen

concentration had to be increased to 1:800 before anything could be detected.

The results of this investigation are shown in Fig. 10. The C<sub>2</sub>H<sub>4</sub>O and CO<sub>2</sub> concentrations in the product stream—with the Cu foam heated at 350 °C in 0.3 mbar of 1:800 O<sub>2</sub>:C<sub>2</sub>H<sub>4</sub>—are shown in Fig. 10a and b, respectively. The Cu L<sub>3</sub>-edge and O K-edge spectra, measured during the reaction, are shown in Fig. 10c.



**Fig. 10** Data from a copper foam heated at 350 °C in a gas feed with an oxygen-to-ethylene ratio of 1:800 and total pressure 0.3 mbar. (a) Concentration of partial oxidation products in the product stream, having molecular formula C<sub>2</sub>H<sub>4</sub>O, measured using PTRMS. (b) Concentration of CO<sub>2</sub> in the product stream, measured using EI-QMS. (c) NEXAFS spectra of the surface of the Cu foam, measured *in situ* at the start of the reaction (in grey), and just prior to cool-down (black). Top spectra are of the total-electron yield spectra of Cu L<sub>3</sub>-edge and bottom spectra are Auger-electron yield spectra ( $E_{kin} = 493$  eV) of the O K-edge.



From these measurements we have found that the O-terminated Cu surface exhibited selectivity to partial oxidation products of *ca.* 4%. However, it should be noted that PTR-MS cannot distinguish ethylene epoxide from acetaldehyde. From the Cu<sub>2</sub>O powder samples shown earlier, it was found by GC that about 50% of the partial oxidation product was acetaldehyde at 350 °C. If we assume the same product distribution from the O-terminated copper surface, then we obtain an epoxidation selectivity of only 2%. It should also be noted that, under these conditions, the copper surface eventually began to show signs of Cu<sub>2</sub>O formation, as seen in the O K-edge spectra. Therefore, one cannot be certain that the observed activity originates completely from the O-terminated Cu surface (*i.e.* some of the activity could be the result of Cu<sub>2</sub>O).

The reactivity data indicates that the O-terminated surface exhibits catalytic properties comparable to the bulk oxides, and does not exhibit the high selectivity predicted for metallic copper. Thus we surmise that, even under the most dilute oxygen conditions achieved here, the copper surface becomes completely saturated with oxygen.

## Discussion

The number of research articles addressing copper's behavior in epoxidation is relatively few compared to silver. Thus we find it instructive to start the discussion with some comparisons between copper and silver. Copper is a very oxo-philic material compared to silver. Under typical epoxidation conditions, silver oxides are not thermodynamically stable; however, the silver surface is covered by various adsorbed oxygen species.<sup>58,64</sup> Conversely, copper oxides are stable under epoxidation conditions – in particular, CuO – and consequently copper corrodes under such conditions, as we have seen in the present study. Thus, even though metallic copper can perform high selectivity epoxidation,<sup>65</sup> under realistic operating conditions, oxygen covers the metal surface much faster than it can be removed by epoxidation of ethylene. Strategies could potentially be employed to stabilize copper in a low oxidation state, as was recently demonstrated using a mixed metal oxide TiCuO<sub>x</sub>.<sup>66</sup>

The reaction mechanism for epoxide formation on silver is still a matter of debate. There are several excellent reviews on the topic that elaborate on all the proposed mechanisms and the experimental findings that have led to these hypotheses.<sup>1,53,67–69</sup> Here we will limit ourselves to a very brief overview of the topic. Early experimental results demonstrated evidence that a common intermediate may be involved in both the total- and partial-oxidation pathways.<sup>70</sup> Further experimental and theoretical evidence suggests such an intermediate could be an oxametallacycle.<sup>1,51,71,72</sup> Within the oxametallacycle model, DFT studies have demonstrated that the selectivity towards partial oxidation is governed by the strength of the metal–oxygen bond relative to the metal–carbon bond in the oxametallacycle.

An alternative mechanism has also been proposed in which epoxidation occurs *via* direct addition of surface oxygen to ethylene's C=C bond, while total oxidation occurs *via*

hydrogen abstraction.<sup>73,74</sup> This affirms that surface atomic oxygen that is relatively electron deficient (termed electrophilic oxygen) performs epoxidation, while surface atomic oxygen that is relatively electron rich (termed nucleophilic oxygen) performs hydrogen abstraction.

There is experimental evidence that shows several surface oxygen species are present on the silver surface under reaction conditions.<sup>41,58,64</sup> These species presumably differ from one another in terms of their valence electron densities. Interestingly the relative populations of the various species is correlated with epoxide selectivity, suggesting that multiple surface species influence the reaction mechanism in an intricate way.<sup>58,64</sup> In general, one would expect the valence electron density of adsorbed oxygen to have a strong influence on selectivity, regardless of whether the epoxidation mechanism follows a common-intermediate route or a direct epoxidation route. The valence electron density of surface oxygen species could be affected by such factors as oxygen surface coverage, the presence of sub-surface oxygen<sup>75</sup> and the presence of electron donating or withdrawing impurities.<sup>58</sup>

Model UHV studies and DFT calculations suggest that metallic copper that is pre-adsorbed with a very small amount of atomic oxygen follows the 'common intermediate' mechanism.<sup>6,8,9,65</sup> Due to the strong Cu–O bond relative to the Cu–C bond, the route from the oxametallacycle to ethylene epoxide is predicted to have a significantly lower barrier than the route to acetaldehyde, giving rise to a high epoxide selectivity on metallic copper.<sup>10</sup>

Traditionally, copper oxides were not considered to be capable of ethylene epoxidation because lattice O<sup>2–</sup> was considered to be too nucleophilic to perform epoxidation, due to the strong Cu–O bond; however, recent theoretical studies have predicted epoxidation to be feasible on Cu<sub>2</sub>O.<sup>26,67</sup> In particular it was found that when ethylene is adsorbed to a Cu<sub>2</sub>O(001) surface that contains an oxygen vacancy, an oxametallacycle can be formed with a relatively small activation energy; however, the barrier for forming the acetaldehyde from the oxametallacycle was significantly lower than the barrier for ethylene epoxidation, suggesting that aldehyde production is preferred over epoxide production.

Interestingly, these studies also indicated that on an oxygen-saturated Cu<sub>2</sub>O surface – in which no metal site is available to form the oxametallacycle – direct epoxidation may occur; however, the epoxide would rapidly isomerise to acetaldehyde, due to the strong Cu–O bond.<sup>26</sup> If isomerization is favored by the strong Cu–O bond, then isomerization might be avoided when a weaker Cu–O bond is involved in the mechanism. One could imagine weak Cu–O bonds would be present when the surface contains excess oxygen. We speculate that oxygen-rich defects, such as copper vacancies, may be involved in the epoxidation observed in the present study. Under the conditions used here – namely, temperatures of 200–500 °C and at oxygen partial pressures 0.15 mbar – one would expect the Cu<sub>2</sub>O surface to be oxygen-rich.

The types of defect present in Cu<sub>2</sub>O, as well as their thermodynamic and electronic properties, are more thoroughly



characterized in the literature than those of CuO. It is well established that the most dominant defect in Cu<sub>2</sub>O is the copper vacancy.<sup>76,77</sup> In CuO, copper vacancies have also been proposed to be the main point defect, although they are likely present in very low concentrations.<sup>48</sup> Due to the scarcity and uncertainty of present knowledge on CuO, we will mainly focus the following discussion on Cu<sub>2</sub>O.

The concentrations of various defects in oxides depend strongly on oxygen pressure and temperature. Defects in an oxide can give rise to deviations from stoichiometry. Truly “stoichiometric” cuprous oxide (*i.e.* Cu<sub>2-*y*</sub>O, where *y* = 0) exists only for a very limited range of conditions.<sup>76</sup> Any deviation in temperature or oxygen chemical potential from such conditions gives rise to point defects, such as oxygen and copper vacancies.

The experimental determination of Cu<sub>2</sub>O non-stoichiometry has shown that *y* in Cu<sub>2-*y*</sub>O can range from *ca.* -0.00003 to 0.00005 at 600 °C, depending on the oxygen partial pressure.<sup>76</sup> The copper vacancy is generally accepted to be the most thermodynamically stable point defect in Cu<sub>2</sub>O.<sup>78</sup> However, at elevated temperatures a considerable number of oxygen vacancies can also be present (especially in oxygen-lean conditions).<sup>76</sup> Under the conditions used in the present study, we expect copper vacancies to be the dominant defect, given the high oxygen chemical potential of the gas phase. In fact CuO is the thermodynamically most stable copper oxide under these conditions,<sup>79</sup> but it is not immediately formed in our experiments due to kinetic constraints. At the maximum temperatures reached in the present experiments (500 °C) one could expect defect concentrations on the order of 10<sup>17</sup>–10<sup>18</sup> cm<sup>-3</sup>.<sup>76</sup> Unfortunately, such small concentrations of defects are not generally detectable by photoemission spectroscopy, so we can only claim that they are present based on previous literature.<sup>76</sup>

In addition to bulk defects, surfaces also give rise to under-coordinated oxygen species. Previous DFT calculations by Stampfl and coworkers<sup>23</sup> have shown that, under oxygen-rich conditions (similar to those used in the present study), the thermodynamically stable surfaces of Cu<sub>2</sub>O are: (1) a defective Cu<sub>2</sub>O(111) surface that contains Cu vacancies by removal of coordinatively unsaturated copper surface atoms; and (2) a Cu<sub>2</sub>O(110) surface that is terminated such that the top-most atomic layer has a CuO stoichiometry. Both of these surfaces are oxygen rich relative to stoichiometric Cu<sub>2</sub>O, and thus contain oxygen coordination environments that differ significantly from stoichiometric Cu<sub>2</sub>O surfaces.

We expect that at high temperature, under the given oxygen partial pressure, the surface oxygen atoms will have lower coordination than at lower temperature, and consequently will be a more active catalyst. Although the aim of the present study is not to elucidate the mechanism of epoxidation on these oxides, we do see some evidence that can provide clues of the structural features that give rise to epoxidation. For instance, from the O K-edge NEXAFS spectra, it is clear that when the oxides are active in epoxidation they do not have their perfect ‘stoichiometric’ structures. We expand on this point in the following discussion.

As mentioned in Section 1, two different O K-edge reference spectra were used to fit the Cu<sub>2</sub>O component of the measured

spectra in Fig. 1c: one spectrum for Cu<sub>2</sub>O at high temperature and one for Cu<sub>2</sub>O at low temperature. Two different spectra were necessary because we observed subtle differences in O K-edge peak shape for Cu<sub>2</sub>O measured at low and high temperatures. The spectra used for reference spectra to fit the data in Fig. 1 are shown in Fig. 11a. These spectra were measured in a 1:10 ratio of O<sub>2</sub>:C<sub>2</sub>H<sub>4</sub>, such that Cu<sub>2</sub>O remains stable (*i.e.* does not oxidized to CuO). One can see in Fig. 11a that, at high temperature, the absorption edge (labeled A) shifts to lower excitation energy by 0.3 eV and broadens. Furthermore, the intensities of the feature labeled A, B, C and D in Fig. 11a decrease relative to the continuum intensity (*i.e.* the intensity at 550 eV excitation energy).

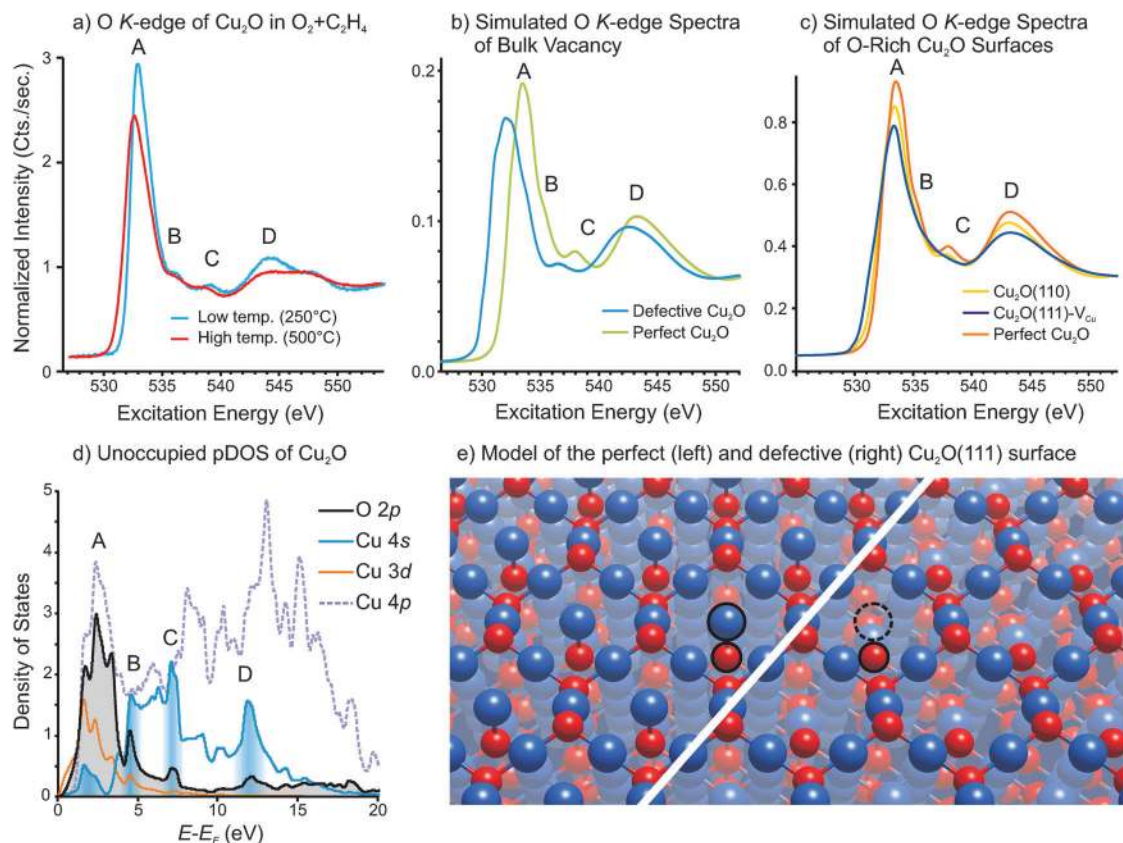
An O K-edge spectrum reflects the local unoccupied p-states on oxygen, so the spectral feature can be assigned by examining the unoccupied partial density-of-states (pDOS). A plot of the unoccupied pDOS of Cu<sub>2</sub>O is shown in Fig. 11d. One can see that the main feature (labeled A) is primarily due to transition into O2p states that are hybridized with Cu3d, Cu4s and Cu4p states, while the remaining features (B, C and D) are due to transitions into O2p states that are primarily hybridized with Cu4s states. The regions of the Cu4s DOS where there is significant hybridization with O2p states, and which give rise to the features in the O K-edge spectrum are highlighted with shading in Fig. 11d.

In order to investigate how oxygen under-coordination affects the O K-edge spectrum we have performed DFT calculations to simulate the O K-edge spectra of three Cu<sub>2</sub>O structures: namely, the two surfaces predicted by Stampfl and coworkers to be present in oxygen-rich conditions,<sup>23</sup> as well as an oxide containing a neutral vacancy (*i.e.* two copper vacancies and one oxygen vacancy in a 2 × 2 × 2 Cu<sub>2</sub>O supercell). The simulated spectrum of Cu<sub>2</sub>O containing a neutral bulk vacancy, as well as that of perfect Cu<sub>2</sub>O, is shown in Fig. 11b, while the simulated spectra of the O-rich Cu<sub>2</sub>O surfaces are shown in Fig. 11c. Note that the calculated spectrum of the bulk defective Cu<sub>2</sub>O is the sum of the O K-spectra for all oxygen species whose spectra are affected by the presence of the under-coordinated oxygen. The spectra of the defective Cu<sub>2</sub>O(111) and Cu<sub>2</sub>O(110) surfaces use the sum of the first five oxygen layers.

Note that all three structures contain under-coordinated oxygen atoms. For instance, Fig. 11e shows the perfect Cu<sub>2</sub>O(111) surface and the defective Cu<sub>2</sub>O(111) that contains surface copper vacancies. One can see in Fig. 11d that the copper atoms that were coordinatively unsaturated on the perfect surface (highlighted in Fig. 11d) have been removed to form the defective surface. The result is under-coordinated oxygen atoms in the defective surface. The structures of the other two structures that were calculated can be found in the ESI.†

In the simulated O K-edge spectra, one can see that in all three cases feature A shifts towards lower excitation energy relative to perfect Cu<sub>2</sub>O. The shift is due to a decrease in the electron density of the coordinatively unsaturated oxygen atoms relative to the oxygen atoms of the perfect lattice. In addition to the shift, the heights of all features that contain a





**Fig. 11** (a) O K-edge spectra of Cu<sub>2</sub>O measured at 'low' temperature (250 °C) and at 'high' temperature (500 °C) in a 1 : 10 mixture of O<sub>2</sub> and C<sub>2</sub>H<sub>4</sub> at 0.3 mbar total pressure. (b) Simulated O K-edge spectra of perfect Cu<sub>2</sub>O and defective Cu<sub>2</sub>O that contains a neutral Cu<sub>2</sub>O vacancy. (c) Simulated O K-edge spectra of perfect Cu<sub>2</sub>O, a Cu<sub>2</sub>O(111) surface containing copper vacancies, and a Cu<sub>2</sub>O(110) surface. (d) Calculated unoccupied partial density-of-states for perfect Cu<sub>2</sub>O. (e) Model of the perfect (left) and defective (right) Cu<sub>2</sub>O(111) surface.

Cu4s component (*i.e.* A, B, C and D) decrease relative to the continuum intensity (at 550 eV). This observation implies that the density of unoccupied Cu4s states decreases in the presence of under-coordinated oxygen, suggesting that electron density is transferring into the Cu4s states.

This observation can be understood as follows. Under-coordinated oxygen has less electron density than fully coordinated oxygen. One could formally write O<sup>-1</sup> for the under-coordinated oxygen ions to signify that they have lost some of their electron density. This charge is given to the neighboring copper ions, and consequently occupies the lowest-lying unoccupied orbital of copper, namely the Cu4s. As a result, the density of unoccupied Cu4s states decreases, giving rise to a decrease in features A, B, C and D in the O K-edge spectra. This kind of 'reverse oxidation' (*i.e.* oxygen donating charge to a metal) is often argued to give rise to a pre-edge peak in the O K-edge spectra.<sup>80–83</sup> Such a change in oxygen electron density would give rise to an oxygen species that is chemically electrophilic.

Given that the differences between the experimentally measured O K-edge spectra at low and high temperatures are consistent with the changes predicted by DFT calculations for structures that have under-coordinated oxygen atoms, we

consider under-coordinated oxygen to be a plausible origin of the observed spectral changes at high temperature. However, as both bulk vacancies and surface defects give rise to similar changes in the O K-edge spectra, we would not be able to distinguish the various structures by the experimental spectra. Interestingly, as seen in Fig. 1d, the appearance of the high-temperature O K-edge spectrum for Cu<sub>2</sub>O correlates well with the epoxide production, which may indicate that under-coordinated oxygen plays a role in the epoxidation mechanism.

Similar to Cu<sub>2</sub>O, the O K-edge of CuO also exhibits subtle changes with increasing temperature (see Fig. S10 in ESI†); however, the spectral changes are even more subtle than for Cu<sub>2</sub>O. When CuO is heated in an atmosphere of O<sub>2</sub> and C<sub>2</sub>H<sub>4</sub> the main absorption feature shifts slightly to lower excitation energy and the feature is broadened, as seen in Fig. 11b. Furthermore, the intensities of the absorption features decrease slightly. Again, we interpret these changes as possibly indicative of a defective structure at elevated temperature. We have not made an attempt at calculating O K-edge spectra for defective CuO structures as this highly correlated material would require an entirely different computational strategy for which PBE calculation, as used in this study, are not suitable. Furthermore, the defect structures of CuO are not well



understood, and warrant an in-depth theoretical and experimental investigation in their own right.

It has been said that the necessary and sufficient conditions for epoxidation on copper is to have a copper site for adsorption and a surface oxygen with the appropriate valence charge density.<sup>12</sup> If such a condition is met then copper can be very selective for epoxidation.<sup>10</sup> However, copper's strong oxophilicity results in heavy corrosion under epoxidation conditions. As seen in the present work, maintaining the copper surface in a metallic state under oxygen partial pressures used for epoxidation conditions seems to be not feasible. Co-feeding a reducing agent, such as H<sub>2</sub> may be able to achieve this; however, this would not be a particularly economical strategy. Furthermore, based on our NAP-XPS experiments, the O-terminated copper surface is stable even in H<sub>2</sub> (at *P* = 0.5 mbar) even up to 500 °C. Thus, in order to attain the metallic surface, one would need to operate the catalyst at very high temperatures, which would change the product distribution towards the total oxidation product.

However, as we have observed epoxidation activity for both CuO and Cu<sub>2</sub>O-presumably both defective structures – it is possible that under-coordinated surface oxygen provides the necessary oxygen valence-charge density for epoxidation to occur. Further theoretical and mechanistic studies would be necessary to support this hypothesis, but if true, it may be possible to improve the selectivity of copper oxides by tuning the surface defects, using promoters that can stabilize under-coordinated oxygen atoms at the surface.

## Conclusions

In the present work, we have characterized the corrosion of copper during ethylene epoxidation. We find that copper goes through several stages of oxidation, beginning with O-termination, followed by the formation and growth of Cu<sub>2</sub>O, and eventually CuO. Copper corrosion proceeds indefinitely, with several-micron-thick oxide layers forming after hours of epoxidation.

Investigation of epoxidation from Cu<sub>2</sub>O and CuO powders revealed that both oxides exhibited some activity for partial oxidation, with Cu<sub>2</sub>O exhibiting slightly higher partial oxidation selectivity than CuO. Furthermore, Cu<sub>2</sub>O was found to produce roughly equal amounts of acetaldehyde as epoxide, while CuO produced roughly ten-times more epoxide than aldehyde.

Examination of copper foils in dilute-O<sub>2</sub> epoxidation conditions (1 part O<sub>2</sub> in 2500 parts C<sub>2</sub>H<sub>4</sub>) revealed the rapid formation of an O-terminated surface. Metallic copper could not be achieved during epoxidation. Reactivity tests of copper foams in dilute-O<sub>2</sub> epoxidation conditions (1 part O<sub>2</sub> in 800 parts C<sub>2</sub>H<sub>4</sub>) showed the O-terminated surface to have partial-oxidation selectivity similar to Cu<sub>2</sub>O.

By comparing measured and calculated O K-edge spectra of Cu<sub>2</sub>O, we find that with coordinatively unsaturated oxygen species may be the origin of the spectral features observed on the active catalyst.

## Acknowledgements

Financial support for this work has been provided by the Alexander von Humboldt Stiftung and the Max-Planck Gesellschaft. We are indebted to Michael Hävecker, Raoul Blume, Gisela Weinberg for their technical support.

## Notes and references

- 1 C. Stegelmann, N. C. Schiødt, C. T. Campbell and P. Stoltze, *J. Catal.*, 2004, **221**, 630.
- 2 A. Peschel, F. Karst, H. Freund and K. Sundmacher, *Chem. Eng. Sci.*, 2011, **66**, 6453.
- 3 B. K. Hodnett, in *Catalysis: An Integrated Approach*, ed. B. A. Averill, J. A. Moulijn, R. A. van Santen and P. W. N. M. van Leeuwen, Elsevier Science & Technology Books, Amsterdam, The Netherlands, 2nd edn, 1999, p. 262.
- 4 J. C. Dellamorte, J. Lauterbach and M. A. Barteau, *Catal. Today*, 2007, **120**, 182.
- 5 K. C. Waugh and M. Hague, *Catal. Today*, 2010, **157**, 44.
- 6 R. L. Cropley, F. J. Williams, O. P. H. Vaughan, A. J. Urquhart, M. S. Tikhov and R. M. Lambert, *Surf. Sci.*, 2005, **578**, L85.
- 7 J. J. Cowell, A. K. Santra, R. Lindsay, R. M. Lambert, A. Baraldi and A. Goldoni, *Surf. Sci.*, 1999, **437**, 1.
- 8 A. Santra, J. Cowell and R. Lambert, *Catal. Lett.*, 2000, **67**, 87.
- 9 D. Torres, N. Lopez, F. Illas and R. M. Lambert, *J. Am. Chem. Soc.*, 2005, **127**, 10774.
- 10 A. Kokalj, P. Gava, S. de Gironcoli and S. Baroni, *J. Catal.*, 2008, **254**, 304.
- 11 J. R. Monnier and G. W. Hartley, *J. Catal.*, 2001, **203**, 253.
- 12 R. M. Lambert, F. J. Williams, R. L. Cropley and A. Palermo, *J. Mol. Catal. A: Chem.*, 2005, **228**, 27.
- 13 O. P. H. Vaughan, G. Kyriakou, N. Macleod, M. Tikhov and R. M. Lambert, *J. Catal.*, 2005, **236**, 401.
- 14 J. Lu, M. Luo, H. Lei, X. Bao and C. Li, *J. Catal.*, 2002, **211**, 552.
- 15 R. L. Cropley, F. J. Williams, A. J. Urquhart, O. P. H. Vaughan, M. S. Tikhov and R. M. Lambert, *J. Am. Chem. Soc.*, 2005, **127**, 6069.
- 16 J. B. Reitz and E. I. Solomon, *J. Am. Chem. Soc.*, 1998, **120**, 11467.
- 17 W. Zhu, Q. Zhang and Y. Wang, *J. Phys. Chem. C*, 2008, **112**, 7731.
- 18 M. Jayamurthy, P. Hayden and A. K. Bhattacharya, *J. Catal.*, 2014, **309**, 309.
- 19 J. He, Q. Zhai, Q. Zhang, W. Deng and Y. Wang, *J. Catal.*, 2013, **299**, 53.
- 20 J. T. Jankowiak and M. A. Barteau, *J. Catal.*, 2005, **236**, 366.
- 21 S. Linic, J. Jankowiak and M. A. Barteau, *J. Catal.*, 2004, **224**, 489.
- 22 S. Piccinin, S. Zafeiratos, C. Stampfl, T. W. Hansen, M. Havecker, D. Teschner, V. I. Bukhtiyarov, F. Girgsdies, A. Knop-Gericke, R. Schlogl and M. Scheffler, *Phys. Rev. Lett.*, 2010, **104**, 035503.



- 23 A. Soon, M. Todorova, B. Delley and C. Stampfl, *Phys. Rev. B: Condens. Matter Mater. Phys.*, 2007, **75**, 125420.
- 24 A. Soon, M. Todorova, B. Delley and C. Stampfl, *Phys. Rev. B: Condens. Matter Mater. Phys.*, 2006, **73**, 165424.
- 25 A. Soon, M. Todorova, B. Delley and C. Stampfl, *Surf. Sci.*, 2007, **601**, 5809.
- 26 M. O. Ozbek, I. Onal and R. A. van Santen, *J. Catal.*, 2011, **284**, 230.
- 27 A. Knop-Gericke, E. Kleimenov, M. Havecker, R. Blume, D. Teschner, S. Zafeiratos, R. Schlogl, V. I. Bukhtiyarov, V. V. Kaichev, I. P. Prosvirin, A. I. Nizovskii, H. Bluhm, A. Barinov, P. Dudin and M. Kiskinova, in *Adv. Catal.*, ed. B. C. Gates and H. Knozinger, 2009, vol. 52, p. 213.
- 28 B. H. Frazer, B. Gilbert, B. R. Sonderegger and G. De Stasio, *Surf. Sci.*, 2003, **537**, 161.
- 29 J. P. Perdew, K. Burke and M. Ernzerhof, *Phys. Rev. Lett.*, 1996, **77**, 3865.
- 30 G. Paolo, B. Stefano, B. Nicola, C. Matteo, C. Roberto, C. Carlo, C. Davide, L. C. Guido, C. Matteo, D. Ismaila, C. Andrea Dal, G. Stefano de, F. Stefano, F. Guido, G. Ralph, G. Uwe, G. Christos, K. Anton, L. Michele, M.-S. Layla, M. Nicola, M. Francesco, M. Riccardo, P. Stefano, P. Alfredo, P. Lorenzo, S. Carlo, S. Sandro, S. Gabriele, P. S. Ari, S. Alexander, U. Paolo and M. W. Renata, *J. Phys.: Condens. Matter*, 2009, **21**, 395502.
- 31 H. J. Monkhorst and J. D. Pack, *Phys. Rev. B: Solid State*, 1976, **13**, 5188.
- 32 N. Marzari, D. Vanderbilt, A. De Vita and M. C. Payne, *Phys. Rev. Lett.*, 1999, **82**, 3296.
- 33 M. E. Straumanis and L. S. Yu, *Acta Crystallogr., Sect. A: Cryst. Phys., Diffr., Theor. Gen. Crystallogr.*, 1969, **25**, 676.
- 34 P. Haas, F. Tran and P. Blaha, *Phys. Rev. B: Condens. Matter Mater. Phys.*, 2009, **79**, 085104.
- 35 X. Duan, O. Warschkow, A. Soon, B. Delley and C. Stampfl, *Phys. Rev. B: Condens. Matter Mater. Phys.*, 2010, **81**, 075430.
- 36 E. Pehlke and M. Scheffler, *Phys. Rev. Lett.*, 1993, **71**, 2338.
- 37 C. Gougoussis, M. Calandra, A. P. Seitsonen and F. Mauri, *Phys. Rev. B: Condens. Matter Mater. Phys.*, 2009, **80**, 075102.
- 38 M. Taillefumier, D. Cabaret, A.-M. Flank and F. Mauri, *Phys. Rev. B: Condens. Matter Mater. Phys.*, 2002, **66**, 195107.
- 39 A. Menzel, S. Benzaid, M. O. Krause, C. D. Caldwell, U. Hergenhanh and M. Bissen, *Phys. Rev. A: At., Mol., Opt. Phys.*, 1996, **54**, R991.
- 40 P. J. W. Weijs, M. T. Czyżyk, J. F. van Acker, W. Speier, J. B. Goedkoop, H. van Leuken, H. J. M. Hendrix, R. A. de Groot, G. van der Laan, K. H. J. Buschow, G. Wiech and J. C. Fuggle, *Phys. Rev. B: Condens. Matter Mater. Phys.*, 1990, **41**, 11899.
- 41 V. I. Bukhtiyarov, A. I. Nizovskii, H. Bluhm, M. Havecker, E. Kleimenov, A. Knop-Gericke and R. Schlogl, *J. Catal.*, 2006, **238**, 260.
- 42 S. G. Urquhart and H. Ade, *J. Phys. Chem. B*, 2002, **106**, 8531.
- 43 E. Cano, C. L. Torres and J. M. Bastidas, *Mater. Corros.*, 2001, **52**, 667.
- 44 B. Hallstedt, D. Risold and L. J. Gauckler, *J. Phase Equilib.*, 1994, **15**, 483.
- 45 L. Schramm, G. Behr, W. Löser and K. Wetzig, *J. Phase Equilib. Diffus.*, 2005, **26**, 605.
- 46 T. Schedel-Niedrig, M. Havecker, A. Knop-Gericke and R. Schlogl, *Phys. Chem. Chem. Phys.*, 2000, **2**, 3473.
- 47 A. Knop-Gericke, M. Hävecker, T. Schedel-Niedrig and R. Schlögl, *Top. Catal.*, 2000, **10**, 187.
- 48 Z. Grzesik and M. Migdalska, *High Temperature Materials and Processes*, 2011, vol. 30, p. 277.
- 49 K. Mimura, J.-W. Lim, M. Isshiki, Y. Zhu and Q. Jiang, *Metall. Mater. Trans. A*, 2006, **37**, 1231.
- 50 W. K. Appleby and R. F. Tylecote, *Corros. Sci.*, 1970, **10**, 325.
- 51 S. Linic and M. A. Barteau, *J. Am. Chem. Soc.*, 2003, **125**, 4034.
- 52 E. M. Cordi and J. L. Falconer, *Appl. Catal., A*, 1997, **151**, 179.
- 53 S. Linic and M. A. Barteau, *Handbook of Heterogeneous Catalysis*, Wiley-VCH Verlag GmbH & Co. KGaA, 2008.
- 54 G. H. Twigg, *Proc. R. Soc. London, Ser. A*, 1946, **188**, 92.
- 55 A. C. Lukaski and M. Barteau, *Catal. Lett.*, 2009, **128**, 9.
- 56 R. E. Kenson and M. Lapkin, *J. Phys. Chem.*, 1970, **74**, 1493.
- 57 C. T. Campbell, *J. Catal.*, 1985, **94**, 436.
- 58 T. C. R. Rocha, M. Havecker, A. Knop-Gericke and R. Schlogl, *J. Catal.*, 2014, **312**, 12.
- 59 Note that using synchrotron radiation with an excitation energy of 355 eV, photoemission spectra are very sensitive to common contaminants. Cl, S, P and Si can be detected in concentrations greater than 0.12, 0.15, 0.12 and 0.19 atomic percent, respectively.
- 60 H. Bluhm, M. Havecker, A. Knop-Gericke, E. Kleimenov, R. Schlogl, D. Teschner, V. I. Bukhtiyarov, D. F. Ogletree and M. Salmeron, *J. Phys. Chem. B*, 2004, **108**, 14340.
- 61 S. Tanuma, C. J. Powell and D. R. Penn, *Surf. Interface Anal.*, 1994, **21**, 165.
- 62 K. Lahtonen, M. Hirsimäki, M. Lampimäki and M. Valden, *J. Chem. Phys.*, 2008, **129**, 124703.
- 63 M. Lampimäki, K. Lahtonen, M. Hirsimäki and M. Valden, *J. Chem. Phys.*, 2007, **126**, 034703.
- 64 T. C. R. Rocha, A. Oestereich, D. V. Demidov, M. Havecker, S. Zafeiratos, G. Weinberg, V. I. Bukhtiyarov, A. Knop-Gericke and R. Schlogl, *Phys. Chem. Chem. Phys.*, 2012, **14**, 4554.
- 65 J. J. Cowell, A. K. Santra and R. M. Lambert, *J. Am. Chem. Soc.*, 2000, **122**, 2381.
- 66 X. Yang, S. Kattel, K. Xiong, K. Mudiyansele, S. Rykov, S. D. Senanayake, J. A. Rodriguez, P. Liu, D. J. Stacchiola and J. G. Chen, *Angew. Chem., Int. Ed.*, 2015, DOI: 10.1002/anie.201504538.
- 67 M. O. Özbek and R. A. van Santen, *Catal. Lett.*, 2013, **143**, 131.
- 68 R. A. Van Santen and H. P. C. E. Kuipers, *Adv. Catal.*, 1987, **35**, 265.
- 69 W. M. H. Sachtler, C. Backx and R. A. Van Santen, *Catal. Rev.*, 1981, **23**, 127.
- 70 N. W. Cant and W. K. Hall, *J. Catal.*, 1978, **52**, 81.
- 71 S. Linic and M. A. Barteau, *J. Am. Chem. Soc.*, 2002, **124**, 310.
- 72 M.-L. Bocquet, A. Michaelides, D. Loffreda, P. Sautet, A. Alavi and D. A. King, *J. Am. Chem. Soc.*, 2003, **125**, 5620.





- 73 R. B. Grant and R. M. Lambert, *J. Catal.*, 1985, **92**, 364.
- 74 E. A. Carter and W. A. Goddard III, *Surf. Sci.*, 1989, **209**, 243.
- 75 X. Bao, M. Muhler, T. Schedel-Niedrig and R. Schlögl, *Phys. Rev. B: Condens. Matter Mater. Phys.*, 1996, **54**, 2249.
- 76 O. Porat and I. Riess, *Solid State Ionics*, 1994, **74**, 229.
- 77 H. Raebiger, S. Lany and A. Zunger, *Phys. Rev. B: Condens. Matter Mater. Phys.*, 2007, **76**, 045209.
- 78 D. O. Scanlon, B. J. Morgan, G. W. Watson and A. Walsh, *Phys. Rev. Lett.*, 2009, **103**, 096405.
- 79 R. D. Schmidt-Whitley, M. Martinez-Clemente and A. Revcolevschi, *J. Cryst. Growth*, 1974, **23**, 113.
- 80 J. Zaanen, G. A. Sawatzky and J. W. Allen, *Phys. Rev. Lett.*, 1985, **55**, 418.
- 81 C. T. Chen, F. Sette, Y. Ma, M. S. Hybertsen, E. B. Stechel, W. M. C. Foulkes, M. Schulter, S. W. Cheong, A. S. Cooper, L. W. Rupp, B. Batlogg, Y. L. Soo, Z. H. Ming, A. Krol and Y. H. Kao, *Phys. Rev. Lett.*, 1991, **66**, 104.
- 82 A. Krol, C. S. Lin, Z. H. Ming, C. J. Sher, Y. H. Kao, C. T. Chen, F. Sette, Y. Ma, G. C. Smith, Y. Z. Zhu and D. T. Shaw, *Phys. Rev. B: Condens. Matter Mater. Phys.*, 1990, **42**, 2635.
- 83 H. L. Ju, H. C. Sohn and K. M. Krishnan, *Phys. Rev. Lett.*, 1997, **79**, 3230.

