

The p53-induced *lincRNA-p21* derails somatic cell reprogramming by sustaining H3K9me3 and CpG methylation at pluripotency gene promoters

Xichen Bao^{1,2,*}, Haitao Wu^{1,2,3,*}, Xihua Zhu^{1,2,3,*}, Xiangpeng Guo^{1,2}, Andrew P Hutchins², Zhiwei Luo^{1,2}, Hong Song², Yongqiang Chen², Keyu Lai², Menghui Yin⁴, Lingxiao Xu⁵, Liang Zhou⁶, Jiekai Chen², Dongye Wang^{1,2,7}, Baoming Qin^{2,8,9}, Jon Frampton¹⁰, Hung-Fat Tse^{9,11,12}, Duanqing Pei^{2,9}, Huating Wang¹³, Biliang Zhang⁴, Miguel A Esteban^{1,2,9}

¹Laboratory of Chromatin and Human Disease, Chinese Academy of Sciences, Guangzhou, Guangdong 510530, China; ²Key Laboratory of Regenerative Biology, South China Institute for Stem Cell Biology and Regenerative Medicine, Guangzhou Institutes of Biomedicine and Health, Chinese Academy of Sciences, Guangzhou, Guangdong 510530, China; ³University of Chinese Academy of Sciences, Beijing 100049, China; ⁴Laboratory of RNA Chemical Biology, State Key Laboratory of Respiratory Diseases, Guangzhou Institutes of Biomedicine and Health, Chinese Academy of Sciences, Guangzhou, Guangdong 510530, China; ⁵School of Life Sciences, Shandong University, Jinan, Shandong 250100, China; ⁶Department of Radiation Medicine, School of Public Health and Tropic Medicine, Southern Medical University, Guangzhou, Guangdong 510515, China; ⁷Drug Discovery Pipeline Group, Guangzhou Institutes of Biomedicine and Health, Chinese Academy of Sciences, Guangzhou, Guangdong 510530, China; ⁸Laboratory of Metabolism and Cell Fate, Guangzhou Institutes of Biomedicine and Health, Chinese Academy of Sciences, Guangzhou, Guangdong 510530, China; ⁹Hong Kong - Guangdong Joint Laboratory of Stem Cells and Regenerative Medicine, the University of Hong Kong and Guangzhou Institutes of Biomedicine and Health, Guangzhou, Guangdong 510530, China; ¹⁰School of Immunity and Infection, College of Medical and Dental Sciences, University of Birmingham, Birmingham B15 2TT, UK; ¹¹Cardiology Division, Department of medicine, Queen Mary Hospital, The University of Hong Kong, Hong Kong SAR, China; ¹²Shenzhen Institutes of Research and Innovation, The University of Hong Kong, Hong Kong SAR, China; ¹³Li Ka Shing Institute of Health Sciences, Department of Orthopaedics and Traumatology, The Chinese University of Hong Kong, Hong Kong SAR, China

Recent studies have boosted our understanding of long noncoding RNAs (lncRNAs) in numerous biological processes, but few have examined their roles in somatic cell reprogramming. Through expression profiling and functional screening, we have identified that the large intergenic noncoding RNA p21 (*lincRNA-p21*) impairs reprogramming. Notably, *lincRNA-p21* is induced by p53 but does not promote apoptosis or cell senescence in reprogramming. Instead, *lincRNA-p21* associates with the H3K9 methyltransferase SETDB1 and the maintenance DNA methyltransferase DNMT1, which is facilitated by the RNA-binding protein HNRNPK. Consequently, *lincRNA-p21* prevents reprogramming by sustaining H3K9me3 and/or CpG methylation at pluripotency gene promoters. Our results provide insight into the role of lncRNAs in reprogramming and establish a novel link between p53 and heterochromatin regulation.

Keywords: somatic cell reprogramming; long noncoding RNAs; p53; *lincRNA-p21*; heterochromatin; H3K9 methylation; DNA methylation

Cell Research (2015) 25:80-92. doi:10.1038/cr.2014.165; published online 16 December 2014

*These three authors contributed equally to this work.

Correspondence: Xichen Bao^a, Miguel A Esteban^b

^aTel: +86-20-3229-0481; Fax: +86-20-3206-8110

E-mail: bao_xichen@gibh.ac.cn

^bTel: +86-20-3202-2920; Fax: +86-20-3206-8110

E-mail: miguel@gibh.ac.cn

Received 29 May 2014; revised 20 September 2014; accepted 14 November 2014; published online 16 December 2014

Introduction

Induced pluripotent stem cells (iPSCs) have major implications for regenerative medicine, *in vitro* disease modeling and toxicology screening [1]. Yet, to fulfill

these expectations, it is necessary to understand how the reprogramming machinery erases and rewrites the somatic epigenetic code. This is important because, among other reasons, reprogramming is prone to errors that could hamper biomedical applications of the derived cells [2].

Reprogramming by exogenous factors is nowadays considered as a multistep process in which cells must overcome a series of roadblocks to ultimately acquire pluripotency [3, 4], though under certain conditions it can also be deterministic [5-7]. Two fundamental reprogramming roadblocks are the activation of a p53-mediated response that promotes apoptosis and cell senescence, and the inefficient removal of preexisting somatic-like epigenetic marks. Accordingly, depletion of p53 [8] or the H3K9 methyltransferases *Setdb1*, *Suv39h1* and *Suv39h2* [9-11], and inhibition of the maintenance DNA methyltransferase DNMT1 [12] improve reprogramming efficiency.

Noncoding RNAs have important roles in establishing or removing different reprogramming roadblocks. However, despite the extensive characterization of microRNA (miRNA) networks in reprogramming [13], only 2 long noncoding RNAs (lncRNAs) are known to modulate this process. lncRNAs are noncoding RNA species longer than 200 nucleotides and act as decoys, guides or scaffolds [14]. *LincRNA-RoR* was the first lncRNA implicated in reprogramming [15] and partly functions as a 'sponge' that titrates down miRNAs targeting pluripotency regulators (e.g., *miR-145*) [16]. Conversely, *lincRNA TUNA* forms a complex with several RNA-binding proteins at the promoters of *Nanog*, *Sox2* and *Fgf4*, where it facilitates the deposition of the active histone mark H3K4me3 [17].

In this report, we identify that the p53-induced large intergenic noncoding RNA p21 (*lincRNA-p21*; also termed *Trp53cor1*) [18-20] acts as a barrier for reprogramming by sustaining heterochromatic state at pluripotency gene promoters.

Results

Functional screening reveals roles of lincRNAs in the preiPSC to iPSC conversion

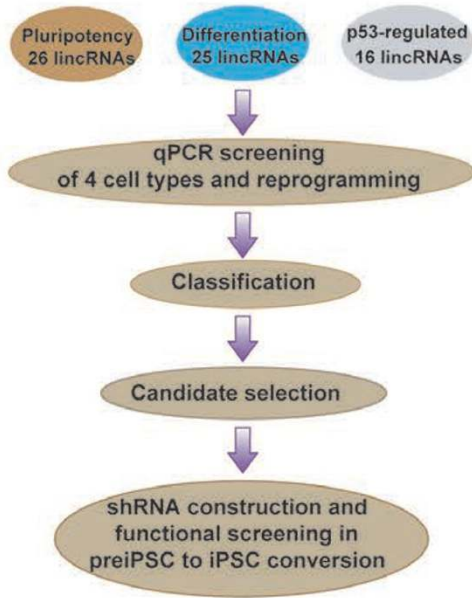
Somatic cells undergoing reprogramming can be trapped in a partially reprogrammed state termed the preiPSC state [21]. These cells have overcome the senescence barrier and downregulated multiple somatic markers, but fail to fully activate the pluripotency network. Importantly, preiPSCs are stable and can be readily converted to fully reprogrammed iPSCs through a variety of approaches [10, 21]. Because reprogramming cells consist of heterogeneous populations progressing at different

speeds [3], preiPSCs provide a relatively well-defined model for dissecting the chain of events eventually leading to the full acquisition of pluripotency [10, 11]. Using preiPSCs, we thus sought to identify lncRNAs that control the late stage of mouse somatic cell reprogramming.

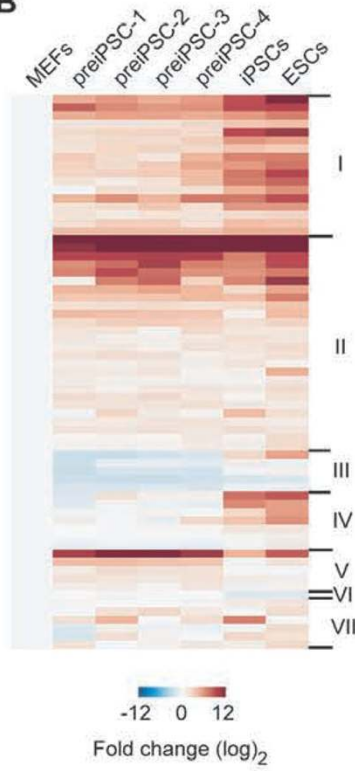
We selected 51 lincRNAs previously reported to regulate embryonic stem cell (ESC) pluripotency (26) or differentiation (25) [22] and 16 p53-regulated lincRNAs [18] (Figure 1A). The rationale for choosing the latter group is that p53 is an important regulator of ESC differentiation and a major barrier for reprogramming [8]. We performed quantitative PCR (qPCR) analysis of these 67 lincRNAs in mouse embryonic fibroblasts (MEFs), 4 independent preiPSC clones (generated from *Oct4-GFP* transgenic MEFs [21] using *Oct4*, *Sox2*, *Klf4* and *c-Myc*; OSKM), iPSCs and ESCs. The analysis showed distinct patterns of lincRNA expression in the 4 cell types that were grouped into 7 classes (Figure 1B, 1C and Supplementary information, Table S1A). Classes I and II were the largest and contained 17 and 26 lincRNAs, respectively, while class VI included only 1 lincRNA (p53-regulated) (Supplementary information, Table S1A). In contrast to classes I-VI, class VII lincRNAs did not show a consistent pattern among the different cell types. Of note, pluripotency- and differentiation-related lincRNAs were distributed evenly among classes I-IV and VII, but only 1 differentiation-related lincRNA was included in class V. Conversely, p53-regulated lincRNAs were mostly in classes II (8) and V (comprising 4 out of 5 constituents). We also performed qPCR analysis for all 67 lincRNAs in MEFs reprogrammed with OSKM (Supplementary information, Figure S1 and Table S1B), and observed that 58 out of the 67 lincRNAs increase by at least 2-fold during reprogramming (Supplementary information, Table S1B).

We then selected 15 lincRNAs from classes I-VI for knockdown and functional analysis in a validated pre-iPSC to iPSC conversion model [10]. We generated 2 individual short hairpin RNA (shRNA) viral vectors for each of the 15 lincRNAs, and identified at least 1 effective shRNA (> 50% depletion) for 11 out of the 15 lincRNAs (Figure 1D, upper panel). Activation of the *Oct4-GFP* reporter was employed as readout for detecting the full acquisition of pluripotency. After infection with the shRNAs, the preiPSCs were passaged onto feeders and treated with vitamin C (Vc) for 8 days before GFP⁺ colony counting [10]. Notably, knockdown of 3 lincRNAs (*-1463*, *-1526*, and *-p21*) with the 2 independent shRNAs showed enhanced GFP⁺ colony formation compared to the control, while *lincRNA-1307* knockdown had the opposite effects (Figure 1D, lower panel and 1E). In summary, our screening successfully identified 4 lincRNAs

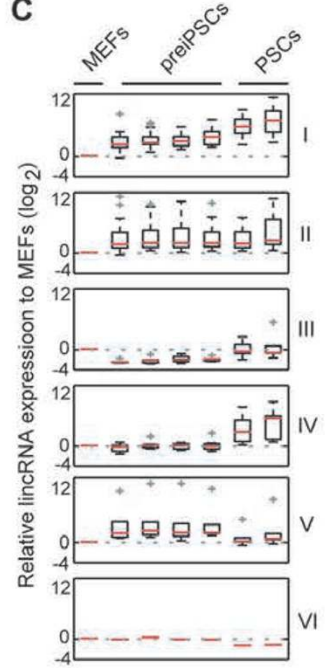
A Selection of lincRNAs



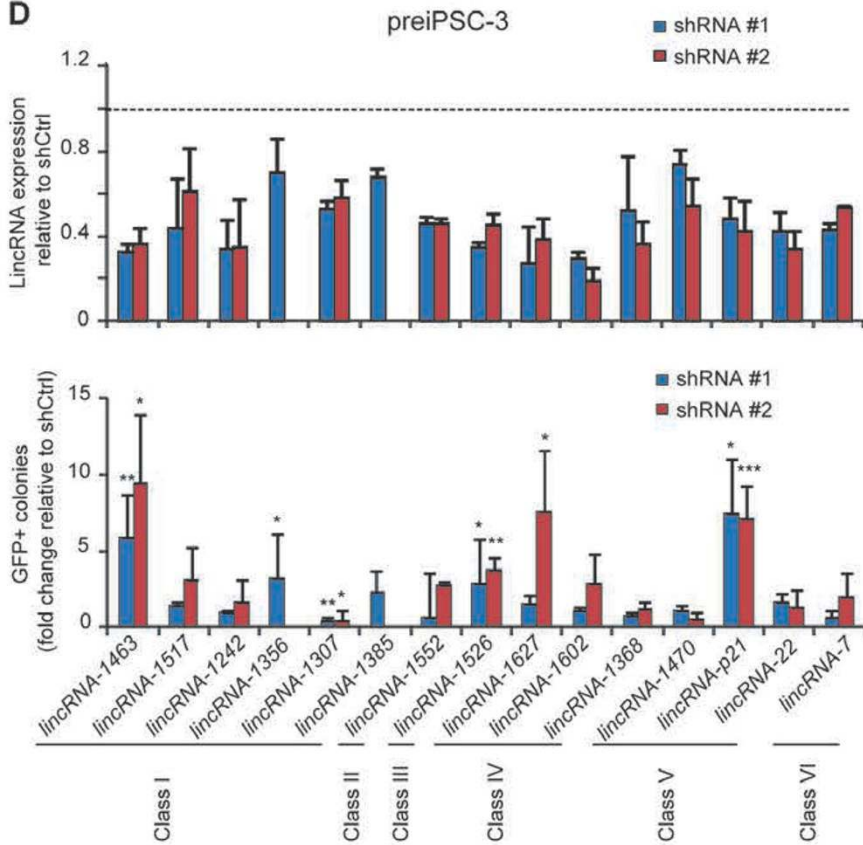
B



C



D



E

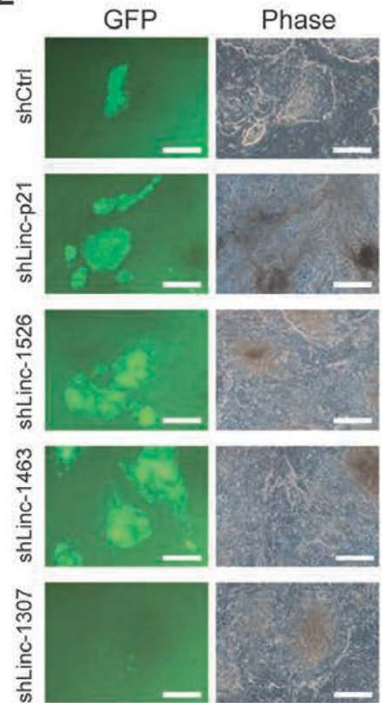


Figure 1 Functional screening of lincRNAs in the preiPSC to iPSC conversion. **(A)** Schematic view of the screening. **(B)** Heatmap of 67 lincRNAs quantified by qPCR in the 4 indicated cell types. The expression level of individual lincRNAs was normalized to MEFs. Colors represent fold change above (red) or below (blue) the values in MEFs. **(C)** Box plot analysis of lincRNA expression levels in the indicated cell types. I-VI indicates distinct expression patterns as shown in **B**. PSCs = iPSCs and ESCs. **(D)** Upper panel, knockdown efficiency of shRNAs for the indicated lincRNAs in a selected preiPSC clone. Data are presented as mean \pm SD of 3 independent experiments with triplicate items (also in the lower panel). shRNA targeting firefly luciferase was used as control (shCtrl; also hereafter in similar experiments). Lower panel, relative number of GFP+ colonies arising from the same preiPSC clone after lincRNA shRNA knockdown and treatment with Vc compared to control shRNA. * $P < 0.05$, ** $P < 0.01$, *** $P < 0.001$ by the Student's *t*-test (also hereafter). **(E)** Representative images of GFP+ colonies produced as in **D**. Bright-field (phase) is also shown. Scale bar, 100 μ m. Supportive data are included in Supplementary information, Figure S1 and Table S1.

that modulate the preiPSC to iPSC conversion.

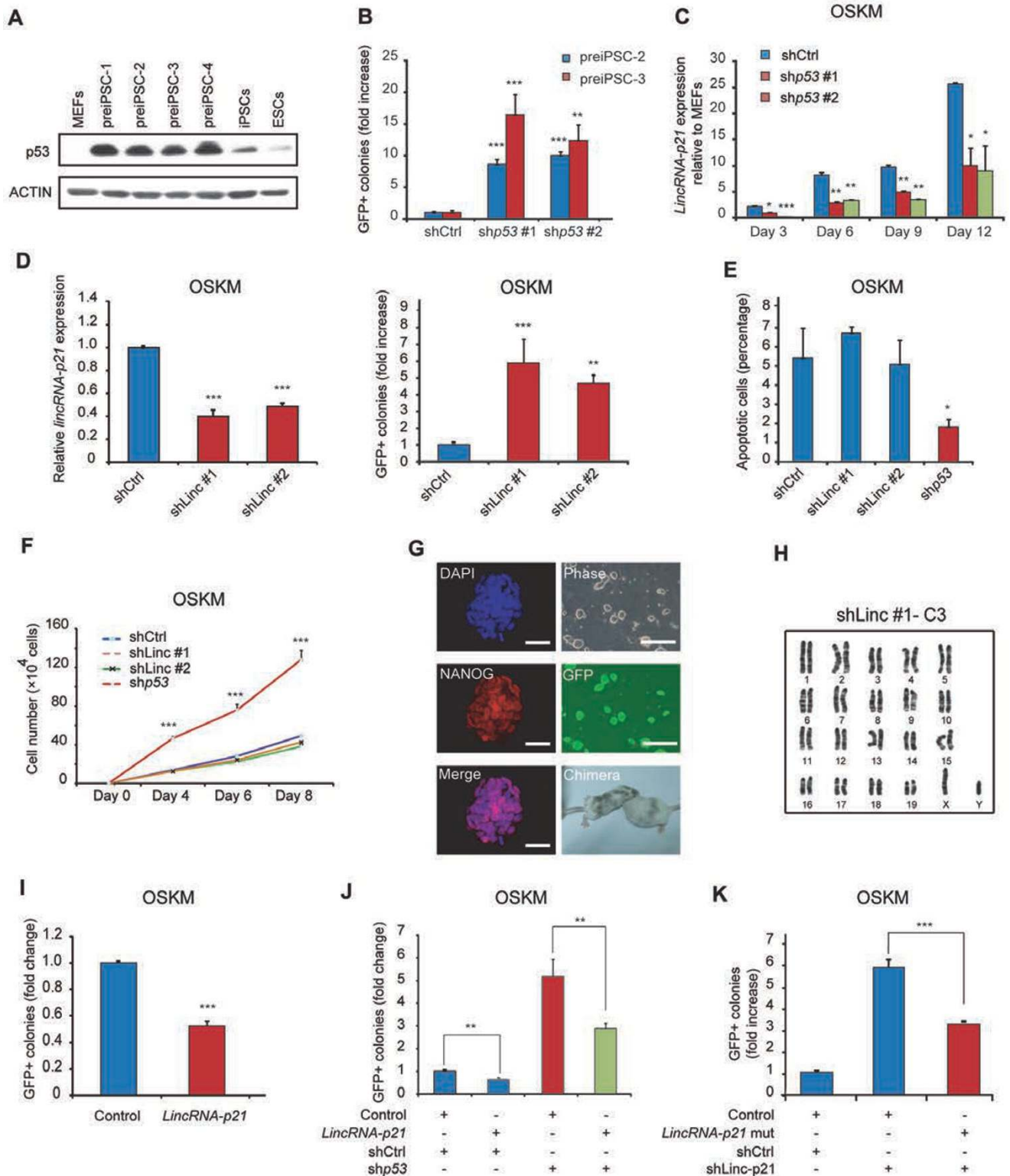
p53-induced lincRNA-p21 impairs reprogramming independent of apoptosis and cell proliferation

Among the 4 lincRNAs identified above, we considered *lincRNA-p21* particularly interesting because of its expression profile (class V: higher in preiPSCs compared to iPSCs/ESCs and MEFs) and p53-dependent regulation. *LincRNA-p21* mediates the apoptotic effects of p53 upon DNA damage [18], although we did not detect any change in apoptosis or cell proliferation during the conversion of preiPSCs to iPSCs when *lincRNA-p21* was knocked down (data not shown). Of note, p53 protein levels were higher in preiPSCs compared with MEFs and iPSCs/ESCs (Figure 2A). This was not due to increased *p53* mRNA expression (Supplementary information, Figure S2A), indicating that p53 is likely regulated at the post-transcriptional level in this setting. Intriguingly, *p53* knockdown similarly enhanced the conversion of preiPSCs to iPSCs (Figure 2B) without influencing

apoptosis or proliferation (Supplementary information, Figure S2B and S2C). These findings suggest that p53 and *lincRNA-p21* act in the same pathway, independent of apoptosis or proliferation, to sustain the preiPSC state.

We also detected that *lincRNA-p21* expression increases significantly (from ~ 20 to ~ 300 copies per cell) during the reprogramming of MEFs with OSKM (Figure 2C and Supplementary information, Figure S2D and Table S1B). This induction was p53-dependent, as assessed by cotransduction of *p53* shRNAs and OSKM into wild-type MEFs and the reprogramming of *p53*^{-/-} tail tip fibroblasts with OSKM (Figure 2C and Supplementary information, Figure S2E). We then tested the effect of knocking down *lincRNA-p21* whilst simultaneously reprogramming *Oct4-GFP* MEFs with OSKM. This led to a higher number of GFP+ colonies (~ 4 - 6 -fold) compared to the control without noticeably influencing apoptosis or cell proliferation, as opposed to the effect of *p53* knockdown (Figure 2D-2F). Besides, we observed that *lincRNA-p21* depletion does not exhibit synergy with *p53*

Figure 2 p53-induced *lincRNA-p21* is a barrier for reprogramming. **(A)** Representative western blot for p53 in the 4 indicated cell types. ACTIN was the loading control. **(B)** Relative number of GFP+ colonies arising from 2 independent preiPSC clones cotransduced with control shRNA or 2 independent shRNAs for *p53*. Data are presented as mean \pm SD of 3 independent experiments with triplicate items (also in **D**, **I**, **J** and **K**). **(C)** qPCR analysis for *lincRNA-p21* in MEFs cotransduced with OSKM and either control shRNA or 2 independent shRNAs for *p53*. Data are presented as mean \pm SD of 2 independent experiments with triplicate items (also in **F**). **(D)** Left panel, qPCR analysis for *lincRNA-p21* in MEFs cotransduced with OSKM and either control shRNA or 2 independent shRNAs for *lincRNA-p21* on day 6. Right panel, relative number of GFP+ colonies counted at day 15 (also in **I**, **J** and **K**) in similar reprogramming experiments. **(E)** Apoptosis in MEFs cotransduced with OSKM and either control shRNA or 2 independent shRNAs for *lincRNA-p21*. Samples were analyzed on day 6. shRNA for *p53* was used as positive control (also in **F**). Data are presented as mean \pm SD of a representative experiment with triplicate items. **(F)** Cell proliferation in MEFs cotransduced with OSKM and either control shRNA or 2 independent shRNAs for *lincRNA-p21*. **(G)** Representative immunofluorescence, phase contrast photographs and photographs of chimeric mice obtained with an iPSC clone produced with OSKM and shRNA for *lincRNA-p21*. Scale bar, 50 μ m (left panels) and 200 μ m (right panels). **(H)** Karyotype analysis for the same iPSC clone employed for chimeric mouse generation in **G**. **(I)** Relative number of GFP+ colonies in MEFs cotransduced with OSKM and *lincRNA-p21*. Empty vector was used as control (control; also hereafter in similar experiments). **(J)** Relative number of GFP+ colonies in MEFs cotransduced with OSKM and the indicated combinations of *lincRNA-p21* and shRNAs. **(K)** Relative number of GFP+ colonies in MEFs co-transduced with OSKM and either control shRNA, shRNA for *lincRNA-p21* or shRNA for *lincRNA-p21* plus shRNA-resistant *lincRNA-p21*. Supportive data are included in Supplementary information, Figures S2 and S3.



depletion in either cell proliferation or reprogramming efficiency (Supplementary information, Figure S3A and S3B). Of note, the resulting iPSC colonies produced with *lincRNA-p21* knockdown were fully reprogrammed, as

demonstrated by standard characterization procedures including the generation of chimeric mice (Figure 2G and Supplementary information, Figure S3C and S3D). Likewise, they had integrated the shRNA vectors into

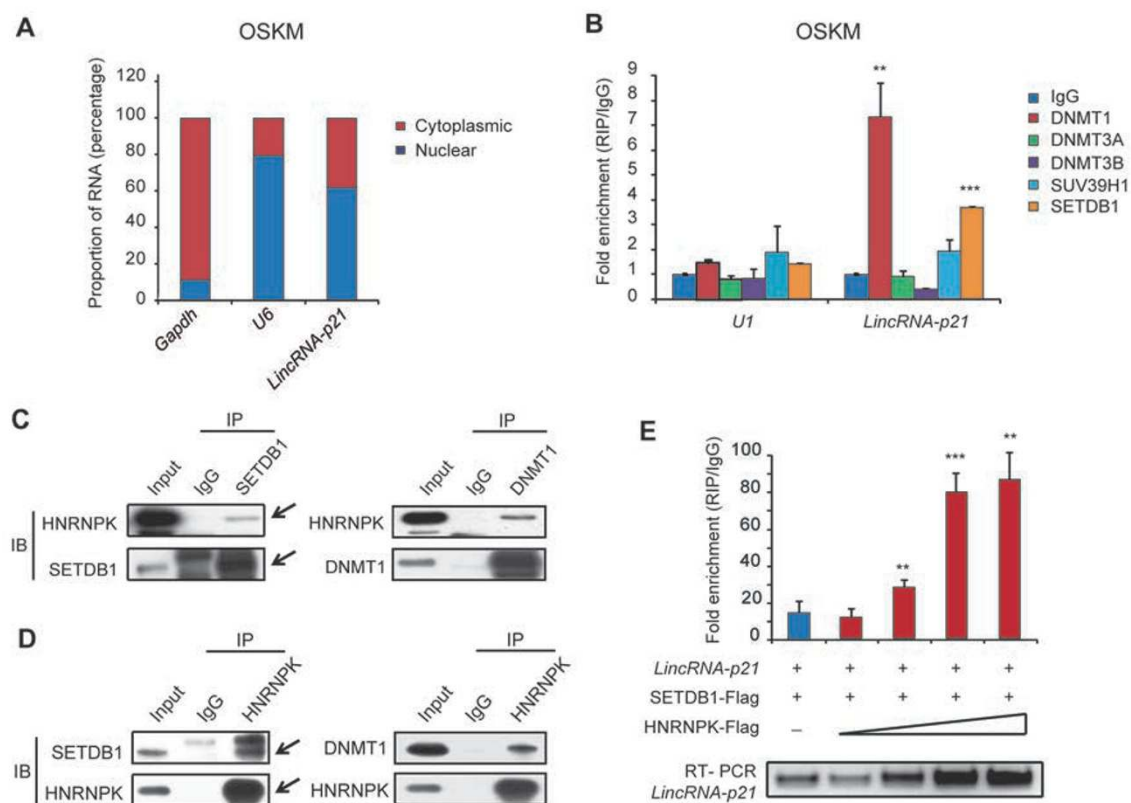


Figure 3 *LincRNA-p21* and HNRNPk associate with SETDB1 and DNMT1 in reprogramming. **(A)** Representative analysis of *lincRNA-p21* distribution by cellular fractionation of MEFs reprogrammed with OSKM on day 6. *U6* RNA and *Gapdh* mRNA served as controls for nuclear and cytoplasmic RNAs, respectively. **(B)** RIP analysis of DNMT1, DNMT3A, DNMT3B, SUV39H1 and SETDB1 in MEFs reprogrammed with OSKM on day 12. Data are presented as mean \pm SD of 2 independent experiments with triplicate items. **(C)** Representative immunoprecipitation (IP) of SETDB1 (left) or DNMT1 (right) in MEFs reprogrammed with OSKM on day 12. The membranes were immunoblotted (IB) for HNRNPk, SETDB1 or DNMT1. Specific bands are marked with an arrow (also in **D**). **(D)** Representative IP of HNRNPk in MEFs reprogrammed with OSKM on day 12. The membranes were immunoblotted for HNRNPk, SETDB1 or DNMT1. **(E)** *In vitro* RIP analysis of SETDB1 using purified *lincRNA-p21*, SETDB1-Flag and HNRNPk-Flag at different concentrations. The extracted RNA was then analyzed by qPCR (upper) and semi-qPCR (lower). Data are presented as mean \pm SD of 2 independent experiments with triplicate items (upper) and a representative experiment (lower). Supportive data are included in Supplementary information, Figure S4.

their genome (Supplementary information, Figure S3E) and displayed a normal karyotype (Figure 2H). Moreover, we observed that overexpressing *lincRNA-p21* impairs OSKM reprogramming efficiency (Figure 2I) and diminishes the enhancing effect of *p53* knockdown in a similar manner (Figure 2J). In addition, overexpressing a shRNA-resistant *lincRNA-p21* with OSKM reduced the enhanced reprogramming efficiency achieved by *lincRNA-p21* knockdown (Figure 2K), ruling out an off-target effect of the shRNA. Therefore, *p53*-induced *lincRNA-p21* acts as a barrier for reprogramming independent of apoptosis and cell proliferation.

LincRNA-p21 associates with SETDB1 and DNMT1 in separate repressor complexes facilitated by HNRNPk

During the DNA damage response, *lincRNA-p21* interacts with and directs the RNA-binding protein HNRNPk to specific genomic loci that are subsequently silenced by an unknown mechanism [18]. We thus speculated that *lincRNA-p21* might interact with alternative partners in reprogramming cells to regulate a distinctive set of genes. Specifically, we envisaged that these partners would be chromatin modifiers with a repressive role in reprogramming. To explore this idea, we first performed cellular fractionation to analyze the subcellular localization of *lincRNA-p21* during the reprogramming of MEFs with OSKM. *LincRNA-p21* was predominantly nuclear (Figure 3A), consistent with a potential role in epigenetic regulation. Then, we employed RNA immunoprecipitation (RIP) with antibodies against a panel of chromatin

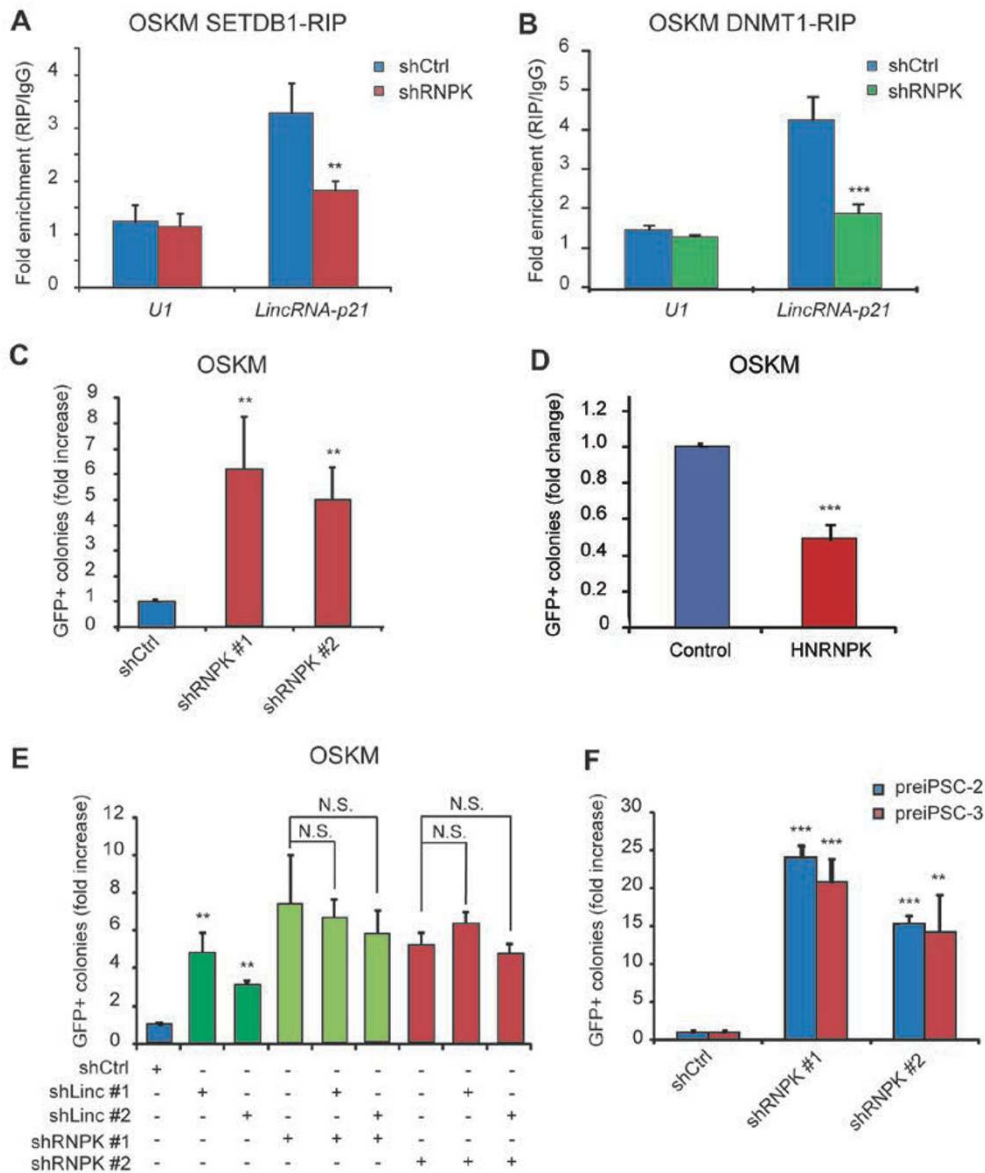


Figure 4 HNRNPK regulates reprogramming. **(A, B)** RIP analysis of SETDB1 **(A)** or DNMT1 **(B)** in MEFs cotransduced with OSKM and either control shRNA or an shRNA for *Hnrnpk* on day 12. The concentration of *lincRNA-p21* (measured by qPCR) in the different input samples (shRNA for *Hnrnpk* or control) employed for RIP was comparable. Data are presented as mean \pm SD of 3 independent experiments with triplicate items (also in **C, D, E** and **F**). **(C)** Relative number of GFP+ colonies counted on day 15 (also in **D** and **E**) in MEFs cotransduced with OSKM and either control shRNA or 2 independent shRNAs for *Hnrnpk*. **(D)** Relative number of GFP+ colonies in MEFs reprogrammed with OSKM and overexpressed HNRNPK. **(E)** Relative number of GFP+ colonies in MEFs cotransduced with OSKM and the indicated shRNAs. NS = not significant. **(F)** Relative number of GFP+ colonies arising from 2 independent preiPSC clones transduced with control shRNA or 2 independent shRNAs for *Hnrnpk*. Supportive data are included in Supplementary information, Figure S4.

modifiers detrimental for reprogramming [9-12, 23] using lysates from MEFs reprogrammed with OSKM on day 12. Notably, there was a substantial enrichment for *lincRNA-p21* in DNMT1 RIP and a less substantial enrichment in SETDB1 RIP, but no enrichment in DNMT3A/B and SUV39H1 RIPs, relative to IgG control

(Figure 3B). The enrichment for *lincRNA-p21* in DNMT1 and SETDB1 RIPs was also present at an earlier phase of OSKM reprogramming (Supplementary information, Figure S4A). We also observed that both SETDB1 and DNMT1 increase during OSKM reprogramming (Supplementary information, Figure S4B).

To confirm the above interactions, we performed RNA pull down with *in vitro* transcribed biotinylated *lincRNA-p21* and *lacZ* control using nuclear extracts of MEFs reprogrammed with OSKM. Yet, despite a robust interaction with HNRNPK, we failed to detect SETDB1 or DNMT1 by western blotting (Supplementary information, Figure S4C). This led us to speculate that the interaction between *lincRNA-p21*, SETDB1 and DNMT1 is facilitated by another protein, potentially HNRNPK. To demonstrate this, we conducted immunoprecipitation of endogenous SETDB1 and DNMT1 in MEFs reprogrammed with OSKM on day 12, and observed that

endogenous HNRNPK could be pulled down in both cases (Figure 3C). This interaction was confirmed by reverse immunoprecipitation using antibodies against HNRNPK (Figure 3D). However, we did not detect interaction between SETDB1 and DNMT1, indicating that each of them likely associates separately with HNRNPK (data not shown). We also performed an *in vitro* interaction assay with purified HNRNPK, SETDB1 and *lincRNA-p21*. The result showed that SETDB1 interacts with *lincRNA-p21* in an HNRNPK-dependent manner (Figure 3E), though we cannot exclude the possibility that additional proteins present in the lysates facilitate

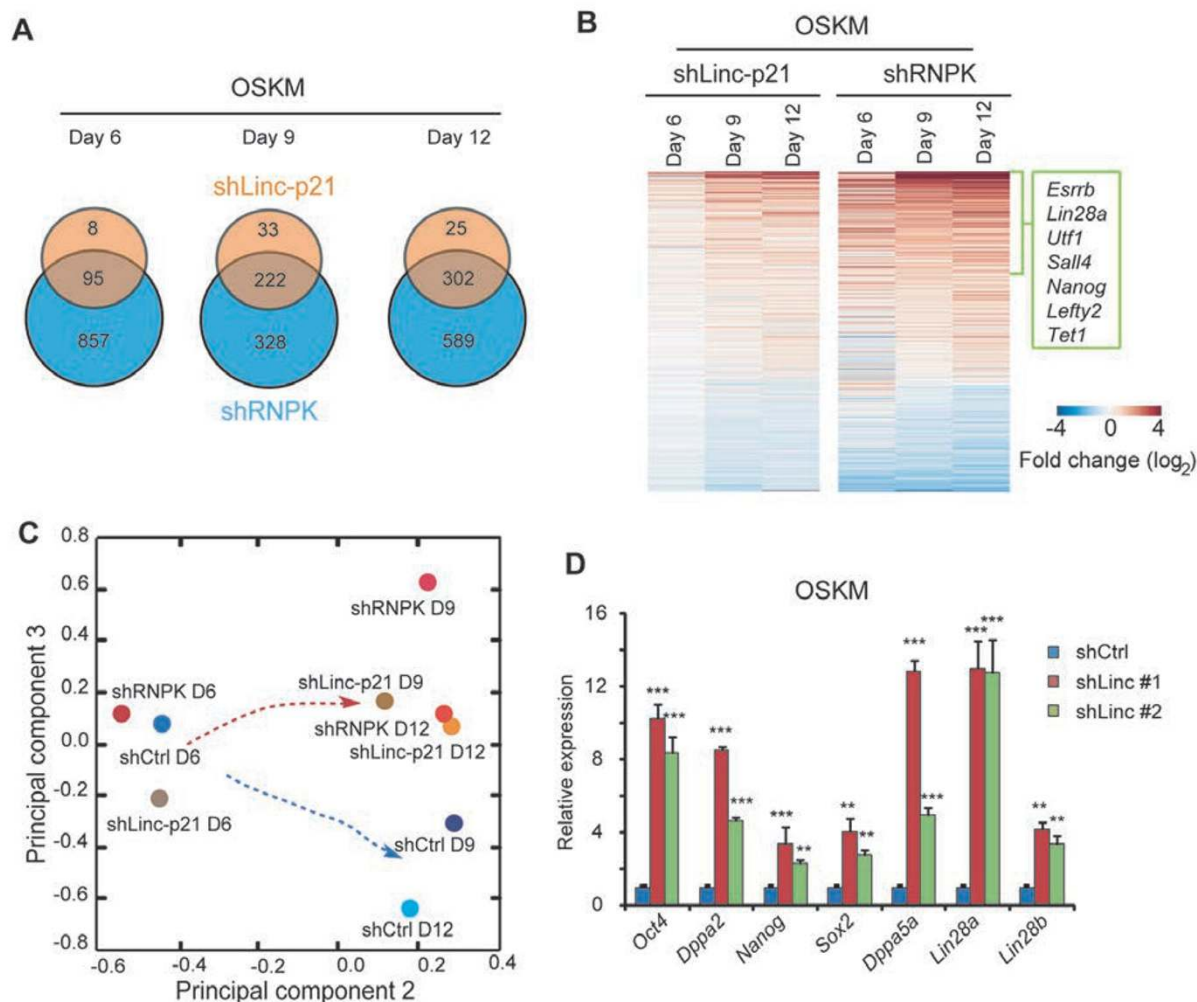


Figure 5 The function of *LincRNA-p21* in reprogramming is mainly mediated by HNRNPK. **(A)** Venn diagrams show the overlap of genes significantly differentially upregulated (> 1.5-fold) by *lincRNA-p21* or *Hnrnpk* knockdown in MEFs cotransduced with OSKM. **(B)** Heatmap shows all genes significantly differentially regulated (q -value < 0.05) by *lincRNA-p21* and *Hnrnpk* knockdown. Colors represent fold-change levels above (red) or below (blue) the control. Selected genes are indicated. **(C)** Principal component analysis of the variance between samples. D = day. **(D)** qPCR analysis for the indicated pluripotency genes in MEFs cotransduced with OSKM and either control shRNA or 2 independent shRNAs for *lincRNA-p21* on day 12. Data are presented as mean \pm SD of 3 independent experiments with triplicate items. Supportive data are included in Supplementary information, Figures S5, S6 and Table S2.

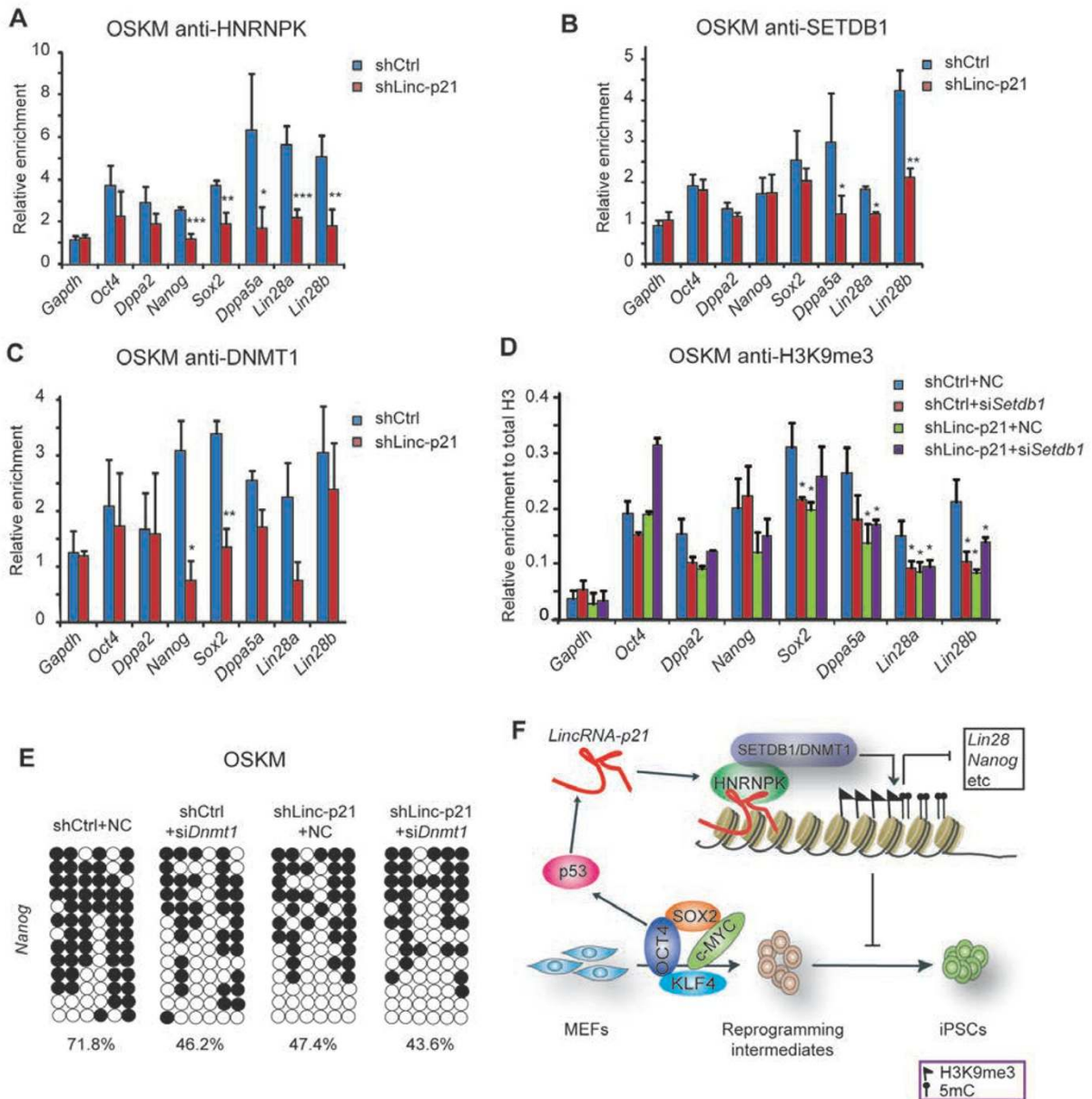


Figure 6 *LincRNA-p21* regulates H3K9me3 and CpG methylation at pluripotency genes. **(A–C)** ChIP analysis of MEFs cotransduced with OSKM and control shRNA or shRNA for *lincRNA-p21* on day 12. Binding of HNRNP **(A)**, SETDB1 **(B)** and DNMT1 **(C)** at the promoters of the indicated pluripotency genes was quantified by qPCR and shown as relative enrichment compared with IgG. *Gapdh* promoter served as control. Data are presented as mean \pm SD of 3 **(A)** or 2 **(B, C and D)** independent experiments with triplicate items. **(D)** ChIP analysis of MEFs cotransduced with OSKM and the indicated combinations on day 12. H3K9me3 enrichment at the promoters of the indicated pluripotency genes were quantified by qPCR and then normalized to total histone H3. *Gapdh* promoter served as control. NC = non-targeted control, si*Setdb1* and si*Dnmt1* refer to siRNA targeting *Setdb1* or *Dnmt1*, respectively **(E)**. **(E)** Representative bisulfite sequencing analysis of the *Nanog* promoter in MEFs cotransduced with OSKM and the indicated combinations on day 15. **(F)** Model for *lincRNA-p21* function in reprogramming. Supportive data are included in Supplementary information, Figure S7.

the interaction. Besides, we observed decreased enrichment for *lincRNA-p21* in SETDB1 or DNMT1 RIPs upon *Hnrnpk* knockdown in MEFs reprogrammed with OSKM on day 12 (Figure 4A and 4B). Yet, this was not

associated with reduced SETDB1 or DNMT1 protein or mRNA expression (Supplementary information, Figure S4D and S4E), which reinforces the notion that HNRNP facilitates the interaction between SETDB1/DNMT1

and *lincRNA-p21* to impair reprogramming. Supporting this, we observed that *Hnrnpk* expression increases in reprogramming (Supplementary information, Figure S4F and S4G). Moreover, *Hnrnpk* knockdown using shRNAs enhanced reprogramming efficiency (~5-6-fold) (Figure 4C) and its overexpression blocked reprogramming (Figure 4D). Likewise, the effect of *Hnrnpk* knockdown was not synergistic with the effect of *lincRNA-p21* knockdown (Figure 4E), further arguing that *Hnrnpk* and *lincRNA-p21* act in the same pathway. In addition, we noticed enhanced conversion of preiPSCs to iPSCs with *Hnrnpk* knockdown upon treatment with Vc (Figure 4F). Altogether, these experiments indicate that *lincRNA-p21* and SETDB1 or DNMT1 associate in separate complexes in reprogramming cells, which are facilitated by HNRNPK.

LincRNA-p21 sustains H3K9me3 and CpG methylation at pluripotency genes

To identify the genes targeted by *lincRNA-p21* during reprogramming and better understand the global interaction with HNRNPK, we performed RNA-sequencing (RNA-seq) of MEFs reprogrammed with OSKM with or without *lincRNA-p21* or *Hnrnpk* knockdown (2 independent shRNAs for each target and 2 shRNA control) at 3 different time points. Notably, most of the genes differentially regulated by *lincRNA-p21* knockdown at each time point (compared with the control) were among those genes differentially regulated by *Hnrnpk* knockdown (Figure 5A, 5B and Supplementary information, Figure S5A and Table S2). This result indicated that *lincRNA-p21* mainly exerts its role in reprogramming through HNRNPK. KEGG pathway analysis of genes upregulated by *lincRNA-p21* or *Hnrnpk* knockdown included the p53 signaling pathway (Supplementary information, Figure S5B). In addition, principal component analysis of the RNA-seq time course similarly confirmed the direction of global gene expression, with a dramatic divergence between the control and the *lincRNA-p21*, as well as *Hnrnpk* knockdown (Figure 5C).

Importantly, mesenchymal and epithelial genes showed no difference upon *lincRNA-p21* or *Hnrnpk* knockdown in the RNA-seq time course compared with the control (Supplementary information, Table S2), which was validated by qPCR (Supplementary information, Figure S6A). We did not observe any change in the cell cycle repressor *p21* in the RNA-seq time course either (Supplementary information, Table S2), which supports our data that *lincRNA-p21* knockdown does not increase cell proliferation in the preiPSC to iPSC conversion or in reprogramming. However, many pluripotency regulators such as *Esrrb*, *Lin28a*, *Utf1*, *Nr5a2*, *Sall4*,

Lefty2 and *Nanog* were significantly upregulated by *lincRNA-p21* or *Hnrnpk* knockdown (Figure 5B and Supplementary information, Table S2). We performed qPCR analysis to confirm that the pluripotency network is severely affected by *lincRNA-p21* knockdown (Figure 5D). Interestingly, *Lin28* had been previously described as a target for *lincRNA-p21* in MEFs subjected to DNA damage [18]. As a major function of LIN28 is to block the maturation of *let-7* miRNAs, we measured mature *let-7* miRNAs by qPCR and observed that they were downregulated (Supplementary information, Figure S6B).

Next, we employed chromatin immunoprecipitation (ChIP) to assess the binding of HNRNPK to the promoters of a panel of pluripotency genes in MEFs reprogrammed with OSKM on day 12. There was a significant enrichment for HNRNPK compared to the IgG control in most of the selected targets (Supplementary information, Figure S7A), and this was reduced in MEFs cotransduced with shRNA for *lincRNA-p21* compared to control shRNA (Figure 6A). A similar pattern was observed when we analyzed the binding of SETDB1 and DNMT1 to the promoters of the same panel of genes (Figure 6B and 6C), though DNMT1 binding to *Nanog* was more enriched compared to SETDB1. Likewise, *lincRNA-p21* knockdown reduced H3K9me3 enrichment in the same genes bound by HNRNPK (except for *Nanog*) compared to the shRNA control (Figure 6D). In addition, *Setdb1* and *lincRNA-p21* knockdown produced a similar reduction in H3K9me3 at target promoters and their combination was not synergistic (Figure 6D). On the other hand, analysis of CpG methylation by bisulfite sequencing demonstrated that *lincRNA-p21* and *Dnmt1* knockdown accelerate the demethylation of the *Nanog* promoter compared to the control and their combination is not synergistic (Figure 6E). However, *lincRNA-p21* knockdown had little effect on CpG methylation of the *Oct4* promoter (Supplementary information, Figure S7B), in agreement with the observation that DNMT1 binding to the *Oct4* promoter was not affected by *lincRNA-p21* knockdown (Figure 6C). We could not detect significant methylation in the *Lin28a* promoter region that we amplified (data not shown).

Collectively, our data imply that *lincRNA-p21* preferentially employs a repressive mechanism through H3K9me3 maintenance at the promoters of a subset of pluripotency genes (e.g., *Lin28a*) and CpG methylation at the promoter of other set of genes (e.g., *Nanog*), which are both mediated by HNRNPK (Figure 6F).

Discussion

The mammalian genome encodes thousands of lin-

cRNAs, many of which participate in a plethora of biological processes ranging from normal embryonic development to tumorigenesis [14]. However, only 2 lincRNAs have been reported to promote reprogramming efficiency, *lincRNA-RoR* and *TUNA* [15, 17], whilst lincRNAs that act as a barrier to reprogramming have not yet been identified. Understanding the repertoire of lincRNAs that regulate reprogramming and their roles is relevant because it could help to improve the reprogramming and also shed light on the role of the same lincRNAs in unrelated contexts, particularly in development. Notably, our functional screening has shown that *lincRNA-1463* and *lincRNA-1526* prevent the preiPSC to iPSC conversion, while *lincRNA-1307* facilitates it. These 3 lincRNAs are known for their roles in preventing ESC differentiation along particular lineages [22]. One possibility is that they function by changing the balance of lineage specifiers [24, 25] that are highly expressed in incompletely reprogrammed colonies [12].

We have also shown that a p53-induced lincRNA, *lincRNA-p21* [18], not only sustains the preiPSC state but also poses a barrier for reprogramming. This finding reinforces the notion that p53 impairs reprogramming not exclusively through apoptosis or cell senescence [26]. Mechanistically, *lincRNA-p21* blocks reprogramming by preserving high levels of H3K9me3 and CpG methylation at pluripotency genes. This finding is important, as it may help to understand how *lincRNA-p21* represses gene transcription in the DNA damage response [18] and potentially other contexts. Moreover, given the role of DNA methylation in sustaining the original cell's epigenetic memory [2, 27], manipulating *lincRNA-p21* expression may help to produce iPSCs of higher quality.

Our results indicate that *lincRNA-p21*'s effects on reprogramming are almost entirely mediated through HNRNPK. In combination, the 2 factors form repressive complexes containing either SETDB1 or DNMT1 at pluripotency gene promoters. However, HNRNPK undoubtedly has additional functions during reprogramming, particularly as it regulates multiple cellular processes including RNA splicing and translational control [28]. In agreement with this, *Hnrnpk* knockdown has a more potent enhancing effect on reprogramming compared to *lincRNA-p21* knockdown. Likewise, the number of genes regulated by *Hnrnpk* knockdown in reprogramming exceeds those regulated by *lincRNA-p21* knockdown. In this regard, HNRNPK and other members of the hnRNP family interact with multiple lincRNAs [29, 30]. This makes it tempting to speculate that hnRNP proteins are widespread mediators of lincRNA function in reprogramming, which act by facilitating the assembly of various chromatin complexes (activating or repressive) at spe-

cific loci. In this scenario, the particular combination of hnRNP proteins and partner lincRNAs at different stages of reprogramming would determine the ultimate effects on this process.

As for the 2 other proteins interacting with *lincRNA-p21* identified in our study, it is interesting to note that DNMT1 had been previously shown to interact with non-poly(A) RNAs (lincRNAs are frequently polyadenylated). This mechanism has been proposed to stimulate gene transcription by preventing access of DNMT1 to loci genome-widely [31]. Our study, in line with another report on *Kcnqlot1* [32], thus expands the concept of DNMT1-interacting RNAs, and suggests that, as opposed to non-poly(A) RNAs, lincRNAs (potentially not just *lincRNA-p21* or *Kcnqlot1*) promote DNMT1 activity at particular loci.

While this manuscript was in preparation, Dimitrova *et al.* [33] used a genetic deletion approach to demonstrate that *lincRNA-p21* also acts *in cis* to induce *p21* expression and diminish MEF proliferation. This contrasts with our work presented here and the work by Huarte *et al.* [18], who could not detect any reduction in *p21* expression upon *lincRNA-p21* knockdown in MEFs. Dimitrova *et al.* [33] also postulated that *lincRNA-p21* blocks OSKM reprogramming of MEFs (measured through alkaline phosphatase staining and qPCR on day 6) by increasing *p21*, though they did not quantify cell proliferation in this setting. A potential explanation for the discrepancy is that complete suppression (as achieved by genetic deletion) of *lincRNA-p21* is necessary to deregulate *p21*. Additional experimentation will be needed to clarify this issue and it is possible that *lincRNA-p21* regulates reprogramming through multiple mechanisms.

Altogether, our study constitutes a resource that may guide others to investigate the functions of lincRNAs in reprogramming, and also provides a new mechanism by which p53, HNRNPK and *lincRNA-p21* regulate gene expression. Future work will further delineate the networks controlled by lincRNAs during reprogramming, which will form new connections with the roadblocks identified up to this point.

Materials and Methods

RIP and RNA pull-down

RIP was performed as described [34]. Briefly, cells were cross-linked with 1% (w/v) formaldehyde (Sigma) and suspended in lysis buffer. Lysates were incubated overnight with the indicated antibodies at 4 °C and RNA-protein complexes were recovered with protein A/G Dynabeads (Life Technologies). RNA pull-down was performed as described [34]. Briefly, biotinylated *lincRNA-p21* and *lacZ* were synthesized with the mMESSAGE mMACHINE kit (Ambion). Biotinylated RNA was folded and incubated with

nuclear extracts. RNA-protein complexes were recovered with Streptavidin agarose beads (Invitrogen). Further details for both procedures are provided in Supplementary information, Data S1.

RNA-seq, bioinformatics and accession number

Sequencing was performed at Guangzhou RiboBio Co., Ltd. with the Illumina HiSeq 2500. RNA-seq data was aligned to the Ensembl v73 transcript annotations using bowtie and RSEM as previously described [35]. All other bioinformatic analysis was performed using gbase [36]. These data were deposited in GEO with accession number GSE57967. Further details are provided in Supplementary information, Data S1.

All other methods are described in Supplementary information, Data S1 and Table S3.

Acknowledgments

We thank all members of the Esteban Lab for their support. This work was supported by the National Basic Research Program of China (973 Program; 2011CB965201 and 2011CBA01106), the Strategic Priority Research Program of the Chinese Academy of Sciences (XDA01020106), the National Natural Science Foundation of China (31371513 and 81202010), the Cooperation Program of the Research Grants Council (RGC) of the Hong Kong Special Administrative Region and the National Natural Science Foundation of China (81261160506), the RGC of the Hong Kong Special Administrative Region, China (476310), the Natural Science Foundation of Guangdong Province (S2013010015487), the Bureau of Science, Technology and Information of Guangzhou Municipality (2012J5100040) and the International Science and Technology Cooperation Program of China (2013DFE33080).

References

- 1 Takahashi K, Yamanaka S. Induced pluripotent stem cells in medicine and biology. *Development* 2013; **140**:2457-2461.
- 2 Liang G, Zhang Y. Genetic and epigenetic variations in iPSCs: potential causes and implications for application. *Cell Stem Cell* 2013; **13**:149-159.
- 3 Polo JM, Anderssen E, Walsh RM, *et al.* A molecular roadmap of reprogramming somatic cells into iPS cells. *Cell* 2012; **151**:1617-1632.
- 4 Liu L, Xu Y, He M, *et al.* Transcriptional pause release is a rate-limiting step for somatic cell reprogramming. *Cell Stem Cell* 2014; **15**:574-588.
- 5 Rais Y, Zviran A, Geula S, *et al.* Deterministic direct reprogramming of somatic cells to pluripotency. *Nature* 2013; **502**:65-70.
- 6 Di Stefano B, Sardina JL, van Oevelen C, *et al.* C/EBPalpha poises B cells for rapid reprogramming into induced pluripotent stem cells. *Nature* 2014; **506**:235-239.
- 7 Guo S, Zi X, Schulz VP, *et al.* Nonstochastic reprogramming from a privileged somatic cell state. *Cell* 2014; **156**:649-662.
- 8 Tapia N, Schöler HR. p53 connects tumorigenesis and reprogramming to pluripotency. *J Exp Med* 2010; **207**:2045-2048.
- 9 Soufi A, Donahue G, Zaret KS. Facilitators and impediments of the pluripotency reprogramming factors' initial engagement with the genome. *Cell* 2012; **151**:994-1004.
- 10 Chen J, Liu H, Liu J, *et al.* H3K9 methylation is a barrier during somatic cell reprogramming into iPSCs. *Nat Genet* 2013; **45**:34-42.
- 11 Sridharan R, Gonzales-Cope M, Chronis C, *et al.* Proteomic and genomic approaches reveal critical functions of H3K9 methylation and heterochromatin protein-1 γ in reprogramming to pluripotency. *Nat Cell Biol* 2013; **15**:872-882.
- 12 Mikkelsen TS, Hanna J, Zhang X, *et al.* Dissecting direct reprogramming through integrative genomic analysis. *Nature* 2008; **454**:49-55.
- 13 Subramanyam D, Billelloch R. From microRNAs to targets: pathway discovery in cell fate transitions. *Curr Opin Genet Dev* 2011; **21**:498-503.
- 14 Rinn JL, Chang HY. Genome regulation by long noncoding RNAs. *Annu Rev Biochem* 2012; **81**:145-166.
- 15 Loewer S, Cabili MN, Guttman M, *et al.* Large intergenic non-coding RNA-RoR modulates reprogramming of human induced pluripotent stem cells. *Nat Genet* 2010; **42**:1113-1117.
- 16 Wang Y, Xu Z, Jiang J, *et al.* Endogenous miRNA sponge lincRNA-RoR regulates Oct4, Nanog, and Sox2 in human embryonic stem cell self-renewal. *Dev Cell* 2013; **25**:69-80.
- 17 Lin N, Chang KY, Li Z, *et al.* An evolutionarily conserved long noncoding RNA TUNA controls pluripotency and neural lineage commitment. *Mol Cell* 2014; **53**:1005-1019.
- 18 Huarte M, Guttman M, Feldser D, *et al.* A large intergenic noncoding RNA induced by p53 mediates global gene repression in the p53 response. *Cell* 2010; **142**:409-419.
- 19 Yoon JH, Abdelmohsen K, Srikantan S, *et al.* LincRNA-p21 suppresses target mRNA translation. *Mol Cell* 2012; **47**:648-655.
- 20 Yang F, Zhang H, Mei Y, Wu M. Reciprocal regulation of HIF-1 α and lincRNA-p21 modulates the Warburg effect. *Mol Cell* 2014; **53**:88-100.
- 21 Silva J, Barrandon O, Nichols J, *et al.* Promotion of reprogramming to ground state pluripotency by signal inhibition. *PLoS Biol* 2008; **6**:e253.
- 22 Guttman M, Donaghey J, Carey BW, *et al.* lincRNAs act in the circuitry controlling pluripotency and differentiation. *Nature* 2011; **477**:295-300.
- 23 Guo X, Liu Q, Wang G, *et al.* microRNA-29b is a novel mediator of Sox2 function in the regulation of somatic cell reprogramming. *Cell Res* 2013; **23**:142-156.
- 24 Montserrat N, Nivet E, Sancho-Martinez I, *et al.* Reprogramming of human fibroblasts to pluripotency with lineage specifiers. *Cell Stem Cell* 2013; **13**:341-350.
- 25 Shu J, Wu C, Wu Y, *et al.* Induction of pluripotency in mouse somatic cells with lineage specifiers. *Cell* 2013; **153**:963-975.
- 26 Choi YJ, Lin CP, Ho JJ, *et al.* miR-34 miRNAs provide a barrier for somatic cell reprogramming. *Nat Cell Biol* 2011; **13**:1353-1360.
- 27 Lee HJ, Hore TA, Reik W. Reprogramming the methylome: erasing memory and creating diversity. *Cell Stem Cell* 2014; **14**:710-719.
- 28 Bomsztyk K, Denisenko O, Ostrowski J. hnRNP K: one protein multiple processes. *Bioessays* 2004; **26**:629-638.
- 29 Ng SY, Bogu GK, Soh BS, Stanton LW. The long noncoding RNA RMST interacts with SOX2 to regulate neurogenesis. *Mol Cell* 2013; **51**:349-359.
- 30 Tuck AC, Tollervy D. A transcriptome-wide atlas of RNP

- composition reveals diverse classes of mRNAs and lncRNAs. *Cell* 2013; **154**:996-1009.
- 31 Di Ruscio A, Ebralidze AK, Benoukraf T, *et al.* DNMT1-interacting RNAs block gene-specific DNA methylation. *Nature* 2013; **503**:371-376.
- 32 Mohammad F, Mondal T, Guseva N, Pandey GK, Kanduri C. Kcnq1ot1 noncoding RNA mediates transcriptional gene silencing by interacting with Dnmt1. *Development* 2010; **137**:2493-2499.
- 33 Dimitrova N, Zamudio JR, Jong RM, *et al.* LincRNA-p21 activates p21 in cis to promote Polycomb target gene expression and to enforce the G1/S checkpoint. *Mol Cell* 2014; **54**:777-790.
- 34 Tsai MC, Manor O, Wan Y, *et al.* Long noncoding RNA as modular scaffold of histone modification complexes. *Science* 2010; **329**:689-693.
- 35 Pike KA, Hutchins AP, Vinette V, *et al.* Protein tyrosine phosphatase 1B is a regulator of the interleukin-10-induced transcriptional program in macrophages. *Sci Signal* 2014; **7**:ra43.
- 36 Hutchins AP, Jauch R, Dyla M, Miranda-Saavedra D. glbase: a framework for combining, analyzing and displaying heterogeneous genomic and high-throughput sequencing data. *Cell Regen* 2014; **3**:1. eCollection 2014.

(**Supplementary information** is linked to the online version of the paper on the *Cell Research* website.)