

The presentation and management of complex female genital malformations

Pedro Acién^{1,2,3,*} and Maribel Acién^{1,2,3}

¹Obstetrics and Gynaecology Service, San Juan University Hospital, San Juan, Alicante, Spain ²Department/Division of Gynaecology, Miguel Hernández University, San Juan Campus, 03550 San Juan, Alicante, Spain ³Institute of Gynaecology PAA, Alicante, Spain

*Correspondence address. Departamento/Area de Ginecología, Facultad de Medicina de la Universidad "Miguel Hernández", Campus de San Juan, 03550 Alicante, Spain. Tel: +34-965919272; Fax: +34-965919551; E-mail: acien@umh.es

Submitted on May 25, 2015; resubmitted on October 7, 2015; accepted on October 14, 2015

TABLE OF CONTENTS

- Introduction
- Methods
 - Cataloging complex female genital malformations
 - Embryological considerations
- Results
 - Agensis or hypoplasia of the urogenital ridge
 - URA and ipsilateral blind or atretic hemivagina syndrome (distal mesonephric anomalies)
 - Cavitated and non-communicating uterine horns and other Müllerian atresias (complex isolated Müllerian anomalies)
 - Anomalies of the cloaca and urogenital sinus. Congenital vesicovaginal fistulas and cloacal anomalies
 - Malformative combinations and other complex malformations
- Additional comments
 - On the cataloging and classification systems of female genital malformations and on the inclusion of complex malformations
 - The systemic association of renal agenesis and ipsilateral genital malformation
 - ACUMs
- Conclusions and future perspectives

BACKGROUND: Common uterine anomalies are important owing to their impact on fertility, and complex mesonephric anomalies and certain Müllerian malformations are particularly important because they cause serious clinical symptoms and affect woman's quality of life, in addition to creating fertility problems. In these cases of complex female genital tract malformations, a correct diagnosis is essential to avoid inappropriate and/or unnecessary surgery. Therefore, acquiring and applying the appropriate embryological knowledge, management and therapy is a challenge for gynaecologists. Here, we considered complex malformations to be obstructive anomalies and/or those associated with cloacal and urogenital sinus anomalies, urinary and/or extragenital anomalies, or other clinical implications or symptoms creating a difficult differential diagnosis.

METHODS: A diligent and comprehensive search of PubMed and Scopus was performed for all studies published from 1 January 2011 to 15 April 2015 (then updated up to September 2015) using the following search terms: 'management' in combination with either 'female genital malformations' or 'female genital tract anomalies' or 'Müllerian anomalies'. The MeSH terms 'renal agenesis', 'hydrocolpos', 'obstructed hemivagina' 'cervicovaginal agenesis or atresia', 'vaginal agenesis or atresia', 'Herlyn–Werner–Wunderlich syndrome', 'uterine duplication' and 'cloacal anomalies' were also used to compile a list of all publications containing these terms since 2011. The basic embryological considerations for understanding female genitourinary malformations were also revealed. Based on our experience and the updated literature review, we studied the definition and classification of the complex malformations, and we analysed the clinical presentation and different therapeutic strategies for each anomaly, including the embryological and clinical classification of female genitourinary malformations.

RESULTS: From 755 search retrieved references, 230 articles were analysed and 120 studied in detail. They were added to those included in a previous systematic review. Here, we report the clinical presentation and management of: agenesis or hypoplasia of one urogenital ridge; unilateral renal agenesis and ipsilateral blind or obstructed hemivagina or unilateral cervicovaginal agenesis; cavitated and non-communicating uterine horns and Müllerian atresias or agenesis, including Rokitansky syndrome; anomalies of the cloaca and urogenital sinus, including congenital vagino-vesical fistulas and cloacal anomalies; malformative combinations and other complex malformations. The clinical symptoms and therapeutic strategies for each complex genitourinary malformation are discussed. In general, surgical techniques to correct genital malformations depend on the type of anomaly, its complexity, the patient's symptoms and the correct embryological interpretation of the anomaly. Most anomalies can typically be resolved vaginally or by hysteroscopy, but laparoscopy or laparotomy is often required as well. We also include additional discussion of the catalogue and classification systems for female genital malformations, the systematic association between renal agenesis and ipsilateral genital malformation, and accessory and cavitated uterine masses.

CONCLUSIONS: Knowledge of the correct genitourinary embryology is essential for the understanding, study, diagnosis and subsequent treatment of genital malformations, especially complex ones and those that lead to gynaecological and reproductive problems, particularly in young patients. Some anomalies may require complex surgery involving multiple specialties, and patients should therefore be referred to centres that have experience in treating complex genital malformations.

Key words: complex malformations / female genital tract anomalies / management / classification / unilateral renal agenesis / cervicovaginal agenesis / obstructive anomalies / urogenital sinus / cloacal anomalies / vaginal atresia

Introduction

Uterine malformations have been reported to occur in 3–4% of women overall, in 4% of infertile women and in 15% of those who have experienced recurrent miscarriage (March, 1990; Ación, 1997; Grimbizis *et al.*, 2001). Other studies identified in a systematic review to present the prevalence and diagnosis of congenital uterine anomalies in women with reproductive failure (Saravolos *et al.*, 2008) observed higher percentages: 6.7% in the general population, 7.3% in the infertile population and 16.7% in the recurrent miscarriage patients. The corresponding prevalence values in unselected and high-risk populations (Chan *et al.*, 2011) were 5.5, 8, 13.3 and 24.5% in those with miscarriage and infertility. Therefore, common uterine or Müllerian anomalies are important because of their effects on fertility, but mesonephric anomalies, certain obstructive Müllerian malformations and other malformative combinations are particularly important because they cause several clinical symptoms and impact the patient's quality of life, in addition to creating fertility problems. Such complex malformations of the female genital tract are not common (17.3% of all female genitourinary malformations; Ación and Ación, 2007), but they can cause severe gynaecological symptoms and other problems, particularly in young women.

In some patients, genital anomalies are associated with other extragenital malformations (Ación *et al.*, 1991; Li *et al.*, 2000; Huang *et al.*, 2001), and they may have a genetic origin (Moerman *et al.*, 1994; Ación *et al.*, 2010c), while in other patients, these anomalies could result from an environmental insult or teratogenic drugs (diethylstilboestrol (DES) syndrome). However, in most cases, there is no evident aetiology or association. Currently, certain genetic mutations and deletions are being studied (Dang *et al.*, 2012; Sanna-Cherchi *et al.*, 2013; Murry *et al.*, 2015; Vera-Carbonell *et al.*, 2015), although these studies have lacked clear identifiable and related pathogenic mechanisms. Therefore, it appears that genital malformations are influenced by multifactorial, polygenic and familial mechanisms that together create a favourable environment for the development of the anomaly (Ación and Ación, 2013a).

The clinical presentation of each anomaly and genital malformation is different; given the diversity of situations and the possible combinations of the wide range of female genital tract malformations (FGTM), it is

nearly impossible to outline a single uniform treatment and management plan. Most common malformations do not typically require surgery, but the majority of complex cases do and the solution is often simple; it is essential to obtain a correct diagnosis to avoid inappropriate and/or unnecessary surgery. Therefore, selecting the appropriate management and therapeutic strategy presents a challenge for gynaecologists. In this paper, we analyse the clinical presentation, review the different therapeutic strategies and discuss the cataloging and classification of complex female genitourinary anomalies.

Methods

We performed a diligent and comprehensive search of PubMed and Scopus for all studies published from 1 January 2011 to 15 April 2015 using the search term 'management' in combination with either 'female genital malformations' or 'female genital tract anomalies' or 'Müllerian anomalies'. The MeSH terms 'renal agenesis', 'hydrocolpos', 'obstructed hemivagina', 'cervicovaginal agenesis or atresia', 'vaginal agenesis or atresia', 'Herlyn–Werner–Wunderlich syndrome', 'uterine duplication' and 'cloacal anomalies' were also used in the search. This search has been updated up to September 2015. Our reference list of the included articles (755 documents) was reviewed to identify case reports, case series, reviews and relevant studies related to complex female genital malformations, and these amounted to 120 full-length reviewed articles and 110 abstracts, including 'Herlyn–Werner–Wunderlich syndrome' (56 papers) and 'cervicovaginal agenesis' or 'vaginal aplasia' (105 papers). In a previous systematic review, these terms were analysed in publications since 1950 (Ación and Ación, 2011).

Ethical approval was not required. The authors have the signed consent of the patients whose images are included or the permission of those that were previously published.

Cataloging complex female genital malformations

There are no widely accepted criteria for classifying certain female genitourinary anomalies as complex malformations. Even the definition of a female genital malformation is controversial. Excluding the anomalies in sexual determination and differentiation, malformations of the female genital tract should include those anomalies that affect the development

and morphology of the Fallopian tubes, uterus, vagina, vulvae and vaginal introitus, with or without associated ovarian, urinary, skeletal or other organ malformations (Ación and Ación, 2007). It is generally accepted that complex anomalies can be defined as those malformations that include more than one organ or part of the female genital tract and/or more than one stage in embryological maldevelopment. Although this is correct, certain malformations that affect a single organ (e.g. Müllerian segmentary atresias) cause severe symptoms and complications (retrograde menstruation and endometriosis) and are associated with a difficult diagnosis, differential diagnosis and treatment. Therefore, we considered complex malformations to be obstructive anomalies (due to partial unilateral agenesis or Müllerian segmentary atresia) and/or those associated with cloacal and urogenital sinus anomalies, urinary and/or extragenital anomalies, or other clinical implications or symptoms creating a difficult differential diagnosis. All of these complex malformations are included in Table I, which notes the embryological and clinical classification of each complex malformation, which together represent 17.3% of all female genitourinary malformations (Ación and Ación, 2007). Table I also analyzes the correspondence of these complex malformations as included in the American Fertility Society (currently American Society for Reproductive Medicine, ASRM) classification of Müllerian anomalies (American Fertility Society, 1988), and in the new European Society for Human Reproduction and Embryology/European Society for Gynaecological Endoscopy (ESHRE/ESGE) classification system of female genital anomalies (Grimbizis et al., 2013).

Embryological considerations

Certain embryological knowledge should be generally accepted.

The formation of the gonads is independent of that of the urogenital tract (Moore, 1976, 1988; Byskov, 1986; Ación, 1992), although urogenesis of a complete urogenital ridge implies ipsilateral gonadal agenesis or dysgenesis.

The Müllerian ducts form the Fallopian tubes and uterus up to the external cervical os but without reaching the urogenital sinus (Moore, 1976; Sadler, 1986; Ación, 1992; Moore and Persaud, 1999; Sánchez-Ferrer et al., 2006).

The Wolffian ducts open into the urogenital sinus, and the ureteral bud sprouts from the caudal tip of their opening (Campbell, 1928; Mackie, 1978; Ación, 1992).

The Müller tubercle is located between the distal portion of the Müllerian ducts and the urogenital sinus, and the Wolffian ducts are positioned at both sides (Koff, 1933; Grünwald, 1941; Marshall and Beisel, 1978; Dohr and Tarmann, 1984; Ación, 1992; Sánchez-Ferrer et al., 2006).

When considering the Müllerian development processes, we must distinguish the following:

Anomalies caused by total or partial agenesis of one (unicornuate uterus) or both Müllerian ducts [Rokitansky or Mayer–Rokitansky–Kuster–Hauser (MRKH) syndrome];

Anomalies caused by the total or partial absence of fusion, i.e. didelphys uterus and bicornuate (bicollis and unicollis) uterus;

Anomalies caused by total or partial lack of reabsorption of the septum between the Müllerian ducts (septate and sub-septate uterus);

Anomalies caused by a lack of later development [hypoplastic uterus, T-shaped and DES exposure (DES syndrome)];

Segmentary defects and combinations.

This classification system for uterine or Müllerian malformations corresponds to the traditional classifications (Strassmann, 1907; Jarcho, 1946; Buttram and Gibbons, 1979), the widely used ASRM classification (1988) or that included in Netter's Atlas (Netter, 1979). The latest ESHRE/ESGE classification system 'UCV' (Grimbizis et al., 2012, 2013) is also based on those concepts (Müllerian development processes), with anatomy providing the basis for the systematic categorization of anomalies. Transitional uterine

malformations and those 'without a classification' (Ación et al., 2009) are well cataloged within the ESHRE/ESGE system.

These classification schemes essentially refer to only Müllerian anomalies or the anatomic visual appearance and do not explain or suggest the actual origin of female genitourinary tract malformations nor their appropriate therapeutic correction, except for the uterine anomalies where the cataloging of the ESHRE/ESGE classes (septate, bicornuate) and sub-classes seems to be better than in the ASRM classification, especially considering fertility problems.

Woolf and Allen (1953) discovered several possible associations between uterine or genital tract malformation and renal agenesis, which is always ipsilateral and is considered the consequence of a mesonephric anomaly. Usually, if both kidneys are present, this anomaly does not occur. The mesonephric or Wolffian ducts are as important as the Müllerian ducts and the Müller tubercle. Specifically, these structures are fundamental for the appropriate development of the female genital tract, particularly when considering three key points related to the previously mentioned embryological knowledge: the embryological development of the human vagina does not proceed from the urogenital sinus and Müllerian ducts (as classically thought) but instead proceeds from the Wolffian ducts and the Müllerian tubercle (Bok and Drews, 1983; Mauch et al., 1985; Ación, 1992; Sánchez-Ferrer et al., 2006); the appropriate development, fusion and resorption of the separating wall between the Müllerian ducts is induced by the Wolffian ducts, which are located on either side and act as guide elements for Müllerian development (Grünwald, 1941; Magee et al., 1979); the ureteral buds sprout and exit from the opening of the Wolffian ducts into the urogenital sinus, and the definitive kidneys are formed when these buds approach the metanephros (Campbell, 1928; Mackie, 1978). Therefore, a distal Wolffian or mesonephric lesion will promote a vaginal anomaly, a uterine anomaly and ipsilateral renal agenesis or renal dysplasia with or without ectopic ureter (Ación, 1992; Ación et al., 2004c, 2010b; Ación and Ación, 2007, 2010, 2011, 2013b), i.e. a complex malformation.

Results

From 755 retrieved references, 230 articles were analysed and 120 studied in detail. They were added to those included in a previous systematic review (Ación and Ación, 2011). Based on our experience and an updated literature review, we briefly analyse the clinical presentation of, and different therapeutic strategies for, each complex malformation included in Table I as well as their cataloging with the embryological and clinical classification of female genitourinary malformations and other classification system.

Agenesis or hypoplasia of the urogenital ridge (1.6% of all FGTM; Ación and Ación, 2007)

The anomalies included in this group might not be considered complex malformations due to the lack of relevant symptoms, although they are associated with unilateral renal agenesis (URA). This association must be considered in reproductive medicine, not only because of the uterine malformation but also because of the ipsilateral absence of the Fallopian tube and ovary (Haydardedeoglu et al., 2006). Clinical manifestations are often due to the absence of the kidney, ovary and Fallopian tube as well as a hemiuterus or hemivagina (undetected) on one side. In some cases, the ovary was situated ectopically (Kollia et al., 2014). The most common presentation is a unicornuate uterus without a rudimentary horn or adnexa (tube and ovary) on the opposite side. This condition is sometimes associated with skeletal and/or auditory anomalies (King et al., 1987; Ación et al., 1991; Ación and Ación,

Table I Complex malformations of the female genitourinary tract and their inclusion in the embryological and clinical classification of female genital malformations (Acién, 1992; Acién et al., 2004c; Acién and Acién, 2011) and in other classification systems (AFS/ASRM, 1988; ESHRE/ESGE, 2013).

Complex malformations of the female genital tract	As included in the embryological and clinical classification (Acién and Acién, 2011)	As included in the AFS/ASRM classification of Müllerian anomalies (American Fertility Society, 1988)	As included in the new ESHRE/ESGE classification system of female genital anomalies (Grimbizis et al., 2013)
1. Agenesis or hypoplasia of a urogenital ridge	Group I: I.1. Rokitansky syndrome with URA. I.2. Unicornuate uterus with contralateral RA	Class Ie (uterovaginal agenesis). Additional findings: URA. Class II (unicornuate uterus). Additional findings: URA	U5 (aplastic)/C4 (cervical aplasia)/V4 (vaginal aplasia). Associated non-Müllerian anomalies: URA. U4 (hemi-uterus)/C0/V0. Associated anomalies: URA
2. Unilateral renal agenesis (URA) (sometimes ectopic ureter and/or renal dysplasia) and ipsilateral blind or atretic hemivagina syndrome showing	Group II: All distal mesonephric anomalies: uterine duplicity with blind hemivagina (or atresia) and URA (sometimes ectopic ureter and renal dysplasia, or other ipsilateral renal anomalies)	Class III, IV or V (didelphus, bicornuate or septate uterus). Additional findings: vagina, cervix, kidneys	U3 or U2 (bicorporeal or septate uterus)/C1, C2 or C3 (septate, double or unilateral cervical aplasia)/V2, V1 or V0 (obstructing, non-obstructing vaginal septum, or normal vagina). Associated non-Müllerian anomalies: URA, ectopic ureter
A. Obstructed or blind hemivagina with large haematocolpos (Wunderlich syndrome)	II.1 Didelphus or bicornuate (rarely septate) uterus with blind hemivagina and ipsilateral RA (sometimes ectopic ureter and renal dysplasia, or other ipsilateral renal anomalies)	Class III, IV or V (didelphus, bicornuate or septate uterus). Additional findings: vagina, cervix, kidneys	U3 or U2 (bicorporeal or septate uterus)/C2, C1 (double, or septate cervix)/V2 (longitudinal obstructing vaginal septum). ^a Associated non-Müllerian anomalies: URA, ectopic ureter
B. A Gartner duct pseudocyst in the upper anterolateral wall of the vagina (Herlyn–Werner syndrome)	II.2 Bicornuate communicating uterus with athretic blind hemivagina and ipsilateral RA (sometimes ectopic ureter, or mesonephric remnants).	Class IVb (partial bicornuate uterus). Additional findings: vagina, cervix, kidneys	U3a (partial bicorporeal uterus)/C3 (unilateral cervical aplasia)/V2 (longitudinal obstructing vaginal septum). ^a Associated non-Müllerian anomalies: URA, ectopic ureter
C. A short vaginal septum or a communicating buttonhole	II.3 Didelphus or bicornis-bicollis uterus with a short vaginal septum or buttonhole, and URA	Class III or IVa (didelphus or bicornuate uterus). Additional findings: vagina, cervix, kidneys	U3b, U3c (bicorporeal uterus)/C2 (double 'normal' cervix)/V1 (longitudinal non-obstructing vaginal septum). Associated non-Müllerian anomalies: URA, ectopic ureter
D. Bicornuate-unicollis communicating uterus with unilateral cervicovaginal atresia and ipsilateral URA	II.4 Bicornis-unicollis communicating uterus with an anomalous horn and ipsilateral RA	Class IVb (partial bicornuate uterus). Additional findings: URA	U3a (partial bicorporeal uterus)/C3 (unilateral cervical aplasia)/V0 (normal vagina). ^b Associated non-Müllerian anomalies: URA
E. Didelphus/unicornuate uterus with unattached and cavitated rudimentary horn, unilateral cervicovaginal atresia and ipsilateral URA	II.5 Didelphus (ultrasound, MR)/unicornuate uterus with contralateral unattached and cavitated rudimentary horn, unilateral cervicovaginal atresia and ipsilateral URA	Class III (didelphus) or IIb (unicornuate uterus, non-communicating). Additional findings: URA	U3b or U4a (complete bicorporeal uterus)/C3 (unilateral cervical aplasia)/V0 (normal vagina). ^c Associated non-Müllerian anomalies: URA
3. Cavitated non-communicating uterine horns (CNCUH) and Müllerian atresias	Group III. Isolated Müllerian anomalies affecting to ducts, tubercle or both elements	Class IIb (unicornuate uterus, non-communicating)	U4a (hemi-uterus with rudimentary cavity)/C0 (normal cervix)/V0 (normal vagina)
A. CNCUH associated with unicornuate/bicornuate uterus (sometimes septate uterus, Robert's uterus)	III.A.2 or III.A.4 Unicornuate uterus (bicornuate and sometimes septate) with cavitated non-communicated uterine horn	Class IIb (unicornuate uterus, non-communicating)	U4a (hemi-uterus with rudimentary cavity)/C0 (normal cervix)/V0 (normal vagina). U2b/C3/V0 in certain cases of Robert's uterus?
B. Segmentary atresia of the one Müllerian duct with a detached horn	III.A.2 Unicornuate uterus with detached cavitated non-communicated uterine horn due to segmentary atresia	Class IIb (unicornuate uterus, non-communicating)	U4a (hemi-uterus with rudimentary cavity)/C0 (normal cervix)/V0 (normal vagina)
C. Vaginal or cervicovaginal agenesis or atresia with a functional uterus	III.B.1 Complete vaginal or cervicovaginal atresia	Class Ia, Ib (hypoplasia/agenesis, vaginal, cervical)	U0 (normal uterus)/C4 (cervical aplasia)/V4 (vaginal aplasia)
D. Vaginal segmentary atresia and transverse vaginal septum	III.B.2 Complete or incomplete transverse vaginal septum	Not included. Isolated vaginal anomalies	U0 (normal uterus)/C0 (normal cervix)/V3 (transverse vaginal septum and/or imperforate hymen)

Continued

Table I Continued

Complex malformations of the female genital tract	As included in the embryological and clinical classification (Ación and Ación, 2011)	As included in the AFS/ASRM classification of Müllerian anomalies (American Fertility Society, 1988)	As included in the new ESHRE/ESGE classification system of female genital anomalies (Grimbizis et al., 2013)
E. Rokitansky or MRKH syndrome	III.C. Complete uterovaginal agenesis (sometimes with a cavitated rudimentary horn)	Class Ic (combined uterovaginal agenesis)	U5b or U5a (aplastic uterus)/C4 (cervical aplasia)/V4 (vaginal aplasia)
4. Congenital vagino-vesical fistula (pseudo-lower vagina atresia) and cloacal anomalies.	Group V. Anomalies of the cloaca and urogenital sinus Imperforated hymen. Congenital vesicovaginal fistula. Cloacal exstrophy	Not included	U6 (unclassified malformations)/V3 (imperforate hymen)
5. Variable malformative combinations	Group VI. Malformative combinations	Not included	U6 (unclassified anomalies). Associated non-Müllerian anomalies

AFS/ASRM, American Fertility Society/American Society for Reproductive Medicine; ESHRE/ESGE, European Society for Human Reproduction and Embryology/European Society for Gynaecological Endoscopy; MRKH, Mayer–Rokitansky–Kuster Hauser; MR, magnetic resonance; URA, unilateral renal agenesis; RA, renal agenesis; U, uterus; C, Cervix; V, vagina.

^aIt could initially be catalogued as U3a/C0/V0.

^bIt could initially be catalogued as U3a/C0/V0 except suggestion from intravenous pyelography and performance of a hysterosalpingography and/or magnetic resonance.

^cIt could initially be catalogued as U3b/C0/V0 or U4a/C0/V0.

2010) or with branchio-oto-renal syndrome (Safaya et al., 2014). No treatment is necessary. If contralateral Müllerian agenesis is also evident, the diagnosis is Rokitansky syndrome with URA (Ación et al., 2010c) or atypical MRKH syndrome (Strübbe et al., 1993; Gorgojo et al., 2002; Kumar et al., 2007), which can require laparoscopy for diagnosis [although this can also be given by magnetic resonance imaging (MR) and dilation or surgery to create a neovagina (Nakhal and Creighton, 2012)]. Recently, a patient with such a malformation (atypical Rokitansky syndrome) achieved the first live birth after receiving a uterus transplant (Brännström et al., 2015).

URA and ipsilateral blind or atretic hemivagina syndrome (distal mesonephric anomalies) (7.1% of all FGTM)

The clinical presentation of these anomalies includes a duplicate uterus (didelphys, bicornuate or, less commonly, septate uterus) with one of the following subtypes: (i) large haematocolpos in a blind or obstructed hemivagina and ipsilateral renal agenesis or ectopic ureter and renal dysplasia; (ii) Gartner's duct pseudocyst in the anterolateral wall of the permeable vagina, with ipsilateral renal agenesis or dysplasia; (iii) partial reabsorption of the vaginal septum and renal agenesis or dysplasia or (iv) complete unilateral vaginal or cervicovaginal agenesis, with or without communication between both hemi-uteri and ipsilateral renal agenesis or dysplasia (Ación et al., 2004a; Ación and Ación, 2011, 2013a). All of these conditions are variants of renal agenesis and ipsilateral blind hemivagina syndrome, which we described previously as a systematic association (Ación et al., 1987, 1991) that clinicians should be aware of. There is sometimes no renal agenesis, only dysplasia that varies in severity, with an ectopic ureter opening into the blind hemivagina (Ación et al., 1990, 2004b). Although cases with normal kidneys have been described (Pinsonneault and Goldstein, 1985; Johnson and Hillman, 1986; Smith and Laufer, 2007), the analysis of what is referred in these works shows that there was always some kind of ipsilateral reno-ureteral anomaly or malrotation (Heinonen,

2000); anomaly that nowadays would be more evident after directed investigation with MR, hysterosalpingography (HSG), urography and endoscopy.

This syndrome includes others described in the literature that relate to renal agenesis and unilateral haematocolpos or Gartner duct pseudocyst [Wunderlich (1976) and Herlyn and Werner (1971) syndromes, respectively], which is frequently reported as 'Herlyn–Werner–Wunderlich syndrome', as well as to 'obstructed hemivagina and ipsilateral renal anomaly (OVHIRA) syndrome' (Smith and Laufer, 2007) and others (Fedele et al., 2013).

The clinical presentation and management are different for each variant or subtype.

Cases with unilateral obstructed or blind hemivagina with large haematocolpos (in girls, hydrocolpos) (Spencer and Levy, 1962; Rosenberg et al., 1982; Burbige and Hensle, 1984) clinically manifest as progressive intra- and postmenstrual dysmenorrhea present from menarche, although it was frequently diagnosed at 16–18 years of age in our patients. In the series published by Tong et al. (2013), the age at diagnosis was 13 ± 2 years (mean \pm SD) in cases with complete obstruction and 24.7 ± 7.7 years (mean \pm SD) in those with incomplete obstruction. However, the clinical presentation is highly variable, frequently delaying diagnosis and leading to significant complications (Ación et al., 1981). Occasionally, the condition can be diagnosed following acute urinary retention (Alumbreros-Andujar et al., 2014). There are also some cases described in girls under 5 years old (Sanghvi et al., 2011; Angotti et al., 2015). Angotti et al. (2015) highlight that this syndrome should be taken into consideration as differential diagnosis in newborn with prenatal ultrasonography of a cystic mass behind the urinary bladder in the absence of a kidney. Lopes Dias and Jogo (2015) also state that when a prenatal diagnosis of URA in newborn girls is known, a gynaecological imaging study should be performed to exclude uterine and vaginal abnormalities.

In general, examination reveals an anterolateral bulge in the vagina that makes it impossible to reach the cervix. Ultrasound can greatly aid in the diagnosis if haematocolpos is suspected, and the diagnosis is confirmed when i.v. pyelography (IVP) and/or cystoscopy show renal agenesis.

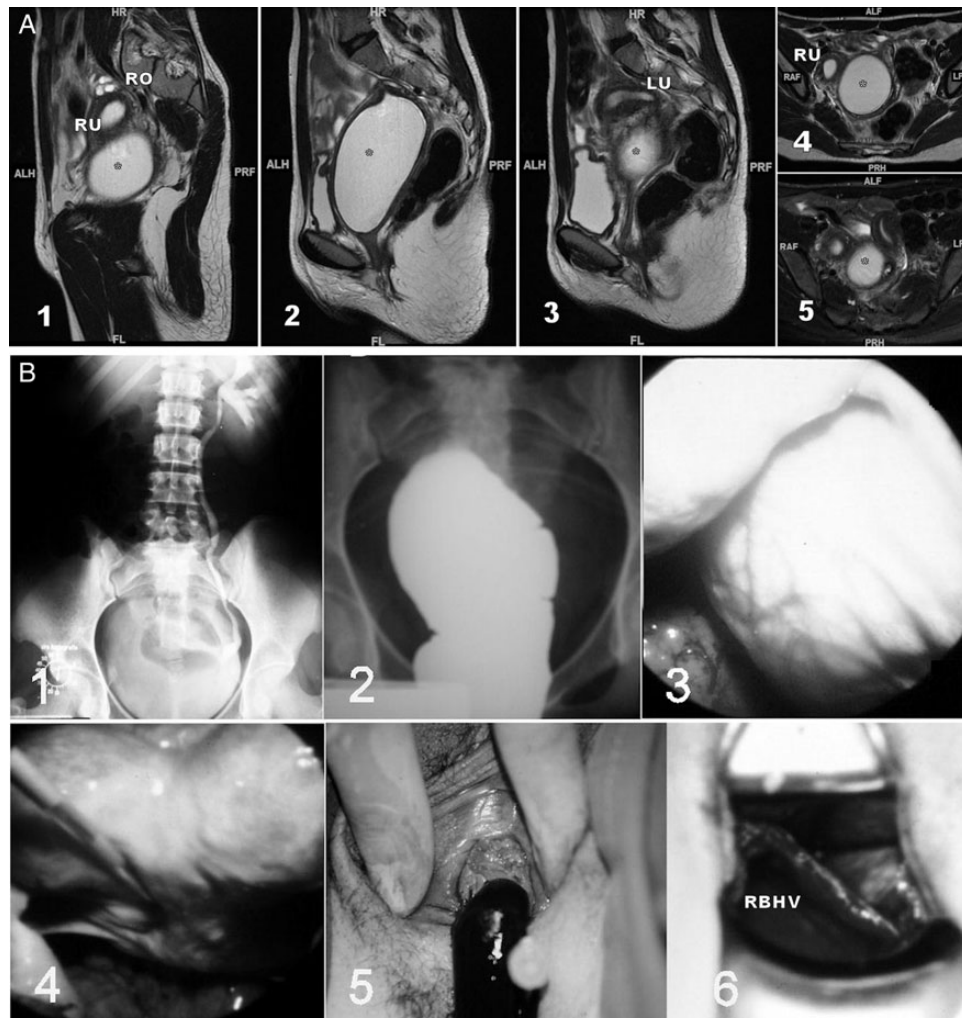


Figure 1 Unilateral renal agenesis and ipsilateral obstructed hemivagina with haematocolpos. **(A)** Magnetic resonance imaging (MR) of a 16-year-old patient with a unilateral blind hemivagina and ipsilateral renal agenesis who experienced strong dysmenorrhea. After clinical examination and MR, she was diagnosed with endometrioma in another hospital. However, a didelphys uterus and right haematocolpos* can be observed; 1–3, sagittal cuts from right to left; 4–5, axial cuts from caudal to cranial. RO, right ovary; RU, right hemiuterus; LU, left hemiuterus. ALH/ALF, anterior; PRF/PRH, posterior; HR, head; FL, foot; RAF, right; LPH, left. **(B)** Images from a 17-year-old patient with unilateral renal agenesis and ipsilateral blind hemivagina syndrome who presented with a large haematocolpos. 1, i.v. pyelogram showing the right renal agenesis; 2, colpography of the right blind hemivagina filled with contrast agent. The transvaginal puncture allows the chocolate-coloured blood to drain, and the injection of a contrast agent permits the visualization of the blind vagina and fills the corresponding hemiuterus and tube in a retrograde manner, revealing potential inter-uterine communication at the level of the isthmus; 3, laparoscopic observation of an intraperitoneal bulging haematocolpos; 4, laparoscopic observation of the bicornuate uterus after drainage of the haematocolpos; 5, drainage of the haematocolpos; 6, observation of both hemivaginas and the vaginal septum. RBHV, right blind hemivagina.

Transvaginal puncture allows the chocolate blood to drain out, and the injection of a contrast agent permits the visualization of the blind vagina and fills the corresponding hemi-uterus and tube in a retrograde manner. Currently, three-dimensional ultrasound, and especially MR, are the primary diagnostic tools, but they must be adequately interpreted to be conclusive: MR of the case presented in Fig. 1A resulted in a diagnosis of endometrioma. Because the diagnosis is incorrect in many cases, leading to unnecessary and inadequate procedures (Nawfal *et al.*, 2011), it is imperative to have acute clinical suspicion when encountering a patient with urogenital anomalies (Adair *et al.*, 2011; Gungor-Ugurlacan *et al.*, 2014). Tzialidou-Palermo *et al.* (2012) have also presented the

diagnostic challenges of hemihaematocolpos and dysmenorrhea in adolescents and suggested a diagnostic and therapeutic algorithm to reduce destructive interventions. In these patients laparoscopy could be performed, and it will show a didelphys or bicornuate uterus (with absence of visualization of the rectovesical ligament—Heinonen, 2013b) and possibly a haematosalpinx and endometriosis that will improve when the obstruction is resolved. The same surgical procedure should include resection of the separating wall between the permeable and blind hemivagina, with drainage of the haematocolpos (Fig. 1B) (Vallerie and Breech, 2010). In general, a single transvaginal surgical procedure, including removal of the obstructed vaginal septum and

marsupialization of the blind hemivagina, solves the symptoms of this pathology (Tzialidou-Palermo *et al.*, 2012). Nonetheless, resection of the obstructive vaginal septum may be difficult. Some authors prefer excision of the vaginal septum and a marsupialization-type operation. This prevents reclosing of the opening. However, clinicians should be aware that in the case of uterus didelphys, the vaginal septum has two layers (one per hemivagina) that might peel off. After the haematocolpos is drained, inadvertent resection of just one layer might occur, with the other remaining flaccid, covering the hemi-cervix of the blind side and suggesting that the cervix is absent, or in the future, that a transverse vaginal septum is present. Some authors recommend hysteroscopic resection of the oblique vaginal septum in virgin girls to maintain hymen integrity (Cetinkaya *et al.*, 2011; Sanghvi *et al.*, 2011; Nassif *et al.*, 2012; Xu *et al.*, 2015). Dietrich *et al.* (2014b) described the technique for vaginal septum resection in detail, explaining the need for care in avoiding complications (e.g. establish landmarks, determine the deviation and thickness of the septum, perform a wide resection with vaginoscopy, use a Foley balloon catheter and respond appropriately to microperforations). There is sometimes limited inter-uterine (at the level of the isthmus) or inter-vaginal (at the vaginal apex) communication. In these cases, persistent postmenstrual haemorrhagia (sometimes malodorous) is characteristic before the patient presents with pyocolpos in the obstructed vaginal canal (Dhar *et al.*, 2011; Cortés-Contreras *et al.*, 2014; Wozniakowska *et al.*, 2014). In other cases, there is intermittent mucopurulent discharge or a history of acute pelvic inflammation (Tong *et al.*, 2013). The inter-uterine communication may also be extensive and asymptomatic if there are no associated pathologies. Likewise, there may be an ectopic ureter opening into the blind vagina (Acién *et al.*, 1990), and because communication between both sides is common, the symptom is permanent urinary incontinence between instances of normal micturition. The injection of a contrast agent into the blind hemivagina, or the uterus in cases of communicating uteri, will enable the identification of the ectopic ureter by retrograde filling (Acién *et al.*, 2004b). These cases might require nephrectomy and ureterectomy of the dysplastic kidney (Acién *et al.*, 1990, 2004b).

Cases of *Gartner duct pseudocyst* frequently have no symptoms other than fertility problems related to the bicornuate uterus. These cases are similar to those of Herlyn–Werner syndrome (Herlyn and Werner, 1971). Examination may reveal a cystic mass with the appearance of a Gartner cyst in the upper anterolateral wall of the vagina. This mass is actually an atretic blind hemivagina (Gadbois and Duckett, 1974). The corresponding hemi-cervix is usually atretic, and the examination and HSG can show a bicornuate-unicollis uterus with normal cervix and vagina (U3a/C0/V0 in the new ESHRE/ESGE classification system, 2013) due to communicating uteri. In other cases with the same hystero-graphic image, the atretic hemi-cervix is permeable and fistulous and communicates with the atretic blind hemivagina (Fig. 2). The predominant symptom is sudden leucorrhoea that is occasionally malodorous and that perhaps interferes with sexual intercourse. A wide resection of the vaginal septum resolves these symptoms (Acién and Acién, 2007; Pereira *et al.*, 2014), and no other surgery is needed. In some cases, a hysteroscopic resection of the uterine septum (partial septate uterus) has been practiced and then an intrapartur rupture of obstructed hemivagina has occurred (Zivković *et al.*, 2014). In other cases without communicating uteri, clinical presentation is similar to those that will be presented in ‘cases of complete unilateral cervicovaginal agenesis’ below, being the cause of repeated surgeries (Dorais *et al.*, 2011). The existence of

URA must be, again, the reason for suspecting and then confirming the right diagnosis.

Cases of *partial reabsorption of the vaginal septum* are similar to those of didelphys uterus with a double vagina, but typically, the vaginal septum does not reach the inferior third of the vagina, or a buttonhole is present on the lateral wall of the vagina that allows access to the genitalia on the side with ipsilateral renal agenesis (Acién and Acién, 2010). Heinonen (2006) reported 67 patients who had a complete septate uterus including the cervix and a longitudinal vaginal septum, finding 4 cases with an obstructed hemivagina causing unilateral haematocolpos. All of them also had ipsilateral renal agenesis. A fifth patient with URA and five more cases with a double ureter did not present obstructed hemivagina. No treatment is needed in these last cases unless there is dyspareunia, associated gynaecological pathology (leiomyomas) or obstetric complications. Malformations associated with URA (bicornuate and didelphys uterus) have fewer reproductive losses compared with the same uterine malformations without URA (Acién *et al.*, 2014). However, Heinonen (2004, 2013a) reported a higher frequency of gestational hypertension and pre-eclampsia associated with URA in women with uterine malformations; one of our patients with right renal agenesis had thick varicosities on the surface of the left pregnant hemiuterus with vascular rupture and significant haemoperitoneum at 30 weeks gestation (Acién and Acién, 2007; Acién *et al.*, 2014).

Cases of *complete unilateral vaginal or cervicovaginal agenesis*, ipsilateral to the renal agenesis, can present with communication between both hemi-uteri, which behaves as a bicornuate-unicollis uterus (communicating uteri) as presented above (U3a/C0/V0 according to the ESHRE/ESGE classification system). The clinical presentation and management corresponds to that of bicornuate-unicollis uterus, although if the communication is limited, a hemi-hysterectomy might be required (Fig. 2B) because it has a better reproductive outcome than hysteroscopic widening of the communication. So, if the patient has a known URA, an ipsilateral vaginal or cervicovaginal agenesis with a communicating bicornuate uterus must be suspected during the ultrasonographic finding of a bicornuate uterus and a gynecological exam showing normal vagina and cervix. HSG, or better MR, could confirm the diagnosis.

In other cases, there is *no communication between the hemi-uteri*. These patients present with a didelphys uterus with unilateral vaginal or cervicovaginal atresia and haematometra (or haematometra, haematocervix and haematosalpinx) as well as endometriosis caused by retrograde menstruation on the side lacking the vagina and kidney (Ruiz *et al.*, 1999; Saleh and Badawy, 2010; Adair *et al.*, 2011); the symptoms will worsen if the tube (or the adnexa, in cases of endometriosis) is removed or sectioned (Acién *et al.*, 2004a; Dorais *et al.*, 2011). Treatment includes a hemi-hysterectomy, which results in a unicornuate uterus (Fig. 2C). In some cases of unknown final diagnosis of the malformation, some authors have performed conservative treatment with a uterine unification procedure per-hysteroscopy and simultaneous laparoscopy (Dorais *et al.*, 2011).

Therefore, patients with URA and ipsilateral blind or atretic hemivagina syndrome, after a proper diagnosis, may require only removal of the inter-vaginal septum and evacuation of the haematocolpos; a wide resection of this wall is potentially necessary for the Gartner duct pseudocyst type. A laparotomy, or laparoscopy if possible, will be necessary if there is a haematosalpinx or endometriomas. In fact, endometriosis is frequently associated with these malformations; within our URA patients (Acién

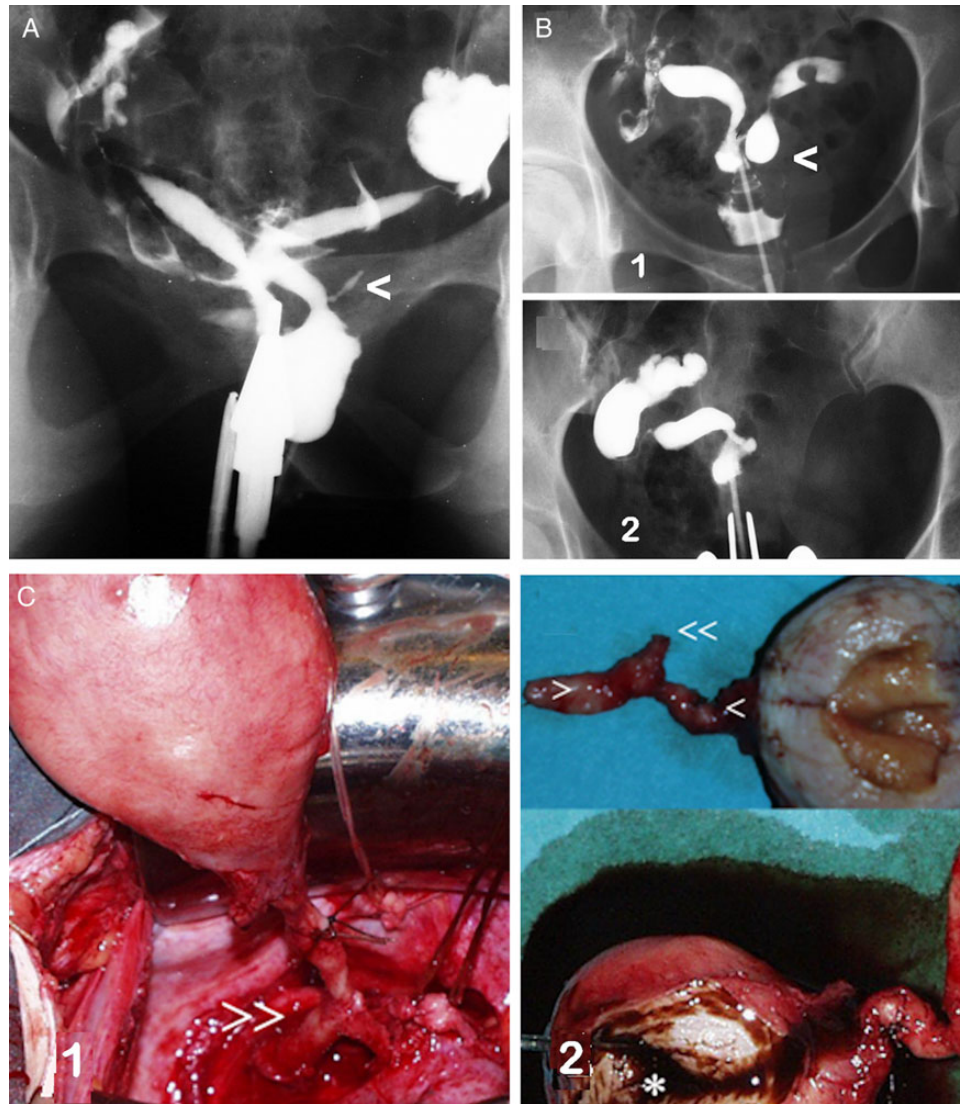


Figure 2 Unilateral renal agenesis and ipsilateral cervicovaginal atresia with or without communicating uteri. (A) HSG image in a case with a mesonephric anomaly involving an apparent bicornuate-unicollis uterus in which the atretic left hemi-cervix is permeable, fistulous and communicating with an atretic left blind hemivagina. There was also left renal agenesis. This presentation corresponds to Herlyn–Werner syndrome (Herlyn and Werner, 1971). Moreover, a remnant of the mesonephric duct or ectopic ureter can be observed (<). (B) Images of a patient with primary infertility who was diagnosed with a genitourinary malformation (left cervicovaginal atresia and renal agenesis with communicating bicornuate uterus) and endometriosis. She underwent surgery in another hospital, where they performed a left hemi-hysterectomy, and an endometrioma in the left ovary was removed. 1, HSG image before surgery; 2, current HSG image. (modified with permission from [Acién et al., 2004c](#)); (C) images of a patient with unilateral cervicovaginal atresia and no communication between the two hemi-uteri. There was also right renal agenesis. After a right adnexectomy to treat tubo-ovarian and appendicular endometriosis was performed in another hospital, a large unilateral right haematometra developed, with severe clinical symptoms. 1, during the right hemi-hysterectomy, we identified what we thought was the mesonephric duct (>>); 2, surgical image showing the cervical and vaginal atresia (> and <) and the mesonephric remnant (<<) (modified with permission from [Acién et al., 2004a](#)).

and [Acién, 2010](#)) we found that 15% of cases (20% in case of bicornuate/didelphys uterus) had associated moderate or severe endometriosis against 7.4% of the control group of genital malformations with both kidneys present. Although in general, endometriosis disappears when the obstructive anomaly is corrected. Nevertheless, and even though no connection between a malformed uterus and ovarian neoplasm has been found ([Woods et al., 1992](#); [Heinonen, 2000](#)), the published cases associating ovarian cancer and malformation were endometrioid ovarian

carcinomas ([Heinonen, 2000](#)), as in one of our cases (52-year-old woman with a bicorne-bicollis uterus communicating at the cervical level, left blind hemivagina and left renal agenesis, with previously suspected endometriosis but not operated, and findings of endometrioid carcinoma of the left ovary and pelvic, right ovarian and appendicular endometriosis). Thus, we suspect that such endometriosis in patients with URA and blind hemivagina might have a higher risk of malignant transformation into ovarian endometrioid carcinoma.

In the case of a duplicate uterus (didelphys uterus) with unilateral cervicovaginal atresia, a hemi-hysterectomy must be performed (Lee *et al.*, 1999; Acién *et al.*, 2004a), and this operation can be conducted laparoscopically (Nawfal *et al.*, 2011; Bolonduro *et al.*, 2015). However, the presence of haematocolpos in a blind vagina proves that the cervix is not completely atretic and that the patient might become pregnant on that side (Nawfal *et al.*, 2011). Obstetric complications are higher in such cases, but pregnancy can result in the delivery of a live infant (Heinonen, 2013a; Acién *et al.*, 2014). If there is a dysplastic kidney with an ectopic ureter opening into the blind vagina, a nephrectomy and ureterectomy may be required (Acién *et al.*, 1990). Removal of the ectopic ureter may also be necessary if it is associated with ascending infections and related problems, even if there is no detectable renal mass (Acién *et al.*, 2004b).

In certain cases (Perino *et al.*, 1995; Romano *et al.*, 2000; El Saman *et al.*, 2011a), hysteroscopic metroplasty has been performed with simultaneous abdominal ultrasound to evacuate and correct a 'complete septate uterus with unilateral haematometra'. However, this appears to be of little benefit, particularly if the tube is occluded (Dorais *et al.*, 2011), and this procedure might even worsen the perinatal results related to the uterine malformation. The need for other surgeries on the genital tract depends on the associated anomaly.

Cavitated and non-communicating uterine horns and other Müllerian atresias (complex isolated Müllerian anomalies) (7.3% of all FGTM)

Some cases of *unicornuate uterus* include a *cavitated and non-communicating uterine horn* with external bicornuate uterine morphology. The inclusion of these cases as bicornuate or unicornuate uterus is discussed. Functionally, these uteri are unicornuate, but it is important to adequately identify the anomaly to determine whether there is renal agenesis and to decide whether surgical correction is required. The HSG image indicates a unicornuate uterus, but ultrasound, and particularly MR, can properly identify the cavitated uterine horn (Fig. 3). Patients may experience dysmenorrhea and present with endometriosis and ovarian endometriomas in the non-communicating horn side, but sometimes, there are no symptoms or adnexal pathology. In one of our studied cases (see Fig. 3B), the patient had a left retrocervical subperitoneal cyst, a Müllerian remnant, that was excised. In another case, severe symptoms appeared after bilateral tubal sterilization following several uneventful pregnancies (Acién and Acién, 2007). Tubal blockage of the side with the cavitated and non-communicating horn led to unilateral haematometra with severe dysmenorrhea. In other cases, there can be gestation in the cavitated rudimentary horns (communicating or not) with possible uterine rupture, usually at the end of the second trimester (Dhar, 2012). Management usually involves excision of the cavitated rudimentary horn, and this can be conducted laparoscopically (Fedele *et al.*, 2005; Lennox *et al.*, 2013). However, there is no basis for the exeresis of a non-functioning rudimentary horn to treat infertility or miscarriages (Buttram and Reiter, 1987).

In some cases of unilateral haematometra, particularly in certain cases of hybrid bicornuate/septate uterus, a hysteroscopic resection of the intermediate septum between the normal uterine horn and the cavitated and non-communicating horn has been conducted (Hucke *et al.*, 1992; Dorais *et al.*, 2011; El Saman *et al.*, 2011a). However, we do not believe there is a basis for this procedure, particularly if the tube on

the haematometra side is occluded (Dorais *et al.*, 2011); besides the risks of a pregnancy in the rudimentary horn, the remaining bicornuate uterus has no better reproductive results (Acién, 1993, 1996; Acién *et al.*, 2014). Nevertheless, a cavitated and non-communicating horn with haematometra can also occur in cases of a septate uterus. These cases of a Robert's uterus or asymmetric septate uterus were first reported by Robert in 1970 (Robert, 1970; Benzineb *et al.*, 1993; Gupta *et al.*, 2007). Pregnancy in the asymmetric blind hemi-cavity of a Robert's uterus has also been noted (Singhal *et al.*, 2003), but some reported cases of menstrual retention in a Robert's uterus (Capito and Sarnacki, 2009) might correspond to accessory and cavitated uterine masses (ACUMs) (Acién *et al.*, 2012), which will be explained below. The hysteroscopic unification of a complete obstructing uterine septum (Spitzer *et al.*, 2008) in a 16-year-old woman with severe, persistent dysmenorrhea and a history of significant endometriosis has also been presented and discussed. Recently, Di Spiezo Sardo *et al.* (2015b) have reported 'an exceptional case of complete septate uterus with unilateral cervical aplasia (formally Robert's uterus) and combined hysteroscopic and laparoscopic treatment'. However, there is no explanation on which grounds 'unilateral cervical aplasia' is diagnosed, or if the patient had ipsilateral renal agenesis.

In cases of *segmentary atresias of one of the Müllerian ducts* with a detached horn or hemiuterus, HSG reveals a unicornuate uterus, but ultrasound and MR show a didelphys uterus in the superior uterine segment with a unilateral cavitated and non-communicating uterine horn. The cervix is simple. Generally, there is dysmenorrhea and endometriosis due to retrograde menstruation from the cavitated uterine horn, but there can also be tubal segmentary atresia, and in such cases, there will be haematometra without endometriosis (Acién *et al.*, 2008a). In all cases, a differential diagnosis must be determined, especially in cases of complete unilateral vaginal or cervicovaginal agenesis without communicating uteri (Acién *et al.*, 2004a, 2004c; Medeiros *et al.*, 2011). Excluding these last cases, which are systematically associated with renal agenesis, both uterosacral ligaments end in the single cervix in cases of Müllerian segmentary atresia, as observed during laparoscopic observation. Regardless, the appropriate treatment is a hemi-hysterectomy, preferably performed laparoscopically (Fedele *et al.*, 2005; Theodoridis *et al.*, 2006; Caserta *et al.*, 2014).

Vaginal or cervicovaginal agenesis or atresia with a functional uterus. This is usually a complex malformation in which the external genitals and tubes appear normal. The uterus may be normal or may present with fusion or resorption defects, and the cervix may be present, absent or hypoplastic (Grimbizis *et al.*, 2004; Sparac *et al.*, 2004). In our experience, the most common presentation, although rare, is complete cervicovaginal atresia or agenesis. The clinical presentation involves primary amenorrhoea and cyclic pain in postpubertal women. Upon gynaecological exploration, normal external genitalia and the absence of a vagina are evident. Transrectal ultrasound, and particularly MR, allows a clear diagnosis that includes a largely normal corpus uteri with endometrium and cervicovaginal atresia. The ovaries are normal, although they might present with endometriosis due to retrograde menstruation, and haematometra may be present, unless previous interventions have been undertaken or other Müllerian anomalies have been identified. A very large abdominal mass due to haematometra with severe anaemia has been reported previously (Opoku *et al.*, 2011).

Surgical methods for the treatment of congenital anomalies of the uterine cervix have included creating a fistula endometrium-vagina with

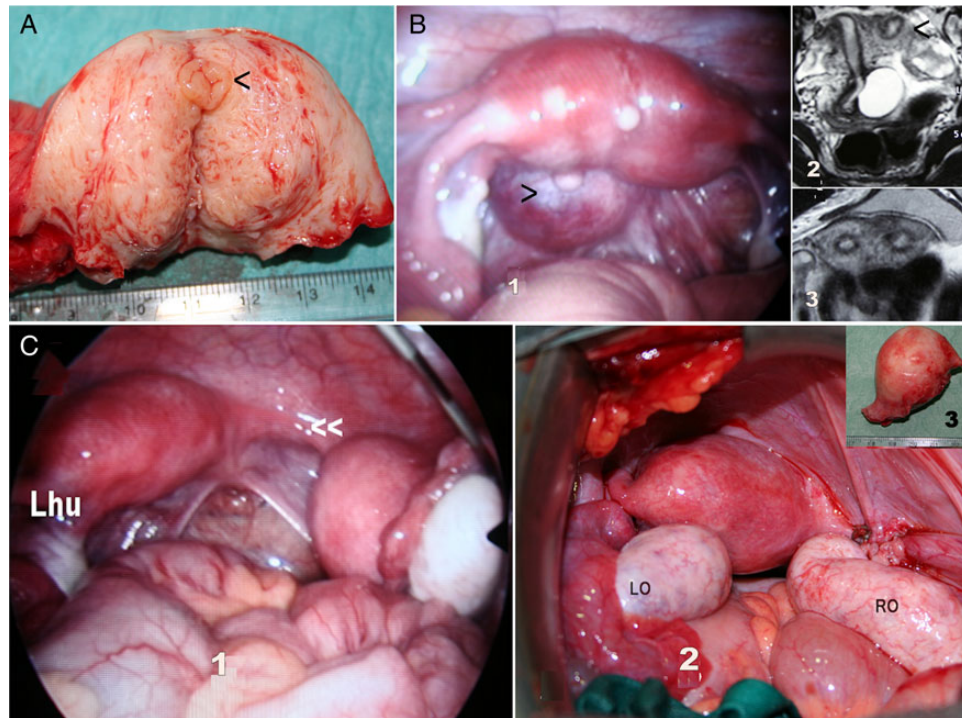


Figure 3 Cases with a cavitated and non-communicating uterine horn. (A) Surgical image of hemi-hysterectomy showing an endometrial cavity (<); (B) another case with a cavitated and non-communicating uterine horn: 1, laparoscopic image of an apparently normal or very slightly arcuate uterus with normal adnexa, and a left retrocervical subperitoneal serous cyst (>) corresponding to a Müllerian remnant. 2 and 3, MR of the same case showing the left cavitated and non-communicating rudimentary uterine horn (<). Due to the absence of symptoms, only the cyst was excised. (C) Case with a left unicornuate uterus and proximal segmentary atresia of the right horn. 1, Laparoscopic image showing the right atretic uterine segment (<<) with a normal and cavitated distal uterine segment and normal right adnexa; 2, a right hemi-hysterectomy was performed and the rudimentary horn with haematometra is shown in 3.

polyethylene or rubber tubes, and some published cases did achieve menstruation. However, pregnancies were rare, and hysterectomy was typically required (Geary and Weed, 1973; Rock et al., 1984). Nevertheless, there are also published cases reporting successful gestation (Deffarges et al., 2001).

If the uterus and/or tubes also present malformations or other alterations associated with low reproductive capacity despite the successful creation of a neovagina, an elective hysterectomy is frequently recommended, even for young patients (Roberts and Rock, 2011). However, when only cervical agenesis is present (Rock et al., 2010; Roberts and Rock, 2011), reimplantation of the cavitated uterine corpus in the vagina (after atretic cervix removal) has been attempted and has achieved normal menstruation and pregnancy. We have performed reimplantation of the uterine corpus in the neovagina (in some cases with complete cervicovaginal agenesis) and have achieved normal menstruation for years and spontaneous gestation at term (Acién et al., 2008b). We first create the neovagina following the McIndoe technique, and 3–4 months later, a laparotomy with atretic cervix resection and reimplantation of the uterine corpus in the neovagina is conducted; a Foley catheter is placed in the uterine cavity to allow antibiotic and anti-inflammatory irrigation during the subsequent month. Figure 4 presents the surgical steps in one of our patients. Currently, this surgery is being performed laparoscopically with or without a stent (self-expandable

metallic or silicone stent: Zhou et al., 2013; Gore-Tex: Rezaei et al., 2015) by certain groups, but the long-term follow-up results are not good because after some months blood retention re-occurs or there is ascending infection and a hysterectomy is needed. Thus, we continue to recommend the laparotomic approach.

If the uterus and cervix are normal, the surgical correction depends on the atretic vaginal segment. If the distance between the blind vaginal bag and the superior portion of the permeable vagina is short, vaginal anastomosis can be performed. Jeffcoate (1969) recommended waiting until a significant superior haematocolpos forms to enable facile penetration of the superior portion of the vagina and to allow adequate vaginal epithelium lining to form before the anastomosis.

If the atretic segment is larger and the area between the superior and inferior portions of the vagina is large and fibrous, or if the atresia affects the entire vagina, the formation of a neovagina must be considered, and the use of an inert material prosthesis and a skin graft is preferable (McIndoe vaginoplasty). The neovagina must be made early in life (at 13–14 years of age) to avoid pelvic menstrual retention and endometriosis. However, if a hysterectomy is required because of associated pathology, the creation of the neovagina must be postponed until 18–20 years of age, when surgery is technically easier and can be safely followed by sexual intercourse, the patient is more mature, and vaginal dilation, as the first choice, fails (Callens et al., 2014). Recently, several papers have

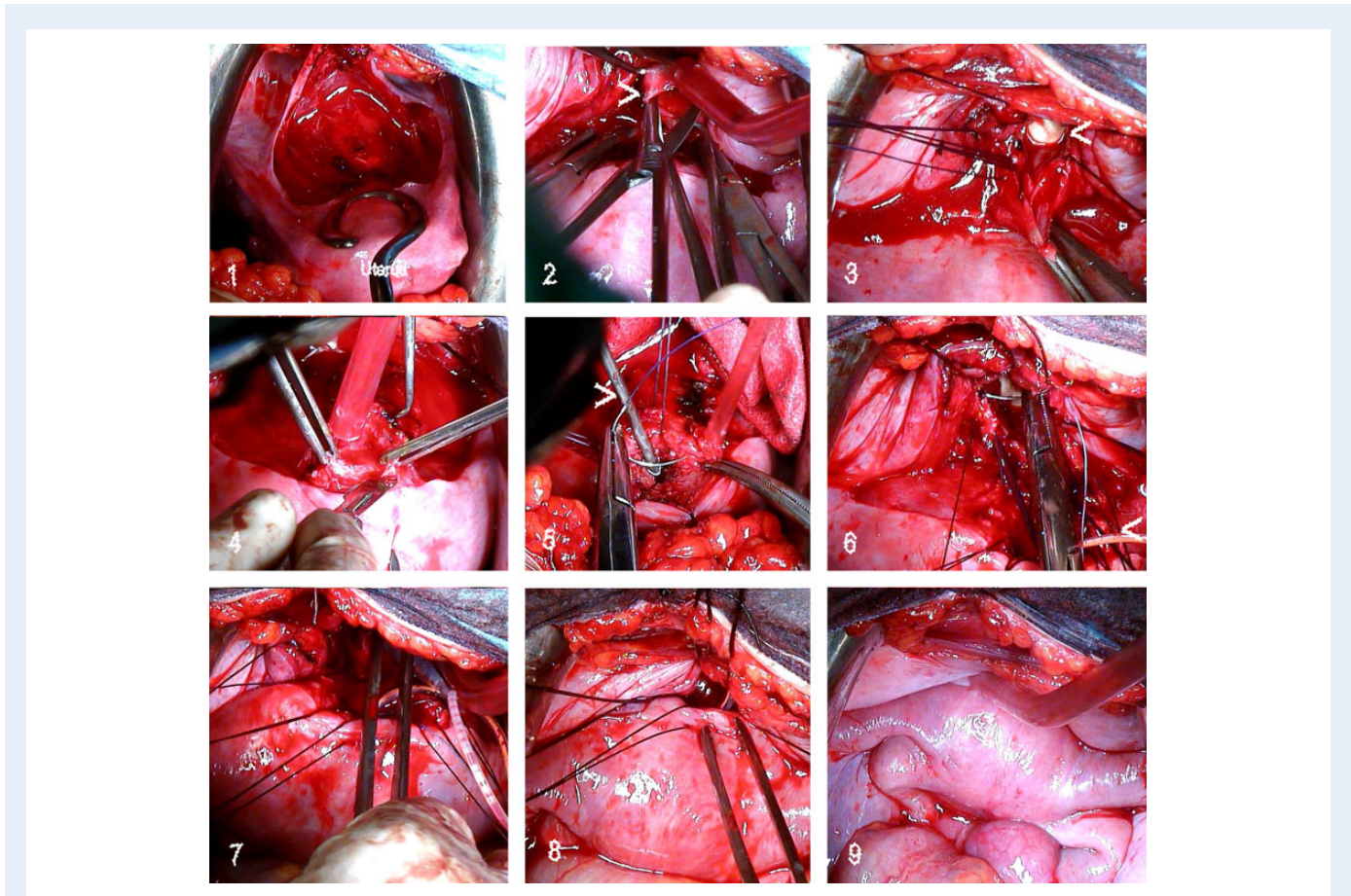


Figure 4 Sequence of utero-neovaginal anastomosis in a 21-year-old patient with primary amenorrhoea and cyclic pelvic pain since 16 years of age. Following a diagnosis of complete cervicovaginal atresia with normal corpus uteri and ovaries, she underwent a McIndoe neovagina procedure; after 3–4 months, we performed a laparotomy with utero-neovaginal anastomosis. 1, Bladder dissection; 2, neovaginal fundus opening (>); 3, fixing sutures to open the neovagina. Note the prosthesis in the vagina (<). 4, removal of the atretic cervical portion and resection of the inferior portion of the uterine corpus; 5, hysteroscope (>) inserted in the uterus and the beginning of stitches in the myometrium (uterus flipped back); 6, suturing of the corpus uteri to the neovagina; Foley catheter in the uterus (<); 7, Foley catheter introduced into the endometrial cavity and extracted via the vagina; 8, anterior suture of the corpus uteri to the neovagina; 9, final result.

been published on laparoscopic-assisted uterovaginal anastomosis. [Kriplani et al. \(2012\)](#) performed the procedure in 14 patients with a silicone tube placed as a stent in the congenital cervical atresia; in 9 patients with associated vaginal aplasia, a modified McIndoe vaginoplasty was performed concomitantly. One patient underwent a hysterectomy, and pregnancy was achieved in three patients. [Kisku et al. \(2014b\)](#) performed a laparotomy with sigmoid neovaginoplasty followed by utero-coloneovaginoplasty in 20 patients. Additionally, [Ding et al. \(2014\)](#) published their experience with a combined laparoscopic and vaginal cervicovaginal reconstruction using an acellular porcine small intestinal submucosa graft during the end of menstruation in eight patients. A T-shaped intrauterine device connected to a Foley catheter was inserted into the uterine cavity, and a permanent lower uterine cerclage was subsequently placed. All the patients resumed menstruation without complications at 8 ± 4 months of follow-up.

In cases of complete vaginal atresia, we usually follow the same technique as for cervicovaginal agenesis or atresia.

Vaginal segmentary atresia/transverse vaginal septum. This corresponds to a short segmentary atresia of the vagina that may completely or

partially obliterate it and/or to a transverse constriction or septum that is perforated or imperforated. In the first case, the atresia presents as annular stenosis, sometimes sufficiently narrow that it causes menstrual retention, dysmenorrhoea, dyspareunia or, most likely, soft-tissue dystocia upon delivery ([Bautista-Gomez et al., 2012](#)). Vaginal Z-plasty can be performed.

A complete or imperforated transverse vaginal septum can present in young girls as a hydrometrocolpos that produces several complications derived from compression ([Spencer and Levy, 1962](#); [Nguyen et al., 1984](#); [Hahn-Pedersen et al., 1984](#)). In other cases, there may be no symptoms until puberty, when the haematocolpos forms and causes episodes of pelvic pain and primary amenorrhoea similar to those observed with vaginal atresia. This condition requires early surgery, and generally, vaginal anastomosis is possible after evacuation of the superior haematocolpos ([Moura et al., 2000](#); [Breech and Laufer, 2009](#)). Some patients may require abdominoperineal vaginoplasty or more extensive surgery to treat complex septae that carry an increased risk of complications ([Williams et al., 2014](#)). [Ugur et al. \(2012\)](#) reported their positive experience with 11 patients with distal vaginal agenesis who were managed

with interposition of a full-thickness skin graft to bridge the gap between the upper vagina and the introitus after placement of an inflatable silicone stent. El Saman *et al.* (2011b) have also proposed and performed an outpatient balloon vaginoplasty for treatment of vaginal aplasia.

The cases of *agenesis and uterine hypoplasias* (Group I of the ASRM classification) include cases of vaginal and cervical agenesis (Rock *et al.*, 1984) with a functioning endometrial cavity as well as cases of uterine fundal or corporal agenesis. In these latter cases, except those with an indication of uterine transplantation in the near future (Brännström *et al.*, 2010, 2014, 2015; Akar and Erdogan, 2013), there is no surgical indication or treatment available for this very rare anomaly. However, combined uterovaginal agenesis is more common and represents the most common type of Müllerian agenesis; it is related to MRKH or Rokitansky syndrome (Oppelt *et al.*, 2006, 2012; Pizzo *et al.*, 2013; Bombard and Mousa, 2014), which is described as an isolated Müllerian malformation affecting both the Müllerian ducts and the Müllerian tubercle (Acién and Acién, 2007, 2011). From the point of view of the differential diagnostic and clinical management, the complete androgen insensitivity syndrome (CAIS) patients (phenotype female, absence of female internal genitalia, male karyotype and eventual inguinal hernia with functional testes) must be taken into account (Konar *et al.*, 2015), as well as some urogenital sinus anomalies that will be later analysed, and certain cases of Rokitansky syndrome with associated 46,XX gonadal agenesis or dysgenesis. An exact diagnosis is stressed before adequate treatment.

Rokitansky or MRKH syndrome is usually not included within the complex malformations of the female genital tract because primary amenorrhea is the only symptom. However, there are potentially other associated urinary or extragenital malformations (Oppelt *et al.*, 2006; Kumar *et al.*, 2007; Acién *et al.*, 2010c; Yoo *et al.*, 2013), and some patients present with one or both cavitated rudimentary horns, leading to classification as a complex malformation (Fig. 5). MR evaluation of the Müllerian remnants and haematomas or endometriomas is the most important diagnostic tool (Yoo *et al.*, 2013). All typical uterine tissues can be found in these uterine rudiments, and the expression of hormone receptors does not differ significantly compared with normal controls, but interestingly the endometrium shows predominantly basalis-like features (Rall *et al.*, 2013). However, Müllerian segmentary anomalies displaying features such as uterine malformation (atretic bicornuate uterus, one of them cavitated) and transverse vaginal septum (Jain *et al.*, 2013) could also be included in this group of complex malformations.

In Rokitansky or MRKH syndrome, the tubes and ovaries are usually normal, although as in other cases within Group I of the embryological and clinical classification (Acién and Acién, 2011), they may be absent on one side (Gorgojo *et al.*, 2002), or ectopic ovaries may be present (Dragusin *et al.*, 2014). Also, as referred to above, cases of Rokitansky syndrome with associated 46,XX gonadal dysgenesis or agenesis (Gorgojo *et al.*, 2002; Kebaili *et al.*, 2013) have been described, and thus, absence of gonads, Fallopian tubes and uterus in the laparoscopic study. The gynecological exam can show a normal vagina ending in a blind pouch (Gorgojo *et al.*, 2002) or just a 1-cm vaginal blind pouch (Kebaili *et al.*, 2013), as occurs in CAIS patients.

The clinical presentation involves primary amenorrhoea, difficulty with sexual intercourse, or infertility along with normal sexual development, the absence of dysmenorrhoea and the absence of a vagina upon gynaecological examination. Laparoscopy generally reveals a fibrous tract or two solid rudimentary horns and normal ovaries with the distal portion of the tubes. As mentioned previously, some of these rudimentary horns may occasionally

exhibit a small functioning endometrial cavity, giving rise to retrograde menstruation, endometriosis and cyclical pain (Acién *et al.*, 1988). Laparoscopic exeresis is then recommended (Will *et al.*, 2013), although an isthmo-neovagina anastomosis could also be considered (Grimbizis *et al.*, 2015), as presented below.

Patients with Rokitansky syndrome (and cases with CAIS) may require a vaginoplasty; historically, the creation of a neovagina with a prosthesis and skin graft (McIndoe technique) has been the most common surgical procedure (Garcia and Jones, 1977). Currently, good results have been achieved by simply covering the prosthesis with Interceed[®] or by using buccal or vesical mucosa, amniotic membranes, or autologous *in vitro* cultured tissue after taking a 1 cm² full-thickness mucosal biopsy from the vaginal vestibule (Panici *et al.*, 2007). Many other techniques using the sigmoid colon (Yang *et al.*, 2013) or ileal neovagina (Monti's technique) (Iglesias-Lopes *et al.*, 2014) have also been reported. Other procedures for the creation of the neovagina include the Creatsas vaginoplasty (Creatsas *et al.*, 2010), the Wharton–Sheares–George neovaginoplasty (Walch *et al.*, 2011), or the Davydov procedure (Giannesi *et al.*, 2005; Fedele *et al.*, 2010), but the most widely used and most attractive method for women is currently the Vecchiatti laparoscopic procedure (Borruto *et al.*, 2007; Brucker *et al.*, 2008) that involves continuous dilation with an external traction device that is temporally affixed to the abdominal wall (Borruto *et al.*, 1999). Nevertheless, the dilation therapy described by Frank (1938) often eliminates the need to conduct a neovaginoplasty, or it may help by creating a wider vagina and simplifying the surgical treatment (Roberts *et al.*, 2001). In some patients, attempts at sexual intercourse alone are enough to form a satisfactory vagina, but vaginal dilator therapy is the first treatment of choice for the creation of the vagina in patients with MRKH syndrome (Edmonds *et al.*, 2012) and CAIS (Ismail-Pratt *et al.*, 2007).

A review of the different neovagina techniques was published by Nakhla and Creighton (2012), and recently, Mc Quillan and Grover (2014a, b) also completed a systematic review of dilation and surgical management in vaginal agenesis. With only one RCT, they reviewed the different techniques, particularly from the perspective of functional, sexual and psychosomatic outcomes, and concluded that the management of vaginal agenesis requires a multidisciplinary approach to fully support these patients from initial diagnosis through management decision-making, long-term follow-up and the transition to adulthood. In addition, Callens *et al.* (2014) completed an update on surgical and non-surgical treatments for vaginal hypoplasia in MRKH or Rokitansky syndrome and in CAIS patients, and concluded that because of the low complication rate and an overall success rate of 75%, vaginal dilation as the first-choice treatment appears to be justified; furthermore, in general, the laparoscopic Vecchiatti procedure is considered an appropriate surgical option for patients who are poorly compliant and who failed dilation therapy or for those who do not wish to start with vaginal dilation therapy. Fliegner *et al.* (2014) have studied the sexual life and sexual wellness in individuals with CAIS and MRKH syndrome with a 'neovagina' (surgically or nonsurgically created) as well as untreated patients. MRKH syndrome women report being satisfied with their sex life whereas the CAIS group was less satisfied with their sexual life and with the length of their vagina; this could partly be attributed to psychological aspects associated with the syndrome such as low sexual confidence and the mere impression of having an abnormal vagina. However, the rates of orgasm experience did not differ between CAIS and MRKH syndrome suggesting good and comparable outcomes even in the

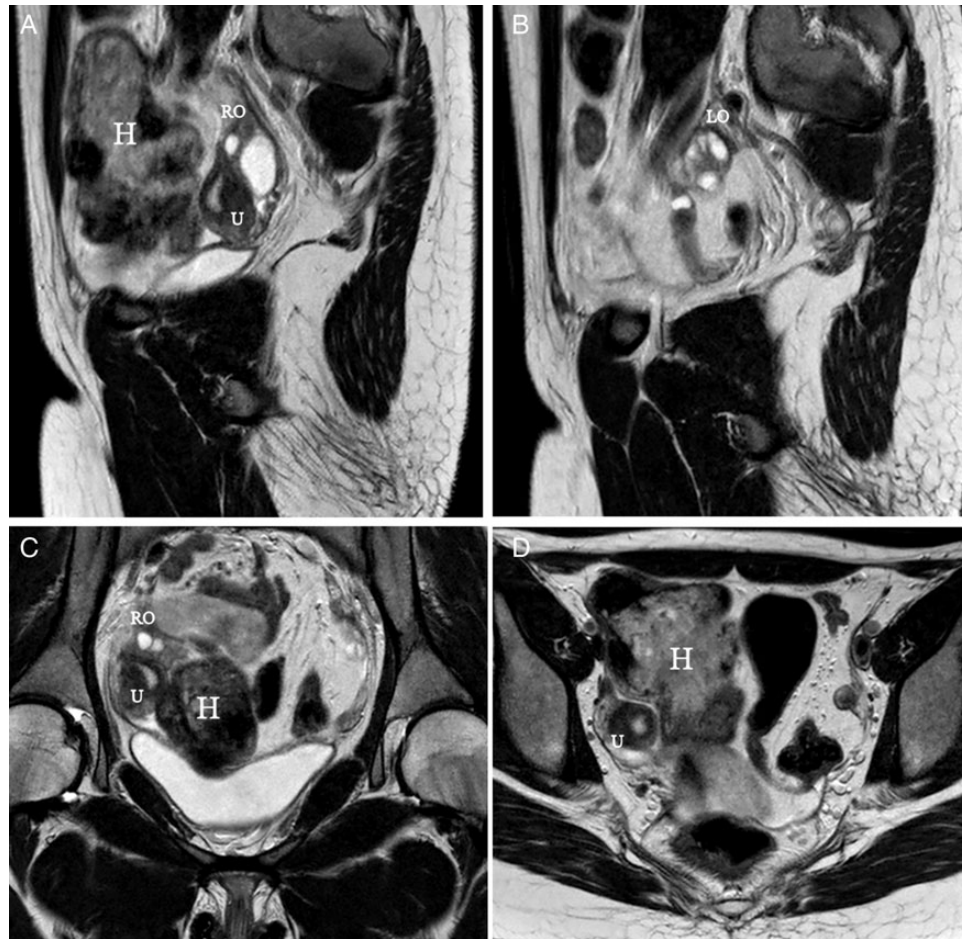


Figure 5 MR images corresponding to a 17-year-old patient with Rokitansky syndrome. She had a right cavitated rudimentary uterine horn with retrograde menstruation and pelvic haematomas (H). (A, B) Sagittal cuts; (C, D) axial cuts. U, uterus, cavitated horn. RO, right ovary. LO, left ovary.

face of anatomical aberrations and different 'neovagina' interventions (Fliegner *et al.*, 2014).

In complex cases with the presence of endometrium within the uterine remnants and subsequent endometriosis associated with pelvic pain and dysmenorrhea, it is necessary to initiate medical and surgical management. Marsh *et al.* (2013) observed uterine remnants associated with pelvic pain in 22 of 48 females (46%); thus, surgical exeresis can be conducted laparoscopically as soon as a cavitated uterine horn is suspected (Vwill *et al.*, 2013), and particularly if haematometra is present (Letterie, 2011). In some Rokitansky cases, a well-developed, cavitated horn might be present and different surgical management can be attempted. We managed a patient with primary amenorrhoea, a normal vagina, cervical agenesis, a left uterine non-cavitated rudimentary horn and a right cavitated horn with endometrioma and endometriosis on the same side. She underwent right adnexectomy in another hospital with worsening of her cyclic pain. We performed a hemiutero-vaginal anastomosis; she subsequently experienced cyclic menses, and she is currently attempting IVF. Kumar *et al.* (2012) reported a similar case that they resolved with hysterectomy. Recently, Grimbizis *et al.* (2015) communicated a successful isthmo-neovagina anastomosis after Davydov's colpoepoiesis in two patients with MRKH or Rokitansky syndrome who had a functional

rudimentary uterine horn. However, as previously mentioned, the hope for future fertility in patients with Rokitansky syndrome lies in uterine transplantation (Brännström *et al.*, 2010, 2014; Akar and Erdogan, 2013). Recently, Brännström *et al.* (2015) published the first case of live birth after uterus transplantation in a woman with Rokitansky syndrome and URA.

Anomalies of the cloaca and urogenital sinus. Congenital vesicovaginal fistulas and cloacal anomalies (<1% of all FGTM in adults)

These anomalies include cases of an imperforated hymen with a persistent urogenital membrane which represents the most simple and common anomaly, but congenital vesicovaginal or vesicouterine fistulas (pseudofistula with cyclical menouria) (Kirks and Currarino, 1977; Martínez-Escoriza *et al.*, 2011, 2014; Kashimura *et al.*, 2012), recto-vestibular fistula (Kiskun *et al.*, 2014a) and other cloacal anomalies (exstrophy or dysgenesis) are also possible. An imperforate hymen is not a complex genital malformation but rather an obstructive anomaly with haematocolpos that suggests a differential diagnosis that includes a transverse vaginal septum and distal vaginal atresia. The obstruction and pain

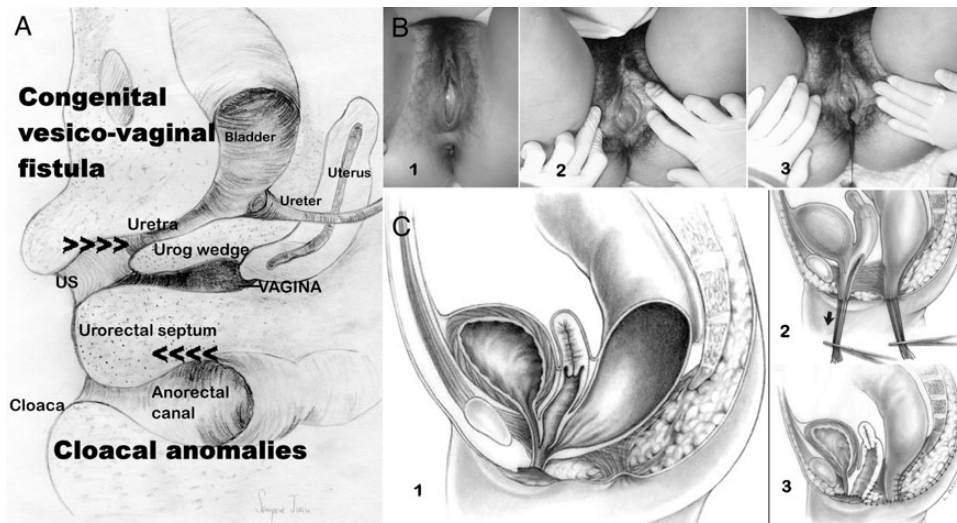


Figure 6 Urogenital sinus and cloacal anomalies. (A) Embryological drawing (sagittal section) of female genitalia at 12–13 weeks gestation illustrating the developing vagina, urethra, cloaca and urogenital sinus as well as the urorectal septum, which separates the cloaca and sinus, and the urogenital wedge, which separates the ureter-urethra and vagina. The allocation of the urogenital sinus and cloacal anomalies is indicated. (B) Images of an imperforate hymen. 1, Imperforate hymen in a 13-year-old girl showing a bulging hymen due to haematocolpos; 2 and 3, another patient with an imperforate hymen; the drainage of the haematocolpos is shown in 3; (C) cloacal malformations; 1, cloaca with a short common channel; 2 and 3, surgical correction following the Peña technique based on total urogenital mobilization (reprinted with permission from Levitt and Peña, 2010).

are relieved by removing the bulging membrane in a cruciate or circular fashion and suctioning all the menstrual content (Fig. 6B). Occasionally, this anomaly has mistakenly been diagnosed in patients with vaginal agenesis. When no bulge is palpable and no haematocolpos egresses during the operation, it is imperative to recognize that the diagnosis may be incorrect, and the surgeon should stop, reevaluate the situation, and reimagine the patient (Miller and Breech, 2008; Dietrich *et al.*, 2014a, b).

A congenital vagino-vesical or vesicovaginal fistula is a rare, complex female genital malformation that is difficult to diagnose, classify and treat. Its embryological origin lies in the abnormal persistence of the urogenital sinus due to the lack of the formation and caudal growth of the urogenital wedge (see Fig. 6A) in combination with conspicuous agenesis or hypoplasia of the urogenital ridge or the mesonephric ducts (Acién and Acién, 2011; Martínez-Escoriza *et al.*, 2014). This diagnosis should be suspected in any girl with urinary incontinence, urinary tract infections from birth, vaginal swelling or hydrocolpometra as well as in adults with cyclical menouria and vaginal atresia (Kashimura *et al.*, 2012). A congenital uterovesical fistula is less frequent but presents with the same clinical symptoms, and it is often associated with other genitourinary malformations (Iglesias-Lopes *et al.*, 2014). The diagnosis should be based on physical examination and imaging (cystoscopy during menouria, ultrasound and MR), and the management is usually challenging and involves vaginal reconstruction (vaginoplasty), vesicovaginal closure (Martínez-Escoriza *et al.*, 2011, 2014) and the attainment of fertility using a transvaginal (transperineal) and transabdominal approach (Kashimura *et al.*, 2012; Iglesias-Lopes *et al.*, 2014) by a multidisciplinary team.

Other anomalies of the ventral urogenital sinus should include cases with blind hemibladder, ectopic ureterocele, or Gartner's duct cyst in a woman with Müllerian malformation and supposed URA (Acién *et al.*, 2010b).

A recto-vestibular fistula often coexists with vaginal or vestibular atresia and poses a surgical dilemma regarding the timing and type of reconstruction (Kisku *et al.*, 2014a). Kisku *et al.* (2014a) recently communicated their experience with seven patients, five of whom underwent anoplasty in childhood and in their teens and presented with primary amenorrhoea and cyclical abdominal pain. Five underwent sigmoid colon neovaginoplasty, and in four patients, the uterus or its remnants were anastomosed to the neovagina, resulting in regular menstrual cycles. Kisku *et al.* (2014a) recommended that the recto-vestibular fistula be used as the neoanus, not as the neovagina, because delayed bowel vaginal replacement provides excellent results and allows for optimal assessment of the functioning uterine body or remnants. The authors presented interesting schemes of surgical reconstruction, both of the anorectovestibular fistula preserved as a neovagina and used as a neoanus and of the subsequent utero-coloneovaginoplasty.

Other cloacal anomalies, such as female cloacal exstrophy, are rare complex malformations. These cloacal anomalies occur when the urorectal septum fails to separate from the cloacal membrane, resulting in the urethra, vagina, rectum and anus opening into a single common channel. This condition includes a spectrum of abnormalities and remains a difficult reconstructive challenge. The short-term paediatric outcomes of surgery are well reported, and survival into adulthood is now common, but the long-term outcome data are less comprehensive (Fernando *et al.*, 2015). Chronic renal failure has been reported to occur in 50% of patients and 26–72% (depending on the length of the common channel) of the patients experience urinary incontinence in adulthood (Fernando *et al.*, 2015). Gynaecological anomalies are common and can necessitate reconstructive surgery during adolescence for menstrual obstruction (Couchman *et al.*, 2015); extragenital malformations are also common. Pregnancy is extremely rare and highly risky (Deans *et al.*, 2012).

Hisamatsu *et al.* (2014) communicated their experience with vaginal reconstruction in seven postpubertal female patients with cloacal exstrophy. Complete duplication of the uterus and vagina was noted in all patients, and all seven underwent various types of vaginoplasty at the time of urinary tract reconstruction, particularly side-to-side anastomosis of the uterus to the neovagina. However, surgical correction following the Peña technique is based on total urogenital mobilization (Fig. 6C). Levitt and Peña (2010) have described the importance of a correct diagnosis for these cloacal anomalies, as well as the surgical techniques and observed complications. All authors agree that patient care should be provided by a multidisciplinary team with experience in managing these and other related complex congenital malformations (Couchman *et al.*, 2015; Fernando *et al.*, 2015).

Malformative combinations and other complex malformations (1.2% of all FGTM)

Some patients may present with several associated anomalies of mesonephric, Müllerian and/or cloacal origin (Ación *et al.*, 2004b, c, 2010b, c; Dwyer and Rosamilia, 2006; Ación and Ación, 2010; Jessel and Laufer, 2013); these conditions originate from very complex malformations (Rock and Jones, 1977; Growdon and Laufer, 2008; Iglesias-Lopes *et al.*, 2014; Ma *et al.*, 2014) with an extensive array of symptoms that are difficult to appropriately catalogue and treat, particularly if the embryology and physiopathology of the female genital tract are not considered. Management and patient care after an extensive and precise diagnosis should be provided by a multidisciplinary team with experience in managing these and other complex congenital malformations.

Additional comments

On the cataloging and classification systems of female genital malformations and on the inclusion of complex malformations

Jones and Rock (Rock and Jones, 1977; Jones, 1981, 1998) divided Müllerian anomalies into three groups: agenesis, vertical fusion defects (obstructive and nonobstructive) and lateral fusion defects (obstructive and nonobstructive or symmetrical and asymmetrical anomalies). This classification system includes complex malformations among the vertical fusion defects but regards them as Müllerian anomalies and does not address their origin or pathogenesis. Recently, Dietrich *et al.* (2014a, b) also analysed non-obstructive Müllerian anomalies and obstructive reproductive tract anomalies. They considered anomalies occurring without pain during the pubertal years to be within the nonobstructive group of anatomic variants involving the reproductive tract and included Müllerian aplasia syndromes that affect 46XX females, such as MRKH or Müllerian-renal-cervical syndrome. Vaginal agenesis may also occur in conjunction with certain disorders of sexual differentiation; other anomalies may be due to fusion or absorption defects, including rudimentary communicating uterine horns and a longitudinal vaginal septum. Dietrich *et al.* (2014b) included imperforate hymen, transverse vaginal septum, cervical dysgenesis and cervicovaginal agenesis, obstructed hemivagina (including OHVIRA), non-communicating uterine horns and lower vaginal atresia among the obstructive anomalies and presented the management and surgical treatment of each of these conditions. Indeed, this second group includes the majority of complex malformations, but

previous work has addressed neither their origin or pathogenesis nor the fact that the suggested management is based on a correct embryological diagnosis. In addition, anomalies of the urogenital sinus, such as supposed lower vagina atresia, have not been considered in relation to a vesicovaginal fistula with or without menouria (Martínez-Escoriza *et al.*, 2014), and ACUMs (Ación *et al.*, 2010a, 2011, 2012) have not been mentioned.

The ASRM classification consists of seven basic groups according to Müllerian development and its relationship to fertility. Additional findings referring to the vagina, cervix, Fallopian tubes, ovaries and urinary system must be separately addressed. Complex malformations are not considered. However, the new ESHRE/ESGE classification system 'UCV' for female genital tract anomalies (Grimbizis *et al.*, 2013) incorporate concepts of the 'Vagina Cervix Uterus Adnex-associated Malformation' classification by Oppelt *et al.* (2005) and includes: (A) uterine anomalies (U) with six main classes and (B) cervical (C)/vaginal (V) anomalies as co-existent classes. Other anomalies are included as unclassified malformations (U6), and must be described as associated anomalies of non-Müllerian origin.

In our view, the ESHRE/ESGE classification system is schematic and interesting, utilizing anatomy as the basis for the systematic categorization of anomalies. Deviations of uterine anatomy deriving from the same embryological origin are the basis for the design of the main classes, and the different degrees of uterine deformity clinically relevant are the basis for the design of the main sub-classes. We find the cataloguing of septate uterus (class U2) considering the internal indentation > 50% of the uterine wall thickness and external contour straight or with indentation < 50%, and the bicorporeal septate sub-classes (U3c) width of the fundal indentation at the midline > 150% of the uterine wall thickness (Grimbizis *et al.*, 2013) more adequate than in the ASRM classification. Moreover, cervical and vaginal anomalies are classified into independent supplementary sub-classes. Di Spiezio Sardo *et al.* (2015a) have made a study on the comprehensiveness of the ESHRE/ESGE classification to include cases not classified by the ASRM system. However, only the recognized anomalies would be included, without suggesting other associated anomalies that should be identified before implementing any therapeutic surgical procedure (see, e.g. in Ación *et al.*, 2004a; Adair *et al.*, 2011; Dorais *et al.*, 2011; Di Spiezio Sardo *et al.* 2015b).

Considering the previously stated embryological knowledge, an embryological and clinical classification system was proposed in 1992 (Ación, 1992), modified in 2004 (Ación *et al.*, 2004c) and updated in 2011 (Ación and Ación, 2011). This classification system has a fundamental interest in correlating the clinical presentation (especially in complex malformations) requiring a search for other associated anomalies and suggesting the most simple and appropriate therapeutic procedures. The inclusion of the complex malformations within the clinical-embryological classification system and their correlation and correspondence as included in the ASRM classification of Müllerian anomalies (American Fertility Society, 1988), and in the new ESHRE/ESGE classification system of female genital anomalies (Grimbizis *et al.*, 2013) have been presented in Table I. It can be noticed that all the anomalies included in Group II (mesonephric anomalies with a duplicate uterus, blind or atretic hemivagina and URA, schematically illustrated by Ación and Ación (2011, 2013b) must be considered complex malformations. Recently, Zhu *et al.* (2015) proposed a 'new classification of Herlyn-Werner-Wunderlich syndrome' with the same groups we previously

proposed in *Human Reproduction* (Ación *et al.*, 2004c) and *Human Reproduction Update* (Ación and Ación, 2011).

In recent years, other classifications of the inferior genital tract have been proposed (Wang *et al.*, 2009; Rock *et al.*, 2010; Ruggeri *et al.*, 2012). We do not believe these classifications are necessary. Ruggeri *et al.* (2012) have proposed 'a classification based on embryological, anatomical and clinical criteria and their surgical management', including sinus and cloacal anomalies within vaginal malformations.

In summary, there are no general criteria for defining complex malformations, but the definition we have presented and the indicated groups in Table I include all the complex malformations of the female genitourinary tract. All these malformations could be considered in any classification system, but the use of an embryological system may ultimately be more suitable for generating better correlations with the clinical presentation and identifying the appropriate treatment.

The systemic association of renal agenesis and ipsilateral genital malformation

As previously mentioned, the combination of uterine duplicity and obstructed or blind hemivagina appears to be virtually always associated with ipsilateral renal agenesis or dysgenesis. Imaging tests (IVP, MR) are necessary not only to confirm the absence of a normal kidney on the affected side but also to detect abnormalities of the contralateral kidney and/or ureter (Stassart *et al.*, 1992). This association or syndrome includes others described in the literature that relate to renal agenesis and unilateral haematocolpos or Gartner duct pseudocyst, frequently reported as 'Herlyn–Werner–Wunderlich syndrome', 'OVHIRA syndrome' and others. Fedele *et al.* (2013) presented the pelvic anatomic variants observed in 87 cases diagnosed with 'double uterus with obstructed hemivagina and ipsilateral renal agenesis', but cases with partial reabsorption of the vaginal septum were not included. Additionally, in the last 2 years, several papers from Peking Union Medical College Hospital (Beijing, China) have been published describing patients with 'Herlyn–Werner–Wunderlich' syndrome (Tong *et al.*, 2013, 2014; Li *et al.*, 2014; Wang *et al.*, 2014; Zhu *et al.*, 2015). They present the 'classification of HWWWS in China' and propose 'a new classification' of the syndrome (Zhu *et al.*, 2015) using the same groups previously published by us. Moreover, many cases with these characteristics have been reported in the literature since the mid-19th century (Mayer, 1940; Pommerenke and Benjamin, 1947; Embrey, 1950; Johnson, 1952; Ación *et al.*, 1981 *et al.*), although the existence or not of URA has not generally been researched (Masson and Mueller, 1933; Martindale, 1935; Merckel *et al.*, 1960; Grizelj and Puharic, 1979; Venter and Theron, 1981 *et al.*). In 1986 (Ación and Armiñana, 1986) and 1987 (Ación *et al.*, 1987), we published a report on renal agenesis and ipsilateral blind hemivagina syndrome describing their systematic association and several variants described above (within distal mesonephric anomalies). Sometimes no renal agenesis is present, and only renal dysplasia of varying severity occurs with an ectopic ureter opening into the blind hemivagina (Ación *et al.*, 1990, 2004b). Although cases with normal kidneys have also been described (Pinsonneault and Goldstein, 1985; Johnson and Hillman, 1986; Smith and Laufer, 2007), the analysis of what is referred in these works shows that there was always some kind of reno-ureteral anomaly or malrotation (Heinonen, 2000). It has equally been described that when a prenatal diagnosis of URA in newborn girls is known, a gynaecological imaging study should be performed to exclude uterine and vaginal

abnormalities (Lopes Dias and Jogo, 2015). Certainly, we think that in all cases with blind hemivagina, there is some type of renal-urinary anomaly, although it could initially not be detected; furthermore, if there is URA, there must also be ipsilateral genital malformation with didelphys, bicornuate and more rarely septate uterus (sometimes reported as single uterus Shah and Laufer, 2011), but there is not necessarily a blind or atretic hemivagina (Heinonen, 2006; Ación *et al.*, 2010b). Neither of these sets of conditions are present in cases of secondary renal atrophy. There could also be cases with partial reabsorption of the vaginal septum, but we do not have and have not found in the literature any reported cases with URA and normal uterus and vagina. These statements are based on the embryological considerations presented in the methods section.

Interestingly, in cases with uterine duplicity and URA, the rectovesical ligament is absent during the laparoscopic observation, whereas it tends to be displayed in cases with both kidneys present (Heinonen, 2013b). In addition, some cases diagnosed as URA with ipsilateral blind hemivagina and bicornuate communicating uterus do not have relevant symptoms but do have normal fertility; thus, these patients do not require surgery. However, adequate knowledge of the malformation and its consequence (always considering the embryological basis) is fundamental. In one of our patients, the radiologist reported that the computerized axial tomography and MR images suggested recurrence of endometrioid ovarian carcinoma after surgery and chemotherapy. The abnormal image was simply the persistence of the cul-de-sac of the left obstructed hemivagina after the hysterectomy and double salpingo-oophorectomy performed 8 months previously.

ACUMs

We wish to comment briefly on this malformative pathology because although it is not a proper complex malformation, it might cause relevant symptoms and create a difficult differential diagnosis with the aforementioned complex malformations. ACUMs represent a variant of Müllerian anomalies that are generally located at the level of the insertion of the round ligament and are possibly related to dysfunction of the female gubernaculum (Ación *et al.*, 2010a, 2011; Ación and Ación, 2011). ACUM is a rare pathology that is observed in young women and that has significant clinical manifestations, particularly severe dysmenorrhea and recurrent pelvic pain; these manifestations create a problematic differential diagnosis, which includes rudimentary and cavitated uterine horns such as those found in other uterine malformations (unicornuate and bicornuate uterus and Müllerian segmentary atresias), adenomyosis with cystic or degenerated areas, degenerated leiomyomas, and essential and primary dysmenorrhea. The criteria used to diagnose ACUMs were mentioned in Ación *et al.* (2010a, 2012). We believe that most cases of isolated or juvenile cystic adenomyoma (JCA) are in fact ACUMs because they present similar clinical and histopathological characteristics (Ación *et al.*, 2010a, 2012). ACUMs are generally underdiagnosed or reported as JCA, but they are not adenomyoses. A high index of suspicion combined with HSG or preferably MR imaging showing a normal uterine cavity can help to achieve an accurate diagnosis (Jain and Verma, 2014). Early surgical treatment involving removal of the mass by laparotomy or laparoscopy (Bedaiwy *et al.*, 2013) could prevent the usual prolonged suffering of these young women. Some published cases with 'menstrual retention in a Robert's uterus' (Capito and Sarnacki, 2009) might in fact be ACUMs based on the age, symptoms and surgical

description of the case report: 'a complete endometrectomy of the blind cavity after a section of the surrounding myometrium; this cavity did not communicate with the ipsilateral fallopian tube'. However, the case reported by Alkhateeb and Yaseen (2015) that involved a twin pregnancy did not appear to have been an ACUM.

Supplementary Table S1 summarizes the clinical symptoms and therapeutic strategies for each of the malformations included in the embryological and clinical classification.

Conclusions and future perspectives

Knowledge of genitourinary embryology is essential for the understanding, study, diagnosis and subsequent treatment of genital malformations, particularly complex malformations and those that generate gynaecological problems (especially in young patients). An embryological and clinical classification of complex malformations is clinically applicable and improves the understanding and management of such conditions. The clinical presentation and treatment of FGTM are directly related to the anatomical status of the defect, especially in case of isolated Müllerian anomalies (dysmorphic, septate or bicorporeal uterus of the new ESHRE/ESGE classification). However, due to the known systematic association (related to the embryological origin) between certain female genitourinary anomalies (e.g. URA and agenesis or hypoplasia of one urogenital ridge or any distal mesonephric anomalies), the finding of any of these anomalies in the genitalia (e.g. obstructed hemivagina or unilateral atresia) or urinary system (URA, hypoplasia, ectopic ureter) should make us think and investigate the presence of the other associated ones and thus, to appropriately diagnose any complex malformation before undertaking any eventual therapeutic correction.

The gynaecologist must be cognizant of clinical features, such as primary amenorrhoea, postmenstrual dysmenorrhoea, or cyclical pelvic pain in young women as well as metrorrhagia or postmenstrual spotting (sometimes malodorous); incontinence or permanent urinary loss between normal episodes of micturition; pelvic masses, endometriosis and suspected adnexitis in teenagers; low pelvic mass or paravaginal cysts (supposed Gartner cysts) along the anterolateral wall of the vagina. All of these situations may indicate a complex genitourinary malformation that can be resolved symptomatically with relatively simple surgery in many cases.

Surgical techniques to correct genital malformations depend on the type of anomaly, its complexity, the patient's symptoms and the proper embryological interpretation of the anomaly. Some anomalies may require complex surgery involving multiple specialties; thus, patients should be referred to centres with experience in the treatment of complex genital malformations. Most malformations can be resolved vaginally or by hysteroscopy, but laparoscopy or laparotomy is often needed; however, the approach and procedure must be carefully chosen and planned. Finally, if there are fertility problems (recurrent miscarriages or immature or premature deliveries) or breech or transverse fetal presentation, a uterine anomaly should always be excluded. The entire genitourinary tract must be analysed considering the embryological aspects presented above.

Supplementary data

Supplementary data are available at <http://humupd.oxfordjournals.org/>.

Acknowledgements

We thank the American Journal Experts and Noemí Ación who edited the manuscript to correct the English.

Authors' roles

P.A. designed the study, prepared the review and figures, and wrote the manuscript; and had full access to all of the data in the study and is responsible for the integrity of the data and the accuracy of the data analysis. M.A. performed the literature search and reviewed the manuscript.

Funding

None.

Conflict of interest

None declared.

References

- Ación P. Embryological observations on the female genital tract. *Hum Reprod* 1992; **7**:437–445.
- Ación P. Reproductive performance of women with uterine malformations. *Hum Reprod* 1993; **8**:22–126.
- Ación P. Uterine anomalies and recurrent miscarriage. *Infert Reprod Med Clin North Am* 1996; **7**:689–719.
- Ación P. Incidence of Müllerian defects in fertile and infertile women. *Hum Reprod* 1997; **12**:1372–1376.
- Ación P, Ación MI. Malformations of the female genital tract and embryological bases. *Curr Women's Health Rev* 2007; **3**:248–288.
- Ación P, Ación MI. Unilateral renal agenesis and female genital tract pathologies. *Acta Obstet Gynecol Scand* 2010; **89**:1424–1431.
- Ación P, Ación MI. The history of female genital tract malformation classifications and proposal of an updated system. *Hum Reprod Update* 2011; **17**:693–705.
- Ación M, Ación P. Classification of the female genital tract malformations and its embryological origin. Diagnostic and therapeutical considerations. *Current Women's Health Rev* 2013a; **9**:1–29.
- Ación P, Ación M. Embryological considerations and update classification of female genital malformations. *Gior It Ost Gin* 2013b; **35**:507–511.
- Ación P, Armiñana E. Agenesia renal y malformaciones útero-vaginales: asociación sistemática. Revisión de la literatura y consideraciones sobre la embriología de la vagina. *Acta Ginec* 1986; **43**:303–318.
- Ación P, Susarte F, de Francisco-Pavón JL, Zaplana F. Duplicidad utero-vaginal y agenesia renal derecha con vagina ciega del mismo lado, hematocolpos y gran hematosalpinx torsionado. *Prog Obstet Ginecol* 1981; **24**:141–144.
- Ación P, Armiñana E, García-Ontiveros E. Unilateral renal agenesis associated with ipsilateral blind vagina. *Arch Gynecol* 1987; **240**:1–8.
- Ación P, Lloret M, Chehab H. Endometriosis in a patient with Rokitansky-Kuster-Hauser syndrome. *Gynecol Obstet Invest* 1988; **25**:70–72.
- Ación P, García-López F, Ferrando J, Chehab HE. Single ectopic ureter opening into blind vagina, with renal dysplasia and associated utero-vaginal duplication. *Int J Gynecol Obstet* 1990; **31**:179–185.
- Ación P, Ruiz JA, Hernández JF, Susarte F, Martín del Moral A. Renal agenesis in association with malformation of the female genital tract. *Am J Obstet Gynecol* 1991; **165**:1368–1370.
- Ación P, Sánchez-Ferrer M, Mayol MJ. Unilateral cervico-vaginal atresia with ipsilateral renal agenesis. *Eur J Obstet Gynecol Reprod Biol* 2004a; **117**:249–251.
- Ación P, Susarte F, Romero J, Galán J, Mayol MJ, Quereda FJ, Sánchez-Ferrer M. Complex genital malformation: ectopic ureter ending in a supposed mesonephric duct in a woman with renal agenesis and ipsilateral blind hemivagina. *Eur J Obstet Gynecol Reprod Biol* 2004b; **117**:105–108.

- Ación P, Ación MI, Sánchez-Ferrer M. Complex malformations of the female genital tract. New types and revision of classification. *Hum Reprod* 2004c; **10**:2377–2384.
- Ación P, Ación M, Fernández S. Segmenatry atresias in Müllerian malformations. *Eur J Obstet Gynecol Reprod Biol* 2008a; **141**:186–191.
- Ación P, Ación M, Quereda F, Santoyo T. Cervicovaginal agenesis: Spontaneous gestation at term after previous reimplantation of the uterine corpus in neovagina. *Hum Reprod* 2008b; **23**:548–553.
- Ación P, Ación M, Sánchez-Ferrer ML. Müllerian anomalies “without a classification”: from the didelphys-unicollis uterus to the bicervical uterus with or without septate vagina. *Fertil Steril* 2009; **91**:2369–2375.
- Ación P, Ación MI, Fernández F, Mayol MJ, Aranda I. The cavitated accessory uterine mass: a Müllerian anomaly in women with an otherwise normal uterus. *Obstet Gynecol* 2010a; **116**:1101–1109.
- Ación P, Ación MI, Romero-Maroto J. Blind hemibladder, ectopic ureterocele, or Gartner’s duct cyst in a woman with Müllerian malformation and supposed unilateral renal agenesis: a case report. *Int Urogynecol J* 2010b; **21**:365–369.
- Ación P, Galán F, Manchón I, Ruiz E, Ación MI, Alcaraz LA. Hereditary renal adysplasia, pulmonary hypoplasia and Mayer-Rokitansky-Kuster-Hauser (MRKH) syndrome. A case report. *Orphanet J Rare Dis* 2010c; **5**:6.
- Ación P, Sánchez del Campo F, Mayol MJ, Ación MI. The female gubernaculum: role in the embryology and development of the genital tract and in the possible genesis of malformations. *Eur J Obstet Gynecol Reprod Biol* 2011; **159**:426–432.
- Ación P, Bataller A, Fernández F, Ación MI, Rodríguez JM, Mayol MJ. New cases of accessory and cavitated uterine masses (ACUM): a significant cause of severe dysmenorrhea and recurrent pelvic pain in young women. *Hum Reprod* 2012; **27**:683–694.
- Ación P, Ación MI, Mazaira N, Quesada-Rico JA. Reproductive outcome in uterine malformations with or without an associated unilateral renal agenesis. *J Reprod Med* 2014; **59**:69–75.
- Adair L, Georgiades M, Osborne R, Ng T. Uterus didelphys with unilateral distal vaginal agenesis and ipsilateral renal agenesis: common presentation of an unusual variation. *Radiology Case* 2011; **5**:1–8.
- Akar ME, Erdogan O. Uterus transplantation. *Fertil Steril* 2013; **100**:e34.
- Alkhateeb HM, Yaseen EM. Twin pregnancy in an accessory cavitated non-communicating uterus. *Int J Surg Case Reports* 2015; **10**:45–48.
- Alumbreros-Andujar MT, Aguilar Galán EV, Céspedes Casas C. Acute urinary retention caused by OVHIRA syndrome. *Int Urogynecol J* 2014; **25**:699–701.
- American Fertility Society. The American Fertility Society classifications of adnexal adhesions, distal tubal occlusion, tubal occlusion secondary to tubal ligation, tubal pregnancies, Müllerian anomalies and intrauterine adhesions. *Fertil Steril* 1988; **49**:944–955.
- Angotti R, Molinaro F, Bulotta AL, Bindi E, Cerchia E, Sica M, Messina M. Herlyn-Werner-Wunderlich syndrome: An “early” onset case report and review of Literature. *Int J Surg Case Rep* 2015; **11**:59–63.
- Bautista-Gomez E, Morales-García V, Flores-Romero AL, Pizarro-Osorno N, Velásquez-Valdivia A. Transverse vaginal septum in the upper part of the vagina and pregnancy (article in Spanish). *Ginecol Obstet Mex* 2012; **80**:487–490.
- Bedaiwy MA, Henry DN, Elguero S, Pickett S, Greenfield M. Accessory and cavitated uterine mass with functional endometrium in an adolescent: diagnosis and laparoscopic excision technique. *J Pediatr Adolesc Gynecol* 2013; **26**:89–91.
- Benzineb N, Bellasfar M, Merchaoui J, Sfar R. Robert’s uterus with menstrual retention in the blind cavity. *J Gynecol Obstet Biol Reprod* 1993; **22**:366–368.
- Bok G, Drews U. The role of the Wolffian ducts in the formation of the sinus vagina: an organ culture study. *J Embryol Exp Morphol* 1983; **73**:275–295.
- Bolonduro O, Akinpeloye A, Abuzeid O, Ashraf M, Abuzeid MI. Herlyn-Werner-Wunderlich syndrome: presentation and surgical management options for five cases. *J Gynecol Surg* 2015; **31**:46–51.
- Bombard DS, Mousa SA. Mayer-Rokitansky-Kuster-Hauser syndrome: complications, diagnosis and possible treatment options: a review. *Gynecol Endocrinol* 2014; **30**:618–623.
- Borruto F, Chasen ST, Chervenak FA, Fedele L. The Vecchiatti procedure for surgical treatment of vaginal agenesis: comparison of laparoscopy and laparotomy. *Int J Gynecol Obstet* 1999; **64**:153–158.
- Borruto F, Camoglio FS, Zampieri N, Fedele L. The laparoscopic Vecchiatti technique for vaginal agenesis. *Int J Gynaecol Obstet* 2007; **98**:15–19.
- Brännström M, Wranning CA, Altchek A. Experimental uterus transplantation. *Hum Reprod Update* 2010; **16**:329–345.
- Brännström M, Johannesson L, Dahm-Kähler P, Enskog A, Mölne J, Kvarnström N, Diaz-Garcia C, Hanafy A, Lundmark C, Marcickiewicz J et al. First clinical uterus transplantation trial: a six-month report. *Fertil Steril* 2014; **101**:1228–1236.
- Brännström M, Johannesson L, Bokström H, Kvarnström N, Mölne J, Dahm-Kähler P, Enskog A, Milenkovic M, Ekberg J, Diaz-Garcia C et al. Livebirth after uterus transplantation. *Lancet* 2015; **385**:607–616.
- Breech LL, Laufer MR. Müllerian anomalies. *Obstet Gynecol Clin N Am* 2009; **36**:47–68.
- Brucker SY, Gegusch M, Zubke W, Rall K, Gauwerky JF, Wallwiener D. Neovagina creation in vaginal agenesis: development of a new laparoscopic Vecchiatti-based procedure and optimized instruments in a prospective comparative interventional study in 101 patients. *Fertil Steril* 2008; **90**:1940–1952.
- Burbige KA, Hensle TW. Uterus didelphys and vaginal duplication with unilateral obstruction presenting as a newborn abdominal mass. *J Urol* 1984; **132**:1195–1198.
- Buttram VC, Gibbons WE. Müllerian anomalies: a proposed classification (an analysis of 144 cases). *Fertil Steril* 1979; **32**:40–46.
- Buttram VC, Reiter RC. Anomalías uterinas. In Tratamiento quirúrgico de la infertilidad femenina. Cap 6, 1987. Medici SA, Barcelona, Spain.
- Byskov AG. Differentiation of mammalian embryonic gonad. *Physiol Rev* 1986; **66**:71–117.
- Callens N, Cuiypere GD, Sutter PD, Monstrey S, Weyers S, Hoebeke P, Cools M. An update on surgical and non-surgical treatments for vaginal hypoplasia. *Hum Reprod Update* 2014; **20**:775–801.
- Campbell MF. Congenital absence of one kidney. Unilateral renal agenesis. *Ann Surg* 1928; **88**:1039–1044.
- Capito C, Sarnacki S. Menstrual retention in a Robert’s uterus. *J Pediatr Adolesc Gynecol* 2009; **22**:e104–e106.
- Caserta D, Mallozzi M, Meldolesi C, Bianchi P, Moscarini M. Pregnancy in a unicornuate uterus: a case report. *J Med Case Rep* 2014; **8**:130.
- Cetinkaya SE, Kahraman K, Sonmez M, Atabekoglu C. Hysteroscopic management of vaginal septum in a virginal patient with uterus didelphys and obstructed hemivagina. *Fertil Steril* 2011; **96**:e16–e18.
- Chan YY, Jayaprakasan K, Zamora J, Thornton JG, Raine-Fenning N, Coomarasamy A. The prevalence of congenital uterine anomalies in unselected and high-risk populations: a systematic review. *Hum Reprod Update* 2011; **17**:761–771.
- Cortés-Contreras DK, Juárez-Cruz PM, Vázquez-Flores J, Vázquez-Flores AD. Obstructed hemivagina and ipsilateral renal anomaly: unusual cause of piocolpos. Report a case and review of literature (Article in Spanish). *Ginecol Obstet Mex* 2014; **82**:711–715.
- Couchman A, Creighton SM, Wood D. Adolescent and adult outcomes in women following childhood vaginal reconstruction for cloacal anomaly. *J Urol* 2015; **193**(5 Suppl):1819–1823.
- Creatsas G, Deligeorgiou E, Christopoulos P. Creation of a neovagina after Creatsas modification of Williams vaginoplasty for the treatment of 200 patients with Mayer-Rokitansky-Kuster-Hauser syndrome. *Fertil Steril* 2010; **94**:1848–1852.
- Dang Y, Qin Y, Tang R, Mu Y, Li G, Xia M, Chen ZJ. Variants of the WNT7A gene in Chinese patients with Müllerian duct abnormalities. *Fertil Steril* 2012; **97**:391–394.
- Deans R, Banks F, Liao LM, Wood D, Woodhouse C, Creighton SM. Reproductive outcomes in women with classic bladder exstrophy: an observational cross-sectional study. *Am J Obstet Gynecol* 2012; **206**:496.e1–e6.
- Deffarges JV, Haddad B, Musset R, Paniel BJ. Utero-vaginal anastomosis in women with uterine cervix atresia: long-term follow-up and reproductive performance. A study of 18 cases. *Hum Reprod* 2001; **16**:1722–1725.
- Dhar H. Ruptured rudimentary horn at 22 weeks. *Niger Med J* 2012; **53**:175–177.
- Dhar H, Razek YA, Hamdi I. Uterus didelphys with obstructed right hemivagina, ipsilateral renal agenesis and right piocolpos: a case report. *Oman Med J* 2011; **26**:447–450.
- Dietrich JE, Millar DM, Quint EH. Non-obstructive Müllerian anomalies. *J Pediatr Adolesc Gynecol* 2014a; **27**:386–395.
- Dietrich JE, Millar DM, Quint EH. Obstructive reproductive tract anomalies. *J Pediatr Adolesc Gynecol* 2014b; **27**:396–402.
- Ding JX, Chen XJ, Zhang X, Zhang Y, Hua KQ. Acellular porcine small intestinal submucosa graft for cervicovaginal reconstruction in eight patients with malformation of the uterine cervix. *Hum Reprod* 2014; **29**:677–682.
- Di Spiezio Sardo A, Giampaolino P, Scognamiglio M, Varelli C, Nazzaro G, Mansueto G, Nappi C, Grimbizis G. An exceptional case of complete septate uterus with unilateral cervical aplasia (Class U2bC3V0/ESHRE/ESGE classification) and isolated Müllerian remnants: Combined Hysteroscopic and Laparoscopic Treatment. *J Minim Invasive Gynecol* 2015a. doi: 10.1016/j.jmig.2015.09.006.

- Di Spiezo Sardo A, Campo R, Gordts S, Spinelli M, Cosimato C, Tanos V, Brucker S, Li TC, Gergolet M, De Angelis C et al. The comprehensiveness of the ESHRE/ESGE classification of female genital tract congenital anomalies: a systematic review of cases not classified by the AFS system. *Hum Reprod* 2015b;**30**:1046–1058.
- Dohr G, Tarmann T. Contacts between Wolffian and Müllerian cells at the tip of the outgrowing Müllerian duct in rat embryos. *Acta Anat* 1984;**120**:123–128.
- Dorais J, Milroy C, Hammoud A, Chaudhari A, Gurtcheff S, Peterson CM. Conservative treatment of a Herlyn-Werner-Wunderlich Müllerian anomaly variant, noncommunicating hemiterus with Gartner duct pseudocyst. *J Minim Invasive Gynecol* 2011;**18**:262–266.
- Dragusin R, Tudorache S, Surlin V, Lichiardopol C, Iliescu DG. Importance of laparoscopic assessment of the uterine adnexa in a Mayer-Rokitansky-Kuster-Hauser Syndrome type II case. *Curr Health Sci J* 2014;**40**:144–147.
- Dwyer PL, Rosamilia A. Congenital urogenital anomalies that are associated with the persistence of Gartner's duct: a review. *Am J Obstet Gynecol* 2006;**195**:354–359.
- Edmonds DK, Rose GL, Lipton MG, Quek J. Mayer-Rokitansky-Kuster-Hauser syndrome: a review of 245 consecutive cases managed by a multidisciplinary approach with vaginal dilators. *Fertil Steril* 2012;**97**:686–690.
- El Saman AM, Nasr A, Tawfik RM, Saadelddeen HS. Müllerian duct anomalies: successful endoscopic management of a hybrid bicornuate/septate variety. *Ped Adolesc Gynecol* 2011a;**24**:e89–e92.
- El Saman AM, Tawfik RM, Hussian M, Abdella MS. Outpatient balloon vaginoplasty for treatment of vaginal aplasia. *Am J Obstet Gynecol* 2011b;**205**:161.
- Embrey MP. A case of uterus didelphys with unilateral gynatresia. *Br Med J* 1950;**1**:820.
- Fedele L, Bianchi S, Zanconato G, Berlanda N, Bergamini V. Laparoscopic removal of the cavitated noncommunicating rudimentary uterine horn: surgical aspects in 10 cases. *Fertil Steril* 2005;**83**:432–436.
- Fedele L, Frontino G, Restelli E, Ciappina N, Motta F, Bianchi S. Creation of a neovagina by Davydov's laparoscopic modified technique in patients with Rokitansky syndrome. *Am J Obstet Gynecol* 2010;**202**:33.e1–e6.
- Fedele L, Motta F, Frontino G, Restelli E, Bianchi S. Double uterus with obstructed hemivagina and ipsilateral renal agenesis: pelvic anatomic variants in 87 cases. *Hum Reprod* 2013;**28**:1580–1583.
- Fernando MA, Creighton SM, Wood D. The long-term management and outcomes of cloacal anomalies. *Pediatr Nephrol* 2015;**30**:759–765.
- Fliegner M, Krupp K, Brunner F, Rall K, Brucker SY, Briken P, Richter-Appelt H. Sexual life and sexual wellness in individuals with complete androgen insensitivity syndrome (CAIS) and Mayer-Rokitansky-Kuster-Hauser Syndrome (MRKHS). *J Sex Med* 2014;**11**:729–742.
- Frank RT. The formation of an artificial vagina without operation. *Am J Obstet Gynecol* 1938;**35**:1053.
- Gadbois WF, Duckett JW. Gartner's duct cyst and ipsilateral renal agenesis. *J Urol* 1974;**4**:720–721.
- Garcia J, Jones HW. The split thickness graft technic for vaginal agenesis. *Obstet Gynecol* 1977;**49**:328–332.
- Geary WL, Weed JC. Congenital atresia of the uterine cervix. *Obstet Gynecol* 1973;**42**:213–217.
- Giannessi A, Marchiole P, Benchaib M, Chevret-Measson M, Mathevet P, Dargent D. Sexuality after laparoscopic Davydov in patients affected by congenital complete vaginal agenesis associated with uterine agenesis or hypoplasia. *Hum Reprod* 2005;**20**:2954–2957.
- Gorgojo JJ, Almodóvar F, López E, Donnay S. Gonadal agenesis 46,XX associated with the atypical form of Rokitansky syndrome. *Fertil Steril* 2002;**77**:185–187.
- Grimbizis GF, Camus M, Tarlatzis BC, Bontis JN, Devroey P. Clinical implications of uterine malformations and hysteroscopic treatment results. *Hum Reprod Update* 2001;**7**:161–174.
- Grimbizis GF, Tsalikis T, Mikos T, Papadopoulos N, Tarlatzis BC, Bontis JN. Successful end-to-end cervico-cervical anastomosis in a patient with congenital cervical fragmentation: case report. *Hum Reprod* 2004;**19**:1204–1210.
- Grimbizis FG, Campo R, On behalf of the Scientific Committee of the Congenital Uterine Malformations (CONUTA) common ESHRE/ESGE working group, Gordts S, Brucker S, Gergolet M, Tanos V, Li TC, De Angelis C, Di Spiezo Sardo A. Clinical approach for the classification of congenital uterine malformations. *Gynecol Surg* 2012;**9**:119–129.
- Grimbizis GF, Gorkts S, Spiezo Sardo A, Brucker S, Angelis C, Gergolet M, Li TC, Tanos V, Brölmann H, Gianaroli L et al. The ESHRE/ESGE consensus on the classification of female genital tract congenital anomalies. *Hum Reprod* 2013;**28**:2032–2044.
- Grimbizis GF, Mikos T, Papanikolaou A, Theodoridis T, Tarlatzis BC. Successful isthmo-neovagina anastomosis after Davydov's colpoepoiesis in Mayer-Rokitansky-Kuster-Hauser syndrome patients with a functional rudimentary uterine horn. *J Minim Invasive Gynecol* 2015;**22**:142–150.
- Grizelj V, Puharic I. Uterus didelphys with unilateral atretic vagina. *Lij Vjes* 1979;**101**:7–13.
- Growdon WB, Laufer MR. Uterine didelphys with duplicated upper vagina and bilateral lower vaginal agenesis: a novel Müllerian anomaly with options for surgical management. *Fertil Steril* 2008;**89**:693–698.
- Grüenwald P. The relation of the growing Müllerian duct to the Wolffian duct and its importance for the genesis of malformation. *Anat Rec* 1941;**81**:1–19.
- Gungor-Ugurlacan F, Bastu E, Gulsen G, Kurek Eken M, Akhan SE. OHVIRA syndrome presenting with acute abdomen: a case report and review of the literature. *Clin Imaging* 2014;**38**:357–359.
- Gupta N, Mittal S, Dadhwal V, Misra R. A unique congenital Müllerian anomaly: Robert's uterus. *Arch Gynecol Obstet* 2007;**276**:641–643.
- Hahn-Pedersen J, Kvist N, Nielsen OH. Hydrometrocolpos: current views on pathogenesis and management. *J Urol* 1984;**132**:537–540.
- Haydardedeoglu B, Simsek E, Kilicdag EB, Tarim E, Aslan E, Bagis T. A case of unicornuate uterus with ipsilateral ovarian and renal agenesis. *Fertil Steril* 2006;**85**:750.e1–750.e4.
- Heinonen PK. Clinical implications of the didelphic uterus: long-term follow-up of 49 cases. *Eur J Obstet Gynecol Reprod Biol* 2000;**91**:183–190.
- Heinonen PK. Gestational hypertension and preeclampsia associated with unilateral renal agenesis in women with uterine malformations. *Eur J Obstet Gynecol Reprod Biol* 2004;**114**:39–43.
- Heinonen PK. Complete septate uterus with longitudinal vaginal septum. *Fertil Steril* 2006;**85**:700–705.
- Heinonen PK. Pregnancies in women with uterine malformation, treated obstruction of hemivagina and ipsilateral renal agenesis. *Arch Gynecol Obstet* 2013a;**287**:975–978.
- Heinonen PK. Recto vesical ligament and fusion defect of the uterus with or without obstructed hemivagina and ipsilateral renal agenesis. *Eur J Obstet Gynecol Reprod Biol* 2013b;**168**:83–86.
- Herlyn U, Werner H. Das gemeinsame vorkommen von offener gartner-gang-zyste, gleichzeitiger niereaplasie und uterusdoppel-mißbildung als typisches mißbildungssyndrom. *Geburtsh U Frauenheilkd* 1971;**31**:340–347.
- Hisamatsu E, Nakagawa Y, Sugita Y. Vaginal reconstruction in female cloacal exstrophy patients. *Urology* 2014;**84**:681–684.
- Huang HM, Yeh RM, Tan CT, Chao MM, Lin KN. Auditory abnormalities associated with unilateral renal agenesis. *Int J Pediatr Otorhinolaryngol* 2001;**60**:113–118.
- Hucke J, DeBruyne F, Campo RL, Freikha AA. Hysteroscopic treatment of congenital uterine malformations causing hemihemimetra: a report of three cases. *Fertil Steril* 1992;**58**:823–825.
- Iglesias-Lopes R, Tibor-Dénes F, Padovani G, Sircili MH, Srougi M. Monti's principle in the treatment of congenital uterovesical fistula. *Urology* 2014;**83**:1170–1172.
- Ismail-Pratt IS, Bikoo M, Liao LM, Conway GS, Creighton SM. Normalization of the vagina by dilator treatment alone in Complete Androgen Insensitivity Syndrome and Mayer-Rokitansky-Kuster-Hauser Syndrome. *Hum Reprod* 2007;**22**:2020–2024.
- Jain N, Verma R. Imaging diagnosis of accessory and cavitated uterine mass, a rare Müllerian anomaly. *Indian J Radiol Imaging* 2014;**24**:178–181.
- Jain N, Gupta A, Kumar R, Minj A. Complete imperforate transverse vaginal septum with septate uterus: a rare anomaly. *J Hum Reprod Sci* 2013;**6**:74–76.
- Jarcho J. Malformations of the uterus. *Am J Surg* 1946;**714**:106–166.
- Jeffcoate TNA. Advancement of the upper vagina in the treatment of haematocolpos and haematometra caused by vaginal aplasia. Pregnancy following the construction of an artificial vaginal. *J Obstet Gynaecol Br Commun* 1969;**76**:961–968.
- Jessel RH, Laufer MR. Management of lower vaginal agenesis in a patient with unicornuate uterus. *J Pediatr Adolesc Gynecol* 2013;**26**:e21–e23.
- Johnson CG. Uterus didelphys with congenital absence of the right kidney. *Am J Surg* 1952;**83**:238–239.
- Johnson J, Hillman BJ. Uterine duplication, unilateral imperforate vagina, and normal kidneys. *AJR Am J Roentgenol* 1986;**147**:1197–1198.
- Jones HW Jr. Reproductive impairment and the malformed uterus. *Fertil Steril* 1981;**36**:137–148.
- Jones HW Jr. Müllerian anomalies. *Hum Reprod* 1998;**13**:789–791.
- Kashimura T, Takahaschi S, Nakazawa H. Successful management of a thick transverse vaginal septum with a vesicovaginal fistula by vaginal expansion and surgery. *Int Urogynecol J* 2012;**23**:797–799.

- Keabaili S, Chaabane K, Mnif MF, Kamoun M, Kacem FH, Guesmi N, Gassara H, Dammak A, Louati D, Amouri H et al. Gonadal dysgenesis and the Mayer-Rokitansky-Kuster-Hauser syndrome in a girl with a 46, XX karyotype: a case report and review of literature. *Indian J Endocrinol Metab* 2013; **17**:505–508.
- King LA, Sanchez-Ramos L, Talledo OE, Reindollar RH. Syndrome of genital, renal, and middle ear anomalies: a third family and report of a pregnancy. *Obstet Gynecol* 1987; **69**:491–493.
- Kirks DR, Currarino G. Imperforate vagina with vaginourethral communication. *Am J Roentgenol* 1977; **129**:623–628.
- Kisku S, Barla RK, Sen S, Karl S, Mathai J, Varghese L. Rectovestibular fistula with vaginal atresia: our experience and a proposed course of management. *Pediatr Surg Int* 2014a; **30**:633–639.
- Kisku S, Varghese L, Kekre A, Sen S, Karl S, Mathai J, Thomas RJ, Barla RK. Cervicovaginal atresia with hematometra: restoring menstrual and sexual function by utero-coloneovaginoplasty. *Pediatr Surg Int* 2014b; **30**:1051–1060.
- Koff AK. Development of the vagina in the human fetus. *Contrib Embryol* 1933; **24**:59–91.
- Kollia P, Kounoudes C, Veloudis G, Giannakou N, Gourgiotis S. True ectopic ovary in the right iliac fossa mimicking acute appendicitis and associated with ipsilateral renal agenesis. *J Obstet Gynaecol Res* 2014; **40**:858–861.
- Konar S, Dasgupta D, Patra DK, De A, Mallick B. Chromosomal study is must for prepubertal girl with inguinal hernia: opportunity to diagnose complete androgen insensitivity syndrome. *J Clin Diagn Res* 2015; **9**:GD01–GD03.
- Kriplani A, Kachhawa G, Awasthi D, Kulshrestha V. Laparoscopic-assisted uterovaginal anastomosis in congenital atresia of uterine cervix: follow-up study. *J Minim Invasive Gynecol* 2012; **19**:477–484.
- Kumar A, Mishra S, Dogra PN. Management of an unusual case of atypical Mayer-Rokitansky-Kuster-Hauser syndrome, with unilateral gonadal agenesis, solitary ectopic pelvic kidney, and pelviureteric junction obstruction. *Int Urogynecol J Pelvic Floor Dysfunct* 2007; **18**:823–825.
- Kumar S, Satija B, Wadhwa L. Complex Mullerian duct anomaly in a young female with primary amenorrhoea, infertility, and chronic pelvic pain. *J Hum Reprod Sci* 2012; **5**:295–297.
- Lee CL, Wang CJ, Swee LD, Yen CF, Soong YK. Laparoscopic hemi-hysterectomy in treatment of a didelphic uterus with a hypoplastic cervix and obstructed hemivagina. *Hum Reprod* 1999; **14**:1741–1743.
- Lennox G, Pantazi S, Keunen J, Van Mieghem T, Allen L. Minimally invasive surgical management of a second trimester pregnancy in a rudimentary uterine horn. *J Obstet Gynaecol Can* 2013; **35**:468–472.
- Letterie GS. Management of congenital uterine abnormalities. *Reprod Biomed Online* 2011; **23**:40–52.
- Levitt MA, Peña A. Cloacal malformations: lessons learned from 490 cases. *Sem Pediatr Surg* 2010; **19**:128–138.
- Li S, Qayyum A, Coakley FV, Hricak H. Association of renal agenesis and Mullerian duct anomalies. *J Comput Assist Tomogr* 2000; **24**:829–834.
- Li Z, Yu Z, Shen J, Liang J, Scoliosis in Herlyn-Werner-Wunderlich syndrome: a case report and literature review. *Medicine Baltimore* 2014; **93**:185.
- Lopes Dias J, Jogo R. Herlyn-Werner-Wunderlich syndrome: pre- and post-surgical MRI and US findings. *Abdom Imaging* 2015; **40**:2667–2682.
- Ma I, Williamson A, Rowe D, Ritchey M, Graziano K. OHVIRA with a twist: obstructed hemivagina ipsilateral renal anomaly with urogenital sinus in 2 patients. *J Pediatr Adolesc Gynecol* 2014; **27**:104–106.
- Mackie GG. Abnormalities of the ureteral bud. *Urol Clin N Am* 1978; **5**:161–174.
- Magee MC, Lucey DT, Fried FA. A new embryologic classification for urogynecologic malformations: the syndromes of mesonephric duct induced Müllerian deformities. *J Urol* 1979; **121**:265–267.
- March CM. Müllerian anomalies. Fertility news 24/1. *Endocr Fert Forum* 1990; **13**:1.
- Marsh CA, Will MA, Smorgick N, Quint EH, Hussain H, Smith YR. Uterine remnants and pelvic pain in females with Mayer-Rokitansky-Düster-Hauser syndrome. *J Pediatr Adolesc Gynecol* 2013; **26**:199–202.
- Marshall FF, Beisel DS. The association of uterine and renal anomalies. *Obstet Gynecol* 1978; **51**:559–562.
- Martindale L. A case of uterus didelphys associated with hematocolpos of the right vagina and simulating appendicitis. *The Lancet* 1935; **225**:1389–1390.
- Martínez-Escoriza JC, Lobato JJ, Lorda E, De Vera M, Moya A, Ramirez R, Sánchez OP. Congenital vesicovaginal fistula with menouria: an anomaly of the urogenital sinus. *Eur J Obstet Gynecol Reprod Biol* 2011; **159**:472–475.
- Martínez-Escoriza JC, Palacios-Marqués AM, López-Fernández JA, Feliu-Rey E, Martín-Medina P, Herráiz-Romero I, Delgado García S, Oliva García AB, Oliver Sánchez C. Congenital vesicovaginal fistula with or without menouria: a literature review. *Eur J Obstet Gynecol Reprod Biol* 2014; **175**:38–48.
- Masson JC, Mueller SC. Uterus duplex bicornis with septate vagina, open only on one side: report of case. *Surg Clin North Am* 1933; **13**:857–861.
- Mauch RB, Thiedemann KU, Drews U. The vagina is formed by downgrowth of Wolffian and Müllerian ducts. Graphical reconstructions from normal and Tfm mouse embryos. *Anat Embryol (Berl)* 1985; **172**:75–87.
- Mayer MD. Lateral pyocolpos, double uterus, cervix, and vagina, with absence of left kidney. *Am J Obstet Gynecol* 1940; **39**:899–904.
- Mc Quillan SK, Grover SR. Dilatation and surgical management in vaginal agenesis. A systematic review. *Int Urogynecol J* 2014a; **25**:299–311.
- Mc Quillan SK, Grover SR. Systematic review of sexual function and satisfaction following the management of vaginal agenesis. *Int Urogynecol J* 2014b; **25**:1313–1320.
- Medeiros LR, Rosa DD, Silva FR, Silva BR, Rosa MI. Laparoscopic approach of a unicornuate uterus with noncommunicating rudimentary horns. *ISRN Obstet Gynecol* 2011; **2011**:906138.
- Merckel GC, Sucoff MC, Sender B. The syndrome of dysmenorrhea and unilateral gynatresia in a double uterus. *Am J Obstet Gynecol* 1960; **80**:70–75.
- Miller RJ, Breech LL. Surgical correction of vaginal anomalies. *Clin Obstet Gynecol* 2008; **51**:223–236.
- Moerman P, Fryns JP, Sastrowijoto SH, Vandenbergh K, Lauweryns JM. Hereditary renal adysplasia: new observations and hypotheses. *Pediatr Pathol* 1994; **14**:405–410.
- Moore KL. *Embriología Básica*. México: Interamericana, 1976.
- Moore KL. *The Developing Human: Clinically Oriented Embryology*, 4th edn. W.B. Philadelphia: Saunders Company, 1988.
- Moore KL, Persaud TVN. *Embriología Clínica*, 6th edn. México: McGraw-Hill Interamericana, 1999.
- Moura MD, Navarro PAAS, Nogueira AA. Pregnancy and term delivery after neovaginoplasty in a patient with vaginal agenesis. *Int J Gynecol Obstet* 2000; **71**:215–216.
- Murry JB, Santos XM, Wang X, Wan YW, Van den Veyver IB, Dietrich JE. A genome-wide screen for copy number alterations in an adolescent pilot cohort with Müllerian anomalies. *Fertil Steril* 2015; **103**:487–493.
- Nakhal RS, Creighton SM. Management of vaginal aplasia. *J Pediatr Adolesc Gynecol* 2012; **25**:352–357.
- Nassif J, Al Chami A, Abu-Musa A, Nassar AH, Kurdi A, Ghulmiyyah L. Vaginoscopic resection of vaginal septum. *Surg Technol Int* 2012; **22**:173–176.
- Nawfal AK, Blacker CM, Strickler RC, Eisenstein D. Laparoscopic management of pregnancy in a patient with uterus didelphys, obstructed hemivagina, and ipsilateral renal agenesis. *J Minim Invasive Gynecol* 2011; **18**:381–385.
- Netter FH. Netter atlas. Colección Ciba de Ilustraciones Médicas. Tomo II. Sistema reproductor. Enfermedades de la vagina, p. 139; Enfermedades del útero, p. 157. Salvat Editores S.A., 1979.
- Nguyen L, Youssef S, Guttman FM, Ahlgren LS, Schlechter R. Hydrometrocolpos in neonate due to distal vaginal atresia. *J Pediatr Surg* 1984; **19**:510–514.
- Opoku BK, Djokoto R, Owusu-Bempah A, Amo-Antwi K. Huge abdominal mass secondary to a transverse vaginal septum and cervical dysgenesis. *Ghana Med J* 2011; **45**:174–176.
- Oppelt P, Renner SP, Brucker S, Strissel PL, Strick R, Oppelt PG, Doerr HG, Schott GE, Huckle J, Wallwiener D et al. The VCUAM (Vagina Cervix Uterus Adnex-associated Malformation) classification: a new classification for genital malformations. *Fertil Steril* 2005; **84**:1493–1497.
- Oppelt P, Renner SP, Kellermann A, Brucker S, Hauser GA, Ludwig KS, Strissel PL, Strick R, Wallwiener D, Beckmann MW. Clinical aspects of Mayer-Rokitansky-Küster-Hauser syndrome: recommendations for clinical diagnosis and staging. *Hum Reprod* 2006; **21**:792–797.
- Oppelt PG, Lermann J, Strick R, Dittrich R, Strissel P, Rettig I, Schulze C, Renner SP, Beckmann MW, Brucker S et al. Malformations in a cohort of 284 women with Mayer-Rokitansky-Küster-Hauser syndrome (MRKH). *Reprod Biol Endocrinol* 2012; **10**:57–64.
- Panici PB, Bellati F, Boni T, Francescangeli F, Frati L, Marchese C. Vaginoplasty using autologous in vitro cultured vaginal tissue in a patient with Mayer-von-Rokitansky-Kuster-Hauser syndrome. *Hum Reprod* 2007; **22**:2025–2028.

- Pereira N, Anderson SH, Verrecchia ES, Brown MA, Glassner MJ. Hemivaginal septum resection in a patient with a rare variant of Herlyn-Werner-Wunderlich syndrome. *J Minim Invasive Gynecol* 2014;**21**:1113–1117.
- Perino A, Chianchiano N, Simonaro C, Cittadini E. Endoscopic management of a case of complete septate uterus with unilateral haematometra. *Hum Reprod* 1995;**10**:2171–2173.
- Pinsonneault O, Goldstein DP. Obstructing malformations of the uterus and vagina. *Fertil Steril* 1985;**44**:241–247.
- Pizzo A, Laganà AS, Sturlese E, Retto G, Retto A, De Dominicis R, Puzzolo D. Mayer-Rokitansky-Küster-Hauser syndrome: embryology, genetics and clinical and surgical treatment. *ISRN Obstetrics and Gynecology* 2013: article ID 628717;1–10.
- Pomerenke WT, Benjamin JA. Coexistence of malformations of the genital and urinary tracts in women. *N Y J Med* 1947;**47**:996–997.
- Rall K, Barresi G, Wallwiener D, Brucker SY, Staebler A. Uterine rudiments in patients with Mayer-Rokitansky-Küster-Hauser syndrome consist of typical uterine tissue types with predominantly basal-like endometrium. *Fertil Steril* 2013;**99**:1392–1399.
- Rezaei Z, Omidvar A, Niroumanesh S, Omidvar A. Cervicovaginal anastomosis by Gore-Tex in Müllerian agenesis. *Arch Gynecol Obstet* 2015;**291**:467–472.
- Robert H. Asymmetrical bifidities with unilateral menstrual retention (apropos of 12 cases). *Chirurgie* 1970;**96**:796–799.
- Roberts CP, Rock JA. Surgical methods in the treatment of congenital anomalies of the uterine cervix. *Curr Opin Obstet Gynecol* 2011;**23**:251–257.
- Roberts CP, Haber MJ, Rock JA. Vaginal creation for Müllerian agenesis. *Am J Obstet Gynecol* 2001;**185**:1349–1353.
- Rock JA, Jones HW. The clinical management of the double uterus. *Fertil Steril* 1977;**28**:798–806.
- Rock JA, Schlaff WD, Zacur HA, Jones HW Jr. The clinical management of congenital absence of the uterine cervix. *Int J Gynaecol Obstet* 1984;**22**:231–235.
- Rock JA, Roberts CP, Jones HW Jr. Congenital anomalies of the uterine cervix: lessons from 30 cases managed clinically by a common protocol. *Fertil Steril* 2010;**94**:1858–1863.
- Romano S, Bustan M, Ben-Shlomo I, Shalev E. A novel surgical approach to obstructed hemiuterus: sonographically guided hysteroscopic correction. *Hum Reprod* 2000;**15**:1578–1579.
- Rosenberg HK, Udassin R, Howell Ch, Betts J, Schnauffer L. Duplication of the uterus and vagina, unilateral hydrometrocolpos, and ipsilateral renal agenesis: sonographic aid to diagnosis. *J Ultrasound Med* 1982;**1**:289–291.
- Ruggeri G, Gargano T, Antonellini C, Carlini V, Randi B, Destro F, Lima M. Vaginal malformations: a proposed classification based on embryological, anatomical and clinical criteria and their surgical management (an analysis of 167 cases). *Pediatr Surg Int* 2012;**28**:797–803.
- Ruiz E, Pastor J, Galera L. Útero doble con ausencia unilateral de cervix: hallazgos en la tomografía computarizada y la resonancia magnética. *Clin Invest Gin Obstet* 1999;**26**:235–238.
- Sadler TW. *Langman Embriología Médica*. 5th edn, México D.F.: Panamericana, 1986.
- Safaya A, Shah S, Doshi B. Unilateral branchial sinus with unilateral renal agenesis: a variant of BOR Syndrome? A case report. *Indian J Otolaryngol Head Neck Sur* 2014;**66**:S356–S358.
- Saleh M, Badawy SZ. Unilateral non-communicating cervical atresia in a patient with uterus didelphys and unilateral renal agenesis. *J Pediatr Adolesc Gynecol* 2010;**23**:e137–e140.
- Sánchez-Ferrer ML, Ación MI, Sánchez del Campo F, Mayol-Belda MJ, Ación P. Experimental contributions to the study of the embryology of the vagina. *Hum Reprod* 2006;**6**:1623–1628.
- Sanghvi Y, Shastri P, Mane SB, Dhende NP. Prepubertal presentation of Herlyn-Werner-Wunderlich syndrome: a case report. *J Pediatr Surg* 2011;**46**:1277–1280.
- Sanna-Cherchi S, Sampogna RV, Papeta N, Burgess KE, Nees SN, Perry BJ, Choi M, Bodria M, Liu Y, Weng PL et al. Mutations in DSTYK and dominant urinary tract malformations. *N Engl J Med* 2013;**369**:1–13.
- Sarvelos SH, Cocksedge KA, Li TC. Prevalence and diagnosis of congenital uterine anomalies in women with reproductive failure: a critical appraisal. *Hum Reprod Update* 2008;**14**:415–429.
- Shah DK, Laufer MR. Obstructed hemivagina and ipsilateral renal anomaly (OHVIRA) syndrome with a single uterus. *Fertil Steril* 2011;**96**:e39–e41.
- Singhal S, Agarwal U, Sharma D, Sirohiwal D. Pregnancy in asymmetric blind hemicavity of Robert's uterus a previously unreported phenomenon. *Eur J Obstet Gynecol Reprod Biol* 2003;**107**:93–95.
- Smith NA, Laufer MR. Obstructed hemivagina and ipsilateral renal anomaly (OHVIRA) syndrome: management and follow-up. *Fertil Steril* 2007;**87**:918–922.
- Sparac V, Stilinovic K, Ilijas M, Barcot Z, Kupesic S, Prka M, Bauman R, Kurjak A. Vaginal aplasia associated with anatomically and functionally normal uterus. *Eur J Obstet Gynecol Reprod Biol* 2004;**115**:110–112.
- Spencer R, Levy DM. Hydrometrocolpos: Report of three cases and review of the literature. *Ann Surg* 1962;**155**:558–571.
- Spitzer RF, Caccia N, Kives S, Allen LM. Hysteroscopic unification of a complete obstructing uterine septum: case report and review of the literature. *Fertil Steril* 2008;**90**:2016.
- Stassart JP, Nagel TC, Prem KA, Phipps WR. Uterus didelphys, obstructed hemivagina, and ipsilateral renal agenesis: the University of Minnesota experience. *Fertil Steril* 1992;**57**:756–761.
- Strassmann P. Die operative Vereinigung eines doppelten Uterus (Nebst Bemerkungen über die Korrektur der sogenannten Verdoppelung des Genitalkanals). *Zentralbl F Gynäk* 1907;**31**:1322–1335.
- Strübbe EH, Willemsen WN, Lemmens JA, Thijn CJ, Rolland R. Mayer-Rokitansky-Küster-Hauser syndrome: distinction between two forms based on excretory urographic, sonographic, and laparoscopic findings. *AJR Am J Roentgenol* 1993;**160**:331–334.
- Theodoridis TD, Saravelos H, Chatzigeorgiou KN, Zepiridis L, Grimbizis GF, Vavilis D, Loufopoulos A, Bontis JN. Laparoscopic management of unicornuate uterus with non-communicating rudimentary horn (three cases). *Reprod Biomed Online* 2006;**12**:128–130.
- Tong J, Zhu L, Lang J. Clinical characteristics of 70 patients with Herlyn-Werner-Wunderlich syndrome. *Int J Gynecol Obstet* 2013;**121**:173–175.
- Tong J, Zhu L, Chen N, Lang J. Endometriosis in association with Herlyn-Werner-Wunderlich syndrome. *Fertil Steril* 2014;**102**:790–794.
- Tzialidou-Palermo I, von Kaisenberg CS, Garcia-Rocha GJ, Schloesser HW, Baehr I, Schippert C. Diagnostic challenges of hemihematoocolpos and dysmenorrhea in adolescents: obstructed hemivagina, didelphys or bicornuate uterus and renal aplasia is a rare female genital malformation. *Arch Gynecol Obstet* 2012;**286**:785–791.
- Ugur MG, Balat O, Ozturk E, Bekerecioglu M, Dikensoy E. Pitfalls in diagnosis and management of distal vaginal agenesis: 10-year experience at a single centre. *Eur J Obstet Gynecol Reprod Biol* 2012;**163**:85–90.
- Vallerie AM, Breech LL. Update in Müllerian anomalies: diagnosis, management, and outcomes. *Curr Opin Obstet Gynecol* 2010;**22**:381–387.
- Venter PF, Theron MS. Double uterus with a unilateral blind vagina. *S Afr Med J* 1981;**59**:838–840.
- Vera-Carbonell A, López-González V, Bafalliu JA, Ballesta-Martínez MJ, Fernández A, Guillén-Navarro E, López-Expósito I. Clinical comparison of 10q26 overlapping deletions: delineating the critical region for urogenital anomalies. *Am J Med Genet A* 2015;**167**:786–790.
- Walch K, Kowarik E, Leithner K, Schätz T, Dörfner D, Wenzl R. Functional and anatomic results after creation of a neovagina according to Wharton-Sheares-Gearge in patients with Mayer-Rokitansky-Küster-Hauser syndrome-long-term follow-up. *Fertil Steril* 2011;**96**:492–497.
- Wang S, Lang JH, Zhu L. Clinical analysis of 6 cases with atypical vulvovaginal malformations. *Zhonghua Fu Chan Ke Za Zhi* 2009;**44**:263–267.
- Wang J, Zhu L, Lang J, Liu Z, Sun D, Leng J, Fan Q. Clinical characteristics and treatment of Herlyn-Werner-Wunderlich syndrome. *Arch Gynecol Obstet* 2014;**290**:947–950.
- Will MA, Marsh CA, Smorgick N, Smith YR, Quint EH. Surgical pearls: laparoscopic removal of uterine remnants in patients with Mayer-Rokitansky-Küster-Hauser syndrome. *J Pediatr Adolesc Gynecol* 2013;**26**:224–227.
- Williams CE, Nakhil RS, Hall-Griggs MA, Wood D, Cutner A, Pattison SH, Creighton SM. Transverse vaginal septae: management and long-term outcomes. *BJOG* 2014;**121**:1653–1659.
- Woods MS, Sheppard RG, Hardman DA, Woods HJ. Congenital genitourinary anomalies. Is there a predilection for multiple primary malignant neoplasms? *Cancer* 1992;**69**:546–549.
- Woolf RB, Allen WM. Concomitant malformations. The frequent, simultaneous occurrence of congenital malformations of the reproductive and urinary tracts. *Obstet Gynecol* 1953;**2**:236–265.
- Wozniakowska E, Torres A, Milart P, Wozniak S, Czuczwar P, Szkodziak P, Paszkowski T. Delayed diagnosis of Herlyn-Werner-Wunderlich syndrome due to microperforation and pyocolpos in obstructed vaginal canal. *J Pediatr Adolesc Gynecol* 2014;**27**:79–81.

- Wunderlich M. Seltene variante einer genitalmißbildung mit aplasia der rechten niere. *Zbl Gynäk* 1976;**98**:559–562.
- Xu B, Xue M, Xu D. Hysteroscopic management of an oblique vaginal septum in a virgin girl with a rare variant of Herlyn-Werner-Wunderlich syndrome. *J Minim Invasive Gynecol* 2015;**22**:7.
- Yang B, Wang N, Zhang S, Wang M. Vaginal reconstruction with sigmoid colon in patients with congenital absence of vagina and menses retention: a report of treatment experience in 22 young women. *Int Urogynecol J* 2013;**24**:155–160.
- Yoo RE, Cho JY, Kim SY, Kim SH. Magnetic resonance evaluation of Müllerian remnants in Mayer-Rokitansky-Küster-Hauser syndrome. *Korean J Radiol* 2013;**14**:233–239.
- Zhou Q, Chen X, Luo X, Ding J, Zhang G, Ren Y, Liu Z, Hua K. Laparoscopic-assisted uterovaginal anastomosis for uterine cervix atresia with vaginal aplasia using a silicone stent lined with acellular porcine small intestinal submucosa graft inserted using a 16F Foley catheter. *J Minim Invasive Gynecol* 2013;**20**:710–713.
- Zhu L, Chen N, Tong JL, Wang W, Zhang L, Lang JH. New classification of Herlyn-Werner-Wunderlich Syndrome. *Chin Med J* 2015;**128**:222–225.
- Zivković K, Prka M, Zivković N, Bucko A, Habek D. Unusual case of OHVIRA syndrome with a single uterus, unrecognized before labor and followed by an intrapartum rupture of obstructed hemivagina. *Arch Gynecol Obstet* 2014;**290**:855–858.