

University of Groningen

## The Reorganization of a Psychiatric Unit During COVID-19

Sturge, Jodi; Starrenburg, Ferdi

*Published in:*  
HERD

*DOI:*  
[10.1177/19375867221098982](https://doi.org/10.1177/19375867221098982)

**IMPORTANT NOTE: You are advised to consult the publisher's version (publisher's PDF) if you wish to cite from it. Please check the document version below.**

*Document Version*  
Publisher's PDF, also known as Version of record

*Publication date:*  
2022

[Link to publication in University of Groningen/UMCG research database](#)

*Citation for published version (APA):*

Sturge, J., & Starrenburg, F. (2022). The Reorganization of a Psychiatric Unit During COVID-19: A Reflection for Psychiatric Hospital Design. *HERD*, 15(4), 354-368. Article 19375867221098982. Advance online publication. <https://doi.org/10.1177/19375867221098982>

**Copyright**

Other than for strictly personal use, it is not permitted to download or to forward/distribute the text or part of it without the consent of the author(s) and/or copyright holder(s), unless the work is under an open content license (like Creative Commons).

The publication may also be distributed here under the terms of Article 25fa of the Dutch Copyright Act, indicated by the "Taverne" license. More information can be found on the University of Groningen website: <https://www.rug.nl/library/open-access/self-archiving-pure/taverne-amendment>.

**Take-down policy**

If you believe that this document breaches copyright please contact us providing details, and we will remove access to the work immediately and investigate your claim.

*Downloaded from the University of Groningen/UMCG research database (Pure): <http://www.rug.nl/research/portal>. For technical reasons the number of authors shown on this cover page is limited to 10 maximum.*

# The Reorganization of a Psychiatric Unit During COVID-19: A Reflection for Psychiatric Hospital Design

Health Environments Research  
& Design Journal  
2022, Vol. 15(4) 354-368  
© The Author(s) 2022



Article reuse guidelines:  
sagepub.com/journals-permissions  
DOI: 10.1177/19375867221098982  
journals.sagepub.com/home/her



Jodi Sturge, PhD<sup>1,2</sup>  and Ferdi Starrenburg, MD Psychiatry<sup>3</sup>

## Abstract

**Objective:** The COVID-19 pandemic has impacted healthcare systems worldwide. Although this disease has primarily impacted general medicine intensive care units, other areas of healthcare including psychiatry were modified in response to corona measures to decrease the transmission of the disease. Reflecting on the modifications to the environment provides an opportunity to design psychiatric environments for future pandemics or other demands for healthcare. **Background:** The therapeutic environment of psychiatric wards was modified in Friesland, the Netherlands, in response to COVID-19. During this time, an interdisciplinary team met consistently to contribute to the preliminary design of a new psychiatric hospital. **Methods:** During the first 18 months of the pandemic, clinical reflections were made to describe the impact of COVID-19 on the psychiatric care environment. Architects have created a preliminary design of a new psychiatric hospital based on these reflections, monthly collaborative design discussions based on virtual mock-ups and evidence-based design based on theoretical concepts and research. **Results and conclusions:** This theoretical and reflective study describes how an inpatient psychiatric environment was restructured to manage infection during COVID-19. The therapeutic environment of the psychiatric ward and patient care changed drastically during COVID-19. The number of patients accessing care decreased, patient autonomy was restricted, and the function of designated behavioral support spaces changed to manage the risk of infection. However, these challenging times have provided an opportunity to reflect on theories and consider the design of new hospital environments that can be adapted in response to future pandemics or be restructured for different care functions.

## Keywords

COVID-19, transdisciplinary study, therapeutic landscapes, mental healthcare, psychiatry, evidence-based design

## Background

Since December 2019, global healthcare systems have been exhausted due to the outbreak of coronavirus disease (COVID-19), caused by the severe acute respiratory syndrome coronavirus 2 (SARS-CoV-2) (Zhou et al., 2020). Although the

<sup>1</sup> Adema Architecten, Groningen, the Netherlands

<sup>2</sup> Population Research Centre, University of Groningen, the Netherlands

<sup>3</sup> GGZ Friesland, Leeuwarden, the Netherlands

## Corresponding Author:

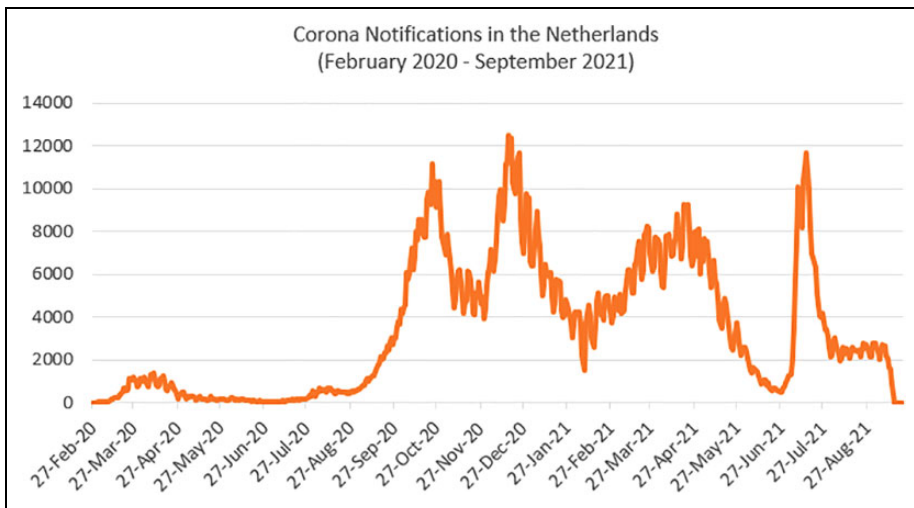
Jodi Sturge, PhD, Adema Architecten, Oosterkade 1 9711RS Groningen, the Netherlands.  
Email: j.sturge@adema-architecten.nl

main impact of this disease has been observed in general medicine intensive care units, other areas of healthcare have also been impacted by the transmission of the disease, including inpatient psychiatry patients and staff (Baumgart et al., 2021). Infection prevention and control practices emerged throughout inpatient psychiatry environments, which limited the autonomy of patients (Hernández-Calle et al., 2020), placed new pressure on staff (Knowles et al., 2020), and presented ethical challenges when patients refused testing or to comply with protective measures such as wearing masks (Fahed et al., 2020; Russ et al., 2020). Further, patient activities outside of wards were limited and personal and professional support (e.g., lawyers and judges) were restricted (Wasser et al., 2020).

Inpatient psychiatric wards consist of both voluntary and involuntary patients who require treatment for psychiatric illnesses. Patients are often admitted for extended periods, and repeated readmissions are common. Compared to other hospital environments, inpatient psychiatric wards tend to have higher patient autonomy. The environment is built around the principles of safety and protection from self-harm rather than infection control (Angelino et al., 2020; Lundin, 2021). The treatment environment often consists of physical and social features that support healing and have positive impact on staff and patients, such as the spatial qualities of inpatient care, such as access to private rooms, open nursing stations, and access to nature (Chrysikou, 2014; Molin et al., 2021; Shepley & Pasha, 2017; Shepley et al., 2016; Wood et al., 2013). Described as “spaces of transition,” the psychiatric environment provides stability, space for social interaction, and skill development for patients to successfully transition back to the community (Chrysikou, 2019; Wood et al., 2013). The design of psychiatric environments is transforming from a stale institutional environment to healing into therapeutic environments, focusing on design features that result in less aggression and a reduction of the use of coercion (e.g., seclusion or restraint) on the wards (Oostermeijer et al., 2021; Papoulias et al., 2014; Seppänen et al., 2018; Shepley & Pasha, 2017; Shepley et al., 2016; Ulrich et al., 2018). Based on Ulrich’s work, there has been a

recent movement to design psychiatric environments based on healing architecture (Lundin, 2021). Although this terminology is familiar to Scandinavian countries (Frandsen et al., 2012; Simonsen & Duff, 2020, 2021), a recent review suggests no standard definition of healing architecture (Simonsen et al., 2022). Researchers have provided the examples of how the built psychiatric care environment is a coproducer of care (Simonsen & Duff, 2020, 2021; Wood et al., 2013, 2015). This work reflects health geography studies that have informed the development of models of care (Curtis, 2007; Curtis et al., 2013) that describe the psychiatric ward environment as a therapeutic landscape. In this context, it is relevant to differentiate the theory of therapeutic landscapes from “landscape architecture,” which refers to the practice of designing and creating physical landscapes. Therapeutic landscape is a theoretical conceptual framework that focuses on “how the healing process works itself out in places (or situations, locales, settings and milieus)” (Gesler, 1992, p. 743). There have been several studies exploring how well-being is influenced by green and blue therapeutic landscapes (Bell et al., 2014, 2017, 2018) and how built environment spaces, such as libraries and the world-renowned Maggie centre care model, are experienced and constructed to be therapeutic landscapes (Brewster, 2014; Butterfield & Martin, 2016). Further, the therapeutic landscape concept has been used to describe psychiatric environments with interest in how the design of psychiatric environments can support or constrain relations between staff, patients, and family (Curtis et al., 2007; Gesler et al., 2004; Wood et al., 2013, 2015). Until recently, there have been limited theoretical approaches or principles for designing the physical environment of psychiatric and mental healthcare facilities (Liddicoat et al., 2020; Ulrich et al., 2018).

The purpose of this case study is to describe the impact of COVID-19 pandemic on the therapeutic landscape of an inpatient psychiatric care environment in Friesland, the Netherlands, and link these reflections to the design of a new psychiatric environment. While other narrative reviews have explored the impact of COVID-19 on the psychiatric care environment (Angelino et al., 2020;



**Figure 1.** COVID-19 infection notifications in the Netherlands. *Source.* Derived from the National Institute for Public Health and the Environment (RIVM) Open Source Data. Accessed on September 21, 2021, from <https://www.rivm.nl/coronavirus-covid-19/grafieken>

Naarding et al., 2020), this interprofessional study is unique where it is based on 18 months of clinical reflections and an integrated theoretical reflection to design. The first author is a health geographer with research experience related to well-being and public space and the second author is a psychiatrist working in high intensive care in psychiatry. Together, we bring different perspectives to the psychiatric environment, viewing it as both a therapeutic landscape and a clinical space. This study has administrative approval from the geestelijke gezondheidszorg (GGZ) Friesland. Ethical review and approval were waived for this study, where the study did not involve the participation of human subjects. This study is based on 18 months of clinical descriptions (e.g., number of admissions) and reflections on the psychiatric environment. There is no identifying information of the patients or staff during the period of time of this study making it not possible to link a description to an individual case.

## Method

### Study Context

On February 27, 2020, the first patient with COVID-19 in the Netherlands was confirmed.

Three weeks later, the Dutch government implemented strict social distancing policies and measures to mitigate the spread of COVID-19 (Dinmohamed et al., 2020). By mid-March, most Dutch people were confined to their homes due to a nationwide lockdown (Naarding et al., 2020). Since the beginning of the pandemic in the Netherlands, there were several peaks in infections, which made it challenging to relax national government corona measures (Figure 1).

In the Netherlands, mental healthcare is delivered through regional network associations known as the GGZ. This case study is based on a collaborative design phase of a new high intensive inpatient psychiatry environment in the province of Friesland, located in the northern part of the Netherlands. High intensive inpatient psychiatry services in the province are provided across two sites; 28 beds in Leeuwarden and 17 beds in Heerenveen. Prior to the pandemic, a business healthcare management team (aag.nl) developed a plan of demands to inform the design of a newly built psychiatric hospital for the GGZ in Leeuwarden. The development plan was based on the centralization of inpatient and outpatient services. The plan detailed the needs of the GGZ staff and patients based on a detailed consultative and participatory design process.

The design and the architecture of this new psychiatric hospital, inclusive of 72 inpatient beds and an outpatient facility, is a collaborative effort consisting of GGZ Friesland staff project committee, a patient advisory committee, and an architecture firm (Adema Architecten). The collaborative design process is led by architects, designers, and a researcher who consult with service users (i.e., staff, patients, and other service providers in the treatment system) with experience using GGZ facilities. During monthly design discussions, 2-D and 3-D virtual mock-ups are interactively presented online. The design team provides a detailed overview of the design and a summary of evidence-based design decisions. Service users are invited to provide feedback through discussions, chat functions, or digital workspaces created with the software Mural. The evidence-based design approach to inform design decisions is based on interdisciplinary scientific research, which links design and environmental features to patient and staff outcomes inspired by several research studies including work by Shepley and Pasha (2017), Shepley et al. (2016), and Ulrich et al. (1991, 2018, 2020). In particular, a research focus on design interventions that prove to reduce stress and aggression and improve the psychiatric environment's safety was translated into the new design (Shepley et al., 2016; Ulrich et al., 2018). For the new design of the psychiatric environment, the project team referred to Ulrich et al.'s (2018) theory that states hospitals can be safer and more healing for patients through a range of interventions, including single-bed rooms, effective ventilation systems, a good acoustic environment, nature distractions and daylight, appropriate lighting, better ergonomic design, acuity-adaptable rooms, and improved floor layouts and work settings. Similarly, other design features such as well-integrated facilities with smaller, more home-like units, single or double bedrooms, and a wide range of communal areas combined with open nursing stations can create a good balance between private and shared space (Jovanović et al., 2019; Shepley et al., 2016). Further, the design reflects the concept of positive health, which presents a new view of health with a focus on the ability of individuals to adapt and self-manage when experiencing social, physical, and emotional challenges. The

concept has a range of indicators categorized into six domains: bodily functions, mental functions and perception, spiritual/existential, quality of life, social and societal participation (social health), and daily functioning (Huber et al., 2011; Huber et al., 2016). Positive health is embedded in the corporate structure of the GGZ and reflected several health policies, including built environment initiatives in the Netherlands (Den Broeder et al., 2017; Steensma, 2021).

*Further, the design reflects the concept of positive health, which presents a new view of health with a focus on the ability of individuals to adapt and self-manage when experiencing social, physical, and emotional challenges.*

## Findings

The therapeutic psychiatric environment in Friesland changed significantly during COVID-19. The number of patients accessing care decreased, patient autonomy was restricted, the function of designated behavioral support spaces changed to manage the risk of infection, and new forms of service provision emerged. These descriptions and reflections provide insight into how to design new psychiatric environments.

*The therapeutic psychiatric environment in Friesland changed significantly during COVID-19. The number of patients accessing care decreased, patient autonomy was restricted, the function of designated behavioral support spaces changed to manage the risk of infection, and new forms of service provision emerged.*

## Descriptions and Reflections on Inpatient Psychiatric Care

### Occupancy Rates and Critical Incidents

Compared to previous years, there were fewer admitted patients across the two psychiatric sites

during the pandemic. Fewer patients impacted the social environment, a central component of the psychiatric treatment environment. There were 26% fewer intakes, and the length of stay decreased by 21%. The psychiatrist noted that particularly patients admitted for depression decided to discharge themselves, where staying confined to a bedroom on the ward with limited nature views was not helping with the depressive symptoms. The decrease in psychiatric hospital admissions was also noted in other sites internationally (Beghi et al., 2021; Gómez-Ramiro et al., 2021; Pignon et al., 2020). Further, similar to other countries, there were fewer involuntary admissions compared to 2019 (Chen et al., 2020; Gómez-Ramiro et al., 2021). However, the number of critical incidents involving aggression increased from 80 incidents in total in 2019 to 125 in total in 2020, and as of September 2021, there were already 101 critical incidents recorded.

### *Adapting the Use of the Physical Environment to Manage Infection*

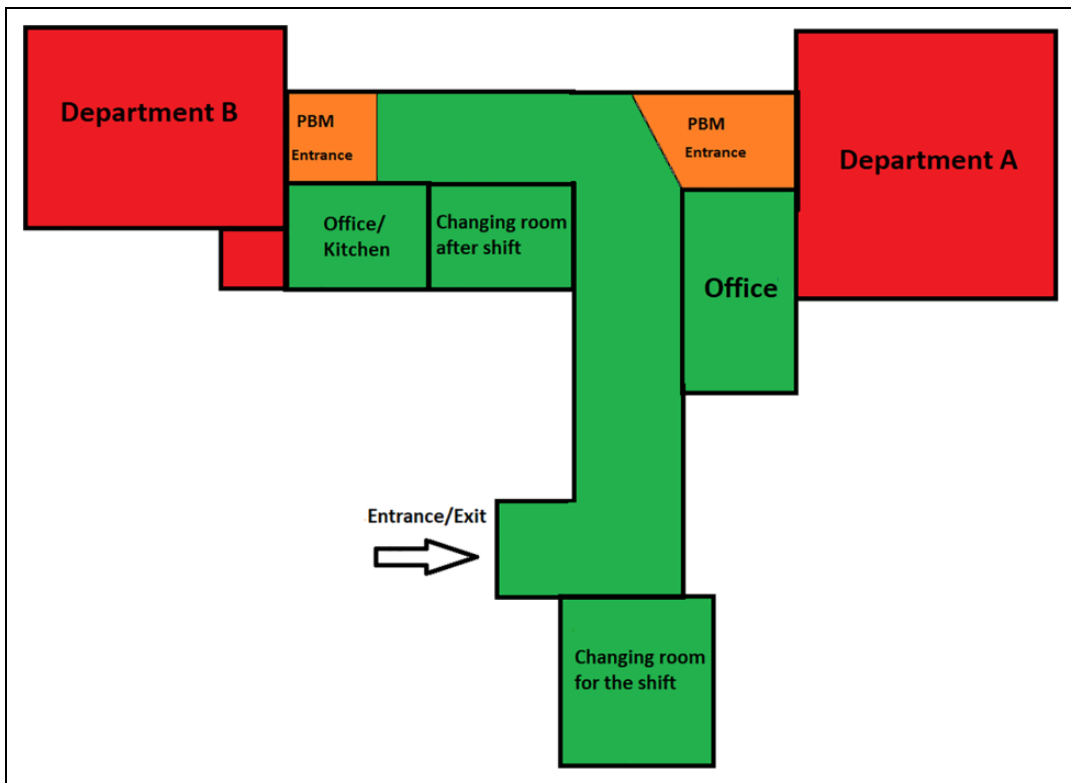
Throughout the pandemic, the physical environment was modified to control infection risk and continue patient care. To limit the risk of infection for patients and staff, alcohol-based hand-rub dispensers were installed at the entrance of the ward and flasks with alcohol-based hand-rub were placed on the ward itself in supervised locations (i.e., nurse station, speaking room). When patients arrived in the ward, they were tested in their rooms. If there was a suspected or confirmed COVID-19 infection on the ward, positive cases were transferred to one of the few isolation rooms. Isolation rooms in psychiatry usually are only used for emergencies to isolate patients who are a physical threat to themselves or others. However, where psychiatric environments are not typically designed to manage infection, these rooms were deemed the most suitable spaces to quarantine patients. Other psychiatric care studies have also described the movement of positive cases to isolation units (Kreuzer et al., 2020). The use of these rooms was modified by keeping the doors open and allowing patients with space to move around. In circumstances where patients would refuse testing or wear masks, they were

also transferred to the isolation environment during the 5-days incubation period of the virus. There are a limited number of isolation rooms. As the infection rates intensified, additional rooms were designated in the ward to manage confirmed or suspected infections.

The physical environment was further modified by adding a “lock” (i.e., a section bounded by two doors), making it possible to create an isolated environment for up to three patients. As seen in Figure 2, preventative zones (e.g., the orange zones) were created to minimize the risk of staff bringing COVID-19 to the ward. To manage the risk of infection, staff came on to the ward through the preventative zone, where they could change into protective clothing for their shift and then after their shift. There was a separate space designated to change out of protective clothing. However, wearing personal protective equipment (PPE) at times (i.e., during a violent escalation on the ward) made it unsafe for staff, especially when administering mandatory intramuscular injection medication. In some cases, staff took a risk and did not wear all the PPE, for instance, aprons. Therefore, as the pandemic continued, the purpose of preventative zoning was used less often.

### *Impact on Patient Autonomy and Therapeutic Encounters*

Due to the high risk of infection, no visitors was permitted on the ward, which impacted the social component of the therapeutic landscape of the psychiatric ward. Further, patient autonomy and interaction were restricted, with most patients confined to their rooms with meals and medication delivered by the nurses. Changing this level of interaction impacted the therapeutic environment, where patients are typically encouraged to leave their rooms, go to the nursing station for medication, and eat together in a communal setting. Further, to limit cross-contamination, patients were kept separate from one another at all times, and patient autonomy was entirely dependent on nurses who had to escort individual patients to the toilet, shower, and smoking breaks. The nurses relocated the nursing station to better respond to patients' requests (e.g., a table). They placed it outside the patient rooms allowing for



**Figure 2.** Preventative zoning and staff routing map.

better patient observation and to keep up with patients' requests. This make-shift nursing station was not ideal for the patients or the staff. There were also fewer therapeutic activities both on-site and outside the hospital. Due to the restrictions, doing a trial home visit was not possible, which was typical for patients near the end of their treatment. In the later months, it was decided to allow the patients more autonomy to move around the ward independently and interact with one another.

### *Digital Transformation of Service Provision*

Similar to most work environments throughout the pandemic, when possible, GGZ staff were encouraged to work from home as much as possible, replacing in-person meetings with video and telemedicine devices (Lyne et al., 2020; Naarding et al., 2020). Patients could use their phones and devices to stay virtually in contact

with friends and family. Similar to other studies, before COVID-19, telecommunication and telepsychiatry were not typical in psychiatric wards (Khanna & Forbes, 2020). However, the use of technology during the pandemic enhanced the otherwise restricted therapeutic environment. As the pandemic prolonged, video conferencing was used more often for patient care and decision making. In Friesland, this digital transformation started with laptops and video conferencing for the psychiatrist, who was in quarantine, to communicate with a patient in seclusion. The video allowed the psychiatrist to assess patients remotely. As the pandemic prolonged, video conferencing made the clinical practice more efficient for some professionals, but it was not as effective for speakerphone conversations.

Similarly, as noted in other psychiatric contexts (Kennedy et al., 2020), patient court hearings took place by speakerphone, not video. For many months, communication with the patient,

their lawyers, judges, and the psychiatrist was restricted through this type of media. Not having a visual of the patient made it challenging to make clinical decisions. These situations improved with a video conferencing system. The video conferencing system Teams was introduced by the GGZ. Portable Teams screens and designated conference rooms with Teams installed changed and enhanced the therapeutic environment during the pandemic—this digital environment allowed for meetings with the patients and health professionals. Further, two rooms were designated for Teams communication.

Most notable was the role Teams played in supporting the work of the function assertive community treatment (FACT) team. FACT teams are a part of the GGZ psychiatry model. FACT is the Dutch evolved version of the assertive community team model and is an interdisciplinary, individual-based case management approach to providing a continuity of care to patients with serve mental illness who live in the community but have histories being admitted for inpatient psychiatric care (Drukker et al., 2008). In Friesland, the FACT team works across the province and in rural and remote locations. Like other sites globally, the FACT team had to adapt and modify their case management in response to COVID-19 restrictions (Couser et al., 2021; Guan et al., 2021; Law et al., 2021). The digital platform of Teams allowed the FACT team to have frequent contact with the hospital staff and saved time on travel. The adaption of the environment and the use of Teams will likely continue in the practice where video conferencing saves travel time for staff outside the ward and is seen as an effective way to make remote decision making in psychiatric care (Best & Ingram, 2020; Ingram & Best, 2020).

### **Preliminary Design of New Psychiatric Environment**

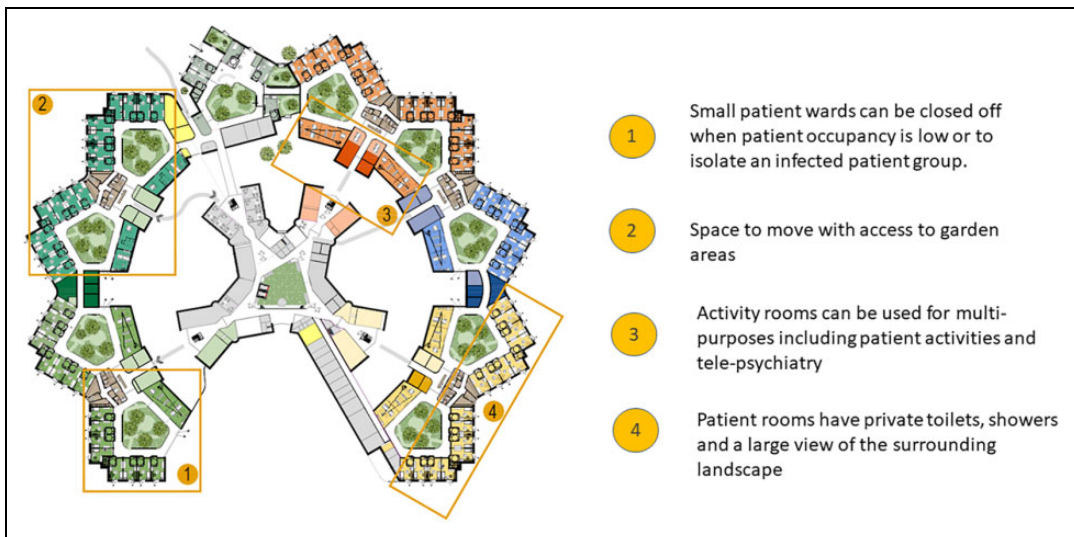
A project team from the GGZ and the architecture team met biweekly, online to make collaborative design decisions throughout the pandemic. These design decisions were based on different levels of experience, plan of demands, research, best practices, and clinical expertise. Participating in these

discussions during the pandemic provided an opportunity to reflect and ensure that the new design would provide continuity of care during a pandemic such as COVID-19. For instance, the current environments are based on a corridor-based floor plan, and patients share toilets and showers and have limited access to garden areas. As described in the descriptions above, the current environment made it difficult to continue care during the pandemic, which impacted patient treatment. As seen in Figure 3, the new design would better support patient well-being, autonomy, and a continuation of care in circumstances of a pandemic similar to COVID-19. The preliminary design is adaptable based on a centralized ward layout with patient rooms organized around a central area with access to unlocked garden areas (Ulrich et al., 2018, 2020). The new layout reduces patient crowding through single-patient rooms (Figure 4) with private showers and toilets and views of outdoor environments (i.e., green landscapes). Even as patients would be restricted to the ward, the new design allows patients to walk around the garden area, access the gardens, and have garden views, which are considered a positive distraction to reduce patient stress (Ulrich et al., 2018). Further, the adaptive design and flexible layout allow the hospital administrator to adapt the use of the site based on patient or operational needs. This design is especially relevant to psychiatric care, where it is expected that inpatient psychiatry will advance over time primarily through the use of technology. Therefore, when the patient occupancy rates are low on one ward, the new design allows patients to relocate to another ward allowing for more flexible capacity, including staffing efficiency.

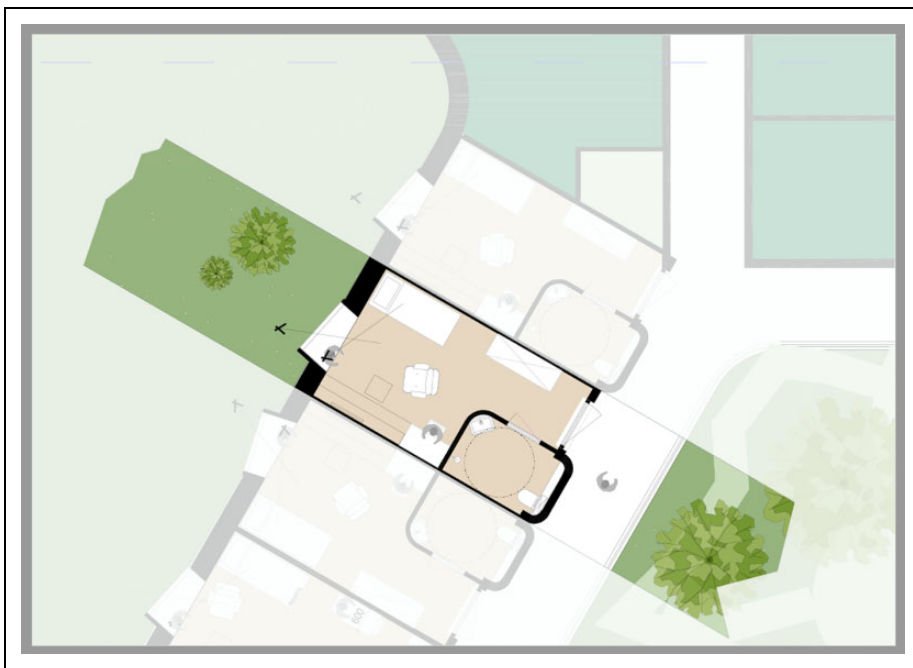
### **Discussion**

The COVID-19 pandemic impacted and halted healthcare systems worldwide. COVID measures had a noticeable impact on the relational dynamics of psychiatric wards, including a lack of activities and visitors, which others have identified as an essential aspect of the therapeutic landscape related to well-being (Duff, 2012; Moon et al., 2016). In general, there is limited research on how the COVID-19 pandemic impacted the inpatient





**Figure 3.** Preliminary design of a new psychiatric environment (illustrated by Gerben van der Heide, Adema Architecten).



**Figure 4.** Preliminary design of a patient room (illustrated by Gerben van der Heide, Adema Architecten).

psychiatry environment (Baumgart et al., 2021). This case study contributes to this emerging area of research by detailing how the inpatient psychiatric environment was restructured in Friesland, the Netherlands, to manage the infection and continue

to provide clinical support. The reflections made in this study are similar to other international psychiatric studies that noted that psychiatric services became more flexible and practical to respond to COVID-19 (Barry et al., 2020). Even more,

reflecting on the modifications to the built and social environment made during the pandemic provides an opportunity to design psychiatric environments for future pandemics or other demands for healthcare (Honey-Rosés et al., 2020; Shepley et al., 2021). Adaptive, flexible design strategies for hospitals and designing for unknown functions is not commonly researched (Pilosof, 2021). Based on this case study and similar to other studies, future research should explore how the built environment can respond to future functions and changes in the delivery of healthcare. The flexible layout of the preliminary design, based on theories, would have been useful during the pandemic to mitigate the risk of transmission, especially when staff availability was at times limited. The organization of the preliminary design would allow for other types of healthcare services to be easily set up in this environment, such as geriatric care, or use the site for a different purpose, such as long-term supportive housing.

As described in this study, the COVID-19 pandemic presented challenges to keep patients and staff safe from infection and provide a therapeutic environment. Prior to the pandemic, providing a healing and safe environment for patients was already said to be challenging when designing psychiatric wards (Lundin, 2021). Therefore, designing a new psychiatric hospital during COVID-19 allowed to translate tacit knowledge to be reflected in the design. Despite the nuance of COVID-19, earlier theories, such as Florence Nightingale's environmental theory, relate to designing hospitals that remain relevant in light of the pandemic (Fernandes & Silva, 2020; Gilbert, 2020). As the theory states, all hospitals should have pure air, pure water, efficient drainage, cleanliness, and light. Further, other theories, such as the stress reduction theory, note that a healing environment should have adequate ventilation systems, nature distractions and daylight, adaptable rooms, and improved floor layouts (Ulrich, 1991; Ulrich et al., 1991, 2018). Not only are these theories foundational for providing quality care and reducing patient and staff stress, but these theories can also be related to designing

renovating care environments to manage infections, such as COVID-19 and continuing care.

This article attempts to link clinical reflections to the concept of therapeutic landscapes by reflecting on how the therapeutic landscape, including describing how the setting, locales, and milieus, changed in response to COVID-19. A focus on place and space provides contextual insight into how an environment was used and modified to mitigate the risk of infection. As described, patients' well-being was impacted when their level of autonomy was restricted with minimal social interaction or engagement with blue and green landscapes. However, this study describes a new milieu in the therapeutic landscape. During this time, a digital landscape emerged and supported the continuity of patient care/and therapeutic landscape. This new therapeutic landscape, created with the Teams environment, created a health-enabling, digital environment (i.e., telepsychiatry) that appears to contribute to the therapeutic environment positively. Unlike the blue or green landscapes, which are nature-based, the digital landscape is a virtual landscape, which allows patients to engage in another dimension of "place," care, connection, and healing. According to other research, most patients were satisfied with the digital remote care and assessment format during the pandemic (Li et al., 2021; Soron et al., 2020). However, this type of landscape that will promote patient autonomy on a longer term basis has not been explored (Columb et al., 2020; Sasangohar et al., 2020). Concerning psychiatric therapeutic landscapes, digital landscapes should be explored to understand how patient healing works in these digital places.

*Concerning psychiatric therapeutic landscapes, digital landscapes should be explored to understand how patient healing works in these digital places.*

### **Strengths and Limitations**

The strength of this case study is the transdisciplinary approach to design during the COVID-19 pandemic. Architecture, geography, and

psychiatry are vastly different disciplines yet, and they have a common interest in the interaction of people with their environment and are often related to cultural and societal trends (Shorter, 2008). Despite these similarities, the health perspectives of geographers, architects, and psychiatrists are rarely reflected in the design phase of healthcare architecture. However, the knowledge between these disciplines has long been implicit in hospital design. For instance, Nightingale's early work emphasized the importance of considering the individual (the patient) in the interaction with the environment (geography) to design environments (architecture) that support the best possible conditions for healing to occur. A transdisciplinary approach provides a unique perspective for designing healthcare, which can guide design decisions and reflect the direct experiences of patients and staff who use the facilities (Pink et al., 2020; Shepley et al., 2016). This transdisciplinary approach provides an opportunity to link credible research across disciplines, enriching the design and creating indicators for the best possible outcomes to support evidence-based design.

*This transdisciplinary approach provides an opportunity to link credible research across disciplines, enriching the design and creating indicators for the best possible outcomes to support evidence-based design.*

Similar to other COVID-19 studies (Couser et al., 2021; Guan et al., 2021; Law et al., 2021), this article is not based on empirical data. This study is theoretical and reflective based on clinical reflections over the past 18 months. Moreover, the descriptions in this study do not include the perspective of the staff or patients who were in these environments during different phases of the pandemic. Further, this study does not evaluate the impact of collaboration on pre-design. Like Jouppila (2021), future research should systematically explore and evaluate the collaborative participation of this project to provide a more detailed impression of how their impression of the clinical environment changed during

the pandemic and how new healthcare environments can be designed to be more responsive.

## Conclusion

Psychiatric environments are often designed based on safety and protection from self-harm without a dedicated focus on infection control. During the pandemic, the psychiatric environment in Friesland was restructured to ensure the continuity of care for patients and limit the number of COVID-19 infections. This transdisciplinary study describes some of these modifications made to the environment. Based on these reflections, design discussions, and an integrated theoretical approach to design, a preliminary design of a new psychiatric environment is presented. This study suggests that COVID-19 provided an opportunity to reflect on how psychiatric environment are built to be more adaptable to manage infection and continue care. The science remains unclear how long the pandemic will last or the long-term impact on physical and mental health. Designing environments informed by theory to create hospital environments to more healing and safe, and meanwhile reflecting on knowledge created during the pandemic, will allow for therapeutic environments to be designed to adapt to new service needs and better respond to further healthcare crises.

*Designing environments informed by theory to create hospital environments to more healing and safe, and meanwhile reflecting on knowledge created during the pandemic, will allow for therapeutic environments to be designed to adapt to new service needs and better respond to further healthcare crises.*

## Implications for Practice

The inpatient psychiatric environment was restructured at GGZ Friesland in the Netherlands to manage the infection and continue to provide clinical support.

- An interprofessional study provides both theoretical reflection and clinical reflections into the inpatient psychiatric care environment.
- A digital landscape supports the continuity of patient care/and therapeutic landscape of a psychiatric environment.
- Design decisions were based on different levels of experience, plan of demands, research, best practices, and clinical reflections and descriptions.

Reflecting on the modifications to the built and social environment made during the pandemic provides an opportunity to design psychiatric environments for future pandemics or other demands for healthcare.

### Acknowledgments

The authors would like to acknowledge the project team (GGZ Friesland and Adema Architecten) for the collaboration that inspired this article. Also, we would like to acknowledge Marie Elf for insightful feedback and suggestions on an early draft of this manuscript.

### Declaration of Conflicting Interests

The author(s) declared no potential conflicts of interest with respect to the research, authorship, and/or publication of this article.

### Funding

The author(s) disclosed receipt of the following financial support for the research and/or authorship of this article: The writing of this article was funded by Adema Architecten.

### ORCID iD

Jodi Sturge, PhD  <https://orcid.org/0000-0002-7598-1558>

### References

- Angelino, A. F., Lyketsos, C. G., Ahmed, M. S., Potash, J. B., & Cullen, B. A. (2020). Design and implementation of a regional inpatient psychiatry unit for patients who are positive for asymptomatic SARS-CoV-2. *Psychosomatics*. <https://doi.org/10.1016/j.psych.2020.06.018>
- Barry, H., Doherty, A. M., Clancy, M., Moore, S., & MacHale, S. (2020). Lockdown logistics in consultation-liaison psychiatry. *Irish Journal of Psychological Medicine*, 104: 1–9.
- Baumgart, J. G., Kane, H., El-Hage, W., Deloyer, J., Maes, C., Lebas, M. C., Marazziti, D., Thome, J., Fond-Harmant, L., & Denis, F. (2021). The Early impacts of the covid-19 pandemic on mental health facilities and psychiatric professionals. *International Journal of Environmental Research and Public Health*, 18(15), 8034. <https://doi.org/10.3390/ijerph18158034>
- Beghi, M., Brandolini, R., Casolaro, I., Beghi, E., Cornaggia, C. M., Fraticelli, C., de Paoli, G., Ravani, C., Castelpietra, G., & Ferrari, S. (2021). Effects of lockdown on emergency room admissions for psychiatric evaluation: An observational study from the AUSL Romagna, Italy. *International Journal of Psychiatry in Clinical Practice*. <https://doi.org/10.1080/13651501.2020.1859120>
- Bell, S. L., Foley, R., Houghton, F., Maddrell, A., & Williams, A. M. (2018). From therapeutic landscapes to healthy spaces, places and practices: A scoping review. *Social Science and Medicine*. <https://doi.org/10.1016/j.socscimed.2017.11.035>
- Bell, S. L., Phoenix, C., Lovell, R., & Wheeler, B. W. (2014). Green space, health and well-being: Making space for individual agency. *Health and Place*. <https://doi.org/10.1016/j.healthplace.2014.10.005>
- Bell, S. L., Wheeler, B. W., & Phoenix, C. (2017). Using geonarratives to explore the diverse temporalities of therapeutic landscapes: Perspectives from “Green” and “Blue” settings. *Annals of the American Association of Geographers*. <https://doi.org/10.1080/24694452.2016.1218269>
- Best, K., & Ingram, D. H. (2020). Five months later: The psychodynamic psychiatrist and psychiatric care in the Era of COVID-19. *Psychodynamic Psychiatry*. <https://doi.org/10.1521/pdps.2020.48.4.363>
- Brewster, L. (2014). The public library as therapeutic landscape: A qualitative case study. *Health and Place*. <https://doi.org/10.1016/j.healthplace.2013.12.015>
- Butterfield, A., & Martin, D. (2016). Affective sanctuaries: Understanding Maggie’s as therapeutic landscapes. *Landscape Research*. <https://doi.org/10.1080/01426397.2016.1197386>
- Chen, S., Jones, P. B., Underwood, B. R., Moore, A., Bullmore, E. T., Banerjee, S., Osimo, E. F., Deakin, J. B., Hatfield, C. F., Thompson, F. J., Artingstall, J. D., Slann, M. P., Lewis, J. R., & Cardinal, R. N.

- (2020). The early impact of COVID-19 on mental health and community physical health services and their patients' mortality in Cambridgeshire and Peterborough, UK. *Journal of Psychiatric Research*. <https://doi.org/10.1016/j.jpsychires.2020.09.020>
- Chrysikou, E. (2014). *Architecture for psychiatric environments and therapeutic spaces*. Ios Press.
- Chrysikou, E. (2019). Psychiatric institutions and the physical environment: Combining medical architecture methodologies and architectural morphology to increase our understanding. *Journal of Healthcare Engineering*. 2019. <https://doi.org/10.1155/2019/4076259>
- Columb, D., Hussain, R., & O'Gara, C. (2020). Addiction psychiatry and COVID-19: Impact on patients and service provision. *Irish Journal of Psychological Medicine*. <https://doi.org/10.1017/ipm.2020.47>
- Couser, G. P., Taylor-Desir, M., Lewis, S., & Griesbach, T. J. (2021). Further adaptations and reflections by an assertive community treatment team to serve clients with severe mental illness during COVID-19. *Community Mental Health Journal*. <https://doi.org/10.1007/s10597-021-00860-3>
- Curtis, S. E., Diez-Roux, A. v., & Macintyre, S. (2007). Understanding and representing "place" in health research: A relational approach. *Social Science & Medicine*, 65(9), 1825–1838. <https://doi.org/10.1016/j.socscimed.2007.05.036>
- Curtis, S. E., Gesler, W., Fabian, K., Francis, S., & Priebe, S. (2007). Therapeutic landscapes in hospital design: A qualitative assessment by staff and service users of the design of a new mental health in-patient unit. *Environment and Planning C: Government and Policy*. <https://doi.org/10.1068/c1312r>
- Curtis, S. E., Gesler, W., Wood, V., Spencer, I., Mason, J., Close, H., & Reilly, J. (2013). Compassionate containment? Balancing technical safety and therapy in the design of psychiatric wards. *Social Science and Medicine*. <https://doi.org/10.1016/j.socscimed.2013.06.015>
- den Broeder, L., Uiters, E., Hofland, A., Wagemakers, A., & Schuit, A. J. (2017). Local professionals' perceptions of health assets in a low-SES Dutch neighbourhood: A qualitative study. *BMC Public Health*. <https://doi.org/10.1186/s12889-017-4555-6>
- Dinmohamed, A. G., Visser, O., Verhoeven, R. H. A., Louwman, M. W. J., van Nederveen, F. H., Willems, S. M., Merckx, M. A. W., Lemmens, V. E. P. P., Nagtegaal, I. D., & Siesling, S. (2020). Fewer cancer diagnoses during the COVID-19 epidemic in the Netherlands. *The Lancet Oncology*. [https://doi.org/10.1016/S1470-2045\(20\)30265-5](https://doi.org/10.1016/S1470-2045(20)30265-5)
- Drukker, M., Maarschalkerweerd, M., Bak, M., Driessen, G., à Campo, J., de Bie, A., Poddighe, G., van Os, J., & Delespaul, P. (2008). A real-life observational study of the effectiveness of FACT in a Dutch mental health region. *BMC Psychiatry*. <https://doi.org/10.1186/1471-244X-8-93>
- Duff, C. (2012). Exploring the role of "enabling places" in promoting recovery from mental illness: A qualitative test of a relational model. *Health and Place*. <https://doi.org/10.1016/j.healthplace.2012.07.003>
- Fahed, M., Barron, G. C., & Steffens, D. C. (2020). Ethical and logistical considerations of caring for older adults on inpatient psychiatry during the COVID-19 pandemic. *American Journal of Geriatric Psychiatry*. <https://doi.org/10.1016/j.jagp.2020.04.027>
- Fernandes, A. G. O., & Silva, T. de C. R. da. (2020). War against the COVID-19 pandemic: Reflection in light of Florence Nightingale's nursing theory. *Revista Brasileira de Enfermagem*. <https://doi.org/10.1590/0034-7167-2020-0371>
- Frandsen, A. K., Gottlieb, S. C., & Harty, C. (2012). Spatial configurations of healthcare practices. In N. Thurairajah (Ed.), *Proceedings of the Joint CIB International Conference: Management of Construction: Research to Practice*. Birmingham School of the Built Environment, Birmingham City University (CIB Proceedings, Vol. 1).
- Gesler, W. M. (1992). Therapeutic landscapes: Medical issues in light of the new cultural geography. *Social Science and Medicine*. [https://doi.org/10.1016/0277-9536\(92\)90360-3](https://doi.org/10.1016/0277-9536(92)90360-3)
- Gesler, W. M., Bell, M., Curtis, S., Hubbard, P., & Francis, S. (2004). Therapy by design: Evaluating the UK hospital building program. *Health and Place*. [https://doi.org/10.1016/S1353-8292\(03\)00052-2](https://doi.org/10.1016/S1353-8292(03)00052-2)
- Gilbert, H. A. (2020). Florence nightingale's environmental theory and its influence on contemporary infection control. *Collegian*. <https://doi.org/10.1016/j.colegn.2020.09.006>
- Gómez-Ramiro, M., Fico, G., Anmella, G., Vázquez, M., Sagué-Vilavella, M., Hidalgo-Mazzei, D., Pacchiarotti, I., Garriga, M., Murru, A., Parellada,

- E., & Vieta, E. (2021). Changing trends in psychiatric emergency service admissions during the COVID-19 outbreak: Report from a worldwide epicentre. *Journal of Affective Disorders*. <https://doi.org/10.1016/j.jad.2020.12.057>
- Guan, I., Kirwan, N., Beder, M., Levy, M., & Law, S. (2021). Adaptations and innovations to minimize service disruption for patients with severe mental illness during COVID-19: Perspectives and reflections from an assertive community psychiatry program. *Community Mental Health Journal*. <https://doi.org/10.1007/s10597-020-00710-8>
- Hernández-Calle, D., Martínez-Alés, G., Mediavilla, R., Aguirre, P., Rodríguez-Vega, B., & Bravo-Ortiz, M. F. (2020). Trends in psychiatric emergency department visits due to suicidal ideation and suicide attempts during the COVID-19 Pandemic in Madrid, Spain. *The Journal of Clinical Psychiatry*. <https://doi.org/10.4088/JCP.20113419>
- Honey-Rosés, J., Anguelovski, I., Chireh, V. K., Daher, C., van den Bosch, C. K., Litt, J., Mawani, V., McCall, M. K., Orellana, A., Oscilowicz, E., Sánchez-Sepúlveda, H. U., Senbel, M., Tan, X., Villagomez, E., Zapata, O., & Nieuwenhuijsen, M. J. (2020). The Impact of COVID-19 on public space: An early review of the emerging questions—design, perceptions and inequities. *Cities & Health*, 1–17.
- Huber, M., André Knottnerus, J., Green, L., van der Horst, H., Jadad, A. R., Kromhout, D., Leonard, B., Lorig, K., Loureiro, M. I., van der Meer, J. W. M., Schnabel, P., Smith, R., van Weel, C., & Smid, H. (2011). How should we define health? *BMJ (Online)*, 343(7817), 1–3. <https://doi.org/10.1136/bmj.d4163>
- Huber, M., van Vliet, M., Giezenberg, M., Winkens, B., Heerkens, Y., Dagnelie, P. C., & Knottnerus, J. A. (2016). Towards a “patient-centred” operationalisation of the new dynamic concept of health: A mixed methods study. *BMJ Open*. <https://doi.org/10.1136/bmjopen-2015-010091>
- Ingram, D. H., & Best, K. (2020). The Psychodynamic psychiatrist and psychiatric care in the era of COVID-19. *Psychodynamic Psychiatry*. <https://doi.org/10.1521/PDPS.2020.48.3.234>
- Jouppila, T. (2021). Staff participation in design with multiple tools: Impact on design and POE results. *Health Environments Research & Design Journal*, 1937586721. <https://doi.org/10.1177/19375867211060734>
- Jovanović, N., Campbell, J., & Priebe, S. (2019). How to design psychiatric facilities to foster positive social interaction—A systematic review. *European Psychiatry*. <https://doi.org/10.1016/j.eurpsy.2019.04.005>
- Kennedy, H. G., Mohan, D., & Davoren, M. (2020). Forensic psychiatry and Covid-19: Accelerating transformation in forensic psychiatry. *Irish Journal of Psychological Medicine*, 38(2), 145–153.
- Khanna, R., & Forbes, M. (2020). Telepsychiatry as a public health imperative: Slowing COVID-19. *Australian and New Zealand Journal of Psychiatry*. <https://doi.org/10.1177/0004867420924480>
- Knowles, M., Aref-Adib, G., Moslehi, S., Aubrey-Jones, D., Obeney-Williams, J., Leveson, S., Galis, A., & Pitman, A. (2020). Containing COVID: The establishment and management of a COVID-19 ward in an adult psychiatric hospital. *BJPsych Open*. <https://doi.org/10.1192/bjo.2020.126>
- Kreuzer, P. M., Baghai, T. C., Rupprecht, R., Wittmann, M., Steffling, D., Ziereis, M., Zowe, M., Hausner, H., & Langguth, B. (2020). SARS-CoV-2 risk management in clinical psychiatry: A few considerations on how to deal with an unrivaled threat. *Frontiers in Psychiatry*. <https://doi.org/10.3389/fpsy.2020.00550>
- Law, S., Guan, I., Beder, M., Ritts, M., Sediqzadah, S., Levy, M., & Kirwan, N. (2021). Further adaptations and reflections by an assertive community treatment team to serve clients with severe mental illness during COVID-19. *Community Mental Health Journal*. <https://doi.org/10.1007/s10597-021-00855-0>
- Li, H., Glecia, A., Kent-Wilkinson, A., Leidl, D., Kleib, M., & Risling, T. (2021). Transition of mental health service delivery to telepsychiatry in response to COVID-19: A literature review. *Psychiatric Quarterly*. <https://doi.org/10.1007/s11126-021-09926-7>
- Liddicoat, S., Badcock, P., & Killackey, E. (2020). Principles for designing the built environment of mental health services. *The Lancet Psychiatry*, 7(10), 915–920.
- Lundin, S. (2021). Can Healing Architecture Increase Safety in the Design of Psychiatric Wards? *Health Environments Research and Design Journal*. <https://doi.org/10.1177/1937586720971814>
- Lyne, J., Roche, E., Kamali, M., & Feeney, L. (2020). COVID-19 from the perspective of urban and rural

- general adult mental health services. *Irish Journal of Psychological Medicine*. <https://doi.org/10.1017/ipm.2020.62>
- Molin, J., Strömbäck, M., Lundström, M., & Lindgren, B. M. (2021). It's not just in the walls: Patient and staff experiences of a new spatial design for psychiatric inpatient care. *Issues in Mental Health Nursing*. <https://doi.org/10.1080/01612840.2021.1931585>
- Moon, G., Kearns, R., & Joseph, A. (2016). The afterlives of the psychiatric asylum: Recycling concepts, sites and memories. *The Afterlives of the Psychiatric Asylum: Recycling Concepts, Sites and Memories*. <https://doi.org/10.4324/9781315612317>
- Naarding, P., Oude Voshaar, R. C., & Marijnissen, R. M. (2020). COVID-19: Clinical challenges in Dutch geriatric psychiatry. *American Journal of Geriatric Psychiatry*. <https://doi.org/10.1016/j.jagp.2020.05.019>
- Oostermeijer, S., Brasier, C., Harvey, C., Hamilton, B., Roper, C., Martel, A., Fletcher, J., & Brophy, L. (2021). Design features that reduce the use of seclusion and restraint in mental health facilities: A rapid systematic review. *BMJ Open*, *11*(7), e046647.
- Papoulias, C., Csipke, E., Rose, D., McKellar, S., & Wykes, T. (2014). The psychiatric ward as a therapeutic space: Systematic review. *British Journal of Psychiatry*. <https://doi.org/10.1192/bjp.bp.114.144873>
- Pignon, B., Gourevitch, R., Tebeka, S., Dubertret, C., Cardot, H., Dauriac-Le Masson, V., Trebalag, A. K., Barruel, D., Yon, L., Hemery, F., Loric, M., Rabu, C., Pelissolo, A., Leboyer, M., Schürhoff, F., & Pham-Scottetz, A. (2020). Dramatic reduction of psychiatric emergency consultations during lockdown linked to COVID-19 in Paris and suburbs. *Psychiatry and Clinical Neurosciences*. <https://doi.org/10.1111/pcn.13104>
- Pilosof, N. P. (2021). Building for change: Comparative case study of hospital architecture. *Health Environments Research and Design Journal*. <https://doi.org/10.1177/1937586720927026>
- Pink, S., Duque, M., Sumartojo, S., & Vaughan, L. (2020). Making spaces for staff breaks: A design anthropology approach. *Health Environments Research & Design Journal*, *13*(2), 243–255.
- Russ, M. J., Sisti, D., & Wilner, P. J. (2020). When patients refuse COVID-19 testing, quarantine, and social distancing in in-patient psychiatry: Clinical and ethical challenges. *Journal of Medical Ethics*. <https://doi.org/10.1136/medethics-2020-106613>
- Sasangohar, F., Bradshaw, M. R., Carlson, M. M., Flack, J. N., Fowler, J. C., Freeland, D., Head, J., Marder, K., Orme, W., Weinstein, B., Kolman, J. M., Kash, B., & Madan, A. (2020). Adapting an outpatient psychiatric clinic to telehealth during the COVID-19 pandemic: A practice perspective. *Journal of Medical Internet Research*. <https://doi.org/10.2196/22523>
- Seppänen, A., Törmänen, I., Shaw, C., & Kennedy, H. (2018). Modern forensic psychiatric hospital design: Clinical, legal and structural aspects. *International Journal of Mental Health Systems*, *12*(1), 1–12.
- Shepley, M. M., Kolakowski, H., Ziebarth, N. I. C. O. L. A. S., & Valenzuela-Mendoza, E. (2021). How COVID-19 will change health, hospitality and senior facility design. *Frontiers in Built Environment*, *7*: 10–10.
- Shepley, M. M., & Pasha, S. (2017). *Design for mental and behavioral health*. Routledge.
- Shepley, M. M., Watson, A., Pitts, F., Garrity, A., Spelman, E., Kelkar, J., & Fronsman, A. (2016). Mental and behavioral health environments: Critical considerations for facility design. *General Hospital Psychiatry*, *42*, 15–21.
- Shorter, E. (2008). History of psychiatry. *Current Opinion in Psychiatry*. <https://doi.org/10.1097/YCO.0b013e32830aba12>
- Simonsen, T. P., & Duff, C. (2020). Healing architecture and psychiatric practice: (Re)Ordering work and space in an in-patient ward in Denmark. *Sociology of Health and Illness*. <https://doi.org/10.1111/1467-9566.13011>
- Simonsen, T. P., & Duff, C. (2021). Mutual visibility and interaction: Staff reactions to the 'healing architecture of psychiatric in-patient wards in Denmark. *BioSocieties*. <https://doi.org/10.1057/s41292-020-00195-4>
- Simonsen, T. P., Sturge, J., & Duff, C. (2022). Healing architecture in healthcare: A scoping review. *Health Environments Research & Design Journal*, *19375867211072513*. <https://doi.org/10.1177/19375867211072513>
- Soron, T. R., Shariful Islam, S. M., Ahmed, H. U., & Ahmed, S. I. (2020). The Hope and hype of telepsychiatry during the COVID-19 pandemic. *The*

- Lancet Psychiatry*. [https://doi.org/10.1016/S2215-0366\(20\)30260-1](https://doi.org/10.1016/S2215-0366(20)30260-1)
- Steensma, H. T. (2021). *Smart sustainable cities—A handbook for applied research. Healthy Urban Living* (pp. 165–183). Utrecht, HU University of Applied Sciences.
- Ulrich, R. S. (1991). Effects of interior design on wellness: Theory and recent scientific research. *Journal of health care interior design: Proceedings from the . . . Symposium on Health Care Interior Design*. Symposium on Health Care Interior Design.
- Ulrich, R. S., Bogren, L., Gardiner, S. K., & Lundin, S. (2018). Psychiatric ward design can reduce aggressive behavior. *Journal of Environmental Psychology*. <https://doi.org/10.1016/j.jenvp.2018.05.002>
- Ulrich, R. S., Cordoza, M., Gardiner, S. K., Manulik, B. J., Fitzpatrick, P. S., Hazen, T. M., & Perkins, R. S. (2020). ICU patient family stress recovery during breaks in a hospital garden and indoor environments. *Health Environments Research and Design Journal*. <https://doi.org/10.1177/1937586719867157>
- Ulrich, R. S., Simons, R. F., Losito, B. D., Fiorito, E., Miles, M. A., & Zelson, M. (1991). Stress recovery during exposure to natural and urban environments. *Journal of Environmental Psychology*. [https://doi.org/10.1016/S0272-4944\(05\)80184-7](https://doi.org/10.1016/S0272-4944(05)80184-7)
- Wasser, L. M., Weill, Y., Brosh, K., Magal, I., Potter, M., Strassman, I., Gelman, E., Koslowsky, M., Zadok, D., & Hanhart, J. (2020). The Impact of COVID-19 on intravitreal injection compliance. *SN Comprehensive Clinical Medicine*. <https://doi.org/10.1007/s42399-020-00614-4>
- Wood, V. J., Curtis, S. E., Gesler, W., Spencer, I. H., Close, H. J., Mason, J. M., & Reilly, J. G. (2013). Spaces for smoking in a psychiatric hospital: Social capital, resistance to control, and significance for “therapeutic landscapes.” *Social Science and Medicine*. <https://doi.org/10.1016/j.socscimed.2013.08.009>
- Wood, V. J., Gesler, W., Curtis, S. E., Spencer, I. H., Close, H. J., Mason, J., & Reilly, J. G. (2015). “Therapeutic landscapes” and the importance of nostalgia, solastalgia, salvage and abandonment for psychiatric hospital design. *Health and Place*. <https://doi.org/10.1016/j.healthplace.2015.02.010>
- Zhou, F., Yu, T., Du, R., Fan, G., Liu, Y., Liu, Z., Xiang, J., Wang, Y., Song, B., Gu, X., Guan, L., Wei, Y., Li, H., Wu, X., Xu, J., Tu, S., Zhang, Y., Chen, H., & Cao, B. (2020). Clinical course and risk factors for mortality of adult in-patients with COVID-19 in Wuhan, China: A retrospective cohort study. *The Lancet*, 395(10229), 1054–1062. [https://doi.org/10.1016/S0140-6736\(20\)30566-3](https://doi.org/10.1016/S0140-6736(20)30566-3)