

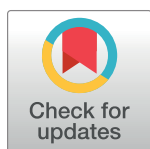
RESEARCH ARTICLE

# The role of fibroblast growth factor signalling in *Echinococcus multilocularis* development and host-parasite interaction

Sabine Förster<sup>1</sup>, Uriel Koziol<sup>1,2</sup>, Tina Schäfer<sup>1</sup>, Raphael Duvoisin<sup>1</sup>, Katia Cailliau<sup>3</sup>, Mathieu Vanderstraete<sup>4</sup>, Colette Dissous<sup>4</sup>, Klaus Brehm<sup>1\*</sup>

**1** University of Würzburg, Institute of Hygiene and Microbiology, Würzburg, Germany, **2** Universidad de la República, Facultad de Ciencias, Sección Biología Celular, Montevideo, Uruguay, **3** CNRS UMR 8576, University of Lille, Villeneuve d'Asq, France, **4** Center for Infection and Immunology of Lille, Inserm U1019, CNRS-UMR 8204, University of Lille, Lille, France

\* [kbrehm@hygiene.uni-wuerzburg.de](mailto:kbrehm@hygiene.uni-wuerzburg.de)



**OPEN ACCESS**

**Citation:** Förster S, Koziol U, Schäfer T, Duvoisin R, Cailliau K, Vanderstraete M, et al. (2019) The role of fibroblast growth factor signalling in *Echinococcus multilocularis* development and host-parasite interaction. PLoS Negl Trop Dis 13(3): e0006959. <https://doi.org/10.1371/journal.pntd.0006959>

**Editor:** Mar Siles-Lucas, IRNASA, CSIC, SPAIN

**Received:** October 25, 2018

**Accepted:** December 21, 2018

**Published:** March 8, 2019

**Copyright:** © 2019 Förster et al. This is an open access article distributed under the terms of the [Creative Commons Attribution License](https://creativecommons.org/licenses/by/4.0/), which permits unrestricted use, distribution, and reproduction in any medium, provided the original author and source are credited.

**Data Availability Statement:** All relevant data are within the manuscript and its Supporting Information files.

**Funding:** This work was supported by the Wellcome Trust (<https://wellcome.ac.uk/>), grant 107475/Z/15/Z (to KB; FUGI), and by a grant of the Deutsche Forschungsgemeinschaft (DFG; <http://www.dfg.de/en/>), BR 2045/4-1 (to KB). SF and UK were supported by grants of the German Excellence Initiative to the Graduate School of Life Sciences (GSLs), University of Würzburg (<https://www.graduateschools.uni-wuerzburg.de/life->

## Abstract

### Background

Alveolar echinococcosis (AE) is a lethal zoonosis caused by the metacestode larva of the tapeworm *Echinococcus multilocularis*. The infection is characterized by tumour-like growth of the metacestode within the host liver, leading to extensive fibrosis and organ-failure. The molecular mechanisms of parasite organ tropism towards the liver and influences of liver cytokines and hormones on parasite development are little studied to date.

### Methodology/Principal findings

We show that the *E. multilocularis* larval stage expresses three members of the fibroblast growth factor (FGF) receptor family with homology to human FGF receptors. Using the *Xenopus* expression system we demonstrate that all three *Echinococcus* FGF receptors are activated in response to human acidic and basic FGF, which are present in the liver. In all three cases, activation could be prevented by addition of the tyrosine kinase (TK) inhibitor BIBF 1120, which is used to treat human cancer. At physiological concentrations, acidic and basic FGF significantly stimulated the formation of metacestode vesicles from parasite stem cells *in vitro* and supported metacestode growth. Furthermore, the parasite's mitogen activated protein kinase signalling system was stimulated upon addition of human FGF. The survival of metacestode vesicles and parasite stem cells were drastically affected *in vitro* in the presence of BIBF 1120.

### Conclusions/Significance

Our data indicate that mammalian FGF, which is present in the liver and upregulated during fibrosis, supports the establishment of the *Echinococcus* metacestode during AE by acting on an evolutionarily conserved parasite FGF signalling system. These data are valuable for understanding molecular mechanisms of organ tropism and host-parasite interaction in AE. Furthermore, our data indicate that the parasite's FGF signalling systems are promising targets for the development of novel drugs against AE.

[sciences/startseite/](#)). The funding bodies had no role in the collection, analysis and interpretation of data, or in the writing of the manuscript and the decision to submit the manuscript for publication.

**Competing interests:** The senior author of this work (KB) is currently member of the Editorial Board of PLoS Neglected Tropical Diseases. Otherwise the authors declare that there are no competing interests.

## Author summary

To ensure proper communication between their different cell populations, animals rely on secreted hormones and cytokines that act on receptors of target cells. Most of the respective cytokines, such as FGFs, evolved over 500 million years ago and are present in similar form in all animals, including parasitic worms. The authors of this study show that the metacestode larva of the tapeworm *E. multilocularis*, which grows like a malignant tumor within the host liver, expresses molecules with homology to FGF receptors from mammals. The authors show that human FGF, which is abundantly present in the liver, stimulates metacestode development and that all parasite FGF receptors are activated by human FGF, despite 500 million years of evolutionary distance between both systems. This indicates that cells of the *Echinococcus* metacestode can directly communicate with cells of the mammalian host using evolutionarily conserved signaling molecules. This mode of host-pathogen interaction is unique for helminths and does not occur between mammals and single-celled pathogens such as protozoans or bacteria. The authors finally demonstrate that BIBF 1120, a drug used to treat human cancer, targets the *Echinococcus* FGF receptors and leads to parasite death. This opens new ways for the development of anti-parasitic drugs.

## Introduction

The flatworm parasite *E. multilocularis* (fox-tapeworm) is the causative agent of alveolar echinococcosis (AE), one of the most dangerous zoonoses of the Northern hemisphere. Infections of intermediate hosts (rodents, humans) are initiated by oral uptake of infectious eggs which contain the parasite's oncosphere larval stage [1,2]. After hatching in the host intestine and penetration of the intestinal wall the oncosphere gains access to the liver, where it undergoes a metamorphic transition towards the metacestode larval stage [3]. The *E. multilocularis* metacestode consists of numerous vesicles which grow infiltratively, like a malignant tumor, into the liver tissue [1–3]. Due to the unrestricted growth of the metacestode, blood vessels and bile ducts of the liver tissue of the intermediate host are obstructed, eventually leading to organ failure [1]. Another hallmark of AE is extensive liver fibrosis which can lead to a complete disappearance of the liver parenchyma, and which most probably involves the activation of hepatic stellate cells during chronic infection [4,5]. Surgical removal of the parasite tissue, the only possible cure, is not feasible in the majority of patients leaving benzimidazole-based chemotherapy as the only treatment option. However, benzimidazoles act parasitostatic only and have to be given for prolonged periods of time (often life-long), underscoring the need for novel treatment options against AE [1].

We previously established that *E. multilocularis* development and larval growth is exclusively driven by a population of somatic stem cells, the germinative cells, which are the only mitotically active cells of the parasite and which give rise to all differentiated cells [6]. Using *in vitro* cultivation systems for metacestode vesicles and germinative cells [7–10], we also demonstrated that host insulin fosters parasite development by acting on evolutionarily conserved receptor kinases of the insulin receptor family that are expressed by the metacestode [11]. Evidence has also been obtained that host epidermal growth factor (EGF) stimulates *Echinococcus* germinative cell proliferation, most probably by acting on parasite receptor tyrosine kinases (RTK) of the EGF receptor family [12,13]. These studies indicate that the interaction of host-derived hormones and cytokines with corresponding receptors of evolutionarily conserved

signalling pathways that are expressed by the parasite may play an important role in AE host-parasite interaction. Although the *E. multilocularis* genome project already indicated that the parasite expresses receptor TK of the fibroblast growth factor (FGF) receptor family in addition to insulin- and EGF-receptors [14], no studies concerning the effects of host FGF and their possible interaction with parasite FGF receptors have been carried out to date.

FGFs are an ancient group of polypeptide cytokines that are present in diploblastic animals, in deuterostomes and, among protostomes, only in ecdysozoa (with some distantly related members in lophotrochozoa)[15,16]. Humans express 22 different FGFs of which several (FGF11 –FGF14) are not secreted and act independently of FGF receptors in an intracrine modus only [15]. The remaining FGFs act in a paracrine fashion and are typically released via N-terminal signal peptides. Notable exceptions are the prototypic FGF1 (acidic FGF) and FGF2 (basic FGF) which are ubiquitously expressed in human tissues, are the most active members of the FGF family, and are released in a signal peptide-independent manner [15]. FGFs have a key role in metazoan embryonic development and, in adults, are typically involved in regeneration processes (angiogenesis, wound healing, liver regeneration, regeneration of nervous tissue)[15]. In the liver, particularly FGF1 but also FGF2 are present as proteins in significant amounts [17], are crucially involved in tissue regeneration upon damage [18,19], and are also upregulated and released during fibrosis [20]. Secreted FGFs act through surface receptor TK of the FGF receptor family, of which four isoforms, Fgfr1-Fgfr4, are expressed by humans [15]. The mammalian FGF receptors comprise an extracellular ligand-binding domain made up of three immunoglobulin (Ig)-like domains, a transmembrane domain, and a split intracellular kinase domain. FGF binding to the cognate FGF receptors typically results in receptor dimerization, transphosphorylation and subsequent activation of downstream signalling pathways such as the Ras-Raf-MAPK (mitogen-activated protein kinase) cascade or the PI3K/Akt pathway [15].

FGF signalling pathways have, in part, already been studied in flatworms. In the free-living planarian species *Dugesia japonica*, two members of the FGFR TK are expressed of which DjFGFR1 exhibits three immunoglobulin-like domains in the extracellular region whereas DjFGFR2 only contains two such domains [21]. Both receptors are expressed by X-ray sensitive planarian stem cells (neoblasts) and in cephalic ganglia and an important role of these FGFRs in planarian brain formation has been suggested [21,22]. Furthermore, similar FGF receptors were also detected in stem cells of the planarian *Schmidtea mediterranea* [23]. In the genome of the flatworm parasite species *Schistosoma mansoni*, two FGFR-encoding genes were identified of which *fgfrA* codes for a predicted protein with two extracellular immunoglobulin domains and a split TK domain whereas the *fgfrB* gene product only comprises one immunoglobulin domain in the extracellular region [24]. Expression of *fgfrA* and *fgfrB* in neoblast-like somatic stem cells has been shown and evidence was obtained for an important role of both receptors in schistosome stem cell maintenance [25–27]. Hahnel et al. [24] also demonstrated that both receptors are enzymatically active, are expressed in the gonads of schistosomes, and are upregulated following pairing, indicating a role in parasite fertility. Interestingly, these authors also showed that treatment of adult schistosomes with FGFR inhibitors leads to a reduction of somatic neoblast-like stem cells in both genders [24].

In the present work we provide a detailed analysis of three FGFRs in the cestode *E. multilocularis* and show that the expression patterns of these receptors differ from those in planaria and schistosomes. We also demonstrate that all three *Echinococcus* FGFRs are activated in response to human FGFs and that host FGF stimulates parasite development *in vitro*. Finally, we also show that inhibition of FGF signalling in *Echinococcus* larvae drastically reduces parasite development and survival.

## Methods

### Organisms and culture methods

FGF stimulation and inhibitor experiments were performed with the natural *E. multilocularis* isolate H95 [14]. Whole mount in situ hybridization was carried out using isolate GH09 which, in contrast to H95, is still capable of producing brood capsules and protoscoleces *in vitro* [14]. All isolates were continuously passaged in mongolian jirds (*Meriones unguiculatus*) as previously described [9]. The generation of metacystode vesicles and axenic cultivation of mature vesicles was performed essentially as previously described [7,9] with media changes usually every three days. Primary cell cultures were isolated from mature vesicles of isolate H95 and propagated *in vitro* essentially as previously described [8–10] with media changes every three days unless indicated otherwise. For FGF stimulation assays, 10 nM or 100 nM of recombinant human acidic FGF (FGF1) or basic FGF (FGF2) (both from ImmunoTools GmbH, Friesoythe, Germany) were freshly added to parasite cultures during medium changes. In the case of primary cells, cultivation was usually performed in cMEM medium which is host hepatocyte-conditioned DMEM (prepared as described in [10]). For inhibitor studies, specific concentrations of BIBF 1120 (Selleck Chemicals LLC, Houston, TX, USA) were added to parasite cultures as indicated and as negative control DMSO (0.1%) was used. The formation of mature metacystode vesicles from primary cells and measurement of metacystode vesicles size was performed essentially as previously described [11].

### Nucleic acid isolation, cloning and sequencing

RNA isolation from *in vitro* cultivated axenic metacystode vesicles (isolate H95), protoscoleces (isolate GH09), and primary cells (H95, GH09) was performed using a Trizol (5Prime, Hamburg, Germany)-based method as previously described [11]. For reverse transcription, 2 µg total RNA was used and cDNA synthesis was performed using oligonucleotide CD3-RT (5'-ATC TCT TGA AAG GAT CCT GCA GGT<sub>26</sub> V-3'). PCR products were cloned using the PCR cloning Kit (QIAGEN, Hilden, Germany) or the TOPO XL cloning Kit (Invitrogen), and sequenced employing an ABI prism 377 DNA sequencer (Perkin-Elmer).

The full-length *emfr1* cDNA was cloned using as starting material the partial sequence of a cDNA of the closely related cestode *E. granulosus*, which encoded a FGFR-like TK domain but which lacked the coding regions for transmembrane and extracellular parts [28]. Using primers directed against the *E. granulosus* sequence (5'-CTA CGC GTG CGT TTT CTG ATG-3' for first PCR; 5'-CCC TCT GAT CCA ACC TAC GAG-3' for nested PCR), the 3' end of the corresponding *E. multilocularis* cDNA was subsequently PCR amplified from a metacystode (isolate H95) cDNA preparation using primers CD3 and CD3nest as previously described [29]. 5'-RACE was performed using the SMART RACE cDNA amplification kit (Clontech) according to the manufacturer's instructions using primers 5'-ACC GTA TTT GGG TTG TGG TCG-3' (first PCR) and 5'-GAA CAG GCA GAT CGG CAG-3' (touchdown PCR) as previously described [30]. The presence of an in frame TAA stop codon 110 bp upstream of the *emfr1* ATG start codon indicated that the correct 5' end had been identified. In a final step, the entire *emfr1* cDNA was PCR amplified from metacystode cDNA using primers 5'-GAC ACA TCT CCT TGG CCG-3' and 5'-GCG AGT TGA TAC TTT ATG AGA G-3' and cloned using the TOPO XL PCR cloning kit (Invitrogen). The sequence is available in the GenBank<sup>TM</sup>, EMBL, and DDJB databases under the accession number LT599044.

For *emfr2* cloning we first identified by BLAST analyses on the published *E. multilocularis* genome sequence [14] a reading frame encoding a FGFR-like TKD annotated as EmuJ\_000196200. Transcriptome analyses [14] and 5' RACE experiments, however, indicated

that there is actually read-through transcription between gene models EmuJ\_000196300 and EmuJ\_000196200. We thus designed primers 5'-ATG TGT CTC CGA GCT CTC TG-3', binding to the 5' end regions of gene model EmuJ\_000196300, and primer 5'-TTA CTC GCT CGA TCG TGG GG-3', binding to the reading frame 3' end of gene model EmuJ\_000196200, to PCR amplify the entire reading frame from metacestode cDNA. The resulting PCR fragment was subsequently cloned using the TOPO XL cloning kit (Invitrogen) and fully sequenced. The sequence is available in the GenBank<sup>TM</sup>, EMBL, and DDJB databases under the accession number LT599045.

For *emfr3* cloning and sequencing we used primers directed against the CDS 5' end (5'-ATG GCA CCT AAG GTT GTG TCA GGA-3') and 3' end (5'-GCA GAT GAG TAA GAA ACC CTC-3') of gene model EmuJ\_000893600 [14] for direct PCR amplification of the reading frame from metacestode cDNA. The resulting PCR fragment was subsequently cloned using the TOPO XL cloning kit (Invitrogen) and sequenced. The sequence is available in the GenBank<sup>TM</sup>, EMBL, and DDJB databases under the accession number LT599046.

### BrdU proliferation assays

Proliferation of *E. multilocularis* metacestode vesicles and primary cells was assessed by a bromodesoxyuridine (BrdU)-based method. Axenically cultivated metacestode vesicles (2–4 mm in diameter) were manually picked and incubated in 12-well plates (Greiner BioOne, Kremsmünster, Germany; 8 vesicles per well) in DMEM medium without serum for 2 days. Freshly isolated primary cells were plated on 12-well plates and grown for 2 days under axenic conditions in conditioned DMEM (cMEM) medium with serum [8]. BrdU (SigmaAldrich, taufkirchen, Germany) as well as recombinant human FGF1 and FGF2 were added at 1mM (BrdU) and 100 nM or 10 nM (FGF1, FGF2) final concentrations as indicated. Cultures were incubated for 48 h at 37°C under 5% CO<sub>2</sub> for metacestode vesicles or under nitrogen atmosphere [7,8] in the case of primary cells. Samples were analysed in duplicates in three independent experiments. As controls, metacestode vesicles or primary cells were incubated in either DMEM without serum or conditioned DMEM, without addition of FGFs.

Primary cells and metacestode vesicles were then isolated for genomic DNA analysis. In detail, vesicles and primary cells were first washed with 1xPBS, pelleted, and subsequently transferred to lysis buffer (100 mM NaCl, 10 mM Tris-HCl, pH 8.0; 50 mM EDTA, pH 8.0, 0.5% SDS) supplemented with 20 µg/ml RNase A and 0.1 mg/ml proteinase K. Samples were then incubated at 50°C for 4 h under constant shaking for complete lysis. DNA was isolated by two rounds of phenol/chlorophorm extraction (1 vol of phenol/chlorophorm/isoamylalcohol 25:24:1). DNA was then precipitated with 2 vol of 96% ethanol and 0.1 vol of LiCl (pH 4.5) after overnight incubation at -20°C and centrifugation at 20.000 rcf for 30 min at 4°C and washed with 70% ethanol. The pellet was then air dried for 15 min and resuspended in 1 x TE buffer (10 mM Tris, 1 mM EDTA, pH 8.0).

The DNA was then prepared for coating onto a 96-well plate (96 well optical bottom plates, Nunc, Langensfeld, Germany). To this end, 5 µg of DNA were combined with 1 vol of Reacti-Bind DNA Coating solution (Pierce Biotechnology, Rockford, IL, USA) and mixed for 10 min. The DNA mix was then added to the microplates in duplicates and incubated overnight at room temperature with gentle agitation. The TE/Reacti-Bind DNA coating solution mix served as a negative control. Unbound DNA was removed by washing three times with 1xPBS. After blocking with 5% nonfat dry milk in 1xPBS for 1 h at room temperature and extensive washing with 1xPBS, 100 µl of anti-BrdU-POD (Cell Proliferation ELISA, BrdU; Roche Applied Science, Mannheim, Germany) was added and incubated for 90 min at room temperature. After incubation, microplates were washed three times with 1xPBS buffer before

substrate solution (Cell Proliferation ELISA, BrdU; Roche Applied Science, Mannheim, Germany) was added and the wells were incubated for 60 min. Stop-solution (25  $\mu$ l of 1 M H<sub>2</sub>SO<sub>4</sub>) was added and absorbance of the samples was measured using an ELISA reader at 450 nm.

### ***In situ* hybridization protocols**

Coding sequences of FGF receptors from *E. multilocularis* were amplified by RT-PCR and cloned into the vectors pDrive (Qiagen) or pJET1.2 (Thermo Fisher). In the case of *emfr2*, the full length coding sequence was amplified using primers 5'-ATG TGT CTC CGA GCT CTC TG-3'(forward) and 5'-TTA CTC GCT CGA TCG TGG GG-3' (reverse), whereas partial coding sequences were amplified for *emfr1* (using forward primer 5'-GCA GTG GGC GTC TTC TTT CAC-3' and reverse primer 5'-GTA AAT GTG GGC CGA CAC TCA G-3') and for *emfr3* (using forward primer 5'-TTG CCC AGT CAT CCG CTA CAA G-3' and reverse primer 5'-GCA AGC GGT CAT GAG GCT GTA G-3'). The recombinant plasmids were used for *in vitro* transcription of digoxigenin-labelled RNA probes as previously described [6]. These probes were used for fluorescent WMISH of *in vitro* cultured *E. multilocularis* larvae as described in [6]. Control WMISH experiments using the corresponding sense probes were always negative.

### ***Xenopus* oocyte expression assays**

For expression in the *Xenopus* system, the *emfr1*, *emfr2*, and *emfr3* coding sequences without predicted signal peptide information were cloned into the pSecTag2/Hygro expression system (ThermoFisher Scientific, Germany) leading to an in frame fusion of the Igk leader sequence (provided by the vector system) and the *E. multilocularis* FGF receptor sequences under control of the T7 promoter. Capped messenger RNAs (cRNA) encoding EmFR1, EmFR2 and EmFR3 were then synthesized *in vitro* using the T7 mMessage mMachine Kit (Ambion, USA). Microinjection of EmFGFR cRNAs (60 ng in 60  $\mu$ l) was performed in stage VI *Xenopus laevis* oocytes according to the procedure previously described [31]. Following 48h of receptor expression, human FGF1 or FGF2 (R & D systems, UK) were added to the extracellular medium at the final concentration of 10 nM. cRNA of *Pleurodeles* FGFR1 identified as homologous to human receptor [32] was a gift of Shi D.L. (CNRS UMR 722, Paris VI) and was used as a positive control.

In some experiments, BIBF1120 (stock solution 10mM in DMSO, Selleck Chemicals LLC) was added (0.1 to 20  $\mu$ M final concentration) 1 h before the addition of 10 nM FGF1 or FGF2 on EmFR1, EmFR2, EmFR3 and *Pleurodeles* FGFR1 expressing oocytes. Following 15 h of FGF1 or FGF2 stimulation, oocytes were analyzed for their state of progression in the cell cycle. The detection of a white spot at the animal pole of the oocyte attested to G2/M transition and GVBD. Non-injected oocytes treated with progesterone (10  $\mu$ M) were used as positive controls of GVBD. For each assay, sets of 20–30 oocytes removed from 3 different animals were used.

Dead kinase (TK-) receptors were obtained by site-directed mutagenesis of the EmFR1, EmFR2 and EmFR3 constructs. The active DFG sites present in EmFR1 (D<sub>442</sub>FG), EmFR2 (D<sub>647</sub>FG) and EmFR3 (D<sub>701</sub>FG) were replaced by an inactivating motif (DNA) as described in [31].

For western blot analysis, oocytes were lysed in buffer A (50 mM Hepes pH 7.4, 500 mM NaCl, 0.05% SDS, 5 mM MgCl<sub>2</sub>, 1 mg ml<sup>-1</sup> bovine serum albumin, 10  $\mu$ g ml<sup>-1</sup> leupeptin, 10  $\mu$ g ml<sup>-1</sup> aprotinin, 10  $\mu$ g ml<sup>-1</sup> soybean trypsin inhibitor, 10  $\mu$ g ml<sup>-1</sup> benzamidine, 1 mM PMSF, 1 mM sodium vanadate) and centrifuged at 4°C for 15 min at 10,000 g. Membrane pellets were resuspended and incubated for 15 min at 4°C in buffer A supplemented with 1% Triton X-100 and then centrifuged under the same conditions. Supernatants were analyzed by

SDS-PAGE. Proteins were transferred to a Hybond ECL membrane (Amersham Biosciences, France). Membranes were incubated with anti-myc (1/50 000, Invitrogen France) or anti-PTyr (1/8000, BD Biosciences, France) antibodies and secondary anti-mouse antibodies (1/50 000, Biorad, France). Signals were detected by the ECL advance Western blotting detection kit (Amersham Biosciences, France)

### MAPK cascade activation assays

Axentially cultivated metacystode vesicles of about 0.5 cm in diameter were incubated in DMEM medium with or without 10% FCS for 4 days. Vesicles cultivated without FCS were subsequently incubated with 10 nM FGF1 (aFGF) or 10 nM FGF2 (bFGF) for 30 sec, 60 sec or 60 min. Immediately after stimulation, vesicles were harvested, cut by a scalpel to remove cyst fluid and then subjected to protein isolation as described previously [33]. Isolated protein lysates were then separated on a 12% acrylamide gel and analysed by Western blotting using a polyclonal anti-Erk1/Erk2 antibody (ThermoFisher Scientific; #61–7400), recognizing Erk-like MAP kinases in phosphorylated and non-phosphorylated form, as well as a polyclonal antibody against phospho-Erk1/Erk2 (ThermoFisher Scientific; #44-680G), specifically directed against the double-phosphorylated (activated) form of Erk1/Erk2 (Thr-185, Tyr-187). We had previously shown that these antibodies also recognize the Erk-like MAP kinase EmMPK1 of *E. multilocularis* in phosphorylated and non-phosphorylated form [33]. As secondary antibody, a peroxidase-conjugated anti-mouse IgG antibody (Dianova, Hamburg, Germany) was used. In inhibitor experiments, axentially cultivated metacystode vesicles were incubated with either 5 μM or 10 μM BIBF 1120 for 30 min and then processed essentially as described above.

### Quantitative reverse transcription PCR (qRT-PCR)

qRT-PCR experiments have been performed as previously described by del Puerto et al. [34] with several modifications. Briefly, RNA samples were prepared with TRI-reagent and the Directzol™ RNA Mini Prep Kit (Zymo Research, USA). Prior to RNA-isolation, *in vitro* cultured metacystode vesicles were deprived of stem cells by treatment with hydroxyurea (HU) and the Polo-like kinase inhibitor BI 2536 essentially as previously described by Koziol et al. [6] and Schubert et al. [35], respectively. Reverse transcription was performed with Omniscript RT Kit (Qiagen, Germany) from 500 ng of RNA using oligo dT23 as primers according to the manufacturer's instructions. qRT-PCRs were then performed using primers *Forward F\_emfr1\_qPCR* (5'-CCG TAT GAA GGG AAA TGG TCG TGT T-3') and *Reverse R\_emfr1\_qPCR* (5'-TGG TGA ATC GCC AAG GCT GAA A-3') for *emfr1*, *Forward F\_emfr2\_qPCR* (5'-GGG AAT TTC CAA GGT CAT CAG GGA C-3') and *Reverse R\_emfr2\_qPCR* (5'-ATC GTG GGG GCA CAA CAT AAT TGC-3') for *emfr2*, as well as *Forward F\_emfr3\_qPCR* (5'-GTC TAC CTT GAG GAA ATT GCT GTG GTC-3') and *Reverse R\_emfr3\_qPCR* (5'-CGT GAG GAA TGA CGC AGG C-3') for *emfr3*. As a control gene for normalization, the constitutively expressed gene *elp* was used with primers as described previously [34]. qRT-PCR conditions and primer amplification efficiency control experiments were performed essentially as previously described [34]. The relative expression of *emfr* genes in each sample was estimated using the delta-delta-Ct method [36], normalising with *elp* expression levels using the StepOne software (Thermo Fisher). All experiments were carried out as technical triplicates.

### Computer analyses and statistics

Amino acid comparisons were performed using BLAST on the nr-aa and swissprot database collections available under (<https://www.genome.jp/>). Genomic analyses and BLAST searches

against the *E. multilocularis* genome [14] were done using resources at (<https://parasite.wormbase.org/index.html>). CLUSTAL W alignments were generated using MegAlign software (DNASTAR Version 12.0.0) applying the BLOSUM62 matrix. Domain predictions were carried out using the simple modular architecture research tool (SMART) available under (<http://smart.embl-heidelberg.de/>) as well as PROSITE scans available under (<https://prosite.expasy.org/scanprosite/>). Two-tailed, unpaired student's T-tests were performed for statistical analyses (GraphPad Prism, version 4). Error bars represent standard error of the mean. Differences were considered significant for p-values below 0.05 (indicated by \*).

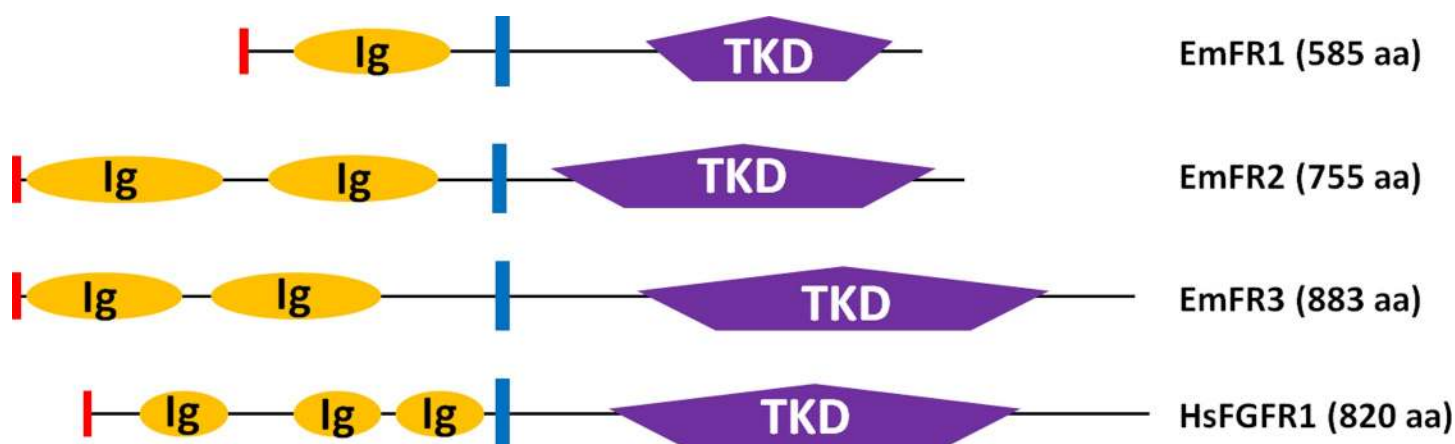
### Ethics statement

All experiments were carried out in accordance with European and German regulations on the protection of animals (*Tierschutzgesetz*). Ethical approval of the study was obtained from the local ethics committee of the government of Lower Franconia (permit no. 55.2 DMS 2532-2-354).

## Results

### The *E. multilocularis* genome encodes FGF receptor kinases but no canonical FGF ligands

By cDNA library screening and mining of the available *E. multilocularis* genome sequence we identified a total of three *Echinococcus* genes encoding members of the FGFR family of RTK. A partial cDNA for a gene encoding a TK with homology to FGFRs was previously cloned for *E. granulosus* [28] and by RT-PCR amplification of metacestode cDNA as well as 5'-RACE, the entire cDNA of the *E. multilocularis* ortholog, designated *emfr1* (*E. multilocularis* fibroblast growth factor receptor 1), was subsequently cloned. As shown in Fig 1, the encoded protein, EmFR1, contained an N-terminal export directing signal peptide, followed by one single Ig-like domain, a transmembrane region, and an intracellular TK domain (Figs 1 and S1). In the recently released *E. multilocularis* genome information [14], this gene was correctly predicted on the basis of genome and transcriptome data (*E. multilocularis* gene designation: EmuJ\_000833200). In the upstream genomic regions of *emfr1*, no information encoding potential Ig-like domains was identified which, together with the presence of a signal peptide



**Fig 1. Domain structure of *E. multilocularis* FGF receptors.** Schematic representation of the domain structure of the *E. multilocularis* receptors EmFR1, EmFR2, and EmFR3 according to SMART (Simple Modular Architecture Tool) analyses. As a comparison, the structure of the human FGFR1 (HsFGFR1) is shown. Displayed are the location and size of the following predicted domains: TK domain (TKD) in purple and IG-domain (Ig) in orange. Predicted signal peptides are depicted in red and transmembrane domains are shown as blue bars. The numbers of amino acids in full length receptors are shown to the right.

<https://doi.org/10.1371/journal.pntd.0006959.g001>



sequence upstream of the single Ig-like domain, indicated that EmFR1 indeed contained only one single Ig-like domain. Amino acid sequence alignments indicated that the kinase domain of EmFR1 contains all residues critical for enzymatic activity at the corresponding positions (S2 Fig) and SWISS-PROT database searches revealed highest similarity between the EmFR1 kinase domain and that of human FGFR4 (42% identical aa; 59% similar aa).

A second gene encoding a TK with significant homology to known FGFRs was identified on the available *E. multilocularis* genome sequence [14] under the annotation EmuJ\_000196200. The amino acid sequence of the predicted protein only contained an intracellular TK domain, a transmembrane region, and one extracellular Ig-like domain, but no putative signal peptide. We therefore carried out 5'-RACE analyses on a cDNA preparation deriving from protoscolex RNA and identified the remaining 5' portion of the cDNA, which contained one additional Ig-like domain and a predicted signal peptide. In the genome annotation, these remaining parts were wrongly annotated as a separate gene under the designation EmuJ\_000196300. Hence, the second FGFR encoding gene of *E. multilocularis*, *emfr2*, encoding the protein EmFR2, actually comprises the gene models EmuJ\_000196300 and EmuJ\_000196200 of the genome sequence. EmFR2 thus comprises a signal peptide, two extracellular Ig-like domains, a transmembrane region, and an intracellular TKD (Figs 1 and S1). The TKD contained all residues critical for TK activity (S2 Fig) and, in SWISS-PROT BLASTP analyses, showed highest similarity to two FGF receptor kinases of the flatworm *Dugesia japonica* (45% identical, 65% similar residues), to the *S. mansoni* receptor FGFRB (55%, 68%) and to human FGFR3 (48%, 62%).

The third FGF receptor encoding gene of *E. multilocularis*, *emfr3*, was identified under the designation EmuJ\_000893600 and was originally listed as an ortholog of the tyrosine protein kinase Fes:Fps [14]. However, unlike the Fes:Fps kinase which contains FCH and SH2 domains, the EmuJ\_000893600 gene product, EmFR3, comprised an N-terminal signal peptide, two extracellular Ig-like domains, a transmembrane region, and an intracellular TKD (Figs 1 and S1), in which 22 of 30 highly conserved residues of TK are present at the corresponding position (S2 Fig). Furthermore in SWISS-PROT BLASTP analyses the EmFR3 TKD displayed highest similarity to several vertebrate FGF receptors and to human FGFR2 (32%, 47%). We thus concluded that EmuJ\_000893600 actually encoded a third *Echinococcus* FGF receptor TK.

Apart from *emfr1*, *emfr2*, and *emfr3*, no further genes were identified in the *E. multilocularis* genome which displayed clear homology to known FGFR TKDs and which contained characteristic IG domains in the extracellular portions. In vertebrates, structural homology has been described between the TKDs of the receptor families of FGF receptors, the vascular endothelial growth factor (VEGF) receptors, and the platelet-derived growth factor (PDGF) receptors, which also contain varying number of Ig domains in the extracellular parts [37]. Furthermore, VEGF receptor-like molecules have also been described in invertebrates such as *Hydra* [37]. We therefore carried out additional BLASTP searches on the *E. multilocularis* genome using human VEGF- and PDGF-receptors as queries, but only obtained significant hits with the above mentioned TKDs of EmFR1, EmFR2, and EmFR3. These data indicated that members of the VEGF- and PDGF-receptor families are absent in *Echinococcus*, as has already been described for the closely related schistosomes [24].

Genes encoding canonical FGF ligands have so far neither been identified in genome projects of free-living flatworms [38], nor in those of trematodes [39] or cestodes [14]. In vertebrates [15] as well as several invertebrate phyla [40–42], however, canonical FGF ligands are clearly expressed. To investigate the situation more closely, we carried out BLASTP and TBLASTN analyses against the predicted proteins and *E. multilocularis* contig information, respectively, using FGF ligand sequences of insect, nematode, and cnidarian origin as queries. The product of only one *E. multilocularis* gene, EmuJ\_000840500 (annotated as 'conserved

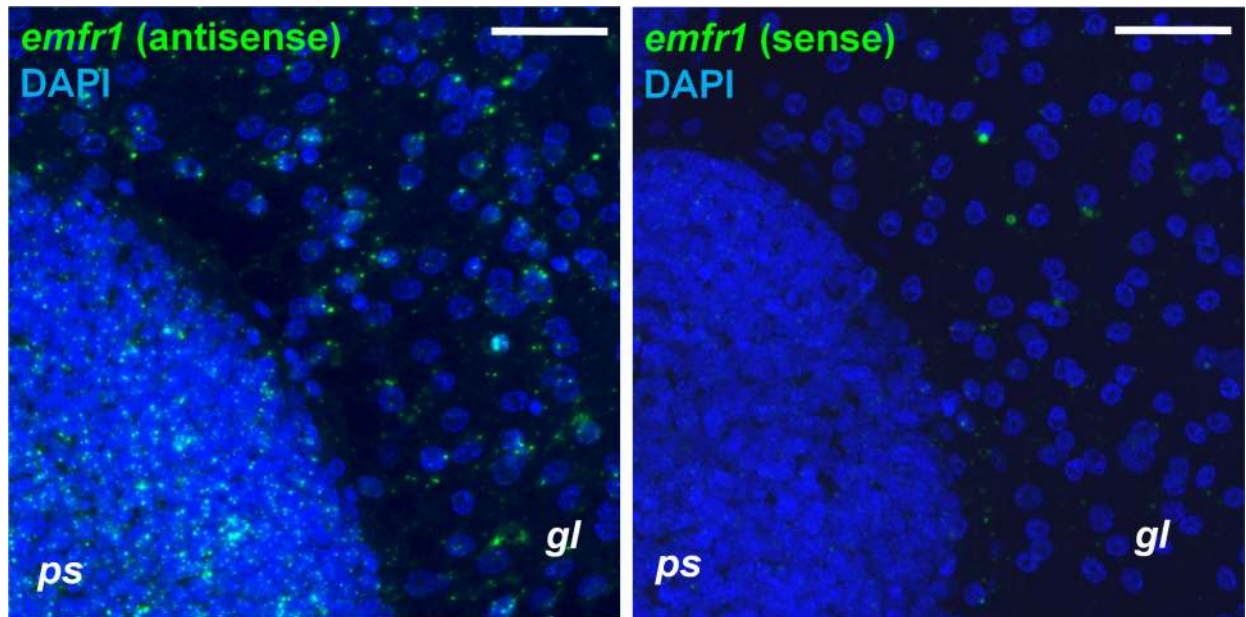
hypothetical protein') showed certain similarity to these FGF ligands and according to SMART protein domain analyses could contain a FGF-ligand domain between amino acids 166 and 258, although this prediction was clearly below the prediction threshold and of low probability (E-value: 817). No export directing signal peptide was predicted for the EmuJ\_000840500 protein, as would be typical for FGF ligands. Furthermore, although EmuJ\_000840500 had clear orthologs in the cestodes *Taenia solium* (TsM\_000953800) and *Hymenolepis microstoma* (HmN\_000558500), none of these gene models had any prediction of an FGF-ligand domain in SMART analyses (nor predicted signal peptides). We thus considered it highly unlikely that EmuJ\_000840500 encodes a so far not identified flatworm FGF-ligand.

Taken together, our analyses indicated that *E. multilocularis* contains genomic information for three members of the FGFR family of RTK with either one (EmFR1) or two (EmFR2, EmFR3) extracellular Ig-like domains, of which one, EmFR3, showed higher divergence within the TKD as it contained only 22 of otherwise 30 highly conserved amino acid residues of TK. On the other hand, no members of the VEGF- and PDGF-receptor families are encoded by the *E. multilocularis* genome, nor does it contain genes coding for canonical FGF-ligands.

### Expression of FGF receptors in *E. multilocularis* larval stages

To investigate gene expression patterns of the *Echinococcus* FGF receptors in parasite larvae, we first inspected Illumina transcriptome data for parasite primary cells after 2 and 11 days of culture (PC2d, PC11d, respectively), metacestode vesicles without or with brood capsules (MC-, MC+, respectively), as well as protoscoleces before or after activation by low pH/pepsin treatment (PS-, PS+, respectively), that had been produced during the *E. multilocularis* genome project [14]. According to these data, *emfr1* was moderately expressed in primary cells, metacestode vesicles, and protoscoleces (S3 Fig). Likewise, *emfr2* was expressed in all stages, but very lowly in primary cells, somewhat more in metacestode vesicles, and highest in protoscoleces. *emfr3*, on the other hand, was low to moderately expressed in primary cells, low in metacestode vesicles, and highest in protoscoleces (S3 Fig). Since primary cell preparations are characterized by a much higher content of germinative (stem) cells than metacestode vesicles [6], these expression patterns could indicate that *emfr3* is stem cell-specifically expressed. We therefore carried out quantitative RT-PCR experiments on cDNA preparations from *in vitro*-cultivated metacestode vesicles (MV) versus metacestode vesicles after treatment with hydroxyurea (MV-HU) or the Polo-like kinase inhibitor BI 2536 (MV-BI), in which the stem cell population had been selectively depleted [6,40]. While *emfr1* expression levels were equal in MV when compared to MV-HU and MV-BI, both *emfr2* and *emfr3* transcripts were significantly reduced in MV-HU and MV-BI (S4 Fig). This indicated that *emfr1* does not have a typical stem cell-specific expression pattern whereas *emfr2* and *emfr3* could be expressed in the parasite's stem cells or their immediate progeny (since HU- and BI 2536-treatment has to be carried out for at least one week [6,34]).

To clarify the situation we carried out whole-mount *in situ* hybridization experiments on metacestode vesicles according to recently established protocols [6,43,44]. In these experiments, proliferating parasite stem cells were labeled by incorporation of the nucleotide analog EdU, which was combined with detection of gene transcripts by using fluorescently labeled probes. According to these experiments, *emfr1* was expressed at low levels throughout the germinal layer and the signal was somewhat higher during the development of protoscoleces (Fig 2), maybe due to higher cell density in the protoscolex. The intensity of the signal was heterogeneous, but no clear pattern could be discerned and it was too low to clearly determine the percentage of positive cells.



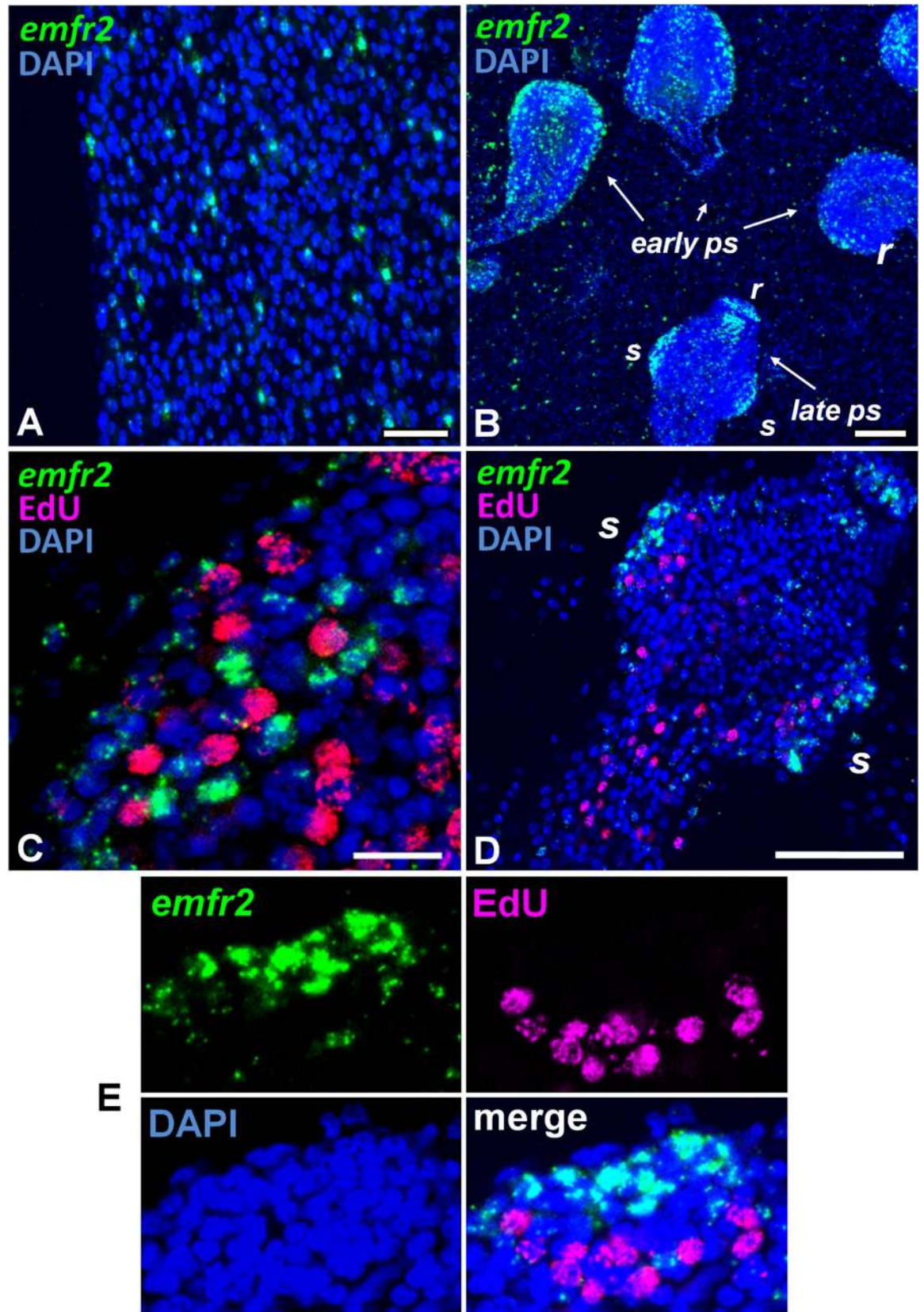
**Fig 2. WMISH analysis of *emfr1* expression.** Left panel, antisense probe detecting *emfr1* expression. Right panel, sense probe (negative control). WMISH signal is shown in green, nuclear DAPI staining in blue. *gl*, germinal layer; *ps*, developing protoscolex. Bar: 20  $\mu$ m.

<https://doi.org/10.1371/journal.pntd.0006959.g002>

*emfr2*, on the other hand, was specifically expressed in a population of small sized cells, which comprised 1.7% to 6.3% of all cells in the germinal layer (Fig 3A). None of these *emfr2*<sup>+</sup> cells were also EdU<sup>+</sup>, indicating that they were post-mitotic [6]. During initial protoscolex development, *emfr2*<sup>+</sup> cells accumulated in the peripheral-most layer of cells, as well as in the anterior-most region (which will form the rostellum), and in three longitudinal bands of cells in the interior of the protoscolex buds (Fig 3B). Again, practically none of the *emfr2* labelled cells was EdU<sup>+</sup> (less than 1% of *emfr2*<sup>+</sup> cells were EdU<sup>+</sup>; Fig 3C). Later during development, some *emfr2*<sup>+</sup> cells were found in the protoscolex body, but most accumulated in the developing rostellum and the suckers (Fig 3D). Importantly, *emfr2* expression was restricted to the sucker cup, where cells are differentiating into *em-tpm-hmw*<sup>+</sup> muscle cells [6], and not the sucker base, where EdU<sup>+</sup> germinative cells accumulate [6] (Fig 3D). Taken together, these data indicate that *emfr2* is expressed in post-mitotic cells, of which many are likely to be differentiating or differentiated muscle cells.

Finally, *emfr3* was expressed in very few cells in the germinal layer (less than 1% of all cells, although the number is difficult to estimate since they were absent in most random microscopy fields) (Fig 4A). *emfr3*<sup>+</sup> cells accumulated in small numbers during brood capsule and protoscolex development (Fig 4B). The *emfr3*<sup>+</sup> cells had a large nucleus and nucleolus and, thus, had the typical morphology of germinative cells (S5 Fig). At the final stages of protoscolex development, few *emfr3*<sup>+</sup> cells were present in the body region and some signals were also present in the rostellar region (S5 Fig). In the developing protoscolex and in the germinal layer, *emfr3*<sup>+</sup> EdU<sup>+</sup> double positive cells were found (Fig 4). These data indicated that *emfr3* is expressed in a very small number of proliferating cells with the typical morphology of germinative cells.

In summary, the three *E. multilocularis* FGF receptor genes showed very different expression patterns in metacestode and protoscolex larval stages. While *emfr1* was lowly expressed in cells that are dispersed throughout the germinal layer, *emfr2* displayed an expression pattern



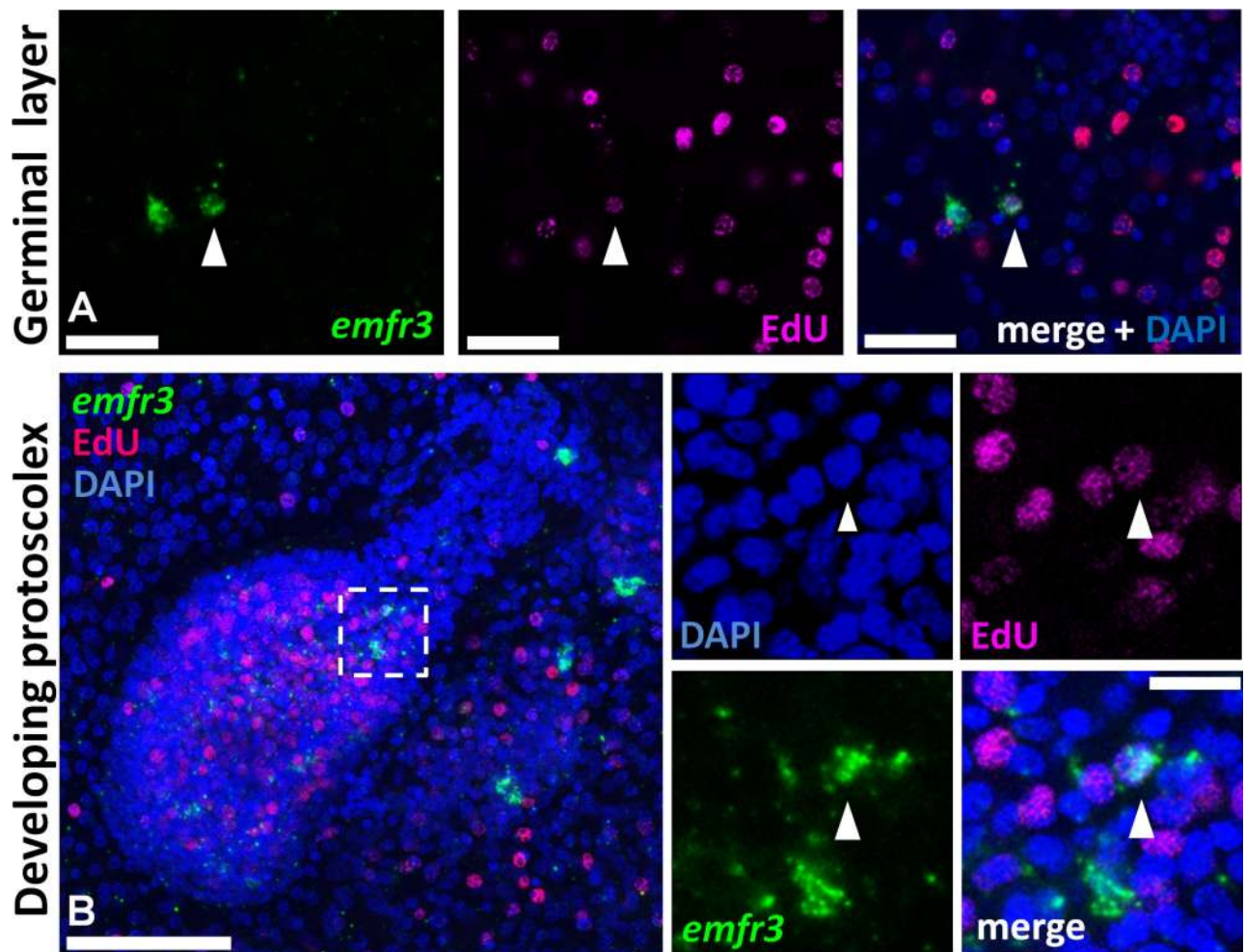
**Fig 3. WMISH analysis of *emfr2* expression.** Shown are WMISH analyses of *emfr2* expression (A, B) and co-detection of *emfr2* WMISH and EdU incorporation (C, D, E) during metacystode development. In C, D, and E, metacystodes were cultured in vitro with 50  $\mu$ M EdU for 5 h and were then processed for WMISH and EdU detection. In all panels the WMISH signal is shown in green, EdU detection in red, and DAPI nuclear staining in blue. A, detail of the germinal layer. B, general view of a region of a metacystode with protoscolexes in different stages of development. C, early protoscolex development. D, late protoscolex development. E, Detail of a sucker, maximum intensity projection of a confocal Z-stack. *r*, rostellum; *s*, sucker. Bars are 20  $\mu$ m for A, 50  $\mu$ m for B, 10  $\mu$ m for C, and 50  $\mu$ m for D. Sense probe (negative control) was negative in all samples.

<https://doi.org/10.1371/journal.pntd.0006959.g003>

indicative of differentiating/differentiated muscle cells. *emfr3*, on the other hand, appeared to be expressed in a minor sub-population of germinative cells.

### Host FGF stimulates *E. multilocularis* larval proliferation and development

Since *E. multilocularis* larvae do not express canonical FGF ligands (see above), but usually develop in an environment in which FGF1 and FGF2 are abundant [17], we next tested whether host-derived FGF ligands can stimulate parasite development *in vitro*. To this end, we



**Fig 4. Co-detection of *emfr3* WMISH and EdU incorporation during metacystode development.** Metacystodes were cultured in vitro with 50  $\mu$ M EdU for 5 h and were then processed for WMISH and EdU detection. In panels displaying multiple channels, the WMISH signal is shown in green, EdU detection in red, and nuclear DAPI staining in blue. A, germinal layer. B, developing protoscolex. Arrowheads indicate  $\text{EdU}^+ \text{emfr3}^+$  double-positive cells. Bars are 25  $\mu$ m for A, 50  $\mu$ m for B (main panel) and 10  $\mu$ m for B (enlarged inset).

<https://doi.org/10.1371/journal.pntd.0006959.g004>

employed two different cultivation systems which we had previously established [7–10]. In the axenic metacystode vesicle cultivation system, mature metacystode vesicles of the parasite are cultivated in the absence of host cells under reducing culture conditions (e.g. low oxygen) [7,9]. In the primary cell cultivation system [8,10], axenically cultivated metacystode vesicles are digested to set up cell cultures which are highly enriched in parasite germinative (stem) cells (~80% [6]), but which also contain certain amounts of differentiated cells such as muscle or nerve cells. In the primary cell cultivation system, mature metacystode vesicles are typically formed within 2–3 weeks, which is critically dependent on proliferation and differentiation of the germinative cell population [6] in a manner highly reminiscent of the oncosphere-metacystode transition [3].

As shown in Fig 5A, the exogenous addition of 10 nM FGF1 to mature metacystode vesicles already resulted in an elevated incorporation of BrdU, indicating enhanced proliferation of parasite stem cells, which was even more pronounced in the presence of 100 nM FGF1. In the case of FGF2, addition of 100 nM resulted in enhanced BrdU incorporation in a statistically significant manner (Fig 5A). Likewise, metacystode vesicles cultured for 4 weeks in the presence of 10 nM FGF1 or FGF2 displayed a considerably larger volume (about two-fold) when compared to non-FGF-stimulated vesicles (Fig 5B).

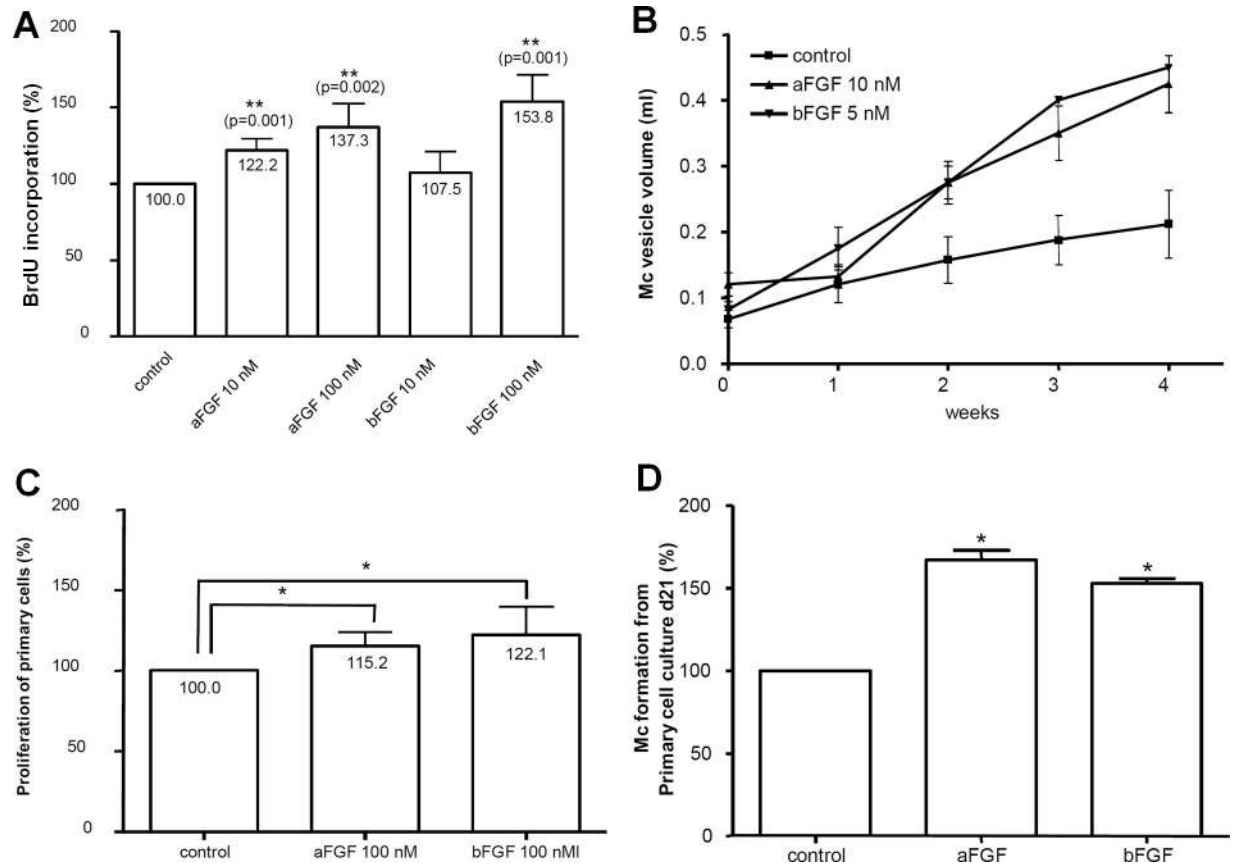
In the primary cell cultivation system, 100 nM concentrations of host ligands had to be added to observe statistically significant effects. Again, the incorporation of BrdU by primary cell cultures was stimulated in the presence of host-derived FGF ligands (Fig 5C), as was the formation of mature metacystode vesicles from primary cell cultures (Fig 5D).

Taken together, these results indicated that host-derived FGF ligands, and in particular FGF1, can stimulate cell proliferation and development of *E. multilocularis* primary cell cultures and mature metacystode vesicles.

### The *E. multilocularis* FGF receptors are activated by host-derived FGF ligands

Having shown that host-derived FGF ligands can stimulate parasite proliferation and development *in vitro*, we were interested whether these effects might be mediated by one or all three of the parasite's FGF receptors which are expressed by the metacystode larval stage. To this end, we first made use of the *Xenopus* oocyte expression system in which the activity of heterologously expressed protein kinases can be measured by germinal vesicle breakdown (GVBD). This system has previously been used to measure the activities of the TKD of schistosome FGF receptors [24], as well as the host-EGF (epidermal growth factor) dependent activation of a schistosome member of the EGF receptor family [31]. We, thus, expressed *Pleurodeles* FGFR1 (as a positive control), which is highly similar to human FGFR1 [32], and all three parasite FGF receptors in *Xenopus* oocytes, which were then stimulated by the addition of 10 nM FGF1 or FGF2. As negative controls, we also expressed kinase-dead versions of all *Echinococcus* FGF receptors in *Xenopus* oocytes.

As can be deduced from Table 1, control (non-stimulated) oocytes were negative for GVBD, whereas progesterone-stimulated oocytes displayed 100% vesicle breakdown. Expression of FGFR1 did not yield GVBD but, after stimulation with 10 nM FGF1, 100% of oocytes underwent GVBD, indicating stimulation of the *Pleurodeles* receptor by FGF1 (as expected). Upon expression of any of the parasite receptors in *Xenopus* oocytes, no GVBD was observed when no ligand was added. The addition of 10 nM FGF1 to these receptors, however, resulted in 100% GVBD for EmFR1 and EmFR2, as well as to 80% GVBD in the case of EmFR3. In the case of human FGF2 (10 nM), 90% GVBD was observed for EmFR1 and EmFR3, and 85% for EmFR2. No GVBD was observed upon addition of 10 nM FGF1 or FGF2 when the kinase-



**Fig 5. Effects of host FGFs on *E. multilocularis* proliferation and development.** A, effects of FGFs on metacystode proliferation. Axenically cultivated metacystode vesicles (eight per well) were incubated for 48 h in DMEM medium (without FCS), then BrdU (1 mM) and FGFs (10 or 100 nM) were added and incubation proceeded for another 48 h before cell lysis, DNA isolation, and BrdU detection. Bars represent percentage of BrdU incorporation with the cMEM control set to 100%. Statistical evaluation of four independent experiments (n = 4) which were conducted in duplicates is shown. Student's t-test (two tailed): \*p<0.05. B, effects of host FGFs on metacystode vesicle development. Single axenically generated metacystode vesicles were *in vitro* cultivated for four weeks in the presence of 10 nM FGF1 (aFGF) or 5 nM FGF2 (bFGF) with daily medium changes. Control vesicles were kept in cMEM. Growth (in ml) of vesicles was monitored. In each of three independent experiments (n = 3), four vesicles were examined for every single condition. C, effects of FGFs on *E. multilocularis* primary cell proliferation. Freshly isolated *E. multilocularis* primary cells were incubated for 48 h in 2 ml cMEM, then BrdU (1 mM) and FGFs (100 nM) were added and cells were incubated for another 48 h before DNA isolation and BrdU detection. Statistical analysis was performed as in A. D, effects of host FGFs on metacystode vesicle development. Freshly prepared *E. multilocularis* primary cells were cultured for 21 days in cMEM medium in the presence or absence of 100 nM FGF1 (aFGF) or FGF2 (bFGF). Half of the medium volume was renewed every second day. The number of newly formed metacystode vesicles at day 21 was analysed. The bars represent the percentage of formed vesicles with the cMEM control set to 100%. The statistical evaluation of three independent experiments (n = 3) which were conducted in duplicates is shown. Student's t-test (two-tailed): \*p<0.05.

<https://doi.org/10.1371/journal.pntd.0006959.g005>

dead versions of the parasite receptors were expressed (S6 Fig). These data clearly indicated that all three parasite receptors were responsive to host derived FGF ligands (albeit to somewhat different extent) and that the kinase activity of the parasite receptors was essential to transmit the signal. We also measured the phosphorylation state of the parasite FGF receptors upon addition of exogenous FGF1 and FGF2 (10 nM each) to *Xenopus* oocytes and obtained significantly induced levels of tyrosine phosphorylation in all three cases (S6 Fig).

Taken together, these data indicated that all three parasite FGF receptors were activated by binding of host-derived FGF1 and FGF2, which was followed by auto-phosphorylation of the intracellular kinase domain and downstream transmission of the signal to the *Xenopus* oocyte signaling systems which induce GVBD.

**Table 1. Effects of host FGFs and BIBF 1120 on *E. multilocularis* FGF receptors.**

BIBF1120	0μM	1μM	10μM	20μM
control	0	0	0	0
Progesterone	100	100	100	70
FGFR1	0	0	0	0
FGFR1 + hFGF1	100	40	0	0
EmFR1	0	0	0	0
EmFR1 + hFGF1	100	90	0	0
EmFR1 + hFGF2	90	50	0	0
EmFR2	0	0	0	0
EmFR2 + hFGF1	100	50	0	0
EmFR2 + hFGF2	85	0	0	0
EmFR3	0	0	0	0
EmFR3 + hFGF1	80	80	30	0
EmFR3 + hFGF2	90	80	30	0

**Legend to Table 1.** *Pleurodeles* FGFR1 (FGFR1) and the three *E. multilocularis* FGF receptors (EmFR1, EmFR2, EmFR3, as indicated) were expressed in *Xenopus* oocytes without or with human FGF1 (hFGF1) or FGF2 (hFGF2) and in the presence of different concentrations of BIBF 1120 (as indicated). Germinal vesicle breakdown (GVBD) was monitored after 15 h of incubation. Numbers indicate % of GVBD, mean of two independent experiments.

<https://doi.org/10.1371/journal.pntd.0006959.t001>

### Inhibition of the *E. multilocularis* FGF receptors by BIBF 1120

The small molecule compound BIBF 1120 (also known as Nintedanib or Vargatef) is a well-studied and highly selective, ATP-competitive inhibitor of mammalian members of the FGF-, VEGF-, and PDGF-receptor families with very limited affinity to other RTK [45,46]. As a possible agent to selectively inhibit FGF RTK activities in the parasite, we measured the effects of BIBF 1120 on EmFR1, EmFR2, and EmFR3 upon expression in the *Xenopus* oocyte system. As can be deduced from Table 1, a concentration of 1 μM of exogenously added BIBF 1120 already diminished the activity (after stimulation with 10 nM FGF1) of FGFR1 to 40%, and led to a complete block of kinase activity upon addition of 10 μM BIBF 1120. In the case of EmFR1 and EmFR2, 1 μM BIBF1120 also led to a marked decrease of receptor kinase activity, although to a somewhat lower extent than in the case of FGFR1. In the presence of 10 μM BIBF 1120, on the other hand, the activities of EmFR1 and EmFR2 were completely blocked. In the case of EmFR3, exogenous addition of 1 μM BIBF 1120 had only slight effects on GVBD, whereas 10 μM BIBF 1120 reduced the activity to less than 50% and 20 μM BIBF 1120 completely blocked TK-dependent GVBD (Table 1). Upon addition of 20 μM BIBF 1120, TK activity of all receptors tested was completely inhibited.

Taken together, these data indicated that all three *Echinococcus* FGF RTK were affected by BIBF 1120, although in all three cases higher concentrations of the inhibitor were necessary to completely block TK activity when compared to FGFR1. BIBF 1120 treatment had the lowest effects on the activity of EmFR3.

### BIBF 1120 inhibits *E. multilocularis* larval development

We next tested the effects of different concentrations of BIBF 1120 on parasite development and survival in the primary cell and metacystode vesicle culture systems. As shown in Fig 6A, the addition of 1–10 μM BIBF 1120 had clear concentration-dependent effects on mature metacystode vesicle survival which, after cultivation for 18 days, led to about 20% surviving vesicles in the presence of 1 μM BIBF 1120, 10% surviving vesicles in the presence of 5 μM



BIBF 1120, and no survival when 10  $\mu\text{M}$  BIBF 1120 was applied. To test whether the metacystode vesicles were indeed no longer capable of parasite tissue regeneration, we set up primary cell cultures from microscopically intact vesicles which had been treated with 5  $\mu\text{M}$  BIBF 1120 for 5 days (90% intact vesicles) and let the cultures recover in medium without inhibitor. In these cultures, however, we never observed the formation of mature vesicles, indicating that either the parasite's stem cell population, and/or other cell types necessary for parasite development in the primary cell culture system, were severely damaged after BIBF 1120 treatment.

We then also tested the effects of BIBF 1120 on fresh primary cell cultures from previously untreated metacystode vesicles. As shown in Fig 6B, a concentration of 1  $\mu\text{M}$  BIBF 1120 had no effect on the formation of metacystode vesicles from these cultures, whereas vesicle formation was completely blocked in the presence of 5  $\mu\text{M}$  or 10  $\mu\text{M}$  BIBF 1120.

Altogether, these results clearly indicated detrimental effects of BIBF 1120 on parasite development already at concentrations as low as 5  $\mu\text{M}$ . Since the parasite does not express known alternative targets for BIBF 1120, such as VEGF- or PDGFR-receptors, we deduced that these effects are due to the inhibition of one or more of the parasite's FGF RTK.

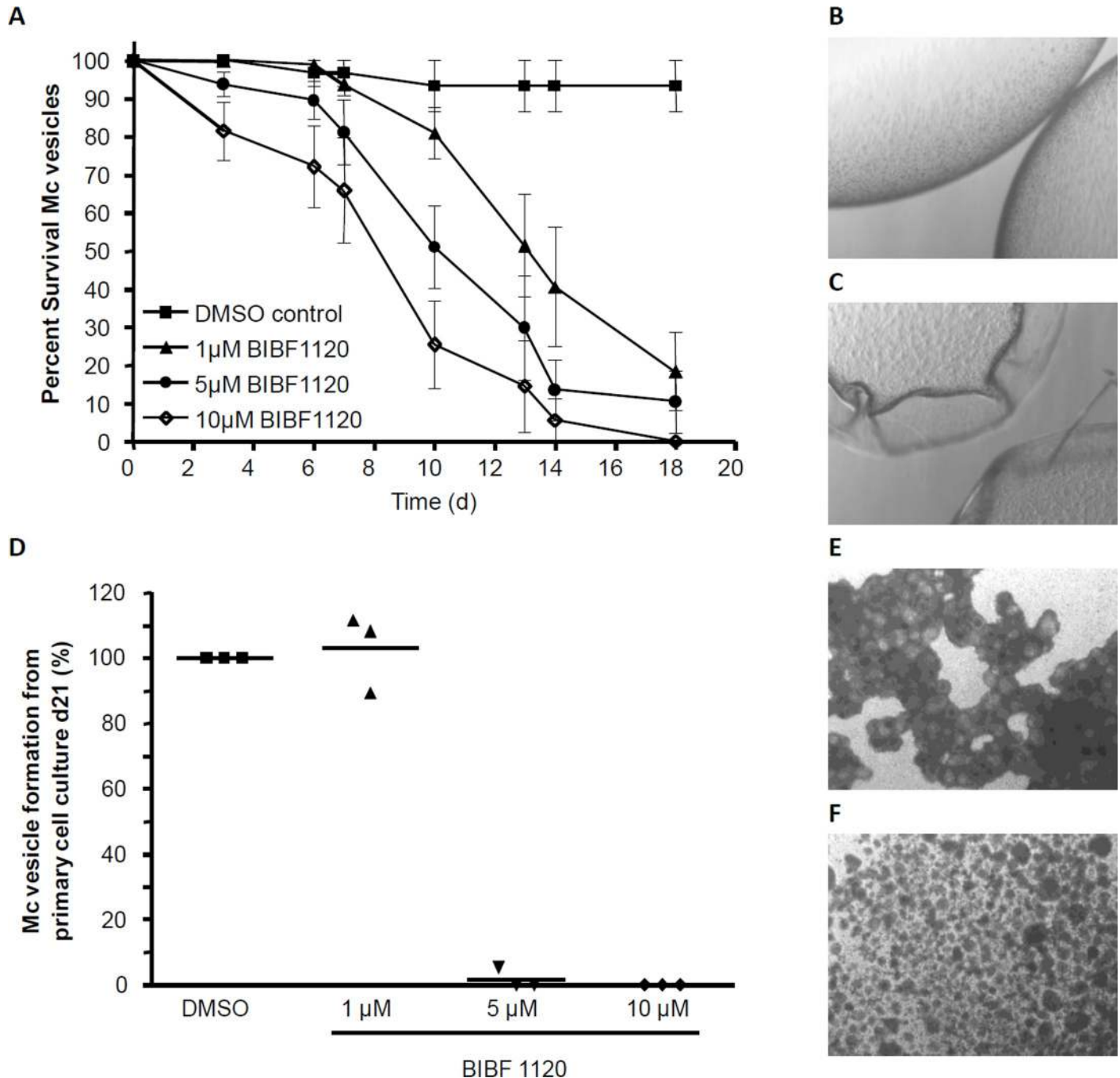
### Host FGF ligands stimulate Erk signaling in *E. multilocularis*

One of the major downstream targets of FGF signaling in other organisms is the Erk-like MAPK cascade, a complete module of which we had previously identified in *E. multilocularis* [33,47,48]. In particular, we had previously shown that the phosphorylation status of the parasite's Erk-like MAP kinase, EmMPK1, can be measured by using antibodies against the phosphorylated form of the human Erk-kinase [33]. To investigate whether exogenously added host FGF can affect the *E. multilocularis* Erk-like MAPK cascade module, we first incubated mature metacystode vesicles for 4 days in serum-free medium (which has no effect on vesicle integrity [29]) and then stimulated these vesicles for 30 sec, 60 sec, and 60 min with 10 nM FGF1 and FGF2. As shown in Fig 7A, FGF1 treatment had a clear effect of EmMPK1 phosphorylation already after 30 sec of exposure. In the case of FGF2, the effect was still measurable, but clearly less pronounced than in the case of FGF1 (Fig 7A). We then also measured the effects of BIBF 1120 treatment on EmMPK1 phosphorylation. To this end, metacystode vesicles were incubated in hepatocyte-conditioned medium and were then subjected to BIBF 1120 treatment (5  $\mu\text{M}$ , 10  $\mu\text{M}$ ) for 30 min. As shown in Fig 7B, this led to diminished phosphorylation of EmMPK1 when 10  $\mu\text{M}$  BIBF 1120 was used.

Taken together, these data indicated that, like in mammals and other invertebrates, the *E. multilocularis* Erk-like MAPK cascade can be activated through FGF signaling, initiated by exogenously added, host-derived FGF ligands.

### Discussion

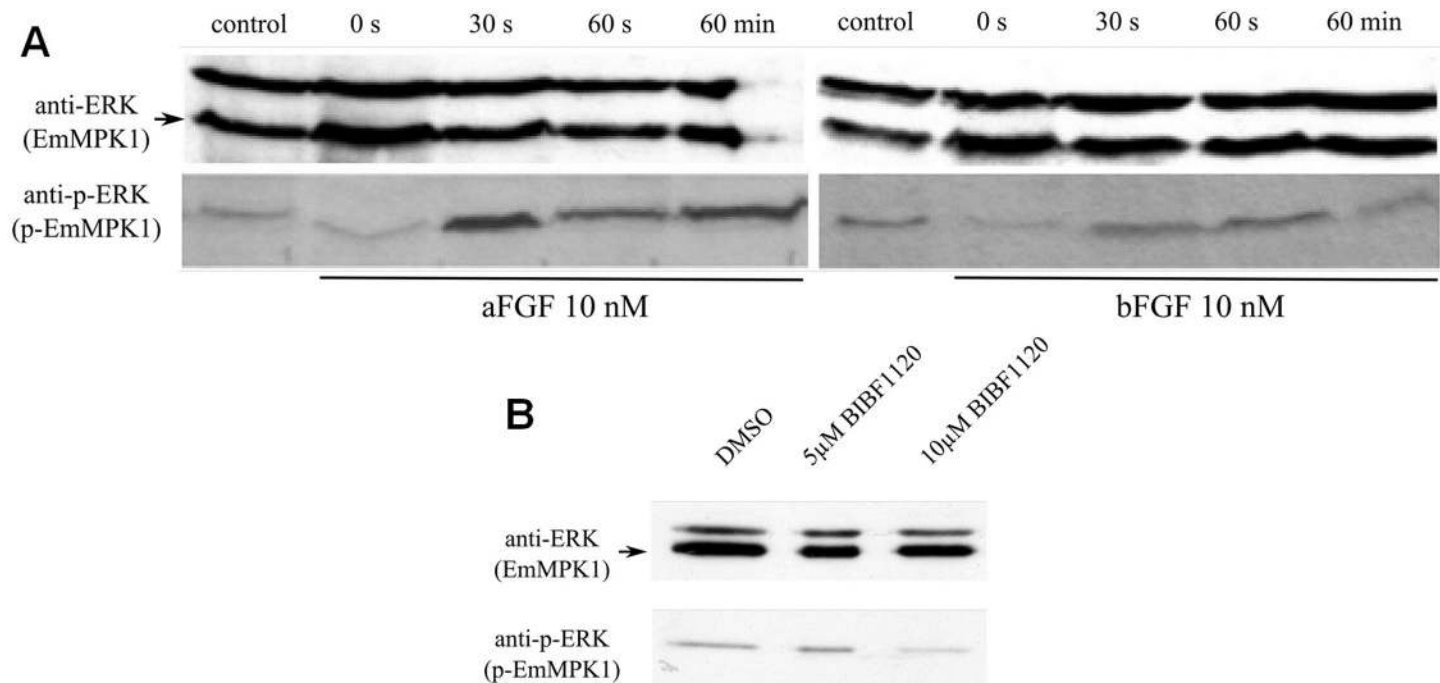
An important difference between parasitic helminths and all other infectious agents (excluding viruses) is that these organisms are evolutionarily relatively closely related to their vertebrate or invertebrate hosts with which they share an ancestor that has lived around 500 to 600 million years ago. Since all metazoans share evolutionarily conserved signalling systems for cell-cell communication, this opens the possibility for host-parasite cross-communication involving evolutionarily conserved cytokines of one partner (e.g. the host) and cognate receptors of the other (e.g. the parasite), which would be of particular relevance for systemic helminths that infect host organs. Several previous studies indicated that this type of host-pathogen interaction is indeed important in helminth infections. In the *E. multilocularis* system, which develops in close association with host liver tissue, we previously demonstrated that host insulin stimulates parasite development and growth via acting on evolutionarily conserved insulin-receptor



**Fig 6. Effects of BIBF 1120 on *E. multilocularis* metacystode vesicles and primary cells.** A, axenically cultivated metacystode vesicles (8 per well in 2 ml volume) were incubated for 18 days in the presence of 0.1% DMSO or BIBF 1120 in different concentrations (as indicated) and the structural integrity of the vesicles was monitored. Structurally intact vesicles (B) and damaged vesicles (C) are shown to the right. The experiment was repeated three times in duplicates. D, freshly isolated *E. multilocularis* primary cells were cultured for 21 days in cMEM medium in the presence of DMSO (0.1%) or BIBF 1120 at different concentrations (as indicated). After 21 days, newly formed metacystode vesicles were counted. The DMSO control for each of the three independent experiments was set to 100%. Microscopic images (25x magnification) of cultures after 2 weeks with DMSO (E) or 10 μM BIBF 1120 (F) are shown to the right.

<https://doi.org/10.1371/journal.pntd.0006959.g006>

TK that are expressed by the parasite [11]. A similar type of cytokine receptor interaction appears to involve epidermal growth factor (EGF)-like cytokines and cognate parasite receptors, of which three (EmER, EmERb, EmERc) are expressed by *E. multilocularis* larvae [3,12].



**Fig 7. Effects of host FGFs and BIBF 1120 on EmMPK1 phosphorylation in metacystode vesicles.** A, axenically cultivated metacystode vesicles were incubated in cMEM (control) or in medium without FCS (0 s), upon which FGF1 (aFGF) or FGF2 (bFGF) were added at a concentration of 10 nM for 30 sec (30s), 60 sec (60s) or 60 min (60min). Protein lysates were subsequently separated by 12% SDS-PAGE and Western blots were analysed using polyclonal antibodies against Erk-like MAP kinases (anti-ERK) or double phosphorylated Erk-like MAP kinases (anti-p-ERK). B, axenically cultivated metacystode vesicles were incubated with DMSO (negative control), 5 mM or 10 mM BIBF1120 (30 min each) and cell lysates were subsequently analysed as described above. Both experiments were performed in triplicate with similar results.

<https://doi.org/10.1371/journal.pntd.0006959.g007>

As recently shown by Cheng et al. [13], host-derived EGF is able to stimulate germinative cell proliferation in *in vitro* cultivated parasite larvae and can stimulate at least one of the parasite EGF-receptors, EmER, when heterologously expressed in *Xenopus* oocytes. Although the parasite itself expresses several EGF-like molecules [14], which likely act on its EGF receptors, these data indicate that host-EGF could act as an additional stimulus, particularly in response to liver tissue damage as it is inflicted upon entry of the parasite into the host liver [4]. Apart from insulin- and EGF-signalling systems, host-parasite interactions in larval cestode infections might also involve the family of transforming growth factor (TGF)- $\beta$ /bone morphogenetic protein (BMP)-family of cytokines since host TGF- $\beta$  has very recently been shown to stimulate larval growth of the cestode *Taenia crassiceps* *in vitro* and was found to interact with parasite TGF- $\beta$  receptors [49]. In a similar way, human BMP2 was reported by us to interact with an *E. multilocularis* BMP receptor [50], although no direct effects of host BMP on parasite development were yet observed. Like in cestodes, the occurrence of insulin- and EGF-receptor TK as well as TGF- $\beta$ /BMP serine/threonine kinases with the capability of interacting with respective human hormones/cytokines was reported for schistosomes [31,51–55], and stimulatory effects of host EGF on the development of schistosome snail stages were observed [31]. In the present work, we extend the list of respective host-parasite cross-communication systems to the FGF-family of host cytokines and cognate FGF RTK which, to our knowledge, have never before been addressed in this context.

We herein clearly show that mammalian FGF1 and FGF2 stimulate the development of *E. multilocularis* metacystode vesicles from cultivated parasite primary cells, which are highly enriched in germinative (stem) cells [6]. Furthermore, we show that human FGF also stimulates proliferation and growth of mature metacystode vesicles. Both FGF1 and FGF2 are

abundantly present in mammalian liver tissue where they are mostly released upon liver cell damage and during regeneration processes [17–20]. Although the precise amounts of host FGF in periparasitic lesions of *E. multilocularis* infected mice has not been measured to date, it is very likely that the early establishing metacestode is encountering considerable amounts of these cytokines since extensive damage to liver tissue is observed not only in chronically infected mice but also in early stages of the infection [4]. The early infectious stage is critical in the establishment of the parasite since the invading oncosphere is not yet producing the laminated layer (LL), an important structure that protects the parasite from direct actions of immune cells [56]. The laminated layer surrounds mature metacestode vesicles (established after 1–2 weeks after invasion) in the chronic phase of the disease. The stimulation of parasite development from stem cells towards mature metacestode vesicles by host FGF, as observed in our cultures, could thus help the parasite to abridge this critical phase and to successfully establish within the liver. Chronic AE is characterized by extensive liver fibrosis, particularly in the peri-parasitic area [57] and is thought to be mediated by hepatic stellate cells [5], which greatly upregulate FGF release during liver regeneration and fibrosis induction [20]. Hence, not only in the initial phase of parasite establishment, but also in the chronic phase of AE, the *E. multilocularis* metacestode should be in contact with elevated levels of host FGF that can continuously support parasite growth and proliferation.

Using the *Xenopus* expression system we clearly showed that all three identified FGF receptors of *E. multilocularis* are functionally active kinases that are capable of inducing GVBD when properly stimulated. We also demonstrated that all three *Echinococcus* kinases are responsive to human FGF1 and FGF2, albeit to somewhat different extent. While 10 nM FGF1 fully stimulated both EmFR1 and EmFR2, EmFR3 was less activated than the other receptors by both FGFs. This does not necessarily indicate, however, that human FGFs bind less well to EmFR3 than to the other two receptors. Instead, EmFR3 might be activated to a lesser extent since two tyrosine residues, Y653 and Y654, which in human FGFR1 are necessary for full activation of the receptor [58], are conserved in EmFR1 and EmFR2 but absent in EmFR3 (S2 Fig). In any case, our data clearly show that particularly human FGF1, but also human FGF2, are capable of activating the parasite receptors. Since the parasite apparently does not produce intrinsic FGF ligands, the only canonical FGFs it encounters during liver invasion are host derived. It is, thus, logical to assume that the effects of FGF1 and FGF2 on parasite growth and development are mediated by one, two or all three *Echinococcus* FGF receptors. In line with this assumption is the stimulation of the parasite's Erk-like MAPK cascade module upon exogenous addition of host FGF to metacestode vesicles. In mammals, the two prominent downstream signalling pathways of FGF receptors are the Ras-Raf-MAPK cascade and the PI3K/Akt pathway, while two others are STAT signalling and the phospholipase  $\gamma$  (PLC $\gamma$ ) pathway [15]. The STAT signalling pathway is absent in *Echinococcus* [14] and PLC $\gamma$  involves binding to human FGF receptors at tyrosine residues that are not conserved in the *Echinococcus* receptors. We had previously demonstrated that the PI3K/Akt pathway exists in *Echinococcus* [11] but we could not measure differential phosphorylation of EmAKT in response to exogenous FGF or after metacestode vesicle treatment with BIBF 1120, indicating that in contrast to human cells, *Echinococcus* mainly involves the MAPK cascade pathway for downstream FGF signalling. In the related planaria, an important role of the Erk-like MAPK cascade in the differentiation of stem cells into multiple cell lineages has been reported [59]. In this system, inhibition of the Erk-like MAPK cascade resulted in reduced differentiation of neoblasts which retained their ability to proliferate and produced new neoblasts [59]. In a recent study on *E. multilocularis* stem cell dynamics, on the other hand, inhibition of the Erk-like MAPK cascade resulted in strongly diminished cell proliferation whereas activation of Erk signalling by exogenous addition of EGF stimulated stem cell self-renewal and clonal expansion, at least under

conditions of low stem cell densities [13]. Furthermore, these authors showed that stimulating EGF signalling can activate quiescent stem cells in the protoscolex to re-enter the cell cycle [13]. Unfortunately, in the *Echinococcus* system no markers are known so far to distinguish between self-renewing stem cells from transit amplifying cells. It will thus in future experiments be interesting to study whether host FGF stimulates *Echinococcus* stem cell renewal, including activation of quiescent stem cells, or the differentiation of transit amplifying stem cells towards differentiated cell lineages. Furthermore, since apparently both FGF and EGF signalling in *Echinococcus* converge on the Erk-like MAPK cascade pathway, it will be worthwhile to study differential or additive effects of both stimuli on *E. multilocularis* stem cell dynamics.

Concerning cellular expression patterns we detected significant differences between the *Echinococcus* FGF receptors and those of the related schistosomes and planaria. In planaria, the expression of FGF receptors is a hallmark of neoblast stem cells and also occurs in cephalic ganglions [21,23]. In schistosomes, one of the two FGF receptors, *fgfrA*, is a marker for a prominent subset of somatic stem cells [25–27] and, like *fgfrB*, is also expressed in the reproductive organs [24]. In *Echinococcus*, we found only one receptor, EmFR3, which is expressed in germinative cells, but only in a very tiny subpopulation. EmFR2 was also only expressed in a few cells which were, however, clearly post-mitotic and most probably represented muscle cells. Likewise, the third *Echinococcus* FGF receptor, EmFR1, was expressed throughout the parasite's metacystode tissue without specific association with the germinative cells. In qRT-PCR analyses on metacystode vesicles which were specifically deprived of stem cells after treatment with hydroxyurea [6] or the Polo-like kinase inhibitor BI 2536 [35] we also never observed diminished levels of *emfr1* expression (S4 Fig), which further supports that the gene is not exclusively expressed in germinative cells. Taken together, these data indicate that the close association of FGF receptor expression with stem cells as observed in planaria and schistosomes is at least highly modified in the *Echinococcus* system, in which at least EmFR1 and EmFR2 are clearly expressed in post-mitotic cells. This adds to stem cell-specific gene expression differences which we had previously observed between planaria and cestodes e.g. concerning *argonaute* or histone deacetylase orthologs [6], and also indicates clear differences between stem cell-specific gene expression patterns in the parasitic flatworm lineages of trematodes and cestodes.

We observed clear inhibitory effects of the TK inhibitor BIBF 1120 on the enzymatic activity of all three *Echinococcus* FGF receptors upon heterologous expression in the *Xenopus* system and also demonstrated that this compound can profoundly affect parasite survival and development *in vitro*. Since in the *Xenopus* system concentrations of 20  $\mu$ M BIBF 1120 fully inhibited all three *Echinococcus* FGF receptors we cannot clearly state whether the detrimental effects on parasite development were due to the specific inhibition of one of the three *Echinococcus* FGF receptors, or on combined activities against all three enzymes. However, based on the fact that EmFR3 is only expressed in less than 1% of the cells of the metacystode, that *emfr3* expressing cells only accumulate during the formation of protoscolexes, and that EmFR3 showed lowest levels of inhibition upon expression in *Xenopus* cells, we do not consider this receptor as a prominent candidate for mediating the BIBF 1120 effects on primary cells and the metacystode. We also consider it unlikely that the inhibition of EmFR2 had produced these effects since the respective gene is only expressed in a small subset (2–5%) of all metacystode cells. Based on the expression of *emfr2* in muscle cells or muscle cell progenitors, however, we cannot completely rule out that EmFR2 inhibition might have led to the depletion of specific parasite cells that are necessary to form a stem cell niche for the parasite's germinative cells. At least in planaria it has already been shown that muscle cells provide important positional information on the stem cell population [60] and our recent studies on the *wnt* signalling pathway in *Echinococcus* clearly demonstrated that this is also the case for cestodes [44]. However, based on the fact that *emfr1* is expressed throughout the metacystode and that in

both primary cells and metacystode vesicles *emfr1* is the highest expressed FGF receptor gene we propose that most of the effects of BIBF 1120 on *Echinococcus* development are mediated by EmFR1 inhibition. On the cellular level, BIBF 1120 could either affect *emfr1*-expressing germinative cells or differentiated cells of the germinal layer or both. Since metacystode vesicles treated with stem cell-specific drugs such as hydroxyurea or BI 2536 still remain intact for 2–3 weeks [6,35], but BIBF 1120-treated vesicles already lose structural integrity after 5 days (Fig 6), we consider it highly likely that EmFR1 inhibition largely damages germinal layer cells which form an important niche for the germinative cells to survive and proliferate.

BIBF 1120 has originally been described as a multi-kinase inhibitor with specificity against members of the VEGF-, FGF-, and PDGF-families, but also with activity against members of the Src-family of non-receptor TK [45]. Our genomic analyses revealed that, similar to schistosomes [24], no genes encoding VEGF- or PDGF-receptors are present on the *E. multilocularis* genome. So far, no Src-like kinase has been biochemically characterized in cestodes. In the related trematode *Schistosoma mansoni*, however, at least one clear Src family kinase, SmTK3, has been described [61] and a close ortholog, EmuJ\_000598200, is encoded on the *E. multilocularis* genome and, at least to a certain level, expressed in primary cells and metacystode vesicles. We thus cannot completely exclude that some of the effects of BIBF 1120 on these cell systems were due to an inhibition of the *Echinococcus* SmTK3 ortholog. On the other hand, we never observed clear effects of Src-kinase specific inhibitors such as PP2 or herbimycin A on *Echinococcus* development *in vitro* which indicates that the observed effects of BIBF 1120 on *Echinococcus* larval development are rather due to the inhibition of other kinases, most probably EmFR1 and/or EmFR2. For the development of novel chemotherapeutics against AE, EmFR1 and EmFR2 would thus be highly interesting target molecules although, of course, BIBF 1120 as originally developed against human FGF receptors showed somewhat higher activities against FGFR1 in the *Xenopus* expression system than against the parasite FGF receptors. Nevertheless, and using the activity assays developed in this work, it should be possible to identify compounds which are related to BIBF 1120 but which show higher affinities against the parasite enzymes than against human FGF receptors.

## Conclusions

In the present work we provide clear evidence that human FGF ligands are capable of activating evolutionarily conserved TK of the FGF receptor family that are expressed by the larval stage of *E. multilocularis* and that the parasite's Erk-like MAPK cascade is stimulated upon exogenous addition of human FGFs to metacystode vesicles. We also showed that human FGF1 and FGF2 are stimulating the development of metacystode vesicles from parasite primary cell cultures and that they accelerate metacystode vesicle proliferation and growth *in vitro*. Since FGF1 and FGF2 are expressed in considerable amounts within the host liver, the primary target organ for the establishment of the *E. multilocularis* metacystode, and since FGF ligands are also constantly produced during liver regeneration and fibrosis, which are consequences of parasite growth within the intermediate host, we consider the observed *in vitro* effects on parasite FGF signalling and metacystode development also of high relevance *in vivo*. Liver-specific activities of host FGF could thus support the development of metacystode vesicles from stem cells that are delivered to the liver by the oncosphere larva, and could constantly stimulate asexual proliferation of the metacystode during an infection. We finally showed that at least one compound that inhibits the activities of mammalian FGF receptors, BIBF 1120, also inhibits the parasite orthologs, leads to metacystode inactivation, and prevents parasite development of stem cell-containing primary cell cultures. This opens new ways for the development of anti-*Echinococcus* drugs using the parasite FGF receptors as target molecules.

## Supporting information

**S1 Fig. Amino acid sequences of *E. multilocularis* FGF receptors.** Deduced amino acid sequences of all three *E. multilocularis* FGF receptors are shown. After the name of each receptor the GenBank accession numbers of the cloned and sequenced cDNAs are shown as well as the gene designation according to the *E. multilocularis* genome project. Predicted signal peptides are marked in red, predicted IG-domains are marked in blue, tyrosine kinase domains are marked in yellow. Transmembrane regions are underlined.  
(PDF)

**S2 Fig. Amino acid sequence alignment of FGF receptor kinase domains.** Depicted is a CLUSTAL W amino acid sequence alignment of the TK domains of *E. multilocularis* EmFR1 (GenBank accession no. LT599044), EmFR2 (LT599045) and EmFR3 (LT599046) with those of *Schistosoma mansoni* FGFR1 (SmFGFR1; Wormbase accession number: Smp\_175590.1) and FGFRB (SmFGFRB; Smp\_157300.1), *Dugesia japonica* FGFR1 (DjFGFR1; NCBI accession no.: Q8MY86) and FGFR2 (DjFGFR2; BAB92086.1), and the human FGFR1 receptor (HsFGFR1; NP\_075598.2). Amino acid residues that are identical to the consensus of all sequences are printed in white on black background. Numbering to the right starts with amino acid 1 of the TK domain. The insert region of the split TK domain is indicated by a grey bar. Amino acids known to be highly conserved among tyrosine and serine/threonine kinases [62] are indicated by asterisks above the alignment. The two tyrosine residues known to be important for full activation of the human FGF receptor [58] are marked by black triangles. The TKD DFG motif which was modified to DNA to generate kinase-dead FGF receptors is indicated by black stars below the sequence.  
(TIF)

**S3 Fig. Expression of *E. multilocularis* FGF receptor genes in larval stages.** Indicated are fpkm (fragments per kilobase of transcript per million mapped reads) values for *emfr1* (red), *emfr2* (orange), and *emfr3* (blue) in *E. multilocularis* primary cell cultures after 2 days of incubation (PC2), after 11 days of culture (PC11), in mature metacystode vesicles without (MV-) and with (MV+) brood capsules as well as in dormant (PS-) and activated (PS+) protoscolexes. Transcriptome data have been generated during the *E. multilocularis* genome project and were mapped to the genome as described in [14].  
(TIF)

**S4 Fig. qRT-PCR analysis of *emfr1-3* expression in stem cell-free metacystode vesicles.** Metacystode vesicles cultivated for 7 days in the presence of DMSO (control, black) or in the presence of hydroxyurea (HU, yellow) or BI 2536 (BI, red) were used for RNA isolation and cDNA preparation. Expression levels of *emfr1*, *emfr2*, and *emfr3* (as indicated) were measured using the constitutively expressed gene *elp* as a normalization control (set to 1.0). All experiments were carried out in triplicates.  
(TIF)

**S5 Fig. WMISH analysis of *emfr3* expression during metacystode development.** In all panels the WMISH signal is shown in green, and DAPI nuclear staining is shown in blue. **A.** Sense probe (negative control). **B.** Early brood capsule formation. **C.** Early protoscolex formation. **D.** Detail of early protoscolex formation, showing an *emfr3*<sup>+</sup> cell in the region of the stalk connecting the developing protoscolex to the brood capsule. **E.** Detail of early protoscolex formation, showing the morphology of an *emfr3*<sup>+</sup> cell (inset: only DAPI channel is shown). **F.** Late protoscolex formation. *bc*, brood capsule; *gl*, germinative layer; *ps*, protoscolex; *r*, rostellum; *s*, sucker; *st*, stalk. Bars: 25  $\mu$ m for B, C, D and F; 10  $\mu$ m for E.  
(TIF)

**S6 Fig. Phosphorylation of *E. multilocularis* FGF receptors upon expression in *Xenopus* oocytes.** *E. multilocularis* EmFR2 (EmFR2) and a kinase-dead version of EmFR2 (EmFR2 TK-) were expressed in *Xenopus* oocytes and stimulated with either 10 nM FGF1 or 10 nM FGF2 as indicated. After stimulation, cell lysates were generated, separated by SDS-PAGE and analysed by Western blot using antibodies against the myc-tag (Anti-myc; loading control) or phosphorylated tyrosine (Anti P<sub>tyr</sub>). Depicted are the results for EmFR2. Results for EmFR1 and EmFR3 were comparable. (TIF)

## Acknowledgments

The authors thank Monika Bergmann and Dirk Radloff for technical support.

## Author Contributions

**Conceptualization:** Uriel Koziol, Colette Dissous, Klaus Brehm.

**Data curation:** Uriel Koziol, Tina Schäfer, Raphael Duvoisin, Katia Cailliau, Mathieu Vanderstraete, Klaus Brehm.

**Formal analysis:** Sabine Förster, Mathieu Vanderstraete, Klaus Brehm.

**Funding acquisition:** Colette Dissous, Klaus Brehm.

**Investigation:** Sabine Förster, Uriel Koziol, Tina Schäfer, Raphael Duvoisin, Katia Cailliau.

**Methodology:** Sabine Förster, Uriel Koziol, Tina Schäfer, Katia Cailliau, Mathieu Vanderstraete, Colette Dissous, Klaus Brehm.

**Project administration:** Klaus Brehm.

**Resources:** Klaus Brehm.

**Supervision:** Colette Dissous, Klaus Brehm.

**Validation:** Sabine Förster, Uriel Koziol, Tina Schäfer, Raphael Duvoisin, Katia Cailliau, Mathieu Vanderstraete, Klaus Brehm.

**Visualization:** Sabine Förster, Uriel Koziol, Tina Schäfer, Raphael Duvoisin, Katia Cailliau, Mathieu Vanderstraete, Colette Dissous, Klaus Brehm.

**Writing – original draft:** Uriel Koziol, Colette Dissous, Klaus Brehm.

## References

1. Kern P, Menezes da Silva A, Akhan O, Müllhaupt B, Vizcaychipi KA, Budke C, Vuitton DA. The echinococcoses: diagnosis, clinical management and burden of disease. *Adv Parasitol.* 2017; 96:259–369. <https://doi.org/10.1016/bs.apar.2016.09.006> PMID: 28212790
2. Thompson RCA. Biology and systematics of *Echinococcus*. *Adv Parasitol.* 2017; 95:65–109. <https://doi.org/10.1016/bs.apar.2016.07.001> PMID: 28131366
3. Brehm K, Koziol U. *Echinococcus*-host interactions at cellular and molecular levels. *Adv Parasitol.* 2017; 95:147–212. <https://doi.org/10.1016/bs.apar.2016.09.001> PMID: 28131363
4. Gottstein B, Soboslay P, Ortona E, Wang J, Siracusano A, Vuitton DA. Immunology of alveolar and cystic echinococcosis (AE and CE). *Adv Parasitol.* 2017; 96:1–54. <https://doi.org/10.1016/bs.apar.2016.09.005> PMID: 28212788
5. Anthony B, Allen JT, Li YS, McManus DP. Hepatic stellate cells and parasite-induced liver fibrosis. *Parasit Vectors.* 2010; 3:60. <https://doi.org/10.1186/1756-3305-3-60> PMID: 20663176



6. Koziol U, Rauschendorfer T, Zanon-Rodriguez L, Krohne G, Brehm K. The unique stem cell system of the immortal larva of the human parasite *Echinococcus multilocularis*. *Evodevo*. 2014; 5:10. <https://doi.org/10.1186/2041-9139-5-10> PMID: 24602211
7. Spiliotis M, Tappe D, Sesterhenn L, Brehm K. Long-term *in vitro* cultivation of *Echinococcus multilocularis* metacystodes under axenic conditions. *Parasitol Res*. 2004; 92:430–2. <https://doi.org/10.1007/s00436-003-1046-8> PMID: 14735358
8. Spiliotis M, Lechner S, Tappe D, Scheller C, Krohne G, Brehm K. Transient transfection of *Echinococcus multilocularis* primary cells and complete *in vitro* regeneration of metacystode vesicles. *Int J Parasitol*. 2008; 38:1025–39. <https://doi.org/10.1016/j.ijpara.2007.11.002> PMID: 18086473
9. Spiliotis M, Brehm K. Axenic *in vitro* cultivation of *Echinococcus multilocularis* metacystode vesicles and the generation of primary cell cultures. *Methods Mol Biol*. 2009; 470:245–62. [https://doi.org/10.1007/978-1-59745-204-5\\_17](https://doi.org/10.1007/978-1-59745-204-5_17) PMID: 19089387
10. Spiliotis M, Mizukami C, Oku Y, Kiss F, Brehm K, Gottstein B. *Echinococcus multilocularis* primary cells: improved isolation, small-scale cultivation and RNA interference. *Mol Biochem Parasitol*. 2010; 174:83–7. <https://doi.org/10.1016/j.molbiopara.2010.07.001> PMID: 20637246
11. Hemer S, Konrad C, Spiliotis M, Koziol U, Schaack D, Förster S, et al. Host insulin stimulates *Echinococcus multilocularis* insulin signalling pathways and larval development. *BMC Biol* 2014; 12:5. <https://doi.org/10.1186/1741-7007-12-5> PMID: 24468049
12. Spiliotis M, Kroner A, Brehm K. Identification, molecular characterization and expression of the gene encoding the epidermal growth factor receptor orthologue from the fox-tapeworm *Echinococcus multilocularis*. *Gene*. 2003; 323:57–65. PMID: 14659879
13. Cheng Z, Liu F, Li X, Dai M, Wu J, Guo X, et al. EGF-mediated EGFR/ERK signaling pathway promotes germinative cell proliferation in *Echinococcus multilocularis* that contributes to larval growth and development. *PLoS Negl Trop Dis*. 2017; 11:e0005418. <https://doi.org/10.1371/journal.pntd.0005418> PMID: 28241017
14. Tsai IJ, Zarowiecki M, Holroyd N, Garciarrubio A, Sanchez-Flores A, Brooks KL, et al. The genomes of four tapeworm species reveal adaptations to parasitism. *Nature*. 2013; 496:57–63. <https://doi.org/10.1038/nature12031> PMID: 23485966
15. Ornitz DM, Itoh N. The fibroblast growth factor signaling pathway. *WIREs Dev Biol*. 2015; 4:215–66.
16. Oulion S, Bertrand S, Escriva H. Evolution of the FGF gene family. *Int J Evol Biol*. 2012; 2012:298147. <https://doi.org/10.1155/2012/298147> PMID: 22919541
17. Nagasaki T, Lieberman MA. Liver contains heparin-binding growth factors as the major growth factor for cultured fibroblasts. *Hepatology* 1991; 13:6–14. PMID: 1703123
18. Steiling H, Wüstefeld T, Bugnon P, Brauchle M, Fässler R, Teupser D, et al. Fibroblast growth factor receptor signalling is crucial for liver homeostasis and regeneration. *Oncogene*. 2003; 22:4380–8. <https://doi.org/10.1038/sj.onc.1206499> PMID: 12853974
19. Kan M, Huang J, Mansson PE, Yasumitsu H, Carr B, McKeehan WL. Heparin-binding growth factor type 1 (acidic fibroblast growth factor): a potential biphasic autocrine and paracrine regulator of hepatocyte regeneration. *Proc Natl Acad Sci USA*. 1989; 86:7432–6. PMID: 2477840
20. Schumacher JD, Guo GL. Regulation of hepatic stellate cells and fibrogenesis by fibroblast growth factors. *Biomed Res Int*. 2016; 2016:8323747. <https://doi.org/10.1155/2016/8323747> PMID: 27699175
21. Ogawa K, Kobayashi C, Hayashi T, Orii H, Watanabe K, Agata K. Planarian fibroblast growth factor receptor homologs expressed in stem cells and cephalic ganglions. *Develop Growth Differ*. 2002; 44:191–204.
22. Cebria F, Kobayashi C, Umesono Y, Nakazawa M, Mineta K, Ikeo K, et al. FGFR-related gene *nou-darake* restricts brain tissues to the head region of planarians. *Nature*. 2002; 419:620–4. <https://doi.org/10.1038/nature01042> PMID: 12374980
23. Wagner DE, Ho JJ, Reddien PW. Genetic regulators of a pluripotent adult stem cell system in planarians identified by RNAi and clonal analysis. *Cell Stem Cell*. 2012; 10:299–311. <https://doi.org/10.1016/j.stem.2012.01.016> PMID: 22385657
24. Hahnel S, Quack T, Parker-Manuel SJ, Lu Z, Vanderstraete M, Morel M, et al. Gonad RNA-specific qRT-PCR analyses identify genes with potential functions in schistosome reproduction such as SmFz1 and SmFGFRs. *Front Genet*. 2014; 5:170. <https://doi.org/10.3389/fgene.2014.00170> PMID: 24959172
25. Wang B, Collins JJ 3rd, Newmark PA. Functional genomic characterization of neoblast-like stem cells in larval *Schistosoma mansoni*. *Elife* 2013; 2:e00768. <https://doi.org/10.7554/eLife.00768> PMID: 23908765
26. Wendt GR, Collins JNR, Pei J, Pearson MS, Bennett HM, Loukas A, et al. Flatworm-specific transcriptional regulators promote the specification of tegumental progenitors in *Schistosoma mansoni*. *Elife*. 2018; 7:e33221. <https://doi.org/10.7554/eLife.33221> PMID: 29557781

27. Wang B, Lee J, Li P, Saberi A, Yang H, Liu C, et al. Stem cell heterogeneity drives the parasitic life cycle of *Schistosoma mansoni*. *Elife*. 2018; 7:e35449. <https://doi.org/10.7554/eLife.35449> PMID: [29988015](https://pubmed.ncbi.nlm.nih.gov/29988015/)
28. Parkinson J, Wasmuth JD, Salinas G, Bizarro CV, Sanford C, Berriman M, et al. A transcriptome analysis of *Echinococcus granulosus* larval stages: implications for parasite biology and host adaptation. *PLoS Negl Trop Dis*. 2012; 6:e1897. <https://doi.org/10.1371/journal.pntd.0001897> PMID: [23209850](https://pubmed.ncbi.nlm.nih.gov/23209850/)
29. Brehm K, Wolf M, Beland H, Kroner A, Frosch M. Analysis of differential gene expression in *Echinococcus multilocularis* larval stages by means of spliced leader differential display. *Int J Parasitol*. 2003; 33:1145–59. PMID: [13678631](https://pubmed.ncbi.nlm.nih.gov/13678631/)
30. Konrad C, Kroner A, Spiliotis M, Zavala-Gongora R, Brehm K. Identification and molecular characterization of a gene encoding a member of the insulin receptor family in *Echinococcus multilocularis*. *Int J Parasitol*. 2003; 33:301–12. PMID: [12670515](https://pubmed.ncbi.nlm.nih.gov/12670515/)
31. Vicogne J, Cailliau K, Tulasne D, Browaeys E, Yan YT, Fafeur V, et al. Conservation of epidermal growth factor receptor function in the human parasitic helminth *Schistosoma mansoni*. *J Biol Chem*. 2004; 279:37407–14. <https://doi.org/10.1074/jbc.M313738200> PMID: [15231836](https://pubmed.ncbi.nlm.nih.gov/15231836/)
32. Browaeys-Poly E, Cailliau K, Vilain JP. Signal transduction pathways triggered by fibroblast growth factor receptor 1 expressed in *Xenopus laevis* oocytes after fibroblast growth factor 1 addition. Role of Grb2, phosphatidylinositol 3-kinase, Src tyrosine kinase, and phospholipase Cgamma. *Eur J Biochem*. 2000; 267:6253–63.
33. Spiliotis M, Konrad C, Gelmedin V, Tappe D, Brückner S, Mösch HU, Brehm K. Characterization of EmMPK1, an ERK-like MAP kinase from *Echinococcus multilocularis* which is activated in response to human epidermal growth factor. *Int J Parasitol*. 2006; 36:1097–1112. <https://doi.org/10.1016/j.ijpara.2006.05.008> PMID: [16793045](https://pubmed.ncbi.nlm.nih.gov/16793045/)
34. del Puerto L, Rovetta R, Navatta M, Fontana C, Lin G, Moyna G, et al. Negligible elongation of mucin glycans with Gal  $\beta$ 1–3 units distinguishes the laminated layer of *Echinococcus multilocularis* from that of *Echinococcus granulosus*. *Int J Parasitol* 2016; 46:311–321. <https://doi.org/10.1016/j.ijpara.2015.12.009> PMID: [26891615](https://pubmed.ncbi.nlm.nih.gov/26891615/)
35. Schubert A, Koziol U, Cailliau K, Vanderstraete M, Dissous C, Brehm K. Targeting *Echinococcus multilocularis* stem cells by inhibition of the Polo-like kinase EmPlk1. *PLoS Negl Trop Dis*. 2014; 8:e2870. <https://doi.org/10.1371/journal.pntd.0002870> PMID: [24901228](https://pubmed.ncbi.nlm.nih.gov/24901228/)
36. Livak KJ, Schmittgen TD. Analysis of relative gene expression data using real-time quantitative PCR and the 2<sup>-</sup>( $\Delta\Delta$ C<sub>T</sub>) method. *Methods* 2001; 25:402–8. <https://doi.org/10.1006/meth.2001.1262> PMID: [11846609](https://pubmed.ncbi.nlm.nih.gov/11846609/)
37. Grassot J, Gouy M, Perriere G, Mouchiroud G. Origin and molecular evolution of receptor tyrosine kinases with immunoglobulin-like domains. *Mol Biol Evol*. 2006; 23:1232–41. <https://doi.org/10.1093/molbev/msk007> PMID: [16551648](https://pubmed.ncbi.nlm.nih.gov/16551648/)
38. Grohme MA, Schloissnig S, Rozanski A, Pippel M, Young GR, Winkler S, et al. The genome of *Schmidtea mediterranea* and the evolution of core cellular mechanisms. *Nature*. 2018; 554:56–61. <https://doi.org/10.1038/nature25473> PMID: [29364871](https://pubmed.ncbi.nlm.nih.gov/29364871/)
39. Berriman M, Haas BJ, LoVerde PT, Wilson RA, Dillon GP, Cerquera GC, et al. The genome of the blood fluke *Schistosoma mansoni*. *Nature*. 2009; 460:352–8. <https://doi.org/10.1038/nature08160> PMID: [19606141](https://pubmed.ncbi.nlm.nih.gov/19606141/)
40. Huang P, Stern MJ. FGF signaling in flies and worms: more and more relevant to vertebrate biology. *Cytokine Growth Factor Rev*. 2005; 16:151–8. <https://doi.org/10.1016/j.cytogr.2005.03.002> PMID: [15863031](https://pubmed.ncbi.nlm.nih.gov/15863031/)
41. Rentzsch F, Fritzenwanker JH, Scholz CB, Technau U. FGF signaling controls formation of the apical sensory organ in the cnidarian *Nematostella vectensis*. *Development*. 2008; 135:1761–9. <https://doi.org/10.1242/dev.020784> PMID: [18441276](https://pubmed.ncbi.nlm.nih.gov/18441276/)
42. Krishnapati LS, Ghaskadbi S. Identification and characterization of VEGF and FGF from *Hydra*. *Int J Dev Biol*. 2013; 57:897–906. <https://doi.org/10.1387/ijdb.130077sg> PMID: [24623082](https://pubmed.ncbi.nlm.nih.gov/24623082/)
43. Koziol U, Radio S, Smircich P, Zarowiecki M, Fernandez C, Brehm K. A novel terminal-repeat retrotransposon in miniature (TRIM) is massively expressed in *Echinococcus multilocularis* stem cells. *Genome Biol Evol*. 2015; 7:2136–53. <https://doi.org/10.1093/gbe/evv126> PMID: [26133390](https://pubmed.ncbi.nlm.nih.gov/26133390/)
44. Koziol U, Jarero F, Olson PD, Brehm K. Comparative analysis of Wnt expression identifies a highly conserved developmental transition in flatworms. *BMC Biol*. 2016; 14:10. <https://doi.org/10.1186/s12915-016-0233-x> PMID: [26941070](https://pubmed.ncbi.nlm.nih.gov/26941070/)
45. Hilberg F, Roth GJ, Krssak M, Kautschitsch S, Sommergruber W, Tontsch-Grunt U, et al. BIBF 1120: Triple angiokinase inhibitor with sustained receptor blockade and good antitumor efficacy. *Cancer Res*. 2008; 68:4774–82. <https://doi.org/10.1158/0008-5472.CAN-07-6307> PMID: [18559524](https://pubmed.ncbi.nlm.nih.gov/18559524/)

46. Roth GJ, Binder R, Colbatzky F, Dallinger C, Schlenker-Herceg R, Hilberg F, et al. Nintedanib: from discovery to clinic. *J Med Chem*. 2015; 58:1053–63. <https://doi.org/10.1021/jm501562a> PMID: [25474320](#)
47. Spiliotis M, Tappe D, Brückner S, Mösch HU, Brehm K. Molecular cloning and characterization of Ras- and Raf-homologues from the fox-tapeworm *Echinococcus multilocularis*. *Mol Biochem Parasitol*. 2005; 139:225–237. <https://doi.org/10.1016/j.molbiopara.2004.11.013> PMID: [15664657](#)
48. Gelmedin V, Spiliotis M, Brehm K. Molecular characterization of MEK1/2- and MKK3/6-like mitogen-activated protein kinase kinases (MAPKK) from the fox-tapeworm *Echinococcus multilocularis*. *Int J Parasitol*. 2010; 40:555–67. <https://doi.org/10.1016/j.ijpara.2009.10.009> PMID: [19887070](#)
49. Adalid-Peralta L, Rosas G, Arce-Sillas A, Bobes RJ, Cardenas G, Hernandez M, et al. Effect of transforming growth factor- $\beta$  upon *Taenia solium* and *Taenia crassiceps* cysticerci. *Sci Rep*. 2017; 7:12345. <https://doi.org/10.1038/s41598-017-12202-z> PMID: [28955045](#)
50. Zavala-Gongora R, Kroner A, Bernthaler P, Knaus P, Brehm K. A member of the transforming growth factor-b-receptor family from *Echinococcus multilocularis* is activated by human bone morphogenetic protein. *Mol Biochem Parasitol*. 2006; 146:265–71. <https://doi.org/10.1016/j.molbiopara.2005.12.011> PMID: [16434111](#)
51. Ramachandran H, Skelly PJ, Shoemaker CB. The *Schistosoma mansoni* epidermal growth factor receptor homologue, SER, has tyrosine kinase activity and is localized in adult muscle. *Mol Biochem Parasitol*. 1996; 83:1–10. PMID: [9010837](#)
52. Oliveira KC, Carvalho ML, Verjovski-Almeida S, LoVerde PT. Effect of human TGF- $\beta$  on the gene expression profile of *Schistosoma mansoni* adult worms. *Mol Biochem Parasitol*. 2012; 183:132–9. <https://doi.org/10.1016/j.molbiopara.2012.02.008> PMID: [22387759](#)
53. Osman A, Niles EG, Verjovski-Almeida S, LoVerde PT. *Schistosoma mansoni* TGF-beta receptor II: role in host ligand-induced regulation of a schistosome target gene. *PLoS Pathog*. 2006; 2:e54. <https://doi.org/10.1371/journal.ppat.0020054> PMID: [16789838](#)
54. Khayath N, Vicogne J, Ahier A, BenYounes A, Konrad C, Trolet J, et al. Diversification of the insulin receptor family in the helminth parasite *Schistosoma mansoni*. *FEBS J*. 2007; 274:659–76. <https://doi.org/10.1111/j.1742-4658.2006.05610.x> PMID: [17181541](#)
55. You H, Zhang W, Jones MK, Gobert GN, Mulvenna J, Rees G, et al. Cloning and characterization of *Schistosoma japonicum* insulin receptors. *PLoS One*. 2010; 5:e9868. <https://doi.org/10.1371/journal.pone.0009868> PMID: [20352052](#)
56. Gottstein B, Dai WJ, Walker M, Stettler M, Müller N, Hemphill A. An intact laminated layer is important for the establishment of secondary *Echinococcus multilocularis* infection. *Parasitol Res*. 2002; 88:822–8. <https://doi.org/10.1007/s00436-002-0659-7> PMID: [12172814](#)
57. Vuitton DA, Guerret-Stocker S, Carbillet JP, Mantion G, Miguet JP, Grimaud JA. Collagen immunotyping of the hepatic fibrosis in human alveolar echinococcosis. *Z Parasitenkd*. 1986; 72:97–104. PMID: [3515794](#)
58. Furdui CM, Lew ED, Schlessinger J, Anderson KS. Autophosphorylation of FGFR1 kinase is mediated by a sequential and precisely ordered reaction. *Mol Cell*. 2006; 21:711–7. <https://doi.org/10.1016/j.molcel.2006.01.022> PMID: [16507368](#)
59. Tasaki J, Shibata N, Nishimura O, Itomi K, Tabata Y, Son F, et al. ERK signaling controls blastemal cell differentiation during planarian regeneration. *Development* 2011; 138:2417–27. <https://doi.org/10.1242/dev.060764> PMID: [21610023](#)
60. Witchley JN, Mayer M, Wagner DE, Owen JH, Reddien PW. Muscle cells provide instructions for planarian regeneration. *Cell Rep*. 2013; 4:633–41. <https://doi.org/10.1016/j.celrep.2013.07.022> PMID: [23954785](#)
61. Kapp K, Knobloch J, Schüssler P, Sroka S, Lammers R, Kunz W, Grevelding CG. The *Schistosoma mansoni* Src kinase TK3 is expressed in the gonads and likely involved in cytoskeletal organization. *Mol Biochem Parasitol* 2004; 138:171–82. <https://doi.org/10.1016/j.molbiopara.2004.07.010> PMID: [15555729](#)
62. Hanks SK, Hunter T. The eukaryotic protein kinase superfamily: kinase (catalytic) domain structure and classification. *FASEB J*. 1995; 9:576–96. PMID: [7768349](#)