



Correction to: The role of transient eddies and diabatic heating in the maintenance of European heat waves: a nonlinear quasi-stationary wave perspective

Qiyun Ma^{1,2} · Christian L. E. Franzke^{1,3,4}

Published online: 25 February 2021
© The Author(s) 2021

Correction to: Climate Dynamics
<https://doi.org/10.1007/s00382-021-05628-9>

In the original version of the article, there is a diagonal line in Figs. 2 and 8. The correct Fig. 2 and Fig. 8 is given below,

The original article can be found online at <https://doi.org/10.1007/s00382-021-05628-9>.

✉ Christian L. E. Franzke
christian.franzke@gmail.com

Qiyun Ma
qiyun.ma@studium.uni-hamburg.de

- ¹ Meteorological Institute, University of Hamburg, Hamburg, Germany
- ² School of Integrated Climate System Science, University of Hamburg, Hamburg, Germany
- ³ Center for Earth System Research and Sustainability, University of Hamburg, Hamburg, Germany
- ⁴ School of Engineering and Science, Jacobs University, Bremen, Germany

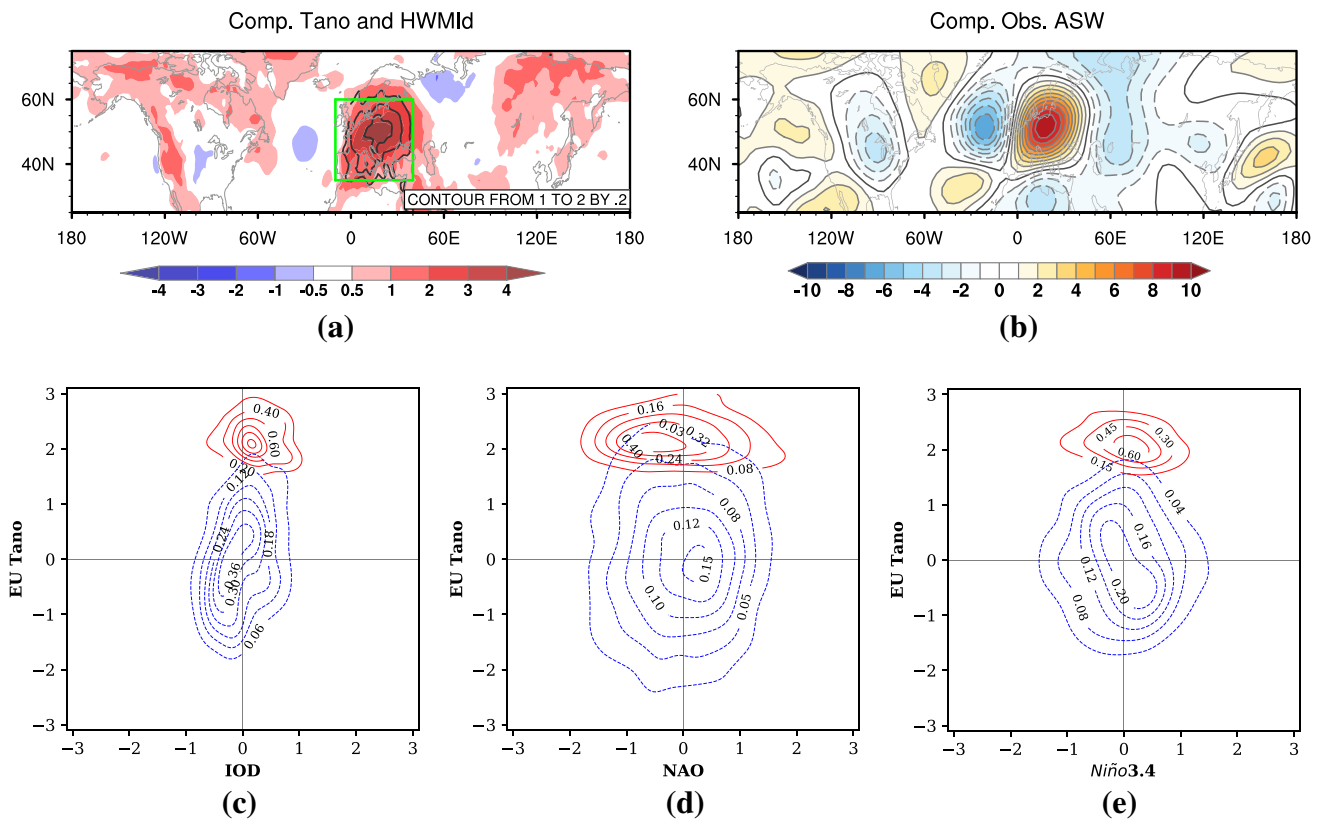


Fig. 2 **a** Composite spatial pattern of temperature anomalies T_{ano} (shading) and the heat wave magnitude HWMId (contour); the green dashed box depicts the used European region of our study. **b** The corresponding composites of the 200 hPa streamfunction anomaly;

contour interval is $1 \times 10^6 \text{ m}^2 \text{ s}^{-1}$. Probability density functions of daily Europe T_{ano} versus NAO **c**, NINO3.4 **d** and IOD **e** index for JJA (blue) and the heat wave events stated in Table 1 (red)

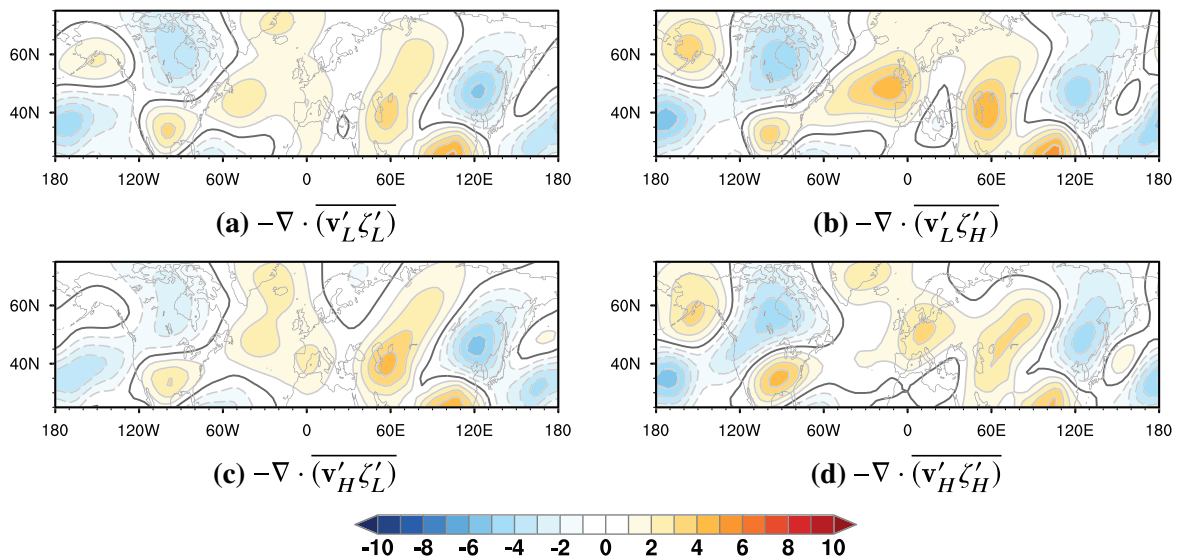


Fig. 8 Same as Fig. 7b, but now the transient vorticity flux is decomposed into different nonlinear interaction parts stemming from different frequency ranges: **a** $-\nabla \cdot \overline{(\mathbf{v}'_L \zeta'_L)}$, **b** $-\nabla \cdot \overline{(\mathbf{v}'_L \zeta'_H)}$, **c** $-\nabla \cdot \overline{(\mathbf{v}'_H \zeta'_L)}$, and **d** $-\nabla \cdot \overline{(\mathbf{v}'_H \zeta'_H)}$

The original article has been corrected.

Publisher's Note Springer Nature remains neutral with regard to jurisdictional claims in published maps and institutional affiliations.