

The SAMI galaxy survey: Galaxy Interactions and Kinematic Anomalies in Abell 119

— [Source link](#) 

Sree Oh, Sukyoung K. Yi, Luca Cortese, Jesse van de Sande ...+29 more authors

Institutions: Yonsei University, University of Western Australia, University of Sydney, Indian Institute of Science Education and Research, Mohali ...+5 more institutions

Published on: 12 Sep 2016 - arXiv: Astrophysics of Galaxies

Topics: Galaxy merger, Galaxy and Stellar kinematics

Related papers:

- [The SAMI Galaxy Survey: Asymmetry in gas kinematics and its links to stellar mass and star formation](#)
- [Galaxy-galaxy interactions as triggers of star formation](#)
- [Morphology and surface photometry of a sample of isolated early-type galaxies from deep imaging](#)
- [Luminosity profiles of advanced mergers of galaxies using 2mass data](#)
- [SDSS-IV MaNGA: probing the kinematic morphology-density relation of early-type galaxies with MaNGA](#)

Share this paper:    

View more about this paper here: <https://typeset.io/papers/the-sami-galaxy-survey-galaxy-interactions-and-kinematic-28r4xw15dw>



THE SAMI GALAXY SURVEY: GALAXY INTERACTIONS AND KINEMATIC ANOMALIES IN ABELL 119

SREE OH¹, SUKYOUNG K. YI¹, LUCA CORTESE², JESSE VAN DE SANDE³, SMRITI MAHAJAN⁴, HYUNJIN JEONG⁵, YUN-KYEONG SHEEN⁵, JAMES T. ALLEN^{3,6}, KENJI BEKKI², JOSS BLAND-HAWTHORN³, JESSICA V. BLOOM^{3,6}, SARAH BROUGH⁷, JULIA J. BRYANT^{3,6,7}, MATTHEW COLLESS^{6,8}, SCOTT M. CROOM^{3,6}, L. M. R. FOGARTY^{3,6}, MICHAEL GOODWIN⁷, ANDY GREEN⁷, IRAKLIS S. KONSTANTOPOULOS^{7,9}, JON LAWRENCE⁷, Á. R. LÓPEZ-SÁNCHEZ^{7,10}, NURIA P. F. LORENTE⁷, ANNE M. MEDLING^{8,11,12}, MATT S. OWERS^{7,10}, SAMUEL RICHARDS^{3,6,7}, NICHOLAS SCOTT^{3,6}, ROB SHARP⁸, AND SARAH M. SWEET⁸

¹ Department of Astronomy & Yonsei University Observatory, Yonsei University, Seoul 120-749, Korea; sree@galaxy.yonsei.ac.kr, yi@yonsei.ac.kr

² ICRAR M468, University of Western Australia, 35 Stirling Highway, Crawley WA 6009, Australia

³ Sydney Institute for Astronomy (SfA), School of Physics, The University of Sydney, NSW 2006, Australia

⁴ Indian Institute of Science Education and Research Mohali, IISERM, Punjab, India

⁵ Korea Astronomy and Space Science Institute, Daejeon 305-348, Korea

⁶ ARC Centre of Excellence for All-sky Astrophysics (CAASTRO), Australia

⁷ Australian Astronomical Observatory P.O. Box 915, North Ryde NSW 1670, Australia

⁸ Research School of Astronomy and Astrophysics Australian National University, Canberra ACT 2611, Australia

⁹ Envizi Group Suite 213, National Innovation Centre, Australian Technology Park, 4 Cornwallis Street, Eveleigh NSW 2015, Australia

¹⁰ Department of Physics and Astronomy, Macquarie University, NSW 2109, Australia

¹¹ Cahill Center for Astronomy and Astrophysics California Institute of Technology, MS 249-17, Pasadena, CA 91125, USA

Received 2016 June 3; revised 2016 September 5; accepted 2016 September 7; published 2016 November 17

ABSTRACT

Galaxy mergers are important events that can determine the fate of a galaxy by changing its morphology, star formation activity and mass growth. Merger systems have commonly been identified from their disturbed morphologies, and we now can employ integral field spectroscopy to detect and analyze the impact of mergers on stellar kinematics as well. We visually classified galaxy morphology using deep images ($\mu_r = 28$ mag arcsec⁻²) taken by the Blanco 4 m telescope at the Cerro Tololo Inter-American Observatory. In this paper we investigate 63 bright ($M_r < -19.3$) spectroscopically selected galaxies in Abell 119, of which 53 are early type and 20 show a disturbed morphology by visual inspection. A misalignment between the major axes in the photometric image and the kinematic map is conspicuous in morphologically disturbed galaxies. Our sample is dominated by early-type galaxies, yet it shows a surprisingly tight Tully–Fisher relation except for the morphologically disturbed galaxies which show large deviations. Three out of the eight slow rotators in our sample are morphologically disturbed. The morphologically disturbed galaxies are generally more asymmetric, visually as well as kinematically. Our findings suggest that galaxy interactions, including mergers and perhaps fly-bys, play an important role in determining the orientation and magnitude of a galaxy’s angular momentum.

Key words: catalogs – galaxies: clusters: individual (Abell 119) – galaxies: evolution – galaxies: interactions – galaxies: kinematics and dynamics

1. INTRODUCTION

Galaxies experience the most dramatic changes during galaxy mergers. Mergers can sometimes change the galaxy morphology (Toomre & Toomre 1972; Barnes & Hernquist 1992), generate starbursts (Cox et al. 2008; Kaviraj 2010a; López-Sánchez 2010), stimulate nuclear activity (Canalizo et al. 2007; Bennert et al. 2008; Ellison et al. 2011; Cotini et al. 2013; Satyapal et al. 2014), and contribute to stellar mass growth (Lee & Yi 2013). Therefore, the merger history of galaxies is important for understanding present-day galaxies. Since mergers cause distortions in the morphology of the system, visual inspections of images are often used to trace recent mergers. Deep images are therefore essential for detecting evidence of mergers and interactions, and reveal that galaxies have assembled a substantial fraction of their mass via mergers even in recent epochs (van Dokkum 2005; Tal et al. 2009; Kaviraj 2010b; Sheen et al. 2012; Yi et al. 2013; Duc et al. 2015).

Kinematics plays a key role in determining the morphology of galaxies, and therefore, visually observable disturbances are also linked to the underlying kinematics (Rampazzo et al. 2005; Kronberger et al. 2007; Yang et al. 2008). Integral field

spectroscopy (IFS) allows us to access 2D spatially resolved velocity fields, so the analyses that are used to detect features in an image can be applied to IFS data as well. As we visually define peculiar morphologies using images, kinematically distinct features (e.g., kinematically distinct cores, counter-rotating cores, and double peaks in velocity dispersion) can be detected using 2D kinematic maps of galaxies (e.g., Krajnović et al. 2011).

Several techniques quantifying peculiarities in gas and stellar kinematics have been applied to large data sets from various surveys (Shapiro et al. 2008; Krajnović et al. 2011). A recent study by Bloom et al. (2016) shows that morphologically disturbed galaxies correlate with asymmetry in gas kinematics better than “stellar” (i.e., photometric) parameters, such as Gini (Abraham et al. 2003), M20 (Lotz et al. 2004), or CAS (Abraham et al. 1996; Conselice 2003). The distribution of gas is more easily disturbed than that of stars, making gas an efficient tracer of kinematic disturbances (Stil & Israel 2002; Cannon et al. 2004; Koribalski & López-Sánchez 2009; López-Sánchez et al. 2012). Gas, however, cannot be used for gas-deficient early-type galaxies. We therefore use stellar kinematics for our cluster galaxy sample, which is predominantly early type and gas deficient.

¹² Hubble Fellow.

Kinematic studies from IFS surveys have changed our view of galaxy morphology. The SAURON (de Zeeuw et al. 2002) and ATLAS^{3D} surveys (Cappellari et al. 2011a) reported that galaxies can be separated into two categories, fast and slow rotators, according to their spin parameter (λ_R). In their classification, the majority of early-type galaxies show fast and regular rotation, which implies that they have measurable levels of ordered motion (e.g., Cappellari et al. 2007; Emsellem et al. 2007, 2011; Krajnović et al. 2013). This, however, is counterintuitive to the traditional idea of a “pressure-supported” early-type and “ordered-motion supported” late-type description of galaxies, thereby questioning the origin and evolution of angular momentum in different types of galaxies.

The investigation of mergers on angular momentum changes can provide clues to the origin of slow rotators. Numerical simulations suggest that galaxies can lose their angular momentum via mergers and become slow rotators (Bois et al. 2011; Khochfar et al. 2011; Naab et al. 2014 and references therein). To empirically assess the role of mergers on the evolution of angular momentum, it is necessary to know the intrinsic distribution of angular momentum of stable disks, before a galaxy undergoes an interaction. The Tully–Fisher relation (T–F, Tully & Fisher 1977) serves this purpose. The tight correlation between stellar luminosity and HI line width has been well established by many studies on disk galaxies in the local universe. Furthermore, the T–F relation is found even among early-type galaxies using HI and CO line observations (Williams et al. 2010; Davis et al. 2011; den Heijer et al. 2015). Recently, Cortese et al. (2014) found that early-type galaxies exhibit a T–F relation similar to spirals, although with markedly larger scatter. These findings imply that the T–F relation is a general trend in “regular” rotating systems regardless of galaxy morphology, and if dynamical interactions change the angular momentum of galaxies, they introduce scatter in the T–F relation (Kassin et al. 2007; Covington et al. 2010; De Rossi et al. 2012).

Several studies from numerical simulations suggest that the direction of angular momentum can be easily changed via gas accretion from cosmic webs or galaxy mergers (e.g., Kimm et al. 2011; Sharma et al. 2012; Dubois et al. 2014). The misalignment of orientation between images and stellar kinematics was first introduced in Franx et al. (1991), and after that several IFS surveys also detected the kinematic misalignment. Krajnović et al. (2011) reported that 10% of early-type galaxies, some of which show prominent merger features, show misaligned kinematic and morphological orientations. Using data from the CALIFA survey (Sánchez et al. 2012), Barrera-Ballesteros et al. (2015) compared kinematic misalignment of interacting and undisturbed galaxies, and found large misalignments among galaxies that seem to be on-going mergers. On the other hand, the misaligned galaxies in their sample do not always show merger signatures, and misalignment was more often found among galaxies that were rounder or had low angular momentum, making it difficult to conclude on the effect of mergers on kinematic anomalies. It is therefore necessary to use deeper imaging data that clearly reveal the merger status of galaxies to answer this question.

Here we investigate the impact of mergers on three aspects of kinematics: angular momentum, orientation, and asymmetry. In order to do this we used deep optical images obtained with the Blanco 4 m telescope at the Cerro Tololo Inter-American Observatory (CTIO, Sheen et al. 2012), and stellar kinematics from the Sydney-AAO Multi-object Integral field (SAMI, Croom et al. 2012) galaxy survey (Bryant et al. 2015). Specifically, we quantitatively compare kinematic properties between morphologically disturbed and undisturbed galaxies in Abell 119 and discuss the merger origin of their kinematic anomalies. Throughout the paper, we adopt a standard Λ CDM cosmology with $\Omega_m = 0.3$, $\Omega_\Lambda = 0.7$, and $H_0 = 70$ km s⁻¹ Mpc⁻¹.

2. DATA AND SAMPLES

2.1. CTIO Deep Imaging

We obtained deep optical images of Abell 119 in the u , g , and r bands using the MOSAIC II CCD mounted on the Blanco telescope. These observations were carefully planned with the goal of detecting low surface brightness features related to galaxy interactions. For Abell 119, seven dithered exposures were taken and combined to make an r -band stacked image with a total integration time of 5040 s. The large field of view (FOV) of the MOSAIC II CCD ($36' \times 36'$) covers $0.7 R_{200}$ of Abell 119 (~ 1.53 Mpc) at $z = 0.044$. The surface brightness profiles of galaxies go down to 30 mag arcsec⁻² in the r band, which allows us to detect extremely faint features ($\mu_r = 28$ mag arcsec⁻², 1σ above the sky level). Magnitudes in this study are corrected for foreground extinction using the reddening maps from Schlegel et al. (1998). Details of data reduction and treatment of photometric data are described in Sheen et al. (2012).

2.2. The SAMI Galaxy Survey

The SAMI instrument (Croom et al. 2012) is mounted on the 3.9 m Anglo-Australian Telescope and fed into the AAOmega spectrograph (Sharp et al. 2006). It has 13 “hexabundles” of 15" diameter (Bland-Hawthorn et al. 2011; Bryant et al. 2014); each is comprised of 61 1"6-diameter optical fibers. The hexabundles patrol a FOV of 1 degree diameter. The beam is split into blue (580 V grating, 3700–5700 Å) and red (1000R grating, 6300–7400 Å) arms; the spectral resolutions of the blue and red gratings are $R = 1730$ and $R = 4500$, respectively. The main SAMI survey will target 3700 nearby galaxies at $0.04 < z < 0.095$ from the Galaxy And Mass Assembly (GAMA; Driver et al. 2011) to obtain an unbiased sample of stellar mass (Bryant et al. 2015) when completed. In addition, SAMI contains eight rich clusters at $z < 0.1$ (EDCC0442, Abell 85, Abell 119, Abell 168, Abell 2399, Abell 3880, APMCC0917, and Abell 4038) to cover the high-density environments missed by the main survey.

The raw data were reduced using the 2DFDR package (Croom et al. 2004) which carries out bias subtraction, flat fielding, wavelength calibration, and sky subtraction. The pairs of data cubes (blue and red) for each galaxy were built after applying telluric correction and flux calibration. See Sharp et al. (2015) and Allen et al. (2015) for a full description of the data reduction. The stellar line-of-sight velocity distribution and velocity dispersion for all galaxies were derived using the

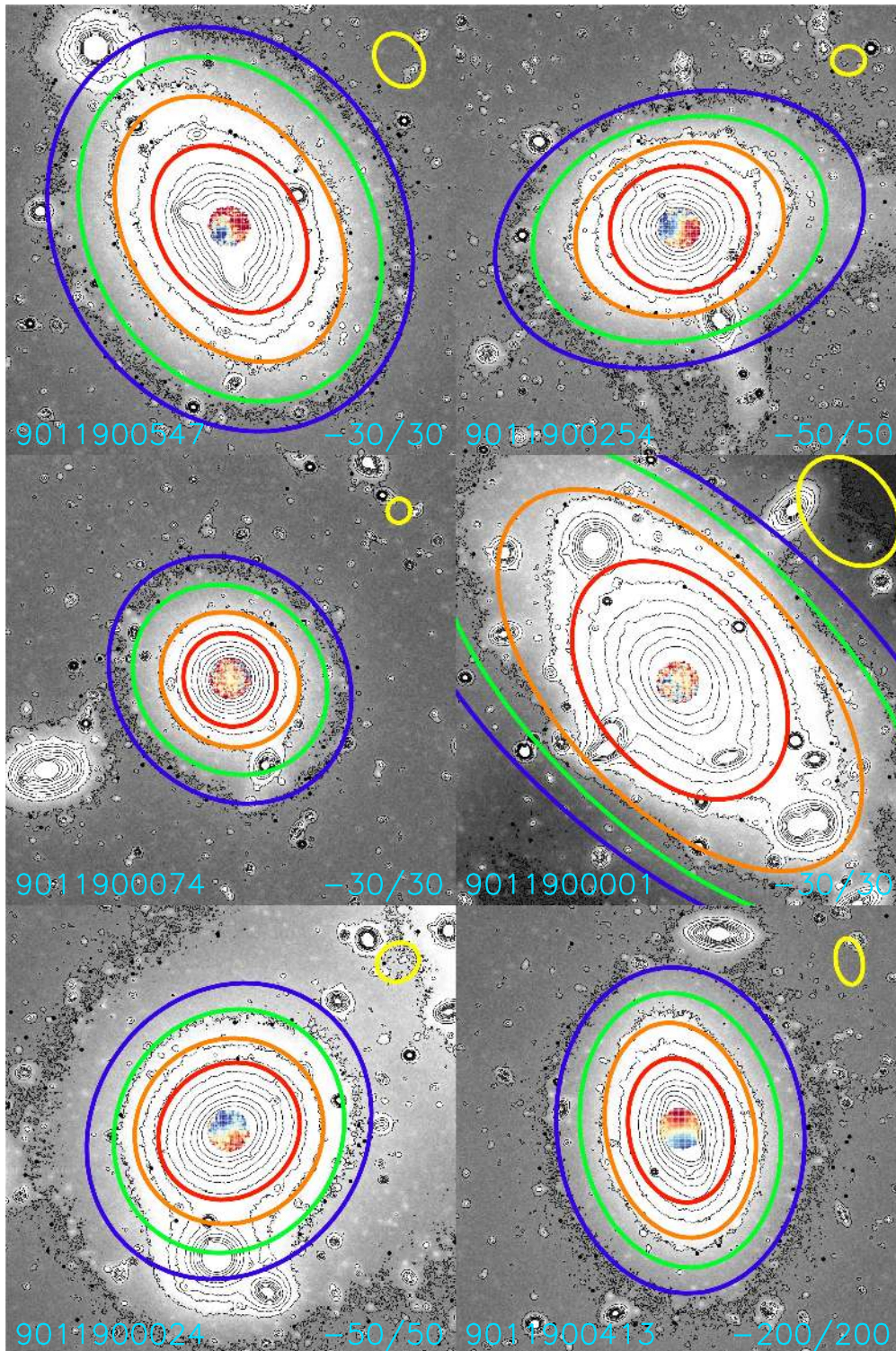


Figure 1. Sample deep images ($160'' \times 160''$) from CTIO with the SAMI stellar velocity map with an S/N cutoff of 5/spaxel. The solid lines indicate the isophotal ellipses at $\mu_r = 24$ (red), 25 (orange), 26 (green), and 27 (blue) mag arcsec $^{-2}$. The ellipse in the top right corner shows the size of R_e . The SAMI id of each galaxy is shown in the bottom left. The color range of stellar velocity map is optimized for each galaxy, and the minimum/maximum velocity of each galaxy is indicated in the bottom right.

pPXF code (Cappellari & Emsellem 2004) following van de Sande et al. (2016), and two-dimensional stellar kinematic maps consisting of $0''.5$ resampled spatial pixels (spaxels) were built from the cubes. In this study, we used stellar velocity fields without binning with a signal-to-noise ratio (S/N) cutoff of 5 for the continuum in each spaxel.

2.3. The Sample

Cluster membership of Abell 119 was determined by the redshift information from the Sloan Digital Sky Survey (SDSS; York et al. 2000; Abazajian et al. 2009), 2-degree Field Galaxy Redshift Survey (2dFGRS; Colless et al. 2001), and Hydra on CTIO (Sheen et al. 2012). Galaxies with $M_* > 10^{9.5} M_\odot$ and

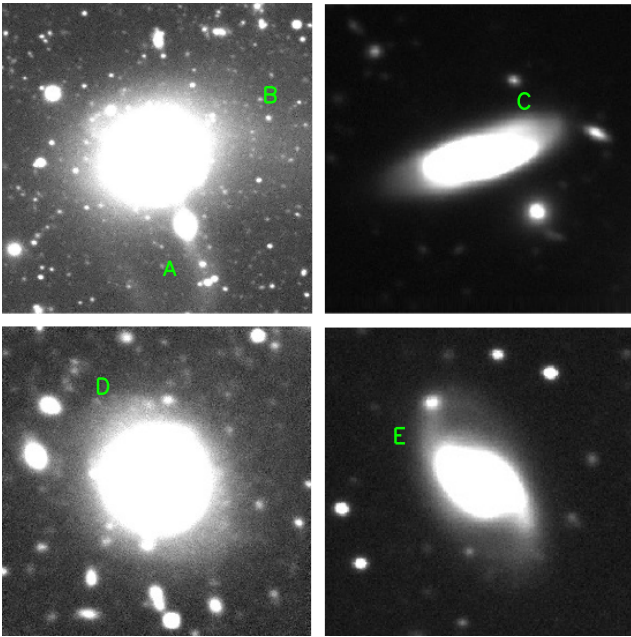


Figure 2. Sample images of morphologically disturbed galaxies in Abell 119. Top left: the galaxy shows a tidal tail (A) and asymmetric light distribution (B). Top right: the late-type galaxy is warped and has an unusual strip of light across it (C). Bottom left: the galaxy displays extended light with irregular shape (D). Bottom right: the galaxy shows a tidal tail (E). Deep images of all sample with a note of our visual classification are provided in the [Appendix](#).

$R < R_{200}$ were selected as primary targets for SAMI observations for this cluster. The SAMI cluster observations are described in detail in M. S. Owers et al. (2016, in preparation). Of the 254 primary targets in Abell 119, 108 galaxies were observed by SAMI by the end of 2015. Our final sample contains 63 galaxies brighter than $r = 17$ ($M_r = -19.3$) after cross-matching the 108 galaxies observed by SAMI with the deep images. Our sample contains both early- and late-type galaxies because the parent targets for SAMI were selected regardless of galaxy morphology (or color). Figure 1 shows six sample galaxies. The grayscale background with contours shows the deep image, the colored isophotes are for the specific values of surface brightness as given in the caption, and the colored map at the center shows the SAMI stellar velocity map.

3. ANALYSIS

3.1. Detecting Disturbed Features

We visually selected galaxies that showed evidence for interactions or mergers in the r -band deep images. Of the 63 galaxies in our sample, 20 galaxies displayed disturbed morphology of varying degree (Figure 2). We considered galaxies as morphologically disturbed when they displayed features including tidal structure, asymmetric light profile, or unusual dust lanes. If galaxies had close-projected companions, we did not classify them as morphologically disturbed galaxies unless they showed any of the above-mentioned distortion features. This cluster was studied for the visual selection of post-merger features in red sequence galaxies by Sheen et al. (2012). In their study using the same images (but for a larger number (133) of member galaxies), they found that approximately 30% of red sequence galaxies show post-merger features, which is comparable to this study (32%, 20/63).

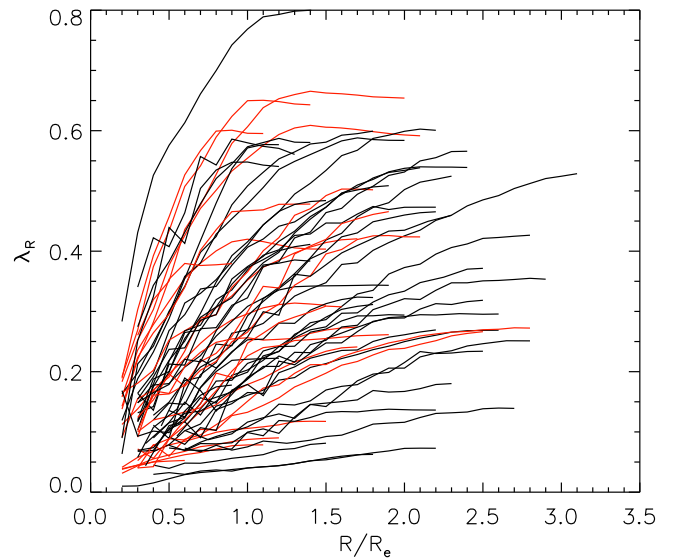


Figure 3. λ_R profile distribution. The black and red lines indicate the distribution of undisturbed and morphologically disturbed galaxies. A gradual distribution of λ_R from slow to fast is detected, rather than two distinct classes.

Abell 119 has been imaged by SDSS; therefore, we can directly compare our classifications of the same galaxies at different image qualities. For comparison, we could find only five disturbed galaxies using the same visual classification on the SDSS images. We present the images of all 63 galaxies in the [Appendix](#), but it is necessary to inspect the images with varying scale to properly determine the level of disturbance. The identification of morphologically disturbed galaxies is admittedly subjective, and we further discuss this in Section 5.2.

We classify the 63 galaxies in our sample into 53 early- (E/S0) and 10 late-type galaxies. Four of the 20 morphologically disturbed galaxies are late type. Considering the high early-type fraction and the dominance of the brightest cluster galaxy (BCG), this puts A119 into a cD cluster category (Way et al. 1997). Its dominance with early-type galaxies within $0.7 R_{200}$ is also consistent with the typical morphology–density relation found in clusters (Dressler et al. 1997). Abell 119 is found to be a dynamically young cluster having unrelaxed groups within the virial radius (Lee et al. 2016). Its dynamical mass has been estimated to be $2.6 \times 10^{14} M_{\odot}$ (Sheen et al. 2012).

3.2. Photometry and Fitting

We measured the effective radius (R_e), position angle (PA), and ellipticity ($\epsilon = 1 - a/b$) using the *ellipse* task in IRAF¹³ STSDAS. The centers of the galaxies were fixed; however, we allowed free estimation of the PA and ellipticity at a given level of light. All the contaminants were masked out to consider only the light from the target galaxy. We used the curve of growth of light from the radial intensity profile to measure the effective (half-light) radius R_e .

3.3. Kinematic Analysis

We measured the spatially resolved stellar velocity observed with SAMI using the *kinemetry* procedure (Krajnović et al.

¹³ IRAF is distributed by NOAO which is operated by AURA Inc., under cooperative agreement with NSF.

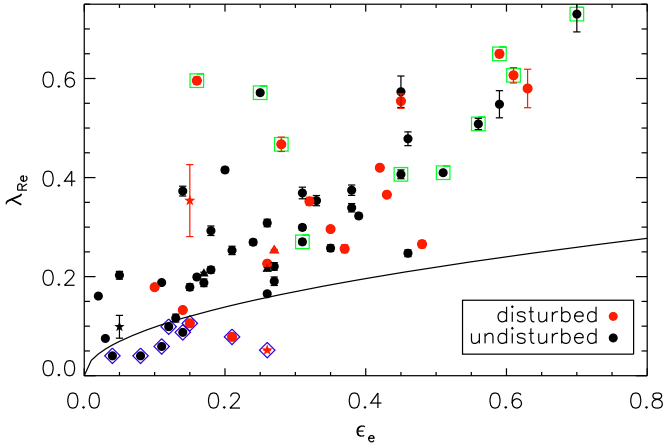


Figure 4. $\lambda_{R_e} - \epsilon$ plane for the diagnostic of slow rotators. The black and red symbols indicate morphologically disturbed and undisturbed galaxies, respectively. Slow rotators (open diamonds) are defined as galaxies under the demarcation line at R_e from Emsellem et al. (2011). We used λ_R at $0.5 R_e$ (stars) and $2 R_e$ (triangles) for some galaxies. Error bars on λ_R were calculated from the analytic method described in Houghton et al. (2013). Approximately, 37% (3/8) of slow rotators show disturbed features. Late-type galaxies (open squares) tend to have high λ_{R_e} .

2006). This procedure calculates the expansion of the surface photometry on velocity fields with high-order moments

$$K(a, \psi) = A_0(a) + \sum_{n=1}^N (A_n(a) \sin(n\psi) + B_n(a) \cos(n\psi)) \quad (1)$$

where a is the semimajor radius of each kinematic ellipse and ψ is the azimuthal angle of the projected major axis. The semimajor axis of each kinematic ellipse was increased by following $a = i + 1.1\bar{l}$, where $i = 1-3$ to avoid possible correlations between ellipse elements. The number of ellipse elements was varied between 20 and 100 (but typically over 60). We measured the ellipse parameters as long as spaxels cover 75% area of the ellipse, and the largest ellipse typically reached $1 - 2 R_e$ for our sample. The orientation and flattening of the iso-velocity contours were measured along the kinematic ellipse.

The amplitude coefficients for each kinematic ellipse (k_n) can be calculated using the harmonic coefficients (A_n and B_n):

$$k_n = \sqrt{A_n^2 + B_n^2}. \quad (2)$$

We used six terms for the harmonic analysis to obtain three odd terms ($n = 1, 3, 5$). The coefficient k_1 describes the amplitude of the circular velocity, and the higher-order terms (k_3 and k_5) represent complex structure of the velocity field, and deviations from the bulk motion. These coefficients are used to calculate the model rotational velocity in Section 4.1 and the kinematic asymmetry in Section 4.3. For a detailed description of the significance of the harmonic coefficients for a thin disk case the reader is referred to Wong et al. (2004) and references therein.

4. RESULTS

4.1. Rotational Velocity and λ_R

We measured the spin parameter λ_R integrating within elliptical apertures with fixed PA and ϵ at the effective radius (see Section 3.2) following Emsellem et al. (2007):

$$\lambda_R \equiv \frac{\langle R |V| \rangle}{\langle R \sqrt{V^2 + \sigma^2} \rangle} = \frac{\sum_{i=1}^N F_i R_i |V_i|}{\sum_{i=1}^N F_i R_i \sqrt{V_i^2 + \sigma_i^2}} \quad (3)$$

where F_i , R_i , V_i , and σ_i are the flux, radius, velocity, and velocity dispersion of the i th spaxel, respectively. For the galaxies whose isophote at the effective radius is highly affected by inner features, such as bars, we measured λ_R using the values of ϵ and PA at $\mu_r = 25 \text{ mag arcsec}^{-2}$ which corresponds to a semimajor axis $3-5 R_e$. Radial profiles of λ_R are shown in Figure 3. Our cluster galaxies do show a wide range of spin parameter reaching high values, as has been reported by previous studies. The red curves show the morphologically disturbed galaxies; and from a cursory inspection, there does not appear to be a clear distinction between disturbed and undisturbed galaxies.

We present the result first in the $\lambda_R - \epsilon$ plane in Figure 4. The demarcation line of

$$\lambda_R < k\sqrt{\epsilon}, \quad (4)$$

where k is the coefficient for fiducial radius, has been proposed to select slow and fast rotators by previous studies. We adopt $k = 0.265, 0.310$, and 0.363 for $R = 0.5 R_e, R_e$, and $2 R_e$ from Emsellem et al. (2011) and Fogarty et al. (2014), respectively.

Considering the radial dependence of kinematics, it is desirable to measure kinematic properties at a consistent radius in all galaxies (Arnold et al. 2014; Foster et al. 2016). We used the diagnostic for the effective radius for all the galaxies in our sample except six. For three galaxies including the BCG, we used the diagnostic for $0.5 R_e$ because the SAMI map did not reach out to R_e . This is not a problem because the two non-BCG galaxies are already classified as fast rotators at $0.5 R_e$, and so if their λ_R rises with radius, as in most cases, they would still be classified as fast rotators at R_e . The BCG on the other hand is classified as a slow rotator at $0.5 R_e$, and given its radial profile would most likely be a slow rotator at larger radii as well. For the other three galaxies whose $R_e < 1.5 \text{ arcsec}$, we used the diagnostic for $2 R_e$ instead in order to avoid the beam smearing effect. The seeing effect on λ_{R_e} measurement is discussed in van de Sande et al. (2016).

Out of the 63 galaxies in our sample, eight were classified as slow rotators (13%). This fraction increases to 15% if the sample is limited to early-type galaxies (53 galaxies) and is consistent with previous studies that found slow rotators in cluster environments using the same classification as this study (Cappellari et al. 2011a; D'Eugenio et al. 2013; Houghton et al. 2013; Fogarty et al. 2014; Scott et al. 2014). Of the eight slow rotators, three exhibited disturbed features, which is comparable to previous reports (Duc et al. 2011; Jimmy et al. 2013). We found a slightly higher fraction of slow rotators in morphologically disturbed galaxies ($15 \pm 10\%$) than in their undisturbed counterparts ($12 \pm 6\%$).

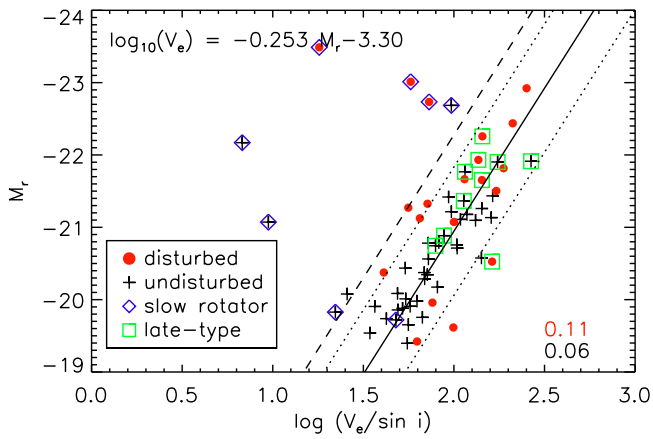


Figure 5. Effective T–F relation. Morphologically disturbed and undisturbed galaxies are denoted by the red and black symbols, respectively. The solid line is the inverse fit of the undisturbed galaxies using the M_r as an independent variable (black symbols). The dotted and dashed lines correspond to 2σ and 3σ of the relation for undisturbed galaxies, respectively. Slow rotators defined using the $\lambda_R - \epsilon$ plane are denoted by open diamonds (see Figure 4), and they deviate significantly from the T–F relation of undisturbed galaxies. Scatter from the least-squares fit was calculated on the morphologically disturbed (0.11) and undisturbed galaxies (0.06).

The effective rotational velocity (V_e) is defined as the modeled amplitude of the rotational velocity (k_1) at R_e as measured from *kinemetry*. SAMI could not recover full rotation curves for most of our sample because of the limited FOV ($15''$) and low S/N in the outer spaxels. Therefore, we could not estimate the maximum flattened velocity for the whole sample. Instead we measured the rotational velocity at R_e . The V_e for the three galaxies whose SAMI measurements did not reach out to R_e was estimated by the linear extrapolation using the closest three points of k_1 . We confirm that there is a linear correlation between V_e and the maximum rotational velocity based on 20 galaxies whose velocity profile reaches out to a flattened velocity curve.

The V_e was corrected for inclination using the apparent major (a) and minor (b) axes at $\mu_r = 25$ mag arcsec $^{-2}$ using the following formula

$$\cos(i) = \sqrt{\frac{(b/a)^2 - q_0^2}{1 - q_0^2}} \quad (5)$$

where intrinsic shape parameter, q_0 , is set to be 0.65 for early-type and 0.2 for late-type galaxies, following Catinella et al. (2012). Although the inclination correction is highly uncertain especially for early-type galaxies, it has a negligible effect on our results and conclusions.

We present the “effective” T–F relation using V_e in Figure 5. Our strategic use of velocities from kinematic modeling significantly reduces the velocity scatter and restores the T–F relation, even for early-type galaxies which have generally been known to lie away from the sequence. As a result, most of the galaxies in our sample are well aligned with the relation. The few outliers seen in Figure 5 are very slow for their stellar mass and most of them (seven out of eight) are classified as slow rotators in the $\lambda_R - \epsilon$ plane (Figure 4). One slow rotator (cross inside diamond at $\log(V_e/\sin i) = 1.7$ and $M_r = -19.6$) lies close to the T–F relation, possibly due to an inaccurate inclination correction. The undisturbed galaxy that lies beyond the 3σ (dashed) line (cross at $\log(V_e/\sin i) = 1.4$ and

$M_r = -20$) on the other hand, likely suffers from the beam smearing effect and hence an inaccurate estimate of V_e .

We estimated the scatter by first finding the robust least-squares fit (the solid line) to the unperturbed galaxies and then measuring the standard deviation of residuals in velocity from the fit excluding slow rotators. Our T–F relation based on the *derived* values of V_e shows scatter that is comparable to that of late-type galaxies (see Kannappan et al. 2002). Though we do not explicitly present it here, the majority of the slow rotators showing a large scatter have a large value of stellar velocity dispersion, while fast rotators have a wider range of velocity dispersion. It is surprising that even galaxies with large values of velocity dispersion are on the T–F relation. We plan to investigate this issue further in an upcoming study.

Morphologically disturbed galaxies show a larger scatter (0.11 dex) in the T–F relation relative to the undisturbed galaxies (0.06 dex). Kassin et al. (2007) reported that perturbed *disk* galaxies deviate from the T–F relation by always showing slower rotation, whereas we found that morphologically disturbed galaxies scatter in both velocity directions. Flores et al. (2006) and Puech et al. (2010) reported large scatter on the T–F relation in galaxies with complex kinematics or perturbed rotation, which probably relates to galaxy mergers. Galaxy mergers generally enhance luminosity but may either reduce or enhance their rotation speed depending on the merger/interaction geometry.

4.2. Misalignment between Photometric PA and Kinematic Orientation

Some galaxies with disturbed features show misalignment in orientation between the photometry and kinematics. The global kinematic orientation (Γ_G), indicating the mean motion of the stellar velocity, was measured using the method described in Krajnović et al. (2006). Specifically, we made 361 simulated maps by rotating the original map in steps of 0.5° and took the angle that minimized χ^2 . The uncertainty in Γ_G is defined as the minimum opening angle of simulated maps that satisfies a 3σ confidence level; $\Delta\chi^2 < 9 + 3\sqrt{2N}$ (van den Bosch & van de Ven 2009; Krajnović et al. 2011). The mean uncertainty value on Γ_G is 6° for the sample galaxies; so, we used 15° as a cut for “misaligned” galaxies. We measured a luminosity-weighted average of PA (PA_{weight}) and ellipticity (ϵ_{weight}) at $R \geq 2R_e$ as representative parameters in the photometry.

There are several uncertainties on the measurement of PA in both the photometry and kinematics. First, PA cannot be determined in round galaxies. The central regions of galaxies ($R \lesssim R_e$) are rather circular, and therefore PA measurements at R_e from optical images have large uncertainties. We therefore measured PA in outer regions ($R \geq 2R_e$) as routinely exercised (e.g., Cappellari et al. 2007; Krajnović et al. 2011).

Second, photometric PA at specific radius can follow the dominant light from spiral arms or disturbed features. A luminosity-weighted average of PA in this study is free from this issue. We manually confirmed that PA_{weight} do not follow local features. Third, we cannot determine the kinematic orientation for galaxies with no rotation. However, even slow rotators in this study have a certain level of rotation which is enough to judge their kinematic orientation, except two galaxies whose V_e is below 10 km s^{-1} . We confirmed that our results are not affected by excluding them from this analysis.

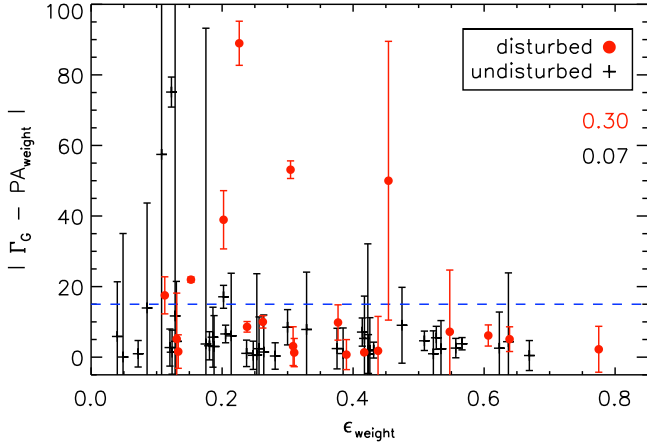


Figure 6. Kinematic misalignment as a function of ϵ_{weight} . Morphologically disturbed and undisturbed galaxies are denoted by the red and black symbols, respectively. The error bars indicate a 3σ confidence level on Γ_G . The dashed line corresponds to 15° dividing angle of kinematic misalignment. Fractions of galaxies showing the kinematic misalignment ($>15^\circ$) in disturbed (red) and undisturbed (black) galaxies are shown in the top-right corner. Morphologically disturbed galaxies show a four times higher fraction of kinematic misalignment, and most misaligned galaxies displayed merger signatures.

Galaxy interactions seem to have played a key role in creating the misalignment between Γ_G and $\text{PA}_{\text{weight}}$ (Figure 6). Galaxies with disturbed features show a four times larger fraction (0.3 ± 0.16) of misaligned galaxies ($\geq 15^\circ$) compared to their undisturbed counterparts (0.07 ± 0.06). We could not find significant differences in the misalignment even if we measured $\text{PA}_{\text{weight}}$ at $R \geq R_e$ or $R \geq 3R_e$. Krajnović et al. (2011) investigated the kinematic misalignment with regard to galaxy morphology and found a higher fraction of kinematic misalignment greater than 15° in their “interaction” or “shell” class (24%) than in their normal morphological class (9%). Barrera-Ballesteros et al. (2015) also reported that 43% of the “interacting” sample showed misalignment larger than the mean value of misalignment angle of the control sample.

Based on the measurement at $R \geq 2R_e$, we found that 67% (6/9) of misaligned galaxies showed disturbed features. In Krajnović et al. (2011), however, only 18% of misaligned galaxies were classified as “interaction” or “shell” class. Our images are three magnitudes deeper than those used by Krajnović et al. (2011) (from the SDSS and Isaac Newton telescope), and thus reveal the link between kinematic misalignment and galaxy interaction more clearly.

Misalignment has been reported to be more conspicuous in slow rotators (e.g., Cappellari et al. 2007; Krajnović et al. 2011). In Figure 7 we also observe a similar trend. We found that only four of the 55 fast rotators are misaligned, compared to five of the eight slow rotators. In addition, we found that kinematic misalignment is only seen in galaxies with low angular momentum (e.g., $\lambda_{R_e} < 0.3$). If we only consider galaxies with $\lambda_{R_e} < 0.3$, a contrast between the morphologically disturbed and undisturbed galaxies becomes more significant: undisturbed galaxies still have a small fraction (0.11) of kinematic misalignment, whereas 60% of the morphologically disturbed galaxies show misalignment. Therefore, we can conclude that mergers seem to affect the kinematic orientation of galaxies primarily with low angular momentum.

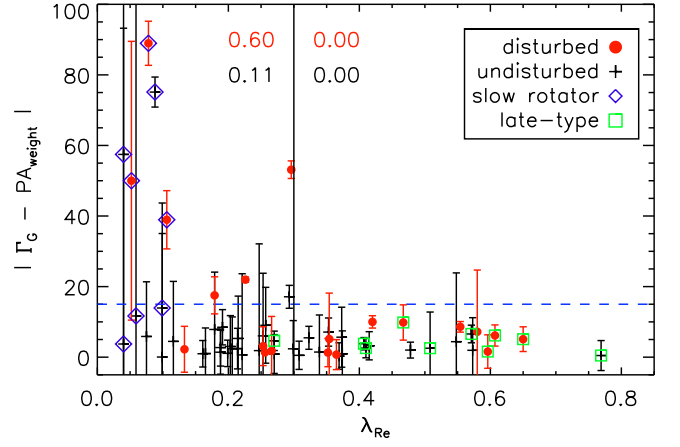


Figure 7. Kinematic misalignment plotted as a function of λ_{R_e} . The dashed line indicates $|\Gamma_G - \text{PA}_{\text{weight}}| = 15^\circ$, the dividing angle of the kinematic misalignments in this study. The error bars indicate a 3σ confidence level on Γ_G . Kinematic misalignment is only seen in galaxies having low angular momentum (e.g., $\lambda_{R_e} < 0.3$); over half of the morphologically disturbed galaxies (0.60) with low angular momentum are misaligned. Undisturbed galaxies show small misalignment fraction (0.11) even when the spin parameter proxy λ_{R_e} is small.

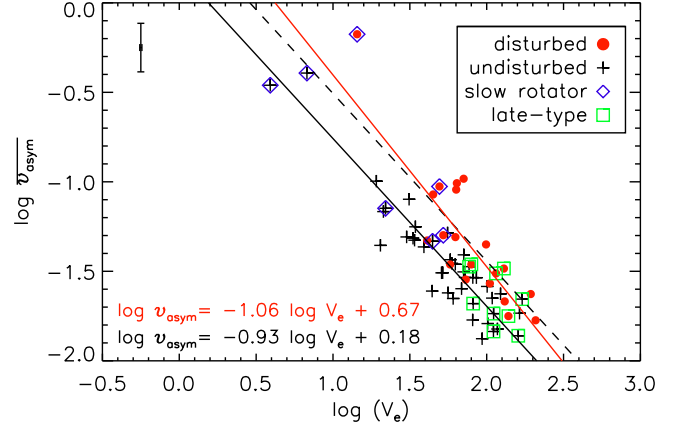


Figure 8. Kinematic asymmetry $\overline{v_{\text{asym}}}$ has a tight correlation with rotational velocity V_e . Inclination correction was not applied in this figure. The solid- and dashed-black lines show the least-squares fit and 2σ distribution of undisturbed galaxies ($\sigma = 0.125$ dex in $\overline{v_{\text{asym}}}$), respectively. The solid-red line indicates the least-squares fit of morphologically disturbed galaxies. We present the fits of disturbed (red) and undisturbed (black) galaxies in bottom left, and the typical errors are shown in top left. In general, kinematic asymmetry in morphologically disturbed galaxies is boosted compared to that in undisturbed galaxies of the same V_e .

4.3. Kinematic Asymmetry

We measured the kinematic asymmetry in the stellar velocity field (v_{asym}) using the first (k_1) coefficient and the summation of the odd high-order ($k_3 + k_5$) coefficients from *kinemetry* (see Bellocchi et al. 2016 and Bloom et al. 2016):

$$v_{\text{asym}} = \frac{k_3 + k_5}{2k_1}. \quad (6)$$

This v_{asym} , using only the odd terms, is a modification of kinematic asymmetry used by Shapiro et al. (2008), who defined kinematic asymmetry using both odd and even terms (k_2, k_3, k_4 , and k_5). We took the mean value of v_{asym} at each

spaxel without giving luminosity weights because our study is focused on faint features.

Previous studies that parameterized kinematic asymmetry used specific values, e.g., k_5/k_1 or $(k_3 + k_5)/2k_1$, to identify “non-regular” kinematics (e.g., Krajnović et al. 2011, Bloom et al. 2016); however, a further consideration of rotational velocity might be necessary. Figure 8 shows that $\overline{v_{\text{asym}}}$ has a tight inverse correlation with V_e because $\overline{v_{\text{asym}}}$ is inversely proportional to k_1 and V_e is defined as k_1 measured at the effective radius.

Morphologically disturbed galaxies show a large $\overline{v_{\text{asym}}}$ compared with undisturbed galaxies at a given V_e . The least-squares fit to the morphologically disturbed sample (the solid-red line) is roughly parallel to and 2σ away from the sequence for the undisturbed sample (the solid-black line), which indicates that galaxy interactions generally increase $\overline{v_{\text{asym}}}$.

Krajnović et al. (2011) reported that only a small fraction of galaxies show signatures of past interactions *regardless* of the presence of kinematic anomaly based on the simple cut of $k_5/k_1 = 0.04$. Following a similar horizontal cut in Figure 8, we would find the same result. However, our sample spans a larger baseline in V_e and clearly calls for necessity for considering a V_e -dependent cut rather than a uniform cut to conclude on the impact of dynamical interactions on kinematic anomaly. We discuss this in the next section.

5. DISCUSSION

5.1. Effect of Galaxy Interactions on Kinematics

We now discuss how kinematic anomalies relate to each other. First, we define two parameters to quantify scatter in the T–F relation (S_{TF}) and the perturbations in $\overline{v_{\text{asym}}}$ (P_{asym}):

$$S_{\text{TF}} = \left| \log \frac{V_e}{\sin i} - \log V_{e,\text{fit}} \right| \quad (7)$$

$$P_{\text{asym}} = \log \overline{v_{\text{asym}}} - \log \overline{v_{\text{asym},\text{fit}}} \quad (8)$$

where $\log V_{e,\text{fit}}$ is the fitted rotational velocity for a given luminosity (the solid line in Figure 5), and $\log \overline{v_{\text{asym},\text{fit}}}$ is the fitted kinematic asymmetry for a given $\log V_e$ (the solid-black line in Figure 8). Therefore, S_{TF} defines scatter in the rotational velocity for a given luminosity. We use absolute value because mergers appear to cause scatter in both directions. P_{asym} is the excess of $\log \overline{v_{\text{asym}}}$ compared with the fitted value of undisturbed galaxies for a given rotation.

We present a comparison between three kinematic parameters in Figure 9. For easy comparison, we divided the galaxies into three groups according to P_{asym} : low levels of perturbation (LP; $P_{\text{asym}} < 0$; the least-squares fit of undisturbed galaxies), intermediate perturbation (IP; $0 \leq P_{\text{asym}} \leq 0.25$), and highly perturbed kinematics (HP; $P_{\text{asym}} > 0.25$; 2σ of the undisturbed galaxies). Except for slow rotators, galaxies with HP kinematics show a higher mean value of S_{TF} (0.18 ± 0.12) than galaxies with IP or LP whose mean S_{TF} is 0.10 ± 0.08 , although scatter is too large to make this trend statistically significant. The trend, if real, is consistent with previous studies based on visual classification on kinematic morphology (Flores et al. 2006; Puech et al. 2010).

The bottom panel of Figure 9 shows a comparison between the kinematic misalignment ($|\Gamma_G - \text{PA}_{\text{weight}}|$) and perturbation in $\overline{v_{\text{asym}}}$ (P_{asym}). Kinematic misalignment ($|\Gamma_G - \text{PA}_{\text{weight}}| > 15^\circ$)

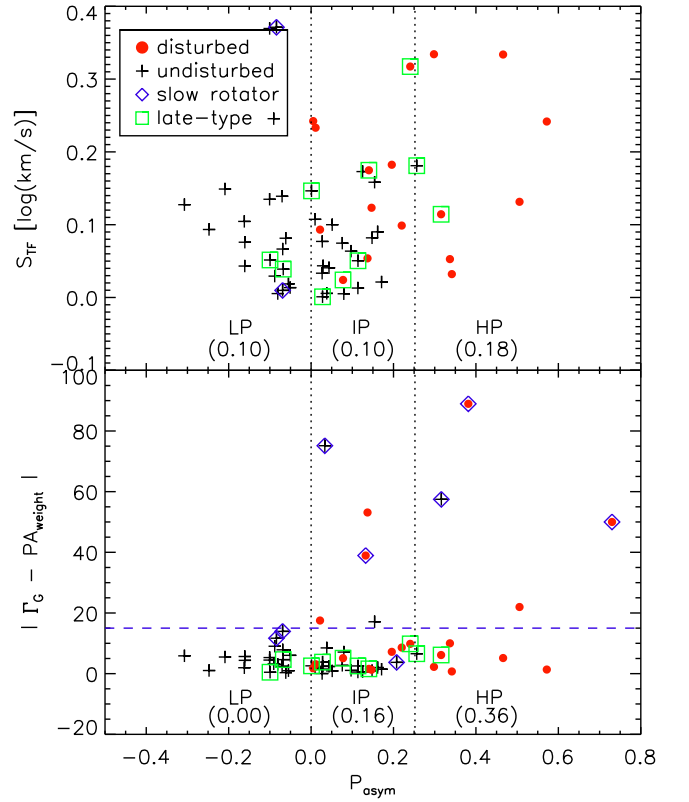


Figure 9. Correlations of the kinematic anomalies in orientation ($|\Gamma_G - \text{PA}_{\text{weight}}|$), kinematic asymmetry (P_{asym}), and angular momentum (S_{TF}). Morphologically disturbed and undisturbed galaxies are denoted by the red and black symbols, respectively. Late-type galaxies and slow rotators are indicated by open rectangles and diamonds, respectively. In top panel, most of the slow rotators are outside the scope of the y-axis. Galaxies are divided into three groups (LP, IP, and HP) according to their P_{asym} . The mean value of S_{TF} (top panel) or fractions of misalignment (bottom panel; $|\Gamma_G - \text{PA}_{\text{weight}}| > 15^\circ$) for each group is provided in the parentheses. The HP group shows a larger mean value of S_{TF} and a higher fraction of misalignment than the others.

is only shown in the IP and HP groups, and we found a higher fraction of misalignment in HP (0.36) than in IP (0.16).

The mild yet positive correlations between the three parameters quantifying kinematic anomalies suggest that galaxy interactions and mergers have a key role in causing such asymmetries.

5.2. Asymmetry

So far we have relied primarily on visual selection of mergers. This is because we believe that the human eye detects morphological anomalies effectively and simply enough. As a sanity check, we now measure the degree of disturbed features using the CAS asymmetry parameter (A) on photometric data (Abraham et al. 1996; Conselice 2003).

Following the classic approach, we subtracted the 180° rotated image from the original one and normalized it using the total flux. Then, the asymmetry parameter A was measured by the summation of residuals excluding contaminated regions by other objects. The central parts of bright galaxies are saturated in our deep images because we were attempting to detect low surface brightness features; hence, we only considered

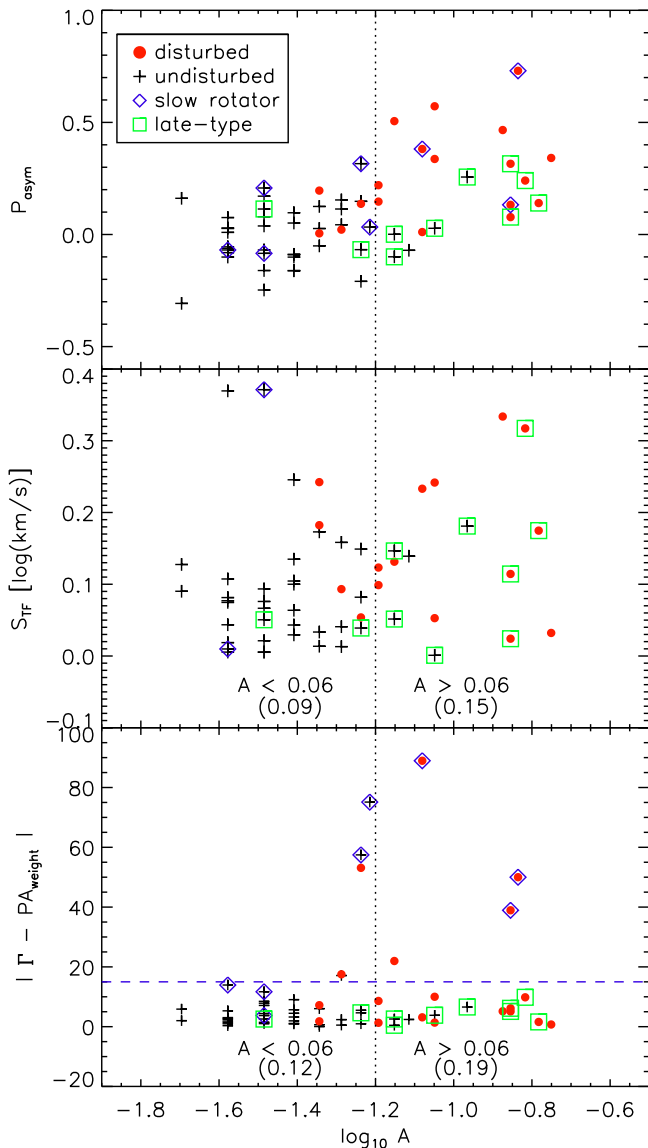


Figure 10. Comparison between the kinematic anomalies and the photometric asymmetry A . Morphologically disturbed and undisturbed galaxies are denoted by the red and black symbols, respectively. Slow rotators are denoted by open diamonds, and late-type galaxies are indicated by open rectangles. The photometric asymmetry A and the perturbation on stellar kinematics (P_{asym}) are correlated to each other (top panel). The mean value of S_{TF} (middle panel) or fractions of misalignment (bottom panel; $|\Gamma_{\text{G}} - \text{PA}_{\text{weight}}| > 15^\circ$) for each group is provided in the parentheses. Galaxies with $A > 0.06$ shows a larger mean value of S_{TF} and a higher fraction of misalignment than galaxies with $A < 0.06$.

residuals in the outer regions: beyond R_e to 3σ above the sky level. For this reason, there is a need for caution when making direct comparisons against previous studies employing asymmetry parameters.

In this study, even the morphologically disturbed galaxies have $A < 0.2$; i.e., we are indeed dealing with low surface brightness features that are only detectable in deep images (Figure 10). Our visually selected disturbed galaxies were well distinguished by A , except the late-type galaxies, which naturally have a high value of A due to spiral arms. Over 80% of the morphologically disturbed galaxies have $A > 0.06$

as shown by the vertical line in Figure 10. In fact, apart from late-type galaxies (green squares), all galaxies but one in the high value of A (> 0.06) region are morphologically disturbed.

Conselice et al. (2008) pointed out that it is difficult to identify visually selected disturbed galaxies using asymmetry parameters if $A \lesssim 0.35$. However, we found a good separation between disturbed and undisturbed galaxies based on low surface brightness features measured in A . The ability of A to detect peculiarities seems to depend greatly on the depth of the image.

In the top panel, the kinematic and photometric asymmetries seem to be correlated with each other, even for slow rotators and late-type galaxies. However, we could not find a good correlation between photometric asymmetry and the scatter in the T-F relation, S_{TF} (middle panel). We found a higher mean value of S_{TF} in galaxies with $A > 0.06$ (0.15 ± 0.10), than in galaxies with $A < 0.06$ (0.09 ± 0.08). Kinematic misalignments ($|\Gamma_{\text{G}} - \text{PA}_{\text{weight}}| > 15^\circ$) appear more in galaxies with $A > 0.06$: 19% (4/21) of galaxies with $A > 0.06$ show misalignment, and 12% (5/42) of galaxies with $A < 0.06$ are misaligned (bottom panel).

The results based on asymmetry index measurements are largely consistent with those based on the visual inspection presented in the earlier sections.

5.3. Recent Mergers and Galaxy Spin

Repeated mergers and interactions between galaxies probably reduce the specific angular momentum of a galaxy, and hence it is reasonable to expect more frequent merger-related features in slow rotators. Our deep images are capable of detecting even (reasonably important) minor mergers and faint features in outer regions of galaxies where dynamical timescale is much longer than in the galaxy center and therefore we can probe the signatures of past mergers further back. We focus on the fraction of disturbed galaxies among slow rotators. Three out of eight slow rotators appear disturbed, which is only marginally significant compared to the fast rotators (17 out of 55). But the statistical differences do not appear clear enough.

Recently, Duc et al. (2015) investigated galaxy morphology using similar deep images to ours and kinematics of the ATLAS^{3D} sample in the field environment. Of the 78 galaxies whose morphological class is not “undetermined,” 46 (59%) displayed features involved in galaxy interactions (“major merger” or “minor merger” or “interacting” in their classification). Fractions of galaxy interactions in fast and slow rotators were $58 \pm 10\%$ (38/66) and $66 \pm 22\%$ (8/12), respectively in their study. The major difference between their and our results is that they found around 1.8 times higher fractions of galaxy interactions than we did. This can be explained by the difference in sample; their sample includes only galaxies in the field environment. Previous studies using deep images reported that galaxies with post-merger features are more frequently observed in the field (e.g., van Dokkum 2005) than in the cluster environment (e.g., Sheen et al. 2012). Besides, the median distance of their sample is 28 Mpc, which is seven times closer than our Abell 119 sample. This makes it easier to detect features of morphological disturbance.

Apart from that, slow rotators show only slightly higher fractions of galaxy interactions than fast rotators both in Duc

et al. (2015) and in this work. This is perhaps because mergers may have occurred in the distant past on those slow rotators that do not show disturbed features. This is consistent with recent galaxy formation models where important mergers are rare after $z = 1$ (Khim et al. 2015).

As shown in Section 4.1, a single merger (or interaction) can either reduce or enhance the spin depending on the merger condition; that is, both effects are possible, as also demonstrated by simulations (Bois et al. 2011; Naab et al. 2014). This makes it difficult to uniquely determine the effect of mergers on the angular momentum of a galaxy at a specific epoch.

6. SUMMARY AND PROSPECTS

We investigated the impact of galaxy interactions on kinematic anomalies using 63 galaxies in Abell 119 based on stellar kinematics from SAMI. We visually selected 20 galaxies with disturbed features (32%) using our deep images. Morphologically disturbed galaxies in this study have faint features that generally show a slight asymmetry ($A < 0.2$), which can only be detected in deep images.

The use of “model” values of rotational velocities reveals a Tully–Fisher relation with unexpectedly small scatter even for early-type galaxies. The morphologically disturbed galaxies on the other hand showed a scatter twice as large. Galaxy interactions are likely the main origin of scatter in the T–F relation, capable of both reducing and enhancing the level of angular momentum, probably depending on the details of galaxy interaction.

We classified slow/fast rotators using the spin parameter λ_R and found eight slow rotators in our sample. Approximately $38 \pm 28\%$ of the slow rotators and $31 \pm 10\%$ of the fast rotators displayed disturbed features. The difference hints at a role of mergers on galaxy spin but is not statistically significant.

Galaxy interactions are one of the key mechanisms that change the orientation of spin of galaxies. Likewise, kinematic misalignments are more often found among the morphologically disturbed galaxies in our sample. Kinematic misalignments are also more common among galaxies with low angular momentum; this is probably because the same level of interaction can have a larger impact on a galaxy with lower angular momentum.

When we measure the level of kinematic perturbation, it seems necessary to account for the underlying relationship between the kinematic asymmetry and the level of rotation. We thus introduced a new parameter (P_{asym}) which effectively reveals the impact of galaxy interactions on kinematics and photometric morphology.

A causal connection is mildly visible between morphological disturbance and kinematics, but not all the disturbed galaxies have unusual kinematics. Several effects may contribute to this. First, we compared the stellar kinematics within $1\text{--}2R_e$ with the disturbed features in the outer regions. If we can detect stellar kinematics in the same region of galaxies where the disturbed features are shown, we might find a tighter correlation between photometry and kinematics. We also need to consider the lifetime of features in kinematics and images. Some aspects might be more quickly regularized than others through galaxy evolution (Hoffman et al. 2010; Ji et al. 2014), which could weaken correlations.

We anticipate progress in several directions. First, it is desired to obtain and analyze the IFS and photometric data in the same extended regions of galaxies. Second, we should perform IFS observations on the numerous cluster galaxies for which deep images are already available. Although some advances have been made in this field by numerical simulations, they have so far been limited to a small number of galaxies or to semi-analytic models. But, new hydrodynamic simulations of cosmological scale will soon provide a critical clue to the evolution of spin in the hierarchical merger paradigm (e.g., Vogelsberger et al. 2014; Schaye et al. 2015; Choi & Yi 2016).

The SAMI Galaxy Survey is based on observations made at the Anglo-Australian Telescope. The Sydney-AAO Multi-object Integral field spectrograph (SAMI) was developed jointly by the University of Sydney and the Australian Astronomical Observatory. The SAMI input catalog is based on data taken from the Sloan Digital Sky Survey, the GAMA Survey and the VST ATLAS Survey. The SAMI Galaxy Survey is funded by the Australian Research Council Centre of Excellence for All-sky Astrophysics (CAASTRO), through project number CE110001020, and other participating institutions. The SAMI Galaxy Survey website is <http://sami-survey.org/>. S.O. thanks D.W.L. for his continued support. SKY acknowledges support from the Korean National Research Foundation (NRF-2014R1A2A1A01003730). S.M.C. acknowledges the support of an Australian Research Council Future Fellowship (FT100100457). J.T.A. acknowledges the award of a SIEF John Stocker Fellowship. M.S.O. acknowledges the funding support from the Australian Research Council through a Future Fellowship Fellowship (FT140100255). JvdS is funded under Bland-Hawthorn’s ARC Laureate Fellowship (FL140100278). S.B. acknowledges the funding support from the Australian Research Council through a Future Fellowship (FT140101166). Mahajan acknowledges the funding support from the INSPIRE Faculty award (DST/INSPIRE/04/2015/002311) and the Fast track fellowship (SB/FTP/PS-054/2013) from the Department of Science and Technology (DST) and the Science Education and Research Board (SERB), respectively. NS acknowledges support of a University of Sydney Postdoctoral Research Fellowship. H.J. acknowledges support from the Basic Science Research Program through the National Research Foundation of Korea (NRF), funded by the Ministry of Education (NRF-2013R1A6A3A04064993). Support for A.M.M. is provided by NASA through Hubble Fellowship grant #HST-HF2-51377 awarded by the Space Telescope Science Institute, which is operated by the Association of Universities for Research in Astronomy, Inc., for NASA, under contract NAS5-26555. This work has been supported by the Yonsei University Future-leading Research Initiative of 2015 (RMS2 2015-22-0064).

APPENDIX DEEP IMAGES

In Figure 11, we present the r -band deep images for the 63 galaxies used in this study. Our visual classifications are presented on each image.

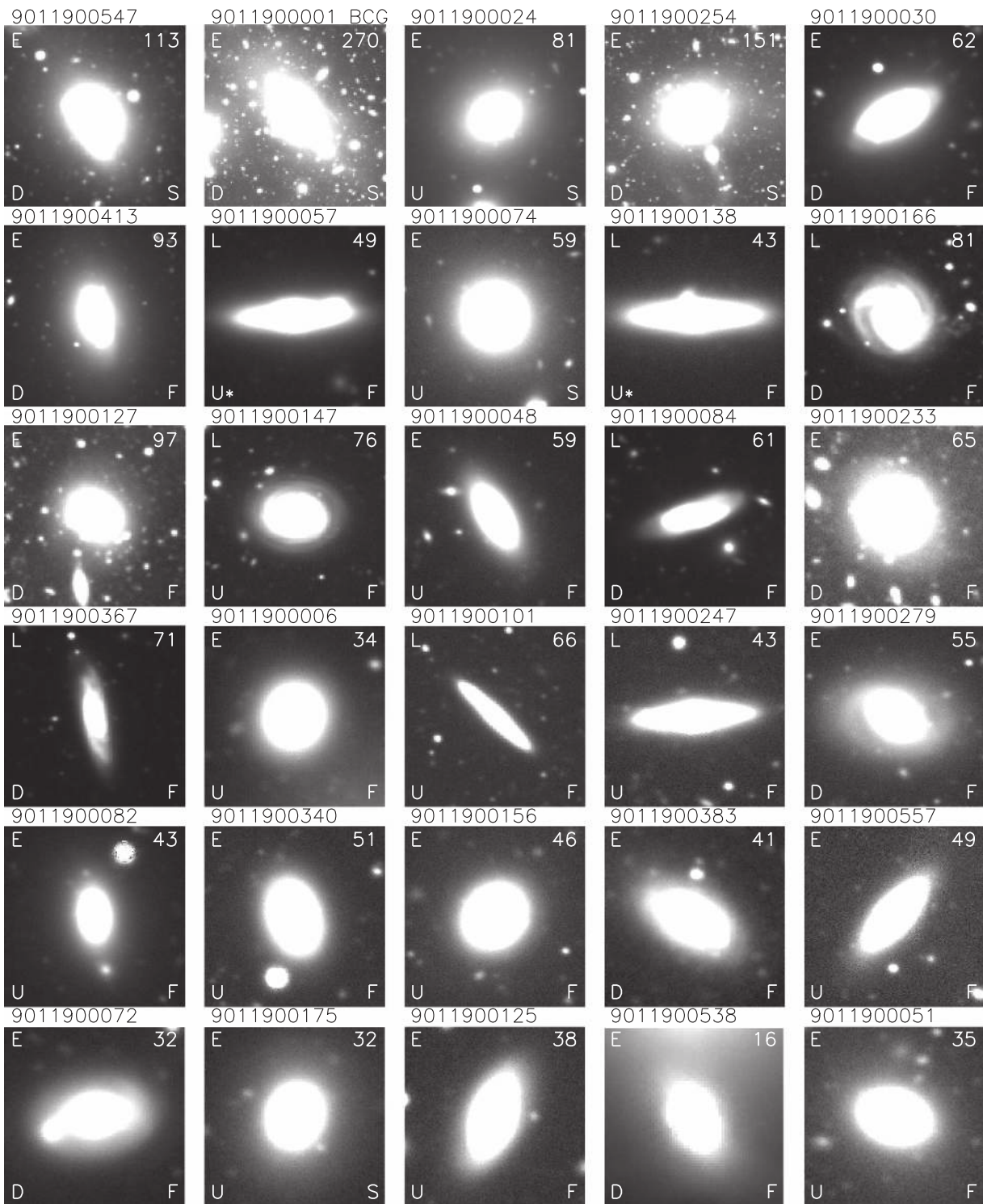


Figure 11. r -band deep images of 63 sample galaxies. The SAMI id is presented at the top of each image. We present our visual classification: early (E) and late (L) in the top-left corner of each image. The disturbed (D) and undisturbed (U) classification is shown in the bottom-left corner. The asterisk (*) following the U mark indicates that the galaxies have spectroscopically confirmed foreground/background contamination. The classification of fast (F) and slow (S) rotators is shown in the bottom-right corner. The number in the top-right corner shows the image size in $''$.

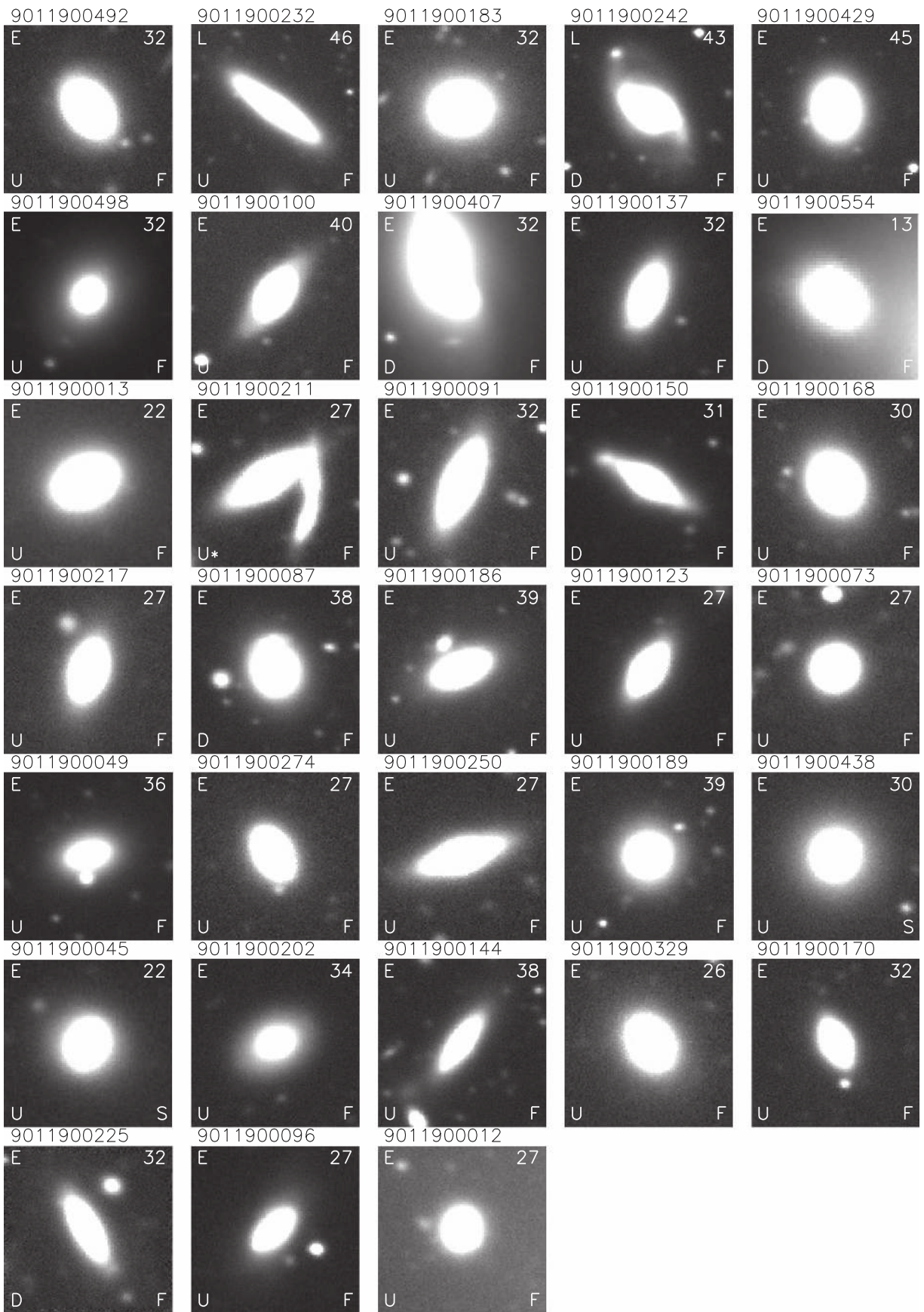


Figure 11. (Continued.)

REFERENCES

- Abazajian, K. N., Adelman-McCarthy, J. K., Agüeros, M. A., et al. 2009, *ApJS*, **182**, 543
- Abraham, R. G., Tanvir, N. R., Santiago, B. X., et al. 1996, *MNRAS*, **279**, L47
- Abraham, R. G., van den Bergh, S., & Nair, P. 2003, *ApJ*, **588**, 218
- Allen, J. T., Croom, S. M., Konstantopoulos, I. S., et al. 2015, *MNRAS*, **446**, 1567
- Arnold, J. A., Romanowsky, A. J., Brodie, J. P., et al. 2014, *ApJ*, **791**, 80
- Barnes, J. E., & Hernquist, L. 1992, *ARA&A*, **30**, 705
- Barrera-Ballesteros, J. K., García-Lorenzo, B., Falcón-Barroso, J., et al. 2015, *A&A*, **582**, A21
- Bellocchi, E., Arribas, S., & Colina, L. 2016, *A&A*, **591**, A85
- Bennert, N., Canalizo, G., Jungwiert, B., et al. 2008, *ApJ*, **677**, 846
- Bland-Hawthorn, J., Ellis, S. C., Leon-Saval, S. G., et al. 2011, *NatCo*, **2**, 581
- Bloom, J. V., Fogarty, L. M. R., Croom, S. M., et al. 2016, arXiv:1610.02773
- Bois, M., Emsellem, E., Bournaud, F., et al. 2011, *MNRAS*, **416**, 1654
- Bryant, J. J., Bland-Hawthorn, J., Fogarty, L. M. R., Lawrence, J. S., & Croom, S. M. 2014, *MNRAS*, **438**, 869
- Bryant, J. J., Owers, M. S., Robotham, A. S. G., et al. 2015, *MNRAS*, **447**, 2857
- Canalizo, G., Bennert, N., Jungwiert, B., et al. 2007, *ApJ*, **669**, 801
- Cannon, J. M., McClure-Griffiths, N. M., Skillman, E. D., & Côté, S. 2004, *ApJ*, **607**, 274
- Cappellari, M., & Emsellem, E. 2004, *PASP*, **116**, 138
- Cappellari, M., Emsellem, E., Bacon, R., et al. 2007, *MNRAS*, **379**, 418
- Cappellari, M., Emsellem, E., Krajnović, D., et al. 2011a, *MNRAS*, **413**, 813
- Cappellari, M., Emsellem, E., Krajnović, D., et al. 2011b, *MNRAS*, **416**, 1680
- Catinella, B., Kauffmann, G., Schiminovich, D., et al. 2012, *MNRAS*, **420**, 1959
- Choi, H., & Yi, S. K. *ApJ*, submitted
- Colless, M., Dalton, G., Maddox, S., et al. 2001, *MNRAS*, **328**, 1039
- Conselice, C. J. 2003, *ApJS*, **147**, 1
- Conselice, C. J., Rajgor, S., & Myers, R. 2008, *MNRAS*, **386**, 909
- Cortese, L., Fogarty, L. M. R., Ho, I.-T., et al. 2014, *ApJL*, **795**, L37
- Cotini, S., Ripamonti, E., Caccianiga, A., et al. 2013, *MNRAS*, **431**, 2661
- Covington, M. D., Kassin, S. A., Dutton, A. A., et al. 2010, *ApJ*, **710**, 279
- Cox, T. J., Jonsson, P., Somerville, R. S., Primack, J. R., & Dekel, A. 2008, *MNRAS*, **384**, 386
- Croom, S. M., Lawrence, J. S., Bland-Hawthorn, J., et al. 2012, *MNRAS*, **421**, 872
- Croom, S. M., Smith, R. J., Boyle, B. J., et al. 2004, *MNRAS*, **349**, 1397
- Davis, T. A., Bureau, M., Young, L. M., et al. 2011, *MNRAS*, **414**, 968
- den Heijer, M., Oosterloo, T. A., Serra, P., et al. 2015, *A&A*, **581**, A98
- De Rossi, M. E., Tissera, P. B., & Pedrosa, S. E. 2012, *A&A*, **546**, A52
- D'Eugenio, F., Houghton, R. C. W., Davies, R. L., & Dalla Bontà, E. 2013, *MNRAS*, **429**, 1258
- de Zeeuw, P. T., Bureau, M., Emsellem, E., et al. 2002, *MNRAS*, **329**, 513
- Dressler, A., Oemler, A., Jr., Couch, W. J., et al. 1997, *ApJ*, **490**, 577
- Driver, S. P., Hill, D. T., Kelvin, L. S., et al. 2011, *MNRAS*, **413**, 971
- Dubois, Y., Pichon, C., Welker, C., et al. 2014, *MNRAS*, **444**, 1453
- Duc, P.-A., Cuillandre, J.-C., Karabal, E., et al. 2015, *MNRAS*, **446**, 120
- Duc, P.-A., Cuillandre, J.-C., Serra, P., et al. 2011, *MNRAS*, **417**, 863
- Ellison, S. L., Patton, D. R., Mendel, J. T., & Scudder, J. M. 2011, *MNRAS*, **418**, 2043
- Emsellem, E., Cappellari, M., Krajnović, D., et al. 2007, *MNRAS*, **379**, 401
- Emsellem, E., Cappellari, M., Krajnović, D., et al. 2011, *MNRAS*, **414**, 888
- Flores, H., Hammer, F., Puech, M., Amram, P., & Balkowski, C. 2006, *A&A*, **455**, 107
- Fogarty, L. M. R., Scott, N., Owers, M. S., et al. 2014, *MNRAS*, **443**, 485
- Foster, C., Pastorello, N., Roediger, J., et al. 2016, *MNRAS*, **457**, 147
- Franx, M., Illingworth, G., & de Zeeuw, T. 1991, *ApJ*, **383**, 112
- Hoffman, L., Cox, T. J., Dutta, S., & Hernquist, L. 2010, *ApJ*, **723**, 818
- Houghton, R. C. W., Davies, R. L., D'Eugenio, F., et al. 2013, *MNRAS*, **436**, 19
- Ji, I., Peirani, S., & Yi, S. K. 2014, *A&A*, **566**, A97
- Jimmy, Tran, K.-V., Brough, S., et al. 2013, *ApJ*, **778**, 171
- Kannappan, S. J., Fabricant, D. G., & Franx, M. 2002, *AJ*, **123**, 2358
- Kassin, S. A., Weiner, B. J., Faber, S. M., et al. 2007, *ApJL*, **660**, L35
- Kaviraj, S. 2010a, *MNRAS*, **408**, 170
- Kaviraj, S. 2010b, *MNRAS*, **406**, 382
- Khim, H.-G., Park, J., Seo, S.-W., et al. 2015, *ApJS*, **220**, 3
- Khochfar, S., Emsellem, E., Serra, P., et al. 2011, *MNRAS*, **417**, 845
- Kimm, T., Devriendt, J., Slyz, A., et al. 2011, *MNRAS*, submitted (arXiv:1106.0538)
- Koribalski, B. S., & López-Sánchez, Á. R. 2009, *MNRAS*, **400**, 1749
- López-Sánchez, Á. R., Koribalski, B. S., van Eymeren, J., et al. 2012, *MNRAS*, **419**, 1051
- Krajnović, D., Alatalo, K., Blitz, L., et al. 2013, *MNRAS*, **432**, 1768
- Krajnović, D., Cappellari, M., de Zeeuw, P. T., & Copin, Y. 2006, *MNRAS*, **366**, 787
- Krajnović, D., Emsellem, E., Cappellari, M., et al. 2011, *MNRAS*, **414**, 2923
- Kronberger, T., Kapferer, W., Schindler, S., & Ziegler, B. L. 2007, *A&A*, **473**, 761
- Lee, J., & Yi, S. K. 2013, *ApJ*, **766**, 38
- Lee, Y., Rey, S.-C., Hilker, M., Sheen, Y.-K., & Yi, S. K. 2016, *ApJ*, **822**, 92
- López-Sánchez, Á. R. 2010, *A&A*, **521**, A63
- Lotz, J. M., Primack, J., & Madau, P. 2004, *AJ*, **128**, 163
- Naab, T., Oser, L., Emsellem, E., et al. 2014, *MNRAS*, **444**, 3357
- Puech, M., Hammer, F., Flores, H., et al. 2010, *A&A*, **510**, A68
- Rampazzo, R., Plana, H., Amram, P., et al. 2005, *MNRAS*, **356**, 1177
- Sánchez, S. F., Kennicutt, R. C., Gil de Paz, A., et al. 2012, *A&A*, **538**, A8
- Satyapal, S., Ellison, S. L., McAlpine, W., et al. 2014, *MNRAS*, **441**, 1297
- Schaye, J., Crain, R. A., Bower, R. G., et al. 2015, *MNRAS*, **446**, 521
- Schlegel, D. J., Finkbeiner, D. P., & Davis, M. 1998, *ApJ*, **500**, 525
- Scott, N., Davies, R. L., Houghton, R. C. W., et al. 2014, *MNRAS*, **441**, 274
- Shapiro, K. L., Genzel, R., Förster Schreiber, N. M., et al. 2008, *ApJ*, **682**, 231
- Sharma, S., Steinmetz, M., & Bland-Hawthorn, J. 2012, *ApJ*, **750**, 107
- Sharp, R., Allen, J. T., Fogarty, L. M. R., et al. 2015, *MNRAS*, **446**, 1551
- Sharp, R., Saunders, W., Smith, G., et al. 2006, *Proc. SPIE*, **6269**, 62690G
- Sheen, Y.-K., Yi, S. K., Ree, C. H., & Lee, J. 2012, *ApJS*, **202**, 8
- Stil, J. M., & Israel, F. P. 2002, *A&A*, **392**, 473
- Tal, T., van Dokkum, P. G., Nelan, J., & Bezanson, R. 2009, *AJ*, **138**, 1417
- Toomre, A., & Toomre, J. 1972, *ApJ*, **178**, 623
- Tully, R. B., & Fisher, J. R. 1977, *A&A*, **54**, 661
- van de Sande, J., Bland-Hawthorn, J., Fogarty, L. M. R., et al. 2016, *ApJ*, submitted
- van den Bosch, R. C. E., & van de Ven, G. 2009, *MNRAS*, **398**, 1117
- van Dokkum, P. G. 2005, *AJ*, **130**, 2647
- Vogelsberger, M., Genel, S., Springel, V., et al. 2014, *MNRAS*, **444**, 1518
- Way, M. J., Quintana, H., & Infante, L. 1997, *ApJ*, submitted (arXiv:astro-ph/9709036)
- Williams, M. J., Bureau, M., & Cappellari, M. 2010, *MNRAS*, **409**, 1330
- Wong, T., Blitz, L., & Bosma, A. 2004, *ApJ*, **605**, 183
- Yang, Y., Flores, H., Hammer, F., et al. 2008, *A&A*, **477**, 789
- Yi, S. K., Lee, J., Jung, I., Ji, I., & Sheen, Y.-K. 2013, *A&A*, **554**, A122
- York, D. G., Adelman, J., Anderson, J. E., Jr., et al. 2000, *AJ*, **120**, 1579