

WP-2008-010

# The Structure of Inflation, Information and Labour Markets: Implications for monetary policy

Ashima Goyal



Indira Gandhi Institute of Development Research, Mumbai  
May 2008

<http://www.igidr.ac.in/pdf/publication/WP-2008-010.pdf>

# The Structure of Inflation, Information and Labour Markets: Implications for monetary policy<sup>1</sup>

Ashima Goyal

Indira Gandhi Institute of Development Research (IGIDR)  
General Arun Kumar Vaidya Marg  
Goregaon (E), Mumbai- 400065, INDIA  
Email (corresponding author): [ashima@igidr.ac.in](mailto:ashima@igidr.ac.in)

## Abstract

*The paper gives a simplified version of a typical dynamic stochastic open economy general equilibrium models used to analyze optimal monetary policy. Then it outlines the chief modifications when dualism in labour and in consumption is introduced to adapt the model to a small open emerging market such as India. The implications of specific labour markets, and the structure of Indian inflation and its measurement are examined. Simulations give the welfare effects of different types of inflation targeting. Flexible CPI inflation targeting (CIT) without lags works best, especially if the economy is more open. But volatile terms of trade make the supply curve even steeper than in a small open economy despite specific labour markets and higher labour supply elasticity. Exchange rate intervention limits the volatility of the terms of trade and improves outcomes, making the supply curve flatter. As long as such intervention is required, domestic inflation targeting (DIT) continues to be more robust and effective. The welfare losses from the lags in CPI, which prevent the implementation of CIT, are low as long as the dualistic structure dominates. As the economy becomes more open, however, the loss from not being able to use CIT rises. The lags in CPI therefore need to be reduced, making its future use possible.*

Key words: small open emerging market, optimal monetary policy, dualistic labour markets, inflation, measurement lags, specific labour markets

JEL Codes: E52, F41

---

<sup>1</sup> The paper uses the model developed in Goyal (2007) to address new questions. The earlier paper was presented at IGIDR-RBI-Northwestern, ISI and IEG conferences in 2007. This paper was presented at the V.K.R.V Rao Centenary Conference on “National Income and other Macroeconomic Aggregates in a Growing Economy” April 28-30, Institute of Economic Growth and Delhi School of Economics, New Delhi. I thank Errol D’Souza, Gopal Kadekodi, Sabyasachi Kar, Hrushikesk Mallick, Rupayan Pal, and V.N. Pandit for helpful comments. and T. S. Ananthi, Jayashree and Reshma Aguiar for secretarial assistance.

# The Structure of Inflation, Information and Labour Markets: Implications for monetary policy

Ashima Goyal

## 1. Introduction

Consumer price indices in India are available only at monthly frequencies, with a two-month lag. Moreover, food items and services with administrative price interventions have a large weight in these indices. Consumer price indices are also not measured on an all India basis. Therefore there are both information and price adjustment lags in the CPI. So the wholesale price index (WPI), or domestic prices, is used as the preferred measure for policy purposes. Worldwide CPI is used to target inflation since this is the measure that directly affects consumer utility and wage expectations. Moreover, in an open economy there is the shortest lag from the exchange rate to consumer prices (Svensson 2000), making this an effective channel for monetary policy.

In this paper we adapt dynamic stochastic open economy general equilibrium models used to analyze optimal monetary policy<sup>2</sup> to the labour market structure of a small open emerging economy. It is then possible to assess the welfare loss, if any, from domestic rather than consumer inflation targeting.

Since the policy response to shocks is analyzed using aggregate demand and supply curves derived from microfoundations, it is immune to the Lucas critique. The coefficients of the model are based on deep parameters of preferences and technology that do not shift with the policy regime. But it has been necessary to put in various types of market imperfections in these types of models for them to be able to reproduce actual macroeconomic outcomes. The labour market is most critical for these outcomes. To hope to be able to reproduce the experience of a small open emerging market economy (SOEME), it is necessary to put in features of its labour market. We allow for a dualistic labour market with large numbers at subsistence employment. Equilibrium models allow unemployment to be driven only by an optimizing labour supply decision—which cannot capture the dimensions of unemployment in a developing economy. The modeling of two types of labour makes it possible to capture this major aspect. Low productivity employment is the major coping mechanism in a SOEME for less than full employment in the productive modern sector. Our model has the usual product diversity and monopolistic competition so that output is at less than the social optimal for this reason as well as for the low labour absorption in productive sectors. Sticky prices allow real effects of monetary shocks.

Labour markets are more segmented in a SOEME because of large skill differences so that the assumption of specific labour markets is better suited to them than economy-wide labour markets. In specific labour markets one labour type works to produce

---

<sup>2</sup> Notable contributions in this area include Clarida, Gali and Gertler (1999, 2001), Obstfeld and Rogoff (1996), Svensson (2000) and Woodford (2003). Gali and Monacelli (2005) offer a detailed and rigorous application to a small open economy.

goods different from those the second type work in. In economy-wide markets a weighted average unit of labour is defined. In these circumstances it pays a firm to raise its prices if others are raising their prices—prices become strategic complements. The output impact of a monetary shock rises—that is the aggregate supply curve becomes flatter.

We compare the welfare consequences of optimizing policy responses to shocks. The exchange rate is not itself a target variable but affects both output and inflation. In earlier results (Goyal 2007), when realistic lags were built into the CPI and flexible domestic inflation targeting (DIT) turned out to have the least welfare loss. Here we show flexible CPI inflation targeting (CIT) without lags works best, especially if the economy is more open. But exchange rate intervention that limits the volatility of the terms of trade improves outcomes. Terms of trade are volatile in a SOEME and this volatility makes the supply curve even steeper than in a small open economy (SOE) despite specific labour markets and higher labour supply elasticity. As long as exchange rate intervention is required, DIT continues to be more robust and effective. The welfare losses from the lags in CPI, which prevent the implementation of CIT, are therefore minimal as long as the dualistic structure dominates. As the economy becomes more open, however, the loss from not being able to use CIT rises. Therefore the lags in CPI need to be reduced, making its future use possible.

Section 2 gives a highly simplified version of a typical SOE model. Section 3 outlines the chief modifications when dualism in labour and consumption is introduced. Section 4 analyzes the implications of specific labour markets, section 5 examines the structure of Indian inflation and its measurement, section 6 reports the calibrations and simulations, and section 7 concludes. Some derivations are in the appendix.

## 2. Basic SOE model

A microfoundation based SOE model is used to derive optimal monetary policy<sup>3</sup>. The key features are intertemporal optimization and labour-leisure tradeoff by consumers, monopolistic competition and product diversity so that producers have pricing power, and output is below the social optimum. The Calvo model of staggered prices generates the sticky prices required for monetary policy to have real effects on output. The optimization results in simple standard aggregate demand (AD) and supply curves (AS) with the difference that they include forward-looking variables. These can be used to derive the optimal policy response to shocks.

The generic form of the objective function the representative consumer maximizes is:

$$E_0 \sum_{t=0}^{\infty} \beta^t u(C_t, N_t) \quad (1)$$

Consumption,  $C$ , increases and labour,  $N$ , decreases the discounted present value of utility with  $\beta$  is the discount factor. Underlying the macro variables is CES aggregation, over  $i \in [0, 1]$  countries, and  $j \in [0, 1]$  product varieties. Aggregate consumption,  $C$ , is derived from CES aggregation of consumption of home and foreign goods ( $C_H, C_F$ ). If the elasticity of substitution between H and F goods is equal to unity, the CES aggregation collapses to Cobb-Douglas:

---

<sup>3</sup> The model in this section is a simplified version of the Gali and Monacelli (2005, henceforth GM) small open economy model.

$$C_t = kC_{H,t}^{1-\alpha} C_{F,t}^\alpha \quad (2)$$

Where  $k = \frac{1}{(1-\alpha)^{1-\alpha} \alpha^\alpha}$  is a constant and  $\alpha$  is an index of openness. The associated consumer price index (CPI) is:

$$P_t = (P_{H,t})^{1-\alpha} (P_{F,t})^\alpha \quad (3)$$

$C_{H,t}$  is itself an index of consumption of domestic goods derived by CES aggregation with elasticity of substitution  $\varepsilon > 1$  over  $j$  domestic varieties.  $C_{F,t}$  is an index of imported goods, derived by CES aggregation with elasticity of substitution  $\gamma = 1$  over imported goods  $j$ , from  $i$  countries of origin,  $C_{i,t}$ . Thus  $C_{i,t}$  is an index over  $j$  goods imported from country  $i$  and consumed domestically. There is also CES aggregation with elasticity of substitution  $\varepsilon > 1$  between  $j$  varieties produced within any country  $i$ .

The other great simplification in a SOE is that foreign variables are independent of home country action, and can be taken as given. Variables with a superscript \* indicate foreign countries.

The specific form of the utility function is:

$$u(C_i, N_i) = \frac{C_{i,t}^{1-\sigma_i}}{1-\sigma_i} - \frac{N_{i,t}^{1+\phi_i}}{1+\phi_i} \quad (4)$$

Since each country  $i$  is assumed to have identical preferences the subscript  $i$  can be dropped. The objective function is maximized subject to the period budget constraint:

$$P_t C_t + E_t \left\{ \frac{D_{t+1}}{R_t} \right\} \leq D_t + W_t N_t + T_t \quad (5)$$

Where  $P_t C_t = P_{H,t} C_{H,t} + P_{F,t} C_{F,t}$  and  $R_t$  is the gross nominal yield on a riskless one-period discount bond paying one unit of domestic currency in  $t+1$  so  $\frac{1}{R_t}$  is its price.

Security markets are complete.  $D_{t+1}$  is the random payoff of the portfolio purchased at  $t$ .

Differentiating with respect to the two arguments  $C$  and  $N$  and over time gives the intratemporal optimality condition:

$$C_t^\sigma N_t^\phi = \frac{W_t}{P_t} \quad (6)$$

And intertemporal optimality or the consumption Euler:

$$\beta R_t E_t \left\{ \left( \frac{C_{t+1}}{C_t} \right)^\sigma \left( \frac{P_t}{P_{t+1}} \right) \right\} = 1 \quad (7)$$

Log-linearized forms of these FOC's are:

$$w_t - p_t = \sigma c_t + \phi n_t \quad (8)$$

$$c_t = E_t\{c_{t+1}\} - \frac{1}{\sigma}(r_t - E_t\{\pi_{t+1}\} - \rho) \quad (9)$$

Where  $\rho$ , the discount rate, equals  $\beta^{-1}-1$  and  $\pi_t$ , CPI inflation, is given by  $\pi_t = p_t - p_{t-1}$ . Small letters normally denote log variables.

Optimal allocation of expenditure between domestic and imported goods gives:

$$C_{H,t} = (1-\alpha) \frac{P_t}{P_{H,t}} C_t \quad (10)$$

$$C_{F,t} = \alpha \frac{P_t}{P_{F,t}} C_t \quad (11)$$

Identities and relationships between different types of inflation and real exchange rates are also required. Log- linearization of CPI gives:

$$p_t = (1-\alpha)p_{H,t} + \alpha p_{F,t} \quad (12)$$

The effective terms of trade is:

$$S_t = \frac{P_{F,t}}{P_{H,t}} \quad (13)$$

Or in log terms:

$$p_{F,t} = s_t + p_{H,t}$$

Substituting in CPI (Eq. 12) gives:

$$p_t = p_{H,t} + \alpha s_t \quad (14)$$

Or

$$\pi_t = \pi_{H,t} + \alpha \Delta s_t$$

That is, CPI inflation is a weighted average of domestic inflation and the terms of trade. The real exchange rate,  $Q$ , is related to the terms of trade as follows:

$$\begin{aligned} Q &= \frac{EP^*}{P} \\ q_t &= e_t + p_t^* - p_t \\ &= s_t + p_{H,t} - p_t \\ &= (1-\alpha)s_t \\ Q &= S_t^{(1-\alpha)} \end{aligned} \quad (15)$$

The identity  $p_{F,t} = e_t + p_t^*$  is used in the derivation.

*International risk sharing:*

The consumption Euler for any other country  $i$ , with its prices translated into home country prices using the nominal exchange rate, is:

$$\beta \left( \frac{C_{t+1}^i}{C_t^i} \right)^{-\sigma} \left( \frac{P_t^i}{P_{t+1}^i} \right) \left( \frac{\varepsilon_t^i}{\varepsilon_{t+1}^i} \right) = \frac{1}{R_t} \quad (16)$$

Using the equivalent Euler equation for the home country, the definition of  $Q$ , and integrating over  $i \in [0, 1]$  countries to get  $C_t^*$ , gives

$$\begin{aligned} C_t &= \nu C_t^* Q^{\frac{1}{\sigma}} \\ c_t &= c_t^* + \frac{1}{\sigma} q_t \\ &= c_t^* + \frac{(1-\alpha)}{\sigma} s_t \end{aligned} \quad (17)$$

Symmetric initial conditions and zero net foreign holdings are assumed so that  $\nu = 1$ . In the symmetric steady state with PPP,  $C=C^*$  and  $Q=S=1$  would also hold.

*Aggregate demand and output equality:*

For goods market clearing in the SOE, domestic output must equal domestic and foreign consumption ( $C_H^*$ ) of home goods:

$$Y_t = C_{H,t} + C_{H,t}^* \quad (18)$$

The appendix shows how substituting the allocation FOCs (10) and (11) in (18) and simplifying, with  $\sigma = 1$ , this demand supply equality reduces to:

$$Y_t = S_t^\alpha C_t \quad (19)$$

*Determinants of the terms of trade:*

Substituting risk sharing again (with  $\sigma = 1$ ) in aggregate demand = supply Eq. (19), we get:

$$Y_t = S_t^\alpha C_t^* Q \quad (20)$$

Substituting  $Q_t = S_t^{1-\alpha}$

$$Y_t = S_t^\alpha Y_t^* S_t^{1-\alpha}$$

$$S_t = \frac{Y_t}{Y^*} \quad (21)$$

That is, the terms of trade depreciate with a rise in home output relative to world output.

*Deriving aggregate supply*

A simple log-linear production function where output increases with labour input and its productivity, gives marginal cost Eq. (23) as a function of unit labour costs, from the firms' optimization,

$$y_t = a_t + n_t \quad (22)$$

$$mc_t = -\nu + w_t - p_{H,t} - a_t \quad (23)$$

The employment subsidy  $\tau$  or  $\nu = -\log(1-\tau)$ , guarantees the optimality of the flexible price outcome, since it induces firms to increase employment to the social optimum.

Adding and subtracting  $p_t$ :

$$mc_t = -\nu + (w - p_t) + (p_t - p_{H,t}) - a_t$$

Substituting the intratemporal FOC (8) and CPI (14):

$$mc_t = -\nu + \sigma c_t + \varphi n_t + \alpha s_t - a_t \quad (24)$$

Substituting risk sharing (17), production function (22), and from (21)  $y_t^* = y_t - s_t$ :

$$\begin{aligned} mc_t &= \nu + \sigma y_t^* + \varphi y_t + s_t - (1 + \varphi)a_t \\ &= -\nu + (\sigma + \varphi)y_t - (1 + \varphi)a_t \end{aligned} \quad (25)$$

The log of gross mark up in steady state,  $mc$ , falls as elasticity of demand rises:

$$mc = -\log \frac{\varepsilon}{\varepsilon - 1} \equiv -\mu$$

The difference of actual from this optimal marginal cost is:

$$\hat{mc}_t = mc_t - mc$$

Under Calvo-style staggered pricing, where  $(1-\theta)$  percent of firms change prices in a period, the firm's optimal price-setting can be shown to give the dynamics of domestic inflation as a function of real marginal cost and discounted expected future inflation (GM Appendix B):

$$\pi_{H,t} = \beta E_t \{ \pi_{H,t+1} \} + \lambda \hat{mc}_t \quad \lambda \equiv \frac{(1-\beta\theta)(1-\theta)}{\theta} \quad (26)$$

The deviation of marginal cost from its optimum is related to the output gap,  $x_t \equiv y_t - \bar{y}_t$ , or the deviation of  $y$  from steady state  $\bar{y}_t$ . The latter is derived from  $mc_t$  (25) by imposing  $mc_t = -\mu$  and solving for  $y_t$ . If  $\sigma=1$  then:

$$\bar{y}_t = \frac{\nu - \mu}{1 + \varphi} + a_t$$

Subtracting  $y_t$  from  $\bar{y}_t$ , substituting for  $y_t$  from the  $mc_t$  equation (26) and for  $\bar{y}_t$  from above shows how the deviation of  $mc$  from its optimal rises with the output gap:

$$\hat{mc}_t = (\sigma + \varphi)x_t$$

Combine with the price setting equation (26) to get aggregate supply:

$$\pi_{H,t} = \beta E_t \{ \pi_{H,t+1} \} + \kappa x_t \quad \kappa = \lambda(1+\varphi) \quad (27)$$

This is the New Keynesian Phillips Curve. It differs from the standard Phillips Curve in including forward-looking variables, which enter since it is derived from microfoundations with optimization over time. Similarly for aggregate demand derived below.

Substituting  $c$  in the Euler Eq. (9) with  $y$  from the aggregate demand equal to supply Eq. (19) and log-linearizing gives:

$$y_t = E_t \{ y_{t+1} \} - \frac{1}{\sigma} (r_t - E_t \{ \pi_{t+1} \} - \rho) - \frac{\alpha}{\sigma} E_t \{ \Delta s_{t+1} \}$$

Converting to domestic prices using  $\pi_t = \pi_{H,t} + \alpha \Delta s_t$

$$y_t = E_t \{ y_{t+1} \} - \frac{1}{\sigma} (r_t - E_t \{ \pi_{H,t+1} \} - \rho)$$



$$x_t = E_t \{x_{t+1}\} - \frac{1}{\sigma_\alpha} (r_t - E_t \{\pi_{H,t+1}\} - r\bar{r}_t) \quad (28)$$

Aggregate demand is less interest elastic in an open compared to a closed economy, since  $\sigma_\alpha$  equals unity if  $\sigma = 1$  and  $\sigma_\alpha < \sigma$  otherwise.

$$r\bar{r}_t = \rho - \sigma_\alpha (1 - \rho_\alpha) a_t + \chi E_t \Delta y_{t+1}^* \quad (29)$$

If  $\sigma = 1$ ,  $\chi = 0$  so  $y^*$  drops out of the equation. World income then does not affect aggregate demand. All the exogenous shocks affecting AD now come through the  $r\bar{r}_t$  term.

### 3. Adaptation to an emerging market

The basic model has to be adapted to make it relevant to analyze monetary policy in emerging markets with large populations in low productivity employment. The steady-state full employment assumption of equilibrium models is far from adequate in these markets.<sup>4</sup> We consider a small open emerging market economy (SOEME) with two representative households consuming and supplying labour: above subsistence (R) and at subsistence (P). The product market structure, technology and preferences of R type consumers are the same across all economies. Productivity shocks differ since emerging markets are in transition stages of applying the new technologies becoming available. P type consumers are assumed to be at a fixed subsistence wage, financed in part by transfers from R types.

The government intermediates these transfers through taxes on R. It runs a balanced budget so that  $\eta T_{R,t} + M_t = - (1-\eta) T_{P,t}$  where a negative tax is a transfer.  $M_t$  is government revenue from its monetary operations. The subsidy is calculated to give P a subsistence wage if they work eight hours daily, but they are free to increase their wages by working longer hours. P types are willing to supply more labor hours to the modern sector at a wage epsilon above their opportunity cost or wages in the informal sector. Since each country is of measure zero, it takes world prices as given.

The intertemporal elasticity of consumption ( $1/\sigma_R$ ), productivity and wages ( $W_R$ ) of R are higher, their labour supply elasticity ( $1/\varphi_R$ ) is lower compared to the P, and they are able to fully diversify risk in international capital markets.  $N_{i,t}$  denotes hours of labour supplied by each type.

Consumption of each type of good is a weighted average of consumption by the R and the P households, with  $\eta$  as the share of R. Since R and P consume H and F in the same proportion,  $C_t$  is distributed between R and P in the same proportion  $\eta$ , where  $\eta$  is the share of above subsistence households in consumption. The aggregate intertemporal elasticity of substitution,  $1/\sigma$ , and the inverse of the labour supply elasticity<sup>5</sup>,  $\varphi$ , are also weighted sums with population shares of R and P as weights. Since P lack the ability to smooth consumption, their intertemporal elasticity of

<sup>4</sup> This adaptation follows Goyal (2007). See the latter for detailed derivations, proofs, and systematic comparisons of the SOEME and the SOE.

<sup>5</sup> This is also the elasticity of price with respect to output in the aggregate supply curve derived. The labour supply elasticity of P can be expected to be high, and their intertemporal elasticity of consumption low. We normalize the latter at zero. Average  $\varphi$  is taken as 0.25 in the simulations, implying a labour supply elasticity of 4.

consumption approaches zero, so the averaging is done with elasticities, rather than inverse elasticities.

The basic consumption Euler and household labor supply are derived for each type. Risk sharing is derived only for R types. Payoffs D are taken as zero for P types, since they do not hold a portfolio of assets.

To solve for  $S_t$  in terms of endogenous  $Y_t$  and exogenous variables, first substitute  $C_{R,t}$  and  $C_{P,t}$  for  $C_t$  in the aggregate demand equal to supply equation and then substitute out  $C_{R,t}$  using risk smoothing. This gives:

$$S_t = \left( \frac{Y_t}{Y_t^* \eta C_{P,t}^{1-\eta}} \right) \sigma_D \quad (30)$$

The terms of trade depreciate with a rise in  $Y_t$  and appreciate with a rise in  $Y_t^*$ ; but in a SOEME the former's effect is magnified.  $C_{P,t}$  also affects  $S_t$ , reducing the impact of

$Y_t^*$ . The multiplier factor  $\sigma_D = \frac{\sigma_R}{(\eta(1-\alpha) + \varpi\alpha)}$ , which affects only the SOEME, is

large because the elasticity of substitution is small. If  $\sigma_R=1$ , then  $\varpi=1$ , and if  $1/\sigma_P=0$ , then  $\sigma = \sigma_R/\eta$ . It also follows that  $\sigma_D < \sigma$ . Both rise as  $\eta$  falls or the proportion of P with low intertemporal elasticity of consumption ( $1/\sigma_P = 0$ ) rises. While  $\eta$  affects  $\sigma$ , both  $\eta$  and  $\alpha$  affect  $\sigma_D$ . As  $\alpha$  falls  $\sigma_D$  rises, and as  $\alpha$  approaches 0, or the economy becomes closed,  $\sigma_D$  equals  $\sigma$ , which is its upper bound. In a fully open economy  $\alpha$  approaches unity, and  $\sigma_D$  falls to its lower bound, which is unity.

The dynamic aggregate supply Eq. (27) now becomes:

$$\pi_H = \beta E_t \{ \pi_{H,t+1} \} + \kappa_D x_t \quad (31)$$

The slope for a SOEME is  $\kappa_D = \lambda(\sigma_D + \varphi)$ . The corresponding value for a closed

economy is  $\lambda(\sigma + \varphi)$  and for a SOE is  $\lambda(\sigma_\alpha + \varphi)$ , where  $\sigma_\alpha = \frac{\sigma_R}{(1-\alpha) + \varpi\alpha}$ ,  $\sigma_R$  enters

$\sigma_\alpha$  since R in the SOEME are identical to the representative SOE consumer. The slope is reduced in an open compared to a closed economy since  $\sigma > \sigma_D > \sigma_\alpha$ , but the slope can be higher in the SOEME compared to a SOE, even though  $\varphi$  is lower for the SOEME, since  $\sigma_D > \sigma_\alpha$ . While  $\sigma_\alpha=1$  if  $\sigma_R=1$ ,  $\sigma_D$  always exceeds unity if  $\alpha < 1$ .

Similar results hold for the more general case of  $\sigma_R \neq 1$ . Since the gap between  $\sigma$  and  $\sigma_D$  is large and varies with  $\eta$  and  $\alpha$ , the slope for the SOEME remains larger than in the SOE.

The dynamic aggregate demand (AD) equation for the SOEME is:

$$x_t = E_t \{ x_{t+1} \} - \frac{1}{\sigma_D} \left( r_t - E_t \{ \pi_{H,t+1} \} - \bar{r} r_t \right) \quad (32)$$

Where  $\bar{r} r_t = \rho - \sigma_D \Gamma (1 - \rho_a) a_t - \sigma_D (1 - \eta + \Phi) E_t \{ \Delta c_{P,t+1} \} + \sigma_D (\Theta - \Psi) E_t \{ \Delta y_{t+1}^* \}$

and  $\Theta = \alpha(\varpi - \eta)$ ,  $d = \frac{1}{\sigma_D + \varphi}$ ,  $\Gamma = \frac{(1 + \varphi)}{\sigma_D + \varphi}$ ,  $\Psi = \eta(\sigma - \sigma_D)d$ ,  
 $\Phi = d((1 - \eta)(\sigma - \sigma_D))$

Since  $\sigma_D > \sigma_a$ , the output gap, just like output, is less responsive to the interest rate in the SOEME compared to the SOE.

Thus (31) and (32) now are the two AS and AD equations.

#### 4. Specific labour market

Although dualism in the labour market and the consumption structure gives the basic differences in results between the SOE and the SOEME in the section above, the marginal cost and therefore the supply curve was still derived on the simplifying assumption of common economy-wide factor markets. An average unit of labour is defined, weighted by the shares of the two labour types. Since labour is assumed mobile at the prevailing factor prices, at any point of time, the marginal cost of supply is equal for all goods  $i$ , although labour supply itself is an index over the two labour types, and the price and output levels are also indices over the differentiated goods in the economy.

But there are large differences in skill, and therefore in labour mobility, in a dualistic labour market. So it is more natural to make the assumption of specific factor markets. The P-type produce different goods from those the R-type labour produces. A rise in wages in one part of the economy need not in the short-run raise wages in other sectors, and it would not raise subsistence wages until subsistence productivity rises. In the long run, migration would tend to equate wages, but the short-run, in which markets remain segmented, is the relevant horizon to analyze policy shocks.

Woodford (2003, Chapter 3) derives the aggregate marginal cost and profit function for specific labour markets with differentiated labor inputs under the facilitating assumption that goods in the same industry change their prices at the same time, therefore charging the same price, and are produced using the same type of labour. Since a continuum of producers bid for each type of labour they do not have market power in their labour market. The firms in a particular industry produce the same amount in equilibrium, in each period, so aggregation is facilitated. In the SOEME some goods use more unskilled labour, and some goods have sticky prices while others are flexible. Administrative interventions in subsistence goods make their prices sticky.

The differential of the profit function with respect to the firm's price  $p$ , gives the first order condition for setting a price that maximizes profits. A log-linear approximation of this condition around unit relative prices, natural output, and zero shocks ( $\tilde{\xi}$ ) gives:

$$\Pi_1(p, p, P; y, \tilde{\xi}) = \Psi_p \log\left(\frac{p_{it}}{P_t}\right) + \Psi_y (y_t - \bar{y}_t) \quad (33)$$

The ratio  $\zeta = -\frac{\Psi_y}{\Psi_p}$  then gives the elasticity of price with respect to the output gap.

This implies the coefficient of the output gap in the AS curve is  $\lambda \zeta$ . The new term added to  $\kappa_D$  is the denominator  $\Psi_p = 1 + \varphi\varepsilon$ .

$$\kappa_D = \lambda \left( \frac{\varphi + \sigma_D}{1 + \varphi \varepsilon} \right) \quad (34)$$

Since the profit function is single-peaked with respect to a firm's price  $\Psi_p$  is  $<0$ . The labour requirement for supplying the marginal unit of output,  $\Psi(y)$ , is a positive increasing function so that  $\Psi_y$  is  $>0$ . In this more general case,  $\varphi = \varphi_w + \varphi_p$ . Both arguments are  $>0$ . The first argument is the elasticity of marginal disutility of work with respect to increase in output, and the second is the elasticity of real wage demands with respect to the level of output.

In the case of economy-wide labour markets the coefficient  $\kappa_D$  collapses to  $\lambda(\varphi + \sigma_\alpha)$ .

The above general formulation is related to the firms' optimization of the preceding sections as follows:

$$\frac{P_{it}}{P_t} = \frac{\varepsilon}{\varepsilon - 1} s(y_{it}, y_t, \tilde{\xi}_t) \quad (35)$$

Where  $s(y_{it}, y_t, \tilde{\xi}_t)$  is the marginal cost function  $mc_t$ . At the natural output where  $p_{it} = P$  and  $y_{it} = y_t = \bar{y}$ :

$$\text{Log } s(y_{it}, y_t, \tilde{\xi}_t) = mc = -\log \frac{\varepsilon}{\varepsilon - 1} = -\mu$$

The optimal markup  $mc = -\mu$  is given by the usual Lerner formula inversely related to elasticity of demand. And

$$\hat{mc}_t = \kappa_D (y_t - \bar{y}) \quad (36)$$

When  $\zeta$  is small there is a substantial effect of variations in nominal spending on output even if only some prices are sticky. So  $\zeta < 1$  is the case of strategic complementarity. Pricing decisions become strategic complements for any firm so that an increase in other goods prices raises the firm's own optimal price. This is the NKE case of real rigidities where the AS is flat. In the case of strategic substitutes,  $\zeta > 1$ . Then the flexible price model is a better approximation and variations in nominal spending have little effect upon output.

It is believed that bottlenecks in emerging markets makes output supply rather than demand determined, but the above result implies that the dualistic labour market structure strengthens the effect of nominal spending on output. Of course this can happen only to the extent other supply bottlenecks are relieved.

Since  $\sigma_D = \frac{\sigma_R}{(\eta(1-\alpha) + \varpi\alpha)}$  which is a part of the numerator in  $\kappa_D$  rises as the share of the rich falls, at low the aggregate supply curve in the SOEME can still be steeper than in the SOE, despite the denominator term  $\Psi_p = 1 + \varphi\varepsilon$ , due to specific labour markets, decreasing its slope<sup>6</sup>.

<sup>6</sup> With the calibration in Section 6, the coefficient of the AS curve falls to 0.2393 with specific labour markets compared to 0.5982 in economy wide labour markets. But with  $\eta = 0.1$  it rises to 0.9840, compared to 0.36 for a SOE.

## 5. Structure of Indian Consumer and Domestic Price Inflation

The wholesale price index (WPI), consumer price index (CPI) and the annual implicit national income deflator are measures of inflation computed in India<sup>7</sup>. The last is broad-based—it includes services. But it is available only with a lag of over a year. The measure of domestic inflation commonly used is therefore the WPI. It is a Laspeyre's index (current prices divided by base-year prices with base-year wholesale market transactions as fixed weights). The current 1993-94 WPI series has 435 commodities in its commodity basket. Table 1 gives the broad weighting structure. WPI is available weekly; the lag is only two weeks for provisional index and ten weeks for the final index. It does not cover non-commodity producing sectors like services and other non-tradable goods.

Major Groups/Items	1993-94=100	1981-82=100
Primary Articles	22.025	32.295
<i>Of which Food Articles &amp;</i>	15.402	17.386
<i>Non-Food Articles</i>	6.138	10.081
Fuel, Power, Light & Lubricants	14.226	10.663
Manufactured Products	63.749	57.042
<b>General</b>	<b>100</b>	<b>100</b>

Source: Ministry of Labour and Agarwal (2008)

Consumer price indices measure the cost of living as the changes in retail prices of selected goods and services on which a homogenous group of consumers spend the major part of their income. The consumer price index for industrial workers (CPI-IW) is compiled using retail prices collected from 261 markets in 76 centres. The items in the consumption basket in different centres vary from 120 to 160. Since January 2006, the revised CPI-IW series on new base-period of 2001 is available. This gives a higher weight to services but has a monthly frequency with a lag of two months. Table 2 shows the weight of the six main commodity groups in the CPI-IW series. While CPI is constructed for specific centres and then aggregated to get the all-India index, WPI is computed on all-India basis. The commodity coverage in WPI is also wider than that in CPI.

WPI inflation averaged at around 5% per annum after 2000, only the component 'Fuel, Power, Light and Lubricant (FPL&L)' had an inflation rate of 10% per annum from 2000 to 2007. There is evidence of higher pass-through of international prices to domestic inflation. FPL&L inflation was the key driver of headline inflation after 2000 (Table 3).

<sup>7</sup> This section draws on Agarwal (2008).

Groups/Items	1982=100	2001=100
Food	57	46.2
Pan, Supari, Tobacco & Intoxicants	3.15	2.27
Fuel & Light	6.28	6.43
Housing	8.67	15.27
Clothing, Bedding & Footwear	8.54	6.57
Miscellaneous Group (Services)	16.36	23.26
<b>General</b>	<b>100</b>	<b>100</b>

Source: Ministry of Labour and Agarwal (2008)

	1981-85	1985-90	1990-95	1995-2000	2000-2007
Primary Articles	22.67	18.05	20.34	22.03	14.26
Food Articles	25.26	19.85	20.22	27.28	12.47
Non Food Articles	21.45	19.84	22.82	10.47	13.50
FPL&L	14.80	18.20	19.63	27.08	47.90
Manufactured Products	15.83	24.06	16.99	13.15	11.88

Note: Overall increase in WPI inflation is normalized to 100%, thus each column sums to 100 in the Table.

Source: RBI (2007) and Agarwal (2008)

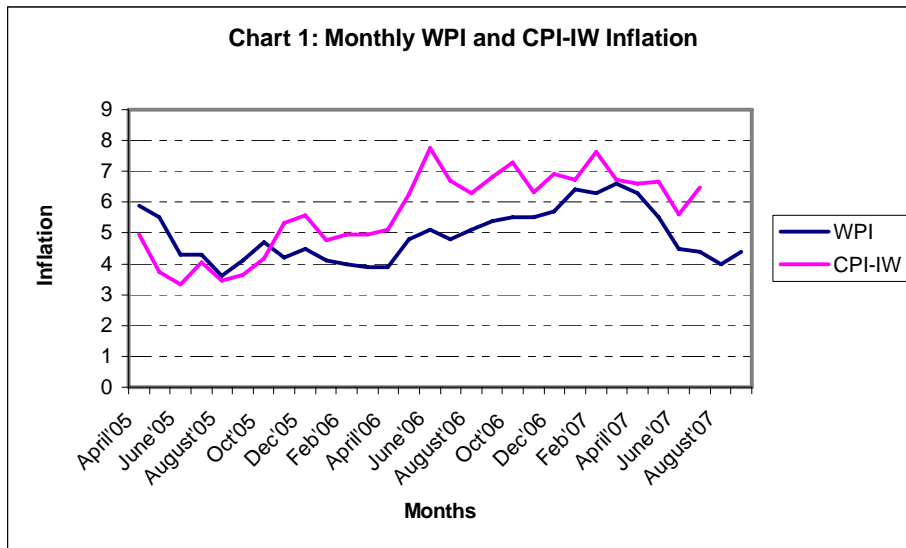
	1981-1990	1990-2000	2000-2007
<b>WPI Inflation</b>			
Mean	6.52	8.12	5.13
Standard Deviation	1.36	3.57	1.41
Coefficient of Variation	20.85	43.90	27.58
<b>CPI-IW Inflation</b>			
Mean	7.70	9.52	4.42
Standard Deviation	2.62	3.01	1.08
Coefficient of Variation	34.06	31.63	24.56

Source: RBI (2007) and Agarwal (2008)

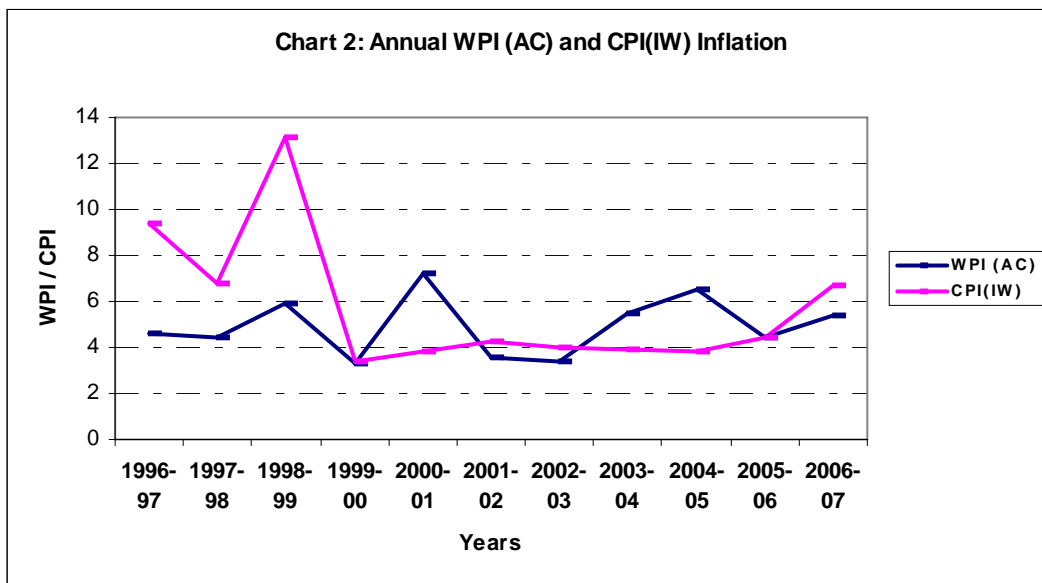
CPI-IW inflation averaged at around 7.6% from 1980 to 2007 (till March). It decelerated after 2000, coming down from 8.6% in late 1990s to 4.4% in the period 2000 to 2007. It was very volatile during 1980s (as measured by coefficient of variation) with volatility exceeding that of WPI inflation. Its volatility fell in the subsequent period before rising again in 1995 to 2000, but stayed below that of WPI. Since food group inflation has the highest weight in the CPI-IW inflation basket, its high volatility drove that of CPI-IW inflation.

Table 5: CPI-IW: Descriptive Statistics					
	1981-85	1985-90	1990-95	1995-2000	2000-2007
<b>CPI-IW inflation: Total</b>					
Mean	7.39	7.96	10.44	8.60	4.42
Max.	12.47	9.40	13.47	13.11	6.83
Min.	3.01	6.13	7.50	3.38	3.73
Standard Deviation	3.93	1.42	2.23	3.65	1.08
Coefficient of Variation	53.21	17.79	21.39	42.40	24.56
<b>CPI-IW inflation: Food</b>					
Mean	8.56	7.76	11.46	8.08	3.72
Max.	13.60	11.18	15.58	14.69	9.11
Min.	4.27	4.73	7.09	0.22	1.57
Standard Deviation	4.01	2.95	3.09	5.56	2.54
Coefficient of Variation	46.91	37.96	26.96	68.80	68.20

Source: RBI (2007) and Agarwal (2008)



Source: Calculated with data from RBI (2007)



Source: Calculated with data from RBI (2007)

Chart 1, which maps Monthly WPI and CPI-IW for the period April 2005 to September 2007, shows that although WPI inflation was less volatile, it led changes in CPI inflation. Oil shocks dominated in this period. The respective coefficients of variation were 17 and 23.

Chart 2 with annual data from the mid-nineties confirms the lead-lag pattern, and shows the changing volatility picture of the two series. WPI all commodities (AC) was more volatile in the period of oil price shocks and CPI-IW in the period of food price shocks. Cost-push factors have dominated Indian inflation in this period. In the late nineties, CPI inflation fell as food prices approached falling world prices and buffer stocks were large. The WPI inflation peak in 2001-02 coincided with the rise in oil prices. Table 3 shows industry's falling contribution to inflation, which indicates a rise in industrial productivity since the weight of manufacturing in WPI has risen from 57 to 64 in the current series with base 1993-94. Among components of demand, broad money growth was flat in the nineties. The fiscal deficit was large but since the government spends more on non-tradables, this and foreign inflows, should have raised non-tradable prices, but did not. In 1998-99, 2000-01, and in early 2003-04, inflation fell as supply shocks wore out, without a sharp tightening in monetary policy.

The international supply shocks, primarily international crude oil inflation, which drove WPI inflation in the current decade, have a lower weight in the CPI-IW basket than in the WPI basket. The alternative inflation rates do, however, tend to converge over long periods of time, as administered prices are changed, and CPI affects wages which raise costs for producers. The FPLL is the outright administered price component in WPI inflation—this is only 14%, and part of it is no longer fixed after the APM was dismantled in 2002. Part of food items, weight 15.4%, is also administered. In the CPI-IW the last category has a weight of 46.2%, fuel and light 6.43% and the services component (weight 23.3%) also has items with fixed user charges. Therefore the component subject to price intervention in WPI is about 30% compared to 60% for CPI-IW.

## **6. Simulations**

The model is calibrated for the Indian economy following Goyal (2007, 2008). The earlier exercises established that if CPI is a function of lagged WPI and current change in exchange rates, targeting CPI inflation leads to high volatility and non-robust responses. Then, in response to both a cost shock affecting WPI and a generic natural interest rate shock, flexible DIT performs best. Flexible CIT (CPI inflation targeting) did almost as well under some kind of exchange rate management, which made the terms of trade credibly sticky.

The components of CPI and WPI shown in the section above, with the higher weight of administrative interventions on CPI, suggest that the lag structure used in the earlier simulations is indeed appropriate. The large delay in availability of CPI, and the larger share of volatile non-core components not affected by aggregate demand and therefore beyond the reach of the Central Bank, also suggest that domestic inflation targeting is more appropriate in India at the present juncture. Oil shocks have a large effect on WPI, and food prices a large weight in the CPI. Administrative



interventions in food make the CPI adjust with a lag, and oil prices also affect food prices with a lag.

But the Indian macroeconomic scene is changing and so it worth asking what happens if the lags affecting CPI reduce. This is the question we explore in the simulations below.

Consumer price inflation is now taken as a weighted average of current domestic prices and depreciation.

$$\pi_t = P_t - P_{t-1}; \pi_{H,t} = P_{H,t} - P_{H,t-1}; \pi_t = \pi_{H,t} + \alpha(e_t - e_{t-1} - \pi_{H,t})$$

The policy response is obtained under discretion with a central bank minimizing different weighted averages of inflation (domestic or consumer), output and interest rate deviations from equilibrium values normalized at unity for the simulations ( $L = q_Y y^2 + q_\pi \pi^2 + q_i i^2$ ). The weights attached to the different arguments of the loss function (qs) ensure stability since the weight on inflation exceeds unity. Under strict inflation targeting only inflation has a positive weight of 2. The exchange rate directly affects consumer inflation while it affects domestic inflation through its affect on marginal cost. Monetary policy affects domestic inflation directly by changing the output gap; domestic inflation is a component of consumer inflation.

The calibration is loosely based on Indian stylized facts. Empirical estimations and the dominance of administered pricing in SOEME's suggest that past inflation affects current inflation (Fraga et. al., 2004), so a modification of the AS Eq. (31) is made to accommodate such behaviour by imposing a share  $\gamma_b$  of lagged prices:

$$\pi_{H,t} = \gamma_f \beta E_t \{ \pi_{H,t+1} \} + \lambda \hat{m} c'_t + \gamma_b \pi_{H,t-1} \quad \gamma_f + \gamma_b = 1$$

In most simulations  $\gamma_b$  is set at 0.2 so  $\gamma_f$  is 0.8. Because of less than perfectly flexible interest rates, lagged interest rate also enters the AD with a weight of 0.2. The openness coefficient  $\alpha$  is set at 0.3; the proportion of R,<sup>8</sup>  $\eta$  at 0.4;  $\beta = 0.99$  implies a riskless annual steady-state return of 4 percent; the price response to output,  $\phi$ , is set at 0.25, which implies an average labour supply elasticity of 4. Consumption of the mature economy and of the rich is normalized at unity, five times that of the poor so  $C_p = 0.2$ . Given  $\eta$ , this gives consistent C values of 0.75, K of 1.1 so that  $c_p = -1.6$  and  $\kappa = 0.1$ . Initial conditions are normalized at unity so the log value is zero.

The natural output  $\bar{y}_t$  is derived from the flexible price equilibrium, with an employment subsidy  $\nu = -\log(1 - \tau)$  set so as to correct for market power and for government temptation to change the terms of trade (GM, Section 4). In a SOEME it is also necessary to correct for the deviation from world income levels and poor infrastructure. Goyal (2008) derives the value of the subsidy as  $\nu = \mu + \log(1 - \alpha) - \kappa + \log \delta$ . The index of infrastructure  $\delta$  is taken as 0.5 less than the world level of unity. An elasticity of substitution between differentiated goods,  $\varepsilon$  equal to 6, implies a steady-state mark-up,  $\mu$ , of 1.2. The value of  $\nu - \mu$  derived from

<sup>8</sup> GMM regressions of CPI inflation for India (Goyal, 2005) give a coefficient of expected inflation of 0.67. India's share of imports in GDP was about 20 percent in 2005, and the proportion of population in rural areas 60 percent. In GMM regressions of aggregate demand with monthly data, the one period forward index of industrial production was strongly significant with a coefficient of -0.42.

the value of  $\alpha$ ,  $\delta$  and  $\kappa$  is -0.9675. The price setting parameters are such that prices adjust in an average of one year ( $\theta = 0.75$ ), giving  $\lambda = 0.24$ .

Since  $\sigma_R = 1$  and  $1/\sigma_P=0$ , the implied average intertemporal elasticity of substitution is  $\eta(1-\alpha) + \alpha=0.58$ . A negative interest rate effect on consumption requires an intertemporal elasticity large enough so that the substitution effect is higher than the positive income effect of higher interest rates on net savers. Empirical studies have found real interest rates to have weak effects on consumption. Especially in low-income countries subsistence considerations are stronger than intertemporal factors. This is particularly so when the share of food in total expenditure is large. The elasticity Ogaki, Ostry and Reinhart (1996) estimate in a large cross-country study, varies from 0.05 for Uganda and Ethiopia to a high of 0.6 for Venezuela and Singapore. Our average elasticity compares well with these figures.

Burns (2008) estimates that the level of technology employed in developing countries is only one-fourth that in high income countries but technological progress increased 40-60 percent faster in the former than in the latter between the early 1990s and early 2000s. Since this catch-up has been even faster in India in recent years we take the value of  $a_t$  to be 0.8 in the SOEME when it is normalized at unity for the SOE.

Table 6a reports the impulse responses to a calibrated 0.2 standard deviation cost shock to period one domestic inflation. The square of the unconditional standard deviations reported gives a measure of the welfare loss. The initial simulated variable value (in brackets) is also reported for selected simulations. Table 6a shows that now flexible CIT outperforms flexible DIT, giving lower volatilities despite a lower rise in the policy rate. The effective use of the direct exchange rate channel possible in this case reduces the necessity to contract output in response to the cost shock.

Sensitivity analysis with variation in key parameters using CIT as the benchmark has similar results as with DIT benchmark in Goyal (2007)(Table 6a and Figure 1). More openness and a higher proportion of R lower the initial interest response and volatility, since the interest elasticity of output falls. The difference compared to DIT is a much larger reduction in the initial policy rate in a more open economy because of a larger impact of appreciation on CPI with higher  $\alpha$ . There is a much greater reduction in CPI and exchange rate volatility in CIT compared to DIT even with the lower policy rate response under CIT. The effect of lower labour elasticity is muted under CIT with the policy rate unchanged until it starts falling slightly when  $\varphi = 1$ . In DIT the initial interest response first rises (at  $\varphi = 1$ ) and then reduces as labour supply becomes even more inelastic (Goyal, 2007). These results are robust for different model structures. A SOE characterized by  $\eta=1$  would therefore have a lower rise in interest rates and appreciation compared to a SOEME.

An aggressive response to inflation lowers the cost of disinflation and therefore volatilities because of the forward-looking behaviour modeled, and need not hold if this is moderated, since it is no longer so effective in anchoring inflation expectations. A simulation with  $\gamma_b=0.8$ , so that domestic inflation is backward looking, has a much smaller rise in interest rates. The response to and volatilities following a cost shock are muted. The performance is very similar to the benchmark DIT (Goyal, 2007). But

when lagged domestic inflation determined the CPI then there was a very large policy rate response under CIT even in this case since the cost shock raised the CPI and exchange rates being a forward looking component affecting CPI, the policy rate was raised to deliver a large appreciation. With both  $\gamma_b=0.8$  and higher  $\alpha$ , the large impact of the latter dominates.

Under exchange rate intervention, the loss of the effective exchange rate channel raises inflation volatility but lowers output volatility, compared to the benchmark, without much change in the policy rate. The clear advantage to a fixed exchange rate, which was there with DIT and lagged CPI, is no longer there. In the S sticky model, where S is credibly fixed, CIT output volatility is much lower, although inflation volatility exceeds the benchmark (Figure 2). DIT does better than CIT in this case, with a very low rise in the policy rate, a rise in output despite the cost shock, and inflation volatilities similar to CIT in the sticky S model. The conclusion is that fixed terms of trade can still lower output volatility in response to a cost shock, at the expense of slightly higher inflation volatility, but these advantages are to be gained more with DIT, compared to CIT. If reducing output volatility is a major objective, then fixed terms of trade and DIT still outperform CIT under a cost shock.

Table 6b reports the estimated reaction function coefficients of the predetermined variables in the different simulations. These continue to be intuitive, with a lower weight on the output gap and higher weight on inflation under the full targeting regimes. Since CPI inflation is itself a weighted average of domestic inflation and the exchange rate, the reaction function weights fall on these two respectively under CPI targeting. In the S sticky model the coefficient of the output gap and inflation both fall. The very low weight on output gap supports the flatter supply curve when S is fixed.

Simulations	Parameters	Standard deviations of (in percentages):				
		Consumer inflation	Output	Domestic inflation	Exchange Rate	Interest rate (initial response)
Benchmark:	$\eta=0.4, \alpha=0.3, \phi=0.25$					
DIT	$q_y=0.7, q_{\pi_H}=2, q_i=1$	0.58	0.36	1.08	0.82	0.70(0.0256)
CIT	$q_y=0.7, q_{\pi}=2, q_i=1$	0.54	0.37	1.03	0.69	0.47(0.0166)
Full CIT	$q_y=0, q_i=0, q_{\pi}=2$	0	0.98	0.59	1.15	0.67(0.0218)
CIT	$\alpha=0.5$ , more open	0.36	0.30	1.10	0.47	0.27(0.0091)
DIT	$\alpha=0.5$	0.45	0.40	1.10	0.78	0.68(0.0247)
CIT	$\eta=0.6$ , more rich	0.58	0.39	1.07	0.64	0.45(0.0160)
CIT	$\Phi=1$ , less lab. Response	0.45	0.40	0.89	0.65	0.47(0.0165)
CIT	$\gamma_b=0.8$ , back looking	0.21	0.12	0.39	0.20	0.16(0.0058)
DIT	$\gamma_b=0.8$	0.23	0.10	0.40	0.19	0.19(0.0069)
CIT	$\gamma_b=0.8, \alpha=0.5$	0.14	0.1	0.41	0.14	0.1(0.0034)
CIT	S Fix	0.80	0.12(-0.004)	1.25	0.32	0.38(0.0138)
CIT	E Fix	0.87	0.15(-0.005)	1.24	0	0.46(0.0169)
CIT	S sticky model	0.81	0.09(-0.002)	1.37	0.59	0.36(0.0126)
DIT	S sticky model	0.93	0.11(0.004)	1.39	0.46	0.14(0.0051)
CIT	S sticky model, SFix	0.86	0.14(0.0051)	1.39	0.47	0.08(0.003)
DIT	S sticky model, SFix	0.86	0.11(0.004)	1.39	0.46	0.14(0.0051)

Note: The bracketed terms give the value of the variable in the first period of the simulation

Simulations	Parameters	Coefficients of:			
Benchmark:	$\eta=0.4, \alpha=0.3, \varphi=0.25$	Shock dummy/ Output gap	Domestic inflation	Exchange Rate	Interest rate
DIT	$qy=0.7, q\pi_H=2, qi=1$	0.0133	0.1282		-0.0659
Full DIT	$qy = 0, q\pi_H=2, qi = 0$	0.0094	0.9098		-0.2500
CIT	$qy=0.7, q\pi = 2, qi = 1$	0.0011	0.0829	-0.1689	-0.0483
Full CIT	$qy = 0, qi = 0, q\pi = 2$	-0.0027	0.1091	-0.3072	-0.0300
CIT	$\alpha = 0.5, \text{ more openness}$	-0.0011	0.0453	-0.2258	-0.0402
CIT	$\eta=0.6, \text{ more rich}$	0.0020	0.0798	-0.1555	-0.0584
CIT	$\Phi = 1, \text{ less lab. Response}$	0.0010	0.0826	-0.1728	-0.0538
CIT	$\gamma_b=0.8 \text{ and } \alpha = 0.5$	-0.0010	0.017	-0.2224	-0.0394
CIT	S Fix	0.0112	0.0692	-0.0957	-0.0542
CIT	E Fix	0.0392	0.0844	-0.1151	-0.0577
CIT	S sticky model	0.0010	0.0630	-0.1380	-0.0178
CIT	S sticky model, S Fix	0.0037	0.0150	-0.0101	-0.0204
DIT	S sticky model, S Fix	0.0039	0.0254		-0.0206

The dynamic impulse response as a calibrated 0.1 shock to the period one natural rate is given in Table 7a below. The generic response to a rise in the natural interest rate is a rise in the policy rate. But because initially the gap between the policy and the natural interest rate falls output rises, this raises domestic inflation, but the accompanying currency appreciation reduces consumer price inflation. The rise in the policy rate covers the expected future depreciation and slowly brings output back to steady-state levels. The response to a fall in natural rates to  $-0.01$  is absolutely symmetric, with the signs reversed. Policy rates fall now.

Simulations	Parameters	Standard deviations of (in percentages):				
Benchmark:	$\eta=0.4, \alpha=0.3, \varphi=0.25$	Consumer inflation	Output	Domestic inflation	Exchange Rate	Interest rate (initial response)
DIT, $0.01r_n$	$qy=0.7, q\pi_H=2, qi=1$	0.46	0.16	0.31	1.60	0.39 (0.0133)
DIT, $0.01r_n$	S Fix	0.31	0.16	0.31	1.02	0.39(0.0133)
DIT, $0.01r_n$	E Fix	0.21	0.16(0.0061)	0.31	0.00	0.39 (0.0133)
CIT, $0.01r_n$	$qy=0.7, q\pi = 2, qi=1$	0.19	0.28(0.0102)	0.27	1.00	0.20 (0.0011)
CIT, $.01r_n$	S Fix	0.55	0.39(0.015)	0.62	1.84	0.46 (0.0112)
CIT, $.01r_n$	E Fix	1.03	0.69(0.0251)	1.47(0.05)	0.00	1.17(0.0392)
DIT, $.01r_n$	S sticky model, S fix	0.12	0.32(0.011)	0.10	0.38	0.11(0.0039)
CIT, $.01r_n$	S sticky model,	0.11	0.30(0.0107)	0.09(0.0026)	0.43	0.08(0.0010)
CIT, $.01r_n$	S sticky model, S fix	0.12	0.33(0.0112)	0.10(0.0031)	0.38	0.11(0.0037)

Note: The bracketed terms give the value of the variable in the first period of the simulation

Since CIT acts largely through the direct exchange rate channel, the policy rate response is very low, implying large output volatility, even though inflation volatility remains lower than with DIT. Lagged CIT had a lower increase in policy rates but greater volatility in every other variable (Goyal, 2008). Output and inflation volatility is especially high when there is exchange rate intervention so that use of the exchange rate channel is limited (Figure 3). In the S sticky model, with S credibly fixed, the performance of DIT and CIT is almost identical. The familiar low coefficients for the policy reaction functions (Table 7b) again confirm the flatter supply curve with S fixed. So the conclusion is again that as long as there is some advantage to fixing S, flexible DIT remains the better form of inflation targeting.

Simulations	Parameters	Coefficients of:			
Benchmark:	$\eta=0.4, \alpha=0.3, \varphi=0.25$	Shock dummy/ Output gap	Domestic inflation	Exchange Rate	Interest rate
DIT, .01r <sub>n</sub>	qy=0.7, q $\pi$ <sub>H</sub> =2, qi=1	0.0133	0.1282		-0.0659
CIT, 0.01r <sub>n</sub>	qy=0.7, q $\pi$ = 2, qi=1	0.0011	0.0829	-0.1689	-0.0483
CIT, .01r <sub>n</sub>	S Fix	0.0112	0.0692	-0.0957	-0.0542
CIT, .01r <sub>n</sub>	E Fix	0.0392	0.0844	-0.1151	-0.0577
DIT, .01r <sub>n</sub>	S sticky model, S fix	0.0039	0.0254		-0.0206
CIT, .01r <sub>n</sub>	S sticky model,	0.0010	0.0630	-0.1380	-0.0178
CIT, .01r <sub>n</sub>	S sticky model, S fix	0.0037	0.0150	-0.0101	-0.0204

## 7. Conclusion

The paper presents a simplified version of a basic microfoundations based small open economy model of the type used for monetary policy. Then the major differences in set-up and results due to two types of consumers and workers in an emerging market are set out. Dual or specific labour markets increase strategic complementarity so that there is a substantial effect of variations in nominal spending on output even if only some prices are sticky. But volatile terms of trade reduce this effect. So in a SOEME compared to a SOE the aggregate supply is flatter if the terms of trade are fixed. The AD is less interest elastic.

This result differs from earlier macroeconomic analysis for a developing economy (Rao, 1952) that pervasive supply bottlenecks could be expected to make demand stimuli ineffective. The difference arises because in an open economy supply bottlenecks are easier to alleviate. Moreover, in this class of models labour productivity is the key output driver, and in labour-surplus economies established on catch-up growth path, capital is available to equip labour and raise its productivity. Goyal (2008) shows the distance between the subsistence consumption and mature consumption, raises potential output, but poor infrastructure and technological distance decrease it. The consumption factor dominates. Temporary shocks to subsistence consumption reduce the natural interest rate.

The key results from all the calibrations and simulations undertaken with the SOEME model are: Flexible DIT outperforms other kinds of targeting if there are lags in the CPI, otherwise flexible CIT is the best. But with terms of trade credibly fixed both are similar. Overall DIT is more robust—since CIT is volatile in some circumstances. So loss from information and time lags in CPI are minimal as long as exchange rate intervention is optimal. If domestic inflation is backward, not forward looking, a small policy rate response is optimal under flexible DIT and under CIT without lags in the CPI. If there are lags in the CPI, the policy rate becomes volatile.

As the economy becomes more open CIT becomes more effective, and therefore the loss from not being able to use it increases. It is necessary, despite India's diversity, to develop an acceptable measure of average CPI and reduce the lags in its availability.

## References

- Agarwal A., 2008, 'Inflation Targeting in India: An Explorative Analysis', Chapter 1 in PhD thesis submitted to IGIDR.
- Burns A., H. Timmer, E. Riordan, and W. Shaw, 2008, Global Economic Prospects 2008: Trends In Technology Diffusion in Developing Countries, World Bank Report, accessed from <http://go.worldbank.org/TC26UFESJ0> on 16th January, 2008.
- Clarida, R., Gali, J., and Gertler, M., 1999, 'The Science of Monetary Policy: A New Keynesian perspective', *Journal of Economic Literature*, 37 (4), 1661-707.
- Clarida, R., Gali, J., and Gertler, M., 2001, 'Optimal Monetary Policy in Closed Versus Open Economies: An integrated approach', *American Economic Review*, 91 (2), May, 248-252.
- Fraga, A., I. Goldfajn, and A. Minella, 2004, 'Inflation Targeting in Emerging Market Economies', in Gertler M. and K. Rogoff (eds.) NBER Macroeconomics Annual, Cambridge: MIT Press.
- Gali, J. and T. Monacelli, 2005, "Monetary Policy and Exchange Rate Volatility in a Small Open Economy." *Review of Economic Studies*, 72(3): 707-734.
- Goyal, A., 2008, 'The Natural Interest rate in Emerging Markets,' IGIDR working paper.
- Goyal, A., 2007, 'A General Equilibrium Open Economy Model for Emerging Markets,' paper presented at ISI International Conference on Comparative Development, available at <http://www.isid.ac.in/~planning/ComparativeDevelopmentConference.html>. An earlier version is available as IGIDR working paper WP-2007-016.
- Goyal, A., 2005, 'Incentives from Exchange rates in an Institutional Context,' IGIDR working paper available at [www.igidr.ac.in/pdf/publication/WP-2005-002-R1.pdf](http://www.igidr.ac.in/pdf/publication/WP-2005-002-R1.pdf), forthcoming *Journal of Quantitative Economics*.
- Obstfeld, M. and K. Rogoff, 1996, *Foundations of International Macroeconomics*, Cambridge, Massachusetts: MIT Press.
- Ogaki, Masao, Jonathan Ostry, and Carmen M. Reinhart, 1996, 'Savings Behaviour in Low-and Middle-Income Countries: A comparison', *IMF Staff Papers* 43 (March): 38-71
- Rao, V.K.R.V, 1952, 'Investment, Income and the Multiplier in an Underdeveloped Economy', *The Indian Economic Review*, February, reprinted in Agarwala, A.N. and S.P. Singh (eds.) *The Economics of Underdevelopment*, London, Oxford, New York: Oxford University Press, 205-218, 1958.
- RBI (Reserve Bank of India), 2007, Handbook of Statistics on the Indian Economy.

Svensson, L.E.O, 2000, 'Open-economy inflation targeting', *Journal of International Economics*, 50, 155-183.

Woodford, M, 2003, *Interest and prices: Foundations of a Theory of Monetary Policy*, NJ: Princeton University Press.

## Appendix

*To derive the aggregate demand supply equality*

The allocation of foreign consumption to goods produced in the SOEME is the same as FOC (11) with  $P_t^* C_t^*$  instead of  $P_t C_t$ . Multiplying and dividing by  $P_{F,t}^*$  and converting the numerator  $P_{F,t}^*$  into SOEME prices using the nominal exchange rate gives:

$$C_{H,t}^* = \alpha \frac{\varepsilon P_{F,t}^*}{P_{H,t}} \frac{P_t^*}{P_{F,t}^*} C_t^*$$

Of the two relative prices, the first one compares the price of SOEME goods to all other foreign goods translated into SOEME prices. The second relative price compares the foreign country price index to the price index of all other foreign goods. Thus more SOEME goods are imported as a function of these two relative prices, the weight of foreign goods in the consumption basket, and aggregate foreign consumption.

Multiplying and dividing by  $P_t$  and substituting  $Q_t$ :

$$C_{H,t}^* = \alpha Q_t \frac{P_t}{P_{H,t}} C_t^*$$

Substituting the FOC for the SOEME consumer (10) and that just derived for the foreign consumer, in the aggregate demand = supply Eq. (18) for the SOEME ( $Y_t = C_{H,t} + C_{H,t}^*$ ), gives:

$$Y_t = \frac{(1-\alpha)P_t C_t}{P_{H,t}} + \alpha Q_t \frac{P_t}{P_{H,t}} C_t^*$$

Substituting out  $C_t^*$  using risk sharing Eq. (17):

$$Y_t = \frac{(1-\alpha)P_t C_t}{P_{H,t}} + \alpha Q_t \frac{P_t}{P_{H,t}} C_t Q^{\frac{1}{\sigma}}$$

Simplifying and assuming  $\sigma = 1$  gives:

$$Y_t = \frac{P_t}{P_{H,t}} C_t (Q^{1-\frac{1}{\sigma}})$$

$$C_t = S_t^\alpha C_t Q^{1-\frac{1}{\sigma}}$$

$$Y_t = S_t^\alpha C_t \tag{19}$$

