



Published in final edited form as:

*Science*. 2009 October 16; 326(5951): 443–445. doi:10.1126/science.1174601.

## The Taste of Carbonation

Jayaram Chandrashekar<sup>1</sup>, David Yarmolinsky<sup>1</sup>, Lars von Buchholtz<sup>2</sup>, Yuki Oka<sup>1</sup>, William Sly<sup>3</sup>, Nicholas J. P. Ryba<sup>2</sup>, and Charles S. Zuker<sup>1</sup>

<sup>1</sup>Howard Hughes Medical Institute and Departments of Neurobiology and Neurosciences, University of California at San Diego, La Jolla, California 92093-0649, USA

<sup>2</sup>National Institute of Dental and Craniofacial Research, National Institutes of Health, Bethesda, Maryland 20892, USA

<sup>3</sup>Department of Biochemistry and Molecular Biology, Saint Louis University School of Medicine, 1100 South Grand Boulevard, St. Louis, MO 63104, USA

### Summary

Carbonated beverages are commonly available and immensely popular, but little is known about the cellular and molecular mechanisms underlying the perception of carbonation in the mouth. In mammals, carbonation elicits both somatosensory and chemosensory responses, including activation of taste neurons. We have now identified the cellular and molecular substrates for the taste of carbonation. By targeted genetic ablation and the silencing of synapses in defined populations of taste receptor cells, we demonstrate that the sour-sensing cells act as the taste sensors for carbonation, and show that carbonic anhydrase 4, a glycosyl-phosphatidyl inositol (GPI)-anchored enzyme, functions as the principal CO<sub>2</sub> taste sensor. These studies reveal the basis of the taste of carbonation, and the contribution of taste cells in the orosensory response to CO<sub>2</sub>.

---

Humans perceive five qualitatively distinct taste qualities: bitter, sweet, salty, sour and umami. Sweet and umami are sensed by members of the T1R family of heteromeric guanine-nucleotide binding protein coupled receptors (GPCRs) (1–3), bitter stimuli are detected by T2R GPCRs (4–7), and sour is sensed by cells expressing the ion channel PKD2L1 (8–10). In the tongue, these receptors function in distinct classes of taste cells, each tuned to a specific modality (7, 8, 11, 12).

In addition to these well-known stimuli, the taste system appears to be responsive to CO<sub>2</sub> (13, 14, 15). Mammals have multiple sensory systems that respond to CO<sub>2</sub>, including nociception (16, 17), olfaction (18), and chemoreception essential for respiratory regulation (19), yet the molecular mechanisms for CO<sub>2</sub> reception remain poorly defined. Thus, we wondered how taste receptor cells (TRCs) detect and respond to carbonation.

We studied the electrophysiological responses of TRCs to CO<sub>2</sub> by recording tastant-induced action potentials from one of the major nerves innervating taste receptor cells of the tongue (chorda tympani; 15); this physiological assay monitors the activity of the gustatory system at the periphery, and provides a reliable measure of taste receptor cell function (12, 20). Indeed, the taste system displayed robust, dose-dependent, and saturable responses to CO<sub>2</sub> stimulation. The responses were evident for carbonated drinks (e.g. club soda), CO<sub>2</sub> dissolved in buffer, and even direct stimulation of the tongue with gaseous CO<sub>2</sub> (Fig. 1). In contrast, stimulation with pressured air did not elicit any gustatory response (Fig. 1).

---

\*Correspondence and requests for materials should be addressed to: C.S.Z., (charles@flyeye.ucsd.edu).

To define the identity of the TRCs needed to taste carbonation we examined CO<sub>2</sub> responses from engineered mice in which specific populations of TRCs were genetically ablated by targeted expression of attenuated diphtheria toxin (e.g. sweet-less, umami-less, sour-less mice, etc. Refs. 8, 21), and determined whether the taste system remained responsive to CO<sub>2</sub>. Selective ablation of sour sensing (i.e. PKD2L1-expressing) cells not only abolished all gustatory responses to acidic stimuli, but also eliminated responses to gaseous or dissolved CO<sub>2</sub> (Fig. 1 and Supplementary Fig. S1). These results demonstrate that PKD2L1-expressing cells are essential for CO<sub>2</sub> detection.

To identify a candidate CO<sub>2</sub> receptor, we carried out gene expression profiling of sour cells. We reasoned that transcripts for genes involved in carbonation sensing should be enriched in PKD2L1-expressing cells, but be relatively rare in taste tissue in which PKD2L1 cells have been ablated. Thus, we conducted complementary microarray experiments using mRNA isolated from hand-picked green fluorescence protein (GFP)-labeled sour TRCs, and as a counter-screen, with mRNA from taste buds of animals lacking sour-sensing cells (PKD2L1-DTA mice Ref. 8). One gene, *Car4*, was particularly attractive as it was highly specific for PKD2L1-expressing cells versus other TRC types (Fig. 2), and most significantly, encoded carbonic anhydrase 4, a member of a large family of enzymes implicated in sensing, acting on, and responding to CO<sub>2</sub> in various systems, including chemosensation (17–19, 22–28).

Carbonic anhydrases (CAs) reversibly catalyze the conversion of CO<sub>2</sub> into bicarbonate ions and free protons (29, 30). *Car4* is a mammalian carbonic anhydrase that functions as an extracellular, GPI-anchored enzyme (30, 31). If *Car4* is the CO<sub>2</sub> sensor in the taste system then (i) pharmacological block of extracellular carbonic anhydrases should abolish CO<sub>2</sub> taste responses, and (ii) a knockout of *Car4* should selectively affect CO<sub>2</sub> taste detection. We examined nerve responses in the presence of benzamide, a membrane impermeant inhibitor of carbonic anhydrase (32, 33; see Supplementary Fig. S2). As predicted, gustatory (chorda tympani nerve) responses to CO<sub>2</sub> were highly susceptible to carbonic anhydrase inhibition (Fig. 3). Next, we characterized *Car4*<sup>-/-</sup> mutant mice (32). Indeed, gustatory responses to CO<sub>2</sub> were severely reduced in the mutants at all concentrations tested. However, responses to other taste stimuli, including sour, were unaltered. Thus, *Car4* functions selectively as the main CO<sub>2</sub> sensor in the taste system.

Given that CO<sub>2</sub> taste sensing is completely eliminated in the absence of PKD2L1-expressing cells, we wondered why there are residual taste responses to CO<sub>2</sub> in the *Car4*<sup>-/-</sup> animals. We hypothesized that the activity of additional carbonic anhydrases in these cells might provide the remaining activity. Notably, dorzolamide, a broadly acting, membrane permeable CA blocker (33; see Supplementary Figure S2) abolished the residual gustatory responses to CO<sub>2</sub>, even at the highest CO<sub>2</sub> concentrations tested (Figure 3). Together, these studies strongly substantiate carbonic anhydrase as the CO<sub>2</sub> receptor, and support a mechanism in which the products of *Car4* activity at the extracellular surface of TRCs (i.e. HCO<sub>3</sub><sup>-</sup> and H<sup>+</sup>) are the principal salient stimuli for detection of carbonation.

Bicarbonate does not stimulate TRCs (Supplementary Fig. 3), thus protons may be the relevant signal. Each of the basic taste modalities is mediated by distinct TRCs, with taste at the periphery proposed to be encoded via labeled lines (i.e. a sweet-line, a sour-line, a bitter-line, etc. 21). Given that *Car4* is specifically tethered to the surface of sour-sensing cells, and thus ideally poised to provide a highly localized acid signal to the sour TRCs, we reasoned that carbonation might be sensed through activation of the sour labeled-line. A prediction of this postulate is that preventing sour cell activation should eliminate CO<sub>2</sub> detection, even in the presence of wild-type *Car4* function. To test this hypothesis we engineered animals in which the activation of nerve fibers innervating sour-sensing cells was blocked by

preventing neurotransmitter release from the PKD2L1-expressing TRCs. In essence, we transgenically targeted expression of tetanus toxin light chain (TeNT, an endopeptidase that removes an essential component of the synaptic machinery *Refs.* 34–36) to sour-sensing TRCs, and then monitored the physiological responses of these mice to sweet, sour, bitter, salty, umami and CO<sub>2</sub> stimulation. As predicted, taste responses to sour stimuli were selectively and completely abolished, whereas responses to sweet, bitter, salty and umami tastants remained unaltered (Fig. 4 and Supplementary Fig. 5). However, these animals also displayed a complete loss of taste responses to CO<sub>2</sub> even though they still express Car4 on the surface of PKD2L1 cells. Together, these results implicate the extracellular generation of protons, rather than intracellular acidification (15), as the primary signal that mediates the taste of CO<sub>2</sub>, and demonstrate that sour cells provide not only the membrane anchor for Car4, but in addition serve as the cellular sensors for carbonation.

Why do animals need CO<sub>2</sub> sensing? CO<sub>2</sub> detection could have evolved as a mechanism to recognize CO<sub>2</sub>-producing sources (18, 37), for instance to avoid fermenting foods. This view would be consistent with the recent discovery of a specialized CO<sub>2</sub> taste detection in insects where it mediates robust innate taste behaviors (38). Alternatively, Car4 may be important to maintain the pH balance within taste buds, and might gratuitously function as a detector for carbonation only as an accidental consequence. Although CO<sub>2</sub> activates the sour-sensing cells, it does not simply taste sour to humans. CO<sub>2</sub> (like acid) acts not only on the taste system, but also in other orosensory pathways, including robust stimulation of the somatosensory system (17, 22), thus the final percept of carbonation may be a combination of these sensory inputs. Notably, the “fizz” and “tingle” of heavily carbonated water is often likened to mild acid stimulation of the tongue and in some cultures seltzer is even named for its salient sour taste (e.g. saurer Sprudel or Sauerwasser).

## Supplementary Material

Refer to Web version on PubMed Central for supplementary material.

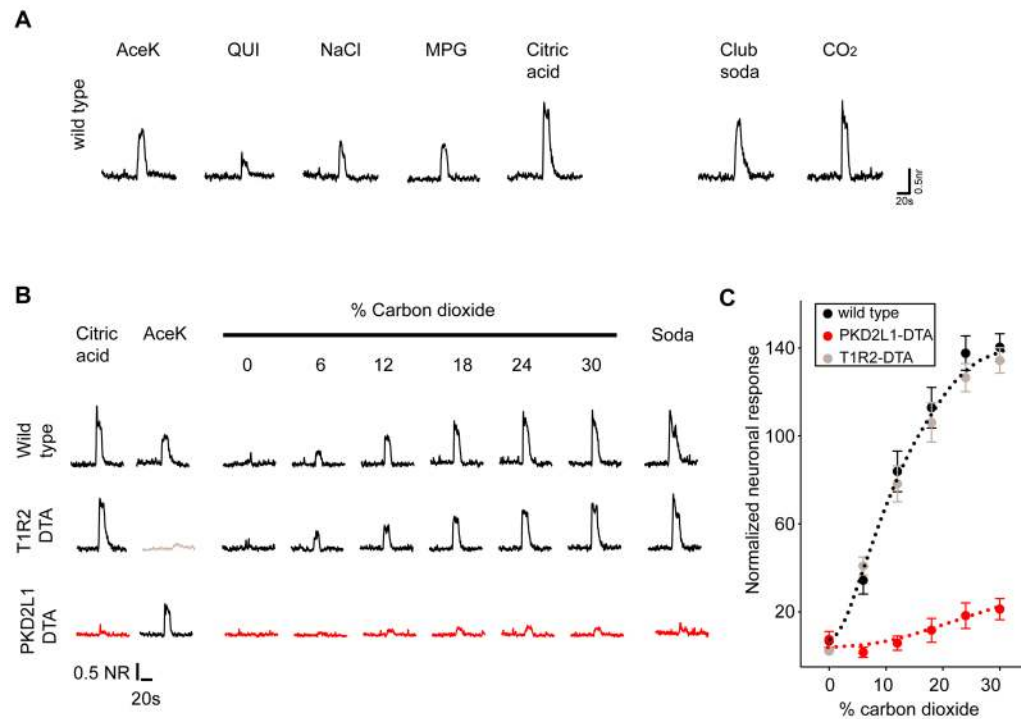
## Acknowledgments

We thank Wei Guo and Ann Becker for generation and maintenance of mouse lines, Dr. Mark Hoon for help in the initial phase of this work, Dr. E.R. Swenson for a generous gift of benzolamide, Dr. Martyn Goulding for *Rosa26-flox-STOP-TeNT* mice and Dr. Abdul Waheed for Car4 antibodies. We thank members of the Zuker laboratory for valuable comments. This research was supported in part by the intramural research program of the NIH, NIDCR (N.J.P.R.). C.S.Z. is an investigator of the Howard Hughes Medical Institute.

## References

1. Nelson G, et al. *Cell*. 2001; 106:381. [PubMed: 11509186]
2. Nelson G, et al. *Nature*. 2002; 416:199. [PubMed: 11894099]
3. Li X, et al. *Proc Natl Acad Sci U S A*. 2002; 99:4692. [PubMed: 11917125]
4. Adler E, et al. *Cell*. 2000; 100:693. [PubMed: 10761934]
5. Chandrashekar J, et al. *Cell*. 2000; 100:703. [PubMed: 10761935]
6. Matsunami H, Montmayeur JP, Buck LB. *Nature*. 2000; 404:601. [PubMed: 10766242]
7. Mueller KL, et al. *Nature*. 2005; 434:225. [PubMed: 15759003]
8. Huang AL, et al. *Nature*. 2006; 442:934. [PubMed: 16929298]
9. Ishimaru Y, et al. *Proc Natl Acad Sci U S A*. 2006; 103:12569. [PubMed: 16891422]
10. Lopezjimenez ND, et al. *J Neurochem*. 2006; 98:68. [PubMed: 16805797]
11. Zhang Y, et al. *Cell*. 2003; 112:293. [PubMed: 12581520]
12. Zhao GQ, et al. *Cell*. 2003; 115:255. [PubMed: 14636554]
13. Kawamura, AAY. Olfaction and taste II. HT, editor. Pergamon; New York: 1967. p. 431-437.

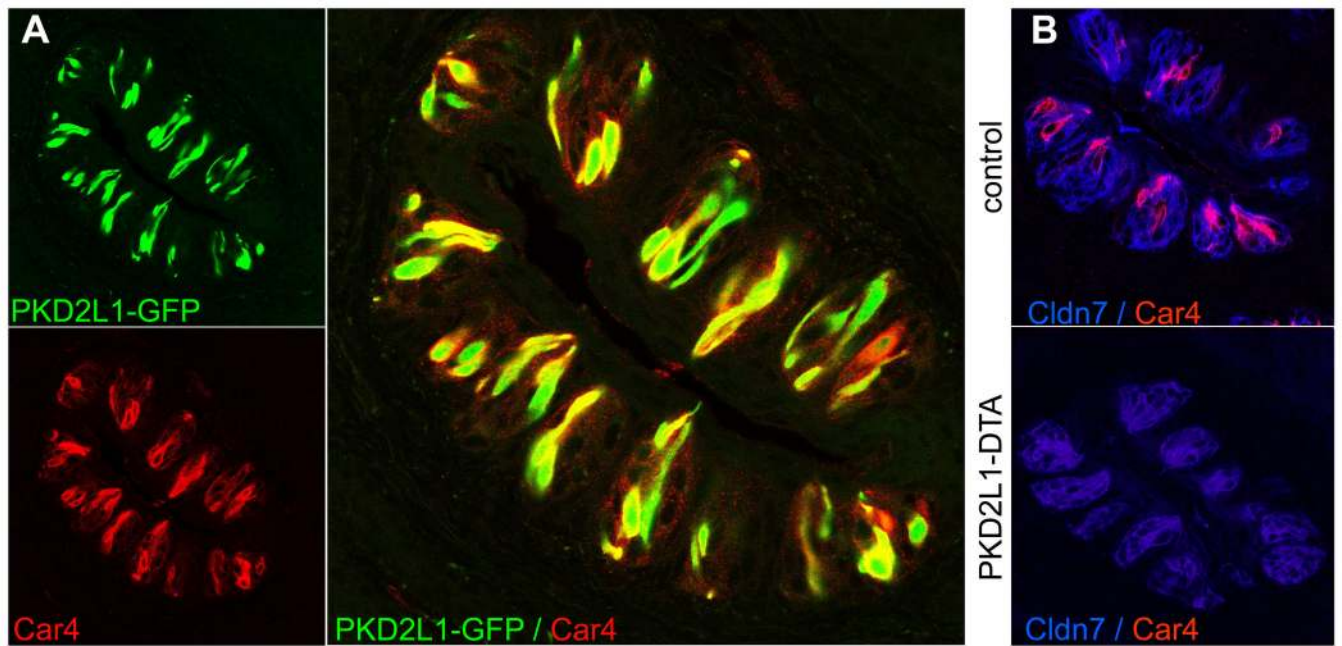
14. Komai, M.; Bryant, BP.; Takeda, T.; Suzuki, H.; Kimura, S. Olfaction and Taste XI. Kurikara, SNK.; Ogawa, H., editors. Springer-Verlag; Tokyo: 1994. p. 92
15. Lyall V, et al. *Am J Physiol Cell Physiol.* 2001; 281:C1005. [PubMed: 11502578]
16. Dessirier JM, Simons CT, O'Mahony M, Carstens E. *Chem Senses.* 2001; 26:639. [PubMed: 11473929]
17. Simons CT, Dessirier JM, Carstens MI, O'Mahony M, Carstens E. *J Neurosci.* 1999; 19:8134. [PubMed: 10479713]
18. Hu J, et al. *Science.* 2007; 317:953. [PubMed: 17702944]
19. Lahiri S, Forster RE 2nd. *Int J Biochem Cell Biol.* 2003; 35:1413. [PubMed: 12818238]
20. Dahl M, Erickson RP, Simon SA. *Brain Res.* 1997; 756:22. [PubMed: 9187310]
21. Chandrashekar J, Hoon MA, Ryba NJ, Zuker CS. *Nature.* 2006; 444:288. [PubMed: 17108952]
22. Komai M, Bryant BP. *Brain Res.* 1993; 612:122. [PubMed: 8330192]
23. Miller LG, Miller SM. *J Fam Pract.* 1990; 31:199. [PubMed: 2380683]
24. Graber M, Kelleher S. *Am J Med.* 1988; 84:979. [PubMed: 3364458]
25. Brown D, Garcia-Segura LM, Orci L. *Brain Res.* 1984; 324:346. [PubMed: 6442178]
26. Daikoku H, et al. *Chem Senses.* 1999; 24:255. [PubMed: 10400443]
27. Bottger B, Finger TE, Bryant B. *Chem Senses.* 1996; 21:580.
28. Akiba Y, et al. *Gut.* 2008; 57:1654. [PubMed: 18682519]
29. Supuran CT. *Curr Pharm Des.* 2008; 14:603. [PubMed: 18336305]
30. Sly WS, Hu PY. *Annu Rev Biochem.* 1995; 64:375. [PubMed: 7574487]
31. Okuyama T, Waheed A, Kusumoto W, Zhu XL, Sly WS. *Arch Biochem Biophys.* 1995; 320:315. [PubMed: 7625839]
32. Shah GN, et al. *Proc Natl Acad Sci U S A.* 2005; 102:16771. [PubMed: 16260723]
33. Vullo D, et al. *Bioorg Med Chem Lett.* 2005; 15:971. [PubMed: 15686895]
34. Yamamoto M, et al. *J Neurosci.* 2003; 23:6759. [PubMed: 12890769]
35. Yu CR, et al. *Neuron.* 2004; 42:553. [PubMed: 15157418]
36. Zhang Y, et al. *Neuron.* 2008; 60:84. [PubMed: 18940590]
37. Suh GS, et al. *Nature.* 2004; 431:854. [PubMed: 15372051]
38. Fischler W, Kong P, Marella S, Scott K. *Nature.* 2007; 448:1054. [PubMed: 17728758]



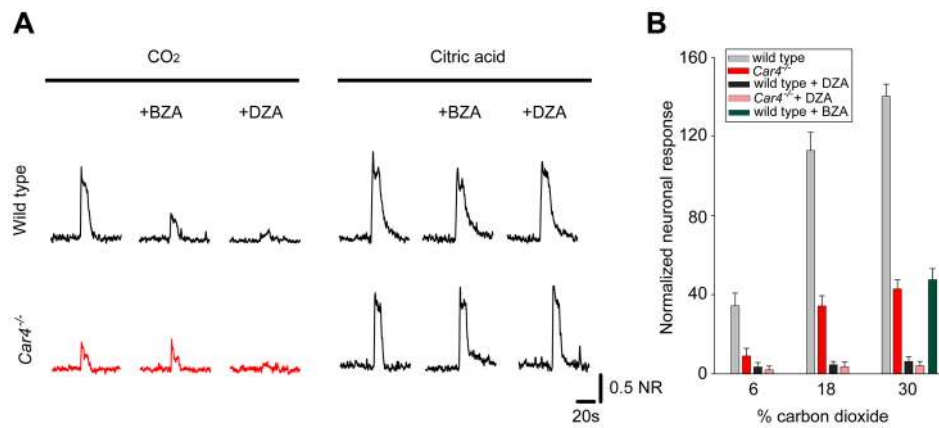
**Fig. 1. PKD2L1-expressing sour-sensing cells mediate taste responses to carbonation**

(a) Wild-type mice show neural responses to carbonated solutions and carbon dioxide.

Shown are chorda tympani nerve responses to control sweet (30mM acesulfameK, AceK), bitter (10mM quinine, QUI), salty (120mM NaCl), amino-acid (30mM mono potassium glutamate+0.5mM inosine mono phosphate, MPG), and sour (50mM Citric acid) stimuli as well as carbonated water (Club soda) and gaseous CO<sub>2</sub> normalized to the responses to 250 mM NaCl (NR; see Materials and Methods). (b–c) Dose-response to CO<sub>2</sub> in wild-type mice or in animals lacking sour-sensing cells (PKD2L1-DTA), and in control animals lacking sweet-sensing cells (T1R2-DTA). (c) Quantitation of carbon dioxide responses in wild-type (n=6), T1R2-DTA (n=4) and PKD2L1-DTA (n=5) animals. The values are mean ± sem of normalized chorda tympani responses.

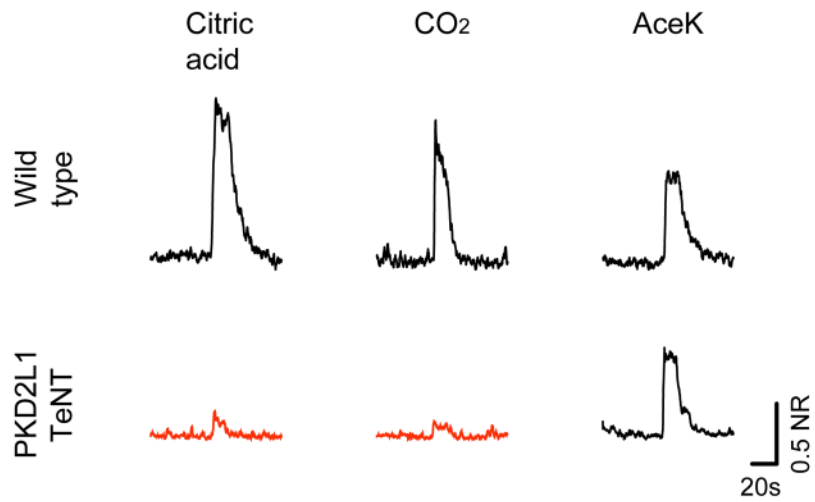


**Fig. 2. Selective localization of carbonic anhydrase 4 to PKD2L1-expressing sour cells**  
 (a) Immunohistochemical staining of Car4 expression (lower panel, red) in taste buds of transgenic mice in which sour-sensing cells were marked by GFP fluorescence (PKD2L1-GFP; upper panel, green); large panel shows the superimposed double labeling. (b) Diphtheria toxin-mediated ablation of sour cells. Upper panel: Double label immunofluorescence with a marker of taste receptor cells, claudin 7 (Cldn7, blue), and antibodies to Car4 (red). Lower panel: labeling in PKD2L1-DTA mice stained as above. Shown are sections of foliate papillae, equivalent results were obtained in taste buds from other regions of the oral cavity (Supplementary Fig. S4).



**Figure 3. Requirement of carbonic anhydrase 4 for taste responses to carbon dioxide**

(a) Representative integrated chorda tympani responses to CO<sub>2</sub> and sour stimulation in wild type or *Car4*<sup>-/-</sup> animals exposed to the cell-impermeant carbonic anhydrase inhibitor benzolamide (BZA) or the cell permeant, broad spectrum inhibitor dorzolamide (DZA). (b) Quantitation of carbon dioxide responses in wild-type and *Car4*<sup>-/-</sup> animals; mean ± sem (n=6). Green bar denotes wild type responses to 30% CO<sub>2</sub> in the presence of BZA. See Supplementary Fig S5 for responses to other taste stimuli.



**Figure 4. Requirement of PKD2L1-sour cells for the taste of carbonation**

Representative integrated chorda tympani responses to sour, sweet and CO<sub>2</sub> stimuli in wild type, or in animals expressing TeNT in PKD2L1 sour-sensing taste receptor cells. See Supplementary Fig. S5 for responses to additional tastants and quantitative analysis.