

Title: The thalamic reticular nucleus: A functional hub for thalamocortical network dysfunction in schizophrenia and a target for drug discovery

Authors: Professor Judith A Pratt ^{1,2} and Professor Brian J Morris ^{2,3}

1. Strathclyde Institute of Pharmacy and Biomedical Sciences, University of Strathclyde, Glasgow, G4 0NR, UK; 2. Psychiatric Research Institute of Neuroscience in Glasgow (PsyRING), University of Glasgow, Glasgow, G12 8QQ, UK; 3. Institute of Neuroscience and Psychology, School of Medical, Veterinary and Life Sciences, University of Glasgow, Glasgow, G12 8QQ, UK

The thalamic reticular nucleus – A communication hub

Abstract

The thalamus (comprising many distinct nuclei) plays a key role in facilitating sensory discrimination and cognitive processes through connections with the cortex . Impaired thalamocortical processing has long been considered to be involved in schizophrenia. In this review we focus on the thalamic reticular nucleus (TRN) providing evidence for it being an important communication hub between the thalamus and cortex and how it may play a key role in the pathophysiology of schizophrenia. We first highlight the functional neuroanatomy, neurotransmitter localisation and physiology of the TRN. We then present evidence of the physiological roles of the TRN in relation to oscillatory activity, cognition and behaviour. Next we discuss the role of the TRN in rodent models of risk factors for schizophrenia (genetic and pharmacological) and provide evidence for TRN deficits in schizophrenia. Finally we discuss new drug targets for schizophrenia in relation to restoring TRN circuitry dysfunction.

The thalamus is composed of many distinct nuclei that have reciprocal topographically organised connections with sensory, motor, limbic and cognitive regions of the cortex. Although it was traditionally considered to be a simple relay station, it is now clear that the thalamus plays a key role in the processing and integration of information (Jones, 2007). A thalamic nucleus of particular importance in regulating thalamocortical function is the TRN.

The TRN is a thin sheet of GABAergic neurones that surrounds other thalamic nuclei (Houser et al., 1980; Mitrofanis and Guillery, 1993; Steriade et al., 1997). Glutamatergic projections from the cortex pass through the TRN en route to the thalamus, innervating TRN cells via collateral fibres. Thalamocortical glutamatergic projections also provide a collateral innervation of TRN neurones. Unlike other thalamic nuclei, the TRN does not send direct projections to the cerebral cortex, but rather sends dense, GABAergic inhibitory projections to the other thalamic nuclei (Mitrofanis and Guillery, 1993; Steriade et al., 1997; Pinault and Deschenes, 1998; Deng and Elberger, 2003; Ferrarelli and Tononi, 2011). Hence the TRN is in an anatomically strategic position to modulate the flow of information between the cortex and thalamus.

Thirty years ago Crick proposed the 'searchlight hypothesis' for the TRN (Crick, 1984) noting that if the thalamus acted as a gateway to the cortex then the TRN acts as a guardian of that gateway (reviewed in (Pinault, 2004; Ferrarelli and Tononi, 2011)). In other words, consistent with the idea that the TRN enables the focussing of information to facilitate salient stimuli and suppress irrelevant stimuli. Since that time, a body of evidence has accumulated to support an involvement of the TRN in sensory gating, attentional modulation, sleep spindles, γ oscillations, emotional salience and cognitive flexibility. These aspects of neural function are all notably disrupted in patients with schizophrenia, consistent with the TRN playing a key role in the disease. Nevertheless, the study of the direct involvement of the TRN in pathological and physiological processes has been hampered by the limitations in technology available to date to precisely probe the function of this thin layer of cells

.

.

1) TRN: functional anatomy, neurotransmitter receptors and physiology

As illustrated in Figure 1, there are reciprocal glutamatergic excitatory connections between thalamic nuclei and the cortex, which also send collateral projections to the TRN. The TRN

provides a powerful means to modulate this circuitry via inhibitory GABAergic projections to thalamic nuclei. The inhibitory output of TRN neurones is largely dependent on the level of excitatory drive to these cells from the cortex and thalamus, and in part by synaptic mechanisms within the TRN. It is notable that collateral projections from many thalamocortical neurones and corticothalamic neurones innervate a single TRN GABAergic neurone which in turn sends projections to many thalamocortical neurones. The large and convergent receptive fields for the TRN inhibitory cells has led to the idea that the TRN has an integrative role (Pinault, 2004)

The TRN was at one time thought to have non-specific diffuse projections within the thalamocortical system. However, there is now strong evidence that TRN projections to sensory-related 'first-order' thalamic nuclei are topographically organised although projections to 'higher-order' thalamic nuclei tend to be diffuse. (Guillery et al., 1998; Ferrarelli and Tononi, 2011). Discrete sectors in the TRN are considered to represent distinct modalities. These comprise sensory (auditory, visual, gustatory, visceral and somatosensory), motor, limbic and cognitive modalities. Whilst there is some anatomical overlap, the anterior ventral regions of the TRN are associated with the cognition-related mediodorsal nucleus of thalamus (MD) whereas limbic regions are associated with the anterior dorsal TRN. Visual and auditory projections are located more caudally, in dorsal and medial positions respectively (see (Guillery et al., 1998); (Pinault, 2004).

Each sector of the TRN receives projections from corresponding cortical and thalamic neurones and projects back to the thalamic nucleus which innervates it. The thalamic nuclei have been classed as 'first' or 'higher' order (Sherman, 2001). Afferents to these nuclei arise from a range of sources and are classed as 'drivers' (Class 1) or 'modulators' (Class 2). The driving inputs, convey the message that is to be transmitted to the cortex whereas the modulators (which constitute the majority of the inputs onto thalamic relay cells) modify the way the message is to be communicated or whether it is conveyed at all (Sherman and Guillery, 2002; 2011)

The 'first-order' thalamic nuclei (e.g. lateral geniculate in the visual thalamus and ventral part of medial geniculate in the auditory thalamus) receive projections from ascending sensory inputs and relay this information from the periphery to the cortex (typically layer IV). The afferent driving inputs (from auditory, visual and somatosensory pathways), along with the modulating inputs from the TRN, brain stem nuclei and interneurons, make multiple synaptic contacts onto thalamic relay cells, forming a 'triadic' junction (or glomerulus) which has a distinctive microscopic appearance (See (Guillery and Sherman, 2002).

The 'higher-order' (HO) thalamic nuclei (e.g MD thalamus, midline and intralaminar nuclei) receive driving inputs from collaterals of layer V cortical neurones (which are en route to motor centres in the brain stem and spinal cord). and convey information back to the cortex (typically layer IV) where information is also transmitted to other cortical regions (corticocortical connections). The HO nuclei also receive inputs from layer IV of the cortex (as do the first order thalamic nuclei and TRN) and, as noted above, projections from the TRN which tend to be diffusely organised (Lam and Sherman, 2007). This pattern of connectivity has led to the proposal that the HO thalamic nuclei are not only able to transmit relevant information to the cortex but also have the capacity to inform other cortical areas about instructions being sent to subcortical regions (Guillery and Sherman 2002)(Guillery and Sherman, 2011; Sherman and Guillery, 2011). The potential mechanisms through which HO nuclei may regulate transmission in cortical circuits in the context of cognitive processing is the subject of a recent review (Saalman, 2014). Importantly, the widespread projections of the TRN to the HO thalamic nuclei suggest that the TRN could play a key role in regulating transthalamic corticocortical communication through its ability to modify the mode of firing of thalamocortical cells (Guillery and Sherman, 2002)(Vukadinovic, 2011)).

Collaterals from the prefrontal cortex (PFC) and MD (which provides the major thalamic innervation of the PFC) terminate more widely in the TRN than collaterals from other cortical and thalamic areas (Zikopoulos and Barbas, 2007), suggesting a particularly effective gating of thalamic relay activity by PFC circuits (Fig 1). In addition, recently discovered TRN afferents from the amygdala (Zikopoulos and Barbas, 2012) implicate the TRN in imparting emotional salience to thalamic filtering of sensory information.

A key feature of the TRN neurones is that they can fire in two different modes: short lasting high frequency bursts and a tonic firing mode. Low voltage-activated T type calcium channels play a key role in enabling TRN neurones to generate rhythmic bursts of action potentials, which in turn are thought to be important in the generation of thalamocortical oscillations. Indeed the TRN has been shown to be important in a range of different rhythms including sleep spindles, slow oscillations and delta and gamma rhythms (Macdonald et al., 1998a; Huguenard and McCormick, 2007).

At the single cell level, the glutamatergic thalamocortical and GABAergic TRN neurones are not reciprocally connected. Rather, they form open-loop connections in which only 1 of 2 neurones innervates the other in a 2 neurone circuit. Operationally, such a 2 neurone GABAergic-glutamatergic circuit functions via lateral inhibition principles (see (Pinault, 2011))

for fuller explanation). Pinault (2011) argues that this process enables the TRN cells to modulate thalamocortical cells efficiently in order to amplify relevant information that should be conveyed to the cortical areas, and to delete/reduce non-relevant or distracting information.

Whilst the TRN neurones are GABAergic (Houser et al., 1980; Mitrofanis and Guillery, 1993; Steriade et al., 1997), they also contain high levels of the calcium-binding protein parvalbumin, along with certain neuropeptides such as TRH, VIP and NPY (Morris, 1989; Burgunder et al., 1999) and the endocannabinoid 2-AG (Sun et al., 2011). Calcium binding proteins such as parvalbumin play an important role in regulating intracellular availability of Ca^{2+} , and hence modulation of membrane potential, synaptic transmission and firing patterns of TRN neurones.

The TRN is rich in glutamate and GABA receptors, and expresses a range of other receptors including acetylcholine ($M2$, $\alpha4\beta2$, $\alpha7$) (Rubboli et al., 1994; Sun et al., 2013b), serotonin (5-HT_{1A} and 5-HT_{2A}) (Rodriguez et al., 2011), dopamine (D₁ D₂ and D₄) (Zhang et al., 2009; Govindaiah et al., 2010), cannabinoid (CB₁) (Sun et al., 2011) and melatonin (MT₂) (Comai and Gobbi, 2014) receptors (Fig 2). This neurochemical signature supports a regulatory influence of a range of neuromodulatory systems on TRN activity (see below).

The TRN GABAergic neurones communicate with each other via both electrical and chemical synapses, the former clearly playing an important role in synchronisation of TRN output, while the latter potentially restrict the numbers of TRN neurones contributing at that time to rhythmic oscillations (Sohal and Huguenard, 2003). A reduction in intra-TRN communication can hence over-synchronise output, and potentially lead to seizure-like activity (Huntsman et al., 1999).

Within the TRN, neurones are interconnected by a network of GABAergic synapses. GABA(A) receptor evoked depolarisations can interact with T-type Ca^{2+} channels to powerfully control burst firing in TRN neurones, which results in feed forward inhibition in thalamic relay cells. This information is transmitted back to RTN cells through axon collaterals of projections (Llinas and Jahnsen, 1982; Huguenard, 1996; Sun et al., 2012). These events are mediated by activation of predominantly postsynaptic GABA_A receptors with an additional contribution of GABA_B receptors during intense TRN output (Huguenard and Prince, 1994; Sun et al., 2012).

Glutamate released from glutamatergic inputs to the TRN from the cortex and the thalamus acts upon a range of glutamate receptors in the TRN, with postsynaptic NMDA receptors considered to play an important role (Jones et al., 1998; Zhang et al., 2009). It has been argued that thalamic circuitry is potentially vulnerable to excessive glutamatergic cortical drive to the RTN or intensive GABAergic inhibition of thalamocortical relay neurones by neurones of the reticular thalamus. Hence physiological mechanisms that enable fine tuning of this circuit activity are required to protect against prolonged activity in the network. A range of presynaptic receptors may fulfil this role. For example, metabotropic receptors may play a protective role by suppressing synaptic release. Activation of mGluR3 and mGluR4/8 receptors modulates the activity of glutamatergic cortical synapses onto RT neurones, and GABAergic synapses onto thalamocortical neurones in the somatosensory thalamus, with the overall effect of suppressing thalamic oscillations (Gu et al., 2008; Kyuyoung and Huguenard, 2014). Similarly the endocannabinoid system may play a critical role in maintaining thalamic synchrony. Under conditions of increased levels of intra TRN synaptic activity, a presynaptic CB1 receptor dependent suppression of inhibitory synaptic strength has been shown which is potentially mediated through alterations in the release of 2-AG from TRN neurones (Sun et al., 2012).

Furthermore, there is in vitro evidence that tonically active presynaptic NMDA receptors and mGlu2Rs act in concert with postsynaptic NMDA and GABA receptors (Crabtree et al., 2013). It is argued that when TRN neurones are relatively hyperpolarised their ability to fire in burst mode will be enhanced, whereas when these neurones are relatively depolarised their firing in single-spike tonic mode will be reduced (Crabtree et al., 2013).

The roles of other receptors in shaping TRN activity are beginning to be understood, predominantly from in vitro electrophysiological studies conducted in brain slices. Dopamine inhibits GABA transmission from the globus pallidus to the TRN through an action at D4 presynaptic receptors, but does not affect intra TRN activity (Govindaiah et al., 2010). Serotonergic neurones project from the dorsal raphe to all areas of the RTN, where 5-HT released acts upon 5-HT1A and 5-HT2A receptors to modulate TRN activity (Rodriguez et al., 2011). Similarly, acetylcholine release from cholinergic neurones arising from the basal forebrain and the pedunculo pontine and laterodorsal nuclei of the brain stem also modulates TRN activity. This occurs via actions at postsynaptic ionotropic nAChRs located on dendrites and pre- and postsynaptic mAChR receptors (for review see (Beierlein, 2014). Interestingly the same low frequency input can generate both excitation (via $\alpha 4\beta 2$ nAChR) followed by inhibition (via M2 mAChR) (Sun et al., 2013b). Sun et al (2013) note that the activation of postsynaptic nAChRs by acetylcholine release from a small number of axons is enough to

trigger action potentials in TRN neurones. Moreover, short trains of cholinergic synaptic inputs can powerfully entrain ongoing TRN neuronal activity. The M2 mAChRs appear to play a key role in controlling nAChR-mediated excitation through their ability to inhibit ACh release (via presynaptic M2 autoreceptors) and via M2 mediated postsynaptic hyperpolarisation (Sun et al., 2013b; Beierlein, 2014).

Agonists at the melatonin 2 receptor have also been shown to increase the neural activity of the reticular thalamus, enhancing the rhythmic burst activity and promoting non REM sleep (Ochoa-Sanchez et al., 2011).

2) The role of the TRN in relation to oscillatory activity, cognition and behaviour

Oscillatory activity,

The constant activity of the cerebral cortex as recorded by the EEG or within brain regions as local field potentials (LFPs) largely results from the interacting oscillations (rhythms) of neuronal networks. The frequencies of these oscillations, which are preserved across mammals, span 0.05-500HZ and include sleep spindles (12-18HZ), theta- (4-10HZ) and gamma-band oscillations (30-90HZ) (Buzsaki and Draguhn, 2004). Most forms of oscillations are inhibition based and in this respect the GABAergic neurones of the TRN play an important role.

The TRN is involved in the generation of 'sleep spindles' characteristic of stage 11 sleep and gamma oscillations, where repetitive TRN bursting produces rhythmic inhibition of the thalamocortical pathways (Steriade et al., 1985; Pinault and Deschênes, 1992; Macdonald et al., 1998b), Oscillations in the gamma range are linked to cognitive processes in the adult (Osipova et al., 2006; Colgin et al., 2009), and underpin plasticity at thalamocortical synapses during development (Minlebaev et al., 2011). Theta rhythms also play a role in memory processes (Osipova et al 2006). Operationally gamma and theta rhythms are proposed to work together to form a neural code that optimises cognitive processing. (for review see (Lisman and Buzsaki, 2008).

Recent technological advances such as optogenetics are dissecting the role of specific cell types and circuits in the TRN, and for the first time providing a direct link between TRN activity and behaviour. Optogenetic stimulation of the TRN, using a GABAergic promoter-driven expression of channelrhodopsin 2 (Halassa et al., 2011), exploiting the relative paucity of GABAergic interneurons in the vicinity of the TRN, demonstrated that the TRN generates cortical spindles supporting results from previous lesioning studies. Furthermore, using

recordings from microelectrode arrays in behaving mice, the same group discovered functional diversity amongst TRN microcircuits. Two TRN subpopulations were discovered, one that correlated with spindles and the other that correlated with arousal (Halassa et al., 2014)

Cognition and behaviour

The basis of the Crick hypothesis (Crick, 1984) is that the TRN acts as an 'attentional searchlight'. Some support for this hypothesis has arisen from lesion and histological studies in rodents. In an attentional orienting task, lesions of the visual TRN produced deficits in behaviour, supporting a link between the TRN and the attentional effects of visual cues (Weese et al., 1999). Another study showed that there was an increase in c-Fos expression in a sector of the TRN that correlated with the modality of an attended stimulus (McAlonan and Brown, 2002). However given that the TRN is a thin layer of cells, lesioning approaches may impact on the function of surrounding thalamic nuclei, thereby limiting interpretation of the data.. Changes in immediate early gene expression in relation to behaviour are also limited in the sense that they are correlative in nature.

Important investigations in primates have produced more direct evidence to support the Crick hypothesis. McAlonan et al. (2006) recorded visual TRN neurones in awake monkeys, and the modulation of the response as the monkeys shifted attention between visual and auditory stimuli. They demonstrated that TRN activity is modified by shifts of visual attention, and that these changes in attention could affect visual processing in the lateral geniculate thalamic nucleus via the inhibitory connections back to the thalamus. They conclude that the TRN contributes to attentional processing, whereby a relevant sensory input is selected for additional processing at the expense of an irrelevant input. Whilst the sensory regions of the TRN have been investigated in attentional tasks, the contributions of the 'cognitive' related TRN inputs, from the PFC and via the MD, have not been explored. The PFC-MD-TRN circuitry is likely to play a prominent role in cognitive flexibility and working memory, and hence future studies that investigate the role of the TRN in tasks that reflect these cognitive domains will be important.

In an elegant recent study, Halassa et al. (Halassa et al., 2014) for the first time combined multi electrode recordings of the TRN with optogenetics. Optogenetics enables good temporal and spatial resolution and most importantly it enables thalamocortical and corticothalamic axons to stay intact during TRN inhibition/excitation. Using the same optogenetic strategy as in their earlier work (Halassa et al., 2011), retrograde lentiviruses containing light-activated ion channel channelrhodopsin-2 were injected into the sensory

visual or anterior limbic thalamus of VGAT (vesicular GABA transporter)-Cre mice. Clear differences were found in the functionality of these TRN projection neurones, with visually-tagged neurones showing correlations to cortical spindle power during slow wave sleep whereas limbic-tagged neurones were negatively correlated. Importantly, during a visual detection task that required attention there was a reduction in firing rate for visual-projection neurones but not limbic-projection TRN neurones. Since the reduction in activity of vision associated TRN neurones occurred after the onset of a trial but just before the stimulus presentation, the authors suggest that these neurones are involved in attentional states. This conclusion was further supported using an alternative optogenetic strategy to reduce the firing rate of sensory TRN neurones further (using eNpHR3.0, a light activated Cl⁻ pump that hyperpolarises cells and inhibits spiking) in response to which the mice showed the predicted increase in behavioural performance. The authors raise the possibility that the demonstrated distinct subgroups of TRN neurones can facilitate the switching from attention to external stimuli to an internal focus. Specifically, they suggest that TRN engagement may contribute not only to “offline” consolidation of memory processes, but also to dynamic conversion between default mode and cognitive-control networks. This is intriguing, given the abnormal default mode network connectivity in schizophrenia (Whitfield-Gabrieli et al., 2009).

-

The TRN and schizophrenia risk factors: preclinical evidence

Converging evidence from preclinical studies in rodents strongly supports the hypothesis that TRN dysfunction may play an important role in the disease process. NMDA receptor (NMDA-R) glutamatergic antagonists such as ketamine and phencyclidine are able to induce a variety of effects in humans and rodents that resemble the positive, negative and cognitive symptoms of schizophrenia. The effects are observed with acute administration, but are consolidated and exacerbated by repeated administration (Krystal et al., 1994; Tamminga, 1998; Morris et al., 2005; Pratt et al., 2012).

We have shown that rats receiving chronic, intermittent treatment with a low dose of the NMDA-R antagonist phencyclidine (PCP) develop metabolic hypofrontality and PFC GABA interneurone deficits that parallel those in the brains of patients with schizophrenia (Cochran et al., 2003). Chronic PCP treatment also reduced metabolic activity and GABAergic marker levels (e.g. PVALB) in the TRN (Cochran et al., 2003). Importantly, the changes in the TRN actually preceded those in the PFC (Cochran et al., 2002). Indeed, cortical PVALB expression is known to be regulated by TRN lesions (Alcántara et al., 1996). Hence the CNS changes particularly characteristic of schizophrenia – prefrontal cortex inefficacy (Tamminga

et al., 1992; Hill et al., 2004; Molina et al., 2005; Potkin et al., 2009) and PFC GABAergic deficits – may occur secondary to TRN dysfunction. This speculative idea highlights the importance of understanding the neurobiological processes through which the TRN may impact on cortical function.

Acute administration of NMDA-R antagonists in rats also induces various effects on thalamocortical circuitry: a) elevated glutamate release in the PFC, although the site of action of the NMDA-R antagonists appears to be outwith the PFC (Lorrain et al., 2003; Lopez-Gil et al., 2007); b) c-fos induction in the PFC and medial thalamus but not in the TRN, consistent with a disinhibition of thalamocortical circuits (Kargieman et al., 2007; Santana et al., 2011); c) increased metabolic activity in the PFC (hyperfrontality), but reduced metabolism in the TRN (Dawson et al., 2013). It was previously thought that NMDA-Rs on PFC PVALB-positive interneurons were the locus of action for the hyperfrontality and increased activity of prefrontal cortex pyramidal cells (Homayoun and Moghaddam, 2007) following acute ketamine/PCP, but opinion is now shifting away from this idea (Rotaru et al., 2011; Povysheva and Johnson, 2012). Thalamic neurones have also been implicated in the actions of NMDA receptor antagonists since PCP alters the activity of thalamic relay neurones of the MD and centromedial (CM) thalamus along with mPFC neurones in anaesthetised rats (Santana et al., 2011). Furthermore microinjections of MK801 into the MD thalamus, but not the PFC, modulates cortical delta band activity in anaesthetised animals similar to that observed following systemic administration (Kiss et al., 2011). Because the TRN provides tonic feed forward inhibition to thalamic nuclei, changes in MD/CM activity could result from NMDA receptor blockade in the TRN. NMDA-Rs in the TRN are active under resting conditions (Jacobsen et al., 2001; Gentet and Ulrich, 2003; Zhang et al., 2009), probably because TRN NMDA-Rs contain the NR2C subunit, and hence show little voltage dependent block at resting potentials. Metabolic hyperfrontality can be induced by elevated activity in PFC afferents (Canals et al., 2009), and so the increased metabolism/activity in the PFC induced by ketamine/PCP may reflect increased thalamocortical activity, due to disinhibition, caused by blockade of NMDA-R drive of GABAergic TRN neurones. Indeed functional connectivity analysis following acute ketamine treatment in rodents provides evidence to support this hypothesis (Dawson et al., 2013) as do recent in vivo electrophysiological studies which showed inhibition of TRN activity after PCP (Troyano-Rodriguez et al., 2014).

In terms of schizophrenia-relevant cognitive behaviours, indirect support for a role for the TRN in PCP-induced attentional set shifting deficits stems from findings of altered expression of Zif268 and parvalbumin in the TRN and infralimbic cortex in animals that exhibited behavioural deficits (Egerton et al., 2005). Changes in attentional set shifting

induced by PCP provide some translation to schizophrenia where deficits occur in the analogous components of the CANTAB task.

In summary, accumulating evidence is consistent with altered PFC function induced by NMDA-R antagonist treatment being secondary to a primary site of action in the TRN.

In terms of genetic risk factors for schizophrenia, DISC1 has attracted considerable attention. The DISC1 gene is located on chromosome 1q42.1, and an abnormal translocation in this gene increases the risk of developing schizophrenia, bipolar disorder, or major depression by ~50 fold in comparison to the general population (Millar et al., 2000; Brandon et al., 2009). DISC1 expression is apparent in schizophrenia-relevant regions such as the prefrontal cortex, hippocampus and TRN. Of particular relevance are the findings that DISC1 is highly expressed in the TRN during periods of development when corticothalamic connections are forming, and that during the developmental period the TRN is relatively larger than the adult size (Mitrofanis and Guillery, 1993; Austin et al., 2004). Taken together these findings suggest that DISC1 in the TRN could play a critical role in the formation of the thalamocortical system, and provide an explanation for the vulnerability to schizophrenia arising from the impact of genetic abnormalities on this circuitry during the neurodevelopmental period. In order to assess the impact of the DISC1 translocation upon adult brain function we have determined the brain imaging signatures of mice with modifications in the DISC1 gene. We have demonstrated that the TRN is a key brain region affected in these mice (Dawson et al., 2014) adding further weight to the concept that TRN dysfunction may be a key factor in the aetiology of schizophrenia.

4 Clinical evidence for TRN dysfunction in schizophrenia There is abundant evidence for thalamic impairment in schizophrenia. Structural studies (through both MRI imaging and post-mortem stereology) show fairly consistent reductions in tissue volume, both for total thalamic volume and for the MD nucleus in particular (Clinton and Meador-Woodruff, 2004; Byne et al., 2009; Pakkenberg et al., 2009; Janssen et al., 2012). Altered levels of expression of glutamate receptors, glutamate transporters and post-synaptic proteins (PSD95 and SAP102 transcripts) are observed in postmortem thalamic tissue from patients (Clinton and Meador-Woodruff, 2004), suggesting disruption of glutamate signalling in the thalamus in the disease. Of potential future interest would be to investigate the NR3 receptor given its importance in neurodevelopment (Sun et al., 1998), and the fact that increased expression would compromise plasticity in thalamocortical circuits. Recent imaging studies in high risk subjects suggest that abnormal glutamate levels in the thalamus may be one of the earliest neurobiological signs associated with the development of psychosis (Fusar-Poli et al., 2011). Functional imaging has also confirmed thalamic abnormalities in patients,

generally suggestive of reduced activity (Andreasen et al., 1994; Buchsbaum et al., 1996; Hazlett et al., 2004; Hazlett et al., 2008; Minzenberg et al., 2009). Hence abnormal function of corticothalamic and thalamocortical pathways is clearly a component of the network dysfunction in schizophrenia (Andreasen et al., 1995; Andreasen et al., 1996; Buchsbaum and Hazlett, 1998; Anticevic et al., 2013).

On the thalamic side of this disrupted network, there appears to be a regional selectivity (Andreasen, 1997; Jones, 1997) that parallels disease-specific changes in cortical structure, activity, connectivity and neurochemistry. Thus cortical abnormalities are centred on prefrontal, cingulate and temporal areas (Hill et al., 2004; Cole et al., 2011; Shepherd et al., 2012; Haijma et al., 2013), with thalamic pathology and connectivity deficits most evident in thalamic nuclei connected with the most-affected areas of cortex. Thus abnormalities in MD and anteroventral thalamus have been frequently reported (Danos et al., 1998; Young et al., 2000; Kemether et al., 2003; Hazlett et al., 2004; Andrews et al., 2006; Shimizu et al., 2008; Byne et al., 2009), while evidence for dysfunction in other parts of the thalamus, such as the lateral geniculate nucleus for example, is sparse. Despite its well-known role in modulating and synchronising activity in thalamocortical loops, and especially in limbic thalamocortical loops, the TRN has been relatively neglected in relation to schizophrenia. As noted earlier in this review, the widespread projections of the TRN to the higher order thalamic nuclei suggest that the TRN could play a key role in regulating transthalamic cortico-cortical communication through its ability to modify the mode of firing of thalamocortical cells (Byne et al., 2009)(Guillery and Sherman, 2002{Vukadinovic, 2011 #4103). The consequences of a disrupted pattern of connectivity in thalamic-TRN-cortical circuitry leading to impaired transthalamic corticocortical communication could result in the incorrect assignment of the relevance of a stimulus, the cortex processing information with only limited information about its context and potentially the inability to determine whether a stimulus is externally or internally derived. Such dysfunction could result in many of the symptoms of schizophrenia (see reviews by Byne et al 2009; Vukadinovic 2011)

Although limited, evidence from a variety of different sources is now focussing attention on the TRN as a key area of dysfunction in patients.

Recent reports implicate TRN dysfunction directly in some of the core neurophysiological changes characteristic of schizophrenia (Ferrarelli and Tononi, 2011; Pinault, 2011). Neural oscillations, as detected using techniques such as electroencephalography or (more sensitively) magnetoencephalography represent co-ordinated electrical activity in interconnected brain regions, sustaining processes such as attention and cognition that

require synchronised activity between cortical and sub-cortical areas (Fries et al., 2007; Womelsdorf et al., 2007). It is now appreciated that the TRN plays a major role in the synchronisation of thalamocortical and corticothalamic activity (Pinault, 2004), and hence in the control of gamma (high frequency) oscillations (Huguenard and McCormick, 2007; Jones, 2009). Gamma oscillations can be maintained locally in cortical networks, but evidence suggests that these are likely to be regulated by the TRN influence on thalamocortical loops (Pinault, 2004). The literature on disturbances in gamma oscillations in schizophrenia is not always consistent (Uhlhaas and Singer, 2010). Nevertheless, the general picture is that this high-frequency oscillatory activity is compromised in schizophrenia. Reduced levels of spontaneous and evoked cortical gamma oscillations are typically detected in patients, in association with sensory processing or performance of executive tasks (Rutter et al., 2009; Uhlhaas and Singer, 2010; Sun et al., 2013a). The abnormal gamma oscillatory activity in schizophrenia may therefore be sending a strong signal that TRN dysfunction is a fundamental component of the disease.

Considering the relationship between oscillatory activity and cognition, the characteristic cognitive deficits of schizophrenia may be directly connected with these impairments. Gamma band oscillations are linked with performance of working memory tasks (Yamamoto et al.; Howard et al., 2003; Roux and Uhlhaas, 2014), where patients show impairment (Perlstein et al., 2001; Bor et al., 2011). Indeed, the deficits in gamma oscillatory activity in patients are correlated with working memory deficits (Cho et al., 2006). The TRN has been particularly strongly linked with attentional mechanisms (Weese et al., 1999; Zikopoulos and Barbas, 2012) – and deficits in attentional processes are characteristic of schizophrenia (Andreasen et al., 1995; Buchanan et al., 1997; Birkett et al., 2007). Equally, the positive symptoms of schizophrenia can also be readily equated with deficient thalamic filtering of sensory information, and thus with impaired modulation of thalamocortical feedback by the TRN.

As with the control of thalamocortical synchronisation during consciousness and cognition, the TRN also plays a central role in the control of rhythmic activity during sleep. The TRN is believed to act as the pacemaker for sleep spindles – slow frequency oscillations that occur particularly during the early stages of sleep (Fuentelba and Steriade, 2005; Halassa et al., 2011; Kim et al., 2012). Patients with schizophrenia exhibit disturbed sleep patterns, with increased sleep latency and more frequent night awakenings (Keshavan et al., 1995; Cohrs, 2008; Sarkar et al., 2010). This disturbed sleep is associated with a marked reduction in the density and coherence of sleep spindles (Ferrarelli et al., 2010; Wamsley et al., 2012; Gardner et al., 2014), with the degree of sleep spindle impairment correlating strongly with

sleep pattern deficits. These deficits are not drug-induced effects, since they are observed in antipsychotic-naïve patients. There is increasing acceptance that sleep problems are in fact a core symptom of schizophrenia (Wilson and Argyropoulos, 2012), also present in ultra-high risk subjects prior to the onset of psychosis (Ruhrmann et al., 2010; Lunsford-Avery et al., 2013). This in itself implicates TRN dysfunction in the development of the disease. Potentially NMDA receptor hypofunction on TRN cells could result in impaired transthalamic cortico-cortico communication leading to sleep spindle deficits (Vukadinovic, 2011).

There is a paucity of data from imaging or postmortem pathology studies to assess the degree of TRN dysfunction in schizophrenia. Unfortunately the TRN is too narrow to be resolved by current in vivo imaging methodologies such as PET or fMRI. However, a recent functional imaging combined with transcranial magnetic stimulation showed thalamic dysfunction in schizophrenia (Guller et al., 2012), which may also implicate altered TRN function given the strong functional connectivity between the TRN and thalamic nuclei. In addition, altered TRN expression of nicotinic cholinergic $\alpha 7$ receptors and glutamate transporters (EAAT1-3) has been reported in post-mortem tissue from patients (Court et al., 1999; Smith et al., 2001), but otherwise there is little information on possible neurochemical or neuropathological changes in the TRN. Future studies should address this issue as a matter of urgency.

It is worth noting, however, that TRN involvement in the fundamental network dysfunction in schizophrenia is consistent with known environmental and genetic influences on disease risk (for recent reviews see (Modinos et al., 2013; Rethelyi et al., 2013). The TRN is particularly vulnerable to ischaemic episodes (Ross and Duhaime, 1989), including perinatal ischaemia (McQuillen et al., 2003), and also to malnutrition during development (Salas et al., 1986). As noted above, during development, the TRN shows some of the highest expression in the brain of the DISC1 gene (Austin et al., 2004), and genetic disruption of DISC1 dramatically increases the incidence of psychiatric disease (Millar et al., 2000). Hence genetic and environmental risk factors may interact at the level of the TRN to initiate circuit dysfunction and deficits in thalamocortical information processing. As noted above, evidence from a variety of sources suggests that this would be sufficient to drive schizophrenia-like biochemical and metabolic changes in PFC and hippocampus, and initiate some behavioural changes characteristic of the disease. Previously, dysfunctional GABAergic interneurons of the PFC have been a focus for the impaired PFC activity in schizophrenia, but arguably this focus could now be shifted to TRN GABAergic neurons as potential drivers of some of the PFC changes and hence for the TRN itself to contribute to the symptoms of schizophrenia.

Implications for drug discovery

Based upon the accumulating evidence that the TRN plays a role in thalamocortical and transthalamic cortico-cortico communication dysfunction in schizophrenia, it is reasonable to suggest that drugs which target receptors localised in the TRN could have the ability to restore circuitry dysfunction resulting in improvements in a range of symptoms. Both postsynaptic and presynaptic receptors are important in modulating TRN activity (see section 1 and Fig 2). Presynaptic receptors that offer potential as drug targets include the mGlu2/3 agonists. Indeed initial clinical trials proved promising with a Glu2/3 agonist although more recent studies have proved inconclusive (Patil et al., 2007; Adams et al., 2013). Another interesting target is the postsynaptic nicotinic alpha 7 receptor and clinical trials suggest potential beneficial effects of alpha 7 receptor agonists on negative symptoms and cognitive deficits (Freedman et al., 2008). Restoration of GABAergic dysfunction in the TRN with GABA_A receptor positive allosteric modulators could be another option. Indeed this concept has been proposed for modulation of PFC parvalbumin containing GABAergic neurones known to be deficient in schizophrenia (Volk and Lewis, 2005). Arguably if the TRN is the driver of PFC-induced changes then the action of drugs in the TRN could be the fundamental basis for treatment. Of the 5-HT receptors localised in the TRN, 5-HT_{2A} receptors are of interest given that many current antipsychotic drugs show affinity for these receptors. Understanding how these receptors modulate thalamocortical function at the level of the TRN and the relationship with specific symptom domains is an important question. Similarly, understanding how other receptors such as CB1 receptors can modify TRN activity at the level of specific modalities will provide greater insight into the potential of compounds to restore particular symptom domains. Ultimately the orchestration of TRN activity depends on a complex interplay of a range of neurotransmitters that modulate pre- and post- synaptic activity. Gaining greater insight into the precise role of these receptors in the topographical organisation of the TRN, their relationship with particular physiological processes and how these may be dysfunctional in schizophrenia is important not only from a disease mechanism perspective but informative for drug discovery.

In summary, despite the strong indications from both preclinical and clinical areas for disease-related TRN dysfunction, much more research is required to understand the neurobiology of the TRN in relation to thalamic and cortico-cortical communication and to demonstrate unequivocally that there is a casual relationship with TRN dysfunction and the aetiology of schizophrenia. Ultimately this improved knowledge may lead to more rational approaches for drug discovery in schizophrenia.

Acknowledgements

This research received no specific grant from any funding agency in the public, commercial, or not-for-profit sectors.

Figure Legends

Fig 1. Schematic diagram of the connections between the Prefrontal cortex (PFC), Mediodorsal nucleus of the thalamus (MDN) and the Thalamic reticular nucleus (TRN)

Fig 2. Schematic diagram showing afferent inputs to a dendrite of a GABAergic TRN neurone together with neurotransmitter receptors. Cell bodies from cortical, thalamic and basal forebrain inputs are represented as triangles and coloured according to the neurotransmitter system utilised. Note that NMDA, AMPA and GABA_A receptors are located postsynaptically (although presynaptic NMDA receptors also exist). GABA_A receptors are activated by locally released GABA from nearby TRN GABAergic neurones (not shown). mGlu2/3 are located presynaptically on glutamatergic inputs from the cortex and presynaptic CB1 receptors may modify intra TRN GABAergic transmission. ACh, DA and 5-HT receptors are thought to be present postsynaptically although presynaptic receptors may also exist (see text for more detail).

Fig 1

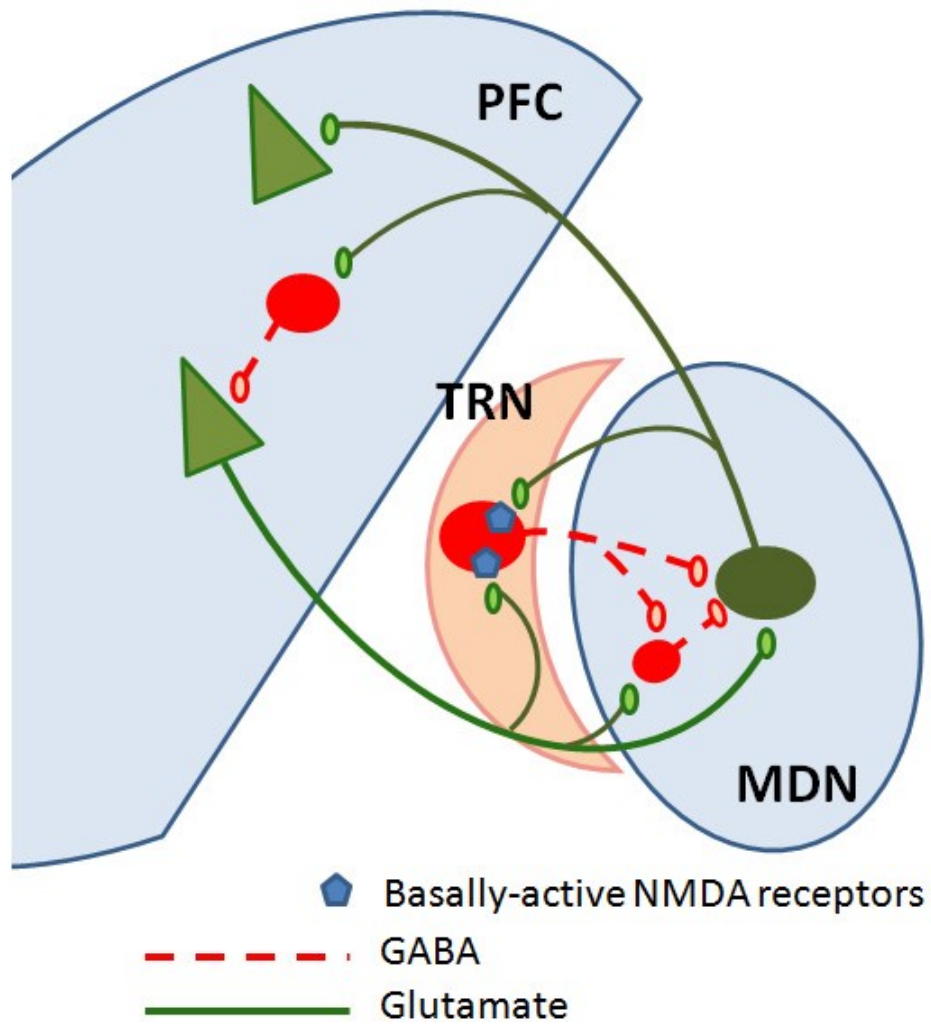
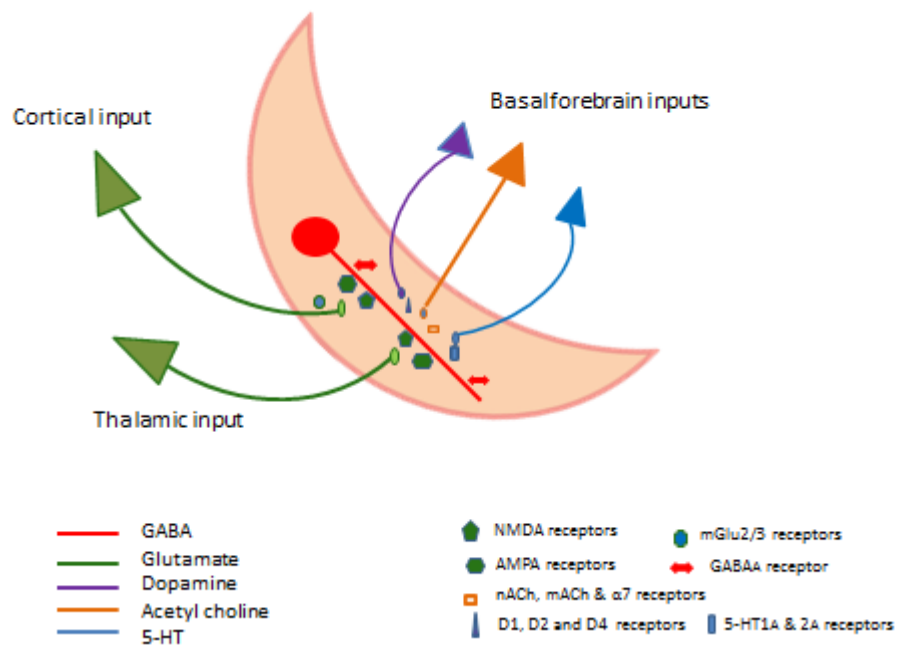


Fig 2



References

- Adams D, Kinon B, Baygani S, Millen B, Velona I, Kollack-Walker S, Walling D (2013) A long-term, phase 2, multicenter, randomized, open-label, comparative safety study of pomaglumetad methionil (LY2140023 monohydrate) versus atypical antipsychotic standard of care in patients with schizophrenia. *BMC Psychiatry* 13:143.
- Alcántara S, Soriano E, Ferrer I (1996) Thalamic and Basal Forebrain Afferents Modulate the Development of Parvalbumin and Calbindin D28k Immunoreactivity in the Barrel Cortex of the Rat. *Eur J Neurosci* 8:1522-1534.
- Andreasen NC (1997) The role of the thalamus in schizophrenia. *Can J Psychiatry* 42:27-33.
- Andreasen NC, Arndt S, Swayze Vn, Cizadlo T, Flaum M, O'Leary D, Ehrhardt JC, Yuh WT (1994) Thalamic abnormalities in schizophrenia visualized through magnetic resonance image averaging [see comments]. *Science* 266:294-298.
- Andreasen NC, Swayze V, O'Leary DS, Nopoulos P, Cizadlo T, Harris G, Arndt S, Flaum M (1995) Abnormalities in midline attentional circuitry in schizophrenia: evidence from magnetic resonance and positron emission tomography. *Eur Neuropsychopharmacol* 5 Suppl:37-41.
- Andreasen NC, O'Leary DS, Cizadlo T, Arndt S, Rezai K, Ponto LL, Watkins GL, Hichwa RD (1996) Schizophrenia and cognitive dysmetria: a positron-emission tomography study of dysfunctional prefrontal-thalamic-cerebellar circuitry. *Proc Natl Acad Sci U S A* 93:9985-9990.
- Andrews J, Wang L, Csernansky JG, Gado MH, Barch DM (2006) Abnormalities of thalamic activation and cognition in schizophrenia. *Am J Psychiatry* 163:463-469.
- Anticevic A, Cole MW, Repovs G, Murray JD, Brumbaugh MS, Winkler AM, Savic A, Krystal JH, Pearlson GD, Glahn DC (2013) Characterizing Thalamo-Cortical Disturbances in Schizophrenia and Bipolar Illness. *Cerebral Cortex*.
- Austin CP, Ky B, Ma L, Morris JA, Shughrue PJ (2004) Expression of disrupted-in-schizophrenia-1, a schizophrenia-associated gene, is prominent in the mouse hippocampus throughout brain development. *Neuroscience* 124:3-10.
- Beierlein M (2014) Synaptic mechanisms underlying cholinergic control of thalamic reticular nucleus neurons. *J Physiol*.
- Birkett P, Sigmundsson T, Sharma T, Touloupoulou T, Griffiths TD, Reveley A, Murray R (2007) Reaction time and sustained attention in schizophrenia and its genetic predisposition. *Schizophr Res* 95:76-85.
- Bor J, Brunelin J, Sappey-Marinié D, Ibarrola D, d'Amato T, Suaud-Chagny M-F, Saoud M (2011) Thalamus abnormalities during working memory in schizophrenia. An fMRI study. *Schizophr Res* 125:49-53.
- Brandon NJ, Millar JK, Korth C, Sive H, Singh KK, Sawa A (2009) Understanding the Role of DISC1 in Psychiatric Disease and during Normal Development. *J Neurosci* 29:12768-12775.
- Buchanan RW, Strauss ME, Breier A, Kirkpatrick B, Carpenter WT, Jr. (1997) Attentional impairments in deficit and nondeficit forms of schizophrenia. *Am J Psychiatry* 154:363-370.
- Buchsbaum MS, Hazlett EA (1998) Positron emission tomography studies of abnormal glucose metabolism in schizophrenia. *Schizophr Bull* 24:343-364.
- Buchsbaum MS, Someya T, Teng CY, Abel L, Chin S, Najafi A, Haier RJ, Wu J, Bunney WE, Jr. (1996) PET and MRI of the thalamus in never-medicated patients with schizophrenia. *Am J Psychiatry* 153:191-199.

- Burgunder JM, Heyberger B, Lauterburg T (1999) Thalamic reticular nucleus parcellation delineated by VIP and TRH gene expression in the rat. *J Chem Neuroanat* 17:147-152.
- Buzsaki G, Draguhn A (2004) Neuronal oscillations in cortical networks. *Science* 304:1926-1929.
- Byne W, Hazlett EA, Buchsbaum MS, Kemether E (2009) The thalamus and schizophrenia: current status of research. *Acta Neuropathol* 117:347-368.
- Canals S, Beyerlein M, Merkle H, Logothetis NK (2009) Functional MRI Evidence for LTP-Induced Neural Network Reorganization. *Current Biology* 19:398-403.
- Cho RY, Konecky RO, Carter CS (2006) Impairments in frontal cortical γ synchrony and cognitive control in schizophrenia. *PNAS* 103:19878-19883.
- Clinton SM, Meador-Woodruff JH (2004) Thalamic dysfunction in schizophrenia: neurochemical, neuropathological, and in vivo imaging abnormalities. *Schizophr Res* 69:237-253.
- Cochran SM, Fujimura M, Morris BJ, Pratt JA (2002) Acute and delayed effects of phencyclidine upon mRNA levels of markers of glutamatergic and GABAergic neurotransmitter function in the rat brain. *Synapse* 46:206 - 214.
- Cochran SM, Steward LJ, Kennedy MB, McKerchar CE, Pratt JA, Morris BJ (2003) Induction of metabolic hypofunction and neurochemical deficits after chronic intermittent exposure to phencyclidine: differential modulation by antipsychotic drugs. *Neuropsychopharmacology* 28:265-275.
- Cohrs S (2008) Sleep disturbances in patients with schizophrenia : impact and effect of antipsychotics. *CNS drugs* 22:939-962.
- Cole MW, Anticevic A, Repovs G, Barch D (2011) Variable Global Dysconnectivity and Individual Differences in Schizophrenia. *Biol Psychiatry* 70:43-50.
- Colgin LL, Denninger T, Fyhn M, Hafting T, Bonnevie T, Jensen O, Moser M-B, Moser EI (2009) Frequency of gamma oscillations routes flow of information in the hippocampus. *Nature* 462:353-357.
- Comai S, Gobbi G (2014) Unveiling the role of melatonin MT2 receptors in sleep, anxiety and other neuropsychiatric diseases: a novel target in psychopharmacology. *J Psychiatry Neurosci* 39:6-21.
- Court J, Spurdin D, Lloyd S, McKeith I, Ballard C, Cairns N, Kerwin R, Perry R, Perry E (1999) Neuronal Nicotinic Receptors in Dementia with Lewy Bodies and Schizophrenia- alpha-Bungarotoxin and Nicotine Binding in the Thalamus. *J Neurochem* 73:1590-1597.
- Crabtree JW, Lodge D, Bashir ZI, Isaac JT (2013) GABAA , NMDA and mGlu2 receptors tonically regulate inhibition and excitation in the thalamic reticular nucleus. *Eur J Neurosci* 37:850-859.
- Crick F (1984) Function of the thalamic reticular complex: the searchlight hypothesis. *Proceedings of the National Academy of Sciences* 81:4586-4590.
- Danos P, Baumann B, Bernstein HG, Franz M, Stauch R, Northoff G, Krell D, Falkai P, Bogerts B (1998) Schizophrenia and anteroventral thalamic nucleus: selective decrease of parvalbumin-immunoreactive thalamocortical projection neurons. *Psychiatry Res* 82:1-10.
- Dawson N, Morris BJ, Pratt J.A. (2013) Subanaesthetic ketamine treatment alters prefrontal cortex connectivity with thalamus and ascending subcortical systems *Schizophr Bull* 39:366-377.
- Dawson N, Winchester CL, McVie A, Thomsom D, Hughes ZA, Dunlop J, Brandon NJ, Morris BJ, Pratt JA (2014) *Disc1* mutation induced alterations in cerebral metabolism

- and in the response to acute subanaesthetic ketamine: a comparison of three different disc1 mutations. *Schizophr Res* 153, Suppl:M9.
- Deng J, Elberger A (2003) Corticothalamic and thalamocortical pathfinding in the mouse: dependence on intermediate targets and guidance axis. *Anat Embryol (Berl)* 207:177-192.
- Egerton A, Reid L, McKerchar CE, Morris BJ, Pratt JA (2005) Impairment in perceptual attentional set shifting following PCP administration: A rodent model of cognitive dysfunction in schizophrenia. *Psychopharmacology (Berl)* 179:77-84.
- Ferrarelli F, Tononi G (2011) The Thalamic Reticular Nucleus and Schizophrenia. *Schizophr Bull* 37:306-315.
- Ferrarelli F, Peterson MJ, Sarasso S, Riedner BA, Murphy MJ, Benca RM, Bria P, Kalin NH, Tononi G (2010) Thalamic Dysfunction in Schizophrenia Suggested by Whole-Night Deficits in Slow and Fast Spindles. *Am J Psychiatry* 167:1339-1348.
- Freedman R, Olincy A, Buchanan RW, Harris JG, Gold JM, Johnson L, Allensworth D, Guzman-Bonilla A, Clement B, Ball MP, Kutnick J, Pender V, Martin LF, Stevens KE, Wagner BD, Zerbe GO, Soti F, Kem WR (2008) Initial Phase 2 Trial of a Nicotinic Agonist in Schizophrenia. *Am J Psychiatry* 165:1040-1047.
- Fries P, Nikolić D, Singer W (2007) The gamma cycle. *Trends in Neurosciences* 30:309-316.
- Fuentealba P, Steriade M (2005) The reticular nucleus revisited: intrinsic and network properties of a thalamic pacemaker. *Prog Neurobiol* 75:125-141.
- Fusar-Poli PP, Stone JM, Broome MR, et al. (2011) Thalamic glutamate levels as a predictor of cortical response during executive functioning in subjects at high risk for psychosis. *Arch Gen Psychiatry* 68:881-890.
- Gardner RJ, Kersante F, Jones MW, Bartsch U (2014) Neural oscillations during non-rapid eye movement sleep as biomarkers of circuit dysfunction in schizophrenia. *Eur J Neurosci* 39:1091-1106.
- Gentet LJ, Ulrich D (2003) Strong, reliable and precise synaptic connections between thalamic relay cells and neurones of the nucleus reticularis in juvenile rats. *The Journal of Physiology* 546:801-811.
- Govindaiah G, Wang T, Gillette MU, Crandall SR, Cox CL (2010) Regulation of inhibitory synapses by presynaptic D(4) dopamine receptors in thalamus. *J Neurophysiol* 104:2757-2765.
- Gu G, Lorrain DS, Wei H, Cole RL, Zhang X, Daggett LP, Schaffhauser HJ, Bristow LJ, Lechner SM (2008) Distribution of metabotropic glutamate 2 and 3 receptors in the rat forebrain: Implication in emotional responses and central disinhibition. *Brain Res* 1197:47-62.
- Guillery RW, Sherman SM (2002) Thalamic relay functions and their role in corticocortical communication: generalizations from the visual system. *Neuron* 33:163-175.
- Guillery RW, Sherman SM (2011) Branched thalamic afferents: what are the messages that they relay to the cortex? *Brain Res Rev* 66:205-219.
- Guillery RW, Feig SL, Lozsadi DA (1998) Paying attention to the thalamic reticular nucleus. *Trends in Neurosciences* 21:28-32.
- Guller Y, Ferrarelli F, Shackman AJ, Sarasso S, Peterson MJ, Langheim FJ, Meyerand ME, Tononi G, Postle BR (2012) Probing Thalamic Integrity in Schizophrenia Using Concurrent Transcranial Magnetic Stimulation and Functional Magnetic Resonance Imaging. *Arch Gen Psychiatry*:2012.2023.
- Haijma SV, Van Haren N, Cahn W, Koolschijn PCMP, Hulshoff Pol HE, Kahn RS (2013) Brain Volumes in Schizophrenia: A Meta-Analysis in Over 18 000 Subjects. *Schizophr Bull* 39:1129-1138.

- Halassa MM, Siegle JH, Ritt JT, Ting JT, Feng G, Moore CI (2011) Selective optical drive of thalamic reticular nucleus generates thalamic bursts and cortical spindles. *Nat Neurosci* 14:1118-1120.
- Halassa MM, Chen Z, Wimmer RD, Brunetti PM, Zhao S, Zikopoulos B, Wang F, Brown EN, Wilson MA (2014) State-dependent architecture of thalamic reticular subnetworks. *Cell* 158:808-821.
- Hazlett EA, Buchsbaum MS, Kemether E, Bloom R, Platholi J, Brickman AM, Shihabuddin L, Tang C, Byne W (2004) Abnormal Glucose Metabolism in the Mediodorsal Nucleus of the Thalamus in Schizophrenia. *Am J Psychiatry* 161:305-314.
- Hazlett EA, Buchsbaum MS, Zhang J, Newmark RE, Glanton CF, Zelmanova Y, Haznedar MM, Chu K-W, Nenadic I, Kemether EM, Tang CY, New AS, Siever LJ (2008) Frontal-striatal-thalamic mediodorsal nucleus dysfunction in schizophrenia-spectrum patients during sensorimotor gating. *NeuroImage* 42:1164-1177.
- Hill K, Mann L, Laws KR, Stephenson CM, Nimmo-Smith I, McKenna PJ (2004) Hypofrontality in schizophrenia: a meta-analysis of functional imaging studies. *Acta Psychiatr Scand* 110:243-256.
- Homayoun H, Moghaddam B (2007) NMDA Receptor Hypofunction Produces Opposite Effects on Prefrontal Cortex Interneurons and Pyramidal Neurons. *J Neurosci* 27:11496-11500.
- Houser CR, Vaughn JE, Barber RP, Roberts E (1980) GABA neurons are the major cell type of the nucleus reticularis thalami. *Brain Res* 200:341-354.
- Howard MW, Rizzuto DS, Caplan JB, Madsen JR, Lisman J, Aschenbrenner-Scheibe R, Schulze-Bonhage A, Kahana MJ (2003) Gamma Oscillations Correlate with Working Memory Load in Humans
10.1093/cercor/bhg084. *Cereb Cortex* 13:1369-1374.
- Huguenard JR (1996) Low-threshold calcium currents in central nervous system neurons. *Annual review of physiology* 58:329-348.
- Huguenard JR, Prince DA (1994) Intrathalamic rhythmicity studied in vitro: nominal T-current modulation causes robust antioscillatory effects. *J Neurosci* 14:5485-5502.
- Huguenard JR, McCormick DA (2007) Thalamic synchrony and dynamic regulation of global forebrain oscillations. *Trends Neurosci* 30:350-356.
- Huntsman MM, Porcello DM, Homanics GE, DeLorey TM, Huguenard JR (1999) Reciprocal inhibitory connections and network synchrony in the mammalian thalamus. *Science* 283:541-543.
- Jacobsen RB, Ulrich D, Huguenard JR (2001) GABAB and NMDA Receptors Contribute to Spindle-Like Oscillations in Rat Thalamus In Vitro. *Journal of Neurophysiology* 86:1365-1375.
- Janssen J, Aleman-Gomez Y, Reig S, Schnack HG, Parellada M, Graell M, Moreno C, Moreno D, Mateos-Perez JM, Udias JM, Arango C, Desco M (2012) Regional specificity of thalamic volume deficits in male adolescents with early-onset psychosis. *Br J Psychiatry* 200:30-36.
- Jones EG (1997) Cortical development and thalamic pathology in schizophrenia [see comments]. *Schizophr Bull* 23:483-501.
- Jones EG (2007) *The Thalamus*: Cambridge University Press.
- Jones EG (2009) Synchrony in the interconnected circuitry of the thalamus and cerebral cortex. *Ann N Y Acad Sci* 1157:10-23.
- Jones EG, Tighilet B, Tran BV, Huntsman MM (1998) Nucleus- and cell-specific expression of NMDA and non-NMDA receptor subunits in monkey thalamus. *J Comp Neurol* 397:371-393.

- Kargieman L, Santana N, Mengod G, Celada P, Artigas F (2007) Antipsychotic drugs reverse the disruption in prefrontal cortex function produced by NMDA receptor blockade with phencyclidine. *Proceedings of the National Academy of Sciences* 104:14843-14848.
- Kemether EM, Buchsbaum MS, Byne W, Hazlett EA, Haznedar M, Brickman AM, Platholi J, Bloom R (2003) Magnetic Resonance Imaging of Mediodorsal, Pulvinar, and Centromedian Nuclei of the Thalamus in Patients With Schizophrenia. *Arch Gen Psychiatry* 60:983-991.
- Keshavan MS, Miewald J, Haas G, Sweeney J, Ganguli R, Reynolds CF (1995) Slow-wave sleep and symptomatology in schizophrenia and related psychotic disorders. *J Psychiatr Res* 29:303-314.
- Kim A, Latchoumane C, Lee S, Kim GB, Cheong E, Augustine GJ, Shin HS (2012) Optogenetically induced sleep spindle rhythms alter sleep architectures in mice. *Proc Natl Acad Sci U S A* 109:20673-20678.
- Kiss Ts, Hoffmann WE, Scott L, Kawabe TT, Milici AJ, Nilsen EA, Haj's MI (2011) Role of thalamic projection in NMDA receptor-induced disruption of cortical slow oscillation and short-term plasticity. *Frontiers in Psychiatry* 2.
- Krystal JH, Karper LP, Seibyl JP, Freeman GK, Delaney R, Bremner JD, Heninger GR, Bowers MJB, Charney DS (1994) Subanesthetic effects of the noncompetitive NMDA antagonist, ketamine, in humans. Psychotomimetic, perceptual, cognitive, and neuroendocrine responses. *Arch Gen Psychiatry* 51:199-214.
- Kyuyoung CL, Huguenard JR (2014) Modulation of Short-Term Plasticity in the Corticothalamic Circuit by Group III Metabotropic Glutamate Receptors. *The Journal of Neuroscience* 34:675-687.
- Lam YW, Sherman SM (2007) Different topography of the reticulothalamic inputs to first- and higher-order somatosensory thalamic relays revealed using photostimulation. *J Neurophysiol* 98:2903-2909.
- Lisman J, Buzsaki G (2008) A neural coding scheme formed by the combined function of gamma and theta oscillations. *Schizophr Bull* 34:974-980.
- Llinas R, Jahnsen H (1982) Electrophysiology of mammalian thalamic neurones in vitro. *Nature* 297:406-408.
- Lopez-Gil X, Babot Z, Amargos-Bosch M, Sunol C, Artigas F, Adell A (2007) Clozapine and Haloperidol Differently Suppress the MK-801-Increased Glutamatergic and Serotonergic Transmission in the Medial Prefrontal Cortex of the Rat. *Neuropsychopharmacology* 32:2087-2097.
- Lorrain DS, Bacceti CS, Bristow LJ, Anderson JJ, Varney MA (2003) Effects of ketamine and n-methyl-d-aspartate on glutamate and dopamine release in the rat prefrontal cortex: modulation by a group II selective metabotropic glutamate receptor agonist LY379268. *Neuroscience* 117:697-706.
- Lunsford-Avery JR, Orr JM, Gupta T, Pelletier-Baldelli A, Dean DJ, Smith Watts AK, Bernard J, Millman ZB, Mittal VA (2013) Sleep dysfunction and thalamic abnormalities in adolescents at ultra high-risk for psychosis. *Schizophr Res* 151:148-153.
- Macdonald KD, Fifkova E, Jones MS, Barth DS (1998a) Focal stimulation of the thalamic reticular nucleus induces focal gamma waves in cortex. *J Neurophysiol* 79:474-477.
- Macdonald KD, Fifkova E, Jones MS, Barth DS (1998b) Focal Stimulation of the Thalamic Reticular Nucleus Induces Focal Gamma Waves in Cortex. *Journal of Neurophysiology* 79:474-477.
- McAlonan K, Brown VJ (2002) The thalamic reticular nucleus: more than a sensory nucleus? *Neuroscientist* 8:302-305.

- McQuillen PS, Sheldon RA, Shatz CJ, Ferriero DM (2003) Selective Vulnerability of Subplate Neurons after Early Neonatal Hypoxia-Ischemia. *The Journal of Neuroscience* 23:3308-3315.
- Millar JK, Wilson-Annan JC, Anderson S, Christie S, Taylor MS, Semple CAM, Devon RS, Clair DMS, Muir WJ, Blackwood DHR, Porteous DJ (2000) Disruption of two novel genes by a translocation co-segregating with schizophrenia. *Human Molecular Genetics* 9:1415-1423.
- Minlebaev M, Colonnese M, Tsintsadze T, Sirota A, Khazipov R (2011) Early Gamma Oscillations Synchronize Developing Thalamus and Cortex. *Science* 334:226-229.
- Minzenberg MJ, Laird AR, Thelen S, Carter CS, Glahn DC (2009) Meta-analysis of 41 functional neuroimaging studies of executive function in schizophrenia. *Arch Gen Psychiatry* 66:811-822.
- Mitrofanis J, Guillery RW (1993) New views of the thalamic reticular nucleus in the adult and the developing brain. *Trends Neurosci* 16:240-245.
- Modinos G, Iyegbe C, Prata D, Rivera M, Kempton MJ, Valmaggia LR, Sham PC, van Os J, McGuire P (2013) Molecular genetic gene-environment studies using candidate genes in schizophrenia: a systematic review. *Schizophr Res* 150:356-365.
- Molina V, Sanz J, Reig S, Martinez R, Sarramea F, Luque R, Benito C, Gispert JD, Pascau J, Desco M (2005) Hypofrontality in men with first-episode psychosis. *The British Journal of Psychiatry* 186:203-208.
- Morris BJ (1989) Neuronal localisation of neuropeptide Y gene expression in rat brain. *JCompNeurol* 290:358-368.
- Morris BJ, Cochran SM, Pratt JA (2005) PCP: from pharmacology to modelling schizophrenia. *Current Opinion in Pharmacology* 5:1-6
- Ochoa-Sanchez R, Comai S, Lacoste B, Bambico FR, Dominguez-Lopez S, Spadoni G, Rivara S, Bedini A, Angeloni D, Fraschini F, Mor M, Tarzia G, Descarries L, Gobbi G (2011) Promotion of non-rapid eye movement sleep and activation of reticular thalamic neurons by a novel MT2 melatonin receptor ligand. *J Neurosci* 31:18439-18452.
- Osipova D, Takashima A, Oostenveld R, Fernandez G, Maris E, Jensen O (2006) Theta and Gamma Oscillations Predict Encoding and Retrieval of Declarative Memory. *The Journal of Neuroscience* 26:7523-7531.
- Pakkenberg B, Scheel-Krüger J, Kristiansen LV (2009) Schizophrenia; from structure to function with special focus on the mediodorsal thalamic prefrontal loop. *Acta Psychiatrica Scandinavica* 120:345-354.
- Patil ST, Zhang L, Martenyi F, Lowe SL, Jackson KA, Andreev BV, Avedisova AS, Bardenstein LM, Gurovich IY, Morozova MA, Mosolov SN, Neznanov NG, Reznik AM, Smulevich AB, Tochilov VA, Johnson BG, Monn JA, Schoepp DD (2007) Activation of mGlu2/3 receptors as a new approach to treat schizophrenia: a randomized Phase 2 clinical trial. *Nature Medicine* 13:1102-1107.
- Perlstein WM, Carter CS, Noll DC, Cohen JD (2001) Relation of Prefrontal Cortex Dysfunction to Working Memory and Symptoms in Schizophrenia. *Am J Psychiatry* 158:1105-1113.
- Pinault D (2004) The thalamic reticular nucleus: structure, function and concept. *Brain Research Reviews* 46:1-31.
- Pinault D (2011) Dysfunctional Thalamus-Related Networks in Schizophrenia. *Schizophr Bull* 37:238-243.
- Pinault D, Deschênes M (1992) Voltage-dependent 40-Hz oscillations in rat reticular thalamic neurons in vivo. *Neuroscience* 51:245-258.

- Pinault D, Deschenes M (1998) Projection and innervation patterns of individual thalamic reticular axons in the thalamus of the adult rat: a three-dimensional, graphic, and morphometric analysis. *J Comp Neurol* 391:180-203.
- Potkin SG, Turner JA, Brown GG, McCarthy G, Greve DN, Glover GH, Manoach DS, Belger A, Diaz M, Wible CG, Ford JM, Mathalon DH, Gollub R, Lauriello J, O'Leary D, van Erp TG, Toga AW, Preda A, Lim KO (2009) Working memory and DLPFC inefficiency in schizophrenia: the FBIRN study. *Schizophr Bull* 35:19-31.
- Povysheva NV, Johnson JW (2012) Tonic NMDA receptor-mediated current in prefrontal cortical pyramidal cells and fast-spiking interneurons. *Journal of Neurophysiology* 107:2232-2243.
- Pratt JA, Winchester C, Dawson N, Morris BJ (2012) Advancing schizophrenia drug discovery: optimizing rodent models to bridge the translational gap. *Nat Rev Drug Discovery* 11:560-579.
- Rethelyi JM, Benkovits J, Bitter I (2013) Genes and environments in schizophrenia: The different pieces of a manifold puzzle. *Neurosci Biobehav Rev* 37:2424-2437.
- Rodriguez JJ, Noristani HN, Hoover WB, Linley SB, Vertes RP (2011) Serotonergic projections and serotonin receptor expression in the reticular nucleus of the thalamus in the rat. *Synapse* 65:919-928.
- Ross DT, Duhaime A-C (1989) Degeneration of neurons in the thalamic reticular nucleus following transient ischemia due to raised intracranial pressure: excitotoxic degeneration mediated via non-NMDA receptors? *Brain Res* 501:129-143.
- Rotaru DC, Yoshino H, Lewis DA, Ermentrout GB, Gonzalez-Burgos G (2011) Glutamate Receptor Subtypes Mediating Synaptic Activation of Prefrontal Cortex Neurons: Relevance for Schizophrenia. *J Neurosci* 31:142-156.
- Roux F, Uhlhaas PJ (2014) Working memory and neural oscillations: alpha-gamma versus theta-gamma codes for distinct WM information? *Trends in cognitive sciences* 18:16-25.
- Rubboli F, Court JA, Sala C, Morris C, Chini B, Perry E, Clementi F (1994) Distribution of nicotinic receptors in the human hippocampus and thalamus. *Eur J Neurosci* 6:1596-1604.
- Ruhrmann S, Schultze-Lutter F, Salokangas RK, Heinimaa M, Linszen D, Dingemans P, Birchwood M, Patterson P, Juckel G, Heinz A, Morrison A, Lewis S, von Reventlow HG, Klosterkötter J (2010) Prediction of psychosis in adolescents and young adults at high risk: results from the prospective European prediction of psychosis study. *Arch Gen Psychiatry* 67:241-251.
- Rutter L, Carver FW, Holroyd T, Nadar SR, Mitchell-Francis J, Apud J, Weinberger DR, Coppola R (2009) Magnetoencephalographic gamma power reduction in patients with schizophrenia during resting condition. *Hum Brain Mapp* 30:3254-3264.
- Saalmann YB (2014) Intralaminar and medial thalamic influence on cortical synchrony, information transmission and cognition. *Frontiers in systems neuroscience* 8:83.
- Salas M, Torrero C, Pulido S (1986) Undernutrition induced by early pup separation delays the development of the thalamic reticular nucleus in rats. *Experimental Neurology* 93:447-455.
- Santana N, Troyano-Rodriguez E, Mengod G, Celada P, Artigas F (2011) Activation of Thalamocortical Networks by the N-methyl-D-aspartate Receptor Antagonist Phencyclidine: Reversal by Clozapine. *Biol Psychiatry* 69:918-927.
- Sarkar S, Katshu MZ, Nizamie SH, Praharaj SK (2010) Slow wave sleep deficits as a trait marker in patients with schizophrenia. *Schizophr Res* 124:127-133.

- Shepherd AM, Laurens KR, Matheson SL, Carr VJ, Green MJ (2012) Systematic meta-review and quality assessment of the structural brain alterations in schizophrenia. *Neurosci Biobehav Rev* 36:1342-1356.
- Sherman SM (2001) Tonic and burst firing: dual modes of thalamocortical relay. *Trends Neurosci* 24:122-126.
- Sherman SM, Guillery RW (2002) The role of the thalamus in the flow of information to the cortex. *Philos Trans R Soc Lond B Biol Sci* 357:1695-1708.
- Sherman SM, Guillery RW (2011) Distinct functions for direct and transthalamic corticocortical connections. *J Neurophysiol* 106:1068-1077.
- Shimizu M, Fujiwara H, Hirao K, Namiki C, Fukuyama H, Hayashi T, Murai T (2008) Structural abnormalities of the adhesio interthalamica and mediodorsal nuclei of the thalamus in schizophrenia. *Schizophr Res* 101:331-338.
- Smith RE, Haroutunian V, Davis KL, Meador-Woodruff JH (2001) Expression of excitatory amino acid transporter transcripts in the thalamus of subjects with schizophrenia. *Am J Psychiatry* 158:1393-1399.
- Sohal VS, Huguenard JR (2003) Inhibitory interconnections control burst pattern and emergent network synchrony in reticular thalamus. *J Neurosci* 23:8978-8988.
- Steriade M, Jones EG, McCormick DAE (1997) *Thalamus: Organisation and Function* 2:617-651.
- Steriade M, Deschenes M, Domich L, Mulle C (1985) Abolition of spindle oscillations in thalamic neurons disconnected from nucleus reticularis thalami. *J Neurophysiol* 54:1473-1497.
- Sun L, Margolis FL, Shipley MT, Lidow MS (1998) Identification of a long variant of mRNA encoding the NR3 subunit of the NMDA receptor: its regional distribution and developmental expression in the rat brain. *FEBS Letters* 441:392-396.
- Sun L, Castellanos N, Grützner C, Koethe D, Rivolta D, Wibrals M, Kranaster L, Singer W, Leweke MF, Uhlhaas PJ (2013a) Evidence for dysregulated high-frequency oscillations during sensory processing in medication-naïve, first episode schizophrenia. *Schizophr Res* 150:519-525.
- Sun Y-G, Wu C-S, Lu H-C, Beierlein M (2011) Target-Dependent Control of Synaptic Inhibition by Endocannabinoids in the Thalamus. *The Journal of Neuroscience* 31:9222-9230.
- Sun YG, Wu CS, Renger JJ, Uebele VN, Lu HC, Beierlein M (2012) GABAergic synaptic transmission triggers action potentials in thalamic reticular nucleus neurons. *J Neurosci* 32:7782-7790.
- Sun YG, Pita-Almenar JD, Wu CS, Renger JJ, Uebele VN, Lu HC, Beierlein M (2013b) Biphasic cholinergic synaptic transmission controls action potential activity in thalamic reticular nucleus neurons. *J Neurosci* 33:2048-2059.
- Tamminga CA (1998) Schizophrenia and glutamatergic transmission. *Crit Rev Neurobiol* 12:21-36.
- Tamminga CA, Thaker GK, Buchanan R, Kirkpatrick B, Alphs LD, Chase TN, Carpenter WT (1992) Limbic system abnormalities identified in schizophrenia using positron emission tomography with fluorodeoxyglucose and neocortical alterations with deficit syndrome. *Arch Gen Psychiatry* 49:522-530.
- Troyano-Rodriguez E, Lladó-Pelfort L, Santana N, Teruel-Martí V, Celada P, Artigas F (2014) Phencyclidine Inhibits the Activity of Thalamic Reticular Gamma-Aminobutyric Acidergic Neurons in Rat Brain. *Biol Psychiatry*.
- Uhlhaas PJ, Singer W (2010) Abnormal neural oscillations and synchrony in schizophrenia. *Nat Rev Neurosci* 11:100-113.

- Volk DW, Lewis DA (2005) GABA Targets for the Treatment of Cognitive Dysfunction in Schizophrenia. *Curr Neuropsychopharmacol* 3:45-62.
- Vukadinovic Z (2011) Sleep abnormalities in schizophrenia may suggest impaired thalamo-cortico-cortical communication: towards a dynamic model of the illness. *Eur J Neurosci* 34:1031-1039.
- Wamsley EJ, Tucker MA, Shinn AK, Ono KE, McKinley SK, Ely AV, Goff DC, Stickgold R, Manoach DS (2012) Reduced sleep spindles and spindle coherence in schizophrenia: mechanisms of impaired memory consolidation? *Biol Psychiatry* 71:154-161.
- Weese GD, Phillips JM, Brown VJ (1999) Attentional Orienting Is Impaired by Unilateral Lesions of the Thalamic Reticular Nucleus in the Rat. *The Journal of Neuroscience* 19:10135-10139.
- Whitfield-Gabrieli S, Thermenos HW, Milanovic S, Tsuang MT, Faraone SV, McCarley RW, Shenton ME, Green AI, Nieto-Castanon A, LaViolette P, Wojcik J, Gabrieli JDE, Seidman LJ (2009) Hyperactivity and hyperconnectivity of the default network in schizophrenia and in first-degree relatives of persons with schizophrenia. *Proceedings of the National Academy of Sciences* 106:1279-1284.
- Wilson S, Argyropoulos S (2012) Sleep in schizophrenia: time for closer attention. *The British Journal of Psychiatry* 200:273-274.
- Womelsdorf T, Schoffelen J-M, Oostenveld R, Singer W, Desimone R, Engel AK, Fries P (2007) Modulation of Neuronal Interactions Through Neuronal Synchronization. *Science* 316:1609-1612.
- Yamamoto J, Suh J, Takeuchi D, Tonegawa S (2014) Successful Execution of Working Memory Linked to Synchronized High-Frequency Gamma Oscillations. *Cell* 157:845-857.
- Young KA, Manaye KF, Liang C, Hicks PB, German DC (2000) Reduced number of mediodorsal and anterior thalamic neurons in schizophrenia. *Biol Psychiatry* 47:944-953.
- Zhang Y, Llinas RR, Lisman JE (2009) Inhibition of NMDARs in the nucleus reticularis of the thalamus produces delta frequency bursting. *Frontiers in Neural Circuits* 3.
- Zikopoulos B, Barbas H (2007) Circuits for multisensory integration and attentional modulation through the prefrontal cortex and the thalamic reticular nucleus in primates. *Rev Neurosci* 18:417-438.
- Zikopoulos B, Barbas H (2012) Pathways for Emotions and Attention Converge on the Thalamic Reticular Nucleus in Primates. *The Journal of Neuroscience* 32:5338-5350.