



The Unique Molecular and Cellular Microenvironment of Ovarian Cancer

Thomas Worzfeld^{1,2}, Elke Pogge von Strandmann³, Magdalena Huber⁴, Till Adhikary⁵, Uwe Wagner⁶, Silke Reinartz⁷ and Rolf Müller^{5*}

¹Institute of Pharmacology, Biochemical-Pharmacological Center (BPC), Philipps University, Marburg, Germany, ²Department of Pharmacology, Max-Planck-Institute for Heart and Lung Research, Bad Nauheim, Germany, ³Experimental Tumor Research, Clinic for Hematology, Oncology and Immunology, Center for Tumor Biology and Immunology, Philipps University, Marburg, Germany, ⁴Institute of Medical Microbiology and Hygiene, Biomedical Research Center, Philipps University, Marburg, Germany, ⁵Institute of Molecular Biology and Tumor Research, Center for Tumor Biology and Immunology, Philipps University, Marburg, Germany, ⁶Clinic for Gynecology, Gynecological Oncology and Gynecological Endocrinology, University Hospital of Giessen and Marburg (UKGM), Marburg, Germany, ⁷Clinic for Gynecology, Gynecological Oncology and Gynecological Endocrinology, Center for Tumor Biology and Immunology (ZTI), Philipps University, Marburg, Germany

OPEN ACCESS

Edited by:

Viive Maarika Howell,
University of Sydney, Australia

Reviewed by:

Reuven Reich,
Hebrew University of Jerusalem,
Israel

Martin Hernán Bonamino,
Instituto Nacional de Câncer, Brazil

*Correspondence:

Rolf Müller
rmueller@imt.uni-marburg.de

Specialty section:

This article was submitted to
Women's Cancer,
a section of the journal
Frontiers in Oncology

Received: 12 December 2016

Accepted: 07 February 2017

Published: 22 February 2017

Citation:

Worzfeld T,
Pogge von Strandmann E, Huber M,
Adhikary T, Wagner U, Reinartz S and
Müller R (2017) The Unique Molecular
and Cellular Microenvironment of
Ovarian Cancer.
Front. Oncol. 7:24.
doi: 10.3389/fonc.2017.00024

The reciprocal interplay of cancer cells and host cells is an indispensable prerequisite for tumor growth and progression. Cells of both the innate and adaptive immune system, in particular tumor-associated macrophages (TAMs) and T cells, as well as cancer-associated fibroblasts enter into a malicious liaison with tumor cells to create a tumor-promoting and immunosuppressive tumor microenvironment (TME). Ovarian cancer, the most lethal of all gynecological malignancies, is characterized by a unique TME that enables specific and efficient metastatic routes, impairs immune surveillance, and mediates therapy resistance. A characteristic feature of the ovarian cancer TME is the role of resident host cells, in particular activated mesothelial cells, which line the peritoneal cavity in huge numbers, as well as adipocytes of the omentum, the preferred site of metastatic lesions. Another crucial factor is the peritoneal fluid, which enables the transcoelomic spread of tumor cells to other pelvic and peritoneal organs, and occurs at more advanced stages as a malignancy-associated effusion. This ascites is rich in tumor-promoting soluble factors, extracellular vesicles and detached cancer cells as well as large numbers of T cells, TAMs, and other host cells, which cooperate with resident host cells to support tumor progression and immune evasion. In this review, we summarize and discuss our current knowledge of the cellular and molecular interactions that govern this interplay with a focus on signaling networks formed by cytokines, lipids, and extracellular vesicles; the pathophysiological roles of TAMs and T cells; the mechanism of transcoelomic metastasis; and the cell type selective processing of signals from the TME.

Keywords: tumor microenvironment, ascites, tumor-associated macrophage, T cell checkpoints, extracellular vesicles, invasion, STAT, NFκB, adhesion, metastasis, mesothelial cell, T cell

Abbreviations: APC, antigen-presenting cell; CAA, cancer-associated adipocyte; CAF, cancer-associated fibroblast; DC, dendritic cell; EC, endothelial cell; EV, extracellular microvesicle; IFN, interferon; IL, interleukin; HGSOc, high-grade serous ovarian carcinoma; MDSC, myeloid-derived suppressor cell; NK cell, natural killer cell; SIP, sphingosine-1-phosphate; STAT, signal transducer and activator of transcription; STIC, serous tubal intraepithelial carcinoma; TAM, tumor-associated macrophage; TGFβ, transforming growth factor β; TIL, tumor-infiltrating lymphocyte; TLR, Toll-like receptor; TME, tumor microenvironment; Treg, T regulatory cell; VEGF, vascular endothelial growth factor.

BIOLOGICAL AND CLINICAL FEATURES OF OVARIAN CARCINOMA

Ovarian cancer is the deadliest of all gynecological malignancies with >60,000 new cases reported annually in the United States and the European Union (1). More than 90% of malignant ovarian tumors are carcinomas, presumably originating from the ovarian surface epithelium and/or the fallopian tube. Ovarian cancer has a dire prognosis with an overall 5-year survival rate of <40%. The WHO classification distinguishes six major entities of ovarian tumors, i.e., serous, mucinous, endometrioid, clear cell, transitional cell, and squamous carcinoma (1), with high-grade serous ovarian carcinoma (HGSOC) representing the most common subtype. The majority of patients present with advanced stage disease and tumor masses in the abdomen beyond the pelvis, contributing to the disastrous prognosis of the disease. HGSOC is characterized by a very high frequency of *TP53* mutations (97%), germline and somatic *BRCA1/2* mutations (~40%), as well as amplification and overexpression of *MYC* (>50%) (2).

According to the prevailing opinion, HGSOCs arise from the fimbriated fallopian tube epithelium (3). There is some evidence to suggest that serous tubal intraepithelial carcinomas (STICs) are precursor lesion of HGSOC, although recent evidence obtained by next-generation sequencing suggests that lesions histologically identified as STICs may actually represent micrometastases (4). Several features contribute to the fatal nature of HGSOC, which distinguish it from other human cancers, in particular, the role of the peritoneal fluid in cancer cell spread:

- Tumor cells can be shed at a very early stage of the disease. Even at a stage when the primary tumor is still confined to the ovary, cancer cells can be detected in peritoneal lavage fluid.
- Besides hematogenous dissemination to the omentum (5), the spread of tumor cells to other pelvic and peritoneal organs is facilitated by the peritoneal fluid serving as a carrier (6). This transcoelomic dissemination is a major route for the adhesion of cancer cells to the omentum and serous membranes lining the peritoneal organs, giving rise to metastatic lesions growing into the peritoneal cavity rather than invading through the lamina propria (6, 7).
- The peritoneal environment, which is frequently formed by the effusion building up in the peritoneal cavity (ascites), is rich in tumor-promoting soluble factors (8), extracellular vesicles (9), highly tumorigenic cancer cells (10), and different types of immune cells, including large numbers of different types of T cells (11), tumor-associated macrophages (TAMs) (12, 13), and other host cells, supporting tumor cell proliferation, progression, chemoresistance, and immune evasion (14–16).
- In contrast to most other cancers, metastases at distant sites are confined to late stages (6). The most serious problem for most HGSOC patients is recurrent, aggressive growth of metastatic lesions within the peritoneal cavity.

Mechanisms of Therapy Failure

Although HGSOC is typically highly sensitive to chemotherapy, a small subgroup (<10%) is refractory to first-line therapy, pointing to a mechanism of inherent resistance. However, even

after a clinical remission, most patients suffer from a relapse of the disease (1). While some of these patients are refractory to chemotherapy due to acquired chemoresistance, the majority undergo remission under the same treatment regimen. This regrowth of lesions displaying a similar chemosensitivity as the primary disease points to a mechanism of therapy failure that is fundamentally different from intrinsic or acquired resistance. However, the mechanisms underlying this transient chemoresistance are unknown.

A number of studies have associated chemoresistance with epithelial–mesenchymal transition (EMT), cell cycle arrest, blocked apoptosis, drug efflux, and several signaling pathways, including TGF β , WNT, and NOTCH, but these observations did not yield a deep understanding of the mechanisms leading to relapse of the disease (17). It has also been a topic of intense research to clarify whether the regrowth of tumors after a complete clinical response is caused by a small population of cancer stem cells that are endowed with stem-like properties (18–20). However, multiple studies showed that ovarian cancer cell subpopulations express stemness markers at highly variable levels in different combinations and with none of these markers being obligatory (21–26). These findings suggest that a common or early ovarian cancer stem cell may not exist or has not been identified yet.

Comprehensive genomic studies by The Cancer Genome Atlas (TCGA) consortium have confirmed the prevalence of the genetic alterations described earlier and identified a number of recurrent, but infrequent changes (2). A more recent study has identified *PTEN* loss as another common driver event associated with a poor prognosis (27). This study also defined four transcriptional subtypes of ovarian carcinoma (differentiated, proliferative, immunoreactive, and mesenchymal), which were, however, not associated with differences in survival. In contrast, a recent reanalysis of the TCGA data indicated a favorable outcome for the immunoreactive subtype, presumably due to partial antitumor immune response (28). However, new insights into the precise mechanisms of chemoresistance were not gained by these studies. Whole-genome sequencing of DNA from patients with primary refractory, sensitive, and matched acquired resistant disease suggested that (i) inactivation of the tumor suppressor genes *RBI1*, *NF1*, *RAD51B*, and *PTEN*, (ii) reversions of germline *BRCA1/2* mutations or loss of *BRCA1* promoter methylation, and (iii) overexpression of *MDR1* are associated with, and may contribute to, acquired chemotherapy resistance (29). In contrast, amplification of *CCNE1* was frequently observed in primary refractory cancer. However, these findings have not been linked to therapy failure or chemoresistance. Finally, a microarray study published in 2005 (30) identified an 11-gene signature characteristic of relapsed HGSOC, but mechanistic links to therapy resistance remain hypothetical.

It has been suggested that treatment failure is caused, in part, by cells escaping chemotherapy-induced cell death by entering a transient state of resistance, e.g., by entering a non-cycling state with low metabolic activity. This is a characteristic feature of detached tumor cells and spheroids floating in the peritoneal fluid or ascites. However, tumor cells surviving chemotherapy can trigger disease recurrence only if they are able to invade

the peritoneum or omentum to establish proliferative lesions. Therefore, cancer cell adhesion to, and invasion of, the mesothelial cell layer lining these organs, and thus the mechanisms of transcoelomic dissemination appear to be central aspects of therapy failure. Conditional resistance can also be modulated by interactions with host cells (31–33), whose presence and functional states are spatially and temporally highly heterogeneous.

THE CELLULAR MICROENVIRONMENT AND CYTOKINE SIGNALING NETWORK OF OVARIAN CANCER ASCITES

Ascites-associated cancer cells occur as single cells or multicellular spheroids and are likely to be responsible for peritoneal dissemination and to contribute to relapse of the disease (34). Besides these tumor cells, macrophages and T cells are the most common cell types in ovarian carcinoma-associated ascites, but other host cells are also present to a variable extent, including natural killer (NK) cells, fibroblasts, adipocytes, and mesothelial cells (15, 35, 36). Cytokines and growth factors released by these cells into the tumor microenvironment (TME) play essential roles in tumor growth and progression, cancer dissemination, and immune escape (12, 15, 36–40). This is exemplified by the induction or promotion of

- (i) cell proliferation and survival, for example, by EGF family members, interleukin (IL)-6, and TGF β (41);
- (ii) EMT, cancer cell invasion, and metastasis, in particular, through TGF β (42);
- (iii) stemness by KIT ligand and R-spondins as ligands for CD117 (21) and LGR5 (43, 44), respectively.
- (iv) angiogenesis by vascular endothelial growth factor (VEGF), basic FGF, and CXCL8/IL-8;
- (v) immune cell migration to the tumor by chemokines of the CCL and CXCL families (45);
- (vi) immune cell suppression, for example, by VEGF, IL-6, IL-10, LIF, and TGF β (46); and
- (vii) the accumulation of ascites, mainly through the action of VEGF as a vascular permeability factor (47).

Several lines of evidence support the clinical significance of these mediators. Thus, evaluation of genomic data has identified a number of clinical associations of signaling loops established by polypeptide ligands and their receptors in solid tumor tissue of advanced ovarian cancer, including TGF β , PDGF, VEGF, ephrin, CXCL12, and CCL chemokines (25). Furthermore, several studies have demonstrated highly significant associations between the ascites levels of various cytokines and the relapse-free survival (RFS) or overall survival (OS) of ovarian cancer patients, for example, TGF β , IL-6, IL-10, and LIF (12, 40, 48–52).

Despite their undisputed role within the TME, the reciprocal interactions of tumor and host cells *via* soluble mediators are only partially understood. A recent study has addressed this issue by determining the transcriptome for tumor cells and TAMs from ovarian cancer ascites samples and using these data to establish an extensive network of signaling mediators

and their receptors and thereby the first global overview of the origins and targets of cytokines in the TME (**Figure 1**). This study defined multiple signaling pathways between tumor cells and TAMs as well as cell type restricted, autocrine mechanisms and uncovered new clinically relevant components within this signaling network (52).

The multifaceted cooperation of tumor cells and TAMs is exemplified by signal transducer and activator of transcription 3 (STAT3)-inducing cytokines IL-10, IL-6, and LIF, all of which are predictive of a poor survival: while the major source and target of IL-10 are TAMs, LIF is synthesized by, and acts on, tumor cells, whereas IL-6 production and action are not cell type selective (52). Both tumor cells and TAMs also contribute to an extensive TGF β -signaling network, consistent with previous findings (42, 53, 54). Multiple components of these pathways are associated with a short RFS, including TGF β 1, TGF β 3, and TGF β R1, the former produced most strongly by TAMs (52). Furthermore, WNT signaling through frizzled receptors also plays a major role, with WNT7A and WNT11 deserving particular attention in light of strong associations with a poor survival. The same study also revealed a comprehensive network of axon guidance molecules, with SEMA5A, SEMA6C, and the ephrin receptor gene EPHB2 standing out as strong indicators of a poor RFS. On the other hand, the identification of all three components, the norrin–frizzled 4–TSPAN12 complex (55), as indicators of a longer RFS is particularly intriguing, since this finding points to an unexpected role for the frizzled ligand norrin in tumor suppression (52).

There is impressive progress in understanding the molecular networks regulating TAMs; however, the role of other host cells within this signaling network is even less understood, including myeloid-derived suppressor cells (MDSCs), different types of T cells, NK cells, adipocytes, and fibroblasts, which are clearly important constituents of the TME. It is also unknown how ascites-associated tumor and host cells differ from their counterparts in solid tumor masses. Therefore, the next obvious step is to extend this work to other cell types of ovarian cancer ascites and solid tumor tissue to obtain a complete integrated picture of the cytokine signaling network operating in the ovarian cancer TME.

THE LIPID SIGNALING NETWORK OF OVARIAN CANCER ASCITES

Molecules generated by the cleavage of phospholipids and present in malignant effusions represent another important class of soluble cancer-promoting mediators. The first major group of lipid mediators highly relevant in the context of ovarian cancer ascites is represented by polyunsaturated fatty acids (PUFAs), in particular eicosanoids (56–58), including arachidonic acid (AA) and its metabolites. These include prostanoids, hydroxy-eicosatetraenoic acids, and leukotrienes that are derived from AA by enzymatic cascades initiated by either cyclooxygenases or lipoxygenases. Prostaglandin E₂ (PGE₂), in particular, is known to promote tumor progression as an immune suppressor and trigger of angiogenesis (59). The PGE₂, PGI₂, and LTB₄ pathways have

been linked with clinical progression through the PGE₂ receptor PTGER3 on tumor cells, expression of the PGI₂-synthesizing enzyme PTGIS by tumor cells and TAMs, as well as release of LTB₄ into the TME by both cell types (52).

Non-metabolized AA itself is also present in ovarian cancer ascites. Its concentrations are inversely linked to RFS (52), which is presumably functionally linked to the AA-generating phospholipase PLA₂G₇ (see below). It is possible that these

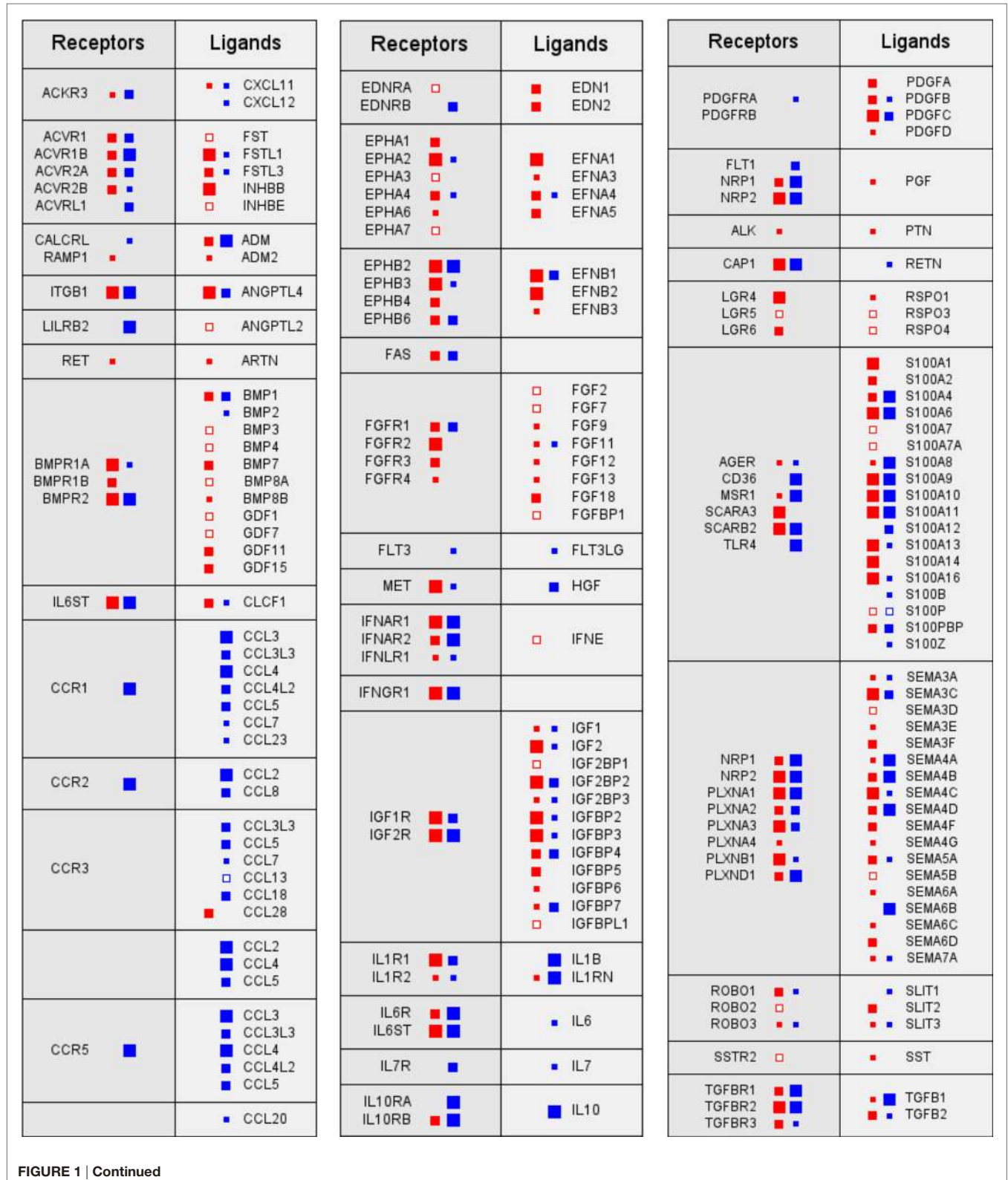


FIGURE 1 | Continued

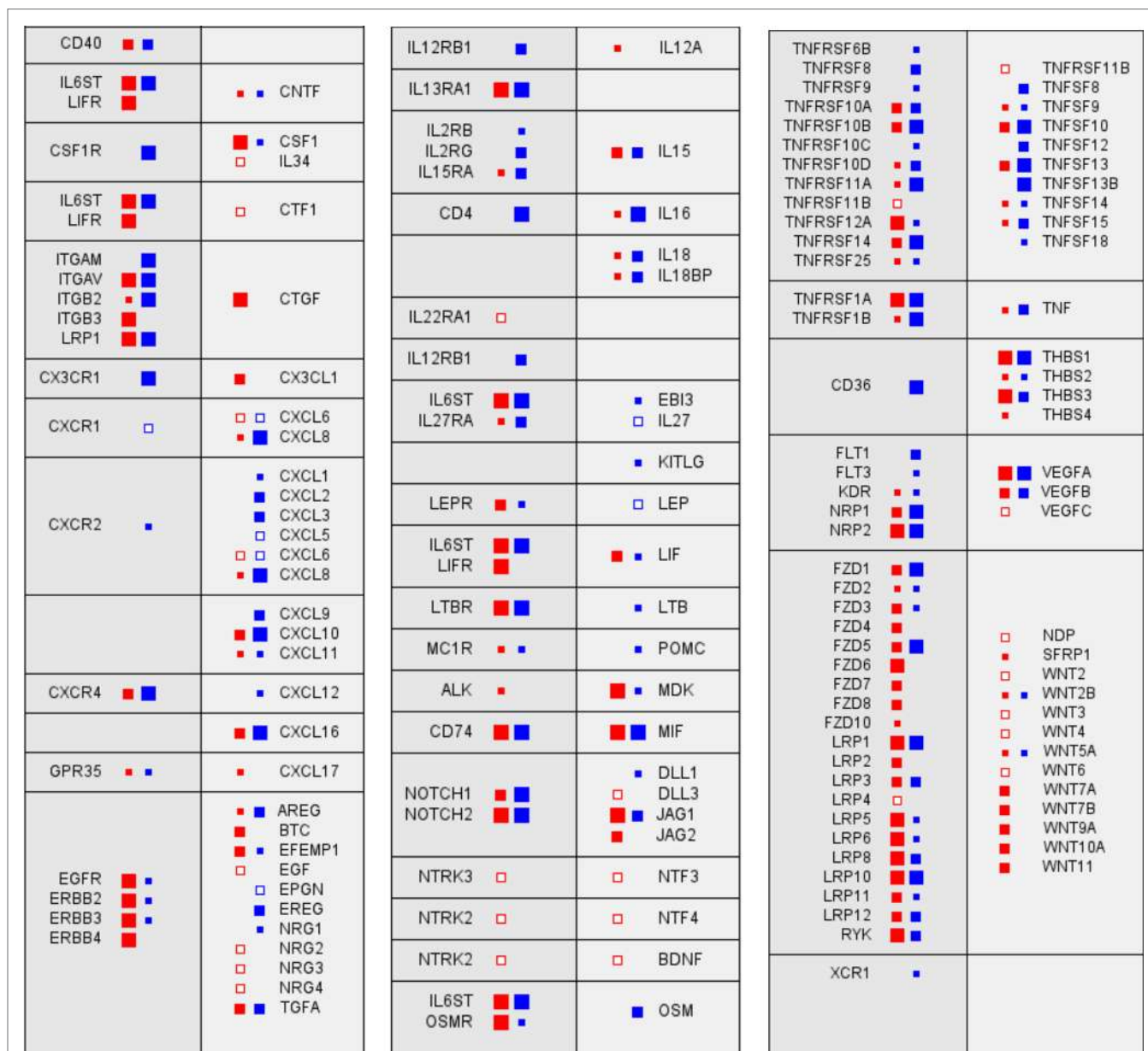


FIGURE 1 | Signaling network between tumor cells and tumor-associated macrophages (TAMs) in ovarian cancer ascites. Prominent examples of signaling pathways operating between tumor cells (red) and TAMs (blue). Genes for receptors and their cognate ligands are ordered in adjacent blocks on the left and right sides, respectively, of each box. The sizes of the filled squares indicate the level of expression determined by RNA-Seq (large: median TPM > 50; intermediate: TPM > 10; and small: TPM > 0.3) (52). Open squares indicate cases, where substantial expression (TPM > 3) was observed only in a fraction of samples (>10%).

associations are not (only) due to AA-derived metabolites, since AA can act directly on intracellular proteins, including PKC and peroxisome proliferator-activated receptors (PPARs) (60–63), in particular at the high concentrations of up to 50 μM in ascites (52). Linoleic acid, another PUFA present at even higher levels in ovarian cancer ascites, did not show any survival associations, but was shown to deregulate target genes of PPARβ/δ by acting as an endogenous agonistic ligand (63). Intriguingly, several of these genes are linked to protumorigenic functions. These include *ANGPTL4*, which is linked to a poor clinical outcome of ovarian cancer (63).

The second major group of lipids found in ascites encompasses lysophosphatidic acids (LPA), a mixture of lipids with different ester- or ether-linked fatty acids in the sn1 position (64–69). Extracellular LPA is generated from phospholipids by the consecutive action of two enzymes, i.e., secretory phospholipases A₂ and the lysophospholipase D autotaxin (67, 69). LPA production is counteracted by lipid phosphatases of the LPPR family (70), although LPA degradation seems to play an insignificant role in ovarian cancer ascites based on the low expression of *LPPR* genes in both tumor cells and TAMs. TAMs seem to play an essential role in phospholipid cleavage as a major source of PLA₂G₇ and

autotaxin, the former being associated with a short RFS (52). On the other hand, it has been reported that mesothelial cells display strong PLA₂ activity and may thus significantly contribute to LPA production (71). Correlative studies have demonstrated that high levels of LPA correlate with poor prognosis (64, 72–75). LPA promotes cancer cell survival and multiple steps of the metastatic cascade, including adhesion, migration, and invasion of ovarian cancer cells (76–87).

LPA interacts with six different G-protein-coupled membrane receptors (LPARs) (69) that are expressed by tumor cells and TAMs in a highly cell type-selective fashion (52). This is intriguing in view of the fact that different receptors respond to different LPA species and trigger distinct, partly overlapping signaling pathways, including cAMP-PKA, PI₃K-AKT, Ras-MAPK, PLC-Ca²⁺-PKC, and RHO-ROCK (69) to promote cancer cell invasion, chemoresistance, and tumor progression (66–68, 71, 88, 89). The role of LPA on TAMs or other host cells is unknown. Different LPA species have been detected in ovarian cancer ascites (64, 90), but associations of distinct LPAs with specific biological features or clinical outcome have not been investigated.

EXTRACELLULAR MICROVESICLES (EVs) IN OVARIAN CANCER ASCITES

The complex network of cellular interactions and soluble factors, which promotes tumor growth, metastasis, immune evasion, and drug resistance in ovarian cancer, is also supported by EVs. EVs are released by tumor cells and normal healthy cells and mediate the transfer of proteins, lipids, and nucleic acids between malignant and non-malignant cells to alter the function and phenotype of the recipient cell. EVs are either shed from the cell surface or released as exosomes *via* exocytosis upon generation in multivesicular bodies. Signal transmission *via* EVs adds another level of complexity to the

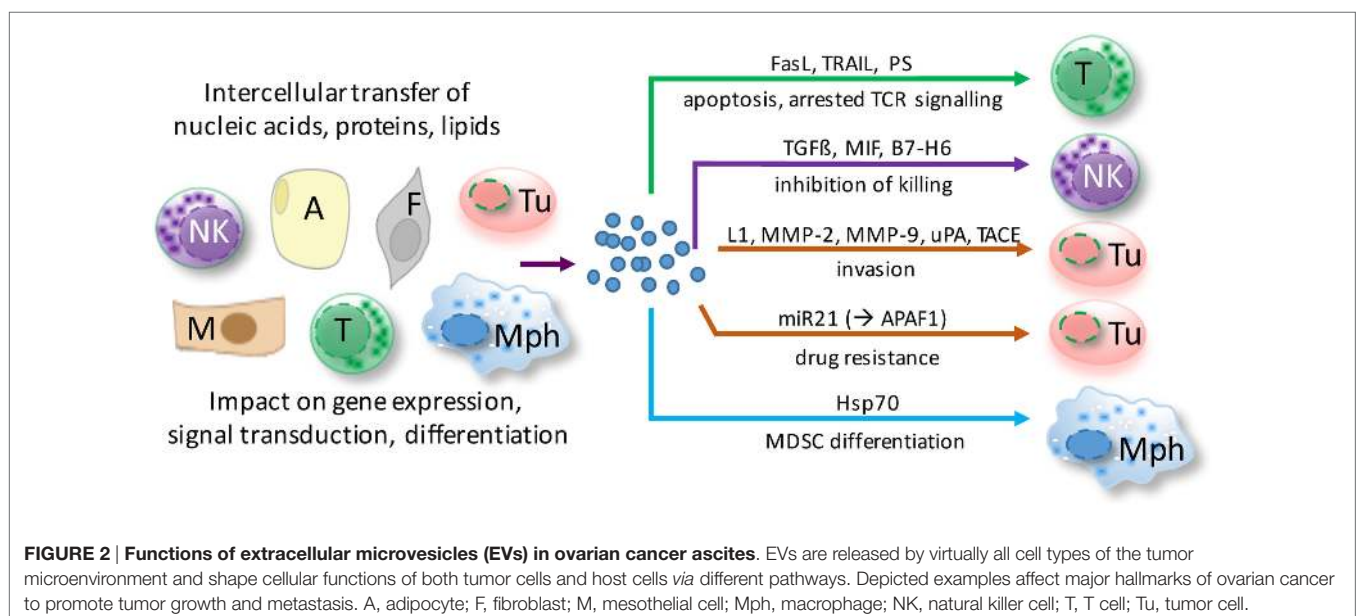
cell communication network as EVs simultaneously release multiple molecules impinging on signaling pathways in the recipient cell. Molecules previously not considered to be exchanged between cells, including mRNA and microRNAs (miRNAs), are transferred by EVs.

microRNAs are non-coding RNAs that control target genes posttranscriptionally. The dysregulation of miRNAs is involved in the tumorigenesis of ovarian cancer. Thus, exosomal miRNAs isolated from the serum or ascites fluid are probably of clinical relevance and may serve as diagnostic markers, as reviewed by Nakamura et al. (91). The first study profiling the miRNA content of exosomes isolated from patient serum identified a disease-specific miRNA signature with exosomal miRNAs (miR-21, miR-141, miR-200a, miR-200b, miR-200c, miR-203, miR-205, and miR-214) (92). Several follow-up studies demonstrated that miRNAs not only reflect diagnostic and prognostic biomarkers in ovarian cancer but also serve as predictors for response to therapy and represent potential therapeutic targets. This topic has been covered in depth by a recently published review (93).

Even though our knowledge of the molecular composition, biological functions, and cellular sources of EVs in ovarian cancer is still limited, available evidence suggests that EVs in ascites interfere with immune evasion, invasion, and drug resistance (Figure 2). The following paragraphs highlight recent data suggesting a role for ascites EVs in ovarian cancer pathogenesis.

Role of MVs in Immune Evasion

Several studies investigated the immunomodulating potential of EVs derived from different cell types. Strikingly, EVs released by dendritic cells (DCs) and B cells reveal antitumor and immune stimulatory effects and can provide costimulatory proteins that are able to activate T cells when presented with tumor antigens (94). Based on these observations, DC-EV-based antitumor vaccination studies were developed and tested in clinical trials (95–97).



On the contrary, exosomes secreted from ovarian tumor and bystander cells suppress the immune response (9). EVs collected from ovarian ascites impaired the cytotoxic activity of peripheral lymphocytes and induced apoptosis of lymphocytes and DCs. This correlated with the vesicle-associated expression of FAS ligand (FAS-L) and TRAIL, both known to be involved in apoptosis induction of immune cells. In line with these findings, secreted vesicle-associated FAS-L purified from patient ascites could trigger FAS-mediated apoptosis in a T cell line (98). These results suggest that vesicle-associated FAS-L counterattacks Fas-bearing immune cells including T cells, thus promoting immune evasion to support tumor cell survival. Moreover, there is evidence that ovarian ascites EVs can inhibit T cell activation by arresting the T cell-signaling cascade (99). This was mechanistically attributed to phosphatidylserine (PS), which is present on EVs. However, the functional role of PS remains to be confirmed since this molecule is required (but not sufficient) for the uptake of EVs by recipient cells (100).

Extracellular microvesicles do not only interact with cytotoxic lymphocytes but also regulate the activation of MDSCs *via* vesicle-associated HSP70, which engages toll-like receptor (TLR) 2 on MDSC (101). There is experimental evidence that these mechanisms might provide a target for successful immunotherapies. Depletion of HSP70-positive EVs and blockade of the HSP70/TLR2 interaction using a specific peptide aptamer diminished the activation and number of MDSCs significantly and inhibited tumor progression in tumor-bearing C57Bl/6 mice. Thus, targeting or interfering with EVs holds promise for novel immunotherapies to treat ovarian cancer. However, the development of innovative therapeutic concepts requires a more detailed understanding of EV biogenesis, molecular composition, and the mechanisms of target cell interaction.

Role of EVs in Invasion

Most studies on ovarian cancer ascites EVs are related to their impact on immune evasion, but there is also evidence that EVs regulate invasion and metastasis. First, ovarian cancer EVs carry molecules that directly regulate tumor cell migration in an autocrine or paracrine fashion, including soluble L1 (102), CD24, EpCAM (103), and soluble ALCAM (104). Second, membrane vesicles from malignant ascites were also found to contain the activated proteases: matrix metalloproteinase (MMP)-2, MMP-9, uPA (105), and ADAM17/TACE (104). These vesicle-associated proteases promote extracellular matrix (ECM) degradation directly or through the release of soluble factors from the EVs, which may allow tumor cell invasion into the stroma to facilitate metastasis. Third, EVs may carry miRNAs, which interfere with invasion and migration either positively or negatively. One prominent example is the transfer of miR-6126, which targets integrin β 1, a key regulator of cancer cell metastasis. The transfer of miR-6126 mimic to endothelial cells (ECs) reduced invasion and migration of ovarian cancer cells *in vitro* and tumor growth *in vivo* (106).

EVs and Drug Resistance

The loading of EVs with specific miRNAs and the transfer of these miRNAs to recipient cells may also affect drug resistance.

The vesicle-mediated transfer of miR21 from omental cancer-associated adipocytes and cancer-associated fibroblasts (CAFs) to ovarian cancer cells was recently identified as a pathway causing resistance to taxane-based chemotherapy. In the recipient cancer cells, miR-21 directly targets *APAF1* mRNA, which is indispensable for the initiation of apoptosis in response to taxanes (32, 107).

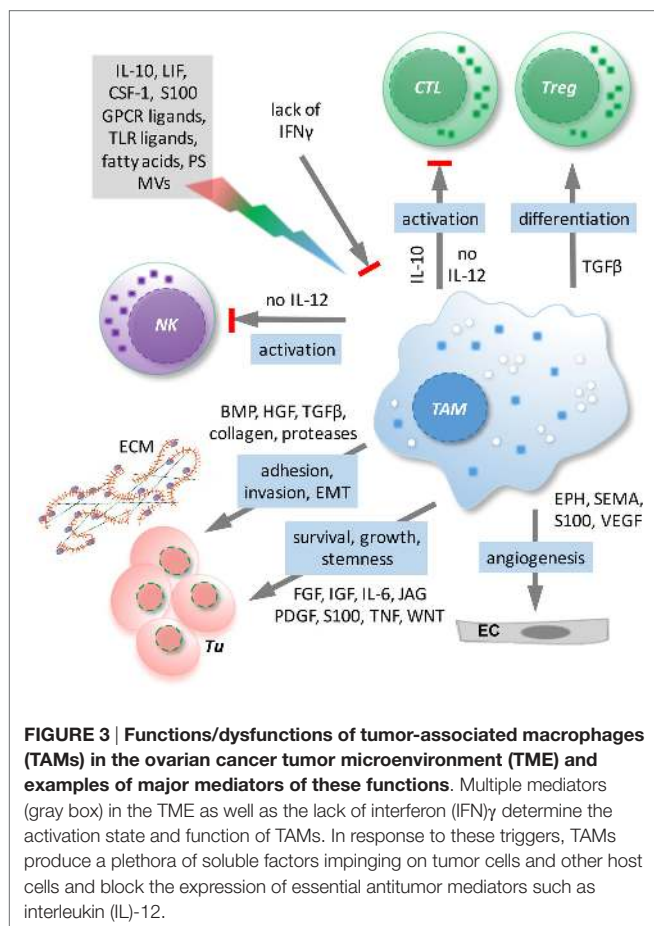
Taken together, the vesicle-mediated cross talk between cells of the ovarian cancer ascites emerges as a pivotal component that establishes a protumorigenic environment promoting—but probably not limited to—immune suppression, invasion, and drug resistance. It remains a challenge to gain a better understanding of the mechanisms regulating cargo sorting into vesicles and their biosynthesis to establish links between vesicle-associated signatures, effects on signaling pathways, and altered functions in recipient cells. This knowledge is a prerequisite to be able to develop new therapeutic options for ovarian cancer by interfering with vesicle biogenesis, loading with specific cargo or vesicle uptake.

IMPAIRMENT OF INNATE IMMUNE CELLS

The complex immune suppression network that effectively neutralizes antitumor immunity is regarded as one of the main reasons for disease progression and treatment failure. The activity of immune effector cells present within the TME, including CD4 T cells, CD8 T cells, and NK cells, is inhibited not only directly by tumor cells but also by immunosuppressive T regulatory cells (Tregs), immature DCs, MDSCs, and TAMs (15, 16, 37). The antitumor activity of these cells is mediated by the concerted action of a plethora of mediators comprising MVs, cytokines (such as IL-10 and TGF- β), lipids (for example, PGE₂), secreted enzymes (e.g., indolamine-2,3-dioxygenase and arginase), and membrane-bound ligands [including B7-H1 and programmed cell death protein 1 (PD-1)].

Tumor-Associated Macrophages

Tumor-associated macrophages represent the major subpopulation of myeloid cells in ovarian cancer ascites. A hallmark of macrophages is their plasticity in response to their microenvironment (108). Classical activation results in immune stimulatory, pro-inflammatory cells, while alternatively activated macrophages comprise a wide spectrum of subtypes with functions in tissue repair, angiogenesis, and immune regulation. TAM activation is skewed by factors of the TME to adopt a spectrum of phenotypes that represent mixed forms of alternatively activated and pro-inflammatory macrophages (108), which has also been clearly demonstrated for TAMs in ovarian cancer ascites (12). TAMs do not possess tumoricidal activity, but are rather thought to promote immune suppression and various aspects of cancer growth and progression, including tumor cell invasion, angiogenesis, and metastasis (108) (Figure 3). Consistent with these tumor-promoting functions of TAMs, expression of the alternative activation marker CD163 in TAMs from malignancy-associated ascites showed a strong correlation with early relapse of serous ovarian carcinoma after first-line therapy (12). Among the soluble factors contributing to TAM polarization, tumor progression, and a poor clinical outcome, IL-6, IL-10, TGF β , and AA play a prominent role (12, 40, 48–50, 109).



As shown in mouse models, normal macrophages can have two developmentally different origins. While infiltrating macrophages are derived from blood monocytes produced by the bone marrow, resident tissue macrophages, including peritoneal macrophages, are of fetal (yolk sac) origin (110–116). Although TAMs can be derived from recruited blood monocytes (117–119), tissue-resident macrophages can also be a substantial source for the generation of TAMs (112, 120–125). A recent study (109) has revealed a surprising similarity between TAMs from ovarian cancer ascites and resident peritoneal macrophages with respect to their global transcriptional profile, the expression of differentiation markers, and their activation state. For example, both resident peritoneal macrophages and TAMs are characterized by high expression of the alternative activation markers CD163 and CD206, and both TAMs and peritoneal macrophages express genes with essential functions in phagocytosis and antigen presentation at similarly high levels. The only clearly discernible difference between both cell types was an upregulation of genes linked to ECM remodeling in TAMs (109). On the other hand, blood monocytes are most likely attracted by chemokines of the tumor microenvironment and therefore consequently contribute to the generation of TAMs. However, it remains an unresolved issue at present to which extent infiltrating monocytes and resident peritoneal macrophages represent the origins of ovarian cancer ascites-associated macrophages.

A therapeutically beneficial effect of “re-educated” TAMs has been reported for patients with pancreas adenocarcinoma and a related mouse model (126), suggesting that TAMs may also represent a potential target in ovarian cancer, as both ascites and tumor tissue typically show a high density of TAMs. TAMs from ovarian cancer ascites can indeed be shifted under experimental conditions to trigger a partial cytotoxic activity under experimental conditions (127, 128).¹ However, the observations are partly contradictory, and activity toward autologous tumor cells has not been analyzed. It is, therefore, unclear, whether, and if so under which conditions, ovarian cancer TAMs could be (re) differentiated to macrophages with tumoricidal properties or the ability to trigger a cytotoxic response by other immune cells under clinically relevant conditions.

Interleukin-12 is a particularly interesting cytokine in the context of ovarian cancer due to its immune stimulatory antitumor effects and its inverse associations with disease progression (129–131). A hallmark of TAMs in ovarian cancer ascites is their defect to release IL-12 in response to inflammatory stimuli, which results from a transcriptional block of the *IL12B* gene encoding the p40 subunit (109, 127, 132). Another cytokine with beneficial immune stimulatory and antitumor effects in ovarian cancer patients is interferon (IFN) γ (133–136) consistent with the observation that IFN γ can prevent the skewing of monocyte differentiation by ovarian cancer ascites from immune stimulatory IL-10^{low}IL-12^{high} macrophages to TAM-like IL-10^{high}IL-12^{low} cells and to abrogate the suppressive effect of ovarian cancer ascites on the inducibility by TLRs ligands of IL-12 secretion (127) (see text footnote 1). As IL-12 is an essential determinant of a cytotoxic immune response, understanding the regulatory network impinging on the *IL12B* gene may be a key to the development of efficacious TAM-targeted therapies.

Dysfunction of Other Innate Immune Cells

Besides macrophages, other myeloid cells and NK cells represent the two main subsets of innate immune cells displaying efficient yet mechanistically distinct tumor suppressive effects. Consequently, both cell types are targeted by tumor immune escape mechanisms. One prominent mechanism is the differentiation of myeloid cells to MDSCs. These cells comprise a heterogeneous population of immature myeloid cells, including immature precursors of macrophages, granulocytes, and DCs. MDSCs are capable of inhibiting both adaptive and innate immunity *via* suppression of lymphocytes and NK cell activity. Like TAMs and Tregs, MDSC significantly impact on patient survival by enhancing cancer progression and metastasis (137).

Recruitment of monocytes and their differentiation into MDSC or TAMs strongly depends on components within the TME. In ovarian cancer, the tumor-associated inflammatory mediator PGE₂ was shown to attract MDSC into ascites. This was dependent on the induced expression of functional CXCR4 and its ligand CXCL12, facilitating migration of MDSC into the

¹Adhikary T, Wortmann A, Finkernagel F, Lieber S, Nist A, Stiewe T, et al. Interferon signaling in ascites-associated macrophages is associated with a favorable clinical outcome in a subgroup of ovarian carcinoma patients. *BMC Genomics* (2016) (submitted).

ascites (58). Direct or indirect blocking of PGE₂ production could effectively inhibit MDSC responsiveness, providing a rationale to target PGE₂ signaling therapeutically (58). Interestingly, tumor-infiltrating MDSC are the predominant producers of IL-10 and also depend on IL-10 to develop their immunosuppressive function *in vivo* further, confirming the fundamental role of IL-10 for the development and maintenance of a permissive TME (138). The molecular mechanisms that regulate the differentiation and function of MDSCs in cancer have been partly identified (137); however, the mechanisms that recruit MDSCs to the tumor tissue and ovarian cancer ascites remain poorly understood.

Another important key component of the innate immune system for recognizing and eliminating cancer cells is NK cells. The most important cytotoxicity receptors that mediate NK cell-dependent immunosurveillance are the CD16 receptor, the NKG2D receptor, and the natural cytotoxicity receptors, including NKP30. Defects in NK cell function such as impaired cytotoxicity/cytokine secretion, aberrant receptor and ligand expression, reduced NK cell number, or NK cell anergy are reported in malignant diseases and involved in immune escape (139). In ovarian cancer ascites, two main pathways inhibiting NKG2D (140) and NKP30 (141, 142) activity were described. First, ovarian cancer cells release the pro-inflammatory cytokine macrophage migration inhibitory factor (MIF), which stimulates tumor cell proliferation, migration, and metastasis and promotes tumor angiogenesis. MIF targets also NKG2D expression by transcriptionally downregulating NKG2D in NK cells to diminish cytotoxicity toward tumor cells (140). Second, NK cell activity in ascites is inhibited due to high levels of soluble B7-H6, one of the ligands for the NKP30 receptor. High expression of soluble B7-H6 was associated with a diminished NKP30 expression on tumor-associated NK cells and impaired NK cell activity (142). In line with this observation, lower B7-H6 expression of patients correlated with a better OS and reduced metastasis and cancer progression (141). Thus, the impaired NK cell functions in the ovarian cancer TME may contribute to immune escape, and the underlying mechanism should be further investigated.

Interleukin-18-primed NK cells release the chemokines CCL3 and CCL4 upon exposure to ovarian cancer cells to attract immature DCs. The NK-DC cross talk results in upregulation of CXCR3 and CCR5 ligands (CXCL9, CXCL10, and CCL5) on DCs, which in turn can recruit CD8⁺ effector T cells to the tumor environment (143). Thus, defective NK cell activation does not only affect NK-dependent killing of target cells but may also impact on the cellular interactions mandatory for the development of an antitumor immune response. A better understanding of the cross talk among innate immune cells in ovarian cancer ascites and the consequences for tumor maintenance and metastasis is one prerequisite for the development of elaborated immunotherapies.

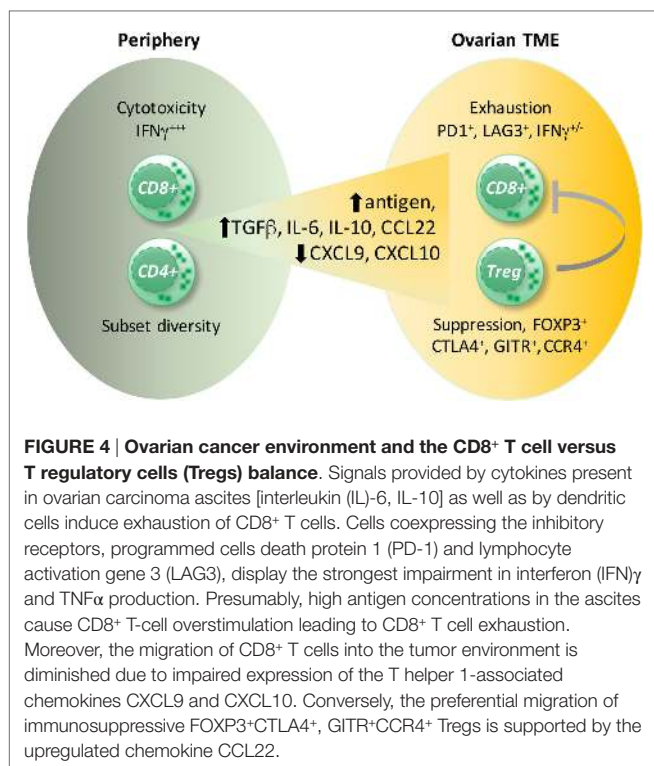
IMPAIRMENT OF THE ANTITUMOR T CELL RESPONSE

More than 10 years ago, it was notified that increased accumulation of intratumoral CD3⁺ T cells [tumor-infiltrating lymphocytes

(TILs)] in ovarian carcinoma patients delayed the recurrence of the disease and was beneficial for survival (144). Other studies confirmed that TIL frequency has a prognostic value and may be important for establishing immune-based therapy regimens (145, 146). The heightened infiltration of TIL was associated with increased levels of the cytokine IFN γ , which is a prognostic factor for longer survival and has been studied in clinical trials for treating ovarian carcinoma (135, 136). Among CD3⁺ T cells, CD4⁺ T helper 1 (Th1) cells and the canonical effector CD8⁺ T cells, also termed cytotoxic T lymphocytes (CTLs), readily produce high amounts of IFN γ upon antigen re-encounter (147, 148). Therefore, it was conceivable that both CD3⁺ T cell subpopulations, Th1 cells and CTLs, contribute to the antitumor response in ovarian carcinoma by maintaining IFN γ production. However, subsequent studies revealed that higher frequencies of intraepithelial CD8⁺ T cells, expressing the α_E integrin subunit CD103, are associated with a better survival prognosis in ovarian cancer, suggesting that CD8⁺ T cells rather than CD4⁺ lymphocytes contribute to the antitumor effects (149–151). Instead, CD4⁺ T cells dampened the beneficial effects of CD8⁺ T cells, as the survival median of subgroups high CD4⁺ versus CD8⁺ T cell ratios was significantly shorter.

T Regulatory Cells

The detrimental effect of CD4⁺ T cells was caused by an immunosuppressive subpopulation of T cells expressing the transcription factor FOXP3, termed Tregs, but not by FOXP3-negative CD4⁺ T cells (149, 152). Tregs are responsible for the maintenance of immune homeostasis by controlling autoimmunity, allergy, and inflammation, as well as responses to tumors. There is a high diversity within Tregs, dependent on their origin (thymus versus periphery), type of immune response they control, and their localization (lymphoid versus non-lymphoid tissue). Tumor-infiltrating Tregs belong to the non-lymphoid subpopulation, which differs from Tregs present in the circulation or lymphoid organs by the production of the immunosuppressive cytokines IL-10 and TGF β as well as the expression of chemokine receptors (e.g., CCR4) and other membrane-associated immune modulators [e.g., cytotoxic T lymphocyte antigen 4 (CTLA4), GITR] (153, 154). Several reports described the presence of Tregs within ovarian cancer tumor-associated lymphocytes (152, 155, 156), and their accumulation correlated inversely with patient survival (157, 158). Tumor-associated Tregs suppressed the proliferation of, as well as IFN γ and IL-2 production by, CD8⁺ T cells specific for the tumor antigen HER2 and thereby counteracted the protective effect of tumor-specific effector T cells (158). The ovarian cancer environment caused migration of CTLA4⁺ FOXP3⁺ GITR⁺ Tregs *via* the chemokine CCL22, secreted by tumor cells and TAMs, and its receptor CCR4, expressed by infiltrating Tregs (155, 158) (**Figure 4**). Accordingly, the application of an anti-CCR4 antibody in an experimental model of ovarian carcinoma blocked Treg migration and enhanced antitumor response including increased IFN γ secretion by CD8⁺ T cells (159). In addition, “non-canonical” CD8⁺FOXP3⁺ cells (160) seem to be involved in ovarian cancer progression. These cells are dependent on TGF β 1 and p38 MAPK signaling (161), but their precise function remains unclear.



Deregulation of Immune Checkpoints

Besides negative effects of Tregs, there are further factors within the ovarian cancer environment that dampen CTL-mediated antitumor responses (Figure 4). These include inhibitory pathways mediated by CTLA4, PD-1, and lymphocyte activation gene 3 (LAG3) protein (162–165). On activation *via* the T cell receptor (TCR) and costimulatory molecule CD28, which provides an essential signal for growth and survival, T cells upregulate CTLA4. CTLA4 is a negative regulator of T cell activity by competing with CD28 for the B7-1 and B7-2 ligands on antigen-presenting cells (APCs), resulting in cell cycle arrest and attenuation of effector function (166). Both, PD-1 and LAG3 are strongly upregulated by CD8⁺ T cells, and their differentiation is skewed toward a dysfunctional pathway, termed functional exhaustion (167). This state was originally described for CD8⁺ T cells arising during chronic infections upon uncontrolled antigen exposure and is characterized by gradual impairment of proliferation and production of effector cytokines IFN γ and TNF α (167). However, the exhausted CD8⁺ T cells maintain some effector function, allowing them to restrict ongoing viral replication while preventing tissue damage (168). This principle might also apply to the ovarian cancer environment in which overwhelming antigen exposure and an inflammatory milieu may cause CD8⁺ T cell exhaustion (163, 164). Nevertheless, the increased numbers of tumor-infiltrating CD8⁺ T cells correlate with a better survival prognosis (144, 149), suggesting that TILs maintain their functionality at least partially as suggested by increased levels of IFN γ in tumor tissue from patients with a favorable clinical outcome (144).

Exhaustion can be reversed by blocking signaling ligands expressed on APCs, tumor cells, or tumor-infiltrating immune

cells (167, 169). Therefore, the main therapeutic focus is currently placed on the development of antibodies blocking interactions of coinhibitory receptor–ligand pairs (e.g., CTLA4:B7, PD-1:PD-L1). These antibodies are termed immune checkpoint inhibitors and have demonstrated considerable benefit in clinical trials for several cancers including ovarian carcinoma (165, 169, 170). In a mouse model of ovarian carcinoma, neutralization of CTLA4 signals caused regression of growing tumors, however, only in an early tumor stage. This was accompanied by activation of CD8⁺ T cells for IFN γ production *in vitro* (171).

Anti-CTLA4 antibodies (ipilimumab) have been administered to ovarian carcinoma patients after vaccination with irradiated, autologous tumor cells engineered to secrete GM-CSF. This treatment resulted in antitumor effects only in a minority of patients, which is in sharp contrast to melanoma (162). The histologic analysis revealed a linear relationship between tumor necrosis and an increased ratio of intratumoral CD8⁺ T cells to FOXP3⁺ Tregs (162). This finding suggests that anti-CTLA4 antibodies could influence not only effector CD8⁺ T cells but also Tregs, which constitutively express CTLA4. Indeed, anti-CTLA4 monoclonal antibody therapy is associated with depletion of intratumoral FOXP3⁺CD4⁺ Tregs and probably with elimination of immune checkpoint blockade of effector CTLs (172). However, in animal studies, the antitumor activity of anti-CTLA4 monoclonal antibodies was attributed to the depletion of Tregs rather than to the direct activation of effector CTLs (173–175). Taken together, these results suggest that the interference with the CTLA4 pathway, leading to depletion of Tregs and probably to activation of effector CD8⁺ T cells, is involved in the control of ovarian carcinoma to some extent. This points to the existence of additional mechanisms suppressing CD8⁺ T cell responses, such as the upregulation of PD-1 and LAG3 expression on TIL (163).

Besides CTLA4, PD-1- and LAG3-expressing CD8⁺ T cells specific for tumor-derived antigen NY-EASO-1 were also detectable within the ovarian carcinoma infiltrates. These molecules were upregulated on CD8⁺ T cells by IL-6 and IL-10, present in ovarian carcinoma ascites, as well as by tumor-infiltrating DCs. The strongest functional impairment in the capability to produce IFN γ and TNF α was detectable within the population of CD8⁺ T cells coexpressing both LAG3 and PD-1, an effect reversible by the simultaneous blockade of these receptors (163). The synergistic suppression of CD8⁺ T cell activity by LAG3 and PD-1 was further evaluated in a mouse model of ovarian carcinoma and revealed that physical interactions between these molecules contribute to this cooperative effect (164). The suppressive effect of ovarian cancer ascites also involves dampening of the TCR-induced activation of transcription factors NF κ B and NFAT, which is crucial for T cell activation, presumably resulting from an inhibition of signal transduction upstream of PLC γ (176). Consistent with the observations that both Tregs and inhibitory molecules contribute to the immune suppression in ovarian carcinoma, high levels of miR-424(322), which targets the PD-1:PD-L1 and CTLA4:B7 pathways, displayed a synergistic antitumor effect with chemotherapy by activating CD8⁺ T cells and reducing Treg infiltration in the mouse model (177).

The blockade of PD-1 by anti-PD-1 antibody (nivolumab) in patients with platinum-resistant ovarian cancer showed encouraging results (165). In addition to suppressing the activity of infiltrating CD8⁺ T cells, the migration of these cells into the TME is prevented by epigenetic suppression of Th1-associated cytokines CXCL9 and CXCL10 (178). Thus, epigenetic regulators of Th1-chemokine production caused increased migration of CD8⁺ T cells into the tumor environment associated with tumor reduction and improved the antitumor efficacy of immune checkpoint blockade in response to anti-PD-L1 antibodies in a mouse model (178). These data indicate that regulation of both the influx and function of CD8⁺ T cells in ovarian carcinoma need to be taken into account for the development of more efficacious therapies. Taken together, the suppression of the antitumor activity of CD8⁺ T cells in the ovarian cancer environment seems to be evoked by multiple mechanisms, which include (i) the inhibition of CD8⁺ T cell migration, (ii) the induction of inhibitory molecules on CD8⁺ T cells, and (iii) modulated CD8⁺ T cell activity by increased presence of Tregs.

Role of Glucose Metabolism

There is accumulating evidence in experimental models for an influence of the TME on the glycolytic metabolism in CD8⁺ T cells, which supports proliferation and effector function (179). The competition for nutrients between tumor cells and T cells has a crucial impact on cancer progression. Thus, decreased availability of glucose in the TME suppressed IFN γ production and antitumor function of CD8⁺ T cells along with reduced glycolysis (180). Likewise, restriction of glycolysis led to insufficient production of phosphoenolpyruvate and defects in Ca²⁺-NFAT signaling, thereby suppressed antitumor CD8⁺ T cell function (181). Moreover, elevated extracellular potassium concentrations in the tumor environment dampened CD8⁺ T cell antitumor function *via* impairment of signaling pathways linked to metabolism (182). Therefore, elucidating the influence of the ovarian cancer environment on CD8⁺ T cell metabolism might extend our understanding on immunosuppression and give new insights for therapy strategies.

TUMOR CELL ADHESION AND INVASION

Role of Mesothelial Cells and the ECM

The metastatic spread of ovarian cancer cells depends on the invasion into the mesothelium, a mostly squamous epithelium that covers all organs within the peritoneal cavity. The mesothelium is formed by a single layer of mesothelial cells with an underlying basement membrane composed of collagen, fibronectin, and laminin. An early event of metastasis involves the attachment of ovarian cancer cells present in the ascites to abdominal organs. It has been shown that cancer cells attach less firmly to mesothelial cells than to the basement membrane (183) and that metastatic sites are typically devoid of mesothelial cells (183, 184). It is therefore widely believed that mesothelial cells act as a barrier for cancer cells and represent the first line of defense against ovarian cancer and against other abdominally metastasizing cancers. It is

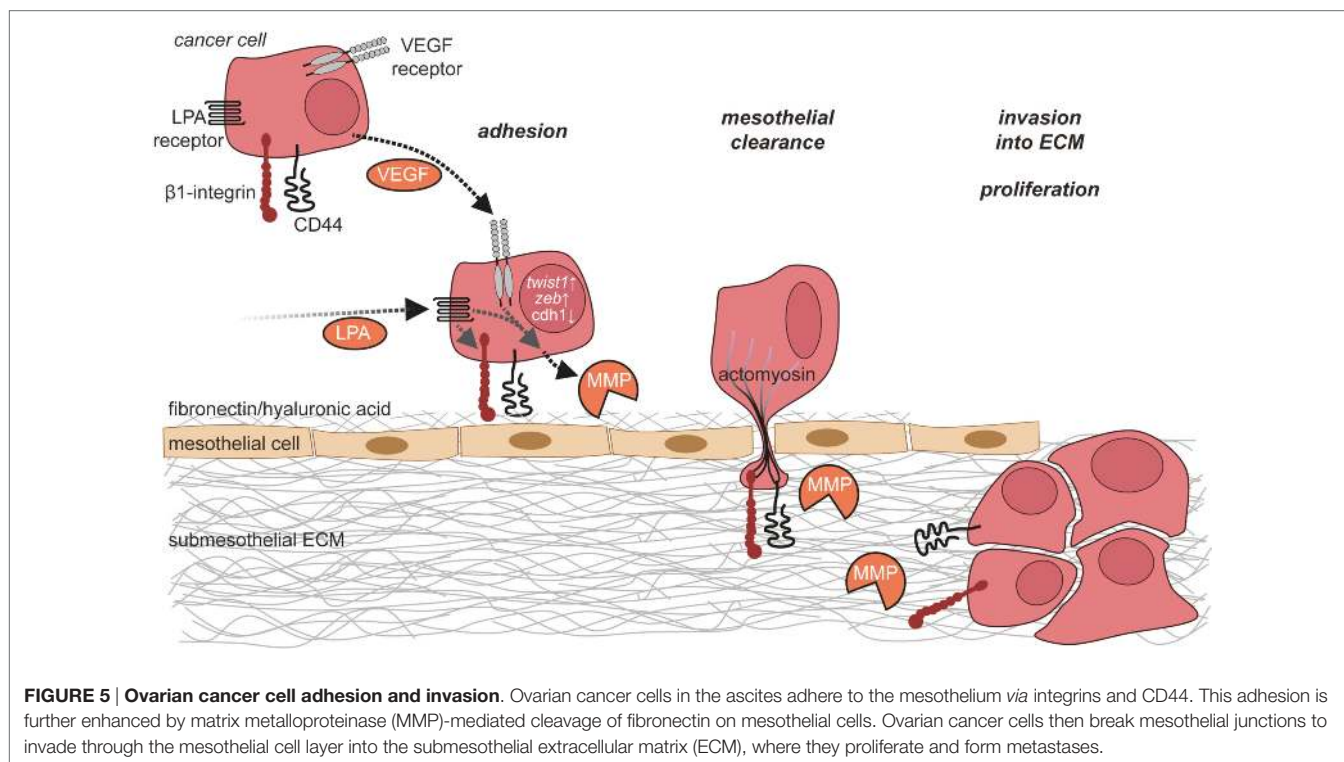
well conceivable that ovarian cancer cells attach to ECM at the site of pre-existing lesions of the mesothelial cell layer, which might occur spontaneously at low frequency or might be fostered by the inflammatory environment of the ascites. However, there is no experimental evidence for this scenario so far.

Alternatively, ovarian cancer cells can attach directly to mesothelial cells, mainly through β 1 integrin (185–187) and CD44 (186, 188, 189). This attachment to mesothelial cells is favored by a genetic program of ovarian cancer cells with upregulation of mesenchymal genes, including *TWIST1* and *ZEB1* (190), as well as downregulation of epithelial genes like *CDH1* encoding E-Cadherin (191). The downregulation of E-Cadherin induces upregulation of α 5 β 1 integrin, which mediates selective binding to fibronectin (192), providing a mechanistic basis for the enhanced ability to attach to mesothelial cells (191).

During the metastatic process, ovarian cancer cells and mesothelial cells mutually influence their behavior in multiple ways. Upon contact with mesothelial cells, ovarian cancer cells upregulate expression of the MMP-2 to cleave fibronectin and vitronectin, with the resulting fragments of fibronectin and vitronectin providing enhanced attachment to mesothelial cells through the integrins α 5 β 1 and α v β 3 (193). The binding of α 5 β 1 integrin on cancer cells to fibronectin on mesothelial cells promotes the activation of myosin in the ovarian cancer cells (194). As a result, the ovarian cancer cells exert myosin-dependent mechanical forces on the mesothelial cell layer to promote the disruption of mesothelial intercellular junctions and retraction of mesothelial cells leading to gaps within the mesothelial cell layer that can be utilized by ovarian cancer cells to invade into the submesothelial matrix (184, 194). This process, by which ovarian cancer cells impact on the integrity of the mesothelial cell layer, has been referred to as “mesothelial clearance” (194). As an alternative to invading through gaps in the mesothelial monolayer by inducing mesothelial retraction, ovarian cancer cells might gain access to the submesothelial tissue by actively killing mesothelial cells. Such a mechanism involving the expression of FAS-L on cancer cells and FAS on mesothelial cells has been shown for colon cancer cells *in vitro* (195).

In disagreement with the concept that mesothelial cells shield the underlying ECM from invasion by ovarian cancer cells, prometastatic functions of mesothelial cells have also been described. Ovarian cancer cells secrete TGF β 1 to activate a TGF β 1/RAC1/SMAD-mediated signaling pathway in mesothelial cells that results in secretion of fibronectin by mesothelial cells and increased ovarian cancer cell adhesion, invasion, and proliferation (196, 197).

After passing through the mesothelial cell layer, ovarian cancer cells adhere to the submesothelial basement membrane, locally disrupt the basement membrane, and invade into the underlying connective tissue (184) (**Figure 5**). This involves the activation of MET in ovarian cancer cells, which is triggered by binding of α 5 β 1 integrin on cancer cells to fibronectin (198). Several lines of evidence strongly suggest that TAMs contribute to the adhesion and invasion of ovarian cancer cells by promoting the remodeling of ECM (199). A comparison of the transcriptomes of ovarian cancer TAMs to that of peritoneal macrophages from non-cancer patients revealed ECM remodeling genes as the main difference

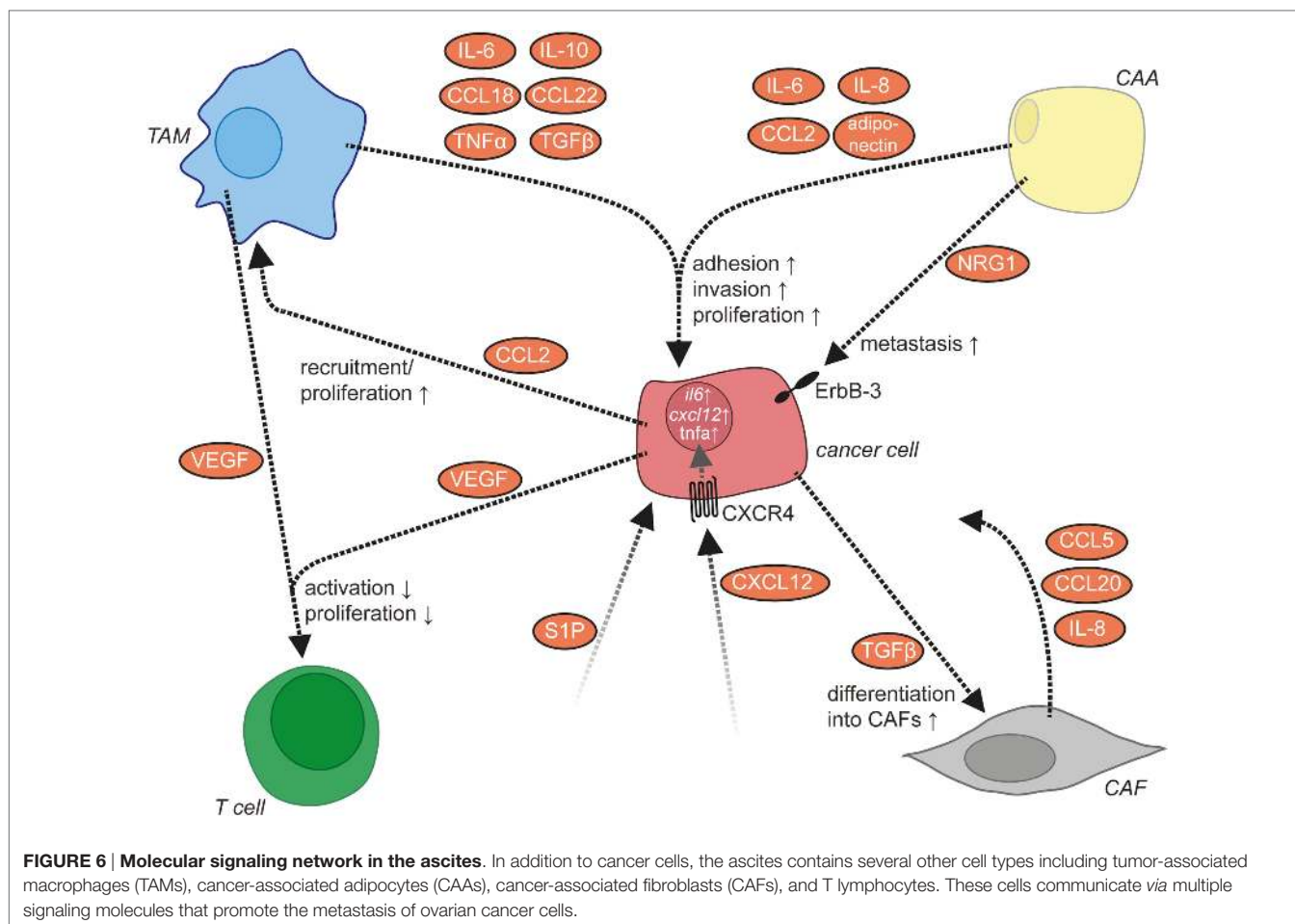


between these cell populations (109). The clinical significance of this observation is supported by a strong correlation of poor survival with the expression of these genes in the PRECOG data set (109, 200). The molecular basis of the cross talk of ovarian cancer cells with cells of their microenvironment (**Figure 6**), in particular with immune cells such as TAMs and T cells in the ascites, and its impact on ovarian cancer cell adhesion and invasion are just beginning to be understood. In the following, we will summarize data on metastasis-promoting factors in the ascites and the molecular signaling pathways induced by them.

Metastasis-Promoting Factors in Ascites

A large body of evidence indicates that LPA, which is frequently present in the ascites at high levels, plays a major role in ovarian cancer metastasis (see The Lipid Signaling Network of Ovarian Cancer Ascites). LPA acts *via* activation of LPA receptors on ovarian cancer cells, the expression of which is upregulated under hypoxic conditions that are frequently encountered in the TME (77). The effects of LPA on adhesion, migration, and invasion of ovarian cancer cells are mediated by multiple intracellular signaling pathways downstream of LPA receptors as described above. Mechanistically, LPA increases the expression of $\beta 1$ integrin on ovarian cancer cells with enhanced adhesion to collagen as well as of MMPs and promotes the degradation of and invasion into the ECM (201). Along the same lines, LPA also induces the down-regulation of tissue inhibitor of metalloproteinases expression (89). Moreover, LPA has been shown to suppress senescence of ovarian cancer cells through LPAR₂ in the presence of wild-type p53 (202) and to induce the expression of VEGF (203).

Vascular endothelial growth factor plays a central role in neoangiogenesis, progression, and metastasis of numerous types of cancer. In ovarian cancer, VEGF is found in both the primary tumor and the ascites at high levels, and VEGF expression correlates with poor survival (204–206). Accordingly, bevacizumab, a monoclonal antibody targeting VEGF, has been approved for the treatment of advanced and relapsing ovarian cancer and prolongs progression-free survival (207). Ovarian cancer cells and TAMs constitute major sources of VEGF (52, 208) (**Figure 1**), but other host cells might also contribute to VEGF production (209–211). The expression of VEGF is induced by hypoxia (212, 213) and multiple other signaling molecules (214). VEGF supports ovarian cancer metastasis by acting on both ovarian cancer cells in an auto-crine or paracrine manner and on other cell types including peritoneal ECs and immune cells (see below). The invasion-promoting effect of VEGF might be mediated, at least in part, by an upregulation of MMPS in ovarian cancer cells (215, 216). In addition to direct effects on cancer cells, VEGF promotes a permissive environment for ovarian cancer cell metastasis by acting on peritoneal ECs to promote angiogenesis and vascular permeability, leading to the formation of ascites (47). At sites of metastatic lesions, VEGF-induced angiogenesis is likely to support the growth of larger metastatic nodules. Moreover, VEGF might further contribute to ovarian cancer metastasis by affecting immune cell functions as there is evidence suggesting that VEGF suppresses T cell activation and proliferation (211) and that VEGF levels inversely correlate with CD3+CD56+ NK-like T cell numbers (217).



Role of TAMs and Adipocytes in Invasion

Multiple aspects of ovarian cancer biology, including cancer cell adhesion and invasion, are under the control of a highly complex communication network between different cell types within the ovarian cancer TME. For some cytokines, ovarian cancer cells or immune cells have been identified as sites of production (Figure 1), while for other cytokines, the cell types releasing them remain unknown. TAMs represent a central player in the ovarian cancer cytokine network to support ovarian cancer cell adhesion and invasion (8). They secrete multiple metastasis-promoting cytokines including IL-6, IL-10, CCL18, CCL22, TNF α , and TGF β (218). The number of TAMs is positively regulated by CCL2/MCP-1, which is released from ovarian cancer cells into the ascites (219). IL-6 released by TAMs promotes the adhesion, invasion, and proliferation of ovarian cancer cells (51, 220), which might be mediated in part by an increase of MMP expression by ovarian cancer cells (220). TNF α produced by TAMs also promotes invasion of ovarian cancer cells, the exact mechanism of which awaits further clarification (221, 222). Through the release of CCL22, TAMs attract Tregs to ovarian cancer cell clusters, which in turn suppress cytotoxic T cells (158).

CXCL12/SDF-1 released by an unknown cellular source into the ascites acts on cancer cells *via* CXCR4 (223). The expression level of CXCR4 is elevated by binding of ovarian cancer cells to

ECM *via* β 1 integrin (223). The activation of CXCR4 results in the upregulation of the prometastatic cytokines IL-6, CXCL12, and TNF α in ovarian cancer cells (8) and increases metastasis (224). IL-6 secretion by ovarian cancer cells is also increased by platinum-based chemotherapy and promotes the polarization of TAMs toward a protumorigenic and chemoresistant phenotype (225). Another mediator present in the ascites is the lipid sphingosine-1-phosphate (SIP), which stimulates invasion of ovarian cancer cells, probably through several different signaling pathways downstream of SIP receptors (226–229).

In addition to ovarian cancer and immune cells, adipocytes of the omentum are actively involved in cytokine signaling. They secrete IL-6, IL-8/CXCL8, CCL2, and adiponectin, which act on cancer cells *via* their respective receptors to support ovarian cancer cell metastasis (230). Adipocytes thereby establish a specific microenvironment with strong growth-promoting effects on disseminated ovarian cancer cells. Examples in this context are (i) the promotion of tumor cell homing and invasion into the omentum by adipocyte-derived IL-8 (230) in cooperation with CAFs, (ii) the direct transfer of fatty acids from adipocytes to adjacent tumor cells *via* fatty acid-binding protein 4 for energy production (230), and (iii) the activation of the ERBB3 receptor on metastasizing cancer cells by the mitogenic ligand neuregulin 1 (5).

STAT AND NF κ B SIGNALING NETWORKS: OPPOSING CELL TYPE-SPECIFIC FUNCTIONS

Similarity of the TME with the Resolution Phase of Wound Healing

Besides tumor cells, large populations of Tregs, TAMs, and possibly other host cells provide high levels of immunosuppressive mediators, thereby strongly limiting the fraction of cells competent to produce the crucial pro-inflammatory cytokines, such as IFN γ and IL-12. The influx of potentially cytotoxic T cells, monocytes, and NK cells cannot counteract this efficient tumor protection scheme: the dominant TME at advanced stages of the disease converts their phenotypes toward tumor promotion and immune suppression despite the presence of pro-inflammatory molecules, including cytokines, lipids, and nitric oxide as well as cellular debris and discharged intracellular molecules acting as ligands for TLRs (231, 232). This cocktail exerts strong suppressive functions on all types of immune cells, but at the same time promotes the protumorigenic properties of cancer cells, enabled by cell type-specific signal transduction mechanisms. It has been known for a long time that tumors resemble wounds that do not heal (233, 234). The final stage of wound healing, termed resolution phase, provides effective termination of inflammation. Therefore, it is tantalizing to speculate that the TME of advanced tumors lock immune cell types in a state resembling a never-ending resolution phase, while deregulated pro-inflammatory, protumorigenic signaling persists in the tumor cells. Consistent with this idea is the observation that ovarian cancer TAMs differ from normal peritoneal macrophages mainly by the upregulation of ECM remodeling genes (109), which is also the hallmark of resolution phase (235). Moreover, type I, III, and V collagens are major components of the TME, similar to a healing wound (233). These collagens are also among the matrix proteins upregulated in ovarian cancer TAMs, and their expression shows a striking association with poor survival (109).

Cell Type-Specific Effects by Mediators of the TME via Differential Signal Integration

A vast number of studies attribute the activation states of both innate and adaptive immune cells to differential activation of JAK/STAT and NF κ B signaling. The JAK/STAT network is primarily regulated by cytokines that have either pro- or anti-inflammatory properties (236) and convey intercellular communication. NF κ B proteins are effectors of receptors that detect either host-elicited or pathogen-derived signals and trigger mostly pro-inflammatory responses (237). In cancer cells, the very same networks exert mostly protumorigenic functions due to differential and constitutive activation of effector molecules and regulation of target genes. Thus, in cancer cells, STAT and NF κ B have been implicated in the stimulation of proliferation, suppression of apoptosis, angiogenesis, promotion of invasion, and other protumorigenic processes (238). Due to the simultaneous presence of a plethora of both pro- and anti-inflammatory mediators, the ovarian cancer TME represents an excellent

model to study how differential signal integration mediates cell type-specific biological effects (12, 14–16, 39, 52, 239). The following paragraphs describe the molecular mechanisms that, in a simplified view, enable unhindered tumor cell growth, driven by constitutive NF κ B and STAT3 signaling, and simultaneously preclude immune cell activation by preventing pro-inflammatory NF κ B via STAT3-driven mechanisms (Figure 7).

The IL-12 Paradigm

Regulation of IL-12 expression is a paradigm for the cross talk of NF κ B and STAT signaling (Figure 8). In humans, macrophages exert their tumoricidal activity largely by activating NK cells via the secretion of IL-12 and IL-18 (240). Likewise, macrophages and other APCs use IL-12 to promote the differentiation of naïve T cells to cytotoxic Th1 cells. Occupation of the IL-12 receptor on T and NK cells induces STAT4 phosphorylation, leading to expression of IFN γ (241), a crucial activator of macrophages and class II major histocompatibility complex gene expression and thus an essential player in tumor surveillance (242, 243). IL-12 exerts its pivotal role in antitumor immune surveillance as a heterodimer of p35 and p40, encoded by the *IL12A* and *IL12B* genes, respectively. Expression of *IL12B* is under stringent transcriptional control and represents the rate-limiting step for IL-12 production (244).

Transcription of *IL12B* in macrophages requires the cooperative action of two transcription factors activated by different signaling pathways, i.e., the NF κ B subunit REL and STAT1. While NF κ B activation is triggered by pro-inflammatory cytokines and TLR ligands, STAT1-containing dimers are induced by interferons (245). STAT1 acts to orchestrate remodeling of promoter-proximal nucleosomes as a prerequisite for activation of *Il12b* transcription by NF κ B proteins (246). Thus, the sequential action of STAT1 and REL in macrophages is crucial for the establishment of a cytotoxic immune response that depends on IL-12 production by macrophages. This provides for a highly

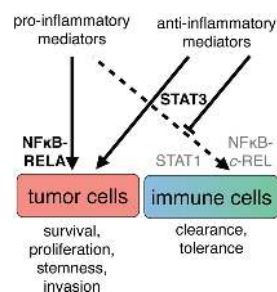


FIGURE 7 | A simplified view of the cell type-specific impact of cytokine signaling in the ovarian cancer tumor microenvironment. The simultaneous presence of pro- and anti-inflammatory mediators suggests that biological outcome depends on both prevalence and interpretation of signals. Left: tumor cells respond with persistent activation of the transcription factors RELA (p65) and STAT3, leading to promotion of growth, progression, and poor clinical outcome. Right: cells of the immune system do not receive appropriate combinations of stimuli for pro-inflammatory activation and therefore do not activate REL and STAT1. Integration of the signaling molecules present in ascites leads to an anti-inflammatory state, at least in part through activation of STAT3.

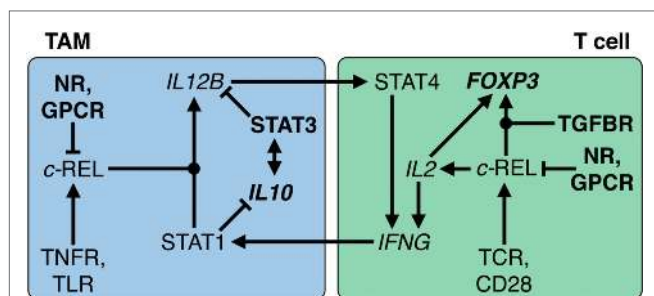


FIGURE 8 | Transcriptional circuitry governing the immunosuppressive state of macrophages and T cells in the ovarian cancer tumor microenvironment (TME). In tumor-associated macrophages (TAMs), interleukin (IL)-10 activates STAT3, which in turn stimulates *IL10* transcription. Both cooperate to repress *IL12B* transcription and REL nuclear translocation by multiple mechanisms, reinforced by GPCR ligands and nuclear receptor (NR) agonists such as glucocorticoids and polyunsaturated fatty acids. In T cells, REL plays an ambivalent role by fostering both *IL2* and *FOXP3* transcription. The latter depends on the presence of TGF β and results in conversion into a T regulatory cell phenotype. In the ovarian TME or ascites, TNFR, toll-like receptor (TLR), T cell receptor (TCR), and CD28-activating stimuli are overruled; without long-term pro-inflammatory stimulation, upregulation of *IFNG* transcription is prevented. As a consequence, pro-inflammatory signals fail to activate STAT1, induction of *IL12B*, and subsequent sustained production of interferony. Dot-shaped nodes denote a requirement for both signals (logical AND).

efficient control mechanism that physiologically safeguards against detrimental inflammatory reactions in the absence of either activated STAT1 or REL. Tumors exploit this stringent regulatory network through signaling mediators that prevent the simultaneous activation of both pathways. IL-12 production is efficiently suppressed by numerous molecules found in ovarian cancer ascites, including IL-10, PS, fatty acid derivatives, and G-protein receptor ligands (247–259). The underlying mechanisms include both global and gene-specific suppression of the NF κ B response in macrophages.

Functions of REL in T Cells

Apart from its role in APCs, REL is required for the expression of *IL2* in T and NK cells and thereby necessary for their proliferation, survival, and activation (Figure 8). This includes the production of IFN γ , thus establishing a positive feedback loop between both cell types. Importantly, transcription of both *IL12B* and *IL2* is fully dependent on REL; its function cannot be substituted by other NF κ B proteins (260–262). However, dependent on the microenvironment, activation of REL in T cells can also dampen the immune response, e.g., in the presence of TGF β , as is the case in ovarian cancer ascites. Thus, a number of mouse studies showed that the TGF β -activated SMAD3 transcription factor cooperates with REL to induce expression of *FOXP3* and that IL-2 contributes to *FOXP3* induction by activating STAT5 (263, 264). As a consequence, *FOXP3* drives the differentiation of naïve CD4-positive T cells to Treg, thereby preventing IFN γ production. These mechanisms are physiologically important to enable states of immune privilege or tolerance, which ensure that initiation of inflammation is efficiently

prevented in reproductive organs, brain, and eyes. This regulatory network orchestrated by immunosuppressive macrophages and Tregs (265) is the blueprint for the immunosuppressive mechanisms invoked in the ovarian cancer TME.

Persistent STAT and NF κ B Activation in Tumor Cells

In contrast to immune cells, NF κ B is constitutively active in >50% of ovarian carcinomas and is correlated with poor survival (266–268). In fact, inflammatory signaling involving NF κ B and STATs has been implicated in the genesis of many tumor entities. Activation of NF κ B in cancer cells is most frequently caused by mediators of TME, since mutations of NF κ B factors are confined to lymphoid malignancies (269). In ovarian cancer ascites, these mediators include IL-6, TNF α , as well as TLR and EGF receptor ligands (8, 12, 15, 52, 270). Proteins encoded by NF κ B target genes include anti-apoptotic, growth-promoting, proinvasive, proangiogenic and immunosuppressive proteins, exemplified by BCLX-L, IL-6, IL-8, VEGF, and PD-1L, which explains its multifaceted role in ovarian cancer progression and therapy resistance (268, 271). Platinum-based chemotherapy also induces NF κ B in ovarian carcinoma (272). Strikingly, RELA was found among the upregulated proteins in carboplatin-resistant tumors, as well as STAT5B (253). STAT5 and STAT3 are frequently hyperactive in human cancers, driving apoptotic blockade, invasion, stemness, and pro-inflammatory signaling, at least in part through persistent NF κ B activation (273–275).

Drugging NF κ B and STAT Networks

NF κ B signaling impacts both protumorigenic and antitumorigenic mechanisms in different cell types; while enabling unhindered growth of tumor cells, it is also crucial for innate and adaptive immune responses as exemplified by its requirement for induction of *IL12B*. Accordingly, cautionary advice has been worded regarding broad pharmacological intervention (252, 256). Non-selective targeting, for example, inhibition of proteasome activity or bromodomain-mediated acetyl-lysine binding, has been tested in clinical studies, but it remains unclear whether these compounds have long-lasting benefits. Drugs that target factor(s) with protumorigenic roles in both tumor and stromal cells may be more promising targets. STAT3 was proposed as a common factor mediating negative effects (274, 275). However, caveats with the development of STAT3 antagonists are its high homology with STAT1 and its roles in barrier function and host defense, and considerable efforts dedicated to the development of specific and bioavailable STAT antagonists have met with little success (258). To circumvent the multifaceted roles of signaling networks, cell type-specific signaling will have to be identified and targeted to avoid the pitfalls of previous drug development strategies. For example, counteracting IL-10 (and other, currently unknown) TME-mediated immunosuppressive signaling events and thereby allowing for STAT1 activation, c-REL translocation, and IL-12 production might be a promising approach.

AUTHOR CONTRIBUTIONS

All authors contributed significantly to this review article with a focus on specific topics. TW: cancer cell adhesion and invasion; ES: EVs and NK cells; MH: T cells; TA: NFκB and STAT signaling pathways; UW: clinical aspects; SR: intercellular signaling; RM: all other topics, conceptual design, and coordination. All authors read and approved the manuscript.

FUNDING

Work in the authors' laboratories is funded by the Deutsche Forschungsgemeinschaft (grants WO 1901/2-1 and GRK 2213 to TW; PO1408/7-1 to ES; AD474/1-1 to TA; RE 1590/1-1 to SR; and Mu601/17-1 to RM), by the Wilhelm-Sander-Stiftung (to SR/UW), and by Universitätsklinikum Giessen und Marburg (2015 to TA/UW; 2016 to MH/SR; 2016 to TW/UW).

REFERENCES

- Colombo N, Peiretti M, Parma G, Lapresa M, Mancari R, Carinelli S, et al. Newly diagnosed and relapsed epithelial ovarian carcinoma: ESMO Clinical Practice Guidelines for diagnosis, treatment and follow-up. *Ann Oncol* (2010) 21(Suppl 5):v23–30. doi:10.1093/annonc/mdq244
- The Cancer Genome Atlas Research Network. Integrated genomic analyses of ovarian carcinoma. *Nature* (2011) 474(7353):609–15. doi:10.1038/nature10166
- Perets R, Wyant GA, Muto KW, Bijron JG, Poole BB, Chin KT, et al. Transformation of the fallopian tube secretory epithelium leads to high-grade serous ovarian cancer in Brca;Tp53;Pten models. *Cancer Cell* (2013) 24(6):751–65. doi:10.1016/j.ccr.2013.10.013
- McDaniel AS, Stall JN, Hovelson DH, Cani AK, Liu CJ, Tomlins SA, et al. Next-generation sequencing of tubal intraepithelial carcinomas. *JAMA Oncol* (2015) 1(8):1128–32. doi:10.1001/jamaoncol.2015.1618
- Pradeep S, Kim SW, Wu SY, Nishimura M, Chaluvally-Raghavan P, Miyake T, et al. Hematogenous metastasis of ovarian cancer: rethinking mode of spread. *Cancer Cell* (2014) 26(1):77–91. doi:10.1016/j.ccr.2014.05.002
- Lengyel E. Ovarian cancer development and metastasis. *Am J Pathol* (2010) 177(3):1053–64. doi:10.2353/ajpath.2010.100105
- Steinkamp MP, Winner KK, Davies S, Muller C, Zhang Y, Hoffman RM, et al. Ovarian tumor attachment, invasion, and vascularization reflect unique microenvironments in the peritoneum: insights from xenograft and mathematical models. *Front Oncol* (2013) 3:97. doi:10.3389/fonc.2013.00097
- Kulbe H, Chakravarty P, Leinster DA, Charles KA, Kwong J, Thompson RG, et al. A dynamic inflammatory cytokine network in the human ovarian cancer microenvironment. *Cancer Res* (2012) 72(1):66–75. doi:10.1158/0008-5472.CAN-11-2178
- Peng P, Yan Y, Keng S. Exosomes in the ascites of ovarian cancer patients: origin and effects on anti-tumor immunity. *Oncol Rep* (2011) 25(3):749–62. doi:10.3892/or.2010.1119
- Latifi A, Luwor RB, Bilandzic M, Nazaretian S, Stenvers K, Pyman J, et al. Isolation and characterization of tumor cells from the ascites of ovarian cancer patients: molecular phenotype of chemoresistant ovarian tumors. *PLoS One* (2012) 7(10):e46858. doi:10.1371/journal.pone.0046858
- Preston CC, Goode EL, Hartmann LC, Kalli KR, Knutson KL. Immunity and immune suppression in human ovarian cancer. *Immunotherapy* (2011) 3(4):539–56. doi:10.2217/imt.11.20
- Reinartz S, Schumann T, Finkernagel F, Wortmann A, Jansen JM, Meissner W, et al. Mixed-polarization phenotype of ascites-associated macrophages in human ovarian carcinoma: correlation of CD163 expression, cytokine levels and early relapse. *Int J Cancer* (2014) 134(1):32–42. doi:10.1002/ijc.28335
- Takaishi K, Komohara Y, Tashiro H, Ohtake H, Nakagawa T, Katabuchi H, et al. Involvement of M2-polarized macrophages in the ascites from advanced epithelial ovarian carcinoma in tumor progression via Stat3 activation. *Cancer Sci* (2010) 101(10):2128–36. doi:10.1111/j.1349-7006.2010.01652.x
- Vaughan S, Coward JI, Bast RC Jr, Berchuck A, Berek JS, Brenton JD, et al. Rethinking ovarian cancer: recommendations for improving outcomes. *Nat Rev Cancer* (2011) 11(10):719–25. doi:10.1038/nrc3144
- Ahmed N, Stenvers KL. Getting to know ovarian cancer ascites: opportunities for targeted therapy-based translational research. *Front Oncol* (2013) 3:256. doi:10.3389/fonc.2013.00256
- Kipps E, Tan DS, Kaye SB. Meeting the challenge of ascites in ovarian cancer: new avenues for therapy and research. *Nat Rev Cancer* (2013) 13(4):273–82. doi:10.1038/nrc3432
- Lloyd KL, Cree IA, Savage RS. Prediction of resistance to chemotherapy in ovarian cancer: a systematic review. *BMC Cancer* (2015) 15:117. doi:10.1186/s12885-015-1101-8
- Foster R, Buckanovich RJ, Rueda BR. Ovarian cancer stem cells: working towards the root of stemness. *Cancer Lett* (2013) 338(1):147–57. doi:10.1016/j.canlet.2012.10.023
- Kwon MJ, Shin YK. Regulation of ovarian cancer stem cells or tumor-initiating cells. *Int J Mol Sci* (2013) 14(4):6624–48. doi:10.3390/ijms14046624
- Ffrench B, Gasch C, O'Leary JJ, Gallagher MF. Developing ovarian cancer stem cell models: laying the pipeline from discovery to clinical intervention. *Mol Cancer* (2014) 13:262. doi:10.1186/1476-4598-13-262
- Zhang S, Balch C, Chan MW, Lai HC, Matei D, Schilder JM, et al. Identification and characterization of ovarian cancer-initiating cells from primary human tumors. *Cancer Res* (2008) 68(11):4311–20. doi:10.1158/0008-5472.CAN-08-0364
- Di J, Yigit R, Figdor CG, Duiveman-de Boer T, Massuger L, Torensma R. Expression compilation of several putative cancer stem cell markers by primary ovarian carcinoma. *J Cancer Ther* (2010) 1:165–73. doi:10.4236/jct.2010.14026
- Meng E, Long B, Sullivan P, McClellan S, Finan MA, Reed E, et al. CD44+/CD24- ovarian cancer cells demonstrate cancer stem cell properties and correlate to survival. *Clin Exp Metastasis* (2012) 29(8):939–48. doi:10.1007/s10585-012-9482-4
- Kryczek I, Liu S, Roh M, Vatan L, Szeliga W, Wei S, et al. Expression of aldehyde dehydrogenase and CD133 defines ovarian cancer stem cells. *Int J Cancer* (2012) 130(1):29–39. doi:10.1002/ijc.25967
- Jaggupilli A, Elkord E. Significance of CD44 and CD24 as cancer stem cell markers: an enduring ambiguity. *Clin Dev Immunol* (2012) 2012:708036. doi:10.1155/2012/708036
- Zeimet AG, Reimer D, Sopper S, Boesch M, Martowicz A, Roessler J, et al. Ovarian cancer stem cells. *Neoplasma* (2012) 59(6):747–55. doi:10.4149/neo_2012_094
- Martins FC, Santiago I, Trinh A, Xian J, Guo A, Sayal K, et al. Combined image and genomic analysis of high-grade serous ovarian cancer reveals PTEN loss as a common driver event and prognostic classifier. *Genome Biol* (2014) 15(12):526. doi:10.1186/s13059-014-0526-8
- Konecny GE, Wang C, Hamidi H, Winterhoff B, Kalli KR, Dering J, et al. Prognostic and therapeutic relevance of molecular subtypes in high-grade serous ovarian cancer. *J Natl Cancer Inst* (2014) 106(10). doi:10.1093/jnci/dju249
- Patch AM, Christie EL, Etemadmoghadam D, Garsed DW, George J, Fereday S, et al. Whole-genome characterization of chemoresistant ovarian cancer. *Nature* (2015) 521(7553):489–94. doi:10.1038/nature14410
- Glinksy GV, Berezovska O, Glinkii AB. Microarray analysis identifies a death-from-cancer signature predicting therapy failure in patients with multiple types of cancer. *J Clin Invest* (2005) 115(6):1503–21. doi:10.1172/JCI23412
- Wang W, Kryczek I, Dostal L, Lin H, Tan L, Zhao L, et al. Effector T cells abrogate stroma-mediated chemoresistance in ovarian cancer. *Cell* (2016) 165(5):1092–105. doi:10.1016/j.cell.2016.04.009
- Au Yeung CL, Co NN, Tsuruga T, Yeung TL, Kwan SY, Leung CS, et al. Exosomal transfer of stroma-derived miR21 confers paclitaxel resistance in

- ovarian cancer cells through targeting APAF1. *Nat Commun* (2016) 7:11150. doi:10.1038/ncomms11150
33. Pogge von Strandmann E, Müller R. Shipping drug resistance: extracellular vesicles in ovarian cancer. *Trends Mol Med* (2016) 22(9):741–3. doi:10.1016/j.molmed.2016.07.006
 34. Liao J, Qian F, Tchabo N, Mhawech-Fauceglia P, Beck A, Qian Z, et al. Ovarian cancer spheroid cells with stem cell-like properties contribute to tumor generation, metastasis and chemotherapy resistance through hypoxia-resistant metabolism. *PLoS One* (2014) 9(1):e84941. doi:10.1371/journal.pone.0084941
 35. Negus RP, Stamp GW, Hadley J, Balkwill FR. Quantitative assessment of the leukocyte infiltrate in ovarian cancer and its relationship to the expression of C-C chemokines. *Am J Pathol* (1997) 150(5):1723–34.
 36. Leinster DA, Kulbe H, Everitt G, Thompson R, Perretti M, Gavins FN, et al. The peritoneal tumour microenvironment of high-grade serous ovarian cancer. *J Pathol* (2012) 227(2):136–45. doi:10.1002/path.4002
 37. Thibault B, Castells M, Delord JP, Couderc B. Ovarian cancer microenvironment: implications for cancer dissemination and chemoresistance acquisition. *Cancer Metastasis Rev* (2013) 33(1):17–39. doi:10.1007/s10555-013-9456-2
 38. Mills GB, May C, Hill M, Campbell S, Shaw P, Marks A. Ascitic fluid from human ovarian cancer patients contains growth factors necessary for intraperitoneal growth of human ovarian adenocarcinoma cells. *J Clin Invest* (1990) 86(3):851–5. doi:10.1172/JCI114784
 39. Matte I, Lane D, Laplante C, Rancourt C, Piche A. Profiling of cytokines in human epithelial ovarian cancer ascites. *Am J Cancer Res* (2012) 2(5):566–80.
 40. Lane D, Matte I, Rancourt C, Piche A. Prognostic significance of IL-6 and IL-8 ascites levels in ovarian cancer patients. *BMC Cancer* (2011) 11:210. doi:10.1186/1471-2407-11-210
 41. Hodge DR, Hurt EM, Farrar WL. The role of IL-6 and STAT3 in inflammation and cancer. *Eur J Cancer* (2005) 41(16):2502–12. doi:10.1016/j.ejca.2005.08.016
 42. Marchini S, Fruscio R, Clivio L, Beltrame L, Porcu L, Fuso Nerini I, et al. Resistance to platinum-based chemotherapy is associated with epithelial to mesenchymal transition in epithelial ovarian cancer. *Eur J Cancer* (2013) 49(2):520–30. doi:10.1016/j.ejca.2012.06.026
 43. Flesken-Nikitin A, Hwang CI, Cheng CY, Michurina TV, Enikolopov G, Nikitin AY. Ovarian surface epithelium at the junction area contains a cancer-prone stem cell niche. *Nature* (2013) 495(7440):241–5. doi:10.1038/nature11979
 44. de Lau W, Peng WC, Gros P, Clevers H. The R-spondin/Lgr5/Rnf43 module: regulator of Wnt signal strength. *Genes Dev* (2014) 28(4):305–16. doi:10.1101/gad.235473.113
 45. Mishra P, Banerjee D, Ben-Baruch A. Chemokines at the crossroads of tumor-fibroblast interactions that promote malignancy. *J Leukoc Biol* (2011) 89(1):31–9. doi:10.1189/jlb.0310182
 46. Duluc D, Delneste Y, Tan F, Moles MP, Grimaud L, Lenoir J, et al. Tumor-associated leukemia inhibitory factor and IL-6 skew monocyte differentiation into tumor-associated macrophage-like cells. *Blood* (2007) 110(13):4319–30. doi:10.1182/blood-2007-02-072587
 47. Byrne AT, Ross L, Holash J, Nakanishi M, Hu L, Hofmann JI, et al. Vascular endothelial growth factor-trap decreases tumor burden, inhibits ascites, and causes dramatic vascular remodeling in an ovarian cancer model. *Clin Cancer Res* (2003) 9(15):5721–8.
 48. Scambia G, Testa U, Benedetti Panici P, Foti E, Martucci R, Gadducci A, et al. Prognostic significance of interleukin 6 serum levels in patients with ovarian cancer. *Br J Cancer* (1995) 71(2):354–6.
 49. Lo CW, Chen MW, Hsiao M, Wang S, Chen CA, Hsiao SM, et al. IL-6 trans-signaling in formation and progression of malignant ascites in ovarian cancer. *Cancer Res* (2011) 71(2):424–34. doi:10.1158/0008-5472.CAN-10-1496
 50. Yanaihara N, Anglesio MS, Ochiai K, Hirata Y, Saito M, Nagata C, et al. Cytokine gene expression signature in ovarian clear cell carcinoma. *Int J Oncol* (2012) 41(3):1094–100. doi:10.3892/ijo.2012.1533
 51. Isobe A, Sawada K, Kinose Y, Ohyagi-Hara C, Nakatsuka E, Makino H, et al. Interleukin 6 receptor is an independent prognostic factor and a potential therapeutic target of ovarian cancer. *PLoS One* (2015) 10(2):e0118080. doi:10.1371/journal.pone.0118080
 52. Reinartz S, Finkernagel F, Adhikary T, Rohnalter V, Schumann T, Schober Y, et al. A transcriptome-based global map of signaling pathways in the ovarian cancer microenvironment associated with clinical outcome. *Genome Biol* (2016) 17(1):108. doi:10.1186/s13059-016-0956-6
 53. Riestler M, Wei W, Waldron L, Culhane AC, Trippa L, Oliva E, et al. Risk prediction for late-stage ovarian cancer by meta-analysis of 1525 patient samples. *J Natl Cancer Inst* (2014) 106(5). doi:10.1093/jnci/dju048
 54. Eng KH, Ruggeri C. Connecting prognostic ligand receptor signaling loops in advanced ovarian cancer. *PLoS One* (2014) 9(9):e107193. doi:10.1371/journal.pone.0107193
 55. Junge HJ, Yang S, Burton JB, Paes K, Shu X, French DM, et al. TSPAN12 regulates retinal vascular development by promoting Norrin- but not Wnt-induced FZD4/beta-catenin signaling. *Cell* (2009) 139(2):299–311. doi:10.1016/j.cell.2009.07.048
 56. Punnonen R, Seppala E, Punnonen K, Heinonen PK. Fatty acid composition and arachidonic acid metabolites in ascitic fluid of patients with ovarian cancer. *Prostaglandins Leukot Med* (1986) 22(2):153–8.
 57. Wymann MP, Schneider R. Lipid signalling in disease. *Nat Rev Mol Cell Biol* (2008) 9(2):162–76. doi:10.1038/nrm2335
 58. Obermayer N, Muthuswamy R, Odunsi K, Edwards RP, Kalinski P. PGE(2)-induced CXCL12 production and CXCR4 expression controls the accumulation of human MDSCs in ovarian cancer environment. *Cancer Res* (2011) 71(24):7463–70. doi:10.1158/0008-5472.CAN-11-2449
 59. Kalinski P. Regulation of immune responses by prostaglandin E2. *J Immunol* (2012) 188(1):21–8. doi:10.4049/jimmunol.1101029
 60. Khan WA, Blobe GC, Hannun YA. Arachidonic acid and free fatty acids as second messengers and the role of protein kinase C. *Cell Signal* (1995) 7(3):171–84.
 61. Xu HE, Lambert MH, Montana VG, Parks DJ, Blanchard SG, Brown PJ, et al. Molecular recognition of fatty acids by peroxisome proliferator-activated receptors. *Mol Cell* (1999) 3(3):397–403.
 62. O'Flaherty JT, Chadwell BA, Kearns MW, Sergeant S, Daniel LW. Protein kinases C translocation responses to low concentrations of arachidonic acid. *J Biol Chem* (2001) 276(27):24743–50. doi:10.1074/jbc.M101093200
 63. Schumann T, Adhikary T, Wortmann A, Finkernagel F, Lieber S, Schnitzer E, et al. Deregulation of PPAR β /d target genes in tumor-associated macrophages by fatty acid ligands in the ovarian cancer microenvironment. *Oncotarget* (2015) 6(15):13416–33. doi:10.18632/oncotarget.3826
 64. Xu Y, Gaudette DC, Boynton JD, Frankel A, Fang XJ, Sharma A, et al. Characterization of an ovarian cancer activating factor in ascites from ovarian cancer patients. *Clin Cancer Res* (1995) 1(10):1223–32.
 65. Westermann AM, Havik E, Postma FR, Beijnen JH, Dalesio O, Moolenaar WH, et al. Malignant effusions contain lysophosphatidic acid (LPA)-like activity. *Ann Oncol* (1998) 9(4):437–42.
 66. Mills GB, Moolenaar WH. The emerging role of lysophosphatidic acid in cancer. *Nat Rev Cancer* (2003) 3(8):582–91. doi:10.1038/nrc1143
 67. Houben AJ, Moolenaar WH. Autotaxin and LPA receptor signaling in cancer. *Cancer Metastasis Rev* (2011) 30(3–4):557–65. doi:10.1007/s10555-011-9319-7
 68. Tsujiuchi T, Araki M, Hirane M, Dong Y, Fukushima N. Lysophosphatidic acid receptors in cancer pathobiology. *Histol Histopathol* (2013) 29(3):313–21. doi:10.14670/HH-29.313
 69. Chun J, Hla T, Spiegel S, Moolenaar W. *Lysophospholipid Receptors: Signaling and Biochemistry*. Hoboken, NJ: John Wiley & Sons, Inc (2013).
 70. Tanyi JL, Hasegawa Y, Lapushin R, Morris AJ, Wolf JK, Berchuck A, et al. Role of decreased levels of lipid phosphate phosphatase-1 in accumulation of lysophosphatidic acid in ovarian cancer. *Clin Cancer Res* (2003) 9(10 Pt 1):3534–45.
 71. Ren J, Xiao YJ, Singh LS, Zhao X, Zhao Z, Feng L, et al. Lysophosphatidic acid is constitutively produced by human peritoneal mesothelial cells and enhances adhesion, migration, and invasion of ovarian cancer cells. *Cancer Res* (2006) 66(6):3006–14. doi:10.1158/0008-5472.CAN-05-1292
 72. Sutphen R, Xu Y, Wilbanks GD, Fiorica J, Grendys EC Jr, LaPolla JP, et al. Lysophospholipids are potential biomarkers of ovarian cancer. *Cancer Epidemiol Biomarkers Prev* (2004) 13(7):1185–91.
 73. Xiao YJ, Schwartz B, Washington M, Kennedy A, Webster K, Belinson J, et al. Electrospray ionization mass spectrometry analysis of lysophospholipids in human ascitic fluids: comparison of the lysophospholipid contents in malignant vs nonmalignant ascitic fluids. *Anal Biochem* (2001) 290(2):302–13. doi:10.1006/abio.2001.5000

74. Xu Y, Fang XJ, Casey G, Mills GB. Lysophospholipids activate ovarian and breast cancer cells. *Biochem J* (1995) 309(Pt 3):933–40.
75. Xu Y, Shen Z, Wiper DW, Wu M, Morton RE, Elson P, et al. Lysophosphatidic acid as a potential biomarker for ovarian and other gynecologic cancers. *JAMA* (1998) 280(8):719–23.
76. Fang X, Yu S, Bast RC, Liu S, Xu HJ, Hu SX, et al. Mechanisms for lysophosphatidic acid-induced cytokine production in ovarian cancer cells. *J Biol Chem* (2004) 279(10):9653–61. doi:10.1074/jbc.M306662200
77. Kim KS, Sengupta S, Berk M, Kwak YG, Escobar PF, Belinson J, et al. Hypoxia enhances lysophosphatidic acid responsiveness in ovarian cancer cells and lysophosphatidic acid induces ovarian tumor metastasis in vivo. *Cancer Res* (2006) 66(16):7983–90. doi:10.1158/0008-5472.CAN-05-4381
78. Kim EK, Yun SJ, Do KH, Kim MS, Cho M, Suh DS, et al. Lysophosphatidic acid induces cell migration through the selective activation of Akt1. *Exp Mol Med* (2008) 40(4):445–52. doi:10.3858/emm.2008.40.4.445
79. Gaetano CG, Samadi N, Tomsig JL, Macdonald TL, Lynch KR, Brindley DN. Inhibition of autotaxin production or activity blocks lysophosphatidylcholine-induced migration of human breast cancer and melanoma cells. *Mol Carcinog* (2009) 48(9):801–9. doi:10.1002/mc.20524
80. Song Y, Wu J, Oyesanya RA, Lee Z, Mukherjee A, Fang X. Sp-1 and c-Myc mediate lysophosphatidic acid-induced expression of vascular endothelial growth factor in ovarian cancer cells via a hypoxia-inducible factor-1-independent mechanism. *Clin Cancer Res* (2009) 15(2):492–501. doi:10.1158/1078-0432.CCR-08-1945
81. Seo JH, Jeong KJ, Oh WJ, Sul HJ, Sohn JS, Kim YK, et al. Lysophosphatidic acid induces STAT3 phosphorylation and ovarian cancer cell motility: their inhibition by curcumin. *Cancer Lett* (2010) 288(1):50–6. doi:10.1016/j.canlet.2009.06.023
82. Vidot S, Witham J, Agarwal R, Greenhough S, Bamrah HS, Tigyi GJ, et al. Autotaxin delays apoptosis induced by carboplatin in ovarian cancer cells. *Cell Signal* (2010) 22(6):926–35. doi:10.1016/j.cellsig.2010.01.017
83. Kim EK, Park JM, Lim S, Choi JW, Kim HS, Seok H, et al. Activation of AMP-activated protein kinase is essential for lysophosphatidic acid-induced cell migration in ovarian cancer cells. *J Biol Chem* (2011) 286(27):24036–45. doi:10.1074/jbc.M110.209908
84. Wu J, Mukherjee A, Leberman DA, Fang X. Lysophosphatidic acid-induced p21Waf1 expression mediates the cytostatic response of breast and ovarian cancer cells to TGFbeta. *Mol Cancer Res* (2011) 9(11):1562–70. doi:10.1158/1541-7786.MCR-11-0340
85. Cai H, Xu Y. The role of LPA and YAP signaling in long-term migration of human ovarian cancer cells. *Cell Commun Signal* (2013) 11(1):31. doi:10.1186/1478-811X-11-31
86. Burkhalter RJ, Westfall SD, Liu Y, Stack MS. Lysophosphatidic acid initiates epithelial to mesenchymal transition and induces beta-catenin-mediated transcription in epithelial ovarian carcinoma. *J Biol Chem* (2015) 290(36):22143–54. doi:10.1074/jbc.M115.641092
87. Nakayama J, Raines TA, Lynch KR, Slack-Davis JK. Decreased peritoneal ovarian cancer growth in mice lacking expression of lipid phosphate phosphohydrolase 1. *PLoS One* (2015) 10(3):e0120071. doi:10.1371/journal.pone.0120071
88. Brindley DN, Lin FT, Tigyi GJ. Role of the autotaxin-lysophosphatidate axis in cancer resistance to chemotherapy and radiotherapy. *Biochim Biophys Acta* (2013) 1831(1):74–85. doi:10.1016/j.bbali.2012.08.015
89. Sengupta S, Kim KS, Berk MP, Oates R, Escobar P, Belinson J, et al. Lysophosphatidic acid downregulates tissue inhibitor of metalloproteinases, which are negatively involved in lysophosphatidic acid-induced cell invasion. *Oncogene* (2007) 26(20):2894–901. doi:10.1038/sj.onc.1210093
90. Lu J, Xiao YJ, Baudhuin LM, Hong G, Xu Y. Role of ether-linked lysophosphatidic acids in ovarian cancer cells. *J Lipid Res* (2002) 43(3):463–76.
91. Nakamura K, Sawada K, Yoshimura A, Kinose Y, Nakatsuka E, Kimura T. Clinical relevance of circulating cell-free microRNAs in ovarian cancer. *Mol Cancer* (2016) 15(1):48. doi:10.1186/s12943-016-0536-0
92. Taylor DD, Gercel-Taylor C. Tumour-derived exosomes and their role in cancer-associated T-cell signalling defects. *Br J Cancer* (2005) 92(2):305–11. doi:10.1038/sj.bjc.6602316
93. Mahdian-Shakib A, Dorostkar R, Tat M, Hashemzadeh MS, Saidi N. Differential role of microRNAs in prognosis, diagnosis, and therapy of ovarian cancer. *Biomed Pharmacother* (2016) 84:592–600. doi:10.1016/j.biopha.2016.09.087
94. Robbins PD, Morelli AE. Regulation of immune responses by extracellular vesicles. *Nat Rev Immunol* (2014) 14(3):195–208. doi:10.1038/nri3622
95. Besse B, Charrier M, Lapiere V, Dansin E, Lantz O, Planchard D, et al. Dendritic cell-derived exosomes as maintenance immunotherapy after first line chemotherapy in NSCLC. *Oncoimmunology* (2016) 5(4):e1071008. doi:10.1080/2162402X.2015.1071008
96. Escudier B, Dorval T, Chaput N, Andre F, Caby MP, Novault S, et al. Vaccination of metastatic melanoma patients with autologous dendritic cell (DC) derived-exosomes: results of the first phase I clinical trial. *J Transl Med* (2005) 3(1):10. doi:10.1186/1479-5876-3-10
97. Morse MA, Garst J, Osada T, Khan S, Hobeika A, Clay TM, et al. A phase I study of dexosome immunotherapy in patients with advanced non-small cell lung cancer. *J Transl Med* (2005) 3(1):9. doi:10.1186/1479-5876-3-9
98. Abrahams VM, Straszewski SL, Kamsteeg M, Hanczaruk B, Schwartz PE, Rutherford TJ, et al. Epithelial ovarian cancer cells secrete functional Fas ligand. *Cancer Res* (2003) 63(17):5573–81.
99. Kelleher RJ Jr, Balu-Iyer S, Loyall J, Sacca AJ, Shenoy GN, Peng P, et al. Extracellular vesicles present in human ovarian tumor microenvironments induce a phosphatidylserine-dependent arrest in the T-cell signaling cascade. *Cancer Immunol Res* (2015) 3(11):1269–78. doi:10.1158/2326-6066.CIR-15-0086
100. Keller S, Konig AK, Marme F, Runz S, Wolterink S, Koensgen D, et al. Systemic presence and tumor-growth promoting effect of ovarian carcinoma released exosomes. *Cancer Lett* (2009) 278(1):73–81. doi:10.1016/j.canlet.2008.12.028
101. Gobbo J, Marcion G, Cordonnier M, Dias AM, Pernet N, Hammann A, et al. Restoring anticancer immune response by targeting tumor-derived exosomes with a HSP70 peptide aptamer. *J Natl Cancer Inst* (2016) 108(3). doi:10.1093/jnci/djv330
102. Gutwein P, Stoeck A, Riedel S, Gast D, Runz S, Condon TP, et al. Cleavage of L1 in exosomes and apoptotic membrane vesicles released from ovarian carcinoma cells. *Clin Cancer Res* (2005) 11(7):2492–501. doi:10.1158/1078-0432.CCR-04-1688
103. Runz S, Keller S, Rupp C, Stoeck A, Issa Y, Koensgen D, et al. Malignant ascites-derived exosomes of ovarian carcinoma patients contain CD24 and EpCAM. *Gynecol Oncol* (2007) 107(3):563–71. doi:10.1016/j.ygyno.2007.08.064
104. Carbotti G, Orengo AM, Mezzanzanica D, Bagnoli M, Brizzolara A, Emionite L, et al. Activated leukocyte cell adhesion molecule soluble form: a potential biomarker of epithelial ovarian cancer is increased in type II tumors. *Int J Cancer* (2013) 132(11):2597–605. doi:10.1002/ijc.27948
105. Graves LE, Ariztia EV, Navari JR, Matzel HJ, Stack MS, Fishman DA. Proinvasive properties of ovarian cancer ascites-derived membrane vesicles. *Cancer Res* (2004) 64(19):7045–9. doi:10.1158/0008-5472.CAN-04-1800
106. Kanlikilicer P, Saber M, Bayraktar R, Mitra R, Ivan C, Aslan B, et al. Ubiquitous release of exosomal tumor suppressor miR-6126 from ovarian cancer cells. *Cancer Res* (2016) 76(24):7194–207. doi:10.1158/0008-5472.CAN-16-0714
107. Strandmann EP, Muller R. Shipping drug resistance: extracellular vesicles in ovarian cancer. *Trends Mol Med* (2016) 22(9):741–3. doi:10.1016/j.molmed.2016.07.006
108. Noy R, Pollard JW. Tumor-associated macrophages: from mechanisms to therapy. *Immunity* (2014) 41(1):49–61. doi:10.1016/j.immuni.2014.06.010
109. Finkernagel F, Reinartz S, Lieber S, Adhikary T, Wortmann A, Hoffmann N, et al. The transcriptional signature of human ovarian carcinoma macrophages is associated with extracellular matrix reorganization. *Oncotarget* (2016) 17:75339–52. doi:10.18632/oncotarget.12180
110. Schulz C, Gomez Perdiguero E, Chorro L, Szabo-Rogers H, Cagnard N, Kierdorf K, et al. A lineage of myeloid cells independent of Myb and hematopoietic stem cells. *Science* (2012) 336(6077):86–90. doi:10.1126/science.1219179
111. Rosas M, Davies LC, Giles PJ, Liao CT, Kharfan B, Stone TC, et al. The transcription factor Gata6 links tissue macrophage phenotype and proliferative renewal. *Science* (2014) 344(6184):645–8. doi:10.1126/science.1251414
112. Wynn TA, Chawla A, Pollard JW. Macrophage biology in development, homeostasis and disease. *Nature* (2013) 496(7446):445–55. doi:10.1038/nature12034
113. Davies LC, Jenkins SJ, Allen JE, Taylor PR. Tissue-resident macrophages. *Nat Immunol* (2013) 14(10):986–95. doi:10.1038/ni.2705

114. Davies LC, Taylor PR. Tissue-resident macrophages: then and now. *Immunology* (2015) 144(4):541–8. doi:10.1111/imm.12451
115. Cassado Ados A, D'Imperio Lima MR, Bortoluci KR. Revisiting mouse peritoneal macrophages: heterogeneity, development, and function. *Front Immunol* (2015) 6:225. doi:10.3389/fimmu.2015.00225
116. Ghosn EE, Cassado AA, Govoni GR, Fukuhara T, Yang Y, Monack DM, et al. Two physically, functionally, and developmentally distinct peritoneal macrophage subsets. *Proc Natl Acad Sci U S A* (2010) 107(6):2568–73. doi:10.1073/pnas.0915000107
117. Mantovani A, Sozzani S, Locati M, Allavena P, Sica A. Macrophage polarization: tumor-associated macrophages as a paradigm for polarized M2 mononuclear phagocytes. *Trends Immunol* (2002) 23(11):549–55. doi:10.1016/S1471-4906(02)02302-5
118. Pollard JW. Tumour-educated macrophages promote tumour progression and metastasis. *Nat Rev Cancer* (2004) 4(1):71–8. doi:10.1038/nrc1256
119. Gabrilovich DI, Ostrand-Rosenberg S, Bronte V. Coordinated regulation of myeloid cells by tumours. *Nat Rev Immunol* (2012) 12(4):253–68. doi:10.1038/nri3175
120. Williams CB, Yeh ES, Soloff AC. Tumor-associated macrophages: unwitting accomplices in breast cancer malignancy. *NPJ Breast Cancer* (2016) 2. doi:10.1038/npjbcancer.2015.25
121. Campbell MJ, Tonlaar NY, Garwood ER, Huo D, Moore DH, Khramtsov AI, et al. Proliferating macrophages associated with high grade, hormone receptor negative breast cancer and poor clinical outcome. *Breast Cancer Res Treat* (2011) 128(3):703–11. doi:10.1007/s10549-010-1154-y
122. Tymoszuk P, Evens H, Marzola V, Wachowicz K, Wasmer MH, Datta S, et al. In situ proliferation contributes to accumulation of tumor-associated macrophages in spontaneous mammary tumors. *Eur J Immunol* (2014) 44(8):2247–62. doi:10.1002/eji.201344304
123. Liu Y, Cao X. The origin and function of tumor-associated macrophages. *Cell Mol Immunol* (2015) 12(1):1–4. doi:10.1038/cmi.2014.83
124. Pucci F, Venneri MA, Bizziato D, Nonis A, Moi D, Sica A, et al. A distinguishing gene signature shared by tumor-infiltrating Tie2-expressing monocytes, blood “resident” monocytes, and embryonic macrophages suggests common functions and developmental relationships. *Blood* (2009) 114(4):901–14. doi:10.1182/blood-2009-01-200931
125. Franklin RA, Liao W, Sarkar A, Kim MV, Bivona MR, Liu K, et al. The cellular and molecular origin of tumor-associated macrophages. *Science* (2014) 344(6186):921–5. doi:10.1126/science.1252510
126. Beatty GL, Chiorean EG, Fishman MP, Saboury B, Teitelbaum UR, Sun W, et al. CD40 agonists alter tumor stroma and show efficacy against pancreatic carcinoma in mice and humans. *Science* (2011) 331(6024):1612–6. doi:10.1126/science.1198443
127. Duluc D, Corvaisier M, Blanchard S, Catala L, Descamps P, Gamelin E, et al. Interferon-gamma reverses the immunosuppressive and protumoral properties and prevents the generation of human tumor-associated macrophages. *Int J Cancer* (2009) 125(2):367–73. doi:10.1002/ijc.24401
128. Bellora F, Castriconi R, Dondero A, Pessino A, Nencioni A, Liggiari G, et al. TLR activation of tumor-associated macrophages from ovarian cancer patients triggers cytolytic activity of NK cells. *Eur J Immunol* (2014) 44(6):1814–22. doi:10.1002/eji.201344130
129. Kusuda T, Shigemasa K, Arihiro K, Fujii T, Nagai N, Ohama K. Relative expression levels of Th1 and Th2 cytokine mRNA are independent prognostic factors in patients with ovarian cancer. *Oncol Rep* (2005) 13(6):1153–8.
130. Koneru M, Purdon TJ, Spriggs D, Koneru S, Brentjens RJ. IL-12 secreting tumor-targeted chimeric antigen receptor T cells eradicate ovarian tumors in vivo. *Oncotarget* (2015) 4(3):e994446. doi:10.4161/2162402X.2014.994446
131. Cohen CA, Shea AA, Heffron CL, Schmelz EM, Roberts PC. Interleukin-12 immunomodulation delays the onset of lethal peritoneal disease of ovarian cancer. *J Interferon Cytokine Res* (2016) 36(1):62–73. doi:10.1089/jir.2015.0049
132. Saccani A, Schioppa T, Porta C, Biswas SK, Nebuloni M, Vago L, et al. p50 nuclear factor-kappaB overexpression in tumor-associated macrophages inhibits M1 inflammatory responses and antitumor resistance. *Cancer Res* (2006) 66(23):11432–40. doi:10.1158/0008-5472.CAN-06-1867
133. Allavena P, Peccatori F, Maggioni D, Erroi A, Sironi M, Colombo N, et al. Intraperitoneal recombinant gamma-interferon in patients with recurrent ascitic ovarian carcinoma: modulation of cytotoxicity and cytokine production in tumor-associated effectors and of major histocompatibility antigen expression on tumor cells. *Cancer Res* (1990) 50(22):7318–23.
134. Pujade-Lauraine E, Guastalla JP, Colombo N, Devillier P, Francois E, Fumoleau P, et al. Intraperitoneal recombinant interferon gamma in ovarian cancer patients with residual disease at second-look laparotomy. *J Clin Oncol* (1996) 14(2):343–50.
135. Windbichler GH, Hausmaninger H, Stummvoll W, Graf AH, Kainz C, Lahodny J, et al. Interferon-gamma in the first-line therapy of ovarian cancer: a randomized phase III trial. *Br J Cancer* (2000) 82(6):1138–44. doi:10.1054/bjoc.1999.1053
136. Marth C, Windbichler GH, Hausmaninger H, Petru E, Estermann K, Pelzer A, et al. Interferon-gamma in combination with carboplatin and paclitaxel as a safe and effective first-line treatment option for advanced ovarian cancer: results of a phase I/II study. *Int J Gynecol Cancer* (2006) 16(4):1522–8. doi:10.1111/j.1525-1438.2006.00622.x
137. Condomine T, Ramachandran I, Youn JI, Gabrilovich DI. Regulation of tumor metastasis by myeloid-derived suppressor cells. *Annu Rev Med* (2015) 66:97–110. doi:10.1146/annurev-med-051013-052304
138. Hart KM, Byrne KT, Molloy MJ, Usherwood EM, Berwin B. IL-10 immunomodulation of myeloid cells regulates a murine model of ovarian cancer. *Front Immunol* (2011) 2:29. doi:10.3389/fimmu.2011.00029
139. Morvan MG, Lanier LL. NK cells and cancer: you can teach innate cells new tricks. *Nat Rev Cancer* (2016) 16(1):7–19. doi:10.1038/nrc.2015.5
140. Krockenberger M, Dombrowski Y, Weidler C, Ossadnik M, Honig A, Hausler S, et al. Macrophage migration inhibitory factor contributes to the immune escape of ovarian cancer by down-regulating NKG2D. *J Immunol* (2008) 180(11):7338–48. doi:10.4049/jimmunol.180.11.7338
141. Zhou Y, Xu Y, Chen L, Xu B, Wu C, Jiang J. B7-H6 expression correlates with cancer progression and patient's survival in human ovarian cancer. *Int J Clin Exp Pathol* (2015) 8(8):9428–33.
142. Pesce S, Tabellini G, Cantoni C, Patrizi O, Coltrini D, Rampinelli F, et al. B7-H6-mediated downregulation of NKP30 in NK cells contributes to ovarian carcinoma immune escape. *Oncotarget* (2015) 4(4):e1001224. doi:10.1080/2162402X.2014.1001224
143. Wong JL, Berk E, Edwards RP, Kalinski P. IL-18-primed helper NK cells collaborate with dendritic cells to promote recruitment of effector CD8+ T cells to the tumor microenvironment. *Cancer Res* (2013) 73(15):4653–62. doi:10.1158/0008-5472.CAN-12-4366
144. Zhang L, Conejo-Garcia JR, Katsaros D, Gimotty PA, Massobrio M, Regnani G, et al. Intratumoral T cells, recurrence, and survival in epithelial ovarian cancer. *N Engl J Med* (2003) 348(3):203–13. doi:10.1056/NEJMoa020177
145. Hwang WT, Adams SF, Tahirovic E, Hagemann IS, Coukos G. Prognostic significance of tumor-infiltrating T cells in ovarian cancer: a meta-analysis. *Gynecol Oncol* (2012) 124(2):192–8. doi:10.1016/j.ygyno.2011.09.039
146. Gajewski TF. The next hurdle in cancer immunotherapy: overcoming the non-T-cell-inflamed tumor microenvironment. *Semin Oncol* (2015) 42(4):663–71. doi:10.1053/j.seminoncol.2015.05.011
147. Kaech SM, Cui W. Transcriptional control of effector and memory CD8+ T cell differentiation. *Nat Rev Immunol* (2012) 12(11):749–61. doi:10.1038/nri3307
148. Huber M, Lohoff M. IRF4 at the crossroads of effector T-cell fate decision. *Eur J Immunol* (2014) 44(7):1886–95. doi:10.1002/eji.201344279
149. Sato E, Olson SH, Ahn J, Bundy B, Nishikawa H, Qian F, et al. Intraepithelial CD8+ tumor-infiltrating lymphocytes and a high CD8+/regulatory T cell ratio are associated with favorable prognosis in ovarian cancer. *Proc Natl Acad Sci U S A* (2005) 102(51):18538–43. doi:10.1073/pnas.0509182102
150. Webb JR, Milne K, Watson P, Deleeuw RJ, Nelson BH. Tumor-infiltrating lymphocytes expressing the tissue resident memory marker CD103 are associated with increased survival in high-grade serous ovarian cancer. *Clin Cancer Res* (2014) 20(2):434–44. doi:10.1158/1078-0432.CCR-13-1877
151. Komdeur FL, Wouters MC, Workel HH, Tijans AM, Terwindt AL, Brunekreeft KL, et al. CD103+ intraepithelial T cells in high-grade serous ovarian cancer are phenotypically diverse TCRalpha+ CD8alpha+ T cells that can be targeted for cancer immunotherapy. *Oncotarget* (2016) 7(46):75130–44. doi:10.18632/oncotarget.12077

152. Preston CC, Maurer MJ, Oberg AL, Visscher DW, Kalli KR, Hartmann LC, et al. The ratios of CD8+ T cells to CD4+CD25+ FOXP3+ and FOXP3- T cells correlate with poor clinical outcome in human serous ovarian cancer. *PLoS One* (2013) 8(11):e80063. doi:10.1371/journal.pone.0080063
153. Burzyn D, Benoist C, Mathis D. Regulatory T cells in nonlymphoid tissues. *Nat Immunol* (2013) 14(10):1007–13. doi:10.1038/ni.2683
154. Liu C, Workman CJ, Vignali DA. Targeting regulatory T cells in tumors. *FEBS J* (2016) 283(14):2731–48. doi:10.1111/febs.13656
155. Landskron J, Helland O, Torgersen KM, Aandahl EM, Gjertsen BT, Bjorge L, et al. Activated regulatory and memory T-cells accumulate in malignant ascites from ovarian carcinoma patients. *Cancer Immunol Immunother* (2015) 64(3):337–47. doi:10.1007/s00262-014-1636-6
156. Woo EY, Chu CS, Goletz TJ, Schlienger K, Yeh H, Coukos G, et al. Regulatory CD4(+)CD25(+) T cells in tumors from patients with early-stage non-small cell lung cancer and late-stage ovarian cancer. *Cancer Res* (2001) 61(12):4766–72.
157. Hermans C, Anz D, Engel J, Kirchner T, Endres S, Mayr D. Analysis of FoxP3+ T-regulatory cells and CD8+ T-cells in ovarian carcinoma: location and tumor infiltration patterns are key prognostic markers. *PLoS One* (2014) 9(11):e111757. doi:10.1371/journal.pone.0111757
158. Curiel TJ, Coukos G, Zou L, Alvarez X, Cheng P, Mottram P, et al. Specific recruitment of regulatory T cells in ovarian carcinoma fosters immune privilege and predicts reduced survival. *Nat Med* (2004) 10(9):942–9. doi:10.1038/nm1093
159. Chang DK, Peterson E, Sun J, Goudie C, Drapkin RI, Liu JF, et al. Anti-CCR4 monoclonal antibody enhances antitumor immunity by modulating tumor-infiltrating Tregs in an ovarian cancer xenograft humanized mouse model. *Oncotarget* (2016) 5(3):e1090075. doi:10.1080/2162402X.2015.1090075
160. Mittrucker HW, Visekruna A, Huber M. Heterogeneity in the differentiation and function of CD8(+) T cells. *Arch Immunol Ther Exp (Warsz)* (2014) 62(6):449–58. doi:10.1007/s00005-014-0293-y
161. Wu M, Chen X, Lou J, Zhang S, Zhang X, Huang L, et al. TGF-beta1 contributes to CD8+ Treg induction through p38 MAPK signaling in ovarian cancer microenvironment. *Oncotarget* (2016) 7(28):44534–44. doi:10.18632/oncotarget.10003
162. Hodi FS, Butler M, Oble DA, Seiden MV, Haluska FG, Kruse A, et al. Immunologic and clinical effects of antibody blockade of cytotoxic T lymphocyte-associated antigen 4 in previously vaccinated cancer patients. *Proc Natl Acad Sci U S A* (2008) 105(8):3005–10. doi:10.1073/pnas.0712237105
163. Matsuzaki J, Gnjjatic S, Mhawech-Fauceglia P, Beck A, Miller A, Tsuji T, et al. Tumor-infiltrating NY-ESO-1-specific CD8+ T cells are negatively regulated by LAG-3 and PD-1 in human ovarian cancer. *Proc Natl Acad Sci U S A* (2010) 107(17):7875–80. doi:10.1073/pnas.1003345107
164. Huang RY, Eppolito C, Lele S, Shrikant P, Matsuzaki J, Odunsi K. LAG3 and PD1 co-inhibitory molecules collaborate to limit CD8+ T cell signaling and dampen antitumor immunity in a murine ovarian cancer model. *Oncotarget* (2015) 6(29):27359–77. doi:10.18632/oncotarget.4751
165. Hamanishi J, Mandai M, Ikeda T, Minami M, Kawaguchi A, Murayama T, et al. Safety and antitumor activity of anti-PD-1 antibody, nivolumab, in patients with platinum-resistant ovarian cancer. *J Clin Oncol* (2015) 33(34):4015–22. doi:10.1200/JCO.2015.62.3397
166. Chen L, Flies DB. Molecular mechanisms of T cell co-stimulation and co-inhibition. *Nat Rev Immunol* (2013) 13(4):227–42. doi:10.1038/nri3405
167. Wherry EJ, Kurachi M. Molecular and cellular insights into T cell exhaustion. *Nat Rev Immunol* (2015) 15(8):486–99. doi:10.1038/nri3862
168. Speiser DE, Utzschneider DT, Oberle SG, Munz C, Romero P, Zehn D. T cell differentiation in chronic infection and cancer: functional adaptation or exhaustion? *Nat Rev Immunol* (2014) 14(11):768–74. doi:10.1038/nri3740
169. Nguyen LT, Ohashi PS. Clinical blockade of PD1 and LAG3 – potential mechanisms of action. *Nat Rev Immunol* (2015) 15(1):45–56. doi:10.1038/nri3790
170. Mahoney KM, Rennert PD, Freeman GJ. Combination cancer immunotherapy and new immunomodulatory targets. *Nat Rev Drug Discov* (2015) 14(8):561–84. doi:10.1038/nrd4591
171. Yang YF, Zou JP, Mu J, Wijesuriya R, Ono S, Walunas T, et al. Enhanced induction of antitumor T-cell responses by cytotoxic T lymphocyte-associated molecule-4 blockade: the effect is manifested only at the restricted tumor-bearing stages. *Cancer Res* (1997) 57(18):4036–41.
172. Tanaka A, Sakaguchi S. Regulatory T cells in cancer immunotherapy. *Cell Res* (2017) 27(1):109–18. doi:10.1038/cr.2016.151
173. Bulliard Y, Jolicoeur R, Windman M, Rue SM, Ettenberg S, Knee DA, et al. Activating Fc gamma receptors contribute to the antitumor activities of immunoregulatory receptor-targeting antibodies. *J Exp Med* (2013) 210(9):1685–93. doi:10.1084/jem.20130573
174. Simpson TR, Li F, Montalvo-Ortiz W, Sepulveda MA, Bergerhoff K, Arce F, et al. Fc-dependent depletion of tumor-infiltrating regulatory T cells co-defines the efficacy of anti-CTLA-4 therapy against melanoma. *J Exp Med* (2013) 210(9):1695–710. doi:10.1084/jem.20130579
175. Selby MJ, Engelhardt JJ, Quigley M, Henning KA, Chen T, Srinivasan M, et al. Anti-CTLA-4 antibodies of IgG2a isotype enhance antitumor activity through reduction of intratumoral regulatory T cells. *Cancer Immunol Res* (2013) 1(1):32–42. doi:10.1158/2326-6066.CIR-13-0013
176. Simpson-Abelson MR, Loyall JL, Lehman HK, Barnas JL, Minderman H, O'Loughlin KL, et al. Human ovarian tumor ascites fluids rapidly and reversibly inhibit T cell receptor-induced NF-kappaB and NFAT signaling in tumor-associated T cells. *Cancer Immunol* (2013) 13:14.
177. Xu S, Tao Z, Hai B, Liang H, Shi Y, Wang T, et al. miR-424(322) reverses chemoresistance via T-cell immune response activation by blocking the PD-L1 immune checkpoint. *Nat Commun* (2016) 7:11406. doi:10.1038/ncomms11406
178. Peng D, Kryczek I, Nagarsheth N, Zhao L, Wei S, Wang W, et al. Epigenetic silencing of TH1-type chemokines shapes tumour immunity and immunotherapy. *Nature* (2015) 527(7577):249–53. doi:10.1038/nature15520
179. Chang CH, Pearce EL. Emerging concepts of T cell metabolism as a target of immunotherapy. *Nat Immunol* (2016) 17(4):364–8. doi:10.1038/ni.3415
180. Chang CH, Qiu J, O'Sullivan D, Buck MD, Noguchi T, Curtis JD, et al. Metabolic competition in the tumor microenvironment is a driver of cancer progression. *Cell* (2015) 162(6):1229–41. doi:10.1016/j.cell.2015.08.016
181. Ho PC, Bihuniak JD, Macintyre AN, Staron M, Liu X, Amezcua R, et al. Phosphoenolpyruvate is a metabolic checkpoint of anti-tumor T cell responses. *Cell* (2015) 162(6):1217–28. doi:10.1016/j.cell.2015.08.012
182. Eil R, Vodnala SK, Clever D, Klebanoff CA, Sukumar M, Pan JH, et al. Ionic immune suppression within the tumour microenvironment limits T cell effector function. *Nature* (2016) 537(7621):539–43. doi:10.1038/nature19364
183. Niedbala MJ, Crickard K, Bernacki RJ. Interactions of human ovarian tumor cells with human mesothelial cells grown on extracellular matrix. An in vitro model system for studying tumor cell adhesion and invasion. *Exp Cell Res* (1985) 160(2):499–513.
184. Birbeck MS, Wheatley DN. An electron microscopic study of the invasion of ascites tumor cells into the abdominal wall. *Cancer Res* (1965) 25:490–7.
185. Bursleton KM, Casey RC, Skubitiz KM, Pambuccian SE, Oegema TR Jr, Skubitiz AP. Ovarian carcinoma ascites spheroids adhere to extracellular matrix components and mesothelial cell monolayers. *Gynecol Oncol* (2004) 93(1):170–81. doi:10.1016/j.ygyno.2003.12.034
186. Lessan K, Aguiar DJ, Oegema T, Siebenson L, Skubitiz AP. CD44 and beta1 integrin mediate ovarian carcinoma cell adhesion to peritoneal mesothelial cells. *Am J Pathol* (1999) 154(5):1525–37.
187. Strobel T, Cannistra SA. Beta1-integrins partly mediate binding of ovarian cancer cells to peritoneal mesothelium in vitro. *Gynecol Oncol* (1999) 73(3):362–7. doi:10.1006/gyno.1999.5388
188. Cannistra SA, Kansas GS, Niloff J, DeFranzo B, Kim Y, Ottensmeier C. Binding of ovarian cancer cells to peritoneal mesothelium in vitro is partly mediated by CD44H. *Cancer Res* (1993) 53(16):3830–8.
189. Strobel T, Swanson L, Cannistra SA. In vivo inhibition of CD44 limits intra-abdominal spread of a human ovarian cancer xenograft in nude mice: a novel role for CD44 in the process of peritoneal implantation. *Cancer Res* (1997) 57(7):1228–32.
190. Davidowitz RA, Selfors LM, Iwanicki MP, Elias KM, Karst A, Piao H, et al. Mesenchymal gene program-expressing ovarian cancer spheroids exhibit enhanced mesothelial clearance. *J Clin Invest* (2014) 124(6):2611–25. doi:10.1172/JCI69815
191. Sawada K, Mitra AK, Radjabi AR, Bhaskar V, Kistner EO, Tretiakova M, et al. Loss of E-cadherin promotes ovarian cancer metastasis via alpha

- 5-integrin, which is a therapeutic target. *Cancer Res* (2008) 68(7):2329–39. doi:10.1158/0008-5472.CAN-07-5167
192. Mould AP, Askari JA, Aota S, Yamada KM, Irie A, Takada Y, et al. Defining the topology of integrin alpha5beta1-fibronectin interactions using inhibitory anti-alpha5 and anti-beta1 monoclonal antibodies. Evidence that the synergy sequence of fibronectin is recognized by the amino-terminal repeats of the alpha5 subunit. *J Biol Chem* (1997) 272(28):17283–92.
 193. Kenny HA, Kaur S, Coussens LM, Lengyel E. The initial steps of ovarian cancer cell metastasis are mediated by MMP-2 cleavage of vitronectin and fibronectin. *J Clin Invest* (2008) 118(4):1367–79. doi:10.1172/JCI33775
 194. Iwanicki MP, Davidowitz RA, Ng MR, Besser A, Muranen T, Merritt M, et al. Ovarian cancer spheroids use myosin-generated force to clear the mesothelium. *Cancer Discov* (2011) 1(2):144–57. doi:10.1158/2159-8274.CD-11-0010
 195. Heath RM, Jayne DG, O'Leary R, Morrison EE, Guillou PJ. Tumour-induced apoptosis in human mesothelial cells: a mechanism of peritoneal invasion by Fas ligand/Fas interaction. *Br J Cancer* (2004) 90(7):1437–42. doi:10.1038/sj.bjc.6601635
 196. Kenny HA, Chiang CY, White EA, Schryver EM, Habis M, Romero IL, et al. Mesothelial cells promote early ovarian cancer metastasis through fibronectin secretion. *J Clin Invest* (2014) 124(10):4614–28. doi:10.1172/JCI74778
 197. Ksiazek K, Mikula-Pietrasik J, Korybalska K, Dworacki G, Jorres A, Witowski J. Senescent peritoneal mesothelial cells promote ovarian cancer cell adhesion: the role of oxidative stress-induced fibronectin. *Am J Pathol* (2009) 174(4):1230–40. doi:10.2353/ajpath.2009.080613
 198. Mitra AK, Sawada K, Tiwari P, Mui K, Gwin K, Lengyel E. Ligand-independent activation of c-Met by fibronectin and alpha(5)beta(1)-integrin regulates ovarian cancer invasion and metastasis. *Oncogene* (2011) 30(13):1566–76. doi:10.1038/ncr.2010.532
 199. Naylor MS, Stamp GW, Davies BD, Balkwill FR. Expression and activity of MMPs and their regulators in ovarian cancer. *Int J Cancer* (1994) 58(1):50–6.
 200. Gentles AJ, Newman AM, Liu CL, Bratman SV, Feng W, Kim D, et al. The prognostic landscape of genes and infiltrating immune cells across human cancers. *Nat Med* (2015) 21(8):938–45. doi:10.1038/nm.3909
 201. Fishman DA, Liu Y, Ellerbroek SM, Stack MS. Lysophosphatidic acid promotes matrix metalloproteinase (MMP) activation and MMP-dependent invasion in ovarian cancer cells. *Cancer Res* (2001) 61(7):3194–9.
 202. Kortlever RM, Brummelkamp TR, van Meeteren LA, Moolenaar WH, Bernards R. Suppression of the p53-dependent replicative senescence response by lysophosphatidic acid signaling. *Mol Cancer Res* (2008) 6(9):1452–60. doi:10.1158/1541-7786.MCR-08-0066
 203. Hu YL, Tee MK, Goetzl EJ, Auersperg N, Mills GB, Ferrara N, et al. Lysophosphatidic acid induction of vascular endothelial growth factor expression in human ovarian cancer cells. *J Natl Cancer Inst* (2001) 93(10):762–7. doi:10.1093/jnci/93.10.762
 204. Yamamoto S, Konishi I, Mandai M, Kuroda H, Komatsu T, Nanbu K, et al. Expression of vascular endothelial growth factor (VEGF) in epithelial ovarian neoplasms: correlation with clinicopathology and patient survival, and analysis of serum VEGF levels. *Br J Cancer* (1997) 76(9):1221–7.
 205. Hartenbach EM, Olson TA, Goswitz JJ, Mohanraj D, Twiggs LB, Carson LF, et al. Vascular endothelial growth factor (VEGF) expression and survival in human epithelial ovarian carcinomas. *Cancer Lett* (1997) 121(2):169–75.
 206. Kassim SK, El-Salahy EM, Fayed ST, Helal SA, Helal T, Azzam Eel D, et al. Vascular endothelial growth factor and interleukin-8 are associated with poor prognosis in epithelial ovarian cancer patients. *Clin Biochem* (2004) 37(5):363–9. doi:10.1016/j.clinbiochem.2004.01.014
 207. Colombo N, Conte PF, Pignata S, Raspagliesi F, Scambia G. Bevacizumab in ovarian cancer: focus on clinical data and future perspectives. *Crit Rev Oncol Hematol* (2016) 97:335–48. doi:10.1016/j.critrevonc.2015.08.017
 208. Olson TA, Mohanraj D, Carson LF, Ramakrishnan S. Vascular permeability factor gene expression in normal and neoplastic human ovaries. *Cancer Res* (1994) 54(1):276–80.
 209. Hagemann T, Wilson J, Burke F, Kulbe H, Li NF, Pluddemann A, et al. Ovarian cancer cells polarize macrophages toward a tumor-associated phenotype. *J Immunol* (2006) 176(8):5023–32. doi:10.4049/jimmunol.176.8.5023
 210. Stadlmann S, Amberger A, Pollheimer J, Gastl G, Offner FA, Margreiter R, et al. Ovarian carcinoma cells and IL-1beta-activated human peritoneal mesothelial cells are possible sources of vascular endothelial growth factor in inflammatory and malignant peritoneal effusions. *Gynecol Oncol* (2005) 97(3):784–9. doi:10.1016/j.ygyno.2005.02.017
 211. Ziovas AC, Gavalas NG, Tsiatas M, Tsitsilonis O, Politi E, Terpos E, et al. VEGF directly suppresses activation of T cells from ovarian cancer patients and healthy individuals via VEGF receptor Type 2. *Int J Cancer* (2012) 130(4):857–64. doi:10.1002/ijc.26094
 212. Horiuchi A, Imai T, Shimizu M, Oka K, Wang C, Nikaido T, et al. Hypoxia-induced changes in the expression of VEGF, HIF-1 alpha and cell cycle-related molecules in ovarian cancer cells. *Anticancer Res* (2002) 22(5):2697–702.
 213. Skinner HD, Zheng JZ, Fang J, Agani F, Jiang BH. Vascular endothelial growth factor transcriptional activation is mediated by hypoxia-inducible factor 1alpha, HDM2, and p70S6K1 in response to phosphatidylinositol 3-kinase/AKT signaling. *J Biol Chem* (2004) 279(44):45643–51. doi:10.1074/jbc.M404097200
 214. Masoumi Moghaddam S, Amini A, Morris DL, Pourgholami MH. Significance of vascular endothelial growth factor in growth and peritoneal dissemination of ovarian cancer. *Cancer Metastasis Rev* (2012) 31(1–2):143–62. doi:10.1007/s10555-011-9337-5
 215. Wang FQ, So J, Reierstad S, Fishman DA. Vascular endothelial growth factor-regulated ovarian cancer invasion and migration involves expression and activation of matrix metalloproteinases. *Int J Cancer* (2006) 118(4):879–88. doi:10.1002/ijc.21421
 216. Zhang A, Meng L, Wang Q, Xi L, Chen G, Wang S, et al. Enhanced in vitro invasiveness of ovarian cancer cells through up-regulation of VEGF and induction of MMP-2. *Oncol Rep* (2006) 15(4):831–6. doi:10.3892/or.15.4.831
 217. Bamias A, Koutsoukou V, Terpos E, Tsiatas ML, Liakos C, Tsitsilonis O, et al. Correlation of NK T-like CD3+CD56+ cells and CD4+CD25+(hi) regulatory T cells with VEGF and TNFalpha in ascites from advanced ovarian cancer: association with platinum resistance and prognosis in patients receiving first-line, platinum-based chemotherapy. *Gynecol Oncol* (2008) 108(2):421–7. doi:10.1016/j.ygyno.2007.10.018
 218. Rodriguez GC, Haisley C, Hurteau J, Moser TL, Whitaker R, Bast RC Jr, et al. Regulation of invasion of epithelial ovarian cancer by transforming growth factor-beta. *Gynecol Oncol* (2001) 80(2):245–53. doi:10.1006/gyno.2000.6042
 219. Negus RP, Stamp GW, Relf MG, Burke F, Malik ST, Bernasconi S, et al. The detection and localization of monocyte chemoattractant protein-1 (MCP-1) in human ovarian cancer. *J Clin Invest* (1995) 95(5):2391–6. doi:10.1172/JCI117933
 220. Wang Y, Li L, Guo X, Jin X, Sun W, Zhang X, et al. Interleukin-6 signaling regulates anchorage-independent growth, proliferation, adhesion and invasion in human ovarian cancer cells. *Cytokine* (2012) 59(2):228–36. doi:10.1016/j.cyto.2012.04.020
 221. Hagemann T, Wilson J, Kulbe H, Li NF, Leinster DA, Charles K, et al. Macrophages induce invasiveness of epithelial cancer cells via NF-kappa B and JNK. *J Immunol* (2005) 175(2):1197–205. doi:10.4049/jimmunol.175.2.1197
 222. Malik ST, Griffin DB, Fiers W, Balkwill FR. Paradoxical effects of tumour necrosis factor in experimental ovarian cancer. *Int J Cancer* (1989) 44(5):918–25.
 223. Barbolina MV, Kim M, Liu Y, Shepard J, Belmadani A, Miller RJ, et al. Microenvironmental regulation of chemokine (C-X-C-motif) receptor 4 in ovarian carcinoma. *Mol Cancer Res* (2010) 8(5):653–64. doi:10.1158/1541-7786.MCR-09-0463
 224. Kajiyama H, Shibata K, Terauchi M, Ino K, Nawa A, Kikkawa F. Involvement of SDF-1alpha/CXCR4 axis in the enhanced peritoneal metastasis of epithelial ovarian carcinoma. *Int J Cancer* (2008) 122(1):91–9. doi:10.1002/ijc.23083
 225. Dijkgraaf EM, Heusinkveld M, Tummers B, Vogelpoel LT, Goedemans R, Jha V, et al. Chemotherapy alters monocyte differentiation to favor generation of cancer-supporting M2 macrophages in the tumor microenvironment. *Cancer Res* (2013) 73(8):2480–92. doi:10.1158/0008-5472.CAN-12-3542
 226. Wang D, Zhao Z, Caperell-Grant A, Yang G, Mok SC, Liu J, et al. S1P differentially regulates migration of human ovarian cancer and human

- ovarian surface epithelial cells. *Mol Cancer Ther* (2008) 7(7):1993–2002. doi:10.1158/1535-7163.MCT-08-0088
227. Park KS, Kim MK, Lee HY, Kim SD, Lee SY, Kim JM, et al. S1P stimulates chemotactic migration and invasion in OVCAR3 ovarian cancer cells. *Biochem Biophys Res Commun* (2007) 356(1):239–44. doi:10.1016/j.bbrc.2007.02.112
228. Hong G, Baudhuin LM, Xu Y. Sphingosine-1-phosphate modulates growth and adhesion of ovarian cancer cells. *FEBS Lett* (1999) 460(3):513–8.
229. Devine KM, Smicun Y, Hope JM, Fishman DA. S1P induced changes in epithelial ovarian cancer proteolysis, invasion, and attachment are mediated by Gi and Rac. *Gynecol Oncol* (2008) 110(2):237–45. doi:10.1016/j.ygyno.2008.04.013
230. Nieman KM, Kenny HA, Penicka CV, Ladanyi A, Buell-Gutbrod R, Zillhardt MR, et al. Adipocytes promote ovarian cancer metastasis and provide energy for rapid tumor growth. *Nat Med* (2011) 17(11):1498–503. doi:10.1038/nm.2492
231. Huang B, Zhao J, Unkeless JC, Feng ZH, Xiong H. TLR signaling by tumor and immune cells: a double-edged sword. *Oncogene* (2008) 27(2):218–24. doi:10.1038/sj.onc.1210904
232. Ridnour LA, Cheng RY, Switzer CH, Heinecke JL, Ambs S, Glynn S, et al. Molecular pathways: toll-like receptors in the tumor microenvironment – poor prognosis or new therapeutic opportunity. *Clin Cancer Res* (2013) 19(6):1340–6. doi:10.1158/1078-0432.CCR-12-0408
233. Dvorak HF. Tumors: wounds that do not heal. Similarities between tumor stroma generation and wound healing. *N Engl J Med* (1986) 315(26):1650–9. doi:10.1056/NEJM198612253152606
234. Dvorak HF. Tumors: wounds that do not heal-redux. *Cancer Immunol Res* (2015) 3(1):1–11. doi:10.1158/2326-6066.CIR-14-0209
235. Gill SE, Parks WC. Metalloproteinases and their inhibitors: regulators of wound healing. *Int J Biochem Cell Biol* (2008) 40(6–7):1334–47. doi:10.1016/j.biocel.2007.10.024
236. Li HS, Watowich SS. Innate immune regulation by STAT-mediated transcriptional mechanisms. *Immunol Rev* (2014) 261(1):84–101. doi:10.1111/imr.12198
237. Hoffmann A, Baltimore D. Circuitry of nuclear factor kappaB signaling. *Immunol Rev* (2006) 210:171–86. doi:10.1111/j.0105-2896.2006.00375.x
238. Grivennikov SI, Karin M. Dangerous liaisons: STAT3 and NF-kappaB collaboration and crosstalk in cancer. *Cytokine Growth Factor Rev* (2010) 21(1):11–9. doi:10.1016/j.cytogfr.2009.11.005
239. Giuntoli RL II, Webb TJ, Zoso A, Rogers O, Diaz-Montes TP, Bristow RE, et al. Ovarian cancer-associated ascites demonstrates altered immune environment: implications for antitumor immunity. *Anticancer Res* (2009) 29(8):2875–84.
240. Michel T, Hentges F, Zimmer J. Consequences of the crosstalk between monocytes/macrophages and natural killer cells. *Front Immunol* (2012) 3:403. doi:10.3389/fimmu.2012.00403
241. Barbulescu K, Becker C, Schlaak JF, Schmitt E, Meyer zum Buschenfelde KH, Neurath MF, et al. IL-12 and IL-18 differentially regulate the transcriptional activity of the human IFN-gamma promoter in primary CD4+ T lymphocytes. *J Immunol* (1998) 160(8):3642–7.
242. Dighe AS, Richards E, Old LJ, Schreiber RD. Enhanced in vivo growth and resistance to rejection of tumor cells expressing dominant negative IFN gamma receptors. *Immunity* (1994) 1(6):447–56.
243. Kaplan DH, Shankaran V, Dighe AS, Stockert E, Aguet M, Old LJ, et al. Demonstration of an interferon gamma-dependent tumor surveillance system in immunocompetent mice. *Proc Natl Acad Sci U S A* (1998) 95(13):7556–61.
244. Snijders A, Hilkens CM, van der Pouw Kraan TC, Engel M, Aarden LA, Kapsenberg ML. Regulation of bioactive IL-12 production in lipopolysaccharide-stimulated human monocytes is determined by the expression of the p35 subunit. *J Immunol* (1996) 156(3):1207–12.
245. Hu X, Chakravarty SD, Ivashkiv LB. Regulation of interferon and Toll-like receptor signaling during macrophage activation by opposing feedforward and feedback inhibition mechanisms. *Immunol Rev* (2008) 226:41–56. doi:10.1111/j.1600-065X.2008.00707.x
246. Ramirez-Carrozzi VR, Nazarian AA, Li CC, Gore SL, Sridharan R, Imbalzano AN, et al. Selective and antagonistic functions of SWI/SNF and Mi-2beta nucleosome remodeling complexes during an inflammatory response. *Genes Dev* (2006) 20(3):282–96. doi:10.1101/gad.1383206
247. Voll RE, Herrmann M, Roth EA, Stach C, Kalten JR, Girkontaite I. Immunosuppressive effects of apoptotic cells. *Nature* (1997) 390(6658):350–1. doi:10.1038/37022
248. Fritsche KL, Byrge M, Feng C. Dietary omega-3 polyunsaturated fatty acids from fish oil reduce interleukin-12 and interferon-gamma production in mice. *Immunol Lett* (1999) 65(3):167–73.
249. Lang R, Patel D, Morris JJ, Rutschman RL, Murray PJ. Shaping gene expression in activated and resting primary macrophages by IL-10. *J Immunol* (2002) 169(5):2253–63. doi:10.4049/jimmunol.169.5.2253
250. Huynh ML, Malcolm KC, Kotaru C, Tilstra JA, Westcott JY, Fadok VA, et al. Defective apoptotic cell phagocytosis attenuates prostaglandin E2 and 15-hydroxyeicosatetraenoic acid in severe asthma alveolar macrophages. *Am J Respir Crit Care Med* (2005) 172(8):972–9. doi:10.1164/rccm.200501-035OC
251. Murray PJ. The primary mechanism of the IL-10-regulated antiinflammatory response is to selectively inhibit transcription. *Proc Natl Acad Sci U S A* (2005) 102(24):8686–91. doi:10.1073/pnas.0500419102
252. Melisi D, Chiao PJ. NF-kappa B as a target for cancer therapy. *Expert Opin Ther Targets* (2007) 11(2):133–44. doi:10.1517/14728222.11.2.133
253. Jinawath N, Vasoontara C, Jinawath A, Fang X, Zhao K, Yap KL, et al. Oncoproteomic analysis reveals co-upregulation of RELA and STAT5 in carboplatin resistant ovarian carcinoma. *PLoS One* (2010) 5(6):e11198. doi:10.1371/journal.pone.0011198
254. Smallie T, Ricchetti G, Horwood NJ, Feldmann M, Clark AR, Williams LM. IL-10 inhibits transcription elongation of the human TNF gene in primary macrophages. *J Exp Med* (2010) 207(10):2081–8. doi:10.1084/jem.20100414
255. Smith AM, Qualls JE, O'Brien K, Balouzian L, Johnson PF, Schultz-Cherry S, et al. A distal enhancer in Il12b is the target of transcriptional repression by the STAT3 pathway and requires the basic leucine zipper (B-ZIP) protein NFIL3. *J Biol Chem* (2011) 286(26):23582–90. doi:10.1074/jbc.M111.249235
256. Natoli G. NF-kappaB and chromatin: ten years on the path from basic mechanisms to candidate drugs. *Immunol Rev* (2012) 246(1):183–92. doi:10.1111/j.1600-065X.2012.01103.x
257. Herve J, Dubreil L, Tardif V, Terme M, Pogu S, Anegón I, et al. beta2-Adrenoreceptor agonist inhibits antigen cross-presentation by dendritic cells. *J Immunol* (2013) 190(7):3163–71. doi:10.4049/jimmunol.1201391
258. O'Shea JJ, Schwartz DM, Villarino AV, Gadina M, McInnes IB, Laurence A. The JAK-STAT pathway: impact on human disease and therapeutic intervention. *Annu Rev Med* (2015) 66:311–28. doi:10.1146/annurev-med-051113-024537
259. Birge RB, Boeltz S, Kumar S, Carlson J, Wanderley J, Calianese D, et al. Phosphatidylserine is a global immunosuppressive signal in efferocytosis, infectious disease, and cancer. *Cell Death Differ* (2016) 23(6):962–78. doi:10.1038/cdd.2016.11
260. Natoli G, Saccani S, Bosisio D, Marazzi I. Interactions of NF-kappaB with chromatin: the art of being at the right place at the right time. *Nat Immunol* (2005) 6(5):439–45. doi:10.1038/ni1196
261. Sanjabi S, Hoffmann A, Liou HC, Baltimore D, Smale ST. Selective requirement for c-Rel during IL-12 P40 gene induction in macrophages. *Proc Natl Acad Sci U S A* (2000) 97(23):12705–10. doi:10.1073/pnas.230436397
262. Sanjabi S, Williams KJ, Saccani S, Zhou L, Hoffmann A, Ghosh G, et al. A c-Rel subdomain responsible for enhanced DNA-binding affinity and selective gene activation. *Genes Dev* (2005) 19(18):2138–51. doi:10.1101/gad.1329805
263. Ruan Q, Kameswaran V, Tone Y, Li L, Liou HC, Greene MI, et al. Development of Foxp3(+) regulatory T cells is driven by the c-Rel enhanceosome. *Immunity* (2009) 31(6):932–40. doi:10.1016/j.immuni.2009.10.006
264. Huehn J, Beyer M. Epigenetic and transcriptional control of Foxp3+ regulatory T cells. *Semin Immunol* (2015) 27(1):10–8. doi:10.1016/j.smim.2015.02.002
265. Bhushan S, Tchatalbachev S, Lu Y, Frohlich S, Fijak M, Vijayan V, et al. Differential activation of inflammatory pathways in testicular macrophages provides a rationale for their subdued inflammatory capacity. *J Immunol* (2015) 194(11):5455–64. doi:10.4049/jimmunol.1401132

266. Guo RX, Qiao YH, Zhou Y, Li LX, Shi HR, Chen KS. Increased staining for phosphorylated AKT and nuclear factor-kappa B p65 and their relationship with prognosis in epithelial ovarian cancer. *Pathol Int* (2008) 58(12):749–56. doi:10.1111/j.1440-1827.2008.02306.x
267. Darb-Esfahani S, Sinn BV, Weichert W, Budczies J, Lehmann A, Noske A, et al. Expression of classical NF-kappa B pathway effectors in human ovarian carcinoma. *Histopathology* (2010) 56(6):727–39. doi:10.1111/j.1365-2559.2010.03544.x
268. Alvero AB. Recent insights into the role of NF-kappa B in ovarian carcinogenesis. *Genome Med* (2010) 2(8):56. doi:10.1186/gm177
269. DiDonato JA, Mercurio F, Karin M. NF-kappa B and the link between inflammation and cancer. *Immunol Rev* (2012) 246(1):379–400. doi:10.1111/j.1600-065X.2012.01099.x
270. Alberti C, Pincioli P, Valeri B, Ferri R, Ditto A, Umezawa K, et al. Ligand-dependent EGFR activation induces the co-expression of IL-6 and PAI-1 via the NFkB pathway in advanced-stage epithelial ovarian cancer. *Oncogene* (2012) 31(37):4139–49. doi:10.1038/onc.2011.572
271. White KL, Rider DN, Kalli KR, Knutson KL, Jarvik GP, Goode EL. Genomics of the NF-kappa B signaling pathway: hypothesized role in ovarian cancer. *Cancer Causes Control* (2011) 22(5):785–801. doi:10.1007/s10552-011-9745-4
272. Godwin P, Baird AM, Heavey S, Barr MP, O'Byrne KJ, Gately K. Targeting nuclear factor-kappa B to overcome resistance to chemotherapy. *Front Oncol* (2013) 3:120. doi:10.3389/fonc.2013.00120
273. Grivennikov SI, Greten FR, Karin M. Immunity, inflammation, and cancer. *Cell* (2010) 140(6):883–99. doi:10.1016/j.cell.2010.01.025
274. Yu H, Lee H, Herrmann A, Buettner R, Jove R. Revisiting STAT3 signalling in cancer: new and unexpected biological functions. *Nat Rev Cancer* (2014) 14(11):736–46. doi:10.1038/nrc3818
275. Yu H, Pardoll D, Jove R. STATs in cancer inflammation and immunity: a leading role for STAT3. *Nat Rev Cancer* (2009) 9(11):798–809. doi:10.1038/nrc2734

Conflict of Interest Statement: The authors declare that the research was conducted in the absence of any commercial or financial relationships that could be construed as a potential conflict of interest.

Copyright © 2017 Worzfeld, Pogge von Strandmann, Huber, Adhikary, Wagner, Reinartz and Müller. This is an open-access article distributed under the terms of the Creative Commons Attribution License (CC BY). The use, distribution or reproduction in other forums is permitted, provided the original author(s) or licensor are credited and that the original publication in this journal is cited, in accordance with accepted academic practice. No use, distribution or reproduction is permitted which does not comply with these terms.