



**QUEEN'S
UNIVERSITY
BELFAST**

The Viral protein Corona Directs Viral Pathogenesis and Amyloid Aggregation

Ezzat, K., Pernemalm, M., Palsson, S., Roberts, T. C., Jarver, P., Dondalska, A., Bestas, B., Sobkowiak, M. J., Levanen, B., Skold, M., Thompson, E. A., Saher, O., Kari, O. K., Lajunen, T., Ekstrom, E. S., Nilsson, C., Ishchenko, Y., Malm, T., Wood, M. J. A., ... Andaloussi, S. EL. (2019). The Viral protein Corona Directs Viral Pathogenesis and Amyloid Aggregation. *Nature Communications*, 10, [2331]. <https://doi.org/10.1038/s41467-019-10192-2>

Published in:
Nature Communications

Document Version:
Publisher's PDF, also known as Version of record

Queen's University Belfast - Research Portal:
[Link to publication record in Queen's University Belfast Research Portal](#)

Publisher rights
Copyright 2019 the authors.
This is an open access article published under a Creative Commons Attribution License (<https://creativecommons.org/licenses/by/4.0/>), which permits unrestricted use, distribution and reproduction in any medium, provided the author and source are cited.

General rights
Copyright for the publications made accessible via the Queen's University Belfast Research Portal is retained by the author(s) and / or other copyright owners and it is a condition of accessing these publications that users recognise and abide by the legal requirements associated with these rights.

Take down policy
The Research Portal is Queen's institutional repository that provides access to Queen's research output. Every effort has been made to ensure that content in the Research Portal does not infringe any person's rights, or applicable UK laws. If you discover content in the Research Portal that you believe breaches copyright or violates any law, please contact openaccess@qub.ac.uk.

ARTICLE

<https://doi.org/10.1038/s41467-019-10192-2>

OPEN

The viral protein corona directs viral pathogenesis and amyloid aggregation

Kariem Ezzat^{1,2}, Maria Pernemalm³, Sandra Pålsson¹, Thomas C. Roberts^{4,5}, Peter Järver¹, Aleksandra Dondalska¹, Burcu Bestas^{2,18}, Michal J. Sobkowiak⁶, Bettina Levänen⁷, Magnus Sköld^{8,9}, Elizabeth A. Thompson¹⁰, Osama Saher^{2,11}, Otto K. Kari¹², Tatu Lajunen¹², Eva Sverremark Ekström¹, Caroline Nilsson¹³, Yevheniia Ishchenko¹⁴, Tarja Malm¹⁴, Matthew J.A. Wood⁴, Ultan F. Power¹⁵, Sergej Masich¹⁶, Anders Lindén^{7,9}, Johan K. Sandberg⁶, Janne Lehtiö³, Anna-Lena Spetz^{1,19} & Samir EL Andaloussi^{2,4,17,19}

Artificial nanoparticles accumulate a protein corona layer in biological fluids, which significantly influences their bioactivity. As nanosized obligate intracellular parasites, viruses share many biophysical properties with artificial nanoparticles in extracellular environments and here we show that respiratory syncytial virus (RSV) and herpes simplex virus type 1 (HSV-1) accumulate a rich and distinctive protein corona in different biological fluids. Moreover, we show that corona pre-coating differentially affects viral infectivity and immune cell activation. In addition, we demonstrate that viruses bind amyloidogenic peptides in their corona and catalyze amyloid formation via surface-assisted heterogeneous nucleation. Importantly, we show that HSV-1 catalyzes the aggregation of the amyloid β -peptide ($A\beta_{42}$), a major constituent of amyloid plaques in Alzheimer's disease, in vitro and in animal models. Our results highlight the viral protein corona as an acquired structural layer that is critical for viral-host interactions and illustrate a mechanistic convergence between viral and amyloid pathologies.

¹Department of Molecular Biosciences, The Wenner-Gren Institute, Stockholm University, Stockholm 10691, Sweden. ²Department of Laboratory Medicine, Clinical Research Center, Karolinska Institutet, Stockholm 14152, Sweden. ³Clinical Proteomics Mass Spectrometry, Department of Oncology-Pathology, Science for Life Laboratory and Karolinska Institutet, Stockholm 17176, Sweden. ⁴Department of Physiology, Anatomy and Genetics, University of Oxford, Oxford OX13PT, UK. ⁵Sanford Burnham Prebys Medical Discovery Institute, Development, Aging and Regeneration Program, La Jolla, CA 92037, USA. ⁶Center for Infectious Medicine, Department of Medicine, Karolinska Institutet, Karolinska University Hospital Huddinge, Stockholm 14186, Sweden. ⁷Unit for Lung and Airway disease, Institute of Environmental Medicine, Karolinska Institutet, Stockholm 17165, Sweden. ⁸Respiratory Medicine Unit, Department of Medicine, Karolinska Institutet, Stockholm 17176, Sweden. ⁹Department of Respiratory Medicine and Allergy, Karolinska University Hospital, Stockholm 17176, Sweden. ¹⁰Immunology and Allergy Unit, and Center for Molecular Medicine, Department of Medicine, Karolinska Institutet, Stockholm 17176, Sweden. ¹¹Faculty of Pharmacy, Department of Pharmaceutics and Industrial Pharmacy, Cairo University, Cairo 11562, Egypt. ¹²Drug Research Program, Faculty of Pharmacy, Division of Pharmaceutical Biosciences, University of Helsinki, Helsinki 00014, Finland. ¹³Department of Clinical Science and Education, Södersjukhuset, Karolinska Institutet and Sachs' Children and Youth Hospital, Stockholm 11883, Sweden. ¹⁴A. I. Virtanen Institute for Molecular Sciences, University of Eastern Finland, Kuopio 70211, Finland. ¹⁵Centre of Experimental Medicine, Queens' University Belfast, Belfast BT97BL, UK. ¹⁶Department of Cell and Molecular Biology, Karolinska Institutet, Stockholm 17177, Sweden. ¹⁷Evov Therapeutics Limited, Oxford Science Park, Oxford OX44HG, UK. ¹⁸Present address: Discovery Sciences, R&D Biopharmaceuticals, AstraZeneca, Gothenburg, Sweden. ¹⁹These authors contributed equally: Anna-Lena Spetz, Samir EL Andaloussi. Correspondence and requests for materials should be addressed to K.E. (email: kariem.ezzat@su.se) or to A.-L.S. (email: anna-lena.spetz@su.se)

The term “protein corona” refers to the layer of proteins that adhere to the surfaces of nanostructures when they encounter biological fluids. Nanoparticles adsorb biomolecules in biological fluids due to the high free energy of their surfaces¹. The importance of the corona layer stems from the fact that it constitutes the actual surface of interaction with biological membranes or “what the cell sees” in the in-vivo context². Hundreds of proteins have been identified to confer a distinct biological identity of nanoparticles in different microenvironments depending on their size, chemistry, and surface modification (recently reviewed in ref. ³). These factors were found to be critical determinants of the biodistribution and pharmacodynamics of nanoparticles. On the other hand, the ability of the surfaces of nanoparticles to partially denature certain corona proteins exposing “cryptic epitopes” highlights the role of the protein corona in the toxicology of nanoparticles^{4–6}. The formation of a protein corona is particularly important in the context of nanoparticle interaction with amyloidogenic peptides such as amyloid- β ($A\beta_{42}$) and islet amyloid polypeptide (IAPP), which are associated with Alzheimer’s disease (AD) and diabetes mellitus type 2 disease, respectively. Nanoparticles have been shown to catalyze amyloid formation via binding of amyloidogenic peptides in their corona, thereby increasing local peptide concentration and inducing conformational changes that facilitate fibril growth via a heterogenous nucleation mechanism^{7,8}. This surface-assisted (heterogenous) nucleation has been demonstrated for several nanoparticles with different amyloidogenic peptides including IAPP and $A\beta_{42}$ ^{9,10}.

Here we studied viruses in terms of their biophysical equivalence to synthetic nanoparticles in extracellular environments. As nanosized obligate intracellular parasites, viruses lack any metabolic activity outside the cell and can thus be expected to interact with host factors in the microenvironment similar to artificial nanoparticles. In the current work, we used well-established techniques of nanotechnology to study the protein corona of respiratory syncytial virus (RSV) in comparison with herpes simplex virus type 1 (HSV-1) and synthetic liposomes. In addition, we studied the interaction of both RSV and HSV-1 with amyloidogenic peptides.

RSV is an enveloped *Orthopneumovirus* with a diameter between 100 and 300 nm, and a single-stranded negative-sense RNA genome with 10 genes encoding 11 proteins¹¹. It is a leading cause of acute lower respiratory tract infections in young children worldwide, causing up to an annual estimate of 34 million cases¹². By the second year of life, nearly 90% of children get infected with RSV causing up to 196,000 yearly fatalities¹³. Reinfection with RSV occurs throughout life, usually with mild local symptoms in the upper airways¹⁴. However, reinfection in the elderly and immunocompromised individuals can lead to severe clinical disease in the lower airways. Although natural infection leads to the production of neutralizing antibodies, the ability of these antibodies to protect from subsequent RSV infections appears to be incomplete^{15,16}. Neither a vaccine nor an antiviral therapy is yet available, except for passive immunization using the anti-RSV monoclonal antibody palivizumab. Early vaccine trials using formalin-inactivated RSV led to enhanced disease with up to 80% of vaccinees being hospitalized and two dying following natural RSV infection^{14,16}. This led to the hypothesis that host immune responses play an important role in the pathophysiology of airway disease caused by RSV.

HSV-1 is an example of another virus with high prevalence, infecting nearly 70% of the human population¹⁷. HSV-1 is a double-stranded DNA virus consisting of an icosahedral nucleocapsid surrounded by tegument and envelope with virion sizes ranging from 155 to 240 nm¹⁸. HSV-1 is a neurotropic virus that infects peripheral sensory neurons and establishes

latency¹⁹. Latent HSV-1 is occasionally reactivated causing peripheral pathology and under certain circumstances it can migrate into the central nervous system causing herpes simplex encephalitis, the most common cause of sporadic fatal viral encephalitis¹⁹. In the context of the current work, we focused on the presumptive role of HSV-1 in the pathology of AD. A number of risk factors have been associated with AD, including the E4 allele of the apolipoprotein E (Apo-E), diabetes, vascular pathology, neuroinflammation, and infections²⁰. Several recent studies have supported the theory of a significant role of HSV-1 in the disease²¹. HSV-1 DNA was found to be localized within amyloid plaques in AD patients and HSV-1 infection has been shown to promote neurotoxic $A\beta$ accumulation in human neural cells and to the formation of $A\beta$ deposits in the brains of infected mice^{22,23}. Moreover, the presence of anti-HSV IgM antibodies, which indicate HSV reactivation, is correlated with a high risk of AD and antiherpetic treatment is correlated with a reduced risk of developing dementia^{24,25}. Despite these correlations, the mechanism by which viruses induce amyloid aggregation, the major pathological hallmark of AD, is not known.

In the present study, we demonstrated that upon encountering different biological fluids, RSV accumulated extensive and distinct protein coronae compared with HSV-1 and synthetic liposomes. The various coronae were dependent on the biological fluid and exerted markedly different effects on RSV infectivity and capacity to activate monocyte-derived dendritic cells (moDCs). Moreover, upon interaction with an amyloidogenic peptide derived from IAPP, RSV accelerated the process of amyloid aggregation via surface-assisted heterogenous nucleation. This amyloid catalysis was also demonstrated for HSV-1 and the $A\beta_{42}$ peptide in vitro and in an AD animal model. Our findings highlight the importance of viral protein corona interactions for viral pathogenesis and provide a direct mechanistic link between viral and amyloid pathologies.

Results

Rich and unique protein coronae for RSV and HSV-1. Based on the extensive literature describing the significant role of corona factors in synthetic nanoparticle functionality, we used established techniques to answer questions regarding RSV pathogenicity²⁶. Using proteomics, we assessed the RSV protein corona profiles in adult human plasma (HP), juvenile (6-month-old infants tested RSV negative at the time of sample collection) HP (jHP), human bronchoalveolar lavage fluid (BALF) from healthy adults, rhesus macaque plasma (MP), and fetal bovine serum (FBS). These biological fluids represent different microenvironments encountered by the virus in terms of tissue tropism (HP vs. BALF), zoonosis (MP), and culturing conditions (FBS). The biological fluids were screened for antibodies against RSV using enzyme-linked immunosorbent assay (ELISA) and both adult HP and BALF contained high levels of anti-RSV IgG antibodies, unlike jHP, MP, and FBS (Supplementary Fig. 1).

Viral stocks were produced in serum-free conditions to prevent initial contamination with FBS proteins. Virions produced under serum-free conditions were incubated with 10% v/v solutions of different biological fluids. Controls included non-infected cell medium representing the background cellular secretome and synthetic lipid vesicles of a size comparable to RSV (200 nm) with positively or negatively charged surfaces. In addition, we compared the coronae of RSV to HSV-1 to probe for differences between different viruses of relatively similar size. After incubation for 1 h at 37 °C, the virions were re-harvested by centrifugation and washed twice before performing mass spectrometry (MS)-based proteomic analyses.

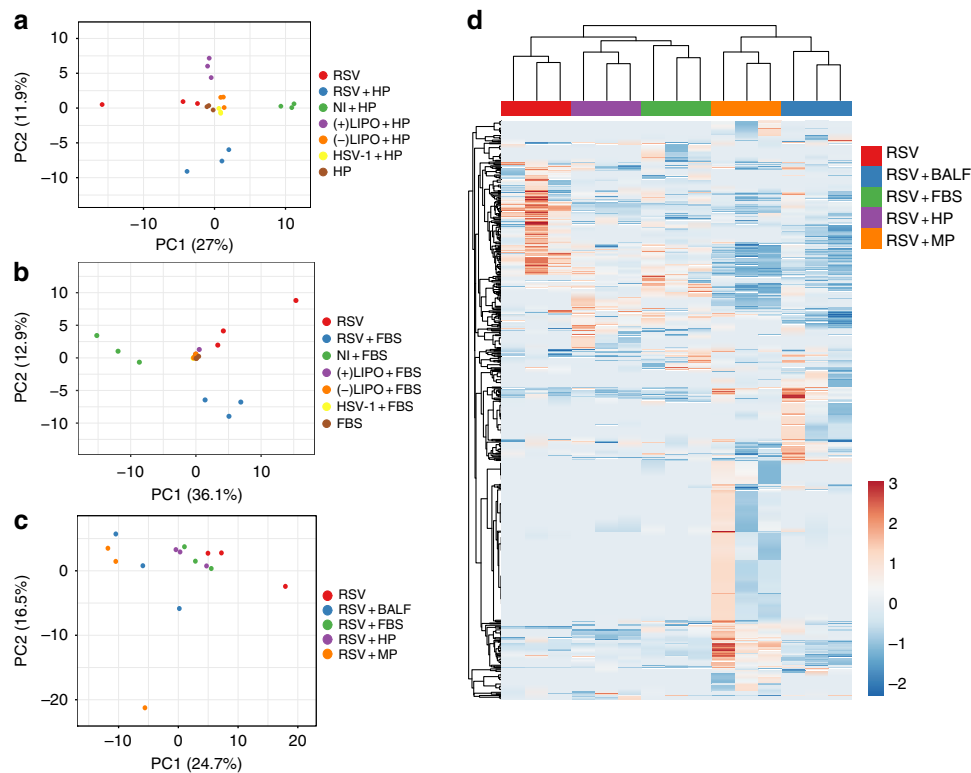


Fig. 1 RSV accumulates a rich and distinctive protein corona in different biological fluids. **a–c** Principal component analyses (PCA) of the corona proteomic profiles of RSV, HSV-1, and controls. Triplicate samples were incubated with 10% v/v solutions of each different biological fluid for 1 h at 37 °C, then re-harvested, washed, and finally analyzed by MS. Only proteins significantly detected (FDR 1%) in all three replicates in each condition were used. NI = non-infected supernatant, (–)Lipo = negatively charged lipid vesicles, 200 nm, (+)Lipo = positively charged lipid vesicles, 200 nm. **a** PCA comparing proteomic profiles in human plasma (HP). **b** PCA comparing proteomic profiles in fetal bovine serum (FBS). **c** PCA comparing the corona profiles of RSV in different biological fluids; HP, FBS, MP, or BALF. **d** Heatmap representing the viral corona fingerprints of RSV after incubation in different biological fluids. The three columns in the heatmap show three replicates. Only proteins significantly detected (FDR 1%) in all three replicates in each condition were used. Red and blue indicate higher and lower than the mean protein signal, respectively. Scale bars represent row Z-scores

Assessment of the proteomic data by principle component analysis (PCA) showed that RSV and HSV-1 samples were well separated from one another, and that the viral samples were well separated from the control samples with the replicates clustering together (Fig. 1 and Supplementary Fig. 2). Replicate clustering was confirmed via corresponding correlation plots for the samples in the PCA, which showed higher correlation coefficients between the replicates within the same corona condition than between different conditions (Supplementary Fig. 3). Notably, both RSV and HSV-1 possessed distinctive proteomic profiles depending on the biological fluid (Fig. 1c and Supplementary Fig. 2c). In addition, RSV protein corona profiles were different between HP and jHP (Supplementary Fig. 2d); however, the use of a different MS for this experiment prevents direct comparison with the data shown in Fig. 1. The reproducibility of the corona preparations was further assessed by calculating coefficient of variation (CV) between the replicates for each sample type. The CVs ranged between 16% and 42% depending on sample type (average 28%, Supplementary Fig. 3d).

In order to determine whether the most abundant corona factors were the most abundant proteins in the biological fluids, the crude fluids were also analyzed by MS. The top ten most abundant proteins identified are presented in Table 1. Similar to previous findings for nanoparticles²⁷, our data showed that the most abundant proteins in the protein corona were not necessarily the most abundant in the biological fluids. This, together with the PCA analyses comparing RSV with HSV-1 and the controls indicated enrichment of particular corona factors

depending on the surface properties of the virus. Moreover, proteomic data sets were visualized by heatmap and hierarchical clustering revealing an extensive protein corona signature for viral samples in each biological fluid (Fig. 1d). Although the serum-free viral particles contained some host factors that were incorporated during virus replication and budding from the cells, the virus was able to subsequently accumulate a different set of host factors that were dependent on the biological fluid. As such, a characteristic viral biological identity was associated with each biological fluid. The viral corona factors present on all three replicates in each biological fluid are listed in Supplementary Data 1. In addition, the raw proteomics data are available in Supplementary Data 2.

In addition, we used transmission electron microscopy (TEM) to visualize the viral protein corona. A layer of factors was observed interacting with the viral surface upon encounter with cell membranes, which was absent in serum-free conditions (Fig. 2a). This demonstrated that RSV accumulated a layer of corona factors that are likely involved in cellular interactions. We also performed cryoimmunoelectron microscopy (iEM) using antibodies for certain proteins that were detected in the viral corona proteomic analysis. In serum-free conditions, we used an anti-RSV F-protein antibody. For adult HP and BALF coronae, we used anti-human IgG and anti-surfactant protein A (SP-A) antibodies, respectively. The bound antibodies were detected using secondary antibodies coated with 10 nm gold nanoparticles. As shown in Fig. 2b, corona factors were bound to the surface of RSV and labeled with the respective antibodies. To further

Table 1 Top ten proteins in the protein coronae of RSV, HSV-1, and crude biological fluids**Top ten proteins****RSV + HP**

Beta-actin-like protein 2 [ACTBL_HUMAN]
 Actin, cytoplasmic 1 [ACTB_BOVIN]
 Actin, alpha skeletal muscle [ACTS_BOVIN]
 Complement C4-B [CO4B_HUMAN]
 Complement C4-A [CO4A_HUMAN]
 Complement C3 [CO3_HUMAN]
 Complement component 3 [AOA0F6QNP7_BOVIN]
 Tubulin alpha-1C chain [TBA1C_HUMAN]
 Nucleoprotein [NCAP_HRSVA]

Glyceraldehyde-3-phosphate dehydrogenase [G3P_HUMAN]

RSV + FBS

Actin, cytoplasmic 1 [ACTB_BOVIN]

Beta-actin-like protein 2 [ACTBL_HUMAN]
 Actin, alpha skeletal muscle [ACTS_BOVIN]
 Tubulin alpha-1C chain [TBA1C_HUMAN]
 Glyceraldehyde-3-phosphate dehydrogenase [G3P_HUMAN]
 Nucleoprotein [NCAP_HRSVA]
 Phosphoprotein [PHOSP_HRSVA]
 Tubulin alpha-4A chain [TBA4A_BOVIN]

Heat shock 70 kDa protein 1A [HS71A_HUMAN]

Glyceraldehyde-3-phosphate dehydrogenase [I2CWU4_MACMU]

RSV + BALF

Actin, alpha skeletal muscle [ACTS_BOVIN]

Actin, cytoplasmic 1 [ACTB_BOVIN]

Beta-actin-like protein [ACTBL_HUMAN]
 Phosphoprotein [PHOSP_HRSVA]
 Glyceraldehyde-3-phosphate dehydrogenase [G3P_HUMAN]

Matrix protein [MATRX_HRSVA]

Nucleoprotein OS [NCAP_HRSVA]

Isoform 2 of Heat shock protein 75 kDa, mitochondrial [TRAP1_HUMAN]

Pulmonary surfactant-associated protein A2 [SFPA2_HUMAN]

Isoform 2 of 4F2 cell-surface antigen heavy chain [4F2_HUMAN]

RSV + MP

Actin, cytoplasmic 1 [ACTB_BOVIN]

Actin, alpha skeletal muscle [ACTS_BOVIN]

Beta-actin-like protein 2 [ACTBL_HUMAN]

Phosphoprotein [PHOSP_HRSVA]

Tetraspanin (Fragment) [G7N5L6_MACMU]

Serum albumin (Fragment) [ALBU_MACMU]

Uncharacterized protein [G7MT40_MACMU]

Matrix protein [MATRX_HRSVA]

Glyceraldehyde-3-phosphate dehydrogenase [G3P_HUMAN]

Isoform 2 of 4F2 cell-surface antigen heavy chain [4F2_HUMAN]

HSV-1 + HP

Ig gamma-1 chain C region [AOA087X079_HUMAN]
 Complement C3 [CO3_HUMAN]
 Complement component 3 [AOA0F6QNP7_BOVIN]
 Ig gamma-3 chain C region (Fragment) [AOA075B6N8_HUMAN]
 Envelope glycoprotein D [GD_HHV1F]
 Protein IGKV3-11 [AOA087WZW8_HUMAN]

Complement C4-B [CO4B_HUMAN]

Complement C4-A [CO4A_HUMAN]

Tegument protein UL47 [TEG5_HHV1F]

Envelope glycoprotein E [GE_HHV1F]

HSV-1 + FBS

Chromatin assembly factor 1 subunit B [A5D9H4_BOVIN]

PRPF8 protein [A7Z025_BOVIN]

Angiotensinogen [ANGT_HUMAN]

Thyroglobulin [F1MPH3_BOVIN]

Serglycin [SRGN_HUMAN]

Histone H2B type 1-N [H2B1N_BOVIN]

Keratin, type II cytoskeletal [K2C6A_HUMAN]

Period circadian protein homolog 3 [AOA087WV69_HUMAN]

Uncharacterized protein [H9H2P7_MACMU]

Uncharacterized protein [F6W1Y2_MACMU]

HSV-1 + BALF

Tyrosine-protein kinase receptor [F1MCM5_BOVIN]

Chromatin assembly factor 1 subunit B [A5D9H4_BOVIN]

PRPF8 protein [A7Z025_BOVIN]

Thyroglobulin [F1MPH3_BOVIN]

XYLT2 protein (Fragment) [A4FV62_BOVIN]

Lactotransferrin (Fragment) [E7EQB2_HUMAN]

Serum amyloid P-component [SAMP_HUMAN]

Angiotensinogen [ANGT_HUMAN]

Ig lambda chain V-III region SH [LV301_HUMAN]

Platelet factor 4 [PLF4_HUMAN]

RSV + jHP

Apolipoprotein A-I [APOA1_HUMAN]

Serum albumin [ALBU_HUMAN]

Apolipoprotein A-II [APOA2_HUMAN]

Isoform Gamma-A of Fibrinogen gamma chain [FIBG_HUMAN]

Fibrinogen beta chain [FIBB_HUMAN]

Apolipoprotein B-100 [APOB_HUMAN]

Fibrinogen alpha chain [FIBA_HUMAN]

Actin, cytoplasmic 1 [ACTB_BOVIN]

Beta-actin-like protein 2 [ACTBL_HUMAN]

ALB protein [BOJYQO_BOVIN]

HP

Serum albumin [ALBU_HUMAN]

Ig alpha-1 chain C region [IGHA1_HUMAN]

Serotransferrin [TRFE_HUMAN]

Ig alpha-2 chain C region [IGHA2_HUMAN]

Protein IGKV3-11 [AOA087WZW8_HUMAN]

Ig lambda-3 chain C regions (Fragment) [AOA075B6L0_HUMAN]

Ig lambda-1 chain C regions (Fragment) [AOA075B6K8_HUMAN]

Haptoglobin OS [HPT_HUMAN]

Isoform 2 of Fibrinogen alpha chain [FIBA_HUMAN]

Hemopexin OS [HEMO_HUMAN]

FBS

Serum albumin [AOA140T897_BOVIN]

ALB protein [BOJYQO_BOVIN]

Alpha-2-HS-glycoprotein [FETUA_BOVIN]

Serotransferrin [G3X6N3_BOVIN]

Serotransferrin [TRFE_BOVIN]

Fetuin-B [FETUB_BOVIN]

Protein AMBP [F1MMK9_BOVIN]

Vitamin D-binding protein [VTDB_BOVIN]

Vitamin D-binding protein [F1N5M2_BOVIN]

Alpha-1B-glycoprotein [A1BG_BOVIN]

BALF

Serum albumin [ALBU_HUMAN]

Serotransferrin [TRFE_HUMAN]

Ig alpha-1 chain C region [IGHA1_HUMAN]

Uteroglobin [UTER_HUMAN]

Lysozyme C [LYSC_HUMAN]

Ig alpha-2 chain C [IGHA2_HUMAN]

Protein IGKV3-11 [AOA087WZW8_HUMAN]

Antileukoproteinase [SLPL_HUMAN]

Ig lambda-3 chain C regions (Fragment) [AOA075B6L0_HUMAN]

Ig lambda-1 chain C regions (Fragment) [AOA075B6K8_HUMAN]

MP

Serum albumin (Fragment) [ALBU_MACMU]

Uncharacterized protein [G7MT40_MACMU]

Uncharacterized protein [G7MJR4_MACMU]

Transferrin OS [F7DHR8_MACMU]

Fibrinogen alpha chain [F6UZ60_MACMU]

Putative uncharacterized protein [F6WR34_MACMU]

Uncharacterized protein [F6UZ87_MACMU]

Haptoglobin isoform 2 preproprotein [H9Z8D4_MACMU]

Uncharacterized protein [AOA1D5QTO2_MACMU]

Hemoglobin subunit beta [HBB_MACMU]

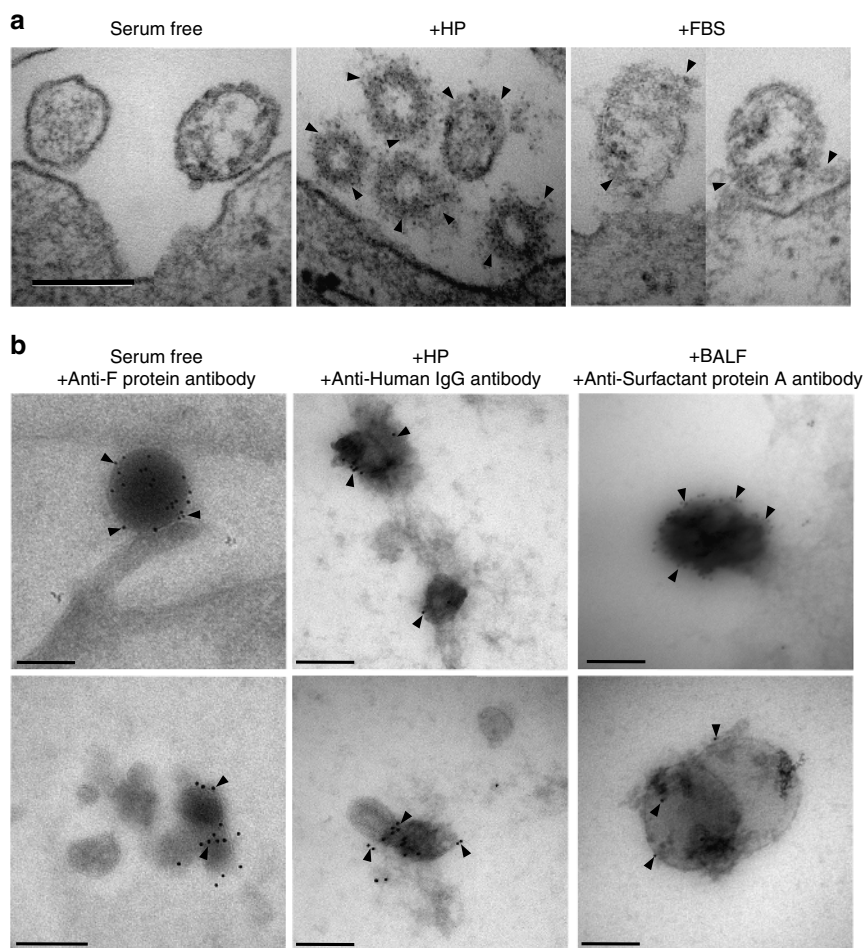
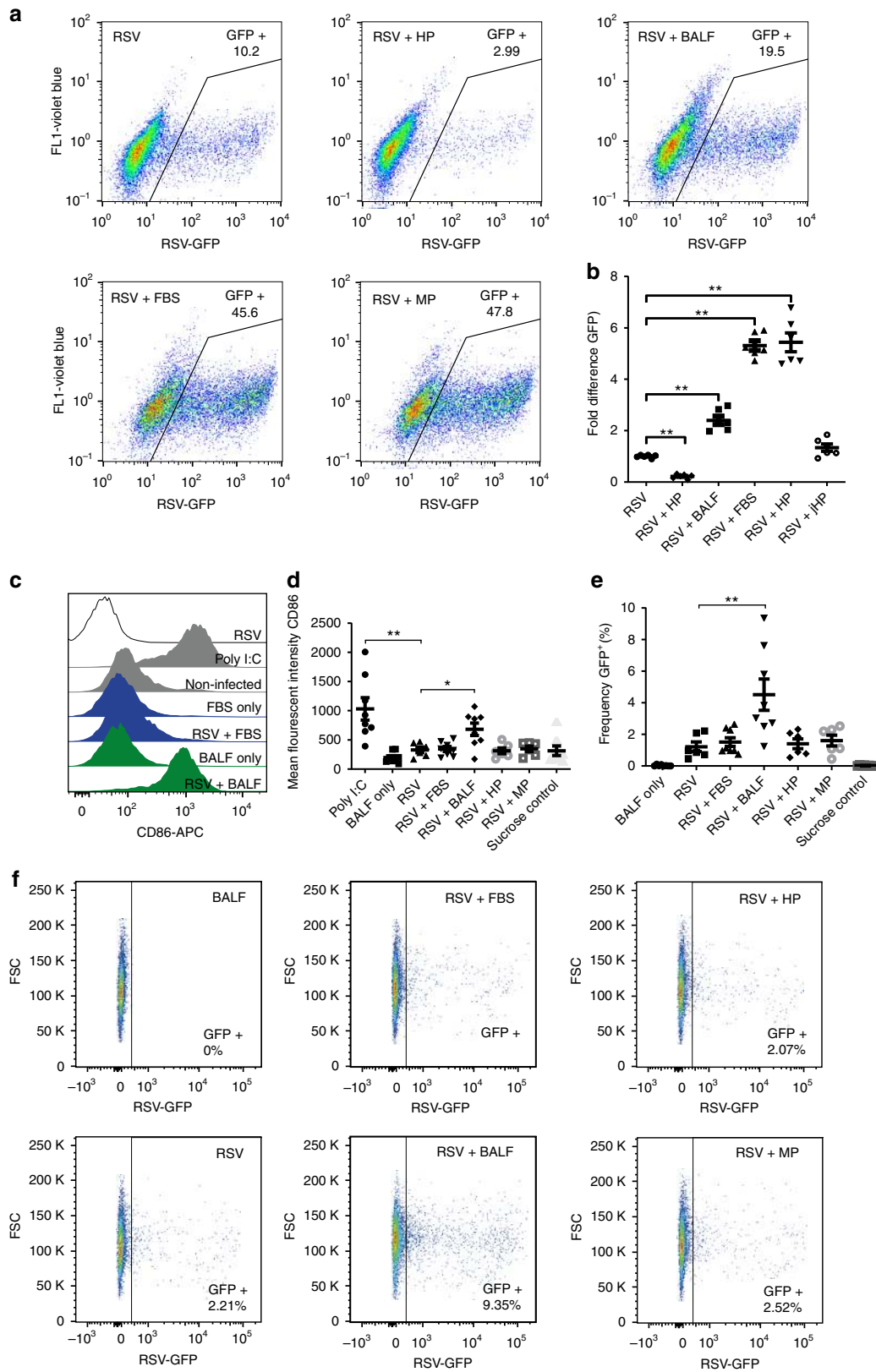


Fig. 2 Corona factors bind to the viral surface. **a** Representative TEM images of HEP-2 cell sections ($n = 3$) after incubation for 1 h with RSV in either serum-free medium or medium with 50% v/v of different biological fluids. Compiled images of virions in close proximity to the cell-surface and black arrows point to bound protein corona. **b** Representative cryo-immunoelectron microscopy images of RSV incubated in serum-free conditions or with 50% v/v of different biological fluids ($n = 3$) then labeled with anti-RSV F protein antibody, anti-human IgG, or anti-surfactant protein A antibody. Black arrows indicate gold labeling. Bar = 200 nm

confirm the binding of these factors, we performed western blotting analysis on viral particles incubated with either HP or BALF. Several bands were detected for SP-A in the BALF corona samples and were completely lacking in the HP corona samples (Supplementary Fig. 4a). In addition to the main SP-A bands, several high-molecular-weight bands were also detected with the anti-SP-A antibody. This suggested that SP-A was forming complexes either on its own or with other corona factors. When stained with anti-human IgG antibodies, bands were detected in both coronae, but with higher intensity in the HP corona compared with the BALF corona (Supplementary Fig. 4b). The bands were normalized to the RSV G protein band, which was used as a loading control (Supplementary Fig. 4c). Taken together, our data demonstrated that RSV acquired a differential protein corona layer depending on the biological fluid.

Protein corona influences viral infectivity and moDC activation. To investigate whether differential corona composition affects viral infectivity, virions produced under serum-free conditions were pre-incubated with different biological fluids before infection of HEP-2 cells. The RSV virions were incubated with biological fluids at a protein concentration of 0.3 mg/mL (equivalent to 5% v/v) for 1 h at 37 °C then diluted ten times in serum-free medium before infecting the cells at final multiplicity of infection (MOI) of 1. Corona pre-coating had a

significant effect on viral infectivity as demonstrated by the differential frequency of green fluorescent protein (GFP)-expressing cells quantified by flow cytometry (Fig. 3a, b and Supplementary Fig. 5). HP corona pre-coating significantly reduced infectivity compared with serum-free conditions, whereas FBS and MP led to five- to sixfold enhancement in infectivity. The BALF corona also enhanced infectivity, but to a lower extent as compared with MP and FBS. Moreover, fluorescence microscopy revealed syncytia formation of cells infected with BALF, MP, and FBS coronae (Supplementary Fig. 6). No significant differences in cell toxicity were observed. jHP pre-coating, on the other hand, slightly enhanced infectivity, but it did not reach significance (Fig. 3b). This lack of inhibition compared with adult HP could be attributed to the lack of anti-RSV antibodies in the selected jHP (Supplementary Fig. 1). Furthermore, we investigated the effect of different coronae on the activation of human moDCs by quantifying the expression of the maturation marker CD86. Differentiated moDCs were infected by virions produced under serum-free conditions with different corona pre-coatings for 4 h in serum-free conditions. The cells were then washed and incubated in serum-containing medium for 72 h before flow cytometry analyses. Only the BALF pre-coated virions were able to induce moDC activation and increase CD86 expression (Fig. 3c–f). Notably, adding BALF alone or corona-free RSV did not activate the cells,



showing that it was the RSV-BALF corona complex that induced moDC activation. In addition, BALF pre-coating enhanced infectivity in moDCs as quantified by flow cytometry of GFP expression (Fig. 3e, f). Altogether, this shows that pre-incubation of virions produced under serum-free conditions in different biological fluids to allow a corona formation

greatly affects infectivity and the ability to induce moDC activation in a biological fluid-dependent manner.

Differential RSV corona composition. The set of factors that were only present in the HP corona and not in the other

Fig. 3 Different protein coronae affect RSV infectivity and moDC activation. **a, b** RSV virions produced under serum-free conditions were pre-coated with different coronae via pre-incubation with different biological fluids prior to addition to HEP-2 cells in serum-free medium (diluted 10×) at an MOI of 1. The frequencies of GFP⁺ cells were quantified by flow cytometry 72 h post infection. Gating strategy and uninfected control is shown in Supplementary Fig. 5. **a** Representative dot blot graphs demonstrating GFP⁺ cell frequency from different corona conditions. **b** Flow cytometry quantification of the GFP⁺ cells presented as fold increase over RSV treatment in serum-free conditions (no corona). Data are presented as mean ± SEM of six replicates from two separate experiments. Significant differences in comparison with RSV (no corona) were assessed by non-parametric Kruskal–Wallis unpaired test followed by Mann–Whitney test. *P*-value: ***P* ≤ 0.01. **c–f** RSV virions produced under serum-free conditions were pre-coated with different coronae prior to the addition to primary moDCs in serum-free conditions at MOI of 20. CD86 expression and frequencies of GFP⁺ cells were quantified by flow cytometry 72 h post infection. **c** Representative histograms of CD86 expression in moDCs are shown. **d** CD86 mean fluorescence intensity (MFI) is shown as mean ± SEM for six to eight individual donors from four separate experiments. Sucrose from the sucrose cushion used for RSV harvesting was also used as a control. **e** The frequency of GFP⁺ cells is shown as mean ± SEM for six to eight individual donors from four separate experiments. Significant differences in comparison with RSV (no corona) were assessed by non-parametric Kruskal–Wallis unpaired test followed by Mann–Whitney test. *P*-value: ***P* ≤ 0.01 and **P* ≤ 0.05. **f** Representative dot blot graphs demonstrating GFP⁺ moDCs frequency from different corona conditions

conditions comprised several antibodies and complement factors (Fig. 4a). Moreover, gene list enrichment analyses of HP corona revealed an enrichment of immunological Gene Ontology (GO) terms such as complement activation and humoral immune response (Fig. 4b). The HP corona proteomic profile was consistent with the observed inhibition of infectivity (neutralization), indicating that the corona characterization methodology is representative of the actual layer of host factors that surrounds the viral particle. Notably, despite having comparably high levels of virus-specific IgG antibodies (according to ELISA analysis, Supplementary Fig. 1), BALF imparted opposite effects on infectivity compared with HP (Fig. 3). At the proteomics level, GO analysis revealed that the viral BALF corona comprised a different set of factors that are less enriched in immunological components and more enriched in factors related to adhesion, anchoring, protein targeting and localization to membranes, and protein complex binding (Fig. 4). This was further supported by the western blotting analysis where the corona of the BALF-incubated virions was less enriched in human IgG compared with the viral HP corona (Supplementary Fig. 4).

On the other hand, anti-RSV IgG-negative fluids (FBS and MP) enhanced viral infectivity in HEP-2 cells. The effect of both FBS and MP corona on enhancement of RSV infectivity was concentration-dependent as shown in Fig. 5a. Although the FBS corona enhancement increased with concentration, the MP effect decreased after a protein concentration of 0.3 mg/mL was reached. This can be due to the increase of unbound corona factors that compete with bound factors for cellular receptors. Furthermore, we investigated the effect of corona pre-coating with FBS and MP on viral neutralization via palivizumab, which is a humanized monoclonal antibody directed against the F protein of RSV. We found that the enhancing effects of the coronae were completely lost in the presence of the antibody, and that the antibody neutralization curves were very similar in the presence and the absence of the viral corona (Fig. 5b). These data demonstrated that high-affinity antibodies were able to compete out corona factors to impart host protection. GO analysis revealed that FBS and MP coronae were also enriched in terms such as anchoring, adhesion, receptor binding, protein complex binding, membrane organization interspecies interaction, viral process, and mutualism through parasitism (Fig. 5c, d).

RSV catalyzes amyloid aggregation. As nanoparticles are known to bind amyloidogenic peptides in their coronae leading to induction of amyloid aggregation via a heterogenous nucleation mechanism, we next investigated whether viruses are also capable of this particular corona interaction. We investigated the interaction of RSV with a model amyloidogenic peptide (NNFGAIL)

derived from the IAPP. We traced the ability of RSV to accelerate amyloid kinetics using the well-established thioflavin-T (ThT)-based methodology. The ThT dye changes its fluorescence emission spectrum upon binding to amyloid fibrils and plotting relative changes in the fluorescence intensity against time illustrates the kinetics of the amyloid formation process²⁸. Using the ThT assay, we found that the presence of RSV particles significantly accelerated amyloid formation of NNFGAIL compared with non-infected cell supernatant demonstrating that RSV acted as a catalytic surface for amyloid aggregation (Fig. 6a). As a control, we compared the kinetic curves of the virus-containing medium vs. virus-free medium upon incubation with ThT alone without a peptide. As shown in Supplementary Fig. 7a, the curves were very similar, indicating that the relative changes that we observed in the presence of amyloidogenic peptides are not due to unspecific interaction of the virions with the ThT dye. In addition, extensive fiber networks were observed with TEM within 100 min of incubation with RSV (Fig. 6b) and some virions were located at the tip of these fibers (Fig. 6c). Moreover, RSV catalytic activity was more efficient than lipid vesicles of similar size; however, it was dramatically reduced in the presence of 5% FBS, indicating a competition between the peptide and other corona factors for the viral surface (Fig. 6d). On the other hand, RSV failed to catalyze the amyloid aggregation of GNNQQNY peptide, which is derived from yeast prion protein (Fig. 6e). This, in turn, indicated that such interactions are not universal to all amyloidogenic peptides but display some selectivity depending on the virus/peptide pair.

HSV-1 catalyzes Aβ₄₂ amyloid aggregation in vitro and in vivo.

The finding that viral surfaces could serve as catalysts for amyloid formation warranted further investigation and confirmation using another virus/peptide system. To this end, we investigated HSV-1 and the Aβ₄₂ peptide, whose aggregation is a major hallmark of AD. Recently, there has been an increasing body of reports suggestive of a correlation between HSV-1 infection and AD, reviewed in ref. ²¹. However, evidence of a direct role of HSV-1 in the process of amyloid nucleation and subsequent fibril growth is currently lacking.

We found that HSV-1 significantly accelerated amyloid formation of Aβ₄₂ compared with non-infected cell supernatant (Fig. 7a). As a control, and similar to the RSV/NNFGAIL system, both the virus-containing medium and virus-free medium produced similar curves upon incubation with ThT alone without peptide (Supplementary Fig. 7b). The catalytic activity was reduced by the presence of FBS, also indicating a competition at the viral surface (Fig. 7b). In addition, HSV-1 was more efficient than liposomes in accelerating the amyloid aggregation kinetics (Fig. 7c). Furthermore, the propensity of HSV-1-mediated amyloid catalysis was higher for the more

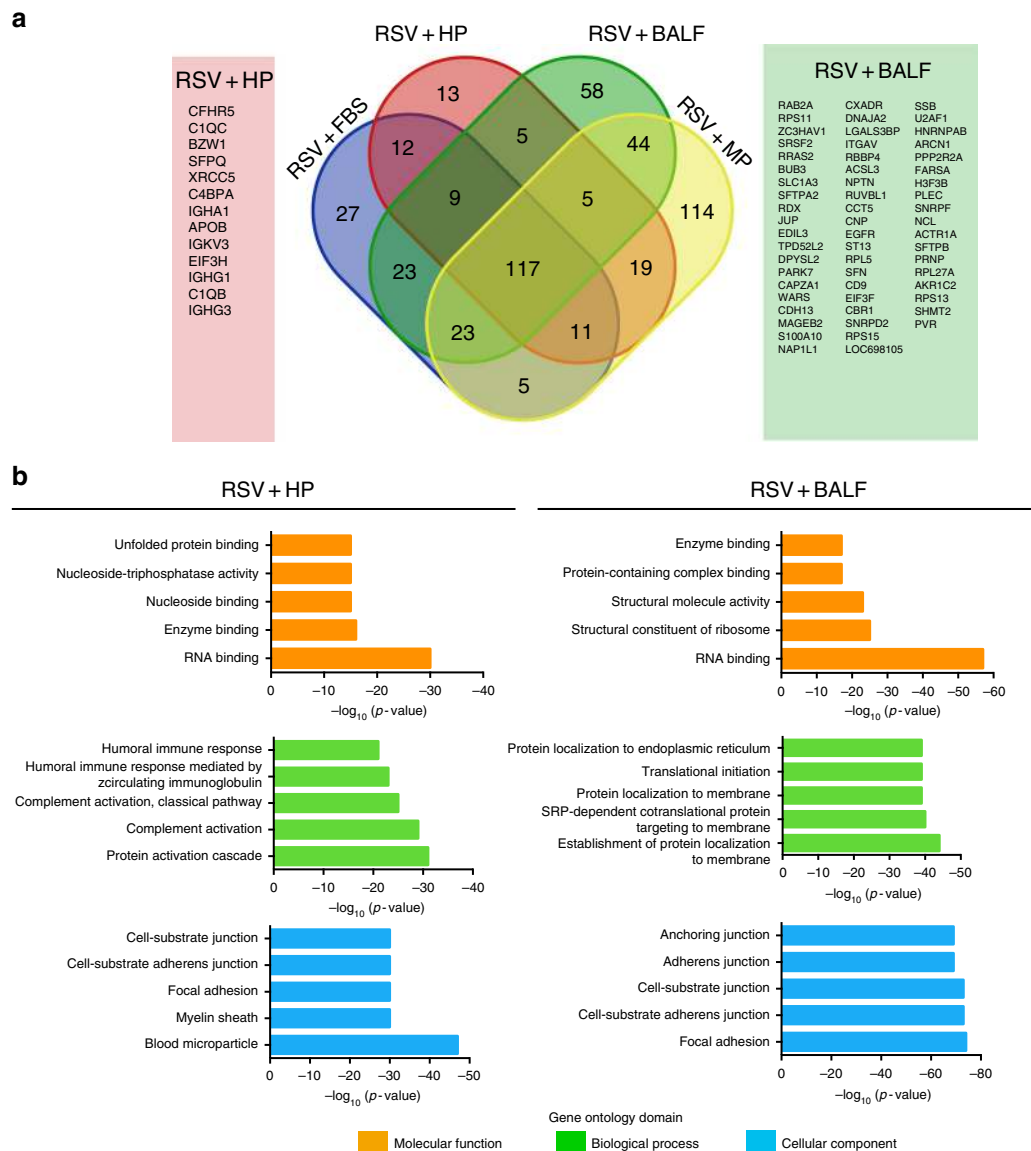


Fig. 4 RSV corona proteomic representation and GO analysis in HP and BALF. **a** Venn diagram showing the unique and overlapping protein populations from the RSV corona profiles in different biological fluids. Only proteins significantly detected (FDR 1%) in all three replicates in each condition were used. The unique factors in HP and BALF are shown. **b** Gene list enrichment analysis of the total RSV corona profile in HP and BALF groups. The top five enriched terms are shown in each GO domain

amyloidogenic A β_{42} peptide compared with the shorter, less amyloidogenic A β_{40} peptide (Fig. 7d). Amyloid induction was further confirmed by TEM demonstrating fibril formation within 100 min of incubation with viral particles (Fig. 7e–h). Amyloid protofilaments and fibrils at different stages of elongation were observed interacting with the viral surface. Figure 7e and f show multiple fibrillary structures emerging from one viral particle, suggesting that a nucleation mechanism was taking place on the surface, thereby sparking fibril elongation. Viral particles also interacted with fibrillar structures that are part of an extensive network of fibers as shown in Fig. 7g, h. Importantly, to demonstrate the in-vivo relevance of our mechanistic findings, we intracranially infected transgenic 5XFAD mice with HSV-1. The 5XFAD mouse is a widely used AD model, as it recapitulates many AD phenotypes with rapid onset of A β_{42} aggregation that spreads to the hippocampus and cortex by 6 months of age²⁹. We observed a significant increase in A β_{42} accumulation in the hippocampi and cortices of HSV-1-infected mice 48 h post

infection (Fig. 7i) in comparison with animals injected with non-infected supernatant. Representative images of the amyloid staining demonstrate the dramatic difference in amyloid accumulation between infected and non-infected animals (Fig. 7j). These results validated our biophysical findings using the ThT assay and demonstrated that the viral corona-driven catalysis of amyloid aggregation could take place in in-vivo situations.

Discussion

Viruses rely on the cellular machinery of the host for replication, production of viral proteins, assembly, and export out of the cell. However, outside cells, viruses share many biophysical properties with artificial nanoparticles. Based on this biophysical equivalence, we hypothesized that viruses accumulate a rich and selective protein corona layer in the extracellular environment similar to nanoparticles. Examples of particular host factors that bind to viral surfaces have previously been described. For example,

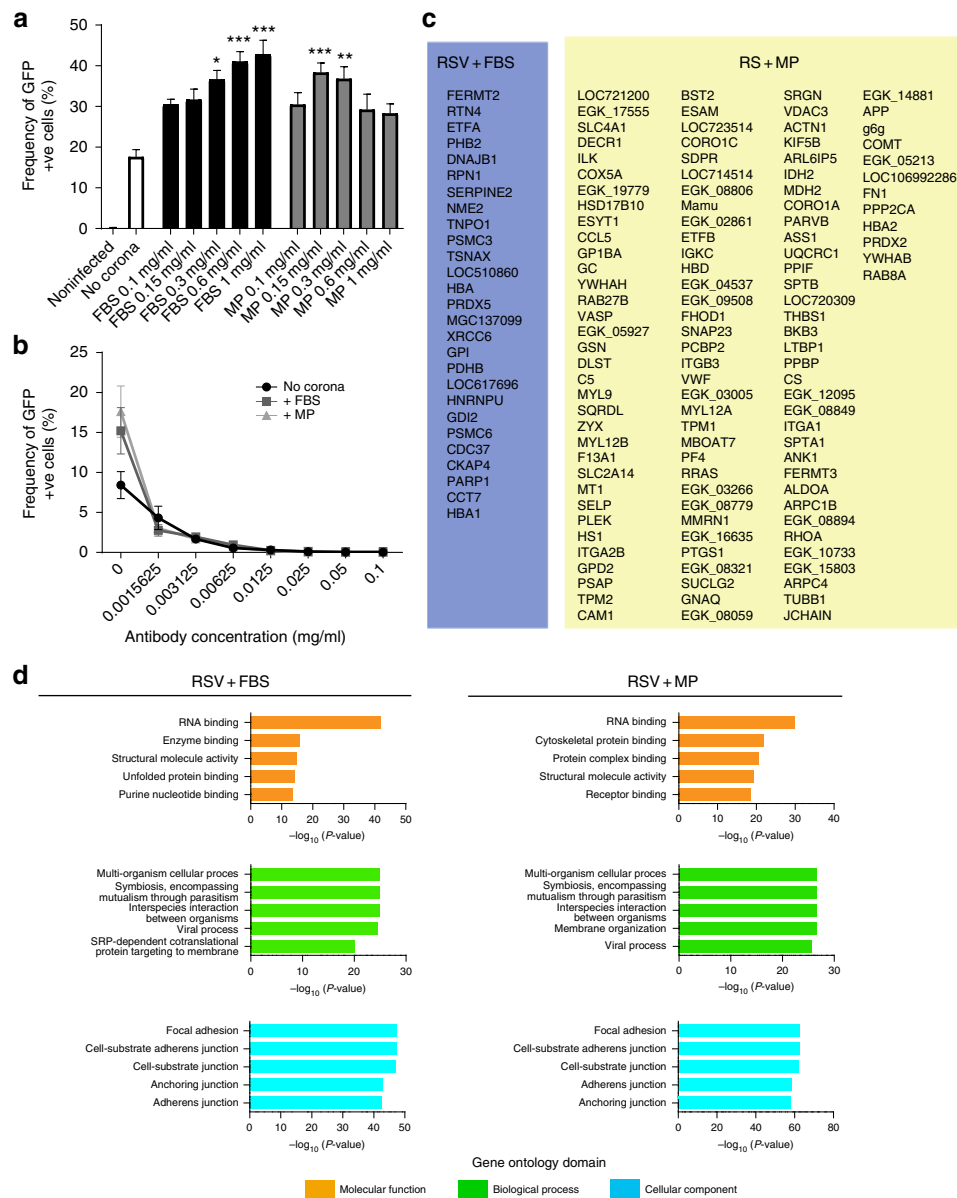


Fig. 5 RSV protein corona in FBS and MP. **a** Serum-free produced RSV was pre-coated with different coronae via pre-incubation with different biological fluids prior to infection of HEP-2 cells in serum-free medium (diluted 10 \times) at an MOI of 1. The frequencies of GFP⁺ cells were quantified by flow cytometry 72 h post infection. Means \pm SEM of six replicates from two separate experiments are shown. Significant differences in comparison with RSV (no corona) were assessed by non-parametric Kruskal-Wallis one-way ANOVA with Dunn's multiple comparison test and are indicated by * $P < 0.05$, ** $P < 0.01$, and *** $P < 0.001$, respectively. **b** Neutralization curves with different concentrations of palivizumab (monoclonal antibody targeting RSV F-protein) of RSV with or without FBS and MP protein coronae at the protein concentration of 0.3 mg/mL protein. Means \pm SEM of six replicates from two separate experiments are shown. **c** The unique factors in FBS and MP from Fig. 4 are listed. **d** Gene list enrichment analysis of the total RSV corona profile in FBS and MP groups. Only proteins significantly detected (FDR 1%) in all three replicates in each condition were used. The top five enriched terms are shown in each GO domain

lipoproteins such as Apo-E were shown to be essential for hepatitis C virus infection³⁰. Furthermore, coagulation factors such as factor X were shown to directly bind adenovirus leading to liver tropism^{31,32}. Other soluble components such as Gas6 were shown to contribute to the infectivity of lentiviral vectors even when pseudotyped with multiple types of envelope proteins³³. Furthermore, soluble heparin sulfonated proteoglycans were shown to enhance the infectivity of human papillomavirus³⁴. Interestingly, amyloids derived from prostatic acidic phosphatase in semen were shown to enhance HIV-1 infectivity by several orders of magnitude³⁵. In addition, plant viral nanoparticles that are used for drug delivery were shown to possess a protein corona that affects their uptake and biodistribution³⁶.

However, to our knowledge, there is no previous work that has characterized the protein corona of an infectious animal virus in different biological fluids and studied its effect on viral pathogenicity.

In this work, we used proteomics to study viral protein corona enrichment in different biological fluids. We investigated the RSV protein coronae in biological fluids that are relevant to viral tropism, zoonosis, and culturing conditions. As RSV is a virus tropic to the respiratory tract, we compared the viral corona in human BALF vs. HP from adult healthy volunteers and jHP from RSV-seronegative 6-month-old infants. We also investigated the RSV corona in plasma from rhesus macaques, which are used as models in RSV studies and vaccine development³⁷. Moreover, we

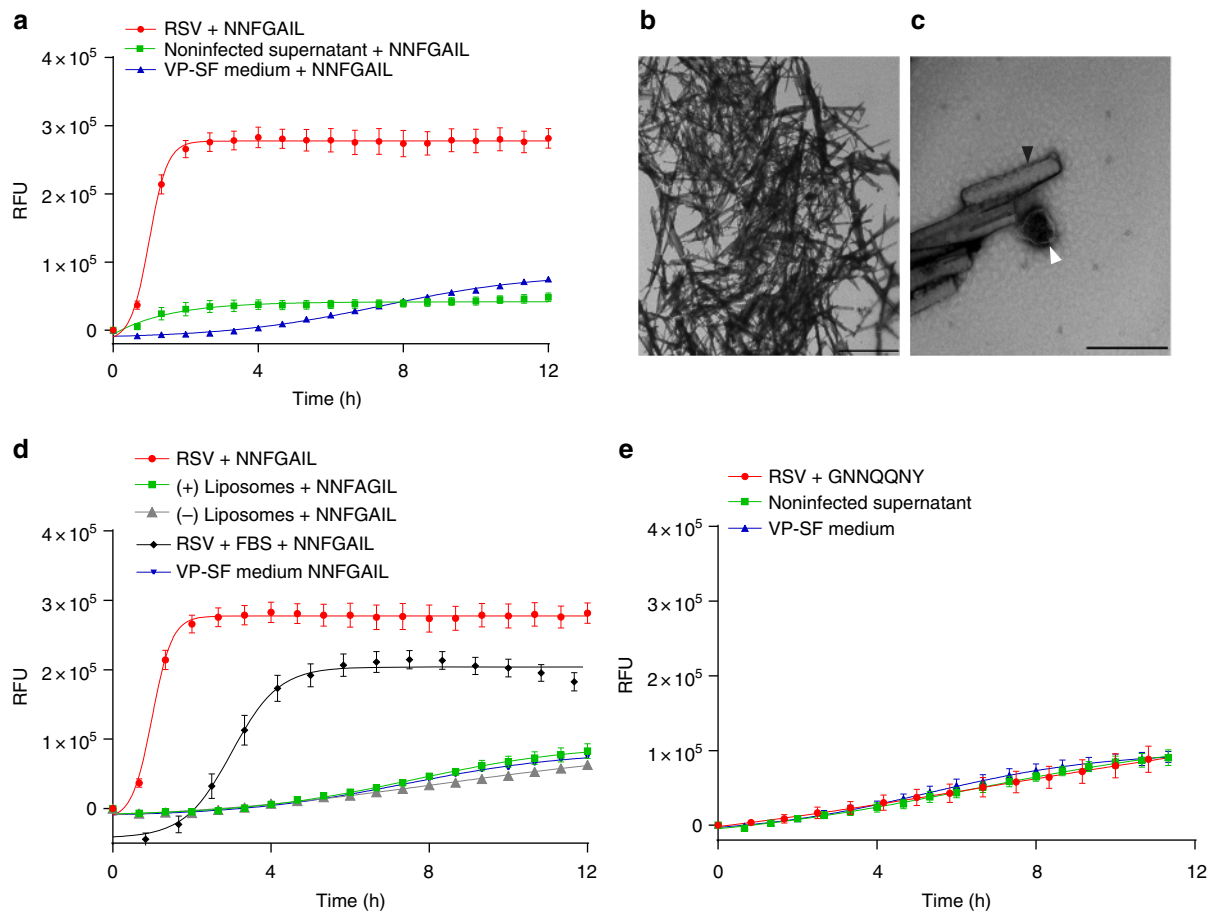
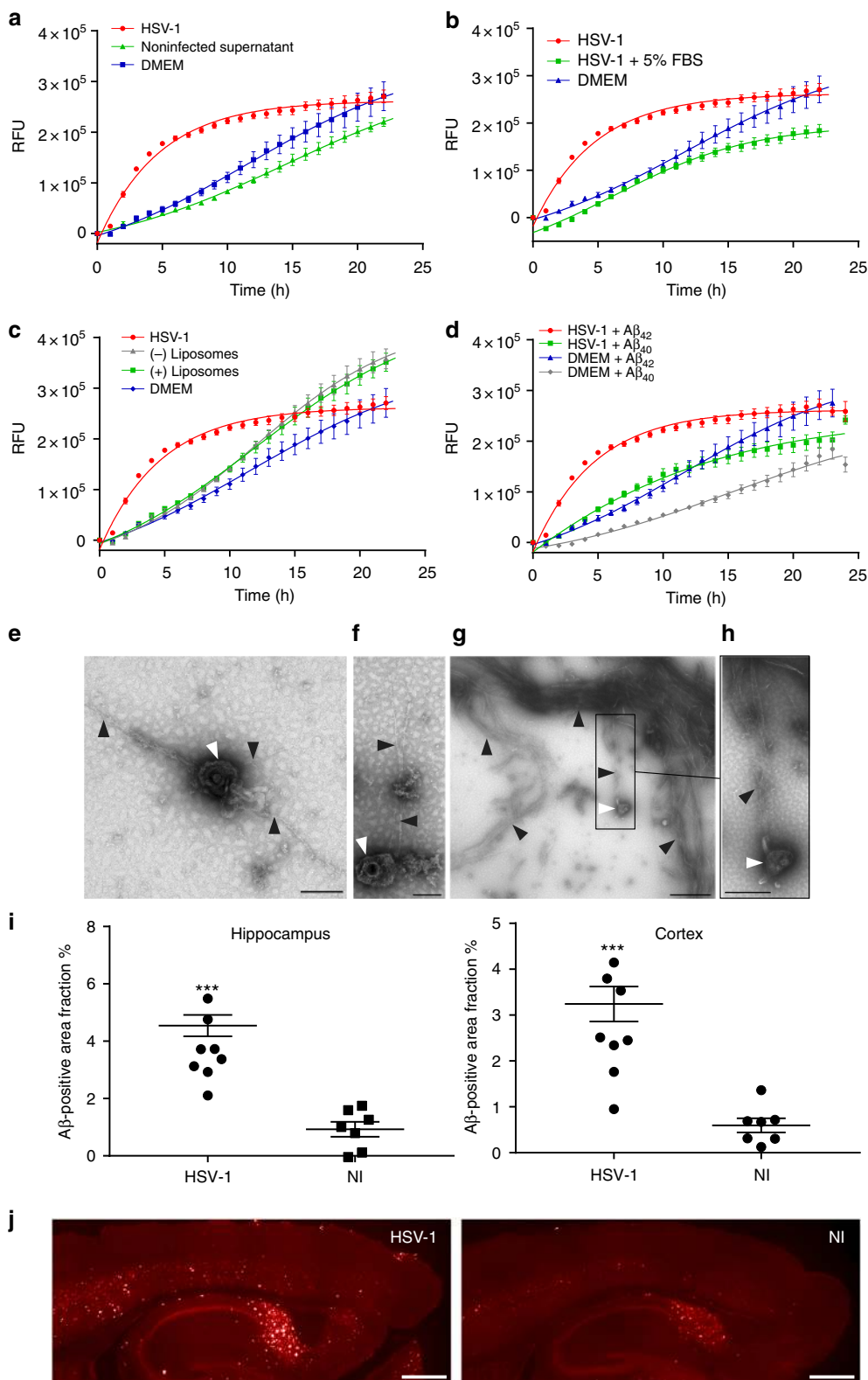


Fig. 6 RSV accelerates the kinetics of amyloid formation. **a** NNFGAIL peptide incubated with ThT solution and RSV (3×10^8 genome copy/mL), non-infected supernatant or serum-free viral production medium (VP-SF medium). ThT fluorescence was measured at 440 nm excitation and 480 nm emission over 12 h at 37 °C. Means \pm SEM of six replicates from two separate experiments are shown. **b, c** Negatively stained TEM images of RSV incubated with 1 mM NFGAIL for 100 mins at 37 °C. **b** Fibrillar tangles are shown. Bar = 5 μ m. **c** RSV virion shown at the base of an amyloid fiber. White arrows indicate viral particle and black arrows indicate fibrillar structures. Bar = 500 nm. **d** NNFGAIL peptide incubated and monitored at similar conditions in the presence or absence of 5% FBS, lipid vesicles (positively or negatively charged, diameter = 200 nm, concentration = 1×10^{10} particles/mL), or VP-SF medium. Means \pm SEM of six replicates from two separate experiments are shown. **e** GNNQQNY peptide incubated with RSV, non-infected supernatant, or VP-SF medium. Means \pm SEM of six replicates from two separate experiments are shown

studied the corona in FBS, which is the most commonly used cell growth supplement for viral production and in-vitro studies. We compared the RSV corona with HSV-1 and lipid vesicles of similar size with positively or negatively charged surfaces, as well as the biological fluids per se. PCA, quantitative intra-sample variability analysis, and correlation matrices demonstrated that the RSV corona profiles were well separated from that of HSV-1 and lipid vesicles (Fig. 1 and Supplementary Figs. 2 and 3). Intra-sample variability could arise in the process of sample preparation during incubation, washing, and digestion or during mass spectroscopy-based detection³⁸. Notably, although the viral corona profile was dependent on the biological fluid, it was not a mere reflection of the most abundant proteins, as demonstrated earlier for nanoparticles²⁷ and as shown in the Table 1 of the top ten proteins present in the viral coronae in comparison with crude biological fluids. The viral protein corona was visualized using TEM, which revealed a layer surrounding the viral surface involved in cellular interactions (Fig. 2a). Using iEM and western blotting, we could detect specific proteins identified from the proteomic analysis (human IgG in HP and SP-A in BALF) associated with RSV upon incubation with HP or BALF, respectively (Fig. 2b and Supplementary Fig. 4). Functionally, the coronae from the different biological fluids enhanced RSV

infectivity, except for the HP corona, which completely neutralized the virus (Fig. 3). Taken together, using several complementary methods, our data demonstrated the specific enrichment of differential corona profiles on viral surfaces. As such, the protein corona represents an initial phase of viral–host interactions that precedes cellular interaction and affects subsequent infectivity. Unlike the viral genome-coded surface proteins, the viral protein corona is an acquired structural layer that is dependent on the viral microenvironment resulting in different viral identities based on the target tissue and the target organism. Moreover, as the corona layer is a rich and complex layer, the final biological effect is expected to be dependent on a multitude of corona factors rather than a single protein.

Proteomic analysis of the HP corona revealed that it was enriched in antibodies and complement factors, which could explain the neutralization effect (Figs. 3 and 4). Other factors of documented immunological functions such as fibrinogen³⁹, properdin⁴⁰, annexin A1⁴¹, protein S100⁴², and vimentin⁴³ were also detected in the HP corona (Supplementary Data 1). These factors could be parts of an immunological corona that enables efficient viral neutralization and/or immune system modulation. On the other hand, jHP, which lacked the anti-RSV antibodies, failed to neutralize the virus and the jHP corona was less enriched



in immunological factors compared with the HP corona (Table 1 and Fig. 3). Interestingly, the BALF corona enhanced viral infectivity in both HEP-2 cells and moDCs, despite having equally high anti-RSV IgG antibody titers as compared with HP according to ELISA analysis (Supplementary Fig. 1). The proteomic and GO analysis showed that the BALF corona was less enriched in immunological factors (Fig. 4). In addition, less IgG was detected in the BALF corona in the western blotting analysis

(Supplementary Fig. 4). The failure of BALF to neutralize the virus despite being rich in anti-RSV antibodies suggested that the differential protein corona profile could affect antibody binding in BALF conditions. This might explain the recurrence of pulmonary RSV infection even in individuals with high IgG titers¹⁵. An alternative explanation is that the BALF anti-RSV antibodies are of lower affinity than their HP counterparts and are thus less able to compete out other corona factors that enhance viral

Fig. 7 HSV-1 accelerates the kinetics of A β ₄₂ fibrillation invitro and in vivo. **a** A β ₄₂ peptide was incubated with ThT solution and HSV-1 (2×10^8 PFU/mL), non-infected supernatant or DMEM serum-free growth medium. ThT fluorescence was measured at 440 nm excitation and 480 nm emission over 24 h at 37 °C. **b** A β ₄₂ incubated with HSV-1 in the presence or absence of 5% FBS. **c** A β ₄₂ incubated with either HSV-1 or lipid vesicles (positively or negatively charged, diameter = 200 nm, concentration = 1×10^{10} particles/mL) incubated with A β ₄₂ peptide. **d** HSV-1 and DMEM serum-free growth medium incubated with A β ₄₂ or A β ₄₀ peptides. For all the curves, means \pm SEM of six replicates from two separate experiments are shown. **e–h** Negatively stained TEM images of HSV-1 incubated with 50 μ M A β ₄₂ for 100 min at 37 °C. White arrows indicate viral particles and black arrows indicate fibrillar structures. **e** Three protofilaments/fibrils stemming from one viral particle, bar = 200 nm. **f** Two protofilaments/fibrils stemming from a viral particle interacting with an aggregated structure, bar = 100 nm. **g** A viral particle interacting with protofilaments/fibrils, which are connected to extensive fibrillar structures, bar = 1 μ m. **h** A rectangular close-up of viral interaction, bar = 500 nm. **i–j** Three-month-old transgenic 5XFAD mice were intracranially injected with HSV-1 or non-infected supernatant (NI). The brains were cryosectioned 48 h postinfection and stained using primary antibody specific to isoforms A β 37–42 and then visualized by fluorescent Alexa 568 secondary antibody. **i** Hippocampal and cortical A β immunoreactivities were quantified from six stained sections and are presented as positive area fraction percent. $N = 8$ in the HSV-1 group and $N = 7$ in the NI group. Data are shown as mean positive area fraction percent \pm SEM from two separate experiments. Significant differences were assessed by non-parametric Kruskal-Wallis unpaired test followed by Mann-Whitney test and are indicated by *** $P < 0.001$. **j** Representative images of the A β staining from HSV-1 vs. NI mice. Bar = 500 μ m

infectivity. It remains to be elucidated which avidity is required in order to compete out the corona layer. The list of proteins that were uniquely detected in the BALF corona included pulmonary surfactants that are known to enhance RSV infectivity⁴⁴, nucleolin, and epidermal growth factor receptor (EGFR), which were shown to be important for RSV cell entry^{45,46}, adhesion molecules (such as tetraspanin, neuropilin, integrin, and cadherin), coxsackievirus/adenovirus receptor, poliovirus receptor, and zinc finger CCCH-type antiviral protein 1 (Fig. 4). Notably, pre-incubation of RSV with BALF was the only condition that induced moDC activation (Fig. 3). Importantly, it was not the combination of the proteins in the biological fluids or the virus per se that affected the outcome, but rather the viral–corona complex, as shown by the lack of moDC activation by BALF or RSV alone. Moreover, and in accordance with the documented role of corona factors in nanoparticle immunogenicity⁴⁷, our results demonstrated the role of the acquired corona layer in virus-induced immune activation that might contribute to disease pathophysiology. It can be speculated that the viral corona factors are part of the pathogen-associated molecular patterns, which are recognized by the innate immune system. It also suggests that corona factors need to be considered in the design of vaccines and adjuvants for efficient stimulation of the immune system.

Additional biological fluids investigated in our study included FBS and MP, and they both enhanced the infectivity of RSV in a concentration-dependent manner (Fig. 5a). Artificially adding anti-RSV antibodies (palivizumab) successfully neutralized the virus even in these corona conditions, indicating successful out-competition by the antibody (Fig. 5b). GO analysis suggested a role of FBS and MP corona factors in interspecies interaction, mutualism, viral process, protein complex binding, unfolded protein binding, anchoring, and adhesion (Fig. 5c, d). Factors uniquely present in the FBS corona that may contribute to these effects include C4b-binding protein α -like, which is a complement inhibitor, isoform 2 of fermitin family homolog 2, which binds to membranes enriched in phosphoinositides and enhances integrin-mediated adhesion⁴⁸ and hepatitis A virus cellular receptor 1 (Fig. 5c). In the MP corona, several adhesion proteins were found including the following: fibronectin isoform 4 pre-protein, endothelial cell-selective adhesion molecule, fermitin family homolog 3 short form, and zyxin. The MP corona also contained receptor ligands such as the following: transferrin and C-X-C motif chemokine together with tetherin (isoform 2 of bone marrow stromal antigen 2), which possesses antiviral properties⁴⁹. Taken together, this illustrated that the observed functional effects of the viral protein corona were most likely mediated by a combination of factors that are enriched on the viral surface and not by a single factor. As many viruses bind to several receptors and co-receptors, such interactions might be taking place in a

multivalent manner⁵⁰. In addition, our results also highlight that the viral protein corona has to be taken into consideration in relation to zoonosis and applications involving viral propagation in vitro.

We then investigated whether viral corona interactions with host factors involve surface-assisted nucleation of amyloids. Nanoparticles have been shown to act as catalytic surfaces that facilitate heterogenous nucleation of amyloid fibrils via binding, concentrating, and enabling conformational changes of amyloidogenic peptides^{7,51,52}. Similar to what have been reported with nanoparticles, we found that RSV accelerated the kinetics of amyloid aggregation of a model amyloidogenic peptide derived from IAPP (NNFGAIL). This demonstrated that viral particles are also capable of amyloid catalysis via surface-assisted heterogenous nucleation (Fig. 6). In order to investigate whether this catalytic mechanism extends to other virus-amyloid pairs, we evaluated whether HSV-1 could accelerate the amyloid kinetics of A β ₄₂, which is implicated in AD. Several recent studies have suggested HSV-1 involvement in AD⁵³. Herein, we found that HSV-1 accelerated the kinetics of amyloid aggregation of A β ₄₂ and, to a lesser extent, the aggregation of A β ₄₀ (Fig. 7). HSV-1 was more efficient than lipid vesicles in amyloid catalysis and this efficiency decreased in the presence of FBS demonstrating a competition with other corona factors on the viral surface. In addition, TEM demonstrated an interaction between amyloid fibrils at different stages of maturation and the viral surface via early protofibrillar intermediates, which we speculate represent the surface-assisted nucleation process. Importantly, infecting 5XFAD AD animal models with HSV-1 lead to increased accumulation of A β ₄₂ plaques as evident by immunohistochemical analysis (Fig. 7), demonstrating that the viral corona-driven catalysis can take place in vivo.

Taken together, our data on RSV and HSV-1 demonstrated that viruses can physically act as nano-surfaces capable of catalyzing amyloid nucleation and leading to accelerated fibril formation. Although our results do not prove disease causality, they present mechanistic explanation of the clinical and experimental correlations drawn between HSV-1 and AD, which requires further investigation. Interestingly, Apo-E, which is a well-known risk factor for AD, was enriched in the HSV-1 corona, suggesting even further disease links (Supplementary Data 1).

Several recent studies have suggested that A β ₄₂ is an antimicrobial peptide that aggregates to sequester pathogens^{54–57}. Here we present an alternative but not mutually exclusive explanation. Our corona-driven hypothesis suggests that the virus interacts with extracellular amyloidogenic peptides as part of the pathogenesis and the bound peptides do not necessarily possess an immunological and/or an antimicrobial function. This is further corroborated by studies showing that amyloids can enhance

the infectivity for viruses such as HIV and HSV^{35,58}, and the fact that amyloid precursor protein knockout animals are not more susceptible for infections compared with wild-type animals⁵⁹. From this perspective, virus surface-assisted nucleation might have evolved as a mechanism by which viruses modulate the host's extracellular environment by catalyzing the phase transition of certain peptides from soluble to insoluble forms; a phase change that could lead to toxic gain or loss of function, or both. In addition, the viral surface-assisted nucleation mechanism could be extended to other viruses correlated with neurodegenerative pathology such as HIV and HIV-associated neurocognitive disorder⁶⁰, and influenza virus and post-encephalitic parkinsonism⁶¹, and others. Furthermore, the phenomenon of amyloid polymorphism⁶² might in part be related to the different nucleation mechanisms, where we hypothesize that the viral-catalyzed heterogeneously nucleated amyloids would be polymorphically distinct from homogeneously nucleated amyloids that result from aberrant protein expression/overexpression. This hypothesis can be tested in future studies on the A β polymorphism in familial and sporadic AD⁶³, and whether this structural polymorphism can be traced back to different nucleation mechanisms related to different etiologies. Finally, the implication that viruses are capable of inducing conformational changes in bound host factors leading to exposure of cryptic epitopes may prove important for better understanding the correlation between viruses and autoimmune diseases.

To conclude, the current work was based on the biophysical equivalence between viruses and artificial nanoparticles in extracellular environments. We here demonstrated that nanotechnological concepts such as the protein corona and surface-assisted nucleation can be extended to infectious viruses. We showed that viral protein corona accumulation and amyloid catalysis are two aspects of the same phenomenon, namely viral surface interaction with extracellular host proteins. This phenomenon leads to the modulation of how viruses interact with cells and/or the induction of conformational changes in bound proteins that leads to accelerated amyloid aggregation. These findings highlight the potentially critical role of viral extracellular interactions in viral infectivity and in relation to extracellular protein pathology.

Methods

Viral and cell culture. HEP-2 cells, a human laryngeal carcinoma cell line, were used for RSV culture and infectivity experiments. Preparation of RSV-A2-GFP stocks was performed using VP-SFM serum-free, ultra-low protein medium containing no proteins, peptides, or other components of animal or human origin (ThermoFisher, USA). HEP-2 cells were initially seeded in growth medium (Dulbecco's modified Eagle's medium (DMEM) with 5% FBS (ThermoFisher, USA), 1% Penicillin/Streptomycin (ThermoFisher, USA), and 0.01 M HEPES (Sigma-Aldrich, Germany) until they reached ~70–80% confluency. At the day of infection, the cells were washed twice with warm phosphate-buffered saline (PBS) and the medium was replaced with VP-SFM containing 50 μ g/mL gentamycin. Cells were infected at MOI of 4 and incubated for 5–6 days until >90% GFP expression was visible with fluorescence microscopy. Cells were then scraped, vortexed thoroughly, sonicated for 10 min, vortexed thoroughly one more time, and spun at 1000 \times g for 5 min. The supernatant was transferred to new tubes and used freshly for the proteomics and amyloid interaction experiments. For long-term storage, infectivity, and moDC activation experiments, the supernatant was adjusted with MgSO₄ and HEPES (SigmaAldrich, Germany) solutions to a final concentration of 0.1 M MgSO₄ and 50 mM HEPES. RSV was then concentrated using a 1.45 M sucrose cushions in the following buffer (1 M MgSO₄, 50 mM Hepes pH 7.5, 150 mM NaCl) according to ref.⁶⁴ via centrifugation for 4 h at 7500 \times g at 4 °C. The viral concentrated layer was then collected from the interface between the cushion and the supernatant, aliquoted, and immediately frozen at –80 °C. Quantifications of viruses were performed using real-time quantitative PCR (qPCR). Purification of viral RNA was performed using the QIAamp® Viral RNA extraction kit (QIAGEN) and extracted RNA was stored at –80 °C. Viral titers were determined using the SuperScript® III Platinum® One-Step Quantitative real-time PCR system (Life Technologies) with the following probe and primers: RSV-A probe 5'-CAC CAT CCA ACG GAG CAC AGG AGA T-3' (5' labeled with 6-FAM and 3' labeled with BHQ1), RSV-A forward primer 5'-AGA TCA ACT TCT GTC ATC CAG CAA-3', and RSV-A

reverse 5'-TTC TGC ACA TCA TAA TTA GGA G-3'. For initial viral quantification purposes, a commercially available RSV-A2 strain was purchased (Advanced Biotechnologies, Inc.). The MOIs used for infectivity experiments were based on genome copies/mL measured by qPCR and the infectious viral titers were measured as TCID₅₀ on HEP-2 cells. Briefly, tenfold dilutions of virus were added onto Hep2 cells for 2 h at 37 °C, then inoculum was removed, and fresh maintenance medium was added. The plates were examined in the microscope on day 7 and the number of wells for each dilution that was positive for GFP was noted. The titer was calculated according to the method of Karber. The viral stock of 7 \times 10⁸ genome copies/mL corresponded to log₁₀ 6.7 TCID₅₀/mL.

For HSV-1, strain F HSV-1 stocks were prepared by infecting African green monkey kidney (VERO) cells at 80–90% confluency in DMEM (Invitrogen) with 5% FBS or in serum-free DMEM. The virus was collected 2 days after infection. Cells were subjected to two freeze–thaw cycles and spun at 20,000 \times g for 10 min to remove cell debris. Clarified supernatant was aliquoted and stored at –80 °C until use. Non-infected cell medium was prepared with the same procedure without viral infection. Plaque assay was used to determine viral titers. Tenfold dilutions of virus were added onto VERO cells for 1 h at 37 °C, then inoculum was removed and fresh medium containing 0.5% carboxymethyl cellulose (Sigma-Aldrich) was added. Cells were fixed and stained 2 days later with a 0.1% crystal violet solution and the number of plaques was counted.

Human BALF samples. The use of human BALF samples for the current study was approved by the Regional Committee for Ethical Review in Stockholm (D. No 2016/1985–32). All donors had given oral and written informed consent to participate in the bronchoscopy study, in line with the Helsinki Declaration. Briefly, healthy subjects of male and female gender were recruited at the Department of Respiratory Medicine and Allergy, Karolinska University Hospital, Solna. These subjects were examined after denying regular tobacco smoking and history of allergy or lung disease during an interview. The final inclusion required that these subjects displayed no signs of pulmonary or disease during clinical examination, spirometry, and clinical blood testing including electrolytes, white cell differential counts, and C-reactive protein. Bronchoscopy with bronchioalveolar lavage (5 \times 50 mL of sterile and PBS) was performed according to clinical routine at Karolinska University Hospital, Solna. The obtained BALF was concentrated using 5 kDa cutoff 4 mL spin concentrator (Agilent Technologies, USA) before infectivity experiments.

Lipid vesicle preparation and characterization. 1,2-Distearoyl-sn-glycero-3-phosphocholine (DSPC), 1,2-dioleoyl-3-trimethylammonium-propane (DOTAP), 1,2-distearoyl-sn-glycero-3-phospho-(1'-rac-glycerol) (DSPG), and cholesterol were bought from Avanti Polar Lipids, Inc. (Alabaster, AL, USA). All other compounds were bought from Sigma-Aldrich (St. Louis, MO, USA). The lipids were dissolved in chloroform in molar ratios of 9:1 (DSPC/cholesterol) for neutral liposomes, 9:1 (DSPC/DOTAP) for cationic liposomes, and 9:1 (DSPC/DSPG) for anionic liposomes. The liposomes were formed by the thin film hydration method followed by extrusion through a polycarbonate membrane. Briefly, chloroform was evaporated by heating the sample tube to 65 °C and gradually reducing the pressure to 70 mbar under a nitrogen flow in a vacuum rotary evaporation system (Büchi R-114, Büchi Labortechnik AG, Flawil, Switzerland). The resulting thin lipid layer was hydrated with 500 μ L of PBS by gently stirring the tube in a water bath (65 °C) for 1 h. The sample was then extruded 11 times (65 °C) through polycarbonate membrane (pore size of 200 nm) with a syringe extrusion device (Avanti Polar Lipids) after which the sample was quickly cooled down and stored in a refrigerator. The concentration of the samples was 19 μ mol/mL. The size of the liposomes was analyzed with a Zetasizer APS dynamic light-scattering automated plate sampler (Malvern Instruments, Malvern, UK). The concentration of liposomes was determined using Nanosight (Malvern, USA). The zeta potential was measured at 25 °C in DTS 1070 folded capillary cells with Zetasizer Nano ZS (Malvern Instruments).

Protein corona proteomics. FBS was obtained commercially (ThermoFisher, USA). HP was obtained and pooled from at least three different healthy donors. jHP was obtained and pooled from at least three different infants participating in a prospective cohort of 281 children born into the cohort between 1997 and 2000 in Stockholm, Sweden. The study was approved by the Human Ethics Committee at Huddinge University Hospital, Stockholm (Dnr 75/97). MP was obtained and pooled from at least three different Indian rhesus macaques that were RSV seronegative. Ethical permit Dnr N2/15, Department of Medicine, Karolinska University Hospital, Solna. All protein corona experiments described below were performed in technical triplicates. For the viral corona proteomic experiments, freshly harvested serum-free RSV supernatant (not-sucrose cushion concentrated) containing 6.6 \times 10⁹ RSV genome equivalents or serum-free DMEM produced HSV-1 stocks (2.1 \times 10⁸ PFU/mL) was incubated with 10% v/v solutions of different biological fluids in for 1 h at 37 °C. Before adding the viruses, all the biological fluid solutions were adjusted to 10 mM sodium citrate (SigmaAldrich, Germany) to prevent coagulation. As a control, uninfected cell supernatant prepared in a similar way was also incubated with the biological fluid solutions. For lipid vesicles, 3 \times 10¹¹ of 200 nm positively or negatively charged lipid vesicles were

incubated with 10% v/v solutions of biological fluids at similar conditions. After incubation, viral/nanoparticle corona complexes were spun at $20,000 \times g$ at 4°C for 1 h, supernatant removed, and the pellet resuspended in 1 mL PBS. The pellet was washed twice with PBS using the same centrifugation conditions, then boiled at 95°C for 5 min before measuring the protein content using Micro BCA™ protein assay kit (ThermoFisher, USA). The viral/nanoparticle corona complexes were then resuspended in PBS and adjusted with ammonium bicarbonate to a final concentration of 20 mM. The samples were reduced by addition of 1:20 v/v 100 mM dithiothreitol for 45 min at 56°C and alkylated with 1:20 v/v 100 mM iodoacetamide (IAA) for 45 min at room temperature (RT) in the dark. Proteins were digested with trypsin (MS gold, Promega) 0.1 $\mu\text{g}/\mu\text{L}$ overnight at 37°C (trypsin: protein ratio 1:50). For sample clean-up, the samples were applied to strong cation exchange SCX microcolumns (Strata-XC Phenomenex). The microcolumns were initially washed with 100% methanol followed by MilliQ grade water. The samples were adjusted to >0.1% formic acid and then applied to the columns. After washing with 30% methanol and 0.1% formic acid, the samples were eluted with 30% methanol and 5% ammonium hydroxide. Samples were dried in a SpeedVac and submitted to MS. For MS analysis, samples were dissolved in 3% ACN, 0.1% formic acid to a final concentration of 1 $\mu\text{g}/\mu\text{L}$. One to 2 μL of sample were analyzed with a hybrid LTQ-Orbitrap Velos or with an Orbitrap Fusion Tribrid Mass Spectrometer (ThermoFisher, USA). For the Velos system, an Agilent HPLC 1200 system (Agilent) was used to provide the 70 min gradient. Data-dependent MS/MS (centroid mode) followed in two stages: first, the top five ions from the master scan were selected for collision-induced dissociation with detection in the ion trap mass spectrometry (ITMS) and then the same five ions underwent higher energy collision dissociation (HCD) with detection in the Orbitrap Fourier transform mass spectrometry (FTMS). For the Fusion system, an UltiMate 3000 UHPLC System was used to provide the 70 min gradient. Data-dependent MS/MS (centroid mode) followed in two stages: first, the top ten ions from the master scan were selected for collision-induced dissociation with detection in the ITMS and then the same ten ions underwent HCD with detection in the Orbitrap (FTMS). The data were searched by Sequest under the Proteome Discoverer 1.4.1.1.4 software (ThermoFisher) against the following Uniprot protein sequence databases; bos taurus version 170310, rhesus macaque version 170704, human version 160210, RSV version 160210, HHV1 version 180613, and *Chlorocebus sabaes* version 180613 using a 1% peptide false discovery rate (FDR) cutoff limit. For samples containing proteins from multiple species, combined species databases were created by merging the corresponding protein databases. For label-free quantification, protein MS1 precursor area was calculated as the average of the top three most intense peptides. Only proteins significantly detected (FDR 1%) in all three technical replicates in each sample were used in the downstream data analysis.

Data analysis. Only proteins significantly detected (FDR 1%) in all three technical replicates in each sample were used in the data analysis. PCA analysis and hierarchical clustering of the filtered proteomics data (described above) was performed using ClustVis (https://bit.cs.ut.ee/clustvis_large/). GO gene list enrichment analysis was performed using ToppFun (<https://toppgene.cchmc.org/enrichment.jsp>). Average CV was calculated for each sample based on protein precursor area. Spearman's correlation matrices were performed using Morpheus software based on precursor area of proteins significantly detected (FDR 1%) in all three technical replicates in each sample (<https://software.broadinstitute.org/morpheus>). For other experiments, non-parametric Kruskal–Wallis unpaired test was used followed by Mann–Whitney test or Dunn's post test, to compare the data. There were six replicates from two independent experiments. Statistics were calculated using GraphPad Prism 7 software.

Enzyme-linked immunosorbent assay. The detection of specific anti-RSV IgG antibodies in biological fluids was performed using Human Anti-Respiratory syncytial virus IgG ELISA Kit (ab108765, abcam®, Sweden), according to the manufacturer's protocol. All biological fluids (FBS, HP, MP, and BALF) were diluted to a protein concentration of 0.3 mg/mL before performing the assay and results were compared with the positive, cutoff and negative controls provided by the kit manufacturer.

RSV infectivity. HEP-2 cells were seeded in maintenance medium until they reached 50–60% confluency. On the day of infection, the cells were washed twice with warm PBS and medium was changed to VP-SFM with gentamycin. Before adding to the cells, sucrose cushion-concentrated RSV stocks were pre-incubated with different biological fluids (FBS, HP, MP, and BALF) at a final protein concentration of 0.3 mg/mL in VP-SFM with 10 mM sodium citrate for 1 h at 37°C . The corona-pre-coated viruses were then added to the cells in serum-free conditions (diluted 10 \times) at a MOI of 1. 24 h post infection, the medium was changed back to growth medium, and cells were visualized with fluorescence microscopy 72 h post infection. After visualization, the cells were washed and stained with LIVE/DEAD™ Fixable Far Red Dead Cell Stain Kit (ThermoFisher, USA) for 30 min at 4°C in Dulbecco's PBS (DPBS no calcium, no magnesium, ThermoFisher), then fixed and washed for flow cytometry using Cytofix/Cytoperm™ (BD, USA) according to manufacturer's protocol. Cells were then scraped and resuspended in DPBS and the data were acquired using MACSQuant® Analyser

10 flowcytometer (Miltenyi Biotec, Sweden). The data were analyzed by FlowJo software (TreeStar), by excluding the dead cells stained with far-red fluorescent dye and subsequent calculation of GFP-positive cells within the viable cell population. For experiments with palivizumab, cells were treated with different concentrations of the antibody before infection.

MoDC differentiation. Human monocytes were negatively selected from buffy coats using the RosetteSep Monocyte Enrichment Kit (1 mL/10 mL buffy coat; StemCell Technologies) and differentiated into moDC, using granulocyte-macrophage colony-stimulating factor (250 ng/mL; PeproTech) and interleukin-4 (6.5 ng/mL; R&D Systems) for 6 days in 37°C , 5% CO_2 at a density of 5×10^5 cells/mL in RPMI 1640 completed with 10% FCS, 1 mM sodium pyruvate, 10 mM HEPES, 2 mM L-glutamine, and 1% penicillin/streptomycin (ThermoFisher, USA). Immature moDC were exposed to RSV pre-incubated with different biological fluids for 4 h in serum-free media, washed, and then incubated in serum-containing medium for 72 h before analyses of CD86 and GFP expression. Dead cells were excluded using Live/Dead fixable near-IR dead cell stain kit (ThermoFisher). Flow cytometry sample data were acquired on a FACSVerser (BD Biosciences) and the analysis was performed in FlowJo software (TreeStar).

Thioflavin-T assay. NNFAGAIL, GNNQQNY, A β_{42} , and A β_{40} were synthesized and purified by Pepscan (The Netherlands) and the final molecular weight was verified by MS. Ten microliters of dimethyl sulfoxide (ThermoFisher, USA) were added to 1 mg aliquots of the peptide and running stocks were prepared in MQ water. ThT (Sigma-Aldrich) was prepared at 4 mM in MQ water. For the assay with RSV and NNFAGAIL or GNNQQNY, 50 μL of 1 mM peptide were incubated with 150 μL of 4 mM ThT solution and 100 μL of RSV (freshly collected serum-free RSV supernatant, not-sucrose cushion concentrated, 3×10^8 genome copy/mL), non-infected supernatant, serum-free viral production medium (VP-SF medium), RSV + 5% FBS, or lipid vesicles (positively or negatively charged, diameter = 200 nm, concentration = 1×10^{10} particles/mL in VP-SF medium). For the assay with HSV-1 and A β_{42} or A β_{40} , 50 μL of 50 μM peptide were incubated with 150 μL of 4 mM ThT solution and 100 μL of serum-free produced HSV-1 (2×10^8 PFU/mL), non-infected supernatant, DMEM serum-free medium, HSV-1 + 5% FBS, or lipid vesicles (positively or negatively charged, diameter = 200 nm, concentration = 1×10^{10} particles/mL in DMEM serum-free medium). ThT fluorescence was measured at 440 nm excitation and 480 nm emission in a black, clear-bottom 96-well plates (Corning, USA) at 10–15 min intervals (from bottom with periodic shaking) over 12–24 h on SpectraMax i3 microplate reader (Molecular Devices, USA). Curves were fitted using GraphPad Prism software.

Electron microscopy. For cell sections with RSV, HEP-2 cells were seeded in 6 cm dishes in maintenance medium until 70–80% confluent, then washed and medium replaced with VP-SFM with gentamycin before infecting with RSV at MOI 100 in serum-free conditions or in 50% v/v of different biological fluids. Cells were then fixed with 2.5% glutaraldehyde in 0.1 M phosphate buffer pH 7.4 at RT for 30 min. The cells were scraped off and transferred to an Eppendorf tube and further fixed overnight in the refrigerator. After fixation, cells were rinsed in 0.1 M phosphate buffer and centrifuged ($100 \times g$ for 5 min). The pellets were then fixed with 2% osmium tetroxide (TAAAB, Berks, England) in 0.1 M phosphate buffer pH 7.4 at 4°C for 2 h, then dehydrated in ethanol followed by acetone and embedded in LX-112 (Ladd, Burlington, Vermont, USA). Ultrathin sections (~50–60 nm) were cut by a Leica EM UC 6 (Leica, Wien, Austria). Sections were stained with uranyl acetate followed by lead citrate and imaged in a Tecnai 12 Spirit Bio TWIN TEM (FEI Company, Eindhoven, The Netherlands) at 100 kV. Digital images were captured by a Veleta camera (Olympus Soft Imaging Solutions, GmbH, Münster, Germany). For iEM, cells were fixed in 3% paraformaldehyde in 0.1 M phosphate buffer. Samples were then rinsed with 0.1 M phosphate buffer and infiltrated in 10% gelatin. Then, the specimens were infiltrated into 2.3 M sucrose and frozen in liquid nitrogen. Sectioning was performed at -95°C and mounted on carbon-reinforced formvar-coated, 50-mesh Nickel grids. Immunolabeling was performed as follows: grids were placed directly on drops of 2% normal goat serum (DAKO, Glostrup, Denmark) in 0.1 M phosphate buffer to block nonspecific binding, then incubated with the following primary antibodies: mouse anti-RSV fusion protein monoclonal antibody (MAB8599, Millipore, USA) or goat anti-human IgG (LI-COR, USA), or mouse anti-SP-A antibody (Abcam, ab51891). Antibodies were diluted 1:50 in 0.1 M of phosphate buffer containing 0.1% normal goat serum overnight in a humidified chamber at RT. The sections were washed using the same buffer and bound antibodies were detected using secondary antibodies coated with 10 nm gold (BBI Solution, Analytic Standard, Sweden) at a final dilution of 1:100. Sections were then rinsed in buffer and fixed in 2% glutaraldehyde, stained with 0.05% uranyl acetate, embedded in 1% methylcellulose, and then examined in a Tecnai G2 Bio TWIN (FEI Company, Eindhoven, The Netherlands) at 100 kV. Digital images were captured by a Veleta camera (Soft Imaging System GmbH, Münster, Germany). For TEM of viruses with amyloids, 100 μL of RSV (3×10^8 genome copies/mL) or HSV-1 (2×10^8 PFU/mL) were incubated with 50 μL 1 mM NNFAGAIL (for RSV) or 50 μM A β_{42} (for HSV-1) for 100 min at 37°C . Samples were applied to Formvar/carbon-coated 200-mesh nickel grids (Agar Scientific, UK), then negatively stained using an aqueous solution of uranyl acetate (1%) and visualized.

Western blotting. Serum-free produced RSV was incubated with BALF or HP, both at a protein concentration of 0.1 mg/mL at a ratio of 1:1 v/v (in citrate-adjusted conditions to prevent coagulation) for 1 h at 37 °C, then collected and washed similar to the procedure for corona proteomic analysis. Samples were lysed using a RIPA lysis buffer with protease inhibitors and protein content was measured. Samples were heated with loading buffer to 95 °C for 5 min and 1 µg of protein was loaded onto NuPAGE® Bis-Tris 4–12% gels then separated at 80 V for 15 min followed by 100 V for 135 min at RT using 1× NuPAGE® MES SDS running buffer (Invitrogen). The gels were then transferred onto nitrocellulose membranes using the IBlot® system (Invitrogen) and, subsequently, the membranes were blocked with Odyssey Blocking Buffer (LI-COR Biosciences GmbH) for 1.5 h. Membranes were incubated overnight at 4 °C with anti-SP-A antibody [6F10] (ab51891, Abcam) diluted at 1:500, then probed the next day using goat anti-human IgG (IRDye 800, red, LI-COR Biosciences) and goat anti-mouse IgG (IRDye 680, green, LI-COR Biosciences). To normalize the bands to a loading control, scanned membranes were stripped for 10 min at 65 °C using 1× New Blot Nitro Stripping buffer (LI-COR Biosciences), blocked for 1.5 h, and then incubated with anti-RSV antibody (ab20745, Abcam)⁶⁵ at 1:500 dilution for 2 h at RT before probing with secondary antibody (donkey anti-goat, IRDye 680, green, LI-COR Biosciences). All western blotting signals were scanned using the Odyssey Imager (LI-COR Biosciences GmbH) and quantification was performed on the images using ImageJ software.

Animal experiments. To evaluate the impact of the HSV-1 on brain β-amyloid (Aβ) levels, 3-month-old transgenic 5XFAD mice (purchased from Jackson Laboratories, Bar Harbor, Maine, USA) were randomly divided into two groups. The animals were injected either with the HSV virus or non-infected supernatant using a micro-infusion pump (The Harvard Apparatus Pump Series, Harvard Bioscience, USA) into the right lateral ventricles. Briefly, surgical anesthesia was induced with 5% isoflurane and maintained with 1.8% isoflurane (in 30% O₂/70% N₂O). The temperature of the animals was maintained at 37 ± 0.5 °C using a thermostatically controlled heating blanket connected to a rectal probe (PanLab, Harvard Apparatus, Barcelona, Spain). The skin was opened and the skull exposed. A small hole ~1 mm in diameter was drilled into the following coordinates: m/l (medial/lateral) + 1.1 mm, a/p (anterior/posterior) –0.3 mm, d/v (dorsal/ventral) –2.0 mm. The mice were infused with either 10 µL of HSV-1 virus (2 × 10⁸ PFU/mL) or with non-infected supernatant as control. After injection, the wound was sutured and the animals placed in individual cages to recover for 48 h. All animal work was approved by the Animal Care and Use Committee of the University of Eastern Finland (Kuopio) and performed according to the guidelines of National Institutes of Health for animal care. Mice were killed at 48 h after ICV (intracerebroventricular) infusion for tissue collection. The mice were anesthetized with an overdose of Avertin followed by transcardial perfusion with heparinized saline (2500 IU/L). The ICV-infused brain hemisphere were removed and post fixed in 4% paraformaldehyde followed by cryoprotection in 30% sucrose. The hemibrains were frozen in liquid nitrogen and cryosectioned into 20 µm sagittal sections, and stored in the anti-freeze solution. Six consecutive sagittal brain sections at 400 µm intervals were selected for immunohistological staining from each mouse. Aβ deposits were detected using primary antibody specific to isoforms Aβ 37–42 (Aβ D54D2 XP, Cell Signaling Technology, 1:100 dilution, overnight at RT) and further visualized by fluorescent Alexa 568 secondary antibody (1:500 dilution, ThermoFisher Scientific). For quantification of Aβ immunoreactivities, the stained sections were imaged using ×10 magnification in Zeiss Axio ImagerM.2 microscope equipped with AxioCam 506 mono charge-coupled device camera (Carl Zeiss, Oberkochen, Germany) running ZEN software (Carl Zeiss) for tiling and stitching of the images. Cortical and hippocampal Aβ immunoreactivities were quantified from six stained sections at 400 µm intervals per animal using MatLab (MathWorks, MatLab 2017b). The accuracy of the analysis was confirmed by re-analyzing the images using ImageJ 1.50i software.

Reporting summary. Further information on research design is available in the Nature Research Reporting Summary linked to this article.

Data availability

All data generated or analyzed during this study are included in this published article and its supplementary information files or from the corresponding authors upon reasonable request.

Received: 16 January 2019 Accepted: 26 April 2019

Published online: 27 May 2019

References

- Monopoli, M. P., Aberg, C., Salvati, A. & Dawson, K. A. Biomolecular coronas provide the biological identity of nanosized materials. *Nat. Nanotechnol.* **7**, 779–786 (2012).
- Walczyk, D., Bombelli, F. B., Monopoli, M. P., Lynch, I. & Dawson, K. A. What the cell ‘sees’ in bionanoscience. *J. Am. Chem. Soc.* **132**, 5761–5768 (2010).
- Cai, R. & Chen, C. The crown and the scepter: roles of the protein corona in nanomedicine. *Adv. Mater.* **1805740**, 1805740 (2018).
- Mortimer, G. M. et al. Cryptic epitopes of albumin determine mononuclear phagocyte system clearance of nanomaterials. *ACS Nano* **8**, 3357–3366 (2014).
- Lynch, I., Dawson, K. A. & Linse, S. Detecting cryptic epitopes created by nanoparticles. *Sci. STKE* **2006**, pe14 (2006). <https://doi.org/10.1126/stke.3272006pe14>
- Deng, Z. J., Liang, M., Monteiro, M., Toth, I. & Minchin, R. F. Nanoparticle-induced unfolding of fibrinogen promotes Mac-1 receptor activation and inflammation. *Nat. Nanotechnol.* **6**, 39–44 (2011).
- Linse, S. et al. Nucleation of protein fibrillation by nanoparticles. *Proc. Natl Acad. Sci. USA* **104**, 8691–8696 (2007).
- Habchi, J. et al. Cholesterol catalyses Aβ₄₂ aggregation through a heterogeneous nucleation pathway in the presence of lipid membranes. *Nat. Chem.* **10**, 673–683 (2018) <https://doi.org/10.1038/s41557-018-0031-x>
- Gladysz, A., Abel, B. & Risselada, H. J. Gold-induced fibril growth: the mechanism of surface-facilitated amyloid aggregation. *Angew. Chem. Int. Ed.* **55**, 11242–11246 (2016). <https://doi.org/10.1002/anie.201605151>
- Cabaleiro-Lago, C., Quinlan-Pluck, F., Lynch, I., Dawson, K. A. & Linse, S. Dual effect of amino modified polystyrene nanoparticles on amyloid beta protein fibrillation. *ACS Chem. Neurosci.* **1**, 279–287 (2010).
- Bächli, T. & Howe, C. Morphogenesis and ultrastructure of respiratory syncytial virus. *J. Virol.* **12**, 1173–1180 (1973).
- Nair, H. et al. Global burden of acute lower respiratory infections due to respiratory syncytial virus in young children: a systematic review and meta-analysis. *Lancet* **375**, 1545–1555 (2010).
- McDermott, D. S., Weiss, K. A., Knudson, C. J. & Varga, S. M. Central role of dendritic cells in shaping the adaptive immune response during respiratory syncytial virus infection. *Futur. Virol.* **6**, 963–973 (2011).
- Collins, P. L. & Graham, B. S. Viral and host factors in human respiratory syncytial virus pathogenesis. *J. Virol.* **82**, 2040–2055 (2008).
- Hall, C. B., Walsh, E. E., Long, C. E. & Schnabel, K. C. Immunity to and frequency of reinfection with respiratory syncytial virus. *J. Infect. Dis.* **163**, 693–698 (1991).
- Graham, B. S. Biological challenges and technological opportunities for RSV vaccine development. *Immunol. Rev.* **239**, 149–166 (2011).
- Roizman, B. *Human Herpesviruses: Biology, Therapy and Immunoprophylaxis*. (Cambridge Univ. Press, 2007). <https://doi.org/10.2277/0521827140>
- Laine, R. F. et al. Structural analysis of herpes simplex virus by optical super-resolution imaging. *Nat. Commun.* **6**, 5980 (2015).
- Menendez, C. M. & Carr, D. J. J. Defining nervous system susceptibility during acute and latent herpes simplex virus-1 infection. *J. Neuroimmunol.* **308**, 43–49 (2017).
- Santos, C. Y. et al. Pathophysiologic relationship between Alzheimer’s disease, cerebrovascular disease, and cardiovascular risk: a review and synthesis. *Alzheimer’s Dement. (Amst.)* **7**, 69–87 (2017).
- Itzhaki, R. F. Corroboration of a major role for herpes simplex virus type 1 in Alzheimer’s disease. *Front. Aging Neurosci.* **10**, 1–11 (2018).
- Wozniak, M. A., Itzhaki, R. F., Shipley, S. J. & Dobson, C. B. Herpes simplex virus infection causes cellular beta amyloid accumulation and secretase upregulation. *Neurosci. Lett.* **429**, 95–100 (2007).
- Wozniak, M. A. & Itzhaki, R. F. Herpes simplex virus type 1 DNA is located within Alzheimer’s disease amyloid plaques. *J. Pathol.* **220**, 114–125 (2010).
- Lövheim, H., Gilthorpe, J., Adolfsson, R., Nilsson, L.-G. & Elgh, F. Reactivated herpes simplex infection increases the risk of Alzheimer’s disease. *Alzheimers Dement.* **11**, 1–7 (2014).
- Tzeng, N. S. et al. Anti-herpetic medications and reduced risk of dementia in patients with herpes simplex virus infections—a nationwide, population-based cohort study in Taiwan. *Neurotherapeutics* **15**, 417–429 (2018).
- Tenzer, S. et al. Rapid formation of plasma protein corona critically affects nanoparticle pathophysiology. *Nat. Nanotechnol.* **8**, 772–781 (2013).
- Whitwell, H. et al. Nanoparticles in the lung and their protein coronas: the few proteins that count. *Nanotoxicology* **10**, 1385–1394 (2016).
- Arosio, P., Knowles, T. P. J. & Linse, S. On the lag phase in amyloid fibril formation. *Phys. Chem. Chem. Phys.* **17**, 7606–7618 (2015).
- Oakley, H. et al. Intraneuronal beta-amyloid aggregates, neurodegeneration, and neuron loss in transgenic mice with five familial Alzheimer’s disease mutations: potential factors in amyloid plaque formation. *J. Neurosci.* **26**, 10129–10140 (2006).
- Chang, K.-S., Jiang, J., Cai, Z. & Luo, G. Human apolipoprotein e is required for infectivity and production of hepatitis C virus in cell culture. *J. Virol.* **81**, 13783–13793 (2007).
- Waddington, S. N. et al. Adenovirus serotype 5 hexon mediates liver gene transfer. *Cell* **132**, 397–409 (2008).
- Doronin, K. et al. Coagulation factor X activates innate immunity to human species C adenovirus. *Science* **338**, 795–798 (2012).

33. Morizono, K. et al. The soluble serum protein Gas6 bridges virion envelope phosphatidylserine to the TAM receptor tyrosine kinase Axl to mediate viral entry. *Cell Host Microbe* **9**, 286–298 (2011).
34. Surviladze, Z., Dziduszko, A. & Ozbun, M. A. Essential roles for soluble virion-associated heparan sulfonated proteoglycans and growth factors in human papillomavirus infections. *PLoS Pathog.* **8**, e1002519 (2012).
35. Münch, J. et al. Semen-derived amyloid fibrils drastically enhance HIV infection. *Cell* **131**, 1059–1071 (2007).
36. Pitek, A. S., Wen, A. M., Shukla, S. & Steinmetz, N. F. The protein corona of plant virus nanoparticles influences their dispersion properties, cellular interactions, and in vivo fates. *Small* **12**, 1758–1769 (2016) <https://doi.org/10.1002/sml.201502458>
37. Taylor, G. Animal models of respiratory syncytial virus infection. *Vaccine* **35**, 469–480 (2017).
38. Forshed, J. Experimental design in clinical omics biomarker discovery. *J. Proteome Res.* **16**, 3954–3960 (2017).
39. Ko, Y.-P. & Flick, M. Fibrinogen is at the interface of host defense and pathogen virulence in *Staphylococcus aureus* infection. *Semin. Thromb. Hemost.* **42**, 408–421 (2016).
40. Blatt, A. Z., Pathan, S. & Ferreira, V. P. Properdin: a tightly regulated critical inflammatory modulator. *Immunol. Rev.* **274**, 172–190 (2016).
41. Gavins, F. N. E. & Hickey, M. J. Annexin A1 and the regulation of innate and adaptive immunity. *Front. Immunol.* **3**, 1–11 (2012).
42. Zackular, J. P., Chazin, W. J. & Skaar, E. P. Nutritional immunity: S100 proteins at the host-pathogen interface. *J. Biol. Chem.* **290**, 18991–18998 (2015).
43. Mor-Vaknin, N., Punturieri, A., Sitwala, K. & Markovitz, D. M. Vimentin is secreted by activated macrophages. *Nat. Cell Biol.* **5**, 59–63 (2003).
44. Hickling, T. P. et al. Lung surfactant protein A provides a route of entry for respiratory syncytial virus into host cells. *Viral Immunol.* **13**, 125–135 (2000).
45. Tayyari, F. et al. Identification of nucleolin as a cellular receptor for human respiratory syncytial virus. *Nat. Med.* **17**, 1132–1135 (2011).
46. Currier, M. G. et al. EGFR interacts with the fusion protein of respiratory syncytial virus strain 2-20 and mediates infection and mucin expression. *PLoS Pathog.* **12**, 1–22 (2016).
47. Neagu, M. et al. Protein bio-corona: critical issue in immune nanotoxicology. *Arch. Toxicol.* **91**, 1–18 (2016).
48. Qu, H. et al. Kindlin-2 regulates podocyte adhesion and fibronectin matrix deposition through interactions with phosphoinositides and integrins. *J. Cell Sci.* **124**, 879–891 (2011).
49. Kuhl, B. D., Cheng, V., Wainberg, M. A. & Liang, C. Tetherin and its viral antagonists. *J. Neuroimmune Pharmacol.* **6**, 188–201 (2011).
50. Wickham, T. J., Granados, R. R., Wood, H. A., Hammer, D. A. & Shuler, M. L. General analysis of receptor-mediated viral attachment to cell surfaces. *Biophys. J.* **58**, 1501–1516 (1990).
51. Buell, A. K. *The Nucleation of Protein Aggregates - From Crystals to Amyloid Fibrils*. *International Review of Cell and Molecular Biology* 329 (Elsevier Inc., 2017).
52. Mahmoudi, M., Kalhor, H. R., Laurent, S. & Lynch, I. Protein fibrillation and nanoparticle interactions: opportunities and challenges. *Nanoscale* **5**, 2570–2588 (2013).
53. Piacentini, R. et al. HSV-1 and Alzheimer's disease: more than a hypothesis. *Front. Pharmacol.* **5**, 1–9 (2014).
54. Readhead, B. et al. Multiscale analysis of independent Alzheimer's cohorts finds disruption of molecular, genetic, and clinical networks by human herpesvirus. *Neuron* **99**, 64–82 (2018). <https://doi.org/10.1016/j.neuron.2018.05.023>
55. Eimer, W. A. et al. Alzheimer's Disease-Associated β -Amyloid Is Rapidly Seeded by Herpesviridae to Protect against Brain Infection. *Neuron* **99**, 56–63 (2018). <https://doi.org/10.1016/j.neuron.2018.06.030>
56. Dominy, S. S. et al. Porphyromonas gingivalis in Alzheimer's disease brains: Evidence for disease causation and treatment with small-molecule inhibitors. *Sci. Adv.* **5**, eaau3333 (2019).
57. De Chiara, G. et al. Recurrent herpes simplex virus-1 infection induces hallmarks of neurodegeneration and cognitive deficits in mice. *PLoS Pathog.* **15**, e1007617 (2019).
58. Wojtowicz, W. M. et al. Stimulation of enveloped virus infection by β -amyloid fibrils. *J. Biol. Chem.* **277**, 35019–35024 (2002).
59. Kumar, D. K. V. et al. Amyloid-beta peptide protects against microbial infection in mouse and worm models of Alzheimers disease. *Sci. Transl. Med.* **8**, 34072–34072 (2016).
60. Clifford, D. B. & Ances, B. M. HIV-associated neurocognitive disorder. *Lancet Infect. Dis.* **13**, 976–986 (2013).
61. Jang, H., Boltz, D. A., Webster, R. G. & Smeyne, R. J. Viral parkinsonism. *Biochim. Biophys. Acta* **1792**, 714–721 (2009).
62. Mezzenga, R. & Adamcik, J. The amyloid polymorphism in the protein folding and aggregation energy landscape. *Angew. Chem. Int. Ed.* **57**, 8370–8382 (2018). <https://doi.org/10.1002/ange.201713416>
63. Condello, C. et al. Structural heterogeneity and intersubject variability of A β in familial and sporadic Alzheimer's disease. *Proc. Natl. Acad. Sci. USA* **115**, E782–E791 (2018). <https://doi.org/10.1073/pnas.1714966115>
64. Mbiguino, A. & Menezes, J. Purification of human respiratory syncytial virus: superiority of sucrose gradient over percoll, renografin, and metrizamide gradients. *J. Virol. Methods* **31**, 161–170 (1991).
65. Munday, D. C. et al. Interactome analysis of the human respiratory syncytial virus RNA polymerase complex identifies protein chaperones as important cofactors that promote L-protein stability and RNA synthesis. *J. Virol.* **89**, 917–930 (2015).

Acknowledgements

We acknowledge the Svenska Sällskapet för Medicinsk Forskning (SSMF) for supporting K.E., Swedish Research Council (K2015–99 × –22880-01-6) and Stockholm University for supporting A.-L.S., Vetenskapsrådet, SSMF, and the Swedish foundation for Strategic Research for supporting S.E.L.A., Dr. Michael N. Teng at the University of South Florida for providing the RSV-GFP virus, Professor Arto Urtti at the University of Helsinki for the lipid vesicles, the Instrumentarium Science Foundation for supporting O.K.K., the service of the Electron Tomography Facility at Karolinska Institutet, and the Academy of Finland for supporting the research of T.M. A.L. obtained project funding from the Swedish Heart-Lung Foundation (No. 20150303), the Swedish Research Council (No. 2016-01653), as well as federal funding from Karolinska Institutet and through the Regional Agreement on Medical Training and Clinical Research (ALF, No. 20140309) between Stockholm County Council and Karolinska Institutet. No funding was obtained from the tobacco industry.

Author contributions

K.E. conceived the concept, designed, performed and analyzed experiments, and wrote the paper. M.P. designed, conducted, and analyzed proteomics experiments. S.P. conducted and analyzed moDC experiments and FACS data. T.R. analyzed proteomics data. P.J. designed, performed, and analyzed moDC experiments. A.D. conducted initial RSV propagation. B.B. performed and analyzed FACS experiments. M.J.S. and J.K.S. provided HSV-1 stocks. B.L., M.S., and A.L. provided BALF samples. E.A.T. provided MP samples. O.S. performed and analyzed western blotting experiments. O.K.K. and T.L. synthesized, characterized, and provided lipid vesicles. E.S.E. and C.N. provided jHP samples. Y.I. and T.M. designed, performed, and analyzed animal experiments. S.M. performed electron microscopy experiments. M.J.A.W., U.F.P., J.L., and S.E.L.A. provided critical feedback. A.-L.S. designed and analyzed experiments, and provided critical feedback. All authors read and commented on the manuscript.

Additional information

Supplementary Information accompanies this paper at <https://doi.org/10.1038/s41467-019-10192-2>.

Competing interests: The authors declare no competing interests.

Reprints and permission information is available online at <http://npg.nature.com/reprintsandpermissions/>

Journal peer review information: *Nature Communications* thanks Carl Walkey and other anonymous reviewer(s) for their contribution to the peer review of this work.

Publisher's note: Springer Nature remains neutral with regard to jurisdictional claims in published maps and institutional affiliations.



Open Access This article is licensed under a Creative Commons Attribution 4.0 International License, which permits use, sharing, adaptation, distribution and reproduction in any medium or format, as long as you give appropriate credit to the original author(s) and the source, provide a link to the Creative Commons license, and indicate if changes were made. The images or other third party material in this article are included in the article's Creative Commons license, unless indicated otherwise in a credit line to the material. If material is not included in the article's Creative Commons license and your intended use is not permitted by statutory regulation or exceeds the permitted use, you will need to obtain permission directly from the copyright holder. To view a copy of this license, visit <http://creativecommons.org/licenses/by/4.0/>.

© The Author(s) 2019