



The XXL Survey: XXV. Cosmological analysis of the C1 cluster number counts

Downloaded from: <https://research.chalmers.se>, 2022-08-27 11:23 UTC

Citation for the original published paper (version of record):

Pacaud, F., Pierre, M., Melin, J. et al (2018). The XXL Survey: XXV. Cosmological analysis of the C1 cluster number counts. *Astronomy and Astrophysics*, 620.

<http://dx.doi.org/10.1051/0004-6361/201834022>

N.B. When citing this work, cite the original published paper.

The XXL Survey

XXV. Cosmological analysis of the C1 cluster number counts[★]

F. Pacaud¹, M. Pierre², J.-B. Melin², C. Adami³, A. E. Evrard^{4,5}, S. Galli⁶, F. Gastaldello⁷, B. J. Maughan⁸, M. Sereno^{9,10}, S. Alis¹¹, B. Altieri¹², M. Birkinshaw⁸, L. Chiappetti⁷, L. Faccioli², P. A. Giles⁸, C. Horellou¹³, A. Iovino¹⁴, E. Koulouridis², J.-P. Le Fèvre¹⁵, C. Lidman¹⁶, M. Lieu¹², S. Maurogordato¹⁷, L. Moscardini^{9,10,18}, M. Plionis^{22,23}, B. M. Poggianti¹⁹, E. Pompei²⁰, T. Sadibekova², I. Valtchanov¹², and J. P. Willis²¹

¹ Argelander-Institut für Astronomie, University of Bonn, Auf dem Hügel 71, 53121 Bonn, Germany
e-mail: fpacaud@astro.uni-bonn.de

² AIM, CEA, CNRS, Université Paris-Saclay, Université Paris Diderot, Sorbonne Paris Cité, 91191 Gif-sur-Yvette, France

³ Aix Marseille Univ., CNRS, CNES, LAM, Marseille, France

⁴ Department of Physics and Michigan Center for Theoretical Physics, University of Michigan, Ann Arbor, MI 48109, USA

⁵ Department of Astronomy, University of Michigan, Ann Arbor, MI 48109, USA

⁶ Institut d'Astrophysique de Paris (UMR7095: CNRS & UPMC-Sorbonne Universities), 75014, Paris, France

⁷ INAF-IASF Milano, Via Bassini 15, 20133 Milano, Italy

⁸ HH Wills Physics Laboratory, Tyndall Avenue, Bristol, BS8 1TL, UK

⁹ INAF-OAS Osservatorio di Astrofisica e Scienza dello Spazio di Bologna, Via Gobetti 93/3, 40129, Bologna, Italy

¹⁰ Dipartimento di Fisica e Astronomia, Alma Mater Studiorum Università di Bologna, Via Gobetti 93/2, 40129 Bologna, Italy

¹¹ Department of Astronomy and Space Sciences, Faculty of Science, 41 Istanbul University, 34119 Istanbul, Turkey

¹² European Space Astronomy Centre (ESA/ESAC), Operations Department, Villanueva de la Cañada, Madrid, Spain

¹³ Department of Space, Earth and Environment, Onsala Space Observatory, Chalmers University of Technology, 439 92 Onsala, Sweden

¹⁴ INAF-Osservatorio Astronomico di Brera, Via Brera 28, 20122 Milano, Via E. Bianchi 46, 20121 Merate, Italy

¹⁵ CEA Saclay, DRF/Irfu/DEDIP/LILAS, 91191 Gif-sur-Yvette Cedex, France

¹⁶ Research School of Astronomy and Astrophysics, Australian National University, Canberra, ACT 2611, Australia

¹⁷ Laboratoire Lagrange, UMR 7293, Université de Nice Sophia Antipolis, CNRS, Observatoire de la Côte d'Azur, 06304 Nice, France

¹⁸ INFN-Sezione di Bologna, viale Berti Pichat 6/2, 40127, Bologna, Italy

¹⁹ INAF-Osservatorio astronomico di Padova, Vicolo Osservatorio 5, 35122 Padova, Italy

²⁰ European Southern Observatory, Alonso de Cordova 3107, Vitacura, 19001 Casilla, Santiago 19, Chile

²¹ Department of Physics and Astronomy, University of Victoria, 3800 Finnerty Road, Victoria, BC V8P 1A1, Canada

²² National Observatory of Athens, Lofos Nymfon, 11810 Athens, Greece

²³ Physics Department of Aristotle University of Thessaloniki, 54124, Thessaloniki, Greece

Received 4 August 2018 / Accepted 11 September 2018

ABSTRACT

Context. We present an estimation of cosmological parameters with clusters of galaxies.

Aims. We constrain the Ω_m , σ_8 , and w parameters from a stand-alone sample of X-ray clusters detected in the 50 deg² XMM-XXL survey with a well-defined selection function.

Methods. We analyse the redshift distribution of a sample comprising 178 high signal-to-noise ratio clusters out to a redshift of unity. The cluster sample scaling relations are determined in a self-consistent manner.

Results. In a lambda cold dark matter (Λ CDM) model, the cosmology favoured by the XXL clusters compares well with results derived from the *Planck* Sunyaev-Zel'dovich clusters for a totally different sample (mass/redshift range, selection biases, and scaling relations). However, with this preliminary sample and current mass calibration uncertainty, we find no inconsistency with the *Planck* CMB cosmology. If we relax the w parameter, the *Planck* CMB uncertainties increase by a factor of ~ 10 and become comparable with those from XXL clusters. Combining the two probes allows us to put constraints on $\Omega_m = 0.316 \pm 0.060$, $\sigma_8 = 0.814 \pm 0.054$, and $w = -1.02 \pm 0.20$.

Conclusions. This first self-consistent cosmological analysis of a sample of serendipitous XMM clusters already provides interesting insights into the constraining power of the XXL survey. Subsequent analysis will use a larger sample extending to lower confidence detections and include additional observable information, potentially improving posterior uncertainties by roughly a factor of 3.

Key words. surveys – X-rays: galaxies: clusters – galaxies: clusters: intracluster medium – large-scale structure of Universe – cosmological parameters

[★] Based on observations obtained with *XMM-Newton*, an ESA science mission with instruments and contributions directly funded by ESA Member States and NASA.

1. Introduction

Recent observations of the cosmic microwave background (CMB) by the *Planck* mission have resulted in a new set of cosmological constraints with unprecedented precision (Planck Collaboration XIII 2016). While these measurements still remain entirely consistent with the simplest six-parameter Λ CDM dark matter (Λ CDM) Universe, they also reveal inconsistencies between the interpretation of the CMB data and several of the late time cosmological probes, in particular a $>3\sigma$ tension with local measurements of the Hubble constant using Cepheids (e.g. Riess et al. 2018), as well as a higher predicted amplitude of matter fluctuations in the late time Universe compared to cosmic shear measurements (Joudaki et al. 2017; Hildebrandt et al. 2017)¹ or the observed number counts of galaxy clusters (Planck Collaboration XXIV 2016).

While part of these discrepancies could be accounted for by statistical fluctuations, investigating their origin could also point to new physics beyond the basic Λ CDM model or reveal residual systematics that remain to be understood in the interpretation of the different probes. For instance, while some work has pointed to a moderately high value for the neutrino mass ($0.1 \lesssim \sum m_\nu \lesssim 0.5$ eV) as a plausible solution for the dearth of massive clusters in the local Universe (Planck Collaboration XXIV 2016; Salvati et al. 2018), others invoke systematic uncertainty in the cluster mass scale estimate as the main route to softening the discrepancy (von der Linden et al. 2014; Israel et al. 2015; Sereno et al. 2017). Indeed, while some recent results use a weak lensing mass calibration (e.g. Mantz et al. 2015), many have relied on scaling relations inferred using the gas distribution alone and assuming hydrostatic equilibrium to reconstruct the cluster mass. Numerical simulations have shown concerns that such methods could underestimate cluster masses by up to 20–30%, due to the turbulent motion and non-thermal pressure of the intra-cluster medium (ICM). In addition, the spread among results obtained by different groups indicates that the systematic uncertainties on the cluster mass calibration may currently be underestimated (Rozo et al. 2014; Sereno & Ettori 2015) for X-ray and for weak lensing derived masses.

The XXL survey is an XMM Very Large Programme covering 50 deg² with ~ 10 ks exposures (Pierre et al. 2016, Paper I). It was specifically designed to constrain cosmological parameters, in particular the dark energy (DE) equation of state through the combination of cluster statistics with the *Planck* CMB results (Pierre et al. 2011). In the first series of XXL papers, our preliminary analysis, based on some 100 clusters, indicated that the *Planck* 2015 CMB cosmology overpredicts cluster counts by $\sim 20\%$ (Pacaud et al. 2016, hereafter Paper II). In the present article we perform a first complete cosmological analysis with a sample almost twice as large.

We describe the cluster sample and compare its redshift distribution with that expected from recent CMB measurements in Sect. 2. Section 3 presents a quantitative comparison between the cosmological constraints from the XXL sample and from the *Planck* CMB analysis, for a simple cosmological constant model and for a more general dark energy equation of state ($w = p_{\text{DE}}/(\rho_{\text{DE}}c^2) \neq -1$). In Sect. 4, we discuss the significance of the results in view of the error budget from systematic uncertainties.

¹ However, some other recent studies do not reproduce these inconsistencies, e.g. Troxel et al. (2018).

For the analysis of XXL clusters in this paper, we assume a flat Universe with massless neutrinos. The number density of galaxy clusters follows the Tinker et al. (2008) mass function and the linear growth of cosmological overdensities is computed using version 2.6.3 of the CLASS code (Blas et al. 2011).

2. Cluster sample

The strength of XXL resides in its well-characterised selection function, based on purely observable parameters (X-ray flux and core radius). This allows us to define cluster samples with a very low contamination rate from misclassified point sources (AGN); see Pacaud et al. (2006) for a description and a graphic representation of the selection function. With the second release of the XXL survey, we provide a large and complete sample of 365 clusters (Adami et al. 2018, hereafter Paper XX) along with various cluster measurements, including spectroscopic redshift confirmation. For statistical studies, our source selection operates in a two-dimensional parameter space combining the measured extent of the sources and the significance of this extension (the extent statistic, see Pacaud et al. 2006). From these data, we define a complete sub-sample of 191 sources with the highest significance of extension, located in the 47.36 deg² of XXL data where the cluster properties can be robustly estimated, namely, the C1 sample. The selection function of this sample was thoroughly estimated from Monte Carlo simulations as a function of the input flux and extent of β -model sources (Cavaliere & Fusco-Femiano 1976), as explained in Paper II. In this paper, we present cosmological constraints based on 178 of these C1 clusters that have a measured redshift between 0.05 and 1.0 (all spectroscopic but one). This redshift sub-selection ensures that our analysis would not be affected by a poorly understood selection function at very low and high redshift. While 8 of the 13 excluded clusters indeed fall outside the redshift range, 5 actually still lack a redshift estimate. We account for the latter in the model as a constant incompleteness factor of 6.6% in the redshift range [0.4–1.0], thereby assuming that they would have been spectroscopically identified if their galaxies were brighter.

We show in Fig. 1 the redshift distribution of the C1 sample, which peaks at $z = 0.3$ – 0.4 . Cluster masses are on the order of $M_{500} \sim 10^{14} M_\odot$, hence sampling a very different population than the *Planck* Sunyaev-Zel'dovich (SZ) clusters (Paper II). For comparison, we also display expectations from recent CMB cosmological parameter sets (Hinshaw et al. 2013; Planck Collaboration XIII 2016). These rely on three scaling relations which we use to predict cluster observational properties: the cluster mass-to-temperature relation ($M_{500, \text{WL}} - T_{300 \text{kpc}}$; Lieu et al. 2016; hereafter Paper IV), our newest determination of the luminosity-to-temperature relation ($L_{500}^{\text{XXL}} - T_{300 \text{kpc}}$) given in Paper XX, and the link between the cluster physical size r_{500} and the X-ray extent r_c (the core radius of a β -model with $\beta = 2/3$)². The coefficients of the scaling relations used in this paper are summarised in Table 1. We note that this mass calibration relies entirely on weak lensing measurements (Paper IV). More details on the computation of the expected cluster counts are provided in Appendix A.

The mismatch between the XXL cluster number counts and the *Planck* CMB cosmology suggested by our preliminary analysis in Paper II remains. The predictions from WMAP9 constitute

² See Appendix F for a description of the notations used for different cluster quantities in the XXL survey.

Table 1. Cluster scaling relations used in the study.

Y	X	X_0	Y_0	α	γ	Scatter	Reference
$M_{500,WL}$	T_{300kpc}	1 keV	$(2.60 \pm 0.55) \times 10^{13} M_{\odot}$	1.67	-1.0	-	Paper IV
L_{500}^{XXL}	T_{300kpc}	1 keV	$8.24 \times 10^{41} \text{ erg s}^{-1}$	3.17	0.47 ± 0.68	0.67	Paper XX
r_c	r_{500}	1 Mpc	0.15 Mpc	1	0	-	Paper II

Notes. All scaling laws are modeled as a power law of the form $Y/Y_0 = (X/X_0)^{\alpha} E(z)^{\gamma}$, where $E(z)$ is the redshift evolution of the Hubble parameter, $E(z) = H(z)/H_0$. When indicated, a log-normal scatter is included around the mean scaling relation. Errors in the Y_0 or γ columns indicate the uncorrelated Gaussian priors used to fit cosmological parameters – parameters provided without errors are held fixed. As a matter of consistency, the luminosities used for the scaling relation of Paper XX are extrapolated to r_{500} from measurements performed inside 300 kpc using the same β -model as in our selection function and cosmological modelling. As appropriate the statistical model used to derive those scaling relations account for the significant Malmquist and Eddington biases affecting our sample.

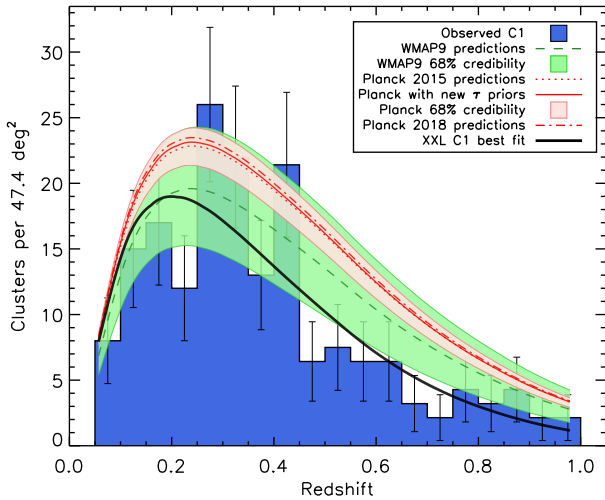


Fig. 1. The histogram shows the observed redshift distribution of the 178 XXL C1 clusters used in the present study. Errors bars account for shot noise and sample variance following Valageas et al. (2011); the cluster deficit at $z \sim 0.5$ is present in both the XXL-N and XXL-S fields. Overlaid, the modelling obtained for different cosmologies assuming the cluster scaling relations of Table 1. The green line shows the prediction from the mean WMAP9 cosmology. The red dotted line corresponds to the *Planck* 2015 parameters (TT+lowTEB+lensing) of Planck Collaboration XIII (2016). The red full line shows the prediction from our reanalysis of the *Planck* 2015 data adopting the updated estimate of the optical depth to reionisation τ presented in Planck Collaboration Int. XLVI (2016), which we describe in Appendix B. For comparison, we also show the prediction of the recent *Planck* 2018 analysis Planck Collaboration VI (2018) which includes the final polarisation analysis (dot-dashed line). The shaded areas around model predictions correspond to uncertainties on the corresponding cosmological parameters, but do not include any error on scaling relations. Finally, the black thick line shows our best-fit Λ CDM model to the XXL clusters of Sect.3.2, which provides a very good fit to the data.

a better fit, but in both cases a slight deficit of C1 clusters is observed in the redshift range [0.4–0.7], as already reported from the analysis of a 11 deg² subfield by Clerc et al. (2014). This global deficit is also the reason for the apparent negative evolution of the cluster luminosity function discussed in Paper XX. Due to the better match with WMAP9, we infer that, as for the *Planck* sample of SZ clusters, the XXL C1 sample probably favours a lower value of σ_8 than the *Planck* CMB cosmology. We quantitatively analyse this hypothesis in the next section.

3. Detailed cosmological modelling

3.1. Assumptions and methods

We have run a stand-alone cosmological fit of the XXL C1 redshift distribution based on a standard Markov chain Monte Carlo procedure (the Metropolis algorithm). For the whole analysis, we only rely on the cluster redshifts and never use directly the additional information contained in the mass distribution of galaxy clusters; clusters masses only appear in the selection function as encoded in the scaling relations (Paper II). Our model uses at most six free cosmological parameters: h , Ω_m , Ω_b , σ_8 , n_s , and w . In most cases the dark energy equation of state parameter w is fixed to -1 (flat Λ CDM). Also, included as nuisance parameters are the optical depth to reionisation (τ) in the CMB analysis, the normalisation of the $M_{500,WL}-T_{300kpc}$ scaling relation, and the evolution of the $L_{500}^{XXL}-T_{300kpc}$ for the XXL clusters (see Table 1); these parameters are then marginalised over. Since XXL clusters are not enough by themselves to constrain all cosmological parameters (in particular, Ω_b and n_s to which the cluster number density is not very sensitive), we apply Gaussian priors on the C1-only constraints, derived from the *Planck* 2015 measurements (so that the priors do not introduce any artificial mismatch between XXL and *Planck*) and with errors increased by a factor of 5 (so the priors are loose enough to not force agreement). We apply this to the parameter combinations that naturally describe the BAO peak pattern observed in the CMB data, namely: $n_s = 0.965 \pm 0.023$, $\Omega_b h^2 = 0.0222 \pm 0.0011$, and $\Omega_m h^2 = 0.1423 \pm 0.0073$. In addition, we impose a conservative Gaussian prior on the Hubble constant to match observations of the local Universe as $h = 0.7 \pm 0.1$.

3.2. Λ CDM

The results for a fixed $w = -1$ are shown in Fig. 2 and compared with the constraints from *Planck* 2015 and a weak lensing tomography analysis from the KIDS survey (Hildebrandt et al. 2017). A good overlap is found between the XXL and *Planck* constraints; using the Index of Inconsistency (IOI, see Appendix E) we can quantify the significance of the offset between the two posteriors to be lower than 0.05σ . Although statistically consistent, the XXL constraints indicate a lower value of σ_8 of 0.72 ± 0.07 (versus 0.811 ± 0.007 for *Planck*) and a correspondingly higher value of $\Omega_m = 0.40 \pm 0.09$ (versus 0.313 ± 0.009 for *Planck*). While the combination with KIDS points to a better agreement with *Planck* on the matter density, σ_8 remains much lower (0.72 ± 0.06). For the XXL constraints to exactly match the *Planck* predictions, we would need to assume that our current masses estimates are biased by 18 ± 5 toward lower

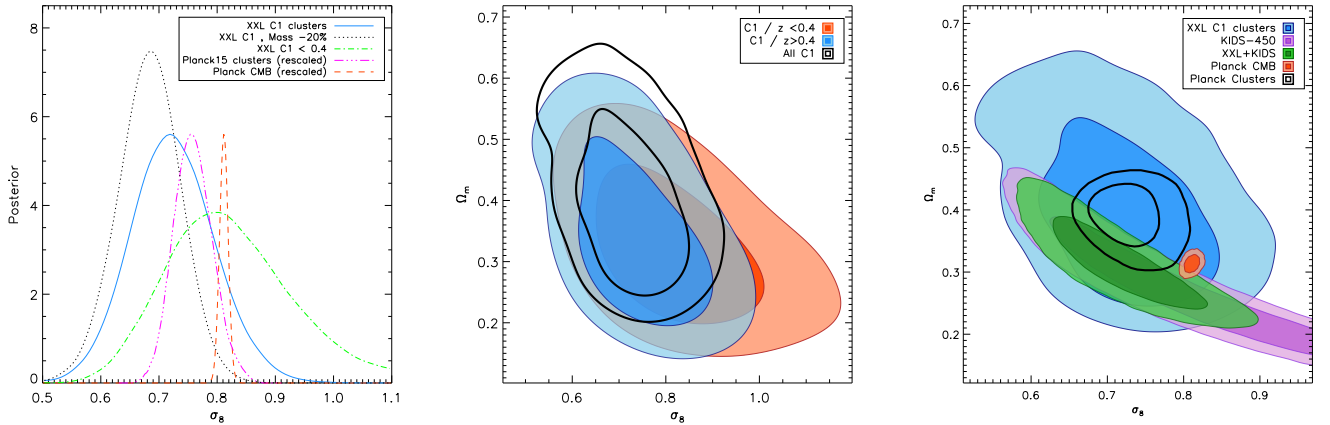


Fig. 2. Cosmological constraints in the flat Λ CDM model. *Left panel:* posterior distribution on σ_8 from the cosmological fit of the whole XXL C1 cluster sample (blue line), when lowering the mass calibration by 20% (black dotted line), when using only clusters below $z = 0.4$ (green dot-dashed line), for *Planck* clusters (Planck Collaboration XXIV 2016; pink triple dot-dashed line), and for CMB (Planck Collaboration XIII 2016; orange dashed line), rescaled to match the peak of the XXL C1 distribution. *Middle panel:* contours of 1σ and 2σ in the σ_8 - Ω_m plane obtained from the C1 clusters as a function of redshift. *Right panel:* comparison of the XXL, KIDS (lensing), and *Planck* 2015 constraints in the σ_8 - Ω_m plane (1σ and 2σ contours).

masses. This is still allowed by the current uncertainty of our $M_{500}-T_{300\text{kpc}}$ calibration, and it explains the lack of significant tension between the two datasets. This estimate of the bias stems from the marginalised constraints on the normalisation of the $M_{500}-T_{300\text{kpc}}$ relation obtained through the combination of XXL and *Planck* leaving the normalisation of the relation entirely free.

Given the apparent lack of intermediate redshift C1 clusters compared to cosmological predictions (Fig. 1), we also investigated separately the constraints arising from C1 clusters below and above $z = 0.4$. As can be seen in Fig. 2, low-redshift C1 clusters show numbers consistent with the *Planck* CMB cosmology (although with large errors), while high- z clusters require lower values of σ_8 . Since a high matter density is required to reproduce the strong redshift evolution of the full sample, the Ω_m - σ_8 degeneracy conspires to push σ_8 even lower when the two redshift ranges are combined.

In a flat universe with a cosmological constant, the CMB acoustic scale sets tight constraints on the Hubble constant, while the CMB peaks mostly fix the baryon ($\Omega_b \times h^2$), matter ($\Omega_m \times h^2$), and photon densities (through CMB black-body temperature, T_{CMB}): there is no strong degeneracy between the parameters. However, when letting Ω_k or w be free, the geometrical degeneracy sets in and the *Planck* constraints loosen drastically, leaving room for the XXL clusters to improve on the *Planck* CMB constraints. We investigate this possibility below.

3.3. Dark energy

The effect of releasing the value of w on the *Planck* CMB is shown in Fig. 3 for σ_8 and Ω_m : the size of the error bars now approaches that from the XXL cluster sample, which are only slightly larger than for fixed w . The XXL dataset, like *Planck*, favours a strongly negative equation of state parameter (respectively $w_0 = -1.53 \pm 0.62$ and -1.44 ± 0.30) albeit with rather different values for the other parameters. Actually, most of the larger parameter space now allowed by the CMB datasets is disfavoured by the XXL C1 clusters, which thus hold the potential to improve significantly on the dark energy constraints provided by *Planck* alone. Still, the constraints obtained from both projects show good overlap, and our inconsistency test with the IOI shows that the two datasets are compatible within $\sim 0.5\sigma$

(PTE = 0.49). In the absence of any apparent tension between the two probes, we thus proceed with their combination.

The joint C1+*Planck* dataset results in a significantly higher value of $w = -1.02 \pm 0.20$, than would each probe if taken separately, with a best-fit cosmology similar to the preferred *Planck* Λ CDM model. Interestingly, other datasets, like supernovae (Betoule et al. 2014, Fig. 14), also favour equation of state parameters that differ from -1 but, once combined with *Planck* or other probes, point toward the concordance Λ CDM cosmology. In addition to comforting the Λ CDM model, our cosmological analysis of the XXL C1 cluster decreases by 30% the errors on w obtained from *Planck* alone, despite using less than half of the final cluster sample and neglecting the constraints provided by both the mass distribution and spatial correlation of clusters.

4. Discussion and conclusion

All in all, our results prove consistent with the *Planck* SZ cluster analysis (Planck Collaboration XXIV 2016) despite relying on a totally different cluster dataset (mass and redshift range, selection procedure, scaling relations based on weak lensing mass measurements). However, the uncertainties resulting from the present analysis are too large to either confirm or dismiss the tension identified within the Planck Collaboration between the primary CMB and the abundance of galaxy clusters. Since our analysis relied on less than half of the full XXL cluster sample, did not use information from the cluster mass distribution and assumed conservative errors on scaling relations, there is ample room for improvement in the constraints provided by XXL alone in the near future. Yet, we showed that, even at the present stage, the XXL clusters already bring significant improvements on dark energy constraints when combined with *Planck* data.

While most of the critics of the *Planck* sample analysis pertains to the hydrostatic bias and its normalisation via numerical simulations, this does not directly affect the present studies which relies on weak lensing mass measurements. There are nevertheless a number of residual uncertainties in the present analysis, in particular regarding our mass estimates, which need to be addressed before using the full power of the survey, and

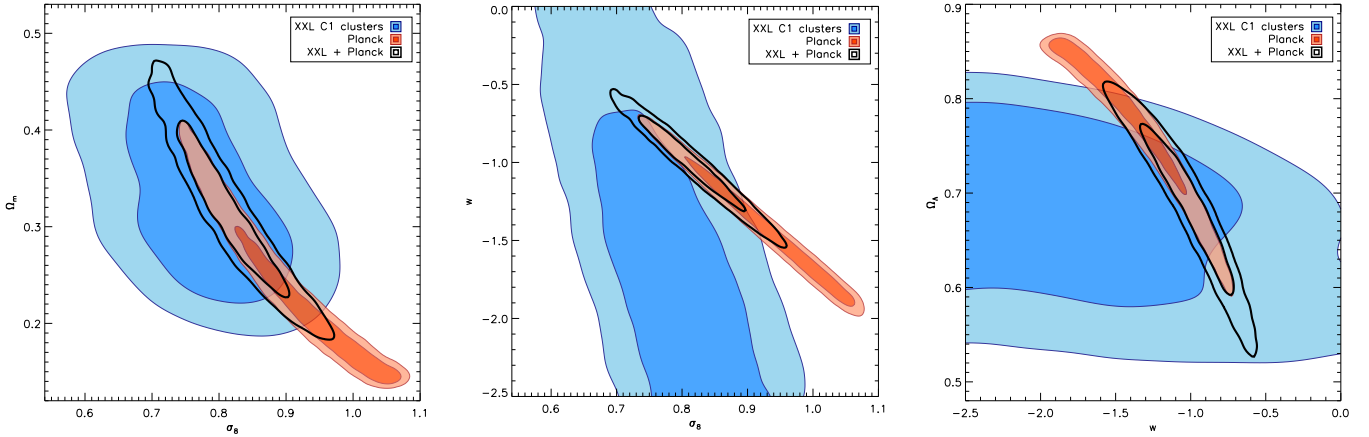


Fig. 3. Comparison between the XXL and *Planck* 2015 constraints, with w free, for the σ_8 – Ω_m , σ_8 – w , and w – Ω_Λ planes (1σ and 2σ contours, same assumption on τ as in Fig. 1).

that we now discuss. Key considerations for the XXL analysis include the following:

– *Accuracy of the mass calibration.* In Eckert et al. (2016, XXL Paper XIII), we analysed the gas mass of 100 XXL galaxy clusters and found that their gas mass fractions were about 20% lower than expected. A possible interpretation would be for the mass calibration published in Paper IV to be overestimated by $\sim 20\%$, which is supported by the parallel weak lensing analysis presented in Lieu et al. (2017). To test the impact of such a calibration offset, we repeated our flat Λ CDM analysis decreasing the prior on the $M_{500,\text{WL}}-T_{300\text{kpc}}$ normalisation by 20%. In this case, the XXL clusters would start to deviate more significantly from the prediction of the *Planck* CMB (by $\sim 1.1\sigma$) with marginalised values of $\sigma_8 = 0.68 \pm 0.05$ and $\Omega_m = 0.35 \pm 0.08$. The marginalised posterior on σ_8 for this case is also shown in the left panel of Fig. 2.

– *Scaling relation model.* For our analysis, we have assumed a bijective relation between cluster mass and temperature, and have attributed all the scatter in cluster scaling laws to the relation between temperature and luminosity. A more realistic model is required that would include the scatter in both luminosity and temperature, as well as their covariance. Another option would be to bypass the need for cluster temperatures by estimating the luminosity in a redshifted band corresponding to the measured flux. Only one scaling relation and its redshift evolution would then be required without covariance issue. In addition, an accurate cosmological analysis requires reevaluating simultaneously cluster scaling relations as the cosmology is varied (e.g. Mantz et al. 2010). Given the large uncertainties in the present analysis, this was not considered necessary, but the same will no longer hold for studies with more clusters and better mass information.

– *The average shape of galaxy clusters.* In the scaling model of Table 1, we chose a specific model for the surface brightness of galaxy clusters (a $\beta = 2/3$ model and $x_c = r_c/r_{500} = 0.15$). Although motivated by observations, the value of x_c is not firmly established, in particular in the new mass–redshift regime uncovered by XXL. Most other plausible values of x_c would lower the number of expected clusters and improve the agreement with the *Planck* CMB model: the detection efficiency becomes lower for very compact clusters (which may be misclassified as X-ray active galactic nuclei, AGN) and for very extended clusters (whose low surface brightness hampers their detection). As for the normalisation of $M_{500,\text{WL}}-T_{300\text{kpc}}$ in Sect. 3, we estimated the value of x_c required by the *Planck* CMB data from its

marginalised constraints when *Planck* and XXL are combined. The resulting constraints on x_c are surprisingly loose, indicating that x_c is not a major systematic in the present study. Furthermore, our fiducial value of 0.15 is only 1.1σ away from the preferred value of $x_c = 0.44 \pm 0.26$ so that changing this parameter cannot improve the agreement between XXL and *Planck* much.

– *The dispersion of cluster shapes.* The fourth paper in the ASpiX series (Valotti et al. 2018) studies the impact of introducing some scatter around x_c in the relation between r_c and r_{500} . Although the results depend on the exact value of x_c , a larger scatter usually implies fewer detected clusters. Using again the same method, we found that the combination of XXL C1 + *Planck* implies a log-normal scatter of 1.49 ± 0.31 . This value is well constrained, showing that an increase in the scatter could, in principle, change the interpretation of the results. We will pay greater attention to this parameter in the forthcoming analyses; in the meantime, we note that the preferred value above is unlikely to be realistic as the gas distribution in galaxy clusters is observed to be rather self-similar (e.g. Croston et al. 2008) and numerical simulations predict a much lower scatter (for instance Le Brun et al. 2017 and Valotti et al. 2018 estimated a log-normal scatter of 0.5 on x_c from the OWLS simulations).

– *The effect of peaked clusters.* As noted by Clerc et al. (2014), a change with redshift in the strength or frequency of cool cores, as well as a different occupation of cluster halos by AGNs, could explain the apparent deficit of clusters at intermediate redshift. So far, our observational programme to identify clusters contaminated by AGNs proved that the C1 selection is robust (Logan et al. 2018, XXL paper XXXIII). However, we already noticed that AGNs may be more common in the centre of the XXL groups than they are in low-redshift massive clusters (Koulouridis et al. 2018b, XXL paper XXXV). In the future, we will use realistic simulations of the combined cluster and AGN populations obtained in Koulouridis et al. (2018a, XXL paper XIX) to further investigate these hypotheses.

– *Systematics of theoretical mass functions.* Here, we rely on the commonly used Tinker et al. (2008) mass function, but over the years a number of new results have become available (e.g. Watson et al. 2013; Despali et al. 2016) that use higher resolution simulations and better statistics. Differences still remain between them, which means that an estimate of systematic uncertainties impinging on the mass function itself must be included. Even more importantly, results from magneto-hydrodynamic

simulations have shown that the detailed physics of the gas affects the collapse of dark matter halos and alters the mass function (Stanek et al. 2009). Even though analytical recipes already exist to include this effect (e.g. Velliscig et al. 2014; Bocquet et al. 2016), there is still enough uncertainty in the modelling of the gas that results still vary between different simulations and codes.

To conclude, the present article constitutes a significant step in the cosmological analysis of X-ray cluster samples, targeting a mass and redshift range that will be the realm of wide-area upcoming surveys (ACT-pol, SPT-pol, eRosita, *Euclid*). When the final XXL data release occurs, a more comprehensive study involving the full cluster sample (some 400 objects) will follow, and will address most of the shortcomings noted above. Our cosmology pipeline will be upgraded to jointly fit cosmology and scaling relations relying directly on the observed signal. One such observable will be the angular extent of clusters for which a scaling relation and scatter will be constrained simultaneously. In parallel, the selection function will undergo significant tests based on realistic MHD simulations (Paper I; Paper XIX) to assess the effect of cool cores and AGN contamination. In addition, lowering our threshold on the extent statistic (i.e. using the C2 sample described in Adami et al. 2018) will roughly double the number of clusters and should improve the cosmological constraints by a factor of $\sim\sqrt{2}$ (Pierre et al. 2011); the new clusters correspond to lower signal-to-noise ratio sources, hence to less massive or more distant clusters. The calibration of the scaling relations will also improve, thanks to lensing mass measurements by the HSC at the Subaru telescope. We shall thus be in a position to model the $dn/dM/dz$ distribution (much more constraining than dn/dz) in combination with the final *Planck* chains (Planck Collaboration VI 2018). The final results will be combined with those from the 3D XXL cluster–cluster correlation function obtained with the same sample (Marulli et al. 2018, XXL Paper XVI); when w is free, this combination has the potential to double the precision on the DE equation of state (Pierre et al. 2011). All in all, by combining a better mass determination, the information from the mass function, the increase in sample size, and the correlation function we expect an improvement of a factor of 3 with respect to the current analysis. We will also be in a strong position to quantify the agreement between XXL and the *Planck* CMB results: dividing by 3 the current XXL cosmological constraints while keeping the same best-fit model would result for instance in a 4.8σ and 13.4σ tension, respectively, in the Λ CDM and w CDM models based on our IOI test.

Acknowledgements. XXL is an international project based on an XMM Very Large Programme surveying two 25 deg^2 extragalactic fields at a depth of $\sim 6 \times 10^{-15}\text{ erg s}^{-1}\text{ cm}^{-2}$ in $[0.5\text{--}2]\text{ keV}$. The XXL website is <http://irfu.cea.fr/xxl>. Multiband information and spectroscopic follow-up of the X-ray sources are obtained through a number of survey programmes, summarised at <http://xxlmultiwave.pbworks.com/>. F.P. acknowledges support by the German Aerospace Agency (DLR) with funds from the Ministry of Economy and Technology (BMWi) through grant 50 OR 1514, and thanks Thomas Reiprich for providing this financial support. E.K. acknowledges the Centre National d'Études Spatiales (CNES) and CNRS for supporting his post-doctoral research. The Saclay group also acknowledges long-term support from the CNES. Finally, we want to thank Dominique Eckert, Stefano Ettori,

Nicolas Clerc, Pier Stefano Corasaniti, Hendrik Hildebrandt, Amandine Le Brun, Ian McCarthy, David Rapetti, and Marina Ricci for useful comments and discussions on the content of this article.

References

- Adami, C., Giles, P., Koulouridis, E., et al. 2018, *A&A*, 620, A5 (XXL Survey, XX)
- Betoule, M., Kessler, R., Guy, J., et al. 2014, *A&A*, 568, A22
- Blas, D., Lesgourgues, J., & Tram, T. 2011, *J. Cosmology Astropart. Phys.*, 7, 034
- Bocquet, S., Saro, A., Dolag, K., & Mohr, J. J. 2016, *MNRAS*, 456, 2361
- Cavaliere, A., & Fusco-Femiano, R. 1976, *A&A*, 49, 137
- Clerc, N., Adami, C., Lieu, M., et al. 2014, *MNRAS*, 444, 2723
- Croston, J. H., Pratt, G. W., Böhringer, H., et al. 2008, *A&A*, 487, 431
- Despali, G., Giocoli, C., Angulo, R. E., et al. 2016, *MNRAS*, 456, 2486
- Eckert, D., Ettori, S., Coupon, J., et al. 2016, *A&A*, 592, A12 (XXL Survey, XIII)
- Gelman, A., & Rubin, D. B. 1992, *Stat. Sci.*, 7, 457
- Hildebrandt, H., Viola, M., Heymans, C., et al. 2017, *MNRAS*, 465, 1454
- Hinshaw, G., Larson, D., Komatsu, E., et al. 2013, *ApJS*, 208, 19
- Israel, H., Schellenberger, G., Nevalainen, J., Massey, R., & Reiprich, T. H. 2015, *MNRAS*, 448, 814
- Jeffreys, H. 1961, *The Theory of Probability* (Oxford: Oxford University Press)
- Joudaki, S., Blake, C., Heymans, C., et al. 2017, *MNRAS*, 465, 2033
- Koulouridis, E., Faccioli, L., Le Brun, A. M. C., et al. 2018a, *A&A*, 620, A4 (XXL Survey, XIX)
- Koulouridis, E., Ricci, M., Giles, P., et al. 2018b, *A&A*, 620, A20 (XXL Survey, XXXV)
- Le Brun, A. M. C., McCarthy, I. G., Schaye, J., & Ponman, T. J. 2017, *MNRAS*, 466, 4442
- Lieu, M., Smith, G. P., Giles, P. A., et al. 2016, *A&A*, 592, A4 (XXL Survey, IV)
- Lieu, M., Farr, W. M., Betancourt, M., et al. 2017, *MNRAS*, 468, 4872
- Lin, W., & Ishak, M. 2017, *Phys. Rev. D*, 96, 023532
- Logan, C. H. A., Maughan, B. J., Bremer, M., et al. 2018, *A&A*, 620, A18 (XXL Survey, XXXIII)
- Mantz, A., Allen, S. W., Rapetti, D., & Ebeling, H. 2010, *MNRAS*, 406, 1759
- Mantz, A. B., von der Linden, A., Allen, S. W., et al. 2015, *MNRAS*, 446, 2205
- Marulli, F., Veropalumbo, A., Sereno, M., et al. 2018, *A&A*, 620, A1 (XXL Survey, XVI)
- Pacaud, F., Pierre, M., Refregier, A., et al. 2006, *MNRAS*, 372, 578
- Pacaud, F., Clerc, N., Giles, P. A., et al. 2016, *A&A*, 592, A2 (XXL Survey, II)
- Pierre, M., Pacaud, F., Juin, J. B., et al. 2011, *MNRAS*, 414, 1732
- Pierre, M., Pacaud, F., Adami, C., et al. 2016, *A&A*, 592, A1 (XXL Survey, I)
- Planck Collaboration XI. 2016, *A&A*, 594, A11
- Planck Collaboration XIII. 2016, *A&A*, 594, A13
- Planck Collaboration XV. 2016, *A&A*, 594, A15
- Planck Collaboration XXIV. 2016, *A&A*, 594, A24
- Planck Collaboration Int. XLVI. 2016, *A&A*, 596, A107
- Planck Collaboration Int. LI. 2017, *A&A*, 607, A95
- Planck Collaboration VI. 2018, *A&A*, submitted [arXiv:1807.06209]
- Riess, A. G., Casertano, S., Yuan, W., et al. 2018, *ApJ*, 861, 126
- Rozo, E., Rykoff, E. S., Bartlett, J. G., & Evrard, A. 2014, *MNRAS*, 438, 49
- Salvati, L., Douspis, M., & Aghanim, N. 2018, *A&A*, 614, A13
- Sereno, M., & Ettori, S. 2015, *MNRAS*, 450, 3633
- Sereno, M., Covone, G., Izzo, L., et al. 2017, *MNRAS*, 472, 1946
- Smith, R. K., Brickhouse, N. S., Liedahl, D. A., & Raymond, J. C. 2001, *ApJ*, 556, L91
- Stanek, R., Rudd, D., & Evrard, A. E. 2009, *MNRAS*, 394, L11
- Tinker, J., Kravtsov, A. V., Klypin, A., et al. 2008, *ApJ*, 688, 709
- Troxel, M. A., MacCrann, N., Zuntz, J., et al. 2018, *Phys. Rev. D.*, 98, 043528
- Valageas, P., Clerc, N., Pacaud, F., & Pierre, M. 2011, *A&A*, 536, A95
- Valotti, A., Pierre, M., Farahi, A., et al. 2018, *A&A*, 614, A72
- Velliscig, M., van Daalen, M. P., Schaye, J., et al. 2014, *MNRAS*, 442, 2641
- von der Linden, A., Mantz, A., Allen, S. W., et al. 2014, *MNRAS*, 443, 1973
- Watson, W. A., Iliev, I. T., D'Aloisio, A., et al. 2013, *MNRAS*, 433, 1230

Appendix A: C1 cluster likelihood model

In this paper, we obtain cosmological constraints from the density and redshift distribution of the C1 galaxy cluster sample. Our analysis relies on the likelihood model described in Paper II, which we summarise here.

The first step in the calculation is to derive the density of galaxy clusters in a given cosmology as a function of their ICM properties. Starting from the differential mass function expressed in terms of redshift (z) and sky area (Ω), $\frac{dn(M_{500,z})}{dM_{500} d\Omega dz}$, we use the $M_{500,WL}-T_{300kpc}$ and $L_{500}^{XXL}-T_{300kpc}$ scaling relations to derive an equivalent temperature function, without including the scatter, and disperse it over a luminosity distribution

$$\frac{dn(L, T, z)}{dz dL dT} = \frac{dn(M, z)}{dM d\Omega dz} \frac{dM(T, z)}{dT} \mathcal{LN}[L | \hat{L}(T, z), \sigma_{LT}], \quad (\text{A.1})$$

where T and \hat{L} are the average temperature and [0.5–2.0] keV luminosities at a given mass obtained from the scaling relations of Table 1, and $\mathcal{LN}[L | \hat{L}, \sigma]$ is a log-normal distribution of mean \hat{L} and scatter σ .

The combination of this distribution with the survey effective sky coverage allows us to derive the cluster redshift density for our analysis. The selection function of the XXL C1 clusters in terms of raw observables is discussed in Sect. 5 of Paper II and depends on the source total count rate (CR_∞) and the angular core radius θ_c of a β -model with $\beta = 2/3$. The corresponding sky coverage $\Omega_S(CR_\infty, \theta_c)$ must be recast as a function of cluster physical properties. First, we derive a core radius from the characteristic size of the clusters, $r_{500} = \left[\frac{3M_{500}(T)}{4\pi \times 500 \rho_c} \right]^{1/3}$, and the size scaling relation of Table 1, which can be expressed through the constant parameter $x_c = r_c/r_{500}$. Second, we use an APEC thermal model (Smith et al. 2001, version 3.0.9) with a metallicity set to 0.3 times the solar value to estimate the source count rate within r_{500} , based on the cluster luminosity, L_{500}^{XXL} , and temperature. In addition, an extrapolation factor from r_{500} to infinity, f_∞ , is computed from the assumed β -model profile. This results in an effective sky coverage,

$$\Omega_S(L, T, z) = \Omega_S(f_\infty CR_{500}[L, T, z], r_c[T, z]/d_A[z]), \quad (\text{A.2})$$

and a final redshift distribution for the model,

$$\frac{dn}{dz}(z) = \int_0^\infty \int_0^\infty \Omega_S(L, T, z) \frac{dn(L, T, z)}{dz dL dT} dL dT. \quad (\text{A.3})$$

The total number of clusters predicted by the model, N_{tot} follows from a simple redshift integration.

To infer model parameters (\mathcal{P}) from the properties of the C1 clusters, we make use of a very generic unbinned likelihood model, in which we separate the information on the number of detected clusters, N_{det} , from their redshift distribution,

$$\mathcal{L}(\mathcal{P}) = P(N_{det}|N_{tot}, \mathcal{P}) \prod_{i=1}^{N_{det}} \left[\frac{1}{N_{tot}} \frac{dn}{dz}(z_i) \right], \quad (\text{A.4})$$

where $P(N_{det}|N_{tot}, \mathcal{P})$ describes the probability of observing N_{det} clusters in a given cosmological model. A standard choice for this probability would be to use a Poisson law of parameter N_{tot} , but we opted for a more complicated distribution in order to account for the significant cosmic variance within the XXL fields. We estimate this variance, σ_v^2 , with the formalism presented in Valageas et al. (2011). For cosmological models which

provide a good description of the XXL cluster population, this super-sample variance term amounts to $\sim 30\%$ of the sample Poisson variance. The combined distribution from shot noise and cosmic variance is modeled as

$$P(N_{det}|\mathcal{P}) = \int \text{Po}(N_{det}|N_{loc}) \mathcal{LN}[N_{loc}|\langle N_{det} \rangle, \sigma_v] dN_{loc}, \quad (\text{A.5})$$

where the local density, N_{loc} , is generated from a log-normal distribution \mathcal{LN} of mean $\langle N_{det} \rangle$ and sample variance σ_v^2 , and N_{loc} is then subjected to additional shot noise through the Poisson law $\text{Po}(x|\lambda)$.

For all the results presented in this article, we sample this likelihood using a Metropolis Markov chain Monte Carlo (MCMC) algorithm, combined with the priors listed in Sect. 3.1 and non-informative priors on all other parameters. We run four chains in parallel, excluding a 20% burn-in phase and monitor the convergence with the Gelman–Rubin diagnostic (Gelman & Rubin 1992). The chains are stopped when they reach a convergence of $R - 1 < 0.03$. As mentioned in the caption of Table 1, two scaling relation parameters are left free in the process, the normalisation of the $M_{500,WL}-T_{300kpc}$ relation and the redshift evolution of the $L_{500}^{XXL}-T_{300kpc}$ relation. These are constrained within the fits by priors derived from earlier XXL scaling relation analyses (Paper IV; Paper XX).

Finally, the combination of the C1 cluster results with other cosmological probes (*Planck*, KIDS) relies on importance sampling of the respective chains based on the C1 likelihood, without any prior. In the specific case of the KIDS survey, Hildebrandt et al. (2017) already applies top-hat priors that are similar to ours on $0.019 < \Omega_b h^2 < 0.026$ and $0.064 < h < 0.82$. However, the prior on $0.01 < \Omega_m < 0.99$ is extremely wide and therefore there is no direct prior applied in the $\Omega_m - \sigma_8$ plane for the combined XXL+KIDS constraints.

Appendix B: Cosmological constraints from CMB observations

Recently, *Planck Collaboration Int. XLVI* (2016) has described new calibration and data processing methods which improve the control of systematics in the CMB polarisation maps obtained with the *Planck* HFI instrument. This has a significant impact on the determination of the optical depth to reionisation, τ , which is almost fully degenerate with the amplitude of matter fluctuation in the temperature power spectrum, but shows distinct signatures on the large-scale polarisation signal. As a result, the authors obtained unprecedented constraints on this parameter, $\tau = 0.055 \pm 0.009$, which is systematically lower than all previous estimates (e.g. $\tau = 0.066 \pm 0.016$ in *Planck Collaboration XIII* 2016). Such a decrease in the optical depth directly translates to a lower amplitude of the matter fluctuations at the epoch of recombination in order to fit the CMB data. It was immediately recognised as a possible route to soften the tensions between the preferred *Planck* cosmological model and low-redshift probes of the large-scale structures (e.g. Salvati et al. 2018).

A meaningful comparison with the XXL cluster sample therefore requires a new CMB analysis that accounts for the updated constraints on τ . Unfortunately, at the time when the core work of this article was being performed, these results had not yet been released by the *Planck* Collaboration, nor were the improved polarisation maps and power spectra available. Instead, we had to use the public *Planck* likelihood codes (*Planck Collaboration XI* 2016) to generate updated sets of cosmological constraints, based on the *Planck* 2015 dataset. In doing so, we

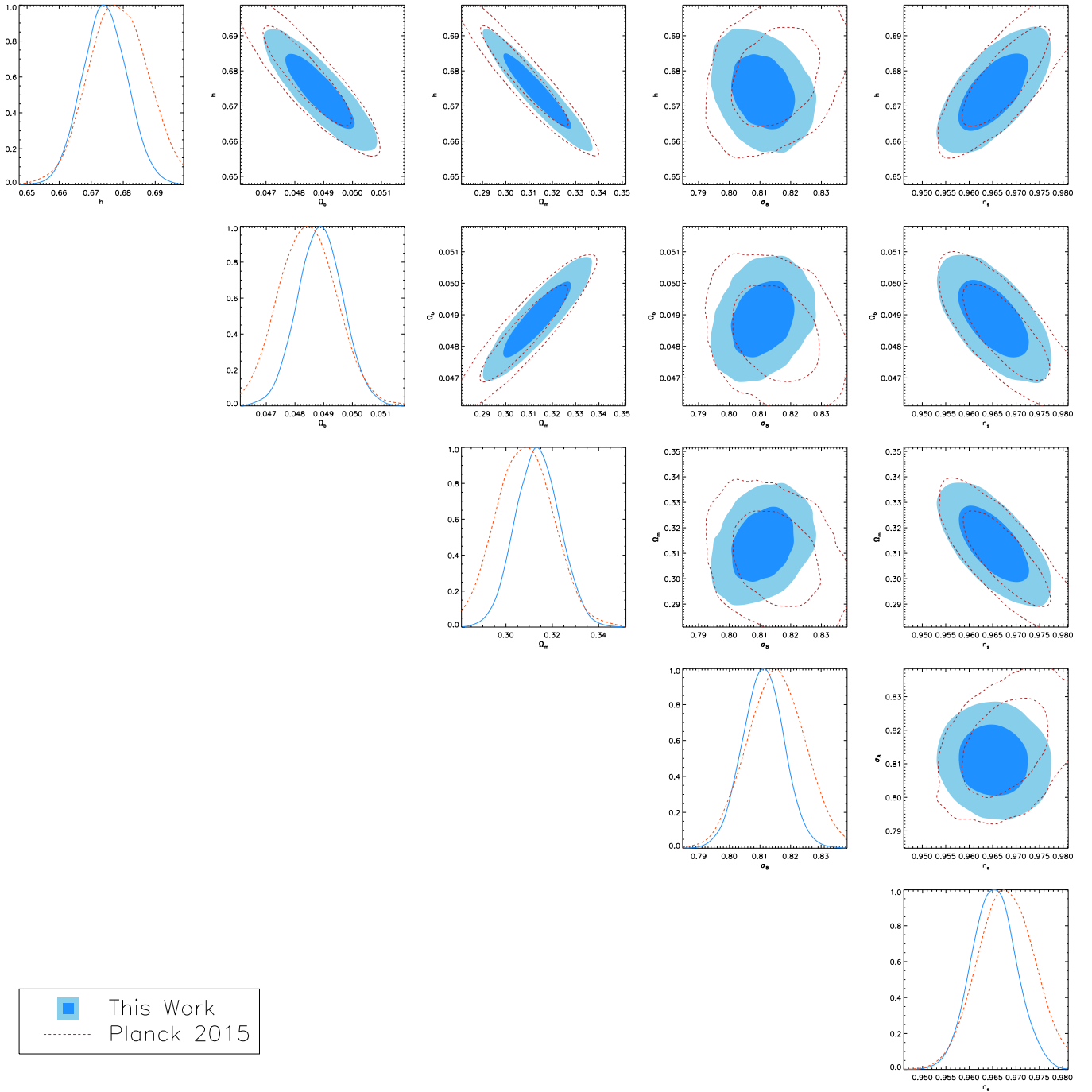


Fig. B.1. Comparison of the cosmological analysis of the *Planck* CMB products used in this paper with the original constraints of *Planck Collaboration XIII* (2016) in a flat Λ CDM Universe (1σ and 2σ contours).

only account for the temperature power spectrum (TT) at both high and low multipole values (ℓ), we ignored any polarisation constraints, but replaced the low- ℓ polarisation likelihood by a Gaussian prior on $\tau = 0.055 \pm 0.009$ mimicking the measurement obtained by *Planck Collaboration Int. XLVI* (2016).

In addition to the temperature and polarisation power spectra, the *Planck* Collaboration also released a reconstructed map of the lensing potential distorting the CMB, as well as its power spectrum (*Planck Collaboration XV* 2016). The latter can also be used to constrain cosmological parameters based on the large-scale structures at intermediate redshifts (with maximum contribution from $z \sim 2-3$). We include the official *Planck*

likelihood for the power spectrum of the lensing potential in our reanalysis. Intuitively, excluding the lensing constraints from the analysis might seem to better decouple probes of early large-scale structures (the primary CMB) from late time tracers (the XXL clusters); however, this is actually not the case. The same lensing effects are indeed already included in the analysis of the temperature power spectrum and, as shown in *Planck Collaboration Int. LI* (2017), play a major role in the derivation of a high σ_8 value from *Planck*: high matter fluctuations are favoured to explain the significant smoothing of high- ℓ acoustic peaks, a natural consequence of CMB lensing. However, the direct modelling of the lensing potential power spectrum does

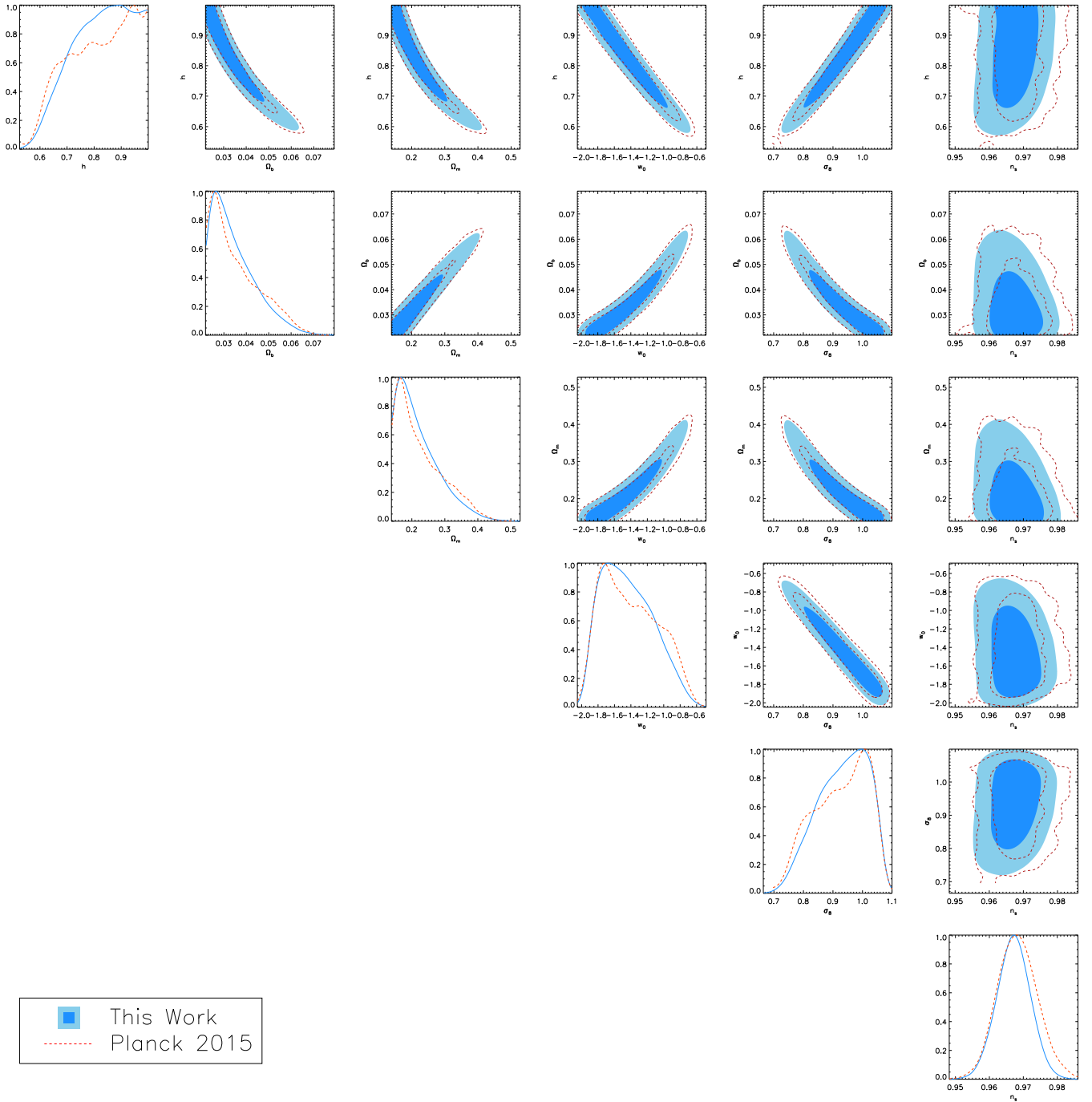


Fig. B.2. Comparison of the cosmological analysis of the *Planck* CMB products used in this paper with the original constraints of *Planck Collaboration XIII* (2016) in a flat w CDM Universe (1σ and 2σ contours).

not require such high fluctuations and adding it to the analysis provides a more balanced view of the constraints originating from CMB lensing.

Figures B.1 and B.2 show a comparison between our new *Planck* CMB constraints and those provided by the *Planck* 2015 public MCMC chains, respectively, for the flat Λ CDM and w CDM models. In the first case, as expected, the new constraints on τ results in somewhat narrower credibility intervals and a lower value for σ_8 (by roughly 0.5σ). However, this also impacts the other parameters to a similar amount with higher values of Ω_m and Ω_b and, correspondingly, a lower value of H_0 .

This latter change actually compensates in part the decrease in σ_8 so that, in the end, the net impact on late time structures and the cluster density is negligible (see predictions in Fig. 1). In the w CDM case, the errors from the primary CMB alone are much larger and the shifts due to the lower value of τ are not as significant. Our updated *Planck* 2015 results still show good consistency with a Λ CDM model, with best-fitting parameters in slight tension with some observations of the late time large-scale structures (Hildebrandt et al. 2017) or distance scale indicators like Cepheids (Riess et al. 2018). Mean and standard deviations for each parameter in our chains are provided in Appendix C.

Table C.1. Primary CMB constraints for the flat Λ CDM model.

Parameter	WMAP9	<i>Planck</i> 15	<i>Planck</i> (this work)	<i>Planck</i> 18	XXL-C1	C1+KiDS
h	0.700 ± 0.022	0.6783 ± 0.0092	0.6740 ± 0.0069	0.6736 ± 0.0054	0.609 ± 0.073	0.740 ± 0.049
Ω_b	0.0463 ± 0.0024	0.0484 ± 0.0010	0.0489 ± 0.0008	0.0493 ± 0.0006	0.062 ± 0.015	0.042 ± 0.007
Ω_m	0.279 ± 0.025	0.308 ± 0.012	0.313 ± 0.009	0.315 ± 0.007	0.399 ± 0.094	0.312 ± 0.049
σ_8	0.821 ± 0.023	0.8149 ± 0.0093	0.8108 ± 0.0066	0.8111 ± 0.0061	0.721 ± 0.071	0.719 ± 0.064
n_s	0.972 ± 0.013	0.9678 ± 0.0060	0.9651 ± 0.0047	0.9649 ± 0.0042	0.965 ± 0.023	1.07 ± 0.13
τ	0.089 ± 0.014	0.066 ± 0.016	0.0566 ± 0.0083	0.0543 ± 0.0074	-	-

Notes. The parameter value corresponds to the mean over the Markov chain, while the error shows the standard deviation. No results are provided for the combination of *Planck* and C1 clusters since, for such a small number of parameters, the *Planck* constraints will fully dominate the results.

Table C.2. Primary CMB constraints for the flat w CDM model.

Parameter	<i>Planck</i> 15	<i>Planck</i> (this work)	<i>Planck</i> 18	XXL-C1	C1+ <i>Planck</i>
h	0.82 ± 0.12	0.83 ± 0.11	0.87 ± 0.09	0.669 ± 0.070	0.681 ± 0.065
Ω_b	0.035 ± 0.011	0.0343 ± 0.0097	0.0310 ± 0.0071	0.051 ± 0.011	0.0491 ± 0.0090
Ω_m	0.224 ± 0.074	0.219 ± 0.063	0.197 ± 0.046	0.328 ± 0.067	0.316 ± 0.060
w	-1.41 ± 0.35	-1.44 ± 0.30	-1.57 ± 0.25	-1.53 ± 0.62	-1.02 ± 0.20
σ_8	0.925 ± 0.094	0.930 ± 0.082	0.964 ± 0.069	0.775 ± 0.078	0.814 ± 0.054
n_s	0.9681 ± 0.0061	0.9669 ± 0.0048	0.9666 ± 0.0041	0.966 ± 0.023	0.9649 ± 0.0048
τ	0.060 ± 0.019	0.055 ± 0.009	0.052 ± 0.007	-	0.0559 ± 0.0087

Notes. The parameter value corresponds to the mean over the Markov chain, while the error shows the standard deviation.

As the present paper was being submitted, the Planck Collaboration released their final set of cosmological parameters (Planck Collaboration VI 2018), including improved data analysis, likelihoods, and the new constraints on optical depth and accurate polarisation power spectra at all scales. For reference, we incorporated these new constraints in the cosmological parameter tables provided in Appendix C. Our results compare very well with the final *Planck* measurements. The uncertainties on individual parameters only decrease by 10–20% and 20–30% respectively for the Λ CDM and w CDM models with the final results. In addition, the offset in the best-fit cosmological models is in all cases smaller than the final *Planck* uncertainties. Given the current constraining power of our XXL analysis, such differences would have negligible impact on the conclusions of our work.

Appendix C: Derived cosmological parameters

This appendix lists all the cosmological parameter constraints obtained in this paper, together with similar constraints from the latest releases of the WMAP (Hinshaw et al. 2013) and the *Planck* satellite (Planck Collaboration XIII 2016). In Table C.1 we provide results for the flat Λ CDM case, while Table C.2 shows the constraints achieved in a w CDM model.

Appendix D: Impact of priors on the XXL C1 analysis

In Sect.3.1, we describe a number of priors applied to the analysis of the XXL clusters alone in order to fix some parameters that our clusters cannot efficiently constrain (n_s , Ω_b through the combination $\Omega_b h^2$) and mitigate the degeneracy between h , Ω_m , and

σ_8 (using priors on $\Omega_m h^2$ and h separately). Of course, these priors could have a significant impact on the comparison between the XXL clusters and *Planck*.

In order to assess the importance of our choice of priors, we used importance sampling methods to modify the priors on our chains and derive alternative constraints:

- *Impact of Planck derived priors.* Our priors on n_s , $\Omega_b h^2$, and $\Omega_m h^2$ are centred on the *Planck* best-fit value, with Gaussian errors scaled by a factor 5 with respect to the *Planck* constraints. We opted for a factor of 5 in order not to force the XXL C1 constraints toward an artificial agreement with *Planck*, but other choices were possible. In Tables D.1 (for the Λ CDM model) and D.2 (for the w CDM model), we present alternative constraints rescaling instead the errors by factors of 10, 3, and 1. The results are essentially the same with slight but insignificant shifts of the average values for all parameters. The resulting errors on n_s directly scale with the width of the priors, as expected since the XXL C1 cluster alone do not bring significant constraints on this parameter. For all other parameters, the errors do not change significantly.
- *We also performed a similar exercise for the prior on h .* For priors still centred on $h = 0.7$, we changed the Gaussian standard deviation from the initial 0.1 to 0.05 and 0.2. The XXL clusters alone favour a value of h lower than 0.7 in for both cosmological models, and therefore tighter priors on h push the best-fit value higher. Given the *Planck* priors on $\Omega_b h^2$ and $\Omega_m h^2$, which the cluster fit tightly follow, the values of the matter densities diminish accordingly. Shifts on σ_8 and w also occur, but stay well within 1σ .

From these basic sanity checks, we conclude that the results presented in the paper for the XXL C1 clusters alone do not depend much on the details of our chosen priors and can be considered robust.

Table D.1. Impact of priors on the XXL C1 cosmological fits for the Λ CDM model.

Parameter	Default	$\sigma(\text{Planck}) \times 10$	$\sigma(\text{Planck}) \times 3$	$\sigma(\text{Planck}) \times 1$	$\sigma(h) = 0.2$	$\sigma(h) = 0.05$
h	0.609 ± 0.073	0.615 ± 0.075	0.608 ± 0.073	0.608 ± 0.073	0.572 ± 0.075	0.668 ± 0.048
Ω_b	0.062 ± 0.015	0.061 ± 0.015	0.063 ± 0.015	0.063 ± 0.015	0.071 ± 0.017	0.051 ± 0.008
Ω_m	0.399 ± 0.094	0.395 ± 0.093	0.401 ± 0.095	0.401 ± 0.096	0.452 ± 0.106	0.326 ± 0.049
σ_8	0.721 ± 0.071	0.716 ± 0.076	0.720 ± 0.071	0.721 ± 0.070	0.706 ± 0.073	0.744 ± 0.065
n_s	0.965 ± 0.023	0.964 ± 0.041	0.965 ± 0.014	0.965 ± 0.005	0.964 ± 0.023	0.966 ± 0.023

Notes. The XXL derived constraints are provided for different widths of the priors on n_s , $\Omega_b h^2$, and $\Omega_m h^2$, rescaling the *Planck* constraints by a factor of 10, 3, and 1 instead of the factor 5 used for the main results.

Table D.2. Impact of priors on the XXL C1 cosmological fits for the w CDM model.

Parameter	Default	$\sigma(\text{Planck}) \times 10$	$\sigma(\text{Planck}) \times 3$	$\sigma(\text{Planck}) \times 1$	$\sigma(h) = 0.2$	$\sigma(h) = 0.05$
h	0.669 ± 0.070	0.659 ± 0.071	0.670 ± 0.069	0.665 ± 0.069	0.660 ± 0.079	0.689 ± 0.047
Ω_b	0.051 ± 0.011	0.053 ± 0.012	0.051 ± 0.011	0.052 ± 0.011	0.053 ± 0.012	0.047 ± 0.007
Ω_m	0.328 ± 0.067	0.335 ± 0.067	0.327 ± 0.067	0.332 ± 0.068	0.338 ± 0.075	0.304 ± 0.044
w	-1.531 ± 0.621	-1.587 ± 0.606	-1.509 ± 0.626	-1.484 ± 0.597	-1.508 ± 0.634	-1.574 ± 0.592
σ_8	0.775 ± 0.078	0.776 ± 0.075	0.774 ± 0.079	0.770 ± 0.079	0.771 ± 0.080	0.787 ± 0.075
n_s	0.966 ± 0.023	0.972 ± 0.044	0.965 ± 0.014	0.965 ± 0.005	0.965 ± 0.023	0.966 ± 0.023

Notes. The XXL derived constraints are provided for different widths of the priors on n_s , $\Omega_b h^2$, and $\Omega_m h^2$, rescaling the *Planck* constraints by a factor of 10, 3, and 1 instead of the factor of 5 used for the main results.

Appendix E: Quantifying the consistency of different probes

To quantitatively assess the compatibility of our XXL C1 results with the *Planck* constraints, we rely on the Index of Inconsistency (IOI; Lin & Ishak 2017). To compare two datasets given a model, it simply measures the multi-dimensional distance between the best fits for each probe, $\mu = \mathcal{P}^{(1)} - \mathcal{P}^{(2)}$, using the covariance of each fit ($\mathcal{C}^{(1)}$, $\mathcal{C}^{(2)}$) to define a metric as

$$\text{IOI} = \frac{1}{2} \mu^T (\mathcal{C}^{(1)} + \mathcal{C}^{(2)})^{-1} \mu. \quad (\text{E.1})$$

The interpretation of the IOI by Lin & Ishak (2017) relies on assigning compatibility levels for different ranges of the parameter, in a similar manner to the Jeffreys scale (Jeffreys 1961) used for model selection in Bayesian statistics. However, the justification for this procedure remains rather vague and, strangely, does not depend on the number of parameters in the model, N_p . More interestingly, the authors correctly note the functional similarity of this statistic to χ^2 and deduce that the confidence level can be derived as $n - \sigma = \sqrt{2\text{IOI}}$ when comparing two one-dimensional distributions. Actually, for posteriors approaching Gaussian distributions, we can show that 2IOI should be distributed as a χ^2 distribution with N_p degrees of freedom.

In our case, since our posteriors deviates slightly from Gaussian distributions, we prefer to connect the measured IOI with confidence levels using Monte Carlo simulations. To do so, we translate the posterior distributions by subtracting from them the best-fit parameters. The two posteriors are therefore centred on the same value and the points in our chain represent

random fluctuations due to the precision of each experiment when both originate from the same model parameters. We use these fluctuations to generate draws of μ and the corresponding IOI, and to obtain a cumulative probability distribution for the IOI. Finally, we estimate from this the probability to exceed (PTE) the observed IOI and the corresponding significance level. Since our *Planck* and XXL C1 posterior are not too different from Gaussian distributions, the significance levels obtained by this method are very similar to the values obtained from the identification with a χ^2 .

Appendix F: Notations for galaxy cluster quantities

Throughout the paper we use a consistent set of notations laid out for the entire XXL survey to designate cluster physical quantities. Subscripts indicate the extraction radius within which the value was measured or, when the quantity is the radius itself, its definition. A unitless extraction radius, usually 500, refers to an overdensity factor with respect to the critical density of the Universe. When relevant, an additional flag may be appended to the radius definition to specify the origin of the overdensity radius estimate, WL for a direct weak lensing mass estimate or MT when it relies on the measured X-ray temperature combined with a scaling relation. Finally, an XXL superscript for a luminosity explicitly indicates that it was estimated for the rest frame [0.5–2] keV band and corrected for galactic absorption. Subscripts and superscripts may be omitted when referring to generic quantities, for which the exact definition is irrelevant.