

 Open access • Journal Article • DOI:10.1016/J.NUCLPHYSBPS.2007.08.139

The ZEPLIN III Detector; Results from Surface Calibrations — [Source link](#)

T. J. Sumner, D.Yu. Akimov, G. J. Alner, Henrique Araujo ...+57 more authors

Institutions: Imperial College London, Rutherford Appleton Laboratory, University of Sheffield, University of Coimbra ...+4 more institutions

Published on: 01 Nov 2007

Topics: Scintillation, Scintillation counter, Particle detector, ZEPLIN-III and Photomultiplier

Related papers:

- [A wedge-shaped scintillation detector for a magnetic spectrometer](#)
- [Tests of PMT signal read-out of liquid argon scintillation with a new fast waveform digitizer](#)
- [A new light readout system for the LXeGRIT time projection chamber](#)
- [Status and design of two-phase liquid-Xenon compton-imaging detector](#)
- [An exact calculation of time resolution with the scintillation detector](#)

Share this paper:    

View more about this paper here: <https://typeset.io/papers/the-zeplin-iii-detector-results-from-surface-calibrations-mue32pdbl>



ELSEVIER

Available online at www.sciencedirect.com

ScienceDirect

Nuclear Physics B (Proc. Suppl.) 173 (2007) 108–112

NUCLEAR PHYSICS B
PROCEEDINGS
SUPPLEMENTS

www.elsevierphysics.com

The ZEPLIN III Detector; Results from Surface Calibrations

T. J. Sumner^a, D. Yu. Akimov^b, G. J. Alner^c, H. M. Araújo, A. Bewick^a, C. Bungau, A. A. Burenkov^b, M. J. Carson^d, H. Chagani^d, V. Chepel^e, D. Cline^f, D. Davidge^a, E. Daw^d, J. Dawson^a, T. Durkin^c, B. Edwards, T. Gamble^d, C. Chag^g, R. J. Hollingworth^d, A. S. Howard^a, W. G. Jones^a, M. Joshi^a, K. Mavrokoridis^d, E. Korolkova^g, A. Kovalenko^b, V. A. Kudryavtsev^d, I. S. Kuznetsov^b, T. Lawson^d, V. N. Lebedenko^a, J. D. Lewin^c, P. Lightfoot^d, A. Lindote^e, I. Liubarsky^a, M. I. Lopes^e, R. Lüscher^c, J. E. McMillan^d, P. Majewski^d, B. Morgan^d, D. Muna^d, A. S. Murphy^g, F. Neves^e, G. G. Nicklin^d, S. M. Paling^d, J. Pinto da Cunha^e, S. J. S. Plank^g, R. Preece^c, J. J. Quenby^a, M. Robinson^d, C. Silva^e, V. N. Solovov^e, N. J. T. Smith^c, P. F. Smith^c, N. J. C. Spooner^d, V. Stekhanov^b, C. Thorne^a, D. R. Tovey^d, E. Tziaferi^d, R. J. Walker^a, H. Wang^f, J. White^h and F. Wolfsⁱ

^aBlackett Laboratory, Imperial College London, UK

^bInstitute for Theoretical and Experimental Physics, Moscow, Russia

^cParticle Physics Department, Rutherford Appleton Laboratory, Chilton, UK

^dPhysics and Astronomy Department, University of Sheffield, UK

^eLIP–Coimbra & Department of Physics of the University of Coimbra, Portugal

^fDepartment of Physics & Astronomy, University of California, Los Angeles, USA

^gSchool of Physics, University of Edinburgh, UK

^hTexas A&M University, USA

ⁱUniversity of Rochester, New York, USA

ZEPLIN-III is a direct dark-matter search instrument using liquid xenon as a target. Both the scintillation light and the ionisation charge are measured. The instrument has been built and it is currently being testing in a surface laboratory. We present results from some of the initial testing, including design thermal control system verification, photomultiplier calibration (including spectral measurements with 60 keV photons from ²⁴¹Am) and two-phase operation showing simultaneous measurement of scintillation and charge and position reconstruction.

1. THE ZEPLIN III INSTRUMENT

ZEPLIN-III is a two-phase (liquid/gas) xenon instrument developed and built by the ZEPLIN Collaboration.¹ It aims to detect Galactic dark matter in the form of Weakly Interacting Massive Particles, or WIMPs. The instrument is described in [1,2]. Once tested at Imperial College,

it will join the ZEPLIN-II [3] and DRIFT-IIa [4] experiments 1100 m underground in our laboratory at the Boulby mine (North Yorkshire, UK).

Two-phase noble gas emission detectors [5] rely on different particle species generating different relative amounts of vacuum ultra-violet scintillation light and ionisation charge in liquid xenon. WIMPs scatter elastically off Xe atoms, much like neutrons, and a recoiling nucleus produces a different signature to the electron recoil from γ -rays. ZEPLIN III is a high-field xenon system [6–9]. Monte Carlo simulations [10,11] helped design the

¹Edinburgh University, Imperial College London, ITEP-Moscow, LIP-Coimbra, Rochester University, CCLRC Rutherford Appleton Laboratory, Sheffield University, Texas A&M, UCLA.

instrument and to assess its performance [2].

There are four important requirements for a dark matter detector: low energy threshold, particle discrimination, 3-D position reconstruction and low background. Figure 1 & 2 show ZEPLIN-III at a target concept level and engineering level.

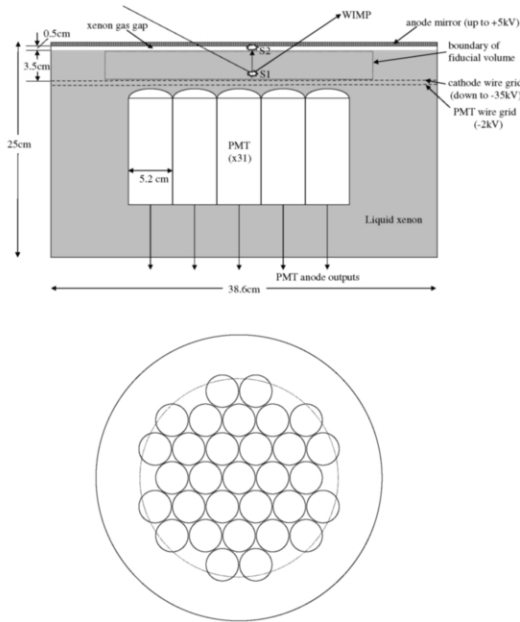


Figure 1. Cross-sections of the target showing the concept. The top panel shows a side view. The bottom panel provides a top view of the PMT arrangement. The fiducial boundary is shown on both.

For low scintillation threshold our photomultipliers (PMTs) are in the liquid, to remove two interfaces with refractive index mismatches, and we use a flat planar geometry to give the highest direct geometrical light collection.

Discrimination comes from measuring scintillation and ionisation for each event. The scintillation output (S1 in figure 1) is a prompt, fast signal (τ few tens of ns). Escaping ionisation is drifted, by an applied electric field, to the surface and extracted into the gas phase where it causes proportional electroluminescence (S2 in figure 1).

S1 and S2 are separated in time (up to $17\mu\text{s}$ for the 3.5 cm depth) and are read out by the same PMTs. The ratio S2/S1 depends on the particle species [12] and good 3-D position reconstruction can identify multiple scattering.

The S2 signal pattern in the 31 2" diameter PMTs provides sub-cm 2-D $r-r\theta$ resolution even for single electrons extracted from the liquid [18]. The z co-ordinate, to $\sim 50\mu\text{m}$, comes from the S1 to S2 time delay. The 3-D reconstruction defines the fiducial volume without reliance on physical surfaces. The fiducial diameter of 31.2 cm is shown in figure 1, and contains 8 kg of xenon [2].

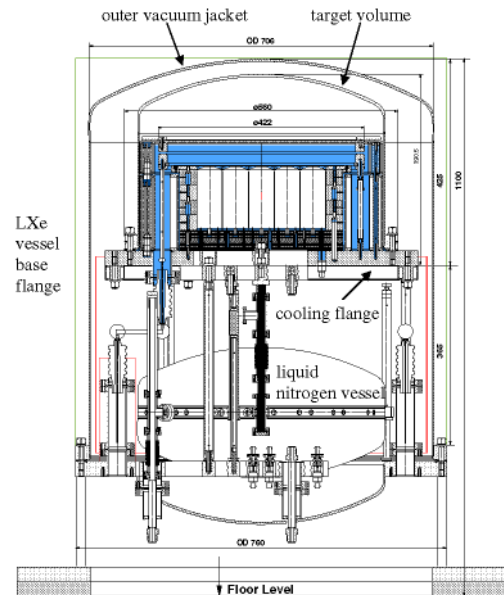


Figure 2. Cross-section of the complete instrument showing the key subsystems. Dimensions are in mm and ZEPLIN-III is 1100 mm high with a diameter of 760 mm. Bulk parts are made of C103 OFHC copper.

2. COMMISSIONING TESTS

The first cool-down verified the thermal control system and tested the PMT array. For this the electrodes were replaced by a copper plate 8 mm

above the PMT array. This plate had 31 ^{241}Am sources vacuum-sealed into it with a copper foil to stop α -particles from reaching the xenon, leaving only low-energy (mainly 59.6 keV) photons. For subsequent tests the electrodes were re-installed.

2.1. Cooling system, PMT array and scintillator output

The initial cool-down, at $\sim 5^\circ\text{C}/\text{hour}$, uses 200 litres of liquid nitrogen (LN_2). Temperature is monitored at critical points. One on the cooling flange on the bottom of the target is the control temperature and is compared with a set temperature to automatically operate two valves: one exhausts straight from the gas volume of the LN_2 reservoir, and one exhausts through the cooling ring. In normal operations the temperature is stable to better than 0.2°C and the LN_2 usage drops to ~ 20 litres/day as expected.

Pulse height spectra, pulse waveforms and single photoelectron spectra (spes) were collected from all PMTs during the first cold-run both with the experiment DAQ electronics and with a pulse height analyser (PHA) set-up using a multichannel analyser (MCA). These confirmed operation of all 31 PMTs. Scintillation pulses from low-energy ^{241}Am γ -rays showed the characteristic decay time of ~ 40 ns. The spes show well resolved peaks and were used to set the amplifier gains to normalise all channels.

LXe scintillates in the vacuum ultraviolet (VUV), near 175 nm. The VUV luminescence is produced by the decay of singlet and triplet states of the Xe_2^* excimer. These can be formed directly by excited atoms left by the interacting particle or as a result of recombination into an excited state along the particle track [13,17].

Figure 3 shows MCA spectra taken from one PMT. The bottom spectrum was taken with the whole arrangement covered with liquid xenon. The two spectral features are the 59.6 keV line from ^{241}Am and a blend of the 26.3 keV ^{241}Am γ -ray with the 30 keV line from escape of Xe K-shell fluorescence photons. Using the MCA single photoelectron spectrum from this PMT gives a signal of ~ 12 phe/keV. There was no applied electric field. The top spectrum was taken with the liquid level between the source and the PMT

window. The improved light collection (up to ~ 17 phe/keV) is a result of total internal reflection at the liquid gas interface. The two-phase resolution is $\sim 13\%$ FWHM.

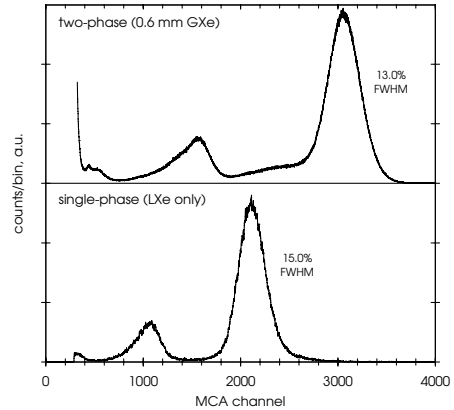


Figure 3. Typical MCA scintillation spectra with ^{241}Am sources a few mm above the PMTs. The two panels have different liquid xenon levels and the highest energy peaks in both are at 59.6 keV.

2.2. Two-phase operation

In two-phase operation a capacitive system probes the liquid xenon height with sub-mm accuracy at three locations. With the xenon filled to its nominal depth, but with no applied electric field, ^{57}Co γ -ray spectra were recorded with an uncollimated source above the detector. A photoelectron yield of 5 phe/keV was obtained from the fiducial volume, with a $\text{FWHM} \approx 25\%$. This yield exceeds that predicted by Monte Carlo simulations (3.4–4.0 phe/keV) [2], which may indicate a higher LXe scintillation yield than previously (60 photons/keV, $W_{ph} = 16.7$ eV). After the zero field tests, 13.5 kV was applied between cathode anode, giving a field of 3.0 kV/cm in the liquid. Figure 5 shows γ -ray interactions in the LXe. The fast scintillations are primary signals, S1. The second, broader signals, S2, occurs when the ionisation released at the inter-

action site has drifted to surface and has been extracted into the gas. The time delay depends on the interaction depth and drift velocity at our fields (~ 2.5 mm/ μ s). The S2 width depends on the gas gap and electric field. Rise and fall times are a combination of extraction dynamics, diffusion and gas scintillation time-constant. S1 and

ner 7 PMTs. The ‘collimated’ S1 spectrum has a light yield of 1.8 phe/keV; $\sim 35\%$ of the zero-field value. A single-Gaussian fit to the 122.1 keV and 136.5 keV blended lines gives a $\simeq 40\%$ FWHM.

A 3-D position recovery algorithm was developed from simulated datasets which provides sub-cm resolution in the horizontal plane [18]. Even before this is applied to real data, the spatial sensitivity is well demonstrated in figure 5, showing an event with two overlapping interactions. There are at least two primary and four secondary signals which, without position sensitivity can not be unambiguously separated. However, using individual PMT traces (left-hand in figure 5) it is obvious that two double-Compton scatters have happened in very different parts of the detector.

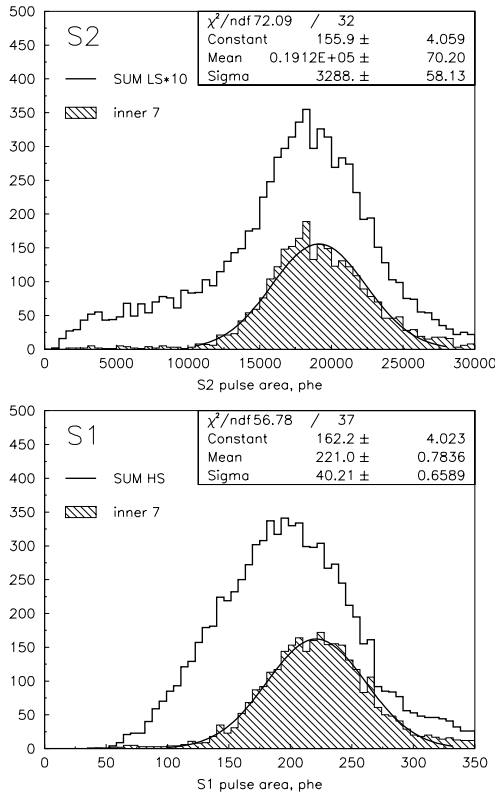


Figure 4. Spectra for S2 (top) and S1 (bottom) from an uncollimated ^{57}Co source above the instrument, with a field of 3.0 kV/cm in the liquid. The peak is a blend of the 122.1 keV and 136.5 keV lines (85.6% and 10.7% respectively).

S2 ^{57}Co spectra at 3.0 kV/cm are shown in figure 4. They use all PMTs, with individual gains and QEs equalised. The shaded spectra only include events with peak signals in one of the in-

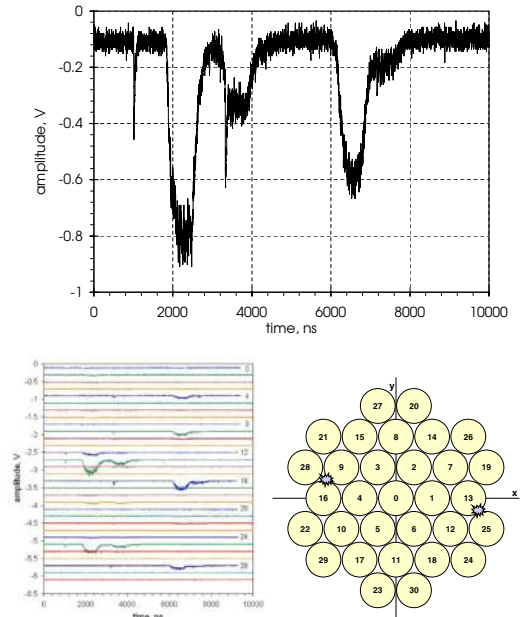


Figure 5. Top: Summed waveforms from two overlapping γ -ray events. Lower: Individual waveforms from the 31 PMTs and reconstructed positions. The symbol size corresponds to the position resolution.

Demonstration of discrimination is given in figure 6, showing the S2/S1 ratio when a 10 mCi

Am-Be (α,n) source is placed above the detector. The field within the liquid was 3 kV/cm as before. Discrimination between elastic recoils (population A) and γ -ray interactions (C) is clearly demonstrated. Population B is from neutron inelastic scattering off ^{129}Xe nuclei; some (quenched) nuclear recoil energy is augmented by a 40 keV γ -ray from nuclear de-excitation.

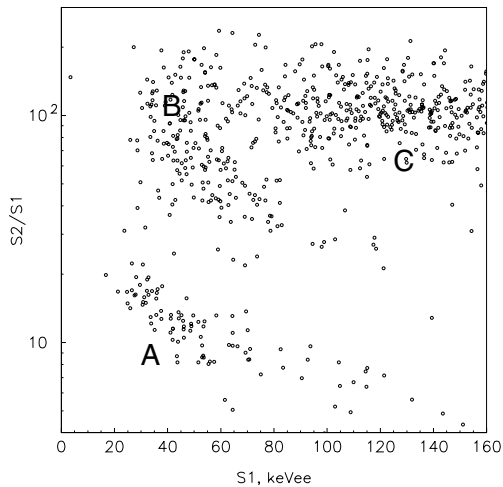


Figure 6. $S2/S1$ ratio as a function of $S1$ for single-scatter events with an Am-Be source. For elastic nuclear recoil events (population A) the energy scale must be multiplied by 1.95, coming from a combination of the inverse quenching factor, $(1/0.19$ [14–16]) and the relative $S1$ suppression factor at our operating field (~ 0.37). Population C are γ -rays.

3. ACKNOWLEDGEMENTS

This work has been funded by the UK Particle Physics And Astronomy Research Council (PPARC). We would like to acknowledge the superb copper machining achieved within the Imperial College Physics Department workshop led by R. Swain, and the development of new welding techniques by The Welding Institute.

REFERENCES

1. D. Yu Akimov et al., *Astropart. Phys.*, in press (2006)
2. H. M. Araújo et al., *Astropart. Phys.*, in press (2006) - (arXiv:astro-ph/0603243)
3. G. J. Alner et al., *New Astronomy Reviews* 49 (2005) 259.
4. G. J. Alner et al., *Nucl. Instrum. Meth. A* 555 (2005) 173
5. B. A. Dolgoshein, V. N. Lebedenko & B. U. Rodionov, *JETP Lett.* 11 (1970) 513
6. T. J. Sumner et al., *Proc. 26th Int. Cosmic Ray Conf.*, D. Kieda, M. Salamon & B. Dingus (Eds), 2 (1999) 516.
7. A. S. Howard et al., *Proc. 3rd Int. Workshop on the Identification of Dark Matter*, N. J. C. Spooner & V. Kudryavtsev (Eds), Singapore: World Scientific (2001) 457.
8. D. Yu Akimov et al., *Proc. 4th Int. Workshop on the Identification of Dark Matter*, N. J. C. Spooner & V. Kudryavtsev (Eds), Singapore: World Scientific, (2003) 371.
9. T. J. Sumner, *New Astronomy Reviews* 49 (2005) 277.
10. D. Davidge, PhD Thesis, University of London (2003).
11. J. Dawson PhD Thesis, University of London (2003).
12. E. Aprile et al., (2006) - (ArXiv: astro-ph/0601552)
13. S. Kubota et al., *Phys. Rev. B* 20(8) (1979) 3486.
14. D. Akimov et al., *Phys. Lett. B* 524 (2002) 245
15. E. Aprile et al., *Phys. Rev. D* 72 (2005) 072006
16. V. Chepel et al., *ArXiv:physics/0512136*, (2005)
17. A. Hitachi et al., *Phys. Rev. B* 27(9) (1979) 5279.
18. A. Lindote et al., *Nucl. Instrum. Meth. A* in press (2006)