

# The Role of Motion Analysis in Elite Soccer

## Contemporary Performance Measurement Techniques and Work Rate Data

Christopher Carling,<sup>1</sup> Jonathan Bloomfield,<sup>2</sup> Lee Nelsen<sup>3</sup> and Thomas Reilly<sup>4</sup>

- 1 LOSC Lille Métropole Football Club, Centre de Formation, Centre de Formation, Domain de Luchin, Camphin-en-Pévèle, France
- 2 Sports Institute of Northern Ireland, University of Ulster, Jordanstown, Northern Ireland, UK
- 3 School of Sport and Exercise Sciences, Loughborough University, Loughborough, Leicestershire, UK
- 4 Research Institute for Sport and Exercise Sciences, Liverpool John Moores University, Henry Cotton Campus, Liverpool, UK

### Contents

Abstract	839
1. Contemporary Techniques for Work Rate Analysis	841
1.1 Individual Player Analysis	841
1.2 Multiple Player Analysis	843
2. Main Issues in Contemporary Motion Analysis Technologies	845
2.1 Validity, Objectivity and Reliability	845
2.2 Interpretation of Results	847
3. Contemporary Motion Analysis Research	849
3.1 Analysis of Data on Overall Work Rate	849
3.2 Categories of Movements	852
3.3 Determining Positional Demands	854
3.4 Use of Motion Analysis in Studies of Fatigue	855
3.5 Other Uses of Motion Analysis Research	858
4. Conclusions	859

### Abstract

The optimal physical preparation of elite soccer (association football) players has become an indispensable part of the professional game, especially due to the increased physical demands of match-play. The monitoring of players' work rate profiles during competition is now feasible through computer-aided motion analysis. Traditional methods of motion analysis were extremely labour intensive and were largely restricted to university-based research projects. Recent technological developments have meant that sophisticated systems, capable of quickly recording and processing the data of all players' physical contributions throughout an entire match, are now being used in elite club environments. In recognition of the important role that motion analysis now plays as a tool for measuring the physical performance of soccer players, this review critically appraises various motion analysis methods currently employed in elite soccer and explores research

conducted using these methods. This review therefore aims to increase the awareness of both practitioners and researchers of the various motion analysis systems available, and identify practical implications of the established body of knowledge, while highlighting areas that require further exploration.

A significant body of research into the host of factors contributing to optimal performance in sport has emerged over the past two decades.<sup>[1]</sup> This increased research activity has been particularly evident in soccer (association football), where the importance of scientific research and applied work has become increasingly accepted in the professional game.<sup>[2]</sup> Over this period, comprehensive reviews have been published on the physiology,<sup>[3,4]</sup> psychology,<sup>[1,5]</sup> biomechanics<sup>[6]</sup> and interdisciplinary<sup>[7]</sup> aspects of soccer. This growing acceptance of sports science is unsurprising considering the performance-enhancing role that it can offer elite soccer coaches continually searching for a competitive edge against rival teams.<sup>[8]</sup>

Among the traditional sport science disciplines, exercise physiology has arguably had the greatest impact upon practices within professional soccer. The optimization of physical fitness is now an integral facet of player and team preparation. The physiological demands of contemporary professional soccer implicate an increased work rate, a higher frequency of competition, and as a consequence, players are obliged to work harder than in previous decades.<sup>[9,10]</sup> The monitoring of players' work rate profiles during competition was originally achieved using manual video-based motion analysis techniques such as that developed by Reilly and Thomas.<sup>[11]</sup> The employment of such methods elicited essential scientific observations, but the perceived complexity and consumption of time required for coding, analysing and interpreting the output formed barriers to their adoption by performance analysts.<sup>[12]</sup> The original techniques were also restricted to the analysis of a single player, so therefore limited to university-based research projects.

Over the past decade, technological advances have included the introduction of increasingly sophisticated motion analysis systems that are now being used in elite soccer. These systems enable the

simultaneous analysis of all players to be completed in a relatively short period, and provide a valuable pool of data that can inform and influence the daily practices of coaches. The use of these advanced approaches furthers our understanding of position-specific work rate profiles of soccer players and their fitness requirements, the intensities of discrete activities during match-play and the occurrence of a reduced work rate among players.<sup>[13,14]</sup> Moreover, these contemporary methods employed by elite clubs can be used to make objective decisions for structuring the conditioning elements of training and subsequent match preparation.

In recognition of the important role that motion analysis now plays as a tool for measuring the physical performance of soccer players, we begin by critically appraising the various methods of motion analysis available to researchers and practitioners in soccer. Throughout, we highlight that many of the latest computerized systems are not only logistically practical, but also offer a greater breadth of analysis compared with the more traditional labour-intensive methods. However, many of these systems still require scientific validation to ensure that data derived from these methods are both accurate and reliable. A presentation and critical appraisal of various validation protocols used for assessing contemporary motion analysis technologies is provided in an attempt to prompt further research into this area of investigation. Also considered are various issues concerning the interpretation of the data obtained through techniques of motion analysis. In the remainder of this review, motion analysis research into work rate profiles within competitive games, exercise patterns, positional demands, fatigue and other uses, is considered. Collectively, this review should serve to increase awareness of practitioners and researchers concerning the various motion analysis systems and the body of accumulated knowledge acquired using these approaches, whilst identifying areas that require further exploration.

## 1. Contemporary Techniques for Work Rate Analysis

### 1.1 Individual Player Analysis

Motion analysis has been applied for over 30 years to the study of work rates in professional soccer, since the classical study of Reilly and Thomas.<sup>[11]</sup> Research studies undertaken in the last 5 years by Scandinavian and Italian researchers<sup>[15-19]</sup> on top-level soccer have incorporated similar approaches to that employed over a decade earlier by Bangsbo and co-workers.<sup>[20]</sup> This original method involved the positioning of video cameras near the side of the pitch, at the level of the midfield line, at a height of approximately 15 m and at a distance of 30–40 m from the touchline. Each camera was used to film a separate player. After the game, the subjects were videotaped for reference purposes whilst performing specific activities (from walking to sprinting) in order to provide calibration values. The video tapes were played back on a television monitor and coded for various match activities. The duration of each activity was recorded, total time summed and frequency of activity calculated according to separate time blocks. The distance covered at each activity within each time block was the product of mean velocity and total time spent in the activity. The total distance covered during a match was calculated as the sum of the distances covered during each individual type of locomotor activity.

The main technological advancement evident in subsequent studies has been the employment of better quality cameras and more advanced input coding methods as a result of contemporary computer software. To this end, Bloomfield et al.<sup>[21]</sup> used the 'PlayerCam' facility (Sky Sports Interactive Service, British Sky Broadcasting Group, UK) to provide high-quality close-up video footage focusing on a single player's movements and actions. The footage was digitized and synchronized for manual coding using the Noldus Observer 5.0 Video-Pro behavioural analysis system,<sup>[22]</sup> which in turn automatically calculated the time spent in the defined movement activities.

These particular video-based methods used for manually measuring work rates have generally demonstrated, in the studies that have been reported to use them, high levels of reliability, objectivity and validity.<sup>[8]</sup> For example, a previous report that

employed these methods stated that no systematic differences were reported in a test-retest analysis of a match, and the mean intraindividual difference in total distance covered was less than 0.2 km (coefficient of variation [CV]=1%).<sup>[15]</sup> Nevertheless, human error through inaccurate data entry is possible due to the subjective nature of human movement recognition, variable observer reaction to events being performed by the player under scrutiny, and different interpretations of performance indicators relating to work rate and movement by different observers.<sup>[23]</sup> In addition, the methods previously described are restricted to the filming and analysis of a single player per camera. Video-based motion analysis may also be subject to errors due to changes in gait during game movements,<sup>[24]</sup> and provides only low spatial and temporal resolutions.<sup>[25]</sup> Furthermore, these techniques do not allow real-time analysis and are extremely labour-intensive in terms of the capture and analysis of data. In this respect, the detailed manual methodology used by Bloomfield et al.<sup>[26]</sup> to code manually and determine the physical demands of English Premier League football was described by the authors as extremely time-consuming and laborious. This criticism applied even for the collection of data from only 5 minutes of match footage because of the frequent changes of movement type, direction and/or intensity. A total of 1563 'purposeful movement' passages were observed for 55 players during 15-minute periods of Premier League soccer, which involved 23487 changes in movement, direction, perceived intensity or individual soccer-specific events (e.g. pass, dribble, shoot). Players performed a mean of  $28.4 \pm 4.3$  passages of purposeful movement for each 15-minute period of the match at a mean duration of  $13.1 \pm 3.2$  seconds. These figures equate to a mean of 15.03 changes in activity for each passage at a rate of 0.87 per second. No significant differences were found between the amount of purposeful movement passages by match period or playing position, although strikers had a significantly shorter mean duration and frequency of passages lasting >15 seconds. Because of the level of detail in this manual-based time-motion analysis, the application and use of such methods of motion analysis are generally restricted to academic research projects because the intense competitive schedules of elite soccer clubs require data to be available usually within 24–36 hours post-match. The difficulties

encountered in manually coding movements may lead some researchers to analyse a single selected period of action per player per game. Attempts can then be made to extrapolate the data from these periods to a projection for the entire match. However, incomplete recordings are limited in their ability to provide detailed individual work rates, as the work rate pattern is highly variable throughout a game and is therefore not so easily predictable.<sup>[27]</sup>

As technology has advanced, time-motion analysis has begun to incorporate electronic devices, mathematical modelling procedures for automatic tracking, sophisticated computer processes and satellite tracking. An overview of contemporary systems used to analyse workload in soccer is given in table I.

Many contemporary approaches are based essentially on an original method designed by Ohashi et al.,<sup>[40]</sup> which employed the calculation of players' position and speed through trigonometric techniques. For example, the motion characteristics of elite Japanese soccer players have been recently measured throughout a game's entirety using a triangular surveying method.<sup>[33]</sup> This method entailed recording the player's movement as angular changes, which were measured by two potentiometers linked to cameras mounted outside and overlooking the field of play. Coordinates for

the player were calculated using the angular data from the cameras and were monitored every 0.5 seconds. The distance between two consecutive coordinates was calculated continuously to obtain the total distance covered. The major limitation of this particular methodology was that it did not allow simultaneous analyses of more than one player.<sup>[8]</sup> Limiting the analysis of the activity profile to one player per game does not allow comparisons to be drawn between the concomitant work rate profiles of team mates or those of opposing players, and can limit full understanding of the tactical importance of work rate.<sup>[27]</sup>

A further technological advancement in this field has been the development of the system 'Trakperformance' (Sportstec, Warriewood, NSW, Australia), which provides a means of mechanically following a single player using a conventional computer pen and commercially available drawing tablet on a scaled version of the specific playing field.<sup>[24,38]</sup> This method is an improvement from the classical cartographic approach previously used by Japanese researchers where movements of soccer players were traced onto a scaled map of the pitch presented on paper sheets.<sup>[41]</sup> The Trakperformance system functions by using ground markings around the pitch, which are employed as reference points for tracking the players. The

**Table I.** Contemporary systems and studies of their workings used to analyse work rate in contemporary elite soccer

Company/institution (country)	System	System type	Website	References
Citech Holdings Pty Ltd (Australia)	Biotrainer®	Electronic transmitter	<a href="http://www.citechholdings.com">http://www.citechholdings.com</a>	28
Chukyo University (Japan)	Direct Linear Transformation	Automatic video tracking		29
INMOTIO Object Tracking BV (Netherlands)	LPM Soccer 3D®	Electronic transmitter	<a href="http://www.abatec-ag.com">http://www.abatec-ag.com</a>	30
Feedback Sport (New Zealand)	Feedback Football®	Automatic video tracking	<a href="http://www.feedbacksport.com">http://www.feedbacksport.com</a>	31
GPSports (Australia)	SPI Elite®	GPS tracking	<a href="http://www.gpsports.com">http://www.gpsports.com</a>	24
Hiroshima College of Sciences (Japan)	Direct Linear Transformation	Automatic video tracking		32
National Defense Academy (Japan)	Triangular surveying	Triangular surveying		33
Noldus (Netherlands)	Observer Pro®	Manual video coding	<a href="http://www.noldus.com">http://www.noldus.com</a>	21,23,26
Performance Group International (UK)	Datatrax®	Automatic video tracking	<a href="http://www.datatrax.tv">http://www.datatrax.tv</a>	34
ProZone Holdings Ltd (UK)	ProZone®	Automatic video tracking	<a href="http://www.pzfootball.co.uk">http://www.pzfootball.co.uk</a>	35
RealTrackFootball (Spain)	Real Track Football®	GPS tracking	<a href="http://www.realtrackfutbol.com">http://www.realtrackfutbol.com</a>	36
Sport-Universal Process SA (France)	AMISCO Pro®	Automatic video tracking	<a href="http://www.sport-universal.com">http://www.sport-universal.com</a>	37
Sportstec (Australia)	TrakPerformance®	Computer pen and tablet	<a href="http://www.sportstecinternational.com">http://www.sportstecinternational.com</a>	24,38
TRACAB (Sweden)	Tracab®	Automatic video tracking	<a href="http://www.tracab.com">http://www.tracab.com</a>	39
University of Campinas (Brazil)	Dvideo	Automatic video tracking		25



miniaturized playing field is calibrated so that a given movement of the mouse or mouse-pen corresponds to the linear distance travelled by the player. This computerized system has demonstrated acceptable levels of accuracy and intra- and inter-observer reliability. For example, an error measurement level of 5% for player distances has been presented and a test of inter-observer reliability between three separate observers reported a Pearson's correlation of  $r=0.98$  for total distance travelled.<sup>[38]</sup> A further advantage is that movements can also be tracked in real-time (although operator skill does need to be very high and a sustained training period is needed for familiarization with the technique) and cost is significantly reduced compared with other commercially available tracking systems. Finally, the portability of this system means it can be readily employed to analyse work rates of players within training contexts.

## 1.2 Multiple Player Analysis

Few systems have the ability to analyse all the players in a team throughout a whole match, tracking each player both on and off the ball.<sup>[42]</sup> The AMISCO Pro<sup>®</sup> system developed in the late 1990s by Sport-Universal Process in collaboration with the French Football Federation was the first system to achieve the simultaneous analysis of the work rate of every player in a team throughout the entirety of a match.<sup>[37]</sup> This system measures on video the movements of every player, the referee and the ball by sampling activity up to 25 times per second during the whole game.<sup>[8,43]</sup> This process leads to the collection of around 4.5 million data-points for position on the pitch as well as over 2000 ball touches per match. Along with the ProZone<sup>®</sup> system,<sup>[35,44]</sup> its chief commercial European competitor, these pioneer multi-player video tracking systems based on state-of-the-art computer and video technology are currently the most comprehensive and widely used commercial tracking systems in professional European soccer. These systems provide a detailed analysis of each player's work rates over the entire match, and create a 2-dimensional animated reconstruction of player movements together with an interactive graphical representation of all playing actions such as passes and duels.<sup>[45]</sup>

Video-based multi-player tracking systems such as AMISCO Pro<sup>®</sup> and ProZone<sup>®</sup> generally require the permanent installation of several cameras fixed in optimally calculated positions to cover the entire surface of play. This layout ensures that every player is captured on video, whatever the position and the moment in time. The number, position, orientation, zoom and field of vision of the cameras depend on factors such as the dimensions of the pitch and the structure of the stadium. The stadium and pitch are calibrated in terms of height, length and width and transformed into a 2-dimensional model to allow player positions (x, y coordinates) to be calculated from the camera sources. Complex trigonometry, propriety mathematical algorithms, image-object transformation methods for obtaining 2- or 3-dimensional space coordinates such as Direct Linear Transformation (DLT)<sup>[32]</sup> from video footage of soccer play, as well as various image processing and filtering techniques, can be used to identify each player's location on the pitch. The individual's movements can then be tracked on the video by computer software through either manual operation or automatic tracking processes, at every single moment of the game. The technology is facilitated by supportive information such as shirt colour, optical character recognition of shirt numbers and prediction of running patterns to help maintain accurate player identification and tracking. During set-play actions such as corners or free kicks, play can become compressed, so such supportive information may be required to help maintain accuracy in tracking individual players. For a further description of the workings of video-based player tracking, see Di Salvo et al.<sup>[35]</sup> and Barros et al.<sup>[25]</sup>

Despite being largely computer automated, these pioneer tracking systems still require some manual input as well as continual verification by an operator to make sure that players are correctly tracked by the computer program. Automatic tracking may not always be possible because of changes in light quality as well as occlusions due to a crowd of players gathering in a small zone at one time. In this case, it becomes necessary for an operator to correct these mistakes manually. Nevertheless, the Dvideo<sup>®</sup> system designed at the University of Campinas, Brazil, is reported to have a 95% automatic tracking rate.<sup>[25]</sup> However, this system uses a lower number of digital film images

per second (7.5 Hz) than other video tracking systems such as AMISCO Pro<sup>®</sup> in order to reduce the amount of data to be processed. This footage would lower its capacity to measure in detail changes in running speed and direction. Work by Fernandes and Caixinha<sup>[46]</sup> has also shown when determining the positions of soccer player from digital video footage that a low frequency of images per second (2 Hz, for example) may lead to a higher rate of error when calculating distances covered.<sup>[46]</sup> A recent DLT-based video-tracking system used to analyse the work rates of professional Japanese players reportedly requires the use of a single digital camcorder, making it more cost effective compared with multi-camera systems.<sup>[29]</sup> However, it also employs a limited number of image frames per second (2 Hz) and requires manual frame-by-frame analysis of play. Furthermore, no information is available on the time required to analyse physical performance using this system and its reliability has not been investigated. Most of these video tracking systems used to date in elite soccer do not provide real-time analysis, the results generally being available within 24–36 hours of the final whistle. This time lag, however, seems acceptable for the many top-level clubs who have adopted these systems over the last decade.

The most recent commercial video-based automatic tracking systems such as Datatrax<sup>®</sup><sup>[34]</sup> and the TRACAB<sup>®</sup> image tracking system<sup>[39]</sup> now provide real-time analysis, albeit using similar tracking methodologies based on multi-camera and image processing techniques. According to commercial information available from the supplier,<sup>[39]</sup> the TRACAB<sup>®</sup> system exploits enhanced techniques for video image processing and by using mathematical algorithms originally designed for object tracking and guiding missiles in the military industry. Similarly, Datatrax<sup>®</sup> uses pixel recognition to track the players automatically and voice recognition to code the match-specific events. Three manual operators are required to manage the process, two people to correct tracking mistakes in real-time for each team and one to perform the voice recognition coding procedure. The main benefit of both systems is that they provide coaches with a high level of instantly available detail concerning match performance, allowing informed decisions to be made during the match that may influence the eventual outcome. Although both

companies claim to have high levels of accuracy for their systems, the validity and reliability have again yet to be scientifically established.

A major advantage of both the manual and automatic video-based tracking systems is that they do not require players to carry any electronic transmitting device. Carrying such material is strictly forbidden by various governing bodies of soccer. Their major disadvantage, however, resides in the high costs and the necessity of installing multiple cameras and a computerized network with at least one dedicated operator to organize the data collection and further operators to perform the analysis.<sup>[35]</sup> This apparent lack of portability means that teams can only employ these systems for matches in their home stadium. However, the Datatrax<sup>®</sup> and Feedbacksport<sup>®</sup><sup>[31]</sup> systems can apparently still be operated at away venues using two portable cameras from the stadium gantry and some mathematical corrections for errors created when players are further away from the camera lens. In addition, the introduction of reciprocal contractual agreements has led to clubs being able to access work rate data when playing in opposition stadiums that are equipped with the same service provider's system.

Electronic transmitting devices have previously been described as the future of the computerized analysis of sport and are taking match analysis one step further in terms of data processing speed and accuracy.<sup>[8]</sup> These wireless and telemetric communication systems allow remote real-time data acquisition, and record movements and positions of every player and the ball up to several hundreds times per second. A small lightweight microchip transmitter is worn in clothing or in a strap around the chest of each player. The identification signal of the transmitter is registered in a fraction of a second by several antennae positioned around and outside the playing field. The reception time of the signal source to the recipient is synchronized and as a result the position is determined. These data are relayed to a central computer and immediately processed for immediate analysis. The LPM Soccer 3D<sup>®</sup> system developed by INMOTIO in collaboration with PSV Eindhoven Football Club provides positional measurements at over a 100 times per second, leading to the production of highly detailed and previously unavailable information on player accelerations, decelerations and changes in

direction.<sup>[30]</sup> This system also combines physical data with physiological measurements through heart rate monitoring (built into the transmitter) as well as synchronized video footage to provide a comprehensive picture of the daily, weekly and monthly workloads experienced in training. Constraints of such systems include potential electronic interference, strength of the electronic signals from players due to the size of playing surfaces and the energy source required to accomplish this signal transfer.<sup>[24]</sup> Furthermore, no investigation has yet attempted to determine scientifically the reliability of these electronic measuring systems.

Global positioning system (GPS) technology has also begun to impact on the analysis of performance in elite soccer. As with electronic transmitting devices, its use is restricted to measuring player efforts during training sessions or friendly matches, although it is now permitted in competition for other codes of professional football such as Australian Rules Football. The GPS technology requires a receiver to be worn by each athlete, which draws on signals sent from at least four Earth-orbiting satellites to determine positional information and calculate movement speeds, distances and pathways as well as altitude.<sup>[47]</sup> The latest SPI Elite<sup>®</sup> GPS receiver designed by GPSports has been adopted by several teams competing in the English Premier Football League and comes with propriety software for simultaneous analysis of data from all players.<sup>[48]</sup> Similarly, a company in Spain known as RealTrack Football has also made commercial GPS specifically available for soccer teams.<sup>[36]</sup> It is possible to purchase kits with over 11 trackers in a set, with potential applications to training contexts and to the other football codes.

Although automatic tracking devices have established methods of providing data on work rate characteristics such as total distance run and time spent in various categories of movement, the latest systems are advancing the analysis of sports performance through a superior level of coordinated biofeedback to accompany the traditional physical feedback. In this respect, the SPI Elite<sup>®</sup> GPS is capable of monitoring heart rate and recording information on the frequency and intensity of impacts such as tackles and collisions by means of a built-in tri-axis accelerometer which also depicts three direction types (forwards, sideways and backwards). The accuracy and reliability of GPS

receivers is relatively high: results of a test of accuracy showed a 4.8% error rate in measuring total distance covered and a test of intra-tester reliability reported a technical error of measurement (TEM) of 5.5%.<sup>[24]</sup> These TEM values can therefore be taken into consideration when interpreting the raw data. Recent technological developments have also led to increased miniaturization and portability.<sup>[49]</sup> An alternative device known as the Biotrainer<sup>®</sup> is also being produced by Citech Holdings Pty Ltd.<sup>[28]</sup> This system is described as a disposable patch, similar to a band-aid, worn by the athlete, which provides GPS tracking data both indoors and outdoors, as well as reportedly supplying real-time biofeedback on nine physiological outputs such as heart rate, body temperature and hydration level. Nevertheless, GPS receivers are still subject to problems of accuracy; the magnitude of error depends on land configuration and the number of available satellite connections. Furthermore, data in previous systems were usually collected at one measurement per second, which was insufficient in frequency for measuring detailed variations in speed and direction. However, the latest GPS receivers<sup>[48]</sup> are now reportedly capable of logging data at frequencies of 50 measurements per second. Although this development has potential to provide much more precise data and could be very useful in speed and agility assessments, the volume is therefore 50 times larger and creates potential problems in unit size, storage capacity and battery life. This new facility may also require extra manual work in data interpretation, which could ultimately delay any feedback. It therefore becomes the challenge for developers and researchers to investigate the optimal measurement frequency to provide appropriate data. Although the price of individual GPS units means they are now more within the reach of the non-elite player, purchasing enough receivers to cover the needs of every member of a squad of players may still be beyond all but the wealthiest of clubs.

## 2. Main Issues in Contemporary Motion Analysis Technologies

### 2.1 Validity, Objectivity and Reliability

The methodologies employed to collect motion analysis data must meet the requirements for

scientific criteria for quality control.<sup>[8]</sup> These specifications include reliability, objectivity and validity. There is a need for a detailed analysis of the errors associated with the analytical procedures used by the systems.<sup>[27]</sup> To date, many of the contemporary commercial motion analysis systems discussed in section 1 have not undergone satisfactory quality control checks. Other than manufacturers' statements, very little scientific evidence exists to verify validity claims.<sup>[24]</sup> The lack of a single validation test protocol considered the 'gold standard' for testing the validity, reliability and objectivity of motion analysis data collection methodologies may be one reason for this low number of validation studies. Any validation protocol itself must also have undergone quality control testing and be easily transferable across the range of systems currently used in elite soccer. However, there are various issues that can play a part in preventing researchers from designing and undertaking validation projects. For example, researchers may face logistical problems such as gaining access to test systems using the playing facilities within soccer stadiums. The current laws of the game also prohibit players from wearing electronic equipment for testing the reliability of movement measurements within competition conditions.

If human input for data collection is still required when using a contemporary system, inter- and intra-observer reliability testing of the same competitive match(es) must be undertaken to assess measurement error. When automatic data collection processes such as tracking movement on video or via a GPS are employed, it is important to test the intra-reliability of the system itself by analysing the same match several times. It is also necessary to check the reliability of data by examining within-subject (player) error across a number of games, which has rarely been achieved in the literature.<sup>[27]</sup> Similarly, to ensure full validation of a system, comparison of the measurements obtained using contemporary analysis software and equipment should be made with those obtained from already established methods. There are also statistical considerations to be taken into account when examining the reliability of a system. The statistical procedures used to compare reliability measurements and the amount of disagreement between measurements deemed to be acceptable

must be suitably defined at the outset of the study. In addition, the statistical test selected should aim to show agreement between observer measurements rather than differences. For more detailed information on reliability checks in match analysis, see the review by Drust et al.<sup>[27]</sup>

A validation procedure of a commercial match analysis system was designed by Di Salvo et al.<sup>[35]</sup> to compare data on running speeds of soccer players obtained via video-based tracking against those obtained from timing gate measurements. The subjects were asked to perform a series of short runs at different determined speeds over several marked courses. Correlation coefficients and absolute reliability coefficients between velocity measurements over runs of 50 and 60 m obtained from both systems were high ( $r = 0.999$ ; total error 0.05, limits of agreement 0.12), indicating that the system can be confidently used to provide an accurate recording of running speed during soccer play. However, as this type of semi-automatic tracking system requires manual input, it would have been beneficial to have compared the reliability of data obtained from the runs by distinguishing between human and automatic tracking of the subjects' movement. Similarly, an intra- and inter-observer reliability study comparing the data from the whole duration of several matches played under real competitive conditions is necessary to gain an idea of the overall reliability of the system output. Validation protocols of video-based tracking systems that use marked courses or zones to evaluate running speed and distance should ensure the inclusion of all the different types of running actions previously identified by means of motion analyses. For example, as well as running in a straight line, moving in backwards and sideways directions, turning, shuffling and jumping actions, and dribbling should be carried out by test subjects. Similarly, adding and removing players to the area analysed is advisable to ensure analysis conditions are close to those observed in real competition. Validation procedures should also be carried out under different climatic conditions (such as variations in light), since environmental variables can affect the quality of the video recordings used for computer tracking.<sup>[8]</sup>

It is important to assess the reliability of data for each individual class of movement intensity. In a previous study, data obtained from manual coding using a computer interface of the time spent in



high-intensity running by English Premier League players (during the same match) were compared between two different observers.<sup>[50]</sup> There was a relatively low level of inter-observer reliability between measurements and a significant systematic bias between observers for the percentage of time spent performing high-intensity activity ( $p < 0.01$ ), with one observer recording much higher values than the other. The validation of a motion analysis system employing photogrammetric techniques to obtain the x and y positional coordinates from digital video images of soccer games has recently been achieved.<sup>[51]</sup> The test subjects were instructed to run at paced speeds following pre-established trajectories over predefined distances, and the measurements were subsequently compared with the distances obtained by means of the photogrammetric method. Results showed an error in distance measurement of  $<1.5\%$  for each of the movement categories. In the same study, the accuracy of the system to determine general position and distance of targets was also determined. For this process, 40 markers were randomly distributed over a football pitch and the pitch was filmed from the main stand. The position of these markers was determined using a pre-calibrated 50 m measuring tape and later obtained through digitization of the frames. A low root mean square error for reconstruction of the coordinates in the x- and y-axis was obtained (0.23 and 0.17 m, respectively). Similarly, the authors reported an error of  $<2\%$  for reconstructing the distance between two individual coordinates. Whilst the accuracy of this system in determining distances covered by players over set running courses seems sufficient, it would also have been pertinent to compare results from whole competitive games against hand-based motion analysis methods,<sup>[11,20]</sup> which have previously demonstrated high levels of reliability and validity (coefficients  $>0.9$ ). This validation requirement should apply even if the measurement error in novel experimental technology may be less than that for a reference method such as that used by Reilly and Thomas.<sup>[11]</sup>

In a recent comparison of GPS and manual computer-based tracking systems for measuring player movement distance during Australian Rules Football games,<sup>[24]</sup> a number of ways were used to determine the validity and reliability of these methods for measuring distance covered.

Validity checks for both systems were undertaken by comparing the data obtained by each system for distance covered by players running over a predetermined marked circuit against the distance calculated by a calibrated trundle-wheel pedometer. Intra-tester reliability of the distance calculated by both systems was also assessed over a range of running courses. Inter-tester reliability of distance covered from the tracking system was assessed by comparing data obtained both in competition and over a marked course. A comparison of the two tracking technologies for measuring movement distances was performed when data were collected simultaneously. Players wearing a GPS receiver ran around circuits of different lengths and geographic layout whilst two observers simultaneously tracked their movements. A calibrated trundle-wheel pedometer was then used to verify the actual track distance following the completion of the circuit. Both the GPS and the tracking system were found to overestimate the true distances (on average by  $<7\%$ ) travelled by players. The authors considered that these relatively small overestimations combined with an acceptable level of relative technical error of measurement both within and between trackers should not prevent the use of either of these technologies to monitor player movements. However, this particular manual tracking system relies on the subjective skills of observation and visual judgement on the part of the tracker. An omission was therefore the lack of testing of the reliability of data for the individual classes of movement and notably for movements at high intensities, which tend to be overestimated.<sup>[50]</sup>

## 2.2 Interpretation of Results

Ultimately, contemporary measurement systems are based on gathering data concerning the events in a match and the physical efforts of the players. In terms of the latter, the workload of the players is derived from data collected on speed, distance and time and compiled to form an assessment of physical exertion. However, the distance covered by players has been an area that has been adversely affected by methodological differences. This includes a lack of standardized approaches and a need for a more rigorous analysis of data. Furthermore, it is important to recognize that physiological evaluation is limited because

the method makes the general assumption that energy is expended only when the player travels to a new location on the pitch, with sprinting usually classified as the most exertive motion. This is an important issue, which causes underestimation of the total energy expenditure of the players because several high-intensity movements are performed in soccer match-play without obvious changes of location on the pitch, for example a vertical jump, competing for possession or a high-speed shuffle. Furthermore, many contemporary systems assume players only travel in a forward direction and therefore do not provide detailed information on backward, sideways or other unorthodox movements that have been reported as more physiologically demanding than movements performed forwards at the same velocity.<sup>[8,9]</sup> To this end, other parameters such as agility (acceleration, deceleration, changing direction), physical contact, 'on-the-ball' activity and, critically, the sequence in which these activities happen, also contribute to physiological energy expenditure. Considering the dynamic nature of movements in soccer, this lack of information restricts a truly valid and thorough assessment of a player's expenditure in match-play. However, if the file containing the raw positional data can be accessed, as in the case of contemporary GPS receivers for team sports,<sup>[48]</sup> then algorithmic filtering may be employed to obtain these missing data.

Some major limitations exist with systems that centre on measuring distance covered through measurement of time spent in motion at different speeds. To this end, there is no agreement on what speed thresholds should be used in soccer; for example, thresholds for sprints have been reported set at speeds of  $>30$  km/h,<sup>[15]</sup>  $>23$  km/h<sup>[35]</sup> and  $>24$  km/h.<sup>[52]</sup> These discrepancies in the definition of speed thresholds make it difficult to compare work rate data between different studies. However, the latest software used to analyse work rate data allows end-users to define their own speed thresholds, permitting a more objective means of analysing and comparing the physical efforts of players according to different intensities of movement.<sup>[43]</sup>

One of the main concerns with motion analysis data is the stringency of the speed thresholds used to categorize the motion types. Essentially, results are created by objective measurement systems by acknowledging the frequency of the occasions that

a player enters a certain threshold and then the time that player spends within that threshold, and subsequently calculating distance covered. However, if a player were to perform a single effort at speeds on the boundary of a particular threshold, it is quite possible that the data would reveal that multiple efforts have been performed if the boundaries have been crossed. For example, if a threshold for 'sprinting speed' was set at efforts  $>24$  km/h and a 1 Hz (second-by-second) raw output over 7 seconds reads 22-23-24-26-23-25-23, it is interpreted that this player sprinted on two occasions when realistically (subjectively), it could and perhaps should be only interpreted as once. Furthermore, it should also be noted that the interpretation here is that the player 'sprinted' for a certain duration, although this only accounts for the time spent at a speed  $>24$  km/h. This result is easily misinterpreted, as it fails to account for the speeds  $\leq 24$  km/h that account for the acceleration phase of this 'sprint'. Instead, the interpretation should be that the player achieved speeds  $>24$  km/h for a certain duration. This fact therefore applies to all motion category thresholds used to evaluate performance because it will also affect total frequencies and mean durations of each motion type. One way of combating this error is to filter or smooth the data using mathematical algorithms to make inferences on the data. For example, this may also be used to illustrate differences between rapid or gradual accelerations or decelerations by determining how quickly a player has moved through different threshold zones. However, this use of multiple equations within a data set requires further validation of the system.

Similarly, although differences have been identified in total distance covered in various levels of performance, with higher levels of performance corresponding with longer distances,<sup>[15]</sup> caution must also be taken when assessing a player's match performance based on the total distance covered. In this respect, players may be inefficient with their movement and in essence 'waste energy' by performing unnecessary movements, which may actually be detrimental to the team tactic, but result in a large distance covered, and may therefore be open to misinterpretation. Alternatively, a player may remain in low-intensity motion for a significant percentage of a match through being highly efficient in movement selection. This would produce a

below-average total distance covered, number of sprints, workload and work rate, yet this player may have had the highest impact on the team's performance. In turn, an opposing player who is responsible for marking this type of player may also appear to have produced a lower workload than normal.

Finally, the overall reporting of results is usually provided macroscopically and in isolation. Traditionally, values for total overall distance, as well as total frequency and mean distance, time and/or percentage time spent in each motion type are reported.<sup>[9]</sup> This huge amount of data for each match can be a challenge in itself for professional soccer staff to make true assessments of match performance, monitor workloads and plan appropriate physical fitness regimes. In this respect, a recent programmed exercise protocol for netball based on mean 'bursts' of high-intensity activity and 'recoveries' of low to moderate intensity derived from time-motion analysis proved to be ineffective in enhancing match-play specific physical fitness.<sup>[53]</sup> To this end, a full range of 'bursts' and 'recoveries' are sought to design physical conditioning programmes that are specific to soccer match-play. Consequently, ratio scales should be used to present data based on levels of intensity.<sup>[54]</sup>

The holistic approach of reporting work rate data ignores the interaction between and within motions, movements and playing activities. Therefore, it is also important to perform temporal pattern (T-pattern) detection to identify patterns within the data. In this respect, the detection of patterns that are not identifiable through simple observation has great benefit not only in soccer match-play variables, but also in establishing the specific physical performance demands.<sup>[55]</sup> A T-pattern is essentially a combination of events where the events occur in the same order, with the consecutive time distances between consecutive pattern components remaining relatively invariant with respect to an expectation assuming, as a null hypothesis, that each component is independently and randomly distributed over time. The method of T-patterning has already been employed to establish playing patterns in soccer by identifying complex intra- and interindividual patterns for both individuals and teams using the detected behavioural patterns in combination with elementary statistics.<sup>[56]</sup> Figure 1 displays a player's movement

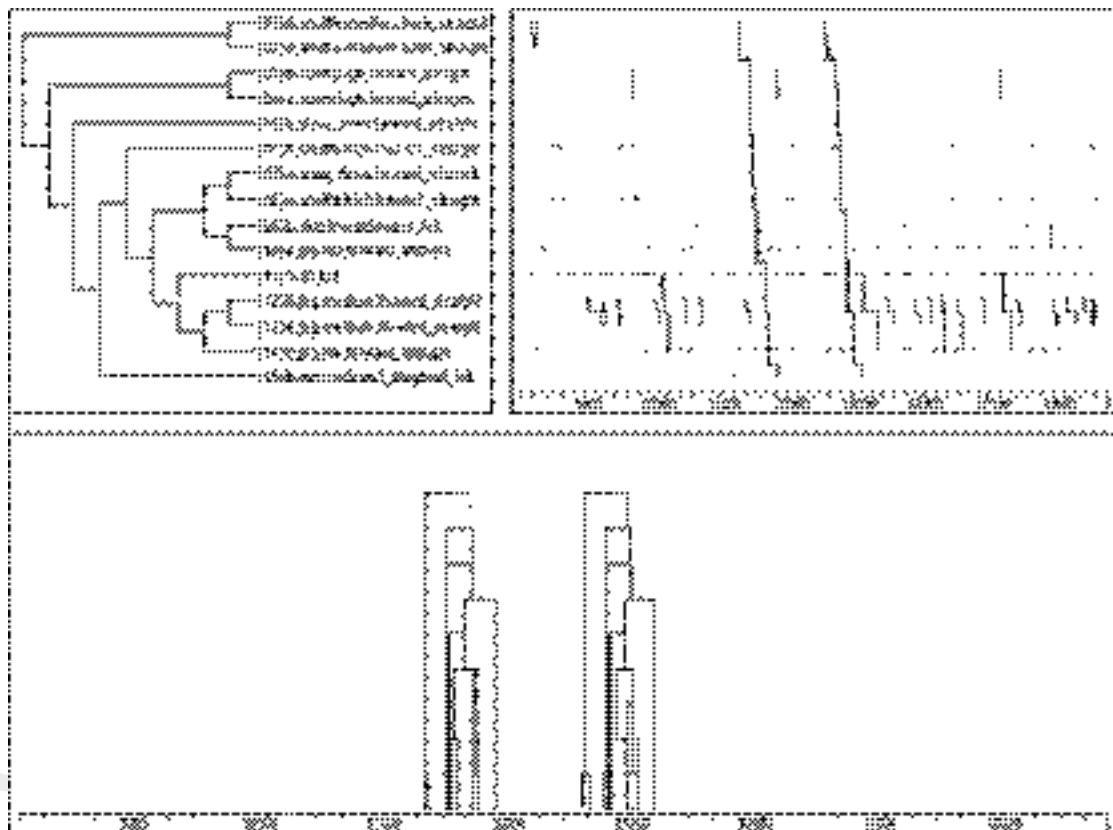
pattern which identifies a varied range of motion. In this particular pattern, the player starts by shuffling backwards and then sprints forward. After this, he decelerates and finishes with a high-intensity shuffle, indicating that he slows down very rapidly. From this point, he skips sideways left at low intensity, turns left and jogs forward at low intensity, gradually increasing pace into a run and changing direction by moving diagonally left to complete the complex pattern. Preliminary investigation of pattern complexity between player positions suggests that a higher number of different patterns and pattern occurrences are detected for defenders than for forwards or midfielders.<sup>[55]</sup> The same also seems to apply for length of patterns. These findings, and their significance, need further examination, although they could be very useful for creating specific training programmes according to individual positional requirements.

### 3. Contemporary Motion Analysis Research

#### 3.1 Analysis of Data on Overall Work Rate

There is a growing interest amongst practitioners within elite soccer in the work rate characteristics of soccer players using the data obtained from the various techniques and technologies described in the previous sections. Generally, the overall work rate in field sports can be expressed as distance covered in a game, given that this measure determines the energy expenditure irrespective of the speed of movement and the individual contribution towards the total team effort.<sup>[9]</sup> This activity can then be broken down into discrete actions for each player across the whole game for classification according to intensity, duration and frequency. Although caution should be taken when comparing the results of various studies because of the differing methodologies employed to obtain data, contemporary outfield male elite soccer players cover on average 9–12 km per match,<sup>[15,25,57,58]</sup> whilst some players may attain distances of around 14 km (see table II).<sup>[59]</sup> Observers of elite female soccer players have generally reported lower results than elite male players in terms of overall distance covered (8.7–12 km) but a similar level of physiological strain.<sup>[16,19,60–62]</sup>

From a coaching perspective, it may be of value to compare the overall distance run by individual



**Fig. 1.** An example of a temporal pattern (T-pattern) incorporating regularity of movements by a centre forward in a Premier League match (reproduced from Bloomfield et al.,<sup>[55]</sup> with permission from IOS Press).

players with that of team mates or opposition players to ascertain relative exertion rates. However, this distance may not be a fair reflection of a player's performance, as playing style, team formation, technical actions and tactical role also influence overall work rate. For example, Rienzi et al.<sup>[65]</sup> presented evidence that the distance covered by South American players was about 1 km less than the output of professionals in the English Premier League. The authors suggested that the higher sustained pace by players in the English game could explain this disparity. However, no motion analysis study has yet been conducted to compare the distances run by elite soccer players belonging to teams across a larger range of national championships.

Measuring the total distance run may also help in examining the evolution of work rates over sev-

eral seasons to determine if the physical requirements of the game are the same and whether current training programmes and fitness tests are still optimal. Professionals in the English Premiership tend to cover greater distances during matches than those in the former First Division (pre-1992), which has had obvious consequences on contemporary fitness training programmes.<sup>[13]</sup> Data presenting the total distance run by 300 professional European midfield players have recently confirmed this upward trend.<sup>[43]</sup> Although contemporary elite players are running further than in previous years, the effects of playing position on distance run is consistent across the last three decades.<sup>[9]</sup>

A pertinent coaching issue may be to look at a division of the total distance run into data for defending (opposition in possession) and



**Table II.** Summary of motion analysis data from different systems of the total distances run and according to playing position by contemporary soccer players, 1999–2007

League/competition level (sex)	Number of players	Distance covered (m)		central defender	midfielder	forward	Reference
		total	fullback				
Manual video analysis							
International English (female)	30	11 979	12 636	11 099	12 971	11 804	63
Italian junior professionals (male)	29	9 890					17
English professionals (male)	24	11 264	11 433	10 650	12 075		13
Elite Danish (male)	24	10 330					15
Danish Premier League (male)	23	10 800					64
Swedish Premier League (male)	23	10 150					64
Italian professionals (male)	18	10 860	10 980 <sup>a</sup>	9 740 <sup>a</sup>	11 000 <sup>a</sup>	10 480 <sup>a</sup>	15
South American professionals (male)	17	8 638					65
Elite Danish (female)	14	10 300					16
English professionals (male)	12	10 274					58
Under 19 professionals (male)	12	9 741					58
International Swedish/Danish (female)	11	10 000					19
Elite Swedish/Danish (female)	11	9 700					19
English professionals (male)	6	10 104					65
Elite English (female)	5	12 400					61
Manual computer pen and tablet							
Professional Australians (male)	36	10 100	8 800 <sup>b</sup>		10 100	9 900	38
Elite Norwegian juniors (male)	9	10 335					66
Automatic tracking on video							
Champions League matches (male)	791	11 010		10 020	11 570		67
Professional European leagues (male)	300	11 393	11 410	10 627	12 009 <sup>c</sup>	11 254	43
Brazilian first division (male)	55	10 012	10 642	9 029	10 537 <sup>c</sup>	9 612	25
European professionals (male)	18	10 864					44
Champions League matches (male)	18	10 461					68
Portuguese first division (male)	3	12 793	14 199 <sup>b</sup>		12 958	11 224	46
French professional (male)	1	11 000			11 000		37
English professionals (male)	NP	10 659					69
Global positioning system							
International Australian (female)	6	9 140	9 010 <sup>b</sup>		9 640	8 510	60
Triangulation/camera potentiometer							
Japanese professionals (male)	1	10 460					33
a Results for each playing position were calculated from a combination of data obtained for both groups of players.							
b Results did not distinguish between fullbacks and central defenders.							
c Combined results for central and external midfield players.							
NP = not provided.							

a Results for each playing position were calculated from a combination of data obtained for both groups of players.

b Results did not distinguish between fullbacks and central defenders.

c Combined results for central and external midfield players.

NP = not provided.

attacking (own team in possession) play. This comparison may help to determine whether players are working as much in a defensive role as they are in attack. At present, this factor has not been examined in the scientific literature. Results are likely to be affected by the tactical role of players, for example a 'holding' midfielder deployed on mainly defensive duties will no doubt cover less distance than other midfielders when his/her team is attacking. Another concern may be to identify whether physical demands are comparable between different levels within elite soccer, for example, between the various divisions in professional leagues. A comparison of professional Italian and elite Danish players showed that the former covered a significantly higher distance during games.<sup>[15]</sup> A motion analysis study of the total distance run by the same elite females competing at both national (for their clubs) and at international level (for their national team) established that these players ran significantly greater distances when competing at international level.<sup>[19]</sup> The observation highlights the need to take the level of competition, and perhaps the importance of the game, into consideration when interpreting data on motion analysis of match-play.

It is not feasible to use the total distance run to compare the overall physical contributions of players when there is a difference in the overall duration of games. For example, different categories of age in youth soccer generally play games of different durations, and other types of soccer such as futsal are limited to a total of 40 minutes play. An alternative means of comparing the overall physical contributions of players is to calculate a relative measurement of performance by correcting the absolute value (total distance covered) for the match to a minute-by-minute analysis of distance run. Recent studies have shown that the intensity of play in professional futsal<sup>[70]</sup> was higher than for elite players competing in the Australian National league.<sup>[38]</sup> The futsal players covered on average 117 m per minute compared with 111 m per minute for the Australian players, indicating that the intensity of the game of futsal may be higher than that for traditional soccer games, although analysis of data on players in professional European Leagues is needed to substantiate this claim.

### 3.2 Categories of Movements

In field sports such as soccer, movement activities are generally coded according to their intensity, which is determined by the speed of actions. When evaluating performance, the frequency of each type of movement and the time spent or distance run in each movement can be analysed. The main categories generally used to analyse soccer work rate are classed as standing, walking, jogging, cruising (striding) and sprinting. These categories have recently been extended to include other activities such as skipping and shuffling.<sup>[26]</sup> Most activities in soccer are carried out at a submaximal level of exertion, but there are many other game-related activities that must be taken into account such as alterations in pace, changes in direction, execution of specific game skills, and tracking opponents (which are examined later in this section). Elite players spend the majority of the total game time in the low-intensity motions of walking, jogging and standing.<sup>[13,15,43]</sup> In comparison, high-intensity efforts (cruising and sprinting) constitute around 10% of the total distance covered.<sup>[3,9]</sup> This finding compares with analysis of performance in professional futsal games where the percentage of the total distance covered spent in high intensity is almost one-quarter (22.6%) and can, on occasions, exceed one-third.<sup>[70]</sup> Research on female performance has shown that these players spend more time in lower intensity activities compared with males, which may be explained by biological differences such as endurance capacity.<sup>[71]</sup>

In soccer, activities at lower levels of intensity such as jogging and walking tend to dominate work rate profiles. However, the impact of high-intensity efforts in match-play cannot be over-emphasized, and it has been suggested that this feature may be the most appropriate means of evaluating and interpreting physical performance.<sup>[16,57]</sup> Measurement of high-intensity exercise, for example every 5 minutes during the course of the game, is an alternative way for coaches to evaluate overall work rate. High-intensity exercise is a constant feature across matches<sup>[9]</sup> and games are often won or lost on successful attempts at scoring carried out at high speed.<sup>[71]</sup> The high-intensity category of work rate includes the addition of cruising and sprinting actions, which are predetermined according to running speed. In elite soccer, players

generally have to run at a high intensity every 60 seconds and sprint all-out once every 4 minutes.<sup>[13]</sup> However, Di Salvo and co-workers<sup>[43]</sup> presented evidence that the number of sprints made per player ranges greatly (3–40). These authors suggested that this finding strongly depended upon individual playing position.

Because of the intermittent nature of the game, performance can be enhanced through improving players' ability to perform high-intensity work repeatedly. The timing of anaerobic efforts, their quality (distance, duration) and the capacity to repeat these efforts, whether in possession of the ball or without, are crucial since the success of their deployment plays a critical role in the outcome of games.<sup>[8]</sup> Players in successful teams competing within the same elite league were reported to perform more high-speed running and sprinting in the most intense periods of the game and more sprinting over the whole 90 minutes than less successful teams.<sup>[64]</sup>

In elite soccer, the average distance and duration of sprints is short, as evidence has shown that these activities are rarely more than 20 m in length and tend to last around 4 seconds.<sup>[3,43,58]</sup> These findings imply that when a player is required to sprint, his or her acceleration capabilities may be of greater importance than their maximal running speed, as the tactical demands of the game probably render it unnecessary to attain maximal speeds. Improving performance in these actions will help players in many aspects of their game, such as being first to the ball or getting away from a marker. For example, if a player tends to lose out by poor acceleration or lack of speed over a short distance, the trainer could suggest an individual speed development programme. A more detailed motion analysis study on the characteristics of sprint patterns of players during competition could be beneficial. For example, no information is available on whether sprints commence from a variety of starting speeds such as a standing start or when jogging and, if so, does such differentiation also exist between playing positions. A recent study on elite rugby union players showed that forwards commenced these actions most frequently from a standing start (41%), whereas backs sprinted from standing (29%), walking (29%), jogging (29%) and occasionally striding (13%) starts.<sup>[72]</sup> Practitioners designing conditioning programmes would no

doubt benefit from this information by ensuring that training sessions involve the actual movement patterns performed in matches. The programme can then provide sufficient overload through careful manipulations of the match demands in preparation for competition. This may involve alterations in playing time, size of pitch or number of players involved in order to increase the training intensity.

In soccer, only a small percentage of the total distance covered by players is with possession of the ball. Nevertheless, evidence from a field test of maximum oxygen consumption has shown that running with the ball significantly raises oxygen consumption and energy expenditure and should be taken into account when evaluating player efforts.<sup>[73]</sup> The vast majority of actions are 'off the ball', either in running to contest possession, supporting team-mates, tracking opposing players, executing decoy runs, making counter-runs by marking a player, or challenging an opponent. These actions often require frequent changes in movement activities, such as accelerations and decelerations, changes of direction, turns and unorthodox movement patterns (backwards and sideways runs), and contribute significantly to additional energy expenditure.<sup>[8]</sup> The latest GPS systems reportedly enable the quantification of the stress placed upon players from accelerations, decelerations, changes of direction and impacts, permitting the individualization and optimization of exercise and recovery programmes<sup>[48]</sup> – although this claim has yet to be scientifically validated. A challenge for future researchers is to investigate and combine data both on contacts, collisions and tackles and on motion analysis categories into a single index of training and competition loading.

Two studies have recently been undertaken to investigate deceleration<sup>[74]</sup> and turning<sup>[75]</sup> movements in professional soccer. Players were shown to perform an average of 54.1 deceleration movements and 558 turning movements during 'purposeful movement' passages from Premier League matches. The authors suggested that both these types of actions are a common and highly important part of the modern game, and there is a particular need for developing specific deceleration and turning exercises in strength and conditioning training sessions. An investigation into whether the inclusion of an enforced deceleration phase on

repeated sprint efforts would cause greater fatigue and slower sprint times compared with efforts undertaken without this phase may be of interest in further understanding match performance and optimizing fitness training programmes.

The activity profile of players may be influenced by the style of play used by individual clubs and by regional differences. Such regional differences in performance are important because players moving between countries will probably need time to adapt both physically and tactically to the particular style of the different leagues. Nevertheless, there is still a lack of studies attempting to address either cultural or geographical differences in the work rate pattern,<sup>[27]</sup> especially at international level or between various professional leagues. Similarly, motion analysis research on the work rate performance characteristics of female and, in particular, younger players is still relatively limited in the literature. Results of a recent study on elite Brazilian youth players belonging to under 15, under 17 and under 20 age groups indicated significant differences in both overall workload and individual playing positions according to player age.<sup>[76]</sup> The age of players should therefore be a relevant factor when evaluating work rate profiles.

### 3.3 Determining Positional Demands

Understanding the workload imposed on top-level soccer players according to their positional role during competitive matches is necessary to develop a sport-specific training protocol.<sup>[43]</sup> Contemporary data<sup>[13,15,43]</sup> generally confirm the previously identified trend<sup>[11,20]</sup> that midfield players generally cover greater distances in a game than defenders or forwards. Goalkeepers usually cover much lower distances (around 4 km) per match. However, individual differences in the distance covered are not just related to a division into basic traditional team positions of defenders, midfielders and attackers. For each playing position, there may be a significant variation in the physical demands, depending on the tactical role and the physical capacity of the players. For example, Barros et al.<sup>[25]</sup> and Di Salvo et al.<sup>[43]</sup> showed that in professional Brazilian and European soccer, fullbacks ran significantly further than central defenders. Similar results between defensive positions have also been obtained for

international female soccer players.<sup>[62]</sup> These results highlight that individual differences in playing style and physical performance should be taken into account when planning training and nutritional strategies.<sup>[77]</sup>

Again, marked differences in the intensity of various running activities exist across the various playing positions. A detailed analysis of English Premier League players showed that playing position (defender, midfielder and attacker) had a significant influence on the time spent sprinting, running, shuffling, skipping and standing still.<sup>[21]</sup> Rienzi et al.<sup>[65]</sup> observed that defenders perform more backward running than strikers. Similarly, it has been reported that Premier League midfielders and strikers engaged in significantly more of the 'other' type of movements (jumping, landing, diving, sliding, slowing down, falling and getting up) than the other positions.<sup>[21]</sup>

Analysis of work rate categories also suggests that training and fitness testing should be tailored specifically to positional groups (e.g. separation between central and external midfielders) rather than simply differentiating between forwards, midfielders and defenders because each positional group has its own unique physical demands. For example, a variation of 1.9 km in the distances covered at high intensities by midfield players in the same game has been observed.<sup>[15]</sup> Variations in work rate between players may imply that not all positions are taxed to full capacity in every game. Findings from a study comparing 123 professional European players showed that central defenders sprinted significantly less distance than fullbacks.<sup>[43]</sup> A large-scale study of professional Spanish soccer players reported a significant difference in the total distance sprinted by wide midfielders compared with central midfielders.<sup>[78]</sup> This research again demonstrates the need for a criterion model in order to tailor training programmes and strategies to suit the particular needs of individual playing positions. Research dividing the high-intensity efforts of players for defending and attacking play would be pertinent to determine whether positional role determines the physical contribution of players according to whether their team is in possession or not.

Motion analysis and its application to training must also take into account the relationship between the physical and technical demands of games. For example, match data on professional English



players show that forwards tend to receive the ball more frequently when cruising and sprinting than defenders and midfielders, indicating that the ability required to implement technical skills at pace when attacking is important for this position.<sup>[79]</sup>

3.4 Use of Motion Analysis in Studies of Fatigue

In motion analyses of soccer, data may be split into distinct time-frames to help establish whether work rate varies with time or task. According to analyses and performance measures during elite match-play, fatigue manifested as a decreased performance seems to occur at three different stages in a game: (i) after short-term intense periods in both halves; (ii) in the initial phase of the second half; and (iii) towards the end of the game.<sup>[57]</sup> Simple comparisons of the overall work rate between first and second halves of matches can indicate the occurrence of fatigue, although it may be more closely identified if activities during the game are broken up into 5- or 15-minute segments.<sup>[8]</sup> Minute-by-minute analysis of work rate throughout a game has also been employed as a possible means of identifying a drop-off in physical performance.<sup>[25]</sup>

In soccer, the evidence of a difference in the total distance covered between halves is inconsistent and a significant decrement does not necessarily occur in all players, especially if players operate below their physical capacities in the first half. Therefore, a simple comparison of the overall distance run per half may not be a valid means to allow interpretation on whether or not a player has experienced fatigue. Nevertheless, table III presents data from various studies comparing the total distance run by

elite soccer players for the two halves of the game. An average difference of  $-3.1\%$  in the total distance run between halves (range  $-9.4\%$  to  $+0.8\%$ ) can be observed across all studies on elite soccer. The largest difference between the total distance run in the first half compared with the second half was reported for players participating in the Australian National Football League.<sup>[38]</sup> Professional Brazilian players have also been reported to cover significantly more distance in the first half,<sup>[25]</sup> whereas more recent data showed no significant difference in work rates between halves for elite Spanish players and other European players participating in Spanish League and the Union of European Football Associations (UEFA) Champions League games.<sup>[43]</sup> In this latter study, the data may have been confounded, as no mention was made as to the inclusion of substitutes and the effect their work rates may have had on the results. Nevertheless, individual teams and players may pace their efforts in order to finish the game strongly. A comparison of total distance run between match halves of the winners (Barcelona) and losers (Arsenal) of the 2005–06 UEFA Champions League final showed that the Spanish players covered more distance in the second half than in the first half (5121 vs 5218 m).<sup>[68]</sup> In contrast, players belonging to the losing team who completed the whole match covered slightly less ground in the second half (5297 vs 5252 m) than in the first half, suggesting they may have been forced into a fatigued state. In this study, the data may have been confounded as Arsenal was forced to play with ten players for the majority of the game due to the dismissal of the goalkeeper.

**Table III.** Comparison of distances covered by elite soccer players during the first and second halves of competitive match-play

Study	Nationality	Distance run (m)			Difference (%)
		total	1st half	2nd half	
Barros et al. <sup>[25]</sup>	Brazilian	10 012	5173	4808	-7.1
Burgess et al. <sup>[38]</sup>	Australian	10 100	5300	4800	-9.4
Di Salvo et al. <sup>[43]</sup>	European	11 393	5709	5684	-0.4
Miyagi et al. <sup>[33]</sup>	Japanese	10 460	5315	5141	-3.3
Mohr et al. <sup>[15]</sup>	Italian	10 860	5510	5350	-2.9
	Danish	10 330	5200	5130	-1.3
Rienzi et al. <sup>[65]</sup>	South American/English	9 020	4605	4415	-4.1
Zubillaga et al. <sup>[68]</sup>	English	10 549	5297	5252	-0.9
	Spanish	10 339	5121	5218	+1.9

A 14% slower overall speed in the second half of the game when compared with the first half has been reported in elite Australian soccer players.<sup>[38]</sup> This result was attributed to fewer observations of the low-intensity movements (9.0% less walking and 12.4% less jogging) and more stationary periods. Engagement in game events such as kicking and passing was also 11.2% less frequent in the second versus the first half of games. Similarly, a recent study of work rates in professional Italian players examined the effects of fatigue on technical performance.<sup>[80]</sup> A significant decline between the first and second half was found for both physical performance and some technical scores (involvements with the ball, short passes and successful short passes). Minute-by-minute analysis of total distances covered by Brazilian players revealed significant differences after the fifth minute of the game, with highly significant differences after the eighth.<sup>[25]</sup> The authors suggested that this more detailed analysis may allow a better understanding of fatigue. However, these results should be treated with caution as it is highly unlikely that players experience fatigue so soon during a match. This reduction in performance is more likely to be linked to play settling down after the frantic first few minutes of the game where engagement is at its most intense. Indeed, a study by Rahnama et al.<sup>[67]</sup> yielded evidence that the majority of critical game incidents and the highest intensity of activities were observed in the first 15 minutes of the game.

A significant reduction in the distance run at medium<sup>[43]</sup> and high intensity<sup>[37,63]</sup> between halves has been reported in players competing in elite European soccer games and tournaments. In elite Scandinavian soccer players, the amount of high-intensity running was lower (35–45%) in the last 15 minutes than in the first 15 minutes of the game, with more than 40% of the players having their lowest amount of intense exercise in the last 15 minutes.<sup>[15]</sup> This trend was confirmed in a study of elite female players where a marked decrease in the amount of high-intensity running within each half was observed and 13 of 14 players did their least amount of high-intensity running in the last 15-minute period of the first or second half.<sup>[16]</sup> Similarly, GPS-based tracking of activity patterns in professional futsal players has shown that during the last period of the game, the number of bouts of high-intensity exercise significantly decreased.<sup>[81]</sup>

However, the total distance covered or the amount of sprinting may be unaffected between playing halves in certain players,<sup>[25]</sup> and the distance covered in high-intensity activities may even increase between halves<sup>[82]</sup> and in the last few minutes of the game.<sup>[8]</sup> Players carrying out fewer actions at low or moderate intensity may be 'sparing' their efforts for the final few crucial actions as their energy levels become depleted. Some players demonstrating no decrease in performance between halves or in the final quarter of the match may have paced themselves in order to finish the game strongly. A pertinent study may be to examine whether the type of competitive match affects work rate and any subsequent reduction in performance. For example, it would be relevant to determine whether players tend to work harder or demonstrate greater fatigue during Cup games than during League games or when playing against teams from lower standards of play. In addition, research to investigate work rates in the extra-time period during Cup matches would provide useful information on the occurrence of fatigue and which players tend to cope better.

Another method of examining fatigue may be to concentrate on the maximal speed or duration of individual sprints to determine whether a player's sprint performance is declining (e.g. is the player slower?) towards the end of the match. The maximal sprint speed of an international midfield soccer player averaged every 5 minutes throughout the match has been reported to decrease significantly towards the end of the match.<sup>[82]</sup> However, as the data were drawn from a case study of one player, it is difficult to draw conclusions about the relationship between maximal sprinting speed and fatigue. In addition, soccer players may not always reach maximal speed during sprinting actions, because of the tactical demands of the particular situations restricting the length of these runs. Work rate analysis to determine whether there is a decrease in the capacity to accelerate rather than in maximal sprint speed towards the end of a game may be a more pertinent means of evaluating the occurrence of fatigue, although no study has as yet examined this feature. Nevertheless, work rate information indicating fatigue towards the end of the game could lead the coach to change tactics or even make a substitution to avoid the opposition exploiting this emerging physical weakness. Substituting players before the onset of fatigue towards the end of the

game may restore the imbalances in work rate. Substitute players have been shown to cover significantly more ground at high intensity during the final 15 minutes than the other players already present on the pitch.<sup>[15]</sup> The latest video-tracking systems allow coaches to analyse work rate in real-time and make objective evidence-based decisions when attempting to identify players who may need replacing.

Evaluating fatigue during match-play may lead coaches to examine whether the intensity of the following sprint is affected by the intensity of the previous sprint (e.g. if the sprint is long and at maximal speed). It may also be useful to look at the relationship between successive sprints and whether the intensity of the subsequent activities is affected, for example if moderate-intensity exercise has more of a negative impact on ensuing sprint performance than efforts at low intensity. Individual sprints often depend on the requirements of the game situation, and particularly the recovery allowed by the unpredictable nature of play. After the 5-minute period during which the amount of high-intensity running peaked in one study, performance was reduced by 12% in the following 5 minutes compared with the game average in elite players.<sup>[15]</sup> Further data on Fourth Division Danish players have shown that performance of the third, fourth and fifth sprints carried out after a period of intense exercise during the first half was reduced compared with before the game.<sup>[83]</sup> This finding together with the observation that sprint performance measured at the end of the first half was the same as before the match, provided direct evidence that fatigue occurs temporarily during a game.

Fatigue may be evident as a prolonged recovery during the game, for example increased time spent in low-intensity activities. The reason for this decline in performance could be repeated pressure from the opposition on an individual player, eventually leading to an inability to respond to game demands. Rampinini et al.<sup>[84]</sup> recently observed that the work rate of a team of professional soccer players was significantly influenced by the activity profile of opponents. Fatigue during match-play may be transient, the player recovering once there is respite from the opponents. In this instance, tactical support for the player targeted is vital so that the offence from the opponents is not relentless. However, the same study<sup>[84]</sup> showed that

the total distance covered and the amount of high-intensity running during matches were higher against 'better' opponent teams than against 'lesser' opponent teams. This finding suggests that players can increase or decrease their work rate according to both the demands of individual matches and to the quality of the opposition.

A study of the relationship between match scoreline and work rate in soccer showed that players performed significantly less high-intensity activity when winning than when the score was level.<sup>[85]</sup> Players also performed significantly less high-intensity activity when losing than when the score was level. The authors suggested that players on teams that are winning relax their work rate, allowing opponents back into the game, and that players on teams that are trailing may lose the motivation to maintain a sufficient work rate. When a team is ahead, however, forward players perform significantly more exercise – although this only appears to relate to the ~10-minute period directly after a goal has been scored, and the elevated work rate is not ultimately sustained.<sup>[86]</sup> This phenomenon merits further investigation, together with the impact of the time in the match at which goals are scored, the actual score-line, the significance of goal to score-line, as well as the impact of dismissals, specific formations and tactics on the work rate of players.

Work rates may vary between successive matches and different phases of the season, with players periodically experiencing a possible decline in performance. Distance covered per match may vary, which again suggests that players may not always be fully utilizing their physical capacity.<sup>[8]</sup> Reasons may include the specific tactical role chosen by the coach for the player or the self-imposed physical demands chosen by the player. Analysis of the total distance run by top-level players has been shown to vary significantly for individual players at different stages of the season with players covering greater distances at the end of the season.<sup>[15]</sup> These discrepancies may be partly explained by changes in the physical condition of the players as the work rate profile fluctuates in conjunction with the amount of training that is completed by teams.<sup>[27]</sup> During an intense schedule of three competitive matches in 5 days in the English Premier League, total distance run did not vary significantly,<sup>[69]</sup> suggesting this measurement may not be always be

a valid indicator of a drop-off in performance during the season.

Analysis of the physical efforts made in the various categories of movement may yield information on whether the performance of a player is decreasing across different games. A case report comparing the performance of an international French player over five successive weekend matches showed little variation in the distance covered within the different categories of running.<sup>[45]</sup> In top-class Danish soccer, the CV in high-intensity running has been shown to be 9.2% between successive matches, whereas it was 24.8% between different stages of the season.<sup>[15]</sup> The seasonal variation is most likely due to alterations in fitness as the competitive schedule reaches a peak. However, few reports have included the ambient conditions under which the games analysed were played.<sup>[27]</sup> As soccer is often played across all four seasons of the year, a future study to examine the relationship between physical performance and playing conditions is recommended. Similarly, a study comparing work rate performance between games played at varying times of the day would be pertinent.

Teams may be required to play several games within a very short time-frame and there is potential for residual fatigue and incomplete recovery to affect the movement patterns of players during subsequent games. English Premiership soccer players were reported to demonstrate a significant increase in recovery time between high-intensity efforts during an intense period of three matches in 5 days.<sup>[69]</sup> Further work is needed to identify whether performance is affected significantly between playing positions. Nevertheless, this finding indicates that motion analysis data can play an important role in the approach to training and preparation before and during intense playing schedules. A future study could be designed to look at a possible relationship between work rate and injury occurrence. For example, a decline in high-intensity performance over several consecutive matches may suggest that recuperation of a player is needed to avoid becoming susceptible to 'overtraining'. Similarly, players returning after injury could have their profiles scrutinized to see how they have recovered from intense periods of play, or have their performance compared against a benchmark profile obtained from previous matches.

Once a susceptibility to fatigue is identified in individual players, the possible reasons for its

occurrence should be explored. A reduction in activity has been identified at the beginning of the second half compared with the first half.<sup>[57]</sup> During the break, players tend to rest, leading to a drop in muscle temperature and subsequently to reduced performance levels. Mohr and co-workers<sup>[87]</sup> presented evidence that undertaking a few minutes of low- to moderate-intensity exercise during the pause may help players to 'ready' themselves and to perform better physically straight after the break. As previously mentioned, fatigue can also occur as the end of a game draws near. Reduced exercise performance at the end of soccer games may be associated with lowered glycogen levels in individual muscle fibres.<sup>[77]</sup> Therefore, adequate attention to nutritional preparation (before, during and after matches) for competition is necessary. The effectiveness of nutritional interventions could be monitored using motion analysis in match-play. Monitoring efforts during training by means of heart rate monitors may also help coaches to avoid over-exerting players before matches and lowering their energy stores. This information can now be combined with motion analysis data from electronic transmitters worn by players to determine individual physiological workload during training.

### 3.5 Other Uses of Motion Analysis Research

Physiological studies and motion analysis research on elite soccer players have provided evidence that the total amount of work done during match-play is related to the maximal aerobic power of players, which underlines the need for a high level of aerobic fitness.<sup>[17,88]</sup> This fact is especially important for certain playing positions such as midfield players who are expected to work harder than the other outfield positions. Motion analysis studies may be employed to determine the effects of a training intervention on competition work rate. Evidence shows that improvements in maximal oxygen uptake after an 8-week period of aerobic interval training corresponded to significant increases in the total distance covered during a match in elite junior players.<sup>[66]</sup> Players who are aerobically well trained can maintain their work rates better towards the end of the game than those of poorer aerobic fitness.<sup>[9]</sup> Increasing maximal aerobic power may also aid recovery following successive bouts of high-intensity anaerobic efforts, which produce transient fati-



gue.<sup>[45]</sup> Its role is paramount because the recovery during repeated-sprint bouts in soccer is often of an active nature. A 6-week programme of aerobic interval training undertaken by a group of amateur senior players led to an 18% increase in high-intensity activities during competition.<sup>[17]</sup>

However, there is still a limited amount of knowledge on the effects of training programmes on actual performance of players in matches at elite level. In addition, no motion analysis study in elite soccer has as yet assessed the degree to whether the physical demands of the game are adequately replicated in training. For example, it may be worthwhile determining whether players undertake comparable amounts of high-intensity exercise (e.g. number and duration of sprints) in training as in match-play.

Over recent years, researchers have attempted to examine the validity of selected field tests by establishing links with on-field physical performance. The results from such tests can help to determine the physical capacity of players and whether they may be susceptible to experiencing fatigue during match-play. The results from a 'repeated sprint ability' test have been highly correlated to the total distance covered in competition when sprinting.<sup>[44]</sup> Similarly, a strong correlation has been observed between an intermittent recovery test and both total distance run and sprint performance in elite females.<sup>[16]</sup> Mohr et al.<sup>[15]</sup> assessed the relationship between physical fitness and match performance at two standards of soccer. They compared the performance of top class soccer players versus moderate level players both in an intermittent recovery test and in work rates in match-play. The top players demonstrated superior performance in the intermittent test and carried out significantly more high-intensity running and sprinting during match-play.

These results justify the use of field and laboratory fitness testing of players and linking the fitness data to work rate assessments. However, the majority of research has been carried out on top-level Scandinavian players and further research (and on a larger scale) is needed to test these relationships in higher level professional leagues and for differing age groups. Furthermore, although various tests have been related closely with the physiological load imposed through match-play, they still appear to lack ecological validity with respect to the motion types, directions, turns and intensities correspond-

ing to the physical demands of the game and do not provide sufficiently adapted protocols for the individual playing positions within soccer.<sup>[21]</sup> These questions may be resolved using motion analysis methods for determining precise locomotor activities during matches.

Motion analysis data drawn from match-play have also been employed to help design laboratory-based protocols to simulate soccer-specific intermittent exercise and examine factors such as the effects of training interventions,<sup>[89]</sup> nutritional strategies,<sup>[90]</sup> temperature<sup>[91]</sup> and fatigue on performance. In the application to fatigue, an intermittent-exercise protocol was designed to simulate the exercise intensities associated with playing a match in order to monitor the functional characteristics of lower limb muscles at half-time and at the end of the 90 minutes.<sup>[92]</sup> Results showed a progressive increase in muscle fatigue due to a decline in muscle strength as exercise continued. Findings therefore had implications for competitive performance and further understanding of the reported increased risk of injury towards the end of the game. A future focus on the relationship between injury occurrence and fatigue during actual competitive match-play should be beneficial. For example, motion analysis techniques could be employed to examine whether players are more at risk of injury after periods of high-intensity exercise.

#### 4. Conclusions

A thorough understanding of the physical demands of soccer via information on player work rates is required so that optimal training and preparation strategies can be constructed. As shown in the present review, an ever-increasing number of scientific investigations based on motion analysis techniques are providing important information on elite soccer play. These investigations have identified the activity profiles and physical requirements of contemporary elite soccer as well as the demands of individual playing positions. Motion analysis research has also allowed investigators to determine the extent of fatigue experienced by players during competition as well as variations in physical performance over the course of the season. There are also possibilities to link fitness data to work rate assessments and to determine the effects of training interventions on match performance.

Many of these investigations into work rate have been possible thanks to major advances in computer and video technology, which are providing more efficient ways of obtaining and analysing data, especially on a larger scale. A plethora of commercial analysis systems are now available, albeit with a price range varying by many thousands of dollars. The cost of many systems currently used in elite soccer is often prohibitive to all but the wealthiest clubs. Similarly, many researchers are still using older techniques, given that they do not have access to these more advanced technologies due to the large costs associated with using them.

Using information derived from these latest techniques, academics could start to test and build upon existing research by exploring some of the gaps and questions identified throughout this review. Furthermore, conducting research into how these technologies are actually being put into use within coaching contexts would be pertinent, as there is little appreciation about how effectively and efficiently they are being translated and adopted by practitioners to prepare and develop members of their squad. This reservation applies to both the operators' comprehension and the coaches' use of data derived from these tools. Additionally, the measurement precision and reliability of systems proven on the basis of sound scientific evidence has not always been satisfactorily demonstrated. No current method has been accepted as the 'gold' standard approach to work rate analysis, and few investigators have attempted to make comparisons between different methodologies and technologies. It is imperative that researchers investigate the scientific legitimacy of these systems so that applied practitioners and the academic community can be assured of their accuracy when employing these methods. Nevertheless, the perfecting of motion analysis technologies will no doubt continue as it has done over recent years, with real-time analysis and application becoming the norm.

## Acknowledgements

The authors have received no funding for the preparation of this article. The authors have no conflicts of interest that are directly relevant to the content of this review except that Christopher Carling and Lee Nelsen have previously participated in the development of the AMISCO Pro match analysis system and Jonathan Bloomfield was previously employed by Prozone Group Limited.

## References

- Williams AM, Hodges NJ. Practice, instruction and skill acquisition in soccer: challenging tradition. *J Sports Sci* 2005 Jun; 23 (6): 637-50
- Reilly T, Williams AM, editors. *Science and soccer*. London: Routledge, 2003
- Stølen T, Chamari K, Castagna C, et al. Physiology of soccer: an update. *Sports Med* 2005; 35 (6): 501-36
- Impellizzeri FM, Rampinini E, Marcora SM. Physiological assessment of aerobic training in soccer. *J Sports Sci* 2005 Jun; 23 (6): 583-92
- Gilbourne D, Richardson D. A practitioner-focused approach to the provision of psychological support in soccer: adopting action research themes and processes. *J Sports Sci* 2005 Jun; 23 (6): 651-8
- Lees A, Nolan L. The biomechanics of soccer: a review. *J Sports Sci* 1998 Apr; (3) 16: 211-34
- Reilly T, Gilbourne D. Science and football: a review of applied research in the football codes. *J Sports Sci* 2003 Sep; 21 (9): 693-705
- Carling C, Williams AM, Reilly T. *The handbook of soccer match analysis*. London: Routledge, 2005
- Reilly T. *Science of training: soccer*. London: Routledge, 2007
- Reilly T. An ergonomics model of the soccer training process. *J Sports Sci* 2005 Jun; 23 (6): 561-72
- Reilly T, Thomas V. A motion analysis of work-rate in different positional roles in professional football match-play. *J Hum Mov Stud* 1976, 97
- James N. The role of notational analysis in soccer coaching. *Int J Sport Sci Coaching* 2006; 1 (2): 185-98
- Strudwick T, Reilly T. Work-rate profiles of elite premier league football players. *Insight FA Coaches Assoc J* 2001, 59
- Reilly T, Drust B, Clarke N. Muscle fatigue during soccer match-play. *Sports Med* 2008; 38 (5): 357-67
- Mohr M, Krstrup P, Bangsbo J. Match performance of high-standard soccer players with special reference to development of fatigue. *J Sports Sci* 2003 Jul; 21 (7): 519-28
- Krstrup P, Mohr M, Ellingsgaard H, et al. Physical demands during an elite female soccer game: importance of training status. *Med Sci Sports Exerc* 2005 Jul; 37 (7): 1242-8
- Impellizzeri FM, Marcora SM, Castagna C, et al. Physiological and performance effects of generic versus specific aerobic training in soccer players. *Int J Sports Med* 2006 Jun; 27 (6): 483-92
- Randers MB, Jensen JM, Krstrup P. Comparison of activity profile during matches in Danish and Swedish premier league and matches in Nordic royal league tournament [abstract]. *J Sports Sci Med* 2007; 6 Suppl. 10: 16
- Andersson H, Krstrup P, Mohr M. Differences in movement pattern, heart rate and fatigue development in international versus national league matches of Swedish and Danish elite female soccer players [abstract]. *J Sports Sci Med* 2007; 6 Suppl. 10: 109
- Bangsbo J, Norregaard J, Thorsoe F. Activity profile of competition soccer. *Can J Sports Sci* 1991; 16 (2): 110-6
- Bloomfield J, Polman RCJ, O'Donoghue PG. Physical demands of different positions in FA Premier League soccer. *J Sports Sci Med* 2007; 6 (1): 63-70

22. The Observer 5.0 Video-Pro® [online]. Available from URL: <http://www.noldus.com/site/doc200407014> [Accessed 2007 Jul 25]
23. Bloomfield J, Polman RCJ, O'Donoghue PG. Reliability of the Bloomfield Movement Classification. *Int J Perf Anal Sport* 2007 Jan; 7 (1): 20-7
24. Edgecomb SJ, Norton KI. Comparison of global positioning and computer-based tracking systems for measuring player movement distance during Australian Football. *J Sci Med Sport* 2006 May; 9 (1-2): 25-32
25. Barros RML, Misuta MS, Menezes RP, et al. Analysis of the distances covered by first division Brazilian soccer players obtained with an automatic tracking method. *J Sports Sci Med* 2007; 6 (2): 233-42
26. Bloomfield J, Polman RCJ, O'Donoghue PG. The 'Bloomfield Movement Classification': motion analysis of individual players in dynamic movement sports. *Int J Perf Anal Sport* 2004 Dec; 4 (2): 20-31
27. Drust B, Atkinson G, Reilly T. Future perspectives in the evaluation of the physiological demands of soccer. *Sports Med* 2007; 37 (9): 783-805
28. Biotrainer™: sporting teams [online]. Available from URL: <http://www.citechholdings.com/index.html> [Accessed 2007 Aug 8]
29. Toki S, Sakurai S. Quantitative match analysis of soccer games with two dimensional DLT procedures [abstract no. 911]. XXth Congress of International Society of Biomechanics; 2005 Jul 31- Aug 5; Cleveland (OH)
30. INMOTIO. You can't improve what you can't measure [online]. Available from URL: <http://www.inmotio.nl/EN/4/change.html> [Accessed 2007 Aug 2]
31. Technology solutions for sport [online]. Available from URL: <http://www.feedbacksport.com> [Accessed 2008 Sep 1]
32. Shiokawa M, Takahashi K, Kan A, et al. Computer analysis of a soccer game by the DLT method focusing on the movement of the players and the ball [abstract no. 267]. V World Congress of Science and Football; 2003 Apr 11-15; Lisbon
33. Miyagi O, Ohashi J, Kitagawa K. Motion characteristics of an elite soccer player during a game: communications to the Fourth World Congress of Science and Football [abstract]. *J Sports Sci* 1999; 17 (10): 816
34. What is DataTrax? [online]. Available from URL: <http://www.datatrax.tv/> [Accessed 2007 Jul 28]
35. Di Salvo V, Collins A, McNeill B, et al. Validation of prozone: a new video-based performance analysis system. *Int J Perf Anal Sport* 2006 Jun; 6 (1): 108-19
36. Welcome to RealTrackFootball! [online]. Available from URL: <http://www.realtrackfutbol.com/ingles/start-gb.html> [Accessed 2007 Aug 2]
37. Brulé P, Carling C, David A, et al. AMISCO: the development of a computerised match analysis system to automatically track the movements of soccer players [abstract]. Proceedings of the IV World Congress of Notational Analysis of Sport, University of Porto; 1998 Sep 22-25; Porto, 36
38. Burgess DJ, Naughton G, Norton KI. Profile of movement demands of national football players in Australia. *J Sci Med Sport* 2006 Aug; 9 (4): 334-41
39. Sports analysis [online]. Available from URL: [http://www.tracab.com/products\\_analysis.asp](http://www.tracab.com/products_analysis.asp) [Accessed 2007 Jul 28]
40. Ohashi J, Togari H, Isokawa M, et al. measuring movement speeds and distances covered during soccer match-play. In: Reilly T, editor. Science and football. London: E & FN Spon, 1988: 329-33
41. Ohta T, Togari H, Komiya Y. Game analysis of soccer. Tokyo: Japanese Football Association, 1969
42. Liebermann DG, Katz L, Hughes MD, et al. Advances in the application of information technology to sport performance. *J Sports Sci* 2002 Oct; 20 (10): 755-69
43. Di Salvo V, Baron R, Tschan H, et al. Performance characteristics according to playing position in elite soccer. *Int J Sports Med* 2007 Mar; 28 (3): 222-7
44. Rampinini E, Bishop D, Marcora SM, et al. Validity of simple field tests as indicators of match-related physical performance in top-level professional soccer players. *Int J Sports Med* 2007 Mar; 35
45. Carling C. Getting the most out of football video and match analysis. *Insight FA Coaches Assoc J* 2001; 5 (3): 16-7
46. Fernandes O, Caixinha P. A new method of time-motion analysis for soccer training and competition [abstract no. 505]. V World Congress of Science and Football; 2003 Apr 11-15; Lisbon
47. Larsson P. Global positioning system and sport-specific testing. *Sports Med* 2003; 33 (15): 1093-101
48. GPSports' SPI Elite & Team AMS [online]. Available from URL: <http://www.gpsports.com> [Accessed 2007 Aug 2]
49. Witte TH, Wilson AM. Accuracy of WAAS-enabled GPS for the determination of position and speed over ground. *J Biomech* 2005 Aug; 38 (8): 1717-22
50. O P. Sources of variability in time-motion data; measurement error and within player variability in work-rate. *Int J Perf Anal Sport* 2004 Dec; 4 (2): 42-9
51. Mallo J, Navarro E, García-Aranda J, et al. Activity profile of top-class association football referees in relation to performance in selected physical tests. *J Sports Sci* 2007 May; 25 (7): 805-13
52. Roberts S, Trewartha G, et al. A comparison of time-motion analysis methods for field based sports. *Int J Sports Phys Perf* 2006; 1: 388-99
53. O'Donoghue PG, Cassidy D. The effect of specific intermittent training on the fitness of international netball players. *J Sports Sci* 2002; 20 (1): 56-7
54. O'Donoghue PG. Analysis of the duration of periods of high-intensity activity and low-intensity recovery performed during English FA Premier League soccer. *J Sports Sci* 2003; 21 (4): 285-6
55. Bloomfield JG, Jonsson K, Polman RCJ, et al. Temporal pattern analysis and its applicability in soccer. In: Anolli L, Duncan S, Magnusson M, et al., editors. The hidden structure of social interaction: from genomics to cultural patterns. Amsterdam: IOS Press, 2005: 237-51
56. Borrie A, Jonsson GK, Magnusson MS, et al. Temporal pattern analysis and its applicability in sport: an explanation and exemplar data. *J Sport Sci* 2002; 20 (10): 845-52
57. Mohr M, Krstrup P, Bangsbo J. Fatigue in soccer: a brief review. *J Sports Sci* 2005; 23 (6): 593-9
58. Thatcher R, Batterham AM. Development and validation of a sport-specific exercise protocol for elite youth soccer players. *J Sports Med Phys Fitness* 2004; 44 (1): 15-22

59. Fernandes O, Caixinha P, Malta P. Techno-tactics and running distance analysis by camera [abstract]. *J Sports Sci Med* 2007; 6 Suppl. 10: 204
60. Hewitt A, Withers R, Lyons K. Match analyses of Australian international women soccer players using an athlete tracking device [abstract]. *J Sports Sci Med* 2007; 6 Suppl. 10: 107
61. Holmes L. A physiological analysis of work-rate in English female football players. *Insight FA Coaches Assoc J* 2002; 5 (2): 55-9
62. Scott D, Drust B. Work-rate analysis of elite female soccer players during match-play [abstract]. *J Sports Sci Med* 2007; 6 Suppl. 10: 107
63. Di Salvo V, Baron R, Cardinale M. Time motion analysis of elite footballers in European cup competitions [abstract]. *J Sports Sci Med* 2007; 6 Suppl. 10: 14
64. Randers MB, Rostgaard T, Krstrup P. Physical match performance and yo-yo IR2 test results of successful and unsuccessful football teams in the Danish premier league [abstract]. *J Sports Sci Med* 2007; 6 Suppl. 10: 16
65. Rienzi E, Drust B, Reilly T, et al. Investigation of anthropometric and work-rate profiles of elite South American international soccer players. *J Sports Med Phys Fitness* 2000; 40 (2): 162-9
66. Helgerud J, Engen LC, Wisløff U, et al. Aerobic training improves soccer performance. *Med Sci Sports Exerc* 2001 Nov; 33 (11): 1925-31
67. Rahnama N, Reilly T, Lees A. Injury risk associated with playing actions during competitive soccer. *Br J Sports Med* 2002 Oct; 36 (5): 354-9
68. Zubillaga A, Gorospe G, Mendo AH, et al. Match analysis of 2005-06 Champions League final with Amisco system [abstract]. *J Sports Sci Med* 2007; 6 Suppl. 10: 20
69. Odetoynbo K, Wooster B, Lane A. The effect of a succession of matches on the activity profiles of professional soccer players [abstract no. O-021]. *J Sports Sci Med* 2007; 6 Suppl. 10: 16
70. Barbero-Alvarez JC, Soto VM, Barbero-Alvarez V, et al. Match analysis and heart rate of futsal players during competition. *J Sports Sci* 2008 Jan; 26 (1): 63-73
71. Kirkendall DT. Issues in training the female player. *Br J Sports Med* 2007 Aug; 41 Suppl. 1: 64-7
72. Duthie GM, Pyne DB, Marsh DJ, et al. Sprint patterns in rugby union players during competition. *J Strength Cond Res* 2006; Feb; 20 (1): 208-14
73. Rupf R, Thomas S, Wells G. Quantifying energy expenditure of dribbling a soccer ball in a field test [abstract]. *J Sports Sci Med* 2007; 6 Suppl. 10: 132
74. Bloomfield J, Polman RCJ, O'Donoghue PG. Deceleration movements performed during FA Premier League soccer matches [abstract]. *J Sports Sci Med* 2007; 6 Suppl. 10: 6
75. Bloomfield J, Polman RCJ, O'Donoghue PG. Turning movements performed during FA Premier League soccer matches [abstract]. *J Sports Sci Med* 2007; 6 Suppl. 10: 9
76. Pereira Da Silva N, Kirkendall DT, Leite De Barros Neto T. Movement patterns in elite Brazilian youth soccer. *J Sports Med Phys Fit* 2007; 47 (3): 270-5
77. Bangsbo J, Mohr M, Krstrup P. Physical and metabolic demands of training and match-play in the elite football player. *J Sports Sci* 2006 Jul; 24 (7): 665-74
78. Zubillaga A, Gorospe G, Mendo AH, et al. Analysis of high intensity activity in soccer highest level competition [abstract no. O-013]. *J Sports Sci Med* 2007; 6 Suppl. 10: 10
79. Williams A, Williams AM, Horn R. Physical and technical demands of different playing positions. *Insight FA Coaches Assoc J* 2003; 2 (1): 24-8
80. Rampinini E, Impellizzeri FM, Castagna C, et al. Technical performance during soccer matches of the Italian Serie A league: effect of fatigue and competitive level. *J Sci Med Sport*. In press
81. Álvarez JCB, Castagna C. Activity patterns in professional futsal players using global position tracking system [abstract]. *J Sports Sci Med* 2007; 6 Suppl. 10: 208
82. Carling C. Football: a game of chance or does match analysis have the answers? *Insight FA Coaches Assoc* 2002; 5 (3): 16-7
83. Krstrup P, Mohr M, Steensberg A, et al. Muscle and blood metabolites during a soccer game: implications for sprint performance. *Med Sci Sports Exerc* 2006; Jun; 38 (6): 1165-74
84. Rampinini E, Coutts AJ, Castagna C, et al. Variation in top level soccer match performance. *Int J Sports Med* 2007; Dec; 28 (12): 1018-24
85. O'Donoghue PG, Tenga A. The effect of score-line on work rate in elite soccer. *J Sports Sci* 2001; 19 (2): 25-6
86. Bloomfield JR, Polman RCJ, O'Donoghue PG. Effects of score-line on work-rate in midfield and forward players in FA Premier League soccer. *J Sports Sci* 2004; 23 (2): 191-2
87. Mohr M, Krstrup P, Nybo L, et al. Muscle temperature and sprint performance during soccer matches: beneficial effects of re-warm-up at half time. *Scand J Med Sci Sports* 2004 Jun; 15 (3): 136-43
88. Reilly T. Motion analysis and physiological demands. In: Reilly T, Williams AM, editors. *Science and soccer*. London: Routledge, 2003: 59-72
89. Sari-Sarraf V, Reilly T, Doran DA. Salivary IgA responses to intermittent and continuous exercise. *Int J Sports Med* 2006; 27: 849-55
90. Clarke ND, Drust B, MacLaren DPM, et al. Strategies for hydration and energy provision during soccer-specific exercise. *Int J Sports Nutr Exerc Metab* 2005; 15: 625-40
91. Drust B, Cable NT, Reilly T. Investigation of the effects of pre-cooling on the physiological responses to soccer-specific intermittent exercise. *Eur J App Phys* 2000; 81: 11-7
92. Rahnama N, Reilly T, Lees A, et al. Muscle fatigue induced by exercise simulating the work rate of competitive soccer. *J Sports Sci* 2003; 21: 933-42

Correspondence: *Christopher Carling*, LOSC Lille Métropole, Centre de Formation, Domain de Luchin, Grand Rue-BP79, Camphin-en-Pévèle, 59780, France.  
E-mail: [chris.carling@free.fr](mailto:chris.carling@free.fr)