

Time Course of Apparent Temperature Effects on Cardiovascular Mortality: A Comparative Study of Beijing, China and Brisbane, Australia

Jing Sun^{1,2,*}, Guo Xing Li^{2,*}, Rohan Jayasinghe³, Ross Sadler¹, Glen Shaw¹, Xiao Chuan Pan^{1,2,*}

¹School of Public Health and Griffith Health Institute, Griffith University, Q4222, Parkland Campus, Parkland, Gold Coast, Australia

²School of Public Health, Peking University, China, 100191, Beijing, China

³School of Medicine, Griffith University and Cardiac Services/Cardiology, Gold Coast Health District Gold Coast Hospital, Q4222, Parkland Campus, Australia

Abstract This comparative study aimed to clarify the different characteristics of time course of apparent temperature and their effect on cardiovascular mortality in Beijing, China, and Brisbane, Australia. The present study used polynomial distributed lag models to explore the lagged effects of apparent temperature on daily cardiovascular mortality up to 27 days in Beijing, China (2005–2009), and Brisbane, Australia (2004–2007). The results show a longer lagged effect on cold days and a shorter lagged effect on hot days. The cut-off points in Beijing and Brisbane were 22°C and 27°C, respectively. In Beijing, a statistically significant association was observed for lags of 0–3 days and lags of 3–18 days on hot and cold days, respectively. In Brisbane, a significant association was found for lags of 3–4 days and lags of 10–21 days on hot and cold days, respectively. The lagged effects extended longer for cold apparent temperature but were immediate for hot apparent temperature. Though the cut-off point in Brisbane was higher than in Beijing, the population in Beijing was more resistant to high temperature above the cut-off point than the population in Brisbane.

Keywords Temperature, Apparent Temperature, Cardiovascular Mortality

1. Introduction

Global warming has attracted attention worldwide. According to the Intergovernmental Panel on Climate Change, it is likely that the global average surface temperature will have increased by 1.8–4.0°C by 2100⁽¹⁾. Many epidemiological studies have shown that extreme temperature has adverse effects on non-accidental and cardiopulmonary mortalities. In an analysis of data, Le Tertre et al. found that the all-cause mortality in nine French cities increased by 3096 extra deaths in the 2003 heatwave⁽²⁾. Baccini et al. found that the estimated overall change in all natural mortality associated with a 1°C increase in maximum apparent temperature (AT) above the city-specific threshold was 3.12% in the Mediterranean region⁽³⁾. This is consistent with reports from other countries⁽⁴⁻⁶⁾. Temperature effects are more pronounced in the elderly, women and those with chronic diseases⁽⁶⁻¹⁰⁾.

Numerous epidemiologic studies have shown that there are lagged effects of temperature on mortality^(11, 12). Goodman et al. found that, in the city of Dublin, from 1980 to

1996, only considering the acute effects of temperature might underestimate the total effects of temperature on mortality⁽¹¹⁾. Pattenden et al. reported that, in London, cold effects appeared after lag 3 days and lasted at least 2 weeks⁽¹²⁾. However, the impact of temperature on mortality might be affected by the adaptation methods used in different geographical areas (for example, the use of an air conditioner). Few studies are available that compare two cities on different continents and that have different climates. A better understanding of the differences between two cities might be helpful for the development of public health policy.

To explore the presence of lagged effects, the time dimension of the relationship between temperature and mortality should be addressed. There are several methods that can be used to study the delayed effects of temperature. Using the moving average of the temperature up to a certain lag is a relatively simple model. However, the limitation of this model is that it cannot show the temporal structure of the temperature effects. The distributed lag non-linear model (DLNM) is an approach based on distributed lag models^(13, 14). This model can flexibly show the detailed temporal structure of temperature–mortality relationships for lags and can adequately model the main effects of temperature^(13,14).

In addition, almost all population studies to date have used mean temperature as meteorological parameter in the analysis of time course of temperature. However, it is

* Corresponding author:

j.sun@griffith.edu.au (Jing Sun)

xcpan@bjmu.edu.cn (Xiao Chuan Pan)

Published online at <http://journal.sapub.org/phr>

Copyright © 2012 Scientific & Academic Publishing. All Rights Reserved

possible that AT is more appropriate for analysis. AT is an index intended to reflect the physiological experience of combined exposure to humidity and temperature and is thereby better able to capture the effects on health than temperature alone^(15, 16).

This study explored the lagged effects of AT on cardiovascular diseases in Beijing, China, and Brisbane, Australia, which have typical temperate and subtropical climates, respectively.

2. Materials and methods

2.1. Study Area

Beijing is the capital of China, located at latitude 39.55' north, longitude 116.25' east (See details: <http://www.infoplease.com/ipa/A0001769.html>). It is on the North China Plain surrounded by mountains with altitudes of 1000–1500 metres to the west, north and north-east and by the Bohai Sea on the south-east. Beijing has a typical warm temperate semi-humid continental monsoon climate, with hot humid summers and cold dry winters. Our study area included the eight urban areas of Beijing, comprising an area of about 1368 km², which consist of eight districts with a population of approximately seven million.

Brisbane is the capital of Queensland, Australia, located at latitude 27.29' north, longitude 153.8' east. Brisbane features a typical subtropical climate, with warm humid summers and mild clear winters. The study area has a population of 0.97 million.

2.2. Mortality and Environmental Data

In this study, we used data from Beijing, China, and Brisbane, Australia. Daily counts of cardiovascular deaths (I00-I99; *International Classification of Diseases*, 10th Revision) for the two cities were obtained from the Queensland Health in Australia and the Chinese Center for Disease Control and Prevention in China. The time-series of daily death data available for analysis in each city covered different time periods: for Beijing, data for the five years from 1 January 2005 to 31 December 2009 were available for analysis, while, for Brisbane, data available for the four years from 1 January 2004 to 31 November 2007 were available.

The temperature data in Brisbane were collected from the Bureau of Meteorology and, in Beijing, from the National Meteorological Information Center (CMA) of China. Daily air pollution data in Brisbane and Beijing were from the Environmental Protection Agency Australia and the Beijing Municipal Environmental Monitoring Center, respectively. In this study, we used AT, which combines temperature and relative humidity, and is an index of human discomfort. AT was calculated using the following formula:

$$AT = -2.563 + (0.994 \times Ta) + (0.0153 \times Td^2),$$

where 'Ta' is air temperature and 'Td' is dew point temperature.

2.3. Statistical Analysis

First, we used an independent model to explore the patterns of the relationship between the temperature and mortality. The independent model is described below.

Model 1

$\text{Log}[E(Y_t|X)] = S(\text{at}, 3) + S(\text{PM}_{10}, 3) + S(\text{season}, 7 * N) + \text{factor}(\text{DOW}) + \text{factor}(\text{holiday}) = S(\text{at}, 3) + \text{COVs}$,
where 't' refers to the day of the observation, 'E(Y_t|X)' denotes the estimated daily case counts on day t, and 'S()' denotes the penalised smoothing spline. 'PM₁₀' and 'at' represent the current day's particulate matter with aerodynamic diameter of 10 μm (PM₁₀) concentration and AT, respectively^(16, 17). Seven degrees of freedom per year for time were selected so that little information from time scales longer than two months was included⁽¹⁸⁾. This choice largely reduced confounding from seasonal factors and from longer-term trends. 'N' denotes the number of years, while 'DOW' represents the day of the week. 'Holiday' was treated as a dummy variable (0 or 1 denote 'not a holiday' or 'a holiday', respectively)⁽¹⁹⁾.

There were J- and U-shaped associations between temperature and mortality as shown in figure 1 for Beijing and Brisbane, respectively. In Beijing, the J shape pattern suggests that there is no sharp increase in mortality with the increasing apparent temperature. However, in Brisbane, the U shape indicates there is a clear and sharp increase in mortality with the increasing apparent temperature.

Temperature stratification cut-offs were determined by Akaike's Information Criterion (AIC) values. AIC values were calculated using 1°C increments in mean temperature from 15 to 30°C. The apparent temperature range was selected based on visual inspection of the plots⁽²⁰⁻²²⁾. The temperature corresponding to the model with the lowest AIC value was chosen as the threshold temperature. We used threshold models as follows.

Model 2

$\text{Log}[E(Y_t|X)] = (\text{at} - T_c) + (\text{at} - T_h) + \text{COVs}$,
where 'Th' and 'Tc' are the hot and cold thresholds; the same covariates as in Model 1 were adjusted.

A DLNM was used to analyse the lagged effects of mean temperature on CVD for Brisbane and Beijing. To capture the lagged temperature effect, we placed spline knots at equal intervals in the log scale of lags up to 27 days and 4 degrees of freedom for lag according to a previous study⁽²³⁾. We used a DLNM as follows.

Model 3

$\text{Log}[E(Y_t|X)] = TC + TH + \text{COVs}$,
where 'TC(TH)' is a matrix obtained by using the DLNM model below the cold threshold and above the hot threshold; the same covariates as in Model 1 were adjusted.

The estimated effects were expressed as the increased percentage of the daily death counts with 1 per increment in the daily AT. All analyses were performed using R software, version 2.11.1 (R Foundation for Statistical Computing, <http://cran.r-project.org/>), using the Multiple Smoothing Parameter Estimation (MGCV) and Distributed lag non-

linear models (DLNM) in R.

3. Results

Table 1 provides summary statistics for the two cities during all seasons. The mean number of deaths from cardiovascular mortality was 15.7 and 6.1 for Beijing and Brisbane, respectively. The corresponding ambient PM10 concentrations were 133.6 g/m³ and 17.6 g/m³, respectively. The mean temperatures were 13.4°C and 19.9°C for Beijing and Brisbane, respectively. The ATs in Beijing and Brisbane were 13.5°C and 20.8°C, respectively.

Figure 1 shows the non-linear relationship between mean

temperature and mortality in the two cities. It is evident that the pattern of the association between AT and mortality exhibits a J shape for Beijing and a U shape for Brisbane. Based on these results, a threshold model was used to explore the lagged effect of cold and hot temperature. According to AIC, 22°C and 27°C were chosen as the cut-off points in Beijing and Brisbane, respectively.

Figure 2 shows the three-dimensional plots between AT and mortality at all lag days. It is obvious that the lagged effects in the cold temperature range were of longer duration than those in the high temperature range in both cities. In Brisbane, cold effects lasted for more lagged days than in Beijing.

Table 1. Characteristics of mortality, weather conditions and air pollutants in Beijing (2005–2009) and Brisbane (2004–2007)

City		Mean	Minimum	P (25)	Medium	P (75)	Maximum
Beijing	Cardiovascular	15.7	3	11	15	19	51
	PM ₁₀ (µg/m ³)	133.6	9.6	68	117	170	600
	Temperature (°C)	13.4	-10.1	3	14.5	23.6	32.1
	Humidity (%)	51.1	8	35	51	68	97
	AT (°C)	13.5	-7.8	2.54	12.5	24.4	37.65
Brisbane	Cardiovascular	6.1	0	4	6	8	19
	PM ₁₀ (µg/m ³)	17.6	5.0	13.6	16.6	20.3	62.61
	Temperature (°C)	19.8	9	16	20	23	32
	Humidity (%)	65.5	18	59	67	74	95
	AT (°C)	20.8	6.7	15.45	21.14	25.3	37.97

PM₁₀: particulate matter with aerodynamic diameter of 10 µm; AT: apparent temperature; P, percentile.

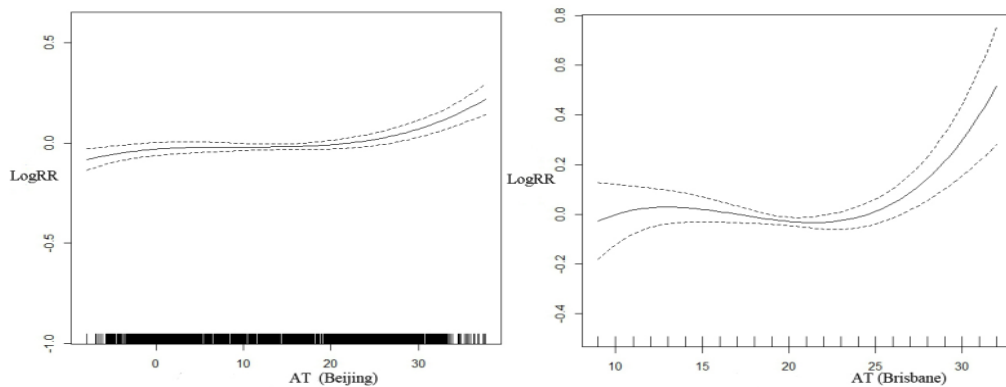


Figure 1. Dose-response relationship between apparent temperature and mortality in Beijing and Brisbane. AT: apparent temperature; RR: relative risk

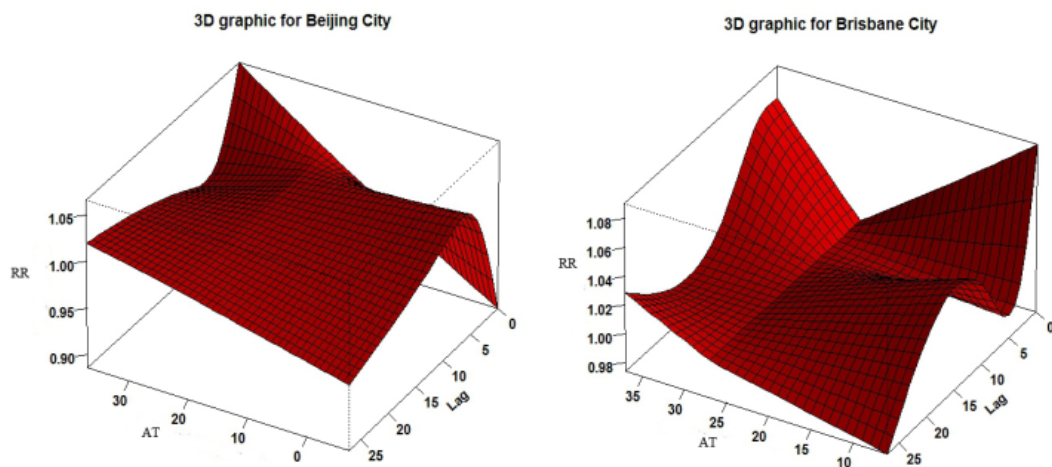


Figure 2. 3-dimensional plots between apparent temperature and mortality at all lag day. RR: relative risk; AT: apparent temperature

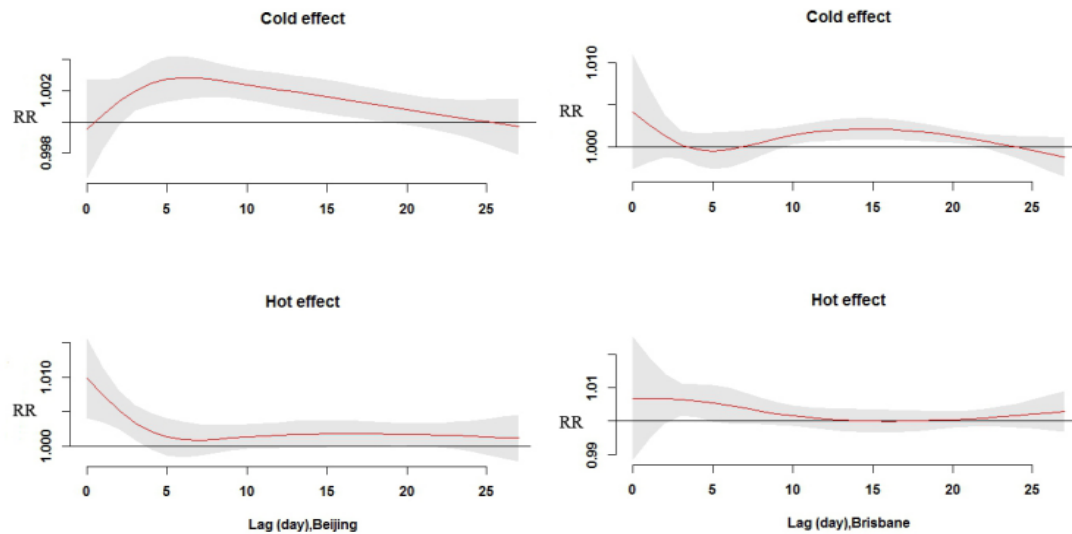


Figure 3. Relative risks of cardiovascular death (CVD) with an increase (or decrease) of 1°C in apparent temperature up to 27 days in Beijing and Brisbane. RR: relative risk

Figure 3 shows the changing trend of hot and cold effects with 1°C increase/decrease above/below threshold temperature. In Brisbane, the highest percentage increases occurred in CVD with lags of 10–21 days for cold and 3–4 for hot. In Beijing, the highest percentage increases occurred in CVD with lags of 3–18 days for cold weather and 0–3 for hot weather.

Table 2 shows estimated effects of temperature on CVD. For Brisbane, a 1°C increase in temperature above the threshold temperature was associated with 0.7% increase on CVD (95% CI: -0.6, 2.2) at lags of 0–4; a 1°C decrease in temperature below the threshold temperature was associated with 5.8% (95% CI: 1.1, 10.7) increase on CVD at lags of 0–21 days. For Beijing, a 1°C increase in temperature above the threshold temperature was associated with 2.5% (95% CI: 1.2, 3.9) increase on CVD at lags of 0–3 days; a 1°C decrease in temperature below the threshold temperature was associated with 3.6% (95% CI: 1.8, 5.3) increase on CVD at lags of 0–18 days.

Table 2. Lagged effect of apparent temperature on CVD in Beijing (2005–2009) and Brisbane (2004–2007)

Lag days	Hot effect (overall % increase [†] [95% CI])	Cold effect (overall % increase [‡] [95% CI])
Beijing	(≥22°C)	(<22°C)
0–3	0.3 (-0.3, 1)	2.5 (1.2, 3.9)
0–4	0.5 (-0.2, 1.3)	2.8 (1.3, 4.2)
0–18	3.6 (1.8, 5.3)	4.8 (2, 7.7)
0–21	3.8 (1.9, 5.8)	5.4 (2.3, 8.5)
0–27	3.9 (1.6, 6.2)	6.2 (2.7, 9.9)
Brisbane	(≥27°C)	(<27°C)
0–3	0.8 (-0.6, 2.2)	2.6 (-1.3, 6.8)
0–4	0.7 (-0.6, 2.2)	3.2 (-0.8, 7.5)
0–18	2.5 (1.3, 3.8)	5.6 (1.2, 10.3)
0–21	2.9 (1.6, 4.2)	5.8 (1.1, 10.7)
0–27	2.7 (1.8, 3.7)	7 (2.3, 11.9)

Notes. [†]Percentage increase with apparent temperature increase of 1°C above 22/27°C; [‡]percentage increase with apparent temperature decrease of 1°C below 22/27°C.

CI = confidence interval; CVD, cardiovascular mortality.

4. Discussion

To our knowledge, this is the first study to quantify the lagged effects of AT on CVD in two cities with temperate and subtropical climates, respectively, in different hemispheres. This study may provide useful knowledge about the different characteristics of climate and adaptation patterns in Brisbane and Beijing and their effects on CVD. In this study, the lagged effects up to 27 days on CVD for both cold and hot AT were examined. A delayed effect of approximately three weeks was observed for cold; however, hot effects were relatively shorter, within one week.

In this study, we found an effect of latitude on CVD: cities at higher latitude had lower threshold temperature. Beijing had a relatively lower threshold temperature compared with Brisbane. This finding is similar to that of Chung *et al.*'s study, which found that Seoul had a relatively higher threshold temperature compared with Beijing with regard to cardiovascular mortality⁽²⁰⁾. We also found that mean AT in Brisbane is higher than that in Beijing, which might partly explain the different threshold AT. In 13 Spanish cities, Iniguez *et al.* also found that minimum mortality temperature rose as the mean temperature of the cities increased⁽²⁴⁾.

It is biologically plausible that temperatures can affect health outcomes. First, high temperatures may increase cardiovascular mortality. Nayha reported that high temperature dilates skin vessels and facilitates sweating, leading to a decrease in blood pressure, loss of fluid and salt, and the risk of thrombosis⁽²⁵⁾. Basu and Samet⁽²⁶⁾ and Bouchama and Knochel⁽²⁷⁾ found that high temperature increases heat loss through increased skin-surface blood circulation, which may be related to increased mortality. Second, cold temperatures may also increase the risks of cardiovascular mortality. Keatinge *et al.* reported that exposure to cold can increase plasma viscosity and arterial pressure in the first hour, contributing to coronary and cerebral thrombosis⁽²⁸⁾. Cold temperature can also increase plasma cholesterol and plasma

fibrinogen, which can lead to thrombosis and acute cardiac events^(26,27). Third, a population may be sensitive to different types of CVD in high/low temperatures. Hong et al. used a case-control design to analyse the risk of ischemic stroke during cold temperature days in Incheon, Korea, from 1998 to 2000. They found that cold temperature can increase stroke occurrence⁽²⁹⁾. Nayha reported that coronary heart disease increased steeply on hot temperature days⁽²⁵⁾. Braga et al. found that for myocardial infarctions, the effect of heat was larger than the effect of cold⁽³⁰⁾.

In this study, the strongest effects of heat were found immediately after exposure in both cities. Braga et al. found that the lagged effect of hot days was no more than seven days in US cities⁽³⁰⁾. Gasparrini et al. also found that the lagged effect of hot temperature was immediate for mortality⁽¹⁷⁾. However, cold-related mortality was found to persist for approximately three weeks in both cities in our study. Carder et al. found that in the low temperature range, the cold effect tends to remain at lag periods greater than 14 days⁽³¹⁾. Other researchers also reported similar results^(32, 33).

We also found that the relationship between AT and mortality was different in the two cities as shown in J and U shape in Figure 1. One possible explanation for our finding is that the two cities have different climate characteristics, living conditions and lifestyles as well as different medical insurance systems, which can modify the effect of temperature on mortality. For example, the range of AT is 45°C in Beijing, well above 31°C in Brisbane. Another explanation is that human adaptation to climate change is different. A population in a subtropical area might be more resistant to high temperature than a population in a temperate area.

Many epidemiological studies have provided convincing evidence that air pollution can increase the risks of CVD in different parts of the world. Schins et al., for example, observed that ambient particles increased tumour necrosis factor alpha and glutathione depletion in a rat study⁽³⁴⁾. Wu et al. and Fang et al. found that ambient particulate matter could increase the risk of heart disease^(35, 36). Therefore, in this study, we assessed the association between AT and mortality after adjustment for air pollutants in the models.

This study has several strengths. First, to our knowledge, this is the first research on the extended characteristics of AT on CVD in cities in China or Australia. Second, the index of AT combines temperature and humidity together, which may better reflect the human experience of these. Third, the DLNM was employed to avoid the collinearity of the ATs on days close together.

Our study also has several limitations. First, the data on meteorological factors and PM10 used in this research were the average levels in the two cities; hence, a degree of bias from measurement errors may be possible. Second, the density and population characteristics varied in the two cities. There might also be some important confounders, such as ozone, as suggested by Schwartz et al., who found that ozone was associated with mortality⁽³⁷⁾.

In this study, we found different lagged characteristics of

cold and hot AT. Cold effects lasted longer than hot, which could provide guidance for policy making. Different targeted efforts in different climate type areas should be used in preventing the adverse effects of climate change. For example, prevention method should be taken in Beijing when AT is progressively lower than or higher than 22°C; and in Brisbane when AT is progressively lower or higher than 27°C.

5. Conclusions

This study found that the lagged effects of low AT on CVD had a longer duration than those of high AT. The susceptibility to temperature in different areas was different. Population at low altitude was more resistant to high temperature. Further studies are still needed to generalise our findings.

We found different patterns in relation to the effect of particular matter and temperature on population mortality in Beijing and Brisbane. In Brisbane, the results indicate a significant increasing mortality rate with increasing temperature and PM10 concentration. The increasing mortality in Beijing shows a different pattern when temperature and PM10 concentration increased. It is noted that the PM10 concentration in Beijing is ten times higher than in Brisbane and the temperature range in Beijing (-10 to 35°C) is much wider than that of Brisbane (10-35°C). However, people in Brisbane were more sensitive to the increasing temperature and PM10 concentration than people in Beijing, as indicated by the increasing mortality rate in Brisbane.

ACKNOWLEDGEMENTS

We thank the Chinese Center for Disease Control and Prevention. This project was supported by the National Natural Science Foundation of China, grant no. 30972433; Peking University Health Science Center Fund, BMU20110244.

REFERENCES

- [1] IPCC. Climate change 2007: the physical basis - summary for policy makers. 2007.
- [2] Le Tertre A, Lefranc A, Eilstein D, Declercq C, Medina S, Blanchard M, et al. Impact of the 2003 heatwave on all-cause mortality in 9 French cities. *Epidemiology*. 2006 Jan;17(1):75-9.
- [3] Baccini M, Biggeri A, Accetta G, Kosatsky T, Katsouyanni K, Analitis A, et al. Heat effects on mortality in 15 European cities. *Epidemiology*. 2008 Sep;19(5):711-9.
- [4] Huang W, Kan H, Kovats S. The impact of the 2003 heat wave on mortality in Shanghai, China. *Sci Total Environ*. 2010 May 1;408(11):2418-20.
- [5] Kim H, Ha JS, Park J. High temperature, heat index, and mortality in 6 major cities in South Korea. *Arch Environ*

- Occup Health. 2006 Nov-Dec;61(6):265-70.
- [6] Tong S, Ren C, Becker N. Excess deaths during the 2004 heatwave in Brisbane, Australia. *Int J Biometeorol*. 2010 Jul;54(4):393-400.
- [7] Barnett AG. Temperature and cardiovascular deaths in the US elderly: changes over time. *Epidemiology*. 2007 May;18(3):369-72.
- [8] Conti S, Meli P, Minelli G, Solimini R, Toccaceli V, Vichi M, et al. Epidemiologic study of mortality during the Summer 2003 heat wave in Italy. *Environ Res*. 2005 Jul;98(3):390-9.
- [9] Schwartz J. Who is sensitive to extremes of temperature?: A case-only analysis. *Epidemiology*. 2005 Jan;16(1):67-72.
- [10] Stafoggia M, Forastiere F, Agostini D, Biggeri A, Bisanti L, Cadum E, et al. Vulnerability to heat-related mortality: a multicity, population-based, case-crossover analysis. *Epidemiology*. 2006 May;17(3):315-23.
- [11] Goodman PG, Dockery DW, Clancy L. Cause-specific mortality and the extended effects of particulate pollution and temperature exposure. *Environ Health Perspect*. 2004 Feb;112(2):179-85.
- [12] Pattenden S, Nikiforov B, Armstrong BG. Mortality and temperature in Sofia and London. *J Epidemiol Community Health*. 2003 Aug;57(8):628-33.
- [13] Armstrong B. Models for the relationship between ambient temperature and daily mortality. *Epidemiology*. 2006 Nov;17(6):624-31.
- [14] Gasparrini A, Armstrong B. The impact of heat waves on mortality. *Epidemiology*. Jan;22(1):68-73.
- [15] Basu R. High ambient temperature and mortality: a review of epidemiologic studies from 2001 to 2008. *Environ Health*. 2009;8:40.
- [16] Kovats RS, Hajat S. Heat stress and public health: a critical review. *Annu Rev Public Health*. 2008;29:41-55.
- [17] Gasparrini A, Armstrong B, Kenward MG. Distributed lag non-linear models. *Stat Med*. 2010 Sep 20;29(21):2224-34.
- [18] Dominici F, Zeger SL, Samet JM. A measurement error model for time-series studies of air pollution and mortality. *Biostatistics*. 2000 Jun;1(2):157-75.
- [19] Li G, Zhou M, Cai Y, Zhang Y, Pan X. Does temperature enhance acute mortality effects of ambient particle pollution in Tianjin City, China. *Sci Total Environ*. 2011 Mar 2.
- [20] Chung JY, Honda Y, Hong YC, Pan XC, Guo YL, Kim H. Ambient temperature and mortality: an international study in four capital cities of East Asia. *Sci Total Environ*. 2009 Dec 20;408(2):390-6.
- [21] Daniels MJ, Dominici F, Samet JM, Zeger SL. Estimating particulate matter-mortality dose-response curves and threshold levels: an analysis of daily time-series for the 20 largest US cities. *Am J Epidemiol*. 2000 Sep 1; 152(5): 397-406.
- [22] Yu W, Vaneckova P, Mengersen K, Pan X, Tong S. Is the association between temperature and mortality modified by age, gender and socio-economic status? *Sci Total Environ*. 2010 Aug 1;408(17):3513-8.
- [23] Guo Y, Barnett AG, Pan X, Yu W, Tong S. The Impact of Temperature on Mortality in Tianjin, China: A Case-crossover Design with A Distributed Lag Non-linear Model. *Environ Health Perspect*. 2011 Aug 9.
- [24] Iniguez C, Ballester F, Ferrandiz J, Perez-Hoyos S, Saez M, Lopez A. Relation between temperature and mortality in thirteen Spanish cities. *Int J Environ Res Public Health*. 2011 Aug;7(8):3196-210.
- [25] Nayha S. Environmental temperature and mortality. *Int J Circumpolar Health*. 2005 Dec;64(5):451-8.
- [26] Basu R, Samet JM. Relation between elevated ambient temperature and mortality: a review of the epidemiologic evidence. *Epidemiol Rev*. 2002;24(2):190-202.
- [27] Bouchama A, Knochel JP. Heat stroke. *N Engl J Med*. 2002 Jun 20;346(25):1978-88.
- [28] Keatinge WR, Coleshaw SR, Cotter F, Mattock M, Murphy M, Chelliah R. Increases in platelet and red cell counts, blood viscosity, and arterial pressure during mild surface cooling: factors in mortality from coronary and cerebral thrombosis in winter. *Br Med J (Clin Res Ed)*. 1984 Nov 24;289(6456):1405-8.
- [29] Hong YC, Rha JH, Lee JT, Ha EH, Kwon HJ, Kim H. Ischemic stroke associated with decrease in temperature. *Epidemiology*. 2003 Jul;14(4):473-8.
- [30] Braga AL, Zanobetti A, Schwartz J. The effect of weather on respiratory and cardiovascular deaths in 12 U.S. cities. *Environ Health Perspect*. 2002 Sep;110(9):859-63.
- [31] Carder M, McNamee R, Beverland I, Elton R, Cohen GR, Boyd J, et al. The lagged effect of cold temperature and wind chill on cardiorespiratory mortality in Scotland. *Occup Environ Med*. 2005 Oct;62(10):702-10.
- [32] Liu LQ, Breitner S, Pan XC, Franck U, Leitte AM, Wiedensohler A, et al. Associations between air temperature and cardio-respiratory mortality in the urban area of Beijing, China: a time-series analysis. *Environmental Health*. 2011 May 25;10.
- [33] Yu W, Hu W, Mengersen K, Guo Y, Pan X, Connell D, et al. Time course of temperature effects on cardiovascular mortality in Brisbane, Australia. *Heart*. 2011 Apr 12.
- [34] Schins RP, Lightbody JH, Borm PJ, Shi T, Donaldson K, Stone V. Inflammatory effects of coarse and fine particulate matter in relation to chemical and biological constituents. *Toxicol Appl Pharmacol*. 2004 Feb 15;195(1):1-11.
- [35] Fang SC, Cavallari JM, Eisen EA, Chen JC, Mittleman MA, Christiani DC. Vascular Function, Inflammation, and Variations in Cardiac Autonomic Responses to Particulate Matter Among Welders. *American Journal of Epidemiology*. 2009 Apr 1;169(7):848-56.
- [36] Wu S, Deng F, Niu J, Huang Q, Liu Y, Guo X. Association of heart rate variability in taxi drivers with marked changes in particulate air pollution in Beijing in 2008. *Environ Health Perspect*. 2010 Jan;118(1):87-91.
- [37] Schwartz J. How sensitive is the association between ozone and daily deaths to control for temperature? *American Journal of Respiratory and Critical Care Medicine*. 2005 Mar 15;171(6):627-31.