

Title: Time of Sample Collection Critical for Microbiome Replicability

Authors: Celeste Allaband^{1,2,3}, Amulya Lingaraju², Stephany Flores Ramos^{1,2}, Tanya Kumar⁴, Haniyeh Javaheri², Maria D. Tiu², Ana Carolina Dantas Machado², Roland A. Richter², Emmanuel Elijah^{8,9}, Gabriel G. Haddad^{3,5,6}, Vanessa A. Leone⁷, Pieter C. Dorrestein^{3,8,9,10}, Rob Knight^{3,9,11}, Amir Zarrinpar^{2,9,12,13,*}

Affiliations:

¹ Division of Biomedical Sciences, University of California, San Diego; La Jolla, CA, USA

² Division of Gastroenterology, University of California, San Diego; La Jolla, CA, USA

³ Department of Pediatrics, University of California, San Diego; La Jolla, CA, USA

⁴ Medical Scientist Training Program, University of California San Diego; La Jolla, CA, USA

⁵ Department of Neurosciences, University of California, San Diego; La Jolla, CA, USA

⁶ Rady Children's Hospital; San Diego, CA, USA

⁷ Department of Animal and Dairy Sciences, University of Wisconsin-Madison; Madison, WI, USA

⁸ Skaggs School of Pharmacy and Pharmaceutical Sciences, University of California, San Diego; La Jolla, CA, USA

⁹ Center for Microbiome Innovation, University of California, San Diego; La Jolla, CA, USA

¹⁰ Center for Computational Mass Spectrometry, University of California, San Diego; La Jolla, CA, USA

¹¹ Department of Computer Science and Engineering, University of California, San Diego; La Jolla, CA, USA

¹² VA Health Sciences San Diego; La Jolla, CA, USA

¹³ Institute of Diabetes and Metabolic Health, University of California, San Diego; La Jolla, CA, USA

*Corresponding author. Email: azarrinpar@health.ucsd.edu

32 **ABSTRACT:**

33 Although many aspects of microbiome studies have been standardized to improve
34 experimental replicability, none account for how the daily diurnal fluctuations in the gut lumen
35 cause dynamic changes in 16S amplicon sequencing. Here we show that sample collection
36 time affects the conclusions drawn from microbiome studies and are larger than the effect size
37 of a daily experimental intervention or dietary changes. The timing of divergence of the
38 microbiome composition between experimental and control groups are unique to each
39 experiment. Sample collection times as short as only four hours apart lead to vastly different
40 conclusions. Lack of consistency in the time of sample collection may explain poor cross-study
41 replicability in microbiome research. Without looking at other data, the impact on other fields is
42 unknown but potentially significant.

43
44
45
46 **One-Sentence Summary:** If we are not controlling for host circadian rhythm time in
47 microbiome studies when performing experiments, it is like trying to measure sea level rise
48 while not knowing that tides or waves exist.

49 **Main Text:**

50 The lack of replicability of microbiome studies has been a barrier to understanding how host-
51 microbe interactions contribute to physiological homeostasis and pathophysiological processes,
52 including heart disease and cancer¹. As the field moves from descriptive and associative
53 research to mechanistic and interventional studies, the ability to rapidly and reproducibly
54 characterize the microbiome is critical to the development of novel microbiome-mediated
55 therapeutics and diagnostic biomarkers². In early studies, many confounding variables involving
56 model systems, sample collection protocols, and pipeline processing were not routinely
57 accounted for in study design, often resulting in irreproducible, noisy data^{1,3}. The investigation
58 of these irreproducible and noisy data led to the discovery of important confounds that
59 influence the results, such as the maternal effect⁴, cage effect⁵, facility differences⁶, as well as
60 laboratory and sample handling protocols⁷. However, despite the introduction of standardization
61 of experimental protocols and analysis pipelines, unexplained variability and lack of replicability
62 still plagues microbiome research.

63
64 One underexplored factor is that the microbiome is dynamic, and exhibits diurnal oscillations⁸⁻
65 ¹⁰. Disruption of microbiome diurnal dynamics¹¹⁻¹⁵ are associated with metabolic syndrome
66 spectrum diseases (e.g. insulin resistance, increased adiposity)⁸. A recent study found that an
67 intestinal specific knockout of one of the circadian genes, *Bmal1*, in a mouse model was able to
68 protect against diet-induced obesity¹⁶. The gut microbiome is intimately linked to host
69 peripheral circadian rhythms and is known to influence physiology broadly, including behavior
70 and thermoregulation¹⁷. Microbiome-depleted mice (i.e. antibiotic-induced depletion or germ-
71 free mice) have dampened epithelial and hepatic circadian rhythms^{11,18,19}. Analysis of the
72 microbiome from human stool samples collected from a multitude of time points^{20,21}, as well as
73 24-hour salivary collections²²⁻²⁴, suggest that the human microbiome also has diurnal
74 fluctuations. In addition, loss of diurnal dynamics of the gut microbiome was recognized as a
75 risk factor for developing type 2 diabetes in a longitudinal study of a large patient cohort²⁵.

76

77 Many labs that study the microbiome anecdotally report collecting their specimens for each
78 experiment at a specific, single time point. However, it is not clear whether the collection time is
79 chosen rationally based on experimental design, convenience to the experimenters, or if this
80 window of time is consistent between experimental replicates both within and outside of the
81 laboratory. We hypothesize that circadian variation is significant enough to affect microbiome
82 results. By using existing diurnal microbiome studies, we can determine whether sampling at
83 different times leads to different conclusions.

84 **RESULTS**

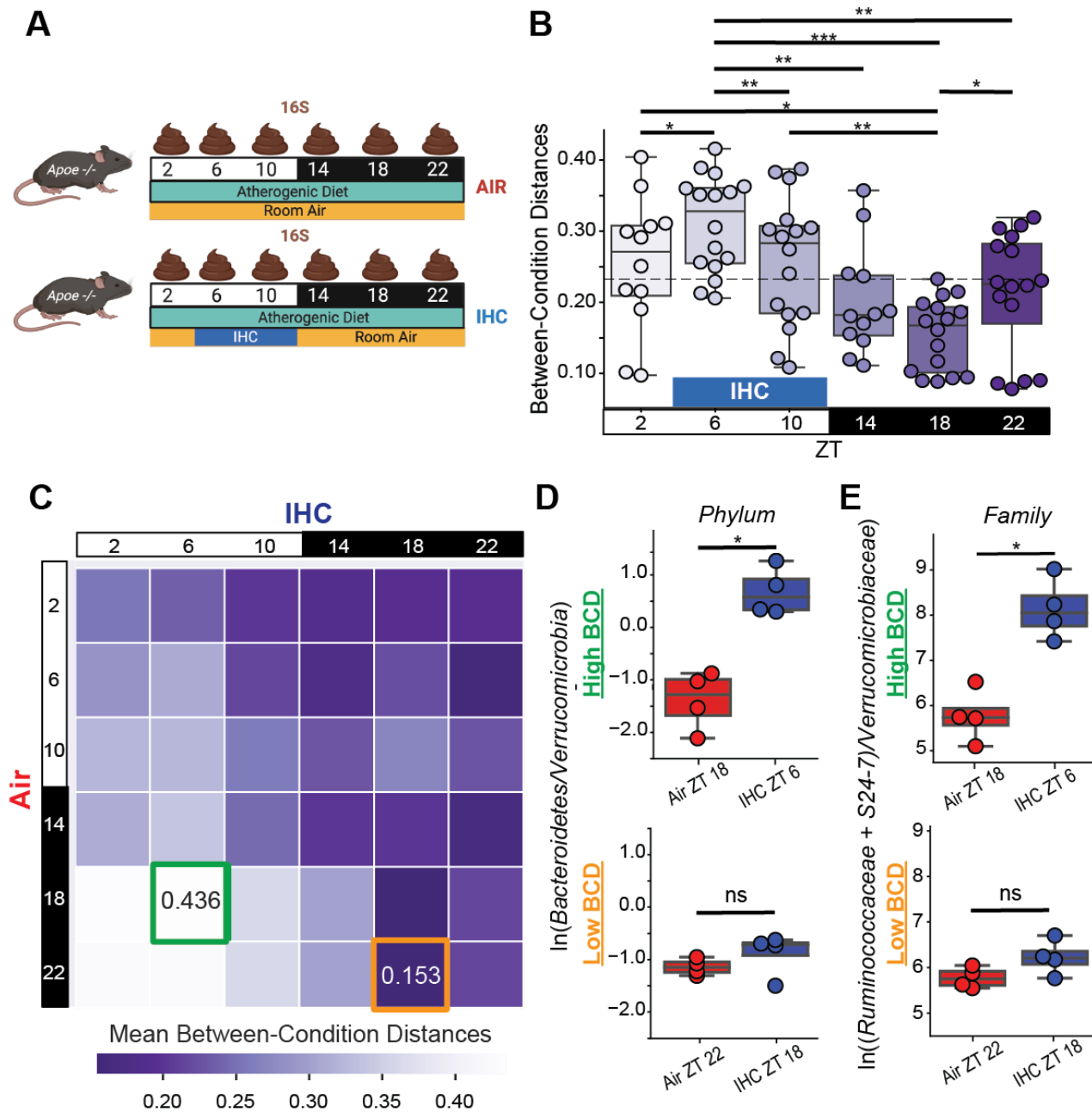


Figure 1: Microbiome Analysis of *Apoe*^{-/-} Mice Exposed to IHC Show Vastly Different Outcomes Depending on Time Point of Sample Collection

A) Experimental design. IHC= intermittent-hypoxia-with-hypercapnia (obstructive sleep apnea-like conditions).

B) Between-condition distances (BCD), a subset of weighted UniFrac β -diversity distances. Significance is determined using paired Wilcoxon rank-sum test. The BCD values in this experiment were oscillating in a diurnal fashion (MetaCycle, JTK method, $p < 0.001$).

C) BCD heatmap by time point. Replicates were collapsed by taking the mean. Highest highlighted in green, lowest highlighted in orange.

At the peak and trough time points identified in C, **(D)** the logarithmic ratios of differentially abundant key phyla of interest and **(E)** the logarithmic ratios of differentially abundant key families of interest. Notation: ns = not significant, * = $p < 0.05$; ** = $p < 0.01$; *** = $p < 0.001$

85

86

87

88

89

90

91

92

93

94

95

96

97

98

99

00 *Time of sample collection is critical to microbiome study conclusions*

01 To determine whether the time of sample collection was included in experimental methods of
02 microbiome studies, we reviewed over 550 articles published in 2019 from major journals
03 where new 16S or metagenomic datasets were generated. Only 0.32% reported a specific time
04 of sample collection (**Fig S1A-C**). A recent study of biological sciences articles confirmed a low
05 percentage of time-of-day information reporting in a broader field²⁶. Since microbiome studies
06 do not commonly report time of sample collection in their methods, we investigated the effects
07 of microbiome sample collection on the potential interpretation of a study using the datasets
08 from our meta-analysis. A targeted literature review followed by extensive correspondence, led
09 to the acquisition of five previously published datasets in a form suitable for re-analysis (**Fig**
10 **S1D**)^{11,13,27-29}. In addition, we included a recently published dataset from the same mice in one
11 of our circadian studies^{13,30}. We also included analysis from an unpublished study that is unique
12 in that it includes two circadian collections over the course of a single experiment. To quantify
13 the effect of sample collection time on the microbial population, we used between-condition
14 weighted UniFrac β -diversity distances (BCD) to show how similar microbiomes are to each
15 other at any given time point. We chose weighted UniFrac because it takes into account both
16 phylogeny and abundance of the organisms present. For circadian studies, standard notation of
17 time of day is Zeitgeber time (ZT), where dawn/lights on is ZT0 (ex. our vivarium lights-on is
18 6AM, but this varies by facility). Thus, increasing or decreasing BCD allows us to assess
19 microbiome compositional fluxes between experimental conditions over time.

20
21 First, we wanted to investigate whether sampling time affects the conclusion of a study with a
22 discrete daily intervention. We started by reanalyzing a previous dataset²⁷ that used
23 apolipoprotein E knock-out mice (*Apoe*^{-/-}) mice under intermittent hypoxia and hypercapnia
24 (IHC) conditions to mimic obstructive sleep apnea (**Fig 1A**). In the study, BCD fluctuated
25 greatly, nearly doubling within a 24hr period (**Fig 1B**), suggesting that compositional
26 assessments from different times would yield radically different results. Within-condition
27 distances fluctuated much less during the same period (**Fig S2F, S2G**).

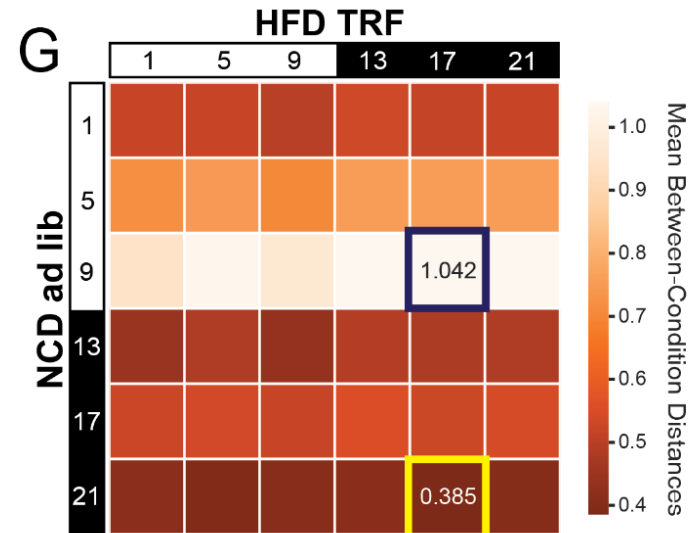
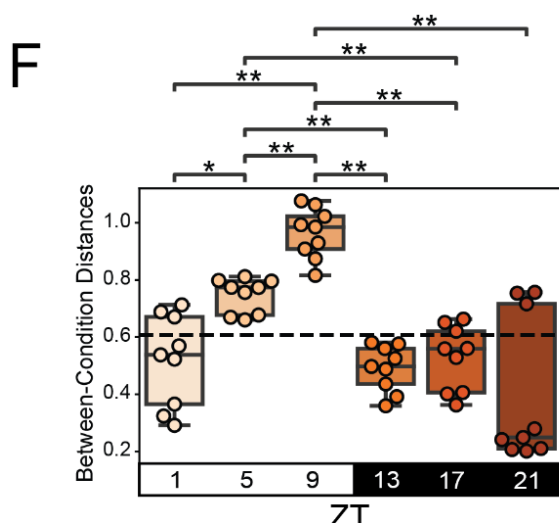
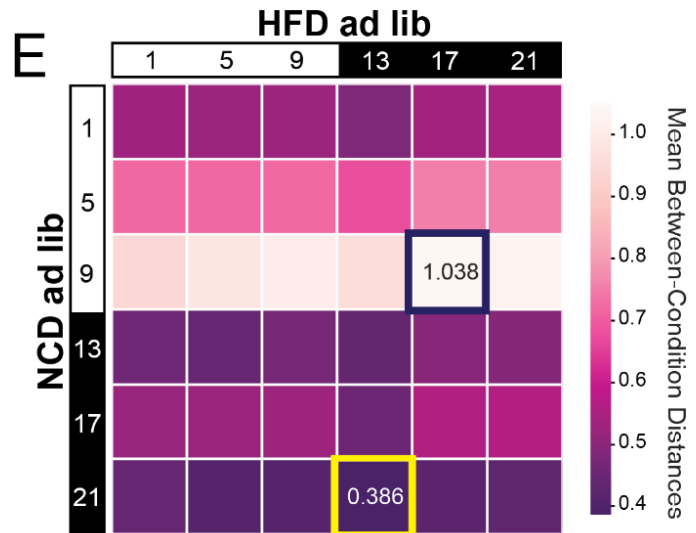
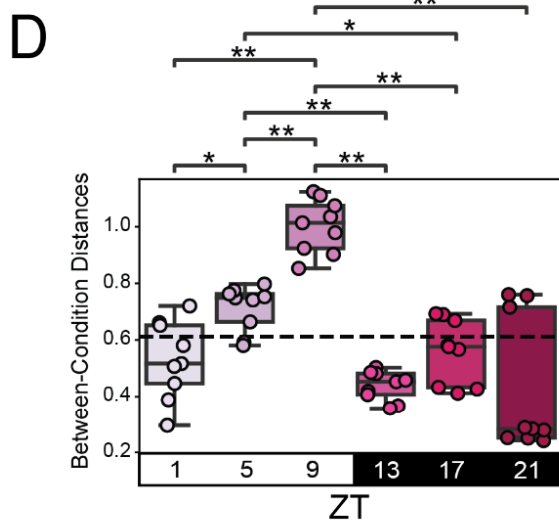
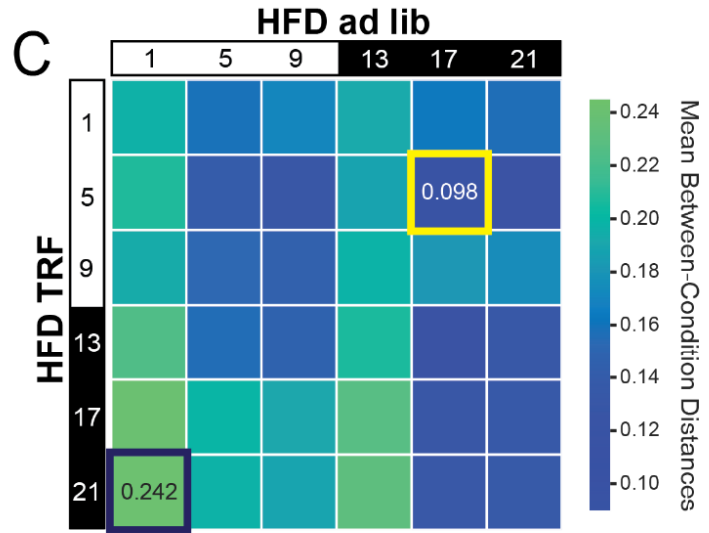
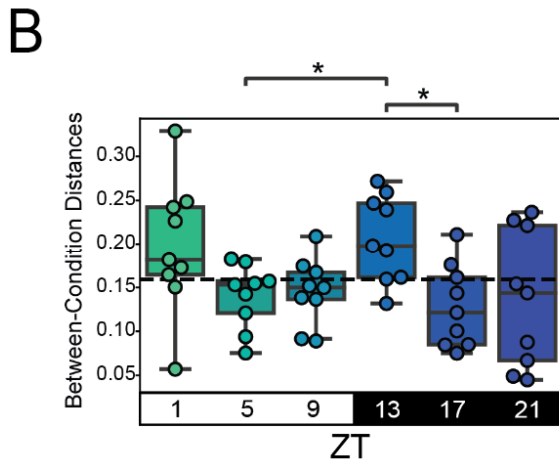
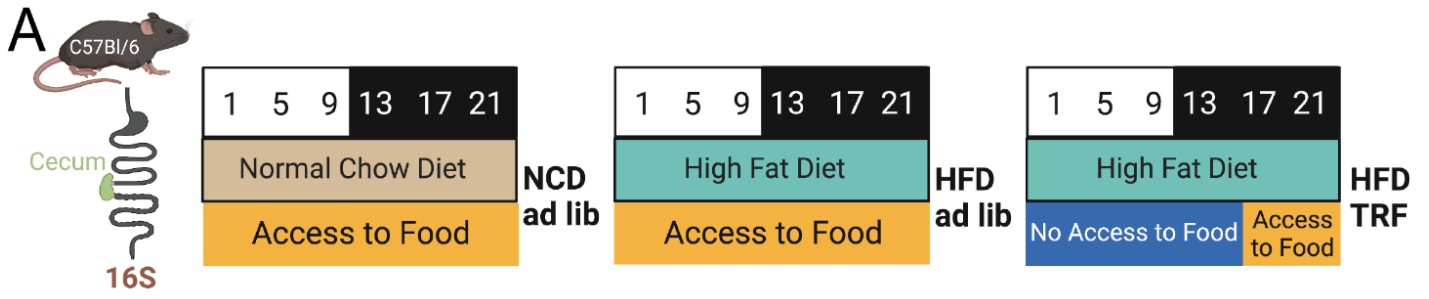
28

29 BCD increased during IHC exposure, with maximal divergence of the two groups at ZT-6 (Fig
30 1B, S2A, S2B). Maximal convergence (similarity) occurred at ZT-18, a half day after the
31 maximal divergence when both groups were experimentally similar. Subsequently, despite the
32 lack of the IHC intervention to separate the groups at that time, distances increased during ZT-
33 22 which suggests a potential microbiome response to host anticipatory stress. In addition, the
34 BCD values conformed to a diurnal pattern (MetaCycle, JTK method, $p < 0.001$). Next, we used
35 the distance matrix to create a heatmap of the average BCD between IHC and control mice for
36 each time point combination to determine all potential outcomes of the study (max = 0.351; min
37 = 0.082; range[max-min] = 0.269; mean = 0.232)(**Fig 1C**). The highest BCD (greatest
38 divergence) between the two groups was Air ZT-18 and IHC ZT-6, which are 12 hrs apart. The
39 lowest BCD (greatest convergence) between the two groups was Air ZT-22 and IHC ZT-18,
40 both of which occur during the dark phase and are only 4 hrs apart. The highest BCD is 2.8
41 times the lowest across all timepoints, while the within-condition distances for Air (4.6X) and
42 intermittent-hypoxia-hypercapnia (4.4X) dynamic ranges were greater (**Fig S2C-E**). The two
43 groups had overall significantly different microbiome compositions (PERMANOVA, all Air vs all
44 intermittent-hypoxia-hypercapnia, $p = 0.005$), with ZT-6 driving differences (PERMANOVA,
45 $p = 0.035$). All other timepoints showed the two groups as being non-significantly different
46 (PERMANOVA, $p > 0.05$). Thus, the beta-diversity of the two conditions can differ 2.8-fold
47 depending on the time of sample collection, potentially affecting the conclusions of the study.

48

49 To determine whether these different sampling times affect conclusions of the compositional
50 analysis while accounting for bias caused by relative compositional bias and unknown microbial
51 loads for each sample³¹, we examined log-ratios of biologically relevant phyla and families at
52 the time points corresponding to the highest and lowest BCD (**Fig 1D**). The impact of sample
53 collection time was most obvious at the phylum level, where the relative proportion of
54 Bacteroidetes to Verrucomicrobia shifted strikingly towards Bacteroidetes in mice under IHC
55 conditions at the highest BCD, but were indistinguishable at the lowest BCD. These differences

56 existed at the sub-phylum level as well. For example, the log-ratio balance of three
57 metabolically important families (Ruminococcaceae and S24-7, in relation to
58 Verrucomicrobiaceae) shifted significantly during maximal BCD, but the balance was similar
59 between experimental groups at the lowest BCD (**Fig 1E**). Thus, time of sample collection had
60 a significant effect on microbiome composition and would have affected the conclusions made
61 if only a single time point was performed.



64

65

66

67

68

69

70

71

72

73

74

75

76

77

78

79

80

81

82

83

84

85

86

87

88

89

90

91

92

Figure 2: Diet and Feeding Pattern Influence Sample Collection Time Results in the Cecum

A) Experimental design. High Fat Diet (HFD). Time restricted feeding (TRF) - mice were restricted to eating only between ZT13-ZT21. Time point ZT13 was collected before the switch to eating, and thus mice were fasted at this time point. Time points were taken every 4 hrs for 24hrs (n=3 mice/condition/time point from separate cages; 6 total time points).

B) BCD for cecal samples comparing HFD *ad libitum* vs HFD TRF. The dotted line is the average of all shown weighted UniFrac distances. Every point represents the calculated beta diversity distance between a control and experimental mouse. Within-group distances are shown in Figure S2. Significance was determined using a paired Mann-Whitney-Wilcoxon test two-sided with Bonferroni correction.

C) Heatmap of cecal BCD between HFD *ad libitum* and HFD TRF mice by time point. Replicates were collapsed by taking the mean. Highest highlighted in indigo, lowest highlighted in yellow.

D) BCD for cecal samples comparing NCD *ad libitum* vs HFD *ad libitum*. The dotted line is the average of all shown weighted UniFrac distances. Significance was determined using the Mann-Whitney-Wilcoxon test two-sided with Bonferroni correction.

E) Heatmap of cecal BCD between NCD *ad libitum* controls and HFD TRF mice by time point. Replicates were collapsed by taking the mean. Highest highlighted in indigo, lowest highlighted in yellow.

F) BCD for cecal samples comparing NCD *ad libitum* vs HFD TRF. The dotted line is the average of all shown weighted UniFrac distances. Significance was determined using the Mann-Whitney-Wilcoxon test two-sided with Bonferroni correction.

G) Heatmap of cecal BCD between NCD *ad libitum* controls and HFD TRF mice by time point. Replicates were collapsed by taking the mean. Highest highlighted in indigo, lowest highlighted in yellow. Notation: * = $p < 0.05$; ** = $p < 0.01$; *** = $p < 0.001$.

93

Diet and Feeding Pattern Influence Sample Collection Time Results

94

Since diet and feeding patterns induce large and reproducible effects on the gastrointestinal environment and resulting microniches³², we hypothesized that it would be less influenced by diurnal microbiome dynamics.

97

98

99

00

01

02

03

04

05

We pursued this hypothesis by analyzing the results from one of our previously published studies¹³ that investigated the effect of diet and feeding patterns on murine host physiology and the diurnal dynamics of the cecal microbiome. In mice on the same diet but with different feeding schedules, the BCD should change in response to differences in the feeding schedules of the experimental groups. In this experiment (**Fig 2A**), wild-type male C57Bl/6J mice were provided with either a normal chow diet (NCD) or a high-fat diet (HFD). Their access to food was either *ad libitum* (control; unrestricted access to food) or time-restricted (TRF). After 8 weeks, mice demonstrated a metabolic phenotype difference between HFD-*ad libitum* and

06 HFD-TRF mice¹³. Subgroups of mice were euthanized and the cecal contents were collected
07 every 4 hours for 24hrs to examine dynamic changes in microbiome composition.

08
09 Since HFD mice spread their caloric intake throughout the day and night, we would expect low
10 BCD between HFD-*ad libitum* and HFD-TRF mice during ZT-17 and ZT-21, when both groups
11 have access to food. We expect high BCD during ZT-1 to ZT-13, when one group has access
12 to food and the other group is forced to fast. As expected, the HFD-*ad libitum* to HFD-TRF BCD
13 was the highest at ZT-13 when the two groups would be the most divergent (**Fig 2B**). We also
14 saw that the HFD-*ad libitum* to HFD-TRF BCD was significantly lower at ZT-17. However, BCD
15 was significantly lower at ZT-5 than ZT-13, and indistinguishable from ZT-17, suggesting that
16 the intestinal environment is not solely influenced by the presence of a consumed diet in the
17 lumen. Furthermore, the heatmap comparing all the combinations of different collection times
18 shows a nearly 2.5-fold difference in peak and nadir BCD (max value = 0.242; min value=
19 0.098; range[max-min] = 0.144; mean = 0.159). There is a trend of the highest values being in
20 the lower left corner (**Fig 2C**), which indicates that light phase of HFD-TRF and dark phase
21 HFD-*ad libitum* have the greatest divergence. Thus, while the feeding schedule does impact
22 microbiome composition, there are also composition shifts not directly attributable to the
23 experimental design.

24
25 Next, we analyzed mice on different diets but with *ad libitum* access to food. Since diet
26 macronutrient profile is a large driver of microbiome differences between cohorts, we wanted to
27 determine if oscillatory dynamics of the gut microbiome could influence conclusions from
28 microbiome compositional analysis. We hypothesized that the greatest differences between the
29 two groups would be when they are eating different diets during the dark phase. Thus, we
30 would expect the highest BCD to occur during ZT-13 to ZT-21 when one group is eating NCD
31 and the other HFD. However, despite having radically different diets, the BCD from all of the
32 dark phase time points are relatively low indicating similarities between the microbiomes
33 ($p>0.05$)(**Fig 2D**). The biggest compositional shifts occurred at the transition from the light

34 phase to the dark phase. The time point of greatest divergence is at ZT-9 when NCD mice are
35 largely fasting, while HFD mice are likely eating at low to moderate levels. The heatmap shows
36 a 2.7-fold difference in the peak to nadir BCD and also confirms that NCD-*ad libitum* ZT-9 as
37 being different from all other HFD time points (max value = 1.038; min value= 0.386;
38 range[max-min] =0.652; mean = 0.611)(**Fig 2E**). This same pattern is seen in a separate
39 published dataset comparing NCD-*ad libitum* and an *ad libitum* milk-fat diet, that also yielded
40 higher BCD during the light phase (mean = 0.416) and lower BCD during the dark phase (mean
41 = 0.321) (**Fig S3**)¹¹. This indicates that the luminal environment differences caused by diet
42 consumption alone do not drive differences between experimental groups and that dynamic
43 oscillations of the luminal environment affect the interpretation of dietary changes, even with a
44 powerful determinant of microbiome composition such as the macronutrient profile of the diet
45

46 Next, we looked at a combination of both diet and feeding pattern differences, using NCD-*ad*
47 *libitum* to HFD-TRF BCD. Since diet has such a huge effect on the microbiome, we
48 hypothesized that the greatest differences between NCD-*ad libitum* and HFD-TRF would be
49 when they are both eating different diets during the dark phase since both groups would be
50 fasting during the light phase. Thus, we would expect the highest BCD to occur during ZT-17 or
51 ZT-21. Opposite to our hypothesis, we found that the highest BCD values were during the light
52 phase, especially ZT-9 (**Fig 2F**). Despite the two groups eating diets with vastly different
53 macronutrient profiles we still saw a significant decrease in BCD values when we would have
54 expected them to diverge. Thus, neither feeding/fasting rhythms nor diet alone drive these
55 temporal fluctuations. In addition, the diurnal pattern of NCD-*ad libitum* to HFD-TRF BCD
56 fluctuations most closely resembled the comparison between two different diets fed *ad libitum*
57 (**Fig 2D**). The heatmap confirms a similar pattern of NCD-*ad libitum* to HFD-TRF value
58 distribution across timepoints (**Fig 2G**) as NCD-*ad libitum* to HFD-*ad libitum* BCD (**Fig 2E**), with
59 a 2.7-fold difference in peak to nadir BCD (max value = 1.042; min value= 0.385; range[max-
60 min] =0.657; mean = 0.608). Since the mean BCD across timepoints is smaller

61 than the maximum BCD at any timepoint minus the minimum BCD at any timepoint, the effect
62 of sample collection time is thus larger than the effect size of a daily experimental intervention
63 or dietary changes.

64

65 Thus, while the feeding pattern and diet do appear to significantly influence microbiome
66 composition, their effects are not predictable on a timepoint-by-timepoint basis. Moreover, if an
67 experimental variable effect as large and reproducible as that imposed by diet is affected by
68 sample collection time, then experimental variables with smaller effects - such as medications,
69 metabolites, and genotype - are likely to be even more variable with respect to time.

70

71

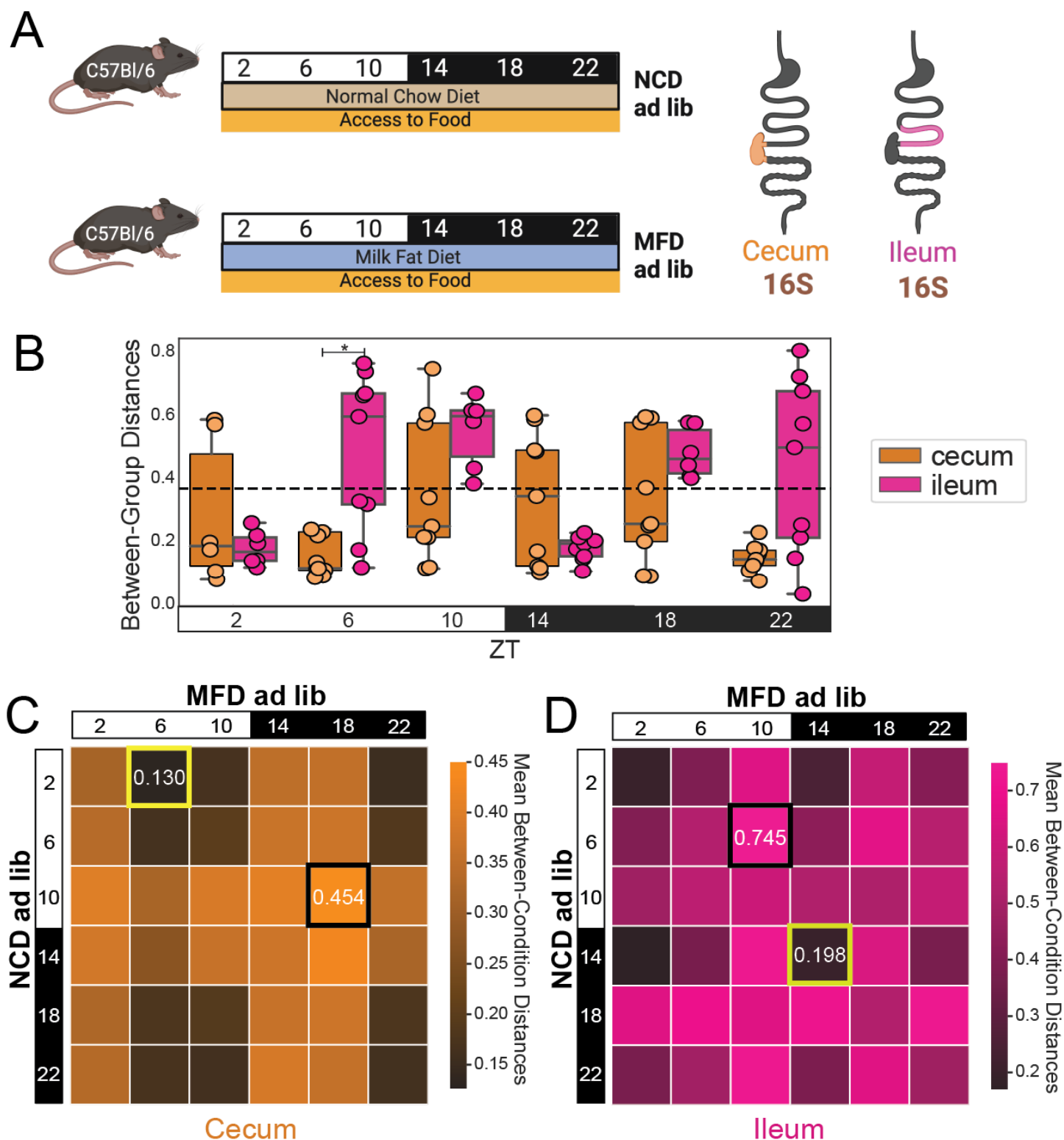


Figure 3: Gastrointestinal Region Influence Sample Collection Time Results

A) Experimental design. Mice were fed *ad libitum* with either normal chow diet (NCD) or high milk fat diet (MFD). After 5 weeks, cecal and ileal samples were collected every 4 hours for 24 hours (N=3 mice/condition/timepoint).

B) BCD for both ileal and cecal samples comparing NCD vs MFD. The dotted line is the average of all shown weighted UniFrac distances. Ileal vs Cecal pairwise significance was determined using Mann-Whitney-Wilcoxon test two-sided with Bonferroni correction.

72

73

74

75

76

77

78

79

80

81 **C)** Heatmap of BCD from cecal samples collected from NCD controls and HFD *ad libitum* mice
82 by time point. Replicates were collapsed by taking the mean. Highest highlighted in black,
83 lowest highlighted in yellow.

84 **D)** Heatmap of BCD from ileal samples collected from NCD controls and HFD TRF mice by
85 time point. Replicates were collapsed by taking the mean. Highest highlighted in black, lowest
86 highlighted in yellow.

87 Notation: * = $p < 0.05$; ** = $p < 0.01$; *** = $p < 0.001$.

88 89 90 91 *Gastrointestinal Region Influence Sample Collection Time Results*

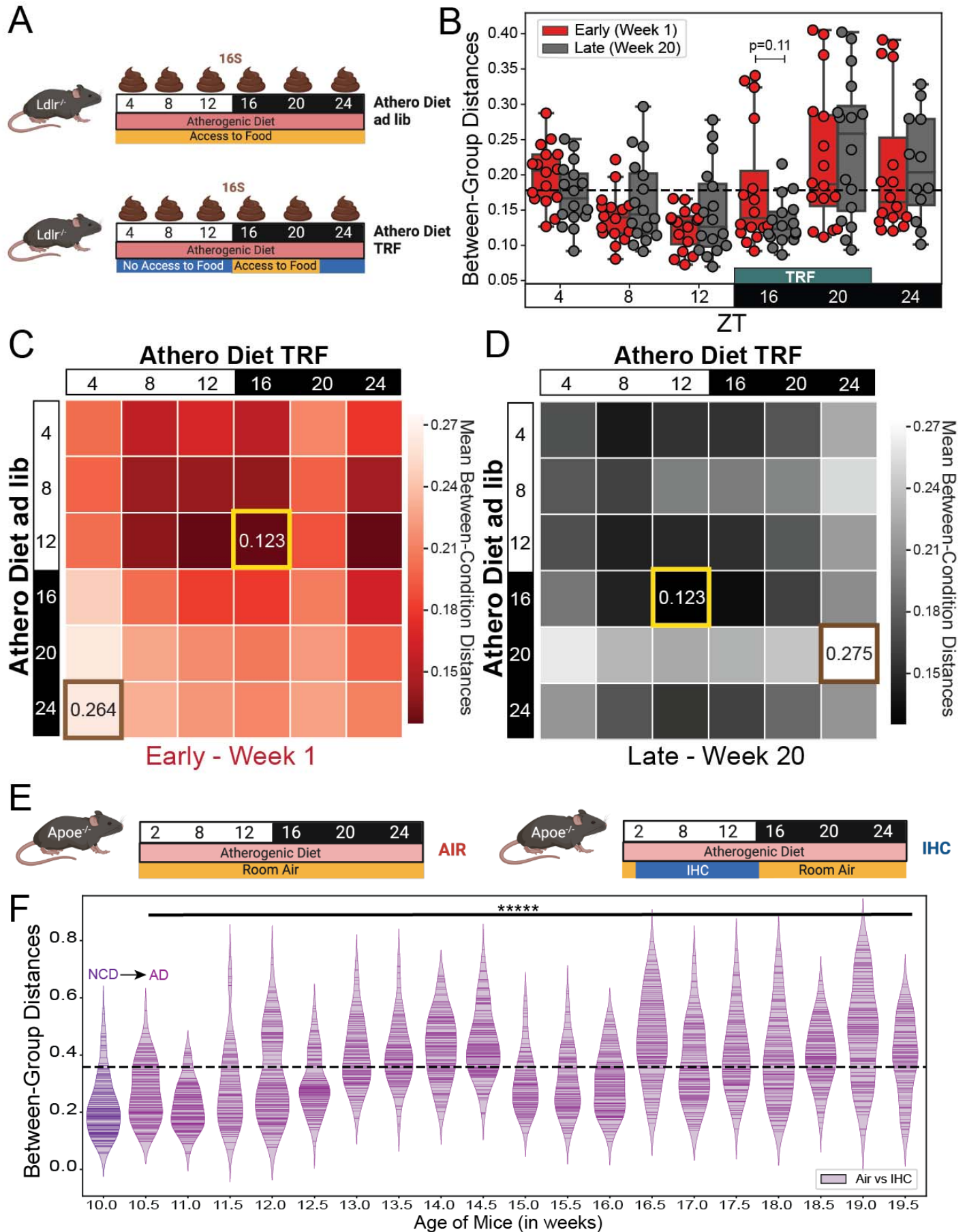
92 Though the microbiome of the large and small intestine are quite different³³, the diurnal
93 dynamics of the latter has only recently been characterized^{11,28,30}. We hypothesized that the
94 dynamic response to changes in diet are not the same between gastrointestinal regions. We
95 pursued this hypothesis by analyzing the results from a previously published study that
96 investigated the diurnal dynamics between different GI regions¹¹. Leone, et al. compared a
97 normal chow diet (NCD) to a high milk-fat diet (MFD) and examined the differences in the
98 microbiome communities of both the cecum and ileum during a 24hr period (**Fig 3A**). The
99 cecum and ileum had significantly different NCD-*ad libitum* to MFD-*ad libitum* BCD at ZT-6, in
00 the middle of the light phase (**Fig 3B**). Thus, while microbial dynamics was generally similar
01 between the two dietary conditions, there is at least one time point where time of sample
02 collection would have made a difference when comparing dietary responses in the two organs.
03 Heatmaps comparing BCD at different collection times for the ileal samples in this experiment
04 show opposite trends in the timepoints of highest and lowest similarity compared to cecal
05 samples (**Fig 3C, 3D**). While they had opposite trends in the timepoints that had the peak and
06 trough values, the magnitude of change between these values was relatively similar with a 3.5-
07 fold dynamic range in the cecum and 3.8-fold dynamic range in the ileum (**Fig 3C, 3D**). Thus,
08 ileal and cecal diurnal dynamics are not always identical and can, at times, be significantly
09 different.

10
11 Moreover, the Zarrinpar, et al. study (used for the analysis presented in Fig 2) also had 16S
12 rRNA amplicon sequencing from the ileum of the same mice that was recently published³⁰.

13 Similar to the Leone, et al. study, these results generally revealed different daily patterns in the

14 ileum (**Fig S4**) than in the cecum (**Fig 2**). The dynamic range of values present in the heatmaps
15 (highest BCD/lowest BCD) is approximately 3.0 in the ileum which is 15% higher than that in
16 the cecum (**Fig 2C, E, G vs Fig S4C, E, G**). Thus these reproducible results show that the
17 ileum responds differently over the course of the day than the cecum to the same conditions.

18
19 Finally, in a separate study, Wu, et al. investigated the effects of light exposure (i.e. 12h
20 light:12h dark [LD] vs. 24hr dark [DD]) on the jejunal and ileal microbiome of Balb/c mice. The
21 jejunal BCD was fairly consistent across all time points (**Fig S5**), suggesting that either this
22 intervention (i.e. light exposure), or the proximal gut which has a more sparse microbiome, do
23 not have the same dynamic shifts as the distal gut. Thus, though sampling time affects the
24 outcomes studies on the ileal microbiome, it does not seem to affect the outcomes of studies in
25 the jejunal samples. Furthermore, specific micro-niche sites (luminal and mucosal) within a
26 single gastrointestinal region can have unique temporal patterns that are not expected based
27 on experimental design alone (**Fig S6**). Together, these studies demonstrate different niches
28 within the same mice have different microbiome dynamics.



30 **Figure 4: Longitudinal changes in BCD over the course of a study.**

31 **A)** Experimental design and sample collection for TRF study. Mice were fed atherogenic diet
32 (AD) either *ad libitum* or TRF. Samples were collected every 4 hours for 24 hours (N=6
33 mice/condition/timepoint) after 1 week (early; pre-phenotype) and after 20 weeks (late; post-
34 phenotype).

35 **B)** BCD for *ad libitum* vs TRF conditions at the early (Week 1) and late (Week 20) timepoints.
36 Dotted line is the average of all of the weighted UniFrac distances. Significance is determined
37 using paired Wilcoxon rank-sum test.

38 **C)** BCD heatmap for early samples, and **D)** BCD heatmap for late samples. Replicates were
39 collapsed by taking the mean. Highest value is highlighted in tan and the lowest value is
40 highlighted in yellow.

41 **E)** Experimental design and sample collection for longitudinal IHC study. During the 10 weeks
42 of exposure to either normal room air or IHC conditions, samples were collected between ZT-3
43 and ZT-5 every 3-4 days for the duration of the study (n=12 mice/condition)..

44 **F)** BCD over the course of the IHC longitudinal study. Dotted line is the mean of all data shown.
45 The only comparison shown is between Age 10.5 weeks and 19.5 weeks; significance was
46 determined using paired Wilcoxon rank-sum tests.

47 Notation: * = p<0.05; ** = p<0.01; *** = p<0.001, ***** = p<0.00001.
48

49 *Longitudinal data is also susceptible to the influence of time*

50 Samples from the IHC experiment (**Fig 1**) were collected a week after the experiment started
51 with the intent to characterize the microbiome induced by the environmental exposure, prior to
52 the dysmetabolic phenotype affecting the gut microbiome. However, in the TRF study (**Fig 2**),
53 samples were collected after the phenotype was present. Since many microbiome experiments
54 do not report the rationale for the timing of their sample collection, we questioned whether the
55 length of experimental exposure time affects BCD. We performed a new study to examine
56 where BCD changes over the course of a long study. In this study (**Fig 4A**), the *Ldlr* knock-out
57 (*Ldlr*^{-/-}) mice received either *ad libitum* (control group) or TRF (experimental group) access to
58 the atherogenic diet. After 1 week (“early”; pre-phenotype development) and 20 weeks (“late”;
59 post-phenotype development), we collected stool every 4 hours for 24hrs to examine dynamic
60 changes in time point composition over the course of a long term experiment.

61
62 As shown in the previous studies, the time of sample collection during the day affects *ad libitum*
63 to TRF BCD distances. During both the early and late phase of the experiment, maximum
64 divergence *ad libitum* to TRF occurred during the dark period (highest mean BCD = ZT-20; **Fig**
65 **4B**). The BCD patterns conformed to a circadian-like pattern (p < 0.05, MetaCycle, JTK
66 method) during both the early and late collection, with nearly identical amplitude and minor

67 shifts in period and phase (**Fig S7**). Furthermore, the *ad libitum* to TRF BCD was not
68 significantly different between the early and late part of the study at any time point (**Fig 4B**),
69 demonstrating consistency within the study over time. The peak-to-trough ratios were also
70 nearly identical between the early (**Fig 4C**) and late collection (**Fig 4D**). In general, these
71 results demonstrate that longitudinal measures of BCD in a non-continuous intervention within
72 a single experiment are relatively consistent over time.

73
74 To investigate the effects of longitudinal exposure to a daily discrete external intervention, we
75 re-analyzed previously published data from our lab. In a previously published cohort of mice in
76 an experiment investigating changes in the microbiome in response to IHC conditions (similar
77 to **Fig 1A**) over several weeks until phenotype development (**Fig 4E**)³⁴. In this cohort, samples
78 were collected once per day, during ZT-3 to ZT-5 (i.e. the time of greatest divergence), twice
79 weekly over 10 weeks. While the control of IHC BCD fluctuated significantly during the course
80 of the experiment, there was a slow generally upward trend (**Fig 4F**). The groups did diverge
81 with significantly increased BCD over time (week 10.5 compared to week 19.5, $p = 2.56 \times 10^{-8}$,
82 paired Wilcoxon rank sum, test statistic 1126) as the phenotype developed. Linear regression
83 analysis resulted in a significant positive coefficient (p -value=6.72E-56, equation:
84 $y=0.016x+0.119$). By holding the time of collection constant, we observed a compositional shift
85 that occurred over time as the phenotype developed.

86
87 To determine if BCD is also relevant in longitudinal human studies, we re-analyzed a study that
88 investigated the effects of a four day longitudinal dietary change (i.e. plant to animal based diet)
89 in adult subjects on the speed and extent of shifts in the gut microbiome³⁵. When BCD was
90 similarly calculated using weighted UniFrac, the plant-to-animal diet BCD demonstrated that
91 the two groups did diverge the most on day 4 on condition (**Fig S8**). Since humans defecate on
92 average once a day, it is difficult to investigate diurnal dynamics as we have done in mice.
93 Recently, there have been attempts to reconstruct human diurnal rhythms using several
94 thousand human samples²⁵, which have also shown diurnal pattern disruption in a disease

95 state. Moreover, circadian rhythms are important from the beginning³⁶ until the end³⁷ of a
96 human's lifespan. Thus, time of sample collection is likely relevant in human samples as well.

98 **DISCUSSION**

99 Since 2014 there has been unequivocal and reproducible research from multiple labs
00 demonstrating diurnal fluctuations in the composition of the gut microbiome^{8,9,11–15,38,39}. Yet
01 neither sample collection time nor the rationale for the selection of this time is reported outside
02 of studies that are focused on diurnal fluctuations of the microbiome. Here, we show that the
03 conclusions of a microbiome research study are greatly dependent on the time of sample
04 collection, and that experimental and control groups undergo a cycle of diverging and
05 converging microbiome composition depending on the nature and timing of experimental
06 interventions. We hypothesize that host environmental differences at least partially drive these
07 changes in gastrointestinal luminal microniches and cause divergence between the two
08 conditions (BCD increase), converging again (BCD decrease) as the stress response fades.

09
10 Moreover, our findings suggest a fluidity of composition that is sensitive to a variety of host
11 factors including environmental exposures, diet, gut region, and luminal micro-niche. Our BCD
12 analysis confirms that, in some experiments, peak and trough distances can be as short as four
13 hours apart. That is, shifting the collection of one condition by four hours could yield
14 dramatically and potentially opposite conclusions on the similarity of the microbiome from
15 experimental and control groups. This time scale may still be an overestimate; we did not
16 collect stool samples at less than four-hour intervals. Thus, conflicting results from different
17 laboratories may be due to differences in phase of the circadian cycle at the time of collection,
18 timing relative to the experimental intervention, investigator chronotype (e.g. morning lark vs.
19 night owl), or vivarium lighting setup. In studies with discrete daily interventions such as those
20 described in this study, these differences can be quite pronounced. Based on our literature
21 review, since the vast majority (>90%) of microbiome studies do not report when samples are
22 collected, laboratories may unknowingly be collecting at suboptimal time points.

23

24 Furthermore, although it is likely a good assumption, due to convention and best utilization of
25 researcher time, the methods section of published papers does not confirm that the control and
26 experimental conditions are collected at the same time or within a specific window. In addition,
27 while optimization of collection time points could be accomplished by sampling at the time of
28 highest beta diversity for each group, caution should be taken not to artificially influence results.
29 It would also be prudent to establish standard collection times for experiments in a field to
30 ensure replication. To improve replicability, investigators should provide an explanation for the
31 collection time of samples as it relates to their scientific hypothesis with the knowledge that
32 anticipatory changes in the microbiome are quite pronounced.

33

34 While several of the studies used in this meta-analysis suffer from a low sample number, the
35 fact that findings are replicated in laboratories from several different institutions, over several
36 years, and with related study designs indicates this phenomenon is greatly understudied.
37 Additional confounders can include changes in water content of stool due to time from
38 defecation before sampling, which affects microbial density and richness as well as
39 metabolism. Furthermore, to improve sensitivity to time, a study that attempts to deconvolute
40 circadian rhythm and hours since sampling could be performed. While we have not had the
41 opportunity to examine this phenomenon in metabolomics, viromics, and more, it is possible
42 and even likely that circadian rhythms have impacts on these datasets as well. Examination of
43 this phenomenon in humans is difficult because of infrequent defecation rates, but could
44 potentially be recreated with large enough cohorts, such as KORA⁴⁰, American Gut Project⁴¹,
45 and FINRISK⁴². We propose that sample collection time be reported in ZT notation in future
46 studies going forward. Otherwise, if we are not controlling for host circadian rhythm time, it is
47 like trying to measure sea level rise while not knowing that tides or waves exist.

48

49 References and Notes

- 50 1. Schloss, P. D. Identifying and Overcoming Threats to Reproducibility, Replicability, Robustness, and
51 Generalizability in Microbiome Research. *mBio* **9**, e00525-18 (2018).
- 52 2. Gilbert, J. A. *et al.* Current understanding of the human microbiome. *Nat. Med.* **24**, 392–400 (2018).
- 53 3. Knight, R. *et al.* Best practices for analysing microbiomes. *Nat. Rev. Microbiol.* **16**, 410–422 (2018).
- 54 4. Ley, R. E. *et al.* Obesity alters gut microbial ecology. *Proc. Natl. Acad. Sci. U. S. A.* **102**, 11070–11075
55 (2005).
- 56 5. Deloris Alexander, A. *et al.* Quantitative PCR assays for mouse enteric flora reveal strain-dependent
57 differences in composition that are influenced by the microenvironment. *Mamm. Genome Off. J. Int.*
58 *Mamm. Genome Soc.* **17**, 1093–1104 (2006).
- 59 6. Friswell, M. K. *et al.* Site and strain-specific variation in gut microbiota profiles and metabolism in
60 experimental mice. *PloS One* **5**, e8584 (2010).
- 61 7. Sinha, R. *et al.* Assessment of variation in microbial community amplicon sequencing by the Microbiome
62 Quality Control (MBQC) project consortium. *Nat. Biotechnol.* **35**, 1077–1086 (2017).
- 63 8. Alvarez, Y., Glotfelty, L. G., Blank, N., Dohnalová, L. & Thaiss, C. A. The Microbiome as a Circadian
64 Coordinator of Metabolism. *Endocrinology* **161**, bqaa059 (2020).
- 65 9. Frazier, K. & Chang, E. B. Intersection of the Gut Microbiome and Circadian Rhythms in Metabolism.
66 *Trends Endocrinol. Metab. TEM* **31**, 25–36 (2020).
- 67 10. Heddes, M. *et al.* The intestinal clock drives the microbiome to maintain gastrointestinal homeostasis. *Nat.*
68 *Commun.* **13**, 6068 (2022).
- 69 11. Leone, V. *et al.* Effects of diurnal variation of gut microbes and high-fat feeding on host circadian clock
70 function and metabolism. *Cell Host Microbe* **17**, 681–689 (2015).
- 71 12. Thaiss, C. A. *et al.* Transkingdom control of microbiota diurnal oscillations promotes metabolic
72 homeostasis. *Cell* **159**, 514–529 (2014).
- 73 13. Zarrinpar, A., Chaix, A., Yooseph, S. & Panda, S. Diet and Feeding Pattern Affect the Diurnal Dynamics of
74 the Gut Microbiome. *Cell Metab.* **20**, 1006–1017 (2014).
- 75 14. Liang, X., Bushman, F. D. & FitzGerald, G. A. Rhythmicity of the intestinal microbiota is regulated by
76 gender and the host circadian clock. *Proc. Natl. Acad. Sci. U. S. A.* **112**, 10479–10484 (2015).

- 77 15. Thaiss, C. A. *et al.* Microbiota Diurnal Rhythmicity Programs Host Transcriptome Oscillations. *Cell* **167**,
78 1495-1510.e12 (2016).
- 79 16. Yu, F. *et al.* Deficiency of intestinal Bmal1 prevents obesity induced by high-fat feeding. *Nat. Commun.* **12**,
80 5323 (2021).
- 81 17. Leone, V. A. *et al.* Atypical behavioral and thermoregulatory circadian rhythms in mice lacking a
82 microbiome. *Sci. Rep.* **12**, 14491 (2022).
- 83 18. Mukherji, A., Kobiita, A., Ye, T. & Chambon, P. Homeostasis in intestinal epithelium is orchestrated by the
84 circadian clock and microbiota cues transduced by TLRs. *Cell* **153**, 812–827 (2013).
- 85 19. Weger, B. D. *et al.* The Mouse Microbiome Is Required for Sex-Specific Diurnal Rhythms of Gene
86 Expression and Metabolism. *Cell Metab.* **29**, 362-382.e8 (2019).
- 87 20. Kaczmarek, J. L., Musaad, S. M. & Holscher, H. D. Time of day and eating behaviors are associated with
88 the composition and function of the human gastrointestinal microbiota. *Am. J. Clin. Nutr.* **106**, 1220–1231
89 (2017).
- 90 21. Skarke, C. *et al.* A Pilot Characterization of the Human Chronobiome. *Sci. Rep.* **7**, 17141 (2017).
- 91 22. Collado, M. C. *et al.* Timing of food intake impacts daily rhythms of human salivary microbiota: a
92 randomized, crossover study. *FASEB J. Off. Publ. Fed. Am. Soc. Exp. Biol.* **32**, 2060–2072 (2018).
- 93 23. Kohn, J. N. *et al.* Differing salivary microbiome diversity, community and diurnal rhythmicity in association
94 with affective state and peripheral inflammation in adults. *Brain. Behav. Immun.* **87**, 591–602 (2020).
- 95 24. Takayasu, L. *et al.* Circadian oscillations of microbial and functional composition in the human salivary
96 microbiome. *DNA Res. Int. J. Rapid Publ. Rep. Genes Genomes* **24**, 261–270 (2017).
- 97 25. Reitmeier, S. *et al.* Arrhythmic Gut Microbiome Signatures Predict Risk of Type 2 Diabetes. *Cell Host*
98 *Microbe* **28**, 258-272.e6 (2020).
- 99 26. Nelson, R. J. *et al.* Time of day as a critical variable in biology. *BMC Biol.* **20**, 142 (2022).
- 00 27. Allaband, C. *et al.* Intermittent Hypoxia and Hypercapnia Alter Diurnal Rhythms of Luminal Gut
01 Microbiome and Metabolome. *mSystems* e0011621 (2021) doi:10.1128/mSystems.00116-21.
- 02 28. Tuganbaev, T. *et al.* Diet Diurnally Regulates Small Intestinal Microbiome-Epithelial-Immune Homeostasis
03 and Enteritis. *Cell* **182**, 1441-1459.e21 (2020).
- 04 29. Wu, G. *et al.* Light exposure influences the diurnal oscillation of gut microbiota in mice. *Biochem. Biophys.*

- 05 *Res. Commun.* **501**, 16–23 (2018).
- 06 30. Dantas Machado, A. C. *et al.* Diet and feeding pattern modulate diurnal dynamics of the ileal microbiome
07 and transcriptome. *Cell Rep.* **40**, 111008 (2022).
- 08 31. Morton, J. T. *et al.* Establishing microbial composition measurement standards with reference frames. *Nat.*
09 *Commun.* **10**, 2719 (2019).
- 10 32. Bisanz, J. E., Upadhyay, V., Turnbaugh, J. A., Ly, K. & Turnbaugh, P. J. Meta-Analysis Reveals
11 Reproducible Gut Microbiome Alterations in Response to a High-Fat Diet. *Cell Host Microbe* **26**, 265-
12 272.e4 (2019).
- 13 33. Baker, F. Normal Rumen Microflora and Microfauna of Cattle. *Nature* **149**, 220–220 (1942).
- 14 34. Tripathi, A. *et al.* Intermittent Hypoxia and Hypercapnia Reproducibly Change the Gut Microbiome and
15 Metabolome across Rodent Model Systems. *mSystems* **4**, (2019).
- 16 35. David, L. A. *et al.* Diet rapidly and reproducibly alters the human gut microbiome. *Nature* **505**, 559–563
17 (2014).
- 18 36. Hampel, D., Shahab-Ferdows, S., Islam, M. M., Peerson, J. M. & Allen, L. H. Vitamin Concentrations in
19 Human Milk Vary with Time within Feed, Circadian Rhythm, and Single-Dose Supplementation. *J. Nutr.*
20 **147**, 603–611 (2017).
- 21 37. Franceschi, C., Garagnani, P., Parini, P., Giuliani, C. & Santoro, A. Inflammaging: a new immune–
22 metabolic viewpoint for age-related diseases. *Nat. Rev. Endocrinol.* **14**, 576–590 (2018).
- 23 38. Uhr, G. T., Dohnalová, L. & Thaïss, C. A. The Dimension of Time in Host-Microbiome Interactions.
24 *mSystems* **4**, e00216-18 (2019).
- 25 39. Voigt, R. M. *et al.* Circadian disorganization alters intestinal microbiota. *PLoS One* **9**, e97500 (2014).
- 26 40. Reitmeier, S. *et al.* Arrhythmic Gut Microbiome Signatures Predict Risk of Type 2 Diabetes. *Cell Host*
27 *Microbe* **28**, 258-272.e6 (2020).
- 28 41. McDonald, D. *et al.* American Gut: an Open Platform for Citizen Science Microbiome Research.
29 *mSystems* **3**, e00031-18, /msystems/3/3/msys.00031-18.atom (2018).
- 30 42. Borodulin, K. *et al.* Cohort Profile: The National FINRISK Study. *Int. J. Epidemiol.* **47**, 696–696i (2018).
- 31 43. Ren, B. *et al.* Methionine Restriction Improves Gut Barrier Function by Reshaping Diurnal Rhythms of
32 Inflammation-Related Microbes in Aged Mice. *Front. Nutr.* **8**, 746592 (2021).

- 33 44. Beli, E., Prabakaran, S., Krishnan, P., Evans-Molina, C. & Grant, M. B. Loss of Diurnal Oscillatory
34 Rhythms in Gut Microbiota Correlates with Changes in Circulating Metabolites in Type 2 Diabetic db/db
35 Mice. *Nutrients* **11**, E2310 (2019).
- 36 45. Wang, L. *et al.* Methionine Restriction Regulates Cognitive Function in High-Fat Diet-Fed Mice: Roles of
37 Diurnal Rhythms of SCFAs Producing- and Inflammation-Related Microbes. *Mol. Nutr. Food Res.* **64**,
38 e2000190 (2020).
- 39 46. Guo, T. *et al.* Oolong Tea Polyphenols Ameliorate Circadian Rhythm of Intestinal Microbiome and Liver
40 Clock Genes in Mouse Model. *J. Agric. Food Chem.* **67**, 11969–11976 (2019).
- 41 47. Mistry, P. *et al.* Circadian influence on the microbiome improves heart failure outcomes. *J. Mol. Cell.*
42 *Cardiol.* **149**, 54–72 (2020).
- 43 48. Shao, Y. *et al.* Effects of sleeve gastrectomy on the composition and diurnal oscillation of gut microbiota
44 related to the metabolic improvements. *Surg. Obes. Relat. Dis. Off. J. Am. Soc. Bariatr. Surg.* **14**, 731–
45 739 (2018).
- 46 49. Bolyen, E. *et al.* Reproducible, interactive, scalable and extensible microbiome data science using QIIME
47 *2*. *Nat. Biotechnol.* **37**, 852–857 (2019).
- 48 50. Amir, A. *et al.* Deblur Rapidly Resolves Single-Nucleotide Community Sequence Patterns. *mSystems* **2**,
49 e00191-16 (2017).
- 50 51. Mirarab, S., Nguyen, N. & Warnow, T. SEPP: SATé-Enabled Phylogenetic Placement. in *Biocomputing*
51 *2012* 247–258 (WORLD SCIENTIFIC, 2011). doi:10.1142/9789814366496_0024.
- 52 52. Lozupone, C., Lladser, M. E., Knights, D., Stombaugh, J. & Knight, R. UniFrac: an effective distance
53 metric for microbial community comparison. *ISME J.* **5**, 169–172 (2011).
- 54 53. Piedrahita, J. A., Zhang, S. H., Hagaman, J. R., Oliver, P. M. & Maeda, N. Generation of mice carrying a
55 mutant apolipoprotein E gene inactivated by gene targeting in embryonic stem cells. *Proc. Natl. Acad. Sci.*
56 *U. S. A.* **89**, 4471–4475 (1992).
- 57 54. Hatori, M. *et al.* Time-Restricted Feeding without Reducing Caloric Intake Prevents Metabolic Diseases in
58 Mice Fed a High-Fat Diet. *Cell Metab.* **15**, 848–860 (2012).
- 59 55. Kohsaka, A. *et al.* High-fat diet disrupts behavioral and molecular circadian rhythms in mice. *Cell Metab.*
60 **6**, 414–421 (2007).

- 61 56. Chaix, A., Zarrinpar, A., Miu, P. & Panda, S. Time-restricted feeding is a preventative and therapeutic
62 intervention against diverse nutritional challenges. *Cell Metab.* **20**, 991–1005 (2014).
63
64

65 **Acknowledgements:**

66
67

68 **Funding:** CA is supported by NIH T32 OD017863. SFR is supported by the Soros Foundation. TK is
69 supported by NIH T32 GM719876. ACDM is supported by R01 HL148801-02S1. AZ is supported by
70 the American Heart Association Beginning Grant-in-Aid (16BGIA27760160) and NIH K08 DK102902,
71 R03 DK114536, R21 MH117780, R01 HL148801, R01 EB030134, R01HL157445, and U01
72 CA265719. All authors receive institutional support from NIH P30 DK120515, P30 DK063491, P30
73 CA014195, P50 AA011999, and UL1 TR001442.

74 **Author Contributions:**

75 Conceptualization: CA, AZ

76 Methodology: CA, EE, PCD, RK, AZ

77 Investigation: CA, AL, SFR, TK, HJ, MDT, ACDM, RAR

78 Visualization: CA, SFR, TK, HJ, MDT, ACDM, RAR

79 Funding acquisition: AZ

80 Project administration: AZ

81 Supervision: RK, AZ

82 Writing – original draft: CA, AL, SFR, TK, HJ, MDT, AZ

83 Writing – review & editing: CA, AL, SFR, TK, HJ, MDT, ACDM, RAR, EE, GGH, VAL, PCD, RK, AZ

84 **Competing Interests:** AZ is a co-founder and holds equity in Endure Biotherapeutics. PCD is an
85 advisor to Cybele and Co-founder and adviser to Ometa and Enveda with prior approval from UC-San
86 Diego.

87 **Data Availability:**

88 *Microbiome*

89 Figure 1 - (Allaband/Zarrinpar 2021) - EBI accession [ERP110592](#).

90 Figure 2 - (Zarrinpar/Panda 2014) - see supplemental excel file attached to source paper [PMID:
91 25470548].

92 Figure 3 - (Leone/Chang 2015) - The figshare accession number for the 16S amplicon sequence data:
93 <http://dx.doi.org/10.6084/m9.figshare.882928>

94 Figure 4 - (longitudinal circadian TRF) EBI: [ERP123226](#) ; (longitudinal IHC) - EBI accession
95 [ERP110592](#).

96 Figure S6 - (Tuganbaev/Elinav 2021) - ENA [PRJEB38869](#)

97 Figure S8 (David/Turnbaugh 2012) - [MG-RAST](#) project ID 6248.

98

99 *Python Notebooks:* <https://github.com/knightlab-analyses/dynamics>.

00

01 **List of Supplementary Materials:**

02 Materials and Methods

03 Fig S1 – S8

04

Supplementary Materials:

Materials and Methods

Fig S1 – S8

Materials and Methods:

Literature Review: (**Fig S1A-C**) We used the advanced search option from the four main journal groups, including the American Society for Microbiology (ASM) (<https://msystems.asm.org>), Science (<https://search.sciencemag.org>), Nature (<https://www.nature.com>), and Cell Press (<https://www.cell.com>). Searching for the term “microbiome” in all search fields (abstract, title, main text) during the year 2019 (Jan 1, 2019, to Dec 31, 2019) resulted in 586 articles from 9 journals; mSystems (ASM), Science Translational Medicine (Science), Science Signaling (Science), Science Advances (Science), Science Immunology (Science), Nature (Nature), Nature Microbiology (Nature), Nature Communications (Nature), Cell Host Microbe (Cell), Cell (Cell), Cell Reports (Cell), Cell Metabolism (Cell). Our collection sheet includes a total of 16 columns: journal group, journal, year, article title, DOI, PMID, first author, last author, Microbiome (yes/no), vivarium (yes/no), vivarium setting, sample host, sample type, collection time, time note, and collection time reason. Notation of collection time was recorded as follows: explicitly stated (“yes”; 8AM, ZT4, etc.), implicitly stated (“relative”; “before surgery”, “in the morning”, etc.), or unstated (“not provided”; “daily”, “once a week”, etc.).

Systematic Review: (**Fig S1D**) When searching for the keywords “circadian microbiome” AND “mice” in PubMed (<https://pubmed.ncbi.nlm.nih.gov/>) for articles published over an 8 year period (from 2014-2021), we found 79 articles that met our initial criteria. Only 66 of those were research articles, and of the remainder we found only 14 articles that contained 16S amplicon sequencing samples collected for more than 3 time points within a 24 or 48 hour period. Of these 14 studies, four had complete publicly available data on ENA/EBI. Of the remainder, four had incomplete datasets on ENA/EBI - ^{12,15,29,43} - and the rest were not publicly available. We then contacted the authors of all studies with missing or incomplete data and got the following

36 responses: four were unable to locate the missing data ^{2,12,14,15}, three could not provide data in
37 a format suitable for re-analysis ⁴³⁻⁴⁵, and three did not respond to repeated inquiries ⁴⁶⁻⁴⁸. This
38 resulted in the acquisition of five previously published datasets in a form suitable for re-analysis
39 ^{11,13,27-29}.

40
41 Microbiome: All of the data in this paper is a re-analysis of previously published 16S studies,
42 except for the data shown in Fig 4A-D (manuscript in preparation). Please refer to the
43 respective source papers for detailed methods, including sample handling and preliminary
44 processing. Raw data was procured from the respective data repositories as stated in the
45 source paper, typically the European Nucleotide Archive (ENA). This data was then run through
46 a standard QIIME2 pipeline (version 2021.8) ⁴⁹ as follows: samples demultiplexed, denoised via
47 deblur ⁵⁰ into the amplicon sequence variant (ASV) table, feature table underwent rarefaction
48 (as stated in source paper, see individual methods sections), representative sequences
49 underwent fragment insertion on Greengenes_13_8 via SATé-enabled phylogenetic placement
50 ⁵¹ to create the phylogenetic tree, and weighted UniFrac distances ⁵² were calculated. The
51 resulting weighted unifrac distance matrix was filtered for only between-condition distances
52 (BCD) as relevant to each study. Thus, using BCD values will show how similar the
53 microbiomes from the two conditions are to each other at any given time point. Since BCD
54 values are a subset of the Weighted UniFrac distance matrix values, both conditions (control
55 and experimental) are taken into account with each distance value shown. Changes in BCD will
56 demonstrate convergence (decreasing distance, increased similarity) or divergence (increasing
57 distance, increased dissimilarity) of the microbiome composition between two groups.
58 Circadian time notation is used throughout the paper to denote when samples were collected:
59 Zeitgeber Time (ZT) were lights on = ZT-0 . Data was visualized using custom python scripts,
60 which can be found at <https://github.com/knightlab-analyses/dynamics>.

61 **Figure 1, S2** - Briefly, two groups of ten-week-old male *Apoe*^{-/-} mice on C57BL/6J
62 background (002052; The Jackson Laboratory, Bar Harbor, ME) were individually housed in a
63 12-hour light:12-hour dark (12:12 L:D) vivarium. All mice were given an atherosclerotic-

64 promoting diet (1.25% cholesterol, 21% milk fat; 4.5 Kcal/g; TD.96121; Envigo-Teklad Madison,
65 WI) starting at 10 weeks of age until the end of the study. Mice in the experimental group were
66 exposed to intermittent hypoxia and hypercapnia (IHC) conditions that consisted of 4 min of
67 synchronized O₂ reduction from 21% to 8% and synchronized elevation of CO₂ from 0.5% to
68 8%, followed by alternating periods of 4 min of normoxia and normocapnia with 1- to 2-min
69 ramp intervals. IHC conditions were administered in a computer-controlled atmosphere
70 chamber (OxyCycler, Reming Bioinstruments, Redfield, NY) for 10 hours per day during the
71 lights on phase (ZT-2 to ZT-12) when mice are sleeping for 10 weeks. Mice in the control group
72 were exposed to normal room air (21% O₂ and 0.5% CO₂) during that same time period. After 6
73 days, fecal samples were collected every 4 hours for 24hrs (n = 4/group). 16S amplicon
74 sequencing was performed on the V4 region using standard protocols ([http://www.
75 earthmicrobiome.org/emp-standard-protocols/](http://www.earthmicrobiome.org/emp-standard-protocols/)). Rarefaction was set at 12,000 reads to control
76 for sequencing effort. Please see the source paper for additional details ^{27,53}.

77 **Figure 2, S4** - In short, wild-type SPF C57Bl/6 group-housed male mice (3 mice per
78 cage) were provided either normal chow diet (LabDiet 5001, 13.5% calories from fat, crude
79 fiber 5.1%) or a high fat diet (61% fat, HFD) and were fed in either an *ad libitum* manner, with
80 access to food at all times, or fed in time-restricted (TRF) manner. TRF mice were allowed
81 unrestricted access to HFD from ZT-13 to ZT-21. Mice on an NCD *ad libitum* diet (controls)
82 typically fast during the light phase and consume >80% of their diet during the dark phase ^{54,55}.
83 However, mice on a HFD *ad libitum* diet (diet-induced obesity) lose this diurnal feeding pattern
84 and spread their caloric intake throughout both the dark and light phase ^{54,55}. TRF of HFD
85 consolidates feeding to the nocturnal period by providing access to food in a narrow time
86 window, from ZT-13 to ZT-21 in this experiment, and is known to prevent the dysmetabolic
87 effects of HFD consumption ^{13,54,56}. After 8 weeks under these dietary conditions, mice were
88 euthanized every 4 hours for 24hrs and intestinal contents collected (n=3 mice/condition/time
89 point from separate cages; 6 time points). At ZT-13, fasted mice were euthanized prior to
90 feeding. 16S amplicon sequencing was performed on the V1-V3 region using the 454 platform
91 for cecal data. 16S amplicon sequencing was performed on the V4 region using Illumina

92 primers for ileal data. For both regions, rarefaction was set to 1,000 reads to control for
93 sequencing effort. Please see source paper for additional details ^{13,30}.

94 **Figure 3, S3** - The study was performed on 8 to 10 week old male C57Bl/6J SPF mice
95 that were maintained in a 12:12 L:D cycle vivarium. The mice were fed *ad libitum* with either a
96 normal chow diet (NCD, Harlan Teklad 2018S, 18% calories from fat, 3.5% crude fiber) or a
97 37.5% saturated milk fat diet (MFD, Harlan Teklad TD.97222 customized diet). Figure 3 - After
98 5 weeks of being on the NCD or MFD diet, the mice were sacrificed and the cecal and ileal
99 contents harvested every 4 hours for 24 hours (n = 3 mice/treatment); organ contents were
00 flash frozen and stored at -80°C. Figure S3 - After 5 weeks of being on the NCD or MFD diet,
01 fecal pellets were collected every 4 hours for 24 hours (n=3 mice/treatment); the fecal samples
02 were stored at -80°C. 16S amplicon sequencing was performed on the V4-V5 region using
03 standard protocols (<https://earthmicrobiome.org/protocols-and-standards/>) in a High-
04 Throughput Genome Analysis Core (Institute for Genomics & Systems Biology) at Argonne
05 National Laboratory. Rarefaction was set at 10,000 reads to control for sequencing effort.
06 Please see the source paper for additional details ¹¹.

07 **Figure S6** - This study was performed on 8 to 12-week old WT C57BL/6 mice that were
08 maintained in a 12:12 L:D cycle vivarium. The mice were fed a normal chow diet (NCD, Harlan
09 Teklad 2018S, 18% calories from fat, 3.5% crude fiber) *ad libitum* for 4 weeks prior to sample
10 collection. The mice were sacrificed and the luminal and mucosal small intestinal samples were
11 collected every 4 hours for 24 hours (except for ZT-8, n = 4-5 mice/time point). The samples
12 were frozen and stored at -80°C. 16S amplicon sequencing was performed on the V4 region of
13 the genome. Rarefaction was set to 4,200 reads to control sequencing effort. Please see the
14 source paper for additional details ²⁸.

15 **Figure 4A-D, S7** - This study was performed on 10 week old *Ldlr^{-/-}* mice (Jackson Labs)
16 which were fed a high fat, high cholesterol diet (Research Diets D12109i; Clinton/Cybulsky
17 high-fat rodent diet, regular casein, 1.25% added cholesterol, 0.5% sodium cholate). During the
18 experiment, mice were maintained in 12:12 L:D reverse light-cycled cabinets (Phenome
19 Technologies). Experimental and control groups were both on an atherogenic diet (AD), but

20 one group was fed *ad libitum* and the other TRF. In TRF, mice were only allowed to eat for 8
21 hours per day during the dark phase of the day between ZT-13 and ZT-21. Fecal samples were
22 collected every 4 hours for 24 hours (n=6 mice/condition) after 1 week (early; pre-phenotype)
23 and after 20 weeks (late; post-phenotype). 16S rRNA was performed on the V4 region using
24 the Earth Microbiome standard protocol (<https://earthmicrobiome.org/protocols-and-standards/>). Rarefaction was set at 11,498 reads to control for sequencing effort.

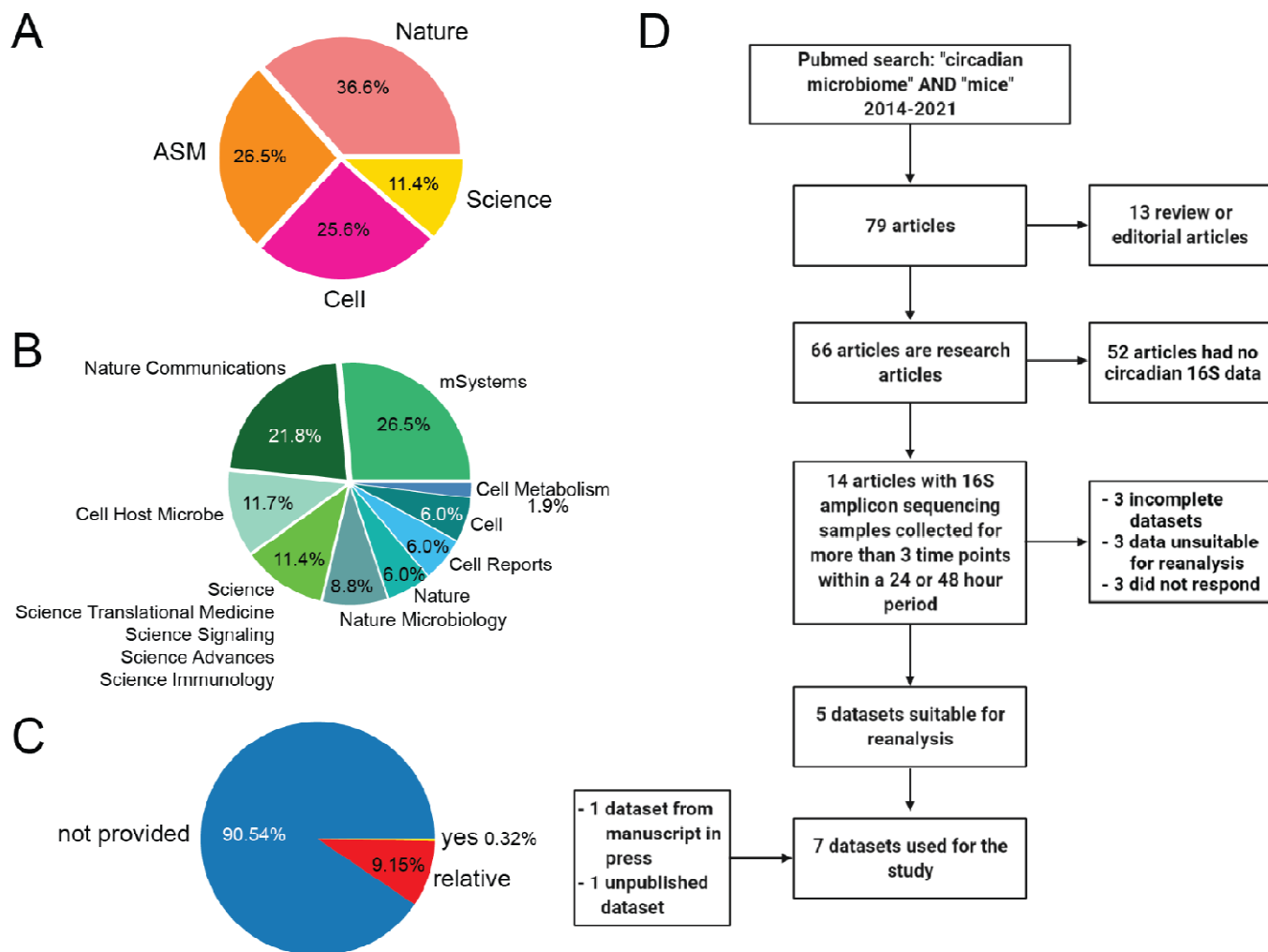
26 **Figure 4E-F** - In brief, two groups of ten-week-old male *Apoe*^{-/-} mice on C57BL/6J
27 background (002052; The Jackson Laboratory, Bar Harbor, ME) were kept in a 12:12 L:D
28 vivarium fed a normal chow diet (Teklad Rodent Diet 8604, 14% calories from fat, 4% crude
29 fiber) before they were switched to an atherosclerotic-promoting diet containing 1.25%
30 cholesterol and 21% milkfat (4.5 Kcal/g; TD.96121; Envigo-Teklad Madison, WI) starting at 10
31 weeks of age until the end of the study. Mice in the experimental group were exposed to IHC
32 conditions as described in Fig 1 and were administered in a computer-controlled atmosphere
33 chamber (OxyCycler, Reming Bioinstruments, Redfield, NY) for 10 hours per day during the
34 lights on phase (ZT2-ZT12) for 10 weeks. Mice in the control group were exposed to normal
35 room air (21% O₂ and 0.5% CO₂) during that same time period. Fecal samples were collected
36 twice a week for the duration of the study³⁴.

37 **Figure S5** - In brief, two groups of five-week-old male *Balb/c* mice were kept in either a
38 12:12 L:D or 0:24 L:D vivarium fed a normal chow diet (unspecified in methods) *ad libitum*.
39 After two weeks on condition, mice were anesthetized and sacrificed every 4 hours for 24hrs
40 (n= 4-5 mice per group per time point). Samples from intestinal lumen, mucous layer, epithelial
41 layer, and cecal contents were collected. The phenol-chloroform method was used for DNA
42 extraction. 16S rRNA amplicon sequencing was performed on the V4 region. Rarefaction was
43 set to 1085 reads to control sequencing effort, as performed in the source paper. Please refer
44 to the source paper for detailed study design and associated protocols²⁹.

45 **Figure S8** - A total of 12 human subjects underwent 5 days of dietary intervention,
46 either plant or animal based (n = 10 humans/condition). Patients that underwent both dietary
47 interventions did so with a 1 month wash-out period in between interventions (10/12 patients;

48 9/10 patients per intervention). Two patients only underwent a single intervention (2/12
49 patients; one plant, one animal; 1/10). Please refer to the source paper for detailed study
50 design and associated protocols ³⁵.

51 **Supplementary Figures:**



52

53 **Supplemental Figure 1: Circadian Microbiome Review**

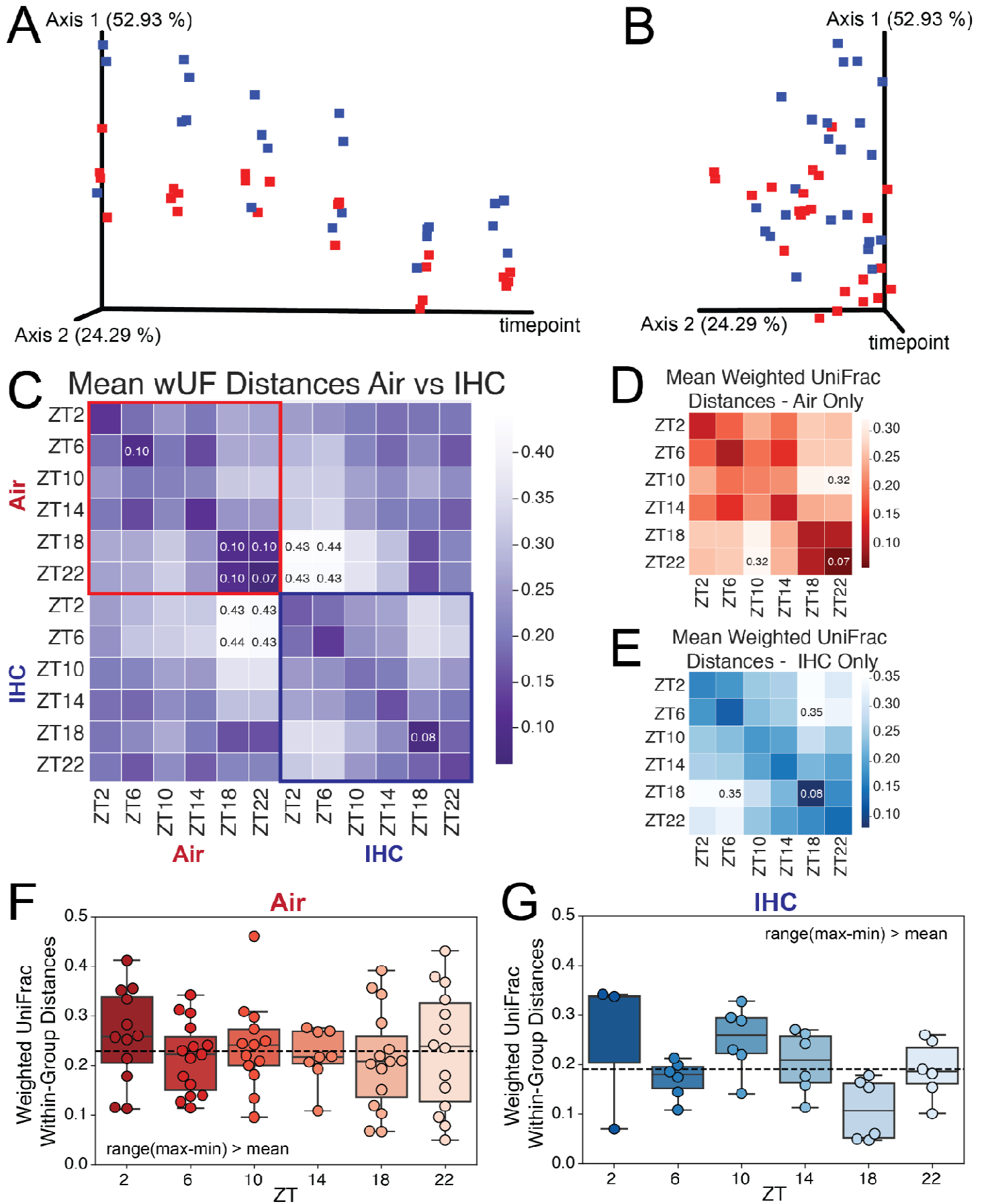
54 A) 2019 Literature Review Summary. Of the 586 articles containing microbiome (16S or
55 metagenomic) data, found as described in the methods section, the percentage of microbiome
56 articles from each of the publication groups.

57 B) The percentage of microbiome articles belonging to each individual journal in 2019. Because
58 the numerous individual journals from Science represented low percentages individually, they
59 were grouped together.

60 C) The percentage articles where collection time was explicitly stated (yes: 8 AM, ZT4, etc.),
61 implicitly stated (relative: “before surgery”, “in the morning”, etc.), or unstated (not provided:
62 “daily”, “once a week”, etc.).

63 D) Meta-Analysis Inclusion Criteria Flow Chart. Literature review resulting in the five previously
64 published datasets for meta-analysis ^{11,13,27-29}.

65



67 **Supplemental Figure 2: Diurnal IHC Weighted UniFrac PCoA and Within-Group**

68 **Distances**

69 A) Weighted UniFrac PCoA lateral view, with timepoints as one axis.

70 B) Weighted UniFrac PCoA stacked view (same as A but different orientation)

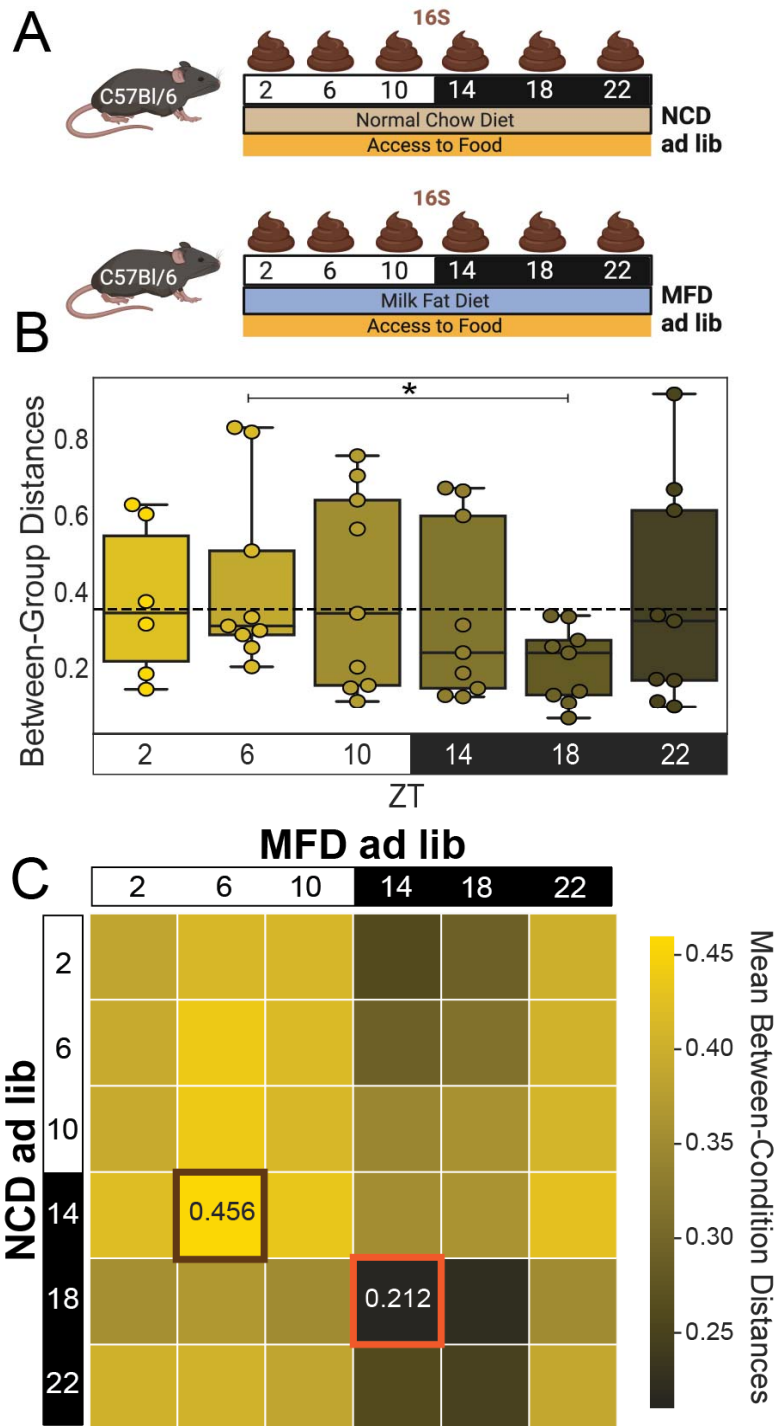
71 C) Full Weighted UniFrac distance matrix heatmap, averaged by timepoint. Red square
72 indicates within-control group (Air) distances. Blue square indicates within-control group (IHC)
73 distances. Top and bottom values labeled.

74 D) Heatmap of mean weighted UniFrac distance values by timepoint, calculated using only
75 control group (Air) samples. Top and bottom values labeled.

76 E) Heatmap of mean weighted UniFrac distance values by timepoint, calculated using only
77 experimental group (IHC) samples. Top and bottom values labeled.

78 F) Boxplot/scatterplot of within-group weighted UniFrac distance values for the control group
79 (Air). Zeros (ex. mouse1 ZT2 vs mouse1 ZT2 distance = 0) and duplicate values in the matrix
80 were dropped. Dotted line indicates the mean of all values presented. No significant differences
81 found.

82 G) Boxplot/scatterplot of within-group weighted UniFrac distance values for the experimental
83 group (IHC). Zeros (ex. mouse1 ZT2 vs mouse1 ZT2 distance = 0) and duplicate values in the
84 matrix were dropped. Dotted line indicates the mean of all values presented. No significant
85 differences found.



Supplemental Figure 3: Temporal changes in BCD between NCD and MFD

A) Experiment design. C57Bl/6 mice were fed NCD (control) vs MFD ad libitum for 5 weeks before fecal samples were collected for analysis. Samples were collected every 4 hours for 24 hours (N=3 mice/condition).

B) BCD for fecal samples comparing NCD vs MFD over 24hrs. The dotted line is the average of all shown weighted UniFrac distances. Significance was determined using the Mann-Whitney-Wilcoxon test two-sided with Bonferroni correction.

C) Heatmap of mean BCD from fecal samples collected from NCD vs MFD mice by time point over 24hrs. Highest highlighted in brown, lowest highlighted in orange.

86

87

88

89

90

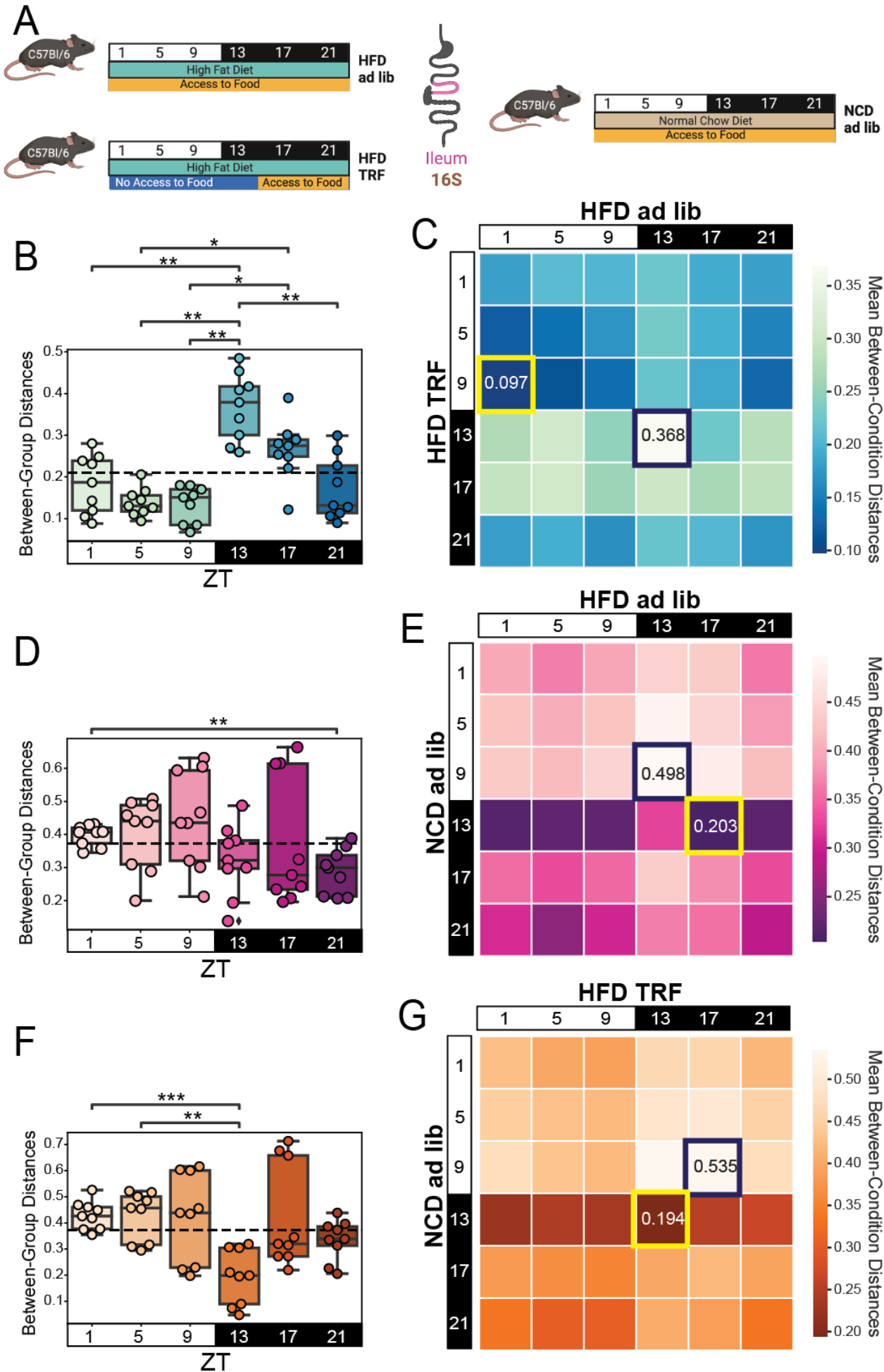
91

92

93

94

95



Supplemental Figure 4: Diet and Feeding Pattern Influence Sample Collection Time

Results in the Ileum

A) Experimental design. Mice used are the same as the ones in Fig 2 except this is unpublished ileal study. Mice were fed either ad libitum or TRF (ZT 13-21) access to HFD and compared to NCD ad libitum controls. After 8 weeks, ileal samples were collected every 4 hours for 24 hours (N=3 mice/condition).

B) BCD for ileum samples comparing HFD ad libitum vs HFD TRF. Dotted line is the average of all shown weighted UniFrac distances. Significance was determined using a paired Mann-Whitney-Wilcoxon test two-sided with Bonferroni correction.

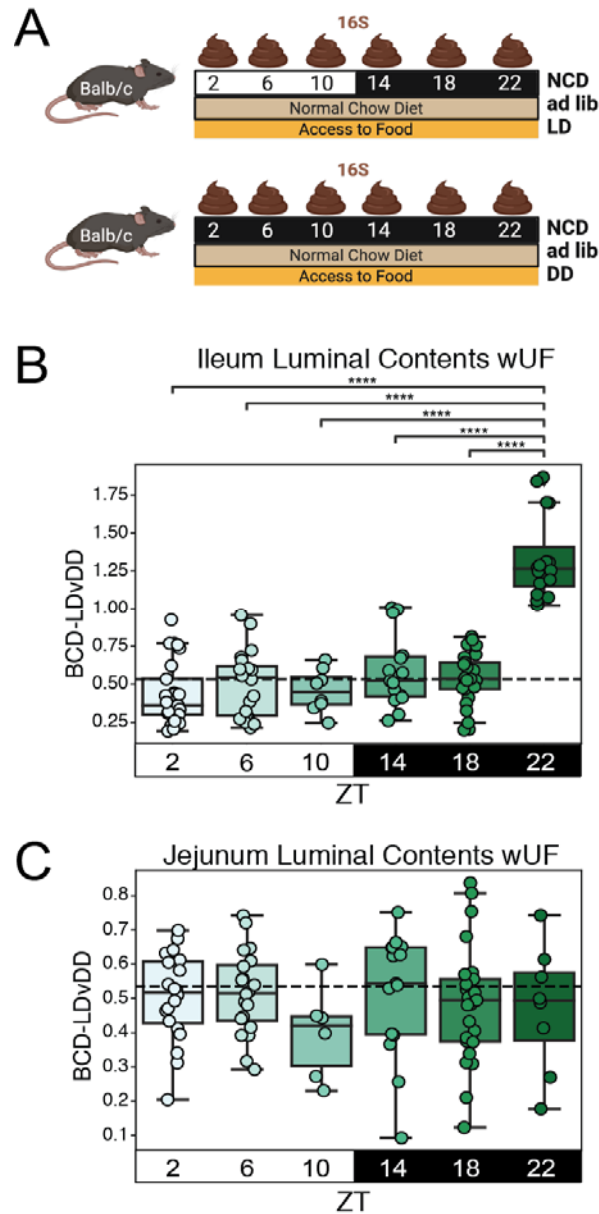
C) Heatmap of mean BCD from ileum samples collected from NCD controls and HFD TRF mice by time point. Highest highlighted in indigo, lowest highlighted in yellow.

D) BCD for ileal samples comparing NCD ad libitum vs HFD ad libitum. Dotted line is the average of all shown weighted UniFrac distances. Significance was determined using the Mann-Whitney-Wilcoxon test two-sided with Bonferroni correction.

E) Heatmap of mean BCD from ileal samples collected from NCD controls and HFD TRF mice by time point. Highest highlighted in indigo, lowest highlighted in yellow.

F) BCD for ileal samples comparing NCD ad libitum vs HFD TRF. Dotted line is the average of all shown weighted UniFrac distances. Significance was determined using the Mann-Whitney-Wilcoxon test two-sided with Bonferroni correction.

G) Heatmap of mean BCD from ileal samples collected from NCD controls and HFD TRF mice by time point. Highest highlighted in indigo, lowest highlighted in yellow.



Supplemental Figure 5: Irregular differences in diurnal rhythm patterns leads to generally minor shifts in BCD when comparing LD vs DD mice.

A) Experimental design. Balb/c mice were fed NCD ad libitum under 0:24 L:D (24hr darkness, DD) experimental conditions and compared to 12:12 L:D (LD) control conditions. After 2 weeks, mice from each group were euthanized every 4 hours for 24 hours (N=4-5 mice/condition) and samples were collected from the proximal small intestine (“jejunum”) and distal small intestine (“ileum”) contents.

B) BCD for luminal contents of proximal small intestine samples comparing LD to DD mice.

Dotted line is the average of all shown weighted UniFrac distances. Significance was determined using a paired Mann-Whitney-Wilcoxon test two-sided with Bonferroni correction.

C) BCD for luminal contents of distal small intestine samples comparing LD to DD mice. Dotted line is the average of all shown weighted UniFrac distances. Significance was determined using a paired Mann-Whitney-Wilcoxon test two-sided with Bonferroni correction.

19

20

21

22

23

24

25

26

27

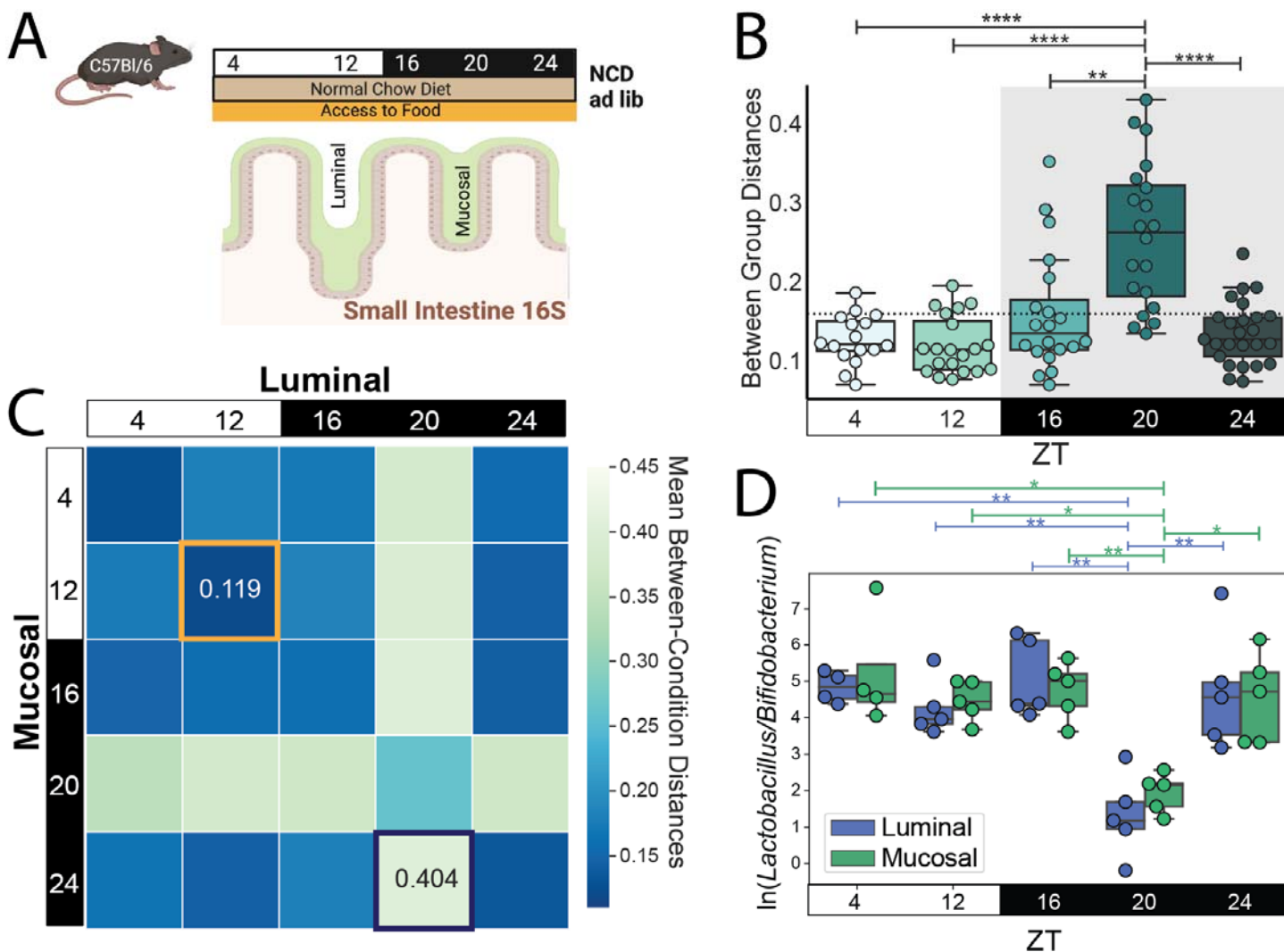
28

29

30

31

32



Supplemental Figure 6: Localized changes in BCD between luminal and mucosal contents.

A) Experimental design and sample collection for a local site study. Small intestinal samples were collected every 4 hours for 24 hours (N=4-5 mice/condition, skipping ZT8). Mice were fed *ad libitum* on the same diet (NCD) for 4 weeks before samples were taken.

B) BCD for luminal vs mucosal conditions. The dotted line is the average of all shown weighted UniFrac distances. Significance is determined using the Mann-Whitney-Wilcoxon test two-sided with Bonferroni correction.

C) Heatmap of mean BCD distances comparing luminal and mucosal by time point. Highest value highlighted in navy, lowest value highlighted in gold.

D) Experimentally relevant log ratio, highlighting the changes seen at ZT20.

Significance was determined using paired Wilcoxon rank-sum test. Notation: * = $p < 0.05$; ** = $p < 0.01$; *** = $p < 0.001$, **** = $p < 0.00001$.

33

34

35

36

37

38

39

40

41

42

43

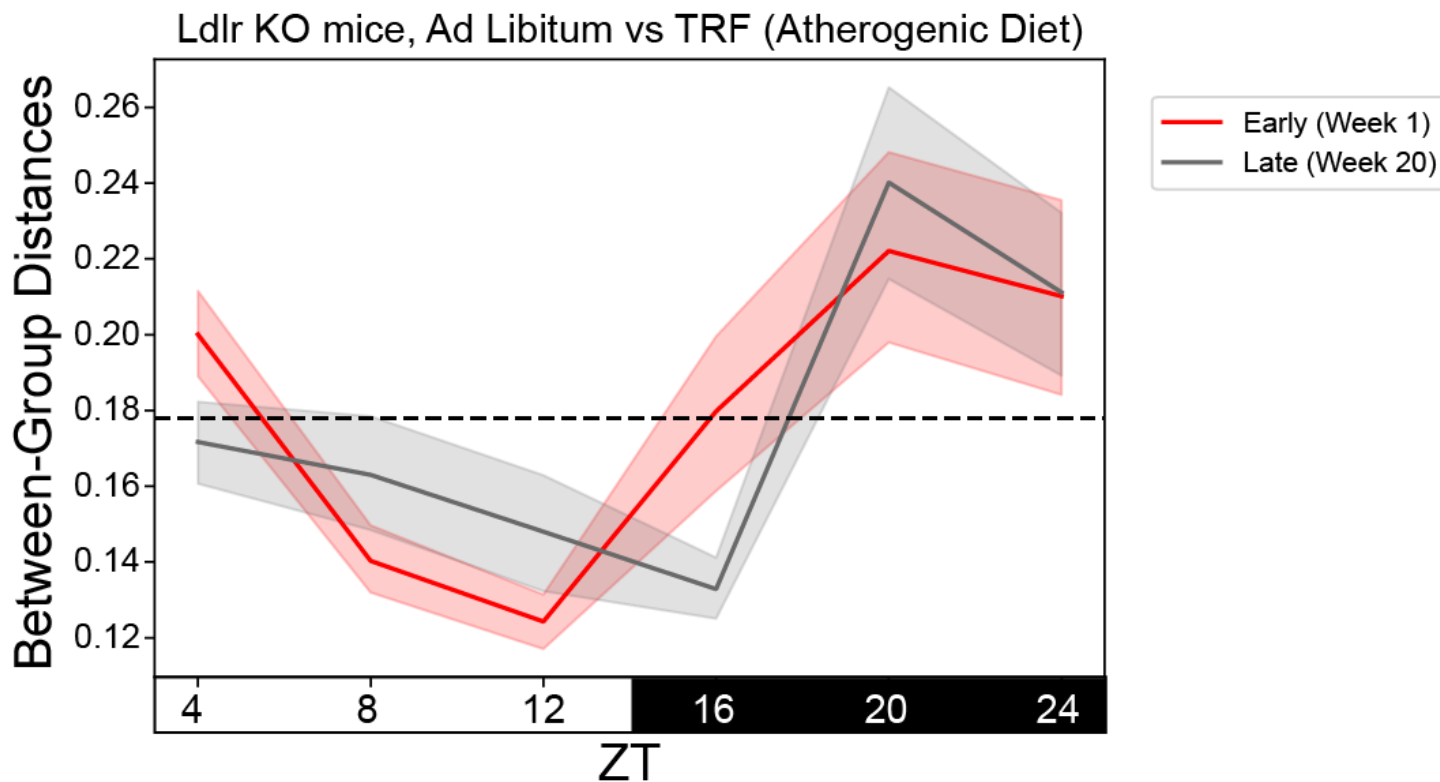
44

45

46

47

48



49

50

51

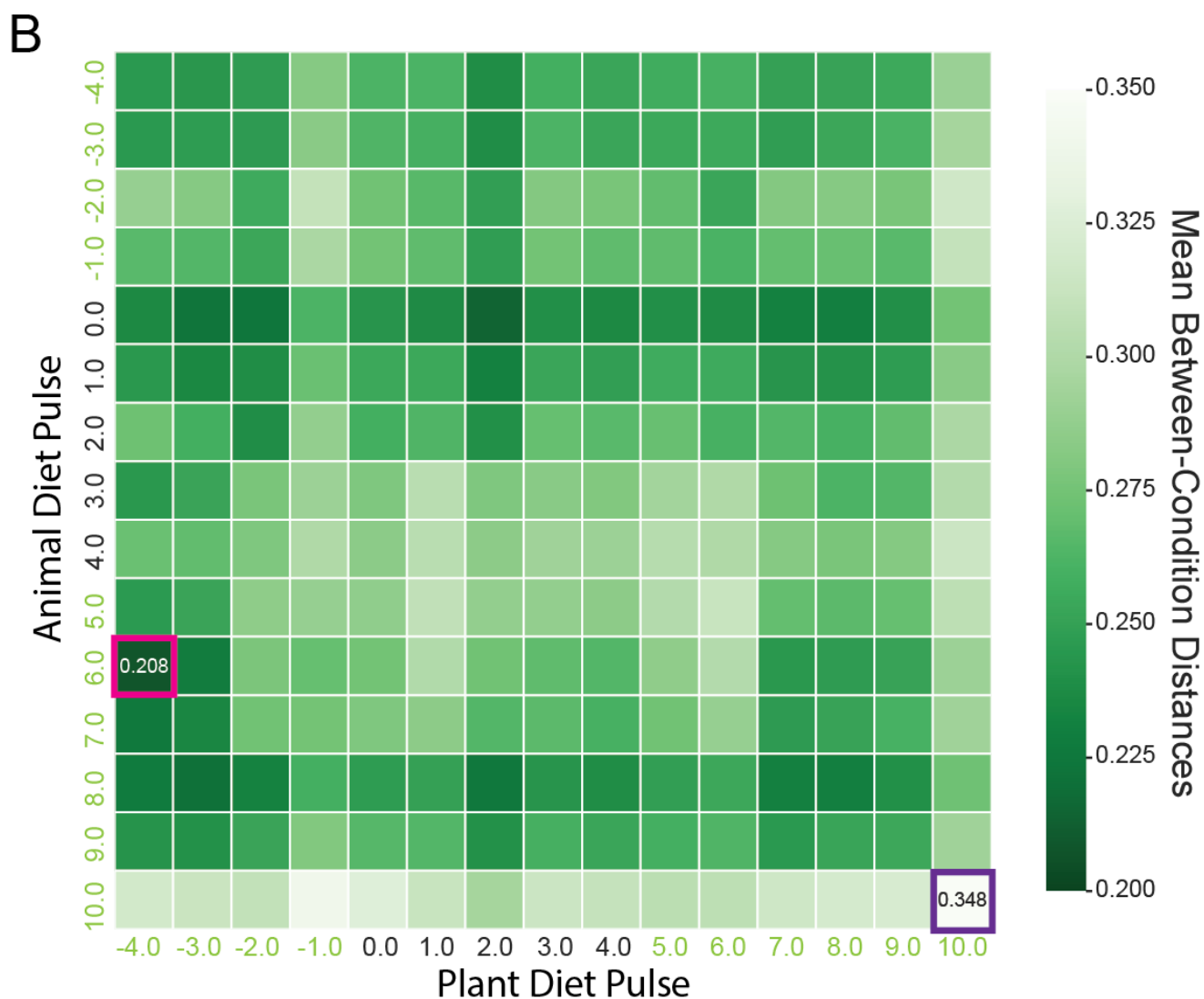
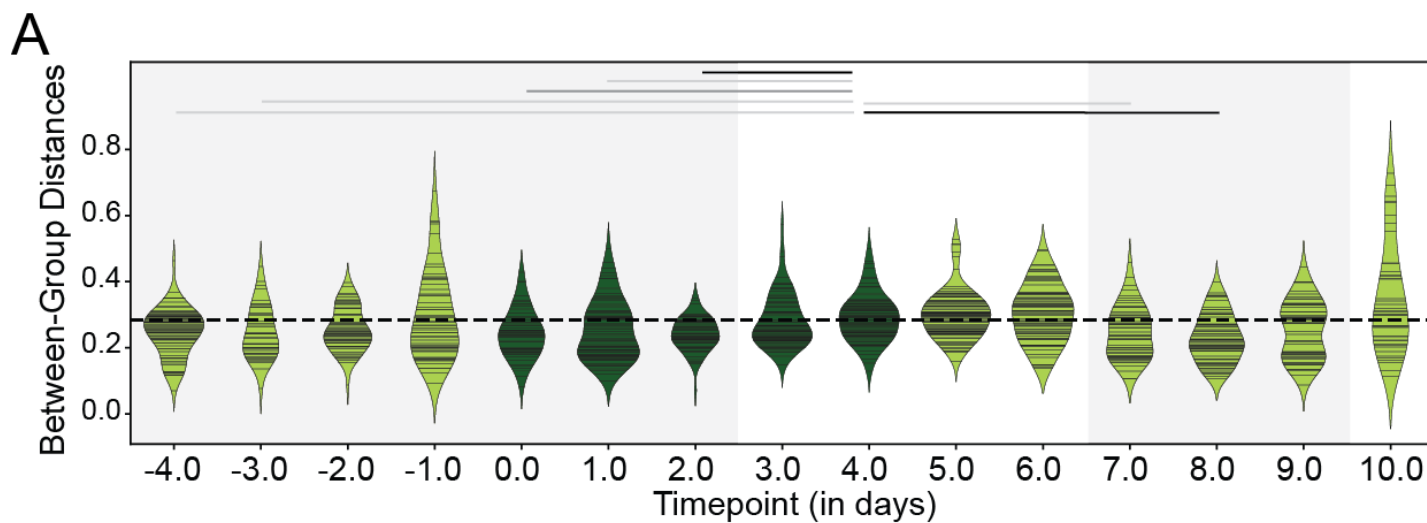
52

53

54

55

Supplemental Figure 7: Line plot of the same values presented in Fig 3B. The shaded region represents the standard error of the mean. The dotted line is the average of all of the weighted UniFrac distances used to calculate this plot. Some of the shifts seen between early and late values may be more easily visualized in this format. Early data: MetaCycle, meta2d/LS method, $p=0.0017$, amplitude=0.215, period=22.3, adjphase=18.0; Late Data: MetaCycle, meta2d/LS method, $p=0.0128$, amplitude=0.198, period=25.7, adjphase=16.2.



56

57

58

59

Supplemental Figure 8: Human data also shows that a non-continuous intervention affects beta diversity distances over the course of a study. Experimental design: The patients underwent 5 days of dietary intervention, either plant or animal-based (N=10

60 humans/condition): 9/10 patients underwent both dietary interventions after a 1 month wash-out
61 period, 1/10 patients only underwent a single intervention. See reference (36).
62 A) Weighted UniFrac β -diversity violin plot using between-group distances for plant and animal
63 dietary interventions. Each line on the violin plot is a sample value. The dotted line is the
64 average of all of the weighted UniFrac distances from the time points farthest from the
65 intervention (-4.0 and 10.0). The shaded area represents time points that are not significantly
66 different from each other, except as noted. Significance was determined using the Mann-
67 Whitney-Wilcoxon test two-sided with Bonferroni correction. Notation: light gray line = $p < 0.05$;
68 medium gray line = $p < 0.01$; black line = $p < 0.0001$.
69 B) Mean weighted UniFrac β -diversity distance heatmap using values calculated between plant
70 and animal dietary interventions by time point. Highest value highlighted in purple, lowest
71 highlighted in pink.
72