



Time-varying serum uric acid predicts new-onset atrial fibrillation in treated hypertensive patients. The LIFE Study

Eran S. Zacks¹, Ildri M. Stokke², Kristian Wachtell¹ , Darcy A. Hille³, Aud Høieggen² , Sverre E. Kjeldsen^{2,4} , Stevo Julius⁴, Eva Gerdts⁵ , Peter M. Okin¹, Richard B. Devereux^{1*}

¹Greenberg Division of Cardiology, Weill Cornell Medicine, New York, NY 10021, USA

²Departments of Cardiology and Nephrology, Ullevaal Hospital, University of Oslo, N-0407 Oslo, Norway

³Merck Research Laboratories, North Wales, PA 19454, USA

⁴Division of Cardiovascular Medicine, University of Michigan, Ann Arbor, MI 48109, USA

⁵Department of Clinical Science, University of Bergen, N-5020 Bergen, Norway

***Correspondence:** Richard B. Devereux, Greenberg Division of Cardiology, Weill Cornell Medicine, 525 East 68th Street, New York, NY 10021, USA. rbdevere@med.cornell.edu

Academic Editor: Carlos M. Ferrario, Wake Forest School of Medicine, USA

Received: November 18, 2021 **Accepted:** January 27, 2022 **Published:** March 17, 2022

Cite this article: Zacks ES, Stokke IM, Wachtell K, Hille DA, Høieggen A, Kjeldsen SE, et al. Time-varying serum uric acid predicts new-onset atrial fibrillation in treated hypertensive patients. The LIFE Study. *Explor Med.* 2022;3:128–38. <https://doi.org/10.37349/emed.2022.00079>

Abstract

Aim: The Losartan Intervention For Endpoint reduction in hypertension (LIFE) study showed less new-onset atrial fibrillation (AF) in hypertensive patients receiving losartan- vs. atenolol-based treatment. Because losartan reduces serum uric acid (SUA) levels, the aim of the present study was to investigate relations of SUA with new-onset AF in the study.

Methods: Hypertensive patients with electrocardiographic (ECG) left ventricular hypertrophy (LVH) and no prior AF ($n = 8,243$) were treated for 5.0 ± 0.4 years with losartan- or atenolol-based therapy. Associations of SUA with new-onset AF documented by Minnesota coding were assessed by Cox models using SUA and systolic blood pressure as time-varying covariates to take into account changes of SUA related to losartan or diuretic treatment, changes in renal function, and aging.

Results: Time-varying SUA was associated with new AF defined by Minnesota code [hazard ratio (HR) = 1.19 per $16.8 \mu\text{mol/L}$ (1 mg/dL), (95% confidence intervals (CIs), 1.12–1.26), $P < 0.0001$], independent of losartan treatment [HR = 0.75 (95% CIs, 0.61–0.93), $P = 0.007$], older age [HR = 1.95 per 7.0 years (95% CIs, 1.73–2.20), $P < 0.0001$], male sex [HR = 1.46 (95% CIs, 1.09–1.94), $P = 0.010$] and higher Cornell voltage-duration product [HR = 1.10 per 1,023 ms·mm (95% CIs, 1.01–1.21), $P = 0.034$]. Similar results were obtained in Cox models with SUA levels partitioned according to baseline quartiles and in which AF was defined by physician reports or by both Minnesota coding and physician reports.

Conclusions: In-treatment SUA is a strong predictor for new-onset AF in hypertensive patients, independent of effects of antihypertensive treatment, age, sex, and ECG-LVH. Further research is needed to clarify how uric acid may provoke AF ([ClinicalTrials.gov](https://clinicaltrials.gov) identifier: NCT00338260).



Keywords

Atrial fibrillation, blood pressure, hypertension, left ventricular hypertrophy, serum uric acid

Introduction

Atrial fibrillation (AF) is associated with increased rates of cardiovascular morbidity and mortality in treated hypertensive patients with left ventricular hypertrophy (LVH) [1]. The incidence of AF is increased in patients with uncontrolled hypertension [2], and antihypertensive treatment reduces new-onset AF [3, 4]. In view of evidence that heart rate control is at least as beneficial as rhythm control for preventing cardiovascular events in patients with AF [5, 6], beta-blockade is an accepted mainstay of AF treatment, despite lack of evidence that it is superior to other antihypertensive treatments in preventing or managing AF. Several animal and human studies suggest that renin-angiotensin blockade reduces the occurrence of AF [7–9], and one study suggested that the beneficial effect was independent of blood pressure (BP) reduction by angiotensin-converting enzyme inhibitors or angiotensin II receptor blockers [10].

A striking result of the Losartan Intervention For Endpoint reduction in hypertension (LIFE) study was a 42% lower rate of cardiovascular events on losartan- compared with atenolol-based treatment in patients with a history of AF [1]. This result and a 33% lower incidence of new-onset AF with losartan- compared with atenolol-based therapy occurred with similar BP lowering in both treatment arms [11]. Additional analyses suggest that this benefit of losartan is not fully accounted for by greater reduction of LVH and left atrial size in LIFE patients treated with losartan [12, 13].

Serum uric acid (SUA) has been independently related to cardiovascular events in a number of epidemiological studies [14–17], and the association seems to be stronger in women than in men and in black compared with white patients. Hyperuricemia has been shown to predict the development of hypertension [18], to be present in one-fourth of untreated hypertensive patients [18], and to be related to hypertension after adjustment for other risk factors and use of diuretics [19, 20]. SUA predicts stroke in the presence or absence of diabetes [21, 22] and is related to increased mortality in patients with congestive heart failure [23, 24] as well as to prevalent [25] and new onset AF [26–29]. The LIFE study was the first clinical trial to indicate that lowering SUA by a uricosuric drug such as losartan has a beneficial effect on cardiovascular outcome independently of changes in renal function or BP [30]. Because losartan reduces SUA levels, the present study aimed to investigate whether lower SUA levels during treatment were associated with less new-onset AF in the LIFE study.

Materials and methods

Materials

The LIFE study was a prospective, randomized, double-masked, parallel group study ($n = 9,193$) that evaluated the long-term effects of losartan- compared with atenolol-based antihypertensive therapy on cardiovascular morbidity and mortality in patients with hypertension and electrocardiographic (ECG)-LVH. The LIFE study design, organization, clinical measures, endpoint definitions, basis for choice of comparative agents, statistical power calculations, recruitment details, baseline characteristics, 1-year follow-up, and primary results have been published [31–32]. The LIFE patients with AF at study baseline ($n = 342$) had a lower rate of cardiovascular events with losartan- compared with atenolol-based treatment [1]. The present study was done in 8,243 LIFE participants with ECG-documented sinus rhythm, no history of AF, and available SUA measurements at study baseline.

As previously described, patients aged 55–80 years with previously treated or untreated hypertension and ECG signs of LVH were randomized to initial therapy with 50 mg/day of losartan or atenolol after 1–2 weeks on placebo if they had sitting systolic BP 160–200 mmHg and/or diastolic BP of 95–115 mmHg [32]. In both groups, hydrochlorothiazide 12.5 mg was added in case of insufficient BP lowering, after which study drug was increased to 100 mg/day and supplemented with hydrochlorothiazide 25 mg or additional antihypertensive therapy to reach target BP of < 140/90 mmHg. Patients were enrolled

from June 1995 to May 1997 and were followed ≥ 4 years (mean 5.0 ± 0.4 years) with regular visits. Sitting BP was recorded 24 h post-dose (range 22–26 h) and blood was obtained for SUA determination at baseline and at annual revisits during the study.

New-onset AF was documented by annual in-study ECGs by Minnesota codes including all types of AF [33] and determination of ECG-LVH by both Cornell voltage-duration product and Sokolow-Lyon voltage at a central ECG core laboratory as previously described [31, 32]. Supplemental analyses used incident AF reported by investigators during the follow-up period, either alone or in combination with new AF by Minnesota code ($n = 652$). Care of patients' new onset AF was left to the discretion of local investigators. Laboratory measurements of SUA were made at central laboratories for the Nordic countries (located in Brussels, Belgium) and in the United States that assured comparability of measurements by cross-validation.

Statistical analyses

The authors had full access to the data and take responsibility for its integrity. All authors have read and agreed to the manuscript as written. SPSS version 12.0 (SPSS, Inc., Chicago, IL, USA) was used for statistical analysis. Potential risk factors (including baseline clinical, demographic, and laboratory data) were assessed for association with new-onset AF. Cox proportional hazards models were used to compare hazard ratios (HRs) between study treatment allocation groups (losartan or atenolol) and to evaluate contributions of differences in the degree of LVH (both Cornell voltage-duration product and Sokolow-Lyon voltage as continuous variables), Framingham risk score, and other covariates. For each baseline characteristic, a univariate proportional hazards regression model was used to estimate the HR and its 95% confidence interval (CI). Variables without significant associations with new-onset AF were eliminated before developing multivariable models.

Multivariable analyses were performed using Cox regression models with inclusion of remaining baseline variables to identify those independently associated with the endpoints. Two-tailed $P < 0.05$ was considered significant. Multivariable Cox models were constructed using SUA and other variables re-measured at intervals during LIFE follow-up as continuous time-varying covariates to take into account variable changes of SUA from baseline among patients related to losartan treatment, changes in renal function, and aging. Supplemental Cox models using quartile ranges of SUA measurements at baseline were used to assess the predictive value of SUA levels in defined ranges for subsequent new AF during intensive antihypertensive treatment in LIFE. HRs were calculated to assess the risk of developing new-onset AF in patients whose SUA fell in the 1st through 4th quartiles at baseline using sex-specific 2nd, 3rd, and 4th SUA quartile ranges as follows: < 309 , 309–353, 354–408, and ≥ 409 $\mu\text{mol/L}$ for men; and < 255 , 255–297, 298–345, and ≥ 346 $\mu\text{mol/L}$ for women. The 1st through the 4th quartiles of baseline SUA contained $n = 2,033$, 2,070, 2,100, and 2,040 patients, respectively, at enrolment. These analyses were repeated using SUA within these sex-specific ranges at each visit during the LIFE study as a time-varying predictor of subsequent AF. A modified Kaplan-Meier plot [34] was constructed to illustrate the association between time-varying SUA in these ranges and the rate of new-onset AF.

Results

Patient selection and characteristics

The present study was performed in 8,243 LIFE participants with ECG-documented sinus rhythm, no history of AF, and available SUA measurements at study baseline. The eligible subjects had a mean age of 66.8 years and 46% were women. Patients treated with losartan had, compared with those on atenolol, similar baseline characteristics with respect to proportion of male sex (54% vs. 55%, respectively), mean age (66.8 years in each group), mean Framingham risk score (22.1 vs. 22.3, respectively), history of diabetes (13% in each group), and mean baseline systolic BP (174 mmHg in each group).

Prediction of new-onset AF

Assessment of univariate relations between baseline variables and new-onset AF (Table 1) identified significant positive associations with older age, non-black ethnicity, higher systolic BP, presence of LVH by

Cornell voltage-duration product criteria, prevalent coronary heart disease and cardiovascular disease, lower serum potassium, and higher urinary creatinine/albumin ratio. New-onset AF was not associated with baseline smoking habit, total cholesterol, high-density-lipoprotein (HDL)-cholesterol, or plasma glucose levels. Similarly, baseline SUA level did not predict subsequent incident AF ($P > 0.20$).

Table 1. New-onset AF in relation to baseline characteristics

Variable		New-onset AF, <i>n</i> (%)	HR (95% CIs)	<i>P</i>
Sex	Men	187 (5.0)	1.22 (0.99–1.50)	0.070
	Women	186 (4.1)		
Age, years	≥ 65	306 (6.0)	3.01 (2.30–3.94)	< 0.0001
	< 65	67 (2.1)		
Ethnicity	Black	8 (1.6)	0.34 (0.17–0.68)	0.001
	Non-Black	362 (4.7)		
Systolic BP, mmHg	> 173	228 (5.5)	1.62 (1.31–2.00)	< 0.0001
	≤ 173	145 (3.5)		
Cornell voltage-duration product	LVH+	273 (5.2)	1.61 (1.26–2.04)	< 0.0001
	LVH–	91 (3.3)		
Coronary heart disease	Present	106 (5.9)	1.91 (1.19–3.04)	0.006
	Absent	22 (3.2)		
Cardiovascular disease	Present	116 (5.8)	1.44 (1.15–1.80)	0.002
	Absent	257 (4.1)		
Serum potassium, mmol/L	< 4.1	165 (5.2)	1.30 (1.05–1.61)	0.019
	≥ 4.1	207 (4.1)		
Urine albumin/creatinine (log)	< 1.25	147 (3.7)	1.44 (1.16–1.78)	0.001
	≥ 1.25	208 (5.3)		

Because SUA and BP levels both changed substantially during the LIFE study, a further multivariable Cox model considered SUA and systolic BP as time-varying covariates. In this model, time-varying SUA strongly predicted subsequent new-onset AF by Minnesota code [HR = 1.19 per 16.8 $\mu\text{mol/L}$ (1 mg/dL), (95% CIs, 1.12–1.26), $P < 0.0001$] independent of the positive associations of new AF with higher Cornell voltage-duration product [HR = 1.10 per 1,023 ms·mm (95% CIs, 1.01–1.21), $P = 0.034$], older age [HR = 1.95 per 7.0 years (95% CIs, 1.73–2.20), $P < 0.0001$], male sex [HR = 1.46 (95% CIs, 1.09–1.94), $P = 0.010$], and the protective effect of losartan treatment [HR = 0.75 (95% CIs, 0.61–0.93), $P = 0.007$]. Systolic BP, Framingham risk score, and previous cardiovascular disease did not contribute significantly to this model.

SUA at baseline and at each annual follow-up visit was divided into four groups based on sex-specific quartile ranges of SUA at baseline, as described above. Additional univariate and multivariable Cox models that adjusted for the same covariates were used to compare SUA level in quartiles with new-onset AF. Patients were analyzed as belonging to the quartiles they belonged to from one year to the next thus the term “time-varying”. SUA in quartile 4 was strongly predictive of new-onset AF defined by Minnesota code in the univariate as well as in multivariate analyses (Table 2).

In a Cox model that considered sex-specific SUA level partitions and systolic BP as time-varying covariates and included time-varying Cornell voltage-duration product, Framingham risk score, and age as well as categorical variables of baseline cerebrovascular disease, gender, and treatment group, SUA in the 4th quartile strongly predicted new-onset AF by Minnesota Code [HR = 1.65 (95% CIs, 1.19–2.29), $P = 0.003$] independent of effects of systolic BP [HR = 0.92 per 14 mmHg (95% CIs, 0.84–1.00), $P = 0.044$], Cornell voltage-duration product [HR = 1.10 per 1,023 ms·mm (95% CIs, 1.01–1.21), $P = 0.033$], age [HR = 1.94 per 7.0 years (95% CIs, 1.72–2.19), $P \leq 0.0001$], male gender [HR = 1.44 (95% CIs, 1.08–1.92), $P = 0.014$], and atenolol treatment [HR = 1.35 (95% CIs, 1.10–1.66), $P = 0.005$]. Framingham risk score and cerebrovascular disease, which were significant in the univariate analysis, did not contribute significantly to this multivariable analysis (Table 3). Of note, SUA was second only to age as a strong predictor of new-onset AF, as shown by the Wald statistic of 30, a four-fold greater effect than that of the next most potent predictor.

Table 2. Univariate and multivariable Cox models for the prediction of subsequent new-onset AF by SUA quartiles using first quartile as reference

Variable	Number of events	Univariate			Multivariable		
		2nd Quartile HR (95% CI) P	3rd Quartile HR (95% CI) P	4th Quartile HR (95% CI) P	2nd Quartile HR (95% CI) P	3rd Quartile HR (95% CI) P	4th Quartile HR (95% CI) P
Baseline	371	1.24 (0.94–1.65) P = 0.130	1.00 (0.75–1.35) P = 0.980	1.09 (0.81–1.46) P = 0.567	1.21 (0.91–1.61) P = 0.195	0.95 (0.70–1.29) P = 0.736	1.03 (0.75–1.40) P = 0.872
Year 1	294	1.95 (1.31–2.91) P = 0.001	1.70 (1.12–2.58) P = 0.012	1.92 (1.32–2.80) P = 0.001	1.58 (1.09–2.30) P = 0.016	1.67 (1.16–2.40) P = 0.006	1.63 (1.15–2.31) P = 0.007
Year 2	242	1.40 (0.94–2.07) P = 0.095	1.25 (0.83–1.90) P = 0.290	1.70 (1.17–2.46) P = 0.005	1.50 (1.07–2.11) P = 0.02	1.11 (0.77–1.59) P = 0.579	1.53 (1.09–2.13) P = 0.013
Year 3	186	1.81 (1.05–3.12) P = 0.033	1.82 (1.05–3.16) P = 0.033	2.56 (1.56–4.21) P < 0.0001	1.42 (0.95–2.10) P = 0.084	1.29 (0.86–1.92) P = 0.215	1.69 (1.17–2.43) P = 0.005
Year 4	130	1.89 (0.96–3.70) P = 0.064	1.75 (0.88–3.46) P = 0.110	2.18 (1.18–4.04) P = 0.013	1.07 (0.70–1.66) P = 0.748	1.29 (0.85–1.94) P = 0.228	1.54 (1.06–2.24) P = 0.025
Year 5	50	1.52 (0.38–6.09) P = 0.552	2.53 (0.70–9.19) P = 0.159	4.26 (1.30–13.93) P = 0.017	1.18 (0.67–2.07) P = 0.569	1.25 (0.74–2.13) P = 0.407	2.10 (1.31–3.38) P = 0.002

1st through 4th SUA quartiles at baseline using sex-specific ranges: < 309, 309–353, 354–408, and ≥ 409 μmol/L for men and < 255, 255–297, 298–345, and ≥ 346 μmol/L for women. 1st quartile *n* = 2,033, 2nd quartile *n* = 2,070, 3rd quartile *n* = 2,100, 4th quartile *n* = 2,040. Multivariable models included age, sex, time-varying Cornell voltage-duration product, time-varying BP, Framingham risk score, cerebrovascular disease, and treatment status

Table 3. Univariate and multivariable Cox models for prediction of new-onset AF by sex-specific SUA quartiles and systolic BP as time-varying covariates

Variable	Number of subsequent events	Univariate		Multivariable		Wald
		HR (95% CI)	P	HR (95% CI)	P	
SUA 2nd Quartile	373	0.59 (0.43–0.80)	0.001	0.87 (0.58–1.30)	0.499	0.46
SUA 3rd Quartile	373	0.83 (0.65–1.07)	0.158	1.14 (0.79–1.64)	0.499	0.46
SUA 4th Quartile	373	1.84 (1.50–2.25)	< 0.001	1.65 (1.19–2.29)	0.003	8.88
Systolic BP, per SD	373	0.95 (0.87–1.04)	0.273	0.92 (0.84–1.00)	0.044	4.06
Cornell voltage-duration product, per SD	373	1.15 (1.05–1.25)	0.003	1.10 (1.01–1.21)	0.033	4.56
Framingham risk score, per SD	373	1.25 (1.14–1.38)	< 0.001	0.94 (0.82–1.08)	0.401	0.71
Cerebrovascular disease	373	1.50 (1.20–1.86)	< 0.001	1.20 (0.96–1.50)	0.114	2.50
Age, per SD	373	1.89 (1.69–2.12)	< 0.001	1.94 (1.72–2.20)	< 0.001	115.0
Male gender	373	1.27 (1.03–1.55)	0.022	1.44 (1.08–1.92)	0.014	6.01
Atenolol treatment	373	1.40 (1.14–1.72)	0.001	1.35 (1.10–1.66)	0.005	7.97

1st through 4th SUA quartiles at baseline using sex-specific ranges: < 309, 309–353, 354–408, and ≥ 409 μmol/L for men and < 255, 255–297, 298–345, and ≥ 346 μmol/L for women. 1st quartile *n* = 2,033, 2nd quartile *n* = 2,070, 3rd quartile *n* = 2,100, 4th quartile *n* = 2,040. SD: standard deviation

Additional time-varying covariate analyses comparing the 2nd, 3rd, and 4th sex specific quartiles of SUA with the 1st quartile separately as predictors of new-onset AF by Minnesota code, with adjustment for time-varying systolic BP, age, sex, prevalent cerebrovascular disease, Cornell voltage-duration product, and Framingham risk score at baseline in losartan-treated and atenolol-treated patients were performed. The HRs in losartan-treated patients [HR = 0.82 (95% CIs, 0.43–1.47), *P* = 0.50, HR = 1.12 (95% CIs, 0.65–1.92), *P* = 0.68, and HR = 1.88 (95% CIs, 1.17–3.01), *P* = 0.009] and in atenolol-treated patients [HR = 0.99 (95% CIs, 0.55–1.76), *P* = 0.96, HR = 1.18 (95% CIs, 0.69–2.20), *P* = 0.55, and HR = 1.59 (95% CIs, 0.92–2.58), *P* = 0.065] did not suggest a major inter-treatment difference in the association of higher SUA with AF. The use of diuretic was identical in the two treatment arms and did not influence the SUA-AF relationship.

In parallel Cox models that were adjusted for the same covariates, new-onset AF defined by physician reports (*n* = 531) was independently predicted by time-varying SUA level [HR = 1.10 per 16.8 μmol/L (1 mg/dL), (95% CIs, 1.04–1.16)], as was the first occurrence of AF defined by either Minnesota code or physician reports (*n* = 644) [HR = 1.11 per 16.8 μmol/L (1 mg/dL), (95% CIs, 1.06–1.16), both *P* < 0.0001].

In a parallel Cox model that adjusted for the same covariates, new-onset AF defined by physician reports ($n = 535$) was higher in the 4th quartile of time-varying SUA level [HR = 1.40 (95% CIs, 1.07–1.83), $P = 0.015$] independent of effects of history of cerebrovascular disease [HR = 1.30 (95% CIs, 1.08–1.56), $P = 0.006$], age [HR = 1.65 per 7.0 years (95% CIs, 1.50–1.82), $P \leq 0.0001$], and male sex [HR = 1.51 (95% CIs, 1.19–1.91), $P = 0.001$]. Higher systolic BP, Cornell voltage-duration product, Framingham risk score, and treatment with losartan did not contribute significantly to this multivariable analysis. In another Cox model that adjusted for the same covariates (Figure 1), new-onset AF defined by either Minnesota code or physician reports ($n = 652$) was higher in the 4th quartile of time-varying SUA level [HR = 1.40 (95% CIs, 1.10–1.79), $P = 0.007$] independently of effects of greater age [HR = 1.67 per 7.0 years (95% CIs, 1.53–1.83), $P \leq 0.0001$], male sex [HR = 1.45 (95% CIs, 1.17–1.80), $P = 0.001$], and history of cerebrovascular disease [HR = 1.32 (95% CIs, 1.11–1.56), $P = 0.001$]. The Cornell voltage-duration product, higher systolic BP, Framingham risk score, and losartan treatment did not contribute significantly to this multivariable analysis.

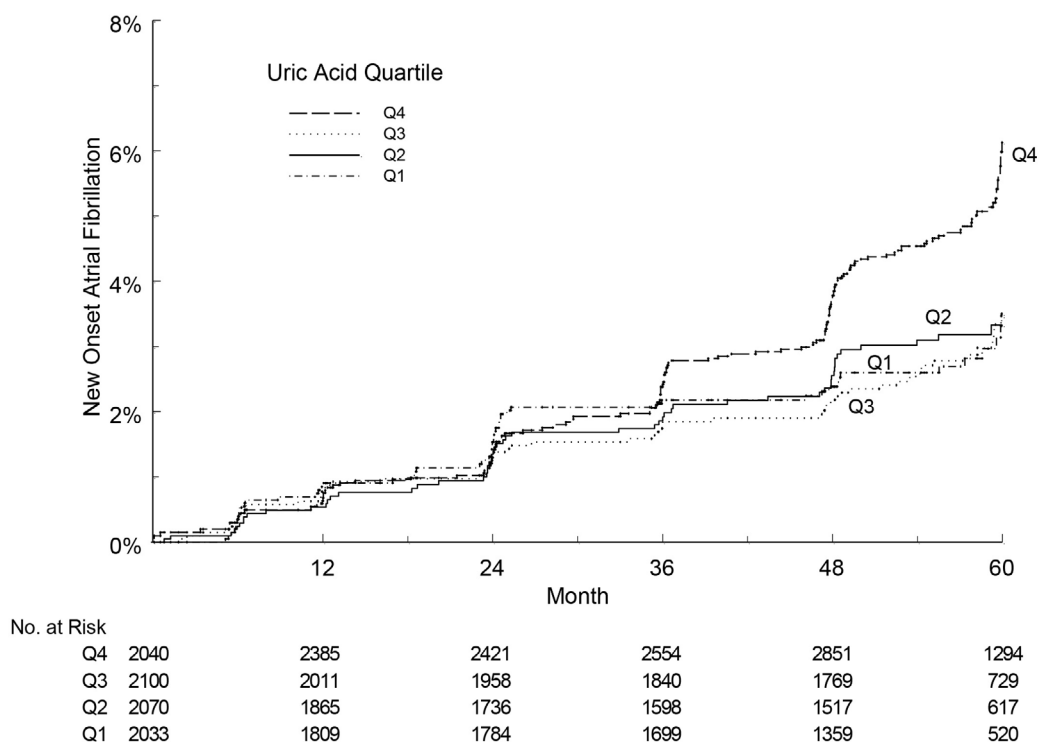


Figure 1. The incidence of new-onset AF (vertical axis) was higher in the 4th quartile than in lower quartiles of sex-specific SUA during five years of antihypertensive treatment (horizontal axis) as illustrated by a modified Kaplan-Meier plot. 1st through 4th SUA quartiles at baseline using sex-specific ranges: < 309, 309–353, 354–408, and ≥ 409 $\mu\text{mol/L}$ for men and < 255, 255–297, 298–345, and ≥ 346 $\mu\text{mol/L}$ for women. 1st quartile $n = 2,033$, 2nd quartile $n = 2,070$, 3rd quartile $n = 2,100$, 4th quartile $n = 2,040$

Discussion

The present study visualized a strong relationship between time-varying SUA levels during antihypertensive treatment and new-onset AF in elderly patients with LVH. This relation between SUA and new-onset AF was present in the patients with new onset AF discovered by annual ECG and Minnesota coding, in patients reported in the adverse event data base, and when the data bases were combined. Because adverse events were not adjudicated by the endpoint committee, the two databases were not merged for all analyses. However, in as much as the results came out more or less identical compared to the incident AF taken from the ECG database, the investigators had reported new-onset AF correctly. The consistent findings irrespective of ECG detection, adverse event reports or combination of the two databases point to a strong relationship between SUA and new-onset AF.

Various mechanisms have been proposed for the effects of SUA on cardiovascular disease outcomes. SUA level is closely related to renal function and renal blood flow and may be a marker of impaired renal

function. Until the beginning of this century moderately elevated SUA levels were not thought to induce renal disease. However, experimental studies suggest that induction of moderate hyperuricemia in rats causes hypertension, intra-renal arterial disease, and impaired renal function [35–38]. The hyperuricemia-associated hypertension was reversed by allopurinol, a drug that inhibits the conversion of oxalate to SUA, and by enalapril, an angiotensin-converting enzyme inhibitor. In a double blind, placebo-controlled crossover trial in 30 adolescents with hyperuricemia and hypertension, allopurinol was associated with significant reduction in office and ambulatory BP [39].

Hyperuricemia is also associated with increased platelet aggregation [40] and elevated whole blood viscosity [41]. Anker and coworkers suggested that hyperuricemia is a marker of impaired oxidative metabolism, activation of inflammatory cytokines, reduced vascular function, and even indicates a poor prognosis in heart failure [23]. Several studies have demonstrated that allopurinol improves endothelial function and peripheral blood flow in patients with type 2 diabetes, congestive heart failure [24], and in smokers [42]. Other studies suggest that SUA may affect the risk of cardiovascular disease through pro-oxidant or antioxidant effects [43, 44].

Multiple clinical studies have established a role for SUA as an independent risk factor for cardiovascular and cerebrovascular disease in various populations and for morbidity and mortality in high-risk populations with known cardiovascular and cerebrovascular disease [14, 15, 45–47] or hypertension [48]. The present study is linking higher SUA with new-onset AF in hypertensive patients who remain at high risk despite aggressive antihypertensive treatment. Previous documentation of high rates of stroke and other cardiovascular events in hypertensive patients with AF provides a hitherto unrecognized pathway via which adverse cardiovascular effects of SUA may be mediated.

Unlike prior studies of the relationship between SUA and cardiovascular outcomes that have restricted analysis to baseline measurements of SUA, the LIFE study measured SUA annually throughout the trial. This design allowed the analysis to take into account the time-varying levels of SUA and BP, variables that were affected by treatment, changes in renal function, and other factors, thereby revealing a substantially stronger relation of SUA levels to new-onset AF than could be detected by baseline measurements of SUA alone. Additionally, analyses were conducted using sex-specific partitions of SUA, based on the known sex difference in SUA levels. The predictive value of SUA in the highest quartile for new-onset AF remained strong even when sex-based partitions were used. There was a 33% reduction in the incidence of new-onset AF with losartan-based therapy compared to atenolol-based therapy with similar BP lowering in both treatment arms in the LIFE study [11]. At the same time the increase in SUA concentration during the 4.8 years was attenuated by losartan compared to atenolol, as previously described [30]. The finding was associated with the uricosuric effects of losartan and its active metabolite, therefore one might speculate whether losartan contributes indirectly, via increased uric acid excretion to reduce the risk of new onset AF.

In [Figure 1](#) it is shown that Kaplan Meier curves split after 2–3 years into the study. This observation indicates that it takes time for SUA to influence new onset AF in patients with hypertension and LVH being aggressively treated with losartan or atenolol, two drugs that we consider preventive against new onset AF. The observation is further in line with “time-varying” SUA (and not SUA at baseline) to relate to new-onset AF.

Some few limitations of the present study need to be mentioned. The LIFE study was a prospective and randomized clinical trial set up to compare cardiovascular outcomes on the angiotensin-receptor blocker losartan vs. the beta-1 selective receptor-blocker atenolol. Incident AF and SUA were secondary endpoints and the relationship between time-varying SUA and incident AF emerged from an ad hoc analysis.

In conclusion, our data supports an association between SUA levels and increased risk of new-onset AF, and extends prior findings of the LIFE study as well as other investigations of elevated SUA levels as a possible mechanism of increased cardiovascular morbidity and mortality in hypertension. Examination of the relation between SUA levels and subsequent rates of new-onset AF in existing data sets is suggested by the present results. If the association between higher SUA and new-onset AF is further confirmed incorporation

of randomized therapy to lower SUA into future studies in populations at high risk of AF will be needed for definitive determination of the role of SUA in the pathogenesis of AF.

Abbreviations

AF: atrial fibrillation

BP: blood pressure

CI: confidence interval

ECG: electrocardiographic

HR: hazard ratio

LIFE: Losartan Intervention For Endpoint reduction in hypertension

LVH: left ventricular hypertrophy

SUA: serum uric acid

Declarations

Acknowledgments

The authors thank the 945 clinical centers who participated in the LIFE study.

Author contributions

ESZ, KW, PMO and RBD contributed to the conception and design of this LIFE sub-study. ESZ, IMS, KW and DAH performed the statistical analyses. ESZ wrote the first draft of the manuscript. All authors contributed to manuscript revision, read and approved the submitted version.

Conflicts of interest

Sverre E. Kjeldsen has received ad-hoc lecture honoraria within the past 3 years from Getz, Merck Healthcare KGaA, Sanofi-Aventis and Vector-Intas. The other authors declare that they have no conflicts of interest.

Ethical approval

The trial protocol was approved by ethical committees in all countries with participating clinical centres and done in accordance with the Declaration of Helsinki.

Consent to participate

Written informed consent to participate in the study was obtained from all participants.

Consent to publication

Not applicable.

Availability of data and materials

The data that support the findings of this study are available from the corresponding author (RBD) upon dire need.

Funding

Merck & Co., Inc. supported the LIFE study with an unrestricted grant from 1993. Merck had a non-voting member of the Steering Committee, which designed the study and wrote the protocol. Merck did monitoring, and data was accumulated in a Merck database until study ended in 2002. Merck provided the study steering committee with free access to blinded data until 2002 and then un-blinded data after the database was cleared for queries and frozen. The steering committee including a committee statistician validated independently the main outcomes. The steering committee has always been free to analyze and interpret the data, make decisions to publish and write the papers. Merck has not had any formal role after 2002 except for sporadically provided expert statistical assistance.

Copyright

© The Author(s) 2022.

References

1. Wachtell K, Horneham B, Lehto M, Slotwiner DJ, Gerdt E, Olsen MH, et al. Cardiovascular morbidity and mortality in hypertensive patients with a history of atrial fibrillation: the Losartan Intervention For End Point Reduction in Hypertension (LIFE) study. *J Am Coll Cardiol*. 2005;45:705–11.
2. Tsang TS, Petty GW, Barnes ME, O'Fallon WM, Bailey KR, Wiebers DO, et al. The prevalence of atrial fibrillation in incident stroke cases and matched population controls in Rochester, Minnesota: changes over three decades. *J Am Coll Cardiol*. 2003;42:93–100.
3. Healey JS, Connolly SJ. Atrial fibrillation: hypertension as a causative agent, risk factor for complications, and potential therapeutic target. *Am J Cardiol*. 2003;91:9–14.
4. L'Allier PL, Ducharme A, Keller PF, Yu H, Guertin MC, Tardif JC. Angiotensin-converting enzyme inhibition in hypertensive patients is associated with a reduction in the occurrence of atrial fibrillation. *J Am Coll Cardiol*. 2004;44:159–64.
5. Hohnloser SH, Kuck KH, Lilienthal J. Rhythm or rate control in atrial fibrillation-Pharmacological Intervention in Atrial Fibrillation (PIAF): a randomised trial. *Lancet*. 2000;356:1789–94.
6. Wyse DG, Waldo AL, DiMarco JP, Domanski MJ, Rosenberg Y, Schron EB, et al.; Atrial Fibrillation Follow-up Investigation of Rhythm Management (AFFIRM) Investigators. A comparison of rate control and rhythm control in patients with atrial fibrillation. *N Engl J Med*. 2002;347:1825–33.
7. Pedersen OD, Bagger H, Køber L, Torp-Pedersen C. Trandolapril reduces the incidence of atrial fibrillation after acute myocardial infarction in patients with left ventricular dysfunction. *Circulation*. 1999;100:376–80.
8. Saito I, Saruta T, Kondo K, Nakamura R, Oguro T, Yamagami K, et al. Serum uric acid and the renin-angiotensin system in hypertension. *J Am Geriatr Soc*. 1978;26:241–7.
9. Perlstein TS, Gumieniak O, Hopkins PN, Murphy LJ, Brown NJ, Williams GH, et al. Uric acid and the state of the intrarenal renin-angiotensin system in humans. *Kidney Int*. 2004;66:1465–70.
10. Fogari R, Mugellini A, Destro M, Corradi L, Zoppi A, Fogari E, et al. Losartan and prevention of atrial fibrillation recurrence in hypertensive patients. *J Cardiovasc Pharmacol*. 2006;47:46–50.
11. Wachtell K, Lehto M, Gerdt E, Olsen MH, Horneham B, Dahlöf B, et al. Angiotensin II receptor blockade reduces new-onset atrial fibrillation and subsequent stroke compared to atenolol: the Losartan Intervention For End Point Reduction in Hypertension (LIFE) study. *J Am Coll Cardiol*. 2005;45:712–9.
12. Devereux RB, Wachtell K, Gerdt E, Boman K, Nieminen MS, Papademetriou V, et al. Prognostic significance of left ventricular mass change during treatment of hypertension. *JAMA*. 2004;292:2350–6.
13. Wachtell K, Gerdt E, Aurigemma G, Boman K, Dahlöf B, Kjeldsen SE, et al. Does reduction in left atrial diameter during antihypertensive treatment reduce new-onset atrial fibrillation in hypertensive patients with left ventricular hypertrophy: the LIFE study [abstract]. *J Am Coll Cardiol*. 2006;47:9A.
14. Freedman DS, Williamson DF, Gunter EW, Byers T. Relation of serum uric acid to mortality and ischemic heart disease: the NHANES I epidemiologic follow-up study. *Am J Epidemiol*. 1995;141:637–44.
15. Levine W, Dyer AR, Shekelle RB, Schoenberger JA, Stamler J. Serum uric acid and 11.5-year mortality of middle-aged women: findings of the Chicago Heart Association Detection Project in Industry. *J Clin Epidemiol*. 1989;42:257–67.
16. Fang J, Alderman MH. Serum uric acid and cardiovascular mortality: the NHANES I epidemiologic follow-up study, 1971–1992. *JAMA*. 2000;283:2404–10.
17. Choi HK, Curhan, G. Independent impact of gout on mortality and risk for coronary heart disease. *Circulation*. 2007;116:894–900.

18. Jossa F, Farinaro E, Panico S, Krogh V, Celentano E, Galasso R, et al. Serum uric acid and hypertension: the Olivetti heart study. *J Hum Hypertens*. 1994;8:677–81.
19. Alderman MH, Cohen H, Madhavan S, Kivlighn S. Serum uric acid and cardiovascular events in successfully treated hypertensive patients. *Hypertension*. 1999;34:144–50.
20. Verdecchia P, Schillaci G, Reboldi G, Santeusano F, Porcellati C, Brunetti P. Relation between serum uric acid and risk of cardiovascular disease in essential hypertension. The PIUMA study. *Hypertension*. 2000;36:1072–8.
21. Lehto S, Niskanen L, Rönnemaa T, Laakso M. Serum uric acid is a strong predictor of stroke in patients with non-insulin-dependent diabetes mellitus. *Stroke*. 1998;29:635–9.
22. Weir CJ, Muir SW, Walters MR, Lees KR. Serum urate is an independent predictor of poor outcome and future vascular events after acute stroke. *Stroke*. 2003;34:1951–6.
23. Anker SD, Doehner W, Rauchhaus M, Sharma R, Francis D, Knosalla C, et al. Uric acid and survival in chronic heart failure: validation and application in metabolic, functional, and hemodynamic staging. *Circulation*. 2003;107:1991–7.
24. Doehner W, Schoene N, Rauchhaus M, Leyva-Leon F, Pavitt DV, Reaveley DA, et al. Effects of xanthine oxidase inhibition with allopurinol on endothelial function and peripheral blood flow in hyperuricemic patients with chronic heart failure: results from 2 placebo-controlled studies. *Circulation*. 2002;105:2619–24.
25. Borghi C, Agabiti-Rosei E, Johnson RJ, Kielstein JT, Lurbe E, Mancia G, et al. Hyperuricaemia and gout in cardiovascular, metabolic and kidney disease. *Eur J Intern Med*. 2020;80:1–11.
26. Memetoglu ME, Kehlibar T, Yilmaz M, Günay R, Arslan Y, Tuygun A, et al. Serum uric acid level predicts new-onset atrial fibrillation after coronary artery bypass graft operation. *Eur Rev Med Pharmacol Sci*. 2015;19:784–9.
27. Chao TF, Hung CL, Chen SJ, Wang KL, Chen TJ, Lin YJ, et al. The association between hyperuricemia, left atrial size and new-onset atrial fibrillation. *Int J Cardiol*. 2013;168:4027–32.
28. Wang X, Hou Y, Wang X, Li Z, Wang X, Li H, et al. Relationship between serum uric acid levels and different types of atrial fibrillation: an updated meta-analysis. *Nutr Metab Cardiovasc Dis*. 2021;31:2756–65.
29. Kawasoe S, Kubozono T, Yoshifuku S, Ojima S, Miyata M, Miyahara H, et al. Uric acid level and new-onset atrial fibrillation in the Japanese general population-longitudinal study. *Circ J*. 2018;83:156–63.
30. Høieggen A, Alderman M, Kjeldsen SE, Julius S, Devereux RB, de Faire U, et al. The impact of serum uric acid on cardiovascular outcomes in the LIFE study. *Kidney Int*. 2004;65:1041–9.
31. Dahlöf B, Devereux RB, Kjeldsen SE, Julius S, Beevers G, de Faire U, et al. Cardiovascular morbidity and mortality in the Losartan Intervention For Endpoint reduction in hypertension study (LIFE): a randomised trial against atenolol. *Lancet*. 2002;359:995–1003.
32. Dahlöf B, Devereux R, de Faire U, Fyhrquist F, Hedner T, Ibsen H, et al. The Losartan Intervention For Endpoint reduction (LIFE) in Hypertension study: rationale, design, and methods. *Am J Hypertens*. 1997;10:705–13.
33. Prineas RJ, Crow RS, Blackburn H. *The Minnesota Code manual of electrocardiographic finding*. 1st ed. Bristol: John Wright & Sons; 1982.
34. Snapinn SM, Jiang Q, Iglewicz B. Illustrating the impact of a time-varying covariate with an extended Kaplan-Meier estimator. *Am Statistician*. 2005;59:301–7.
35. Johnson RJ, Kang DH, Feig D, Kivlighn S, Kanellis J, Watanabe S, et al. Is there a pathogenetic role for uric acid in hypertension and cardiovascular and renal disease? *Hypertension*. 2003;41:1183–90.
36. Mazzali M, Hughes J, Kim YG, Jefferson JA, Kang DH, Gordon KL, et al. Elevated uric acid increases blood pressure in the rat by a novel crystal-independent mechanism. *Hypertension*. 2001;38:1101–6.

37. Mazzali M, Kanellis J, Han L, Feng L, Xia YY, Chen Q, et al. Hyperuricemia induces a primary renal arteriopathy in rats by a blood pressure-independent mechanism. *Am J Physiol Renal Physiol*. 2002;282:F991-7.
38. Kang DH, Nakagawa T, Feng L, Watanabe S, Han L, Mazzali M, et al. A role for uric acid in the progression of renal disease. *J Am Soc Nephrol*. 2002;13:2888-97.
39. Feig DI, Soletsky B, Johnson RJ. Effect of allopurinol on blood pressure of adolescents with newly diagnosed essential hypertension: a randomized trial. *JAMA*. 2008;300:924-32.
40. Mustard JF, Murphy EA, Ogrzylo MA, Smythe HA. Blood coagulation and platelet economy in subjects with primary gout. *Can Med Assoc J*. 1963;89:1207-11.
41. Høiegggen A, Fossum E, Reims H, Kjeldsen SE. Serum uric acid and hemorheology in borderline hypertensives and in subjects with established hypertension and left ventricular hypertrophy. *Blood Press*. 2003;12:104-10.
42. Guthikonda S, Sinkey C, Barenz T, Haynes WG. Xanthine oxidase inhibition reverses endothelial dysfunction in heavy smokers. *Circulation*. 2003;107:416-21.
43. Coghlan JG, Flitter WD, Clutton SM, Panda R, Daly R, Wright G, et al. Allopurinol pretreatment improves postoperative recovery and reduces lipid peroxydation in patients undergoing coronary artery bypass grafting. *J Thorac Cardiovasc Surg*. 1994;107:248-56.
44. Abuja PM. Ascorbate prevents prooxidant effects of urate in oxidation of human low density lipoprotein. *FEBS Lett*. 1999;446:305-8.
45. Bickel C, Rupprecht HJ, Blandkenberg S, Rippin G, Hafner G, Daunhauer A, et al. Serum uric acid as an independent predictor of mortality in patients with angiographically proven coronary artery disease. *Am J Cardiol*. 2002;89:12-7.
46. Baker JF, Krishnan E, Chen L, Schumacher HR. Serum uric acid and cardiovascular disease: recent developments, and where do they leave us? *Am J Med*. 2005;118:816-26.
47. Iwashima Y, Horio T, Kamide K, Rakugi H, Ogihara T, Kawano Y. Uric acid, left ventricular mass index, and risk of cardiovascular disease in essential hypertension. *Hypertension*. 2006;47:195-202.
48. Viridis A, Masi S, Casiglia E, Tikhonoff V, Cicero AFG, Ungar A, et al. Identification of the uric acid thresholds predicting an increased total and cardiovascular mortality over 20 years. *Hypertension*. 2020;75:302-8.