



TM5-FASST: a global atmospheric source–receptor model for rapid impact analysis of emission changes on air quality and short-lived climate pollutants

Rita Van Dingenen¹, Frank Dentener¹, Monica Crippa¹, Joana Leitao^{1,a}, Elina Marmer^{1,b}, Shilpa Rao², Efisio Solazzo¹, and Luana Valentini³

¹European Commission, Joint Research Centre (JRC), Ispra (VA), Italy

²Norwegian Institute for Public Health, P.O. Box 4404 Nydalen, 0403 Oslo, Norway

³GFT Italia S.r.l., Via Sile, 18, 20139 Milan, Italy

^anow at: IASS – Institute for Advanced Sustainability Studies, Potsdam, Germany

^bnow at: Research Group Climate Change and Security, Department of Geography, University of Hamburg, Hamburg, Germany

Correspondence: Rita Van Dingenen (rita.van-dingenen@ec.europa.eu)

Received: 31 January 2018 – Discussion started: 26 February 2018

Revised: 6 September 2018 – Accepted: 9 October 2018 – Published: 13 November 2018

Abstract. This paper describes, documents, and validates the TM5-FAst Scenario Screening Tool (TM5-FASST), a global reduced-form air quality source–receptor model that has been designed to compute ambient pollutant concentrations as well as a broad range of pollutant-related impacts on human health, agricultural crop production, and short-lived pollutant climate metrics, taking as input annual pollutant emission data aggregated at the national or regional level. The TM5-FASST tool, providing a trade-off between accuracy and applicability, is based on linearized emission–concentration sensitivities derived with the full chemistry–transport model TM5. The tool has been extensively applied in various recent critical studies. Although informal and fragmented validation has already been performed in various publications, this paper provides a comprehensive documentation of all components of the model and a validation against the full TM5 model. We find that the simplifications introduced in order to generate immediate results from emission scenarios do not compromise the validity of the output and as such TM5-FASST is proven to be a useful tool in science-policy analysis. Furthermore, it constitutes a suitable architecture for implementing the ensemble of source–receptor relations obtained in the frame of the HTAP modelling exercises, thus creating a link between the scientific community and policy-oriented users.

1 Introduction

A host of policies influence emissions. In principle any policy that influences the economy and use of resources will also impact emissions into the atmosphere. Specific air pollution policies aim to mitigate the negative environmental impacts of anthropogenic activities, some of which may be affected by other policies, like climate mitigation actions, transport modal shifts, or agricultural policies. Further, air quality policies may impact outside their typical environmental target domains (human and ecosystem health, vegetation and building damage, etc.) for instance through the role played by short-lived pollutants in the Earth's radiation balance (Myhre et al., 2011; Shindell et al., 2009). Insight into the impacts of policies in a multidisciplinary framework through a holistic approach could contribute to a more efficient and cost-effective implementation of control measures (e.g. Amann et al., 2011; Maione et al., 2016; Shindell et al., 2012).

Several global chemical transport models are available for the evaluation of air pollutant levels from emissions, sometimes in combination with offline-computed climate-relevant metrics such as optical depth or instantaneous radiative forcing (e.g. Lamarque et al., 2013; Stevenson et al., 2013). These models provide detailed output, but are demanding in terms of computational and human resources for preparing input, running the model, and analyzing output. Further

they often lack flexibility to evaluate ad hoc a series of scenarios or perform swift what-if analysis of policy options. Therefore, there is a need for computationally efficient methods and tools that provide an integrated environmental assessment of air quality and climate policies, which have a global dimension with sufficient regional detail, and evaluate different impact categories in an internally consistent way. Reduced-form source–receptor (SR) models are a useful concept in this context. They are typically constructed from pre-computed emission–concentration transfer matrices between pollutant source regions and receptor regions. These matrices emulate underlying meteorological and chemical atmospheric processes for a predefined set of meteorological and emission data and have the advantage that concentration responses to emission changes are obtained by a simple matrix multiplication, avoiding expensive numerical computations. Reduced-form SR models are increasingly being used, not only to compute atmospheric concentrations (and related impacts) from changes in emissions, but they have also proven to be very useful in cost optimization and cost-benefit analysis because of their low computational cost (Amann et al., 2011). Further, because of the detailed budget information embedded in the SR matrices, they are applied for apportionment studies as a complementary approach to other techniques such as adjoint models (e.g. Zhang et al., 2015) and chemical tagging (e.g. Grewe et al., 2012).

Although the computational efficiency of SR models comes at a cost of accuracy, regional detail, and flexibility in spatial arrangement of emissions, they have been successfully applied in regional studies (Foley et al., 2014; Li et al., 2014; Liu et al., 2017; Porter et al., 2017) and have demonstrated their key role in policy development (Amann et al., 2011).

An extensive collaborative global chemistry modelling effort evaluated local and long-range pollutant responses to emission reductions in four world regions in the first phase of HTAP (Dentener et al., 2010; Fiore et al., 2009), hereafter referred to as HTAP1. The resulting ensemble SR relations among those regions have been used to evaluate the driving factors behind regional ozone changes in five world regions (Wild et al., 2012). Similarly, Yu et al. (2013) evaluated aerosol radiative forcing from HTAP1 results, whereas Fry et al. (2012) assessed the radiative forcing effects by ozone. Several papers in this special issue (e.g. Stjern et al., 2016) are devoted to advancing the HTAP analysis with new models and methodologies.

One of the participating global models in the HTAP1 assessment was the two-way nested global chemical transport model TM5, applied with $1^\circ \times 1^\circ$ resolution over the continents (Krol et al., 2005). In order to address the need for swift scenario analysis, we used TM5 to develop a reduced-form global SR model, with the capability of assessing in a single framework a broad portfolio of short-lived pollutants' environmental impacts at the global scale, including their interaction with climate and impact on human health,

vegetation, and ecosystems. The reduced-form version was named TM5-Fast Scenario Screening Tool (TM5-FASST). The TM5-FASST approach refines and extends the one developed in the HTAP1 assessment by defining SR regions at a finer resolution and by implementing a direct emission-based calculation of pollutant concentrations and their impacts. To our knowledge such a comprehensive global SR model for a variety of components and impacts (primary and secondary particulate matter, trace gases, wet and dry deposition, climate, and health metrics) is at this moment not available for fast impact assessments. The need for models like TM5-FASST is demonstrated by its extensive application in various critical studies (OECD, 2016; Rao et al., 2016; World Bank, 2013; UNEP, 2011). An overview of earlier studies with TM5-FASST, in which fragmented and informal validation has already been performed, is given in Sect. S1 of the Supplement.

The tool is undergoing continuous developments and updates regarding metrics and impact evaluations. Hereafter we will refer to the native chemical transport model and the derived SR model as TM5 and TM5-FASST_v0 (or its shortcuts TM5-FASST and FASST) respectively, with version number v0 referring to the features and methodologies described in this paper and as applied in the earlier assessments. The present paper is a comprehensive documentation of the model and its validation against TM5 to ensure credibility and future applications.

In Sect. 2, we describe the methods implemented in TM5-FASST to evaluate in a single framework a broad portfolio of short-lived air pollutants (including CH₄) and their environmental impacts, such as interaction with climate and impact on human health, natural vegetation, and crops. Section 3 focuses on how the derived reduced-form TM5-FASST replicates the full native TM5 model in terms of linearity, additivity, and application to a realistic set of future scenarios. We also evaluate the performance of TM5-FASST against some case studies from the literature. We finish with a discussion (Sect. 4) of the limitations of the methodology, future development paths, and possible ways forward for the best use of such modelling systems for future policy assessments.

2 Methods

2.1 The native TM5 model

The Tracer Model version 5 (TM5) is a three-dimensional global atmospheric chemical transport model that simulates transport, chemical processes, and wet and dry deposition of chemically active atmospheric trace gases (e.g. ozone – O₃, SO₂, NO_x, VOCs, NH₃), and particulate matter components, including SO₄²⁻, NO₃⁻, NH₄⁺, primary PM_{2.5}, and its components black carbon (BC), organic carbon (OC), sea salt, and mineral dust. Biogenic secondary organic aerosol (BSOA) was included following the AEROCOM recommendation

(Dentener et al., 2006a; Kanakidou et al., 2005), which parameterized BSOA formation from natural VOC emissions as a fixed fraction of the primary emissions. The relative fraction compared to the anthropogenic POM emissions varies spatially, with a higher contribution in regions where the emissions of terpene are higher. SOA from anthropogenic emission was not explicitly included in the current simulations.

Model version TM5-JRC-cy2-ipcc (abbreviated TM5) was used to compute the SR relationships as first described by Krol et al. (2005). This model version was used in the PhotoComp scenario studies (e.g. Dentener et al., 2006b; Stevenson et al., 2006) and in the HTAP1 multi-model SR assessment (e.g. Anenberg et al., 2009; Fiore et al., 2009; Wild et al., 2012). TM5 results used in the present study allow comparison with a range of other global model results in HTAP1 but ignore subsequent updates and improvements in TM5 as, for instance, described in Huijnen et al. (2010), which we consider not critical for this study. The most recent TM5 model no longer considers zoom regions, but recoded the model into a massive parallel framework, enabling efficient execution on modern computers. While global horizontal resolution ($1^\circ \times 1^\circ$) is similar to the resolution of the most refined zoom region in TM5, vertical resolution was increased. Further, the model also uses vertical mass fluxes from the parent ECMWF meteorological model, not available at the time of development of TM5-cy2-ipcc, which could lead to somewhat different mixing characteristics. The gas-phase chemical module has been updated to a modified version of CMB5.

The TM5 model operates with offline meteorology from the European Centre for Medium-Range Weather Forecasts (ECMWF; 6 h IFS forecast). These data are stored at a 6-hourly horizontal resolution of $1^\circ \times 1^\circ$ for large-scale 3-D fields, and 3-hourly resolution for parameters describing exchange processes at the surface. Of the 60 vertical layers in the operational (OD) ECMWF model (status ca. 2008), a subset of 25 layers is used within TM5, including 5 in the boundary layer, 10 in the free troposphere, and 10 in the stratosphere. Although for most health and ecosystem impacts only the surface level fields are required, climate metrics (e.g. radiative forcing) require the full vertical column and profile information. Therefore base simulation and perturbed pollutant concentrations were calculated and stored for the 25 vertical levels of the model as monthly means and some air-quality-relevant parameters as hourly or daily fields. Meteorological fields are obtained from the ECMWF operational forecast representative for the year 2001. The implications of using a single meteorological year will be discussed in Sect. 4.2.

TM5 utilizes a so-called two-way nested approach, which introduces refinements in both space and time in predefined regions. The nesting comprises a regional high-resolution zoom ($1^\circ \times 1^\circ$) within relatively coarse global resolution ($6^\circ \times 4^\circ$), and a transitional grid of $3^\circ \times 2^\circ$, as illustrated

in Fig. S2.1 of the Supplement. A preprocessing software aggregated the 3-D $1^\circ \times 1^\circ$ meteorological fields into the abovementioned coarser resolutions in a fully mass-conserving way. TM5 has a flexible choice of regional extent and number of zoom regions. For instance, the HTAP1 simulation set-up utilized a set of four simultaneous $1^\circ \times 1^\circ$ zooms nested over Europe, North America, South Asia, and East Asia. Since hundreds of simulations are needed to drive the TM5-FASST SR model, due to computational constraints, it was decided to use single-zoom regions, covering the countries and regions for which emission perturbation studies were carried out. For example, the European zoom would contain all European countries, the East Asian zoom region countries like China and Korea, etc. An overview of zoom regions and their regional extent is given in Sect. S2. Post-processing software merged the outputs of base and sensitivity simulations into uniform $1^\circ \times 1^\circ$ fields.

We note that at the time of development of the zoom model, the TM5-specific model set-up allowed us to perform photochemistry and aerosol calculations with a relatively high $1^\circ \times 1^\circ$ resolution in the source regions, whereas other global models were operating at much coarser resolutions (typically $2.8^\circ \times 2.8^\circ$). With the introduction of massive parallel computing, however, this comparative advantage is now slowly disappearing, and global model resolutions of $1^\circ \times 1^\circ$ or finer are now becoming more common (see the model descriptions in this special issue; e.g. Liang et al., 2018). The model grid resolution influences the predicted pollutant concentrations as well as the estimated population exposure, especially near urban areas where strong gradients occur in population density and pollutant levels, which cannot be resolved by the $1^\circ \times 1^\circ$ resolution. In Sect. 2.4 we describe a methodology to improve population PM_{2.5} exposure estimates by applying sub-grid concentration adjustments based on high-resolution ancillary data. The bias introduced by model resolution also affects computed SR matrices, e.g. offsetting the share of “local” versus “imported” pollution in a given receptor region. We will discuss this aspect more in detail in Sect. 4.3.

More details on the TM5 model, together with an overview of earlier validation efforts, are provided in Sect. S2.

2.2 Base emissions

As base simulation emissions we use the community-generated Representative Concentration Pathway (RCP) pollutant emissions for the year 2000 at $1^\circ \times 1^\circ$ resolution, prepared for the IPCC Fifth Assessment (Lamarque et al., 2010). Relevant emitted anthropogenic pollutants include SO₂, NO_x, NH₃, BC, OC, non-methane volatile organic carbon (NMVOC), CO, and CH₄. (Semi-)natural emissions (sea salt, mineral dust, volcanoes, lightning, vegetation, biomass burning, and terrestrial and oceanic dimethyl sulfide) for the base simulations were included following the recommendations for the AEROCOM study (Dentener et al., 2006a) but

Table 1. Relevant precursor–pollutant relationships included in TM5-FASST. ●: direct emission or immediate product; ○: effect via thermodynamic equilibration; ◇: effect via first-order oxidation products (OH) affecting the lifetime of other precursors.

Pollutant\precursor	SO ₂ (g)	NO _x (g)	NH ₃ (g)	O ₃	CH ₄	SO ₄ (PM _{2.5})	NO ₃ (PM _{2.5})	NH ₄ (PM _{2.5})	EC (PM _{2.5})	POM (PM _{2.5})	SO _x (dep)	NO _y (dep)	Rad. forcing
SO ₂ (g)	●	◇	○	◇	◇	●	○	○			●		●
NO _x (g)	◇	●	○	●	◇	○	●	○			◇	●	●
NH ₃ (g)	◇	◇	●	◇	◇	○	○	●			◇		●
BC (pm)									●				●
POM (pm)										●			●
NMVOCs (g)	◇	◇	◇	●	◇	◇	◇	◇			◇		●
CO (g)*				●	◇								●
CH ₄ (g)*	◇	◇	◇	◇	●	◇	◇	◇			◇		●

* From HTAP phase 1 (Dentener et al., 2010).

they are not affected in the perturbation simulations in which we consider only perturbations of anthropogenic emissions.

2.3 Air pollutant SR relations

In general, air quality SR models (AQ-SRMs) link emissions of pollutants in a given source region with downwind concentrations and related impacts, implicitly including the underlying effects of meteorology and atmospheric chemical and physical processes. The source region is any point or area from which emissions are considered; the receptor is any point or area at which the pollutant concentration and impact is to be evaluated. Primary pollutant concentrations are primarily affected by dry and wet removal from the atmosphere (e.g. elemental carbon, sea salt, and mineral dust) after being emitted. Secondary pollutants are formed from reactions of primary emissions, e.g. NO₂ forms nitrate aerosol but also leads to the formation of O₃; emitted SO₂ is transformed into sulfate aerosols.

A change of pollutant emissions has the potential to change the chemical formation of other secondary species; e.g. NO₂ affects the oxidative capacity of the atmosphere and therefore influences the lifetime of methane. In summary, a specific secondary component and related impact can be influenced from one or more emitted precursors, and an emitted precursor can change the impact from one or more pollutants. An AQ-SRM will need to include a functional relationship between each precursor and each relevant pollutant or pollutant metric, for each source region and each receptor region.

TM5-FASST_v0 has been designed as a reduced-form SR model: the relation between the emissions of compound *i* from source *x* and resulting concentration (or burden) of pollutant *j* at receptor *y* is expressed by a simple functional relation that mimics the underlying meteorological and chemical processes. In the current version v0 of TM5-FASST the emission–concentration relationship is locally approximated

by a linear function expressing the change in pollutant concentration in the receptor region upon a change in precursor emissions in the source region with the generic form $dC_y = SRC \times dE_x$, where dC_y equals the change in the pollutant concentration compared to a reference concentration in receptor region *y*, dE_x is the change in precursor emission compared to a reference emission in source region *x*, and SRC is the SR coefficient for the specific compound and SR pair – in this case emulating atmospheric processes linked to the meteorology in 2001. The SR coefficients are implemented as matrices with dimensions $[n_x, n_y]$ with n_x and n_y the number of source and receptor regions respectively. A single SR matrix is available for each precursor and for each resulting component from that precursor. Table 1 gives an overview of all precursor–pollutant links that have been included.

For TM5-FASST_v0 we defined 56 source regions, as shown in Fig. 1. A detailed breakdown of regions by country is given in Sect. S2. The choice of regions has been made to obtain an optimal match with integrated assessment models such as IMAGE (Eickhout et al., 2004; van Vuuren et al., 2007), MESSAGE (Riahi et al., 2007), GAINS (Höglund-Isaksson and Mechler, 2005), and the POLES model (Russ et al., 2007; Van Aardenne et al., 2007). Most European countries are defined as individual source regions, except for the smallest countries, which have been aggregated. In the current version v0, the USA, China, and India are treated as a single emission region each, i.e. without breakdown in states or provinces. Although most integrated assessment models cover Africa, South America, Russia, and South East Asia as a single socio-economic entity, it was decided to subdivide these regions, to account for climatological difference in these vast continents. In addition to the 56 regions, SR coefficients were calculated between global international shipping and aviation as sources, and the global grid as a receptor, resulting in $n_x = 58$ source functions.

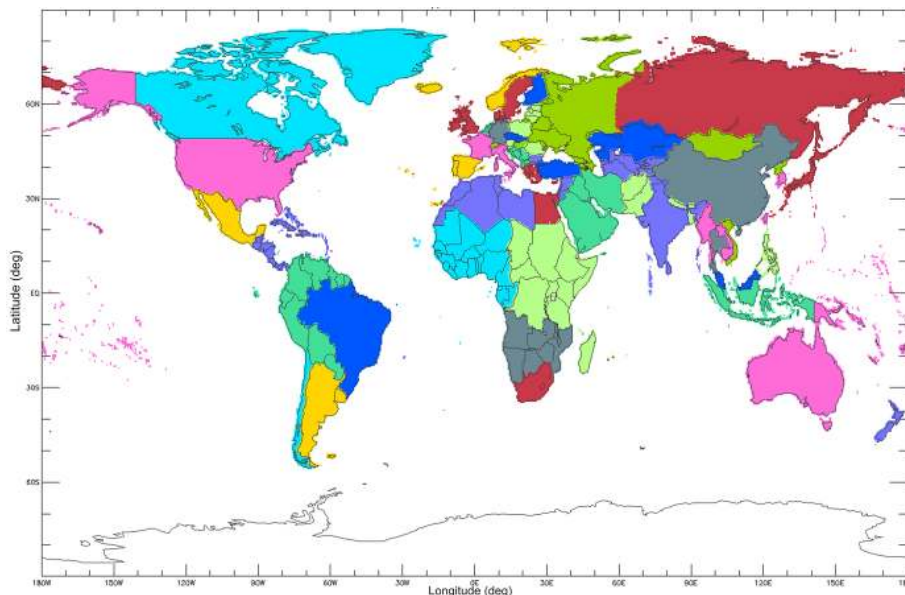


Figure 1. The 56 continental emission source regions in TM5-FASST. See Table S2.2 for the mapping between regions and countries.

The SR matrices, describing the concentration response in each receptor upon a change in emissions in each source region, have been derived from a set of simulations with the full chemical transport model TM5 by applying -20% emission perturbations for each of the 56 defined source regions (plus shipping and aviation), for all relevant anthropogenic precursor components, in comparison to a set of unperturbed simulations, hereafter denoted as “base simulations”. Emissions from biogenic organic components were included as a spatio-temporally varying component, but did not vary in the model sensitivity simulations. Consequently, absolute concentrations of BSOA were identical across base and perturbation simulations and no SR coefficients are available.

A 15% to 20% emission perturbation is commonly used to establish SR emission concentration sensitivities (Alcamo et al., 1990; Amann et al., 2011; Dentener et al., 2010). The applicability of the established SRs for larger emission perturbations – e.g. in future emission scenario studies – depends on the linearity of the emission concentration responses and will be evaluated in detail in Sect. 3.

As elucidated in the previous section, base and perturbed simulations are available on a $1^\circ \times 1^\circ$ global resolution. Figures S3.1 and S3.2 show some examples of emission perturbation–concentration response grid maps for $\text{PM}_{2.5}$, O_3 metrics, deposition, and column burden for source regions China, India, and the USA, clearly illustrating the difference in long-range transport characteristics among different species.

For each receptor point y (i.e. each model vertical level $1^\circ \times 1^\circ$ grid cell), the change in concentration of component j in receptor y resulting from a -20% perturbation

of emitted precursor i in source region x is expressed by a unique SR coefficient $A_{ij}[x, y]$:

$$A_{ij}[x, y] = \frac{\Delta C_j(y)}{\Delta E_i(x)} \text{ with } \Delta E_i(x) = 0.2E_{i,\text{base}}(x). \quad (1)$$

In the present version TM5-FASST_v0, the SR coefficients for pollutant concentrations are stored as annual mean responses to annual emission changes. Individual $\text{PM}_{2.5}$ component SRs are stored as dry mass ($\mu\text{g m}^{-3}$). $\text{PM}_{2.5}$ residual water at 35% is optionally calculated a posteriori for sensitivity studies, assuming mass growth factors for ammonium salts of 1.27 (Tang, 1996) and for sea salt of 1.15 (Ming and Russell, 2001). The presence of residual water in $\text{PM}_{2.5}$ is not irrelevant: epidemiological studies establishing $\text{PM}_{2.5}$ exposure–response functions are commonly based on monitoring data of gravimetrically determined $\text{PM}_{2.5}$, for which measurement protocols foresee filter conditioning at 30% – 50% RH. As many health impact modelling studies consider dry $\text{PM}_{2.5}$ mass or do not provide information on the inclusion of residual water, we use dry $\text{PM}_{2.5}$ for health impact assessment in this study for consistency, unless mentioned differently.

We also established SR matrices linking annual emissions to specific O_3 exposure metrics that are based on seasonal or hourly O_3 concentrations (e.g. crop exposure metrics based on daytime ozone during crop growing season, human exposure to O_3 during the highest 6-monthly mean of hourly maximum values). The total concentration of component (or metric) j in receptor region y , resulting from arbitrary emissions of all n_i precursors i at all n_x source regions x , is obtained as a perturbation on the base-simulation concentration, by summing up all the respective SR coefficients scaled with the

actual emission perturbation:

$$C_j(y) = C_{j,\text{base}}(y) + \sum_{k=1}^{n_x} \sum_{i=1}^{n_i} A_{ij} [x_k, y] \cdot [E_i(x_k) - E_{i,\text{base}}(x_k)]. \quad (2)$$

Pollutants C_j include particulate matter components (SO_4 , NO_3 , NH_4 , BC, particulate organic matter – POM), trace gases (SO_2 , NO, NO_2 , NH_3 , O_3), and deposition fluxes of BC, N, and S species. In the case of ozone, the n_i precursors in Eq. (2) would comprise NO_x , NMVOCs, CO, and CH_4 . The set of linear Eq. (2) with associated SR matrices (Eq. 1) for all components and all source and receptor regions thus emulates the “full” TM5 chemical transport model (CTM) and constitutes the “kernel” of TM5-FASST_v0. When OC emissions are provided in mass units C, the OC mass is multiplied with a factor 1.3 to obtain POM (Kanakidou et al., 2005).

BC and POM are assumed not to interact with other pollutants and their atmospheric lifetimes are prescribed and assumed neither to be affected by mixing with other soluble species like sulfate, nitrate, or ammonium salts nor to undergo oxidation by O_3 . Recent work (e.g. Huang et al., 2013) indicates that a parameterized approach, as applied in TM5, tends to underestimate BC and POM atmospheric lifetimes, leading to a low concentration bias. Huang et al. (2013) find that when explicitly modelled, including the combined impact of both mechanisms, the global atmospheric residence times of BC and POM are lengthened by 9 % and 3 % respectively.

We note that, unlike many other inventories, the RCP emission scenarios do not include a separate inventory for total primary $\text{PM}_{2.5}$, which includes in addition to BC and POM other non-specified primary particulates (e.g. primary sulfate, fly ash). When specific scenario studies require so, TM5-FASST_v0 treats this “other” primary $\text{PM}_{2.5}$ (OPP = Primary $\text{PM}_{2.5}$ – BC – POM) as BC in Eq. (2), where both $C_{\text{OPP},\text{base}}$ and $E_{\text{OPP},\text{base}}$ are zero.

$$C_{\text{OPP}}(y) = \sum_{n_x} A_{BC} [x, y] \cdot E_{\text{OPP}}(x) \quad (3)$$

TM5 surface ozone (and NO_2) fields from base and perturbation experiments were stored at hourly intervals allowing for the calculation of specific vegetation and health-related O_3 metrics, often based on thresholds of hourly O_3 concentrations or concentrations during daytime. The hourly O_3 surface fields were converted into specific O_3 metric responses to annual emissions, including accumulated hourly ozone above a threshold of 40 ppb during a 3-month crop growing season (AOT40), 3-monthly mean of 7 or 12 h daytime ozone during crop growing season (M7, M12), maximum 6-monthly running average of daily maximum hourly O_3 (6mDMA1), and the sum of daily maximal 8 h ozone mean concentrations above 35 ppbV (SOMO35).

The –20 % perturbation simulations were performed for the combination of precursors given in Table 2, with P0 the unperturbed reference simulation and P1 through P5 –20 % perturbations for combined or single precursors. Due to limited CPU availability, precursors that are expected not to interact chemically are perturbed simultaneously, with P1 combining SO_2 , NO_x , BC, and POM and P4 combining NH_3 and NMVOCs. P1 and P4 were computed for each of the 56 continental source regions plus shipping (P1 and P4) and aviation (P1). Additionally, a SO_2 -only perturbation was computed for all individual source regions and shipping (P2), and a NO_x -only perturbation was computed for a selection of key source regions (P3). Finally a set of combined NO_x + NMVOC perturbation simulations (P5) were performed for a set of key regions.

For a limited set of representative source regions, an additional wider range of emission perturbations P'_i [–80 % to +100 %] have been applied to evaluate possible non-linearities in the emission–concentration relationships. The list of these additional perturbation simulations is given in Table S3. In Sect. 3.1 we explain how this set of perturbation runs is combined into FASST to obtain a complete set of SR matrices for each precursor and source region.

We did not perform dedicated perturbation simulations on CH_4 as an O_3 precursor, but we implemented TM5 results obtained in the frame of the first phase of the Hemispheric Transport of Air Pollutants (HTAP1) assessment (Dentener et al., 2010; Fiore et al., 2008). In one of the prescribed experiment set-ups, models evaluated how surface ozone levels respond when the global steady-state CH_4 concentration decreases by 20 % from 1760 ppbv (the global mean CH_4 concentration in the year 2000) to 1408 ppbv. The outcome of this experiment is a set of global grid maps with hourly O_3 concentration responses from which all relevant O_3 metrics can be obtained. As an example, the annual mean O_3 concentration response to the CH_4 concentration perturbation is shown in Fig. S3.3. Section S3 provides more details on the methodology applied to convert the CH_4 concentration perturbation into a CH_4 emission-based perturbation.

Because of its long lifetime compared to short-lived ozone precursors, CH_4 SR coefficients are considered independent of the location of emission and are therefore provided as global emission-to-regional (or gridded) concentration responses.

Because of the mismatch between the HTAP1 SR regions and the FASST ones, the current version of TM5-FASST does not include SR relations between CO and O_3 concentration (or O_3 exposure metrics), only impacts of CO emissions on global methane and O_3 global radiative forcing, also in this case retrieved from HTAP1 dedicated CO perturbation experiments with TM5.

Deposition SR matrices of nitrogen and sulfur compounds are obtained in the same way as for the pollutant ambient concentration fields, making the difference between the base and perturbation simulations. Nitrogen depositions are cal-

Table 2. Overview of TM5 CTM perturbation simulations (20 % emission reduction) for the calculation of the source–receptor (SR) matrices.

Simulation	Emission perturbations	Applied to source regions	Scope
P0	No perturbations	Master zoom regions with $1^\circ \times 1^\circ$ resolution: AFR, AUS, EAS, EUR, MAM, MEA, NAM, RSA, RUS, SAM, SAS, SEA, and PAC ($3^\circ \times 2^\circ$)	Base simulation
P1	SO ₂ , NO _x , BC, POM	All 56 continental regions* + international shipping + aviation	SR matrices for BC and POM and first-order approximation for SO ₂ and NO _x , assuming negligible chemical interaction
P2	SO ₂	All 56 source regions* + shipping	Independent SR for SO ₂ , to be compared to P1 to quantify potential interference between SO ₂ and NO _x in the formation of sulfate and ozone
P3	NO _x	Representative source regions* (China, Europe, Japan, India, Germany, South Africa, USA)	Independent SR for NO _x , to verify the additivity of P1 = P2 + P3 and justify the use of (P1–P2) as a proxy for NO _x perturbation for all other regions
P4	NH ₃ , NMVOCs	All 56 continental source* regions + international shipping	SR matrices for NH ₃ and NMVOCs emissions, assuming little chemical interaction among the selected precursors in the formation of NH ₄ and O ₃
P5	NMVOCs, NO _x	Representative source regions* (Europe, China, India, USA)	Quantify chemical feedbacks in O ₃ formation between NO _x and NMVOCs (P5 = P3 + P4) additivity

* See list of regions and their definitions in Table S2.2.

culated from accumulation of the instantaneous surface budgets of all relevant nitrogen components (NO, NO₂, NO₃, 2 × N₂O₅, HNO₄, organic nitrates, NH₃, NH₄) and similar for sulfur from SO₂ and SO₄ into monthly time steps. Column amounts of ozone and particulate matter are also computed using 3-D monthly output of concentrations and meteorological parameters.

2.4 PM_{2.5} adjustments in urban regions for health impact evaluation

TM5-FASST is specifically aimed at providing pollutant exposure fields for further impact evaluation. For the evaluation of health impacts from outdoor air pollution, a $1^\circ \times 1^\circ$ horizontal resolution may not adequately represent sub-grid gradients of pollutants. Indeed, higher pollutant levels are expected to concur with high population density in urban areas; hence an area-averaged concentration for a nominally $100 \times 100 \text{ km}^2$ sized grid cell will underestimate the expo-

sure of population located in pollution hotspots within a single grid cell. We provide a simple parameterization, generating a correction factor for the grid box area-mean PM_{2.5} concentration to better represent the actual mean population exposure within that grid cell. In the current approach we only consider PM_{2.5}, although also ozone and NO₂ are likely subject to sub-grid gradients. The parameterization is based on the underlying assumption that the spatial distribution of primary emitted PM_{2.5} correlates with population density. Our parameterization builds upon high-resolution population grid maps, allowing a sub-grid readjustment of the PM_{2.5} concentration within each $1^\circ \times 1^\circ$ grid cell. Further, it needs additional information to flag the population sub-grids as “urban” or “rural”, e.g. population density for which an urban threshold can be defined, or more sophisticated schemes defining urban areas. We further assume that only primary PM_{2.5} from the residential and the surface transport sectors contributes to the local (urban) increment, whereas other

aerosol precursor components and other sectors are assumed to be homogeneously distributed over the $1^\circ \times 1^\circ$ grid cell. Indeed, secondary $\text{PM}_{2.5}$ is formed over longer timescales and therefore deemed to be more homogeneously distributed at the regional scale, while primary $\text{PM}_{2.5}$ emissions from sources other than the residential and transport sector are assumed to occur more remotely from urban areas. The adjusted population-weighted mean concentration within each $1^\circ \times 1^\circ$ grid cell (conserving the area-based grid cell mean) is then calculated as follows:

$$\begin{aligned} \text{PM}_{2.5,\text{inc}} = & \text{DU} + \text{SS} + \text{SO}_4^{2-} + \text{NO}_3^- + \text{NH}_4^+ \\ & + (1 - k_{\text{BC}}) \text{BC} + (1 - k_{\text{POM}}) \text{POM} \\ & + \text{INCR} (k_{\text{BC}} \text{BC} + k_{\text{POM}} \text{POM}), \end{aligned} \quad (4)$$

with DU and SS the fixed natural mineral dust and sea salt contributions respectively; SO_4^{2-} , NO_3^- , NH_4^+ , BC, and POM the $1^\circ \times 1^\circ$ grid cell average values resulting from TM5 or TM5-FASST; k_{BC} (k_{POM}) the fraction of (residential + transport) BC (POM) emissions in the total BC (POM) emissions within the $1^\circ \times 1^\circ$ grid cell, and INCR the urban increment factor. This sub-grid parameterization has been applied as a part of the methodology to estimate population exposure in the Global Burden of Disease (GBD) assessments (Brauer et al., 2012). Section S4 provides details on the calculation of INCR.

The required gridded sectorial emission data may not be readily available for any assessment. A default set of regional population-weighted averaged increment factors for BC and POM is given in Table S4.2, based on the RCP year 2000 baseline simulations performed with TM5 for the year 2000, i.e. using year 2000 population (CIESIN GWPv3) and the RCP year 2000 gridded emissions by sector.

2.5 Health impacts

TM5-FASST provides output of annual mean $\text{PM}_{2.5}$ and O_3 health metrics (3-monthly and 6-monthly mean of daily maximum hourly O_3 (3mDMA1, 6mDMA1) and the sum of the maximal 8-hourly mean above a threshold of 35 ppbV (SOMO35) or without a threshold (SOMO0), as well as annual mean NO_x and SO_2 concentrations at a grid resolution of $1^\circ \times 1^\circ$. These are the metrics consistent with underlying epidemiological studies (Jerrett et al., 2009; Krewski et al., 2009; Pope III et al., 2002). The population-weighted pollutant exposure metrics grid maps, in combination with any consistent population grid map, are thus available for human health impact assessment. The TM5-FASST_v0 tool provides a set of standard methodologies, including default population and health statistics, to quantify the number of air-quality-related premature deaths from $\text{PM}_{2.5}$ and O_3 .

Health impacts from $\text{PM}_{2.5}$ are calculated as the number of annual premature mortalities from five causes of death, following the GBD methodology (Lim et al., 2012): ischemic heart disease (IHD), chronic obstructive pulmonary

disease (COPD), stroke, lung cancer (LC), and acute lower respiratory airway infections (ALRIs) whereas mortalities from exposure to O_3 are related to respiratory disease.

Cause-specific excess mortalities are calculated at grid cell level using a population-attributable fraction approach as described in Murray et al. (2003) from $\Delta \text{Mort} = m_0 \times \text{AF} \times \text{Pop}$, where m_0 is the baseline mortality rate for the exposed population, $\text{AF} = (\text{RR} - 1)/\text{RR}$ is the fraction of total mortalities attributed to the risk factor (exposure to air pollution), RR is the relative risk of death attributable to a change in population-weighted mean pollutant concentration, and Pop is the exposed population (adults ≥ 30 years old, except for ALRI for which the population of infants < 5 years old was considered). RR for $\text{PM}_{2.5}$ exposure is calculated from the integrated exposure-response (IER) functions developed by Burnett et al. (2014) and first applied in the GBD study (Lim et al., 2012).

In order to facilitate comparison with earlier studies, TM5-FASST also provides mortality estimates based on a log-linear exposure-response function $\text{RR} = \exp^{\beta \Delta \text{PM}_{2.5}}$ where β is the concentration-response factor (i.e. the estimated slope of the log-linear relation between concentration and mortality) and $\Delta \text{PM}_{2.5}$ is the change in concentration. More details on the health impact methodologies, as well as sources for currently implemented population and baseline mortality statistics and their projections in TM5-FASST_v0 are given in Sect. S5.

For O_3 exposure, $\text{RR} = e^{\beta(\Delta 6\text{mDMA1})}$, β is the concentration–response factor, and $\text{RR} = 1.040$ [95% confidence interval (CI): 1.013, 1.067] for a 10 ppb increase in 6mDMA1 according to Jerrett et al. (2009). We apply a default counterfactual concentration of 33.3 ppbV, the minimum 6mDMA1 exposure level in the Jerrett et al. (2009) epidemiological study.

We note that the coefficients in the IER functions used in the GBD assessments have been recently updated due to methodological improvements in the curve fitting, leading to generally higher RR and mortality estimates (Cohen et al., 2017; Forouzanfar et al., 2016). In particular, the theoretical minimum risk exposure level was assigned a uniform distribution of $2.4\text{--}5.9 \mu\text{g m}^{-3}$ for $\text{PM}_{2.5}$, bounded by the minimum and fifth percentiles of exposure distributions from outdoor air pollution cohort studies, compared to the presently used range of $5.8\text{--}8.8 \mu\text{g m}^{-3}$, which would increase the health impact from $\text{PM}_{2.5}$ in relatively clean areas. Further, a recent health impact assessment (Malley et al., 2017), using updated RR estimate and exposure parameters from the epidemiological study by Turner et al. (2016), estimates 1.04–1.23 million respiratory deaths in adults attributable to O_3 exposure, compared with 0.40–0.55 million respiratory deaths attributable to O_3 exposure based on the earlier (Jerrett et al., 2009) risk estimate and parameters. These recent updates have not been included in the current version of TM5-FASST. Health impacts from exposure to

Table 3. Overview of air quality indices used to evaluate crop yield losses. The a , b , and c coefficients refer to the exposure-response equations given in Eqs. (5) and (6). Sources include Van Dingenen et al. (2009), Mills et al. (2007), and Wang and Mauzerall (2004).

Metric	Wheat			Rice			Soy			Maize		
	a	b	c	a	b	c	a	b	c	a	b	c
AOT40 (ppm h ⁻¹)	0.0163	–	–	0.00415	–	–	0.0113	–	–	0.00356	–	–
Mi (ppbV)	137	2.34	25	202	2.47	25	107	1.58	20	124	2.83	20

other pollutants (NO₂ and SO₂ for example) are currently not being evaluated in TM5-FASST-v0.

2.6 Crop impacts

The methodology applied in TM5-FASST to calculate the impacts on four crop types (wheat, maize, rice, and soy bean) is based on Van Dingenen et al. (2009). In brief, TM5 base and -20% perturbation simulations of gridded crop O₃ exposure metrics (averaged or accumulated over the crop growing season) are overlaid with crop suitability grid maps to evaluate receptor region-averaged exposure metrics SR coefficients. Gridded crop data (length and centre of growing period, as well as a gridded crop-specific suitability index, based on average climate of 1961–1990) have been updated compared to Van Dingenen et al. (2009) using the more recent and more detailed Global Agro-Ecological Zones (GAEZ) data set (IIASA and FAO, 2012, available at <http://www.gaez.iiasa.ac.at/>, last access: 12 October 2016).

Available crop ozone exposure metrics are 3-monthly accumulated ozone above 40 ppbV (AOT40) and seasonal mean 7 or 12 h daytime ozone concentration (M7, M12) for which exposure-response functions are available from the literature (Mills et al., 2007; Wang and Mauzerall, 2004). Both metrics (M_i) are calculated as the 3-monthly mean daytime (09:00–15:59 LT for M7, 08:00–19:59 LT for M12) ozone concentration. AOT40 and M_i are evaluated over the 3 months centred on the midpoint of the location-dependent crop growing season provided by the GAEZ data set. Note that in the GAEZ methodology, the theoretical growing season is determined based on prevailing temperatures and water balance calculations for a reference crop and can range between 0 and 365 days; however our approach always considers 3 months as the standard metric accumulation or averaging period.

The crop relative yield loss (RYL) is calculated as a linear function from AOT40 and from a Weibull-type exposure response as a function of M_i :

$$\text{RYL}[\text{AOT40}] = a \times \text{AOT40}, \quad (5)$$

$$\left. \begin{aligned} \text{RYL}(M_i) &= 1 - \frac{\exp\left[-\left(\frac{M_i}{a}\right)^b\right]}{\exp\left[-\left(\frac{c}{a}\right)^b\right]} & M_i \geq c \\ \text{RYL}(M_i) &= 0 & M_i < c \end{aligned} \right\}. \quad (6)$$

The parameter values in the exposure-response functions are given in Table 3. Coefficients a and b are shape factors of the Weibull function, while c represents the lower M_i threshold for visible crop damage. Furthermore, the non-linear shape of the $\text{RYL}(M_i)$ function requires the ΔRYL for two scenarios (S_1, S_2) to be evaluated as $\text{RYL}(M_{i,S_2}) - \text{RYL}(M_{i,S_1})$ and not as $\text{RYL}(M_{i,S_2} - M_{i,S_1})$.

Finally, it is important to note that TM5-FASST-modelled O₃ surface concentrations refer to the middle of the TM5's lower layer grid box, i.e. 30 m above the surface, whereas monitoring of O₃ (from which exposure metrics are derived) actually happens at a standard altitude of 3 to 5 m above the surface where, due to deposition and meteorological processes, the concentration may differ. However, comparing TM5-simulated grid box centre ozone metrics with observations from 99 monitoring stations worldwide, Van Dingenen et al. (2009) find that, when averaged at the regional scale, TM5-simulated crop metrics obtained from the grid box centre reproduce the observations within their standard deviations and that the monthly 10 m TM5 metric values do not significantly improve the bias between model and observations. Therefore, we use the standard model output at 30 m.

2.7 Climate metrics

We make use of the available 3-D aerosol and O₃ fields in the -20% emission perturbation simulations with TM5 to derive the change in global forcing for each of the perturbed emitted precursors. The regional-to-global radiative forcing SR for precursor j , emitted from region k (SR_RF_k^j), is calculated as the emission-normalized change in global radiative forcing between the TM5 base and the corresponding -20% emission perturbation experiment:

$$\text{SR_RF}_k^j = \frac{\text{RF_PERT}[j, k] - \text{RF_BASE}}{0.2E_k^j}, \quad (7)$$

where RF_PERT and RF_BASE are the TM5 global radiative forcings for the perturbation and base simulations respectively, and E_k^j is the annual base emission of precursor j from region k .

For each emitted pollutant (primary and secondary) the resulting normalized global forcing responses are then further used to calculate the global warming potential (GWP) and global temperature potential (GTP) for a series of time horizons H . In this way, a set of climate metrics is calcu-

lated with a consistent methodology as the air quality metrics, health, and ecosystem impacts calculated from the concentration and deposition fields. In this section we describe in more detail the applied methodologies in TM5 to obtain the radiative forcing from aerosols, clouds, and gases, as well as the derivation of the GWP and GTP metrics.

2.7.1 Instantaneous radiative forcing by aerosols

The base simulation and -20% perturbation response of the column-integrated aerosol mass over all 25 vertical layers of TM5 for all relevant species was calculated and stored. The calculation of the top-of-atmosphere (TOA) instantaneous forcing by aerosol is based on the radiative transfer model described by Marmer et al. (2007) using monthly average meteorological fields and surface characteristics using ECMWF monthly average meteorological fields (temperature, clouds, relative humidity, surface albedo) for the year 2001. We assume externally mixed aerosols and calculate the forcing separately for each component. The total aerosol forcing is obtained by summing up these contributions. We refer to Sect. S6 for a more detailed description of the forcing calculations. To avoid further extensive radiative transfer calculation, monthly-mean radiative forcing efficiencies, expressed as $\text{W m}^{-2} \text{mg}^{-1}$, were calculated once using the $1^\circ \times 1^\circ$ gridded TM5 base simulation outputs and offline radiative code using monthly fields of aerosol, ECMWF meteorology, and surface characteristics and stored for further use (Marmer et al., 2007). The annual TOA global forcing for each scenario is then obtained by multiplying the monthly column-integrated aerosol mass with this grid-cell-specific monthly mass forcing efficiency and subsequently averaged over 1 year. Neglecting the aerosol mixing state and using column-integrated mass rather than vertical profiles introduces additional uncertainties in the resulting forcing efficiencies. Accounting for internal mixing may increase the BC absorption by 50 % to 200 % (Bond et al., 2013), whereas including the vertical profile would weaken BC forcing and increase SO_4 forcing (Stjern et al. 2016). Further, the BC forcing contribution through the impact on snow and ice is not included and nor are semi- and indirect effects of BC on clouds. Our evaluation of pre-industrial to present radiative forcing in the validation section demonstrates that, in the context of the reduced-form FASST approach, the applied method does however provide useful results. Figure S6.1a–c show the resulting global radiative forcing fields for sulfate, POM, and BC. The regional emission-normalized forcing SRs for aerosol precursors ($\text{W m}^{-2} \text{Tg}^{-1}$) are given in Table S6.2.

2.7.2 Indirect aerosol forcing

Aerosols modify the microphysical and radiative properties and lifetime of clouds, commonly denoted as the aerosol indirect effect (Haywood and Boucher, 2000). This forc-

ing results from the ability of the hygroscopic particles to act as (warm) cloud condensation nuclei, thus altering the size, the number, and the optical properties of cloud droplets (Twomey, 1974). More and smaller cloud droplets increase the cloud albedo, which leads to cooling. Using TM5 output, indirect forcing is evaluated considering only the so far best studied first indirect effect and using the method described by Boucher and Lohmann (1995). Fast feedbacks on cloud lifetimes and precipitation were not included in this offline approach. This simplified method uses TM5 3-D time-varying fields of SO_4 concentrations, cloud liquid water content, and cloud cover (the latter from the parent ECMWF meteorological data). The parameterization uses the cloud information (liquid water content and cloud cover) from the driving ECMWF operational forecast data (year 2001). Fast feedbacks on cloud lifetimes and precipitation were not included in this offline approach. The cloud droplet number concentrations and cloud droplet effective radius were calculated following Boucher and Lohmann (1995) separating continental and maritime clouds. The equations are given in Sect. S6. The global indirect forcing field associated with sulfate aerosols is shown in Fig. S6.1d and regional forcing SRs are listed in Table S6.2. Indirect forcing by clouds does however remain highly uncertain, and although FASST evaluates its magnitude, it is often not included in our analyses.

2.7.3 Radiative forcing by O_3 and CH_4

Using TM5 output, radiative forcing by ozone is approximated using the forcing efficiencies obtained by the STOCHEM model as described in Dentener et al. (2005), normalized by the ozone columns obtained in that study. Here we use annual averaged forcing based on the radiative forcing computations provided as monthly averages by David S. Stevenson (personal communication, 2004). The radiative transfer model was based on Edwards and Slingo (1996). These forcings account for stratospheric adjustment, assuming the fixed dynamical heating approximation, which reduces instantaneous forcings by $\sim 22\%$.

For CH_4 the radiative forcing associated with the base simulation was taken from the equations in the IPCC Third Assessment Report (TAR) (Table 6.2 of Ramaswamy et al., 2001). Using the HTAP1-calculated relationship between CH_4 emission and concentration (see Sect. S3.1), we evaluated a globally uniform value of 2.5 mW m^{-2} per Tg of CH_4 emitted. It includes both the direct CH_4 greenhouse gas forcing (1.8 mW m^{-2}) as well as the long-term feedback of CH_4 on hemispheric O_3 (0.7 mW m^{-2}). From the TM5 perturbation experiments we also derive regional-to-global radiative forcing SRs (expressed as $\text{W m}^{-2} \text{Tg}^{-1}$) for precursors NO_x , NMVOCs, SO_2 , and CO (the latter taken from HTAP1 experiments) through their feedback on the CH_4 lifetime and subsequently on long-term hemispheric O_3 levels. Hence, the greenhouse gas radiative forcing contribution of each ozone precursor consists of three components: a direct effect

through the production of O₃, a contribution by a change in CH₄ through modified OH levels (including a self-feedback factor accounting for the modified CH₄ lifetime), and a long-term contribution via the feedback of CH₄ on hemispheric ozone. The details of the applied methodology for direct and indirect CH₄ forcing SRs are given in Sect. S6.2, including tables with the regional emission-based forcing efficiencies for all precursors (Tables S6.3 to S6.5).

In its current version, TM5-FASST_v0 provides the steady-state concentrations and forcing response of the long-term O₃ and CH₄ feedback of sustained precursor emissions; i.e. it does not include transient computations that take into account the time lag between emission and establishment of the steady-state concentration of the long-term O₃ and CH₄ responses.

2.7.4 Calculation of GWP, GTP, delta T, and CO_{2eq} emissions

The obtained emission-based forcing efficiencies (Tables S6.2 to S6.5) are immediately useful for evaluating a set of short-lived climate pollutant climate metrics. Applying the methodology described by Fuglestedt et al. (2010) briefly outlined below, the resulting emission-normalized specific forcing responses A_x are used to calculate the absolute global warming potential (AGWP) and absolute global temperature potential (AGTP) for various time horizons H (20, 50, 100, 500 years), as a basis to obtain the corresponding CO_{2eq} for the actually emitted amounts.

The AGWP for emitted short-lived (exponentially decaying) species x with lifetime a_x is calculated by integrating the specific forcing over a time span H of an emission pulse at $t = 0$:

$$\text{AGWP}(H) = \int_0^H A_x \exp\left(\frac{-t}{a_x}\right) dt = A_x a_x \left[1 - \exp\left(\frac{-H}{a_x}\right)\right]. \quad (8)$$

AGTP of a short-lived (exponentially decaying) component is calculated as an endpoint change in temperature after H years from a 1-year emission pulse at time 0.

$$\text{AGTP}(H) = \int_0^H A_x \exp\left(\frac{-t}{a_x}\right) R(H-t) dt, \quad (9)$$

where $R(t)$ represents the response in global-mean surface temperature to a unit pulse in forcing. Following Fuglestedt et al. (2010), we adopt the functional form for $R(t)$ from Boucher and Reddy (2008), derived from a global climate model:

$$R(t) = \sum_{j=1}^2 \frac{c_j}{d_j} \exp\left(-\frac{t}{d_j}\right). \quad (10)$$

The first term in the summation can crudely be associated with the response of the ocean mixed layer to a forcing, the second term as the response of the deep ocean to

c_j (K(W m⁻²)⁻¹) and d_j (years) temperature sensitivity and response time of both compartments respectively. This leads to

$$\text{AGTP}(H) = \sum_{j=1}^2 \frac{A_x a_x c_j}{(a_x - d_j)} \left(\exp\left(\frac{-H}{a_x}\right) - \exp\left(\frac{-H}{d_j}\right) \right). \quad (11)$$

As discussed earlier, we take into account that species such as NO_x, NMVOCs, and CO lead to changes in O₃ and CH₄ and consequently have a short-lived component (O₃) as well as long-lived components (CH₄ and CH₄-induced O₃) contributing to AGWP and AGTP. We refer to Appendix 2 in Fuglestedt et al. (2010) for a detailed description of the methodology and numerical values for c_j and d_j . As aerosols and directly produced O₃ from ozone precursors have a lifetime of the order of days (aerosols) to several months (O₃), the resulting integrated specific forcing is insensitive to the actual lifetime for the range of time horizons considered (decades to centuries), and in practice we use a default value of 0.02 years for aerosols and 0.27 years for short-term O₃. This does not however apply to the long-term forcing contribution of CH₄ and the associated O₃ feedback from O₃ precursors for which we use a perturbation adjustment time of 14.2 years (Wild et al., 2001). Note that this adjustment timescale is larger than the total atmospheric timescale for CH₄ oxidation by OH combined with losses to soils and the stratosphere (HTAP1 model ensemble mean: 8.8 years; Fiore et al., 2009) due to the feedback of CH₄ on atmospheric OH concentrations and thereby its own lifetime (Forster et al., 2007). Fuglestedt et al. (2010) report CH₄ adjustment times from various modelling studies between 10.2 and 16.1 years. Dimensionless metrics GWP (GTP) are obtained dividing AGWP (AGTP) by the AGWP (AGTP) of CO₂ as a reference gas for which we use values from Joos et al. (2013).

Finally, still following Fuglestedt et al. (2010), we also include a calculation of the global temperature change $\Delta T_x(H)$ between year 0 and year H for a sustained emission change $\Delta E_x(t) = E_x(t) - E_x(0)$ of component x as the sum of ΔT from 1-year emission “pulses” approaching the time horizon.

$$\Delta T_x(H) = \sum_{t=0}^H \Delta E_x(t) \text{AGTP}(H-t) \quad (12)$$

In this way, a set of climate metrics is obtained which is consistent with the air quality metrics and health and ecosystem impacts calculated from the concentration and deposition fields.

3 Results: validation of the reduced-form TM5-FASST

In this section we focus on the validation of regionally aggregated TM5-FASST_v0 outcomes (pollutant concentrations, exposure metrics, impacts), addressing specifically

1. the additivity of individual pollutant responses as an approximation to obtain the response to combined precursor perturbations;
2. the linearity of the emission responses over perturbation ranges extending beyond the -20% perturbation;
3. the FASST outcome versus TM5 for a set of global future emission scenarios that differ significantly from the reference scenario;
4. FASST key-impact outcomes versus results from the literature for some selected case studies, with a focus on climate metrics, health impacts, and crops.

3.1 Validation against the full TM5 model: additivity and linearity

We recall that TM5-FASST computes concentrations and metrics based on a perturbation approach, i.e. the linearization applies only to the difference between scenario and reference emissions. Therefore we focus on evaluating the perturbation response, i.e. the second term on the right-hand side of Eq. (2).

The standard set of -20% emission perturbation simulations, available for all 56 continental source regions and constituting the kernel of TM5-FASST_v0, are simulations P1 (perturbation of SO_2 , NO_x , BC, and POM), P2 (SO_2 only), and P4 (NH_3 and NMVOCs) shown in Table 2. Additional standard -20% perturbation experiments P3 (NO_x only) and P5 (NO_x and NMVOCs), as well as an additional set of perturbation simulations P1' to P5' over the range $[-80\%, +100\%]$, listed in Table S3, have been performed for a limited selection of representative source regions (Europe, the USA, China, India, Japan) due to limited CPU resources. For the same reason, no combined perturbation studies are available for ($\text{SO}_2 + \text{NH}_3$) and ($\text{NO}_x + \text{NH}_3$) for a systematic evaluation of additivity and linearity. The available $[-80\%, +100\%]$ perturbations are used to validate the linearized reduced-form approach against the full TM5 model, exploring chemical feedback mechanisms (additivity) and extrapolation of the -20% response sensitivity towards larger emission perturbation magnitudes (linearity). This is in particular relevant for the NO_x –NMVOC– O_3 chemistry and for the secondary $\text{PM}_{2.5}$ components NO_3^- – SO_4^{2-} – NH_4^+ . These mechanisms could also be important for organic aerosol, but we remind the reader that in this study organic aerosol formation was parameterized as pseudo-emissions.

3.1.1 Additivity and linearity of secondary inorganic $\text{PM}_{2.5}$ response

Experiment P1, in which BC, POM, SO_2 , and NO_x emissions are simultaneously perturbed by -20% relative to the base simulation P0, delivers SR matrices for primary components BC and POM and a first-order approximation for the precursors SO_2 and NO_x whose emissions do not only affect

SO_2 and NO_x gas concentrations but also lead to several secondary products (SO_2 forms ammonium sulfate; NO_x leads to O_3 and ammonium nitrate). Experiment P2 perturbs SO_2 only, whereas experiment P3 perturbs NO_x only (in this latter case, to limit the computational cost, computed for a limited set of representative source regions only).

We first test the hypothesis that the $\text{PM}_{2.5}$ response to the combined ($\text{NO}_x + \text{SO}_2$) -20% perturbation (P1) can be approximated by the sum of the single precursor perturbations responses (P2 + P3). Figure 2 summarizes the resulting change in SO_4^{2-} , NO_3^- , NH_4^+ , and total inorganic $\text{PM}_{2.5}$ respectively for the selected source regions. For Europe, the emission perturbations were applied over all European countries simultaneously; hence the responses are partly due to interregional transport from other countries. The following findings result from the perturbation experiments P1–P3.

1. Sulfate shows a minor response to NO_x emissions, and likewise nitrate responds only slightly to SO_2 emissions and both perturbations are additive. In general the response is 1 order of magnitude lower than the direct formation of SO_4^{2-} and NO_3^- from SO_2 and NO_x respectively (Fig. 2a and b).
2. NH_4 responds to NO_x and SO_2 emissions with comparable magnitudes and in an additive way (Fig. 2c).
3. The response of total sulfate, nitrate, and ammonium to a combined NO_x and SO_2 -20% perturbation can be approximated by the sum of the responses to the individual perturbations, i.e. $\text{P1} \approx \text{P2} + \text{P3}$ (Fig. 2d). Scatter plots of P1 versus P2 + P3 responses for the regional averaged individual secondary products and total inorganic $\text{PM}_{2.5}$ are shown in Fig. S7.1.

From the combined $\text{SO}_2 + \text{NO}_x$ perturbation (P1), and the separate SO_2 perturbation simulations (P2), both available for all source regions, the missing NO_x SR matrices have been gap filled using $\text{P1} - \text{P2}$. By lack of simulations for combined $\text{SO}_2 + \text{NH}_3$ or $\text{NO}_x + \text{NH}_3$ perturbations we assume additivity for simultaneous NH_3 , SO_2 , and NO_x perturbations; i.e. the response is computed from a linear combination of P2 – P4.

Next we evaluate the hypothesis that the -20% perturbation responses can be extrapolated towards any perturbation range, as an approximation of a full TM5 simulation. Figure 3 shows, for the selected regions listed in Table S3, the TM5-computed relative change in secondary $\text{PM}_{2.5}$ concentration versus the relative change in precursor emission in the range $[-80\%, +100\%]$. The figure illustrates the general near-linear behaviour of regionally aggregated responses to single precursor emission perturbations for all regions, except for India where the linearity of the response to NO_x emissions breaks down for emission reductions beyond -50% . For India we further observe a relatively strong nitrate response to NO_x emissions, with NO_3^- increasing by

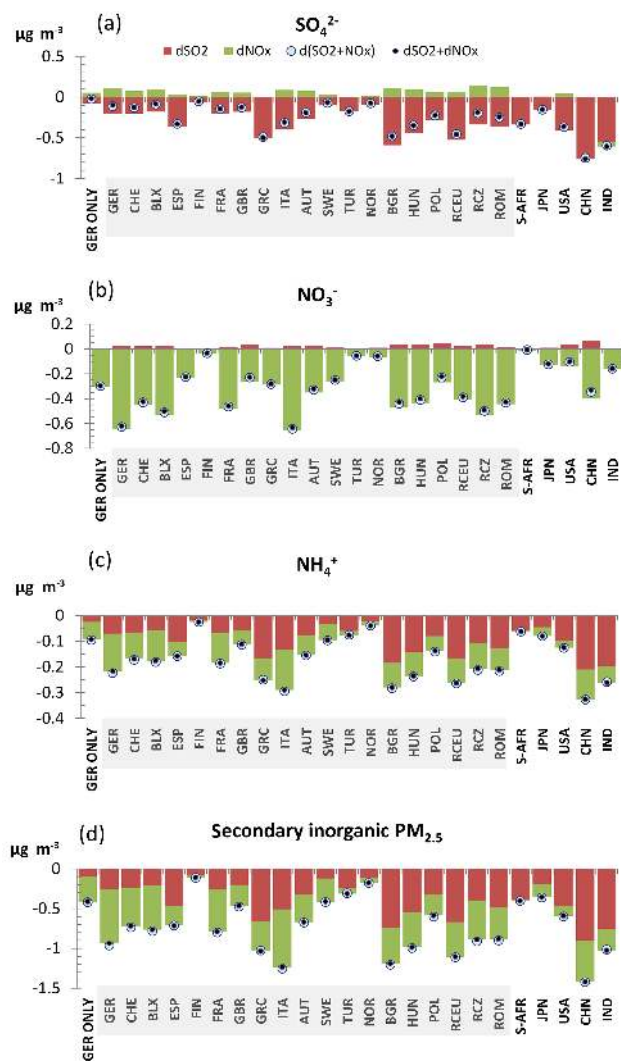


Figure 2. TM5 CTM response in annual population-weighted mean sulfate (a), nitrate (b), ammonium (c), and total inorganic secondary PM_{2.5} (d) (as a sum of the three components) upon emitted precursor perturbation of -20% for selected source regions (see Table S2.2 for the region code legend). Only the concentration change inside each source region is shown. Red bars show SO₂-only perturbation (simulation P2); green bars show NO_x-only perturbation (simulation P3). Open circles show simultaneous (SO₂ + NO_x) perturbation (simulation P1). Black dots show P2 + P3. Shaded regions are perturbed simultaneously as one European region.

a factor of 3 for a doubling of NO_x emissions, although the responses shown in Fig. 2 indicate that absolute changes ($\mu\text{g m}^{-3}$) in NO₃ are relatively low and that secondary PM_{2.5} in this region is dominated by SO₄. We are not aware of reliable observations or other published NO_x–aerosol sensitivity studies from that region that could corroborate this calculated sensitivity. Because such a feature may strongly affect projected future PM_{2.5} levels and associated impacts, we rec-

ommend regional multi-model studies devote attention to this feature.

Because the TM5-FASST linearization is based on the extrapolation of the -20% perturbation slope, concave-shaped trends in Fig. 3 indicate a tendency of TM5-FASST to over-predict secondary PM_{2.5} at large negative or positive emission perturbations, and the opposite is true for convex-shaped trends. Figure 4 illustrates the error introduced in regional secondary PM_{2.5} concentration responses when linearly extrapolating the regional -20% perturbation sensitivities to -80% (blue dots) and $+100\%$ (red dots) perturbations. While the scatter plots for the single perturbations (Fig. 4a–c) evaluate the linearity of the single responses, the panel showing the combined (SO₂ + NO_x) perturbation (Fig. 4d) is a test for the linearity combined with additivity of SO₂ and NO_x perturbations over the considered range. In general, the linear approximation leads to a slight over-prediction of the resulting secondary PM_{2.5} (i.e. the sum of sulfate, nitrate, and ammonium) for all regions considered, in either perturbation direction. Table 4 shows regional statistical validation metrics (normalized mean bias NMB (%), mean bias MB ($\mu\text{g m}^{-3}$), and correlation coefficient, definitions are given in the table notes) for the grid-to-grid comparison between TM5-FASST and TM5 CTM of the response to the $[-80\%, 100\%]$ perturbation simulations (with Europe presented as a single region). In terms of NMB, the FASST linearization performs worst for the NO_x perturbations, with almost a factor of 2 overestimate in Japan for an emission doubling. However, because of the already low NO_x emissions in this region, the absolute error (MB) remains below $0.2 \mu\text{g m}^{-3}$. In all considered perturbation cases, FASST shows a positive MB, except for the NO_x perturbation in India. In general, the highest NMBs are observed for the regions where secondary PM_{2.5} shows low response sensitivity to the applied perturbations and where the impact on the total PM_{2.5} is therefore relatively low. Indeed, when considering the total resulting secondary PM_{2.5} (i.e. the full right-hand side of Eq. 2, including the PM_{2.5} base-concentration term containing primary and secondary components), regional averaged FASST secondary PM_{2.5} values stay within 15% of TM5 (see Table S7.1). A breakdown for the individual receptor regions within the European zoom region of the linearization error on the resulting total secondary PM_{2.5} from individual and combined precursor perturbations is shown in Fig. S7.3.

3.1.2 Additivity and linearity of O₃ responses to combined precursor emissions

O₃ atmospheric chemistry is in general highly non-linear, displaying a response magnitude and sign depending on the concentration ratio of its two main ozone precursors NO_x and NMVOCs, with high VOC/NO_x ratios corresponding to NO_x-sensitive chemistry and low VOC/NO_x ratios corresponding to VOC-sensitive chemistry (Seinfeld and Pan-

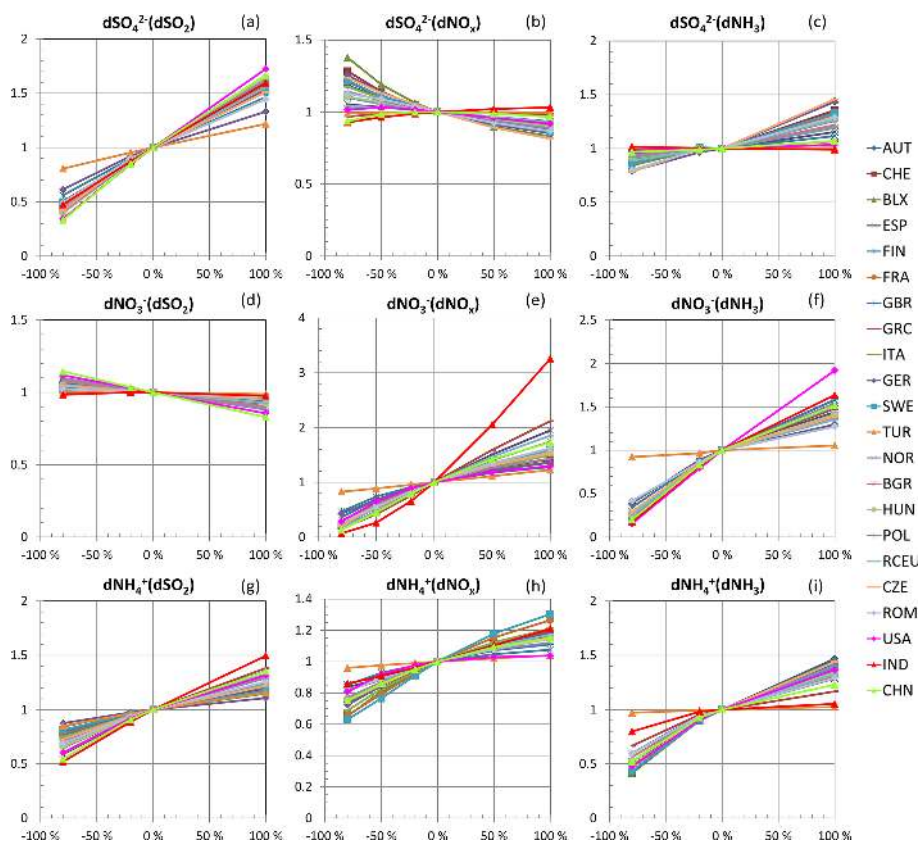


Figure 3. TM5 CTM change in population-weighted regional mean secondary $\text{PM}_{2.5}$ components SO_4^{2-} (a–c), NO_3^- (d–f), and NH_4^+ (g–i), relative to their respective base scenario concentration, as a function of precursor SO_2 (a, d, g), NO_x (b, e, h), and NH_3 (c, f, i) emission perturbation strength for European receptor regions, the USA, India, and China. Perturbations were applied over all European regions simultaneously.

dis, 1998; Sillman, 1999). Because the NO_x / NMVOC ratio determines the O_3 response to emission changes, a perturbation with simultaneous NO_x and NMVOC emission changes of the same relative size is expected to behave more linearly than single perturbations since the chemical regime remains similar. The FASST reduced-form approach builds on the assumption that the O_3 response to combined precursor perturbation can be approximated by the sum of the single component emission perturbations (additivity hypothesis). This is in particular relevant for combined and individual NO_x and NMVOC perturbations, and to a lesser extent for the SO_2 and NO_x combination.

Although the impact of SO_2 chemistry on O_3 is low, for gap-filling purposes we first evaluate the additivity hypothesis for the combined SO_2 + NO_x perturbation. Comparing experiments P1 (SO_2 + NO_x perturbation), P2 (SO_2 perturbation), and P3 (NO_x perturbation) confirms that the ozone response to SO_2 emissions is marginal and additive to the response to NO_x ($\text{P1} \approx \text{P2} + \text{P3}$) over the full range of perturbations, as shown in Fig. S7.2, and hence we can gap fill the missing NO_x perturbation SR matrix for all source and receptor regions from $\text{P3} \approx \text{P1} - \text{P2}$.

Next, we evaluate whether the O_3 response to the combined NO_x + NMVOC perturbation (P5) can be approximated by the sum of O_3 responses to individual NO_x (P3) and NMVOC (P4) perturbations, i.e. assuming $\text{P5} = \text{P4} + \text{P3}$. P5 was obtained for a limited set of representative source regions: Europe (by perturbing precursor emissions from all FASST source regions inside the EUR master zoom region simultaneously), China, India, and the USA. As shown in Fig. 5, for the -20% perturbations we find good agreement between the combined NO_x + NMVOCs perturbation (open circles) and the sum of the individual precursor perturbations (black dots). This occurs even in situations in which titration by NO_2 causes a reverse response in O_3 concentration as is the case in most of Europe and the USA, indicating that a -20% perturbation in individual precursors appears not to change the prevailing O_3 regime. However, extending the O_3 (and metrics) linearized responses as a sum of scaled individual -20% precursor responses towards more extreme perturbation ranges could be a challenge, as the individual perturbation of one of the NO_x or NMVOC precursors may change the ozone formation regime. In particular during wintertime, titration of O_3 under high- NO_x conditions may reverse the

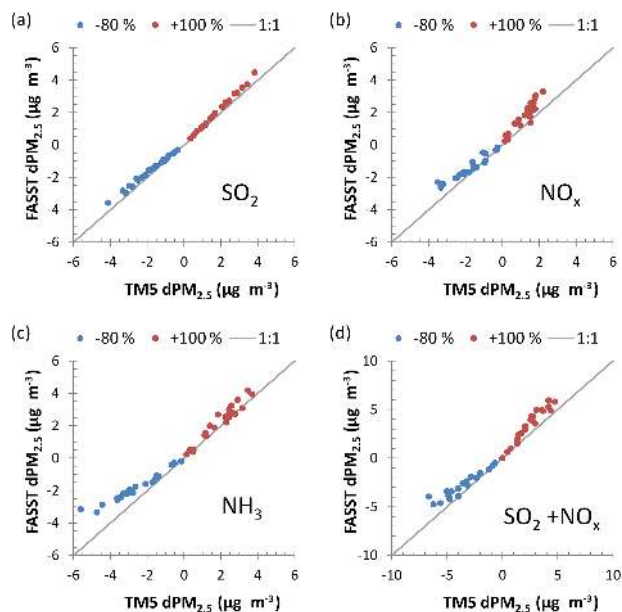


Figure 4. Regional secondary $\text{PM}_{2.5}$ ($\text{SO}_4^{2-} + \text{NO}_3^- + \text{NH}_4^+$) response to -80% and $+100\%$ single precursor emission perturbations for SO_2 (a), NO_x (b), and NH_3 (c) as well as the combined $\text{SO}_2 + \text{NO}_x$ perturbation (d). The x axis shows the full TM5 model; the y axis shows the linear extrapolation of -20% perturbation (FASST approach). Each point corresponds to the population-weighted mean concentrations over a receptor region.

slope of the NO_x emission O_3 concentration response. Conversely, the impact-relevant O_3 metrics, both health and crop related, are based on summertime and daytime values and are expected to be less affected by titration and consequently to maintain a positive emission–response slope (Wu et al., 2009).

Figure 6 shows that, while the response to NMVOCs (with constant NO_x) is near linear and monotonically increases over the full range for all regions, the NO_x response (with constant NMVOCs) shows a more complex behaviour, exhibiting a negative slope for annual mean O_3 over nearly all European regions and the USA, whereas the slope is positive for India and China. For the health-relevant exposure metric 6mDMA1 and the crop metric M12 the slope is positive in most regions due to their implicit constraint to the summer season when titration plays a minor role, except in strongly NO_x -polluted north-western European countries (Great Britain, Germany, Belgium, and the Netherlands, as well as Finland) where titration in large urbanized areas remains important even during summer. The concave shapes of the response curves indicate significant non-linearities, in particular for responses of crop and health exposure metrics to strong NO_x emission perturbations.

Figure 7 illustrates the performance of the TM5-FASST approach versus TM5 for regional-mean annual mean ozone, health exposure metric 6mDMA1 (both evaluated as

population-weighted mean), and for the crop-relevant exposure metrics AOT40 and M12 (both evaluated as area-weighted mean) over the extended emission perturbation range. In most cases the response (i.e. the change between the base and perturbed cases) to emission perturbations lies above the 1 : 1 line across the four metrics, indicating that FASST tends to over-predict the resulting metric (as a sum of base concentration and perturbation). Of the four presented metrics, AOT40 is clearly the least robust one, which can be expected for a threshold-based metric that has been linearized. Tables 5 to 7 give the statistical metrics for the grid-to-grid comparison of the perturbation term between FASST and TM5 for the health exposure metric 6mDMA1 and crop exposure metrics AOT40 and M12 respectively. Statistical metrics for the total absolute concentrations (base concentration + perturbation term) are given in Tables S7.2 to S7.4. As anticipated, the NO_x -only perturbation terms show the highest deviation, in particular for a doubling of emissions; however, combined NO_x –NMVOC perturbations are reproduced fairly well for all regions, staying within 33 % for a -80% perturbation for all three exposure metrics and within 38 % for an emission doubling for 6mDMA1 and M12, while the AOT40 metric is overestimated by 76 % to 126 % for emission doubling. The total resulting concentration over the entire perturbation range for single and combined NO_x and NMVOC perturbation agrees within 5 % for 6mDMA1 and M12 and within 64 % for AOT40. The mean bias is positive for both perturbations, for all metrics, and over all analysed regions, except for crop metric M12 under a doubling of NMVOC emissions over Europe showing a small negative bias. The deviations for individual European receptor regions under single and combined NMVOCs and NO_x perturbations for health and crop exposure metrics are shown in Figs. S7.4 to S7.6.

3.2 TM5-FASST_v0 versus TM5 for future emission scenarios

In this section we evaluate different combinations of precursor emission changes relative to the base scenario in a global framework. We take advantage of available TM5 simulations for a set of global emission scenarios which differ significantly in magnitude from the FASST base simulation and as such provide a challenging test case for the application of the linear SR relationships used in TM5-FASST. We assume that the full TM5 model provides valid evaluations of emission scenarios, and we test to what extent these simulations can be reproduced by the linear combinations of SRs implemented in the TM5-FASST_v0 model.

We use a set of selected policy scenarios prepared with the MESSAGE integrated assessment model in the frame of the Global Energy Assessment (GEA; Rao et al., 2012, 2013; Riahi et al., 2012). These scenarios are the so-called “frozen legislation” and “mitigation” emission variants for the year 2030 (named FLE2030 and MIT2030 respectively),

Table 4. Statistical metrics describing the correspondence between the linearized FASST- and TM5-computed change in secondary PM_{2.5} upon –80 % and 100 % emission perturbation in its precursors (SO₂, NO_x, NH₃, and combined SO₂ + NO_x), relative to the RCP2000 base scenario. Statistics are calculated over all 1° × 1° grid cells in each region. Statistics for total concentrations are given in Sect. S7.

Region	FASST mean (µg m ⁻³)		TM5 mean (µg m ⁻³)		NMB ^a (%)		MB ^b (µg m ⁻³)		R ^{2c}	
	–80 %	100 %	–80 %	100 %	–80 %	100 %	–80 %	100 %	–80 %	100 %
Precursor: SO ₂										
EUR	–1.0	1.2	–1.1	1.1	–11.8	12.8	0.13	0.14	0.99	1.00
USA	–0.8	1.1	–0.9	1.0	–8.2	10.8	0.08	0.10	1.00	1.00
JPN	–0.3	0.4	–0.3	0.4	–5.0	6.8	0.02	0.02	1.00	1.00
CHN	–1.5	1.8	–1.7	1.6	–13.3	17.7	0.22	0.28	1.00	1.00
IND	–2.1	2.7	–2.2	2.5	–4.6	8.3	0.10	0.20	1.00	1.00
Precursor: NO _x										
EUR	–0.9	1.2	–1.1	0.8	–13.7	44.4	0.15	0.36	0.96	0.95
USA	–0.5	0.6	–0.6	0.4	–25.1	60.9	0.15	0.21	0.87	0.87
JPN	–0.3	0.4	–0.4	0.2	–27.3	93.2	0.11	0.17	0.92	0.91
CHN	–0.8	1.0	–0.9	0.7	–11.9	35.5	0.11	0.26	0.97	0.90
IND	–0.6	0.7	–0.6	0.8	6.8	–9.3	–0.04	–0.08	0.95	0.94
Precursor: NH ₃										
EUR	–1.1	1.4	–1.6	1.2	–29.0	12.8	0.45	0.16	0.97	0.92
USA	–0.6	0.8	–0.8	0.6	–20.2	28.6	0.16	0.17	0.96	0.94
JPN	–0.4	0.4	–0.4	0.4	–16.9	28.2	0.07	0.10	0.98	0.99
CHN	–0.8	1.0	–1.0	0.7	–25.5	43.8	0.26	0.30	0.98	0.98
IND	–0.2	0.3	–0.4	0.2	–47.6	48.4	0.18	0.08	0.88	0.94
Precursor: SO ₂ + NO _x										
EUR	–1.9	2.4	–2.3	1.8	–17.5	33.5	0.40	0.60	0.94	0.95
USA	–1.3	1.6	–1.6	1.2	–16.1	31.2	0.25	0.39	0.96	0.97
JPN	–0.6	0.7	–0.7	0.5	–16.5	44.9	0.11	0.22	0.96	0.96

^a Normalized mean bias = (FASST–TM5)/TM5. ^b Mean bias = (FASST–TM5). ^c Correlation coefficient; \bar{Y} = average of all grid cells in region.

policy variants that describe two different policy assumptions on air pollution until 2030. These scenarios and their outcomes are described in detail in Rao et al. (2013), the scope of the present study is the inter-comparison between FASST and TM5 resulting pollutant concentration and exposure levels, as well as associated health impacts.

Major scenario features and emission characteristics are provided in Sect. S8. Table S8.1 shows the change in global emission strengths for the major precursors for both test scenarios, relative to the RCP2000 base, aggregated to the FASST “master zoom” regions listed in Table S2.2. Emission changes for the selected scenarios mostly exceed the 20 % emission perturbation amplitude from which the SRs were derived. Under the MIT2030 low-emission scenario, all precursors and primary pollutants (except primary PM_{2.5} in East Asia and NH₃ in all regions) show a strong decrease compared to the RCP2000 reference scenario. The strongest decrease is seen in Europe (NO_x: –83 %, SO₂: –93 %, BC: –89 %, primary PM_{2.5} –56 %) while NH₃ increases by 14 %

to 46 % across all regions. The FLE2030 scenario displays a global increase for all precursors, with heterogeneous trends across regions however. In Europe, North America, and Australia, the legislation in place, combined with use of less and cleaner fuel by 2030, leads to a decrease in pollutant emissions except for NH₃ and primary PM_{2.5}. Conversely, very substantial emission increases are projected in the east and south-east for BC, NO_x, and primary PM_{2.5}. Anticipating possible linearity issues, we note that for both scenarios, in all regions, SO₂ and NO_x emissions evolve in the same direction, although not always with similar relative changes, whereas NH₃ always increases, which may induce linearity issues in the ammonium–sulfate–nitrate system. Regarding O₃ metrics, NMVOCs and NO_x evolve in the same direction, but also here we observe possible issues due to a changing emission ratio (in particular in Russia and Asia). We further note that not only the emission levels of these scenarios are different from the FASST base scenario (RCP year 2000), but

Table 5. Statistical metrics describing the correspondence between the linearized FASST- and TM5-computed change in O₃ exposure metric 6mDMA1 upon –80 % and 100 % emission perturbation in its precursors (NMVOCs, NO_x, and combined NO_x + NMVOCs), relative to the RCP2000 base scenario. Statistics are calculated over all 1° × 1° grid cells in each region. Statistics for total concentrations are given in Sect. S7.

Region	FASST mean (ppb)		TM5 mean (ppb)		NMB ^a (%)		MB ^b (ppb)		R ^{2c}	
	–80 %	100 %	–80 %	100 %	–80 %	100 %	–80 %	100 %	–80 %	100 %
	Precursor: NMVOCs									
EUR	–1.5	1.8	–1.7	1.3	–11	36	0.2	0.5	0.55	0.41
USA	–1.1	1.4	–1.3	1.2	–10	23	0.1	0.3	0.98	0.99
JPN	–0.9	1.1	–1.0	0.8	–14	30	0.1	0.3	0.99	0.98
CHN	–0.9	1.1	–1.3	0.6	–30	93	0.4	0.5	0.98	0.96
IND	–0.9	1.1	–1.2	0.7	–25	59	0.3	0.4	0.99	0.99
Precursor: NO _x										
EUR	–2.7	3.3	–4.5	1.2	–41	169	1.9	2.1	0.87	0.77
USA	–4.5	5.7	–6.8	3.3	–33	70	2.3	2.3	0.79	0.85
JPN	–1.1	1.4	–2.7	–0.4	–58	–499	1.6	1.8	0.59	0.59
CHN	–4.3	5.4	–6.1	3.3	–29	64	1.7	2.1	0.96	0.82
IND	–7.3	9.1	–9.6	6.4	–25	41	2.4	2.7	0.98	0.96
Precursor: NO _x + NMVOCs										
EUR	–4.1	5.2	–5.1	3.8	–18	38	0.9	1.4	0.89	0.97
USA	–5.7	7.1	–7.1	5.2	–20	36	1.4	1.9	0.97	0.95
CHN	–5.2	6.5	–6.0	5.2	–13	26	0.8	1.3	0.99	0.99
IND	–8.1	10.1	–9.6	8.4	–15	21	1.5	1.7	0.99	0.99

^a Normalized mean bias = (FASST–TM5) / TM5. ^b Mean bias = (FASST–TM5). ^c Correlation coefficient; \bar{Y} = average of all grid cells in region.

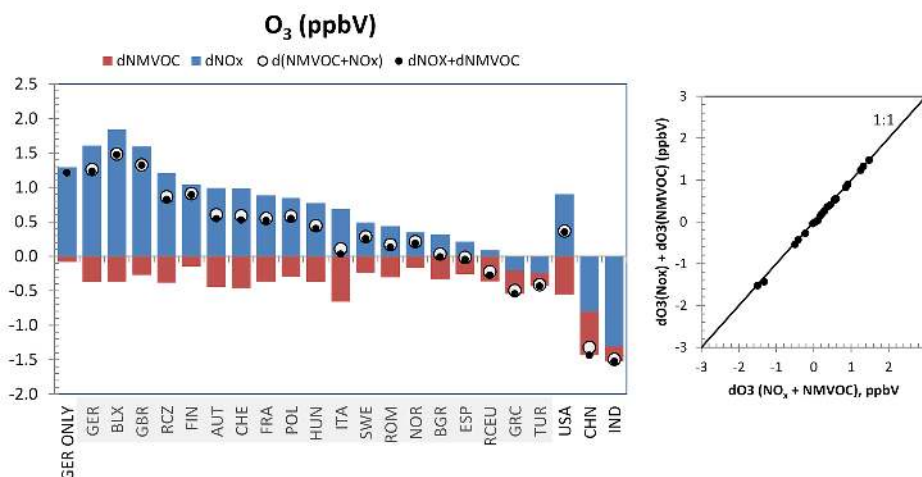


Figure 5. TM5 CTM response in annual mean population-weighted O₃ concentration (ppbV) upon emitted precursor perturbation of –20 % for selected source–receptor regions. European regions were perturbed simultaneously. Red bar: response form NMVOC-only perturbation (simulation P4); the blue bar shows the response form NO_x-only perturbation (simulation P3). Open circles show the response from simultaneous (NMVOC + NO_x) perturbation (simulation P5). Black dots show the sum of individual responses. Shaded regions are perturbed simultaneously as one European region. The right panel shows the scatter plot between O₃ response to combined and summed individual responses.

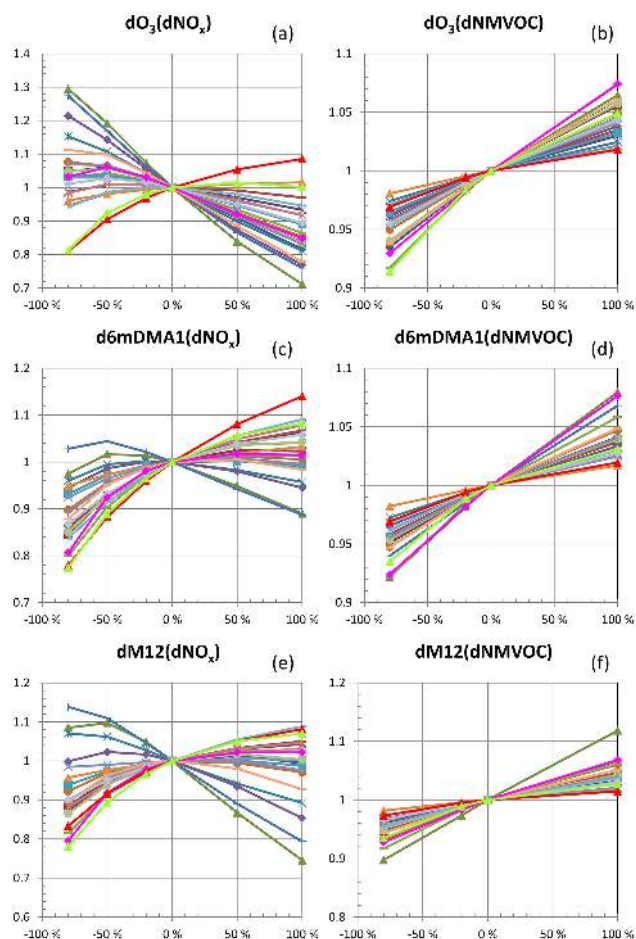


Figure 6. TM5 CTM response in population-weighted annual mean O_3 (a, b), health exposure metric 6mDMA1 (c, d), and in grid-cell-area-weighted crop exposure metric M12 (e, f) relative to their respective base simulation values, as a function of precursors NO_x (a, c, e) and NMVOC (b, d, f) emission perturbation strength. Legend as in Fig. 3. European regions are perturbed simultaneously.

also the spatial distribution of the emissions, at the resolution of grid cells, may differ from the reference set.

We use FASST to compute $PM_{2.5}$ and ozone concentrations applying Eq. (2), i.e. considering the FLE2030 and MIT2030 emission scenarios as a perturbation of the FASST reference emission set (RCP year 2000).

The scope of TM5-FASST is to evaluate on a regional basis the impacts of policies that affect emissions of short-lived air pollutants and their precursors. Hence we average the resulting O_3 and $PM_{2.5}$ concentration and O_3 exposure metric 6mDMA1 over each of the 56 FASST regions and compare them with the averaged TM5 results for the same regions.

Further, in a policy impact analysis framework, the change in pollutant concentrations between two scenarios (e.g. between a reference and policy case) is often more relevant than the absolute concentrations. We therefore present absolute concentrations as well as the change (delta) between

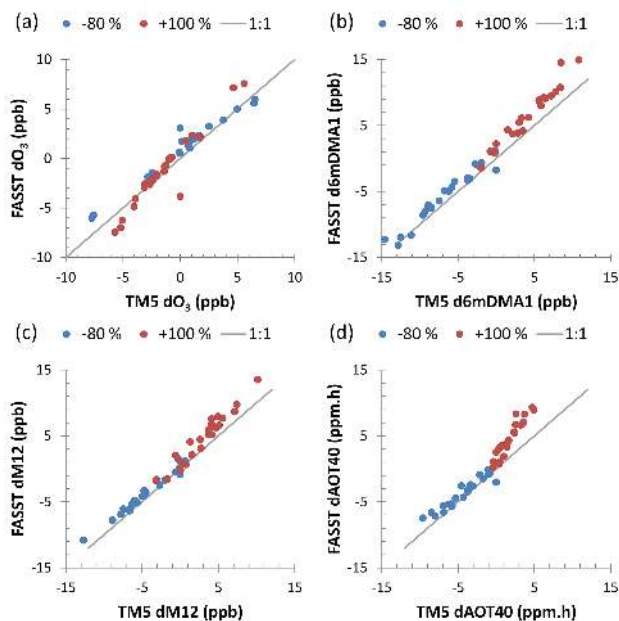


Figure 7. Regional O_3 and O_3 exposure metric responses to combined -80% and $+100\%$ precursor emission perturbations of NO_x and NMVOCs. (a) Annual mean population-weighted O_3 ; (b) population-weighted 6mDMA1; (c) area-mean M12; (d) area-mean AOT40. The x axis shows the full TM5 model; the y axis shows the linear extrapolation of -20% perturbation (FASST approach). Each point corresponds to the mean metric over a source region.

the two GEA scenarios, evaluating the benefit of a mitigation scenario versus the frozen legislation scenario.

Figure 8 shows the FASST versus TM5 regional scatter plots for absolute and delta population-weighted mean anthropogenic $PM_{2.5}$ for all 56 FASST receptor regions while the population-weighted means over the nine larger zoom areas are shown in Fig. 9. Similarly, annual mean population-weighted O_3 and 6mDMA1 scatter plots are shown in Fig. 10, and the regional distribution in Fig. 11. The grid cell statistics (mean, NMB, MB, and R^2) over larger zoom areas are given in Tables 8 and 9 for $PM_{2.5}$ and 6mDMA1 respectively.

Figure 8 and Table 8 show that on a regional basis, the low-emission scenario generally overestimates population-weighted $PM_{2.5}$ concentrations, with the highest negative bias in Europe and Asia, while the lowest deviation is found in Latin America and Africa. The agreement between FASST and TM5 is significantly better for the high-emission scenario, in line with the findings in the previous section. As shown in Table 8, averaged over the larger zoom regions, we find that the relative deviation for $PM_{2.5}$ is within 11 % for FLE2030 and within 28 % for MIT2030, except for Europe where the (low) $PM_{2.5}$ concentration is overestimated by almost a factor of 2. The policy-relevant delta between the scenarios, however, is for all regions reproduced within 23 %.

Table 6. Statistical metrics describing the correspondence between the linearized FASST- and TM5-computed change in O₃ crop exposure metric AOT40 upon –80 % and 100 % emission perturbation in its precursors (NMVOCs, NO_x, and combined NO_x + NMVOCs), relative to the RCP2000 base scenario. Statistics are calculated over all 1° × 1° grid cells in each region.

Region	FASST mean (ppm h ⁻¹)		TM5 mean (ppm h ⁻¹)		NMB ^a (%)		MB ^b (ppm h ⁻¹)		R ^{2c}	
	–80 %	100 %	–80 %	100 %	–80 %	100 %	–80 %	100 %	–80 %	100 %
	Precursor: NMVOCs									
EUR	–1.1	1.4	–1.3	1.2	–11	24	0.1	0.3	0.87	0.75
USA	–1.0	1.3	–1.1	1.0	–10	26	0.1	0.3	0.98	0.99
JPN	–0.7	0.8	–0.8	0.6	–13	38	0.1	0.2	0.98	0.98
CHN	–0.7	0.8	–0.9	0.4	–29	95	0.3	0.4	0.98	0.96
IND	–0.6	0.8	–0.8	0.4	–27	70	0.2	0.3	0.98	0.96
Precursor: NO _x										
EUR	–2.1	2.6	–3.1	1.3	–34	102	1.1	1.3	0.93	0.84
USA	–4.6	5.7	–6.3	3.7	–27	57	1.7	2.1	0.82	0.86
JPN	–0.7	0.9	–1.7	–0.2	–56	–498	0.9	1.1	0.83	0.63
CHN	–3.0	3.7	–3.5	2.5	–14	50	0.5	1.3	0.92	0.87
IND	–4.5	5.6	–5.3	3.9	–15	44	0.8	1.7	0.93	0.91
Precursor: NO _x + NMVOCs										
EUR	–3.2	4.0	–4.2	1.8	–23	126	1.0	2.2	0.94	0.91
USA	–5.6	7.0	–6.9	3.8	–18	86	1.3	3.2	0.95	0.90
CHN	–3.7	4.6	–4.3	2.4	–15	90	0.6	2.2	0.87	0.89
IND	–5.1	6.3	–5.8	3.6	–12	76	0.7	2.7	0.89	0.90

^a Normalized mean bias = $(\overline{\text{FASST-TM5}})/\overline{\text{TM5}}$. ^b Mean bias = $(\overline{\text{FASST-TM5}})$. ^c Correlation coefficient; \bar{Y} = average of all grid cells in region.

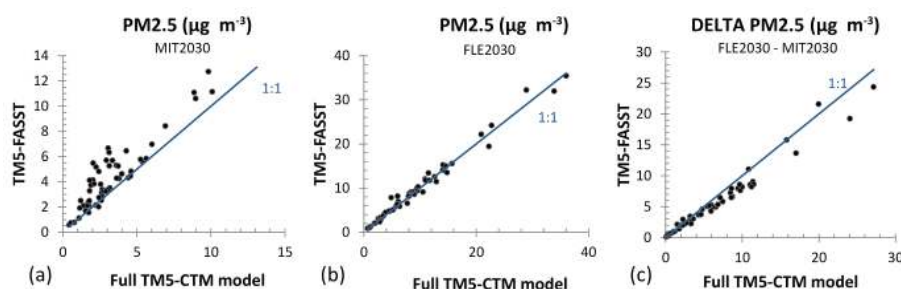


Figure 8. Population-weighted mean PM_{2.5} concentration computed with TM5-FASST versus TM5 CTM for low-emission scenario MIT2030 (a), high-emission scenario FLE2030 (b), and the change between the two. Each point represents the population-weighted mean over a TM5-FASST receptor region. The blue line is the 1 : 1 relation.

The ozone health metric 6mDMA1 is more scattered than annual mean ozone, and also here, as expected, the low-emission scenario performs worse than the high-emission one. Over larger zoom areas, however, the agreement is acceptable for both scenarios (FASST within 22 % of TM5). Contrary to PM_{2.5}, the NMB for the delta 6mDMA1 between two scenarios is higher than the NMB on absolute concentrations, with a low bias for the delta metric of –38 % and –45 % for Europe and North America respectively, and a high bias of 35 % to 46 % in Asia. However, the MB on

the delta is of the same order or lower than the absolute concentrations (Table 9). This is a consequence of the fixed background ozone in the absolute concentration reducing the weight of the anthropogenic fraction in the relative error.

Figures 9 and 11 provide a general picture of the performance of FASST: despite the obvious uncertainties and errors introduced with the FASST linear approximation for large emission changes compared to the RCP base run, at the level of regionally aggregated concentrations, a consis-

Table 7. Statistical metrics describing the correspondence between the linearized FASST- and TM5-computed change in O₃ crop exposure metric M12 upon –80 % and 100 % emission perturbation in its precursors (NMVOCs, NO_x, and combined NO_x + NMVOCs), relative to the RCP2000 base scenario. Statistics are calculated over all 1° × 1° grid cells in each region.

Region	FASST mean (ppb)		TM5 mean (ppb)		NMB ^a (%)		MB ^b (ppb)		R ^{2c}	
	–80 %	100 %	–80 %	100 %	–80 %	100 %	–80 %	100 %	–80 %	100 %
	Precursor: NMVOCs									
EUR	–0.9	1.1	–1.6	1.3	–43	–16	0.7	–0.2	0.50	0.37
USA	–1.0	1.3	–1.2	1.0	–11	27	0.1	0.3	0.98	0.99
JPN	–0.7	0.9	–0.8	0.6	–16	38	0.1	0.2	0.98	0.97
CHN	–0.8	0.9	–1.1	0.5	–33	102	0.4	0.5	0.98	0.95
IND	–0.6	0.8	–0.9	0.5	–28	76	0.7	0.3	0.98	0.95
Precursor: NO _x										
EUR	–1.6	2.0	–3.2	0.4	–49	392	1.6	1.6	0.87	0.78
USA	–4.3	5.4	–6.4	3.2	–33	66	2.1	2.2	0.82	0.84
JPN	0.5	–0.6	–0.6	–1.9	–188	–67	1.1	1.3	0.92	0.80
CHN	–3.4	4.3	–4.9	2.5	–30	68	1.5	1.7	0.95	0.81
IND	–4.8	6.0	–6.8	3.9	–29	54	2.0	2.1	0.94	0.98
Precursor: NO _x + NMVOCs										
EUR	–2.5	3.2	–3.8	2.7	–33	16	1.2	0.4	0.88	0.88
USA	–5.3	6.7	–6.6	5.0	–19	34	1.3	1.7	0.96	0.94
CHN	–4.2	5.2	–4.8	4.2	–13	25	0.6	1.1	0.98	0.96
IND	–5.5	6.9	–6.6	5.6	–18	23	1.2	1.3	0.96	0.94

^a Normalized mean bias = $(\overline{\text{FASST-TM5}})/\overline{\text{TM5}}$. ^b Mean bias = $(\overline{\text{FASST-TM5}})$. ^c Correlation coefficient; \bar{Y} = average of all grid cells in region.

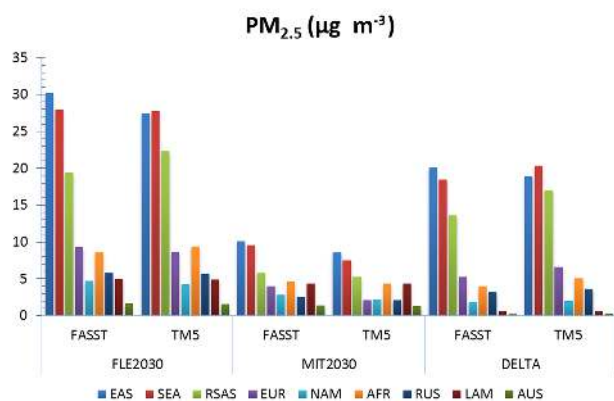


Figure 9. Total population-weighted anthropogenic PM_{2.5} over larger FASST zoom areas, for the high-emission (FLE2030) and low-emission (MIT2030) scenarios, and the difference (delta) between both, computed with the full TM5 model and with FASST.

tent result emerges for both absolute concentrations from the individual scenarios and the policy-relevant delta.

A major issue in air pollution or policy intervention impact assessments is the impact on human health; therefore we also evaluate the TM5-FASST outcome on air pollution pre-

ature mortalities with the TM5-based outcome, applying the same methodology to both TM5 and FASST outcomes. We evaluate mortalities from PM_{2.5} using the IER functions (Burnett et al., 2014) and O₃ mortalities using the log-linear ER functions and RRs from Jerrett et al. (2009) respectively. Figure 12 (PM_{2.5}) and Fig. 13 (O₃) illustrate how FASST-computed mortalities compare to TM5, both as absolute numbers for each scenario, as well as the delta (i.e. the health benefit for MIT2030 relative to FLE2030). Regional differences in premature mortality numbers are mainly driven by population numbers. In line with the findings for the exposure metrics (PM_{2.5} and 6mDMA1), FASST in general overpredicts the absolute mortality numbers, in particular in the low-emission case. For MIT2030, global PM_{2.5} mortalities are overestimated by 19 %; in Europe and North America FASST even overestimates by 43 %. In the FLE2030 case, we find a better agreement, with a global mortality overprediction of 3 % (5 % for Europe and 11 % for North America). For the latter scenario, the highest deviation is found in Latin America (10 %–20 %). O₃ mortalities are overestimated globally by 11 % (7 %) with regional agreement within 20 % (14 %) for MIT2030 (FLE2030). However, as shown by the error bars, the difference between FASST and TM5 is smaller than the uncertainty on the mortalities resulting

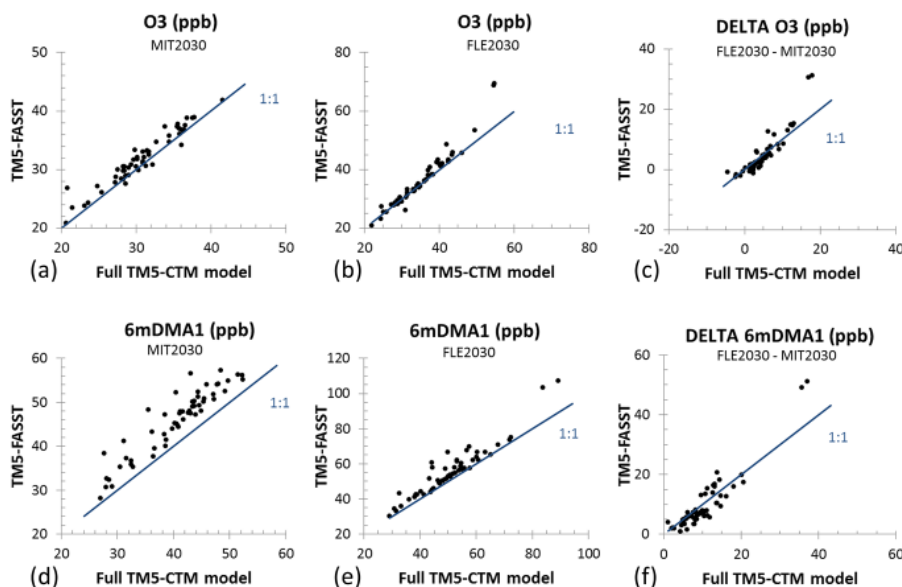


Figure 10. Population-weighted mean annual ozone (a–c) and ozone exposure metric 6mDMA1 (d–f) computed with TM5-FASST versus TM5 CTM for low-emission scenario MIT2030 (a, d), high-emission scenario FLE2030 (b, e), and the change between the two (c, f). Each point represents the population-weighted mean over a TM5-FASST receptor region. The blue line is the 1 : 1 relation.

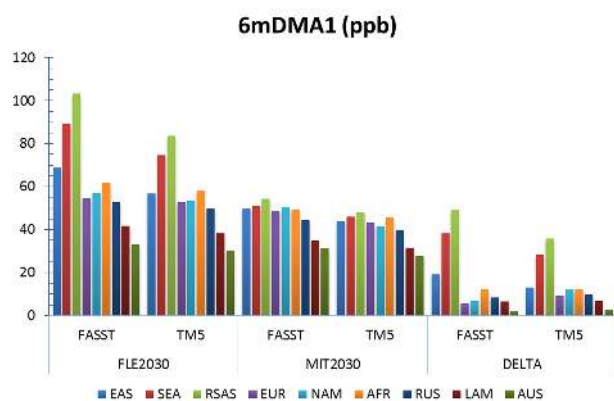


Figure 11. Total population-weighted anthropogenic $\text{PM}_{2.5}$ over larger FASST zoom areas, for the high-emission (FLE2030) and low-emission (MIT2030) scenarios, and the difference (delta) between both, computed with the full TM5 model and with FASST.

from the uncertainty on RRs only. The potential health benefit of the mitigation versus the non-mitigation scenario (calculated as FLE2030 minus MIT2030 mortalities) is shown in Figs. 12c and 13c. Globally, FASST underestimates the reduction in global $\text{PM}_{2.5}$ mortalities by 17 %, with regional deviations ranging between -30% for Europe and North America and -12% for India. The global health benefit for ozone is underestimate by 2 % for O_3 , however, as a net result of 11 % overestimation in India and 12 % to 59 % underestimation in the other regions. The numbers corresponding to Figs. 12 and 13 are provided in Tables S8.4 and S8.5.

The error ranges presented here are obviously linked to the choice of the test scenarios and will for any particular scenario depend on the magnitude and the relative sign of the emission changes relative to RCP2000, but given the amplitude of the emission change for the two currently selected scenarios relative to RCP2000, these results support the usefulness of TM5-FASST as a tool for quick scenario screening.

3.3 Comparison of TM5-FASST_v0 impact estimates with published studies

In this section we evaluate TM5-FASST_v0 outcomes for a number of key impacts (climate metrics, human health, and O_3 damage to crops) with results from earlier studies in the literature.

3.3.1 Year 2000 total global anthropogenic forcing by component

The most widely published radiative forcing estimates compare the present day with the pre-industrial time. To simulate pre-industrial, for simplicity in our TM5-FASST_v0 evaluation we set all anthropogenic emissions in the base simulation (RCP year 2000) to zero and calculate the change in forcing compared to the base case. We include forcing from all aerosol components, as well as CH_4 (including its feedback on O_3) and the short- and long-term forcing impacts of NO_x , NMVOCs, and CO on ozone and the methane lifetime. Figure 14 shows the anthropogenic forcings derived from TM5-FASST by emitted component, together with re-

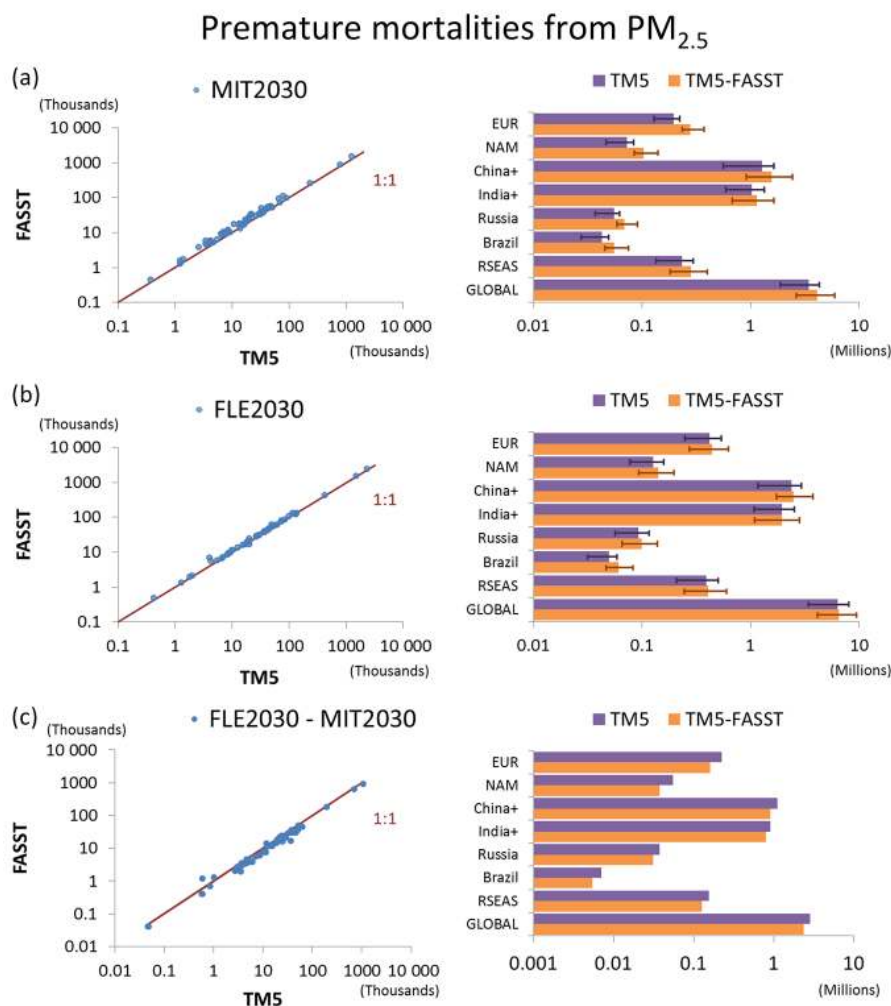


Figure 12. FASST versus TM5 premature mortalities from exposure to PM_{2.5} for MIT2030 (a) and FLE2030 (b) scenarios and the delta between both (c). Dots show values aggregated over each FASST region. Bar plots show totals for selected world regions and the global total. Error bars represent the 95 % CI on the RR from the exposure-response function (by Burnett et al., 2014).

sults from AR5 (years 1750–2011). We find that, except for BC, TM5-FASST_v0 reproduces, within the uncertainties reported by IPCC AR5, the global forcing values by emitted component. Only our estimated BC forcing (0.15 W m^{-2}) falls just outside the AR5 90 % confidence interval ($0.23, 1.02 \text{ W m}^{-2}$), which can be partly explained by the different emission years used in the inter-comparison (also explaining the relatively low estimate for CH₄). However, comparing to another widely used literature source (Bond et al., 2013), the TM5-FASST_v0 BC forcing estimate still falls within the 90 % CI ($0.08, 1.27 \text{ W m}^{-2}$ direct radiative forcing given for the year 2005, with a comparable global BC emission rate. Our low-end BC forcing estimate can be partly explained by the simplified treatment as externally mixed aerosol, without accounting for the enhancement of the mass absorption cross section when BC particles become mixed or coated with scattering components. Not-included snow albedo and

indirect cloud effects would contribute with $+0.13$ ($+0.04$ to $+0.33$) W m^{-2} and $+0.23$ (-0.47 to $+1.0$) W m^{-2} respectively (Bond et al., 2013).

A breakdown of the forcing contributions of each emitted pollutant to aerosol, ozone (including immediate and long-term response modes), and methane (when applicable) forcing is given in Table S6.6, together with the respective AR5 central values. Although there are very large uncertainties associated with the estimates of the indirect aerosol effect due to the strong approximations made in this work, the calculated magnitude (-0.81 W m^{-2}) is in agreement with the published literature range -0.55 W m^{-2} 90 % CI ($-1.33, -0.06$) W m^{-2} .

Table 10 compares the contribution of anthropogenic O₃ precursors CH₄, NO_x, NMVOCs, and CO to the O₃ and CH₄ radiative forcing with earlier work (Shindell et al., 2005, 2009; Stevenson et al., 2013). Except for NO_x,

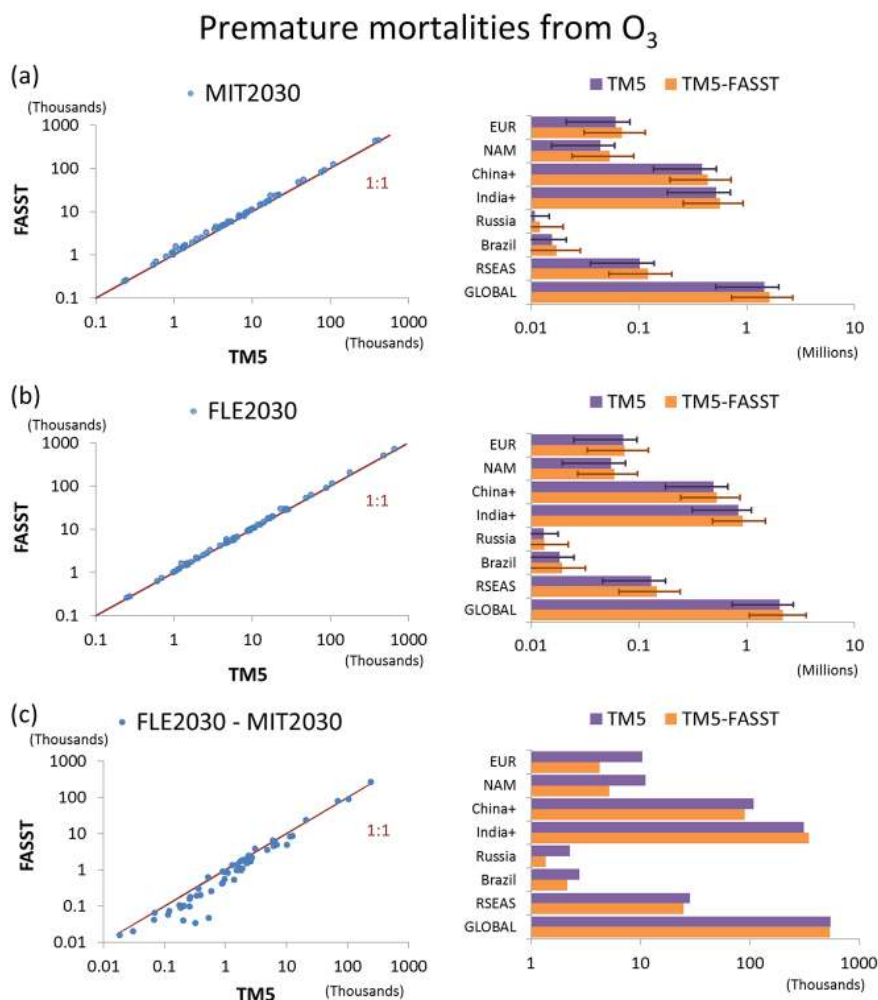


Figure 13. FASST versus TM5 premature mortalities from exposure to O₃ for MIT2030 (a) and FLE2030 (b) scenarios and the delta between both (c). Dots show values aggregated over each FASST region. Bar plots show totals for selected world regions and the global total. Error bars represent the 95 % CI on the exposure-response function (Jerrett et al., 2009).

which shows a large scatter across the studies, the FASST-computed contributions to global O₃ and CH₄ forcing – using the same 1850–2000 emission changes as in Stevenson et al. (2013) – are in good agreement with the model ensemble range in the latter study. FASST NO_x forcing contributions are a factor of 3 lower than in the Stevenson et al. study and more in line with Shindell et al. (2005, 2009) values (based on the period of 1750–2000); however the latter obtain a NMVOC contribution to O₃ forcing which is a factor of 5 to 6 lower than the other estimates. Differences across the studies are likely due to differences in oxidation chemistry and lifetimes across models.

3.3.2 Regional forcing efficiencies by emitted component

Earlier work in the frame of HTAP1 (Fry et al., 2012; Yu et al., 2013) and HTAP2 (Stjern et al., 2016) evaluated re-

gional forcing efficiencies for larger regions than the ones defined for FASST. For a comparison we aggregate the FASST forcing efficiencies (as listed in Sect. S6.3) by making emission-weighted averages over Europe (EUR), North America (NAM), South Asia (SAS), East Asia (EAS), the Mediterranean and Middle East (MEA), and Russia, Belarus, and Ukraine (RBU). Table 11 (PM precursors) and Table 12 (NO_x, NMVOCs, and CO) show the earlier studies along with the FASST results. The FASST forcing efficiencies for PM precursors confirm our earlier observation that FASST is biased particularly low for BC, especially compared to Stjern et al. (2016), but further compares relatively well with earlier work, in particular with Yu et al. (2013), which was based on a year 2001 baseline, similar to conditions of our base scenario. A similar observation is made for the regional O₃ precursors for which FASST forcing efficiencies correspond within 1 SD (standard deviation) to the study by Fry et

Table 8. Regional grid cell mean anthropogenic PM_{2.5} concentration (including primary and secondary components) and performance statistics for FASST versus TM5, for the high-emission (FLE2030) and low-emission (MIT2030) scenarios and for the delta. See Table S2.2 for the region legend.

REG	PM _{2.5} FASST ($\mu\text{g m}^{-3}$)	PM _{2.5} TM5 ($\mu\text{g m}^{-3}$)	NMB	MB ($\mu\text{g m}^{-3}$)	R ²
FLE2030					
EUR	9.2	8.7	6 %	0.56	0.94
NAM	4.7	4.2	11 %	0.47	0.95
EAS	30.2	27.5	10 %	2.75	0.93
SAS + SEA	26.4	26.8	−2 %	−0.42	0.84
RUS	5.8	5.7	1 %	0.07	0.91
SAM	5.0	4.9	1 %	0.07	0.77
MEA	8.9	9.2	−3 %	−0.23	0.88
AFR	8.5	9.4	−10 %	−0.90	0.77
MIT2030					
EUR	4.0	2.1	86 %	1.84	0.83
NAM	2.8	2.2	28 %	0.63	0.78
EAS	10.1	8.5	19 %	1.58	0.94
SAS + SEA	8.8	7.1	24 %	1.72	0.73
RUS	2.6	2.1	24 %	0.51	0.85
SAM	4.4	4.3	1 %	0.04	0.74
MEA	3.6	3.2	11 %	0.36	0.74
AFR	4.9	4.7	5 %	0.21	0.93
FLE2030 – MIT2030					
EUR	5.3	6.6	−20 %	−1.28	0.97
NAM	1.8	2.0	−8 %	−0.16	0.93
EAS	20.1	18.9	6 %	1.17	0.93
SAS + SEA	17.6	19.7	−11 %	−2.14	0.85
RUS	3.2	3.6	−12 %	−0.44	0.85
SAM	0.6	0.6	6 %	0.03	0.13
MEA	5.4	6.0	−10 %	−0.59	0.77
AFR	3.6	4.8	−23 %	−1.11	0.47

Table 9. Regional grid cell mean anthropogenic ozone health exposure metric 6mDMA1 and performance statistics for FASST versus TM5, for the high-emission (FLE2030) and low-emission (MIT2030) scenarios, and for the delta. See Table S2.2 for the region legend.

REG	6mDMA1 FASST (ppb)	6mDMA1 TM5 (ppb)	NMB	MB (ppb)	R ²
FLE2030					
EUR	55	53	4 %	2	0.98
NAM	57	53	7 %	4	0.96
EAS	69	57	21 %	12	0.93
SAS + SEA	92	76	20 %	15	0.96
RUS	53	50	6 %	3	0.98
SAM	42	38	9 %	3	0.92
MEA	72	70	4 %	3	0.95
AFR	59	55	7 %	4	0.94
MIT2030					
EUR	49	43	13 %	6	0.95
NAM	50	41	22 %	9	0.95
EAS	50	44	13 %	6	0.94
SAS + SEA	51	46	11 %	5	0.90
RUS	44	40	11 %	4	0.99
SAM	35	31	12 %	4	0.90
MEA	55	51	9 %	4	0.89
AFR	48	44	8 %	3	0.96
FLE2030 – MIT2030					
EUR	6	9	−38 %	−4	0.89
NAM	7	12	−45 %	−5	0.67
EAS	19	13	46 %	6	0.89
SAS + SEA	40	30	35 %	10	0.94
RUS	8	10	−15 %	−1.4	0.89
SAM	6	7	−5 %	−0.3	0.47
MEA	17	19	−9 %	−1.8	0.89
AFR	11	10	4 %	0.4	0.72

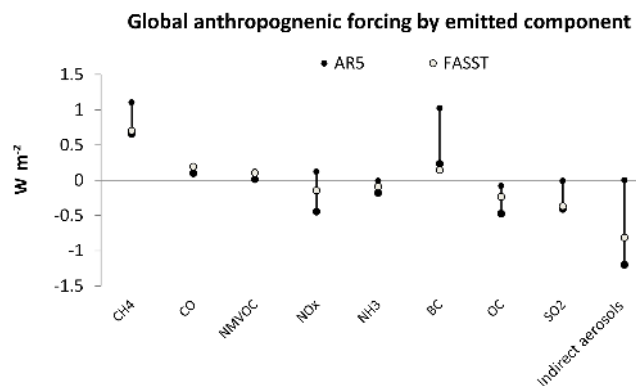


Figure 14. Global anthropogenic radiative forcing by emitted component, from TM5-FASST forcing efficiencies applied to RCP (year 2000 anthropogenic emissions), and range of best anthropogenic forcings from AR5 (change over the period of 1750–2011).

al. (2012) except for South Asia and East Asia where FASST falls within 2 SD.

3.3.3 Direct radiative forcing of short-lived climate pollutants by sector

The segregation of the RCP reference emission inventory by sector enables the evaluation of the contribution of individual sectors to the global instantaneous forcing. This is achieved by “switching off” the respective sectorial emissions in the base emission scenario one by one and comparing the resulting Δ forcing with the reference case. In Fig. 15 we compare the total and sector-attributed direct radiative forcing with that of Unger et al. (2010), who made a similar evaluation for the year 2000 based on the EDGAR Fast Track 2000 emission inventory (Olivier et al., 2005). Figure 15b shows the breakdown by forcing component, including the direct contributions by aerosols, short-lived precursors to O₃ (SLS S-

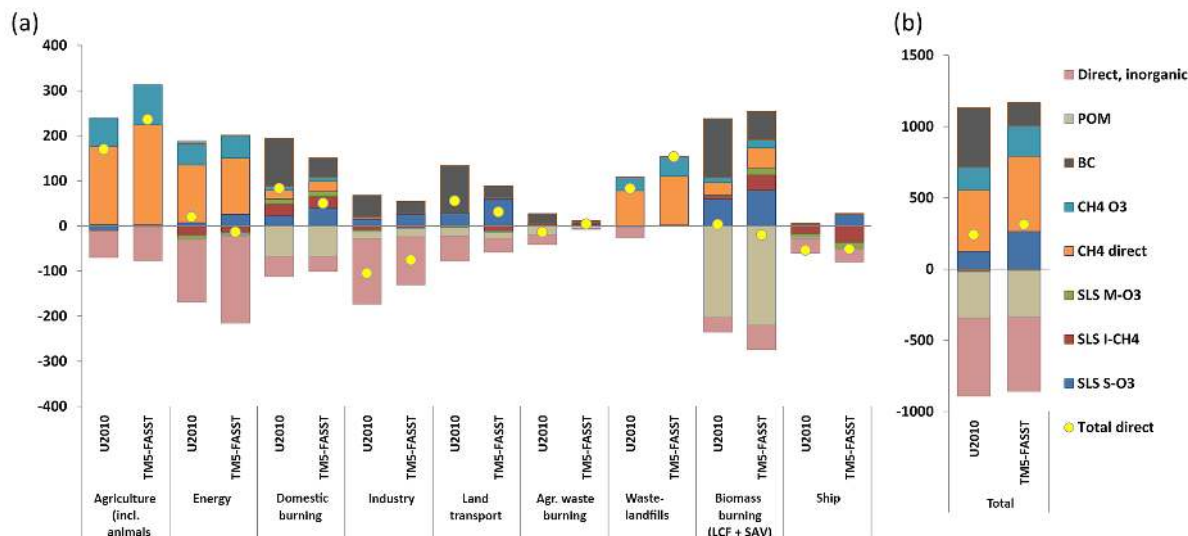


Figure 15. Year 2000 radiative forcing from Unger et al. (2010), based on EDGAR year 2000 emissions and from TM5-FASST applied to RCP year 2000 (a), broken down by sector and by forcing component. Biomass burning includes both large-scale fires and savannah burning; (b) total over all sectors. SLS S-O₃ shows the direct contribution of short-lived species (SLS) to O₃; SLS I-CH₄ shows the indirect contribution from SLS to CH₄; SLS M-O₃ shows the indirect feedback from SLS on background ozone via the CH₄ feedback. CH₄ O₃ shows the feedback of emitted CH₄ on background O₃.

Table 10. Contributions of emissions of CH₄, NO_x, CO, and NMVOCs to O₃ and CH₄ radiative forcing. Stevenson et al. (2013) is for the period 1850–2000, and Shindell et al. (2005, 2009) for the period 1750–2000. FASST shows emission changes from Stevenson et al. (2013) multiplied with FASST global forcing efficiencies.

	Stevenson et al. (2013)	Shindell et al. (2005)	Shindell et al. (2009)	TM5-FASST
Contribution to O ₃ forcing (mW m ⁻²)				
CH ₄	166 ± 46	200 ± 40	275	211
NO _x	119 ± 33	60 ± 30	41	35
CO	58 ± 13		48	67
NMVOCs	35 ± 9		7	39
Contribution to CH ₄ forcing (mW m ⁻²)				
CH ₄	533 ± 39	590 ± 120	530	528
NO _x	-312 ± 67	-170 ± 85	-130	-95
CO	57 ± 9			58
NMVOCs	22 ± 18			38

O₃), their indirect effect on CH₄ (SLS I-CH₄), and associated long-term O₃ (SLS M-O₃), as well as CH₄ forcing from direct CH₄ emissions and its associated feedback on background ozone (CH₄ O₃). Figure 15a separates the contributions by emission sector. Since different inventories are used, we do not expect a perfect match between the two analyses; however, the emerging picture, in terms of overall contribution by emitted component as well as the contribution by sector, is very similar, underlining the applicability of the TM5-FASST tool for this type of analysis in a consistent framework with other types of impacts. In general, BC forcing and

the short-term O₃ forcing by NO_x and NMVOCs (SLS-O₃) are consistently lower for FASST, while the indirect feedbacks on CH₄ and long-term O₃ correspond well. This is also the case for the direct forcing by inorganic aerosols and POM. The higher direct CH₄ forcing and its feedback on O₃ by Unger et al. (2010) can be attributed to higher emissions, in particular in the agricultural and waste–landfill sectors.

3.3.4 GWP and GTP

We use the methodology described in Sect. 2.7.4 to evaluate global GTP and GWP for different time horizons H (20 and 100 years) and compare with the range of values given in IPCC AR5 (Myhre et al., 2013). We recall that the forcings used to compute the FASST metrics, based on the meteorological year 2001 and RCP year 2000 emissions, are region specific and take into account differences in atmospheric lifetime and surface albedo. As shown in Table 13 we find an overall good agreement with AR5 values. TM5-FASST BC metrics are at the low end of the IPCC range, in line with the previously made observation regarding the low FASST BC forcing. For the NO_x metrics we have separately reported the strongly different ranges from Fuglestvedt et al. (2010) and Shindell et al. (2009). Our values for NO_x appear to be more in line with the former study, except for GWP20 for which FASST gives a negative value (−31) whereas AR5 reports a range of (12, 26) from Fuglestvedt et al. (2010) and (−440, −220) from Shindell et al. (2009).

Table 11. Regional-to-global direct radiative forcing efficiencies for PM_{2.5} precursors (mW m⁻² Tg⁻¹ of annual emissions) for the larger source–receptor regions in earlier studies, and from FASST, aggregated to similar regional definitions. Values in brackets represent 1 SD (standard deviation) from the respective reported model ensembles.

		NAM	EUR	SAS	EAS	RBU	MEA
Stjern et al. (2016)	BC	52 (±21)	55 (±22)	94 (±38)	55 (±16)	78 (±47)	202 (±323)
	POM	-8 (±6)	-7 (±4)	-10 (±6)	-5 (±3)	-2 (±5)	-18 (±7)
	SO ₄ (SO ₂)	-5 (±2)	-6 (±2)	-8 (±4)	-4 (±1)	-4 (±1)	-10 (±7)
Yu et al. (2013)	BC	27 (±15)	37 (±19)	25 (±15)	28 (±20)		
	POM	-4 (±2)	-4 (±2)	-4 (±2)	-4 (±2)		
	SO ₄ (SO ₂)	-4 (±1)	-4 (±1)	-4 (±1)	-3 (±1)		
FASST (RCP2000)	BC	17	19	19	16	25	43
	POM	-6	-4	-6	-5	-4	-9
	SO ₄ (SO ₂)	-3	-3	-4	-2	-2	-7

Table 12. Regional-to-global direct radiative forcing efficiencies for O₃ precursors (mW m⁻² Tg⁻¹ of annual emissions) for the larger source–receptor regions in earlier work, and from FASST, aggregated to similar regional definitions, including direct O₃ forcing, feedbacks on CH₄ and long-term O₃ forcing from the latter. Values in brackets represent reported 1 SD from the model ensemble in Fry et al. (2012).

		East Asia	Europe	N America	South Asia
Fry et al. (2012)	NO _x	-0.31 (±0.6)	-0.80 (±0.5)	-0.53 (±0.6)	-1.17 (±2.2)
	NMVOCS	0.50 (±0.2)	0.45 (±0.2)	0.47 (±0.2)	0.72 (±0.2)
	CO	0.15 (±0.02)	0.13 (±0.02)	0.16 (±0.02)	0.15 (±0.02)
FASST (RCP200)	NO _x	-0.44	-0.33	-0.35	-1.43
	NMVOCS	0.60	0.57	0.61	0.74
	CO	0.18	0.15	0.15	0.19

Table 13. Global GWP and GTP values' 95 % CI range (excluding indirect radiative effects) from IPCC AR5 (Forster et al., 2007) and from FASST based on RCP year 2000 emissions and the regional forcing efficiencies listed in Table S6.2 (all numbers rounded to two significant figures).

	GWP20		GWP100		GTP20		GTP100	
	AR5	FASST	AR5	FASST	AR5	FASST	AR5	FASST
CH ₄	(70, 98)	78	(24, 33)	29	(56, 79)	66	(3.6, 5.0)	3.9
BC	(940, 4100)	880	(257, 1100)	240	(270, 1200)	340	(35, 150)	37
OC	(-410, -89)	-280	(-114, -25)	-77	(-120, -26)	-110	(-16, -3)	-12
SO ₂	(-210, -70)	-150	(-58, -19)	-40	(-61, -20)	-57	(-8, 38)	-6.2
VOC	(8.3, 20)	21	(2.7, 6.3)	7	(4.4, 11)	11	(0.4, 0.9)	1.2
NO _x	(12, 26) ^a (-220, -440) ^b	-31	(-15, -7) ^a (-130, -64) ^b	-14	(-120, -57)	-100	(-3.9, -1.9)	-8
CO	(6.0, 7.8)	7.9	(2, 3)	2.6	(3.7, 6.1)	6.3	(0.27, 0.55)	0.42

^a Fuglestvedt et al. (2010). ^b Shindell et al. (2009).

3.3.5 Health impacts

Present-day health impacts

Table 14 gives an overview of recent global PM_{2.5} health impact studies, together with FASST estimates for the year 2000 (RCP) and year 2010 (HTAP2 scenario). The studies differ in emission inventories and year evaluated, in ap-

plied methodologies to estimate PM_{2.5} exposure, in model resolution, and in the choice of the exposure–response functions, the value of the minimum exposure threshold, and mortality statistics. Studies excluding natural dust from the exposure mostly apply the log-linear exposure–response function and RR from Krewski et al. (2009) and estimate between 1.6 and 2.7 million annual premature mortalities from PM_{2.5} in scenario years 2000 to 2004. FASST returns 2.1 and

Table 14. Overview of previous studies on health impact of PM_{2.5}, together with FASST results for two different scenarios. Uncertainty ranges are as reported in the respective studies. The uncertainty range on FASST results includes the RR uncertainty only (Fig. S5.1).

Reference	Year evaluated	Method	Threshold	Exposure - response function	Global deaths (millions)
Excluding mineral dust					
Fang et al. (2013)	2000	CTM	no	K2009 ^a	1.6 (1.2–1.9)
Silva et al. (2013)	2000	CTM	no	K2009	2.1 (1.3–3.0)
Anenberg et al. (2010)	2000	CTM	5.8 µg m ⁻³	K2009	2.7 (2.0–3.4)
Evans et al. (2013)	2004	SAT	5.8 µg m ⁻³	K2009	2.7 (1.9–3.5)
Lelieveld et al. (2013)	2005	CTM	no	K2009	2.2 (2.1–2.3)
FASST (RCP)	2000	FASST	~ 7.3 µg m ⁻³	K2009	2.5 (1.2–3.6)
FASST (RCP)	2000	FASST	~ 7.3 µg m ⁻³	B2014 ^b	2.1 (1.0–3.0)
Including mineral dust					
Silva et al. (2016)	2000	ACCMIP CTM ensemble	~ 7.3 µg m ⁻³	B2014	1.7 (1.3–2.1)
Evans et al. (2013)	2004	SAT	5.8 µg m ⁻³	K2009	4.3 (2.9–5.4)
Lelieveld et al. (2015)	2010	CTM	~ 7.3 µg m ⁻³	B2014	3.2 (1.5–4.6)
GBD2010 (Lim et al., 2012)	2010	Fused (FASST + SAT + ground based)	~ 7.3 µg m ⁻³	B2014	3.2 (2.8–3.6)
GBD2013 (Forouzanfar et al., 2015)	2013	Fused (FASST + SAT + ground based)	~ 7.3 µg m ⁻³	B2014	2.9 (2.8–3.1)
GBD2015 (Cohen et al., 2017)	2015	Fused (FASST + SAT + ground based)	~ 4.1 µg m ⁻³	B2014	4.2 (3.7–4.8)
FASST (RCP)	2000	FASST	~ 7.3 µg m ⁻³	K2009	3.6 (2.7–4.5)
FASST (RCP)	2000	FASST	~ 7.3 µg m ⁻³	B2014	2.6 (1.2–3.8)
FASST (HTAP2)	2010	FASST	~ 7.3 µg m ⁻³	B2014	4.1 (2.0–5.9)

^a Krewski et al. (2009). ^b Burnett et al. (2014).

Table 15. Overview of previous studies on long-term health impact of ozone, together with FASST results for two different scenarios.

Ref.	Year	Method	Threshold	Exposure - response function	Global deaths (thousands)
Anenberg et al. (2010)	2000	CTM	33.3	J2009*	470 (182–758)
Silva et al. (2013)	2000	ACCMIP CTM ensemble	33.3	J2009	380 (117–750)
Lelieveld et al. (2015)	2010	CTM	~ 37.6	J2009	142 (90–208)
GBD 2010 (Lim et al., 2012)	2010	FASST	~ 37.6	J2009	152 (52–270)
GBD 2013 (Forouzanfar et al., 2015)	2013	FASST	~ 37.6	J2009	217 (161–272)
GBF 2015 (Cohen et al., 2017)	2015	FASST	~ 37.6	J2009	254 (97–422)
FASST (RCP)	2000	FASST	33.3	J2009	197 (66–315)
FASST (HTAP2)	2010	FASST	33.3	J2009	340 (116–544)

* Jerrett et al. (2009).

2.5 million deaths using the GBD and log-linear exposure functions respectively. Studies including mineral dust mostly apply the GBD integrated exposure-response functions and a non-zero threshold to avoid unrealistically high relative risk rates at high PM_{2.5} levels in regions frequently exposed to dust. Depending on the choice of the exposure-response function and scenario year, FASST obtains 2.6 to 4.1 million global deaths, comparable with the range of 1.7 to 4.2 million from previous studies.

Global ozone mortalities reported in Table 15 have been commonly based on the Jerrett et al. (2009) methodology, implemented in FASST. FASST obtains 197 thousand and

340 thousand deaths for the RCP 2000 and HTAP2 2010 scenarios respectively, while the earlier studies find 380 to 470 thousand deaths in 2000 and 140 to 250 thousand in 2010–2015. Differences can be attributed to model chemical and meteorological processes, emission inventories, and the use of different sources for respiratory base mortality statistics.

For both PM_{2.5} and O₃, the difference between the different studies falls within the combined RR uncertainty and model variability range.

Health impacts in future scenarios: intercomparison with ACCMIP model ensemble

The health impact analysis of the RCP scenarios performed with the Atmospheric Chemistry and Climate Model Intercomparison Project (ACCMIP) model ensemble (Silva et al., 2016) provides a useful test case for the ability of TM5-FASST to reproduce trends derived from emission scenarios. The ACCMIP ensemble consisted of 14 state-of-the-art global chemistry–climate models with spatial resolution from $1.9^\circ \times 1.2^\circ$ to $5^\circ \times 5^\circ$. The ACCMIP models simulated future air quality for specific periods through 2100, for four global greenhouse gas and air pollutant emission scenarios projected in the Representative Concentration Pathways (RCPs). The analysis by Silva et al. (2016) used the same methodology implemented in FASST for estimating premature mortalities from $\text{PM}_{2.5}$ and O_3 as in the GBD study (i.e. Burnett et al., 2014, and Jerrett et al., 2009 respectively), with the small difference that it does not include ALRIs as a cause of death (in FASST applicable to the age group below 5 years only) and the evaluated age group is > 25 years old, while in TM5-FASST the analysis was performed for the population older than 30 years. Further, the ACCMIP health impact analysis uses scenario-specific projections for population and cause-specific base mortalities while FASST uses the same population projections and mortality rates, as described in Sect. 2, across all scenarios.

Following the approach of Silva et al. (2016), we compare the global population-weighted annual mean $\text{PM}_{2.5}$ concentration change and ozone exposure metric 6mDMA1 relative to year 2000 concentrations for RCP scenarios 2.6, 4.5, and 8.5 for the years 2030 and 2050, with year 2000 exposure evaluated over the population of the respective scenario years (Tables S2 and S3 in Silva et al., 2016). Figure 16 shows the results from the ACCMIP model ensemble as well as individual model results along with TM5-FASST outcome. We make the evaluation with and without the urban increment parameterization included (using the generic increment factors from Table S4.2). We find that TM5-FASST qualitatively reproduces $\text{PM}_{2.5}$ trends between 2030 and 2050 for the selected RCP scenarios, although in only two of the six considered scenarios does the TM5-FASST concentration relative to year 2000 falls within the ACCMIP ensemble range. Even without urban increment correction, TM5-FASST consistently gives higher $\text{PM}_{2.5}$ exposure levels than ACCMIP (higher by 0.9, 1.5, and $1.0 \mu\text{g m}^{-3}$ in 2030 and 0.7, 1.3, and $0.9 \mu\text{g m}^{-3}$ in 2050 for RCP2.6, RCP4.5, and RCP8.5 respectively). Apart from our previous finding that FASST tends to overestimate $\text{PM}_{2.5}$ levels compared to a full chemistry–transport model, an additional plausible explanation is the underlying higher spatial resolution in FASST ($1^\circ \times 1^\circ$) than any of the ACCMIP models. Including the urban increment increases the global mean change in exposure relative to the year 2000 with an additional 0.1 to $0.6 \mu\text{g m}^{-3}$.

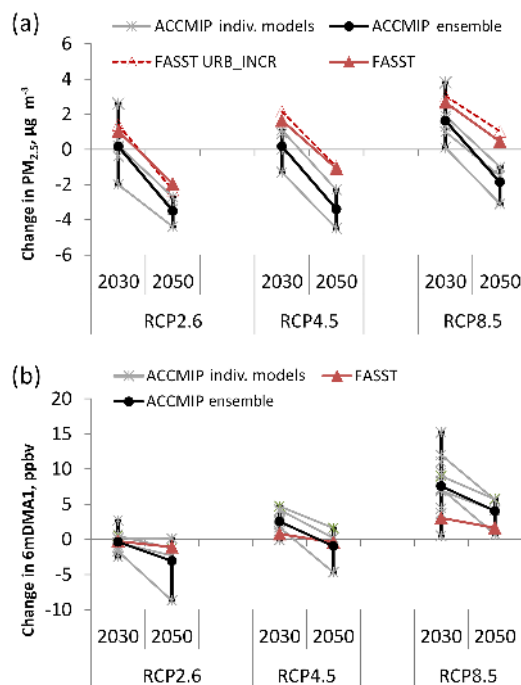


Figure 16. Global-population-weighted differences (scenario year minus the year 2000) (a) in annual mean $\text{PM}_{2.5}$ concentrations and (b) in O_3 exposure metric 6mDMA1 for three RCP scenarios in each future year, from the ACCMIP model ensemble (Silva et al., 2016) (black symbols and lines) and TM5-FASST_v0 (red symbols and lines). FASST URB_INCR includes the urban increment correction. Grey symbols show results from individual ACCMIP models. Grey lines connect results from a single model. Not all models have provided data for all scenarios. ACCMIP error bars represent the range (min, max) across the ACCMIP ensemble.

The ozone exposure metric 6mDMA1 falls within the range of the ACCMIP model ensemble for 2030–2050, but the slope between 2030 and 2050 is lower than for the ACCMIP ensemble mean; i.e. FASST shows a lower response sensitivity for O_3 to changing emissions between 2030 and 2050 than the ACCMIP models (-1 ppb from 2030 to 2050 in FASST, versus -3 ppb for the ACCMIP mean). Given our previous observation that FASST reproduces TM5 relatively well, this indicates that inter-model variability is a stronger factor in the model uncertainty than the reduced-form approach.

The trends from 2000 to 2050 in global mortality burden from $\text{PM}_{2.5}$ and O_3 are shown in Fig. 17. Assuming that the relative error for the year 2000 – the only uncertainty range given by Silva et al. (2016) – can be applied to the other cases, we find that TM5-FASST reproduces the ACCMIP health impacts from $\text{PM}_{2.5}$ within the ACCMIP range. Including the urban increment correction increases the mortality by 26 % in 2000; 24 %, 22 %, and 17 % in 2030; and 32 %, 31 %, and 25 % in 2050 for RCP2.6, RCP4.5, and RCP8.5 respectively.

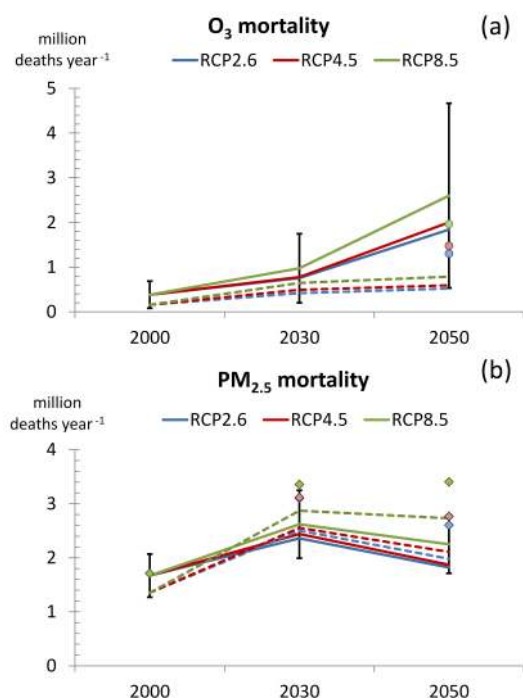


Figure 17. Trends in global burden on mortality of ozone (a) and $\text{PM}_{2.5}$ (b) from the years 2000 to 2050 from the ACCMIP multi-model ensemble (Silva et al., 2016) (full lines) and TM5-FASST (dashed lines) for three RCP scenarios. The error bar on the year 2000 is the ACCMIP 95 % CI including uncertainty in RR and across models. CIs for 2030 and 2050 were not provided by ACCMIP; we use here the same relative error as for the year 2000. Dots (O_3 mortality) show the adjusted TM5-FASST ozone mortalities for RCP 2050, using baseline respiratory mortalities consistent with Silva et al. (2016). Diamonds ($\text{PM}_{2.5}$ mortality) show the TM5-FASST estimate including the urban increment parameterization.

While calculated O_3 mortalities for the years 2000 and 2030 are within the ACCMIP range, TM5-FASST does not confirm the strongly increasing O_3 mortalities in the ACCMIP ensemble by 2050. However, this difference can be attributed to the use of different baseline mortality statistics, in particular for the year 2050 when FASST, by lack of WHO projections for 2050, assumes year 2030 WHO-projected mortality rates whereas Silva et al. (2016) use International Futures (IFs) projections up until 2100. Indeed, the IFs projections (Fig. S7 in the Supplement of Silva et al., 2016) foresee relative constant global mortality rates (deaths per 1000 people) between 2030 and 2050 for all air-pollution-related death causes, except for respiratory disease (on which O_3 mortality estimates are based), which increases with a factor of 2.5 globally from 2030 to 2050. An acceptable agreement with the ACCMIP model ensemble outcome is achieved when this effect is included as a simple adjustment factor on the FASST RCP year 2050 O_3 mortalities, as shown by the dot symbols (year 2050) in Fig. 17. Respira-

tory mortality is not considered as a cause of death for $\text{PM}_{2.5}$, which explains why a similar disagreement is not observed in the $\text{PM}_{2.5}$ mortality trend in Fig. 17b.

A regional breakdown of mortality burden from $\text{PM}_{2.5}$ in 2030 and 2050, relative to exposure to year 2000 concentrations, for major world regions and for the globe is shown in Figs. S9.1 and S9.2. Compared to Fig. 17, which shows the global mortality trends as a combined effect of changing population, mortality rates, and pollution level, here the effect of changing population and baseline mortality is eliminated by exposing the evaluated year's population to pollutant levels of the relevant year and to RCP year 2000 levels respectively and calculating the change between the two resulting mortality numbers. FASST reproduces the overall observed trends across the regions: we see substantial reductions in North America and Europe in 2030, whereas in East Asia significant improvements in air quality impacts are realized after 2030. For the India region, all scenarios project a worsening of the situation. The global trend is dominated by the changes in East Asia. The observed differences between the FASST and ACCMIP ensembles are not insignificant and partly due to different mortality and population statistics in particular for the year 2050; still they are consistent with the findings in the previous section: FASST tends to overestimate absolute $\text{PM}_{2.5}$ concentrations for emission scenarios different from RCP2000 and consequently tends to under-predict the benefit of emission reductions, while over-predicting the impact of increasing emissions.

3.3.6 Present-day O_3 -induced crop losses

Avnery et al. (2011) evaluate year 2000 global and regional O_3 -induced crop losses for wheat, maize, and soy bean, based on the same crop ozone exposure metrics as used in FASST, obtained with a global chemical transport model at $2.8^\circ \times 2.8^\circ$ resolution. Figure 18 compares their results (in terms of relative yield loss) with FASST (TM5) results based on RCP year 2000 for the globe and three selected key regions (Europe, North America, and East Asia). Despite the less robust quantification of crop impacts from O_3 in a linearized reduced-form model set-up, we find that FASST reproduces the major features and trends across regions and crop varieties. Differences may be attributed to a variety of factors, including model resolution, model O_3 chemistry processes, emissions, definition of crop growing season, and crop spatial distribution.

4 Discussion

Although the methodology of a reduced-form air quality model, based on linearized emission concentration sensitivities, is not new and has been successfully applied in earlier studies (Alcamo et al., 1990), the concept of directly linking pollutant emission scenarios to a large set of impacts across

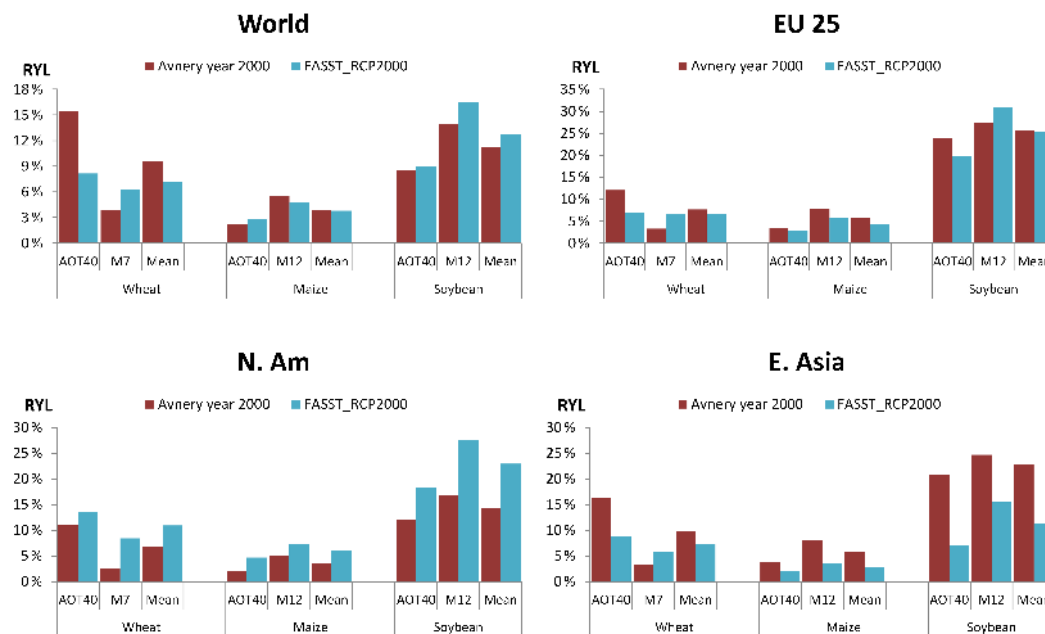


Figure 18. Year 2000 global and regional ozone-induced relative yield losses in four world regions for three major crops, from Avnery et al. (2011) and from TM5-FASST (RCP year 2000), estimated from the two common exposure metrics M7 and AOT40 (see text), as well as the mean of both.

various policy fields, in a global framework, has made TM5-FASST a highly requested tool in a broad field of applications. HTAP1 showed that TM5 SR results (for the large HTAP1 regions) were in most cases similar to the median model results of more than 10 global models, lending additional trust to the model performance (e.g. Anenberg et al., 2014; Dentener et al., 2010; Fiore et al., 2009). The results in the previous sections have outlined its strengths and weaknesses. The major strength of the tool is its mathematical simplicity, allowing for quick processing of large sets of scenarios or scenario ensembles. An extreme example is the full family of shared socioeconomic pathway (SSP) scenarios delivered by all participating integrated assessment models, for decadal time slices up to 2050, constituting a batch of 594 scenarios of which a selection of 124 scenarios was analysed with TM5-FASST in the study by Rao et al. (2017). Further, the tool is unique in having a broad portfolio of implemented impact modules which are evaluated consistently over the global domain from the same underlying pollutant field, which creates a basis for a balanced evaluation of trade-offs and benefits attached to policy options.

Conversely, the reduced-form approach inevitably encompasses a number of caveats and uncertainties that have to be considered with care and which are discussed in the following sections.

4.1 Issues related to the reduced-form approach

The reliability of the model output in terms of impacts depends critically on the validity of the linearity assumption for the relevant exposure metrics (in particular secondary components), which becomes an issue when evaluating emission scenarios that deviate strongly from the base and -20% perturbation on which the current FASST SRs are based. The evaluation exercise indicated that non-linearity effects in $\text{PM}_{2.5}$ and O_3 metrics in general lead to a higher bias for stringent emission reductions (towards -80% and beyond) than for strong emission increases compared to the RCP2000 base case but overall remain within acceptable limits when considering impacts. Indeed, because of the thresholds included in exposure-response functions, the higher uncertainty on low (below-threshold) pollutant levels from strong emission reductions has a low weight in the quantification of most impacts. In future developments the available extended-range (-80% , $+100\%$) emission perturbation simulations could form the basis of a more sophisticated parameterization including a bias correction based on second-order terms following the approach by Wild et al. (2012) for both O_3 and secondary $\text{PM}_{2.5}$. The breakdown of the linearity at low-emission strengths is relevant for O_3 and O_3 exposure metrics as the implementation of control measures in Europe and the US has already substantially lowered NO_x levels over the past decade, gradually modifying the prevailing O_3 formation regime from NO_x saturated (titration regime) to NO_x limited (Jin et al., 2017).

Ozone impact on agricultural crop production is deemed to be the least robustly quantified impact category included in FASST, in particular when evaluated from the threshold-based AOT40 metric, and has to be interpreted as an indicative order-of-magnitude estimate. In an integrated assessment perspective of evaluating trade-offs and benefits of air pollutant scenarios, the dominant impact category appears to be human health (Kitous et al., 2017; OECD, 2016; UNEP, 2011) for which TM5-FASST provides reliable estimates.

Another issue for caution relates to the FASST analysis of emission scenarios with spatial distribution that differs from the FASST reference scenario (RCP year 2000). The definition of the source regions when establishing the SR matrices implicitly freezes the spatial distribution of pollutant emissions within each region, and therefore the reduced-form model cannot deal with intra-regional spatial shifts in emissions. In practice this is not expected to introduce large errors as anthropogenic emissions are closely linked to populated areas and road networks of which the extent may change, but their location is less likely to change. It can be a problem when going far back in time, when large patterns of migration and land development occurred, while in RCP scenarios relatively simple expansions of emissions into the future did not assume huge shifts in regional emission patterns.

The implicitly fixed emission spatial distribution may also become relevant when making a sector apportionment of pollutant concentrations and impacts. SR relations are indeed particularly useful to evaluate the apportionment of emission sources (in terms of economic sector as well as source region) to pollutant levels in a given receptor. However, as the TM5-FASST_v0 SR matrices were not segregated according to economic sectors, an emission reduction of 20 % for a given source region is implicitly considered to be a 20 % reduction in all sectors simultaneously. Although the atmospheric chemistry and transport of emissions is in principle independent of the specific source, a difference in the sector-specific SR matrices may occur due to differences in temporal and spatial (horizontal–vertical) distribution of the sources. Therefore, apportionment studies on sectors which have a significantly different emission spatial distribution than other sectors in the same region should be interpreted with care. In particular, impacts of offshore flaring cannot be assessed with TM5-FASST because those emissions were not included in the RCP base emissions. This limitation, however, does not apply to international shipping and aviation, for which specific SR matrices have been established.

Comparing to earlier studies and reference data, the performance of TM5-FASST with respect to climate metrics is satisfactory, with the exception of BC forcing, which is on the low side of current best estimates. In fact, earlier TM5-FASST assessments in which climate metrics were provided (UNEP, 2011; UNEP and CCAC, 2016) applied a uniform adjustment factor of 3.6 on BC forcing, in line with the observation that many models underestimate atmospheric absorption attributable to BC by a factor of almost 3. In TM5-

FASST, an adjustment factor of 3.6 leads to a global forcing by anthropogenic BC of 600 mW m^{-2} . This tuning factor implicitly accounts for not-considered BC forcing contributions and for a longer BC atmospheric lifetime than implemented in the TM5 model and the resulting FASST SR coefficients.

The current version of TM5-FASST is missing some SR relations, which may introduce a bias in estimated $\text{PM}_{2.5}$ and O_3 responses upon emission changes. The omission of secondary organic PM in TM5 is estimated to introduce a low bias in the base concentration of the order of $0.1 \mu\text{g m}^{-3}$ as global mean; however, regional levels in central Europe and China reach up to $1 \mu\text{g m}^{-3}$ in areas where levels of primary organic matter are $20 \mu\text{g m}^{-3}$ (Farina et al., 2010), indicating a relatively low contribution of SOA to total $\text{PM}_{2.5}$. O_3 formation from CO is included in the TM5 base simulations, but no SR matrices for the FASST source region definition are available. Based on the HTAP1 CO perturbation simulations with TM5, we estimate that a doubling of anthropogenic CO emissions contributes 1–1.9 ppb in annual mean O_3 over Europe, 1.3–1.9 ppb over North America, 0.7–1.0 ppb over South Asia, and 0.3–1.5 ppb over East Asia. Development of CO– O_3 SRs is an important issue for the further development of the tool.

4.2 Inter-annual meteorological variability

A justified critique on the methodology applied to construct the FASST SRs relates to the use of a single and fixed meteorological year 2001, implying possible unspecified biases in pollutant concentrations and SR matrices compared to using a typical meteorological–climatological year. We followed the choice of the meteorological year 2001 made for the HTAP1 exercise. As the North Atlantic Oscillation (NAO) is an important mode of the inter-annual variability in pollutant concentrations and long-range transport (Christoudias et al., 2012; Li et al., 2002; Pausata et al., 2013; Pope et al., 2018), the HTAP1 expectation was that this year was not an exceptional year for long-range pollutant transport – e.g. for the North Atlantic region, as indicated by a NAO index close to zero for that year (<https://www.ncdc.noaa.gov/teleconnections/nao/>, last access: 20 August 2018). The HTAP1 report (Dentener et al., 2010) also suggested that “Inter-annual differences in SR relationships for surface O_3 due to year-to-year meteorological variations are small when evaluated over continental-scale regions. However, these differences may be greater when considering smaller receptor regions or when variations in natural emissions are accounted for”. The role of spatial and temporal meteorological variability can thus be reduced by aggregating resulting pollutant levels and impacts as regional and annual averages or aggregates, the approach taken in TM5-FASST.

The impact of the choice of this specific year on the TM5-FASST model uncertainty or possible biases in base concentrations and SR coefficients is not easily quantified. For what concerns the pollutant base concentrations, some in-

sights into the possible relevance of meteorological variability can be found in the literature. For example, Andersson et al. (2007) showed that in Europe, the meteorological component in regional inter-annual variability in pollutant concentrations ranges between 3 % and 11 % for airborne pollutants (O_3 , $PM_{2.5}$) and up to 20 % for wet deposition. On a global scale, Liu et al. (2007) demonstrated that the inter-annual variability in PM concentrations, related to inter-annual meteorological variability, can even be up to a factor of 3 in the tropics (e.g. over Indonesia) and in the storm track regions. A sample analysis (documented in Sect. S2.2) of the RCP year 2000 emission scenario with TM5 at $6^\circ \times 4^\circ$ resolution of 5 consecutive meteorological years from 2001 to 2005 indicates a year-to-year variability in regional $PM_{2.5}$ within 10 % (relative standard deviation) and within 3 % for annual mean O_3 . We find a similar variability in the magnitudes of 20 % emission perturbation responses within the source region for six selected regions (India, China, Europe, Germany, the USA, and Japan). The relative share of source regions to the pollutant levels within a given receptor region shows a lower inter-annual variability (typically between 2 % and 6 % for $PM_{2.5}$) than the absolute contributions.

4.3 Impact of the native TM5 grid resolution on pollutant concentration and SRs

FASST base concentrations and SRs have been derived at a $1^\circ \times 1^\circ$ resolution, which is a relatively fine grid for a global model, but still not optimal for population exposure estimates and health impact assessments. Previous studies have documented the impact of grid resolution on pollutant concentrations. The effect of higher grid resolution in global models is in general to decrease ozone exposure in polluted regions and to reduce O_3 long-range transport, while $PM_{2.5}$ exposure – mainly to primary species – increases (Fenech et al., 2018; Li et al., 2016; Pungler and West, 2013). Without attempting a detailed analysis, a comparison of TM5 available output for $PM_{2.5}$ and O_3 at $6^\circ \times 4^\circ$, $3^\circ \times 2^\circ$, and $1^\circ \times 1^\circ$ resolution confirms these findings, as illustrated in Fig. S2.6. Although FASST is expected to better represent population exposure to pollutants than coarser-resolution models, a resolution of $1^\circ \times 1^\circ$ may not adequately capture urban-scale pollutant levels and gradients when the urban area occupies only a fraction of the grid cell. The developed sub-grid parameterization for $PM_{2.5}$, providing an order-of-magnitude correction which is consistent with a high-resolution satellite product, is subject to improvement and to extension to other primary pollutants (NO_2 ; e.g. Kiesewetter et al., 2014, 2015) and O_3 . To our knowledge a workable parametrization to quantify the impact of sub-grid O_3 processes on population exposure – in particular titration due to local high NO_x concentrations in urban areas – has not been addressed in global air quality models.

The impact of grid resolution on the within-region SR coefficients can be significant, in particular for polluted re-

gions where the coarse resolution includes ocean surface, like Japan. Table S2.3 shows as an example within-region and long-range SR coefficients for receptor regions Germany, the USA, and Japan. A higher grid resolution increases the within-region response and decreases the contribution of long-range transport (where the contribution of China to nearby Japan behaves as a within-region perturbation). In the case of Japan, the within-region $PM_{2.5}$ response magnitude increases with a factor of 3, and the sign of the within-region O_3 response is reversed when passing from $6^\circ \times 4^\circ$ to higher resolution. Also over the USA, the population-weighted within-region response sensitivity upon NO_x perturbation increases with a factor of 5. Further, we find that in titration regimes, the magnitude of the O_3 response to NO_x emissions increases with resolution (i.e. ozone increases more when NO_x is reduced using a fine resolution) whereas the in-region ozone response is reduced in non-titration regimes (India and China, Fig. 2.7d). These indicative results are in line with more detailed studies (e.g. Wild and Prather, 2006).

5 Conclusions and way forward

The FASST_v0 version of TM5 is a trade-off between accuracy and applicability. TM5-FASST_v0 enables immediate “what-if” and sensitivity calculations, and, by means of the available SR coefficients, the extraction of this information down to the level of individual regions, economic sectors, and chemical compounds. In this paper we have extensively documented the embedded methodology and validated the tool against the full chemistry transport model as well as against selected case studies from the literature. In conclusion, provided that the TM5-FASST_v0 is considered to be a screening tool, the simplifications introduced in order to generate immediate results from emission scenarios do not compromise the validity of the output and as such TM5-FASST_v0 has been proven to be a useful tool in science-policy analysis.

The native set of TM5-FASST region-to-grid SR grid maps is sufficiently detailed, in terms of both spatial and temporal resolution as well as number of pollutant species and metrics, to include additional impact categories not included so far. Some examples are BC deposition to snow-covered surfaces and combined nitrogen fertilization and O_3 feedbacks on carbon sequestration by vegetation from NO_x emission, both relevant as additional climate forcings, and population exposure to NO_2 and SO_2 as additional health effects.

The regional 58×56 region-to-region SR matrices aggregated from the high-resolution (region-to-grid map) SRs are easily implemented in a spreadsheet-type environment. A user-friendly web-based interactive stable version based on the latter is available at <http://tm5-fasst.jrc.ec.europa.eu/> (last access: 7 November 2018). This version offers the possibil-

ity to explore built-in as well as user-defined scenarios, using static default urban increment correction factors and crop production data. A more sophisticated in-house research version with gridded output and flexibility in the choice of gridded ancillary data (population grid maps, scenario-specific urban increment factors, crop distribution) is under continuous development and has been applied for the assessments listed in Table S1.

Some foreseen further developments of the TM5-FASST tool, making use of readily available SRs, include

- using the available extended-range perturbation simulations to develop a correction algorithm on the current simple linear extrapolation procedure, in particular for the regions where the O₃ or secondary PM_{2.5} regimes are non-linear, e.g. following the approach by Wild et al. (2012) and Turnock et al. (2018);
- updating the health impact modules with recent findings in literature, specifically on the long-term O₃ impact (Turner et al., 2016), adjusting IER function parameters and age-specific exposure-response functions for PM_{2.5} mortalities (Cohen et al., 2017), and including different health metrics (DALYS, life years lost) and improved projections for base mortalities and other health statistics;
- a transient O₃ response function to CH₄ emission changes;
- cryosphere forcing via BC deposition;
- a stomatal approach for crop ozone impacts and extension of vegetation types considered;
- higher temporal resolution exploiting the available native monthly SR maps.

Even with these further developments, an important limitation of TM5-FASST_v0 remains that it is based on a single meteorological year (2001), on SR relations computed by a single underlying chemistry-transport model, based on the reference year 2000, and fixed fields for natural PM_{2.5}. The HTAP phase 2 modelling exercise addresses these issues: it has been designed in line with the FASST philosophy (albeit with a larger aggregation of source region definitions), with an ensemble of chemistry-transport or climate–chemistry models providing SR simulations, based on an updated and harmonized common anthropogenic pollutant emission inventory for the years 2008–2010 (Janssens-Maenhout et al., 2015; Koffi et al., 2016). The FASST architecture allows for an implementation of new or additional SR matrices, for instance new HTAP2 model ensemble mean matrices, each one accompanied by an ensemble standard deviation matrix to include the model variability in the results. Efforts are now underway to create a new web-based and user-friendly HTAP–FASST version, operating under the same principles as TM5-FASST, but based on an up-to-date reference simulation and

underlying meteorology, thus creating a link between the knowledge generated by the HTAP scientific community and interested policy-oriented users.

Data availability. The RCP emissions used for establishing the FASST source–receptor matrices are publicly available via the RCP Database, available at: <http://www.iiasa.ac.at/web-apps/tnt/RcpDb> (RCP Database, 2009). References to ancillary data (population, crop, and health statistics) have been included in the paper and in the Supplement. The FASST tool is publicly accessible via the Joint Research Centre FASST Webpage, available at: <http://tm5-fasst.jrc.ec.europa.eu/> (Joint Research Centre, 2018). FASST embedded source–receptor matrices are available from the corresponding author upon request by email.

Supplement. The supplement related to this article is available online at: <https://doi.org/10.5194/acp-18-16173-2018-supplement>.

Author contributions. RVD prepared the paper with contributions from all co-authors; FD carried out all TM5 simulations and contributed to FASST data analysis; RVD designed and developed the FASST tool and performed all analyses; MC, JL, and ES contributed to FASST impact module development, scenario analyses, and model validation studies; LV contributed to the web-based FASST interface and validation studies; SR provided the GEA emission scenarios; EM developed the radiative transfer module.

Competing interests. The authors declare that they have no conflict of interest.

Special issue statement. This article is part of the special issue “Global and regional assessment of intercontinental transport of air pollution: results from HTAP, AQMEII and MICS”. It is not associated with a conference.

Acknowledgements. Joana Leitao acknowledges support by the European Commission Seventh Framework Programme (FP7/2007–2013) project LIMITS under grant agreement 282846. Luana Valentini acknowledges support from the AMITO2 Administrative Arrangement. The paper has greatly benefitted from insights and suggestions provided by the two anonymous reviewers.

Edited by: Gregory Carmichael

Reviewed by: two anonymous referees

References

- Alcamo, J., Shaw, R., and Hordijk, L. (Eds.): The RAINS Model of Acidification – Science and Strategies in Europe, 1st Edn., Springer Netherlands, 1990.
- Amann, M., Bertok, I., Borken-Kleefeld, J., Cofala, J., Heyes, C., Höglund-Isaksson, L., Klimont, Z., Nguyen, B., Posch, M., Rafaj, P., Sandler, R., Schöpp, W., Wagner, F., and Winiwarter, W.: Cost-effective control of air quality and greenhouse gases in Europe: Modeling and policy applications, *Environ. Model. Softw.*, 26, 1489–1501, <https://doi.org/10.1016/j.envsoft.2011.07.012>, 2011.
- Andersson, C., Langner, J., and Bergström, R.: Interannual variation and trends in air pollution over Europe due to climate variability during 1958–2001 simulated with a regional CTM coupled to the ERA40 reanalysis, *Tellus B*, 59, 77–98, <https://doi.org/10.1111/j.1600-0889.2006.00196.x>, 2007.
- Anenberg, S. C., West, J. J., Fiore, A. M., Jaffe, D. A., Prather, M. J., Bergmann, D., Cuvelier, K., Dentener, F. J., Duncan, B. N., Gauss, M., Hess, P., Jonson, J. E., Lupu, A., Mackenzie, I. A., Marmer, E., Park, R. J., Sanderson, M. G., Schultz, M., Shindell, D. T., Szopa, S., Vivanco, M. G., Wild, O., and Zeng, G.: Intercontinental impacts of ozone pollution on human mortality, *Environ. Sci. Technol.*, 43, 6482–6487, <https://doi.org/10.1021/es900518z>, 2009.
- Anenberg, S. C., Horowitz, L. W., Tong, D. Q., and West, J. J.: An estimate of the global burden of anthropogenic ozone and fine particulate matter on premature human mortality using atmospheric modeling, *Environ. Health Perspect.*, 118, 1189–1195, <https://doi.org/10.1289/ehp.0901220>, 2010.
- Anenberg, S. C., West, J. J., Yu, H., Chin, M., Schulz, M., Bergmann, D., Bey, I., Bian, H., Diehl, T., Fiore, A., Hess, P., Marmer, E., Montanaro, V., Park, R., Shindell, D., Takemura, T., and Dentener, F.: Impacts of intercontinental transport of anthropogenic fine particulate matter on human mortality, *Air Qual. Atmos. Health*, 7, 369–379, <https://doi.org/10.1007/s11869-014-0248-9>, 2014.
- Avnery, S., Mauzerall, D. L., Liu, J., and Horowitz, L. W.: Global crop yield reductions due to surface ozone exposure: 1. Year 2000 crop production losses and economic damage, *Atmos. Environ.*, 45, 2284–2296, <https://doi.org/10.1016/j.atmosenv.2010.11.045>, 2011.
- Bond, T. C., Doherty, S. J., Fahey, D. W., Forster, P. M., Berntsen, T., DeAngelo, B. J., Flanner, M. G., Ghan, S., Kärcher, B., Koch, D., Kinne, S., Kondo, Y., Quinn, P. K., Sarofim, M. C., Schultz, M. G., Schulz, M., Venkataraman, C., Zhang, H., Zhang, S., Bellouin, N., Guttikunda, S. K., Hopke, P. K., Jacobson, M. Z., Kaiser, J. W., Klimont, Z., Lohmann, U., Schwarz, J. P., Shindell, D., Storelvmo, T., Warren, S. G., and Zender, C. S.: Bounding the role of black carbon in the climate system: A scientific assessment, *J. Geophys. Res.-Atmos.*, 118, 5380–5552, <https://doi.org/10.1002/jgrd.50171>, 2013.
- Boucher, O. and Lohmann, U.: The sulfate-CCN-cloud albedo effect: a sensitivity study with two general circulation models, *Tellus B*, 47, 281–300, 1995.
- Boucher, O. and Reddy, M. S.: Climate trade-off between black carbon and carbon dioxide emissions, *Energy Policy*, 36, 193–200, <https://doi.org/10.1016/j.enpol.2007.08.039>, 2008.
- Brauer, M., Amann, M., Burnett, R. T., Cohen, A., Dentener, F., Ezzati, M., Henderson, S. B., Krzyzanowski, M., Martin, R. V., Van Dingenen, R., Van Donkelaar, A., and Thurston, G. D.: Exposure assessment for estimation of the global burden of disease attributable to outdoor air pollution, *Environ. Sci. Technol.*, 46, 652–660, <https://doi.org/10.1021/es2025752>, 2012.
- Burnett, R. T., Pope III, C. A., Ezzati, M., Olives, C., Lim, S. S., Mehta, S., Shin, H. H., Singh, G., Hubbell, B., Brauer, M., Anderson, H. R., Smith, K. R., Balmes, J. R., Bruce, N. G., Kan, H., Laden, F., Prüss-Ustün, A., Turner, M. C., Gapstur, S. M., Diver, W. R., and Cohen, A.: An Integrated Risk Function for Estimating the Global Burden of Disease Attributable to Ambient Fine Particulate Matter Exposure, *Environ. Health Perspect.*, 122, 397–403, <https://doi.org/10.1289/ehp.1307049>, 2014.
- Christoudias, T., Pozzer, A., and Lelieveld, J.: Influence of the North Atlantic Oscillation on air pollution transport, *Atmos. Chem. Phys.*, 12, 869–877, <https://doi.org/10.5194/acp-12-869-2012>, 2012.
- Cohen, A. J., Brauer, M., Burnett, R., Anderson, H. R., Frostad, J., Estep, K., Balakrishnan, K., Brunekreef, B., Dandona, L., Dandona, R., Feigin, V., Freedman, G., Hubbell, B., Jobling, A., Kan, H., Knibbs, L., Liu, Y., Martin, R., Morawska, L., Pope III, C. A., Shin, H., Straif, K., Shaddick, G., Thomas, M., van Dingenen, R., van Donkelaar, A., Vos, T., Murray, C. J. L., and Forouzanfar, M. H.: Estimates and 25-year trends of the global burden of disease attributable to ambient air pollution: an analysis of data from the Global Burden of Diseases Study 2015, *Lancet*, 389, 1907–1918, [https://doi.org/10.1016/S0140-6736\(17\)30505-6](https://doi.org/10.1016/S0140-6736(17)30505-6), 2017.
- Dentener, F., Stevenson, D., Cofala, J., Mechler, R., Amann, M., Bergamaschi, P., Raes, F., and Derwent, R.: The impact of air pollutant and methane emission controls on tropospheric ozone and radiative forcing: CTM calculations for the period 1990–2030, *Atmos Chem Phys*, 5, 1731–1755, <https://doi.org/10.5194/acp-5-1731-2005>, 2005.
- Dentener, F., Kinne, S., Bond, T., Boucher, O., Cofala, J., Generoso, S., Ginoux, P., Gong, S., Hoelzemann, J. J., Ito, A., Marelli, L., Penner, J. E., Putaud, J.-P., Textor, C., Schulz, M., van der Werf, G. R., and Wilson, J.: Emissions of primary aerosol and precursor gases in the years 2000 and 1750 prescribed data-sets for AeroCom, *Atmos. Chem. Phys.*, 6, 4321–4344, <https://doi.org/10.5194/acp-6-4321-2006>, 2006a.
- Dentener, F., Stevenson, D., Ellingsen, K., Van Noije, T., Schultz, M., Amann, M., Atherton, C., Bell, N., Bergmann, D., Bey, I., Bouwman, L., Butler, T., Cofala, J., Collins, B., Drevet, J., Doherty, R., Eickhout, B., Eskes, H., Fiore, A., Gauss, M., Hauglustaine, D., Horowitz, L., Isaksen, I. S. A., Josse, B., Lawrence, M., Krol, M., Lamarque, J. F., Montanaro, V., Müller, J. F., Peuch, V. H., Pitari, G., Pyle, J., Rast, S., Rodriguez, J., Sanderson, M., Savage, N. H., Shindell, D., Strahan, S., Szopa, S., Sudo, K., Van Dingenen, R., Wild, O., and Zeng, G.: The global atmospheric environment for the next generation, *Environ. Sci. Technol.*, 40, 3586–3594, <https://doi.org/10.1021/es0523845>, 2006b.
- Dentener, F., Keating, T., Akimoto, H., Pirrone, N., Dutchak, S., and Zuber, A.: Convention on Long-range Transboundary Air Pollution, United Nations and UNECE Task Force on Emission Inventories and Projections, Hemispheric transport of air pollution 2010: prepared by the Task Force on Hemispheric Transport of Air Pollution acting within the framework of the Convention on Long-range Transboundary Air Pollution, United Nations, New York, Geneva, 2010.

- Edwards, J. M. and Slingo, A.: Studies with a flexible new radiation code. I: Choosing a configuration for a large-scale model, *Q. J. Roy. Meteorol. Soc.*, 122, 689–719, 1996.
- Eickhout, B., Den Elzen, M. G. J., and Kreileman, G. J. J.: The Atmosphere–Ocean System of IMAGE 2.2. A global model approach for atmospheric concentrations, and climate and sea level projections, RIVM, Bilthoven, the Netherlands, available at: <http://rivm.openrepository.com/rivm/handle/10029/8936> (last access: 10 January 2017), 2004.
- Evans, J., van Donkelaar, A., Martin, R. V., Burnett, R., Rainham, D. G., Birkett, N. J., and Krewski, D.: Estimates of global mortality attributable to particulate air pollution using satellite imagery, *Environ. Res.*, 120, 33–42, <https://doi.org/10.1016/j.envres.2012.08.005>, 2013.
- Fang, Y., Naik, V., Horowitz, L. W., and Mauzerall, D. L.: Air pollution and associated human mortality: the role of air pollutant emissions, climate change and methane concentration increases from the preindustrial period to present, *Atmos. Chem. Phys.*, 13, 1377–1394, <https://doi.org/10.5194/acp-13-1377-2013>, 2013.
- Farina, S. C., Adams, P. J., and Pandis, S. N.: Modeling global secondary organic aerosol formation and processing with the volatility basis set: Implications for anthropogenic secondary organic aerosol, *J. Geophys. Res.-Atmos.*, 115, D09202, <https://doi.org/10.1029/2009JD013046>, 2010.
- Fenech, S., Doherty, R. M., Heaviside, C., Vardoulakis, S., Macintyre, H. L., and O'Connor, F. M.: The influence of model spatial resolution on simulated ozone and fine particulate matter for Europe: implications for health impact assessments, *Atmos. Chem. Phys.*, 18, 5765–5784, <https://doi.org/10.5194/acp-18-5765-2018>, 2018.
- Fiore, A. M., West, J. J., Horowitz, L. W., Naik, V., and Schwarzkopf, M. D.: Characterizing the tropospheric ozone response to methane emission controls and the benefits to climate and air quality, *J. Geophys. Res.-Atmos.*, 113, D08307, <https://doi.org/10.1029/2007JD009162>, 2008.
- Fiore, A. M., Dentener, F. J., Wild, O., Cuvelier, C., Schultz, M. G., Hess, P., Textor, C., Schulz, M., Doherty, R. M., Horowitz, L. W., MacKenzie, I. A., Sanderson, M. G., Shindell, D. T., Stevenson, D. S., Szopa, S., Van Dingenen, R., Zeng, G., Atherton, C., Bergmann, D., Bey, I., Carmichael, G., Collins, W. J., Duncan, B. N., Faluvegi, G., Folberth, G., Gauss, M., Gong, S., Hauglustaine, D., Holloway, T., Isaksen, I. S. A., Jacob, D. J., Jonson, J. E., Kaminski, J. W., Keating, T. J., Lupu, A., Marmer, E., Montanaro, V., Park, R. J., Pitari, G., Pringle, K. J., Pyle, J. A., Schroeder, S., Vivanco, M. G., Wind, P., Wojcik, G., Wu, S., and Zuber, A.: Multimodel estimates of intercontinental source-receptor relationships for ozone pollution, *J. Geophys. Res.-Atmos.*, 114, D04301, <https://doi.org/10.1029/2008JD010816>, 2009.
- Foley, K. M., Napelenok, S. L., Jang, C., Phillips, S., Hubbell, B. J., and Fulcher, C. M.: Two reduced form air quality modeling techniques for rapidly calculating pollutant mitigation potential across many sources, locations and precursor emission types, *Atmos. Environ.*, 98, 283–289, <https://doi.org/10.1016/j.atmosenv.2014.08.046>, 2014.
- Forouzanfar, M. H., Alexander, L., Anderson, H. R., et al.: Global, regional, and national comparative risk assessment of 79 behavioural, environmental and occupational, and metabolic risks or clusters of risks in 188 countries, 1990–2013: a systematic analysis for the Global Burden of Disease Study 2013, *Lancet*, 386, 2287–2323, [https://doi.org/10.1016/S0140-6736\(15\)00128-2](https://doi.org/10.1016/S0140-6736(15)00128-2), 2015.
- Forouzanfar, M. H., Afshin, A., Alexander, L. T., et al.: Global, regional, and national comparative risk assessment of 79 behavioural, environmental and occupational, and metabolic risks or clusters of risks, 1990–2015: a systematic analysis for the Global Burden of Disease Study 2015, *Lancet*, 388, 1659–1724, [https://doi.org/10.1016/S0140-6736\(16\)31679-8](https://doi.org/10.1016/S0140-6736(16)31679-8), 2016.
- Forster, P., Ramaswamy, V., Artaxo, P., Berntsen, T., Betts, R., Fahey, D. W., Haywood, J., Lean, J., Lowe, D. C., Myhre, G., Nganga, J., Prinn, R., Raga, G., Schulz, M., and Van Dorland, R.: Changes in Atmospheric Constituents and in Radiative Forcing, in: *Climate Change 2007: The Physical Science Basis*, Contribution of Working Group I to the Fourth Assessment Report of the Intergovernmental Panel on Climate Change, Cambridge University Press, Cambridge, UK and New York, NY, USA, available at: http://inis.iaea.org/Search/search.aspx?orig_q=RN:3900246 (last access: 30 November 2017), 2007.
- Fry, M. M., Naik, V., West, J. J., Schwarzkopf, M. D., Fiore, A. M., Collins, W. J., Dentener, F. J., Shindell, D. T., Atherton, C., Bergmann, D., Duncan, B. N., Hess, P., MacKenzie, I. A., Marmer, E., Schultz, M. G., Szopa, S., Wild, O., and Zeng, G.: The influence of ozone precursor emissions from four world regions on tropospheric composition and radiative climate forcing, *J. Geophys. Res.-Atmos.*, 117, D07306, <https://doi.org/10.1029/2011JD017134>, 2012.
- Fuglestedt, J. S., Shine, K. P., Berntsen, T., Cook, J., Lee, D. S., Stenke, A., Skeie, R. B., Velders, G. J. M., and Waitz, I. A.: Transport impacts on atmosphere and climate: Metrics, *Atmos. Environ.*, 44, 4648–4677, <https://doi.org/10.1016/j.atmosenv.2009.04.044>, 2010.
- Grewe, V., Dahlmann, K., Matthes, S., and Steinbrecht, W.: Attributing ozone to NO_x emissions: Implications for climate mitigation measures, *Atmos. Environ.*, 59, 102–107, <https://doi.org/10.1016/j.atmosenv.2012.05.002>, 2012.
- Haywood, J. and Boucher, O.: Estimates of the direct and indirect radiative forcing due to tropospheric aerosols: A review, *Rev. Geophys.*, 38, 513–543, <https://doi.org/10.1029/1999RG000078>, 2000.
- Höglund-Isaksson, L. and Mechler, R.: The GAINS model for greenhouse gases – version 1.0: Methane (CH₄), IASA Interim Report, International Institute for Applied Systems Analysis, Laxenburg, Austria, available at: <http://pure.iiasa.ac.at/7784/> (last access: 10 January 2017), 2005.
- Huang, Y., Wu, S., Dubey, M. K., and French, N. H. F.: Impact of aging mechanism on model simulated carbonaceous aerosols, *Atmos. Chem. Phys.*, 13, 6329–6343, <https://doi.org/10.5194/acp-13-6329-2013>, 2013.
- Huijnen, V., Williams, J., van Weele, M., van Noije, T., Krol, M., Dentener, F., Segers, A., Houweling, S., Peters, W., de Laat, J., Boersma, F., Bergamaschi, P., van Velthoven, P., Le Sager, P., Eskes, H., Alkemade, F., Scheele, R., Nédélec, P., and Pätz, H.-W.: The global chemistry transport model TM5: description and evaluation of the tropospheric chemistry version 3.0, *Geosci. Model Dev.*, 3, 445–473, <https://doi.org/10.5194/gmd-3-445-2010>, 2010.

- IIASA and FAO: Global Agro-Ecological Zones V3.0, available at: <http://www.gaez.iiasa.ac.at/> (last access: 11 November 2016), 2012.
- Janssens-Maenhout, G., Crippa, M., Guizzardi, D., Dentener, F., Muntean, M., Pouliot, G., Keating, T., Zhang, Q., Kurokawa, J., Wankmüller, R., Denier van der Gon, H., Kuenen, J. J. P., Klimont, Z., Frost, G., Darras, S., Koffi, B., and Li, M.: HTAP_v2.2: a mosaic of regional and global emission grid maps for 2008 and 2010 to study hemispheric transport of air pollution, *Atmos. Chem. Phys.*, 15, 11411–11432, <https://doi.org/10.5194/acp-15-11411-2015>, 2015.
- Jerrett, M., Burnett, R. T., Arden, P. I., Ito, K., Thurston, G., Krewski, D., Shi, Y., Calle, E., and Thun, M.: Long-term ozone exposure and mortality, *N. Engl. J. Med.*, 360, 1085–1095, <https://doi.org/10.1056/NEJMoa0803894>, 2009.
- Jin, X., Fiore, A. M., Murray, L. T., Valin, L. C., Lamsal, L. N., Duncan, B., Folkert, B., De, S., Abad, G. G., Chance, K., and Tonnesen, G. S.: Evaluating a Space-Based Indicator of Surface Ozone-NO_x-VOC Sensitivity Over Midlatitude Source Regions and Application to Decadal Trends, *J. Geophys. Res.-Atmos.*, 122, 10439–10461, <https://doi.org/10.1002/2017JD026720>, 2017.
- Joint Research Centre: FASST Webpage, available at: <http://tm5-fasst.jrc.ec.europa.eu/>, last access: 7 November 2018.
- Joos, F., Roth, R., Fuglestedt, J. S., Peters, G. P., Enting, I. G., von Bloh, W., Brovkin, V., Burke, E. J., Eby, M., Edwards, N. R., Friedrich, T., Frölicher, T. L., Halloran, P. R., Holden, P. B., Jones, C., Kleinen, T., Mackenzie, F. T., Matsumoto, K., Meinshausen, M., Plattner, G.-K., Reisinger, A., Segschneider, J., Shaffer, G., Steinacher, M., Strassmann, K., Tanaka, K., Timmermann, A., and Weaver, A. J.: Carbon dioxide and climate impulse response functions for the computation of greenhouse gas metrics: a multi-model analysis, *Atmos. Chem. Phys.*, 13, 2793–2825, <https://doi.org/10.5194/acp-13-2793-2013>, 2013.
- Kanakidou, M., Seinfeld, J. H., Pandis, S. N., Barnes, I., Dentener, F. J., Facchini, M. C., Dingenen, R. V., Ervens, B., Nenes, A., Nielsen, C. J., Swietlicki, E., Putaud, J. P., Balkanski, Y., Fuzzi, S., Horth, J., Moortgat, G. K., Winterhalter, R., Myhre, C. E. L., Tsigaridis, K., Vignati, E., Stephanou, E. G., and Wilson, J.: Organic aerosol and global climate modelling: a review, *Atmos. Chem. Phys.*, 5, 1053–1123, <https://doi.org/10.5194/acp-5-1053-2005>, 2005.
- Kiesewetter, G., Borken-Kleefeld, J., Schöpp, W., Heyes, C., Thunis, P., Bessagnet, B., Terrenoire, E., Gsella, A., and Amann, M.: Modelling NO₂ concentrations at the street level in the GAINS integrated assessment model: projections under current legislation, *Atmos. Chem. Phys.*, 14, 813–829, <https://doi.org/10.5194/acp-14-813-2014>, 2014.
- Kiesewetter, G., Borken-Kleefeld, J., Schöpp, W., Heyes, C., Thunis, P., Bessagnet, B., Terrenoire, E., Fagerli, H., Nyiri, A., and Amann, M.: Modelling street level PM₁₀ concentrations across Europe: source apportionment and possible futures, *Atmos. Chem. Phys.*, 15, 1539–1553, <https://doi.org/10.5194/acp-15-1539-2015>, 2015.
- Kitous, A., Keramidis, K., Vandyck, T., Saveyn, B., Van Dingenen, R., Spadaro, J., and Holland, M.: Global Energy and Climate Outlook 2017: How climate policies improve air quality, Publications Office of the European Union, Joint Research Centre, Luxembourg, 2017.
- Koffi, B., Dentener, F., Janssens-Maenhout, G., Guizzardi, D., Crippa, M., Diehl, T., Galmarini, S., and Solazzo, E.: Hemispheric Transport Air Pollution (HTAP): Specification of the HTAP2 experiments, Publications Office of the European Union, Luxembourg, available at: <http://publications.jrc.ec.europa.eu/repository/bitstream/JRC102552/lbna28255enn.pdf> (last access: 14 December 2017), 2016.
- Krewski, D., Jerrett, M., Burnett, R. T., Ma, R., Hughes, E., and Shi, Y.: Extended Follow-Up and Spatial Analysis of the American Cancer Society Study Linking Particulate Air Pollution and Mortality, Research Report, Health Effects Institute, Boston, 2009.
- Krol, M., Houweling, S., Bregman, B., van den Broek, M., Segers, A., van Velthoven, P., Peters, W., Dentener, F., and Bergamaschi, P.: The two-way nested global chemistry-transport zoom model TM5: algorithm and applications, *Atmos. Chem. Phys.*, 5, 417–432, <https://doi.org/10.5194/acp-5-417-2005>, 2005.
- Lamarque, J., Bond, T., Eyring, V., Granier, C., Heil, A., Klimont, Z., Lee, D., Liousse, C., Mieville, A., Owen, B., Schultz, M., Shindell, D., Smith, S., Stehfest, E., Van Aardenne, J., Cooper, O., Kainuma, M., Mahowald, N., McConnell, J., Naik, V., Rihani, K., and van Vuuren, D.: Historical (1850–2000) gridded anthropogenic and biomass burning emissions of reactive gases and aerosols: methodology and application, *Atmos. Chem. Phys.*, 10, 7017–7039, <https://doi.org/10.5194/acp-10-7017-2010>, 2010.
- Lamarque, J.-F., Shindell, D. T., Josse, B., Young, P. J., Cionni, I., Eyring, V., Bergmann, D., Cameron-Smith, P., Collins, W. J., Doherty, R., Dalsoren, S., Faluvegi, G., Folberth, G., Ghan, S. J., Horowitz, L. W., Lee, Y. H., MacKenzie, I. A., Nagashima, T., Naik, V., Plummer, D., Righi, M., Rumbold, S. T., Schulz, M., Skeie, R. B., Stevenson, D. S., Strode, S., Sudo, K., Szopa, S., Voulgarakis, A., and Zeng, G.: The Atmospheric Chemistry and Climate Model Intercomparison Project (ACCMIP): overview and description of models, simulations and climate diagnostics, *Geosci. Model Dev.*, 6, 179–206, <https://doi.org/10.5194/gmd-6-179-2013>, 2013.
- Lelieveld, J., Barlas, C., Giannadaki, D., and Pozzer, A.: Model calculated global, regional and megacity premature mortality due to air pollution, *Atmos. Chem. Phys.*, 13, 7023–7037, <https://doi.org/10.5194/acp-13-7023-2013>, 2013.
- Lelieveld, J., Evans, J. S., Fnais, M., Giannadaki, D., and Pozzer, A.: The contribution of outdoor air pollution sources to premature mortality on a global scale, *Nature*, 525, 367–371, <https://doi.org/10.1038/nature15371>, 2015.
- Li, J., Yang, W., Wang, Z., Chen, H., Hu, B., Li, J., Sun, Y., and Huang, Y.: A modeling study of source–receptor relationships in atmospheric particulate matter over Northeast Asia, *Atmos. Environ.*, 91, 40–51, <https://doi.org/10.1016/j.atmosenv.2014.03.027>, 2014.
- Li, Q., Jacob, D. J., Bey, I., Palmer, P. I., Duncan, B. N., Field, B. D., Martin, R. V., Fiore, A. M., Yantosca, R. M., Parrish, D. D., Simmonds, P. G., and Oltmans, S. J.: Transatlantic transport of pollution and its effects on surface ozone in Europe and North America, *J. Geophys. Res.-Atmos.*, 107, ACH 4-1–ACH 4-21, <https://doi.org/10.1029/2001JD001422>, 2002.
- Li, Y., Henze, D. K., Jack, D., and Kinney, P. L.: The influence of air quality model resolution on health impact assessment for fine particulate matter and its components, *Air Qual. Atmos. Health*, 9, 51–68, <https://doi.org/10.1007/s11869-015-0321-z>, 2016.

- Liang, C.-K., West, J. J., Silva, R. A., Bian, H., Chin, M., Davila, Y., Dentener, F. J., Emmons, L., Flemming, J., Folberth, G., Henze, D., Im, U., Jonson, J. E., Keating, T. J., Kucsera, T., Lenzen, A., Lin, M., Lund, M. T., Pan, X., Park, R. J., Pierce, R. B., Sekiya, T., Sudo, K., and Takemura, T.: HTAP2 multi-model estimates of premature human mortality due to intercontinental transport of air pollution and emission sectors, *Atmos. Chem. Phys.*, 18, 10497–10520, <https://doi.org/10.5194/acp-18-10497-2018>, 2018.
- Lim, S. S., Vos, T., Flaxman, A. D., et al.: A comparative risk assessment of burden of disease and injury attributable to 67 risk factors and risk factor clusters in 21 regions, 1990–2010: A systematic analysis for the Global Burden of Disease Study 2010, *Lancet*, 380, 2224–2260, [https://doi.org/10.1016/S0140-6736\(12\)61766-8](https://doi.org/10.1016/S0140-6736(12)61766-8), 2012.
- Liu, X., Penner, J. E., Das, B., Bergmann, D., Rodriguez, J. M., Strahan, S., Wang, M., and Feng, Y.: Uncertainties in global aerosol simulations: Assessment using three meteorological data sets, *J. Geophys. Res.*, 112, D11212, <https://doi.org/10.1029/2006JD008216>, 2007.
- Liu, Y., Hong, Y., Fan, Q., Wang, X., Chan, P., Chen, X., Lai, A., Wang, M., and Chen, X.: Source-receptor relationships for PM_{2.5} during typical pollution episodes in the Pearl River Delta city cluster, China, *Sci. Total Environ.*, 596–597, 194–206, <https://doi.org/10.1016/j.scitotenv.2017.03.255>, 2017.
- Maione, M., Fowler, D., Monks, P. S., Reis, S., Rudich, Y., Williams, M. L., and Fuzzi, S.: Air quality and climate change: Designing new win-win policies for Europe, *Environ. Sci. Policy*, 65, 48–57, <https://doi.org/10.1016/j.envsci.2016.03.011>, 2016.
- Malley, C. S., Henze, D. K., Kuylensstierna, J. C. I., Vallack, H., Davila, Y., Anenberg, S. C., Turner, M. C., and Ashmore, M.: Updated Global Estimates of Respiratory Mortality in Adults = 30 Years of Age Attributable to Long-Term Ozone Exposure, *Environ. Health Perspect.*, 125, 087021, <https://doi.org/10.1289/EHP1390>, 2017.
- Marmer, E., Langmann, B., Hungershofer, K., and Trautmann, T.: Aerosol modeling over Europe: 2. Interannual variability of aerosol shortwave direct radiative forcing, *J. Geophys. Res.-Atmos.*, 112, D23S16, <https://doi.org/10.1029/2006JD008040>, 2007.
- Mills, G., Buse, A., Gimeno, B., Bermejo, V., Holland, M., Emberson, L., and Pleijel, H.: A synthesis of AOT40-based response functions and critical levels of ozone for agricultural and horticultural crops, *Atmos. Environ.*, 41, 2630–2643, <https://doi.org/10.1016/j.atmosenv.2006.11.016>, 2007.
- Ming, Y. and Russell, L. M.: Predicted hygroscopic growth of sea salt aerosol, *J. Geophys. Res.-Atmos.*, 106, 28259–28274, 2001.
- Murray, C. J., Ezzati, M., Lopez, A. D., Rodgers, A., and Vander Hoorn, S.: Comparative quantification of health risks: conceptual framework and methodological issues, *Popul. Health Metr.*, 1, 1, 2003.
- Myhre, G., Fuglestedt, J. S., Berntsen, T. K., and Lund, M. T.: Mitigation of short-lived heating components may lead to unwanted long-term consequences, *Atmos. Environ.*, 45, 6103–6106, <https://doi.org/10.1016/j.atmosenv.2011.08.009>, 2011.
- Myhre, G., Shindell, D., Bréon, F.-M., Collins, W., Fuglestedt, J., Huang, J., Koch, D., Lamarque, J.-F., Lee, D., and Mendoza, B.: Anthropogenic and natural radiative forcing, in: *Climate Change 2013: The Physical Science Basis, Contribution of Working Group I to the Fifth Assessment Report of the Intergovernmental Panel on Climate Change*, vol. 423, edited by: Stocker, T. F., Qin, D., Plattner, G.-K., Tignor, M., Allen, S. K., Boschung, J., Nauels, A., Xia, Y., Bex, V., and Midgley, P. M., Cambridge University Press, Cambridge, UK and New York, NY, USA, 658–740, 2013.
- OECD: The Economic Consequences of Outdoor Air Pollution, OECD Publishing, available at: http://www.oecd-ilibrary.org/environment/the-economic-consequences-of-outdoor-air-pollution_9789264257474-en (last access: 10 January 2017), 2016.
- Olivier, J. G. J., Aardenne, J. A. V., Dentener, F. J., Pagliari, V., Ganzeveld, L. N., and Peters, J. A. H. W.: Recent trends in global greenhouse gas emissions: regional trends 1970–2000 and spatial distribution of key sources in 2000, *Environ. Sci.*, 2, 81–99, <https://doi.org/10.1080/15693430500400345>, 2005.
- Pausata, F. S. R., Pozzoli, L., Dingenen, R. V., Vignati, E., Cavalli, F., and Dentener, F. J.: Impacts of changes in North Atlantic atmospheric circulation on particulate matter and human health in Europe, *Geophys. Res. Lett.*, 40, 4074–4080, <https://doi.org/10.1002/grl.50720>, 2013.
- Pope III, C. A., Burnett, R. T., Thun, M. J., Calle, E. E., Krewski, D., Ito, K., and Thurston, G. D.: Lung Cancer, Cardiopulmonary Mortality, and Long-term Exposure to Fine Particulate Air Pollution, *J. Am. Med. Assoc.*, 287, 1132–1141, <https://doi.org/10.1001/jama.287.9.1132>, 2002.
- Pope, R. J., Chipperfield, M. P., Arnold, S. R., Glatthor, N., Feng, W., Dhomse, S. S., Kerridge, B. J., Latter, B. G., and Sidans, R.: Influence of the wintertime North Atlantic Oscillation on European tropospheric composition: an observational and modelling study, *Atmos. Chem. Phys.*, 18, 8389–8408, <https://doi.org/10.5194/acp-18-8389-2018>, 2018.
- Porter, P. S., Rao, S. T., Hogrefe, C., and Mathur, R.: A reduced form model for ozone based on two decades of CMAQ simulations for the continental United States, *Atmos. Pollut. Res.*, 8, 275–284, <https://doi.org/10.1016/j.apr.2016.09.005>, 2017.
- Punger, E. M. and West, J. J.: The effect of grid resolution on estimates of the burden of ozone and fine particulate matter on premature mortality in the United States, *Air Qual. Atmos. Health*, 6, 563–573, <https://doi.org/10.1007/s11869-013-0197-8>, 2013.
- Ramaswamy, V., Boucher, O., Haigh, J., Hauglustaine, D., Haywood, J., Myhre, G., Nakajima, T., Shi, G., Solomon, S., Betts, R. E., Charlson, R., Chuang, C. C., Daniel, J. S., Del Genio, A. D., Feichter, J., Fuglestedt, J., Forster, P. M., Ghan, S. J., Jones, A., Kiehl, J. T., Koch, D., Land, C., Lean, J., Lohmann, U., Minschwaner, K., Penner, J. E., Roberts, D. L., Rodhe, H., Roelofs, G.-J., Rotstayn, L. D., Schneider, T. L., Schumann, U., Schwartz, S. E., Schwartzkopf, M. D., Shine, K. P., Smith, S. J., Stevenson, D. S., Stordal, F., Tegen, I., van Dorland, R., Zhang, Y., Srinivasan, J., and Joos, F.: Radiative Forcing of Climate Change, Pacific Northwest National Laboratory (PNNL), Richland, WA, USA, available at: <https://www.osti.gov/scitech/biblio/899821> (last access: 27 January 2017), 2001.
- Rao, S., Chirkov, V., Dentener, F., Van Dingenen, R., Pachauri, S., Purohit, P., Amann, M., Heyes, C., Kinney, P., Kolp, P., Klimont, Z., Riahi, K., and Schoepp, W.: Environmental Modeling and Methods for Estimation of the Global Health Impacts of Air Pollution, *Environ. Model. Assess.*, 17, 613–622, <https://doi.org/10.1007/s10666-012-9317-3>, 2012.

- Rao, S., Pachauri, S., Dentener, F., Kinney, P., Klimont, Z., Riahi, K., and Schoepp, W.: Better air for better health: Forging synergies in policies for energy access, climate change and air pollution, *Global Environ. Change*, 23, 1122–1130, <https://doi.org/10.1016/j.gloenvcha.2013.05.003>, 2013.
- Rao, S., Klimont, Z., Smith, S. J., Van Dingenen, R., Dentener, F., Bouwman, L., Riahi, K., Amann, M., Bodirsky, B. L., van Vuuren, D. P., Aleluia Reis, L., Calvin, K., Drouet, L., Fricko, O., Fujimori, S., Gernaat, D., Havlik, P., Harmsen, M., Hasegawa, T., Heyes, C., Hilaire, J., Luderer, G., Masui, T., Stehfest, E., Streifler, J., van der Sluis, S., and Tavoni, M.: Future air pollution in the Shared Socio-economic Pathways, *Global Environ. Change*, 42, 346–358, <https://doi.org/10.1016/j.gloenvcha.2016.05.012>, 2016.
- Rao, S., Klimont, Z., Smith, S. J., Van Dingenen, R., Dentener, F., Bouwman, L., Riahi, K., Amann, M., Bodirsky, B. L., van Vuuren, D. P., Aleluia Reis, L., Calvin, K., Drouet, L., Fricko, O., Fujimori, S., Gernaat, D., Havlik, P., Harmsen, M., Hasegawa, T., Heyes, C., Hilaire, J., Luderer, G., Masui, T., Stehfest, E., Streifler, J., van der Sluis, S., and Tavoni, M.: Future air pollution in the Shared Socio-economic Pathways, *Global Environ. Change*, 42, 346–358, <https://doi.org/10.1016/j.gloenvcha.2016.05.012>, 2017.
- RCP Database: available at: <http://www.iiasa.ac.at/web-apps/tnt/RcpDb> (last access: 9 November 2018), 2009.
- Riahi, K., Grübler, A., and Nakicenovic, N.: Scenarios of long-term socio-economic and environmental development under climate stabilization, *Technol. Forecast. Soc. Change*, 74, 887–935, <https://doi.org/10.1016/j.techfore.2006.05.026>, 2007.
- Riahi, K., Dentener, F., Gielen, D., Grubler, A., Jewell, J., Klimont, Z., Krey, V., McCollum, D., Pachauri, S., Rao, S., van Ruijven, B., van Vuuren, D. P., and Wilson, C.: The Global Energy Assessment – Chapter 17 – Energy Pathways for Sustainable Development, in: *Global Energy Assessment – Toward a Sustainable Future*, Cambridge University Press, Cambridge, UK and New York, NY, USA and the International Institute for Applied Systems Analysis, Laxenburg, Austria, 1203–1306, available at: <http://www.globalenergyassessment.org/> (last access: 9 November 2016), 2012.
- Russ, P., Wiesenthal, T., Van Regemorter, D., and Ciscar, J.: Global Climate Policy Scenarios for 2030 and beyond. Analysis of Greenhouse Gas Emission Reduction Pathway Scenarios with the POLES and GEM-E3 models, European Commission, Joint Research Centre, IPTS, Seville, Spain, 2007.
- Seinfeld, J. H. and Pandis, S. N.: *Atmospheric Chemistry and Physics: From Air Pollution to Climate Change*, 1st Edn., Wiley, Hoboken, New Jersey, available at: <http://www.wiley.com/WileyCDA/WileyTitle/productCd-1118947401.html> (last access: 11 August 2017), 1998.
- Shindell, D. T., Faluvegi, G., Bell, N., and Schmidt, G. A.: An emissions-based view of climate forcing by methane and tropospheric ozone: Emissions-based climate forcing, *Geophys. Res. Lett.*, 32, L04803, <https://doi.org/10.1029/2004GL021900>, 2005.
- Shindell, D. T., Faluvegi, G., Koch, D. M., Schmidt, G. A., Unger, N., and Bauer, S. E.: Improved Attribution of Climate Forcing to Emissions, *Science*, 326, 716–718, <https://doi.org/10.1126/science.1174760>, 2009.
- Shindell, D. T., Kuylenstierna, J., Vignati, E., van Dingenen, R., Amann, M., Klimont, Z., Anenberg, S., Muller, N., Janssens-Maenhout, G., Raes, F., Schwartz, J., Faluvegi, G., Pozzoli, L., Kupiainen, K., Hoglund-Isaksson, L., Emberson, L., Streets, D., Ramanathan, V., Hicks, K., Oanh, N., Milly, G., Williams, M., Demkine, V., and Fowler, D.: Simultaneously Mitigating Near-Term Climate Change and Improving Human Health and Food Security, *Science*, 335, 183–189, <https://doi.org/10.1126/science.1210026>, 2012.
- Sillman, S.: The relation between ozone, NO_x and hydrocarbons in urban and polluted rural environments, *Atmos. Environ.*, 33, 1821–1845, [https://doi.org/10.1016/S1352-2310\(98\)00345-8](https://doi.org/10.1016/S1352-2310(98)00345-8), 1999.
- Silva, R. A., West, J. J., Zhang, Y., Anenberg, S. C., Lamarque, J.-F., Shindell, D. T., Collins, W. J., Dalsoren, S., Faluvegi, G., Folberth, G., Horowitz, L. W., Tatsuya Nagashima, Naik, V., Rumbold, S., Skeie, R., Sudo, K., Takemura, T., Bergmann, D., Cameron-Smith, P., Cionni, I., Doherty, R. M., Eyring, V., Josse, B., MacKenzie, I. A., Plummer, D., Righi, M., Stevenson, D. S., Strode, S., Szopa, S., and Zeng, G.: Global premature mortality due to anthropogenic outdoor air pollution and the contribution of past climate change, *Environ. Res. Lett.*, 8, 034005, <https://doi.org/10.1088/1748-9326/8/3/034005>, 2013.
- Silva, R. A., West, J. J., Lamarque, J. F., Shindell, D. T., Collins, W. J., Dalsoren, S., Faluvegi, G., Folberth, G., Horowitz, L. W., Nagashima, T., Naik, V., Rumbold, S. T., Sudo, K., Takemura, T., Bergmann, D., Cameron-Smith, P., Cionni, I., Doherty, R. M., Eyring, V., Josse, B., MacKenzie, I. A., Plummer, D., Righi, M., Stevenson, D. S., Strode, S., Szopa, S., and Zeng, G.: The effect of future ambient air pollution on human premature mortality to 2100 using output from the ACCMIP model ensemble, *Atmos. Chem. Phys.*, 16, 9847–9862, <https://doi.org/10.5194/acp-16-9847-2016>, 2016.
- Stevenson, D. S., Dentener, F. J., Schultz, M. G., Ellingsen, K., van Noije, T. P. C., Wild, O., Zeng, G., Amann, M., Atherton, C. S., Bell, N., Bergmann, D. J., Bey, I., Butler, T., Co-fala, J., Collins, W. J., Derwent, R. G., Doherty, R. M., Drevet, J., Eskes, H. J., Fiore, A. M., Gauss, M., Hauglustaine, D. A., Horowitz, L. W., Isaksen, I. S. A., Krol, M. C., Lamarque, J.-F., Lawrence, M. G., Montanaro, V., Müller, J.-F., Pitari, G., Prather, M. J., Pyle, J. A., Rast, S., Rodriguez, J. M., Sanderson, M. G., Savage, N. H., Shindell, D. T., Strahan, S. E., Sudo, K., and Szopa, S.: Multimodel ensemble simulations of present-day and near-future tropospheric ozone, *J. Geophys. Res.-Atmos.*, 111, D08301, <https://doi.org/10.1029/2005JD006338>, 2006.
- Stevenson, D. S., Young, P. J., Naik, V., Lamarque, J.-F., Shindell, D. T., Voulgarakis, A., Skeie, R. B., Dalsoren, S. B., Myhre, G., Bernsten, T. K., Folberth, G. A., Rumbold, S. T., Collins, W. J., MacKenzie, I. A., Doherty, R. M., Zeng, G., Van, N., Strunk, A., Bergmann, D., Cameron-Smith, P., Plummer, D. A., Strode, S. A., Horowitz, L., Lee, Y. H., Szopa, S., Sudo, K., Nagashima, T., Josse, B., Cionni, I., Righi, M., Eyring, V., Conley, A., Bowman, K. W., Wild, O., and Archibald, A.: Tropospheric ozone changes, radiative forcing and attribution to emissions in the Atmospheric Chemistry and Climate Model Intercomparison Project (ACCMIP), *Atmos. Chem. Phys.*, 13, 3063–3085, <https://doi.org/10.5194/acp-13-3063-2013>, 2013.
- Stjern, C. W., Samset, B. H., Myhre, G., Bian, H., Chin, M., Davila, Y., Dentener, F., Emmons, L., Flemming, J., Haslerud, A. S., Henze, D., Jonson, J. E., Kucsera, T., Lund, M. T., Schulz, M., Sudo, K., Takemura, T., and Tilmes, S.: Global and regional

- radiative forcing from 20 % reductions in BC, OC and SO₄ – An HTAP2 multi-model study, *Atmos. Chem. Phys.*, 16, 13579–13599, <https://doi.org/10.5194/acp-16-13579-2016>, 2016.
- Tang, I. N.: Chemical and size effects of hygroscopic aerosols on light scattering coefficients, *J. Geophys. Res.-Atmos.*, 101, 19245–19250, 1996.
- Turner, M. C., Jerrett, M., Pope, C. A., Krewski, D., Gapstur, S. M., Diver, W. R., Beckerman, B. S., Marshall, J. D., Su, J., Crouse, D. L., and Burnett, R. T.: Long-Term Ozone Exposure and Mortality in a Large Prospective Study, *Am. J. Respir. Crit. Care Med.*, 193, 1134–1142, <https://doi.org/10.1164/rccm.201508-1633OC>, 2016.
- Turnock, S. T., Wild, O., Dentener, F. J., Davila, Y., Emmons, L. K., Flemming, J., Folberth, G. A., Henze, D. K., Jonson, J. E., Keating, T. J., Kengo, S., Lin, M., Lund, M., Tilmes, S., and O'Connor, F. M.: The impact of future emission policies on tropospheric ozone using a parameterised approach, *Atmos. Chem. Phys.*, 18, 8953–8978, <https://doi.org/10.5194/acp-18-8953-2018>, 2018.
- Twomey, S.: Pollution and the planetary albedo, *Atmos. Environ.*, 8, 1251–1256, [https://doi.org/10.1016/0004-6981\(74\)90004-3](https://doi.org/10.1016/0004-6981(74)90004-3), 1974.
- UNEP: Near-term climate protection and clean air benefits: Actions for controlling short-lived climate forcers, Report, United Nations Environment Programme, Nairobi, Kenya, available at: <http://researchrepository.murdoch.edu.au/id/eprint/15325/> (last access: 10 January 2017), 2011.
- UNEP and CCAC: Integrated Assessment of Short-Lived Climate Pollutants for Latin America and the Caribbean: improving air quality while mitigating climate change. Summary for decision makers, United Nations Environmental Programme, Nairobi, Kenya, available at: http://www.ccacoalition.org/sites/default/files/resources/UNEP_AssessmentASINGLE.pdf (last access: 14 December 2017), 2016.
- Unger, N., Bond, T. C., Wang, J. S., Koch, D. M., Menon, S., Shindell, D. T., and Bauer, S.: Attribution of climate forcing to economic sectors, *P Natl. Acad. Sci. USA*, 107, 3382–3387, <https://doi.org/10.1073/pnas.0906548107>, 2010.
- Van Aardenne, J., Dentener, F., Van Dingenen, R., Maenhout, G., Marmer, E., Vignati, E., Russ, P., Szabo, L., and Raes, F.: Climate and air quality impacts of combined climate change and air pollution policy scenarios, JRC Scientific and Technical Reports, Ispra, Italy, 2007.
- Van Dingenen, R., Dentener, F. J., Raes, F., Krol, M. C., Emberson, L., and Cofala, J.: The global impact of ozone on agricultural crop yields under current and future air quality legislation, *Atmos. Environ.*, 43, 604–618, <https://doi.org/10.1016/j.atmosenv.2008.10.033>, 2009.
- van Vuuren, D. P., den Elzen, M. G. J., Lucas, P. L., Eickhout, B., Strengers, B. J., van Ruijven, B., Wonink, S., and van Houdt, R.: Stabilizing greenhouse gas concentrations at low levels: an assessment of reduction strategies and costs, *Climatic Change*, 81, 119–159, <https://doi.org/10.1007/s10584-006-9172-9>, 2007.
- Wang, X. and Mauzerall, D. L.: Characterizing distributions of surface ozone and its impact on grain production in China, Japan and South Korea: 1990 and 2020, *Atmos. Environ.*, 38, 4383–4402, <https://doi.org/10.1016/j.atmosenv.2004.03.067>, 2004.
- Wild, O. and Prather, M. J.: Global tropospheric ozone modeling: Quantifying errors due to grid resolution, *J. Geophys. Res.-Atmos.*, 111, D11305, <https://doi.org/10.1029/2005JD006605>, 2006.
- Wild, O., Prather, M., and Akimoto, H.: Indirect long-term global radiative cooling from NO_x emissions, *Geophys. Res. Lett.*, 28, 1719–1722, 2001.
- Wild, O., Fiore, A. M., Shindell, D. T., Doherty, R. M., Collins, W. J., Dentener, F. J., Schultz, M. G., Gong, S., MacKenzie, I. A., Zeng, G., Hess, P., Duncan, B. N., Bergmann, D. J., Szopa, S., Jonson, J. E., Keating, T. J., and Zuber, A.: Modelling future changes in surface ozone: a parameterized approach, *Atmos. Chem. Phys.*, 12, 2037–2054, <https://doi.org/10.5194/acp-12-2037-2012>, 2012.
- World Bank: The International Cryosphere Climate Initiative: On Thin Ice, Washington, D.C., available at: <http://iccinet.org/thinicepubfinal> (last access: 11 November 2016), 2013.
- Wu, S., Duncan, B. N., Jacob, D. J., Fiore, A. M., and Wild, O.: Chemical nonlinearities in relating intercontinental ozone pollution to anthropogenic emissions, *Geophys. Res. Lett.*, 36, L05806, <https://doi.org/10.1029/2008GL036607>, 2009.
- Yu, H., Chin, M., West, J. J., Atherton, C. S., Bellouin, N., Bergmann, D., Bey, I., Bian, H., Diehl, T., Forberth, G., Hess, P., Schulz, M., Shindell, D., Takemura, T., and Tan, Q.: A multimodel assessment of the influence of regional anthropogenic emission reductions on aerosol direct radiative forcing and the role of intercontinental transport, *J. Geophys. Res.-Atmos.*, 118, 700–720, <https://doi.org/10.1029/2012JD018148>, 2013.
- Zhang, L., Liu, L., Zhao, Y., Gong, S., Zhang, X., Henze, D. K., Capps, S. L., Fu, T.-M., Zhang, Q., and Wang, Y.: Source attribution of particulate matter pollution over North China with the adjoint method, *Environ. Res. Lett.*, 10, 084011, <https://doi.org/10.1088/1748-9326/10/8/084011>, 2015.