

 Open access • Journal Article • DOI:10.1007/S11116-017-9811-1

## Tracking a system of shared autonomous vehicles across the Austin, Texas network using agent-based simulation — [Source link](#)

[Jun Liu](#), [Kara M. Kockelman](#), [Patrick M. Boesch](#), [Francesco Ciari](#)

**Institutions:** [University of Texas at Austin](#), [ETH Zurich](#)

**Published on:** 23 Aug 2017 - [Transportation](#) (Springer US)

**Topics:** [Mode choice](#)

Related papers:

- [The travel and environmental implications of shared autonomous vehicles, using agent-based model scenarios](#)
- [Dynamic ride-sharing and fleet sizing for a system of shared autonomous vehicles in Austin, Texas](#)
- [Autonomous Vehicle Fleet Sizes Required to Serve Different Levels of Demand](#)
- [Operations of a shared, autonomous, electric vehicle fleet: Implications of vehicle & charging infrastructure decisions](#)
- [Preparing a nation for autonomous vehicles: opportunities, barriers and policy recommendations](#)

Share this paper:    

View more about this paper here: <https://typeset.io/papers/tracking-a-system-of-shared-autonomous-vehicles-across-the-57mt2y9v8b>

# Tracking a system of shared autonomous vehicles across the Austin, Texas network using agent-based simulation

**Working Paper****Author(s):**

Liu, Jun; Kockelman, Kara M.; Bösch, Patrick M.; Ciari, Francesco

**Publication date:**

2016

**Permanent link:**

<https://doi.org/10.3929/ethz-b-000120634>

**Rights / license:**

[In Copyright - Non-Commercial Use Permitted](#)

**Originally published in:**

Arbeitsberichte Verkehrs- und Raumplanung 1210

1           **TRACKING A SYSTEM OF SHARED AUTONOMOUS VEHICLES ACROSS THE**  
2           **AUSTIN, TEXAS NETWORK USING AGENT-BASED SIMULATION**

3  
4           **Jun Liu, Ph.D.**

5           Postdoctoral Fellow

6           Center for Transportation Research

7           The University of Texas at Austin – UTA 4.228

8           [jun.liu@utexas.edu](mailto:jun.liu@utexas.edu)

9  
10           **Kara M. Kockelman, Ph.D., P.E.**

11           (Corresponding Author)

12           Professor, and E.P. Schoch Professor in Engineering

13           Department of Civil, Architectural and Environmental Engineering

14           The University of Texas at Austin – 6.9 E. Cockrell Jr. Hall

15           Austin, TX 78712-1076

16           [kkockelm@mail.utexas.edu](mailto:kkockelm@mail.utexas.edu)

17           Phone: 512-471-0210 & FAX: 512-475-8744

18  
19           **Patrick M. Boesch**

20           Research Assistant

21           IVT, ETH Zurich

22           CH-8093 Zurich, Switzerland

23           [patrick.boesch@ivt.baug.ethz.ch](mailto:patrick.boesch@ivt.baug.ethz.ch)

24  
25           **Francesco Ciari, Ph.D.**

26           Research Associate

27           IVT, ETH Zurich

28           CH-8093 Zurich, Switzerland

29           [ciari@ivt.baug.ethz.ch](mailto:ciari@ivt.baug.ethz.ch)

30  
31           Under review for publication in *Transportation Research Record*, August 2016

32  
33           **ABSTRACT**

34           This study provides a large-scale micro-simulation of transportation patterns in a metropolitan  
35           area when relying on a system of shared autonomous vehicles (SAVs). The six-county region of  
36           Austin, Texas is used for its land development patterns, demographics, networks, and trip tables.  
37           The agent-based MATSim toolkit allows modelers to track individual travelers and individual  
38           vehicles, with great temporal and spatial detail. MATSim's algorithms help improve individual  
39           travel plans (by changing tour and trip start times, destinations, modes, and routes). Here, the  
40           SAV mode requests were simulated through a stochastic process for four possible fare levels:  
41           \$0.50, \$0.75, \$1, and \$1.25 per trip-mile. These fares resulted in mode splits of 50.9%, 12.9 %,  
42           10.5%, and 9.2% of the region's person-trips, respectively.

43           Mode choice results show longer-distance travelers preferring SAVs to private, human-driven  
44           vehicles (HVs) - thanks to the reduced burden of SAV travel (since one does not have to drive  
45           the vehicle). For travelers whose households do not own an HV, SAVs (rather than transit,  
46           walking and biking) appear preferable for trips under 10 miles, which is the majority of those

1 travelers' trip-making. It may be difficult for traditional transit services and operators to survive  
2 once SAVs become available in regions like Austin, where dedicated rail lines and bus lanes are  
3 few. Simulation of SAV fleet operations suggest that higher fare rates allow for greater vehicle  
4 replacement (ranging from 5.6 to 7.7 HVs per SAV, assuming that the average SAV serves 17 to  
5 20 person-trips per day); this is due to travel demands shifting away from longer trip distances,  
6 when fares rise. Empty vehicle miles traveled by the fleet of SAVs ranged from 7.8 percent to  
7 14.2 percent, across the scenarios in this study. Implications of mobility and sustainability  
8 benefits of SAVs are also discussed in the paper.

## 9 **KEYWORDS**

10 Shared Autonomous Vehicles, Car-sharing, Agent-Based Simulation, Mode Choice, Travel  
11 Demand Modeling

## 12 **INTRODUCTION**

13 Autonomous vehicles (AVs) may begin to transform surface transportation systems in the next  
14 few years. Human-controlled vehicles (HVs) are normally owned by the traveler, and are parked  
15 95% of the time (Barter, 2013). Since AVs can self-drive (to find a parking space and refuel),  
16 there is much less need for private vehicle ownership. Shared AVs (SAVs) are expected to  
17 become a major travel mode, bringing expensive transport technologies to the masses well before  
18 individuals may be able to afford their own AV (Kornhauser et al., 2013; Fagnant and  
19 Kockelman, 2014a; Fagnant and Kockelman, 2015; Google, 2016; Uber, 2016).

20 Car-sharing allows many travelers to quickly access a fleet of automobiles without ownership  
21 costs and responsibilities. Car-sharing is especially popular among younger travelers (Gagnier,  
22 2013), making it a strong candidate for future mode choices. About 5.8 million people, around  
23 the world, are already using car-sharing services, and users are anticipated to number 15 million  
24 by 2020 (Tomlinson, 2016). SAVs improve car-sharing access times, by bringing empty vehicles  
25 directly to the user (avoiding search costs) and dropping off passengers at their requested  
26 destinations, without worrying about parking (or, presumably, refueling). SAV use in travel-rich  
27 environments is likely to bring economies of scale and density, with little empty travel, out-  
28 performing many other modes (Chen et al. 2016).

29 AV use is expected to reduce crash counts and crash severities (Kockelman and Li, 2016), travel  
30 costs (in terms of travel time burdens for those who previously were at the wheel, maneuvering  
31 their vehicles through traffic, rain, and darkness), while facilitating longer-distance trip-making  
32 and travel by those with disabilities or those without licenses (Anderson et al., 2014; Fagnant and  
33 Kockelman, 2014a; Chen and Kockelman, 2015; Fagnant and Kockelman, 2015; Chen et al.,  
34 2016). If VMT and vehicle sizes do not increase much, AV technologies may also reduce energy  
35 consumption and emissions (Paul et al., 2011; Folsom, 2012; Ford, 2012; Chapin et al., 2013;  
36 Bansal et al., 2015; Liu et al., 2015; Liu and Kockelman, 2016; Reiter and Kockelman, 2016)  
37 Leob et al., 2016).

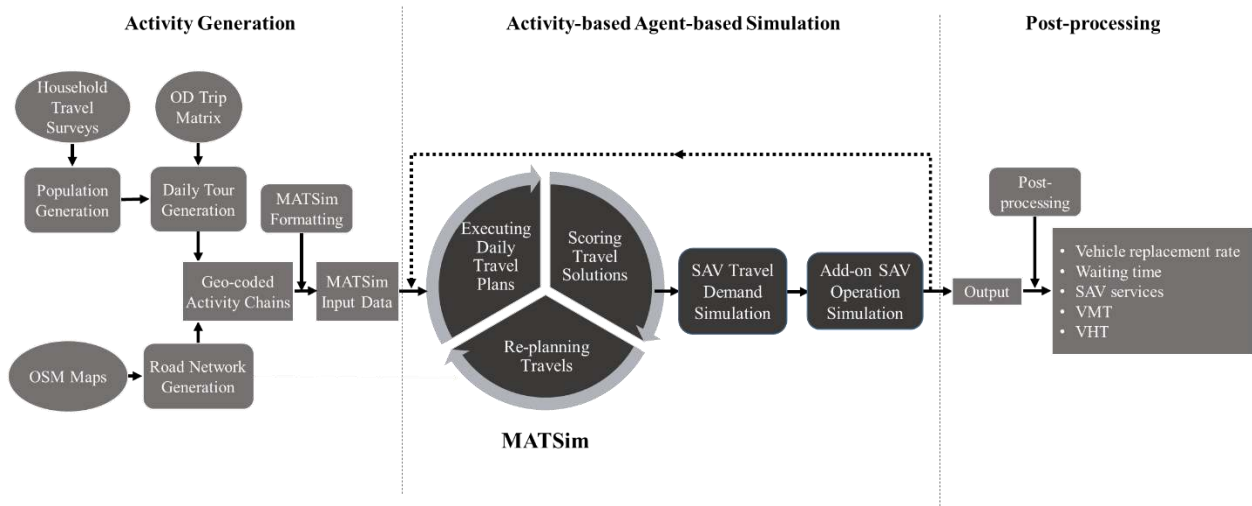
38 This study offers insights into the operations of a system of SAVs the Capital Area Metropolitan  
39 Planning Organization (CAMPO) region of Texas, with the city of Austin at its core. A large-

1 scale micro-simulation was constructed to mimic daily travel tours by individuals across the 2.3  
 2 million person (895 thousand household) region. Using CAMPO's (2015) travel demand model  
 3 results across 2,102 traffic analysis zones (TAZs), an agent-based, large-scale transport  
 4 simulation platform called MATSim was employed (MATSim, 2016b). MATSim has been  
 5 applied by many researchers outside the U.S., including Horni et al. (2009) in their investigations  
 6 of shopping and leisure activities, Maciejewski and Nagel's (2013) simulation of taxi services  
 7 around the Polish city of Mielec, Novose et al.'s (2015) exploration of transport's energy  
 8 demands, and Ciari et al.'s (2016) car-sharing simulations for Zurich.

9 Travel patterns in MATSim are specified at the most disaggregate, individual level, with  
 10 persons' daily activity plans serving as core model inputs. SAV mode choice is determined  
 11 through a random process, comparing deterministic utility scores of SAVs versus HVs versus  
 12 transit and other mode options. Research questions addressed here include: Who tends to prefer  
 13 SAVs and why?, How do SAVs serve requests and how many SAVs are needed in different  
 14 scenarios, to avoid long wait times?, and What are the mobility and other impacts of using  
 15 SAVs? The work seeks to provide insights for private and public sector stakeholders who hope  
 16 to implement SAVs systems. The results also provide guideposts to transportation planners and  
 17 policy (and decision-) makers who must plan for arrivals of these new technologies and modes.

18 **METHODOLOGY**

19 The work involved here can be described as a series of three major parts: 1) traveler activity  
 20 generation, 2) activity-based agent-based simulation, and 3) post-processing of outputs, as  
 21 shown in Figure 1.



22

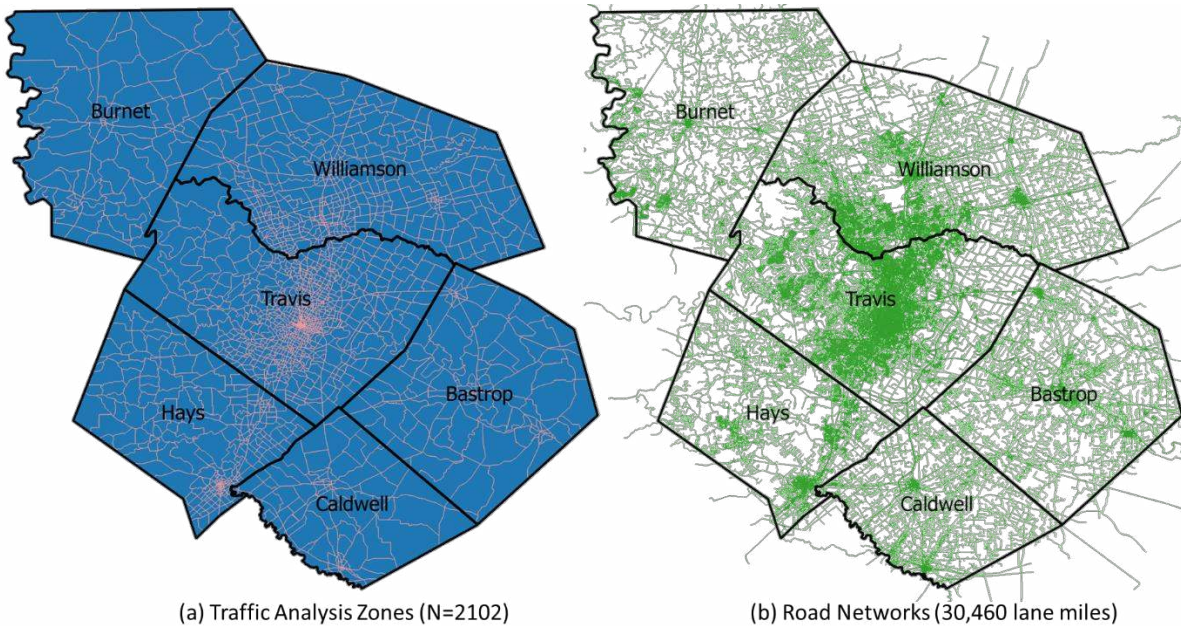
23

**Figure 1: Overview of research methodology**

24 **Reconstructing Travel Activity**

25 This study used CAMPO's (2015) existing, inter-TAZ travel demand (trip-count) predictions for  
 26 year 2020. OpenStreetMap (OSM) files were extracted to provide locations of homes and  
 27 businesses, and all road links and nodes, at much greater detail than MPOs tend to code their  
 28 roadway systems. The result of this intensive effort was a spatially detailed plan for each

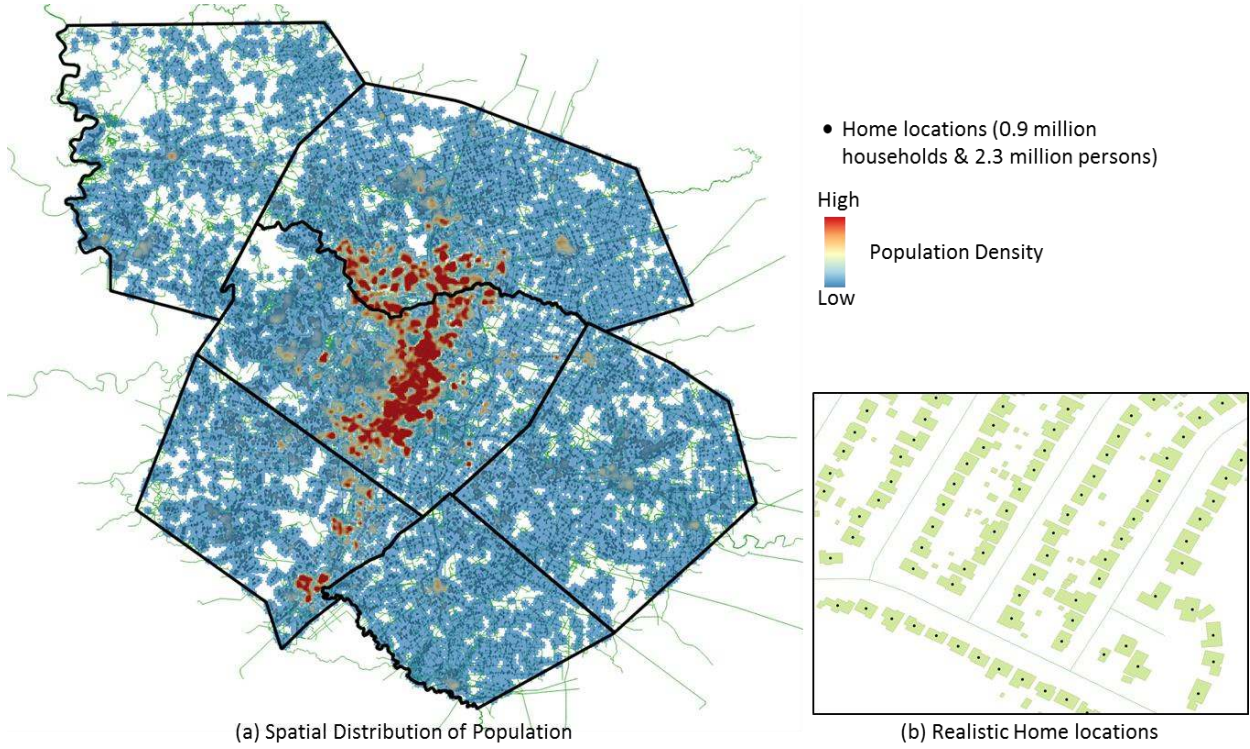
1 traveler's activities, chained or sequenced over time and space. Figure 2(a) shows CAMPO's 6  
2 counties and 2102 TAZs, expected to contain 2.33 million people and 895-thousand households  
3 in year 2020 (CAMPO 2015); Figure 2(b) shows the road networks, including 30,460 directed  
4 (one-direction) lane-miles, across 147,049 nodes and 234,444 links. The central areas, with  
5 dense roadways, is the City of Austin. Note, the road network in a traditional four-step models of  
6 CAMPO only contains 18,571 lane miles (CAMPO 2015); therefore, the network created in this  
7 study has greater details.



8  
9

**Figure 2: Study region and road networks**

10 Figure 3(a) shows the spatial distributions of population in CAMPO area, indicating the possible  
11 trip start locations. According to the U.S.'s 2009 National Household Travel Survey (NHTS), the  
12 average Texan makes 3.76 person-trips a weekday (versus 3.78 trips/day for the average  
13 American). In total, about 8.8 million person-trips were constructed for this region. Then, these  
14 simple trips were chained for individual travelers, to create a daily tour for performing planned  
15 activities. The trip start location (or activity location) information came from building footprint  
16 (and centroid) data were extracted from the OSM maps, as shown in Figure 3(b).



**Figure 3: Generating a synthetic micro-population**

### Activity-based Agent-based Simulation

Transportation resources, e.g., road link capacity, are limited. People may have to modify their (original) travel plans by adjusting trip start time, altering travel mode and route choices, or even changing the destination choices (e.g., going somewhere else or cancelling a trip if possible), to make the travel plans more executable and avoid the unacceptable loss of utility that is related to the value of time, travel cost and the value of performing an activity. To obtain more realistic and executable travel plans under transport constraints, this study employed MATSim, a large-scale agent-based transport simulation package, to model the each persons' activities in a real-world regional transportation network (i.e., CAMPO region) and to observe on an individual level how agents (representing travelers and vehicles) run in the network. In MATSim, all agents try to maximize their utility in a co-evolutionary process until a dynamic user equilibrium (DUE) is reached, i.e., no agent can further improve their mobility behavior by modifying their plans (Bösch et al., 2016; Ciari et al., 2016). Unlike studies or programs where the utility is calculated for travel only (the mode or route choice), the utility function in MATSim accounts for both the travel and the activities:

$$U = \sum_{i=1}^q U_{travel,i} t_{travel,i} + \sum_{j=1}^{q+1} U_{activity,j} t_{activity,j} \quad (1)$$

1 where,  $U$  = Total utility of a travel solution composed of a daily trip chain;  $U_{travel,i}$  = Utility of  
 2 travel for  $i^{th}$  trip in a day;  $i = 1, 2, 3, \dots, q$  trips;  $t_{travel,i}$  = Travel time for  $i^{th}$  trip;  $U_{activity,j}$  =  
 3 Utility of performing the  $j^{th}$  activity in a day;  $j = 1, 2, 3, \dots, q+1$  activities; and  
 4  $t_{travel,i}$  = Duration of  $j^{th}$  activity. The travel solution optimization is to maximize the total utility  
 5 of a chain of trips an agent may take to perform his or her planned activities. More details about  
 6 the MATSim scoring function are available in MATSim Book (MATSim, 2016b).

7

## 8 **SAV Operations Simulation**

9 Agents request the SAV service based on their travel plans. SAVs are initially distributed  
 10 according to the first group of travel requests in the early morning. In SAV operation  
 11 simulations, except the first group of requests, a travel request is assigned to the closest,  
 12 available SAV within a predefined service radius (SAV travel time to the start location of the  
 13 request). The assigned SAV moves to the start location of the travel request. The assigned SAV  
 14 can arrive before the end of the prior activity. In this case, the assigned SAV waits for the  
 15 traveler to finish the activity. If the traveler finishes the activity earlier than the SAV's arrival,  
 16 the traveler waits for the SAV (the waiting time threshold is the predefined service radius of  
 17 SAVs). Once the SAV and the traveler are both ready, they move together to the trip end  
 18 location. After they arrive, the AV becomes available for a next request. Bösch et al. (2016)  
 19 showed more details about the SAV operation simulation package in their study (Bösch et al.,  
 20 2016).

## 21 **Implementing the Simulations**

22 SAV travel demand was drawn based on the DUE travel plans, presuming that SAVs have the  
 23 same driving characters as HVs (e.g., the similar headway, travel speed, and vehicle size). It is  
 24 expected that not all travelers would choose SAVs and some drivers will remain using private  
 25 owned HVs (or even private AVs), or existing public transit. Mode choice between SAVs and  
 26 HVs (or transit) was conducted separately for households who own a HV and those who do not.  
 27 For households with at least one HV, their members have three options of travel modes (HV,  
 28 transit and SAV), and for those without a HV, there are only two options (transit and SAV). The  
 29 travel mode was stochastically determined based on discrete choice models (Chen and  
 30 Kockelman, 2015).

31 For travelers with privately owned HVs, the probability of using a SAV can be estimated to be:

$$P_{SAV} = \frac{\exp(V_{SAV})}{\exp(V_{SAV}) + \exp(V_{HV}) + \exp(V_{transit})} \quad (2)$$

32

33 where,  $V_{SAV}$  = Deterministic utility of using a SAV;  $V_{HV}$  = Deterministic utility of using a HV;  
 34 and  $V_{PT}$  = Deterministic utility of using transit. For travelers without access to privately owned  
 35 HVs, the probability of using a SAV can be estimated to be:

36

$$P_{SAV} = \frac{\exp(V_{SAV})}{\exp(V_{SAV}) + \exp(V_{transit})} \quad (3)$$



1 The out-of-pocket cost and the value of time (of both in-vehicle and out-of-vehicle) were  
2 considered when determining the utility:

- 3 1) Out-of-Pocket Cost. According to AAA, the average cost to own and operate a vehicle is 58  
4 cents per mile (AAA, 2015). The cost of using a HV was assumed to be 60 cents per mile in  
5 this study. For those who do not have access to a HV, the cost of using transit is important in  
6 mode choice. The cost of taking transit in CMAPO area is somehow fixed based on the lines  
7 and riding services, not based on the trip distance (Metro, 2016). According to the current  
8 fare rates of Austin Public Transit, \$2 per ride was assumed for the simulation  
9 implementation. For SAVs, distance-based fare rates plus fixed costs were assumed in this  
10 study. The fare rates in this study are the unit cost (per mile) of using a SAV, which can be  
11 around or even higher than the cost of operating and owning a HV, because travelers do not  
12 own SAVs. Four possible distance-based fare rates are assumed: \$0.50, \$0.75, \$1 and \$1.25  
13 per mile. The fixed costs include membership fees and other additive charges (e.g.,  
14 insurance) which are unrelated to the service distance. For each SAV service, \$1 fixed cost is  
15 assumed.
- 16
- 17 2) Value of Time (VOT). According to the Urban Mobility Report by Texas Transportation  
18 Institute (Schrank et al., 2015), the value of in-vehicle travel time (IVTT) for HV travelers is  
19 estimated at \$17.67 per hour. Similar to PT's VOT, SAVs' VOT is expected to be less than  
20 that HVs', because travelers (mainly the driver) will perceive the reduced burden of travel  
21 due to no longer needing to drive and being able to perform other activities (such as reading,  
22 working and resting). In this study, the value of IVTT for SAV and transit travelers is  
23 assumed to be half of HVs' associated VOT, \$8.84 per hour. However, taking a bus may  
24 result in longer IVTT because of the frequent stops. This study assumed that transit trips take  
25 averagely 1.5 longer time to reach the destination than driving a HV, all other factors equal.  
26 SAVs are expected to take the same IVTT as a HV would. Regarding the value of out-of-  
27 vehicle time (OVTT), a report by National Cooperative Highway Research Program  
28 (NCHRP) provided an estimate of 2 to 3 times of the IVTT (NCHRP, 2012). Therefore, the  
29 value of OVTT was assumed to be twice of IVTT, \$35.34 per hour.

30 So, the utility function for using a HV is:

$$V_{HV} = -0.6 \times Distance - 17.67 \times IVTT \quad (4)$$

31 The utility function for using transit services is:

$$V_{PT} = -2 - 8.84 \times IVTT_{transit} - 35.34 \times (OVTT_{walking} + OVTT_{waiting}) \quad (5)$$

32 The utility function of SAVs is:

$$V_{SAV} = -Fixed\ Cost - Fare \times Distance - 8.84 \times IVTT - 35.34 \times OVTT_{waiting} \quad (6)$$

33 where, the travel distance and driving-based IVTT were obtained through the MATSim DUE  
34 travel plans and the  $IVTT_{transit} = 1.5 IVTT$ .  $OVTT_{walking}$  and  $OVTT_{waiting}$  for transit services

1 was simulated in this study, randomly determined (between 0 to 15 minutes) based on the public  
2 transit plans in Austin area (Metro, 2010).

3 The  $OVTT_{waiting}$  for SAVs is related to the dynamic distributions of available SAVs (Fagnant  
4 and Kockelman, 2015). A random OVTT (ranging from 0 to 10 minutes and following a gamma  
5 distribution with the shape parameter  $k = 2$  and the scale parameter  $\theta = 1$ ) was made for a  
6 traveler when a travel request is about to be made, to mimic a traveler roughly estimating his or  
7 her waiting time when perfect information is not available. Note that, in the future, the SAV  
8 services through information technologies (such as smartphone applications) are expected to  
9 provide such real-time waiting time for each request, given certain SAV fleet size and the  
10 operation schemes. Known the fare rate, travel distance, IVTT and OVTT, the probability of a  
11 traveler choosing SAV for travel can be obtained. Then the decision of choosing either SAV,  
12 transit or HV was made through a stochastic process.

13 With the travel mode determined, the travel demand for SAVs was pulled into the add-on SAV  
14 operation simulations. The outputs of these simulations included the optimal SAV fleet size,  
15 average waiting time, and many other perspectives of the SAV operations in CAMPO region,  
16 given a certain fare rate.

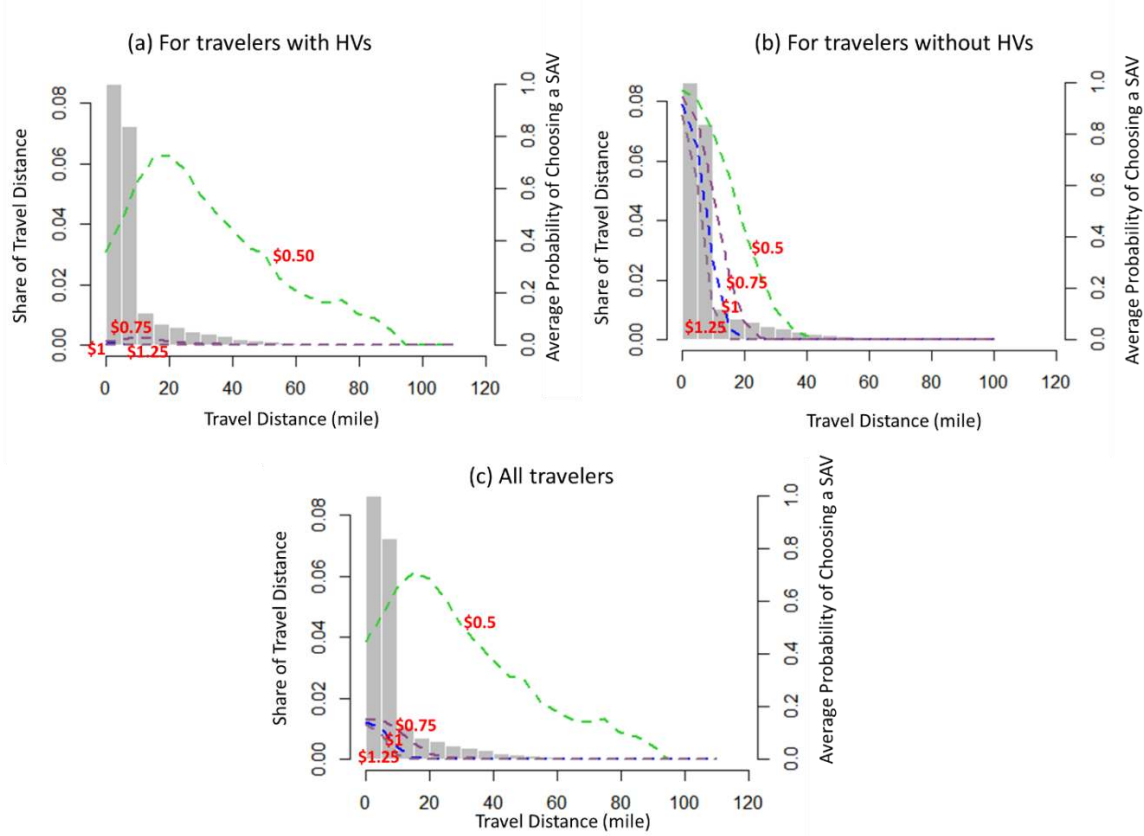
## 17 **SIMULATION RESULTS**

### 18 **Mode Choice for SAVs**

19 As shown in Equations (2) through (6), the probability of a traveler choosing to use a SAV  
20 depends on the travel distance, trip duration and waiting time, give a certain fare rate. This study  
21 examined four possible fare rates (\$0.50, \$0.75, \$1 and \$1.25 per mile), resulting in four mode-  
22 split scenarios. Figure 4(a) shows the average probability of choosing a SAV over HV or transit  
23 under four assumed fare rates and fixed cost \$1 (relationships between travel distances). When  
24 SAV fare rate is \$0.5 per mile, the probability of choosing a SAV increases with the trip length  
25 between 0 and 20 miles. When trip length reaches 20 miles, the probability is about 70%, and  
26 after that the probability decreases as the length increases. At a lower fare rate, SAVs may be  
27 more likely to be chosen than HVs while the travel distance increases, because of the reduced  
28 burden of in-vehicle activities in SAVs. However, with the increase of trip length, SAVs may  
29 lose their attractiveness because of the cost, compared with transit services (as transit is also with  
30 reduced burden in-vehicle activities). In general, transit services may be not competitive for short  
31 trips (owing to the walking and waiting time), but for long travels, such walking and waiting  
32 time may become a small portion of the total duration of travel. That is why Figure 4(a) shows  
33 when SAV fare rate is \$0.5 per mile the probability of choosing SAV increases first (before 20  
34 miles) and then deceases as the travel distance increases, because travelers prefer to choose a  
35 cheaper travel mode (i.e., transit). When SAV fare rates are \$0.75 per mile, the probability of  
36 choosing a SAV increases with trip distance, until it reaches 10 miles. When fare rates are \$1 and  
37 \$1.25 per mile are assumed, this probability is very small and falls with travel distance. When  
38 SAV fare rates are high, long-distance travelers find SAVs to be too costly, so HV or transit  
39 modes are chosen.

1 Figure 4(b) shows the shows the average probability of choosing a SAV over transit (for  
 2 travelers who do not have access to a HV). For four SAV fare rates, similar trends are found: as  
 3 the trip distance increases, the probability of choosing a SAV decreases. Noticeably, for trips  
 4 under 10 miles (which accounts for about 80% of all person-trips across the CAMPO region),  
 5 SAVs (under four possible fare rates) are expected to replace the transit services for most  
 6 travelers who do not have a privately owned vehicle.

7 Figure 4(c) summarizes the probabilities of choosing a SAV for two groups of travelers (with or  
 8 without access to a HV). Since about 85% of households own at least one HV, the totaled  
 9 probabilities are generally similar to what is shown in Figure 4(a) with slightly shifting up. After  
 10 obtaining the probability of choosing a SAV for travel, given the fare rate, travel distance, IVTT  
 11 and OVTT, a stochastic process was undertaken to determine a travel model for each trip.



12

13 **Figure 4: Probability of choosing SAV under four SAV fare rates assumptions, across**  
 14 **different trip distances**

15 **SAV Operations**

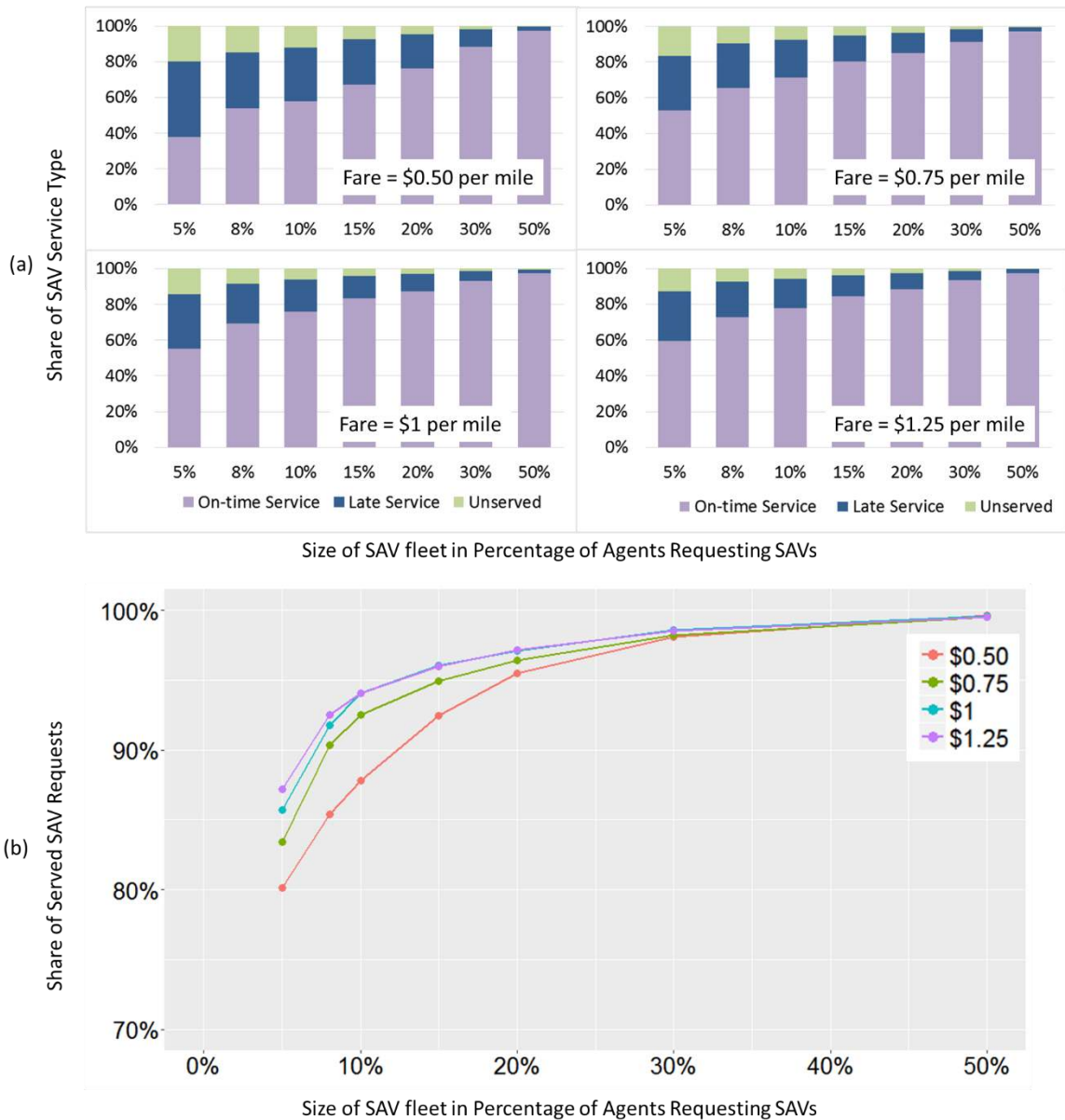
16 SAVs were simulated to serve the MATSim DUE travel demand under four different fare rates,  
 17 \$0.50, resulting in four levels of demand for SAVs:

- 18 1) 50.9% of trips request SAVs when fares are \$0.50 per mile;
- 19 2) 12.9 % of trips request SAVs when fares are \$0.75 per mile;
- 20 3) 10.5% of trips request SAVs when fares are \$1 per mile; and

1        4) 9.2% of trips request SAVs when fares are \$1.25 per mile.

2        To get the optimized SAV fleet size, an objective of SAV operations was made based on Bösch  
3        et al. (Bösch et al., 2016). This objective was to meet about 95% of travel demand for SAVs  
4        within two possible OVTT values: 1) on-time service if  $OVTT < 5$  minutes, and 2) late service if  
5         $OVTT > 5$  minutes but  $< 10$  minutes. Note that, in real practice, the rest 5% of SAV travel  
6        demand may still be able to be served if the users agree to wait for a SAV longer than 10  
7        minutes, or they fall back to other travel modes, e.g., transit.

8        Figure 5(a) presents the simulation results (over all random seeds) from four scenarios (four fare  
9        rates with fixed cost \$1), regarding the SAV fleet size in percentage of travelers requesting  
10       SAVs. The results include the shares of SAV service type: on-time service, late service and  
11       unserved requests (waiting time  $> 10$  minutes). Figure 5(b) shows the total shares of served  
12       SAV requests including both on-time and late services along with the SAV fleet sizes. The SAV  
13       service performances are generally consistent in four scenarios: with the increase in SAV fleet  
14       size, more SAV requests can be served (Bösch et al., 2016). Table 1 summarizes the  
15       performance of SAV systems serving 95% of SAV requests under four fare rates.



**Figure 5: SAV Service Performance vs. SAV Fleet Size**

1  
2

3 Bösch et al. (2016) reported that SAVs may be able to serve more efficiently in a scenario with  
 4 more SAV requests. However, this study found that the higher fare rates which resulted in fewer  
 5 requests in Austin region are related to the higher vehicle replacement rates, 7.7 HVs per SAV.  
 6 Reasons are related to their SAV requests' characteristics. As shown in Table 1, average service  
 7 time (i.e., trip duration, not wait time) is 12.7 minutes if the fare rate is \$0.5 per mile and just 7.5  
 8 min when fare is \$1.25 per mile. These shorter trips are likely to concentrate in urban centers,  
 9 where SAVs may perform more efficiently than they do in less trip-rich/less densely settled  
 10 locations (as evident in Table X's average number of trips served per SAV.

11

1

**Table 1: Performance of SAV system under four fare rates**

<b>Metric</b>	<b>\$0.5</b>	<b>\$0.75</b>	<b>\$1</b>	<b>\$1.25</b>
SAV demand in % of total trips	50.9%	12.9%	10.5%	9.2%
SAV fleet size in % of travelers	18%	15%	13%	13%
HV replacement rate	5.6	6.7	7.7	7.7
Average number of trips served per SAV	18.0	17.1	20.1	19.0
Extra VMT	7.8%	12.1%	14.2%	14.2%
Average waiting time (minute)	3.1	3.2	3.1	3.2
Average service time (minute)	12.7	8.9	7.9	7.5
% on-time service (waiting < 5 minutes)	72.6%	80.1%	81.1%	82.6%
% late service (waiting 5 to 10 minutes)	21.9%	14.8%	14.4%	12.9%

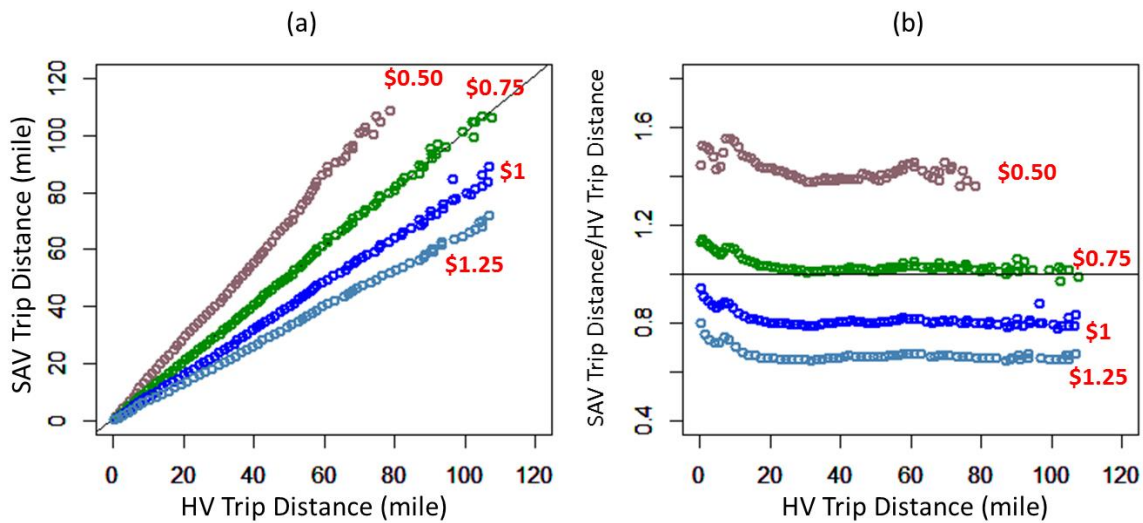
## 2 **DISCUSSION**

### 3 **Mobility Implications**

4 SAVs are expected to result in reduced travel burden (especially in vehicle portion), so that  
5 travelers may travel to destinations that are farther away than current destinations without the  
6 increase in comprehensive cost (including the out-of-pocket cost and relevant time spent during a  
7 trip). Figure 6(a) shows controlling for the equal utility how far a SAV trip can reach given  
8 certain HV trip distances. Figure 6(b) shows the ratio of distances of SAV trips and HV trips  
9 with same utility. For SAV fare rate \$0.5 per mile, travelers may travel 1.5 times longer  
10 (respectively) using a SAV than using a HV with the same amount of paying (including the out-  
11 of-pocket cost and the VOT). When fare rate is \$0.75 per mile (which is higher than the cost of  
12 using a HV, \$0.6 per mile), SAV travelers could travel similar distances with HV drivers, though  
13 the distance-based cost for SAVs (\$0.75 per mile) is be greater than the cost of using a HV (\$0.6  
14 per mile). While for two high fare rates, SAV trips tend to be shorter than HV trips, because of  
15 the high out-of-pock cost of using a SAV.

16 Though SAVs with high fare rates do not increase the cost-equivalent distances of traveling (than  
17 HVs), they are still expected to improve the mobility for certain group of people who are unable  
18 to drive or walk to bus stations, such as people with disabilities, older fellows and children who

1 go to school.



2  
3 **Figure 6: Travel distance by SAVs vs. HVs with equal mobile utility**

4 **Sustainability Implications**

5 The sustainability benefits of SAVs relative to HVs include two parts: macro- and microscopic  
6 estimates. The macroscopic estimates (Chester and Horvath, 2009; Fagnant and Kockelman,  
7 2014b) consider the life-cycle attributes of AVs (e.g., manufacturing improvements, parking,  
8 vehicle starts, traffic controls and so on). And the microscopic estimates were made by assuming  
9 the smoother driving cycles of AVs than that of HVs (Liu and Kockelman, 2016). All estimates  
10 are VMT-based and Table 2 shows the relative energy saving and emission reductions (in  
11 percentage) of SAVs compared to HVs. It shows that the total energy saving (per species) for  
12 SAVs from HVs is 19.6% ( $=1-(1-12\%)\times(1-8.6\%)$ ). The total emission reductions range from  
13 13.8% to 44.1% across five emission types.

14 However, owing to AV's self-driving while empty of passengers, the extra VMT would result in  
15 additional energy use and emissions. To obtain impacts of SAVs (per effective VMT) on  
16 transportation sustainability, the extra VMT is considered in the discussion. For example, when  
17 an SAV's fare is \$0.20 per mile, just 3.5% of SAVs' simulated VMT is without passengers.  
18 Therefore, the one of the resulting sustainability benefits is 13.3% less fuel consumed per  
19 effective (trip-maker) VMT, where  $13.3\% = 1 - (1-19.6\%)\times(1+7.8\%)$ . Other beneficial impacts  
20 are also shown in Table 2.

21 Greater energy and emissions savings when SAV fares are lower, because of the AV's  
22 advancements in energy saving and eco-technologies. And extra VMT by empty SAVs does not  
23 overcome such savings of AVs' advances (e.g. smaller vehicles, warm starts, eco-driving, etc.).

24

1

**Table 2: Impacts of SAV Systems on Energy Use and Emissions**

Sustainability Elements		Fuel consumption	GHG	PM2.5	CO	NOx	SO <sub>2</sub>
Average Light-duty HVs vs. SAVs	Macroscopic estimates (life-cycle based)	-12.0%	-5.6%	-6.5%	-34.0%	-18.0%	-19.0%
	Microscopic estimates (driving-cycle based)	-8.6%	-8.7%	-21.2%	-15.3%	-17.2%	-8.7%
	Total savings (distance-based)	-19.6%	-13.8%	-26.3%	-44.1%	-32.1%	-26.0%
Fare = \$0.50	Extra VMT=7.8%	-13.3%	-7.1%	-20.6%	-39.7%	-26.8%	-20.3%
Fare = \$0.75	Extra VMT=12.1%	-9.8%	-3.4%	-17.4%	-37.3%	-23.9%	-17.1%
Fare = \$1	Extra VMT=14.2%	-8.1%	-1.6%	-15.9%	-36.2%	-22.5%	-15.5%
Fare = \$1.25	Extra VMT=14.2%	-8.1%	-1.6%	-15.9%	-36.2%	-22.5%	-15.5%

2 Note: the estimates are based on no change of travel patterns (i.e., travel distance and travel  
3 frequency)

#### 4 CONCLUSIONS AND EXTENSIONS

5 A system of SAVs was simulated here, using a realistic road network across Austin, Texas (5307  
6 sq. miles) using MATSim, a large-scale agent-based simulation platform. To do so, the research  
7 team first generated extensive travel demand data at the level of individual travelers (pivoting off  
8 of traditional travel demand model results for groups of travelers, at the level of TAZs).

9 SAVs were introduced to satisfy many travelers' trip-making demands, assuming per-mile rates  
10 of \$0.50, \$0.75, \$1, and \$1.25. , and resulting in mode split predictions of 51%, 13%, 10%, and  
11 9%, assuming that HVs cost their owners just \$0.20 per mile (in marginal costs, neglecting  
12 vehicle depreciation, insurance and several other costs). For trips exceeding 40 miles, transit  
13 becomes more competitive, due to its flat cost assumption (\$2 per trip). Higher SAV fare rates  
14 resulting in fewer long trips via the SAV mode. At rates of \$1 and \$1.25 per person-trip-mile,  
15 vehicle replacement rate was found to be 7.7 HVs per SAV with an average waiting time 3  
16 minutes.

17 Further, this study discussed the mobility and sustainability benefits of SAVs. If SAV fare rate is  
18 low enough (though not necessarily lower than the cost of using a HV), SAV users may travel  
19 more miles than HV travelers. In addition, relative to HVs, AVs are expected to result in 19.6%  
20 energy savings, and 13.8% to 44.1% emission reductions, if all other factors are equal. However,  
21 the extra-VMT by SAVs while empty of travelers may compromise such sustainability benefits  
22 of the use of AVs. Empty-VMT travel by the fleet of SAVs ranged from 7.8 percent to 14.2  
23 percent, across the scenarios in this study. Empty-VMT seems not sizable to overcome the  
24 sustainability benefits from the AVs' advancements. That being said, the level of empty-vehicle  
25 could still turn already-congested cities into far more congested cities, due to the convex nature  
26 of link performance functions. Ride-sharing, tight headways, traffic smoothing, and other  
27 opportunities for SAVs and AVs may help counteract some of these VMT increases, in terms of  
28 congestion and emissions.



1 While this study delivers insights for regional operations of SAV fleets, results can be improved  
2 through continuing efforts. For example, this study's results depend on the accuracy of  
3 individuals' travel activity patterns, and destination choices, which were generating using TAZ-  
4 level travel demand forecasts. The model of mode choice did not consider evolving HV  
5 ownership levels and uneven cost of owning and operating a HV.

6 This study also assumed that travel requests with wait times longer than 10 minutes (total, from  
7 request of service to vehicle arrival at trip-maker's origin) could not be served. Such requests  
8 may still be served if the traveler is patient enough, or the SAV managers (or companies) offers  
9 discounted (or even free) rides for these travels in order to increase the ridership of the SAV  
10 system. The extra VMT from access to AVs and SAVs may greatly influence traffic levels, as  
11 AV prices fall and SAV fleet sizes grow. Moreover, dynamic feedback of traffic loads and travel  
12 times to mode and destination choices is important for better understanding of coming  
13 transportation system impacts and operations.

#### 14 **ACKNOWLEDGEMENTS**

15 The authors would like to thank Texas Department of Transportation (TxDOT) for financially  
16 supporting this research (under research project 6838, "Bringing Smart Transport to Texans:  
17 Ensuring the Benefits of a Connected and Autonomous Transport System in Texas"). The  
18 authors are grateful to the developers of MATSim for their consistent efforts in improving this  
19 toolkit (available at <http://www.matsim.org/>). Special thanks to Scott Schauer-West, for his  
20 constructive comments, edits, and administrative support.

#### 21 **REFERENCES**

- 22 Anderson, J. M., K. Nidhi, K. D. Stanley, P. Sorensen, C. Samaras, and O. A. Oluwatola. 2014.  
23 *Autonomous Vehicle Technology: A Guide for Policymakers*. Rand Corporation. Online at:  
24 [http://www.rand.org/pubs/research\\_briefs/RB9755.html?utm\\_source=t.co&utm\\_medium=rand\\_s](http://www.rand.org/pubs/research_briefs/RB9755.html?utm_source=t.co&utm_medium=rand_s)  
25 [ocial](#)
- 26 Bansal, P., K. M. Kockelman, and Y. Wang. 2015. Hybrid Electric Vehicle Ownership and Fuel  
27 Economy across Texas: An Application of Spatial Models. *Transportation Research Record:*  
28 *Journal of the Transportation Research Board*, 2495: 53–64.
- 29 Barter, P. 2013. "Cars are parked 95% of the time". Let's check! Online at:  
30 <http://www.reinventingparking.org/2013/02/cars-are-parked-95-of-time-lets-check.html>.
- 31 Bösch, P. M., F. Ciari, and K. W. Axhausen. 2016. Required Autonomous Vehicle Fleet Sizes to  
32 Serve Different Levels of Demand. In: *Transportation Research Board 95th Annual Meeting*,  
33 Online at: [https://www.ethz.ch/content/dam/ethz/special-interest/baug/ivt/ivt-](https://www.ethz.ch/content/dam/ethz/special-interest/baug/ivt/ivt-dam/vpl/reports/ab1089.pdf)  
34 [dam/vpl/reports/ab1089.pdf](#)
- 35 CAMPO. 2015. *CAMPO 2010 Planning Model Guide*, Capital Area Metropolitan Planning  
36 Organization (CAMPO), Austin, TX. Online at: <http://www.campotexas.org/plans-programs/>

- 1 Census. 2014. ACS Profiles [dataset application]. Online at:  
2 [https://www.austintexas.gov/sites/default/files/files/Planning/Demographics/CoA\\_ACS\\_Profile](https://www.austintexas.gov/sites/default/files/files/Planning/Demographics/CoA_ACS_Profile)  
3 [2013.pdf](https://www.austintexas.gov/sites/default/files/files/Planning/Demographics/CoA_ACS_Profile)
- 4 Chapin, D., R. Brodd, G. Cowger, J. Decicco, G. Eads, R. Espino, J. German, D. Greene, J.  
5 Greenwald, and L. Hegedus. 2013. *Transitions to Alternative Vehicles and Fuels*. National  
6 Academies Press, Washington, DC.
- 7 Chen, D., and K. M. Kockelman. 2015. Management of a Shared, Autonomous, Electric Vehicle  
8 Fleet: Charging and Pricing Strategies. In: *IATBR 2015-WINDSOR*. Online at:  
9 [http://www.cae.utexas.edu/prof/kockelman/public\\_html/TRB16SAEVsModeChoice.pdf](http://www.cae.utexas.edu/prof/kockelman/public_html/TRB16SAEVsModeChoice.pdf)
- 10 Chen, D., K. M. Kockelman, and J. Hanna. 2016. Operations of a Shared, Autonomous, Electric  
11 Vehicle (SAEV) Fleet: Implications of Vehicle & Charging Infrastructure Decisions In:  
12 *Transportation Research Board 95th Annual Meeting*. Online at:  
13 [http://www.cae.utexas.edu/prof/kockelman/public\\_html/TRB16SAEVs100mi.pdf](http://www.cae.utexas.edu/prof/kockelman/public_html/TRB16SAEVs100mi.pdf)
- 14 Chester, M., and A. Horvath. 2009. *Life-cycle energy and emissions inventories for motorcycles,*  
15 *diesel automobiles, school buses, electric buses, Chicago rail, and New York City rail*. UC  
16 Berkeley Center for Future Urban Transport: A Volvo Center of Excellence. Online at:  
17 <http://www.its.berkeley.edu/sites/default/files/publications/UCB/2009/VWP/UCB-ITS-VWP->  
18 [2009-2.pdf](http://www.its.berkeley.edu/sites/default/files/publications/UCB/2009/VWP/UCB-ITS-VWP-)
- 19 Ciari, F., M. Balac, and K. W. Axhausen. 2016. Modeling carsharing with the agent-based  
20 simulation MATSim: state of the art, applications and future developments. In: *Transportation*  
21 *Research Board 95th Annual Meeting*. Online at: [http://e-](http://e-citations.ethbib.ethz.ch/view/pub:161004)  
22 [citations.ethbib.ethz.ch/view/pub:161004](http://e-citations.ethbib.ethz.ch/view/pub:161004)
- 23 Fagnant, D. J., and K. Kockelman. 2014a. Preparing a Nation for Autonomous Vehicles:  
24 Opportunities, Barriers and Policy Recommendations for Capitalizing On Self-Driven Vehicles.  
25 *Transportation Research Part A* 77: 167-181, 2015.
- 26 Fagnant, D. J., and K. M. Kockelman. 2014b. The travel and environmental implications of  
27 shared autonomous vehicles, using agent-based model scenarios. *Transportation Research Part*  
28 *C: Emerging Technologies* 40: 1-13.
- 29 Fagnant, D. J., and K. M. Kockelman. 2015. Dynamic ride-sharing and optimal fleet sizing for a  
30 system of shared autonomous vehicles. Forthcoming in *Transportation*. Online at:  
31 [http://www.cae.utexas.edu/prof/kockelman/public\\_html/TRB15SAVwithDRSinAustin.pdf](http://www.cae.utexas.edu/prof/kockelman/public_html/TRB15SAVwithDRSinAustin.pdf)
- 32 Folsom, T. 2012. Energy and autonomous urban land vehicles. *IEEE Technology and Society*  
33 *Magazine* 2: 28-38.
- 34 Ford. 2012. Model T Facts. Online at:  
35 <https://media.ford.com/content/fordmedia/fna/us/en/news/2013/08/05/model-t-facts.html>

1 Gagnier, S. 2013. Car sharing users to reach 12 million by 2020, report says. Online at:  
2 <http://www.autonews.com/article/20130916/OEM06/130919868/car-sharing-users-to-reach-12->  
3 [million-by-2020-report-says.](http://www.autonews.com/article/20130916/OEM06/130919868/car-sharing-users-to-reach-12-)

4 Google. 2016. Google Self-Driving Car Project. Online at:  
5 <https://www.google.com/selfdrivingcar/>

6 Horni, A., D. Scott, M. Balmer, and K. Axhausen. 2009. Location choice modeling for shopping  
7 and leisure activities with MATSim: combining microsimulation and time geography.  
8 *Transportation Research Record: Journal of the Transportation Research Board* 2135: 87-95.

9 Kockelman, K. M., and T. Li. 2016. Valuing the Safety Benefits of Connected and Automated  
10 Vehicle Technologies. In: Transportation Research Board 95th Annual Meeting. Online at:  
11 [http://www.cae.utexas.edu/prof/kockelman/public\\_html/TRB16CAVSafety.pdf](http://www.cae.utexas.edu/prof/kockelman/public_html/TRB16CAVSafety.pdf)

12 Leob, B., K. Kockelman and J. Liu. 2016. Shared Autonomous Electric Vehicles (SAEV)  
13 Operations across the Austin, Texas Network with a Focus on Charging Infrastructure Decisions.  
14 Under review for publication in *Transportation Research Record*.

15 Liu, J., A. Khattak, and X. Wang. 2015. The role of alternative fuel vehicles: Using behavioral  
16 and sensor data to model hierarchies in travel. *Transportation Research Part C: Emerging*  
17 *Technologies* 55: 379-392.

18 Liu, J., K. Kockelman, and A. Nichols. 2016. Anticipating the Emissions Impacts Of Connected  
19 and Autonomous Vehicles Using the MOVES Model. Under review for publication in  
20 *Transportation Research Record*. Online at:  
21 [http://www.cae.utexas.edu/prof/kockelman/public\\_html/TRB17emissionsAVsmoothedcycle.pdf](http://www.cae.utexas.edu/prof/kockelman/public_html/TRB17emissionsAVsmoothedcycle.pdf)

22 Maciejewski, M., and K. Nagel. 2013. Simulation and dynamic optimization of taxi services in  
23 MATSim, VSP Working Paper 13-05, TU Berlin, Transport Systems Planning and Transport  
24 Telematics. Online at: <http://svn.vsp.tu-berlin.de/repos/public-svn/publications/vspwp/2013/13->  
25 [05/2013-06-03\\_Maciejewski\\_Nagel.pdf](http://svn.vsp.tu-berlin.de/repos/public-svn/publications/vspwp/2013/13-)

26 MATSim. 2016a. MATSim | Multi-Agent Transport Simulation. Online at:  
27 <http://www.matsim.org/scenarios>.

28 MATSim. 2016b. *The MATSim Book*. Online at: <http://www.matsim.org/the-book>

29 Capital Metropolitan Transportation Authority. 2010. ServicePlan2020 [Draft Final Report],  
30 Capital Metropolitan Transportation Authority. Online at:  
31 [http://www.capmetro.org/uploadedFiles/Capmetroorg/Future\\_Plans/Service\\_Plan\\_2020/ServiceP](http://www.capmetro.org/uploadedFiles/Capmetroorg/Future_Plans/Service_Plan_2020/ServiceP)  
32 [lan2020%20-%20Final%20Report.pdf](http://www.capmetro.org/uploadedFiles/Capmetroorg/Future_Plans/Service_Plan_2020/ServiceP)

33 Capital Metropolitan Transportation Authority. 2016. Capital Metro of Austin.  
34 <http://www.capmetro.org/>

35 NCHRP. 2012. *Travel Demand Forecasting: Parameters and Techniques*. National Cooperative  
36 Highway Research Program, Transportation Research Board. Online at:  
37 [http://onlinepubs.trb.org/onlinepubs/nchrp/nchrp\\_rpt\\_716.pdf](http://onlinepubs.trb.org/onlinepubs/nchrp/nchrp_rpt_716.pdf)

- 1 Novosel, T., L. Perković, M. Ban, H. Keko, T. Pukšec, G. Krajačić, and N. Duić. 2015. Agent  
2 based modelling and energy planning—Utilization of MATSim for transport energy demand  
3 modelling. *Energy* 92: 466-475.
- 4 Paul, B., K. Kockelman, and S. Musti. 2011. Evolution of the light-duty vehicle fleet:  
5 anticipating adoption of plug-In hybrid electric vehicles and greenhouse gas emissions across the  
6 US fleet. *Transportation Research Record: Journal of the Transportation Research Board* 2252:  
7 107-117.
- 8 Reiter, M. S., and K. M. Kockelman. 2016. Emissions and Exposure Costs of Electric Versus  
9 Conventional Vehicles: A Case Study for Texas. In: *Transportation Research Board 95th*  
10 *Annual Meeting*. Online at:  
11 [http://www.cae.utexas.edu/prof/kockelman/public\\_html/TRB16Emissions&Exposure.pdf](http://www.cae.utexas.edu/prof/kockelman/public_html/TRB16Emissions&Exposure.pdf)
- 12 Santos, A., N. McGuckin, H. Y. Nakamoto, D. Gray, and S. Liss. 2011. *Summary of Travel*  
13 *Trends: 2009 National Household Travel Survey*. Online at: <http://nhts.ornl.gov/2009/pub/stt.pdf>
- 14 Schrank, D., B. Eisele, T. Lomax, and J. Bak. 2015. 2015 Urban Mobility Scorecard Texas  
15 A&M Transportation Institute & INRIX, Inc., Colleague Station, TX. Online at:  
16 <http://d2dtl5nnlpfr0r.cloudfront.net/tti.tamu.edu/documents/mobility-scorecard-2015.pdf>
- 17 Tomlinson, C. 2016. Car-sharing expected to rise dramatically. Online at:  
18 [http://www.houstonchronicle.com/business/outside-the-boardroom/article/Car-sharing-expected-](http://www.houstonchronicle.com/business/outside-the-boardroom/article/Car-sharing-expected-to-rise-dramatically-7511140.php)  
19 [to-rise-dramatically-7511140.php](http://www.houstonchronicle.com/business/outside-the-boardroom/article/Car-sharing-expected-to-rise-dramatically-7511140.php)
- 20 TxDOT. 2015. Roadway Inventory Data. Online at: [http://www.txdot.gov/inside-](http://www.txdot.gov/inside-txdot/division/transportation-planning/roadway-inventory.html)  
21 [txdot/division/transportation-planning/roadway-inventory.html](http://www.txdot.gov/inside-txdot/division/transportation-planning/roadway-inventory.html).
- 22 Uber. 2016. Steel City's New Wheels. Online at: [https://newsroom.uber.com/us-](https://newsroom.uber.com/us-pennsylvania/new-wheels/)  
23 [pennsylvania/new-wheels/](https://newsroom.uber.com/us-pennsylvania/new-wheels/).