

Published in final edited form as:

*Science*. 2011 November 11; 334(6057): 817–821. doi:10.1126/science.1213671.

## tRNAs marked with CCACCA are targeted for degradation

Jeremy E. Wilusz<sup>1,\*</sup>, Joseph M. Whipple<sup>2</sup>, Eric M. Phizicky<sup>2</sup>, and Phillip A. Sharp<sup>1</sup>

<sup>1</sup>Koch Institute for Integrative Cancer Research and Department of Biology, Massachusetts Institute of Technology, Cambridge, MA 02139

<sup>2</sup>Department of Biochemistry and Biophysics, Center for RNA Biology, University of Rochester School of Medicine, Rochester, NY 14642

### Abstract

The CCA-adding enzyme [ATP(CTP):tRNA nucleotidyltransferase] adds CCA to the 3' ends of transfer RNAs (tRNAs), a critical step in tRNA biogenesis that generates the amino acid attachment site. Here, we show that the CCA-adding enzyme plays a key role in tRNA quality control as it selectively marks structurally unstable tRNAs and tRNA-like small RNAs for degradation. Instead of adding CCA to the 3' ends of these transcripts, CCA-adding enzymes from all three kingdoms of life add CCACCA. In addition, hypomodified mature tRNAs are subjected to CCACCA addition as part of a rapid tRNA decay (RTD) pathway *in vivo*. We conjecture that CCACCA addition is a universal mechanism for controlling tRNA levels and preventing errors in translation.

Although tRNAs require CCA at their 3' ends for amino acid attachment and correct positioning in the ribosome, CCA is not encoded in nearly all eukaryotic tRNA genes or in many archaeal and bacterial tRNA genes (1-4). Instead, the CCA-adding enzyme post-transcriptionally adds CCA to the 3' ends of tRNAs and tRNA-like transcripts (5-8). Recent work has identified two tRNA-like small RNAs, mascRNA (MALAT1-associated small cytoplasmic RNA) and the MEN  $\beta$  tRNA-like small RNA, that are generated by 3' end processing of long nuclear-retained noncoding RNAs in human and mouse cells (9-11) (Fig. 1A). These RNAs are ~70% similar in sequence and are generated by enzymes involved in canonical tRNA biogenesis, including RNases P and Z. Although the long noncoding RNAs from which they are processed are expressed at roughly equal levels, the MEN  $\beta$  tRNA-like small RNA is below the threshold of detection by Northern blot analysis (Fig. 1B) (12). This suggests that these tRNA-like transcripts are differentially regulated post-transcriptionally. Using a more sensitive 3' rapid amplification of cDNA ends (RACE) PCR approach, we detected expression of the MEN  $\beta$  tRNA-like small RNA *in vivo* (Fig. S1). Surprisingly, nearly all sequenced transcripts ended in CCACCA or CCACC, which is not encoded in the genome. This 3' end modification was not detected on mascRNA (9) and thus would be consistent with CCACCA addition signaling RNA degradation.

Although the CCA-adding enzyme is thought to terminate after CCA synthesis (7, 8), it was the most likely candidate to catalyze CCACCA addition. We thus expressed and purified His-tagged versions of the CCA-adding enzyme from human (13), *Escherichia coli* (14), and *Sulfolobus shibatae* (15) (Fig. S2, A to C) and confirmed that all three enzymes terminate polymerization once CCA has been added to canonical tRNAs (Fig. S2, D to F). In contrast, CCACCA or CCACC was added to the MEN  $\beta$  tRNA-like small RNA *in vitro*

\*To whom correspondence should be addressed. wilusz@mit.edu.

Supporting Online Material: www.sciencemag.org, Materials and Methods, SOM Text, Figs. S1 to S20, Tables S1 to S5, References (30-34)

(Fig. S3), recapitulating the *in vivo* 3' RACE results. This indicates that the CCA-adding enzyme catalyzes CCA or CCACCA addition depending on the characteristics of the RNA substrate.

To determine the sequence elements required for CCACCA addition, we investigated converting mouse *mascRNA* from a CCA to a CCACCA target by generating chimeric *mascRNA*-MEN  $\beta$  tRNA-like transcripts (Fig. 2A and fig. S4A). Swapping the acceptor stem (Mut 1) was sufficient to convert *mascRNA* from a CCA to a CCACCA target *in vitro* with near 100% efficiency, whereas the other arms had no effect on CCA addition (Fig. 2B and fig. S4). CCA-adding enzymes from all three kingdoms of life added CCACCA to the Mut 1 transcript, despite the eukaryotic (Fig. 2B) and eubacterial enzymes (Fig. S4C) having a different catalytic mechanism from archaeal enzymes (Fig. 2C) (16-20). Substituting the acceptor stems of canonical tRNAs with that of the mouse MEN  $\beta$  tRNA-like small RNA similarly converted those transcripts to CCACCA targets *in vitro* (Fig. S5A). This indicates that the CCA-adding enzyme monitors the acceptor stem when selecting between CCA and CCACCA addition. Furthermore, the CCA-adding enzyme functions as a CCACCA repair enzyme as it can, for example, add an additional A to a substrate ending in CCACC (Fig. S5B).

To investigate the features in the mouse MEN  $\beta$  acceptor stem that signal CCACCA addition, we took advantage of the fact that this stem is poorly conserved across species (Fig. 2D and fig. S6). When the *mascRNA* acceptor stem was swapped with that of the human MEN  $\beta$  tRNA-like transcript, CCACCA addition was also observed *in vitro* (Fig. 2D). The end of the acceptor stems of the mouse and human MEN  $\beta$  transcripts are significantly unstable due to a C-A mismatch or multiple G-U wobbles, respectively. In contrast, other MEN  $\beta$  homologs have significantly more stable acceptor stems and were CCA targets *in vitro*. Using COS7 cells, we confirmed that the Old World monkey MEN  $\beta$  homolog is a CCA target and stable transcript *in vivo* that is easily detected using Northern blot analysis (Fig. S7).

By extensively mutagenizing *mascRNA* and canonical tRNAs, we determined that CCACCA addition requires a transcript to have an unstable acceptor stem and guanosines at the first and second positions (See SOM, Fig. S8 to S11). Instability facilitates isomerization of the acceptor stem after the first CCA is added, allowing the Cs of the CCA sequence to base pair with G<sub>1</sub>G<sub>2</sub> (Fig. 2E). The A of the CCA sequence becomes the new discriminator base and is positioned in the enzyme's catalytic pocket, ready to undergo a second round of CCA addition using the well-established polymerization mechanisms (8, 17-19). As to why polymerization stops once CCACCA has been added, we propose that additional unpaired nucleotides in the bulge interfere with enzyme recognition.

Could addition of CCACCA be a common reaction for many tRNAs? Between 30 and 45 percent of tRNA genes in a given species begin with G<sub>1</sub>G<sub>2</sub>, indicating a strong enrichment for GG at 5' ends (Fig. 3A and fig. S12). However, it is unlikely that most of these tRNAs are subjected to CCACCA addition under normal conditions as they have stable acceptor stems. Single point mutations that cause a mismatch or an additional G-U wobble in the acceptor stems of two unrelated arginine tRNAs (Fig. 3B and fig. S13) or a cysteine tRNA (Fig. S14) were sufficient to completely convert these transcripts from CCA to CCACCA targets *in vitro*. Mutant tRNAs ending in CCACCA were rapidly degraded in HeLa nuclear extracts (Fig. 3C and fig. S15), indicative of an efficient decay mechanism that is distinct from cleavage in the anticodon loop (21).

The rapid tRNA decay (RTD) pathway functions in yeast as a surveillance mechanism to degrade a subfraction of mature tRNAs (22-24). Originally identified as a mechanism to

degrade specific hypomodified tRNAs, the RTD pathway also degrades tRNAs containing mutations that destabilize their structure (25). We noticed that tRNAs sensitive to RTD often conform to the rules for CCACCA addition as they tend to start with GG and have slightly destabilized acceptor stems due to a single G-U wobble near their end (Fig. 4A). We, therefore, hypothesized that CCACCA may be added to tRNAs being degraded by RTD *in vivo*.

Here, we focused on tRNA<sup>Ser(CGA)</sup> and tRNA<sup>Ser(UGA)</sup>, two highly similar species that are rapidly degraded in a *trm44-Δ tan1-Δ* strain grown at high temperatures due to the lack of 2'-O-methylation of U<sub>44</sub> and N<sup>4</sup> acetylation of C<sub>12</sub> (24). By combining 3' RACE PCR and deep sequencing (Fig. S16), we detected a low, but reproducible, level of extended CCA motifs (defined as CCAC, CCACC, or CCACCA) on tRNA<sup>Ser(CGA)</sup> and tRNA<sup>Ser(UGA)</sup> in a wild type strain grown at 28°C or 37°C (Fig. 4A and tables S1-2). Consistent with a role for CCACCA addition in this proofreading pathway, switching the *trm44-Δ tan1-Δ* strain to growth at 37°C triggers RTD of tRNA<sup>Ser(CGA)</sup> and tRNA<sup>Ser(UGA)</sup> and a progressive increase in transcripts ending in extended CCA motifs, which mirrors the time course of degradation (24). Interestingly, we also detected a significant increase in tRNAs with short poly(A) tails added to their CCA ends when RTD was occurring (Fig. S17 and tables S3-4). Deleting the 5'-3' exonuclease Xrn1 or Met22, a phosphatase whose substrate is an Xrn1 inhibitor, prevents tRNA degradation by RTD (23) and, likewise, significantly decreased the level of extended CCA motifs and poly(A) tails observed (Fig. 4A).

As increasing the stability of the acceptor or T-stems of tRNA<sup>Ser(CGA)</sup> was shown to decrease RTD sensitivity (25), we asked if strengthening the tRNA tertiary structure would also affect CCACCA addition levels *in vivo*. Changing the U<sub>51</sub>:U<sub>63</sub> mismatch to a G<sub>51</sub>:C<sub>63</sub> base pair near completely abolished CCACCA addition, whereas substitution of U<sub>6</sub>:G<sub>67</sub> by U<sub>6</sub>:A<sub>67</sub> decreased CCACCA levels by ~60%, consistent with its more modest increase in predicted stability (Fig. 4B and table S2).

We, therefore, suggest that CCACCA or poly(A) addition generates a single-stranded tail that is sufficiently long to be recognized by 3'-5' exonucleases. Indeed, tRNAs ending in CCACCA, but not CCA, were degraded *in vitro* by RNase R from *E. coli* (26) (Fig. S18A) and by yeast Rrp44, the active 3'-5' exonuclease component of the exosome (27) (Fig. 4C and fig. S18B). Consistent with the genetics and deep sequencing, we found that yeast Xrn1 cooperates with Rrp44 to degrade tRNAs ending in CCACCA *in vitro* (Fig. 4D and fig. S18C). Rrp44 often pauses once it nears the double-stranded acceptor stem (Fig. S18C) and we propose that Xrn1 recruitment allows efficient degradation of the rest of the transcript. In the absence of Xrn1, it is likely that the CCA-adding enzyme repairs the 3' end of the tRNA.

Our results suggest a model in which the CCA-adding enzyme adds CCACCA to tRNAs with unstable structures and a 5' terminal GG sequence, preventing aminoacylation and marking them for degradation (Fig. S19). Many events can destabilize a tRNA, including transcriptional errors, nucleotide modifications that alter base pairing strengths, or conformational changes caused by the binding of proteins or other RNAs *in trans*. In addition, some tRNAs have genomically encoded mismatches that are corrected by post-transcriptional editing events (28, 29), a process likely proofread by the CCA-adding enzyme as the unedited transcripts are CCACCA targets (Fig. S20). Considering that CCACCA addition is conserved across all three kingdoms of life, surveillance by the CCA-adding enzyme likely represents a universal mechanism for ensuring accurate protein synthesis.

## Supplementary Material

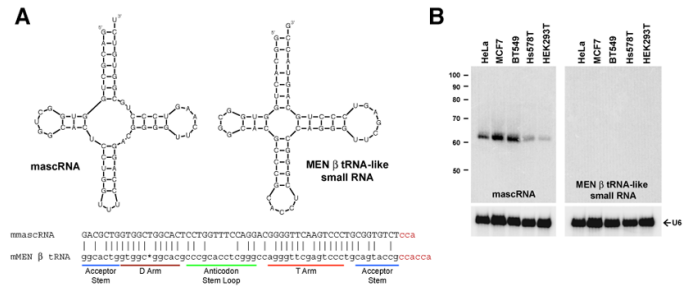
Refer to Web version on PubMed Central for supplementary material.

## Acknowledgments

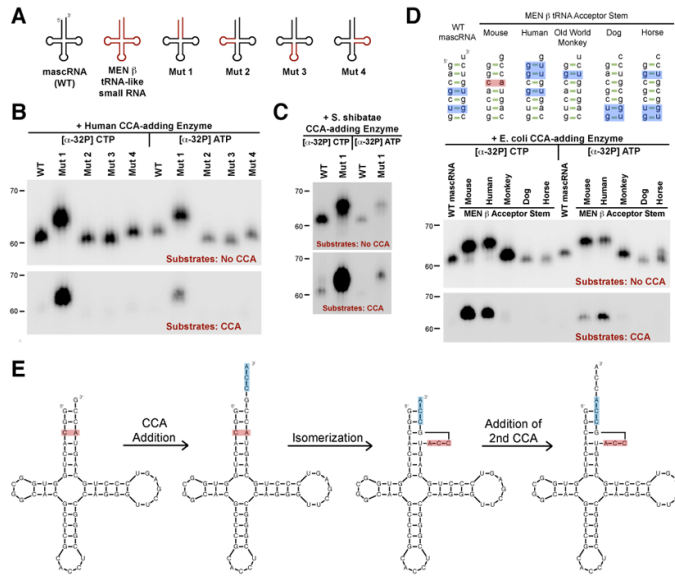
We thank Alan Weiner for providing CCA-adding enzyme expression plasmids, Alla Leshinsky and Dick Cook for performing the deep sequencing, Elena Conti for providing the Rrp44 protein, as well as Oliver Tam, Assaf Gordon, and Greg Hannon for help with the deep sequencing analysis. We thank Caroline Koehrer, Tom RajBhandary, Paul Schimmel, David Spector, Carol Wilusz, Jeff Wilusz, and members of the Sharp and Phizicky laboratories for discussions and advice. J.E.W. is a fellow of the Leukemia and Lymphoma Society. J.M.W. was supported by NIH Training Grant in Cellular, Biochemical and Molecular Sciences 5T32-GM068411. This work was supported by NIH grants R01-GM34277 (P.A.S.), R01-CA133404 (P.A.S.), and R01-GM52347 (E.M.P.) as well as partially by Cancer Center Support (core) Grant P30-CA14051 from NCI (P.A.S.).

## References and Notes

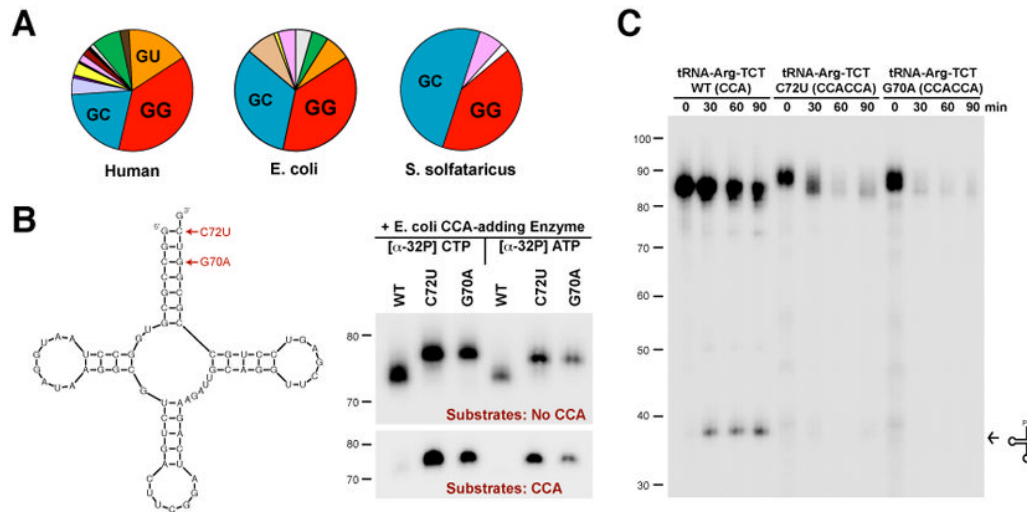
1. Sprinzl M, Cramer F. *Prog Nucleic Acid Res Mol Biol.* 1979; 22:1. [PubMed: 392600]
2. Korostelev A, Trakhanov S, Laurberg M, Noller HF. *Cell.* 2006; 126:1065. [PubMed: 16962654]
3. Nissen P, Hansen J, Ban N, Moore PB, Steitz TA. *Science.* 2000; 289
4. Phizicky EM, Hopper AK. *Genes Dev.* 2010; 24
5. Deutscher MP. *The Enzymes.* 1982; 15
6. Betat H, Rammelt C, Morl M. *Cell Mol Life Sci.* 2010; 67
7. Xiong Y, Steitz TA. *Curr Opin Struct Biol.* 2006; 16
8. Shi PY, Maizels N, Weiner AM. *EMBO J.* 1998; 17:3197. [PubMed: 9606201]
9. Wilusz JE, Freier SM, Spector DL. *Cell.* 2008; 135:919. [PubMed: 19041754]
10. Sunwoo H, et al. *Genome Res.* 2009; 19:347. [PubMed: 19106332]
11. Wilusz JE, Spector DL. *RNA.* 2010; 16:259. [PubMed: 20007330]
12. Materials and methods are available as supporting material on Science Online
13. Nagaïke T, et al. *J Biol Chem.* 2001; 276:40041. [PubMed: 11504732]
14. Shi PY, Weiner AM, Maizels N. *RNA.* 1998; 4:276. [PubMed: 9510330]
15. Yue D, Weiner AM, Maizels N. *J Biol Chem.* 1998; 273:29693. [PubMed: 9792681]
16. Yue D, Maizels N, Weiner AM. *RNA.* 1996; 2:895. [PubMed: 8809016]
17. Tomita K, et al. *Nature.* 2004; 430:700. [PubMed: 15295603]
18. Xiong Y, Steitz TA. *Nature.* 2004; 430:640. [PubMed: 15295590]
19. Pan B, Xiong Y, Steitz TA. *Science.* 2010; 330:937. [PubMed: 21071662]
20. Augustin MA, et al. *J Mol Biol.* 2003; 328:985. [PubMed: 12729736]
21. Thompson DM, Parker R. *Cell.* 2009; 138:215. [PubMed: 19632169]
22. Alexandrov A, et al. *Mol Cell.* 2006; 21:87. [PubMed: 16387656]
23. Chernyakov I, Whipple JM, Kotelawala L, Grayhack EJ, Phizicky EM. *Genes Dev.* 2008; 22:1369. [PubMed: 18443146]
24. Kotelawala L, Grayhack EJ, Phizicky EM. *RNA.* 2008; 14:158. [PubMed: 18025252]
25. Whipple JM, Lane EA, Chernyakov I, D'Silva S, Phizicky EM. *Genes Dev.* 2011; 25:1173. [PubMed: 21632824]
26. Vincent HA, Deutscher MP. *J Biol Chem.* 2006; 281:29769. [PubMed: 16893880]
27. Lorentzen E, Basquin J, Tomecki R, Dziembowski A, Conti E. *Mol Cell.* 2008; 29:717. [PubMed: 18374646]
28. Leigh J, Lang BF. *RNA.* 2004; 10:615. [PubMed: 15037771]
29. Lonergan KM, Gray MW. *Science.* 1993; 259:812. [PubMed: 8430334]



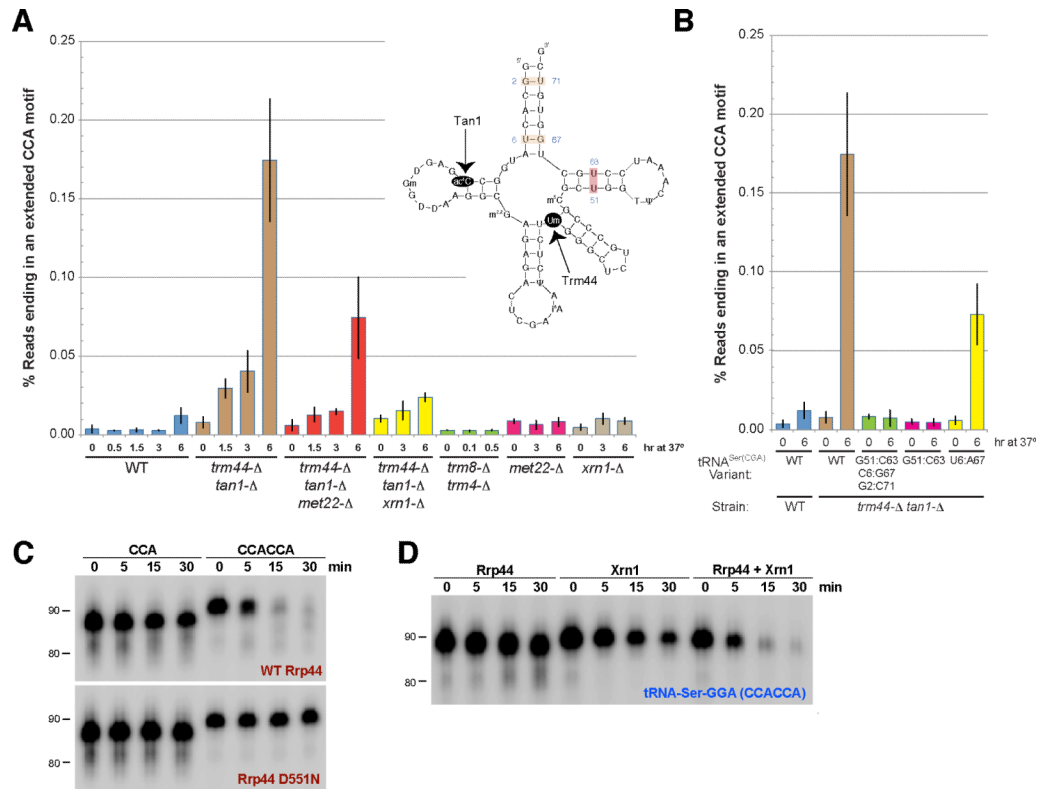
**Fig. 1. CCACC(A) is added to the MEN  $\beta$  tRNA-like small RNA**  
**(A)** mascRNA and the MEN  $\beta$  tRNA-like small RNA are predicted to fold into cloverleaf secondary structures. The mouse homologs are shown. 3' RACE revealed that different 3' terminal sequences are post-transcriptionally added to the RNAs (shown in red). **(B)** Northern blot analysis using 15  $\mu$ g of total RNA from five cell lines.



**Fig. 2. An unstable acceptor stem is isomerized to allow for CCACCA addition**  
**(A)** Chimeric transcripts generated. **(B and C)** Wild-type mascRNA (denoted WT) and the chimeras were incubated *in vitro* with human **(B)** or *S. shibatae* **(C)** CCA-adding enzyme. [ $\alpha$ - $^{32}$ P] CTP or [ $\alpha$ - $^{32}$ P] ATP was added to assay for incorporation of each nucleotide into the unlabeled substrates. In the upper panels, substrates lacked CCA so all substrates should undergo, at minimum, one round of CCA addition, with a second round of CCA addition (yielding CCACCA) generating a 3 nucleotide shift in mobility. In the lower panels, CCA was already present so only RNAs that are CCACCA targets yield visible bands. **(D)** WT mascRNA or chimeras in which the acceptor stem was swapped with that of a MEN  $\beta$  homolog were used as substrates. Mismatches and G-U wobble base pairs are in red and blue, respectively. **(E)** Model for how CCACCA is added to the mouse MEN  $\beta$  tRNA-like small RNA.



**Fig. 3. Destabilizing tRNAs causes CCACCA addition and transcript degradation *in vitro***  
**(A)** Pie charts showing the first two nucleotides of canonical tRNAs from human (representing 631 tRNAs), *E. coli* (88 tRNAs), and *S. solfataricus* (46 tRNAs). **(B)** tRNA<sup>Arg(TCG)</sup> transcripts containing point mutations were used as *in vitro* substrates for the *E. coli* CCA-adding enzyme. **(C)** Radiolabeled wild-type or mutant arginine tRNAs ending in CCA or CCACCA, respectively, were incubated in HeLa nuclear extracts for the indicated times. Arrow denotes the accumulation of wild-type tRNAs cleaved in the anticodon loop.



**Fig. 4. CCACCA is added to tRNAs being actively degraded *in vivo***  
**(A)** The percentage of tRNA<sup>Ser(CGA)</sup> and tRNA<sup>Ser(UGA)</sup> transcripts ending in an extended CCA motif in yeast strains grown at 28°C (designated 0 hr) or 37°C for the indicated times was determined. The structure of tRNA<sup>Ser(CGA)</sup> is shown. **(B)** The endogenous tRNA<sup>Ser(CGA)</sup> gene was replaced in the *trm44-Δ tan1-Δ* strain with the variants shown and the strains were subjected to 3' RACE PCR. Error bars represent standard deviation. **(C)** A serine tRNA ending in CCACCA was degraded *in vitro* by yeast Rrp44. The Rrp44 D551N mutant lacks exonuclease catalytic activity. **(D)** Yeast Rrp44 and Xrn1 cooperate to degrade tRNAs ending in CCACCA *in vitro*. The enzymes were titrated to identify conditions in which minimal degradation was observed when only a single exonuclease was present.