

 Open access • Journal Article • DOI:10.1029/2012JC007881

Tropical storm-induced near-inertial internal waves during the Cirene experiment: Energy fluxes and impact on vertical mixing — [Source link](#)

Yannis Cuypers, X. Le Vaillant, Pascale Bouruet-Aubertot, Jérôme Vialard ...+1 more authors

Institutions: Centre national de la recherche scientifique, Pacific Marine Environmental Laboratory

Published on: 01 Jan 2013 - Journal of Geophysical Research (John Wiley & Sons, Ltd)

Topics: Thermocline, Pycnocline, Internal wave, Inertial wave and Sea surface temperature

Related papers:

- [Upper Ocean Response to a Hurricane](#)
- [Near-Inertial Wave Propagation In Geostrophic Shear](#)
- [Internal Wave Wake of a Moving Storm. Part I. Scales, Energy Budget and Observations](#)
- [On the Behavior of Internal Waves in the Wakes of Storms](#)
- [Model-predicted distribution of wind-induced internal wave energy in the world's oceans](#)

Share this paper:    

View more about this paper here: <https://typeset.io/papers/tropical-storm-induced-near-inertial-internal-waves-during-48ovhnx321>



HAL
open science

Tropical storm-induced near-inertial internal waves during the Cirene experiment: energy fluxes and impact on vertical mixing

Yannis Cuypers, Xavier Le Vaillant, Pascale Bouruet-Aubertot, Jérôme Vialard, Michael J. Mcphaden

► To cite this version:

Yannis Cuypers, Xavier Le Vaillant, Pascale Bouruet-Aubertot, Jérôme Vialard, Michael J. Mcphaden. Tropical storm-induced near-inertial internal waves during the Cirene experiment: energy fluxes and impact on vertical mixing. Symposium OGOA, May 2013, Lyon, France. hal-00840934

HAL Id: hal-00840934

<https://hal.archives-ouvertes.fr/hal-00840934>

Submitted on 11 Jul 2013

HAL is a multi-disciplinary open access archive for the deposit and dissemination of scientific research documents, whether they are published or not. The documents may come from teaching and research institutions in France or abroad, or from public or private research centers.

L'archive ouverte pluridisciplinaire **HAL**, est destinée au dépôt et à la diffusion de documents scientifiques de niveau recherche, publiés ou non, émanant des établissements d'enseignement et de recherche français ou étrangers, des laboratoires publics ou privés.

Yannis Cuypers (LOCEAN)**Tropical storm-induced near-inertial internal waves during the Cirene experiment: energy fluxes and impact on vertical mixing**

Yannis Cuypers, Xavier Le Vaillant, Pascale Bouruet-Aubertot, Jérôme Vialard, Mike McPhaden

Near-inertial Internal Waves (NIW) excited by storms and cyclones play an essential role in driving turbulent mixing in the thermocline and interior ocean. Storm-induced mixing may be climatically relevant in regions like the thermocline ridge in the southwestern Indian Ocean, where a shallow thermocline and strong high frequency wind activity enhance the impact of internal gravity wave-induced mixing on sea surface temperature. The Cirene research cruise in early 2007 collected ship-

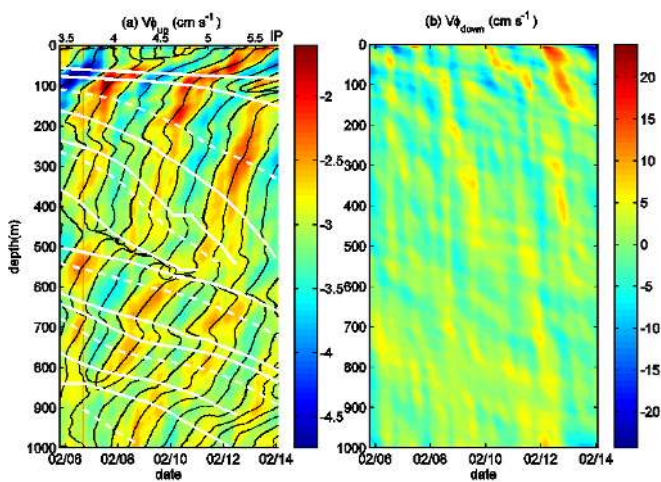


Figure 1: Fixed point station LADCP meridional velocity component during leg 2 separated in upward (left) and downward phase propagation, black lines represent line of constant phase obtained after complex demodulation of rotary current, whites lines represent rays trajectories computed from the vertical group velocity. The time axis below the left panel indicates the dates, while the time axis above the panel indicates the number of inertial periods after the first eyewall passage (e.g. after the 24th of January 2007).

increased to $0.42^{\circ}\text{C month}^{-1}$, indicative of increased shear instability along near inertial wave energy pathways.

borne and mooring vertical profiles in this region under the effect of a developing tropical cyclone. In this paper, we characterize the NIW field and the impact of these waves on turbulent mixing in the upper ocean. NIW packets were identified down to 1000 m, the maximum depth of the measurements. We estimated a NIW vertical energy flux of up to 2.5 mW m^{-2} within the pycnocline, which represents about 10% of the maximum local wind power input. A non-negligible fraction of the wind power input is hence potentially available for subsurface mixing. The impact of mixing by internal waves on the upper ocean heat budget was estimated from a fine-scale mixing parameterization. During the first leg of the cruise (characterized by little NIW activity), the average heating rate due to mixing was $\sim 0.06^{\circ}\text{C month}^{-1}$ in the thermocline (23-24 kg m^{-3} isopycnals). During the second leg, characterized by strong NIW energy in the thermocline and below, this heating rate

Cuypers, Y., Le Vaillant, X., Bouruet-Aubertot, P., Vialard, J., McPhaden, M.. «Generation and propagation of near-inertial baroclinic waves during Cirene experiment: energy fluxes and impact on vertical mixing», *J. Geophys. Res.*, 118, 358-380