

**Keywords:** tumour-infiltrating inflammation; T lymphocytes; T regulatory cells; colorectal cancer; prognosis; tumour location; meta-analysis

# Tumour-infiltrating inflammation and prognosis in colorectal cancer: systematic review and meta-analysis

Z Mei<sup>1</sup>, Y Liu<sup>1</sup>, C Liu<sup>1</sup>, A Cui<sup>1</sup>, Z Liang<sup>1</sup>, G Wang<sup>1</sup>, H Peng<sup>1</sup>, L Cui<sup>\*1</sup> and C Li<sup>2</sup>

<sup>1</sup>Department of Colorectal Surgery, Xinhua Hospital, Shanghai Jiao Tong University School of Medicine, Shanghai, People's Republic of China and <sup>2</sup>Department of Biological Psychiatry, Shanghai Mental Health Centre, Shanghai Jiao Tong University School of Medicine, Shanghai, People's Republic of China

**Background:** The role of tumour-infiltrating inflammation in the prognosis of patients with colorectal cancer (CRC) has not been fully evaluated. The primary objective of our meta-analysis was to determine the impact of tumour-infiltrating inflammation on survival outcomes.

**Methods:** Ovid MEDLINE and EMBASE were searched to identify studies reporting the prognostic significance of tumour-infiltrating inflammation for patients with CRC. The primary outcome measures were overall survival (OS), cancer-specific survival (CS) and disease-free survival (DFS).

**Results:** A total of 30 studies involving 2988 patients were identified. Studies were subdivided into those considering the associations between CRC survival and generalised tumour inflammatory infiltrate ( $n=12$ ) and T lymphocyte subsets ( $n=18$ ). Pooled analyses revealed that high generalised tumour inflammatory infiltrate was associated with good OS (HR, 0.59; 95% CI, 0.48–0.72), CS (HR, 0.40; 95% CI, 0.27–0.61) and DFS (HR, 0.72; 95% CI, 0.57–0.91). Stratification by location and T lymphocyte subset indicated that in the tumour centre, CD3<sup>+</sup>, CD8<sup>+</sup> and FoxP3<sup>+</sup> infiltrates were not statistically significant prognostic markers for OS or CS. In the tumour stroma, high CD8<sup>+</sup>, but not CD3<sup>+</sup> or FoxP3<sup>+</sup> cell infiltrates indicated increased OS. Furthermore, high CD3<sup>+</sup> cell infiltrate was detected at the invasive tumour margin in patients with good OS and DFS; and high CCR7<sup>+</sup> infiltrate was also indicated increased OS.

**Conclusion:** Overall, high generalised tumour inflammatory infiltrate could be a good prognostic marker for CRC. However, significant heterogeneity and an insufficient number of studies underscore the need for further prospective studies on subsets of T lymphocytes to increase the robustness of the analyses.

The clinical guidelines for the treatment of colorectal cancer (CRC) are mainly based on the TNM classification scheme proposed by the American Joint Committee on Cancer. However, the current staging system has not been adequately validated for treatment planning and prognosis assessments. According to the guidelines, adjuvant therapy is not recommended for patients with stage I or low-risk stage II CRC after radical surgery because, theoretically, those patients can be completely cured and can achieve long-term survival (Benson *et al*, 2013). However,

approximately 10% of stage I and 20% of stage II patients experience recurrence or metastasis. Moreover, pronounced heterogeneity in survival outcome is noted among patients with stage II CRC, which accounts for approximately 40% of all CRC cases. For those patients, TNM stage cannot serve as an early warning marker for postoperative metastasis or recurrence. Therefore, additional accurate prognostic and predictive markers for staging must be identified as a complement to the TNM system for postoperative adjuvant therapy.

\*Correspondence: Professor L Cui; E-mail: longcuidr@126.com

Received 22 October 2013; revised 2 January 2014; accepted 8 January 2014; published online 6 February 2014

© 2014 Cancer Research UK. All rights reserved 0007–0920/14

The local tumour microenvironment, comprises tumour cells, extracellular matrix, immune cells, cytokines and other factors, has an important role in tumour formation, growth, invasion and metastasis. Immune cells, particularly T lymphocytes, serve as regulatory factors in the tumour microenvironment (Liotta and Kohn, 2001; Li *et al.*, 2007). Jass (1986) first proposed that infiltration of immune cells is a novel independent prognostic factor in CRC, and this new system was considered superior to the Dukes' staging system. Using molecular biological methods, such as immunohistochemistry (IHC) and haematoxylin-eosin (HE) staining, various studies have demonstrated that the type of immune cells (e.g., CD3<sup>+</sup>/CD8<sup>+</sup>/FOXP3<sup>+</sup> T lymphocytes) and the density or location of tumour-infiltrating T cells have a prognostic correlation for CRC (Naito *et al.*, 1998; Chiba *et al.*, 2004; Galon *et al.*, 2006; Salama *et al.*, 2009; Sinicrope *et al.*, 2009; Correale *et al.*, 2010; Deschoolmeester *et al.*, 2010; Chew *et al.*, 2011). Such a correlation has been well described in a variety of tumours, such as ovarian cancer and breast cancer (Sato *et al.*, 2005; Tomsova *et al.*, 2008; Mahmoud *et al.*, 2011; Liu *et al.*, 2012). However, the prognostic value of tumour-infiltrating lymphocytes in CRC remains controversial because of the limited number of studies.

To date, results have varied greatly among studies because of differences in their design, assay methods and reported outcomes, making it difficult to interpret the overall estimates. Hence, based on the published studies, we performed a systematic review and meta-analysis to investigate the relationship between tumour inflammatory infiltrates and CRC survival stratified according to T lymphocyte subset and infiltration site.

## MATERIALS AND METHODS

**Search strategy.** The Ovid MEDLINE (1946 to August 2013) and EMBASE (1976 to August 2013) databases were searched without limits to identify all relevant studies. The literature search included Medical Subject Headings and Emtree headings and related text and keyword searches in a manner that combined terms related to the prognostic effect of tumour inflammatory infiltration on patients with CRC. Detailed search terms and strategies for both databases are provided in Supplementary Appendix 1. We also explored reference lists of previously published reviews and meta-analyses. We did not include conference abstracts in the analysis because of the insufficient data provided by the authors.

**Study selection and inclusion criteria.** Two independent reviewers (ZBM and YL or AC) selected the identified studies based on the title and abstract. If the study's topic could not be ascertained from its title or abstract, the full-text version would be retrieved for evaluation. Disagreement was resolved by discussion or consensus or with a third party (CYL). Original studies were eligible for inclusion if all patients were surgically treated for primary CRC. Studies were included if they focused on generalised tumour inflammatory infiltrate and associated T lymphocyte subsets (including CD3<sup>+</sup>, CD8<sup>+</sup>, FoxP3<sup>+</sup>, CCR7<sup>+</sup>, CD45RO<sup>+</sup> and GRB<sup>+</sup> lymphocytes) in CRC patients identified by HE staining and/or IHC staining (high versus low density) and reported prognostic information, including overall survival (OS), cancer-specific survival (CS) and/or disease-free survival (DFS). We included the analysis of lymphocytes in the tumour centre (CC) and tumour stroma (ST) and at the invasive tumour margin (IM). Exclusion criteria included the following: patients had autoimmune diseases, <30 patients were considered in the analysis or insufficient data were provided to calculate the hazard ratio (HR) with a 95% confidence interval (CI). Review articles, case reports, commentaries and letters were not included. However, references from those forms of articles were manually searched to identify additional relevant studies. In studies with

multiple publications, only data from the most recent publication were included in the meta-analysis. If possible, authors of included studies were contacted for unreported data.

**Data extraction.** Two reviewers (ZBM and YL or AC) independently selected articles and extracted data from eligible studies. A standardised data abstraction form was developed, and key elements pertaining to the study design, sample size, patient age, stage of disease, T lymphocyte subset, T lymphocyte counting site, follow-up duration, use of multivariate logistic model analysis, adjustment variables, HR estimates (with the corresponding 95% CIs) for the high density over the low density of each T-cell subset at certain locations within tumours (CT, ST or IM) and the HR cutoff point were obtained. Discrepancies were resolved by discussion by a third reviewer (CYL) until the two reviewers reached consensus or by contacting content experts if necessary.

**Study quality and risk of bias assessment.** The quality of each study was assessed using an established form that was first developed and applied by McShane *et al.* (2005) and Hayes *et al.* (1996) (Supplementary Appendix 3). The following seven domains were assessed and scored on a scale from 0 to 8: inclusion and exclusion criteria, study design (prospective or retrospective), patient and tumour characteristics, description of the method or assay, study endpoints, follow-up time with patients and number of patients that dropped out during the follow-up period.

**Subgroup analyses and definition of prognostic outcomes.** We conducted subgroup analyses to investigate associations between prognostic outcomes (OS, CS and DFS) and both T lymphocyte subsets (CD3<sup>+</sup>, CD8<sup>+</sup>, FoxP3<sup>+</sup> and CCR7<sup>+</sup> lymphocytes) and T lymphocyte infiltrate location (CT, ST or IM). Overall, survival was defined as the time elapsing from the date of initial primary diagnosis of CRC to the date of death irrespective of the cause of death. CS was defined as the interval between the initial primary diagnosis of CRC and the last objective follow-up information or death caused by the disease. DFS was defined as the interval between the date of initial primary diagnosis of CRC and the date of the first relapse or death.

**Statistical analysis.** We used Stata statistical software (version 12.0; Stata Corporation, College Station, TX, USA) to perform the meta-analysis. For time-to-event outcomes, we retrieved the HR estimates with a 95% CI from the original articles. When Kaplan-Meier curves were provided rather than the HR, the HR was estimated indirectly from the curves using the methods described by Parmar *et al.* (1998) and Tierney *et al.* (2007).

The HR abstracted in each study provided an estimate of the ratio of the HR for high-density over low-density tumour inflammatory infiltrate. Thus, an HR <1 favoured high density and implied a good prognosis, whereas an HR >1 favoured low density and implied a poor prognosis. We then performed subgroup analyses according to the type and location of the T lymphocyte infiltrates. Summary statistics were derived with a random-effect model because some evidence for heterogeneity across the studies was observed in the meta-analysis (e.g., study designs, methods and duration of follow-up), and HRs and 95% CIs were pooled regarding related outcomes according to the DerSimonian and Laird methods (Borenstein *et al.*, 2011). Interstudy heterogeneity was quantified using the *I*<sup>2</sup> statistic, with an *I*<sup>2</sup> value >50% indicating substantial heterogeneity. Potential sources of heterogeneity were then investigated using a predefined form (Supplementary Appendix 3) in some domains reported by de Graeff *et al.* (2009).

In addition, subgroup analyses were performed on each T lymphocyte subset according to infiltration location. Also, the most frequently reported subsets, including generalised tumour inflammatory infiltrate and CD3<sup>+</sup>, CD8<sup>+</sup>, FoxP3<sup>+</sup> and CCR7<sup>+</sup> lymphocytes, were assessed.

Publication bias was examined visually by inspecting funnel plots and statistically by using Egger's or Begg's regression model (Egger *et al*, 1997), in which a *P*-value of  $<0.10$  was considered significant (Hedges *et al*, 1985; Higgins and Thompson, 2002). Reasons for statistical heterogeneity were explored through sensitivity analyses.

## RESULTS

**Literature search.** Figure 1 presents the selection process of the eligible studies. In brief, among the 2988 studies identified for initial evaluation, 32 studies were eligible for further assessment. Two studies had published insufficient data (Liska *et al*, 2011; Zlobec *et al*, 2008) (i.e., did not provide a HR with a 95% CI or data sufficient for estimating the HR). We tried to contact the corresponding authors of these two studies for additional information, but neither of them responded. Therefore, 30 studies were left with sufficient data for extraction.

**Study characteristics.** The baseline characteristics of each study are summarised in Supplementary Appendix 2 (Ropponen *et al*, 1997; Naito *et al*, 1998; Nielsen *et al*, 1999; Guidoboni *et al*, 2001; Nagtegaal *et al*, 2001; Cianchi *et al*, 2002; Chiba *et al*, 2004; Menon *et al*, 2004; Buckowitz *et al*, 2005; Gao *et al*, 2005; Günther *et al*, 2005; Klintrup *et al*, 2005; Schimanski *et al*, 2005; Galon *et al*, 2006; Szynglarczyk *et al*, 2007; Ogino *et al*, 2009; Roxburgh *et al*, 2009; Salama *et al*, 2009; Sinicrope *et al*, 2009; Correale *et al*, 2010; Deschoolmeester *et al*, 2010; Frey *et al*, 2010; Lee *et al*, 2010; Nosho *et al*, 2010; Simpson *et al*, 2010; Correale *et al*, 2012; Huh *et al*, 2012; Richards *et al*, 2012; Yoon *et al*, 2012; Kim *et al*, 2013). Generalised tumour inflammatory infiltrates were reported in 12 studies (Cianchi *et al*, 2002; Ropponen *et al*, 1997; Nielsen *et al*, 1999; Nagtegaal *et al*, 2001; Buckowitz *et al*, 2005; Gao *et al*, 2005; Klintrup *et al*, 2005; Szynglarczyk *et al*, 2007; Ogino *et al*, 2009; Roxburgh *et al*, 2009; Huh *et al*, 2012; Richards *et al*, 2012) and 15

studies included T lymphocyte subsets (Naito *et al*, 1998; Guidoboni *et al*, 2001; Chiba *et al*, 2004; Menon *et al*, 2004; Günther *et al*, 2005; Schimanski *et al*, 2005; Galon *et al*, 2006; Salama *et al*, 2009; Sinicrope *et al*, 2009; Correale *et al*, 2010; Deschoolmeester *et al*, 2010; Frey *et al*, 2010; Lee *et al*, 2010; Nosho *et al*, 2010; Simpson *et al*, 2010; Correale *et al*, 2012; Yoon *et al*, 2012; Kim *et al*, 2013). The majority of the studies were performed in Europe ( $n=21$ ). Others were conducted in Asia ( $n=4$ ), North America ( $n=4$ ) and Oceania ( $n=1$ ). The total sample size from all studies was 7840, with a mean of 261 patients (ranging from 45 to 843 patients) per study. Ten studies included fewer than 100 patients and 15 studies enrolled  $>200$  patients. All studies were published between 1997 and 2013.

The eligible studies applied either IHC ( $n=18$ ) or HE staining ( $n=12$ ) as a detection method. The study design variables and summary results are provided in Tables 1 and 2, respectively. The assessment of risk of bias for the individual studies indicated that 16 studies had quality scores of  $>4$ , whereas the remaining 14 studies had scores of 4 ( $n=9$ ) or  $<4$  ( $n=5$ ). Analyses of tumour inflammatory lymphocyte type and lymphocyte subset as prognostic factors were confirmed in a multivariate analysis in 24 of the included studies. HRs for OS, CS or DFS could be directly extracted in 25 studies and were estimated through survival curves for the four remaining studies (Chiba *et al*, 2004; Günther *et al*, 2005; Schimanski *et al*, 2005; Galon *et al*, 2006; Lee *et al*, 2010; Kim *et al*, 2013).

The most frequently used cutoff values for the high versus low/present versus absent density of tumour-infiltrating lymphocytes were the median ( $n=8$ ) and values calculated using several semiquantitative methods, including K-M criteria (scores of 0 and 1 versus scores of 2 and 3;  $n=4$ ) and Jass classification (none/few versus extensive;  $n=4$ ) (see Supplementary Appendix 2 for details).

**Subgroup analysis.** Subgroup analyses were performed and the results are summarised in Table 2. We first evaluated the prognostic significance of generalised tumour inflammatory infiltrates evaluated by general counts of tumour-infiltrating lymphocytes in CRC and some of the most frequently studied T

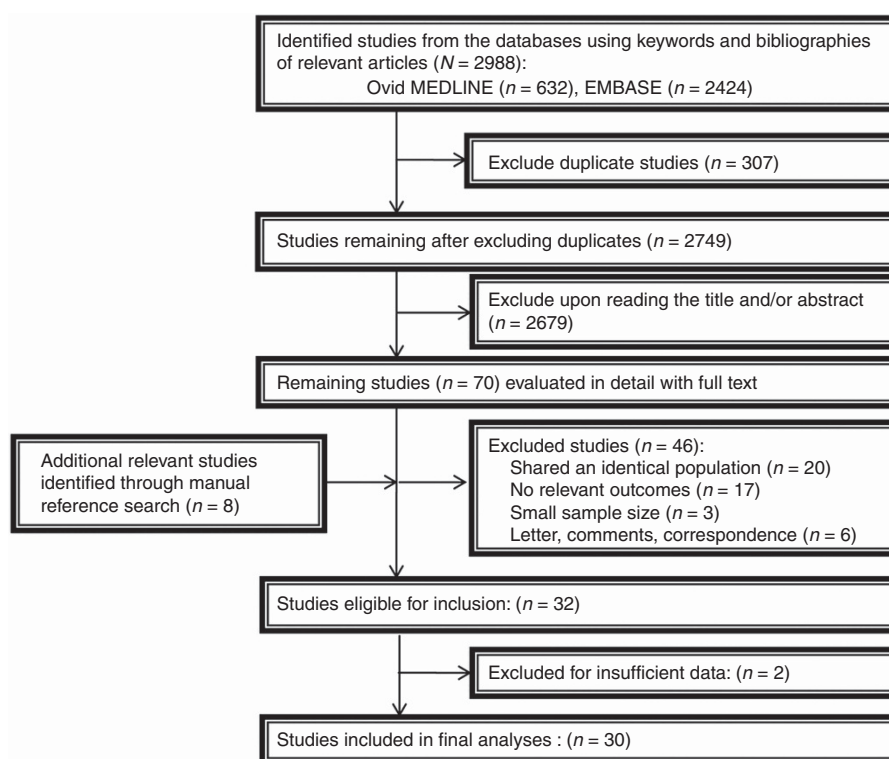


Figure 1. Flowchart of the study selection.

Table 1. Design variables of included studies for the T lymphocyte subsets analysed

First author	Counting site	Cutoff point	T-cell subset analysed	Adjustment variables	Outcomes reported
Chew	IM, ST, CC	Median	SPARC <sup>+</sup> , FOXP3 <sup>+</sup> , CD8 <sup>+</sup> , CD45RO <sup>+</sup>	Unclear	OS
Chiba	CC	Median	CD8 <sup>+</sup>	Age, sex, tumour grade, invasive pattern, location, MMR protein, TILs, stage	CS
Correale	ST	>30/HPF	FOXP3 <sup>+</sup>	Sex, performance status, basal lymphocytes number, DFS, grading	OS, DFS
Correale	ST	Median (>20/HPF)	CCR7 <sup>+</sup>	Performance status, sex, age, tumour grading, presence or absence of liver metastases	OS, DFS
Deschoolmeester	IM, ST, CC	<20/HPF, >50/HPF	CD3 <sup>+</sup> , CD8 <sup>+</sup> , GRB <sup>+</sup>	Age, sex, location, stage, tumour grade, adjuvant treatment, other T-cell subsets	OS, DFS
Frey	CC	Median	FOXP3 <sup>+</sup>	Age, sex, stage, tumour grade, vascular invasion, tumour border, configuration	CS
Galon	IM, CC	75th percentile	CD3 <sup>+</sup>	Stage	OS, DFS
Guidoboni	CC	Median	CD3 <sup>+</sup>	Age, sex, stage	OS, RFR
Lee <i>et al</i>	ST, CC	Mean	CD3 <sup>+</sup>	Vascular invasion, neural invasion, other T-cell subsets	OS, DFS
Menon <i>et al</i>	IM	75th percentile	CD8 <sup>+</sup>	Age, sex, location, stage, tumour grade	DFS
Naito	IM, ST, CC	Median	CD8 <sup>+</sup>	Inflammatory cells, invasive pattern, stage, tumour grade	OS
Nosho	CC	All quartiles	CD3 <sup>+</sup>	Age, sex, BMI, family history, year of diagnosis, location, stage, tumour grade, LINE-1, CIMP, MSI, BRAF, KRAS, PIK3CA, other T-cell subsets	OS, CS
Simpson	CC	Mean	CD3 <sup>+</sup>	Stage and extramural vascular invasion	CS
Sinicrope	CC, ST	Bottom quartile	CD3 <sup>+</sup> /FOXP3 <sup>+</sup> ratio	Age, lymph node, MSI, stage, tumour grade	OS, DFS
Suzuki	CC	Mean	CD8 <sup>+</sup> /FOXP3 <sup>+</sup> ratio	Stage, venous invasion	OS
Yoon	CC, ST	Median	FOXP3 <sup>+</sup>	Age, stage and tumour grade	OS

Abbreviations: BRAF, KRAS and PIK3CA = BRAF, KRAS and PIK3CA gene mutations; CC = tumour centre; CIMP = CpG island methylator phenotype; CS = cancer-specific survival; DFS = disease-free survival; HPF = high-power fields; IM = invasive tumour margin; LINE-1 = long interspersed nucleotide element-1 methylation; MMR = mismatch repair; MSI = microsatellite instability; OS = overall survival; RFR = relapse-free rate; ST = tumour stroma; TILs = tumour-infiltrating lymphocytes.

lymphocyte subsets stratified by tumour location (CT, ST or IM). Estimation of between-study heterogeneity was highly imprecise because of the limited number and low individual power of studies available in each subgroup. Therefore, funnel plot analyses were performed only for subsets of generalised tumour inflammatory infiltrates and T lymphocyte subgroups in the tumour centre for OS that included a relatively high number of studies. Furthermore, we analysed the influence of study quality, tumour stage, study design, sample size, cutoff criteria and duration of follow-up on the pooled results for OS for the above subset.

**Generalised tumour inflammatory infiltrate.** Twelve studies were pooled for analysis of the density of generalised tumour inflammatory infiltrates at the invasive margin. All studies indicated a good prognostic effect for OS (HR = 0.59; 95% CI, 0.48–0.72), CS (HR = 0.40; 95% CI, 0.27–0.61) and DFS (HR = 0.72; 95% CI, 0.57–0.91; Figure 2A). Egger's test ( $P = 0.963$ ) and Begg's test ( $P = 1.00$ ), as well as funnel plots, provided no evidence of publication bias (Figure 3A) for OS. However, moderate heterogeneity was noted ( $I^2 = 26.8\%$ ,  $P = 0.206$ ). Therefore, we performed subgroup analyses to evaluate the effect of the interstudy variability on the pooled results (see Table 3), and these analyses revealed that high levels of generalised tumour inflammatory infiltrate were associated with improved OS in studies with high study quality (score >4; HR = 0.55; 95% CI, 0.43–0.71) and large sample size ( $\geq 200$ ; HR = 0.56; 95% CI, 0.44–0.71); however, statistical significance was not noted in studies with low study quality (HR = 0.78; 95% CI, 0.49–1.23)

or small sample size (HR = 0.84; 95% CI, 0.46–1.56). Similarly, subgroup analyses indicated that for this subset, prognostic benefit was observed for both stages I–III CRC (HR = 0.43; 95% CI, 0.26–0.72) and stages I–IV CRC (HR = 0.66; 95% CI, 0.55–0.79); prospective studies (HR = 0.54; 95% CI, 0.37–0.78) and retrospective studies (HR = 0.64; 95% CI, 0.51–0.81); standard cutoff criteria (HR = 0.57; 95% CI, 0.39–0.84) and other criteria (HR = 0.64; 95% CI, 0.52–0.78); and longer follow-up durations ( $\geq 60$  months; HR = 0.66; 95% CI, 0.54–0.82) and shorter follow-up durations (<60 months; HR = 0.54; 95% CI, 0.39–0.76).

**CD3<sup>+</sup> T lymphocyte subset.** Seven studies (Figure 2B) investigated the association between the infiltration of CD3<sup>+</sup> T lymphocytes and survival of CRC patients stratified by tumour location, with seven assessing the CC, three the ST and two the IM.

**Tumour centre.** Pooled estimates of the HR and 95% CI from the CC panel were provided for OS (HR = 0.59; 95% CI, 0.31–1.12). Statistically significant heterogeneity was observed between studies ( $I^2 = 82.5\%$ ,  $P < 0.001$ ). The estimated pooled HRs for CS and DFS were 0.89 (95% CI, 0.44–1.82) and 0.48 (95% CI, 0.35–0.66), respectively. Significant heterogeneity was observed for CS ( $I^2 = 81.7\%$ ,  $P = 0.02$ ), whereas a lower level of heterogeneity was observed for DFS ( $I^2 = 17.5\%$ ,  $P = 0.30$ ).

**Tumour stroma.** Three studies in each outcome panel investigated CD3<sup>+</sup> infiltration in the ST; the pooled HRs of these three studies

Table 2. Impact of study design variables on heterogeneity tests ( $I^2$  test) and overall effect according to the subgroup analysis

		Overall effect			Heterogeneity		
Subset/ location	Outcome measures	No. of studies	Summary HR	95% CI of HR	$I^2$ test(%)	P-value	References (first author)
<b>Generalised tumour inflammatory infiltrate</b>							
	OS	9	0.59	0.48–0.72	26.8	0.206	Gao, Buckowitz, Cianchi, Klintrup, Nielsen, Ogino, Ropponen, Nagtegaal, Huh
	CS	3	0.40	0.27–0.61	0	0.731	Richards, Ogino, Roxburgh
	DFS	3	0.72	0.57–0.91	0	0.943	Huh, Ropponen, Szynglarewicz
<b>CD3<sup>+</sup></b>							
CC	OS	5	0.59	0.31–1.12	82.5	<0.001	Deschoolmeester, Galon, Guidoboni, Lee, Nosh
	CS	2	0.89	0.44–1.82	81.7	0.019	Simpson, Nosh
	DFS	4	0.50	0.35–0.72	32.2	0.219	Deschoolmeester, Galon, Guidoboni, Sinicrope
ST	OS	3	1.20	0.76–1.89	0	0.493	Deschoolmeester, Lee, Sinicrope
	DFS	3	0.72	0.24–2.10	65	0.058	Deschoolmeester, Lee, Sinicrope
IM	OS	2	0.63	0.42–0.93	22.1	0.257	Galon, Deschoolmeester
	DFS	2	0.48	0.35–0.68	0.045	0.306	Deschoolmeester, Galon
<b>CD8<sup>+</sup></b>							
CC	OS	6	0.72	0.54–0.96	56.1	0.044	Deschoolmeester, Guidoboni, Naito, Nosh, Chew, Yoon
	CS	2	0.75	0.56–0.99	0	0.655	Chiba, Nosh
	DFS	2	0.41	0.20–0.82	0	0.43	Deschoolmeester, Guidoboni
ST	OS	3	0.78	0.67–0.92	0	0.379	Deschoolmeester, Yoon, Naito
	DFS	1	1.95	0.66–5.76			Deschoolmeester
IM	OS	2	0.91	0.85–0.99	0	0.448	Deschoolmeester, Naito
	DFS	2	0.61	0.37–1.00	0	0.53	Menon, Deschoolmeester
<b>FoxP3<sup>+</sup></b>							
CC	OS	4	0.88	0.69–1.12	46.2	0.134	Chew, Nosh, Sinicrope, Yoon
	CS	2	0.77	0.59–1.01	0	0.362	Frey, Nosh
	DFS	2	0.45	0.04–4.69	80.5	0.024	Lee, Sinicrope
ST	OS	3	0.54	0.28–1.03	57.6	0.095	Correale, Yoon, Sinicrope
	DFS	3	0.48	0.21–1.07	59.1	0.087	Correale, Lee, Sinicrope
<b>CCR7<sup>+</sup></b>							
general	OS	3	0.51	0.30–0.89	0	0.537	Correale, Günther, Schimanski
	DFS	1	0.54	0.28–1.03	—	—	Correale
<b>CD45RO<sup>+</sup></b>							
CC	OS	3	0.79	0.51–1.22	69.4	0.038	Chew, Nosh, Lee
	CS	1	0.51	0.32–0.81			Nosh
	DFS	1	0.25	0.08–0.78			Lee
ST	OS	1	0.13	0.02–1.18			Lee
	DFS	1	0.20	0.06–0.71			Lee
<b>GRB<sup>+</sup></b>							
CC	OS	2	0.51	0.10–2.53	84.5	0.011	Deschoolmeester, Guidoboni
	DFS	2	0.63	0.06–6.52	89.8	0.002	Deschoolmeester, Guidoboni
ST	OS	1	0.86	0.37–2.00			Deschoolmeester
	DFS	1	0.53	0.17–1.65			Deschoolmeester
IM	OS	1	0.59	0.24–1.45			Deschoolmeester
	DFS	1	1.14	0.37–3.52			Deschoolmeester

Abbreviations: CC = tumour centre; CI = confidence interval; CS = cancer-specific survival; DFS = disease-free survival; HR = hazard ratio; IM = invasive tumour margin; OS = overall survival; ST = tumour stroma.

for OS and DFS were 1.20 (95% CI, 0.76–1.89) and 0.72 (95% CI, 0.24–2.10), respectively. However, these results should be interpreted with caution because of the small number of contributing studies and the significant evidence of heterogeneity between studies ( $I^2 = 65\%$ ,  $P = 0.06$ ).

*Invasive tumour margin.* For the two studies investigating CD3<sup>+</sup> infiltration at the IM, the pooled HRs for OS and DFS were 0.63 (95% CI, 0.42–0.93) and 0.48 (95% CI, 0.35–0.68), respectively. Although these results might indicate an association between improved survival and a high density of CD3<sup>+</sup> infiltration, they

should be interpreted with caution because of the small number of contributing studies.

**CD8<sup>+</sup> T lymphocyte subset.** Eight studies provided data concerning the association between CD8<sup>+</sup> infiltration and survival outcomes (Figure 2C), with seven assessing the CC, three the ST and three the IM.

**Tumour centre.** Pooled estimates of the HR and 95% CI from the CC panel were provided for OS (HR = 0.67; 95% CI, 0.45–1.00). Statistically significant heterogeneity was observed between studies ( $I^2 = 57.9\%$ ,  $P = 0.05$ ); however, no clear asymmetry was identified in the funnel plot (Figure 3B). The pooled HRs for CS and DFS were 0.64 (95% CI, 0.46–0.91) and 0.41 (95% CI, 0.20–0.82), respectively. Significant heterogeneity was observed for CS ( $I^2 = 76.9\%$ ,  $P = 0.013$ ), whereas was no heterogeneity was observed for DFS ( $I^2 = 0\%$ ,  $P = 0.43$ ).

**Tumour stroma and invasive tumour margin.** Three studies examined CD8<sup>+</sup> infiltration in the ST, and a positive pooled effect

was obtained for OS (HR = 0.78; 95% CI, 0.67–0.92,  $n = 3$ ,  $I^2 = 38\%$ ,  $P = 0.38$ ). Pooled estimates of two studies revealed a positive effect for OS (HR = 0.91; 95% CI, 0.85–0.99) and DFS (HR = 0.61; 95% CI, 0.37–1.00).

**FoxP3<sup>+</sup> Treg subset.** Eight eligible studies provided estimates of the HR and 95% CI for the correlation between FOXP3<sup>+</sup> Tregs and CRC survival (Figure 2D), with seven studies considering the CC and four considering the ST. For studies investigating the CC, the pooled HRs for OS, CS and DFS were 0.82 (95% CI, 0.58–1.17), 0.68 (95% CI, 0.52–0.90) and 0.45 (95% CI, 0.04–4.69), respectively. Moderate heterogeneity was noted in both the OS and DFS panels (OS:  $I^2 = 44.40\%$ ,  $P = 0.15$ ; CS:  $I^2 = 39.30\%$ ,  $P = 0.19$ , respectively). The funnel plot for OS indicated that the HRs were symmetrically distributed, indicating a low risk of publication bias (Figure 3B). Significant heterogeneity was observed for DFS ( $I^2 = 80.50\%$ ,  $P = 0.002$ ). Pooled analysis of studies investigating FOXP3<sup>+</sup> Tregs in the ST did not indicate a prognostic impact regarding OS (HR, 0.54; 95% CI, 0.28–1.03;  $n = 3$ ,  $I^2 = 57.60\%$ ) or DFS (HR, 0.48; 95% CI, 0.21–1.07;  $n = 3$ ,  $I^2 = 59.10\%$ ).

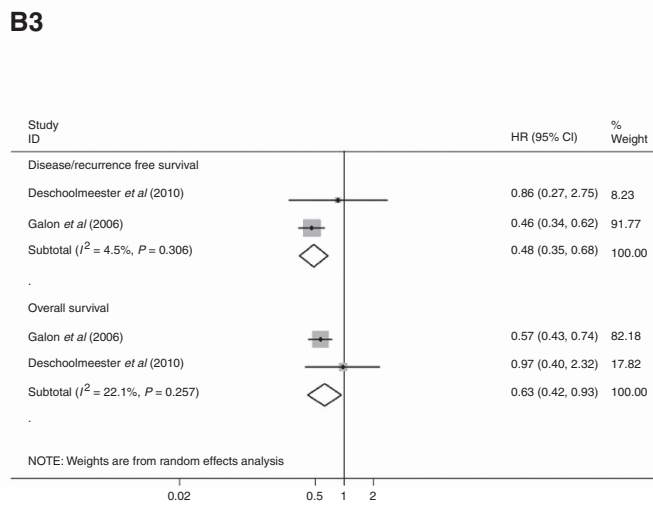
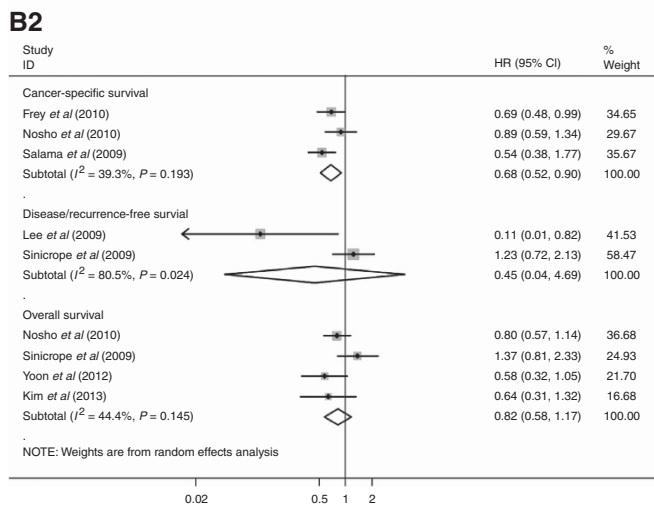
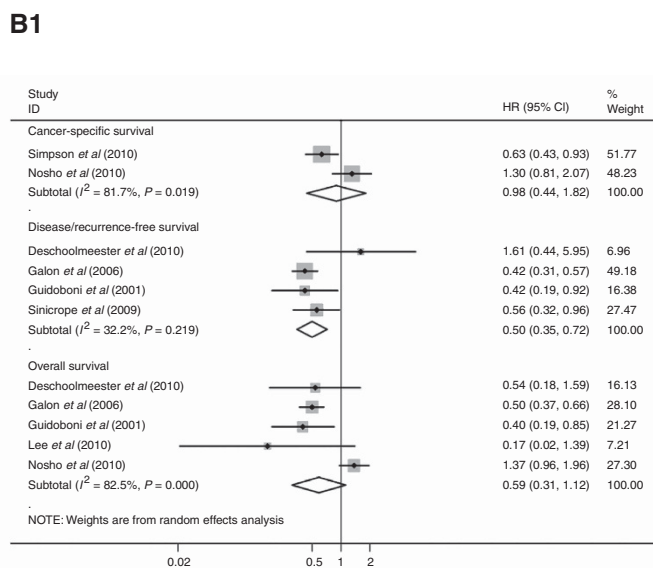
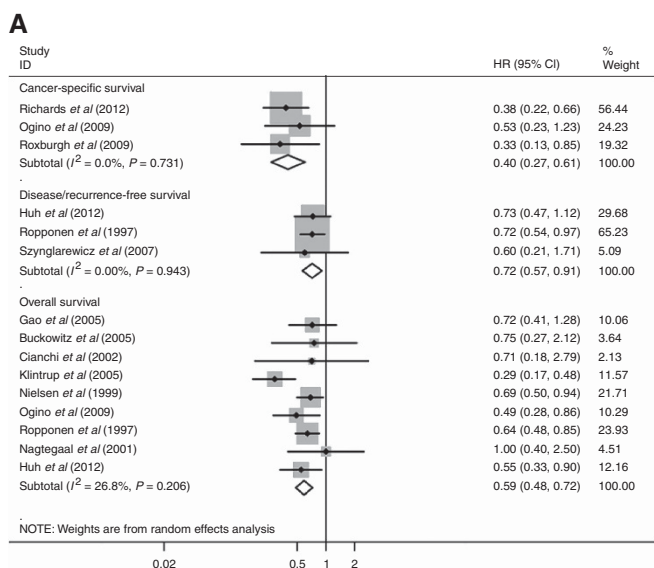


Figure 2. Forest plots of the random-effect meta-analysis for the efficacy of tumour-infiltrating inflammatory cells for generalised tumour inflammatory infiltrate (A) and the CD3<sup>+</sup> (B), CD8<sup>+</sup> (C) and FoxP3<sup>+</sup> (D) subsets stratified by infiltration location, including the tumour centre (CC), tumour stroma (ST) and invasive tumour margin (IM). The horizontal bars indicate the 95% CIs. The size of the square around each effect estimate indicates the weight of the individual study in the meta-analysis. Note: (A) Generalised tumour inflammatory infiltrate; (B1) CD3<sup>+</sup> (CC); (B2) CD3<sup>+</sup> (ST); (B3) CD3<sup>+</sup> (IM); (C1) CD8<sup>+</sup> (CC); (C2) CD8<sup>+</sup> (ST); (C3) CD8<sup>+</sup> (IM); (D1) FoxP3<sup>+</sup> (CC); (D2) FoxP3<sup>+</sup> (ST); (E) CCR7<sup>+</sup>.

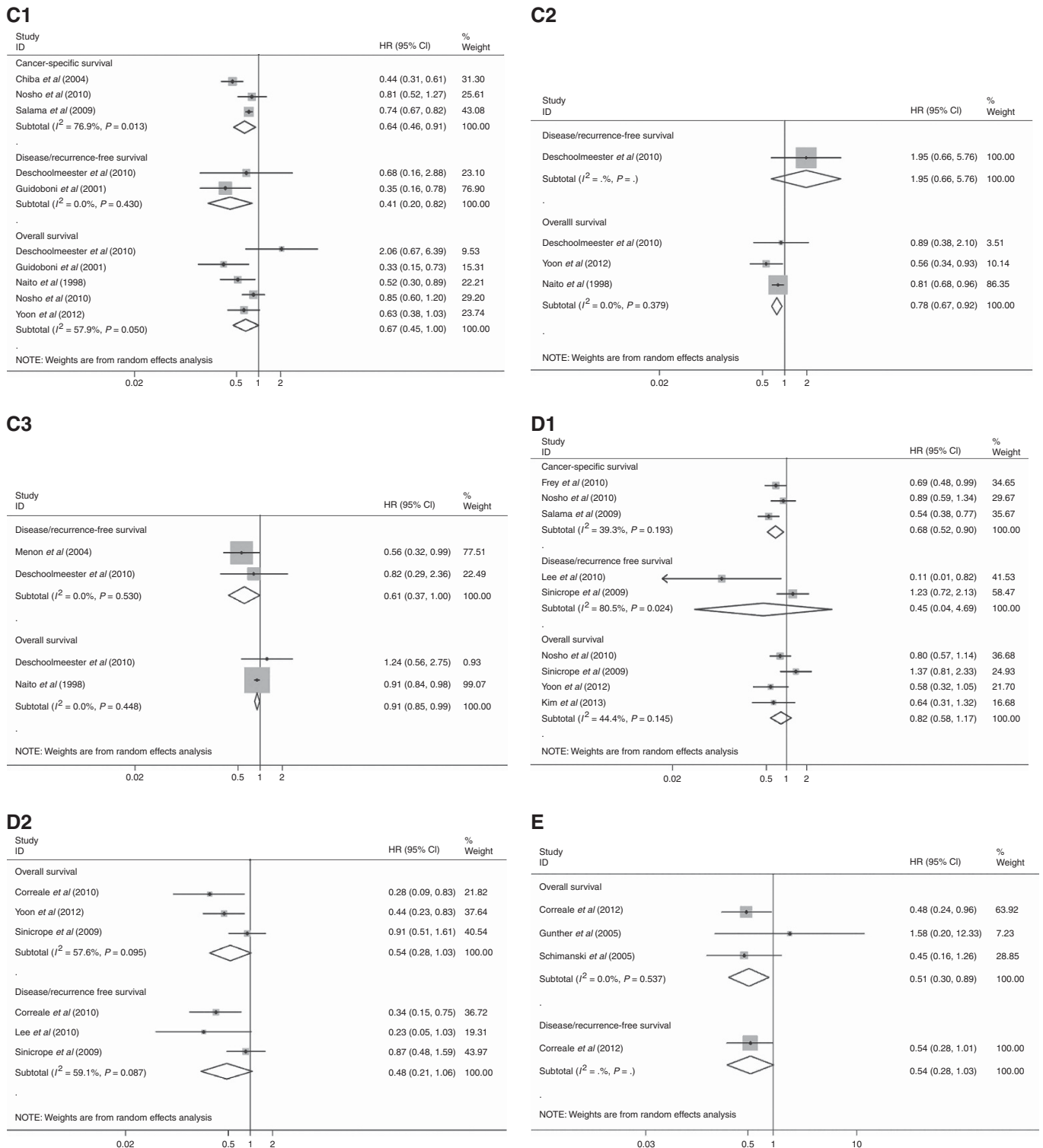


Figure 2. (Continued)

**CCR7<sup>+</sup> subset.** Three studies examined the association between CCR7<sup>+</sup> infiltration and CRC survival (Figure 2E). The pooled HRs for OS and DFS were 0.51 (95% CI, 0.30–0.89) and 0.54 (95% CI, 0.28–1.03), respectively. There was no evidence of heterogeneity for OS ( $I^2 = 0.0\%$ ,  $P = 0.537$ ).

**Other subsets.** Only a small number of studies evaluating the prognostic impact of T lymphocyte subsets on CRC survival included CD45RO<sup>+</sup> and GRB<sup>+</sup>. Therefore, we do not present the

detailed pooled effects of these subsets even though the subgroup analysis revealed a favourable prognosis (summarised in Table 2).

**DISCUSSION**

Our meta-analysis based on patient prognostic data from prospective and retrospective studies comparing high and low tumour inflammatory infiltrate densities in patients with CRC

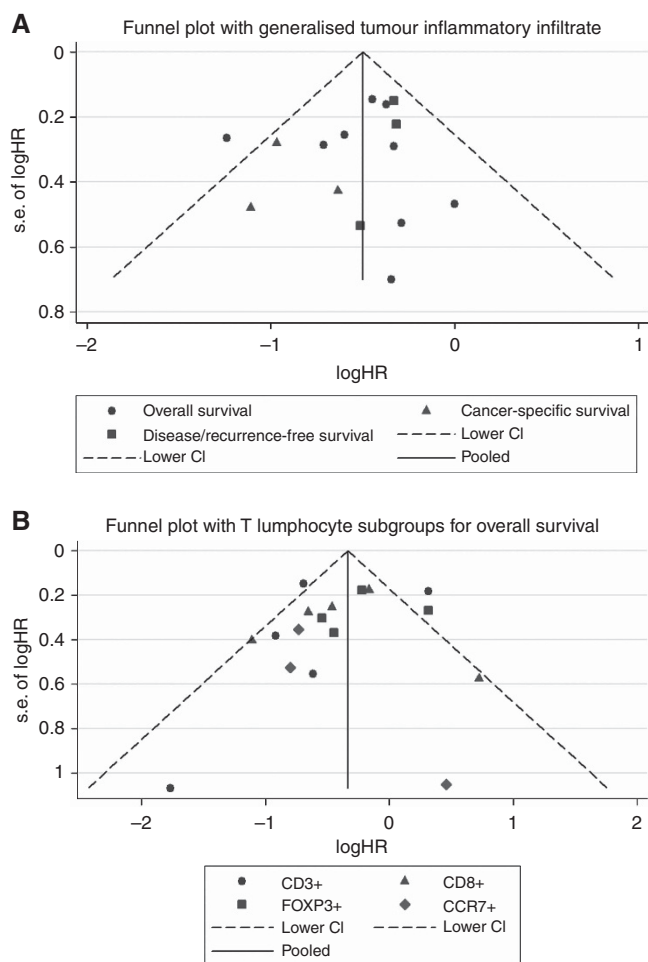


Figure 3. Funnel plots of the relationship between the size of the effect in individual studies and the precision of the study estimate (log HR, horizontal axis; s.e., vertical axis) for generalised tumour inflammatory infiltrate (A) and T lymphocyte subgroups for OS (B).

indicated that high generalised tumour inflammatory infiltrate alone could be a relatively pronounced predictive marker, with better associated outcomes than low infiltrate densities in terms of OS, CS and DFS. Similar findings favouring high infiltrate densities were provided in each individual study. The sensitivity analyses indicated the robustness of the HR estimates. We found no evidence of publication bias in the survival panels.

In contrast, the summary HRs across studies calculated for each subset of T lymphocytes stratified by infiltration location were not strong prognostic markers for CRC, with several of the pooled HRs moving close to or crossing one, indicating inconsistent findings of our available data. For example, in the original studies concerning CD3<sup>+</sup> infiltration in CC, Galon *et al* (2006) and Guidoboni *et al* (2001) reported a favourable OS, with estimated HRs of 0.5 (95% CI, 0.37–0.66) and 0.4 (95% CI, 0.19–0.85), respectively. However, Deschoolmeester *et al* (2010), Lee *et al* (2010) and Nosho *et al* (2010) found that high intratumoural CD3<sup>+</sup> infiltrate density was not associated with improved OS in CRC. Our meta-analysis does not support an association between high intratumoural CD3<sup>+</sup> infiltration and OS (HR, 0.59; 95% CI, 0.31–1.12). Similarly, no significant association was observed for panels of cells other than T lymphocytes.

Inflammatory infiltration composed of lymphocytes is a common feature found in neoplasms. Nascent tumour cells are eliminated by the host innate and adaptive immune systems before the formation of a detectable tumour, a process that we call tumour

immunosurveillance (Dunn *et al*, 2002). During the tumour-specific adaptive immune responses, some crucial components, such as cytotoxic T lymphocytes, can induce the production of tumour-associated antigen and the cytokine IFN- $\gamma$ . IFN- $\gamma$  has a pivotal role in antitumour immunity by inducing cell cycle arrest, differentiation, apoptosis, angiostasis and tumoricidal macrophage activity (Dunn *et al*, 2004). The great immune selection pressure in the host allows for the emergence of tumour cell variants that are able to avoid immune system attacks. The dual host-protective and tumour-promoting roles of immune cells are referred to as tumour immunoediting (Schreiber *et al*, 2011). The effects of the host immune response on tumour cell proliferation, survival, invasion, recurrence and metastasis are demonstrated by an analysis of *in situ* immunity. Studies have confirmed that immune infiltrates differ between tumour types and between individual patients. A variety of immune cell types could exist within one tumour, including innate and adaptive immune cells, which can be found at the CC, IM or ST or in the adjacent tertiary lymphoid structures, constituting what we have termed the immune contexture (Fridman *et al*, 2012). The immune contexture includes the type, density and location of adaptive immune cells, namely, CD3<sup>+</sup>, CD8<sup>+</sup>, FOXP3<sup>+</sup> and CD45RO<sup>+</sup> T cells. The results of several studies have indicated an association between tumour immune infiltrates and favourable disease outcomes, including survival, recurrence and metastasis (Nakano *et al*, 2001; Zhang *et al*, 2003; Sato *et al*, 2005; Galon *et al*, 2006; Pagès *et al*, 2009).

Subsets of immune cells are distributed differently among different tumour types, with the CC and IM being the most frequently involved areas. Different tumour types are affected by subsets of immune cells to different extents. Immune cell infiltration, particularly T lymphocyte infiltration, has been investigated in various tumour types and displays a strong correlation with improved outcome in breast, colorectal, prostatic, ovarian, biliary tract and other types of cancer (Sato *et al*, 2005; Galon *et al*, 2006; Flammiger *et al*, 2012; Goepfert *et al*, 2013; Seo *et al*, 2013).

To the best of our knowledge, this study is the first to systematically evaluate the prognostic effect of tumour-infiltrating inflammation stratified by lymphocyte subsets and infiltration site. The previous meta-analyses have not specifically focused on a certain cancer type and lack evidence of survival benefits in certain T lymphocyte subsets (Gooden *et al*, 2011; Kost *et al*, 2012). One strength of our study was the broad search strategy for articles that encompassed the most frequently used human T lymphocyte markers for CRC survival prediction and were published over the last 15 years. Thus, we were able to estimate the most appropriate prognostic markers for future clinical use.

However, these findings should be interpreted within the limitations of a meta-analysis based on observational studies because data are liable to be confounded by various factors, as reflected by the levels of heterogeneity. In addition, if studies met inclusion criteria, we did not further exclude them because of low methodological quality. In addition, we analysed potential confounders by performing a subgroup analysis. However, because of the small number of studies in each subgroup panel, the results of this analysis should be interpreted with caution. We assumed the following potential sources of bias. First, different cell scoring methods resulted in bias regarding the assignment of high and low lymphocyte infiltration. In our meta-analysis, cutoff points were used in several manners, with some studies choosing present/absent or few/extensive (Nagtegaal *et al*, 2001; Cianchi *et al*, 2002; Gao *et al*, 2005; Szynglarewicz *et al*, 2007), whereas other studies used the mean, median or quartiles (Naito *et al*, 1998; Guidoboni *et al*, 2001; Chiba *et al*, 2004; Menon *et al*, 2004; Galon *et al*, 2006; Salama *et al*, 2009; Frey *et al*, 2010; Lee *et al*, 2010; Nosho *et al*, 2010; Yoon *et al*, 2012) and related statistics; such differences might be responsible for the variability in reaching a standard



Table 3. Subgroup analyses of the relationships between generalised tumour inflammatory infiltrate subsets and OS

	HR	95% CI	Degree of heterogeneity ( $I^2$ statistics; %)	P-value	No. of included Studies
Total	0.59	0.48–0.72	26.8	0.206	9
<b>Study quality</b>					
Score >4	0.55	0.43–0.71	45	<0.001	6
≤4	0.78	0.49–1.23	0	0.285	3
<b>Stage of disease</b>					
I–III	0.43	0.26–0.72	44.9	0.001	3
I–IV	0.66	0.55–0.79	0	<0.001	6
<b>Study design</b>					
Prospective	0.54	0.37–0.78	55.2	0.001	5
Retrospective	0.64	0.51–0.81	0	<0.001	4
<b>Sample size</b>					
≥200	0.56	0.44–0.71	46.8	<0.001	6
<200	0.84	0.46–1.56	0	0.586	3
<b>Cutoff criteria</b>					
Standard <sup>a</sup>	0.57	0.39–0.84	43.0	0.004	6
Others	0.64	0.52–0.78	0	<0.001	3
<b>Duration of follow-up months</b>					
≥60	0.66	0.54–0.82	0	<0.001	3
<60	0.54	0.39–0.76	42.2	<0.001	6

Abbreviations: CI = confidence interval; HR = hazard ratio; OS = overall survival.  
<sup>a</sup>Standard cutoff criteria included Jass classification, K–M criteria and Crohn's like reaction criteria.

threshold of a certain lymphocyte count. Second, although we performed subgroup analysis pertaining to prognostic associations between tumour location and T lymphocyte subtype, the tumour microenvironment was recognised as a complicated state of tumour–host interactions modulated by multiple cell societies inhabiting the epithelium and stromal unit. This environment consists of cytokines, chemokines, stromal cells and other factors in addition to lymphocytes (Liotta and Kohn, 2001; Li *et al*, 2007), which could result in specific tumour microenvironments of tumour-infiltrating inflammation and immune tolerance. Moreover, the type of immune cells or specific lymphocytes may be partial confounding factors. Other possible factors, such as tumour stage and microsatellite instability, also affect the prognosis of patients with CRC (Guidoboni *et al*, 2001; Menon *et al*, 2004; Noshio *et al*, 2010). However, those potential confounding variables varied considerably among individuals and thus yielded inconsistent prognostic results; multivariate analysis was performed in most of the included studies ( $n=23$ ) to obtain more precise estimates, adjusting for clinicopathological variables. Third, for studies concerning T lymphocyte subgroups, some studies combined multiple markers and indicated that this combination of markers was a more sensitive predictor for recurrence and survival than a single T lymphocyte type, which was identified in intratumoural CD8<sup>+</sup>/FOXP3<sup>+</sup> and CD3<sup>+</sup>/FoxP3<sup>+</sup> cell ratios (Sinicrope *et al*, 2009; Suzuki *et al*, 2010). However, this finding must be investigated further because of the limited number of studies. Fourth, some HRs were derived from Kaplan–Meier survival curves when not provided by the original studies directly. To minimise this type of bias, we attempted to contact the authors for original data; furthermore, data were abstracted by two independent reviewers and cross-checked. However, the results

should be still interpreted with caution because we may have failed to identify some published and unpublished studies with negative results that might have affected our pooled estimates. Although the funnel plots (Figure 3B) did not provide evidence of publication bias for OS stratified by T lymphocyte subset, we recognise that the use of relatively few studies might have decreased the power for detecting publication bias.

In summary, despite the above limitations, our findings suggest that generalised tumour inflammatory infiltration might serve as a robust marker for predicting the prognosis of patients with CRC. However, our findings do not provide strong evidence that a high density of T lymphocyte subsets in patients with CRC is a marker for good prognosis. With the establishment of improved and standardised evaluation protocols, a comprehensive assessment of tumour inflammatory infiltration might provide more valuable prognostic information for patients with CRC in the future. Future studies should use a prospective study design to improve the quality of clinical research and should consider the clinicopathological variables of the patient, such as age, tumour location, tumour stage, KRAS mutation status, microsatellite instability and other tumour microenvironment factors. A strict follow-up scheme should also be used in future studies.

## ACKNOWLEDGEMENTS

This research was supported by the National Natural Science Foundation of China (grant no. 81372636) and the National High Technology Research and Development Program of China (863 program; grant no. SQ2014SFOZD00314).

## REFERENCES

- Benson 3rd AB, Bekaii-Saab T, Chan E, Chen YJ, Choti MA, Cooper HS, Engstrom PF, Enzinger PC, Fakih MG, Fenton MJ, Fuchs CS, Grem JL, Hunt S, Kamel A, Leong LA, Lin E, May KS, Mulcahy MF, Murphy K, Rohren E, Ryan DP, Saltz L, Sharma S, Shibata D, Skibber JM, Small Jr W, Sofocleous CT, Venook AP, Willett CG, Gregory KM, Freedman-Cass DA (2013) Localized colon cancer, version 3.2013: featured updates to the NCCN Guidelines. *J Natl Compr Canc Netw* **11**(5): 519–528.
- Borenstein M, Hedges LV, Higgins JP, Rothstein HR (2011) *Introduction to meta-analysis*. Wiley: Chichester, UK.
- Buckowitz A, Knaebel HP, Benner A, Blaker H, Gebert J, Kienle P, von Knebel Doeberitz M, Kloor M (2005) Microsatellite instability in colorectal cancer is associated with local lymphocyte infiltration and low frequency of distant metastases. *Br J Cancer* **92**(9): 1746–1753.
- Chew A, Salama P, Robbshaw A, Klopac B, Zeps N, Platell C, Lawrance IC (2011) SPARC, FOXP3, CD8 and CD45 correlation with disease recurrence and long-term disease-free survival in colorectal cancer. *PLoS One* **6**(7): e22047.
- Chiba T, Ohtani H, Mizoi T, Naito Y, Sato E, Nagura H, Ohuchi A, Ohuchi K, Shiiba K, Kurokawa Y, Satomi S (2004) Intraepithelial CD8+ T-cell-count becomes a prognostic factor after a longer follow-up period in human colorectal carcinoma: possible association with suppression of micrometastasis. *Br J Cancer* **91**(9): 1711–1717.
- Cianchi F, Palomba A, Messerini L, Boddi V, Asirelli G, Perigli G, Bechi P, Taddei A, Pucciani F, Cortesini C (2002) Tumor angiogenesis in lymph node-negative rectal cancer: correlation with clinicopathological parameters and prognosis. *Ann Surg Oncol* **9**(1): 20–26.
- Correale P, Rotundo MS, Botta C, Del Vecchio MT, Ginanneschi C, Licchetta A, Conca R, Apollinari S, De Luca F, Tassone P (2012) Tumor infiltration by T lymphocytes expressing chemokine receptor 7 (CCR7) is predictive of favorable outcome in patients with advanced colorectal carcinoma. *Clin Cancer Res* **18**(3): 850–857.
- Correale P, Rotundo MS, Del Vecchio MT, Remondo C, Migali C, Ginanneschi C, Tsang KY, Licchetta A, Mannucci S, Loiacono L, Tassone P, Francini G, Tagliaferri P (2010) Regulatory (FoxP3+) T-cell tumor infiltration is a favorable prognostic factor in advanced colon cancer patients undergoing chemo or chemoimmunotherapy. *J Immunother* **33**(4): 435–441.
- de Graeff P, Crijns AP, de Jong S, Boezen M, Post WJ, de Vries EG, van der Zee AG, de Bock GH (2009) Modest effect of p53, EGFR and HER-2/neu on prognosis in epithelial ovarian cancer: a meta-analysis. *Br J Cancer* **101**(1): 149–159.
- Deschoolmeester V, Baay M, Van Marck E, Weyler J, Vermeulen P, Lardon F, Vermorken JB (2010) Tumor infiltrating lymphocytes: an intriguing player in the survival of colorectal cancer patients. *BMC Immunol* **11**: 19.
- Dunn GP, Bruce AT, Ikeda H, Old LJ, Schreiber RD (2002) Cancer immunoeediting: from immunosurveillance to tumor escape. *Nat Immunol* **3**(11): 991–998.
- Dunn GP, Old LJ, Schreiber RD (2004) The three Es of cancer immunoeediting. *Annu Rev Immunol* **22**: 329–360.
- Egger M, Davey Smith G, Schneider M, Minder C (1997) Bias in meta-analysis detected by a simple, graphical test. *BMJ* **315**(7109): 629–634.
- Flammiger A, Bayer F, Cirugeda-Kühnert A, Hulan H, Tennstedt P, Simon R, Minner S, Bokemeyer C, Sauter G, Schlomm T (2012) Intratumoral T but not B lymphocytes are related to clinical outcome in prostate cancer. *APMS* **120**(11): 901–908.
- Frey DM, Drosier RA, Viehl CT, Zlobec I, Lugli A, Zingg U, Oertli D, Kettelhack C, Terracciano L, Tornillo L (2010) High frequency of tumor-infiltrating FOXP3(+) regulatory T cells predicts improved survival in mismatch repair-proficient colorectal cancer patients. *Int J Cancer* **126**(11): 2635–2643.
- Fridman WH, Pagès F, Sautès-Fridman C, Galon J (2012) The immune contexture in human tumours: impact on clinical outcome. *Nat Rev Cancer* **12**(4): 298–306.
- Galon J, Costes A, Sanchez-Cabo F, Kirilovsky A, Mlecnik B, Lagorce-Pages C, Tosolini M, Camus M, Berger A, Wind P, Zinzindohoue F, Bruneval P, Cugnenc PH, Trajanoski Z, Fridman WH, Pages F (2006) Type, density, and location of immune cells within human colorectal tumors predict clinical outcome. *Science* **313**(5795): 1960–1964.
- Gao JF, Arbman G, Wadhra TI, Zhang H, Sun XF (2005) Relationships of tumor inflammatory infiltration and necrosis with microsatellite instability in colorectal cancers. *World J Gastroenterol* **11**(14): 2179–2183.
- Goeppert B, Frauenschuh L, Zucknick M, Stenzinger A, Andrusik M, Klauschen F, Joehrens K, Warth A, Renner M, Mehrabi A (2013) Prognostic impact of tumour-infiltrating immune cells on biliary tract cancer. *Br J Cancer* **109**(10): 2665–2674.
- Gooden M, De Bock G, Leffers N, Daemen T, Nijman H (2011) The prognostic influence of tumour-infiltrating lymphocytes in cancer: a systematic review with meta-analysis. *Br J Cancer* **105**(1): 93–103.
- Guidoboni M, Gafa R, Viel A, Doglioni C, Russo A, Santini A, Del Tin L, Macri E, Lanza G, Boiocchi M, Dolcetti R (2001) Microsatellite instability and high content of activated cytotoxic lymphocytes identify colon cancer patients with a favorable prognosis. *Am J Pathol* **159**(1): 297–304.
- Günther K, Leier J, Henning G, Dimmler A, Weißbach R, Hohenberger W, Förster R (2005) Prediction of lymph node metastasis in colorectal carcinoma by expression of chemokine receptor CCR7. *Int J Cancer* **116**(5): 726–733.
- Hayes DF, Bast RC, Desch CE, Fritsche Jr H, Kemeny NE, Jessup JM, Locker GY, Macdonald JS, Mennel RG, Norton L, Ravdin P, Taube S, Winn RJ (1996) Tumor marker utility grading system: a framework to evaluate clinical utility of tumor markers. *J Natl Cancer Inst* **88**(20): 1456–1466.
- Hedges LV, Olkin I, Statistiker M (1985) *Statistical Methods for Meta-Analysis*. Academic Press: New York.
- Higgins JP, Thompson SG (2002) Quantifying heterogeneity in a meta-analysis. *Stat Med* **21**(11): 1539–1558.
- Huh JW, Lee JH, Kim HR (2012) Prognostic significance of tumor-infiltrating lymphocytes for patients with colorectal cancer. *Arch Surg* **147**(4): 366–372.
- Jass JR (1986) Lymphocytic infiltration and survival in rectal cancer. *J Clin Pathol* **39**(6): 585–589.
- Kim M, Grimmig T, Grimm M, Lazariotou M, Meier E, Rosenwald A, Tsaui I, Blaheta R, Heemann U, Germer CT, Waaga-Gasser AM, Gasser M (2013) Expression of Foxp3 in colorectal cancer but not in Treg cells correlates with disease progression in patients with colorectal cancer. *PLoS One* **8**(1): e53630.
- Klintrup K, Makinen JM, Kauppila S, Vare PO, Melkko J, Tuominen H, Tuppurainen K, Makela J, Karttunen TJ, Makinen MJ (2005) Inflammation and prognosis in colorectal cancer. *Eur J Cancer* **41**(17): 2645–2654.
- Kost SE, Kakal JA, Nelson BH (2012) The prognostic value of FoxP3+ tumor-infiltrating lymphocytes in cancer: a critical review of the literature. *Clin Cancer Res* **18**(11): 3022–3029.
- Lee WS, Park S, Lee WY, Yun SH, Chun HK (2010) Clinical impact of tumor-infiltrating lymphocytes for survival in stage II colon cancer. *Cancer* **116**(22): 5188–5199.
- Li H, Fan X, Houghton J (2007) Tumor microenvironment: the role of the tumor stroma in cancer. *J Cell Biochem* **101**(4): 805–815.
- Liotta LA, Kohn EC (2001) The microenvironment of the tumour-host interface. *Nature* **411**(6835): 375–379.
- Liska V, Daun O, Novak P, Treska V, Vycital O, Bruha J, Pitule P, Holubec L (2011) Tumor infiltrating lymphocytes as prognostic factor of early recurrence and poor prognosis of colorectal cancer after radical surgical treatment. *Anticancer Res* **31**: 1990–1991. doi:10.5772/27244. Available from: <http://www.intechopen.com/books/colorectal-cancer-biology-from-genes-to-tumor/tumor-infiltrating-lymphocytes-as-prognostic-factor-of-early-recurrence-and-poor-prognosis-of-colore>.
- Liu S, Lachapelle J, Leung S, Gao D, Foulkes WD, Nielsen TO (2012) CD8+ lymphocyte infiltration is an independent favorable prognostic indicator in basal-like breast cancer. *Breast Cancer Res* **14**(2): R48.
- Mahmoud SM, Paish EC, Powe DG, Macmillan RD, Grainge MJ, Lee AH, Ellis IO, Green AR (2011) Tumor-infiltrating CD8+ lymphocytes predict clinical outcome in breast cancer. *J Clin Oncol* **29**(15): 1949–1955.
- McShane LM, Altman DG, Sauerbrei W, Taube SE, Gion M, Clark GM (2005) REporting recommendations for tumour MARKer prognostic studies (REMARK). *Br J Cancer* **93**(4): 387–391.
- Menon AG, Janssen-van Rhijn CM, Morreau H, Putter H, Tollenaar RA, van de Velde CJ, Fleuren GJ, Kuppen PJ (2004) Immune system and prognosis in colorectal cancer: a detailed immunohistochemical analysis. *Lab Invest* **84**(4): 493–501.
- Nagtegaal ID, Marijnen CA, Kranenburg EK, Mulder-Stapel A, Hermans J, van de Velde CJ, van Krieken JH (2001) Local and distant recurrences in rectal cancer patients are predicted by the nonspecific immune response; specific immune response has only a systemic effect—a histopathological and immunohistochemical study. *BMC Cancer* **1**: 7.

- Naito Y, Saito K, Shiiba K, Ohuchi A, Saigenji K, Nagura H, Ohtani H (1998) CD8+ T cells infiltrated within cancer cell nests as a prognostic factor in human colorectal cancer. *Cancer Res* **58**(16): 3491–3494.
- Nakano O, Sato M, Naito Y, Suzuki K, Orikasa S, Aizawa M, Suzuki Y, Shintaku I, Nagura H, Ohtani H (2001) Proliferative activity of intratumoral CD8+ T-lymphocytes as a prognostic factor in human renal cell carcinoma clinicopathologic demonstration of antitumor immunity. *Cancer Res* **61**(13): 5132–5136.
- Nielsen HJ, Hansen U, Christensen IJ, Reimert CM, Brunner N, Moesgaard F (1999) Independent prognostic value of eosinophil and mast cell infiltration in colorectal cancer tissue. *J Pathol* **189**(4): 487–495.
- Nosho K, Baba Y, Tanaka N, Shima K, Hayashi M, Meyerhardt JA, Giovannucci E, Dranoff G, Fuchs CS, Ogino S (2010) Tumour-infiltrating T-cell subsets, molecular changes in colorectal cancer, and prognosis: cohort study and literature review. *J Pathol* **222**(4): 350–366.
- Ogino S, Nosho K, Irahara N, Meyerhardt JA, Baba Y, Shima K, Glickman JN, Ferrone CR, Mino-Kenudson M, Tanaka N, Dranoff G, Giovannucci EL, Fuchs CS (2009) Lymphocytic reaction to colorectal cancer is associated with longer survival, independent of lymph node count, microsatellite instability, and CpG island methylator phenotype. *Clin Cancer Res* **15**(20): 6412–6420.
- Pagès F, Kirilovsky A, Mlecnik B, Asslaber M, Tosolini M, Bindea G, Lagorce C, Wind P, Marliot F, Bruneval P (2009) *In situ* cytotoxic and memory T cells predict outcome in patients with early-stage colorectal cancer. *J Clin Oncol* **27**(35): 5944–5951.
- Parmar MK, Torri V, Stewart L (1998) Extracting summary statistics to perform meta-analyses of the published literature for survival endpoints. *Stat Med* **17**(24): 2815–2834.
- Richards CH, Roxburgh CS, Anderson JH, McKee RF, Foulis AK, Horgan PG, McMillan DC (2012) Prognostic value of tumour necrosis and host inflammatory responses in colorectal cancer. *Br J Surg* **99**(2): 287–294.
- Ropponen KM, Eskelinen MJ, Lipponen PK, Alhava E, Kosma VM (1997) Prognostic value of tumour-infiltrating lymphocytes (TILs) in colorectal cancer. *J Pathol* **182**(3): 318–324.
- Roxburgh CS, Salmond JM, Horgan PG, Oien KA, McMillan DC (2009) The relationship between the local and systemic inflammatory responses and survival in patients undergoing curative surgery for colon and rectal cancers. *J Gastrointest Surg* **13**(11): 2011–2018 discussion 2018–2019.
- Salama P, Phillips M, Grieu F, Morris M, Zeps N, Joseph D, Platell C, Iacopetta B (2009) Tumor-infiltrating FOXP3+ T regulatory cells show strong prognostic significance in colorectal cancer. *J Clin Oncol* **27**(2): 186–192.
- Sato E, Olson SH, Ahn J, Bundy B, Nishikawa H, Qian F, Jungbluth AA, Frosina D, Gnajatic S, Ambrosone C, Kepner J, Odunsi T, Ritter G, Lele S, Chen YT, Ohtani H, Old LJ, Odunsi K (2005) Intraepithelial CD8+ tumor-infiltrating lymphocytes and a high CD8+/regulatory T cell ratio are associated with favorable prognosis in ovarian cancer. *Proc Natl Acad Sci USA* **102**(51): 18538–18543.
- Schimanski CC, Schwald S, Simiantonaki N, Jayasinghe C, Gönner U, Wilsberg V, Junginger T, Berger MR, Galle PR, Moehler M (2005) Effect of chemokine receptors CXCR4 and CCR7 on the metastatic behavior of human colorectal cancer. *Clin Cancer Res* **11**(5): 1743–1750.
- Schreiber RD, Old LJ, Smyth MJ (2011) Cancer immunoeediting: integrating immunity's roles in cancer suppression and promotion. *Science* **331**(6024): 1565–1570.
- Seo AN, Lee HJ, Kim EJ, Kim HJ, Jang MH, Lee HE, Kim YJ, Kim JH, Park SY (2013) Tumour-infiltrating CD8+ lymphocytes as an independent predictive factor for pathological complete response to primary systemic therapy in breast cancer. *Br J Cancer* **109**(10): 2705–2713.
- Simpson JA, Al-Attar A, Watson NF, Scholefield JH, Ilyas M, Durrant LG (2010) Intratumoral T cell infiltration, MHC class I and STAT1 as biomarkers of good prognosis in colorectal cancer. *Gut* **59**(7): 926–933.
- Sinicrope FA, Rego RL, Ansell SM, Knutson KL, Foster NR, Sargent DJ (2009) Intraepithelial effector (CD3+)/regulatory (FoxP3+) T-cell ratio predicts a clinical outcome of human colon carcinoma. *Gastroenterology* **137**(4): 1270–1279.
- Suzuki H, Chikazawa N, Tasaka T, Wada J, Yamasaki A, Kitaura Y, Sozaki M, Tanaka M, Onishi H, Morisaki T, Katano M (2010) Intratumoral CD8(+) T/FOXP3 (+) cell ratio is a predictive marker for survival in patients with colorectal cancer. *Cancer Immunol Immunother* **59**(5): 653–661.
- Szynglarewicz B, Matkowski R, Suder E, Sydor D, Forgacz J, Pudelko M, Grzebieniak Z (2007) Predictive value of lymphocytic infiltration and character of invasive margin following total mesorectal excision with sphincter preservation for the high-risk carcinoma of the rectum. *Adv Med Sci* **52**: 159–163.
- Tierney JF, Stewart LA, Ghersi D, Burdett S, Sydes MR (2007) Practical methods for incorporating summary time-to-event data into meta-analysis. *Trials* **8**: 16.
- Tomsova M, Melichar B, Sedlakova I, Steiner I (2008) Prognostic significance of CD3+ tumor-infiltrating lymphocytes in ovarian carcinoma. *Gynecol Oncol* **108**(2): 415–420.
- Yoon HH, Orrock JM, Foster NR, Sargent DJ, Smyrk TC, Sinicrope FA (2012) Prognostic impact of FoxP3+ regulatory T cells in relation to CD8+ T lymphocyte density in human colon carcinomas. *PLoS One* **7**(8): e42274.
- Zhang L, Conejo-Garcia JR, Katsaros D, Gimotty PA, Massobrio M, Regnani G, Makrigiannakis A, Gray H, Schlienger K, Liebman MN (2003) Intratumoral T cells, recurrence, and survival in epithelial ovarian cancer. *N Engl J Med* **348**(3): 203–213.
- Zlobec I, Terracciano LM, Lugli A (2008) Local recurrence in mismatch repair-proficient colon cancer predicted by an infiltrative tumor border and lack of CD8+ tumor-infiltrating lymphocytes. *Clin Cancer Res* **14**(12): 3792–3797.

This work is published under the standard license to publish agreement. After 12 months the work will become freely available and the license terms will switch to a Creative Commons Attribution-NonCommercial-Share Alike 3.0 Unported License.

Supplementary Information accompanies this paper on British Journal of Cancer website (<http://www.nature.com/bjc>)