

# **Turn-on fluorescent chemosensor for Zn (II) via ring opening of rhodamine spirolactam and their live cell imaging**

**Gandhi Sivaraman, Thangaraj Anand and Duraisamy Chellappa\*<sup>[a]</sup>**

**Electronic supplementary information.**

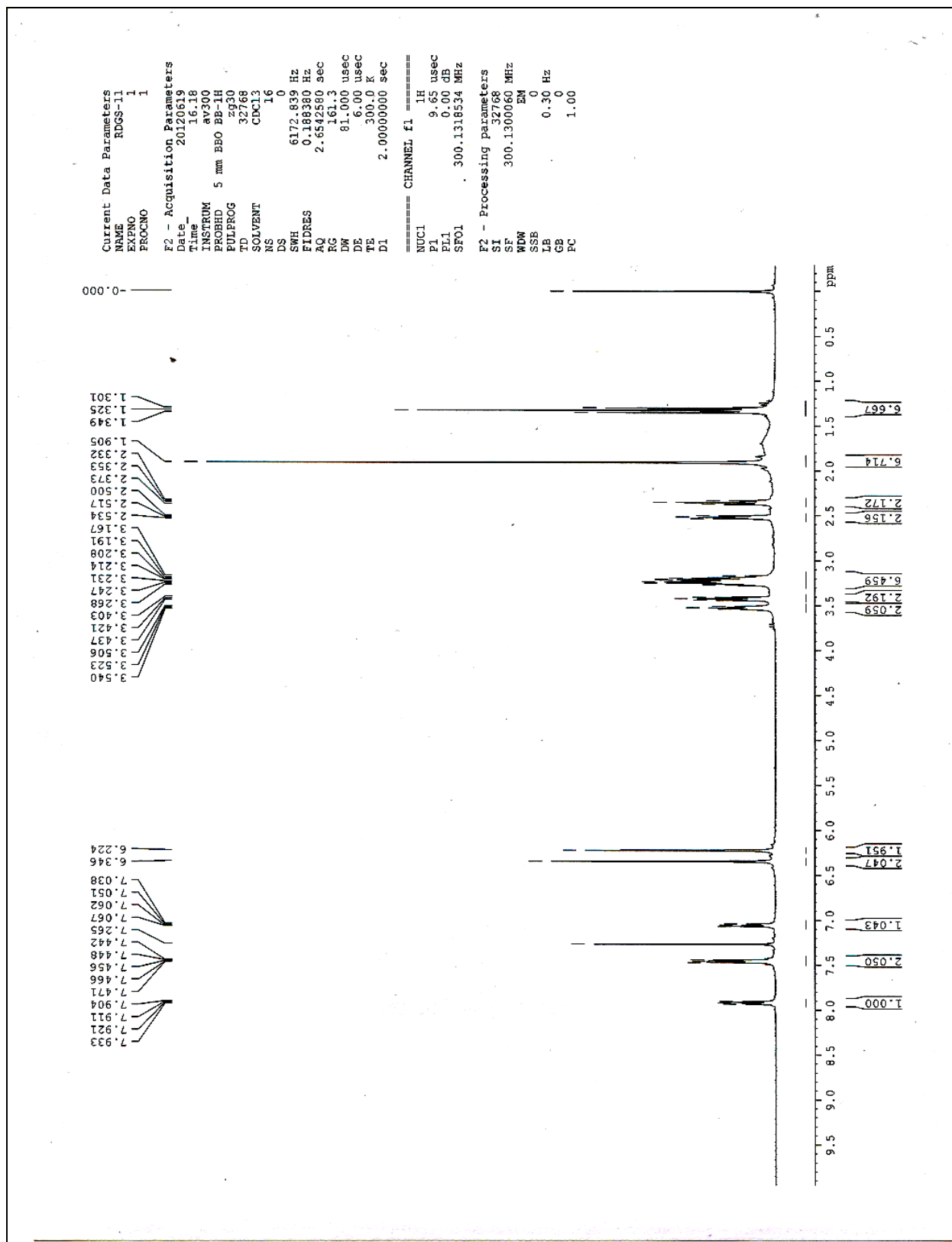


Fig S1: <sup>1</sup>H-NMR spectrum of ZRP-1 in CDCl<sub>3</sub>.

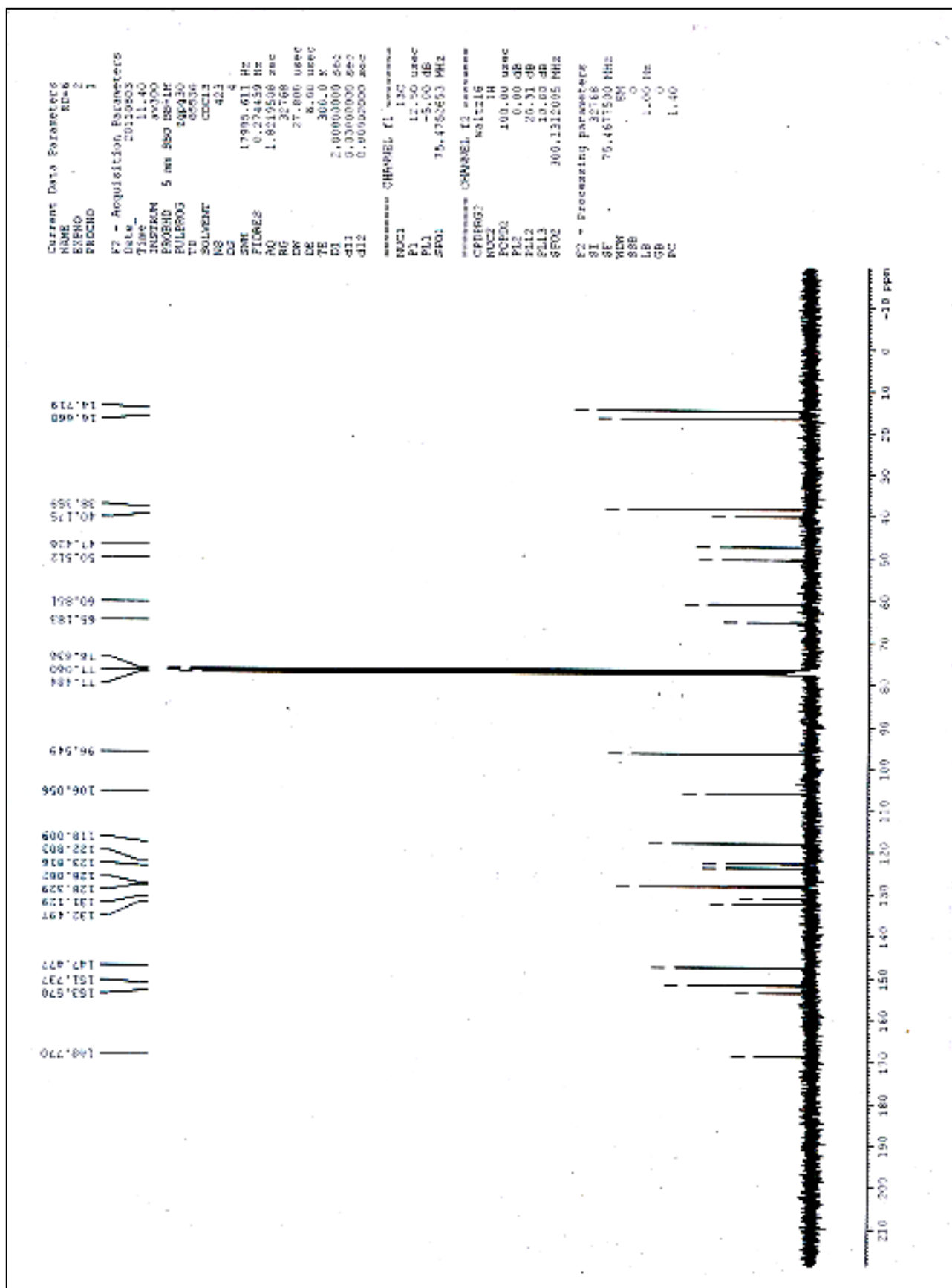


Fig S2:  $^{13}\text{C}$ -NMR spectrum of ZRP-1 in  $\text{CDCl}_3$ .

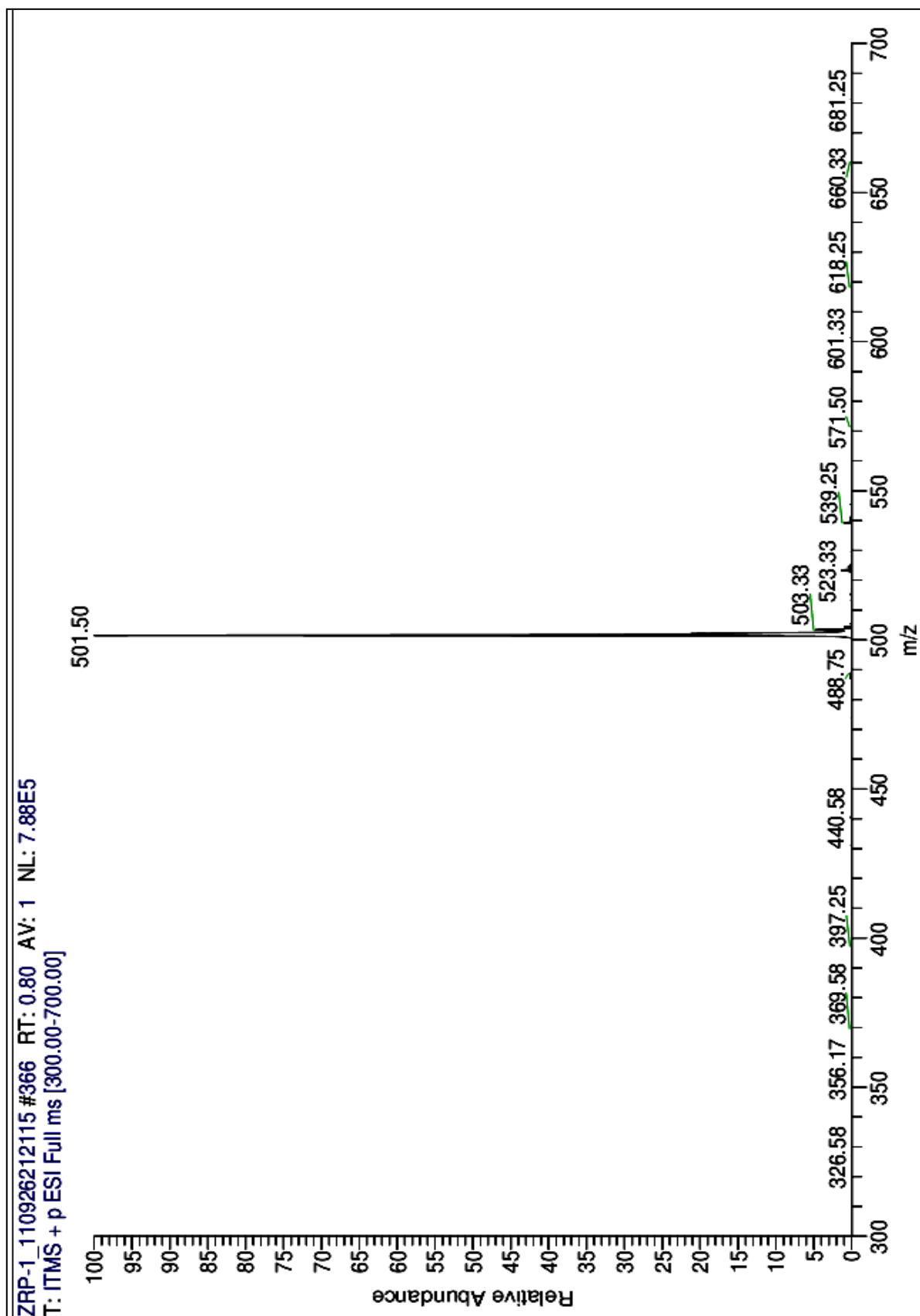


Fig S3: ESI-MS spectrum of ZRP-1.

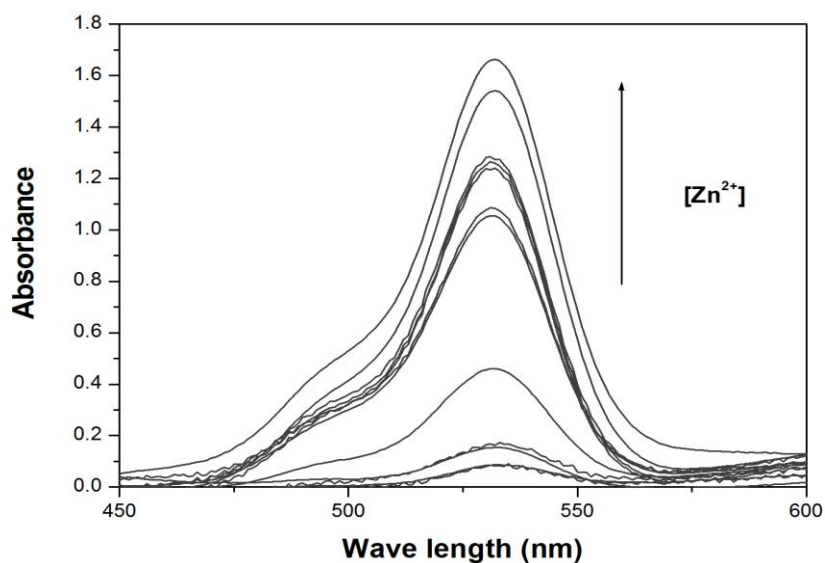


Fig S4: Absorption spectra of ZRP-1 (10 μM) in 100 mM Phosphate buffer (pH 7.4) in the presence of increasing amounts of Zn<sup>2+</sup> (0 - 10 μM)

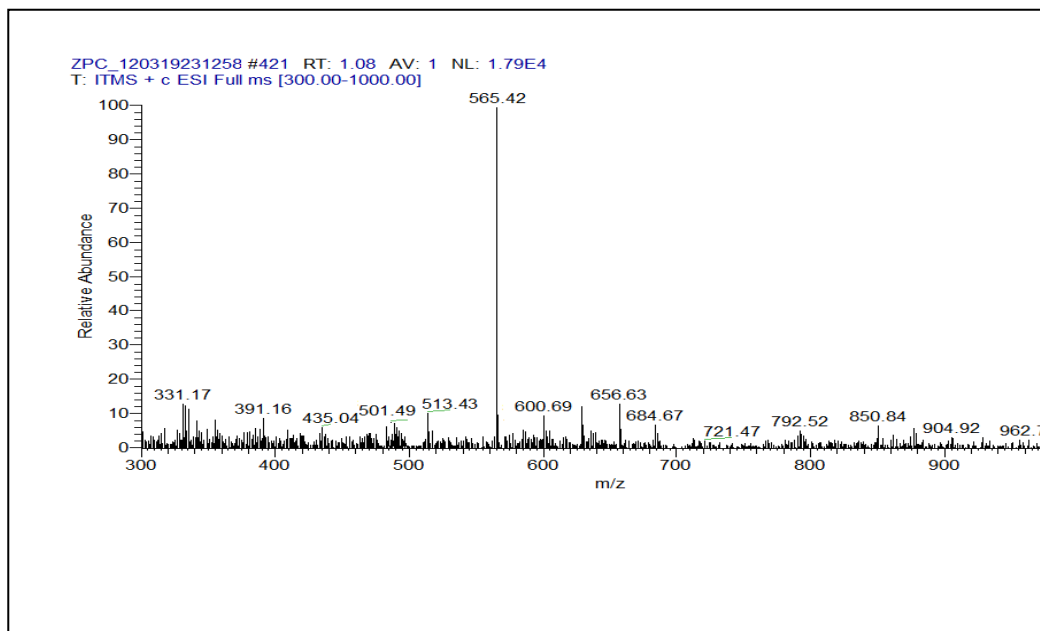


Fig S5: ESI-MS spectrum of ZRP-1 + Zn<sup>2+</sup>

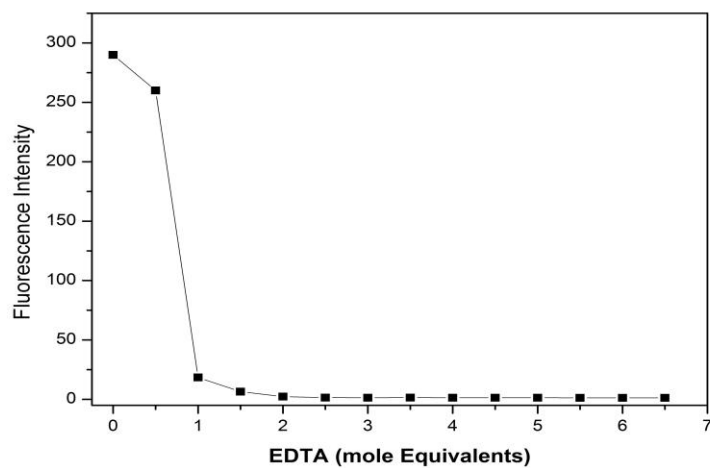


Fig S6: Fluorescence response of ZRP-1+ Zn<sup>2+</sup> during addition of EDTA.

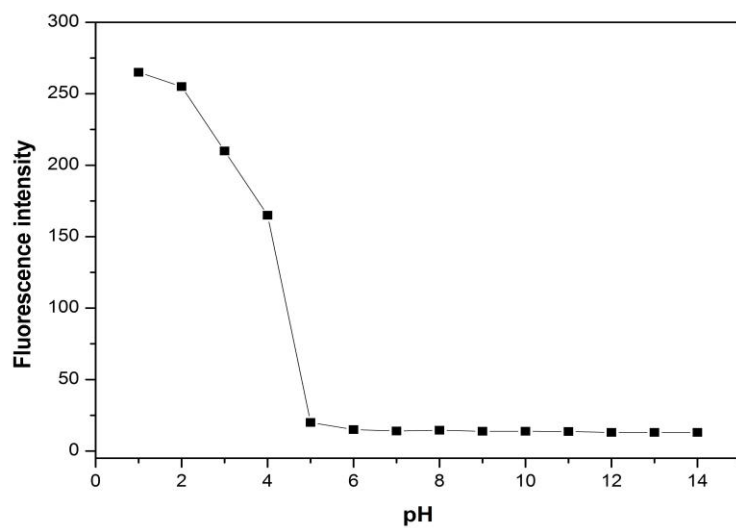


Fig S7: Effect of pH in the Fluorescence response of ZRP-1

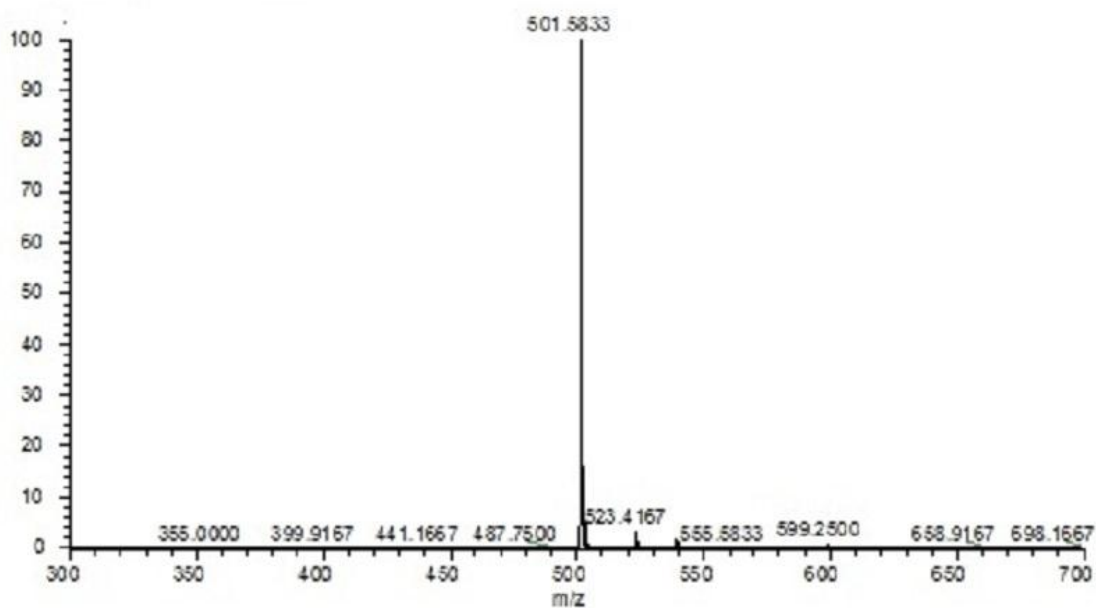


Fig S8: HRMS of ZRP-1.

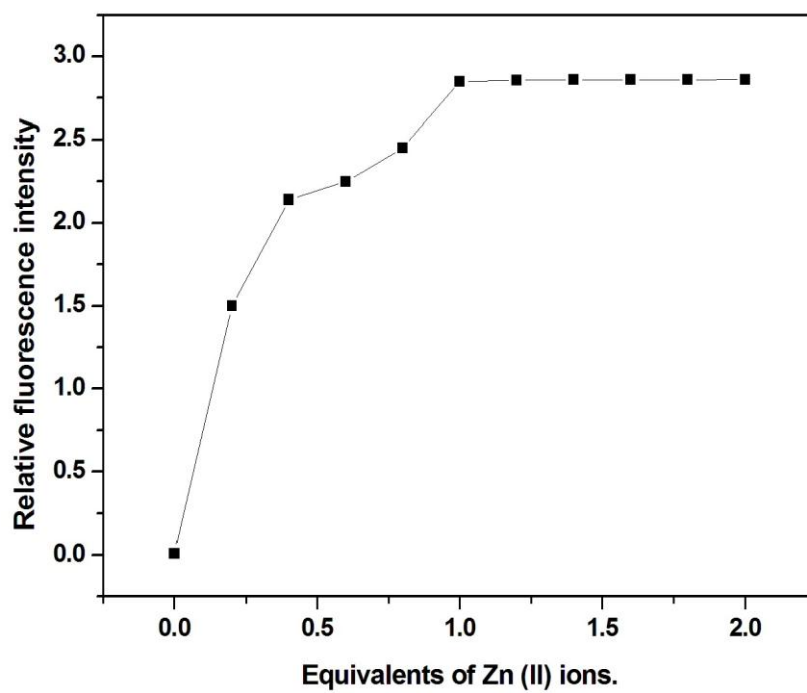


Fig S9: Plot of fluorescence intensity vs concentration of zinc.

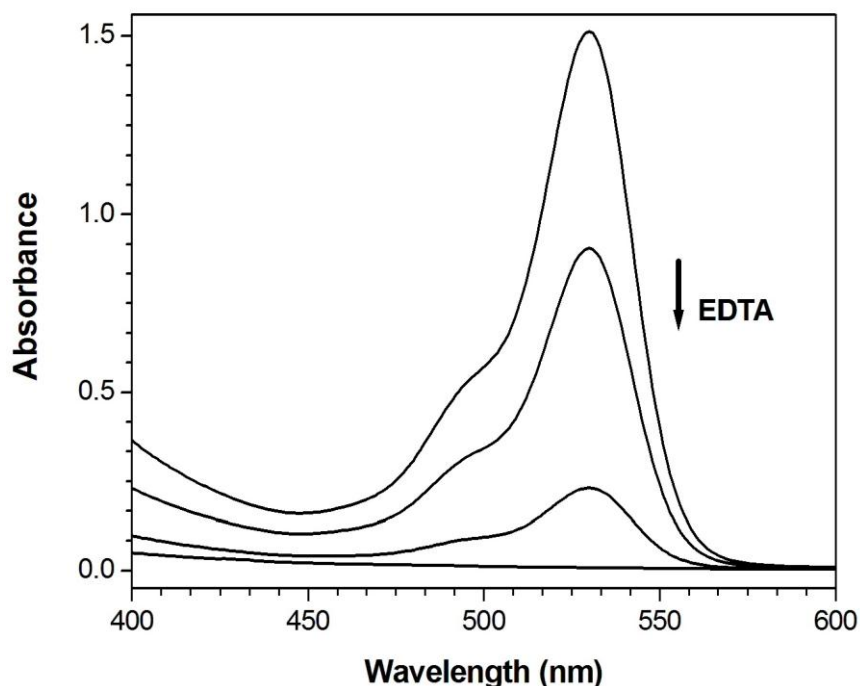


Fig S10: UV-vis absorbance spectral changes after addition of EDTA to ZRP-1 + Zn (II)

### Calculation of Binding constant:

The binding constant  $K$  was determined from the plot of the linear regression of  $\log [(F - F_0) / (F_m - F)]$  vs.  $\log [M]$  in equation to obtain the intercept as  $\log K$  and the slope as  $n$ .

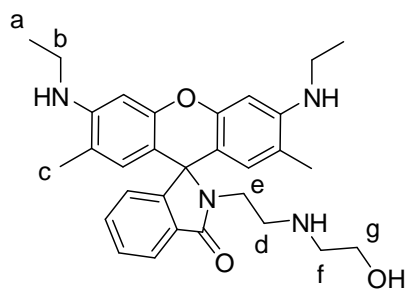
$$\log \frac{F - F_0}{F_m - F} = \log K + n \log [M]$$

### Calculation of Detection limit:

LOD was calculated based on the standard deviation of the response (SD) and the slope of the calibration curve (S) at levels approximating the LOD according to the formula:

$$\text{LOD} = 3.3 (\text{SD}/S)$$





$^1\text{H-nmr}$ : 7.93-7.904 (ar), 7.47-7.44 (ar), 7.06-7.03 (ar), 6.34 (ar), 6.22(ar), 3.54-3.50 (g), 3.43-3.40(e), 3.26-3.16 (b), 2.53-2.50 (f), 2.373-2.332 (d), 1.905 (c), 1.34-1.30 (a).

**Fig S 11: Labelling of  $^1\text{H-nmr}$  spectrum of ZRP-1**