

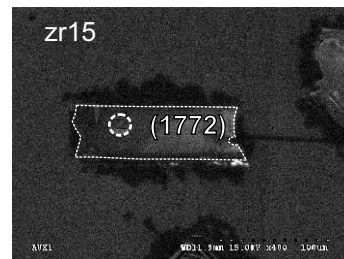
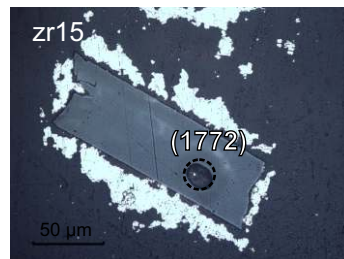
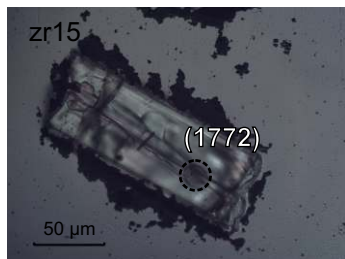
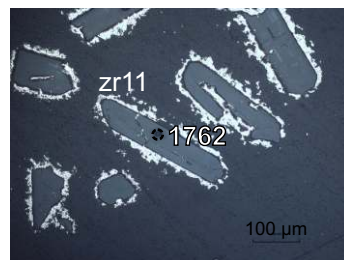
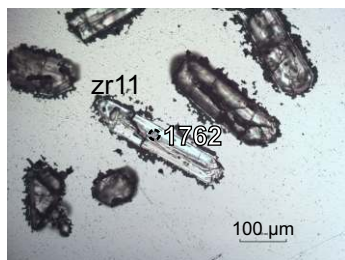
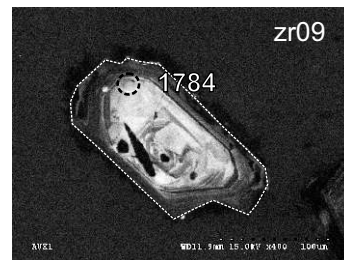
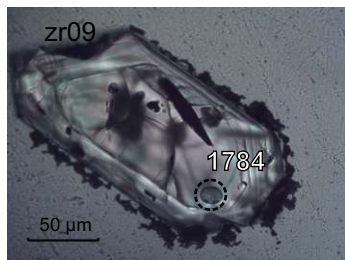
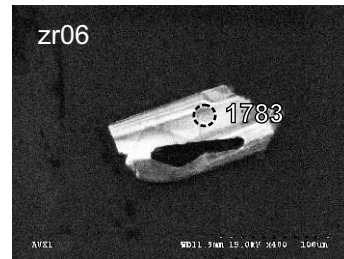
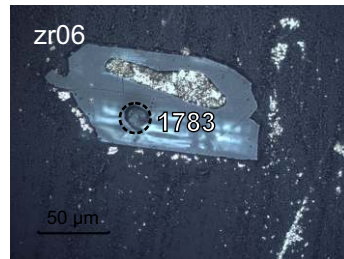
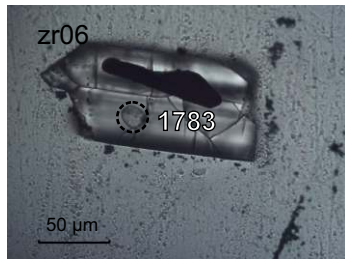
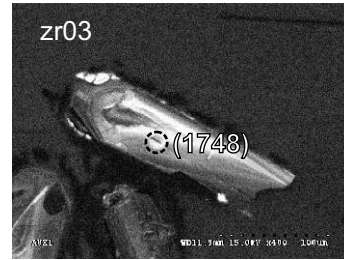
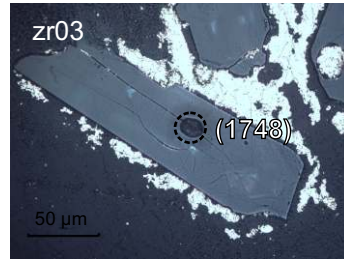
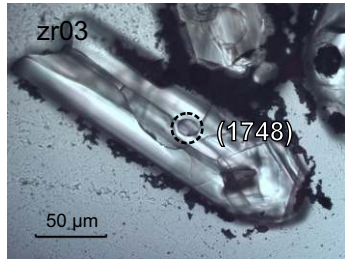
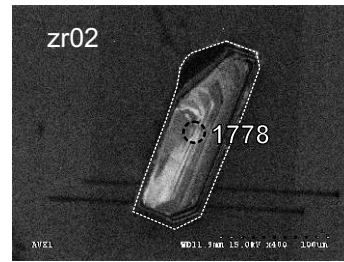
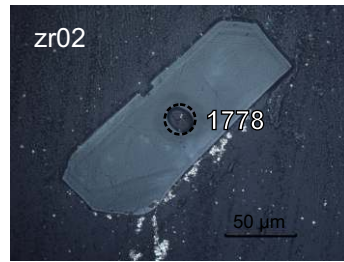
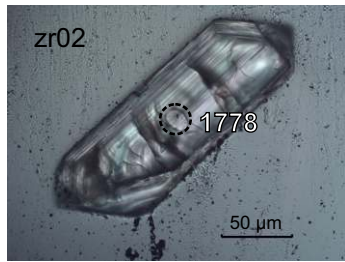
KK90:100. Småland granite, Falan. p.1.

$^{207}\text{Pb}/^{206}\text{Pb}$ ages. More than 5% discordant points in brackets.

Transmitted light

Reflected light

Cathodoluminescence



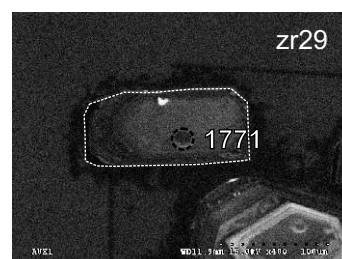
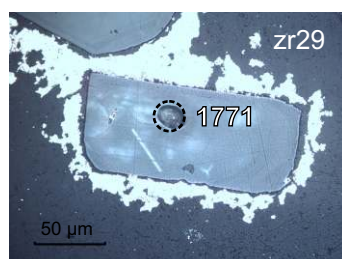
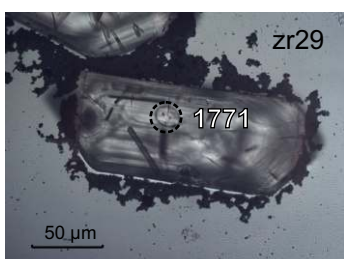
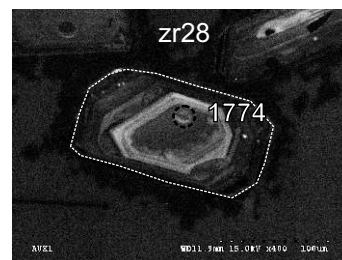
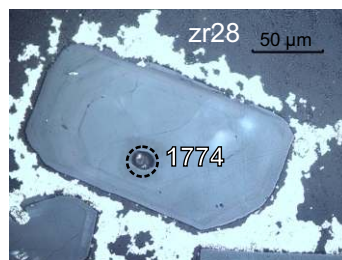
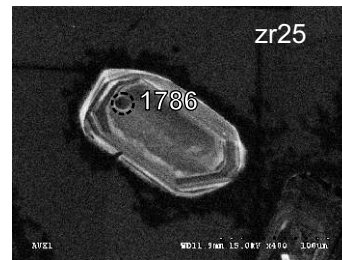
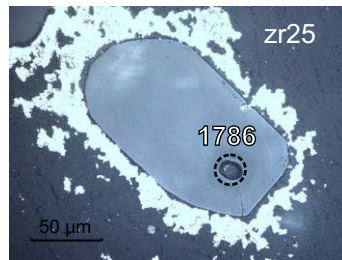
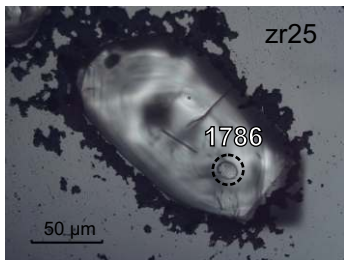
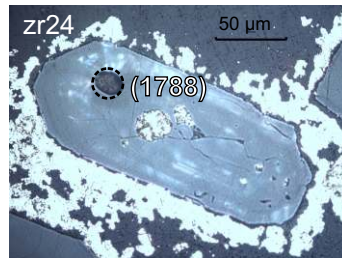
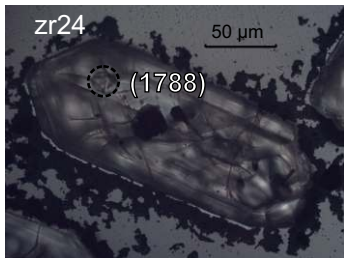
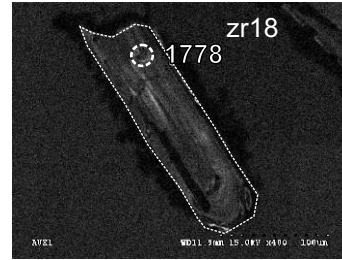
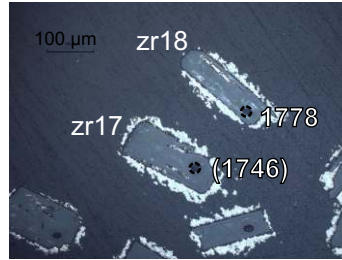
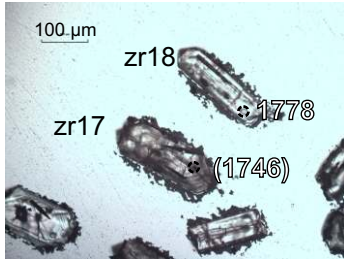
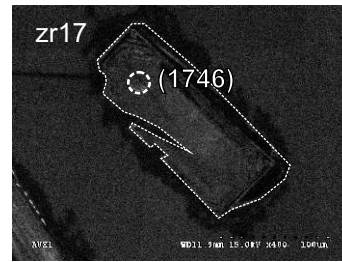
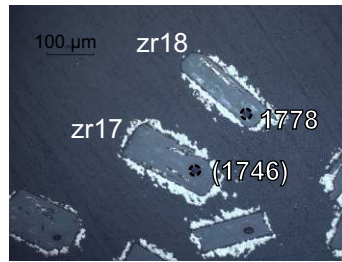
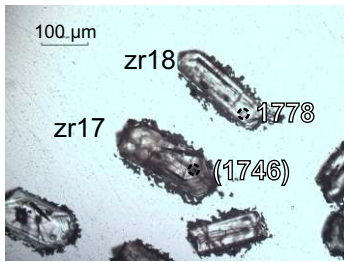
KK90:100. Småland granite, Falan. p.2.

$^{207}\text{Pb}/^{206}\text{Pb}$ ages. More than 5% discordant points in brackets.

Transmitted light

Reflected light

Cathodoluminescence



KK90:100. Småland granite, Falan. p.3.

$^{207}\text{Pb}/^{206}\text{Pb}$ ages. More than 5% discordant points in brackets.

Transmitted light

Reflected light

Cathodoluminescence

