

ARTICLE

Received 7 Aug 2014 | Accepted 18 Dec 2014 | Published 30 Jan 2015

DOI: 10.1038/ncomms7142

Ultrasmooth organic–inorganic perovskite thin-film formation and crystallization for efficient planar heterojunction solar cells

Wei Zhang¹, Michael Saliba¹, David T. Moore², Sandeep K. Pathak¹, Maximilian T. Hörantner¹, Thomas Stergiopoulos¹, Samuel D. Stranks¹, Giles E. Eperon¹, Jack A. Alexander-Webber¹, Antonio Abate¹, Aditya Sadhanala³, Shuhua Yao⁴, Yulin Chen¹, Richard H. Friend³, Lara A. Estroff^{2,5}, Ulrich Wiesner² & Henry J. Snaith¹

To date, there have been a plethora of reports on different means to fabricate organic–inorganic metal halide perovskite thin films; however, the inorganic starting materials have been limited to halide-based anions. Here we study the role of the anions in the perovskite solution and their influence upon perovskite crystal growth, film formation and device performance. We find that by using a non-halide lead source (lead acetate) instead of lead chloride or iodide, the perovskite crystal growth is much faster, which allows us to obtain ultrasmooth and almost pinhole-free perovskite films by a simple one-step solution coating with only a few minutes annealing. This synthesis leads to improved device performance in planar heterojunction architectures and answers a critical question as to the role of the anion and excess organic component during crystallization. Our work paves the way to tune the crystal growth kinetics by simple chemistry.

¹Clarendon Laboratory, University of Oxford, Parks Road, Oxford OX1 3PU, UK. ²Department of Materials Science and Engineering, Cornell University, Ithaca, New York 14853, USA. ³Cavendish Laboratory, Department of Physics, University of Cambridge, 19 JJ Thomson Avenue, Cambridge CB3 0HE, UK.

⁴National Laboratory of Solid State Microstructures, Department of Materials Science and Engineering, Nanjing University, Nanjing 210093, China.

⁵Kavli Institute at Cornell for Nanoscale Science, Cornell University, Ithaca, New York 14853, USA. Correspondence and requests for materials should be addressed to H.J.S. (email: h.snaith1@physics.ox.ac.uk).

Perovskite solar cells have rapidly become an emerging photovoltaic technology, which has evoked widespread scientific and industrial interest^{1–9}. The light-absorbing material is an organic–inorganic trihalide perovskite with an ABX₃ structure (where A is an organic cation, B a divalent metal ion and X a halide Cl, Br or I or any mixture thereof). Typically, this is methylammonium lead triiodide CH₃NH₃PbI₃ or mixed halide variants CH₃NH₃PbI_{3–x}Cl_x and CH₃NH₃PbI_{3–x}Br_x, which can be synthesized simply from cheap materials, in contrast to traditional semiconductors. Thin films can also be fabricated by various deposition procedures including simple one-step solution coating^{1–3}, sequential dip coating⁴, vapour phase deposition⁵ or combinations thereof¹⁰, similarly versatile to organic semiconductors. In contrast to the latter though, perovskites exhibit excellent crystallinity, ambipolar transport³ and large diffusion length for both electrons and holes^{11,12}. Since the seminal work by Miyasaka and co-workers¹³ in 2009, who showed a 3.8% efficient perovskite-sensitized solar cell employing a liquid electrolyte, various device structures ranging from sensitized solar cells on mesoscopic semiconducting TiO₂ (refs 2–4) or insulating Al₂O₃ scaffolds^{1,14}, to the planar heterojunction (PHJ) architecture^{5,7,11}, have been explored. To date, through optimizing device design, material interfaces and processing techniques, a certified efficiency of 17.9% has been reported¹⁵, in a device which is a combination of a mesoporous infiltrated anode with a solid perovskite thin film. These recent developments demonstrate the enormous potential of perovskite solar cells, with trajectory suggesting that they should soon compete with traditional silicon solar cells.

Although the performance of perovskite solar cells has improved rapidly in the last 2 years, the basic properties of organic–inorganic trihalide perovskites are not well understood. A lot of recent work exploring the absorber material has focused on tuning the band gap by changing the ratio of the anions¹⁶, cations¹⁷ or the divalent metal^{18,19}. However, the impact of the solution composition on perovskite crystal growth and film formation, and thus on the device performance, is still under scrutiny^{20,21}. For example, it is challenging to form a smooth and continuous perovskite film on compact TiO₂ (c-TiO₂)-coated fluorine-doped tin oxide (FTO) substrates by one-step solution coating of a solution containing lead iodide (PbI₂) or lead chloride (PbCl₂) blended with methylammonium iodide (CH₃NH₃I)^{22,23}. A noncontinuous perovskite film is usually obtained, where pinholes can introduce shunting pathways limiting the solar cell performance. In addition, although the different electrical and photophysical properties have been observed for the ‘mixed halide’ perovskite CH₃NH₃PbI_{3–x}Cl_x as compared with CH₃NH₃PbI₃ (refs 11,12), the existence and role of Cl in mixed halide perovskite are still debatable and the varied results from groups employing different characterization techniques are hard to reconcile^{1,20,23–26}. We have previously found that by employing a large excess of organic component (CH₃NH₃I) much larger crystalline domains can be formed¹, and smoother films can be created than those processed from a stoichiometric mix of CH₃NH₃I and PbI₂ (ref. 11). However, the role and the fate of the excess organic component during film formation and crystallization remain mysterious. A complete understanding of these issues is hence critically important for advancing our understanding of perovskite semiconductors and solar cell performance.

In this work, we employ several lead salts, PbCl₂, PbI₂ and lead acetate (PbAc₂) in conjunction with a 3-molar excess of CH₃NH₃I. All material-processing routes lead to the formation of CH₃NH₃PbI₃ with undetectable amounts of the ‘spectator’ anion (Cl or Ac) but with considerably different thin-film properties. In the latter case, PbAc₂, the only halide source in the

final perovskite film, is from CH₃NH₃I, which helps to identify more clearly what role the spectator ion (Cl or Ac) plays during perovskite film formation. Our findings reveal that the anion has a substantial effect on the perovskite crystal growth kinetics and film morphology. By simple one-step solution coating using PbAc₂ as the lead source, we obtain a compact perovskite film with full coverage on the substrate. Surprisingly, the smoothness of the films surpasses that of vapour-deposited films. In addition, the processing time is greatly reduced to a few minutes for the PbAc₂ route because of the more rapid loss of excess organic material and ensuing faster crystal growth. By optimizing device fabrication conditions, we achieve a power conversion efficiency (PCE) of 15.2% in a PHJ architecture through the PbAc₂ route, measured under one sun illumination, which is a significant improvement upon similar solar cells fabricated from either PbCl₂ or PbI₂ routes.

Results

Crystallographic structure and evolution of perovskite. We prepared different perovskite solutions by mixing 3:1 (by moles) of CH₃NH₃I:PbX₂ in N,N-Dimethylformamide, where X is Cl, I or Ac. It is noted that we do not use a ratio of 1:1 of CH₃NH₃I:PbI₂ as the focus of this study is to elucidate the role of anions when processed with excess organic component, as we employ in our conventional ‘mixed halide’ perovskite CH₃NH₃PbI_{3–x}Cl_x. We fabricated films on FTO/c-TiO₂ substrates by one-step solution coating of different perovskite solutions in a nitrogen-filled glovebox. The perovskite films made from solutions using PbCl₂ or PbAc₂ as the lead source were annealed at 100 °C in the glovebox after spin-coating. Since the perovskite does not form at 100 °C from the solution using PbI₂ as the lead source, even after 12 h annealing, the temperature was increased to 150 °C for this PbI₂ route. The annealing times were optimized separately for each route to achieve best solar cell performance (see Methods). In Fig. 1, we show the X-ray diffraction patterns of perovskite films fabricated using different lead

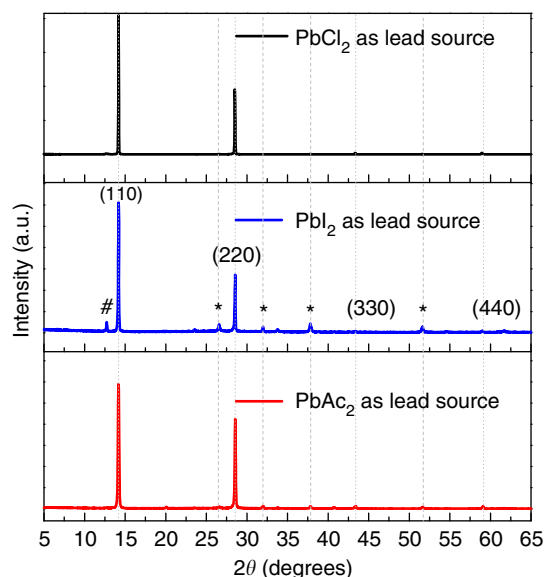


Figure 1 | X-ray diffraction spectra. The perovskite films were deposited on a FTO/c-TiO₂ substrate from the reagent solution containing different lead sources (lead chloride, lead iodide and lead acetate). Peaks are assigned to the reflections from a tetragonal perovskite lattice with unit cell parameters $a = b = 8.85 \text{ \AA}$, $c = 12.64 \text{ \AA}$. Peaks marked with * and # are assigned to the FTO and traces of PbI₂, respectively.

sources. From the X-ray diffraction reflections it is evident that the materials fabricated from perovskite solutions with different lead sources are invariably the same in their crystal structure. X-ray diffraction reflection confirms the $\text{CH}_3\text{NH}_3\text{PbI}_3$ perovskite structure with lattice parameter with $\mathbf{a}=\mathbf{b}=8.85\text{ \AA}$ and $c=12.64\text{ \AA}$ (ref. 13).

From an analysis using the Scherrer equation, the crystal sizes of perovskites made from PbCl_2 , PbI_2 and PbAc_2 routes are estimated to be $>500\text{ nm}$ (larger than machine resolution), 305 ± 65 and $135\pm 45\text{ nm}$, respectively. It is important to note that these values are based on the assumption of spherical perovskite crystals. In contrast, for our samples, because of the film thickness limitation, crystals are much more parallel than perpendicular to the substrate, meaning that the crystal size is underestimated by the Scherrer equation analysis. Considering that all samples have similar film thickness, it is safe to assume that the observed size trend is still valid. In addition, scanning electron microscope (SEM) images shown below are consistent with the PbAc_2 route, delivering smaller crystals.

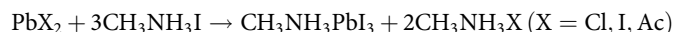
To understand the evolution of the perovskite crystal formation using different lead sources, we performed *in situ* wide-angle X-ray scattering (WAXS). Figure 2a–c shows a series of one-dimensional (1D) plots obtained from two-dimensional (2D) data sets, which have been integrated over all azimuthal angles. Similar to previous reports, we note a ‘precursor’ material formed before the perovskite crystallization²⁷; although each system exhibits a different diffraction pattern for the ‘precursor’ structure, they are all distinguishable from the perovskite pattern. The kinetics of the systems are assessed by tracking the key ‘precursor’ peaks (marked in Fig. 2a–c on the bottom-most traces) and defining t_{end} as the time when all ‘precursor’ peaks are gone. The PbAc_2 - and PbCl_2 -based films are annealed at the same temperature and can be compared straight away with $t_{\text{end}}=2.5\text{ min}$ and $t_{\text{end}}=43.8\text{ min}$, respectively. The PbI_2 -based film was annealed at $150\text{ }^\circ\text{C}$ and has a $t_{\text{end}}=17.8\text{ min}$. In a previous experiment we annealed PbCl_2 films at $130\text{ }^\circ\text{C}$ and found $t_{\text{end}}\sim 8\text{--}10\text{ min}$ (Supplementary Fig. 1). From these data we can extrapolate that perovskite crystal formation is faster from PbCl_2 route than from PbI_2 route, and fastest from PbAc_2 route leading to the following order: $\text{PbAc}_2 \gg \text{PbCl}_2 > \text{PbI}_2$.

In addition to providing a relative comparison of the kinetics of the three systems, the WAXS data also reveal information about the crystal texture and coarsening. Figure 2d–f shows 2D perovskite patterns obtained at t_{end} . The dashed red lines note the location of the (110) peaks that are radially integrated resulting in line scans as shown in panels Fig. 2g–i. The less spotty 2D pattern and a weak dependence of peak intensity on azimuthal angle for the PbAc_2 -based film suggest a material with smaller grains and weaker crystallographic orientation, as expected from the faster rate of crystallization. Overall, the PbCl_2 -based film shows a similar orientational behaviour as the PbI_2 -based one, but with larger crystal sizes. We attribute this difference to longer overall annealing times at lower temperatures allowing for better crystal growth before the beginning of decomposition. It should be noted that these are crystal morphology effects that need to be distinguished from film morphology effects discussed further below.

Figure 2j–l shows the (110) peak intensity for each film beginning just before the time when all ‘precursor’ peaks are gone, t_{end} , and extending to the end of the experiment. While for PbI_2 - and PbCl_2 -based films the complete transformation to the perovskite is immediately followed by a decrease in peak intensity, for the PbAc_2 -based film the intensity first increases after the perovskite is fully formed and only then decreases on a timescale slower than the timescale for perovskite formation. Since the scattering-intensity decrease in all samples can be

attributed to decomposition into PbI_2 , as verified by the respective decomposition peaks occurring at later time points (Supplementary Fig. 2), we can ascertain the key information about the crystal evolution from Fig. 2l. First, we ascribe the initial increase in peak intensity for PbAc_2 -based film to the film coarsening not present for PbI_2 - or PbCl_2 -based films. Second, we note that when the (110) peak intensity of the PbAc_2 -based film does decrease, the peak intensity still remains above its value at t_{end} implying a slower decomposition relative to the crystallization time.

The transition process of starting materials into perovskite is generally described by the following equation:



The above reaction typically involves the evaporation of solvent, sublimation/evaporation of the by-product ($\text{CH}_3\text{NH}_3\text{X}$), crystal nucleation and growth, and so on²⁸. As shown in the WAXS study, the anneal time is much shorter for perovskite made from PbAc_2 route than that made from PbCl_2 and PbI_2 routes, which could be correlated to the ease with which the by-product can be removed during perovskite film formation. To confirm this hypothesis, we recorded the thermal gravimetric analysis (TGA) curves for the by-product $\text{CH}_3\text{NH}_3\text{X}$ ($\text{X} = \text{Cl, I, Ac}$). As shown in Fig. 3, the initial decomposition temperature (defined by T at 95% weight) is 97.4, 226.7 and $245.0\text{ }^\circ\text{C}$ for $\text{CH}_3\text{NH}_3\text{Ac}$, $\text{CH}_3\text{NH}_3\text{Cl}$ and $\text{CH}_3\text{NH}_3\text{I}$, respectively, which is consistent with the trend of the maxima, T_{d} , of the derivative weight loss/temperature curves for which $T_{\text{d}}(\text{CH}_3\text{NH}_3\text{Ac}) \ll T_{\text{d}}(\text{CH}_3\text{NH}_3\text{Cl}) < T_{\text{d}}(\text{CH}_3\text{NH}_3\text{I})$. These data indicate that the $\text{CH}_3\text{NH}_3\text{Ac}$ is thermally unstable and is much easier to be removed than $\text{CH}_3\text{NH}_3\text{Cl}$ and $\text{CH}_3\text{NH}_3\text{I}$ at the adopted processing temperature range. Thus, at the same annealing temperature, the nucleation density is much higher for the films processed from the PbAc_2 route, which tend to form a large amount of relatively small crystals on a short timescale (1–2 min) and fully cover the substrate. In contrast, for the PbCl_2 and PbI_2 routes, the $\text{CH}_3\text{NH}_3\text{Cl}$ and $\text{CH}_3\text{NH}_3\text{I}$ need longer annealing times to be removed. As a result, the nucleation density is lower leading to large crystals^{11,22}. In addition, noncontinuous films are frequently observed, which could be because of the thermal energy enabling pore growth to occur before the perovskite film is crystallized²².

For perovskites made from PbAc_2 or PbI_2 routes, the presence of only one type of halide in the reagent solution, that is I^- , ensures the formation of methylammonium lead triiodide ($\text{CH}_3\text{NH}_3\text{PbI}_3$) crystals. In contrast, the perovskite obtained from the reagent solution with PbCl_2 contains both I^- and Cl^- , giving the more complicated possibility of forming a mixed halide perovskite ($\text{CH}_3\text{NH}_3\text{PbI}_{3-x}\text{Cl}_x$). Interestingly, in the mixed halide perovskite the exact location and the concentration of the Cl^- remains unclear to date, with varying observations by several groups^{1,20,23–26}. The difficulty of detecting the Cl^- in the mixed halide perovskite may partly be because of the detection limit of the techniques used; however, the fact that often only small quantities are observed suggests that the final content in the films may be very low. Here we employ oxygen flask combustion-potentiometric titration method to detect the Cl^- concentration in the perovskite²⁹, which reaches down to the level of 30 p.p.m., a much higher resolution than the traditional analytical methods adopted so far^{1,20,23–26}. For the perovskite films prepared via the PbCl_2 route, the titration process showed no change of electric potential corresponding to Cl^- , suggesting an upper bound of the concentration of Cl^- in the final films of 30 p.p.m. (mass ratio). Even if we take into account other possible experimental errors (for example, sample weighing, solution volume error and so on) and relax the error by 10 times (very conservative), the

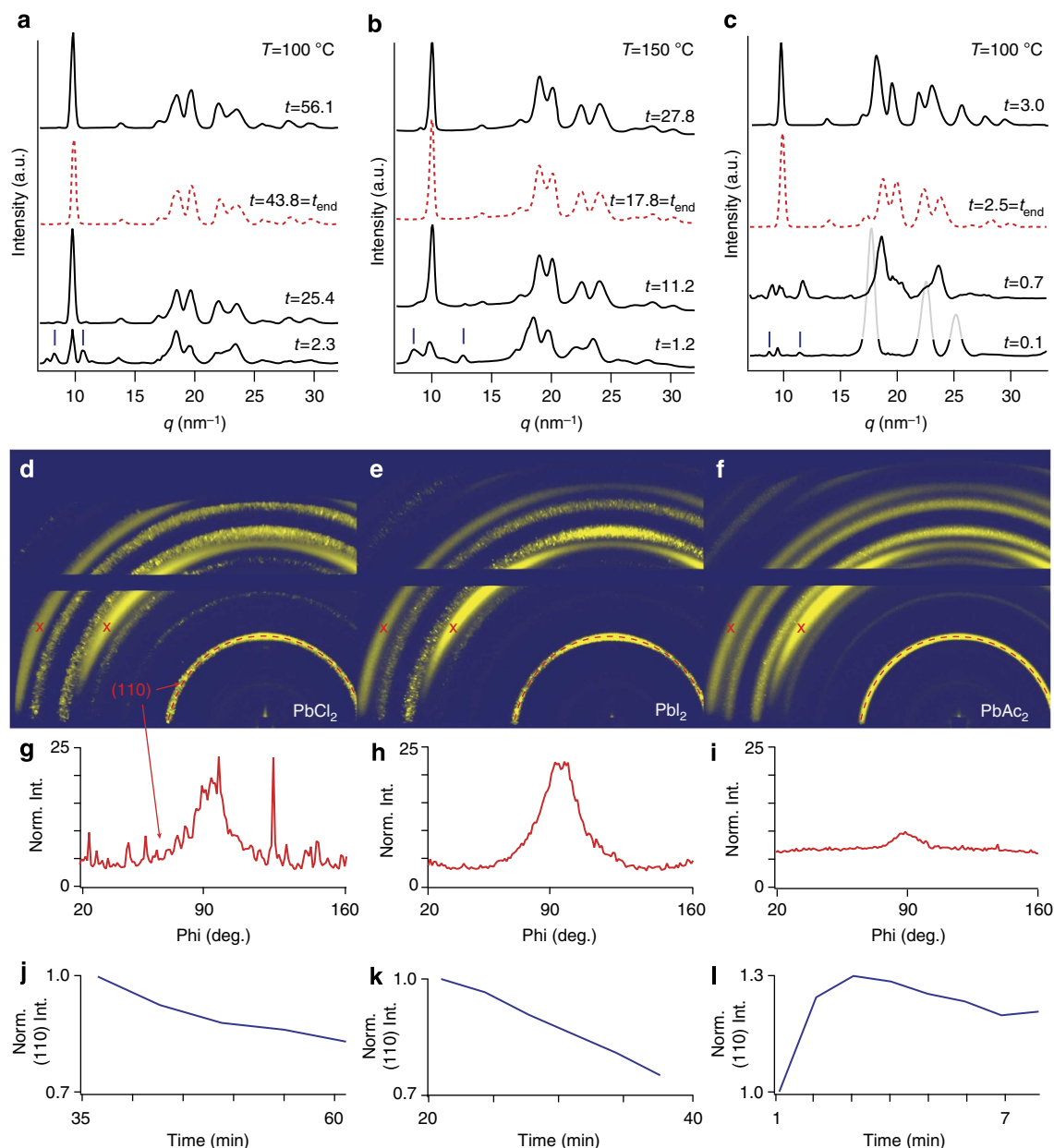


Figure 2 | In situ WAXS data for all three routes. Azimuthally integrated 1D plots at several key time points (t , in minutes) of annealing for films made from (a) PbCl_2 , (b) PbI_2 and (c) PbAc_2 routes. Red dashed traces indicate the point of complete perovskite transformation, blue stick markers on the bottom-most traces note the peaks used to track the ‘precursor’ structure; the three grey peaks in c are from the TiO_2 substrate and have been greyed out for clarity. (d–f) 2D WAXS images corresponding to t_{end} of the respective samples in a–c. Two rings marked with a red ‘x’ are from the TiO_2 substrate, horizontal line is the detector seam; red dashed line is the (110) peak for the tetragonal perovskite. (g–i) Azimuthal line scans for (110) peak at 10 nm^{-1} (q vector) radially integrated between $9.9\text{--}10.1\text{ nm}^{-1}$ and normalized such that the entire integrated area = 1,000. (j–l) Peak intensity of the (110) peak normalized by the intensity at t_{end} (defined in text). Plots begin ~ 1 time point before t_{end} and extend to the end of the experiment.

Cl^- is less than 300 p.p.m. (mass ratio). This then leads us to believe that the predominant phase in the mixed halide approach (PbCl_2 as the lead source) is $\text{CH}_3\text{NH}_3\text{PbI}_3$, similar to the neat iodide source. (that is, reagent solution with PbI_2). We note that such results are based on the films deposited on flat substrates rather than on mesoscopic structures (TiO_2 or Al_2O_3). Whether the Cl^- will remain at the interface in mesoscopic structures still needs further scrutiny³⁰. We also note that the predominant absence of Cl^- in the final film is consistent with the by-product ($\text{CH}_3\text{NH}_3\text{Cl}$) of the reaction between $\text{CH}_3\text{NH}_3\text{I}$ and PbCl_2 , evaporating from the film during annealing. Even though the bulk TGA results suggest that the $\text{CH}_3\text{NH}_3\text{Cl}$ should be thermally stable until 230°C , lowering of this temperature in a thin film is

expected because of the relative increase in surface area relative to volume. Therefore, if there is remnant unreacted organic halide within the film, it is at a very low level. Since methylammonium acetate is thermally unstable and is easily decomposed by heating (Fig. 3), it is very likely that the acetate will be predominantly removed after the annealing process. X-ray diffraction result shown in Fig. 1 also confirms that the crystal is very similar (if not identical) to $\text{CH}_3\text{NH}_3\text{PbI}_3$. If there were significant incorporation of acetate within the lattice, we would expect a reduction in the crystal lattice parameter because the ionic radius of acetate (0.162 nm) $<$ Cl^- (0.184 nm) $<$ I^- (0.220 nm). In addition, because of the much smaller ionic radii, acetate is even less likely than Cl^- to be incorporated into the lattice of $\text{CH}_3\text{NH}_3\text{PbI}_3$.

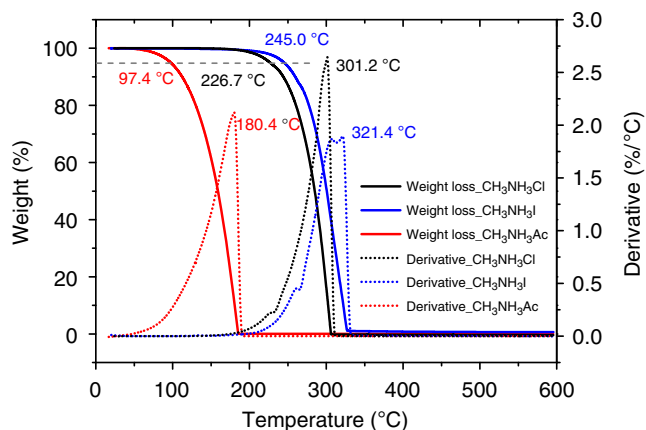


Figure 3 | Thermal stability analysis. TGA curves and their derivatives for $\text{CH}_3\text{NH}_3\text{X}$ ($\text{X} = \text{Cl}, \text{I}, \text{Ac}$) in nitrogen atmosphere.

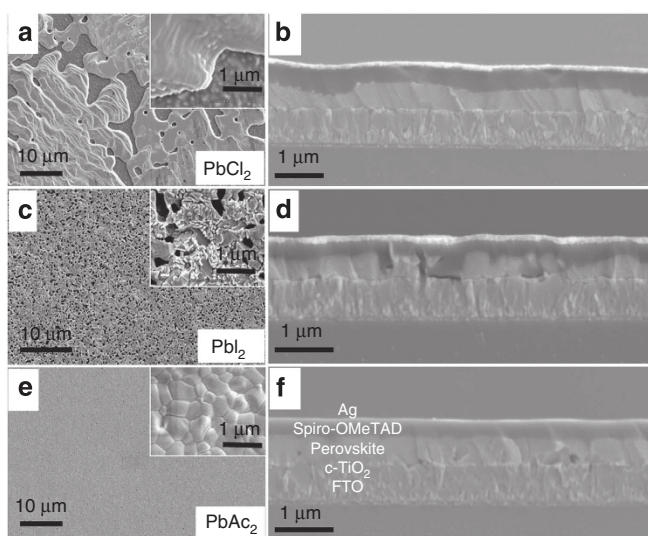


Figure 4 | SEM images of perovskite films. The films were deposited on FTO/ $c\text{-TiO}_2$ substrates from the three different lead sources PbCl_2 (a), PbI_2 (c) and PbAc_2 (e); insets show images with higher resolution; cross-sections of full devices with the perovskite derived from PbCl_2 (b), PbI_2 (d) and PbAc_2 (f) routes.

Perovskite film morphology. The composition of the perovskite solution and the temperature and rate at which the by-products are driven out of the film directly influence the crystallization rate, crystal size and film morphology. To illustrate this we show SEM images of the respective perovskite films deposited from the different perovskite solutions in Fig. 4. The perovskite films made from PbCl_2 (a) and PbI_2 (c) routes are noncontinuous with pinholes on different length scales. For the PbCl_2 route, the crystalline platelets appear to be on the 10s of micrometre length scale with large voids between them. This appearance is consistent with literature reports on similar films²². For the PbI_2 route, the pore size scale is much smaller, on the order of 100s of nanometres. However, there are no clear crystalline grain boundaries on this same length scale, and coupled with the X-ray diffraction results we presented earlier, this is consistent with the PbI_2 route delivering a porous crystalline film, rather than micropores between crystalline grains. The perovskite films derived from PbAc_2 (e) route exhibit a considerably different morphology attaining almost full coverage on the substrates with an absence of pinholes. Crystal grains are apparent that range

from a few hundred nanometres to one micrometre in size (e, inset). In addition, from the cross-section SEM images we can observe that the perovskite films derived from the PbAc_2 route are much smoother (f) than films made from PbCl_2 (b) and PbI_2 (d) routes, which in contrast show an undulating nature.

We further characterized the films derived from different lead sources by atomic force microscopy (AFM) as shown in Fig. 5. We calculated the root mean-squared roughness of the perovskite films made from PbCl_2 (Fig. 5a), PbI_2 (Fig. 5b) and PbAc_2 (Fig. 5c) routes to be 62.4, 52.2 and 12.3 nm respectively, for areas of $15\ \mu\text{m} \times 15\ \mu\text{m}$. The roughness of films fabricated via the PbAc_2 route is greatly reduced compared with traditional one-step solution coating, as is evident from both, AFM line segments (Fig. 5e) and height distribution analysis (Fig. 5f). It is worth emphasizing that there is a lack of pinholes for the PbAc_2 -derived film as compared with films from both PbCl_2 and PbI_2 (see circles in Fig. 5a,b). In addition, we show the surface AFM image of films produced by dual source vapour deposition of $\text{CH}_3\text{NH}_3\text{I}$ and PbCl_2 (ref. 5), which until now has delivered much smoother and more continuous films than solution coatings. It is encouraging that by choosing the appropriate anion of the lead source, the smoothness of the perovskite films made by a simple one-step solution coating are even better than those of the vapour-deposited films based on PbCl_2 (16.2 nm, Fig. 5d) or PbI_2 (23.2 nm)¹⁰.

Optical properties of the perovskite films. We show the absorption and photoluminescence (PL) spectra of perovskite films derived from the different lead sources in Fig. 6a. We observe similar absorption edges and sharp PL spectra at $\sim 775\ \text{nm}$ for all samples, consistent with non-detectable Cl or Ac in the perovskite structure. The PL spectra for films derived from PbI_2 and PbAc_2 routes are slightly blue-shifted with respect to the PbCl_2 -derived film. The magnitude of the shift correlates inversely with the observed crystal size, which is consistent with recent findings by De Bastiani *et al.*³¹, who saw that small perovskite crystallites result in blue-shifted emission relative to perovskite crystals, which are free to grow without any constraints. We note that this is unlikely to be a quantum confinement effect because of the relatively large size of all crystals, but may be because of crystal strain induced or relaxed at the grain boundaries.

We used photothermal deflection spectroscopy (PDS) to measure the optical absorption of the perovskite films near the band edge with high sensitivity and show the results in Fig. 6b. As was recently reported by Sadhanala *et al.* and De Wolf *et al.* for $\text{CH}_3\text{NH}_3\text{PbI}_3$, we observe sharp band edges for all the samples with an exponential decay of the density of states at the band edge, known as the Urbach tail^{32,33}. The extent of the absorption tail below the band gap is correlated with the degree of electronic disorder within the material, which could originate from thermal fluctuation of the ions composing the material but also from defects of the crystalline structure. Indeed, several recent modelling lines of work reported that defects within $\text{CH}_3\text{NH}_3\text{PbI}_3$ perovskite crystals would result in localized states in the range of a few hundred meV from the extended states of the bands, which will be detected as a broadening of the Urbach tail³⁴. Assuming the same level of thermal disorder, the slope of the exponential part of the Urbach tail gives an estimation about the concentration of these defects, in terms of Urbach energy E_u ^{32,33}. The estimated Urbach energies for samples derived from PbCl_2 , PbI_2 and PbAc_2 routes are shown in the inset of Fig. 6b, along with the respective fitting error, and are 14.0, 15.8 and 14.4 meV, respectively. The data fittings are shown in the Supplementary Fig. 3. These values suggest that within the measurement error, PbI_2 -derived perovskite has a higher

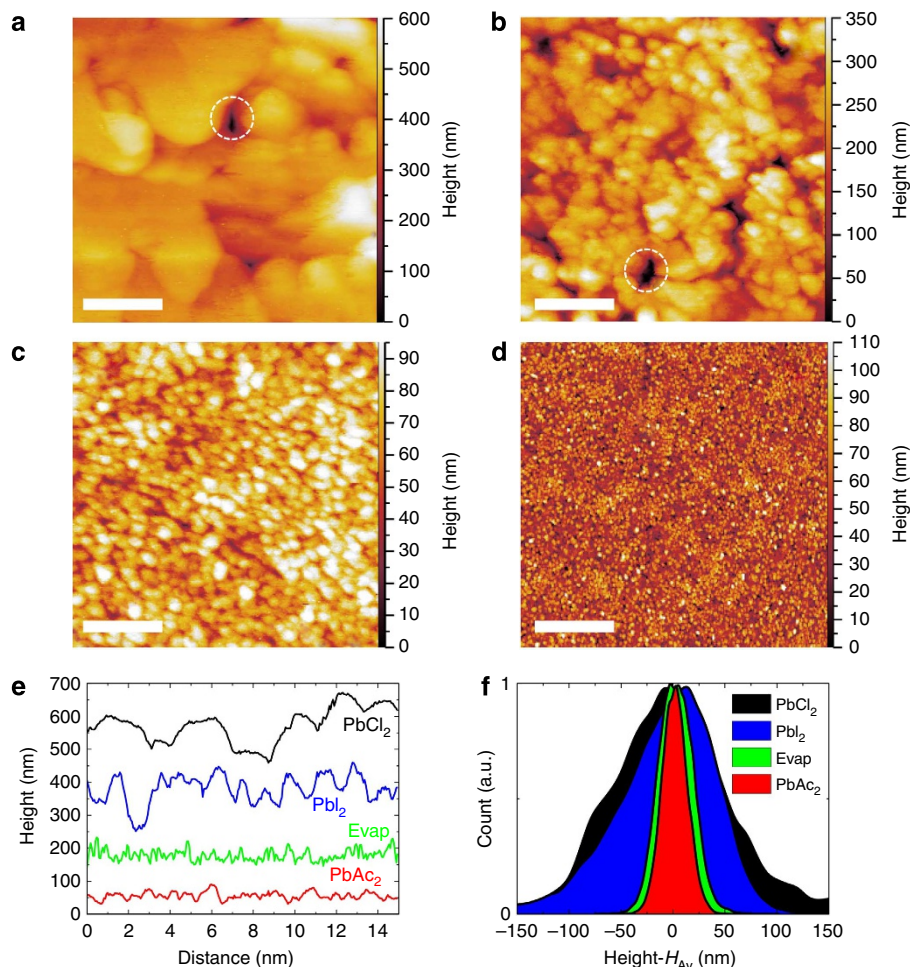


Figure 5 | AFM images of perovskite films. The films were deposited on a FTO/c-TiO₂ substrate derived from the three different lead sources, PbCl₂ (a), PbI₂ (b), PbAc₂ (c) and a vapour-deposited film based on PbCl₂ (d). The scale bars are 4 μm. Examples of pinholes in PbCl₂- and PbI₂-derived films are circled, which are notably absent in the film from PbAc₂. Line segments from each scan (e) and the height distribution (f) around the average height, H_{Av} , show the exceptional smoothness of the PbAc₂-derived films.

level of electronic disorder compared with both PbCl₂- and PbAc₂-derived perovskites.

Photovoltaic performance and characterization. We fabricated PHJ solar cells employing the perovskite films prepared from the different lead sources, and present the results for the optimized devices in Fig. 7a. We show the respective annealing time optimization for the different samples in the Supplementary Figs 4–6. To achieve the best device performance, the perovskite films made from PbCl₂ and PbI₂ routes needed to be annealed for 2 h and 40 min, respectively, at their corresponding temperatures of 100 and 150 °C. However, the optimized anneal time was much shorter for the films made from the PbAc₂ route (5 min at 100 °C), which is consistent with the much more facile removal of excess CH₃NH₃Ac during crystallization. Importantly, this represents a considerable saving in time, energy and capital expenditure when considering industrial-scale manufacture of this technology. As shown in Table 1, the average PCE with optimized annealing times for perovskites from PbCl₂, PbI₂ and PbAc₂ routes are 12.0%, 9.3% and 14.0%, respectively. Therefore, by using PbAc₂ as the lead source, we have not only achieved much faster and more uniform crystallization, but this has translated into improved device performance over the other two routes. In addition, the smaller standard deviation (s.d.) of solar

cell performance parameters for the PbAc₂ route as compared with the other two routes indicates a higher degree of reproducibility of the highest efficiency devices. The average open-circuit voltage (V_{oc}) of devices increases in the sequence PbI₂ (0.85 V) ~ PbCl₂ (0.88 V) < PbAc₂ (0.99 V). The lower voltages with PbI₂- and PbCl₂-derived samples can be explained by the increased shunting pathway because of contact between spiro-OMeTAD and TiO₂ compact layer from the noncontinuous perovskite films, as evident from the SEM images (Fig. 4). We further confirmed this feature by electrochemical impedance spectroscopy (EIS) measurements showing that the recombination was strongly suppressed by the PbAc₂ route (see more details in Supplementary Fig. 7). We also observed that the average fill factors (FFs) of devices via the PbI₂ route are relatively low, in comparison with those based on PbCl₂ and PbAc₂ routes. The electron and hole diffusion lengths were observed to be much lower in the materials prepared via the PbI₂ route in this manner because of much shorter electron and hole lifetimes^{11,12}. This faster bulk recombination may explain the lower FFs, which may be attributed to more defects in the film (consistent with the PDS measurements we show here) or because of the minor impurity of PbI₂ after annealing (as we also observed in the X-ray diffraction).

We show in Fig. 7b the J - V curve for the best device fabricated from the PbAc₂ route measured under simulated AM 1.5G (100 mW cm⁻²) solar irradiation in air, exhibiting outstanding

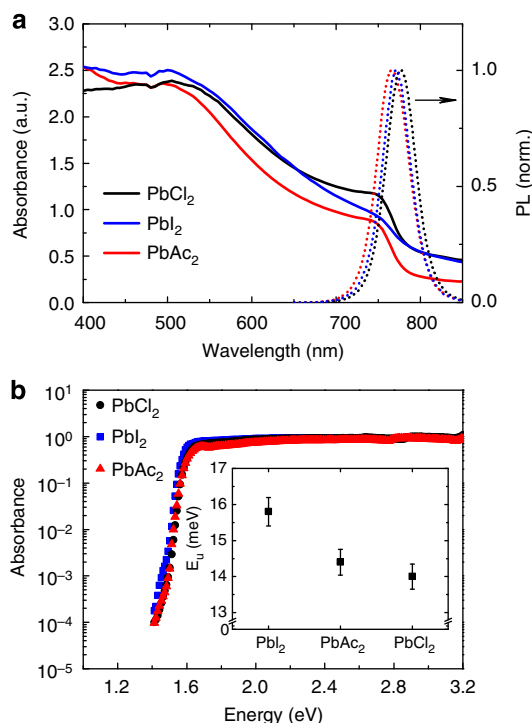


Figure 6 | Optical properties of the perovskite films. (a) UV-vis absorption spectra for perovskite films deposited on FTO/c-TiO₂ substrates derived from different lead sources. The right axis shows the PL spectra of the perovskites prepared on glass, with photoexcitation at 507 nm. (b) The absorption spectra of perovskite films derived from different lead sources measured using the PDS technique. The inset shows the corresponding Urbach energies for all three samples. The error bar is defined by the s.d.

performance with $J_{SC} = 21.7 \text{ mA cm}^{-2}$, $V_{OC} = 0.97 \text{ V}$, $FF = 0.72$ and $PCE = 15.2\%$ when scanned from forward bias (FB) to short circuit (SC), and $J_{SC} = 21.7 \text{ mA cm}^{-2}$, $V_{OC} = 0.87 \text{ V}$, $FF = 0.65$ and $PCE = 12.3\%$ when scanned from SC to FB, so far among the highest efficiencies based on CH₃NH₃PbI₃ with a PHJ structure^{5,7,10,26}. The hysteresis between forward and backward J - V scan is a manifestation of a slow response time of the cell to a change in load and the mechanism, although yet to be fully understood, is discussed in detail in recent publications^{35,36}. The best means to compare cells that exhibit hysteresis is to measure the ‘stabilized power output’ under load near the maximum power point. The stabilized power output of the same cell is shown in the inset, exhibiting a PCE of $\sim 13.4\%$, which is 88% of the highest derived FB-SC scan efficiency. For a PHJ solar cell, this level of hysteresis and the difference between the two J - V curves determined and stabilized power output is relatively low. As a comparison, the JV-determined maximum PCE and stabilized power output for best devices fabricated from the PbCl₂ route are 14.1% and 10.5% (74% of JV PCE), respectively (Supplementary Fig. 8), whereas from those the PbI₂ route are 10.1% and 6.5% (64% of JV PCE), respectively (Supplementary Fig. 9), indicating that the PbAc₂ route has a much higher stabilized power output than either the PbCl₂ or PbI₂ route, and thus a reduced impact of hysteresis.

Discussion

Through this study we have unraveled a number of previously perplexing issues associated with solution processed organic-inorganic perovskite thin-film formation and crystallization, and in addition presented a new route to create CH₃NH₃PbI₃ films, which results in much faster and more uniform thin-film

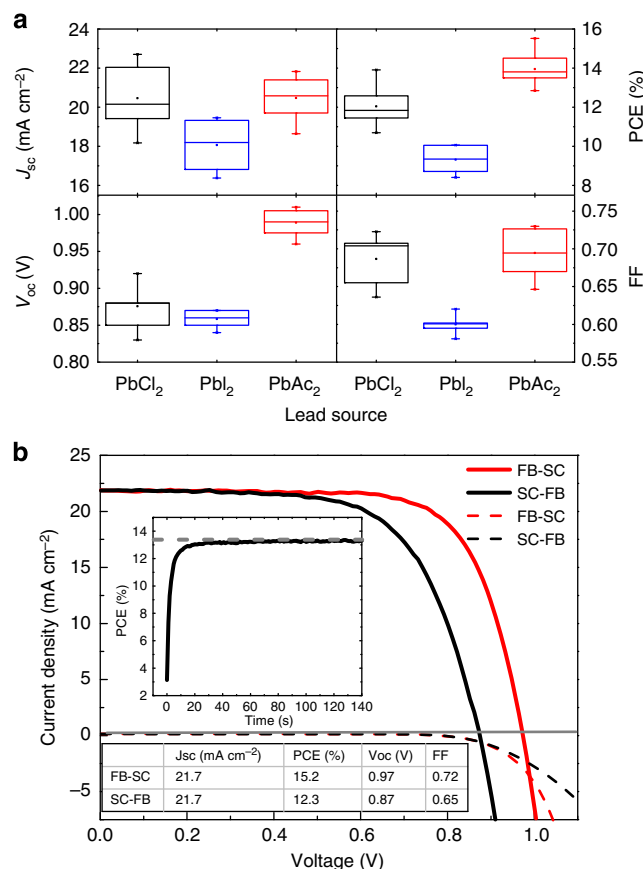


Figure 7 | Photovoltaic performance characteristics. (a) Device performance at optimized conditions using different lead sources measured under simulated AM 1.5 sunlight of 100 mW cm^{-2} irradiance. The data are represented as a standard box plot where the box range is defined by the s.d. Ninety percent of all data points fall within the upper and lower whisker. (b) J - V curves of the best-performing device using PbAc₂ as lead source measured under simulated AM 1.5 sunlight of 100 mW cm^{-2} irradiance (solid lines) and in the dark (dashed lines), with the stabilized power output of the same cell shown in the inset. All J - V scans were performed from forward bias to short circuit (FB-SC) and from short circuit to forward bias (SC-FB) at a scan rate of 0.15 Vs^{-1} . The data in **a** are derived from the FB-SC scans.

Table 1 | Solar cell performance parameters.

Lead source	J_{sc} (mA cm ⁻²)	PCE (%)	V_{oc} (V)	FF
PbAc ₂	20.5 ± 1.0	14.0 ± 0.7	0.99 ± 0.01	0.69 ± 0.03
PbCl ₂	20.5 ± 1.6	12.0 ± 1.0	0.88 ± 0.03	0.69 ± 0.03
PbI ₂	18.1 ± 1.4	9.3 ± 0.8	0.85 ± 0.01	0.60 ± 0.02

FF, fill factor; J_{sc}, short-circuit current density; PCE, power conversion efficiency; V_{oc}, open-circuit voltage

formation. The specific steps in the perovskite crystallization from a solution containing excess organic component are as follows:

1. During the initial stages of solution coating, solvent evaporation occurs; however, the excess organic component remains predominantly entrapped with the film and full crystallization to the perovskite is strongly retarded. As such, the excess organic component is responsible for the formation a uniform film. We note that there may be a ‘precursor’ material, which forms from the starting composition during this stage²⁷.

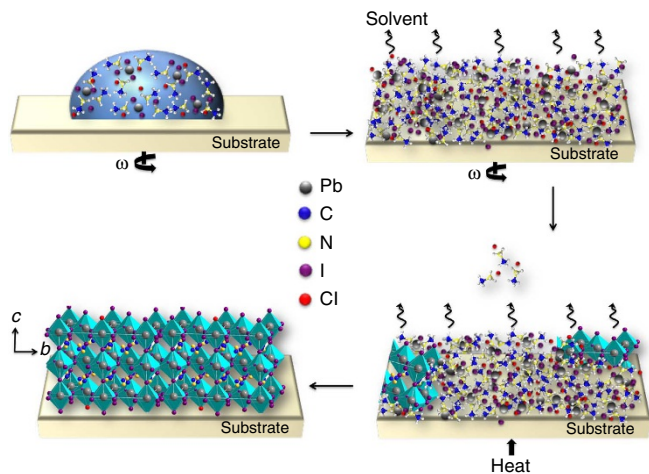


Figure 8 | Illustration of the stages in the fabrication of $\text{CH}_3\text{NH}_3\text{PbI}_{3-x}\text{Cl}_x$ thin films. During the solution coating process, solvent evaporation occurs but the excess organic component remains within the film, the removal of which by following thermal annealing leads to the fully crystallized perovskite thin film.

- The crystallization to the ABX_3 perovskite *only* proceeds as the excess organic component is driven out of the film with increased enthalpy; however, the temperature and time over which this process occurs depend strongly upon the by-product of the crystallization ($\text{CH}_3\text{NH}_3\text{X}$, $\text{X} = \text{Cl}$, I or Ac).
- If the excess organic component is not volatile enough, we have to put in too much heat for too long to drive it out and the film morphology coarsens. What we do not know yet is what the impact of excessive heating has upon the stoichiometry of the crystals; however, we speculate that this may lead to CH_3NH_3 and halide deficiencies, which may be the cause for the increased energetic disorder in the perovskites fabricated via the PbI_2 route.
- By choosing a by-product salt with volatility much higher than $\text{CH}_3\text{NH}_3\text{Cl}$ and $\text{CH}_3\text{NH}_3\text{I}$, we have managed to reduce the required thermal input and hence achieved crystallization faster resulting in much smoother films with smaller and fewer pinholes.

As an example, we show an illustration of the stages in the fabrication of $\text{CH}_3\text{NH}_3\text{PbI}_{3-x}\text{Cl}_x$ thin films in Fig. 8.

Through high-resolution elemental analysis, we confirmed that Cl does not exist at a high concentration in the perovskite films that we deposited on flat substrates using PbCl_2 as lead source in this study. The role of the Cl (in comparison with I) is to reduce the temperature at which the excess organic component can be driven off, enabling subsequent crystallization from an organic-rich precursor. We cannot exclude a direct electronic role of Cl, or incorporation of Cl at the grain boundaries or surfaces; however, the current study is consistent with the main role being its influence on crystallization. The material fabricated from combining $\text{CH}_3\text{NH}_3\text{I}$ and PbCl_2 has been referred to as a mixed halide perovskite $\text{CH}_3\text{NH}_3\text{PbI}_{3-x}\text{Cl}_x$. Even though the Cl content is likely to be very low, this notation remains relevant and clearly distinguishes between the PbCl_2 and PbI_2 routes. However, when non-halide lead sources are employed, we suggest simply referring to the material as $\text{CH}_3\text{NH}_3\text{PbI}_3$, but clearly identifying the fabrication route.

We note that we cannot exclude some excess organic component remaining within the film or being entrapped at the $c\text{-TiO}_2$ /perovskite interface. We also have no precise knowledge of the time when solvent evaporation occurs, and whether

entrapped solvent is driven out concurrently as the excess organic component is driven out of the film or if this happens sequentially and as such the relative importance of the interactions between solvent and organic component remains uncertain.

In summary, we have systematically studied the role of the anions in the lead source during perovskite thin-film crystallization. We found that the anions determine the perovskite crystal growth kinetics, which in turn affects the film morphology and device performance. The role of the excess organic component is to aid with uniform film formation in the early stages of film deposition. By changing lead halides (PbCl_2 and PbI_2) into a non-halide lead source (PbAc_2), we accelerated the crystal growth kinetics in the organic-rich route because of the facile removal of $\text{CH}_3\text{NH}_3\text{Ac}$. As such, by a simple one-step solution-coating technique, we have enhanced both perovskite film smoothness and surface coverage, which in turn lead to better device performance. In addition, a shorter annealing time will have a significant impact on future manufacturing costs of perovskite solar modules. Importantly, this work demonstrates the possibility to tune the crystal growth kinetics by simple chemical management and opens an avenue to make uniform crystallized perovskite thin films at even lower temperatures by using other non-halide lead sources.

Methods

Perovskite solution preparation. Methylammonium iodide ($\text{CH}_3\text{NH}_3\text{I}$) was prepared by reacting methylamine, 33 wt% in ethanol (Sigma-Aldrich), with hydroiodic acid (HI) 57 wt% in water (Sigma-Aldrich), at room temperature. HI was added dropwise while stirring. Upon drying at 100°C , a white powder was formed, which was dried overnight in a vacuum oven and purified with ethanol before use. To generate the perovskite solution, $\text{CH}_3\text{NH}_3\text{I}$ and PbX_2 ($\text{X} = \text{Cl}$, I , Ac) were dissolved in anhydrous N,N -Dimethylformamide at a 3:1 molar ratio with final concentrations of ~ 40 wt%. Lead acetate (CAS No. 6080-56-4) was purchased from Sigma-Aldrich.

Substrate preparation. Devices were fabricated on FTO-coated glass (Pilkington, $7\ \Omega\ \square^{-1}$). Initially, FTO was removed from regions under the anode contact by etching the FTO with 2 M HCl and zinc powder. Substrates were then cleaned sequentially in 2% Hellmanex detergent, acetone, propan-2-ol and oxygen plasma. A hole-blocking layer of compact TiO_2 was deposited by spin-coating a mildly acidic solution of titanium isopropoxide in ethanol, and annealed at 500°C for 30 min. Spin-coating was carried out at 2,000 r.p.m. for 60 s.

Perovskite deposition. For devices, the perovskites were prepared by spin-coating a 40 wt% perovskite solution at 2,000 r.p.m. in a nitrogen-filled glovebox. After spin-coating, the films were annealed at 100°C for 5 min, 100°C for 2 h and 150°C for 40 min for perovskites derived from PbAc_2 , PbCl_2 and PbI_2 routes, respectively. The spiro-OMeTAD hole-transporting layer was then deposited from a 66-mM chlorobenzene solution containing additives of lithium bis(trifluoromethanesulfonyl)imide and 4-tert-butylpyridine. Finally, 120-nm-silver electrodes were thermally evaporated under vacuum of $\sim 10^{-6}$ Torr, at a rate of $\sim 0.1\ \text{nm s}^{-1}$, to complete the devices.

X-ray diffraction. 2θ scans were obtained from samples of perovskite deposited on the compact TiO_2 -coated FTO glass using an X-ray diffractometer (Panalytical X'Pert Pro).

SEM. A field emission SEM (Hitachi S-4300) was used to acquire SEM images. The instrument uses an electron beam accelerated at 10–30 kV, enabling operation at a variety of currents.

AFM. The AFM images were obtained using a ThermoMicroscope M5 in non-contact mode and scanning over a range of $15\ \mu\text{m}$ by $15\ \mu\text{m}$ at a resolution of 256×256 data points. The surface roughness was measured as the root mean-squared roughness over the scanning area.

UV-vis. The absorbance of the perovskite films on compact TiO_2 -coated FTO glasses were measured on a Carry 300 Bio (Agilent Technologies). To reduce the sample variance, at least three samples were determined for each group and the average of all spectra presented.

Elemental analysis. The samples were made using the same spin-coating and annealing conditions for device fabrication. The perovskite films were then carefully scratched off from the substrate in the glovebox. To determine the concentration of chlorine ion, 15 mg of sample was accurately weighed and filled into a flask with oxygen. The sample was then ignited and the combustion products were directly titrated in the combustion flask using AgNO_3 ($0.1 \mu\text{mol} \mu\text{l}^{-1}$, inject $1 \mu\text{l}$ each time or corresponding to 30 p.p.m. resolution).

TGA. Thermal decomposition profiles of $\text{CH}_3\text{NH}_3\text{X}$ ($\text{X} = \text{Cl, I, Ac}$) were recorded by a thermogravimetric analyzer TA Q500 in nitrogen atmosphere with a flow rate of 20 ml min^{-1} . The temperature varied from 25 to $600 \text{ }^\circ\text{C}$ at a heating rate of $10 \text{ }^\circ\text{C min}^{-1}$. $\text{CH}_3\text{NH}_3\text{Ac}$ was synthesized according to literature report³⁷.

PDS measurement. The PDS was performed using a set-up similar to that previously reported by Jackson *et al.*³⁸ We collected PDS measurements for perovskite films deposited on the compact TiO_2 layer, following the same procedure that we used to prepare the solar cells. For this particular measurement, we made use of quartz rather than the FTO-coated glass to minimize light absorption because of the substrate. During the measurement we kept the samples in a hermetically sealed quartz cuvette filled with an inert liquid, Fluorinert FC-72 from 3M Corporation, which acts as the deflection medium with high temperature-dependent refractive index. We excited the perovskite films with a modulated monochromated light beam perpendicular to the plane of the sample. A modulated monochromated light beam was produced by a combination of a Light Support MKII 100 W Xenon arc source and a CVI DK240 monochromator. The transverse probe beam was produced with Qioptiq 670-nm fibre-coupled diode laser and passed as close as possible to the perovskite film surface. Beam deflection was measured using a differentially amplified quadrant photodiode and a Stanford Research SR830 lock-in amplifier.

PL. Samples consisted of perovskites prepared on glass and coated with the inert polymer poly(methyl methacrylate). PL spectra were acquired using a time-resolved single photon-counting set-up (FluoTime 300, PicoQuant GmbH). Samples were photoexcited using a 507-nm laser head (LDH-P-C-510, PicoQuant GmbH) with pulse duration of 117 ps, fluence of $\sim 0.03 \mu\text{J cm}^{-2}$ per pulse and a repetition rate of 10 MHz.

WAXS. Samples were spin-coated at the Cornell High Energy Synchrotron Source and loaded on a custom-built temperature-controlled grazing incidence stage at the D1 beamline³⁹, with a typical transfer period of 2–5 min. Images were collected using a Pilatus 300 K high-speed pixel array detector, 487×619 pixels with $172 \mu\text{m}$ per pixel resolution, at a distance of 93 mm from the sample. The X-ray wavelength was 0.1155 nm and the incident beam angle was $\sim 0.5^\circ$, well above the substrate critical angle. Typical exposure times were $< 1 \text{ s}$. Samples were moved after each exposure to avoid beam damage and the total spectra for a given sample collected at 12–16 different locations. 2D WAXS images were integrated using the Fit2D software package from ESRF; background subtraction and peak area calculations were performed using IGOR, a commercially available software product.

Impedance. EIS measurements were performed under open-circuit conditions by illuminating the solar cells using a powerful LED array (maximum output power of 306 lumen at 700 mA driving current), emitting light at 627 nm. Light intensities were adjusted by controlling the diode's current by a LED driver; the LED was previously calibrated employing a Si reference photodiode. The illuminated area of the solar cells was set at 0.0625 cm^2 , using a mask. The spectra were recorded by varying the frequency range from 100 KHz to 10 mHz (amplitude of voltage perturbation: 15 mV RMS) using an electrochemical working station (Autolab PGSTAT302N, Ecochemie) and its built-in frequency response analyzer (FRA2). The recorded spectra were fitted using the NOVA software.

Solar cell characterization. The J - V curves were measured (2400 Series SourceMeter, Keithley Instruments) under simulated AM 1.5 sunlight at 100 mW cm^{-2} irradiance generated by an Abet Class AAB sun 2000 simulator, with the intensity calibrated with an NREL-calibrated KG5-filtered Si reference cell. The mismatch factor was calculated to be less than 1%. The solar cells were masked with a metal aperture to define the active area, typically 0.0625 cm^2 (measured individually for each mask) and measured in a light-tight sample holder to minimize any edge effects and ensure that the reference cell and test cell are located in the same spot under the solar simulator during measurement.

References

- Lee, M. M., Teuscher, J., Miyasaka, T., Murakami, T. N. & Snaith, H. J. Efficient hybrid solar cells based on meso-superstructured organometal halide perovskites. *Science* **338**, 643–647 (2012).
- Kim, H.-S. *et al.* Lead iodide perovskite sensitized all-solid-state submicron thin film mesoscopic solar cell with efficiency exceeding 9%. *Sci. Rep.* **2**, 591 (2012).
- Heo, J. H. *et al.* Efficient inorganic-organic hybrid heterojunction solar cells containing perovskite compound and polymeric hole conductors. *Nat. Photon* **7**, 486–491 (2013).
- Burschka, J. *et al.* Sequential deposition as a route to high-performance perovskite-sensitized solar cells. *Nature* **499**, 316–319 (2013).
- Liu, M., Johnston, M. B. & Snaith, H. J. Efficient planar heterojunction perovskite solar cells by vapour deposition. *Nature* **501**, 395–398 (2013).
- Malinkiewicz, O. *et al.* Perovskite solar cells employing organic charge-transport layers. *Nat. Photon* **8**, 128–132 (2014).
- Liu, D. & Kelly, T. L. Perovskite solar cells with a planar heterojunction structure prepared using room-temperature solution processing techniques. *Nat. Photon* **8**, 133–138 (2014).
- Jeon, N. J. *et al.* Solvent engineering for high-performance inorganic-organic hybrid perovskite solar cells. *Nat. Mater.* **13**, 897–903 (2014).
- Hodes, G. Perovskite-based solar cells. *Science* **342**, 317–318 (2013).
- Chen, Q. *et al.* Planar heterojunction perovskite solar cells via vapor-assisted solution process. *J. Am. Chem. Soc.* **136**, 622–625 (2013).
- Stranks, S. D. *et al.* Electron-hole diffusion lengths exceeding 1 micrometer in an organometal trihalide perovskite absorber. *Science* **342**, 341–344 (2013).
- Xing, G. *et al.* Long-range balanced electron-and hole-transport lengths in organic-inorganic $\text{CH}_3\text{NH}_3\text{PbI}_3$. *Science* **342**, 344–347 (2013).
- Kojima, A., Teshima, K., Shirai, Y. & Miyasaka, T. Organometal halide perovskites as visible-light sensitizers for photovoltaic cells. *J. Am. Chem. Soc.* **131**, 6050–6051 (2009).
- Ball, J. M., Lee, M. M., Hey, A. & Snaith, H. J. Low-temperature processed meso-superstructured to thin-film perovskite solar cells. *Energy Environ. Sci.* **6**, 1739–1743 (2013).
- Green, M. A., Ho-Baillie, A. & Snaith, H. J. The emergence of perovskite solar cells. *Nat. Photon* **8**, 506–514 (2014).
- Noh, J. H., Im, S. H., Heo, J. H., Mandal, T. N. & Seok, S. I. Chemical management for colorful, efficient, and stable inorganic-organic hybrid nanostructured solar cells. *Nano Lett.* **13**, 1764–1769 (2013).
- Pellet, N. *et al.* Mixed-organic-cation perovskite photovoltaics for enhanced solar-light harvesting. *Angew. Chem. Int. Ed.* **53**, 3151–3157 (2014).
- Ogomi, Y. *et al.* $\text{CH}_3\text{NH}_3\text{Sn}_x\text{Pb}_{(1-x)}\text{I}_3$ perovskite solar cells covering up to 1060 nm. *J. Phys. Chem. Lett.* **5**, 1004–1011 (2014).
- Hao, F., Stoumpos, C. C., Chang, R. P. & Kanatzidis, M. G. Anomalous band gap behavior in mixed Sn and Pb perovskites enables broadening of absorption spectrum in solar cells. *J. Am. Chem. Soc.* **136**, 8094–8099 (2014).
- Zhao, Y. & Zhu, K. $\text{CH}_3\text{NH}_3\text{Cl}$ -assisted one-step solution growth of $\text{CH}_3\text{NH}_3\text{PbI}_3$: structure, charge-carrier dynamics, and photovoltaic properties of perovskite solar cells. *J. Phys. Chem. C* **118**, 9412–9418 (2014).
- Moore, D. T., Sai, H., Tan, K. W., Estroff, L. A. & Wiesner, U. Impact of the organic halide salt on final perovskite composition for photovoltaic applications. *APL Mater* **2**, 081802 (2014).
- Eperon, G. E., Burlakov, V. M., Docampo, P., Goriely, A. & Snaith, H. J. Morphological Control for high performance, solution-processed planar heterojunction perovskite solar cells. *Adv. Func. Mater.* **24**, 151–157 (2014).
- Conings, B. *et al.* Perovskite-based hybrid solar cells exceeding 10% efficiency with high reproducibility using a thin film sandwich approach. *Adv. Mater.* **26**, 2041–2046 (2014).
- You, J. *et al.* Low-temperature solution-processed perovskite solar cells with high efficiency and flexibility. *ACS Nano* **8**, 1674–1680 (2014).
- Colella, S. *et al.* $\text{MAPbI}_{3-x}\text{Cl}_x$ mixed halide perovskite for hybrid solar cells: the role of chloride as dopant on the transport and structural properties. *Chem. Mater.* **25**, 4613–4618 (2013).
- Docampo, P. *et al.* Solution deposition-conversion for planar heterojunction mixed halide perovskite solar cells. *Adv. Energ. Mater.* **4** (2014).
- Tan, K. W. *et al.* Thermally induced structural evolution and performance of mesoporous block copolymer-directed alumina perovskite solar cells. *ACS Nano* **8**, 4730–4739 (2014).
- Dualeh, A. *et al.* Effect of annealing temperature on film morphology of organic-inorganic hybrid perovskite solid-state solar cells. *Adv. Funct. Mater.* **24**, 3250–3258 (2014).
- Haslam, J., Hamilton, J. B. & Squirrel, D. C. M. The determination of chlorine by the oxygen flask combustion method: a single unit for electrical ignition by remote control and potentiometric titration. *Analyst* **85**, 556–560 (1960).
- Mosconi, E., Ronca, E. & De Angelis, F. First principles investigation of the TiO_2 /organohalide perovskites interface: the role of interfacial chlorine. *J. Phys. Chem. Lett.* **5**, 2619–2625 (2014).
- De Bastiani, M., D'Innocenzo, V., Stranks, S. D., Snaith, H. J. & Petrozza, A. Role of the crystallization substrate on the photoluminescence properties of organo-lead mixed halides perovskites. *APL Mater.* **2**, 081509 (2014).
- Sadhanala, A. *et al.* Preparation of Single-Phase Films of $\text{CH}_3\text{NH}_3\text{Pb}(\text{I}_{1-x}\text{Br}_x)_3$ with Sharp Optical Band Edges. *The Journal of Physical Chemistry Letters* **5**, 2501–2505 (2014).

33. De Wolf, S. *et al.* Organometallic halide perovskites: sharp optical absorption edge and its relation to photovoltaic performance. *J. Phys. Chem. Lett.* **5**, 1035–1039 (2014).
34. Kim, J., Lee, S.-H., Lee, J. H. & Hong, K.-H. The role of intrinsic defects in methylammonium lead iodide perovskite. *J. Phys. Chem. Lett.* **5**, 1312–1317 (2014).
35. Snaith, H. J. *et al.* Anomalous hysteresis in perovskite solar cells. *J. Phys. Chem. Lett.* **5**, 1511–1515 (2014).
36. Unger, E. L. *et al.* Hysteresis and transient behavior in current-voltage measurements of hybrid-perovskite absorber solar cells. *Energy Environ. Sci.* **7**, 3690–3698 (2014).
37. Buckingham, D. A., Clark, C. R., Rogers, A. J. & Simpson, J. Synthesis and structures of five [Co (Mecyclen)(S-AlaO)]²⁺ isomers: use of nOe and COSY 1H NMR spectroscopy for structural assignment in solution. *Inorg. Chem.* **34**, 3646–3657 (1995).
38. Jackson, W. B., Amer, N. M., Boccard, A. C. & Fournier, D. Photothermal deflection spectroscopy and detection. *Appl. Opt.* **20**, 1333–1344 (1981).
39. Bian, K. *et al.* Shape-anisotropy driven symmetry transformations in nanocrystal superlattice polymorphs. *ACS Nano* **5**, 2815–2823 (2011).

Acknowledgements

We acknowledge the EPSRC Supergen, ERC Hyper Project for financial support and thank Professor Ming-Hui Lu for elemental analysis and Ms Mingzhen Liu for providing vapour-deposited perovskite film for AFM study. Work at Cornell University was supported by the U.S. Department of Energy, Office of Science, Basic Energy Sciences, under Award # DE-SC0010560. This work made use of the research facilities of the Cornell High Energy Synchrotron Source (CHESS), which is supported by the NSF and

the NIH/National Institute of General Medical Sciences under NSF award DMR-1332208. We acknowledge the use of Fit2D for WAXS data analysis and thank AP Hammersley and ESRF, for its development and free use. T.S. acknowledges financial support by a Marie Curie Intra European Fellowship (MESO-SUPERCELLS, PIEG-GA-2012-327015) within the 7th European Community Framework Programme.

Author contributions

W.Z. and H.J.S. conceived of the project. W.Z. performed the device fabrication and characterization. M.S., M.T.H. and J.A.A.-W. contributed to the film morphology study. S.K.P. performed TGA analysis. M.S. prepared samples for WAXD, and D.T.M., L.A.E. and U.W. contributed to WAXD study and analysis. A.A., A.S. and S.D.S. performed optical measurements. G.E.E. performed X-ray diffraction analysis. T.S. performed EIS study. S.Y. and Y.C. contributed to the elemental analysis. W.Z. wrote the first draft of the paper. All authors contributed to the writing of the paper.

Additional information

Supplementary Information accompanies this paper at <http://www.nature.com/naturecommunications>

Competing financial interests: The authors declare no competing financial interests.

Reprints and permission information is available online at <http://npg.nature.com/reprintsandpermissions/>

How to cite this article: Zhang, W. *et al.* Ultrasoft organic–inorganic perovskite thin-film formation and crystallization for efficient planar heterojunction solar cells. *Nat. Commun.* **6**:6142 doi: 10.1038/ncomms7142 (2015).