

# UltraVISTA: a new ultra-deep near-infrared survey in COSMOS<sup>★,★★</sup>

H. J. McCracken<sup>1</sup>, B. Milvang-Jensen<sup>2</sup>, J. Dunlop<sup>3</sup>, M. Franx<sup>4</sup>, J. P. U. Fynbo<sup>2</sup>, O. Le Fèvre<sup>5</sup>,  
J. Holt<sup>4</sup>, K. I. Caputi<sup>3,6</sup>, Y. Goranova<sup>1</sup>, F. Buitrago<sup>3</sup>, J. P. Emerson<sup>7</sup>, W. Freudling<sup>8</sup>, P. Hudelot<sup>1</sup>,  
C. López-Sanjuan<sup>5</sup>, F. Magnard<sup>1</sup>, Y. Mellier<sup>1</sup>, P. Møller<sup>8</sup>, K. K. Nilsson<sup>2</sup>, W. Sutherland<sup>7</sup>,  
L. Tasca<sup>5</sup>, and J. Zabl<sup>2</sup>

<sup>1</sup> Institut d'Astrophysique de Paris, UMR7095 CNRS, Université Pierre et Marie Curie, 98 bis Boulevard Arago, 75014 Paris, France  
e-mail: hjmcc@iap.fr

<sup>2</sup> Dark Cosmology Centre, Niels Bohr Institute, University of Copenhagen, Juliane Maries Vej 30, 2100 Copenhagen, Denmark

<sup>3</sup> SUPA, Institute for Astronomy, University of Edinburgh, Royal Observatory, Edinburgh, EH9 3HJL, UK

<sup>4</sup> Leiden Observatory, Leiden University, PO Box 9513, 2300 RA Leiden, The Netherlands

<sup>5</sup> Laboratoire d'Astrophysique de Marseille, CNRS et Aix-Marseille Université, 38 rue Frédéric Joliot-Curie,  
13388 Marseille Cedex 13, France

<sup>6</sup> Kapteyn Astronomical Institute, University of Groningen, PO Box 800, 9700 AV Groningen, The Netherlands

<sup>7</sup> Astronomy Unit, School of Physics and Astronomy, Queen Mary University of London, Mile End Road, London, E1 4NS, UK

<sup>8</sup> European Southern Observatory, Karl-Schwarzschild-Strasse 2, 85748 Garching bei München, Germany

Received 30 April 2012 / Accepted 22 June 2012

## ABSTRACT

In this paper we describe the first data release of the UltraVISTA near-infrared imaging survey of the COSMOS field. We summarise the key goals and design of the survey and provide a detailed description of our data reduction techniques. We provide stacked, sky-subtracted images in  $YJHK_s$  and narrow-band filters constructed from data collected during the first year of UltraVISTA observations. Our stacked images reach  $5\sigma$  AB depths in an aperture of  $2''$  diameter of  $\sim 25$  in  $Y$  and  $\sim 24$  in  $JHK_s$  bands and all have sub-arcsecond seeing. To this  $5\sigma$  limit, our  $K_s$  catalogue contains 216 268 sources. We carry out a series of quality assessment tests on our images and catalogues, comparing our stacks with existing catalogues. The  $1\sigma$  astrometric rms in both directions for stars selected with  $17.0 < K_s(AB) < 19.5$  is  $\sim 0.08''$  in comparison to the publicly-available COSMOS ACS catalogues. Our images are resampled to the same pixel scale and tangent point as the publicly available COSMOS data and so may be easily used to generate multi-colour catalogues using this data. All images and catalogues presented in this paper are publicly available through ESO's "phase 3" archiving and distribution system and from the UltraVISTA web site.

**Key words.** surveys – galaxies: general – galaxies: high-redshift – cosmology: observations – large-scale structure of Universe

## 1. Introduction

The vital role of near-infrared ( $\lambda \approx 1\text{--}2.5\ \mu\text{m}$ ) imaging surveys for advancing our understanding of galaxy evolution has long been recognised (Cowie et al. 1990; Glazebrook et al. 1991). While optical surveys utilising large-format charge-coupled device (CCD) detectors were the first to enable the discovery of substantial samples of normal galaxies at redshifts  $z > 2$  (Steidel et al. 1996; Madau et al. 1996), it was already known that at least some galaxies at high redshift were either too old or too dust-obscured to be easily detected by rest-frame near-ultraviolet selection (Dunlop et al. 1996; Dey et al. 1996). In addition, even for apparently young UV-luminous galaxies, the value of using near-infrared observations to sample the rest-frame optical light, more representative of the evolved mass-dominant stellar population, was understood and indeed demonstrated before the advent of multi-pixel near-infrared imagers (Lilly & Longair 1984).

However, near-infrared surveys are a challenging proposition for several reasons. Firstly, at near-infrared bandpasses the sky background is extremely bright; in the  $K_s$  band, in AB magnitudes, it is typically  $15\ \text{mag/arcsec}^2$ , which means that many short exposures must be combined in order to avoid detector saturation on the sky, greatly increasing overheads. Secondly, the sky background is time-variable, many magnitudes brighter than the faint astronomical sources of interest, and so must be carefully subtracted from each image before scientific exploitation can take place. Lastly, conventional silicon CCDs are very inefficient at near-infrared wavelengths, and a different detector technology must be employed which is an order of magnitude more expensive. In terms of sky footprint, near-infrared detectors have generally lagged behind optical detectors by approximately a decade.

Nevertheless, these challenges have been progressively overcome, and, following the pioneering work described above with early near-infrared arrays such as IRCAM on the UK Infrared Telescope (UKIRT; McLean et al. 1986), the full potential of near-infrared surveys to clarify our view of galaxy evolution at  $z \approx 1\text{--}3$  began to be realised with the advent of larger format infrared array cameras such as ISAAC on ESO's Very Large Telescope (VLT; Cimatti et al. 2002; Labbé et al. 2003; Franx et al. 2003). Meanwhile, the importance of near-infrared surveys for revealing dust-obscured star-forming galaxies was further enhanced by the discovery of significant numbers of

\* Based on data products from observations made with ESO Telescopes at the La Silla Paranal Observatory under ESO programme ID 179.A-2005 and on data products produced by TERAPIX and the Cambridge Astronomy Survey Unit on behalf of the UltraVISTA consortium.

\*\* Catalogues are only available at the CDS via anonymous ftp to [cdsarc.u-strasbg.fr](ftp://cdsarc.u-strasbg.fr) (130.79.128.5) or via <http://cdsarc.u-strasbg.fr/viz-bin/qcat?J/A+A/544/A156>

dusty-enshrouded high-redshift star-forming galaxies at sub-mm wavelengths (Hughes et al. 1998; Scott et al. 2002). Around the same time the unique power of the deepest near-infrared imaging to conduct rest-frame ultraviolet surveys for galaxies at  $z > 6.5$  was first demonstrated using the NICMOS camera on the *Hubble* Space Telescope (HST; Bouwens et al. 2004; Thompson et al. 2005).

Despite these impressive advances, the field-of-view offered by near-infrared cameras such as IRCAM, NICMOS and ISAAC was very small (a few arcmin<sup>2</sup>), and it is only in the last half-decade or so that the introduction of genuinely large-format near-infrared array cameras has enabled efficient, deep near-infrared imaging of degree-scale areas of sky, allowing studies of more representative volumes of the high-redshift universe (i.e.  $\approx 100 \times 100$  comoving Mpc). First WFCAM on UKIRT (Casali et al. 2007), then WIRCam on the Canada France Hawaii Telescope (CFHT; Puget et al. 2004), and NEWFIRM at NOAO (Probst 2004) have heralded a new era of major coordinated near-infrared survey programmes (e.g. UKIDSS, Lawrence et al. 2007; NEWFIRM Medium-Band Survey, van Dokkum et al. 2009); WIRDS and associated near-infrared follow-up of the COSMOS field (Bielby et al. 2012; McCracken et al. 2010). This has led to a number of breakthroughs in extra-galactic astronomy, including, for example, the study of the bright end of the galaxy luminosity function from  $z = 0$  out to  $z \approx 6$  (McLure et al. 2009; Cirasuolo et al. 2010), and the discovery of the most distant known quasar (Mortlock et al. 2011).

In addition, deep, wide-field near-infrared photometry coupled with high-quality optical surveys has enabled spectral energy distribution (SED) fitting techniques to be pushed beyond  $z \sim 1.5$ . Near-infrared data play a key role in minimising the catastrophic failure rates in photometric redshift estimates and provides robust rest-frame visible flux determinations at  $z \sim 2$  (Ilbert et al. 2009), enabling measurements of the evolution of the mass buildup in stars over a large fraction of the age of the Universe (Drory et al. 2005; Arnouts et al. 2007; Ilbert et al. 2010; Caputi et al. 2011).

These efforts have now culminated in VISTA (Emerson & Sutherland 2010) the first 4-m class telescope specifically designed to conduct wide-area near-infrared surveys and equipped with a large-format array camera, “VIRCAM” (Dalton 2006). Thanks to its large mosaic of 16 detectors, VIRCAM is currently the most efficient wide-field near-infrared survey camera in the world (around four times more efficient than WIRCam, and three times as efficient as WFCAM). It also has the benefit of being mounted on a telescope for which virtually all observing time is available for surveys, and for which observations are efficiently programmed in queue-scheduled mode. Inspired by the success of UKIDSS, ESO has implemented a coordinated multi-tier public survey programme with VISTA. The UltraVISTA survey presented here is the deepest component of the VISTA survey “wedding cake”.

Covering an area of 1.5 deg<sup>2</sup>, UltraVISTA is significantly larger than the only comparably-deep near-infrared survey conducted to date (the UKIDSS Ultra Deep Survey UDS; Almaïni et al. 2007), and will ultimately go significantly deeper. VIRCAM also offers two significant advantages over WFCAM (and indeed WIRCam or NEWFIRM) in that its Raytheon detectors are much more sensitive in *Y*-band, and are essentially free from the electronic cross-talk. These are crucial benefits in the planned exploitation of UltraVISTA for the discovery of the most luminous galaxies at  $z \approx 7$ , e.g., Bowler et al. (2012).

To maximise the leverage and legacy value of these new deep near-infrared data, the UltraVISTA survey is centred on the

COSMOS field, the location of the largest ever ACS optical mosaic obtained with HST (Scoville et al. 2007; Koekemoer et al. 2007) and an ever growing heritage of deep ground-based and space-based multi-frequency imaging and spectroscopy<sup>1</sup>. The first-year data set described in this paper is already deeper than all existing COSMOS NIR data (McCracken et al. 2010; Bielby et al. 2012) in all bands by between one and two magnitudes and also contains for the first time deep *Y*-band imaging.

To most efficiently exploit VISTA for the discovery and study of UV-selected galaxies at the highest redshifts ( $z \approx 6.5$ –9) and in the investigation of the growth of galaxies through the crucial redshift range  $1 < z < 3$  when cosmic star-formation density peaks (Hopkins & Beacom 2006), the UltraVISTA survey comprises three separate components: a wide, deep *Y, J, H, K<sub>s</sub>* survey (a contiguous field covering  $\approx 1.5$  deg<sup>2</sup>); an ultra-deep *Y, J, H, K<sub>s</sub>* survey (consisting of deeper strips covering  $\approx 0.7$  deg<sup>2</sup>), and an ultra-deep narrow-band ( $\lambda = 1.18 \mu\text{m}$ ) survey targeting emission-line galaxies at a range of redshifts, e.g. H $\alpha$  at  $z = 0.8$ , [OIII]-emitters at  $z = 1.4$ , [OII] emitters at  $z = 2.2$ , and ultimately Ly $\alpha$  emitters at  $z = 8.8$ . To accomplish these goals, UltraVISTA has been allocated 1800 h of execution time.

It is important to stress that while the advent of Wide Field Camera 3 (WFC3) on HST in 2009 has enabled extremely deep near-infrared imaging (up to  $\lambda \approx 1.6 \mu\text{m}$ ) which has revolutionised the study of galaxies at  $z \approx 7$ –8, (Bouwens et al. 2010; McLure et al. 2010; Oesch et al. 2009; Finkelstein et al. 2010; Bunker et al. 2010) the very small field-of-view offered by WFC3/IR coupled with its inability to observe in the *K*-band means that deep ground-based surveys such as UltraVISTA remain of crucial importance. In particular, the largest current (or indeed planned) WFC3/IR extragalactic survey is the Cosmic Assembly Near-infrared Deep Extragalactic Legacy Survey (CANDELS; Grogin et al. 2011; Koekemoer et al. 2011), but even this 900-orbit 3-year HST Treasury Program will only cover  $\approx 800$  arcmin<sup>2</sup>. Thus UltraVISTA is an excellent complement to CANDELS, and indeed CANDELS has recently completed deep *J, H*-band WFC3/IR imaging of a  $\approx 200$  arcmin<sup>2</sup> region within the 1.5 deg<sup>2</sup> UltraVISTA imaging described here (i.e. covering only  $\approx 4\%$  of UltraVISTA).

In this paper we present a detailed description of the data reduction methods and properties of the five near-infrared stacks created from the first season of UltraVISTA operations. Already, with only these first images, the UltraVISTA survey has the largest *étendue* of any near-infrared survey.

All magnitudes in this paper, unless otherwise noted, are given in the AB system. Data products described here are available from ESO<sup>2</sup>, the UltraVISTA website<sup>3</sup> and CESAM<sup>4</sup>.

## 2. Observations and data reductions

### 2.1. Observations

The images described here were taken between 5th December 2009 and the 19th of April 2010 with the VIRCAM instrument on the VISTA telescope at Paranal as part of the UltraVISTA survey programme. VIRCAM is a wide-field near-infrared camera consisting of 16 2048  $\times$  2048 Raytheon VIRGO HgCdTe arrays

<sup>1</sup> <http://cosmos.astro.caltech.edu>

<sup>2</sup> [http://www.eso.org/sci/observing/phase3/data\\_releases.html](http://www.eso.org/sci/observing/phase3/data_releases.html)

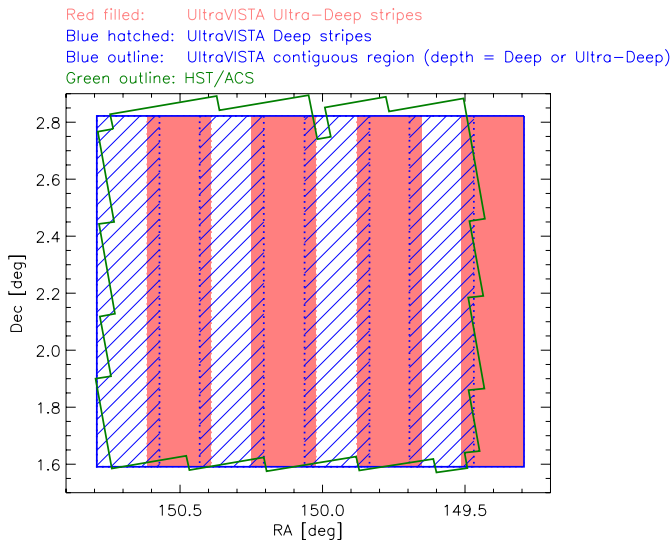
<sup>3</sup> <http://www.ultravista.org/>

<sup>4</sup> <http://cesam.oamp.fr/ultravista/index.php>

**Table 1.** Characteristics of the OBs used in UltraVISTA season 1.

OB description	Filter	DIT [s]	NDIT	Jitter parameters			Nesting	$N_{\text{pawprints}}$	Total exp. [s]	$N_{\text{OBs}}$
				Pattern	Amplitude ["]	$N_{\text{jitter}}$				
<i>Y</i>	<i>Y</i>	30	4	Random	60	30	FPJME	1	3600	36
<i>J</i>	<i>J</i>	30	4	Random	60	30	FPJME	1	3600	37
<i>H</i>	<i>H</i>	6	10	Random	60	60	FPJME	1	3600	36
$K_s$ long OB	$K_s$	10	6	Random	60	60	FPJME	1	3600	18
$K_s$ short OB	$K_s$	10	6	Random	60	30	FPJME	1	1800	27
NB118 single paw	NB118	300	1	Random	61	11	FPJME	1	3300	6
NB118 three paws	NB118	280	1	Random	61	4	FJPME	3	3360	4

**Notes.** The ‘‘Amplitude’’ column gives the Maximum Jitter Amplitude, where a value of 60’’ corresponds to jitter positions being drawn from a random, uniform distribution over a box of side length 120’’, centered on the nominal centre coordinates of the given pawprint. The ‘‘Nesting’’ column indicates the order in which different operations are done, see text. The ‘‘ $N_{\text{pawprints}}$ ’’ column gives the number of pawprints done by the given OB. To cover the contiguous UltraVISTA field in an approximately uniform manner, a set of 6 OBs of type  $N_{\text{pawprints}} = 1$  are needed, each centered on the pawprint in question. The ‘‘Total exp.’’ column gives the total exposure time contained in the OB; this number is  $\text{DIT} \times \text{NDIT} \times N_{\text{jitter}} \times N_{\text{pawprints}}$ . The ‘‘ $N_{\text{OBs}}$ ’’ column gives the number of OBs of the given type that are associated with the data covered by this paper.



**Fig. 1.** Schematic layout of UltraVISTA observations, showing deep and ultra-deep regions (hatched and filled regions respectively). The data described in this paper correspond to a uniform coverage in *YJHKs* of the contiguous region and to NB118 observations of the ultra-deep stripes.

arranged in a sparse-filled array with gaps between each array of 0.90 & 0.425 of a detector in *X* and *Y* respectively (Emerson & Sutherland 2010). The mean pixel scale is  $0.34'' \text{ pixel}^{-1}$  (Dalton 2006).

The sky coverage of the 16 non-contiguous detectors is called a ‘‘pawprint’’. A contiguous region of size  $1.5^\circ \times 1.23^\circ$  can be covered by means of six pawprints suitably spaced in right ascension and declination with random 60’’ jitter offsets in both directions (two  $\approx 0.1^\circ$  bands at the top and bottom of the field receive half the exposure time).

Specifically, three pawprints with identical RA and with Dec differing by  $5.5' = 47.5\%$  of a detector height make up a set of four stripes (corresponding to the ultra-deep stripes in UltraVISTA), and another three pawprints shifted by 95% of a detector width in RA make up another set of stripes, which together form a contiguous region where most pixels in the resulting stack are covered by two of the six pawprints.

Figure 1 illustrates the layout of UltraVISTA observations showing the deep survey, which will cover the full survey area, and the ultra-deep part, which covers half of this area in a series

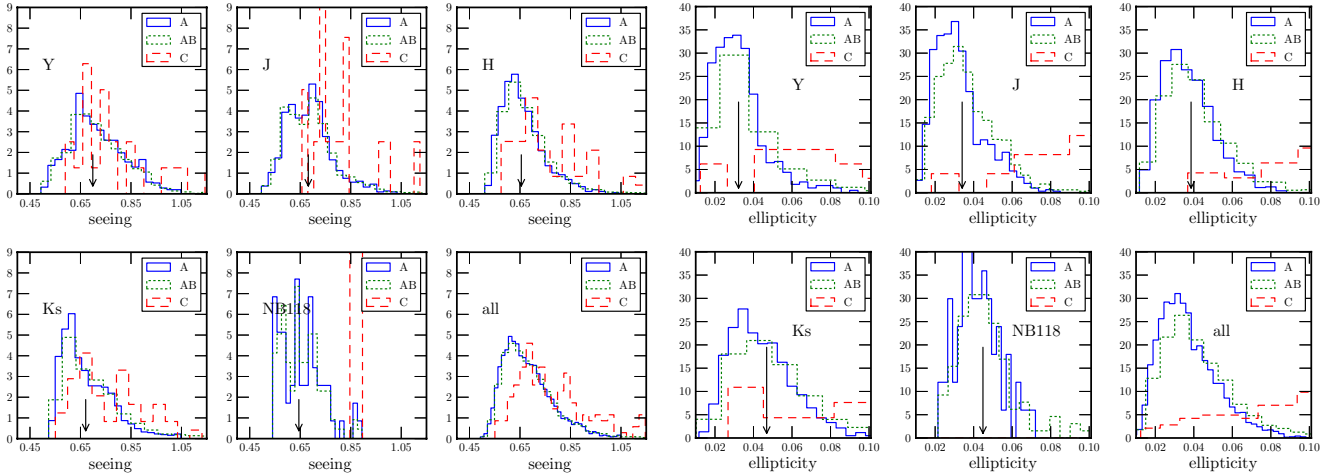
of ultra-deep stripes. The first season of UltraVISTA data described in this paper comprises six contiguous pawprints in four broad-band filters covering the deep survey area, each with equal exposure times, and narrow band observations on the ultra-deep stripes; subsequent observing seasons are expected to concentrate exclusively on the ultra-deep stripes.

The observations, carried out in service mode, are specified by observation blocks (OBs). The characteristics of the OBs used in UltraVISTA season one are listed in Table 1. Most of the season one OBs comprise images jittered around the centre of a single pawprint position, with the jitters being drawn from a random, uniform distribution over a box of side length 120’’ (random jitters are necessary because of persistence effects in VIRCAM and are also essential to derive a good sky frame).

The exception to this was the ‘‘NB118 three paws’’ OBs (Table 1), which comprised images jittered around the centres of the *three* pawprints forming the ultra-deep stripes. For OBs containing more than a single pawprint per OB, the nesting (Table 1) is important, and we did not use the optimal value. These OBs had a nesting of ‘‘FJPME’’ such that F (filter) is the outermost loop, and E (expose) is the innermost loop. The important aspect here is that the three pawprints (P) (spaced exactly by  $5.5'$  in Dec) are completed before a random jitter (J) is applied. This means that the faint persistent images (i.e. fake sources that are memories of a bright star at that *x, y* position on the detector in the one or two previous exposures) will be present in the stack at positions located  $5.5'$  (and  $11'$ ) away from bright stars in Dec. We deal with this by masking the persistent images in the individual NB118 images (see Milvang-Jensen et al., in prep., for details of the procedure). For the other UltraVISTA OBs, the faint persistent images are fully removed by the sigma clipping used in producing the stacks, thanks to the random jitters applied between each single exposure. The first season of observations described here comprise around 200 OBs in total. The average efficiency (calculated as the total exposure time divided by total execution time these OBs) was 77%.

In light of our experience gained in the season one observations described here, from season 2 onwards we modified some of the OBs. For *Y*, we changed the DIT to 60 s (with NDIT = 2), since 30 s was unnecessarily short; for *H*, we changed the DIT to 10 s (with NDIT = 6), for the same reason. For NB118, we changed the DIT to 120 s (with NDIT = 1), since 300 s was unnecessarily long. We also changed our observation strategy to jitters centered around a single pawprint per OB, and changed the total exposure time per OB to 1 h (corresponding to 30 jittered exposures in an OB).





**Fig. 2.** Seeing (*left*) and ellipticity (*right*) distributions for all UltraVISTA images considered. The arrow represents the median of each distribution for images classified as A or AB. Note that the distributions for each quality class have been re-normalised, and the vertical axis has been rescaled. A, AB, C represent the quality classifications described in the text.

## 2.2. Image selection and grading

VIRCAM images are transferred to the Cambridge Astronomy Survey Unit (CASU)<sup>5</sup> for pre-preprocessing and removal of the instrumental signature. This includes dark subtraction, correction for rest anomaly, flat-fielding, initial sky-subtraction, destriping, non-linearity corrections and gain normalisation (Irwin et al. 2004). CASU subsequently provides these pre-processed images for each survey, as well as stacks of images from a single OB and pawprint, comprising typically 30 or 60 images.

For UltraVISTA we start from the individual pre-processed images, rather than the stacked OB blocks, for a number of reasons: firstly, the OB blocks are combined at CASU at the native pixel scale of the instrument, which means that in good seeing conditions (median  $FWHM \sim 0.6''$ ) VIRCAM data is under-sampled. For this reason it is preferable to re-sample these data at a finer pixel scale; secondly, one of the principal scientific aims of the UltraVISTA project is to make measurements of distant ( $z > 6$ ) and faint ( $K_s \simeq 24$ ) galaxies. To do this requires extremely accurate removal of the sky background for each individual image; in the version of the CASU pipeline we used, a single sky background was used for all images coming from a given OB, and objects were not masked using the deepest possible mask. Given that the sky background is known to vary on shorter timescales, this process may lead to a systematic magnitude offset at faint magnitudes near bright sources. For these reasons we use an iterative sky-background removal technique starting from the pre-processed images and also resample all data to a pixel scale of  $0.15'' \text{ pixel}^{-1}$ .

The images in this release were taken between 5th December 2009 and the 19th of April 2010. This does not consist of the complete number of images taken for the UltraVISTA program in the 2009–2010 observing season; subsequently, around 10% additional images in  $H$  and  $K_s$  were made available by CASU using a different pipeline processing, after we had already graded the first batch of images. In order to maintain as a homogenous as possible data set, we restrict in this release ourselves to this initial batch. However, had we included these data, the average exposure time per pixel would have been 4800 s and 5400 s higher in  $H$  and  $K_s$  respectively, i.e. only around 10% larger.

<sup>5</sup> <http://casu.ast.cam.ac.uk/surveys-projects/vista/technical/data-processing>

The images considered here were all processed with v0.8 of the CASU pre-processing pipeline and in total, we consider 7031 individual images (each of which is a single multi-extension fits image containing 16 image extensions one for each of the VISTA detectors).

Since UltraVISTA represents the first significant amount of data from VIRCAM processed at TERAPIX, we wished to visually inspect all images to identify any problems which had been potentially overlooked by the automatic pipelines. Therefore, all images were inspected and graded in the YOUPI<sup>6</sup> environment. Images were assigned a grade of A, B (usable for science), C, D (rejected). The left and right panels of Fig. 2 shows the seeing FWHM (measured assuming a Gaussian core), ellipticity and grading distributions for all images. Based on these distributions we decided to keep all images which have stellar  $FWHM < 1.0''$  and ellipticity  $< 0.1$  and which were classified as either A or B based on visual inspection. The visual inspection process in general finds images which have bad point spread functions (PSFs) or other optical defects which would have not been found by a typical seeing or ellipticity cut<sup>7</sup>. In total we reject 426 images or around 6% of the total.

We do not use the confidence maps provided by CASU, but create our own weight maps from the supplied flat-fields and bad pixel maps using the *weightwatcher* tool (Marmo & Bertin 2008). For our NB118 images which were taken at a fixed set of jitter patterns and thus suffer from image persistence effects, we mask the persistent images using the procedure described in Milvang-Jensen et al. (in prep.).

## 2.3. Two-step sky subtraction

To derive our sky-subtracted images, we use a set of tools developed at TERAPIX which run under the distributed processing

<sup>6</sup> <http://youpi.terapix.fr/>

<sup>7</sup> Some of these bad PSFs were caused in part by software errors in early versions of ESO's Survey Area Definition tool: all season 1 OBs had pointing centres such that when a jitter jump went too far in one direction, the guide star fell outside the guide CCD; guiding was not active for the remaining images of that OB. This was fixed in season two observations by moving the pawprint centers. These tracking errors produce double-lobed PSFs in some images; each of the *individual* PSFs are smaller than the requirement and so pass our cut.

environment “condor”<sup>8</sup>. (These processing steps are described fully in [Bielby et al. 2012](#)). Sky-subtraction is a two-step iterative process. To summarise, we start by adding back the sky background frames subtracted by CASU (which are supplied as part of the original data release.) Based on the first-pass stack (computed using the CASU sky-subtracted images) and astrometric solutions, we compute object masks for each individual image. Next, we use these object masks (appropriately resampled based on an initial astrometric solution) to effectively remove objects computed from a running sky for each individual image, based on a median of images taken during a 20-min sliding window. After the subtraction of the running sky, we re-“destripe” the images and remove large-scale background gradients using *sextractor* ([Bertin & Arnouts 1996](#)). In general, computing sky backgrounds for each of the 7000 images is highly processor intensive; for each image, it takes around 15–20 min on a standard TERAPIX computing node.

#### 2.4. Astrometric and photometric solutions

After sky-subtraction, weight maps and catalogues are computed once more for each image using *QualityFITS*. Saturated objects, based on an examination of the distribution of objects in the peak surface brightness/magnitude plane, are flagged in these catalogues, and the weight maps are used to flag cosmic rays. Bad pixels are also flagged. Next, these catalogues are used to compute the final astrometric and photometric solutions which will be used to combine and scale the images. Astrometric solutions are computed independently from each filter using the *scamp* tool ([Bertin 2006](#)), but use a common astrometric reference catalogue drawn from the COSMOS *i*-band CFHT data (the same reference catalogue used in [Capak et al. 2007](#); [McCracken et al. 2010](#)). We use a third-order polynomial solution in  $x$  and  $y$  detector co-ordinates (note that unlike the CASU reductions, we do not assume a radially symmetric astrometric solution). In order to derive a more robust astrometric solution, we use a precomputed “.ahead” file for all images which specifies the relative positions and orientations of each of the sixteen detectors. In addition, we require that all the detectors share a common tangent point (focal plane mode “SAME\_CRVAL” in *scamp*). These steps ensure that we can reliably match our reference astrometric catalogues for many thousands of input images (note that we do not use the higher-order terms of the initial astrometric solution provided by CASU<sup>9</sup>). Thanks to our densely sampled astrometric reference catalogue the internal sigma of our astrometric solution is  $\sim 0.08''$ ,  $0.09''$  in directions North-South, East-West directions respectively.

Compared to our reference catalogue, in the same directions, we find standard deviations of  $\sim 0.09''$ ,  $0.10''$ . Similar values are found in all filters. Given that the native pixel scale of VIRCAM is  $0.34'' \text{ pixel}^{-1}$ , our astrometric solution is more than sufficient to provide a precise and reliable image coaddition (in fact, our astrometric accuracy is probably limited by undersampling in the VIRCAM images).

Our initial magnitude zero points for each individual image are based on those supplied by CASU for their *.st* stacks (which comprise a stack of several individual images), which is based on their calibration of the VISTA photometric system’s zero points. To account for possible photometric variations between the images in each *.st* stack we calculate a rescaling factor

for each using *scamp* based on overlapping paw-prints. Note that the same rescaling factors are applied to all detectors: we assume that the relative scaling factors between chips does not change (the CASU processing pipeline equalises the gain between all detectors at the flat-fielding stage, and should remain constant). To create our final stacks in the AB magnitude system ([Oke 1974](#)) we simply apply the appropriate flux scaling to convert the supplied Vega magnitudes to AB, based on the VISTA telescope detector, filter and atmosphere combination. The conversion factor  $C$  from AB to Vega we use are as follows, in the sense  $\text{mag}_{\text{AB}} = \text{mag}_{\text{Vega}} + C$  where  $C = 0.61, 0.90, 1.38, 1.84, 0.86$  for  $Y, J, H, K_s$  and NB118 filters respectively.

Note that CASU produces “flat” images which have constant flux per pixel for a uniform illumination; this is taken into account in the resampling stage.

#### 2.5. Coadded images

In the last processing step, the images and weight maps are coadded using a modified version of the *swarp* software ([Bertin et al. 2002](#)) which permits a combination of images based on a clipped sigma estimator; we use a clipping threshold of  $2.8\sigma$ . Before stacking, a small number of images which have large photometric extinction or bad astrometric solutions are also rejected. For the final stacks, in the five bands, 6520 images were used. Since the size of VIRCAM pixels varies radially as a function of distance from the centre of the mosaic, this must be accounted for during image co-addition. Bad regions on individual detectors (such as half of detector 16, whose pixels suffer from time variable quantum efficiency, most notable at shorter wavelengths where the sky background is lower) are also masked, which explains the irregular appearance in the corner of the stacked images. Figure 3 shows most of the  $K_s$  image, resampled  $2 \times 2$ . The final image is completely free of any large-scale gradients, and the background is perfectly flat except near the brightest objects in the field.

In this release, five stacked images and their corresponding weight maps are made available for  $Y, J, H, K_s$  and NB118 data taken during the first year of public survey operations of the UltraVISTA survey. These images have a zero point of 30.0 AB magnitudes for an effective exposure time of one second and a pixel scale of  $0.15''/\text{pixel}$ . The weight-maps correspond to *swarp*’s image type *MAP\_WEIGHT* which correspond to maps of relative inverse variance. Figure 4 shows an RGB image composed  $K_s JY$  images of a small section of the final field, illustrating the excellent image quality and depth of our final stacks. The bright saturation limit for stellar sources in these catalogues is  $\sim 14$  mag in  $Y$  and 15 mag in  $YJHK_s$  bands.

The images all have a common tangent point, in decimal RA, Dec of (1.501163213, 2.200973097), corresponding to the tangent point of the publicly available IRSA/COSMOS images. Each image (uncompressed) is  $\sim 9$  Gb in size. This common tangent point and pixel scale means that the UltraVISTA survey images are pixel-matched to publicly available COSMOS data.

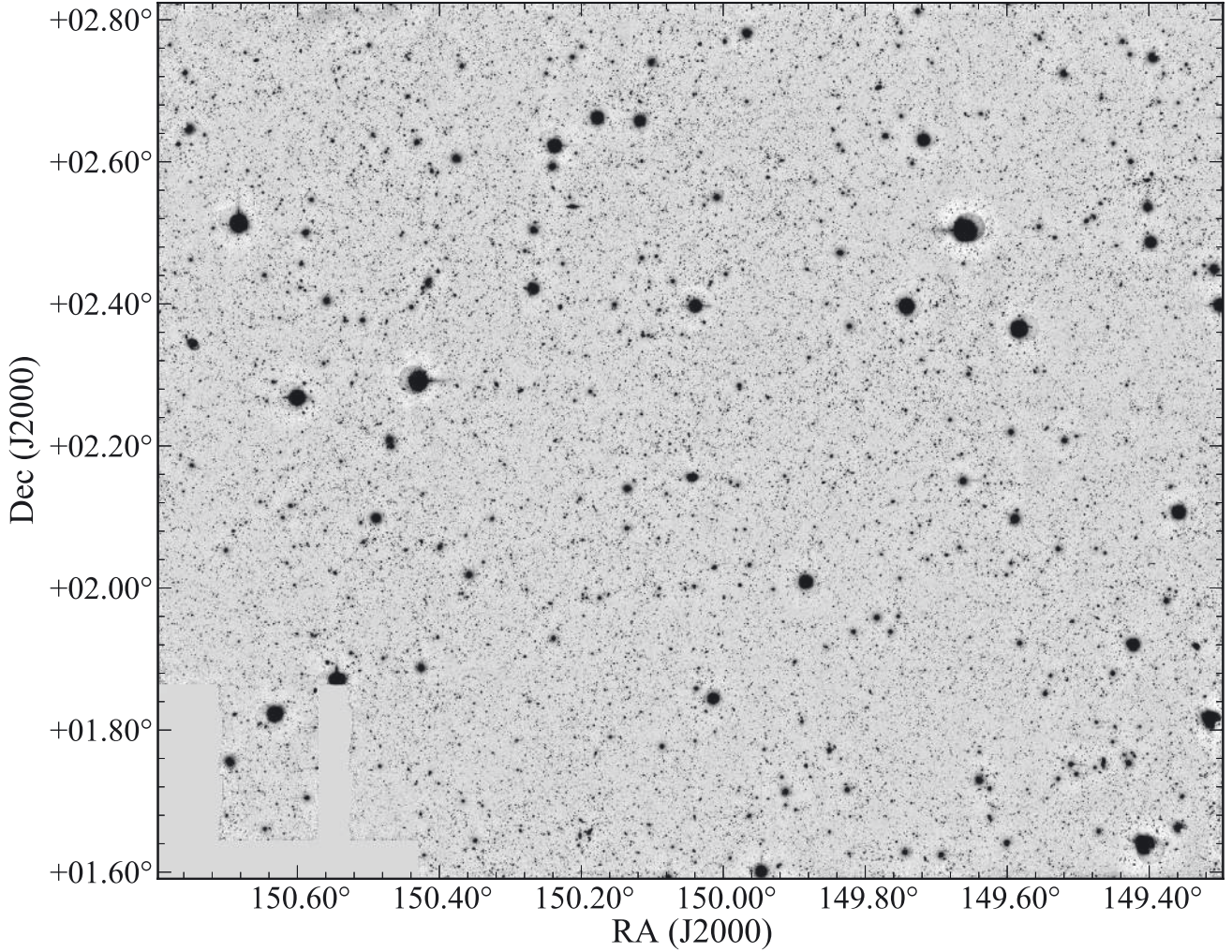
Finally, to prepare these data products for ingestion in ESO’s “phase three” system, all the image and table headers produced were edited to comply with the Phase 3 requirement document, including most of the information which is presented here in the FITS header keywords.

Table 2 summarises the principal properties of each coadded stack. In each case we report the average seeing over the full mosaic, the 95% completeness limit, and the limiting magnitude. We also list the typical exposure time per pixel for each stack as well as the total on-sky integration time. Summed over all filters,

<sup>8</sup> <http://www.cs.wisc.edu/condor/>

<sup>9</sup> <http://casu.ast.cam.ac.uk/surveys-projects/vista/technical/astrometric-properties>





**Fig. 3.** Full  $K_s$  mosaic, displayed using a logarithmic stretch. The background level is extremely flat, and is not perturbed near almost all bright stars. Several clusters are visible, corresponding to the many rich structures which are present in the COSMOS field.

**Table 2.** Characteristics of the stacked images.

Filter	Typical exposure time per pixel	Total exposure time	$5\sigma(2'')$ ( $\pm 0.1$ mag)	95% comp. ( $\pm 0.1$ mag)	Seeing ( $''$ ) ( $\pm 0.1''$ )
<i>Y</i>	42 360	127 080	24.6	24.2	0.82
<i>J</i>	49 720	149 160	24.4	24.2	0.79
<i>H</i>	42 520	127 560	23.9	24.1	0.76
$K_s$	39 400	118 200	23.7	23.8	0.75
NB118	23 773	35 660	$22.9 \pm 0.2$	22.6	0.75

**Notes.** The seeing is computed from a fit to a [Moffat \(1969\)](#) profile.

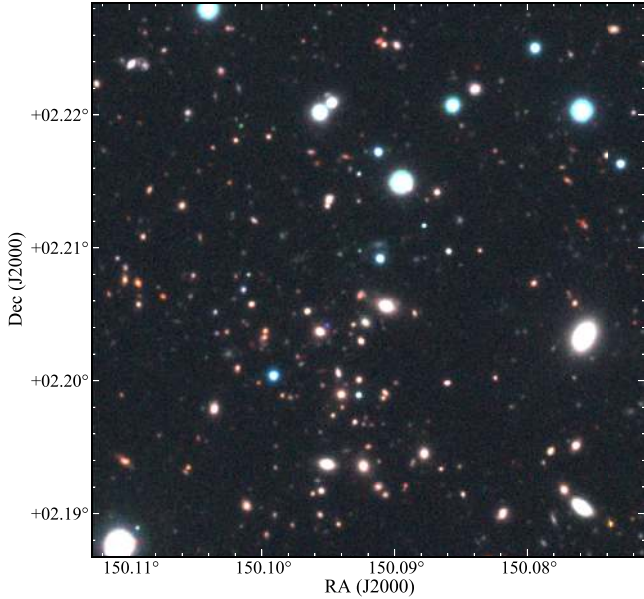
this is 55 and 155 h respectively for the data presented here. Seeing on the final stack is characterised using the PSFex tool. The average seeing is calculated from a fit to a [Moffat \(1969\)](#) profile. We note that in *Y* band the PSF has slightly broader wings compared to redder bandpasses (with a best-fitting Moffat  $\beta$  parameter which varies from  $\sim 2.4$  in *Y* to  $\sim 3.5$  in  $K_s$ ).

Limiting magnitudes are computed as follows: first, SExtractor is run on each stack using the same detection threshold parameters as used for catalogue generation. All pixels belonging to objects to this detection limit are flagged. Next, we measure fluxes in apertures of diameter  $2''$  over the entire mosaic; any aperture which contains object pixels is discarded. The limiting magnitude is then simply computed from the standard deviation of fluxes measured in these apertures. Our

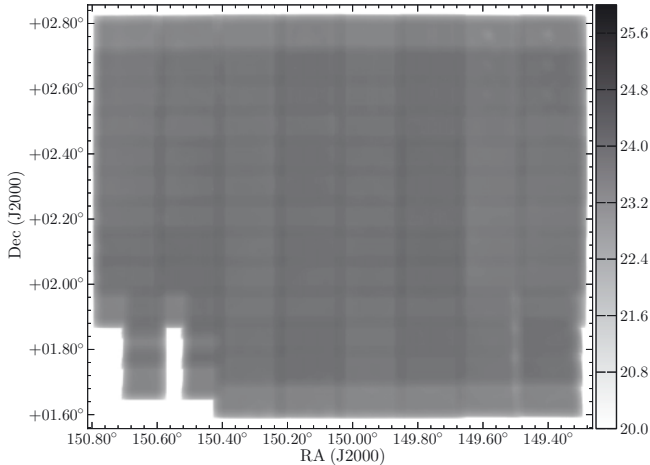
completeness statistics are computed by adding artificial stars to the images with average image FWHM and then measuring the fraction which are successfully detected with SExtractor using the same measurement parameters used for the catalogues.

Figure 5 shows the weight-map from the first year of  $K_s$  observations described in this paper. The intensity at each pixel has been converted to an approximate limiting magnitude for a detection in a  $5\sigma, 2''$  aperture. It is important to note that our weight map is quite uniform, thanks to our adopted observing strategy.

From these stacks, two sets of catalogues are provided at the ESO archive: those extracted on individual images, and matched catalogues which use the  $K_s$  band image as a detection image. Aperture magnitudes reported in the catalogues are measured in  $2''$  and  $7.1''$  diameters respectively. Based on the average



**Fig. 4.** RGB image composed of  $K_s$ ,  $J$  and  $Y$  data respectively. The size of this image represents less than 1/500th of the total area of the field. Sources as faint as  $K_s \sim 22$  are easily visible.



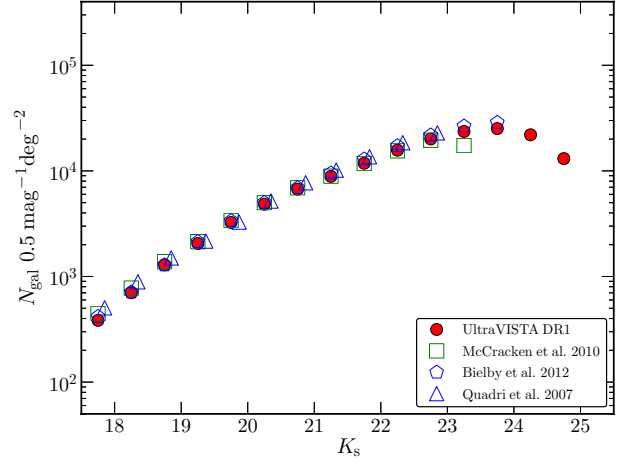
**Fig. 5.** Weight-map for the first-year  $K_s$ -band data. The intensity at each pixel has been converted to an approximate  $5\sigma$  limiting magnitude for an aperture of  $2''$  diameter. The strips at the top and bottom of the image have half the average exposure time per pixel.

stellar profiles each of the four broad-band filters, these aperture magnitudes can be “corrected” to pseudo-total magnitudes by adding  $\sim -0.35, -0.3, -0.2, -0.2$  magnitudes to  $Y, J, H, K_s$   $2''$  aperture magnitudes. These corrections are not applied to the catalogues delivered to the ESO archive but they *are* applied to the colour–colour plots shown in Sect. 3.5.

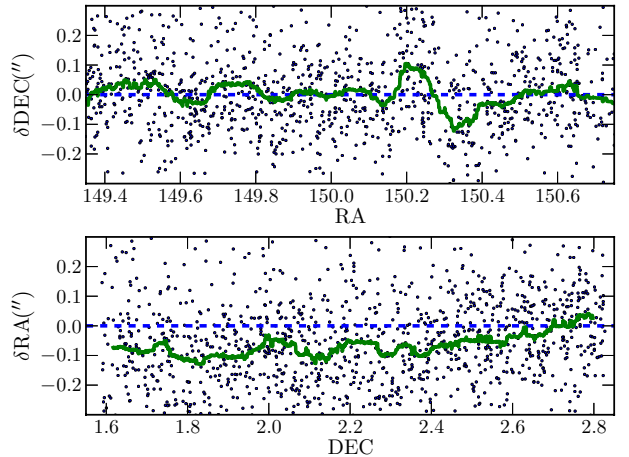
### 3. Data quality assessment

#### 3.1. Galaxy number counts

Figure 6 shows the  $K_s$ -band number counts extracted from our catalogues in comparison with recent literature measurements, in particular from the wide-area survey “WIRDS” carried out using WirCAM at the CFHT (Bielby et al. 2012) and from COSMOS (McCracken et al. 2010). Not surprisingly, our counts agree well with the existing COSMOS  $K_s$  counts but also reach  $1 \sim \text{mag}$



**Fig. 6.**  $K_s$ -selected galaxy number counts for UltraVISTA, in addition to some recent wide-field near-infrared surveys. The agreement with previous studies is excellent.



**Fig. 7.** Difference in position, in arcseconds, with respect to stars in the 2MASS, as a function of right ascension and declination (upper and lower panels respectively); every second point is plotted. The solid line shows a running median. The rms in both axes is  $\sim 0.15''$ .

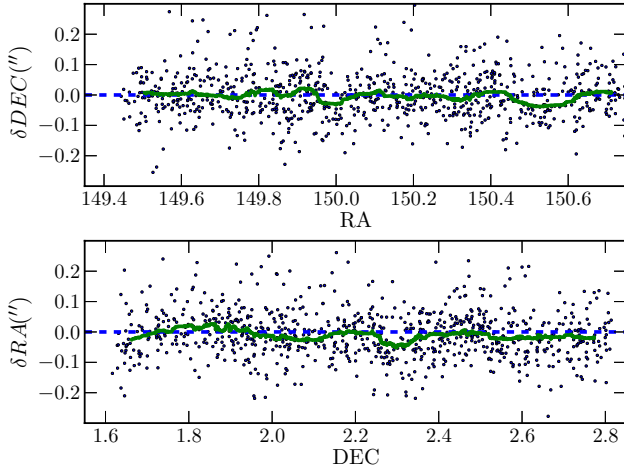
deeper. We are in good agreement with the other, independent studies covering smaller areas than our work, for example (Quadri et al. 2007).

#### 3.2. Astrometric comparisons with external catalogues

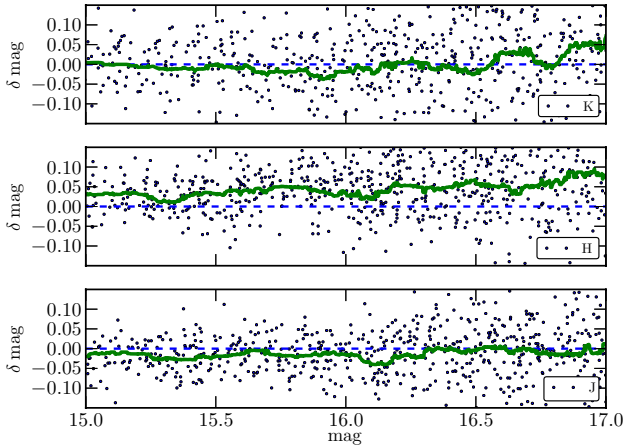
We compare the positions in right ascension and declination of point sources in 2MASS with those in our UltraVISTA  $K_s$  catalogue. This is shown in Fig. 7. Note that, unlike for our photometric solutions, we do not use 2MASS as our astrometric reference catalogue but use instead a densely-sampled catalogue from the COSMOS CFHT  $i$ -band observations. The absolute astrometric calibration of COSMOS is derived from VLA 20 cm observations (Schinnerer et al. 2004), and these positions are known to be offset slightly with respect to 2MASS (Capak et al. 2007), which is indeed what we observe. Our median offsets and  $1\sigma$  rms with respect to 2MASS is  $(0.00, 0.14)$  arcsec and  $(-0.07, 0.15)$  arcsec in RA and Dec respectively.

To verify that our astrometric reference frame is consistent with COSMOS, we carried out a similar comparison with stars in the COSMOS ACS catalogue (Leauthaud et al. 2007); this is





**Fig. 8.** Difference in position in arcseconds for stars between the public ACS catalogue of Leauthaud et al. (2007) and the UltraVISTA  $K_s$  stack; every second point is plotted. The solid line shows a running median. For both axes the median residuals are  $\lesssim 0.05''$ .

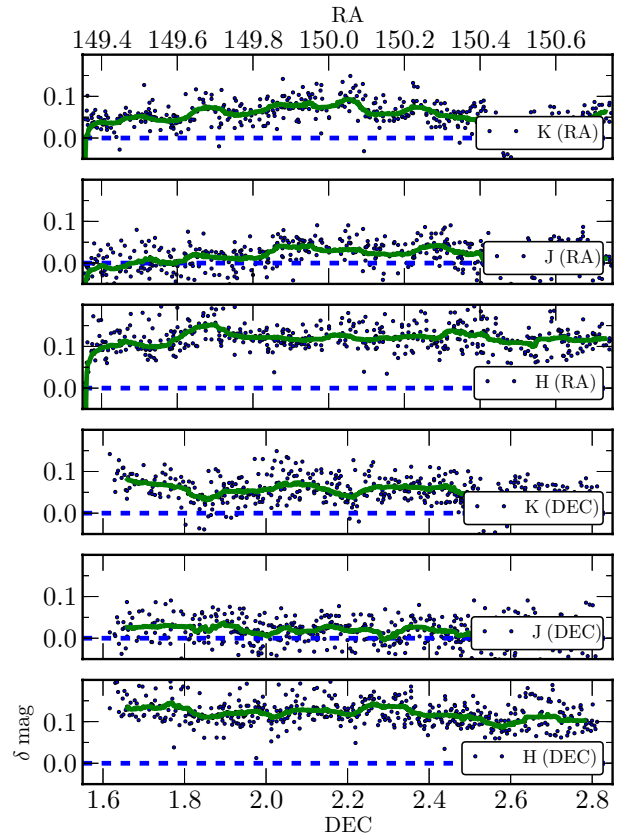


**Fig. 9.** Difference between total  $J$ ,  $H$ , and  $K_s$  magnitudes of stars in UltraVISTA with sources in 2MASS. The green line corresponds to a running median.

shown in Fig. 8. In RA and Dec, no offset is observed. The  $1\sigma$  rms in both directions for stars selected with  $17.0 < K_s < 19.5$  is  $\sim 0.08$  arcsec. The internal astrometric accuracy between different UltraVISTA bands is expected to be of this order or better, i.e., much better than one  $0.15''$  pixel.

### 3.3. Photometric comparisons with external catalogues

We compare the total magnitudes of stars in our catalogue (`mag_auto`) with those in the 2MASS all-sky point source catalogue (Skrutskie et al. 2006). (Note also that 2MASS is used for the photometric calibration of the survey by CASU.) Of course, a significant limitation of this comparison is that the magnitude range over which sources in UltraVISTA and 2MASS overlap is relatively small. Nevertheless, the result of this test is shown in Fig. 9 where we plot UltraVISTA-2MASS magnitudes for all non-saturated stellar sources and for a total photometric error in (2MASS and UltraVISTA, summed in quadrature) of less than 0.2 mag. The thick solid line shows a running median which is always within 0.05 mag of zero for  $15.0 < \text{mag} < 17.0$ . There is a slight systematic offset visible in  $H$  ( $\sim 0.03$ ) magnitudes; this



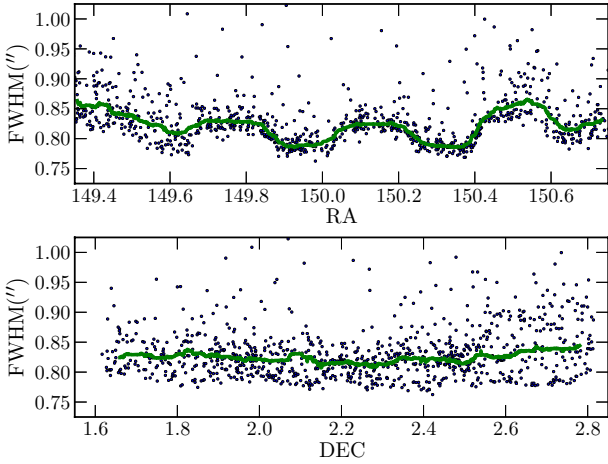
**Fig. 10.** Difference in  $J$ ,  $H$  and  $K_s$  total magnitudes between  $BzK$ -selected stars with  $17 < K_s < 19$  in UltraVISTA and COSMOS as a function of right ascension (top three panels) and declination (bottom three panels). For clarity, only every fourth point is plotted. The thick green line corresponds to a sliding median calculated from a window of 100 points. In all cases, the differences with the COSMOS photometry is less than 0.1 mag.

could be due to incorrectly rescaling our exposures to slightly non-photometric images or a real offset between the two different photometric systems.

This section presents photometric comparisons between UltraVISTA and COSMOS  $JHK_s$  measurements. A large amount of near-infrared observations have already been accumulated on the UltraVISTA field by the COSMOS team. These consist of  $K_s$ - (McCracken et al. 2010) and  $H$ -band observations made with WIRCAM on the CFHT and  $J$ -band observations made with WFCAM on UKIRT. In all cases, these observations are shallower than the first-year UltraVISTA data set presented here. Since our stacks have the same pixel scale and tangent point as the public COSMOS data, to make our comparisons we can simply run `sextractor` in “dual-image” mode, choosing as detection image the UltraVISTA  $K_s$  image and as measurement images the publicly-available COSMOS  $K_s$ ,  $H$  and  $J$  stacks. This approach ensures that no source matching errors are introduced. The results of this comparison is shown in Fig. 10. For test sources we choose  $BzK$ -selected stars, as described in the following section.

In Figs. 10 there is an offset of  $\sim 0.1$ – $0.05$  mag between UltraVISTA and the publicly-available COSMOS  $HK_s$  data. We note that at brighter magnitudes, UltraVISTA magnitudes are in good agreement with 2MASS, at least for  $K_s$  and  $J$ , bands, and for  $H$  the offset reported with respect to 2MASS is smaller than the offset with respect to COSMOS magnitudes. There is also some evidence in the  $K_s$  data of a position-dependent





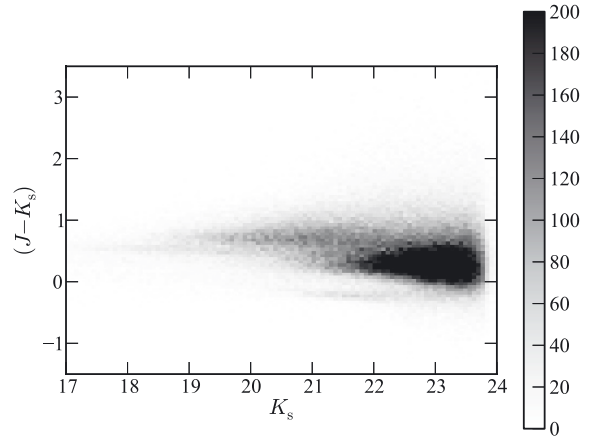
**Fig. 11.** Seeing FWHM for stars (corresponding to SExtractor’s FWHM\_WORLD parameter) selected in the  $BzK$  diagram, as a function of RA and Dec, in the  $K_s$  stack (every fourth point is plotted). As before, the solid green line corresponds to a running median. The seeing variations are small, of order  $\sim 0.05''$ , and vary principally as a function of RA.

offset. Without a third, equally deep data set, it is hard to know with certainty the origin of these offsets (especially as the VISTA and COSMOS data photometric systems are not identical). Furthermore, examining the magnitude of the offsets with respect to the COSMOS and UltraVISTA weight-maps they do not seem to be correlated with position on the focal planes of either instrument (which might be the case if there was a problem with the photometric calibration on a chip-by-chip basis). A definitive resolution to this issue awaits more involved tests, such as photometric redshift comparisons with spectroscopic data, which will be the subject of a future article.

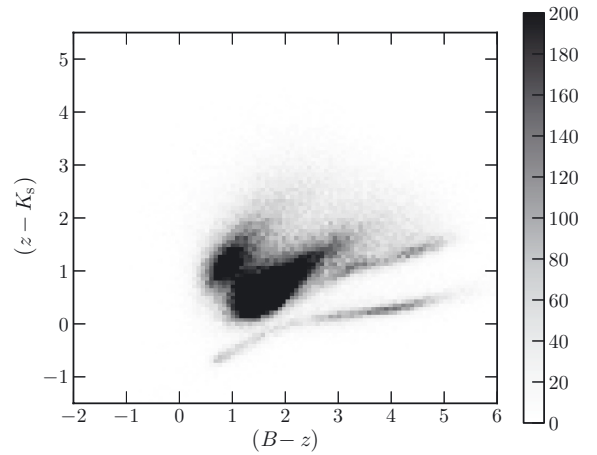
### 3.4. Seeing variation across the mosaics

As described above, the final UltraVISTA stack is comprised of six separate “pawprints”. At each pawprint the telescope jitter displacement is less than the separation between the detectors, so no detectors overlap. In general, each OB typically contains only images jittered around a single pawprint position, and consequently the observing conditions, in particular the average seeing is not always identical pawprint-to-pawprint. In first-year data presented here, OBs had a mix of maximum seeing constraint between  $0.8''$  and  $1.0''$ ; furthermore there is no minimum seeing cut. A consequence of this is that when the observations are separated paw-by-paw, in some filters, there is a variation of around 5–10% in average seeing over all 16 detectors from paw-to-paw. In the final stack, which is the combination of all pawprints, this is visible as bands of regions of slightly different seeing.

In a future UltraVISTA release we will make available stacks for which we have carried out a paw-level homogenisation (in which each of the six pawprints are convolved by a Gaussian to bring them to a common FWHM). For the moment, we report here that this effect is important for the  $K_s$  and  $H$ -band stacks. In Fig. 11 we show the seeing, calculated from SExtractor’s FWHM\_WORLD parameter (which is derived from the isophotal area of the object at half maximum, and so may not be comparable to the figures listed in Table 2), as a function of right ascension and declination. Because of a sequence of pawprints with significantly better seeing, there is around a 5% variation in seeing as a function of right ascension.



**Fig. 12.** Two-dimensional histogram showing  $(J-K_s)$  corrected aperture colour as a function of  $K_s$  total magnitude; the grey level at each bin in magnitude-colour space corresponds to the surface density of objects. The narrow ridge clearly visible at  $(J-K_s) \sim -0.2$  corresponds to the location of stellar sources.



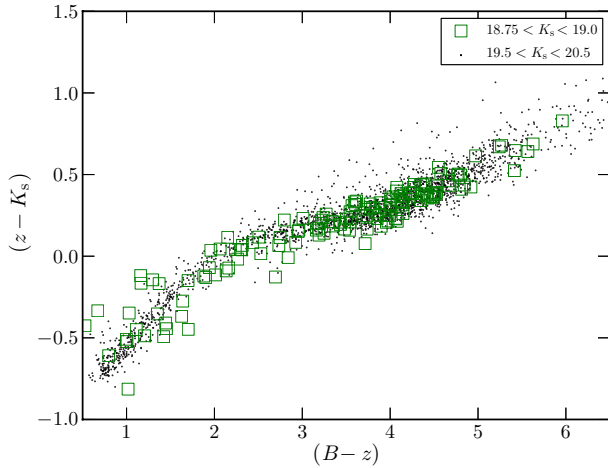
**Fig. 13.** Two-dimensional histogram of  $(B-z)$  vs.  $(z-K_s)$  corrected aperture colour for UltraVISTA. All sources detected to a  $5\sigma$  limit in  $K_s$  auto magnitudes are shown. The stellar locus is clearly visible as a ridge at blue  $(z-K_s)$  colour.

### 3.5. Colour–magnitude and colour–colour diagrams

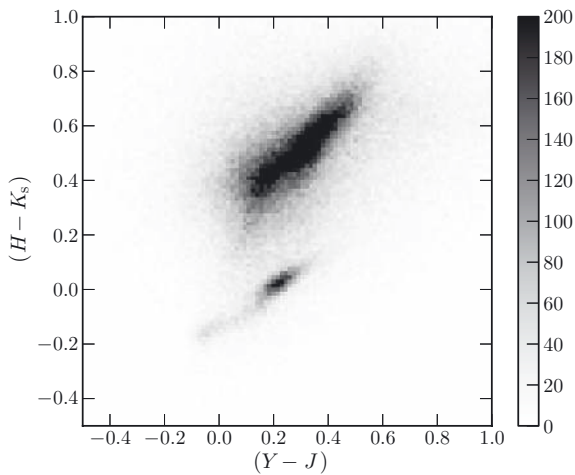
The large number of sources in our catalogues combined with our excellent seeing and high signal-to-noise means that we can investigate in detail the distribution of objects in colour–colour space. In Fig. 12 we plot the  $(J-K_s)$  vs.  $K_s$  distribution of sources in our  $K_s$  selected catalogue. The stellar locus is clearly visible as a narrow ridge of constant  $(J-K_s)$  colour (which one can confirm by overplotting on this diagram the location of stars identified in the ACS catalogue).

Next, we consider the distribution of objects in optical and near-infrared colour–colour space, turning first to the “ $BzK$ ” diagram as this allows us to cleanly separate stars and galaxies. We use the publicly-available COSMOS  $B$  and  $z$  Subaru images (Capak et al. 2007) and transform the  $B$  and  $z$  magnitudes in each catalogue following the recipes in McCracken et al. (2010) to bring our system to the “ $BzK$ ” system defined in Daddi et al. (2004).

The result is shown in Fig. 13 as a two-dimensional grey-scale histogram; in this diagram and all subsequent diagrams we show all objects detected to  $5\sigma$  in  $K_s$  band aperture magnitude. Several interesting features are clearly visible in this



**Fig. 14.** Stellar locus for bright and faint stars in UltraVISTA (shown as points and dots respectively) in the  $(B-z)$  vs.  $(z-K_s)$  corrected aperture colour-colour plane. Bright and faint stars occupy the same location in colour-colour space.



**Fig. 15.** Two-dimensional corrected aperture colour-colour  $(H-K_s)$  vs.  $(Y-J)$  histogram for all sources with total magnitude  $16.0 < K_s < 23$ . Stars and galaxies are cleanly separated. The stellar locus corresponds to the “bump” visible at 0.2, 0.1 in  $(Y-J)$  vs.  $(H-K_s)$ .

diagram: firstly the stellar locus, which is apparent as the long “ridge” feature which is relatively blue in  $(z-K_s)$ ; secondly, almost parallel to the stellar locus but redder in  $(B-z)$  is a second “ridge” which is comprised mainly of lower-redshift passive galaxies (Lane et al. 2007; Bielby et al. 2012). Thirdly, the division between lower-redshift normal and star-forming galaxies (the “sBzK” galaxies of Daddi et al. 2004) is clear.

In Fig. 14 we show a magnified view of the stellar locus in the  $BzK$  diagram, and we show both bright and faint stars. The position of the stellar locus does not depend on the magnitude limit, which demonstrates that there are no magnitude-dependent effects present in our data which could arise if there were issues related to an incorrect sky-subtraction.

We also consider the distribution of galaxies in the purely near-infrared colour-colour space  $(H-K_s)$  vs.  $(Y-J)$ , shown in Fig. 15. Again, stars and galaxies are cleanly separated.

#### 4. Summary and conclusions

In this paper we have described the first public UltraVISTA data release. This data set comprises five high-quality image stacks

representing a unique combination of depth and areal coverage at near-infrared wavelengths. Our stacked images reach  $5\sigma$  depths in aperture of  $2''$  diameter of  $\sim 25$  in  $Y$  and  $\sim 24$  in  $JHK_s$  bands. Furthermore, it is worth noting that these depths are in agreement with the expected sensitivity of the telescope at the time of writing the original UltraVISTA survey proposal. To these limits, our  $K_s$  catalogue contains 216 268 sources. The  $1\sigma$  astrometric rms in right ascension and declination for stars selected with  $17.0 < K_s < 19.5$  is  $\sim 0.08$  arcsec in comparison to the publicly-available COSMOS ACS catalogues. Each of the stacks has sub-arcsecond seeing and the FWHM variation over the images is less than 5% in most bands. Our number counts and photometric calibration are in good agreement with previous studies.

The images and catalogues described here are publicly available from the ESO archive<sup>10</sup>.

At the present time of writing (April 2012), a further 250 h of UltraVISTA observations have been completed. We intend to deliver regular releases of UltraVISTA data products as the observations proceed towards the total 1800 h of observation time allocated to the project.

*Acknowledgements.* H. J. McCracken acknowledges the use of TERAPIX computing facilities. This research has made use of the Vizier catalogue access tool provided by the CDS, Strasbourg, France. This research was supported by ANR grant “ANR-07-BLAN-0228”. J.P.U.F. and B.M.J. acknowledge support from the ERC-StG grant EGG-278202. The Dark Cosmology Centre is funded by the Danish National Research Foundation. OLF, CSJ, LT acknowledge support from the ERC advanced grant ERC-2010-AdG-268107. J.H. acknowledges support from NWO. J.S.D. acknowledges the support of the Royal Society via a Wolfson Research Merit award, and also the support of the European Research Council via the award of an Advanced Grant. The UltraVISTA team would like to thank ESO staff for scheduling and making the UltraVISTA observations, and the Cambridge Astronomy Survey Unit for providing us with pre-processed UltraVISTA images. E. Bertin is thanked for useful discussions concerning the data reductions presented here.

#### References

- Almaini, O., Foucaud, S., Lane, K., et al. 2007, *Cosmic Frontiers*, ASP Conf. Ser., 379, 163
- Arnouts, S., Walcher, C. J., Le Fèvre, O., et al. 2007, *A&A*, 476, 137
- Bertin, E. 2006, *Astronomical Data Analysis Software and Systems XV*, ASP Conf. Ser., 351, 112
- Bertin, E., & Arnouts, S. 1996, *ApJS*, 117, 393
- Bertin, E., Mellier, Y., Radovich, M., et al. 2002, *Astronomical Data Analysis Software and Systems XI*, 281, 228
- Bielby, R., Hudelot, P., McCracken, H. J., et al. 2012, *A&A*, in press, DOI: 10.1051/0004-6361/201118547
- Bouwens, R. J., Thompson, R. I., Illingworth, G. D., et al. 2004, *ApJ*, 616, L79
- Bouwens, R. J., Illingworth, G. D., Oesch, P. A., et al. 2010, *ApJ*, 709, L133
- Bowler, R. A. A., Dunlop, J. S., McLure, R. J., et al. 2012, *MNRAS*, submitted [arXiv:1205.4270]
- Bunker, A. J., Wilkins, S., Ellis, R. S., et al. 2010, *MNRAS*, 409, 855
- Capak, P., Aussel, H., Ajiki, M., et al. 2007, *ApJS*, 172, 99
- Caputi, K. I., Cirasuolo, M., Dunlop, J. S., et al. 2011, *MNRAS*, 413, 162
- Casali, M., Adamson, A., Alves de Oliveira, C., et al. 2007, *A&A*, 467, 777
- Cimatti, A., Daddi, E., Mignoli, M., et al. 2002, *A&A*, 381, L68
- Cirasuolo, M., McLure, R. J., Dunlop, J. S., et al. 2010, *MNRAS*, 401, 1166
- Cowie, L. L., Gardner, J. P., Lilly, S. J., & McLean, I. 1990, *ApJ*, 360, L1
- Daddi, E., Cimatti, A., Renzini, A., et al. 2004, *ApJ*, 617, 746
- Dalton, G. B. 2006, in *Ground-based and Airborne Instrumentation for Astronomy (SPIE)*, 1207
- Dey, A., Cimatti, A., van Breugel, W., Antonucci, R., & Spinrad, H. 1996, *ApJ*, 465, 157
- Drory, N., Salvato, M., Gabasch, A., et al. 2005, *ApJ*, 619, L131
- Dunlop, J., Peacock, J., Spinrad, H., et al. 1996, *Nature*, 381, 581
- Emerson, J. P., & Sutherland, W. J. 2010, in *Proc. SPIE*, 7733, 773306

<sup>10</sup> [http://www.eso.org/sci/observing/phase3/data\\_releases/ultravista\\_dr1.html](http://www.eso.org/sci/observing/phase3/data_releases/ultravista_dr1.html)

- Finkelstein, S. L., Papovich, C., Giavalisco, M., et al. 2010, *ApJ*, 719, 1250  
 Franx, M., Labbé, I., Rudnick, G., et al. 2003, *ApJ*, 587, L79  
 Glazebrook, K., Peacock, J. A., Miller, L., & Collins, C. A. 1991, *Adv. Space Res.*, 11, 337  
 Grogin, N. A., Kocevski, D. D., Faber, S. M., et al. 2011, *ApJS*, 197, 35  
 Hopkins, A. M., & Beacom, J. F. 2006, *ApJ*, 651, 142  
 Hughes, D. H., Serjeant, S., Dunlop, J., et al. 1998, *Nature*, 394, 241  
 Ilbert, O., Capak, P., Salvato, M., et al. 2009, *ApJ*, 690, 1236  
 Ilbert, O., Salvato, M., Floc'h, E. L., et al. 2010, *ApJ*, 709, 644  
 Irwin, M. J., Lewis, J., Hodgkin, S., et al. 2004, in *Proc. SPIE*, 5493, 411  
 Koekemoer, A. M., Aussel, H., Calzetti, D., et al. 2007, *ApJS*, 172, 196  
 Koekemoer, A. M., Faber, S. M., Ferguson, H. C., et al. 2011, *ApJS*, 197, 36  
 Labbé, I., Franx, M., Rudnick, G., et al. 2003, *AJ*, 125, 1107  
 Lane, K. P., Almaini, O., Foucaud, S., et al. 2007, *MNRAS*, 379, L25  
 Lawrence, A., Warren, S. J., Almaini, O., et al. 2007, *MNRAS*, 379, 1599  
 Leauthaud, A., Massey, R., Kneib, J.-P., et al. 2007, *ApJS*, 172, 219  
 Lilly, S. J., & Longair, M. S. 1984, *MNRAS*, 211, 833  
 Madau, P., Ferguson, H. C., Dickinson, M. E., et al. 1996, *MNRAS*, 283, 1388  
 Marmo, C., & Bertin, E. 2008, *Astronomical Data Analysis Software and Systems*, ASP Conf. Ser., 394, 619  
 McCracken, H. J., Capak, P., Salvato, M., et al. 2010, *ApJ*, 708, 202  
 McLean, I. S., Chuter, T. C., McCaughrean, M. J., & Rayner, J. T. 1986, *Proc. SPIE*, 627, 430  
 McLure, R. J., Cirasuolo, M., Dunlop, J. S., Foucaud, S., & Almaini, O. 2009, *MNRAS*, 395, 2196  
 McLure, R. J., Dunlop, J. S., Cirasuolo, M., et al. 2010, *MNRAS*, 403, 960  
 Moffat, A. F. J. 1969, *A&A*, 3, 455  
 Mortlock, D. J., Warren, S. J., Venemans, B. P., et al. 2011, *Nature*, 474, 616  
 Oesch, P. A., Bouwens, R. J., Illingworth, G. D., et al. 2009, *ApJ*, 709, L16  
 Oke, J. B. 1974, *ApJS*, 27, 21  
 Probst, R. G. 2004, in *Ground-based Instrumentation for Astronomy (SPIE)*, 1716  
 Puget, P., Stadler, E., Doyon, R., et al. 2004, *Proc. SPIE*, 5492, 978  
 Quadri, R., Marchesini, D., van Dokkum, P., et al. 2007, *AJ*, 134, 1103  
 Schinnerer, E., Carilli, C. L., Scoville, N. Z., et al. 2004, *AJ*, 128, 1974  
 Scott, S. E., Fox, M. J., Dunlop, J. S., et al. 2002, *MNRAS*, 331, 817  
 Scoville, N., Abraham, R. G., Aussel, H., et al. 2007, *ApJS*, 172, 38  
 Skrutskie, M. F., Cutri, R. M., Stiening, R., et al. 2006, *AJ*, 131, 1163  
 Steidel, C. C., Giavalisco, M., Pettini, M., Dickinson, M., & Adelberger, K. L. 1996, *ApJ*, 462, L17  
 Thompson, R. I., Illingworth, G., Bouwens, R., et al. 2005, *AJ*, 130, 1  
 van Dokkum, P. G., Labbé, I., Marchesini, D., et al. 2009, *PASP*, 121, 2