

## Understanding the impact of 1q21.1 copy number variant

Article (Published Version)

Havard, Chansonette, Strong, Emma, Mercier, Eloi, Colnaghi, Rita, Alcantara, Diana Rita Ralha, Chow, Eva, Martell, Sally, Tyson, Christine, Hrynchak, Monica, McGillivray, Barbara, Hamilton, Sara, Marles, Sandra, Mhanni, Aziz, Dawson, Angelika J, Pavlidis, Paul et al. (2011)  
Understanding the impact of 1q21.1 copy number variant. Orphanet Journal of Rare Diseases, 6 (54). pp. 1-12. ISSN 1750-1172

This version is available from Sussex Research Online: <http://sro.sussex.ac.uk/id/eprint/41577/>

This document is made available in accordance with publisher policies and may differ from the published version or from the version of record. If you wish to cite this item you are advised to consult the publisher's version. Please see the URL above for details on accessing the published version.

### **Copyright and reuse:**

Sussex Research Online is a digital repository of the research output of the University.

Copyright and all moral rights to the version of the paper presented here belong to the individual author(s) and/or other copyright owners. To the extent reasonable and practicable, the material made available in SRO has been checked for eligibility before being made available.

Copies of full text items generally can be reproduced, displayed or performed and given to third parties in any format or medium for personal research or study, educational, or not-for-profit purposes without prior permission or charge, provided that the authors, title and full bibliographic details are credited, a hyperlink and/or URL is given for the original metadata page and the content is not changed in any way.

RESEARCH

Open Access

# Understanding the impact of 1q21.1 copy number variant

Chansonette Harvard<sup>1,2†</sup>, Emma Strong<sup>1,2†</sup>, Eloi Mercier<sup>3</sup>, Rita Colnaghi<sup>4</sup>, Diana Alcantara<sup>4</sup>, Eva Chow<sup>5</sup>, Sally Martell<sup>1,2</sup>, Christine Tyson<sup>6</sup>, Monica Hrynchak<sup>6</sup>, Barbara McGillivray<sup>7</sup>, Sara Hamilton<sup>7</sup>, Sandra Marles<sup>8</sup>, Aziz Mhanni<sup>8</sup>, Angelika J Dawson<sup>8</sup>, Paul Pavlidis<sup>3</sup>, Ying Qiao<sup>1,2,7</sup>, Jeanette J Holden<sup>9,10,11</sup>, Suzanne ME Lewis<sup>1,7,10</sup>, Mark O'Driscoll<sup>4\*</sup> and Evica Rajcan-Separovic<sup>1,2\*</sup>

## Abstract

**Background:** 1q21.1 Copy Number Variant (CNV) is associated with a highly variable phenotype ranging from congenital anomalies, learning deficits/intellectual disability (ID), to a normal phenotype. Hence, the clinical significance of this CNV can be difficult to evaluate. Here we described the consequences of the 1q21.1 CNV on genome-wide gene expression and function of selected candidate genes within 1q21.1 using cell lines from clinically well described subjects.

**Methods and Results:** Eight subjects from 3 families were included in the study: six with a 1q21.1 deletion and two with a 1q21.1 duplication. High resolution Affymetrix 2.7M array was used to refine the 1q21.1 CNV breakpoints and exclude the presence of secondary CNVs of pathogenic relevance. Whole genome expression profiling, studied in lymphoblast cell lines (LBCs) from 5 subjects, showed enrichment of genes from 1q21.1 in the top 100 genes ranked based on correlation of expression with 1q21.1 copy number. The function of two top genes from 1q21.1, *CHD1L/ALC1* and *PRKAB2*, was studied in detail in LBCs from a deletion and a duplication carrier. *CHD1L/ALC1* is an enzyme with a role in chromatin modification and DNA damage response while *PRKAB2* is a member of the AMP kinase complex, which senses and maintains systemic and cellular energy balance. The protein levels for *CHD1L/ALC1* and *PRKAB2* were changed in concordance with their copy number in both LBCs. A defect in chromatin remodeling was documented based on impaired decatenation (chromatid untangling) checkpoint (DCC) in both LBCs. This defect, reproduced by *CHD1L/ALC1* siRNA, identifies a new role of *CHD1L/ALC1* in DCC. Both LBCs also showed elevated levels of micronuclei following treatment with a Topoisomerase II inhibitor suggesting increased DNA breaks. AMP kinase function, specifically in the deletion containing LBCs, was attenuated.

**Conclusion:** Our studies are unique as they show for the first time that the 1q21.1 CNV not only causes changes in the expression of its key integral genes, associated with changes at the protein level, but also results in changes in their known function, in the case of AMPK, and newly identified function such as DCC activation in the case of *CHD1L/ALC1*. Our results support the use of patient lymphoblasts for dissecting the functional sequelae of genes integral to CNVs in carrier cell lines, ultimately enhancing understanding of biological processes which may contribute to the clinical phenotype.

\* Correspondence: m.o-driscoll@sussex.ac.uk; eseparovic@cw.bc.ca

† Contributed equally

<sup>1</sup>Child and Family Research Institute, Molecular Cytogenetics and Array Laboratory, 950 West 28th Avenue, Vancouver, BC, Canada

<sup>4</sup>Human DNA Damage Response Disorders Group, Genome Damage & Stability Centre, University of Sussex, Brighton, UK

Full list of author information is available at the end of the article

## Background

Copy number changes of 1q21.1 chromosomal region (OMIM 612474 and 612475) have been associated with variable phenotypes which include ID and/or autism [1,2], schizophrenia [3-5], congenital heart anomalies [2,6-8], dysmorphic features [1,6,7] or a normal phenotype [1,2]. Deletions and duplications of 1q21.1 were detected in 0.24% and 0.12% of cases respectively [9], and in 1/4737 controls [2]. The 1q21.1 critical region spans approximately 1.35 Mb (from 145 to 146.35 Mb, according to NCBI build 36) [2] and includes at least 12 genes. The cause of the phenotypic variability associated with 1q21.1 copy number variant (CNV) remains largely unexplained; however recent studies show that the presence of "two hit" CNVs can contribute to variability associated with CNVs that escape syndromic classification [10].

The impact of the 1q21.1 CNV, beyond the clinical description of affected subjects, is unknown. Traditionally, the functional impact of CNVs is studied in mouse models where expression changes in 83% of genes from CNVs were reported in at least one, but frequently in several, mouse tissues studied [11,12]. Mouse models of human microdeletion/microduplication disorders such as DiGeorge [13] and Smith Magenis syndrome [14], also helped to detect expression changes at the mRNA and protein levels of genes integral to CNVs and identify the critical candidate genes for the phenotype (e.g. transcription factors *Tbx1* for DiGeorge and *RAI1* for Smith Magenis syndrome). Subsequent studies of mutant forms of these genes in transfected human cell lines showed their abnormal function at the cellular level (i.e. changed transcriptional activity and/or abnormal sub-cellular localization/stability of the protein [15,16]). Unfortunately, functional consequences of genes integral to CNVs in cells/tissues from carriers are rarely studied, due to unavailability of appropriate human tissues and the rarity of patients with individual CNVs [17]. Nevertheless, in rare cases where human lymphoblasts were used to assess gene expression in CNV carriers, changes within the CNV and genome wide were noted [18,19] suggesting that peripheral blood cells can be used for assessment of the effect of gene copy number change. Subsequent studies of the function of genes showing expression changes in cells from CNV carriers have not yet been reported.

Our study aimed to understand the impact of the 1q21.1 CNV on gene expression genome wide as well as on the function of a selection of its integral genes in lymphoblasts cell lines from clinically well described subjects.

## Methods

### Subjects

Eight subjects were included in the study and their clinical description provided in Additional File 1, Table S1.

They belong to three families (family A, B and C with 3, 3 and 2 subjects, respectively). Individuals A1, A2, A3, C1, and C2 were enrolled in a research based array CGH screening for pathogenic CNVs. The detailed criteria for enrollment were described in Qiao *et al.* (2010) [20]. The array CGH study was approved by the University of British Columbia Clinical Research Ethics Board. Subjects B1 and B2 were ascertained via a clinical genetics service. They had normal karyotypes and Fragile X testing. B1's brother, B3, was also ascertained through clinical genetic service because of the family history of 1q21.2 CNV.

### Whole Genome Arrays

The 1q21.1 CNV was detected in all subjects using initial lower resolution whole genome array analysis as previously described [20]. Seven of eight subjects were also analysed subsequently using the new Affymetrix Cytogenetics Whole-Genome 2.7 M Array (DNA was not available from B2 for high resolution array analysis). This higher resolution array contains approximately 400,000 SNP markers and 2.3 million non-polymorphic markers, with high density coverage across cytogenetically significant regions. Data was collected using either GeneChip<sup>®</sup> Scanner 3000 7 G or GeneChip<sup>®</sup> Scanner 3000 Dx and CEL files were analyzed using Affymetrix Chromosome Analysis Suite software (ChAS v.1.1). The annotation file used in our analysis can be found on the Affymetrix website, listed as ArrayNA30.2 (hg18). Additional CNVs detected with the high resolution array were compared with the Database of Genomic Variants <http://projects.tcag.ca/variation> for overlap with copy number variants in controls using previously described criteria for defining common variants [20].

### Fluorescent *in-situ* hybridization (FISH)

Rearrangements at 1q21.1 were confirmed by FISH following previously described protocols [21]. FISH probes used are listed in Additional File 1, Table S1.

### Whole genome expression

RNA from EBV (Epstein Barr Virus) transformed lymphoblastoid cell lines was used to study gene expression in subjects with a 1q21.1 microdeletion (A1-3), microduplication (C1 & C2), and in 3 normal controls. Transcript levels were assayed using a commercial whole genome expression array (Illumina, HumanRef-8 v3.0 Expression BeadChip) using standard protocols. Array hybridization, washing, blocking, and streptavidin-Cy3 staining were also done according to standard protocols (Illumina). The BeadChip was then scanned using an Illumina BeadArray Reader to quantitatively detect fluorescence emission by Cy3. Eight arrays were run in parallel on a single BeadChip. Each array contained ~

24,500 well-annotated transcripts (NCBI RefSeq database Build 36.2, Release 22), present multiple times on a single array.

### Expression Data Analysis

Background-corrected intensity values were generated for each probe using GenomeStudio software (Illumina). Subsequent analyses were carried out in R <http://www.R-project.org/>. The data were quantile normalized and differential expression with respect to 1q21.1 copy number analyzed using limma [22], with Benjamini-Hochberg multiple test correction to control the false discovery rate (FDR). This yields a ranking of the genes used in subsequent analyses.

The ranking of genes from the 2.5 Mb and 5 Mb flanking regions of 1q21.1 (57 and 150 genes respectively) were examined in the full ranking provided by the analysis described above, and tested for enrichment using the Wilcoxon rank-sum test as well as the hypergeometric distribution considering just the 100 genes with the highest expression/1q21.1 copy number correlation.

### *In silico* functional analysis of top 100 genes

Genes which ranked highest (top 100 genes) in the expression/1q21.1 copy number correlation analysis were selected for further *in silico* functional analysis. An over-representation analysis (ORA) for Gene Ontology (GO) terms was performed using ermineJ [http://www.chibi.ubc.ca/ermineJ/\[23\]](http://www.chibi.ubc.ca/ermineJ/[23]). GO terms considered included biological processes, molecular functions, and cellular components. The ORA analysis was run using the following settings: gene set sizes were restricted from to 3-200 genes and best scoring replicates were used for any replicate genes in the datasets.

### Functional studies

#### Cell culture

EBV-transformed patient-derived LBCs were cultured in RPMI with 15% FCS (fetal calf serum), L-Gln and antibiotics (Pen-Strep) at 5% CO<sub>2</sub>. The Werner syndrome LBCs (WRN) were from a WRN syndrome patient homozygous for the p.Arg368X pathogenic mutation. A549 adenocarcinoma cells were maintained in MEM with 10% FCS.

#### Antibodies and Western blotting analysis

Anti-CHD1L (CHDL1 21703a), MCM2, phospho-S10-histone H3 and  $\beta$ -tubulin were from Santa Cruz. Antibodies against AMPK $\beta$ 1, AMPK $\beta$ 2 (4148), AMPK $\alpha$  and AMPK $\alpha$ -pT172, ACC, ACC-pS79 and RAPTOR-pS792 were obtained from Cell Signalling. Whole cell extracts were prepared by lysing cells in urea buffer (9 M urea, 50 mM Tris-HCl at pH 7.5 and 10 mM 2-mercaptoethanol), followed by 15 s sonication at 30% amplitude using

a micro-tip (SIGMA-Aldrich). The supernatant was quantified by Bradford Assay. For CHD1L and AMPK- $\beta$ 2 expression, differing amounts of whole cell extracts were separated by SDS-PAGE and Western blotting signals were obtained following ECL (Pierce)-development. Densitometric quantification of scanned films was achieved using the Image J Software.

#### ATM- and ATR-dependent G2-M

G2-M cell cycle checkpoint analysis was carried out as previously described [17]. Briefly, following irradiation (3 Gy IR for ATM-dependent or 7 J/m<sup>2</sup> UV for ATR-dependent) cells were incubated for 4 h in the presence of 200 ng/mL of Demecolcine prior to swelling, fixation (Carnoy's) and staining as described below.

#### Decatenation Checkpoint Assay (DCC)

Exponentially growing LBCs were treated with 1  $\mu$ M ICRF193 (Meso-4,4'-(3,2-butanediyl)-bis(2,6-piperazine-dione) and 200 ng/mL of Demecolcine and incubated for 4 h. Cells were harvested, washed 1 $\times$  in PBS and swollen in 75 mM KCl for 10 min before fixing with PBS containing 3% paraformaldehyde, 2% Sucrose for 10 min. Following a PBS wash cells were cytospun on to polylysine coated slides and treated with 0.2% triton X-100 for 1 min before staining with an anti-phospho-histone H3 polyclonal antibody and secondary detection using Cy3-conjugated anti-rabbit. Nuclei were counterstained with 0.2  $\mu$ g/mL 4,6-diamidino-2-phenylindole dilactate (DAPI) and viewed using Nikon E-400 microscope. Approximately 300 cells were counted per treatment.

#### CHD1L/ALC1 siRNA and ICRF193 treatment

CHD1L/ALC1 knock out in A549 epithelial lung cancer cells was done using 20 nM Dharmacon SmartPool siRNA oligos with Metafectine as the transfection reagent according to the manufacturer's instructions. 20 h after addition of siRNA, cells were treated with 0.05  $\mu$ M ICRF193 and 200 ng/mL of Demecolcine and incubated for 4 h. For chromosome spreads cells were swollen in 75 mM KCL (10 mins) and fixed in Carnoy's (methanol:glacial acetic acid 3:1) for 10 mins, washed (PBS), dropped onto slides and air dried prior to staining with Giemsa and imaged using a ZeissAxioplan microscope. Indirect immunofluorescence using anti-phospho-Ser10-Histone 10 was also carried out. At least 100 mitotic spreads were counted per treatment.

#### Pseudomitoses and Micronuclei determination

Cells with entangled chromosomes were considered to represent pseudomitoses. Their frequency was determined relative to interphase cells (mean no. of interphase cells counted per treatment = 300).

The levels of micronuclei (MN) were enumerated in cytochalasin B-induced binucleate [24] cells following exposure to and recovery from a low dose of ICRF193. The MN present in binucleate cells are derived from the

previous cell cycle. Exponentially growing LBCs were treated for 16 hrs with 0.1  $\mu$ M ICRF193. The drug was removed, cells washed in PBS and treated with cytochalasin B (1.5  $\mu$ g/ml) for a further 24 hrs. Cells were pelleted, fixed in Carnoy's, stained with DAPI and, cytospun onto poly-L-Lysine coated slides and viewed using a Nikon E-400 microscope. At least 100 binucleate cells were enumerated per treatment.

## Results

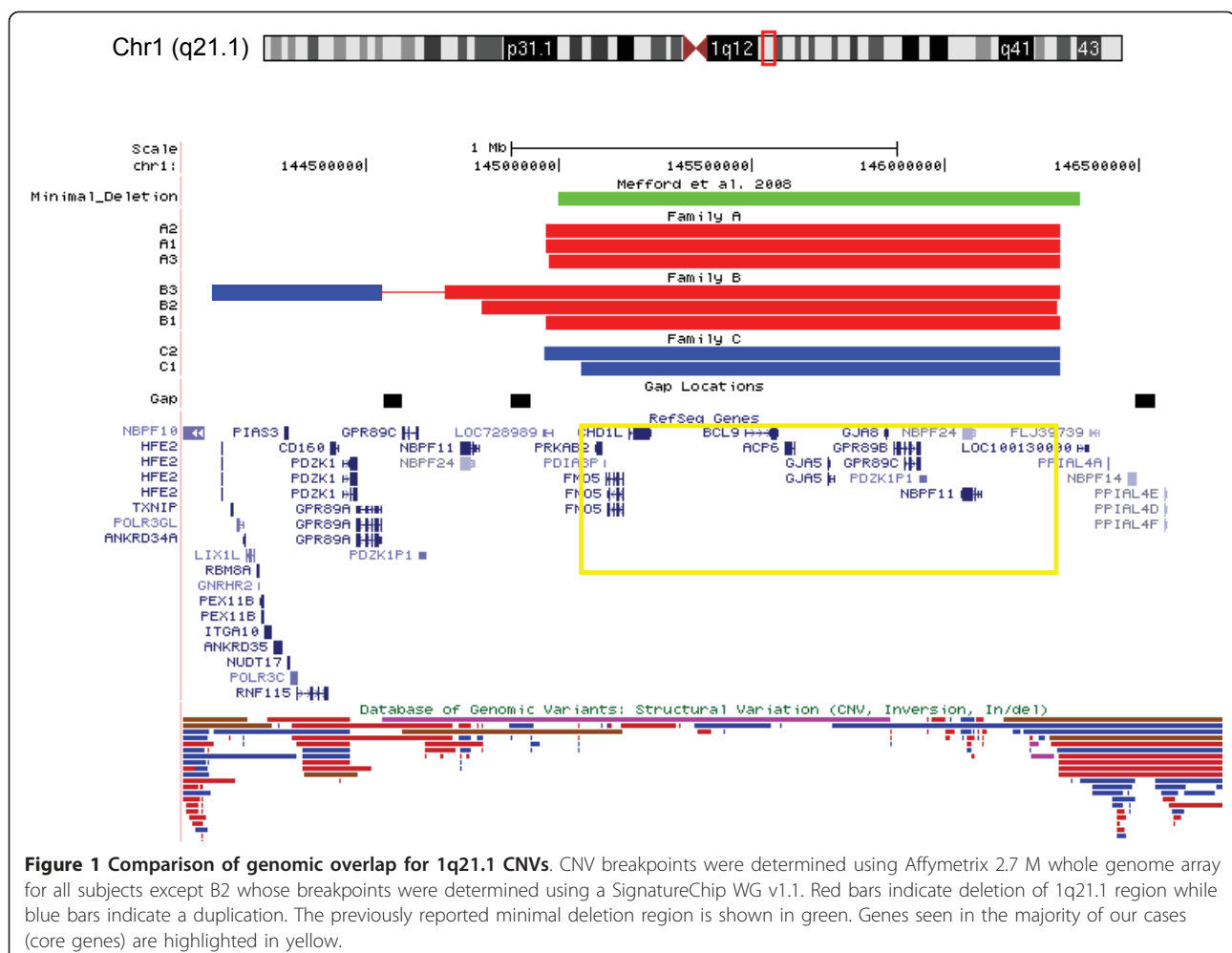
### Clinical and genomic findings

The clinical and genomic findings for all eight 1q21.1 CNV carriers are presented in Additional File 1, Table S1 and Figure 1. The clinical assessment included prenatal history and prenatal/newborn complications were documented in 5/8 cases. In addition, detailed clinical evaluation of 1q21.1 CNV carriers, both affected as well as those initially considered to be normal, was performed. This resulted in recognition of learning problems of various degrees in all studied subjects, although 2/6 subjects (A3 and C2) had very subtle

learning difficulties as A3 did not complete secondary school training and C2 admitted having to work very hard to pass grades. Learning difficulties of variable degree were therefore common to all subjects, while other features varied, within and between families.

In family A, the phenotypes of three 1q21.1 deletion carriers showed different severity despite identical 1q21.1 gene content and almost identical 1q21.1 breakpoints (Additional File 1, Table S1 and Figure 1) as determined by high resolution 2.7 M Affymetrix array. In family B, phenotypes also differed between individuals, with individual B3 showing the least severe phenotype despite having the largest genomic imbalance which included both a deletion and a duplication. In family C, the affected proband (C1) inherited the duplication from his father, who was apparently normal but reported mild ADHD as child (not treated) and difficulties in passing grades in school.

The core genes seen in all subjects with a 1q21.1 CNV are *PRKAB2*, *PDIA3P*, *FMO5*, *CHD1L/ALC1*, *BCL9*, *ACP6*, *GJA5*, *GJA8*, *GPR89B*, *GPR89C*, *PDZK1P1*, and



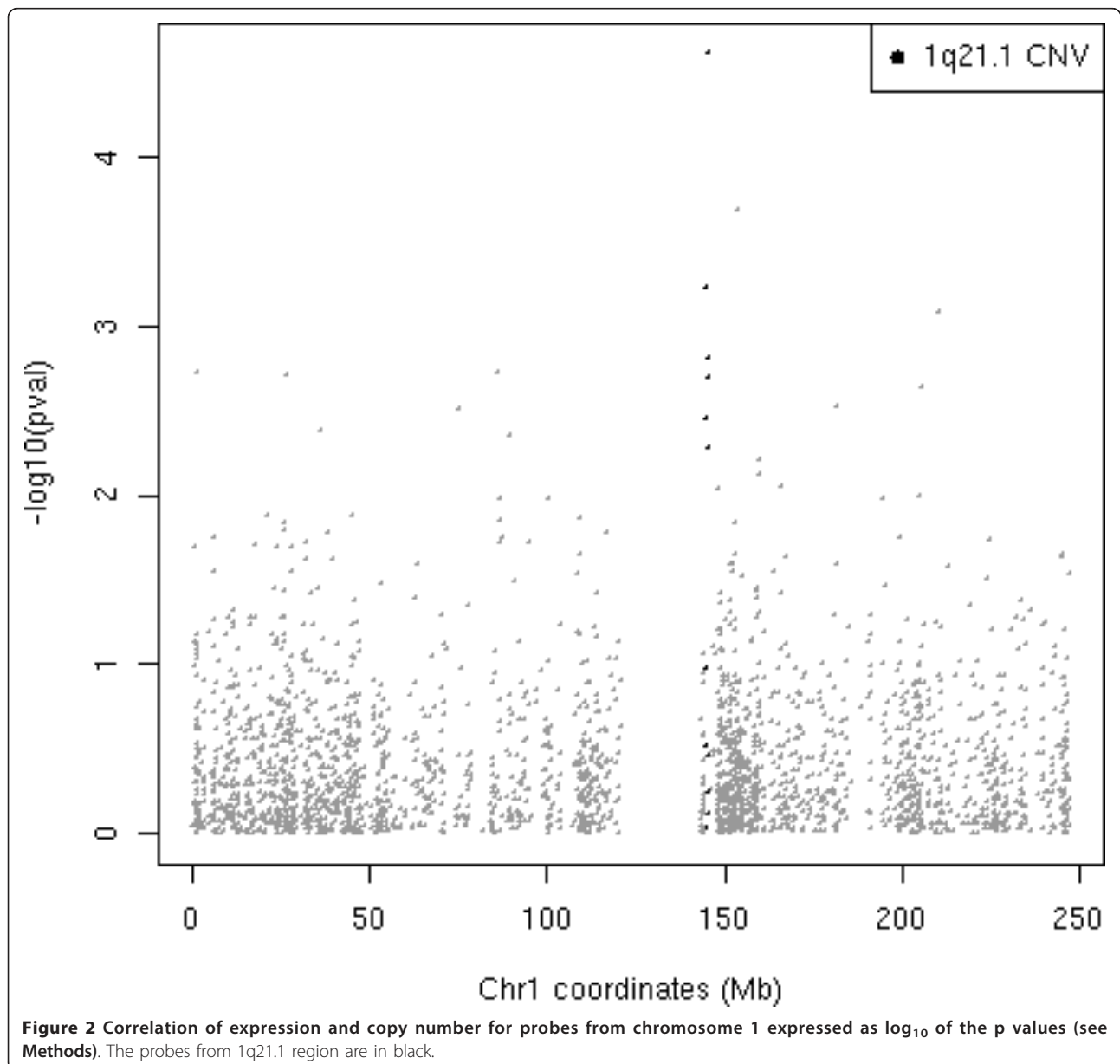
*NBPF11*. There were no secondary CNVs that could be considered pathogenic and contributing to the phenotype.

#### Whole genome expression analysis

Gene expression analysis was performed for 3 subjects with microdeletion (A1-3, from family A) two subjects with microduplication (C1 and C2 from family C) and 3 controls. Ranking of genes was based on correlation of expression changes and 1q21.1 copy number. Significant enrichment of gene transcripts from the 1q21.1 CNV (6/11 with probes on Illumina array) was detected within the top 100 genes in our 1q21.1 copy number/expression correlation analysis (Additional File 1, Table

S2 and Figure 2). Transcripts from these genes (*PRKAB2*, *CHD1L/ALC1*, *BCL9*, *ACP6*, *GPR89A*, and *PDIA3P*) are ranked higher in our analysis than would be expected by chance ( $p = 2.5 \times 10^{-14}$ ) and are positively correlated with 1q21.1 copy number with the exception of *PDIA3P*.

*CHD1L/ALC1*, a gene within the 1q21.1 CNV, was at the top of the correlation list, i.e. the correlation of its expression and copy number change was the least likely to have occurred by chance ( $p = 2.42 \times 10^{-5}$ , though not significant after multiple test correction). The p values for the correlation of expression and 1q21.1 copy number for all probes across all chromosomes is shown in Additional File 2, Figure S1. We did not find any



**Figure 2** Correlation of expression and copy number for probes from chromosome 1 expressed as  $\log_{10}$  of the p values (see Methods). The probes from 1q21.1 region are in black.

evidence that the 1q21.1 CNV influenced expression of genes flanking the CNV (2.5 or 5 Mb windows; Wilcoxon rank-sum test and hypergeometric tests  $p > 0.2$ , see Methods). Gene Ontology enrichment analysis did not reveal any GO terms with more genes from the top 100 than would be expected by chance.

#### Gene function analysis

Gene function analysis was performed using LBCs from B1 and C1. B1 represented the 1q21.1 deletion (Del) and C1 represented the 1q21.1 duplication (Dup). Two genes, *CHD1L/ALC1* and *PRKAB2*, from 1q21.1 were studied because they ranked highest in the expression/1q21.1 copy number correlation analysis (*CHD1L/ALC1* position 1 and *PRKAB2* position 10) and because they have functions in relevant cellular processes (see below and discussion for details). The protein expression of these genes was determined using Western blotting in patient LBCs. Reduction of protein level for both *CHD1L/ALC1* and *PRKAB2* was seen in the LBCs with 1q21.1 Del and an increase in the LBCs with 1q21.1 Dup in comparison to the control (Figure 3A and 3B and 5A respectively).

#### Functional assays for *CHD1L/ALC1*

*CHD1L/ALC1* (hereafter referred to as *CHD1L*) has been implicated in chromatin remodeling and DNA relaxation process required for DNA replication, repair and transcription [25]. Both depletion and over-expression of *CHD1L* have been implicated in impaired chromatin remodeling during DNA single strand break repair [26] suggesting that it is a dosage-sensitive gene with a role in DNA Damage Response (DDR). The DDR incorporates DNA repair processes as well as signal transduction processes and is coordinated by two protein kinases ATM (Ataxia Telangiectasia Mutated) and ATR (Ataxia Telangiectasia Mutated Rad3-related) that sense DNA damage and co-ordinate appropriate cell cycle checkpoint activation, DNA repair and apoptosis [27].

We set out to probe DDR function in 1q21.1 CNV LBCs by initially examining the ATM and ATR-dependent G2-M checkpoint via mitotic index enumeration following ionising radiation (IR; for ATM-dependent arrest) or UV irradiation (for ATR-dependent arrest) respectively. LBCs with a deletion or duplication of 1q21.1 exhibited normal arrest, as evidenced by an increase in G2 cells and decrease in mitotic cell index, suggesting functional ATM and ATR-dependent checkpoint activation (data not shown). But, in the course of this analysis we noticed elevated levels of 'pseudomitosis' in LBCs containing 1q21.1 Del and Dup containing cell lines, which prompted more detailed analysis of their frequencies in the 1q21.1 Del and Dup cell lines. Pseudomitotic cells exhibit catenated entangled chromatids and their presence indicates sub-optimal Decatenation

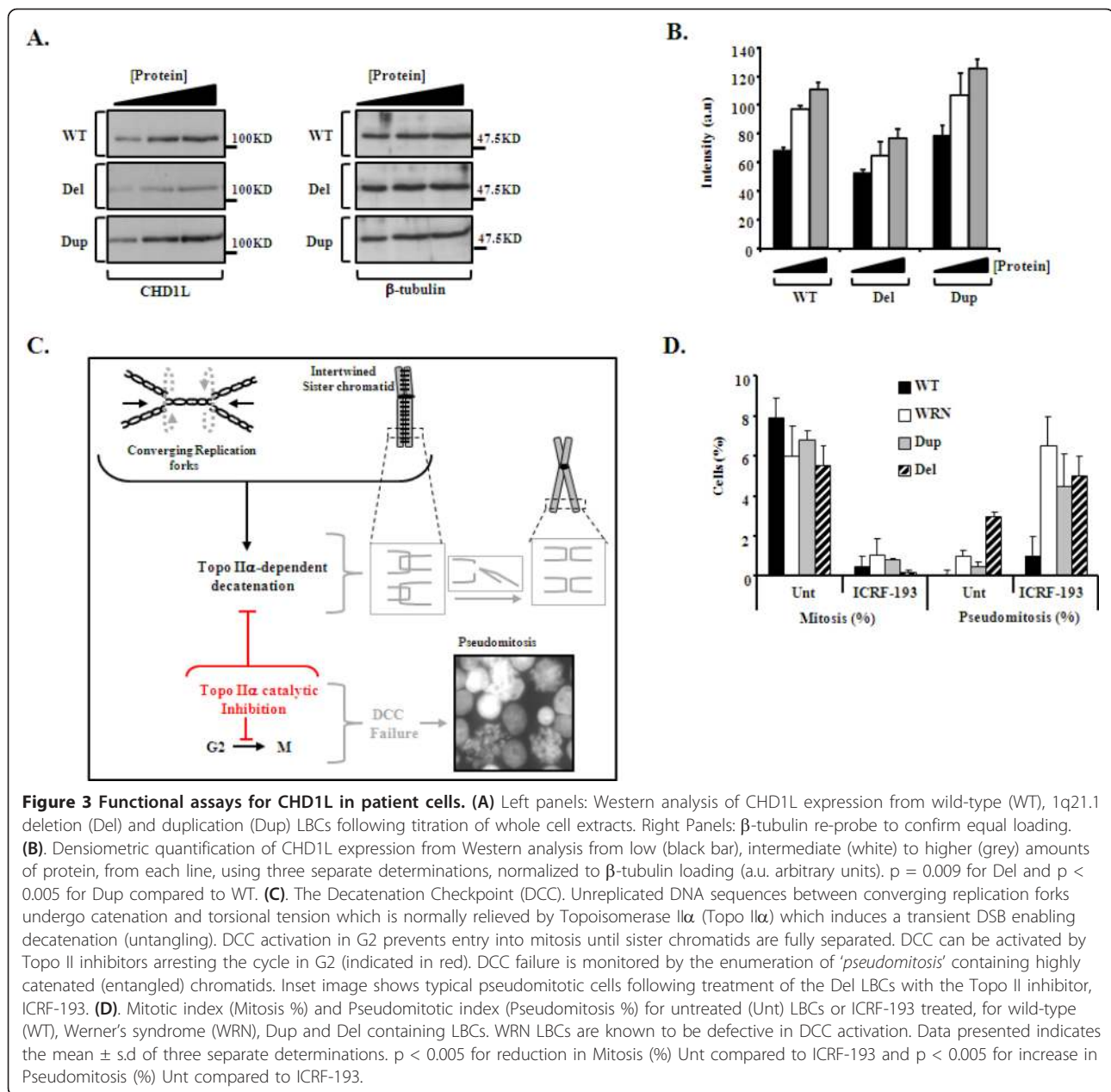
Checkpoint (DCC) activation (Figure 3C). The DCC is a functional cell cycle checkpoint, involving proteins such as ATR, ATM, WRN, MDC1, BRCA1 and RAD9, that delays cells in G2 phase until DNA is fully decatenated [28]. Chromosome catenation is a normal by-product of DNA replication as replication forks attempt to merge producing intertwined catenated sister chromatids (Figure 3C). Topoisomerase II alpha (Topo II $\alpha$ ) specifically functions to decatenate/untangle these chromosomes by transient introduction of a DNA double strand break (DSB) allowing one strand to pass through the other thereby facilitating completion of DNA replication and faithful chromosome segregation (Figure 3C). DCC can be activated following treatment with a bisdioxopiperazine Topo II catalytic inhibitor that prevents Topo-II-dependent DSB formation (e.g. ICRF193).

Interestingly, we found that LBCs carrying a Del or Dup of 1q21.1 failed to arrest in G2 following Topo II inhibition, and instead, exhibited elevated pseudomitosis similar to *WRN*-defective cells from a patient with Werner syndrome (OMIM #277700, Figure 3D), which are known to exhibit defective DCC activation [29]. Considering that *CHD1L* functions as a chromatin remodeler [26], and that catenated chromosomes are a conceivable outcome of an inability to efficiently manipulate chromatin structure, we sought to determine whether reduction of *CHD1L* specifically could underlie this phenotype. Using careful titration of *CHD1L* siRNA in A549 cells so as to mimic the patient LBC situation (Figure 4A), we found that modestly reduced *CHD1L* was indeed associated with impaired DCC activation following Topo II inhibition and resulted in increase in number of pseudomitoses (Figure 4B). These data describe a novel consequence of limiting *CHD1L* levels.

Failure of the DCC can also ultimately result in chromosome breakage and elevated levels of genomic instability as evidenced by increase in micronuclei [30,31]. Consistent with DCC failure observed in 1q21.1 Del and Dup containing LBCs, we found elevated levels of micronuclei in both LBCs following prolonged treatment (16 hrs) with ICRF193, although to a greater extent in the 1q21.1 Del containing LBCs compared to the 1q21.1 Dup containing LBCs (Figure 4C). Nevertheless, these data are consistent with a failure to efficiently activate the DCC and with elevated levels of DSBs which manifest as micronuclei in these cultures (Figure 4C). There was no evidence of spontaneous chromosome instability or increased micronuclei formation in the 1q21.1 Del and 1q21.1 Dup containing cell lines based on analysis of solid stained and G banded patient chromosomes and nuclei after short term culture.

#### Functional assays for *PRKAB2*

AMP-activated protein kinase (AMPK) senses and regulates systemic and cellular energy balance by regulating

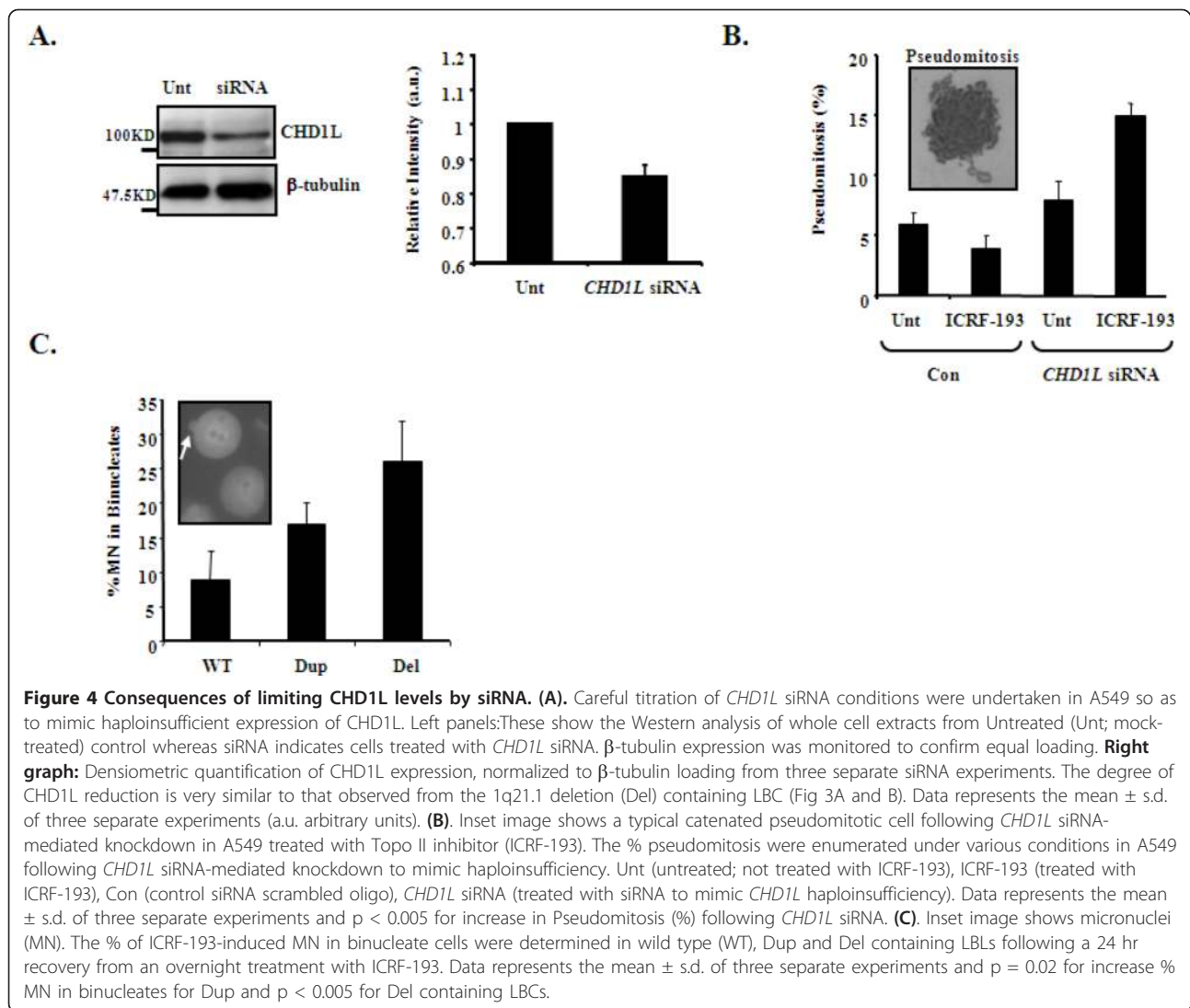


food intake, body weight, and glucose and lipid homeostasis [32]. It also plays an important role in negatively regulating the mTOR pathway that functions to control ribosome and protein biosynthesis [33]. AMPK is a heterotrimeric complex composed of a catalytic  $\alpha$ -subunit, a regulatory  $\beta$ -subunit and an ADP/ATP-binding  $\gamma$ -subunit [34]. Furthermore, several isoforms of each subunit exist ( $\alpha 1$ ,  $\alpha 2$ ,  $\beta 1$ ,  $\beta 2$ ,  $\gamma 1$ ,  $\gamma 2$ ,  $\gamma 3$ ) thereby enabling the generation of multiple distinct heterotrimeric complexes. *PRKAB2* encodes the  $\beta 2$ -isoform of AMPK.

Expression of *PRKAB2* protein product, AMPK $\beta 2$ , in patient cells was decreased in the cell line with 1q21.1

Del and increased in the cell line with 1q21.1 Dup compared to a wild-type (WT) control, whilst that of the  $\beta 1$  subunit was unaffected (Figure 5A and 5B). The gene encoding AMPK- $\beta 1$  subunit (*PRKAB1*) is located on chromosome 12q24.1 and so is not within the 1q21.1 CNV. To investigate the impact of increased and decreased AMPK- $\beta 2$  expression on AMPK activity we treated patient-derived LBCs with AICAR (*N*<sup>1</sup>-( $\beta$ -D-Ribofuranosyl)-5-aminoimidazole-4-carboxamide), a cell permeable nucleoside analogue that mimics the effects of AMP on the allosteric activation of AMPK, and monitored phosphorylation of AMPK on threonine-172 ( $p$ -

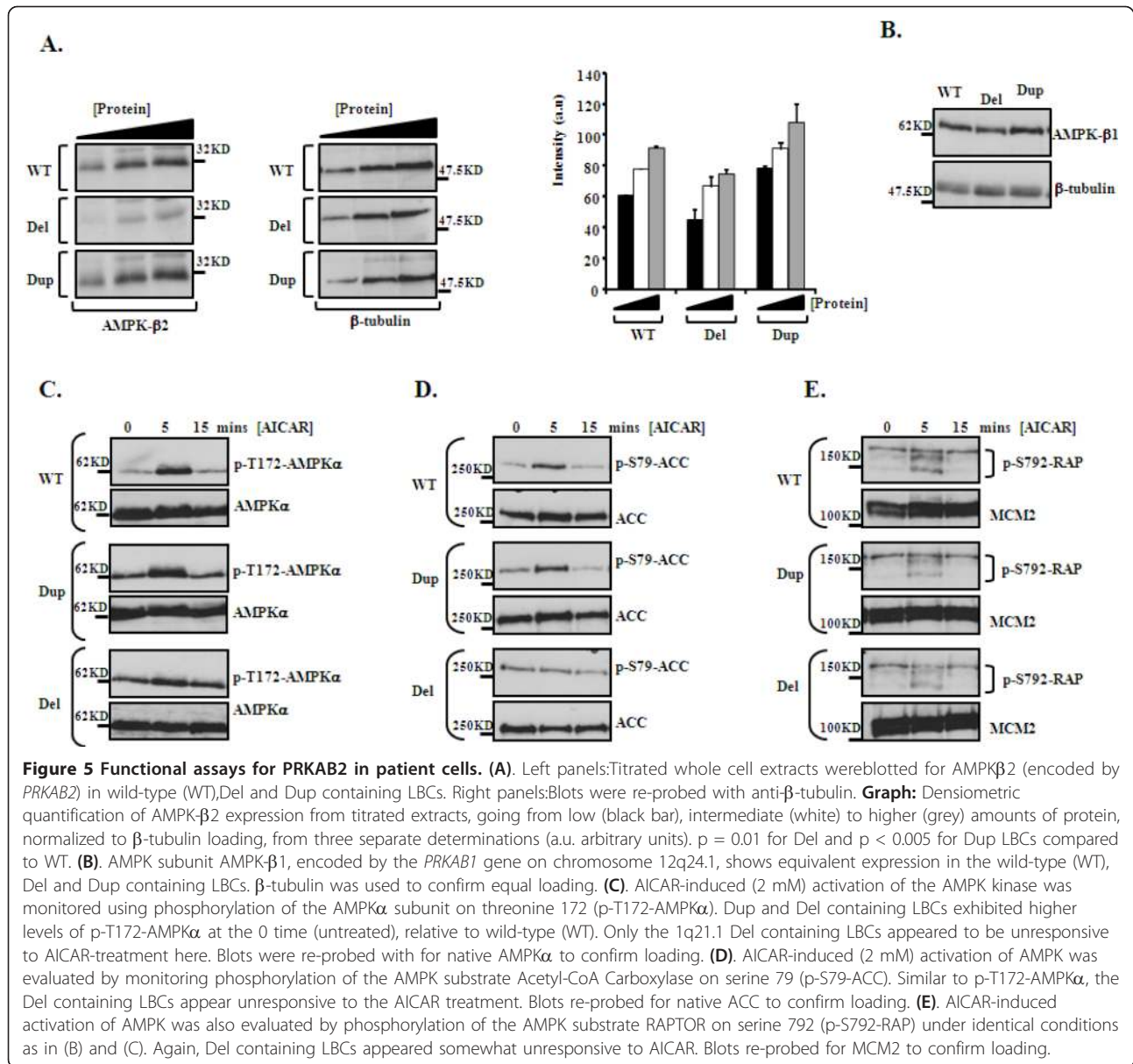




T172-AMPK $\alpha$ ). This is an essential modification, required for and diagnostic of AMPK activity (Figure 5C). Interestingly, both the 1q21.1 Dup and 1q21.1 Del containing LBCs exhibited slightly elevated basal levels of p-T172-AMPK $\alpha$  in the absence of AICAR (0 time), compared to wild-type (WT). Elevated AICAR-induced p-T172-AMPK $\alpha$  was detectable in wild-type LBCs (WT) within 5 minutes, and to a similar extent 1q21.1 Dup containing cells (Figure 5C). In comparison, the change in the AICAR-induced p-T172-AMPK $\alpha$  activity at 5 minutes was less apparent in the 1q21.1 Del containing cell line, and the activity remained constant at 15 minutes. In contrast, the AICAR-induced p-T172-AMPK $\alpha$  activity of the WT and 1q21.1 Dup containing cell line was reduced after 15 minutes. This suggests that decreased AMPK- $\beta$ 2 level is associated with somewhat unresponsive AMPK activation, while the 1q21.1 duplication-containing LBC (Dup) showed similar pattern of

responsiveness to WT cells under these conditions (Figure 5C).

To further substantiate these findings we explored AMPK-mediated phosphorylation of two of its well known substrates, Acetyl-CoA Carboxylase (ACC) and RAPTOR. ACC is a key mediator of fatty acid (FA) synthesis. AMPK-induced phosphorylation of ACC on serine-79 (p-S79-ACC) inhibits ACC enzymatic activity thereby limiting FA synthesis under energy limiting conditions (i.e. high [AMP] and low [ATP]) [32]. Consistent with our findings with p-T172-AMPK $\alpha$ , we found efficient induction of p-S79-ACC in WT and LBCs with 1q21.1 Dup within 5 minutes of AICAR treatment, whilst the LBCs with 1q21.1 Del failed to exhibit significant levels of p-S79-ACC under these conditions. This data supports the observation of sub-optimal AMPK activity in this line (Figure 5D).



RAPTOR is an important regulatory component of the mTOR containing complex 1 (mTORC1) and is required for optimal mTOR kinase activity [35]. AMPK-mediated phosphorylation of RAPTOR on serine-792 (p-S792-RAP) inhibits mTORC1 thereby limiting protein synthesis and inducing cell cycle arrest when cellular energy is limiting. Again, consistent with sub-optimal AMPK activity in the 1q21.1 Del containing LBCs, we found reduced AICAR-induced p-S792-RAPTOR in these cells in contrast to the 1q21.1 Dup containing line and the WT control (Figure 5D). Together, these results suggest that haploinsufficiency of *PRKAB2* results in reduced expression of AMPK-β2 which is associated with impaired AICAR-induced AMPK activation. In

contrast, duplication of *PRKAB2* did not negatively impact on AMPK activity under the conditions examined here.

### Discussion

We have performed whole genome expression and cell function studies in carriers of 1q21.1 deletion and 1q21.1 duplication. Our data show that the top genes ranked based on correlation of expression and 1q21.1 copy number change are significantly enriched for 1q21.1 genes, indicating association of expression and copy number for ~50% of 1q21.1 CNV genes. Furthermore, we show that the function of proteins coded by two of the genes from the 1q21.1 CNV, which ranked

highest in 1q21.1 copy number expression correlation, is altered in both the deletion and duplication patient cell lines.

*CHD1L*, the gene which ranked first in the expression/1q21.1 copy number correlation, has been implicated in chromatin remodeling and relaxation as well as DNA damage response [25,26]. Our studies identified a novel role for *CHD1L* in decatenation, which was suspected based on its known chromatin remodeling function, and the defective Topo II decatenation checkpoint demonstrated here in both the 1q21.1 Del and Dup containing patient cell lines.

It is of interest that the DCC defect detected in the 1q21.1 Del and Dup containing cell lines is comparable to that seen in cells from Werner syndrome (OMIM 277700), an autosomal recessive disorder, associated with predisposition to cancer and premature aging, neither of which were noted in our patients. The only overlapping feature, short stature, was noted in 5/6 subjects with the 1q21.1 deletion and also reported in subjects from other cohorts [2]. Previous DCC studies of Werner syndrome and control cells suggested that DCC defect *per se* is not sufficient to cause significant genomic instability, but requires absence or dysfunction of "caretaker" genes such as *ATR*, *BRCA1* or *WRN* [29]. It is possible that in cell lines with 1q21.1 Del and Dup the DCC defect is not accompanied with other deleterious events and thus the threshold for significant spontaneous genomic instability leading to premature cell senescence/cancer predisposition is not met. We have not found evidence of spontaneous chromosome instability in the short term chromosome cultures of our patients nor has this been previously reported for any of the 1q21.1 CNV subjects who had routine chromosome analysis. Future studies of the association of *CHD1L* with other genes in decatenation checkpoint mechanism may shed more light on the precise role of *CHD1L* in DCC. So, whilst the phenotypic consequences of defective DCC activation in subjects with a 1q21 CNV are unclear, their cellular phenotype does appear to be consistent with *CHD1L* dysfunction.

Our findings that the same cellular phenotype is present in both the 1q21.1 Del and Dup containing cell lines, is in keeping with reports [26] that both dosage imbalances of *CHD1L* result in identical cellular effects. Haploinsufficiency and duplication sensitivity is thought to affect genes regulating balanced expression of other genes ("master genes" [36]), which is in keeping with *CHD1L*'s role as a chromatin remodeler and indirect regulator of many key biological processes such as replication, transcription and translation [37]. In that respect, it is interesting to note that > 18 genes with a role in chromatin remodeling have been implicated in intellectual disability [38].

*PRKAB2*, which ranked 10<sup>th</sup> in the expression/1q21.1 copy number correlation, encodes the  $\beta$ 2-subunit of AMPK, a key regulator of cellular response to a large number of external stimuli which modulates energy levels at the cellular and organism level [39]. The deregulation of AMPK $\beta$ 2 function in 1q21.1 deletion and duplication carriers was suspected based on a) changes in levels of AMPK $\beta$ 2 protein (in keeping with the 1q21.1 copy number state and expression level of the *PRKAB2* gene), b) different basal levels of p-T172-AMPK $\alpha$  in both 1q21.1 Del and Dup containing lines in comparison to WT, and c) sub-optimal AICAR-induced phosphorylation of the AMPK substrates ACC and RAPTOR, which was more obvious in the 1q21.1 Del containing line. The last observation could be explained by the fact that AMPK, as a multi protein complex, may be sensitive to imbalances of its components [36], and that reduced availability of a regulatory  $\beta$ -isoform, as occurs here, could impact on AMPK activity more than over-abundance.

The multifaceted nature of AMPK role in brain function is of particular interest to the 1q21.1 phenotype which most consistently includes some form of learning difficulty. Previous studies showed that alternations of AMPK activity resulted in profound abnormalities of the central nervous system in AMPK- $\beta$ 1<sup>-/-</sup> knockout mice which had reduction of AMPK activity [34], whereas the consequences of AMPK activation remain controversial as some groups have shown that AMPK activation is neuroprotective while others show that AMPK overactivation is detrimental [39]. The essential role of AMPK in brain function is further supported by its inhibition of the mTOR pathway [32] which is required for learning and memory [40].

Our studies are the first to report that the function of two genes integral to 1q21.1 CNV is changed in patient lymphoblasts and that both genes are likely to be dosage sensitive. Both genes are expressed in multiple tissues, including brain [34,41] which may explain the multi-systemic nature of the physical abnormalities, and the frequent involvement of learning difficulty albeit at a very variable levels. It remains uncertain as to the tissue-specific consequences of gene function changes in individuals with 1q21.1 CNV although AMPK is clearly involved in brain development and homeostasis. We believe that our investigations are unique as they pointed to genes for which further functional investigation in additional carriers and cell lines may prove to be worthwhile.

The phenotypic variability for some CNVs has been traditionally explained by genetic and environmental factors [42]. In that respect it is of interest to note that *CHD1L* and *PRKAB2* have a role in sensing and responding to genomic (chromosomal structure) and

metabolic (energy level) stress and therefore their dysfunction may result in a more severe phenotype in individuals which experienced more adverse environmental conditions during development. Sequence changes of other genes from the 1q21.1 region as well as other genes across the genome that impair their function cannot be ruled out as a source of variability at this time and the new whole genome sequencing technologies will no doubt become useful in future investigations of their contribution to the development of an abnormal phenotype.

## Conclusion

Our studies are unique as they provide evidence of changes in the function of genes from 1q21.1 CNV in lymphoblasts from both deletion and duplication carriers. Furthermore, they also provide evidence that deletions and duplications can have similar (e.g. DCC deficiency in 1q21.1 Del and Dup containing LBCs) as well as differing functional consequences (e.g. less responsive AICAR-induced AMPK activity in 1q21.1 Del containing LBCs) depending on the genes and pathways involved. Our results support the use of patient lymphoblasts for dissecting the functional sequelae of genes integral to CNVs in carrier cell lines, ultimately enhancing understanding of biological processes which may contribute to the clinical phenotype.

## Additional material

**Additional file 1: Table S1: Clinical and genomic information on subjects included in the study. Table S2: Top 100 Genes from Expression/1q21.1 Copy Number correlation analysis.**

**Additional file 2: Figure S1: Correlation of expression and 1q21.1 copy number for probes across the genome expressed as  $\log_{10}$  of p values.**

## Acknowledgements

We are grateful to the subjects' and their extended family members' enthusiastic support of this study. This work was supported by a CIHR operating grant (MOP 74502; PI: ERS) and Career Investigator Award from the Michael Smith Foundation for Health Research (ERS, PP and MESL). The M.O'D lab is funded by Cancer Research UK and the UK Medical Research Council. M.O'D is a CRUK Senior Cancer Research Fellow.

## Author details

<sup>1</sup>Child and Family Research Institute, Molecular Cytogenetics and Array Laboratory, 950 West 28th Avenue, Vancouver, BC, Canada. <sup>2</sup>Department of Pathology, University of British Columbia, Vancouver, BC, Canada. <sup>3</sup>Department of Psychiatry, University of British Columbia, Vancouver, BC, Canada. <sup>4</sup>Human DNA Damage Response Disorders Group, Genome Damage & Stability Centre, University of Sussex, Brighton, UK. <sup>5</sup>Clinical Genetics Service, Centre for Addiction and Mental Health, Toronto, and Department of Psychiatry, University of Toronto, Canada. <sup>6</sup>Cytogenetics Laboratory, Royal Columbian Hospital, New Westminster, BC, Canada. <sup>7</sup>Department of Medical Genetics, University of British Columbia, Vancouver, BC, Canada. <sup>8</sup>Departments of Pediatrics and Child Health and Biochemistry and Medical Genetics, University of Manitoba, Winnipeg, MB, Canada. <sup>9</sup>Department of

Physiology, Queen's University, Kingston, Ontario, Canada. <sup>10</sup>Department of Psychiatry, Queen's University, Kingston, Ontario, Canada. <sup>11</sup>Genetics and Genomics Research Laboratory, Ongwanada, Kingston, Ontario, Canada.

## Authors' contributions

ERS designed the study, initiated the collaborative project, monitored data collection for the whole study, and revised the paper. M.O'D designed the functional analysis for the two genes, and wrote the functional aspect of the paper. ES and CH performed the genomic and expression related experiments and drafted the manuscript. SMartell and YQ contributed to genomic array data analysis. RC and DA performed the functional studies. ME and PP performed the statistical analysis of the expression data. EC, SH, BM, SMarles, AM, AD, SL contributed with clinical information on the subjects. JJA reviewed the manuscript. MH and CT supervised the 2.7 Affymetrix genomic analysis. All authors approved and read the final manuscript.

## Competing interests

The authors declare that they have no competing interests.

Received: 10 April 2011 Accepted: 8 August 2011

Published: 8 August 2011

## References

1. Brunetti-Pierri N, Berg JS, Scaglia F, Belmont J, Bacino CA, Sahoo T, Lalani SR, Graham B, Lee B, Shinawi M, Shen J, Kang SH, Pursley A, Lotze T, Kennedy G, Lansky-Shafer S, Weaver C, Roeder ER, Grebe TA, Arnold GL, Hutchison T, Reimschisel T, Amato S, Geraghty MT, Innis JW, Obersztyrn E, Nowakowska B, Rosengren SS, Bader PI, Grange DK, et al: **Recurrent reciprocal 1q21.1 deletions and duplications associated with microcephaly or macrocephaly and developmental and behavioral abnormalities.** *Nature genetics* 2008, **40**:1466-1471.
2. Mefford HC, Sharp AJ, Baker C, Itsara A, Jiang Z, Buysse K, Huang S, Maloney VK, Crolla JA, Baralle D, Collins A, Mercer C, Norga K, de Ravel T, Devriendt K, Bongers EM, de Leeuw N, Reardon W, Gimelli S, Bena F, Hennekam RC, Male A, Gaunt L, Clayton-Smith J, Simoncic I, Park SM, Mehta SG, Nik-Zainal S, Woods CG, Firth HV, et al: **Recurrent rearrangements of chromosome 1q21.1 and variable pediatric phenotypes.** *The New England journal of medicine* 2008, **359**:1685-1699.
3. Stefansson H, Rujescu D, Cichon S, Pietilainen OP, Ingason A, Steinberg S, Fossdal R, Sigurdsson E, Sigmundsson T, Buizer-Voskamp JE, Hansen T, Jakobsen KD, Muglia P, Francks C, Matthews PM, Gylfason A, Halldorsson BV, Gudbjartsson D, Thorgeirsson TE, Sigurdsson A, Jonasdottir A, Jonasdottir A, Bjornsson A, Mattiasdottir S, Blondal T, Haraldsson M, Magnusdottir BB, Giegling I, Moller HJ, Hartmann A, et al: **Large recurrent microdeletions associated with schizophrenia.** *Nature* 2008, **455**:232-236.
4. Tam GW, van de Lagemaat LN, Redon R, Strathdee KE, Croning MD, Malloy MP, Muir WJ, Pickard BS, Deary IJ, Blackwood DH, Carter NP, Grant SG: **Confirmed rare copy number variants implicate novel genes in schizophrenia.** *Biochemical Society transactions* 2010, **38**:445-451.
5. Walsh T, McClellan JM, McCarthy SE, Addington AM, Pierce SB, Cooper GM, Nord AS, Kusenda M, Malhotra D, Bhandari A, Stray SM, Rippey CF, Roccanova P, Makarov V, Lakshmi B, Findling RL, Sikich L, Stromberg T, Merriman B, Gogtay N, Butler P, Eckstrand K, Noory L, Gochman P, Long R, Chen Z, Davis S, Baker C, Eichler EE, Meltzer PS, et al: **Rare structural variants disrupt multiple genes in neurodevelopmental pathways in schizophrenia.** *Science (New York, NY)* 2008, **320**:539-543.
6. Brunet A, Armengol L, Heine D, Rosell J, Garcia-Aragones M, Gabau E, Estivill X, Guitart M: **BAC array CGH in patients with Velocardiofacial syndrome-like features reveals genomic aberrations on chromosome region 1q21.1.** *BMC medical genetics* 2009, **10**:144.
7. Christiansen J, Dyck JD, Elyas BG, Lilley M, Bamforth JS, Hicks M, Sprysak KA, Tomaszewski R, Haase SM, Vicens-Wyhony LM, Somerville MJ: **Chromosome 1q21.1 contiguous gene deletion is associated with congenital heart disease.** *Circulation research* 2004, **94**:1429-1435.
8. Greenway SC, Pereira AC, Lin JC, DePalma SR, Israel SJ, Mesquita SM, Ergul E, Conta JH, Korn JM, McCarroll SA, Gorham JM, Gabriel S, Altshuler DM, Quintanilla-Dieck Mde L, Artunduaga MA, Eavey RD, Plenge RM, Shadick NA, Weinblatt ME, De Jager PL, Hafler DA, Breitbart RE, Seidman JG, Seidman CE: **De novo copy number variants identify new**

- genes and loci in isolated sporadic tetralogy of Fallot. *Nature genetics* 2009, **41**:931-935.
9. Girirajan S, Eichler EE: **Phenotypic variability and genetic susceptibility to genomic disorders.** *Human molecular genetics* 2010, **19**:R176-187.
  10. Girirajan S, Rosenfeld JA, Cooper GM, Antonacci F, Siswara P, Itsara A, Vives L, Walsh T, McCarthy SE, Baker C, Mefford HC, Kidd JM, Browning SR, Browning BL, Dickel DE, Levy DL, Ballif BC, Platky K, Farber DM, Gowans GC, Wetherbee JJ, Asamoah A, Weaver DD, Mark PR, Dickerson J, Garg BP, Ellingwood SA, Smith R, Banks VC, Smith W, et al: **A recurrent 16p12.1 microdeletion supports a two-hit model for severe developmental delay.** *Nature genetics* 2010, **42**:203-209.
  11. Henrichsen CN, Chaignat E, Reymond A: **Copy number variants, diseases and gene expression.** *Human molecular genetics* 2009, **18**:R1-8.
  12. Orozco LD, Cokus SJ, Ghazalpour A, Ingram-Drake L, Wang S, van Nas A, Che N, Araujo JA, Pellegrini M, Lusis AJ: **Copy number variation influences gene expression and metabolic traits in mice.** *Human molecular genetics* 2009, **18**:4118-4129.
  13. Meechan DW, Maynard TM, Wu Y, Gopalakrishna D, Lieberman JA, LaMantia AS: **Gene dosage in the developing and adult brain in a mouse model of 22q11 deletion syndrome.** *Molecular and cellular neurosciences* 2006, **33**:412-428.
  14. Ricard G, Molina J, Chrast J, Gu W, Gheldof N, Pradervand S, Schutz F, Young JJ, Lupski JR, Reymond A, Walz K: **Phenotypic consequences of copy number variation: insights from Smith-Magenis and Potocki-Lupski syndrome mouse models.** *PLoS biology* 2010, **8**:e1000543.
  15. Carmona-Mora P, Encina CA, Canales CP, Cao L, Molina J, Kairath P, Young JJ, Walz K: **Functional and cellular characterization of human Retinoic Acid Induced 1 (RAI1) mutations associated with Smith-Magenis Syndrome.** *BMC molecular biology* 2010, **11**:63.
  16. Griffin HR, Topf A, Glen E, Zweier C, Stuart AG, Parsons J, Peart I, Deanfield J, O'Sullivan J, Rauch A, Scambler P, Burn J, Cordell HJ, Keavney B, Goodship JA: **Systematic survey of variants in TBX1 in non-syndromic tetralogy of Fallot identifies a novel 57 base pair deletion that reduces transcriptional activity but finds no evidence for association with common variants.** *Heart (British Cardiac Society)* 2010, **96**:1651-1655.
  17. O'Driscoll M, Dobyns WB, van Hagen JM, Jeggo PA: **Cellular and clinical impact of haploinsufficiency for genes involved in ATR signaling.** *American journal of human genetics* 2007, **81**:77-86.
  18. Merla G, Howald C, Henrichsen CN, Lyle R, Wyss C, Zabol MT, Antonarakis SE, Reymond A: **Submicroscopic deletion in patients with Williams-Beuren syndrome influences expression levels of the nonhemizygous flanking genes.** *American journal of human genetics* 2006, **79**:332-341.
  19. Yang S, Wang K, Gregory B, Berrettini W, Wang LS, Hakonarson H, Bucan M: **Genomic landscape of a three-generation pedigree segregating affective disorder.** *PLoS one* 2009, **4**:e4474.
  20. Qiao Y, Harvard C, Tyson C, Liu X, Fawcett C, Pavlidis P, Holden JJ, Lewis ME, Rajcan-Separovic E: **Outcome of array CGH analysis for 255 subjects with intellectual disability and search for candidate genes using bioinformatics.** *Human genetics* 2010, **128**:179-194.
  21. Rajcan-Separovic E, Harvard C, Liu X, McGillivray B, Hall JG, Qiao Y, Hurlburt J, Hildebrand J, Mickelson EC, Holden JJ, Lewis ME: **Clinical and molecular cytogenetic characterisation of a newly recognised microdeletion syndrome involving 2p15-16.1.** *Journal of medical genetics* 2007, **44**:269-276.
  22. Smyth GK: **Linear models and empirical bayes methods for assessing differential expression in microarray experiments.** *Statistical applications in genetics and molecular biology* 2004, **3**:Article 3.
  23. Gillis J, Mistry M, Pavlidis P: **Gene function analysis in complex data sets using ErmineJ.** *Nature protocols* 2010, **5**:1148-1159.
  24. Cimini D, Tanzarella C, Degraffi F: **Differences in malsegregation rates obtained by scoring ana-telophases or binucleate cells.** *Mutagenesis* 1999, **14**:563-568.
  25. Deng W: **PARYlation: strengthening the connection between cancer and pluripotency.** *Cell stem cell* 2009, **5**:349-350.
  26. Ahel I, Horejsi Z, Wiechens N, Polo SE, Garcia-Wilson E, Ahel I, Flynn H, Skehel M, West SC, Jackson SP, Owen-Hughes T, Boulton SJ: **Poly(ADP-ribose)-dependent regulation of DNA repair by the chromatin remodeling enzyme ALC1.** *Science (New York, NY)* 2009, **325**:1240-1243.
  27. Kerzendorfer C, O'Driscoll M: **Human DNA damage response and repair deficiency syndromes: linking genomic instability and cell cycle checkpoint proficiency.** *DNA repair* 2009, **8**:1139-1152.
  28. Damelin M, Bestor TH: **The decatenation checkpoint.** *British journal of cancer* 2007, **96**:201-205.
  29. Franchitto A, Oshima J, Pichierri P: **The G2-phase decatenation checkpoint is defective in Werner syndrome cells.** *Cancer research* 2003, **63**:3289-3295.
  30. Bower JJ, Karaca GF, Zhou Y, Simpson DA, Cordeiro-Stone M, Kaufmann WK: **Topoisomerase Ialpha maintains genomic stability through decatenation G(2) checkpoint signaling.** *Oncogene* 2010, **29**:4787-4799.
  31. Fenech M, Kirsch-Volders M, Natarajan AT, Surrallés J, Crott JW, Parry J, Norppa H, Eastmond DA, Tucker JD, Thomas P: **Molecular mechanisms of micronucleus, nucleoplasmic bridge and nuclear bud formation in mammalian and human cells.** *Mutagenesis* 2011, **26**:125-132.
  32. Kahn BB, Alquier T, Carling D, Hardie DG: **AMP-activated protein kinase: ancient energy gauge provides clues to modern understanding of metabolism.** *Cell metabolism* 2005, **1**:15-25.
  33. Garelick MG, Kennedy BK: **TOR on the brain.** *Experimental gerontology* 2011, **46**:155-163.
  34. Dasgupta B, Milbrandt J: **AMP-activated protein kinase phosphorylates retinoblastoma protein to control mammalian brain development.** *Developmental cell* 2009, **16**:256-270.
  35. Kim DH, Sarbassov DD, Ali SM, King JE, Latek RR, Erdjument-Bromage H, Tempst P, Sabatini DM: **mTOR interacts with raptor to form a nutrient-sensitive complex that signals to the cell growth machinery.** *Cell* 2002, **110**:163-175.
  36. Schuster-Bockler B, Conrad D, Bateman A: **Dosage sensitivity shapes the evolution of copy-number varied regions.** *PLoS one* 2010, **5**:e9474.
  37. Gottschalk AJ, Timinszky G, Kong SE, Jin J, Cai Y, Swanson SK, Washburn MP, Florens L, Ladurner AG, Conaway JW, Conaway RC: **Poly (ADP-ribosylation) directs recruitment and activation of an ATP-dependent chromatin remodeler.** *Proceedings of the National Academy of Sciences of the United States of America* 2009, **106**:13770-13774.
  38. Kramer JM, van Bokhoven H: **Genetic and epigenetic defects in mental retardation.** *The international journal of biochemistry & cell biology* 2009, **41**:96-107.
  39. Ronnett GV, Ramamurthy S, Kleman AM, Landree LE, Aja S: **AMPK in the brain: its roles in energy balance and neuroprotection.** *Journal of neurochemistry* 2009, **109**(Suppl 1):17-23.
  40. Qi S, Mizuno M, Yonezawa K, Nawa H, Takei N: **Activation of mammalian target of rapamycin signaling in spatial learning.** *Neuroscience research* 2010, **68**:88-93.
  41. Chen M, Huang JD, Hu L, Zheng BJ, Chen L, Tsang SL, Guan XY: **Transgenic CHD1L expression in mouse induces spontaneous tumors.** *PLoS one* 2009, **4**:e6727.
  42. Iascone MR, Vittorini S, Sacchelli M, Spadoni I, Simi P, Giusti S: **Molecular characterization of 22q11 deletion in a three-generation family with maternal transmission.** *American journal of medical genetics* 2002, **108**:319-321.

doi:10.1186/1750-1172-6-54

Cite this article as: Harvard et al: Understanding the impact of 1q21.1 copy number variant. *Orphanet Journal of Rare Diseases* 2011 **6**:54.

**Submit your next manuscript to BioMed Central and take full advantage of:**

- Convenient online submission
- Thorough peer review
- No space constraints or color figure charges
- Immediate publication on acceptance
- Inclusion in PubMed, CAS, Scopus and Google Scholar
- Research which is freely available for redistribution

Submit your manuscript at  
www.biomedcentral.com/submit

