



THE UNIVERSITY *of* EDINBURGH

Edinburgh Research Explorer

## Unrecognised myocardial infarction and its relationship to outcome in critically ill patients with cardiovascular disease

### Citation for published version:

Docherty, AB, Alam, S, Shah, AS, Moss, A, Newby, DE, Mills, NL, Stanworth, SJ, Lone, NI, Walsh, TS & TROPICCAL Investigators 2018, 'Unrecognised myocardial infarction and its relationship to outcome in critically ill patients with cardiovascular disease', *Intensive Care Medicine*, vol. 44, no. 12, pp. 2059–2069. <https://doi.org/10.1007/s00134-018-5425-0>

### Digital Object Identifier (DOI):

[10.1007/s00134-018-5425-0](https://doi.org/10.1007/s00134-018-5425-0)

### Link:

[Link to publication record in Edinburgh Research Explorer](#)

### Document Version:

Peer reviewed version

### Published In:

Intensive Care Medicine

### Publisher Rights Statement:

This is the author's peer-reviewed manuscript as accepted for publication.

### General rights

Copyright for the publications made accessible via the Edinburgh Research Explorer is retained by the author(s) and / or other copyright owners and it is a condition of accessing these publications that users recognise and abide by the legal requirements associated with these rights.

### Take down policy

The University of Edinburgh has made every reasonable effort to ensure that Edinburgh Research Explorer content complies with UK legislation. If you believe that the public display of this file breaches copyright please contact [openaccess@ed.ac.uk](mailto:openaccess@ed.ac.uk) providing details, and we will remove access to the work immediately and investigate your claim.



# Unrecognised myocardial infarction and its relationship to outcome in critically ill patients with cardiovascular disease

Author names:

Annemarie B. Docherty<sup>1,2</sup>, Shirjel Alam<sup>3</sup>, Anoop S. Shah<sup>3</sup>, Alastair Moss<sup>3</sup>, David E. Newby<sup>3</sup>, Nicholas L. Mills<sup>3</sup>, Simon J. Stanworth<sup>4,5</sup>, Nazir I. Lone<sup>1,6</sup>, Timothy S. Walsh<sup>1,2</sup> on behalf of the TROPICCAL Investigators

1. Department of Anaesthesia, Critical Care and Pain Medicine, University of Edinburgh
2. Centre for Inflammation Research, University of Edinburgh
3. Centre for Cardiovascular Sciences, University of Edinburgh
4. Radcliffe Department of Medicine, University of Oxford
5. Transfusion Medicine, NHS Blood and Transplant, Oxford
6. The Usher Institute, University of Edinburgh

Corresponding author: Annemarie B. Docherty: [Annemarie.docherty@ed.ac.uk](mailto:Annemarie.docherty@ed.ac.uk), 2<sup>nd</sup> floor Anaesthetics corridor, Royal Infirmary Edinburgh, Old Dalkeith Road, Edinburgh, EH16 4SA, Scotland.

Author contributions: All authors were involved in the design of the study. ABD ran the study. SA, ASS, and AM performed the ECG analysis. ABD, NIL and TSW undertook the data analysis. All authors were involved in the interpretation of the data and the drafting of the manuscript.

Running title:

Myocardial infarction and outcome in cardiovascular ICU patients

Take-home message:

Around a quarter of patients with pre-existing cardiovascular disease experience myocardial infarction (MI) during ICU care, which is usually unrecognized in routine care and results predominantly from oxygen supply-demand imbalance (type 2 MI). Both myocardial injury (isolated troponin elevation) and MI are associated with worse short and long-term survival, and MI may be on the causal pathway between acute physiological derangement and mortality.

Grants: This study was undertaken as part of ABD's PhD, which was funded by the National Blood Service, and the Scottish National Blood Transfusion Service.

Conflict of Interests: Dr Shah has received speaker fees from Abbott Diagnostics. Professor Mills has acted as a consultant for Abbott Diagnostics, Beckman-Coulter, Roche and Singulex who manufacture troponin assays, and has received research grants from Abbott Diagnostics.

Key words (4-6)

Critical care, Cardiovascular disease, Troponin, Myocardial Infarction, Cohort Study

Abstract:

Purpose

To establish the incidence of myocardial infarction (MI) in ICU patients with co-existing cardiovascular disease (CVD), and explore its association with long-term survival.

Methods:

In a multi-centre prospective cohort study in 11 UK ICUs we enrolled 273 critically ill patients with co-existing CVD. We measured troponin I (cTnI) with a high sensitivity assay for ten days; ECGs were done daily for five days and analysed by blinded cardiologists for dynamic changes. Data were combined to diagnose myocardial ‘infarction’, ‘injury’ or ‘no injury’ according to the third universal definition of MI. Patients were followed-up for six months. Regression and mediation analyses were used to explore relationships between acute physiological derangements, MI, and mortality.

Results:

cTnI was detected in all patients with a rise/fall pattern consistent with an acute hit. In 73% of patients this peaked on days 1-3 (median 114ng/l (1<sup>st</sup>,3<sup>rd</sup> quartiles: 27, 393). Serial ECGs indicated 24.2% (n=66) of patients experienced MI, but >95% were unrecognized by clinical teams. Type 2 MI was the most likely aetiology in all cases. A further 46.1% (n=126) experienced injury (no ECG changes). Injury and MI were both associated with six month mortality (reference: no injury): OR injury 2.28 (95% CI 1.06-4.92, p=0.035), OR MI 2.70 (95% CI 1.11-6.55 p=0.028). Mediation analysis suggested MI partially mediated the relationship between acute physiological derangement and six month mortality (p=0.002) suggesting a possible causal association.

Conclusions:

Undiagnosed MI occurs in around a quarter of critically ill patients with co-existing CVD and is associated with lower long-term survival.

Around 20-30% of adult ICU admissions have pre-existing cardiovascular disease (CVD) [1, 2]. These patients are at risk of myocardial ischaemia during acute illness as a result of cardiovascular stress and reduced coronary oxygen delivery.

Diagnosing myocardial infarction (MI) is difficult in critically ill patients. The third universal definition of MI requires evidence of myocardial necrosis (elevation of myocardial injury biomarkers such as troponin), together with clinical symptoms, ischaemic ECG changes, regional wall motion abnormalities on echocardiography, or evidence of coronary thrombus [3]. MI is further categorized into Type 1 (plaque rupture) and Type 2 (oxygen supply-demand imbalance). Myocardial injury is isolated troponin elevation secondary to cardiac ischaemia. Troponin elevation is also known to result from other aetiologies including sepsis [4], pulmonary embolism [5], acute intracerebral pathology [6], and comorbidities such as COPD [7] and renal failure [8]. In intensive care (ICU) patients, sedation and altered consciousness make application of the universal definition difficult.

In large studies of non-cardiac surgery myocardial injury is independently associated with worse outcomes [9, 10]. Furthermore, both type 2 MI and injury are associated with worse outcomes than type 1 MI [11-13]. Although some previous studies have measured troponins in ICU patient cohorts, no large studies have systematically used the universal definition to estimate myocardial injury and infarction events [2, 14, 15]. This is especially relevant to critically ill patients with pre-existing CVD, who are at greater risk due to established coronary artery lesions. It is also unclear whether myocardial injury or infarction are causally related to higher mortality, rather than simply associated with more severe illness.

Understanding whether this association is, at least in part, causal has potential clinical relevance because, particularly for type 2 MI, it may justify interventions to optimise myocardial oxygen supply-demand balance such as anaemia correction or cardiovascular

manipulation. Current uncertainty is highlighted by the wide variation in clinical practice in response to troponin elevation between clinicians [16].

Our aim was to establish the incidence of myocardial injury and MI during ICU care according to the third universal definition in patients admitted with non-cardiac diagnoses but with known pre-existing CVD, and explore whether a causal relationship exists between acute physiological derangement, myocardial injury and MI, and six month mortality.

## Methods

### Study Design and setting

TROPICCAL (TROPonin I in Cardiovascular patients in CriticAl care, UKCRN 19253) was a prospective cohort study in 11 UK ICUs. Ethical approval was by Scotland A Research Ethics Committee, and Newcastle and North Tyneside Ethics Committees.

### Participants

Inclusion criteria were critically ill adults with pre-existing CVD requiring admission to ICU. CVD was defined as any combination of: chronic cardiac disease, peripheral vascular disease, previous transient ischaemic attack or cerebrovascular accident, age  $\geq 75$  yrs with diabetes or hypertension, or previous myocardial infarction or unstable angina (table E1). Patients with new ACS were excluded if this was the primary diagnosis. Patients or relatives were approached for consent depending on their capacity.

### Data collection

We collected baseline demographic data and daily information for ten days regarding illness severity/organ support, and routine blood tests (see eSupplement). Daily troponin I (cTnI) was measured using the ARCHITECT STAT high-sensitive troponin I assay (Abbott

Diagnostica, Illinois, USA), a two-step immunoassay using chemiluminescent microparticle (CMIA) technology. The limit of detection was 1.2 ng/l, with an upper reference limit (99th centile) of 34 ng/L in men and 16 ng/L in women [17]. The co-efficient of variation is 10% at 6 ng/l [18] (see eSupplement). Clinicians were blinded to study cTnI data, but could order cardiac biomarkers at clinical discretion.

Daily ECGs were performed for up to five days post-admission. ECG interpretation was performed by cardiology research fellows, each with over ten years postgraduate experience, blinded to clinical information and cTnI results, for the following features: ST elevation/LBBB, ST depression, T wave inversion, new Q waves, RBBB (see eSupplement). Cardiologists also reported, as a binary outcome, whether serial ECGs indicated dynamic changes consistent with acute myocardial ischaemia.

## Outcomes

Main outcomes were myocardial injury/infarction category, and 6 month mortality. Other outcomes were duration of mechanical ventilation, and length of ICU and hospital stay. MI was defined as TnI above the sex-specific upper reference limit with  $\geq 20\%$  rise and/or fall in cTnI concentrations, with evidence of dynamic ECG abnormalities suggesting ischaemia. Acute myocardial injury was defined as  $\geq 20\%$  rise and/or fall in cTnI, without ECG signs of ischaemia. Chronic myocardial injury was defined as a persistently elevated cTnI ( $< 20\%$  change) with no evidence of ischaemia. Patients in whom cTnI remained within the reference range and had no signs of ischaemia were defined as no injury [3]. Components of the SOFA score during the 24 hours preceding MI were used to qualitatively assess the likelihood of type 1 versus 2 aetiology.



## Statistical analyses:

*Myocardial injury and MI data:* Data were analyzed using R (R Core Team v3.3.2, Vienna, Austria) [19]. Statistical significance was set at  $p=0.05$ . All tests were 2-sided. We presented continuous data as mean (95% CI), or median (IQR) if non-normally distributed. Binary data were presented as frequency (%). For univariate comparisons, we used the Student t test, ANOVA, Mann Whitney U, or Kruskal-Wallis test according to data distribution. Categorical data were compared using Fisher's exact test.

*Relationship with mortality:* We plotted unadjusted Kaplan Meier survival curves and compared group outcomes with the log rank test. As an exploratory analysis and to explore and illustrate the possible importance of baseline illness severity, we compared mortality outcomes for patients with higher versus lower acute physiological scores (APS, the acute physiological component for APACHE II scores) by dichotomizing the population using the median APS score. To further explore possible causal mechanisms between APS ("exposure"), MI ("mediator") and mortality at six months ("outcome") we undertook a mediation analysis [20] (see Figure E1). For this, we used a binomial ("probit") model using the mediation R package (see eSupplement for further explanation) [21]. We included variables with significant univariable association with mortality, and those considered clinically important.

We explored the association of myocardial injury category with six month mortality using multivariable logistic regression, including the same variables. APS was excluded from this model due to the potential for adjusting for a mediator.

## Results

Between 15<sup>th</sup> February 2015 and 30<sup>th</sup> June 2016 we recruited 279 patients in 11 different UK National Health Service (NHS) regions (Consort diagram, figure E2; table E2). The prevalence of CVD among ICU admissions was 23.4% (table E2). Cohort characteristics are summarized in table 1. The majority of patients (91.4%) were on long-term medication for CVD (table E3).

### Pattern of cTnI release

All patients had detectable cTnI during ICU stay. There was a wide range of cTnI at admission (median (1<sup>st</sup>, 3<sup>rd</sup> quartile, range) 36ng/l (13, 140, 1-45400ng/l)), and peak cTnI (median 114ng/l (27, 393; 3-58820ng/l) (figure 1). 64 (84.2%) women and 130 (66.0%) men had peak cTnI over the sex-specific diagnostic threshold for diagnosis of myocardial infarction or injury (overall total n=194 (71.1%), figure 1A). Peak cTnI for most patients (73%) occurred within 2-3 days of admission to ICU (figure 1B). Virtually all patients had a dynamic rise and fall pattern of cTnI release consistent with acute myocardial injury, which was apparent across all quartiles of peak cTnI (figure 2). Among the 37 (13%) of patients who died in ICU, 33 (89%) had dynamic rise and fall patterns before they died and four patients died on the day of peak cTnI. Patterns of TnI rise and fall were similar across severity of Acute Kidney Injury groups (figure E4, online supplement).

### ECG abnormalities

There was excellent agreement between cardiologists regarding the presence/absence of acute myocardial ischaemia on serial ECGs (kappa 0.89, table E4). On admission to ICU 132 (47.3%) patients had a normal ECG (figure E3) of whom 19 (14.4%) had subsequent dynamic ECG changes consistent with acute myocardial ischaemia. Ninety one patients (32.6%) had an abnormal ECG on admission, of whom 44 (48.3%) had no subsequent

changes suggesting chronic abnormalities, but 47 (51.6%) had evolving changes consistent with acute myocardial ischaemia. In 24 patients (8.6%) no baseline ECG was available of whom 22 had no subsequent ECG abnormalities and two demonstrated dynamic changes consistent with acute myocardial ischaemia. Overall, 68 patients (24.4%) had dynamic abnormalities on serial ECG testing considered indicative of acute myocardial ischaemia.

### Incidence of infarction and injury

Sixty eight patients fulfilled the universal definition for MI (24.4%, 95% CI 19.2% to 29.7%); 126 for acute injury (46.1%, 95% CI 40.1% to 52.3%); and 84 demonstrated no injury (30.7%, 95% CI 25.3% to 36.6%) (figure 3). The median peak cTnI for MI was significantly higher than for injury (infarction 375ng/l vs injury 138ng/l,  $p<0.001$ ). Only 4.3% (n=12) of patients were diagnosed with MI by the clinical teams, of whom only three fulfilled the universal definition of MI. Twenty four percent (N=65) of the patients therefore experienced clinically undiagnosed MI according to the universal definition.

Physiological data relevant to coronary oxygen supply-demand imbalance during the 24 hours preceding the peak TnI for each patient suggested that type 2 MI was the most likely mechanism in all patients (table E5). Specifically, all patients (n=68) were receiving medium or high dose vasoactive drugs (57% (n=39) high dose) but, despite this, 37% (n=25) had a lowest MAP  $\leq 60$ mmHg. Sixty percent (n=41) had a highest lactate  $\geq 2$ mmol/l and 40% (n=27) had a lowest haemoglobin  $\leq 90$ g/l.

### Mortality, duration of mechanical ventilation, and length of stay

Survival curves according to injury category are shown in figure 4. Patients experiencing infarction and injury had lower survival over six months than patients with no injury (P=0.003; Figure 4A; Table E6), but without statistically significant differences between the injury and infarction groups. When dichotomised by median APS (median=13), patterns of

survival were different between the injury/infarction groups. For  $APS > 13$  (greater physiological derangement) there were differences across the groups ( $P=0.042$ ), but injury and MI groups had similar survival curves. However, for  $APS \leq 13$  (less physiological derangement), differences between groups were more marked ( $p=0.005$ ) and patients experiencing MI had higher mortality than those in both injury and no injury groups (Figure 4B, 4C). The interaction between APS and MI was significant ( $p=0.035$ ) suggesting that the relationship between injury/infarction category and mortality may differ according to the early severity of physiological derangement. TnI release was lower in the Injury patients versus the MI patients for the lower APS sub-group, but substantially higher in the Injury patient (and similar to MI patients) in the higher APS sub-group (figure E5).

Length of ICU and hospital stay was similar across categories (table E6), but patients experiencing MI had longer median (1<sup>st</sup>, 3<sup>rd</sup> quartile; range) duration of MV than patients with injury, or no injury (MI 4 days (2, 7; 0-39); injury 2 days (0, 5; 0-31); no injury (1 day (0, 4; 0-33);  $P=0.001$  infarction versus injury).

#### Independent and potential causal relationship between injury, MI, and mortality

The mediation model suggested that APS (“Exposure”, Estimate 0.114,  $p=0.0005$ ) and MI (“Mediator”, Estimate 2.50,  $p=0.006$ ) were significantly associated with mortality at six months (“Outcome”). Mediation analysis estimated that 63.0% of the effect on six month mortality from APS lay on the direct route (Average Direct Effect:  $b=0.006$ , 95% CI 0.003 to 0.010,  $p=0.001$ ), but 37.0% of the effect was mediated through MI (Average Causal Mediation Effect:  $b=0.0038$ , 95% CI 0.001 to 0.007,  $p<0.001$ , Figure E6). This confirmed the expected significant relationship between APS and mortality, but suggested that the occurrence of an MI was on a causal pathway for part of this relationship.

There was a strong univariable association between six month mortality and injury/infarction category (Ref: no injury, Injury OR 2.96 (95% CI 1.45, 6.03), MI OR 3.35 (95% CI 1.51, 7.43). This persisted after adjustment for confounders: OR injury 2.28 (95% CI 1.06 to 4.92), Infarction 2.70 (95% CI 1.11 to 6.55) (table E8).

## Discussion

We found cTnI was detectable in all critically ill patients admitted to ICUs with pre-existing CVD, and consistently demonstrated a rise and fall pattern in keeping with an ‘acute hit’ mechanism of injury. Detailed prospective classification of myocardial injury and infarction indicated an incidence of MI of 24.2%, with >95% undiagnosed by clinical teams. The physiological status of all patients with MI suggested potential coronary supply/demand imbalance, and likely type 2 MI rather than plaque ruptures or other coronary occlusive events. Both myocardial injury and infarction were associated with higher six month mortality, which in adjusted logistic regression suggested an independent association. Exploratory analyses of sub-groups with greater or lesser acute physiological derangement suggested the association between MI and mortality may be strongest among patients with less acute physiological derangement. Importantly, a mediation analysis exploring whether MI mediates part of the relationship between APS and mortality suggested it did contribute on the causal pathway.

The prevalence of CVD was 23.4% in this study, which is similar to previous studies [1, 2] and highlights the importance of understanding whether ICU care should be modified for this population. Although peak cTnI concentrations varied widely, in virtually all patients there was a characteristic rise/fall pattern suggesting an acute mechanism of injury and the patterns cTnI were broadly similar to the log linear decrease seen post primary angioplasty for ST

elevation MI. This suggests an acute ‘hit’ within the first 2-3 days of admission in most patients [22]. Of relevance, patterns were similar across all grades of renal injury.

The blinded systematic approach by cardiologists used to discriminate injury from MI has been shown to result in higher diagnostic agreement compared with non-cardiologist interpretation [23], and demonstrated fair to good agreement for ST elevation and ST depression. The poorer reliability of T-wave inversion is also consistent with previous literature suggesting this is a less valid measure of ischaemia [24-26]. We used dynamic ischaemia using all ECGs to define MI, which had high reliability. This was important because a third of patients had abnormal baseline ECGs, of whom only one half experienced dynamic changes. Although the absence of clinical symptoms made temporal relationships between ECG changes and troponin release difficult to interpret, we observed closely concurrent changes in patients within the first 2-3 days in the majority of patients, suggesting we achieved high diagnostic accuracy for injury and MI. This was in contrast with non-systematic approaches by clinicians which resulted in very low identification of MI. Only a quarter of patients diagnosed clinically with MI fulfilled the universal definition.

Both injury and MI were significantly associated with six month mortality, which is consistent with published literature for troponin in both perioperative and critical care practice where elevated troponin levels are associated with greater mortality irrespective of the etiology of release [2, 14, 27-30]. Only two previous ICU studies analyzed both troponin and ECG data concurrently; both were in general ICU populations rather than restricted to patients with co-existing CVD [2, 15]. Lim et al found 50% of 103 patients had an elevated TnT (threshold of 40ng/l) [15], of whom half were judged to have had an MI, and more than 30% of these a Type 2 MI. However, classification for Type 2 MI required no history of coronary artery disease or risk factors. Ostermann et al found the majority of critically ill patients (84%, total study n=144) had a TnT rise (threshold 15ng/l); 41% met criteria for MI,

of whom only 20% were recognized clinically. In both studies patients with TnT increase had higher mortality. Our multicentre study restricted to patients with pre-existing CVD reports the most detailed evaluation to date, and confirms high rates of unrecognized MI in this population (around a quarter of patients).

To address the key question of whether myocardial injury or infarction have any causal association with mortality, we used mediation analysis. Our analysis confirmed the expected direct effect of acute physiological derangement on mortality, but suggested that around a third of this effect may be mediated through MI events. Although we cannot be sure of the mechanism of MI, all patients who were diagnosed with MI were on high dose vasopressors from a pathophysiological perspective this is consistent with oxygen supply-demand imbalance (Type 2 MI). However, inflammation in the critically ill patient may also be associated with greater risk of plaque rupture and type 1 MI. A potentially causal relationship between MI and mortality supports the hypothesis that interventions to optimize myocardial oxygen/supply demand balance might improve outcomes in patients with pre-existing CVD, and future randomized trials are likely to be the best way to address this. Our exploratory sub-group analysis suggested the association between MI and mortality may interact with acute physiological derangement, with greater effects from MI observed in less deranged patients. This relationship appeared different for myocardial injury alone. This hypothesis-generating observation has potential biological plausibility, because mortality attributable to new MI may be proportionately greater in patients with less severe illness.

Strengths of our study include the use of a highly sensitive cTnI assay across a range of ICUs, and inclusion of a range of pre-existing CVD categories suggesting generalisability. We also had few missing data and complete patient follow up. Our study has several weaknesses. Patients may have had further episodes of injury or MI later in their hospital stay, and we only captured events during the first 5 days in ICU. We recorded admission cardiac

medications, but not whether these were continued or stopped during the ICU admission as this was not the aim of the study. Although our study is the largest to date, with a high event rate, the power of our analyses was restricted by sample size and could be subject to both type I and II error. Due to sample size we dichotomised on median APS score rather than reporting in tertiles or quartiles. The mediation analysis allowed novel exploration of possible causal mechanisms, but a randomized trial would be needed to know if strategies aimed at manipulating physiological variables can prevent MI and improve outcomes. Candidate components of an intervention to decrease coronary oxygen-supply imbalance include a more liberal transfusion practice, and it is notable that nadir haemoglobin was also independently associated with mortality in our analysis. Recent meta-analyses suggest that liberal transfusion strategies may decrease MI rates in both patients with CVD [31] and without known CVD [32]. The TRICS III trial suggested heterogeneity within the cardiac surgery population [33], highlighting further that personalised approaches to transfusion may be context specific. Other potential interventions include continuation or initiation of cardiac medications. There is substantial clinical uncertainty and practice variation regarding primary and secondary interventions for injury and MI in ICU patients [13, 16]. Our data support the need for further research to clarify best practice in patients at high risk of MI, such as those with pre-existing CVD.

## Conclusion

In conclusion, we have demonstrated that around a quarter of patients with pre-existing CVD experience MI during ICU care, which is usually unrecognised in routine care. Both myocardial injury and infarction are associated with worse short and long-term survival, and MI may be on the causal pathway between acute physiological derangement and mortality. These data support future research to explore whether ICU interventions to reduce MI in patients with pre-existing CVD can improve outcomes.



## References

1. Walsh TS, McClelland DB, Lee RJ, Garrioch M, Maciver CR, McArdle F, Crofts SL, Mellor I, Group AS, (2005) Prevalence of ischaemic heart disease at admission to intensive care and its influence on red cell transfusion thresholds: multicentre Scottish Study. *Br J Anaesth* 94: 445-452
2. Ostermann M, Lo J, Toolan M, Tuddenham E, Sanderson B, Lei K, Smith J, Griffiths A, Webb I, Coutts J, Chambers J, Collinson P, Peacock J, Bennett D, Treacher D, (2014) A prospective study of the impact of serial troponin measurements on the diagnosis of myocardial infarction and hospital and six-month mortality in patients admitted to ICU with non-cardiac diagnoses. *Crit Care* 18: R62
3. Thygesen K, Alpert JS, Jaffe AS, Simoons ML, Chaitman BR, White HD, Writing Group on the Joint ESCAAHAWHFTFftUDoMI, Thygesen K, Alpert JS, White HD, Jaffe AS, Katus HA, Apple FS, Lindahl B, Morrow DA, Chaitman BA, Clemmensen PM, Johanson P, Hod H, Underwood R, Bax JJ, Bonow RO, Pinto F, Gibbons RJ, Fox KA, Atar D, Newby LK, Galvani M, Hamm CW, Uretsky BF, Steg PG, Wijns W, Bassand JP, Menasche P, Ravkilde J, Ohman EM, Antman EM, Wallentin LC, Armstrong PW, Simoons ML, Januzzi JL, Nieminen MS, Gheorghide M, Filippatos G, Luepker RV, Fortmann SP, Rosamond WD, Levy D, Wood D, Smith SC, Hu D, Lopez-Sendon JL, Robertson RM, Weaver D, Tendera M, Bove AA, Parkhomenko AN, Vasilieva EJ, Mendis S, Guidelines ESCCfP, (2012) Third universal definition of myocardial infarction. *Eur Heart J* 33: 2551-2567
4. Altmann DR, Korte W, Maeder MT, Fehr T, Haager P, Rickli H, Kleger GR, Rodriguez R, Ammann P, (2010) Elevated cardiac troponin I in sepsis and septic shock: no evidence for thrombus associated myocardial necrosis. *PLoS One* 5: e9017
5. Douketis JD, Leeuwenkamp O, Grobara P, Johnston M, Sohne M, Ten Wolde M, Buller H, (2005) The incidence and prognostic significance of elevated cardiac troponins in patients with submassive pulmonary embolism. *J Thromb Haemost* 3: 508-513
6. Bruder N, Rabinstein A, Participants in the International Multi-Disciplinary Consensus Conference on the Critical Care Management of Subarachnoid H, (2011) Cardiovascular and pulmonary complications of aneurysmal subarachnoid hemorrhage. *Neurocrit Care* 15: 257-269
7. Soyseth V, Bhatnagar R, Holmedahl NH, Neukamm A, Hoiseth AD, Hagve TA, Einvik G, Omland T, (2013) Acute exacerbation of COPD is associated with fourfold elevation of cardiac troponin T. *Heart* 99: 122-126
8. Jacobs LH, van de Kerkhof J, Mingels AM, Kleijnen VW, van der Sande FM, Wodzig WK, Kooman JP, van Dieijen-Visser MP, (2009) Haemodialysis patients longitudinally assessed by highly sensitive cardiac troponin T and commercial cardiac troponin T and cardiac troponin I assays. *Ann Clin Biochem* 46: 283-290
9. Writing Committee for the VSI, Devereaux PJ, Bicccard BM, Sigamani A, Xavier D, Chan MTV, Srinathan SK, Walsh M, Abraham V, Pearse R, Wang CY, Sessler DI, Kurz A, Szczeklik W, Berwanger O, Villar JC, Malaga G, Garg AX, Chow CK, Ackland G, Patel A, Borges FK, Belley-Cote EP, Duceppe E, Spence J, Tandon V, Williams C, Sapsford RJ, Polanczyk CA, Tiboni M, Alonso-Coello P, Faruqui A, Heels-Ansdell D, Lamy A, Whitlock R, LeManach Y, Roshanov PS, McGillion M, Kavsak P, McQueen MJ, Thabane L, Rodseth RN, Buse GAL, Bhandari M, Garutti I, Jacka MJ, Schunemann HJ, Cortes OL, Coriat P, Dvirnik N, Botto F, Pettit S, Jaffe AS, Guyatt GH, (2017) Association of Postoperative High-Sensitivity Troponin Levels With Myocardial Injury and 30-Day Mortality Among Patients Undergoing Noncardiac Surgery. *JAMA* 317: 1642-1651
10. Botto F, Alonso-Coello P, Chan MT, Villar JC, Xavier D, Srinathan S, Guyatt G, Cruz P, Graham M, Wang CY, Berwanger O, Pearse RM, Bicccard BM, Abraham V, Malaga G, Hillis GS, Rodseth RN, Cook D, Polanczyk CA, Szczeklik W, Sessler DI, Sheth T, Ackland GL, Leuwer M, Garg AX, Lemanach Y, Pettit S, Heels-Ansdell D, Luratibuse G, Walsh M,

- Sapsford R, Schunemann HJ, Kurz A, Thomas S, Mrkobrada M, Thabane L, Gerstein H, Paniagua P, Nagele P, Raina P, Yusuf S, Devereaux PJ, Devereaux PJ, Sessler DI, Walsh M, Guyatt G, McQueen MJ, Bhandari M, Cook D, Bosch J, Buckley N, Yusuf S, Chow CK, Hillis GS, Halliwell R, Li S, Lee VW, Mooney J, Polanczyk CA, Furtado MV, Berwanger O, Suzumura E, Santucci E, Leite K, Santo JA, Jardim CA, Cavalcanti AB, Guimaraes HP, Jacka MJ, Graham M, McAlister F, McMurtry S, Townsend D, Pannu N, Bagshaw S, Bessissow A, Bhandari M, Duceppe E, Eikelboom J, Ganame J, Hankinson J, Hill S, Jolly S, Lamy A, Ling E, Magloire P, Pare G, Reddy D, Szalay D, Tittley J, Weitz J, Whitlock R, Darvish-Kazim S, Debeer J, Kavsak P, Kearon C, Mizera R, O'Donnell M, McQueen M, Pinthus J, Ribas S, Simunovic M, Tandon V, Vanhelder T, Winemaker M, Gerstein H, McDonald S, O'Bryne P, Patel A, Paul J, Punthakee Z, Raymer K, Salehian O, Spencer F, Walter S, Worster A, Adili A, Clase C, Cook D, Crowther M, Douketis J, Gangji A, Jackson P, Lim W, Lovrics P, Mazzadi S, Orovan W, Rudkowski J, Soth M, Tiboni M, Acedillo R, Garg A, Hildebrand A, Lam N, Macneil D, Mrkobrada M, Roshanov PS, Srinathan SK, Ramsey C, John PS, Thorlacius L, Siddiqui FS, Grocott HP, McKay A, Lee TW, Amadeo R, Funk D, McDonald H, Zacharias J, Villar JC, Cortes OL, Chaparro MS, Vasquez S, Castaneda A, Ferreira S, Coriat P, Monneret D, Goarin JP, Esteve CI, Royer C, Daas G, Chan MT, Choi GY, Gin T, Lit LC, Xavier D, Sigamani A, Faruqui A, Dhanpal R, Almeida S, Cherian J, Furrugh S, Abraham V, Afzal L, George P, Mala S, Schunemann H, Muti P, Vizza E, Wang CY, Ong GS, Mansor M, Tan AS, Shariffuddin, II, Vasanthan V, Hashim NH, Undok AW, Ki U, Lai HY, Ahmad WA, Razack AH, Malaga G, Valderrama-Victoria V, Loza-Herrera JD, De Los Angeles Lazo M, Rotta-Rotta A, Szczeklik W, Sokolowska B, Musial J, Gorka J, Iwaszczuk P, Kozka M, Chwala M, Raczek M, Mrowiecki T, Kaczmarek B, Biccard B, Cassimjee H, Gopalan D, Kisten T, Mugabi A, Naidoo P, Naidoo R, Rodseth R, Skinner D, Torborg A, Paniagua P, Urrutia G, Maestre ML, Santalo M, Gonzalez R, Font A, Martinez C, Pelaez X, De Antonio M, Villamor JM, Garcia JA, Ferre MJ, Popova E, Alonso-Coello P, Garutti I, Cruz P, Fernandez C, Palencia M, Diaz S, Del Castillo T, Varela A, de Miguel A, Munoz M, Pineiro P, Cusati G, Del Barrio M, Membrillo MJ, Orozco D, Reyes F, Sapsford RJ, Barth J, Scott J, Hall A, Howell S, Loblely M, Woods J, Howard S, Fletcher J, Dewhirst N, Williams C, Rushton A, Welters I, Leuwer M, Pearse R, Ackland G, Khan A, Niebrzegowska E, Benton S, Wragg A, Archbold A, Smith A, McAlees E, Ramballi C, Macdonald N, Januszewska M, Stephens R, Reyes A, Paredes LG, Sultan P, Cain D, Whittle J, Del Arroyo AG, Sessler DI, Kurz A, Sun Z, Finnegan PS, Egan C, Honar H, Shahinyan A, Panjasawatwong K, Fu AY, Wang S, Reineks E, Nagele P, Blood J, Kalin M, Gibson D, Wildes T, Vascular events In noncardiac Surgery patlents cOhort evaluatioN Writing Group oboTveInSpceI, Appendix 1. The Vascular events In noncardiac Surgery patlents cOhort evaluatio NSIWG, Appendix 2. The Vascular events In noncardiac Surgery patlents cOhort evaluatio NOC, Vascular events In noncardiac Surgery patlents cOhort evaluatio NVSI, (2014) Myocardial injury after noncardiac surgery: a large, international, prospective cohort study establishing diagnostic criteria, characteristics, predictors, and 30-day outcomes. *Anesthesiology* 120: 564-578
11. Shah AS, McAllister DA, Mills R, Lee KK, Churchhouse AM, Fleming KM, Layden E, Anand A, Fersia O, Joshi NV, Walker S, Jaffe AS, Fox KA, Newby DE, Mills NL, (2015) Sensitive troponin assay and the classification of myocardial infarction. *Am J Med* 128: 493-501 e493
  12. Chapman A, Shah A, Anand A, Strachan F, McAllister D, Newby D, Mills N, (2016) Long Term Outcomes of Patients with Type 2 Myocardial Infarction or Injury. *Heart* 102: A80
  13. McCarthy CP, Vaduganathan M, Januzzi JL, Jr., (2018) Type 2 Myocardial Infarction-Diagnosis, Prognosis, and Treatment. *JAMA*
  14. Lim W, Cook DJ, Griffith LE, Crowther MA, Devereaux PJ, (2006) Elevated cardiac troponin levels in critically ill patients: prevalence, incidence, and outcomes. *Am J Crit Care* 15: 280-288; quiz 289
  15. Lim W, Whitlock R, Khera V, Devereaux PJ, Tkaczyk A, Heels-Ansdell D, Jacka M, Cook D, (2010) Etiology of troponin elevation in critically ill patients. *J Crit Care* 25: 322-328

16. Gundre P, Kleyn M, Kulbak G, Kupfer Y, Tessler S, (2011) Elevated Troponin Cs in Intensive Care Units - A Nationwide Survey of Critical Care Physicians. *Chest* 140: 1013A
17. Shah AS, Griffiths M, Lee KK, McAllister DA, Hunter AL, Ferry AV, Cruikshank A, Reid A, Stoddart M, Strachan F, Walker S, Collinson PO, Apple FS, Gray AJ, Fox KA, Newby DE, Mills NL, (2015) High sensitivity cardiac troponin and the under-diagnosis of myocardial infarction in women: prospective cohort study. *BMJ* 350: g7873
18. Shah AS, Anand A, Sandoval Y, Lee KK, Smith SW, Adamson PD, Chapman AR, Langdon T, Sandeman D, Vaswani A, Strachan FE, Ferry A, Stirzaker AG, Reid A, Gray AJ, Collinson PO, McAllister DA, Apple FS, Newby DE, Mills NL, High Si, (2015) High-sensitivity cardiac troponin I at presentation in patients with suspected acute coronary syndrome: a cohort study. *Lancet* 386: 2481-2488
19. R-Core-Team (2015) R: A Language and Environment for Statistical Computing. In: Editor (ed)^(eds) Book R: A Language and Environment for Statistical Computing. R Foundation for Statistical Computing, City, pp.
20. Baron RM, Kenny DA, (1986) The moderator-mediator variable distinction in social psychological research: conceptual, strategic, and statistical considerations. *J Pers Soc Psychol* 51: 1173-1182
21. Tingley D, Yamamoto T, Hirose K, Keele L, Imai K, (2014) mediation: R Package for Causal Mediation Analysis. *Journal of Statistical Software* 59: 1-38
22. Laugaudin G, Kuster N, Petiton A, Leclercq F, Gervasoni R, Macia JC, Cung TT, Dupuy AM, Solecki K, Lattuca B, Cade S, Cransac F, Cristol JP, Roubille F, (2016) Kinetics of high-sensitivity cardiac troponin T and I differ in patients with ST-segment elevation myocardial infarction treated by primary coronary intervention. *Eur Heart J Acute Cardiovasc Care* 5: 354-363
23. Salerno SM, Alguire PC, Waxman HS, American College of P, (2003) Training and competency evaluation for interpretation of 12-lead electrocardiograms: recommendations from the American College of Physicians. *Ann Intern Med* 138: 747-750
24. Lim W, Qushmaq I, Cook DJ, Devereaux PJ, Heels-Ansdell D, Crowther MA, Tkaczyk A, Meade MO, Cook RJ, (2006) Reliability of electrocardiogram interpretation in critically ill patients. *Crit Care Med* 34: 1338-1343
25. Mehta S, Granton J, Lapinsky SE, Newton G, Bandayrel K, Little A, Siau C, Cook DJ, Ayers D, Singer J, Lee TC, Walley KR, Storms M, Cooper J, Holmes CL, Hebert P, Gordon AC, Presneill J, Russell JA, Vasopressin, Septic Shock Trial I, (2011) Agreement in electrocardiogram interpretation in patients with septic shock. *Crit Care Med* 39: 2080-2086
26. Zimetbaum PJ, Josephson ME, (2003) Use of the electrocardiogram in acute myocardial infarction. *N Engl J Med* 348: 933-940
27. Nagele P, Brown F, Gage BF, Gibson DW, Miller JP, Jaffe AS, Apple FS, Scott MG, (2013) High-sensitivity cardiac troponin T in prediction and diagnosis of myocardial infarction and long-term mortality after noncardiac surgery. *Am Heart J* 166: 325-332 e321
28. van Waes JA, Nathoe HM, de Graaff JC, Kemperman H, de Borst GJ, Peelen LM, van Klei WA, Cardiac Health After Surgery I, (2013) Myocardial injury after noncardiac surgery and its association with short-term mortality. *Circulation* 127: 2264-2271
29. Investigators WCftVS, (2017) Association of Postoperative High-Sensitivity Troponin Levels With Myocardial Injury and 30-Day Mortality Among Patients Undergoing Noncardiac Surgery. *JAMA* 317: 1642-1651
30. Devereaux PJ, Xavier D, Pogue J, Guyatt G, Sigamani A, Garutti I, Leslie K, Rao-Melacini P, Chrolavicius S, Yang H, Macdonald C, Avezum A, Lanthier L, Hu W, Yusuf S, Investigators P, (2011) Characteristics and short-term prognosis of perioperative myocardial infarction in patients undergoing noncardiac surgery: a cohort study. *Ann Intern Med* 154: 523-528
31. Docherty AB, O'Donnell R, Brunskill S, Trivella M, Doree C, Holst L, Parker M, Gregersen M, Pinheiro de Almeida J, Walsh TS, Stanworth SJ, (2016) Effect of restrictive versus liberal transfusion strategies on outcomes in patients with cardiovascular disease in a non-cardiac surgery setting: systematic review and meta-analysis. *BMJ* 352: i1351

32. Cortes-Puch I, Wiley BM, Sun J, Klein HG, Welsh J, Danner RL, Eichacker PQ, Natanson C, (2018) Risks of restrictive red blood cell transfusion strategies in patients with cardiovascular disease (CVD): a meta-analysis. *Transfus Med*
33. Mazer CD, Whitlock RP, Fergusson DA, Hall J, Belley-Cote E, Connolly K, Khanykin B, Gregory AJ, de Medicis E, McGuinness S, Royse A, Carrier FM, Young PJ, Villar JC, Grocott HP, Seeberger MD, Frenes S, Lellouche F, Syed S, Byrne K, Bagshaw SM, Hwang NC, Mehta C, Painter TW, Royse C, Verma S, Hare GMT, Cohen A, Thorpe KE, Juni P, Shehata N, Investigators T, Perioperative Anesthesia Clinical Trials G, (2017) Restrictive or Liberal Red-Cell Transfusion for Cardiac Surgery. *N Engl J Med* 377: 2133-2144

TROPICCAL Investigators:

Dr Stephen Wright, Newcastle Hospitals; Dr Stuart McKechnie, Oxford University Hospitals;  
Dr Marlies Ostermann, Guys and St Thomas' London; Dr David Pogson, Portsmouth  
Hospitals NHS Trust; Dr Dan Horner, Salford Royal Infirmary, Dr Madhu Balasubramaniam,  
Royal Bolton Hospital; Dr Jon Hopper, University Hospital South Manchester; Dr Owen  
Boyd, Brighton and Sussex University Hospitals; Dr Robert Shawcross, East Lancashire  
Hospitals Trust; Dr Malcolm Sim, Queen Elizabeth University Hospital Glasgow

Figure legends:

Figure 1. A) Peak cTnI concentration for each patient (n=273) on a logarithmic scale (blue dots are men, red dots are women). Horizontal lines represent the sex-specific upper reference limits for men and women with 130/197 (66.0%) men and 64/76 (84.2%) women respectively above this threshold. B) Histogram showing the day of peak cTnI concentration for all patients (day 1 is the first day of ICU admission).

Figure 2: Change in cTnI concentrations centred around the peak concentration. Each coloured line represents a separate patient. The black line represents the “average” patient (the smoothed conditional mean with 95% confidence intervals). A) cTnI concentrations as a percentage of the peak concentration in all patients. B) cTnI concentrations stratified into quartiles to display the rise and fall pattern across the range of peak cTnI concentrations (Q1 cTnI <25 ng/l, Q2 cTnI 25-107 ng/l, Q3 cTnI 107-380 ng/l, Q4 cTnI >380ng/l [Q4 on logarithmic scale]).

Figure 3: n=273. Dynamics of peak cTnI by No injury (cTnI<threshold, n=84, 30.7%); Injury (cTnI>threshold, no dynamic ECG ischaemia, n=126, 46.1%); Infarction (cTnI elevation + dynamic ECG ischaemia, n=66, 24.2%). cTnI is plotted on log<sub>10</sub> scale. Box plots represent median and IQR. Horizontal dotted line at sex specific thresholds cTnI=16 & 34ng/l.

Figure 4: Kaplan Meier survival plots, stratified by group (red, no injury; green, acute myocardial injury; blue, myocardial infarction). A) All patients, log rank test  $\text{Chi}^2=11.8$  (df=2), p=0.003. B) Patients with Acute Physiological Score >13 (median population value), log rank test  $\text{Chi}^2=6.4$  (df=2), p=0.042. C) Patients with Acute Physiological Score ≤13, log rank test  $\text{Chi}^2=10.5$  (df=2) p=0.005.

Table 1: Baseline Characteristics for whole cohort. N=279. Patients can appear in more than one CVD category and more than one Chronic cardiac disease category.

Variable	n or mean/median	% or SD or IQR
	279	
Age mean(SD)	72.3	10.9
Male sex n(%)	200	71.7
Chronic cardiovascular disease eligibility diagnosis n(%)		
Acute Coronary Syndrome	22	7.9
Cerebrovascular accident/Transient ischaemic attack	42	15.1
Peripheral Vascular Disease	55	19.7
≥75 with Diabetes Mellitus/Hypertension	90	32.5
Chronic cardiac disease	174	62.4
Coronary artery disease	67	38.5
Congestive cardiac failure	27	15.5
Valvular disease	26	14.9
Arrhythmia	65	37.4
Hypertensive heart disease	58	33.3
Hypercholesterolemic heart disease	13	7.5
ICU admission diagnosis system n(%)		
Respiratory	65	23.3
Cardiovascular	64	22.9
Gastrointestinal	84	30.1
Neurological	12	4.3
Genito-urinary	31	11.1
Other	22	7.9
Comorbidity assessment		
Apache: 0	233	83.5
1	36	12.9
≥2	10	3.6
Functional comorbidity index score med(IQR)	2	1,3
Type of admission n(%)		
Elective Surgical	56	20.1
Emergency Surgical	81	29
Non-operative	142	50.9
Severity of Illness in first 24h		
APACHE II score	18	15,23
SOFA score	7	5,10
Vasopressors n(%)	104	37.3
Mechanical Ventilation n(%)	134	48.2
Renal Replacement Therapy n(%)	8	2.9
pre ICU Length of Stay (d) med(IQR)	1	0,2
Haemoglobin at admission g/l med (IQR)	111	93,125
Troponin at admission ng/l med (min, IQR, max)	26	1, 7 ,56, 2157

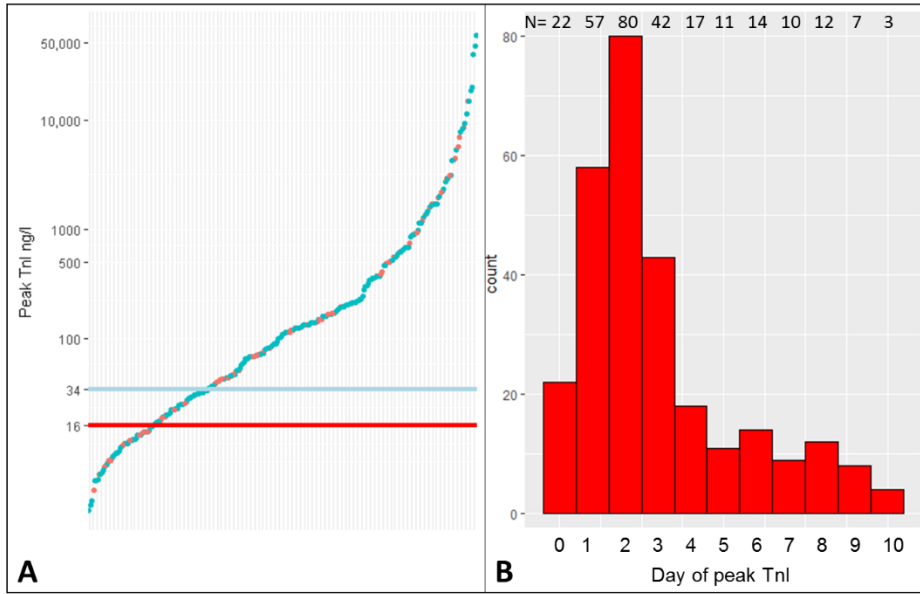


Figure 1

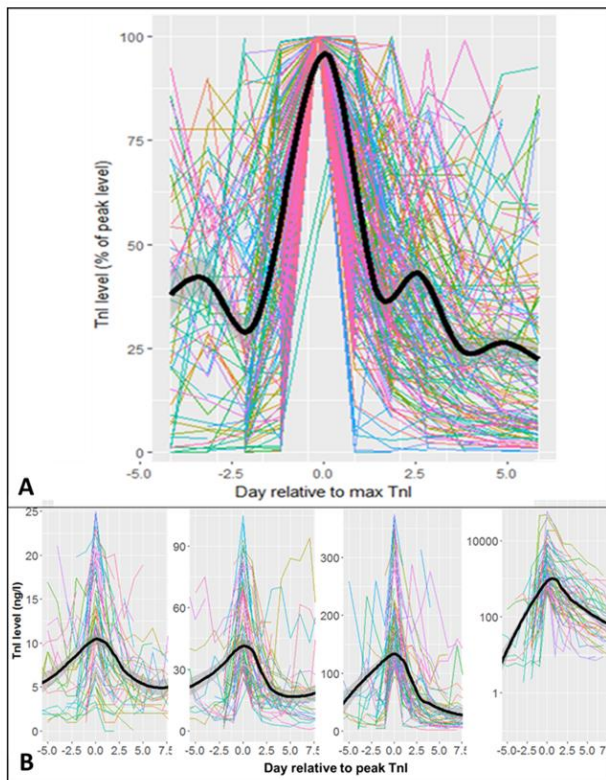


Figure 2

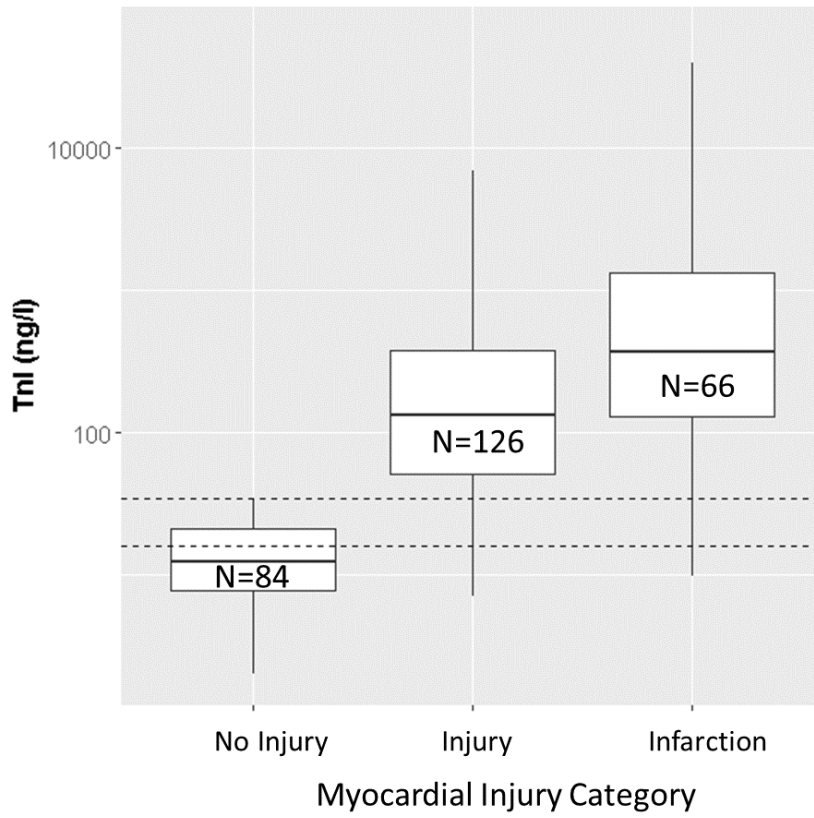


Figure 3

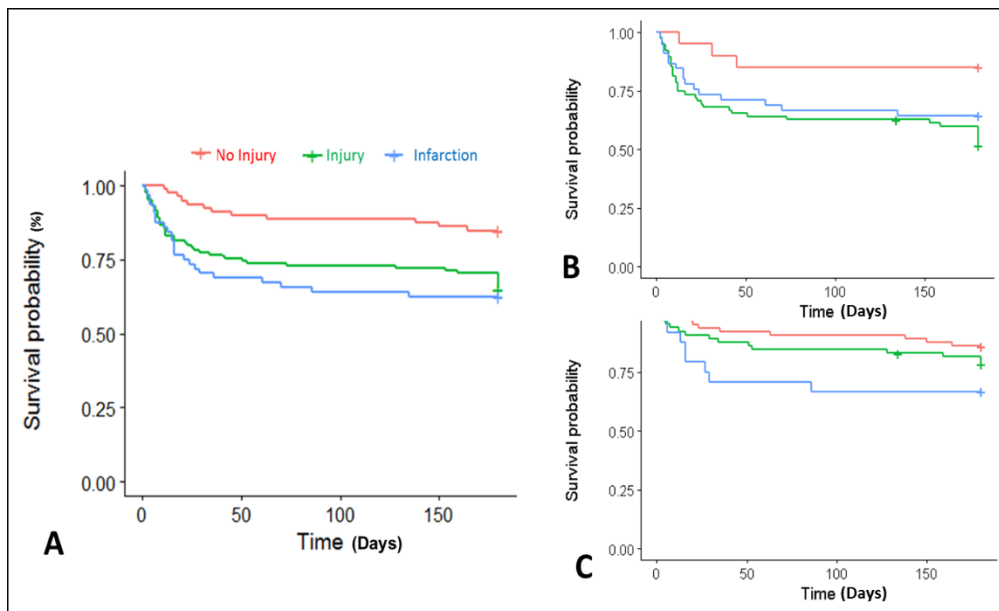


Figure 4