



# Urban and Transport Scaling: Northern Mesopotamia in the Late Chalcolithic and Bronze Age

Mark Altaweel<sup>1</sup>  · Alessio Palmisano<sup>1</sup>

Published online: 15 October 2018  
© The Author(s) 2018

## Abstract

Scaling methods have been applied to study modern urban areas and how they create accelerated, feedback growth in some systems while efficient use in others. For ancient cities, results have shown that cities act as social reactors that lead to positive feedback growth in socioeconomic measures. In this paper, we assess the relationship between settlement area expressed through mound area from Late Chalcolithic and Bronze Age sites and mean hollow way widths, which are remains of roadways, from the Khabur Triangle in northern Mesopotamia. The intent is to demonstrate the type of scaling and relationship present between sites and hollow ways, where both feature types are relatively well preserved. For modern roadway systems, efficiency in growth relative to population growth suggests roads should show sublinear scaling in relation to site size. In fact, similar to modern systems, such sublinear scaling results are demonstrated for the Khabur Triangle using available data, suggesting ancient efficiency in intensive transport growth relative to population levels. Comparable results are also achieved in other ancient Near East regions. Furthermore, results suggest that there could be a general pattern relevant for some small sites (0–2 ha) and those that have fewer hollow ways, where  $\beta$ , a measure of scaling, is on average low ( $\approx < 0.2$ ). On the other hand, a second type of result for sites with many hollow ways (11 or more) and that are often larger suggests that  $\beta$  is greater (0.23–0.72), but still sublinear. This result could reflect the scale in which larger settlements acted as greater social attractors or had more intensive economic activity relative to smaller sites. The provided models also allow estimations of past roadway widths in regions where hollow ways are missing.

**Keywords** Hollow ways · Ancient roads · Mesopotamia · Near East · Bronze Age · Late Chalcolithic · Tells · Mounds · Settlement · Scaling · Urban geography · Land use · Landscape

---

Mark Altaweel and Alessio Palmisano contributed equally to this work.

**Electronic supplementary material** The online version of this article (<https://doi.org/10.1007/s10816-018-9400-4>) contains supplementary material, which is available to authorized users.

✉ Mark Altaweel  
tcnma3@ucl.ac.uk

<sup>1</sup> Institute of Archaeology, University College London, London, UK

## Introduction

Urban scaling has been a major research topic not only for those interested in modern urbanism (Bettencourt et al. 2010; Bettencourt 2013; Batty 2013; Schläpfer et al. 2014) but also those studying the past (Ortman et al. 2014, 2015; Cesaretti et al. 2016; Ossa et al. 2017; Smith 2018). Urban scaling work builds on theory that frames human settlements as social reactors (Bettencourt 2013), where generally bigger cities create social interaction opportunities that result in greater socioeconomic outputs *per capita* (e.g., incomes, transport networks, technological innovations). These outputs scale relative to the population of the city. Several past studies have demonstrated systematic power law regularities between population size and socioeconomic outputs (e.g., Pumain et al. 2006; Bettencourt et al. 2007, 2010; Batty 2008; Samaniego and Moses 2009). Other earlier anthropological work has looked at issues of system scaling and complex organization, where larger systems have been argued as creating conditions for greater social complexity and evident qualitative change to social structures (e.g., Carneiro 1967, 2000). Intensification of interactions and feedbacks can help create ever larger and more socially complex societies (Johnson and Earle 2000). Power law relationships are also found in non-urban societies and their dwelling areas (Wiessner 1974). While works on scaling could potentially investigate social transformations, scaling can also inform how population affects other urban systems, including those that have economic implications (e.g., wealth, transport network, household consumption, water supply system).

There are three kinds of urban scaling between population size and the magnitude of socioeconomic outputs: (1) linear, where the output has the same growth rate as population; (2) superlinear, where the output grows at a higher rate than population, and (3) sublinear, where the output increases at a lower rate than population. For factors such as innovation and wealth, cities have shown a pattern expressed by superlinear power exponents at around 1.15 (Bettencourt et al. 2010), while systems such as transport are typical of economies of scale that reflect efficiency accommodating increasing populations, making them sublinear (Bettencourt et al. 2007). For ancient urban systems, the challenge has been to find relevant measures that can be easily compared to population in a similar manner for modern systems that can demonstrate such power law relationship. Work by Ortman et al. (2014, 2015) demonstrate socioeconomic relationships that are similar between modern societies and past New World settlements (e.g., population and residential settled area, public construction rates). However, relative few proxies from different archaeological settings have been used (e.g., estimated settlement area, area of public plazas and monuments, number of inscriptions; see Cesaretti et al. 2016; Hanson and Ortman 2017; Hanson et al. 2017; Ossa et al. 2017).

This work represents an exploratory analysis into the scaling relationship between settlement area and remnants of past interurban roadway systems. Such a focus has not been conducted before and, therefore, our results are a preliminary assessment. One area where data afford an opportunity to compare relationships between proxies for urban population and other measures is the Near East (Fig. 1). Particularly in northern Mesopotamia, mounded Late Chalcolithic (LC) to Bronze Age (ca. 4200–1200 BCE) sites, such as those studied from different surveys, are often clearly visible on satellite imagery along with remnants of

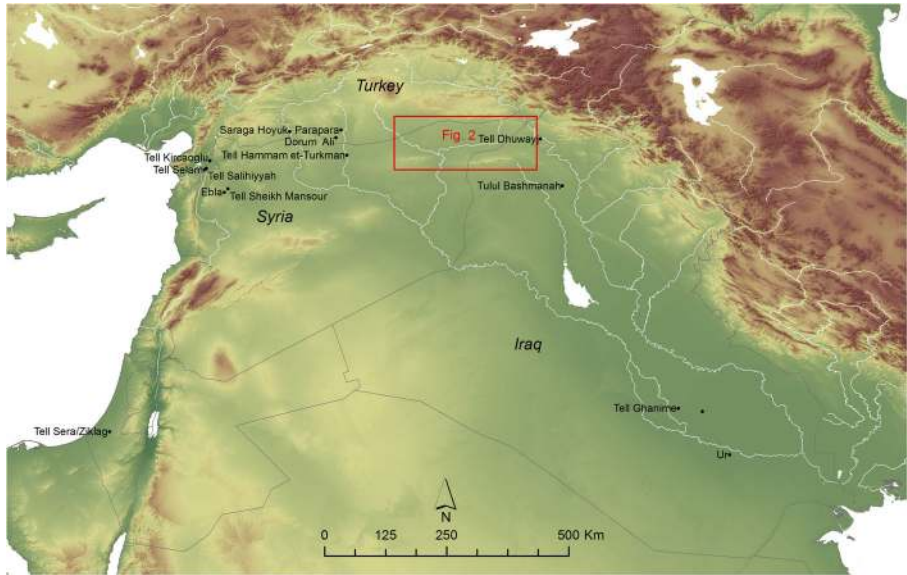


Fig. 1 Map of the study area and of the key sites analyzed. The inset shows the Khabur Triangle (KT) illustrated in Fig. 2

ancient roads, termed hollow ways (Wilkinson 1993; Fig. 2). This provides an opportunity to understand how interurban road networks and roads that connected agricultural areas relate and scale to mound area. In effect, if mound area reflects a proxy for population, then the relationship between mounds and hollow ways can inform on how past road systems were affected by and related to population. This also informs how agricultural landscapes and settlements interacted. That relationship, represented in a developed model, could be used to forecast characteristics of ancient roads that are missing.

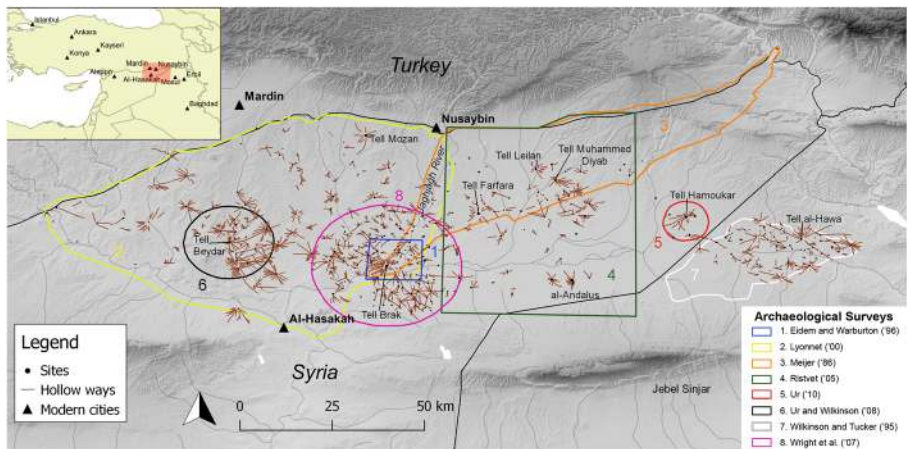


Fig. 2 Network of hollow ways and mounded sites dating to the LC and Bronze Age in the Khabur Triangle (KT). The numbered polygons represent the spatial extent of the archaeological surveys carried out in the area (see Table 1 for references)

In presenting this work, we first provide background data on the archaeological data used to measure urban scaling. Then, the research method undertaken to determine the relationship between urban area and hollow ways is presented. Different results are given based on varied site areas and hollow ways, including how they may affect measurement values. The implications and archaeological significance of the results are discussed, helping to extend the finds for other cases. In concluding, methods to improve the results and future direction are presented.

## Background to Case Study

### Late Chalcolithic and Bronze Age Sites in Northern Mesopotamia

For the purpose of this paper, we chose the Khabur Triangle (KT) as the case study, an area located within the Syrian-Iraqi Jazira, measuring some 37,500 km<sup>2</sup> and extending between the Tigris and Euphrates rivers. It is bounded by what is today the Syrian and Turkish border to the north, the Jebel Sinjar and the Jebel 'Abd-al-Aziz to the south, and the Khabur River to the west (Fig. 2). The choice of this region is motivated by the wealth of archaeological settlement data spanning between the late fourth millennium and the late second millennium BCE, which is the result of an intensive survey research activity in the past three decades, as indicated in Fig. 2, and by the good state of preservation of hollow ways.

From the end of the fifth millennium BCE to the end of the second millennium BCE, the KT was characterized by fluctuating trajectories of social complexity in urbanization, administrative hierarchy, political structure, and agricultural and transport infrastructures. Although there is a general tendency among scholars to consider southern Mesopotamia as the heartland of early social complexity and urbanism (Algaze 2001, 2008; Liverani 2006), in the KT during the LC 2 (*ca.* 4200–3800 BCE), settlements such as Tell Brak, al-Andalus, and Khirbet al-Fakhar reached large areas (55, 64, and 30 ha respectively), with high population densities possibly reached earlier than sites in Southern Mesopotamia (Ur et al. 2007, 2011; Oates et al. 2007; Wright et al. 2006–2007; Ur 2010a, b; Lawrence and Wilkinson 2015, 329–333). During the LC 3–4 (around 3800–3300 BCE), Tell Brak grew steadily and reached an area of 130 ha (Ur et al. 2007, 2011), which may have epitomized north Mesopotamia's early urbanism and showing traits of complex societies such as political centralization and economic specialization.

Northern Mesopotamia in the Early Jazirah (EJ) I-II period (*ca.* 2900–2500 BCE) was characterized by the reduction of social complexity and the landscape consisted of dispersed small settlements, with a few centers measuring 15–25 ha (Stein and Wattenmaker 2003; Ur 2010a, 401–403; McMahon 2013, 464). At the end of the EJ II (*ca.* 2600–2500 BCE) and in the EJ III periods (*ca.* 2500–2300 BCE), northern Mesopotamia experienced a rapid process of urbanization, where cities such as Tell Mozan, Tell Leilan, and Tell Hamoukar expanded from 15 ha to around 90–120 ha (Ristvet 2005, 59; Ur 2010a, 405; Ur 2010b, 105–109; McMahon 2013, 464; Lawrence and Wilkinson 2015, 333–335). Some sites, such as Tell Brak (65–70 ha), Tell Beydar (25 ha), and Tell Mohammed Diyab re-expanded (Ristvet 2005, 59; Ur and Wilkinson 2008, 307–308; Ur et al. 2011, 9–11), while new major cities, such as Tell al-Hawa, just

to the east of the KT, emerged (Wilkinson and Tucker 1995, 50–53). Although historical texts are largely missing from this period, with the exception of sites such as Ebla, Mari, and Tell Beydar, scholars have generally assumed this was a period of city-state competition (Archi 1998; Akkermans and Schwartz 2003; Archi 1998). In the late third millennium (EJ IV-V, *ca.* 2300–2000 BCE), settlement area reduced and the number of sites decreased. The causes of this change are still unclear and some scholars link the abandonment of settlements or their reduction in size to global climate change events (Weiss et al. 1993; Weiss 2017), while others advocate an interplay of unfavorable climate conditions in tandem with the exceeding carrying capacity of the land by the large urban centers (Wilkinson 1997; Wilkinson et al. 2007).

In the first half of the second millennium BCE (Old Jazirah I-II, *ca.* 2000–1600 BCE), there is a resurgence of urbanism and the KT consists of a three-tiered hierarchy of settlement area, with few dominating large urban centers measuring 60–90 ha (Tell Leilan, Tell Farfara, and Tell al-Hawa), several medium-sized sites of 15–35 ha (*e.g.*, Tell Muhammed Diyab, Tell Brak, Dumdum, Tell Mozan), and many small villages and farmsteads. This settlement structure arguably reflects the actual political landscape in the early second millennium, which was mostly fragmented into several independent city-states (see Charpin and Ziegler 2003; Veenhof and Eidem 2008, 290–321; Ristvet 2008, 2012; Palmisano 2015, 2017; Palmisano and Altaweel 2015), except when it was part of the Amorite kingdoms of Shamshi Adad I (*ca.* 1808–1776 BCE) and Zimri-Lim (*ca.* 1780–1758 BCE; Villard 1995, 873; Charpin and Ziegler 2003; Eidem 2000, 2008). The late second millennium BCE witnessed the rise of the Mitanni and Middle Assyrian Empires respectively, but by the eleventh century the Assyrians had declined (Radner 2015). Throughout this period, large and small sites were often present within mounded settlements. Table 1 lists some of the key surveys and works in the KT that reflect LC and Bronze Age (*ca.* 4200–1200 BCE) settlements (Fig. 2).

### Hollow Ways and Sites

Many of the dated sites have associated hollow ways, which are informal landscape features (tracks or paths) generated by human or animal movement and radiating out from known mounded settlements (Wilkinson 1993, 1994; Altaweel 2003, 2008; Ur

**Table 1** List of archaeological surveys carried out in the Khabur Triangle. The map numbers align with Fig. 2, showing where the surveys took place

Map no.	Season	Reference	Area (sq. km)	Total no. of sites
1	1988	Eidem and Warburton 1996	193	56
2	1989–1991	Lyonnet 2000	5100	161
3	1976–1977, 1979	Meijer 1986	2296	290
4	1984, 1987, 1995, 1997	Ristvet 2005	1919	335
5	1999–2001	Ur 2010a, b	127	60
6	1997–1998	Ur and Wilkinson 2008	454	83
7	1986–87, 1989–90	Wilkinson and Tucker 1995	475	183
8	2002–2003	Wright et al. 2006–2007	1275	268



2003 and 2009; Casana 2013). Hollow ways are broad and shallow (often 60–120 m wide and 0.50–2 m deep) linear depressions in the landscape (Ur 2010b, 76–78; Wilkinson et al. 2010, 766–767). Despite their size, these features are very difficult to detect on the ground: the largest ones can be visible with specific light conditions and oblique angles or after atmospheric events such as a flooding when these features infill with water. Figure 3 illustrates a relatively rare example when these features become evident from ground level. Given this, the detection of hollow ways often necessitates the use of aerial imagery. Therefore, a major contribution in detecting hollow ways has been made by aerial photography and satellite imagery, especially declassified CORONA satellite images. The CORONA program, in operation from 1959 to 1972, was launched by US intelligence with the purpose of monitoring sensitive strategic areas by spy satellites.<sup>1</sup> High-resolution CORONA satellite images have been widely used in the Middle East to detect small, often mounded sites, including small sites (< 1 ha), ancient tracks, and irrigation channels (Philip et al. 2002; Altaweel 2008; Casana et al. 2012; Casana and Cothren 2013; Casana 2013).<sup>2</sup> The available data have allowed the mapping of about 6000 km of tracks in the Upper Khabur valley (Ur 2010b, 76), highlighting a busy landscape characterized by interconnecting and overlapping tracks. The use of hollow ways as pathways or tracks has been widely accepted by most scholars despite some interpreting these features either as channels to harvest rainwater (McClellan et al. 2000) or as modern roads (Weiss and Courty 1994). The association of these features with ancient roadways has been based on hollow ways traversing multiple watersheds and often leading to known gates at ancient sites (Wilkinson 1993, 1994; Altaweel 2008). Recent geomorphological studies have demonstrated that these informal linear tracks were already incised during the fourth millennium BCE (Wilkinson et al. 2010). Furthermore, Casana (2013) in his recent cross-regional study in the Near East has demonstrated that hollow ways are associated with nucleated settlements and specific modes of pastoral activities and land management.

Hollow ways starting from archaeological sites show a radial pattern (Fig. 4). This is similar to some modern towns or villages in the region today with regard to their road networks. Area around sites were also possibly intensively cultivated and movement of farmers and shepherds and their flocks were constrained by the presence of agricultural fields, with boundaries regulated by patterns of land tenure and social norms (Schloen 2001; Casana 2007, 212–214; Ur 2009, 194; Casana 2013, 268). In fact, at a certain distance from settlements (generally 3–5 km), hollow ways gradually fade out, possibly because they reached the limits of the cultivation zone and the start of pastoral lands, where dispersed movement not constrained by particular fields does not create depressed tracks (Wilkinson 1994, 493; Ur 2009, 194; Fig. 4). These patterns of linear tracks radiating out from settlements are known cross-culturally in societies practicing dry-farming economies (Chisholm 1962; Wilkinson 2007). Wide hollow ways (measuring 80–130 m) radiating out from large urban centers such as Ebla,

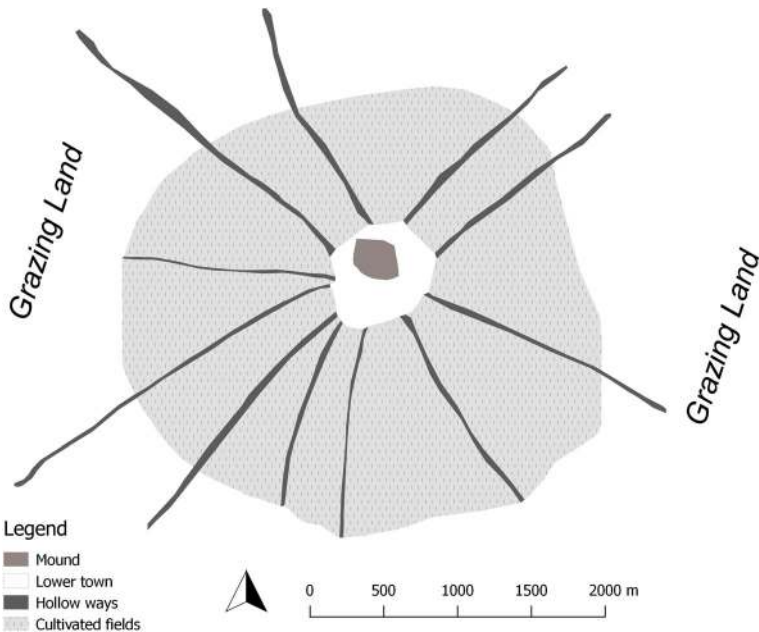
<sup>1</sup> The declassification of US Corona satellite images by the US government in 1995 and consequently their open dissemination to any user at low prices (about 30\$ per scene), the relatively high resolution of these images (2 m), and the almost total coverage of western Asia make these data an essential tool for landscape archaeology in the Near East.

<sup>2</sup> On the website of the the University of Arkansas' Center for Advanced Spatial Technologies (CAST), it is possible to have access to a database of georeferenced CORONA satellite images covering most of the Middle East: <http://corona.cast.uark.edu/>.



**Fig. 3** Flooded hollow ways to the north of Tell Brak after heavy precipitations (picture taken by A. Palmisano on 1 May 2011)

Tell Brak, Tell Leilan, and Tell Mozan resemble large droveways (*tratturi*) used in the Appenines of Italy and in Scotland to herd sheep and cattle between highlands and lowlands pastures (*cf.* Barker 1995, 34–36; Haldane 1997; Bell et al. 2002, 172;). The analysis of the radial pattern of hollow ways surrounding a settlement may be useful for estimating the area of agricultural



**Fig. 4** Schematic, highly stylized model of settlement, roadways, and land-use zones in the Near East

catchments (Wilkinson 1994, 493; Deckers and Riehl 2008; Ur 2009, 195; Kalayci 2016).

Most of the hollow ways in the KT are associated with Bronze Age sites, although some of them could be dated to the fourth millennium BCE, when extensive proto-urban centers arose in the alluvial plains of northern Mesopotamia (Ur 2010a, 395–396; Wilkinson et al. 2010). In this area, Byzantine and early Islamic sites dated to the second half of the first millennium AD are associated with these features that, nonetheless, are narrower in width (around 10/15 m) and never are as broad as the ones dating to the Early Bronze Age site, which can be more than 50-m wide and reach 100–130 m in exceptional cases (Van Liere and Lauffray 1954–1955; Ur 2010b, 145; Casana 2013, 259).

The North Jazirah and northern Mesopotamia in general, including the KT, are ideal for the preservation of hollow way features due to the semi-arid nature of the present landscape and the fact that settlement activity and agriculture were not as intensive in later periods. Other parts of the Middle East, such as Iraqi Kurdistan (*e.g.*, Altaweel et al. 2012), are not as well preserved or preservation is relatively more limited in other places (Casana and Cothren 2013). Nevertheless, examples of these road systems and their associated settlements have been found in the southern Levant (*e.g.*, Tell Sera/Ziklag; see Fig. 1), the northern Levant (*e.g.*, Ebla, Tell Sheikh Mansour), the Balikh valley (*e.g.*, Tell Hammam et-Turkman, Parapara), the Amuq plain (*e.g.*, Tell Kirkaoglu, Tell Selam; *cf.* Casana 2003), the Upper Tigris region of northern Iraq (*e.g.*, Tulul Bashmanah, Tell Dhuwayj; *cf.* Altaweel 2003, 2005; Mühl 2012), and in southern Mesopotamia (*e.g.*, Ur, Tell Ghanime).

## Research Approach

### Site and Hollow Way Measurements from Satellite Imagery

To assess archaeological sites and hollow ways used in this study, we conducted a comprehensive review, standardization, and synthesis of settlement data from reports and gazetteers of archaeological surveys carried out in the KT (see Meijer 1986; Wilkinson and Tucker 1995; Eidem and Warburton 1996; Lyonnet 2000; Ristvet 2005; Wright et al. 2006–2007; Ur and Wilkinson 2008; and Ur 2010a, b; see Table 1 and Fig. 2). This step allowed us to identify and spatially locate settlements occupied in the KT in the LC (*ca.* 4200–3000 BCE) and in the Bronze Age (*ca.* 3000–1200 BCE). Although soil micro-morphological techniques can be used to date hollow ways (*e.g.*, Wilkinson et al. 2010), generally they are dated on the basis of the occupation periods of the mounds from which they depart. Therefore, one major caveat is represented by multi-period sites that have been occupied for hundreds of years, where we cannot guarantee an accurate chronology for hollow ways radiating out from sites. Nevertheless, preserved remains of mounds and hollow ways provide minimum values that can be used for measurements looking at relationships across time. We assess the chronological evolution of the network of hollow ways distributed over the KT and we focus our analysis exclusively on these features' spatial association with the site mounds from which they depart. To measure sites and hollow ways, we made use of the CORONA Atlas of the Middle East (see Casana et al. 2012; Casana and Cothren 2013), which

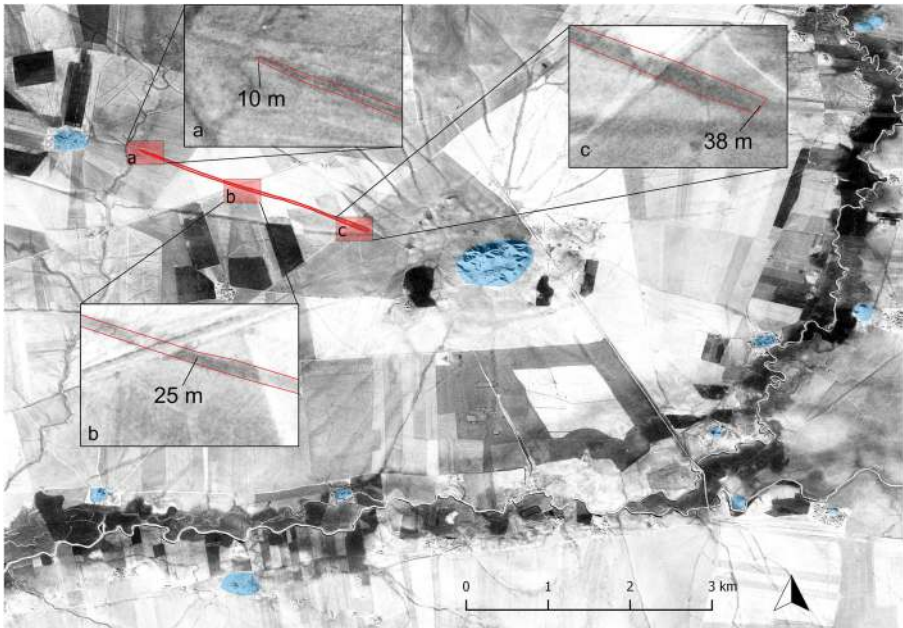


represents an excellent source of more than 1000 images georeferenced and orthorectified and freely downloadable.<sup>3</sup> Hence, settlement data have been recorded, where possible, as georeferenced polygons, with hollow ways departing from them being digitized.

Different measures were initially investigated, before we made a selection of what variables to measure, including overall area and minimum and maximum area estimates for mounded sites. For hollow ways, widths, number of hollow ways from sites, lengths, and combination measurements that included different measures (*e.g.*, length and width) and number of hollow ways were assessed (Fig. 5). We eventually simply used the measured mounded area for sites, which seemed to be the best proxy for population where larger sites generally represent greater population at some point during the mound's history. Although this assumption is not consistent across different regions of the world (*cf.* Drennan et al. 2015, 20–25), we prefer this approach and do not multiply the mounded area by a population density constant, which is likely to covariate with settlement area and that is still the subject of a long-lasting debate among scholars (*cf.* Adams 1981; Postgate 1994; Colantoni 2017; Steinkeller 2017; Stone 2017). In addition, one issue is that most existing publications indicate only the overall extent of mounds but neither the size for a particular chronological phase nor the extent of the surrounding lower town. In the present study, we adopted a more cautious and conservative approach and chose the mean of hollow way widths to compare to mound area, as these showed a more developed relationship based on visual assessment and goodness-of-fit measures. Testing the hypothesis that there is a statistically significant positive relationship between mean hollow way widths and site mound area shows we can reject the null, at  $p < 0.01$  level, using a Pearson correlation coefficient, on mean hollow widths and mound area. Given the evident relationship between mound area and mean hollow way widths, we chose to focus on these two measures.

One issue is that hollow way preservation, including their lengths, are likely affected by continual land use, such as modern agriculture that destroys these features. We decided to exclude the hollow ways' length and number from the analysis due to their weaker relationship to site area, although we suspect there could have been a relationship. For area measurements, not all archaeological surveys carried out in the KT provide estimated extent of sites per cultural period and very few examples record the area of surrounding lower towns (*e.g.*, Wilkinson and Tucker 1995; Ur and Wilkinson 2008; Ur 2010a, b; Ur et al. 2011). For all hollow ways, we took three measurements, using their widths (*i.e.*, one at the beginning, one at the middle, and one at the end; see Fig. 5). From these three measures for each hollow way, averages were then used for all hollow ways associated with a site so that there was one average width measurement for each site. This gives one hollow way measure to then compare to site area. For each measurement used to create the average, we recorded the maximum

<sup>3</sup> On the website of the University of Arkansas' Center for Advanced Spatial Technologies (CAST), it is possible to have access to a database of georeferenced CORONA satellite images covering most of the Middle East: <http://corona.cast.uark.edu/>.



**Fig. 5** Hollow ways surrounding Tell Brak seen on the CORONA image taken on 11 December 1967 (*n.* DS1102-1025F007). The insets show the measurements taken at the beginning (c), at the middle (b), and at the end (a) of one hollow way

visible width. These measurements have been standardized by taking into account how the appearance of hollow ways can vary from CORONA images taken at different times of the year due to changing soil moisture conditions (Ur 2010a, b). In practice, for a given specific area, we scrutinized and compared several CORONA images taken in different months of the year. This is because different seasonal images may affect the perception of how wide a given hollow way is (*e.g.*, more water in a hollow way could make it appear wider). A total of 388 settlement mounds, called sites or mounds here, and 1408 hollow ways have been collected using the above approach. From these, 312 sites were associated with hollow ways; these sites and associated hollow ways were used in the analysis. The data used for scaling analysis are provided in the supplementary data file.

### Site Area and Hollow Way Scaling Method

After data collection was completed, a scaling model to investigate the relationship between mound areas and hollow way widths was applied. Power law relationships in scaling of systems have long been conducted in research, where many factors could be multiplicative and be incorporated as increased population size (Coffey 1979). This includes allometric growth found in biological and urban or other forms of settlement systems, where parts of a system grow in a relationship to the larger system (Nordbeck 1971; Wiessner 1974). For our work, we hypothesize that across the Near East, there is a systematic relationship between the width of the hollow ways and the population of the LC and Bronze Age settlements. There are various possible explanations once this relationship is demonstrated, specifically whether the width of these peculiar ancient

tracks changed proportionally or less proportionally in relation to population or economic activity. The basic equation used to measure urban scaling is given as:

$$Y(N) = Y_0 N^\beta \quad (1)$$

Here,  $Y$  is hollow way widths, which is expressed as having a scale relationship to  $N$ , the size of the system or mounded area in this case. The  $\beta$  represents the scaling exponent and  $Y_0$  is the normalized constant. For all sites, the best-fit  $\beta$  and  $Y_0$  could, therefore, be found. However, (1) can be reconfigured to adjust to statistical variations in site-specific measurements where it is log-transformed to:

$$\ln Y_i = \ln Y_0 + \beta \ln N_i + \xi_i \quad (2)$$

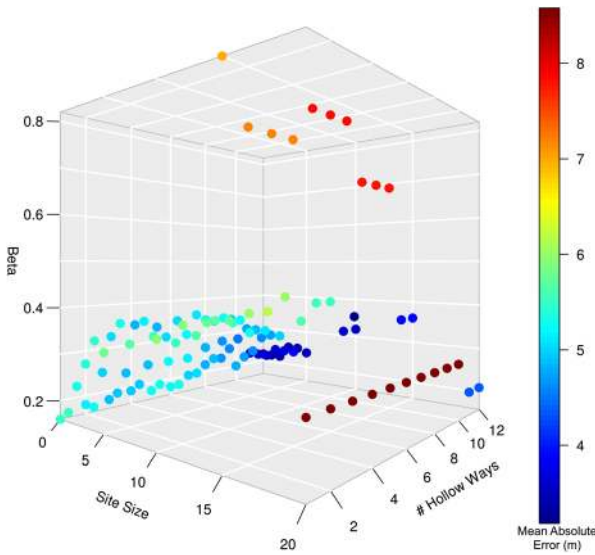
In this case,  $i$  is each indexed mounded site and  $\xi_i$  represents specific log deviations among sites to produce  $Y$  estimates (Lobo et al. 2013). These deviations can be statistically measured to assess patterns of variation within overall measurements made and the type of distributions evident in adjusting to empirical measurements.

## Results

### Scaling Model Fit Results

A key issue is the quality of hollow way and site preservation as well as the sample number. Preservation skews sampling, as sites with more hollow ways or those with less might not reflect what the layout of hollow ways were relative to mounds in any one period. The sample number should be comprehensive to enable a confident estimate for values that are representative, while also removing samples that may bias results. Sites varied from 1 to 32 hollow ways, with Tell Brak (site 168) having the most. The average number of hollow ways for sites is 4.66. Therefore, to find the best-fit constants ( $Y_0$ ) and  $\beta$  coefficients for sites collected and to reflect variation in data affecting results, different minimum site areas in analysis, ranging from 0 to 20, and number of hollow ways, ranging from 1 to 12, were used. Least squares fitting was done to find the best-fit coefficient results that produced the least error for estimated hollow way widths relative to empirical observations. Figure 6 indicates the fit results for minimum site areas, the minimum number of hollow ways, and  $\beta$  tested. Table 2 gives further details on some of the better-fit results, including the minimum values for number of hollow ways and site area used in the tests. The confidence intervals (CI 95%) are also provided for  $Y_0$  and  $\beta$ . Two error values are given, which are the mean absolute error (MAE) and root mean square error (RMSE), between estimated and empirical hollow way widths.

What the figure and table show are sites with more hollow ways included in analyses produced the best estimated hollow way width error results, that is the least error, with sites with 11 or more hollow ways having  $\beta = 0.23\text{--}0.36$ . Many of the larger mounds, averaging 11.7 ha, have 11 or more hollow ways, where relatively few sites reach such area and have many hollow ways (Table 2: k). While some combinations show relatively good fit, those often have relatively fewer samples, as many sites do not meet the criteria (*i.e.*, having a high number of hollow ways and greater area). Applying different minimum thresholds not only allows us to see how this affects key measures,



**Fig. 6** Results showing MAE for hollow way width model and empirical estimates, where site area,  $Y_0$  (constant), and  $\beta$  are tested

in particular  $\beta$ , but it demonstrates how different models could be applied in light of uneven preservation of hollow ways and mound areas or simply variation in samples for different sites areas and hollow ways. Furthermore, it allows us to see if multiple  $\beta$  patterns are evident in the data. The best results in Table 2 that had at least 100 sites included in the analysis is when all site areas are included, that is area > 0, and there are

**Table 2** Different  $\beta$  and  $Y_0$  results using different minimum mound area and minimum number of hollow ways in the analysis. Results reflect alternative sample results (see Fig. 6 for how well results fit empirical data); this table presents some of the better fits to empirical data and demonstrates how different scenarios compare

Minimum site area (ha)	Minimum hollow ways	$\beta$	$\beta$ (95% CI)	$Y_0$	$Y_0$ (95% CI)	MAE (m)	RMSE (m)	Letter	No. of sites
0	1	0.16	0.124–0.192	18.3	18.26–18.33	5.48	7.11	a	312
0	2	0.18	0.145–0.216	17.9	17.86–19.93	5.18	6.81	b	254
0	3	0.18	0.140–0.216	17.7	17.66–17.73	4.91	6.38	c	202
1	11	0.23	0.168–0.286	18.1	17.16–19.34	3.63	4.66	d	26
2	9	0.29	0.224–0.361	14.8	14.18–16.19	4.49	6.48	e	41
3	2	0.34	0.299–0.385	12.9	12.83–13.89	5.09	6.6	f	155
3	10	0.29	0.211–0.367	15.1	14.27–16.58	4.61	6.87	g	30
3	12	0.25	0.190–0.308	17.1	17.04–17.15	3.24	4.36	h	21
5	1	0.33	0.276–0.383	13.1	12.89–14.25	5.79	7.3	i	104
10	3	0.38	0.297–0.460	11.6	10.90–12.76	5.78	7.23	j	28
11	11	0.36	0.279–0.430	12.2	11.25–13.19	3.18	4.34	k	8
15	2	0.72	0.576–0.854	3.7	3.23–4.27	7.26	8.8	l	9

at least 3 hollow ways (Table 2: c), where the MAE width error measured 4.91 m. This allowed 202 sites from the total to be analyzed, yielding  $\beta = 0.18$ , well within sublinear scaling. The  $\beta$  measure allows us to see if different patterns exist for different subsets of data for given mound area and hollow way widths.

Another result of this analysis is the evident variability in the relationship between measured widths of hollow ways and mound areas. The range of  $\xi_i$  are measured and can be used to show adjustments needed in the model in order to get the best individual fit for each site to determine hollow way widths ( $Y_i$ ). This also allows us to know the type of distribution for  $\xi_i$  that can be used to provide a range of hollow way width estimates from site area, which is useful in creating a model that can estimate possible hollow way widths in cases where these features are missing. Figure 7 indicates distributions for  $\xi_i$ , where the letters in the graph corresponds to the letters in Table 2. The kernel density measures allow us to see that graphs a–c and f resemble normal, that is log-normal, distributions for  $\xi_i$ , while graph i appears somewhat similar to a normal distribution. An applied Cullen and Frey (1999) test on these graphs' distributions shows they are similar to normal distributions; these graphs have ranges of  $-0.44$  to  $-0.27$  skewness and  $2.95$ – $3.09$  for kurtosis. This indicates that the normal distribution standard deviations could be used to capture a high probability for the range of hollow way width estimates within the models associated with those graphs. In fact, such results are similar to findings in Ortman et al. (2015), which measured mean house area and settlement population.

For a–c and f, standard deviations for  $\xi_i$  are 0.31, 0.288, 0.273, and 0.271 respectively. For i, it is 0.278. Roughly 68% of measurements could be within 1 standard deviation; 95% of measurements fall within 2 standard deviations. A model could apply standard deviations to estimate likely minimum and maximum widths of hollow ways for different sites, including for sites where these features are missing. In other

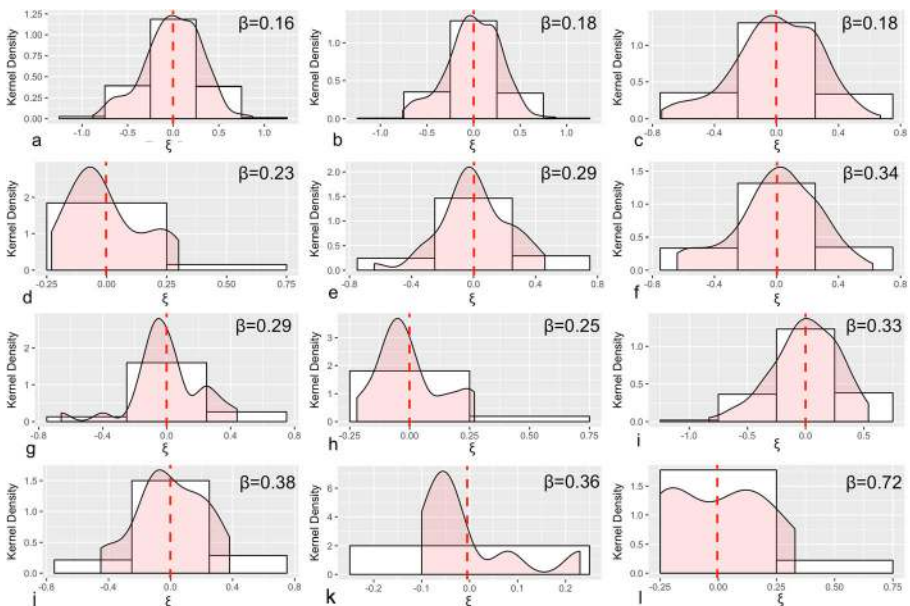


Fig. 7 Graph showing distributions for  $\beta$ , where the values from Table 2 are used



words, it can be used as an indication of what hollow way measurements could be if they were preserved for sites where these features are not evident. As an example, taking (2) from above and adding  $\pm 0.273$  for one standard deviation in place of  $\xi_i$ , in this case using Table 2: c's values, results in:

$$\ln Y_i = \ln Y_0 + \beta \ln N_i \pm 0.273 \tag{3}$$

for sites. A site such as Tell Jamous (site 10; 4.23 ha in area) would then result in the expectation that hollow way widths should be approximately between 17.46–30.14 m, for 1 standard deviation, or between 13.29–39.61 m for 2 standard deviations. In fact, that site averaged 21.66 m for hollow way widths, where it had 4 hollow ways. Similarly, this can be applied to other sites and standard deviations for  $\xi_i$  in Table 2: a–c, f, and i.

Figure 8 shows linear regressions using the natural log of hollow way widths and site areas. This shows that graphs k and l (see letters in Table 2) have the best linear fits, at  $r^2 = 0.73$  and  $r^2 = 0.68$  respectively. While the sample number of sites is low (8 and 9 respectively), larger sites and those with many hollow ways (e.g., h, k, and l) generally

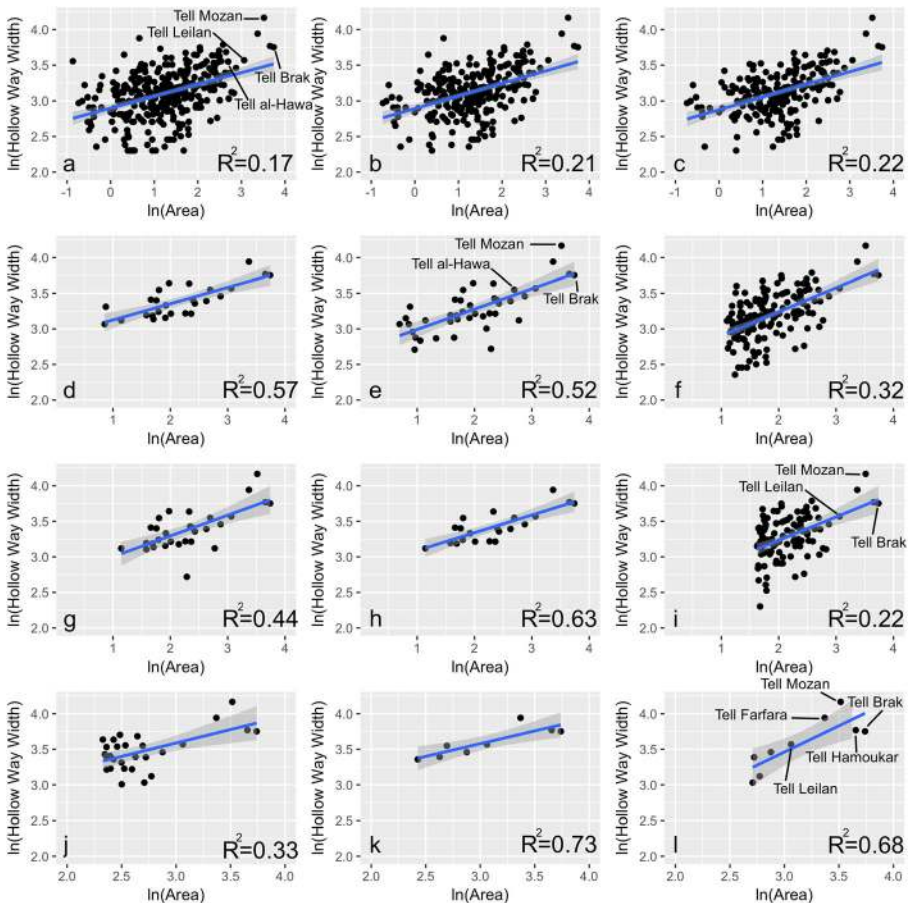


Fig. 8 Linear regression for site area and hollow way widths



appear to show better fit between hollow way widths and site area. On the other hand, smaller sites and those that have fewer hollow ways show greater disparity among the results and weaker fit. This could suggest two general, underlying patterns, where one is relevant for smaller sites and those that have generally fewer hollow ways and the other is for larger (*i.e.*,  $\geq 3$ ) sites which often have more ( $\geq 11$ ) hollow ways. For sites between 0 and 2 ha,  $\beta$  ranged from 0.16–0.29. In fact, if we rerun sites so that only small sites ( $\leq 2$ ) are included, thus excluding large sites, and having a minimum of one or two hollow ways, then  $\beta$  is even lower at 0.11 and 0.2 respectively. However, a lot of disparity is evident, where  $r^2$  remains below 0.2. For cases where more hollow ways ( $\geq 11$ ) and/or greater area for sites ( $\geq 3$ ) are analyzed,  $\beta$  increases in range, where it is 0.23–0.72 in Table 2's examples.

### Similarity Test with Regions Outside the KT

While overall there are far fewer mounded sites and hollow ways preserved outside of the KT and northern Mesopotamia in general, obtaining site area and hollow way widths from other sites allows us to test to see if comparable patterns are evident outside of the KT. Therefore, a total of 15 sites and associated hollow ways have been collected and are included in the associated supplementary files with this article. The periods covered the LC and Bronze Age for these sites and they were from western Syria, the Levant, southern Mesopotamia, and southeastern Anatolia. The variation in regions allows us to see if hollow way width and site area relationships are spatially comparable among these regions. Table 3 summarizes some of the results using the different parameters, similar to the KT; Fig. 9 indicates regression values showing goodness-of-fit using a linear least squares regression similar to before. As there are relatively few sites analyzed, the results can only be preliminary. Nevertheless, the  $\beta$  results, that have the greatest number of sites analyzed in this example, do show  $\beta$  range between 0.18–0.23, similar to the KT sites that also included the largest number of sample sites (Table 2: a–d). This could suggest some common range in  $\beta$  is evident among spatially diverse regions. As with the KT, Fig. 9 indicates some wide disparity between site area and hollow way widths, where fit improves by increasing site area analyzed and number of hollow ways.

**Table 3** Different  $\beta$  and  $Y_0$  results using different minimum site area and hollow way widths for 15 sites from areas outside the KT

Minimum site area (ha)	Minimum hollow ways	$\beta$	$Y_0$	MAE (m)	RMSE (m)	Letter	No. of sites
0	1	0.23	11.9	3.23	4.54	a	15
0	2	0.18	13.3	3.62	4.78	b	12
0	3	0.21	12	2.66	3.27	c	11
1	1	0.21	12.3	3.35	4.60	d	14
1	2	0.18	13.3	3.62	4.78	e	12
3	1	0.2	12.5	2.81	3.52	f	7

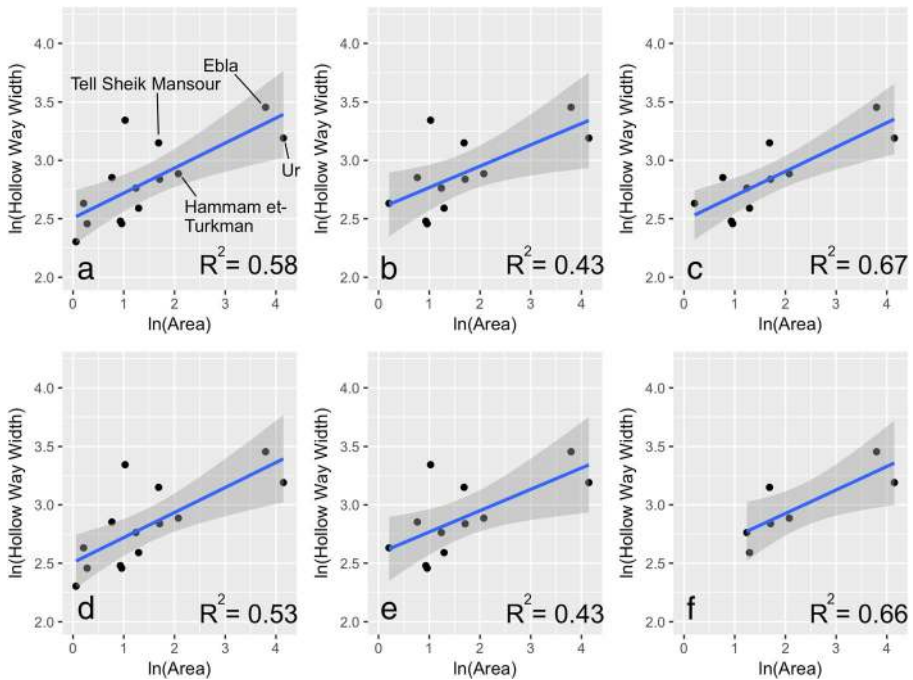


Fig. 9 Linear regressions for site area and hollow way widths used to compare to the KT

## Discussion

What this work demonstrates is that some scaling effects between site area and hollow way widths are evident. This has implications for settlement and land use/landscape archaeology, as similar studies of the past, so far, have not looked at how wider regions around settlements may scale in relation to settlements. However, our results are exploratory, in that they provide an initial assessment of how settlement area, a proxy for population, and hollow way widths, or road widths, scale. We cannot conclude that the relationship is strong in all cases, where there is considerable variability in results, but the clearest result we can conclude is site area and hollow way widths generally show a sublinear scaling relationship. This suggests that ancient transport remains in the KT that connected sites and field systems, and likely extending to other regions, reflect properties of efficiency relative to population growth that allow them to grow at  $\beta < 1.0$  levels (Bettencourt et al. 2007; Levinson 2012; Bettencourt 2013). Put simply, road network widths do not increase proportionally to population because if given urban centers grow, the existing roads will drive or accommodate some of the augmented traffic. In part, the comparison is between an extensive system, that is area reflecting an aggregate measure, and an intensive system, or hollow way widths, that is a *per capita* measure (Ortman et al. 2016). A scaling relationship is evident between these two types of systems, but one that may likely have generally lower  $\beta$  values than comparing like systems (*i.e.*, intensive to intensive or extensive to extensive). While one clear scaling pattern between site area and hollow way widths is not entirely evident in the KT, there could be multiple patterns that reflect greater variability, particularly for smaller sites and those with fewer hollow ways. For the most general

scenarios that included the largest number of sites,  $\beta$  ranged below 0.2, while sites with area between 0 and 2 showed  $\beta$  ranging from 0.16–0.29. In fact,  $\beta$  ranged between 0.11–0.2 when only sites between 0 and 2 ha were analyzed. On the other hand, when only focusing on larger sites or those that had more hollow ways, such as 3.0 ha or more or having 11 or more hollow ways, we see  $\beta$  ranging between 0.23–0.72.

In particular, for smaller sites and those with fewer hollow ways, there is a lot of variability, as is evident in Fig. 8, where differences in area and hollow way measures more greatly affect logarithmic measures such as those seen. In part, measurement errors or preservation are more sensitive for smaller sites. The  $\beta = 0.72$  achieved for Table 2: l is more similar to the  $\approx 0.8$  achieved by Bettencourt et al. (2007) for urban infrastructure such as roads (see also Bettencourt 2013, 1439), although previously this assessment was on road lengths and population. Having lower  $\beta$ , closer to 0.3, such as Table 2: k and others, could be expected in comparing intensive and extensive systems such as those compared here. Other scaling analyses also show greater disparities among measured values at the lower ends that is smaller population areas (e.g., Bettencourt et al. 2010; Lobo et al. 2013; Ortman et al. 2015). This could suggest that such deviations observed here among smaller sites are to be expected. Once larger sites are investigated, deviations become more minor, which results in better fit results. Overall, we can state that larger sites' infrastructure that is hollow ways, were more intensively used than smaller sites. Sites from regions outside the KT likely demonstrate similar results to the KT, at least for the lower  $\beta$  values that are similar to Table 2: a–d. Similarly, greater variation is likely evident for smaller sites which explains also the lower  $\beta$  value.

As Casana (2013, 27) has recently pointed out in his recent cross-regional study, hollow ways reflect agro-pastoral economies involving the movement of massive flocks of sheep/goats, management of cultivated and grazing lands of local households, and seasonal migrations to grazing lands outside agricultural catchments of settlements. The area studied (Fig. 1) encompasses sites adjacent and within the so-called zone of uncertainty, which is the drier agro-pastoral zone with mean annual rainfall between 200 and 300 mm today. This area has been seen as riskier for cereal cultivation and more suitable for sheep/goat husbandry, where hollow ways reflect movement of sheep/goats to pastures (cf. Wilkinson et al. 2014, 53–55, Fig. 3a). The percentage of sheep/goats in the zooarchaeological assemblages of LC and Bronze Age ranged between 40 and 70% in sites located in the Tigris-Euphrates and in the KT, and between 60 and 90% in the Syrian Upper Euphrates and in the Balikh valley (for a summary cf. Wossink 2009, 104–106, Fig. 6.2). In the Middle Khabur valley, the percentage of caprines raises from 30 to 90% in the latter half of the third millennium and in the early second millennium BCE (Zeder 1998). The increase of caprines in the Fertile Crescent reveal a specialized economy of sheep/goats already evident in the LC (Algaze 2008, 77–92) and that reached a full development by the middle third millennium BCE, perhaps because of commodification of textiles and wool production in Near Eastern polities (McCorriston 1997; Stein 2004; Wossink 2009, 107–110; Porter 2012).

In this context, we can postulate a relationship between hollow ways and the magnitude of the pastoral economy of the corresponding settlements, where increased settled area, or population, does not match an equivalent growth in economic activity. This corroborates the view of Wilkinson about the sublinear relationship between population and productivity levels of agricultural lands (1994, 495–496). In addition,

the higher  $\beta$  values for larger sites with more hollow ways radiating out from them may mean that those sites experienced similar urban scaling regularities of contemporary cities. In this perspective, the elaborate network of LC-Bronze Age roads should be seen as the result of interactions between settlements, where individual farmers, labor supply, and flocks of caprines moved across the landscape and were drawn to cities from the surrounding villages or from exogenous sources (*cf.* Lawrence and Wilkinson 2015, 339–40; Palmisano and Altaweel 2015, 227–228). However, larger settlements appear to have attracted more substantial feedback that is intensive growth, and demand for pastoral animals than their smaller counterparts. In particular, the widths of hollow ways could be a proxy of the magnitude of goods and people flowing from and into urban centers. Bronze Age textual evidence from Ebla and Tell Beydar reveal, at least in part, an institutionalized and centralized pastoral economy where massive flocks of caprines (estimates for Ebla range from 670,000 to 2 million; *cf.* Pettinato 1991, 82; Milano 1995) were directly managed by the palace (see Sallaberger 1996, 2004). This could explain the positive correlation between the widths of hollow ways and the area of larger settled mounds (see Fig. 9), where economies of scale of primary and secondary agro-pastoral products could be managed mostly by large urban centers. The width of hollow ways could demonstrate the flow of food surpluses that large urban centers, exceeding the carrying capacity of their agricultural catchments, had to import from surrounding villages of the hinterland (Wilkinson et al. 2007; Ur 2009, 194–195).

Furthermore, the hollow ways in the KT can be seen as highways that favored long-distance contacts and distribution of prestigious and exotic goods (*e.g.*, obsidian, ivory, lapis lazuli) in the LC and Bronze Age towards prominent urban centers such as Tell Brak, Tell Hamoukar, and Tell Mozan (*cf.* Khalidi et al. 2009; Stein 2012; Massa and Palmisano 2018). Perhaps then, unsurprisingly, small sites with an area equal or lower than 2 ha have a low  $\beta$  value (0.1–0.2), where this reflects the minor role of small sites in drawing population from other settlements and in attracting goods and products from exogenous sources. In the KT, the great variability of values for smaller sites ( $r^2 = \sim .2$ ; see Fig. 8:a–c, i) could be due to the fact that some of those small sites surround large urban centers, such as Tell Brak and Tell Halawa, which are associated with wider hollow ways. As formerly proposed by several scholars (Wilkinson 1993, 1994; Deckers and Riehl 2008; Ur 2009; Casana 2013), hollow ways' widths can be seen as flow of staple goods that surplus producers, such as small rural settlements, provided to the large urban centers that may have exceeded their carrying capacities. Some sites could have exploited the steppe landscape by focusing on animal production or mixed grain agriculture with pastoralism, which could affect the shape and evident area of sites (Castel and Peltenburg 2007). It is possible that corrals or other animal pens made up some of the space for certain sites, affecting area. Specialized pastoral sites may demonstrate wider hollow ways, whereas less specialized sites could be narrower, all of which could reflect the evident disparity we see in results. Finally, preservation and taphonomic factors in the archaeological record could, of course, affect evident variation, perhaps with smaller sites particularly affected.

Despite the variations evident in results, overall errors (MAE; RMSE) from some models (Table 2: a–c, f, i) indicate that one can estimate average widths of hollow ways, albeit with some caveats given the variations we see. Even though  $r^2$  fit measures were low in some tests, the fact that distributions in places did conform to normal

distributions makes the range of possible hollow way widths something that can be estimated where it is missing. This has relevant implications, above all if we accept that the hollow ways were the results of agro-pastoral activities and the main axes on which the flow of people, animal herds, and people transited as a result of the interaction between large urban centers and their surrounding rural hinterland (villages and hamlets; *cf.* Ur 2009; Wilkinson et al. 2010; Casana 2013; Palmisano and Altaweel 2015, 227–228). Given the fact that variations appear to show a normal distribution, such as that using  $\beta = 0.18$  with  $Y_0 = 17.7$  (Table 2: c), this allows us to estimate possible widths for average hollow ways for sites, within 1–2 standard deviations for instance, including sites missing these features. In fact, Table 2: c's model could be the best in terms of error measures given, while also focusing on sites where these features are relatively well preserved (*i.e.*, with 3 or more hollow ways). In this case,  $\beta$  has a standard deviation of 0.273. Nevertheless, it is also evident there might be other possible patterns, where  $\beta$  is likely to be greater but sublinear, particularly for larger sites and/or those with more hollow ways.

## Conclusion

Although our work is exploratory and clearly the relationship between settlement area and hollow way widths is not always easily evident, the benefit of this work is it demonstrates scaling models can be used to evaluate relationships between sites and hollow way widths. This has important implications for understanding how land use and landscapes around settlements relate to settlements in the past. The models given can be used to give a range of estimates for hollow way widths for sites where these features are missing. The results also imply transport efficiency between sites, as sites scaled to larger areas in the LC to Bronze Age.

The results achieved by this work could certainly improve by acquiring more exact dating for sites and measures for area extent. The use of site mounds for area is not ideal, as this neither represents true site area in a given period nor the full extent of sites if all periods are considered. An improvement of this research could involve probabilistic models to address the temporal uncertainty in the archaeological dataset (see Crema et al. 2010; Crema 2012). Improvements in dating and measurement of full site extent or even hollow ways width could benefit results achieved such that the accuracy for the range of  $\beta$  for estimating hollow way widths, and even site area if hollow way widths are initially known, is possible. One thing we did not do is differentiate between hollow ways that connect to sites and hollow ways that only extend to fields in the analysis, as little difference was noticed between the two types. However, for some regions, there could be different patterns in scaling between interurban and field-connecting hollow ways that we did not easily differentiate.

As a way to expand this study, scaling relationships that estimate the number of animals herded out from a site could also be potentially developed using the results presented here by looking at density of animal concentrations in herds (*e.g.*, through ethnographic data as a baseline measure). This could look at density of animals that form across tracks and such numbers could then be scaled to settlement areas. In effect, we would expect some power law relationship between herd sizes and hollow way widths that also relates to settlement area. Such analyses could further investigate the

extent that hollow ways reflect agro-pastoral economies in settlements. Other studies could investigate intra-urban roads compared with site area in a similar fashion as this paper, in particular for single period sites where road features are more likely to be evident and correlated with urban area. This could provide another potential for extrapolating scaling values that allow one to estimate road feature qualities where they are not evident, while also providing potential theoretical insight.

**Open Access** This article is distributed under the terms of the Creative Commons Attribution 4.0 International License (<http://creativecommons.org/licenses/by/4.0/>), which permits unrestricted use, distribution, and reproduction in any medium, provided you give appropriate credit to the original author(s) and the source, provide a link to the Creative Commons license, and indicate if changes were made.

## References

- Adams, R. M. (1981). *Heartland of cities: surveys of ancient settlement and land use on the central floodplain of the Euphrates*. Chicago: University of Chicago Press.
- Akkermans, P. M. M. G., & Schwartz, G. (2003). *The archaeology of Syria: from complex hunter-gatherers to early urban societies (ca. 16,000–300 BC)*. Cambridge: Cambridge University Press.
- Algaze, G. (2001). Initial Social Complexity in Southwestern Asia. *Current Anthropology*, 42(2), 199–233.
- Algaze, G. (2008). *Ancient Mesopotamia at the Dawn of Civilization: The Evolution of an Urban Landscape*. Chicago: University of Chicago Press.
- Altaweel, M. (2003). The roads of Ashur and Nineveh. *Akkadica*, 124(2), 221–228.
- Altaweel, M. (2005). The use of ASTER satellite imagery in archaeological contexts. *Archaeological Prospection*, 12(3), 151–166.
- Altaweel, M. (2008). *The imperial landscape of Ashur: settlement and land use in the Assyrian heartland*. Heidelberg: Heidelberg Orientverlag.
- Altaweel, M., Marsh, A., Mühl, S., Nieuwenhuys, O., Radner, K., Rasheed, K., & Saber, S. A. (2012). New investigations in the environment, history, and archaeology of the Iraqi hilly flanks: Shahrizor survey project 2009–2011. *Iraq*, 74, 1–35.
- Archi, A. (1998). The regional state of Nagar according to the texts of Ebla. In M. Lebeau (Ed.), *Subartu: studies devoted to Upper Mesopotamia* (pp. 1–15). Subartu IV. Turnhout: Brepols.
- Barker, G. (1995). *A Mediterranean valley: landscape archaeology and annales history in the Biferno valley*. London: Leicester University Press.
- Batty, M. (2008). The size, scale, and shape of cities. *Science*, 319(5864), 769–771.
- Batty, M. (2013). A theory of city size. *Science*, 340(6139), 1418–1419.
- Bell, T., Wilson, A., & Wickham, A. (2002). Tracking the Samnites: landscape and communications routes in the Sangro Valley, Italy. *American Journal of Archaeology*, 106(2), 169–186.
- Bettencourt, L. M. A. (2013). The origins of scaling in cities. *Science*, 340(6139), 1438–1441.
- Bettencourt, L. M. A., Lobo, J., Helbing, D., Kuhnert, C., & West, G. B. (2007). Growth, innovation, scaling, and the pace of life in cities. *Proceedings of the National Academy of Sciences*, 104(17), 7301–7306.
- Bettencourt, L. M. A., Lobo, J., Strumsky, D., & West, G. B. (2010). Urban scaling and its deviations: revealing the structure of wealth, innovation and crime across cities. *PLoS One*, 5(11), e13541. <https://doi.org/10.1371/journal.pone.0013541>.
- Carneiro, R. L. (1967). On the relationship between size of population and complexity of social organization in human societies. *Southwestern Journal of Anthropology*, 23(3), 234–243.
- Carneiro, R. L. (2000). The transition from quantity to quality: a neglected causal mechanism in accounting for social evolution. *Proceedings of the National Academy of Sciences*, 97(23), 12926–12931.
- Casana, J. (2003). The archaeological landscape of Late Roman Antioch. In J. A. R. Huskinson & B. Sandwell (Eds.), *Culture and Society in Late Roman Antioch* (pp. 102–125). Oxford: Oxbow.
- Casana, J. (2007). Structural transformations in settlement systems of the northern Levant. *American Journal of Archaeology*, 111(2), 195–221.
- Casana, J. (2013). Radial route systems and agro-pastoral strategies in the Fertile Crescent: new discoveries from western Syria and southwestern Iran. *Journal of Anthropological Archaeology*, 32(2), 257–273.



- Casana, J., & Cothren, J. (2013). The CORONA atlas project: orthorectification of CORONA satellite imagery and regional-scale archaeological exploration in the Near East. In D. Comer & M. Harrower (Eds.), *Mapping archaeological landscapes from space* (pp. 33–43). New York: Springer.
- Casana, J., Cothren, J., & Kalayci, T. (2012). Swords into ploughshares: archaeological applications of CORONA satellite imagery in the Near East. *Internet Archaeology*, 32(2), <https://doi.org/10.11141/ia.32.2>.
- Castel, C., & Peltenburg, E. (2007). Urbanism on the margins: third millennium BC Al-Rawda in the arid zone of Syria. *Antiquity*, 81(313), 601–616.
- Cesaretti, R., Lobo, J., Bettencourt, L. M., Ortman, S. G., & Smith, M. E. (2016). Population-area relationship for Medieval European cities. *PLoS One*, 11(10), e0162678.
- Charpin, D., & Ziegler, N. (2003). *Florilegium marianum*. 5, Mari et le Proche-Orient à l'époque amorrite : essai d'histoire politique. Paris: Société pour l'étude du Proche-Orient ancien.
- Chisholm, M. (1962). *Rural settlement and land use: an essay in location*. London: Hutchinson.
- Coffey, W. J. (1979). Allometric growth in urban and regional social economic systems. *Canadian Journal of Regional Science*, 11(1), 49–65.
- Colantoni, C. (2017). Are we closer to establishing how many Sumerians per hectare? In Y. Heffron, A. Stone, & M. Worthington (Eds.), *At the dawn of history: ancient Near Eastern studies in honour of J. N. Postgate* (pp. 95–119). Eisenbrauns: Winona Lake.
- Crema, E. R. (2012). Modelling temporal uncertainty in archaeological analysis. *Journal of Archaeological Method and Theory*, 19(3), 440–461.
- Crema, E. R., Bevan, A., & Lake, M. W. (2010). A probabilistic framework for assessing spatio-temporal point patterns in the archaeological record. *Journal of Archaeological Science*, 37(5), 1118–1130.
- Cullen, A. C., & Frey, H. C. (1999). *Probabilistic techniques in exposure assessment: a handbook for dealing with variability and uncertainty in models and inputs*. New York: Plenum Press.
- Deckers, K., & Riehl, S. (2008). Resource exploitation of the Upper Khabur Basin (NE Syria) during the 3rd millennium BC. *Paléorient*, 34(2), 173–189.
- Drennan, R. D., Berrey, C. A., & Peterson, C. E. (2015). *Regional settlement demography in archaeology*. Clinton Corners, NY: Eliot Werner Publications.
- Eidem, J. (2000). Northern Jazira in the 18th century BC. Aspects of geo-political patterns. In O. Rouault, & M. Wäfler (Eds.), *La Djéziré et l'Euphrate syriens de la protohistoire à la fin du IIe millénaire av. J.-C.: tendances dans l'interprétation historique des données nouvelles* (pp. 255–64). *Subartu*, 7. Turnhout: Brepols.
- Eidem, J. (2008). The evidence from Tell Leilan. In J. G. Dercksen (Ed.), *Anatolia and the Jazira during the old Assyrian period* (pp. 31–41). Leiden: Nederlands Instituut Voor Het Nabije Oosten.
- Eidem, J., & Warburton, D. (1996). In the land of Nagar: a survey around Tell Brak. *Iraq*, 58, 51–64.
- Haldane, A. R. B. (1997). *The drove roads of Scotland*. Edinburgh: Birlinn.
- Hanson, J. W., & Ortman, S. G. (2017). A systematic method for estimating the populations of Greek and Roman settlements. *Journal of Roman Archaeology*, 30, 301–324.
- Hanson, J. W., Ortman, S. G., & Lobo, J. (2017). Urbanism and the division of labour in the Roman empire. *Journal of the Royal Society Interface*, 14(136), 2017036.
- Johnson, A., & Earle, T. (2000). *The evolution of human societies*. Palo Alto: Stanford University Press.
- Kalayci, T. (2016). Settlement sizes and agricultural production territories: a remote sensing case study for the early Bronze Age in Upper Mesopotamia. *STAR: Science & Technology of Archaeological Research*, 2(2), 217–234.
- Khalidi, L., Gratuze, B., & Boucetta, S. (2009). Provenance of obsidian excavated from Late Chalcolithic levels at the sites of Tell Hamoukar and Tell Brak, Syria. *Archaeometry*, 51(6), 879–893.
- Lawrence, D., & Wilkinson, T. J. (2015). Hubs and upstarts: pathways to urbanism in the northern Fertile Crescent. *Antiquity*, 89(344), 328–344.
- Liverani, M. (2006). *Uruk: The First City*. London and Oakville: Equinox.
- Levinson, D. (2012). Network structure and city size. *PLoS One*, 7(1), e29721. <https://doi.org/10.1371/journal.pone.0029721>.
- Lobo, J., Bettencourt, L. M. A., Strumsky, D., & West, G. B. (2013). Urban scaling and the production function for cities. *PLoS One*, 8(3), e58407. <https://doi.org/10.1371/journal.pone.0058407>.
- Lyonnet, B. (2000). *Prospections archéologiques du Haut-Khabur occidentale (Syrie du n.e.). Vol. 1*. Bibliothèque archéologique et historique 155. Beyrouth.
- Massa, M., & Palmisano, A. (2018). Change and continuity in the long-distance exchange networks between western/central Anatolia, northern Levant and northern Mesopotamia, c. 3200–1600 BCE. *Journal of Anthropological Archaeology*, 49, 65–87.

- McClellan, T. L., Grayson, R., & Oglesby, C. (2000). Bronze Age water harvesting in north Syria. *Subartu*, 7, 137–155.
- McCorriston, J. (1997). The fiber revolution: textile extensification, alienation, and social stratification in ancient Mesopotamia. *Current Anthropology*, 38(4), 517–549.
- McMahon, A. (2013). North Mesopotamia in the third millennium BC. In H. Crawford (Ed.), *The Sumerian world* (pp. 462–477). New York: Routledge.
- Meijer, D. J. W. (1986). *A survey in northeastern Syria*. Leiden: Nederlands Historisch-Archaeologisch Instituut Istanbul.
- Milano, L. (1995). Ebla: a third millennium city-state in ancient Syria. In J. Sasson (Ed.), *Civilizations of the Ancient Near East* (Vol. 2, pp. 1219–1230). New York: Scribners/Macmillan.
- Mühl, S. (2012). Human landscape –site (trans-)formation in the Transtigris area. In R. Hofman, F. K. Moetz, & J. Müller (Eds.), *Tells: Social and Environmental Space. Proceedings of the International Workshop “Socio-Environmental Dynamics over the Last 12,000 Years: The Creation of Landscapes II (Kiel, 14th–18th March 2011)* (pp. 79–92). Vol. 3. Bonn: Verlag Dr. Rudolf Habelt GmbH.
- Nordbeck, G. (1971). Urban allometric growth. *Geografiska Annaler: Series B, Human Geography*, 53(1), 54–67.
- Oates, J., McMahon, A., Karsgaard, P., Al Quntar, S., & Ur, J. (2007). Early Mesopotamian urbanism: a new view from the north. *Antiquity*, 81(313), 585–600.
- Ortman, S. G., Andrew, H. F., Cabaniss, J. O. S., & Bettencourt, L. M. A. (2014). The pre-history of urban scaling. *PLoS One*, 9(2), e87902. <https://doi.org/10.1371/journal.pone.0087902>.
- Ortman, S. G., Cabaniss, A. H., Sturm, J. O., & Bettencourt, L. M. (2015). Settlement scaling and increasing returns in an ancient society. *Science Advances*, 1(1), e1400066.
- Ortman, S. G., Davis, K. E., Lobo, J., Smith, M. E., Bettencourt, L. M. A., & Trumbo, A. (2016). Settlement scaling and economic change in the Central Andes. *Journal of Archaeological Science*, 73, 94–106.
- Ossa, A., Smith, M. E., & Lobo, J. (2017). The size of plazas in Mesoamerican cities and towns: a quantitative analysis. *Latin American Antiquity*, 28(4), 457–475.
- Palmisano, A. (2015). Geopolitical patterns and connectivity in the Upper Khabur Valley in the middle Bronze Age. In A. Archi (Ed.), *Tradition and Innovation in the Ancient Near East. Proceedings of the 57th Rencontre Assyriologique Internationale at Rome, 4-8 July 2011* (pp. 369–380). Winona lake: Eisenbrauns.
- Palmisano, A. (2017). Confronting scales of settlement hierarchy in state-level societies: Upper Mesopotamia and Central Anatolia in the middle Bronze Age. *Journal of Archaeological Science: Reports*, 14, 220–240.
- Palmisano, A., & Altaweel, M. (2015). Landscapes of interaction and conflict in the middle Bronze Age: From the open plain of the Khabur triangle to the mountainous inland of Central Anatolia. *Journal of Archaeological Science: Reports*, 3, 216–236.
- Pettinato, G. (1991). *Ebla: A new look at history*. Baltimore: Johns Hopkins University Press.
- Philip, G., Donoghue, D., Beck, A., & Galiatsatos, N. (2002). CORONA satellite photography: An archaeological application from the Middle East. *Antiquity*, 76(291), 109–118.
- Porter, A. (2012). *Mobile pastoralism and the formation of Near Eastern civilizations: Weaving together society*. Cambridge: Cambridge University Press.
- Postgate, J. N. (1994). How many Sumerians per hectare? Probing the anatomy of an early city. *Cambridge Archaeological Journal*, 4(1), 47–65.
- Pumain, D., Paulus, F., Vacchiana-Marcuzzo, C., & Lobo, J. (2006). An evolutionary theory for interpreting urban scaling laws. *Cybergeo: European Journal of Geography* (article 343). <http://cybergeo.revues.org/2519?lang=en>
- Radner, K. (2015). *Ancient Assyria: a very short introduction*. Oxford: Oxford University Press.
- Ristvet, L. (2005). *Settlement, economy, and society in the Tell Leilan Region, Syria, 3000–1000 BC*. Unpublished dissertation. University of Cambridge.
- Ristvet, L. (2008). Legal and archaeological territories of the second millennium BC in northern Mesopotamia. *Antiquity*, 82(317), 585–599.
- Ristvet, L. (2012). Resettling Apum: Tribalism and tribal states in the tell Leilan region, Syria. In A. Bianchi, N. Laneri, & S. Valentini (Eds.), *Looking north: The socioeconomic dynamics of the northern Mesopotamian and Anatolian regions during the late third and early second millennium BC* (pp. 37–50). Wiesbaden: Harrasowitz.
- Sallaberger, W. (1996). Grain accounts: Personnel lists and expenditure documents. In F. Ismail, W. Sallaberger, P. talon, and K. van Lerberghe (Eds.), *Administrative documents from Tell Beydar (seasons 1993–1995)* (pp. 81–106). Subartu 2. Turnhout: Brepols.

- Sallaberger, W. (2004). A note on the sheep and goat flocks. Introduction to texts 141–167. In L. Milano, W. Sallaberger, P. talon, and K. van Lerberghe (Eds.), *Third millennium cuneiform texts from Tell Beydar (seasons 1996–2002)* (pp. 13–21). Subartu 12. Turnhout: Brepols.
- Samaniego, H., & Moses, M. E. (2009). Cities as organisms: Allometric scaling of urban road networks. *Journal of Transportation and Land Use*, 1(1), 21–39.
- Schlöpfer, M., Bettencourt, L. M., Grauwlin, S., Raschke, M., Claxton, R., Smoreda, Z., West, G. B., & Ratti, C. (2014). The scaling of human interactions with city size. *Journal of the Royal Society Interface*, 11(98), 20130789.
- Schloen, D. (2001). *The house of the father as fact and symbol: patrimonialism in Ugarit and the Ancient Near East*. Studies in the Archaeology and History of the Levant 2. Winona Lake, Ind.: Eisenbrauns.
- Smith, M. E. (2018). Energized crowding and the generative role of settlement aggregation and urbanization. In A. Gyucha (Ed.), *Coming Together: Comparative Approaches to Population Aggregation and Early Urbanization*. Albany: State University of New York Press.
- Stein, G. (2004). Structural parameters and socio-cultural factors in the economic organization of north Mesopotamian urbanism in the third millennium BC. In G. M. Feinman & L. M. Nichols (Eds.), *Archaeological perspectives on political economies* (pp. 61–78). Salt Lake City: University of Utah Press.
- Stein, G. (2012). The development of indigenous social complexity in Late Chalcolithic Upper Mesopotamia in the 5th–4th millennia BC—an initial assessment. *Origini*, 34, 125–151.
- Stein, G. J., & Wattenmaker, P. (2003). Settlement trends and the emergence of social complexity in the Leilan region of the Habur plains (Syria) from the fourth to the third millennium BC. In E. Rova & H. Weiss (Eds.), *The origins of north Mesopotamian civilization: Ninevite 5 chronology, economy, society* (pp. 361–386). Turnhout: Brepols.
- Steinkeller, P. (2017). An Estimate of the Population of the City of Umma in Ur III Times. In Y. Heffron, A. Stone, & M. Worthington (Eds.), *At the Dawn of History: Ancient Near Eastern Studies in Honour of J. N. Postgate* (pp. 535–566). Winona Lake: Eisenbrauns.
- Stone, E. C. (2017). How many Mesopotamians per hectare? In Y. Heffron, A. Stone, & M. Worthington (Eds.), *At the dawn of history: Ancient Near Eastern studies in honour of J. N. Postgate* (pp. 567–582). Eisenbrauns: Winona Lake.
- Ur, J. (2003). CORONA satellite photography and ancient road networks: A northern Mesopotamian case study. *Antiquity*, 77(295), 102–115.
- Ur, J. A. (2009). Emergent landscapes of movement in early bronze age northern Mesopotamia. In J. E. Snead, C. Erickson, & W. A. Darling (Eds.), *Landscapes of movement: Paths, trails, and roads in anthropological perspective* (pp. 180–203). Philadelphia: University of Pennsylvania Museum Press.
- Ur, J. A. (2010a). *Cycles of civilization in northern Mesopotamia, 4400–2000 BC*. *Journal of Archaeological Research*, 18(4), 387–431.
- Ur, J. A. (2010b). *Urbanism and cultural landscapes in northeastern Syria: The Tell Hamoukar Survey, 1999–2001*. Oriental institute publications 137. Chicago: University of Chicago, Oriental Institute.
- Ur, J. A., & Wilkinson, T. J. (2008). Settlement and economic landscapes of tell Beydar and its hinterland. In M. Lebeau & A. Suleiman (Eds.), *Beydar studies I* (pp. 305–327). Turnhout: Brepols.
- Ur, J., Karsgaard, P., & Oates, J. (2007). Early urban development in the Near East. *Science*, 317(5842), 1188.
- Ur, J., Karsgaard, P., & Oates, J. (2011). The spatial dimensions of early Mesopotamian urbanism: The tell Brak suburban survey, 2003–2006. *Iraq*, 73, 1–19.
- Van Liere, W. J., & Lauffray, J. (1954–1955). Nouvelle prospection archeologique dans la Haute Jazireh Syrienne. *Les Annales Archéologique Arabes Syriennes*, 4(5), 129–148.
- Veenhof, K. R., & Eidem, J. (2008). *Mesopotamia, the old Assyrian period*. Fribourg: Academic Press Fribourg.
- Villard, P. (1995). Shamshi-Adad and sons: the rise and fall of an Upper Mesopotamian empire. In J. Sasson (Ed.), *Civilizations of the ancient Near East* (pp. 873–883). New York: Simon & Schuster MacMillan.
- Weiss, H. (2017). 4.2 ka BP Megadrought and the Akkadian collapse. In H. Weiss (Ed.), *Megadrought and collapse: From early agriculture to Angkor* (pp. 93–160). Oxford: Oxford University Press.
- Weiss, H., & Courty, M. A. (1994). Comments on T.J. Wilkinson, the structure and dynamics of dry-farming states in Upper Mesopotamia. *Current Anthropology*, 35(5), 512–514.
- Weiss, H., Courty, M.-A., Wetterstrom, W., Guichard, F., Senior, L., Meadow, R., & Curnow, A. (1993). The genesis and collapse of third millennium north Mesopotamian civilization. *Science*, 261(5124), 995–1004.
- Wiessner, P. (1974). A functional estimator of population from floor area. *American Antiquity*, 39(2-Part1), 343–350.
- Wilkinson, T. J. (1993). Linear hollows in the Jazira, Upper Mesopotamia. *Antiquity*, 67(256), 548–562.

- Wilkinson, T. J. (1994). The structure and dynamics of dry farming states in Upper Mesopotamia. *Current Anthropology*, 35(1), 483–520.
- Wilkinson, T. J. (1997). Environmental fluctuations, agricultural production and collapse: a view from Bronze Age Upper Mesopotamia. In H. N. Dalfes, G. Kukla, & H. Weiss (Eds.), *Third millennium BC climate change and Old World collapse* (pp. 67–106). Berlin: Springer-Verlag.
- Wilkinson, T.J. (2007). Ancient Near Eastern route systems: From the ground up. ArchAtlas, February 2010, edition 4: <http://www.archatlas.org/workshop/TWilkinson07.php>. Accessed 03/26/2018.
- Wilkinson, T. J., & Tucker, D. J. (1995). *Settlement development in the North Jazira, Iraq: a study of the archaeological landscape* (Iraq archaeological reports 3). Warminster: Aris & Phillips.
- Wilkinson, T. J., Christiansen, J., Ur, J. A., Widell, M., & Altaweel, M. (2007). Urbanization within a dynamic environment: Modelling Bronze Age communities in Upper Mesopotamia. *American Anthropologist*, 109(1), 52–68.
- Wilkinson, T. J., French, C., Ur, J. A., & Semple, M. (2010). The geoarchaeology of route systems in Northern Syria. *Geoarchaeology*, 25(6), 745–771.
- Wilkinson, T. J., Philip, G., Bradbury, J., Dunford, R., Donoghue, D., Galiatsatos, N., Lawrence, D., Ricci, A., & Smith, S. L. (2014). Contextualizing early urbanization: settlement cores, early states and agro-pastoral strategies in the Fertile Crescent during the fourth and third millennia BC. *Journal of World Prehistory*, 27(1), 43–109.
- Wossink, A. (2009). *Challenging climate change: competition and cooperation among pastoralists and agriculturalists in northern Mesopotamia (c. 3000–1600 BC)*. Leiden: Sidestone Press.
- Wright, H. T., Rupley, E. S. A., Ur, J., Oates, J., & Ganem, E. (2006–2007). Preliminary report on the 2002 and 2003 seasons of the Tell Brak sustaining area survey. *Les Annales Archéologiques Arabes Syrienne*, 49–50, 7–21.
- Zeder, M. (1998). Environment, economy, and subsistence on the threshold of urban emergence in northern Mesopotamia. In M. Fortin & O. Aurenche (Eds.), *Espace naturel, espace habité en Syrie du Nord (10e–2e mille'naires av. J.C.)* (pp. 55–67). Bulletin 33. Quebec: Canadian Society for Mesopotamian Studies.