

Using Biotic Interaction Networks for Prediction in Biodiversity and Emerging Diseases

Christopher R. Stephens^{1,2*}, Joaquín Giménez Heau^{1,3}, Camila González^{1,3}, Carlos N. Ibarra-Cerdeña^{1,3}, Victor Sánchez-Cordero^{1,3}, Constantino González-Salazar^{1,3}

1 C3 - Centro de Ciencias de la Complejidad, Universidad Nacional Autónoma de México, Ciudad de México, México, **2** Instituto de Ciencias Nucleares, Universidad Nacional Autónoma de México, Ciudad de México, México, **3** Instituto de Biología, Universidad Nacional Autónoma de México, Ciudad de México, México

Abstract

Networks offer a powerful tool for understanding and visualizing inter-species ecological and evolutionary interactions. Previously considered examples, such as trophic networks, are just representations of experimentally observed direct interactions. However, species interactions are so rich and complex it is not feasible to directly observe more than a small fraction. In this paper, using data mining techniques, we show how potential interactions can be inferred from geographic data, rather than by direct observation. An important application area for this methodology is that of emerging diseases, where, often, little is known about inter-species interactions, such as between vectors and reservoirs. Here, we show how using geographic data, biotic interaction networks that model statistical dependencies between species distributions can be used to infer and understand inter-species interactions. Furthermore, we show how such networks can be used to build prediction models. For example, for predicting the most important reservoirs of a disease, or the degree of disease risk associated with a geographical area. We illustrate the general methodology by considering an important emerging disease - Leishmaniasis. This data mining methodology allows for the use of geographic data to construct inferential biotic interaction networks which can then be used to build prediction models with a wide range of applications in ecology, biodiversity and emerging diseases.

Citation: Stephens CR, Heau JG, González C, Ibarra-Cerdeña CN, Sánchez-Cordero V, et al. (2009) Using Biotic Interaction Networks for Prediction in Biodiversity and Emerging Diseases. *PLoS ONE* 4(5): e5725. doi:10.1371/journal.pone.0005725

Editor: Laurent Rénia, BMSI-A*STAR, Singapore

Received: March 19, 2008; **Accepted:** November 20, 2008; **Published:** May 28, 2009

Copyright: © 2009 Stephens et al. This is an open-access article distributed under the terms of the Creative Commons Attribution License, which permits unrestricted use, distribution, and reproduction in any medium, provided the original author and source are credited.

Funding: Funds and support received from the UNAM Macroproyectos: Tecnologías para la Universidad de la Información y de la Computación and SIBA and from CONACYT. The funders had no role in study design, data collection and analysis, decision to publish, or preparation of the manuscript.

Competing Interests: The authors have declared that no competing interests exist.

* E-mail: stephens@nucleares.unam.mx

Introduction

A fundamental underlying goal of biology is to model the distribution of biota and identify their interactions, thus permitting both an understanding of current distributions and the possibility of predicting future ones [1]. Such models have important applications, such as in biodiversity [2] and emerging diseases. Networks offer an important tool for understanding and visualizing biotic interactions and have been used in a variety of contexts [4,5,6]. They are constructed by linking nodes of the network, usually species that have a known interaction, such as in trophic webs. However, as it is not feasible to exhaustively track the large numbers of ecological interactions, the question arises: can biotic interaction networks be constructed other than by direct observation, using other available data?

There is evidence that the evolutionary dynamics of inter-species interactions create rich geographic mosaics [7]. Moreover, phylogenetic research has shown that species are conservative when it comes to the taxa with which they interact, both spatially and temporally. As an example relevant to this paper, blood sucking insects have evolved phenotypic traits to optimize host-seeking and feeding [8]. Co-distributions of host and parasite will then reflect the strong biotic relation that exists between them. Similarly, as a reflection of the potential confrontation of species, co-occurrence could also engender an interaction in the absence of

a pre-existing one [9]. We are thus led to consider distributional data for constructing inter-species interaction networks.

Collection data offer an important proxy for modeling distributions. Here, we show how such data can be used to infer potential inter-species interactions, construct an associated network and, further, show how that network can be used to construct prediction models. Collection data are already widely used in biodiversity informatics [10,11], and have been principally used for constructing species distributions from abiotic niche variables only. The data are taxonomic in nature and georeferenced, the set of point collections of a species in a geographical region giving a sampling for the distribution of the species in that region. Of course, there is an important question of sample bias in the data [12,14] (see also the Materials and Methods section), though its extensive use and utility, even in areas where data are scarce [13], is testament to the fact that it can yield important information if treated carefully. Additionally, in the case of urgent problems of great social impact, such as that of emerging diseases, it is important to try to leverage the data that actually exist, at least until better, more bespoke, data become available.

Results

Dividing up a geographic region into spatial cells, x_s , we take as our underlying variable of interest, $B_i(x_s)$, a measure of the

distribution of the i th taxon in the spatial cell x_α . The specific form of B_i is determined by the available data - relative or absolute abundance, presence/absence or presence only. A fundamental object of interest is $P(B_i(x_\alpha) | \mathbf{I}(x_\alpha))$, the probability that the distribution measure $B_i(x_\alpha)$ takes a certain value in the spatial cell x_α conditioned on, $\mathbf{I}(x_\alpha)$, which is composed of, in principle, all biotic and abiotic variables that affect species distributions, and which constitute the biotic and abiotic profiles of the corresponding niche [10]. An example of interest would be that $B_i(x_\alpha)$ represents presence of the i th species in the spatial cell x_α .

As we have no underlying theory with which to construct $P(B_i(x_\alpha) | \mathbf{I}(x_\alpha))$ we will use a data mining approach to estimate it, using point collection data as a proxy for the actual distribution of taxa. Point collection data here represent the set of georeferenced localities (latitude, longitude and date) of museum voucher specimens. It is important to remember that the distribution of taxa is a direct result of the past and present interactions of all relevant causative factors - climactic, phylogenetic, co-evolutionary, ecological etc. Hence, part of the task of any analysis is to determine, out of the myriad of factors that contribute to \mathbf{I} , which ones are the most predictive in determining a particular distribution. An immediate problem is that, as every spatial cell is unique, for each x_α one has a statistical sample of size one and hence $P(B_i(x_\alpha) | \mathbf{I}(x_\alpha)) = 0$ or 1.

To overcome this, one first constructs the relationship between B_i and \mathbf{I} , such as $P(B_i | \mathbf{I})$, via a sampling of all spatial cells in order to obtain the relationship between a given distribution measure and the associated niche variables. With this in hand, a “profile” of any given spatial cell x_α can be constructed in terms of the biotic and abiotic niche variables and the relationship between B_i and \mathbf{I} used to determine $P(B_i(x_\alpha) | \mathbf{I}(x_\alpha))$ (see Materials and Methods section).

As $P(B_i | \mathbf{I})$ involves counting the number of spatial cells where there is a co-occurrence of the i th species with a particular configuration of the niche variables \mathbf{I} , if \mathbf{I} is of high dimension then the number of cells where there are co-occurrences will be small or zero. We thus restrict attention for the moment to the case where \mathbf{I} is a single variable, I_j , so that $P(B_i | I_j) = N_{B_i \& I_j} / N_{I_j}$, where $N_{B_i \& I_j}$ is the number of cells with a co-occurrence of the distribution variable B_i and the niche variable I_j , and N_{I_j} is the number of cells with niche variable I_j . In the case where I_j is also a taxon distribution, and we consider presence, then $P(B_i | B_j)$ measures the probability of presence of taxon B_i given the presence of taxon B_j and is thus a measure of the statistical association between B_i and B_j . As $P(B_i | B_j)$ does not take into account statistical confidence however, we consider rather

$$\varepsilon(B_i | B_j) = \frac{N_{B_i} (P(B_i | B_j) - P(B_i))}{(N_{B_i} P(B_i) (1 - P(B_i)))^{1/2}}$$

which also measures the degree of confidence one can have in the statistical association between B_i and B_j relative to the null hypothesis, $P(B_i)$, that the distribution of B_i is independent of B_j and distributed with this probability over the region of interest. Essentially, this is a one-sided binomial test where the null hypothesis is that the distribution of B_i is random over the sample space; in this case the cells of the region of interest. It can, of course, be useful to consider other null hypotheses. For instance, one could use as null hypothesis $P(B_i | \mathbf{A})$ where \mathbf{A} represents a set of abiotic factors, or the result of a niche-model such as GARP or MaxEnt [15,16]. Values of $|\varepsilon(B_i | B_j)|$ greater than a certain threshold (see Materials and Methods section) measure the degree to which the data is consistent with the null hypothesis. In the case

where the binomial distribution associated with $P(B_i)$ can be approximated by a normal distribution then values of $|\varepsilon(B_i | B_j)| > 2$ would indicate an inconsistency between the data and the null hypothesis to the 95% confidence level.

For any pair of taxa, B_i and B_j , taken as nodes of a network, a link between them, whose “strength” is given by $\varepsilon(B_i | B_j)$, or $P(B_i | B_j)$, can be graphed. The resulting interaction network then offers a visualization of the inferred statistical dependencies between different taxa. Note that, contrary to networks that are common in the literature, that represent known interactions, such as between predator and prey in a trophic web [15], this network represents statistical associations from which inferences about real causal interactions can be made and then tested. Higher order statistical associations, such as $P(B_i | B_j B_k)$, can also be examined. Such an interaction could be represented by three nodes, with links from B_j and B_k to B_i , and would represent the degree of statistical dependence of taxon B_i on the co-occurrence of the taxa B_j and B_k . From the network, for a given node B_i , a ranked list of values of $\varepsilon(B_i | B_j)$, or $P(B_i | B_j)$, can be taken as a model for predicting the most important potential biotic interactions of the species B_i . To determine $P(B_i | \mathbf{I}')$ when \mathbf{I}' is high dimensional, a statistical model must be used to approximate it. A very useful and transparent one, that can be deduced using only the properties of the network, is the naive Bayes approximation [22] (see the Materials and Methods section), wherein a score function, $S(B_i | \mathbf{I}')$, that is a monotonic function of $P(B_i | \mathbf{I}')$, can be constructed. The score consists of a sum of contributions from each niche variable, both biotic and abiotic, from which it is possible to observe which are the most important niche variables.

As an example of the general methodology we consider an important emerging disease - Leishmaniasis - a vector borne disease widely distributed in tropical regions that is estimated to affect 12 million people in 88 countries. Since Leishmaniasis is a zoonotic tropical disease, sylvan reservoirs are crucial to the maintenance of the parasite in ecological communities and, further, are intimately associated with human transmission [18]. Reservoirs of *Leishmania* can be classified as primary and incidental, according to their importance in the long-term transmission of the parasite, being considered incidental if they are dead ends that do not transmit to vectors [19]. Although direct experiment could determine to which type a given reservoir belongs, when there are many potential reservoirs other alternatives, such as that presented here, are more feasible.

We used collection data points for 427 terrestrial mammal species occurring in Mexico as potential or confirmed reservoirs and 11 species of *Lutzomyia* as confirmed or potential vectors for *Leishmania*. The description of the data set can be found in the Materials and Methods section. *Lutzomyia* is a genus of “sand flies” that in the New World is responsible for the transmission of the *Leishmania* parasite. Only females suck blood for egg production. In Mexico there is little information about which vectors are involved in transmission of the parasite in different geographic regions. The only confirmed vector is *Lutzomyia olmeca olmeca* [20]. However, several species have been found with the parasite - *Lutzomyia olmeca olmeca*, *Lutzomyia cruciata* and *Lutzomyia ovallesi* [21]. With respect to transmission of the visceral form of the disease the principle vector *Lutzomyia longipalpis* has been collected in Mexico but has not been reported with the parasite. For the secondary vector *Lutzomyia evansi*, there exists only one collection in the state of Chiapas which was without infection [22]. In Mexico, there are only eight mammal species found infected with *Leishmania mexicana* parasites, responsible for the cutaneous form of the disease, identified in the state of Campeche in southern Mexico [23,24,25]; a very small number when compared to the total number of potential

reservoirs. It is important, therefore, to be able to predict which currently unidentified mammals are most likely to be important as actual or potential reservoirs for the disease. As a measure of statistical association we consider $P(v_i | m_j)$ and $\varepsilon(v_i | m_j)$, where v_i represents the i th vector and m_j the j th potential reservoir. There are 4697 potential vector-reservoir pairs. In Figure 1 we show the 241 most important positive associations (highest values of ε) between *Lutzomyia* as vectors and mammals as suspected and confirmed reservoirs for *Leishmania*. The vector species are marked as red nodes, while the confirmed reservoirs are marked as green. The darker the link, the stronger is the associated statistical dependence between the associated *Lutzomyia* and mammal.

The connectivity of the network is related to the geographical distribution of the different species and has consequences for the way in which a parasite could propagate across the network from one geographical region to another. The separated subnetwork corresponds to *L. anthophora*, a species indigenous only to the north of Mexico and the United States. For *Lutzomyia* nodes, the vertex degree dictates with how many mammals a given vector shares important positive statistical associations, while, for mammal nodes, the vertex degree tells us how many vectors are potentially exploiting the mammal. A high vertex degree for a given vector shows that it could potentially exploit many different mammals.

Moreover, if there are many connections to mammals that are not connected to other vectors, then all else being equal, it would be evolutionarily suboptimal for the vector not to exploit them. *L. cruciata* and *L. longipalpis*, in particular are associated with large numbers of mammals that have no statistical relation with other vectors. On the other hand, *L. olmeca*, *L. ovalesi*, *Lutzomyia shannoni* and *Lutzomyia panamanensis* are all within a highly connected part of the network that corresponds geographically to the peninsula of Yucatan, where many mammals are associated with several different vectors. In such circumstances, a vector may adopt a strategy of specializing to a smaller group of species in order to avoid competition. Interestingly, four of the eight infected rodent reservoirs - *Peromyscus yucatanicus*, *Ototylomys phyllotis*, *Reithrodontomys gracilis* and *Heteromys gaumeri*, all restricted to the peninsula of Yucatan, have very high vertex degrees, a fact that associates them with higher risk, as potentially many different vector species can exchange parasites with them.

Besides offering substantial insight into the ecological interactions between potential vectors and reservoirs of a disease, the interaction network can also be used to obtain predictive models. Here we consider two such models - one for directly predicting the most important potential disease reservoirs and another for predicting a measure of disease risk for a given geographic area.

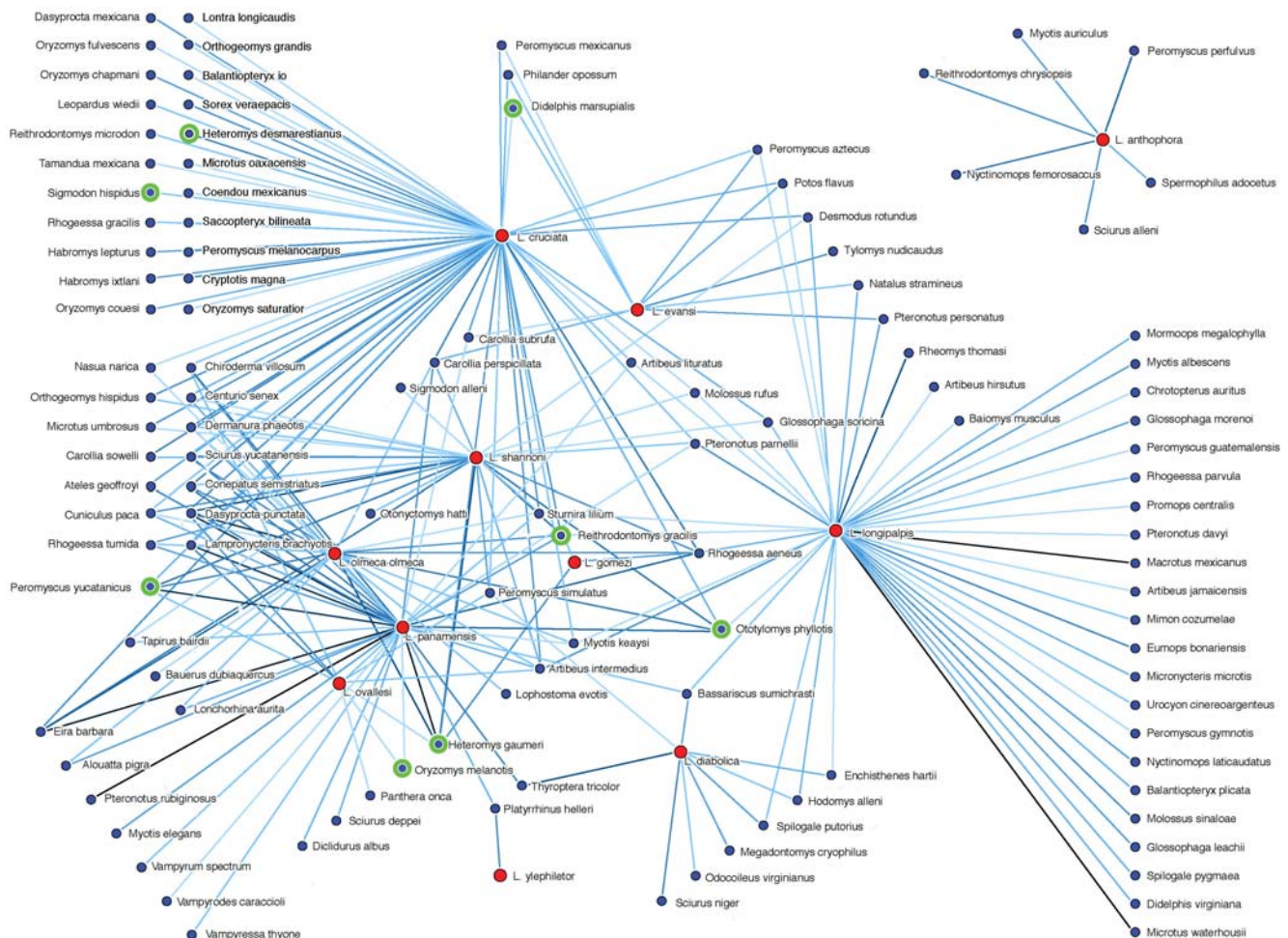


Figure 1. Interaction network between potential and confirmed vectors and reservoirs for *Leishmania* in Mexico. Mammal species confirmed as reservoirs for *Leishmania mexicana*, responsible for the cutaneous form of the disease are marked with a double circle. One species, *Didelphis marsupialis* is the known sylvatic reservoir for the visceral form. doi:10.1371/journal.pone.0005725.g001

Turning first to the prediction of potential reservoirs: with $\varepsilon(v_i | m_j)$ in hand, for a given vector v_i , we can construct a ranked list, from maximum to minimum value, of $\varepsilon(v_i | m_j)$, over all pairs (v_i, m_j) , i.e., a ranking of the links of a given node according to their strength. Those mammals with the highest values of ε are predicted to correspond to the most important potential reservoirs for that vector. In Table 1 we show the results for the highest 150 values of $\varepsilon(v | m_j)$, where to obtain the list we have grouped together the different *Lutzomyia* species into one group v to form a list of 427 values of $\varepsilon(v | m_j)$ as a function of j . The highest ranked mammals have the highest degree of statistical correlation with *Lutzomyia*, with the implication that these mammals are the most important potential reservoirs for *Leishmania*. By grouping together the different *Lutzomyia* species we are considering association between a given mammal species and the different species of the *Lutzomyia* genus present in Mexico, rather than with individual species, thus increasing the sample size and allowing for more robust statistics. A secondary logic for this is also that the biomass of parasite that can pass from vector to mammal in a given spatial cell depends on the number of different vector species that are present in that cell. Thus, a mammal with a high probability of co-occurrence with more than one *Lutzomyia* will, all else being equal, present a higher degree of risk of having the *Leishmania* parasite transmitted to them than one that has a high degree of occurrence with only one species.

Such a ranked list provides a general model for predicting the most important likely reservoirs for any given disease. Note that, of the eight infected reservoirs of *Leishmania* in Mexico, six of them, including the four confirmed, appear in the top 7% of ranked predictions of most important potential reservoirs. If we take as null hypothesis that the confirmed reservoirs are distributed randomly in the ranked list, then the probability that they appear with their actual rankings is less than 10^{-8} , thus showing that the model's results are statistically significant and that the model predicts very well, especially given the relative lack of information on which it is based, in that at no point was information on confirmed reservoirs used to "train" the model. Of course, one could argue that, all else being equal, there should be a higher degree of co-occurrence between *Lutzomyia* species and those mammals that are most widespread, as these will have had a higher probability of having being tested as potential reservoirs. Of course, if this were true, it would greatly reduce the predictive power of the model. We tested this hypothesis on a subset of 360 mammal species where distribution data was readily available. The positions of the confirmed reservoir species ranked according to their area of distribution were: 25, 152, 154, 200, 224, 230, 249, 255 and 257; while when ranked according to our prediction model the positions were 4, 6, 8, 22, 27, 28, 40, 88 and 130. As a simple statistical comparison one can compare the mean rank from both methods using an independent two sample t-test. The test statistic value is 5.4 corresponding to a p value of less than 0.001 clearly indicating that the predictive power of our model cannot be explained by assuming that those species with larger distributions are more likely to be confirmed reservoirs.

The third step we will take is to construct a predictive model to quantify disease "risk" in any given geographic cell. Here we take as risk measure the probability that disease vectors are present, while the prediction itself is based only on biotic factors, i.e., the presence of potential mammal reservoirs. Explicitly, a score function, $S(B_i | \mathbf{B})$, for predicting class membership is constructed, where B_i is associated with the i th vector species and \mathbf{B} represents the presence of mammal species, B_1, \dots, B_N , and related to the posterior classifier probabilities, $P(B_i | \mathbf{B})$, using the naive Bayes approximation, $P(\mathbf{B} | B_i) = \prod_{j=1}^N P(B_j | B_i)$, the factors $P(B_j | B_i)$

being associated with directed links from vector to reservoir in the network. The advantage of this approximation is that the contribution of each biotic niche variable, B_i , is independent of the rest, so that, in the case where abiotic variables are also explicitly included, the relative importance of both biotic and abiotic factors can be studied. As one would expect in the present case, biotic variables play a more important role than abiotic ones, due to the direct dependence of a vector on its associated reservoirs. With $S(\mathbf{B})$ in hand, the biotic niche profile of any geographical area can be determined using a ranked list of niche characteristics and allows one to see at a glance which species are playing an important role.

In Figure 2 we see the results for the grid partition of Mexico we used earlier. The redder/whiter the area the higher/lower the predicted probability for finding *Lutzomyia* based only on co-occurrence with mammal species, the mid-range being associated with the probability $P(B_i)$ associated with the null hypothesis. Also shown is the georeferenced set of point collections of *Lutzomyia*. As can be seen, the agreement is good, though there are one or two outliers. Finally, on the map we also see those geographical regions where cases of *Leishmaniasis* have been reported. The shaded regions correspond to "municipios" (municipalities) where *Leishmaniasis* cases have been reported in the last 40 years. Note that the area of different municipios can vary greatly. In regions where there is no cross-hatching there are no cases that have been reported to the Secretaria de Salud Pública (Governmental Public Health Agency) in Mexico. This does not necessarily imply that there are none, as there is no obligatory reporting of cases of *Leishmaniasis* in Mexico. In this sense reported cases are the equivalent of presence data, while no reported cases does not imply "absence". A noteworthy feature of the map is that there are no areas with reported cases where the model does not predict a higher than random probability for presence of *Lutzomyia*. In interpreting the apparent overprediction several comments are in order: First of all, as mentioned, the quality of reporting data of cases of *Leishmaniasis* varies significantly from state to state in Mexico. Secondly, the map is of degree of risk due to biotic factors only; the output being a score that measures the probability of *Lutzomyia* being present in a given spatial cell. In that sense, it is a map associated with only one type risk factor, all be it an important and necessary one for the presence of the disease in the human population which, obviously, depends on many other factors. By including such factors, for example, abiotic or socio-demographic variables, more complex risk models can be simply created using our methodology.

Discussion

The main contribution of this paper is to show how biotic interaction networks may be constructed inferentially using a data mining approach applied, in this case, to point collection data, rather than by direct observation, and to show that these networks can be used, not only to understand and visualize potential inter-species interactions, but also to formulate prediction models. The important area of emerging diseases was used as a test bed to show the utility of the approach. The main logic of this methodology is that current distributions of biota, as proxied by point collection data for the example given here, adequately reflect all causal influences, both biotic and abiotic. The task, for a given set of input variables, is to discriminate which ones are of greater influence for a particular distribution. In this paper we used only biotic variables. A statistical dependence between two species infers, but does not prove, a direct biotic causal relationship. Thus, for a pair of nodes the strength of the link between them measures

Table 1. Ranked list of potential mammal reservoirs for *Leishmania* in Mexico.

	Mammals	Epsilon	Conf.	Mammals	Epsilon	Conf.	Mammals	Epsilon	Conf.	
1	<i>Eira barbara</i>	10.1683		<i>Molossus sinaloae</i>	5.8518	101	<i>Balantiopteryx plicata</i>	3.8590		
2	<i>Rhogeessa aeneus</i>	9.3649		<i>Artibeus lituratus</i>	5.8422	102	<i>Peromyscus leucopus</i>	3.7994		
3	<i>Artibeus intermedius</i>	9.1628		<i>Mormoops megalophylla</i>	5.8374	103	<i>Sturnina ludovici</i>	3.7888		
4	<i>Reithrodontomys gracilis</i>	8.8921	Yes	<i>Habromys lepturus</i>	5.7848	104	<i>Enchisthenes hartii</i>	3.6929		
5	<i>Carollia sowelli</i>	8.8303		<i>Myotis keaysi</i>	5.6148	105	<i>Vampyroides caraccioli</i>	3.6929		
6	<i>Heteromys gaumeri</i>	8.8000	Yes	<i>Chiroderma villosum</i>	5.5562	106	<i>Eptesicus furinalis</i>	3.6453		
7	<i>Peromyscus mexicanus</i>	8.7859		<i>Tamandua mexicana</i>	5.4845	107	<i>Liomys pictus</i>	3.6107		
8	<i>Heteromys desmarestianus</i>	8.7164	Yes	<i>Tylomys nudicaudus</i>	5.4510	108	<i>Glossophaga commissarisi</i>	3.4861		
9	<i>Molossus rufus</i>	8.6277		<i>Saccopteryx bilineata</i>	5.2984	109	<i>Lonchorhina aurita</i>	3.4781		
10	<i>Glossophaga soricina</i>	8.5713		<i>Macrotus mexicanus</i>	5.2472	110	<i>Phyllostomus discolor</i>	3.4781		
11	<i>Carollia perspicillata</i>	8.5030		<i>Sciurus aureogaster</i>	5.2267	111	<i>Peromyscus gymnotis</i>	3.4516		
12	<i>Orthogeomys hispidus</i>	8.3468		<i>Baiomys musculus</i>	5.2092	112	<i>Anoura geoffroyi</i>	3.4201		
13	<i>Pteronotus parnellii</i>	8.1632		<i>Rhogeessa tumida</i>	5.1950	113	<i>Platyrrhinus helleri</i>	3.3586		
14	<i>Desmodus rotundus</i>	8.1519		<i>Sciurus deppei</i>	5.1414	114	<i>Eumops bonariensis</i>	3.3398		
15	<i>Dasyprocta mexicana</i>	8.1128		<i>Dermanura watsoni</i>	5.1338	115	<i>Sciurus variegatoides</i>	3.3398		
16	<i>Sturnira lilium</i>	8.0290		<i>Otonyctomys hatti</i>	5.1338	116	<i>Uroderma bilobatum</i>	3.3373		
17	<i>Dermanura phaeotis</i>	8.0055		<i>Orthogeomys grandis</i>	5.0556	117	<i>Lasiurus intermedius</i>	3.2197		
18	<i>Dasyprocta punctata</i>	7.9678		<i>Alouatta palliata</i>	5.0457	118	<i>Lasiurus ega</i>	3.1739		
19	<i>Oryzomys couesi</i>	7.7253		<i>Choeroneiscus godmani</i>	5.0457	119	<i>Peromyscus megalops</i>	3.1410		
20	<i>Potos flavus</i>	7.7246		<i>Peropteryx macrotis</i>	5.0457	120	<i>Eumops glaucinus</i>	3.0564		
21	<i>Conepatus semistriatus</i>	7.6879		<i>Pteronotus personatus</i>	5.0266	121	<i>Urocyon cinereoargenteus</i>	2.9697		
22	<i>Ototylomys phyllotis</i>	7.5587	Yes	<i>Lontra longicaudis</i>	4.9330	122	<i>Procyon lotor</i>	2.9502		
23	<i>Ateles geoffroyi</i>	7.4787		<i>Reithrodontomys mexicanus</i>	4.9120	123	<i>Hylonycteris underwoodi</i>	2.9343		
24	<i>Cryptotis magna</i>	7.4207		<i>Oryzomys rostratus</i>	4.8681	124	<i>Rhynchonycteris naso</i>	2.8580		
25	<i>Cuniculus paca</i>	7.3220		<i>Mimon cozumelae</i>	4.8327	125	<i>Eptesicus brasiliensis</i>	2.8106		
26	<i>Lamproncycteris brachyotis</i>	7.2852		<i>Pteronotus davyi</i>	4.7943	126	<i>Myotis albescens</i>	2.8106		
27	<i>Sigmodon hispidus</i>	7.2805	Yes	<i>Herpailurus yagouaroundi</i>	4.7100	127	<i>Lophostoma evotis</i>	2.8106		
28	<i>Peromyscus yucatanicus</i>	7.2486	Yes	<i>Glossophaga leachii</i>	4.6849	128	<i>Tapirus bairdii</i>	2.8106		
29	<i>Oryzomys chapmani</i>	7.1242		<i>Rhogeessa gracilis</i>	4.6317	129	<i>Vampyrum spectrum</i>	2.8106		
30	<i>Didelphis virginiana</i>	7.1150		<i>Sylvilagus brasiliensis</i>	4.6317	130	<i>Marmosa mexicana</i>	2.7731	Yes	
31	<i>Peromyscus melanocarpus</i>	7.0260		<i>Hodomys alleni</i>	4.5155	131	<i>Peromyscus furvus</i>	2.7731		
32	<i>Microtus umbrosus</i>	6.9630		<i>Leopardus wiedii</i>	4.4420	132	<i>Myotis velifera</i>	2.5757		
33	<i>Thyroptera tricolor</i>	6.9630		<i>Peromyscus simulatus</i>	4.4195	133	<i>Spilogale putorius</i>	2.5411		
34	<i>Nasua narica</i>	6.8953		<i>Sigmodon alleni</i>	4.3707	134	<i>Microtus mexicanus</i>	2.5268		
35	<i>Megadontomys cryophilus</i>	6.6830		<i>Bassariscus sumichrasti</i>	4.3110	135	<i>Dasybus novemcinctus</i>	2.4725		
36	<i>Oryzomys alfaroi</i>	6.6816		<i>Oryzomys fulvescens</i>	4.3110	136	<i>Myotis nigricans</i>	2.4704		
37	<i>Sorex veraepacis</i>	6.6797		<i>Diphylla ecaudata</i>	4.3013	137	<i>Lophostoma brasiliense</i>	2.4407		
38	<i>Carollia subrufa</i>	6.6316		<i>Oryzomys melanotis</i>	4.2907	Yes	138	<i>Diclidurus albus</i>	2.4407	
39	<i>Peromyscus aztecus</i>	6.6173		<i>Micronycteris microtis</i>	4.2338	139	<i>Sciurus niger</i>	2.4407		
40	<i>Didelphis marsupialis</i>	6.4390	Yes	90	<i>Mazama americana</i>	4.2274	140	<i>Leptonycteris curasoae</i>	2.4268	
41	<i>Sciurus yucatanensis</i>	6.3865		91	<i>Microtus oaxacensis</i>	4.2061	141	<i>Nyctomys sumichrasti</i>	2.4026	
42	<i>Philander opossum</i>	6.2546		92	<i>Rheomys thomasi</i>	4.2061	142	<i>Sigmodon mascotensis</i>	2.3815	
43	<i>Habromys ixtlani</i>	6.1120		93	<i>Oryzomys saturatior</i>	4.2061	143	<i>Alouatta pigra</i>	2.3374	
44	<i>Microtus waterhousii</i>	6.1120		94	<i>Myotis elegans</i>	4.2024	144	<i>Peromyscus melanophrys</i>	2.2204	
45	<i>Pteronotus rubiginosus</i>	6.1120		95	<i>Oligoryzomys fulvescens</i>	4.1984	145	<i>Dermanura tolteca</i>	2.1920	
46	<i>Reithrodontomys microdon</i>	6.0967		96	<i>Natalus stramineus</i>	4.0626	146	<i>Trachops cirrhosus</i>	2.1663	
47	<i>Coendou mexicanus</i>	6.0268		97	<i>Balantiopteryx io</i>	4.0522	147	<i>Bauerus dubiaquercus</i>	2.1612	
48	<i>Centurio senex</i>	6.0076		98	<i>Nyctinomops laticaudatus</i>	4.0522	148	<i>Spilogale pygmaea</i>	2.1612	
49	<i>Artibeus jamaicensis</i>	5.9786		99	<i>Tlacuatzin canescens</i>	4.0119	149	<i>Leptonycteris nivalis</i>	2.1402	
50	<i>Glossophaga morenoi</i>	5.8847		100	<i>Odocoileus virginianus</i>	3.9265	150	<i>Sylvilagus floridanus</i>	2.1002	

doi:10.1371/journal.pone.0005725.t001

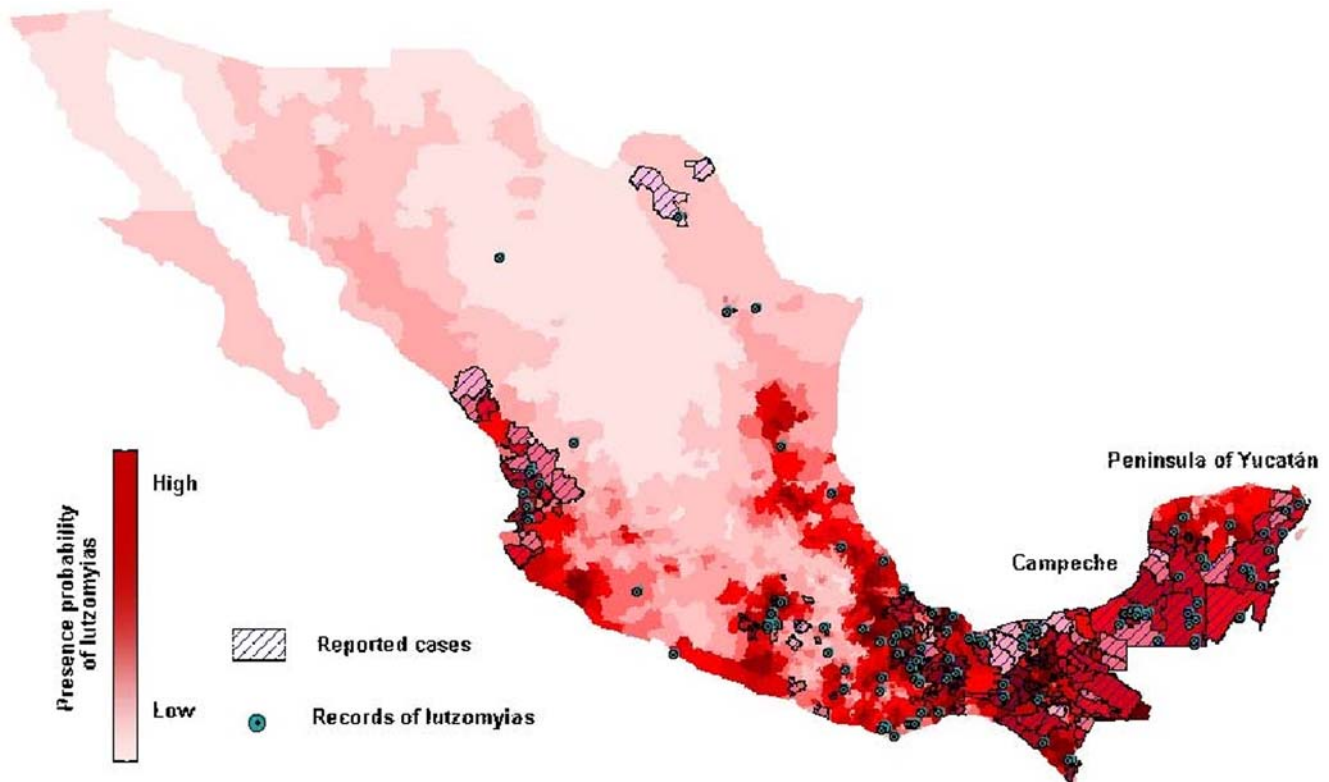


Figure 2. Biotic risk map for *Leishmania* using the mapped score function.
doi:10.1371/journal.pone.0005725.g002

the degree to which two species tend to co-occur. If they co-occur in a statistically significant way we are prompted to identify as a plausible explanation a vector-reservoir interaction.

In the case of *Lutzomyia* and mammals this understanding comes from the natural potential direct causal relationship there: that the *Lutzomyia* feed on the corresponding mammal. The properties of the corresponding biotic network show to what extent a given vector is exploiting its potential food sources, evolutionary dynamics giving a logic as to why this usage should be optimal. From the network, the corresponding list of predicted reservoirs for a given *Lutzomyia* is not based on the physiological possibility that a given mammal is a reservoir but, rather, on the fact that a mammal with a high fraction of co-occurrences is more likely to be an important food resource for *Lutzomyia* than one with a small fraction and, therefore, that there is greater transmission of the parasite from one to the other. Moreover, as $\varepsilon(v_i | m_j)$ increases as the range of the mammal m_j grows, then this measure also predicts the degree of importance of the reservoir, a reservoir of small range being of less potential impact, all else being equal, than one of ample range. As mentioned, the utility of the model is clearly in evidence, given that all known reservoirs in Mexico are highly ranked in the complete list of 427 possible candidates.

To create spatial prediction models we used a model that utilized only information that came from the biotic interaction network. The associated score is a measure of the probability that *Lutzomyia* are present, which we can take as a proxy for the probability that the disease is present. To relate this to the number of cases in a more sophisticated model would require the inclusion of socio-economic and socio-demographic variables among others.

The results of this paper clearly lead us in the direction of making corresponding hypotheses that can be verified by further empirical research. Our ranked list of potential reservoirs is, as

emphasized, based on the relative importance of the potential reservoir in terms of what biomass of parasite can potentially be harbored in a given spatial cell rather than what mammals are physiologically capable of being reservoirs. To test this, the following scenario may be envisaged: consider the known distribution of a given mammal from the list; select spatial cells at random from this distribution; in each cell capture the chosen mammal species and test for the presence of *Leishmania*. The appropriate metric is the proportion of spatial cells in which specimens were found with the parasite or, alternatively, if sufficient statistics may be obtained, $\varepsilon(\text{cells with specimens with parasite} | \text{total cells with specimens})$. This would be repeated for different mammal species. The hypothesis is that a highly ranked species will yield higher values for these two metrics than a low ranked one. To facilitate testing the hypothesis, the most appropriate species would be those chosen from different points in the ranked list that are common in a given geographical region and easy to capture. Of course, many mammals simply do not have any geographical overlap with the vectors. Strictly speaking one should consider these mammals too and test for presence of the parasite. Common sense would dictate that for those species far away from the known distribution of the vectors there is effectively zero probability of finding the parasite thus obviating the need to explicitly check these areas. Work is currently being planned to undertake these tests.

Materials and Methods

The data set consisted of point collection data associated with one Class, Mammalia, and one genus - *Lutzomyia*. The mammal data set consisted of 37,297 point collections from georeferenced localities for 427 terrestrial mammals occurring in Mexico. The

data were obtained from museum voucher specimens from national and international museum collections, public electronic databases (MaNIS; www.manis.gob.mx, and CONABIO; www.conabio.gob.mx) and published records [27,28]. For *Lutzomyia*, there were 270 point collections, taken from published literature and from national entomological collections (Instituto de Diagnóstico y Referencia Epidemiológica (InDRE, Mexico City), the Colección Entomológica Regional Universidad Autónoma de Yucatán (UADY, Mérida) and the Laboratorio de Medicina Tropical at the Universidad Nacional Autónoma de México (UNAM, Mexico City), associated with 11 species. For both data sets, each locality was georeferenced to the nearest 0.01 degrees of latitude and longitude using 1:250,000 topographic maps (INEGI; www.inegi.gob.mx, Instituto de Geografía, Universidad Nacional Autónoma de México; www.igeograf.unam.mx). Point collection data was, of course, not collected in order to provide an unbiased sampling of underlying species abundance and therefore must be considered carefully to understand potential statistical biases that might be present. The utility and limitations of point collection data have been amply discussed in [12,14].

With respect to the data set for Mexican mammals, this data has been collected over a period of more than 100 years with a consequently large number of collectors [24,25]. Hence, although the data has not been collected systematically, it has probably led to an adequate sampling. Additionally, mammals are the best known and collected group in Mexico. In the case of *Lutzomyia* the coverage is less but still represents the best available. With the registered cases of Leishmaniasis, unfortunately, there is no compulsory reporting of these in Mexico. So one can infer where the disease is present but not where it is absent. In problems of great social impact, such as that of emerging diseases, it is important to try to leverage the data that actually exists, at least until better more bespoke data becomes available. Parasite detection studies in potential reservoirs have been carried out principally in the state of Campeche. Van Wynsberghe et al [21] analyzed the evolution of the infection using parasitological methods in 29 naturally infected rodents. The mammals belonged to four species: *Sigmodon hispidus* (2), *Oryzomys melanotis* (12), *Otobryomys phyllotis* (9) and *Peromyscus yucatanicus* (6). In a second study [22], infection by *Leishmania mexicana* was detected in eight mammal species using two methods – in culture and PCR. The *Leishmania* parasite was confirmed by both methods in six species: *O. phyllotis*, *Heteromys gaueri*, *O. melanotis*, *P. yucatanicus*, *S. hispidus*, and *Heteromys desmarestianus*. In the other two species it was confirmed using only via one of the methods: in culture for *Marmosa mexicana* and by PCR for *Reithrodontomys gracilis*.

As collection data is fundamentally tied to a taxonomic classification, it is natural to describe the biota in terms of taxa and consider the spatio-temporal distribution of a species for example. For a data set that covers a spatial area A and time interval T one may divide the space and interval into spatio-temporal cells, (x_α, t_β) which form a mesh that partitions both the geographic region and time interval. The labels x_α and t_β simply indicate the particular spatio-temporal cell we are considering. A point collection associated with this cell is such that it corresponds to a latitude and longitude within the spatial cell x_α and to a collection date in the temporal cell t_β . We can consider the distribution of the set of species, $B(x_\alpha, t_\beta) = (B_1(x_\alpha, t_\beta), \dots, B_{NB}(x_\alpha, t_\beta))$, where $B_i(x_\alpha, t_\beta)$ is a measure of the distribution of the i th taxon in a spatial cell x_α , in the time interval t_β . A natural realization of $B_i(x_\alpha, t_\beta)$ would be the abundance of the taxon i in the spatial cell x_α , in the time interval t_β as measured by its frequency or relative frequency. A less discriminating realization for $B_i(x_\alpha, t_\beta)$ would be a function that indicates only presence or presence/absence in the

geographic region x_α in the time interval t_β . As $B_i(x_\alpha, t_\beta)$ is a stochastic variable, the distribution of any taxon $B_i(x_\alpha, t_\beta)$ is described by a probability distribution, $P(B_i(x_\alpha, t_\beta))$, whose evolution, in principle, depends on both biotic factors, $B_j(x_\alpha, t_\sigma)$, associated with other species, and abiotic factors, $A(x_\alpha, t_\sigma) = (A_1(x_\alpha, t_\sigma), \dots, A_{NA}(x_\alpha, t_\sigma))$, such as temperature, precipitation etc., where we consider cells x_α, t_σ that may be different to a given cell x_α, t_β to indicate that, in principle at least, there may be statistical associations between a given spatio-temporal cell and others. The full ecological niche at x_α and t_β can be described by a vector $\mathbf{I}(x_\alpha, t_\beta) = (A_1(x_\alpha, t_\beta), \dots, A_{NA}(x_\alpha, t_\beta); B_1(x_\alpha, t_\beta), \dots, B_{NB}(x_\alpha, t_\beta))$.

A full model would consist of determining $P(B_i(x_\alpha, t_\beta)) = F(\mathbf{I}(x_\alpha, t_\sigma))$, relating the distribution of a subset of biota at one place and time to all biotic and abiotic factors considered at different places and times. Of course, there are no underlying fundamental principles on which to build the function F . We therefore adopt a non-parametric “data mining” approach, modeling the distribution directly using available data, rather than constructing an a priori parametric model. An advantage of this approach is that the observed distribution is a direct result of the past and present interactions of all relevant causative factors - climatic, phylogenetic, co-evolutionary, ecological etc. Nothing is omitted. However, an observation of $P(B_i(x_\alpha, t_\beta))$ in itself does not provide a predictive model. To create such a model we consider the problem as a classification task, relating a class, such as the class of cells with presence of a given species, to a feature vector \mathbf{I} using the conditional probabilities $P(B_i | \mathbf{I})$. Converting the problem to one of classification is very natural from the point of view of presence or presence/absence. In the case of abundance a coarse graining of the abundance data in a given spatial-temporal cell is required. This can be achieved in many ways, depending on how many classes are posited and the criterion by which a given abundance fits in a given category. For example, one might classify abundance into three categories – Low, Normal and High – where Low is any abundance at least one standard deviation below the average and High is any abundance at least one standard deviation above the average. One can then naturally consider the conditional probability that a High abundance of species B_i is found given a High abundance of species B_j . Of course, in order to do this, one requires abundance data in the first place. As this is less common than presence or presence/absence data, and simply not available in the context of emerging diseases such as Leishmaniasis, we will here focus on the latter. For the same reason, in the following, we will also restrict attention to the spatial dependence of the distributions and ignore the temporal aspect, as the data simply is not capable of reliably describing temporal changes.

The class, we will take to be a taxon distribution, B_i , while the feature vector set is taken to be a subset of niche variables $I' \subseteq I$. In this case, \mathbf{I}' , represents a niche profile with both biotic and abiotic components which constitute the biotic and abiotic profiles of the niche. For a given taxon, $B' \subseteq B$, and niche variables, $I' \subseteq I$, our chief object of study is the probability $P(B_i | \mathbf{I}') = N_{B_i \text{ AND } I'} / N_{I'}$, where $N_{B_i \text{ AND } I'}$ is the number of spatial cells where there is a co-occurrence of the taxon B_i and the niche variables \mathbf{I}' , and $N_{I'}$ is the number of cells where the niche variables take their stated values. The niche profile $\mathbf{I}'(x_\alpha)$ associated with a spatial cell x_α then determines the probability of the distribution variable, $B_i(x_\alpha)$, in that cell, and one now has a predictive model. Note that, although we concentrate on biotic variables in the present paper, in the current approach, all niche variables can be treated on a democratic footing. The problem of calculating $P(B_i | \mathbf{I}')$ directly is that both $N_{B_i \text{ AND } I'}$ and $N_{I'}$ are likely to be zero when the number of taxa or niche variables considered simultaneously is large, as there will tend to be no co-occurrences of so many

variables. This can be ameliorated by considering a reduced number of both class and feature variables. For instance, $P(B_i | I_k)$ is determined by the number of co-occurrences of the taxon B_i and the niche variable I_k and, in principle, allows us to find the most important statistical associations between the niche variables and the taxa distributions. However, $P(B_i | I_k)$ being a probability does not account for sample size. For example, if $P(B_i | I_k) = 1$ this may be as a result of there being a coincidence of B_i and I_k in one spatial cell or 1,000. Obviously, the latter is more statistically significant. To remedy this we consider the following test statistic

$$\epsilon(B_i|I_k) = \frac{N_{I_j}(P(B_i|I_k) - P(B_i))}{(N_{I_j}P(B_i)(1 - P(B_i)))^{1/2}} \quad (1)$$

which measures the statistical dependence of B_i on I_k relative to the null hypothesis that the distribution of B_i is independent of I_k and randomly distributed over the grid, i.e., $P(B_i) = N_{B_i}/N$, where N_{B_i} is the number of grid cells with point collections of species B_i and N is the total number of cells in the grid. The sampling distribution of the null hypothesis is a binomial distribution where, in this case, every cell is given a probability $P(B_i)$ of having a point collection of B_i . The numerator of equation (1) then, is the difference between the actual number of co-occurrences of B_i and I_k relative to the expected number if the distribution of point collections were obtained from a binomial with sampling probability $P(B_i)$. As we are talking about a stochastic sampling the numerator must be measured in appropriate “units”. As the underlying null hypothesis is that of a binomial distribution, it is natural to measure the numerator in standard deviations of this distribution and that forms the denominator of equation (1). In general, the null hypothesis will always be associated with a binomial distribution as in each cell we are carrying out a Bernoulli trial (“coin flip”). However, the sampling probability can certainly change. For instance, one could take as null hypothesis a binomial distribution with sampling probability $P(B_i|M=1) = N_{B_i}/N_{M=1}$, where M here is a binary variable associated with the fact that a niche-variable model, such as GARP or MaxEnt, says whether the species B_i is present or absent. N_M is then the number of cells where the niche model says there is presence. Taking $P(B_i | B_k, M)$ relative to the null hypothesis $P(B_i|M)$ tells us how the presence of species B_i is associated with the presence of B_k in the context of cells where a niche model has indicated the presence/absence of B_k . In other words, how B_k affects the distribution of B_i in those places where the niche model says B_k is present/absent.

The quantitative values of $\epsilon(B_i | B_k)$ can be interpreted in the standard sense of hypothesis testing by considering the associated p-value as the probability that $|\epsilon(B_i | B_k)|$ is at least as large as the observed one and then comparing this p-value with a required significance level. In the case where $N_{B_j} \geq 5 - 10$ then a normal approximation for the binomial distribution should be a decent approximation and in this case $\epsilon(B_i | B_k) = 2$ would represent the standard 95% confidence interval. In the case where a normal approximation is not accurate then other approximations to the cumulative probability distribution of the binomial must be used.

In the case where $I_k = B_k$, another taxon, then $P(B_i | B_k)$ and $\epsilon(B_i | B_k)$ are measures of the statistical association between the two taxa, $\epsilon(B_i | B_k)$ having the added advantage of having built into it the degree of statistical confidence that one may have about the association. Note that such a statistical association does not necessarily prove that there is a direct “causal” interaction between the two taxa. Rather, it allows for a statistical inference that may be validated subsequently.

From either $P(B_i | B_k)$ or $\epsilon(B_i | B_k)$, an inferential interaction network between taxa can be constructed where the nodes are the taxa and the links represent the degree of statistical dependence of one on the other. The links must represent the degree of interaction as otherwise one has a uniform fully connected network. This can be done, for instance, by only showing the principle interactions above a certain threshold of ϵ or P , or by having the link width or size depend on their values. Note that such an interaction network, being based on point collection data, is inferential with respect to real biotic interactions between the taxa. This is distinct to other networks where network links are determined observationally. $P(B_i | B_k)$ and $\epsilon(B_i | B_k)$ are measures of pair-wise dependencies between taxa. They can be generalized to take into account higher order interactions. For instance, $\epsilon(B_i | B_k B_m)$ measures the statistical interaction between the joint presence of taxa B_m and B_k and that of taxon B_i .

Probabilities $P(B_i | I')$, where I' is of high dimension, can be constructed using different classification models, such as neural networks, discriminant analysis etc. A particularly transparent, simple and effective approximation is the Naive Bayes approximation [26] with

$$P(B_i|I) = \frac{P(I|B_i)P(B_i)}{P(I)} = \frac{\prod_{k=1}^N P(I_k|B_i)P(B_i)}{P(I)}$$

where, in the first equality, Bayes rule has been used, and in the second it has been assumed that the niche variables I_k are independent. The product here is over the N niche variables under consideration as conditioning factors for B_i . In the case of the relationship between *Lutzomyia* and mammals, N represents the number of mammal species. A score function that can be used as a proxy for $P(B_i | I')$ is

$$S(B_i|I') = \sum_{k=1}^N S(B_i|I_k) = \sum_{k=1}^N \ln \left(\frac{P(I_k|B_i)}{P(I_k|\bar{B}_i)} \right)$$

where \bar{B}_i is the complement of the set B_i . For example, if B_i is the set of cells with presence of taxon B_i then \bar{B}_i represents the set of cells without presence. $S(B_i | I')$ is a measure of the probability to find the distribution variable B_i when the niche profile is I' . It can be applied to a spatial cell x_α by determining the niche profile of the cell, $I'(x_\alpha)$. As an example, for two biotic niche variables, B_2 and B_3 , that take values 1 (corresponding to the fact that there is a point collection associated with that cell) and 0 (there is no point collection associated with the cell), the four possible biotic niche profiles of any cell are $(B_2, B_3) = (0,0); (0,1), (1,0)$ and $(1,1)$. The score contributions of each biotic variable are $S(B_i|B_2)$ and $S(B_i|B_3)$, calculated using the above formula. Hence, $S(B_i | I') = S(B_i | B_2, B_3) = S(B_i | B_2) + S(B_i | B_3)$. Thus, for any given spatial cell x_α one can assign a niche profile, i.e. values of B_2 and B_3 , from whence it is possible to assign a corresponding score. If there is no statistical association between B_i and B_2 or B_3 then the corresponding score contributions are zero. An overall zero score then signifies that the probability to find B_i is the same as would be found if B_i were distributed randomly. If the score is positive then there is a higher than random probability to find B_i present and on the contrary if the score is negative.

The geographical region of interest for the data of the present study is Mexico. Within this specified region there is an important question of how to choose an appropriate mesh size. The right degree of coarse graining is essentially governed by the size of the data set available relative to the data necessary to construct a given

probability function. For instance, to calculate $P(B_i, B_k)$, where B_i represents presence of species i in grid cell x_x : If the mesh size is too small then the probability of a co-occurrence of species i and k is very small. On the other hand, if the mesh size is too big then, as well as a lack of statistical significance, discrimination will also be lost. A reasonable estimate of the appropriate cell size can be determined by assuming that the N collections are distributed randomly in an area A . An appropriate cell size is then $A^{1/2}/N$, which corresponds to having, on average, one collection per cell. Given that we are emphasizing here pairwise associations between species, the appropriate value of N is the average number of collections for any species. A more sophisticated methodology is to consider the number of co-occurrences as a function of cell size and look for the maximum of this function. This can be done for a particular pair of species, or one may consider an average over different pairs. For our study we used 3,337 square cells of linear size 25 km which corresponds to an average number of point collections of about 20.

Checks were made with other cell sizes of 5 km, 10 km, 50 km and 100 km to assure the robustness of our conclusions. In Table 2, for the ranked list of potential reservoirs we see how the average position in the ranked list changes as a function of cell size. This shows that the relative ranking is quite insensitive to the cell size, as the z-scores of the average rank of six of the known reservoirs relative to the expected average rank if the distribution were random are highly statistically significant. In other words, the predictions as to which species are most likely to be reservoirs are robust to large changes in the cell size. In general, the absolute

Table 2. Relative rank by score of known reservoirs for *Leishmania* in Mexico as a function of grid size.

Species	5 km	10 km	25 km	50 km	100 km
<i>Didelphis marsupialis</i>	52	31	40	17	22
<i>Heteromys gaumeri</i>	1	13	6	47	38
<i>Sigmodon hispidus</i>	17	19	27	50	90
<i>Ototylomys phyllotis</i>	2	5	22	60	40
<i>Oryzomys melanotis</i>	90	54	88	72	51
<i>Peromyscus yucatanicus</i>	3	10	28	84	62
Average Rank	27.50	22.00	35.17	55.00	50.50
z-score	-12.54	-25.93	-15.48	-16.69	-16.91

doi:10.1371/journal.pone.0005725.t002

values of epsilon will change as a function of cell size, principally due to the effect of reducing the number of co-occurrences as one passes to large cell sizes or to very small cell sizes. However, relative values of epsilon will remain quite stable.

Author Contributions

Analyzed the data: CRS JG CG CI VSC CGS. Wrote the paper: CRS. Designed the models: CRS.

References

- Lomolino M, Brown JH, Riddle B (2005) Biogeography. Sunderland, MA, USA: Sinauer.
- Volkov I, Banavar JR, Hubbell SP, Maritan A (2007) Patterns of relative species abundance in rainforests and coral reefs. *Nature* 450: 45–49.
- Peterson AT, Sánchez-Cordero V, Beard CB, Ramsey JM (2002) Ecologic niche modeling and potential reservoirs for Chagas disease in Mexico. *Emerg Inf Dis* 8: 662–667.
- Montoya JM, Pimm SL, Solé RV (2006) Ecological networks and their fragility. *Nature* 442: 259–264.
- Strogatz SH (2001) Exploring complex networks. *Nature* 410: 268–276.
- McCann K (2007) Protecting biostructure. *Nature* 446: 29.
- Thompson JN (1999) The evolution of species interactions. *Science* 284: 2116–2118.
- Balashov YS (1984) Interaction between blood-sucking arthropods and its hosts, and its influence on vector potential. *Ann Rev Ent* 29: 137–156.
- Lossos J (1996) Phylogenetic Perspectives on Community Ecology. *Ecology* 77: 1344–1354.
- Soberón J, Peterson AT (2004) Biodiversity informatics: Managing and applying primary biodiversity data. *Phil Trans Roy Soc B* 359: 689–698.
- Elith J, et al. (2006) Novel methods improve prediction of species distributions from occurrence data. *Ecography* 29: 129–151.
- Ponder WF, Carter GA, Flemons P, Chapman RR (2001) Evaluation of Museum Collection Data in Biodiversity Assessment. *Cons Biol* 15: 648–657.
- Lim BK, ATownsendPeterson, Engstrom MD (2004) Robustness of ecological niche modeling algorithms for mammals in Guyana. *J Biodiv Cons* 11: 1237–1246.
- Graham CH, Ferrier S, Huettman F, Moritz C, A Townsend Peterson (2004) New developments in museum-based informatics and applications in biodiversity analysis. *Trends Ecol Evol* 19: 497–503.
- Stockwell DRB, Peters D (1999) The GARP modeling system: problems and solutions to automated spatial prediction. *Int J Geogr Inform Sci* 13: 143–158.
- Peterson AT, Papes M, Eaton M (2007) Transferability and model evaluation in ecological niche modeling: a comparison of GARP and Maxent. *Ecography* 30: 550–560.
- Krebs CJ, et al. (1995) Impact of Food and Predation on the Snowshoe Hare Cycle. *Science* 269: 1112–1115.
- Wolfe, et al. (2007) Origins of major human infectious diseases. *Nature* 447: 279–283.
- Chaves LF, Hernández MJ, Dobson A, Pascual M (2007) Sources and sinks: revisiting the criteria for identifying reservoirs for American cutaneous *Leishmaniasis*. *Trends Parasit* 23: 311–316.
- Biagi F, de Biagi AM, Beltrán y F (1965) *Phlebotomus flaviscutellatus*, transmisor natural de *Leishmania mexicana*. *Prensa Médica México* 30: 276, 272.
- Rebollar-Téllez E, Ramírez-Fraire A, Andrade-Narvaez y FJ (1996) A two years study on vectors of cutaneous leishmaniasis. Evidence for sylvatic transmission in the state of Campeche, Mexico. *Memorias Instituto Oswaldo Cruz* 91(5): 555–560.
- Ibáñez-Bernal S, Rodríguez-Domínguez G, Gomez-Hernández CH, Ricardez-Esquinca JR (2004) First record of *Lutzomyia evansi* in Mexico. *Mem Inst Oswaldo Cruz* 99(2): 127–129.
- Van Wynsberghe NR, Canto-Lara SB, Damián-Centeno AG, Itzá-Ortiz MF, Andrade-Narvaez FJ (2000) Retention of *Leishmania mexicana* in Naturally Infected Rodents from the State of Campeche, Mexico. *Mem Inst Oswaldo Cruz* 95(5): 595–600.
- Canto-Lara SB, Van Wynsberghe NR, Vargas-González A, Ojeda-Farfán FF, Andrade-Narvaez FJ (1999) Use of monoclonal antibodies for the identification of *Leishmania* spp. isolated from humans and wild rodents in the State of Campeche, Mexico. *Mem Inst Oswaldo Cruz* 94(3): 305–9.
- Erika Ivett Sosa Bibiano (2004) Diagnóstico e identificación del subgénero de *Leishmania* en mamíferos silvestres mediante la técnica de reacción en cadena de la polimerasa (RCP). Mérida, Yucatán, México: Universidad Autónoma de Yucatán, Facultad de Medicina, Unidad de Posgrado e Investigación. En opción al título de Maestro en Ciencias.
- Hand D, Mannila H, Smyth P (2001) Principles of Data Mining. MA, USA: MIT Press.
- Hall ER (1981) The Mammals of North America, Vol. 1 and 2. NY: Ronald Press.
- Guevara-Chumacero L, López-Wilchis R, Sánchez-Cordero V (2001) 105 años de investigación mastozoológica en México (1890–1995): una revisión de sus enfoques y tendencias. *Acta Zool Mex, N S* 83: 35–72.