



UNIVERSITY OF LEEDS

This is a repository copy of *Using tree species inventories to map biomes and assess their climatic overlaps in lowland tropical South America*.

White Rose Research Online URL for this paper:
<http://eprints.whiterose.ac.uk/128778/>

Version: Accepted Version

Article:

Silva de Miranda, PL, Oliveira-Filho, AT, Pennington, RT et al. (3 more authors) (2018) Using tree species inventories to map biomes and assess their climatic overlaps in lowland tropical South America. *Global Ecology and Biogeography*, 27 (8). pp. 899-912. ISSN 1466-822X

<https://doi.org/10.1111/geb.12749>

© 2018 John Wiley & Sons Ltd. This is the peer reviewed version of the following article: Silva de Miranda PL, Oliveira-Filho A, Pennington RT, Neves DM, Baker TR, Dexter KG. Using tree species inventories to map biomes and assess their climatic overlaps in lowland tropical South America. *Global Ecol Biogeogr*. 2018;27:899–912, which has been published in final form at <https://doi.org/10.1111/geb.12749>. This article may be used for non-commercial purposes in accordance with Wiley Terms and Conditions for Self-Archiving. Uploaded in accordance with the publisher's self-archiving policy.

Reuse

Items deposited in White Rose Research Online are protected by copyright, with all rights reserved unless indicated otherwise. They may be downloaded and/or printed for private study, or other acts as permitted by national copyright laws. The publisher or other rights holders may allow further reproduction and re-use of the full text version. This is indicated by the licence information on the White Rose Research Online record for the item.

Takedown

If you consider content in White Rose Research Online to be in breach of UK law, please notify us by emailing eprints@whiterose.ac.uk including the URL of the record and the reason for the withdrawal request.



eprints@whiterose.ac.uk
<https://eprints.whiterose.ac.uk/>

1 **Using tree species inventories to map biomes and assess their climatic overlaps in lowland**
2 **tropical South America**

3 Pedro Luiz Silva de Miranda^{1*}, Ary Oliveira-Filho², R. Toby Pennington^{3,4}, Danilo M. Neves⁵,
4 Timothy R. Baker⁶, Kyle G. Dexter^{1,3}

5 **Short-running tittle:** South American Biomes

6 ¹School of GeoSciences, University of Edinburgh, Edinburgh, EH9 3FF, UK

7 ²Departamento de Botânica, Instituto de Ciências Biológicas, Universidade Federal de Minas
8 Gerais, Av. Antônio Carlos, 6627, Belo Horizonte, Minas Gerais, 31270–901, Brazil

9 ³Royal Botanic Garden Edinburgh, 20a Inverleith Row, Edinburgh, EH3 5LR, UK

10 ⁴Department of Geography, University of Exeter, Rennes Drive, Exeter, EX4 4RJ, UK

11 ⁵Department of Ecology and Evolutionary Biology, University of Arizona, Tucson 85721, USA

12 ⁶School of Geography, University of Leeds, Leeds, LS2 9JT, UK

13

14

15

16 *Correspondence: P.L.Silva-De-Miranda@sms.ed.ac.uk

17 Phone: +44 7871462345

18 Address: Room 401, Crew Building, King's Buildings, Edinburgh EH9 3FF

19 **Key-words:** Amazon Forest, Atlantic Forest, Cerrado, Chaco, Cluster Analysis, NeoTropTree,
20 Savanna, Seasonally Dry Tropical Forest,

21 **Number of words in abstract:** 287

22 **Number of words in main text:** 5620

23 **Number of references:** 84

24

25

26 **Abstract**

27 **Aim**

28 To define and map the main biomes of lowland tropical South America (LTSA) using data
29 from tree species inventories and to test the ability of climatic and edaphic variables to
30 distinguish amongst them.

31 **Location**

32 Lowland Tropical South America (LTSA), including Argentina, Bolivia, Brazil, Ecuador,
33 Paraguay, Peru and Uruguay.

34 **Time Period**

35 Present

36 **Major Taxa Studied**

37 Trees

38 **Methods**

39 We compiled a database of 4,103 geo-referenced tree species inventories distributed across
40 LTSA. We used *a priori* vegetation classifications and cluster analyses of floristic composition
41 to assign sites to biome. We mapped these biomes geographically and assessed climatic
42 overlaps amongst them. We implemented classification tree approaches to quantify how
43 well climatic and edaphic data can assign inventories to biome.

44 **Results**

45 Our analyses distinguish savanna and seasonally dry tropical forest (SDTF) as distinct
46 biomes, with the Chaco woodlands potentially representing a third dry biome in LTSA.
47 Amongst the wet forests, we find that the Amazon and Atlantic Forests may represent
48 different biomes as they are distinct in both climate and species composition. Our results
49 show an important environmental overlap amongst biomes, with error rates to classify sites into

50 biomes of 19-21% and 16-18% when only climatic data and with the inclusion of edaphic data,
51 respectively..

52 **Main Conclusions**

53 Tree species composition can be used to determine biome identity at continental scales. We
54 find high biome heterogeneity at small spatial scales, likely due to variation in edaphic
55 conditions and disturbance history. This points to the challenges of using climatic and/or
56 interpolation-based edaphic data or coarse resolution, remotely-sensed imagery to map
57 tropical biomes. From this perspective, we suggest that using floristic information in biome
58 delimitation will allow for greater synergy between conservation efforts centred on species
59 diversity and management efforts centred on ecosystem function.

60 **Key-words:** Cluster Analysis, Atlantic Forest, Amazon Forest, Chaco, Savanna, Cerrado,
61 Seasonally Dry Tropical Forest, NeoTropTree.

62 **Introduction**

63 The biome concept has existed for over a century with the overarching purpose of delimiting
64 recognisable, ecologically meaningful vegetation units. Humboldt (1816) used the term
65 phytophysionomy when referring to areas that may be geographically disjunct, but share
66 similar vegetation physiognomy or structure. The link between vegetation structure and
67 climatic conditions was detailed by Schimper (1903), who attributed these similarities to
68 physiological and anatomical adaptations to precipitation and temperature. The relationship
69 between vegetation form and climate permeates the majority of vegetation classification
70 schemes proposed during the 20th century (Clements, 1916; Holdridge, 1947; Walter, 1973;
71 Whittaker, 1975), and climate is still regarded as the main driver of plant and biome
72 distributions (Box, 1995; Prentice et al., 1992; Prentice, 1990). More recently, biomes have
73 been used to categorise the function of ecosystems at large spatial scales, including across
74 continents (Higgins, Buitenwerf, & Moncrieff, 2016; Woodward, Lomas, & Kelly, 2004), and
75 the most prevalent biome concept at present, which we employ here, is that of a widespread
76 vegetation formation with distinct ecosystem function.

77 The term 'biome' itself was first employed by Clements (1916) when referring to the biotic
78 community, or set of species, occupying a certain habitat. However, subsequently, Holdridge
79 (1947), Walter (1973), Whittaker (1975) and Odum (1975) gave more emphasis to the
80 relationship between climate and vegetation structure when proposing classification systems
81 for vegetation formations or biomes, and distanced themselves from the community
82 composition perspective suggested by Clements (1916). These latter authors delimited
83 biomes using standard climatic variables, such as mean annual temperature (MAT) and mean
84 annual precipitation (MAP) (e.g., Whittaker 1975). A motivating factor for these studies was
85 to create practical classification systems that allow researchers to assign sites to biome by
86 simply knowing the MAT and MAP (e.g., as in Qian, Jin, & Ricklefs, 2017; Siepielski et al., 2017).
87 More recently, large-scale remotely sensed data have become available, which has led
88 researchers to map biomes using simple characterisations of vegetation physiognomy or
89 ecosystem function, including average vegetation height, percent tree cover, primary
90 productivity and phenology (Higgins et al., 2016; Hirota, Holmgren, Van Nes, & Scheffer, 2011;
91 Staver, Archibald, & Levin, 2011; Woodward et al., 2004). However, remote sensing
92 approaches can fail when biomes are indistinguishable from satellite images (Beuchle et al.,
93 2015) or when there is high structural heterogeneity within biomes (Särkinen, Iganci, Linares-
94 Palomino, Simon, & Prado, 2011)

95 Meanwhile, the different global biome schemes, be they derived from climate or remote
96 sensing, often fail to agree on which are the main biomes (e.g. Whittaker, 1975 vs. Friedl et
97 al., 2002 vs. Woodward et al., 2004 vs. Higgins et al., 2016), and can differ dramatically on
98 the mapping of any given biome (Särkinen et al., 2011). Furthermore, the degree to which
99 biome maps actually delimit the spatial distribution of ecosystem function is debated
100 (Moncrieff, Hickler, & Higgins, 2015). The need for more ecologically meaningful definitions
101 of biomes has led some to suggest that functional traits, such as wood density or leaf mass
102 per area of the dominant plant species, should be used to define and delimit biomes (Van
103 Bodegom, Douma, & Verheijen, 2014; Violle, Reich, Pacala, Enquist, & Kattge, 2014). In order
104 to map functional trait distributions at large spatial scales, researchers have used geo-
105 referenced collection localities for species with available trait data (e.g. Engemann et al.,
106 2016; Lamanna et al., 2014). There are challenges with this approach, most importantly, the
107 absence of trait data for many species, especially in tropical vegetation (Baker et al., 2017;

108 Sandel et al., 2015; Violle, Borgy, & Choler, 2015). The premise of this paper is that species
109 occupying distinct biomes have different functional traits and therefore that floristic
110 information can be used to map biomes, avoiding the uncertainties associated with linking
111 species composition to trait databases. Species distribution modelling (a.k.a. ecological niche
112 modelling) of indicator species can be used to map biomes (as in Prieto-Torres & Rojas-Soto,
113 2016; Särkinen et al., 2011), but such distribution modelling usually uses only climatic
114 variables as predictors and therefore is subject to similar concerns as mapping biomes directly
115 based on climatic data. We argue that, at least for some regions, there are now sufficient
116 species distribution data to map biomes directly using the distribution data themselves.

117 The mapping of biomes based on floristic information also offers the possibility of synergies
118 with conservation (Whittaker et al., 2005). Bioregionalisation schemes that partition space
119 into geographic units based on species composition and environmental data, such as the
120 global ecoregions proposed by Olson & Dinerstein (1998) and Olson et al. (2001) – recently
121 reviewed and updated by Dinerstein et al. (2017) – have been used by researchers and
122 decision makers in conservation at local and global scales. For example, it was by relying on
123 Olson & Dinerstein’s (1998) scheme that Myers et al.(2000) and Mittermeier et al. (1998,
124 2004) proposed the global biodiversity hotspots, which are biomes or geographic subsets of
125 biomes (i.e. ecoregions), that present high numbers of endemic species and are particularly
126 threatened.

127 Brazil, which comprises the majority of the land surface of Lowland Tropical South America
128 (LTSA), has proposed its own bioregionalisation scheme, the Domain system, established by
129 Veloso, Rangel Filho, & Lima (1991) and IBGE (2012). The six Domains, which are used to guide
130 conservation and management policy, are the Amazon Forest, Atlantic Forest, Cerrado,
131 Caatinga, Pantanal and Pampa. The first two are wet forests, with the Amazon Forest
132 occupying much of northern LTSA and the Atlantic Forest occurring along the Atlantic coast
133 of South America, principally in Brazil. They are separated by a ‘Dry Diagonal’ of seasonally
134 dry forests, woodlands and savanna vegetation formations (Neves, Dexter, Pennington,
135 Bueno, & Oliveira Filho, 2015; Vanzolini, 1963). The Cerrado Domain is comprised primarily of
136 savanna and sits in the centre of the Dry Diagonal, occupying much of central Brazil, but there
137 are disjunct patches of savanna found elsewhere in LTSA, particularly within the Atlantic and
138 Amazon Forests (Ratter, Ribeiro, & Bridgewater., 1997). Wet forests intrude into the Cerrado

139 as gallery forests along river courses (Oliveira-Filho & Ratter, 1995). The Caatinga Domain at
140 the northeast corner of the Dry Diagonal represents the largest extent of seasonally dry
141 tropical forest (SDTF) in LTSA (Prado & Gibbs, 1993). However, SDTF also occurs in disjunct
142 patches throughout the Cerrado on more fertile soils (DRYFLOR, 2016; Pennington, Prado, &
143 Pendry, 2000; Prado & Gibbs, 1993). SDTFs and the Cerrado can be distinguished by
144 physiognomy, function and dissimilarities in phylogenetic composition (Oliveira-Filho,
145 Pennington, Rotella, & Lavin, 2014; Oliveira-Filho et al., 2013). The Chaco woodlands at the
146 southwest of the Dry Diagonal are climatically seasonal and its woodlands do not experience
147 fire. The Chaco woodlands have been considered distinct from SDTF on the basis that they
148 experience regular frost, greater temperature seasonality and often distinct edaphic
149 conditions, e.g. hypersaline soils (DRYFLOR, 2017; Prado & Gibbs, 1993). The Pantanal Domain
150 has heterogeneous vegetation including SDTFs, savanna and swamps, while the Pampa
151 Domain is a largely subtropical grassland that has forest patches along river courses and on
152 certain edaphic conditions.

153 Lowland Tropical South America, due to its size, diversity and non-continuous geographic
154 distribution of biomes and vegetation types, is an ideal system to study how biomes can be
155 delimited, at a continental scale, through means other than climate and remote sensing. Its
156 complex environmental controls of both climate and soil point to the necessity of developing
157 a new approach for biome delimitation that is better linked to biodiversity. Biome schemes
158 centred on species composition may be more useful for comparative biology, conservation,
159 and enable a better understanding of the possible mechanistic relationships between
160 vegetation and environment.

161 Here we test the utility and performance of a floristic approach for mapping biomes at a
162 continental scale, with a particular focus on Brazil and neighbouring countries. We use a
163 dataset of 4,103 geo-referenced floristic inventories of tree species that span the major
164 climatic and edaphic gradients of the region. We first test how well climatic data perform in
165 distinguishing among biomes. We hypothesize that climatic data will be able to distinguish
166 wet forests from the dry biomes, but that it will fail to distinguish SDTF from savanna as they
167 are often edaphically differentiated (Ratter et al., 1997). We also test the ability of edaphic
168 data, when considered in conjunction with climate, to increase the accuracy of biome
169 delimitation. Lastly, we assess how our floristic approach to mapping biomes compares with

170 the ecoregion-based classification system of Dinerstein et al. (2017) (a revised version of
171 Olson et al. (2001) system), and then for Brazil only, against the Domain classification of IBGE
172 (2012). Our use of floristics data may allow for the delimitation and mapping of biomes in a
173 manner directly relevant to managing ecosystems and developing conservation strategies, for
174 example by enabling the modelling of future climate change effects on tropical vegetation
175 (Prieto-Torres & Rojas-Soto, 2016; Prieto-Torres et al., 2016).

176 **Methods**

177 **The NeoTropTree dataset**

178 Floristic inventories of tree communities were obtained from the NeoTropTree (NTT) dataset
179 (Oliveira-Filho, 2017), which contains tree species inventories for more than 6,000 geo-
180 referenced sites across South America. Trees are here defined as free-standing woody plants
181 greater than three metres in height. Every site in the NTT database is based on a tree species
182 list generated via an inventory, phytosociological survey or floristic survey. These data sources
183 are derived from published and unpublished literature (e.g. PhD theses, environmental
184 consultancy reports). Other species are added to the site species list based on surveys of
185 specimens in herbaria in South America, USA and Europe or online (e.g. CRIA, 2012). All
186 entries are carefully checked for doubtful determinations and synonyms by consulting the
187 taxonomic literature, the “Flora do Brasil” (<http://floradobrasil.jbrj.gov.br/>) and the “Flora del
188 Conosur” (Zuloaga, Belgrano, Zuloaga, & Belgrano, 2015) – <http://www.darwin.edu.ar/>), with
189 additional direct consultation of taxonomists. Our data excludes checklists with < 10 species,
190 because in lowland tropical regions, this is invariably due to low sampling or collecting efforts,
191 rather than truly low species richness.

192 The vegetation type for each site, as documented in the original data source, is recorded and
193 standardized to the vegetation types in Oliveira-Filho (2017; see also Table S1). When a
194 herbarium voucher of an additional species is noted to come from within a 5 km radius of the
195 original site, the collection label is checked to ensure that the species is found in the same
196 vegetation type. Where two or more sites of different vegetation types co-occur within 10 km
197 (768 sites– 19.13 % of our total), this results in geographically overlapping sites in the NTT
198 database, each for a distinct vegetation type. Further details of NTT history, protocols and

199 data can be found at www.neotropree.info. We restricted analyses to the tropical and
200 neighbouring subtropical lowlands of South America east of the Andes, and did not include
201 any NTT site above 1,000 m elevation or below 36° S latitude. Montane areas were excluded
202 because biogeographic barriers may be playing significant roles in floristic differentiation.
203 Including subtropical sites allowed us to contextualize our results from the tropics. In total,
204 we included 4,103 individual sites, containing 10,306 tree species from 1,062 genera and 148
205 families.

206 **Statistical Analyses**

207 We performed hierarchical clustering based on tree species composition to assign sites to
208 groups in an unsupervised manner (i.e. without reference to any environmental data). For
209 clustering, we used the Simpson floristic distance amongst sites, which is the complement of
210 the number of species shared between two sites divided by the maximum number of species
211 that could be shared between the two sites: $1 - \text{species}_{\text{shared}} / \text{total_species}_{\text{minimum}}$ (Baselga,
212 2010). This is identical to the β_{sim} metric (Kreft & Jetz, 2010), but we use the term Simpson
213 distance because of its historical precedence (Baselga, 2010). This metric isolates the effects
214 of species turnover and is not confounded by large differences in species richness amongst
215 sites (Baselga, 2010). We built 1,000 clusters, each after randomising the row order in the
216 matrix (species per site), following the procedure of Dapporto et al. (2013). We removed 24
217 sites that were unstable in their placement across the 1,000 clusters, which were identified
218 by co-opting an approach used in phylogenetics to identify ‘rogue taxa’ that reduce resolution
219 in phylogenetic analyses (Aberer, Krompass, & Stamatakis, 2012). In the final consensus
220 cluster, only those groups that were present in at least 50% of the clusters are distinguished
221 (Omland, Cook, & Crisp, 2008). This analysis was performed in R (R Team, 2016) using the
222 “recluster” package (Dapporto et al., 2015).

223 To determine the biome identity of clusters, we used a reciprocal illumination procedure of
224 assessing the overall structure of the cluster while considering site vegetation types (see Table
225 S1). This process is inherently fractal and one could identify increasingly smaller groups of
226 sites. We focused on defining biomes in the broadest sense in order to increase their
227 generality and utility, and our delimitations were performed in the context of the main
228 biomes that have previously been proposed for LTSA, namely wet or moist tropical forests

229 (hereafter wet forests), SDTF, subtropical forests, savanna and chaco woodlands. In essence,
230 our approach tested if there is floristic integrity to these previously proposed biomes, and we
231 found clear evidence that there was, i.e. higher-level groups were comprised largely of one
232 broad biome type (Table S1). For heuristic purposes, we constructed a continuous biome map
233 by applying Thiessen's polygons method in ArcGIS 10.4.1 (ESRI, 2017). This approach expands
234 a polygon of a given biome classification for each NTT site until the polygons from
235 neighbouring NTT sites are encountered. If they represent the same biome, then the polygons
236 are fused and this procedure is continued until the entirety of the study area was categorised
237 to biome.

238 We assessed which sites may be intermediate or transitional between our biomes using a
239 silhouette analysis, via the R package cluster (Maechler, Rousseeuw, Struyf, Hubert, & Hornik,
240 2016). We also visually assessed where these ambiguously classified sites are located in
241 species compositional space by means of a non-metric multidimensional scaling analysis
242 (NMDS, McCune & Grace, 2002) of sites in two dimensions based on the Simpson distance
243 amongst sites.

244 **Using climate and edaphic data to distinguish biomes**

245 To assess if the biomes identified could be distinguished using climatic data, with or without
246 edaphic data, we used a Random Forest classification tree approach (Breiman, 2001),
247 implemented in the randomForest package in the R Statistical Software (Liaw & Wiener, 2002).
248 We used 19 bioclimatic variables developed by (Hijmans, Cameron, Parra, Jones, & Jarvis,
249 2005), which quantify various aspects of temperature and precipitation regimes, as well as an
250 estimate of average maximum climatological water deficit (CWD) per year (Chave et al., 2014).
251 As edaphic variables, we included pH (extracted with KCl), cation exchange capacity (cmol/kg)
252 and percentage of sand, silt and clay extracted from SoilGrids v0.5.5 (<https://soilgrids.org/>,
253 Hengl et al., 2017) at four different soil depths: 0 cm, 5 cm, 15 cm and 30 cm, which were
254 then averaged. Two different classifications were performed, one considering climatic data
255 alone and another considering both climatic and soil data.

256 In order to assess the success rate of the classification tree approach in assigning sites to
257 biome and to determine which biomes were incorrectly classified, we generated confusion

258 matrices, which show assignment based on climate alone or climate and soil versus
259 assignment done above based on vegetation type and tree species composition. We also
260 estimated the importance of each variable for distinguishing biomes using Breiman's measure
261 of importance (Breiman, 2001). As we had substantial variation in sample size amongst our
262 biomes that could bias importance measures, we equalized the number of sites across all
263 biomes by rarefying to the number of sites present in the most poorly sampled biome.
264 Rarefactions were performed randomly 100 times and variable importance values were
265 averaged across the 100 replicates. In order to understand climatic overlaps amongst biomes,
266 we additionally plotted sites in a pairwise manner for key climatic variables (MAP, MAT and
267 CWD).

268 **Comparison to existing biome maps**

269 We compared how two commonly used vegetation maps for South America classify sites to
270 biome compared to our analyses. We focused on the map of Dinerstein et al. (2017), in which
271 ecoregions are grouped into biomes and which is a revised version of Olson et al. (2001), and
272 the Brazilian Domain system (IBGE 2012). We determined which biomes and domains in these
273 systems conceptually correspond to the biomes we established here, and assessed how often
274 these mapping systems gave the same identity to our NTT sites. The ecoregion data layer was
275 obtained from <https://ecoregions2017.appspot.com/> and the IBGE Domain data layer from
276 <http://www.geoservicos.ibge.gov.br/geoserver/web/> (layer CREN:biomas_5000).

277 **Results**

278 **Biomes of Lowland Tropical South America**

279 Hierarchical cluster analysis produced five higher-level groups (Fig. 1), which we designated
280 as biomes based on *a priori* vegetation type classifications. Wet forests fell into two different
281 groups, which we tentatively treat as separate biomes. One comprises sites in the Amazon
282 and the Guiana Shield, which we refer to as the Amazon Forest biome, and the other is
283 comprised of sites along the Atlantic coast, which we refer to as the Atlantic Forest biome (Fig.
284 2). These two biomes are largely concordant with the Amazon and Atlantic Forest Domains,
285 except that they also include semideciduous and gallery forests, found well outside of the
286 geographic areas of the forest Domains (Fig. 2).

287 The other three major groups in the cluster are found primarily in the Dry Diagonal, which
288 extends from northeast Brazil to Bolivia, Paraguay and northern Argentina (Fig. 2). One, which
289 we refer to as Savanna, comprises sites with a grassy understorey found throughout central
290 Brazil and eastern Bolivia, overlapping with the Cerrado Domain, but with disjunct
291 occurrences in the Amazon Forest and Atlantic Forest biomes. The Savanna biome is clearly
292 distinguished floristically from a biome that we term Seasonally Dry Tropical Forest (SDTF),
293 based on the original vegetation classifications of sites (Table S1). The SDTF biome has a
294 discontinuous distribution from the Pantanal and Chiquitania in Bolivia and southern Brazil to
295 its largest extension in the Caatinga Domain of northeastern Brazil (Fig. 2). It is spatially
296 interdigitated with the Savanna biome. The last group, which we distinguish as a separate
297 biome is the Chaco, comprising woodlands in Bolivia, Argentina and Paraguay and extending
298 to the borders of southern Brazil. While most of the sites in the Chaco biome cluster are
299 subtropical and experience frost, there are a significant number of sites found north of 23
300 degrees latitude that are unlikely to experience freezing and can be considered tropical (Fig.
301 2). See Supplementary Materials (Appendix 1) for further description of the biomes. Our
302 continuous biome map, developed using the Thiessen's polygons method, shows the LTSA
303 biomes' overall spatial distribution and highlights the regions in which they interdigitate
304 (Figure 3).

305 Of 4,103 sites, 1,097 were classified as Amazon Forest, 1,566 as Atlantic Forest, 760 as
306 Savanna, 564 as SDTF and 116 as Chaco. Silhouette analysis (Fig S1) showed that 271 sites are
307 floristically more similar to a different biome than that with which they were original clustered,
308 which we interpret to indicate that these sites are transitional between two biomes (Fig. 4a,
309 Table S2). An ordination of sites (NMDS with two axes, stress value= 0.1816) also suggests
310 that these sites are compositionally transitional (Fig. 4b). Floristically transitional sites were
311 common between the Amazon and Atlantic Forest biomes (53 sites), between the Savanna
312 and Atlantic Forest biomes (115 sites), and between the SDTF and Atlantic Forest biomes (49
313 sites), while they were infrequent between other biomes, including between any pair of dry
314 biomes. Floristically transitional sites are common in the Dry Diagonal (Fig. 4a), particularly
315 between the Cerrado and the Amazon Forest and between the Chaco and the Atlantic Forest.
316 Many of the gallery forests within the Cerrado Domain also have an ambiguous tree species
317 compositional identity and are therefore difficult to classify.

318 **Using climate and edaphic data to distinguish biomes**

319 We find that biomes overlap substantially in climatic space, both in terms of water availability
320 (Fig. 5) and temperature (Fig. 6). For example, all five biomes defined here occupy at least
321 two of the climatic biomes proposed by Whittaker (1975) (Fig. 6). Of the 3,832 sites that are
322 not considered transitional in nature, 712 were misclassified based on climate (18.6% of sites;
323 Table 1). Considering all sites together, including transitional ones, we found a slightly higher
324 error rate of 20.7% (Table S3). The most common misclassifications involved Amazon or
325 Atlantic Forest sites being classified as belonging to the Savanna biome or vice versa, while
326 climatic misclassifications of SDTF and Savanna were also common (Table 1). Sites in the
327 Amazon and Atlantic Forest wet biomes were distinct climatically. Meanwhile, the Chaco
328 biome was rarely confused climatically with any of the other biomes. These patterns did not
329 change when sites that have centres within 10 km of each other, i.e. overlapping in geographic
330 space, were removed (Table S4, error rate: 20.3%).

331 The inclusion of edaphic variables slightly increased overall classification success by 3.2%
332 (Table 2), and 3% when transitional sites were included (Table S5). There were a total of 124
333 sites that switched from being classified incorrectly (with just climatic data) to being classified
334 correctly (once edaphic data were included; Table 2). Most of these were Savanna sites
335 classified as Atlantic Forest and vice-versa.

336 Whether or not edaphic variables are included, the three main most important variables for
337 classification were Mean Annual Precipitation, Temperature Seasonality and Maximum
338 Climatological Water Deficit (Table 3). Overall, climatic variables seem to be more important
339 than edaphic variables for distinguishing biomes, with variables related to precipitation,
340 water availability and temperature seasonality ranking higher than variables related to mean
341 temperature. However, overall we do have fewer edaphic variables and pH and cation
342 exchange capacity (CEC) are among the top 10 variables (Table 3).

343 **Comparison to existing biome maps**

344 The classification systems developed by Olson and Dinerstein et al. (2001, 2017) and IBGE
345 (2012) assigned 74-75% of the NTT sites to the same biomes as they were placed according
346 to our analyses (74.7% Dinerstein et al., 2017, Table S6; 74.5% IBGE, 2012, Table S7). In

347 Dinerstein's system, the majority of the misclassification results from Atlantic Forest sites
348 being incorrectly classified as Tropical or Subtropical Savannas and Savanna being classified
349 as Tropical Moist Forest (Figure S2). In IBGE's system, the error rate stems from SDTF sites
350 being classified as Cerrado and vice-versa (Figure S3).

351 **Discussion**

352 Our study demonstrates that using climatic data alone, with or without supplementary
353 edaphic data, to map biomes would result in substantial error, causing misclassification of
354 15.2 - 20.7% of sites. Such misclassifications are due to pronounced climatic overlap of biomes
355 (Figs 5, 6) and to edaphic heterogeneity at small spatial scales that is not captured by available
356 data, which are derived via interpolation among relatively sparse soil sampling. Recently,
357 researchers have begun assigning study sites to biomes, generally those of Whittaker (1975)
358 based solely on climatic values, e.g. mean annual precipitation and temperature (e.g. Díaz et
359 al., 2016; Qian & Ricklefs, 2017; Siepielsky et al., 2017). Our results suggest this is potentially
360 problematic (Fig. 6). For example, the Amazon and Atlantic Forests can both occur in areas
361 that are more seasonal than 'tropical rain forest' (sensu Whittaker), while the Savanna biome
362 can occur in much wetter areas than indicated by Whittaker (1975; see also Lehmann et al.,
363 2014). It is notable that none of our five major biomes are restricted to a single biome in
364 Whittaker's climatic biome classification (Fig. 6).

365 We were able to employ a floristic approach to mapping biomes at a continental scale. Recent
366 biome maps of LTSA, generally based on remote sensing, either fail to include major biomes
367 (e.g. Seasonally Dry Tropical Forest is absent from Hirota et al., 2011; Staver et al., 2011), or
368 are unable to distinguish amongst the dry tropical biomes of Savanna and SDTF (Beuchle et
369 al., 2015). While floristic approaches to mapping biomes are unlikely to succeed inter-
370 continentally because of the lack of shared species or even genera at this scale (Dexter et al.,
371 2015), the increasing availability of floristic composition and species distribution information
372 (e.g. www.gbif.org, www.forestplots.net, www.neotroptree.info) should allow this approach
373 to be implemented within continents. It is important to note that any complete and
374 continuous (or 'wall-to-wall') map of biome distribution will be inaccurate at small spatial
375 scales due to high edaphic and floristic heterogeneity coupled with incomplete sampling. We
376 have generated a continuous map (Fig. 3), but its purpose is as a heuristic scheme to

377 understand patterns in the distribution of biomes in LTSA. We do not contend that every point
378 on the map is accurately classified, as that would belie one of the principal outcomes of this
379 study, that of high biome heterogeneity at small spatial scales, as previously noted by
380 Pennington et al. (2006), Werneck (2011), Collevatti et al. (2013).

381 **Biomes of Lowland Tropical South America**

382 Our analyses suggest three to five major biomes in LTSA. The Amazon and Atlantic Forests
383 might represent separate biomes, whereas previously they have often been considered as a
384 single tropical wet/moist forest biome. They are floristically distinct and their climatic niches
385 are almost completely non-overlapping. Our floristic circumscription of the Atlantic Forest
386 matches the *sensu-latissimo* definition of Oliveira-Filho, Jarenkow, & Rodal (2006). Our
387 delimitation of the Amazon Forest is similar to previous studies that include the majority of
388 the Amazon Basin drainage and the Guianan Shield (e.g., Prance, 1982; ter Steege et al., 2006),
389 although we note that our sampling of the Guianan Shield is limited.

390 The Savanna biome is floristically distinct from the other dry biomes, which is expected since
391 it is a uniquely disturbance driven system, strongly influenced by fire (Archibald, Lehmann,
392 Gómez-dans, & Bradstock, 2013; Ratter et al., 1997). Many sites in the SDTF biome are often
393 drier, in terms of MAP and CWD, than the majority of sites in the Savanna biome (Fig. 5),
394 which runs counter to thinking that tropical wet forest transitions to tropical seasonal forest
395 and then to savanna as water availability declines (e.g. Malhi et al., 2009). Meanwhile, our
396 results from floristic analyses give support to previous studies (DRYFLOR, 2016; Pennington,
397 Lavin, & Oliveira-Filho, 2009; Pennington et al., 2000; Prado & Gibbs, 1993) that have argued
398 that the SDTFs scattered across lowland tropical South America should be regarded as a single
399 biome, with the exclusion of the Chaco. We find that the climatic niches of Chaco and SDTF
400 do not overlap, with the Chaco occurring in a colder climate with much higher temperature
401 seasonality. However, further studies are needed that compare ecosystem function in the
402 Amazon versus Atlantic Forests and in the SDTF versus Chaco to verify their status as distinct
403 biomes. For further discussion of floristic patterns within and across biomes, please refer to
404 the supplementary material (Appendix 1).

405 **Using climate and edaphic data to distinguish biomes**

406 Mean annual precipitation (MAP), several measures of dry season precipitation and water
407 deficit, temperature variability and soil pH were the most important environmental variables
408 in distinguishing major biomes (Table 2). That precipitation-related variables are on average
409 more important than temperature-related variables is to be expected, given that the majority
410 of our sampling and most of the biomes under study are within the tropics, and thus represent
411 a limited range of non-freezing temperature regimes (Augusto, Davies, Delzon, De Schrijver,
412 & Chave, 2014). Nevertheless, it is notable that measures of temperature variability,
413 particularly across seasons, were more important than other temperature measures,
414 including mean annual temperature (MAT) and minimum temperature of the coldest month.
415 This may be because plant species' ranges are often constrained by how much temperature
416 can vary in a given location, and by temperature extremes (O'Sullivan et al., 2017).

417 While a classification success rate of 80% seems high, this would result in 1 in 5 sites being
418 misclassified, which is potentially problematic for conservation and management decisions.
419 Some sites are floristically transitional in nature and inherently difficult to classify. Such
420 transitional sites may be particularly resilient, and thus important, under future climate
421 change, and they may require their own management regimes (Prieto-Torres et al. 2016).
422 Regardless, the high error rate (18.6%) among non-transitional sites (sites not detected by
423 the silhouette analysis as belonging to a different biome) is still of concern as they comprise
424 93.4% of our sites. In order to improve classification of these sites to biome based on
425 environmental data, environmental data in better resolution are needed. Publicly available
426 environmental data are derived from interpolation. For climate, which varies at a relatively
427 broad spatial grain, this may not be problematic. However, edaphic data vary at a small spatial
428 grain, and interpolation-based methods may be inadequate to capture edaphic conditions at
429 many sites. Also, the edaphic data from SoilGrids does not include variables, such as soil
430 fertility (sum of bases), phosphorous and aluminium content, which are highly relevant to
431 tree species growth. Meanwhile, other non-climatic and non-edaphic variables, such as fire
432 and disturbance, may play a significant role in determining tree species composition at local
433 sites, and biome identity more widely. For example, SDTF and wet forest can convert to
434 savanna if there is sufficient disturbance via fire or anthropogenic woody biomass removal
435 (Devisscher, Anderson, Aragão, Galván, & Malhi, 2016).

436 **Comparing to existing biome maps**

437 The comparisons between the classification system presented here and those of Dinerstein
438 et al. (2017) and the Domain system (IBGE, 2012) revealed a ~25% misclassification rate for
439 the latter two. These high error rates stem from two sources: the intrusion of SDTF and the
440 Atlantic and Amazon Forests (as gallery forest) into the Savanna biome in the dry diagonal,
441 and the existence of non-equivalent categories among these systems. Dinerstein et al. (2017)
442 and IBGE (2012) recognize tropical and subtropical wetlands (named Pantanal in IBGE's
443 system) as a distinct biome or domain, while the IBGE Domain system also delimits the
444 Pampas (a.k.a. Campos Sulinos - southern Brazilian steppes). These two categories have not
445 been detected and classified by our approach. Rather, the region classified as Pantanal by
446 IBGE (2012) is covered by a mix of different vegetation formations that are floristically similar
447 to SDTFs, Savannas and also the semideciduous portion of the Atlantic Forest. The forests
448 within the area known as the Pampas at South Brazil are floristically similar, in relation to tree
449 species composition, to the rest of the subtropical portion of the Atlantic Forest biome
450 (Oliveira-Filho, Budke, Jarenkow, Eisenlohr, & Neves, 2015).

451 **Synergies between biodiversity conservation and ecosystem management**

452 Delimiting biomes based on tree species composition offers the possibility of synergy
453 between ecosystem management planning and conservation prioritisation. The biomes we
454 have delimited differ in tree species composition and therefore likely differ in ecosystem
455 function. Ecosystem management plans should therefore be developed separately for each.
456 Similarly, these biomes have almost no species in common, yet have many species unique to
457 them. Our schematic map (Fig. 3) also indicates how these biomes are distributed at a
458 continental scale, highlighting how discontinuous biome distribution can be in LTSA. These
459 are important observations that must be considered in conservation and management. As an
460 example, it is only recently that the SDTF have been recognised as a biome (Gentry, 1995;
461 Murphy & Lugo, 1986; Prado & Gibbs, 1993), a definition consistent with our analyses, and
462 there is no synthetic conservation plan that addresses the biome as a whole across the
463 Neotropics (though see DRYFLOR 2016 for first steps). Current conservation planning for SDTF
464 in Brazil focuses solely on the Caatinga Domain, but many Brazilian SDTFs are found in disjunct
465 patches outside of this area, especially in the Cerrado, placing them under laws designed to
466 protect savanna diversity. As another example, the Chaco is under great threat due to an
467 increase of habitat destruction and fragmentation during the last 30 years (Hansen et al., 2013,

468 Nori et al. 2016), but if recognised as a separate biome, as our analyses suggest, the urgency
469 of its conservation may be better recognised (Kuemmerle et al., 2017).

470 **Conclusions**

471 We have mapped the principal biomes in LTSA by using information on tree species
472 composition of > 4,000 sites. The Savanna, Amazon and Atlantic Forest and SDTF biomes have
473 an interdigitated distribution in central South America and overlap substantially in climatic
474 space. Biome distribution cannot therefore be fully accounted for by climate, suggesting that
475 climate projections alone will be insufficient to predict future biome shifts. Additional,
476 meaningful environmental variables (e.g. available nitrogen, phosphorous, aluminium, etc.)
477 must be measured and accounted for in models. The interdigitiation of biomes, especially in
478 the dry diagonal across Brazil, is not recognised in the current IBGE (2012) system on which
479 Brazilian conservation legislation is based, leading to the neglect of highly threaten SDTF
480 vegetation outside of the Caatinga Domain. Our analyses also show Chaco and SDTF are
481 distinct, which must be considered in land management and conservation. We suggest that
482 species composition can be central to delimiting meaningful biomes for comparative research
483 and conservation.

484 **Acknowledgements**

485 P.L.S.M. thanks the Coordenação de Aperfeiçoamento de Pessoal de Nível Superior—Brazil
486 (CAPES) for supporting a full PhD at the University of Edinburgh under the Science without
487 Borders Programme (grant 99999.013197/2013-04). A.O.F. was supported by the Conselho
488 Nacional de Desenvolvimento Científico e Tecnológico—Brazil (CNPq) (grant 301644/88-8).
489 D.M.N., R.T.P. and K.G.D. were supported by the National Environment Research Council
490 (grant NE/I028122/1). P.L.S.M also thanks Chrystiann Lavarini for help in making Figure 3.

491 **Data Accessibility**

492 The data used to produce this paper can be freely accessed at <http://www.neotropree.info/>.

493 **Biosketch**

494 Pedro L. Silva de Miranda is a PhD student at the University of Edinburgh under the
495 supervision of Dr. Kyle G. Dexter, Dr. Toby Pennington, Dr. Caroline Lehmann and Professor
496 Ary Oliveira-Filho. His PhD focuses on identifying the main biomes in Lowland Tropical South
497 America, understanding the main environmental drivers behind them (climatic and edaphic)
498 and assessing the effects climate change will have on their distribution and diversity. The
499 research group – PLant Evolutionary Ecologists and BiogeographerS, PLEEBs
500 (<http://phylodiversity.net/kdexter/HOME.html>) – is led by Dr. Kyle Dexter and focuses
501 primarily on tropical vegetation.

502 **References**

- 503 Aberer, A. J., Krompass, D., & Stamatakis, A. (2012). Pruning Rogue Taxa Improves Phylogenetic
504 Accuracy. *Systematic Biology*, *62*, 162–166.
- 505 Archibald, S., Lehmann, C. E. R., Gómez-dans, J. L., & Bradstock, R. A. (2013). Defining pyromes and
506 global syndromes of fire regimes. *Proceedings of the National Academy of Sciences*, *110*, 6442–6447.
- 507 Augusto, L., Davies, T. J., Delzon, S., De Schrijver, A., & Chave, J. (2014). The enigma of the rise of
508 angiosperms: can we untie the knot?. *Ecology Letters*, *17*, 1326–1338.
- 509 Baker, T. R., Pennington, R. T., Dexter, K. G., Fine, P. V. A., Fortune-Hopkins, H., Honorio, E. N., ...
510 Vasquez, R. (2017). Maximising Synergy among Tropical Plant Systematists, Ecologists, and
511 Evolutionary Biologists. *Trends in Ecology & Evolution*, *32*, 258–267.
- 512 Baselga, A. (2010). Partitioning the turnover and nestedness components of beta diversity. *Global
513 Ecology and Biogeography*, *19*, 134–143.
- 514 Beuchle, R., Grecchi, R. C., Shimabukuro, Y. E., Seliger, R., Eva, H. D., Sano, E., & Achard, F. (2015).
515 Land cover changes in the Brazilian Cerrado and Caatinga biomes from 1990 to 2010 based on a
516 systematic remote sensing sampling approach. *Applied Geography*, *58*, 116–127.
- 517 Box, E. O. (1995). Factors determining distributions of tree species and plant functional types.
518 *Vegetatio*, *121*, 101–116.
- 519 Breiman, L. (2001). Random forests. *Machine Learning*, *45*, 5–32.
- 520 Chave, J., Réjou-Méchain, M., Búrquez, A., Chidumayo, E., Colgan, M. S., Delitti, W. B. C., ...
521 Vieilledent, G. (2014). Improved allometric models to estimate the aboveground biomass of tropical
522 trees. *Global Change Biology*, *20*, 3177–3190.
- 523 Clements, F. E. (1916). The Development and Structure of Biotic Communities. In *Ecological Society
524 of America* (Vol. 5, pp. 119–128). New York.
- 525 Collevatti, R. G., Lima-Ribeiro, M. S., Diniz-Filho, J. A. F., Oliveira, G., Dobrovolski, R., & Terribile, L. C.
526 (2013). Stability of Brazilian Seasonally Dry Forests under Climate Change: Inferences for Long-Term
527 Conservation. *American Journal of Plant Sciences*, *04*, 792–805.
- 528 CRIA. (2012). speciesLink. Retrieved from: <http://www.splink.org.br/index>

- 529 Dapporto, L., Ramazzotti, M., Fattorini, S., Talavera, G., Vila, R., & Dennis, R. L. H. (2015). Package
530 'recluster' - Ordination methods for the analysis of beta-diversity indices. Retrieved from:
531 <https://cran.r-project.org/web/packages/recluster/recluster.pdf>
- 532 Dapporto, L., Ramazzotti, M., Fattorini, S., Talavera, G., Vila, R., & Dennis, R. L. H. (2013). Recluster:
533 An unbiased clustering procedure for beta-diversity turnover. *Ecography*, *36*, 1070–1075.
- 534 Devisscher, T., Anderson, L. O., Aragão, L. E. O. C., Galván, L., & Malhi, Y. (2016). Increased Wildfire
535 Risk Driven by Climate and Development Interactions in the Bolivian Chiquitania, Southern
536 Amazonia. *PLoS ONE*, *11*(9): e0161323.
- 537 Dexter, K. G., Smart, B., Baldauf, C., Baker, T. R., ..., Pennington, R. T. (2015). Vegetation in seasonally
538 dry regions of the tropics: floristics and biogeography. *International Forestry Review*, *17*, 10–32.
- 539 Díaz, S., Kattge, J., Cornelissen, J. H. C., Wright, I. J., Lavorel, S., Dray, S., ... Gorné, L. D. (2016). The
540 global spectrum of plant form and function. *Nature*, *529*, 167–171.
- 541 Dinerstein, E., Olson, D., Joshi, A., Vynne, C., Burgess, N. D., Wikramanayake, E., ... Saleem, M.
542 (2017). An Ecoregion-Based Approach to Protecting Half the Terrestrial Realm. *BioScience*, *67*, 534–
543 545.
- 544 DRYFLOR. (2016). Plant diversity patterns in neotropical dry forests and their conservation
545 implications. *Science*, *353*, 1383–1387.
- 546 DRYFLOR, Pennington, R. T., Banda-R, K., Delgado-Salinas, A., Dexter, K. G., Galetti, L., ... Särkinen, T.
547 (2017). Response - Forest conservation: Remember Gran Chaco. *Science*, *355*, 465–466.
- 548 Engemann, K., Sandel, B., Enquist, B. J., Jørgensen, P. Mø., Kraft, N., Marcuse-Kubitza, A., ...
549 Svenning, J. C. (2016). Patterns and drivers of plant functional group dominance across the Western
550 Hemisphere: A macroecological re-assessment based on a massive botanical dataset. *Botanical
551 Journal of the Linnean Society*, *180*, 141–160.
- 552 ESRI. (2017). ArcGIS 10.4.1. Redlands: CA: Environmental Systems Research Institute.
- 553 Friedl, M. A., McIver, D. K., Hodges, J. C., Zhang, X. Y., Muchoney, D., & Strahler. (2002). Global land
554 cover mapping from MODIS: algorithms and early results. *Remote Sensing of Environment*, *83*, 287–
555 302.
- 556 Gentry, A. H. (1995). Patterns of diversity and floristic composition in Neotropical montane forest. In
557 S. P. Churchill, H. Balslev, E. Forero, & J. L. Luteyn (Eds.), *Biodiversity and Conservation of Neotropical
558 Montane Forest* (pp. 103–126). New York: The New York Botanical Garden.
- 559 Hansen, M. C., Potapov, P. V., Moore, R., Hancher, M., Turubanova, S. A., Tyukavina, A., ...
560 Townshend, J. R. G. (2013). High-Resolution Global Maps of 21st-Century Forest Cover Change.
561 *Science*, *342*, 850–853.
- 562 Hengl, T., Jesus, J. M. de, Heuvelink, G. B. M., Gonzalez, M. R., Kilibarda, M., Blagotić, A., ... Kempen,
563 B. (2017). SoilGrids250m: Global gridded soil information based on machine learning. *PLoS ONE*,
564 *12*(2): e0169748.
- 565 Higgins, S. I., Buitenwerf, R., & Moncrieff, G. R. (2016). Defining functional biomes and monitoring
566 their change globally. *Global Change Biology*, *22*, 3583–3593.

567 Hijmans, R. J., Cameron, S. E., Parra, J. L., Jones, P. G., & Jarvis, A. (2005). Very high resolution
568 interpolated climate surfaces for global land areas. *International Journal of Climatology*, *25*, 1965–
569 1978.

570 Hirota, M., Holmgren, M., Van Nes, E. H., & Scheffer, M. (2011). Global Resilience of Tropical Forest
571 and Savanna to Critical Transitions. *Science*, *334*, 232–235.

572 Holdridge, L. R. (1947). Determination of world plant formations from simple climatic data. *Science*,
573 *105*, 267–268.

574 Humboldt, C. A. (1816). XCIII. On the laws observed in the distribution of vegetable forms. *The*
575 *Philosophical Magazine*, *47*, 446–453.

576 Instituto Brasileiro de Geografia e Estatística (Ed.). (2012). *Manual técnico da vegetação brasileira*
577 (2ª edição revista e ampliada). Rio de Janeiro: Instituto Brasileiro de Geografia e Estatística-IBGE.

578 Kreft, H., & Jetz, W. (2010). A framework for delineating biogeographical regions based on species
579 distributions. *Journal of Biogeography*, *37*, 2029–2053.

580 Kuemmerle, T., Baldi, G., Camino, M., Cuellar, E., Cuellar, R. L., Decarre, J., ... Semper-pascual, A.
581 (2017). Forest conservation : Remember Gran Chaco Forest conservation: Humans' handprints.
582 *Science*, *355*, 465.

583 Lamanna, C., Blonder, B., Violle, C., Kraft, N. J. B., Sandel, B., Šímová, I., ... Enquist, B. J. (2014).
584 Functional trait space and the latitudinal diversity gradient. *Proceedings of the National Academy of*
585 *Sciences*, *111*, 13745–13750.

586 Lehmann, C. E. R., Anderson, T. M., Sankaran, M., Higgins, S. I., Archibald, S., Hoffmann, W. A., ...
587 Bond, W. J. (2014). Savanna Vegetation-Fire-Climate Relationships Differ Among Continents. *Science*,
588 *343*, 548–553.

589 Liaw, A., & Wiener, M. (2002). Classification and Regression by randomForest. *R News*, *2*, 18–22.

590 Maechler, M., Rousseeuw, P., Struyf, A., Hubert, M., & Hornik, K. (2016). cluster: Cluster Analysis
591 Basics and Extensions.

592 Malhi, Y., Aragao, L. E. O. C., Galbraith, D., Huntingford, C., Fisher, R., Zelazowski, P., ... Meir, P.
593 (2009). Exploring the likelihood and mechanism of a climate-change-induced dieback of the Amazon
594 rainforest. *Proceedings of the National Academy of Sciences*, *106*, 20610–20615.

595 McCune, Bruce, James B. Grace, and Dean L. Urban. *Analysis of ecological communities*. Vol. 28.
596 Glenden Beach, OR: MjM software design, 2002.

597 Mittermeier, R. A., Gil, P. G., Hoffmann, M., Pilgrim, J., Brooks, T., Mittermeier, C. G., ... Fonseca, G.
598 A. B. (2004). *Hotspots Revisited* (1st ed.). Mexico City: CEMEX.

599 Mittermeier, R. A., Myers, N., Thomsen, J. B., da Fonseca, G. A. B., & Olivieri, S. (1998). Biodiversity
600 Hotspots and Major Tropical Wilderness Areas: Approaches to Setting Conservation Priorities.
601 *Conservation Biology*, *12*, 516–520.

602 Moncrieff, G. R., Hickler, T., & Higgins, S. I. (2015). Intercontinental divergence in the climate
603 envelope of major plant biomes. *Global Ecology and Biogeography*, *24*, 324–334.

- 604 Murphy, P. G., & Lugo, A. E. (1986). Ecology of Tropical Dry Forest. *Annual Review of Ecology and*
605 *Systematics*, 17, 67–88.
- 606 Myers, N., Mittermeier, R. A., Mittermeier, C. G., Fonseca, G. A. B., & Kent, J. (2000). Biodiversity
607 hotspots for conservation priorities. *Nature*, 403, 853–858.
- 608 Neves, D. M., Dexter, K. G., Pennington, R. T., Bueno, M. L., & Oliveira Filho, A. T. (2015).
609 Environmental and historical controls of floristic composition across the South American Dry
610 Diagonal. *Journal of Biogeography*, 42, 1566–1576.
- 611 Nori, J., Torres, R., Lescano, J. N., Cordier, J. M., Periago, M. E., Baldo, D. & Di Minin, E. (2016).
612 Protected areas and spatial conservation priorities for endemic vertebrates of the Gran Chaco, one
613 of the most threatened ecoregions of the world. *Diversity and Distributions*, 22, 1212-1219.
- 614 Odum, E. P. (1975). *Ecology* (2nd ed.). London: Holt Rinehart and Winston.
- 615 Oliveira-Filho, A. T. (2017). NeoTropTree, Flora arbórea da Região Neotropical: Um banco de dados
616 envolvendo biogeografia, diversidade e conservação. Retrieved from <http://www.neotropree.info/>
- 617 Oliveira-Filho, A. T., Budke, J. C., Jarenkow, J. A., Eisenlohr, P. V., & Neves, D. R. M. (2015). Delving
618 into the variations in tree species composition and richness across South American subtropical
619 Atlantic and Pampean forests. *Journal of Plant Ecology*, 8, 242–260.
- 620 Oliveira-Filho, A. T., Cardoso, D., Schrire, B. D., Lewis, G. P., Pennington, R. T., Brummer, T. J., ...
621 Lavin, M. (2013). Stability structures tropical woody plant diversity more than seasonality: Insights
622 into the ecology of high legume-succulent-plant biodiversity. *South African Journal of Botany*, 89,
623 42–57.
- 624 Oliveira-Filho, A. T., Jarenkow, L. A., & Rodal, M. J. N. (2006). Floristic relationships of seasonally dry
625 forests of Eastern South America based on tree species distribution patterns. In *Neotropical*
626 *Savannas and Seasonally Dry Forests: Plant Diversity, Biogeography, and Conservation* (pp. 159–
627 192). London: Taylor & Francis.
- 628 Oliveira-Filho, A. T., Pennington, R. T., Rotella, J., & Lavin, M. (2014). Exploring evolutionarily
629 meaningful vegetation definitions in the tropics: a community phylogenetic approach. In D. A.
630 Coomes, D. F. R. P. Burslem, & W. D. Simonson (Eds.), *Forests and Global Change* (pp. 239–260).
631 Cambridge: Cambridge University Press.
- 632 Oliveira-Filho, A. T., & Ratter, J. A. (1995). A study of the origin of central Brazilian forests by the
633 analysis of plant species distribution patterns. *Edinburgh Journal of Botany*, 52, 141–194.
- 634 Olson, D. M., & Dinerstein, E. (1998). The Global 200: A Representation Approach to Conserving the
635 Earth's Most Biologically Valuable Ecoregions. *Conservation Biology*, 12, 502–515.
- 636 Olson, D. M., Dinerstein, E., Wikramanayake, E. D., Burgess, N. D., Powell, G. V. N., Underwood, E.
637 C., ... Kassem, K. R. (2001). Terrestrial Ecoregions of the World: A New Map of Life on Earth A new
638 global map of terrestrial ecoregions provides an innovative tool for conserving biodiversity.
639 *BioScience*, 51, 933–938.
- 640 Omland, K. E., Cook, L. G., & Crisp, M. D. (2008). Tree thinking for all biology: the problem with
641 reading phylogenies as ladders of progress. *BioEssays : News and Reviews in Molecular, Cellular and*
642 *Developmental Biology*, 30, 854–867.

- 643 O'Sullivan, O. S., Heskell, M. A., Reich, P. B., Tjoelker, M. G., Weerasinghe, L. K., Penillard, A., ... Atkin,
644 O. K. (2017). Thermal limits of leaf metabolism across biomes. *Global Change Biology*, *23*, 209–223.
- 645 Pennington, R. T., Lavin, M., & Oliveira-Filho, A. (2009). Woody Plant Diversity, Evolution, and
646 Ecology in the Tropics: Perspectives from Seasonally Dry Tropical Forests. *Annual Review of Ecology,
647 Evolution, and Systematics*, *40*, 437–457.
- 648 Pennington, R. T., Prado, D. E., & Pendry, C. A. (2000). Neotropical seasonally dry forests and
649 Quaternary vegetation changes. *Journal of Biogeography*, *27*, 261–273.
- 650 Prado, D. E., & Gibbs, P. E. (1993). Patterns of Species Distributions in the Dry Seasonal Forests of
651 South America. *Annals of the Missouri Botanical Garden*, *80*, 902–927.
- 652 Prance, G. T. (1982). *Forest Refuges: evidence from woody angiosperms*. In G. T. Prance (Ed.),
653 *Biological diversification in the tropics* (pp. 137-156). New York, NY: Columbia University Press.
- 654 Prentice, I. C., Cramer, W., Harrison, S. P., Leemans, R., Robert, A., Solomon, A. M., ... Solomon, A. M.
655 (1992). A Global Biome Model Based on Plant Physiology and Dominance, Soil Properties and
656 Climate. *Journal of Biogeography*, *19*, 117–134.
- 657 Prentice, K. C. (1990). Bioclimatic distribution of vegetation for general circulation models. *Journal of
658 Geophysical Research*, *95*, 11811–11830.
- 659 Prieto-Torres, D. A., & Rojas-Soto, O. R. (2016). Reconstructing the Mexican Tropical Dry Forests via
660 an Autoecological Niche Approach: Reconsidering the Ecosystem Boundaries. *PLOS ONE*, *11*.
- 661 Prieto-Torres, D. A., Navarro-Siguenza, A. G., Santiago-Alarcon, D. & Rojas-Soto, O. R. (2016)
662 Response of the endangered tropical dry forests to climate change and the role of Mexican
663 Protected Areas for their conservation. *Global Change Biology*, *22*, 364-379.
- 664 Qian, H., Jin, Y., & Ricklefs, R. E. (2017). Patterns of phylogenetic relatedness of angiosperm woody
665 plants across biomes and life-history stages. *Journal of Biogeography*, *44*, 1383-1392.
- 666 Ratter, J. A., Ribeiro, J. F., & Bridgewater, S. (1997). The Brazilian Cerrado Vegetation and Threats to
667 its Biodiversity. *Annals of Botany*, *80*, 223–230.
- 668 Sandel, B., Gutiérrez, A. G., Reich, P. B., Schrödt, F., Dickie, J., & Kattge, J. (2015). Estimating the
669 missing species bias in plant trait measurements. *Journal of Vegetation Science*, *26*, 828–838.
- 670 Särkinen, T., Iganci, J. R. V, Linares-Palomino, R., Simon, M. F., & Prado, D. E. (2011). Forgotten
671 forests - issues and prospects in biome mapping using Seasonally Dry Tropical Forests as a case
672 study. *BMC Ecology*, *11*, 1-15.
- 673 Schimper, A. F. W. (1903). *Plant-geography upon a physiological basis*. Oxford: Clarendon Press.
- 674 Siepielski, A. M., Morrissey, M. B., Buoro, M., Carlson, S. M., Caruso, C. M., Clegg, S. M., ... Maccoll, A.
675 D. C. (2017). Precipitation drives global variation in natural selection. *Science*, *355*, 959–962.
- 676 Staver, a C., Archibald, S., & Levin, S. A. (2011). The global extent and determinants of savanna and
677 forest as alternative biome states. *Science*, *334*, 230–232.
- 678 R Core Team (2017). R: A language and environment for statistical computing. Vienna, Austria: R
679 Foundation for Statistical Computing.

- 680 ter Steege, H., Pitman, N. C. A., Phillips, O. L., Chave, J., Sabatier, D., Duque, A., ... Vásquez, R. (2006).
681 Continental-scale patterns of canopy tree composition and function across Amazonia. *Nature*, *443*,
682 444–447.
- 683 Van Bodegom, P. M., Douma, J. C., & Verheijen, L. M. (2014). A fully traits-based approach to
684 modeling global vegetation distribution. *Proceedings of the National Academy of Sciences of the*
685 *United States of America*, *111*, 13733–13738.
- 686 Vanzolini, P. E. (1963). Problemas faunísticos do cerrado. *Simpósio Sobre o Cerrado*, *307*, 1.
- 687 Veloso, H. P., Rangel Filho, A. L. R., & Lima, J. C. A. (1991). *Classificação da vegetação brasileira,*
688 *adaptada a um sistema universal*. Rio de Janeiro: Ministério da Economia, Fazenda e Planejamento,
689 Fundação Instituto Brasileiro de Geografia e Estatística, Diretoria de Geociências, Departamento de
690 Recursos Naturais e Estudos Ambientais.
- 691 Violle, C., Borghy, B., & Choler, P. (2015). Trait databases: Misuses and precautions. *Journal of*
692 *Vegetation Science*, *26*, 826–827.
- 693 Violle, C., Reich, P. B., Pacala, S. W., Enquist, B. J., & Kattge, J. (2014). The emergence and promise of
694 functional biogeography. *Proceedings of the National Academy of Sciences*, *111*, 13690–13696.
- 695 Walter, H. (1973). *Vegetation of the earth in relation to climate and the eco-physiological conditions*.
696 New York: Springer.
- 697 Whittaker, R. H. (1975). *Community and ecosystems*. New York: McMillan.
- 698 Whittaker, R. J., Araújo, M. B., Jepson, P., Ladle, R. J., James, E., Watson, M., ... Willis, K. J. (2005).
699 Conservation Biogeography : Assessment and Prospect. *Diversity and Distributions*, *11*, 3–23.
- 700 Woodward, F. I., Lomas, M. R., & Kelly, C. K. (2004). Global climate and the distribution of plant
701 biomes. *Philosophical Transactions of the Royal Society of London. Series B, Biological Sciences*, *359*,
702 1465–76.
- 703 Zuloaga, F. O., Belgrano, M. J. (2015). The Catalogue of Vascular Plants of the Southern Cone and the
704 Flora of Argentina: their contribution to the World Flora. *Rodriguésia*, *66*, 989–1024.

Table 1: Confusion matrix between sites categorised based on floristic composition via hierarchical clustering (rows) and sites categorised using climate and a classification tree approach (columns). The diagonal gives the number of sites that are correctly classified by climate, while the off-diagonal elements give mis-classifications (18.6%). Only non-floristically transitional sites were considered. Accuracy: 81%; Average precision: 81%; Average recall: 80%.

	Amazon Forest	Atlantic Forest	Cerrado	Chaco	SDTF
Amazon Forest	989	6	45	0	0
Atlantic Forest	3	1290	199	5	50
Cerrado	58	167	357	0	50
Chaco	0	7	0	76	1
SDTF	0	51	65	1	408

Table 2: Confusion matrix between sites categorised based on floristic composition via hierarchical clustering (rows) and sites categorised using climate + soil and a classification tree approach (columns). The diagonal gives the number of sites that are correctly classified by climate, while the off-diagonal elements give mis-classifications (15.2%). Accuracy: 84%; Average precision: 84%; Average recall: 83%.

	Amazon Forest	Atlantic Forest	Cerrado	Chaco	SDTF
Amazon Forest	1001	4	37	0	0
Atlantic Forest	4	1331	161	4	49
Cerrado	48	121	423	0	40
Chaco	0	7	0	76	1
SDTF	0	55	52	1	417

Table 3: The mean variable importance value (\pm one standard error) for all climatic variables included in the Random Forest analysis across 100 runs of the Breiman's algorithm utilizing rarefactions of the main dataset (116 sites per biome).

Environmental Variables	Climate	Climate + Soil
	Mean \pm SE	Mean \pm SE
Mean Annual Precipitation (mm)	356.81 \pm 1.09	318.8 \pm 1.18
Temperature Seasonality (C°)	319.73 \pm 1.23	287.14 \pm 1.13
Maximum Climatological Water Deficit (mm/yr)	273.2 \pm 0.69	232.07 \pm 0.71
Isothermality (%)	233.29 \pm 0.98	211.53 \pm 0.87
pH (KCl)	*	188.98 \pm 0.84
Mean Temperature of Coldest Quarter (C°)	187.06 \pm 0.95	163.07 \pm 0.97
Precipitation of Wettest Quarter (mm)	155.06 \pm 0.56	120.57 \pm 0.48
Cation Exchange Capacity (cmol/Kg)	*	119.89 \pm 0.23
Precipitation of Driest Quarter (mm)	148.46 \pm 0.53	119.37 \pm 0.51
Precipitation of Driest Month (mm)	133.16 \pm 0.49	109.94 \pm 0.44
Mean Annual Temperature (C°)	122.75 \pm 0.71	96.15 \pm 0.66
Precipitation of Wettest Month (mm)	119.83 \pm 0.42	91 \pm 0.35
Mean Temperature of Driest Quarter (C°)	106.46 \pm 0.57	81.93 \pm 0.49
Amount of Sand (%)	*	81.73 \pm 0.17
Maximum Temperature of Warmest Month (C°)	103.8 \pm 0.33	81.69 \pm 0.31
Amount of Silt (%)	*	76.89 \pm 0.13
Temperature Annual Range (C°)	101.51 \pm 0.32	75.32 \pm 0.23
Precipitation Seasonality (%)	99.22 \pm 0.24	74.3 \pm 0.31
Minimum Temperature of Coldest Month (C°)	99.21 \pm 0.23	73.38 \pm 0.37
Precipitation of Warmest Quarter (mm)	98.61 \pm 0.3	70.77 \pm 0.18
Precipitation of Coldest Quarter (mm)	97.11 \pm 0.47	69.21 \pm 0.25
Temperature's Diurnal Range (C°)	91.45 \pm 0.19	68.67 \pm 0.16
Amount of Clay (%)	*	65.97 \pm 0.13
Mean Temperature of Wettest Quarter (C°)	79.01 \pm 0.22	61.57 \pm 0.24
Mean Temperature of Warmest Quarter (C°)	60.71 \pm 0.12	46.52 \pm 0.16

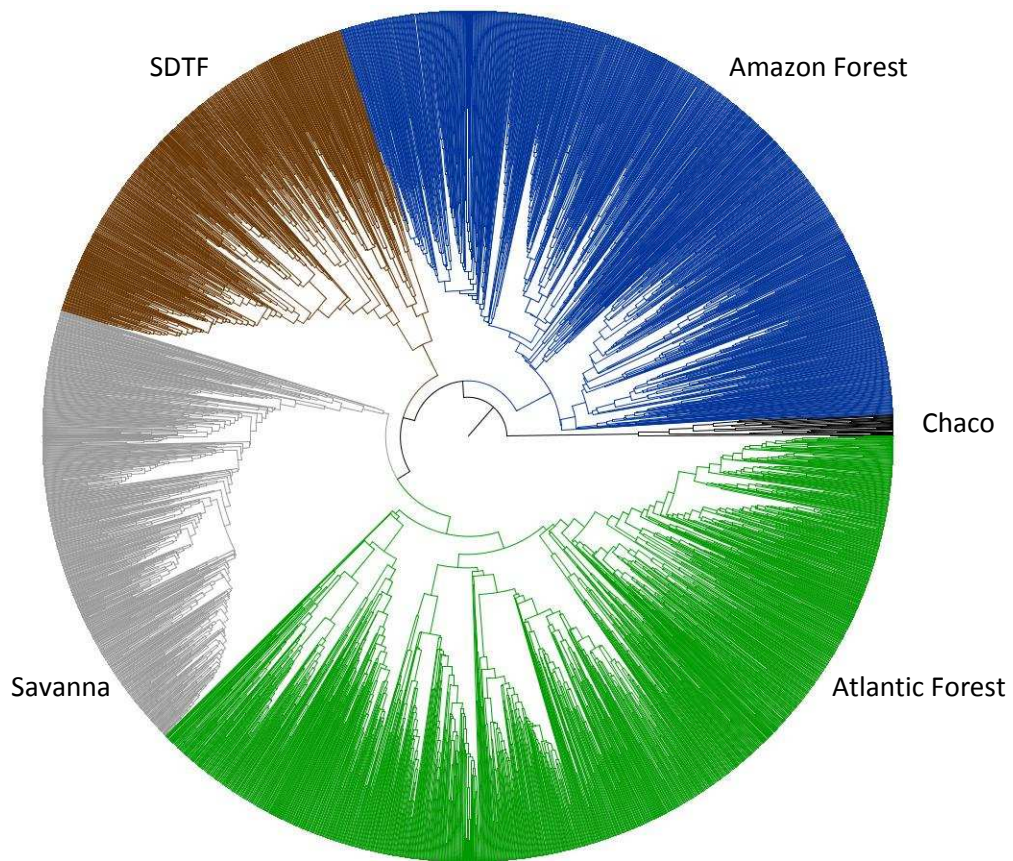


Figure 1: Hierarchical cluster of 4,103 sites in lowland (<1,000 m.a.s.l.) tropical South America and neighbouring subtropical areas based on tree species composition. Five principal higher-level groups can be observed, which were refer to as the Amazon Forest (blue), Atlantic Forest (green), Savanna (grey), Seasonally Dry Tropical Forest or SDF (brown) and Chaco (black) biomes. See main text for details.

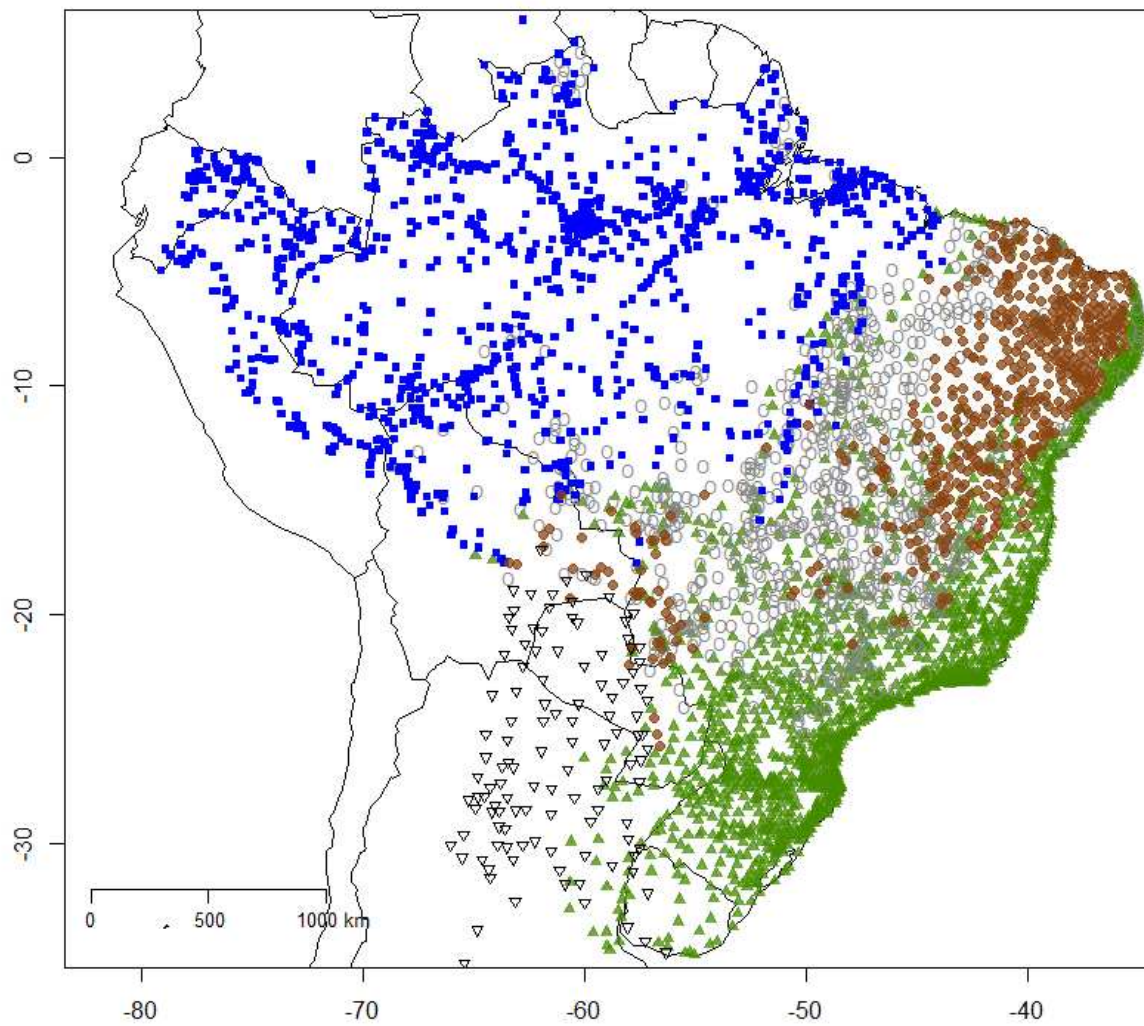


Figure 2 - Map of Lowland Tropical South America with sites classified into biomes based on hierarchical cluster analysis of tree species composition: Atlantic Forest (green triangles), Seasonally Dry Tropical Forest (brown circles), Savanna (hollow grey circles), Amazon Forest (blue squares), Chaco (inverted hollow black triangles). Sites that were revealed to be more similar floristically to a different biome from the one with which they originally clustered are here given the symbol of the floristically more similar biome.

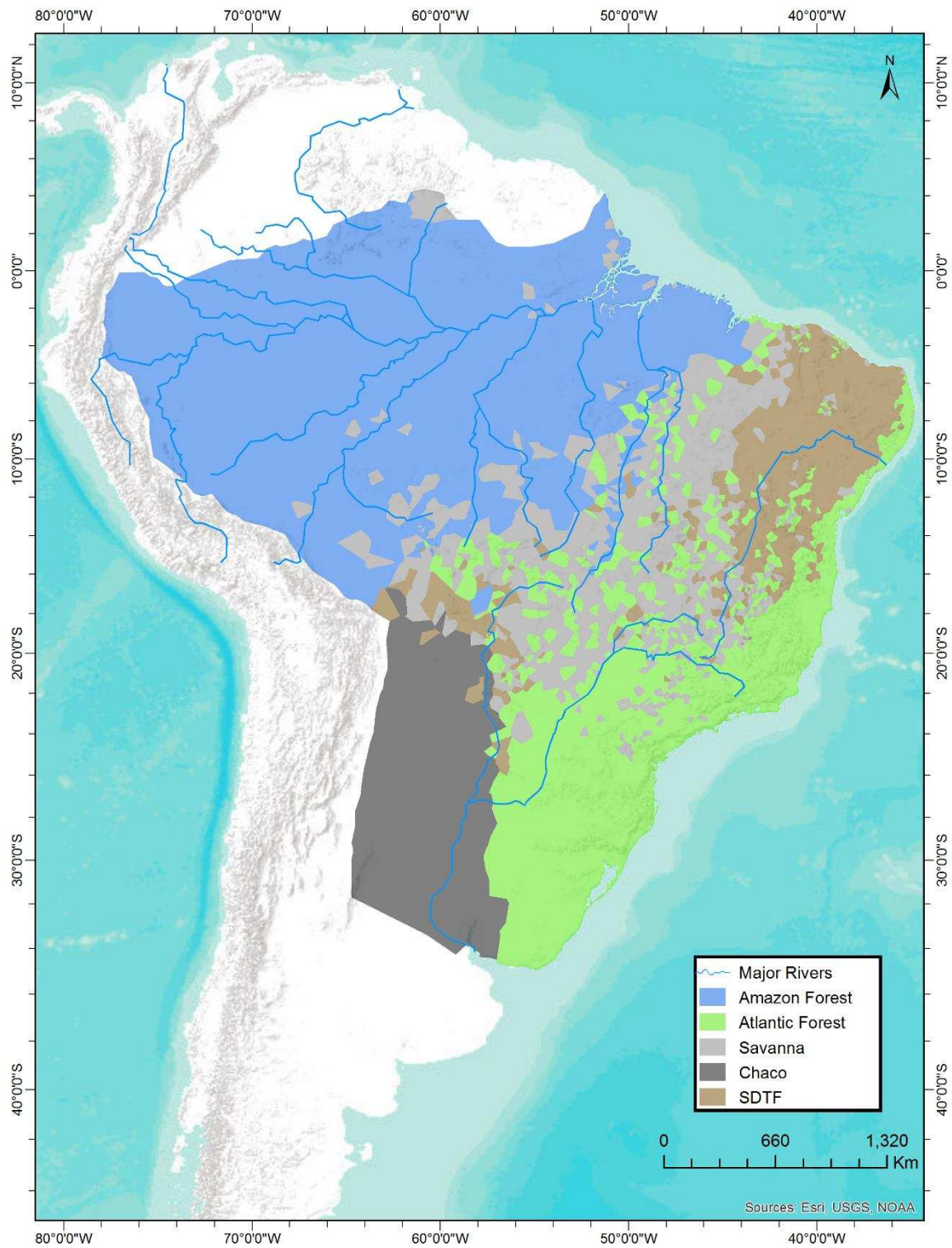


Figure 3 – Map of South America with a schematic representation of the biomes delimited via hierarchical cluster analysis in the present contribution (Amazon Forest, Atlantic Forest, Savanna, Chaco and Seasonally Dry Tropical Forests – SDTF). The map was created by applying the Thiessen polygons method on the categorised points presented in figure 2. See text for further details.

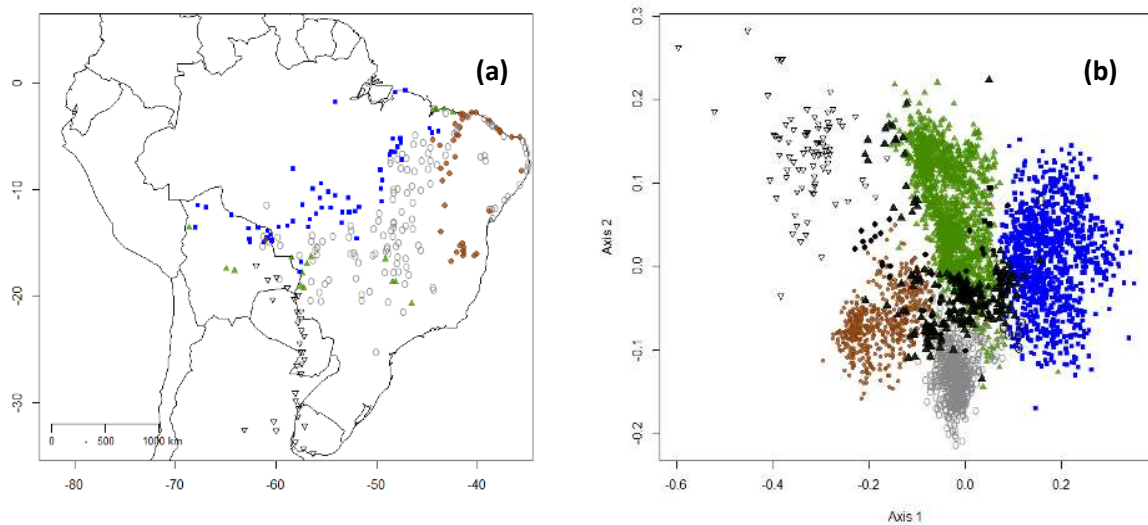


Figure 4: NeoTropTree sites which have a transitional/ambiguous floristic identity, as revealed by the silhouette analysis, and how they are distributed in geographic (a) and species compositional (b) spaces. In (a), sites are categorised according to the biome to which they are floristically more similar. In (b), correctly classified sites are shown in the same colour scheme as Figure 2, whereas misclassified sites are represented in black and in the same shape as the sites of their biome based on the original clustering analysis. Symbols correspond to: Atlantic Forest (green triangles), Seasonally Dry Tropical Forest (brown circles), Savanna (hollow grey circles), Amazon Forest (blue squares), Chaco (inverted hollow black triangles).

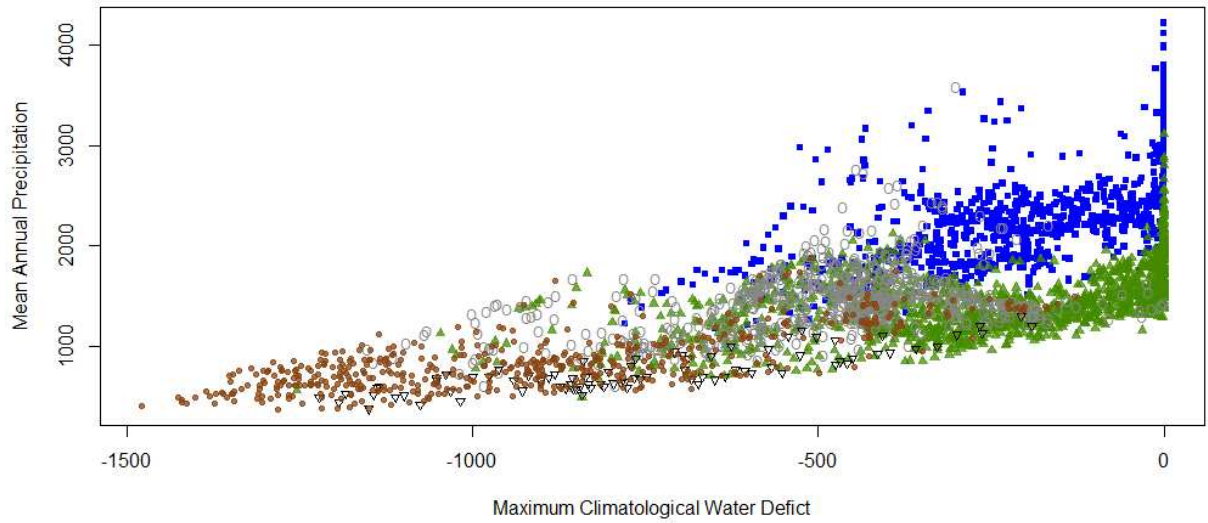


Figure 5: Distribution of sites with respect to precipitation regime. Mean annual precipitation values come from worldclim (Hijmans et al. 2005) and maximum climatological water deficit comes from Chave et al. (2014). Symbols correspond to: Atlantic Forest (green triangles), Seasonally Dry Tropical Forest (brown circles), Savanna (hollow grey circles), Amazon Forest (blue squares), Chaco (inverted hollow black triangles). Modelled after Fig. 1 in Malhi *et al.* (2009), which suggested that savannas were drier than seasonal forests, contrary to the pattern here.

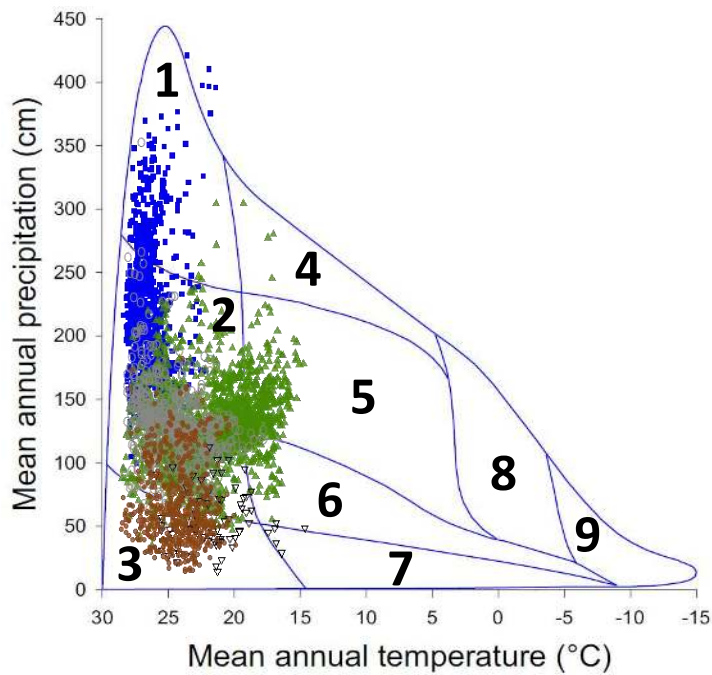


Figure 6: Distribution of sites in climatic space across the nine biomes proposed by Wittaker (1975) considering mean annual precipitation (cm) and mean annual temperature (C°). Numbers correspond to: Tropical rain forest (1), Tropical seasonal forest/savanna (2), Tropical and subtropical desert (3), Temperate rainforest (4), Temperate deciduous forest (5), Woodland/scrubland (6), Temperate grassland/dessert (7), Boreal forest (8), and Tundra (9). While symbols and colors correspond to: Atlantic Forest (green triangles), Seasonally Dry Tropical Forest (brown circles), Savanna (hollow gray circles), Amazon Forest (blue squares), and Chaco (inverted hollow black triangles).

Appendix to:

Silva de Miranda, P., L., Oliveira-Filho, A., T., Pennington, R., T., Neves, D., M., Baker, T., R., Dexter, K., G. (2018). Using tree species inventories to map biomes and assess their climatic overlaps in lowland tropical South America

Appendix 1. Main Biomes of Lowland Tropical South America – Brief descriptions

Wet Forest Biomes (Amazon and Atlantic Forests)

All rain forests, moist forests, evergreen forests and most semideciduous forests fell within two overarching groups in the cluster analysis, which we termed the Atlantic and Amazon Forest biomes. While we have argued that a floristics approach can be used to delimit biomes at continental scales where biogeographic factors are not the main driver of turnover in species composition, it may be that the floristic differentiation between the Atlantic and Amazon Forests is due in part to their biogeographic isolation by the Dry Diagonal. However, to definitely determine whether these forests represent distinct biomes, further comparative research is needed to determine how they compare in terms of ecosystem function.

The Atlantic Forest biome can be further divided into three different floristic groups, a northern group, completely tropical, encompassing all the coastal Atlantic forests ranging from northeast Brazil south to the state of Rio de Janeiro; a second group, largely sub-tropical, beginning at Sao Paulo's coast and harbouring all of the forests covering the South of Brazil, Uruguay, Southeast Paraguay and portions of Northeast Argentina, especially the Misiones region; and a last group, also tropical, formed by semideciduous forests further inland, scattered mostly across Brazil, but also present as far west as Bolivia. This distribution matches the *sensu-latissimo* definition proposed by (Oliveira-Filho *et al.*, 2006) with the additional inclusion of forest patches amongst the subtropical grasslands in the south of Brazil, Southern Paraguay, most of Uruguay and Northeast Argentina. This region has been distinguished from the Atlantic Forest in the past based on its overall physiognomy of forest patches in a grassy landscape, which contrasts with contiguous forest. However, these forest patches clearly show strong floristic continuity

with the Atlantic Forest, as was also observed by Oliveira-Filho *et al.* (2013), and likely have similar ecosystem function to the now heavily fragmented Atlantic Forest.

The Amazon Forest biome does not show as clear subdivisions as the Atlantic Forest biome. However, there is evident floristic differentiation between “terra firme” and seasonally flooded forests, and these two subgroups can be further divided between sites in the western Amazon (from Peru, Bolivia, Ecuador and the Brazilian state of Acre) and the eastern Amazon (encompassing most of the Brazilian portion of the Amazon Forest, including the states of Amazonas, Pará, Mato Grosso, Maranhão and Roraima). These divisions between eastern and western Amazon and between “terra firme” and seasonally flooded forests have been reported before in the literature (e.g. Prance 1982; ter Steege *et al.*, 2006).

The gallery forests within the Cerrado Domain do not cluster with the prevailing Savanna biome in that Domain, nor do they form their own unique cluster. Instead, they are floristically most similar to the most geographically proximal wet forest biome, either the Atlantic or the Amazon Forest. Similarly, sites found in sandy coastal areas of Brazil, often termed “restingas” or “matas de maré”, do not comprise a single group in our hierarchical cluster, but cluster with the closest wet forest biome (Atlantic or Amazon Forest).

Dry Biomes (Savanna, Seasonally Dry Tropical Forest and Chaco)

Our analyses confirm that the savannas distributed across LTSA form a single floristic unit. There are no clear subdivisions within this Biome. Savanna is a disturbance driven system, which may allow for the ready establishment of dispersing propagules of dominant tree species and a homogenisation of the tree flora over large spatial scales. Indeed, savannas in SA have been shown to possess a consistent set of dominant oligarchic tree species (Bridgewater *et al.*, 2004), which may be why clear subgroups are not evident. In addition, the high disturbance in the system may prevent tree communities from reaching an equilibrium or ‘climax’ in species composition, which may inhibit sites from converging on similar species composition in similar environments, which could in turn inhibit the formation of clear floristic groups.

Our analyses suggest that the SDTF scattered across lowland tropical South America should be regarded as one single biome, as has been suggested by previous studies (DRYFLOR, 2016; Pennington et al., 2000, 2009; Prado & Gibbs, 1993). As found by Neves et al. (2015) and DRYFLOR (2016), our results suggest two main groups across the Dry Diagonal, one comprising the various forests of the Caatinga Domain and the other comprising SDTF patches scattered throughout the Cerrado Domain and into regions of the Pantanal and Chiquitania. The Misiones floristic group here shows greater floristic affinity with the Atlantic Forest than it does with other SDTF. The Misiones forests receive more rainfall than other STDF (Neves et al. 2015) and are semi-deciduous in nature (DRYFLOR 2016). Meanwhile, the Piedmont forests are found to be floristically more similar to sites in the Chaco than to other SDTF. This is perhaps not surprising given their proximity to the Chaco and that both environments receive significant frost in the winter season (Neves et al. 2015).

The Chaco is floristically different, in terms of tree species composition, from other sites across LTSA. While this difference has been noted in the past, particularly in comparison with SDTF (Pennington et al., 2000; Prado & Gibbs, 1993; Spichiger et al., 2004), it has often been attributed to the Chaco experiencing heavy frost. While many of the sites in our Chaco biome do experience frost, a large number of sites in eastern Bolivia, western Paraguay and south central Brazil (Mato Grosso do Sul state) do not experience frost, and could be considered tropical in nature. We refer to these northern Chaco sites as the 'tropical Chaco'. It is floristically distinct from other SDTF and may have different ecosystem function, but further research is needed to compare ecosystem function in SDTF versus tropical and subtropical Chaco sites.

Chiquitania and Pantanal

Two regions that have always been a challenge to place in floristic or biome classification schemes are the Chiquitania and Pantanal regions of eastern Bolivia and southwestern Brazil. The Chiquitania region is the site of contact between savannas (composed mostly of the savanna wetlands from the Pantanal region and the Llanos de Moxos region in Bolivia), Amazon Forest, SDTF and the Chaco (Killeen et al., 2006; Pennington et al., 2009). This region is composed of a mosaic of SDTF mixed with savannas, overlying

diverse old geological formations (Navarro, 2011), and its northern portion grades into the Amazon Forest. Chiquitania is notable for its lack of endemic plant species, which is attributed to its recent geological past and to its transitional nature (Killeen et al., 2006). Our analyses show that sites within the Chiquitania's geographic range (Navarro, 2011) alternatively cluster together with the SDTF, Savanna and Amazon Forest biomes, and that perhaps the region should not be considered as a distinct vegetation entity on its own.

The floristic identity of forests and woodlands in the Pantanal also do not stand out as distinct within a continental context, although such was proposed by Veloso et al. (1991) and Navarro (2011). The Brazilian government also classifies it as a unique Domain (IBGE, 2012). However, just like Chiquitania, the Pantanal is composed of sites that belong to the Savanna and SDTF biomes as well as a wet forest biome, but in this case the Atlantic Forest biome. The lack of endemic species in this region is also evidence of its lack of floristic distinctness and recent geological history (Pott *et al.*, 2011)

References:

- Bridgewater, S., Ratter, J. A., & Ribeiro, J. F. (2004). Biogeographic patterns , b-diversity and dominance in the cerrado biome of Brazil. *Biodiversity and Conservation*, 13, 2295–2318.
- DRYFLOR. (2016). Plant diversity patterns in neotropical dry forests and their conservation implications. *Science*, 353, 1383–1387.
- IBGE. (2012). *Manual Técnico da Vegetação Brasileira* (segunda ed). Rio de Janeiro: Instituto de Brasileiro de Geografia e Estatística - IBGE.
- Killeen, T., Chavez, E., Peña-Claros, M., Toledo, M., Arroyo, L., Caballero, J., ... Steininger, M. (2006). The Chiquitano Dry Forest, the Transition between Humid and Dry Forest in Eastern Lowland Bolivia. In R. . T. Pennington, G. P. . Lewis, & J. A. Ratter (Eds.), *Neotropical Savannas and Seasonally Dry Forests Plant Diversity, Biogeography, and Conservation* (pp. 213–233). CRC Press.

- Navarro, G. (2011). *Classificación de la Vegetación de Bolivia*. Santa Cruz de la Sierra: Centro de Ecología Difusión Simón I. Patiño.
- Neves, D. M., Dexter, K. G., Pennington, R. T., Bueno, M. L., & Oliveira-Filho, A. T. (2015). *Environmental and historical controls on floristic composition across the South American Dry Diagonal*.
- Oliveira-Filho, A. T., Budke, J. C., Jarenkow, J. A., Eisenlohr, P. V., & Neves, D. R. M. (2013). Delving into the variations in tree species composition and richness across South American subtropical Atlantic and Pampean forests. *Journal of Plant Ecology*, 8, 242–260.
- Oliveira-Filho, A. T., Jarenkow, L. A., & Rodal, M. J. N. (2006). Floristic relationships of seasonally dry forests of Eastern South America based on tree species distribution patterns. In *Neotropical Savannas and Seasonally Dry Forests: Plant Diversity, Biogeography, and Conservation* (pp. 159–192).
- Pennington, R. T., Lavin, M., & Oliveira-Filho, A. (2009). Woody Plant Diversity, Evolution, and Ecology in the Tropics: Perspectives from Seasonally Dry Tropical Forests. *Annual Review of Ecology, Evolution, and Systematics*, 40, 437–457.
- Pennington, R. T., Prado, D. E., & Pendry, C. A. (2000). Neotropical seasonally dry forests and Quaternary vegetation changes. *Journal of Biogeography*, 27, 261–273.
- Pott, a, Oliveira, a K. M., Damasceno-Junior, G. a, & Silva, J. S. V. (2011). Plant diversity of the Pantanal wetland. *Brazilian Journal of Biology = Revista Brasileira de Biologia*, 71(1 Suppl 1), 265–273.

- Prado, D. E., & Gibbs, P. E. (1993a). Patterns of Species Distributions in the Dry Seasonal Forests of South America. *Annals of the Missouri Botanical Garden*, 80, 902–927.
- Prado, D. E., & Gibbs, P. E. (1993b). Patterns of species distributions in the dry seasonal forests of South America. *Annals of the Missouri Botanical Garden*, 80, 902–927.
- Prance, G. T. (1982). *Biological Diversity in the Tropics*. (N. York, Ed.). Columbia University Press.
- Spichiger, R., Calenge, C., & Bise, B. (2004). Geographical zonation in the Neotropics of tree species characteristic of the Paraguay-Paraná Basin. *Journal of Biogeography*, 31, 1489–1501.
- ter Steege, H., Pitman, N. C. a, Phillips, O. L., Chave, J., Sabatier, D., Duque, A., ... Vásquez, R. (2006). Continental-scale patterns of canopy tree composition and function across Amazonia. *Nature*, 443, 444–447.
- Veloso, H. P., Rangel Filho, A. L. R., & Lima, J. C. A. (1991). *Classificação da Vegetação Brasileira Adaptada a um Sistema Universal*. Rio de Janeiro: Fundação Instituto Brasileiro de Geografia e Estatística, IBGE.

Appendix to:

Silva de Miranda, P., L., Oliveira-Filho, A., T., Pennington, R., T., Neves, D., M., Baker, T., R., Dexter, K., G. (2018). Using tree species inventories to map biomes and assess their climatic overlaps in lowland tropical South America

Appendix 2. Indicator Species Analysis

Methods

In order to determine the biome affiliation of species, we used a modified version of the phi coefficient of Tichy & Chytrý (2006) that leverages presence/absence data and accounts for variation in sampling amongst groups. Specifically, we used the the r^g correlation index of De Cáceres & Legendre (2009). This varies from -1 to 1, with positive values indicating a non-random association of a species with a group, or biome in this case, and negative values indicating a non-random anti-association. To test if the associations between a given species and biomes were significant, we randomized occurrences across sites 1000 times and assessed if a species was found more or less frequently in a biome than expected by chance, using an 0.05 alpha significance threshold, with a multiple significance test (Šidák's test) to avoid Type I error. Species with a significant and positive association with any biome are henceforth referred to as diagnostic species for that biome. Indicator species analyses were conducted using functions in the `indicspecies` package for the R Statistical Software (De Cáceres & Legendre, 2009).

Results:

In total, 8231 out of 10306 tree species were found to be significantly positively associated with at least one biome ($p < 0.05$ after Šidák's test). The Atlantic Forest has 2492 diagnostic species, the Amazon Forest has 4786 and the other Biomes – Savanna, SDTF and Chaco – have 318, 459 and 177 respectively. Table S8 reports all species and their association values (r^B) for each Biome.

References:

Cáceres, M. De, & Legendre, A. N. D. P. (2009). Associations between species and groups of sites: Indices and statistical inference. *Ecology*, *90*, 3566–3574.

Tichy, L., & Chytrý, M. (2006). Statistical determination of diagnostic species for site groups of unequal size. *Journal of Vegetation Science*, *17*, 809–818.

Appendix to:

Silva de Miranda, P., L., Oliveira-Filho, A., T., Pennington, R., T., Neves, D., M., Baker, T., R., Dexter, K., G. (2018). Using tree species inventories to map biomes and assess their climatic overlaps in lowland tropical South America

Appendix 3. Supplementary figures and tables

Table S2: Summary of results for silhouette analysis. The rows correspond to totals under the original classification, derived from the hierarchical clustering analysis, while the columns correspond to totals based on looking at the overall similarity of sites to the multidimensional centroid of each major group in the cluster. The diagonal corresponds to sites where the two approaches agree, while the off-diagonal elements correspond to sites where the two approaches disagree, which we consider to indicate sites that are transitional between the two biomes.

	Amazon Forest	Atlantic Forest	Cerrado	Chaco	SDTF	Original Classification
Amazon Forest	1042	7	0	0	0	1049
Atlantic Forest	46	1549	115	19	39	1768
Cerrado	7	0	632	0	0	639
Chaco	0	0	0	84	0	84
SDTF	2	10	13	13	525	563
Corrected Classification	1097	1566	760	116	564	4103

Table S3: Confusion matrix between sites categorised based on floristic composition via hierarchical clustering (rows) and sites categorised using climate + soil and a classification tree approach (columns), for all sites including ones identified as transitional via a silhouette analysis. The diagonal gives the number of sites that are correctly classified by climate + soil, while the off-diagonal elements give misclassifications (20.7%). Accuracy: 79%; average precision: 78%; average **recall** rate: 76%.

	Amazon Forest	Atlantic Forest	Cerrado	Chaco	SDTF
Amazon Forest	1021	8	66	0	2
Atlantic Forest	7	1281	209	11	58
Cerrado	79	179	439	1	62
Chaco	0	22	0	89	5
SDTF	2	60	75	5	422

Table S4: Confusion matrix between sites categorised based on floristic composition via hierarchical clustering (rows) and sites categorised using climate and a classification tree approach (columns), for all non-geographically overlapping sites (those with centres >10 km apart). The diagonal gives the number of sites that are correctly classified by climate, while the off-diagonal elements give mis-classifications (20.3%). Accuracy: 79%; average precision: 79%; average recall rate: 77%.

	Amazon Forest	Atlantic Forest	Cerrado	Chaco	SDTF
Amazon Forest	812	6	63	0	1
Atlantic Forest	6	1051	158	7	44
Cerrado	66	137	361	1	56
Chaco	0	14	1	78	4
SDTF	2	42	64	4	353

Table S5: Confusion matrix between sites categorised based on floristic composition via hierarchical clustering (rows) and sites categorised using climate + soil and a classification tree approach (columns), for all sites including ones identified as transitional via a silhouette analysis. The diagonal gives the number of sites that are correctly classified by climate + soil, while the off-diagonal elements give mis-classifications (17.7%). Accuracy: 82%; average precision: 81%; average recall rate: 80%.

	Amazon Forest	Atlantic Forest	Cerrado	Chaco	SDTF
Amazon Forest	1038	6	51	0	2
Atlantic Forest	9	1317	174	10	56
Cerrado	69	136	500	1	54
Chaco	0	22	0	87	7
SDTF	3	57	64	4	436

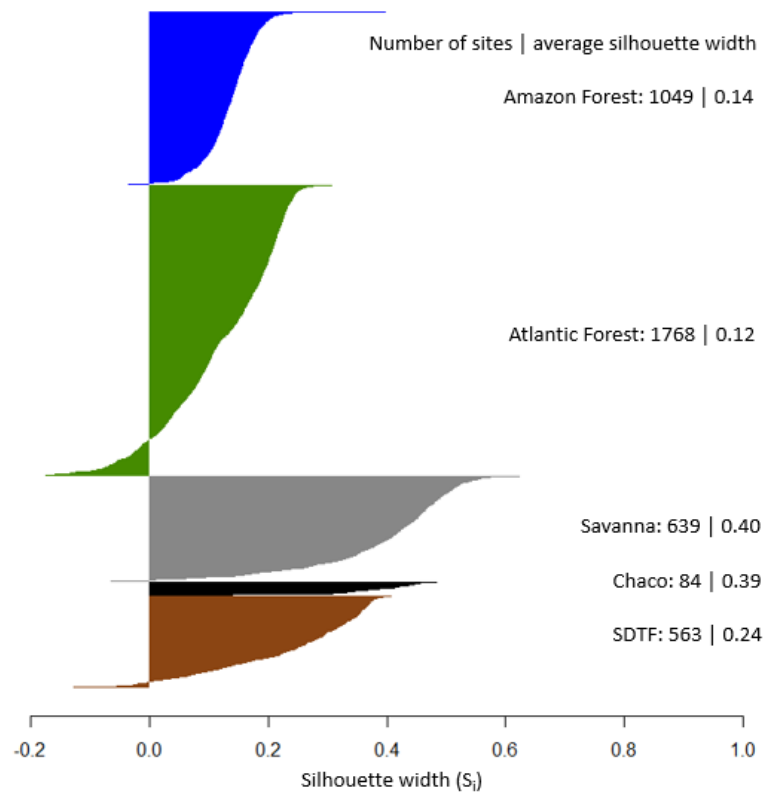


Figure S1 – Silhouette plot with all 4103 NeoTropTree sites included in the cluster analysis. Positive Silhouette width values (S_i) indicate that a site is indeed most similar, in terms of tree species composition, to the other sites in the biome it has been assigned to, whereas negative values indicate that a given site is compositionally more similar to one of the other biomes delimited through the cluster analysis than it is to the biome with which it clustered. The plot also presents the number of sites that compose each biome and their average silhouette width value (S_i).

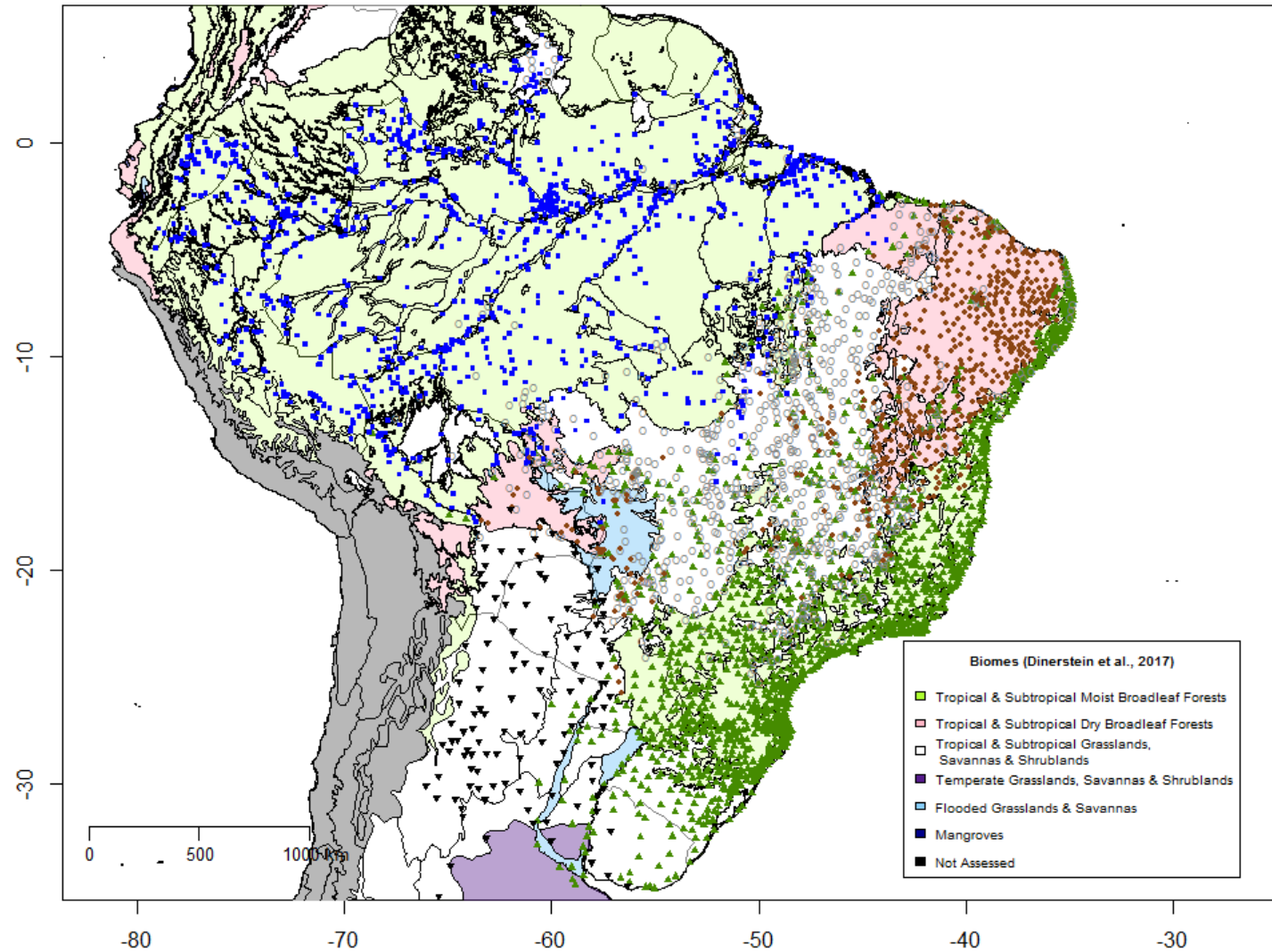


Figure S2 – Map of South America with areas coloured according to Dinerstein *et al.*, (2017), which combines ecoregions into biomes and is a reviewed and updated version of Olson *et al.* (2001). The points on the map are the NeoTropTree tree species inventory sites classified into biomes by this study: Atlantic Forest (green triangles), Seasonally Dry Tropical Forest (brown circles), Savanna (hollow gray circles), Amazon Forest (blue squares), and Chaco (inverted hollow black triangles).

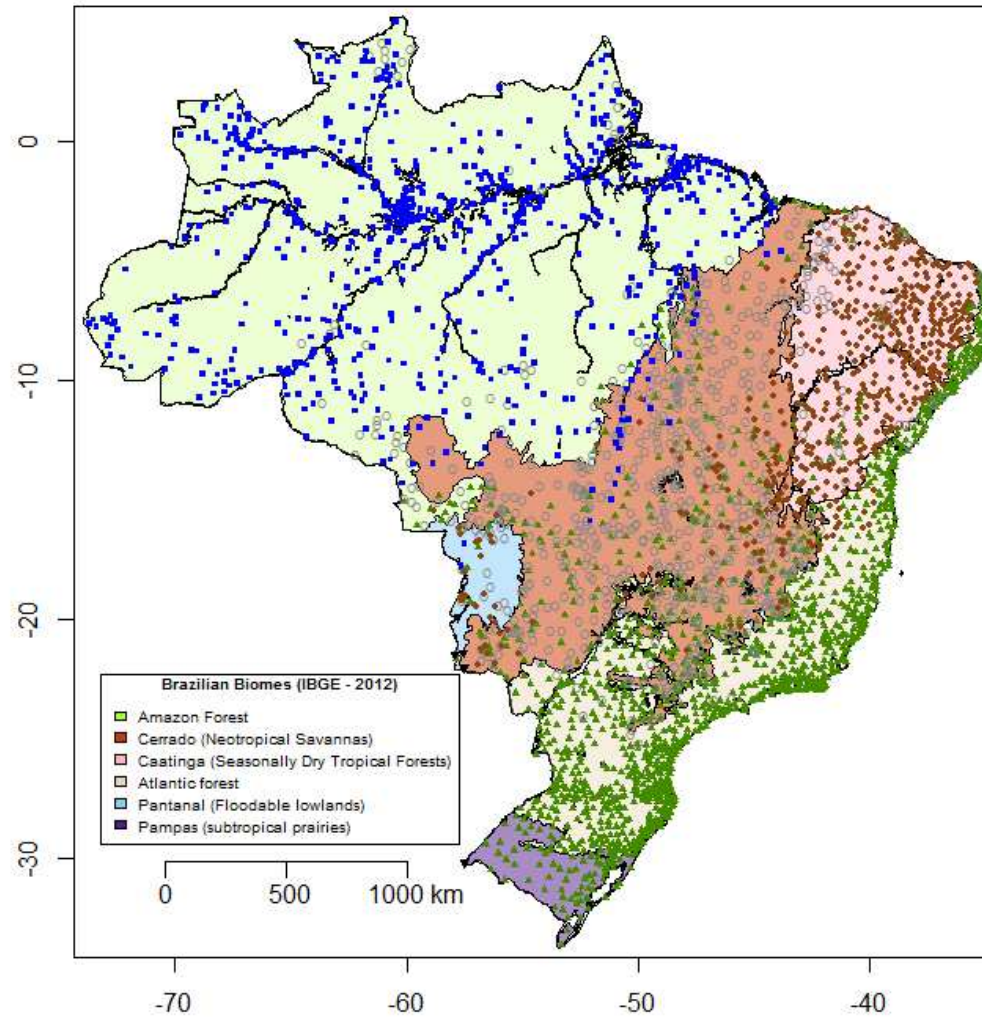


Figure S3 – Map of South America with areas coloured according to the Domain system of IBGE (2012), which are also sometimes referred to as biomes. The points on the map are the Brazilian NeoTropTree tree species inventory sites classified into biomes by this study: Atlantic Forest (green triangles), Seasonally Dry Tropical Forest (brown circles), Savanna (hollow gray circles), Amazon Forest (blue squares), and Chaco (inverted hollow black triangles).

Table S6: Confusion matrix between sites categorised according to Dinerstein *et al.* (2017) biome classification system (rows), which was adapted from Olson *et al.*(2001), and sites as categorised into biomes in this study (columns). The underlined numbers represents the sites that were assigned to matching categories between the two systems. The other elements are treated here as mis-classifications.

Dinerstein <i>et al.</i> (2017) - Adapted from Olson <i>et al.</i> (2001)	Existing Lowland Tropical South America Biomes according to tree species composition					
	Amazon Forest	Atlantic Forest	Savanna	Chaco	SDTF	Total
Tropical and subtropical moist broadleaf forests (tropical and subtropical humid)	<u>994</u>	<u>994</u>	117	0	41	2146
Tropical and subtropical grasslands, savannas and shrublands (tropical and subtropical semiarid)	57	403	<u>544</u>	<u>99</u>	90	1193
Tropical and subtropical dry broadleaf forests (tropical and subtropical semihumid)	21	88	78	1	<u>420</u>	608
Flooded grasslands and savannas (temperate to tropical fresh or brackish water inundated)	1	18	16	4	15	54
Temperate grasslands, savannas and shrublands (temperate semiarid)	0	10	0	<u>12</u>	0	22
Mangrove (subtropical and tropical salt water inundated)	24	51	5	0	0	80

Table S7: Confusion matrix between sites categorised according to IBGE (2012) biome/phytogeographic domain classification system (rows), which was adapted from Veloso (1992), and sites as categorised into biomes in this study (columns). The underlined numbers represents the sites that were assigned to matching categories between the two systems. The other elements are treated here as mis-classifications.

Existing Lowland Tropical South America Biomes according to tree species composition						
Brazilian biomes	Amazon Forest	Atlantic Forest	Savanna	SDTF	Chaco	Total
Amazon Forest	<u>635</u>	20	74	1	0	730
Atlantic Forest	0	<u>911</u>	37	31	0	979
Cerrado	35	<u>287</u>	<u>539</u>	114	2	977
Caatinga	0	57	54	<u>369</u>	0	480
Pampa	0	78	0	0	1	79
Pantanal	2	9	21	18	1	51
Continental water mass	85	21	4	10	1	121
Oceanic water mass	6	89	2	2	0	99