



RESEARCH

Open Access

Validation of various adaptive threshold methods of segmentation applied to follicular lymphoma digital images stained with 3,3'-Diaminobenzidine&Haematoxylin

Anna Korzynska¹, Lukasz Roszkowiak^{1*}, Carlos Lopez², Ramon Bosch², Lukasz Witkowski¹ and Marylene Lejeune²

Abstract

The comparative study of the results of various segmentation methods for the digital images of the follicular lymphoma cancer tissue section is described in this paper. The sensitivity and specificity and some other parameters of the following adaptive threshold methods of segmentation: the Niblack method, the Sauvola method, the White method, the Bernsen method, the Yasuda method and the Palumbo method, are calculated. Methods are applied to three types of images constructed by extraction of the brown colour information from the artificial images synthesized based on counterpart experimentally captured images. This paper presents usefulness of the microscopic image synthesis method in evaluation as well as comparison of the image processing results. The results of thoughtful analysis of broad range of adaptive threshold methods applied to: (1) the blue channel of RGB, (2) the brown colour extracted by deconvolution and (3) the 'brown component' extracted from RGB allows to select some pairs: method and type of image for which this method is most efficient considering various criteria e.g. accuracy and precision in area detection or accuracy in number of objects detection and so on. The comparison shows that the White, the Bernsen and the Sauvola methods results are better than the results of the rest of the methods for all types of monochromatic images. All three methods segments the immunopositive nuclei with the mean accuracy of 0.9952, 0.9942 and 0.9944 respectively, when treated totally. However the best results are achieved for monochromatic image in which intensity shows brown colour map constructed by colour deconvolution algorithm. The specificity in the cases of the Bernsen and the White methods is 1 and sensitivities are: 0.74 for White and 0.91 for Bernsen methods while the Sauvola method achieves sensitivity value of 0.74 and the specificity value of 0.99. According to Bland-Altman plot the Sauvola method selected objects are segmented without undercutting the area for true positive objects but with extra false positive objects. The Sauvola and the Bernsen methods gives complementary results what will be exploited when the new method of virtual tissue slides segmentation be develop.

Virtual Slides: The virtual slides for this article can be found here: slide 1: <http://diagnosticpathology.slidepath.com/dih/webViewer.php?snapshotId=13617947952577> and slide 2: <http://diagnosticpathology.slidepath.com/dih/webViewer.php?snapshotId=13617948230017>.

Keywords: Lymphoma, Immunohistochemistry, Nuclear quantification, Pathology, Morphometry

*Correspondence: Iroszkowiak@ibib.waw.pl

¹Nalecz Institute of Biocybernetics and Biomedical Engineering, Ks. Trojdena 4 Str. Warsaw, Poland

Full list of author information is available at the end of the article

Introduction

Immunohistochemically (IHC) stained tissue samples are used by pathologists to establish the diagnosis and the prognosis and the treatment in various types of cancer [1-4]. The evaluation process takes into account the amount of immunopositive cells (membrane, cytoplasm or nuclear staining) and the architecture of the tissue sample. Such evaluation can be done by the experienced pathologist directly via microscope or from digital images of the samples.

The human direct evaluation is irreproducible, time-consuming as well as intra- and interobserver error prone [5]. So different automated methods, based on the digital image processing are proposed, as they promise the improvement of evaluation reproducibility and they can become tools for inter- and intralaboratory unification in cut-offs and threshold levels [6].

To make the validation more accurate and precise, the image segmentation should indicate cells' membrane, cells' cytoplasm and/or nuclei and/or other organelles (e.g. the lysosome) efficiently and robustly [7-9]. The error in objects detection ought to be as small as possible and should be given explicitly since it determines errors in features important in the process of diagnosis. Errors in objects detection influences objects morphology evaluation, pattern of objects' distribution and texture features which reflects chromatin distribution [10,11].

Segmentation of the images of stained tissue samples is a complex problem, because of huge variability of shapes, size and colour in the objects of interest and in the general architecture of the tissue samples. So far, there have been developed many methods, which detect objects of interest in these types of images, by many groups [12-18]. These methods come from various segmentation approaches and present various advantages and disadvantages. The main obstacle is that all these methods are validated by their authors on their experimentally captured images. There is lack of any comparative study which answers a question of usefulness, efficiency and reproducibility of the particular method, applying it to the particular type of tissue and/or staining processes. Using comparative study on fixed images' database it is possible to achieve result even if a very small difference in results of segmentation is expected.

The comparative study of results of various methods of segmentation has been performed for the fluorescent microscopy images of living cell images [6], for the stained tissue section in neuroblastoma cancer (Ki67) [8] and breast cancer cells (estrogen/progesterone status) [1]. In the case of fluorescent microscopy images segmentation, the Lehmusola and co-workers [19,20] proposed evaluate segmentation method using set of synthetic images constructed by prepared software with assumed objects'

border position. The averaged multiple manual segmentation results were treated as reference "true" in the case of the other comparisons. Because comparison results for fluorescent images allows their authors to detect small differences in method performance, it was decided to use synthetic images to compare chosen segmentation methods. This paper presents the method of artificial tissue sections images construction. In this method the position, shape and colour of objects and background are generated according to statistical model constructed based on observation the set of experimentally acquired images and on the physics of digital image acquisition and microscope image erasing. In this paper the follicular lymphoma cancer tissue sections immunohistochemically stained with 3,3'-diaminobenzidine (DAB) and contra-stained with hematoxylin (H) are under interest. The images captured from several tissue sections and from various camera and microscope sets are used to gain the knowledge about images features and characteristics.

The reliable evaluation of the chosen adaptive threshold methods of segmentation is the main goal of this investigation. The results of this study will serve as the background for developing of a new hybrid method in the next step of our investigation. But there is the additional aim of this paper: to present usefulness of the images synthesis method in evaluation and comparison of the image processing results. The synthetic images maintain features of experimental images such as level of noise, range of colour and tones, vignetting, and so on in controlled degree what gives researcher possibility to observe the influence of all the features and each feature separately on the result of image processing methods.

Next section "Related works" shows the review of principles of the automated approaches developed so far and used for various types of cancer tissue sections evaluation. The following section contains description of the characteristics of experimentally acquired lymphoma section tissue images stained with DAB & H. In total, six methods of segmentation are introduced in the other section. The experimentally collected and synthesized artificial images are presented subsequently. The validation of the methods and the results of their comparison are described in the section entitled "The results of the adaptive threshold method comparison". The discussion and conclusions are presented in the last section.

Related works

First systems for microscopic image analysis in histopathology, e.g. iPATH or UICC-TPCC [21], have been established as academic projects. The following steps have been performed in these systems: sampling, segmentation and calculation of chosen features which

are determined among normal, benign and malignant cells or cells' nuclei. The System EAMUS [22] followed the systems described above. It was dedicated to the digitalized glass slides, called virtual slides, for telemedicine which was designed as remote systems connected by internet with automatic image measurement systems to consults physicians and scientists. Its successor was developed under MATLAB and Java platform by Markiewicz [23] as a system for specific markers and pathologies. Both these systems are applied within the telepathology projects framework as a tool for verification the idea of the examination of microscopic images from a distance. Next semi-automatic computer-assisted systems for histopathology and immunohistopathology have become commercially available from DAKO and Aperio. But they are used as the virtual multiresolution slides constructors rather, than the sample or object in sample classification systems. More oriented towards feature evaluation is system proposed by Bueno [24] as parallel solution for high resolution histological and immunohistochemically stained tissue section images. What was learned from the use of all systems described above is that the automatic image segmentation, as the bottle neck of the computer-aided image analysis method is the most complex and challenging step in both histopathological samples images of paraffin tissue sections and also for cytological smears [25-27]. There are some complex and sophisticated algorithms [8,12,14,28-30], which have been developed and tested for various markers used in digital images of the histopathological samples apply to various tissues in various pathology. All of them use various threshold methods on selected or modified colour information separated from RGB digital images. Some of them use blue channel only as it gives greatest contrast between brown and blue but loose information about brown colour spread in G and R channels [31], the other propose combination of all channels of RGB as: "brown axis" = $B - 0.3 * (R + G)$ Tadrous 2010, [32], -colour deconvolution in which three well defined colour vectors, describing new colours in old colour space, should be achieved as calibration information (Ruifrok and Johanston 2001) [33-35], -"de-staining" algorithm separating up to three visually distinct colours to effect selective contrast [32]. Minority of algorithms uses HSV colour model in which detection of the brown colour can be simply rotation of the hue axes by Kuse [36]. All of threshold methods suffer from a lack of universality as they are adjusted by specific image parameters: level of contrast [37-39] or degree of saturation [8] and so on. It is observed that changes in image characteristics caused by tissue variability or more often by optics and camera settings cases moderate results of segmentation [15,40]. This paper compares the results of chosen thresholding methods applied to three types of colour information captured from RGB

digital images: (1) B channel, (2) brown axis and (3) deconvolution to separate brown channel. It allows us to analyze which thresholding method is effective towards which type of colour information if brown objects in DAB & H staining lymphoma tissue section should be selected.

The characteristics of experimentally acquired lymphoma section tissue images stained with DAB & H

Digital images of tissue section of paraffin embedded lymphomas where captured in a brightfield microscope. These images differ in colour ranges, pattern of object - cells' nuclei - distribution as well as in local and global contrast and brightness. Figure 1 (top-left) shows the image collected in the Hospital de Tortosa Verge de la Cinta using the indirect immunohistochemical primary antibodies against FOXP3 and the secondary antibodies which include the peroxidase block, labeled polymer, buffered with substrate/DAB+ chromogen and finally contra-stained with hematoxylin. All images show the brown end products for the immunopositive cells' nuclei among blue colour nuclei for the immunonegative cells.

The singular brown objects as well as the small clusters of brown objects, surrounded by blue ones, are observed in images. Nuclei are touching, not overlapping one another, in the clusters. Variation in blue and brown colours, as well as variation in objects density in one image and from one image to another, is observed. The inside of brown objects is visible as almost homogeneous, with smooth and slightly visible texture, while the inside of blue objects seems to be filled mostly with curly texture. Cells' nuclei marked with FOXP3 are nuclei of regulatory T-cells, it means immune system cells, so their distribution of size is similar to normal T-cells' population (distribution with small range and sharp peak), while distribution of most of the blue nuclei cells' population is typical for cancer cells' population (tumoral B lymphocytes). But some image features hinder the segmentation process, e.g. a presence of:

- spurious stain deposits in other types of cells: stromal, scar, lymphocytes;
- very dark parts of blue stained nuclei;
- partly blurred nuclei border with the colour rim caused by the chromatic aberration;
- colour noise.

Some non-homogeneity of light distribution in a single image is observed: the middle part is brighter than the peripheral one. Even images collected by one pathologist, using the particular microscope and camera, differ one from another. It is caused by random changes in

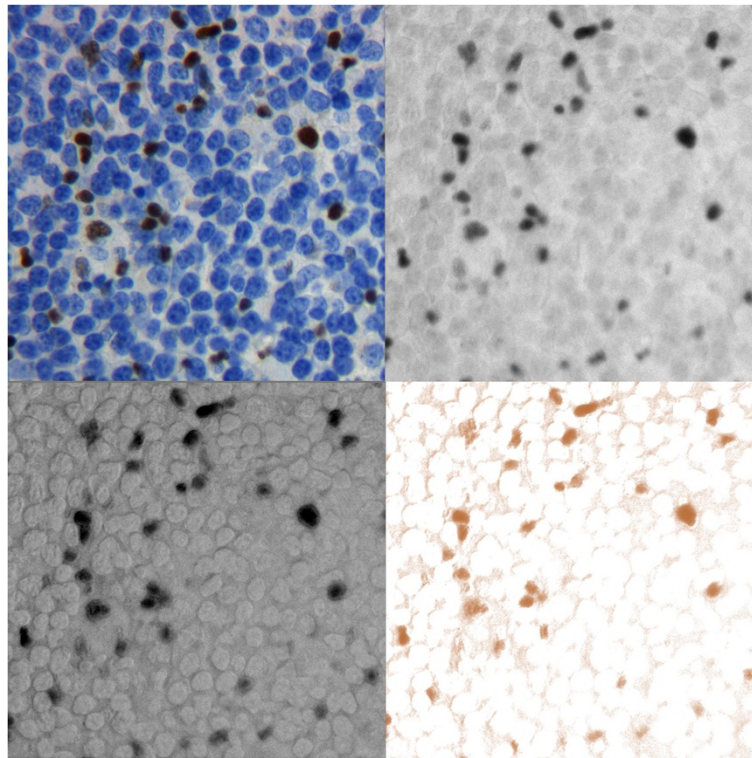


Figure 1 Experimentally collected image. The experimentally collected image (top-left) and its B-channel of RGB (top-right), its "brown" axis (bottom-left) and its brown map after colour deconvolution (bottom-right).

external light conditions and chosen parameters of image acquisition.

All features of images and objects of interest described above, observable in Figure 1 (top-left), cause that adaptive threshold methods of segmentation are adequate to the situation. Six adaptive methods of threshold, locally adjusted to the contrast, originally defined for documents and the text segmentation, have been adjusted to analyze three versions of colour information extracted from images with objects in various shades of brown among blue textured spots on the off-white background. The chosen threshold methods, the method of comparison and the results of thresholds are presented in the next sections.

Methods

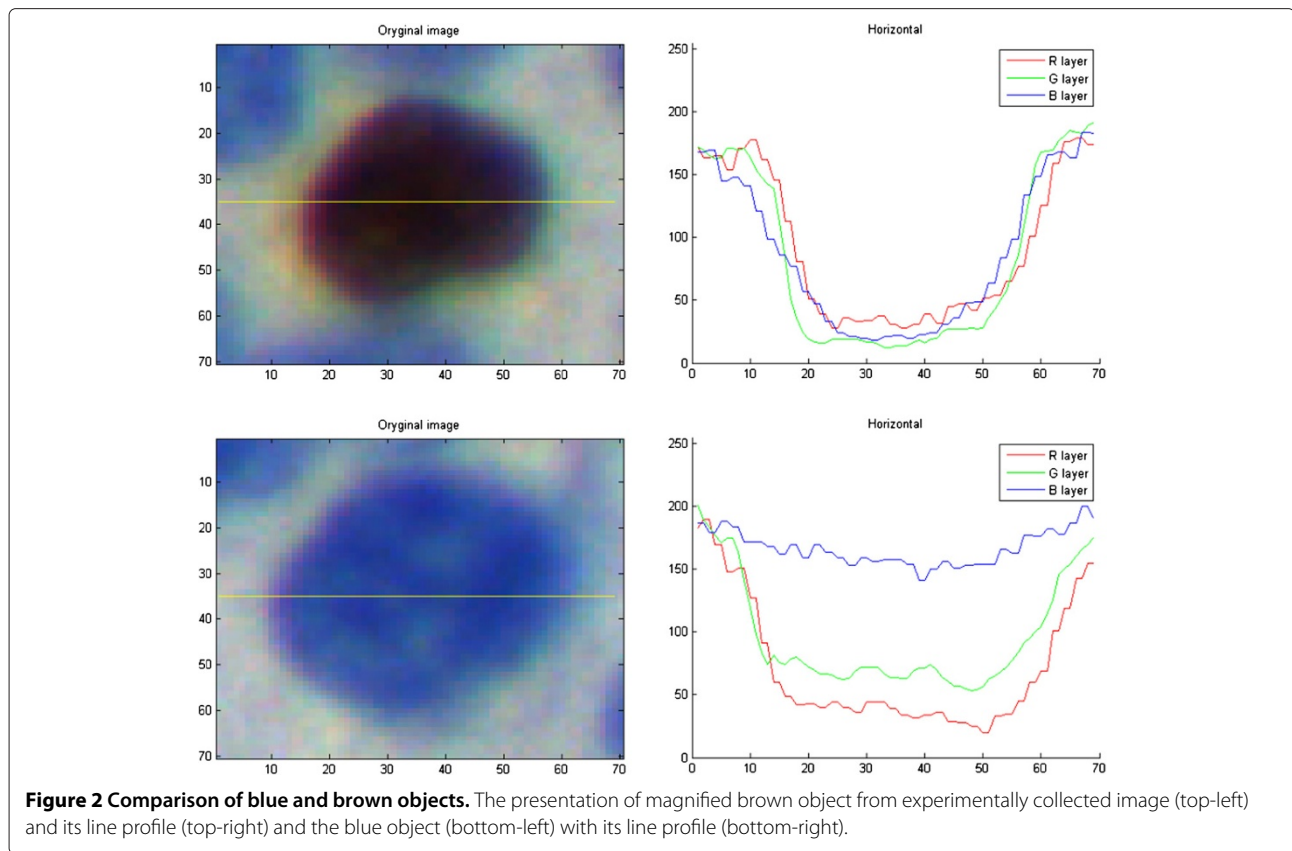
The chosen methods of segmentation

Image segmentation can be considered as the process of dividing an image into multiple components [41,42]. It is usually used to separate objects from the background. There are many forms of image segmentation: thresholding, clustering, transform and edge or texture based methods. The segmentation as some delimitation of boundaries between compartments in this case is limited to detect a hypothetical (not existing in real word) line between nucleus and surrounding cytoplasm or stroma.

Because of contrast fluctuation between objects of interest and background across image plane and from image to image the locally adaptive thresholding methods seems to be appropriate. The method which have been defined for text detection in scanned digital documents deal with grayscale images with Gaussian and uniform noise characteristics and with big contrast. Although the acquired images are 3-channel RGB images, the segmentation algorithms treat separately monochromatic images containing separated information of brown colour:

- the blue channel from RGB, presented in Figure 1 (top-right), because of the results of the analysis of cells' nuclei profiles presented in Figure 2;
- the "brown channel" calculated from RGB image which is presented in Figure 1 (bottom-left);
- the results of brown colour deconvolution from RGB image which can be observed in Figure 1 (bottom-right).

All images which have been prepared to the comparison are transformed to obtain introduced three versions of each image. All tested methods are implemented in MATLAB [23] and used to calculate results of segmentation for all version of colour information.



Locally adaptive thresholding

Local threshold is calculated at every point of image with sliding window image processing. Threshold value is based on the intensity of the pixel and its neighborhood [43]. In this paper it is considered: two local variance methods, three local contrast methods and one center-surround scheme. All expressions used in algorithms presented below are described in Table 1.

Table 1 Expressions

Expression	Definition
I	Image of size $M \times N$
$I(x, y)$	Intensity value
$B(x, y)$	Binarization algorithm
$T(x, y)$	Threshold value algorithm
$m_{nb}(x, y)$	Mean value of the neighborhood of analyzed pixel
$m_{w \times w}(x, y)$	Mean value of the window of size w
$\sigma(x, y)$	Standard deviation
$\mu(x, y)$	Variance
$C(x, y)$	Contrast as a difference between max and min
0	Object
1	Background

Used expressions.

Niblack

The most basic adaptive threshold method is Niblack method [44] and it belongs to the group of local variance methods. Local threshold is calculated based on mean and standard deviation of local neighborhood of size set by the parameter w . Another applied parameter k introduces bias of variance value.

$$B(x, y) = \begin{cases} 1 & \text{if } I(x, y) > T(x, y), \\ 0 & \text{otherwise.} \end{cases}, \text{ where} \quad (1)$$

$$T(x, y) = m_{w \times w}(x, y) + k \cdot \sigma_{w \times w}(x, y)$$

These two parameters of Niblack method values and the rest of used parameters values are presented in Table 2.

Table 2 Parameters

	w	k	R	$bias$	T_c	T_1	T_2	T_3	T_4
Niblack	51	-0.2			150				
Sauvola	51	-0.2	128		150				
White	51			2	150				
Bersen	51				150				
Palumbo	51				150	20	0.85		
Yasuda	51				150	50	100	128	15

Values of parameters used in segmentation methods.

Sauvola

Method presented by Sauvola and Pietaksinen [45] is another local variance method and can be treated as modified version of Niblack's local variance method. It is based on one more parameter (R) which introduces the variance standardization value.

$$B(x, y) = \begin{cases} 1 & \text{if } I(x, y) > T(x, y), \\ 0 & \text{otherwise.} \end{cases}, \text{ where}$$

$$T(x, y) = m_{w \times w}(x, y) + \left\{ 1 + k \cdot \left[\frac{\sigma_{w \times w}(x, y)}{R} - 1 \right] \right\} \quad (2)$$

White

The method presented by White and Rohrer [37] separates objects from background if the value of the analyzed pixel multiplied by the bias parameter is greater than mean value of neighborhood it is considered as an object. Basically, if the pixel is considerably darker than its surrounding, it is considered as an object.

$$B(x, y) = \begin{cases} 1 & \text{if } m_{w \times w}(x, y) < I(x, y) \cdot \text{bias}, \\ 0 & \text{otherwise.} \end{cases} \quad (3)$$

Bernsen

Another local contrast method is offered by Bernsen [38], as two stage method. Contrast value as a difference between the maximum and minimum value in neighborhood is calculated during first stage of calculation. In second stage threshold value is calculated as a mean of the minimum and maximum value in neighborhood of the analyzed pixel if the contrast value was high enough (over assumed T_c value).

$$B(x, y) = \begin{cases} 1 & \text{if } I(x, y) > T(x, y), \\ 0 & \text{otherwise.} \end{cases}, \text{ where}$$

$$T(x, y) = \begin{cases} \frac{\max_{w \times w}(x, y) + \min_{w \times w}(x, y)}{2} & \text{if } C_{w \times w}(x, y) \geq T_c, \\ 0 & \text{otherwise.} \end{cases} \quad (4)$$

Yasuda

The Yasuda, Dubois and Huang's method [39] is local contrast method and consists of four steps [46].

Step 1. Increasing dynamic range in the image.

$$I_1(x, y) = \frac{I(x, y) - \min(I)}{\max(I) - \min(I)} \quad (5)$$

Step 2. Nonlinear smoothing. Replace pixel with average value (m_{nb}) of its (3 by 3) neighbourhood if local range is below assumed value of T_1 .

$$I_2(x, y) = \begin{cases} m_{nb} & \text{if } (\max(nb) - \min(nb)) < T_1, \\ I_1(x, y) & \text{otherwise.} \end{cases} \quad (6)$$

Step 3. Primary thresholding with course marking of background. For every pixel its neighborhood is taken and if its local contrast is not greater than assumed value of T_2 or value of the pixel is greater than average of neighborhood. Wherever condition is met, it is flagged as background. For every other pixel the given calculation is performed.

$$I_3(x, y) = \begin{cases} 1 & \text{if } m_{w \times w}(x, y) < I_2(x, y) \vee c_w < T_2 \\ \frac{I_2(x, y) - \min_{w \times w}(x, y)}{c_w} & \text{otherwise.} \end{cases}$$

where $c_w = \max_{w \times w}(x, y) - \min_{w \times w}(x, y)$ (7)

Step 4. Secondary thresholding with precise segmentation to classify rest of the pixels. Sliding window image processing uses 3 by 3 window. In this step the pixel is marked as background if minimum from neighborhood is not greater than assumed value of T_3 or variance is greater than assumed value of T_4 .

$$B(x, y) = \begin{cases} 0 & \text{if } \min_{3 \times 3}(x, y) < T_3 \vee \sigma_{w \times w}(x, y) > T_4 \\ 1 & \text{otherwise.} \end{cases} \quad (8)$$

Palumbo

The last but not least tested method designed by Palumbo, Swaminathan and Srihari [47] is using center-surround scheme. The sliding window is divided symmetrically into 9 smaller windows, but only 5 of those are used in computations. A_{center} is near neighborhood and 4 diagonal windows are far neighborhood (A_{neigh}). The tested pixel is supposed to be treated as object when the central window contains the foreground object and the neighboring windows are filled with background.

$$B(x, y) = \begin{cases} 0 & \text{if } I(x, y) < T_1 \vee T_2 \cdot m(A_{neigh}) > m \cdot (A_{center}), \\ 1 & \text{otherwise.} \end{cases} \quad (9)$$

Hybrid methods

Niblack and Sauvola methods appear to be insufficiently sensitive in case of ICH images and they were modified for a better use. It was done by adding the contrast condition similar to that defined in Bernsen method.

Hybrid of Niblack and Bernsen

Under the contrast condition defined by Bernsen method the threshold value is calculated using the equation defined by Niblack method.

$$B(x, y) = \begin{cases} 1 & \text{if } I(x, y) > T(x, y), \\ 0 & \text{otherwise.} \end{cases}, \text{ where}$$

$$T(x, y) = \begin{cases} m_{w \times w}(x, y) + k \cdot \sigma_{w \times w}(x, y) & \text{if } C_{w \times w} \geq T_c, \\ 0 & \text{otherwise.} \end{cases} \quad (10)$$

Hybrid of Sauvola and Bernsen

Under the contrast condition defined by Bernsen method the threshold value is calculated using the equation defined by Sauvola method.

$$B(x, y) = \begin{cases} 1 & \text{if } I(x, y) > T(x, y), \\ 0 & \text{otherwise.} \end{cases}, \text{ where}$$

$$T(x, y) = \begin{cases} m_{w \times w}(x, y) + \left[1 + k \cdot \left[\frac{\sigma_{w \times w}(x, y)}{R} - 1 \right] \right] & \text{if } C_{w \times w} \geq T_c, \\ 0 & \text{otherwise.} \end{cases} \quad (11)$$

From this point onward, reference to the Niblack and Sauvola methods means their respective Hybrids with Bernsen method. After a successful segmenting the image, a simple postprocessing is done. The used postprocessing consist of thresholding by size where every object with area lesser than 900px is discriminated from outcome image.

The methods of comparison of the chosen segmentation methods results

Testing synthetic images were paired with their corresponding binary representation (template) where assumed shape and location of positive cells' nuclei are marked. Taking into account the binary image as a reference following measurements are possible: - true positive (TP), - true negative (TN), - false positive (FP), - false negative (FN), basing on template and results of each segmentation method.

Based on these parameters, statistical measurement of the performance of segmentation methods can be calculated:

Sensitivity

$$S = \frac{TP}{TP + FN} \quad (12)$$

Specificity

$$P = \frac{TN}{TN + FP} \quad (13)$$

Dice's coefficient

$$r_D = \frac{2 \cdot TP}{2 \cdot TP + FN + FP} \quad (14)$$

Jaccard's coefficient

$$r_J = \frac{TP}{TP + FN + FP} \quad (15)$$

Sokal and Sneath's coefficient

$$r_{SS} = \frac{TP}{TP + 2 \cdot FN + 2 \cdot FP} \quad (16)$$

Rogers and Tanimoto's coefficient

$$r_{RT} = \frac{TP + TN}{TP + TN + 2 \cdot FN + 2 \cdot FP} \quad (17)$$

To analyze agreement between results of segmentation and 'true' value presented by template the Bland-Altman plots (B-A plots) were produced for 70 objects segmented for each method (6) and each type of colour information (3) and for selected feature (5) e.g. area, axis ratio of the ellipse fitted to object, roundness, solidity and eccentricity. The results of the analysis of 90 plots encouraged us to develop our own parameter which allows us to find any bias or presence of outliers in cretin aspect of method performance. This parameter was defined as the sum of false positive (FP) and false negative (FN) areas divided by area of 'true' object observed in the function of distance between centroids of the 'true' objects and segmented object. Plots similar to B-A plot but comparing the centroids distance with the sum of FP and FN divided by area of 'true' object allow identification of objects with specifically distributed erroneously detected pixels. When the distance between centroids has small value while second parameter has big value it means that extra detected or undetected area is homogeneously distributed around the object otherwise badly detected or undetected area is located in such a way that detected area centroid moves away from template object centroid. It allows us to determine if any of examined methods presents any stable or occasionally occurring bias in erroneously detected area.

The experimentally collected and the synthesized artificial images

The experimentally collected images

The variability in appearance of the tissue section in images stained with DAB & H is remarkable due to: (1) inherent features of tissue and variability of morphology in pathological cases, (2) inherent variability of results of the staining process and (3) inherent microscopic deformations as well as introduced artefacts and noise.

The morphology of pathological follicular lymphoma tissues varies [48]. Besides the different pathological manifestations, the variability in appearance of staining samples increases during the tissues preparation. This procedure is standardized but has a non-deterministic nature because the number of chemical particles of the stain bound to the nucleus is random. It implicates variation in the brown colour, from the intensive orange, through the intensive brown to the dark brown in immunopositive nuclei [8,14]. The paper deals with samples immunohistochemically stained against FOXP3, which indicates nuclei of regulatory T-cells [3]. This type of staining procedure produces brown objects (immunopositive nuclei of regulatory T-cells) among blue objects (mostly immunonegative nuclei of tumoral B lymphocytes). Examination of the lymphoma samples leads to score the number of regulatory T-cells in the cancer tissue, what allows estimating this specific organism's immune response to this type of cancer.

In case of automated evaluation of tissue samples, the image acquisition should be done. Because of chosen microscope and camera settings: white balance, brightness, contrast and inherent inhomogeneity in light distribution, as well as some obstacles in the light path and noise added by microscope and camera [31], variability in nuclei appearance increases. Experimentally collected images have been acquired via a brightfield microscope (Leica DM LB2 upright light microscope, Leica Microsystems Wetzlar GmbH, Wetzlar, Germany), with 40x plane-apochromatic objective of numerical aperture 0,63. 60 images captured by the experienced pathologist from 60 areas of various complexity of the several samples have been collected in Tortosa hospital. 5 images, randomly chosen from the experimental data, have been used as the models to construct their synthetic counterparts.

The synthesized artificial images

To compare results of any segmentation methods, the exact position of the boundary of objects should be known. Information of the nuclei position is available for artificial images, which are constructed via the simulation of the cells' population.

The process of artificial image construction is proposed as follows: random generator chooses the position of brown and blue objects (immunopositive and immunonegative cells' nuclei) in image plane according to the founded probability distribution of their shape and size. These distributions are estimated using collection of experimentally acquired images. The number of both types of objects, colour tones, texture of objects and background are taken from experimentally collected counterpart image as samples and numbers characteristic for the particular image. Spots of the clean background are captured to the synthetic image background layer and enlarged to form continuous layer on which objects layer are located. Synthesis of objects layers is done using the adjusted version of SIMCEP software and Camera Raw 4.1 module of Photoshop CS5.

The SIMCEP, developed by Lehmußola and co-workers [19,20], is available via internet. The software is dedicated to synthesize the full colour fluorescent microscopic images of nuclei or cells' culture. For the needs of this paper it has been adjusted to simulate images from the transmission light microscopy. The core of SIMCEP system, the generator of nuclei according to distribution of their shape and size, the template generation, the texture constructor and microscope and camera signal degradation module have been used, while problems with the specific background characteristics have been solved in Photoshop.

Five experimentally acquired images of lymphoma tissue samples become the models of five artificial images, constructed as the RGB 24-bits colour synthetic

microscopic images stored in uncompressed tif files. The artificial image presented in Figure 3 (top-left) has been synthesized based on the model image, presented in Figure 1 (top-left), using the template of the immunopositive cell's nucleus position and size presented in the image in Figure 3 (bottom-left). To compare synthetic image and its counterpart image characteristic full images are presented in Figure 3 (top-left) and Figure 1 (top-left) respectively while magnified fragments of both images are presented in Figure 3 (top-right) to show details in object and background characteristics. Also, Table 3 with results of statistical comparison is provided.

The number of brown, marked nuclei are adjusted to the particular experimentally collected image and the templates of all nuclei location generated using SIMCEP are presented: (1) in Figure 3 (bottom-left) - immunopositive in the form of template and (2) in Figure 3 (bottom-right) - immunonegative in the form of the textured by Perlin noise map. The colours are separated from the immunopositive and immunonegative nuclei and from the background of the counterpart image after the reduction of noise and chromatic aberration in Camera Raw. All layers (background layer, brown objects of interest layer and blue nuclei layer) are put together in Photoshop. Each step of artificial image signal degradation, typical for the microscope and camera technical limitations, such as noise, vignetting and blurring, are simulated by the SIMCEP software, except of the chromatic aberration added in Camera Raw.

The results of the adaptive threshold method comparison

All chosen adaptive threshold methods are applied to three types of images calculated based on full colour synthetic image (see Figure 4 top-left image):

- B channel of RGB colour image in Figure 4 (bottom-left),
- monochromatic image calculated accordingly to the presented earlier equation as brown component extracted from all RGB channels in Figure 4 (bottom-right),
- brown part of image obtained by colour deconvolution with three colours: blue, brown and the rest called the third component in Figure 4 (top-right).

5 artificial images (from A to E) segmentation results for all objects in image (without rejection of the objects touching image border) are presented as number of found objects, the sensitivity, the specificity and four coefficients of similarity in Tables 4, 5 and 6. In Table 4 are presented results for monochromatic images constituted as B-channel, Table 5 presents results for monochromatic

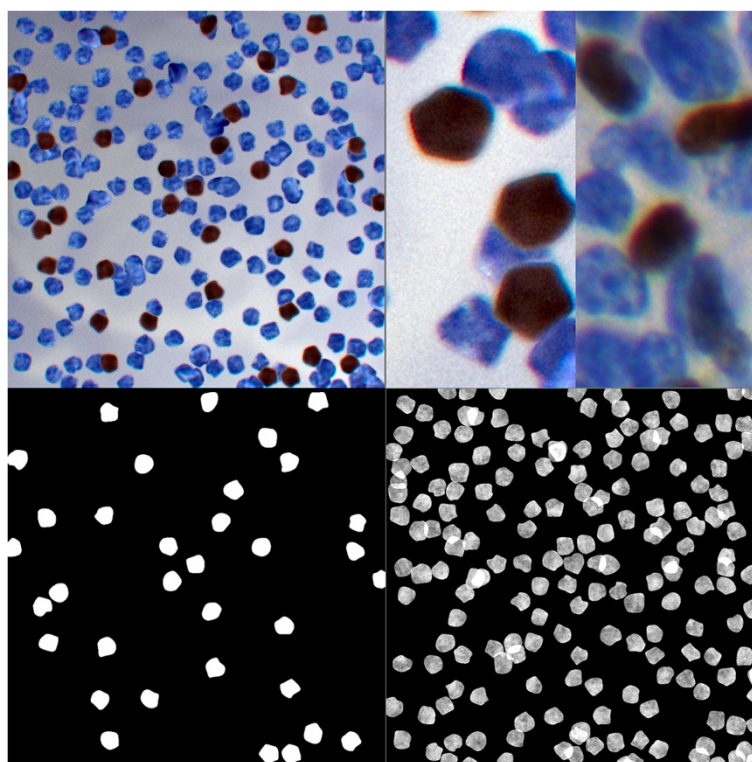


Figure 3 Synthesized artificial image. The artificial image (top-left) constructed as counterpart of image shown in Figure 1; enlarged fragment of experimentally collected image compared to the artificial image (top-right); the template of brown objects (bottom-left); the blue objects template with added Perlin texture (bottom-right).

images constituted by deconvolution and Table 6 presents results for monochromatic images constituted as brown color extracted from RGB channels. These tables show that results for each artificial image are close for each method of segmentation applied to particular image. Generally the best results are those of segmentation applied to brown component after colour deconvolution, the mean and the standard deviation of the value of the number of found objects calculated as difference between the number of found objects and the number of 'true' objects in template for all segmentation methods is -0.2 ± 0.6 while 2.3 ± 6.9 for monochromatic image with brown color extracted from RGB called 'brown channel' and 6.0 ± 13.9

for the blue channel from RGB. The mean of the sensitivity calculated for all segmentation methods is 0.9264 ± 0.0611 , 0.8366 ± 0.1571 , 0.9432 ± 0.0764 respectively while mean of the specificity calculated in this data are 0.9981 ± 0.0035 , 0.9858 ± 0.0264 , 0.9886 ± 0.0235 . So 5 artificial images are similar one to each other and all objects in all images can be treated as homogeneous population of tested objects.

The next step of comparison and evaluation concerns rather methods of adaptive threshold so it have been done on the level of single object (not single image). Because objects that touch borders are segmented with holes or cavities what cause that in most cases these object disappear during the step of size filtering in further evaluation

Table 3 Objects characteristics

Image	Area		Max radius		Min radius		Per area (obj./total)	
	Artificial	Experimental	Artificial	Experimental	Artificial	Experimental	Artificial	Experimental
A	1681 ± 426	1060 ± 413	27,4 ± 1,4	23,3 ± 5,0	17,4 ± 3,9	12,9 ± 3,2	0,0017 ± 0,0004	0,0011 ± 0,0004
B	1922 ± 166	953 ± 406	27,9 ± 1,3	23,5 ± 5,9	20,7 ± 1,8	11,7 ± 3,4	0,0019 ± 0,0002	0,0009 ± 0,0004
C	1867 ± 256	1352 ± 358	28,0 ± 1,2	27,2 ± 4,4	20,2 ± 2,8	14,1 ± 2,6	0,0019 ± 0,0003	0,0014 ± 0,0004
D	2047 ± 150	1078 ± 586	29,0 ± 1,0	24,4 ± 6,0	21,2 ± 1,4	11,6 ± 4,0	0,0020 ± 0,0002	0,0011 ± 0,0006
E	1892 ± 211	892 ± 463	27,8 ± 1,0	21,8 ± 6,0	20,7 ± 2,5	9,5 ± 4,0	0,0019 ± 0,0002	0,0009 ± 0,0005

Characteristics of objects of interest (brown spots) and its distribution in experimentally collected (right column) and synthesized (left column) images.

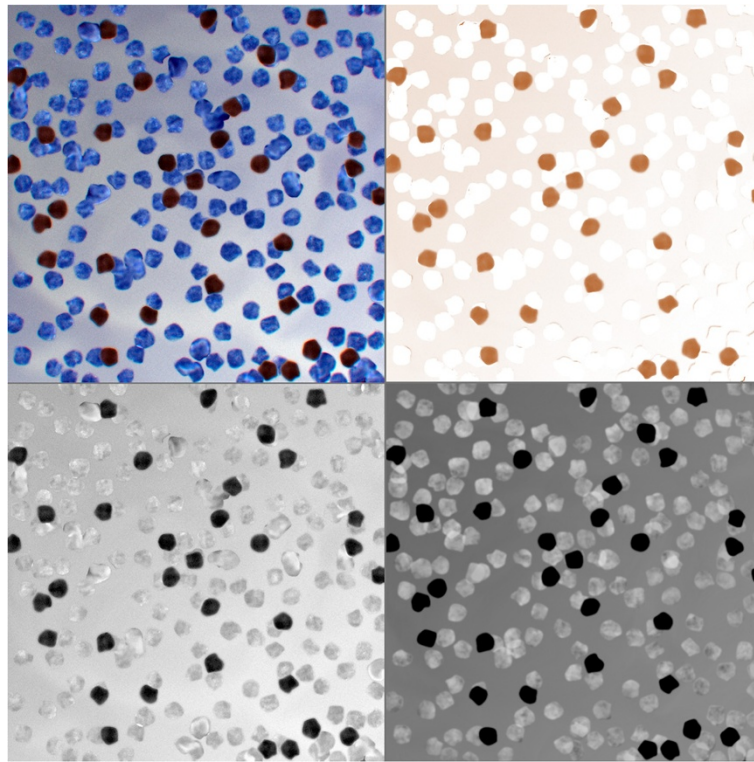


Figure 4 Artificial image and three types of images calculated based on full colour image. The artificial image (bottom-left) constructed as described in article and its B-channel of RGB (bottom-right), its "brown" axis (top-right) and its brown map after colour deconvolution (top-left).

it was taking in to account only these objects which do not touching image border. As new designed method will be applied to the virtual slides which will be analysed by parallel algorithms dealing with images which are fragments of virtual slides selected with covering margins so the rejection of objects touching image border would be compensate on the level of results connection.

The evaluation of the segmentation results of single object is presented as B-A plots for such objects' features as area of object, roundness, eccentricity and so. The comparison of objects' area in pixels for all except one segmentation methods (for five methods) calculated for each of 3 types of monochromatic images collecting various information about brown colour from five true colour artificial images are presented in Figure 5A-I. The Yasuda method was excluded from presentation because of its performance; it does not select certain fraction of object and at the same time it selects essential fraction of false positive objects for all types of images (for blue channel 103, for brown colour 63, for results of colour deconvolution only 2) so its plots are not presented in the paper. Some of the plots in Figure 5 (A, B, C, D, G and H) consist of about 70 non-touching image border objects from 5 synthetic images, while the others (E, F and I) present combined plots showing distinguishable by colours 3 or 4

methods' results together. In Figure 5 and Figure 6 objects segmented by the Niblack method are presented in red, by the Sauvola method in blue, the Bernsen method in green, the White method in black and the Palumbo method in yellow.

It is visible in Figure 5 that results of almost all methods applied to images after colour deconvolution (A, B, C, F) are better than applied to blue channel of RGB (G, H, I) and to the brown component extracted from all channels of RGB (D, E); the latter seems to be the worst. Generally, it is visible that some B-A plots of area comparison between template objects and detected objects show systematic under-segmentation of area. Bernsen method (Figure 5A) and Niblack, Palumbo, and White methods (Figure 5F) applied to images after colour deconvolution and White method applied to brown component monochromatic image (Figure 5D) and to blue channel of RGB (Figure 5H) shows that there is a bias in the segmented object area. This bias is visible as objects' area decrease in comparison to the corresponding template object area but all these method are accurate and precise in objects number. For the Bernsen method accurate and precise both are equal 1 while for the modified Sauvola method are equal 1 and 0.9722 respectively. At the same time the size of object detected by: Sauvola method

Table 4 The results of adaptive threshold comparison computed on channel BLUE (channel BLUE from RGB)

Image	Method	# objects in the template	Segmented objects (filtered by size)	Sensitivity	Specificity	r_D	r_J	r_{SS}	r_{RT}	Mean $\pm \sigma$ of columns 5 ÷ 10
A	Hyb. Niblack	8	8	0,9212	0,9998	0,9527	0,9097	0,8344	0,9975	0,9359 \pm 0,0622
	Hyb. Sauvola	8	9	0,9443	0,9983	0,9127	0,8395	0,7234	0,9952	0,9022 \pm 0,1055
	White	8	5	0,6461	1,0000	0,7850	0,6461	0,4772	0,9905	0,7575 \pm 0,2085
	Bernsen	8	8	0,9447	0,9995	0,9546	0,9132	0,8403	0,9976	0,9417 \pm 0,0596
	Palumbo	8	46	0,8632	0,9499	0,3116	0,1846	0,1017	0,9024	0,5522 \pm 0,3933
	Yasauda	8	64	0,9981	0,8954	0,2063	0,1150	0,0610	0,8128	0,5148 \pm 0,4308
B	Hyb. Niblack	34	34	0,9739	0,9985	0,9765	0,9540	0,9121	0,9939	0,9681 \pm 0,0317
	Hyb. Sauvola	34	34	0,9917	0,9957	0,9658	0,9339	0,8759	0,9909	0,9590 \pm 0,0469
	White	34	34	0,8905	1,0000	0,9421	0,8905	0,8026	0,9858	0,9186 \pm 0,0731
	Bernsen	34	34	0,9842	0,9980	0,9782	0,9573	0,9181	0,9943	0,9717 \pm 0,0299
	Palumbo	34	41	0,9541	0,9883	0,8992	0,8169	0,6905	0,9724	0,8869 \pm 0,1147
	Yasauda	34	46	0,9993	0,9720	0,8328	0,7135	0,5547	0,9489	0,8369 \pm 0,1744
C	Hyb. Niblack	15	15	0,9876	0,9997	0,9893	0,9788	0,9584	0,9988	0,9854 \pm 0,0153
	Hyb. Sauvola	15	16	0,9929	0,9968	0,9440	0,8940	0,8083	0,9934	0,9382 \pm 0,0753
	White	15	14	0,8392	1,0000	0,9126	0,8392	0,7230	0,9910	0,8842 \pm 0,1055
	Bernsen	15	15	0,9873	0,9997	0,9883	0,9770	0,9550	0,9987	0,9843 \pm 0,0166
	Palumbo	15	14	0,9280	0,9989	0,9448	0,8953	0,8105	0,9939	0,9286 \pm 0,0701
	Yasauda	15	18	0,9998	0,9887	0,8354	0,7173	0,5592	0,9782	0,8464 \pm 0,1791
D	Hyb. Niblack	13	13	0,9641	0,9989	0,9622	0,9272	0,8644	0,9960	0,9521 \pm 0,0504
	Hyb. Sauvola	13	13	0,9920	0,9977	0,9549	0,9138	0,8412	0,9950	0,9491 \pm 0,0620
	White	13	13	0,8330	1,0000	0,9088	0,8328	0,7136	0,9911	0,8799 \pm 0,1093
	Bernsen	13	13	0,9753	0,9994	0,9761	0,9532	0,9107	0,9975	0,9687 \pm 0,0331
	Palumbo	13	15	0,9419	0,9970	0,9187	0,8497	0,7386	0,9912	0,9062 \pm 0,0982
	Yasauda	13	23	0,9987	0,9776	0,7090	0,5492	0,3785	0,9573	0,7617 \pm 0,2592
E	Hyb. Niblack	21	21	0,9857	0,9995	0,9863	0,9730	0,9475	0,9978	0,9816 \pm 0,0193
	Hyb. Sauvola	21	23	0,9937	0,9935	0,9245	0,8595	0,7537	0,9872	0,9187 \pm 0,0966
	White	21	20	0,8386	1,0000	0,9122	0,8386	0,7220	0,9873	0,8831 \pm 0,1051
	Bernsen	21	21	0,9871	0,9993	0,9854	0,9711	0,9439	0,9977	0,9807 \pm 0,0207
	Palumbo	21	34	0,9422	0,9824	0,7958	0,6608	0,4934	0,9623	0,8061 \pm 0,1965
	Yasauda	21	61	0,9975	0,9332	0,5523	0,3815	0,2357	0,8793	0,6633 \pm 0,3180

Table 5 The results of adaptive threshold comparison computed on brown colour images after colour deconvolution of RGB image

Image	Method	# objects in the template	Segmented objects (filtered by size)	Sensitivity	Specificity	r_D	r_J	r_{SS}	r_{RT}	Mean $\pm \sigma$ of columns 5 ÷ 10
A	Hyb. Niblack	8	8	0,9535	0,9997	0,9645	0,9315	0,8718	0,9981	0,9532 \pm 0,0478
	Hyb. Sauvola	8	8	0,9746	0,9994	0,9646	0,9315	0,8719	0,9981	0,9567 \pm 0,0485
	White	8	7	0,7938	1,0000	0,8851	0,7938	0,6582	0,9945	0,8542 \pm 0,1324
	Bernsen	8	8	0,9649	0,9997	0,9702	0,9421	0,8905	0,9984	0,9609 \pm 0,0408
	Palumbo	8	8	0,9163	0,9995	0,9373	0,8820	0,7889	0,9967	0,9201 \pm 0,0789
	Yasauda	8	8	0,9958	0,9839	0,6270	0,4567	0,2959	0,9686	0,7213 \pm 0,3051
B	Hyb. Niblack	34	34	0,9628	0,9999	0,9802	0,9612	0,9252	0,9949	0,9707 \pm 0,0274
	Hyb. Sauvola	34	35	0,9805	0,9977	0,9740	0,9493	0,9034	0,9932	0,9663 \pm 0,0352
	White	34	34	0,8828	1,0000	0,9378	0,8828	0,7902	0,9848	0,9131 \pm 0,0778
	Bernsen	34	34	0,9648	0,9999	0,9814	0,9634	0,9294	0,9952	0,9724 \pm 0,0259
	Palumbo	34	34	0,9445	0,9982	0,9586	0,9206	0,8528	0,9894	0,9440 \pm 0,0531
	Yasauda	34	32	0,9984	0,9912	0,9400	0,8867	0,7965	0,9835	0,9327 \pm 0,0788
C	Hyb. Niblack	15	15	0,9378	0,9990	0,9512	0,9070	0,8298	0,9946	0,9366 \pm 0,0629
	Hyb. Sauvola	15	16	0,9912	0,9983	0,9671	0,9362	0,8801	0,9962	0,9615 \pm 0,0463
	White	15	14	0,8267	1,0000	0,9051	0,8267	0,7046	0,9903	0,8756 \pm 0,1127
	Bernsen	15	14	0,9196	1,0000	0,9580	0,9193	0,8507	0,9955	0,9405 \pm 0,0563
	Palumbo	15	14	0,9149	0,9996	0,9489	0,9028	0,8228	0,9945	0,9306 \pm 0,0661
	Yasauda	15	15	0,9995	0,9939	0,9046	0,8258	0,7032	0,9883	0,9025 \pm 0,1189
D	Hyb. Niblack	13	13	0,8982	0,9994	0,9355	0,8787	0,7837	0,9934	0,9148 \pm 0,0807
	Hyb. Sauvola	13	13	0,9228	0,9990	0,9421	0,8906	0,8028	0,9940	0,9252 \pm 0,0730
	White	13	13	0,8047	1,0000	0,8912	0,8037	0,6718	0,9896	0,8602 \pm 0,1257
	Bernsen	13	13	0,9019	0,9995	0,9390	0,8850	0,7936	0,9938	0,9188 \pm 0,0770
	Palumbo	13	13	0,8788	0,9994	0,9252	0,8609	0,7557	0,9925	0,9021 \pm 0,0915
	Yasauda	13	12	0,9469	0,9941	0,8756	0,7787	0,6376	0,9858	0,8698 \pm 0,1394
E	Hyb. Niblack	21	21	0,9439	1,0000	0,9710	0,9436	0,8933	0,9955	0,9579 \pm 0,0398
	Hyb. Sauvola	21	21	0,9705	0,9995	0,9789	0,9587	0,9206	0,9967	0,9708 \pm 0,0291
	White	21	20	0,7808	1,0000	0,8769	0,7808	0,6404	0,9827	0,8436 \pm 0,1372
	Bernsen	21	21	0,9373	1,0000	0,9676	0,9373	0,8820	0,9950	0,9532 \pm 0,0441
	Palumbo	21	20	0,8906	0,9997	0,9381	0,8835	0,7913	0,9907	0,9156 \pm 0,0779
	Yasauda	21	21	0,9945	0,9939	0,9288	0,8670	0,7652	0,9880	0,9229 \pm 0,0921

Table 6 The results of adaptive threshold comparison computed on the “brown channel” calculated from RGB image

Image	Method	# objects in the template	Segmented objects (filtered by size)	Sensitivity	Specificity	r_D	r_J	r_{SS}	r_{RT}	Mean $\pm \sigma$ of columns 5 \div 10
A	Hyb. Niblack	8	7	0,7310	0,9999	0,8421	0,7272	0,5714	0,9927	0,8107 \pm 0,1676
	Hyb. Sauvola	8	7	0,7317	0,9999	0,8405	0,7248	0,5684	0,9926	0,8096 \pm 0,1686
	White	8	8	0,9351	1,0000	0,9664	0,9349	0,8778	0,9983	0,9521 \pm 0,0463
	Bernsen	8	7	0,7317	0,9968	0,7431	0,5912	0,4196	0,9865	0,7448 \pm 0,2242
	Palumbo	8	12	0,9666	0,9793	0,5548	0,3839	0,2375	0,9591	0,6802 \pm 0,3313
	Yasauda	8	20	0,9994	0,9255	0,2676	0,1545	0,0837	0,8630	0,5490 \pm 0,4230
B	Hyb. Niblack	34	34	0,8932	0,9988	0,9353	0,8784	0,7831	0,9840	0,9121 \pm 0,0792
	Hyb. Sauvola	34	38	0,8967	0,9926	0,8959	0,8114	0,6827	0,9731	0,8754 \pm 0,1144
	White	34	34	0,9414	0,9997	0,9679	0,9379	0,8830	0,9919	0,9536 \pm 0,0429
	Bernsen	34	33	0,8983	0,9813	0,8294	0,7086	0,5487	0,9529	0,8198 \pm 0,1649
	Palumbo	34	47	0,9731	0,9569	0,7515	0,6020	0,4306	0,9193	0,7722 \pm 0,2201
	Yasauda	34	53	0,9824	0,8919	0,5568	0,3858	0,2390	0,8146	0,6451 \pm 0,2978
C	Hyb. Niblack	15	13	0,6038	1,0000	0,7529	0,6038	0,4324	0,9781	0,7285 \pm 0,2260
	Hyb. Sauvola	15	13	0,6038	1,0000	0,7529	0,6038	0,4324	0,9781	0,7285 \pm 0,2260
	White	15	14	0,8791	1,0000	0,9357	0,8791	0,7843	0,9933	0,9119 \pm 0,0817
	Bernsen	15	13	0,6038	1,0000	0,7529	0,6038	0,4324	0,9781	0,7285 \pm 0,2260
	Palumbo	15	17	0,9758	0,9944	0,8992	0,8168	0,6904	0,9878	0,8941 \pm 0,1208
	Yasauda	15	24	1,0000	0,9718	0,6715	0,5055	0,3382	0,9467	0,7390 \pm 0,2775
D	Hyb. Niblack	13	12	0,7979	0,9993	0,8757	0,7789	0,6379	0,9880	0,8463 \pm 0,1376
	Hyb. Sauvola	13	12	0,8120	0,9985	0,8696	0,7694	0,6252	0,9871	0,8436 \pm 0,1411
	White	13	13	0,8960	0,9997	0,9395	0,8859	0,7951	0,9939	0,9183 \pm 0,0768
	Bernsen	13	12	0,8109	0,9989	0,8758	0,7791	0,6381	0,9878	0,8485 \pm 0,1366
	Palumbo	13	16	0,9605	0,9948	0,8937	0,8078	0,6776	0,9879	0,8870 \pm 0,1244
	Yasauda	13	21	0,9940	0,9744	0,6788	0,5137	0,3457	0,9511	0,7430 \pm 0,2737
E	Hyb. Niblack	21	15	0,5377	0,9997	0,6959	0,5336	0,3639	0,9633	0,6823 \pm 0,2547
	Hyb. Sauvola	21	15	0,5401	0,9992	0,6931	0,5303	0,3608	0,9627	0,6810 \pm 0,2553
	White	21	21	0,8987	1,0000	0,9466	0,8986	0,8159	0,9920	0,9253 \pm 0,0691
	Bernsen	21	15	0,5405	0,9982	0,6826	0,5182	0,3497	0,9608	0,6750 \pm 0,2588
	Palumbo	21	26	0,9665	0,9908	0,8832	0,7909	0,6541	0,9799	0,8776 \pm 0,1332
	Yasauda	21	44	0,9970	0,9313	0,5452	0,3748	0,2306	0,8760	0,6591 \pm 0,3202

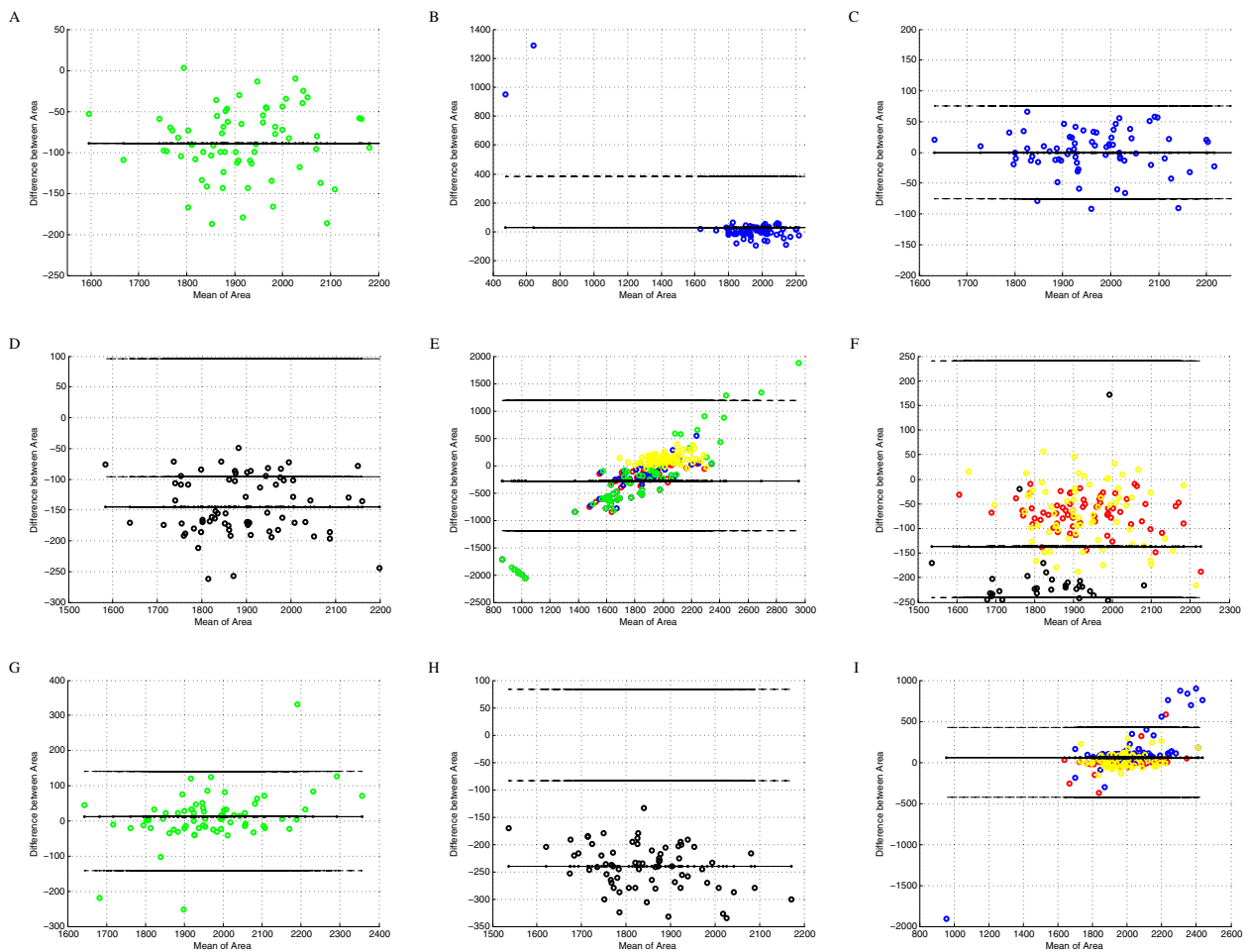
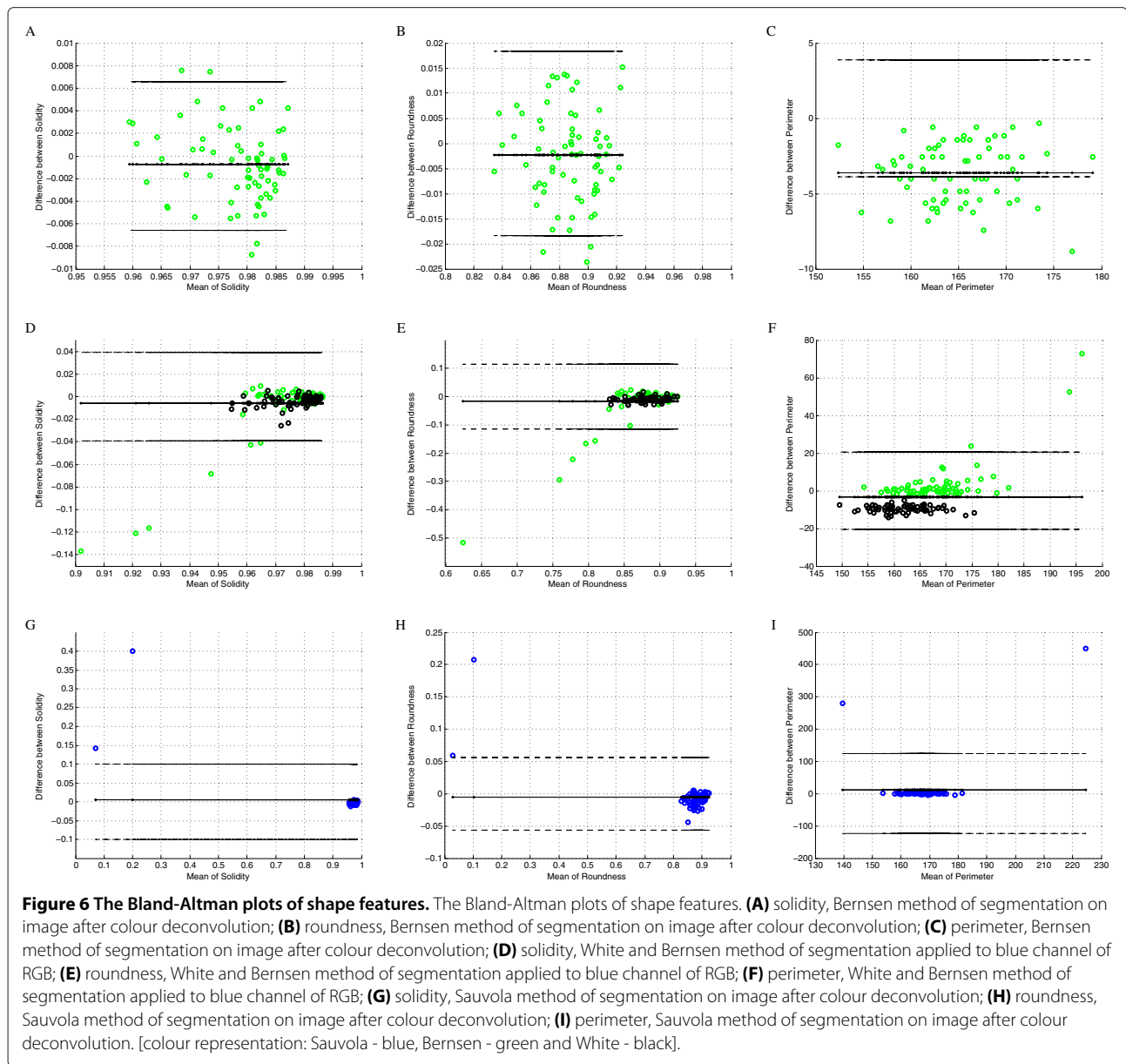


Figure 5 The Bland-Altman plots of area feature. The Bland-Altman plots of area feature. **(A)** Bernsen method of segmentation applied to image after colour deconvolution; **(B)** Sauvola method of segmentation applied to image after colour deconvolution; **(C)** Sauvola method of segmentation applied to image after colour deconvolution, presentation of true positive objects only; **(D)** White method of segmentation applied to 'brown channel'; **(E)** Niblack, Sauvola, Bernsen and Palumbo method of segmentation applied to 'brown channel'; **(F)** Niblack, White and Palumbo method of segmentation applied to image after colour deconvolution; **(G)** Bernsen method of segmentation applied to blue channel of RGB; **(H)** White method of segmentation applied to blue channel of RGB; **(I)** Niblack, Sauvola and Palumbo method of segmentation applied to blue channel of RGB. [colour representation: Niblack - red, Sauvola - blue, Bernsen - green, White - black and Palumbo - yellow].

applied to image after colour deconvolution (Figure 5B), Bernsen method applied to the blue channel from RGB, Palumbo method also applied to the blue channel and Yasuda method applied to all three types of monochromatic images (not presented in paper) seems not biased in objects' area detection. But some of methods mentioned above in various degree detect extra objects in background (false positive object, FP). For the Sauvola method the number of FP objects is minimal (2 from 72) while for the Yasuda method these numbers are vast as it was mentioned above. These results are the reason that the Yasuda method is excluded from further consideration. To find method which is accurate enough in area detection the comparison as B-A plots, between area of the segmented and the 'true' object from template, is done. The

difference between area of the segmented and the 'true' object from template for the Sauvola method applied to the result of image deconvolution for all selected object (Figure 5B) are ranged between -100 to 1400 pixels and for true positive objects only (Figure 5C) between ± 80 pixels while the Bernsen method applied to blue channel of RGB (Figure 5G) and the Palumbo method (yellow circles in Figure 5F) applied to blue channel of RGB are ranged in ± 130 pixels and ± 170 pixels. So the error in area detection is the lowest if the objects are selected by the Sauvola method but only if false positive object are excluded based on the other information.

To reject extra objects selected by the Sauvola method two sources of information could be used: - from biased in object size segmentation method which produce accurate



and precise result in number of detected objects so these results can be used to mark true positive object among the Sauvola method results or - from objects found by the Sauvola method can be filtered by any or by all of described below shape coefficients classifier.

To find segmentation method that gives precise number of detected objects and at the same time decrease objects' size by homogeneous area rejection around objects' periphery, only methods applied to image after colour deconvolution (Figure 5A,F) or blue channel (Figure 5G,H,I) should be taken into consideration. B-A plots for the area feature for monochromatic image from brown color extracted from RGB (Figure 5E) shows rather biased results (from -100 to -350 pixels) because

of presence of cavities and holes in large fraction of segmented objects. So the following three methods: the Bernsen method applied to the results of colour deconvolution (Figure 5A) and to blue channel of RGB (Figure 5G) and the White method applied to blue channel (Figure 5H) are taken into consideration.

The choice among previously mentioned methods and/or among the shape determined object filtration are examined based on B-A plots comparing shape features: perimeter, solidity, roundness and axis ratio, and two features which describe relative position (co-localization) of segmented and template objects: eccentricity and quasi B-A plots described further in this section. These quasi B-A plots show distribution of erroneously detected area

(FP) as the function of the distance between centroids of selected and template objects. They have been calculated for all methods (6), all types of monochromatic image with various colour information (3) and all features (6), but only some of them, these which have impact in conclusions, are shown in Figure 6 and Figure 7.

B-A plots in Figure 6 present shape features (except axis ratio which results are similar to presented features): - solidity which shows if increase of objects' size to achieve convex area is homogeneously distributed (Figure 6A,D,G), - roundness which shows if ratio of area to squared perimeter is independent from objects' roundness (Figure 6B,E,F) and - perimeter length which shows if the changes in perimeter length compared to the template objects perimeter are independent from perimeter length (Figure 6C,E,I). All these features are presented for the

Bernsen method applied to the image after colour deconvolution (Figure 6A,B,C) in the context of the plots of sum of the Bernsen and the White methods applied to blue channel of RGB image (Figure 6D,E,F). The first method plots present much more homogeneous distribution than the second group of plots which are presented below (respectively Figure 6D,E,F). These three shape features plots proof that error in object area detection (decrease of object size described above) for the Bernsen method applied to image after colour deconvolution is homogeneously distributed around object and do not affect its shape. Plots of B-A presented in Figure 6 (G, H, I) present also all previously described shapes coefficient for the Sauvola method applied to the result of image deconvolution. The values of false positive objects appear to be drastically different than the values of these coefficients

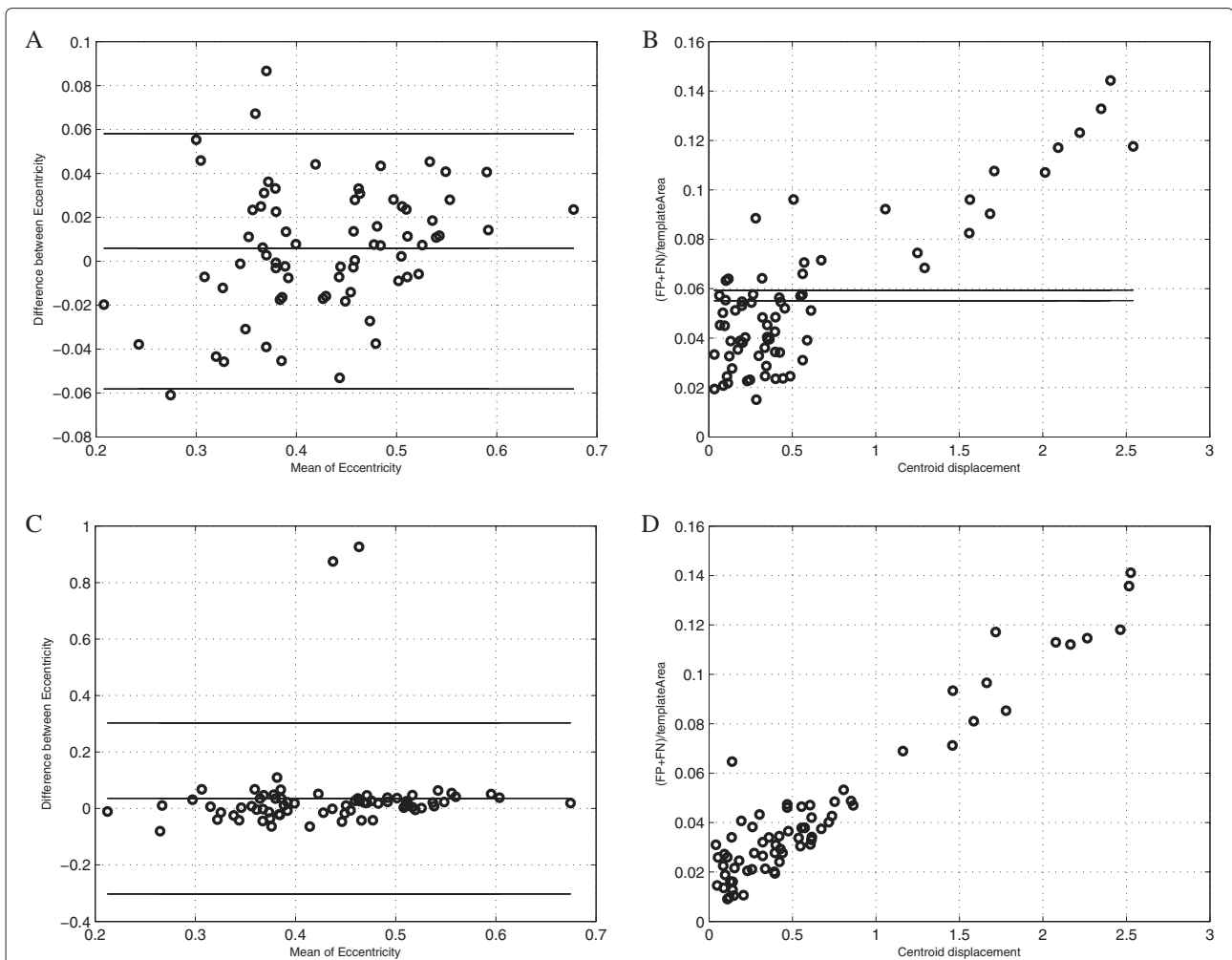


Figure 7 The co-localization features. The co-localization features: eccentricity (**A, C**) and defined by authors quasi B-A plots (**B, D**). (**A**) Bland-Altman plot of eccentricity, Bernsen method of segmentation on image after colour deconvolution; (**B**) quasi B-A plot (described in section "The methods of comparison of the chosen segmentation methods results") Bernsen method of segmentation on image after colour deconvolution; (**C**) Bland-Altman plot of eccentricity, Sauvola method of segmentation on image after colour deconvolution; (**D**) quasi B-A plot, Sauvola method of segmentation on image after colour deconvolution.

for true positive objects. Based on this knowledge it is possible to form criteria (classifier) of false positive objects rejection from the set of results. So the Bernsen and the Souvola methods applied to result of deconvolution and shape coefficients (mainly solidity or perimeter) are the best candidates to be used in new hybrid method construction but only if the Bernsen method results of true positive objects indicate part of the Souvola method results.

B-A plots in Figure 7 presents co-localization features: eccentricity (Figure 7A,C) and defined by authors new coefficient (Figure 7B,D) which shows if the distance between two centroids is correlated with the ratio of the sum of false negative and false positive pixels divided by true positive pixels. Eccentricity defined as the ratio of the distance between the foci of the ellipse and its major axis length is calculated for ellipse that has the same second-moments as an object. Homogeneous distribution of error without any bias both for the Sauvola and the Bernsen method for eccentricity is achieved. It shows that erroneously detected area in both cases does not cause significant changes in ellipse which is an estimate of object. As this information do not tell us if errors in detected area moves centroid position more than within circle of reduce equal 1 pixel the new B-A like plots have been analysed. These plots are presented in Figure 7 (B, D) and they show that fraction of object which in consequence of error in peripheral part detection moves centroid of segmented object in comparison to the corresponding template object of distance between 1 and 2.5 pixels is less than 20% of objects (for the Bernsen method 12 objects from 70 but for the Sauvola method 14 objects from 72). So in most results of the Bernsen and the Souvola methods the error in area detection is homogeneously located on peripheral part of object if we applied these method to the monochromatic image after colour deconvolution. It proofs that the Bernsen method results can be used as true positive objects markers (particularly if they are eroded using mathematical morphology operation [49,50]) and these markers should indicate inside of some of the Sauvola method results; all objects which are not marked are FP objects and can be rejected.

Figure 8 presents segmentation results calculated for the chosen fragment of image shown in Figure 3 (top-left) more detail for all types of the monochromatic images: in the first row for B-channel, in the second row for the result of deconvolution and the bottom row for the results of brown component extraction. These results are presented as the various colour outlines of the detected objects. In left column of Figure 8 there are results of four methods: (1) Niblack method, in red colour, (2) Yasuda method, in green colour, (3) Palumbo method, in gray colour, and (4) Sauvola method, in blue colour. While in the right column there are only two: (1) White method, in red colour, and

(2) Bernsen method, in green colour. Other colours which appear in image arising by the low of primary colour adding only for the overlapping outlines: yellow colour as result of green colour added to red colour, magenta colour as result of blue colour added to red colour, cyan colour as result of green colour added to red colour and white colour as result of adding all tree colours. The left part of each image is imposed on the template, while the right part, without the template. Both parts show the mutual localization of the detected lines relative to each other and to the template objects. Visual evaluation of the Figure 8 shows that template cover almost all detected objects outlines because detected object are smaller or just in size of template object so the difference of particular method results can be observed in right part of each image. All white pixels in left parts of all images and all yellow pixels in right parts shows agreement in selected outlines while the lines in other colours shows distance between results. These distances are relatively small for results of the segmentation performed with monochromatic image which is results of deconvolution and which is B-channel image (Figure 8A-D). There is presented only one FP object segmented by the Sauvola method in Figure 8C while in Figure 8A there are much more FP objects (in green colour) segmented by the Yasuda method. So all method of results comparison strengths our belief that the process of colour deconvolution produce monochromatic image with best performance of brown colour component.

Discussion and conclusions

The investigation presented in this paper has two aims: (1) to compare the chosen adaptive threshold method on immunohistochemically stained lymphoma tissue sections to collect the knowledge how to design the new method based on the local thresholding methodology, and (2) to prove usefulness of creating artificial images which simulate experimentally acquired microscopic images used for the objective validation of image processing methods. The first goal has been achieved because results of all tested adaptive threshold methods except for the Yasuda method appear to be good or very good (accuracy from 0.9986 to 0.9816 and precision from 1 to 0.6773 for respectively the Bernsen method and the Palumbo method applied to B-channel and to the White method applied to B-channel and for the Palumbo method applied to the result of the colour deconvolution) when accuracy and precision are quantifying based on pixels classification. The best accuracy and precision (respectively 0.9945 and 1) is for the White method applied to B-channel of RGB but this method decreases the size of segmented objects and sometimes reject objects that touches image edges. The accuracy and precision for both chosen methods are 0.9892 and 0.9331 for the Sauvola method and 0.9864 and 0.8454 for the Bernsen method

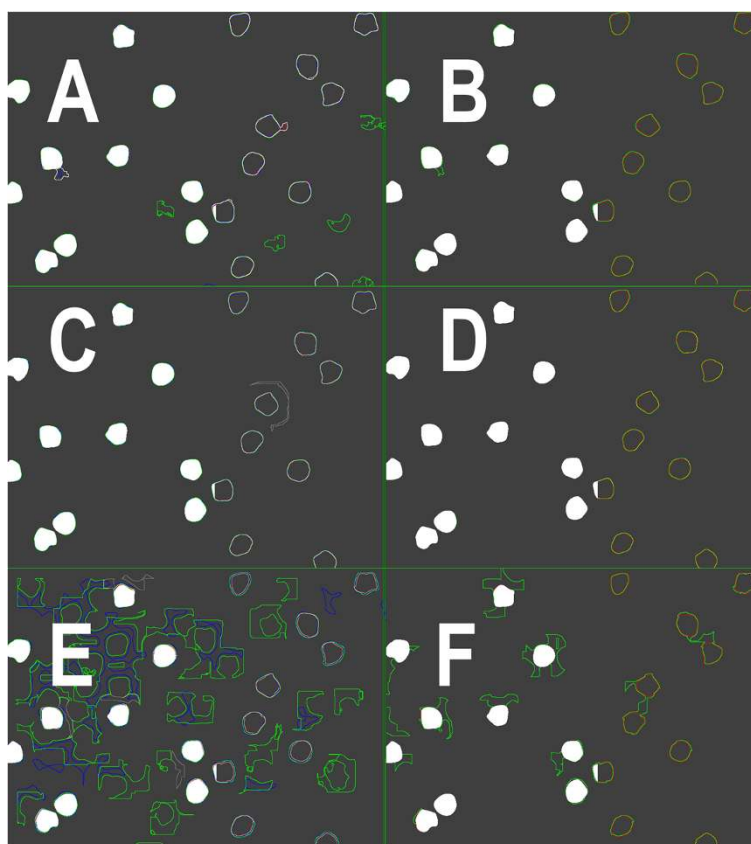


Figure 8 Image segmentation results. The sub-images present overlapped results of adaptive threshold methods in the left column for: the Niblack method (in red), the Sauvola method (in blue), the Yasuda method (in green) and the Palumbo method (in gray) and in the right column for: the White method (in red) and the Bernsen method (in green). The top row (**A** and **B**) presents results calculated on B-channel of RGB, the middle row (**C** and **D**) presents results calculated for the brown map after colour deconvolution while the bottom row (**E** and **F**) for the "brown axis" in RGB. The other colours appearing in image should be identified according to the law of primary colour adding as overlapping outlines. The left part of each sub-image is imposed on the template what causes that inside of object there is white colour while the right part, shows the mutual localization of the detected lines on dark gray instead of black background.

calculating it from an area. But calculating it based on the number of selected objects for the Bernsen method accuracy and precision both are equal to 1 while for the modified Sauvola method are equal 1 and 0.9722 respectively.

All tested methods produce results based on various criteria but all uses the same size of the sliding window of image processing algorithm around classified pixels (in this investigation window size is 51x51 pixels because of object size) and the same value of minimal contrast for object and background (in this investigation $T_c = 150$):

- the Bernsen method uses only these two parameters but it generally produces various threshold level across image plane, adjusting it to the mean value of two numbers: the maximum and the minimum of intensity in window; if local contrast is bigger than T_c the threshold value is settled on the level on locally adjusted value if not the background is detected;
- the hybrid of Sauvola method classifies objects according to description above using two other parameters: $k = -0.2$ which introduce bias in variance value and $R = 128$ which allows to standardize variance value; this method also produce locally adjusted threshold level according to mean intensity value in window corrected by biased and standardized variance; if local contrast is bigger than T_c the threshold value is settled on the level on locally adjusted value if not the background is detected;
- the White method classifies object also according to pixels mean intensity value inside window but classifies it as belonging to the object if intensity of analyzed pixel multiplied by bias parameter (in this investigation $bias = 2$) is bigger than mean intensity value calculated inside window, what is essential in this method that threshold level is also locally adjusted but local threshold value is dependent from

mean intensity value in window and from chosen constant bias.

The local threshold level in the White method is dependent on bias which increase intensity of analysed pixel causes that the method perform well in images with high contrast between objects and background. The highest contrast is observed in blue channel monochromatic image despite the fact that texture present in blue objects locally disturbs this contrast. The other two methods are dependent on mean intensity corrected by the variance for the Sauvola method and on the half of intensity range inside window for the Bernsen method what causes that they are less dependent from the value of contrast but rather dependent from lack of local contrast disturbance. This is observed in monochromatic images after deconvolution where texture of blue object is rejected and texture in background is really weak. Both methods applying to the images after colour deconvolution produce complementary results. It derives from the fact that the corrected by standardized variance mean value of the intensity is sensitive enough to detect less conduced brown colour regions. It means that it can detect blurred edges of objects and at the same time it detects gentle contrails of stain deposits in the background while the half of the intensity range cut all blurred fragments of objects and do not detect stain deposits in the background. So it leads to the conclusion that the new developed method should take advantage from both the Bernsen and the Souvola methods in precision and accuracy of object detection and working synergistically it rejects all errors e.g. extra objects.

The evaluation of performance of 6 adaptive threshold methods, on three types of monochromatic images, based on 5 true colour artificial images was done. So the second aim, the verification of the thesis about usefulness of the artificial image synthesis method in the image processing method evaluation and comparison, also was achieved. The known and assumed location of objects of interest in the template allows using the standard methods for the quality assessment, as specificity, sensitivity and standard coefficients of similarity, precision and accuracy and Bland-Altman analysis which work well in all comparative study. As the scientific and clinical interest in quantifying brown objects in DAB&H stained samples is evident the evaluation of the segmentation results using artificial synthesized images allows gathering huge amount of knowledge about image analysis efficiency in the context of image characteristics. This knowledge will be used during new method development in future.

Competing interests

The authors declare that they have no competing interests.

Authors' contributions

AK suggested the idea of investigation (artificial image and adjusted adaptive threshold method), wrote part of the paper with results, discussion and conclusions and some figures. LR wrote part of paper and tables and figures and designed and implemented software for image analysis and processing and Blend-Altman analysis, performed image analysis and consulted the obtained results. LW supported software implementation. CL, RB, ML performed experiments and acquired images and consulted the obtained results. All authors have read and approved the final manuscript.

Acknowledgements

No outside funding was received for this study.

Author details

¹Nalecz Institute of Biocybernetics and Biomedical Engineering, Ks. Trojdena 4 Str. Warsaw, Poland. ²Molecular Biology and Research Section Hospital de Tortosa Verge de la Cinta, C Esplanetes 14, Tortosa, Spain.

Received: 7 December 2012 Accepted: 28 February 2013

Published: 25 March 2013

References

1. Roux L, Tutac A, Lomenie N, Balensi D, Racoceanu D, all: **A cognitive virtual microscopic framework for knowledge-based exploration of large microscopic images in breast cancer histopathology**. In *Engineering in Medicine and Biology Society, 2009. EMBC 2009. Annual International Conference of the IEEE*. Minneapolis, MN: IEEE; 2009:3697–3702.
2. Grala B, Markiewicz T, Kozłowski W, Osowski S, Slodkowska J, Papierz W: **New automated image analysis method for the assessment of Ki-67 labeling index in meningiomas**. *Folia Histochemica et Cytobiologica* 2010, **47**(4):587–592. [http://dx.doi.org/10.2478/v10042-008-0098-0]
3. Swerdlow S, for Research on Cancer IA, Organization WHO: *WHO Classification of Tumours of Haematopoietic and Lymphoid Tissues*. World Health Organization classification of tumours, International Agency for Research on Cancer; 2008. [http://www.ncbi.nlm.nih.gov/nlmcatalog/101477951]. [ISBN-13: 9789283224310; ISBN-10: 9283224310].
4. Rojo M, Bueno G, Slodkowska J: **Review of imaging solutions for integrated quantitative immunohistochemistry in the Pathology daily practice**. *Folia Histochemica et Cytobiologica* 2010, **47**(3):349–354. [http://czasopisma.viamedica.pl/fhc/article/view/4337]
5. Seidal T, Balaton AJ, Battifora H: **Interpretation and Quantification of Immunostains**. *Am J Surg Pathol* 2001, **25**(9):1204–1207. [http://journals.lww.com/ajsp/Fulltext/2001/09000/Interpretation_and_Quantification_of_Immunostains.13.aspx]
6. Yaziji H, Barry T: **Diagnostic Immunohistochemistry: What can Go Wrong?** *Adv Anat Pathol* 2006, **13**(5):238–246. [http://journals.lww.com/anatomicpathology/Fulltext/2006/09000/Diagnostic_Immunohistochemistry_What_can_Go.3.aspx]
7. Du X, Dua S: **Segmentation of fluorescence microscopy cell images using unsupervised mining**. *Open Med Inform J* 2010, **4**:41–49. [http://europepmc.org/abstract/MED/21116323]
8. Markiewicz T, Wisniewski P, Osowski S, Patera J, Kozłowski W, Koktysz R: **Comparative analysis of methods for accurate recognition of cells through nuclei staining of Ki-67 in neuroblastoma and estrogen/progesterone status staining in breast cancer**. *Anal Quant Cytol Histol* 2009, **31**:49–62. [http://www.ncbi.nlm.nih.gov/pubmed/19320193]
9. Lopez C, Lejeune M, Salvado MT, Escriva P, Bosch R, Pons L, Alvaro T, Roig J, Cugat X, Baucells J, Jaen J: **Automated quantification of nuclear immunohistochemical markers with different complexity**. *Histochem Cell Biol* 2008, **129**:379–387. [http://dx.doi.org/10.1007/s00418-007-0368-5]
10. Pietka E, Kawa J, Spinczyk D, Badura P, Wieclawek W, Czajkowska J, Rudzki M: **Role of radiologists in CAD life-cycle**. *Eur J Radiol* 2011, **78**(2):225–233. [http://www.sciencedirect.com/science/article/pii/S0720048X09005087]
11. Korzynska A, Zychowicz M: **A method of estimation of the cell doubling time on basis of the cell culture monitoring data**. *Biocybern Biomed Eng* 2008, **28**(4):75–82. [http://ibib.waw.pl/bbe/bbfulltext/BBE_28_4_075_FT.pdf]

12. Choi HJ, Choi IH, Cho NH, Choi HK: **Color image analysis for quantifying renal tumor angiogenesis.** *Anal Quant Cytol Histol* 2005, **27**:43–51. [http://www.ncbi.nlm.nih.gov/pubmed/15794451]
13. Comaniciu D, Meer P: **Cell image segmentation for diagnostic pathology.** In *Advanced Algorithmic Approaches to Medical Image Segmentation*. Advances in Computer Vision and Pattern Recognition. London: Springer; 2002:541–558. [http://dx.doi.org/10.1007/978-0-85729-333-6_10]
14. Markiewicz T, Osowski S, Patera J, Kozlowski W: **Image processing for accurate cell recognition and count on histologic slides.** *Anal Quant Cytol Histol / Int Acad Cytology [and] Am Soc Cytol* 2006, **28**(5):281–291. [http://www.ncbi.nlm.nih.gov/pubmed/17067010]
15. Kayser K, Gortler J, Goldmann T, Vollmer E, Hufnagl P, Kayser G: **Image standards in tissue-based diagnosis (Diagnostic Surgical Pathology).** *Diagn Pathol* 2008, **3**:17. [http://www.diagnosticpathology.org/content/3/1/17]
16. Gil J, Wu HS: **Applications of image analysis to anatomic pathology: realities and promises.** *Cancer Investig* 2003, **21**(6):950–959. [http://informahealthcare.com/doi/abs/10.1081/CNV-120025097]
17. Gil J, Wu H, Wang BY: **Image analysis and morphometry in the diagnosis of breast cancer.** *Microsc Res Tech* 2002, **59**(2):109–118. [http://dx.doi.org/10.1002/jemt.10182]
18. Klapper W, Hoster E, Determann O, Oschlies I, Laak J, Berger F, Bernd HW, Cabecadas J, Campo E, Cogliatti S, Hansmann M, Kluin P, Kodet R, Krivolapov Y, Loddenkemper C, Stein H, Muller P, Barth T, Maller-Hermelink K, Rosenwald A, Ott G, Pileri S, Ralfkiaer E, Rymkiewicz G, Krieken J, Wacker H, Unterhalt M, Hiddemann W, Dreyling M: **Ki-67 as a prognostic marker in mantle cell lymphoma-consensus guidelines of the pathology panel of the European MCL Network.** *J. Hematopathol* 2009, **2**:103–111. [http://dx.doi.org/10.1007/s12308-009-0036-x]
19. Lehmuussola A, Ruusuvaori P, Selinummi J, Huttunen H, Yli-Harja O: **Computational framework for simulating fluorescence microscope images with cell populations.** *Med Imaging, IEEE Trans* 2007, **26**(7):1010–1016.
20. Lehmuussola A, Ruusuvaori P, Selinummi J, Rajala T, Yli-Harja O: **Synthetic images of high-throughput microscopy for validation of image analysis methods.** *Proc IEEE* 2008, **96**(8):1348–1360.
21. Kayser K, Radziszowski D, Bzdyl P, Sommer R, Kayser G: **Towards an automated virtual slide screening: theoretical considerations and practical experiences of automated tissue-based virtual diagnosis to be implemented in the Internet.** *Diagn Pathol* 2006, **1**:1–8. [http://dx.doi.org/10.1186/1746-1596-1-10]
22. Kayser G, Radziszowski D, Bzdyl P, Sommer R, Kayser K: **Theory and implementation of an electronic, automated measurement system for images obtained from immunohistochemically stained slides.** *Anal Quant Cytol Histol* 2006, **28**:27–38. [http://pubget.com/paper/16566277]
23. Markiewicz T: **Using MATLAB software with Tomcat server and Java platform for remote image analysis in pathology.** *Diagn Pathol* 2011, **6**:1–7. [http://dx.doi.org/10.1186/1746-1596-6-S1-S18]
24. Bueno G, Gonzalez R, Deniz O, Garcia-Rojo M, Gonzalez-Garcia J, Fernandez-Carrobles M, Vallez N, Salido J: **A parallel solution for high resolution histological image analysis.** *Comput Methods Programs Biomed* 2012, **108**:388–401. [http://www.sciencedirect.com/science/article/pii/S016926071200082X]
25. Korzynska A, Iwanowski M: **Segmentation of moving cells in bright field and Epi-Fluorescent microscopic image sequences.** In *Computer Vision and Graphics, Volume 6374 of Lecture Notes in Computer Science*. Edited by Bolc L, Tadeusiewicz R, Chmielewski L, Wojciechowski K. Berlin Heidelberg: Springer; 2010:401–410. [http://dx.doi.org/10.1007/978-3-642-15910-7_46]
26. Korzynska A, Hoppe A, Strojny W, Wertheim D: **Investigation of a combined texture and contour method for segmentation of light microscopy cell images.** In *Proceedings of the Second IASTED International Conference on Biomedical Engineering, Volume 417*. Edited by Tilg B; 2004:234–239. [http://www.actapress.com/Abstract.aspx?paperId=16336]
27. Korzynska A, Iwanowski M: **Multistage morphological segmentation of bright-field and fluorescent microscopy images.** *Opto-Electron Rev* 2012, **20**(2):174–186. [http://dx.doi.org/10.2478/s11772-012-0026-x]
28. Bartels P, Montironi R, Duval da Silva V, Hamilton P, Thompson D, Vaught L, Bartels H: **Tissue architecture analysis in prostate cancer and its precursors: an innovative approach to computerized histometry.** *Eur Urol* 1999, **35**(5-6):484–491. [http://www.karger.com/DOI/10.1159/000019884]
29. Schulerud H, Kristensen GB, Liestol K, Vlatkovic L, Reith A, Albrechtsen F, Danielsen HE: **A review of caveats in statistical nuclear image analysis.** *Anal Cell Pathol* 1998, **16**(2):63–82. [http://iospress.metapress.com/content/6159KHY5B2WPJN0Y]
30. Koprowski R, Wrobel Z: **The cell structures segmentation.** In *Computer Recognition Systems, Volume 30 of Advances in Soft Computing*. Edited by Kurzynski M, Puchala E, Wozniak M, Zolnierek A. Berlin Heidelberg: Springer; 2005:569–576. [http://dx.doi.org/10.1007/3-540-32390-2_67]
31. Korzynska A, Neuman U, Lopez C, Lejeun M, Bosch R: **The method of immunohistochemical images standardization.** In *Image Processing and Communications Challenges 2, Volume 84 of Advances in Intelligent and Soft Computing*. Edited by Choras R. Berlin Heidelberg: Springer; 2010:213–221. [http://dx.doi.org/10.1007/978-3-642-16295-4_24]
32. Tadrous P: **Digital stain separation for histological images.** *J Microsc* 2010, **240**(2):164–172. [http://dx.doi.org/10.1111/j.1365-2818.2010.03390.x]
33. Ruifrok A, Johnston D: **Quantification of histochemical staining by color deconvolution.** *Anal Quant Cytol Histol* 2001, **23**(4):291–299. [http://europepmc.org/abstract/MED/11531144]
34. Di Cataldo S, Ficarra E, Acquaviva A, Macii E: **Automated segmentation of tissue images for computerized IHC analysis.** *Comput Methods Programs Biomed* 2010, **100**:1–15. [http://www.sciencedirect.com/science/article/pii/S0169260710000337]
35. Di Cataldo S, Ficarra E, Acquaviva A, Macii E: **Achieving the way for automated segmentation of nuclei in cancer tissue images through morphology-based approach: A quantitative evaluation.** *Comput Med Imaging Graph* 2010, **34**(6):453–461. [http://www.sciencedirect.com/science/article/pii/S089561110900158X]
36. Kuse M, Sharma T, Gupta S: **A classification scheme for lymphocyte segmentation in H&E stained histology images.** In *Recognizing Patterns in Signals, Speech, Images and Videos, Volume 6388 of Lecture Notes in Computer Science*. Edited by Unay D, Cataltepe Z, Aksoy S. Berlin Heidelberg: Springer; 2010:235–243. [http://dx.doi.org/10.1007/978-3-642-17711-8_24]
37. White JM, Rohrer GD: **Image thresholding for optical character recognition and other applications requiring character image extraction.** *IBM J Res Dev* 1983, **27**(4):400–411.
38. Bernsen J: **Dynamic thresholding of gray-level images.** In *ICPR'86: International Conference on Pattern Recognition*; 1986. [http://libra.msra.cn/Publication/2042781/dynamic-thresholding-of-gray-level-images]
39. Yasuda Y, Dubois M, Huang T: **Data compression for check processing machines.** *Proc IEEE* 1980, **68**(7):874–885.
40. Neuman U, Korzynska A, Lopez C, Lejeune M: **Segmentation of stained lymphoma tissue section images.** In *Inform Technol Biomed, Volume 69 of Advances in Intelligent and Soft Computing*. Edited by Pietka E, Kawa J. Berlin Heidelberg: Springer; 2010:101–113. [http://dx.doi.org/10.1007/978-3-642-13105-9_11]
41. Pham DL, Xu C, Prince JL: **A survey of current methods in medical image segmentation.** *Annu Rev Biomed Eng* 2000, **2**:315–337. [http://www.annualreviews.org/doi/abs/10.1146/annurev.bioeng.2.1.315] [PMID: 11701515]
42. Fu K, Mui J: **A survey on image segmentation.** *Patt Recognit* 1981, **13**:3–16. [http://www.sciencedirect.com/science/article/pii/S001320381900285]
43. Sezgin M, Sankur B: **Survey over image thresholding techniques and quantitative performance evaluation.** *J Electron Imaging* 2004, **13**:146–168. [http://dx.doi.org/10.1117/1.1631315]
44. Niblack W: *An Introduction to Image Processing*. Englewood Cliffs: Prentice-Hall International; 1986. [http://books.google.pl/books?id=XOxRAAAAMAAJ]
45. Sauvola J, Pietikainen M: **Adaptive document image binarization.** *Patt Recognit* 2000, **33**(2):225–236. [http://www.sciencedirect.com/science/article/pii/S0031320399000552]
46. Siva P, Hulls C: **Dynamic segmentation of small image windows for visual servoing.** In *Mechatronics and Automation, 2005 IEEE International*

Conference, Volume 2. Niagara Falls, Canada: IEEE Service Center; 2005:643–648. [http://dx.doi.org/10.1109/ICMA.2005.1626625]

47. Palumbo PW, Swaminathan P, Srihari SN: **Document image binarization: evaluation of algorithms.** *Proc SPIE Appl Digit Image Process IX* 1986, **697**(278):278–285. [+http://dx.doi.org/10.1117/1.2.976229]
48. Alvaro T, Lejeune M, Salvado MT, Lopez C, Jaen J, Bosch R, Pons LE: **Immunohistochemical patterns of reactive microenvironment are associated with clinicobiologic behavior in follicular lymphoma patients.** *J Clin Oncol* 2006, **24**(34):5350–5357. [http://jco.ascopubs.org/content/24/34/5350.abstract]
49. Nieniewski M: *Morfologia matematyczna w przetwarzaniu obrazow.* Problemy Wspolczesnej Nauki: Informatyka, Akademicka Ofic. Wydawnicza PLJ; 1998. [http://books.google.pl/books?id=vAk_twAACAAJ]
50. Iwanowski M: *Metody morfologiczne w przetwarzaniu obrazow cyfrowych:* Akademicka Oficyna Wydawnicza EXIT; 2009. [https://sites.google.com/site/metodymorfologiczne/]

doi:10.1186/1746-1596-8-48

Cite this article as: Korzynska et al.: Validation of various adaptive threshold methods of segmentation applied to follicular lymphoma digital images stained with 3,3'-Diaminobenzidine&Haematoxylin. *Diagnostic Pathology* 2013 **8**:48.

Submit your next manuscript to BioMed Central
and take full advantage of:

- Convenient online submission
- Thorough peer review
- No space constraints or color figure charges
- Immediate publication on acceptance
- Inclusion in PubMed, CAS, Scopus and Google Scholar
- Research which is freely available for redistribution

Submit your manuscript at
www.biomedcentral.com/submit

