

Published in final edited form as:

*Nat Genet.* 2010 May ; 42(5): 430–435. doi:10.1038/ng.567.

## Variants in *ADCY5* and near *CCNL1* are associated with fetal growth and birth weight

Rachel M Freathy<sup>\*,1</sup>, Dennis O Mook-Kanamori<sup>\*,2,3,4</sup>, Ulla Sovio<sup>\*,5</sup>, Inga Prokopenko<sup>\*,6,7</sup>, Nicholas J Timpson<sup>\*,8</sup>, Diane J Berry<sup>\*,9</sup>, Nicole M Warrington<sup>\*,10</sup>, Elisabeth Widen<sup>11</sup>, Jouke Jan Hottenga<sup>12</sup>, Marika Kaakinen<sup>13,14</sup>, Leslie A Lange<sup>15</sup>, Jonathan P Bradfield<sup>16</sup>, Marjan Kerkhof<sup>17</sup>, Julie A Marsh<sup>10</sup>, Reedik Mägi<sup>6,7</sup>, Chih-Mei Chen<sup>18,19</sup>, Helen N Lyon<sup>20,21</sup>, Mirna Kirin<sup>22</sup>, Linda S Adair<sup>23</sup>, Yurii S Aulchenko<sup>3</sup>, Amanda J Bennett<sup>6</sup>, Judith B Borja<sup>24</sup>, Nabila Bouatia-Naji<sup>25</sup>, Pimphen Charoen<sup>5,26</sup>, Lachlan J M Coin<sup>5</sup>, Diana L Cousminer<sup>11</sup>, Eco J. C. de Geus<sup>12</sup>, Panos Deloukas<sup>27</sup>, Paul Elliott<sup>5</sup>, David M Evans<sup>8</sup>, Philippe Froguel<sup>25,28</sup>, The Genetic Investigation of ANthropometric Traits (GIANT) Consortium<sup>57</sup>, Beate Glaser<sup>8,29</sup>, Christopher J Groves<sup>6</sup>, Anna-Liisa Hartikainen<sup>30</sup>, Neelam Hassanali<sup>6</sup>, Joel N Hirschhorn<sup>20,31,32,33</sup>, Albert Hofman<sup>3</sup>, Jeff M P Holly<sup>34</sup>, Elina Hyppönen<sup>9</sup>, Stavroula Kanoni<sup>35</sup>, Bridget A Knight<sup>36</sup>, Jaana Laitinen<sup>37</sup>, Cecilia M Lindgren<sup>6,7</sup>, The Meta-Analyses of Glucose and Insulin-related traits Consortium (MAGIC)<sup>57</sup>, Wendy L McArdle<sup>38</sup>, Paul F O'Reilly<sup>5</sup>, Craig E Pennell<sup>39</sup>, Dirkje S Postma<sup>40</sup>, Anneli Pouta<sup>41</sup>, Adaikalavan Ramasamy<sup>5,42</sup>, Nigel W Rayner<sup>6,7</sup>, Susan M Ring<sup>38</sup>, Fernando Rivadeneira<sup>3,43</sup>, Beverley M Shields<sup>36</sup>, David P Strachan<sup>44</sup>, Ida Surakka<sup>11</sup>, Anja Taanila<sup>13</sup>, Carla Tiesler<sup>18,19</sup>, Andre G Uitterlinden<sup>3,43</sup>, Cornelia M van Duijn<sup>3</sup>, The Wellcome Trust Case Control Consortium (WTCCC)<sup>57</sup>, Alet H Wijga<sup>45</sup>, Gonneke Willemsen<sup>12</sup>, Haitao Zhang<sup>16</sup>, Jianhua Zhao<sup>46</sup>, James F Wilson<sup>22</sup>, Eric A P Steegers<sup>47</sup>, Andrew T Hattersley<sup>36</sup>, Johan G Eriksson<sup>48,49,50,51</sup>, Leena Peltonen<sup>11,27,52</sup>, Karen L Mohlke<sup>15</sup>, Struan F A Grant<sup>16,46,53</sup>, Hakon Hakonarson<sup>16,46,53</sup>, Gerard H Koppelman<sup>54</sup>, George V Dedoussis<sup>35</sup>, Joachim Heinrich<sup>18</sup>, Matthew W Gillman<sup>55</sup>, Lyle J Palmer<sup>10</sup>, Timothy M Frayling<sup>1</sup>, Dorret I Boomsma<sup>†,12</sup>, George Davey Smith<sup>†,8</sup>, Chris

<sup>†</sup>Corresponding authors; these authors jointly directed this work.. Corresponding author contact details: **Dorret I. Boomsma** Department of Biological Psychology VU University Amsterdam van der Boechorststraat 1 1081 BT Amsterdam the Netherlands Tel. +31 (0)20 598 8787 Fax. +31 (0)20 598 8832 dorret@psy.vu.nl. **George Davey Smith** The MRC Centre for Causal Analyses in Translational Epidemiology University of Bristol Oakfield House Oakfield Grove Bristol BS8 2BN UK Tel. +44 (0)117 3310095 Fax. +44 (0)117 3310123 George.Davey-Smith@bristol.ac.uk. **Chris Power** Centre for Paediatric Epidemiology & Biostatistics MRC Centre of Epidemiology for Child Health University College of London Institute of Child Health London WC1N 1EH UK Tel. +44 (0)20 7242 9789 Fax. +44 (0)20 7905 2381 C.Power@ich.ucl.ac.uk. **Vincent V. W. Jaddoe** Generation R Study Group (Room AE 006) Erasmus Medical Center PO Box 2040 3000 CA, Rotterdam the Netherlands Tel. +31 (0)10 7043405 Fax. +31 (0)10 7044645 v.jaddoe@erasmusmc.nl. **Marjo-Riitta Jarvelin** Department of Epidemiology and Public Health Imperial College London London UK Tel. +44 (0)207 5943345 Fax. +44 (0)207 4022150 m.jarvelin@imperial.ac.uk. **Mark I. McCarthy** Oxford Centre for Diabetes, Endocrinology and Metabolism Churchill Hospital Old Road, Headington Oxford OX3 7LJ UK Tel. +44 (0)1865 857298 Fax. +44 (0)1865 857299 mark.mccarthy@drl.ox.ac.uk.

<sup>57</sup>A complete list of members is available in a Supplementary Note.

\*These authors contributed equally to this work.

### AUTHOR CONTRIBUTIONS

**Project Design:** R.M.F., U.S., N.J.T., E.W., M.Kerkhof, H.N.L., L.S.A., J.B.B., E.J.C.D.G., A.-L.H., J.N.H., A.H., E.H., J.L., D.S.P., A.P., A.T., A.H.W., G.W., J.F.W., E.A.P.S., A.T.H., L.P., K.L.M., S.F.A.G., H.H., G.H.K., G.V.D., J.H., M.W.G., L.J.P., T.M.F., D.I.B., G.D.S., C.P., V.W.V.J., M-R.J., M.I.M.

**Sample collection and phenotyping:** D.O.M.K., U.S., D.J.B., M.Kaakinen, M.Kerkhof, L.S.A., A.J.B., J.B.B., P.E., A.-L.H., E.H., S.K., B.A.K., J.L., W.L.M., C.E.P., D.S.P., A.P., F.R., B.M.S., D.P.S., A.T., A.G.U., A.H.W., G.W., J.F.W., A.T.H., J.G.E., S.F.A.G., H.H., G.H.K., G.V.D., J.H., M.W.G., L.J.P., G.D.S., C.P., V.W.V.J., M-R.J.

**Genotyping:** R.M.F., J.J.H., M.Kerkhof, H.N.L., A.J.B., N.B-N., E.J.C.D.G., P.D., P.E., P.F., C.J.G., N.H., J.N.H., W.L.M., D.S.P., S.M.R., F.R., A.G.U., A.H.W., J.F.W., L.P., S.F.A.G., H.H., G.H.K., D.I.B., M-R.J.

**Statistical analysis:** R.M.F., D.O.M.K., U.S., I.P., N.J.T., D.J.B., N.M.W., E.W., J.J.H., M.Kaakinen, L.A.L., J.P.B., M.Kerkhof, J.A.M., R.M., C.M.C., H.N.L., M.Kirin, Y.S.A., P.C., L.J.M.C., D.L.C., D.M.E., B.G., C.M.L., P.O., D.S.P., A.R., N.W.R., B.M.S., I.S., C.T., C.M.V.D., A.H.W., J.Z., H.Z., G.H.K., M.W.G., L.J.P.

**Writing:** R.M.F., D.O.M.K., U.S., I.P., N.J.T., D.J.B., J.M.P.H., A.T.H., L.J.P., T.M.F., V.W.V.J., M-R.J., M.I.M.

### COMPETING INTERESTS STATEMENT

The authors declare no competing financial interests.

**Power<sup>†,9</sup>, Vincent W V Jaddoe<sup>†,2,3</sup>, Marjo-Riitta Jarvelin<sup>†,5,13,14,41</sup>, and Mark I McCarthy<sup>†,6,7,56</sup> for the Early Growth Genetics (EGG) Consortium**

<sup>1</sup> Genetics of Complex Traits, Peninsula College of Medicine and Dentistry, University of Exeter, Magdalen Road, Exeter, EX1 2LU, UK <sup>2</sup> Department of Pediatrics, Erasmus Medical Center, Rotterdam, the Netherlands <sup>3</sup> Department of Epidemiology, Erasmus Medical Center, Rotterdam, the Netherlands <sup>4</sup> The Generation R Study, Erasmus Medical Center, Rotterdam, the Netherlands <sup>5</sup> Department of Epidemiology and Public Health, Imperial College London, London, UK <sup>6</sup> Oxford Centre for Diabetes, Endocrinology and Metabolism, University of Oxford, UK, OX3 7LJ <sup>7</sup> Wellcome Trust Centre for Human Genetics, University of Oxford, Oxford, OX3 7BN, UK <sup>8</sup> The MRC Centre for Causal Analyses in Translational Epidemiology, Department of Social Medicine, University of Bristol, Oakfield House, Oakfield Grove, Bristol, BS8 2BN, UK <sup>9</sup> Centre for Paediatric Epidemiology and Biostatistics, MRC Centre of Epidemiology for Child Health, University College of London Institute of Child Health, London, UK <sup>10</sup> Centre for Genetic Epidemiology and Biostatistics, The University of Western Australia <sup>11</sup> Institute for Molecular Medicine Finland (FIMM), Tukholmankatu 8 (P.O: Box 20), 00014 University of Helsinki <sup>12</sup> Department of Biological Psychology, VU University Amsterdam, Amsterdam, the Netherlands <sup>13</sup> Institute of Health Sciences, University of Oulu, Oulu, Finland <sup>14</sup> Biocenter Oulu, University of Oulu, Oulu, Finland <sup>15</sup> Department of Genetics, University of North Carolina, Chapel Hill, NC, USA <sup>16</sup> Center for Applied Genomics, The Children's Hospital of Philadelphia, Pennsylvania 19104, USA <sup>17</sup> Department of Epidemiology, University Medical Center Groningen, University of Groningen, the Netherlands <sup>18</sup> Helmholtz Zentrum Muenchen, German Research Centre for Environmental Health, Institute of Epidemiology, Neuherberg, Germany <sup>19</sup> Ludwig-Maximilians-University of Munich, Dr. von Hauner Children's Hospital, Munich, Germany <sup>20</sup> Division of Genetics, Program in Genomics, Children's Hospital, Boston, MA, USA <sup>21</sup> Department of Pediatrics, Harvard Medical School, Boston, MA, USA <sup>22</sup> Centre for Population Health Sciences, University of Edinburgh, Teviot Place, Edinburgh, EH8 9AG, Scotland, UK. <sup>23</sup> Department of Nutrition, University of North Carolina, Chapel Hill, NC, USA <sup>24</sup> Office of Population Studies Foundation, University of San Carlos, Cebu City, Philippines <sup>25</sup> CNRS UMR 8090 Institute of Biology, Pasteur Institute of Lille and Lille 2 Droit et Sant, University, Lille, France <sup>26</sup> Department of Tropical Hygiene, Faculty of Tropical Medicine, Mahidol University, Bangkok, Thailand <sup>27</sup> Wellcome Trust Sanger Institute, Wellcome Trust Genome Campus, Hinxton Cambridge, CB10 1SA, UK <sup>28</sup> Genomic Medicine, Hammersmith Hospital, Imperial College London, London, UK <sup>29</sup> Children of the Nineties, Department of Social Medicine, University of Bristol, Oakfield House, Oakfield Grove, Bristol, BS8 2BN, UK <sup>30</sup> Institute of Clinical Medicine, University of Oulu, Oulu, Finland <sup>31</sup> Program in Medical and Population Genetics, Broad Institute of MIT and Harvard, Cambridge, MA, USA <sup>32</sup> Department of Genetics, Harvard Medical School, Boston, MA, USA <sup>33</sup> Division of Endocrinology, Children's Hospital, Boston, MA, USA. <sup>34</sup> Department of Clinical Science at North Bristol, University of Bristol, Paul O'Gorman Lifeline Centre, Southmead Hospital, Bristol BS10 5NB, UK <sup>35</sup> Department of Dietetics-Nutrition, Harokopio University, Greece <sup>36</sup> Peninsula NIHR Clinical Research Facility, Peninsula College of Medicine and Dentistry, University of Exeter, Barrack Road, Exeter, EX2 5DW, UK <sup>37</sup> National Institute of Occupational Health, Finland <sup>38</sup> Department of Social Medicine, University of Bristol, Oakfield House, Oakfield Grove, Bristol, BS8 2BN, UK <sup>39</sup> School of Women's & Infants' Health, The University of Western Australia <sup>40</sup> Department of Pulmonology, University Medical Center, University of Groningen, Groningen, the Netherlands <sup>41</sup> National Institute of Health and Welfare, Oulu, Finland <sup>42</sup> Respiratory Epidemiology and Public Health Group, National Heart and Lung Institute, Imperial College London, London, UK <sup>43</sup> Department of Internal Medicine, Erasmus Medical Center, Rotterdam, the Netherlands <sup>44</sup> Division of Community Health Sciences, St. George's, University of London, London, UK <sup>45</sup> Centre for Prevention and Health Services Research, National Institute for Public Health and the Environment (RIVM), Bilthoven, the Netherlands <sup>46</sup> Division of Human Genetics, The Children's Hospital of Philadelphia,

Pennsylvania 19104, USA <sup>47</sup> Department of Obstetrics and Gynaecology, Erasmus Medical Center, Rotterdam, the Netherlands <sup>48</sup> Helsinki University Central Hospital, Unit of General Practice, Helsinki, Finland. <sup>49</sup> Department of General Practice, University of Helsinki, Helsinki, Finland <sup>50</sup> Folkhälsan Research Centre, Helsinki, Finland <sup>51</sup> National Institute for Health and Welfare, Helsinki, Finland <sup>52</sup> Broad Institute of Harvard and MIT, Cambridge, Massachusetts, USA <sup>53</sup> Department of Pediatrics, University of Pennsylvania School of Medicine, Philadelphia Pennsylvania 19104, USA <sup>54</sup> Pediatric Pulmonology and Pediatric Allergology, Beatrix Children's Hospital, University Medical Center, University of Groningen, Groningen, the Netherlands <sup>55</sup> Obesity Prevention Program, Department of Population Medicine, Harvard Medical School/ Harvard Pilgrim Health Care Institute, Boston, MA, USA <sup>56</sup> Oxford NIHR Biomedical Research Centre, Churchill Hospital, Oxford OX3 7LJ, UK

## INTRODUCTORY PARAGRAPH

To identify genetic variants associated with birth weight, we meta-analyzed six genome-wide association (GWA) studies (N=10,623 Europeans from pregnancy/birth cohorts) and followed up two lead signals in thirteen replication studies (N=27,591). Rs900400 near *LEKR1* and *CCNL1* ( $P=2\times 10^{-35}$ ), and rs9883204 in *ADCY5* ( $P=7\times 10^{-15}$ ) were robustly associated with birth weight. Correlated SNPs in *ADCY5* were recently implicated in regulation of glucose levels and type 2 diabetes susceptibility,<sup>1</sup> providing evidence that the well described association between lower birth weight and subsequent type 2 diabetes<sup>2,3</sup> has a genetic component, distinct from the proposed role of programming by maternal nutrition. Using data from both SNPs, the 9% of Europeans with 4 birth weight-lowering alleles were, on average, 113g (95%CI 89-137g) lighter at birth than the 24% with 0 or 1 allele ( $P_{trend}=7\times 10^{-30}$ ). The impact on birth weight is similar to that of a mother smoking 4-5 cigarettes per day in the third trimester of pregnancy.<sup>4</sup>

The extremes of birth weight are associated with high risks of perinatal morbidity and mortality.<sup>5,6</sup> In addition, there are well-documented observational associations between lower birth weight and later life chronic disease, including type 2 diabetes, cardiovascular disease and higher blood pressure.<sup>2,3</sup> The mechanisms underlying these associations are poorly understood. Birth weight is a complex multifactorial trait.<sup>7,8</sup> The importance of genetic factors acting independently of the intra-uterine environment is illustrated by correlations between paternal height or weight and offspring birth weight,<sup>7,9,10</sup> and genetic variants that are associated both with low birth weight and increased risk of type 2 diabetes may account for some of the observed correlation between these phenotypes.<sup>11-13</sup> However, the genetic loci that influence birth weight are largely unknown.

Birth weight may be influenced directly by fetal genotype, and also indirectly by maternal genotype operating through the intra-uterine environment. This is clearly illustrated by observations of mothers and offspring with rare, heterozygous glucokinase (*GCK*) mutations. By reducing insulin secretion, these mutations increase offspring birth weight by 600g when inherited by the mother and reduce birth weight by 530g when inherited by the fetus.<sup>14</sup>

To search for common genetic variants associated with birth weight, we performed a meta-analysis of GWA studies. We reasoned that finding such variants, even those with modest effects, would lead to enhanced understanding of pathways important for fetal growth and those underlying the associations between fetal growth and adult disease.

We meta-analyzed association statistics from 2,427,548 directly-genotyped and imputed SNPs in singletons of European descent from six discovery GWA studies (N=10,623; Supplementary Table 1). Birth weight (BW) was standardized to Z-scores within each study

([BW-mean]/standard deviation, SD) and adjusted for sex and gestational age. We observed SNPs at two independent loci on chromosome 3 that were associated with birth weight at, or close to, genome-wide significance ( $P < 5 \times 10^{-8}$ ; Supplementary Figure 1). The first locus was at 3q25, between *CCNL1* and *LEKRI*; and the second, at 3q21 in *ADCY5* (Figure 1). To replicate these associations, we genotyped the most strongly associated SNP from each locus (rs900400 from 3q25; rs9883204 from 3q21), or a closely-correlated proxy (HapMap  $r^2 = 0.927-0.963$ ), in thirteen further samples of European descent (N=27,591; Supplementary Table 2). Robust evidence of association was seen for both signals in these replication samples (Figure 2;  $P = 3 \times 10^{-26}$  and  $3 \times 10^{-9}$ , respectively). Combining all discovery and replication samples, each additional C-allele of SNP rs900400 (frequency 32-47%) was associated with a 0.086 SD lower birth weight (95% CI: 0.073-0.100;  $P = 2 \times 10^{-35}$ ), while each C-allele of SNP rs9883204 (frequency 71-83%) was associated with a 0.063 SD lower birth weight (95% CI: 0.047-0.079;  $P = 7 \times 10^{-15}$ ; Table 1). These SD changes equate approximately to differences of 40g and 30g per allele, respectively (median study SD=484g). Analysis conditional on the index SNPs, rs900400 and rs9883204 did not produce any evidence for additional independent signals at either of the loci.

We found no evidence of heterogeneity between the studies examined ( $P > 0.5$ ;  $I^2 = 0\%$ ),<sup>15</sup> despite differences in mean birth weight (reflecting secular and population differences in birth weight distribution; Table 2), and the associations with birth weight were similar in males and females ( $P > 0.05$  for difference in effect sizes). Gestational age was not available as a covariate in three of our replication studies (combined N=6235; Supplementary Table 2), but these studies did not introduce detectable heterogeneity, and their removal from the meta-analysis changed the results very little (Figure 2 and Table 1 footnote). We also assessed the effects of the two SNPs on birth weight in a limited number of non-European or admixed samples from 2 studies (N=1415 Filipino subjects from the Cebu Longitudinal Health and Nutrition Survey, and N=298-448 African descended, Moroccan and Turkish subjects from Generation R; Supplementary Tables 2 and 3). There was no difference in the effect sizes observed relative to the European studies ( $P > 0.5$ ), but power to detect association was limited. Further well-powered studies will be needed to investigate these associations in non-Europeans.

Maternal and fetal genotypes are correlated due to segregation. In a previous study, an observed association between fetal *TCF7L2* genotype and birth weight was driven by the effects of maternal *TCF7L2* variation on the intra-uterine environment, rather than a direct effect on fetal growth.<sup>16</sup> To distinguish between these two mechanisms, we tested whether the novel birth weight associations were independent of maternal genotype. We genotyped both SNPs in all available maternal DNAs (N=9127; 5 study samples). Meta-analysis of associations between birth weight and fetal genotype, conditional on maternal genotype, yielded results which were very similar to the original associations at both loci (Supplementary Table 4), showing that these are direct fetal effects. As expected, there was no association between fetal genotype and various covariates of birth weight that were not included in our main analysis (maternal smoking, BMI, parity, education, age at delivery; all  $P > 0.05$ ; data not shown).

Birth weight may be influenced by skeletal growth or fat mass. In available samples, we analyzed the association between each locus and birth length, birth head circumference and ponderal index (Table 1 and Supplementary Figures 2-4). The association with ponderal index, relative to the birth length and head circumference associations, was particularly strong for the rs900400 SNP (0.094 SD [95% CI: 0.074-0.113] per C-allele;  $P = 5 \times 10^{-21}$ ), suggesting a greater association with fat mass than skeletal growth. For the rs9883204 SNP, the measures showed more proportionate changes (Table 1). We investigated associations with adult height and BMI using published GWA meta-analyses from the GIANT

consortium.<sup>17,18</sup> Only the rs900400 signal was captured in the published height data at  $r^2 > 0.8$  (since that study only included direct genotypes from the Affymetrix Genechip 500k), and there was no association ( $P=0.64$ ;  $N=9818$ ). There was no association with adult BMI for either locus ( $N \approx 32500$ ,  $P > 0.1$ ). This is consistent with the weak observational association between birth weight and adult BMI,<sup>19</sup> indicating that they are largely governed by different processes.

Although birth weight is a continuous trait, standard clinical cut-offs are used to identify neonates who are small for gestational age and who may require further observation. We therefore assessed whether each SNP increased the odds of gestational age-adjusted birth weight  $< 10^{\text{th}}$  percentile. Both loci were associated with smallness for gestational age: odds ratios (OR) 1.16 [95% CI: 1.10-1.23] ( $P=1 \times 10^{-7}$ ) and 1.09 [1.02-1.16] ( $P=0.009$ ) per C-allele of rs900400 and rs9883204, respectively (Table 1; Supplementary Figure 5).

The birth weight signal marked by rs900400 maps approximately 35kb 3-prime to the leucine, glutamate and lysine rich 1 (*LEKRI*) locus and 67kb 3-prime to cyclin L1 (*CCNL1*). Neither gene has previously been implicated in fetal growth. The CCNL1 protein may be involved in pre-mRNA splicing and RNA processing, and associates with cyclin-dependent kinases.<sup>20</sup> A non-coding RNA of unknown function, 682bp from rs900400 (AK311218, Human March 2006 Assembly 18), overlaps with the signal. We found no evidence for association at a genome-wide level ( $P > 5 \times 10^{-8}$ ) between our 3q25 birth weight signal and mRNA expression in lymphocytes, using the publicly available 'mRNA by SNP Browser 1.0',<sup>21</sup> and there was no association between rs900400 or rs900399 and type 2 diabetes or related adult glycemic traits in the recent GWA meta-analysis from the MAGIC consortium ( $P > 0.1$ ).<sup>1</sup> A range of approaches (including resequencing and functional studies) will be required to establish which gene (*CCNL1*, *LEKRI* or another gene) is mediating the effect on fetal growth.

The second birth weight locus at 3q21 (index SNP rs9883204) maps within the adenylyl cyclase 5 gene (*ADCY5*). *ADCY5* belongs to the family of enzymes responsible for the synthesis of cyclic adenosine monophosphate (cAMP).<sup>22-24</sup> Allele A of rs11708067, in linkage disequilibrium (LD) with the birth weight-lowering C-allele of rs9883204 ( $r^2=0.75$ ), is associated with a higher risk of type 2 diabetes (OR: 1.12 [95% CI: 1.04-1.15];  $P=9.9 \times 10^{-21}$ ; 40,655 cases/87,022 controls), higher fasting glucose (0.027 mmol/l [95% CI: 0.021-0.033];  $P=7.1 \times 10^{-22}$ ;  $N=118,475$ ), and reduced values of the Homeostatic Model Assessment (HOMA-) derived index of beta-cell function (HOMA-B;  $P=7.1 \times 10^{-12}$ ;  $N=94,212$ ),<sup>1</sup> suggesting that it may impact on insulin secretion. Fetal insulin is a key fetal growth factor, and these metabolic associations suggest that one mechanism explaining the *ADCY5* association with birth weight might be a direct effect of the fetal risk allele on fetal growth via reduced insulin secretion, consistent with the fetal insulin hypothesis.<sup>11</sup>

However, our previous studies suggest that an association between fetal genotype and birth weight is not characteristic of all type 2 diabetes loci. For example, susceptibility variants at *CDKN2A/B*, *IGF2BP2* and *SLC30A8* and *TCF7L2* were not associated with birth weight in previous studies of  $N > 15000$ , after adjusting for maternal genotype.<sup>12,16</sup> To test this more comprehensively, we examined the associations between birth weight and all published type 2 diabetes ( $N=24$ ) and fasting glucose ( $N=16$ ) loci in our discovery GWA meta-analysis ( $N=10,623$ ).<sup>1,25,26</sup> Only *ADCY5* and the previously observed birth weight association at *CDKAL1*<sup>12,13</sup> showed evidence of association at  $P < 0.01$  (Supplementary Table 5). One explanation for the variable effects of different type 2 diabetes susceptibility loci on birth weight is that they may influence beta-cell function at different points of the life course, with *ADCY5* having a more marked effect *in utero* than the other loci. However, other mechanisms could be partially or wholly responsible for the *ADCY5* association with birth

weight including the regulation of placental glucose transporter expression,<sup>27</sup> vitamin B<sub>2</sub> uptake in the placenta<sup>28</sup> and the architecture and permeability of the materno-fetal placental barrier.<sup>29</sup>

The associations at 3q25 and 3q21 explained 0.3% and 0.1% of the variance in birth weight, respectively. Given that estimates of the fetal genetic contribution to birth weight from twin and family studies are generally between 10 and 40%,<sup>30,31</sup> the proportion of heritability explained may be up to ten times greater. The variance explained by the first locus is comparable to that of maternal age (0.5%). We used a weighted risk allele score to estimate the differences in birth weight attributable to combinations of birth weight-lowering alleles at both loci. The 9% of Europeans with 4 birth weight-lowering alleles were, on average, 113g (95%CI 89-137g) lighter at birth than the 24% with 0 or 1 allele (P for trend =  $7 \times 10^{-30}$ ). For comparison, this effect on birth weight is similar to the impact of a mother smoking 4-5 cigarettes per day,<sup>4</sup> and is approximately one-third of the impact of the severe malnutrition of the Dutch Famine of 1944-45, during which pregnant women consumed, on average, <1000 calories/day.<sup>32</sup>

To conclude, we have identified novel, robust associations between fetal genotype and birth weight at loci near *CCNLI* and at *ADCY5*. The causal mechanisms are not yet known, but the *ADCY5* locus has pleiotropic effects on glucose regulation and type 2 diabetes in adulthood. This is robust evidence that the widely described association between lower birth weight and subsequent type 2 diabetes has a genetic component, distinct from the proposed role of programming by maternal nutrition. Further understanding of these associations will illuminate the biological pathways important for fetal growth and its relationship with adult diseases.

## METHODS

### Stage 1: GWA meta-analysis of birth weight

**Discovery samples, genotyping and imputation**—We selected six population-based European studies with birth weight, gestational age and GWA data available by the beginning of May 2009 (combined N=10,623): the Northern Finland 1966 Birth Cohort (NFBC1966; N=4333); Netherlands Twin Register (NTR; N=414; singletons only); and sub-samples from the 1958 British Birth Cohort (B58C-WTCCC, N=1227; B58C-T1DGC, N=2037), Generation R (N=1194) and Avon Longitudinal Study of Parents And Children (ALSPAC; N=1418). The B58C-WTCCC and B58C-T1DGC were analyzed separately because they were genotyped on different platforms at different times. However, there is no systematic phenotypic difference between these sub-samples. Genotypes were obtained using high-density SNP arrays, and then imputed for ~2.4 million HapMap SNPs (Phase II, release 21/22, <http://hapmap.ncbi.nlm.nih.gov/>). The basic characteristics, exclusions (e.g. samples of non-European ancestry), genotyping, quality control and imputation methods for each discovery sample are presented in Supplementary Table 1.

**Statistical analysis within discovery samples**—Multiple and preterm births (gestational age <37 weeks) were excluded from all analyses. Birth weight was transformed into a Z-score (= [value-mean]/SD) to allow comparison of the data across studies. The overall (as opposed to sex-stratified) mean and SD from each study were used to create Z-scores. The association between each SNP and birth weight was assessed in each study sample using linear regression of birth weight Z-score against genotype (additive model), with sex and gestational age as covariates. Imputed genotypes were used only where directly-assayed genotypes were unavailable. In addition to this “UNIFORM” analysis, a second analysis (“BEST”) was performed, in which the analysis details were decided within each study. Details of the BEST analysis, GWA analysis software, and any additional

corrections for study-specific population structure in the UNIFORM analysis are given in Supplementary Table 1.

**Meta-analysis of discovery samples**—Data exchange was facilitated by the SIMBioMS platform ([simbioms.org](http://simbioms.org)).<sup>33</sup> Prior to meta-analysis, SNPs with a minor allele frequency <1% and poorly-imputed SNPs ( $\text{proper\_info} < 0.4$  [SNPTEST];  $r^2 < 0.3$  [MACH2QTL]) were filtered. Fixed effects meta-analyses of the UNIFORM and BEST analyses were each run in parallel in two different study centers. Each was performed using different software packages: METAL (<http://www.sph.umich.edu/csg/abecasis/metal/index.html>); and MetaMapper (developed in-house at Imperial College London, UK). Genomic control<sup>34</sup> was applied twice at the meta-analysis stage: first, to adjust the statistics generated within each cohort (see Supplementary Table 1 for individual study  $\lambda$ -values); and second, to adjust the overall meta-analysis statistics ( $\lambda=1.032$ ). The results from the UNIFORM analysis were meta-analyzed using the inverse-variance method, whereas for the BEST analysis a Z-score weighted method that allows for differences in the units of beta coefficients and standard errors was applied.<sup>35</sup> SNPs available for less than half of the total expected sample were excluded. Final meta-analysis results were obtained for 2,427,548 SNPs. Those SNPs that reached a p-value threshold of  $<10^{-7}$  in the UNIFORM analysis ( $N=10$  SNPs, representing 2 distinct genomic regions on chromosome 3) were considered for further follow-up. The UNIFORM (reported here) and BEST analyses (data not shown) gave very similar results.

**Checking for independent associations at the two loci**—To test for the presence of additional association signals around the most strongly associated SNP in each region (rs900400 and rs9883204), we re-ran the UNIFORM association analysis on chromosome 3 in each discovery sample, including rs900400 and rs9883204 genotypes as additional covariates. Where these SNPs were imputed, genotype dosage was calculated from the genotype probabilities and used in the model. We meta-analyzed results using the inverse-variance method.

## Stage 2: Follow-up of two lead signals in additional samples

**Follow-up samples, genotyping and analysis**—We used 17 study samples (combined  $N=30,098$ ) to follow up the two lead signals from the GWA meta-analysis (represented by index SNPs rs900400 and rs9883204). Details of these samples are presented in Supplementary Table 2. Thirteen of the samples (combined  $N=27,591$ ) were of European ancestry and were used for replication of the birth weight associations. We also examined associations in four further non-European or admixed study samples (combined  $N=2507$ ). Informed consent was obtained from all discovery and follow-up study participants (or parental consent, as appropriate), and study protocols were approved by the local ethics committees. If the index SNP was unavailable, a closely correlated proxy was substituted (rs1482853 or rs900399 for rs900400 [HapMap  $r^2=1$  and 0.96, respectively]; rs2877716 or rs6798189 for rs9883204 [HapMap  $r^2=0.95$  and 0.93, respectively]). In four of the replication studies, the index SNPs were imputed from genome-wide genotype data (see Supplementary Table 2). The UNIFORM birth weight analysis (described above) was performed within each study sample. To investigate whether the associations were similar in the sexes, we repeated the analysis in males and females separately.

**Meta-analyses**—We performed fixed effects inverse variance meta-analyses of the UNIFORM results as follows: (i) including all 13 European replication samples; (ii) including all 19 discovery and replication samples of European descent, (iii) a sensitivity analysis, excluding the three studies without gestational age; and (iv) including all 23 study samples, regardless of ethnic background. We meta-analyzed the sex-stratified results from

all European studies. All meta-analyses were performed in parallel at two different study centers, using different software packages (the METAN module, developed for Stata v.10,<sup>36</sup> MetaAnalyst [Beta 3.13],<sup>37</sup> RMeta in R [v.2.7.0]). We used the Cochran Q test and the  $I^2$  statistic<sup>15</sup> to assess evidence of between-study heterogeneity of effect sizes.

### Analysis of additional phenotypes

**Birth length, birth head circumference, ponderal index and small for gestational age**—Where available, we created Z-scores (value-mean/SD) within each study for birth length, head circumference and ponderal index (birth weight/length<sup>3</sup>). We used linear regression to assess the association between each outcome and each SNP (rs900400 or rs9883204, or proxies), with sex and gestational age as covariates. To examine the odds of small-for-gestational age (SGA), we created sex- and gestational age-adjusted birth weight Z-scores (SDS) within 15 of the available European studies using Growth Analyser 3.0 (<http://www.growthanalyser.org>; Dutch Growth Research Foundation, Rotterdam, the Netherlands). The reference was a cohort of 475,588 children born between 1977 and 1981 in Sweden.<sup>38</sup> Subsequently, each study defined SGA as below the 10<sup>th</sup> percentile of birth weight SDS within their study population. We analysed the associations between the two top hits and SGA using logistic regression. Analyses were repeated with a 5<sup>th</sup> percentile cut-off. We combined the results across studies using fixed effects inverse variance meta-analysis.

### Combined allele score

To estimate the birth weight effect sizes attributable to the two loci in combination, we created an allele score using information from both SNPs, which was weighted by effect size. This allowed us to estimate the differences in birth weight between individuals with different numbers of birth weight-lowering alleles at the two loci. We used nine European replication samples in which gestational age was available (N=20,190). After verifying that the two SNPs were statistically independent, we generated the score using the formula

$$s_j = 2 \times \frac{\sum_{i=1}^2 w_i g_{ij}}{\sum_{i=1}^2 w_i}$$

where  $s_j$  is score for individual  $j$ ,  $g_{ij}$  is number of birth weight-lowering alleles (0, 1, 2) for SNP  $i$  carried by individual  $j$  and  $w_i$  is effect size for SNP  $i$  from the UNIFORM analysis within the cohort. We performed linear regression of birth weight (grams) against the allele score (additive model), with sex and gestation as covariates. We combined the coefficients from the nine studies using fixed effects inverse variance meta-analysis. We then rounded the weighted score to the nearest integer, grouping scores “0” and “1” together, and performed linear regression of birth weight against the rounded score as indicator variables, with sex and gestation as covariates. The beta coefficients from the comparison of score 4 versus 0/1 in all nine studies were meta-analyzed (inverse variance, fixed effects).

### Variance explained

To estimate the percentage of variation in birth weight explained by each of the associated loci, we obtained the adjusted-R<sup>2</sup> from univariate linear regression of birth weight against genotype. We then calculated a mean value from all European studies, weighted by sample size. For comparison, we also calculated the variance explained by variables such as gestational age, maternal age and smoking.



## Analyses of potential confounders

To assess whether the associations were independent of maternal genotype, we used mother-offspring pairs from the 5 studies with both maternal and fetal genotype available (see Supplementary Table 4; total N=8880 for rs900400; N=9127 for rs9883204). Within each study, we performed the UNIFORM analysis, with maternal genotype as an additional covariate. For direct comparison, we repeated this without maternal genotype, using only subjects for whom maternal genotype was available. We performed two inverse variance meta-analyses (fixed effects) for each SNP, combining regression coefficients for (i) fetal genotype, and (ii) fetal genotype adjusted for maternal genotype.

To verify that the SNPs were not associated with maternal covariates of birth weight which could theoretically confound the observed associations with birth weight (including maternal age, BMI, parity, smoking, pre-eclampsia, education), we used linear or logistic regression to model the association between each covariate and genotype, using nine European replication cohorts with gestational age available. Where possible, we meta-analyzed results to assess overall evidence of association.

## Supplementary Material

Refer to Web version on PubMed Central for supplementary material.

## Acknowledgments

See also Supplementary Note for detailed acknowledgments by study.

Major funding for the research in this paper is as follows: Academy of Finland (project grants 104781, 120315, 209072, 129255 and Center of Excellence in Complex Disease Genetics); Biocentrum Helsinki; Biocenter, University of Oulu, Finland; British Heart Foundation; Canadian Institutes of Health Research (grant MOP 82893); Center for Medical Systems Biology; Centre for Neurogenomics and Cognitive Research (CNCR-VU) (grant EU/QLRT-2001-01254); The Chief Scientist Office of the Scottish Government; The Children's Hospital of Philadelphia (Institute Development Award); Coca-Cola Hellas; Cotswold Foundation (Research Development Award); Darlington Trust; Department of Health's National Institute of Health Research UK; Diabetes UK (grant RD08/0003704); Dutch Asthma Foundation; Dutch Ministry of the Environment; Erasmus Medical Center Rotterdam; Erasmus University Rotterdam; European Commission (EURO-BLCS, Framework 5 award QLGI-CT-2000-01643); The European Community's Seventh Framework Programme (FP7/2007-2013), ENGAGE project, grant agreement HEALTH-F4-2007- 201413; The European Union Framework Program 6 EUROSPAN Project (LSHG-CT-2006-018947); Exeter NHS Research and Development; Friedrich-Schiller-University Jena; Genetic Association Information Network; Healthway Western Australia; Helmholtz Zentrum Muenchen - German Research Center for Environment and Health; Institute of Epidemiology Neuberger; IUF-Institut für Umweltmedizinische Forschung Düsseldorf; Juvenile Diabetes Research Foundation International; Kompetenznetz Adipositas (Competence Network Obesity) funded by the Federal Ministry of Education and Research (FKZ: 01GI0826); Marien-Hospital Wesel; Medical Research Council UK (grants G0601261, G0600705, studentship grant G0500539, G0000934, G0601653); Munich Center of Health Sciences (MCHEALTH); Municipal Health Service Rotterdam; National Health and Medical Research Council of Australia (grant 572613); National Human Genome Research Institute; National Institute of Allergy and Infectious Diseases; National Institute of Child Health and Human Development; National Institute of Diabetes and Digestive and Kidney Diseases; National Public Health Institute, Helsinki, Finland; NHLBI (grant 5R01HL087679-02 through the STAMPEED program (1RL1MH083268-01)); NIH (grants 5R01MH63706:02, 1R01HD056465-01A1, 1R01DK075787, DK078150, TW05596, HL085144, HL068041, HD034568, HD05450, RR20649, ES10126, and DK56350); NWO/ZonMw (grants SPI 56-464-14192, 904-61-090, 904-61-193, 480-04-004, 400-05-717); Office of Population Studies Foundation; Peninsula NIHR Clinical Research Facility; Raine Medical Research Foundation; Rotterdam Homecare Foundation; South West NHS Research and Development; Spinoza; St.Georg Hospital Leipzig; Stichting Astmabestrijding; Stichting Trombosedienst & Artsenlaboratorium Rijnmond (STAR) Rotterdam; Technical University Munich; Telethon Institute for Child Health Research; Type 1 Diabetes Genetics Consortium; UFZ-Centre for Environmental Research Leipzig-Halle; University Hospital Oulu Biocenter, University of Oulu Finland; University of Bristol; University of Leipzig; Wellcome Trust (grants 085301, 068545/Z/02, 076113/B/04/Z); Western Australian DNA Bank; Western Australian Genetic Epidemiology Resource; Wind Over Water Foundation; and ZonMw.

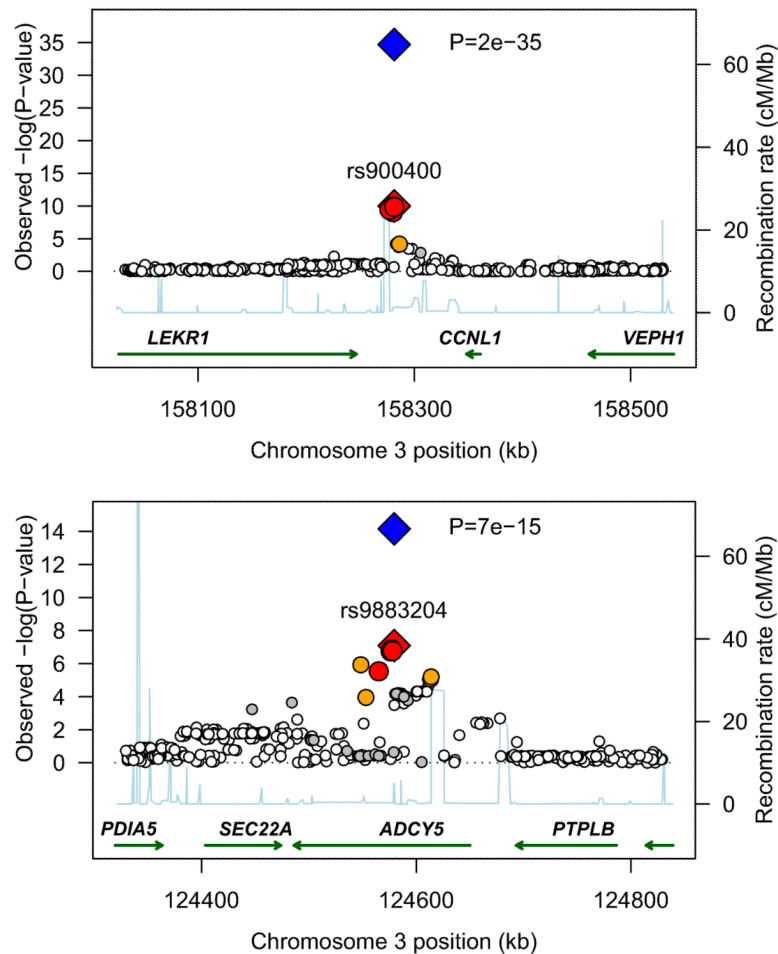
Data exchange for the meta-analyses was facilitated by the SIMBioMS platform ([simbioms.org](http://simbioms.org)).

Personal funding is as follows: R.M.F. by a Sir Henry Wellcome Postdoctoral Fellowship (Wellcome Trust grant 085541/Z/08/Z); E.W. by the Academy of Finland (grant 120315 and 129287); H.N.L. by NIH grant 1R01DK075787; E.H. by the Career Scientist Award, Department of Health, UK; C.M.L. is a Wellcome Trust Research Career Development Fellow; A.R. by the UK Department of Health Policy Research Programme; B.M.S., B.A.K. and A.T.H. are employed as core members of the Peninsula NIHR Clinical Research Facility; J.F.W. by The Royal Society; L.P. by Wellcome Trust (grant 89061/Z/09/Z); and V.W.V.J. by the Netherlands Organization for Health Research (ZonMw 90700303).

## REFERENCES

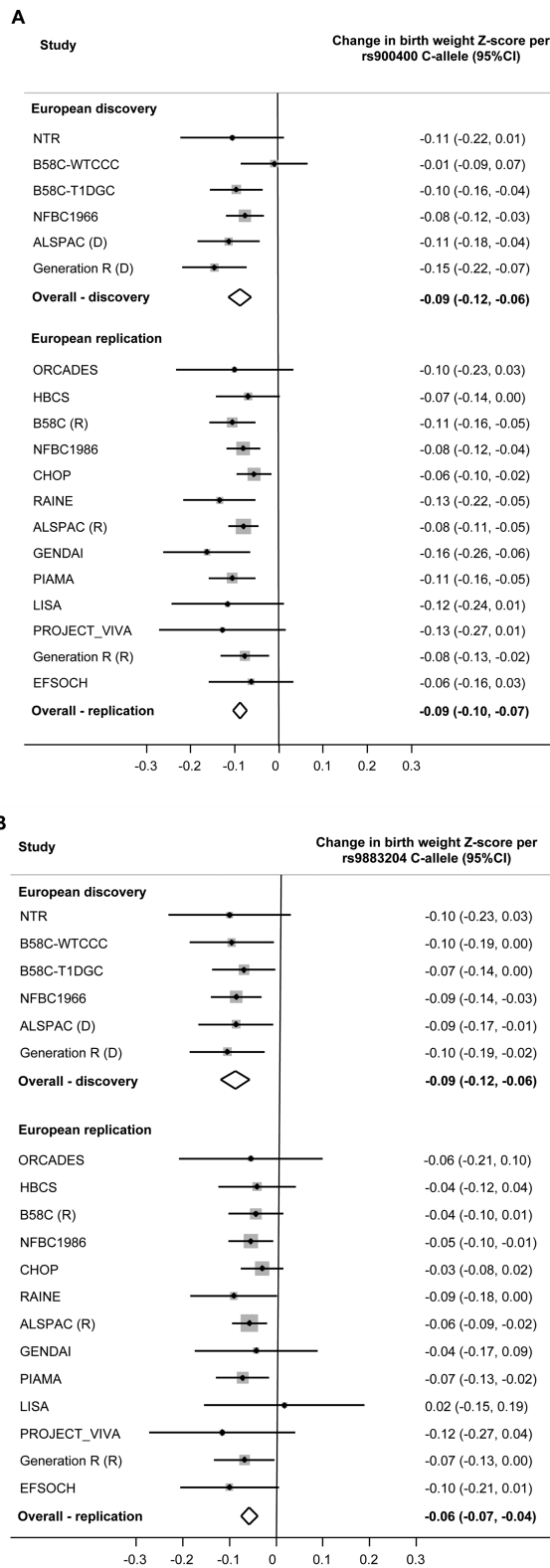
1. Dupuis J, et al. New genetic loci implicated in fasting glucose homeostasis and their impact on type 2 diabetes risk. *Nat Genet.* 2010; 42:105–16. [PubMed: 20081858]
2. Barker DJ, et al. Type 2 (non-insulin-dependent) diabetes mellitus, hypertension and hyperlipidaemia (syndrome X): relation to reduced fetal growth. *Diabetologia.* 1993; 36:62–7. [PubMed: 8436255]
3. Jarvelin MR, et al. Early life factors and blood pressure at age 31 years in the 1966 northern Finland birth cohort. *Hypertension.* 2004; 44:838–46. [PubMed: 15520301]
4. Bernstein IM, et al. Maternal smoking and its association with birth weight. *Obstet Gynecol.* 2005; 106:986–91. [PubMed: 16260516]
5. Battaglia FC, Lubchenco LO. A practical classification of newborn infants by weight and gestational age. *J Pediatr.* 1967; 71:159–63. [PubMed: 6029463]
6. Acker DB, Sachs BP, Friedman EA. Risk factors for shoulder dystocia. *Obstet Gynecol.* 1985; 66:762–8. [PubMed: 4069477]
7. Kramer MS. Determinants of low birth weight: methodological assessment and meta-analysis. *Bull World Health Organ.* 1987; 65:663–737. [PubMed: 3322602]
8. Jarvelin MR, et al. Ecological and individual predictors of birthweight in a northern Finland birth cohort 1986. *Paediatr Perinat Epidemiol.* 1997; 11:298–312. [PubMed: 9246691]
9. Knight B, et al. Evidence of genetic regulation of fetal longitudinal growth. *Early Hum Dev.* 2005; 81:823–31. [PubMed: 16085375]
10. Klebanoff MA, Mednick BR, Schulsinger C, Secher NJ, Shiono PH. Father's effect on infant birth weight. *Am J Obstet Gynecol.* 1998; 178(5):1022–6. [PubMed: 9609578]
11. Hattersley AT, Tooke JE. The fetal insulin hypothesis: an alternative explanation of the association of low birthweight with diabetes and vascular disease. *Lancet.* 1999; 353:1789–92. [PubMed: 10348008]
12. Freathy RM, et al. Type 2 Diabetes Risk Alleles are Associated with Reduced Size at Birth. *Diabetes.* 2009
13. Zhao J, et al. Examination of type 2 diabetes loci implicates CDKAL1 as a birth weight gene. *Diabetes.* 2009; 58:2414–8. [PubMed: 19592620]
14. Hattersley AT, et al. Mutations in the glucokinase gene of the fetus result in reduced birth weight. *Nat Genet.* 1998; 19:268–70. [PubMed: 9662401]
15. Higgins JP, Thompson SG, Deeks JJ, Altman DG. Measuring inconsistency in meta-analyses. *Bmj.* 2003; 327:557–60. [PubMed: 12958120]
16. Freathy RM, et al. Type 2 diabetes TCF7L2 risk genotypes alter birth weight: a study of 24,053 individuals. *Am J Hum Genet.* 2007; 80:1150–61. [PubMed: 17503332]
17. Weedon MN, et al. Genome-wide association analysis identifies 20 loci that influence adult height. *Nat Genet.* 2008; 40:575–83. [PubMed: 18391952]
18. Willer CJ, et al. Six new loci associated with body mass index highlight a neuronal influence on body weight regulation. *Nat Genet.* 2009; 41:25–34. [PubMed: 19079261]
19. Parsons TJ, Power C, Manor O. Fetal and early life growth and body mass index from birth to early adulthood in 1958 British cohort: longitudinal study. *Bmj.* 2001; 323:1331–5. [PubMed: 11739217]
20. Loyer P, et al. Characterization of cyclin L1 and L2 interactions with CDK11 and splicing factors: influence of cyclin L isoforms on splice site selection. *J Biol Chem.* 2008; 283:7721–32. [PubMed: 18216018]

21. Dixon AL, et al. A genome-wide association study of global gene expression. *Nat Genet.* 2007; 39:1202–7. [PubMed: 17873877]
22. Tesmer JJ, Sprang SR. The structure, catalytic mechanism and regulation of adenylyl cyclase. *Curr Opin Struct Biol.* 1998; 8:713–9. [PubMed: 9914249]
23. Hanoune J, et al. Adenylyl cyclases: structure, regulation and function in an enzyme superfamily. *Mol Cell Endocrinol.* 1997; 128:179–94. [PubMed: 9140089]
24. Ludwig MG, Seuwen K. Characterization of the human adenylyl cyclase gene family: cDNA, gene structure, and tissue distribution of the nine isoforms. *J Recept Signal Transduct Res.* 2002; 22:79–110. [PubMed: 12503609]
25. Prokopenko I, McCarthy MI, Lindgren CM. Type 2 diabetes: new genes, new understanding. *Trends Genet.* 2008; 24:613–21. [PubMed: 18952314]
26. Prokopenko I, et al. Variants in MTNR1B influence fasting glucose levels. *Nat Genet.* 2008
27. Ogura K, et al. 8-bromo-cyclicAMP stimulates glucose transporter-1 expression in a human choriocarcinoma cell line. *J Endocrinol.* 2000; 164:171–8. [PubMed: 10657852]
28. D'Souza VM, et al. cAMP-Coupled riboflavin trafficking in placental trophoblasts: a dynamic and ordered process. *Biochemistry.* 2006; 45:6095–104. [PubMed: 16681382]
29. Leach L. The phenotype of the human materno-fetal endothelial barrier: molecular occupancy of paracellular junctions dictate permeability and angiogenic plasticity. *J Anat.* 2002; 200:599–606. [PubMed: 12162727]
30. van Baal CG, Boomsma DI. Etiology of individual differences in birth weight of twins as a function of maternal smoking during pregnancy. *Twin Res.* 1998; 1:123–30. [PubMed: 10051336]
31. Lunde A, Melve KK, Gjessing HK, Skjaerven R, Irgens LM. Genetic and environmental influences on birth weight, birth length, head circumference, and gestational age by use of population-based parent-offspring data. *Am J Epidemiol.* 2007; 165:734–41. [PubMed: 17311798]
32. Stein AD, Zybert PA, van de Bor M, Lumey LH. Intrauterine famine exposure and body proportions at birth: the Dutch Hunger Winter. *Int J Epidemiol.* 2004; 33:831–6. [PubMed: 15166208]
33. Krestyaninova M, et al. A System for Information Management in BioMedical Studies--SIMBioMS. *Bioinformatics.* 2009; 25:2768–2769. [PubMed: 19633095]
34. Devlin B, Roeder K. Genomic control for association studies. *Biometrics.* 1999; 55:997–1004. [PubMed: 11315092]
35. de Bakker PI, et al. Practical aspects of imputation-driven meta-analysis of genome-wide association studies. *Hum Mol Genet.* 2008; 17:R122–8. [PubMed: 18852200]
36. Harris, R., et al. Statistical Software Components S456798. Boston College Department of Economics; 2006. METAN: Stata module for fixed and random effects meta-analysis. revised 19 Feb 2007. <<http://ideas.repec.org/c/boc/bocode/s456798.html>>
37. Wallace BC, Schmid CH, Lau J, Trikalinos TA. Meta-Analyst: software for meta-analysis of binary, continuous and diagnostic data. *BMC Med Res Methodol.* 2009; 9:80. [PubMed: 19961608]
38. Niklasson A, et al. An update of the Swedish reference standards for weight, length and head circumference at birth for given gestational age (1977-1981). *Acta Paediatr Scand.* 1991; 80:756–62. [PubMed: 1957592]



**Figure 1.**

Regional plots of two novel associations with birth weight. For each of the two regions, 3q25 [A] and 3q21 [B], directly genotyped and imputed SNPs are plotted using filled circles with their meta-analysis  $P$  values (as  $-\log_{10}$  values) as a function of genomic position (NCBI Build 35). In each plot, the discovery stage SNP taken forward to replication stage is represented by a blue diamond (defining a global meta-analysis  $P$  value), with its discovery meta-analysis  $P$  value denoted by a red diamond. Local LD structure is reflected by the plotted estimated recombination rates (taken from HapMap) in the region around the associated SNPs and their correlated proxies. Each analyzed SNP is represented by circle. The colour scheme of the circles respects LD patterns (HapMap CEU pair-wise  $r^2$  correlation coefficients) between top discovery SNP and surrounding variants: white  $r^2 < 0.2$ , grey  $0.5 > r^2 \geq 0.2$ , orange  $0.8 > r^2 \geq 0.5$ , red  $r^2 \geq 0.8$ . Gene annotations were taken from the University of California Santa Cruz genome browser.



**Figure 2.** Forest plots of the association between birth weight and genotype at each locus.

**[A]** Index SNP rs900400 at 3q25.

**[B]** Index SNP rs9883204 at 3q21.

If the index SNP was unavailable, a closely-correlated proxy (HapMap  $r^2 > 0.9$ ) was used.

Table 1

Associations between novel birth weight loci and anthropometric traits at birth

Phenotype	Locus 3q25, nearest genes: <i>CCN1L</i> , <i>LEKR1<sup>a</sup></i>				Locus 3q21, <i>ADCY5<sup>b</sup></i>			
	N	Effect SD	95%CI	P value <sup>c</sup>	N	Effect SD	95%CI	P value <sup>c</sup>
Birth weight Z-score <sup>d</sup>	37745	-0.086 SD	-0.100, -0.073	2×10 <sup>-35</sup>	38214	-0.063 SD	-0.079, -0.047	7×10 <sup>-15</sup>
Birth length Z-score	21512	-0.028 SD	-0.046, -0.010	0.002	21782	-0.044 SD	-0.066, -0.022	4×10 <sup>-5</sup>
Birth head circumference Z-score	17349	-0.024 SD	-0.044, -0.004	0.017	17693	-0.025 SD	-0.048, -0.004	0.030
Ponderal index <sup>e</sup> Z-score	21515	-0.094 SD	-0.113, -0.074	5×10 <sup>-21</sup>	21785	-0.032 SD	-0.055, -0.009	0.006
Odds ratio for SGA <10th percentile <sup>f</sup>	30370	1.16	1.10, 1.23	1×10 <sup>-7</sup>	30778	1.09	1.02, 1.16	0.009

Results are from inverse variance, fixed effects meta-analysis of all 19 study samples of European ancestry. The effect allele for each SNP is labelled on the positive strand according to HapMap. The effect is the beta coefficient (or odds ratio) for genotype, assuming an additive genetic model. If the index SNP was unavailable, this was substituted with a closely-correlated (HapMap  $r^2 > 0.9$ ) proxy (rs1482853 or rs900399 for rs900400; rs2877716 or rs6798189 for rs9883204). There was no evidence of between-study heterogeneity of effect size estimates (all  $P > 0.18$ ;  $I^2 < 26\%$ ).

<sup>a</sup>Index SNP rs900400, effect allele C (40% frequency in HapMap CEU; range 32–47% in our European study samples).

<sup>b</sup>Index SNP rs9883204, effect allele C (73% frequency in HapMap CEU; range 71–83% in our European study samples).

<sup>c</sup>The P value for the birth weight meta-analysis includes the double-GC correction of the discovery meta-analysis.

<sup>d</sup>Excluding the three studies that were unable to adjust for gestational age, the beta (s.e.m.), N and P values in the birth weight analysis were: -0.089(0.008), N=31510,  $P=7 \times 10^{-32}$  (3q25); -0.068(0.009), N=31901,  $P=8 \times 10^{-15}$  (3q21).

<sup>e</sup>Ponderal index = birth weight/length<sup>3</sup>.

<sup>f</sup>SGA <5th percentile, OR (P value): rs900400=1.11 (0.004); rs9883204=1.04 (0.41).

**Table 2**  
Mean birth weight (SD) by genotype and individual association results by study

Study type	Study	Year(s) of birth	Total N <sup>a</sup>	% male	Locus 3q25, nearest genes: <i>CCNLI</i> , <i>LEKRI</i> <sup>b</sup>						Locus 3q21, <i>ADCY5</i> <sup>b</sup>					
					TT	CT	CC	P value <sup>c</sup>	TT	CT	CC	P value <sup>c</sup>	TT	CT	CC	P value <sup>c</sup>
					Mean BW in g (SD)	Mean BW in g (SD)	Mean BW in g (SD)		Mean BW in g (SD)	Mean BW in g (SD)	Mean BW in g (SD)		Mean BW in g (SD)	Mean BW in g (SD)	Mean BW in g (SD)	
	NTR	1923-86	414	37.9	3470 (652)	3401 (615)	3329 (646)	0.08	3500 (720)	3402 (604)	3359 (633)	0.09				
	B58C-WTCCC	1958	1227	50.4	3367 (444)	3337 (455)	3364 (454)	0.77	3459 (457)	3357 (456)	3336 (455)	0.05				
	B58C-TIDGC	1958	2037	49.2	3399 (468)	3339 (464)	3308 (461)	1×10 <sup>-3</sup>	3396 (463)	3375 (484)	3341 (463)	0.07				
Discovery	NFBC1966	1966	4333	48.1	3567 (458)	3519 (458)	3503 (458)	5×10 <sup>-4</sup>	3630 (459)	3559 (459)	3529 (459)	4×10 <sup>-3</sup>				
	ALSPAC (D)	1991-2	1418	48.8	3486 (481)	3419 (482)	3374 (467)	2×10 <sup>-3</sup>	3451 (458)	3462 (465)	3405 (514)	0.03				
	Generation R (D)	2002-6	1194	53.1	3633 (435)	3562 (447)	3492 (448)	1×10 <sup>-4</sup>	3655 (449)	3593 (444)	3549 (456)	0.01				
	ORCADES	1920-88	328	43.3	3635 (599)	3615 (594)	3487 (602)	0.12	3542 (612)	3670 (605)	3566 (595)	0.74				
	HBCS	1934-44	1566	42.7	3462 (436)	3434 (438)	3403 (430)	0.06	3391 (426)	3479 (434)	3431 (418)	0.33				
	B58C (R)	1958	2550	51.6	3407 (454)	3341 (451)	3308 (456)	7×10 <sup>-5</sup>	3338 (457)	3387 (448)	3340 (477)	0.14				
	NFBC1986	1985-6	5008	49.1	3656 (440)	3607 (440)	3591 (440)	4×10 <sup>-5</sup>	3674 (441)	3646 (441)	3620 (441)	0.03				
	CHOP	1987-2009	5149	53.3	3384 (634)	3333 (646)	3318 (628)	5×10 <sup>-3</sup>	3389 (641)	3357 (647)	3341 (609)	0.19				
	RAINE	1989-92	988	52.4	3507 (428)	3432 (417)	3384 (429)	1×10 <sup>-3</sup>	3472 (426)	3489 (431)	3427 (425)	0.06				
Replication	ALSPAC (R)	1991-2	5695	54.6	3303 (547)	3259 (568)	3229 (493)	3×10 <sup>-6</sup>	3305 (464)	3288 (580)	3257 (626)	3×10 <sup>-3</sup>				
	GENDAI	1994-6	758	45.5	3401 (530)	3215 (528)	3235 (529)	1×10 <sup>-3</sup>	3291 (539)	3286 (539)	3260 (539)	0.53				
	PIAMA	1996-7	1789	51.3	3629 (438)	3575 (443)	3512 (427)	9×10 <sup>-5</sup>	3619 (441)	3607 (425)	3554 (430)	0.01				
	LISA	1998-9	387	56.9	3476 (366)	3454 (363)	3368 (363)	0.07	3532 (365)	3429 (366)	3443 (367)	0.84				
	PROJECT VIVA	1999-2003	300	50.0	3711 (406)	3646 (411)	3594 (407)	0.08	3698 (412)	3703 (402)	3625 (408)	0.15				
	Generation R (R)	2002-6	1885	50.3	3558 (435)	3527 (423)	3481 (413)	6×10 <sup>-3</sup>	3615 (433)	3534 (435)	3518 (430)	0.04				
	EFSOCH	2003-4	719	53.1	3556 (427)	3509 (432)	3504 (431)	0.20	3660 (433)	3513 (435)	3503 (432)	0.07				

BW, birth weight. All birth weight values are adjusted for sex and, where available, gestational age. Gestational age was not available for the ORCADES, CHOP and GENDAI studies.

**Key to study names:** NTR, Netherlands Twin Register; B58C-WTCCC, British 1958 Birth Cohort – Wellcome Trust Case Control Consortium subset; B58C-TIDGC, British 1958 Birth Cohort – Type 1 Diabetes Genetics Consortium subset; NFBC1966, Northern Finland Birth Cohort 1966; ALSPAC (D), Avon Longitudinal Study of Parents and Children Discovery subset; Generation R (D), Generation R Discovery subset; ORCADES, Orkney Complex Disease Study; HBCS, Helsinki Birth Cohort Study; B58C (R), British 1958 Birth Cohort Replication subset; NFBC1986, Northern Finland Birth Cohort



1986; CHOP, Children's Hospital Of Philadelphia; RAINE, The Raine Study; ALSPAC (R), Avon Longitudinal Study of Parents and Children Replication subset; GENDAI, GENE and Diet Attica Investigation; PIAMA, Prevention and Incidence of Asthma and Mite Allergy; LISA, Lifestyle – Immune System – Allergy; Project Viva, The Project Viva Cohort; Generation R (R), Generation R Replication subset; EFSOCH, Exeter Family Study Of Childhood Health.

<sup>a</sup> Study N in the birth weight association analysis for rs900400 genotype. Total numbers of European discovery and replication samples, respectively, were N=10623 and N=27122 for rs900400; N=10623 and N=27591 for rs9883204.

<sup>b</sup> If the index SNP was unavailable, this was substituted with a closely-correlated (HapMap  $r^2 > 0.9$ ) proxy (rs1482853 or rs900399 for rs900400 at 3q25; rs2877716 or rs6798189 for rs9883204 at 3q21).

<sup>c</sup> P value is from linear regression of birth weight Z score against SNP (additive model), with sex and gestational age, where available, as covariates. All study samples were of European descent.