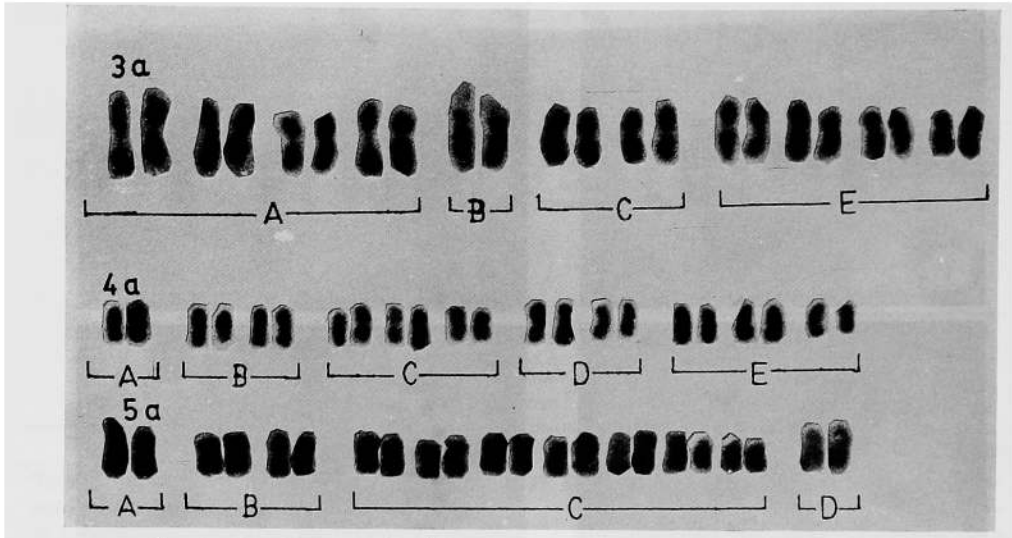
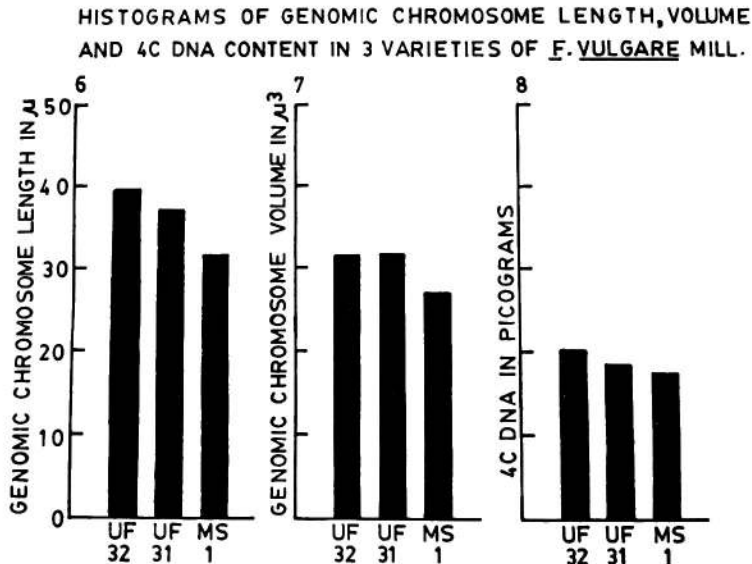


Figs. 1-5. 1, synchronous cell division showing somatic metaphase in *Foeniculum vulgare*. 2, types of chromosomes present in different varieties of *Foeniculum vulgare*. 3-5, somatic metaphase plates. 3, *F. vulgare* var. UF32 (2n=22). 4, *F. vulgare* var. UF31 (2n=22). 5, *F. vulgare* var. MSI (2n=22). × 2200.

Total genomic metaphase chromosome length was 39.46μ in UF32, 37.08μ in UF31 and 32.45μ in MSI. There was a slight increase of nuclear volume in UF31 than UF32. But this result is not significant statistically (Table 2). 4C DNA amount was maximum in UF32 and minimum in MSI. In UF31 it was intermediate. Differences in 4C DNA amount of these three varieties were highly significant. The mean results of total genomic chromosome length, volume, 4C DNA amount and their t-test values have been given in Table 2.



Figs. 3a-5a. Corresponding idiograms of different varieties of *F. vulgare*. $\times 2000$.



Figs. 6-8. Histograms regarding chromosome length, chromosome volume and 4C DNA content in 3 varieties of *F. vulgare*.

