

VERY LONG-LIVED MOLLUSKS CONFIRM 17TH CENTURY AD TEPHRA-BASED RADIOCARBON RESERVOIR AGES FOR NORTH ICELANDIC SHELF WATERS

Alan D Wanamaker Jr^{1,2} • Jan Heinemeier³ • James D Scourse¹ • Christopher A Richardson¹ • Paul G Butler¹ • Jón Eiríksson⁴ • Karen Luise Knudsen⁵

ABSTRACT. Marine sediment records from the north Icelandic shelf, which rely on tephrochronological age models, reveal an average ΔR (regional deviation from the modeled global surface ocean reservoir age) of approximately 150 yr for the last millennium. These tephra-based age models have not hitherto been independently verified. Here, we provide data that corroborate ΔR values derived from these sediment archives. We sampled the youngest portion (ontogenetic age) of a bivalve shell, *Arctica islandica* (L.), for radiocarbon analysis, which was collected alive in 2006 from the north Icelandic shelf in ~80 m water depth. Annual band counting from the sectioned shell revealed that this clam lived for more than 405 yr, making it the longest-lived mollusk and possibly the oldest non-colonial animal yet documented. The ¹⁴C age derived from the umbo region of the shell is 951 ± 27 yr BP. Assuming that the bivalve settled onto the seabed at AD 1600, the corresponding local value of ΔR is found to be 237 ± 35 yr by comparison of the ¹⁴C age with the Marine04 calibration curve (Hughen et al. 2004) at this time. Furthermore, we cross-matched a 287-yr-old, dead-collected, *A. islandica* shell from AD 1601 to 1656 from the same site with the live-caught individual. ¹⁴C analysis from the ventral margin of this shell revealed a ΔR of 186 ± 50 yr at AD 1650. These values compare favorably with each other and with the tephra-based ΔR values during this period, illustrating that ¹⁴C from *A. islandica* can effectively record ¹⁴C reservoir changes in the shelf seas.

INTRODUCTION

Marine sediment archives (Andrews and Giraudeau 2003; Eiríksson et al. 2004, 2006; Giraudeau et al. 2004; Knudsen et al. 2004a,b; Jiang et al. 2005; Sicre et al. 2008) collected from the north Icelandic shelf reveal important changes in North Atlantic ocean circulation and climate during recent millennia. Multiproxy-based evidence derived from these sediment cores shows that the position of the Polar Front has been dynamic (Eiríksson et al. 2004). The oceanic Polar Front is now situated in the Denmark Strait between Greenland and Iceland where the relatively warm and saline waters from the North Atlantic flow clockwise around Iceland, as the Irminger Current, and mix with the relatively cold and lower salinity waters of the East Icelandic Current (Figure 1) (see Stefánsson 1962; Swift 1986; Malmberg and Jónsson 1997; Hansen and Østerhus 2000). Along the north Icelandic shelf, the East Icelandic Current is a mixture of Arctic water derived from the inflow of Atlantic water from the Iceland Sea and Polar water from the East Greenland Current (Stefánsson 1962; Swift and Aagaard 1981; Jónsson 1992). The position of the Polar Front is closely linked to North Atlantic Deep Water convection sites and the North Atlantic meridional overturning circulation (e.g. Austin et al. 1995; Astthorsson et al. 2007; Jónsson 2007), and these strong oceanic and atmospheric gradients make this region particularly sensitive to climate change (Eiríksson et al. 2004; Astthorsson et al. 2007 and references therein). Because the Irminger and East Greenland currents have distinctly different physical properties (temperature and salinity) and radiocarbon reservoir ages (Tauber and Funder 1975; Larsen et al. 2002; Eiríksson et al. 2004), biogenic archives that calcify in these waters reflect the dominant water mass present during biomineralization. As these organisms become part of the sediment record, they preserve paleoenvironmental conditions. However, sediment-based paleoclimate reconstructions depend on reliable age/depth models to accurately assess atmospheric and oceanic temporal responses to climate perturbations, and often they rely on “floating” ¹⁴C ages with uncertain reservoir corrections from mollusks or foraminifera

¹School of Ocean Sciences, College of Natural Sciences, Bangor University, Wales LL59 5AB, United Kingdom.

²Corresponding author. Email: a.wanamaker@bangor.ac.uk.

³AMS ¹⁴C Dating Centre, Department of Physics and Astronomy, University of Aarhus, DK-8000 Aarhus C, Denmark.

⁴Earth Science Institute, Askja, University of Iceland, IS-101 Reykjavík, Iceland.

⁵Department of Earth Sciences, University of Aarhus, DK-8000 Aarhus C, Denmark.

within the sediment record to constrain the age/depth relationship. Because of the dynamic nature of ^{14}C reservoir ages across the Polar Front, using age models based on floating ^{14}C ages from biogenic carbonates may be inadequate and may mask important paleoenvironmental data. Eiriksson et al. (2004) found significant deviations in ΔR (defined as the regional deviation from the modeled global surface ocean reservoir age of about 405 ^{14}C yr; see Hughen et al. 2004) between tephra-based and floating ^{14}C age model values for north Icelandic shelf waters during the Holocene. Tephrochronological age models seek to improve the reconstruction of temporal changes in the ^{14}C reservoir age near the Polar Front by providing exactly dated anchors in the sediment records. This approach also enables the use of deviations in ΔR as a paleoceanographic tool for tracking past changes in the position of the Polar Front (Eiriksson et al. 2004).

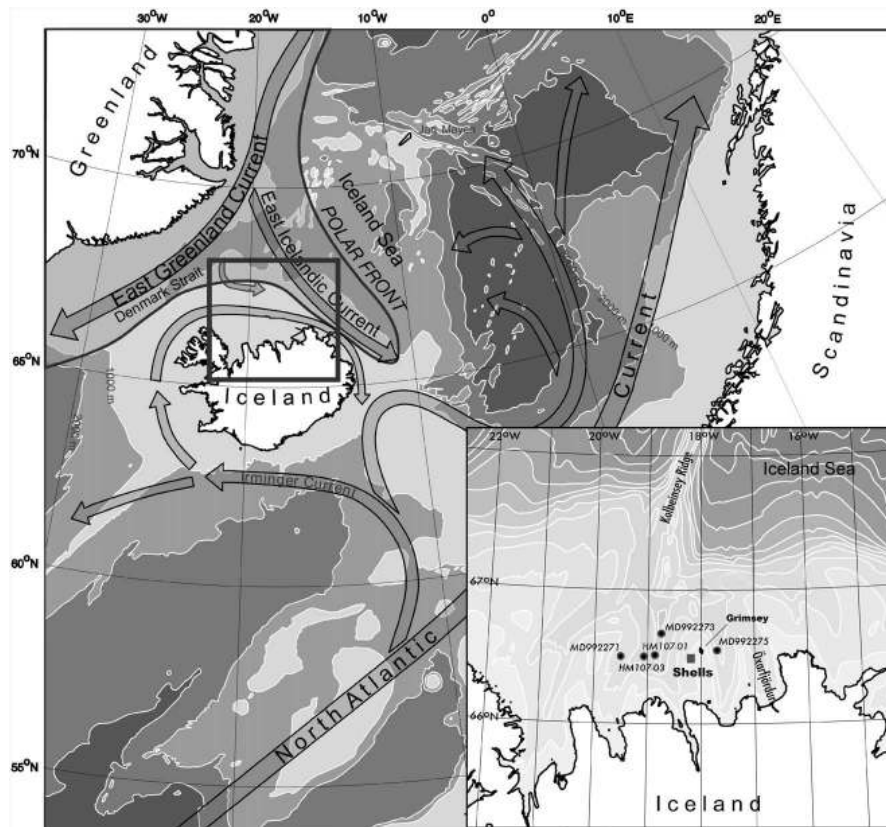


Figure 1 Site location map showing the major surface currents and the position of the modern Polar Front (modified from Eiriksson et al. 2004). The study area is noted by the black box, with the inset map showing the sediment core records (MD99-2271, HM107-03, HM107-01, MD99-2273, MD99-2275) and the shell collection region; contour line on the inset map = 100 m.

The north Icelandic shelf is an ideal region to use tephrochronology to constrain sediment age/depth relationships because of its high sedimentation rates (>0.20 cm/yr) and its close proximity to the numerous source volcanoes for Holocene tephra (Larsen et al. 2002). Five marine sediment cores from the north Icelandic shelf reveal a variable ΔR of 156 ± 116 yr for the last millennium (Figure 2). Although tephra-based age models may offer significant advantages over floating ^{14}C

age models, these tephra-based age models from the north Icelandic shelf have not been independently verified (Eiriksson et al. 2004).

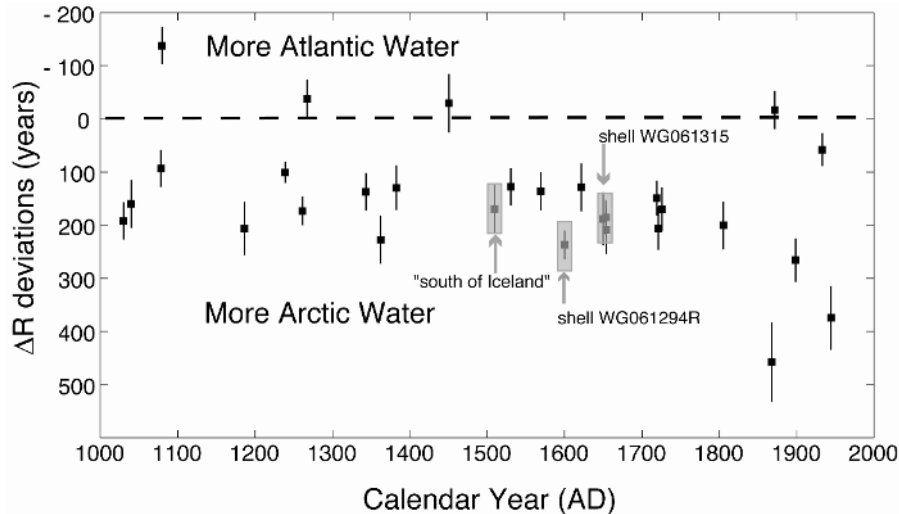


Figure 2 ΔR deviations from the north Icelandic shelf for the last 1000 yr (the data are from Eiriksson et al. 2004: Figure 10). The ΔR deviations from Eiriksson et al. (2004) are based on 5 sediment core records (MD99-2271, HM107-03, HM107-01, MD99-2273, MD99-2275) using a tephra-based age model. Shell-based ΔR deviations from this study are shown for AD 1600 and AD 1650 (see arrows and shading). The newly calculated ΔR value at AD 1497 from the 374-yr-old *Arctica islandica* shell reported by Schöne et al. (2005a) is shown as “south of Iceland” (see Discussion for details). More negative ΔR values indicate a dominant Atlantic water mass, while positive ΔR values indicate a dominant Arctic water mass (Eiriksson et al. 2004).

Marine biogenic carbonates that are long-lived (corals, sclerosponges, and mollusks) and of known collection dates have the potential to monitor changes in the uptake and mixing of ^{14}C in the oceans through time and contribute to a better understanding of climate change. The use of ^{14}C in seawater in the form of dissolved inorganic carbon as a water-mass tracer began decades ago (Broecker and Olson 1961), and in the late 1970s, coral ^{14}C was used to monitor changes in ocean circulation and climate change (e.g. Druffel and Linick 1978; Druffel 1980, 1982, 1989; Guilderson et al. 1998, 2004; Kilbourne et al. 2007; Druffel et al. 2007, 2008). Recently, Kilbourne et al. (2007) produced a subdecadal ^{14}C time series from a Puerto Rico coral (*Montastraea faviolata*) from AD 1750 to 2000 that showed significant decadal variability likely related to the advection of different water masses into the Caribbean Sea, and possible changes in the Atlantic meridional overturning circulation. Druffel et al. (2007) provided an ultra-high resolution (annual) ^{14}C time series from the Galápagos Islands in the tropical east Pacific based on a coral colony with annual banding (*Pavona clavus*), which demonstrated the natural variability of the oceanic ^{14}C since AD 1600. However, in the extratropics there have been few, if any, published studies that have yielded a well-constrained (temporally), high-resolution time series of ^{14}C variability prior to the atmospheric bomb pulse of the 1950s. Weidman and Jones (1993) first demonstrated the utility of the ^{14}C signature extracted from the annually-banded shell material of the long-lived bivalve *Arctica islandica* (Linnaeus 1767) for tracking the oceanic uptake of bomb ^{14}C in the northwestern Atlantic (Georges Bank). Moreover, Weidman and Jones (1993) showed that shells sampled for ^{14}C from Georges Bank had an attenuated response to the atmospheric bomb ^{14}C produced during atomic testing in the 1950s compared

to tropical corals; this result illustrated important hydrographic differences controlling the rates at which atmospheric carbon is mixed into the oceans, and it also suggested a deepwater source for the waters of Georges Bank. Furthermore, annual growth records and geochemical information ($\delta^{18}\text{O}$) derived from the shells of *A. islandica* have been used to study past ocean conditions in the North Atlantic (Weidman et al. 1994; Witbaard 1996; Witbaard et al. 1997, 2003; Marsh et al. 1999; Marchitto et al. 2000; Schöne et al. 2003, 2004, 2005a; Scourse et al. 2006; Helama et al. 2007; Wanamaker et al. 2008). These shell-based records, like tree rings, offer a significant advantage of being absolutely dated (Thompson et al. 1980; Jones 1980), and therefore enable the generation of ultra-high-resolution paleoenvironmental records based on an absolute timescale (Marchitto et al. 2000). The chronostratigraphy developed from these biogenic carbonates is equivalent to varved sea sediments, which are generally rare. However, *A. islandica* is common in the shelf seas of the temperate to subpolar North Atlantic and has enormous potential as a high-resolution marine archive. Marchitto et al. (2000) demonstrated that live-caught *A. islandica* shells could be reliably cross-matched with fossil (dead-collected) shells; thus, regional reconstructions in ΔR on centennial-to-millennial scales are possible if there is sufficient fossil shell material available. Because fossil shells can be linked to recent shells through cross-matching techniques, ΔR reconstructions can extend further back in time than those based on individual live shells with a temporal resolution higher than tephra-based methods. This method will be extremely valuable in regions where tephra is sparse or absent.

In this paper, we provide independent ^{14}C evidence from an *Arctica islandica* shell more than 400 yr old (live-caught in 2006), and a 286-yr-old subfossil shell, which supports relatively high ΔR values for the north Icelandic shelf waters during the 17th century. These results are consistent with ^{14}C reservoir ages based on tephra-based age models from nearby sediment archives. These 2 shells were successfully linked together by cross-matching, a technique commonly used in dendrochronology, thus creating a continuous shell chronology from AD 1373 to 2005. Here, we further demonstrate that information derived from the shells of the bivalve *A. islandica* can be used to study extra-tropical ocean circulation and environmental change. Its great longevity, its fidelity as a proxy record, and its abundance and wide geographical distribution make *A. islandica* a key proxy archive for the North Atlantic region.

METHODS

Shell Collection

The 2 shells studied in this paper were part of a collection of live, dead articulated, and dead single valves of *Arctica islandica* collected by trawling the seabed surface with a bespoke dredge on the north Icelandic shelf (see Figure 1) in June 2006 from the research vessel *Bjarni Sæmundsson* (Cruise No. B05-2006). Live specimens were frozen onboard and processed following thawing soon after return to the laboratory, whereupon the soft tissues were removed and the shell valves scrubbed clean and dried prior to processing. The 2 shells reported in this study (WG061294R and WG061315) were collected near the island of Grimsey ($66^{\circ}31.59'\text{N}$, $18^{\circ}11.74'\text{W}$; see Figure 1) in a water depth of 81–83 m (trawl B05AD03) and were selected because they were relatively large and heavily calcified. Shell WG061294R was collected alive, while the right shell valve WG061315 was from a dead, non-articulated clam.

Shell Preparation and Sclerochronology

The annually resolved growth lines were identified in acetate peel replicas (Ropes 1984) of polished and etched shell sections of the hinge tooth at the umbo of the shell (Figure 3). The right and left shell valves of WG061294R and the right shell valve of WG061315 were embedded in resin (Met-

Prep Ltd; Kleer Set type FF) and the shells sectioned radially from the umbo to the shell margin. The embedded left valve was sectioned through the center of the hinge tooth, whereas the right hinge shell valve was sectioned radially to the side of the tooth using a diamond saw. The cut surfaces were ground on progressively finer grades of silicon carbide paper (MetPrep Ltd; P120, P400, P1200) and

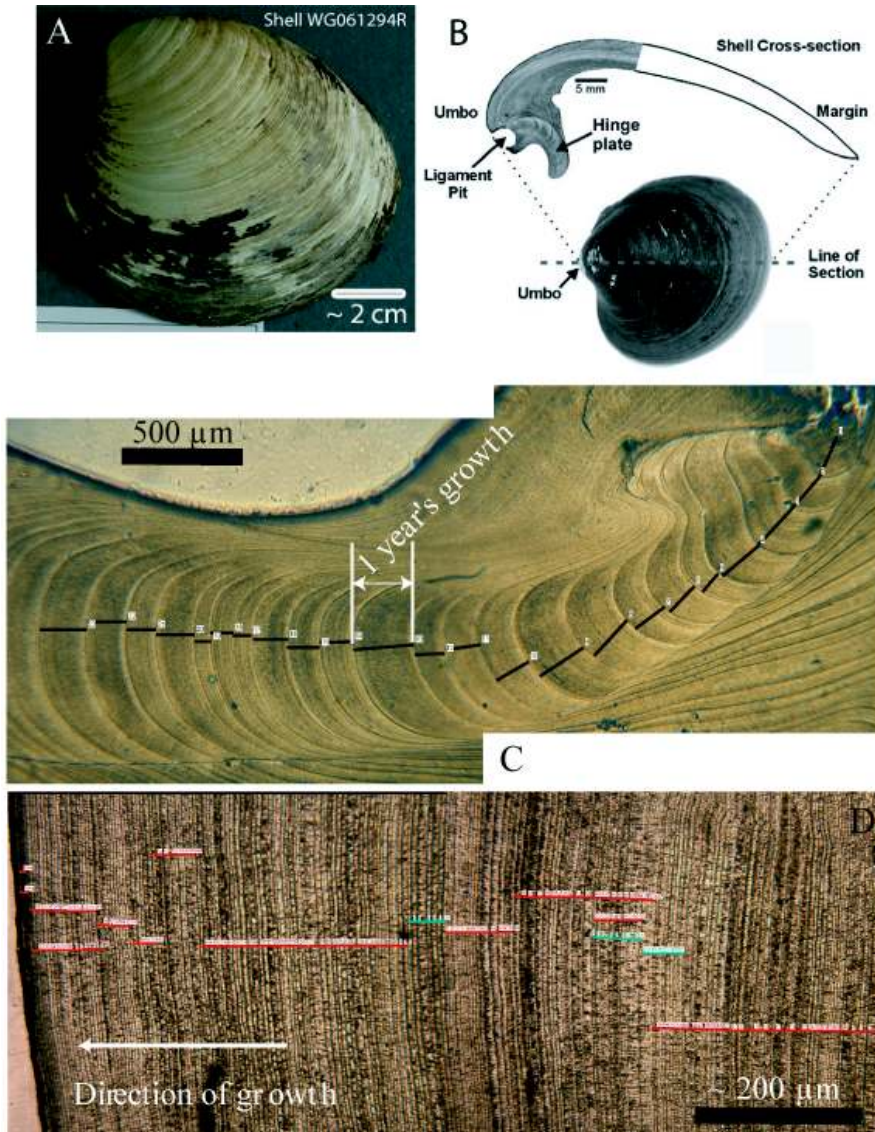


Figure 3 (A) Left valve of *Arctica islandica* shell WG061294R collected from the north Icelandic shelf. (B) Idealized line of section, and an *A. islandica* shell cross-section noting the major features (modified from Scourse et al. 2006). (C) Digitized photomicrograph (magnification = $\times 2.5$) of an acetate peel from a young portion of an *A. islandica* sample from the hinge plate collected from the Grimsey site. One yr of shell growth is measured from 1 growth check to the next, which is shown in white. The first 23 annual growth increments are shown in black. (D) Digitized photomicrograph (magnification = $\times 10$) of an acetate peel from shell WG061294R with approximately the last 175 yr of growth in the hinge plate.

polished with dilute diamond paste (Presi; 3 μm) on rotary magnetic pads (Presi; 200 mm, 3106 and 0307) and etched in a modified Mutvei solution (without alcian blue) at room temperature for 45 min (see Schöne et al. 2005b). Acetate peel replicas (Agar Scientific; 35 μm) of the polished and etched surfaces were prepared and examined in transmitted light under magnifications of $\times 2.5$, $\times 4$, and $\times 10$ using a Leica Laborlux S microscope. Following the production of acetate peel replicas, annual growth increment widths can be measured and recorded either from the outer shell surface (Schöne et al. 2005a) or along the hinge plate in the umbo (Scourse et al. 2006). The hinge plate was used because the growth increments here are most obvious (Figure 3C). Because of its great longevity, shell WG061294R was measured by 3 operators at the same time; only growth checks that were mutually agreed upon by all operators were counted. Images of the incremental record in the sectioned hinge plates were captured using a digital camera (Soft Imaging Systems; Colorview) and the increment widths measured using the software analySIS[®] 3.2 (Figure 3C). This system facilitates increment measurement using an automated cursor that feeds directly into a data spreadsheet and enables both the growth increment series and their axis of measurement to be digitized. Because of the nature of the *A. islandica* growth curve, where yearly growth can vary by 2 orders of magnitude over the lifespan of the animal, the raw increment-width data are treated using a high-pass filter that removes the low-frequency ontogenetic growth trend to produce a standard shell growth-increment plot for each shell (Scourse et al. 2006). This involves generating the natural logarithm of the data to remove the different orders of magnitude and the residuals are then taken from a 15-yr spline through the data (Figure 4A). This detrending method is optimal for cross-matching shell growth records and chronology construction.

Radiocarbon Analysis

The periostracum was removed by scraping the outer shell surface using a razor blade near the targeted region for ^{14}C sampling. Approximately a 30-mg solid sample of shell carbonate was cut with a razor blade and removed from the outer shell surface (Figure 3B) from the umbo region of the shell WG061294R and from the ventral margin (adjacent to the axis of maximum growth) of shell WG061315. The shell samples were treated following a standard mollusk rinsing procedure at the University of Aarhus (Denmark): to eliminate any possible surface contamination, the outer 25% of the shell was removed by etching in 1M HCl. Any organic carbon incorporated in the shell carbonate was removed by treatment with a KMnO_4 solution for 16–20 hr at 80 °C. The CO_2 was liberated with ~100% phosphoric acid in an evacuated vial at 25 °C. Part of the CO_2 was used for $\delta^{13}\text{C}$ measurements; the rest was converted to graphite for accelerator mass spectrometry (AMS) ^{14}C measurements by reduction with H_2 , with cobalt as a catalyst (Vogel et al. 1984).

All AMS ^{14}C measurements were carried out using the EN tandem accelerator at the University of Aarhus. The dating results are reported according to international convention (Stuiver and Polach 1977) as conventional ^{14}C dates in ^{14}C yr BP (before AD 1950) based on the measured $^{14}\text{C}/^{13}\text{C}$ ratio corrected for the natural isotopic fractionation by normalizing the result to the standard $\delta^{13}\text{C}$ value of -25‰ VPDB (Andersen et al. 1989). The results are shown in Table 1.

RESULTS

Ontogenetic Age and Radiocarbon Analysis

Four hundred and five annual bands were counted in the sectioned hinge area for shell WG061294R. Part of this record (~last 175 yr) is shown in Figure 3D. This is the oldest mollusk known to science, and perhaps the oldest documented non-colonial animal. As this clam was live-caught in 2006, we assigned a calendar year to each annual increment beginning in 2005, and based on this method, we

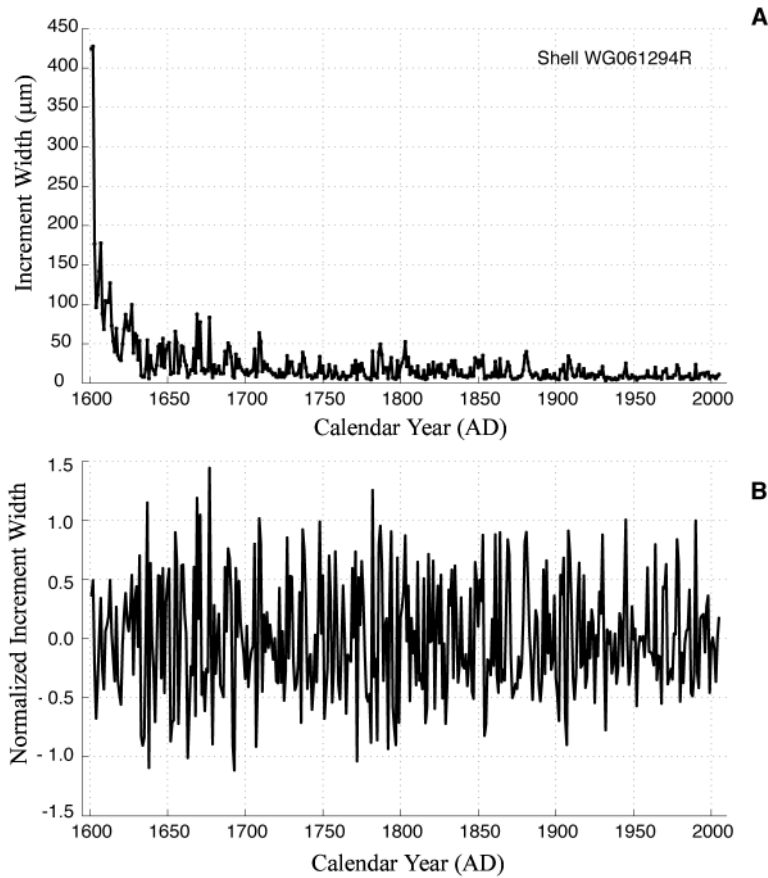


Figure 4 (A) Raw annual increment width measurements from shell WG061294R. (B) Standardized increment width time series for the same shell. The data were first treated with a natural logarithm to normalize the variance through time, then the ontogenetic growth trend was removed with a 15-yr cubic spline function.

Table 1 Summary of ^{14}C analyses for *A. islandica* shells WG061294R and WG061315 from the Grimsey site along the north Icelandic shelf. Sclerochronological ages were determined by counting the annual increments in the sectioned shells. Shell WG061294R was live-caught in AD 2006, while shell WG061315 was dead-collected and cross-dated with shell WG061294R (see text for details).

Laboratory ID	Sample ID	^{14}C age (yr BP) $\pm 1 \sigma$	$\delta^{13}\text{C}$ (‰)	Sclerochronological age of sample (AD)	Calculated $\Delta R \pm 1 \sigma$
AAR-11784	61294	951 \pm 27	2.58	1600	237 \pm 35
AAR-11784	61315	863 \pm 45	1.93	1650	186 \pm 50

suggest that this animal settled onto the seafloor north of Iceland in AD 1600. Subfossil shell WG061315 contained 284 annual bands. The actual age of each clam is at least 2 yr older than the number of annual bands counted (407 and 286, respectively), because the first and last years of life do not form complete annual increments. The umbo portion (within the first ontogenetic year) of WG061994R had a ^{14}C age of 951 \pm 27 BP. The ventral margin of shell WG061315 had a ^{14}C age

of 863 ± 45 BP (Table 1). This sample was integrated over approximately 10 yr (growth increments), corresponding to an average date of growth around AD 1650. Although we sampled the relatively fast-growing juvenile portion in shell WG061994R and the relatively slow-growing adult portion of shell WG061315 for ^{14}C analyses, we conclude that this methodology did not bias our results. In fact, Schöne (2005a: Figure 6 on page 138) demonstrated that carbon and oxygen isotopes from the aragonitic material of an *A. islandica* shell from Iceland were not impacted by vital effects during the first 39 yr of growth. Additionally, earlier work by Weidman and Jones (1993) showed no evidence to support an ontogenetic-related effect for the incorporation of ^{14}C into the shell material of *A. islandica*.

ΔR and Cross-Matching

As the oldest shell (WG061294R) was live-caught in 2006, the calculation of ΔR was determined by comparing the measured ^{14}C age with the ^{14}C value of the Marine04 calibration curve (Hughen et al. 2004) at AD 1600 (714 ± 23 BP). This analysis produced a ΔR of 237 ± 35 at AD 1600 (Figure 2). The standardized incremental growth series between shells WG061294R and WG061315 were cross-matched with the visualization software program SHELLCORR (see Scourse et al. 2006 for details) (Figures 5, 6), initially using a ΔR of 250. We chose this ΔR value based on the result from the live-caught shell WG061294R and the relatively high ΔR values revealed from nearby sediment archives (Eiriksson et al. 2004). SHELLCORR allows 2 time series to be compared with various time lags (up to ± 250 yr) (Figure 6) to account for mismatched calendar ages, or floating ^{14}C estimates. Once a statistically significant cross-match is achieved, the calendar age of the dead-collected clam can be refined. We successfully cross-matched the subfossil shell with the live-caught shell (Figure 6). The correlation between the 2 growth indices during the overlap interval (AD 1601 to 1656) was highly significant ($r = 0.66$; $p < 0.0001$). To further assess the strength of the agreement between the 2 shell growth records, we used the t statistic by Baillie and Pilcher (1973), which is shown below (Equation 1):

$$t = \frac{r\sqrt{n-2}}{\sqrt{1-R^2}} \quad (1)$$

Based on the correlation coefficient (r), the coefficient of determination (R^2), and the number of overlapping years (n), the t statistic between the 2 shells is 8.51, which is substantially higher than the critical value of 3.5. Pilcher et al. (1995) further suggested that a t value of 4.0 may be significant and values greater than 6.0 are very likely to be significant. These results suggest that it is extremely unlikely that the cross-match between these 2 shells is due to chance alone, but the addition of another shell in the chronology during this interval will improve the strength of this argument. Based on the cross-matched relationship, we have assigned a sclerochronological lifespan to the subfossil shell WG061315 from AD 1373 to 1656; a settlement date of AD 1373 and death at AD 1656. ^{14}C analysis of ~ 10 increments taken from the ventral margin of this shell revealed a ΔR of 186 ± 50 yr at AD 1650 (Figure 2), close to the estimated date of death determined from the sclerochronological record. These values compare well with each other and with the tephra-based ΔR values for the north Icelandic shelf during this period (see Table 1 and Figure 2).

DISCUSSION

In this study, we have demonstrated that a long-lived (400+ yr), live-caught *Arctica islandica* shell can be successfully cross-matched with a subfossil specimen, thus creating and extending a dated shell growth increment chronology (>600 yr), i.e. AD 1373–2005 (Figure 5 top), for Icelandic

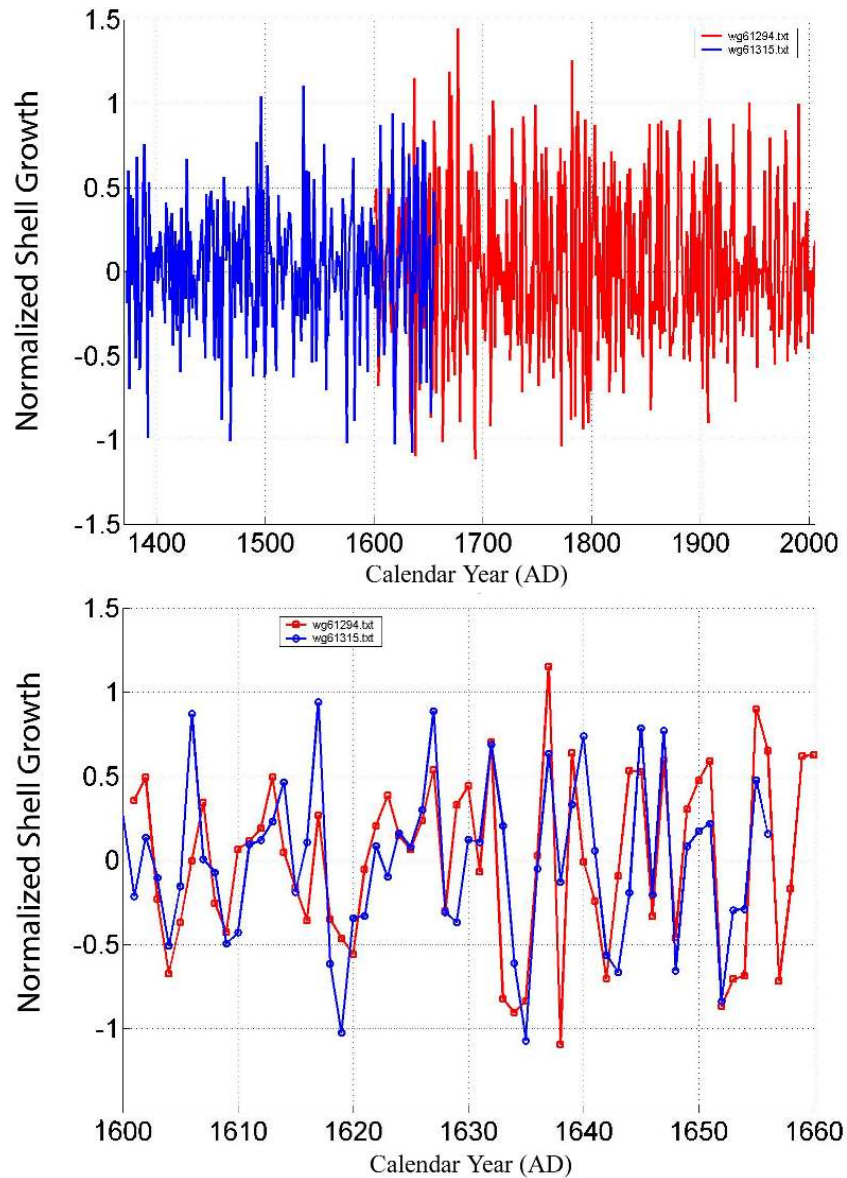


Figure 5 (Top) Normalized shell growth records from WG061294R (red) and WG061315 (blue) based on ¹⁴C analysis and cross-matching techniques. (Bottom) Cross-match between the 2 shells from AD 1601 to 1656. The correlation between the 2 shells during the overlap interval was highly significant ($r = 0.66$; $p < 0.0001$; t statistic = 8.51 after Baillie and Pilcher 1973).

waters. We have also shown that the widely spaced growth increments deposited during the first 50 yr of life by the old live-collected clam (WG061294R) could be successfully and robustly cross-matched with the narrow growth increments deposited in the older shell portions of the subfossil clam shell (WG061315) once the incremental growth series are standardized (Figure 5 bottom).

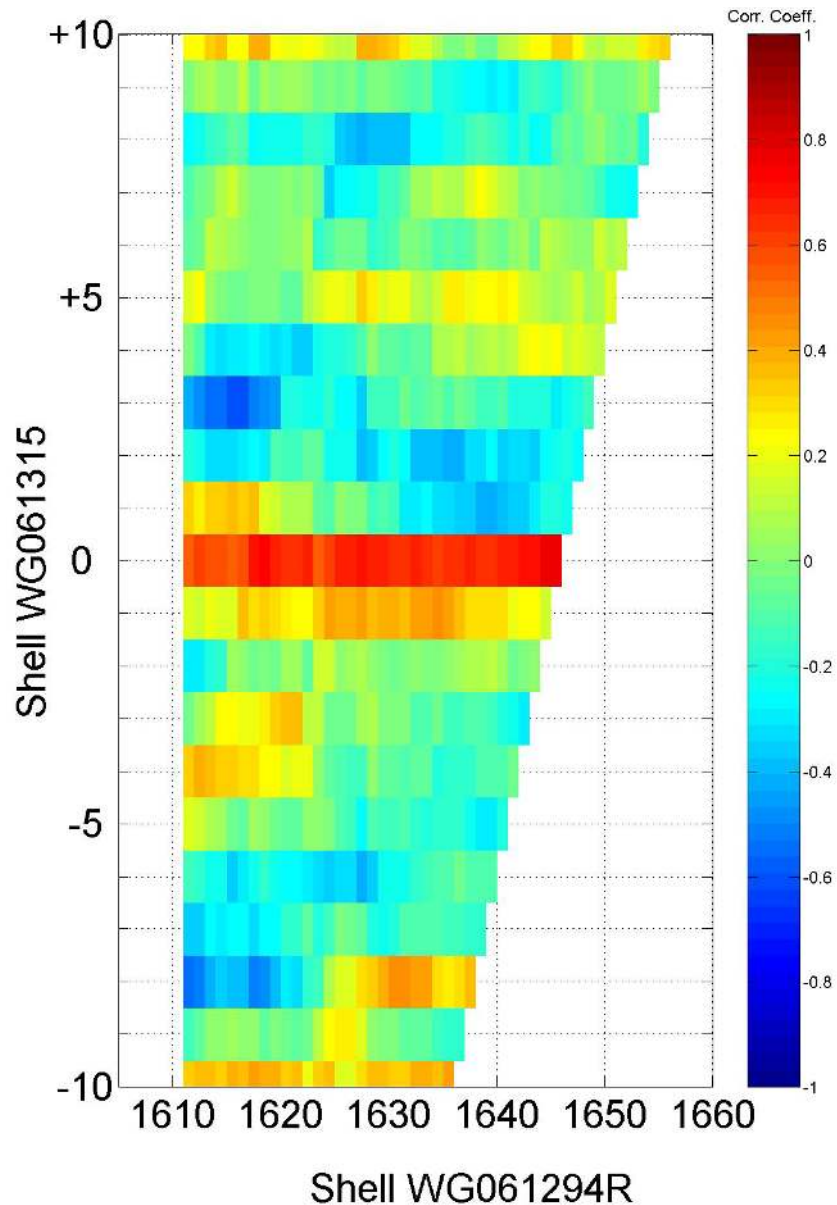


Figure 6 SHELLCORR output with the correct temporal alignment of shell WG061315, and noting the strength of the correlation during the overlap period (calendar yr AD) using a 21-yr sliding window.

The results presented here further demonstrate that the ^{14}C content of annually-banded *Arctica islandica* growth increments has the potential to document past ocean conditions, including the reservoir ages of the shelf seas in the North Atlantic (Weidman and Jones 1993). Furthermore, we have independently verified the tephra-based ΔR values for the north Icelandic shelf during the 17th century. The shell and sediment-derived ΔR data overlap once the analytical errors are considered when calculating ΔR values (Figure 2). It is often difficult to determine phase relationships (lead or lag)

between climate perturbations and the response of the system(s) of interest. Sediment-based paleoclimate reconstructions that rely on tephra-based age/depth models (Eiríksson et al. 2006; Sicre et al. 2008) offer the unique opportunity to accurately capture the temporal response of the ocean with respect to climate perturbations when tephra is abundant through time. However, when tephra is less abundant or absent, high-resolution (decadal-scale) shell-based ΔR reconstructions can fill in gaps between the tephra layers or provide an alternative method for monitoring ^{14}C reservoir changes. This technique will be especially important south of Iceland where tephra is scarce. The relatively high ΔR values of 237 ± 35 and 186 ± 50 , at AD 1600 and 1650, respectively, derived from *A. islandica* and the data of Eiríksson et al. (2004) (Figure 2) indicate a pervasive presence of Arctic water over the north Icelandic shelf during the beginning and middle of the 17th century. This interpretation is consistent with paleoceanographic evidence that suggests the shelf region north of Iceland was extremely cold during this interval of the Little Ice Age (Knudsen et al. 2004a; Jiang et al. 2005; Eiríksson et al. 2006; Sicre et al. 2008). In addition, Schöne et al. (2005a) sampled the umbo portion of a museum-archived *A. islandica* shell to confirm its great sclerochronological age of ~ 374 yr old. This shell was originally collected from the south Icelandic shelf, but because its exact location was not known, the incremental series cannot be used with any great certainty to reconstruct the ΔR of the water mass and oceanic circulation around Iceland. Schöne et al. (2005a) have suggested that the clam may have been collected from either the eastern or western shelf south of Iceland. However, as the clam was collected alive in July 1868, a ^{14}C reservoir age can be determined. We calculated the ^{14}C reservoir age of this shell to be 150 ± 45 based on the published ^{14}C value in Schöne et al. (2005a; uncalibrated ^{14}C age = 950 ± 40 BP from AD 1497) a value that is close to ΔR values observed on the north Icelandic shelf at about AD 1500 (see Figure 2). From these observations, we suggest that this shell was probably collected from the eastern portion of the shelf (see Schöne et al. 2005a; Figure 1). As the East Icelandic Current flows clockwise around Iceland from the north to the south (Figure 1), it can bring relatively depleted waters with respect to ^{14}C ($\Delta R > 150$), due to the contribution of Arctic water masses (Tauber and Funder 1975). In contrast, the southwestern Icelandic waters are primarily influenced by the Irminger Current, which is relatively enriched with respect to ^{14}C due to prolonged air-sea exchange (ΔR near 0). Although this new ΔR value (150 ± 45 at AD 1497) south of Iceland should be used with caution because the exact location of the shell is not known, it does suggest a strong influence of Arctic waters north of Iceland during this interval, which is consistent with the data presented in Figure 2. In contrast, according to the CHRONO Marine Reservoir Database (<http://intcal.qub.ac.uk/marine>), there are 11 previous reservoir determinations made on pre-bomb live-collected shells from coastal sites around Iceland. The weighted mean ΔR value is 52 yr, and the values range from 56 to +225, exhibiting a standard deviation of 71 yr. In general, this would indicate a shift from an Arctic water mass to an Atlantic water source in the recent centuries, perhaps representing the end of the Little Ice Age. The data presented in Figure 2 illustrate a highly dynamic water mass north of Iceland since AD 1800. A decadal-scale reconstruction of ΔR during this interval would substantially improve our understanding of the processes impacting the climate and oceanography north of Iceland, especially during a time of increased anthropogenic influence on Earth's climate. We are currently constructing such a record, and we are confident that the ^{14}C from *A. islandica* shells will elicit important oceanographic information, including hydrographic changes and possibly the relative position of the Polar Front north of Iceland.

CONCLUSION

Here, we provide independent evidence that supports tephra-based age models for the north Icelandic shelf during the 17th century AD. ^{14}C analyses from the 2 long-lived *Arctica islandica* shells dis-

cussed in this paper reveal a ΔR of 237 ± 35 at AD 1600 and a ΔR of 186 ± 50 yr at AD 1650, respectively. In terms of the oceanographic setting during this interval, it appears that the north Icelandic shelf was dominated by an Arctic water mass. This result is consistent with nearby sediment-based studies that indicate that the shelf region north of Iceland was extremely cold during this interval of the Little Ice Age. Further, we have shown that there is potential to match the growth series from live-caught *A. islandica* shells with dead-collected specimens, which could lead to the construction of very long, absolutely dated, shell chronologies. We have demonstrated that even young shell portions can be cross-matched with older shell portions once the incremental series from the shells are standardized. In addition, with the 2 shells discussed in this paper, we have developed a shell-growth chronology spanning more than 6 centuries (AD 1373–2005). These shells will serve as a template for constructing a master shell chronology for the past millennium, which will be used to assess the evolution of climate and oceanographic change north of Iceland. The great longevity of *A. islandica*, its precise temporal control, its abundance through geologic time, and its broad distribution in the temperate North Atlantic make it a key marine proxy to study past oceanic environments.

ACKNOWLEDGMENTS

We thank the crew from the research vessel *Bjarni Sæmundsson* (Cruise No. B05-2006) and the members who participated on the research cruise. We thank Brian Long (Bangor University) for his technical support, and Ian Harris (University of East Anglia) for the SHELLCORR program. We thank 2 anonymous reviewers for their comments and suggestions, which improved the content and flow of this paper. This research is funded by EU Millennium (European Climate of the Last Millennium; Project no. 017008). JDS acknowledges a Royal Society-Leverhulme Trust Senior Research Fellowship.

REFERENCES

- Andersen GJ, Heinemeier J, Nielsen HL, Rud N, Thomsen MS, Johnsen S, Sveinbjörnsdóttir Á, Hjartarson Á. 1989. AMS ^{14}C dating on the Fossvogur sediments, Iceland. *Radiocarbon* 31(3):592–600.
- Andrews JT, Giraudeau J. 2003. Multi-proxy records showing significant Holocene environmental variability: the inner N. Iceland shelf (Húnaflói). *Quaternary Science Reviews* 22(2–4):175–93.
- Asthorsson OS, Gislason A, Jónsson S. 2007. Climate variability and the Icelandic marine ecosystem. *Deep-Sea Research Part II* 54(23–26):2456–77.
- Austin WEN, Bard E, Hunt JB, Kroon D, Peacock JD. 1995. The ^{14}C age of the Icelandic Vedde Ash: implications for Younger Dryas marine reservoir age corrections. *Radiocarbon* 37(1):53–62.
- Baillie MGL, Pilcher JR. 1973. A simple cross-dating program for tree-ring research. *Tree-Ring Bulletin* 33: 7–14.
- Broecker WS, Olson EA. 1961. Lamont radiocarbon measurements VIII. *Radiocarbon* 3(1):176–204.
- Druffel EM. 1980. Radiocarbon in annual coral rings of Belize and Florida. *Radiocarbon* 22(2):363–71.
- Druffel EM. 1982. Banded corals: changes in oceanic carbon-14 during the Little Ice Age. *Science* 218(4567):13–9.
- Druffel ERM. 1989. Decade time scale variability of ventilation in the North Atlantic: high-precision measurements of bomb radiocarbon in banded corals. *Journal of Geophysical Research-Oceans* 94(C3): 3271–85.
- Druffel EM, Linick TW. 1978. Radiocarbon in annual coral rings of Florida. *Geophysical Research Letters* 5(11):913–6.
- Druffel ERM, Griffin S, Beupré SR, Dunbar RB. 2007. Oceanic climate and circulation changes during the past four centuries from radiocarbon in corals. *Geophysical Research Letters* 34(9): L09601, doi: 10.1029/2006GL028681.
- Druffel ERM, Robinson LF, Griffin S, Halley RB, Southon JR, Adkins JF. 2008. Low reservoir ages for the surface ocean from mid-Holocene Florida corals. *Paleoceanography* 23(2): PA2209, doi:10.1029/2007PA001527.
- Eiriksson J, Larsen G, Knudsen KL, Heinemeier J, Símónarson LA. 2004. Marine reservoir age variability and water mass distribution in the Iceland Sea. *Quaternary Science Reviews* 23(20–22):2247–68.
- Eiriksson J, Bartels-Jónsdóttir HB, Cage AG, Guðmundsdóttir ER, Klitgaard-Kristensen D, Marret F, Rodrigues T, Abrantes F, Austin WEN, Jiang H, Knudsen KL, Sejrup H-P. 2006. Variability of the North Atlantic Current during the last 2000 years based on shelf bottom water and sea surface temperatures along an open ocean/shallow marine transect in

- western Europe. *The Holocene* 16(7):1017–29.
- Giraudeau J, Jennings AE, Andrews JT. 2004. Timing and mechanisms of surface and intermediate water circulation changes in the Nordic Seas over the last 10,000 cal years: a view from the North Iceland shelf. *Quaternary Science Reviews* 23(20–22):2127–39.
- Guilderson TP, Schrag DP, Kashgarian M, Southon J. 1998. Radiocarbon variability in the western equatorial Pacific inferred from a high-resolution coral record from Nauru Island. *Journal of Geophysical Research-Oceans* 103(C11):24,641–50.
- Guilderson TP, Schrag DP, Cane MA. 2004. Surface water mixing in the Solomon Sea as documented by a high-resolution coral ^{14}C record. *Journal of Climate* 17(5):1147–56.
- Hansen B, Østerhus S. 2000. North Atlantic-Nordic seas exchanges. *Progress in Oceanography* 45(2):109–208.
- Helama S, Schöne BR, Kirchhefer AJ, Nielsen JK, Rodland DL, Janssen R. 2007. Compound response of marine and terrestrial ecosystems to varying climate: pre-anthropogenic perspective from bivalve shell growth increments and tree-rings. *Marine Environmental Research* 63(3):185–99.
- Hughen KA, Baillie MGL, Bard E, Beck JW, Bertrand CJH, Blackwell PG, Buck CE, Burr GS, Cutler KB, Damon PE, Edwards RL, Fairbanks RG, Friedrich M, Guilderson TP, Kromer B, McCormac G, Manning S, Bronk Ramsey C, Reimer PJ, Reimer RW, Remmele S, Southon JR, Stuiver M, Talamo S, Taylor FW, van der Plicht J, Weyhenmeyer CE. 2004. Marine04 marine radiocarbon age calibration, 0–26 cal kyr BP. *Radiocarbon* 46(3):1059–86.
- Jiang H, Eiriksson J, Schulz M, Knudsen KL, Seidenkrantz M-S. 2005. Evidence for solar forcing of sea-surface temperature on the North Icelandic Shelf during the late Holocene. *Geology* 33(1):73–6.
- Jones DS. 1980. Annual cycle of shell growth increment formation in two continental shelf bivalves and its paleoecologic significance. *Paleobiology* 6(3):331–40.
- Jónsson S. 1992. Sources of fresh water in the Iceland Sea and mechanisms for governing its interannual variability. *ICES Marine Science Symposia* 95:62–7.
- Jónsson S. 2007. Volume flux and fresh water transport associated with the East Icelandic Current. *Progress in Oceanography* 73(3–4):231–41.
- Kilbourne KH, Quinn TM, Guilderson TP, Webb RS, Taylor FW. 2007. Decadal- to interannual-scale source water variations in the Caribbean Sea recorded by Puerto Rican coral radiocarbon. *Climate Dynamics* 29(1):51–62.
- Knudsen KL, Eiriksson J, Jansen E, Jiang H, Rytter F, Gudmundsdóttir ER. 2004a. Palaeoceanographic changes off North Iceland through the last 1200 years: foraminifera, stable isotopes, diatoms and ice rafted debris. *Quaternary Science Reviews* 23(20–22):2231–46.
- Knudsen KL, Jiang H, Jansen E, Eiriksson J, Heinemeier J, Seidenkrantz M-S. 2004b. Environmental changes off North Iceland during the deglaciation and the Holocene: foraminifera, diatoms and stable isotopes. *Marine Micropaleontology* 50(3–4):273–305.
- Larsen G, Eiriksson J, Knudsen KL, Heinemeier J. 2002. Correlation of late Holocene terrestrial and marine tephra markers, north Iceland: implications for reservoir age changes. *Polar Research* 21(2):283–90.
- Malmberg S-A, Jónsson S. 1997. Timing of deep convection in the Greenland and Iceland seas. *ICES Journal of Marine Science* 54(3):300–9.
- Marchitto Jr TM, Jones GA, Goodfriend GA, Weidman CR. 2000. Precise temporal correlation of Holocene mollusk shells using sclerochronology. *Quaternary Research* 53(2):236–46.
- Marsh R, Petrie B, Weidman CR, Dickson RR, Loder JW, Hannah CG, Frank K, Drinkwater K. 1999. The 1882 tilefish kill - a cold event in shelf waters off the north-eastern United States? *Fisheries Oceanography* 8(1):39–49.
- Pilcher JR, Baillie MGL, Brown DM, McCormac FG, MacSweeney PB, McLawrence AS. 1995. Dendrochronology of subfossil pine in the north of Ireland. *Journal of Ecology* 83(4):665–71.
- Ropes JW. 1984. Procedures for preparing acetate peels and evidence validating the annual periodicity of growth lines formed in the shells of ocean quahogs, *Arctica islandica*. *Marine Fisheries Review* 46(2):27–35.
- Schöne BR, Oschmann W, Rössler J, Castro ADF, Houk SD, Kröncke I, Dreyer W, Janssen R, Rumohr H, Dunca E. 2003. North Atlantic Oscillation dynamics recorded in shells of a long-lived bivalve mollusk. *Geology* 31(12):1037–40.
- Schöne BR, Castro ADF, Fiebig J, Houk SD, Oschmann W, Kröncke I. 2004. Sea surface water temperatures over the period 1884–1983 reconstructed from oxygen isotope ratios of a bivalve mollusk shell (*Arctica islandica*, southern North Sea). *Palaeogeography, Palaeoclimatology, Palaeoecology* 212(3–4):215–32.
- Schöne BR, Fiebig J, Pfeiffer M, Gleß R, Hickson J, Johnson ALA, Dreyer W, Oschmann W. 2005a. Climate records from a bivalve *Methuselah* (*Arctica islandica*, Mollusca; Iceland). *Palaeogeography, Palaeoclimatology, Palaeoecology* 228(1–2):130–48.
- Schöne BR, Dunca E, Fiebig J, Pfeiffer M. 2005b. Mutvei's solution: an ideal agent for resolving micro-growth structures of biogenic carbonates. *Palaeogeography, Palaeoclimatology, Palaeoecology* 228(1–2):149–66.
- Scourse J, Richardson C, Forsythe G, Harris I, Heinemeier J, Fraser N, Briffa K, Jones P. 2006. First cross-matched floating chronology from the marine fossil record: data from growth lines of the long-lived bivalve mollusc *Arctica islandica*. *The Holocene* 16(7):967–74.

- Sicre M-A, Jacob J, Ezat U, Rousse S, Kissel C, Yiou P, Eiriksson J, Knudsen KL, Jansen E, Turon J-L. 2008. Decadal variability of sea surface temperatures off North Iceland over the last 2000 years. *Earth and Planetary Science Letters* 268(1–2):137–42.
- Stefánsson U. 1962. North Icelandic waters. *Rit Fiskideildar* 3:1–269.
- Stuiver M, Polach HA. 1977. Discussion: reporting of ^{14}C data. *Radiocarbon* 19(3):355–63.
- Swift JH. 1986. The Arctic waters. In: Hurdles BG, editor. *Nordic Seas*. Volume 3. New York: Springer-Verlag. p 129–53.
- Swift JH, Aagaard K. 1981. Seasonal transitions and water mass formation in the Iceland and Greenland seas. *Deep-Sea Research Part A* 28(10):1107–29.
- Tauber H, Funder S. 1975. ^{14}C content of recent molluscs from Scoresby Sund, central East Greenland. *Grønlands Geologiske Undersøgelese, Rapport* 75:95–9.
- Thompson I, Jones DS, Dreibelbis D. 1980. Annual internal growth banding and life history of the ocean quahog *Arctica islandica* (Mollusca: Bivalvia). *Marine Biology* 57(1):25–34.
- Vogel JS, Southon JR, Nelson DE, Brown TA. 1984. Performance of catalytically condensed carbon for use in accelerator mass spectrometry. *Nuclear Instruments and Methods in Physics Research B* 5(2):289–93.
- Wanamaker Jr AD, Kreutz KJ, Schöne BR, Pettigrew N, Borns HW, Introne DS, Belknap D, Maasch KA, Feindel S. 2008. Coupled North Atlantic slope water forcing on Gulf of Maine temperatures over the past millennium. *Climate Dynamics* 31(2–3):183–94.
- Weidman CR, Jones GA. 1993. A shell-derived time history of bomb ^{14}C on Georges Bank and its Labrador Sea implications. *Journal of Geophysical Research-Oceans* 98(C8):14,577–88.
- Weidman CR, Jones GA, Lohmann KC. 1994. The long-lived mollusc *Arctica islandica*: a new paleoceanographic tool for the reconstruction of bottom temperatures for the continental shelves of the northern North Atlantic Ocean. *Journal of Geophysical Research-Oceans* 99(C9):18,305–14.
- Witbaard R. 1996. Growth variations in *Arctica islandica* L. (Mollusca): a reflection of hydrography-related food supply. *ICES Journal of Marine Science* 53(6): 981–7.
- Witbaard R, Duineveld GCA, DeWilde PAWJ. 1997. A long-term growth record derived from *Arctica islandica* (Mollusca, Bivalvia) from the Fladen Ground (northern North Sea). *Journal of the Marine Biological Association of the United Kingdom* 77(3):801–16.
- Witbaard R, Jansma E, Klaassen US. 2003. Copepods link quahog growth to climate. *Journal of Sea Research* 50(1):77–83.