

Vevacious: a tool for finding the global minima of one-loop effective potentials with many scalars

J.E. Camargo-Molina^{1,a}, B. O'Leary^{1,b}, W. Porod^{1,c}, F. Staub^{2,d}

¹Institut für Theoretische Physik und Astronomie, Universität Würzburg Am Hubland, 97074 Würzburg, Germany

²Bethe Center for Theoretical Physics & Physikalisches Institut der Universität Bonn, 53115 Bonn, Germany

Received: 12 July 2013 / Revised: 4 September 2013 / Published online: 8 October 2013

© The Author(s) 2013. This article is published with open access at Springerlink.com

Abstract Several extensions of the Standard Model of particle physics contain additional scalars implying a more complex scalar potential compared to that of the Standard Model. In general these potentials allow for charge- and/or color-breaking minima besides the desired one with correctly broken $SU(2)_L \times U(1)_Y$. Even if one assumes that a metastable local minimum is realized, one has to ensure that its lifetime exceeds that of our universe. We introduce a new program called `Vevacious` which takes a generic expression for a one-loop effective potential energy function and finds *all* the tree-level extrema, which are then used as the starting points for gradient-based minimization of the one-loop effective potential. The tunneling time from a given input vacuum to the deepest minimum, if different from the input vacuum, can be calculated. The parameter points are given as files in the `SLHA` format (though is not restricted to supersymmetric models), and new model files can be easily generated automatically by the `Mathematica` package `SARAH`. This code uses `HOM4PS2` to find all the minima of the tree-level potential, `PyMinuit` to follow gradients to the minima of the one-loop potential, and `CosmoTransitions` to calculate tunneling times.

1 Introduction

A major part of the phenomenology of the incredibly successful standard model of particle physics (SM) is the spontaneous breaking of some (but not all) of the gauge symmetries of the Lagrangian density by the *vacuum expectation value* (VEV) of a scalar field charged under a subgroup

of the SM gauge group. The entire scalar sector of the SM consists of a doublet of $SU(2)_L$ which also has a hypercharge under $U(1)_Y$ equal in magnitude to that of the lepton $SU(2)_L$ doublet. The potential energy of the vacuum is minimized by the scalar field taking a constant non-zero value everywhere. The presence of this VEV radically changes the phenomenology of the theory, and allows for masses for particles that would be forced to be massless if the gauge symmetries of the Lagrangian density were also symmetries of the vacuum state.

Since this scalar field is the only field in the SM that can possibly have a non-zero VEV while preserving Lorentz invariance, finding the minima of the potential energy is straightforward, though of course evaluating it to the accuracy required is quite involved [1–3].

Also, with the current measurements for the masses of the top quark and Higgs boson, one finds that the SM potential at one-loop order is actually unbounded from below for a fixed value of the renormalization scale. The value of the Higgs field for which the potential is lower than the desired vacuum is so high that one may worry that large logarithms of the Higgs field over the electroweak scale would render the loop expansion non-convergent. However, the effect of large logarithms can be resummed, and the conclusion that our vacuum is only metastable persists using the renormalization-group-improved effective potential [1–5].

The existence of multiple non-equivalent vacua both raises technical challenges and introduces interesting physics. The technical challenges are now that one has to find several minima and evaluate which is the deepest, as well as calculate the tunneling time from a false vacuum to the true vacuum. However, this is an important ingredient in theories where a first-order phase transition explains the baryon asymmetry of the universe through the sphalerons occurring in the nucleation of bubbles of true vacuum (see [6] and references therein).

^ae-mail: jose.camargo@physik.uni-wuerzburg.de

^be-mail: ben.oleary@physik.uni-wuerzburg.de

^ce-mail: porod@physik.uni-wuerzburg.de

^de-mail: fnstaud@th.physik.uni-bonn.de

Many extensions of the SM introduce extra scalar fields. Sometimes these fields are introduced explicitly to spontaneously break an extended gauge symmetry down to the SM gauge group [7, 8], and they are assumed to have non-zero VEVs at the true vacuum of the theory. Other times they are introduced for other reasons, such as supersymmetry [9], and often non-zero VEVs for such fields would be disastrous, such as breaking $SU(3)_c$ and/or $U(1)_{EM}$, which excludes certain parts of the parameter space of the minimal supersymmetric standard model (MSSM) from being phenomenologically relevant.

The technical challenges are much tougher when multiple scalar fields are involved. Even a tree-level analysis involves solving a set of coupled cubic equations, the so-called minimization or tadpole equations. It has generally only been attempted for highly symmetric systems such as two Higgs doublet models (2HDM) [10, 11] or with only a minimal amount of extra degrees of freedom such as the (assumed) three non-zero VEVs of the next-to-minimal supersymmetric standard model (NMSSM) [12–14].

Since a general solution is usually too difficult, the question of the stability of VEV configurations against tunneling to other minima of the potential is often ignored. Instead, potentials are often engineered to have a local minimum at a desired VEV configuration through ensuring that the tadpole equations are satisfied for this set of VEVs. This approach allows one to go beyond tree level straightforwardly, and one-loop tadpoles are the norm, and in supersymmetric models two-loop contributions are often included [15]. This local minimum is implicitly assumed to be stable or long-lived enough to be physically relevant. Unfortunately, as some examples will show, local minima which are not the global minimum of their parameter point are often extremely short-lived, excluding some benchmark parameter points for some models.

The program *Vevacious* has been written to address this. Given a set of tadpole equations and the terms needed to construct the one-loop effective potential,¹ first all the extrema of the tree-level potential are found using homotopy continuation (HOM4PS2), which are then used as starting points for gradient-based minimization (PyMinuit) of the (real part of the) one-loop potential, and finally, if requested, the tunneling time from an input minimum to the deepest minimum found is estimated at the one-loop level (CosmoTransitions). The program is intended to be suitable for parameter scans, taking parameter points in the SLHA format [16, 17] and giving a result within seconds, depending on the number of fields allowed to have non-zero VEVs and the accuracy of the tunneling

time required. *Vevacious* is available to download from <http://www.hepforge.org/downloads/vevacious>.

2 The potential energy function at tree level and one-loop level

The terminology of minimizing the effective potential of a quantum field theory is rather loaded. Hence first we shall clarify some terms and conventions that will be used in the rest of this article. In the following we consider models where only scalars can get a VEV as required by Lorentz invariance.

In principle, the effective potential is a real-valued² functional over all the quantum fields of the model. However, under the assumption that the vacuum is homogeneous and isotropic, for the purposes of determining the vacua of the model, the effective potential can be treated as a function of sets of (dimensionful) numbers, which we shall refer to as *field configurations*. Each field configuration is a set of variables which correspond to the classical expectation values for the spin-zero fields which are constant with respect to the spatial co-ordinates.

The example of the SM is relatively simple: the field configuration is simply a set of two complex numbers, which are the values of the neutral and charged scalar fields assuming that each is constant over all space. These four real degrees of freedom can be reduced to a single degree of freedom by employing global $SU(2)_L$ and phase rotations, leaving an effective potential that is effectively a function of a single variable.

Henceforth we shall assume that each complex field is treated as a pair of real degrees of freedom, and note that this may obscure continuous sets of physically equivalent degrees of freedom which are manifestly related by phase rotations when expressed with complex fields.

Also we shall refer to the local minima of the effective potential as its *vacua*, and label the global minimum as the *true vacuum*, while all the others are *false vacua*. A potential may have multiple true vacua, either as a continuous set of minima related by gauge transformations as in the SM for example, or a set of disjoint, physically inequivalent minima, each of which may of course be a continuous set of physically equivalent minima themselves. In cases where there is a continuous set of physically equivalent minima, we assume that a single exemplar is taken from the set for the purposes of comparison of physically inequivalent minima.

Furthermore, the term *vacuum expectation value* can be used in many confusing ways. In this work, VEVs will only

¹The potential may include non-renormalizable terms, as long as the one-loop effective potential is of the form of a polynomial plus V^{mass} as given in Eq. (4).

²As noted in Sect. 2.4, the loop expansion may lead to complex values for the one-loop effective potential. See [18, 19] for detailed discussions.

refer to the sets of constant values which the scalar fields have at the field configurations which minimize the effective potential. Hence we do *not* consider the effective potential to be a “function of the VEVs”, rather a function of a set of numbers that we call a field configuration.

2.1 The tree-level potential and tadpole equations

If one merely considers the SM at tree level, minimizing the potential is straightforward. A global $SU(2)_L$ rotation can bring the part of the potential due to the scalar doublet into the form

$$V = \frac{\lambda}{4}|\phi|^4 + \frac{\mu^2}{2}|\phi|^2 \tag{1}$$

where ϕ is the neutral component of the $SU(2)_L$ doublet. After a little differentiation and algebra, one finds that if $\lambda > 0, \mu^2 < 0$, then the potential is minimized for $|\phi| = v = \sqrt{-\mu^2/\lambda}$.

However, for a set of N real scalar degrees of freedom ϕ_i (writing complex scalar fields as two separate real scalars), the scalar part of the tree-level potential of a renormalizable quantum field theory in four space-time dimensions is of the form

$$V^{\text{tree}} = \lambda_{ijkl}\phi_i\phi_j\phi_k\phi_l + A_{ijk}\phi_i\phi_j\phi_k + \mu_{ij}^2\phi_i\phi_j + \text{irrelevant constant term} \tag{2}$$

which, when differentiated with respect to the N independent ϕ_i , yields N polynomial equations of up to degree three. We have assumed that any terms linear in the fields have been removed by constant shifts of the fields.

Although we assume renormalized potentials here for simplicity, the methods used by `vevacious` are equally applicable to non-renormalizable potentials, as long as V^{tree} is expressed as a finite-degree polynomial. The value of loop corrections to a non-renormalizable potential may be debatable, but `vevacious` can be restricted to using just the tree-level potential.

While closed-form solutions for cubic polynomials in one variable exist, solving a coupled system in general requires very involved algorithms, such as using Gröbner bases to decompose the system [20, 21], or homotopy continuation to trace known solutions of simple systems as they are deformed to the complicated target system of tadpole equations.

2.1.1 The homotopy continuation method

The homotopy continuation method [22, 23] has found use in several areas of physics [24–26], in particular to find string theory vacua [27, 28] and extrema of extended Higgs sectors [29], where the authors investigated a system of two Higgs doublets with up to five singlet scalars in a general

tree-level potential, and [30], where systems of up to ten fields were allowed to have non-zero VEVs. In contrast, the Gröbner basis method is deemed prohibitively computationally expensive for systems involving more than a few degrees of freedom [20].

The numerical polyhedral homotopy continuation method is a powerful way to find all the roots of a system of polynomial equations quickly [31]. Essentially it works by continuously deforming a simple system of polynomial equations with known roots, with as many roots as the classical Bézout bound of the system that is to be solved (i.e. the maximum number of roots it could have). The simple system with known roots is continuously deformed into the target system, with the position of the roots updated with each step. While the method is described in detail in [22, 23], a light introduction can be found for example in [29].

2.2 The one-loop potential

The general form of the renormalized one-loop effective potential [32, 33] is

$$V^{1\text{-loop}} = V^{\text{tree}} + V^{\text{counter}} + V^{\text{mass}} \tag{3}$$

where V^{tree} is as above and V^{counter} has the same form as V^{tree} , i.e. a polynomial of the same degree in the same fields, but the coefficients are instead the renormalization-dependent finite parts of the appropriate counterterms [32]. The term V^{mass} has the form, for a given field configuration Φ ,

$$V^{\text{mass}} = \frac{1}{64\pi^2} \sum_n ((-1)^{(2s_n)} (2s_n + 1) (\bar{M}_n^2(\Phi))^2 \times [\log(\bar{M}_n^2(\Phi)/Q^2) - c_n]) \tag{4}$$

where the sum runs over all real scalar, Weyl fermion, and vector degrees of freedom, with s_n being the spin of the degree of freedom. Complex scalars and Dirac fermions are accounted for as mass-degenerate pairs of real scalars and Weyl fermions respectively.

For scalar degrees of freedom, the $\bar{M}_n^2(\Phi)$ are the eigenvalues of the second functional derivative of V^{tree} , i.e. the eigenvalues of $(\bar{M}_{s=0}^2)_{ij} = (\lambda_{ijkl} + \lambda_{ikjl} + \lambda_{iljk} + \dots)\phi_k\phi_l + (A_{ijk} + A_{ikj} + A_{kij} + \dots)\phi_k + \mu_{ij}^2 + \mu_{ji}^2$. Thus these $\bar{M}_n^2(\Phi)$ are the eigenvalues of the tree-level scalar “mass-squared matrix” that would be read off the Lagrangian with the scalars written as fluctuations around the field configuration. Unless the field configuration corresponds to a minimum of the effective potential, these do not correspond to physical masses in any way, of course.

Likewise, the $\bar{M}_n^2(\Phi)$ for fermionic and vector degrees of freedom are the eigenvalues of the respective “mass-squared matrices” where the scalar fields are taken to have constant values given by the field configuration. (The fermion mass-squared matrix is given by the mass matrix multiplied by its Hermitian conjugate.)

The terms c_n depend on the regularization scheme. In the $\overline{\text{MS}}$ scheme, c_n is $3/2$ for scalars and Weyl fermions, but $5/6$ for vectors, while in the $\overline{\text{DR}}$ scheme [33, 34], more suitable for supersymmetric models, c_n is $3/2$ for all degrees of freedom. Since this is a finite-order truncation of the expression, the renormalization scale Q also appears explicitly in the logarithm, as well as implicitly in the scale dependence of the renormalized Lagrangian parameters.

Much of the literature on one-loop potentials (including [33]) assumes a renormalization scheme where V^{counter} is zero; however, such a scheme is often inconvenient for other purposes, such as ensuring tadpole equations have a given solution at the one-loop level, see e.g. the appendix of [35]. (SARAH automatically generalizes this approach to extended SUSY models as explained in [36, 37].) Finally, we also note that models can be constructed where spontaneous symmetry breaking does not happen at tree level, but does exist when one takes loop corrections into account [18, 38].

2.2.1 Scale dependence

As noted, the one-loop effective potential depends on the renormalization scale. Ideally one would use the “renormalization-group improved” expression for the potential [32] as this is invariant under changes of scale; however, this is often totally impractical except for potentials with only a handful of parameters and a single scalar field.

If one must use a scale-dependent expression for the potential, as is often the case, the renormalization scale should be chosen carefully: if one chooses a scale too high or too low, one may find that with a finite-loop-order (and thus scale-dependent) effective potential, there is no spontaneous breaking of any symmetry, or even that the potential is not bounded from below [39]! This is often simply due to the fact that higher orders become more important in such a case, especially when corrections from the next order would introduce new, large couplings, such as often happens when going from tree level to one loop. It can also be that the scale is so large or small that the loop expansion is no longer a reliable expansion. We also note that rather undermines arguments that radiative effects do not change tree-level conclusions on the absolute stability of vacua such as in [40] (where the argument also fails to take into account that there may not even be a scale at which the renormalization condition used can be satisfied).

Indeed, it is crucial that the scale is chosen so that the loop expansion is valid. Explicitly, large logarithms should not spoil the perturbativity of the expansion in couplings. Loops with a particle n typically come with a factor of $\ln(\bar{M}_n^2(\Phi)/Q^2)$ along with the factor of $\alpha_n = [\text{relevant coupling}]^2/(4\pi)$, and thus $\alpha_n \ln(\bar{M}_n^2(\Phi)/Q^2)$ should remain sufficiently smaller than one such that the expansion can be trusted [32]. A rough first estimate then

of the region of validity, assuming that the dimensionful Lagrangian parameters are all of the order of the renormalization scale to some power, is where $\ln(v^2/Q^2)/(4\pi) \leq 1/2$, say, for a field configuration with vector length v , so where the VEVs are within a factor of $e^\pi \simeq 20$ of the renormalization scale.

Furthermore, it is in general not valid to compare the potential for different field configurations using a different scale for each configuration, if one is using a scale-dependent effective potential. The reason is that there is an important contribution to the potential that is field-independent yet still depends on the scale³ [41, 42]. Of course, if one knows the full scale dependence of all the terms of the Lagrangian regardless of whether they lead to field-dependent contributions to the effective potential, then one can correctly evaluate different field configurations at different scales.

2.3 Gauge dependence

The one-loop potential is explicitly gauge-dependent [43, 44]. However, as shown in [44, 45], the values it takes at its extrema are independent of the gauge chosen, except for spurious extrema of poorly-chosen gauges. The popular R_ξ gauges are well-behaved and do not have fictitious gauge-dependent extrema for reasonable choices of ξ [45].

It is also possible to formulate the effective potential in terms of gauge-invariant composite fields [46], though this may not always be practical. One can also verify the gauge-independence of extrema using more complicated gauges and applying BRST invariance [47].

2.4 Convexity

As shown in [18], the effective potential, which can be thought of as the quantum analogue of the classical potential energy for constant fields, is real for all values of the fields. However, the loop expansion leads to complex values in regions where the classical potential is non-convex. While one can take the convex hull of the truncated expansion of the potential when evaluating the potential for configurations of fields in the convex region, it is not particularly helpful for the purpose of computing tunneling transition times. Fortunately, the one-loop truncation of the effective potential as a function of constant values for the fields can consistently be interpreted as a complex number with real part giving the expectation value of the potential energy density for the given field configuration and imaginary part proportional to the decay rate per unit volume of this configuration [19].

³For example, if one is comparing two field configurations of the MSSM potential where the squark fields happen to have zero values, the mass of the gluino is independent of the non-zero fields and yet provides a scale-dependent contribution to the effective potential.

2.5 Comparing two vacua

If there are two or more physically inequivalent minima of a potential, then it is vitally important to know if the phenomenologically desired minimum is the global minimum, or, if not, how long the expected tunneling time to the true vacuum is.

Given the issues raised above in Sects. 2.2.1 and 2.3, it is safe to use a scale- and gauge-dependent one-loop effective potential to compare two inequivalent minima provided that the scale is held fixed and that the two minima are within the region of validity determined by the renormalization scale. Of course, an explicitly gauge- and scale-independent expression for the effective potential would obviously be unburdened by such concerns, but unfortunately it is rare to be able to formulate such an expression.

3 Tunneling from false vacua to true vacua

The usual expression for the decay rate Γ per unit volume for a false vacuum is given in [48, 49] as

$$\Gamma/\text{vol.} = Ae^{(-B/\hbar)}(1 + \mathcal{O}(\hbar)) \quad (5)$$

where A is a factor which depends on eigenvalues of a functional determinant and B is the bounce action. The A factor is typically estimated on dimensional grounds as it is very complicated to calculate and, because of the exponentiation of B , is far less important than getting the bounce action as accurate as possible. If A is taken to be $\mathcal{O}((100\text{--}1000 \text{ GeV})^4)$, then for $\Gamma/\text{vol.}$ to be roughly the age of the known Universe to the fourth power, B must be around $400\hbar$, and a per-cent variation in B leads to a factor of e variation in the tunneling time.

Given a path through the field configuration space from one vacuum to another with a lower value, which for convenience we shall label as the false vacuum and true vacuum respectively, one can solve the equations of motion for a bubble of true vacuum of critical size in an infinite volume of false vacuum [48, 50]. This allows one to calculate the bounce action and thus the major part of the tunneling time.

Unfortunately, this means that to calculate the tunneling time from a false vacuum to a true vacuum, one needs to evaluate the potential along a continuous path through the field configuration space, and even though the extrema of the potential are gauge-invariant as noted above, the paths between them are not. However, it has been proved that at zero temperature, the gauge dependence at one-loop order cancels out [51].

At finite temperature, the situation is not so clear, though the Landau gauge may be most appropriate [52]. While some studies have shown that for “reasonable” choices of gauge, the differences in finite-temperature tunneling times are small [53], it is still possible to choose poor gauges that can even obscure the possibility of tunneling [54].

4 Vevacious: objectives, outline, features and limitations

4.1 Objectives

The `Vevacious` program is intended as a tool to quickly evaluate whether a parameter point with a given set of VEVs, referred to henceforth as the *input vacuum*, has, to one-loop order,⁴ any vacua with lower potential energy than the input vacuum, and, optionally, to estimate the tunneling time from the input vacuum to the true vacuum if so.

A typical use envisaged is a parameter scan for a single model. Some effort needs to be put into creating the model file in the first place, though this is straightforward if using `SARAH` as described in Sect. 6.1; once the model file has been created, parameter points given in the form of `SLHA` files should be evaluated within a matter of seconds, depending on how complicated the model is, what simplifications have been made, and how accurately the tunneling time should be calculated if necessary.

Given a model (through a model file) and a parameter point (through an `SLHA` file), `Vevacious` determines the global minimum of the one-loop effective potential, and a verdict on whether the input minimum is absolutely stable, by it being the global minimum, or metastable. The user provides a threshold for which the metastability is rated as long-lived or short-lived. Whether the tunneling time or just an upper bound is calculated depends on whether the upper bound is above or below the threshold, or may be forced by certain options (see Sect. 6.3).

4.2 Outline

Here we present the steps taken by `Vevacious`, which are schematically shown in Fig. 1.

- (1) An input file in the `SLHA` format [16] is read in to obtain the Lagrangian parameters defining the parameter point, required to evaluate the potential. We emphasize that even though the *SUSY Les Houches Accord* is used as the format, the model itself does not need to be supersymmetric, as long as the `SLHA` file contains appropriate `BLOCKS`.
- (2) *All* the extrema of the tree-level potential are found using the homotopy continuation method [22] to solve the tree-level tadpole equations. The publicly available program `HOM4PS2` [31] is used for this.
- (3) The tree-level extrema are used as starting points for gradient-based minimization of the one-loop effective potential. The `MINUIT` algorithms [55] are used

⁴As mentioned in Sect. 2.2.1, a renormalization-group-improved effective potential would be better than the one-loop effective potential, but at the moment it seems infeasible to implement.

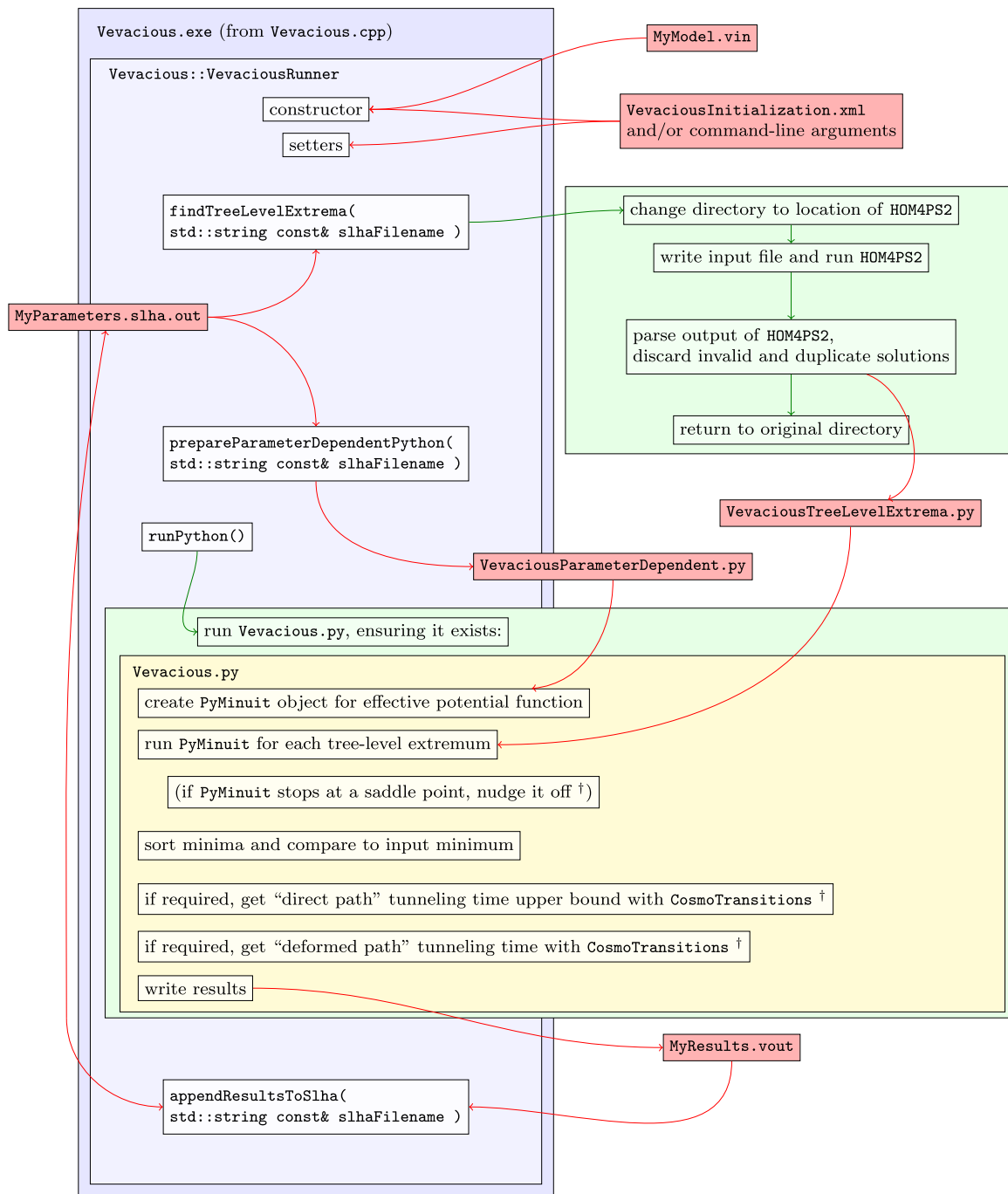


Fig. 1 Vevacious flow diagram. The member functions of `VevaciousRunner` are shown from top to bottom in the order in which they are called by `Vevacious.exe`, as can be seen by looking into

the `Vevacious.cpp` source file. All steps labeled with † are elaborated in the text. (Most file names can be changed, see Sect. 6.3)

here through the Python wrapper `PyMinuit` [56]. The points where `PyMinuit` stops are checked to see if they are really minima.⁵ Any saddle point is then split into two further points, displaced from the original in the

directions of steepest descent by amounts given by the `<saddle_nudges>` arguments (see Sect. 6.3), which are then also used as starting points for `PyMinuit`. By default, `PyMinuit` is restricted to a hypercube of field configurations where each field is only allowed to have a magnitude less than or equal to one hundred times the renormalization scale of the SLHA file. This is rather

⁵`PyMinuit` stops when it has found a sufficiently flat region without checking whether it is at a minimum.

excessive by the reasoning of Sect. 2.2.1, which would lead one to take at most maybe ten or twenty times the scale as an upper limit; however, it was considered better to allow the user to decide whether the results of `Vevacious` are within a trustworthy region.

- (4) The minima are sorted, and, if necessary, the tunneling time from the input vacuum to the true vacuum is calculated. The A factor of Eq. (5) is taken to be equal to the fourth power of the renormalization scale, as this is expected to be the typical scale of the potential and thus the expected scale of the solitonic solutions, and the bounce action is calculated with the code `CosmoTransitions` [50]. To save time, first `CosmoTransitions` is called to calculate the bounce action with a bubble profile given by a straight line in field configuration space from the false vacuum to the true vacuum to get an upper bound on the tunneling time. If this upper bound is below the user-given threshold `<direct_time>` (see Sect. 6.3), then no refinement is pursued. If, however, the upper bound is above the threshold, the bounce action is calculated again allowing `CosmoTransitions` to deform the path in field configuration space to find the minimal surface tension for the bubble. If one wishes to calculate the tunneling time with a different A factor, one can edit a line of Python code as described in Sect. 4.3.
- (5) The results are printed in a results file and also appended to the SLHA input file.

4.3 Features

Finds all tree-level extrema The homotopy continuation method is guaranteed to find all the solutions of the system of tadpole equations (to the limitations of the finite precision of the machine following the algorithm) [22]. One does not have to worry that there may be solutions just beyond the range of a scan looking for the solutions.

Rolls to one-loop minima `Vevacious` rolls from the tree-level extrema to the minima of the one-loop effective potential before comparing them, because in general the VEVs get shifted. In addition, extrema that change their nature with radiative corrections, such as the field configuration with zero values for all the fields in the Coleman–Weinberg model of radiative spontaneous symmetry breaking [38], which is a minimum of the tree-level potential but a local maximum of the one-loop effective potential, are found.

Calculates tunneling times or upper bounds on them A parameter point in a model is not necessarily ruled out on the basis that the desired minimum of the potential is not the global minimum, since a metastable configuration with a lifetime of roughly the observed age of the Universe or

longer is compatible with the single data point that we have. `Vevacious` creates `CosmoTransitions` objects with its effective potential function to evaluate the bounce action and thus the tunneling time from a false vacuum to the true vacuum of a parameter point.

Fast An important aspect of `Vevacious` is that it is fast enough to be used as a check in a parameter scan of a model. For example, on a laptop with a 2.4 GHz processor, a typical parameter point for the MSSM allowing six real non-zero VEVs (two Higgs, two stau, two stop) can report within 3.2 seconds that no deeper vacuum than the input vacuum was found, or, for a different parameter point, can report an upper bound on the tunneling time within 18 seconds. However, borderline cases which require a full calculation of the minimal bounce action can take up to 500 seconds. Reducing the number of degrees of freedom to four (fixing the stop values at zero) reduces the calculation times to 0.6, 2.3 and 27 seconds respectively.

Flexible `Vevacious` has been written in a way that should allow useful customizations with small changes to the main Python code. For example, one can change a single line (line 36) in `Vevacious.py` so that the tree-level potential is used for the analysis rather than the one-loop effective potential:

```
effectivePotentialFunction
    = VPD.LoopCorrectedPotential
```

can be changed to

```
effectivePotentialFunction
    = VPD.TreeLevelPotential
```

and no further changes are necessary (line breaks should not be there in the Python: they are only here so that these lines fit this text). `Vevacious.exe` does not overwrite `Vevacious.py`, so any changes to the Python code will be kept. This was chosen as the best compromise to allow non-trivial changes without forcing the user to go very deep into the code, though it does rely on the user learning some Python to be able to do so. Another customization that one may wish to make could be to change the A factor for the calculation of the tunneling time (and hence the thresholds for the bounce action calculations). This would be done by editing line 433 of `Vevacious.py` to fix the fourth root of A from the renormalization scale:

```
fourthRootOfSolitonicFactorA
    = VPD.energyScaleFourth
```

can be changed to

```
fourthRootOfSolitonicFactorA = 246.0
```

to change the A factor to $(246 \text{ GeV})^4$ for example, if one feels that the electroweak scale is a more appropriate choice.

4.4 Limitations

Garbage in, garbage out `Vevacious` performs very few sanity checks, so rarely protects the user from their own mistakes. For instance, `Vevacious` does not check if the potential is bounded from below. However, there are some checks, such as those which result in the warning that the given input minimum was actually rather far from the nearest minimum found by `Vevacious` (though `Vevacious` carries on regardless after issuing the warning). Another important sanity check that is *not* performed is to check that the SLHA BLOCKS required by the model file are actually present in the given SLHA input file. The user is fully responsible for providing a valid SLHA file to match the model. As model files are expected to be produced automatically by software such as SARAH, it is expected that the SLHA files for the model will also be prepared consistently with the expected BLOCKS. Unfortunately it is quite easy to miss this point when using the example model files provided by default with `Vevacious`: if one does use these files, one must use the correct model file for the input SLHA files, as described in Sect. 7.

May be excessively optimistic about the region of validity By default, `Vevacious` allows VEVs to have values up to a hundred times the renormalization scale, and it is up to the user to decide whether any given set of results is meaningful and within the region of validity of the one-loop effective potential used. However, it is straightforward to change the allowed region to a smaller multiple of the renormalization scale by editing line 85 of the default `Vevacious.py` from

```
minuitObject.limits[ vevVariable ]
    = (-100.0, 100.0)
```

to, for example,

```
minuitObject.limits[ vevVariable ]
    = (-20.0, 20.0)
```

to limit VEVs to be no larger than twenty times the renormalization scale (again, the line breaks should not be present in the Python). One could also insert more complicated Python code here, but one should be aware that the `PyMinuit` object deals with a potential where the field values are in units of the renormalization scale.

Not guaranteed to find minima induced purely by radiative effects While `Vevacious` does find all the extrema of the tree-level effective potential, there is no guarantee that these correspond to all the minima of the effective potential at the one-loop level. The strategy adopted by `Vevacious` will find all the minima of the one-loop effective potential that are in some sense “downhill” from tree-level

extrema, but any minima that develop which would require “going uphill” from every tree-level extremum will not be found. Such potentials are not impossible: if the quadratic coefficient in the Coleman–Weinberg potential [38] is small enough while still positive, the single tree-level minimum can remain a minimum at the one-loop level while deeper minima induced by radiative corrections still appear. However, if the tree-level minimum is sufficiently shallow then the finite numerical derivatives used by `Vevacious` may be enough to push it over the small “hills” into the one-loop minima.

Extreme slow-down with too many degrees of freedom Like many codes, the amount of time `Vevacious` needs to produce results increases worse than linearly with the number of degrees of freedom. A proper quantification of exactly how `Vevacious` scales with degrees of freedom remains on the to-do list, but as a guide, some typical running times (again on a 2.4 GHz core) for the HOM4PS2 part are: 3 degrees of freedom: 0.03 seconds; 5: 0.28 seconds; 7: 5.1 seconds; 10: 20 minutes; 15: 10 days. The `PyMinuit` part depends on the number of solutions found by HOM4PS2, but in general takes several seconds. The `CosmoTransitions` part is strongly dependent on the details of a particular potential, and how rapidly the path deformations converge; models with the same degrees of freedom can vary wildly from seconds to hours to be computed. For this reason, `Vevacious` only calls the full calculation of `CosmoTransitions` if the quick estimate of the upper bound on the tunneling time is over the user-given threshold, and also gives the user the option to never use the full calculation, rather only the quick upper-bound calculation, which in general takes only a few seconds at most.

Homotopy continuation method requires discrete extrema The homotopy continuation method relies on tracking the paths of a discrete number of simple solutions to a discrete number of target solutions. There is no guarantee that a system with a continuous set of degenerate solutions will be solved by HOM4PS2, and unfortunately `Vevacious` can not check that the system has redundant degrees of freedom such as those corresponding to a gauge transformation. Hence the user must choose the degrees of freedom of the model appropriately.

Homotopy continuation path tracking resolution The homotopy continuation method guarantees that there is a path from each solution of the simple system to its target solution, however, there is a danger that a finite-precision path-tracking algorithm will accidentally “jump” from the path it should be following onto a very close other path to a different solution, possibly leading to one or more solutions remaining unfound (though not necessarily, since several simple solutions may map to the same (degenerate) target solution).

Tunneling path resolution Calculating the tunneling time requires finding a continuous path in field configuration space from the false to the true vacuum. However, this must be discretized to a finite number of points on a finite machine, and may even lead to a very small barrier between the vacua disappearing entirely. However, in such cases the tunneling time should be very short indeed, so `Vevacious` notes this and takes a fixed very small tunneling time as the result.

5 Subtleties: renormalization schemes and allowed degrees of freedom

Currently, `Vevacious` performs very few sanity checks. In particular, it remains blissfully ignorant of any physical meanings the user intends for the values of the Lagrangian parameters which are given. Thus is it entirely up to the user to ensure that these values correspond correctly to the intended renormalization conditions. However, `Vevacious` *does* assume some form of dimensional regularization (e.g. switching between $\overline{\text{DR}}$ and $\overline{\text{MS}}$ depends on the value for c_n given for the vector mass-squared matrix in the model file, see [Appendix B](#), and providing explicit terms for the “ ϵ scalars”). So far, Lagrangian parameters as appearing in the model files and as printed by the `SPheno` produced by `SARAH 4` are consistent with the renormalization conditions as specified in the appendix of [35]. One should note though that the VEVs from `Vevacious` are given for the Landau gauge by default, and have slightly different values to those they have in the Feynman–’t Hooft gauge that is used within `SPheno`, for example.

In principle, every single degree of freedom should be checked for a VEV, but this is often totally impractical, given that about ten degrees of freedom is at the limit of what might be considered tolerable with current processors. Thus the user will often want to consider only a subset of scalars as being allowed non-zero VEVs. For example, when considering a supersymmetric model, one might restrict oneself to possible VEVs only for the third generation, or when considering a model specifically engineered for light staus but all other sfermions being very heavy, one might only worry about stau VEVs as a first check. Hence `Vevacious` should be used bearing in mind the caveat that it will *not* find vacua with non-zero VEVs for degrees of freedom which are not allowed non-zero VEVs in the model file. It is up to the user to decide on the best compromise between speed and comprehensiveness by choosing which degrees of freedom to use.

Importantly, the user is responsible for ensuring that the model file has a tree-level potential which has a discrete number of minima. Mostly this means that the user has to identify unphysical phases and hence remove the associated

degrees of freedom from the imaginary parts of such complex fields. Another way that problems can arise is when there are flat directions such as the $\tan\beta = 1$ direction of the MSSM with unbroken supersymmetry, even though the degeneracy of these directions may be lifted by loop corrections.

6 Using `Vevacious`

`Vevacious` needs at least two input files: the *model file* and the *parameter file*. The model file contains the information about the physical setup. This file is most easily generated by `SARAH`, as explained in Sect. 6.1. Should the user intend to modify this file by hand, we give more information about the format in [Appendix B](#). The parameter file should be in the `SLHA` format, extended within the spirit of the format, as required in general for extended models, as described in Sect. 6.2. Finally, there is the option of supplying an initialization file in `XML` to save giving several command-line arguments, and this file is described along with these arguments in Sect. 6.3.

6.1 Preparing the input file for `SARAH`

`SARAH` [57–60] is a tool to derive many analytical properties of a particle physics model, like mass matrices, tad-pole equations, vertices and renormalization group equations, from a very short user input. This information can be used, for instance, to write model files for several matrix generators or source code for `SPheno` [61, 62]. While previous versions of `SARAH` were optimized for supersymmetric models but supported also to some extent non-supersymmetric models, `SARAH 4` will provide a simplified input and new features also for non-supersymmetric models [63]. In addition, `SARAH 4` supports also the output of input files for `Vevacious`. To get this file, run in `Mathematica`

```
<<path/to/SARAH/SARAH.m;
Start["MyModel"];
MakeVevacious[Options];
```

The possible options are:

- `ComplexParameters`, Value: list of parameters, Default: `{}`;
By default, all parameters are assumed to be real when writing the `Vevacious` input files. However, the user can define those parameters which should be treated as complex.
- `IgnoreParameters`, Value: list of parameters, Default: `{}`;
The user can define a list of parameters which should be set to zero when writing the `Vevacious` input.

– `OutputFile`, Value: String, Default `MyModel.vin`, where `MyModel` here is the same name as is given in `Start["MyModel"]`; above:
The name used for the output file.

The first two options allow one to treat parameters differently in the `Vevacious` output as defined in the `SARAH` model file. It may be in the user's interest to try to speed up the evaluation by taking out those parameters which on physical grounds play only a subdominant role, but the gain by doing so has yet to be quantified.

Example: MSSM with stau VEVs Here we discuss briefly the main steps to prepare an MSSM version including stau VEVs. For a more general discussion of the format of the `SARAH` model files, we refer the interested reader to [60, 64]. In general, three changes are always necessary to include new VEVs in a model.

1. Defining the particles which can get a VEV

```
DEFINITION[EWSB][VEVs]=
{{SHd0,{vdR,1/Sqrt[2]},{sigmad,1/Sqrt[2]},{
    phid,1/Sqrt[2]}},
{SHu0,{vuR,1/Sqrt[2]},{sigmau,1/Sqrt[2]},{
    phiu,1/Sqrt[2]}},
{SeL,{vLR[3],1/Sqrt[2]},{vLI[3],1/Sqrt[2]},{
    sigmaL,1/Sqrt[2]},{phiL,1/Sqrt[2]}},
{SeR,{vER[3],1/Sqrt[2]},{vEI[3],1/Sqrt[2]},{
    sigmaR,1/Sqrt[2]},{phiR,1/Sqrt[2]}},
{SHdm,{0,0},{sigmaM,1/Sqrt[2]},{
    phiM,1/Sqrt[2]}},
{SHup,{0,0},{sigmaP,1/Sqrt[2]},{
    phiP,1/Sqrt[2]}},
{SvL,{0,0},{sigmaV,1/Sqrt[2]},{
    phiV,1/Sqrt[2]}}
};
```

where it is important that the VEVs have names that are at least two characters long. The first two lines are the standard decomposition of the complex Higgs scalar $H_i^0 \rightarrow \frac{1}{\sqrt{2}}(v_i + i\sigma_i + \phi_i)$ and are the same as in the charge-conserving MSSM. The third and fourth line define the decomposition of the three generations of left- and right-handed charged sleptons. The last three lines define the decomposition of the charged Higgs fields and the sneutrinos into CP-even and -odd eigenstates. This is necessary for the adjacent mixing, see below.

There are two new features in `SARAH 4` which are shown here: (i) it is possible to give VEVs just to specific generations of a field, such as in this example we only use the third one (`vLR[3]`)—in the same way, one can allow for smuon and stau VEVs using `vLR[2,3]`; (ii) VEVs can have real and imaginary parts. Until now, complex VEVs in `SARAH` had been defined by an absolute value and a phase ($ve^{i\phi}$); however, it is easier to handle within `Vevacious` in the form $v_R + iv_I$.

2. Changing the rotation of the vector bosons:

```
DEFINITION[EWSB][GaugeSector]=
{{{VB,VWB[1],VWB[2],VWB[3]},{
    VB1,VB2,VB3,VB4},ZZ},
{{fWB[1],fWB[2],fWB[3]},{fWm,fWp,fW0},ZfW}};
```

With non-zero stau VEVs the photon won't be massless any more but will mix with the massive gauge bosons. In general, there can be a mixing between the B gauge boson (VB) and the three W gauge bosons ($VWB[i]$) to four mass eigenstates ($VB1 \dots VB4$). The mixing matrix is called ZZ .

3. Changing the rotation of matter fields:

```
DEFINITION[EWSB][MatterSector]=
{
...
{phid,phiu,phiM,phiP,phiV,phiL,phiR},{hh,ZH}},
{sigmad,sigmau,sigmaM,sigmaP,sigmaV,sigmaL,
    sigmaR},{Ah,ZA}},
{fB,fW0,FHd0,FHu0,FvL,FeL,conj[FeR],fWm,FHdm,
    fWp,FHup},{L0,ZN}},
...
};
```

The stau VEVs generate new bilinear terms in the scalar potential which trigger a mixing between the neutral and charged Higgs fields, the charged sleptons and the sneutrinos. Note that even if we had used above complex stau VEVs to present the new syntax, we don't take the potential mixing between CP-even and -odd eigenstates into account here. To incorporate this, the new basis would read

```
DEFINITION[EWSB][MatterSector]=
{
...
{phid,phiu,phiM,phiP,phiV,phiL,phiR,sigmad,
    sigmau,sigmaM,sigmaP,sigmaV,sigmaL,sigmaR},
{hh,ZH}},
...
};
```

Also, stau VEVs lead to a mixing of all the uncolored fermions, which are now also Majorana in nature. In this model file, they are now all labeled as `L0` with mixing matrix `ZN`. The spinor sector also has to be adjusted:

```
DEFINITION[EWSB][DiracSpinors]={
Fd ->{ FDL, conj[FDR]},
Fu ->{ FUL, conj[FUR]},
Chi ->{ L0, conj[L0]},
Glu ->{ fG, conj[fG]}
};
```

6.2 Preparing the SLHA data

To check for the global minimum in a given model for a specific parameter point all necessary numerical values of parameters have to be provided via an SLHA spectrum file. The conventions of this file have to be, of course, identical to the ones used for preparing the `Vevacious` model file.

The SLHA (1 [16] and 2 [17]) conventions are only concerned with the MSSM and the NMSSM, but do specify that extra BLOCKs within the same format should be acceptable within SLHA files, and should be ignored by programs that do not recognize them. `Vevacious` is intended to be used for many other models, so accepts any BLOCKs that are mentioned in its model file and looks for them in the given SLHA file. In this sense, the user is free to define BLOCKs as long as the names are unbroken strings of alphanumeric characters (e.g. `BLOCK THISISAVAILIDNAME` or `BLOCK MY_BLOCK_0123`⁶). However, we strongly advise against redefining those BLOCKs specified by [16] and [17], or any of their elements, to have meanings other than those given in [16] and [17].

With this in mind, two sets of pre-generated model files for the MSSM (each file within a set allowing for different scalars to have non-zero VEVs) are provided: one set being that produced by SARAH 4, which assumes a certain extension of the SLHA `BLOCK H MIX`, the other restricted to quantities completely specified by the SLHA 1 and 2 conventions. The extensions of `H MIX` are three additional elements: 101, providing the value of m_3^2 (often written as B_μ) directly, and 102 and 103 providing the values of v_d and v_u respectively. All three can be derived from elements 2, 3, and 4 of `H MIX`, but are much more suited to conversion between renormalization schemes and different gauges (as v_d and v_u , and thus $\tan\beta$, are gauge-dependent quantities, with values which also depend on the renormalization conditions).

6.2.1 Scale dependence in the SLHA file

`Vevacious` is a tool for finding minima for a one-loop effective potential evaluated at a single scale, and thus it is important that the Lagrangian parameters are provided consistently at this scale. The scale is also required to be given explicitly. Since the SLHA convention specifies that running parameters are given in BLOCKs each with their own scale, at first glance this may seem problematic. Even worse, the format allows for multiple instances of the same BLOCK, each with its own scale. However, the default behaviour of `SPheno`, `SoftSUSY`, `SuSpect`, and `ISAJET` when writing SLHA output is to give all running parameters consistently at a single scale. This is the behaviour that `Vevacious` assumes.

The explicit value of the scale Q used in V^{mass} in Eq. (4) is that given by the `BLOCK GAUGE`. All other BLOCKs are

⁶The SLHA papers [16, 17] do not specify whether BLOCK names should be case-sensitive (so that `H MIX` and `H mix` would be considered equivalent for example) and many spectrum generators have already adopted different case conventions for their output, so `Vevacious` reads in BLOCK names as case-insensitive.

assumed to be at this same scale. Although it is not the default behaviour of any of the popular spectrum generators to give the same BLOCKs at different scales, if `Vevacious` finds multiple instances of the same BLOCK, the BLOCK with the lowest scale is used and the others ignored. In addition, `Vevacious` performs a consistency check that all the BLOCKs used have the same scale, aborting the calculation if not.

6.2.2 SLHA expression of parameters at different loop orders

The output BLOCKs enumerated in the SLHA papers are specified to be in the $\overline{\text{DR}}$ renormalization scheme,⁷ but some users may prefer a different renormalization scheme. The SLHA does not insist on private BLOCKs adhering to the same standards of those explicitly part of the accord, so `Vevacious` allows for a certain pattern of private BLOCKs to give values for a different renormalization scheme. (Again, we strongly advise against using the BLOCKs explicitly mentioned in [16, 17] to convey values that do not adhere to the definitions in [16, 17].) The additional renormalization schemes that `Vevacious` allows are those where the finite parts of Lagrangian parameters are themselves apportioned into loop expansions, e.g. $\mu + \delta\mu$, where $\delta\mu$ is considered to be a parameter already of at least one order higher than μ .

To allow for different renormalization conditions of this type, `Vevacious` first looks for extra (“private”) SLHA BLOCKs that specify particular loop orders. Since `Vevacious` deals with one-loop effective potentials, it has two categories of parameters: “tree-level” and “one-loop”. When writing the minimization conditions for the tree-level potential, it uses exclusively the “tree-level” values. When writing the full one-loop effective potential, it uses both sets appropriately to avoid including spurious two-loop terms. With reference to Eqs. (2), (3), and (4), `Vevacious` writes combines the sum $V^{\text{tree}} + V^{\text{counter}}$ by inserting the “one-loop” parameter values into V^{tree} as part of $V^{1\text{-loop}}$. (The tree-level potential function that is also written automatically for convenience, as mentioned in Sect. 4.3, uses the “tree-level” values, of course.) The term V^{mass} is already a loop correction, so “tree-level” values are used in the $\vec{M}_n^2(\Phi)$ functions. If only a single value for any parameter is given, it is assumed to be in a scheme where it has a single value which is to be used in all parts of the effective potential.

As an example, within the renormalization used by `SPheno3.1.12`, at the point `SPS1a'`, μ has the value 374.9 GeV at tree level, and 394.4 GeV at one loop. `Vevacious` inserts the value 374.9 for μ in the minimization conditions (as the units are assumed to be in GeV, as per the SLHA standard), and also into the “mass-squared” matrices

⁷The $\overline{\text{DR}}$ scheme is just called the $\overline{\text{DR}}$ scheme in [16, 17], however.

that are part of the evaluation of the V^{mass} contributions to the one-loop effective potential. `Vevacious` inserts the value 394.4 for μ in the polynomial part of the potential, accounting for the contributions of both V^{tree} and V^{counter} together.

In detail, when inserting a “tree-level” value, `Vevacious` looks for an SLHA BLOCK with the prefix “TREE” first, and uses that value as its “tree-level” value. If there is no BLOCK with that prefix, or if there is such a BLOCK but it does not specify the appropriate element, then the BLOCK without the prefix is assumed to have the appropriate value. Likewise, when inserting a “one-loop” value, BLOCKS with the prefix “LOOP” have priority. Hence for the SPS1a’ example above, `Vevacious` could be given an SLHA file with 394.4 as element 1 of HMIX⁸ and 374.9 as element 1 of TREEHMIX. When `Vevacious` is writing the “tree-level” value of μ , it would first look for element 1 of TREEHMIX, and since it would find 374.9, this value would be used, and element 1 of HMIX would not be looked for. When writing the “one-loop” value, element 1 of LOOPHMIX would be looked for, but not found, and because of this, element 1 of HMIX would then be looked for, and 394.4 would be found and used. One can specify element 1 of both TREEHMIX and LOOPHMIX, and then `Vevacious` would never use element 1 of HMIX, which could give the $\overline{\text{DR}}$ ’ value, for example, without worrying that it might mix schemes in the calculation. (If one prefers to use other prefixes, both “TREE” and “LOOP” can be replaced by other strings in the model file in the <block_prefixes> element; e.g.

```
<block_prefixes tree = "LO" loop = "NLO"/ >
```

so that LOHMIX and NLOHMIX would be looked for appropriately.)

Those aspects are taken into account in the SPheno [61, 62] output of SARAH 4 [63]. For this purpose, a new flag has been introduced which can be used in the SLHA input file

Block	SPhenoInput	# SPheno specific input
...		
530	1.	# Use Vevacious conventions

In that case, the new tree and one-loop level block will be present.

6.3 Setting up and running `Vevacious`

There are many options that can be passed to `Vevacious`. If values other than the defaults are required, they can either be passed by command-line arguments or with an initialization file in XML format. If an option is given by both

command-line argument and in an initialization file, the command-line argument takes precedence.

We enumerate the options as they would be as command-line arguments setting the options to the defaults. All floating point numbers may be given as standard decimals, such as 0.1234, or in scientific E notation, such as $1.234\text{E} - 1$ (uppercase ‘E’ or lowercase ‘e’, with or without preceding ‘0’ characters, with or without ‘+’ in the exponent, e.g. 987 or $9.874\text{E} + 002$ or $0098.7\text{e}001$).

1. `--hom4ps2_dir=./HOM4PS2/`
This is a string giving the path to the directory where the HOM4PS2 executable is.
2. `--homotopy_type=1`
This is an integer used to decide which mode HOM4PS2 should run in: 1 is used for polyhedral homotopy and 2 for linear homotopy.
3. `--imaginary_tolerance=0.0000001`
This is a floating-point number giving the tolerance for imaginary parts of VEVs found as solutions to the tree-level minimization conditions, since it is possible that a numerical precision error could lead to what should be an exact cancellation leaving behind a small imaginary part. It is in units of GeV, as the other dimensionful values are assumed to be so since that is how they are in the SLHA standard.
4. `--model_file=./MyModel.vin`
This is a string giving the name of the model file discussed in Sect. 6.1, including the (relative or absolute) directory path.
5. `--slha_file=./MyParameters.slha.out`
This is a string giving the name of the SLHA file discussed in Sect. 6.2, including the (relative or absolute) directory path.
6. `--result_file=./MyResult.vout`
This is a string giving the name of the XML output file, discussed in Sect. 6.2, to write, including the (relative or absolute) directory path.
7. `<saddle_nudges>1.0,5.0,20.0</saddle_nudges>`

(Unfortunately this option does not work very well as a command-line argument, so instead here we display the XML element as it should appear in the XML initialization file. No initialization file has to be used, of course, if the default 1.0, 5.0, 20.0 is fine.) As discussed in Sect. 4.2, PyMinuit may get stuck at saddle points, and `Vevacious` creates pairs of nearby points as new starting points for PyMinuit in an attempt to get it to roll away to minima. Using the default list shown, if `Vevacious` finds that PyMinuit stopped at a saddle point, it will create two new starting points displaced by 1.0 GeV either side of this saddle point. If PyMinuit rolls from either or both of these displaced points to new saddle points (or just does not roll as it is still

⁸Technically this is already an abuse of the BLOCK HMIX, since the value entering here is not exactly the value it should have in the $\overline{\text{DR}}$ ’ scheme, but the difference is a two-loop order effect.

in a region that is too flat), `Vevacious` will repeat the process for each new saddle point, but this time displacing the new starting points by 5.0 GeV. `Vevacious` can repeat this a third time, using 20.0 GeV, but after this gives up. Giving a longer comma-separated list of floating-point numbers will lead to `Vevacious` performing this “nudging” as many times as there are elements of the list.

8. `--max_saddle_nudges=3`
This is an integer giving the length of the list of floating-point numbers of the `saddle_nudges` option: if it is larger than the length of the list `Vevacious` already has, the list is extended with copies of the last element; if it is shorter, the list is truncated after the given number of elements.
9. `--ct_path=./CosmoTransitions`
This is a string giving the path to the directory where the `CosmoTransitions` files `pathDeformation.py` and `tunneling1D.py` are.
10. `--roll_tolerance=0.1`
This is a floating-point number giving a tolerance for extrema are identified with each other, since `PyMinuit` may roll to the same minimum from two different starting points, but not stop at exactly the same point numerically. If the length of the vector that is the *difference* of the two field configurations is less than the tolerance multiplied by the length of the longer of the two vectors that are the displacements of the two field configurations from the origin, then the two field configurations are taken to be the same minimum within errors; e.g. if A is $v_d = 24.42$, $v_u = 245.0$ and B is $v_d = 24.39$, $v_u = 242.7$, the length of A is 246.2140, the length of B is 243.9225, so the longer length is 246.2140; the length of their difference is 2.300196 which is less than $0.1 * 246.2140$, so A and B are considered to be the same extremum. (This is important for avoiding attempting to calculate a tunneling time from a point back to itself.)
11. `--direct_time=0.1`
This is a floating-point number giving a threshold tunneling time as a fraction of the age of the Universe for whether the metastability is decided by the upper bound from the fast `CosmoTransitions` calculation taking a straight line from the false vacuum to the true vacuum as described in Sect. 4.2. If the upper bound resulting from this calculation is below this number, the input vacuum is considered to be short-lived and no refinement in calculating the tunneling time is pursued; e.g. if it is 0.1, and the upper bound on the tunneling time is found to be 10^{-20} times the age of the Universe, the input vacuum is judged to be short-lived since the tunneling time is definitely below 0.1 times the age of the Universe. If the value given for `direct_time` is negative, this fast calculation is skipped.

12. `--deformed_time=0.1`
This is a floating-point number giving a threshold tunneling time as a fraction of the age of the Universe for whether the input vacuum is considered short-lived or long-lived when the full `CosmoTransitions` calculation is performed. If the tunneling time was calculated to have an upper bound *above* the threshold given by the `direct_time` option (or if the calculation of the upper bound was skipped because `direct_time` was given a negative value), then `CosmoTransitions` is called to calculate the bounce action allowing it to deform the path in VEV space to find the minimal bounce action. If the tunneling time calculated from this bounce action is less than the `deformed_time` value, the input vacuum is considered short-lived, otherwise it is reported to be long-lived. (In order to prevent overflow errors when exponentiating a potentially very large number, the bounce action is capped at 1000.) If `deformed_time` is set to a negative value, this calculation is skipped.

As mentioned above, an XML initialization file can be provided with values for these options. By default, `Vevacious` looks for `./VevaciousInitialization.xml` for these options, but a different file can be specified with the command-line option `--input=/example/MyVevaciousInit.xml` to use `/example/MyVevaciousInit.xml` as the initialization file. Any other command-line arguments take priority over options set in the initialization file.

An example XML initialization file called `VevaciousInitialization.xml` is provided with the download, which shows how to set each option.

It does not matter what the root element is called (the example file provided with the download uses `<Vevacious_defaults>`, but it really doesn't matter, as long as it is closed properly). Taking the option `slha_file` as an example, the body of the XML element with the name `slha_file` is used as the value of the option (stripped of leading and trailing whitespace). Hence

```

<slha_file >
  /some/path/SPheno.spc.MSSM.SPS1ap
</slha_file >

```

would serve instead of

```
--slha_file
  = /some/path/SPheno.spc.MSSM.SPS1ap
being passed as a command-line argument. Likewise,
```

```

<direct_time > 0.01 </direct_time >

```

would set the quick calculation threshold to a more conservative time of a hundredth of the age of the Universe.

6.4 The results of Vevacious

When Vevacious is finished it returns the results twice:

(i) as separate file with the name defined in the initialization file, (ii) attached to the used SLHA spectrum file. The format of the output file is again in XML. As an example of a point which is reported to be stable, we present the result of a run on the CMSSM point SPS1a [65] (which is strongly excluded by experimental non-observation, but suffices as an example). This parameter point was checked with the model file described in Sect. 6.1 for the MSSM allowing real VEVs for the neutral components of the Higgs doublets (v_dR and v_uR) and for the staus (v_{LR3} and v_{ER3}), and reads

```
<Vevacious_result >
<reference version="1.0.7"
  citation="arXiv:1307.1477 (hep-ph)" />
<stability> stable </stability>
<global_minimum
  relative_depth="-89467096.8481"
  vdR="24.2105220258" vER3="0.0" vLR3="0.0"
  vuR="241.158873762" />
<input_minimum
  relative_depth="-89467096.8481"
  vdR="24.2105220258" vER3="0.0" vLR3="0.0"
  vuR="241.158873762" />
<lifetime action_calculation="unnecessary" >
-1.0 </lifetime>
</Vevacious_result >
```

(where some line breaks have been inserted to fit on the page).

The element `<stability>` can have the values `stable`, if the input minimum is the global minimum, `long-lived` if the lifetime of the input minima is longer than the specified limit, or `short-lived` if the tunneling time of the input minimum to the global minimum is shorter than the specified threshold.

The elements `<global_minimum>` and `<input_minimum>` contain the numerical values of all VEVs at the global and input minima respectively as well as the depth of the potential at this point, relative to the (real part of the) value of the one-loop effective potential for the field configuration where all fields are zero. The VEVs are given in units of GeV, while the potential depths are in units of $(\text{GeV})^4$.

Finally, `<lifetime>` contains information about the method used for the calculation of the lifetime of the input minimum as well as the lifetime as a fraction of the age of the Universe (taken as $10^{41}/\text{GeV}$ by default, and this can be changed by editing line 436 of the default `Vevacious.py`). If the global minimum is the input minimum, `-1` is returned as lifetime. For a point with a global charge-breaking minimum (with the provided example `CMSSM_CCB`), again using the MSSM allowing real Higgs and stau VEVs, the output file would look like

```
<Vevacious_result >
<reference version="1.0.7"
  citation="arXiv:1307.1477 (hep-ph)" />
<stability> short-lived </stability>
<global_minimum
  relative_depth="-2.11285984487e+13"
  vdR="4132.33029884" vER3="5551.67597322"
  vLR3="5115.06350174" vuR="5241.9876933" />
<input_minimum relative_depth="-109122205.646"
  vdR="6.19344185577" vER3="0.0"
  vLR3="1.13686838E-010" vuR="241.242512796" />
<lifetime
  action_calculation="direct_path_bound" >
4.38300042027e-26 </lifetime>
</Vevacious_result >
```

(where some line breaks have been inserted so that the output fits the width of the page). We can see that the numerical minimization did not quite roll properly to a zero VEV for $\tilde{\tau}_L$ at the input minimum, but stopped extremely close to it. Here, an upper limit of the lifetime has been calculated using a direct path between the input and the global minimum. The same information is also written to the SLHA file using the new block `VEVACIOUSRESULTS`, which has elements given by two integer indices followed by a floating-point number and a string of characters.

BLOCK	VEVACIOUSRESULTS	#	results	from Vevacious...
0	0	-1.00000000E+000	short-lived	
0	1	+4.38300042E-026	direct_path_bound	
1	0	-1.09122206E+008	relative_depth	
1	1	+0.00000000E+000	vER3	
1	2	+1.13686838E-010	vLR3	
1	3	+6.19344186E+000	vdR	
1	4	+2.41242513E+002	vuR	
2	0	-2.11285984E+013	relative_depth	
2	1	+5.55167597E+003	vER3	
2	2	+5.11506350E+003	vLR3	
2	3	+4.13233030E+003	vdR	
2	4	+5.24198769E+003	vuR	

The conventions are that the $(0, 0)$ entry of this block gives the information about the stability (-1 for short-lived, 0 for long-lived, 1 for stable as the floating-point number, followed by the description as the second part of the information for these indices). For metastable points, the lifetime is saved in $(0, 1)$ (capped at 1000), with the string following giving the type of calculation (`unnecessary` if the input minimum was the true vacuum, `direct_path_bound` if the upper bound from a direct path in field configuration space was below the threshold, or `full_deformed_path` if CosmoTransitions had to calculate the action using path deformation). The entries $(1, 1)$ to $(1, n)$ contain the numerical values of all n VEVs and their names as strings at the input minimum and $(2, 1)$ to $(2, n)$ give the values and names of the VEVs at the global minimum. Entries $(1, 0)$ and $(2, 0)$ are the depths of the input and global minimum (followed by the string `relative_depth`).

Vevacious first deletes any files with the same name as was given as the output file, and if Vevacious was unable to end properly, no output is produced. In the case that

there were problems during the run which did not crash the program, `Vevacious` prints warnings, and creates an additional XML element `<warning>` in the results file, and also appends these warnings in a BLOCK `VEVACIOUSWARNINGS`. Possible warnings are (with `<...>` standing for strings describing field configurations, potential depths, or the string given by `PyMinuit` when it throws an exception)

- No tree-level extrema were found. This might happen for example if `HOM4PS2` did not find any real solutions (recalling that complex fields have already been written as pairs of real scalars) because it was given a system with continuous degenerate solutions—however, it is not necessarily the case that this is indicative of this problem, and also it is not necessarily guaranteed to result from such problematic systems.

```
No tree-level extrema were found.
```

- `PyMinuit` threw exceptions:

```
PyMinuit had problems starting at <...>
[Minuit.MinuitError: <...>]. PyMinuit
stopped at <...> with relative depth <...>
at one-loop level and <...> at tree level.
Minuit's estimate of how much deeper it
should go is <...>.
```

- `PyMinuit` got stuck at saddle points with very shallow descending or possibly flat directions:

```
<N> extremum/a with at least one descending
or flat direction remained after all nudging:
<...>
```

- No one-loop extrema were found. (This shouldn't ever happen, even for a potential that is unbounded from below, as by default, `PyMinuit` is restricted to a hypercube of field configurations where no field is allowed a value greater than a hundred times the scale Q .)

```
No one-loop extrema were found.
```

- The nearest extremum to the input field configuration is actually a saddle point:

```
Input VEVs seem to correspond to a saddle
point!
```

- The nearest extremum to the input field configuration is

further away than the permitted tolerance:

```
PyMinuit rolled quite far from the input VEVs!
(from <...> to <...>)
```

- The energy barrier between the false and true vacua is thinner than the resolution of the tunneling path:

```
Energy barrier from input VEVs to global
minimum thinner than resolution of
tunneling path!
```

7 Comparison with existing tools and examples with supersymmetric models

The major components of `Vevacious` have been tested and used already in the literature: `HOM4PS2`, `MINUIT`, and `CosmoTransitions`. The innovations of `Vevacious` are the automatic preparation and parsing of input and output of the various components in a consistent way, optimization of the running time with respect to how short-lived a metastable vacuum might be, and the feature that `SARAH 4` can automatically generate `Vevacious` model files for any new model that can be implemented in `SARAH`.

Very few tools are currently available to do the same job as `Vevacious`. One can of course implement the minimization conditions of a tree-level potential in `HOM4PS2` or other implementations of the homotopy continuation method, or any implementation of the Gröbner basis method, on a case-by-case basis.

To our knowledge, there is only one publicly-available program that purports to find the global minimum of a potential of a quantum field theory: `ScannerS` [66]. However, at the time of writing, the routines to actually find the global minimum are still under development and are not available.

The model files generated by `SARAH` use the internal expressions that have already been cross-checked in [59, 64]. In addition, the potential was always found to have a local minimum at the input field configuration, as expected, for a wide range of test points. Furthermore, using the model file

```
SARAH-SPhenoMSSM_
```

```
JustNormalHiggsAndSingletVevs.vin
```

described below and with the modification to `Vevacious` to use only a tree-level analysis as described in Sect. 4.3, we confirmed the results of [20].

Several example model and parameter files are provided with the download of `Vevacious`. Three model files are given for the MSSM with different allowed non-zero VEVs:

- `SARAH-SPhenoMSSM_JustNormalHiggsVevs.vin` with only the normal real neutral Higgs VEVs allowed;

- SARAH-SPhenoMSSM_RealHiggsAndStauVevs.vin with real VEVs allowed for the neutral Higgs components and for the staus;
- SARAH-SPhenoMSSM_RealHiggsAndStauAndStopVevs.vin with real VEVs allowed for the neutral Higgs components, for the staus, and for the stops.

These model files were generated automatically with SARAH 4. They assume that the SLHA parameter file will use the standard SARAH-generated SPhenoMSSM (SPheno using the MSSM SARAH model file) output, which uses the SLHA 2 flavor violation conventions, i.e. that the BLOCKs TE, TD, TU, MSQ2, etc., are present, and also the extra H MIX parameters 101, 102, and 103, that SPhenoMSSM prints out. There are no tadpoles for the first two generations of sfermions, which is strictly inconsistent with non-zero VEVs for the third generation along with the Higgs doublets in the presence of non-zero off-diagonal Yukawa and trilinear soft SUSY-breaking terms. However, the assumption is that any point with e.g. non-zero stop VEVs has such small sup and scharm VEVs that the stability of the input vacuum can be judged by comparison to the minimum in the zero-sup-and-scharm-VEV plane nearest the true global minimum.

Three variants which use only SLHA 2-specified BLOCKs are also present:

```
pure_SLHA2_MSSM_JustNormalHiggsVevs.vin,
pure_SLHA2_MSSM_RealHiggsAndStauVevs.vin,
and
pure_SLHA2_MSSM_
RealHiggsAndStauAndStopVevs.vin.
```

These model files also assume that the SLHA parameter file will use the SLHA 2 flavor violation conventions, i.e. that the BLOCKs TE, TD, TU, MSQ2, etc., are present, but do not require the extra H MIX parameters of the SARAH-SPheno versions.

Three variants which use only SLHA 1-specified BLOCKs are also present:

```
pure_SLHA1_MSSM_JustNormalHiggsVevs.vin,
pure_SLHA1_MSSM_RealHiggsAndStauVevs.vin,
and
pure_SLHA1_MSSM_
RealHiggsAndStauAndStopVevs.vin.
```

These model files assume that the SLHA parameter file will use the SLHA 1 conventions without flavor violation, i.e. that the BLOCKs AE, AD, AU, etc., are present, that the sfermion soft SUSY-breaking sfermion mass-squared parameters are given by the MSOFT BLOCK instead of in MSQ2 etc., and also do not require the extra H MIX parameters of the SARAH-SPheno versions.

Three model files are also provided for a constrained version of the NMSSM (where the dimensionful superpotential parameters μ , μ' , and ξ_F , and the soft SUSY-breaking parameters m_3^2 , m_S^2 , and ξ_S , in the notation of [17], are set to zero) with different allowed non-zero VEVs:

- SARAH-SPhenoNMSSM_JustNormalHiggsAndSingletVevs.vin with only the normal real neutral Higgs and singlet VEVs allowed;
- SARAH-SPhenoNMSSM_RealHiggsAndSingletAndStauVevs.vin with real VEVs allowed for the neutral Higgs components, for the singlet, and for the staus;
- SARAH-SPhenoNMSSM_RealHiggsAndSingletAndStauAndStopVevs.vin with real VEVs allowed for the neutral Higgs components, for the singlet, for the staus, and for the stops.

Again, the same flavor issues as the MSSM model files have apply, and again, three variants which use only SLHA 2-specified BLOCKs are also present:

```
pure_SLHA2_NMSSM_
JustNormalHiggsAndSingletVevs.vin,
pure_SLHA2_NMSSM_
RealHiggsAndSingletAndStauVevs.vin,
and
pure_SLHA2_NMSSM_
RealHiggsAndSingletAndStauAndStopVevs.
vin.
```

(There are no SLHA 1 variants, as the NMSSM was not specified in the SLHA 1 conventions. It is important to note though that these SLHA 2 model files still also require the flavor violation conventions, i.e. that TE, TD, TU, MSQ2, etc., are present, even though an NMSSM SLHA 2 file without flavor violation, using AE instead of TE etc., is still a valid SLHA 2 file.)

In addition, several example parameter points have been provided to demonstrate the existence of metastable points:

- SPS1a, the CMSSM point SPS1a from [65] (which is stable);
- CMSSM_CCB, which corresponds to the CMSSM best-fit point including LHC and $m_h = 126$ GeV constraints from [67] (which has a global charge- and color-breaking minimum);
- NUHM1_CCB, which corresponds to the NUHM1 best-fit point (“low”) from [68] (which also has a global charge- and color-breaking minimum);
- CNMSSM_wrong_neutral, which corresponds to benchmark point P1 from [69] (which also has a neutral global minimum which however is not the input minimum).

These parameter files are given in the SLHA output of SPheno as `SPS1a.slha.out` and so on, with example output as `SPS1a.vout` and so on. (The SLHA input files are `SPS1a.slha.in` and so on.)

We note that the CCB vacua found for CMSSM_CCB, for example, have VEVs of the order of five times the renormalization scale (shown in Sect. 6.4). This should not cause much concern, as $\ln(5^2)/(4\pi) \simeq 0.256$ so the one-loop effective potential should still be reasonable around this minimum. However, even if one restricts the VEVs to be less than twice the scale, as described in Sect. 4.4, `Vevacious` still finds a tunneling time (upper bound) of 10^{-6} times the age of the known Universe to a CCB configuration at the edge of the bounding hypercube.

The MSSM model and parameter files are in the `MSSM` subdirectory and those of the NMSSM are in the `NMSSM` subdirectory.

8 Conclusion

Several extensions of the Standard Model contain additional scalar states. Usually one engineers the model such that one obtains a phenomenologically acceptable vacuum with the desired breaking of $SU(2)_L \times U(1)_Y$ to $U(1)_{EM}$. However, in general it is not checked if the minimum obtained is the global minimum, as this in general quite an involved task already at tree level, where hardly any analytical conditions can be given. Often loop corrections become important too.

To tackle this problem, we have presented the program `Vevacious` as a tool to quickly evaluate one-loop effective potentials of a given model. It finds all extrema at tree level, which allows for a first check for undesired minima. Starting from these extrema, it calculates the one-loop effective potential to obtain a more reliable result. This is important as loop contributions can potentially change the nature of an extremum. In the case that the original minimum turns out to be merely a local minimum rather than the global minimum, the possibility is given to evaluate the tunneling time. As test cases we have considered supersymmetric models, but the program can be used for a general model provided that the tree-level potential is polynomial in the scalar fields.

Acknowledgements The authors would like to thank Max Wainwright for advice on `CosmoTransitions`. This work has been supported by the DFG project No. PO-1337/2-1 and the research training group GRK 1147.

Open Access This article is distributed under the terms of the Creative Commons Attribution License which permits any use, distribution, and reproduction in any medium, provided the original author(s) and the source are credited.

Appendix A: Installation and pre-requisites

To fully evaluate a parameter point with `Vevacious` and the connected tools, you need a Linux or MacOS system with ...

- ... a C++ compiler such as `gcc`
- ... the Python environment, at least version 2.7.1
- ... the `python-dev` headers (`Python.h`) for `gcc` or the equivalent—*this is important!* (MacPorts for OS X automatically installs `Python.h` as part of the installation of `Python 2.7`)

If you want to create new input files using `SARAH`, you need at least `Mathematica 7`. To compile SPheno to create the numerical input for `Vevacious`, a Fortran compiler such as `gfortran` or `ifort` is needed.

`Vevacious` makes use of several public tools. We give here only a brief introduction to the installation of these tools but refer to the corresponding references and authors for more information.

We assume in this description that all codes are downloaded and extracted in the same directory. The placeholder for the path to this directory is called `$VSPATH` in the following.

1. `HOM4PS2`
 - (a) Download `HOM4PS2` from http://www.math.nsysu.edu.tw/~leetsung/works/HOM4PS_soft_files/HOM4PS_Linux.htm (without the line break)
 - (b) Extract the tar file


```
> tar -xf HOM4PS2_64-bit.tar.gz
```

 which should create `$VSPATH/HOM4PS2/`.
 - (c) No compilation is necessary but now would be a good point to check that `HOM4PS2` works with one of its examples.
2. `MINUIT` and `PyMinuit` Detailed instructions about the installation and compilation of `PyMinuit` and `MINUIT` are given at <https://code.google.com/p/pyminuit/wiki/HowToInstall> (without the line break) We summarize only briefly the main steps
 - (a) Download `MINUIT` from <http://code.google.com/p/pyminuit/>. Choose `Minuit-1_7_9-patch1.tar.gz`.
 - (b) Extract the tarball


```
> tar -xf Minuit-1_7_9-patch1.tar.gz
```

 which should create `$VSPATH/Minuit-1_7_9/`.
 - (c) Configure and compile `MINUIT`

```
> cd Minuit-1_7_9
> ./configure --prefix = $VSPATH/Min/
> make
> make install
```

 which should create `$VSPATH/Min/`.

- (d) Download `pyminuit-1.2.1.tar.gz` or a more recent version from <http://code.google.com/p/pyminuit/>
- (e) Extract PyMinuit
- ```
> tar -xf pyminuit-1.2.1.tar.gz
```
- which should create `$VPATH/pyminuit/`.
- (f) Run the setup of PyMinuit stating the location of MINUIT *where the .o files are*, so `$VPATH/Minuit-1_7_9/` rather than `$VPATH/Min/`
- ```
> cd pyminuit-1.2.1
> python setup.py install
--home = $VPATH/pym/
--with-minuit = $VPATH/Minuit-1_7_9/
```
- which should create `$VPATH/pym/` (with the second command broken over three lines to fit on the page).
3. Make sure that you have properly exported `PYTHONPATH` (which should include the path to `minuit.so`, in `$VPATH/pym/lib/python/` in our example) and `LD_LIBRARY_PATH` (which should include the path to `liblcg_Minuit.a`, in `$VPATH/Min/lib/` in our example). Now would be a good time to check that PyMinuit works by running the following test program:
- ```
>>> import minuit
>>> def (x, y):
... return ((x**2 + y**2)**2
... - 0.5 * x**2)
...
>>> m = minuit.Minuit (f)
>>> m.values = { 'x': 0.1, 'y': 0.2 }
>>> m.migrad ()
>>> m.values, m.fval
```
4. CosmoTransitions
- (a) Ensure that the Python packages Numpy and SciPy are installed (if not, please use your favorite Internet search engine to find out how to install them on your system)
- (b) Download `CosmoTransitions_package_v1.0.2.zip` or a more recent version from <http://chasm.uchicago.edu/cosmotransitions>
- (c) unzip the archive
- ```
> unzip
CosmoTransitions_package_v1.0.2.zip
```
- which should create `$VPATH/CosmoTransitions_package_v1.0.2/` (with the command broken over two lines to fit on the page)
5. LHPC
- (a) Download LHPC from <http://www.hepforge.org/downloads/lhpc/>
- (b) Extract the files from the compressed tarball (change the version number appropriately)
- ```
> tar -xf LHPC-0.8.5.tar.gz
```
- (c) Enter the LHPC directory and compile it
- ```
> cd LHPC-0.8.5
> make
```
6. Vevacious
- (a) Download the most recent version from <http://www.hepforge.org/downloads/vevacious/>
- (b) Extract the files from the compressed tarball and compile Vevacious stating the path to LHPC
- ```
> tar -xf Vevacious-1.0.7.tar.gz
> cd Vevacious-1.0.7
> make LHPCDIR = $VPATH/LHPC-0.8.5/
```
- Now would be a good time to check that Vevacious works. Edit `$VPATH/Vevacious-1.0.7/bin/VevaciousInitialization.xml` to correctly set all the paths, then run
- ```
> ./bin/Vevacious.exe
--input = ./bin/VevaciousInitialization.xml
```
- (with the command broken over two lines to fit on the page) which should produce the result file with the name given in the initialization file.
- For example, in Debian-based Linux distribution one can ensure that the paths are properly set by adding the following to `.bashrc`:
- ```
export PYTHONPATH =
 $VPATH/pym/lib/python/:$PYTHONPATH
export PYTHONPATH =
 $VPATH/CosmoTransitions_package_v1.0.2/
 cosmoTransitions/:$PYTHONPATH
export LD_LIBRARY_PATH =
 $VPATH/Min/lib/:$LD_LIBRARY_PATH
```
- (without the line breaks inserted after the '=' characters or in the middle of the `CosmoTransitions` path, of course). To get the input for a point, you can use a spectrum generator based on SPheno based on the corresponding SARAH output

## 1. SARAH

- (a) Download the most recent version of SARAH 4 from <http://sarah.hepforge.org>
- (b) Extract SARAH and run Mathematica

```
> tar -xf SARAH4b-0.0.5.tar.gz
> mathematica
```

- (c) Load SARAH, evaluate a model and generate the SPheno output

```
<< "$VSPATH/SARAH4b-0.0.5/SARAH.m";
Start["MyModel"];
MakeSPheno[];
```

MyModel can be for instance MSSM or NMSSM.

## 2. SPheno

- (a) Download SPheno from <http://spheno.hepforge.org>
- (b) Extract SPheno

```
> tar -xf SPheno-3.2.3.tar.gz
```

- (c) Enter the SPheno directory and create a new subdirectory for the new model

```
> cd SPheno-3.2.3
> mkdir MyModel
```

- (d) Copy the source code produced by SARAH to the new sub directory

```
> cp $VSPATH/SARAH4b-0.0.5/Output/
 MyModel/EWSB/SPheno/* MyModel/
```

(without the line break)

- (e) Compile SPheno and the new SPheno module

```
> make Model=MyModel
```

**Appendix B: Model file format**

Vevacious is not restricted to a specific model, but any necessary information to evaluate the one-loop effective potential in a given model, assuming a particular set of VEVs, must be provided by the user as a model file. This file can usually be produced by SARAH as described in Sect. 6.1. However, in the case that the user wants to modify things manually, we give here more information about the format.

The Lagrangian parameters that will take values given by the SLHA file are written in the form `SLHA : :BLOCKNAME [ENTRY]`, where ENTRY is a comma-separated list of indices. For example, element 1 of the HMIX BLOCK is written as `SLHA : :HMIX[1]` and the 2, 3 element of the YD BLOCK is written as `SLHA : :YD[2, 3]` (floating point numbers are still interpreted as integers, so `SLHA : :YD[2.0, 3.0]` would also work). Any BLOCKs with no index should use an empty list, e.g. `SLHA : :ALPHA[]`.

This file is in XML and begins/ends with

```
<Vevacious_stuff>
...
</Vevacious_stuff>
```

(though the actual name of the root element is not important: one could use

```
<MyModelForVevacious>
...
</MyModelForVevacious>
```

for example instead). The model file must contain the following information:

**1. The names of all VEVs which can be present**

```
<input_vevs vdR="SLHA::HMIX[102]"
 vuR="SLHA::HMIX[103]"
 vLR3="0" vER3="0" >
 <taken_positive> vdR, vER3 </taken_positive>
</input_vevs>
```

(though the line breaks should not be present in the `<input_vevs>` opening tag). The XML element `<input_vevs>` serves the dual purpose of enumerating the allowed non-zero VEVs along with specifying what is considered to be the input minimum. In the MSSM example here, the Higgs fields of course are allowed VEVs, and the input minimum is specified by `vdR` ( $v_d$ ) being provided in the SLHA file in the BLOCKHMIX as entry 102, and `vuR` ( $v_u$ ) by entry 103. The model file is also allowing non-zero stau VEVs (`vLR3`, `vER3`), and also at the same time specifying that their value at the input minimum is 0. (One can actually put valid Python code here within the quote marks for the input minimum values, though it is not recommended, and surrounding the code with brackets is advised if one insists on going through with it.)

In addition, there is usually some redundancy in the sets of VEVs which minimize the tree-level scalar potential, since different minima can be related by phase rotations. To reduce the number of redundant solutions, it can be explicitly defined that some VEVs have to be positive using `<taken_positive> ... </taken_positive>`.

## 2. The tree-level tadpole equations

```
<tadpoles>
{
...
(0.5*vLR3*SLHA::MSL2[1,3])
+(0.5*vLR3*SLHA::MSL2[3,1])
+(0.7071067811865475*vDR*vER3*SLHA::TE[3,1])
+(0.5*vDR^2*vLR3*SLHA::YE[1,1]*SLHA::YE[1,3])
+(0.5*vDR^2*vLR3*SLHA::YE[2,1]*SLHA::YE[2,3])
+(-0.7071*vER3*vUR*SLHA::HMIX[1]*SLHA::YE[3,1])
+(0.5*vDR^2*vLR3*SLHA::YE[3,1]*SLHA::YE[3,3])
+(0.5*vER3^2*vLR3*SLHA::YE[3,1]*SLHA::YE[3,3])
;
...
}
</tadpoles>
```

(digits from the second decimal expansion of  $\sqrt{2}$  have been truncated just to fit on the page). This element contains a list of entries in the format  $(t_1; t_2; t_3; \dots; t_n)$ . Here,  $t_i$  are the tadpole equations of the tree-level scalar potential, i.e.  $t_i = \frac{\partial V}{\partial \phi_i} = 0$ . Note that each equation has to end with a semi-colon. In addition, to circumvent problems during parsing this file, it is convenient to use for each term a separate line and to put it into brackets. Furthermore, to associate the different parameters with the numerical values given later on via an SLHA spectrum file, all parameters but the field configurations have to be replaced by their corresponding entries in the SLHA file, in the SLHA::BLOCKNAME[ENTRY] format explained above. For instance, using the SLHA 2 conventions [17], the hypercharge  $g_1$  is replaced by SLHA::GAUGE[1] and the top Yukawa coupling  $Y_t = Y_u^{33}$  by SLHA::YU[3,3].

## 3. The polynomial part of the scalar potential

```
<polynomial_part>
(0.03125*vDR^4*SLHA::GAUGE[1.]^2)
+ (-0.125*vDR^2*vE3^2*SLHA::GAUGE[1.]^2)
+ (0.125*vE3^4*SLHA::GAUGE[1.]^2)
+ (0.0625*vDR^2*vL3^2*SLHA::GAUGE[1.]^2)
+ (-0.125*vE3^2*vL3^2*SLHA::GAUGE[1.]^2)
...
</polynomial_part>
```

This element contains the scalar potential  $V(\phi_i; g_i, Y_i, T_i, \dots, m_i^2)$  as function of all possible field configurations and the other parameters like gauge and Yukawa couplings or mass terms. The conventions are similar to those of <tadpoles>: (i) choose a separate line for each term, (ii) put each term into brackets, (iii) replace all parameters but the field configurations by their SLHA entries.

## 4. All mass-squared matrices to calculate the full one-loop effective potential

```
<mass-squared_matrix
particle="Sd" rotationmatrix="ZD" factor="6" >
(-0.04166666666666666*vDR^2*SLHA::GAUGE[1.]^2+...),
...
</mass-squared_matrix >
```

To calculate the one-loop effective potential all field-configuration-dependent “masses”  $\bar{M}_n^2(\Phi)$  have to be specified. This happens by using for each mass-squared matrix the XML element <mass-squared\_matrix . . . >. Two attributes must be given: an overall constant (factor) which takes into account the degrees of freedom of the particle, including the spin  $s_n$  from Eq. (4), and also saves reproducing identical matrices due to color factors or pairs of charge conjugates, for example. This factor is given by  $r \cdot c_F \cdot (-1)^s (2s + 1)$ , where  $r = 1$  holds for real bosons or Majorana fermions, and  $r = 2$  for complex bosons and Dirac fermions, and  $c_F$  is the number of degenerate states (e.g.  $6 = 3$  colors  $\times 2$  charge-conjugate states for quarks, if  $SU(3)_c$  is unbroken in the model file).

The body of each block contains all entries of the mass-squared matrix. Here, the convention is that each line consists of one element of the mass matrix which is placed into brackets and ends with a comma. The order is that first all elements of a line are given from left to right, before the entries of the next line follow, i.e. for an  $n \times n$  mass-squared matrix, the order is

$$((\bar{M}_{11}^2), (\bar{M}_{12}^2), \dots, (\bar{M}_{1n}^2), (\bar{M}_{21}^2), \dots, (\bar{M}_{n1}^2), \dots, (\bar{M}_{nn}^2)).$$

It is, of course, necessary to express the tadpole equations, the potential as well as the mass matrices taking into account all field configurations that the user wants to check. For instance, to study charge-breaking minima in the MSSM, the tadpole equations for the stau VEVs have to be given as input as well as all possible terms in potential. Furthermore, the mass matrices must include the mixing between the Higgs fields, the sneutrinos and the charged sleptons which can be triggered by non-vanishing stau VEVs. If, in addition, color conservation should be checked, also stop VEVs have to be included with their entire impact. Obviously, preparing this input by hand can easily become a cumbersome task. Therefore, we recommend automatic generation of the input using the Mathematica package SARAH.

## References

1. J. Elias-Miro, J.R. Espinosa, G.F. Giudice, G. Isidori, A. Riotto et al., Phys. Lett. B **709**, 222 (2012). doi:10.1016/j.physletb.2012.02.013



2. F. Bezrukov, M.Y. Kalmykov, B.A. Kniehl, M. Shaposhnikov, J. High Energy Phys. **1210**, 140 (2012). doi:[10.1007/JHEP10\(2012\)140](https://doi.org/10.1007/JHEP10(2012)140)
3. G. Degrandi, S. Di Vita, J. Elias-Miro, J.R. Espinosa, G.F. Giudice et al., J. High Energy Phys. **1208**, 098 (2012). doi:[10.1007/JHEP08\(2012\)098](https://doi.org/10.1007/JHEP08(2012)098)
4. G. Isidori, G. Ridolfi, A. Strumia, Nucl. Phys. B **609**, 387 (2001). doi:[10.1016/S0550-3213\(01\)00302-9](https://doi.org/10.1016/S0550-3213(01)00302-9)
5. J. Ellis, J. Espinosa, G. Giudice, A. Hoecker, A. Riotto, Phys. Lett. B **679**, 369 (2009). doi:[10.1016/j.physletb.2009.07.054](https://doi.org/10.1016/j.physletb.2009.07.054)
6. A. Riotto, M. Trodden, Annu. Rev. Nucl. Part. Sci. **49**, 35 (1999). doi:[10.1146/annurev.nucl.49.1.35](https://doi.org/10.1146/annurev.nucl.49.1.35)
7. P. Langacker, Rev. Mod. Phys. **81**, 1199 (2009). doi:[10.1103/RevModPhys.81.1199](https://doi.org/10.1103/RevModPhys.81.1199)
8. L. Basso, S. Moretti, G.M. Pruna, Eur. Phys. J. C **71**, 1724 (2011). doi:[10.1140/epjc/s10052-011-1724-0](https://doi.org/10.1140/epjc/s10052-011-1724-0)
9. H.P. Nilles, Phys. Rep. **110**, 1 (1984). doi:[10.1016/0370-1573\(84\)90008-5](https://doi.org/10.1016/0370-1573(84)90008-5)
10. T. Lee, Phys. Rev. D **8**, 1226 (1973). doi:[10.1103/PhysRevD.8.1226](https://doi.org/10.1103/PhysRevD.8.1226)
11. G. Branco, P. Ferreira, L. Lavoura, M. Rebelo, M. Sher et al., Phys. Rep. **516**, 1 (2012). doi:[10.1016/j.physrep.2012.02.002](https://doi.org/10.1016/j.physrep.2012.02.002)
12. P. Fayet, Nucl. Phys. B **90**, 104 (1975). doi:[10.1016/0550-3213\(75\)90636-7](https://doi.org/10.1016/0550-3213(75)90636-7)
13. J.R. Ellis, J. Gunion, H.E. Haber, L. Roszkowski, F. Zwirner, Phys. Rev. D **39**, 844 (1989). doi:[10.1103/PhysRevD.39.844](https://doi.org/10.1103/PhysRevD.39.844)
14. M. Drees, Int. J. Mod. Phys. A **4**, 3635 (1989). doi:[10.1142/S0217751X89001448](https://doi.org/10.1142/S0217751X89001448)
15. A. Dedes, P. Slavich, Nucl. Phys. B **657**, 333 (2003). doi:[10.1016/S0550-3213\(03\)00173-1](https://doi.org/10.1016/S0550-3213(03)00173-1)
16. P.Z. Skands, B. Allanach, H. Baer, C. Balazs, G. Belanger et al., J. High Energy Phys. **0407**, 036 (2004). doi:[10.1088/1126-6708/2004/07/036](https://doi.org/10.1088/1126-6708/2004/07/036)
17. B. Allanach, C. Balazs, G. Belanger, M. Bernhardt, F. Boudjema et al., Comput. Phys. Commun. **180**, 8 (2009). doi:[10.1016/j.cpc.2008.08.004](https://doi.org/10.1016/j.cpc.2008.08.004)
18. Y. Fujimoto, L. O'Raiifeartaigh, G. Parravicini, Nucl. Phys. B **212**, 268 (1983). doi:[10.1016/0550-3213\(83\)90305-X](https://doi.org/10.1016/0550-3213(83)90305-X)
19. E.J. Weinberg, A. Wu, Phys. Rev. D **36**, 2474 (1987). doi:[10.1103/PhysRevD.36.2474](https://doi.org/10.1103/PhysRevD.36.2474)
20. M. Maniatis, A. von Manteuffel, O. Nachtmann, Eur. Phys. J. C **49**, 1067 (2007). doi:[10.1140/epjc/s10052-006-0186-2](https://doi.org/10.1140/epjc/s10052-006-0186-2)
21. J. Gray, Y.H. He, A. Ilderton, A. Lukas, Comput. Phys. Commun. **180**, 107 (2009). doi:[10.1016/j.cpc.2008.08.009](https://doi.org/10.1016/j.cpc.2008.08.009)
22. A. Sommese, C. Wampler, The numerical solution of systems of polynomials arising in engineering and science (2005)
23. T. Li, in *Handbook of numerical analysis*, vol. 11 (2003), p. 209
24. D. Mehta, A. Sternbeck, L. von Smekal, A.G. Williams, PoS **QCD-TNT09**, 025 (2009)
25. D. Mehta, Phys. Rev. E **84**, 025702 (2011). doi:[10.1103/PhysRevE.84.025702](https://doi.org/10.1103/PhysRevE.84.025702)
26. D. Mehta, J.D. Hauenstein, M. Kastner, Phys. Rev. E **85**, 061103 (2012)
27. D. Mehta, Adv. High Energy Phys. **2011**, 263937 (2011). doi:[10.1155/2011/263937](https://doi.org/10.1155/2011/263937)
28. D. Mehta, Y.H. He, J.D. Hauenstein, J. High Energy Phys. **1207**, 018 (2012). doi:[10.1007/JHEP07\(2012\)018](https://doi.org/10.1007/JHEP07(2012)018)
29. M. Maniatis, D. Mehta, Eur. Phys. J. Plus **127**, 91 (2012). doi:[10.1140/epjp/i2012-12091-1](https://doi.org/10.1140/epjp/i2012-12091-1)
30. J. Camargo-Molina, B. O'Leary, W. Porod, F. Staub, Phys. Rev. D **88**, 015033 (2012). doi:[10.1103/PhysRevD.88.015033](https://doi.org/10.1103/PhysRevD.88.015033)
31. T. Lee, T. Li, C. Tsai, Computing **83**(2), 109 (2008)
32. M. Sher, Phys. Rep. **179**, 273 (1989). doi:[10.1016/0370-1573\(89\)90061-6](https://doi.org/10.1016/0370-1573(89)90061-6)
33. S.P. Martin, Phys. Rev. D **65**, 116003 (2002). doi:[10.1103/PhysRevD.65.116003](https://doi.org/10.1103/PhysRevD.65.116003)
34. I. Jack, D.T. Jones, S.P. Martin, M.T. Vaughn, Y. Yamada, Phys. Rev. D **50**, 5481 (1994). doi:[10.1103/PhysRevD.50.R5481](https://doi.org/10.1103/PhysRevD.50.R5481)
35. M. Hirsch, W. Porod, L. Reichert, F. Staub, Phys. Rev. D **86**, 093018 (2012). doi:[10.1103/PhysRevD.86.093018](https://doi.org/10.1103/PhysRevD.86.093018)
36. F. Staub, W. Porod, B. Herrmann, J. High Energy Phys. **10**, 040 (2010). doi:[10.1007/JHEP10\(2010\)040](https://doi.org/10.1007/JHEP10(2010)040)
37. B. O'Leary, W. Porod, F. Staub, J. High Energy Phys. **1205**, 042 (2012). doi:[10.1007/JHEP05\(2012\)042](https://doi.org/10.1007/JHEP05(2012)042)
38. S.R. Coleman, E.J. Weinberg, Phys. Rev. D **7**, 1888 (1973). doi:[10.1103/PhysRevD.7.1888](https://doi.org/10.1103/PhysRevD.7.1888)
39. G. Gamberini, G. Ridolfi, F. Zwirner, Nucl. Phys. B **331**, 331 (1990). doi:[10.1016/0550-3213\(90\)90211-U](https://doi.org/10.1016/0550-3213(90)90211-U)
40. R. Kuchimanchi, R.N. Mohapatra, Phys. Rev. D **48**, 4352 (1993). doi:[10.1103/PhysRevD.48.4352](https://doi.org/10.1103/PhysRevD.48.4352)
41. P. Ferreira, Phys. Lett. B **509**, 120 (2001). doi:[10.1016/S0370-2693\(01\)00552-4](https://doi.org/10.1016/S0370-2693(01)00552-4)
42. M.B. Einhorn, D.T. Jones, J. High Energy Phys. **0704**, 051 (2007). doi:[10.1088/1126-6708/2007/04/051](https://doi.org/10.1088/1126-6708/2007/04/051)
43. L. Dolan, R. Jackiw, Phys. Rev. D **9**, 2904 (1974). doi:[10.1103/PhysRevD.9.2904](https://doi.org/10.1103/PhysRevD.9.2904)
44. N. Nielsen, Nucl. Phys. B **101**, 173 (1975). doi:[10.1016/0550-3213\(75\)90301-6](https://doi.org/10.1016/0550-3213(75)90301-6)
45. R. Fukuda, T. Kugo, Phys. Rev. D **13**, 3469 (1976). doi:[10.1103/PhysRevD.13.3469](https://doi.org/10.1103/PhysRevD.13.3469)
46. W. Buchmüller, Z. Fodor, A. Hebecker, Phys. Lett. B **331**, 131 (1994). doi:[10.1016/0370-2693\(94\)90953-9](https://doi.org/10.1016/0370-2693(94)90953-9)
47. B.M. Kastening, Phys. Rev. D **51**, 265 (1995). doi:[10.1103/PhysRevD.51.265](https://doi.org/10.1103/PhysRevD.51.265)
48. S.R. Coleman, Phys. Rev. D **15**, 2929 (1977). doi:[10.1103/PhysRevD.15.2929](https://doi.org/10.1103/PhysRevD.15.2929)
49. J. Callan, G. Curtis, S.R. Coleman, Phys. Rev. D **16**, 1762 (1977). doi:[10.1103/PhysRevD.16.1762](https://doi.org/10.1103/PhysRevD.16.1762)
50. C.L. Wainwright, Comput. Phys. Commun. **183**, 2006 (2012). doi:[10.1016/j.cpc.2012.04.004](https://doi.org/10.1016/j.cpc.2012.04.004)
51. D. Metaxas, E.J. Weinberg, Phys. Rev. D **53**, 836 (1996). doi:[10.1103/PhysRevD.53.836](https://doi.org/10.1103/PhysRevD.53.836)
52. W. Fischler, R. Brout, Phys. Rev. D **11**, 905 (1975). doi:[10.1103/PhysRevD.11.905](https://doi.org/10.1103/PhysRevD.11.905)
53. M. Garny, T. Konstandin, J. High Energy Phys. **1207**, 189 (2012). doi:[10.1007/JHEP07\(2012\)189](https://doi.org/10.1007/JHEP07(2012)189)
54. C.L. Wainwright, S. Profumo, M.J. Ramsey-Musolf, Phys. Rev. D **86**, 083537 (2012). doi:[10.1103/PhysRevD.86.083537](https://doi.org/10.1103/PhysRevD.86.083537)
55. F. James, M. Roos, Comput. Phys. Commun. **10**, 343 (1975). doi:[10.1016/0010-4655\(75\)90039-9](https://doi.org/10.1016/0010-4655(75)90039-9)
56. J. Pivarski, <https://code.google.com/p/pyminuit/>
57. F. Staub, [arXiv:0806.0538](https://arxiv.org/abs/0806.0538) (2008)
58. F. Staub, Comput. Phys. Commun. **181**, 1077 (2010). doi:[10.1016/j.cpc.2010.01.011](https://doi.org/10.1016/j.cpc.2010.01.011)
59. F. Staub, Comput. Phys. Commun. **182**, 808 (2011). doi:[10.1016/j.cpc.2010.11.030](https://doi.org/10.1016/j.cpc.2010.11.030)
60. F. Staub, Comput. Phys. Commun. **184**, 1792 (2013). doi:[10.1016/j.cpc.2013.02.019](https://doi.org/10.1016/j.cpc.2013.02.019)
61. W. Porod, Comput. Phys. Commun. **153**, 275 (2003). doi:[10.1016/S0010-4655\(03\)00222-4](https://doi.org/10.1016/S0010-4655(03)00222-4)
62. W. Porod, F. Staub, Comput. Phys. Commun. **183**, 2458 (2012). doi:[10.1016/j.cpc.2012.05.021](https://doi.org/10.1016/j.cpc.2012.05.021)
63. F. Staub, [arXiv:1309.7223](https://arxiv.org/abs/1309.7223) (2013)
64. F. Staub, T. Ohl, W. Porod, C. Speckner, Comput. Phys. Commun. **183**, 2165 (2012). doi:[10.1016/j.cpc.2012.04.013](https://doi.org/10.1016/j.cpc.2012.04.013)
65. B. Allanach, M. Battaglia, G. Blair, M.S. Carena, A. De Roeck et al., Eur. Phys. J. C **25**, 113 (2002). doi:[10.1007/s10052-002-0949-3](https://doi.org/10.1007/s10052-002-0949-3)
66. R. Coimbra, M.O. Sampaio, R. Santos, Eur. Phys. J. C **73**, 2428 (2013). doi:[10.1140/epjc/s10052-013-2428-4](https://doi.org/10.1140/epjc/s10052-013-2428-4)
67. P. Bechtle, T. Bringmann, K. Desch, H. Dreiner, M. Hamer et al., J. High Energy Phys. **1206**, 098 (2012). doi:[10.1007/JHEP06\(2012\)098](https://doi.org/10.1007/JHEP06(2012)098)

68. O. Buchmueller, R. Cavanaugh, M. Citron, A. De Roeck, M. Dolan et al., *Eur. Phys. J. C* **72**, 2243 (2012). doi:[10.1140/epjc/s10052-012-2243-3](https://doi.org/10.1140/epjc/s10052-012-2243-3)
69. A. Djouadi, M. Drees, U. Ellwanger, R. Godbole, C. Hugué et al., *J. High Energy Phys.* **0807**, 002 (2008). doi:[10.1088/1126-6708/2008/07/002](https://doi.org/10.1088/1126-6708/2008/07/002)