

ORIGINAL ARTICLE

Visible light optical coherence tomography measures retinal oxygen metabolic response to systemic oxygenation

Ji Yi¹, Wenzhong Liu¹, Siyu Chen¹, Vadim Backman¹, Nader Sheibani², Christine M. Sorenson², Amani A. Fawzi³, Robert A. Linsenmeier^{1,3,4} and Hao F. Zhang^{1,3}

The lack of capability to quantify oxygen metabolism noninvasively impedes both fundamental investigation and clinical diagnosis of a wide spectrum of diseases including all the major blinding diseases such as age-related macular degeneration, diabetic retinopathy, and glaucoma. Using visible light optical coherence tomography (vis-OCT), we demonstrated accurate and robust measurement of retinal oxygen metabolic rate (rMRO₂) noninvasively in rat eyes. We continuously monitored the regulatory response of oxygen consumption to a progressive hypoxic challenge. We found that both oxygen delivery, and rMRO₂ increased from the highly regulated retinal circulation (RC) under hypoxia, by $0.28 \pm 0.08 \mu\text{L min}^{-1}$ ($p < 0.001$), and $0.20 \pm 0.04 \mu\text{L min}^{-1}$ ($p < 0.001$) per 100 mmHg systemic pO₂ reduction, respectively. The increased oxygen extraction compensated for the deficient oxygen supply from the poorly regulated choroidal circulation. Results from an oxygen diffusion model based on previous oxygen electrode measurements corroborated our *in vivo* observations. We believe that vis-OCT has the potential to reveal the fundamental role of oxygen metabolism in various retinal diseases.

Light: Science & Applications (2015) 4, e334; doi:10.1038/lisa.2015.107; published online 25 September 2015

Keywords: oxygen metabolism; retinal circulation; visible light optical coherence tomography

INTRODUCTION

Retinal cell degeneration is ubiquitous in the early stages of essentially all the major blinding retinal diseases (e.g., loss of pericytes in diabetic retinopathy (DR)¹, retinal ganglion cells in glaucoma², retinal pigment epithelial (RPE) cells in age-related macular degeneration³). Because the highly metabolic retinal cells rely on sufficient oxygen supply to maintain their functions, abnormality of retinal oxygen metabolism naturally could cause cell degeneration⁴. This aberrant oxygen metabolism can further create prolonged impact on retinal function through oxygen-sensitive signaling pathways^{5–7}, such as hypoxia-induced factor-mediated pathways⁸. Therefore, when accurately measured, the retinal oxygen metabolic rate (rMRO₂) could potentially be a sensitive biomarker for early-stage diagnosis or an indicator for progression of several retinal diseases.

Currently there is no single *non-invasive* technique to measure rMRO₂ *in vivo*. Direct measurement of intraretinal oxygen tension (PO₂) using microelectrodes is considered as the gold standard in quantifying oxygen metabolism⁹; however, the procedure is invasive and difficult to practice. Two-photon phosphorescence imaging has also been applied to quantify intraretinal PO₂, but it relies on contrast agents¹⁰. Magnetic resonance imaging can measure temporal changes of PO₂ but only qualitatively in humans¹¹. Alternatively, rMRO₂ can be measured by quantifying the consumption of oxygen derived from

the retinal circulation (RC), which requires concurrent quantification of both blood flow and hemoglobin oxygen saturation (sO₂). Several techniques such as laser Doppler velocimetry^{12–14}, multi-wavelength fundus photography and laser scanning ophthalmoscopy^{15–18}, and photoacoustic ophthalmoscopy^{19–20} have been demonstrated to measure one of the two parameters, but not both together. Optical coherence tomography (OCT)²¹ is another major technique for three-dimensional (3D) retinal imaging. Different OCT methods such as phase-sensitive optical Doppler coherence tomography^{22–23} and optical microangiography²⁴ have been introduced to measure retinal blood flow, but rMRO₂ is still inaccessible without other independent sO₂ measurements.

Here we demonstrate that visible light optical coherence tomography (vis-OCT) can quantify rMRO₂ *in vivo* through concurrent measurement of blood flow and sO₂ from RC. We have previously demonstrated that sO₂ can be measured *in vivo* through spectral analysis of OCT signals acquired within the visible light spectral range²⁵. The key advantage of vis-OCT is that the 3D imaging capability allows one to recover optical spectra specifically from blood vessels and eliminate the confounding signal from other retinal layers^{25–27}. We first validated the blood flow and sO₂ measurements both *in vitro* and *in vivo*. Then, as a proof of principle, we investigated the metabolic response to progressive hypoxia challenges. The experimental results were cross-validated by an oxygen

¹Department of Biomedical Engineering, Northwestern University, Evanston, IL 60208, USA; ²McPherson Eye Research Institute, University of Wisconsin, Madison, WI 53705, USA; ³Department of Ophthalmology, Northwestern University, Chicago Illinois 60611, USA and ⁴Department of Neurobiology, Northwestern University, Evanston, IL 60208, USA
Correspondence: HF Zhang, Email: hfzhang@northwestern.edu

Received: 11 March 2015; revised: 1 June 2015; accepted: 7 June 2015; accepted article preview online 10 June 2015

diffusion model derived from direct oxygen tension measurements in rat outer retina using microelectrodes.

MATERIALS AND METHODS

Visible light optical coherence tomography imaging system

Vis-OCT (Figure 1) uses a supercontinuum light source (SuperK, NKT photonics) with a working bandwidth from 520 nm to 630 nm. The illuminating power on the cornea was measured to be 0.8 mW, which is within the ANSI laser safety standard (Supplementary laser safety standard calculation). Briefly, we used a free-space interferometry configuration to minimize the dispersion, where the probing beam was collimated and split by a cube beam splitter into the reference and sample arms. The beam in the sample arm was steered by a pair of galvanometer mirrors to scan the focal point across the retina. The two beams from the reference and sample arms recombined at the beam splitter and were collected by an optical fiber. The fiber delivered the light to a home-made spectrometer that collected the interference spectral fringes by a line-scan CCD camera (spl2k, Basler). The full-width-half-maximum (FWHM) of the spectral coverage was ~ 85 nm, giving us $1.7\text{-}\mu\text{m}$ axial resolution. The lateral resolution was estimated to be $15\ \mu\text{m}$ in the retina. Two scanning protocols were performed. Protocol 1 raster-scanned a 20° squared retinal area with 256×256 pixels in each direction at a 25 kHz A-line rate. Protocol 2 used dual circle scanning that scanned two concentric circles centered at the optic disk with 4096 pixels in each circle at a 70 kHz A-line rate. The dual circle scan pattern was repeated eight

times and the results were averaged to remove motion artifacts and pulsatile flow pattern. Protocol 1 was used for $s\text{O}_2$ measurement and microvascular imaging. Protocol 2 was used for blood flow measurement, which requires much denser scanning. For visualizing the microvasculature, the mean intensity projection of a slab at depth range from $150\ \mu\text{m}$ to $200\ \mu\text{m}$ with respect to the retinal surface was taken to capture the microvasculature. The system schematic (Supplementary Fig. S1), scanning, data acquisition protocols, and data processing (Supplementary Fig. S2) are explained in detail in the Supplementary Information.

Quantification of rMRO_2 by vis-OCT

To quantify rMRO_2 (gas volume of oxygen consumed per unit time, mL min^{-1}), we measured the overall oxygen difference between the major arterioles and venules in RC. The extracted oxygen from RC primarily supports inner retinal metabolism but could also supply part of the outer retina. Two parameters from the RC: total retinal blood flow F ($\mu\text{L min}^{-1}$) and $s\text{O}_2$ (%) were measured, and the rMRO_2 was calculated according to:

$$\text{rMRO}_2 = 1.34 \times C_{\text{Hb}} \times F \times (s_a\text{O}_2 - s_v\text{O}_2), \quad (1)$$

where C_{Hb} is the total hemoglobin concentration (g mL^{-1}); 1.34 is the oxygen-binding capacity of hemoglobin (mL g^{-1})²⁸; $s_a\text{O}_2$ and $s_v\text{O}_2$ are arterial and venous $s\text{O}_2$ with the subscript of a and v denoting arterial and venous blood, respectively. All major retinal arterioles branch (and venules merge) at the optic disk such that the global rMRO_2

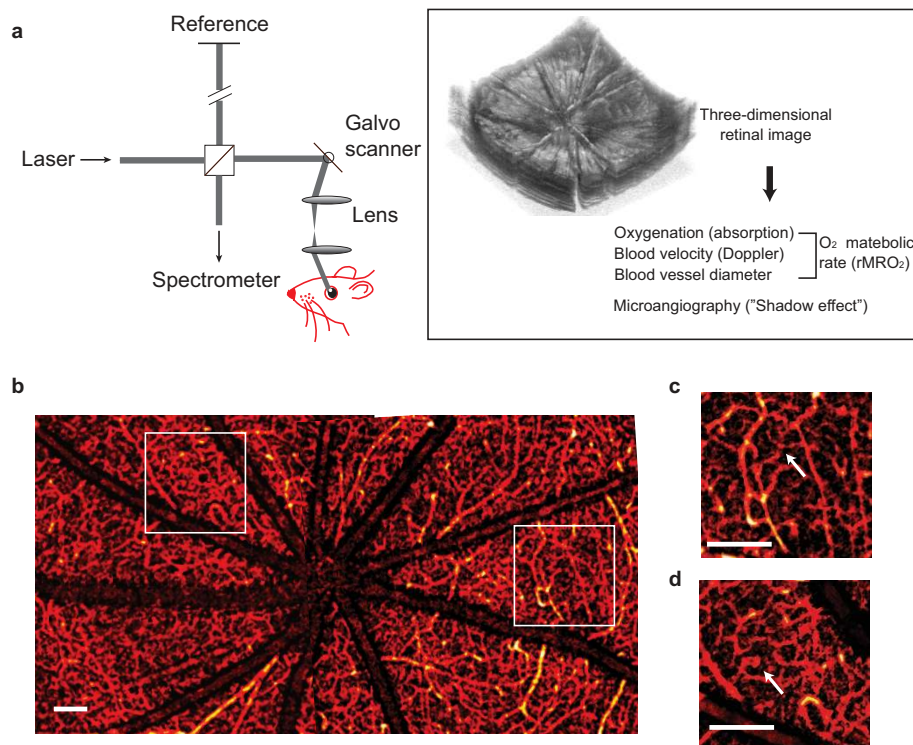


Figure 1 Principle of vis-OCT retinal imaging. (a) Illustration of vis-OCT system. A laser beam with a bandwidth from 520 nm to 630 nm was focused onto the retina. The reflected light interferes with the reference light, and the interference spectral fringes were collected by a home-built spectrometer. The interference spectral fringes were used to reconstruct the echo reflected from different depths of the retina. As the focal point was scanned across the retina by galvo mirrors, the 3D retinal structure was obtained. Further post-processing calculated the rMRO_2 and produced the retinal microangiogram. (b) Example of a wide-field view of retinal microvasculature imaged by vis-OCT. (c–d) Magnified view of the highlight squared areas in the panel b. The arrows highlight the smallest capillary vessels. Bar: $200\ \mu\text{m}$.

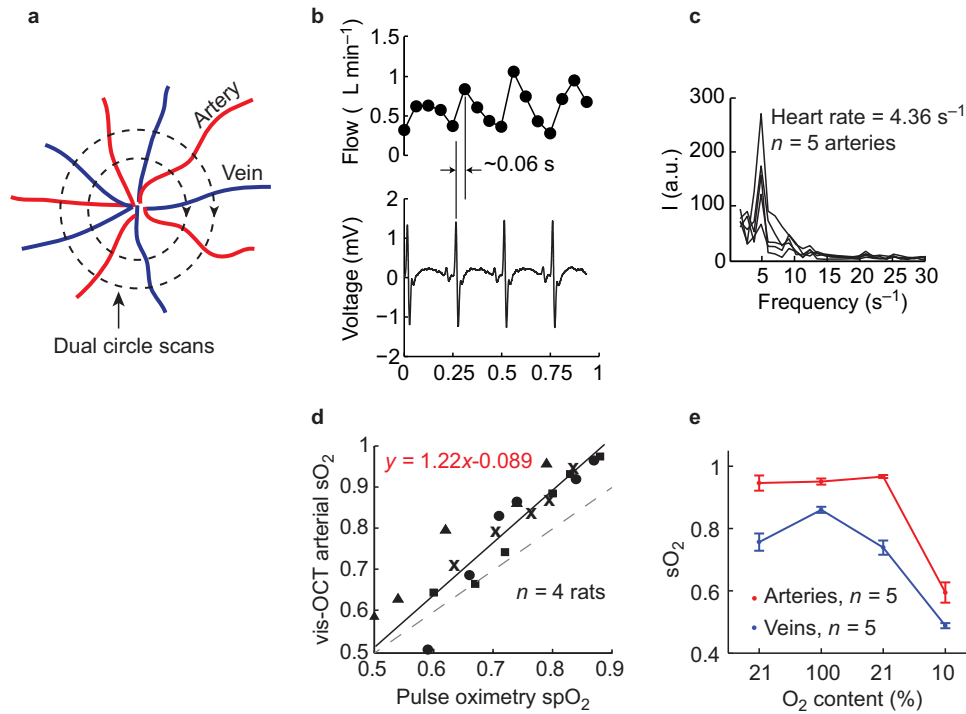


Figure 2 Validation of blood flow and sO_2 measurements *in vivo* using vis-OCT. (a) Illustration of scanning pattern for flow measurement. Two concentric circular trajectories around the optic disk scan cross all the major retinal blood vessels. (b) Pulsatile flow pattern from arterioles and the simultaneous recorded EKG signal. (c) Fourier transform of the pulsatile flow pattern from all arterioles showing the heart rate. (d) Correlation of arterial sO_2 measurement by vis-OCT (y -axis) and spO_2 measured by a pulse oximetry (x -axis). Measurements from different rats were labeled with different markers ($n = 4$ rats). Each vis-OCT sO_2 was averaged from all the major arteries. Solid line plots the linear regression from all the data. Dashed line plots the ideal (unity slope) correlation line. (e) Variations in arterial ($n = 5$) and venous ($n = 5$) sO_2 responding to the changing oxygen content of the inhaled air. Error bar = SEM.

derived from the RC can be calculated by measuring the flow and sO_2 from major vessels around the optic disk.

Blood flow measurement by phase sensitive Doppler OCT algorithm

In phase sensitive Doppler OCT, interferometric spectral signals from two adjacent A-lines were used to extract blood velocity²⁹. The blood velocity can be expressed as

$$v = \frac{f_{\text{sample}} \cdot \lambda_0 \cdot \Delta\phi}{4 \cdot \pi \cdot n \cdot \cos(\theta)}, \quad (2)$$

where f_{sample} is the OCT A-line scanning frequency³⁰; λ_0 (nm) is the center wavelength of the OCT light source; $\Delta\phi$ (radians) is the phase shift between adjacent A-scans after inverse Fourier transform; $n = 1.38$ (dimensionless) is the refraction index of the sample; and θ (radians) is the Doppler angle: the angle between the blood vessel and probing light (Supplementary Fig. S3). Phase wrap was present when the blood velocity was high. With the knowledge of flow direction (inward or outward from the optic disk), we corrected the phase wrapping by adding or subtracting 2π to or from the original phase shift. The Doppler angle θ was calculated by the relative displacement of each vessel between two circular scan images (Supplementary Information)^{29,31}.

Because of the higher axial resolution than lateral resolution in vis-OCT, we directly measured the vessel height H axially from B-scan intensity images from the circular scanning protocol. The upper and lower boundaries of the vessels were manually selected.

After correcting the Doppler angle, the diameter of the blood vessel, Dia , is

$$Dia = H \times \sin(\theta). \quad (3)$$

The total blood flow is equal to the product of the velocity and the vessel cross-sectional area

$$Flow = v \times \frac{\pi}{4} Dia^2. \quad (4)$$

Oxygen saturation rate (sO_2) measurement by spectroscopic OCT analysis

A Gaussian window with FWHM $k_w = 0.32 \mu\text{m}^{-1}$ (17-nm bandwidth at 585-nm center wavelength) swept the interferometric spectrum to select sub spectral bands. After the inverse Fourier transform on each sub-band, spatially resolved spectra can be obtained at each 3D voxel. The ability to selectively collect light reflected from a particular depth was the key to avoid the background reflectance that has hampered the accuracy of fundus photography-based methods¹⁵. The spectral signal from the vessel bottom along the vessel center lines was used to fit the following analytical model based on a modified Beer's law:

$$I^2(\lambda) = I_0^2(\lambda) R_0 r(\lambda) \exp[-2d\mu_{HbO_2}(\lambda) \times sO_2 - 2d\mu_{Hb}(\lambda) \times (1 - sO_2)], \quad (5)$$

where $I_0(\lambda)$ is the incident intensity on the retina. We ignored the optical attenuation induced by the cornea, lens, and vitreous chamber due to their high transmission within the visible spectral range³² and,

thus, took the source spectrum as I_0 ; R_0 is the reference arm reflectance; d (mm) is the vessel diameter; $r(\lambda)$ (dimensionless) is the reflectance at the vessel wall, whose scattering spectrum can be modeled as a power law under the first-order Born approximation $r(\lambda) = A\lambda^{-\alpha}$, where A (dimensionless) is a constant. The optical attenuation coefficient μ (mm^{-1}) combines the absorption (μ_a) and scattering coefficients (μ_s) of the whole blood, which are both wavelength- and oxygenation-dependent. The subscripts Hb and HbO₂ denote the contribution from deoxygenated and oxygenated blood, respectively. A linear regression to the logarithmic spectra returned the value of $s\text{O}_2$.

Animal preparation

All the experimental procedures were approved by the Northwestern University IACUC and conformed to the Association for Research in Vision and Ophthalmology Statement on Animal Research. Two anesthesia protocols were used in this work. For data shown in Figure 2, we initially anesthetized adult Long-Evans rats with 4.5% isoflurane for 10 mins, followed by 2.5% isoflurane during the imaging session. Isoflurane provided deeper anesthesia and better animal stability during the experiment, which is preferable for technology validation purposes. However, isoflurane is known to introduce vasodilation which would affect physiological studies³³. Thus, for data shown in Figures 3 and 4 that involved vessel size measurements, we anesthetized rats with a mixture of ketamine and xylazine (ketamine: 11.45 mg mL⁻¹; xylazine: 1.7 mg mL⁻¹, in saline) injected intraperitoneally. The initial injection used a dose of 10 mL kg⁻¹ body weight, followed by a 0.5-mL intraperitoneal injection every half an hour after the initial injection. A pulse oximeter was attached to the left rear paw of the animal to monitor its arterial $s\text{O}_2$ and heart rate (Supplementary Table). The body temperature was maintained between 36.5 °C and 37.5 °C using a heating pad (homeothermic blanket system, Stoelting Co.) underneath the animal. A home-made three-lead electrocardiogram (ECG) was used to record cardiac cycles. The animal was placed on a custom-made animal holder for imaging. We applied 0.5%

Tetracaine Hydrochloride ophthalmic solution to the rats' eyes for local anesthesia and applied 1% Tropicamide Hydrochloride ophthalmic solution to dilate the pupil. Commercial artificial tears were applied to the rats' eyes every other minute to prevent corneal dehydration. The inhaled gas was a mixture of oxygen and nitrogen. The ratio of the two gases was controlled by a gas proportioner (7300 Series, Matheson). The ventilated gas was changed to a hypoxic mixture according to the protocols as shown in the section on "Results and discussion". After the hypoxia challenge, the animal was allowed to recover and stabilize under normal air (21% O₂) for 5 min before being released.

Analytical model of oxygen consumption in the outer retina

Oxygen consumption is defined as volume of oxygen consumed by tissue per unit time (gas volume consumed per unit time). The units of $r\text{MRO}_2$ and oxygen consumption are the same, but the distinction is that we refer to oxygen consumption as what the inner and/or outer retina actually uses, whereas $r\text{MRO}_2$ is what the RC supplies.

Because the outer retina is avascular, oxygen is supplied solely through diffusion. An analytical model can be applied based on Fick's second law according to the PO_2 at both sides of the outer retina and the geometry of the outer retina. This model has been validated by microelectrode measurements on different species, including rats, cats, and macaques³⁴⁻³⁶.

Oxygen diffusion in the outer retina can be described by a one-dimensional three-layer diffusion model based on Fick's second law³⁴

$$QO_2 = Dk \frac{d^2P}{dx^2}, \quad (6)$$

where QO_2 is the oxygen consumption normalized by tissue weight ($\text{mL O}_2 \cdot \text{min}^{-1} \cdot 100 \text{ g}^{-1}$); D is the diffusivity of oxygen in tissue ($1.97 \times 10^{-5} \text{ cm}^2 \text{ s}^{-1}$); k is the solubility of oxygen ($2.4 \times 10^{-5} \text{ mL O}_2 / (\text{mL retina} \cdot \text{mmHg})$); P is PO_2 (mmHg); and x is the distance from the choroid. The photoreceptor outer segments, which do not consume oxygen, occupy layer 1 in the model, between $x = 0$ and $x = L_1$. The oxygen-consuming inner segments are between $x = L_1$ and $x = L_2$.

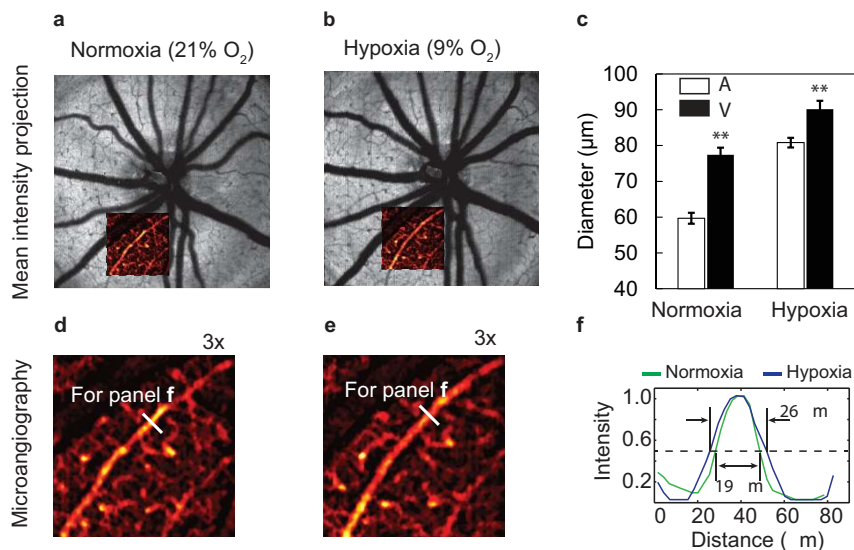


Figure 3 Retinal vasculature diameter variation under hypoxia. (a–b) Mean intensity projection images around the optic disk under normoxia and hypoxia, respectively. The insets show pseudo-colored microvasculature images. (c) Comparison of average diameters of major arterioles (A) and veins (V) under normoxia and hypoxia ($n = 33$ from six rats). Error bar = SEM. (d) Magnified view of the inset in the panel a. (e) Magnified view of the inset in the panel b. (f) Comparison of the arteriole diameters highlighted in both panels d and e under normoxia and hypoxia. Bar: 200 μm . $**p < 0.01$ from two sample t -test.

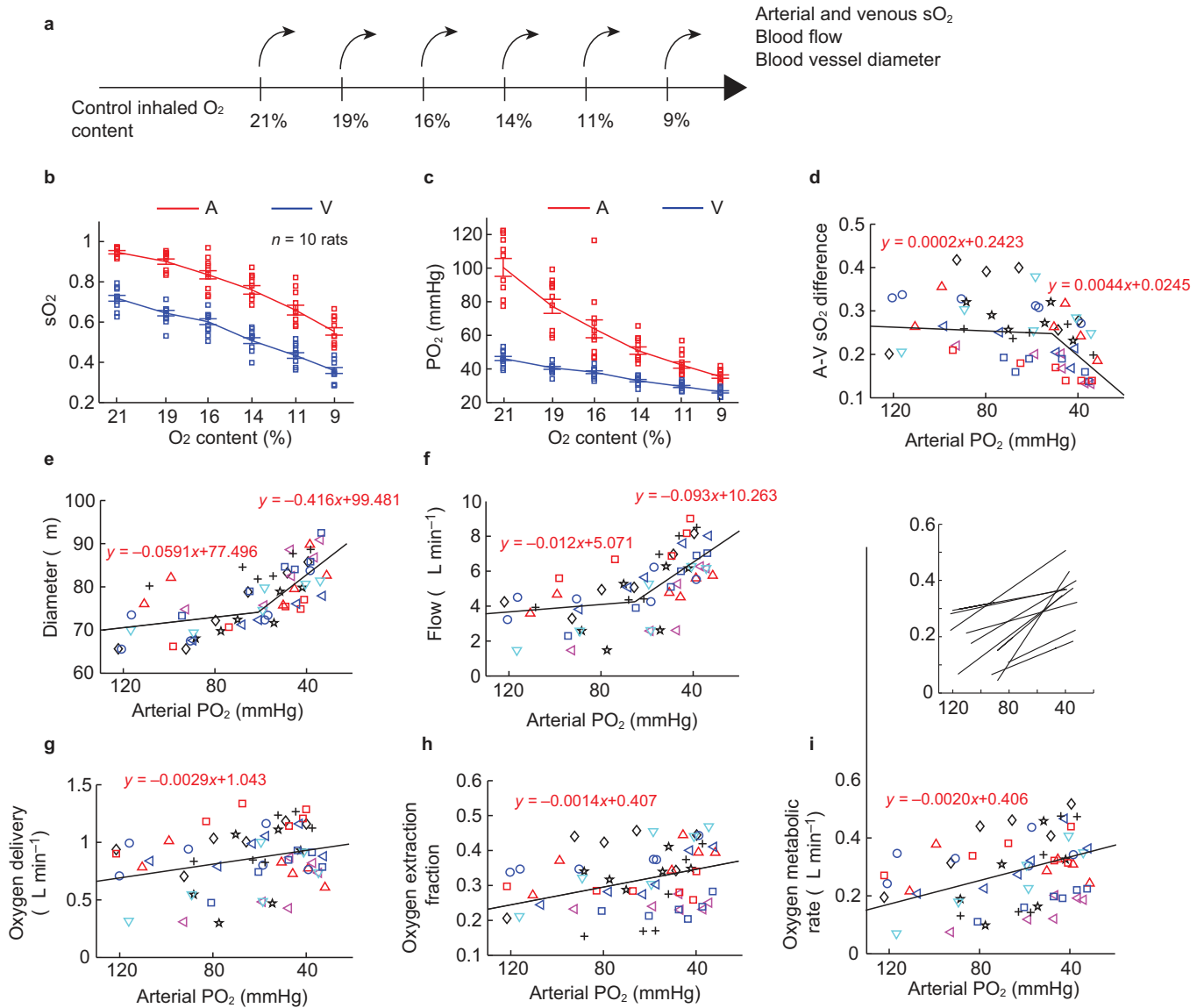


Figure 4 Retinal oxygen consumption derived from retinal circulation in responding to systemic oxygen tension variation. **(a)** Progressive hypoxia challenge procedure. The oxygen content in the inhaling gas was reduced gradually in six steps from 21% to 9%. Arterial and venous sO_2 , blood flow, and blood vessel diameter were directly measured at each step. Arteriovenous sO_2 difference, oxygen delivery, oxygen extraction fraction of retinal tissue, and $rMRO_2$ were further calculated. **(b)** and **(c)** are sO_2 and oxygen tension (PO_2) changes under reduced oxygen content (red-arterial, blue-venous), respectively. The corresponding progression of **(d)** arteriovenous oxygenation difference, **(e)** average diameter of major retinal blood vessels, **(f)** retinal blood flow, **(g)** oxygen delivery from arterial vessels, **(h)** oxygen extraction fraction, and **(i)** retinal oxygen metabolism from retinal circulation. The solid lines in **(d-i)** are linear regressions from the scatter plots. Different rats were labeled with different markers ($n = 10$ rats). In **i**, regression lines for each rat are shown in the inset on the same axis as the main figure.

The third layer is the outer nuclear layer (photoreceptor cell bodies), which do not consume oxygen, and is between $x = L_2$ and $x = L$, where L is the thickness of the outer retina. The averaged QO_2 in outer retina (Q_{av,O_2}) under light adaption has been characterized by fitting this model to microelectrode data³⁴.

From the parameters of the model, the fraction of the outer retina supplied by the RC (F_r) can be derived as³⁵

$$F_r = \left[\frac{(L_1 + L_2)}{2L} + \frac{(P_L - P_C)}{(Q_{av,O_2}/(Dk)L^2)} \right], \quad (7)$$

where P_C and P_L are the PO_2 s at the choroid and at L , respectively. For the implementation of the model in the present work, L_1 , L_2 , and L were manually measured from circular scan OCT B-Scan images at ten

discrete locations (Supplementary Fig. S4). The averaged values were used in the simulation. It has been experimentally validated that the averaged PO_2 in inner retina and P_L are well maintained during hypoxia challenge, whereas P_C is linearly proportional to arterial oxygen tension (P_aO_2) as³⁵

$$P_C = 0.64P_aO_2 + 1.66. \quad (8)$$

Under normoxic light-adapted conditions, F_r is usually less than 10%; that is, most of the outer retina is supplied by CC rather than RC. However, because P_C decreases in hypoxia, F_r increases, and part of $rMRO_2$ supplies the outer retina, which could be calculated as:

$$O_{2(RC \rightarrow \text{Outer retina})} = Q_{av,O_2} \times F_r \times m, \quad (9)$$

where m is the weight of the outer retina. We measured the total weight of the rat retina to be 12 mg and the outer retinal weight m to be 6 mg. Table 1 lists the values of characteristic parameters. Some of the parameters necessary to calculate this were measured by us, and some were taken from the literature. Detailed methods to solve the diffusion equation and the simulation of the PO_2 profile are provided in Supplementary Information.

Statistics

Statistical analysis was performed using STATA (StataCorp LP). Two sample T-test was used to test the significance in Figure 3c. Piecewise linear regression was used in Figure 4d–4f. The location of the discontinuity between fitted line segments were determined by minimizing the total square errors (least square error). A fixed effect statistical model was used for the linear regression in Figure 4g–4i to evaluate the fitted slopes assuming the slopes were the same in different subjects. The intercepts of the fitted line in Figure 4g–4i were averaged from all the animals.

RESULTS AND DISCUSSION

We imaged the 3D structure of the rat retina and quantified $rMRO_2$ using vis-OCT (Figure 1a). A focused broadband laser was scanned across the retina to provide transverse (x,y) discrimination. Reflectance at different depths (z) was reconstructed through interference between the reflected light and the reference light. Different contrasts were utilized to calculate $rMRO_2$. Blood flow is the product of the vessel cross-section area and velocity, where the vessel diameter was measured from the tomographic image and the velocity was measured based on the phase variation from the moving blood cells^{22,23}. The distinct optical absorption spectra of oxy- and deoxy-hemoglobin provided the contrast for sO_2 measurement^{37,38}.

Because of the strong attenuation of light in blood within the visible light spectral range, a shadow was cast underneath the vessels (Supplementary Fig. S4). We used an *en face* slice in the outer retina as a “screen” to capture this “shadow effect” and to create a “2D print” of the microvasculature (Figure 1b–1d). We were able to clearly visualize the large retinal vessels as well as the details of the microvasculature. This method does not require a high-density raster scan protocol as reported previously^{24,39}, and yet it provides robust label-free microangiography.

Testing the accuracy of sO_2 and blood flow measurements

First we evaluated the accuracy of flow and sO_2 measurement *in vitro* using vis-OCT (Supplementary Information). For flow measurement verification and calibration, a turbid aqueous solution (1% IntralipidTM) was pumped through a capillary tube by a syringe pump, and then the vis-OCT flow measurements were calibrated against the pump flow settings. For sO_2 measurement verification, bovine whole

blood samples with controlled sO_2 were pumped through a capillary tube and we compared the vis-OCT sO_2 quantification with the results derived from blood analyzer readings. The accuracies were within 4.7% and 4% relative errors for flow and sO_2 measurements, respectively (Supplementary Figs. S5 and S6).

To accomplish flow measurement *in vivo*, we adopted a dual-circle scanning protocol around the optic nerve head (ONH)²³. Because retinal blood vessels run radially from the ONH, each circle scanned cross all of the arteries and veins, which allowed us to capture the total retinal blood flow (Figure 2a). We repeatedly performed eight dual-circle scans at an A-line rate of 70 kHz. The high-speed scanning allowed us to capture the pulsatile profile of the blood flow (Figure 2b). EKG signals were recorded simultaneously to provide correlation between measured retinal blood flow and cardiac cycles. The pulsatile flow pattern from an artery coincided well with the EKG profile, with a slight delay (~ 0.1 s) between the peaks of the flow and the QRS complex. This delay was likely caused by the time needed by the sequence of atrioventricular node discharge, ventricular contraction, and the pressure propagation from heart to head. We took a Fourier transform of the pulsatile profile and the distinct peaks from all the arterial flows were consistent, indicating that the frequency of the cardiac cycle was 4.36 Hz (261.6 min^{-1} heart rate). We averaged the pulsatile flow readings over the eight dual-circle scans for each vessel and calculated the total arterial and venous flows. The two total blood flows agreed with each other within a measurement precision ($\pm 0.38 \mu\text{L min}^{-1}$ averaged from $n = 4$ rats) (Supplementary Fig. S7), verifying the consistency between the inward (venous) and outward (arterial) blood flows. The value of total averaged blood flow was 6–8 $\mu\text{L min}^{-1}$ ($n = 4$ rats), which agrees well with reported values using the same anesthesia protocol⁴⁰.

Two experimental tests were used to examine the accuracy of our *in vivo* sO_2 measurement. In the first test, we gradually changed the oxygen content in the ventilated air from 21% to 10% in six steps. After each adjustment of O_2 content, the animals were allowed to adapt to the changed air and re-stabilize for 2 mins. The systemic peripheral arterial oxygenation (spO_2) was monitored by a pulse oximeter attached to a rear leg of the rats. At each inhalation condition, we measured arterial sO_2 by vis-OCT and compared the averaged values with the pulse oximeter spO_2 readings (Figure 2d). The linear correlation ($R^2 = 0.839$) established the responsiveness of our retinal sO_2 measurements to the systemic sO_2 changes. We observed a slightly lower spO_2 value than the vis-OCT sO_2 , which may be due to the mild ischemia caused by the mechanical pressure from the sensor clip designed for human use. In the second test, we changed the inhaled oxygen from 21% to 100%, then back to 21%, and finally to 10% (Figure 2e). Arterial sO_2 was roughly unchanged from 21% to 100%, but dropped significantly at 10% oxygen (0.95 ± 0.02 at 21% oxygen, 0.95 ± 0.01 at 100% oxygen, 0.96 ± 0.01 at recovery 21%, and 0.59 ± 0.03 at 10% oxygen); on the other hand, the venous sO_2 changed with every change in oxygen content (0.75 ± 0.03 at 21% oxygen, 0.86 ± 0.01 at 100% oxygen, 0.74 ± 0.02 at recovery 21%, and 0.48 ± 0.01 at 10% oxygen). The arterial sO_2 changed much less than venous sO_2 during hyperoxia because the arterial blood was already well oxygenated under normal air breathing.

Testing the longitudinal monitoring of blood flow, sO_2 , and $rMRO_2$

The advantage of using vis-OCT to measure $rMRO_2$ is the label-free and non-invasive nature, which allows us to perform longitudinal monitoring of blood flow, sO_2 , and $rMRO_2$ from the same object. To demonstrate that, we performed a time-course study, in which five

Table 1 Characteristics of oxygen distribution and consumption in simulation

Characteristics of oxygen distribution and consumption	Values
L_1 (μm)	25 (measured)
L_2 (μm)	46 (measured)
L (μm)	85 (measured)
PO_2 at L , P_L (mmHg)	28.8^{35}
Q_{av} ($\text{mL} \cdot \text{min}^{-1} \cdot 100 \text{g}^{-1}$)	1.8^{34}
Outer retinal weight (mg)	6 (unpublished measurement by Robert A. Linsenmeier)

measurements were taken from the same subjects over two weeks (Supplementary Fig. S8). The standard deviations of four functional parameters measurements were all within 11% of the mean values (7.4% for arterial sO_2 , 6.4% for venous sO_2 , 9% for blood flow, and 11% for $rMRO_2$).

Retinal metabolic response to systemic hypoxia

Having characterized the accuracy of blood flow and sO_2 measurements, we studied how systemic oxygen tension affects $rMRO_2$ during hypoxia. Although previous studies have shown hemodynamic (increased retinal blood flow) and anatomical vascular changes (increased vessel diameter) under low oxygen supply⁴¹, a comprehensive observation of how inner retinal oxygen consumption reacts to limited oxygen supply was never reported using a non-invasive approach. In addition, the oxygen supply to the outer retina relies mostly on the choroidal circulation (CC) and little on the RC under light-adapted conditions^{34,35}, but how their roles change in supplying the outer retina during hypoxia is still unknown.

We first investigated the retinal vascular anatomical changes under hypoxia (Figure 3). We observed that the major arteries and veins dilated under hypoxia. The average vessel diameter increased by 35% in arteries ($59.7 \pm 1.5 \mu m$ during normoxia; $80.8 \pm 2.0 \mu m$ during hypoxia), and 16% in veins ($77.4 \pm 2.0 \mu m$ during normoxia; $90.2 \pm 2.3 \mu m$ during hypoxia). Under normoxia, the arteries were curved due to a constrictive vascular tone; under hypoxia, as a comparison, straighter arteries indicated relaxation of vascular smooth muscle. In addition, we also observed dilation in smaller arterioles (Figure 3d–3f), which allows more blood flow into the deep retinal capillary network in the outer plexiform layer (OPL).

In order to progressively track the auto-regulatory response, we used a “step-down” hypoxia challenge protocol, in which the inhaled oxygen content was reduced from 21% (normoxia) to 9% (hypoxia) in six steps (21%, 19%, 16%, 14%, 11%, and 9%) as shown in Figure 4a. Multiple measurements were taken at each step and the progressing trends of sO_2 , blood flow, vessel diameter, and $rMRO_2$ were quantified separately ($n = 10$ rats). The entire experiments took less than 30 mins. Heart rate was monitored by the pulse oximeter during the experiments. During air breathing it was $280 \pm 13.3 \text{ min}^{-1}$ (mean and SEM). On average, it increased by about 5% at an intermediate O_2 content of 14%, and returned toward the control value at lower O_2 content of 9%.

As expected, both arterial and venous sO_2 decreased with reduced oxygen supply (Figure 4b). The venous sO_2 decreased almost linearly, while the arterial sO_2 decreased more rapidly when the oxygen content was below 14%. Because PO_2 is a direct stimulus to autoregulation, we translated our sO_2 readings to PO_2 based on the haemoglobin dissociation curve (Figure 4b), defined by Hill’s equation⁴² with $n = 2.8$ and $P50 = 32.9 \text{ mmHg}$:

$$PO_2 = \left(\frac{sO_2}{1 - sO_2} \right)^{\frac{1}{n}} P50. \quad (10)$$

For arteries and veins, the average PO_{2S} were 103.7 ± 5.8 and $46.3 \pm 1.5 \text{ mmHg}$, respectively, and dropped almost linearly to 36.3 ± 1.2 and $26.3 \pm 0.8 \text{ mmHg}$ at 9% inhaled O_2 (Figure 4c). The arteriovenous sO_2 difference exhibited a two-segment pattern that decreased slightly when the arterial PO_2 was higher than $\sim 60 \text{ mmHg}$ and decreased quickly thereafter (Figure 4d). When we examined the progressive trend of vessel diameter with arterial PO_2 , it also had a similar two-segment pattern where the dilation became more dramatic during severe hypoxia (Figure 4e). A consequence of vessel dilation was the reduction in vascular resistance, which allowed more blood flow (Figure 4f). The discontinuous point of the two segment pattern was observed at a P_aO_2 of $\sim 60 \text{ mmHg}$ when the inhaled oxygen was about 16% (Figure 4c). When oxygen was further reduced, the animals were more severely hypoxic, which may cause more dramatic autoregulation. The increased blood flow compensated for the deficiency in s_aO_2 (arterial sO_2), and the total oxygen delivery (defined by $1.34 \times F_{\text{artery}} \times s_aO_2$) by arterial vessels was actually increased (slope = -0.0029) (Figure 4g). The oxygen extraction fraction (defined by the ratio of arteriovenous sO_2 difference divided by s_aO_2) increased, indicating that the retina extracted oxygen more efficiently under hypoxia (Figure 4h). Finally, $rMRO_2$ also increased with the decreased P_aO_2 (Figure 4i). The slopes in Figure 4g–4i were significantly different from zero ($p = <0.001$, 0.001 , and <0.001 , respectively), with the scatter contributed largely by the vertical offset of the data from individual animals, each of which exhibited the same trend in slope (illustrated in the inset in Figure 4i). A summary of the slope fitting statistics for oxygen delivery, oxygen extraction fraction and $rMRO_2$ is listed in Table 2.

Balanced oxygen supply from retinal and CCs

The increased extraction of oxygen during hypoxia was not previously observed. We believe it is a result of increased oxygen supply to the outer retina from the RC when oxygen supply from CC drops (Figure 5a). Such a balance between the RC and CC is not an active compensation during hypoxia; rather, it results from the different responses to oxygen deficiency by the two circulations. The CC has a small arteriovenous sO_2 difference and very little autoregulatory response, while the RC has a large arteriovenous sO_2 difference and is well regulated⁴³. To determine whether this balancing mechanism could quantitatively account for the increased oxygen extraction from the RC, we compared our experimental results with a simulation model built upon oxygen electrode measurements in the retina³⁴. The model quantifies the oxygen consumption in the outer retina, and theoretically predicts the percentage of oxygen supply from RC and CC. It has been experimentally shown that the oxygen consumption does not change significantly (i.e. averaged PO_2 does not change significantly) in the inner retina during hypoxia challenge under light adaptation^{34,35}. Thus by calculating the oxygen supplied from RC to outer retina, the model can predict the change of $rMRO_2$.

The PO_2 profile across the retina is illustrated in Figure 5b and 5c. When the systemic PO_2 drops, the choriocapillaris PO_2 also drops and increases the oxygen gradient from inner retina to outer retina^{34–36}. The amount of oxygen delivered from the inner retina to the outer retina can

Table 2 Summary of the slopes of the linear fitting against arterial PO_2

	Slope	Robust SE	p value	[95% confidence interval]
Oxygen extraction fraction (OEF)	-.0013995	.000274	<0.001	[-.0019501 to -.0008489]
Oxygen delivery (OD)	-.0028637	.000828	0.001	[-.0045277 to -.0011997]
$rMRO_2$	-.0020111	.0003709	<0.001	[-.0027563 to -.0012658]

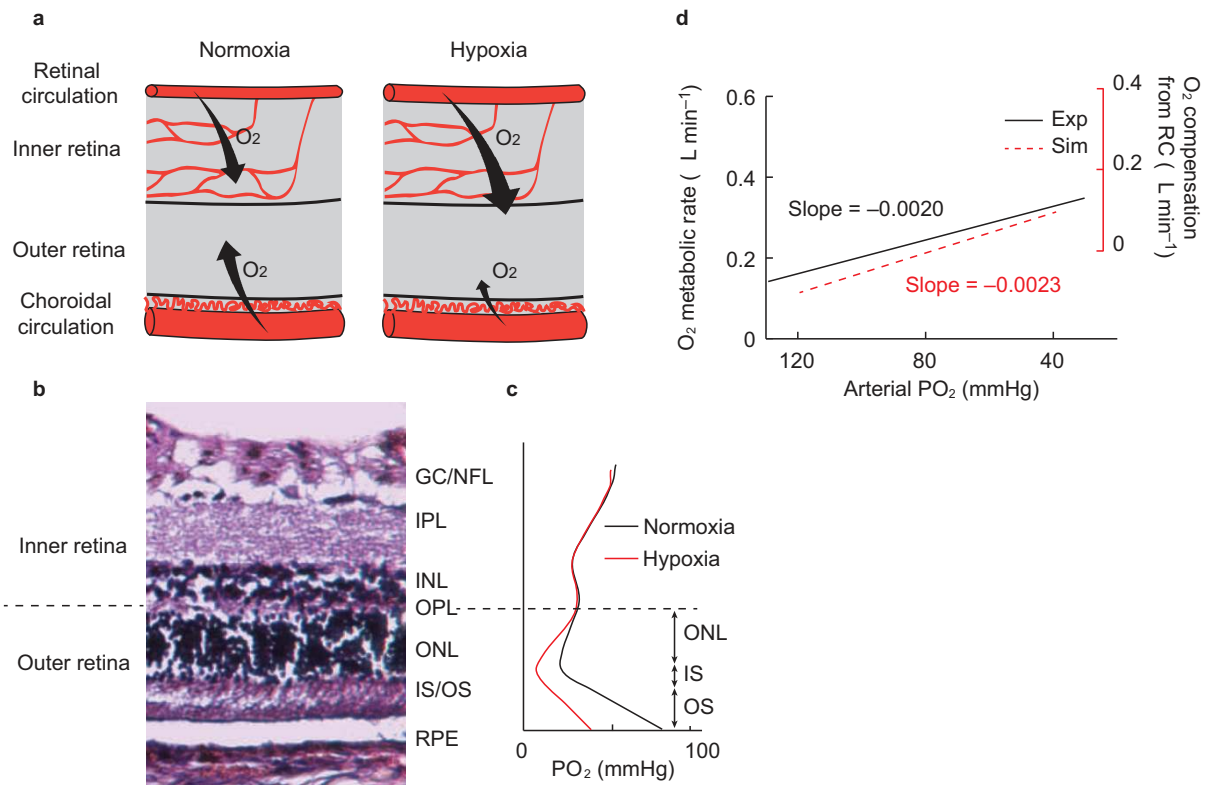


Figure 5 Balance of oxygen supplies between retinal and choroidal circulations under hypoxia. **(a)** Under systemic hypoxia, the retinal circulation provides more oxygen to the outer retina to compensate the deficit from the choroidal circulation. **(b)** Anatomical structure of a rat retina. The retinal pigment epithelium (RPE) resides beneath the neural retina, which consists of several defined layers: the outer (OS) and inner segment (IS) of the photoreceptor, and the outer nuclear layer (ONL), outer plexiform layer (OPL), inner nuclear layer (INL), inner plexiform layer (IPL), ganglion cell (GC), and nerve fiber layer (NFL). The boundary between the inner retina and outer retina is the OPL. **(c)** Simulated PO₂ profile across the retina (Supplementary Fig. S9). The inner retinal PO₂ is assumed to be constant under the level of hypoxia used here, while the outer retinal PO₂ profile changes. The majority of the oxygen is consumed in the IS, where the PO₂ reaches a minimum in the outer retina. The oxygen diffuses from both the choroidal and retinal circulations, forming two PO₂ gradients toward the IS. This distinct PO₂ profile in three segments in the outer retina can be modeled by a one-dimensional oxygen diffusion model. **(d)** Comparison of the oxygen metabolism from experimental observation and simulation. The experimental oxygen metabolic rate is re-plotted from Figure 4i.

then be calculated by Equations 7–9, in which the averaged outer retina oxygen consumption and PO₂ has been previously characterized³⁴. Notably, Equation 9 reveals an expected linear relationship between rMRO₂ and arterial PO₂, based on which we linearly fitted our experimental data. When we compared the simulated change of rMRO₂ with the experimental rMRO₂ as in Figure 5d, the trends with decreased arterial PO₂ were almost identical (slope = -0.0023 in the simulation and -0.0020 in the *in vivo* experiment). This implies that the apparent increase in the detected oxygen consumption during hypoxia was due to the additional oxygen provided to the outer retina, and that for the range of arterial PO₂ in our experiments, inner retinal oxygen consumption actually did not change.

Discussion

It is well known that RC and CC behave differently under systemic hypoxia⁵. This has been experimentally shown by the direct micro-electrode measurements by Linsenmeier and Braun in cats³⁵. They showed that the PO₂ in the inner retina was well maintained under hypoxia challenge under light adaption; while the PO₂ dropped in the chorioicapillaris. This difference in PO₂ results from the fact that blood flow in the RC increases during hypoxia (as we have verified noninvasively), while blood flow in the CC remains unchanged. Although the balance of oxygen supply between RC and CC is

somewhat predicted by the diffusion model, noninvasive measurement of consumption of oxygen derived from RC has never been reported. Here we used a step-wise hypoxia challenge to experimentally observe the rMRO₂ response to systemic PO₂ under light adaption. The non-invasive nature of our approach allows us to continuously monitor the same animal through the entire hypoxia challenge. Counterintuitively, we found that rMRO₂ increased with lower systemic PO₂, which was explained by the oxygen diffusion model. In contrary, Wanek *et al.* reported a reduced rMRO₂ under hypoxia challenge using fluorescent microsphere to measure blood flow and two photon phosphorescence life time to measure sO₂⁴⁴. Although the reduced arterial sO₂ and arteriovenous sO₂ difference in our study were consistent with their findings, we observed monotonically increased blood flow under hypoxia; whereas in their results the blood flow increased at moderate hypoxia and returned to the normal level at severe hypoxic challenge. This appears to be the major discrepancy. If we decreased inspired oxygen further, we would expect that eventually the RC would fail to compensate and see the result observed by Wanek *et al.*

Translating vis-OCT from rodents to humans requires a few additional considerations. The first one is whether the visible light illumination will induce metabolic change during imaging. It has been shown that transitions between dark and light adaptation cause transient changes in retinal blood flow and oxygen metabolism^{45–47};

however, constant visible light exposure under light adaptation does not^{48,49}. This indicates that vis-OCT is not likely to affect retinal oxygen metabolism when eyes are already light-adapted before imaging. Another practical concern is that the scanning visible light beam may distract eye fixation during imaging. However, this can be overcome by integrating an additional near infrared OCT channel for alignment purpose, where the visible light channel can only be turned on at the time of data acquisition for a short period of time.

The ability to quantify rMRO₂ can potentially provide valuable insight into the pathogenesis of various retinal diseases, particularly DR and glaucoma. A key element is to understand the causal relationship between retinal cell degeneration and hemodynamic dysregulation. For example in DR, it is known that endothelial and pericyte disruption occurs in early-stage DR, but how the associated hemodynamic changes are unknown. Some studies showed increased retinal blood flow^{50,51} and suggested that the higher blood flow and high glucose level causes hyperperfusion, which further damages the endothelium and pericytes⁵¹. On the other hand, contradictory data exist and show that decreased blood flow is one of the earliest changes in diabetic retina^{52,53}. The hypothesis is that the loss of pericytes in the early phase of the disease reduces oxygen consumption, which may paradoxically lead to increased oxygenation of the retina. This might create a hyperoxia, resulting in vasoconstriction and reduced blood flow⁵⁴. Similarly, in glaucoma, there exists degeneration of retinal ganglion cells. Although altered blood flow and vasculature were observed in glaucoma, their causal relationship to ganglion cell death remains unknown⁵⁵. Through measuring rMRO₂, we will have the opportunity to correlate metabolic function and blood flow, which could potentially reveal the connection between hemodynamic dysregulation and retinal cell degeneration. With improved understanding of retinal metabolic function, improved approaches to early disease detection and therapeutic strategies can be designed.

The ability to quantify oxygen metabolism will expand the applications of OCT to a much broader scope. Vis-OCT provides a convenient approach that allows both blood flow and sO₂ quantification with one set of measurements, which otherwise would either be invasive or requires different imaging systems.

CONCLUSIONS

We demonstrated the capability of vis-OCT to accurately measure rMRO₂ and to monitor rMRO₂ response subject to systemic oxygen modulation. This method allowed us to monitor retinal function via its oxygen consumption. We experimentally measured the response of rMRO₂ to systemic PO₂ variations and observed increased oxygen consumption supplied from the RC under hypoxia. This is explained by the balanced oxygen supply between retinal and CC. This method presents a noninvasive way of studying the role of oxygen consumption in various diseases whether the dysregulation of oxygen metabolism is important.

ACKNOWLEDGEMENTS

We would like to acknowledge the generous financial support from the NIH (Grant Nos 1R01EY019951 and 1R24EY022883) and NSF (Grant Nos CBET-1055379 and CBET-1066776). Wenzhong Liu is supported by a HHMI graduate student fellowship. Ji Yi is supported by a Seed Grant from the Illinois Society for Blindness Prevention and a post-doctoral fellowship award from the Juvenile Diabetes Research Foundation (JDRF).

- 2 Mozaffarieh M, Grieshaber MC, Flammer J. Oxygen and blood flow: players in the pathogenesis of glaucoma. *Mol Vis* 2008; **14**: 224–233.
- 3 Nowak JZ. Age-related macular degeneration (AMD): pathogenesis and therapy. *Pharmacol Rep* 2006; **58**: 353–363.
- 4 Caprara C, Grimm C. From oxygen to erythropoietin: relevance of hypoxia for retinal development, health and disease. *Prog Retin Eye Res* 2012; **31**: 89–119.
- 5 Lange CA, Bainbridge JW. Oxygen sensing in retinal health and disease. *Ophthalmologica* 2012; **227**: 115–131.
- 6 Crosson LA, Kroes RA, Moskal JR, Linsenmeier RA. Gene expression patterns in hypoxic and post-hypoxic adult rat retina with special reference to the NMDA receptor and its interactome. *Mol Vis* 2009; **15**: 296–311.
- 7 Kaur C, Sivakumar V, Foulds WS. Early response of neurons and glial cells to hypoxia in the retina. *Invest Ophthalmol Vis Sci* 2006; **47**: 1126–1141.
- 8 Arjamaa O, Nikinmaa M. Oxygen-dependent diseases in the retina: role of hypoxia-inducible factors. *Exp Eye Res* 2006; **83**: 473–483.
- 9 Linsenmeier RA, Braun RD, McRipley MA, Padnick LB, Ahmed J et al. Retinal hypoxia in long-term diabetic cats. *Invest Ophthalmol Vis Sci* 1998; **39**: 1647–1657.
- 10 Shahidi M, Wanek J, Blair NP, Little DM, Wu T. Retinal tissue oxygen tension imaging in the rat. *Invest Ophthalmol Vis Sci* 2010; **51**: 4766–4770.
- 11 Berkowitz BA, Kowluru RA, Frank RN, Kern TS, Hohman TC et al. Subnormal retinal oxygenation response precedes diabetic-like retinopathy. *Invest Ophthalmol Vis Sci* 1999; **40**: 2100–2105.
- 12 Riva CE, Grunwald JE, Petrig BL. Autoregulation of human retinal blood flow. An investigation with laser Doppler velocimetry. *Invest Ophthalmol Vis Sci* 1986; **27**: 1706–1712.
- 13 Palkovits S, Told R, Schmidl D, Boltz A, Napora KJ et al. Regulation of retinal oxygen metabolism in humans during graded hypoxia. *Am J Physiol Heart Circ Physiol* 2014; **307**: H1412–H1418.
- 14 Palkovits S, Lasta M, Told R, Schmidl D, Boltz A et al. Retinal oxygen metabolism during normoxia and hyperoxia in healthy subjects. *Invest Ophthalmol Vis Sci* 2014; **55**: 4707–4713.
- 15 Harris A, Dinn RB, Kagemann L, Rechtman E. A review of methods for human retinal oximetry. *Ophthalmic Surg Lasers Imaging* 2003; **34**: 152.
- 16 Hardarson SH, Harris A, Karlsson RA, Halldorsson GH, Kagemann L et al. Automatic retinal oximetry. *Invest Ophthalmol Vis Sci* 2006; **47**: 5011–5016.
- 17 Palsón O, Geirsdóttir A, Hardarson SH, Ólafsdóttir OB, Kristjansdóttir JV et al. Retinal oximetry images must be standardized: a methodological analysis. *Invest Ophthalmol Vis Sci* 2012; **53**: 1729–1733.
- 18 Kristjansdóttir JV, Hardarson SH, Halldorsson GH, Karlsson RA, Eliasdóttir TS et al. Retinal oximetry with a scanning laser ophthalmoscope. *Invest Ophthalmol Vis Sci* 2014; **55**: 3120–3126.
- 19 Jiao S, Jiang M, Hu J, Fawzi A, Zhou Q et al. Photoacoustic ophthalmoscopy for *in vivo* retinal imaging. *Opt Express* 2010; **18**: 3967–3972.
- 20 Song W, Wei Q, Liu W, Liu T, Yi J et al. A combined method to quantify the retinal metabolic rate of oxygen using photoacoustic ophthalmoscopy and optical coherence tomography. *Sci Rep* 2014; **4**: 6525.
- 21 Yazdanfar S, Rollins AM, Izatt JA. Imaging and velocimetry of the human retinal circulation with color Doppler optical coherence tomography. *Opt Lett* 2000; **25**: 1448–1450.
- 22 Zhao Y, Chen Z, Saxer C, Xiang S, de Boer JF et al. Phase-resolved optical coherence tomography and optical Doppler tomography for imaging blood flow in human skin with fast scanning speed and high velocity sensitivity. *Opt Lett* 2000; **25**: 114–116.
- 23 Wang Y, Bower BA, Izatt JA, Tan O, Huang D. Retinal blood flow measurement by circumpapillary Fourier domain Doppler optical coherence tomography. *J Biomed Opt* 2008; **13**: 064003.
- 24 Zhi Z, Cepurna W, Johnson E, Shen T, Morrison J et al. Volumetric and quantitative imaging of retinal blood flow in rats with optical microangiography. *Biomed Opt Express* 2011; **2**: 579–591.
- 25 Yi J, Wei Q, Liu W, Backman V, Zhang HF. Visible-light optical coherence tomography for retinal oximetry. *Opt Lett* 2013; **38**: 1796–1798.
- 26 Yi J, Li X. Estimation of oxygen saturation from erythrocytes by high-resolution spectroscopic optical coherence tomography. *Opt Lett* 2010; **35**: 2094–2096.
- 27 Robles FE, Wilson C, Grant G, Wax A. Molecular imaging true-colour spectroscopic optical coherence tomography. *Nat Photonics* 2011; **5**: 744–747.
- 28 de Villota ED, Carmona MT, Rubio JJ, de Andrés SR. Equality of the *in vivo* and *in vitro* oxygen-binding capacity of haemoglobin in patients with severe respiratory disease. *Br J Anaesth* 1981; **53**: 1325–1328.
- 29 Wang Y, Bower BA, Izatt JA, Tan O, Huang D. *In vivo* total retinal blood flow measurement by Fourier domain Doppler optical coherence tomography. *J Biomed Opt* 2007; **12**: 041215.
- 30 Suzuki H, Watkins DN, Jair KW, Schuebel KE, Markowitz SD et al. Epigenetic inactivation of SFRP genes allows constitutive WNT signaling in colorectal cancer. *Nat Genet* 2004; **36**: 417–422.
- 31 Wang Y, Fawzi AA, Varma R, Sadun AA, Zhang X et al. Pilot study of optical coherence tomography measurement of retinal blood flow in retinal and optic nerve diseases. *Invest Ophthalmol Vis Sci* 2011; **52**(2): 840–845.
- 32 Boettner EA, Wolter JR. Transmission of the ocular media. *Invest Ophthalmol Vis Sci* 1962; **1**: 776–783.
- 33 Schwinn DA, McIntyre RW, Reves JG. Isoflurane-induced vasodilation: role of the α -adrenergic nervous system. *Anesth Analg* 1990; **71**: 451–459.
- 34 Lau JC, Linsenmeier RA. Oxygen consumption and distribution in the Long-Evans rat retina. *Exp Eye Res* 2012; **102**: 50–58.

1 Hammes HP. Pericytes and the pathogenesis of diabetic retinopathy. *Horm Metab Res* 2005; **37**: 39–43.

- 35 Linsenmeier RA, Braun RD. Oxygen distribution and consumption in the cat retina during normoxia and hypoxemia. *J Gen Physiol* 1992; **99**: 177–197.
- 36 Ahmed J, Braun RD, Dunn R, Linsenmeier RA. Oxygen distribution in the macaque retina. *Invest Ophthalmol Vis Sci* 1993; **34**: 516–521.
- 37 Faber DJ, Aalders MC, Mik EG, Hooper BA, van Gemert MJ et al. Oxygen saturation-dependent absorption and scattering of blood. *Phys Rev Lett* 2004; **93**: 028102.
- 38 Bosschaart N, Edelman GJ, Aalders MC, van Leeuwen TG, Faber DJ. A literature review and novel theoretical approach on the optical properties of whole blood. *Lasers Med Sci* 2014; **29**: 453–479.
- 39 Srinivasan VJ, Radhakrishnan H. Total average blood flow and angiography in the rat retina. *J Biomed Opt* 2013; **18**: 076025.
- 40 Choi W, Baumann B, Liu JJ, Clermont AC, Feener EP et al. Measurement of pulsatile total blood flow in the human and rat retina with ultrahigh speed spectral/Fourier domain OCT. *Biomed Opt Express* 2012; **3**: 1047–1061.
- 41 Nagaoka T, Sakamoto T, Mori F, Sato E, Yoshida A. The effect of nitric oxide on retinal blood flow during hypoxia in cats. *Invest Ophthalmol Vis Sci* 2002; **43**: 3037–3044.
- 42 Hill AV. The combinations of haemoglobin with oxygen and with carbon monoxide. I. *Biochem J* 1913; **7**: 471–480.
- 43 Pournaras CJ, Rungger-Brändle E, Riva CE, Hardarson SH, Stefansson E. Regulation of retinal blood flow in health and disease. *Prog Retin Eye Res* 2008; **27**: 284–330.
- 44 Wanek J, Teng PY, Blair NP, Shahidi M. Inner retinal oxygen delivery and metabolism under normoxia and hypoxia in rat. *Invest Ophthalmol Vis Sci* 2013; **54**: 5012–5019.
- 45 Kur J, Newman EA, Chan-Ling T. Cellular and physiological mechanisms underlying blood flow regulation in the retina choroid in health disease. *Prog Retin Eye Res* 2012; **31**: 377–406.
- 46 Newman EA. Functional hyperemia and mechanisms of neurovascular coupling in the retinal vasculature. *J Cereb Blood Flow Metab* 2013; **33**: 1685–1695.
- 47 Teng PY, Wanek J, Blair NP, Shahidi M. Response of inner retinal oxygen extraction fraction to light flicker under normoxia and hypoxia in rat. *Invest Ophthalmol Vis Sci* 2014; **55**: 6055–6058.
- 48 Riva CE, Logean E, Petrig BL, Falsini B. Effect of dark adaptation on retinal blood flow. *Klin Monbl Augenheilkd* 2000; **216**: 309–310.
- 49 Braun RD, Linsenmeier RA, Goldstick TK. Oxygen consumption in the inner and outer retina of the cat. *Invest Ophthalmol Vis Sci* 1995; **36**: 542–554.
- 50 Kohner EM, Hamilton AM, Saunders SJ, Sutcliffe BA, Bulpitt CJ. The retinal blood flow in diabetes. *Diabetologia* 1975; **11**: 27–33.
- 51 Kohner EM, Patel V, Rassam SM. Role of blood flow and impaired autoregulation in the pathogenesis of diabetic retinopathy. *Diabetes* 1995; **44**: 603–607.
- 52 Feke GT, Buzney SM, Ogasawara H, Fujio N, Goger DG et al. Retinal circulatory abnormalities in type 1 diabetes. *Invest Ophthalmol Vis Sci* 1994; **35**: 2968–2975.
- 53 Bursell SE, Clermont AC, Kinsley BT, Simonson DC, Aiello LM et al. Retinal blood flow changes in patients with insulin-dependent diabetes mellitus and no diabetic retinopathy. *Invest Ophthalmol Vis Sci* 1996; **37**: 886–897.
- 54 Wright WS, McElhatten RM, Harris NR. Increase in retinal hypoxia-inducible factor-2 α , but not hypoxia, early in the progression of diabetes in the rat. *Exp Eye Res* 2011; **93**: 437–441.
- 55 Flammer J, Örgül S, Costa VP, Orzalesi N, Kriegelstein GK et al. The impact of ocular blood flow in glaucoma. *Prog Retin Eye Res* 2002; **21**: 359–393.



This license allows readers to copy, distribute and transmit the Contribution as long as it is attributed back to the author. Readers are permitted to alter, transform or build upon the Contribution as long as the resulting work is then distributed under this or a similar license. Readers are not permitted to use the Contribution for commercial purposes. Please read the full license for further details at - <http://creativecommons.org/licenses/by-nc-sa/4.0/>

Supplementary information for this article can be found on the *Light: Science & Applications*' website: (<http://www.nature.com/lisa>).