

 Open access • Journal Article • DOI:10.1038/NATURE14584

## Volcanic–plutonic parity and the differentiation of the continental crust

— [Source link](#) 

C. Brenhin Keller, Blair Schoene, Mélanie Barboni, Mélanie Barboni ...+3 more authors

**Institutions:** [Princeton University](#), [University of California, Los Angeles](#), [University of Wisconsin-Madison](#)

**Published on:** 16 Jul 2015 - [Nature](#) (Nature Publishing Group)

**Topics:** [Continental crust](#), [Felsic](#), [Volcanic rock](#), [Igneous rock](#) and [Rift](#)

Related papers:

- [Chemical and isotopic systematics of oceanic basalts. Implications for Mantle Composition and Processes](#)
- [How important is the role of crystal fractionation in making intermediate magmas? Insights from Zr and P systematics](#)
- [The Genesis of Intermediate and Silicic Magmas in Deep Crustal Hot Zones](#)
- [Crustal contributions to arc magmatism in the Andes of Central Chile](#)
- [Composition of the Continental Crust](#)

Share this paper:    

View more about this paper here: <https://typeset.io/papers/volcanic-plutonic-parity-and-the-differentiation-of-the-2uld6x62sb>

# VOLCANIC–PLUTONIC PARITY AND THE DIFFERENTIATION OF THE CONTINENTAL CRUST

PREPRINT

C. Brenhin Keller<sup>1\*</sup>, Blair Schoene<sup>1</sup>, Melanie Barboni<sup>1,2</sup>, Kyle Samperton<sup>1</sup>, and Jon M. Husson<sup>1,3</sup>

<sup>1</sup>Department of Geosciences, Guyot Hall, Princeton University, Princeton, NJ 08544

<sup>2</sup>Department of Earth, Planetary, and Space Sciences, University of California, Los Angeles, CA 90095

<sup>3</sup>Department of Geoscience, University of Wisconsin-Madison, Madison, WI 53706

## ABSTRACT

**The continental crust is central to the biological and geological history of Earth. However, crustal heterogeneity has prevented a thorough geochemical comparison of its primary igneous building blocks volcanic and plutonic rocks and the processes by which they differentiate to felsic compositions. Our analysis of a comprehensive global dataset of volcanic and plutonic whole-rock geochemistry shows that differentiation trends from primitive basaltic to felsic compositions for volcanic versus plutonic samples are generally indistinguishable in subduction zone settings, but divergent in continental rifts. Offsets in major and trace element differentiation patterns in rift settings suggest higher water content in plutonic magmas and reduced eruptibility of hydrous silicate magmas. In both tectonic settings, our results indicate that fractional crystallization, rather than crustal melting, is predominantly responsible for the production of intermediate and felsic magmas, emphasizing the role of mafic cumulates as a residue of crustal differentiation.**

## 1 INTRODUCTION

Earth is the only planet in our solar system with a high-silica continental crust, which is complemented by a low-silica oceanic crust similar to that of the Moon, Mars and Venus [1, 2]. The resulting bimodal topography [3] of oceans and continents is essential for regulating Earth's climate [4, 5] and providing elemental nutrients to the biosphere [6]. Igneous geochemistry drives our understanding of the formation and evolution of the continental crust, along with its depleted complement, the mantle [2, 7]. Detailed investigations of specific igneous systems have revealed that mantle-derived basaltic melts differentiate to higher silica contents through processes such as fractional crystallization, metamorphism, and remelting of crustal material. Though these processes are generally agreed to result in a geochemically-stratified lithosphere which increases in silica abundance from the crust-mantle boundary to the surface [2, 8], the compositional and geologic heterogeneity of the continents scaling from kilometers to micrometers has made it difficult to assess the relative importance of specific endmember processes. Solving this problem requires an understanding of why magmas a) ascend through the crust and erupt to form volcanic rocks, or b) stall and freeze at depth as plutons. Some models suggest that magma composition and volatile content dictate eruptibility [9, 10], while others emphasize physical processes such as crystal/melt segregation in magma chambers [11] resulting in complementary volcanic and plutonic compositions. Alternatively, eruptibility may be controlled by thermal constraints whereby higher magma fluxes result in more magma reaching the surface [12], in which case systematic geochemical differences between volcanic and plutonic rocks are not required. Here we test such models by taking advantage of increased availability of whole-rock compositional data to perform a comprehensive statistical analysis of the geochemical relationship between volcanic and plutonic rocks. We posit that

this comparison provides insight not only into the predominant mechanisms of igneous differentiation and the origins of crustal stratification, but also since magmas that reach the Earth's surface are more efficiently recycled back into the mantle via erosion and subduction into crust-mantle geochemical evolution over billion-year timescales.

## 2 QUANTIFYING VOLCANIC-PLUTONIC PARITY

To determine if continental plutonic and volcanic rocks are compositionally equivalent, we have applied computational statistical techniques to a dataset of major and trace element geochemical analyses, with 122,751 plutonic and 171,690 volcanic whole-rock samples of the continental crust, extracted from the EarthChem database [13]. After filtering spurious data (Methods), each dataset was subjected to weighted bootstrap Monte Carlo analysis [14], with sample weights inversely proportional to spatial sample density in order to obtain a uniform, maximally representative posterior sample distribution on the globe (Methods). This method maximises the accuracy of statistical parameters such as the mean and median, and minimises the effect of oversampling in regions that have been subjected to more intensive field study. Sampling bias is further minimised in our interpretations by focusing on intensive compositional variables, binned by differentiation proxies such as SiO<sub>2</sub> and MgO (Methods, Figures 1-2). Results are reported as the mean and two-standard-error of the mean for 2 weight percent (wt.%) SiO<sub>2</sub> bins.

The geochemistry of igneous rocks is known to correlate with tectonic setting [15, 16], arising in part from different styles of mantle melting: water-driven flux melting in subduction zones (volcanic arcs) versus decompression melting in rifts [17, 18, 19]. These contrasting processes form the basis of the classically-defined calc-alkaline versus tholeiitic differentiation

series, as observed in both major and trace element systematics [20, 16, 21, 19]. Since the proportion of volcanic versus plutonic magmatism may vary with tectonic setting, we have examined differentiation trends separately for arc and rift samples (based on geographic location for predominantly sub-200 Myr old samples; Methods) to prevent such an effect from biasing our geochemical analysis. The results (Figures 1-2) are shown along with mid-ocean ridge (MOR) differentiation trends as an endmember tholeiitic case for comparison.

Major and trace elements from both tectonic settings follow curvilinear differentiation trends (Figures 1-2), with rift volcanics falling closer to the tholeiitic MOR dataset. Elemental abundances consistently diverge for compositions more mafic than average primitive basalt (*i.e.*, < 50% SiO<sub>2</sub>), with plutonic rocks enriched in MgO and depleted in nominally incompatible major elements (Figure 1), consistent with the exposure of mafic plutonic cumulates. Enrichments in volcanic TiO<sub>2</sub> and K<sub>2</sub>O at low silica may also suggest the influence of highly eruptible peralkaline volcanics with few intrusive equivalents. Above 55% SiO<sub>2</sub>, element compositions for arc plutonic and volcanic rocks follow overlapping trends at the two-standard-error level, while rift volcanics reveal subtle enrichments in FeO and depletions in CaO and Al<sub>2</sub>O<sub>3</sub> relative to rift plutonic samples. More dramatic differences between rift volcanic and plutonic rocks are observed in the trace element data, with offsets by up to a factor of two across a wide range of SiO<sub>2</sub>. Ba and Sr are significantly enriched in plutonic relative to volcanic rift rocks above 50% SiO<sub>2</sub> (Figure 2), while conversely, felsic rift plutonic rocks show depletions in Zr, Hf, and the heavy rare earth elements (HREE). Divergences in rift samples remain when sampling only rocks <100 Ma, such that plutonic compositions are not biased towards older, basement continental crust. In addition, while rift samples are generally associated with high heat fluxes [22] that may permit anatexis of preexisting crust to produce incompatible element-enriched melts, average rift differentiation trends in Figure 1 do not show a strong tendency towards S-type [23] signatures, *e.g.*, with lower Al at high silica than in arcs.

As Zr and Hf are nominally incompatible in all major rock-forming minerals, the inflection toward decreasing Zr and Hf with increasing silica reflects saturation of zircon (ZrSiO<sub>4</sub>) [24]. Yttrium and the HREE are similarly influenced by zircon fractionation, as well as by fractionation of amphibole and garnet [25, 26]. The large divalent cations Ba and Sr, meanwhile, are primarily compatible in feldspar, particularly high-Na plagioclase [26]. Consequently, decreased feldspar fractionation and increased zircon fractionation in rift plutonic relative to rift volcanic magmas could produce the observed offsets in Zr, Hf, HREE, and Sr at a given SiO<sub>2</sub>, consistent with a less dramatic but systematic depletion of CaO and Al<sub>2</sub>O<sub>3</sub> in rift volcanics compared to plutonics (Figure 1).

### 3 THE ROLE OF WATER IN MAGMA ERUPTIBILITY

In one scenario for mineral fractionation between volcanic and plutonic rocks, eruptible felsic melt is extracted from a crystal-rich magma shortly prior to eruption, leaving behind a lower SiO<sub>2</sub>, cumulate-like plutonic residue [11]. This mechanism may be expected to enrich the plutonic residue, as is observed, in Ba and Sr due to feldspar accumulation. However, it is not

obvious why such a process would be active in rift environments but completely absent in arcs.

Differences between rift and arc magmas indicate a higher proportion of anhydrous decompression melting in rifts compared to dominantly fluid driven flux melting beneath arcs [17, 18, 19]. As seen in Figure 1, rift volcanics consistently plot closer to the dry, tholeiitic MOR differentiation trend than other continental igneous rocks, with increased FeO\* and TiO<sub>2</sub> and decreased CaO and Al<sub>2</sub>O<sub>3</sub> at a given silica content [21, 19]. The tholeiitic character of rift volcanics relative to all other continental samples is illustrated most prominently in Figure 3, in which rift volcanic rocks show initial FeO enrichment with decreasing MgO that typifies the tholeiitic differentiation trend [21, 19]. In contrast, rift plutonic and arc rocks show lower FeO\* at a given MgO and no FeO enrichment with decreasing MgO. Given the strong correlation between water content and the degree of tholeiitic versus calc-alkaline differentiation [27, 20, 21] this observation is consistent with a systematically more hydrous composition for plutonic rift relative to volcanic rift samples.

Dissolved water in silicate melts has the effect of lowering the liquidus and solidus temperatures such that most silicates saturate at lower temperatures [28, 27, 29, 20, 30], with a particularly strong effect for sodic plagioclase [28, 20]. In contrast, experiments reveal little to no effect of water content on the saturation temperature of minerals such as magnetite [31] and zircon [24]. Thus, at high water activity, crystallization of common silicates will be suppressed relative to these phases at a given temperature: zircon and magnetite are therefore expected to saturate at lower magma SiO<sub>2</sub> contents during hydrous fractionation. Increased fractional crystallization of magnetite relative to plagioclase and other silicates in hydrous magmas is responsible for FeO depletion in the calc-alkaline trend [27, 20, 21, 31]. We argue that given the dominant control of zircon on magma Zr and Hf, combined with decreased partitioning of Ba and Sr in anorthite compared to albite [26], calc-alkaline differentiation also explains enrichment of Ba and Sr and depletion of Zr, Hf, and HREEs in the melt phase relative to differentiation at lower water contents.

If Ba and Sr contents are elevated in hydrous magmas due to suppressed plagioclase stability, the Eu anomaly (Eu/Eu\*; Figure 2), typically viewed as an indicator of plagioclase fractionation during differentiation, may be expected to follow a less negative trend for hydrous differentiation. In apparent contradiction to the plagioclase fractionation hypothesis, the datasets show that Eu/Eu\* is identical in all plutonic and volcanic rocks above 52% SiO<sub>2</sub> regardless of tectonic setting. Surprisingly, however, arc Eu/Eu\* is observed to follow equally or even more negative differentiation trends than MOR samples (Figure 2). The relative lack of negative Eu/Eu\* in dry MORB tholeiites has been observed in other data compilations [32], and may suggest that water availability in a differentiating magma has little effect on resulting Eu/Eu\*. Indeed, while plagioclase is often credited as the primary driver of magma Eu/Eu\*, a compilation of published partition coefficients [26] illustrates that, for instance, orthoclase may often have a higher  $K_d$  Eu<sup>2+</sup>/Eu<sup>3+</sup> than plagioclase (Table 1). Consequently Eu/Eu\* is not directly diagnostic of plagioclase fractionation, and the lack of a more pronounced Eu anomaly in MOR and rift volcanic samples does

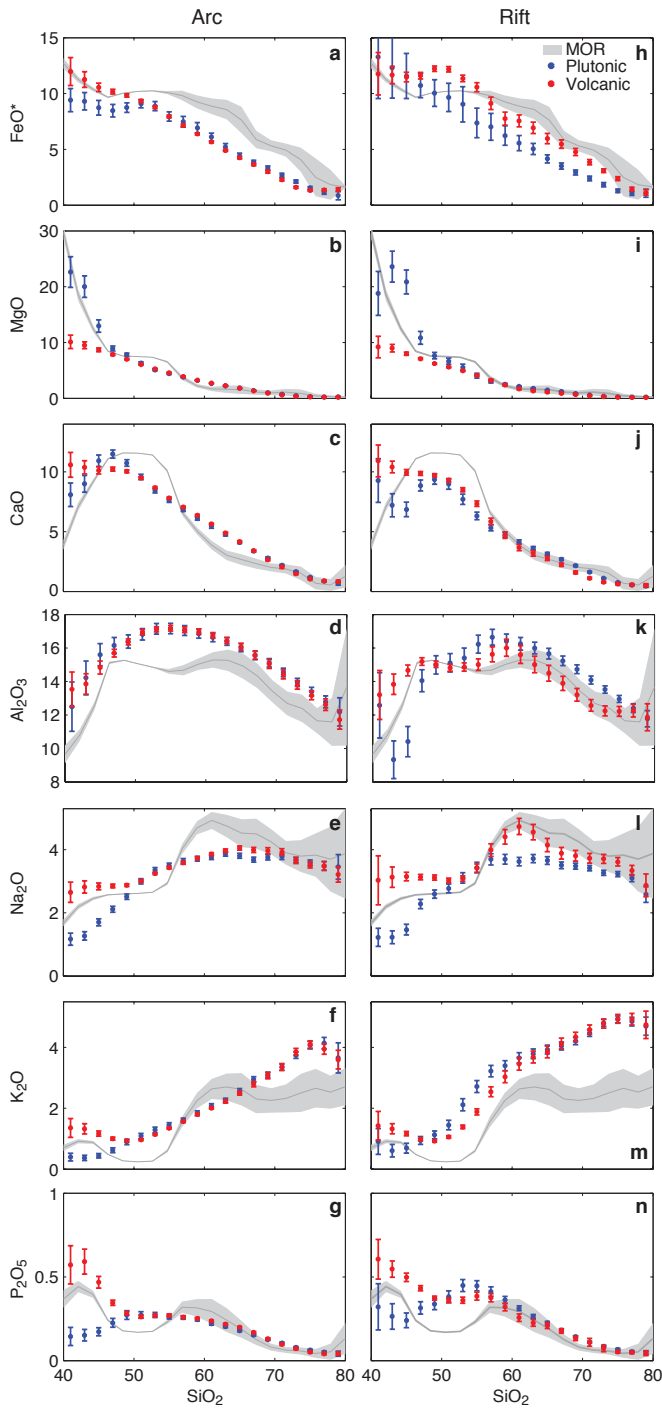


Figure 1: Major element Harker diagrams showing mean and two-standard-error uncertainties of the mean in 2% SiO<sub>2</sub> bins for plutonic (blue) and volcanic (red) samples from arc (left column) and rift (right column) tectonic settings. Mean and two-standard-error confidence intervals for average MORB and felsic MOR differentiates are shown in grey for comparison.

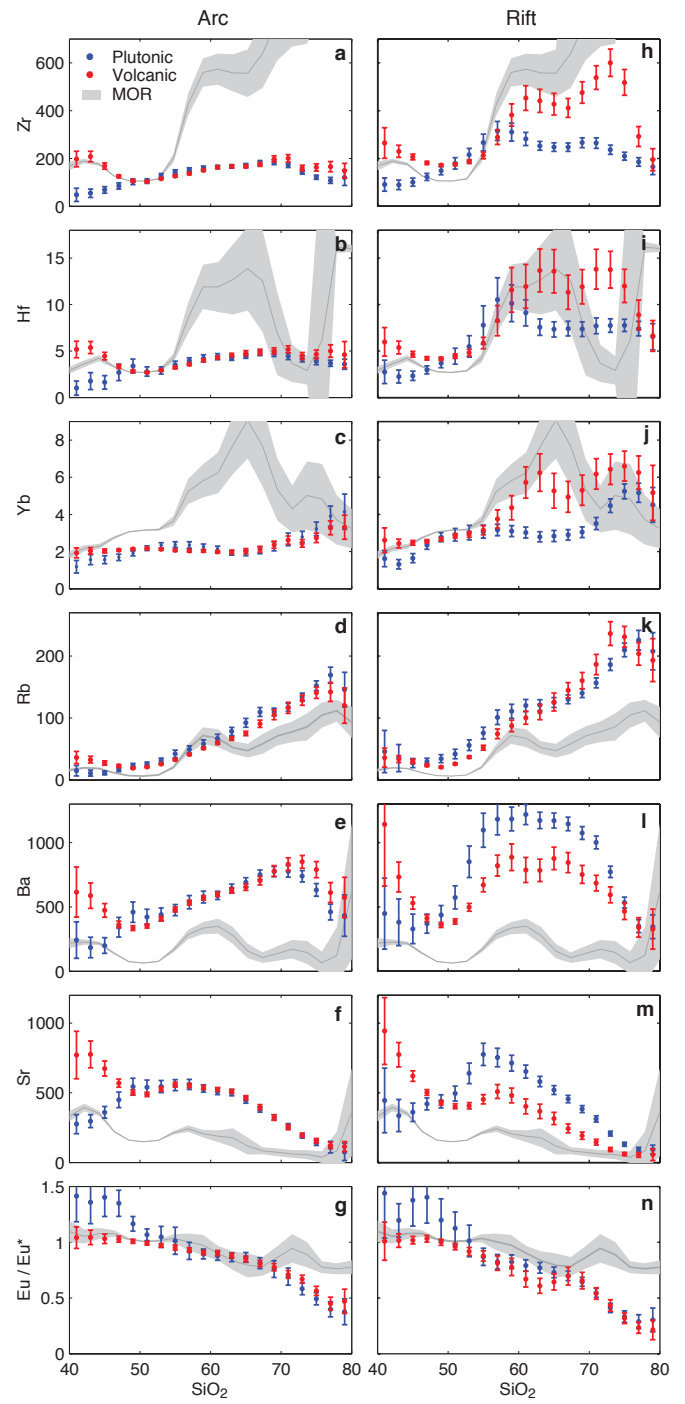


Figure 2: Trace element Harker diagrams showing mean and two-standard-error uncertainties of the mean in 2% SiO<sub>2</sub> bins for plutonic (blue) and volcanic (red) samples from arc (left column) and rift (right column) tectonic settings. Mean and two-standard-error confidence intervals for average MORB and felsic MOR differentiates are shown in grey. Europium anomaly  $Eu/Eu^*$  represents depletion ( $Eu/Eu^* < 1$ ) or enrichment ( $Eu/Eu^* > 1$ ) of  $Eu^{2+}$  relative to adjacent 3+ rare earth elements.



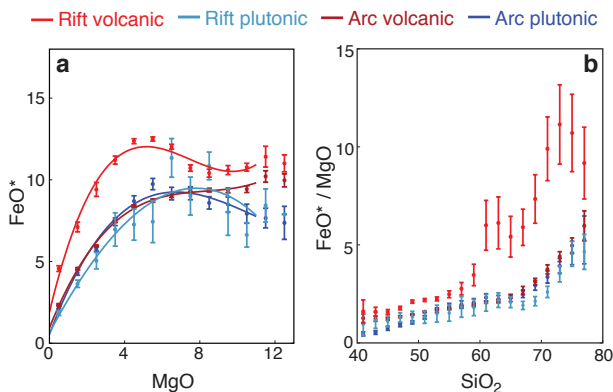


Figure 3: Fe-Mg systematics of arc and rift volcanic and plutonic rocks. Increasing FeO\* (total iron normalized as Fe<sup>2+</sup>) during differentiation from 8% MgO to 4% MgO indicates a tholeiitic differentiation trend, while decreasing FeO\* indicates a calc-alkaline trend.

not rule out increased plagioclase crystallization in these dry lithologies relative to arc and plutonic samples if coupled with complementary H<sub>2</sub>O-induced changes in the fractionation of other Eu/Eu\*-active minerals.

Given the high fluid solubility of Ba and Sr [33, 16], source enrichment by aqueous fluids provides an alternative origin of enhanced Ba and Sr concentrations in rift plutonics. Such metasomatic fluids may be released along with fluid-mobile elements such as Ba, Sr, Pb, and Rb [33, 16] by rift-associated heating of mantle lithosphere or hydrous continental crust. However, enrichment in fluid-soluble elements cannot solely explain Ba and Sr offsets in rift plutonics given the lack of equivalent offsets in other fluid-soluble elements like Rb and Pb (Figure 2), which are observed to be strongly elevated in known cases of fluid-mobile element enrichment in metasomatic veins and aureoles [16], and in experimental measurements of aqueous fluids produced by dehydration of oceanic crust [33]. Enrichment by metasomatic fluids is consistent with the lack of Eu/Eu\* offset associated with Ba and Sr enrichment, and may provide an initial water source for hydrous plutonic magmas in rifts. Melts enriched by these fluids would be driven towards calc-alkaline differentiation trends by the increased water content, with suppressed plagioclase fractionation and increased zircon fractionation generating a majority of observed volcanic-plutonic offsets.

Examination of the hydrous and anhydrous solidi for granitic compositions predicts a plutonic fate for hydrated granitoid magmas. Given the negative slope of the water-saturated solidus, hydrous magmas approach the solidus and may freeze upon decompression due to devolatilization, while decompression of dry magmas moves them away from the solidus towards greater degrees of partial melt (Figure 4; Supplementary Discussion) [29, 30, 9, 10]. Consequently, water content may correlate with emplacement depth in settings where magmas with highly variable water contents are observed. In arcs, where magmas are almost ubiquitously hydrated [34] and often water-saturated by upper crustal depths for felsic compositions, the probability of eruption may instead be dictated by variables such as magma flux, crustal stress and thermal state, as has

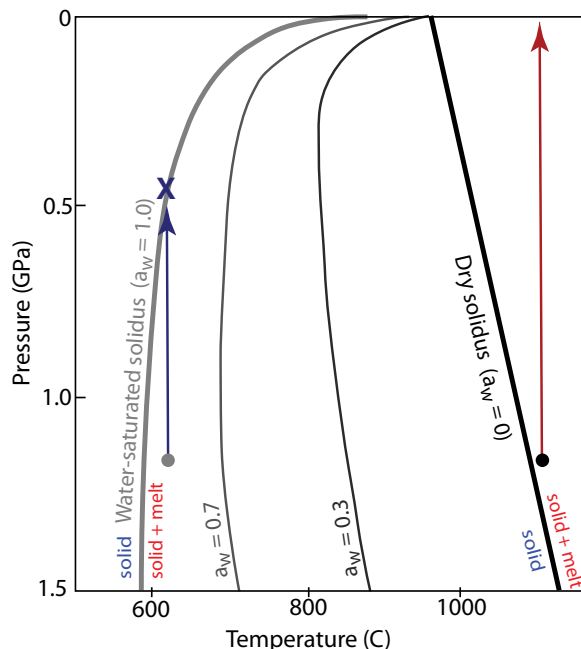


Figure 4: Water-saturated and undersaturated solidi in granitic systems. Adapted from Miller et al. [10] and Thomson [30]. Wet magmas, which are typically colder than dry magmas due to generation near the solidus of their protolith (supplementary discussion), move towards the solidus and may freeze upon decompression, while drier magmas with higher solidus temperatures move away from the solidus and may not crystallize until after eruption.

been suggested based on geochronological, thermal, and structural considerations [35, 12, 36] and as required by the identical arc volcanic and plutonic differentiation trends. Therefore, while dry tholeiitic magmas have been documented in arc settings [19], our analysis indicates that such melts do not affect average arc differentiation trends.

#### 4 GENERATION OF THE FELSIC CONTINENTAL CRUST

Despite the critical role of the continental crust on Earth, the relative contribution of two endmember processes responsible for crustal differentiation fractional crystallization of mantle-derived basaltic magma and partial melting of older crust remains uncertain [37, 38, 39, 40]. The distribution of silica in crustal rocks, both globally (Figure 5) and regionally, reveals a pronounced gap in the abundance of intermediate compositions, generally referred to as the Daly Gap [41, 37, 38, 42, 39]. This bimodality initially suggests partial melting as the dominant mechanism of differentiation [37]: low-degree melting of mantle-derived basalt with ~50% SiO<sub>2</sub> can produce granodioritic and trondhjemitic melts with ~70% SiO<sub>2</sub> or more corresponding to the two observed peaks in the silica distribution [27, 43]. In this model intermediate magmas are produced primarily by magma mixing between basaltic and granitic endmembers [44], as suggested by the observation of crystal-rich andesites [42]. Comparatively, fractional crystallization is less clearly predisposed to produce a bimodal silica distribution. Mechanisms have nonetheless been suggested by which com-

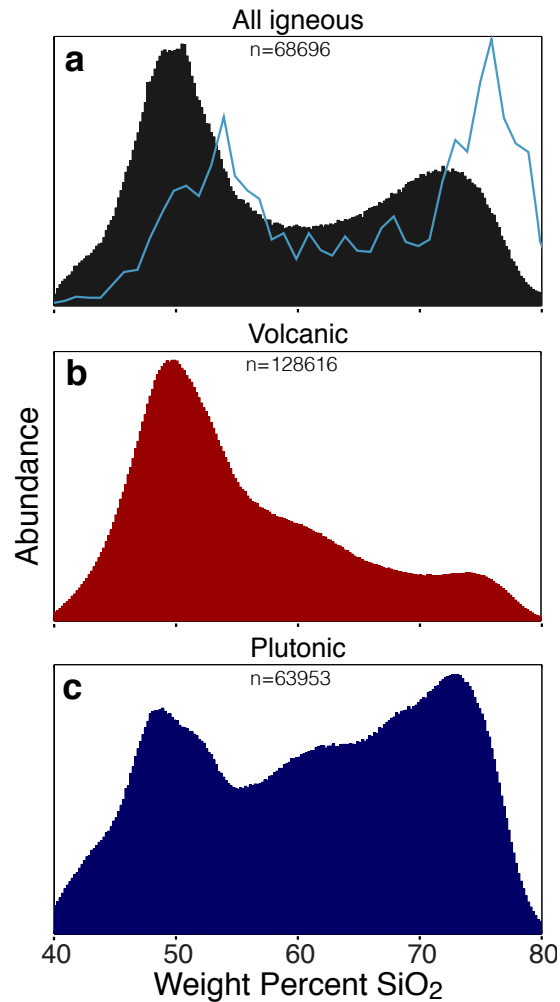


Figure 5: Histograms of rock abundance as a function of silica content for all igneous (a), volcanic (b) and plutonic (c) samples. While first observed in oceanic alkaline magma series [41, 37, 38], compositional gaps clearly emerge in a spatiotemporally weighted whole-rock global dataset (a) with peak compositions equally spaced but systematically 5 wt. %  $\text{SiO}_2$  lower than those observed in the melt inclusion histograms of [42] (blue line). The low-silica peak is dominant in volcanic samples (b), while the high-silica peak predominates in plutonic samples (c).

positional gaps may result from the systematics of crystal fractionation [38] or the dynamics of liquid-crystal separation [39].

Fractional crystallization and partial melting models may be distinguished, however, in that the two mechanisms result in contrasting major and trace element differentiation trends at intermediate compositions. Given that intermediate magmas are produced by mixing between granitic and basaltic endmembers in the partial melting model, differentiation trends in this model must follow straight mixing lines, as physical mixing between two compositional endmembers invariably produces straight lines in element-element space [45]. Fractional crystallization, in contrast, produces curved trends through continuous differentiation [46, 47, 48, 49].

Consistent with a fractional crystallization model, the observed volcanic and plutonic differentiation trends follow distinctly

curved paths, even at intermediate compositions (Figures 1-2). These curved paths resemble liquid lines of descent for fractional crystallization, overlapping with experimental batch fractional crystallization results (Figure 6a) [47, 48, 49]. Comparison of the observed trends to differentiation trends of primitive basalt subject to varying degrees of magma mixing suggest a maximum 40% contribution of magma mixing to the production of intermediate magmas relative to idealized continuous fractional crystallization (Figure 6a inset), decreasing to almost no allowed mixing relative to the experimental batch results. Abundant field and petrologic evidence for magma mixing [50, 44] suggests an underlying differentiation process intermediate in efficiency, on average, between batch and continuous fractional crystallization.

One first-order prediction of the fractional crystallization model is the production of abundant crystal cumulates as a by-product of magma differentiation, which will vary in mineralogy and composition as a function of the pressure, temperature, and extent of melt extraction [46], but must be compositionally complementary to the extracted melt, resulting in divergent cumulate and melt compositions [51]. As a result, the presence of cumulates in the plutonic record will produce observable compositional offsets between volcanic and plutonic averages for any nonlinear differentiation trends (*e.g.*, Supplementary Figure 1). Clear compositional divergence attributable to plutonic cumulates is observed below 50%  $\text{SiO}_2$  in both arc and rift settings (*e.g.*, MgO, Eu/Eu\*). However, compositional offsets between felsic (>62%  $\text{SiO}_2$ ) volcanic and plutonic differentiation trends are absent in arcs (Figures 1-2) and are parsimoniously explained in rifts by the petrologic effects of water. This lack of a felsic cumulate signature suggests that any cumulates with more than 60%  $\text{SiO}_2$  are either small in volume, minimal in degree of melt extraction, or extensively remobilized into the volcanic record – and thus of limited significance for crustal differentiation. Consequently, we propose that the production of even felsic magmas by fractional crystallization results in a predominantly mafic cumulate residue with <62%  $\text{SiO}_2$ .

To test this prediction, we conducted geochemical modeling in which cumulate compositions, volatile contents, and P-T paths representative of average crustal differentiation are estimated by inversion of 1.36 million pMELTS [52, 53] simulations to fit the observed major element differentiation paths given in Figures 1-2 (Methods). As displayed in Figure 6b-e, felsic magmas with up to 80%  $\text{SiO}_2$  are produced in equilibrium with a cumulate of no more than 60%  $\text{SiO}_2$ . In addition to anticipated outputs of MgO-enriched ultramafic olivine-clinopyroxene-garnet-spinel cumulates, MELTS modeling elucidates the origin of several previously unexplained features of our dataset (*e.g.*, subtle plutonic  $\text{K}_2\text{O}$  enrichment between 52-62%  $\text{SiO}_2$  due to orthoclase accumulation; Figure 6e) while reproducing observed differentiation trends.

The production of intermediate and felsic crust by fractional crystallization is therefore consistent with both the curvature of observed differentiation trends and the existence of mafic cumulates in the plutonic record. However, questions remain regarding crustal silica distributions in a fractional crystallization scenario. As shown in Figure 5, the compositional gap in crustal igneous rocks is largely driven by the contrasting silica distributions of volcanic and plutonic rocks, with a high-silica peak

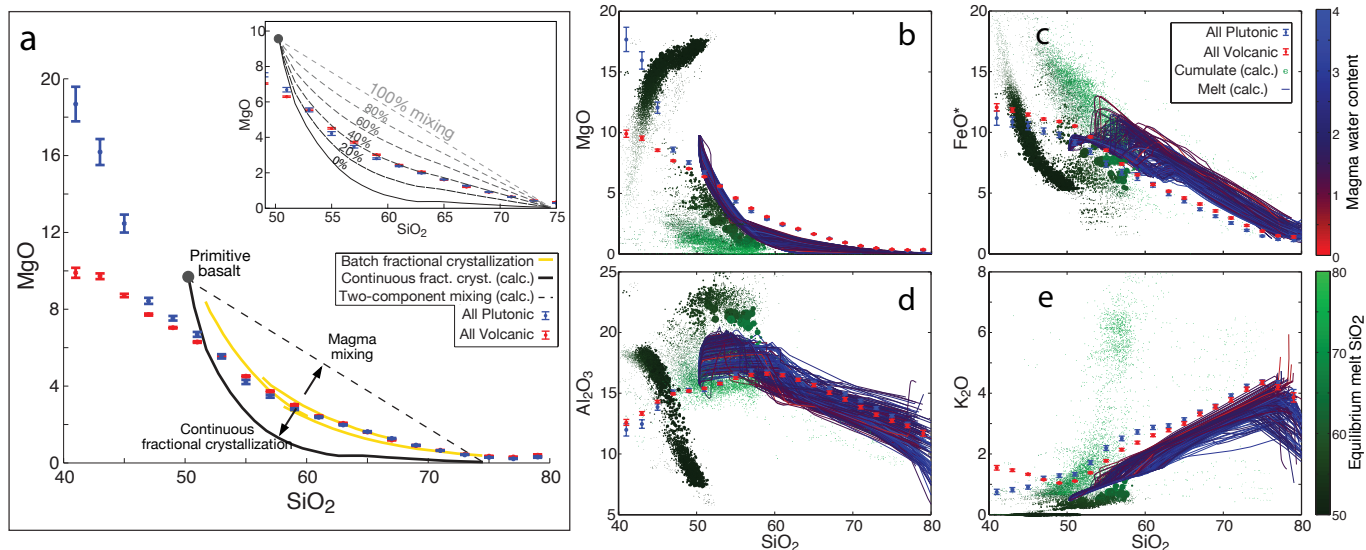


Figure 6: (a) Comparison of volcanic and plutonic MgO differentiation to experimental batch fractionation (yellow, from [47, 48, 49] as compiled by [42]) and calculated continuous fractionation trends (black, average of individual trends in **b**) from MELTS. (b-e) Results of 200 best-fitting MELTS simulations showing liquid fractionation trends (blue lines) and corresponding cumulate compositions (green points), with point size proportional to the volume of cumulates produced at each simulation step. Cumulate compositions are colored according to the silica content of the magma with which they are in equilibrium, but are plotted at their own (solid)  $\text{SiO}_2$ . Observed volcanic and plutonic differentiations trends (red and blue error-bars) in this figure include all samples regardless of tectonic environment. Fit is relative to volcanic path to avoid potential cumulate influence on melt composition.

in plutonic samples and a low-silica peak in volcanic samples. This relationship is the opposite of that predicted by proposed mechanisms of compositional gap formation by mineral-melt separation [38, 39], and may indicate that the global whole-rock compositional gap is distinct from that observed in some individual volcanic suites [41, 39]. The global Daly Gap as reflected in exposed igneous rocks appears to originate instead from superimposing a mantle-derived primitive basaltic distribution with a peak at  $\sim 52\%$   $\text{SiO}_2$  onto a differentiated plutonic silica distribution skewed towards high silica.

While mafic cumulates clearly exist in the plutonic record, the higher average silica of plutonic samples is significant in the context of differentiation by fractional crystallization, and suggests that the majority of the mafic residue from crustal differentiation is lost from or otherwise not represented in the plutonic record. This is one expression of a widely-acknowledged problem in crustal mass balance: namely, the production of continental crust with  $\sim 61\%$   $\text{SiO}_2$  from basaltic mantle inputs with  $\sim 50\%$   $\text{SiO}_2$  [54, 2]. This issue is not unique to a fractional crystallization origin of the felsic crust, but can be averted in some crustal melting models by mechanisms where the mafic residue never leaves the mantle, *e.g.*, slab melting [43]. In a fractional crystallization model (and most crustal melting models), however, a mechanism by which cumulates are physically removed from the continental crust is required, *e.g.*, lower crustal delamination [54].

Further implications for the evolution of the crust-mantle system arise from the observed differences in volcanic and plutonic differentiation in rift settings. Because volcanic rocks are more easily eroded and removed from the crust, the tendency towards higher water in rift plutonic rocks should bias the mean

crustal composition towards calc-alkaline, thus downplaying the importance of intracontinental magmatism to crustal growth. Meanwhile, the weatherable volcanics are more readily recycled and incorporated into surface biogeochemical cycles – for instance, elevated phosphorous in mafic volcanics (Figure 1) will necessarily contribute to increased phosphate availability over geologic timescales. Conversely, the preferential sequestration of elements enriched in plutonic rocks in the continental crust, such as K, Ba, and Sr (Figures 1-2), when compounded over billions of years, influences the crust-mantle elemental budget and radiogenic isotope mass balance, and provides additional constraint for quantitative models of crustal growth from the Archean to the present.

Although our results emphasize the distinction between arc and rift magmatism, the curvature of differentiation trends underscores the importance of fractional crystallization in both environments. Given the exclusively Phanerozoic age of surveyed arc and rift samples, our results suggest that it is possible to produce a bulk andesitic crust by processes of fractional crystallization and subsequent loss of mafic cumulates in modern tectonic settings, consistent with a fundamentally uniformitarian origin of the crust by processes now in operation.

## 5 METHODS

In order to elucidate the geochemical relationship between volcanic and plutonic rocks, we have prepared and analyzed a dataset of major and trace element compositional data for 171,690 volcanic and 122,751 plutonic whole-rock samples together with location and lithological information. Data was obtained from the freely-accessible EarthChem Portal, including samples from NavDat, Georoc, PetDB, and the US Geological Survey [13]. Oceanic samples were extracted

to calculate tholeiitic MOR differentiation trends, while continental samples were separated into volcanic and plutonic datasets based on reported lithology. Volcanic and Plutonic samples were further classified by cross-correlating sample location with present-day tectonic environment, using a geospatially referenced tectonic setting map modified from the USGS Global Crustal Database [55] (Supplementary Figure 2).

As illustrated in Supplementary Figure 2, only samples from active oceanic and continental arcs are included in the arc category, while samples from active rifts along with some well-established failed rifts (aulacogens) and plume-associated continental large igneous provinces were included in the rift category. Consequently, rift samples represent those whose parental basaltic magma was produced primarily by decompression melting of the mantle, while arc samples are characterized by the contributions of flux melting in the arc mantle wedge. Continental samples whose original tectonic environment could not be discerned (grey area in Supplementary Figure 2) were excluded from plots of arc versus rift geochemistry, but included in the trends of Figure 6.

In contrast to the dataset of Keller and Schoene [14], a substantial proportion (~40%) of the whole-rock samples in our larger volcanic-plutonic dataset are not associated with age constraints. Tectonic setting assignments based on present-day location are, naturally, only valid for samples produced in their current setting, limiting the accuracy of assignments for samples older than a few hundred million years. If numerous, mis-assigned samples would likely blur the distinction between arc and rift subsets. However, based on the distribution of known sample dates (Supplementary Figure 3), the proportion of older inherited samples in modern arc and rift settings is negligible in our dataset. This dominantly Phanerozoic age distribution has the additional benefit of increasing the probability that the process of tectonics and crust formation has not changed within the period of our analysis. Accordingly, differentiation diagrams including only samples with known ages in the last 100 Ma (Supplementary Figure 4) display the same trends and offsets as those including all available data, only with somewhat larger standard errors of the mean due to smaller sample size.

Due to the large size of the dataset, spurious data was filtered both manually and algorithmically. Although outlier removal may introduce bias by rejecting valid but exceptional data, the presence of extreme outliers (*e.g.*, several orders of magnitude farther from the median than the 25% C.I. and likely not representing real bulk rock compositions) necessitated a method of outlier rejection to produce optimally accurate distributions of crustal composition. Consequently, conservative outlier rejection bounds were set manually in severe cases. Data representing physically impossible conditions (*e.g.*, compositional normalization >>100%) was not considered meaningful, and thus deleted categorically.

Data were then subjected to a modified version of the statistical approach of Keller and Schoene [14]. Since geochronological constraints are not available for many samples in the volcanic-plutonic dataset, resampling weights were based only on sample location, rather than location and age as in Keller and Schoene [14], to obtain an optimally uniform posterior spatial distribution (Supplementary Figure 5). Although elemental distributions in the dataset are often not Gaussian (Supplementary Figures 6-7), the arithmetic mean of a set of sample compositions nonetheless has unique physical significance, representing the bulk composition that would be produced by physically homogenizing that sample set. Further, in contrast to the distribution of the elemental data, the distribution of the mean for each element is nearly Gaussian, due to the effects of the central limit theorem. Consequently, Figures 1-2 show the arithmetic mean of binned volcanic and plutonic samples, along with the two-standard-error of the mean; equivalent plots based instead on the median are shown in Supplementary Figure 6, with congruent results.

As the single dominant oxide component of most igneous rocks, wt.% SiO<sub>2</sub> is simpler to interpret and easier to correlate with observed rock compositions than most alternative differentiation indicators. Nonetheless, similar volcanic-plutonic trends to those in the Harker diagrams (Figures 1-2) may be observed as well with wt% MgO as the independent variable (Supplementary Figure 8), with decreasing MgO corresponding to increasing differentiation.

### 5.1 MELTS simulations

To test our predictions regarding the influence of fractional crystallization on average differentiation trends, the characteristics of cumulates in the plutonic record, and the effect of water on differentiation, we have conducted trace and major element geochemical modelling using high-performance computational resources at the DOE's National Energy Resource Supercomputing Center and the Princeton Institute for Computational Science and Engineering. The massive parameter space and the nonlinear, discontinuous equations of igneous differentiation processes such as fractional crystallization lead to highly nonunique solutions which cannot be obtained analytically except in the simplest cases. Consequently, we have approached the problem through a brute-force Monte Carlo approach, minimizing 1.36 million MELTS fractionation paths with differing starting compositions and P-T paths to fit the observed crustal differentiation trends. These simulations were conducted using the alphaMELTS [53] v1.4.1 command-line version of the MELTS and pMELTS thermodynamic modelling software [52] along with parallel scripting codes. As each forward MELTS simulation is independent, the computation is inherently highly parallel, with minimal communication requirements between processes. However, due to the design of MELTS and alphamelts, numerous small configuration, input, and output files must be written for each simulation, such that networked filesystem performance may be a limiting factor for scalability. The average primitive oceanic basalt of Kelemen et al. [56] was used as a starting composition, with varying initial H<sub>2</sub>O, CO<sub>2</sub> contents and P-T conditions. Initial H<sub>2</sub>O and CO<sub>2</sub> contents were drawn from uniform distributions between 0-4% by weight for H<sub>2</sub>O and between 0-1% for CO<sub>2</sub>. Initial oxygen fugacity was equilibrated at the Fayalite-Magnetite-Quartz buffer (FMQ) but subsequently allowed to evolve in response to mineral fractionation.

Pressure ranges of differentiation were set following the assumption that basaltic magmas must be generated in the mantle (conservatively, at depths greater than ~33 km) and solidify in the crust. Maximum pressure is limited in a typical arc setting by the depth of the subducted slab (~100 km) but was constrained slightly shallower in practice so as not to greatly exceed the calibration range of pMELTS. Consequently, initial and final pressures were drawn from uniform random distributions between 1-2.5 and 0-1 GPa, respectively, with initial temperature set by the primitive basalt liquidus and a final temperature of 700 °C. Pseudorandom P-T paths were then generated by selecting five points from a uniform distribution for both pressure and temperature between the previously generated minima and maxima for each simulation, subject to the constraint that subsequent points must be non-increasing in both pressure and temperature. Each P-T path was then constructed by linearly interpolating between these seven points. The production simulations were then run using alphaMELTS v1.2 with a fractionation threshold of 0.005 and a 10 °C cooling step size. To explore the effect of oxygen fugacity, an equivalent set of simulations was conducted with an initial oxygen fugacity one log unit above the Fayalite-Magnetite-Quartz buffer (FMQ+1). The initial volatile compositions, average volatile compositions, and P-T paths of the best-fitting 350 simulations out of 1.36\*10<sup>6</sup> simulations for initial oxygen fugacities of FMQ and FMQ+1 are shown in Supplementary Figure 8, along with a comparison of best-fitting major element paths for these two different initial redox states. Results elsewhere throughout the text show the FMQ version.



Given the large compositional and physical parameter space sampled, some simulations will inevitably fall in regions where MELTS is poorly calibrated. In addition, saturation of hydrous mafic phases (largely amphibole) is likely underestimated in general, while at high silica MELTS may underestimate the saturation of quartz and overestimate that of potassium feldspar; rhyolite-MELTS, which addresses the latter two problems [57] (not available in an alphasim scripted version at time of our simulations) may result in different inversion results. Consequently, our simulations should be reproduced with multiple versions of MELTS before assigning particular significance to second-order results such as the inverted optimal P-T paths or water contents shown in Supplementary Figure 8. Nonetheless, the MELTS results do unequivocally demonstrate that fractionation of the the calculated cumulate compositions can accurately reproduce the observed average major element differentiation trends.

### 5.2 Trace element calculations

In order to additionally simulate trace element fractionation, we calculated representative average mineral/melt partitioning using partition coefficients from the the GERM partition coefficient database [26]. Due to the strong compositional dependence of most trace element partition coefficients (mineral/melt partition coefficients tend to increase with increasing magma silicate network strength), partition coefficients were binned and interpolated as a function of magma SiO<sub>2</sub> content, propagating errors through unweighted Monte Carlo bootstrap resampling.

Trace element differentiation paths were calculated for ideal fractional crystallization using mineral phase proportions from the best-fit MELTS simulations. As seen in Supplementary Figure 9, calculated fractionation paths conform to the expectation of increasing Sr, and to a lesser degree Ba with increasing magma water content. As seen in Table 1, the compiled partition coefficient data reveals high  $K_d$  Eu/Eu\* in orthoclase as well as plagioclase feldspar, resulting in no clear correlation of magma water content with Eu anomaly during differentiation (Supplementary Figure 9).

### 5.3 Solidus temperature of hydrous and dry magmas

While the opposing slopes of the hydrous vs. dry solidi are unambiguously determined (as seen in Figure 4) from experimental data [58, 30], connecting these solidi to the preferential stalling of hydrous magmas upon decompression also requires lower average temperatures for hydrous magmas. The assumption of colder temperatures in hydrous magmas is somewhat justified since these magmas inevitably derive from systems with suppressed solidi and liquidi. As an example, let us consider an arbitrary silicate protolith to which a finite quantity of heat is added, sufficient to produce an extractable proportion of silicate magma over a geologically relevant temporal and spatial scale. Two factors suggest that, in this scenario, final magma temperature will be linked to the solidus and liquidus temperatures of the protolith.

Firstly, for processes within the solid earth, rates of heat transport are competitive with those of heat addition. Once the solidus is reached in one region of the protolith, heat can diffuse and advect to adjacent regions of unmelted protolith, until the available heat is consumed as latent heat of fusion. This is demonstrated by the extreme rarity of terrestrial supersolidus magmas, which are thought to be produced only in cases of extremely rapid heat addition such as large bolide impacts [59]. Secondly, the molar heat capacity  $C_p$  [J/mol K] of most silicates is much lower (by two to three orders of magnitude) than their molar latent heat of fusion  $\Delta H_f$  [kJ/mol] [60]. In this sense, a difference in solidus temperature is equivalent in terms of heat consumed to a comparatively small change in the extent of protolith melting. As long as the liquidus is not exceeded, then, the final magma temperature will be a consistent offset above the solidus over a range of solidus

temperatures. In other words, once the solidus is reached, the remaining available heat is primarily used to produce more magma, not raise magma temperature. We may then infer that the addition of heat to a hydrous (low-T solidus) vs. dry (high-T solidus) protolith will result in a relatively similar extent of melting – and thus a similar position relative to the appropriate solidus – but with higher temperature for the dry magma due to its higher solidus temperature. The same reasoning holds for the addition of water to an existing magma: the addition of water will promote further melting (of entrained crystals, if any, or of the surrounding wall rock), decreasing magma temperature as the melting reaction consumes the available excess enthalpy.

### 5.4 Causality of the plutonic water correlation

If our observed correlation between plutonic emplacement and geochemical signatures of higher water content is not fortuitous, there are at least two plausible causal mechanisms we must consider, with opposite directions of causality: that plutonic magmas are hydrous because they are not degassed near the surface, or that their higher water content forces them to stall at depth.

Given that the solubility of water in silicate magma increases with increasing pressure [61], there is an inherent bias towards higher water content in magmas differentiated and emplaced at higher pressure. However, our geochemical evidence for higher water in plutonic magmas requires increased water content during the period of differentiation, rather than that of final emplacement. The apparent dearth of cumulates in the upper crust (Figures 1-2) may indicate that proportionately little differentiation occurs in shallow subvolcanic magma chambers, partially decoupling depth of emplacement from depth of differentiation. If, despite these considerations, greater emplacement depth does contribute significantly to higher water content in plutonic magmas during differentiation, this effect and the associated geochemical signatures of higher water content in plutonic magmas during differentiation should be observed equally in both arc and rift environments, which is not what our data show. In contrast, higher water content leading to an increased likelihood of plutonic emplacement invokes no such contradiction if arc magmas are (as expected) uniformly hydrous at crustal depths. Such considerations, combined with a thermodynamic expectation for the stalling of hydrous magmas as discussed in the section on solidus temperature lead us to favor the latter direction (plutonic because hydrous) of causality.

### 5.5 Eu anomalies

Although negative Eu anomalies in magmas are typically attributed to plagioclase fractionation [62, 63], plagioclase is not the only mineral with substantial potential effect on Eu/Eu\*. Instead, as observed in Table 1, minerals such as orthoclase, sphene, apatite, allanite, clinopyroxene, and garnet may also substantially both the Eu budget and Eu/Eu\* ratio [26]. One potential explanation for the apparent lack of a systematic difference in Eu anomaly between dry and hydrous magmas hinges on the relative abundance of orthoclase and plagioclase feldspar. While water suppresses plagioclase stability (other factors held constant), it also increases the relative proportion – and possibly the absolute proportion – of orthoclase feldspar. Given the substantially greater  $K_d$  Eu/Eu\* and  $K_d$  Eu of orthoclase relative to anorthite (Table 1), the increased partitioning of Eu into orthoclase may offset the decrease in Eu fractionation by plagioclase, resulting in an equally negative Eu anomaly of the magma even in the case of decreased plagioclase fractionation. Such an explanation is not without caveats: for instance, considering only the feldspars, this mechanism would predict that any water-related Ba offset produced by plagioclase suppression would be similarly negated by orthoclase, which is not observed. However, the lack of any difference in Eu anomaly between arc and rift (including MOR) samples for a given silica range demonstrates that, whatever



	$K_d \text{ Eu} / K_d \text{ Eu}^*$	$K_d \text{ Eu}$
Orthoclase	69.19	3.22
Anorthite	11.79	1.32
Orthopyroxene	1.043	0.478
Biotite	0.947	0.316
Amphibole	0.8682	1.36
Clinopyroxene	0.8005	3.22
Olivine	0.5560	0.259
Sphene	0.4997	73.7
Allanite	0.4432	124.6
Apatite	0.3927	9.81
Garnet	0.2183	1.28

Table 1: Mineral/melt partition coefficients at 70% SiO<sub>2</sub>, interpolated from data of the Geochemical Earth Reference Model  $K_d$  Database[26].

the its cumulative effects on mineral stability, water activity evidently does not substantially alter magma Eu anomalies (Figure 2).

### 5.6 Melt extraction from crystal-rich magmas

One potentially significant mechanism for the production of compositional offsets between volcanic and plutonic compositions is the extraction of mobile (and potentially eruptible) melt from a magma, leaving a cumulate plutonic residue [11, 51]. At low silica, plutonic cumulates would be expected to be enriched in minerals such as olivine and pyroxene relative to non-cumulate volcanic magmas, resulting in enrichments of compatible elements such as Mg and Ni. Meanwhile, accumulation of plagioclase and pyroxene, as in (similarly mafic) anorthosites and cumulate gabbros would be expected to result in positive plutonic Eu anomalies. Evidence of such mafic cumulate processes is evident in the geologic record [64, 65, 66] as well as from our analysis of geochemistry in both arc and rift environments (Figures 1-2).

At higher silica, a similar process of melt extraction would be expected to leave plutonic cumulates enriched in feldspar along with potentially lesser proportions of amphibole, biotite, and quartz. This feldspar accumulation would enrich the felsic plutonic residue in Ba and Sr [51], as is observed in rift settings. However, felsic plutonic cumulates resulting from shallow melt extraction would not readily account for the occurrence of plutonic Ba and Sr enrichments only in rift (and not arc) settings, nor the additional volcanic enrichments of Zr and Hf in rift settings. While plagioclase saturation may be suppressed in arcs relative to rifts due to higher overall water content, plagioclase remains a dominant rock-forming mineral in arcs. Accordingly, suppression of plagioclase in arc settings is evidently not so dramatic as to prevent or even markedly reduce the formation of anorthosite or leucogabbro-like mafic cumulates with positive Eu anomalies in arcs (Figure 2), and would not be expected to prevent or reduce the formation of feldspathic-cumulates at higher silica when magma temperatures have fallen farther into the feldspar stability range. As such, melt extraction in should be expected to result in Ba and Sr enrichment of the residue in arc settings as much as in rifts. Consequently, although shallow volcanic melt extraction leaving a plutonic residue has been argued to occur in some scenarios [67] (and our results should not be taken to indicate otherwise), it does not appear to be a volumetrically significant mechanism for the production and differentiation of felsic crust.

### AUTHOR CONTRIBUTIONS

C.B.K conducted the Monte Carlo calculations and geochemical simulations. All authors participated in interpretation of the results and preparation of the manuscript.

### 6 ACKNOWLEDGEMENTS

C.B.K. was supported by a Computational Science Graduate Fellowship through U.S. Department of Energy Office of Science grant DE-FG02-97ER25308. Computational resources were provided by the National Energy Research Scientific Computing Center under DOE Office of Science Contract No. DE-AC02-05CH11231, and by the Princeton Institute for Computational Science and Engineering. Thanks to Patrick Boehnke for valuable discussion and feedback throughout the project.

### DATA AVAILABILITY

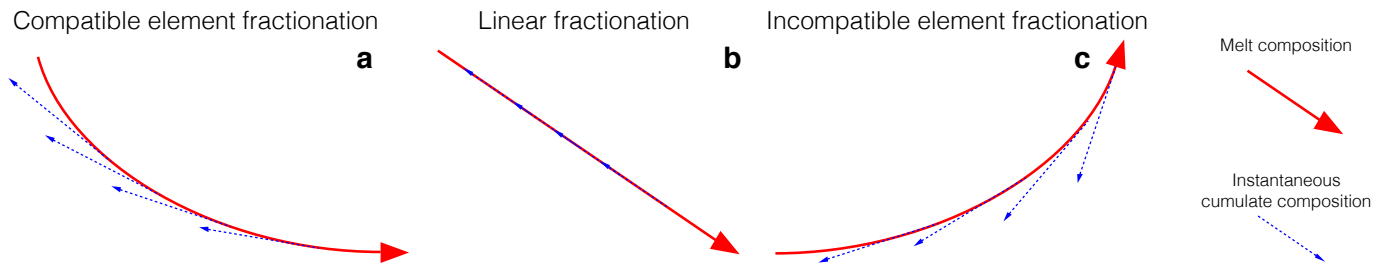
The full datasets for volcanic and plutonic whole rock composition, partition coefficients, and MELTS simulation output are freely available along with all associated source code at <https://github.com/brenhinkeller/VolcanicPlutonic>

### REFERENCES

- [1] Stuart Ross Taylor. Growth of planetary crusts. *Tectonophysics*, 161:147–156, 1989.
- [2] Roberta L Rudnick and David M Fountain. Nature and composition of the continental crust: A lower crustal perspective. *Reviews of Geophysics*, 33(3):267–309, August 1995.
- [3] P Rosenblatt, P C Pinet, and E Thouvenot. Comparative hypsometric analysis of Earth and Venus. *Geophysical Research Letters*, 21(6):465–468, March 1994.
- [4] James C G Walker, P B Hays, and J F Kasting. A negative feedback mechanism for the long-term stabilization of Earth’s surface temperature. *Journal of Geophysical Research*, 86(C10):9776–9782, 1981.
- [5] Ken Caldeira. Long-term control of atmospheric carbon dioxide; low-temperature seafloor alteration or terrestrial silicate-rock weathering? *American Journal of Science*, 295:1077–1114, 1995.
- [6] P N Froelich, M L Bender, N A Luedtke, and G R Heath. The marine phosphorus cycle. *American Journal of Science*, 282:474–511, 1982.
- [7] Albrecht W Hofmann. Mantle geochemistry: the message from oceanic volcanism. *Nature*, 385:219–229, January 1997.
- [8] Nikolas I Christensen and Walter D Mooney. Seismic velocity structure and composition of the continental crust: A global view. *Journal of Geophysical Research*, 100 (B6):9761–9788, June 1995.
- [9] Ian S E Carmichael. The andesite aqueduct: perspectives on the evolution of intermediate magmatism in west-central (105–99°W) Mexico. *Contributions to Mineralogy and Petrology*, 143(6):641–663, September 2002.

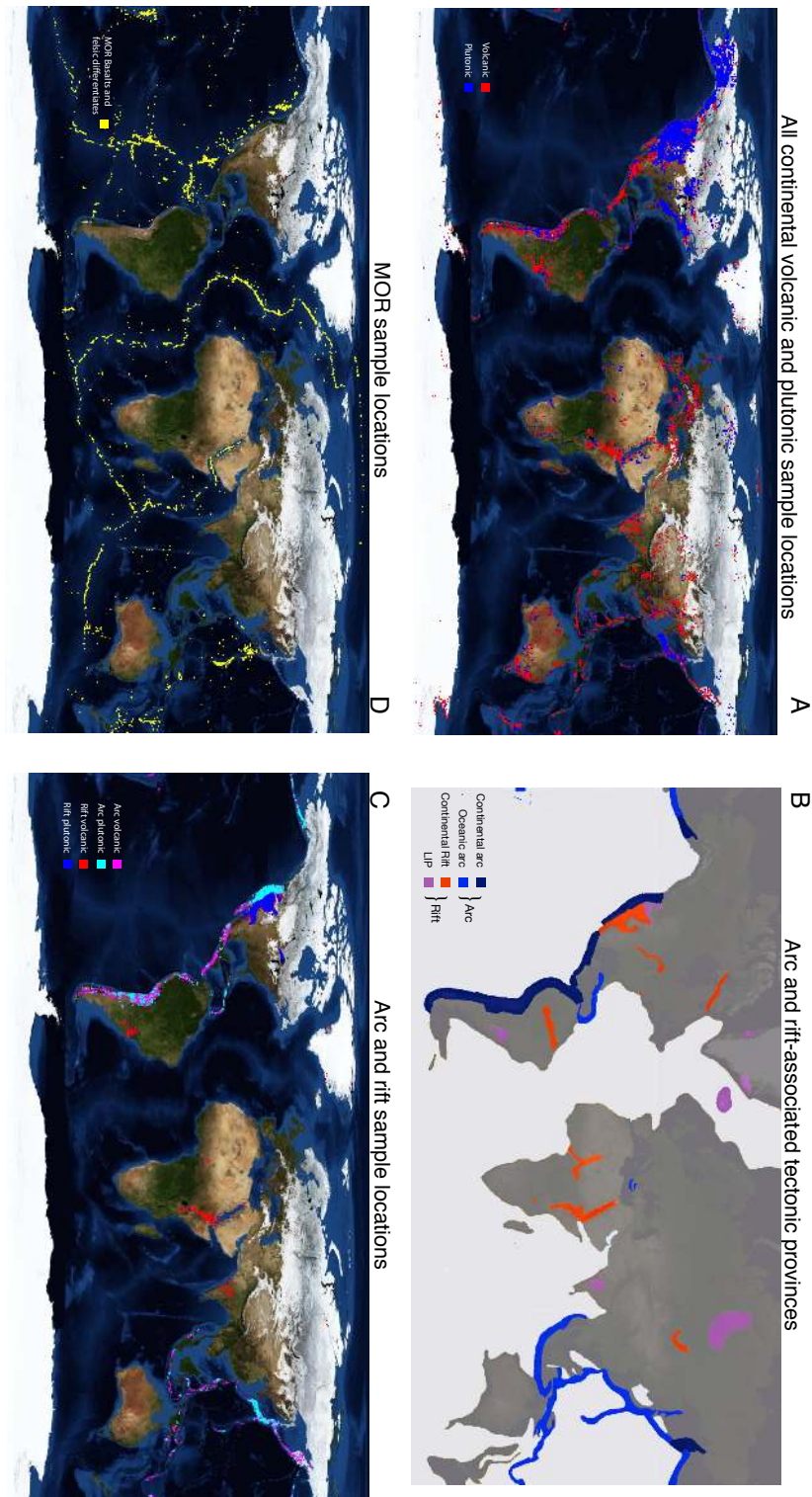
- [10] Calvin F Miller, Susanne Meschter McDowell, and Russell W Mapes. Hot and cold granites? Implications of zircon saturation temperatures and preservation of inheritance. *Geology*, 31(6):529–532, 2003.
- [11] Olivier Bachmann, Calvin F Miller, and S L de Silva. The volcanic–plutonic connection as a stage for understanding crustal magmatism. *Journal of Volcanology and Geothermal Research*, 167:1–23, 2007.
- [12] Catherine Annen. From plutons to magma chambers: Thermal constraints on the accumulation of eruptible silicic magma in the upper crust. *Earth and Planetary Science Letters*, 284:409–416, 2009.
- [13] EarthChem. EarthChem Portal, January 2010. URL <http://www.earthchem.org/>.
- [14] C Brenhin Keller and Blair Schoene. Statistical geochemistry reveals disruption in secular lithospheric evolution about 2.5Gyr ago. *Nature*, 485(7399):490–493, May 2012.
- [15] Julian A Pearce, Nigel B W Harris, and Andrew G Tindle. Trace Element Discrimination Diagrams for the Tectonic Interpretation of Granitic Rocks. *Journal of Petrology*, 25(4):956–983, November 1984.
- [16] Gray E Bebout. 4.20 Chemical and Isotopic Cycling in Subduction Zones. In Roberta L Rudnick, editor, *Treatise on Geochemistry*, pages 703–747. Elsevier, 2014.
- [17] W S Fyfe and A R McBirney. Subduction and the structure of andesitic volcanic belts. *American Journal of Science*, 275A:285–297, 1975.
- [18] D K Bailey. The chemical and thermal evolution of rifts. *Tectonophysics*, 94(1-4):585–597, May 1983.
- [19] Timothy L Grove, Christy B Till, and M J Krawczynski. The role of H<sub>2</sub>O in subduction zone magmatism. *Annual Review of Earth and Planetary Sciences*, 40:413–439, March 2012.
- [20] T W Sisson and Timothy L Grove. Experimental investigations of the role of H<sub>2</sub>O in calc-alkaline differentiation and subduction zone magmatism. *Contributions to Mineralogy and Petrology*, 113:143–166, 1993.
- [21] Mindy M Zimmer, Terry Plank, Erik H Hauri, Gene M Yogodzinski, Peter Stelling, Jessica Larsen, Brad S Singer, Brian Jicha, Charles Mandeville, and Christopher J Nye. The Role of Water in Generating the Calc-alkaline Trend: New Volatile Data for Aleutian Magmas and a New Tholeiitic Index. *Journal of Petrology*, 51(12):2411–2444, 2010.
- [22] P Morgan. Heat flow in rift zones. In G Pálmason, editor, *Continental and Oceanic Rifts, Geodynamics Series*, pages 107–122. American Geophysical Union, 1982.
- [23] A J R White, J D Clemens, J R Holloway, L T Silver, Bruce W Chappell, and V J Wall. S-type granites and their probable absence in southwestern North America. *Geology*, 14(2):115, 1986.
- [24] Patrick Boehnke, E Bruce Watson, Dustin Trail, T Mark Harrison, and Axel K Schmitt. Zircon saturation revisited. *Chemical Geology*, 351:324–334, August 2013.
- [25] C C Schnetzler and John A Philpotts. Partition coefficients of rare-earth elements between igneous matrix material and rock-forming mineral phenocrysts—II. *Geochimica et Cosmochimica Acta*, 34(3):331–340, March 1970.
- [26] GERM. Geochemical Earth Reference Model Partition Coefficient Database, January 2013. URL <http://www.earthref.org/KDD/>.
- [27] Trevor H Green and A E Ringwood. Genesis of the calc-alkaline igneous rock suite. *Contributions to Mineralogy and Petrology*, 18(2):105–162, 1968.
- [28] H S Yoder, Jr. Diopside-Anorthite-Water at Five and Ten Kilobars and Its Bearing on Explosive Volcanism. *Year Book of the Carnegie Institution of Washington*, 64:82–89, 1965.
- [29] C Wayne Burnham and N F Davis. The role of H<sub>2</sub>O in silicate melts; II, Thermodynamic and phase relations in the system NaAlSi<sub>3</sub>O<sub>8</sub> - H<sub>2</sub>O to 10 kilobars, 700 degrees to 1100 degrees C. *American Journal of Science*, 274(8):902–940, October 1974.
- [30] Alan Bruce Thomson. Fertility of crustal rocks during anatexis. *Transactions of the Royal Society of Edinburgh: Earth Sciences*, 87:1–10, 1996.
- [31] R E Botcharnikov, R R Almeev, J Koepke, and F Holtz. Phase relations and liquid lines of descent in hydrous ferrobasalt—implications for the Skaergaard intrusion and Columbia River flood basalts. *Journal of Petrology*, 49(9):1687–1727, 2008.
- [32] S Sun and William F McDonough. Chemical and isotopic systematics of oceanic basalts: implications for mantle composition and processes. In A D Saunders and M J Norry, editors, *Magmatism in the Ocean Basins, Geological Society Special Publication*, pages 313–345. Geological Society, 1989.
- [33] Y Tatsumi, D L Hamilton, and R W Nesbitt. Chemical characteristics of fluid phase released from a subducted lithosphere and origin of arc magmas: evidence from high-pressure experiments and natural rocks. *Journal of Volcanology and Geothermal Research*, 29:293–309, 1986.
- [34] Terry Plank, Katherine A Kelley, Mindy M Zimmer, Erik H Hauri, and Paul J Wallace. Why do mafic arc magmas contain 4 wt. percent water on average? *Earth and Planetary Science Letters*, 364:168–179, February 2013.
- [35] Allen F Glazner, John M Bartley, Drew S Coleman, Walt Gray, and Ryan Z Taylor. Are plutons assembled over millions of years by amalgamation from small magma chambers? *GSA Today*, 14(4/5):4–11, 2004.
- [36] Nick Petford, Ross C Kerr, and John R Lister. Dike transport of granitoid magmas. *Geology*, 21(9):845–848, 1993.
- [37] F Chayes. Relative abundance of intermediate members of the oceanic basalt-trachyte association. *Journal of Geophysical Research*, 68(5):1519–1534, March 1963.
- [38] D A Clague. The Oceanic Basalt-Trachyte Association: An Explanation of the Daly Gap. *The Journal of Geology*, 86(6):739–743, November 1978.
- [39] Josef Dufek and Olivier Bachmann. Quantum magmatism: Magmatic compositional gaps generated by melt-crystal dynamics. *Geology*, 38(8):687–690, July 2010.

- [40] Cin-Ty Aeolus Lee and Olivier Bachmann. How important is the role of crystal fractionation in making intermediate magmas? Insights from Zr and P systematics. *Earth and Planetary Science Letters*, 393:266–274, May 2014.
- [41] Reginald Aldworth Daly. The Geology of Ascension Island. *Proceedings of the American Academy of Arts and Sciences*, 60(1):3–80, June 1925.
- [42] Olivier Reubi and Jonathan D Blundy. A dearth of intermediate melts at subduction zone volcanoes and the petrogenesis of arc andesites. *Nature*, 461(7268):1269–1273, October 2009.
- [43] Mark S Drummond and Marc J Defant. A model for trondhjemite-tonalite-dacite genesis and crustal growth via slab melting: Archean to modern comparisons. *Journal of Geophysical Research*, 95(B13):21503–21521, December 1990.
- [44] Adam J R Kent, Cristina Darr, Alison M Koleszar, Morgan J Salisbury, and Kari M Cooper. Preferential eruption of andesitic magmas through recharge filtering. *Nature Geoscience*, 3(9):631–636, August 2010.
- [45] Charles H Langmuir, Robert D Vocke, Jr., Gilbert N Hanson, and Stanley R Hart. A general mixing equation with applications to Icelandic basalts. *Earth and Planetary Science Letters*, 37(3):380–392, January 1978.
- [46] Norman L Bowen. *The Evolution of the Igneous Rocks*. Oxford University Press, 1928.
- [47] Timothy L Grove, Julie M Donnelly-Nolan, and T Housh. Magmatic processes that generated the rhyolite of Glass Mountain, Medicine Lake volcano, N. California. *Contributions to Mineralogy and Petrology*, 127:205–223, 1997.
- [48] Othmar Müntener, Peter B Kelemen, and Timothy L Grove. The role of H<sub>2</sub>O during crystallization of primitive arc magmas under uppermost mantle conditions and genesis of igneous pyroxenites: an experimental study. *Contributions to Mineralogy and Petrology*, 141(6):643–658, September 2001.
- [49] R Alonso-Perez, Othmar Müntener, and Peter Ulmer. Igneous garnet and amphibole fractionation in the roots of island arcs: experimental constraints on andesitic liquids. *Contributions to Mineralogy and Petrology*, 157:541–558, 2009.
- [50] John C Eichelberger, Darren G Chertkoff, Scott T Dreher, and Christopher J Nye. Magmas in collision: Rethinking chemical zonation in silicic magmas. *Geology*, 28(7):603–606, 2000.
- [51] Sarah E Gelman, Chad D Deering, Olivier Bachmann, Christian Huber, and Francisco J Gutierrez. Identifying the crystal graveyards remaining after large silicic eruptions. *Earth and Planetary Science Letters*, 403:299–306, October 2014.
- [52] Mark S Ghiorso, Marc M Hirschmann, Peter W Reiners, and Victor C Kress, III. The pMELTS: A revision of MELTS for improved calculation of phase relations and major element partitioning related to partial melting of the mantle to 3 GPa. *Geochemistry Geophysics Geosystems*, 3(5):1–36, May 2002.
- [53] Paula M Smith and Paul D Asimow. Adiabatic 1-ph: A new public front-end to the MELTS, pMELTS, and pHMELTS models. *Geochemistry Geophysics Geosystems*, 6(1):1–8, 2005.
- [54] Robert Woodbury Kay and Suzanne Mahlburg Kay. Creation and destruction of lower continental crust. *Geologische Rundschau*, 80(2):259–278, 1991.
- [55] USGS. US Geological Survey Global Crustal Database Geologic Province and Thermo-Tectonic Age Maps, January 1997. URL <http://earthquake.usgs.gov/research/structure/crust/maps.php>.
- [56] Peter B Kelemen, K Hanghøj, and A R Greene. 4.21 One View of the Geochemistry of Subduction-Related Magmatic Arcs, with an Emphasis on Primitive Andesite and Lower Crust. In Roberta L Rudnick, editor, *Treatise on Geochemistry*, pages 749–806. Elsevier, 2014.
- [57] Guilherme A R Gualda, Mark S Ghiorso, R V Lemons, and T L Carley. Rhyolite-MELTS: a Modified Calibration of MELTS Optimized for Silica-rich, Fluid-bearing Magmatic Systems. *Journal of Petrology*, 53(5):875–890, April 2012.
- [58] D H Green. Experimental melting studies on a model upper mantle composition at high pressure under water-saturated and water-undersaturated conditions. *Earth and Planetary Science Letters*, 19(1):37–53, May 1973.
- [59] Michael J Zieg and Bruce D Marsh. The Sudbury Igneous Complex: Viscous emulsion differentiation of a superheated impact melt sheet. *Geological Society of America Bulletin*, 117(11):1427–1450, 2005.
- [60] TJB Holland and R Powell. An improved and extended internally consistent thermodynamic dataset for phases of petrological interest, involving a new equation of state for solids. *Journal of Metamorphic Geology*, 29:333–383, 2011.
- [61] D L Hamilton, C Wayne Burnham, and E F Osborn. The Solubility of Water and Effects of Oxygen Fugacity and Water Content on Crystallization in Mafic Magmas. *Journal of Petrology*, 5(1):21–39, 1964.
- [62] John A Philpotts and C C Schnetzler. Europium anomalies and the genesis of basalt. *Chemical Geology*, 3:5–13, 1968.
- [63] D F Weill and M J Drake. Europium Anomaly in Plagioclase Feldspar: Experimental Results and Semiquantitative Model. *Science*, 180(4090):1059–1060, June 1973.
- [64] R H Hunter and R S J Sparks. The differentiation of the Skaergaard Intrusion. *Contributions to Mineralogy and Petrology*, 95(4):451–461, April 1987.
- [65] Lewis D Ashwal. *Anorthosites*. Minerals and Rocks. Springer-Verlag, 1993.
- [66] Oliver Jagoutz and Max W Schmidt. The formation and bulk composition of modern juvenile continental crust: The Kohistan arc. *Chemical Geology*, 298–299:79–96, 2012.
- [67] Olivier Bachmann. On the Origin of Crystal-poor Rhyolites: Extracted from Batholithic Crystal Mushes. *Journal of Petrology*, 45(8):1565–1582, July 2004.



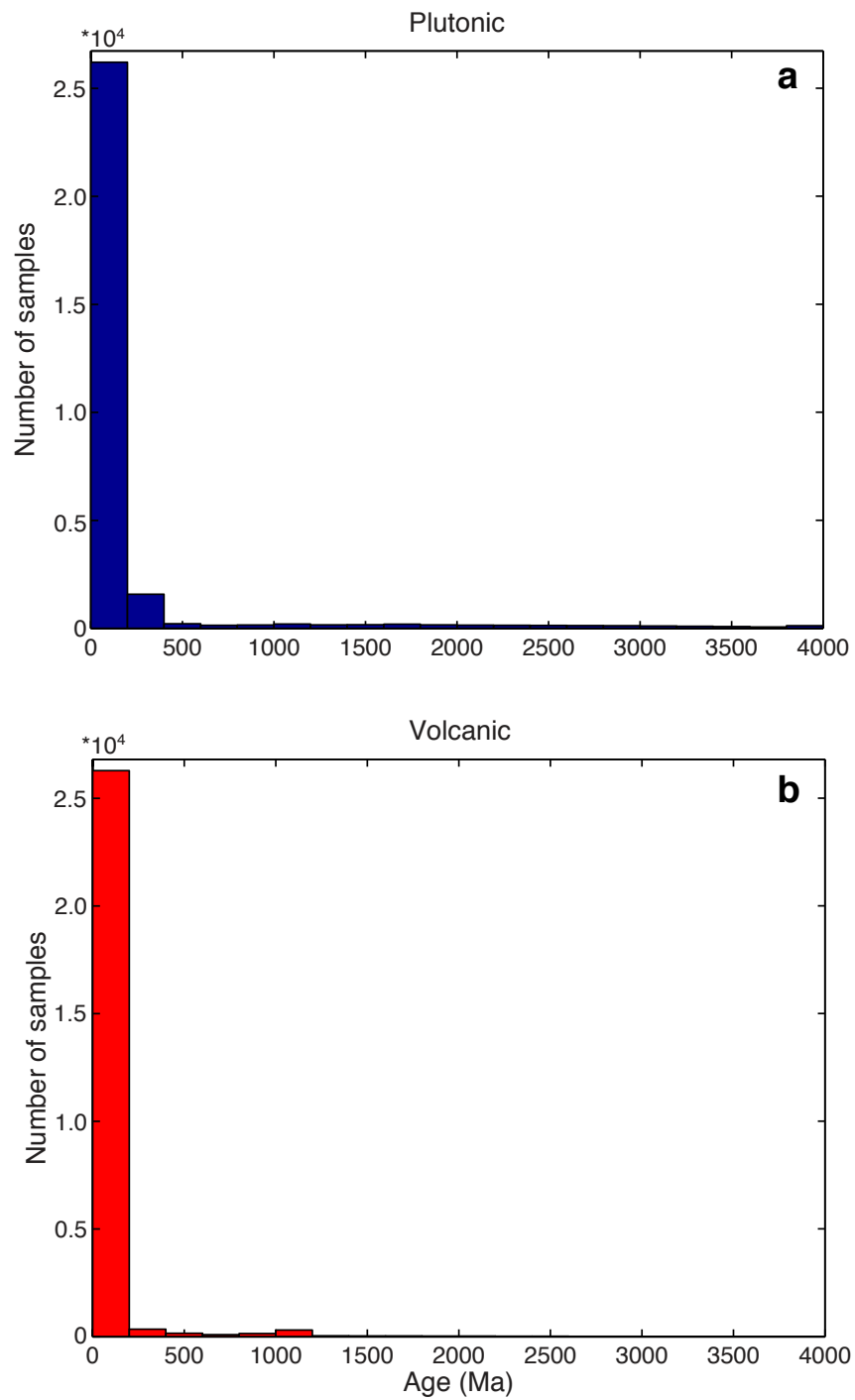
Supplementary Figure 1: Schematic illustration of instantaneous cumulate compositions required by fractionation trends, illustrating the offset between melt and cumulate trajectories for curved (a,c) and linear (b) fractionation trends. Instantaneous cumulate compositions will fall along blue line tangent to the melt curve, with the extent of offset along this line correlating with the efficiency of cumulate extraction. Relatively efficient fractionation, corresponding to a large compositional offset and a high-curvature differentiation trend, is suggested by the observed curvature of major and trace element differentiation trends (Figures 1-2); efficient differentiation is additionally consistent with thermal constraints [e.g., 12] which indicate limited heat budgets for crustal differentiation.



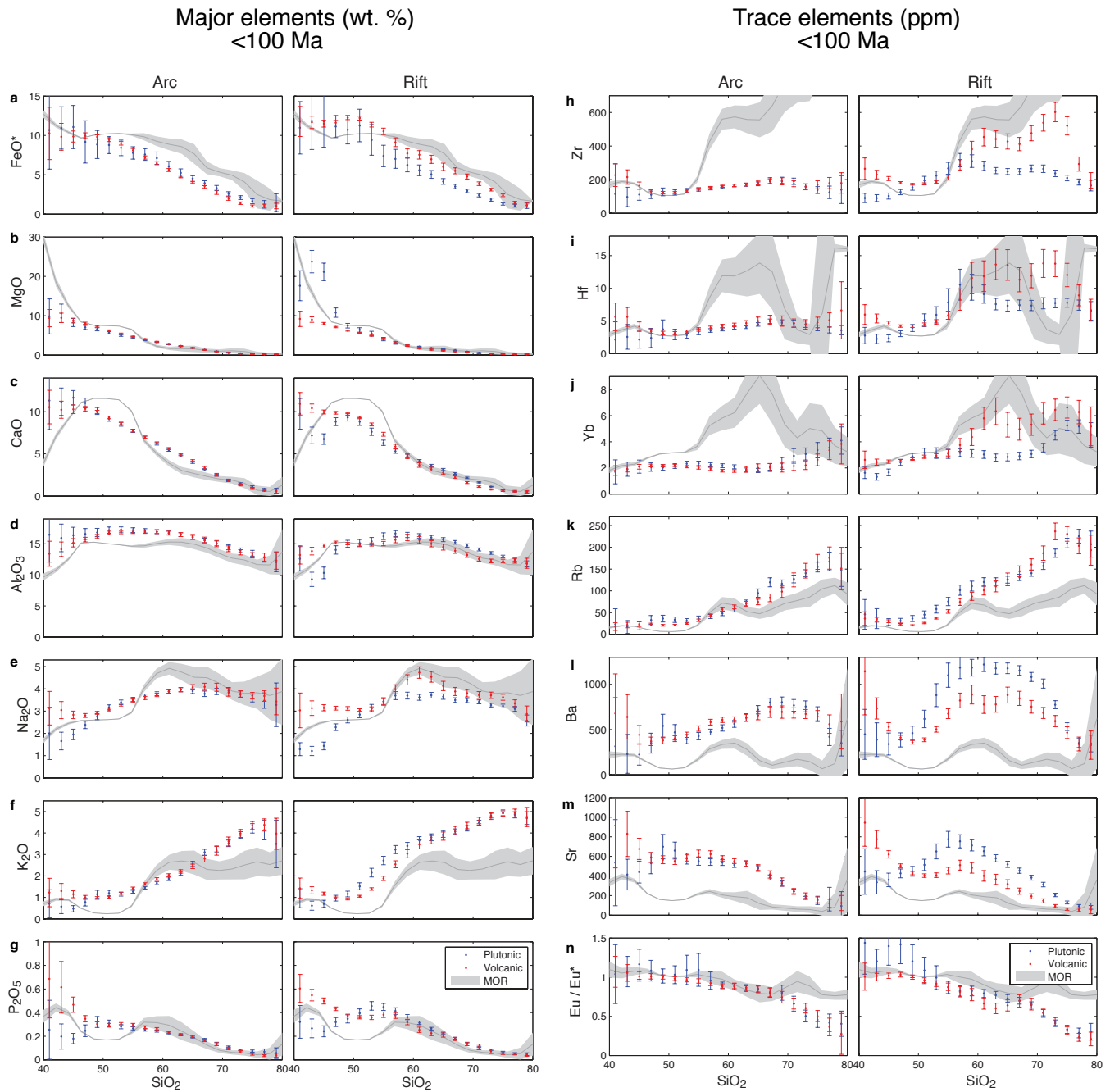


Supplementary Figure 2: Sample locations and tectonic setting assignments. a: All volcanic and plutonic sample locations (n=294,347). b: Tectonic setting map modified from the USGS Global Crustal Database [55] c: Assigned arc and rift volcanic and plutonic sample locations (n=141,561). d: Oceanic (MOR) sample locations (n=48,605). Plutonic samples are plotted above and may obscure full range of volcanic samples. Samples not originating in explicit arc or rift provinces (grey area in b) were excluded from setting-specific differentiation trends, but included in the general volcanic and plutonic differentiation trends of Figure 6.

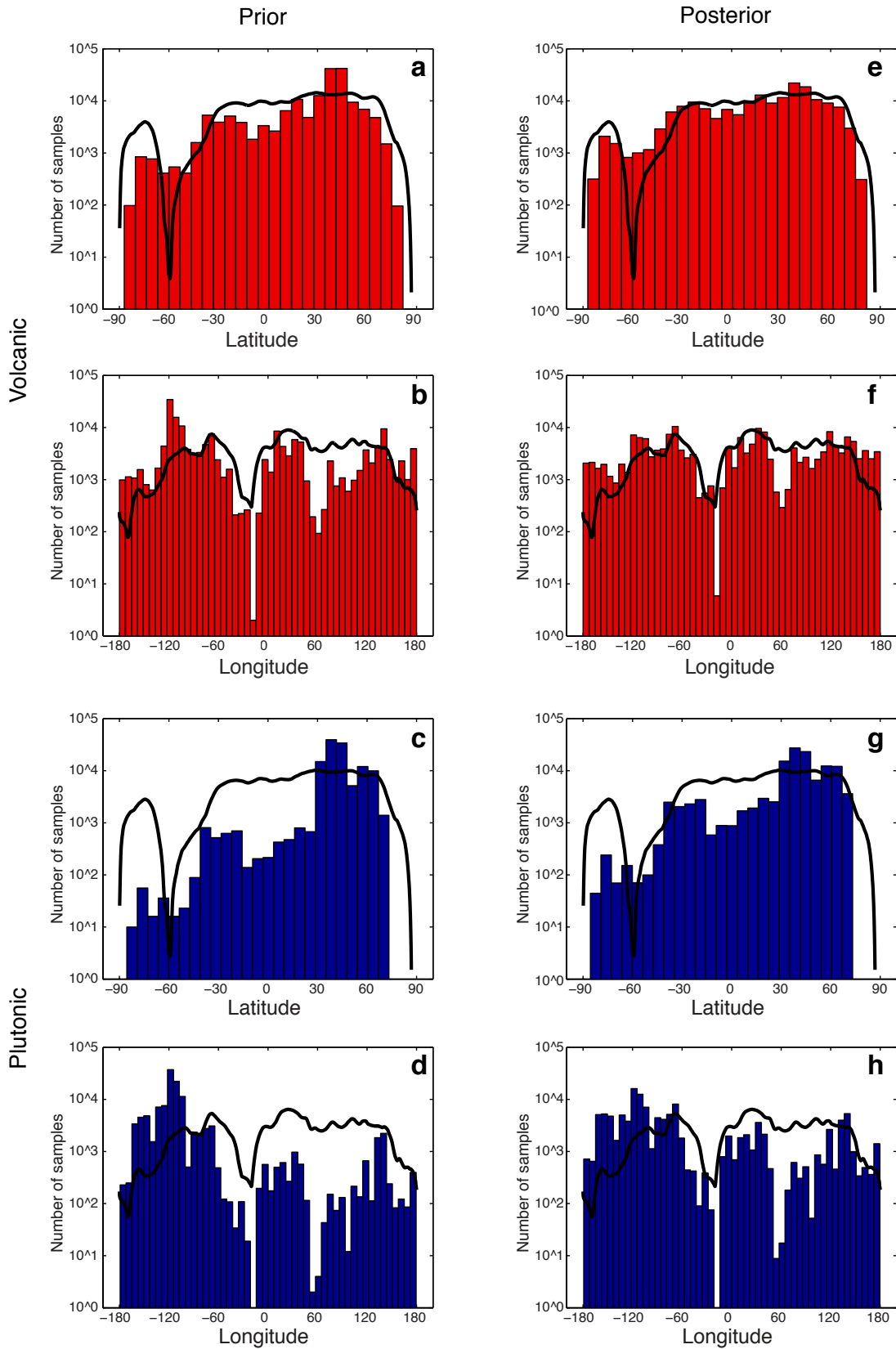




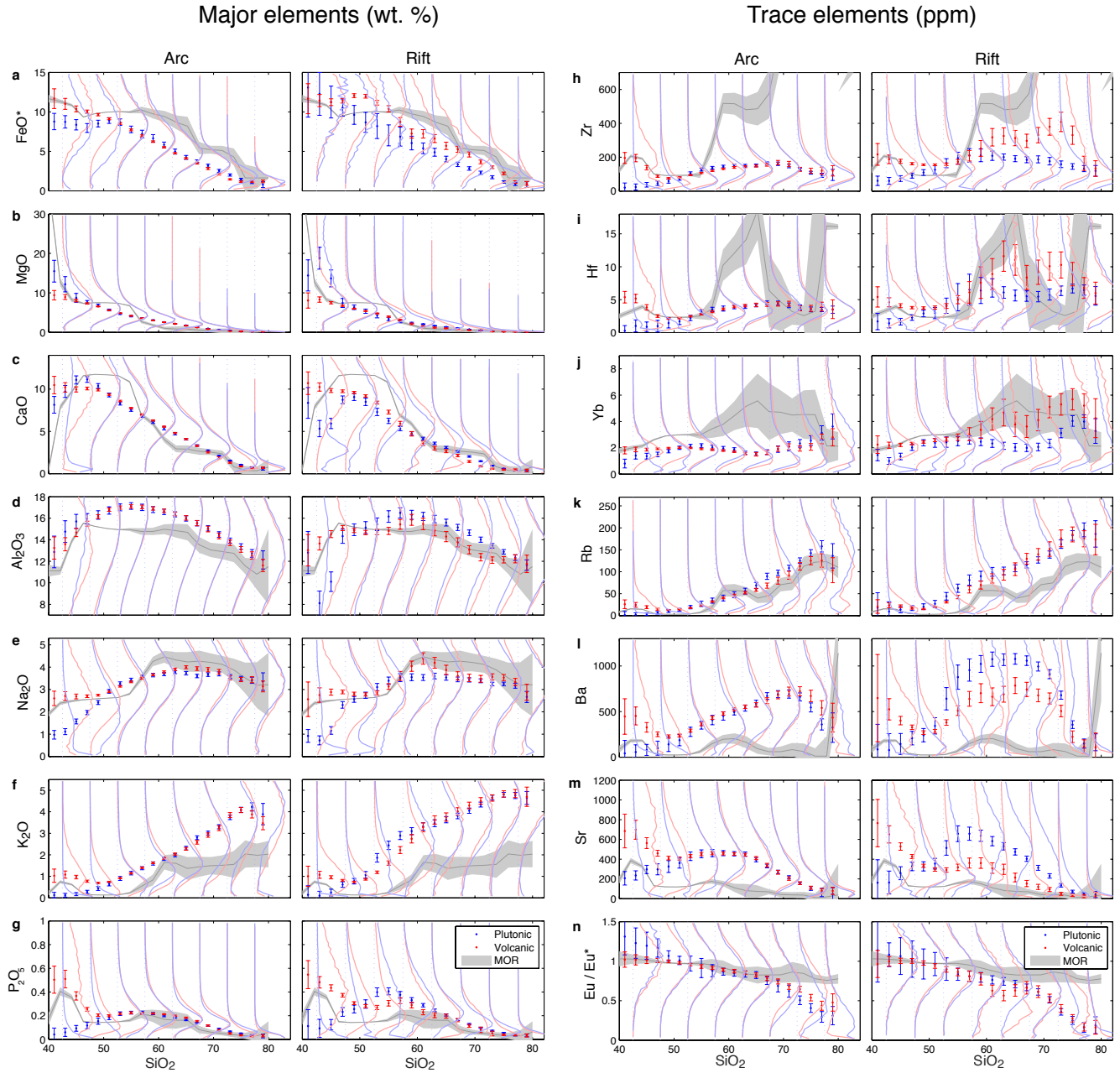
Supplementary Figure 3: Age distributions for plutonic (a) and volcanic (b) samples with known ages. Both are dominated by Phanerozoic (<540 Ma) samples, with a slightly greater proportion of pre-200 Ma samples in the plutonic distribution.



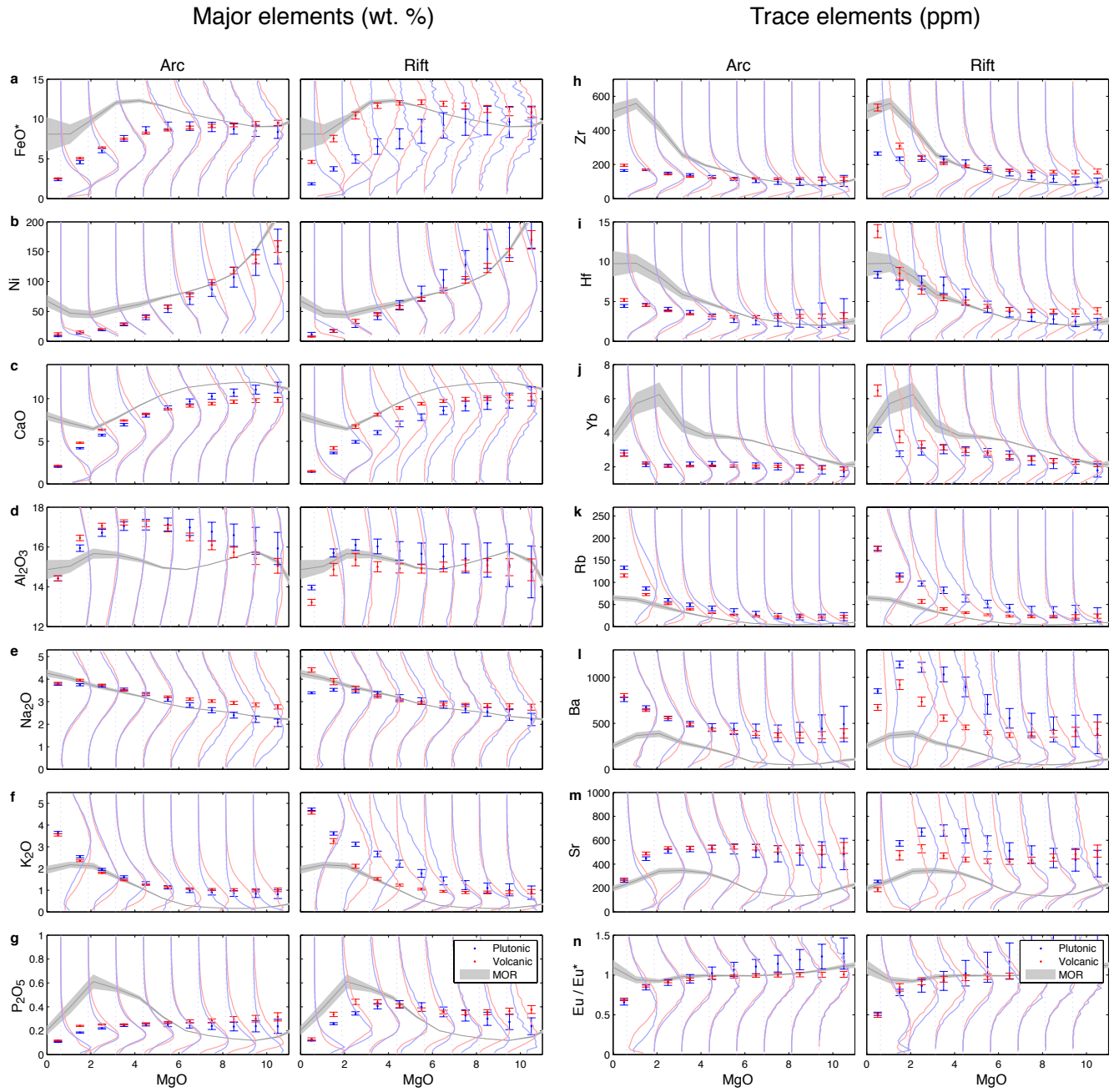
Supplementary Figure 4: Mean major (a-g) and trace element (h-n) differentiation trends a function of  $\text{SiO}_2$  (binned in 2 wt.% intervals) along with two-standard-error uncertainties (error bars) for volcanic (red) and plutonic (blue) samples with known ages less than 100 Ma, along with tholeiitic mid ocean ridge differentiates (grey outline).



Supplementary Figure 5: Prior (original data, a-d) and posterior (after Monte-Carlo analysis, e-h) sample distributions in log scale for both volcanic and plutonic samples. Ideal distributions given uniform sampling of the continents (black line) shown for comparison. Since bootstrap resampling probabilities are weighted to reject no more than 90% of samples, improvement in posterior distribution is limited to roughly one log unit.

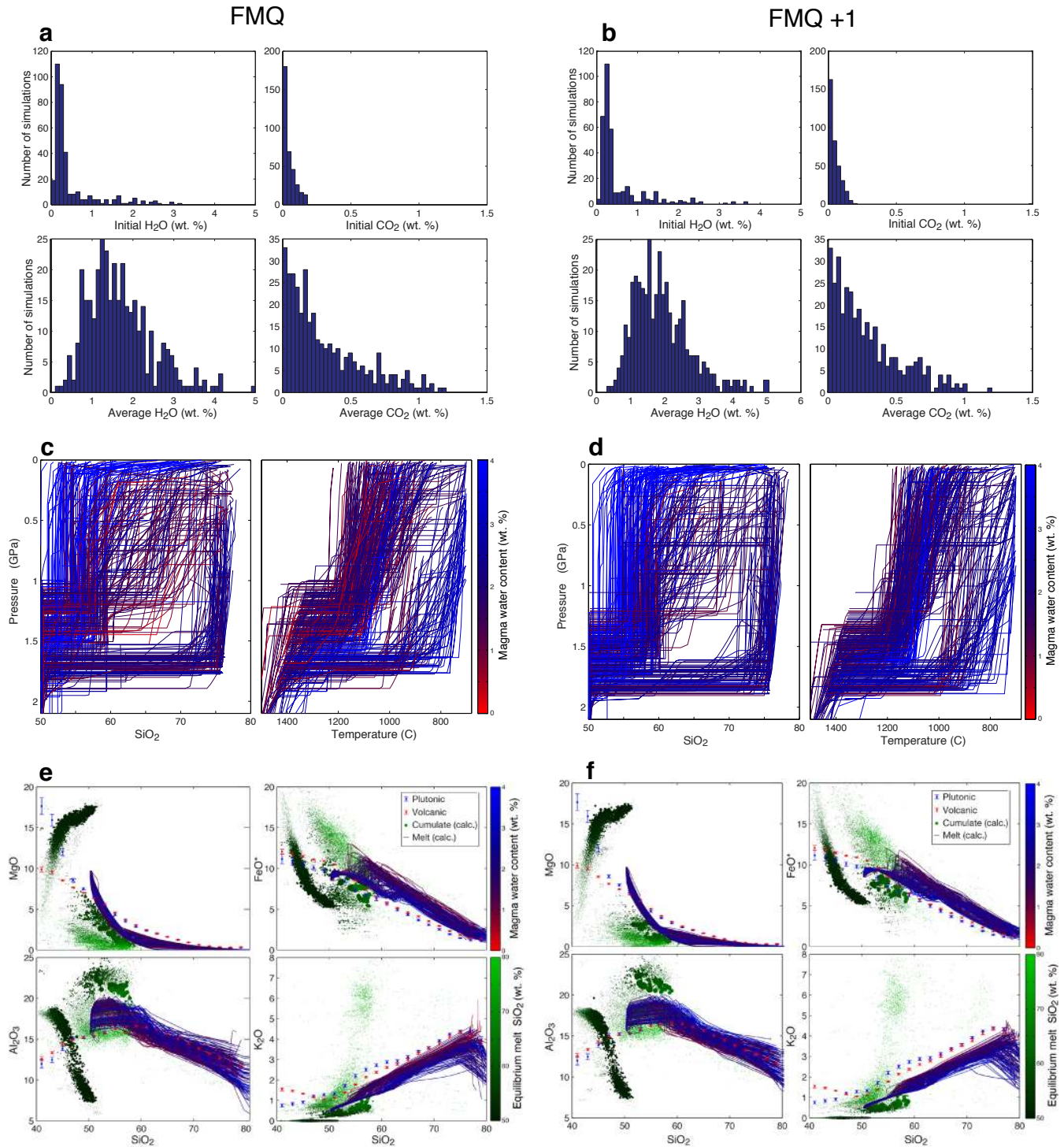


Supplementary Figure 6: Median major (a-g) and trace element (h-n) differentiation trends as a function of SiO<sub>2</sub>, (error bars) with elemental distributions (lines) for volcanic (red) and plutonic (blue) samples, along with tholeiitic mid ocean ridge differentiates (grey outline). Error bars and MOR outline show median and two-standard-error uncertainties in 2 wt.% SiO<sub>2</sub> bins, while distributions are shown for 5 wt. % SiO<sub>2</sub> bins.

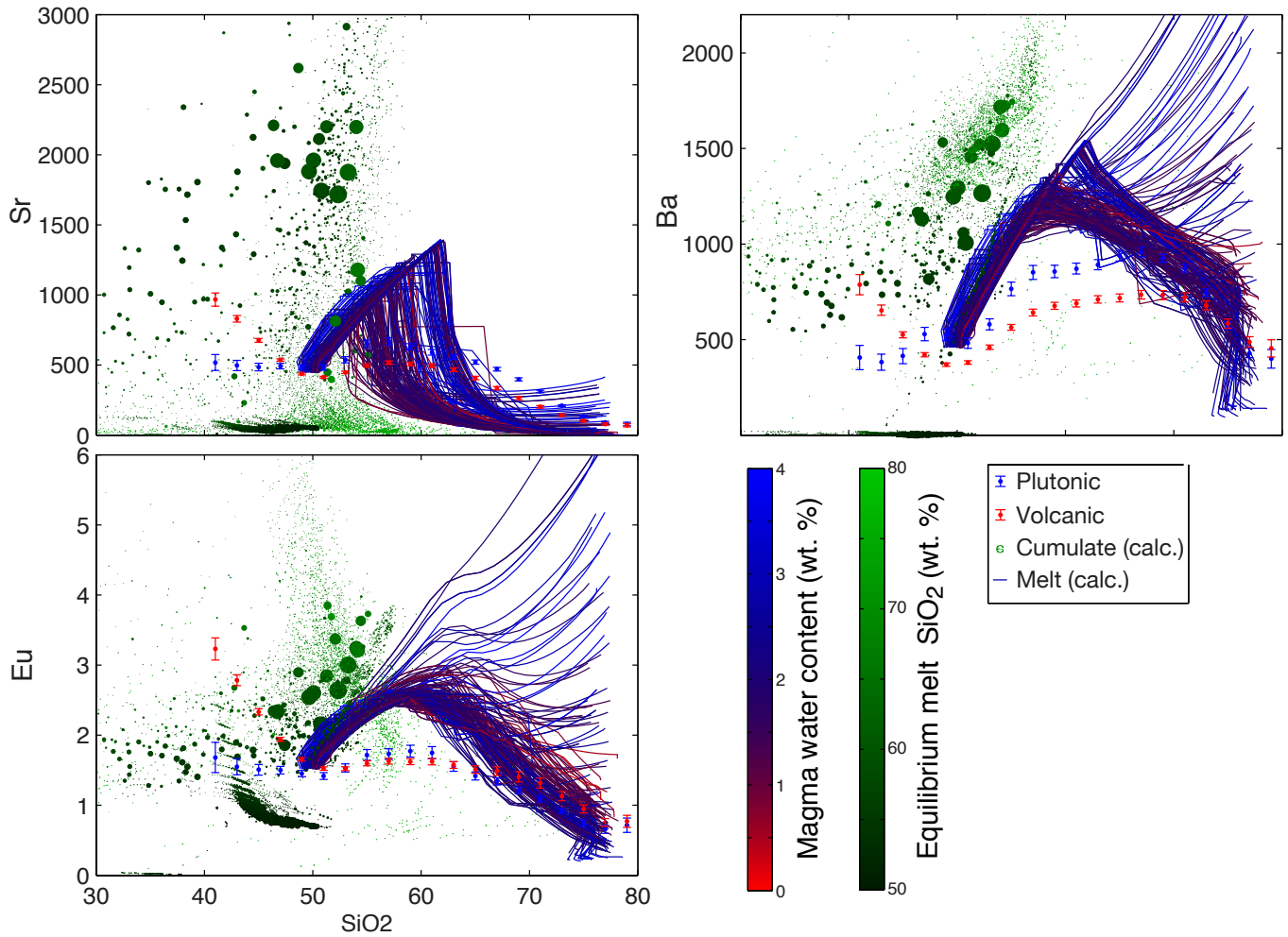


Supplementary Figure 7: Mean major (a-g) and trace element (h-n) differentiation as a function of MgO, (error bars) with elemental distributions (lines) for volcanic (red) and plutonic (blue) samples, along with tholeiitic mid ocean ridge differentiates (grey outline). Error bars and MOR outline show median and two-standard-error uncertainties in 1 wt.% MgO bins, while distributions are shown for 1.25 wt. % MgO bins.





Supplementary Figure 8: Comparison of inverted MELTS parameters and compositional paths from  $\sim 1.3 \times 10^6$  MELTS simulations with initial oxygen fugacity set by the Fayalite-Magnetite-Quartz buffer (FMQ, left) versus another  $\sim 1.3 \times 10^6$  simulations with initial oxygen fugacity one log unit above the FMQ buffer (FMQ+1, right). a-b: Initial and average volatile distributions of 350 best-fitting simulations. c-d: P-T and P-SiO<sub>2</sub> paths of 350 best-fitting MELTS simulations. e-f: Major element melt and cumulate compositions for 200 best-fitting MELTS simulations.



Supplementary Figure 9: Simulated Sr (a) Ba (b) and Eu (c) differentiation paths (blue lines) and corresponding cumulate compositions (green points) calculated by applying GERM partition coefficients [26] to the mineral percentages derived from 200 MELTS simulations with best-fitting major element trends out of 1.36 million MELTS simulations with varying initial H<sub>2</sub>O, CO<sub>2</sub>, and P-T paths (methods) and initial oxygen fugacity set by the Fayalite-Magnetite-Quartz (FMQ) buffer. The diameter of each cumulate point is proportional to the volume of cumulates produced at each simulation step.