

Title	Wavelet-based compression of power disturbances using the minimum description length criterion
Author(s)	Hamid, Effrina Yanti; Mardiana, Redy; 河崎, 善一郎
Citation	Proceedings of the IEEE Power Engineering Society Transmission and Distribution Conference. 3 P.1772-P.1777
Issue Date	2001-01
Text Version	publisher
URL	<a href="http://hdl.handle.net/11094/14061">http://hdl.handle.net/11094/14061</a>
DOI	
rights	c2001 IEEE. Personal use of this material is permitted. However, permission to reprint/republish this material for advertising or promotional purposes or for creating new collective works for resale or redistribution to servers or lists, or to reuse any copyrighted component of this work in other works must be obtained from the IEEE..
Note	

*Osaka University Knowledge Archive : OUKA*

<https://ir.library.osaka-u.ac.jp/>

Osaka University

# Wavelet-based Compression of Power Disturbances using The Minimum Description Length Criterion

Effrina Yanti Hamid, Redy Mardiana, and Zen-Ichiro Kawasaki, *Member, IEEE*

**Abstract**—This paper introduces a compression technique for power disturbance data via discrete wavelet transform (DWT) and wavelet packet transform (WPT). The data compression leads to a potential application for remote power protection and power quality monitoring. The compression technique is performed through signal decomposition up to a certain level, thresholding of wavelet coefficients, and signal reconstruction. The choice of which wavelet to use for the compression is of critical importance, because the wavelet affects reconstructed signal quality and the design of the system as a whole. The Minimum Description Length (MDL) criterion is proposed for the selection of an appropriate wavelet filter. This criterion permits to select not only the suitable wavelet filter but also the best number of wavelet retained coefficients for signal reconstruction. The experimental study has been carried out for a single-phase to ground fault event, and the data compression results of using the suitable wavelet filter show that the compression ratios are less than 11% and are reduced to more than a half of that value by implementing an additional lossless coding.

**Index Terms**—Data compression, power disturbances, wavelets, wavelet packets.

## I. INTRODUCTION

THE transients due to ground faults, load switchings, and other disturbances may cover a broad frequency spectrum in the order of KHz to MHz. A single captured event recorded for several seconds using monitoring instruments can produce megabytes of data. As a result, the volume of the generated and maintained data increase significantly, which lead to a high cost in storing and transmitting such data. Therefore, it is necessary to develop an effective compression technique which has capability to reduce the volume of data necessary for storing and to speed up the transmitted data for remote monitoring [1], [2], [3].

Wavelet and wavelet packet transforms have recently emerged as powerful tools for a broad range of applications, signal compression in particular [2], [3], [4], [5]. The wavelet transform has good localization in both frequency and time domains, having fine frequency resolution and coarse time resolutions at lower frequency, and coarse frequency resolution and fine time resolution at higher frequency. It makes the wavelet transform suitable for time-frequency analysis. In data compression, the wavelet transform is used to exploit the redundancy in the signal. The performance of a wavelet transform for data compression lies in its ability in concentrating a large percentage of total signal energy in a few coefficients [6]. After the original

signal is transformed into the wavelet coefficients, many coefficients are so small so that these coefficients can be omitted without losing significant information after the signal is reconstructed.

During the last three years, power disturbance data compression using wavelet and wavelet packet transforms have been proposed [2], [3]. The choice of which wavelet to use in compression system plays an important role, because the wavelet affects reconstructed signal quality and the design of the system as a whole. Compared with the actual compression performance of several different wavelets, the previous authors [2], [3] choose only a specific wavelet filter. Improper choice of filter can produce distortions in the reconstructed signal and can cause not optimum compression ratio. An algorithm to optimize the efficiency of compression in the wavelet domain called the Minimum Description Length (MDL) has been proposed by Saito [7]. The MDL criterion aims to gain the compromise between the number of retained wavelet coefficients and the error of signal reconstruction. The algorithm permits one to select the suitable wavelet filter and the best number of wavelet retained coefficients of a signal.

In this paper, we propose a data compression method based on wavelet and wavelet packet for power system disturbances. The method includes the selection of wavelet filter using the MDL criterion to optimize the compression technique. We evaluate several wavelet filters and compare their performances. Although there are many types of wavelet filters, we restrict ourselves to the Daubechies, Coiflets and Symlets families with a certain level of decomposition. In addition the results from this wavelet-based compression method are then combined with a lossless coding e.g. Huffman, Lempel-Ziv-Welch (LZW), or Lempel-Ziv-Haruyasu (LZH) to get more effective compression [3].

## II. WAVELET TRANSFORMS

### A. Discrete Wavelet Transform

The wavelet transform of a discrete input data sequence  $\mathbf{f} = \{f_n\} = \{f_0, f_1, \dots, f_{N-1}\}$ , where  $N$  is the length, can be presented in a vector matrix form as

$$\boldsymbol{\alpha} = \mathbf{W}\mathbf{f} \quad (1)$$

where  $\boldsymbol{\alpha}$  contains  $N$  wavelet coefficients, and  $\mathbf{W}$  ( $N \times N$ ) is an orthogonal matrix consisting of row basis vectors. The basis vector are specified by a set of numbers, called wavelet and scaling filter coefficients.

Once a specific wavelet has been chosen, we can use its coefficients to define two filters, the low-pass filter and the

E.Y. Hamid, R. Mardiana, and Z-I. Kawasaki are with the Department of Electrical Engineering, Osaka University, Osaka, Japan. Fax: (81) 6-6879-7724, email: redy@ieee.org

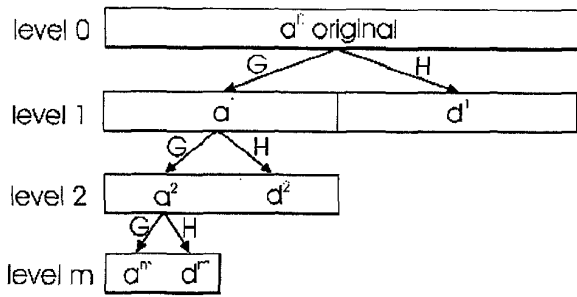


Fig. 1. Decomposition of  $a^0$  up to level  $m$  using DWT.

high-pass filter. Both types of filters use the same set of wavelet filter coefficients, but with alternating signs and in reversed order, meaning this pair of filters is the quadrature mirror filters (QMF). The low-pass and high-pass filters are also called the scaling and the wavelet filters, respectively. These filters are used to construct the filter matrices, denoted as  $\mathbf{G}$  and  $\mathbf{H}$ .

To decompose (or analyze) the signal, Mallat [8] introduced a recursive algorithm which is known as pyramid algorithm. This algorithm offers the hierarchical, multiresolution of the signal. In this algorithm the set of  $N$  input data is passed through the low-pass and high-pass filters. Each output of the filter consists of  $N/2$  wavelet coefficients. The output from low-pass filter is the approximation coefficients ( $a^1 = \{a_0^1, a_1^1, \dots, a_{N/2-1}^1\}$ ) at the first level of resolution. The output from high-pass filter is the detail coefficients ( $d^1 = \{d_0^1, d_1^1, \dots, d_{N/2-1}^1\}$ ) at the first level of resolution. The approximation coefficient  $a^1$ , can now be used as the data input for another pair of wavelet filters (identical with the first pair), generating sets of length  $N/4$  of approximation ( $a^2 = \{a_0^2, a_1^2, \dots, a_{N/4-1}^2\}$ ) and details coefficients ( $d^2 = \{d_0^2, d_1^2, \dots, d_{N/4-1}^2\}$ ) at the second level of resolution. The process is continued until a desired level of resolution. Since the original input data vector,  $\mathbf{f}$ , is the approximation at the lowest resolution (level 0), i.e.:  $a^0 = \mathbf{f} = \{f_0, f_1, \dots, f_{N-1}\}$ , then the DWT algorithm can be presented by the following recursive formula

$$\mathbf{a}^m = \mathbf{G}\mathbf{a}^{m-1} \quad \text{and} \quad \mathbf{d}^m = \mathbf{H}\mathbf{a}^{m-1} \quad (2)$$

where  $m$  denotes the resolution level and  $m = 1, 2, \dots, \log_2 N$ . Figure 1 shows this decomposition process.

The different resolution for each level is related to the sampling interval. For level  $m$  the sampling interval equals  $2^m$ . As the sampling interval increases, resolution decreases and each approximation contains gradually less information. The difference in information between the approximations at level  $m$  and level  $m-1$  is contained in the detail at level  $m$ .

It is possible to use the approximation and detail coefficients to reconstruct (or synthesize) the original signal. The reconstruction process uses the recursion algorithm in reverse with conjugates of  $\mathbf{G}$  and  $\mathbf{H}$ . For the orthonormal basis the conjugates of  $\mathbf{G}$  and  $\mathbf{H}$  equal to the transposed

matrices  $\mathbf{G}^T$  and  $\mathbf{H}^T$ , respectively. Thus, the reconstruction formula is as follows

$$\mathbf{a}^{m-1} = \mathbf{G}^T \mathbf{a}^m + \mathbf{H}^T \mathbf{d}^m. \quad (3)$$

In general noise suppression is implemented before the signal is reconstructed. This means that the wavelet coefficients  $d^m$  and/or  $a^m$  whose absolute value is less than a predefined threshold is set, for example, to zero, and then Eq.(3) is applied.

## B. Wavelet Packet Transform

### B.1 Theory

Wavelet packet transform is a direct expansion of the structure of the DWT tree algorithm to a full binary tree. In the pyramid algorithm the detail branches are not used for further calculations, only the approximations at each level of resolution are treated to yield approximation and detail obtained at higher level. For the wavelet packet, both the detail and approximation coefficients at level  $m$  are further decomposed into level  $m+1$ . The main advantage of the WPT is better signal representation. The search for the best representation of the signal by any subtree of the WPT is called the best-basis selection. Wavelet packet decomposition is shown in Fig. 2, in a tree structure to indicate the decomposition processes. The detail and approximation coefficients in each level for each tree (or subspace) are derived in similar manner to those of DWT using Eq.(2).

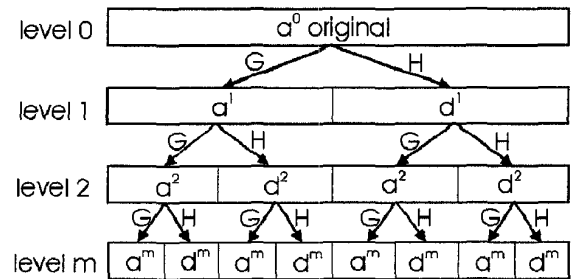


Fig. 2. Wavelet packet decomposition of  $a^0$  viewed as a binary tree.

### B.2 Best-Basis Selection

The overcomplete representation of signal by the WPT allows us to choose the appropriate representation of the signal. To find the best-basis or the wavelet coefficients of the best-tree, one first computes its complete detail and approximation (wavelet) coefficients up to a desired level. Then, it is very natural to use the entropy as a measure of efficiency of the basis. Here the entropy of a signal  $\mathbf{x} = \{x_n\} = \{x_0, x_1, \dots, x_{N-1}\}$  is defined as

$$H(\mathbf{x}) = - \sum_n^{N-1} |x_n|^2 \log |x_n|^2, \quad (4)$$

which is known as the non-normalized Shannon entropy [9]. The best-basis is the basis giving the minimum entropy or maximum information for its distribution of coefficients [6], [9].

The wavelet packet may be efficiently searched for the best-basis. Each tree in the binary tree as shown in Fig. 2 represents a subspace, consisting of the detail or approximation coefficients, of the original signal. Each parent subspace is the orthogonal sum of its two children's subspaces. The search for the best-basis involves computing entropy using Eq.(4) for each subspace, then performing a comparison between the entropy of parent subspace and that of its two children's subspaces. If the parent has a smaller entropy, its two children are omitted from the tree. On the other hand, if the parent has a larger entropy, its two children are kept from the tree. This process is repeated until the original signal at the top level is reached.

### III. MINIMUM DESCRIPTION LENGTH CRITERION

The Minimum Description Length (MDL) criterion is an interesting approach to simultaneous noise suppression and signal compression. It is free from any parameter setting such as threshold selection, which can be particularly useful for real data where the noise level is difficult to estimate. The MDL selects the "best" wavelet filter and the "best" number of wavelet coefficients to be retained for the signal reconstruction [7].

The MDL criterion has the following algorithm. Let us consider a discrete model

$$\mathbf{f} = \mathbf{x} + \mathbf{n}$$

where the vector  $\mathbf{f}$  represent the noisy observed data, vector  $\mathbf{x}$  is the unknown true signal to be estimated, and vector  $\mathbf{n}$  is noise. *First*, pick the index  $(k, n)$  from the MDL function defined as

$$MDL(k, n) = \min \left\{ \frac{3}{2} k \log N + \frac{N}{2} \log \|\tilde{\alpha}_n - \alpha_n^{(k)}\|^2 \right\} \quad (5)$$

$$0 \leq k < N ; 1 \leq n \leq M$$

where  $\tilde{\alpha}_n = \mathbf{W}_n \mathbf{f}$  denotes the vector of the decomposition coefficients of  $\mathbf{f}$  via the wavelet filter  $n$ , and  $\alpha_n^{(k)} = \Theta^{(k)} \tilde{\alpha}_n = \Theta^{(k)} (\mathbf{W}_n \mathbf{f})$  denotes the vector that contains  $k$  nonzero elements, and  $\Theta^{(k)}$  is a hard-thresholding operation which keeps the  $k$  largest elements of  $\tilde{\alpha}_n$  in absolute value intact and set all other elements to zero. The  $N$  and  $M$  denote respectively the length of the signal and the total number of wavelet filters used. The  $\tilde{\alpha}_n$  and  $\alpha_n^{(k)}$  have to be normalized by  $\|\tilde{\alpha}_n\|$ , so that the magnitude of each coefficient in  $\tilde{\alpha}_n$  and  $\alpha_n^{(k)}$  is strictly less than one. Note that  $\|\mathbf{x}\|$  is defined as  $(\sum_0^{N-1} |x_n|^2)^{1/2}$ . The MDL function is expressed as the sum of two conflicting terms. The first term represents the penalty function, linearly increasing with the number of the retained wavelet coefficients  $k$ , whereas the second term describes the logarithmic of residual energy between  $\tilde{\alpha}_n$  and  $\alpha_n^{(k)}$ . We see that the log(residual energy) always decreases as  $k$  increases (see

also Fig. 4 later). Number of coefficients  $k$ , for which the MDL function reaches its minimum, is considered as the optimal one. With this criterion one can optimize the choice of wavelet filter as well. It should be noted that each wavelet filter has different characteristics. A wavelet filter, which is optimal for a given signal, is not necessarily the best for another type of signal.

*Second*, reconstruct the estimated true signal  $\mathbf{x}$  through the following equation

$$\mathbf{x} = \mathbf{W}_n^T \alpha_n^{(k)}, \quad (6)$$

which is exactly the same process as in Eq.(3).

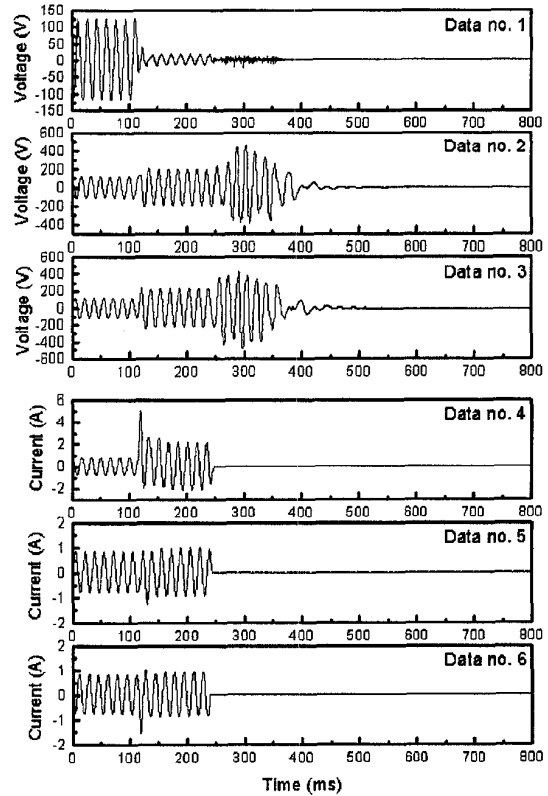


Fig. 3. Fault record from a single-phase to ground of three-phase power system. Data no. 1, 2 and 3 are the voltage of phase a, phase b and phase c, respectively, and the data 4, 5 and 6 are for the current of phase a, phase b and phase c, respectively. The fault occurred at 116 ms on phase a.

## IV. EXPERIMENTAL STUDY

### A. Power Disturbance Data

The experimental study has been carried out for a single-phase to ground fault event, and six power disturbance data have been recorded. The data were obtained from a power system hardware simulator owned by Kansai Electric Power Company (KEPCO), Japan. The performances of DWT and WPT compression are evaluated using these power disturbance data. Figure 3 shows these original signals. The length of each signal is  $N = 8000$  samples for

800 ms. Each sample requires 12 bytes (magnitude only), so that each signal has a size of 96,000 bytes.

### B. Library of Wavelet Filters

Ten wavelets from the Daubechies family (with 2, 4, 6, 8, 10, 12, 14, 16, 18, and 20 filter coefficients), five wavelets from Coiflets (with 2, 4, 6, 8, and 10 filter coefficients), and seven wavelets from Symlets (with 4, 6, 8, 10, 12, 14 filter coefficients) are used for the data compression. This corresponds to  $M = 22$ . The coefficients of each wavelet filter can be found in [9].

### C. Performance Evaluation

To evaluate the compression performance, two performance indexes are employed. The first one is the compression ratio (CR), i.e., the ratio of the size of the compressed file over the size of the original file, defined as

$$CR(\%) = \frac{\text{bytes of the compressed signal}}{\text{bytes of the original signal}} \times 100 \quad (7)$$

The second one is the percentage of mean square error, defined as

$$MSE(\%) = \frac{\sqrt{\sum_{n=0}^{N-1} (f_n - x_n)^2}}{\sqrt{\sum_{n=0}^{N-1} f_n^2}} \times 100 \quad (8)$$

where  $f$  and  $x = \{x_n\} = \{x_0, x_1, \dots, x_{N-1}\}$  are noisy observed (or original) signal and reconstructed signal, respectively.

## V. RESULTS

We compare the performance of 22 wavelet filters for the compression. All signals are decomposed via the DWT and WPT with those filters up to fourth level of resolution ( $m = 4$ ). For the case of the WPT, the decomposition is performed following the best-basis selection with minimum entropy criterion. The wavelet coefficients from the decomposition is sorted according to their absolute amplitude. The optimal number of retained coefficients  $k$  can be calculated based on the MDL criterion.

To simplify the explanation we will give attention on the signal of data no. 2, and we apply the WPT with the Daubechies 5 (Db5) filter. First the data is decomposed up to a predefined level using Eq.(2). The entropy of each subspace is then calculated using Eq.(4) to find the best-basis. Once the best-basis is found the MDL function is applied to compute the number of wavelet retained coefficients  $k$ . The result of the MDL function and its components is shown in Fig. 4. The function reaches the minimum at  $k = 595$ . This means the minimum number of coefficients required for the signal reconstruction with the smallest distortion is 595. The process above is repeated until the last wavelet filter in the library ( $n = 22$ ), and then, the appropriate filter can be chosen.

We have applied the MDL criterion to all data to select the suitable filter, and the results are tabulated in Table I and Table II for the DWT and WPT, respectively.

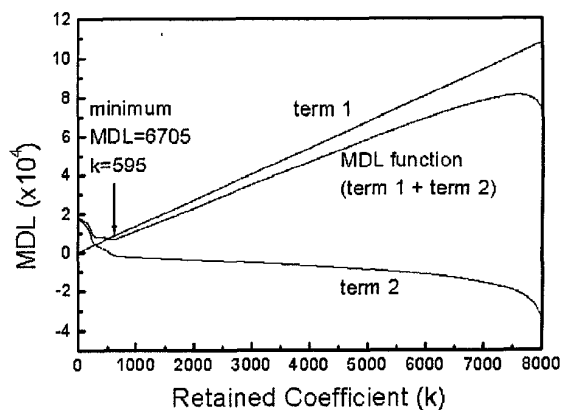


Fig. 4. The MDL function and its components for the WPT coefficients of data no. 2 with Db5 filter.

Both tables show the number of retained coefficients  $k$ , the MSE and the minimum value of the MDL function for all wavelet filters. From this point, we can choose the appropriate filter for each corresponding data based on the minimum MDL value, and the results for the first two filters having smallest MDL are tabulated in Table III. We can see that the appropriate filter for a given signal may differ for another type of signal. However, in practice it is highly preferable to use only one "best" filter for all signals. From the table the Symlets 7 and Symlets 8 filters seem to be the candidates for the best filter. We simply select the Symlets 7 filter for the compression of all power disturbance data analyzed here.

Using the MDL we can compute the number of wavelet coefficients to be stored as the compressed data. Here the compressed data contains both magnitude and position of the coefficients. We allocate 12 bytes for the magnitude and 5 bytes for its position. The signal reconstruction of this compressed data is done using Eq.(6). Figure 5 shows an example of the reconstructed signal and its residual error for data no. 2 using the selected filter. In addition, more effective compression can be performed by implementing an additional lossless coding (e.g. Huffman, LZW, or LZH) to the results of the DWT and WPT compression. Since the coding has lossless properties, the compression always reproduce the same data when a file is decompressed. Table IV and Table V show the comparison of CR and MSE of the analyzed signals using the Symlets 7 filter. The compressed file size (in percentage of original file size) is calculated for the DWT, WPT, and DWT+lossless coding as well as WPT+lossless coding. Both the DWT and WPT compression significantly reduce the original file size of each signal to less than 11%. Further, the tables show that by implementing the lossless coding the CR's are reduced to more than a half of those CR's without the lossless coding.

TABLE I  
NUMBER OF RETAINED COEFFICIENTS, MSE, AND MDL VALUE FOR 22 WAVELET FILTERS USING DWT

Filter n	k (1)	MSE (1)	MDL (1)	k (2)	MSE (2)	MDL (2)	k (3)	MSE (3)	MDL (3)	k (4)	MSE (4)	MDL (4)	k (5)	MSE (5)	MDL (5)	k (6)	MSE (6)	MDL (6)
Db1	160	14.68	12904	336	10.38	13891	327	10.31	13740	214	9.86	12041	247	11.00	12922	217	13.84	13435
Db2	133	10.95	11367	341	3.40	9491	388	2.76	9290	205	3.63	7916	168	6.56	9789	147	9.97	11182
Db3	135	10.13	11080*	598	0.89	7607	629	0.73	7246	163	3.26	6927	591	1.14	8478	556	1.72	9671
Db4	138	10.11	11114	577	0.75	8644	600	0.62	6205	539	0.85	6638	547	1.15	7931	527	1.71	9246
Db5	138	10.17	11137	588	0.72	8611	609	0.59	6084	528	0.84	6434*	547	1.13	7845	529	1.64	9106
Db6	140	10.02	11105	577	0.73	8539	601	0.59	6016	537	0.83	6477	541	1.11	7693	533	1.61	9098
Db7	132	10.50	11184	593	0.72	8696	603	0.59	6041	537	0.82	6445	538	1.10	7629*	533	1.61	9091
Db8	144	10.12	11200	577	0.73	8537	604	0.60	6128	541	0.82	6490	547	1.08	7699	531	1.61	9065*
Db9	143	10.16	11200	583	0.74	8667	601	0.59	6004*	539	0.82	6482	548	1.08	7683	539	1.59	9118
Db10	144	10.20	11229	578	0.73	8550	608	0.59	6112	542	0.82	6516	540	1.09	7631*	534	1.61	9115
Coif1	136	10.70	11313	331	3.49	9457	377	2.75	9125	201	3.67	7908	165	6.47	9695	633	1.92	11139
Coif2	147	9.92	11159	582	0.76	8758	597	0.63	6221	544	0.85	6704	551	1.13	7911	533	1.67	9232
Coif3	146	10.18	11248	577	0.75	8611	603	0.60	6068	541	0.83	6534	541	1.10	7683	535	1.63	9162
Coif4	151	10.11	11290	582	0.73	8589	610	0.59	6115	545	0.82	6576	552	1.09	7782	540	1.60	9162
Coif5	161	9.92	11351	588	0.74	8713	602	0.61	6111	556	0.82	6690	558	1.07	7780	544	1.60	9205
Sym2	133	10.95	11367	341	3.40	9491	388	2.76	9290	205	3.63	7916	168	6.56	9789	147	9.97	11182
Sym3	135	10.13	11080	598	0.89	7607	629	0.73	7246	163	3.26	6927	591	1.14	8478	556	1.72	9671
Sym4	138	9.99	11065*	578	0.77	8766	590	0.65	6219	534	0.88	6692	545	1.15	7910	529	1.68	9217
Sym5	138	10.10	11111	584	0.72	8584	609	0.58	6054	537	0.84	6518	546	1.12	7828	532	1.63	9120
Sym6	141	10.02	11120	587	0.71	8561	601	0.59	6024	536	0.83	6468	536	1.12	7664	528	1.62	9056*
Sym7	138	10.26	11175	569	0.75	8502*	603	0.59	6022	536	0.82	6443*	532	1.12	7637	537	1.60	9114
Sym8	142	10.20	11202	577	0.72	8486*	592	0.61	5971*	543	0.83	6554	543	1.09	7671	535	1.61	9114

Note: The number inside the parenthesis is the data number, and the asterisk (\*) indicates the first two minimum MDL.

TABLE II  
NUMBER OF RETAINED COEFFICIENTS, MSE, AND MDL VALUE FOR 22 WAVELET FILTERS USING WPT

Filter n	k (1)	MSE (1)	MDL (1)	k (2)	MSE (2)	MDL (2)	k (3)	MSE (3)	MDL (3)	k (4)	MSE (4)	MDL (4)	k (5)	MSE (5)	MDL (5)	k (6)	MSE (6)	MDL (6)
Db1	187	13.40	12890	341	9.98	13787	336	9.74	13622	352	5.46	11521	279	9.82	12886	217	13.88	13433
Db2	135	10.90	11362	354	3.26	9481	387	2.76	9261	206	3.63	7916	169	6.56	9789	148	9.97	11182
Db3	139	10.05	11090	608	0.88	7670	628	0.75	7287	165	3.25	6926	592	1.14	8478	557	1.72	9671
Db4	142	10.06	11136	583	0.75	8705	603	0.65	6382	539	0.85	6621	550	1.15	7967	528	1.71	9239
Db5	135	10.44	11189	595	0.72	8705	620	0.58	6166	530	0.84	6453*	547	1.12	7816	529	1.64	9091
Db6	146	10.02	11173	593	0.71	8626	593	0.62	6060	538	0.83	6480	540	1.12	7704	532	1.62	9082
Db7	138	10.50	11251	589	0.75	8766	594	0.63	6125	538	0.83	6480	537	1.10	7625*	534	1.61	9079
Db8	150	10.18	11291	595	0.71	8631	614	0.59	6149	541	0.82	6487	549	1.08	7707	531	1.61	9055*
Db9	129	10.27	11044*	587	0.74	8712	596	0.60	6007	540	0.82	6482	549	1.08	7683	540	1.59	9117
Db10	137	10.29	11158	587	0.73	8664	603	0.60	6072	543	0.82	6516	541	1.09	7631	535	1.61	9115
Coif1	136	10.73	11313	331	3.50	9463	381	2.73	9137	202	3.67	7908	166	6.47	9695	634	1.92	11147
Coif2	148	9.92	11159	586	0.74	8708	597	0.63	6193	541	0.86	6658	549	1.14	7910	534	1.66	9209
Coif3	150	10.01	11221	585	0.71	8492	600	0.59	5964	540	0.83	6510	539	1.10	7652	534	1.63	9138
Coif4	154	10.03	11286	586	0.70	8487	611	0.58	6028	546	0.82	6576	553	1.09	7782	541	1.60	9162
Coif5	162	9.94	11357	597	0.71	8657	601	0.59	5974	557	0.82	6690	559	1.07	7780	545	1.60	9205
Sym2	135	10.90	11362	354	3.26	9481	387	2.76	9261	206	3.63	7916	169	6.56	9789	148	9.97	11182
Sym3	139	10.05	11090	608	0.88	7670	628	0.75	7287	165	3.25	6926	592	1.14	8478	557	1.72	9671
Sym4	140	9.93	11058*	589	0.75	8752	591	0.65	6220	532	0.89	6681	544	1.15	7887	531	1.67	9199
Sym5	140	10.05	11103	586	0.72	8590	593	0.61	6033	539	0.83	6524	545	1.13	7807	530	1.64	9101
Sym6	144	9.96	11121	585	0.70	8459	599	0.59	5946	536	0.83	6474	537	1.12	7664	529	1.62	9056*
Sym7	146	10.01	11167	569	0.73	8420*	598	0.58	5885*	538	0.82	6464*	532	1.12	7610*	536	1.60	9093
Sym8	143	10.20	11203	580	0.71	8435*	583	0.60	5818*	543	0.83	6539	540	1.10	7647	535	1.60	9088

Note: The number inside the parenthesis is the data number, and the asterisk (\*) indicates the first two minimum MDL.

TABLE III  
THE APPROPRIATE WAVELET FILTERS BASED ON MDL CRITERION

Data	DWT	WPT
1	Sym4 - Db3	Db9 - Sym4
2	Sym8 - Sym7	Sym7 - Sym8
3	Sym8 - Db9	Sym8 - Sym7
4	Db5 - Sym7	Db5 - Sym7
5	Db7 - Db10	Sym7 - Db7
6	Sym6 - Db8	Db8 - Sym6

## VI. CONCLUSIONS

The application of DWT and WPT for compressing the data of power system disturbances has been evaluated. Both transforms offer attractive properties for the compression. The experimental results show that better quality reconstruction can be achieved by employing an appropriate wavelet filter to each signal. In practice, it is preferable to use one suitable filter for all signals. Using

the MDL criterion, the Symlets 7 filter generally appears superior than other wavelet filters for most power disturbance signals analyzed here. The compression ratios that can be obtained using this filter are varied but less than 11%. Combining wavelet and wavelet packet compression with a lossless coding could results in better compression ratios. Our results show that the compression ratios are reduced to more than a half by implementing an additional

TABLE IV  
CR AND MSE USING DWT WITH SYMLET 7 FILTER AND LOSSLESS  
CODINGS

Data	DWT (%)	DWT+Huff. (%)	DWT+LZW (%)	DWT+LZH (%)	MSE (%)
1	2.49	1.10	1.20	1.09	10.26
2	10.10	4.38	4.45	4.19	0.75
3	10.72	4.65	4.67	4.40	0.59
4	9.54	3.74	3.20	2.80	0.82
5	9.46	3.73	3.05	2.68	1.12
6	9.55	3.76	3.10	2.74	1.60

TABLE V  
CR AND MSE USING WPT WITH SYMLET 7 FILTER AND LOSSLESS  
CODINGS

Data	WPT (%)	WPT+Huff. (%)	WPT+LZW (%)	WPT+LZH (%)	MSE (%)
1	2.75	1.21	1.32	1.19	10.01
2	10.23	4.43	4.50	4.22	0.73
3	10.75	4.66	4.67	4.39	0.58
4	9.72	3.80	3.25	2.85	0.82
5	9.55	3.76	3.07	2.70	1.12
6	9.64	3.80	3.13	2.78	1.60

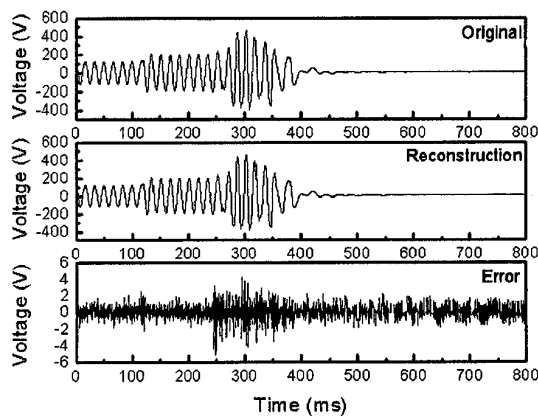


Fig. 5. The original, reconstructed, and residual error signals of data no. 2 using WPT with Sym7 filter.

lossless coding. Finally, the compression algorithm presented here can be used to compress not only ground fault signals but also wide variety of one-dimensional power disturbance signals.

#### ACKNOWLEDGMENTS

The authors would like to thank to Kansai Electric Power Company (KEPCO), Japan for the permission to use the ground fault data.

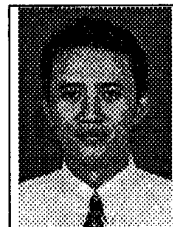
#### REFERENCES

- [1] K.B. Mehta and B.D. Russel, "Data Compression for digital data from power system disturbance: requirements and technique evaluation", IEEE Trans. Power Delivery, vol. 4, pp. 1683-1689, 1989.
- [2] S. Santoso, E.J. Power, and W.M. Grady, "Power quality data

- compression using wavelet transform methods", IEEE Trans. Power Delivery, vol. 12, pp. 1250-1257, 1997.
- [3] T.B. Littler and D.J. Morrow, "Wavelet for the analysis and compression of power system disturbances", IEEE Trans. Power Delivery, vol. 14, pp. 358-362, 1999.
- [4] M.L. Hilton, "Wavelet and wavelet packet compression of electrocardiograms", IEEE Trans. Biomed. Eng., vol. 44, pp. 394-402, 1997.
- [5] B. Walczak and D.L. Massart, "Noise suppression and signal compression using the wavelet packet transform", Chemom. Intel. Lab. Sys., vol. 36, pp. 81-94, 1997.
- [6] R.R. Coifmann and M.V. Wickerhauser, "Entropy-based algorithms for best basis selection", IEEE Trans. Inform. Theory, vol. 38, pp. 713-719, 1992.
- [7] N. Saito, "Simultaneous noise suppression and signal compression using a library of orthonormal bases and the minimum description length criterion", in Wavelets in Geophysics, E. Foufoula-Georgiou and P. Kumar (Eds), Academic Press, San Diego, CA, pp. 299-324, 1994.
- [8] S.A. Mallat, "A theory for multiresolution signal decomposition: The wavelet representation", IEEE Trans. Pattern Anal. Machine Intell., vol. 11, pp. 674-693, 1989.
- [9] M.V. Wickerhauser, "Adapted wavelet analysis from theory to software", IEEE Press, New York, USA, pp.273-298 and pp. 443-462, 1994.



**Effrina Yanti Hamid** was born in Indonesia. She received the bachelor and master degrees in telecommunication engineering from Bandung Institute of Technology, Indonesia in 1995 and 1998, respectively. Now, she is a Ph.D. student in the Department of Electrical Engineering, Osaka University. Her main interest is in signal processing and its application to power system.



**Redy Mardiana (M'99)** was born in Indonesia. He received the bachelor and master degrees in electrical engineering from Bandung Institute of Technology, Indonesia in 1992 and 1997, respectively. From 1993 to 1994, he got a training fellowship in the Forschungszentrum Jülich, Jülich, Germany. Now, he is pursuing a Ph.D. degree in the Department of Electrical Engineering, Osaka University. His main interest is in lightning detection and its application to power system. He is a student member of The IEEE.



**Zen-Ichiro Kawasaki** was born in Japan. He received the B.S., M.S. and Dr. Eng. degrees in communication engineering from Osaka University, Japan in 1973, 1975 and 1978, respectively. In 1989, he joined the Department of Electrical Engineering, Osaka University where he is currently a Professor. His current research interests are in signal processing, diagnosis techniques of power apparatus, and the electromagnetic of lightning discharges. Dr. Zen-Ichiro Kawasaki is a member of The Institute of Electrical and Electronics Engineers (IEEE), The Institute of Electrical Engineers of Japan (IEEJ), American Geophysical Union (AGU), and The Society of Atmospheric Electricity of Japan (SAEJ).