



National Poverty Center Working Paper Series

#13-05

April 2013

Wealth Disparities before and after the Great Recession

Fabian T. Pfeffer, Sheldon Danziger, and Robert F. Schoeni,
University of Michigan

This paper is available online at the National Poverty Center Working Paper Series index at:
http://www.npc.umich.edu/publications/working_papers/

This paper was supported by the National Poverty Center with funding provided by the American Academy of Political and Social Science and will appear in a forthcoming issue of *The ANNALS*. Any opinions, findings, conclusions, or recommendations expressed in this material are those of the author(s) and do not necessarily reflect the view of the National Poverty Center or any sponsoring agency.

WEALTH DISPARITIES BEFORE AND AFTER THE GREAT RECESSIONⁱ

Fabian T. Pfeffer, Sheldon Danziger, and Robert F. Schoeni

University of Michigan

April 1, 2013

(Minor adjustments, August 2013)

Abstract

The collapse of the labor, housing, and stock markets beginning in 2007 created unprecedented challenges for American families. This study examines disparities in wealth holdings leading up to the Great Recession and during the first years of the recovery. All socioeconomic groups experienced declines in wealth following the recession, with higher wealth families experiencing larger absolute declines. In percentage terms, however, the declines were greater for less-advantaged groups as measured by minority status, education, and pre-recession income and wealth, leading to a substantial rise in wealth inequality in just a few years. Despite large changes in wealth, longitudinal analyses demonstrate little change in mobility in the ranking of particular families in the wealth distribution. Between 2007 and 2011, one fourth of American families lost at least 75 percent of their wealth, and more than half of all families lost at least 25 percent of their wealth. Multivariate longitudinal analyses document that these large relative losses were disproportionately concentrated among lower income, less educated, and minority households.

INTRODUCTION

The Great Recession caused an unprecedented decline in wealth holdings among American households. Between 2007 and 2009, average housing prices in the largest metropolitan areas fell by nearly a third as measured by the Case-Shiller Index. Stock prices also collapsed, with the Dow Jones Index losing nearly half of its value between mid-2007 and early 2009 (see Figure A.1 in Appendix A). These developments were exacerbated by a rapid rise in the unemployment rate from 5 percent in December 2007 to 10 percent in October 2009 and a large reduction in labor market earnings due to increased unemployment, wage cuts, and furloughs.

The enormity of wealth disparities and their growth prior to the Great Recession is well documented (Wolff 1995; 2006; Keister 2000; Klevmarken et al. 2003). As demonstrated below, in 2003 households at the 90th percentile of the net worth distribution held 73 times the net worth of households at the 25th percentile. Similarly, households in the highest income quintile had median wealth that was 45 times the median of households in the lowest income quintile. And whites had median wealth that was over six times that of nonwhites. These disparities dwarf disparities in individual earnings and household incomes (Keister and Moller 2000; Oliver and Shapiro 1997; Scholz and Levine 2004).

This study assesses the extent to which the Great Recession altered the distribution of wealth through 2011. We begin by using repeated cross-sectional data from two widely-used surveys, the Panel Study of Income Dynamics (PSID) and the Survey of Consumer Finances (SCF), to document changes in wealth inequality. Motivated by hypotheses that the Great Recession affected some groups more than

others, we further examine whether pre-existing disparities in wealth across socioeconomic groups were exacerbated. We then make use of the longitudinal nature of the PSID data and examine wealth changes for individual households over time. We determine whether the ranking of households based on their wealth after the recession was similar to the ranking prior to the recession, i.e., whether –despite the dramatic declines in wealth due to the Great Recession –the households that were at the top (bottom) of the wealth distribution before the crash remained at the top (bottom) through 2011. Lastly, we estimate the magnitude of wealth losses – and gains – for individual households and identify the households characteristics that were associated with wealth losses to learn what types of household were able to weather the recession more and less effectively.

BACKGROUND

Long-terms trends in the distribution of wealth

Previous studies have documented trends in the distribution of wealth for the United States from its founding years (Shammas 1993) and have shown that wealth inequality increased throughout the 18th and 19th century, with the most pronounced increases occurring during the industrialization period of the 19th century. The concentration of wealth at the very top, i.e. the share owned by the wealthiest one percent, rose sharply over this period, peaking immediately before the Great Depression of 1929 and falling rapidly in its aftermath (Ohlsson et al. 1997). A gradual decrease in wealth inequality ensued up to the late 1970s (Wolff 1995). Wealth inequality began to increase again in the 1980s: between 1983 and 1989, the share of wealth held by the wealthiest one percent

grew from 33.8 percent to 37.4 percent, the net worth of the bottom 40 percent decreased, and the Gini coefficient rose from .799 to .832 (Wolff 2006). The growth of wealth inequality slowed in the 1990s and remained relatively stable during the 2000s leading up to the Great Recession (Wolff 2010 Kennickell 2009). In Figure 1, we index the inflation-adjusted value of net worth at 1.0 in 1984 for households at four points in the distribution. Since this year, the PSID has collected detailed wealth information on a regular basis. Wealth inequality increased between 1984 and 2001, with the net worth at the 95th percentile increasing by about two thirds and that at the 25th percentile declining slightly. The most pronounced increase in inequality occurred between 2001 and 2007, prior to the Great Recession (Gouskova and Stafford 2009). For example, in 2007, net worth at the 95th percentile was more than double that of 1984, whereas net worth at the 25th percentile declined to 70 percent of its 1984 level. We return to a more detailed discussion of recent trends below.

The incidence of households with zero or negative net worth has increased since the 1980s (with the exception of a brief and moderate decline in the early 2000s). For example, 15.5 percent had zero or negative net worth in 1983 compared to 18.6 percent in 2007. The amount of debt held by households as a share of their income also rose dramatically in the years leading up to the recession – from 68.4 percent in 1983 to 81.1 percent in 2001 to 118.7 percent in 2007 (Wolff 2010; Main and Sufi 2011). That is, by 2007 households held on average 19 percent more debt than their annual income.

Racial inequalities in wealth holdings are substantial. Oliver and Shapiro (1997) estimate, based on data from the 1988 Survey of Income and Program Participation (SIPP), that the median net worth of African American families was a mere 8 percent that

of the median net worth of white families. The racial net worth gap remained around 10 cents on the dollar in the 1990s and 2000s (Wolff 2006; Scholz and Levine 2004).

Early evidence on the effects of the Great Recession on the distribution of wealth

Bricker et al. (2012), using the 2007 and 2010 waves of the cross-sectional SCF, find that the largest relative declines in net worth were for people below the 75th percentile of the wealth distribution. Median wealth declined for all income groups except the top decile. Mean wealth declined more for minorities than whites, while the change in median wealth was similar for the two groups.

Emmons and Noeth (2012), also using the 2007 and 2010 SCF, demonstrate that the percentage losses in wealth were larger for younger families, families headed by young and middle-aged African-Americans and Hispanics, and families headed by people with less education. Analyzing data from a variety of sources through, for the most part, 2009, Wolff et al. (2011) find that almost all groups experienced substantial wealth losses, but the losses were particularly large for young families, minorities, and middle-class households.

Using SCF longitudinal data from 2007 to 2009, Kennickell (2011, 2012) finds that the largest relative declines in net worth were for people below the 30th percentile of the wealth distribution and most pronounced for those in the bottom 10 percent who were particularly likely to fall into net debt. Bucks and Moore (2012), using the same panel data, find that two thirds of families had wealth losses, and the median loss among losers was around \$60,000. They also found that wealth inequality increased between 2007 and 2009.

Using the 2007 – 2009 longitudinal data from the PSID, Bosworth (2012) finds that the median change in wealth was negative for all three income terciles (based on 2007 income) and education groups, was roughly the same across education groups (although the decline was slightly higher for the high school educated), and was smaller for families in the bottom third of the income distribution in 2007 (-8.6 percent) than families in the top third (-15.1 percent). Shapiro et al. (2013) show that losses of net worth for African-Americans were greater than for whites between 2007 and 2009.

Based on SIPP data, the Census Bureau reports an increase in median net worth of 30 percent between 2000 and 2005 followed by a sharp decline. By 2011, median net worth was 16 percent below that of 2000 (Gottschalck et al. 2013). Taylor et al. (2011), also using SIPP data, show that between 2004 and 2009, the white-to-black ratio of median net worth increased from 11 to 19 and the white-to-Hispanic ratio from 7 to 15.

Group differences in wealth losses during the Great Recession

One goal of this study is to document changes in wealth disparities across socioeconomic groups. While, for the most part, we do not seek to explain why these changes have occurred, they are likely to have resulted from and changes housing and stock prices, recession-related changes in employment, and savings behaviors. Less-educated, minority, and low-wage workers typically experience greater increases in unemployment and reductions in work hours and earnings during recessions than more advantaged workers (Hoynes, Miller, and Schiller, 2012). As a result, they are less likely to maintain

their pre-recession levels of pension contributions and additions to savings and are also more likely to draw down assets to maintain consumption.

This latter effect on wealth holdings may have been exacerbated by the fact that asset prices had declined significantly prior to the rapid increase in unemployment in 2008 and 2009. And the least-advantaged families were less likely to have benefited from the post-2009 recovery in stock prices because they had already withdrawn a substantial share of their market holdings (Bridges and Stafford 2012) and because they had relatively small savings prior to the Great Recession.

Although stock prices rose after 2009, national housing prices remained stagnant through at least the end of 2011. Home equity is the largest component of wealth for many families, and this is particularly true for less-educated, low-income, and minority families (Keister 2000). Families that purchased a home shortly before the collapse of the housing market, who are disproportionately younger families, had lower levels of home equity and therefore were most vulnerable to having an “underwater mortgage,” defined as having negative home equity (Stafford et al. 2012, Owens and Wimer 2013). Also, those living in areas where unemployment was extremely high were more likely to have experienced greater declines in home equity, as there was wide variation in the distribution of housing price declines across the country.

DATA

Few nationally representative surveys include detailed assessments of wealth holdings. The Survey of Consumer Finances (SCF) contains the most in-depth information on households’ financial assets, real assets, and liabilities. Since 1983, The SCF has

typically been administered as a cross-sectional survey on a triennial basis. However, respondents from two survey years have also been re-interviewed in later years. The first SCF panel occurred in the 1980s, the second was a 2009 re-interview of 2007 respondents and thus nicely timed for a longitudinal assessment of wealth losses during the Great Recession. Since 1989, the SCF has oversampled wealthy households through a list sample developed from Internal Revenue Service (IRS) tax records, which captures some of the very large amounts of wealth held by the wealthiest households..

Since 1968, the Panel Study of Income Dynamics (PSID) has collected a broad range of socio-economic and other information on families on an annual basis and since 1997 on a bi-annual basis. The PSID first introduced an extensive wealth module in 1984, which was repeated every five years until 1999 and on a bi-annual basis since then. The last pre-recession wealth measure from the PSID was collected in 2007; survey waves 2009 and 2011 provide information on wealth holdings after the Great Recession . While the PSID wealth module also covers all major wealth components – namely, housing wealth, a range of financial and real assets, retirement wealth, and various types of liabilities – it draws on fewer survey items than does the SCF (for details on the PSID measures, see table A.2 in Appendix A). Nevertheless, total wealth estimates produced from the PSID are comparable to those from the SCF. The primary exception is for the wealthiest 1 to 3 percent of households, which the SCF reaches through its IRS oversample and the PSID does not (Juster et al. 1999; Pfeffer et al., 2013).

The PSID has several advantages for analyzing wealth losses following the Great Recession. First, because of its panel nature, it identifies wealth changes for individual

households that cannot be analyzed with cross-sectional data. Unlike the SCF 2007-2009 panel, it can track wealth changes and income changes across a much longer panel.

Second, the PSID includes many socio-economic attributes of households that are measured several years before the recession. Thus, we analyze wealth changes for households classified by their pre-recession permanent income (averaged across the 2003-2007 pre-recession surveys) instead of by single-year incomeⁱⁱ. Permanent income measures have less measurement error than single-year income measures (Solon 1992). Third, the early-release PSID data for 2011 are now available, whereas the SCF data beyond 2010 are not.

Our analyses are weighted to provide nationally representative estimates. The longitudinal analyses are based on a balanced sample of households that responded in each of the 2007, 2009, and 2011 surveys. We restrict the sample to households with the same head in 2007 and 2009 to reduce the impact of changes in the composition of households. The 2011 wealth data are drawn from an early release fileⁱⁱⁱ. As we show below, we find prolonged and persistent effects of the Great Recession that extend beyond the period covered by the SCF panel.

Net worth in the PSID and SCF are defined as the total sum of housing wealth, financial wealth, real assets, retirement wealth, minus any liabilities (such as mortgages and other debts). All absolute values are reported in constant 2011 dollars.

RESULTS

Repeated cross-sectional analyses

Absolute changes in wealth. Table 1 reports the net worth distribution as estimated using the PSID in the top panel (for longer-term trends see Table B.1 in Appendix B) and the SCF in the bottom panel. For the PSID, we also report net worth excluding home equity and other real estate to demonstrate the importance of changes in the housing market both before and after the recession.

According to the PSID data, prior to the Great Recession, median wealth increased from \$84,964 in 2003 to \$92,721 in 2005, and then to \$95,471 in 2007. While the absolute increase at the 50th percentile (median) over these four years was about \$10,000, increases for wealthier households were substantially greater. Net worth at the 75th percentile increased by over \$63,000 to \$355,305 in 2007, while net worth at the 95th rose by over \$421,000 to \$1,573,105 in 2007. At the same time, net worth at the bottom of the distribution declined by \$3,000 at the 25th percentile and was negative and falling at the 5th percentile.

In contrast to the 2003-2007 period, net worth declined throughout the distribution between 2007 and 2011. The 95th percentile experienced a decline of more than \$426,000 to \$1,147,000 while the median fell by about \$48,000 to \$47,000. The drop at the 5th percentile of nearly \$26,000 was especially notable given the fact that net worth at the 5th percentile in 2007 was \$13,019. In addition, the declines between 2007 and 2009 and between 2009 and 2011 are remarkably linear. In terms of wealth losses, the Great Recession did not end in mid-2009, the official end date of the recession based

on growth in gross domestic product (GDP) as declared by the National Bureau of Economic Research.

At the 95th percentile, the drop in net worth following the Great Recession was nearly identical to the increase experienced in the four years leading up to it, so that net worth was roughly the same in 2011 as in 2003 – about \$1.15 million. However, there were larger declines in net worth at other points in the distribution between 2007 and 2011, so all other points shown in Table 1 have lower net worth in 2011 than in 2003. For example, net worth at the median was about \$38,000 lower in 2011 than in 2003 (\$47,000 vs. \$84,964). These trends also apply to mean net worth, which rose by more than \$83,000 between 2003 and 2007, and then declined by more than \$175,000 between 2007 and 2011, reflecting the broad destruction of private wealth.

The SCF estimates of net worth in any year, shown at the bottom of Table 1, are higher than those in the PSID, most likely due to the fact that the SCF includes the IRS oversample of high wealth households and because the SCF asks many more questions about assets and liabilities than does the PSID (Juster et al. 1999; Pfeffer et al., 2012). Despite the differences in level, however, the patterns of changes in net worth across the distribution are similar in both data sets. At the 95th percentile, the decrease in wealth was more than \$102,000, between 2007 and 2010, and net worth was higher in 2010 than in 2004 (\$1.92 vs. \$1.70 million). In contrast, median household wealth declined by \$50,000 between 2007 and 2010, and was lower in 2010 than in 2004 (\$79,310 vs. \$110,671).

In the bottom part of the PSID panel in Table 1, we show the trend in the measure of net worth that excludes home equity and other real estate. These data highlight the

significance of the collapse of the housing market on household wealth portfolios. At the median, non-real estate wealth declined by only about \$8,000 between 2007 and 2011, compared to a decline in total net worth of over \$48,000. However, median net worth excluding real estate was only \$14,000 in 2011, compared to \$47,000 when real estate is included.

By 2011, the stock market had rebounded from its Great Recession low. More affluent households are more likely to hold stocks and have large portfolios, which presumably allowed them to benefit from the gains in the stock market. As a result, net worth not held in real estate actually increased by more than \$80,000 at the 95th percentile between 2003 and 2011 (from \$715,163 to \$795,500). The same was not the case at the 75th percentile, the median, or at the bottom of the distribution. That is, even excluding real estate, net worth at the median fell at most points of the distribution except the very top between 2003 and 2011. Also, note that net worth excluding real estate already fell before the recession for the bottom half of the distribution. This is different from the trend in net worth including real estate and implies that pre-recession increases in median net worth were entirely driven by increasing home prices. That is, excluding the wealth gains associated with the “housing bubble”, the net worth of the average American family had declined between 2003 and the onset of the recession at the end of 2007.

Relative changes in wealth. In Figure 2a for total net worth and Figure 2b for net worth excluding real estate, we report values for PSID households at the 25th, 50th, 75th, and 95th percentile that are all indexed at 1.0 in 2003. Thus, any value on the y-axis above

1.0 represents a percentage increase in wealth over time, and any value below 1.0 represents a percentage decrease.

The figures demonstrate that, in relative terms, declines in net worth were most pronounced at the bottom of the distribution. While households at the 95th percentile of net worth were worth roughly the same in 2011 and 2003 (0.996 in Figure 2a), households at the median in 2011 had only 55 percent of the 2003 median net worth and those at the 25th percentile had only 15.3 percent of those at the 25th percentile in 2003. Moreover, the relative decline in net worth was smaller at higher percentiles than at lower percentiles.

Focusing on non-housing wealth (Figure 2b), the net worth of households at the 95th percentile was 11.2 percent higher in 2011 than in 2003. But below the 75th percentile, there were sharp declines in non-housing net worth. The 75th percentile in 2011 was at just three quarters of its 2003 level. Median household wealth in 2011 was only 57.3 percent of the 2003 level and net worth at the 25th percentile decreased by 99 percent. That is, in 2011, the bottom 25 percent of all households had zero or negative net worth.

Wealth inequality. The Gini coefficient and various percentile ratios from the PSID and SCF data document substantial increases in the dispersion of wealth both before and after the Great Recession (Table 2, for longer-term trends see Table B.2 in Appendix B). Based on PSID data (top row), the Gini coefficient – a measure of inequality across the entire distribution – rose from 0.81 in 2003 to 0.83 in 2007 and to 0.89 in 2009. It remained high at .88 in 2011, a 10 percent total increase between 2003 and 2011. The SCF Gini shows an increase by 5 percent from .809 in 2004 to .846 in 2010.

Ratios of net worth at various percentiles also demonstrate rising inequality, providing an easily interpreted metric of the magnitude of the change. For example, using the PSID, households at the 50th percentile relative had 8.7 times the net worth of those at the 25th percentile in 2003, but 31.3 times that by 2011. In other words, the 50/25 ratio increased almost fourfold (i.e., $31.3/8.7$). The 95/25 ratio was 117.8 in 2003 and increased more than six-fold to 764.7 by 2011.

The SCF percentile ratios show increases in all rows of the table, but the rate of change is somewhat smaller, especially for comparisons at the 25th percentile. For example, the 95/25 ratio roughly doubled from 108.3 to 224.0 between 2004 and 2010, not six-fold as in the PSID data. The 95/50 change is similar in both data sets – an increase from 13.6 to 24.4 in the PSID over eight years, and an increase from 15.4 to 24.2 over six years in the SCF.

Changes in wealth disparities. Disadvantaged groups, whether in terms of socioeconomic status, income, education, marital status or race, have much lower net worth than advantaged groups. The magnitude of these disparities in median net worth is shown in column one of table three for the 2003 PSID data. We display disparities by income quintile, educational attainment, race, age categories, marital status, and whether children are present in the household.

Our focus is on changes in these disparities leading up to (2003-2007) and following (2007-2011) the Great Recession. In almost every instance, the more advantaged group has much higher net worth and experienced a larger absolute decline (or increase, depending on the time period) than the disadvantaged group. For example, households in the bottom income quintile experienced a decline between 2003 and 2011

of \$5,824, while the top quintile experienced a decline of \$67,447. The pattern of absolute losses is not surprising given the tremendous differences in the level of wealth holdings in 2003: \$7,824 for the bottom quintile and \$354,647 for the top quintile.

What is perhaps unexpected is the fact that the relative wealth losses over the eight years were far greater for the less-advantaged than for the more-advantaged groups in almost every case. For example, median wealth of the households in the bottom income quintile fell in 2011 to 26 percent of the 2003 level, while median wealth held by the top income quintile fell to just 81 percent of its 2003 level. Similarly, while median wealth fell by 2011 to 69 percent of the 2003 level for non-Hispanic whites and Asians, it fell to 27 percent for nonwhites (African Americans, Hispanics, Native Americans and others). In 2003, the typical non-Hispanic white and Asian household had net worth that was 6.5 times as large as that as the median nonwhite household (\$120,594/\$18,338); by 2011 this ratio increased to 16.7 (\$83,600/\$5,000). For groups defined by income, education, and race/ethnicity, those with lower median wealth holdings in 2003 experienced larger relative declines through 2011.

Changes in wealth holdings: longitudinal analysis

Wealth Mobility. Given the tremendous swings in household net worth between 2003 and 2011, the relative position of particular households in the wealth distribution may have changed substantially. To investigate this issue, we use the longitudinal nature of the PSID to estimate wealth mobility between the pre-recession period (i.e., defined as average net worth in the 2005 and 2007 surveys) and the post-recession period (i.e., average of the 2009 and 2011 surveys). As shown in Table 4a, among households who

were in the bottom wealth quintile before the Great Recession, 71.7 percent remained in the bottom quintile and an additional 20.8 percent moved up one quintile. Less than 8 percent moved more than one quintile up the distribution. Downward mobility from the top of the distribution was even less likely to occur, as 77 percent of households that were in the highest quintile before the recession were still there after the great recession. Also, only 5.2 percent of the top quintile households moved down more than one quintile.

Bricker et al. (2011) report similar rates of immobility between 2007 and 2009 using the SCF panel. Among households in the bottom quintile in 2007, 76 percent remained in the bottom quintile in 2009 and 97 percent were in one of the bottom two quintiles. Among families in the top quintile in 2007, 78 percent remained in the top quintile in 2009 and 95 percent were in the top two quintiles.

In sum, despite the significant impact of the Great Recession on the overall dispersion of wealth demonstrated above, the recession did not fundamentally alter the ordering of households along the wealth distribution. Another way to demonstrate this is to compare the PSID recession wealth mobility rates (Table 4a) to mobility rates before the Great Recession (Table 4b). They are strikingly similar across nearly all cells of these two mobility tables. The main type of mobility for which we can observe some change during the recession is the extent of downward mobility from the middle of the distribution: While close to 30 percent of households at the middle quintile showed downward mobility both before and during the recession, the share of households at the middle quintile that was demoted to the lowest quintile doubled (from 5.1 percent before the recession to 10.8 percent after the recession).

Disparities in changes in wealth. The longitudinal data allow us to examine changes in wealth for particular households. In Table 5, we report the share of households experiencing various amounts of absolute losses and gains and selected percentage changes from 2007 to 2011. The top row shows that 12.2 percent of households experienced a loss of \$250,000 or more; the second row shows that 33.3 percent of households lost at least \$50,000. Although net worth losses were the norm, some households had higher net worth in 2011 than in 2007. In fact, 5.3 percent of households experienced a gain of at least \$250,000, and 16.9 percent experienced gains of at least \$50,000. A total of 30 percent gained \$10,000 or more.

The second panel shows that 9.1 percent of households fell into debt – that is, they had positive net worth in 2007, but negative net worth in 2011.

The third panel in Table 5 shows relative changes in net worth for households that had positive net worth in 2007. A quarter of them lost at least 75 percent of their wealth and 36.3 percent lost at least 50 percent. On the other hand, more than a quarter of families experienced a gain of at least 25 percent. Taking all households who had positive net worth in 2007, the median change by 2011 was a loss of \$16,367. And among those who did lose net worth, the median loss was \$70,348.

Socioeconomic disparities in wealth changes. We estimate multivariate regressions to assess the marginal effects of various socioeconomic factors on changes in net worth from 2007 to 2011. The independent variables include proxies for permanent net worth quintiles and permanent net income quintiles computed as the average of a household's values for the pre-recession years of 2003, 2005 and 2007, head's educational attainment, race/ethnicity, age, marital status and presence of children in the household^{iv}. The results

are shown in Table 6 for absolute losses for all households and in the first row of Table 7 for relative losses for those households with positive net worth in 2007.

It is not surprising that households who had higher net worth prior to the Great Recession experienced greater absolute losses. For example, those in the top net worth quintile were 6.39 times more likely to have experienced any loss and 58.57 times more likely to have lost more than \$50,000. These highest net worth households were, however, only one-third as likely to have fallen into debt (last column in Table 6) as the lowest net worth quintile.

Holding pre-recession net worth quintiles constant, there are few significant coefficients for the pre-recession income quintiles. The highest income quintile was about 39 percent less likely to have experienced any loss than the lowest income quintile (holding initial wealth quintile constant) and 31 percent less likely to have lost more than \$10,000.

Everything else equal, whites and Asians were much less likely to have lost significant wealth than African Americans, Hispanics, Native Americans and others: 30 percent less likely to have lost any wealth, 37.5 percent less likely to have fallen into debt, and 74 percent less likely to have lost at least \$250,000. Households with heads who have a BA degree were 36 percent less likely to have lost any wealth compared to those without a high school degree. In general, the older the household head, the more likely – and higher – the absolute losses. However, the likelihood of falling into debt is highest for households with heads under the age of 35. Married couples were more likely to fall into debt than households with unmarried male heads. Households with children were more 2 percent more likely to have lost any wealth.

These conditional associations are illustrated graphically by generating, based on the regression coefficients reported in Table 6, predicted probabilities of losing more than \$10,000 for several hypothetical households. In Figure 3, we report the predicted probability of losing at least \$10,000 for households in the third pre-recession permanent income and third pre-recession permanent wealth quintiles, who have children, and whose head is married, white or Asian, has a college degree, and is between the ages of 35 and 54 years old. For this baseline household, we predict the probability for a loss of at least \$10,000 is 57 percent. If instead the household was in the bottom pre-recession income quintile – and the other observed characteristics were the same – this probability would be 61 percent. If the household head was a high school graduate and not a college graduate, the likelihood of loss would be 64 percent. The large differences by race/ethnicity are demonstrated by the fact that the rate would be 66 percent instead of 57 percent if the household head were nonwhite – all else equal.

The first row of Table 7 reports the coefficients from a regression model in which the dependent variable is the percentage loss in net worth between 2007 and 2011^v. Thus, the sample is restricted to families who had positive net worth in 2007. The mean percentage loss for the sample was 38.2 percent. Households whose mean net income in 2003, 2005 and 2007 placed them in the top quintile lost 8 percentage points less than those in the bottom income quintile. Households with highly educated heads (those with the BA or more than a BA) compared to high school drop outs experienced wealth losses that were roughly ten percentage points lower. Households with a white or Asian head lost, all else equal, 13.8 percentage points less than those with a non-white head. Households nearing retirement (55-64) lost four percentage points less than households

headed by someone under 35 years old. And households with children lost three percentage points more than those without.

These conditional associations are illustrated with predicted probabilities in Figure 4. Again, the racial differences in wealth losses stand out: The same baseline household described above lost 31.9 percent of its wealth while the same household with a non-white head lost 45.7 percent of its wealth.

Evidence on the impact of unemployment. So far, we have documented the extent, the distribution, and the factors associated with wealth losses after the Great Recession. Because of the extensive effects of the Great Recession on the labor market (Freeman, this issue), we now turn to the potential contribution of unemployment to these wealth losses. If households use their assets to smooth consumption in reaction to income losses, as economic theory suggests, we should observe higher wealth losses for those experiencing unemployment. This is indeed the case, as seen in the second column of Table 7. Households that experienced unemployment in 2008 (by either the household head or partner) lost 7.36 - 9.42 percent more wealth than those who experienced no unemployment, all else equal. However, including differential unemployment experiences in the regression does not significantly change the size of the coefficients on the other variables in the model.

With the PSID data that are currently available, we do not have information on unemployment experiences after 2008. As Freeman shows (this issue), unemployment rates have recovered very slowly since then, with many households experiencing prolonged periods of unemployment. Extended unemployment might in fact explain a larger part of the documented continued decline in net worth through 2011.

DISCUSSION

In terms of household wealth, there are very few signs of recovery from the losses associated with the Great Recession. Declines in net worth from 2007 to 2009 were large, and the declines continued through 2011. These wealth losses, however, were not distributed equally. While large absolute amounts of wealth were destroyed at the top of the wealth distribution, households at the bottom of the wealth distribution lost the largest share of their wealth. As a result, wealth inequality increased significantly—the PSID Gini coefficient of household net worth increased by about 10 percent between 2007 and 2011 and the 95/25 ratio increased over six-fold between 2003 and 2011.

Wealth changes following the Great Recession also differed greatly across socio-economic groups and were patterned similar to changes in income and unemployment documented elsewhere (Hout et al. 2011; Smeeding et al. 2011; Freeman this volume). That is, the most disadvantaged groups (non-whites, young adults, the less-educated) experienced the greatest relative wealth losses and were the most likely to have fallen into debt. In addition, we found a particularly strong racial/ethnic bias in losses even when comparing households with otherwise equal socio-economic characteristics.

The American economy has experienced rising income and wealth inequality for several decades and there is little evidence that these trends are likely to reverse in the near term. It is possible that the very slow recovery from the Great Recession will continue to generate increased wealth inequality in the coming years as those hardest hit may still be drawing down assets to cover current consumption.

ENDNOTES

ⁱ This research was supported by a grant from the Russell Sage Foundation. We thank Patricia Andreski for her assistance in preparing the SCF data. Fabian Pfeffer is a Research Assistant Professor at the Survey Research Center of the Institute for Social Research, University of Michigan. Sheldon Danziger is H.J. Meyer Distinguished University Professor of Public Policy and Director of the National Poverty Center at the Gerald R. Ford School of Public Policy, University of Michigan. Robert Schoeni is Research Professor at the Institute for Social Research and Professor of Economics and Public Policy, University of Michigan. Please direct all correspondence to Fabian T. Pfeffer, fpfeffer@umich.edu, Institute for Social Research, University of Michigan, 426 Thompson Street, Ann Arbor, MI 48106.

ⁱⁱ While wealth is reported as of the interview date, the PSID income measure refers to the year prior to the survey (that is, 2002, 2004, and 2006).

ⁱⁱⁱ The preliminary 2011 data do not allow us to impose the same restriction to households with an unchanged household head and contain un-imputed missing values. Also, we use the 2009 weights as 2011 weights, which are not yet available. Final data for 2011 were released in August 2013. Updates to some of the analyses reported here based on those final data are reported in Pfeffer, Danziger, and Schoeni 2013.

^{iv} We have conducted a range of sensitivity tests with different specifications of the pre-recession wealth predictor, such as logged net worth and net debt and the inverse hyperbolic sine transformation. These do not alter the substantive conclusions presented here. These sensitivity checks were motivated by the possibility that a relatively crude measure of baseline wealth, such as the quintile dummy indicators used here, may bias the effects of various indicators of disadvantaged status downwards (e.g. the racial gap). There is some indication that our estimates of the racial effects are conservative based on sensitivity checks that include interactions between baseline wealth and race (results available from the authors).

^v Regression models that predict net worth gains between 2007 and 2011 generally mirror those presented here and are available from the authors upon request.

REFERENCES

- Bosworth, Barry. 2012. "Economic Consequences of the Great Recession. Evidence from the Panel Study of Income Dynamics." *Center for Retirement Research at Boston College Working Paper* (2012-4).
- Bricker, Jesse, Brian Bucks, Arthur Kennickell, Traci Mach, and Kevin Moore. 2011. "Surveying the Aftermath of the Storm. Changes in Family Finances from 2007 to 2009." *Finance and Economics Discussion Series, Federal Reserve Board, Washington, D.C.* (2011-17).
- Bridges, Thomas, and Frank Stafford. 2012. "At the Corner of Main and Wall Street. Family Pension Response to Liquidity Change and Perceived Returns." Michigan Retirement Research Center Working Paper.
- Bucks, Brian, and Kevin Moore. 2012. "The Great Recessions' Varied Effects on Household Well-Being and Its Consequences for Inequality." *Paper presented at the General Conference of The International Association for Research in Income and Wealth.*
- Emmons, By William R, and Bryan J Noeth. 2012. "Household Financial Stability. Who Suffered the Most from the Crisis?" *The Regional Economist* 11-17.
- Gouskova, Elena, and Frank Stafford. 2009. "Trends in Household Wealth Dynamics , 2005-2007." *PSID Technical Paper #09-03.*
- Gottschalck, By Alfred, Marina Vornovytsky, and Adam Smith. 2013. "Household Wealth in the U.S.: 2000 to 2011." Press release by the Census Bureau, March 2013.

- Hout, Michael, Asaf Levanon, and Erin Cumberworth. 2011. "Job Loss and Unemployment." Pp. 59–126 in *The Great Recession*, edited by David B. Grusky, Bruce Western, and Christopher Wimer. New York: Russell Sage.
- Hoynes, Hilary, Douglas L Miller, and Jessamyn Shaller. 2012. Who suffers during recessions? *Journal of Economic Perspectives*. 26 (3): 27 – 48.
- Juster, F Thomas, James P Smith, and Frank Stafford. 1999. "The measurement and structure of household wealth." *Labour Economics* 6(2):253–275.
- Keister, Lisa A. 2000. *Wealth in America. Trends in Wealth Inequality*. Cambridge: Cambridge University Press.
- Keister, Lisa A, and Stephanie Moller. 2000. "Wealth Inequality in the United States." *Annual Review of Sociology* 26:63–81.
- Kennickell, Arthur B. 2000. "Wealth Measurement in the Survey of Consumer Finances : Methodology and Directions for Future Research." *Finance & Economic Discussion Paper, Federal Reserve Board Washington D.C.*
- Kennickell, Arthur B. 2009. "Ponds and Streams. Wealth and Income in the U.S., 1989 to 2007." *Finance & Economic Discussion Paper, Federal Reserve Board Washington D.C.*
- Kennickell, Arthur B. 2011. "Tossed and Turned: Wealth Dynamics of U.S. Households 2007 – 2009." *Finance & Economic Discussion Paper, Federal Reserve Board Washington D.C.*
- Kennickell, Arthur B. 2012. "The Other, Other Half. Changes in the Finances of the Least Wealthy 50 Percent, 2007-2009." *Finance & Economic Discussion Paper, Federal Reserve Board Washington D.C.*

- Klevmarcken, N Anders, Joseph P Lupton, and Frank P Stafford. 2003. "Wealth Dynamics in the 1980s and 1990s." *The Journal of Human Resources* 38(2):322–353.
- Mian, Atif, and Amir Sufi. 2011. "House Prices, Home Equity-Based Borrowing, and the US Household Leverage Crisis." *American Economic Review* 101(5): 2132–2156.
- Ohlsson, Henry, Jesper Roine, and Daniel Waldenström. 2008. "Long-Run Changes in the Concentration of Wealth. An Overview of Recent Findings." Pp. 42–63 in *Personal Wealth from a Global Perspective*, edited by James B. Davies. Oxford: Oxford University Press.
- Oliver, Melvin L, and Thomas M Shapiro. 1997. *Black Wealth, White Wealth. A New Perspective on Racial Inequality*. New York: Routledge.
- Owens, Lindsay A., and Christopher Wimer. 2013. "The Dynamics of Mortgage Debt in the Wake of the Great Recession." *Unpublished Manuscript*.
- Panel Study of Income Dynamics, public use dataset. Produced and distributed by the Institute for Social Research, Survey Research Center, University of Michigan, Ann Arbor, MI (2003).
- Pfeffer, Fabian T., Sheldon Danziger, Robert F. Schoeni. 2013. "Wealth Inequality and the Great Recession". Research Summary. Russell Sage Foundation & The Stanford Center on Poverty and Inequality.
- Pfeffer, Fabian T., Robert F. Schoeni, and Patricia Andreski. 2013. "A comparison of wealth estimates based on the 2007 Panel Study of Income Dynamics and the 2007 Survey of Consumer Finances." *PSID Technical Paper*.

- Scholz, Karl John, and Kara Levine. 2004. "U.S. Black-White Wealth Inequality." Pp. 895–929 in *Social Inequality*, edited by Kathryn M Neckerman. New York: Russell Sage.
- Shammas, Carole. 2012. "A New Look at Long-Term Trends in Wealth Inequality in the United States." *American Historical Review* 98(2):412–431.
- Shapiro, Thomas, Tatjana Meschede, and Sam Osoro. 2013. "The Roots of the Widening Racial Wealth Gap. Explaining the Black-White Economic Divide." Institute on Assets and Social Policy
- Smeeding, Timothy M, Jeffrey P Thompson, Asaf Levanon, and Esra Burak. 2011. "Income, Inequality, and Poverty over the Early Stages of the Great Recession." in *The Great Recession*, edited by David B Grusky, Bruce Western, and Christopher Wimer. New York: Russell Sage Foundation.
- Solon, Gary. 1992. "Intergenerational Income Mobility in the United States." *American Economic Review* 82(3):393–408.
- Stafford, Frank, Bing Chen, and Robert Schoeni. 2012. "Mortgage Distress and Financial Liquidity. How U.S. Families are Handling Savings, Mortgages and Other Debts." *PSID Technical Paper #12-02*.
- Wolff, Edward N. 1995. *Top Heavy. A study of the increasing inequality of wealth in America*. New York: Twentieth Century Fund Press.
- Wolff, Edward N. 2006. "Changes in household wealth in the 1980s and 1990s in the United States." Pp. 107–150 in *International Perspectives on Household Wealth*, edited by Edward N Wolff. Cheltenham: Edward Elgar.

Wolff, Edward N. 2010. "Recent Trends in Household Wealth in the United States: Rising Debt and the Middle-Class Squeeze. An Update to 2007." *Levy Economics Institute Working Paper* (589).

Wolff, Edward N., Lindsay A. Owens, and Esra Burak. 2011. "How Much Wealth Was Destroyed in the Great Recession?" Pp. 127–158 in *The Great Recession*, edited by David B. Grusky, Bruce Western, and Christopher Wimer. New York: Russell Sage Foundation.

TABLES

Table 1. Net worth distribution, 2003-2011

	PSID						Absolute change		
	2003	2005	2007	2009	2011	'03-'07	'07-'11	'03-'11	
	Net worth								
Mean	325,627	363,709	409,024	397,032	233,575	83,397	-175,449	-92,052	
5th percentile	-9,413	-10,136	-13,019	-26,737	-38,800	-3,606	-25,781	-29,387	
25th	9,780	8,869	6,726	2,630	1,500	-3,054	-5,226	-8,280	
50th	84,964	92,721	95,471	68,365	47,000	10,507	-48,471	-37,964	
75th	291,821	339,781	355,305	292,007	244,000	63,484	-111,305	-47,821	
95th	1,151,595	1,427,080	1,573,105	1,371,438	1,147,000	421,510	-426,105	-4,595	
Net worth excluding home equity & real estate									
Mean	191,429	198,904	225,896	195,091	134,297	34,467	-91,599	-57,132	
5th percentile	-16,993	-18,429	-21,698	-27,156	-32,400	-4,705	-10,702	-15,407	
25th	2,262	1,728	1,085	577	25	-1,177	-1,060	-2,237	
50th	24,450	23,036	22,240	18,873	14,000	-2,210	-8,240	-10,450	
75th	122,250	126,698	134,528	115,335	95,000	12,278	-39,528	-27,250	
95th	715,163	830,448	935,604	828,315	795,500	220,441	-140,104	80,338	
Observations	7,822	8,002	8,289	8,690	8,187				

	SCF			Absolute change		
	2004	2007	2010	'04-'07	'07-'10	'04-'10
	Net worth					
Mean	533,133	594,324	509,763	61,191	-84,561	-23,370
5th percentile	-3,249	-4,922	-15,862	-1,673	-10,940	-12,613
25th	15,708	15,087	8,570	-621	-6,517	-7,138
50th	110,671	128,860	79,310	18,189	-49,550	-31,361
75th	328,830	398,361	309,309	69,531	-89,052	-19,521
95th	1,701,105	2,022,300	1,919,714	321,195	-102,586	218,609
Observations	4,519	4,418	6,482			

Table 2. Indicators of inequality in net worth, 2003-2011

Indicator of inequality	PSID										
	1984	1989	1994	1999	2001	2003	2005	2007	2009	2011	2011/1984
Gini coefficient	0.807	0.798	0.796	0.818	0.813	0.814	0.815	0.832	0.890	0.879	1.1
Percentile ratios											
50/25	7.1	7.6	8.3	8.4	9.4	8.7	10.5	14.2	26.0	31.3	4.4
75/25	20.5	25.0	25.9	27.9	32.5	29.8	38.3	52.8	111.0	162.7	7.9
90/25	45.6	56.9	60.3	67.9	76.1	72.8	94.4	134.1	301.0	481.3	10.6
95/25	73.6	91.0	100.3	113.9	132.1	117.8	160.9	233.9	521.5	764.7	10.4
75/50	2.9	3.3	3.1	3.3	3.4	3.4	3.7	3.7	4.3	5.2	1.8
90/50	6.4	7.5	7.2	8.1	8.1	8.4	9.0	9.4	11.6	15.4	2.4
95/50	10.3	12.0	12.0	13.6	14.0	13.6	15.4	16.5	20.1	24.4	2.4
90/75	2.2	2.3	2.3	2.4	2.3	2.4	2.5	2.5	2.7	3.0	1.3
95/75	3.6	3.6	3.9	4.1	4.1	3.9	4.2	4.4	4.7	4.7	1.3
95/90	1.6	1.6	1.7	1.7	1.7	1.6	1.7	1.7	1.7	1.6	1.0

Table 3. Absolute and relative changes in net worth by socio-economic status, PSID

	Median in 2003	Change in median			Relative to median in 2003			
		'03-'07	'07-'11	'03-'11	2005	2007	2009	2011
Household income quintile								
1st (bottom)	7,824	-4,027	-1,797	-5,824	0.59	0.49	0.27	0.26
2nd	35,942	-7,734	-15,707	-23,442	0.95	0.78	0.60	0.35
3rd	70,295	11,073	-34,368	-23,295	1.16	1.16	0.82	0.67
4th	122,250	25,296	-63,846	-38,550	1.14	1.21	0.84	0.68
5th	354,647	147,661	-215,109	-67,447	1.19	1.42	0.98	0.81
Education								
<high school	22,127	-6,179	-11,748	-17,927	0.86	0.72	0.57	0.19
High school	70,905	-2,014	-41,891	-43,905	0.96	0.97	0.70	0.38
Some college	71,150	15,643	-55,192	-39,550	1.15	1.22	0.60	0.44
BA	174,818	24,804	-77,122	-52,318	1.17	1.14	0.86	0.70
>BA	360,638	106,412	-221,549	-115,138	1.23	1.30	0.81	0.68
Race								
Nonwhite	18,338	-979	-12,358	-13,338	1.17	0.95	0.51	0.27
White and Asian	120,594	13,392	-50,385	-36,994	1.10	1.11	0.88	0.69
Age								
<35	10,391	-2,797	-2,094	-4,891	0.78	0.73	0.50	0.53
35-54	83,375	16,220	-60,295	-44,075	1.13	1.19	0.69	0.47
55-64	205,991	10,989	-72,380	-61,391	1.12	1.05	0.81	0.70
>=65	221,028	36,093	-64,121	-28,028	1.03	1.16	1.09	0.87
Marital status								
Married	166,505	48,306	-78,810	-30,505	1.18	1.29	0.98	0.82
Single male	26,284	-5,996	-9,988	-15,984	0.84	0.77	0.48	0.39
Single female	32,519	-5,396	-16,023	-21,419	0.90	0.83	0.61	0.34
Have children in household								
No	103,301	849	-45,150	-44,301	1.07	1.01	0.80	0.57
Yes	56,846	20,432	-48,279	-27,846	1.25	1.36	0.74	0.51

Table 4a. Quintile-to-quintile wealth mobility during the Great Recession, PSID

Net Worth 2005/2007	Net Worth 2009/2011					Total
	1st	2nd	3rd	4th	5th	
1st (lowest) quintile	66.2	28.3	4.0	1.3	0.3	100
2nd	22.7	49.0	24.0	3.8	0.6	100
3rd	10.8	17.2	51.0	18.9	2.2	100
4th	4.0	5.3	18.8	54.8	17.2	100
5th (highest) quintile	1.2	2.1	2.7	17.4	76.6	100

Note: Based on balanced panel 2005-2011 for households headed by the same household head in 2005, 2007, and 2009

Table 4b. Quintile-to-quintile wealth mobility before the Great Recession, PSID

Net Worth 2001/2003	Net Worth 2005/2007					Total
	1st	2nd	3rd	4th	5th	
1st (lowest) quintile	71.7	20.8	6.3	0.8	0.3	100
2nd	22.8	50.3	21.3	4.1	1.5	100
3rd	5.1	26.1	46.4	20.0	2.4	100
4th	1.1	4.7	21.4	55.0	17.9	100
5th (highest) quintile	1.2	1.2	2.8	17.9	77.0	100

Note: Based on balanced panel 2001-2007 for households headed by the same household head in all years

Table 5. Distribution of change in net worth 2007 to 2011, PSID

Absolute change (N=5,839)	%	Cumulative %
Lost >=\$250k	12.2	12.2
Lost \$50k-\$250k	21.2	33.3
Lost \$10k-\$50k	14.0	47.3
Lost less than \$10k	10.8	58.1
No change	1.8	59.8
Gained <\$10k	10.1	70.0
Gained \$10k-\$50k	13.1	83.1
Gained \$50k-\$250k	11.6	94.7
Gained >=\$250k	5.3	100.0

Fell into debt (N=5,839)	%	Cumulative %
No	90.9	90.9
Yes	9.1	100.0

Percentage change (N=4,676)*	%	Cumulative %
Lost 75-100%	25.1	25.1
Lost 50-74%	11.2	36.3
Lost 25-49%	15.1	51.4
Lost <25%	13.0	64.4
Gained <25%	9.2	73.6
Gained 25-99%	11.7	85.3
Gained >=100%	14.7	100.0

Median loss	
Among all with net worth in 2007	\$16,367
Among those having lost net worth	\$70,348

* Note: Among those holding positive net worth in 2007.

Table 6. Logistic regressions predicting absolute losses of net worth 2007-11, PSID Odds Ratios

	Any Loss	Loss of $\geq 10k$	Loss of $\geq 50k$	Loss of $\geq 250k$	Fell in debt
Net worth 03-07, Q1	<i>ref.</i>	<i>ref.</i>	<i>ref.</i>		<i>ref.</i>
Net worth 03-07, Q2	1.878*** (0.213)	3.434*** (0.451)	3.576*** (0.761)		1.362+ (0.218)
Net worth 03-07, Q3	2.981*** (0.362)	7.141*** (0.979)	13.357*** (2.779)	58.253*** (60.026)	1.160 (0.207)
Net worth 03-07, Q4	3.900*** (0.525)	11.242*** (1.670)	29.919*** (6.454)	395.032*** (406.133)	0.661+ (0.158)
Net worth 03-07, Q5	6.392*** (0.976)	18.250*** (3.065)	58.569*** (13.589)	2004.070*** (2067.020)	0.313*** (0.107)
HH income 03-07, Q1	<i>ref.</i>	<i>ref.</i>	<i>ref.</i>	<i>ref.</i>	<i>ref.</i>
HH income 03-07, Q2	1.165 (0.145)	1.050 (0.141)	1.129 (0.190)	0.674 (0.230)	1.061 (0.196)
HH income 03-07, Q3	1.039 (0.136)	1.231 (0.176)	1.268 (0.223)	0.804 (0.255)	1.173 (0.240)
HH income 03-07, Q4	0.952 (0.140)	1.106 (0.172)	1.259 (0.237)	0.967 (0.307)	1.124 (0.252)
HH income 03-07, Q5	0.610** (0.100)	0.693* (0.119)	0.905 (0.180)	0.947 (0.316)	0.967 (0.267)
Head's education: <HS	<i>ref.</i>	<i>ref.</i>	<i>ref.</i>	<i>ref.</i>	<i>ref.</i>
Head's education: HS	0.888 (0.115)	1.092 (0.144)	0.980 (0.149)	0.967 (0.301)	1.003 (0.198)
Head's education: Some college	0.935 (0.122)	1.247+ (0.167)	1.157 (0.179)	1.066 (0.335)	1.101 (0.218)
Head's education: BA	0.638** (0.094)	0.812 (0.125)	0.758 (0.134)	0.786 (0.258)	0.910 (0.215)
Head's education: >BA	0.716+ (0.135)	0.990 (0.194)	0.840 (0.177)	0.803 (0.282)	0.805 (0.286)
Head's race: White/Asian	0.703*** (0.061)	0.699*** (0.063)	0.564*** (0.060)	0.260*** (0.050)	0.625*** (0.085)
Head's age: <35	<i>ref.</i>	<i>ref.</i>	<i>ref.</i>	<i>ref.</i>	<i>ref.</i>
Head's age: 35-54	1.286** (0.110)	1.360*** (0.126)	1.684*** (0.192)	1.864** (0.426)	0.745* (0.094)
Head's age: 55-64	1.213 (0.145)	1.359* (0.167)	1.765*** (0.250)	1.598+ (0.392)	0.445*** (0.093)
Head's age: 65-	1.458** (0.206)	1.823*** (0.266)	2.278*** (0.375)	2.111** (0.565)	0.279*** (0.097)
Married	<i>ref.</i>	<i>ref.</i>	<i>ref.</i>	<i>ref.</i>	<i>ref.</i>
Unmarried Male Head	0.925 (0.094)	0.814+ (0.086)	0.896 (0.110)	0.788 (0.159)	0.675* (0.115)
Unmarried Female Head	0.910 (0.091)	0.854 (0.090)	0.794+ (0.096)	0.571* (0.125)	0.904 (0.140)
Children in HH	1.209* (0.097)	1.414*** (0.120)	1.429*** (0.140)	1.021 (0.163)	1.001 (0.124)
Constant	0.706* (0.123)	0.140*** (0.027)	0.031*** (0.008)	0.001*** (0.001)	0.234*** (0.063)
N	5,839	5,839	5,839	5,839	5,839
Pseudo-R2	0.060	0.146	0.235	0.360	0.070

+ p<.10, * p<.05, ** p<.01, *** p<.001; s.e. in parantheses

Table 7. OLS regression predicting relative losses of net worth 2007-2011, PSID

	% Lost	% Lost
Net worth 03-07, Q1	<i>ref.</i>	<i>ref.</i>
Net worth 03-07, Q2	-1.121 (2.128)	-1.083 (2.124)
Net worth 03-07, Q3	1.500 (2.186)	1.686 (2.182)
Net worth 03-07, Q4	-0.530 (2.312)	-0.139 (2.310)
Net worth 03-07, Q5	1.894 (2.547)	2.120 (2.543)
HH income 03-07, Q1	<i>ref.</i>	<i>ref.</i>
HH income 03-07, Q2	-4.258* (1.979)	-4.302* (1.975)
HH income 03-07, Q3	-3.749+ (2.112)	-3.593+ (2.110)
HH income 03-07, Q4	-3.855+ (2.280)	-3.539 (2.277)
HH income 03-07, Q5	-7.797** (2.560)	-7.219** (2.559)
Head's education: <HS	<i>ref.</i>	<i>ref.</i>
Head's education: HS	-3.010 (2.057)	-3.228 (2.053)
Head's education: Some college	-2.039 (2.119)	-2.284 (2.115)
Head's education: BA	-10.721*** (2.340)	10.920*** (2.336)
Head's education: >BA	-9.358** (2.920)	-9.692*** (2.917)
Head's race: White/Asian	-13.751*** (1.442)	13.349*** (1.442)
Head's age: <35	<i>ref.</i>	<i>ref.</i>
Head's age: 35-54	-1.065 (1.588)	-1.177 (1.586)
Head's age: 55-64	-4.015* (2.003)	-3.768+ (2.000)
Head's age: 65-	-2.414 (2.194)	-1.757 (2.195)
Married	<i>ref.</i>	<i>ref.</i>
Unmarried Male Head	3.080+ (1.650)	3.219+ (1.647)
Unmarried Female Head	2.589+ (1.545)	3.062* (1.546)
Children in HH	2.922* (1.429)	2.968* (1.427)
Unemployment: None		<i>ref.</i>
Unemployment: 1-26 weeks		9.421*** (2.383)
Unemployment: 27 or more weeks		7.361* (3.160)
Constant	56.805*** (3.098)	55.202*** (3.114)
N	4,676	4,676
R2	0.052	0.056

+ p<.10, * p<.05, ** p<.01, *** p<.001; s.e. in parantheses

FIGURES

Figure 1. Total net worth relative to 1984, PSID

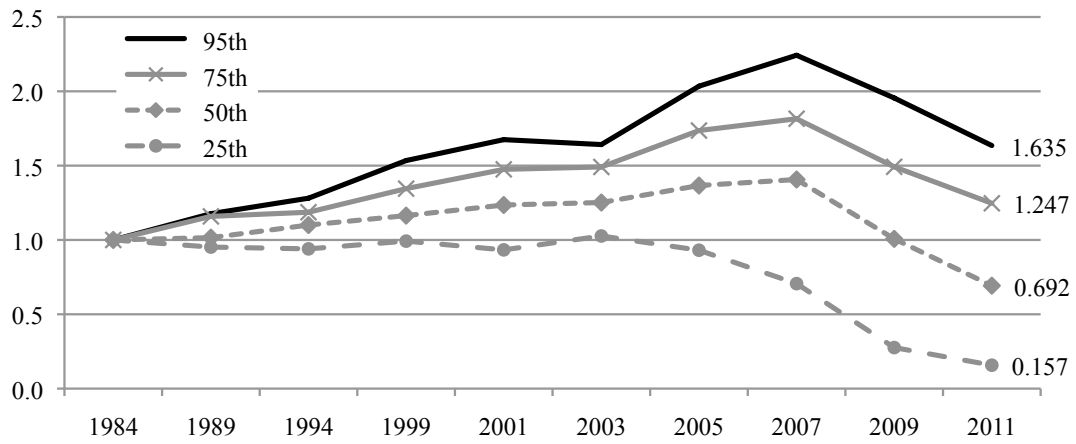


Figure 2a. Total net worth relative to 2003, PSID

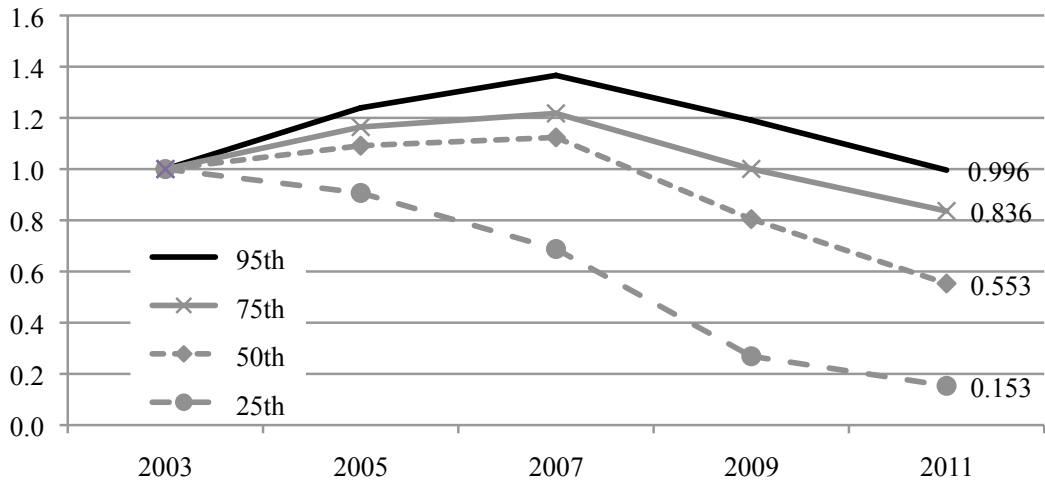


Figure 2b. Net worth excluding real estate relative to 2003, PSID

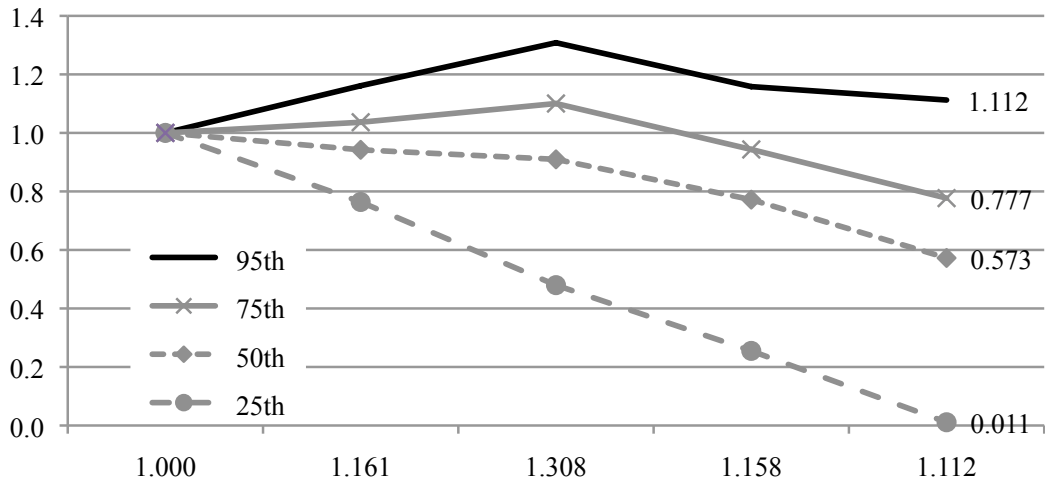
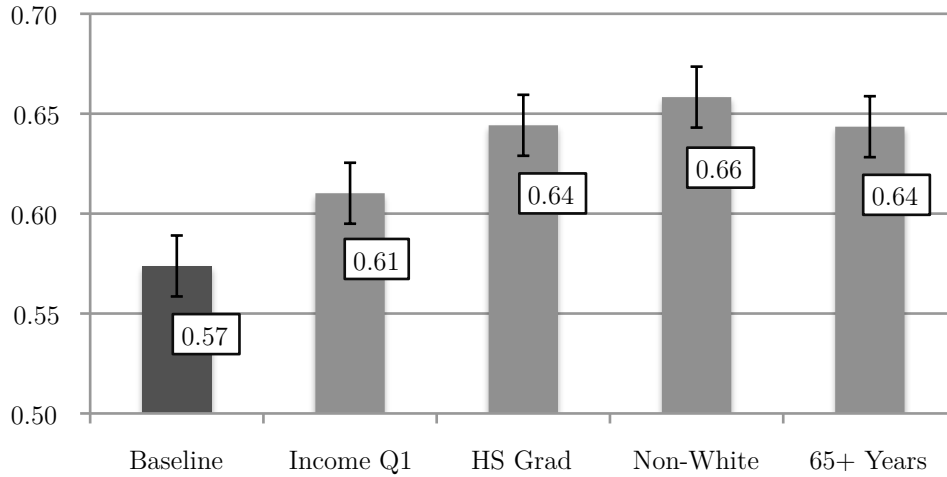


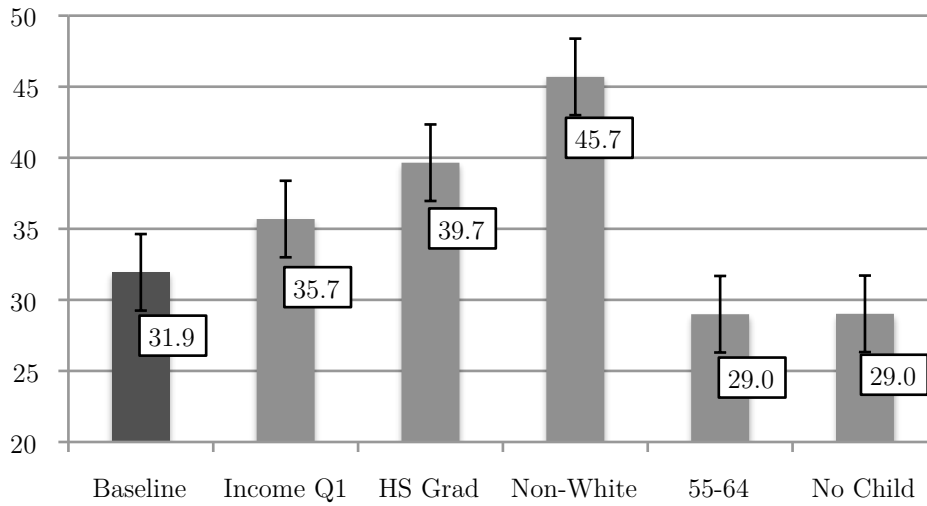
Figure 3. Predicted probabilities of losing \$10,000 or more in net worth, 2007-11, PSID

Based on regression model shown in Table 6



Note: Baseline predicted probability is for a household in the third pre-recession permanent income and third pre-recession permanent wealth quintiles, with children, and whose household head is married, white or Asian, has a college degree, and is between the ages of 35 and 54 years old, 95 percent CI shown

Figure 4. Predicted percentage loss of net worth between 2007 and 2011, PSID
Based on regression model shown in Table 7, first column



Note: Baseline predicted probability is for a household in the third pre-recession permanent income and third pre-recession permanent wealth quintiles, with children, and whose household head is married, white or Asian, has a college degree, and is between the ages of 35 and 54 years old; 95 percent CI shown

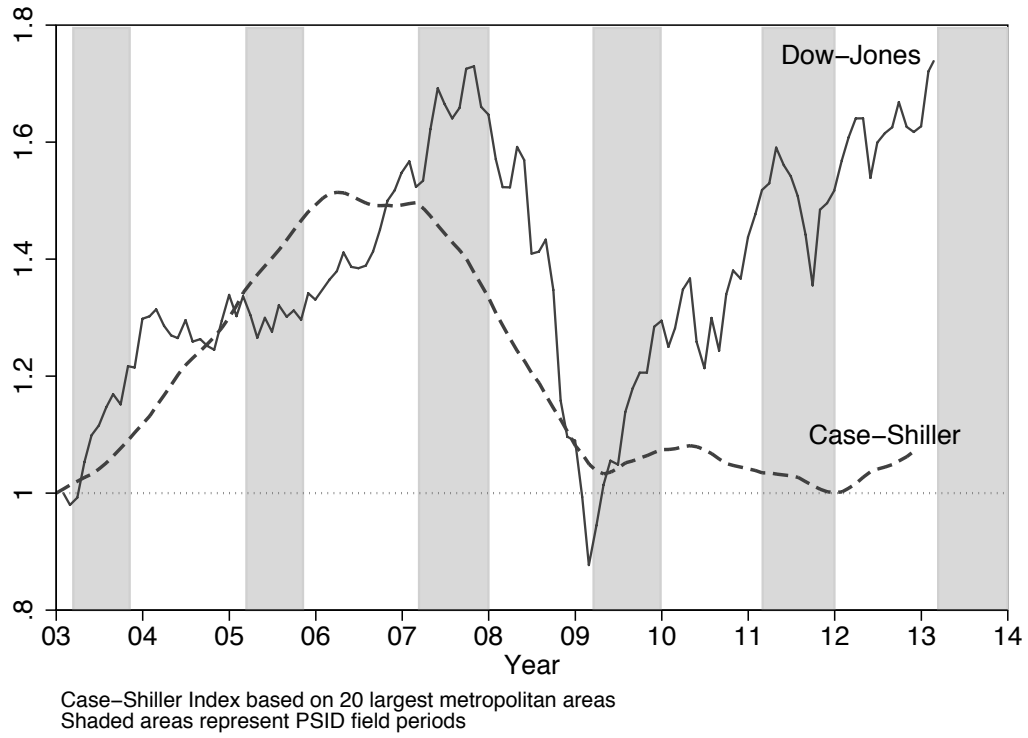
APPENDIX A: Information on data sources

Both the Survey of Consumer Finances (SCF) and the Panel Study of Income Dynamics (PSID) collect wealth data through survey questions on the holdings and values of separate asset components. For a description of wealth measurement in the SCF, we refer the reader to Kennickell (2000). For the PSID, Table A.1 documents the survey questions on assets. Figure A.1 shows the PSID field periods (in grey) and their convenient timing compared to the macro-economic shocks of the Great Recession.

Table A.1: Asset measures in the PSID

Survey Item	Survey Questions
Home value	Do you (or anyone else in your family living there) own the (home/apartment), pay rent, or what? Could you tell me what the present value of your (house/apartment) is--I mean about how much would it bring if you sold it today?
Mortgage (since 1994 up to two mortgages)	Do you have a mortgage or loan on this property? About how much is the remaining principal on this mortgage?
Checking and savings	Do you [or anyone in your family living here] have any money in checking or savings accounts, money market funds, certificates of deposit, government savings bonds, or treasury bills, not including assets held in employer-based pensions or IRA's? If you added up all such accounts [for all of your family living here], about how much would they amount to right now?
Stocks, mutual funds, investment trusts	Do you [or anyone in your family living here] have any shares of stock in publicly held corporations, mutual funds, or investment trusts, not including stocks in employer-based pensions or IRA's? If you sold all that and paid off anything you owed on it, how much would you have?
Other financial assets	Do you [or anyone in your family living here] have any other savings or assets, such as bond funds, cash value in a life insurance policy, a valuable collection for investment purposes, or rights in a trust or estate that you haven't already told us about? If you sold that and paid off any debts on it, how much would you have?
Farm or business	Do you [or anyone in your family living here] own part or all of a farm or business? If you sold all that and paid off any debts on it, how much would you realize on it?
Real estate	Do you (or your family living here) have any real estate other than your main home, such as a second home, land, rental real estate, or money owed to you on a land contract? If you sold all that and paid off any debts on it, how much would you realize on it?
Vehicles	What is the value of what you [or anyone in your family living here] own on wheels? Including personal vehicles you may have already told me about and any cars, trucks, a motor home, a trailer, or a boat -- what are they worth all together, minus anything you still owe on them?
Annuities, IRAs	Do you [or anyone in your family living here] have any money in private annuities or Individual Retirement Accounts (IRAs)? How much would they be worth?
Credit card debt, student loans, other debt	Aside from the debts that we have already talked about, like any mortgage on your main home or vehicle loans -- do you [or anyone in your family living here] currently have any other debts such as credit card charges, student loans, medical or legal bills, or loans from relatives? If you added up all these debts [for all of your family living here], about how much would they amount to right now?

Figure A.1: Timing of PSID data collection & macro-economic trends



APPENDIX B: Long-term trends based on the PSID

Table B.1: Net worth distributions, PSID 1984-2011

	PSID									
	1984	1989	1994	1999	2001	2003	2005	2007	2009	2011
Net worth										
Mean	213,702	233,547	236,132	304,021	312,200	325,627	363,709	409,024	397,032	233,575
5th percentile	-1,299	-3,628	-7,437	-9,397	-8,827	-9,413	-10,136	-13,019	-26,737	-38,800
10th	0	0	0	0	0	0	-346	-1,302	-6,606	-11,000
25th	9,526	9,070	8,955	9,451	8,891	9,780	8,869	6,726	2,630	1,500
50th	67,873	68,932	74,676	78,987	83,827	84,964	92,721	95,471	68,365	47,000
75th	195,716	226,750	232,223	263,289	288,694	291,821	339,781	355,305	292,007	244,000
90th	434,299	516,083	539,578	641,345	676,963	711,495	837,359	902,094	791,618	722,000
95th	701,460	825,370	898,538	1,076,109	1,174,843	1,151,595	1,427,080	1,573,105	1,371,438	1,147,000
Net worth excluding home equity & real estate										
Mean	121,450	117,127	129,129	196,624	190,074	191,429	198,904	225,896	195,091	134,297
5th percentile	-3,031	-6,349	-10,017	-12,017	-13,971	-16,993	-18,429	-21,698	-27,156	-32,400
10th	0	-736	-1,404	-2,565	-3,810	-4,279	-5,759	-7,594	-9,751	-12,700
25th	3,248	2,721	2,163	2,970	2,540	2,262	1,728	1,085	577	25
50th	18,403	21,768	24,133	25,654	25,440	24,450	23,036	22,240	18,873	14,000
75th	69,930	81,630	100,934	122,868	136,536	122,250	126,698	134,528	115,335	95,000
90th	212,495	247,611	315,702	377,313	413,037	391,200	428,470	509,578	433,031	410,000
95th	376,710	468,012	549,595	716,956	749,359	715,163	830,448	935,604	828,315	795,500
Observations	6,918	7,114	8,658	6,997	7,406	7,822	8,002	8,289	8,690	8,187

Table B.2: Indicators of inequality in net worth, PSID 1984-2011

Indicator of inequality	PSID										
	1984	1989	1994	1999	2001	2003	2005	2007	2009	2011	2011/1984
Gini coefficient	0.807	0.798	0.796	0.818	0.813	0.814	0.815	0.832	0.890	0.879	1.1
Percentile ratios											
50/25	7.1	7.6	8.3	8.4	9.4	8.7	10.5	14.2	26.0	31.3	4.4
75/25	20.5	25.0	25.9	27.9	32.5	29.8	38.3	52.8	111.0	162.7	7.9
90/25	45.6	56.9	60.3	67.9	76.1	72.8	94.4	134.1	301.0	481.3	10.6
95/25	73.6	91.0	100.3	113.9	132.1	117.8	160.9	233.9	521.5	764.7	10.4
75/50	2.9	3.3	3.1	3.3	3.4	3.4	3.7	3.7	4.3	5.2	1.8
90/50	6.4	7.5	7.2	8.1	8.1	8.4	9.0	9.4	11.6	15.4	2.4
95/50	10.3	12.0	12.0	13.6	14.0	13.6	15.4	16.5	20.1	24.4	2.4
90/75	2.2	2.3	2.3	2.4	2.3	2.4	2.5	2.5	2.7	3.0	1.3
95/75	3.6	3.6	3.9	4.1	4.1	3.9	4.2	4.4	4.7	4.7	1.3
95/90	1.6	1.6	1.7	1.7	1.7	1.6	1.7	1.7	1.7	1.6	1.0