

What's on the horizon for macroecology?

Jan Beck, Liliana Ballesteros-Mejia, Carsten M. Buchmann, Jürgen Dengler, Susanne A. Fritz, Bernd Gruber, Christian Hof, Florian Jansen, Sonja Knapp, Holger Kreft, Anne-Kathrin Schneider, Marten Winter and Carsten F. Dormann

J. Beck (jan.beck@unibas.ch) and L. Ballesteros-Mejia, Univ. of Basel, Dept of Environmental Sciences (Biogeography), CH-4056 Basel, Switzerland. – C. M. Buchmann, Univ. of Potsdam, Dept of Plant Ecology and Nature Conservation, DE-14469 Potsdam, Germany. – J. Dengler, Univ. of Hamburg, Biocentre Klein Flottbek and Botanical Garden, Biodiversity, Evolution and Ecology of Plants, DE-22609 Hamburg, Germany. – S. A. Fritz and C. Hof, Univ. of Copenhagen, Center for Macroecology, Evolution and Climate, Dept of Biology, DK-2100 Copenhagen, Denmark. Present address of SAF and CH: Biodiversity and Climate Research Centre (BiK-F) and Senckenberg Gesellschaft für Naturforschung, DE-60325 Frankfurt, Germany. – B. Gruber, Univ. of Canberra, Faculty of Applied Science, Inst. for Applied Ecology, ACT2601 Canberra, Australia. – F. Jansen, Ernst-Moritz-Arndt-Univ., Inst. of Botany and Landscape Ecology, DE-17487 Greifswald, Germany. – S. Knapp and M. Winter, UFZ – Helmholtz Centre for Environmental Research, Dept of Community Ecology, DE-06120 Halle (Saale), Germany. – H. Kreft, Univ. of Göttingen, Faculty of Forest Sciences and Forest Ecology, Biodiversity, Macroecology, and Conservation Biogeography group, DE-37077 Göttingen, Germany. – A.-K. Schneider, Leibniz-Center for Agricultural Landscape Research (ZALF), DE-15374 Müncheberg, Germany. Present address for A-KS: Univ. of Potsdam, Inst. for Earth- and Environmental Sciences, DE-14476 Potsdam, Germany. – C. F. Dormann, UFZ – Helmholtz, Centre for Environmental Research, Dept of Computational Landscape Ecology, DE-04318 Leipzig, Germany and Univ. of Freiburg, Biometry and Environmental System Analysis, DE-79106 Freiburg, Germany.

Over the last two decades, macroecology – the analysis of large-scale, multi-species ecological patterns and processes – has established itself as a major line of biological research. Analyses of statistical links between environmental variables and biotic responses have long and successfully been employed as a main approach, but new developments are due to be utilized. Scanning the horizon of macroecology, we identified four challenges that will probably play a major role in the future. We support our claims by examples and bibliographic analyses. 1) Integrating the past into macroecological analyses, e.g. by using paleontological or phylogenetic information or by applying methods from historical biogeography, will sharpen our understanding of the underlying reasons for contemporary patterns. 2) Explicit consideration of the local processes that lead to the observed larger-scale patterns is necessary to understand the fine-grain variability found in nature, and will enable better prediction of future patterns (e.g. under environmental change conditions). 3) Macroecology is dependent on large-scale, high quality data from a broad spectrum of taxa and regions. More available data sources need to be tapped and new, small-grain large-extent data need to be collected. 4) Although macroecology already lead to mainstreaming cutting-edge statistical analysis techniques, we find that more sophisticated methods are needed to account for the biases inherent to sampling at large scale. Bayesian methods may be particularly suitable to address these challenges. To continue the vigorous development of the macroecological research agenda, it is time to address these challenges and to avoid becoming too complacent with current achievements.

The unparalleled rise of large-scale ecology as a newly recognized field in biology over the last two decades warrants a reflection on its current state and future development. Since the term ‘macroecology’ was coined by Brown and Maurer (1989), the subject has moved from the fringes to the center of ecological thinking and journals that emphasize macroecology have caught up with the top-tier ecological journals (Fig. 1).

Macroecology investigates patterns of ecological systems that emerge at large spatial or temporal scales. Following Brown's wordplay (1995), macroecology uses ‘macroscopes’ to step away from the objects, just as other fields of biology use microscopes to get closer to them. Such distance to the raw data facilitates the recognition of general patterns. Among the recurrent themes of macroecology are latitudinal

gradients in species richness (Hawkins et al. 2007), metabolic scaling theory (West and Brown 2005, Capellini et al. 2010), range size distributions (Svenning and Skov 2004, Beck et al. 2006) and phylogenetic relationships (Capellini et al. 2010, Wiens et al. 2010). A common thread in many current studies is the use of species distribution data linked to phylogenies (Winter et al. 2009, Cadotte et al. 2010), range size (McPherson et al. 2004, Morin and Chuine 2006), network theory (Cumming et al. 2010), or analyses of species richness patterns (Adler et al. 2005).

Still, macroecology faces several methodological shortcomings that need to be overcome to successfully advance large-scale ecological research. Now is a good moment in the discipline's development to evaluate where macroecology is standing, and to point out some burning issues that will be

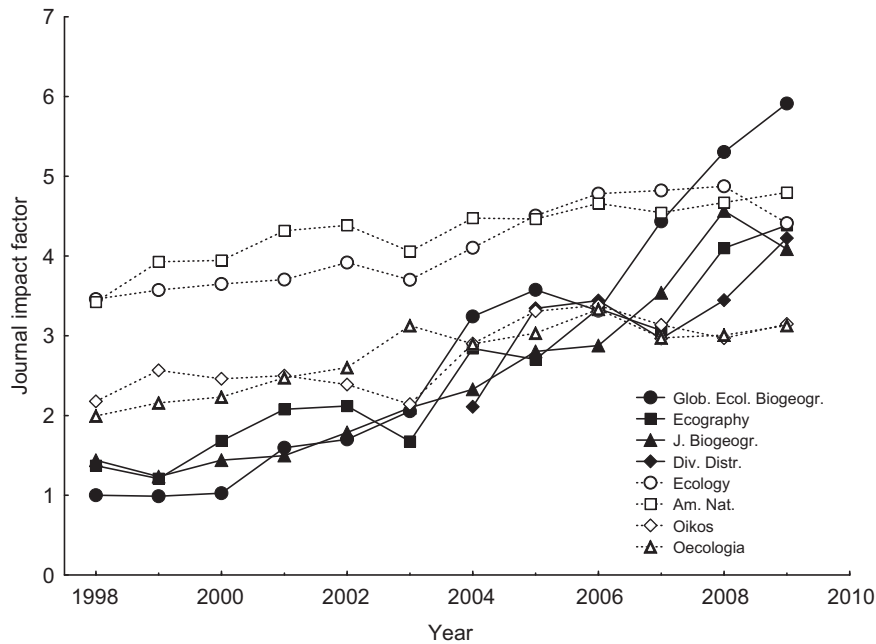


Figure 1. Impact factors (ISI Web of Science, < www.isiknowledge.com >) of four journals with a strong focus on macroecology (filled symbols), in comparison to four established general ecology journals (open symbols) for the same time period. Impact factors are an index of citation frequency of articles from a journal in relation to the number of articles published in the journal.

relevant to the discipline's further growth. In this paper, we elaborate on four topics within macroecology as particularly important to many in the research community: 1) the role of biogeographic and Earth history, 2) the importance of processes in understanding patterns, 3) issues of data availability, and 4) advances in statistical analysis. We identify the major challenges in each of these fields, and we discuss potential solutions. Our account does not aim at reviewing the literature in an exhaustive manner; instead we focus on general problems and promising positive examples.

Throwing light on the shadows of the past: the role of history in macroecological patterns

Macroecology aims at explaining biotic patterns predominantly by using current environmental conditions. However, there are temporal contingencies in ecological systems due to past fluctuations of environmental conditions (e.g. climatic changes, plate tectonics) and organisms' phylogenetic history that affect, e.g. trait distributions (Jablonski 2008, Wiens et al. 2010). Historical signals are thus an inherent component of current species distributions and other objects of macroecological investigation, and ignoring these 'shadows of the past' could lead to erroneous findings. This is especially true if historical patterns are collinear with current conditions (Hortal et al. 2011). Indeed, some authors have argued that prominent topics in macroecology, such as the latitudinal biodiversity gradient, can only be understood by following a top-down hierarchy of filters from the historical, evolutionary effects on regional species pools to the mechanisms that determine species occurrence at the community scale, and not vice versa (Ricklefs 2004, Wiens and

Donoghue 2004). Additionally, more recent historical events such as anthropogenic impacts on ecosystems may heavily distort patterns observed in recent data (Kelt and Meyer 2009, see also Hermy and Verheyen 2007).

We see three main avenues for integrating historical information into the macroecological research agenda: 1) using paleo-data on species distributions, climate, land-cover, etc., 2) considering phylogenetic relatedness of taxa, and 3) integrating analytical approaches from historical biogeography.

1) Incorporating paleo-data into macroecological analyses is conceptually relatively straightforward. Fossil time series can be used to investigate the temporal variation of macroecological patterns (e.g. the latitudinal species richness gradient: Jablonski et al. 2006, Powell 2007) or trait variation in extinct communities (e.g. prior to human impact: Erwin 2008). For plants, pollen records provide useful information about past species distributions and abundances (Theuerkauf and Joosten 2009) and properties of past communities (Odgaard 1999, Bush et al. 2004). However, there are substantial data limitations and a considerable bias towards well-fossilizing taxa (Foote and Sepkoski 1999). Paleo-data can also be reconstructions of past abiotic (e.g. climatic) or biotic (e.g. vegetation type) conditions, which can be used to understand historical effects on past and current species distributions (e.g. dispersal-related lags in colonization after Pleistocene climate fluctuations; Montoya et al. 2007, Svenning and Skov 2007) or on patterns of species richness or endemism (Dynesius and Jansson 2000, Jansson and Davies 2008). However, this approach can involve subtle circularity if paleodistributions of one taxon are the basis of climatic reconstruction, which is then used to model other species' distributions (Svenning et al. 2011).

Hind-casting of species distributions based on reconstructions of past climates by techniques of 'ecological niche modeling' (Elith and Leathwick 2009), in particular, is an increasingly employed method with great potential, but also many pitfalls (Nogues-Bravo 2009, Svenning et al. 2011). Such approaches are seen as particularly useful in combination with phylogeography (see below) as they can provide information on past scenarios of distribution, hence the preconditions of speciation events (e.g. allopatry of populations), that can then be tested against phylogenetic reconstructions.

Species distribution models and analyses of geographic patterns of species richness and endemism may profit from novel ways to quantify the degree and pattern of past climate fluctuations and the potential that landscapes (and seascapes) offer for species to track such changes (Loarie et al. 2009, Sandel et al. 2011) or to provide microrefugia (Rull 2009).

2) The integration of phylogenetic information into macroecological analyses is encouraged by the increasing availability of comprehensive phylogenies (Bininda-Emonds 2004, Wiens and Donoghue 2004, Davies et al. 2008). Many different approaches have been taken to incorporate these data into macroecological analyses. They range from phylogenetically informed analyses of trait correlations or deconstructions of spatial patterns into different phylogenetic lineages or systematic groups (Marquet et al. 2004, Beck and Kitching 2009) to more complex calculations of phylogenetic diversity or phylogenetic structure in space (Hawkins et al. 2007, Davies et al. 2008).

Comparing the relatedness of coexisting taxa to the phylogeny of the regionally available pool (i.e. whether coexisting communities indicate phylogenetic overdispersion and clustering) has yielded interesting results in community ecology (Webb et al. 2002). Theoretical expectations have been formulated regarding the patterns of phylogenetic composition and trait similarity that may be expected under various geographical and ecological scenarios (Emerson and Gillespie 2008, Cavender-Bares et al. 2009). Techniques of incorporating such 'local' phylogenetic measures into larger-scale macroecological analyses are currently being devised (Graham and Fine 2008, Kühn et al. 2009, Dormann et al. 2010, Kissling et al. 2012). We think this is a very promising approach to be developed and applied.

Explicitly analyzing the link between phylogenies and emergent traits (such as niche dimensions) that affect distributions is another approach that may considerably advance our understanding of the relevance of the past for the patterns observed today (Hof et al. 2010, Wiens et al. 2010). Phylogeography, the analysis of (mainly intraspecific) molecular phylogenies in a spatial context (Avice 2009), may be particularly useful to macroecology in the context of providing independent tests for geographic range scenarios from past distribution modeling (see above). However, data and techniques from phylogeography – be it intra- or interspecific – may also benefit a potential revival of cladistic biogeography, as outlined below.

3) Integrating classical historical biogeographical approaches with macroecology is a third, rarely utilized approach. Cladistic biogeography uses the phylogeny of taxa occurring in a region to infer historical events that shaped their evolution. Area cladograms, depicting the relatedness

of regions with respect to speciation of an investigated taxon (Morrone 2009), might reflect the evolutionary relevant geographic history of regions (e.g. vicariance events). These patterns can be tested and verified against other taxa. The designation of biogeographic regions, for example, can be the outcome of such historical analyses, going beyond current faunistic or floristic similarities (Kreft and Jetz 2010). Broad biogeographical regionalizations have been included in macroecological analysis to investigate regional historical effects (Kreft and Jetz 2007, Hof et al. 2008). A drawback of such analyses is that historical effects are likely to leave their mark at much finer spatial scales. For instance, a biogeographical region like the Afrotropics contains many sub-regions that are assembled from different species pools with different evolutionary histories. Indeed, many finer-scaled, hierarchical biogeographic classifications are available in the literature for many regions and taxonomic groups (de Klerk et al. 2002, Kreft and Jetz 2010, Rueda et al. 2010) that may provide useful geographic templates to investigate regional effects. We suggest that these data should be utilized more and that the approach be expanded to fit the extent and resolution of macroecological analyses (i.e. having small regions, such as islands or grid cells, at the tips of area cladograms; Fig. 2). Existing information from phylogenies or supertrees (Bininda-Emonds 2004, Bininda-Emonds et al. 2007) should also continue to be exploited more for cladistic biogeographic analyses. Advances in historical inference and methodology are being made and may lead to accelerating the construction of area cladograms (Linder 2001, Donoghue and Moore 2003). Knowledge of evolutionary history in grid cells would allow mapping and incorporating the historical homogeneity of cells as a continuous variable in macroecological modeling, facilitating much finer-scaled and robust partitioning of current vs historical effects on response variables.

Integrating phylogenetic and distributional data into a place-based history could be achieved by a transfer of available techniques of accounting for phylogenetic contingencies in interspecific comparative studies (Fig. 2; Freckleton et al. 2002). Clearly, it will require some effort to assemble the relevant data (or to collect new data where necessary), and to devise and assess analytical procedures that best integrate them into analyses. If successful, however, this would represent a major advance in bridging the conceptual and methodological gaps between the aggregation levels of ecology, macroecology, and historical biogeography.

Putting processes into macroecology

Macroecology has proven very successful in describing general patterns, but ultimately this is not sufficient if we cannot infer causalities (Dormann 2007, Kearney and Porter 2009). It is a long-standing issue in ecology to understand the processes behind patterns (West and Brown 2005), even more so as this is a prerequisite for reliable future predictions of impacts of climate and land-use change and for the development of mitigation and adaptation strategies. Ecological processes and mechanisms have long been investigated much more thoroughly on the community scale (Supplementary material Appendix 1). On a macroecological

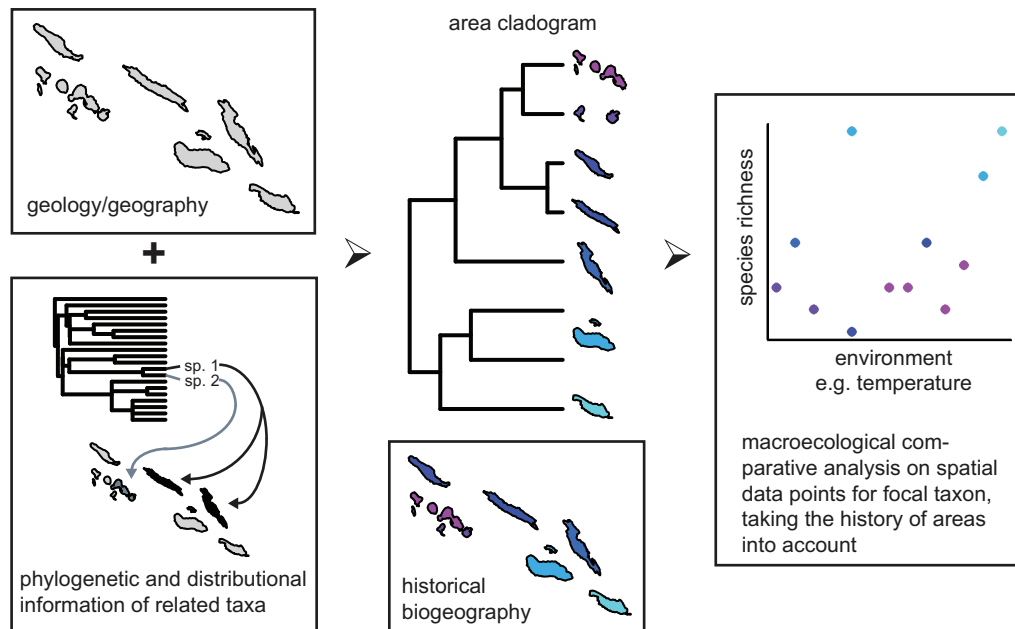


Figure 2. Integration of historical biogeography into macroecological research using area cladograms and comparative methods. We illustrate an island chain here, but the approach could be similarly applied to grid cells. The macroecological question addressed as an example is the relationship of species richness for a taxon of interest with environmental correlates, such as temperature (right panel). In order to integrate the historical biogeography of the region, we propose building an area cladogram (middle panel) from information (left panel) on phylogenies and distributions of taxa (ideally, many taxa should be used). This area cladogram can then be integrated by applying phylogenetic comparative methods to the spatial data points of the macroecological analysis, i.e. the relationship of richness vs temperature can be assessed controlling for area history as illustrated by the color of the data points (right panel).

scale this is more challenging not only because of practical limitations (e.g. the difficulties of large-scale experiments), but also because some mechanisms are likely to act differently at community and at macro-scales.

The path to a better understanding of the processes behind macro-scale patterns may be analyses of the scale-dependencies of relationships, or the collection of standardized experimental data on local processes over large spatial extents (Passy 2008, Hendriks et al. 2009). Formulating multiple, testable predictions from hypotheses aids the differentiation between mechanisms that lead to similar patterns (Currie et al. 2004, McGill et al. 2006).

To disentangle causalities for emergent patterns, the application of process-based simulation models to derive null expectations for large-scale patterns (Zurell et al. 2009, Gotelli et al. 2010) seems more promising than current statistical approaches (e.g. path analysis), but it is challenging due to difficulties of their parameterization (Hodges 2010, Lele 2010). Recently, modelers have started to develop individual-based, spatially-explicit approaches to test large-scale patterns (Zurell et al. 2009, Buchmann et al. 2011). Models that include macroecological mechanisms, such as dispersal limitation and evolutionary origins, have been developed to predict biogeographic patterns (Gotelli et al. 2009). Species distribution models have begun to incorporate dispersal limitation into future predictions using realistic dispersal variables (Engler and Guisan 2009).

Another challenge is that interspecific competition may influence distribution ranges (see e.g. Ritchie et al. 2009 for a recent example). Consumer-resource or biotic interactions

are increasingly included in species distribution models, and such models yield improved results compared to the more simplistic ones (Heikkinen et al. 2007, Schweiger et al. 2008). Still, these analyses are correlative, and a better model fit with a potential competitor included may simply indicate that both have related environmental niches, not that they actually interact. In other words, species distribution models usually do not include ecological assembly rules that could account for biotic interactions (Guisan and Rahbek 2011). However, approaches that incorporate this kind of information are already being developed, such as functional and phylogenetic approaches and their combination: 1) functional traits link species occurrence to the environmental factors that govern occurrence (Díaz et al. 2004); 2) phylogeny takes into account that today's communities are a product of not only recent but also evolutionary processes (Gerhold et al. 2008). Hence, by considering function and phylogeny in concert, we can link environment and history to better understand underlying community assembly processes on small scales as well as on large scales, such as species richness gradients. Moreover, to disentangle effects of environmental filters from effects of biotic interactions, analyses of phylogenetic diversity and trait conservatism within lineages were already proving useful (Cavender-Bares et al. 2009). Besides function and phylogeny, data on population size or abundance were already identified as key variables for better linking many ecological processes and patterns (Evans et al. 2008, Cadotte et al. 2010, Beck et al. 2011). These parameters could easily be implemented in the approaches described above.

Integrating all parameters that potentially affect community assembly into one macroecological framework might be achieved by combining existing methods, such as recently proposed by Guisan and Rahbek (2011). In their SESAM approach (spatially explicit species assemblage modeling), they account for both abiotic and biotic filters by combining species source pools and ecological assembly rules with macroecological modeling and species distribution modeling. However, Guisan and Rahbek (2011) admit that ecological assembly rules, which are the key to explaining biotic interactions in SESAM, are at best available at local scales (for some taxa in some regions), but missing at large scales. However, patterns and processes can change across scales, as shown, for example, by Belmaker and Jetz (2011) for richness-environment associations. Consequently, macroecological research needs more spatially resolved data at small-grain scale, but covering large spatial extents (see section Data: deficits and solutions) to increase the feasibility of scaling up pattern-process relationships from small to large scales.

There seems to be an interesting parallel between current directions in understanding patterns in macroecology and history of advancement in understanding of patterns of population dynamics. Research on population dynamics started with simple, top-down, non-spatial and non-individual-based models. This has changed dramatically in recent decades, as more detailed knowledge on the importance of effects of underlying processes such as individual behavior has been gathered (Grimm et al. 2005). Based on these findings, the use of bottom-up approaches advanced the ability to predict future population dynamics considerably. This may be true for macroecology as well. With the advancement of data quality, statistical methods, and macroecological theory, we will be increasingly able to move beyond describing patterns towards including and testing the processes behind them, particularly dispersal and biotic interactions.

Data: deficits and solutions

It was more than a decade ago that Wilson (2000) expressed the need for a global assessment of all aspects of biodiversity, a ‘map of biodiversity’. But even for species richness of well-studied groups, this goal has not been achieved. Moreover, missing data on species traits, distributions and phylogenetic relatedness make it difficult to thoroughly assess global biodiversity patterns and underlying processes. Although a range of automated assessment frameworks were developed in recent years to handle large data sets, to link different data sources and to create large phylogenies (Guralnick and Hill 2009), macroecological analyses still suffer from large uncertainties and gaps in the raw data. Specifically, macroecological research until now has largely been driven by data already available, revealing two major shortcomings: 1) limited coverage of biomes, taxa and spatial scales, and 2) insufficient or unknown data quality. We warn against the common practice of accepting published data as unquestioned truth: by citing a data source, the suitability of these data for the question at hand is often taken for granted (Robertson et al. 2010), in marked contrast to reviewer skepticism on researchers’ own data.

Most macroecological studies focus on few taxa (Fig. 3). While mammals and birds are vastly overrepresented in studies, and all other vertebrates as well as vascular plants are reasonably well studied, macroecological studies on invertebrates, non-vascular plants, and fungi are scarce. Until now, the majority of macroecological studies deal with terrestrial taxa (Fig. 4), despite the fact that a large number of phylogenetic lineages are restricted to, or predominantly occur in, the marine realm (Witman and Roy 2009). It is not surprising that Europe and North America are the best studied continents, while more diverse tropical regions, particularly Asia or Africa, are heavily underrepresented (Fig. 4).

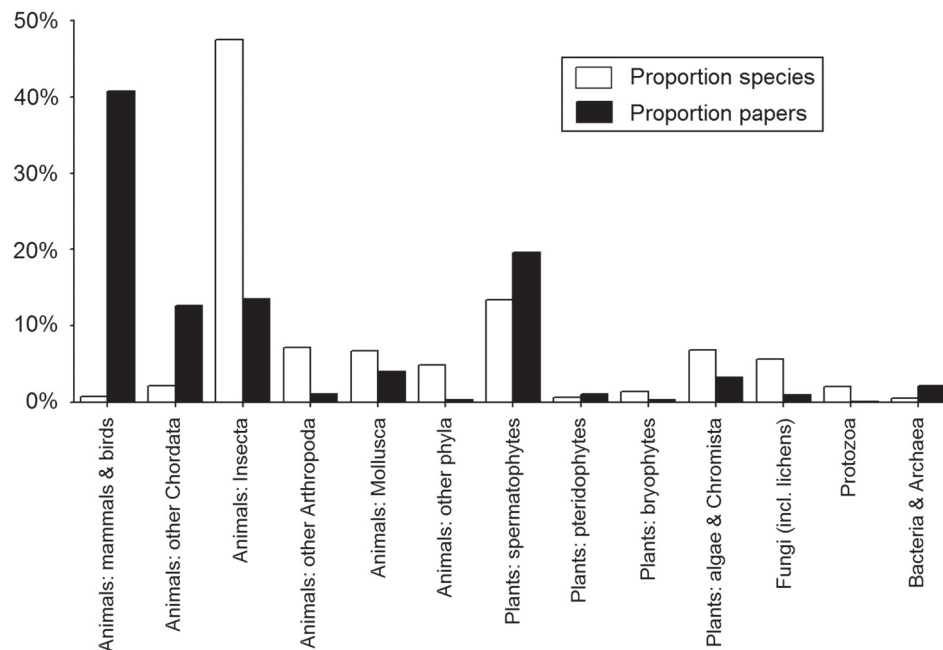


Figure 3. Distribution of macroecological papers in ISI Web of Science (3 April 2010) regarding major taxa. The bar chart depicts the proportion of papers in relation to the proportion of described species of the respective lineage (for details on the literature search see Supplementary material Appendix 2).

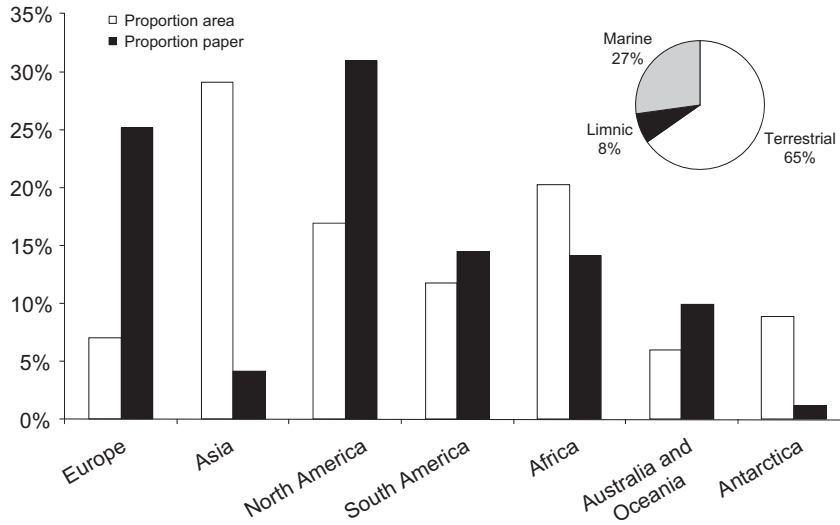


Figure 4. Distribution of macroecological papers in ISI Web of Science (3 April 2010) regarding terrestrial, limnic, and marine habitats (pie chart). The bar chart depicts the geographic distribution of the terrestrial studies to continents and relates this to the proportional surface of each continent (for details on the literature search, see Supplementary material Appendix 3).

Generally, ecologists acknowledge that ecological processes act at different spatial scales (Turner and Tjørve 2005), and thus the patterns detected and their underlying processes will normally be scale-dependent (Willig et al. 2003). ‘Scale’ refers to both ‘extent’ and ‘grain’ (Shmida and Wilson 1985, Rahbek 2005). While macroecology essentially considers large extent, this can be combined with coarse or fine grain. However, data at large extent derived from distribution atlases, as they are typically applied in macroecology, primarily have large grain sizes (Robertson et al. 2010). Hence, studies with a small grain but covering a large spatial extent are extremely scarce (Fig. 5). Therefore, up to now the

macroecological perception is dominated by biodiversity patterns and inferences about underlying drivers at large grain sizes ($\geq 100 \text{ km}^2$), and there is a wide-spread believe in the scale invariance of these findings (Rahbek 2005). This is astonishing as even early macroecological works demonstrated that, among relatively similar, large grain sizes, results might nonetheless vary significantly (Kaufman and Willig 1998, Rahbek and Graves 2001). More recently, comprehensive reviews have demonstrated that the differences increase when medium or small grain sizes are included (Rahbek 2005, Field et al. 2008). While considering coarse-grained data might be sufficient for

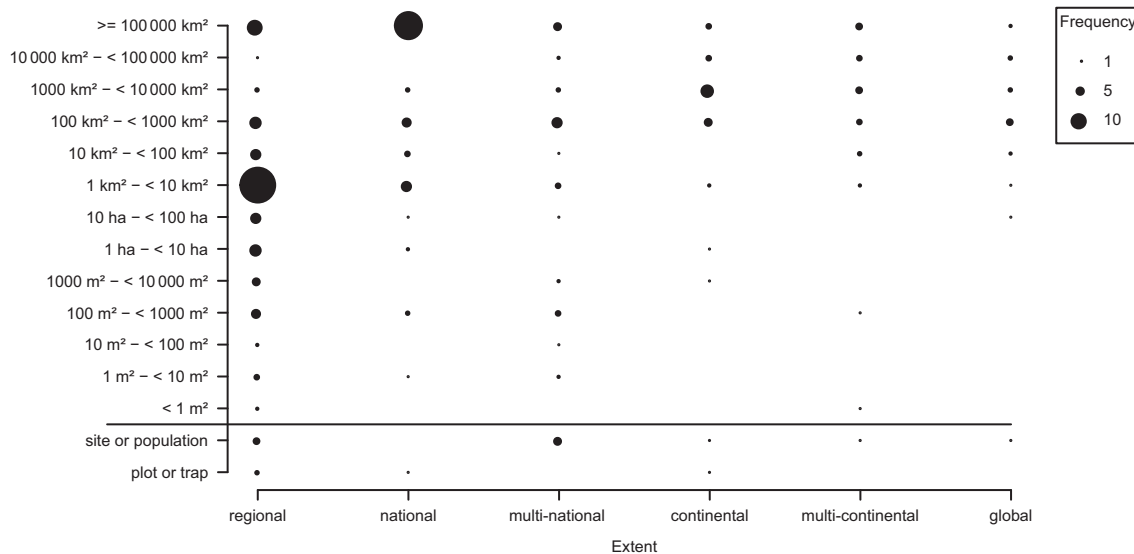


Figure 5. Extent and grain sizes used in macroecological studies published between 2007 and 2009 (for details on the literature search see Supplementary material Appendix 4). Dot size represents the number of studies conducted for a given extent and grain size. Dot size varies continuously; the legend shows frequencies 1, 5, and 10 for orientation. Studies that did not use a defined grid but sampled single sites, populations, or traps are given separately in the two bottom rows.

explaining processes that act at large scales (e.g. climate, plate tectonics, orogenesis), we suggest that fine-grained macroecological data could open new avenues in understanding the imprint of small-scale processes (e.g. dispersal, niches, species interactions) on patterns at large scale, particularly across steep environmental gradients. Moreover, the emergent pattern of scale-dependencies (Willig et al. 2003, Drakare et al. 2006) in itself might be an interesting topic of macroecological research, which could deepen our theoretical understanding (Rahbek 2005).

Macroecological data, including species distribution data, often lack information about data quality and uncertainty (Rocchini et al. 2011), which in turn increases model uncertainty: different levels of data quality can have significant effects on model predictions and ecological inference (Dormann et al. 2008). Data uncertainties may already result from the use of different species nomenclature (Jansen and Dengler 2010). These problems are inherent to aggregating and comparing data from different sources. For trait analyses, ignoring intraspecific variation and its impact on correlations especially across large scales and climatic gradients can be problematic (Jenouvrier et al. 2009, Albert et al. 2010), but trait values are often available only as averages per species.

We suggest not waiting passively for better data that fill the highlighted gaps, but actively stimulating field inventories with statistically sound, highly standardized field methods. In many regions of the world research and monitoring initiatives are active in this direction, but they often lack methodological rigor, international standardization or the awareness which data types are most urgently needed. By emphasizing the need for standardization and proposing appropriate multi-purpose monitoring schemes (Dengler 2009), macroecologists could have a hand in making the data from such monitoring schemes more useful without increasing the overall effort. An outstanding positive example is the Swiss Biodiversity Monitoring program (Hintermann et al. 2000); other positive examples are the Biodiversity Observatories of BIOTA Africa (Jürgens et al. 2012) and the Large Forest Dynamics Plots of CTFS (<www.ctfs.si.edu/>). All three examples combine large spatial extent with small spatial grain, which could bring macroecology closer to the processes behind patterns. Based on the BIOTA Observatory data, Schmiechel et al. (2010) could, for example, show that the inter-biome diversity patterns of vascular plants at grain sizes of 100 m² or 1 km² are not necessarily consistent with those found at large grain sizes (Barthlott et al. 2005).

However, macroecologists could also make better use of existing data. These are often scattered in different places or not accessible through the internet. Not only museums but also universities, administrative agencies and citizen science programs collect valuable ecological information (Edwards et al. 2000, Dengler et al. 2011). Mobilizing these data (which in many cases will require their digitization) would vastly increase the pool of available data, especially for poorly known taxa and for small grain sizes. We see an urgent need for establishing and strengthening cooperation between macroecology and bioinformatics in order to facilitate data finding and sharing among a large number of researchers and institutions.

Various online databases aim at making available large amounts of data, e.g. on biodiversity and distribution (Global Index of Vegetation-Plot Databases, <www.givd.info/>; Global Biodiversity Information Facility, <www.gbif.org/>), phylogenetic or trait data of whole taxonomic groups (mammals: YouTheria, <www.utheria.org/>; plants: TRY, <www.try-db.org/>), DNA barcoding data (BOLD, <www.barcodinglife.com/>), or nomenclature (Taxonomic Name Resolution Service for plants, <<http://tnrs.iplantcollaborative.org/>>). Recent initiatives aim at creating central databases (Guralnick and Hill 2009, Reichman et al. 2011, Jetz et al. 2012), e.g. TreeBase (<www.treebase.org/>), DataOne (<www.dataone.org/>) or Map of Life (<www.mappinglife.org/>). They will significantly decrease the amount of time for finding data and simplify data management for publication (Whitlock 2011).

Further tasks on the horizon: analytical methods for macroecology

Macroecology has become a pacemaker in introducing advanced statistical methods to ecology and related disciplines. Combined with the increase in computing power this has greatly increased the complexity of statistical applications in ecology (Heisey et al. 2010). We have progressed considerably in meeting the methodological challenges in macroecology that were pointed out 15 yr ago by Blackburn and Gaston (1998). While early analyses, for example, were based on simple tools such as ordinary least square regressions, it has now become standard to account for spatial and phylogenetic contingencies in data, to apply appropriate null-models, to consider scale-dependency of results, and to appropriately treat non-linear relationships. Spatial autocorrelation, in particular, has received a lot of attention as a methodological issue (Dormann et al. 2007, Beale et al. 2010), although there is considerable controversy whether this attention has led to ecological advances (Bini et al. 2009, Hawkins 2012). Other issues remain, such as the need for better data and a better understanding of the causality of processes (see above).

However, a major impediment that still waits to be broadly acknowledged and addressed is that macroecological data result from two hierarchical processes: the underlying stochastic processes in nature and the stochastic sampling process generating observations. This relates to the 'missing species' and 'artefacts' problem in Blackburn and Gaston (1998) – sampling can never be perfect and may always introduce a bias. However, this is especially true if the data were actually not sampled for the purpose at hand, but represent, e.g. compilations of local field studies, taxonomic and museum collections, etc. If we are to learn from such data about the 'real' processes, we need methods that can adequately account for both stochastic components. Spatially and taxonomically biased undersampling has been pointed out (Graham et al. 2004, Rondinini et al. 2006, Boakes et al. 2010), but this can be only the beginning of tackling the problem.

Many statistical analyses in macroecology face three challenges, which perhaps can be addressed simultaneously most successfully in a Bayesian framework: 1) data bias (e.g. due

to detection probabilities, sampling effort); 2) correlated but causally clearly hierarchical predictors (e.g. temperature decreasing with altitude, but the former directly affecting plant and insect growth, while the latter is only an indirect variable *sensu* Austin 2002); and 3) quantification of prediction uncertainty when combining these two issues with classical modeling methods (e.g. spatial GLMs). The methodological objective, under a hierarchical Bayesian framework, is to represent the observed data (be it presence-absence or abundances) as a random variable emanating from processes at several hierarchical levels. For example, Latimer et al. (2006) used a Bayesian approach to embrace spatial autocorrelation and spatially variable detection probabilities when analyzing presence-absence data (see also Meyer et al. 2011).

A second common problem is collinearity among ecological predictors, which Shipley (2002) argues is most satisfactorily embraced through structural equation modeling. Representing not only alternative explanations but also detection probabilities and perhaps different data sets to inform different parts of a mechanistic model, as well, is beyond the capabilities of any current off-the-shelf software. If interactions are likely to influence a species' distribution, then other interacting species may also need to be represented in the model; many species may remain undetected but still affect the abundance of target species and thus have to be modelled 'without data' (as done in Ovaskainen and Soininen 2011). When species are additionally assumed to interact non-homogeneously in time and/or space, a high level of statistical sophistication is required (Bierman et al. 2010, Cressie and Wikle 2011).

Although multi-level or hierarchical models can be coded in a frequentist framework (e.g. in mixed models; Zuur et al. 2009), it can be argued that Bayesian approaches are more transparent since they lay open the mechanisms modeled as well as the sampling processes (Royle and Dorazio 2008).

Fundamentally, however, the point is not whether Bayesian methods are needed to code ecological and sampling processes satisfactorily, but that incorporating these processes into statistical analyses promises to further our ecological understanding (Clark and Gelfand 2006). It was through a (non-Bayesian) fitting of a population model that Schooler et al. (2011) were able to explain biological control success, while Pagel and Schurr (2012) used a Bayesian framework for solving a similar problem based on demographic modeling. Knowing the system well enough to propose (several) population models and having the data and statistical tools to choose among them is the central methodological challenge.

Conclusions

We have highlighted challenges and potential solutions in four areas crucial for the future development of macroecology: the roles of history and underlying processes, and the need for better data and more appropriate analytical methods. Here, we have pointed out the main current problems and possible solutions. Without these, we shall not be able to maintain the successful abstraction and generalization of ecological understanding from large data sets that is macroecology.

Acknowledgements – This paper was initiated at the workshop of the Specialist Group Macroecology of the Gesellschaft für Ökologie (Ecological Society of Germany, Austria and Switzerland): 'Macroecology – scanning the horizon' held in Uder, Germany, on 9–11 March 2010, organized by CFD and Ingolf Kühn. CFD acknowledges funding by the Helmholtz Association (VH-NG-247). A follow-up meeting in Basel was financed by the Swiss National Science Foundation (SNF grant IZ32Z0_135899/1 to JB). CH and SF acknowledge the Danish National Science Foundation for support to the Center for Macroecology, Evolution and Climate, as well as the research funding program 'LOEWE – Landes-Offensive zur Entwicklung wissenschaftlich-ökonomischer Exzellenz' of Hesse's Ministry of Higher Education, Research, and the Arts, for financial support to the Biodiversity and Climate Research Centre (BiK-F). We are grateful for comments by Ingolf Kühn, Bob O'Hara, Katrin Böhning-Gaese and Simon Loader on an earlier version. We greatly appreciated two insightful reviews and the editing work by Rob Colwell. The paper was initiated by CFD and followed through by JB. The section on history was drafted by SF, CH, HK and JB; the one on processes by SK, LBM, CMB and MW; the one on data by JD, FJ, SK, MW; all authors critically revised the whole text.

References

- Adler, P. B. et al. 2005. Evidence for a general species–time–area relationship. – *Ecology* 86: 2032–2039.
- Albert, C. H. et al. 2010. Intraspecific functional variability: extent, structure and sources of variation. – *J. Ecol.* 98: 604–613.
- Austin, M. P. 2002. Spatial prediction of species distribution: an interface between ecological theory and statistical modeling. – *Ecol. Model.* 157: 101–118.
- Avise, J. C. 2009. Phylogeography: retrospect and prospect. – *J. Biogeogr.* 36: 3–15.
- Barthlott, W. et al. 2005. Global centers of vascular plant diversity. – *Nova Acta Leopoldina N. F.* 92: 61–83.
- Beale, C. M. et al. 2010. Regression analysis of spatial data. – *Ecol. Lett.* 13: 246–264.
- Beck, J. and Kitching, I. J. 2009. Drivers of moth species richness on tropical altitudinal gradients: a cross-regional comparison. – *Global Ecol. Biogeogr.* 18: 361–371.
- Beck, J. et al. 2006. Measuring range sizes of southeast-Asian hawkmoths (Lepidoptera: Sphingidae): effects of scale, resolution and phylogeny. – *Global Ecol. Biogeogr.* 15: 339–348.
- Beck, J. et al. 2011. Links between the environment, abundance and diversity of Andean moths. – *Biotropica* 43: 208–214.
- Belmaker, J. and Jetz, W. 2011. Cross-scale variation in species richness–environment associations. – *Global Ecol. Biogeogr.* 20: 464–474.
- Bierman, S. M. et al. 2010. Bayesian image restoration models for combining expert knowledge on recording activity with species distribution data. – *Ecography* 33: 451–460.
- Bini, L. M. et al. 2009. Coefficient shifts in geographical ecology: an empirical evaluation of spatial and non-spatial regression. – *Ecography* 32: 193–204.
- Bininda-Emonds, O. R. P. 2004. Phylogenetic supertrees: combining information to reveal the tree of life. – *Computational Biology, Vol. 3*, Kluwer.
- Bininda-Emonds, O. R. P. et al. 2007. The delayed rise of present-day mammals. – *Nature* 446: 507–512.
- Blackburn, T. M. and Gaston, K. J. 1998. Some methodological issues in macroecology. – *Am. Nat.* 151: 68–83.
- Boakes, E. H. et al. 2010. Distorted views of biodiversity: spatial and temporal bias in species occurrence data. – *PLoS Biol.* 8: e1000385.
- Brown, J. H. 1995. *Macroecology*. – The Univ. of Chicago Press.

- Brown, J. H. and Maurer, B. A. 1989. Macroecology: the division of food and space among species on continents. – *Science* 243: 1145–1150.
- Buchmann, C. M. et al. 2011. An allometric model of home range formation explains the structuring of animal communities exploiting heterogeneous resources. – *Oikos* 120: 106–118.
- Bush, M. B. et al. 2004. 48,000 years of climate and forest change in a biodiversity hot spot. – *Science* 303: 827.
- Cadotte, M. W. et al. 2010. Phylogenetic diversity metrics for ecological communities: integrating species richness, abundance and evolutionary history. – *Ecol. Lett.* 13: 96–105.
- Capellini, I. et al. 2010. Phylogeny and metabolic scaling in mammals. – *Ecology* 91: 2783–2793.
- Cavender-Bares, J. et al. 2009. The merging of community ecology and phylogenetic biology. – *Ecol. Lett.* 12: 693–715.
- Clark, J. S. and Gelfand, A. E. 2006. A future for models and data in environmental science. – *Trends Ecol. Evol.* 21: 375–380.
- Cressie, N. and Wikle, C. K. 2011. *Statistics for spatio-temporal data*. – Probability and Statistics Series, Wiley.
- Cumming, G. S. et al. 2010. Network analysis in conservation biogeography: challenges and opportunities. – *Divers. Distrib.* 16: 414–425.
- Currie, D. J. et al. 2004. Predictions and tests of climate-based hypotheses of broad-scale variation in taxonomic richness. – *Ecol. Lett.* 7: 1121–1134.
- Davies, T. J. et al. 2008. Phylogenetic trees and the future of mammalian biodiversity. – *Proc. Natl Acad. Sci. USA* 105: 11556–11563.
- de Klerk, H. M. et al. 2002. Biogeographical patterns of endemic terrestrial Afrotropical birds. – *Divers. Distrib.* 8: 147–162.
- Dengler, J. 2009. A flexible multi-scale approach for standardised recording of plant species richness patterns. – *Ecol. Indic.* 9: 1169–1178.
- Dengler, J. et al. 2011. The Global Index of Vegetation-Plot Databases (GIVD): a new resource for vegetation science. – *J. Veg. Sci.* 22: 582–597.
- Díaz, S. et al. 2004. The plant traits that drive ecosystems: evidence from three continents. – *J. Veg. Sci.* 15: 295–304.
- Donoghue, M. J. and Moore, B. R. 2003. Toward an integrative historical biogeography. – *Integr. Comp. Biol.* 43: 261–270.
- Dormann, C. F. 2007. Promising the future? Global change projections of species distributions. – *Basic Appl. Ecol.* 8: 387–397.
- Dormann, C. F. et al. 2007. Methods to account for spatial autocorrelation in the analysis of species distributional data: a review. – *Ecography* 30: 609–628.
- Dormann, C. F. et al. 2008. Components of uncertainty in species distribution analysis: a case study of the great grey shrike. – *Ecology* 89: 3371–3386.
- Dormann, C. F. et al. 2010. Evolution of climate niches in European mammals? – *Biol. Lett.* 6: 229–232.
- Drakare, S. et al. 2006. The imprint of the geographical, evolutionary and ecological context on species–area relationships. – *Ecol. Lett.* 9: 215–227.
- Dynesius, M. and Jansson, R. 2000. Evolutionary consequences of changes in species' geographical distributions driven by Milankovitch climate oscillations. – *Proc. Natl Acad. Sci. USA* 97: 9115–9120.
- Edwards, J. L. et al. 2000. Interoperability of biodiversity databases: biodiversity information on every desktop. – *Science* 289: 2312–2314.
- Elith, J. and Leathwick, J. R. 2009. Species distribution models: ecological explanation and prediction across space and time. – *Annu. Rev. Ecol. Evol. Syst.* 40: 677–697.
- Emerson, B. C. and Gillespie, R. G. 2008. Phylogenetic analysis of community assembly and structure over space and time. – *Trends Ecol. Evol.* 23: 619–630.
- Engler, R. and Guisan, A. 2009. MigClim: predicting plant distribution and dispersal in a changing climate. – *Divers. Distrib.* 15: 590–601.
- Erwin, D. H. 2008. Extinction as the loss of evolutionary history. – *Proc. Natl Acad. Sci. USA* 105: 11520–11527.
- Evans, K. L. et al. 2008. Spatial scale, abundance and the species–energy relationship in British birds. – *J. Anim. Ecol.* 77: 395–405.
- Field, R. et al. 2008. Spatial species-richness gradients across scales: a meta-analysis. – *J. Biogeogr.* 36: 132–147.
- Foote, M. and Sepkoski, J. J. 1999. Absolute measures of the completeness of the fossil record. – *Nature* 398: 415–417.
- Freckleton, R. P. et al. 2002. Phylogenetic analysis and comparative data: a test and review of evidence. – *Am. Nat.* 160: 712–726.
- Gerhold, P. et al. 2008. Phylogenetic structure of local communities predicts the size of the regional species pool. – *J. Ecol.* 96: 709–712.
- Gotelli, N. J. et al. 2009. Patterns and causes of species richness: a general simulation model for macroecology. – *Ecol. Lett.* 12: 873–886.
- Gotelli, N. J. et al. 2010. Macroecological signals of species interactions in the Danish avifauna. – *Proc. Natl Acad. Sci. USA* 107: 5030–5035.
- Graham, C. H. and Fine, P. V. A. 2008. Phylogenetic beta diversity: linking ecological and evolutionary processes across space in time. – *Ecol. Lett.* 11: 1265–1277.
- Graham, C. H. et al. 2004. New developments in museum-based informatics and applications in biodiversity analysis. – *Trends Ecol. Evol.* 19: 497–503.
- Grimm, V. et al. 2005. Pattern-oriented modeling of agent-based complex systems: lessons from ecology. – *Science* 310: 987–991.
- Guisan, A. and Rahbek, C. 2011. SESAM – a new framework integrating macroecological and species distribution models for predicting spatio-temporal patterns of species assemblages. – *J. Biogeogr.* 38: 1433–1444.
- Guralnick, R. and Hill, A. 2009. Biodiversity informatics: automated approaches for documenting global biodiversity patterns and processes. – *Bioinformatics* 25: 421–428.
- Hawkins, B. A. 2012. Eight (and a half) deadly sins of spatial analysis. – *J. Biogeogr.* 39: 1–9.
- Hawkins, B. A. et al. 2007. Climate, niche conservatism, and the global bird diversity gradient. – *Am. Nat.* 170: 16–27.
- Heikkinen, R. K. et al. 2007. Biotic interactions improve prediction of boreal bird distributions at macro-scales. – *Global Ecol. Biogeogr.* 16: 754–763.
- Heisey, D. M. et al. 2010. Rejoinder: sifting through model space. – *Ecology* 91: 3503–3514.
- Hendriks, A. J. et al. 2009. Towards a coherent allometric framework for individual home ranges, key population patches and geographic ranges. – *Ecography* 32: 929–942.
- Hermý, M. and Verheyen, K. 2007. Legacies of the past in the present-day forest biodiversity: a review of past land-use effects on forest plant species composition and diversity. – *Ecol. Res.* 22: 361–371.
- Hintermann, U. et al. 2000. Biodiversity monitoring in Switzerland. – *Schriftenreihe für Landschaftspflege und Naturschutz* 62: 47–58.
- Hodges, J. S. 2010. Are exercises like this a good use of anybody's time? – *Ecology* 91: 3496–3500.
- Hof, C. et al. 2008. Latitudinal variation of diversity in European freshwater animals is not concordant across habitat types. – *Global Ecol. Biogeogr.* 17: 539–546.
- Hof, C. et al. 2010. Phylogenetic signals in the climatic niches of the world's amphibians. – *Ecography* 33: 242–250.
- Hortal, J. et al. 2011. Ice age climate, evolutionary constraints and diversity patterns of European dung beetles. – *Ecol. Lett.* 14: 741–748.
- Jablonski, D. 2008. Species selection: theory and data. – *Annu. Rev. Ecol. Evol. Syst.* 39: 501–524.
- Jablonski, D. et al. 2006. Out of the tropics: evolutionary dynamics of the latitudinal diversity gradient. – *Science* 314: 102–106.

- Jansen, F. and Dengler, J. 2010. Plant names in vegetation databases – a neglected source of bias. – *J. Veg. Sci.* 21: 1179–1186.
- Jansson, R. and Davies, T. J. 2008. Global variation in diversification rates of flowering plants: energy vs. climate change. – *Ecol. Lett.* 11: 173–183.
- Jenouvrier, S. et al. 2009. Global climate patterns explain range-wide synchronicity in survival of a migratory seabird. – *Global Change Biol.* 15: 268–279.
- Jetz, W. et al. 2012. Integrating biodiversity distribution knowledge: toward a global map of life. – *Trends Ecol. Evol.* 23: 151–159.
- Jürgens, N. et al. 2012. The BIOTA Biodiversity Observatories in Africa – a standardized framework for large-scale environmental monitoring. – *Ecol. Monit. Assess.* doi: 10.1007/s10661-011-1993-y
- Kaufman, D. M. and Willig, M. R. 1998. Latitudinal patterns of mammalian species in the New World: the effects of sampling method and faunal group. – *J. Biogeogr.* 25: 795–805.
- Kearney, M. and Porter, W. 2009. Mechanistic niche modeling: combining physiological and spatial data to predict species ranges. – *Ecol. Lett.* 12: 334–350.
- Kelt, D. A. and Meyer, M. D. 2009. Body size frequency distributions in African mammals are bimodal at all spatial scales. – *Global Ecol. Biogeogr.* 18: 19–29.
- Kissling, W. D. et al. 2012. Quaternary and pre-Quaternary historical legacies in the global distribution of a major tropical plant lineage. – *Global Ecol. Biogeogr.* doi: 10.1111/j.1466-8238.2011.00728.x
- Kreft, H. and Jetz, W. 2007. Global patterns and determinants of vascular plant diversity. – *Proc. Natl Acad. Sci. USA* 104: 5925–5930.
- Kreft, H. and Jetz, W. 2010. A framework for delineating biogeographic regions based on species distributions. – *J. Biogeogr.* 37: 2029–2053.
- Kühn, I. et al. 2009. Combining spatial and phylogenetic eigenvector filtering in trait analysis. – *Global Ecol. Biogeogr.* 18: 745–758.
- Latimer, A. M. et al. 2006. Building statistical models to analyze species distributions. – *Ecol. Appl.* 16: 33–50.
- Lele, S. R. 2010. Model complexity and information in the data: could it be a house built on sand? – *Ecology* 91: 3493–3496.
- Linder, H. P. 2001. On areas of endemism, with an example from the African Restionaceae. – *Syst. Biol.* 50: 892–912.
- Loarie, S. R. et al. 2009. The velocity of climate change. – *Nature* 462: 1052–1055.
- Marquet, P. A. et al. 2004. Diversity emerging: toward a deconstruction of biodiversity patterns. – In: Lomolino, M. V. and Heaney, L. R. (eds), *Frontiers of biogeography: new directions in the geography of nature*. Sinauer, pp. 191–210.
- McGill, B. J. et al. 2006. Empirical evaluation of neutral theory. – *Ecology* 87: 1411–1423.
- McPherson, J. M. et al. 2004. The effects of species' range sizes on the accuracy of distribution models: ecological phenomenon or statistical artefact? – *J. Appl. Ecol.* 41: 811–823.
- Meyer, C. F. J. et al. 2011. Accounting for detectability improves estimates of species richness in tropical bat surveys. – *J. Appl. Ecol.* 76: 777–787.
- Montoya, D. et al. 2007. Contemporary richness of holarctic trees and the historical pattern of glacial retreat. – *Ecography* 30: 173–182.
- Morin, X. and Chuine, I. 2006. Niche breadth, competitive strength and range size of tree species: a trade-off based framework to understand species distribution. – *Ecol. Lett.* 9: 185–195.
- Morrone, J. J. 2009. *Evolutionary biogeography: an integrative approach with case studies*. – Columbia Univ. Press.
- Nogues-Bravo, D. 2009. Predicting the past distribution of species climatic niches. – *Global Ecol. Biogeogr.* 18: 521–531.
- Odgaard, B. V. 1999. Fossil pollen as a record of past biodiversity. – *J. Biogeogr.* 26: 7–17.
- Ovaskainen, O. and Soininen, J. 2011. Making more out of sparse data: hierarchical modeling of species communities. – *Ecology* 92: 289–295.
- Pagel, J. and Schurr, F. M. 2012. Forecasting species ranges by statistical estimation of ecological niches and spatial population dynamics. – *Global Ecol. Biogeogr.* doi: 10.1111/j.1466-8238.2011.00663.x
- Passy, S. I. 2008. Continental diatom biodiversity, in stream benthos declines as more nutrients become limiting. – *Proc. Natl Acad. Sci. USA* 105: 9663–9667.
- Powell, M. G. 2007. Latitudinal diversity gradients for brachiopod genera during late Palaeozoic time: links between climate, biogeography and evolutionary rates. – *Global Ecol. Biogeogr.* 16: 519–528.
- Rahbek, C. 2005. The role of spatial scale and the perception of large-scale species-richness patterns. – *Ecol. Lett.* 8: 224–239.
- Rahbek, C. and Graves, G. R. 2001. Multiscale assessment of patterns of avian species richness. – *Proc. Natl Acad. Sci. USA* 98: 4534–4539.
- Reichman, O. J. et al. 2011. Challenges and opportunities of open data in ecology. – *Science* 331: 703–705.
- Ricklefs, R. E. 2004. A comprehensive framework for global patterns in biodiversity. – *Ecol. Lett.* 7: 1–15.
- Ritchie, E. G. et al. 2009. Separating the influences of environment and species interactions on patterns of distribution and abundance: competition between large herbivores. – *J. Anim. Ecol.* 78: 724–731.
- Robertson, M. P. et al. 2010. Getting the most out of atlas data. – *Divers. Distrib.* 16: 363–375.
- Rocchini, D. et al. 2011. Accounting for uncertainty when mapping species distributions: the need for maps of ignorance. – *Prog. Phys. Geogr.* 35: 211–226.
- Rondinini, C. et al. 2006. Tradeoffs of different types of species occurrence data for use in systematic conservation planning. – *Ecol. Lett.* 9: 1136–1145.
- Royle, J. A. and Dorazio, R. M. 2008. *Hierarchical modeling and inference in ecology: the analysis of data from populations, metapopulations and communities*. – Academic Press.
- Rueda, M. et al. 2010. Towards a biogeographic regionalization of the European biota. – *J. Biogeogr.* 37: 2067–2076.
- Rull, V. 2009. Microrefugia. – *J. Biogeogr.* 36: 481–484.
- Sandel, B. et al. 2011. The influence of Late Quaternary climate-change velocity on species endemism. – *Science* 334: 660–664.
- Schmiedel, U. et al. 2010. Patterns and dynamics of vascular plant diversity along the BIOTA transects in southern Africa. – In: Schmiedel, U. and Jürgens, N. (eds), *Biodiversity in southern Africa. Volume 2: patterns and processes at regional scale*. Klaus Hess, pp. 118–135.
- Schooler, S. S. et al. 2011. Alternative stable states explain unpredictable biological control of *Salvinia molesta* in Kakadu. – *Nature* 470: 86–89.
- Schweiger, O. et al. 2008. Climate change can cause spatial mismatch of trophically interacting species. – *Ecology* 89: 3472–3479.
- Shipley, B. 2002. *Cause and correlation in biology. A user's guide to path analysis, structural equations and causal inference*. – Cambridge Univ. Press.
- Shmida, A. and Wilson, M. V. 1985. Biological determinants of species diversity. – *J. Biogeogr.* 12: 1–20.
- Svenning, J. C. and Skov, F. 2004. Limited filling of the potential range in European tree species. – *Ecol. Lett.* 7: 565–573.

- Svenning, J. C. and Skov, F. 2007. Could the tree diversity pattern in Europe be generated by postglacial dispersal limitation? – *Ecol. Lett.* 10: 453–460.
- Svenning, J. C. et al. 2011. Applications of species distribution modelling to paleobiology. – *Quart. Sci. Rev.* 30: 2930–2947.
- Theuerkauf, M. and Joosten, H. 2009. Substrate dependency of Lateglacial forests in north-east Germany: untangling vegetation patterns, ecological amplitudes and pollen dispersal in the past by downscaling regional pollen. – *J. Biogeogr.* 36: 942–953.
- Turner, W. R. and Tjørve, E. 2005. Scale-dependence in species–area relationships. – *Ecography* 28: 721–730.
- Webb, C. O. et al. 2002. Phylogenies and community ecology. – *Annu. Rev. Ecol. Evol. Syst.* 33: 475–505.
- West, G. B. and Brown, J. H. 2005. The origin of allometric scaling laws in biology from genomes to ecosystems: towards a quantitative unifying theory of biological structure and organization. – *J. Exp. Biol.* 208: 1575–1592.
- Whitlock, M. C. 2011. Data archiving in ecology and evolution: best practices. – *Trends Ecol. Evol.* 26: 61–65.
- Wiens, J. J. and Donoghue, M. J. 2004. Historical biogeography, ecology and species richness. – *Trends Ecol. Evol.* 19: 639–644.
- Wiens, J. J. et al. 2010. Niche conservatism as an emerging principle in ecology and conservation biology. – *Ecol. Lett.* 13: 1310–1324.
- Willig, M. R. et al. 2003. Latitudinal gradients of biodiversity: pattern, process, scale, and synthesis. – *Annu. Rev. Ecol. Evol. Syst.* 34: 273–309.
- Wilson, E. O. 2000. A global biodiversity map. – *Science* 289: 2279.
- Winter, M. et al. 2009. Plant extinctions and introductions lead to phylogenetic and taxonomic homogenization of the European flora. – *Proc. Natl Acad. Sci. USA* 106: 21721–21725.
- Witman, J. D. and Roy, K. 2009. *Marine macroecology*. – Univ. of Chicago Press.
- Zurell, D. et al. 2009. Static species distribution models in dynamically changing systems: how good can predictions really be? – *Ecography* 32: 733–744.
- Zuur, A. F. et al. 2009. *Mixed effects models and extensions in ecology with R*. – Springer.

Supplementary material (Appendix E7364 at <www.oikosoffice.lu.se/appendix>). Appendix 1–4.

Ecography

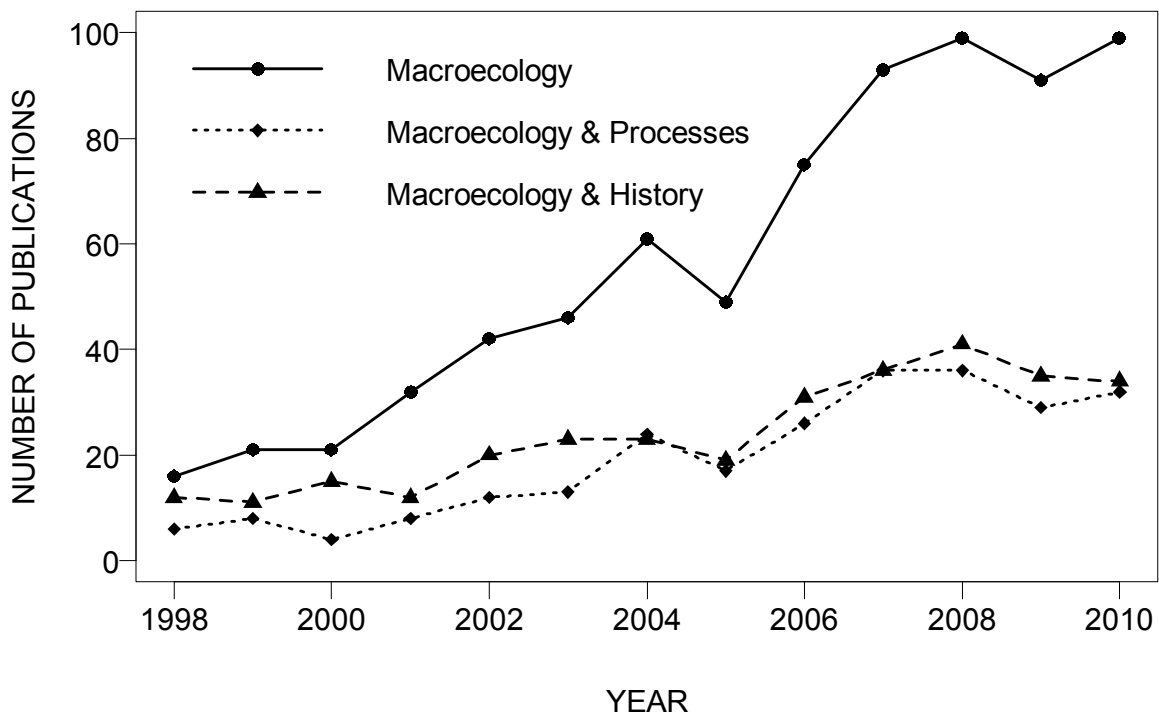
E7364

Beck, J., Ballesteros-Mejia, L., Buchmann, C. M., Dengler, J., Fritz, S. A., Gruber, B., Hof, C., Jansen, F., Knapp, S., Kreft, H., Schneider, A.-K., Winter, M. and Dormann, C. F. 2012. What's on the horizon for macroecology? – *Ecography* 35: xxx–xxx.

Supplementary material

Appendix 1 (A) Numbers of papers on *history* and *processes*; **(B)** Processes at community vs. large scales.

(A) Number of all macroecological papers and macroecological papers dealing with either *history* or *processes* in ISI Web of Science (www.isiknowledge.com; November 03rd, 2011), based on timespan 1998–2010. ISI-search strings: Topic=(macroecol*); Topic=((phylogen* OR taxonom* OR evolution* OR phylogeograph* OR “historical_biogeography” OR palaeo* OR cladistic*) AND macroecol*); Topic=(("population_dynamics" OR "population_growth" OR mortality OR reproduct* OR physiolog* OR dispersal OR mutualism OR facilitation OR symbiotic OR symbios* OR competition OR competitive OR herbivory OR host-parasit* OR parasitism OR predator-prey OR “trophic_interaction”) AND macroecol*); cf. Appendix S1 for processes.



If related to 1998 numbers, the increase in “process”-papers was approximately proportional to the general increase in macroecology papers (ca. five-fold in 2010) while it was smaller in “history”-papers (less than 3-fold).

(B) Results of an ISI Web of Science (www.isiknowledge.com) literature survey of ecological studies of environmental drivers and various processes at two levels of aggregation: the 1st level of aggregation covers studies at community scales (community), the 2nd those at large spatial scales and with more than one study species. Notation: * <10, ** 11-100, *** 101-1000, **** >1000 studies.

		1 st level of aggregation	2 nd level of aggregation
Drivers	Temperature & precipitation	***	***
	land-use	***	***
Processes	Population dynamics	****	**
	Physiology	****	**
	Dispersal	***	**
	Mutualism/facilitation/symbiosis	***	*
	competition	****	**
	Herbivory	***	*
	Parasitism	**	*
	predator-prey/trophic interaction	***	**

Search strings for 1st aggregation level (up to community scale OR only up to one species):

(communit* OR assemblage)
 AND
 (temperature OR precipitation)
 ("land_use" OR "land-use")
 ("population_dynamics" OR "population_growth" OR mortality OR reproduct*)
 (physiolog*)
 (dispersal)
 (mutualism OR facilitation OR symbiotic OR symbios*)
 (competition OR competitive)
 (herbivory) # recheck: no just herbivore communities, but the process
 (host-parasit* OR parasitism)
 (predator-prey OR "trophic_interaction")

Search strings for 2nd aggregation level (more than one species AND large scales):

(macroecolog* OR "large_scale" OR "large-scale" OR "species_area_curve" or "species-area-curve" OR "species_area_relationship" OR (trait AND distribution) OR "range_size_distribution*" OR "body_mass_distribution" OR "body-mass-distribution" OR "Rapoport's rule" OR "abundance_distribution" OR "body_size_distribution" OR "body-size-distribution")
 AND
 (temperature OR precipitation)
 ("land_use" OR "land-use")
 ("population_dynamics" OR "population_growth" OR mortality OR reproduct*)
 (physiolog*)
 (dispersal)
 (mutualism OR facilitation OR symbiotic OR symbios*)
 (competition OR competitive)
 (herbivory) # recheck: no just herbivore communities, but the process

(host-parasit* OR parasitism)
(predator-prey OR "trophic_interaction")

Appendix 2. Information on generation of Fig. 3.

Taxa studied by papers with TOPIC = macroecol* and contained in the ISI Web of Science on 5 April 2010. Within the total of 688 macroecological papers retrieved, the taxa were searched with the given search strings in TOPIC. Note that one paper could be assigned to more than one category. The species richness data are based on Lecointre & Le Guyader (2006).

No.	Taxon	Search string	Papers	Proportion papers	Species	Proportion species	Representation relative to average
1	Animals: Chordata: mammals and birds	mammal* OR bird* OR avian	260	40.8%	14168	0.8%	50.27
2	Animals: Chordata: other classes	reptil* OR amphib* OR fish* OR actinopterygii OR appendicularia OR ascidiacea OR cephalaspidomorphi OR cephalochordata OR elasmobranchii OR myxini OR sarcopterygii OR thaliacea	81	12.7%	38078	2.2%	5.83
3	Animals: Arthropoda: insects	insect* OR hexapoda OR archaeognatha OR balltodea OR coleoptera OR dermaptera OR diptera OR embiidina OR ephemeroptera OR gryllblattodea OR hemiptera OR hymenoptera OR isoptera OR lepidoptera OR mantodea OR mantophasmatodea OR mecoptera OR neuroptera OR odonata OR orthoptera OR phasmida OR phthiraptera OR plecoptera OR psocoptera OR raphidioptera OR siphonaptera OR strepsiptera OR thysanoptera OR trichoptera OR zoraptera OR zygentoma OR butterfly* OR moth* OR bees OR beetles OR dragonfl* OR grasshopper*	86	13.5%	830075	47.5%	0.28
4	Animals: Arthropoda: other classes	spiders OR crayfish OR arachn* OR branchiopoda OR cephalocarida OR chilopoda OR diplopoda OR entognatha OR malacostraca OR maxillopoda OR ostracoda OR pycnogonida OR remipedia	7	1.1%	126339	7.2%	0.15
5	Animals: Mollusca	mollusc* OR aplacophora OR bivalvia OR cephalopod* OR gastropod* OR monoplacophora OR polyplacophora OR scaphopoda OR snail* OR mussel* OR cuttlefish	26	4.1%	117495	6.7%	0.61
6	Animals: other phyla	acanthocephala OR acoelomorpha OR annelid* OR brachiopoda OR cephalorhyncha OR chaetognatha OR cnidaria OR ctenophora OR cycliophora OR echinodermata OR echiura OR ectoprocta OR entoprocta OR gastrotricha OR gnathostomulida OR hemichordata OR mesozoa OR myxozoa OR nemat* OR nemertea OR onychophora OR phoronida OR placozoa OR plathyhelminthes OR plathelminthes OR porifer* OR sipuncula OR tardigrad*	2	0.3%	85457	4.9%	0.06
7	Plants: spermatophytes	spermatophyt* OR angiosperm* OR gymnosperm OR (plant* NOT (bryophyt* OR liverwort* OR pteridophyt* OR fern* OR alga*))	125	19.6%	234707	13.4%	1.46
8	Plants: pteridophytes	pteridophyt* OR equiset* OR lycopodio* OR fern*	7	1.1%	10795	0.6%	1.78
9	Plants: bryophytes	bryophyt* OR anthocero* OR marchantio* OR mosses OR liverworts	2	0.3%	24400	1.4%	0.22
10	Plants: algae & Chromista	alga* OR diatom* OR bacillariophyta OR chlorophyta OR cyanidiophyta OR glaucophyta OR prasinophyta OR rhodophyta chromista OR cryptophyta OR haptophyta OR hyphochytriomycota OR labyrinthista OR ochrophyta OR oomycota OR sagenista OR	21	3.3%	119935	6.9%	0.48
11	Fungi (including lichens)	fungi OR lichen* OR ascomyc* or basidiomyc* or chytridiomyc* OR zygomyc*	6	0.9%	100000	5.7%	0.16
12	Protozoa	protozoa* OR acritarcha OR apicomplexa OR cercozoa OR choanozoa OR ciliophora OR dinophyta OR eugleno* OR flagellata OR mycetozoa OR parabasalia OR percolozoa OR sarcomastigophora OR xenophyophora	1	0.2%	37122	2.1%	0.07
13	Bacteria & Archaea	bacteria* OR archaea	14	2.2%	9280	0.5%	4.13
Sum			638		1747851		

Appendix 3. Information on generation of Fig. 4.

Major habitat types and continents studied by papers with TOPIC = macroecol* and contained in the ISI Web of Science on 5 April 2010. Within the total of 688 macroecological papers retrieved, the subsets were searched with the combinations of search strings in TOPIC that are given in the heads of the lines and the columns. Note that the total values (All) are normally slightly lower than the sums over the categories because some studies belong to more than one category. The values given in read are those used for the production of the figure. The value with * has been replaced with 329, which is the result for the search string (*terr* OR land OR global OR world OR europe* OR "north america*" OR "south america*" OR asia* OR africa* OR australia* OR oceania* OR antarct**) NOT (*"fresh water" OR limn* OR river* OR lake* OR marine OR sea OR ocean**) because the original value probably included some non-terrestrial (e.g. theoretical) studies.

Category	Search string	Limnic "fresh water" OR limn* OR river* OR lake*	Marine marine OR sea OR ocean*	Terrestrial NOT ("fresh water" OR limn* OR river* OR lake* OR marine OR sea OR ocean*)	All
Europe	<i>europe*</i>	4	3	66	71
Asia	<i>asia*</i>	1	1	11	13
North America	<i>"north america**"</i>	2	8	81	90
South America	<i>"south america**"</i>	2	7	38	46
Africa	<i>africa*</i>	2	5	37	44
Australia and Oceania	<i>australia* OR oceania*</i>	0	4	26	30
Antarctica	<i>antarct*</i>	0	6	3	9
Global	<i>global OR world</i>	8	46	152	203
Continent not specified	NOT (<i>global OR world OR europe* OR "north america**" OR "south america**" OR asia* OR africa* OR australia* OR oceania* OR antarct*</i>)	23	76	234	
All		38	137	523*	688

Appendix 4. Information on generation of Fig. 5.

Extent and grain sizes used in macroecological studies. Papers were selected based on the following search string in ISI Web of Science:

Topic=(macroecol* OR spatial AND "large scale" OR spatial AND "diversity pattern" OR spatial AND "species distribution" OR spatial AND "large scale" AND "diversity pattern" OR spatial AND "large scale" AND "species distribution" OR spatial AND "large scale" AND "diversity pattern" AND "species distribution" OR "large scale" AND "diversity pattern" OR "large scale" AND "species distribution" OR "large scale" AND "diversity pattern" AND "species distribution" OR "diversity pattern" AND "species distribution"); Refined by: Subject Areas=(ECOLOGY) AND Document Type=(ARTICLE OR REVIEW) AND Publication Years=(2007 OR 2008 OR 2009) AND Source Titles=(GLOBAL ECOLOGY AND BIOGEOGRAPHY OR JOURNAL OF BIOGEOGRAPHY OR MARINE ECOLOGY-PROGRESS SERIES OR ECOLOGY OR ECOGRAPHY OR BIOLOGICAL CONSERVATION OR DIVERSITY AND DISTRIBUTIONS OR BIODIVERSITY AND CONSERVATION); Timespan=All Years. Databases=SCI-EXPANDED, SSCI.

Extents $\leq 10\,000\text{ km}^2$ ($100\text{ km} \times 100\text{ km}$) and transect lengths $\leq 200\text{ km}$ were classified as not macroecological and the respective studies were excluded. Further, studies were excluded if grain size was not clearly defined, no grain was used, no real data was used (editorials, forum papers, reviews, meta-analyses, method-papers, simulations, software notes), or no biological properties were studied. In the search string, "Document Type" included reviews because ISI classifies articles with large reference lists as reviews. The table shows all papers included in the meta-analysis. Several papers used a range of grain sizes or extent classes; this is indicated in the "Grain size class" or "Extent category" column. Accordingly studies with different grain or extent classes were used several times in the meta-analysis. Grain size classes: 1: $< 1\text{ m}^2$; 2: $1\text{ m}^2 - < 10\text{ m}^2$; 3: $10\text{ m}^2 - < 100\text{ m}^2$; 4: $100\text{ m}^2 - < 1,000\text{ m}^2$; 5: $1,000\text{ m}^2 - < 10,000\text{ m}^2$; 6: $1\text{ ha} - < 10\text{ ha}$; 7: $10\text{ ha} - < 100\text{ ha}$; 8: $1\text{ km}^2 - < 10\text{ km}^2$; 9: $10\text{ km}^2 - < 100\text{ km}^2$; 10: $100\text{ km}^2 - < 1,000\text{ km}^2$; 11: $1,000\text{ km}^2 - < 10,000\text{ km}^2$; 12: $10,000\text{ km}^2 - < 100,000\text{ km}^2$; 13: $\geq 100,000\text{ km}^2$; P: plot or trap without precise area; S: site or population without precise area.

Journal	Article	Grain size class	Extent category
Biodiversity & Conservation	Beche, LA; Statzner, B (2009): Richness gradients of stream invertebrates across the USA: taxonomy- and trait-based approaches. - BIODIVERSITY AND CONSERVATION 18: 3909-3930.	4	national
Biodiversity & Conservation	Diniz, JAF; Bini, LM; Pinto, MP; Rangel, TFLVB; Carvalho, P; Vieira, SL; Bastos, RP (2007): Conservation biogeography of anurans in Brazilian Cerrado. - BIODIVERSITY AND CONSERVATION 16: 997-1008.	11	regional
Biodiversity & Conservation	Finch, OD; Blick, T; Schuldt, A (2008): Macroecological patterns of spider species richness across Europe. - BIODIVERSITY AND CONSERVATION 17: 2849-2868.	12	national, continental

Biodiversity & Conservation	Giralt, D; Valera, F (2007): Population trends and spatial synchrony in peripheral populations of the endangered Lesser grey shrike in response to environmental change. - BIODIVERSITY AND CONSERVATION 16: 841-856.	9	regional
Biodiversity & Conservation	Godet, L; Devictor, V; Jiguet, F (2007): Estimating relative population size included within protected areas. - BIODIVERSITY AND CONSERVATION 16: 2587-2598.	8	national
Biodiversity & Conservation	Hernandez, PA; Franke, I; Herzog, SK; Pacheco, V; Paniagua, L; Quintana, HL; Soto, A; Swenson, JJ; Tovar, C; Valqui, TH; Vargas, J; Young, BE (2008): Predicting species distributions in poorly-studied landscapes. - BIODIVERSITY AND CONSERVATION 17: 1353-1366.	8	multi-national
Biodiversity & Conservation	Keil, P; Hawkins, BA (2009): Grids versus regional species lists: are broad-scale patterns of species richness robust to the violation of constant grain size?. - BIODIVERSITY AND CONSERVATION 18: 3127-3137.	10	continental
Biodiversity & Conservation	Nielsen, SE; Haughland, DL; Bayne, E; Schieck, J (2009): Capacity of large-scale, long-term biodiversity monitoring programmes to detect trends in species prevalence. - BIODIVERSITY AND CONSERVATION 18: 2961-2978.	5, 8	regional
Biodiversity & Conservation	Pautasso, M; Zotti, M (2009): Macrofungal taxa and human population in Italy's regions. - BIODIVERSITY AND CONSERVATION 18: 473-485.	11	national
Biodiversity & Conservation	Peralvo, M; Sierra, R; Young, KR; Ulloa-Ulloa, C (2007): Identification of biodiversity conservation priorities using predictive modeling: An application for the equatorial pacific region of South America. - BIODIVERSITY AND CONSERVATION 16: 2649-2675.	9	regional
Biodiversity & Conservation	Puddu, G; Maiorano, L; Falcucci, A; Corsi, F; Boitani, L (2009): Spatial-explicit assessment of current and future conservation options for the endangered Corsican Red Deer (<i>Cervus elaphus corsicanus</i>) in Sardinia. - BIODIVERSITY AND CONSERVATION 18: 2001-2016.	6	regional
Biodiversity & Conservation	Qi, DW; Hu, YB; Gu, XD; Li, M; Wei, FW (2009): Ecological niche modeling of the sympatric giant and red pandas on a mountain-range scale. - BIODIVERSITY AND CONSERVATION 18: 2127-2141.	5	regional
Biodiversity & Conservation	Ranius, T; Eliasson, P; Johansson, P (2008): Large-scale occurrence patterns of red-listed lichens and fungi on old oaks are influenced both by current and historical habitat density. - BIODIVERSITY AND CONSERVATION 17: 2371-2381.	9	regional

Biodiversity & Conservation	Scarnati, L; Attorre, F; De Sanctis, M; Farcomeni, A; Francesconi, F; Mancini, M; Bruno, F (2009): A multiple approach for the evaluation of the spatial distribution and dynamics of a forest habitat: the case of Apennine beech forests with <i>Taxus baccata</i> and <i>Ilex aquifolium</i> . - BIODIVERSITY AND CONSERVATION 18: 3099-3113.	3	regional
Biodiversity & Conservation	Tsiftsis, S; Tsiripidis, I; Karagiannakidou, V (2009): Identifying areas of high importance for orchid conservation in east Macedonia (NE Greece). - BIODIVERSITY AND CONSERVATION 18: 1765-1780.	10	regional
Biodiversity & Conservation	Valenzuela-Galvan, D; Arita, HT; Macdonald, DW (2008): Conservation priorities for carnivores considering protected natural areas and human population density. - BIODIVERSITY AND CONSERVATION 17: 539-558.	12	continental
Biodiversity & Conservation	Wood, LJ; Dragicevic, S (2007): GIS-Based multicriteria evaluation and fuzzy sets to identify priority sites for marine protection. - BIODIVERSITY AND CONSERVATION 16: 2539-2558.	11	regional
Biological Conservation	Barlow, J; Mestre, LAM; Gardner, TA; Peres, CA (2007): The value of primary, secondary and plantation forests for Amazonian birds. - BIOLOGICAL CONSERVATION 136: 212-231.	6, 8	regional
Biological Conservation	Brambilla, M; Casale, F; Bergero, V; Crovetto, GM; Falco, R; Negri, I; Siccardi, P; Bogliani, G (2009): GIS-models work well, but are not enough: Habitat preferences of <i>Lanius collurio</i> at multiple levels and conservation implications. - BIOLOGICAL CONSERVATION 142: 2033-2042.	6	regional
Biological Conservation	Britton, AJ; Beale, CM; Towers, W; Hewison, RL (2009): Biodiversity gains and losses: Evidence for homogenisation of Scottish alpine vegetation. - BIOLOGICAL CONSERVATION 142: 1728-1739.	1, 2	regional
Biological Conservation	Buhle, ER; Holsman, KK; Scheuerell, MD; Albaugh, A (2009): Using an unplanned experiment to evaluate the effects of hatcheries and environmental variation on threatened populations of wild salmon. - BIOLOGICAL CONSERVATION 142: 2449-2455.	11, 12	regional
Biological Conservation	Carrete, M; Grande, JM; Tella, JL; Sanchez-Zapata, JA; Donazar, JA; Diaz-Delgado, R; Romo, A (2007): Habitat, human pressure, and social behavior: Partialling out factors affecting large-scale territory extinction in an endangered vulture. - BIOLOGICAL CONSERVATION 136: 143-154.	8, 10	national
Biological Conservation	Garcia, J; Suarez-Seoane, S; Miquelez, D; Osborne, PE; Zumalacarregui, C (2007): Spatial analysis of habitat quality in a fragmented population of little bustard (<i>Tetrax tetrax</i>): Implications for conservation. - BIOLOGICAL CONSERVATION	8	regional

137: 45-56.

Biological Conservation	Huerta, MAO (2007): Fragmentation patterns and implications for biodiversity conservation in three biosphere reserves and surrounding regional environments, northeastern Mexico. - BIOLOGICAL CONSERVATION 134: 83-95.	7	regional
Biological Conservation	Killengreen, ST; Ims, RA; Yoccoz, NG; Brathen, KA; Henden, JA; Schott, T (2007): Structural characteristics of a low Arctic tundra ecosystem and the retreat of the Arctic fox. - BIOLOGICAL CONSERVATION 135: 459-472.	8, 10, 11	regional
Biological Conservation	Lassalle, G; Beguer, M; Beaulaton, L; Rochard, E (2008): Diadromous fish conservation plans need to consider global warming issues: An approach using biogeographical models. - BIOLOGICAL CONSERVATION 141: 1105-1118.	10, 11, 12, 13	multi-continental
Biological Conservation	Murray, JV; Choy, SL; McAlpine, CA; Possingham, HP; Goldizen, AW (2008): The importance of ecological scale for wildlife conservation in naturally fragmented environments: A case study of the brush-tailed rock-wallaby (<i>Petrogale penicillata</i>). - BIOLOGICAL CONSERVATION 141: 7-22.	7, 8, 9	regional
Biological Conservation	Parsons, B; Short, J; Roberts, JD (2009): Using community observations to predict the occurrence of malleefowl (<i>Leipoa ocellata</i>) in the Western Australian wheatbelt. - BIOLOGICAL CONSERVATION 142: 364-374.	8	regional
Biological Conservation	Polasky, S; Nelson, E; Camm, J; Csuti, B; Fackler, P; Lonsdorf, E; Montgomery, C; White, D; Arthur, J; Garber-Yonts, B; Haight, R; Kagan, J; Starfield, A; Tobalske, C (2008): Where to put things? Spatial land management to sustain biodiversity and economic returns. - BIOLOGICAL CONSERVATION 141: 1505-1524.	6	regional
Biological Conservation	Sergio, C; Figueira, R; Draper, D; Menezes, R; Sousa, AJ (2007): Modelling bryophyte distribution based on ecological information for extent of occurrence assessment. - BIOLOGICAL CONSERVATION 135: 341-351.	8	multi-continental
Biological Conservation	Suryan, RM; Dietrich, KS; Melvin, EF; Balogh, GR; Sato, F; Ozaki, K (2007): Migratory routes of short-tailed albatrosses: Use of exclusive economic zones of North Pacific Rim countries and spatial overlap with commercial fisheries in Alaska. - BIOLOGICAL CONSERVATION 137: 450-460.	11	multi-continental
Biological Conservation	Thieme, M; Lehner, B; Abell, R; Hamilton, SK; Kellendorfer, J; Powell, G; Riveros, JC (2007): Freshwater conservation planning in data-poor areas: An example from a remote Amazonian basin (Madre de Dios River, Peru and Bolivia). - BIOLOGICAL CONSERVATION 135: 484-501.	10	multi-national

Biological Conservation	Thomaes, A; Kervyn, T; Maes, D (2008): Applying species distribution modelling for the conservation of the threatened saproxylic Stag Beetle (<i>Lucanus cervus</i>). - BIOLOGICAL CONSERVATION 141: 1400-1410.	9	national
Biological Conservation	Witt, MJ; Baert, B; Broderick, AC; Formia, A; Fretey, J; Gibudi, A; Mounguengui, GAM; Moussounda, C; Nguouessono, S; Parnell, RJ; Roumet, D; Sounguet, GP; Verhage, B; Zogo, A; Godley, BJ (2009): Aerial surveying of the world's largest leatherback turtle rookery: A more effective methodology for large-scale monitoring. - BIOLOGICAL CONSERVATION 142: 1719-1727.	10, 11	national
Diversity & Distributions	Anadon, JD; Gimenez, A; Martinez, M; Palazon, JA; Esteve, MA (2007): Assessing changes in habitat quality due to land use changes in the spur-thighed tortoise <i>Testudo graeca</i> using hierarchical predictive habitat models. - DIVERSITY AND DISTRIBUTIONS 13: 324-331.	8	regional
Diversity & Distributions	Beatty, GE; McEvoy, PM; Sweeney, O; Provan, J (2008): Range-edge effects promote clonal growth in peripheral populations of the one-sided wintergreen <i>Orthilia secunda</i> . - DIVERSITY AND DISTRIBUTIONS 14: 546-555.	2, 3	multi-national
Diversity & Distributions	Brotons, L; Herrando, S; Pla, M (2007): Updating bird species distribution at large spatial scales: applications of habitat modelling to data from long-term monitoring programs. - DIVERSITY AND DISTRIBUTIONS 13: 276-288.	6	regional
Diversity & Distributions	Buisson, L; Grenouillet, G (2009): Contrasted impacts of climate change on stream fish assemblages along an environmental gradient. - DIVERSITY AND DISTRIBUTIONS 15: 613-626.	10	national
Diversity & Distributions	Clarke, A; Griffiths, HJ; Linse, K; Barnes, DKA; Crame, JA (2007): How well do we know the Antarctic marine fauna? A preliminary study of macroecological and biogeographical patterns in Southern Ocean gastropod and bivalve molluscs. - DIVERSITY AND DISTRIBUTIONS 13: 620-632.	11, 12, 13	continental
Diversity & Distributions	Cofre, HL; Bohning-Gaese, K; Marquet, PA (2007): Rarity in Chilean forest birds: which ecological and life-history traits matter?. - DIVERSITY AND DISTRIBUTIONS 13: 203-212.	5, 8	regional
Diversity & Distributions	Costa, GC; Nogueira, C; Machado, RB; Colli, GR (2007): Squamate richness in the Brazilian Cerrado and its environmental-climatic associations. - DIVERSITY AND DISTRIBUTIONS 13: 714-724.	11	regional
Diversity & Distributions	Ferro, VG; Diniz, IR (2008): Biological attributes affect the data of description of tiger moths (<i>Arctiidae</i>) in the Brazilian Cerrado. - DIVERSITY AND DISTRIBUTIONS 14: 472-482.	13	regional

Diversity & Distributions	Figueiredo, MSL; Grelle, CEV (2009): Predicting global abundance of a threatened species from its occurrence: implications for conservation planning. - DIVERSITY AND DISTRIBUTIONS 15: 117-121.	8, 10, 11, 12	regional
Diversity & Distributions	Fischer, J; Lindenmayer, DB; Montague-Drake, R (2008): The role of landscape texture in conservation biogeography: a case study on birds in south-eastern Australia. - DIVERSITY AND DISTRIBUTIONS 14: 38-46.	8, 9, 12	regional
Diversity & Distributions	Franklin, J; Wejnert, KE; Hathaway, SA; Rochester, CJ; Fisher, RN (2009): Effect of species rarity on the accuracy of species distribution models for reptiles and amphibians in southern California. - DIVERSITY AND DISTRIBUTIONS 15: 167-177.	S	regional
Diversity & Distributions	Gibson, L; Barrett, B; Burbidge, A (2007): Dealing with uncertain absences in habitat modelling: a case study of a rare ground-dwelling parrot. - DIVERSITY AND DISTRIBUTIONS 13: 704-713.	7	regional
Diversity & Distributions	Grey, EK (2009): Scale-dependent relationships between native richness, resource stability and exotic cover in dock fouling communities of Washington, USA. - DIVERSITY AND DISTRIBUTIONS 15: 1073-1080.	1	regional
Diversity & Distributions	Guisan, A; Graham, CH; Elith, J; Huettmann, F (2007): Sensitivity of predictive species distribution models to change in grain size. - DIVERSITY AND DISTRIBUTIONS 13: 332-340.	6, 8, 10	regional
Diversity & Distributions	Knapp, S; Kuhn, I; Bakker, JP; Kleyer, M; Klotz, S; Ozinga, WA; Poschlod, P; Thompson, K; Thuiller, W; Romermann, C (2009): How species traits and affinity to urban land use control large-scale species frequency. - DIVERSITY AND DISTRIBUTIONS 15: 533-546.	10	national
Diversity & Distributions	Kuhn, I (2007): Incorporating spatial autocorrelation may invert observed patterns. - DIVERSITY AND DISTRIBUTIONS 13: 66-69.	10	national
Diversity & Distributions	Lambdon, PW; Lloret, F; Hulme, PE (2008): Do non-native species invasions lead to biotic homogenization at small scales? The similarity and functional diversity of habitats compared for alien and native components of Mediterranean floras. - DIVERSITY AND DISTRIBUTIONS 14: 774-785.	10, 11	multi-national
Diversity & Distributions	Lira-Noriega, A; Soberon, J; Navarro-Siguenza, AG; Nakazawa, Y; Peterson, AT (2007): Scale dependency of diversity components estimated from primary biodiversity data and distribution maps. - DIVERSITY AND DISTRIBUTIONS 13: 185-195.	9, 10, 11	regional

Diversity & Distributions	Lobo, JM; Baselga, A; Hortal, J; Jimenez-Valverde, A; Gomez, JF (2007): How does the knowledge about the spatial distribution of Iberian dung beetle species accumulate over time?. - DIVERSITY AND DISTRIBUTIONS 13: 772-780.	10	multi-national
Diversity & Distributions	Marmion, M; Parviainen, M; Luoto, M; Heikkinen, RK; Thuiller, W (2009): Evaluation of consensus methods in predictive species distribution modelling. - DIVERSITY AND DISTRIBUTIONS 15: 59-69.	7	regional
Diversity & Distributions	Osborne, PE; Foody, GM; Suarez-Seoane, S (2007): Non-stationarity and local approaches to modelling the distributions of wildlife. - DIVERSITY AND DISTRIBUTIONS 13: 313-323.	8, 10	regional, national
Diversity & Distributions	Osborne, PE; Leitao, PJ (2009): Effects of species and habitat positional errors on the performance and interpretation of species distribution models. - DIVERSITY AND DISTRIBUTIONS 15: 671-681.	8	regional
Diversity & Distributions	Tsoar, A; Allouche, O; Steinitz, O; Rotem, D; Kadmon, R (2007): A comparative evaluation of presence-only methods for modelling species distribution. - DIVERSITY AND DISTRIBUTIONS 13: 397-405.	8	national
Diversity & Distributions	Williams, JN; Seo, CW; Thorne, J; Nelson, JK; Erwin, S; O'Brien, JM; Schwartz, MW (2009): Using species distribution models to predict new occurrences for rare plants. - DIVERSITY AND DISTRIBUTIONS 15: 565-576.	6	regional
Diversity & Distributions	Williams, SE; Middleton, J (2008): Climatic seasonality, resource bottlenecks, and abundance of rainforest birds: implications for global climate change. - DIVERSITY AND DISTRIBUTIONS 14: 69-77.	7	regional
Diversity & Distributions	Wisz, MS; Hijmans, RJ; Li, J; Peterson, AT; Graham, CH; Guisan, A (2008): Effects of sample size on the performance of species distribution models. - DIVERSITY AND DISTRIBUTIONS 14: 763-773.	5, 6	continental
Diversity & Distributions	Wisz, MS; Tamstorf, MP; Madsen, J; Jespersen, M (2008): Where might the western Svalbard tundra be vulnerable to pink-footed goose (<i>Anser brachyrhynchus</i>) population expansion? Clues from species distribution models. - DIVERSITY AND DISTRIBUTIONS 14: 26-37.	5, 8	regional, continental
Diversity & Distributions	Zanini, F; Pellet, J; Schmidt, BR (2009): The transferability of distribution models across regions: an amphibian case study. - DIVERSITY AND DISTRIBUTIONS 15: 469-480.	11	national
Ecography	Algar, AC; Kharouba, HM; Young, ER; Kerr, JT (2009): Predicting the future of species diversity: macroecological theory, climate change, and direct tests of alternative forecasting methods. - ECOGRAPHY 32: 22-33.	12	national

Ecography	Brathen, KA; Gonzalez, VT; Iversen, M; Killengreen, S; Ravolainen, VT; Ims, RA; Yoccoz, NG (2007): Endozoochory varies with ecological scale and context. - ECOGRAPHY 30: 308-320.	8	regional
Ecography	Certain, G; Bellier, E; Planque, B; Bretagnolle, V (2007): Characterising the temporal variability of the spatial distribution of animals: an application to seabirds at sea. - ECOGRAPHY 30: 695-708.	8	regional
Ecography	Cornelissen, T; Stiling, P (2009): Spatial, bottom-up, and top-down effects on the abundance of a leaf miner. - ECOGRAPHY 32: 459-467.	S	regional
Ecography	Diniz, JAF; Bini, LM; Rodriguez, MA; Rangel, TFLVB; Hawkins, BA (2007): Seeing the forest for the trees: partitioning ecological and phylogenetic components of Bergmann's rule in European Carnivora. - ECOGRAPHY 30: 598-608.	12	continental
Ecography	Gonzalez-Taboada, F; Nores, C; Alvarez, MA (2007): Breeding bird species richness in Spain: assessing diversity hypothesis at various scales. - ECOGRAPHY 30: 241-250.	10, 11	national
Ecography	Lenoir, J; Gegout, JC; Pierrat, JC; Bontemps, JD; Dhote, JF (2009): Differences between tree species seedling and adult altitudinal distribution in mountain forests during the recent warm period (1986-2006). - ECOGRAPHY 32: 765-777.	4	regional
Ecography	Maraun, M; Schatz, H; Scheu, S (2007): Awesome or ordinary? Global diversity patterns of oribatid mites. - ECOGRAPHY 30: 209-216.	12	global
Ecography	McPherson, JM; Jetz, W (2007): Effects of species' ecology on the accuracy of distribution models. - ECOGRAPHY 30: 135-151.	11	multi-national
Ecography	Melo, AS; Rangel, TFLVB; Diniz, JAF (2009): Environmental drivers of beta-diversity patterns in New-World birds and mammals. - ECOGRAPHY 32: 226-236.	12	multi-continental
Ecography	Qian, H (2009): Global tests of regional effect on species richness of vascular plants and terrestrial vertebrates. - ECOGRAPHY 32: 553-560.	13	global
Ecography	Raes, N; Roos, MC; Slik, JWF; van Loon, EE; ter Steege, H (2009): Botanical richness and endemism patterns of Borneo derived from species distribution models. - ECOGRAPHY 32: 180-192.	10	multi-national
Ecography	Sandel, B (2009): Geometric constraint model selection - an example with New World birds and mammals. - ECOGRAPHY 32: 1001-1010.	11	multi-continental
Ecography	Sanz, R; Pulido, F; Nogues-Bravo, D (2009): Predicting mechanisms across scales: amplified effects of abiotic constraints on the recruitment of yew <i>Taxus baccata</i> . - ECOGRAPHY 32: 993-1000.	S	multi-national

Ecography	Schuldt, A; Assmann, T (2009): Environmental and historical effects on richness and endemism patterns of carabid beetles in the western Palaearctic. - ECOGRAPHY 32: 705-714.	13	multi-continental
Ecography	Schuldt, A; Wang, ZH; Zhou, HZ; Assmann, T (2009): Integrating highly diverse invertebrates into broad-scale analyses of cross-taxon congruence across the Palaearctic. - ECOGRAPHY 32: 1019-1030.	13	multi-continental
Ecography	Svenning, JC; Normand, S; Skov, F (2009): Plio-Pleistocene climate change and geographic heterogeneity in plant diversity-environment relationships. - ECOGRAPHY 32: 13-21.	11	continental
Ecography	Syphard, AD; Franklin, J (2009): Differences in spatial predictions among species distribution modeling methods vary with species traits and environmental predictors. - ECOGRAPHY 32: 907-918.	P	regional
Ecography	Wang, XP; Fang, JY; Sanders, NJ; White, PS; Tang, ZY (2009): Relative importance of climate vs local factors in shaping the regional patterns of forest plant richness across northeast China. - ECOGRAPHY 32: 133-142.	4	regional
Ecography	Willis, SG; Thomas, CD; Hill, JK; Collingham, YC; Telfer, MG; Fox, R; Huntley, B (2009): Dynamic distribution modelling: predicting the present from the past. - ECOGRAPHY 32: 5-12.	10	national
Ecography	Wolf, M; Frair, J; Merrill, E; Turchin, P (2009): The attraction of the known: the importance of spatial familiarity in habitat selection in wapiti Cervus elaphus. - ECOGRAPHY 32: 401-410.	4	regional
Ecology	Burrows, MT; Harvey, R; Robb, L; Poloczanska, ES; Mieszkowska, N; Moore, P; Leaper, R; Hawkins, SJ; Benedetti-Cecchi, L (2009): Spatial scales of variance in abundance of intertidal species: effects of region, dispersal mode, and trophic level. - ECOLOGY 90: 1242-1254.	10	regional
Ecology	Capers, RS; Selsky, R; Bugbee, GJ; White, JC (2007): Aquatic plant community invasibility and scale-dependent patterns in native and invasive species richness. - ECOLOGY 88: 3135-3143.	7	regional
Ecology	Connolly, SR; Dornelas, M; Bellwood, DR; Hughes, TP (2009): Testing species abundance models: a new bootstrap approach applied to Indo-Pacific coral reefs. - ECOLOGY 90: 3138-3149.	4, 5	multi-national
Ecology	Dormann, CF; Purschke, O; Marquez, JRG; Lautenbach, S; Schroder, B (2008): COMPONENTS OF UNCERTAINTY IN SPECIES DISTRIBUTION ANALYSIS: A CASE STUDY OF THE GREAT GREY SHRIKE. - ECOLOGY 89: 3371-3386.	9	regional

Ecology	Kharouba, HM; Algar, AC; Kerr, JT (2009): Historically calibrated predictions of butterfly species' range shift using global change as a pseudo-experiment. - ECOLOGY 90: 2213-2222.	2	national
Ecology	Lester, SE; Gaines, SD; Kinlan, BP (2007): Reproduction on the edge: Large-scale patterns of individual performance in a marine invertebrate. - ECOLOGY 88: 2229-2239.	5	multi-national
Ecology	MacNeil, MA; Graham, NAJ; Polunin, NVC; Kulbicki, M; Galzin, R; Harmelin-Vivien, M; Rushton, SP (2009): Hierarchical drivers of reef-fish metacommunity structure. - ECOLOGY 90: 252-264.	4	national
Ecology	Navarrete, SA; Broitman, BR; Menge, BA (2008): Interhemispheric comparison of recruitment to intertidal communities: Pattern persistence and scales of variation. - ECOLOGY 89: 1308-1322.	4	multi-continental
Ecology	Passy, SI (2008): Species size and distribution jointly and differentially determine diatom densities in US streams. - ECOLOGY 89: 475-484.	P	national
Ecology	Rosa, R; Dierssen, HM; Gonzalez, L; Seibel, BA (2008): LARGE-SCALE DIVERSITY PATTERNS OF CEPHALOPODS IN THE ATLANTIC OPEN OCEAN AND DEEP SEA. - ECOLOGY 89: 3449-3461.	13	global
Ecology	Schweiger, O; Settele, J; Kudrna, O; Klotz, S; Kuhn, I (2008): CLIMATE CHANGE CAN CAUSE SPATIAL MISMATCH OF TROPICALLY INTERACTING SPECIES. - ECOLOGY 89: 3472-3479.	9, 11	multi-national
Ecology	Witman, JD; Cusson, M; Archambault, P; Pershing, AJ; Mieszkowska, N (2008): THE RELATION BETWEEN PRODUCTIVITY AND SPECIES DIVERSITY IN TEMPERATE-ARCTIC MARINE ECOSYSTEMS. - ECOLOGY 89: S66-S80.	10, 11, 13	multi-continental
Ecology	Wolf, SG; Sydeman, WJ; Hipfner, JM; Abraham, CL; Tershy, BR; Croll, DA (2009): Range-wide reproductive consequences of ocean climate variability for the seabird Cassin's Auklet. - ECOLOGY 90: 742-753.	8	multi-national
Global Ecology and Biogeography	Algar, AC; Kerr, JT; Currie, DJ (2007): A test of Metabolic Theory as the mechanism underlying broad-scale species-richness gradients. - GLOBAL ECOLOGY AND BIOGEOGRAPHY 16: 170-178.	12	continental
Global Ecology and Biogeography	Almeida-Neto, M; Campassi, F; Galetti, M; Jordano, P; Oliveira, A (2008): Vertebrate dispersal syndromes along the Atlantic forest: broad-scale patterns and macroecological correlates. - GLOBAL ECOLOGY AND BIOGEOGRAPHY 17: 503-513.	S	regional

Global Ecology and Biogeography	Araujo, MB; Luoto, M (2007): The importance of biotic interactions for modelling species distributions under climate change. - GLOBAL ECOLOGY AND BIOGEOGRAPHY 16: 743-753.	10	continental
Global Ecology and Biogeography	Bahn, V; McGill, BJ (2007): Can niche-based distribution models outperform spatial interpolation?. - GLOBAL ECOLOGY AND BIOGEOGRAPHY 16: 733-742.	10	multi-national
Global Ecology and Biogeography	Beketov, MA (2009): The Rapoport effect is detected in a river system and is based on nested organization. - GLOBAL ECOLOGY AND BIOGEOGRAPHY 18: 498-506.	S	regional
Global Ecology and Biogeography	Da Silva Cassemiro, FADS; Barreto, BDS; Rangel, TFLVB; Diniz-Filho, JAF (2007): Non-stationarity, diversity gradients and the metabolic theory of ecology. - GLOBAL ECOLOGY AND BIOGEOGRAPHY 16: 820-822.	12	multi-continental
Global Ecology and Biogeography	Davies, RG; Orme, CDL; Webster, AJ; Jones, KE; Blackburn, TM; Gaston, KJ (2007): Environmental predictors of global parrot (Aves : Psittaciformes) species richness and phylogenetic diversity. - GLOBAL ECOLOGY AND BIOGEOGRAPHY 16: 220-233.	12	multi-continental
Global Ecology and Biogeography	Devictor, V; Julliard, R; Clavel, J; Jiguet, F; Lee, A; Couvet, D (2008): Functional biotic homogenization of bird communities in disturbed landscapes. - GLOBAL ECOLOGY AND BIOGEOGRAPHY 17: 252-261.	8	national
Global Ecology and Biogeography	Diniz, JAF; Rangel, TFLVB; Bini, LM (2008): Model selection and information theory in geographical ecology. - GLOBAL ECOLOGY AND BIOGEOGRAPHY 17: 479-488.	12	continental
Global Ecology and Biogeography	Duarte, LD; Carlucci, MB; Pillar, VD (2009): Macroecological analyses reveal historical factors influencing seed dispersal strategies in Brazilian Araucaria forests. - GLOBAL ECOLOGY AND BIOGEOGRAPHY 18: 314-326.	5	regional
Global Ecology and Biogeography	Galley, C; Linder, HP; Zimmermann, NE (2009): Pentaschistis (Poaceae) diversity in the Cape mediterranean region: habitat heterogeneity and climate stability. - GLOBAL ECOLOGY AND BIOGEOGRAPHY 18: 586-595.	11	regional
Global Ecology and Biogeography	Hugo, S; van Rensburg, BJ (2008): The maintenance of a positive spatial correlation between South African bird species richness and human population density. - GLOBAL ECOLOGY AND BIOGEOGRAPHY 17: 611-621.	10	national
Global Ecology and Biogeography	Hurlbert, AH; White, EP (2007): Ecological correlates of geographical range occupancy in North American birds. - GLOBAL ECOLOGY AND BIOGEOGRAPHY 16: 764-773.	8	national

Global Ecology and Biogeography	Kelt, DA; Meyer, MD (2009): Body size frequency distributions in African mammals are bimodal at all spatial scales. - GLOBAL ECOLOGY AND BIOGEOGRAPHY 18: 19-29.	S, 13	continental
Global Ecology and Biogeography	Le Maitre, DC; Thuiller, W; Schonegevel, L (2008): Developing an approach to defining the potential distributions of invasive plant species: a case study of Hakea species in South Africa. - GLOBAL ECOLOGY AND BIOGEOGRAPHY 17: 569-584.	11	multi-national
Global Ecology and Biogeography	Luoto, M; Virkkala, R; Heikkinen, RK (2007): The role of land cover in bioclimatic models depends on spatial resolution. - GLOBAL ECOLOGY AND BIOGEOGRAPHY 16: 34-42.	10, 11	national
Global Ecology and Biogeography	Maridet, O; Escarguel, G; Costeur, L; Mein, P; Hugueney, M; Legendre, S (2007): Small mammal (rodents and lagomorphs) European biogeography from the Late Oligocene to the mid Pliocene. - GLOBAL ECOLOGY AND BIOGEOGRAPHY 16: 529-544.	11	continental
Global Ecology and Biogeography	McPherson, JM; Jetz, W (2007): Type and spatial structure of distribution data and the perceived determinants of geographical gradients in ecology: the species richness of African birds. - GLOBAL ECOLOGY AND BIOGEOGRAPHY 16: 657-667.	11	continental
Global Ecology and Biogeography	Menke, SB; Holway, DA; Fisher, RN; Jetz, W (2009): Characterizing and predicting species distributions across environments and scales: Argentine ant occurrences in the eye of the beholder. - GLOBAL ECOLOGY AND BIOGEOGRAPHY 18: 50-63.	5, 10	regional
Global Ecology and Biogeography	Montoya, D; Purves, DW; Urbieto, IR; Zavala, MA (2009): Do species distribution models explain spatial structure within tree species ranges?. - GLOBAL ECOLOGY AND BIOGEOGRAPHY 18: 662-673.	8	national
Global Ecology and Biogeography	O'Hara, TD (2007): Seamounts: centres of endemism or species richness for Ophiuroids?. - GLOBAL ECOLOGY AND BIOGEOGRAPHY 16: 720-732.	11, 13	multi-national
Global Ecology and Biogeography	Olalla-Tarraga, MA; Rodriguez, MA (2007): Energy and interspecific body size patterns of amphibian faunas in Europe and North America: anurans follow Bergmann's rule, urodeles its converse. - GLOBAL ECOLOGY AND BIOGEOGRAPHY 16: 606-617.	12	multi-national
Global Ecology and Biogeography	Partel, M; Laanisto, L; Wilson, SD (2008): Soil nitrogen and carbon heterogeneity in woodlands and grasslands: contrasts between temperate and tropical regions. - GLOBAL ECOLOGY AND BIOGEOGRAPHY 17: 18-24.	S	global

Global Ecology and Biogeography	Passy, SI (2009): The relationship between local and regional diatom richness is mediated by the local and regional environment. - GLOBAL ECOLOGY AND BIOGEOGRAPHY 18: 383-391.	P	national
Global Ecology and Biogeography	Qian, H; Badgley, C; Fox, DL (2009): The latitudinal gradient of beta diversity in relation to climate and topography for mammals in North America. - GLOBAL ECOLOGY AND BIOGEOGRAPHY 18: 111-122.	12	multi-national
Global Ecology and Biogeography	Ramirez, L; Diniz, JAF; Hawkins, BA (2008): Partitioning phylogenetic and adaptive components of the geographical body-size pattern of New World birds. - GLOBAL ECOLOGY AND BIOGEOGRAPHY 17: 100-110.	12	continental
Global Ecology and Biogeography	Real, R; Olivero, J; Vargas, JM (2008): Using chorotypes to deconstruct biogeographical and biodiversity patterns: the case of breeding waterbirds in Europe. - GLOBAL ECOLOGY AND BIOGEOGRAPHY 17: 735-746.	13	continental
Global Ecology and Biogeography	Rodriguez, MA; Olalla-Tarraga, MA; Hawkins, BA (2008): Bergmann's rule and the geography of mammal body size in the Western Hemisphere. - GLOBAL ECOLOGY AND BIOGEOGRAPHY 17: 274-283.	12	continental
Global Ecology and Biogeography	Rodriguez-Sanchez, F; Arroyo, J (2008): Reconstructing the demise of Tethyan plants: climate-driven range dynamics of Laurus since the Pliocene. - GLOBAL ECOLOGY AND BIOGEOGRAPHY 17: 685-695.	10	multi-continental
Global Ecology and Biogeography	Rowe, RJ; Lidgard, S (2009): Elevational gradients and species richness: do methods change pattern perception?. - GLOBAL ECOLOGY AND BIOGEOGRAPHY 18: 163-177.	S	regional
Global Ecology and Biogeography	Schurr, FM; Midgley, GF; Rebelo, AG; Reeves, G; Poschlod, P; Higgins, SI (2007): Colonization and persistence ability explain the extent to which plant species fill their potential range. - GLOBAL ECOLOGY AND BIOGEOGRAPHY 16: 449-459.	8	regional
Global Ecology and Biogeography	Terribile, LC; Diniz, JAF; Rodriguez, MA; Rangel, TFLVB (2009): Richness patterns, species distributions and the principle of extreme deconstruction. - GLOBAL ECOLOGY AND BIOGEOGRAPHY 18: 123-136.	12	Global
Global Ecology and Biogeography	Ting, S; Hartley, S; Burns, KC (2008): Global patterns in fruiting seasons. - GLOBAL ECOLOGY AND BIOGEOGRAPHY 17: 648-657.	11	Global
Global Ecology and Biogeography	van der Heijden, GMF; Phillips, OL (2008): What controls liana success in Neotropical forests?. - GLOBAL ECOLOGY AND BIOGEOGRAPHY 17: 372-383.	4	multi-national
Global Ecology and Biogeography	Verbruggen, H; Tyberghein, L; Pauly, K; Vlaeminck, C; Van Nieuwenhuyze, K; Kooistra, WHCF; Leliaert, F; De Clerck, O (2009): Macroecology meets macroevolution: evolutionary niche dynamics in the seaweed Halimeda. - GLOBAL ECOLOGY AND BIOGEOGRAPHY 18: 393-405.	9	global

Global Ecology and Biogeography	White, PJT; Kerr, JT (2007): Human impacts on environment-diversity relationships: evidence for biotic homogenization from butterfly species richness patterns. - GLOBAL ECOLOGY AND BIOGEOGRAPHY 16: 290-299.	9	national
Global Ecology and Biogeography	Whittaker, RJ; Nogues-Bravo, D; Araujo, MB (2007): Geographical gradients of species richness: a test of the water-energy conjecture of Hawkins et al. (2003) using European data for five taxa. - GLOBAL ECOLOGY AND BIOGEOGRAPHY 16: 76-89.	11	multi-national
Journal of Biogeography	Beck, J; Chey, VK (2008): Explaining the elevational diversity pattern of geometrid moths from Borneo: a test of five hypotheses. - JOURNAL OF BIOGEOGRAPHY 35: 1452-1464.	P	regional
Journal of Biogeography	Besold, J; Schmitt, T; Tammaru, T; Cassel-Lundhagen, A (2008): Strong genetic impoverishment from the centre of distribution in southern Europe to peripheral Baltic and isolated Scandinavian populations of the pearly heath butterfly. - JOURNAL OF BIOGEOGRAPHY 35: 2090-2101.	S	multi-national
Journal of Biogeography	Blanchette, CA; Miner, CM; Raimondi, PT; Lohse, D; Heady, KEK; Broitman, BR (2008): Biogeographical patterns of rocky intertidal communities along the Pacific coast of North America. - JOURNAL OF BIOGEOGRAPHY 35: 1593-1607.	4	multi-national
Journal of Biogeography	Brandle, M; Heuser, R; Marten, A; Brand, R (2007): Population structure of the freshwater flatworm <i>Crenobia alpina</i> (Dana): old lineages and low gene flow. - JOURNAL OF BIOGEOGRAPHY 34: 1183-1192.	S	multi-national
Journal of Biogeography	Buermann, W; Saatchi, S; Smith, TB; Zutta, BR; Chaves, JA; Mila, B; Graham, CH (2008): Predicting species distributions across the Amazonian and Andean regions using remote sensing data. - JOURNAL OF BIOGEOGRAPHY 35: 1160-1176.	P	continental
Journal of Biogeography	Caruso, T; Hogg, ID; Carapelli, A; Frati, F; Bargagli, R (2009): Large-scale spatial patterns in the distribution of Collembola (Hexapoda) species in Antarctic terrestrial ecosystems. - JOURNAL OF BIOGEOGRAPHY 36: 879-886.	8	regional
Journal of Biogeography	Connell, SD; Irving, AD (2008): Integrating ecology with biogeography using landscape characteristics: a case study of subtidal habitat across continental Australia. - JOURNAL OF BIOGEOGRAPHY 35: 1608-1621.	4	regional
Journal of Biogeography	Dengler, J (2009): Which function describes the species-area relationship best? A review and empirical evaluation. - JOURNAL OF BIOGEOGRAPHY 36: 728-744.	7	global
Journal of Biogeography	Diniz, JAF; Rodriguez, MA; Bini, LM; Olalla-Tarraga, MA; Cardillo, M; Nabout, JC; Hortal, J; Hawkins, BA (2009): Climate history, human impacts and global body size of Carnivora (Mammalia: Eutheria) at multiple evolutionary scales. - JOURNAL OF BIOGEOGRAPHY 36: 2222-2236.	11	global

Journal of Biogeography	Etherington, TR; Ward, AI; Smith, GC; Pietravalle, S; Wilson, GJ (2009): Using the Mahalanobis distance statistic with unplanned presence-only survey data for biogeographical models of species distribution and abundance: a case study of badger setts. - JOURNAL OF BIOGEOGRAPHY 36: 845-853.	6, 7	regional
Journal of Biogeography	Heikinheimo, H; Fortelius, M; Eronen, J; Mannila, H (2007): Biogeography of European land mammals shows environmentally distinct and spatially coherent clusters. - JOURNAL OF BIOGEOGRAPHY 34: 1053-1064.	11	continental
Journal of Biogeography	Hortal, J; Rodriguez, J; Nieto-Diaz, M; Lobo, JM (2008): Regional and environmental effects on the species richness of mammal assemblages. - JOURNAL OF BIOGEOGRAPHY 35: 1202-1214.	10, 11	global
Journal of Biogeography	Ilmonen, J; Paasivirta, L; Virtanen, R; Muotka, T (2009): Regional and local drivers of macroinvertebrate assemblages in boreal springs. - JOURNAL OF BIOGEOGRAPHY 36: 822-834.	4	national
Journal of Biogeography	Krasnov, BR; Shenbrot, GI; Khokhlova, IS; Vinarski, M; Korralo-Vinarskaya, N; Poulin, R (2008): Geographical patterns of abundance: testing expectations of the 'abundance optimum' model in two taxa of ectoparasitic arthropods. - JOURNAL OF BIOGEOGRAPHY 35: 2187-2194.	S	multi-continental
Journal of Biogeography	La Sorte, FA; McKinney, ML (2007): Compositional changes over space and time along an occurrence-abundance continuum: anthropogenic homogenization of the North American avifauna. - JOURNAL OF BIOGEOGRAPHY 34: 2159-2167.	8	multi-national
Journal of Biogeography	Leprieur, F; Olden, JD; Lek, S; Brosse, S (2009): Contrasting patterns and mechanisms of spatial turnover for native and exotic freshwater fish in Europe. - JOURNAL OF BIOGEOGRAPHY 36: 1899-1912.	13	continental
Journal of Biogeography	Loiselle, BA; Jorgensen, PM; Consiglio, T; Jimenez, I; Blake, JG; Lohmann, LG; Montiel, OM (2008): Predicting species distributions from herbarium collections: does climate bias in collection sampling influence model outcomes?. - JOURNAL OF BIOGEOGRAPHY 35: 105-116.	7	multi-national
Journal of Biogeography	Manning, AD; Lindenmayer, DB; Barry, SC; Nix, HA (2007): Large-scale spatial and temporal dynamics of the vulnerable and highly mobile superb parrot. - JOURNAL OF BIOGEOGRAPHY 34: 289-304.	10	regional
Journal of Biogeography	Moleon, M; Sanchez-Zapata, JA; Real, J; Garcia-Charton, JA; Gil-Sanchez, JM; Palma, L; Bautista, J; Bayle, P (2009): Large-scale spatio-temporal shifts in the diet of a predator mediated by an emerging infectious disease of its main prey. - JOURNAL OF BIOGEOGRAPHY 36: 1502-1515.	S	multi-national

Journal of Biogeography	Newbold, T; Gilbert, F; Zalat, S; El-Gabbas, A; Reader, T (2009): Climate-based models of spatial patterns of species richness in Egypt's butterfly and mammal fauna. - JOURNAL OF BIOGEOGRAPHY 36: 2085-2095.	7, 11	national
Journal of Biogeography	Nunes, MFC; Galetti, M; Marsden, S; Pereira, RS; Peterson, AT (2007): Are large-scale distributional shifts of the blue-winged macaw (<i>Primolius maracana</i>) related to climate change?. - JOURNAL OF BIOGEOGRAPHY 34: 816-827.	10	regional
Journal of Biogeography	Parviainen, M; Luoto, M; Rytteri, T; Heikkinen, RK (2008): Modelling the occurrence of threatened plant species in taiga landscapes: methodological and ecological perspectives. - JOURNAL OF BIOGEOGRAPHY 35: 1888-1905.	7	regional
Journal of Biogeography	Qian, H (2008): Effects of historical and contemporary factors on global patterns in avian species richness. - JOURNAL OF BIOGEOGRAPHY 35: 1362-1373.	13	global
Journal of Biogeography	Qian, H; Kissling, WD; Wang, XL; Andrews, P (2009): Effects of woody plant species richness on mammal species richness in southern Africa. - JOURNAL OF BIOGEOGRAPHY 36: 1685-1697.	12	multi-national
Journal of Biogeography	Robertson, C; Nelson, TA; Jelinski, DE; Wulder, MA; Boots, B (2009): Spatial-temporal analysis of species range expansion: the case of the mountain pine beetle, <i>Dendroctonus ponderosae</i> . - JOURNAL OF BIOGEOGRAPHY 36: 1446-1458.	6	regional
Journal of Biogeography	Rodriguez-Gonzalez, PM; Ferreira, MT; Albuquerque, A; Santo, DE; Rego, PR (2008): Spatial variation of wetland woods in the latitudinal transition to arid regions: a multiscale approach. - JOURNAL OF BIOGEOGRAPHY 35: 1498-1511.	4	multi-national
Journal of Biogeography	Romermann, C; Tackenberg, O; Scheuerer, M; May, R; Poschlod, P (2007): Predicting habitat distribution and frequency from plant species co-occurrence data. - JOURNAL OF BIOGEOGRAPHY 34: 1041-1052.	10	regional
Journal of Biogeography	Schlick-Steiner, BC; Steiner, FM; Pautasso, M (2008): Ants and people: a test of two mechanisms potentially responsible for the large-scale human population-biodiversity correlation for Formicidae in Europe. - JOURNAL OF BIOGEOGRAPHY 35: 2195-2206.	12	continental
Journal of Biogeography	Schrag, AM; Bunn, AG; Graumlich, LJ (2008): Influence of bioclimatic variables on tree-line conifer distribution in the Greater Yellowstone Ecosystem: implications for species of conservation concern. - JOURNAL OF BIOGEOGRAPHY 35: 698-710.	4	regional
Journal of Biogeography	Svenning, JC; Borchsenius, F; Bjorholm, S; Balslev, H (2008): High tropical net diversification drives the New World latitudinal gradient in palm (<i>Arecaceae</i>) species richness. - JOURNAL OF BIOGEOGRAPHY 35: 394-406.	12	multi-continental

Journal of Biogeography	Thieltges, DW; Ferguson, MAD; Jones, CS; Noble, LR; Poulin, R (2009): Biogeographical patterns of marine larval trematode parasites in two intermediate snail hosts in Europe. - JOURNAL OF BIOGEOGRAPHY 36: 1493-1501.	S	multi-national
Journal of Biogeography	Tingley, R; Herman, TB (2009): Land-cover data improve bioclimatic models for anurans and turtles at a regional scale. - JOURNAL OF BIOGEOGRAPHY 36: 1656-1672.	10	regional
Journal of Biogeography	Titeux, N; Maes, D; Marmion, M; Luoto, M; Heikkinen, RK (2009): Inclusion of soil data improves the performance of bioclimatic envelope models for insect species distributions in temperate Europe. - JOURNAL OF BIOGEOGRAPHY 36: 1459-1473.	9	national
Journal of Biogeography	Tittensor, DP; Baco, AR; Brewin, PE; Clark, MR; Consalvey, M; Hall-Spencer, J; Rowden, AA; Schlacher, T; Stocks, KI; Rogers, AD (2009): Predicting global habitat suitability for stony corals on seamounts. - JOURNAL OF BIOGEOGRAPHY 36: 1111-1128.	12	global
Journal of Biogeography	Urbieto, IR; Zavala, MA; Maranon, T (2008): Human and non-human determinants of forest composition in southern Spain: evidence of shifts towards cork oak dominance as a result of management over the past century. - JOURNAL OF BIOGEOGRAPHY 35: 1688-1700.	4	regional
Journal of Biogeography	Van der Veken, S; Bellemare, J; Verheyen, K; Hermy, M (2007): Life-history traits are correlated with geographical distribution patterns of western European forest herb species. - JOURNAL OF BIOGEOGRAPHY 34: 1723-1735.	10	multi-national
Journal of Biogeography	Wang, YC (2007): Spatial patterns and vegetation-site relationships of the presettlement forests in western New York, USA. - JOURNAL OF BIOGEOGRAPHY 34: 500-513.	9	regional
Journal of Biogeography	Wilson, JW; van Rensburg, BJ; Ferguson, JWH; Keith, M (2008): The relative importance of environment, human activity and space in explaining species richness of South African bird orders. - JOURNAL OF BIOGEOGRAPHY 35: 342-352.	10	national
Journal of Biogeography	Winter, M; Kuhn, I; Nentwig, W; Klotz, S (2008): Spatial aspects of trait homogenization within the German flora. - JOURNAL OF BIOGEOGRAPHY 35: 2289-2297.	10	national
Journal of Biogeography	Wollan, AK; Bakkestuen, V; Kauserud, H; Gulden, G; Halvorsen, R (2008): Modelling and predicting fungal distribution patterns using herbarium data. - JOURNAL OF BIOGEOGRAPHY 35: 2298-2310.	9	national

Marine Ecology-Progress Series	Alberti, J; Escapa, M; Daleo, P; Iribarne, O; Silliman, B; Bertness, M (2007): Local and geographic variation in grazing intensity by herbivorous crabs in SW Atlantic salt marshes. - MARINE ECOLOGY-PROGRESS SERIES 349: 235-243.	S	multi-national
Marine Ecology-Progress Series	Beaugrand, G; Helaouet, P (2008): Simple procedures to assess and compare the ecological niche of species. - MARINE ECOLOGY-PROGRESS SERIES 363: 29-37.	9	multi-continental
Marine Ecology-Progress Series	Cermeno, P; Figueiras, FG (2008): Species richness and cell-size distribution: size structure of phytoplankton communities. - MARINE ECOLOGY-PROGRESS SERIES 357: 79-85.	1	multi-continental
Marine Ecology-Progress Series	Cheung, WWL; Close, C; Lam, V; Watson, R; Pauly, D (2008): Application of macroecological theory to predict effects of climate change on global fisheries potential. - MARINE ECOLOGY-PROGRESS SERIES 365: 187-197.	11	global
Marine Ecology-Progress Series	Gaertner, JC; Bertrand, JA; Relini, G; Papaconstantinou, C; Mazouni, N; de Sola, LG; Durbec, JP; Jukic-Peladic, S; Souplet, A (2007): Spatial pattern in species richness of demersal fish assemblages on the continental shelf of the northern Mediterranean Sea: a multiscale analysis. - MARINE ECOLOGY-PROGRESS SERIES 341: 191-203.	8	multi-national
Marine Ecology-Progress Series	Helaouet, P; Beaugrand, G (2007): Macroecology of Calanus finmarchicus and C-helgolandicus in the North Atlantic Ocean and adjacent seas. - MARINE ECOLOGY-PROGRESS SERIES 345: 147-165.	9	multi-continental
Marine Ecology-Progress Series	Kelly, JE; Frank, KT; Leggett, WC (2009): Degraded recruitment synchrony in Northwest Atlantic cod stocks. - MARINE ECOLOGY-PROGRESS SERIES 393: 131-146.	13	multi-national
Marine Ecology-Progress Series	Kempf, A; Floeter, J; Temming, A (2008): Predator-prey overlap induced Holling type III functional response in the North Sea fish assemblage. - MARINE ECOLOGY-PROGRESS SERIES 367: 295-308.	11	multi-national
Marine Ecology-Progress Series	Kuhn, CE; Johnson, DS; Ream, RR; Gelatt, TS (2009): Advances in the tracking of marine species: using GPS locations to evaluate satellite track data and a continuous-time movement model. - MARINE ECOLOGY-PROGRESS SERIES 393: 97-109.	2	regional
Marine Ecology-Progress Series	Malcolm, HA; Gladstone, W; Lindfield, S; Wraith, J; Lynch, TP (2007): Spatial and temporal variation in reef fish assemblages of marine parks in New South Wales, Australia - baited video observations. - MARINE ECOLOGY-PROGRESS SERIES 350: 277-290.	2	regional

Marine Ecology-Progress Series	Muhling, BA; Beckley, LE; Gaughan, DJ; Jones, CM; Miskiewicz, AG; Hesp, SA (2008): Spawning, larval abundance and growth rate of <i>Sardinops sagax</i> off southwestern Australia: influence of an anomalous eastern boundary current. - MARINE ECOLOGY-PROGRESS SERIES 364: 157-167.	2	regional
Marine Ecology-Progress Series	Nye, JA; Link, JS; Hare, JA; Overholtz, WJ (2009): Changing spatial distribution of fish stocks in relation to climate and population size on the Northeast United States continental shelf. - MARINE ECOLOGY-PROGRESS SERIES 393: 111-129.	10	regional
Marine Ecology-Progress Series	Redfern, JV; Barlow, J; Ballance, LT; Gerrodette, T; Becker, EA (2008): Absence of scale dependence in dolphin-habitat models for the eastern tropical Pacific Ocean. - MARINE ECOLOGY-PROGRESS SERIES 363: 1-14.	8, 9, 10	multi-continental
Marine Ecology-Progress Series	Renaud, PE; Webb, TJ; Bjorgesæter, A; Karakassis, I; Kedra, M; Kendall, MA; Labrune, C; Lampadariou, N; Somerfield, PJ; Wlodarska-Kowalczyk, M; Vanden Berghe, E; Claus, S; Aleffi, IF; Amouroux, JM; Bryne, KH; Cochrane, SJ; Dahle, S; Degraer, S; Denisenko, SG; Deprez, T; Dounas, C; Fleischer, D; Gil, J; Gremare, A; Janas, U; Mackie, ASY; Palerud, R; Rumohr, H; Sarda, R; Speybroeck, J; Taboada, S; Van Hoey, G; Weslawski, JM; Whomersley, P; Zettler, ML (2009): Continental-scale patterns in benthic invertebrate diversity: insights from the MacroBen database. - MARINE ECOLOGY-PROGRESS SERIES 382: 239-252.	11	continental
Marine Ecology-Progress Series	Riascos, JM; Carstensen, D; Laudien, J; Arntz, WE; Oliva, ME; Guntner, A; Heilmayer, O (2009): Thriving and declining: climate variability shaping life-history and population persistence of <i>Mesodesma donacium</i> in the Humboldt Upwelling System. - MARINE ECOLOGY-PROGRESS SERIES 385: 151-163.	12	national
Marine Ecology-Progress Series	Schaber, M; Hinrichsen, HH; Neuenfeldt, S; Voss, R (2009): Hydroacoustic resolution of small-scale vertical distribution in Baltic cod <i>Gadus morhua</i> -habitat choice and limits during spawning. - MARINE ECOLOGY-PROGRESS SERIES 377: 239-253.	11	regional
Marine Ecology-Progress Series	Thieltges, DW; de Montaudouin, X; Fredensborg, B; Jensen, KT; Koprivnikar, J; Poulin, R (2008): Production of marine trematode cercariae: a potentially overlooked path of energy flow in benthic systems. - MARINE ECOLOGY-PROGRESS SERIES 372: 147-155.	8, 9, 10, 11	global
Marine Ecology-Progress Series	Tuya, F; Wernberg, T; Thomsen, MS (2008): Testing the 'abundant centre' hypothesis on endemic reef fishes in south-western Australia. - MARINE ECOLOGY-PROGRESS SERIES 372: 225-230.	4	regional

Marine Ecology-Progress Series	Wanless, S; Harris, MP; Lewis, S; Frederiksen, M; Murray, S (2008): Later breeding in northern gannets in the eastern Atlantic. - MARINE ECOLOGY-PROGRESS SERIES 370: 263-269.	11	multi-national
Marine Ecology-Progress Series	Webb, TJ; Aleffi, IF; Amouroux, JM; Bachelet, G; Degraer, S; Dounas, C; Fleischer, D; Gremare, A; Herrmann, M; Hummel, H; Karakassis, I; Kedra, M; Kendall, MA; Kotwicki, L; Labrune, C; Nevrova, EL; Occhipinti-Ambrogi, A; Petrov, A; Revkov, NK; Sarda, R; Simboura, N; Speybroeck, J; Van Hoey, G; Vincx, M; Whomersley, P; Willems, W; Wlodarska-Kowalczyk, M (2009): Macroecology of the European soft sediment benthos: insights from the MacroBen database. - MARINE ECOLOGY-PROGRESS SERIES 382: 287-296.	2	multi-national
Marine Ecology-Progress Series	Webb, TJ; Tyler, EHM; Somerfield, PJ (2009): Life history mediates large-scale population ecology in marine benthic taxa. - MARINE ECOLOGY-PROGRESS SERIES 396: 293-306.	12	continental
Marine Ecology-Progress Series	Wismer, S; Hoey, AS; Bellwood, DR (2009): Cross-shelf benthic community structure on the Great Barrier Reef: relationships between macroalgal cover and herbivore biomass. - MARINE ECOLOGY-PROGRESS SERIES 376: 45-54.	3	regional
