

WORKLOAD FORECASTING FOR A CALL CENTER: METHODOLOGY AND A CASE STUDY

BY SIVAN ALDOR-NOIMAN¹, PAUL D. FEIGIN² AND
AVISHAI MANDELBAUM²

University of Pennsylvania and Technion—Israel Institute of Technology

Today's call center managers face multiple operational decision-making tasks. One of the most common is determining the weekly staffing levels to ensure customer satisfaction and meeting their needs while minimizing service costs. An initial step for producing the weekly schedule is forecasting the future system loads which involves predicting both arrival counts and average service times.

We introduce an arrival count model which is based on a *mixed* Poisson process approach. The model is applied to data from an Israeli Telecom company call center. In our model, we also consider the effect of events such as billing on the arrival process and we demonstrate how to incorporate them as exogenous variables in the model.

After obtaining the forecasted system load, in large call centers, a manager can choose to apply the QED (Quality-Efficiency Driven) regime's "square-root staffing" rule in order to balance the offered-load per server with the quality of service. Implementing this staffing rule requires that the forecasted values of the arrival counts and average service times maintain certain levels of precision. We develop different goodness of fit criteria that help determine our model's practical performance under the QED regime. These show that during most hours of the day the model can reach desired precision levels.

1. Introduction. Many companies invest significant resources in order to provide high quality customer service, with much or all customer interactions based on telephone or internet access. Telephone Call Centers, and their multimedia extensions called Contact Centers, support these interactions between companies and their customers. Such service centers accumulate vast amounts of data, which can be analyzed and utilized for short-term operational decisions, medium-term tactical decisions or long-term strategic decisions.

Over recent years, the service industry has expanded dramatically. Estimates from 2005 indicated that call center costs exceeded \$300 billion worldwide [Gilson and Khandelwal (2005)]. It is estimated that there are 4 million call center agents

Received November 2008; revised February 2009.

¹Currently a Ph.D. candidate in Department of Statistics, The Wharton School, University of Pennsylvania.

²Supported in part by The Israel Science Foundation Grant 1046/04.

Key words and phrases. Call centers, QED regime, "square-root staffing," forecasting arrival count, exogenous variables.

in the USA, 800 thousand in the UK, 500 thousand in Canada and 500 thousand in India [Holman, Batt and Holtrewe (2007)].

One of the main challenges in operating a telephone call center is determining staffing levels that meet future demand, given desired levels of service quality and efficiency. A prerequisite for such a task is the forecasting of the system workload over the periods of the day, for several days in advance. The workload, or what is technically called the *offered-load*, depends on the arrival process and the service times that each arrival (customer) requires. For planning a staffing schedule, call center operators utilize forecasts of the arrivals and service times at a sufficient resolution—say for every half hour. Given that information, jointly with some understanding of customer patience characteristics [Zeltyn (2005)] and increasingly prevalent software tools (e.g., 4CallCenters Software, <http://ie.technion.ac.il/serveng/4CallCenters/Downloads.htm>), an operator can determine the required number of agents for each period.

A common approach for achieving proscribed service quality and efficiency [Zeltyn (2005)] is via the *square-root staffing rule*. Assume for simplicity a constant arrival rate of λ calls per minute, and let the average service time be $E[S]$ (in minutes). The *offered-load* R is defined to be $R = \lambda \times E[S]$: it is the average amount of work (in service time) that arrives to the system (per unit of time). With a forecast of R , one sets the number of agents to be $N = R + \beta\sqrt{R}$, for some parameter β (typically $-1 \leq \beta \leq 2$) that reflects the required balance between service quality (short waiting times, few abandonments) and service efficiency (utilization of agents). Selecting a value for β is the manager's way of achieving a required call center performance (see Section 6.2).

The purpose of the present paper is to describe an implementation of the above described program, from statistical modeling of the arrival and service processes, through using these models for forecasting, and finally applying the forecasts to predict workload and thus staffing requirements.

We use Gaussian linear mixed model formulations to describe both a suitably transformed version of the arrival process and the average service times. Mixed models allow us the much needed flexibility to describe different seasonality effects using correlation structures in both models. Moreover, they provide more realistic prediction intervals than those obtained ignoring correlations in the series. Mixed models also allow us to incorporate exogenous variables in a “natural” manner.

Since forecasting³ is an error prone activity, we also analyze the ramifications of forecasting errors on system performance, when compared with the desired level of performance as determined under the QED regime.

This paper describes both the analysis of a particular call center and the methodological approach that can be used as a blueprint for other call centers. Signifi-

³In this paper we shall use the terms forecasting and predicting interchangeably.

cantly, the forecasting models considered can be implemented using *standard* statistical software—such as SAS[®]/STAT [SAS (2004) used here] or R [R Development Core Team (2005)].

We start with a review of past and recent studies that have been conducted on call center arrival processes. We then describe our case study data set (Section 3), and explain the component models used for workload forecasting (Sections 4 and 5). Finally, we consider the forecasting of offered-load, its application to staffing, and the effects of forecasting error on performance, all in Section 6.

2. Literature review. For a review of research on the operational aspects of call centers, readers are referred to Gans Koole and Mandelbaum (2003). A more recent survey focusing on the multiple disciplines required to support call center research is Aksin, Armony and Mehrotra (2007).

Queueing models: The operational reality of a basic call center can be well captured by the $M_t/G/N + G$ queue [Whitt (2007)]. Here one assumes i.i.d. (independent and identically distributed) customers and i.i.d. servers (agents), with a time-varying arrival-rate of calls. Formally: (i) M_t indicates that the arrival process is nonhomogeneous Poisson with a deterministic arrival rate function $\lambda(t)$; (ii) The first G indicates that the service times are i.i.d., independent of the arrival process, each distributed as a random variable (to be generically denoted S) with cumulative distribution function $G(x)$ and finite mean $\frac{1}{\mu} \equiv E(S)$; (iii) N is the number of servers, which is allowed to be a time-dependent deterministic function; and (iv) the second G indicates that customers can abandon while waiting to be served; customers' impatience times (times to abandon) are i.i.d., independent of the arrival process and the service times, and with finite mean $\frac{1}{\theta}$.

The $M_t/G/N + G$ model is intractable analytically. Fortunately, for practical purposes it is often reducible to the tractable $M_t/M/N + M$ model [Brown et al. (2005)], in which service time distribution is exponential(μ) and patience is exponential(θ). In Section 6 we describe how to use the $M_t/M/N + M$ model, often referred to as Erlang-A, to assess the accuracy of our proposed forecasting method.

Call arrivals: Early forecasting studies applied classical Box and Jenkins, Auto-Regressive-Moving-Average (ARMA) models, for example, the Fedex study [Xu (2000)] and L. L. Bean [Andrews and Cunningham (1995)]. The latter study considers two arrival processes, each with its own characteristics: it incorporates exogenous variables along-side MA (Moving Average) and AR (Auto-Regressive) variables, using transfer functions to help predict outliers such as holidays and special sales promotion periods. Antipov and Meade (2002) also tackled the problem of including advertising response and special calendar effects by adding exogenous variables in a multiplicative manner.

More recently, Taylor (2008) applied several time series models to two sources of data, including seasonal ARMA models, double exponential smoothing methods for seasonality and dynamic harmonic regression. His results indicated that,

for practical forecasting horizons (longer than one day), a very basic averaging model outperforms all of the suggested more complex alternatives.

Beyond Poisson: Recent empirical work has revealed several important characteristics that underly the arrival process of telephone calls:

- *Time-variability:* Arrival rates vary temporally over the course of a day, see Tanir and Booth (1999). For example, peak hour arrival rate can be significantly higher than the level of the average daily arrival rate [Brown et al. (2005)];
- *Over-dispersion:* Arrival counts exhibit variance that substantially dominates the mean value. This goes against the assumption that the arrival process is Poisson. A mechanism that accounts for over-dispersion was suggested by Jongbloed and Koole (2001). They proposed the Poisson mixture model which incorporates a *stochastic* arrival rate process to generate the additional variability;
- *Inter-day correlation:* There is significant dependency between arrival counts on successive days. Brown et al. (2005) suggest an arrival forecasting model which incorporates a random daily variable that has an autoregressive structure to explain the inter-day correlations;
- *Intra-day correlation:* Successive periods within the same day exhibit strong correlations. This intra-day correlation was modeled and analyzed by Avramidis, Deslauriers and L'Ecuyer (2004), using Dirichlet distributions.

Forecasting methods: In recent years, technological advances have enabled researchers to employ sophisticated Bayesian techniques to call forecasting. These yield the forecasted arrival *counts*, as well as their *distribution*, thus providing far more information than just point estimates.

For example, Soyer and Tarimcilar (2008) analyzed the effect of marketing strategies on call arrivals. Their Bayesian analysis is based on the Poisson distribution of arrivals over time periods measured in days, with cumulative rate function. They model the rate function using a mixed model approach. Their conclusion is that the random effects model fits much better than the fixed effects model; indeed, the data cannot be adequately described by assuming a fixed model without some additional random variability source. The mixture model also provides within advertisement correlations over different time periods.

Another model of incoming call arrivals to a US Bank call center, also employing Bayesian techniques, was proposed in Weinberg, Brown and Stroud (2007). In that paper the authors use the Normal-Poisson stabilization transformation to transform the Poisson arrival counts into normal variates. The normally transformed observations allowed them the necessary flexibility to incorporate conjugate multivariate normal priors with a wide variety of covariance structures. The authors provide a detailed description of both the one-day-ahead forecast and within-day learning algorithms. Both algorithms use Gibbs sampling techniques and Metropolis–Hastings steps to sample from the forecast distributions. These techniques, although very modern, nevertheless still require long processing times (since the procedure requires meeting the convergence criteria as well

as “overcoming” the auto-correlations between successive samples). For our proposed model the run time is actually quite short since we implement it using a two-stage approach (which will be discussed in detail in Section 4.1.2).

The Bayesian model also requires carrying out sensitivity analyses with respect to the hyper-parameters. This fine tuning of the parameters can be a much more tedious and burdensome process than the adjustments we implement in our model (described in Section 4).

Taking a non-Bayesian approach, Shen and Huang (2005) analyzed and modeled call center arrival data using a Singular Value Decomposition (SVD) method. The SVD algorithm allowed them to visually analyze the data. Expanding on the same idea, Shen et al. take advantage of this technique to reduce the dimension of the data and also create a prediction model which provides inter-day forecasting and an intra-day updating mechanism for the arrival rate profiles [Shen and Huang (2008b)]. In a more recent paper Shen and Huang (2008a) incorporate the previous idea (i.e., SVD) but make use of Poisson regression to give better predictions of the arrival counts and their prediction intervals.

In our model we demonstrate how to incorporate covariates. This process of adding exogenous variables is quite “natural” and easy under the mixed model settings. It is not quite clear how one would add these exogenous variables under the Bayesian setting proposed by Weinberg et al. or using the SVD approach by Shen and Huang.

Our arrival count prediction model is a natural extension of the model which was initially explored by Brown et al. (2005). However, we do offer some key modifications, such as adding exogenous variables and modeling both intra- and inter-day correlation using an auto-regressive process.

For a detailed bibliography on the subject of forecasting telephone call arrivals, as well as other call centers’ related papers, readers are referred to Mandelbaum (2004).

3. Case study data. Our data originate from an ongoing research project that is conducted at the Technion’s SEE Laboratory SSE (<http://ie.technion.ac.il/Labs/Serveng/>). This project [Feigin et al. (2003)], entitled DataMOCCA (Data MOdels for Call Center Analysis), has created a repository of multiyear histories from several call centers, at the individual-call level. The present study focuses on data from an Israeli Telecom company, as will be now described. See the supplemental material for further details about the data Aldor-Noiman, Feigin and Mandelbaum (2009).

3.1. Arrival process. The call center handles calls from several main queues: Private clients; Business clients; Technical Support problems; Foreign languages queues; and a few minor queues. In general, queues are operated by separate service provider groups. Almost 30% of the incoming calls join the Private customers

queue, which is catered by a dedicated team of 150 telephone agents. The load generated from each of the remaining queues is much smaller (e.g., the second largest queue is the Business queue, which generates 18% of the overall incoming load). Hence, we shall limit our analysis to the Private queue (and bear in mind that our modeling techniques are applicable to the other queues as well).

The Private queue's call center operates six days a week, closing only on Saturdays and Jewish holidays. On regular weekdays, operating hours are between 7 a.m. and 11 p.m. and on Fridays it closes earlier, at around 4 p.m.

The data includes arrivals between mid-February, 2004 and December 31, 2004. We divide each day into half-hour intervals. There are two alternative justifications for choosing a half-hour analysis resolution: (a) currently, shift scheduling is carried out at this resolution; and (b) from a computational complexity point of view, taking shorter intervals significantly increases the computing time for many models and may make their implementation completely impractical.

In the sequel we consider, for each day, the 24 half-hourly intervals between 10 a.m. and 10 p.m., as this is when the call center is most active.

Note that if the arrival rate was *very* inhomogeneous during a particular half-hour interval, then using the average arrival rate could lead to under-staffing. Specifically, the staff level assigned to meet the average load would not be able to cope with the peak load in that particular half-hour interval. We do basically assume in the sequel that the within interval inhomogeneity is mild—it is further evaluated in Section 4.4.

Figure 1 demonstrates the arrival counts between April, 2004 and September, 2004. Higher resolution analysis of this graph gives rise to the following weekly patterns: Sundays and Mondays have the highest arrival counts; the number of arrivals gradually decreases over the week until it reaches its lowest point on Fridays; and, there are quite a few outliers which occur in April.

Examination of outlying observations singles out twenty-two days with unusual arrival counts. Among these days, 17 days were holidays and five days exhibited different daily patterns and unusual daily volumes when compared to similar regular weekdays.

As mentioned earlier, April 2004 has an unusual weekly pattern. Out of the list of twenty-two outliers, nine occur in April, which explains the peculiar pattern that we see in Figure 1. These nine outliers can be attributed to Holidays and a countrywide change in phone number prefixes. In conclusion, the outlying days were excluded from the learning stage of our model but were kept for later evaluation purposes.

Study of intra-day arrival patterns for regular days also reveals some interesting characteristics:

- The weekdays Monday through Thursday have a similar pattern. Figure 2 illustrates the last fact by depicting the *normalized* weekday patterns—each half hour is divided by the mean half-hour arrival rate for that day, and the normalized values for corresponding weekdays are averaged. There are two major

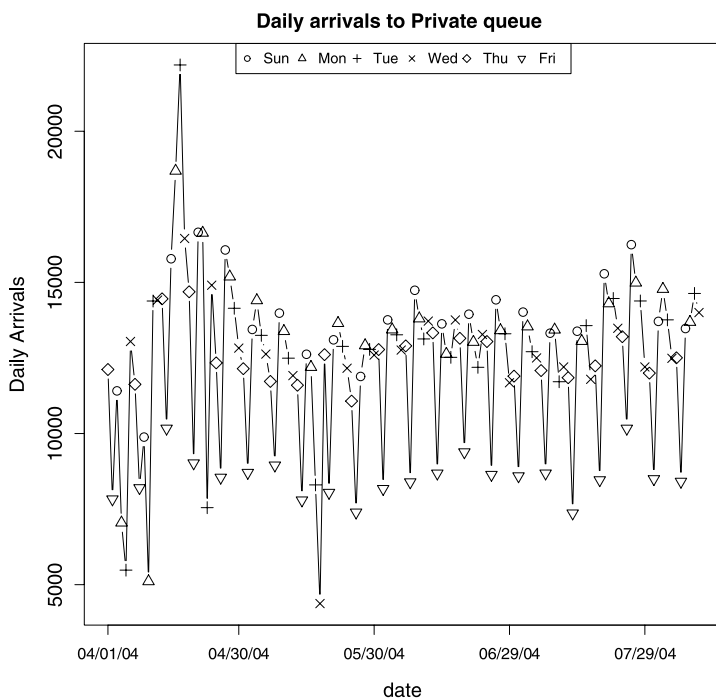


FIG. 1. Daily arrivals, including holidays, to the Private queue between April 1st, 2004 and September 1st, 2004.

peaks during the day: one at around 2 p.m. and the higher one at around 7 p.m. The higher peak is probably due to the fact that people finish working at around this hour and so are free to phone the call center. From 7 p.m. onward there is a gradual decrease (except for a small increase at around 9 p.m.).

- Fridays have a completely different pattern from the rest of the weekdays. This can be seen in Figure 2. For each day of the week, arrivals in the 24 periods were smoothed using the default smoothing method in the R Development Core Team (2005). Because Friday is a half work day for most people in Israel, it is very reasonable for its daily pattern to differ from the rest of the weekdays.
- Sunday's pattern also differs from the rest of the weekdays. Figure 2 exhibits how Sunday has an earlier increase than the other weekdays (Monday through Thursday), possibly as a result of customers who were not able to contact the call center on the weekend (Saturday).

The above three properties lead us to consider, in Section 4.3.2, models with three intra-day patterns to capture the average behavior of all six weekdays.

3.2. *Billing cycles.* The Private queue customers are assigned to one of four *billing cycles* when they purchase a service contract. The telecom company's major

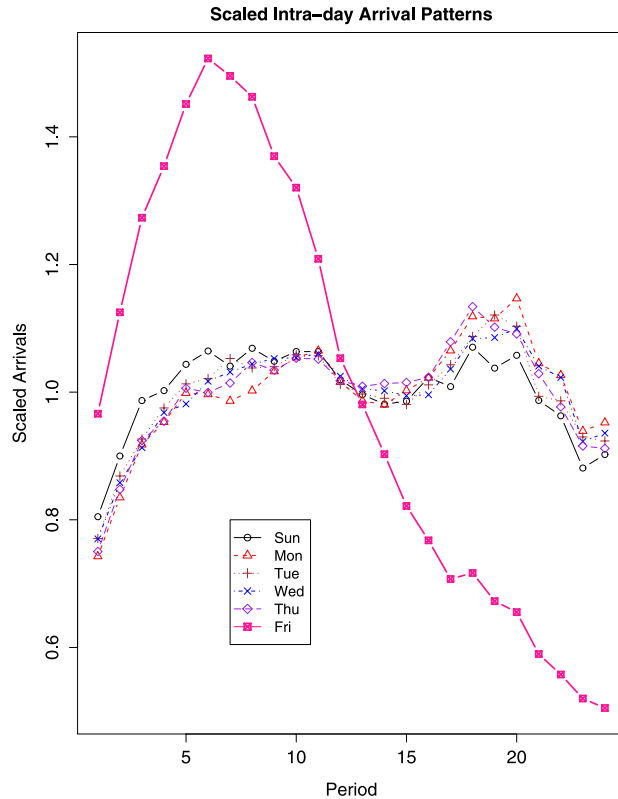


FIG. 2. Normalized intra-day arrival patterns—averaged over weeks and smoothed.

complaint regarding their current forecasting algorithm is that it does not incorporate billing cycles' effects. Indeed, their own experience leads them to believe that on billing days the number of incoming calls is higher than on nonbilling days.

Each billing cycle is defined according to two periods: the delivery period—prior to the bank billing day, each customer receives a letter detailing his expenses; and the billing period—the day on which the customer's bank account will be debited. The delivery period extends over two working days (depending solely on the Israeli postal services). The billing period usually covers only one day. There is usually a full week between the delivery period and the billing period but this can vary due to weekends and holidays. We decided therefore to describe *each* cycle using two indicators: a delivery indicator—marking the two working days of the delivery period; and a billing indicator—marking the day of the billing period and zero otherwise. By describing each cycle using two indicators we actually differentiate between the influence of the actual billing date and that of the delivery of the bill. According to the telecom company's past experience, the different queues are affected by different periods. For example, the Private queue is strongly affected by the delivery periods and not so much by the billing periods. On the other

hand, the Finance queue is strongly affected by the billing periods and less by the delivery periods. Section 4.3.1 demonstrates how we examined which indicators are significant for the Private queue’s arrival process.

3.3. *Average service times.* The various customer queues are generally served by dedicated groups of agents. Here, we concentrate on the average service times of the Private queue agents.

Different weekdays demonstrate different daily patterns of average service times. Figure 3 demonstrates the smoothed average service times for a typical week. Most weekdays have a similar nonconstant pattern. Friday has a distinct downward-sloping pattern.

3.4. *Staffing predictions.* The Israeli Telecom company utilizes arrivals forecast for determining weekly staffing schedules. Each Thursday, using the past six weeks of data as the learning data, it predicts the week starting on Sunday ten days ahead. We will refer to this forecasting strategy as the *ten-day-ahead* weekly

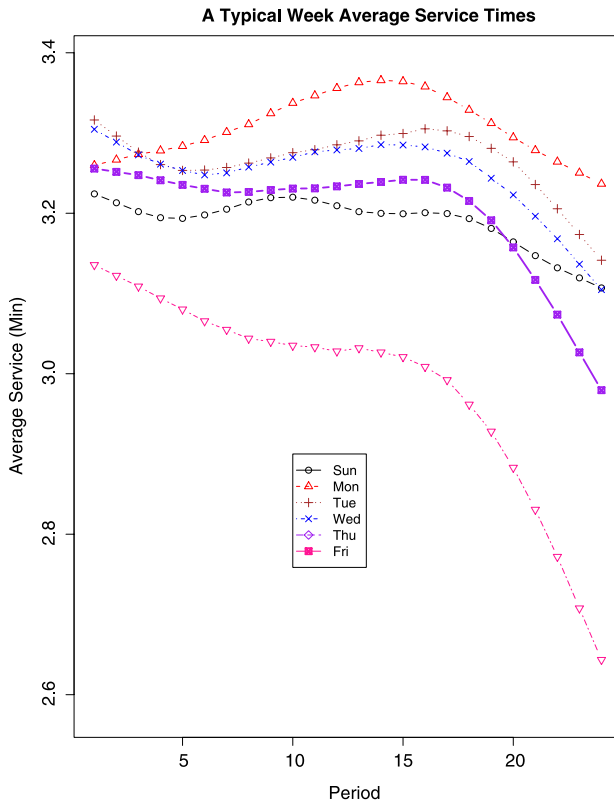


FIG. 3. A typical week of average service times.

predictions. Accordingly, we define three periods: the *learning* period; the prediction *lead-time*, which is the duration between the last learning day and the first predicted day; and the *forecast* period.

In an attempt to mimic the challenges that the company faces, we will predict the arrivals to the Private queue for each day between April 11, 2004 and December 24, 2004 ($D = 222$ days). For each day, we predict the arrivals for the $K = 24$ half-hour intervals between 10 a.m. and 10 p.m., using six weeks of learning data and a lead-time period of seven days. (In Section 4.5 we also consider shorter lead times and their effect on prediction accuracy.)

We have a total of $n = 222 \cdot 24 = 5328$ predicted values. Excluding the 19 irregular days (which occur during the mentioned period), we evaluate the results using a total of 203 days or $203 \cdot 24 = 4872$ observations.

Note that although we exclude the irregular days, we preserve the numerical distance between days in the data set by indexing them by true dates. Later, the AR(1) correlation structure (in Section 4.3.3) is fitted using the power transformation option with true distances between days.

Our goal is to combine the arrival-process predictions with the service-time estimates in order to predict the offered-load. We shall then be able to estimate the staffing required in order to achieve desired service levels.

4. Modeling the arrival process. Our approach to predicting the arrival process is to create a parametric model for the process, then estimate its parameters based on historical data. We discuss here the types of models considered, how they are estimated, how they are compared and how a particular model is ultimately chosen. Attention is also paid to justifying the resolution (period length) used and to the dependence of the prediction accuracy on lead-time.

4.1. *Models.* The family of models we consider allow for individual day-of-the-week effects, period effects (possibly together with their interactions) and exogenous effects, as well as between days and within day (between period) dependence structures. The latter are incorporated using random effects (or *mixed* model) formulations.

4.1.1. *Mixed model.* Let N_{dk} denote the number of arrivals to the queue on day $d = 1, \dots, D$, during the time interval $[t_{k-1}, t_k)$, where $k = 1, \dots, K$ denotes the k th period of the day. Our basic model assumption is that N_{dk} follows a Poisson distribution, with expected value (λ_{dk}) . As suggested by Brown, Zhang and Zhao (2001), we take advantage of the following variance stabilizing transformation for Poisson data: if $N_{dk} \sim \text{Poisson}(\lambda_{dk})$, then $y_{dk} = \sqrt{N_{dk} + \frac{1}{4}}$ has approximately a mean value of $\sqrt{\lambda_{dk}}$ and a variance of $\frac{1}{4}$. As $\lambda_{dk} \rightarrow \infty$, y_{dk} is approximately normally distributed. In our data, λ_{dk} has values around 500 per half hour, hence, it is reasonable to apply this approximation.

The transformed observations y_{dk} allow one to exploit the benefits of the Gaussian linear mixed modeling approach. We model the expected value of these observations, that is, $\sqrt{\lambda_{dk}}$ (since their variance is known). In the mixed model the square root of the arrival rate ($\sqrt{\lambda_{dk}}$) is regarded as a linear function of both fixed and random effects.

Our response variable, \mathbf{y} , is a vector containing the transformed observations for each period within each day, that is, $\mathbf{y} = (y_{1,1}, \dots, y_{1,K}, y_{2,1}, \dots, y_{D,1}, \dots, y_{D,K})^T$. In the following paragraphs we will introduce each component of our model, starting with the different fixed effects.

Fixed effects: The fixed effects include the weekday effects and the interaction between them and the period effects. With these two effects, we capture the weekday differences in daily levels and intra-day profiles (over the different periods).

We begin by modeling the day-level fixed effects (and later we also discuss the intra-day level fixed effects). Formally, let $q_d \in \{1, 2, 3, 4, 5, 6\}$ denote the weekday which corresponds to day $d \in \{1, \dots, D\}$ in the data. Using this notation, introduce a matrix $W = [w_{d,j}]$ (of dimensions $D \times 6$), which is the design matrix⁴ for day-of-the-week fixed-effects: $w_{d,j} = I_{\{q_d=j\}}$, for $d \in \{1, \dots, D\}$ and $j \in \{1, \dots, 6\}$.

In our model we may also add exogenous variables to the above day-level fixed effects (e.g., explanatory variables for the billing cycles in our case study). In the next section we shall elaborate on these additional variables but, for now, let F_D denote a $(D \times r)$ design matrix for the other explanatory day-level variables.

Combing the two matrices, W and F_D , produces the day-level fixed effects design matrix, $X_D = [W, F_D] \otimes \mathbf{1}_K$, where $\mathbf{1}_K = (1, \dots, 1)^T \in \mathbb{R}^K$ and \otimes is the Kronecker product (often referred to as the outer product).

As mentioned before, we also consider fixed intra-day effects. Let X_P denote the corresponding design matrix. This matrix has DK rows and m columns. The value of m can be up to $6K$ if we assume a separate period effect for each period of each day of the week—that is, $X_P = W \otimes I_K$, where I_K is the $K \times K$ identity matrix.

Random effects: The random effects are Gaussian deviates with a prespecified covariance structure. One random effect is the daily volume deviation from the fixed weekday effect. In concert with other modeling attempts, a first-order autoregressive covariance structure (over successive days) has been considered for this daily deviation. It involves the estimation of one variance parameter (σ_G^2) and one autocorrelation parameter (ρ_G). Let $\gamma = (\gamma_1, \dots, \gamma_D)^T$ denote the random day effects with covariance matrix G where $g_{i,j} = \sigma_G^2 \cdot \rho_G^{|i-j|}$. The corresponding design matrix can be written as $Z = (I_D \otimes \mathbf{1}_K)$, where I_D is the D -dimensional identity matrix.

The other random effects, $\boldsymbol{\varepsilon}$, are called the noise or residual effects, and refer to the period-by-period random deviations from the observed values after accounting

⁴A linear model can be written as follows: $\mathbf{Y} = \mathbf{X}\boldsymbol{\beta} + \boldsymbol{\varepsilon}$. \mathbf{X} is referred to as the design matrix.

for the fixed weekday, period effects and the random day effects. Let R^* be the within-day period-by-period error covariance matrix. We assume that this matrix is of the form $R + \sigma^2 \cdot I_K$, where $R = [r_{i,j}]$ has a first order autoregressive process covariance structure, that is, $r_{i,j} = \sigma_R^2 \cdot \rho_R^{|i-j|}$. Imposing this covariance structure means that if, for example, at a certain period of the day the call center experiences a drop in the amount of incoming calls, then we would also expect a decrease in calls during the following periods of that day. Alternate correlation structures for R will be discussed in Section 4.3.3.

On the basis of the square-root transformation, σ^2 should have a value of about 0.25.

The general formulation of our linear mixed model can be now written as follows:

$$\begin{aligned}
 (1) \quad & \mathbf{y} = X_D \boldsymbol{\beta}_D + X_P \boldsymbol{\beta}_P + Z \boldsymbol{\gamma} + \boldsymbol{\varepsilon}, \\
 (2) \quad & \text{var}(\boldsymbol{\gamma}) = G, \\
 (3) \quad & \text{var}(\boldsymbol{\varepsilon}) = I_D \otimes R^* = I_D \otimes (R + I_k \cdot \sigma^2), \\
 (4) \quad & E(\boldsymbol{\varepsilon}) = \mathbf{0}, \quad E(\boldsymbol{\gamma}) = \mathbf{0}, \quad \boldsymbol{\varepsilon} \perp \boldsymbol{\gamma},
 \end{aligned}$$

where:

- $\mathbf{y} = (y_{1,1}, \dots, y_{1,K}, y_{2,1}, \dots, y_{D,1}, \dots, y_{D,K})^T$.
- $\boldsymbol{\beta}_D$ is a $(6 + r)$ -vector of fixed effects day-level coefficients.
- $\boldsymbol{\beta}_P$ is a m -vector of fixed effects period-level coefficients.
- $\boldsymbol{\gamma}$ is a (D) -vector of random day-level effects.
- $\boldsymbol{\varepsilon}$ is a (DK) -vector of random residuals effects.

Using the above notation, we can specify the covariance matrix of \mathbf{y} in the following manner:

$$(5) \quad V = G \otimes J_K + I_D \otimes R + I_{D \times k} \cdot \sigma^2 \quad \text{where } J_K = \mathbf{1}_K \mathbf{1}_K^T.$$

4.1.2. *The two-stage mixed model.* Computational problems arise when trying to implement the model in (1) for the data presented in Section 3. We encountered convergence problems when we tried to specify a parametric structure of a simple first-order auto regression for both R and G .

Therefore, we consider an alternative analysis based on first modeling the daily averages in a way that is consistent with the original model. This stage provides an estimated covariance matrix for G that later can be used when performing the second stage analysis during which the fixed day-level and period-level effects, as well as R , are estimated.

Left multiplying \mathbf{y} by $M = (I_D \otimes \frac{1}{K} \mathbf{1}_K^T)$ provides a vector containing the average number of incoming calls per period, for each day. Here is the daily-average

model formulation:

$$(6) \quad \mathbf{M}\mathbf{y} = [W, F_D]\boldsymbol{\beta}_D + X_P^*\boldsymbol{\beta}_P + MZ\boldsymbol{\gamma} + M\boldsymbol{\varepsilon},$$

$$(7) \quad \text{var}(\boldsymbol{\gamma}) = G,$$

$$(8) \quad \text{var}(\boldsymbol{\varepsilon}) = I_D \otimes (R + I_k \cdot \sigma^2),$$

where $X_P^* = M \cdot X_P$. Considering the random terms, we note that

$$(9) \quad \text{var}(M\mathbf{y}) = MVM^T = G + u \cdot I_D,$$

where

$$(10) \quad u = \frac{1}{K} \cdot \left(\frac{1}{K} \mathbf{1}_K^T R \mathbf{1}_K + \sigma^2 \right) = \frac{1}{K} \cdot \left(\frac{1}{K} \sum_{i,j} r_{ij} + \sigma^2 \right).$$

Thus, the first stage model, as presented above in (6), provides an estimated covariance matrix G , denoted by \hat{G} together with an estimate of u .

In the second stage we use the full model referred to in (1), but fix the matrix G using \hat{G} from the first stage. In this stage we get estimators for all the daily fixed effects and the periods' random effects.

The value of σ^2 should be about 0.25 if the Poisson model holds. If the estimated value of σ^2 is close to 0.25, then we are led to believe that the model has discovered the majority of the predictive structure in the data, and that what is left is purely random and unpredictable variation (at least in terms of the underlying Poisson model). The two-stage strategy enables us to fix σ^2 at the theoretical value of 0.2 and also enables us to obtain estimates for this parameter. We analyze these estimated values in Section 4.3.4.

Another advantage of this two-stage approach is its computational efficiency. Predicting the 203 days in our data set took approximately 50 minutes. This makes our method valid for practical usage since predicting a full week will take several minutes.

4.1.3. *Benchmark models.* An elementary prediction model would simply average past data for the corresponding weekday in order to produce a forecast. This model will be referred to as the *industry model*. Denote $W_{i,D} = \{d : d \leq i \text{ and } q_D = q_d\}$ and let $|W_{i,D}|$ denote the cardinality of $W_{i,D}$. Then the forecast of the arrival count, $N_{D+h,k}$, utilizing the information up to day D , can be expressed as

$$(11) \quad \hat{N}_{D+h,k} = \frac{\sum_{d \in W_{D,D+h}} N_{d,k}}{|W_{D,D+h}|}.$$

Based on this intuitive approach, we develop two similar baseline models. These models will serve as benchmarks for our more complicated models.

The first basic model only considers the weekday fixed effects and their interactions with the periods. Basically, this model states that each day of the week has

its own baseline level and its own intra-day pattern and that consecutive days and periods are uncorrelated [as opposed to our initial correlated mixed model defined in (1)]. The formulation of this model can be written as follows:

$$(12) \quad \mathbf{y} = X_p \boldsymbol{\beta} + \boldsymbol{\varepsilon},$$

$$(13) \quad \text{var}(\boldsymbol{\varepsilon}) = I_{DK} \cdot (\sigma_R^2 + \sigma^2),$$

where σ^2 has a value of about 0.25 and X_p is the intra-weekday fixed effects design matrix. This model basically corresponds to the industry model [defined in (11)].

Alternatively, one can think of a different benchmark model which is similar to the above model and also includes exogenous variables. As a result, our second benchmark model also incorporates exogenous variables such as the billing cycles variables. Using the above notation, we can define the second benchmark model in the following manner:

$$(14) \quad \mathbf{y} = X_D \boldsymbol{\beta}_D + X_P \boldsymbol{\beta}_P + \boldsymbol{\varepsilon},$$

$$(15) \quad \text{var}(\boldsymbol{\varepsilon}) = I_{DK} \cdot (\sigma_R^2 + \sigma^2),$$

where σ^2 has a value of about 0.25. The fixed effect matrices, X_D and X_P , have the same structures as indicated in (1).

This second benchmark model (similarly to the first benchmark model) has an underlying assumption that all of its observations are uncorrelated. Hence, it represents a baseline to our more elaborate, correlated model.

Both of the benchmark models are, in fact, linear regression models and are quite fast and efficient in providing the necessary predictions using standard programs such as R [R Development Core Team (2005)] and SAS[®]/STAT [SAS, 2004].

4.2. Model evaluation criteria. Suppose now that we aim to predict arrivals over D^P days, for each of the K periods in those days; altogether $n = D^P K$ predicted values. Let \hat{N}_{dk} denote the predicted value of N_{dk} , which is the number of arrivals in the k th period for day d . We define two measures to compare between the observed and the predicted values:

- Squared Error: $\text{SE}_{dk} = (\hat{N}_{dk} - N_{dk})^2$,
- Relative Error: $\text{RE}_{dk} = 100 \cdot \frac{|\hat{N}_{dk} - N_{dk}|}{N_{dk}}$.

The following two measures are used to evaluate confidence statements concerning N_{dk} :

- $\text{Cover}_{dk} = \mathbf{I}(N_{dk} \in (\text{Lower}_{dk}, \text{Upper}_{dk}))$,
- $\text{Width}_{dk} = \text{Upper}_{dk} - \text{Lower}_{dk}$.

In the above, $Lower_{dk}$ and $Upper_{dk}$ denote the lower and upper (nominally 95%) confidence limits. We obtain these limits using conditional multivariate Gaussian theory. We can use this theory since we assume that the observations y_{dk} follow the Gaussian distribution. For further details on how these limits are computed, the reader is referred to Henderson (1975).

The comparison between different forecasting models is performed over the entire set of n predicted values or *out-of-sample* predictions. For each day we predict the arrival counts for each of the twenty-four periods based on six weeks of past data and a lead-time of one week. This procedure is carried out 203 times since there are 203 regular weekdays between April 11, 2004 and December 25, 2004. Then we average the following measures for each day over the K periods:

- $RMSE_d = \sqrt{\frac{\sum_{k=1}^K SE_{dk}}{K}}$,
- $APE_d = \frac{\sum_{k=1}^K RE_{dk}}{K}$,
- $Cover_d = \frac{\sum_{k=1}^K Cover_{dk}}{K}$,
- $Width_d = \frac{\sum_{k=1}^K Width_{dk}}{K}$.

This procedure results in 203 daily values for each of these measures. We then report for each measure the lower quartile, the median, the mean and the upper quartile values of these daily summary statistics.

These four measures reflect different aspects of prediction accuracy. The RMSE represents an average prediction error, while the APE is the average percentage error. They both give a sense of how well our point estimates are performing. The coverage probability and the prediction interval width relate to prediction intervals. The width of the prediction intervals are constructed using a nominal confidence level of 95%. Hence, we expect the mean coverage probability to be close to 95%. A model which performs well will have a narrow prediction width with coverage probabilities close to 95%.

4.3. *Choosing the model.* In practice, there may be several proposed exogenous variables that may have an effect on the call arrival process. Our strategy for screening those variables is to first work with models at the daily level, that is, to find those exogenous variables that have an impact on the daily counts. It is typically too burdensome to use a full mixed model analysis in order to screen for exogenous day-level variables.

After having chosen the day-level exogenous variables, the next step is to fit full mixed models and to evaluate different covariance structures at both the between-day and the within-day (between-period) levels. For further discussion on the theory of mixed models, the reader is referred to Demidenko (2004).

We illustrate these steps for our case study data.

4.3.1. *Exogenous variables.* As mentioned in the data description, in our case study there are eight indicators which represent the four major billing cycles (i.e., four delivery period indicators and four billing period indicators). Based on the company's information, we were made aware that some of these indicators might not have a significant influence on the Private queue's arrival process. The purpose of this preliminary examination is to highlight those indicators which are significant so they may later be incorporated in the final forecasting model. For this coarse investigation, we use the aggregated *daily* arrivals between February 14th, 2004 and December 31st, 2004 (excluding all twenty-two outliers).

Let N_d denote the number of arrivals to the Private queue on day $d = 1, \dots, D$. As before, let q_d denote the weekday corresponding to day d . The daily arrivals are modeled using a Poisson log-linear model [for further details on this approach, the reader is referred to McCullagh and Nedler (1989)]. Our initial model is of the following form:

$$(16) \quad N_d \sim \text{Poisson}(\lambda_d),$$

$$\log(\lambda_d) = \sum_{l=1}^6 W_l \cdot X_{q_d}^l + \sum_{j \in \text{cycles}} B_j \cdot P_d^j + \sum_{j \in \text{cycles}} D_j \cdot U_d^j,$$

where

W_l is the l th weekday coefficient,

$$X_{q_d}^l = \begin{cases} 1, & \text{if } l = q_d, \\ 0, & \text{otherwise,} \end{cases}$$

B_j is the j th billing period coefficient,

$$P_d^j = \begin{cases} 1, & \text{if cycle } j\text{'s billing period falls on the } d\text{th day,} \\ 0, & \text{otherwise,} \end{cases}$$

D_j is the j th delivery period coefficient,

$$U_d^j = \begin{cases} 1, & \text{if cycle } j\text{'s delivery period falls on the } d\text{th day,} \\ 0, & \text{otherwise.} \end{cases}$$

The model may be implemented using the *GENMOD* procedure in SAS[®]/STAT [Aldor-Noiman, Feigin and Mandelbaum (2009)] based on the 254 observations in the current learning set. Some of the results are summarized in Table 1.

The results indicate the following: the six weekdays have significantly different effects, each having a different baseline mean; the *delivery* period indicators are significant and have a positive effect on the mean value of the number of incoming calls; on the other hand, most of the *billing* period indicators seem less significant, which confirms the telecom company's beliefs. The Cycle 14 billing period seems to have an exceptional effect. First, it is statistically significant as opposed to the billing indicators of the rest of the cycles. Furthermore, its estimator is the only negative value among those of all of the effects. This noticeable result would

TABLE 1
Analysis of parameter estimates for the Poisson log-linear model

Parameter	Category	Estimate	Chi-square	Pr > ChiSq
W_q	Sunday	9.5358	718,177	< 0.0001
W_q	Monday	9.4977	541,484	< 0.0001
W_q	Tuesday	9.4880	572,102	< 0.0001
W_q	Wednesday	9.4719	649,509	< 0.0001
W_q	Thursday	9.4326	677,894	< 0.0001
W_q	Friday	9.0385	453,474	< 0.0001
D^1	.	0.0586	11.59	0.0007
D^7	.	0.0327	3.71	0.0540
D^{14}	.	0.0449	5.39	0.0202
D^{21}	.	0.0935	17.98	< 0.0001
B^1	.	0.0242	2.10	0.1473
B^7	.	0.0279	2.17	0.1403
B^{14}	.	-0.0592	6.83	0.0090
B^{21}	.	0.0276	2.54	0.1109

suggest that the number of incoming calls is reduced during the Cycle 14 billing period. We could not attribute this phenomenon to any outlying data problems. One possibility is that this negative value can be compensating for other oversized billing cycle effects, which could arise due to the overlap of delivery and billing days among the 4 cycles.

These results led us to believe that some of the explanatory variables are statistically redundant. We proceeded by comparing different models with this initial model [defined in (16)] using the “contrast” statement in the *GENMOD* procedure (which computes likelihood-ratio statistics). The different models were variations of the initial model. They excluded different covariates in order to establish the significance of the omitted variables.

The results indicated that billing periods 1, 7 and 21 are redundant. It is therefore clear that there are three main factors contributing to the daily volumes: the weekday, the delivery periods and billing period of Cycle 14. This analysis led to two possible modeling alternatives: (i) The first model includes the weekday effect, Cycle 14 billing period indicator and the four delivery period indicators; (ii) The second model includes the weekday effect, Cycle 14 billing period indicator and the one global delivery period indicator (which takes the value one when at least one of the cycles is during its delivery period). The results of the two models are shown in Table 2. In the next section we will explore both of these setups and choose the one which yields better out-of-sample results.

4.3.2. *Adjusting the fixed effects.* Our process of model selection does not rely on classical inference methods or measures, such as *F*-test or Akaike’s Information

TABLE 2

Log-linear models contrasts analyses. Each row depicts a different model which is compared to the initial model. Comparing models 1 and 2 to the initial model shows that the extra variables are not significant at a significance level of 5%

Model no.	The alternative model explanatory variables	Numerator degrees of freedom	Denominator degrees of freedom	<i>F</i>	Pr > <i>F</i>
1	Weekday, billing 14 period indicator, global delivery period indicator	6	240	1.89	0.0834
2	Weekday, billing 14 period indicator, four delivery period indicators	3	240	2	0.1152

Criteria [Sakamoto, Ishiguro and Kitagawa (1999)]. These methods rely on the learning-set and its dimension but do not consider the models forecasting qualities.

Therefore, we decide to explore the influence of the models' elements on the prediction performance based on the 2004 validation-set. The evaluation criteria were detailed in Section 4.2.

Keeping the parsimony⁵ concept in mind, Figure 2 suggests that some weekday patterns resemble others. Mainly, Monday through Thursday have similar intra-day period profiles. We shall explore two alternatives for the weekday pattern setting: (i) a model which includes a different period profile for each weekday—we refer to this setting as the *Multi-Pattern* setting; (ii) a model which includes three intra-day patterns (i.e., one for Sunday, one for Friday and one for the rest of the weekdays)—we refer to this setting as the *Three-Pattern* setting.

Combining the two different settings for the intra-day effects with the two settings of the billing cycles effects (detailed in Section 4.3.1) results in four different models: (i) Model 1—is a Three-Pattern model which also includes Cycle 14 billing period and one global delivery period indicator; (ii) Model 2—is a Three-Pattern model which also includes Cycle 14 billing period and four delivery period indicators; (iii) Model 3—is a Multi-Pattern model which also includes Cycle 14 billing period and one global delivery period indicator; (iv) Model 4—is a Multi-Pattern model which also includes Cycle 14 billing period and four delivery period indicators.

For now, we shall set the between-periods (within-day) correlation structure according to a first-order autoregressive structure. We choose this specific structure for its simplicity. In the next section we will also consider other correlation structures. We also fix the value of σ^2 to its 0.25 theoretical value.

⁵Parsimony refers to the philosophic rule where the simplest of competing theories/models be preferred to the more complex.

TABLE 3
RMSE results for the three fixed effects models and two benchmarks models

<i>N</i> = 203	RMSE				
	Model 1	Model 2	Model 3	Benchmark 1	Benchmark 2
1st quartile	31.80	32.28	32.55	33.24	32.39
Median	39.30	40.16	40.19	40.54	39.98
Mean	44.78	47.19	45.49	46.51	45.45
3rd quartile	51.63	58.29	52.38	54.88	53.16

In addition, we compare the four models with the performance of the two benchmark models, mentioned in Section 4.1.3. The first benchmark model only includes the weekday effect and the weekday period profiles. The alternative benchmark model has the Multi-Pattern fixed effects and two additional billing cycles' indicators: one global delivery indicator and the billing period indicator associated with Cycle 14. The reason why these specific fixed effects settings were chosen will be explained later in this section.

These six models are evaluated using the same out-of-sample prediction procedure previously discussed.

We use the SAS[®]/STAT *Mixed* procedure in order to implement and evaluate the candidate models. Convergence problems occurred when we tried to implement Model 4 with the Multi-Pattern and the billing cycles effects. Therefore, this model was subsequently excluded from the analysis.

Tables 3, 4, 5 and 6 present the results of the three different fixed model setups. Out of the three different models, the 1st alternative seems to exhibit the best results. Its results are generally better than the benchmark models. One might argue that the shorter confidence intervals imply that the benchmark models outperform the first model. However, since their coverage probabilities are very far from the nominal 95%, we conclude that these narrow intervals are unreliable and probably result from an underestimated error variance, that is, σ_R^2 . This phenomenon can

TABLE 4
APE results for the four fixed effects models and two benchmarks models

<i>N</i> = 203	APE				
	Model 1	Model 2	Model 3	Benchmark 1	Benchmark 2
1st quartile	6.51	6.57	6.74	6.81	6.77
Median	8.13	8.45	8.12	8.24	8.09
Mean	9.27	9.75	9.41	9.58	9.41
3rd quartile	11.27	11.75	11.34	11.29	11.31

TABLE 5
Coverage probabilities for the four fixed effects models and two benchmarks models

<i>N</i> = 203	Coverage probability				
	Model 1	Model 2	Model 3	Benchmark 1	Benchmark 2
1st quartile	0.92	0.88	0.92	0.33	0.33
Median	0.96	0.96	0.96	0.50	0.50
Mean	0.93	0.92	0.93	0.49	0.49
3rd quartile	1	1	1	0.63	0.63

occur when not all of the sources of variability are accounted for in the model and, in particular, when correlation structure in the data is ignored.

The second benchmark model includes the same billing cycles' settings as the first model. It can be thought of as a "fixed" version of the first model, that is, without the random effects. It is interesting to see that introducing the intra- and inter-day correlations generally improves the forecasting results. Intuitively speaking, the additional correlation parameters result in wider confidence intervals to compensate for the extra uncertainty.

Following these analyses, the models considered in the next subsection will all have the fixed effects of the 1st model. These fixed effects include the Three-Pattern intra-day effect and the two indicators of the billing cycles.

4.3.3. *Dependence structures.* Having chosen the fixed effects that will be incorporated in our model, we now discuss the modeling of the random effects. There are two sources of variation in our model: one is from the daily volume effect γ and the other is the within-day error vector ε .

We begin by examining different structures for the matrix R which is the within-day covariance matrix where the residuals' variance (i.e., σ^2) is confined to its theoretical value of 0.25. Based on previous research [e.g., Avramidis, Deslauriers and L'Ecuyer (2004)], we consider two simple time series structures for R which both can account for the strong intra-day correlations. The first is an AR(1) (first order

TABLE 6
Confidence interval widths for the three fixed effects models and two benchmarks models

<i>N</i> = 203	Width				
	Model 1	Model 2	Model 3	Benchmark 1	Benchmark 2
1st quartile	150.03	149.14	149.13	52.62	51.44
Median	168.99	169.22	168.81	59.67	58.80
Mean	175.47	178.24	174.31	62.92	61.44
3rd quartile	195.27	194.61	197.81	68.95	67.86

TABLE 7
Different within-day errors covariance structure.
RMSE results

<i>N</i> = 203	RMSE	
	AR(1)	ARMA(1, 1)
1st quartile	31.80	31.85
Median	39.30	39.36
Mean	44.78	44.81
3rd quartile	51.63	51.26

auto-regressive) implying that $r_{i,j} = \sigma_R^2 \cdot \rho^{|i-j|}$. The second is an ARMA(1, 1) (auto-regressive moving averages) which means that $r_{i,j} = \sigma_R^2 \cdot \delta \cdot \rho^{|i-j|-1}$ (the covariance between periods i and j where $i \neq j$) and $r_{i,i} = \sigma_R^2$ (which is the variance of period i). Other covariance structures theoretically may also be incorporated here, but since most of them are more complex (such as the Toeplitz form, which includes more parameters), we did not consider them because of computational limitations. Note also that most other forms of covariance matrices in SAS®/STAT are not directly related to time series structures.

We evaluate and compare the models using the same technique we developed for selecting the fixed effects. We use the same learning data as before.

The results are shown in Tables 7, 8, 9 and 10. The results for the ARMA(1, 1) show only slight improvements in the coverage probability compared to the AR(1) structure. However, it seems that the point predictions are slightly better using the AR(1) structure. Another factor that should be taken into consideration is that the CPU time was higher for the ARMA(1, 1) model. In conclusion, the model chosen for R in this approach is the AR(1) model for the residual error vector.

The last source of variability is the daily volume effect, G . We assume that its covariance structure also has a first-order autoregressive form. This basic assumption means that if on a certain day the call center experienced a rise in the amount

TABLE 8
Different within-day errors covariance structure.
APE results

<i>N</i> = 203	APE	
	AR(1)	ARMA(1, 1)
1st quartile	6.51	6.52
Median	8.13	8.12
Mean	9.27	9.28
3rd quartile	11.27	11.20

TABLE 9
*Different within-day errors covariance structure
 comparison. Coverage results*

$N = 203$	Coverage probability	
	AR(1)	ARMA(1, 1)
1st quartile	0.92	0.92
Median	0.96	1
Mean	0.93	0.94
3rd quartile	1	1

of incoming calls (compared to the fixed effects prediction), then we would also expect to see a similar increase during the following days. As the days become farther apart from that day, we expect its influence to decline.

We investigated the influence of the γ correlations by comparing our mixed model with an alternative model which does not include this random effect. Using the company's current strategy for prediction which includes a relatively long lead-time of one week, one would hardly expect to see any difference between the two models. The results are summarized in Tables 11, 12, 13 and 14. The results show a slight improvement after incorporating an AR(1) structure.

To examine the influence of the between-day random effect, we further explore the results of the above two models by changing the lead-time period. This analysis is presented in Section 4.5. The analysis reveals that the model incorporating the AR(1) inter-day covariance structure produces better results.

4.3.4. *Final model choice—goodness of fit.* Our final model includes an intra-day pattern for each weekday, two billing cycles indicators and a first order autoregressive structure for both the intra-day and the inter-day correlations. Figure 4 presents the QQ-plot for the residuals of our final model. It appears that the assumption of normally distributed residuals is reasonable.

TABLE 10
*Different within-day errors covariance structure.
 Width results*

$N = 203$	Width	
	AR(1)	ARMA(1, 1)
1st quartile	150.03	154.93
Median	168.99	174.01
Mean	175.47	179.96
3rd quartile	195.27	204.09

TABLE 11
Testing the influence of the daily random effect. RMSE results

<i>N</i> = 203	RMSE	
	Model with AR(1) daily random effect	Model without a daily random effect
1st quartile	31.80	31.92
Median	39.30	39.67
Mean	44.78	44.83
3rd quartile	51.63	50.40

As mentioned in previous sections, the theoretical value of σ^2 , described in (1), is 0.25. We reran our chosen model, but this time we did not specify the value of σ^2 in advance. Instead we computed the estimated value of this parameter. Since we predict 203 days in our database (each time based on 6 weeks data with a lead-time of 7 days), we can obtain 203 values of this parameter. Based on these values, the mean estimated value was 0.29. Since the estimated value of σ^2 is close to 0.25, we are inclined to believe that the model has discovered the majority of the predictive structure in the data, and that what is left is purely random and unpredictable variation.

4.4. *Justifying the half-hour periods.* An interesting debate might be held between practitioners and theoreticians as to what is the appropriate interval resolution to analyze. Theoreticians might say that in order to fully maintain the homogeneity assumption the intervals should be as small as possible. Alternatively, from a practitioner’s point of view, the resolution should be determined as a function of managerial flexibility: for example, if it is feasible to change the number of available agents every 5 minutes, then this should be the appropriate interval resolution. (Such high flexibility can occur, e.g., in large call centers where there are typically agents who are occupied with various off-line tasks and who can be

TABLE 12
Testing the influence of the daily random effect. APE results

<i>N</i> = 203	APE	
	Model with AR(1) daily random effect	Model without a daily random effect
1st quartile	6.51	6.46
Median	8.13	8.15
Mean	9.27	9.28
3rd quartile	11.27	11.09

TABLE 13
Testing the influence of the daily random effect. Coverage results

<i>N</i> = 203	Coverage probability	
	Model with AR(1) daily random effect	Model without a daily random effect
1st quartile	0.92	0.88
Median	0.96	0.96
Mean	0.93	0.92
3rd quartile	1.00	1.00

made immediately available for service.) However, our experience suggests that call centers commonly plan their daily schedule according to either half-hour or 15-minute resolutions.

Our Gaussian mixed model can be easily modified to deal with different interval resolutions. An interesting question is how much worse are predictions based on lower-level resolutions than 15-minute predictions, when evaluated at the 15-minute period level. For example, if one predicted accurately the arrival count over a half-hour period, but in that period the first 15 minutes had 0.5 times the average arrival rate, and the second 15 minutes had 1.5 times the average arrival rate, then using the half-hour prediction (by dividing it equally over each 15-minute interval) would lead one to seriously overstaff during the first 15 minutes and understaff during the second 15 minutes. This problem would not have happened if one had good predictions at the 15-minute resolution.

Hence, we are interested in analyzing the effect of the interval resolution on the forecast accuracy at the finest practical resolution.

To this end, we use our Israeli Telecom data and predict the arrival counts between 10 a.m. and 10 p.m. during the 203 regular weekdays between April 11 and December 24, 2004. The forecast procedure is the same as before, meaning that we

TABLE 14
Testing the influence of the daily random effect. Width results

<i>N</i> = 203	Width	
	Model with AR(1) daily random effect	Model without a daily random effect
1st quartile	150.03	144.20
Median	168.99	163.49
Mean	175.47	165.95
3rd quartile	195.27	186.43

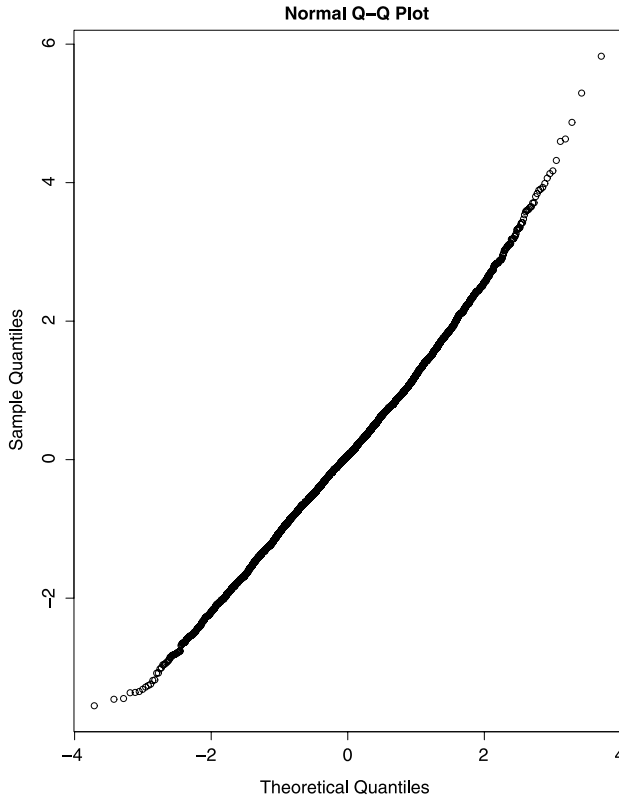


FIG. 4. *The model residuals QQ plot.*

used 6 weeks of past data as learning data to predict the day which begins seven days ahead.

Our baseline data resolution is 15-minute intervals. We compared 15-minute intervals with three additional interval resolutions: *half-hour*, *one-hour* and *four-hours*. In order to fairly assess the behavior of the different interval widths, we scaled the predictions into 15-minute blocks: the lower-resolution forecasts were simply *equally* distributed among the 15-minutes intervals. For example, we took the predicted arrival count for a specific hour (on a certain day) and equally divided it over its four quarter hours.

Tables 15 and 16 describe the results for both the RMSE and APE, respectively. Using the RMSE measure, we see that the half-hour resolution predictions are virtually as precise as the 15-minute ones, and somewhat better than the one-hour resolution predictions. However, using the RMSE measure puts the forecasts based on wider intervals at a disadvantage and, thus, we also take a look at the APE results.

The APE measure results are not as conclusive as the RMSE. We see that sometimes it is better to use half-hour intervals and sometimes it is even better to use

TABLE 15

Prediction accuracy as a function of interval resolution. We compare the RMSE result of the mixed model for four different resolutions: 15-minute, half-hour, one-hour and four-hour

	RMSE			
	15-minutes	Half-hour	One-hour	Four-hour
Min	12.28	12.07	14.13	32.18
1st quartile	19.67	19.81	20.86	38.18
Median	22.48	22.59	23.56	41.37
Mean	24.97	25.06	25.87	42.80
3rd quartile	28.45	28.29	29.18	46.14
Max	60.00	60.01	60.21	73.12

the hour intervals and not the 15-minutes ones. However, it is also noticeable that the differences between the three resolutions are usually quite small. The four-hour resolution results are quite bad in comparison with the other interval resolutions. These results can be used to justify the use of half-hour intervals in our case study—only a minor improvement to precision might be achieved by using a higher resolution.

In our comparisons, we have used the same AR(1) and ARMA(1, 1) autocorrelation structure between periods no matter what their length. (Of course, the parameters were estimated independently for each.) A reviewer has pointed out, it is feasible that allowing a different correlation structure for 15-minute periods may achieve better performance than that based on half-hour periods. Due partly to computational convergence problems for more complicated correlation structures, these were not considered here.

4.5. Dependence of precision on forecast lead-time. Our prediction process has three user defined elements: the learning time; the prediction lead-time; and

TABLE 16

Prediction accuracy comparison as a function of interval resolution. We compare the APE result of the mixed model with four different resolutions: 15-minute, half-hour, one-hour and four-hour

	APE			
	15-minutes	Half-hour	One-hour	Four-hour
Min	5.68	5.57	5.36	7.17
1st quartile	8.01	8.03	8.14	9.74
Median	9.30	9.34	9.33	11.20
Mean	10.59	10.59	10.67	12.65
3rd quartile	12.08	12.24	12.15	14.70
Max	27.33	27.18	26.84	30.78

the forecasting horizon. During our model's training stage we did not change these parameters.

Academic studies such as Weinberg, Brown and Stroud (2007) and Shen and Huang (2008b) concentrate on producing one-day-ahead predictions or sometimes online updating forecasting algorithms. These methods, however, do not address the industry problem of attaining good predictions in order to produce the weekly schedule sufficiently ahead of time. Trying to cope with this problem, our Telecom Company actually uses a two stage process. It first produces a somewhat inaccurate (rough) forecast ten days ahead of the desired week, and then it generates another forecast five days before. The second forecast, we are being told, is essential in order to adequately schedule agents. One interesting question that arises from this practice is the extent to which prediction lead-time effects forecasting accuracy.

In order to study prediction lead-time effects, we ran our forecasting procedure using *seven* different lead times, ranging from one-day-ahead to seven-days-ahead. The learning period and the forecasting horizon stay the same, that is, six weeks and one day, respectively. We ran this prediction procedure using two models: one is with a between-day covariance structure; and one without it (just as we did in Section 4.3.3). This allows us to further examine the effect of this covariance structure.

We analyzed the prediction results of the two models for each weekday separately. We do this in order to examine if certain weekdays are more influenced by the change in forecast lead time.

Figures 5 and 6 present the boxplots of individual RMSEs and APEs for each weekday, as a function of the forecast lead time.

Surprisingly, the results indicate that shorter lead times do not always improve predictions' accuracy. However, it is also important to notice that the difference between the lead-time results for each weekday are small for both the APE and the RMSE. This property may be useful for call center managers who want to know if they should update their week-ahead forecasts one or two days ahead.

Another conclusion that can be derived is that incorporating the AR(1) inter-day covariance structure generally improves the prediction results. For example, looking at Figures 5 and 6, we can see that the median RMSE and APE⁶ of the model with the AR(1) covariance structure generally both have values less than or equal to the median RMSE and APE of the model without it.

5. Modeling expected service times. In addition to predicting arrival rates, forecasting the workload of a queuing system requires also predicting the average service patterns (or alternatively the service rate pattern over each day). Since our

⁶The median is indicated by a black horizontal short line inside the boxplots.

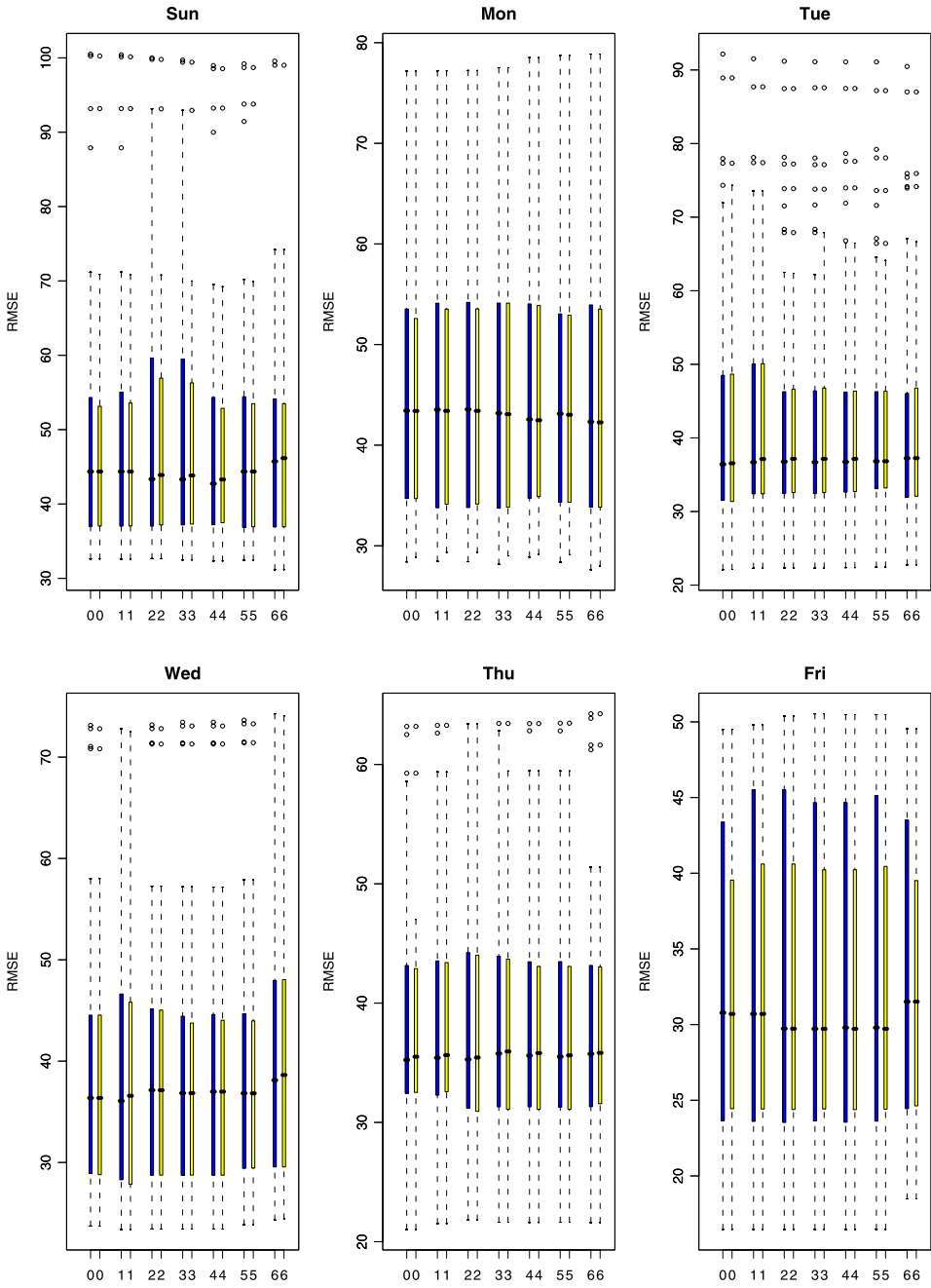


FIG. 5. Comparison of RMSE as a function of the prediction lead time. The blue (left) boxplot corresponds to the model with AR(1) correlation structure between days and the yellow (right) boxplot corresponds to the model without it.

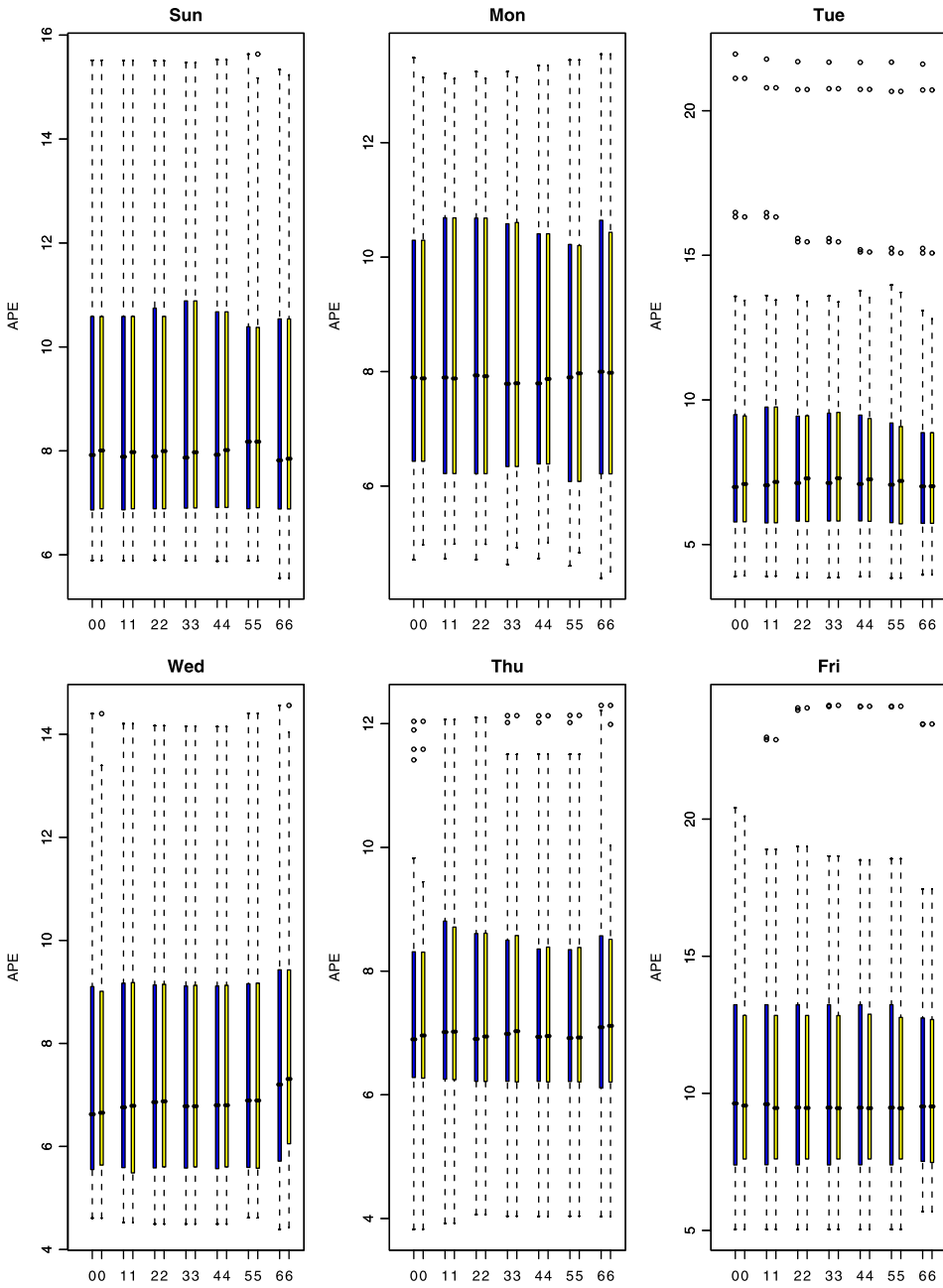


FIG. 6. Comparison of APE as a function of the prediction lead time. The blue (left) boxplot corresponds to the model with AR(1) correlation structure between days and the yellow (right) boxplot corresponds to the model without it.

arrival's model applies a specific resolution (30 minutes), one must predict average service times during those same time intervals (periods).

Our model involves two explanatory variables that may affect service rates: the weekday and the period. We compare two alternative models where one is a generalization of the other.

In Figure 3, the average service time patterns resemble a quadratic curve.

Hence, the first model describes the average service time using a quadratic regression in the periods, with interactions with the weekday effect, where the period is included as a numeric variable (rather than as a categorical variable). Intuitively speaking, this model states that the daily service time curves differ among the different weekdays but they are confined to be of a quadratic form.

This model formulates the average service time during period k , that is, z_{dk} in the following manner:

$$(17) \quad \begin{aligned} \text{Model 1:} \quad z_{dk} = & \alpha_{q_d} + \beta_1 \cdot k^2 + \beta_2 \cdot k + \gamma_{1,q_d} \cdot k^2 \\ & + \gamma_{2,q_d} \cdot k + \phi \cdot d + \varepsilon_{dk}; \quad \varepsilon_{dk} \sim N(0, \sigma^2), \end{aligned}$$

where α_q is the constant term related to the q th weekday; β_1 and β_2 are, respectively, the quadratic and linear coefficients; γ_{1,q_d} and γ_{2,q_d} are the weekday-specific quadratic and linear period effects and make up the weekday-period interaction effects. The last effect is a postulated linear daily trend coefficient denoted by ϕ . We naturally added a random error term denoted by ε_{dk} .

The second model is a generalization of the first model and it assumes that the period's variable is a categorical variable. It basically assumes that each weekday has its own average service times pattern with no other restriction on its shape. Hence, it is a generalization of the previous quadratic profile model. It is a more complicated model which involves many more parameters. We add both the linear daily trend effect to this model and the error term as well. This model can be formulated in the following manner:

$$(18) \quad \text{Model 2:} \quad z_{dk} = \rho_{q_d,k} + \phi \cdot d + \varepsilon_{dk}; \quad \varepsilon_{dk} \sim N(0, \sigma^2),$$

where $\rho_{q,k}$ is the interaction between the weekday and the effect of the k th period.

We estimate parameters of the two average service times models using the SAS[®] *GLM* procedure. The learning data include dates between mid-February, 2004 and the end of December, 2004. Examining the first model results shows that the interaction between the quadratic period term and the weekday is not significant. Consequently, we also examined the first model excluding the insignificant term. This last model is referred to as Model 3. Since our data has a large number of observations (6096 which correspond to 254 regular days), we use the asymptotic log-likelihood ratio chi-square test to compare the models. Table 17 summarizes the results of the different models. We compare Model 3 against Model 2 to check if the generalized model is significantly better than the reduced quadratic model. The relevant chi-square statistic equals 13.524 and the appropriate p -value

TABLE 17
Average service time models. Model 1 assumes a different quadratic curve for each weekday. Model 3 is the same as Model 1 excluding the interaction between the quadratic period term and the weekday. Model 2 is the generalized model which assumes a different pattern for each weekday

Model no.	No. of parameters	Error SS
1	18	588.907
2	144	575.884
3	13	589.408

is approximately one. It thus seems that the generalized model (i.e., Model 2) is not significantly better in modeling the average service times. Hence, we choose Model 3 as our forecasting model.

Figure 7 shows the predicted pattern for each weekday between August 8, 2004 and August 13, 2004 versus the true average service times using Models 2 and 3.

By comparing the predictions to the true service means in the same manner as we did with the arrival process analysis, we calculate the mean APE. Its value is 7.68%. The predictions and the mean APE value will later be used to estimate alternative measures of system loads.

6. Forecasting offered-loads in support of staffing. In this section we begin with a brief review of how we obtained estimators for the expected load using our data. We then introduce measures that evaluate the performance of forecasts of the offered-load (R) with respect to the QED “square-root staffing” rule. We also show how to use these measures to evaluate the impact of prediction errors (in the offered-loads) on call center operational performance.

6.1. *Estimating expected load.* In an $M_t/G/N + G$ queueing system, the offered-load R_t at time t is defined to be the average number of servers (agents) that would be busy at time t , in the corresponding infinite server system $M_t/G/\infty$ (with the same arrival process and same service times). One can show [see, e.g., Whitt (2007)] that R_t has the following two representations:

$$(19) \quad R_t = E \int_{t-S}^t \lambda(u) du = E\lambda(t - S_e) \cdot ES;$$

here S is a generic service-time, and S_e is a random variable with the stationary-excess cdf associated with the service time cdf G , namely,

$$(20) \quad \Pr(S_e \leq t) \equiv \frac{1}{E(S)} \int_0^t [1 - G(u)] du, \quad t \geq 0.$$

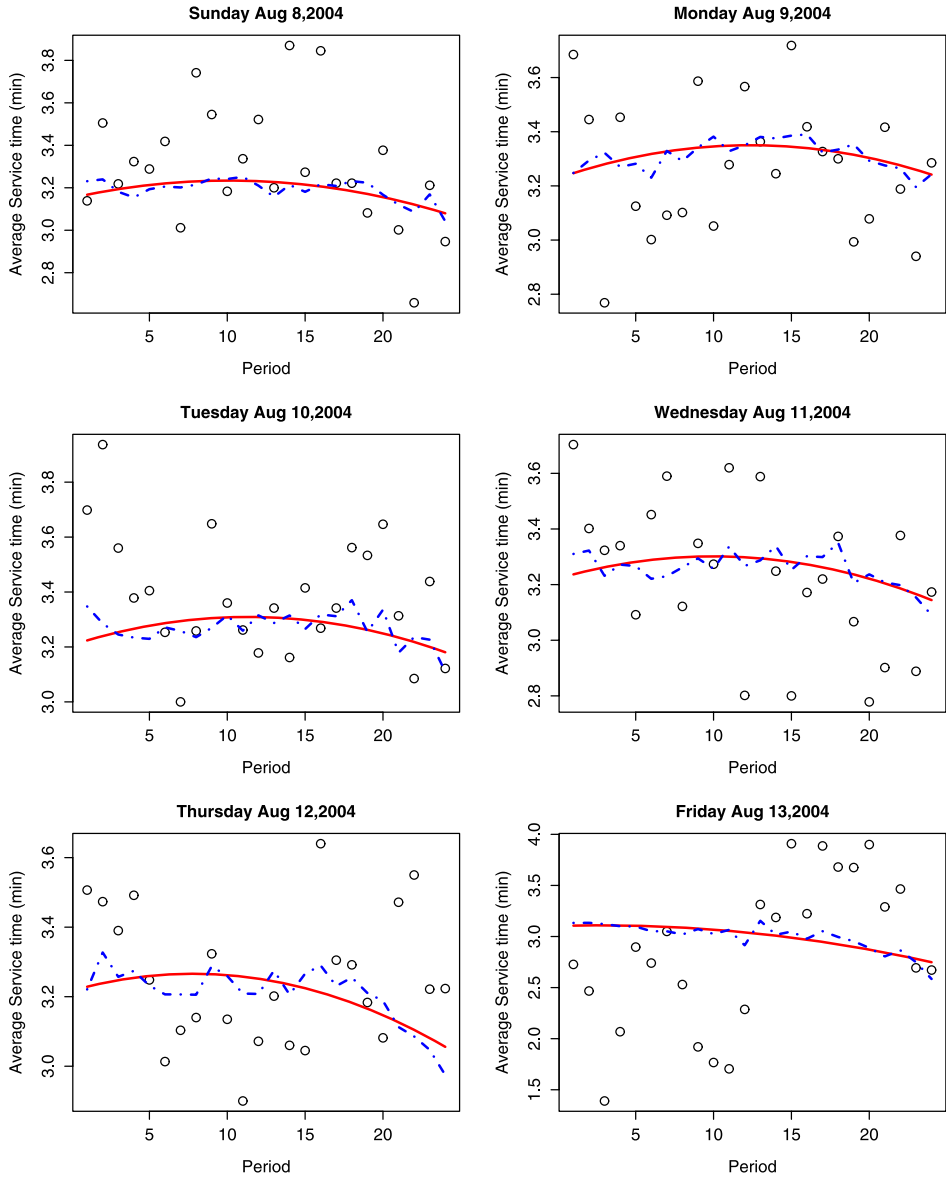


FIG. 7. The predicted average service pattern for typical weekdays as a function of period using Models 2 and 3. The points represent the (true) estimated average service times. The (blue) dotted line represents the predicted average service times using Model 2 and the (red) line represents the appropriate predictions using Model 3.

The offered-load at time t plays a central role in the planned staffing at that time, as will be explained in the next section. Whitt (2007) employs Taylor-series approximations to justify the first-order approximation $R_t \approx \lambda(t - E(S_e))E(S)$. If

the system reaches a steady-state or if the arrival rate λ is constant, then the offered-load is exactly given by $R = \lambda \cdot ES$. However, under time-varying arrivals, the two representations above demonstrate that staffing at time t must take into account the arrivals prior to t (over the stochastic time interval $(t - S, t]$), which manifests itself through Whitt’s approximation [the arrival rate λ at time $(t - E(S_e))$].

In our model we assume that the arrival process is an inhomogeneous Poisson process but that during each 30-minute interval the arrival rate remains constant. Hence, we predict the offered-load at day d during the k th interval by the following natural statistic:

$$(21) \quad \tilde{R}_{dk} = \frac{\tilde{\lambda}_{dk} \cdot \tilde{S}_{dk}}{30}, \quad d = 1, \dots, D, k = 1, \dots, K,$$

where $\tilde{\lambda}_{dk}$ is the predicted arrival count at day d during the k th interval, and \hat{S}_{dk} is the estimated average service time during that same interval. (The division by 30 is to convert the predicted arrival rate into the same units as the average service time—minutes). In concert with the above, we also assume that performance during each time interval can be predicted via the queueing model $M/G/N + G$.

Whitt (2005) shows that, for practical parameter values, the performance of the $M/G/N + G$ model is rather insensitive to the service-time distribution, whereas the time to impatience distribution has a far greater impact. This reduces performance analysis to that of the tractable $M/M/N + G$ queue. But, furthermore, in the desired regimes for call centers’ operations, $M/M/N + G$ can be in fact approximated (with a suitable transformation of parameters) by $M/M/N + M$ (Erlang-A), as articulated in Zeltyn (2005) and Manedelbaum and Zeltyn (2007). These observations will be used in the next section to evaluate system performance.

6.2. *Error in β and implications.* The square-root staffing rule, described in the Introduction, gives rise to the so-called Quality and Efficiency Driven (QED) operational regime Gans Koole and Mandelbaum (2003). Here, the number of service providers (agents), denoted N , is determined by the relation

$$(22) \quad N = \lceil R + \beta \cdot \sqrt{R} \rceil,$$

where R is the offered-load defined previously. The value of β determines a call center’s operational regime: it is Quality-Driven with large beta, Efficiency-Driven with small, and QED if β is near zero [typically within $(-2, 1)$]. In order to maintain the latter regime, the system manager strives to achieve a careful balance between service quality and efficiency. For a discussion on how to determine β , as a function of operating costs (staffing and congestion costs), see Manedelbaum and Zeltyn (2007), Zeltyn (2005), Borst, Mandelbaum and Reiman (2004).

Define β_u as the user (say, call center manager) chosen β . In order to forecast the number of required agents, \tilde{N} , the user will use the predicted values of the arrival and service rates to forecast the offered-load, and set

$$(23) \quad \tilde{N} = \tilde{R} + \beta_u \cdot \sqrt{\tilde{R}},$$

where \tilde{R} is the forecasted offered-load.

In practice, the assigned agents will face the true (realized) value (λ) of the arrival rate and the actual service rate (μ). With these real values of λ , μ , and the corresponding value of R and the pre-determined number of agents \tilde{N} , the call center is in effect operating under a different value of β . This *adjusted* value of β will be referred to as $\tilde{\beta}_a$, which is determined via

$$\tilde{\beta}_a = \frac{\tilde{N} - R}{\sqrt{R}}.$$

The above expression can be rewritten as

$$(24) \quad \tilde{N} = R + \tilde{\beta}_a \sqrt{R}.$$

Since the number of pre-assigned agents (\tilde{N}) is the same in both equations (23) and (24), we can equate them and conclude the following:

$$\begin{aligned} R + \tilde{\beta}_a \cdot \sqrt{R} &= \tilde{R} + \beta_u \cdot \sqrt{\tilde{R}}, \\ \tilde{\beta}_a - \beta_u \cdot \sqrt{\frac{\tilde{R}}{R}} &= \frac{\tilde{R} - R}{\sqrt{R}}. \end{aligned}$$

The mean APE for average service time is 0.0768, which means that $\sqrt{\frac{\tilde{\mu}}{\mu}}$ has a value of approximately 1. The mean APE arrival rate is 0.0927, indicating that $\sqrt{\frac{\tilde{\lambda}}{\lambda}}$ also has a value of approximately 1. Considering these two values, we conclude that $\sqrt{\frac{\tilde{R}}{R}} \approx 1$, which allows us to make the following approximation:

$$(25) \quad \Delta\beta \triangleq \tilde{\beta}_a - \beta_u \approx \frac{\tilde{R} - R}{\sqrt{R}}.$$

The quantity $\Delta\beta$ measures the standardized difference between the predicted offered-load and the true offered-load. Examining its values can help assess forecasting quality. It enables one to answer questions such as follows: does this forecasting algorithm usually overestimate or under-estimate the number of arrivals?; and, by how many agents will one under or overstaff? Note that the ideal value of $\Delta\beta$ is zero, indicating a perfect point prediction of the realized offered-load.

In Figure 8 we examine the averaged $\Delta\beta$ values across the 24 periods of the day using our final mixed model predictions. To obtain these averaged values of the estimated $\Delta\beta$, we first estimate $\Delta\beta$ for each day in our learning data during each period. These were averaged for each period separately over all the days, excluding holidays and irregular days.

Small absolute values of $\Delta\beta$ (a user's β_u close to the actual $\tilde{\beta}_a$) indicate that our model does quite well in predicting the values of offered-load. The estimated average values are close to zero but are usually smaller than zero, which means that for most parts of the day the predictions would lead to some under-staffing.

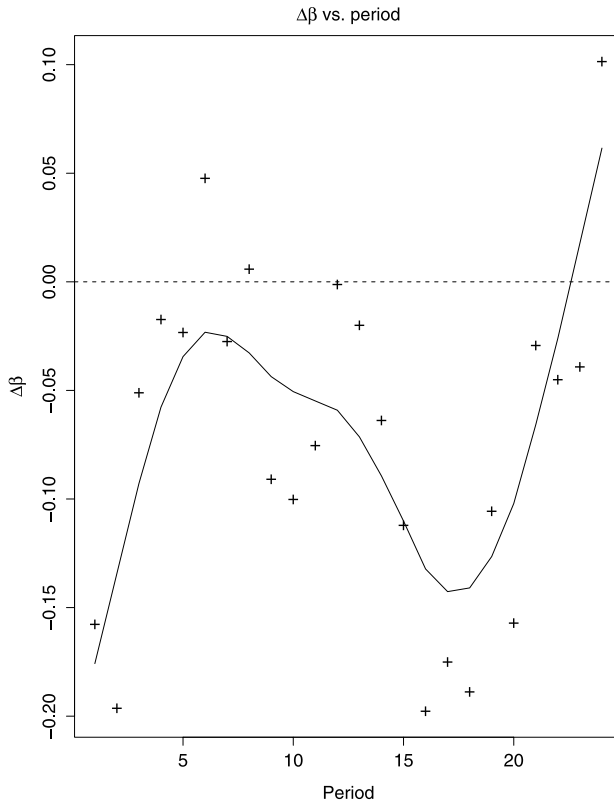


FIG. 8. The average estimated $\Delta\beta$ as a function of period.

After examining the values of average $\Delta\beta$, one can also examine the dispersion of $\Delta\beta$ throughout the day. To this end, consider the boxplots for each period, as shown in Figure 9. We note that most of the $\Delta\beta$ values have absolute value less than 1. (There seems to be an outlier in the 13th period. This corresponds to one day, October 10th, where the average service time was particularly short for some unexplained reason.) The boxplots reveal that 50% of $\Delta\beta$ values are between -0.75 and 0.75 and on average are zero. Given that practical values of β are between -1 and 2 , on a large fraction of the periods our mixed model will not make a gross error in predicting the offered-load.

We now proceed to analyze how deviations in $\Delta\beta$ affect a call center’s operational performance. Specifically, we examine three performance measures: the probability of being delayed for service, $\Pr(W > 0)$; the probability of abandonment, $\Pr(Ab)$; and the average waiting time, $E(W)$. We then compute these measures in an $M/M/N + G$ environment, using the asymptotic results in Zeltyn (2005), Manedelbaum and Zeltyn (2007). The relevant formulae require knowledge of the value of β , as well as the ratio between the service rate $\mu = 1/E(S)$

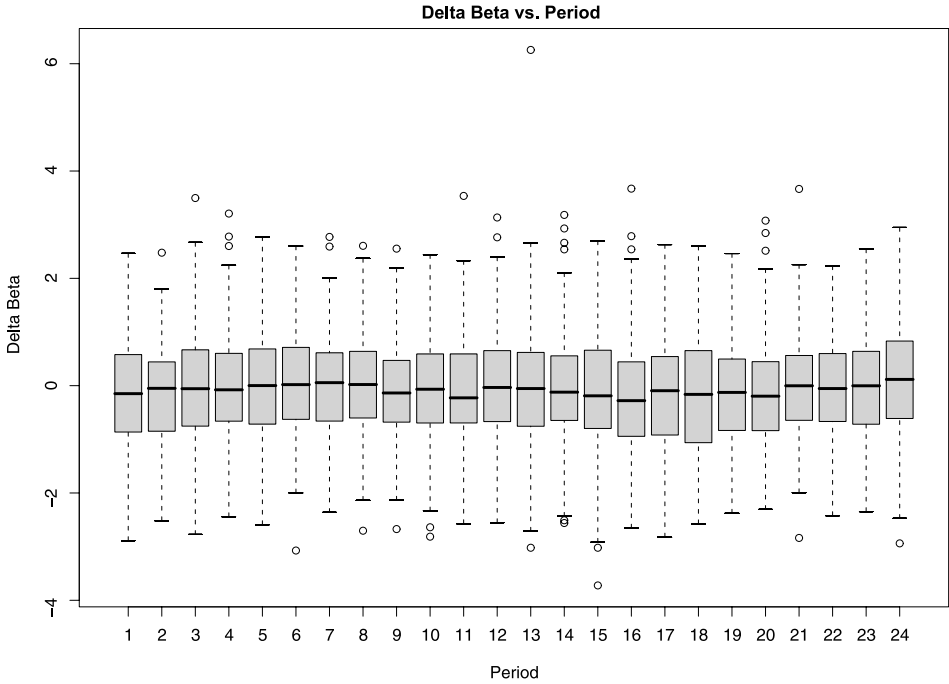


FIG. 9. Boxplots of $\Delta\beta$ for the different periods.

and an (im)patience rate parameter θ . [One can think of $1/\theta$ as some measure of average (im)patience.]

We compute performance measures for three values of the ratio between service rate and patience rate: 0.1—corresponding to impatient customers; 1—average customer patience is the same as their average service time; and 2—implying that customers are rather patient. (Based on our experience, a value of 2 for this ratio is quite realistic.) For further discussion on these issues refer to Zeltyn (2005), Manedelbaum and Zeltyn (2007).

Since $\Delta\beta$ only provides us with the deviation between β_a and β_u , we must determine one of them in order to compute the other. Hence, we choose three reasonable values for β_u : $-1, 0, 1$. Using these values and $\Delta\beta$, we can calculate β_a . The next step is to compute performance measures using the two different β 's, the predicted offered-load and the observed offered-load. This provides us with the three performance measures for each period during each day, for β_u and β_a .

To analyze the outcomes, we averaged each performance measure over the 203 days. This provides us with all three average performance measures for each period using β_u and β_a , and for each of the three different settings of the ratio between μ and θ . Tables 18 and 19 show the average performance measures for two selected periods: the 6th, 13:00–13:30, and the 16th, 18:00–18:30. (When looking

TABLE 18
Average Performance Measures for the period between 13:00–13:30 using $\beta_u = -1, 0, 1$ and $\mu/\theta = 0.1, 1, 2$

	Pr($W > 0$)			Pr(Abandon)			E(W) (sec)		
	$\frac{\mu}{\theta} = 0.1$	$\frac{\mu}{\theta} = 1$	$\frac{\mu}{\theta} = 2$	$\frac{\mu}{\theta} = 0.1$	$\frac{\mu}{\theta} = 1$	$\frac{\mu}{\theta} = 2$	$\frac{\mu}{\theta} = 0.1$	$\frac{\mu}{\theta} = 1$	$\frac{\mu}{\theta} = 2$
$\beta_u = -1$	0.442	0.841	0.931	0.199	0.167	0.160	3.882	32.528	62.223
$\tilde{\beta}_a$	0.428	0.754	0.819	0.210	0.180	0.174	4.099	35.741	69.173
Ratio	0.968	0.896	0.900	1.055	1.077	1.087	1.055	1.098	1.111
$\beta_u = 0$	0.240	0.5	0.586	0.087	0.057	0.047	1.7023	11.091	18.377
$\tilde{\beta}_a$	0.252	0.487	0.550	0.010	0.076	0.070	1.993	15.270	27.94
Ratio	1.05	0.974	0.938	0.115	1.333	1.490	1.171	1.377	1.520
$\beta_u = 1$	0.083	0.159	0.179	0.024	0.011	0.008	0.476	2.173	2.975
$\tilde{\beta}_a$	0.113	0.224	0.257	0.038	0.024	0.020	0.760	4.850	8.558
Ratio	1.361	1.409	1.436	1.583	2.182	2.500	1.596	2.232	2.876

at Figure 8, one observes that the smallest average absolute $\Delta\beta$ occurs around the 6th period and the largest deviation occurs at around the 16th, which is why these two periods were chosen.)

In Figures 10, 11 and 12, we summarize the ratios between the three performance measures, using $\tilde{\beta}_a$ and β_u . It is clear that the ratios of each measure vary along the day. The graphs examine not only how the ratios change when the user (call center manager) chooses different values of β_u but also when the ratio between the service rate, μ , and the (im)patience rate, θ , varies. The following con-

TABLE 19
Average Performance Measures for the period between 18:00–18:30 $\beta_u = -1, 0, 1$ and $\mu/\theta = 0.1, 1, 2$

	Pr($W > 0$)			Pr(Abandon)			E(W) (sec)		
	$\frac{\mu}{\theta} = 0.1$	$\frac{\mu}{\theta} = 1$	$\frac{\mu}{\theta} = 2$	$\frac{\mu}{\theta} = 0.1$	$\frac{\mu}{\theta} = 1$	$\frac{\mu}{\theta} = 2$	$\frac{\mu}{\theta} = 0.1$	$\frac{\mu}{\theta} = 1$	$\frac{\mu}{\theta} = 2$
$\beta_u = -1$	0.442	0.841	0.931	0.214	0.179	0.172	4.100	34.355	65.716
$\tilde{\beta}_a$	0.475	0.798	0.854	0.172	0.230	0.225	5.182	46.597	91.144
Ratio	1.05	0.989	0.917	0.804	1.285	1.308	1.264	1.356	1.387
$\beta_u = 0$	0.240	0.5	0.586	0.092	0.060	0.0501	1.764	11.606	19.229
$\tilde{\beta}_a$	0.299	0.562	0.627	0.131	0.105	0.098	2.666	21.556	40.434
Ratio	1.246	1.124	1.070	1.424	1.750	1.956	1.511	1.857	2.103
$\beta_u = 1$	0.083	0.159	0.179	0.025	0.012	0.008	0.490	2.255	3.095
$\tilde{\beta}_a$	0.149	0.295	0.337	0.054	0.037	0.032	1.116	7.699	13.395
Ratio	1.795	1.855	1.883	2.160	3.083	4.000	2.278	3.414	4.328

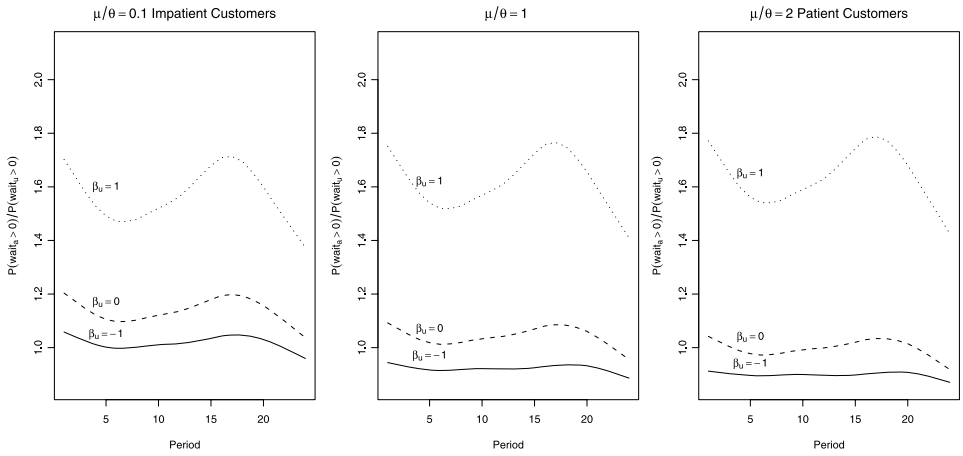


FIG. 10. The average waiting probability ratio over periods. Each of the three plots has three curves. Each curve corresponds to a different β_u value (i.e., -1, 0, 1). The plots examine the ratio of the average waiting probabilities using β_a and β_u . The three plots, from left to right, show the results when using ratios of $\frac{\mu}{\theta} = 0.1$, $\frac{\mu}{\theta} = 1$ and $\frac{\mu}{\theta} = 2$, respectively.

clusions can be drawn from the graphs and tables:

- The average waiting probability ratios show more variability for higher values of β_u . However, when we examine the average waiting probability ratios across different ratios of μ and θ , there is little variation.

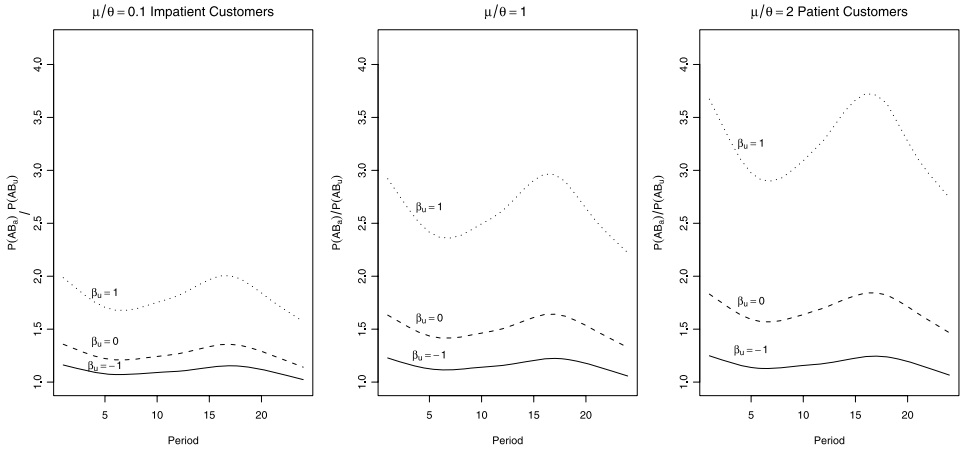


FIG. 11. The average abandonment probability ratio over periods. Each of the three plots has three curves. Each curve corresponds to a different β_u value (i.e., -1, 0, 1). The plots examine the ratio of the average abandonment probabilities using β_a and β_u . The three plots, from left to right, show the results when using ratios of $\frac{\mu}{\theta} = 0.1$, $\frac{\mu}{\theta} = 1$ and $\frac{\mu}{\theta} = 2$, respectively.

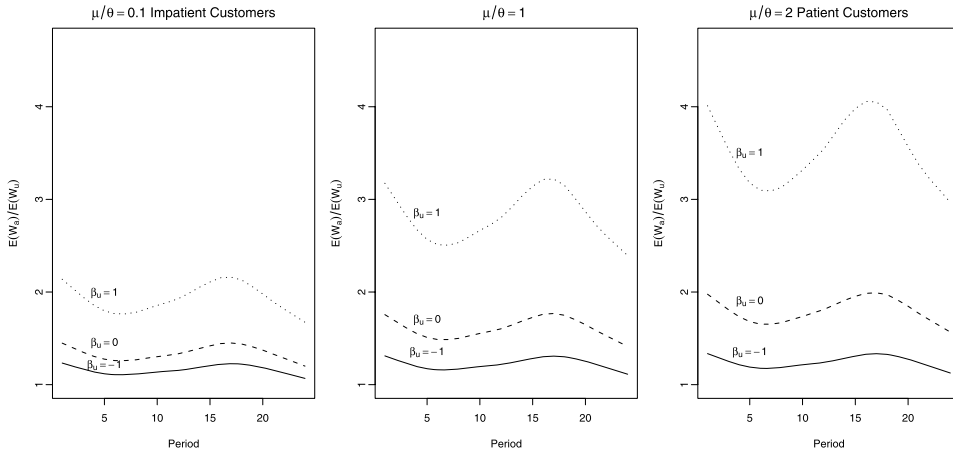


FIG. 12. The average waiting time ratio over periods. Each of the three plots has three curves. Each curve corresponds to a different β_u value (i.e., $-1, 0, 1$). The plots examine the ratio of the average waiting time using β_a and β_u . The three plots, from left to right, show the results when using ratios of $\frac{\mu}{\theta} = 0.1, \frac{\mu}{\theta} = 1$ and $\frac{\mu}{\theta} = 2$, respectively.

- The average abandonment probability ratios vary more for higher values of β_u , and also for higher values of the ratio between μ and θ . From the tables we see that the probabilities of abandonment are not large (usually smaller than 0.1).
- The average waiting time ratios vary more for higher values of β_u and this is also true for higher values of the ratio between μ and θ . From the tables we see that the average waiting times are not long (usually less than 1 minute).

6.3. Error in number of servers. The actual error in the number of servers, due to forecasting error, is also of interest. Using the same methodology as before, one can assume that β has been chosen to achieve specified quality and efficiency goals. Then, based on the predicted values \tilde{R} of the true offered-load R , the number of required agents \tilde{N} is estimated via

$$(26) \quad \tilde{N} = \tilde{R} + \beta \cdot \sqrt{\tilde{R}}.$$

Knowing the true offered-load, R , the appropriate number of agents is N —the correct number of agents required to handle the actual system load at the desired quality and efficiency trade-off. Formally,

$$(27) \quad N = R + \beta \cdot \sqrt{R}.$$

From the above two formulae and the conclusions that were derived in Section 6.2, one deduces the following relations:

$$(28) \quad \Delta N \triangleq \hat{N} - N \approx \tilde{R} - R \approx \Delta\beta \cdot \sqrt{R}.$$

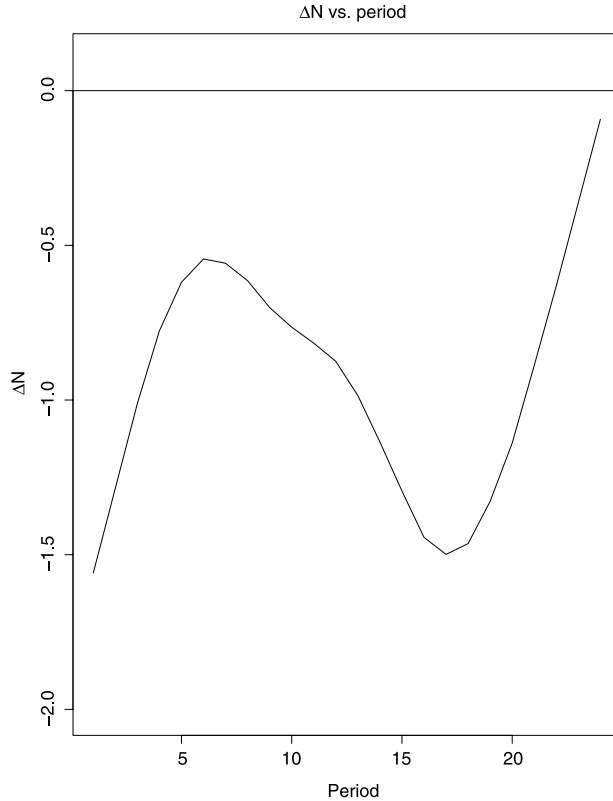


FIG. 13. *The average estimated ΔN as a function of period.*

The measure ΔN enables one to evaluate the difference between the actually deployed and the desired number of agents.

We proceed with calculating ΔN , using the same data as before. Figure 13 demonstrates the results.

Not surprisingly, the outcomes are quite similar to the graphs we observed when examining $\Delta\beta$. We are underestimating the offered-load and hence under-staffing the call center. However, the deviation between the required and the predicted number of agents for most periods is less than 1 agent, which is encouraging. This seems to indicate that our prediction models offer a rather good solution for estimating the offered-load in the QED regime.

6.4. Lead-time effect. In Section 4.5 we examined the effect of forecast lead time on the precision of arrival counts predictions. The analysis revealed that the forecast lead time has no significant influence on precision. Now we would like to examine how the forecast lead time affects $\Delta\beta$ and ΔN . Intuitively, one would expect both of these measures to decrease in their absolute value as we shorten lead times.

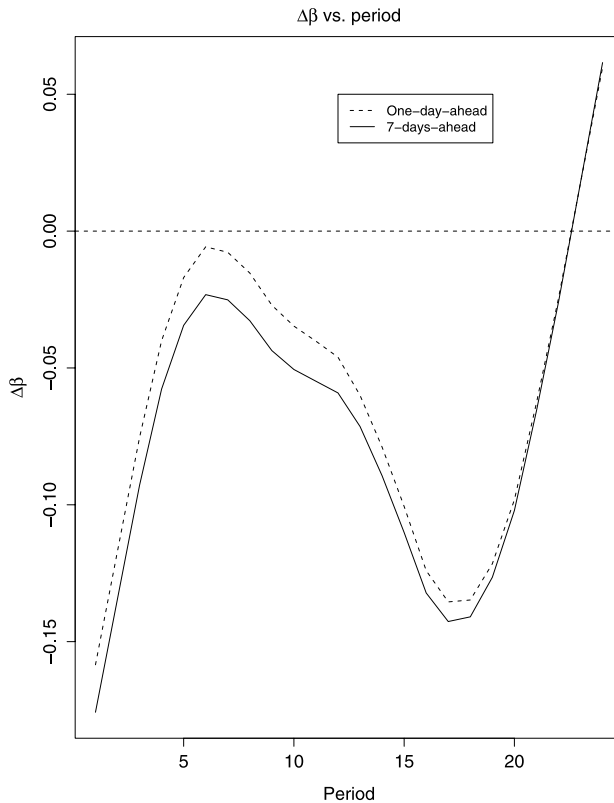


FIG. 14. The average estimated $\Delta\beta$ as a function of period for different forecast lead times.

Figure 14 shows the smoothed average $\Delta\beta$ for each period, using one-day-ahead predictions and a week-ahead predictions. Figure 15 presents the average ΔN under the two different forecast lead-time alternatives.

The differences between the average results of the two measures are not very significant. However, we observe that the one-day-ahead results are better than the week-ahead results since the absolute values of the deviations in both $\Delta\beta$ and ΔN are smaller. Also, both measures indicated that the week-ahead predictions were fairly accurate to begin with and, hence, we did not expect them to improve by much.

7. Conclusions and further research. Our mixed model was customized to the specific requirements of an Israeli Telecom company. The company requires that the weekly forecast be available to the decision makers a few days in advance and should be based on six weeks of past data. Recent research, on the other hand, has focused on producing one-day-ahead forecasts or within-day learning algorithms. These issues are very important and may be very useful for call centers

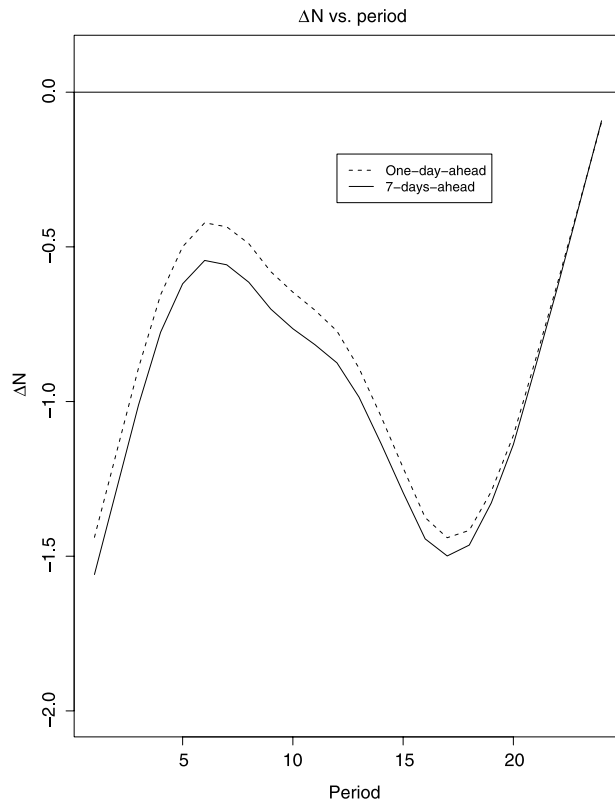


FIG. 15. *The average estimated ΔN as a function of period for different forecast lead times.*

that can mobilize their agents on short notice. As we show, our mixed model does contain the much needed practical flexibility to also support long lead times and short learning periods. It is also relatively easy to implement with standard software such as SAS[®] and yields a computationally efficient solution.

The mixed model incorporates fixed effects, such as day-of-week and its interaction with the daily periods; but it also models the day-to-day and the period-to-period correlations. We have detailed how to determine the significance of such effects. The modeling approach allowed us to incorporate billing cycle information as exogenous variables after a preliminary examination was carried out to help reduce the parameter vector dimension.

Unfortunately, we could not obtain the Israeli Telecom company's predictions for the learning data used in this paper since the company does not regularly maintain its past predictions. However, we were able to attain the company's predictions for the week between November 4th, 2007 and November 9th, 2007. Based on these predictions, it seems that our mixed model and the company's algorithm both produce similar results for most periods of the day. Yet, during periods of the

day which exhibit more instability (mainly early morning and late evening), their algorithm performs worse than our mixed model.

The mixed model results were examined under different lead times. From a practical perspective, a manager might wish to consider a two-stage prediction forecast: first, producing an early weekly forecast for the scheduling process; and next, producing another forecast one day before the week begins. This later prediction might provide a more reliable forecast. Using this one-day-ahead forecast, the manager of a call center might be able to incorporate immediate changes into the weekly schedule.

We investigated the interval resolution effect on the prediction accuracy. This analysis showed that, for practical implementations, one can use a half-hour resolution with only little loss to the prediction accuracy levels. Using this resolution can simplify the problem when compared with the 15-minute resolution. It is also a practical time interval which call center managers often use for determining their weekly staff schedule.

Our original forecast problem was to predict the system load based on the average service times and the arrival rates. To model the average service times, we suggested and fitted a fairly easy quadratic regression model which incorporates weekdays and period effects.

Having both the average service times' predictions and the arrival counts, we constructed QED regime performance measures. Using these measures, we analyzed the effect of our models results on a call center's operational performance (i.e., the probability of being delayed for service, the probability of abandonment and the average waiting time). Our results indicate that during busy periods, when the QED regime's "square-root staffing" rule is relevant, the system will perform at a desired level commensurate with the actual load or very close to it. This result gives some evidence that one can ensure a prespecified QED regime using load forecasts that are sufficiently precise.

An interesting future research question is how to estimate and predict the system load function $R(t)$ directly (instead of predicting the average service times and arrival rates separately). Such estimation problems can be approached using nonparametric methods or parametric models. It will be interesting to learn if such prediction methods yield better results than the method proposed here. [For further discussion about the effects of time-varying system load on determining staffing levels, the reader is referred to Feldman et al. (2008).]

Acknowledgments. The authors thank Professor Larry Brown for proofreading and helpful suggestions. We also want to thank a number of reviewers for constructive comments and suggestions.

SUPPLEMENTARY MATERIAL

Supplement: Israeli Telecom company call center data set and forecasting code (DOI: [10.1214/09-AOAS255SUPP](https://doi.org/10.1214/09-AOAS255SUPP); .zip). The zip folder contains three files:

a readme file which describes the data set in detail; the Israeli Telecom company data set both in text format and SAS format; and the SAS[®]/STAT [SAS (2004)] code which was used to create our final forecasting model.

REFERENCES

- AKSIN, Z., ARMONY, M. and MEHROTA, V. (2007). The modern call-center: A multi-disciplinary perspective on operations management research. *Production and Operations Management* **16** 465–688.
- ALDOR-NOIMAN, S., FEIGIN, P. D. and MANDELBAUM, A. (2009). Supplement to “Workload forecasting for a call center: Methodology and a case study.” DOI: [10.1214/09-AOAS255SUPP](https://doi.org/10.1214/09-AOAS255SUPP).
- ANDREWS, B. H. and CUNNINGHAM, S. M. (1995). L. L. Bean improves call-center forecasting. *Interfaces* **25** 1–13.
- ANTIPOV, A. and MEADE, N. (2002). Forecasting call frequency at a financial services call centre. *J. Oper. Res. Soc.* **53** 953–960.
- AVRAMIDIS, A. N., DESLAURIERS, A. and L’ECUYER, P. (2004). Modeling daily arrivals to a telephone call center. *Management Science* **50** 896–908.
- BORST, S., MANDELBAUM, A. and REIMAN, M. (2004). Dimensioning large call centers. *Oper. Res.* **52** 17–34. [MR2066238](https://doi.org/10.1287/opre.52.1.17)
- BROWN, L. D., GANS, N., MANDELBAUM, A., SAKOV, A., SHEN, H., ZELTYN, S. and ZHAO, L. (2005). Statistical analysis of a telephone call center: A queueing-science perspective. *J. Amer. Statist. Assoc.* **100** 36–55. [MR2166068](https://doi.org/10.1198/016214504000000000)
- BROWN, L. D., ZHANG, R. and ZHAO, L. (2001). Root un-root methodology for non parametric density estimation. Technical report, The Wharton School, Univ. Pennsylvania.
- DEMIDENKO, E. (2004). *Mixed Models: Theory and Applications*. Wiley, Haifa, Israel. [MR2077875](https://doi.org/10.1002/9781118133333)
- FEIGIN, P., MANDELBAUM, A., ISHAY, E., and TROFIMOV, V. (2003). Data MOCCA—Data MModel for Call Center Analysis. Technical report, Technion—Israel Institute of Technology. Available at <http://iew3.technion.ac.il/serveng/course2004/References/DataMOCCA.pdf>.
- FELDMAN, Z., MANDELBAUM, A., MASSEY, W. A. and WHITT, W. (2008). Staffing of time-varying queues to achieve time-stable performance. *Management Science* **54** 324–338. Available at <http://iew3.technion.ac.il/serveng/References/FeldmanMMW020507.pdf>.
- GANS, N., KOOLE, G. and MANDELBAUM, A. (2003). Telephone call centers: Tutorial, review, and research prospects. *Manufacturing and Service Operations Management* **5** 79–141.
- GILSON, K. A. and KHANDELWAL, D. K. (2005). Getting more from call centers. *The McKinsey Quarterly*. Available at http://www.evolvondemand.com/download_file_684.pdf.
- HENDERSON, C. R. (1975). Best linear unbiased estimation and prediction under a selection model. *Biometrics* **31** 423–447.
- HOLMAN, D., BATT, R. and HOLTGREWE, U. (2007). The global call center report: International perspectives on management and employment. ILR Collection, Research Studies and Reports, Cornell Univ. Available at <http://www.ilr.cornell.edu/globalcallcenter/upload/GCC-Intl-Rept-US-Version.pdf>.
- JONGBLOED, G. and KOOLE, G. (2001). Managing uncertainty in call centers using Poisson mixtures. *Appl. Stoch. Models Bus. Ind.* **17** 307–318. [MR1873474](https://doi.org/10.1080/01676360108839474)
- MANDELBAUM, A. (2004). Call centers (centres) research bibliography with abstracts. Chapter two details Statistics and Forecasting related papers. Available at <http://iew3.technion.ac.il/serveng/References/references.html>.
- MANDELBAUM, A. and ZELTYN, S. (2007). Staffing many-server queues with impatient customers: Constraint satisfaction in call centers. *Oper. Res.* To appear.
- MCCULLAGH, P. and NEDLER, J. A. (1989). *Generalized Linear Models*, 2nd ed. Chapman & Hall, Boca Raton, FL.

- R DEVELOPMENT CORE TEAM (2005). *R: A Language and Environment for Statistical Computing*. R Foundation for Statistical Computing, Vienna, Austria. ISBN 3-900051-07-0. Available at <http://www.R-project.org>.
- SAKAMOTO, Y., ISHIGURO, M. and KITAGAWA, G. (1999). *Akaike Information Criterion Statistics*. Springer, New York.
- SAS (2004). *SAS OnlineDoc*[®]9.1.3. SAS Institute Inc., Cary, NC.
- SHEN, H. and HUANG, J. Z. (2005). Analysis of call centre arrival data using singular value decomposition. *App. Stoch. Models Bus. Ind.* **21** 251–263. MR2159632
- SHEN, H. and HUANG, J. Z. (2008a). Forecasting time series of inhomogeneous poisson process with application to call center workforce management. *Ann. App. Statist.* **2** 601–623.
- SHEN, H. and HUANG, J. Z. (2008b). Interday forecasting and intraday updating of call center arrivals. *Manufacturing and Service Operations Management* **10** 391–410.
- SOYER, R. and TARIMCILAR, M. M. (2008). Modeling and analysis of call center arrival data: A Bayesian approach. *Management Science* **54** 266–278.
- TANIR, O. and BOOTH, R. J. (1999). Call center simulation in Bell Canada. In *Proceedings of the 1999 Winter Simulation Conference* (P. A. Farrington, N. H. B. Nembhard, D. T. Sturrock and G. W. Evans, eds.) 1640–1647. IEEE Press, Piscataway, NJ.
- TAYLOR, J. W. (2008). A comparison of univariate time series methods for forecasting intraday arrivals at a call center. *Management Science* **54** 253–265.
- WEINBERG, J., BROWN, L. D. and STROUD, J. R. (2007). Bayesian forecasting of an inhomogeneous Poisson process with applications to call center data. *J. Amer. Statist. Assoc.* **102** 1185–1199. MR2412542
- WHITT, W. (2005). Engineering solution of a basic call-center model. *Management Science* **51** 221–235.
- WHITT, W. (2007). What you should know about queueing models to set staffing requirements in service systems. *Naval Res. Logist.* **54** 476–484. MR2380781
- XU, W. (2000). Long range planning for call centers at Fedex. *The Journal of Business Forecasting Methods and Systems* **18** 7–11.
- ZELTYN, S. (2005). Call centers with impatient customers: Exact analysis and many-server asymptotics of the $M/M/N + G$ queue. Ph.D. thesis, Technion—Israel Institute of Technology. Available at <http://ie.technion.ac.il/serveng/References/references.html>.

S. ALDOR-NOIMAN
DEPARTMENT OF STATISTICS
THE WHARTON SCHOOL
UNIVERSITY OF PENNSYLVANIA
PHILADELPHIA, PENNSYLVANIA 19104
USA
E-MAIL: sivana@wharton.upenn.edu

P. D. FEIGIN
A. MANDELBAUM
WILLIAM DAVIDSON FACULTY OF
INDUSTRIAL ENGINEERING AND MANAGEMENT
TECHNION—ISRAEL INSTITUTE OF TECHNOLOGY
TECHNION CITY, HAIFA 32000
ISRAEL
E-MAIL: paulf@ie.technion.ac.il
avim@tx.technion.ac.il