

A UNITED STATES
DEPARTMENT OF
COMMERCE
PUBLICATION



NBS TECHNICAL NOTE 618

WR15 Microwave Calorimeter and Bolometer Unit

U. S.
DEPARTMENT
OF
COMMERCE
National
Bureau
of
Standards

QC
100
05753
no. 618
1972
c. 2

NATIONAL BUREAU OF STANDARDS

The National Bureau of Standards¹ was established by an act of Congress March 3, 1901. The Bureau's overall goal is to strengthen and advance the Nation's science and technology and facilitate their effective application for public benefit. To this end, the Bureau conducts research and provides: (1) a basis for the Nation's physical measurement system, (2) scientific and technological services for industry and government, (3) a technical basis for equity in trade, and (4) technical services to promote public safety. The Bureau consists of the Institute for Basic Standards, the Institute for Materials Research, the Institute for Applied Technology, the Center for Computer Sciences and Technology, and the Office for Information Programs.

THE INSTITUTE FOR BASIC STANDARDS provides the central basis within the United States of a complete and consistent system of physical measurement; coordinates that system with measurement systems of other nations; and furnishes essential services leading to accurate and uniform physical measurements throughout the Nation's scientific community, industry, and commerce. The Institute consists of a Center for Radiation Research, an Office of Measurement Services and the following divisions:

Applied Mathematics—Electricity—Heat—Mechanics—Optical Physics—Linear Radiation²—Nuclear Radiation²—Applied Radiation²—Quantum Electronics³—Electromagnetics³—Time and Frequency³—Laboratory Astrophysics³—Cryogenics³.

THE INSTITUTE FOR MATERIALS RESEARCH conducts materials research leading to improved methods of measurement, standards, and data on the properties of well-characterized materials needed by industry, commerce, educational institutions, and Government; provides advisory and research services to other Government agencies; and develops, produces, and distributes standard reference materials. The Institute consists of the Office of Standard Reference Materials and the following divisions:

Analytical Chemistry—Polymers—Metallurgy—Inorganic Materials—Reactor Radiation—Physical Chemistry.

THE INSTITUTE FOR APPLIED TECHNOLOGY provides technical services to promote the use of available technology and to facilitate technological innovation in industry and Government; cooperates with public and private organizations leading to the development of technological standards (including mandatory safety standards), codes and methods of test; and provides technical advice and services to Government agencies upon request. The Institute also monitors NBS engineering standards activities and provides liaison between NBS and national and international engineering standards bodies. The Institute consists of the following technical divisions and offices:

Engineering Standards Services—Weights and Measures—Flammable Fabrics—Invention and Innovation—Vehicle Systems Research—Product Evaluation Technology—Building Research—Electronic Technology—Technical Analysis—Measurement Engineering.

THE CENTER FOR COMPUTER SCIENCES AND TECHNOLOGY conducts research and provides technical services designed to aid Government agencies in improving cost effectiveness in the conduct of their programs through the selection, acquisition, and effective utilization of automatic data processing equipment; and serves as the principal focus within the executive branch for the development of Federal standards for automatic data processing equipment, techniques, and computer languages. The Center consists of the following offices and divisions:

Information Processing Standards—Computer Information—Computer Services—Systems Development—Information Processing Technology.

THE OFFICE FOR INFORMATION PROGRAMS promotes optimum dissemination and accessibility of scientific information generated within NBS and other agencies of the Federal Government; promotes the development of the National Standard Reference Data System and a system of information analysis centers dealing with the broader aspects of the National Measurement System; provides appropriate services to ensure that the NBS staff has optimum accessibility to the scientific information of the world, and directs the public information activities of the Bureau. The Office consists of the following organizational units:

Office of Standard Reference Data—Office of Technical Information and Publications—Library—Office of Public Information—Office of International Relations.

¹ Headquarters and Laboratories at Gaithersburg, Maryland, unless otherwise noted; mailing address Washington, D.C. 20234.

² Part of the Center for Radiation Research.

³ Located at Boulder, Colorado 80302.

U.S. BUREAU OF STANDARDS
JUG 1 1972
QC100
J5753
not occ.

UNITED STATES DEPARTMENT OF COMMERCE

Peter G. Peterson, Secretary

NATIONAL BUREAU OF STANDARDS • Lewis M. Bronscomb, Director



TECHNICAL NOTE 618

ISSUED MAY 1972

Not. Bur. Stand. (U.S.), Tech. Note 618, 41 pages (May 1972)

CODEN: NBTNA

WR15 Microwave Calorimeter and Bolometer Unit

Morris E. Harvey

Electromagnetics Division
National Bureau of Standards
Boulder, Colorado



NBS Technical Notes are designed to supplement the Bureau's regular publications program. They provide a means for making available scientific data that are of transient or limited interest. Technical Notes may be listed or referred to in the open literature.

TABLE OF CONTENTS

	PAGE
LIST OF TABLES.....	v
LIST OF FIGURES.....	vii
ABSTRACT.....	1
1. INTRODUCTION.....	1
1.1 Change in Electroformed Isolation Section.....	2
1.2 Changes in Bolometer Units.....	3
2. CONSTRUCTION.....	4
2.1 Directions for Assembly of the Calorimeter Lead-in.....	4
2.2 Directions for Assembly of the Calorimeter....	4
2.3 Directions for Assembly of Bolometer Unit.....	6
3. CALORIMETER OPERATION.....	7
3.1 Measurement Sequence.....	7
4. ERROR ANALYSIS.....	9
4.1 Nonproportionality of Thermopile Voltage.....	10
4.2 Bolometer Unit Walls.....	10
4.3 Calorimeter Flange.....	11
4.4 Thermal Isolation Section.....	12
4.5 Microvolt Potentiometer.....	12
4.6 Environment Stability.....	13
4.7 Lead Thermal Isolation.....	13
4.8 Error Due to the Bridge and Voltmeter.....	13
4.9 The Bolometer Units.....	14

TABLE OF CONTENTS (continued)

4.10 Imprecision.....	15
4.11 Summary.....	15
5. REFERENCES.....	17

LIST OF TABLES

	PAGE
1. Commercial Products for Calorimeter.....	18
2. Commercial Products for Bolometer Units.....	20
3. Components of Lead-in Seals.....	21
4. Components to Supply Microwave Power to WR15 Calorimeter.....	22
5. Connections to Microwave Components.....	23
6. Accessory Equipment.....	24
7. Systematic Errors and Limits of Systematic Uncertainty.....	25

LIST OF FIGURES

	PAGE
1. WR15 Calorimeter.....	26
2. Calorimeter Assembly and Mandrel.....	27
3. Calorimeter Cover Part and Lead-in Parts.....	28
4. Calorimeter Base Parts.....	29
5. Bolometer Unit Parts Leads.....	30
6. Lead-in Seals.....	31
7. Components to Supply Microwave Power.....	32
8. Accessory Equipment.....	33

WR15
MICROWAVE CALORIMETER
AND
BOLOMETER UNIT

by

Morris E. Harvey
Electromagnetics Division
National Bureau of Standards
Boulder, Colorado

ABSTRACT

A microwave calorimeter which serves as the National Bureau of Standards (NBS) standard for power measurements in the frequency range 50 to 75 GHz has been completed and evaluated recently. Included here are descriptions of the principal changes in the calorimeter and bolometer unit from the WR28 models which are of similar design. Also included are construction details, accessory equipment, operation procedure, and error analysis. An improved thermal isolating waveguide section and calorimeter flange are features of this calorimeter.

A careful error analysis permits the determination of the effective efficiency of a standard bolometer unit to estimated limits of systematic uncertainty of $\pm 0.23\%$. The estimated 3σ limit of random uncertainty is 0.05% .

Key words: Calorimeter; microwave; power; standard.

1. INTRODUCTION

The National Bureau of Standards (NBS) standards for microwave power consist of a series of calorimeters and

standard bolometer units which evolved from a design by Macpherson and Kerns [1]¹. Refinements and modifications to the original design have been made by Engen [2]. The calorimeters are used to determine the effective efficiencies of bolometer units which are used as transfer standards. This paper describes the latest of the NBS calorimeters and bolometer units (fig. 1) which are designed for use in the frequency band 50 to 75 GHz (WR15).

Presented here is a description of the principal changes from earlier WR28 designs of the standard bolometer units and the calorimeters [3]; directions for construction, operating procedures, and an error analysis. The error analysis includes a correction for systematic errors, and an estimate of the total limits of uncertainty in the effective efficiencies of the standard bolometer units.

1.1. Changes in Electroformed Isolation Section

The principal difference of the WR15 calorimeter from the WR28 calorimeter is in the construction of the thin-walled waveguide thermal isolation section. This section of waveguide had previously been folded from one thousandth-inch thick copper but now is electroformed. It proved difficult to terminate the thin-walled section to provide a flange surface having the same loss as the flange of a precision

¹Figures in brackets indicate literature references.

section of waveguide. (Ideally the flange loss should be the same when the mount is calibrated in the calorimeter and when the mount is being used.) The electroformed section has several advantages--ease of making a flange surface similar to that of a precision section of waveguide; also the isolation section and flange microwave loss may be evaluated by a sliding short method [4]. The sliding short method provides better accuracy than the previously used fixed short method for evaluation of loss in the isolation section and flange.

1.2. Changes in Bolometer Units

There are two principal differences between the new WR15 bolometer units and the earlier WR28 units. The WR15 commercial block, which contains the thermistor matching structure and microwave bypass for the dc lead, proved to have an inadequate microwave bypass and required more lossy material around the dc lead in the unit than had been previously used. The other difference is that thermal barriers across the waveguide were not used in the WR15 units. Thermal barriers have been used in the units to keep thermal energy from the thermistor from leaving the unit. The justification for omitting the thermal barriers is given in the error analysis.

2. CONSTRUCTION

Details of the fabrication of calorimeter and bolometer unit parts are shown in figures 2, 3, 4, and 5, and a list of commercial products used is given in tables 1 and 2.

2.1. Directions for Assembly of the Calorimeter Lead-in

To start the assembly of the calorimeter lead-in, solder the seal flange to the short end of the J shaped waveguide, and face off the flange. Drill screw clearance holes and alignment holes using a drill jig. Put the conduit fittings in place and flare the conduit ends, (fig. 6). Pass the waveguide and the conduits through the holes in the two conduit spaces and the binding post block and solder on the underside. Solder the calorimeter unit flange; face it off and drill screw holes and alignment holes and tap the screw holes. Install the binding posts. Next pull the thermistor lead and the thermopile lead through the conduits. Attach the thermistor lead to the ungrounded binding post. Install the O rings, waveguide, and conduit seals. The seals are shown in figure 6, and the components are listed in table 3.

2.2. Directions for Assembly of the Calorimeter

Start the assembly of the calorimeter base by removing 1.5 inches (3.8 cm) of the aluminum mandrel from the base

flange end of the electroformed waveguide using hot concentrated sodium hydroxide solution. Next, tin, then solder together the electroformed waveguide, calorimeter flange, base flange, and base using 60-40 tin lead solder. The solder must be kept off the thin section of the electroformed waveguide and the surfaces that fit against the spacers. Clean up any flux in this area. Position the spacers. The space between the electroformed waveguide and spacers must be totally filled with low viscosity epoxy resin. Epoxy resin is also used to bind the spacers to the base, calorimeter flange, and reference flange, and the stainless steel inserts in the calorimeter flange. After the epoxy resin has cured, remove the remainder of the mandrel using sodium hydroxide solution. Protect the spacer. Face off the base flange and drill screw and alignment holes using a drill jig. Drill the alignment holes in the calorimeter flange and grind it flat. Put in the trim wires and close the holes in reference ring and base using a pointed punch. Insert the thermopile insulation into the reference flange and calorimeter flange. Wind the thermopile form with 47 evenly spaced turns of constantan wire and secure the ends by looping the wire through the holes in the form. Mask the wires on the top of the form to prevent plating, and copper plate the exposed wire for 30 minutes using a current of 100 milliamperes. Remove the masking material and solder the jacks in place. Press the thermopile

into place. Assemble the conduit to the base and add the legs and O-ring. Add the reference ring and connect the thermopile leads. Screw the hanger, calorimeter spacer, stud and cover together. The cover screws are used not only to hold the cover in place but also to remove it.

2.3. Directions for Assembly of the Bolometer Unit

Place the sleeve over the post on the commercial block and solder the dc lead to the post. Solder together the block flange, waveguide section, and unit flange. Face off both flanges, and drill screw and alignment holes, tap the screw holes, in the unit flange. Grind the unit flange flat. Assemble the unit binding post in the block flange. Secure the block to the block flange with screws. Lay the block dc lead in the groove in the block flange. Cut the dc lead to length and solder to the unit binding post. Cover the exposed joint with electrical grade room temperature cure silicon rubber. Fill the groove in the block flange with a mixture of powdered iron and low viscosity epoxy resin. Epoxy resin is also used to hold the cover plates in place. Conducting epoxy resin is used to calk the grooves in the block flange. The block and block flange are covered with aluminized polyester pressure-sensitive tape.

3. CALORIMETER OPERATION

The operation of the calorimeter requires a number of items of equipment. Figure 7 shows the waveguide components used to supply microwave power. The components are listed in table 4 and connections to the components are listed in table 5. The accessory equipment is shown in figure 8 and listed in table 6.

3.1. Measurement Sequence

The sequence followed in determining the effective efficiency of a bolometer unit is as follows:

- (1) Install the unit in the calorimeter, and seal the calorimeter.
- (2) Place the calorimeter in the water bath.
- (3) Connect the appropriate calorimeter leads to the bolometer bridge, the microvolt potentiometer, and microwave WR15 waveguide line.
- (4) Time is then allowed for the calorimeter to come to practical equilibrium with the water bath. Practical equilibrium occurs about one and one half hours after the calorimeter is placed in the bath. The need for practical equilibration after the calorimeter is placed in the water bath results from the lack of exact equality of the bolometer unit and thermal reference time constants, and from a difference in temperature between the calorimeter and water bath.

(5) The bolometer bridge is then turned on. If the practical equilibration time is known, the bolometer bridge may be switched on immediately after the calorimeter is placed in the bath, rather than waiting for the thermopile output to reach a low value (i.e. 0.002 μ V). The klystron is turned on and locked on frequency. The microwave switch must be open to keep power from the calorimeter.

(6) An interval of about 40 minutes is required for thermal equilibrium between the unit and thermal reference after a change in the power level to the unit.

(7) After equilibration, the thermopile voltage and the voltage across the self-balancing bridge are noted.

(8) The microwave power is switched into the calorimeter, and its level adjusted to give a nominal V_2/V_1 ratio of 0.5. The microwave power stabilizer used has a stability of 10 ppm per hour.

(9) The thermopile voltage increases, with about 40 minutes required to re-establish thermal equilibrium.

(10) The voltage data are taken.

(11) The microwave power is switched off.

(12) The thermopile voltage decreases, with about 40 minutes required for equilibration.

(13) The voltage data are taken.

(14) The data are reduced. Usually there is a small drift (0.06%/Hr.) of the total bias power requirements of the bolometer due to long term drift in the bolometer, therefore the dc data are averaged. This drift does not represent a change in η_e , but only instability in the bolometer element itself.

(15) The calorimeter is taken from the water bath, dried off, the cover opened, and the unit removed.

4. ERROR ANALYSIS

The error analysis presented is similar to that in [3]; except that the flange loss and isolation section microwave loss measurements were made by the moving short method [4] rather than the fixed short method [3].

The equation used to calculate the effective efficiency (η_e) of the bolometer unit is

$$\eta_e = \frac{1 - (V_2/V_1)^2}{e_2[1 + b]/e_1 - (V_2/V_1)^2} \quad (1)$$

where V is the voltage across the self-balancing bolometer bridge [5] and e is the thermopile voltage. The subscripts 1 and 2 denote respectively conditions of dc only, and dc plus microwave power, absorbed in the thermistor. The term $(1 + b)$ is the correction for systematic errors in e_2 , the

thermopile voltage. The systematic errors and limits of systematic uncertainty affecting e_2 are listed in table 7.

It is necessary to convert from the values of systematic errors--power absorbed in unit walls, calorimeter flange, thermal isolation section, and by microwave leakage--which are in percentage of microwave power to percentage of e_2 . The converting multiplier used is 0.765, which is the ratio of microwave power absorbed in the unit to the total power absorbed in the unit, $[0.75 + 0.75(1 - 0.926)]/[0.75 + 0.25 + 0.75(1 - 0.926)]$, where 0.75 is the microwave power in the thermistor, 0.25 is the dc power in the thermistor, and 0.926 is the effective efficiency. This conversion is necessary because the value of e_2 is a function of total power absorbed in the unit rather than a function of microwave power alone.

4.1. Nonproportionality of the Thermopile Voltage

This is a small error and it is assumed that it will be similar to the values reported in reference [3], which lists a systematic error of + 0.00012 and limits of systematic uncertainty of $\pm 0.01\%$ of e_2 for the WR28 calorimeter.

4.2. Bolometer Unit Walls

The microwave power absorbed in the waveguide between the unit flange and the thermistor will have a greater effect on the value of e_2 than power absorbed in the thermistor.

The greatest effect is near the flange. This is due to the thermal resistance of the mount walls and the distributed radiative and convective thermal leakage from the unit. The thermopile sensitivity to dc power dissipated in a small temporary test heater located at the flange was determined to be greater than the thermopile sensitivity for dc power absorbed in the thermistor by 1.7% of the latter. The loss in the mount waveguide may be considered as being half way between the flange and thermistor, and the microwave power absorbed in the mount waveguide would thus have 0.85% too great an effect on the thermopile voltage. The loss in the waveguide is 1.5% of the microwave power absorbed in the mount and thermistor. Therefore, the contribution to b is $- 0.0001$, $(0.015 \times 0.0085 \times 0.765)$ of e_2 with limits of systematic uncertainty of $\pm 0.01\%$ of e_2 .

4.3. Calorimeter Flange

A portion of the microwave power is absorbed in the waveguide joint consisting of the unit flange and mating calorimeter flange. If the joint loss is the same whether the unit is being calibrated or being used, the joint loss may be considered a part of the effective efficiency and not a systematic error. The measurements made to date do not indicate a significant difference between the calibration and use joint losses. The combined uncertainty for the two

joint loss measurements is $\pm 0.1\%$ of the incident power or $\pm 0.076\%$ of e_2 .

4.4. Thermal Isolation Section

A portion of the microwave power is absorbed in the waveguide lead to the bolometer unit. Only the loss from the center of the thermal isolating waveguide section to the calorimeter flange raises the value of e_2 and constitutes a systematic error [6]. The loss in this section was determined by a moving short method [4]. The loss for this 0.25 inch (0.635 cm) long section is 0.4% of the incident microwave power or 0.306% of e_2 . The uncertainty in the length of the section is ± 0.005 inch (± 0.013 cm) and the uncertainty in the value of the loss measurement is $\pm 0.11\%$ of the incident power. The sum of these uncertainties is $\pm 0.12\%$ of the incident power or $\pm 0.092\%$ of e_2 .

4.5. Microvolt Potentiometer

The limits of systematic uncertainty for the ratio e_2/e_1 were calculated from calibration data for the microvolt potentiometer, which is used to null and display the e values. This limit is $\pm 0.0055\%$ of e_2 .

4.6. Environment Stability

The nonidentical twin geometry and lack of inner shell increases the demands on the temperature stability of the calorimeter environment. This increased thermal stability is well within the capability of the precision temperature-controlled water bath [7], [8] which has a stability during the measurement of $\pm 10\mu\text{K}$. Based on the calorimeter thermopile output after changing the bath temperature by $1000\mu\text{K}$, the change in the thermopile output due to a change of $\pm 10\mu\text{K}$ would be $\pm 0.0004\%$ of a typical e_1 value, which is negligible.

4.7. Lead Thermal Isolation

Although the calorimeter is immersed in a temperature-controlled water bath, its leads extend into the room air. So changes in room temperature can effect the calorimeter through its leads. Measurements made on the WR28 calorimeter showed that the effect is small. A $\pm 1.5\text{K}$ change in room temperature would produce a calculated change of $\pm 0.00025\%$ in e_2 .

4.8. Error Due to the Bridge and Voltmeter

Analysis of the bridge errors as applied to the calorimeter measurement of η_e shows the errors to be one part per million or smaller and they are neglected.

The principal error in the determination of the dc power in the thermistor is due to errors in the voltmeter used to measure the voltage across the bridge. The worst case error in the ratio V_2/V_1 is 0.0066% of the ratio. To determine the resulting error in η_e , the partial derivative of η_e (equation 1) with respect to V_2/V_1 was taken. Substitution of typical values yielded an uncertainty in η_e of $\pm 0.0004\%$ which is negligible.

4.9. The Bolometer Units

Any microwave power that leaks from the unit would constitute a systematic error because this leakage power would not be accounted for either in the effective efficiency or the reflected power from the unit. The commercial thermistor block which was used in assembling the bolometer unit had appreciable leakage around the dc lead. Consequently lossy material was placed in the unit around the dc lead to reduce the leakage. A measurement showed the leakage to be 0.01% of the incident power or 0.0076% of e_2 , with uncertainty limits of $\pm 0.0076\%$ of e_2 .

Typically, there is some convected and radiated thermal energy transmitted out through the waveguide from the thermistor bead. This thermal energy is not measured by the thermopile, and if its magnitude changed with the addition of microwave energy the change would cause a systematic error. The dc

resistance of the thermistor is maintained constant by the self-balancing bolometer bridge. But theoretically, the presence of microwave power can cause some change in the surface temperature distribution of the bead. In previously constructed NBS bolometer units the thermal leakage was confined inside the mount by thermal barriers placed across the waveguide. This eliminated the potential error.

Recent experimental evidence indicates that the change in thermal radiation from a thermistor when microwave power replaces 75% of the dc power in the thermistor is less than 1% of the power in the thermistor. The thermal power leaving the unit through the WR15 waveguide is 0.1% of the thermistor power; which would indicate a possible uncertainty of 0.001%, (0.1×0.01) which is negligible, and indicates that thermal barriers are not necessary.

4.10. Imprecision

An estimate of the imprecision in the effective efficiency measurement was made for the WR28 calorimeter [3], and is assumed to be similar for the WR15 calorimeter. The estimated 3σ limits for η_e are $\pm 0.05\%$ of the effective efficiency.

4.11. Summary

The estimated 3σ limits of the imprecision (random error) in the measurement of the effective efficiency are $\pm 0.05\%$ of η_e .

The systematic errors and their uncertainties are listed and totaled in table 7. The total estimated systematic error is -0.00296 and the correction $(1 + b)$ to e_2 is 0.99704.

The estimated limits of uncertainty in the above systematic error are $\pm 0.203\%$ of e_2 . To obtain the corresponding estimated limits of systematic uncertainty in the value of η_e , the partial derivative of η_e was taken with respect to $(1 + b)$ and typical values substituted to obtain a multiplier of 1.106. The estimated limits to the systematic uncertainty in the value of η_e are therefore $\pm 0.23\%$ of η_e . The total uncertainty (systematic + random) is $\pm 0.28\%$ of η_e .

5. REFERENCES

- [1] Macpherson, A. C., and Kerns, D. M., A microwave micro-calorimeter, Rev. Sci. Instr., vol. 26, No. 1, 27-33 (January 1955).
- [2] Engen, G. F., A refined X-band microwave microcalorimeter, J. Res. NBS, (U.S.), 63C, No. 1, 77-82 (1959).
- [3] Harvey, M. E., Non-identical twin microwave calorimeter, J. Res. NBS, to be published.
- [4] Engen, G. F., An extension to the sliding short method of connector and adaptor evaluation, J. Res. NBS, Sect. C, Vol. 75C, 3-4, July-Dec., 1971.
- [5] Larsen, N. T., and Clague, F. R., The NBS type II power measurement system, ISA, 712 (1970).
- [6] Ginnings, D. C. and West, E. D., Heater lead problem in calorimetry, Rev. Sci. Instr., vol. 35, No. 8, 965-967 (August 1964).
- [7] Larsen, N. T., 50 microdegree temperature controller, Rev. Sci. Instr., vol. 39, No. 1, 1-12 (January 1968).
- [8] Harvey, M. E., Precision temperature-controlled water bath, Rev. Sci. Instr., vol. 39, No. 1, 13-18 (January 1968).

Table 1
Commercial Products for Calorimeter

Quantity	Item
1	WR15 copper waveguide bent to J shape
1	Flange UG-385/U
2	Binding posts
1	No. 6 spaghetti tubing, 1/4 in. (0.64 cm) long
1	No. 6 Polyamide washer
2	No. 6 Brass washer
3	6-32 Brass nuts
1	Cable clamp, for 1/8 inch O.D. cable
1	No. 6 Solder lug
31 In.	14 gauge (AWG) stranded copper wire with polytetrafluoroethylene insulation
8 ft.	Polytetrafluoroethylene tubing, size 18,
17 ft.	30 gauge (AWG) insulated magnetic wire
2 oz.	Electrical grade room temperature cure silicone rubber
1	O ring 7/16" OD, 1/16" Dia. cross section, for seal flange
1	O ring 7/8" OD, 1/16" Dia. cross section, for seal flange
3	O ring 3/16" OD, 1/16" Dia. cross section, for lead seals
3	O ring 7/32" OD, 1/16" Dia. cross section, for lead seals
1	O ring 3/4" OD, 090" Dia. cross section, for stud
1	O ring 4 1/2" OD, 3/16" Dia. cross section, for base
4	4-40 Sealing screws with O ring
1 lb.	Sodium hydroxide
1 lb.	Low viscosity (900 cps) epoxy, solvent free, room temperature cure

Table 1 (Continued)

Quan- tity	Item
6 ft.	30 gauge (AWG) constantan wire (bare)
2	Jack for 0.02 inch Dia. pin, 0.18 inch long. 0.05 inch Dia.
4	0-80 Round head screws, 1/2 inch long
4	2-56 Binding head screws, 1/4 inch long

Table 2
Commercial Products for Bolometer Units

Quantity	Item
2	WR15, copper waveguide, one inch long
2	Commercial block Hitachi*, Model M2521 or equivalent
4	2-56, Flathead brass screw, 1/4 inch long
2	1-72, Round head brass screw, 1/8 inch long
2	24 gauge (AWG), Insulated magnet wire, 2 inch 5 (cm) long
1 oz.	Silver filled conducting epoxy
1 ft.	1 inch (2.5 cm) wide aluminized polyester pressure sensitive tape
1 oz.	Powdered iron
2	Size 18, Tetrafluoroethylene tubing, 0.13 inches (0.33 cm) long

*At this writing this is the only known broad band commercial block available in WR15 waveguide size. In no case does this identification imply recommendation or endorsement by the National Bureau of Standards, nor does it imply that the component identified is necessarily the best available for the purpose.

Table 3
Components of Lead-in Seals

No. on Figure 6	Component
1	Conduit spacer
2	Thermistor lead
3	Thermopile lead
4	Conduit seals
5	J shaped waveguide
6	Conduits
7	Conduit fittings
8	O rings
9	Waveguide seal
10	Seal flange

Table 4
Components to Supply Microwave Power to
WR15 Calorimeter

No. on Figure 7	Component
1	Klystron
2	Water Jacket
3	10 dB Directional Coupler
4	Wavemeter
5	Crystal Detector
6	Isolator
7	Variable Attenuator
8	Power Leveler
9	Switch
10	90° E plane bend
11	Load
12	Waveguide Stands

Table 5
Connections to Microwave Components

A	Klystron Ground
B	To klystron power supply via Pound frequency stablizer
C	To cooling water and drain
D	Crystal current to Pound stabilizer
E	Power leveler current from Type II power bridge
D	Microwave power to Calorimeter

Table 6
Accessory Equipment

1. Klystron power supply
2. Pound Stabilizer
3. Photocell Galvanometer Amplifier
4. Secondary Galvanometer
5. AC Voltmeter
6. NBS Type II Power Measurement System
7. Digital Voltmeter
8. NBS precision temperature-controlled water bath
9. Microvolt potentiometer

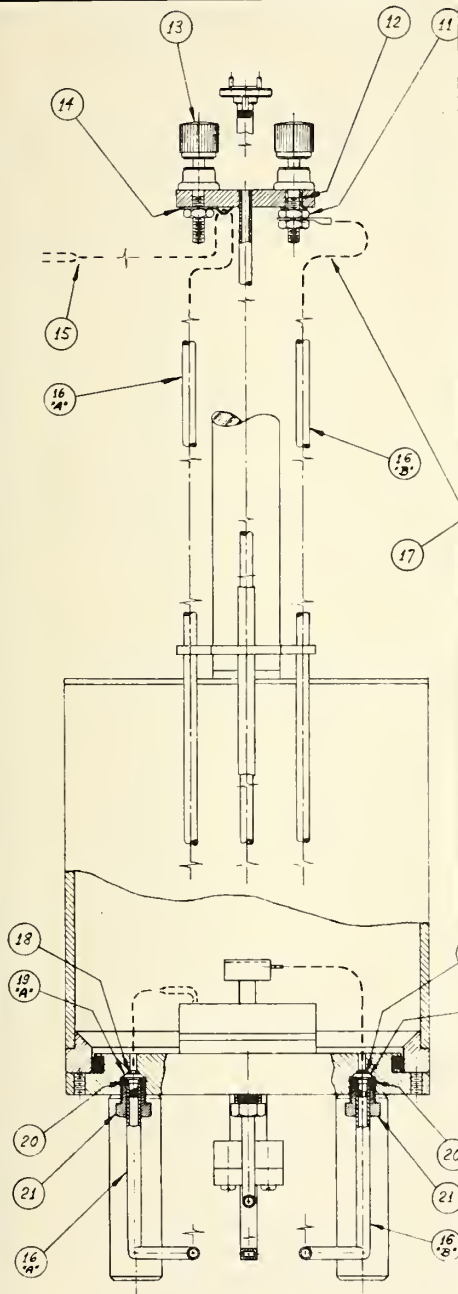
Table 7

Systematic Errors and Limits of Systematic Uncertainty

	Systematic Error b	Limits of Systematic Uncertainty % of e_2
Thermopile Nonproportionality	+ 0.00012	$\pm 0.01\%$
Unit Walls	- 0.0001	$\pm 0.01\%$
Calorimeter Flange		$\pm 0.076\%$
Thermal Isolation Section	- 0.00306	$\pm 0.092\%$
Microvolt Potentiometer		$\pm 0.0055\%$
Environmental Stability		$\pm 0.0004\%$
Lead Tempering		$\pm 0.00025\%$
Microwave Leakage from Bolometer Unit	+ 0.000076	$\pm 0.0076\%$
Change in Thermal Leakage from the Waveguide		$\pm 0.001\%$
TOTALS	- 0.00296	$\pm 0.203\%$



Figure 1. WR15 calorimeter.



0400) DRILL 1/8" DEEP
AND OPPOSITE END

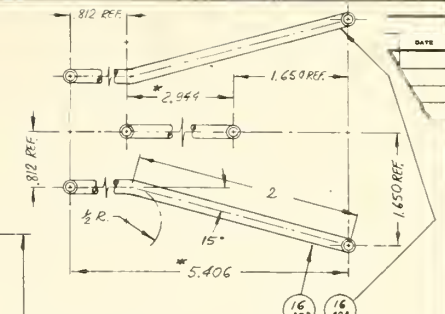
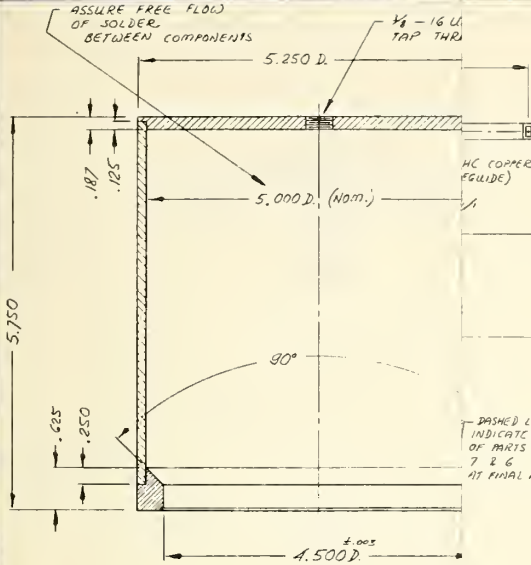
ORIGINAL DATE OF DRAWING			REVISIONS	
NO.	S. C. H.	CHANGES	DATE	
1				
2				
3				
4				

LIST OF PARTS

* STOCK PARTS		
NO.	DESCRIPTION	QTY.
	MANDREL	1
	SUB-ASSEMBLY	1
	SUB-ASSEMBLY	1
32	THERMOPILE FORM MATERIAL - TETRAFLUORETHYLENE	1
31	BRASS SCREW, 80° POINT ROUND HEAD, 1/2" LONG	4
30	REFERENCE RING MATERIAL - FREE CUTTING BRASS	1
29	REFERENCE FLANGE WITH WELD MATERIAL - TELLURIUM COPPER	1
28	O-RING, 1/4" O.D., 1/16" NOM. WIDTH	1
27	COVER SCREW MATERIAL - FREE CUTTING BRASS	3
26	LEG MATERIAL - FREE CUTTING BRASS	4
25	SEAL FLANGE MATERIAL - FREE CUTTING BRASS	1
24	BRASS SCREW, # 4-40 UNC HEAD WITH O-RING SEAL, 3/4" LONG	4
23	O-RING, 7/16" O.D., 1/8" NOM. WIDTH	1
22	O-RING, 7/8" O.D., 1/8" NOM. WIDTH	1
21	CONDUIT FITTING MATERIAL - FREE CUTTING BRASS	3
20	O-RING, 7/8" O.D., 1/8" NOM. WIDTH	3
19	CONDUIT SEAL MATERIAL - FREE CUTTING BRASS	1
19	LEAD SEAL, BATHOMETER DO LEAD MATERIAL - FREE CUTTING BRASS	1
19	LEAD SEAL, THERMOPILE LEAD MATERIAL - FREE CUTTING BRASS	1
18	O-RING, 1/2" O.D., 1/8" NOM. WIDTH	3
17	BATHOMETER DO LEAD MATERIAL - SEE DETAIL 20A	1
16	CONDUIT MATERIAL - BRASS TUBE, 1/4" O.D., 1/2" WALL	1
16	CONDUIT MATERIAL - BRASS TUBE, 1/4" O.D., 1/2" WALL	1
16	CONDUIT MATERIAL - BRASS TUBE, 1/4" O.D., 1/2" WALL	1
15	THERMOPILE LEAD MATERIAL - SEE DETAIL 20A	1
14	CABLE CLAMP FOR 1/4" O.D. CABLE	1
13	COMMERCIAL BINDING POST	2
12	DIELECTRIC BUSHING MATERIAL - POLYAMIDE	1
11	BRASS HEX. NUT # 6 - 32 UNC	3
10	WR 15 UNIT FLANGE MATERIAL - FREE CUTTING BRASS	2
9	STAINLESS STEEL CAPTIVE SCREW # 4-40 UNC (MIL. STD. FOR HEX)	4
8	WR 15 WAVE GUIDE MATERIAL - ORNG COPPER	1
7	BINDING POST BLOCK MATERIAL - FREE CUTTING BRASS	1
6	CONDUIT SPACER MATERIAL - FREE CUTTING BRASS	2
5	HANGER MATERIAL - FREE CUTTING BRASS	1
4	CALORIMETER SPACER MATERIAL - POLYAMIDE	1
3	O-RING, 3/4" O.D. 0.30" WIDTH	1
2	STUD MATERIAL - FREE CUTTING BRASS	1
1	COVER MATERIAL - FREE CUTTING BRASS	1

FIGURE 2
CALORIMETER ASSEMBLY
AND
MANDREL

DIMENSIONS IN INCHES (Unless otherwise specified)	DRAFTSMAN Victor LeCina	CHECKER PROJEK ENGR
TOLERANCES DECIMALS ± .005 FRACTIONS ± .010 ANGLES ± 1'	PROJECT ENGR D. E. HANVEY	SUBMITTED BY CHIEF ENGR
DO NOT SCALE THIS PRINT	EXAMINED BY CHIEF ENGINEER	APPROVED BY CHIEF DTL
DW. NO. 272 150	THIS PRINT ISSUED W 65K-1/348D	

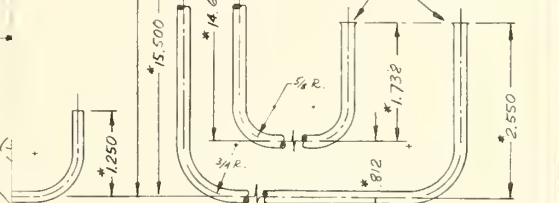


MAT'L - BRASS TUBE 1/4 O.D., 1/2 WALL 1 OF EA REQ'D SCALE - 1/1

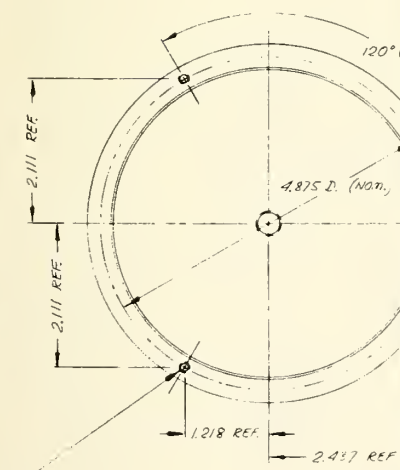
DASHED LINES INDICATE POSITION OF PARTS NO 7 & 6 AT FINAL ASSY

MAT'L - BRASS TUBE 1/4 O.D., 1/2 WALL 1 REQ'D SCALE - 1/1

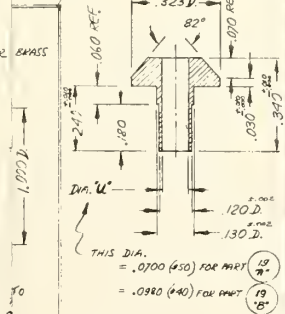
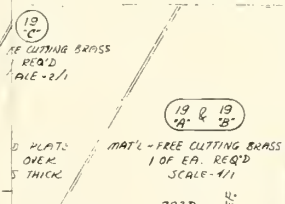
FLARE ENDS AFTER INSTALLATION OF PARTS NO 21



DIMENSIONS SHOWN ARE FINAL DIMENSIONS REQ'D - ALLOW 1" EA END FOR TRIM
 DIMENSIONS INDICATED WITH * ARE NOMINAL
 KEY: GOLD PLATE WAVEGUIDE AND TUBES .0005 THICK ALL OVER (AFTER BENDING)
 INSTALL PARTS NO. 6 & 7, INSTALL PARTS NO. 21 OVER TUBES, TRIM LENGTHS OF WAVEGUIDE AND TUBES AS NECESSARY. SOLDER PARTS NO 10 AND NO 25 (WAVEGUIDE FINJES) IN PLACE, FINAL TRIM WAVEGUIDE WITH INSTALLED FINJES AND TUBE ENDS (FLARE TUBE ENDS AS SHOWN) SOLDER PARTS NO 6 & 7 IN PLACE
 No. 8, 10 & 25 - C&T - 127, 16" B 16" X" WITH PARTS NO 21. MAKE ONE SUB ASSY

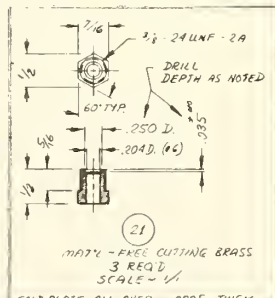


8 - 30 UNC - 2B BOTTOM TAP 3/6 DEEP FOR ASSEMBLY WITH SUB ASSY CALORIMETER BRASS 3 HOLES EQUALLY SPACED ON DIA. AS NOTED



THIS DIA. = .0700 (40) FOR HOLE 19 7" = .0980 (40) FOR HOLE 19 10" 19 15"

NOTE: GOLD PLATE ALL OVER .0005 THICK



MAT'L - FREE CUTTING BRASS 3 REQ'D SCALE - 1/1

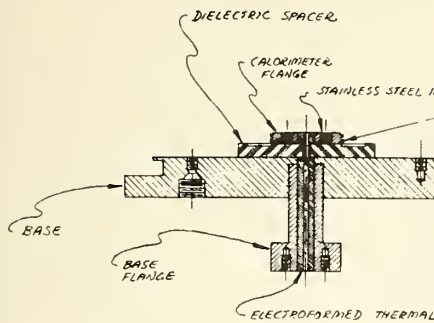
FIGURE 3 CALORIMETER COVER PARTS AND LEAD-IN PARTS.

DIMENSIONS IN INCHES (Unless otherwise specified)	DRAFTSMAN VERA LECHEVA	CHECKER PROJECT ENG
TOLERANCES (Unless otherwise specified)	PROJECT ENG J.C. HARVEY	PROJECT ENG
DECIMALS ± .005 FRACTIONS ± 1/16 ANGLES ± 1'	SUBMITTED BY CHIEF SEC.	CHIEF SEC.
DO NOT SCALE THIS PRINT	EXAMINED BY CHIEF ENGINEER	CHIEF ENGINEER
BY: SEC. THIS PRINT ISSUED 272/30	APPROVED BY CHIEF DIV.	CHIEF DIV.
		W65K - 1/348 D

NOTES: COMPONENTS TO BE HARD SOLDERED AND STRESS RELIEVED AT 750°F FOR OUTSIDE FINISH APPROX. 32° INSIDE POLISHED TO MIRROR FINISH GOLD PLATE ALL OVER .0002 THICK

1

MAT'L - 1) FREE CUTTING BRASS PLATE 3/16 TO 2) SEAMLESS BRASS TUBING 5.2500 3) FREE CUTTING BRASS PLATE 5/8 T 1 REQ'D SCALE - 1/1



(27)
 MAT'L ~ FREE CUTTING BRASS
 3 REQ'D
 SCALE ~ 1/1

8 - 32 UNC - 2 1/2

3.000

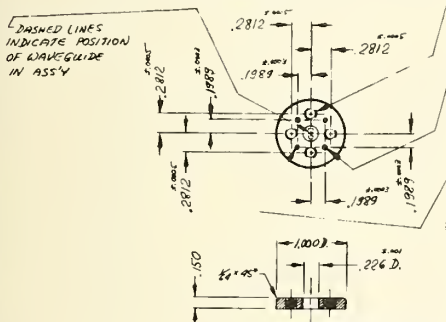
.30"

2.700 REF.

GOLD PLATE ALL OVER .0005" THICK

ORIGINAL DATE OF DRAWING				REVISIONS	
NO.	REV.	DATE	CHANGE	BY	DATE
1					
2					
3					
4					

SUB-ASS'Y CALORIMETER UNIT BASE
 SCALE ~ 1/1



(28)
 MAT'L ~ TELLURIUM COPPER
 1 REQ'D
 SCALE ~ 1/1

90° (4)

.100

.24145"

1.700"

.1068 D.

.040 TYP.

.050

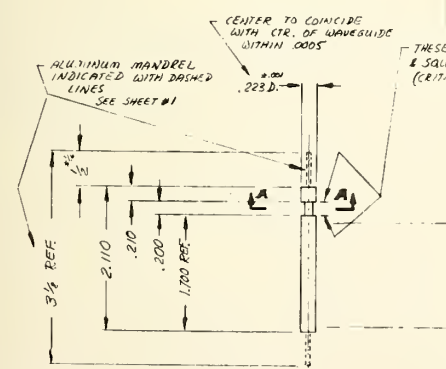
.300

SECTION A-A

DASHED LINE SHOWS POSITION OF THERMOPILE INSULATION (POLYESTER PRESSURE SENSITIVE TAPE) SEE DEVELOPED VIEW BELOW

COMPONENT (TRIM WIRE)
 4 REQ'D
 MAT'L ~ # 20 (.0320) COPPER WIRE
 NOTE: INSTALL IN EA. .0330 D. HOLE IN THIS ITEM AND IN EA. .0330 HOLE IN BASE (SEE LEFT SIDE THIS SHEET)

CALORIMETER FLANGE
 MAT'L ~ TELLURIUM COPPER
 1 REQ'D
 SCALE ~ 1/1



(29)
 MAT'L ~ TETRAFLUORETHYLENE
 1 REQ'D
 SCALE ~ 1/1

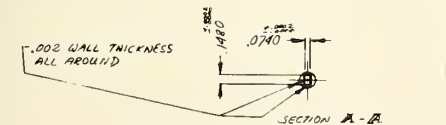
WOUND ON THIS FORM
 47 TURNS EVENLY SPACED
 OF CONSTANT WIRE
 SECURE ENDS BY LOOPING
 THE WIRE THRU THE HOLES SHOWN
 INSTALL JACKS CAMBION # 3230
 OR EQUIVALENT AS SHOWN

.080

.250

.15017"

.1673 D. REF.



(30)
 MAT'L ~ FREE CUTTING BRASS
 1 REQ'D
 SCALE ~ 1/1

OVER .001 THICK

.422

.1700 D.

.1910 D.

ELECTROFORMED THERMAL ISOLATION SECTION
 MAT'L ~ ELECTRODEPOSITED COPPER
 1 REQ'D
 SCALE ~ 1/1

ELECTROFORMING SCHEDULE:
 MASK OFF ENDS OF MANDREL
 PLATE OFF .002 THICK COPPER ALL OVER
 MASK OFF .200 SECTION - SEE CRITICAL REQUIREMENTS
 CONTINUE PLATING TO OBTAIN FINAL D - ALLOW FOR MACH

POLYESTER TAPE

CALORIMETER FLANGE (IN THIS SUB ASS'Y)

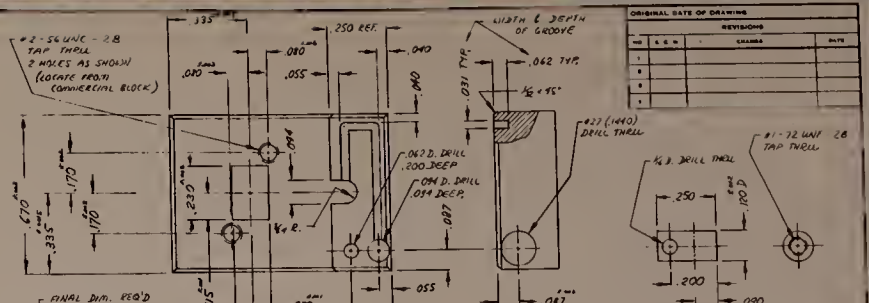
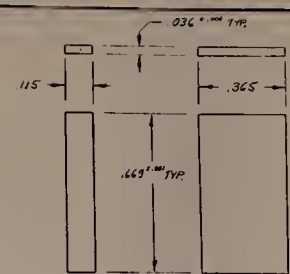
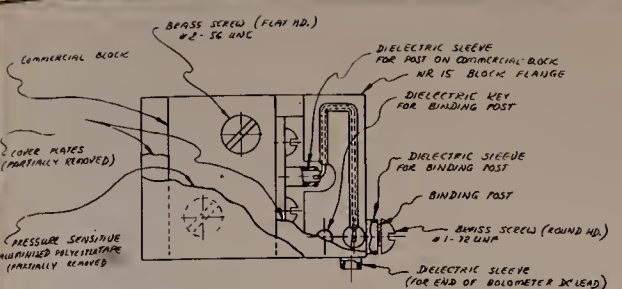
POLYESTER TAPE

PART No. 23

FIGURE 4
 CALORIMETER BASE PARTS.

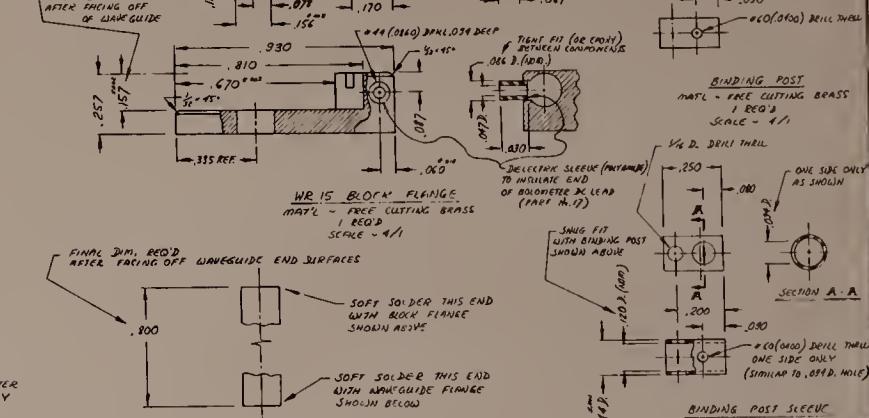
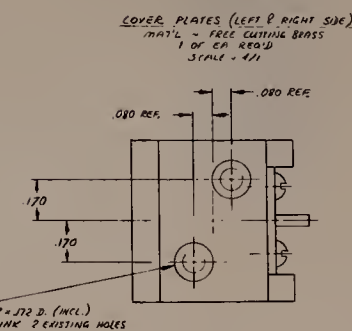
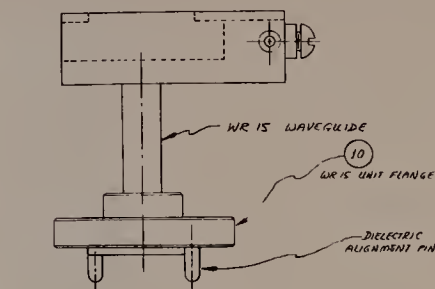
DIMENSIONS IN INCHES (Unless otherwise specified) TOLERANCES (Unless otherwise specified)	QUALITYMAN (Circle 100) PROJECT CODE M.E. HARVEY	CHECKED PROJECT ENGR CHIEF ENG.
DECIMALS ± .005 FRACTIONS ± .010 ANGLES ± 5'	DESIGNED BY M.E. HARVEY	EXAMINED BY CHIEF ENGINEER
DO NOT SCALE THIS PRINT	APPROVED BY THIS PRINT ISSUED	CHECK BY W 65K-1/348 D

ORIGINAL DATE OF DRAWING			
REV.	DATE	REVISIONS	BY
1		ISSUED FOR FABRICATION	
2		REVISED TO SHOW CHANGES	
3			
4			



BRASS SCREW (FLAT HD.) #2-56 UNC
COMMERCIAL BLOCK
COVER PLATES (PARTIALLY REMOVED)
PRESSURE SENSITIVE ALUMINED POLYETHYLENE (PARTIALLY REMOVED)
DIELECTRIC SLEEVE FOR POST ON COMMERCIAL BLOCK
WR 15 BLOCK FLANGE
DIELECTRIC KEY FOR BINDING POST
DIELECTRIC SLEEVE FOR BINDING POST
BINDING POST
BRASS SCREW (ROUND HD.) #1-72 UNF
DIELECTRIC SLEEVE (FOR END OF BOLOMETER X LEAD)

COVER PLATES (LEFT & RIGHT SIDE)
MAT'L - FREE CUTTING BRASS
1 REQ'D
SCALE - 4/1



SUB-ASSY BOLOMETER UNIT
SCALE - 4/1

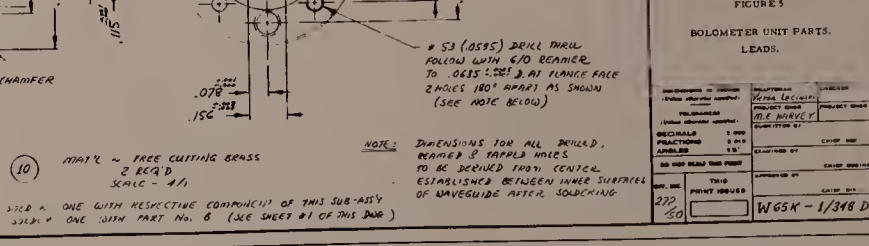
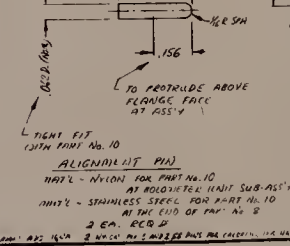
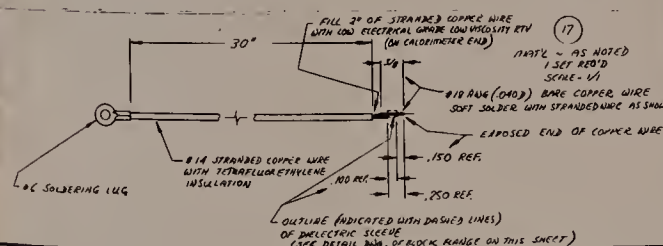
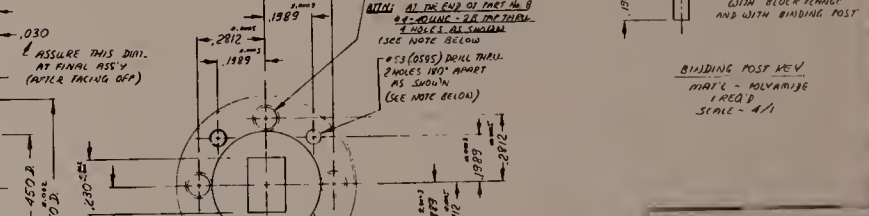
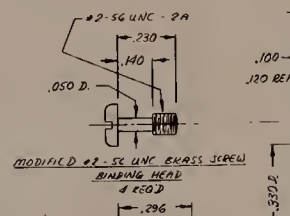
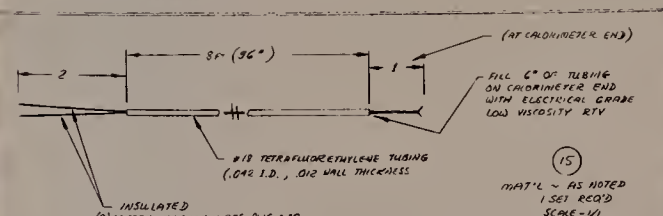
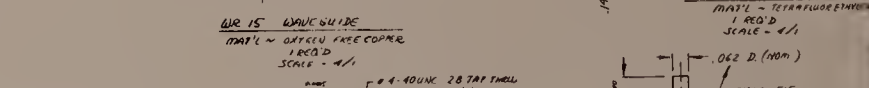
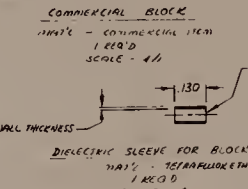


FIGURE 5
BOLOMETER UNIT PARTS
LEADS.

REV.	DATE	REVISIONS	BY
1		ISSUED FOR FABRICATION	
2		REVISED TO SHOW CHANGES	
3			
4			

WGSX-1/348 D

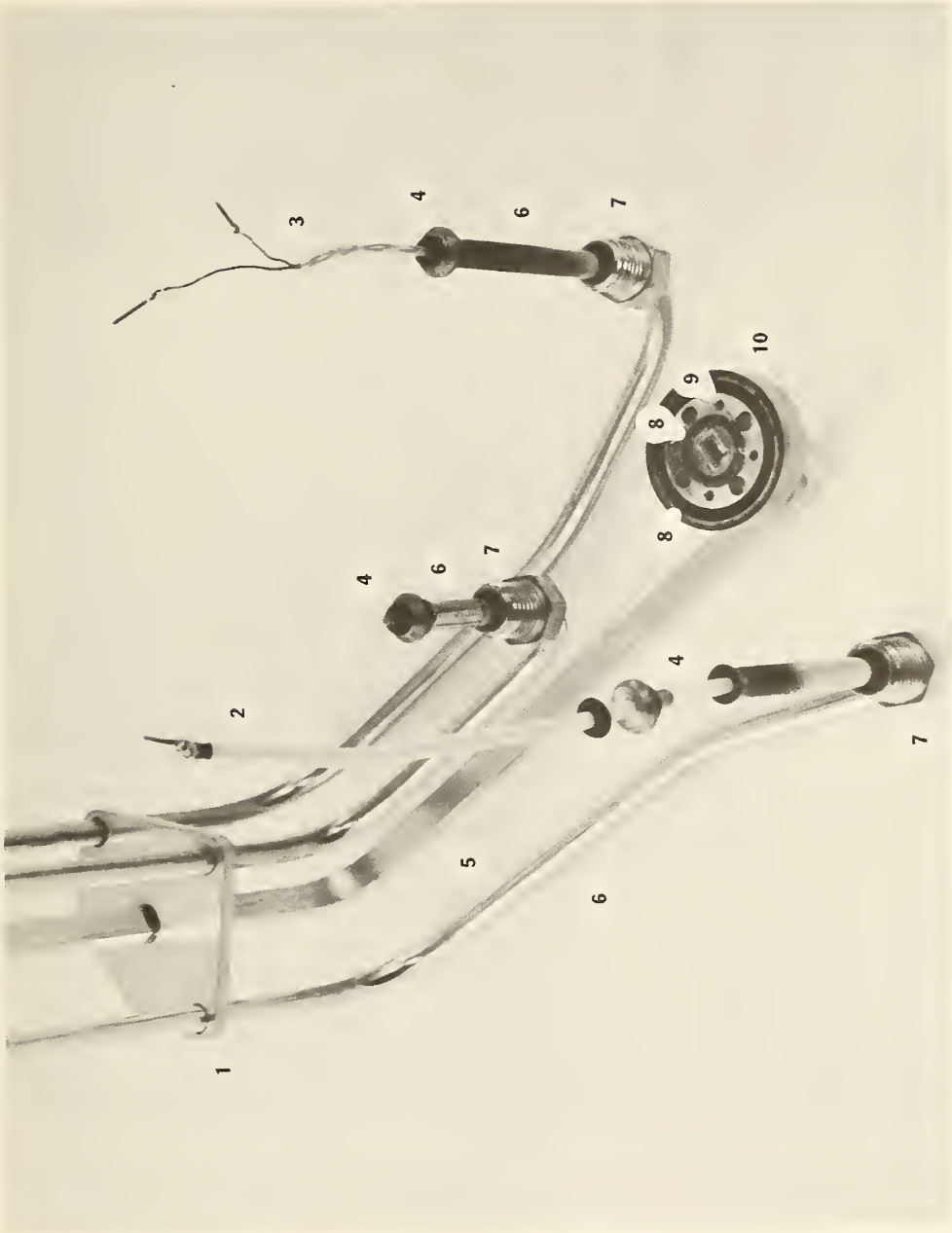


Figure 6. Lead-in seals.

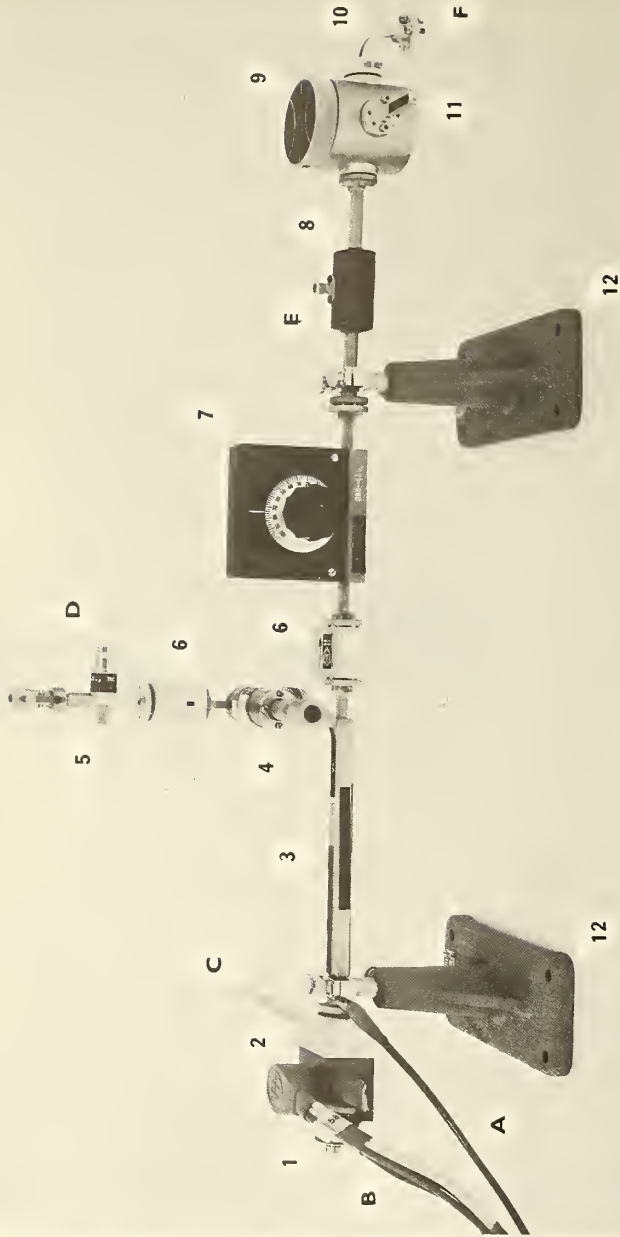


Figure 7. Components to supply microwave power.

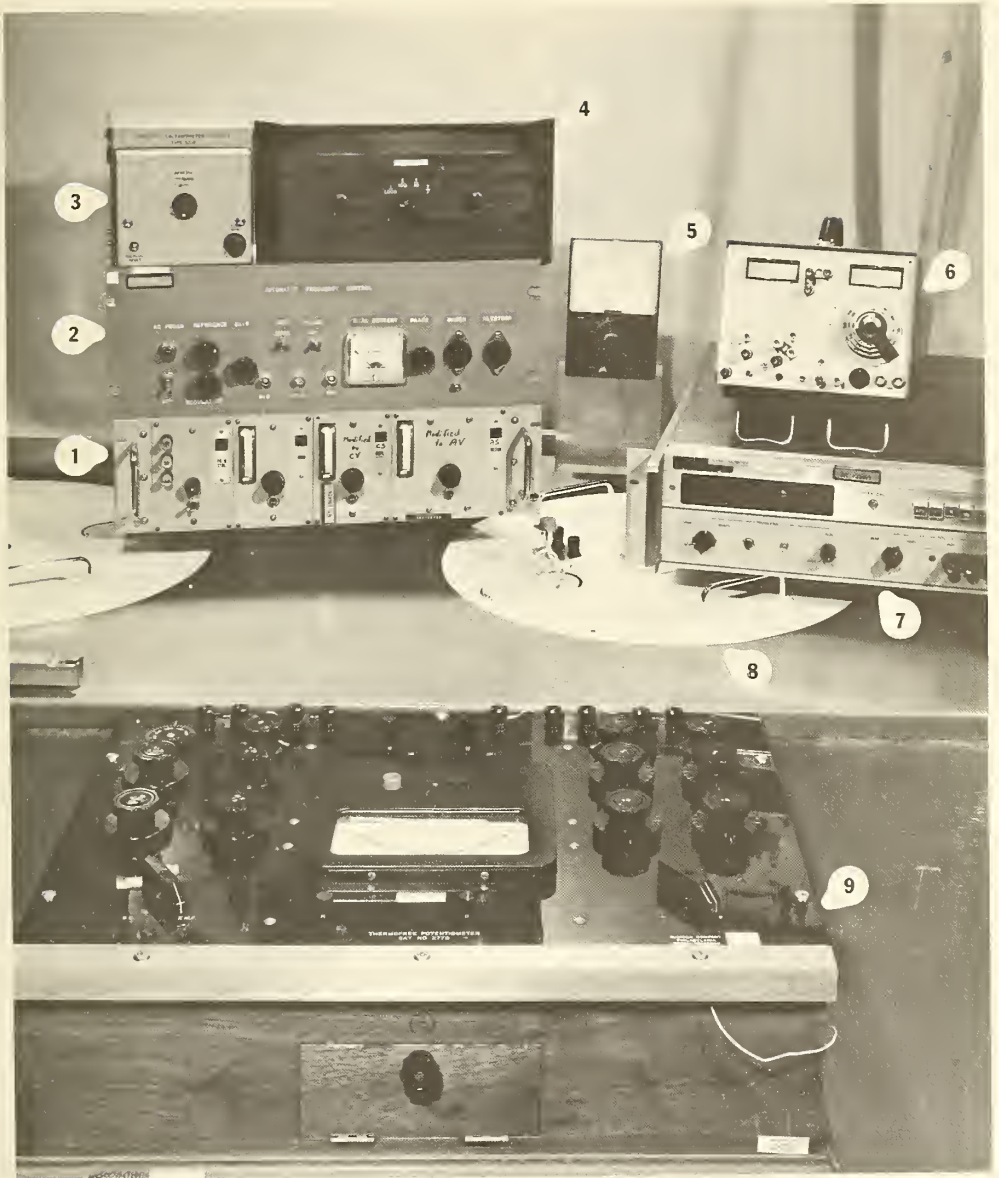


Figure 8. Accessory equipment.

U.S. DEPT. OF COMM. BIBLIOGRAPHIC DATA SHEET	1. PUBLICATION OR REPORT NO. Technical Note 618	2. Gov't Accession No.	3. Recipient's Accession No.
4. TITLE AND SUBTITLE WR15 Microwave Calorimeter and Bolometer Unit		5. Publication Date	
		6. Performing Organization Code	
7. AUTHOR(S) Morris E. Harvey		8. Performing Organization	
9. PERFORMING ORGANIZATION NAME AND ADDRESS NATIONAL BUREAU OF STANDARDS, Boulder Labs. DEPARTMENT OF COMMERCE Boulder, Colorado 80302		10. Project/Task/Work Unit No.	
		Project No. 2725171 11. Contract/Grant No.	
12. Sponsoring Organization Name and Address		13. Type of Report & Period Covered	
		Final(1/1/71-12/31/71) 14. Sponsoring Agency Code	
15. SUPPLEMENTARY NOTES			
<p>16. ABSTRACT (A 200-word or less factual summary of most significant information. If document includes a significant bibliography or literature survey, mention it here.)</p> <p>A microwave calorimeter which serves as the National Bureau of Standards (NBS) standard for power measurements in the frequency range 50 to 75 GHz has been completed and evaluated recently. Included here are descriptions of the principal changes in the calorimeter and bolometer unit from the WR28 models which are of similar design. Also included are construction details, accessory equipment, operation procedure, and error analysis. An improved thermal isolating waveguide section and calorimeter flange are features of this calorimeter.</p> <p>A careful error analysis permits the determination of the effective efficiency of a standard bolometer unit to estimated limits of systematic uncertainty of $\pm 0.23\%$. The estimated 3σ limit of random uncertainty is 0.05%.</p>			
<p>17. KEY WORDS (Alphabetical order, separated by semicolons)</p> <p>Calorimeter; microwave; power; standard.</p>			
<p>18. AVAILABILITY STATEMENT</p> <p><input checked="" type="checkbox"/> UNLIMITED.</p> <p><input type="checkbox"/> FOR OFFICIAL DISTRIBUTION. DO NOT RELEASE TO NTIS.</p>		<p>19. SECURITY CLASS (THIS REPORT)</p> <p>UNCLASSIFIED</p>	<p>21. NO. OF PAGES</p>
		<p>20. SECURITY CLASS (THIS PAGE)</p> <p>UNCLASSIFIED</p>	<p>22. Price</p> <p>\$.75</p>

NBS TECHNICAL PUBLICATIONS

PERIODICALS

JOURNAL OF RESEARCH reports National Bureau of Standards research and development in physics, mathematics, and chemistry. Comprehensive scientific papers give complete details of the work, including laboratory data, experimental procedures, and theoretical and mathematical analyses. Illustrated with photographs, drawings, and charts. Includes listings of other NBS papers as issued.

Published in two sections, available separately:

• Physics and Chemistry

Papers of interest primarily to scientists working in these fields. This section covers a broad range of physical and chemical research, with major emphasis on standards of physical measurement, fundamental constants, and properties of matter. Issued six times a year. Annual subscription: Domestic, \$9.50; \$2.25 additional for foreign mailing.

• Mathematical Sciences

Studies and compilations designed mainly for the mathematician and theoretical physicist. Topics in mathematical statistics, theory of experiment design, numerical analysis, theoretical physics and chemistry, logical design and programming of computers and computer systems. Short numerical tables. Issued quarterly. Annual subscription: Domestic, \$5.00; \$1.25 additional for foreign mailing.

TECHNICAL NEWS BULLETIN

The best single source of information concerning the Bureau's measurement, research, developmental, cooperative, and publication activities, this monthly publication is designed for the industry-oriented individual whose daily work involves intimate contact with science and technology—for engineers, chemists, physicists, research managers, product-development managers, and company executives. Includes listing of all NBS papers as issued. Annual subscription: Domestic, \$3.00; \$1.00 additional for foreign mailing.

Bibliographic Subscription Services

The following current-awareness and literature-survey bibliographies are issued periodically by the Bureau: Cryogenic Data Center Current Awareness Service (weekly), Liquefied Natural Gas (quarterly), Superconducting Devices and Materials (quarterly), and Electromagnetic Metrology Current Awareness Service (monthly). Available only from NBS Boulder Laboratories. Ordering and cost information may be obtained from the Program Information Office, National Bureau of Standards, Boulder, Colorado 80302.

NONPERIODICALS

Applied Mathematics Series. Mathematical tables, manuals, and studies.

Building Science Series. Research results, test methods, and performance criteria of building materials, components, systems, and structures.

Handbooks. Recommended codes of engineering and industrial practice (including safety codes) developed in cooperation with interested industries, professional organizations, and regulatory bodies.

Special Publications. Proceedings of NBS conferences, bibliographies, annual reports, wall charts, pamphlets, etc.

Monographs. Major contributions to the technical literature on various subjects related to the Bureau's scientific and technical activities.

National Standard Reference Data Series. NSRDS provides quantitative data on the physical and chemical properties of materials, compiled from the world's literature and critically evaluated.

Product Standards. Provide requirements for sizes, types, quality, and methods for testing various industrial products. These standards are developed cooperatively with interested Government and industry groups and provide the basis for common understanding of product characteristics for both buyers and sellers. Their use is voluntary.

Technical Notes. This series consists of communications and reports (covering both other-agency and NBS-sponsored work) of limited or transitory interest.

Federal Information Processing Standards Publications. This series is the official publication within the Federal Government for information on standards adopted and promulgated under the Public Law 89-306, and Bureau of the Budget Circular A-86 entitled, Standardization of Data Elements and Codes in Data Systems.

Consumer Information Series. Practical information, based on NBS research and experience, covering areas of interest to the consumer. Easily understandable language and illustrations provide useful background knowledge for shopping in today's technological marketplace.

CATALOGS OF NBS PUBLICATIONS

NBS Special Publication 305, Publications of the NBS, 1966-1967. When ordering, include Catalog No. C13.10:305. Price \$2.00; 50 cents additional for foreign mailing.

NBS Special Publication 305, Supplement 1, Publications of the NBS, 1968-1969. When ordering, include Catalog No. C13.10:305/Suppl. 1. Price \$4.50; \$1.25 additional for foreign mailing.

NBS Special Publication 305, Supplement 2, Publications of the NBS, 1970. When ordering, include Catalog No. C13.10:305/Suppl. 2. Price \$3.25; 85 cents additional for foreign mailing.

Order NBS publications (except Bibliographic Subscription Services) from: Superintendent of Documents, Government Printing Office, Washington, D.C. 20402.

U.S. DEPARTMENT OF COMMERCE
National Bureau of Standards
Washington, D.C. 20234

OFFICIAL BUSINESS

Penalty for Private Use, \$300

POSTAGE AND FEES PAID
U.S. DEPARTMENT OF COMMERCE

